

THE SANTA ANNA NEWS

ESTABLISHED 1886

Published Every Friday Morning by THE NEWS PUBLISHING COMPANY AT SANTA ANNA, COLEMAN COUNTY, TEXAS

R. A. JEFFREYS, Editor and Business Manager HARRIET M. JEFFREYS, Secretary

Notices of entertainments, where a charge of admission is made, obituaries, cards of thanks, resolutions of respect, and all items of public interest will be shared for the regular rates.

Circulation 1,100. Advertising Rates on Application.

Any erroneous reflection upon the character of any person or firm, or misstatement of facts, appearing in these columns will be gladly and promptly corrected upon the matter being called to the attention of the management.

SUBSCRIPTION RATES:

In Coleman County \$1.00 Per Annum Outside of Coleman County \$1.50 Per Annum Canada and Mexico \$1.50 Per Annum

Published at Santa Anna, Texas, as second class matter under the Act of Congress of March 3, 1879.

A Weekly Newspaper With an Editorial Personality Working For the Welfare of Santa Anna. Not a Numbly-jumbo or Milk-sop. Editorial Column. Put One With the Courage of His Convictions Whether You Agree With Its Ideas or Not.

Editorial

FEW DOUBT THE CAPACITY of America to arm against any aggressor, since her marvelous industrial machine moves into its stride. But it takes far more than a tough military nation to live—and prosper—permanently as an independent sovereign power in the world of today. The world of today is a world of reality. Natural laws of survival which during the past decade had been submerged in a mist of theory and reform, have suddenly reappeared like grim headlands on a rocky coast. France was wrecked on one of these headlands, and in the words of Wendell Wilkie, was crushed like an eggshell. She was wrecked because she had adopted a candy stick theory of government. When a child cries you give him a piece of candy and try to quiet him. This country has been living on the candy stick theory. A \$20,000,000,000 deficit is less than a dozen candy sticks. The candy stick theory has been passed on to the children of the future. It is predicted that...

the Federal debt will rise at least to \$60,000,000,000 and probably more before the end. This debt and the trend back of it will ultimately result in utter destruction of all that America stands for: freedom of opportunity, freedom of speech, freedom of religion, unless we are tough enough morally to face the reality which France failed to face. Armaments alone won't save us. Democracy collapses when it becomes safe internally and when its people forget to work. Candy sticks are not a strengthening diet.

SANTA ANNA NEEDS A LAW to stop autoists from parking in the street with a big fine for those who leave their cars for from five to thirty minutes. It is a common practice for cars to be stopped in the street and block other cars whose drivers desire to leave. One driver sat in his car at the post office one morning for a week and caused much trouble for the police. The law should be passed which would require the autoist to park in a designated parking place and provide him from parking and causing trouble for other autoists. If the law is passed it should be enforced. Another law should be passed which would require the autoist to park in a designated parking place and provide him from parking and causing trouble for other autoists.

SENIORS FOR SALE A Brownwood Business College scholarship at a price and on terms you can't afford to pass by. THE SANTA ANNA NEWS

COBB... A Capable Attorney I have tried many cases, both criminal and civil, in the courts of the state, as the records will show. To affirm this statement I invite your inspection of the court records most accessible to you, the voters of this district, those of McCulloch, Mason and other adjoining counties of my home county. I am at present serving my fourth year as judge of McCulloch county in my judgment as well as experience. OFFICE OF RESPONSIBILITY My office is an office of heavy responsibility and a man who considers every detail of any case with utmost care and of good sound judgment, a man who will conscientiously fulfill his duties as district attorney. COURTEOUS HONEST EFFICIENT and ELERT And if elected my pledge to you is, that in so far as it is humanly possible I will strive to reach the highest standard as your district attorney, to be at all times and to prosecute every offender of the law with equal effort. A McCulloch county man has never held office in this district since it was created. LET'S GIVE ONE A TRIAL. VOTE FOR HOWELL E. COBB FOR DISTRICT JUDGE, 35TH JUDICIAL DISTRICT

get out of their cars in the middle of the street and stand and talk with their car door open. It would serve them right if a passing car knocked their hip pockets out of joint and moved their doors a block or two ahead of their cars.

A STRIKE IN ONE OF THE country's major aircraft factories was recently averted by a narrow margin. The factory plays a key role in the new arms program. One wonders when malcontents will realize that the people will no longer stand for industrial disputes which menace national security. If labor and management can't get together and settle their troubles without disrupting production, the authority of government will of necessity be used to control them. Labor and industry have a chance today to show the stuff they are made of. When the nation dictates the policy that will take men for national defense, it cannot allow labor or industry to dictate terms of employment or production.

RODEO

(Continued From Page 1) Boys' break-away calf roping: First, Rex Beck, Valera, 8.7; second, Hal Beck, Valera, 16.1; third, Jack Kingsbery, Santa Anna, 29. Saddle bronc riding: First, Ernie Barnett, Del Rio; second, Paul Gould, Deming, N. M.; third, Elmo Walls, Cleburne. Steer bulldozing: First, Clinton Booth, Manville, 8 seconds; second, Hobart Flowers, Duncan, Okla., 15.3; third, Carl Taylor, Pecos, 16.4. Girls' flag race: First, Mrs. Curtis Barron, Cameron, 16.2; second, Laverne Johnson, McGregor, 16.3; third, Lou Mitchell, Lampasas, 16.4. Coleman county calf roping: First, J. P. Miller, Jr., Coleman, 26.8; second, J. D. Brown, Talpa, 30.5; third, John W. Taylor, Santa Anna, 36.8. Wild cow milking: First, Curtis Barron, Cameron, 29.4; second, T. J. Brannon, Comstock, 33.6; third, Peanut Barron, Cameron, 35.2. Calf roping: First, Buck Echols, Liberty, 16.5; second, Leo Brannon, Comstock, 17; third, Jim Reynolds, Albany, 18.1. Final results of first go-round: Calf roping: First, Frank Hedrick, Buckholtz, 16 seconds; second, Echols, 16.5; third, Reynolds, 17.5. Wild cow milking: First...

JEWELRY Watches and Diamonds Complete Line of Jewelry Watch Repairing John T. Payne YOUR LOCAL JEWELER

Announcements

- FOR DISTRICT CLERK: MRS. JACK McCLURE (Re-election) FOR PUBLIC WEIGHER PCT. 2: JOE FLORES (Re-election) FOR COMMISSIONER PCT. 2: JOHN A. WILLIAMS (Re-election) FOR COUNTY CLERK: GEORGE M. SMITH (Re-election) FOR ASSESSOR - COLLECTOR: H. M. BROWN (Re-election) FOR SHERIFF: GEORGE ROBEY (Re-election) COUNTY TREASURER: HUNTER WOODRUFF (Re-election) FOR COUNTY ATTORNEY: L. M. CRUMP FOR COUNTY JUDGE: JOHN O. HARRIS (Re-election) FOR DISTRICT ATTORNEY: 35th Judicial District W. B. (Billy) BAKER HOWELL E. COBB 119th Judicial District O'NEAL DENDY FOR JUSTICE OF THE PEACE Precinct No. 7 C. H. RICHARDS J. J. GREGG

GOOD OLD BERMUDA! It's 'good old bermuda' and 'good old johnson grass' now. These two grasses, once hated and feared by the farmer, are coming into their own. The man without livestock still has no love for them—but cattle, sheep and goats are showing up on more and more Texas farms. Both grasses are fine at healing wounds caused by erosion, at protecting terrace channel outlets, and both respond wonderfully to proper care and management. Chemical analysis of 1,432 samples of various grasses growing in East Texas, recently made by the Texas Agricultural Experiment Station, saw bermuda grass top all others in protein content, which ranged as high as 8 percent in the spring months. Johnson grass was also in the top bracket in this respect. Bermuda and johnson grass shared top ranking in both phosphoric acid and lime, two important minerals in sections where livestock often suffer from mineral deficiency. As an indication of the increasing popularity of the two grasses, R. R. Lancaster, pasture specialist of the Texas A and M Extension Service, quotes Soil Conservation Service reports that more requests are coming in for plantings than the CCC boys and WPA labor groups can handle. In 1939, 1,512 farmers claimed AAA soil-building payments for sodding 16,022 acres. On July 25th, the Texas Farm and Home Hour Program of the Texas Quality Network was devoted to the work of the Texas Sheep and Goat Raisers Association. E. S. Mayer, President of the Association, pointed out the many phases of the organization's work and program which is being carried on for the benefit of the grower. The close cooperation between the state and national organizations was emphasized. Since a large number of the listeners were probably city people of Houston, Dallas, Fort Worth and San Antonio, the desirability of lamb as a meat was brought out. The work of the National Live Stock and Meat Board in advertising lamb for Texas growers was stressed. Santa Anna Merchants who advertise here help give you a good paper. Patronize them.

Treat yourself to a summer's supply of cool, comfortable Airmen Whites. Their collars won't wilt in the warmest weather... and they won't shrink out of fit. In crisp, frosty broadcloth, mesh and other smart new lightweight weaves. SHIRTCRAFT AIRMAN WHITE SHIRTS THE MAN'S STORE PARKER'S

ed and feared by the farmer, are coming into their own. The man without livestock still has no love for them—but cattle, sheep and goats are showing up on more and more Texas farms. Both grasses are fine at healing wounds caused by erosion, at protecting terrace channel outlets, and both respond wonderfully to proper care and management. Chemical analysis of 1,432 samples of various grasses growing in East Texas, recently made by the Texas Agricultural Experiment Station, saw bermuda grass top all others in protein content, which ranged as high as 8 percent in the spring months. Johnson grass was also in the top bracket in this respect. Bermuda and johnson grass shared top ranking in both phosphoric acid and lime, two important minerals in sections where livestock often suffer from mineral deficiency. As an indication of the increasing popularity of the two grasses, R. R. Lancaster, pasture specialist of the Texas A and M Extension Service, quotes Soil Conservation Service reports that more requests are coming in for plantings than the CCC boys and WPA labor groups can handle. In 1939, 1,512 farmers claimed AAA soil-building payments for sodding 16,022 acres. On July 25th, the Texas Farm and Home Hour Program of the Texas Quality Network was devoted to the work of the Texas Sheep and Goat Raisers Association. E. S. Mayer, President of the Association, pointed out the many phases of the organization's work and program which is being carried on for the benefit of the grower. The close cooperation between the state and national organizations was emphasized. Since a large number of the listeners were probably city people of Houston, Dallas, Fort Worth and San Antonio, the desirability of lamb as a meat was brought out. The work of the National Live Stock and Meat Board in advertising lamb for Texas growers was stressed. Santa Anna Merchants who advertise here help give you a good paper. Patronize them.

On July 25th, the Texas Farm and Home Hour Program of the Texas Quality Network was devoted to the work of the Texas Sheep and Goat Raisers Association. E. S. Mayer, President of the Association, pointed out the many phases of the organization's work and program which is being carried on for the benefit of the grower. The close cooperation between the state and national organizations was emphasized. Since a large number of the listeners were probably city people of Houston, Dallas, Fort Worth and San Antonio, the desirability of lamb as a meat was brought out. The work of the National Live Stock and Meat Board in advertising lamb for Texas growers was stressed. Santa Anna Merchants who advertise here help give you a good paper. Patronize them.

PLAY POOL In Air-conditioned, comfortable Surroundings. Also Dominoes. You are always welcome here. SANTA ANNA RECREATION CLUB Raymond Kemp, Proprietor.

TYPEWRITER RIBBONS Ribbons to fit all standard typewriters. Also carbon paper and second sheets. THE SANTA ANNA NEWS

WE'RE READY... and big enough to do the Job! AMERICA is busily engaged in building a defense of her freedom. This freedom of ours—freedom of action, freedom of thought, freedom from fear and oppression, freedom of enterprise—is the most precious thing in the world to protect. Electric service will play a big part in this great program of strengthening our defenses. Your electric company is ready NOW to do its full share in any task this community may be called upon to perform. We're ready because for years we have planned far in advance in order to meet your ever-increasing demands for electrical service. Because of this we have built power capacity in advance of any demands in the community. To assure constant power under all conditions our several sources of electricity are linked together so that the switch at your finger-tip controls power from many sources. If one should fail, it is but a split second until a new source of power is at your bidding. The highly skilled and trained staff of people who have built up your electric service, and who are serving you from day to day, are eager for any new task. It is through these people, and this marvelous system of interconnected power plants and distribution lines they have built, that we are ready to do our part. Meanwhile, we have not forgotten that our job in the future, as in the past, is to improve our service and its usefulness to you, and bring more of the good things of life to more people at less cost.

West Texas Utilities Company Invite a visitor to West Texas—the Land of Opportunity

Leedy News

By Dorothy McClure

Mr. and Mrs. Roy Newman and children, Roy Jr., Janice, and Charles, of Dallas are visiting relatives here this week.

Mr. and Mrs. W. C. Newman and sons of Portales, New Mexico, Mrs. R. Mears and daughter, Clovis, New Mexico and Mrs. L. Moore and sons of Portales, New Mexico came for the Newman reunion last week and visited friends and relatives later.

The people in this community enjoyed the nice rain the latter part of last week.

Mrs. Noble Carpenter of Line, who has been ill, is spending several weeks with her parents, Mr. and Mrs. W. J. McClure. Miss Marie Rouse returned Sunday from visiting Mr. and Mrs. Roy Higgins of Beard.

Mr. and Mrs. Z. W. Box and Wilburn returned Saturday from a weeks visit with her son, and family, Mr. and Mrs. Chesler Box in Roby, Texas.

Boots McClure visited Sunday with Mr. and Mrs. W. J. McClure and J. E. McClure.

Miss Bertha McClure is visit-

ing her sister, Mrs. Elwayne Weathers in Cisco, this week.

H. D. C. News

Santa Anna H. C. Club News

Mrs. Fred Rollins will be hostess and program chairman when the Santa Anna Home Demonstration Club meets at her home, Friday, August 23, at 2:30 p. m. Those not having conveyance meet at Phillip's Drug Store, some one will pick you up.

We are very happy to announce our club float won second place in the rodeo parade. We are also proud to know our 4-H boys of the county won first place. Congratulations.

TO THE VOTERS OF PRECINCT NO. 7: Handicapped under difficulties which have prevented me from seeing many of you to personally solicit your vote in the second primary, of Saturday of this week, I wish to take this method of thanking those who so kindly supported me in the first primary, and assure you all that I will greatly appreciate your vote Saturday, August 24th. The ticket will be short, but let me urge you to go to the polls and vote.

Yours truly, J. J. Gregg, candidate for Justice of the Peace, Precinct No. 7, Coleman County, Texas.

OLIN CULBERSON IS CAREER MAN ASKING PROMOTION

Olin Culberson is a newcomer to Texas politics, but he is a veteran of many years experience as far as the Texas railroad commission is concerned. For many years, he was a top-ranking official in the agency which regulates oil production and transportation. He was particularly active in the long fight which led to reduction of gas rates in scores of Texas towns and cities.

With the race narrowed to two men, it should not be difficult for any thoughtful voter to make up his mind.

Mr. Culberson has had years of valuable experience in the department of government to whose directorate he now seeks election. If elected to the railroad commission, he will go to work immediately, without having to go through a long period of training and experimentation. He is thoroughly familiar with every detail of a highly technical and responsible job.

His opponent has shown ability as a campaigner in three races for State office, but he lacks the solid background of public experience and training which Mr. Culberson possesses.

In every respect, Olin Culberson is a career man seeking promotion on the basis of his record in office. Such a man seldom has sufficient vote-getting ability to make an impression in a statewide political race, but Mr. Culberson is an exception. Opposing men much better known to the voters, he showed strength in every part of the State and outdistanced opponents whose names have appeared frequently on Texas ballots.—Houston Post.

NO. 236—IN EQUITY (Samford)

In the United States District court in and for the Western District of Texas, Waco Division.

J. M. HUBBERT vs. TEMPLE TRUST COMPANY

NOTICE IS HEREBY GIVEN that the undersigned has filed his application with the Clerk of the United States District Court in and for the Western District of Texas, Waco Division, for an order authorizing him to sell and convey to B. E. Samford and wife, Laura Samford all of the East one-half (1/2) of Lot Three (3), Block Twelve (12), of Sadler & Martin Addition to the City of Coleman, Coleman County, Texas, together with all

improvements thereon situated, and for a consideration of \$850.00 and of which amount, the sum of \$124.00 will be paid in cash, and the balance, \$726.00, to be evidenced by one note in said sum, to be executed by said purchasers, payable to the order of the undersigned at his office in the City of Temple, Bell County, Texas, and the principal and interest to accrue on said note to become due and payable in 84 monthly installments of \$10.96 each, the first installment to become due and payable on or before October 1, 1940, and a similar installment on or before the first day of each succeeding 83 months, to bear interest from September 1, 1940 at the rate of seven per cent per annum, the interest to become due and payable monthly, and each payment, when made, to be applied first to the accrued interest on said note, and the balance to the principal, and all past due principal and interest on said note to bear interest from maturity date of such principal and interest at the rate of ten per cent per annum, and to provide that failure to pay any monthly installment of principal or interest thereon, when due, shall, at the option of the holder, mature said note; to stipulate for ten per cent additional as attorney's fees, and said note to be secured by a Vendor's Lien and Deed of Trust lien on the property and premises, above described.

Said application will be heard by the Honorable Charles A. Boynton, Judge of said Court, after this notice shall have been published for a period of ten days, and any person interested in said Receivership Estate may contest this application.

WITNESS my hand at Temple Texas, this 13th day of August A. D. 1940.

H. C. GLENN, Receiver for Temple Trust Company, Temple, Texas.

(Published Aug. 16 23 1940)

Classified

Custom Grinding

We are doing custom grinding and mixing on poultry and dairy feeds. Use your home grown grains and save from 50 cents to \$1.00 per hundred pounds. Griffin Hatchery

Wanted

Anyone having a 2- or 3-bedroom house close in to the business section for lease, advise the News office, please.

WANTED: Fifty pupils for free instruction in oil painting. Mrs. Charles Oakes. 1tp

Lost

LOST—Black pig, white spot on forehead. H. R. Layne. 33-1tp

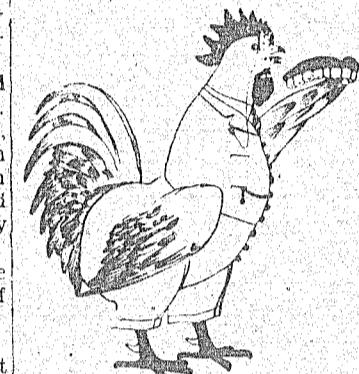
LOST—American Legion radiator emblem, last week, finder return to The News office. 1t

Lost or Strayed

LOST—or strayed, one grey horse, 1100 pounds, with shoes on, star in left hock. Reward. Rat Guthrie 1tc

For Rent

FOR RENT: Two-room furnished house near town. Telephone Red 326. 1tp



Chickens Need TEETH

Granite Grit supplies this need GRANITEX

is recommended by poultrymen everywhere. Grow better flocks at lower cost. Helps digestion by grinding feed thoroughly. Ask your local dealer, or write:

Llano Granite Products Co. LLANO, TEXAS

E. L. WOOD'S SINCLAIR STATION
Brady Highway Junction
SINCLAIR PRODUCTS
24-Hour Service
Gates Tires and Batteries
Washing and Greasing
Santa Anna Phone 74

YOUNG PEOPLE
WHAT ABOUT YOUR FUTURE?
WHEN YOU LOOK FOR A JOB AND THE EMPLOYING OFFICIAL ASKS
WHAT CAN YOU DO?
Can You Tell Him You've Been Trained?

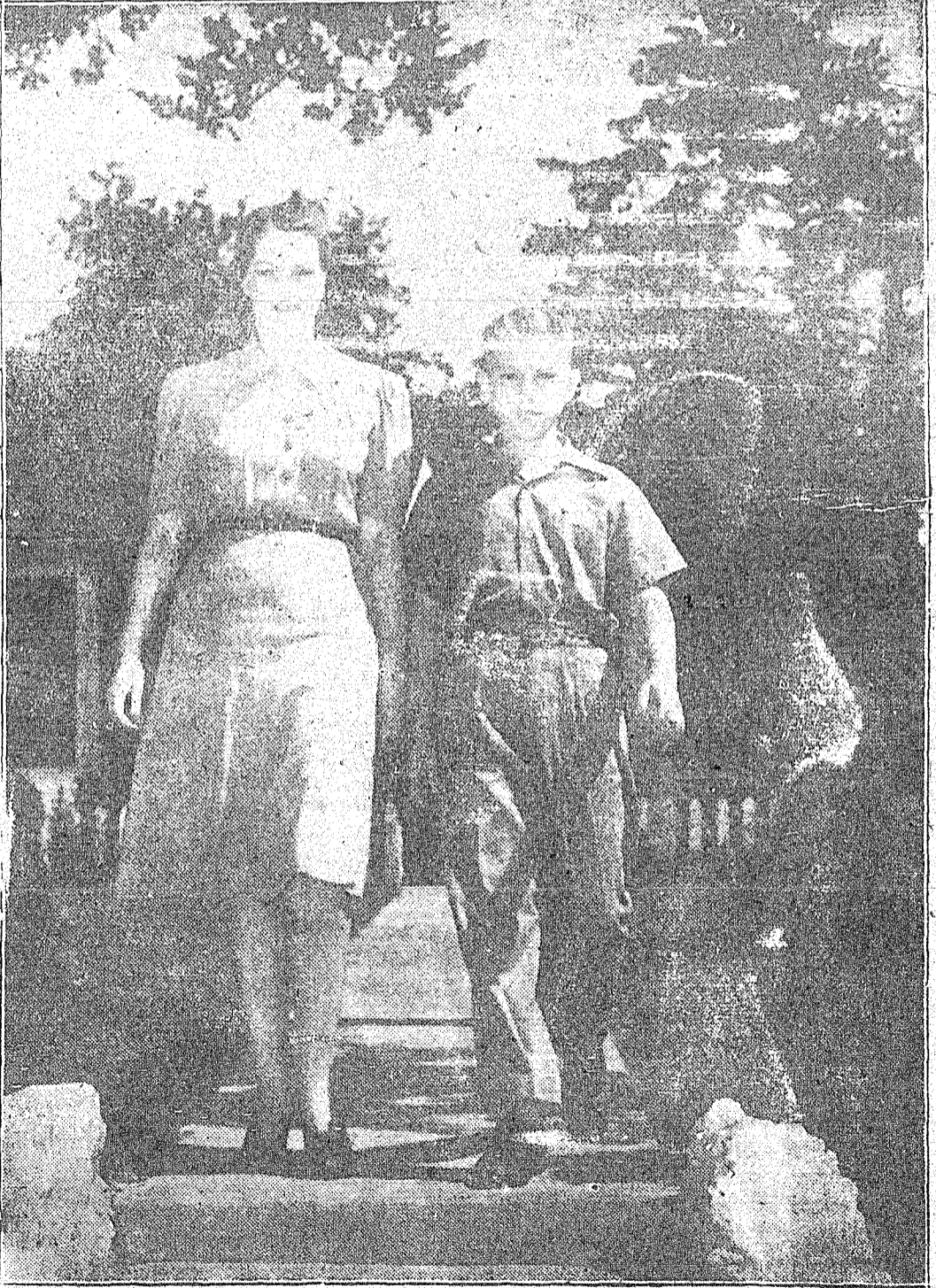
Your chances for employment and advancement in business are 100 per cent greater if you are trained to be an—
ACCOUNTANT or BOOKKEEPER
SECRETARY or STENOGRAPHER

Write for free booklet about OPPORTUNITIES IN BUSINESS
FALL TERM STARTS SOON
AIR CONDITIONED
Brownwood College of Business
100 1/2 Center Avenue Brownwood, Texas

GROCERY SPECIALS
THAT GIVE A NEW MEANING TO THRIFT
SPECIALS FOR THE WEEK-END AND THE RODEO DAYS
SUGAR Powdered or Brown 1 Poud Cartons 2 for .15
PEACHES Medium Syrup No. 1 Tall Can .09
SOAP CHIPS Our Value 5 Lb.Box .35
SPUDS Colorado White 10 Lb. For .16
PEANUT BUTTER Quart Jar .25
COFFEE Our Special 2 Lbs. For 29
See Our News Flashes For Other Specials
THE RED & WHITE STORES
J. L. Boggus & Co. Phone 56
Hunter Brothers Phone 48

be up for consideration within the next few weeks, will be the means of informing the consumer what he is buying. It will also afford a means by which

Pierce Brooks' Star Campaigners



This attractive couple are enthusiastic campaigners for Pierce Brooks in his runoff race for railroad commissioner. Pictured before their modest cottage in Oak Cliff, Dallas suburb, they are Mrs. Pierce Brooks and Bob, age 12. Although they remain at home while the candidate tours the state, they are each doing a big part in the campaign. Mrs. Brooks has spoken at club meetings and over the radio, and son Bob has mounted the stump to enlist the neighborhood kids to urge their parents' votes.

(This advertisement paid for by friends of Pierce Brooks).

ROY VOSS
HOUSE WIRING
Electrical Installations
Telephone: Black 214

DR. D. B. SPROTT
Graduate Veterinarian
Humane Treatment
Phone 673
Coleman, Texas

Densman Welding Shop
Trailer Work — Horse Shoeing
GENERAL BLACKSMITHING
Electric and Acetylene Welding
All Work Guaranteed

DR. J. E. MARTIN
OPTOMETRIST
EYES EXAMINED
GLASSES REPAIRED
LENS DUPLICATED
GLASSES FITTED
607-609 Coleman Office Bldg.
Office 716—PHONE—Res. 192

DR. R. A. ELLIS
Optometrist
309-10-11 Citizens Nat'l. Bank Building
Brownwood Texas

Spot news
Try US Next Time!

When your shoes need repairing, bring them to us. We give careful attention to our work and with modern methods and machinery make 'em look "Brand New." Our low prices and guaranteed work will meet your needs. Try us. A wide range of other leather work handled with dispatch.

The Shoe Hospital
J. Glen Willie, D.M., Surgeon.

FOR SANITARY LAUNDRY WORK
PHONE NO. 2-8-4
Or see JACK BRUSENHAN
Medium Weight Quilts 5 for \$1.00
Wool Rugs 3c per square foot
Pillows 25c each
Damp Wash 3c lb.
Rough Dry 6c lb.
Flat Work 5c lb.
EVERYTHING WEIGHED DRY
Santa Anna-Coleman Steam Lndry.

SOCIETY - CLUBS

MRS. ODOM HONORED

Mrs. J. D. Henderson assisted by Mrs. Fred Brusenhan, Miss Ola Roberts and Mrs. Payne Henderson, honored Mrs. Will Odom with a gift party Tuesday afternoon...

Personals

Miss Mary Gladys Pope returned Wednesday from San Angelo where she has been visiting friends. Mr. and Mrs. Lovel Simmons of Ziegler, Ill., spent from Thursday to Tuesday visiting Mrs. Simmons parents...

Austin is spending his vacation here with relatives and friends. Erin Ashmore of Dalhart, Texas spent the weekend in Santa Anna. Miss Katherine Gibbs of Breckenridge spent the weekend with Mrs. Henry Cook...

Rev. E. E. White of Plainview read the ceremony. The improvised altar in the living room was banked with fernery and baskets of white asters with cathedral tapers in tall candelabra...

old. The family settled in Bell county near Rogers, Texas. He joined the Primitive Baptist Church in 1898 at Little Flock Church and was baptized by Elder A. V. Atkins...

The little flower girl, Sandra Snider, niece of the bride wore a pink ne frock. Mr. Ulysses Herman of Sulphur Springs was best man. The bride wore a white chiffon gown made with a full gathered skirt...

CARD OF THANKS We wish to express sincere thanks to our neighbors and friends for every deed of kindness during the illness and death of our companion and father...

Church Notices MRS. H. M. SMITH and Blanche Mr. and Mrs. R. O. White and daughter Mr. and Mrs. N. J. Stacy and son Mr. and Mrs. Bob White and children Mr. and Mrs. D. L. Thigpen and children

Weddings WOOD - JOHNSON Miss Bert Johnson of Rockwood became the bride of Mr. Luther Wood at 5 o'clock Sunday afternoon in the home of Rev. M. C. Golden Baptist pastor...

Deaths HENRY M. SMITH Funeral services for Henry M. Smith, Santa Anna were held Thursday August 15, with a short service at the home conducted by Rev. C. B. Baso of Kirbyville...

SOWELL - HOWARD Miss Evelyn Sowell of Lubbock, Texas and Finett Howard son of Mr. and Mrs. G. W. Howard of Santa Anna were married in Fort Worth Monday evening at 7 p. m. at the home of the bride's sister, Mrs. Maurice...

VOTE FOR OLIN CULBERSON Olin Culberson seeks your vote on HIS reputation. His life and his official dealings will stand the acid test. We invite the voters to compare the record of the men offering for



Vote for Olin Culberson for Railroad Commissioner. Take no chances. No capable man would solicit your vote on the popularity of the governor or any other public official.

RAILROAD COMMISSIONER Paid for by Santa Anna Volunteer Fire Department and friends Olin Culberson.

BAPTIST CHURCH S. R. SMITH, Pastor. Sunday School 9:45 a. m. Preaching services 11 a. m. and 8:30 p. m. Training Union 7:30 p. m. All-church night and teachers meeting Wednesday night at 8:00.

PRESBYTERIAN CHURCH M. J. WOMACK, Minister. Sunday school at ten. Preaching at eleven and eight. Bible study each Thursday evening at eight.

CHRISTIAN CHURCH Pastor, Ernest H. Wylie. Regular services each Sunday except second Sunday. Bible School 10 a. m. Communion and preaching services 11 a. m. Revival meeting begins Aug. 25 and runs until Sept. 7.

Cumberland Presbyterian J. W. Burgett, pastor. Sunday School at 10:00 o'clock. Prayer meeting, Wednesday evening 7:30. Preaching fourth Sunday at 11 a. m. and 7:30 p. m.

Church Societies Methodist Missionary Society August 26, 3 p. m. Hostess, Mrs. Seary. Leader, Mrs. Hardy Blue Song Prayer Meditation "The Way of Holiness," Mrs. Blue "The Jew in America" Mrs. S. L. Weaver. Benediction

LABOR DAY EXCURSIONS between all Points in TEXAS and LOUISIANA. 1 Coach Fare Plus 25¢ For the Round Trip. Tickets on sale for trains arriving destination August 31st and September 1st and prior to noon, September 2nd. Limited to reach original starting point prior to midnight, September 4th.

PIGGLY WIGGLY - the Open Road to SAVINGS. Illustration of a piggy bank on a road leading to a sign that says SAVINGS.

WHEATIES and Corn Kix PKG. 10. COMET RICE 2 Pound Box 16. TOMATO JUICE 6 Cans .25. ROYAL GELATINE Pkg .04. HOMINY 3 No.2 1-2 Can .25. PINTO BEANS 10 Pounds .39.

Quality MEATS. BACON Sugar Cured Not Sliced .16. LONG BOLOGNA Pure Meat .09. BEEF ROAST Choice Cuts From Fed Baby Beeves .16. DRESSED FRYERS. HOT BARBEQUE.

PIGGLY WIGGLY

FRANK Hayes PLUMBER OFFICE AT Coleman Gas & Oil Co. Office 88 PHONE Home 51

LYRIC Brownwood, Texas. Fri.-Sat. MARTHA RAYE JOE PENNER ALLAN JONES ROSEMARY LANE. "Boys From Syracuse". Prevue Sat. Night Sun.-Mon. VICTOR MATURE LOUISE PLATT LEO CARRILLO. "Captain Caution". Tuesday-Wednesday "Flowing Gold" with JOHN GARFIELD PAT O'BRIEN FRANCES FARMER.