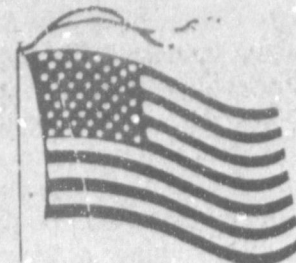


WEATHER

September 27	78	38	.00
September 28	77	38	.00
September 29	81	40	.00
September 30	85	46	.00

BAILEY COUNTY JOURNAL

'The Community Of Opportunity-Where Water Makes The Difference'



Vol. 27, No. 40

14 PAGES TODAY

Published Every Sunday At Muleshoe, Bailey County, Texas 79347

20°

Sunday, October 1, 1989

Ambulance Service In Spotlight Again

around
Muleshoe

The MHS sophomore class will be sponsoring the Homecoming pre-game supper on Friday, October 6, from 5-7 p.m. at the Muleshoe High School cafeteria.

On the menu for the "Mexican Fiesta" will be corn chips, chili, beans, rice, cheese, onions, lettuce, tomatoes, jalapenos and Galante Sauce.

It will be a stack your own meal. Dessert will be chocolate cake.

For carry out and delivery service, call 272-4360.

Tickets are available from any sophomore student or at the door for \$5 for adults and \$3 for children.

Monday, October 2, at 7:30 p.m. will be a very 'special' night in Muleshoe.

Cont. Page 8, Col. 2

JV Mules

Give DC

Hard Time

During the evening of Thursday, Sept. 21 the J.V. Mules hooked up with a very formidable opponent known as the Denver City Mustangs. It was a hard fought contest and the team battled their tooth and nail but a Mule victory was not to be that evening. Despite giving up 27 points the Mule defense pursued hit and gave the Mustangs all the pop and crackle they could stand.

The Mules mounted two formidable drives during the evening but were denied both times (one in the first quarter and one in the fourth quarter). After a hard fought first quarter of 0-0, the Mules were scored upon 11:06 in the second quarter on a five yard run the try for two was no good leaving the score 6-0.

With 3:09 left in the second, the Mustang Quarter Back threaded a pass through the Mule secondary which probably could not be duplicated before or ever again for 25 yards and a 12-0 lead. The try for two was no good and the Mules were about to get the ball back. After several plays the Mules punted short and the Mustangs took advantage of the punt and field position with a six play 35 yard drive capped by a circus catch in the extreme corner of the end zone, the slimest of margin was the difference between incomplete and six. Then the Mules almost thwarted the Mustangs extra points but it was good and the score stood 20-0 at half time.

In the second half the Mules limited the Mustangs to just 100 yards and played them to a stand still. The only other score came with 1:43 left in the third quarter and the kick was good. Through the fourth quarter the Never Say Die! Mules mounted offensively and charged and rammed down field only to be denied on fourth and a foot on the Denver City three yard line with 3:01 to go in the game with a quick change of possessions the Mules stopped the Mustangs.

Coach Tom Duncan commented: Despite the loss to the D.C.J.V. our offense and personnel played hard and improved. Our defense was given credit for hitting D.C. the hardest they had been attacked all year despite being the over all smallest team they had played. Our direction from here is up and what we have to do is just keep working consistently and improve. We will not look back, just work for the future and the improvement of the team.



JOE KING RECOGNIZED FOR SERVICE--Thursday afternoon, Joe King of Western '66' was presented an engraved watch, pin and plaque by Bill Wetsel of Amarillo, marketing representative for Phillips '66, in this area. (Journal Photo)

Muleshoe Mules Make Long Trek To Take On Midland Greenwood

It was perfect weather Friday night at Midland Greenwood football stadium when the Greenwood Rangers downed the Muleshoe Mules by a score of 29-0.

With the Mules taking first possession of the ball, Mules fullback John Orozco raced upfield grinding out 20 yards for his first carry of the game.

Just two plays later with the Mules still in possession of the

ball, The Greenwood Rangers saw their first penalty of the night and certainly was not going to be their last one. With the 15 yard penalty against Greenwood, put the Mules on their own 48 yard line.

The Mules unable to move the ball upfield with carries of 5-1 and an incomplete pass intended for Mule A.J. Liles, were forced to punt the ball away at 9:32 into the first quarter giving the Rangers their first possession of the game.

With two plays under their belts, Ranger QB Cody Mebane took the ball leaving his defenders behind raced into an open field for 30 yards good for a Ranger 'First Down.'

The Mules showing their good defense kept the Rangers from moving the ball further up field and forced them to punt the ball with Mule Hector Sanchez returning the punt to the Mules own 30 yard line.

Gonzales again at the quarterback position handed-off to No. 20 Mule Juan Perez which was good for 4 yards. A play later with Gonzales carrying the ball the Mules were penalized for clipping and cost them a loss of yardage.

SPCAA Will Hold Election For Directors

South Plains Community Action Association Inc. will hold an election the week of October 10, through October 13, to elect one Target (Client) Sector Representative to the South Plains Community Action Association Inc. Board of Directors.

Persons wishing to file for a place on the ballot may do so by contacting Janie Mejia or Debbie Longoria at the Bailey County Community Action Center at 804 W. American Blvd. in Muleshoe, Phone 272-5130.

Filing deadline is Friday, October 1, at 5 p.m. Voting will be from 8 a.m.-5 p.m. on Tuesday, October 10, through Friday, October 13, at the Bailey County Community Action Center, 804 W. American Blvd. in Muleshoe.

Again the Mules were forced to punt the ball at 4:37 left in the first quarter, saw the Greenwood Rangers take advantage of a Mule mistake gave them a safety in the end zone for the first score of the ball game.

The Mules trying to recover from their first mistake of the game held the Rangers to very few yardage.

Once again the Greenwood Rangers taking the ball on their own side of the field, kept adding up yards with their ground attack moving the ball up the field with carries of 2-3-5 yards.

The clock moving down towards the end of the first quarter saw Ranger QB Cody Mebane hand-off to Greenwood Cont. Page 8, Col. 5

Folksinger Will Perform At Local Church

Folk-singer and storyteller, Ed Kilbourne, is coming to Muleshoe, on Wednesday, Oct. 4. He will be in concert at 7 p.m. at the First United Methodist Church fellowship hall, 507 W. 2nd.

With what one reviewer called "a touch of James Taylor in his voice and a whole handfull of Garrison Keillor in his story-telling style", Ed has become known over the years for his concerts of moving music and insightful monologues. His latest album, "Beyond Belief" (Fly-By-Night Records), features his vocal, guitar, and keyboard work, as well as the backup vocal skills of his wife, Mick, and guitar and harmonica tracks from fellow South Carolina artist, Tom Davidson.

Ed began his career in the late 50's and early 60's, singing in folk groups while in high school and college. Since then he has performed solo in over 5000 concerts in Europe, Asia, and in the United States. He has opened concerts for such as Kenny Rogers and Michael Martin Murphy, and for two years he was lead singer for the Colorado band, White Rock.

Kilbourne and his family make their home in southern York County, not too far from Rock Hill, South Carolina.

Well, it's almost back to 'square one' with the Bailey County Ambulance Service!

Approximately ten minutes was taken up in reading the minutes of the last meeting and authorizing seeking bids for a motor grader for Precinct One.

From then, the rest of the more than two and a half hour meeting concerned the Bailey County Ambulance Service.

Dr. Bruce Purdy, who has acted as medical director of the Bailey County EMS Ambulance Service for the past two years said he had been checking into EMS rules and regulations, and then checked with his insurance carrier.

He was said that as medical director of the ambulance service he became a Type IV, and being a Type IV, his insurance would need to be raised each year. The premium for the raise in liability or malpractice insurance is \$5,000. He asked the commissioners for the insurance premium to be paid by the county.

He also said he would no longer perform the service as medical director 'free' as he has the past few years. He now is asking for a compensation of \$1,000 per month for taking on the responsibility of being medical director. Even a BLS (Basic Life Service) is now required to have a medical director, but a lot of responsibility goes along with it.

"Our ambulance service has been in quite a turmoil since Richelle (Watkins, EMS Director) resigned. Our EMT's have felt put upon, they feel their ideas and thoughts are not given proper consideration.

"My main concern," said Dr. Purdy, "and only concern, is strictly the delivery of quality health care to Bailey County. I don't care who runs the ambulance service. That person is strictly administrative, to see that bills are filed, do paperwork, etc. My particular position as medical director is strictly "in the field."

He continued, for the past few years we have had paramedics in Muleshoe who have been exemplary, and they are to be commended. My position is that we must continue that exemplary care."

The doctor said that for paramedics to do what has to be done involves training. They must not only be given Basic but Advanced Life classes. Our paramedics have saved many lives. They have the ability to give drugs in the field, they can take care of heart attacks, read a monitor, they can defibrillate, for both heart attack and shock.

"I would like to remind you that the first few minutes are vital and make the difference in

living or dying. Most physicians will not allow paramedics to give medications in the field, but that's not true with our ALS. That's what I want to continue here -- ALS (Advanced Life Support)."

He also talked about Randy Watkins, who was a Paramedic-SS, who Dr. Purdy termed his assistant medic director. "Randy Watkins did most things that were needed and which were supposed to be done. He was extremely well educated and did a fine job. When he found problems he could not figure out, he would come to me and discuss it.

"I didn't have the 'headaches' that it looks like I will have under the new system."

In speaking of the newly hired director of the Bailey County Ambulance Service, Dr. Purdy Cont. Page 8, Col. 1

3-Way Eagles Make It 4-0 Friday Night

Coach Greg Jeffcoat's Three Way Eagles came out of the game 'banged up,' but the coach was very proud of the Eagles' the 40-16 victory over Whitharral, which takes the team to a 4-0 season record.

Jesse Haros broke scoring loose in the first quarter with a 16 yard romp, followed by an Extra Point by Roy Guitron. At that time, 2:58 was left in the first.

Again, with :31 left to play in the first, Jesse Haros broke free again for a six-yarder to paydirt, but this time the EP was blocked.

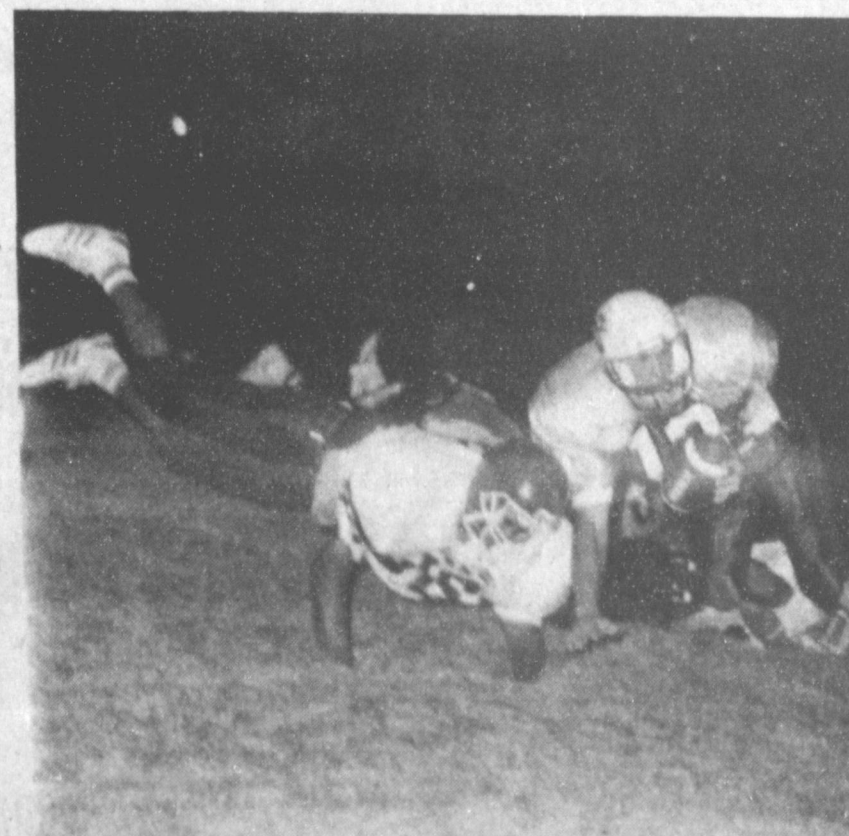
Coming back in the second, it was Mario Guillen who added two TDs. He scored first in the second at 7:15 on the clock on an eight yard run, but the PAT was wide. Then, with :49 left to halftime, Marion scampered 34 yards.

It was 26-16 game at the half. It was Mario Guillen again in the third when he scored from two yards out, with 8:13 left in quarter. The PAT was blocked.

Final score for Three Way was at 6:30 of the fourth when Mario lobbed a 70 yard TD pass to Efrain Guillen. Roy Guitron added the PAT.

In the game, the Eagles had 272 rushing yards and 173 passing yards. Individually, Mario carried 30 times for 259 yards and three TDs; and Jesse Haros carried five times for 33 yards and two TDs.

Mario completed 8-20 passes for 173 yards, one interception and 1 TD; and Efrain Guillen had six catches for 165 yards and 1 TD.



CLARENCE LEWIS GOES FOR QUARTERBACK--Shortly before being injured in the third quarter at Midland Greenwood Friday night, Clarence Lewis, left, makes a dive for Midland Greenwood Ranger Quarterback Cody Mebane. Despite their best efforts, the Mules lost to the Rangers, 29-0. (Journal Photo)

Comptroller Says Permits Are Needed

State Comptroller Bob Bullock Tuesday reminded Texans buying diesel fuel tax-free that state fuels tax permits are needed to comply with the law.

Bullock said that some customers can buy diesel fuel tax-free in Texas by signing a statement saying that they don't own or operate any diesel-powered vehicles driven on Texas roads. The Comptroller's office provides the printed statements.

Purchases made in this way are restricted to 2,000 gallons or less at any one time with a monthly limit of 10,000 gallons or less.

The statement becomes invalid if the customer buys or uses any vehicle powered by diesel fuel on Texas highways but taxpayers

have a couple of options if that happens, Bullock said.

First, they could pay the fuels tax of 15 cents a gallon and file for a refund with the Comptroller's office. Refunds are given for tax paid on any diesel fuel that wasn't used on Texas roads.

Or, they could prepay the tax to the Comptroller's office for vehicles weighing 10,000 pounds or less. The cost is based on the vehicle's weight.

To buy diesel tax-free for vehicles that weigh more than 10,000 pounds, owners need a bonded user's permit. For this they must maintain records and file quarterly reports with the Comptroller's office. They may also need to post a bond with the Comptroller's office.

Bullock cautioned fuel suppliers to keep a copy of an up-to-date permit or a signed statement from each customer

before selling any diesel fuel tax-free.

To order forms or for more information, call the Comptroller's office at 1-800-252-5555.

WASHINGTON NOTES

July Home Sales

Declining mortgage rates boosted sales of existing homes in July, causing the first back-to-back monthly increases this year.

Foley On Tax Increase

In a message to the White House, Tom Foley says Democrats won't initiate a tax proposal without Bush's wholehearted support.

PEST MANAGEMENT UPDATE

Parmer - Bailey Counties

Mike D. Blanton

Extension Agent - Entomology

COTTON

Many fields of cotton now have open bolls in the bottom one-third of plants.

CHEMICAL DISPOSAL

Axodrin, Galecron, and Fundal cannot be used on any crop after September 30, 1989. If you have any of these insecticides you need to use them up (following label) or make arrangements either with the chemical company or a dealer to take them off your hands.

If you still have these chemicals after September 30, disposal will be an expensive process. Canceled pesticides become hazardous wastes and the

use, improper storage, transport, or disposal of a hazardous waste may bring criminal charges.

COMMERCIAL/NON-COMMERCIAL APPLICATOR INFORMATION

Effective September 1, 1989, commercial applicators must be physically present at the site of application and workers under their direct supervision must be knowledgeable of label requirements, rules, and regulations governing the use of the pesticide being applied. For further information on these changes call the TDA Pesticide Enforcement Program in Austin at 512-463-0013.

The annual West Texas Agricultural Chemicals Conference will be held at the Lubbock Plaza Hotel on October 4-5. Participants can obtain five CEU's by attending the Thursday session.

LAST NEWSLETTER

This is the last of the "weekly" issues of the "Pest Management Update" for the 1989 growing season. I hope it has been informative and timely. As important pest situations or meetings and events come up there will be more issues. If you have any questions or comments, please do not hesitate to call or come by the office.

There is no such thing as something for nothing in life.

This is the time of year to check your fire insurance.

From now until late December the days grow shorter.

Air Force

ROTC Scholarships

Available

Scholarships are available to high school seniors or graduates who have not enrolled as full-time college students that intend to pursue specific majors listed in the "Air Force ROTC College Scholarship Information" booklet. An application with instructions and other information are offered with this booklet.

Applicants for the four year scholarship become eligible applicants after submitting all basic application items and meeting this criteria by December 1 the year before entering college:

a. High school cumulative grade-point average of 2.5 (A=4.0).

b. High school class standing in top 25 percent.

c. College entrance examination scores of (Air Force ROTC uses highest scores from a single test date--ACT/SAT minimums are not waivable); d. Achieved minimum grade-point average and class standing by the end of the junior year (or the end of the senior year if graduated). If attending a selective admissions high school or are enrolled in an honor's or advanced placement program, have the high school official submit a waiver.

Robert D. Green, Inc.
IS ON A MISSION TO SAVE YOUR TRANSMISSION!

Our 11-Point Transmission Service Will Cost You A Lot Less Than Replacing Your Transmission

Here's what we do:

<ul style="list-style-type: none"> • Drain the transmission fluid • Adjust the throttle linkage • Replace the pan gasket • Clean the pan 	<ul style="list-style-type: none"> • Replace/refill transmission fluid • Adjust the linkage • Check the vacuum system • Conduct a thorough road test.
--	---

ALL FOR ONLY: **\$59⁹⁵***

*Parts extra if required
Offer Good Until 11-1-89
GMC Model Cars & Pickups Only
Some Models Higher

Robert D. Green, Inc.
2400 W. Amer. Blvd.
272-4588
Mr. Goodwrench

SPECIAL CALF SALE AND APPRECIATION DAY

Saturday, October 7th
Free Dinner at 11:00 A.M.
Sale Starts at 1:00 P.M.
presented by

presented by
CLOVIS LIVESTOCK AUCTION
Clovis, N.M.

Selling 2500-3000 head of New Mexico and West Texas' finest weanling calves.
\$1000 for the best pen of 10 steers
\$500 for the winner of each class

Please make plans to attend this event

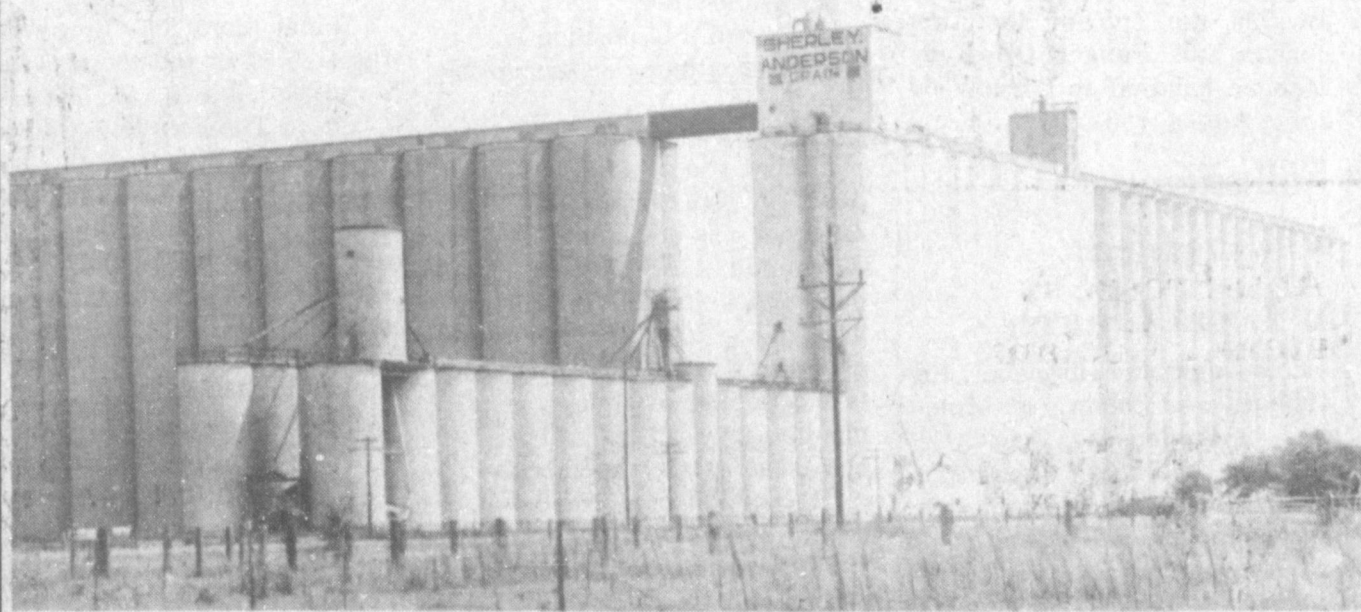
For more information please call:
CLOVIS LIVESTOCK AUCTION
(505) 762-4422

Nights: Rustin Rowley 763-7959	Charlie Rogers 762-1070
Joe Rowley 356-5943	Dick Moore 276-8347

ATTENTION:

CORN HARVESTERS!

We Appreciate Your Business



Sherley-Anderson Grain Co.-Lariat
Lonnie McFarland-Don Gartin-John McFarland



Sherley-Anderson-Lazbuddie
David Anderson-Scott Brown-Ray Stanley

Ready To Serve You This Harvest Season!

SHERLEY-ANDERSON ELEVATORS

Capacity 600,000 Bushels
SHERLEY-ANDERSON-RHEA ELEVATOR
Parmer, Texas
295-3505

Capacity 6,500,000 Bushels
SHERLEY-ANDERSON GRAIN COMPANY
Lariat, Texas
Okla. Line 825-2565

W.M. SHERLEY (1899-1974)
G.M. D. ANDERSON, JR.
J. A. PITMAN (1897-1959)

Members of
PANHANDLE GRAIN DEALERS ASS'N.
TEXAS GRAIN DEALERS ASS'N.
NATIONAL GRAIN DEALERS ASS'N.

Capacity 6,000,000 Bushels
SHERLEY GRAIN COMPANY
Bovina, Texas
228-1521 Main Office

Capacity 3,000,000 Bushels
SHERLEY-ANDERSON-PITMAN, INC.
Forwell, Texas
481-3343



GARDEN SPOT OF THE WEEK--If you are passing down West Avenue C, take a look at the purple and lilac petunias in the front yard of J. W. and Gladys Maddox, 1528 W. Ave. C. This is the final garden spot for this summer. (Journal Photo)

Change In Diet May Not Be Responsible For Behavior

Beware of advice linking nutrients and behavior. General statements and recommendations linking these two could be premature, said Dr. Mary Kinney Sweeten, Texas Agricultural Extension Service nutrition specialist.

The relationship between nutrition and behavior has received a lot of publicity lately, and some of these guides and paperback advisories may be fiction, Sweeten said.

Recent research, cited in the spring edition of *nutrition and Food Sciences*, indicates that changes in diet may not be directly responsible for changes in an individual's behavior, she said.

"Actually, different people may have varying sensitivities to nutritional factors," she said.

The brain comprises two percent of the body's weight and consumes up to 30 percent of the energy that the body produces at rest. "You would assume that the brain, and therefore behavior, is affected by the food we eat," she said.

The total number of neurons--100 billion to be exact--is equal to the number of stars in this galaxy. Each of these cells is connected to thousands of others 100,000 other cells.

However, the cells aren't physically connected to each other, but can transmit minute

and it's estimated that some cells receive direct signals from electrical signals across a gap that is less than a millionth of an inch across, Sweeten said. Neurotransmitters, complex chemicals, assist the signal transfer.

Research presented by a University of Toronto, Ontario professor indicates that amino acids, the building blocks of proteins, have many uses in the body. For example, an amino acid called tryptophan is eventually metabolized into serotonin, a neurotransmitter. At elevated concentrations, tryptophan decreases food intake and produces drowsiness and sedation, according to *Nutrition and Food Sciences*.

Additionally, some vitamins have the potential to affect brain function at levels that are considered "normal," according to the publication.

"Many factors are present and many factors could be affecting behavior," Sweeten said.

"Therefore it would be premature to assume that changes in an individual's behavior are directly linked to diet," she said.

Indecision is costly but hasty action sometimes costs more.

About the best test of a person's religion is the life that one leads.

Yogurt Becoming America's Favorite

From the last lick of a frozen yogurt cone to the spoonful of fruit at the bottom of the container, yogurt is becoming America's favorite.

Buy it at the supermarket, in specialty food stores and in yogurt shops. Statistics show that per capita consumption of yogurt has increased from 2.56 pounds per person in 1980, to 4.60 pounds in 1987. It's no wonder, since the varieties of yogurt products are rapidly expanding. In the average grocery store you can usually find yogurt frozen, as a drink, in lowfat and nonfat forms and combined with any number of fruits. And even within the combined-with-fruit category, there are choices. Select from Swiss-style (fruit is blended throughout) or sundae-style (fruit is at the bottom).

Market growth of yogurt and yogurt products is predicted to

continue at a minimum of 10 percent annually through 1990.

And now it's time to take yogurt beyond just eating it straight from the carton or soft-serve machine. Yogurt's perfection is most apparent in its culinary versatility. To exemplify this, the American Dairy Association has developed an all new recipe leaflet, "Make It With Yogurt". Yogurt is incorporated into a variety of recipes to show the limitless possibilities for using it as an ingredient in drinks, salads, soups, entrees and desserts.

One of the recipes included in this collection is Chocolate Orange Cheesecake. Its creamy dense, chocolaty texture and slightly tangy taste will tempt even the plain yogurt purest! This and eight other equally delicious recipes are included in "Make It With Yogurt". For your free copy, send a self-addressed, stamped business size envelope to Make It With Yogurt, Associated Milk Producers, Inc., P.O. Box 5040, Arlington, TX 76005.

Young Homemakers

Lazbuddie Young Homemakers met on Tuesday, Sept. 18 at the Lazbuddie School cafeteria for the annual Membership Tea. They welcomed two new members, Cathy Richardson and Sherri Nichols, to their group.

Betty Wagnon, from Something Special presented the program. She showed the group some new holiday decorating ideas. They included wreaths to hang in their homes, some ceramic pieces to light up their homes, and gave some helpful tips to create their own decorations. To conclude the program she gave step by step instructions on how to make paper roses. Each member participated and reported that they had a lot of fun seeing each others creation.

Members present were: Mandy Seaton, Kim Kimbrough, Sara Black, Jana St. Clair, Rita Mimms, Lana Copp, Barbara Lust and Judy Stienbock.

The Homemakers are currently selling pecans and if you would like some for your holiday baking you may contact Mandy Seaton at 965-2438; Kim Kimbrough at 965-2986; or Lana Copp at 965-2806.

1 tablespoon flour
1 container (8 ounces) plain lowfat yogurt
6 ounces semi-sweet chocolate melted, cooled slightly

Preheat oven to 350F. For crust, combine all ingredients; mix well. Press onto bottom of 8-inch springform pan. Bake 10 minutes; cool. For filling, beat cream cheese and sugar in large mixer bowl until light and fluffy. Beat in eggs, orange liqueur and orange peel until well blended. Add flour, yogurt and chocolate. Mix until well blended. Pour into baked crust. Reduce oven temperature to 300F. Bake 60 to 70 minutes, or until cheesecake pulls away slightly from sides of pan. Turn oven off. Let cake cool in oven with door ajar 1 hour. Refrigerate several hours before serving. To serve, place cake on a serving plate. Run a thin knife around edge of cake. Carefully remove sides of pan. Serves 8.

Wisdom is not necessarily shown by those who make no mistakes.

Three Way News

by: Mrs. H.W. Garvin

Mr. and Mrs. Joe Sowder returned home Thursday after a week's visit in Arkansas with their son, the Mike Sowder family. ***

Mr. and Mrs. Herbert Dille from Littlefield spent Monday with their son, the Bill Dolle family. ***

Mrs. Baxter Vaughn and children from Plainview spent the past two weeks with her parents, the Adolph Wittners. ***

Mrs. H.W. Garvin from Maple and Mrs. Winnie Byers from Enochs were in Lubbock Wednesday for doctors appointments. ***

Mrs. Jack Lane, Mrs. Bud Huff and Mr. Harold Toombs took birthday cake and punch to the nursing home in Morton Thursday. ***

The Three Way football boys played Welman there Friday night with Three Way winning the game. So far Three Way is unbeaten in football.

CHOCOLATE ORANGE YOGURT CHEESECAKE

1 cup chocolate wafer crumbs
1/4 cup (1/2 stick) butter, melted
1/4 teaspoon ground cinnamon

Filling:

2 packages (8 ounces each) cream cheese, softened
1 cup sugar
3 eggs, at room temperature
1 tablespoon orange liqueur
2 teaspoons grated orange peel

Bailey County Journal USPS 040-200
Established March 31, 1963. Published by Muleshoe Publishing Co., Inc. Every Sunday at 304 W. Second, Box 449, Muleshoe, Tx 79347. Second Class Postage paid at Muleshoe, Tx. 79347.

Member 1989
TA TEXAS PRESS ASSOCIATION

L.B. Hall, Publisher
Sammy Hall, Vice President/Controller
Cleta Williams, News
Evelyn Harris, Society
Holly Millap, Advertising
Dora Fozcano, Classified
SUBSCRIPTIONS
Muleshoe Journal and Bailey County Journal
Bailey and Surrounding Counties
By Mail \$14.75
Muleshoe Journal and Bailey County Journal
Elsewhere By Mail \$16.50
Muleshoe Journal and Bailey County Journal
Yearly by Carrier \$12.50

Advertising Rate Card on Application.
Advertisers should check their ad the first day of insertion. The Journal will not be liable for failure to publish and ad or for a typographical error or errors in publication except to the extent of the cost of the ad for the first day insertion. Adjustment for errors will be limited to the cost of that portion of the ad where the error occurred.

Do you know you can try a hearing aid risk-free for 30 days?

You need not risk a dime on a hearing aid unless you're convinced it's the right thing for you. We give you a full 30 days to decide how well you'll enjoy hearing with a custom fit Beltone hearing aid. If you're not satisfied with it for any reason, simply return it and we'll refund the full cost of the hearing aid.

At Beltone, we're in business to help people hear better. Call us for an appointment now!

Friday, October 6, 1989
10 a.m.-12
Beltone® Bailey Co. Coliseum
Better Hearing Through Professional Care 272-4114
Free Hearing Test

FALL IS FOR PLANTING

Garden Mums - Shasta Daisies
Pansies - Dianthus - Flowering Cabbage

Clearance Sale On Trees & Shrubs

Now is the time to plant your Bluebonnet Seeds!

We have Diazinon Crystals for Grubs!

Kristy's Plants

1504 W. Amer. Blvd.
272-5536

BEAT THE COLD... Winterize Now!

Anti-Freeze & Summer Coolant \$6.89 per gal.

Trop Artic SAE 10W-40 88¢ per qt.

Call for farm delivery or come by and see us about a Fuel Card!

PHILLIPS 66 SUPERCLEAN UNLEADED GASOLINES

The Clean-Up and Keep Clean Gasolines

66 Western "66" Company 66

Earth Highway 272-4556 Muleshoe

Dillman Elementary School To Give Attendance Awards

The month of October is attendance accounting month in the state of Texas. The average daily attendance of students determines the amount of funding that the school receives from the state.

For each absence, the school district loses approximately \$70 in potential state revenue. "Because of the importance of receiving this state funding, we are planning some ways to encourage perfect attendance from both the students and the teachers," said Barbara Finney, principal of Dillman Elementary.

The following is a list of activities Dillman is planning. Other campuses will be doing something different to promote attendance.

At the end of the four week attendance accounting, all students who were in attendance

every day for four weeks will have their names put into a drawing. The boy whose name is drawn will receive a skateboard; the girl whose name is drawn will receive a Designer Line Cabbage Patch Doll. We will also draw five names per grade level (K, 1 and 2) to give away a Mule Backpack.

Each Friday during the four weeks, everyone with perfect attendance for the week will receive a small award such as a ring, toy helicopter, necklace, erasers, or straws.

The Sonic Drive-In will be giving coupons for a free ice cream cone to each student who has perfect attendance for all four weeks.

Teachers and Teacher Assistant's with perfect attendance will also have a drawing for a gift certificate and all teachers and teacher assistants who have perfect attendance, plus have their classroom have perfect attendance for two or more weeks will be honored one day with a special lunch.

Tops Club

TOPS chapter No. 34 met Thursday, Sept. 28 at 6:30 p.m. in the Heritage Thrift Shop. The meeting was called to order by Laverne James, leader. The TOPS pledge was recited, fellowship song sung and Mrs. James led the group in a prayer.

Roll Call by Orvdie Burris was answered with 15 members stating the amount they had lost or gained.

Aurora Mata read the minutes of the previous meeting and they were approved as read.

It was reported that the chapter received the third place "Walking Stick" award at the ARD meeting in Amarillo. The theme of the ARD meeting was "Out of this World."

Mrs. James received the Coordinators Award for being the most inspiring "Alien" for the local chapter. Clea Robertson received the Coordinator award for being the chapter's best loser.

The group elected to hold an open house for the chapter on Thursday, Oct. 15.

Clea Robertson received a hair set for six weeks consecutive weeks weight loss and Lucille Harp celebrated her birthday. She received a gift from her secret pal and one from the chapter members.

Best loser for the week was Ruth Clements. First runner-up was Aurora Mata, and second runner-up was a tie between Alma Robertson and Clea Robertson.

The meeting was adjourned with the singing of the goodnight song.



ENGAGEMENT ANNOUNCED--Jerry and Darlene Ruthardt would like to announce the engagement and approaching marriage of their daughter, Tina Diana, to Robbie Burgess of Artesia, N.M. Vows will be exchanged at 7 p.m., Nov. 18, in Artesia. The bride-elect is a 1985 graduate of Muleshoe High School and is currently residing in Grand Prairie, TX. The couple will be honored with a wedding shower at 2 p.m. Oct. 21 at the First Assembly of God Church. (Guest Photo)

Jennyslippers Meet In Regular Session

Muleshoe Jennyslippers had a light agenda when they met at noon Tuesday at the library. Sandi Robison conducted the business meeting and minutes of the previous meeting were read by Nancy Kidd, they were accepted as read.

The group voted not to accept teen-agers as dues paying members. Although they may become honorary members. This decision was reached following a lengthy discussion.

Vivian White and Donna Kirk volunteered to be the Garden Spot of the Week judges for this final week.

A report was given on the convention held here last Saturday and Pat Langfitt thanked those who had worked in making this convention possible. She stated that this district had accepted the Brownfield Red Skirts into the conference. It was reported that the convention will be held in Spearman in 1990, Dumas in 1991 and Amarillo in 1992.

It was decided to make a memorial to the Heritage Center in memory of Woods Goforth.

Three new members were welcomed into the Jennyslippers and they are Pat Prater, Ann Sowder and Shiela Stevenson.

IN FASHION

Winter coats are an expensive part of one's wardrobe and should be carefully chosen. Always try on a coat over winter clothing to allow for suits or layering. Check the construction, trim and buttons for durability.

For those who work five days a week, choosing a dressy coat is desired. Most of the better coats are made of wool and mohair or acrylic and wool combinations.

People only get old; life is continually new and full of changes.



PERFECT ATTENDANCE AWARDS--Norma Prather (right) a teacher at Dillman Elementary and Barbara Finney, principal, show off the gifts that will be given to some lucky students. A drawing will be held, with all students who have perfect attendance in October with the names being put in a jar. (Journal Photo)

Sudan Womens Club News

On Monday, September 18, the Sudan Women's Club hosted a "New Member" salad supper in the First National Bank community room. Pam Maxwell, president, welcomed all the guests and members.

Following the meal, Ms. Maxwell gave a brief history of the club and read the organization's creed. She also reviewed last year's programs and community service projects. Some of the service projects included: Toys for Tots (which served over 100 children), a benefit basketball game for the scholarship, and the community calendars.

Ms. Maxwell announced that many of the club's programs for 1989-90 will be open to the public. These include: Oct. 23, Make a Wish Foundation,

Lubbock Dec. 11, Southwestern Public Service "Festive Foods, Kay Davis, Lubbock 7 p.m.

March 26, "MADD" (Mothers Against Drunk Drivers) Lou Young, Lubbock

All of these programs will be in the First National Bank community room at 7:30 p.m. Any area resident interested in joining Sudan Women's Club may do so at the next meeting.

NEWS VIEWS

William Lucas, civil rights lawyer prospect:

"I was able to disprove all--not some, but all--of the allegation. There's no cloud left hanging over my head."

George Bush, President, on Iran's offer to help resolve hostage crises:

"I don't want to raise hopes beyond fulfillment, but there's reason to be somewhat encouraging."

Mr. Corn Farmer



We are now
accepting feed
&
food corn
at
215 E. Amer. Blvd.
or the
Main Elevator
in Muleshoe.

Come by either location
in Muleshoe and discuss
our food corn program
today.

Farmer's Cooperative
Elevators

Muleshoe

272-4335

Get 'Em While They're

HOT
Rocky Mountain
Jeans

New Fall Styles & Colors!
starting at
\$17.98

Rocky Tops
All On Sale!
\$26.98

Little Girl Blouses
\$22.98

Little Girl Rockies
\$22.98

New Fall Merchandise Arriving Daily!
And Ladies,
It's NOT Western!

Rip's Ladies' Apparel

In Texico

1-800-748-2459

Layaways Welcome

Alterations 482-3363

314 Wheeler

Complimentary Gift Wrap

Open 8:00 A.M.-6:30 P.M. CDT





GIRL SCOUT OFFICERS--(From Left) Mary Ann Ramirez, chairman; Sheryl Puckett, Troop Organizer-Nelda Merriott, treasurer; and Terry Mudford, publicity, are the new Girl Scout officers for the local unit. Not pictured are Nancy Castorena, Secretary and Rose Mary De Palma, Troop Consultant.

(Journal Photo)

Senior Citizens

The Bailey County Senior Citizens met at the Old Depot Monday, September 25 for their regular covered dish luncheon. The invocation was given by Duward Head.

Twenty were present to enjoy the meal and fellowship.

It was reported that although Mae Wilterding had arranged for the program, a very inspiring devotional from Phil. 4:4-9, how to have a happy life, brought by Velma Guinn. "We could always rejoice in the Lord." "She brought many things to our memory of our childhood days, the small animals that brought us happiness; all of God's creation. The birds cheering, the patter of rain drops and the many surprises we receive. But most of all we are to love God with all our heart, and mind and love our

neighbor as our self." The group then sang religious hymns with Mrs. Guinn at the piano and Zora Mae Bellar leading the singing. Opal Robison played two numbers on the piano, "Let Me Touch Him", and "Whispering Hope."

J.C. Shanks, Olive Cox, Clara Coffman and Eva Ashford sang "Christ Arose and Lives Again",

"I Will Meet You In The Morning" and "Guide Me". The group then sang several old favorites with Odessa Shanks at the piano and Mrs. Bellar leading.

Get well cards were sent to Mae Wilterding and Lola Crim.

The closing prayer was led by Lester Howard.

Muleshoe Girl Scouts Begin New Year

With the starting of the new school year, the Muleshoe Girl Scouts have begun another year with five troops presently meeting, one Junior Troop and four Brownie Troops. Mrs. Nelda Merriott reported that five little girls would like to be Daisies, but they need a leader. If you have an hour or two a week to work with these girls they would appreciate it. You don't have to have a daughter this age, perhaps you don't have any daughters, you may be a grandmother, you are needed.

Troops and their leaders now registered include: Junior Troop 152, Rea Morris, leader and Terry Radford, assistant leader; Brownie Troop No. 300 (First Year) Mary Ramirez, leader and

Linda Tosh, assistant; Brownie Troop 228, Lela Villarreal, Linda Tosh and Nancy Castorena;

Brownie Troop No. 200, Cherie Maddox and Pam Hancock; and Brownie Troop 322, Cheryl Puckett and Anita Johnson.

Improve The Mind

One of the characteristics of American life today is the all-out chase for fun and pleasure.

Along with profits, leisure and fun, however, should go some dedication to the mind.

Every adult should be making some individual effort to improve the mind--by adding to one's knowledge, by broadening one's philosophy, understanding

and thinking.

What are you doing--in that direction? If doing nothing, you're falling behind, your mentality and personality regressing.

The goal of life should not be fun, money and pleasure alone. Life is somewhat empty without knowledge, wisdom, understanding and tolerance.



Latest Arrivals

George Merino

Trinidad and Raul Merino of Farwell are the proud parents of a son, George Merino, who was born at 11:10 p.m. Monday in Muleshoe Area Medical Center. The couple have one other child, Flor Yesenia.

Grandparents are Elaisa and Ricardo E. Riques and Matilde and Cruz Merino, all of Mexico.

DaKota Cody Gonzalez

Mr. and Mrs. Rudy Gonzales of Muleshoe are the proud parents of a son, DaKota Cody, who was born at 4 a.m. Monday, Sept. 18 in Clovis High Plains Hospital.

The young man weighed seven pounds and seven and half ounces and was 21 and half inches long. He has one sister, Cassandra, and a brother, Rudy Michael.

Grandparents are Mr. and Mrs. Luis Quintana of Ralls and Raymond Gonzales of Muleshoe.

Great grandparents are Mr. and Mrs. Aniseto Lucero of Portales, N.M. and Felix Gonzales of Colorado.

1- 10x13 (Wall Photo)
1- 8x10
2- 5x7
2- 3x5
16- King Size Wallets
8- Regular Size Wallets

30 Color Photos

99¢ Deposit
\$10.00 Due at Pick up (plus tax)

\$10.99

WE USE KODAK PAPER

AT Anthony's 272-3478
Wed. & Thurs. Oct. 4-5
Photo Hours: 9 - 6 p.m.

Shugart's inc.

Group charge 99¢ per person

We use **Kodak** PAPER for a Good Look
FOR CREATIVE COLOR PORTRAITS

Rebekah Lodge News

On September 26, Velma Howell, acting Noble Grand, called the Muleshoe Rebekah Lodge No. 114 to order. The flag was presented by Dorothy Browning escorted by Joyline Costen. The opening prayer was given by Sandi Robinson.

The roll call by June Green showed 20 members present. Minutes of the previous meeting were read and approved.

It was reported that next Tuesday, Oct. 3, the charter will be draped for Juanita Snow and all friends and relatives are welcome to attend. The meeting will get underway at 7:30 p.m.

Plans for the Thanksgiving dinner on November 2 were brought forward and discussed. The committee will be notified next week.

Rehearsal for the draping of the charter was held and all members present contributed. The group elected to wear formals and to serve punch and cookies following the ceremony.

Refreshments were served by Sandi Robinson and Dorothy Browning and the closing prayer was by Sandi Robinson.



NAZARENE CHURCH RECEIVES GIFTS--Wednesday afternoon, Rev. and Mrs. Dennis Hayes picked up a Coleman ice chest, five piece bath set, salt and pepper shaker set and a crib sheet and two talking telephones for the nursery at the New Visions Nazarene Church, at the Western Gift Store. These gifts were made possible by 2,256 books of stamps being spent at the gift store. (Journal Photo)

Birthday Party Honors Stacey Corley

Stacey Corley was honored Sunday afternoon on her third birthday with a party in the home of her parents, Mr. and Mrs. John Corley of Lubbock, formerly of Sudan.

"Clowns" was the theme carried out and a cake decorated with clowns and balloons and ice cream were served to her grandparents, Mr. and Mrs. James Withrow, Sudan and Mrs. Vanette Pyle of Tucumcari, N.M. and other family members including: Mr. and Mrs. W.O. Stephens, Mr. and Mrs. Greg Lance and Maegan, Mr. and

Mrs. Speedy Ritchie, all of Sudan, Bryce Corley and Kathrine of Clovis, N.M., Janie and Jensenn Corley of Roswell, N.M. and other friends.

NOTES, COMMENT

Facts are better than dreams, if pleasant.

It is usually a mistake to pay in advance for a job.

The know-how is less important than the do-it-now.

FALL Savings

KESON®

Land Measurer




Reg. 82.50

52⁵⁰

Fry & Cox, Inc.

401 S. 1st Muleshoe 272-4511

CHARGE CARD



Congratulations to our local 4-H!

They're an organization dedicated to creating a better future by guiding today's youth in the right direction.

4-H introduces young people to the business of agriculture and the pleasure of accomplishment, the joys of working together as a team and the satisfaction of seeing that work benefit their community.

We're especially proud of them and the fine work they do!

1ST BANK MULESHOE

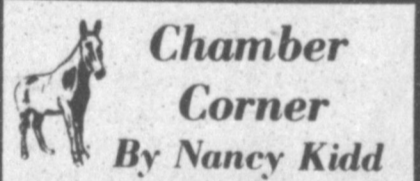
202 S. 1st Member F.D.I.C. 272-4515

Three Way Menu

OCT. 2-6
MONDAY
BREAKFAST
Sausage/Waffles, Juice and Milk
LUNCH
Meat Loaf, Green Beans, Mash-ed Potatoes, Hot Roll, Cherry Cobbler and Milk
TUESDAY
Homemade Doughnuts, Juice and Milk
LUNCH
Kentucky Chili, Vegetable Sticks, Grilled Cheese Sandwich, No-Bake Cookies and Milk
WEDNESDAY
BREAKFAST
Biscuit/Gravy, Juice and Milk
LUNCH
Taco, Refried Beans, Tossed Salad, Cake and Milk
THURSDAY
Sausage/Eggs, Juice and Milk
LUNCH
Burritos, Mexican Rice, Corn, Chocolate Chip Cookies and Milk
FRIDAY
BREAKFAST
Eggs/Biscuit, Juice and Milk
LUNCH
Hamburger, Tator Tots, Tossed Salad, Hot Bun, Pineapple and Milk

Lazbuddie Menu

OCT. 2-6
MONDAY
BREAKFAST
Toast, Bacon, Juice and Milk
LUNCH
Pizza, Corn, Green Salad, Pudding and Milk
TUESDAY
BREAKFAST
Cereal, Juice and Milk
LUNCH
Fried Chicken, Potatoes/Gravy, Beans, Biscuits, Fruit and Milk
WEDNESDAY
BREAKFAST
Jelly Donuts, Juice and Milk
LUNCH
Corn Dogs, French Fries, Pickles, Cake and Milk
THURSDAY
BREAKFAST
French Toast, Juice and Milk
LUNCH
Chili & Beans, Cheese Sticks, Crackers, Brownies and Milk
FRIDAY
BREAKFAST
Cinnamon Rolls, Fruit and Milk
LUNCH
Hamburgers, Tator Tots, Lettuce Tomatoes, Pickles, Cobbler and Milk
SALAD BAR SERVED
MONDAY-THURSDAY



I say "Hello, and I'm excited to be your new Chamber of Commerce and Agriculture Manager". I welcome suggestions, thank yous, why don't yous, what would happen ifs, and good constructive criticisms. There is a special place for gripes, fault-finders, and nit-pickers.
If the Chamber office can be of help or assistance to any one, please call, or come by and we will do all we can. Come by and let me welcome you to the Muleshoe Chamber of Commerce and Agriculture. The more we are, the better we are.
"When a gourd seed is placed in a bottle, it will grow only to the bounds of that bottle. Let's don't restrict our growth."

BIBLE VERSE

"I have fought a good fight, I have finished my course, I have kept the faith."

- Who is the author of the above declaration?
- To whom was he writing?
- Where was he at the time of this writing?
- Where may we find this statement?

- Answers:
1. Paul, the Apostle.
2. To Timothy, a young preacher.
3. In prison in the city of Rome.
4. II Timothy 4:7.

<p>SHURSAVING BATH TISSUE 8 ROLL PKG. \$1 39</p>	<p>SHURSAVING PAPER TOWELS JUMBO ROLLS 2 99¢ FOR</p>	<p>SHURSAVING CUT GREEN BEANS 15 1/2 OZ. CANS 3 99¢ FOR</p>	<p>SHURSAVING CS/WK GOLDEN CORN 16 OZ. CANS 3 99¢ FOR</p>
---	---	--	--

Cumberland

Sale Price Without Purchase

Dinner Plate	\$2.99
Cup DECORATED	\$1.99
Saucer	\$1.29
Cereal Bowl	\$1.79
Salad Plate DECORATED	\$1.99

DOUBLE ON SALE

MEAT

SHURFINE BONELESS FULL COOKED 2-3 LB. AVERAGE

TURKEY HAMS \$1 48
LB.

SELECT LEAN TRIM CENTER CUT

PORK CHOPS
COUNTRY STYLE-LOTS OF MEAT

PORK RIBS
SHURFINE QUALITY

MEAT FRANKS
SHURFINE SLICED

MEAT BOLOGNA
SHURFINE SLICED

BEEF BOLOGNA
TATER PATTIES HASH BROWN

POTATOES FRESH FROM MEAT CASE

Harvest of Values

SHUR SAVING

YOU CAN OWN YOUR CHOICE

1. Handy Chopper	\$18.49
2. Dust Buster	\$21.99
3. Ten Cup Drip Coffee Maker	\$15.99
4. Jelly Bean Stereo Headset	\$11.99
5. Fashion Portable Radio Tape Radio	\$27.49
6. Personal AM/FM Stereo Cassette Player	\$27.49
7. Personal AM/FM Stereo Cassette Player with Graphic Equalizer	\$27.49

WHEN THIS CARD IS COMPLETELY PUNCHED OUT AT PARTICIPATING MERCHANT YOU CAN PURCHASE YOUR CHOICE OF THESE PRODUCTS FOR THE LOW PRICE LISTED ABOVE.

PROGRAM WILL TERMINATE DEC. 16, 1989

Betty Blue Says...
YOUR CHOICE

1. HANDY CHOPPER
2. DUST BUSTER
3. TEN CUP DRIP COFFEE MAKER
4. JELLY BEAN STEREO HEADSET
5. FASHION PORTABLE RADIO TAPE RADIO
6. PERSONAL AM/FM STEREO CASSETTE PLAYER
7. PERSONAL AM/FM STEREO CASSETTE PLAYER WITH GRAPHIC EQUALIZER

BLACK & DECKER™ GENERAL ELECTRIC
YOU CAN OWN YOUR CHOICE
FOR A FRACTION OF ITS COST.
GET YOUR FREE PUNCH CARD TODAY.

FAVORITE FOODS

SHURSAVING INSTANT MILK	20 QT. BOX	\$5.99
SHURSAVING TEA BAGS	100 CT. BOX	99¢
SHURSAVING PANCAKE MIX	32 OZ. BOX	79¢
SHURSAVING PANCAKE SYRUP	32 OZ. BTL.	89¢
SHURSAVING DILL PICKLES	32 OZ. JAR	99¢
SHURSAVING MUSTARD	24 OZ. BTL.	59¢
SHURSAVING SQUEEZE CHOCOLATE SYRUP	24 OZ. BTL.	\$1.19
SHURSAVING HOT COCOA MIX	12 CT. PKG.	99¢
SHURSAVING COFFEE CREAMER	22 OZ. JAR	\$1.29
SHURSAVING SALAD DRESSING	32 OZ. JAR	99¢
SHURSAVING IODIZED SALT	2 26 OZ. BOXES	49¢
SHURSAVING HOMINY	3 15 OZ. CANS	99¢
SHURSAVING PINTO BEANS	3 15 OZ. CANS	99¢

SHURSAVING ALL PURPOSE FLOUR 25 LB. BAG **\$2.99**

SHURSAVING SUGAR

SHURSAVING LIQUID BLEACH GAL. PLASTIC JUG 79¢	SHURSAVING TOMATO SAUCE 8 OZ. CANS 5 99¢ FOR	SHURSAVING MEDIUM/LARGE ELASTIC LEG DIAPERS CONVENIENCE PAK \$5.99	SHURSAVING ASSORTED PEANUT BUTTER 18 OZ. JAR \$1.29
--	---	---	--

SPECIALS

SHURSAVING ASSORTED SPAGHETTI SAUCE	32 OZ. JAR	89¢
SHURSAVING APPLE JUICE	64 OZ. BTL.	\$1.39
SHURSAVING APPLE SAUCE	25 OZ. JAR	79¢
SHURSAVING FRUIT MIX	16 OZ. SIZE	69¢
SHURSAVING PEACHES	SHURSAVING BARTLETT PEAR HALVES OR YELLOW CLING SLICED 16 OZ. CAN	69¢
SHURSAVING TOMATOES	2 16 OZ. CANS	89¢
SHURSAVING SWEET RELISH	22 OZ. JAR	\$1.19
SHURSAVING CRANAPPLE JUICE	64 OZ. BTL.	\$1.79
SHURSAVING SANDWICH COOKIES	2 LB. PKG.	\$1.59
SHURSAVING QUICK OATS	42 OZ. BOX	\$1.79
SHURSAVING EVAPORATED MILK	3 12 OZ. CANS	99¢
SHURSAVING CAT LITTER	25 LB. BAG	\$1.99
SHURSAVING ALUMINUM FOIL	2 25 FT. ROLLS	99¢
SHURSAVING DETERGENT	36 OZ. BOX	99¢
SHURSAVING COFFEE FILTERS	200 CT. PKG.	89¢
SHURSAVING RICE	SHURSAVING LONG GRAIN 4 LB. BAG	\$1.39
SHURSAVING KITCHEN BAGS	30 CT. BOX	\$1.79
SHURSAVING SANDWICH BAGS	150 CT. BOX	79¢
SHURSAVING POPCORN	SHURSAVING YELLOW 4 LB. BAG	\$1.49
SHURSAVING GARLIC SALT	2 OZ. SIZE	99¢

SHURSAVING BLACK PEPPER 8 OZ. CAN **\$1.99**

SHURSAVING DRY ROASTED PEANUTS 16 OZ. SIZE **\$1.89**

SHURSAVING ELBO RONI 32 OZ. PKG. **99¢**

HEALTH AND

WESTERN FAMILY ISOPROPYL ALCOHOL
WESTERN FAMILY REG. OR MINT ANTI-PLAQUE RINSE
WESTERN FAMILY COLD CAPSULES

AT AFFILIATED FOODS INC.
MEMBER STORE

HOME OWNED & OPERATED

th

Muleshoe Menu

OCT. 2-6
MONDAY

BREAKFAST
Milk, Cereal, Toast and Fruit
LUNCH
Milk, Chicken Nuggets, Gravy, Creamed Potatoes, Green Beans, Hot Rolls and Fruit
COMBO
Milk, Burritos, Cheese Stick, Buttered Corn, Crackers and Fruit

TUESDAY

BREAKFAST
Milk, Honey Buns, Sausage and Juice
LUNCH
Milk, Juicy Burgers, Lettuce & Tomato, Pickles & Onions, Tater Tots and Cookies

COMBO

Milk, Hamburgers, Lettuce & Tomatoes, Pickles & Onions, Tater Tots, Cookies

WEDNESDAY

BREAKFAST
Milk, Toast, Jelly, Hash Browns and Fruit

LUNCH

Milk, Spaghetti With Meat Sauce, Fried Okra, Blackeyed Peas, Corn Bread and Fruit

COMBO

Milk, Chicken Pot Pie, Cheese Stick, Spinach and Fruit

THURSDAY

BREAKFAST
Milk, Cooked Cereal, Toast and Fruit

LUNCH

Milk, Hot Dogs, Pork & Beans, Potato Salad and Cake

COMBO

Milk, Sandwiches, Pork & Beans, Potato Salad and Cake

FRIDAY

BREAKFAST
Milk, Blueberry Muffins and Fruit

LUNCH

Milk, Fish, Macaroni & Cheese, Eng. Peas, Hot Rolls and Fruit

COMBO

Milk, Fried Chicken, Creamed Potatoes, English Peas, Hot Rolls and Fruit

Enochs News

by: Mrs. J.D. Bayless

Mrs. Shorty McCall and daughters, Mrs. Brenda George and husband, Robert of Lubbock, Mrs. Dolores Mosser and husband, Steve, and children, Kelly, Kim and her friend, Tracy Storkey of Slaton honored her husband and father with a birthday dinner Saturday at the McCall home. He was 81 Saturday night Mr. and Mrs. McCall spent the night with their daughter, Mr. and Mrs. Robert George.

Rain received Thursday night was a half inch. A cold front came through Friday night and the temperature dropped to 32 to 36 degrees. There was ice on top of the cars Sunday morning.

Last weekend Mr. and Mrs. Harrie Pollard had a birthday dinner for their daughter, Gwen Sinclair. All of their children and grandchildren were present, Mr. and Mrs. Tommy Lewis and children of Littlefield, Mr. and Mrs. Joel Sinclair and children of Muleshoe, and Mr. and Mrs. Steve Pollard and baby Magen of Morton.

Brittany, Monty and Cody Kirby spent the weekend with their grandmother, Mrs. Goldman Stroud.

Mr. and Mrs. Ken Jackman from Mesa, Az. came for a visit with Mr. and Mrs. Bill Key Sunday afternoon.

Clifford Snitker was dismissed from Methodist Hospital Tuesday. His sister, Lena and Davie Johns of Roswell, N.M. visited them that afternoon.

David Graves, son of Rev. and Mrs. David Graves, was a patient in the Morton Hospital a few days the past week.

Vonna Hamilton and Mrs. Bill Key visited in the H.O. Huff, Jr. home Thursday.

Mrs. Bill Key and Vonna Hamilton visited in the Homer Howard home and Mrs. Lucille Johnson at the Littlefield Medical Center Saturday. She broke her hip.

Houseware
5-Pc. Place Setting
Dinner Plate, Cup, Saucer, Salad Plate, Cereal Bowl
Only **\$3.99**
with \$10 Purchase
\$10.05 Value!

COUPONS
SATURDAYS

<p>SHURSAVING SWEET PEAS 17 OZ. CANS 3.99¢ FOR</p>	<p>SHURSAVING ASSORTED SODA POP 2 LTR. BTL. 5.99¢</p>	<p>SHURSAVING SALTINE CRACKERS 16 OZ. BOXES 2.99¢ FOR</p>	<p>SHURSAVING DRY DOG FOOD 25 LB. BAG \$2.99</p>
---	--	--	---

SPECIALS

SHURFINE WHOLE HOG REGULAR OR HOT PORK SAUSAGE
1 LB. ROLL **\$1.39**
2 LB. ROLL **\$2.77**

LEAN TRIM FAMILY PAK PORK CHOPS 8-11 ASSTD.
PORK CHOPS \$1.38
LB.

SHURFINE HICKORY SMOKED SLICED BACON
\$1.18
1 LB. PKG.

POTATOES \$1.59
10 LB. BAG

ALL PURPOSE RUSSET POTATOES

89¢

NEW CROP WASHINGTON EXTRA FANCY RED DELICIOUS APPLES
39¢
LB.

NEW CROP RUBY RED SEEDLESS GRAPES	LB.	89¢
CALIFORNIA FRESH BROCCOLI	LB.	59¢
CALIFORNIA CRISP CARROTS	5 1 LB. BAGS	\$1.00
YELLOW ONIONS	5 LBS.	\$1.00
NEW CROP SWEET POTATOES	LB.	59¢

SHURSAVING GRANULATED SUGAR 5 LB. BAG \$1.59	SHURSAVING SHORTENING 42 OZ. CAN 99¢	SHURSAVING ALL PURPOSE FLOUR 5 LB. BAG 79¢	SHURSAVING SALAD OIL 48 OZ. BTL. \$1.69
---	---	---	--

SHURFINE STD. VARIETIES POTATO CHIPS 7 OZ. BAG 79¢	SHURSAVING MARGARINE QUARTERS 1 LB. BOXES 3.99¢ FOR	SHURSAVING ASSORTED "BRICK BAG" COFFEE 13 OZ. BAG \$1.49	SHURSAVING DINNERS MACARONI & CHEESE 7 OZ. BOXES 6.99¢ FOR	SHURSAVING ASSORTED NACHO CHIPS 3 LB. BAG \$2.29
---	---	---	--	---

AND BEAUTY

WESTERN FAMILY NASAL 12 HOUR SPRAY	1 OZ. BTL.	\$1.79
WESTERN FAMILY NON-COATED ASPIRIN	100 CT. BTL.	59¢
WESTERN FAMILY IBUPROFEN	100 CT. BTL.	\$3.59
WESTERN FAMILY HYDROGEN PEROXIDE	16 OZ. BTL.	39¢

SHURSAVING AMERICAN SINGLES 12 OZ. PKG. 99¢	SHURFINE ASSORTED ICE MILK 1/2 GAL. CTN. 99¢
FROZEN AND DAIRY	
SHURFINE ASSORTED TEXAS STYLE BISCUITS	2 10 CT. CANS 99¢
SHURFINE ORANGE DANISH ROLLS	11 OZ. CAN \$1.19
SHURFINE CHEDDAR HALFMOON CHEESE	8 OZ. PKG. \$1.29
ORANGE JUICE	16 OZ. CAN \$1.39
SHURFINE APPLE OR GRAPE JUICE	12 OZ. CAN 79¢
SHURSAVING FRENCH FRIED POTATOES	2 LB. BAG 79¢
SHURFINE GREEN PEAS OR GOLDEN CORN	16 OZ. PKG. 99¢
SHURFINE FUDGE BOMB JRS.	12 CT. PKG. \$1.49

Giftway

PRICES EFFECTIVE OCT. 1-7, 1989
RESERVE THE RIGHT TO LIMIT QUANTITIES.

Nursing Home News

by: Joy Stancell

Tuesday afternoon Margaret Buhrman, Bonnie Green, Claudine Embry, Lula Maye Shanks, Beth Watson and Olive Cox shampooed and set the ladies' hair and gave them a lot of T.L.C. Dustie Moynihan gave manicures.

Lula Maye Shanks and Louise King made and served home made ice cream and cake to the residents Tuesday after beauty shop.

Frances Saldana, Nina Agundez, Corena Reyna brought their class of youngsters to visit the residents Monday. We hope they will come again.

Ernest Kerr celebrated his birthday Monday. His family visited and brought gifts and a birthday party. He received many cards from his family and friends. He wishes to express his thanks to each one who sent birthday cards or came by for a visit he really appreciated each one.

We had a fun and enjoyable afternoon Friday. We were entertained by Glenda Jennings as she led us in songs and "livened" us up with her wit and charm. Lona Embry and Joyce Turnbow served refreshments of angel food cake and punch.

Thursday morning Pastor Mike Doyle conducted a memorial service in honor of Juanita Snow in the Health Care Center's Day Room. Mrs. Snow's family and friends attended the special service.

Wednesday afternoon, The Health Care Center honored the dietary, laundry and maintenance departments with an appreciation reception. They were served angel food cake, cherries and strawberries, ice tea and coffee from a beautiful decorated table. Each employee of the honored departments were given a corsage or boutonniere and a fresh loaf of home made bread. Our thanks to our two friends who got this all together. You did a wonderful job.

Sunday afternoon the Progress Baptist Church brought the Sunday service for the residents.

Guy Kendall was visited by

R.L. Scott and Lewis Scoggins Tuesday afternoon.

Pearl Cox had Sunday dinner in the home of her daughter, Holly Milsap.

We were so pleased to see Eric Smith at the singing Wednesday afternoon. He had been confined to his room due to health problems and he was showing symptoms of "cabin fever". Glad you were able to come out Eric.

Our thanks to the AARP for their donation to our Health Care Center.

Mr. and Mrs. J.C. Shanks sang and played gospel music for us Wednesday afternoon.

Josie Flowers visited Margaret Beard Wednesday afternoon.

Johnny Chappell is in the local hospital. Get well soon Johnny.

Thelma Stearns was visited by her daughter, Joyeline Costen, several times this week. Joyeline serves coffee to the residents at supper.

Tuesday afternoon, Jackie Johnson and Nickolas, Margaret Buhrman, Claudine Embry, Olive Cox, Bonnie Green, Lula Maye Shanks shampooed and set the ladies hair.

Ora Roberts, Effie Smith, Lois Ethridge, Guy Kendall, Pearl Cox, Thelma Stearns, Emma Schuster, Patsy Franklin, Stella Morgan, and Clara Weaver painted ceramics in the class conducted by Louise Legg of Ma's Ceramic Shop in Sudan.

J.E. Embry visited us Tuesday and brought us some fresh tomatoes. What a nice snack.

Inez Allgood was visited by her sister and friends from out of town last week.

Who Knows?

1. Who is the White House spokesman?
2. Define rhomboid.
3. What does an olive branch represent?
4. Who was King Arthur?
5. Where is the Gilla monster found in the U.S.?

Answers:

1. Marlin Fitzwater.
2. A parallelogram with oblique angles and the adjacent sides unequal.
3. It's considered an emblem of peace.
4. A legendary king of Britain of the 6th century.
5. A large poisonous lizard of Arizona and New Mexico.

West Texas Wheat Growers Should Avoid Early Planting

Wheat growers across West Texas should avoid early planting to reduce the threat of devastating wheat streak mosaic virus in this season's crop, warns a plant pathologist with the Texas Agricultural Extension Service.

Several counties on the South Plains and in the Texas Panhandle were hit hard by the virus in 1989, said Dr. Harold Kaufman, the Extension specialist. Potential losses from the virus were overshadowed in many counties by drought and freeze injury losses, he said.

The disease is spread by a wind-borne wheat curl mite which is most active in warm weather. Symptoms of the mosaic vary with wheat cultivars, time of infection and environmental conditions, the Extension Service specialist said. Infected plants are stunted, with yellow and green-streaked leaves.

"Fall infection is common and most devastating," Kaufman said, "but symptoms rarely show until temperatures increase in the spring."

The wheat curl mite is the only vector of the virus. It thrives on the tender, young growth of wheat and many grasses. Other hosts include corn, barley, rye and oats.

"Mite numbers can increase rapidly in a short time, going from egg to adult in eight to 10 days," Kaufman said.

Distribution of the virus in a field is related to the dispersal of the mite. Margins of the field are the first areas affected.

"The mite is simply blown into fields by the wind," the plant pathologist said. "Since it is only active during warm weather, it is usually warm winds from the southwest that move it. Therefore, the virus usually moves across a field from southwest to northeast."

Control of wheat streak mosaic is achieved by destroying volunteer wheat, avoiding Conservation Reserve Program (CRP)

land, planting later and planting resistant varieties, Kaufman said.

Mites survive the summer on volunteer wheat and various grasses, many of which are used as cover on CRP acreage.

Volunteer wheat should be avoided, as winds from the southwest will blow the wheat curl mite into the planted wheat," he said. If such locations must be planted to wheat, they should be planted last, he said. Early planted wheat should be placed in safer areas, he said.

"The planting date is very important in controlling wheat streak mosaic virus," Kaufman stressed. "Volunteer wheat and CRP grasses provide the vector and virus, but early planted wheat provides the bridge to the entire new crop."

This jeopardizes not only the wheat on that land, but also the crop of downwind neighbors and the entire area, he cautioned.

Planting should be delayed to allow mite populations to decrease. "Ideally, it should be delayed until the first frost," Kaufman said.

Later planting allows the mite and the virus less time to damage the crop. "It is widely known," Kaufman said, "that the earlier the infection occurs in the fall, the more severe the impact on yield."

"Just a week's difference in the planting date can have a significant effect on the severity of wheat streak mosaic infection."

Some wheat varieties have shown tolerance to the virus, he said. Among these are Tam-200, Thunderbird, Tam-105 and Triumph 64. Resistance to the mite has been reported for Century, Thunderbird, Tam-107 and Tam-200. The most susceptible varieties are Mustang, Hawk and Centurk 78.

Risky early plantings, especially near sources of the mite should be to tolerant

varieties, the Extension specialist said. More susceptible varieties should be planted last and as far as possible from volunteer wheat CRP acreage.

October Attendance Important To School

Muleshoe Independent School District receives about \$1450 per student who is in attendance at school in October. It is important for every student to be present in October. For one student to be absent just one day will cost the MISD about \$72.50. Parents are asked to see that their children attend school regularly.

October is the official attendance counting period for the fall. All students need to be present during this accounting period, as funding for the school district is impacted by the attendance count during the fall and spring.

To encourage attendance in high school the district and business have joined in an award effort to reward students and classes who attend classes during the attendance period. The following awards have been established:

Students who have perfect attendance throughout the month will have their names placed in a container and a drawing will be held each week for a compact AM/FM radio with ear phones. These awards compliments of the school district.

For those students who have

perfect attendance during the month their name goes into the container and a drawing held at the end of the accounting period for a "Jam Box". This award compliments of the school district.

Students who have perfect attendance each week will also receive special certificates from Sonic Drive-In for food and drink.

The last award will be for the best attendance during the second period class. The high school will be treating the two top classes to coke and other refreshments for their efforts.

Students are reminded that under the new attendance laws, they are required to attend school 80 days each semester to receive credit. If they fail to attend school for the 80 days, a committee hearing will be necessary to decide if they will receive credit. This hearing is mandated for those with excused absences as well as those with unexcused absences.

Strikers Spread
MOSCOW--Strikes in Moldova against a pending language law spread and the southern republic's government appealed for calm.

CATTLE FEEDERS GRAIN COTTON TRADING & HEDGING FUTURES & OPTIONS

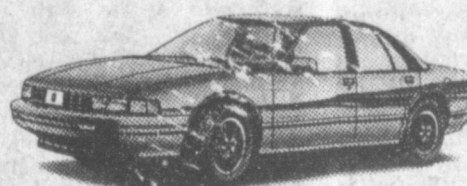
Wes Tex Futures, Inc.

P.O. Box 324 • 114 East Avenue C
Muleshoe, Texas 79347

Telephone 806/272-5585

Roderick Moss

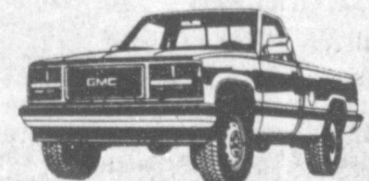
NOW SHOWING 1990's ...starring...



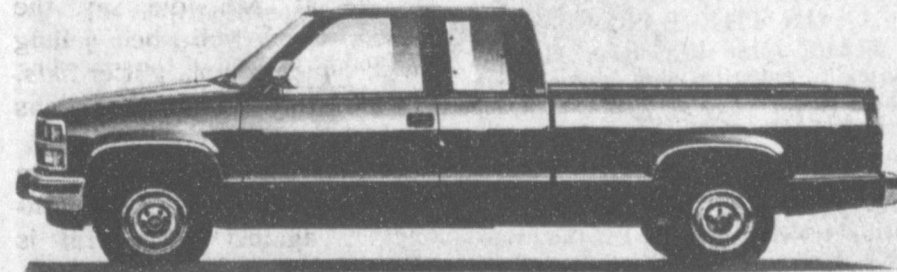
OLDSMOBILE
Cutlass Supreme



CHEVROLET
Caprice Classic



GMC PICKUPS
C/K 1500



C1500 EXTENDED CAB
Silverado Short-Box Pickup



BUICK
Park Avenue



PONTIAC
Grand Am



GEO
Tracker

ALSO STARRING...

SOUTH PLAINS FAIR SPECIAL - Until Oct. 2nd, 1989

ANNUAL PERCENTAGE RATES
With Approved Credit

36 Mo. 11.65 - 48 Mo. 11.85
60 Mo. 11.95

Robert D. Green, Inc.

806-272-4588

2400 W. American Blvd. Muleshoe, Texas

Toll Free
From NM
1-800-367-0261



Mr. Goodrich



FOOD CORN PREMIUM

Pioneer 3192
Yellow Corn

and

Approved

White Corn Varieties

Call 272-4231

for current price quotes

TEXAS SESAME

Wayne
Crittenden
Manager

Mark
Glawe
Vice President

Muleshoe

272-4231



Sudan News

by: Evelyn Ritchie

Mr. and Mrs. Curtis Knox of Utah visited during the weekend with his parents, Mr. and Mrs. R.B. Knox and also his sister, Mr. and Mrs. Bill Kuykendall and family, and grandmother, Mrs. Daisy Ford.

Juanda Fields and Gary visited friends and relatives in Stephenville and Baird during the weekend. They returned home late Monday evening.

Gill Rogers and Mae White's names were omitted from those attending the U.M.W. salad supper at the Methodist Church last week. Our apologies.

Mr. and Mrs. Wayne Rogers were in Melrose, N.M. Sunday to visit his aunt, Mrs. Nellie Simons.

Stephanie Bickett was home from Texas Tech during the weekend with her mother, Patty Miller and Misty.

Mr. and Mrs. Billy Baker of Spearman have been Sudan visitors recently with his mother, Mrs. Mae Baker and other relatives.

JV Longhorns

Now At 3-0;

Down Amherst

It's 3-0 now for Lazbuddie JV Coach Mark Scisson's team, following their 46-34 victory over Amherst Thursday evening.

In the first quarter, Chris Cozby put the first 'Horn points on the scoreboard on a 30-yard scamper, with Jonas Hernandez adding the extra point.

Also in the first Brett Thomas connected with Jody Copp for a 13-yarder and paydirt. Cozby came back in the first, and returned a kickoff for 60 yards for a third TD, with A Brett Thomas-Jody Copp pass adding the PAT.

Coming back in the second, Brett lobbed a 15 yarder to Jody, who turned it into a successful TD, followed by successful extra point try by Jon Colby Miller.

QB Brett then completed a 10 yard TD pass to Chris Cozby, with Jon Colby Miller again adding the extra point.

Winding up third quarter scoring, it was a 25-yarder from Brett to Jody.

In the third, Chris Cozby added six more with a 60 yard ramble downfield.

Also in the third quarter, Longhorn Quarterback Brett Thomas, broke his foot, and Amherst scored 22 points in the second half.

Next Thursday, the JV Longhorns will play Whitharral.

Prior to the JV game, the Lazbuddie seventh grade won against Amherst, 12-0. Scores were by Brandon Walker and Tony Gonzales.

Tanya Ray and family of Seminole visited during the weekend with her parents, Mr. and Mrs. Jerry Ray and other family members.

Mr. and Mrs. Eddie Bond and daughter of Vega were in Sudan Monday to attend funeral services for Norma Poe.

More than 100 students piled into the Church of Christ fellowship hall, Friday night, Sept. 15, after the Hornets' victory over Anton. Excitement filled the air as everyone chatted about the game and "pigged out" on cookies, sandwiches and drinks.

Pudd and Kay Wiseman recently attended opening day ceremonies at ACU where their daughter, Linda, is enrolled as a junior. During the ceremonies the Big Purple Band and a combined chorus sang and played patriotic songs. A parade of 50 state flags and 45 flags of nations represented by students enrolled at ACU marched around Moody Coliseum at these ceremonies.

Linda Wiseman, a junior at Abilene Christian University, recently served as an Inter-G leader for the freshman students during Welcome Week. Linda also is a member of the Big Purple Band, where she serves as a squad leader.

In a 62-8 romp over the Muleshoe Mules, the JV Hornets gained their first win making the record 1-0. Darren Collins started the Hornet domination with a touchdown early in the first quarter. Collins also led the scoring with three touchdowns. Ricky Weaver and Gabe Narramore came in close behind with two touchdowns each.

Also scoring touchdowns were Andy Roberts and Shannon Fisher. Two point conversions were made by Clint Humphreys, Fisher, Narramore, and Weaver. The Hornet's defense didn't allow the Mules to score until the third quarter.

The Band Booster organization sponsored a Stew Supper Friday, Sept. 15, prior to the Sudan VS Anton game. "This has turned out to be one of the biggest fund raisers we could have hoped for" said Mrs. Paula Ford.

Visiting this week with Mr. and Mrs. Billy Chester were his mother, Mrs. Stella Chester and aunt, Mrs. Frances Gage of Hereford. They also visited other friends and relatives while here including Stella's daughter, Mr. and Mrs. Dick West.

Donald Doty of Lubbock has been visiting his parents, Mr. and Mrs. Wayne Doty.

Billy Dale Williams of Lubbock visited during the weekend with his parents, Mr. and Mrs. Lee Williams.

Cindy Nichols and girls of El Paso plan to arrive for a visit with her parents, Mr. and Mrs.

Dwayne Powell and family.

Jayson Vincent of Cannon AFB was home during the weekend with his parents, Mr. and Mrs. Kenneth Vincent and other friends and relatives.

Weekend visitors with Mr. and Mrs. Jerry Ray were their daughter, Tanya Bell, and family of Seminole. They also visited her sister, Mr. and Mrs. Roby Lynn, and girls and her grandmother, Mabel Reed. Also visiting with them was Georgia Newcomer of Lubbock.

On September 13 and 14 the following members of the Sudan Fire Department attended the 16th Annual Cannon Area Control Fire School: Fire Marshal-Carl Burnett, training officer-Bobby Phillips, Fireman-Sam DeLariva, Fireman-Rick Walker.

Also attending the school as instructors of the smokehouse, 2nd Assistant Fire Chief-Rick Hill and 1st Assistant Fire Marshal-Mike Hill.

Dr. Karen Rich of Canyon visited during the weekend with her parents, Mr. and Mrs. Jack Engram.

Jay Harrison of Canon was among those from out of town that were here to attend the football game Friday night when Sudan defeated Anton.

Among college students home Friday to attend the game were Eddy Boyles, Eddie and Gorge Salinas, Dawn Gaston, Stephanie Bickett, Karen and Kendra Whitten, Shannon and Melanie Peck.

Mr. and Mrs. Bobby Jack Markham were in San Angelo during the weekend for an art show and sale.

The Fireman's Auxiliary met recently for the annual "New Members Salad Supper". One new member, Pam Richards, was present.

The Auxiliary will again work all the concessions stands on the visiting side with lots of homemade goodies. Also Fire Prevention Week will be Oct. 9-13. Posters will be judged again this year and poster boards will be given to the students in the near future.

Members present were Norma Burnett, LaRhonda Hill, Ginger Ritchie, Shonda Hill, Ann Carson, Louise DeLaRiva, Joyce Conn and the new member, Pam.

Wayland Baptist University Sets Career Day

Wayland Baptist University has scheduled a Career Day for Tuesday, Oct. 3 from 1 to 4 p.m. and would like to encourage all high seniors to participate.

high seniors to participate.

This is to provide an opportunity for high school seniors and college students to explore the possibilities of a number of careers. They have arranged to have professionals on campus to visit with students and answer any questions they might have. Representatives from many fields will be present including engineering, military, medical, social sciences, management and many more. "This would be a good time to encourage students to begin thinking about their futures" said Ellen Masten, Assistant in Placement in Career Planning. "We feel this will be beneficial to all who attend."

Bentley's
Muleshoe

Quitting Business Sale

Extended One Week!

We Would Rather Sell It Than Move It!

Prices Slashed

60% to 80% off

Absolutely Final Week!



Personal Checks
All Sales Final - No Layaways

Smart Fashion

110 S. MAIN ST. MULESHOE, TX. PHONE 272-4119

Open Mon.-Sat. 9-6
No Approvals - No Holds

CLEARANCE

On All 1989
Fords - Plymouths - Dodges -
Chryslers

Priced To Sell

Including
Pickups - Thunderbirds -
Tempos - Escorts - Dodge Colts -
Dodge Spirits - Dodge Shadows -
Chrysler New Yorkers




"Car Capitol Of The West Plains"

Muleshoe Motor Co.

1225 W. Amer. Blvd. 272-1251

STATEMENT OF OWNERSHIP, MANAGEMENT AND CIRCULATION			
1. TITLE OF PUBLICATION			
Bailey County Journal		10-1-89	
2. FREQUENCY OF ISSUE			
Weekly	52	\$16.50	
3. COMPLETE MAILING ADDRESS OF KNOWN OFFICE OF PUBLICATION (Street, City, State and ZIP Code) (Not printers)			
304 W. Second Muleshoe, Texas 79347, Bailey			
4. COMPLETE MAILING ADDRESS OF THE HEADQUARTERS OR GENERAL BUSINESS OFFICES OF THE PUBLISHER (Not printer)			
304 W. Second Muleshoe, Texas 79347, Bailey			
5. FULL NAMES AND COMPLETE MAILING ADDRESS OF PUBLISHER, EDITOR, AND MANAGING EDITOR (The firm must not be blank)			
L.B. Hall 1007 W. 7th Muleshoe, Texas 79347			
Cleta Williams 705 W. Third Muleshoe, Texas 79347			
L.B. Hall 1007 W. 7th Muleshoe, Texas 79347			
6. OWNERS (If owned by a corporation, its name and address must be stated and also immediately thereunder the names and addresses of stockholders owning or holding 1 percent or more of total amount of stock. If not owned by a corporation, the names and addresses of the individual owners must be given. If owned by a partnership or other unincorporated firm, its name and address, as well as that of each individual must be given. If the publication is published by a nonprofit organization, its name and address must be stated.) (This must be completed)			
L.B. Hall		1007 W. 7th Muleshoe, Texas 79347	
Perry B. Hall		2055 E 18th Place Tulsa, Okla. 74105	
Lawren L. Hall		2819A Mechanic Row Galveston, TX 77550	
7. FOR COMPLETION BY NONPROFIT ORGANIZATIONS AUTHORIZED TO MAIL AT SPECIAL RATES (Section 3113, GMM 3097)			
<input type="checkbox"/> HAS NOT CHANGED DURING PRECEDING 12 MONTHS <input type="checkbox"/> HAS CHANGED DURING PRECEDING 12 MONTHS			
8. EXTENT AND NATURE OF CIRCULATION			
A. TOTAL NO. COPIES (Net Press Run)		2800	
B. PAID CIRCULATION		1169	
C. TOTAL PAID CIRCULATION (Sum of B 1 and B 2)		2084	
D. FREE DISTRIBUTION BY MAIL, CARRIER OR OTHER MEANS		150	
E. TOTAL DISTRIBUTION (Sum of C and D)		2534	
F. COPIES NOT DISTRIBUTED		266	
G. RETURN FROM NEWS AGENTS		2800	

Letter To The Editor

Dear Editor:

JENNYSLIPPERS wish to THANK the citizens and merchants for their participation, donations and/or assistance during the 8th Annual Regional Conference of Chamber of Commerce Women.

A special thanks to: Harvey Bass, Harvey Bass Appliance; Joella Flowers, Keepsake Video; Diane Alison, Decorator's Floral; Dani Heathington, Blue Goose; Susan Copeland, KMUL; Judy Watson, Ranger; Magann Rennels, Channel 6; Clea Williams, Muleshoe Journal; Nancy Kidd, manager, Muleshoe Chamber of Commerce and Agriculture; Darrell Turner, Muleshoe Mayor; Norene Pearson, Trophies and More; Joyce Holmes, Bailey County Coliseum and Hubert Kidd/Hugh Young, Five Area Telephone.

Also, Cara Juan Schuster, Mary Moore, Jackie Carlan, Marsha Lewis, Pat and Tisha Young, Norma Bruce, Louvenia Garlington, Hellen Adrian, Beth Gandy, James Wedel, Sam Harlan, IOOF Lodge, Holly Huckaby, Heather Huton, Ana Mendoza, Amy Montgomery and Christi Pena, Ambassadors; and to all JENNYSLIPPERS who worked with committees to make this regional meeting successful - my personal thanks for a job well done!!!!

Pat Langfitt
Regional Conference Chairman

September 25, 1989
Muleshoe Publishing Co Inc
304 West 2nd
Muleshoe TX 79347

Dear Taxpayer:

The Texas Legislature passed a new law which allows certain corporations to compute their Texas franchise tax on the same basis as they use to determine their federal income tax liability.

This new law covers those companies organized under the Texas Close Corporation law, or under a similar law of another state, and corporations which have elected to be treated as "S corporations" for federal income tax purposes.

The legislation applies to reports due after December 31, 1989. Guidelines for this new provision are:

For initial reports, the corporation must be eligible before the original due date of the return.

For annual reports, the corporation must be eligible before May 31 of the reporting year.

This reporting method does not apply to any subsidiary corporation if its parent is not also eligible.

For tax assistance call 1-800-252-5555 toll free nationwide, or call 512/463-4600.

Sincerely,
Bob Bullock
Comptroller of Public Accounts

Texas A&M psychologist says depressed need guidance and therapy

COLLEGE STATION — The most soft-hearted psychological therapist is the one who gets patients back on their feet and coping right away, says a Texas A&M University clinical psychologist.

"It may sound like the hard-hearted approach, but saying 'There, there, baby,' can often make a depressed person's problem worse," says Dr. Albert Casey, a psychologist specializing in behavior modification.

One of the main aims of behavior modification, what Casey terms "B-Mod," is to restructure behavior to maximize the individual's potential for receiving rewards from the environment.

"We first look at the environmental factors, such as a major family change, a major financial loss, or demands beyond the level of competence," Casey explains. "We also look at the person's skills and emotional resources, then do whatever it takes to get the patient moving. Involvement in the world can preempt depression."

"The mood disorder is real, and the pain is there," Casey says. "Occasionally they just need someone to listen and understand, but often a depressed person needs guidance as much as 'therapy,'" he says. People should look at their own resources and strengths and use them. If there is a deficit, they can be taught them.

B-Mod has been successful in treating children's learning and behavioral problems, and adult and youth anxiety, phobias, compulsive/obsessive behaviors, mood disorders, and various stress-related disorders.

Loie Precure Funeral Services Held Friday

Funeral services for Loie Ethel Precure, 87, were held at 2 p.m. Friday, Sept. 29 in the First Baptist Church with the Rev. Barry Bradley, pastor, officiating.

Burial was in Muleshoe Memorial Park Cemetery under the direction of Ellis Funeral Home. Justice of the Peace Jack Bates pronounced her dead of natural causes at 4 p.m. Wednesday.

Born July 13, 1902, in Bokchito, Okla., she had been a resident of Bailey County since 1933, moving here from Oklahoma City, Okla. She was a homemaker and a member of the Muleshoe First Baptist Church. She married R.D. Precure on Feb. 9, 1919, in Cordell, Okla. He died May 14, 1988.

Survivors include three sons, Dewitt Precure, Kenneth Precure and Ray Precure, all of Muleshoe; two brothers, Herman Ashford of Pampa and Arnold Ashford of Francis, Okla.; nine grandchildren; and 11 great grandchildren.

One grandson, Allison Precure preceded her in death in 1970.

Human beings are different and no rule can be applied to them en masse.

Most people think they are pretty smart, so why not agree with them?

Junior, Senior Day Set At E.N.M.U.


Junior-Senior Saturday, a special day for high school juniors and seniors to visit Eastern New Mexico University is scheduled for October 21, 1989. This event is being held in conjunction with the 16th annual Peanut Valley Festival, the largest arts and crafts fair in Roosevelt County.

A variety of activities have been scheduled to help juniors and seniors get more familiar with Eastern, and to give them a head start in knowing what they want to do after graduation.

Throughout the morning they will be able to meet with deans and faculty members who will provide career information and discuss programs available here at Eastern. Areas to be discussed include fine arts, education and technology, liberal arts and sciences, and business. They will also have the opportunity to meet with ENMU students, various student organizations, and receive an overview on financial

aid. Pizza will be served on campus at two dollars per person. After lunch students are invited to participate in the "Peanut Olympics" and will also have time to look through the arts and crafts fair. Junior-Senior Saturday participants will also receive a free ENMU t-shirt.

Additional information about Junior-Senior day may be obtained by contacting Linda Marr at the high school.



RONNIE HOLT INSURANCE AGENCY

SPECIALIZING IN CROP, LIFE & HEALTH INSURANCE

Ronnie Holt

P.O. Box 304
Western 66 Office Building
Muleshoe, Texas 79347
Office: (806) 272-3614
Residence: (806) 965-2842

Dr. A.R. Ploudre
Optometrist

*Family Vision Care *Contact Lenses
*Texas Medicaid

(505) 762-2951 1515 Gidding St., Clovis

Hours: Monday through Friday 1-5 p.m.
8:00 a.m. to 12 noon Saturday, 8 a.m.-12 noon

Immaculate Conception Catholic Church

Father Patrick Maher
Northeast City

First Baptist Church

220 West Ave. E.
Barry Bradley, Pastor

Emmanuel Baptist Church

Iglesia Bautista Emmanuel
107 East Third
Isaias Cardenas, Pastor

Trinity Baptist Church

314 E. Ave. B.
Rev. Dale Berry

Circle Back Baptist Church

INTERSECTION FM 3397 & FM 2-8
946-3676

Calvary Baptist Church

1733 W. Ave. C.
Rev. Rick Michael

Muleshoe Baptist Church

8th and Ave. G.
Bob Dodd, Pastor

Progress Baptist Church

Charles Fist, Pastor
Progress, Texas

Richland Hills Baptist Church

17th and West Ave. D.
Allen Petersen, Pastor

St. Matthews Baptist Church

Corner of West Boston
West Birch
M.S. Brown, Pastor

Progress Second Baptist Church

1st and 3rd Sunday
Rev. Arthur Hayes

The Community Church

Morton Hwy
Mort Cross, Pastor
272-5992

Church Of The Nazarene

9th and Ave. C.
Dennis Hayes, Pastor



... a famous and well known quotation, and a good rule to follow. Any doctor will agree that eating some fruit every day is beneficial to health. Eating fruit is an aid to health and also gives us great pleasure, for instance how about one of mother's delicious apple pies, or what joy comes from biting into a nice juicy apple, or orange. Spiritually, attending church is of great benefit to us. The soul needs the nourishment provided by a good sermon or the encouragement of fellow worshippers. Not only do we need the things that the church offers, but there are many pleasures to be derived there.

The Church is God's appointed agency in this world for spreading the knowledge of His love for man and of His demand for man to respond to that love by loving his neighbor. Without this grounding in the love of God, no government or society or way of life will long persevere and the freedoms which we hold so dear will inevitably perish. Therefore, even from a selfish point of view, one should support the Church for the sake of the welfare of himself and his family. Beyond that, however, every person should uphold and participate in the Church because it tells the truth about man's life, death and destiny; the truth which alone will set him free to live as a child of God.

ATTEND Church REGULARLY

© Coleman Adv. Serv.

Longview Baptist Church

965-3413
B.C. Stonecipher, Pastor

Primera Iglesia Bautista

223 E. Ave. B.
Roy Martinez, Pastor

Lariat Church Of Christ

Sunday School 10:00 a.m.
Worship 11:00 & 6:00 p.m.
Wednesday Services 7:00 p.m.
Sam Billingsley, Minister

Muleshoe Church Of Christ

Clovis Hwy.
Bret McCasland, Minister

16th & Ave. D. Church Of Christ

Sunday 10:30 a.m.
Evening 6:00 p.m.
Wednesday 8:00 p.m.

First Assembly Of God

Rev. David C. McCune
9:45 Sunday School
11:00 Morning Worship
6:30 Evening Services
7:30 Mid-Week Services
272-3984

Spanish Assembly Of God

East 6th and Ave. F.
Mike Doyle, Pastor

First United Methodist Church

507 W. 2nd Street
Richard Edwards, Pastor

1st Baptist Church

Lazbuddie, Tx. 965-2126
Gary Wilcox, Pastor

Primitive Baptist Church

621 South First
Elder Cleveland Bass, Pastor
Lazbuddie Church Of Christ

202 W. Ave. B. New Covenant Church

Plainview Hwy.
Sunday 10:00 a.m.
Wednesday 7:00 p.m.
Jimmy Lowe, Pastor

Western Drug 114 Main 272-3106	Western Drug 114 Main 272-3106	Dairy Queen 1204 W. Amer. Blvd. 272-3412	Dairy Queen 1204 W. Amer. Blvd. 272-3412
Sain Irrigation Clovis Hwy. 272-4397	Ana's House of Beauty 109 W. Ave. B. 272-4152	American Valley, Inc. Hwy. 84 W. 272-4266	Robert D. Green, Inc. 2400 W. Amer. Blvd. 272-4588
Fry & Cox, Inc. 401 S. First 272-4511	Bob Stovall Printing 221 E. Ave. B. 272-3373	James Roy Meat Market 506 W. Amer. Blvd. 272-4361	Lookin' Good 206 Main 272-5052
Main Street Beauty Salon 115 Main 272-3448	1st Bank Member F.D.I.C. 202 South First 272-4515	Bratcher Motor Supply 107 E. Ave. B. 272-4288	5-Area Telephone Co-Op 302 Uvalde 272-5533
Irrigation Pumps & Power W. Hwy. 84 272-4483	Farmers Co-Op Elevators 113 N. 1st 272-4335	Wes Tex Futures 114 E. Ave. c. 272-5585	Richland Hills Texaco 1914 W. Ave. B. 272-4875

CLASSIFIEDS 272-4536

CLASSIFIED RATES

15 Words & Under
Minimum Charge
\$2.00
Thereafter
\$2.00
16 Words & Over
for insertion
15 cents per word
2nd insertion
10 cents per word

CLASSIFIED DISPLAY RATES
\$1.75
Per Column Inch

HEADLINES
12 noon Tues.
For Thursday Paper
12 noon Friday
For Sunday Paper

To receive the reduce rate after the first insertion ad must run continuously.

We reserve the right to classify, revise, or reject any ad. We are not responsible for any error after ad has run once.

1. Personals

PAINTING: Interior & Exterior. Call 272-4874 21-30-1c

CONCERNED About Someone's Drinking? HELPFUL AVAILABLE through Al-Anon Call 272-2350 or 965-2879 or come to visit Tuesday nights, 8:00 p.m. or Saturday mornings at 10:30 a.m. and through AA call 965-2879 or come visit Tuesday nights, 8:00 at 620 W. Second, Mulvane.

needed: Companion to elderly lady. Routine area, lifetime professional. House, time off, salary negotiable. Call 866-236-1639 or 265-3836. 1-39-41p

Call your local used car dealer for 7 day a week used auto removal. 965-2915 or 1-800-692-4045. 6-37-1c

Mary Kay Cosmetics
Janie Flowers
272-3865
Call 8-12 a.m. and after 6 p.m.

log homes dealership
Investment 100% secured by note loan starting at \$2495. Loan your own car. Call Don Nickman 241 Fax 1-800-632-6678 or Collect 615-986-1731.
Country Living 157-1440
211 Mulvane, Texas
Autumn 1989

Data Security Print is not responsible for any debts other than her own. 272-4874

Shop Mulvane Post

3. Help Wanted

LICENSED Beauty Operator wanted. Call Helen at Main Street Beauty Salon, 272-3448. 965-386-1c
We are taking applications for part-time sales clerks. Apply in person. Mulvane Fin. 102 West American Blvd. 272-398-2c

ATTENTION Hiring! Government jobs your area. Many immediate openings without waiting list or test. \$97,840-\$69,485. Call 1-602-438-8885. EXT R0001. 3-39c-41p

ATTENTION: Excellent income for home assembly work. (Info) call 506-666-0700. Dept. P0827 272-416-41p (10)

ATTENTION: Earn Money Reading Books! \$32,000/year income potential. Details: (1) 602-838-8885 EXT B01001. 3-39c-41p

4. Houses For Rent

FOR RENT: 2 bedroom, 2 bath, Mobile Home. About six miles out. Middle Age couple preferred. 966-3663. 26-40c-1c

FOR RENT: 3 bedroom house in the County. Call 965-2781 or 272-4666. 64-40c-2c

11. For Sale Or Trade

Small deer situation. Recently won Best of Show at Bailey County Fair. Stud service available. Call 966-3656 or 272-3897. D11-38c-41c

PIANO FOR SALE: Wanted - Responsible party to take on small monthly payments on piano. See locally. Call manager at 890-635-7611, anytime. 1611-38c-61p(10)

FOR SALE: Tomatoes, Bell Peppers, Onions on Highway 84 By-Pass-Lattfield. B.E. Turner. (806) 385-5980. 711-30c-1c

15. Misc.

FOR SALE: Tandy 1000 EX computer; IBM PC compatible; 640K main memory; 5 1/4" and 3 1/2" disk drives; color monitor; software includes: WordPerfect 5.0 word processor, Microsoft QuickBasic 4.5, Microsoft Quick C 2.0; Microsoft Macro Assembler 5.1; Resonator Complete Business II Accounting software; all manuals and many tutorial and other books. Sacrifice at \$4,000. 272-5378, ask for Mary Storie. C15-39c-1c

15. Misc.

Ernie's Roofing
Specializing in flat roofs, shingles and built-up roofs. Residential-Commercial. Free estimates. References, work guaranteed. 116-38c-1c
Rm. 505-762-6510

17. Seed and Feed

SELECT-TAM 105 Wheat Seed. Call 965-2895 or 965-2886. 17-38c-41p

18. Legals

Ordinance No. 3058

ORDINANCE NO 3058

AN ORDINANCE BY THE CITY OF MULVASHORE AUTHORIZING THE PREVENTION OF FLOOD DAMAGE PERTAINING TO SUBSTANTIAL AUTHORIZATION, FINDINGS OF FACT, PURPOSE AND METHODS, GENERAL PROVISIONS, ADMINISTRATION, PROVISIONS FOR FLOOD HAZARD REDUCTION, AND ESTABLISHING AN EFFECTIVE DATE FOR SUCH ACTIONS, REPLACING ORDINANCE NO. 2744, ADOPTED APRIL 21, 1987, PASSED AND APPROVED THIS 29th DAY OF SEPTEMBER.

Mayor, City of Mulvane



That's All She Did Dinner. What's wrong with these eggs? Waitress: Don't ask me, I only laid the table.

No Collisions "You say you never clash with your wife?" "Never. She goes her way and I go hers."

Really Tough A recruit strolled into a bar in the roughest part of town. Being a bit uneasy, he casually said to bartender: "I like these old pieces with sawdust on the floor."

A Circus A hard-driving politician ignored a red signal, floundered the traffic policeman's knees, missed the street light by an inch, and ground a hole, all in one shot.

The policeman halted him, then stroled over to the road, pulling a big handkerchief from his pocket on route.

"Loser country," he growled. "On your way back I'll drop this and see if you can pick it up with your teeth."

8. Real Estate

James F. Hayes & Co. Agricultural Real Estate Vice Color Agent Sales & Appraisals
110 Main Street, Suite 103

FOR SALE: 3-1-1 House. New Heat Pump, Ceiling Fans. Excellent Condition. Asking \$28,500.00. 312 Avenue K. During working hours, call 272-5501. Nights and Weekends, Call 272-5866. 28-39c-1c

FOR SALE: Charming 3 BR house; new carpet; 1 bath; covered patio; stop; single garage. 272-3282. 405 E. Dallas. 8-37c-41p

FOR SALE: 3-1-1 House. Heat Pump. Fenced Yard. Excellent condition. Asking \$28,500. 305 Avenue K. During working hours, call 272-4538. Nights & weekends, call 272-4946. 28-39c-1c

Double Wide Mobile Home for sale. During day 272-4613 and after 8 p.m. 272-4881. Scoggin Ag Center, P. O. Box 452. 28-37c-1c

FARM LAND FOR SALE: 177 acres dry-land with full allotment. 177 acres irrigated with full allotment. 966-5478. C8-35c-1c

World Talk "Say, Pa?" "Well, what is it now?" "When deaf mutes say 'hey' write to they go their fingers-jointed?"

Heads in Language Old Lady, in New York "Isn't it wonderful how a single policeman can dam the flow of traffic?" "Boy--yes, grumpy, but you should hear the one-driven."

High School JUST LISTED-COZY 2-1 Home, nicely remodeled, fenced yard, & more \$97,000!!!

2-1/2-1 Brick, 11 furnaces, CA, fenced yard & more. \$207,000!!!!

NICE 2-1/2-1 Home, corner lot, built-ins, nice carpet, heat pump, fenced yard, storage bldg. & more!!!!

PRICED REDUCED FOR QUICK SALE! Nice 2-1-1 Home, Cent. Heat, carpet, workshouse area, and much more. \$49,950.00!!!!

8. Real Estate

Smallwood Real Estate 282 Main Mulvane 272-9838
Lemon Addition-3 Bedroom, 1 Bath, Wood stove in den, living room, 2-car Garage, Storage bldg., Fenced Yard NICE. Priced to sell.
Langston Area-1 Labor of red, sandy, dry land. This is productive land.
1 Block South of Hospital-2 Bedrooms, 1 Bath, \$500.00 Closing cost \$970.00. Monthly payments include taxes and insurance.

WHITT - REID Mulvane 272-3611 Insurance
201 Main Real Estate Sales & Appraisals
"OLD JOHN DEERE BUILDING"
For Sale at a very reasonable price Home Phones
By Whitt, C.R.E.A. 272-3058
Certified Real Estate Appraiser
Thursie Reid George Paton Sandra Changy 272-5538 272-4067 955-6727
We have buyers for farm land..

Classifieds 272-4536

Bingham & Nieman Realty 116 E. Ave. C 272-5285 or 272-5226
RICHLAND MILLS BEAUTIFUL COUNTRY OVERLOOKING AREA - 2-1/2 Cent. Acre, built-ins, PP, 4 ft. of w. area, loads of storage, no split, fenced yd., & MUCH MORE. \$70,000!!!!
4 NICE RESIDENTIAL LOTS PRICED FROM \$5,000.00!!!!
JUST LISTED-Nice 3-2-2 Brick on large corner lot, Cent. Acre, built-ins, storm windows & doors, large basement, much more!!!!
IMMACULATE 3-2-2 Home, corner lot, Cent. Acre, built-ins, PP, loads of storage & closet space, much more!
VERY NICE 3-2-3 Home, Cent. Acre, built-ins, PP, fans, split, sys., fenced. PRICED TO SELL!!!!
RICHLAND AREA NICE 3-2-2 Brick home (2 story), on corner lot, Cent. Acre, built-ins, and much more. LET'S LOOK TODAY!!!!
NICE 3-2-1 Brick Home, Cent. Acre, built-ins, large den w/fireplace. Fenced yard, storage bldg. \$50,000!!!!
PRICE REDUCED 2-2-2 Brick, corner lot, Cent. Acre, spacious rooms, utility, cov. patio, fenced yard, & much more. 49,000!!!!
VERY NICE 3-2-1 Brick, Cent. Acre, built-ins, PP, storm windows & doors, covered patio, fenced yard, corner lot. \$97,000!!!!
HIGH SCHOOL JUST LISTED-COZY 2-1 Home, nicely remodeled, fenced yard, & more \$97,000!!!
2-1/2-1 Brick, 11 furnaces, CA, fenced yard & more. \$207,000!!!!
NICE 2-1/2-1 Home, corner lot, built-ins, nice carpet, heat pump, fenced yard, storage bldg. & more!!!!
\$600 TOTAL MOVE-IN POSSIBLE to qualified Buyer on this 3-1-1 Brick, Cent. Heat, Evap. Air, built-ins, fenced yard. \$27,000!!!!
PRICED REDUCED FOR QUICK SALE! Nice 2-1-1 Home, Cent. Heat, carpet, workshouse area, and much more. \$49,950.00!!!!
DIANNE NIEMAN, BROKER GEORGE NIEMAN, BROKER

BUSHELFUL OF VALUES!
YOU CAN FIND IT IN THE CLASSIFIEDS
Mulvane Journal and Bailey County Journal 272-4536

SELL-NENT-TRADE OR BUY THROUGH THE CLASSIFIEDS! Call 272-4536