



SAHS Mountaineers host Lometa - Friday - 7:30
 Parents recognized 6:45
 Junior High & SAHS Junior Varsity at Lometa Thurs. 6:30

GO SAHS VOLLEYBALL TEAM!

SAHS Volleyball team in Bi-District game against Perrin-Whitt at Cisco Junior College gym, Thursday - 6:30

1-98
 SOUTHWEST MICRO PUBLISHING
 2627 E. YANDELL DR.
 EL PASO TX 79903
 750-1

Your
 Hometown
 Newspaper
 Since 1886

Santa Anna News

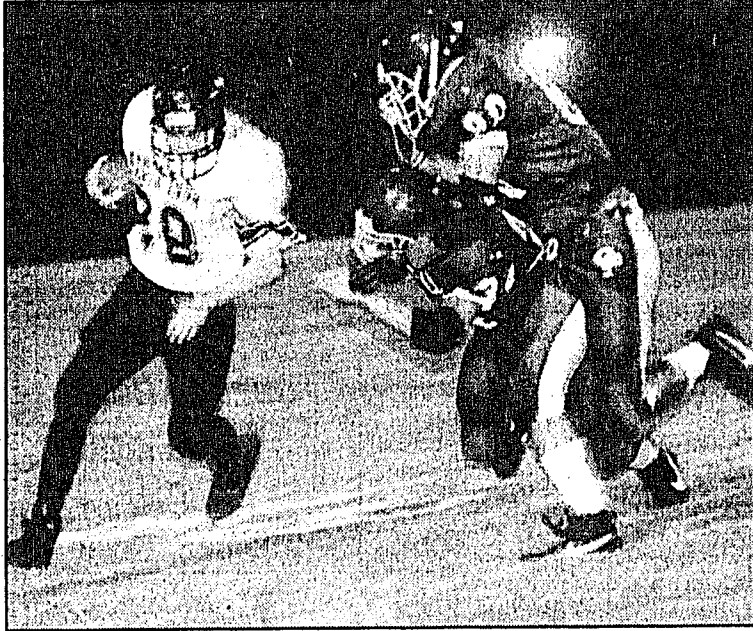
"He Profits Most Who Serves Best"

Newstand Price 50c

Volume 112 Number 44

Thursday, November 6, 1997

Mountaineers Put Fear In Cross Plains, End Season Here Friday Against Lometa



SAHS Senior Jason Jones gains yardage while eluding two Cross Plains Buffalos last Friday evening. The Mountaineers made the Buffalos work hard to keep their sixth place ranking in the state AP Poll. Although the Mountaineers were narrowly defeated 21-18 they played like they were state-ranked with the Buffalos. They left Cross Plains with the Buffalos realizing that the Mountaineers were a force to be reckoned with.

Photo by Carol Herring

The Santa Anna Mountaineers played long and hard last Friday evening in Cross Plains and going into the fourth quarter were winning 18-13 when the Buffalos scored in and added two points to the scoreboard to win the game 21-18.

Shane Watson's 45 yard pass to Clay Crossley gave the Mountaineers the edge with 10:10 left on the clock in the first quarter and the score 6-0. Cross Plains then added their own score along with the extra point, pulling the Buffalos ahead 7-6. Josh Roberson

Representative Turner To Be Honored Tuesday In Coleman

Coleman County organizations and friends of Voss native Bob Turner are planning an appreciation dinner for the State Representative of the 73rd District on November 11. Scores of state legislators have been invited to the dinner honoring the Coleman County native who has served the district well the past seven years. Congressman Charles Stenholm has informed the organizers, he will attend the function, barring an emergency. The dinner will be held at the

Coleman Junior High K-8 cafeteria at 6:30 p.m. Skip Casey will be preparing a buffet of steak, lamb, goat and all the trimmings.

The Texas Electric Cooperatives will sponsor the entertainment with "The Cooper Fiddlers" of Abilene Cooper High School performing.

Tickets are on sale at Santa Anna National Bank, First Coleman National Bank and Coleman County State Bank at a cost of \$20 per plate.

The NEWS Wants To Hear From Those Classes Holding Reunions At Homecoming

The NEWS office would like to hear from the SAHS Classes of '47, '67, '77 and '87 who held class

reunions during the recent homecoming weekend.

If group pictures were made while



Yum, Yum, What A Yam!

Everyone knows Clarence Gilbert is quite the gardener and this time he outdid himself by raising these 'giant' sweet potatoes. The potato Clarence is holding weighs 5 pounds and the smaller ones beside him weighed in at 2 lbs. and 3 lbs.. Clarence has been sharing with "everyone in town" so there have been lots of yummy sweet potato dishes on tables around town.

then ran 54-yards to bring the score 13-7.

During the second quarter Robertson interception a Buffalo pass and raced 59 yards to bring the score up to 18-7. Before the half Cross Plains once again scored and the scoreboard at halftime showing 18-13.

Monday coaches named Roberson "Offensive Player of the Game" with Clay Crossley receiving "Defensive Player of the Game" honors.

Individual stats for the game were:

Chris Boyet: 20-5; Shane Watson 11-3; Josh Roberson 100-11-1; Jason Jones 17; Lupe Castillo 9-4; and Hector Patino 36-9. Crossley had a 45-yard interception and 1 touchdown.

This Friday evening the Mountaineers will end the season at home when they host the Lometa Hornets.

The Mountaineers received several injuries last Friday at Cross Plains but Monday Head Coach David Robinett said he felt like all those injured would be able to return to the field this Friday.

Robinett said, "Those who did not make the trip to Cross Plains last Friday missed the best game of the year. We worked all week telling the team not to be intimidated by the Buffalos number six ranking in the state. We went over there believing we could play well against them and that is what we did."

Robinett stated that Lometa has a big line, probably the biggest the Mountaineers have seen all year.

Methodist Church To Hold Lord's Acre Festival Saturday

The booths will open at 10:00 a.m. for the Santa Anna Methodist Church Lord's Acre Festival to be held Saturday at the armory in Santa Anna.

The festival will include a silent auction taking place from 10:00 a.m. to 5:00 p.m., a country store, crafts and a bake sale. Children's activities will be held throughout the day.

Members of the church are presently selling tickets for a whole beef which will be given away at 5:00 p.m. Saturday. Tickets for the beef are \$1.00 each or 6 for \$5.00 and will also be available all day at the festival.

Barbecue sandwiches will be served at lunch for the price of \$3.50 and a barbecue beef dinner will be served starting at 5:00 p.m. Price of dinner tickets are \$5.00 for adult plates and \$3.00 for children under 12 years of age. Meal tickets are available from church members or may be purchased at the door.

Plans are in progress for some local entertainment to take place at dinner time. As always someone is sure to embarrass themselves so you will want to be sure to be present.

you were together, we would also like to borrow these to be published.

Please call or drop by the NEWS office with information of your class gatherings.

Academic Pep Rally To Be Held Tues. Nov. 11

On Tuesday, November 11, a full blown academic pep rally will be held at 3 p.m. in Perry Gym.

The State of Texas will recognize Santa Anna school for their academic excellence.

Plaques will be presented to Santa Anna Elementary School, Santa Anna Junior High School, Santa Anna High School and the school district as a whole.

Everybody is invited to come support the school and students.

Bi-District Volleyball Against Perrin-Whitt At Cisco Thurs.

The Santa Anna High School girls volleyball girls won district last Tuesday night when they played Lingleville. The girls will

SAISD Announces District And Campus Site Based Committees

For several years the state has focused on decreasing the role of the state in determining specifically how programs are conducted at the local school level. They have indicated that it is the business of local communities and their school systems to determine how educational programs will be structured--and that the state's role is to establish the standards for performance and determine district accountability with respect to state standards.

Senate Bill 1, passed in June of 1990, provided for the establish-

ment of district and campus committees whose classroom teacher and campus based staff representatives are elected. The role of committees includes responsibility for improving student outcomes through good setting, curriculum, budgeting, staffing patterns and school organization.

These committees are composed of teachers elected by their peers to serve four-year terms, parents of students currently enrolled, community members who reside in the District and business people. The committees, known as Site-Based Decision Making Committees, are representative of the community and provide the opportunity for constructive input from the community.

The Site-Based committees for the 1997-98 school year are as follows:

DISTRICT SITE-BASED COMMITTEE (1997-98)

Teri Jones, chairperson (97-98) 1 year; David Robinett, recorder (97-99) 2 years; Sharon Cheaney, member, (1997-2000) 3 years; Gail Loyd, member (1997-2001) 4 year; Dean Bass, superintendent; Montie Guthrie, professional member; Leanna Hartman, community representative; Rod Musick, business representative and Marty reed, parent representative.

SECONDARY SITE-BASED COMMITTEE (1997-98)

Sandra Guthrie, high school, chair, (1997-2000) 3 years; Anna Bozarth, junior high school (1997-1999) 2 years; Roland Nicholas, high school (97-98) 1 year; Mark Buresh, high school (1997-2001) 4 years; Mike Wetsel, professional member; Thomas Ray Rutherford, business representative; Alice Anna Spillman, community representative; and Laura Mata, parent representative.

ELEMENTARY COMMITTEE (1997-98)

Sharon Greenlee, chair (95-99) 2 years; Dee Dee Hudson, teacher (1997-2001) 4 years; Susan Snipes, teacher (1996-2000) 3 years; Betty Smith (1994-1998) 1 year; Kathy Holt, teacher; Royce McIver, community member; Gail Horner, para-professional; and Nona Hall, business member.

Felicia Ellerbe Is Frenzy Winner

Felicia Ellerbe topped all entries in our Mountaineer Football Frenzy contest last week by guessing correct on 14 of 17 games. There were six contestants who showed up with 13 correct picks. Felicia will be awarded \$20 for winning the contest but won't get the \$5 bonus since she didn't know our former Mountaineer who was Randy Brown. Randy was pictured as a senior at SAHS in the 1963 yearbook. Even though Felicia didn't know who he was, almost all our other contestants did know him.

The games that gave our players the most problems this week were Santa Anna-Cross Plains, Odessa and Midland high schools, Missouri-Colorado, and Mississippi College.

Be sure to get your Frenzy entry in this week, as it will be our last of the season. The Mountaineer Football season will end this Friday and according to our agreement with our supporting advertisers, that is when we will end our contest. Be sure to tell our advertisers how much you appreciate their helping to bring you the contest.

Results of last weeks games were:

- San Francisco 17 - Dallas 10
- Carolina 38 - Oakland 14
- Baird 40 - Evant 12
- Cross Plains 21 - Santa Anna 18
- Gorman 26 - Rising Star 9
- Wylie 37 - Coleman 7
- Panther Creek 54 - Veribest 0
- Midland 41 - Odessa 14
- Brownwood 49-Mineral Wells 13
- Early 33 - Junction 18
- San Saba 28 - Mason 25
- Bangs 34 - Goldthwaite 29
- Mississippi College 13 - HPU 0
- Missouri 41 - Colorado 31
- UCLA 27 - Stanford 7
- Forsan 36 - Ozona 12
- Rich. Springs 60 -Paint Rock 14

Santa Anna Booster Club Meeting Mon.

The Santa Anna Booster Club will be meeting on Monday, November 10 at 6 p.m. in the coaches office of Perry Gym.

Plans will be finalized for the upcoming junior high and high school basketball tournaments scheduled for the first and second weekend of December.

Everyone is encouraged to come to this and any Booster Club meeting.

be playing this Thursday at 6:30 p.m. at Cisco Junior College in Cisco. They will be playing Perrin-

Whitt. Cost of admission is \$2 for adults and \$1 for students. Members of the team are Buffy Martin, Kristi Wade, Jennifer Johnson, Martv Siller, Amanda Lishka, Kristen Keeney, Yolanda Frausto, Rene Yancy. Debbie Bacon is the coach.

Parents To Be Recognized At Game Fri., Band Sweetheart & Beau Will Be Named

The Santa Anna Booster club will be sponsoring Parent's Night on Friday evening prior to the Santa Anna-Lometa football game.

Varsity football players and cheerleaders will be introduced along with their parents. Those to be introduced are asked to be at the north end of the field at 6:45 p.m. for the presentation.

The Santa Anna Mountaineer Band Sweetheart and Beau will be presented during the halftime show at the game.

The Football Beau and Sweetheart will be announced during the Pep Rally Friday afternoon at 3 p.m. in Perry Gym.



Junior High Football Beau And Sweetheart

The 1997 Santa Anna Junior High Beau and Sweetheart were announced last Thursday evening during halftime of the Cross Plains-Santa Anna game. Bo Morgan, son of Bobby and Michelle Morgan, was selected Football Beau with Jamie Ellerbe, daughter of James and Felicia Ellerbe being named Football Sweetheart.

**GOOD LUCK AT BI-DISTRICT - THURSDAY AT CISCO
 SAHS VOLLEYBALL TEAM**

NOV 06 1997

Obituaries

Berniece Key Mulroy

HOUSTON—Services were held last week in Houston for Berniece Key (Mrs. Bill) Mulroy, age 91, with burial in Earthman Resthaven Cemetery, Houston. She died October 21, 1997 at Seven Acres Geriatric Center, where she had been a resident the past three years, having suffered from Alzheimer's the last ten years.

Until the past three years her children, Bill Mulroy, Jr. of Gatlinburg, Tenn. and Evangeline Mulroy Horton of Houston, had taken care of her with her spending alternate times in their homes.

Former residents of Santa Anna, Bill and Berniece Mulroy were active in the Santa Anna community being the manager and secretary/bookkeeper for West Texas Utilities for thirty-two years.

They retired in 1963 and moved to Jacksonville to be near their daughter and later to Houston. Bill preceded Berniece in death in 1967.

During their years in Santa Anna the Mulroys were active in First Methodist Church where Berniece taught Sunday School and was a member of the choir and active in Women's Society of Christian Service. Even in her confused state of mind during her illness, she quoted scriptures when she could remember nothing else.

Survivors besides her two children and their spouses are six grandchildren and five great-grandchildren.

God always answers in the deeps,
never in the shallows of our soul.
—Amy Carmichael

Carmel Colin

MASON—Carmel Ivey Colin, 82, of Santa Anna and formerly of Mason, died Thursday, Oct. 30, 1997 in Brownwood.

Services were held at 2 p.m. Sunday, Nov. 2, 1997 in Mason Funeral Home Chapel with burial in Gooch Cemetery.

She was born July 3, 1915 in Mason County and had been a resident of Santa Anna for the past year. She was a homemaker and a Baptist.

Survivors include a son, Bill Ivey of Nederland; two daughters, Frankie Hackler and Linda Culver, both of Santa Anna; a brother, Bud Martin of Stephenville; a sister, Jessie Kinsey of Mason; nine grandchildren; and 14 great-grandchildren.

Santa Anna Nutrition Center Menu

FRIDAY, NOVEMBER 7
Vegetable beef soup, mixed fruit, brownies and combread

MONDAY, NOVEMBER 10
Oven fried chicken, white gravy, baked mexican corn, whipped potatoes, bisquits and peanut butter cookies

FRIDAY, NOVEMBER 14
Hamburgers w/tomatoes, lettuce and pickles, french fries and peach cobbler

Barton Goodwin

BROWNWOOD—Barton Goodwin, 54, of Early died Saturday morning, Oct. 31, 1997 at a local hospital.

Services were held at 10 a.m. Tuesday, Nov. 4, 1997 at Heartland Funeral Home Chapel with the Rev. Lowell Skaggs and Jay Swoveland officiating. Burial followed in Eastlawn Memorial Park.

He was born in Santa Anna to the late Henry Clay St. and Allie Belle Goodwin. He graduated from Santa Anna High School. He was a retired conductor-switchman with Santa Fe Railroad, where he was employed 31 years. He moved to Early in 1966 from Santa Anna and was a member of Early Baptist Church. He married Joe Ann Wallace Jan. 11 1964 in Santa Anna.

Survivors include his wife; four sons; Jeff Goodwin of Arlington, Mark Goodwin of Austin, Michael Goodwin of Houston and Matt Goodwin of Early; two brothers, Henry Goodwin of Brownwood and Bob Goodwin of Snyder; and six grandchildren.

Local survivors in his father-in-law, Joe Wallace of Santa Anna.

He was preceded in death by his parents and two brothers, Aubrey Goodwin and James Goodwin.

Clyde R. Meek

KERRVILLE—Graveside services for Clyde R. Meek, 84, of Kerrville, were held at 2 p.m. Monday, Nov. 3, 1997, at Garden of Memories Cemetery under the direction of Cook-Walden Funeral Home.

He died Saturday, Nov. 1, 1997. He was born Oct. 16, 1913, in Munday. He married Cleo Avalee Smith in Coleman.

Survivors include a son and daughter-in-law, Wade and Verna Lou Meek; a sister, Letha Lewallen of Sweetwater; a brother-in-law, Harold Byler of Austin; and numerous nieces and nephews.

Local survivors include a brother-in-law, Rankin McIver of Trickham and a niece, Sherry Blake of Trickham.

Allen Wells

Allen Wells, 86, of Santa Anna died Wednesday, Oct. 29, 1997 at 2 a.m. at the Brownwood Regional Medical Center in Brownwood.

Services were held Friday, Oct. 31, 1997 at 2 p.m. at Henderson Funeral Home Chapel with Rev. Raymond Jones officiating. Burial followed in the Trickham Cemetery with Henderson Funeral Home of Santa Anna in charge of arrangements.

He was born to the late James K. and Gracie Peoples Wells in Coleman County on Aug. 1, 1911. He was a lifetime resident of Coleman County where he attended the Trickham schools.

He married Ollie Banta in Santa Anna on Oct. 6, 1933 and they celebrated 47 years of marriage. She preceded him in death in 1981. He was a member of the Church of Christ and was a stockfarmer and carpenter.

Survivors include a daughter, Ruby Sansom of Brownwood; three sons, Charles Wells, Jerry Wells and Rusty Wells, all of Santa Anna; 17 grandchildren; 24 great-grandchildren; and two great-great-grandchildren.

Pallbearers were Jackie Sansom, Ronnie Sansom, Tommie Sansom, Daniel Wells, Darren Wells, Jerry Wells, Reece Wells, Shane Simmons and Nathan Berka.

Cleveland Cemetery Memorials

The Cleveland Cemetery Association has received the following donations and memorials: Donations from Clarence and Betty Smith and Paula Venable; and A memory from John and Juanita Naron in memory of Samantha Jo Cupps.

1997 Fall Rejuvenation/Dance Classes To Begin Soon

Angelie Bliss of Santa Anna, will start teaching "Tai Polyalsh" and "Hula Dance" this month. The classes will be held on the Trickham Highway south of Santa Anna. She is the author of "I discovered the Ancient Secrets of the Fountain of Youth! - The Golden Key to Unlock the Hidden Door of the Profound Treasure Within", which is now available at Hastings Books in San Angelo. Bliss was awarded 1st place in the 1995 Athletic Carnival, Molokai, Hawaii; 2nd runner-up as 1996 Ms. Hula Molokai, Hawaii; and Famous Poet for 1995 and 1996 Famous Poets Society, Hollywood California. She is also a Hula and Alsharqi dancer.

For more information and to register, call 915-348-3312.



Angelie Bliss

"Tai Polyalsh" is a short word for "Tai Chi for Longevity with Polynesian and Alsharqi Techniques. Tai Polyalsh is introduced in her upcoming book which is to be published in January 1998. Bliss says that Tai Polyalsh is the only way to many gentle body movements for longevity. It is a mediation exercise that uses the human vital energy for revitalization, balancing and protection. It helps to reduce stress in life and to heighten ones energy. It practices the techniques of the ancients to develop body, mind and spirit to such a degree that one can retard old age.

Hula Dance is a graceful and fluid dance of the Hawaiian Islands. It is an ancient Polynesian dance. It is fun, exciting and keeps you fit. Each body movement tells a story.

Class fees are \$30 per person or \$55 a couple in each selected class. All ages and beginners are welcome.

Her classes are sponsored by Forever Young Club of Truth or Consequences, New Mexico.

WALKER FUNERAL HOME

Pre-Arranged Funerals
Phone 625-4103
Coleman, Texas



FBC

First Baptist Church

Marty Reed, Pastor
915-348-3725

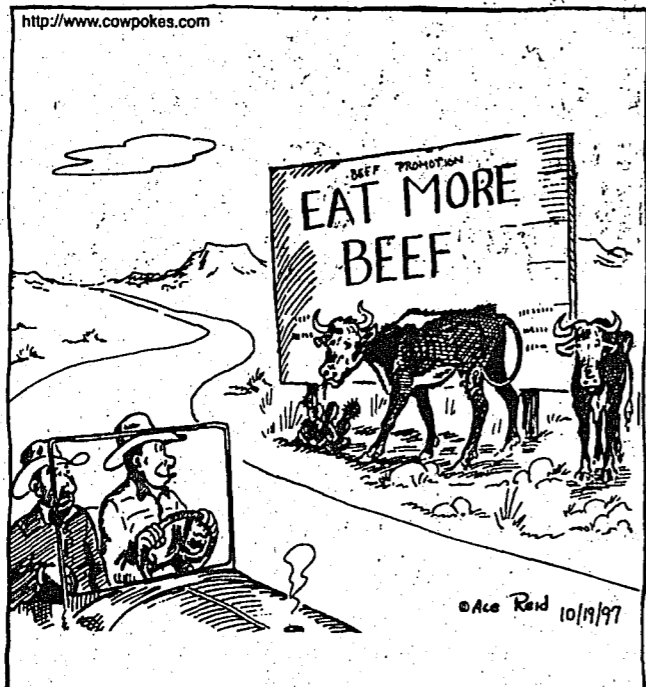
SUNDAY MORNING
"How To Pray"

SUNDAY EVENING
Preaching From
REVELATION
"God Goes Camping"

Sunday School - 9:30 a.m.
Morning Worship - 10:45 a.m.
Evening Worship - 6:00 p.m.

An alternative Children's Church (ages infant to 10 yrs.) on Sunday evenings - a separate worship designed for children.

COW POKES
By Ace Reid



"Say, I don't believe them things are helpin' our sign much!"


Santa Anna National Bank

"Make Our Bank Your Bank"

Agriculture and Livestock Loans
Business and Industrial Loans
Personal and Monthly Installment Loans
NOW Checking Accounts, Checking Savings, CDs

915-348-3108
348-3109

FOR YOUR CONVENIENCE
WE HAVE A DIRECT LINE TO BOOKKEEPING
FOR YOUR SAVINGS & CHECKING ACCOUNT NEEDS
915-348-3115





Check It Out

By Alice Anna Spillman

Now to some of your latest donations. The Smiley family donated more children's books. Do you boys and girls like science? There are several really good ones. You can do experiments at home, if you really want to learn why or how something happens.

Joe Green has donated a hard bound copy of *Hell Bent* by Skip Bayless. This is said to be the truth of what is happening to the Dallas Cowboys. Joe ordered this book from library loan but the other libraries had too long waiting lists. He finally bought the book and has given it to the library. All you sports fans take note. He brought some *Popular Mechanics* magazines.

Mrs. Bliss has donated a copy of the copy she has written. She teaches dance and has started clubs based on the philosophy of her book.

New to our community, her books now joins authors who have called this home.

Mrs. Ester Mitchell is Regent of the Capt. William Buckner Chapter of the Daughters of the American Revolution. She has donated a copy of Mrs. Leona Bruce's book *Santa Anna's Peak*. This is to honor her chapter of DAR. This library is delighted because we had a single copy of the book. Many use it as a historic reference. Now we can check one out.

Mrs. Retamae Gaines delivered the book, our thanks to everyone.

Amanda Ellerbe has searched for the quilt pattern for the boy companion of Sun Bonnet Sue. The library passed the word and Mrs. Donna Tomme brought one in. Isn't that a special neighbor?

Mr. Williams Worley brought in a whole box of books about computers. These are being processed. It looks like all of us are going to need to learn about this technology. Children today will be lost without such knowledge. We even have books for dummies, come see.

Mr. Worley is rather new here too, we welcome him and appreciate his interest in the library.


The library still needs a copy machine. Anyone know about a really good used one? Also one of our swivel chairs seems to have a broken, non-repairable part, anyone have one to donate. Just thought I'd mention our needs.

Thank You

The family of
Gussie Wise
wishes to express
their appreciation
for all the
prayers, food and
memorials at the
time of their
recent loss.

Allen & Allen INSURANCE

A Coleman County Authorized Agency For The:



AMERICAN INDEMNITY GROUP

BEACON INSURANCE GROUP

THE TRINITY COMPANIES

Serving Coleman County and the surrounding area since 1922
200 WEST PECAN STREET 625-4124 COLEMAN, TEXAS

OWL DRUG STORE

"Insurance Specialists"
Jim Caldwell R. Ph. — Linda Riley Caldwell R. Ph.

Now Delivering to Santa Anna up to twice daily - at your request!!

Week days & Saturday

- We accept Medicaid
- Most Insurance Cards
(Small additional delivery charge for insurance RX)
- Fast - Convenient
- Competitive Prices
- Professional
- Old Fashioned Fountain & Grill
- Gift Shop / Bridal Registry
- Free In-Store Blood Pressure Machine

1-800-442-3695

OWL DRUG

312 S. COMMERCIAL COLEMAN, TEXAS

Open 8 - 6 Monday thru Friday — 8 - 2 Saturday

Welfare To Work

In these changing times, we hear a lot about moving folks from "Welfare" to "Work" since it is now mandated by the United States government. It is simply called "Welfare Reform". There are now time limited benefits on both TNAF (Temporary Assistance to Needy Families) formerly known as AFDC and also on food stamps.

As a result of the need for jobs for people in this community, there has been put in place a "Local Jobs Posting Board". This board is located at the office of the Texas Department of Human Services at 114 Needham in Coleman.

You are invited to go by and place a card on the board if you are a person looking for work, or if you are an employer looking for someone to work. It can be anything as simple as babysitting,

lawn care, fence building, day work or permanent jobs.

If you are a person looking for work, there are other job listings in the office at 114 Needham and you are encouraged to go by and look at all of them.

If these changing the community needs to be aware of the impact these welfare reform changes can have on the lives of people who live here.

Also a reminder, that career stop is now in operation in Coleman at the offices of Central Texas Opportunities and this is also a great resource for persons looking for work or job training assistance.

It is time for us all to pull together and get our community up and moving and helping people make the transition from "Welfare or Work".

Rockwood Women's Club Plans Thanksgiving Supper

Contributed

The Rockwood Women's Club met Tuesday, October 28 at the community center.

Skeeta Cooper brought the club to order and led the pledges to the U. S. and Texas flags. Minnie Bray gave the thought for the day and read the minutes from the last meeting and the treasurer's report.

There was no old business, but in new business we voted to have our Thanksgiving supper on November 22. There will be more later on this.

We also talked about the Christmas party.

The meeting was turned over to Peggy Flynn who directed us in decorating styrofoam balls with artificial flowers, pot pourri and ribbons. She is very artistic.

As the hostess, she served refreshments to Skeeta Cooper, Lois Bryan, Vera Faye Wise, Coleta Pearson, Bettie Dues, Minnie Bray, Rose Cooper, Vivian Steward and LaNell Brusenhan.

Every time you turn green with envy you are ripe for trouble.

REED MEMORIAL CO. LIMITED

Monuments of Distinction
Fl. Worth Hwy in Brownwood
Phone 915-646-7625

Sylvia Herring - Local Rep.
348-3461

Delta Omicron Enjoys Fall Social

Contributed

Delta Omicron Sorority of Santa Anna met Sunday evening, November 2, at the Coleman County Telecommunications Office for their fall social.

Games were played and a delicious fried chicken dinner was served.

Attending were Peggy and John Hensley; Gayle and Burgess Stewardson, Debbie and Danny Wheatley, Pat and Cecil Vance, Patti Musick, Bernidine Watson and Tommy Winfrey and guest Loretta Simmons.

Youth Fellowship Held As Alternative To Halloween

The Santa Anna and Bangs United Methodist youth groups joined together Saturday night to host an area youth fellowship as an alternative to the usual Halloween activities.

Young people from Santa Anna left town on a hayride about the same time a group left in the same fashion from Bangs. They met at the Trickham Community Center where food, fun and fellowship was the fare for the evening. Grilled hamburgers and all the trimmings were served to the approximately 75 youth attending and a number of adult sponsors and chaperones.

What you see and hear depends on a good deal on where you are standing; it also depends on what sort of person you are.

—C.S. Lewis

Thank You

Raymond and I thank each of you who prayed for me following my accident. We received encouragement from the many cards, telephone calls and visits. Also, the food and gifts were appreciated. To those who have, and still are, performing my volunteer duties at the church library, Nursing Home, Homebound visitation, Senior Adult Luncheon, and game night, I shall ever be grateful. I enjoyed those beautiful birthday cards!

Lodema Jones

SANTA ANNA CHAMBER SALUTES Holt's General Store

When you need gas or a quick meal from the deli, Holt's is the place to go. They are hometown people and their store offers a large selection of grocery items and snacks. So lets show them we are glad they are here by SHOPPING AT HOME

Margaret Hensley MSN, RNCS Family Nurse Practitioner

Family Health Care Clinic

106 N. 2nd
Santa Anna

OPEN
MON. thru THURS.
8:30 a.m. - 5:00 p.m.
348-3566

A philosopher is someone who always knows what to do until it happens to him.

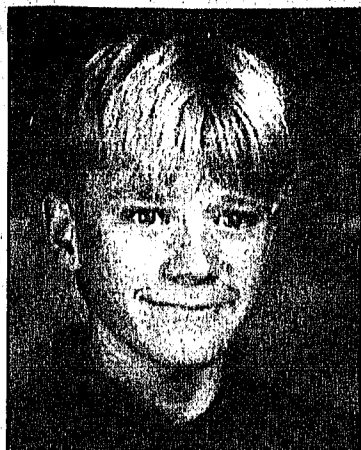
Donald Pope M.D., Medical Director

Stevens Funeral Home



- FULL-SERVICE FUNERAL HOME
- PRENEED & PREARRANGED FUNERAL PLANNING
- MONUMENTS

915-625-2175



Jason Mapson

'Jason's Holiday' To Benefit Toys For Tots

Donna Rasberry Mapson is planning to remember her son's birthday in a very unique way while helping children of our area. She is getting ready for a party to be held on Saturday, November 15, at the Methodist Church annex to benefit the Coleman County Toys for Tots drive. Donna reasons that we have birthday holidays for Washington, Lincoln, Martin Luther King and others. Everyone important in our history has a special day. "Well", she says, "the most important person to me was my son, Jason."

On Jason's thirteenth birthday, Oct. 12, 1994, he was diagnosed with cancer. Eight months later he passed away on May 12, 1995. Donna wants to acknowledge him this year in a very special way and decided to have Jason's Holiday on her birthday, since it is closer to Christmas. "And this Toys for Tots program would be something he would approve of."

"We will have a party and everyone can come and contribute a toy for the program," Donna said. You are invited to come by between the hours of 1:00 and 6:00 p.m. on that day to enjoy some refreshments and leave a toy for some needy child. Checks made out to Toys for Tots may also be accepted.

She added, "In my heart of hearts I cannot let twelve months of the year go by without having Jason's Holiday. My Jason was a terrific young man and a love to be around. He had great goals and enjoyed the gift of life."

Now we in the area can remember Jason with a gift for another child.

For more information on Toys for Tots, Call Jeff Robinett in Coleman, 625-2642 or Pam Pryer 625-4782.

Trickham Tidbits

By Anna York

Rev. Clyde Majors preached a good sermon Sunday morning for our church service. His scripture was taken from the ninth chapter of 2 Corinthians 8 vs. with the title being "I Will Not Leave Your Nor Forsake You". We had six visitors present which we welcome and invite them to come again.

Clint Stearns and wife of McGregor spent the weekend with his grandmother Novella Stearns.

Phillip Cozart of Round Rock spent a few days last week with his parents Reba and Elvis Cozart and Preston Grey of Georgetown visited over the weekend and the men did some hunting.

Laverne McClatchy visited three days the past week in Lubbock with her granddaughter Lara Meckfessel

who is employed with a newspaper there.

Bettie Martin visited on Wednesday in Brownwood with her mother Mrs. Mary Crawford. Sunday dinner guests of Bettie and Felton were Rev. Clyde and Dora Bell Majors and Paul and Gaynell Martin and children Sabrina and Colt.

Wyndham Dean spent the weekend in Midland with his grandmother and helped her celebrate a birthday. He returned home Sunday. Kit Dean of Comanche spent the weekend with his parents Mr. and Mrs. Ray Dean.

Recent visitors with Loreno Rice in Santa Anna were Billy Joe and Johnny Parish of Tucumcari, New Mexico and Patsy Bible of Houston.

Mr. and Mrs. Hollis Watson were Thursday afternoon visitors with Winnie Haynes and Novella Stearns visited Sunday afternoon.

Billy Roy Laughlin of Brownwood visited on Sunday afternoon with his mother Mrs. Edna Laughlin.

Those that visited during the week with Mrs. Florence Stearns were Rev. and Mrs. Clyde Majors, Anna York, Winnie Haynes and Marjorie Sullivan, Alice Wells of Coleman spent Saturday and Verna and Arvil were in, and out several times. We are happy to report Florence returned to her home

Tuesday after a few days in the hospital and is doing fine.

Tona Holland and little daughter Charity visited on Monday with Annie Lou Vaughn and JoAnna Smith of Terrel and her mother Mary Ola Woods of Bangs visited with her Thursday.

Natalie McIver attended a woman's club meeting in Brownwood Tuesday, Sunday Rankin and Natalie and Sherrie Blake and Megan were in Austin to visit with the family of Clyde Meek, uncle of Sherrie. He passed away and the funeral will be at Kerrville Monday. We were sorry to learn of his death.

The ladies of the quilting club met on Monday at the community center and finished a quilt for Novella Stearns. Thursday night there were seven present for the eighty-four club meeting.

Fellowship Club Holds Meeting

Contributed

The Community Fellowship Club met Sunday, November 2 at the home of Mrs. Ruby Edwards.

Rocanna Barton, president opened the meeting with a song and Ruby Edwards read from Psalms 54: 1-7.

Mrs. Edwards then led the prayer. A report stated that Nathaniel Baker is home recovering from surgery, Ivera Byrd is in the hospital and Joe Coleman had surgery.

Each member gave a report or talk on the goodness of God.

The next meeting will be in Santa Anna at the home of Mrs. Ivera Byrd, the first Sunday in December.



Todd and Shannon Puckett of Abilene are proud to announce the arrival of a daughter, Leigha Kathryn Puckett, who was born Oct. 14, 1997 at Abilene Regional Medical Center in Abilene.

Grandparents are Sharon Wise Taylor and Mark McCord of Dallas; Charlie and Kathie Taylor of Abilene; and Frank and Linda Puckett of Abilene.

The infant is the great-granddaughter of the late C. E. and Vera Wise of Santa Anna.

TIPS ON STAYING SAFE AND SOUND WITH NATURAL GAS.

For more than 80 years, Lone Star Gas has been providing safe, dependable energy to its customers. By following a few simple rules, you can help make sure you and your family stay safe and sound with natural gas:

- Always have qualified service people install, regularly check and maintain all gas heaters and appliances, following the manufacturer's instructions for installation, ventilation, and operation.

- Always use a gas appliance only for its intended purpose. An oven, for example, should not be used to heat a room.

- Always keep flammable materials and substances away from gas heaters and appliances. Remember, a pilot light is constantly burning.

- If your gas appliance is more than 20 years old, have it checked by a qualified professional. Certain older, uncoated brass connectors have flaws that may be dangerous and should be changed. Do not move your appliance and check the connector yourself. Call a qualified professional to inspect and replace your connector if necessary.



IF YOU SMELL GAS

in your home, or know you have a gas leak, follow these rules:

- 1 Everyone should leave the house immediately, leaving the doors open for ventilation.
- 2 Do not switch anything electrical on or off.
- 3 Do not use your telephone (telephones use small amounts of electricity).
- 4 Do not strike a match or do anything else that might cause a spark.
- 5 Go to the nearest telephone and call Lone Star Gas Company. Wait until we have found the cause of the gas leak before returning to your home.

If you smell gas while you're outside, contact Lone Star Gas immediately.

BEFORE YOU DIG, call for pipeline locations to avoid any potential problems: 1-800-344-8377 (1-800-DIG-TESS).



Safe energy for your home, naturally.

Lone Star Gas Company
A Texas Utilities CompanySM

Hollywood Theaters

300 Early Blvd • 915-643-3881

Red Corner (R)
Fri, Mon-Thurs 4:45 7:10 9:40
Sat, Sun. 2:05 4:45 7:10 9:40

Starship Troopers (R)
Fri, Mon-Thurs 4:30 7:15 9:45
Sat, Sun. 1:45 4:30 7:15 9:45

I Know What You Did Last Summer (R)
Fri, Mon-Thurs 5:00 7:05 9:25
Sat, Sun. 2:10 5:00 7:05 9:25

Men in Black (PG-13)
Fri, Tues-Thurs 7:05
Sat, Sun & Mon. 2:15 7:05

Air Force One (R)
Fri-Thurs 4:45 9:30

NOV 06 1997

News For And About Santa Anna Mountaineers



School Menu

MONDAY, NOVEMBER 10
 Breakfast: Donuts
 Lunch: Corn dogs, pinto beans, potato salad and mustard

TUESDAY, NOVEMBER 11
 Breakfast: Breakfast muffins
 Lunch: Fish fries, blackeye peas, coleslaw, macaroni and cheese, cornbread, catsup and tartar sauce

WEDNESDAY, NOVEMBER 12
 Breakfast: French toast and syrup
 Lunch: Chicken nuggets, whipped potatoes, english pea salad, gravy, catsup and honey

THURSDAY, NOVEMBER 13
 Breakfast: Biscuits, sausage gravy and jelly
 Lunch: Burritos w/chili and cheese, whole kernel corn, toss salad w/dressing, picante sauce and peppers

FRIDAY, NOVEMBER 14
 Breakfast: Cream of wheat, toast and jelly
 Lunch: Hamburger, french fries, lettuce and tomato w/pickle, spice cake, mayo or mustard and catsup

After Game Fellowship At Northside Church Of Christ Friday

The Northside Church of Christ will host the after game fellowship on Friday night following the Lometa-Santa Anna football game. All junior high and high school students are invited to attend.

G/T Kids, Where Are You?

What is a G/T kid?
 G/T stands for gifted and talented. What does it mean to be gifted and talented?

It means someone that learns fast, understands things quickly, reads all the time or knows a whole lot about something.

What is this for?
 Santa Anna ISD is soliciting nominations for its Gifted and Talented Program. This program addresses the needs of kids who have special gifts and/or talents towards learning.

Who can be in it?
 Any student that displays advanced learning. They can be in elementary school, junior high or high school. If you have a student in mind, ask yourself these questions.

1. Does this child use big words compared to other kids their age?
2. Does this child pick up (learn) things extremely quickly?
3. Does this child notice details that others do not?

What does it mean if I say yes to any of these questions?
 This child may have gifts and/or talents that need to be nurtured.

What do I do if I think a child is gifted?
 Call the school to nominate the child. Call Anna Bozarth, Montie Guthrie or Lee Coffman at 349-3137.

What if the student is not my child?
 You may nominate any child, even if you are not the parent or guardian.

What happens after a child is nominated?
 You will need to sign a Nomination Form that can be mailed to you; or you can come by the school to sign it. A form will then be sent to the parent or guardian to get permission to test the child for giftedness.

If you have any questions, please call of the persons listed above.

Note: Only 3 to 5 percent of the whole school population can be in the gifted and talented program. Only a few students will be admitted to the Program.

Santa Anna High School Basketball Schedule

Nov. 11	Baird (girls scrimmage)	Here	VG, JVG	6:30 p.m.
Nov. 13	Three way boys scrimmage	Here	VB, JVB	4:30 p.m.
	Rising Star—San Saba—Santa Anna			
Nov. 15	Rising Star	Here	VG, JVG	1:00 p.m.
Nov. 18	Sidney	There	VG, VB, JVB	5:00 p.m.
Nov. 21	Paint Rock	There	VG, VB, JVG	5:00 p.m.
Nov. 25	Novice	Here	VG, VB	6:30 p.m.
Dec. 2	Lohn	Here	VG, VB, JVB-G	4:00 p.m.
Dec. 4-6	Santa Anna Tourney			
Dec. 9	Paint Rock	Here	VG, VB, JVB	5:00 p.m.
Dec. 11	Novice Tourney			
Dec. 19	Novice	There	VG, VB	6:30 p.m.
Dec. 30	Moran	Here	VG, VB	6:30 p.m.
Jan. 2	Sidney	Here	VG, VB, JVB	5:00 p.m.
Jan. 6	Richland Springs	Here	VG, VB, JVG	5:00 p.m.
Jan. 9	Luders-Avoca Tourney			
Jan. 13	Mullin	Here	VG, VB, JVB-G	4:00 p.m.
Jan. 16	Eden	Here	VG, VB, JVB-G	4:00 p.m.
*Jan. 20	Cross Plains	There	VG, VB, JVB-G	4:00 p.m.
*Jan. 23	Evant	Here	VG, VB, JVB-G	4:00 p.m.
*Jan. 27	Lometa	There	VG, VB, JVB	5:00 p.m.
*Jan. 30	Evant	There	VG, VB, JVB-G	4:00 p.m.
*Feb. 3	Cross Plains	Here	VG, VB, JVB-G	4:00 p.m.
*Feb. 6	Lometa	Here	VG, VB, JVB-G	4:00 p.m.

* Denotes District Games

Mountaineer FOOTBALL FRENZY

TEXAS RANGER MOTEL
 Hwy. 84, East 915-348-3150
 "Owned & Operated By A Texan"
HUNTERS WELCOME LSU-Alabama
 We have facilities for cleaning your game

WEB ACCESS
 Internet & World-Wide Web
 admin@web-access.net
 801 Wallis • 348-9295 or 800-439-1723

WESTERN AUTO
 TIRES - DISCOUNT AUTO PARTS - APPLIANCES
 PLUMBING SUPPLIES - ELECTRICAL SUPPLIES
 LAWN & GARDEN EQUIPMENT AND TOOLS
 705 Wallis • McMurry-HPU • 348-3771

WE'RE SERVING UP THE HOTTEST DISH IN TOWN!
 COME IN TODAY FOR A TAST OF DIRECTV.[™]
Coleman County Broadcasting Systems
 915-348-3951 (801 S. Santa Fe • Santa Anna) 800-618-3951

SIMMONS FEED & SEED
 FEED SEED FERTILIZER
 PURINA • ACCO • POSTON
 MYCOGEN • McCORMICK • FARM BOY
 Lawn & Garden — Vaccine—Pet Supplies
 Seeds — Feeds — Bulk Fertilizer — Herbicides
 Pesticides — Bag Fertilizer
 1st & Wallis 348-3168

Quality Western Wear For All The Family
JM Western Wear
 108 COMMERCIAL - Lometa—Santa Anna — 625-2433

WTU
 Your Electric Connection
 348-3101

The Treasure Hut
 Where You'll Find The Usual
 New England—Buffalo
 The Unusual
 511 Wallis • Santa Anna • 348-3517

Each Week's Winner Can Take Home \$20 - \$25

Your Name _____
 Address _____

Tiebreaker
 Cross Plains—Baird
 Circle Winner (Above)
 Total Combined Points

BFI Waste Management
 Web Access
 D & R Garage
 The Treasure Hut
 J E Stevens Co.
 Coleman Co. Telephone, Inc.
 Western Auto
 Hall's Grocery Store
 J M Western Wear
 Williams Tire Store
 Simmons Feed & Seed
 Texas Ranger Motel
 Holt's General Store
 Santa Anna National Bank
 Coleman C. Broadcasting
 West Texas Utilities
 Countywide Insurance

CONTEST RULES:
 1) A game is found in each of the sponsoring ads on this page. Indicate your pick by writing the name of the team on the line adjacent to that advertiser's name. Please use black or blue ink - no pencil or red ink.
 2) \$20 will be awarded to the person picking the most games correctly.
 In the event of a tie, the tiebreaker will determine the winner. (See football above - pick winning team and total combined points scored in game.)
 3) A \$5 bonus will be awarded to the contest winner if he/she also identifies the former MOUNTAINEER correctly.
 4) All decisions by the judges are final.
 5) Employees of Santa Anna News are not eligible.
 6) Mail, FAX, or bring your entry to: Santa Anna News, 609 Wallis, P.O. Box 399, Santa Anna, TX 76878. FAX-915-348-3545. Entries must be received by 5:00 p.m. Friday for that week's contest. Mailed entries will be accepted Monday if they show a postmark of no later than 5:00 p.m. Friday. The NEWS will not be responsible for late arriving mail.
 7) Winners will be announced each week in the Santa Anna News, and may come by the office to claim their prize. Out of town winners will receive prizes through the mail.

Identify this former Mountaineer for a \$5 bonus

Hall's Grocery
 Cross Plains—Baird
 N. 2nd & Santa Fe — Mon thru Sat 8:00 a.m. - 8:00 p.m. Closed Sunday
 Your Hometown Grocers
 Sonny & Nora Hall

HOLT'S GENERAL STORE
 GROCERY • DELI
 Come by for gas and visit our deli before you start to the game.
 **Where Mountaineer fans meet! Evant—Rising Star

Santa Anna National Bank
 "Make Our Bank Your Bank"
 Agriculture and Livestock Loans
 Business and Industrial Loans
 Personal and Monthly Installment Loans

J E STEVENS CO.
 "EVERY DAY LOW PRICE"
 VALUE \$6.99
 Latex Flat House Paint
 Gallon
 Coleman • 1400 S. Commercial • 625-2124

COUNTYWIDE INSURANCE AGENCY
 PAUL SKELTON - AGENT
 HOMEOWNERS
 WORKER'S COMPENSATION
 FIRE
 AUTO
 LIFE & HEALTH
 LIABILITY
 BONDS
 SANTA ANNA 348-3116
 COLEMAN 625-4126

BFI Waste Systems
 Army—Air Force

KELLY TIRES
 A GOOD DEAL ON A GREAT TIRE
Kelly Tires
 Williams Tire Store
 Where Service & Bargains Are Tradition
 2003 Commercial • Coleman

D & R Garage
 CAR CARE & INSPECTION CENTER
 200 E. PECAN - COLEMAN - 625-5140

SUPPORTING ALL COLEMAN CO. TEAMS
COLEMAN COUNTY TELEPHONE COOPERATIVE, INC.
 Santa Anna — 915-348-3124

News For And About Santa Anna Mountaineers



Music Classes Study Different Cultures

Recently the second and third grade music classes at Santa Anna Elementary were busy studying the different cultures and their music. To further their study of Indians, they made Indian instruments. The classes are under the direction of Gail Loyd. Helping with this activity were parents Kathy Holt, Kam and Alex DeLeon and PALS Lupe Castillo, Ryan Keeney and Josh Daniel. Pictured are Tracy Halé, Terrence Jackson, Ryan Keeney, son of Kathy Holt, Kathy Holt, Trey Holt, son of Kathy Holt and Kimberly Lawhon.

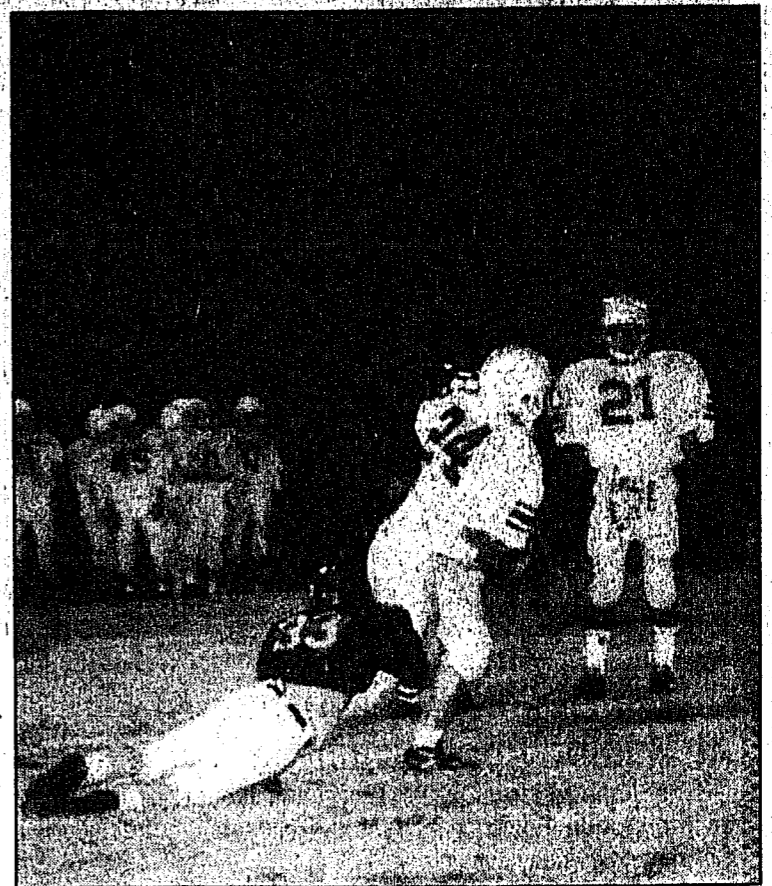
Swine Validation And Tagging To Be Held Saturday At Show Barns

The Santa Anna swine validation and tagging for the Coleman County and major state livestock shows will be Saturday, November 8 at the Santa Anna Show Barn. All Santa Anna swine need to be at the show barn by 11 a.m. for weighing and worming. Ivomec shots will be given for the control of worms and lice to those animals that have not already been

ivomeced. Breeders tagging several pigs will need to furnish their own Ivomec. Tagging will begin at 1 p.m. by the validation committee and a small fee will be charged for each tag. All swine placed in the shown barn on Saturday need to be taken back home after tagging has been completed.

SAHS Writes

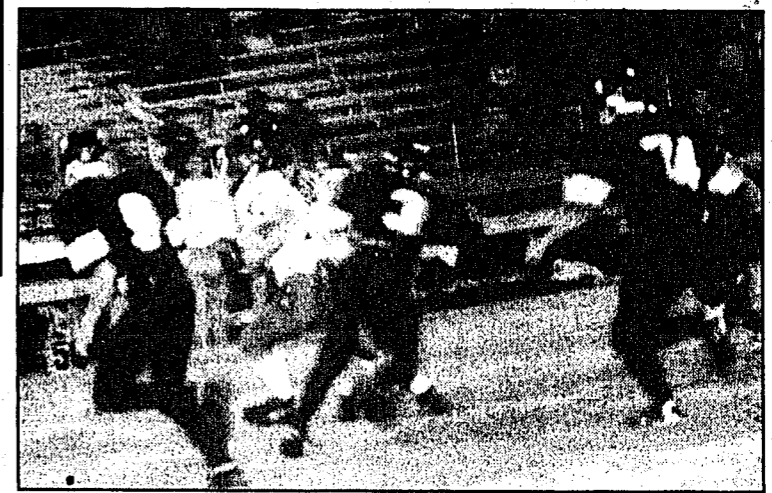
What Would I Take?
 By Moses Mata
 Civilization is coming to an end. There are only minutes left. There are only a few things I can save. Here are the few things I would save.
 The first thing I would save are pictures of my family. With these pictures, I can remember my memories of all of them. I would remember all the love they gave me, and I would never forget where I came from.
 The second thing I would take is my brother Paul's United States flag. This was the last thing touching my brother. This flag would comfort me in my hard times. This flag would bring back memories of the past which I would never forget.
 The third thing I would take is a laptop computer. This computer would have a rechargeable battery that would recharge each time the computer was turned off. This computer would do everything. It would help me survive in the hard conditions to come.
 The last thing I would take is a weapon. This would help me get my food and protect me. This would also make me feel safe.
 These are the things that I would take. I just hope it will not come down to it.



SAJHS Defeated By Cross Plains; End Season In Lometa Thursday

The Santa Anna Junior High School Mountaineers were defeated 44-8 last Thursday evening at Mountaineer Stadium by the Cross Plains Buffalos. Scoring for the team were Bo Morgan and Adam LaPin. Pictured above is Junior Mountaineer Adam LaPin tripping up a Junior Buffalo. Photo by Carol Herring

Good Luck
 SAHS Volleyball Girls!!!
 Beat Perrin-Whitt!!!



Santa Anna JV Narrowly Defeated By Buffalos

The Santa Anna Junior Varsity Mountaineers took on the Cross Plains Junior Varsity Buffalos last Thursday evening at Mountaineer Stadium. At the half the score was 0-0 with the Mountaineers returning to the field in the third quarter and Brent Beal and Bobby Hale each scoring a touchdown with the extra points failing. During the fourth quarter the Buffalos scored twice and added extra points each time making the score at the end of the game 14-12. Pictured above working to stop a Buffalo are J. J. Beloat (9); Bobby Hale (3); and Casey Herring (74).

November Is FORD TRUCK MONTH

#1 Selling Vehicle in America **50TH ANNIVERSARY 1918-1998**

Save \$3,185.00

NEW '98 F-150 SUPERCAB SALE \$17,995.00

#8347
 •Air •Speed Control
 •Tilt Wheel •Cassette
 •Two-Tone •Chrome Package
 MSRP \$21,180.00
 Factory Disc. -1,100.00
 Anniversary Disc. -2,085.00

MORE SAVINGS DURING FORD TRUCK MONTH

Save \$3,571.00 **NEW '97 F-150 REG CAB** #8248
 •Air •Cassette
 •Speed Control
 •Tilt Wheel
 •Carpet
 •Chrome Package
 •Two-Tone
 MSRP \$17,570.00
 Factory Disc. -1,100.00
 Anniversary Disc. -2,471.00
\$13,999.00*

Save \$4,975.00 **NEW '97 EXPEDITION** #5311
 •4.6 V8
 •Dual Air
 •Rear 3rd Seat
 •Trailer Towing
 •Rear Load Leveling
 •CD Player
 •All Power Group
 MSRP \$32,970.00
 Factory Disc. -720.00
 Anniversary Disc -4,255.00
\$27,995.00

Save \$4,345.00 **NEW '97 RANGER** #0443
 •XLT
 •Air
 •60/40 XLT Seat
 •Super Cooling
 •Floor Console
 •Power Steering
 MSRP \$14,840.00
 Factory Disc. -1,625.00
 Factory Rebate -1,500.00
 Dealer Disc. -1,220.00
\$10,495.00*

6.9, 60 month \$0 Down Available on '97 F-150s*

PRE OWNED TRUCKS SPECIAL PRICING

1995 F150 Super Cab #5560, V8, XLT, Automatic, Power Windows, Cassette, Speed Control.....ONLY *10,995.00
 1995 Ranger Super Cab #5687, Air, Cassette, Low Mileage.....ONLY *9,995.00
 1995 F150 Reg. Cab #5713, Extra Clean, Low Mileage, Air, Cassette.....ONLY *11,988.00
 1997 Ranger XLT #5137, Only 3,000 Miles, Automatic, Air, Cassette, One Owner.....ONLY *11,888.00
 1996 F150 Reg. Cab #5714, Air, Low Mileage, Extra Clean, Cassette.....ONLY *11,888.00
 1995 F150 XLT Super Cab #5743, 31,000 Miles, Two Tone, Like New, All Power, V8.....ONLY *15,995.00
 1997 Aerostar Wagon #5703, Extended Length, Dual Air, Automatic, All Power, 27,000 Miles.....ONLY *16,888.00

WEATHERBY MOTOR COMPANY
 500 Fisk 1-800-284-4051 915-643-1651
 Weatherby has been selling and servicing The Ford Family of Fine Cars & Trucks for over 85 years.
 Brownwood
 *with approved credit see salesperson for details

Santa Anna Junior High School Basketball Schedule

Nov. 17	Richland Springs	Here	4 p.m.
Nov. 24	Moran	There	6 p.m.
Dec. 1	TBA		
Dec. 8	Cross Plains	Here	4 p.m.
Dec. 13	Santa Anna Tournament		
Jan. 5 or 8	TBA		
Jan. 12	Evant	There	5 p.m.
Jan. 17	Cross Plains Tournament		
Jan. 19	Lometa	Here	5 p.m.
Jan. 26	Cross Plains	There	4 p.m.
Feb. 2	Evant	Here	5 p.m.
Feb. 9	Lometa	There	5 p.m.

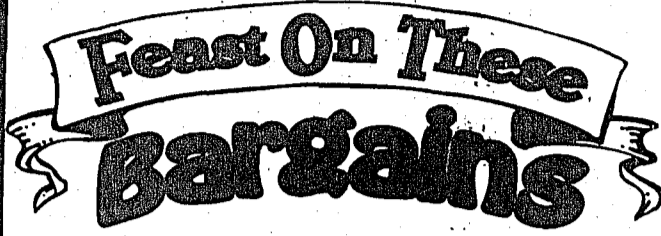
HENDERSON FUNERAL HOME
 Donnie & Christina Henderson
 "People Who Care"
 SANTA ANNA 348-3131 COLEMAN 625-2121

HOME VIDEO OUTLET # 2
 615 Wallis Ave. Santa Anna 348-3182
 Lost World--Jurassic Park
 Closing hours on Thursday and Friday subject to change due to football games
 Usual Hours:
 Mon, Tues, Thurs. & Fri. 2:00 to 9:00
 Sat. 1:00 to 9:00 Wed. & Sun. Closed

NOV 06 1997

NEW STORE HOURS

8:00 A.M. - 7:00 P.M.
MONDAY - SATURDAY
 CLOSED SUNDAY



Hall's Grocery

Second & Santa Fe • Santa Anna, Texas • 348-3177

OPEN
 8:00 A.M. - 7:00 P.M.
MON. - SAT.
 CLOSED SUNDAY



LONE STAR
 And W.I.C.
WELCOME

FROZEN FOODS

- SHURFINE - 6 PACK
 NUTTY BUDDY CONES..... **1.99**
- SHURFINE
 WHIPPED TOPPING..... 12 OZ **99¢**
- PEAS/CARROTS, GREEN BEANS, PEAS
 WHOLE KERNEL CORN, MIXED VEGETABLES
 SHURFINE VEGETABLES... 16 OZ **89¢**
- SHURFINE
 CRINKLE CUT FRIES... 32 OZ **2/3.00**
- SHURFINE
 MINI CORN ON COB..... 8 CT **2/3.00**
- SHURFINE
 ORANGE JUICE..... 16 OZ **99¢**
- SHURFINE - ASSORTED ROUND CARTONS
 ICE CREAM..... 1/2 GAL **3/5.00**

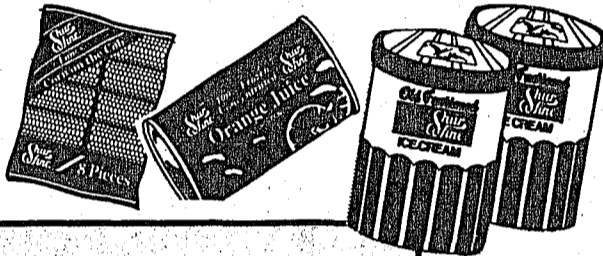
MEAT MARKET SPECIALS

- SHURFINE GRADE A
TURKEYS.....LB. **49¢**
- FRESH - BONELESS
ARM ROAST.....LB. **1.69**
- SHURFINE - BONELESS
HAM.....LB. **1.99**
- FRESH BONELESS BEEF
STEW MEAT.....LB. **1.99**
- FRESH GROUND
GROUND CHUCK..LB. **1.59**
- PILGRIM'S PRIDE BONELESS
FRYER BREAST....LB. **2.19**
- SHURFINE
SLICED BACON.....LB. **1.79**
- SHURFINE
 REGULAR OR POLISH
SMOKED SAUSAGE
 LB. **1.39**
- SHURFINE
WEINERS
 12 OZ. PKG **69¢**
- DECKER BOLOGNA**... **89¢** LB PKG

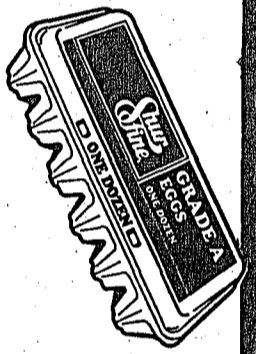
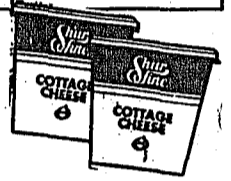
ALWAYS FRESH MEAT

DAIRY SECTION

- SHURFINE - TEXAS STYLE
 BISCUITS..... 12 OZ **69¢**
- SHURFINE
 CINNAMON ROLLS..... 8 CT **1.19**
- SHURFINE
 CREAM CHEESE..... 8 OZ **89¢**
- BORDENS - 8 OZ
 WHIPPING CREAM..... **2/1.00**
- BORDENS
 HALF & HALF..... 16 OZ **69¢**
- SHURFINE - MEDIUM
 EGGS..... DOZ **59¢**
- SHURFINE LB QTRS.
 MARGARINE..... **3/1.00**
- SHURFINE
 BUTTERMILK..... 1/2 GAL **1.19**
- SHURFINE
 COTTAGE CHEESE... 24 OZ **1.69**
- SHURFINE - CHEDDAR OR COLBY
 CHEESE..... 10 OZ **1.69**



- SHURFINE - BATHROOM
 TISSUE 4 ROLL PKG. **69¢**
- SHURFINE
 PAPER TOWELS... BIG ROLL **79¢**
- GOLD MEDAL
 FLOUR..... 5 LB BAG **79¢**
- SHURFINE - 3 LITER BTL
 DRINKS..... **89¢**
- SHURFINE - 4 LB BAG
 SUGAR..... **1.29**
- SHURFINE - HEAVY DUTY
 FOIL... 18 X 37 **99¢**
- SHURFINE 15 OZ CAN
 PUMPKIN..... **3/1.00**



- SHURFINE
 POWDERED SUGAR
 OR
 BROWN SUGAR..... 2 LB **79¢**
- SHURFINE
 COFFEE..... 13 OZ **2.39**
- SHURFINE - 16 OZ
 COFFEE CREAMER... **1.19**
- SHURFINE - 16 OZ
 CRANBERRY SAUCE **2/89¢**
- SHURFINE - 8 OZ
 TOMATO SAUCE..... **8/1.00**
- SHURFINE - 14.5 OZ
 CHICKEN BROTH..... **3/1.00**
- SHURFINE - 16 OZ
 CUT YAMS..... **59¢**
- SHURFINE - 32 OZ
 CORN SYRUP..... **99¢**
- SHURFINE - 10 OZ PKG
 MARSHMALLOWS..... **69¢**
- SHURFINE - 16 OZ BOX
 SALTINE CRACKERS..... **79¢**



Look For More Bargains On Every Shelf



SHURFINE - CANNED MIX OR MATCH - CORN, CUT GREEN BEANS, SLICED GREEN BEANS, SWEET PEAS VEGETABLES..... **3/1.00**

SHURFINE
 MACARONI & CHEESE DINNERS..... **5/1.00**

FRESH PRODUCE

- FRESH MUSHROOMS
 8 OZ PKG **89¢**
- CAULIFLOWER
 HEAD **99¢**
- TANGERINES
 LB **69¢**
- RED OR GOLDEN DELICIOUS APPLES
 LB **79¢**
- RED RIPE TOMATOES
 LB **89¢**

RUSSET POTATOES
 10 LB. BAG
\$1.39



GREEN PEPPERS
3/\$1

HEALTH & BEAUTY CARE FROM WESTERN FAMILY

- COTTON SWABS..... 180 CT **99¢**
- COSMETIC PUFFS..... 100 CT **69¢**
- MOUTHWASH 24 OZ - REG. \$3.45 **99¢**
- IBUPROFEN TABS. & CAPLETS..... **2.89**

PRICES EFFECTIVE THROUGH NOVEMBER 11, 1997