

Your  
Hometown  
Newspaper  
Since 1886

# Santa Anna News

"He Profits Most Who Serves Best"

Newstand Price 50c

Volume 111 Number 34

Thursday, August 22, 1996



## Renovation Work Well Under Way

Men are working the cement poured Monday and Tuesday for the floor of the historic Kelly building on Wallis Ave. The major renovation is well under way. Perhaps we should begin to refer to it as the Patterson Building since local building contractor Gary Patterson purchased the building from the Historical Development Organization last year. He plans to utilize it for his cabinet works when the renovation is completed. Much interest has been shown in the work being done as the building has been an eyesore in the downtown area for some years.

Staff photo

## Construction Expected To Begin In September On School Addition

Plans are in the works to begin work on a new four classroom addition to the Santa Anna Elementary School building.

According to Michael W. Marrs Architects, Inc. bids are to be opened next week for subcontractors and supplies with work scheduled tentatively to begin the second

week of September.

The building will be connected to the south end of the existing structure by a covered awning and will house Kindergarten age students.

Next in the construction phase taking place will be a library facility which will combine the high school and elementary libraries

into one building.

Funds for the project has been received from a facilities grant totaling up to \$500,000.00. The bulk of the funds which amounts to 85% will not be local funds. The grant includes the buildings and furnishings.

## Garbage Collection Rates Going Up

The Santa Anna City Council met in a special called session on July 30 with council members Karen Morris, Jim Spillman, Mike Pritchard, Robert Noriega and Bobby Morgan present. Also present were Mayor Danny Kellar, City Secretary Alys Pelton, Superintendent of Operations Tommy Jackson and Montie Guthrie.

A motion was made and passed to

authorize the use of hotel/motel occupancy tax revenue for the promotion of Santa Anna's Frontier

Heritage Festival to be held in October. The invoices and/or statements for the public service announcements and two signs--one at each of town--will be submitted to the city for payment in the amount of approximately \$1,200.00.

The council also agreed to purchase a Hewlett-Packard Deskjet 850C for \$619.00 for Computex of Brownwood.

The regular monthly meeting of the Santa Anna City Council was held on August 13 with Mayor Pro-Tem Bobby Morgan and council members Jim Spillman, Robert Noriega and Mike Pritchard in attendance. Also attending were Arthur Michon, Freddie Dodson, Tuy and Bobby Chamberlain, Superintendent of Operations Tommy Jackson and City Secretary Alys Pelton.

Tuy Chamberlain spoke to members of the council regarding illegal use of go-carts on city streets. It was recommended that violations of the ordinance be reported to the police department.

Speeding of Bowie Street was discussed with Arthur Michon speaking on the matter. A letter from Sylvia Herring was read. Enforcement personnel will be

monitoring the street to help slow traffic.

Following discussion among council members, a motion was passed that no unauthorized persons be allowed to ride in city vehicles, including fire trucks to conform with provisions of the liability insurance policy.

Following a request from BFI for a rate increase for garbage pick up, the increase was approved.

A letter to city officials detailed cost increases of BFI services and why they had asked for the raise in rates.

The rate increase to begin on September 1 will amount to 90 cents per month for local residential customers with 1-7 garbage containers; 95 cents for businesses with up to 7 containers; \$1.11 for 8-14 containers; \$4.39 for 2-yard dumpsters; \$6.28 for 3-yard dumpsters; \$7.91 for 4-yard dumpsters and 11.32 for 6-yard dumpsters.

By-laws of the Santa Anna Development Board were approved by the Council.

The 1997 City Property Tax was tabled until the next meeting of the council.

Also tabled was a decision on the Texas Municipal League group benefit medical insurance.

Accounts payable were reviewed and approved for payment.

The police report was reviewed. Approval was given to order computer generated checks.

## Business Breakfast Thursday At Western Auto

The Santa Anna Chamber of Commerce monthly business breakfast will be hosted by Clint and Rita Day on Thursday, August 22, at Western Auto, from 7:00 to 8:30 a.m.

Held monthly, the coffee breakfast gives business people and employees a chance to visit in an informal atmosphere over a cup of coffee and a donut.

## Meetings Scheduled To Formulate Community Plan For Economic Development

The Santa Anna Economic Development Corporation and West Texas Utilities Company are hosting meetings for the forming of a Community Plan for Santa Anna. Planners say the meeting will be an opportunity for citizens to have an input in a comprehensive economic development initiative for the community.

The Santa Anna Economic Development Corporation is the governing body for the economic

sales tax that Santa Anna citizens approved in an election held in August of 1995. The tax will be collected starting in October and Santa Anna should receive its first rebate in January of 1997. Although voters approved a one cent tax, only half of that goes toward economic development and the other half toward property tax relief.

Participants in the meetings will identify the strengths and weaknesses of the community,

develop realistic goals and formulate a plan to improve the business climate, enhance economic development and create a better quality of life for all area citizens.

The two sessions are to be held from 6:00 to 9:00 p.m. Monday, August 26 and Tuesday, August 27, at the school cafeteria.

Business people have been contacted by letter, but all interested people are encouraged to be present.

## CCTC Membership Meeting Saturday

The 43rd annual membership meeting of Coleman County Telephone Cooperative, Inc. will be held this Saturday, August 24th, at Mountaineer Stadium. In case of bad weather the meeting will be moved to the high school auditorium.

Registration will begin at 7:30 p.m. and the business meeting will start at 8:30 p.m. Business to be conducted will include the report of

officers and election of two directors.

Donnie Neff and Jerry Stearns are on the ballot for director representing Santa Anna Rural-North. Stanley Hartman and Jean Robinett Findley are on the ballot representing Santa Anna. Neff and Hartman are incumbent directors.

Tom Kingsbery of Santa Anna is president of the board of directors. Other directors are Jerry Allen of

Mozelle, Topy Beaver of Valera, Tommie Connelly of Burkett, and Glen Scarborough of Rockwood.

Free cold drinks will be available and drawings will be held for many great gifts. All members registering will receive a door prize and there will be a drawing for grand prizes of \$300, \$200 and \$100. Members must attend the meeting to be eligible to win prizes or to vote.

## Board Decides Against Baseball For Now Open Letter On Page 4 From School Board Regarding Decision

The Santa Anna I.S.D. Board of Trustees met in their regular monthly meeting on Tuesday, August 13.

Board members present were Roddy Dean, Barbara Simmons, Sharon Guthrie, Edwin Hipsher, Dickie Horner and Marty Donham. Also present were Superintendent of Schools Dean Bass, Business Manager Judy Hartman, District Principal Lee Coffman, School Secretary Carole Voss and visitors Montie Guthrie, Sue Johnson, Sharon Cheaney, Sandra Guthrie and Lois Harper.

Sue Johnson, a member of the committee appointed during the July 9 board meeting to gather information regarding a school baseball program, presented the findings of the committee. Discussion was held regarding student insurance, liability insurance, lease of a field, equipment, uniforms, field size, field maintenance and funding. A motion was made that a baseball program be implemented at the

most economical cost possible to the school. The motion failed with a 2-4 vote. A recommendation was made with all board members in agreement that the baseball program be included in the budget plan for the 1997-98 school year.

See page 4 for an open letter from the school board regarding the decision.

The board decided to postpone the fence around the football field and reconsider the item in the spring.

Policy Update #51, which is QC local, DCB legal and DCB local passed unanimously.

Teacher appraisal dates were set for first probationary--October 1 through December 19; second probationary--January 7 through May 1; and term teachers--October 1 through February 20.

The Integrated Pest Management Program was reviewed and approved for the school current.

Superintendent of Schools Dean Bass presented training certificates to board members and reported that

repairs have been made to the high school roof. He also informed the board that he had been in contact

CONTINUED PAGE 5

## Mountaineers Scrimmage Here Thursday

The SAHS Mountaineers will meet their first opponent of the year Thursday when they play host to Robert Lee in a football scrimmage to be held here starting at 6:00 p.m. at Mountaineer Stadium.

On the team roster provided the NEWS and expected to see action Thursday are seniors Chris Cheaney, Tim Abernathy, Mark Yancy, Albert Dixon, Aaron Goss, Cesar Patino, Scott Watson, Clifton Blaine and Dennis Allen.

Juniors Josh Lewis, Shane Watson, Aaron Guthrie, Chris Lewis, Hector Patino, Chris



## First Day Of School Year

Chrystal Bolds and Jon Turney are shown entering the school doors on Monday, the first day of the new Santa Anna school year. Chrystal, a first grade student, daughter of Mr. and Mrs. John Bolds, seems to be happy enough but Jon shows a good humored grimace. A 6th grade student, he is the son Mr. and Mrs. Mark Turney.

Staff Photo

## Football Season Reserve Seats On Sale

Reserved seat tickets for the 1996 Santa Anna Mountaineers football season are now on sale. The price will be \$1 per seat which does not include the regular gate admission for each home game.

Those having reserved seats in

past years will have first choice of the seats they previously held.

To reserve your season tickets contact Sandra Guthrie at 348-3137 between 8 a.m. and 8:45 a.m. or at 348-3826.

Those having reserved seats in past years will have first choice of the seats they previously held. To reserve your season tickets contact Sandra Guthrie at 348-3137 between 8 a.m. and 8:45 a.m. or at 348-3826.

Johnson, Tony Abernathy, Josh Daniels, Ryan Keeney, and Devin Brand.

Sophomore Chris Boyet is also expected to see action in the 6:00 p.m. scrimmage.

Santa Anna — A Town Of Friendly People

Saying "Hello" to  
LaWanda Todd of San Marcos

AUGUST 22 1996

### Check It Out

By Alice Anna Spillman

No matter how much I try it seems, I fail to recognize some who have helped with the Reading Club. Last week the younger women who gave much needed help were left off the list. Nikki Johnson, Sandra Connelly, Jeanie Donham and Mrs. Grissom were there when we really needed them. Thank you from all the library. Kids too!

A few boys and girls who earned some book bucks haven't been by the library. Several have gotten an item or two to start school.

Two children brought books to replace some that they lost. We appreciate the fact that they cared.

Several of you need to check your rooms! There are still books over due. We will begin calling with reminders next week.

It was a real thrill that Becca and Bryan Fellers had made bead and conch friendship ropes for library workers. Harmony Herring had hand made decorations for Christmas and just to feel better. These children don't realize what a blessing they are to all of us! We have the gifts out so you all see them.

Racheal Balch came to the library often while she visited her grandmother last summer. She came by to visit and brought her Malanta, Texas grandmother.

Book donations this week were from Mr. Brashear—a western! Mr. Bomba, Carol Herring and Mr. McKeenan. Thanks!

John Hensley, Sr. gave us an article from the *Brownwood Bulletin*. He had read books by Linda Lay Shuler and the articles tell about the third book of her trilogy. Mrs. Juancita Norris had given the library *She Who Remembers* and *Voice of the Eagle*. The latest book is *Let The Drum Speak*. Everyone who has read the books enjoyed them. Someone has forgotten to return *Voice of the Eagle*. The library needs it, please return at your earliest chance.

One of the books from Maurice Kingsbery was *The Naked Face* Sidney Sheldon. It's an exciting mystery about a psychoanalyst trying to decide if one of his patients is a murderer.

Jim and I have been enjoying the latest Reader's Digest Condensed book. All four of the stories should entertain you. Those who enjoy the cat mysteries can look forward to *The Cat Who Said Cheese*. Lots of laughs, especially if you have ever been owned by a cat.

Janet Dailey has written a modern day western. has both romance and mystery. Notorious.

*Snow Wolf Meade* is a spy novel

## Former County Residents Celebrate Birthdays In London

By LaNell Morgan  
Bobby and LaNelle Morgan of Grapevine celebrated their 50th birthdays in London. Bobby, a 1964 graduate of Santa Anna High School is the son of Virgie Morgan and the late Garland Morgan. LaNelle, a 1964 graduate of Coleman High School, is the daughter of the late Edna Anderson.

Planning of the trip was on short notice due to business reasons and surrounded by several moments of excitement. Due to the Olympics in Atlanta, it was almost impossible to make flight arrangements for LaNelle to join Bobby in London after his business engagement, but finally five days prior to the trip all was worked out. Bobby was to leave on July 12, but due to a weather delay at DFW Airport, his trip was delayed until the next day. He could not have made connections with the flight to London, and with the Olympics in Atlanta, it would have been impossible to find a place to stay overnight. On July 17 as LaNelle's flight was preparing to land in Atlanta to make connections to London, the TWA Flight 800 went down in New York. Flights were delayed in departing from Atlanta for a couple of hours, but air service was continued and her flight arrived in London on July 18 as planned.

Upon arrival at Gatwick Airport, they rent a Peugeot (blue, five speed) and headed for the country side with plans to spend the first night in the Plymouth area. Driving on the wrong side (left) of the road and shifting a five speed with your left hand proved to be an exciting adventure itself. Even being the passenger on the left side of the car, took getting use to. The roads were narrow, crooked and often lined with shrubbery and/or a stone wall. Speed limits varied, and on the motor ways (freeways) there seemed to be no speed limit. To exit to a different road, you had to proceed through the "turn about" a sort of traffic circle.

En route to their destination, they stopped by Windsor Castle, the largest castle in London and the occasional home of Her Majesty the Queen. The building of the castle was spread over more than eight centuries, began by William the Conqueror in the 11th century, modified by Edward

that goes back into 1953 happenings to get the facts.

Mirage Soheir Khashoggi. Read this to realize how truly blessed we who live in America area. We have freedom that others only dream. The story is fiction but is surely based on the author's life. I have read several other true stories of women and children who suffered terribly under fundamentalist Muslim culture.

This book will find its way onto library shelves soon. Thanks to several donors there will be plenty of condensed books for the next book sale.

Memorial to Doyle Evans from Gale Allen Brock. Our sincere sympathy to a friend next door.

III in the mid-1300's and completed by George IV between 1824 and 1837. Windsor is the only royal residence that has been in continuous use by the royal family since the Middle Ages. However, to tour the castle would take at least five hours and time did not permit.

The next stop was at Stonehenge (medieval phrase meaning "hanging stones"), the oldest monument in Europe, parts of it dating back 5,000 years. This monument was begun around 2800 BC, and has been excavated and rearranged several times over the centuries. The stones are enormous in size, some perhaps 18-24 feet high and 6-8 feet thick. The 80 blue stones (dolerite) were transported from the Preseli mountains on the Atlantic coast of Wales. Great blocks of sarsen stone were quarried in north Wiltshire and brought to the site. It is believed to have been a religious site involving the cycles of the sun, as they are in alignment with the sunrise in midsummer and sunset in midwinter. There has also been speculation that Stonehenge may have been a kind of neolithic computer, with an astronomical purpose.

Then on to their overnight stay at a quaint little Bed and Breakfast, The Peter Tavy Inn, a two story stone cottage built in the late 1400's located two miles north of Tavistock, Devon. The furnishings were antique and provided a romantic English atmosphere, carved wooden four poster beds with wooden canopies, lace and quilted bedding, and the old claw footed bath tubs. Travelers, as well as local residents for miles around, sought out this "pub" for its food, drink and atmosphere.

Rest and filled with enthusiasm, the next morning took them through the country up the west side of England to North Wales. The country side was beautiful, and even though they were experiencing a bit of a drought, the hay season was well under way and even small fields seem to produce well. The journey took most of the day and they arrived at Caernarfon Castle just as the gates were locked, so this would be where they would start the next day. The night was spent at another Bed and Breakfast, Ty'n Rhos (House in the Vale). This was an immaculate farmhouse with eleven bedrooms with baths upstairs, and setting rooms, dining and kitchen downstairs, all with beautiful furnishings, and with views across the fields to the Isle of Anglesey.

Saturday morning began with a tour of the Caernarfon Castle, the most famous and perhaps the most impressive castle in Wales, construction began by Edward I in 1283, taking nearly 50 years to complete and the costliest of Edward's castles. According to tradition, it was here in 1301 that the first English Prince of Wales was presented to the Welsh people. Edward I had promised them a prince who did not speak English and duly offered his five day old son, Edward II. The tradition that the first-born son of the monarch shall become Prince of Wales continues, and in July 1969, Elizabeth II presented her oldest son Prince Charles, to the people of Wales as their prince. This was the first time the ceremony had been held since 1911 when Prince Edward was presented his by father George V. The castle holds a wealth of history and the architecture is magnificent.

Our journey then took us across the Menai Strait to Abergavenny, the Isle of Anglesey. Here we visited the Museum and Memorabilia of Childhood, a collection of ancient audio and visual items, clocks, music boxes, children's toys and nursery furniture. Then we crossed from Beaumaris to Bangor, on the mainland, crossing the Menai Bridge, a chain suspension bridge built in 1826 by Thomas Telford. We traveled through the beautiful Snowdonia National Park and mountain valley back into England and returned our rent car at the Gatwick Airport.

From here we caught the train to Victoria Station and then the "underground" into the heart of London. The "underground" appeared to be the main transportation for the teenagers and young crowd, seeing that it was around 11 p.m. and we were amongst the few "older" passengers. It was quite fun and we safely arrived at our hotel, the

Shepherd, which would be our base for the next three nights. They were having an unusual summer in England, temperatures were 80-90 F days and 50-60 F nights. No air conditioning, unless you paid well for it. Ice in your drinks consists of 2-3 cubes, and a request for more ice was an unusual request. The nights did not cool down enough to sleep until 1 a.m., and then daylight came around 4:30 a.m.

July 21 was spent seeing London on our own, a ride on the double decker city bus to Piccadilly Circus and Covent Garden. Around Piccadilly Square and along the entrance street to Covent Garden are various shops, theaters and restaurants. It is here the "street entertainers" gather to perform. Many of them are very good entertainers. Each has their own little territory and the performers vary from string and other various musicians, jugglers, contortionists, portrait art, mimes and numerous others. One can have a whole day of free entertainment, but contributions are gladly accepted as this is how many make this living or pay their way through college.

Covent Garden is a market with various vendors with their crafts and flea-market goods, and open-air entertainers perform. The original "convent garden" produced fruit and vegetables for the 13-century Abbey of St. Peter at Westminster. Later, it passed into the hands of the earls and dukes of Bedford. In 1630, the fourth earl commissioned to have St. Paul's Church built at one end of the square. Only the church remains now, as the traffic grew to be too much for the narrow streets and the Convent Garden was moved south of the Thames, at the end of Piccadilly Square.

We chose our last day in London for a guided tour. The tour bus picked us up at the Cumberland Hotel in one of the more expensive hotels in London, across the street from the Marble Arch, the site of myriad public floggings and hangings. We traveled to Victoria Station, where we boarded buses according to the type of tour we had registered for. Our tour guide was Debra and our driver was Auzzie, two wonderful English people who kept us entertained for the day. Debra was a "history book" but was also very delightful in that she mixed in the "light" side and even a few jokes involving the English royalty. It was a full day, no loitering, she kept the group on the move all day. We started at 8 a.m. and did not return to our "pick-up point" until 6 p.m.

Our tour took us through the streets of the West End where some of the major shopping and entertainment centres are located, such as the world famous Harrods and St. James' Palace and the Royal Albert Hall. Also along in this area are famous Royal Parks, the Mayfair and Kensington.

The first was Westminster Abbey,

the most ancient of London's great royal churches. Services are still held here on Sundays, therefore taking pictures is prohibited. Britain's monarchs have been crowned here since the coronation of William the Conqueror on Christmas Day 1066, and has been a church since the 6th century. The present abbey is a largely 13th and 14th century rebuilding of the 11th century church founded by Edward the Confessor. Two later additions are the Henry VII Chapel, built in the early 1500's and the 18th century twin towers over the west entrance. It is also the resting place of countless monarchs, statesmen, poets and heroes.

Aboard our tour bus again, we hurried off to Buckingham Palace to view "the Changing of the Guard", the most celebrated of all London ceremonies. Buckingham Palace stands at the end of the Mall, behind a huge traffic circle edged with flowerbeds. When the queen is in residence, the royal standard flies over the east front. Inside are dozens of splendid state rooms used on formal occasions, offices for the royal staff, and the north wing is the private apartments of the queen and Prince Phillip. Behind the palace lie 40 acres of secluded garden. The palace is open to tourists for eight weeks in August and September, when the royal family is away. Therefore, being July, we were not permitted to tour the palace.

Our guide hurried us along in order that we might have a front row view along the street. The guards that have been on duty leave their posts and march along The Mall to Wellington Barracks, thus leaving the Palace with only a skeleton crew for 8 to 15 minutes. We were then instructed by our guide to run briskly across the park in order to gain a front row view by the street to observe the guards coming on duty. The ceremony is colorful and very impressive. The guards wear uniforms of long high length red coats, black trousers and black fluffy fur hats (helmets) that were at least 18 inches tall, carrying loaded rifles ready to protect the palace and royalty at all times.

We drove through the Ancient City of London, founded over 2,000 years ago, which now houses all the financial and legal institutions, many of London's famous institutions, the Stock Exchange, Mansion House, and many more. This took us to our "lunch cruise" aboard the Naticia on the River Thames, which unites the oldest and newest areas of London. It's spanned by bridges of different design: the earliest, Richmond, dates from 1774 and the most recent, London Bridge, from 1973--the former London Bridge having been sold and rebuilt in Arizona, and possibly the most impressive, the Tower Bridge. Built in 1885-94 displaying a medieval appearance, it is London's only drawbridge. Many historic buildings and sites line the

## Commodities Distribution Today In Coleman

Central Texas Opportunities, Inc. will distribute non-USA food items in Coleman County at the former CTO, Inc., offices, 800 E. Second Street, Coleman, on Thursday, August 22 from 10:00 a.m. to 1:00 p.m.

CTO has no control over what items are available or the quantity of items.

Shut-ins are encouraged to designate an authorized person to pick up items for them.

All qualified people in the county are eligible to receive the food items. Those wishing to qualify should contact the Coleman Co. Multi-Purpose Center, 1200 S. Frio, Coleman, 625-3583, during regular business hours, 8:00 a.m. to 12:00 noon and 1 to 5 p.m. Monday, Thursday and Friday. Bring proof of income, a utility bill and drivers license.

river, the Public Library, the Merchant's House, and the Traitor's Gate, just to name a few.

The last stop of our tour was The Tower of London and The Crown Jewels, an awesome medieval fortress dating back to the 11th century. Our guide told us of the Tower's use as a fortress, prison, palace and a place of brutal execution. The Tower has such a long history and its buildings have known so many uses that it would be difficult to try to tell the story in such short space. There is the History Gallery, the White Tower, the Waterloo Barracks, the Bloody Tower, just to name a few.

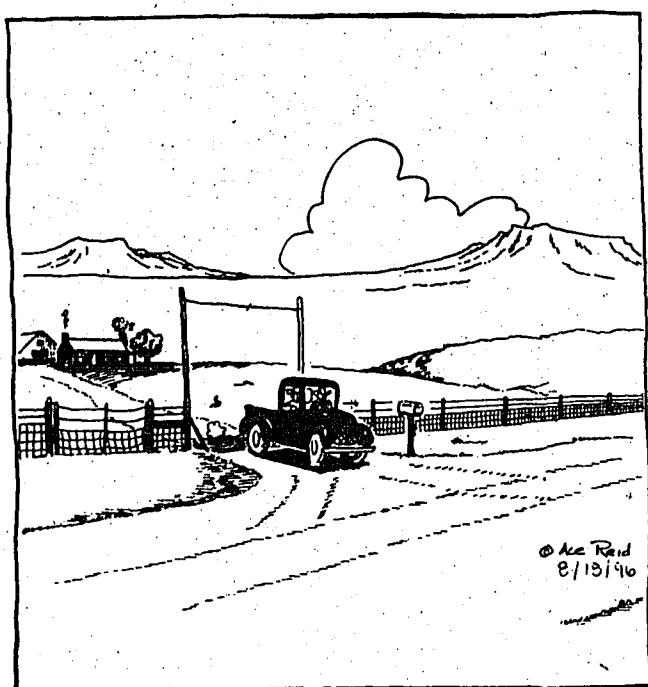
The Crown Jewels are housed in the Duke of Wellington's Barracks, which can accommodate 20,000 visitors per day. The Jewels are a breathtaking impressive collection of regalia, precious stones, gold and silver. The Royal Scepter contains the largest cut diamond in the world, The Imperial State Crown, made for Queen Victoria's coronation in 1838, is studded with 3,000 precious stones, mainly diamonds and pearls. Some of these are large and appear to be so heavy, one might wonder how one was able to support the weight upon one's head, or carry the scepters with grace and poise. There are huge royal serving platters and punch bowls of gold. The collection is awesome but of course, no pictures allowed.

We returned to our hotel and packed for our return trip. The return flight did not seem as long, but there was very little time once we arrived in Atlanta to collect our bags, clear customs, recheck our luggage, run from one end of the airport terminal to the other with only seconds to catch our flight to DFW. We made it but our luggage did not!

I would say "A 50th Birthday to Remember!"

### COW POKES

By Ace Reid



"Drouth's still on, cattle sellin' cheap, everybody mighty discouraged, but I can't find a ranch for lease in the whole dang state!"

## Santa Anna National Bank

Deposits Insured By FDIC Up To \$100,000  
Ask About Our Interest Bearing-Accounts  
Checking Accounts  
\$1,000 Minimum  
Pass Book Savings  
Certificate of Deposit

MEMBER F.D.I.C.

Substantial Interest Penalty Is Required For Early Withdrawal

### MOVIES 4

Heartland Mall-643-3661

ADULTS \$2.00  
Children & Senior Adults \$1.00  
All Shows Before 6p.m. \$1.00

Very Brady Special (PG-13)  
Fri-Thurs 1:30 3:30 5:30 7:30 9:30

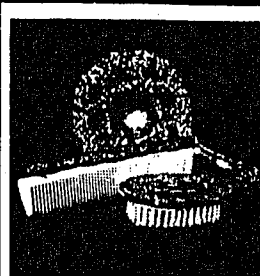
House Arrest (PG-13)  
Fri-Thurs 1:15 5:15

Jack (PG-13)  
Fri-Thurs 12:00 5:00 7:15 9:50

Independence Day (PG-13)  
Fri-Thurs 1:00 4:00 7:00 9:45

Matilda (PG)  
Fri-Thurs 3:15 7:00 9:15

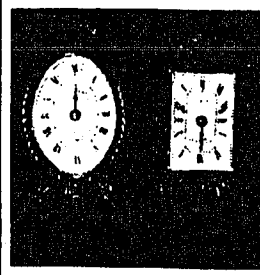
## "GIFTS FOR ANY OCCASION"



### THREE PIECE SILVERPLATED DRESSER SET

Style #7931

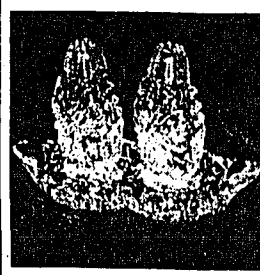
Reg. \$24<sup>95</sup> Market Special \$12<sup>88</sup>



### "CRYSTAL CLEAR" CRYSTAL CLOCK

Oval or Square

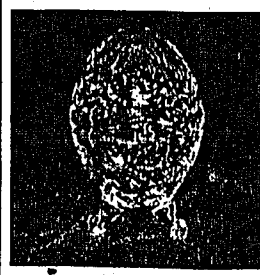
Reg. \$24<sup>95</sup> Market Special \$12<sup>88</sup>



### "CRYSTAL CLEAR" SALT & PEPPER SET

With Crystal Tray

Reg. \$16<sup>95</sup> Market Special \$10<sup>88</sup>



### "FIFTH AVENUE" CRYSTAL 6" EGG BOX

("Alexandra" #303197-GB)

Reg. \$15<sup>95</sup> Market Special \$10<sup>88</sup>

Limited To Merchandise In Stock  
Items Are Gift Boxed  
Sale Ends August 24th

**Nathans JEWELERS**  
a touch of class  
The Tradition Continues...  
309 Center • 643-2526  
Downtown Brownwood  
• Free Gift Wrapping • No Finance Charge  
1-800-NATHAN-8  
We Support TRUTH IN PRICING

## Dear Editor

In regard to the article on the mountain in the Santa Anna News on August 8, I would like to express my views.

On March 28, 1995, my husband and I took on the enormous job of trying to restore the beautiful rock home of the late Mr. and Mrs. C. D. Bruce. These lovely old folks meant a lot to our town and county, and it gave us great pleasure to be able to keep their memory alive by nurturing what they had left for others to protect and care for.

It took us three months of very hard work to repair the huge cracks in the walls, floors and ceilings as a result of years of blasting on the mountain. There were 25 broken window panes, some of which were not the result of the blasts.

Imagine our shock to see dozers coming down the side of the mountain, behind our house, digging out a huge new double lane road. How many roads does there have to be? For Mr. Yates to say his company is not hurting the exterior of the mountain is ridiculous, when this road can be seen all the way from the Brady mountains. This ugly eyesore will never heal over. Nothing is going to grow back on caliche walls and twenty to thirty foot piles of caliche. We only can look at the east end of the mountain to be reminded of that.

I really take exception to Mr. Yates comments about "this old sore down here" that comes up every year or so. Is this his way of disassociating his actions with the misery of an entire town and our heritage? Are we just supposed to sit and watch a Texas landmark being destroyed and hauled off and not say anything?

It really doesn't make any difference how "tenderly" Mr. Yates takes away our mountain, the results are the same. He is filling his pocket with money, while an entire town and everyone who passes by, feels misery and sorrow for this loss. Would Mr. Yates enjoy a gravel pit in his back yard? Would his wife just really love working in her yard with white dust covering trees, shrubs and flowers she is trying to grow? Would they enjoy having their cows trying to eat "white" grass? Would they enjoy filling cracks in their home and replacing windows each year? Well that's what's ahead for us again. More cracks in the ceiling, walls and two more cracked windows.

Mr. Yates and all who are a part of this destruction can just get ready to listen to the complaints about this "old sore" down here, because of we do care about this landmark, we do care to honor our heritage and those wonderful pioneers that went before us. We would like to leave something beautiful behind for our children and our children's children to love and protect and something beautiful for every traveler to see that passes our way.

Sincerely,  
Suzanne Bass  
Santa Anna, Texas

My name is Geraldine Lewellen Graves. I lived in Santa Anna all my early life. Started and finished school there. My father and mother were Barney and Bessie Lewellen. My brother was Oran L. Lewellen. My sisters are Billie McDonnell of Plains, Texas and Shirley Merryman of Coleman.

My grandfather W. H. Lewellen used to take us on Sunday afternoons to climb the Mountain. We packed a picnic and had a good time.

My first cousin, Virginia Zirkle lived several miles south of Santa Anna. You can see the mountain from her house. That Mountain is a part of history and a part of everyone who has lived there.

I wish everyone who is fighting to SAVE THE MOUNTAIN all the best and success in the effort.

Geraldine Graves  
Gary, Texas

## State Capital



### HIGHLIGHTS

By Lyndell Williams & Ed Sterling  
TEXAS PRESS ASSOCIATION

**AUSTIN —** Insurance Commissioner Elton Bomer said last week the Texas Department of Insurance would take full regulatory control over health maintenance organizations this fall.

The agency presently shares regulatory control of HMOs with the Texas Department of Health.

Bomer said the Legislature will have to approve a plan to make the switch permanent, and meetings to discuss the issue were scheduled last week.

Jeff Wurzel, executive director of the Texas Health Maintenance Organization Association said the regulatory change could make dealing with state regulations easier for the 44 HMO programs that cover 2.2 million Texans.

"I think the change will be positive. We hope that at one agency, the process will be improved," Wurzel said.

Lisa McGiffert, a policy analyst for Consumers Union Southwest Regional Office, said the change could be good, but she said ending the health department's regulatory role will take away a check-and-balance system. And she said the health department knows more about health-care needs than the insurance department.

But she said she hopes Bomer will hire staff who would keep a close watch on the growing HMO industry.

**NAACP Appeals Court Order**  
Attorneys for the NAACP appealed to the U.S. Supreme Court last week to overturn a federal court order requiring special elections in 13 congressional districts in Texas.

The attorneys raised many objections to the court order, arguing that special elections would be highly disruptive, that it is not necessary to redraw 13 districts to correct constitutional violations in only three districts, and that with less than three months until the general election, minority voter turnout would be lessened.

A federal court panel of three judges earlier this month redrew 13 of Texas' 30 congressional district boundaries that were declared unconstitutional because they were racially gerrymandered.

Attorney General Dan Morales is considering whether to file an appeal to stay the panel's order for special elections.

**Tobacco Trial to Stay Put**  
Texas' \$4 billion lawsuit against the tobacco industry will stay in Texarkana where Attorney General Morales filed it, a federal judge ruled last week.

U.S. District Judge David Folsom rejected arguments from to-

bacco industry lawyers who sought to move the lawsuit to Austin, which would have been more convenient.

Morales filed suit in March against the tobacco industry, accusing it of committing fraud and violating federal antitrust and racketeering laws. The suit seeks reimbursement to the state of the costs of treating tobacco-related illnesses.

**College Testing Scores Improve**  
The Texas Education Agency announced last week that students who took the American College Testing exam this year had a higher composite score than those who took it last year.

This year, 55,442 Texas seniors took the ACT, scoring a composite of 20.2. Last year, the 59,857 students who took the exam had a composite score of 20.1. The national average composite score this year was 20.9.

"These results clearly demonstrate that taking challenging courses in high school is a prerequisite for success in college," said state Education Commissioner Mike Moses.

"For students who are planning to attend college after high school, taking challenging courses is not a luxury but a necessity. There is no substitute for good solid academic preparation."

More students take the Scholastic Aptitude Test than the ACT, but all colleges and universities in Texas accept ACT results for admission

Continued Page 5

## Join Our Celebration

You are invited to join us in the celebration of the fiftieth wedding anniversary of Gene and Billie Deal and the annual Cozart Reunion. Gene is the son of Mr. and Mrs. R.J. Deal and Billie is the daughter of Mr. and Mrs. Etoile Cozart. They were both raised in the Trickham Community.

The reunion celebration will be held at noon, September 1, 1996 at the Trickham Community Center. Please bring a covered dish and \$2.00 for catered meat. RSVP to Michelle Cozart Morgan, 348-3463, no later than August 27th.

## Birthdays & Anniversaries

AUGUST 22  
Tim Abernathy  
Molly Pritchard  
Bobby Chamberlin

AUGUST 23  
Lois Ann Harper  
Tom Guthrie  
Jeff Greenlee

AUGUST 24  
Brent Beal  
Kelly Rose Nixon

AUGUST 25  
J.E. Casey Jr.  
Guy McElrath  
Jim Laubhan  
Mr&Mrs David Horner\*  
Oleta Mobley

AUGUST 26  
Vicki Drake  
Danna Jones  
Pat Wright  
Tara D'Ann Watts

AUGUST 28  
Alex DeLeon  
Nikki Donham  
James Matthew Steele  
Bernidine Watson  
Vikki Wristen  
Jewel Hosch  
Mr&Mrs Kevin Fritz\*

## 'Round & About

Visitors with Carmen Donham last week were her brother and his wife, Glen and Leanne Lewis of Wichita Falls and her niece Cynthia Cotton of Cartersville, Georgia. The ladies enjoyed the annual quilt show in Lampasas on Friday.

Visitors with R. W. Balke over the weekend have been his daughter Linda Davidson, granddaughter, Theresa Pierce and great-granddaughter Brittany Balke, all of Louisiana.

Visitors in Santa Anna and in the NEWS office Tuesday was former Santa Anna resident and SAHS graduate, Betty Ruth Goen Maciel of San Antonio. She was accompanied by her daughter, Donna Padilla and grandchildren Bryan and Robbie, all of Kansas City, Missouri.

Derriel and Polly Warnock joined their son, Marty and Cathy Warnock of Mesquite, in Gainesville Sunday to attend church services where Marty's daughter Stephanie was baptized.

## Novice Welcomes Foreign Students

Exchange students who are staying in the Novice area and attending high school are:

Sylvia Haran of Poland, 17, who is residing with Billy Lancaster and family; and

Skawomira Jarecka of Poland, 17, who is residing with David and Dottie Bradley.

## WANTED

Friends and family to come help celebrate the 80th birthday of CLIFFORD MORRIS Saturday, August 24th, Elk Lodge, Brownwood 2:00 - 5:00 p.m.

## HOME VIDEO OUTLET # 2

615 Wallis Ave. Santa Anna 348-3102  
Latest Movie Releases

Mr. Wrong

The Substitute

## COUNTYWIDE INSURANCE AGENCY

214 N. 2ND  
SANTA ANNA  
915-348-3116

PAUL SKELTON—AGENT

If It's Affordable...We'll Insure It

HOMEOWNERS  
WORKER'S COMPENSATION  
FIRE  
AUTO  
LIFE & HEALTH INSURANCE  
LIABILITY  
BONDS

TOM KINGSBERY  
President

JERRY ALLEN  
Vice President

TOMMIE CONNELLY  
Secretary-Treasurer

## Coleman County Telephone Cooperative, Inc.

DANNY KELLAR, Manager  
215 North Second Street  
Santa Anna, Texas 76878

### DIRECTORS

JERRY ALLEN, MOZELLE  
TOPPY BEAVER, VALERA  
TOMMIE CONNELLY, BURKETT  
STANLEY HARTMAN, SANTA ANNA  
TOM KINGSBERY, SANTA ANNA  
DONNIE NEFF, SANTA ANNA  
GLEN SCARBOROUGH, Rockwood



P.O. Box 608  
915 348-3124

## Notice of Annual Meeting

The annual meeting of the members of the Coleman County Telephone Cooperative, Inc. will be held at the Santa Anna Football Stadium (in case of bad weather, the High School Auditorium) at Santa Anna, Texas, on Saturday, August 24, 1996 at 8:30 P.M. to take action on the following matters, to wit:

- Report of officers
- Election of two directors of said Cooperative. You must be a member of the Cooperative in order to vote. The nominees are as follows:

Donnie Neff

Route 1 Box 106

Santa Anna, Texas 76878

Stanley Hartman

P.O. Box 184

Santa Anna, Texas 76878

SANTA ANNA RURAL - NORTH

SANTA ANNA

Jerry Stearns

Route 1 Box 102-A

Santa Anna, Texas 76878

Jean Robinett Findley

P.O. Box 81

Santa Anna, Texas 76878

- All other business which may come before the meeting or any adjournment thereof.

TOMMIE CONNELLY

Secretary

REGISTRATION FROM 7:30 P.M. UNTIL 8:30 P.M.

Free Cold Drinks

Drawing for Many Great Gift Items

Door Prizes to all Members

Grand Prizes - \$300.00 - \$200.00 & \$100.00 Cash!

Only members who attend are eligible to win prizes and vote.

## Heating, Air Conditioning & Appliances

Sales, Service & Installation  
Residential & Commercial

Emergency 24-Hour Call

STATE LICENSED & INSURED

## Morgan Services

1-800-445-2108  
David C. Morgan  
Santa Anna, Texas  
Lic.: TACLB 015953C

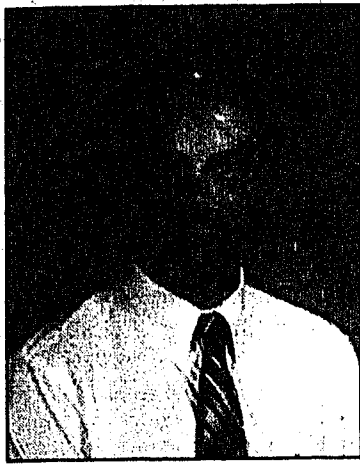


AUGUST 22 1996



## Meet The Staff And Faculty Of The Santa Anna ISD

*Editors Note: The following is a continuing series to introduce the teachers and staff at Santa Anna ISD to our readers.*



**BRUCE GOODWIN**  
Family: Wife Ellen and children Stuart, Claire and Amy  
Grade or subject you are

**teaching:** High school physical education, Texas History (7th grade) United States History (8th grade) junior high athletics, high school athletics

**Previous schools taught in:** Student taught at Grape Creek Middle School

**Education:** B. A. from Angelo State University

**What influences you to become a teacher:** Scouting for Rotan High Schools football team during my early college years

I enjoy the friendly disposition of the people of Santa Ann.

**Family:** Husband Eddie, sons Michael and wife, Donna and James and wife Tanya and three grandchildren Maegan, Travis and Katie

**Hometown:** Born in Dallas and lived most of my life in Santa Anna

**Position:** Secondary (7-12) School Secretary

**What you like about your job:** I enjoy interacting with the students, watching them mature physically and mentally each year as they become young adults. I also enjoy the mental challenge my job presents.

**Family:** Wife Sandra and sons Montie, Rhett and Mitchell

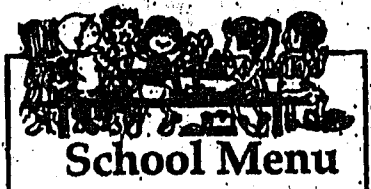
**Grade or subject you are teaching:** K-12 Counselor

**Education:** BA 1969 Tarleton State University and M.Ed 1993 Tarleton State University

**What influenced you to become a counselor:** Previous counselor quit the day school was to begin in 1990. Gerald Brister called and offered me the job.

Counseling has taught me patience and tolerance, as well as to shut up and listen.

I feel that my job is to be the advocate of every child in the Santa Anna ISD. Sometimes I don't do the best job, but I hope I'm learning to do better day by day.



### School Menu

Choice of dry cereal, graham crackers, whole white, lowfat white and lowfat chocolate milk offered daily

#### MONDAY, AUGUST 26

**Breakfast:** Cinnamon roll, fruit or raisins and milk

**Lunch:** Chicken fried steak, seasoned potato wedge, slice peaches, apple or orange juice, hot rolls, milk, gravy and honey

#### TUESDAY, AUGUST 27

**Breakfast:** Waffles, sausage, fruit juice or raisins, milk and syrup

**Lunch:** Ham & cheese sandwich, slice bread, shredded lettuce, slice tomato, apple or orange juice, fresh oranges and cookie

#### WEDNESDAY, AUGUST 28

**Breakfast:** Breakfast burritos, fruit juice or raisins, milk and picante sauce

**Lunch:** Salisbury steak, english peas, apple or orange juice, fruit cup, steam rice, hot rolls, milk and brown gravy

#### THURSDAY, AUGUST 29

**Breakfast:** Breakfast muffins, fruit or raisins and milk

**Lunch:** Burritos w/chili/cheese, whole kernel corn, apple or orange juice, chilled fruit, crackers, milk, cake, picante sauce and peppers

#### FRIDAY, AUGUST 30

**Breakfast:** Creamy rice, toast, fruit or raisins, milk and jelly

**Lunch:** Chopped bar-b-que on a homemade bun, tator tots, pork & beans, slice pickles, apple or orange juice, milk, cookie, catsup

**Tell Our Advertisers You Saw It In The Santa Anna News**

**Tell Us About Your College Students**

Parents are urged to let us know about the return of their children to school of higher learning.

Information to be requested will be student's name, high school graduation year, classification of the current year, major or field of study and name of parents.

### Open Letter To Residents Of The Santa Anna I.S.D.

One of the goals of the Santa Anna Independent School District for the 1996-1997 year is increased parent/community involvement. We believe that our school system can only benefit when all the members of our community are involved with and interested in the education of our young people.

Recently a group of young people, parents and community members approached us with a proposal to implement a baseball program for spring 1997. On the group's behalf, Mrs. Sue Johnson made the proposition. It was obvious the proposition was the result of much thought, research and hard work.

While we are not able to begin the program for the upcoming school year, we were very impressed with Mrs. Johnson's presentation. She made many good points about the worth of such a program. On behalf of our school and our students, we very much appreciate her time and effort, as well as of those who helped her.

The Board has worked very hard in the recent past to reduce expenditures and to economize without sacrificing educational excellence. In keeping with our commitment to young people to provide the best educational experience possible, it is our intent to reexamine the feasibility of this program during the budgetary process this coming spring.

We believe we have a fine school system, and with the involvement of all in our community, we can make it even better. Mrs. Johnson and her group have set a fine example of commitment.

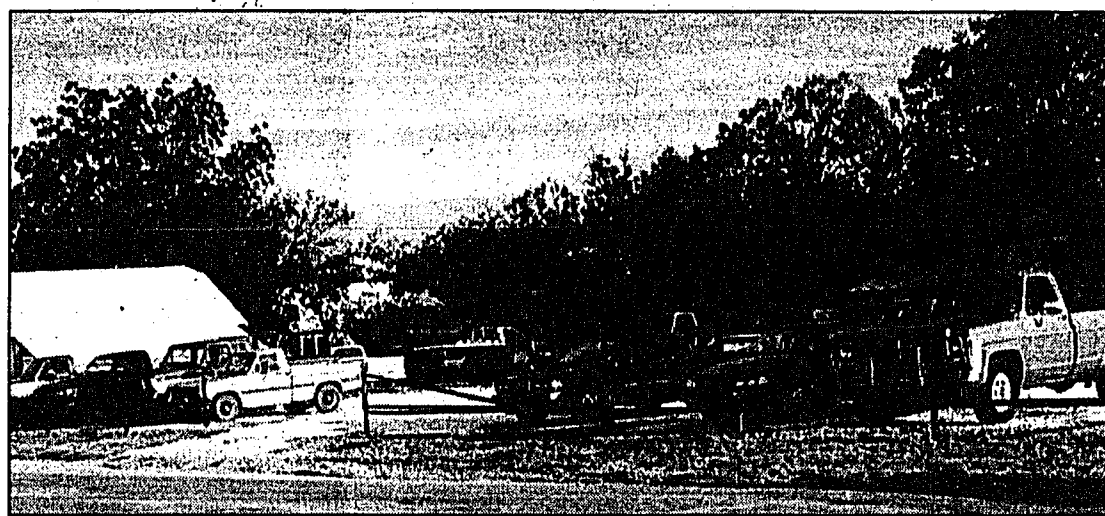
**SANTA ANNA INDEPENDENT SCHOOL DISTRICT BOARD OF TRUSTEES**



**MARY ANN HARTMAN**



**MONTIE GUTHRIE**



### Students Parking In New Area

Students with driver's license in the Santa Anna ISD began parking in the two parking lots located directly across the street from the high school building when school began on Monday. This measure was taken to alleviate the congestion on cars in the area of the gym and junior high/administration building. The above photo shows the west parking lot almost full just after the first tardy bell of the 1996-97 school year.

Photo by Carol Herring

**REED MEMORIAL CO. LIMITED**  
Monuments of Distinction  
Fl. Worth Hwy. Brownwood, Tx.  
Phone (815) 648 7625  
Sylvia Herring—Local Rep.  
Phone 348-3461

For 24 Hour Service Call  
(915)625-2128  
OR  
TOLL FREE  
1-800-560-2128  
**COLEMAN COUNTY ELECTRIC CO-OP**

COLEMAN, TEXAS

### Junior High Football Schedule

September 12	Ranger	There	6 p.m.
September 19	May	Here	6 p.m.
September 26	May	Here	6 p.m.
October 3	Baird	There	6 p.m.
October 10	Rising Star	Here	6 p.m.
October 17	Gorman	There	6 p.m.
October 24	Evant	Here	6 p.m.
October 31	Cross Plains	There	6 p.m.
November 7	Lometa	Here	6 p.m.

### School Events Calendar

Thursday, August 22: Mountaineer Football team to scrimmage Robert Lee at Mountaineer Stadium, 6 p.m.

Monday, August 26: "Meet the Mountaineers" Night at Mountaineer Stadium sponsored by Athletic Booster Club, 7 p.m.

Tuesday, August 27: Lady Mountaineers vs. Evant at Perry Gym, 5:30 p.m.

### Fishing Lake Ivie

By Durwood Strickland

The water is clear on the main lake but a little murky in the upper end and creeks and rivers.

Black bass to 4 1/2 lbs. are being caught, although they are a little slow. Recommended bait is plastic worms and buzz baits. Fishing for white bass is fair.

Crappie fishing has been pretty fair using minnows fished in 20-30 feet water in the creeks, ridges and coves. 20-40 feet in the main lake. Best crappie fishing continues to be at night.

Catfish are fair on trotlines baited with cut bait fished over baited holes. Yellow catfish are fair on trotlines baited with perch.

We're gearing up out here also for hunting season. Let's talk fishing or hunting. Call me at 915-357-4785.

Courtesy Of

### Concho Park

On Lake O.H. Ivie

RV Hookups Convenience Store  
Ice, Supplies, Bait, Fishing Tackle  
Licenses, Permits, Gasoline  
Short-order Grill

Motel (915) 357-4467  
Store (915) 357-4466

### WELLNESS CENTER

Family Health Care Clinic

• Santa Anna •

106 N. 2nd • 348-3566

### BACK TO SCHOOL SPECIAL

—ALL of AUGUST—

Sports Physicals.....\$15.....Reg \$21

Immunizations Free — (Bring shot record)

Peggy Hensley MSN, RNCS  
Family Nurse Practitioner

Donald Pope M.D.  
Director

Monday — Thursday 8:30 - 5:00



Continuing to offer you the most caring, professional service

### Stevens Funeral Home

400 Pecan, Coleman, Texas 76834

(915) 625-2175

Lana Korzenewski, Funeral Director

### Allen & Allen INSURANCE

A Coleman County Authorized Agency For The:



AMERICAN INDEMINITY GROUP

BEACON INSURANCE GROUP

THE TRINITY COMPANIES

Serving Coleman County and the surrounding area since 1922  
200 WEST PECAN STREET 625-4124 COLEMAN, TEXAS

### OD's Chuckwagon & Smokin'

### Chuckwagon Meals

- Rehearsal Dinners
- Church Outings
- Family Reunions
- Company Parties
- Etc.....

• Now booking  
Hunting Groups



Let O.D. do your custom smoking

Derriell Warnock

915/348-3167 — (If no answer, call 915/348-3545)

### Capital Highlights Continued from Page 3

consideration.

#### Drought Hurts Cotton Crop

Total production of cotton, corn, peanuts and soybeans is lower than last year because of the drought, Agriculture Commissioner Rick Perry said last week.

Texas, the nation's leading cotton-producing state, is estimated to produce 3.65 million bales, down 18 percent from last year. It is only the second time since 1990 that the Texas cotton crop has dropped below 4 million bales.

Perry said more than 600,000 acres were abandoned on the southern high plains; the state's largest cotton-producing area.

#### Inmates Rebuild School Buses

When public schools reopened across the state last week, nearly 600 school buses rebuilt by inmates hit the streets.

More than 200 inmates at a Texas Department of Criminal Justice unit near Huntsville rebuilt old

buses, saving thousands of dollars for local school districts.

Shawn Blair, manager of the school bus repair plant, said the criminal justice department earned nearly \$2 million last year.

#### Other Capital Highlights

Immigration officers last week arrested about 135 illegal immigrants working at Sun City Georgetown, a retirement housing project being developed by Dell Webb Corp. of Phoenix. One day earlier, officers made 80 other arrests in the Austin area. Sun City officials said all of those arrested were employed by contractors, except one who had provided documents before being hired.

The hero is one who kindles a great light in the world, who sets up blazing torches in the dark street of life for men to see by. The saint is the man who walks through the dark paths of the world, himself a light.

- Felix Adler

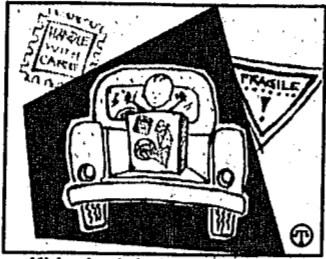
### School Board Continued From Page 1

with Carpenter Co. regarding the repair/surface of the elementary roof.

#### School Enrollment Figures On First Day

Enrollment for the first day of school on Monday was 300 students.

A breakdown by class was seniors 19; juniors 28; sophomores 28; freshman 23; eighth 23; seventh 23; sixth 30; fifth 14; fourth 23; third 25; second 23; first 20 and kindergarten 21.



Kids don't belong in the cargo area of pickup trucks.

### Public/Legal Notices

#### INVITATION TO BID

The Santa Anna Independent School District will receive proposals from suppliers and subcontractors for labor and/or materials for the following trades:

Site Work, Concrete, Masonry, Woods & Plastics, Thermal & Moisture Protection, Hollow Metal, Wood Doors, and Hardware, Windows, Drywall, Ceiling Suspension System, Floor Covering, Painting, Specialties, Pre-Engineered Structure, Plumbing, Mechanical, Electrical, for the construction of a 4 Classroom Building at the campus in Santa Anna, Texas according to plans and specifications prepared by Michael W. Marrs Architects, Inc., until 2:00 p.m., August 27, 1996 at the

**WALKER FUNERAL HOME**  
Pre-Arranged Funerals  
Phone 625-4103  
Coleman, Texas

### Public/Legal Notices

Superintendent's office 701 Bowie St., P.O. Box 99, Santa Anna, Texas 76878-0099, at which time bids will be opened.

For instructions, interested parties should contact the Architect:

Michael W. Marrs Architects, Inc.  
2027 South 61st Street, Suite 108  
Temple, Texas 76504  
(817) 778-0877 - Phone  
(817) 778-1133 - Fax

**Dr. Orhan Oral**  
115 West Street - Coleman  
(West of Courthouse in office space between Geo. D. Rhone Co. and Security Finance)  
915-625-2101  
915-625-2102  
FAX 915-625-2445  
After Hours: 915-625-3730  
OFFICE HOURS: 9:00 a.m. to 5:00 p.m.  
Monday through Friday

## CLASSIFIED 915-348-3545

DEADLINE - 12:00 NOON, TUESDAY

### CORRESPONDENT NEEDED

Need someone to report news items from the Rockwood Community. Need not be a resident of that area but should be knowledgeable of the community. If interested call 348-3545 or come by the Santa Anna News, 609 Wallis, Santa Anna.

#### CHILDCARE IN MY HOME

Call Gayla Lishka, 348-9145  
34

#### HELP WANTED

Nursery worker. First Baptist Church, Santa Anna. Sun. morning, Sun. and Wed. nights. Applicants need not be member of the church. For more information, contact the church office at (915) 348-3725 weekdays 9:00 a.m. to 1:00 p.m. or (915) 348-3662 after 5:00 p.m.  
21f

#### FOR SALE BY OWNER

Nice home in Santa Anna. 2 BDR - one bath. Double carport w/garage. Large double fenced lot w/pecans trees. Conveniently located 2 blocks from town, 3 blocks from school. Call 348-3463.  
M28f

#### NEED LEASE ON PASTURE OR SMALL FARM:

Building Limousin herd. Need more land in Rockwood area. Long term lease. Will improve on land, etc. Homer Richter, 785-4230.  
34-37p

#### MENS LAREDO ROPER BOOTS

Black or brown. Sizes 6 1/2 - 13. \$51.99

#### JOHNSON'S DRY GOODS

CROSS PLAINS  
817-725-6211

#### PLUMBING SUPPLIES

WESTERN AUTO  
705 WALLIS 348-3771

#### 1979 CHEVROLET IMPALA

For sale: 1979 Chev Impala. Come by 912 Wallis or call 348-3799.  
31-4p

#### ACCEPTING APPLICATIONS

The Santa Anna Chamber of Commerce is currently accepting applications for a temporary Office Manager position. Applications may be picked up at Home Video on Wallis Ave.  
30f

#### AUTO PARTS: Everything for the "do it yourself mechanic."

WESTERN AUTO  
705 WALLIS 348-3771

#### GARAGE SALE

2 households. 910 Wallis, Santa Anna. Saturday only.  
M34p

**LiveOak REAL ESTATE**  
115 W. LIVEOAK, COLEMAN, TX.  
(915) 625-4181

#### NEW LISTING: 316.25 ACRES

approx. 10 mi. southwest of S.A. \$345/AC.

#### 80 ACRES

South of Bangs. \$550/AC.

#### EAST OF S.A.

200 acres. Good hunting, 150 ac in cultivation. \$75,000

#### 317.34 ACRES

S. of Coleman. 150 in cultivation; Hunting. \$300/AC

#### PRICE REDUCED

1440 Sq. ft. 3 BDR, 2B brick home in Santa Anna. \$35,900. Sale pending.

#### REDUCED PRICE

198 ACRES south of Santa Anna. \$380/AC.

JAMES HUNTER, BROKER 625-2232  
EARLENE BARKER 625-2876  
JOYCE KIRWIN 625-3943

## BEAT THE HEAT IN AUGUST

#### PEPSI 6 PACK 12 OZ. CANS

**\$2.09**  
"YOUR DRINK PEPSI GET STUFF" HEADQUARTERS"

#### COMBO MEAL Piping Hot Link, Potato Wedges & Tallsup

**\$1.99**

#### THORN APPLE VALLEY POLISH, SMOKED OR SPICY Sausage

12 OZ. PKG. **99¢**

#### SHURFINE Charcoal Briquets

10 LB. BAG **\$1.79**

## SUMMERTIME VALUES!

#### CHEETOS & LAY'S Grab Bags

REG. 75¢ **\$1**

#### SHURFINE HAMBURGER Dill Slices

32 OZ. JAR **\$1.99**

#### SHURFINE Squeeze Ketchup

28 OZ. BTL. **\$1.39**

You'll find all this and more at your Allsup's store  
#126 Santa Anna

#### SHURFINE Crispy Crunch Cereal

16 OZ. BOX **\$2.29**

#### SUN LIGHT DISH SOAP

22 OZ. **\$1.49**

#### ALLSUP'S BREAD

**2/\$1.29**

#### ALLSUP'S MOTOR OIL

1 qt. **89¢**

#### ALLSUP'S ICE

8lb. **1.09**

## LOW PRICES, GREAT PRODUCTS 24 HOURS A DAY

# ALLSUP'S Always

### \$50.00 WORTH OF GASOLINE FREE !!!

Take this coupon to any Strebeck location. If you purchase a new vehicle before August 31, 1996, you will receive \$50.00 worth of free gasoline courtesy of ALLSUP'S.

PRICES EFFECTIVE Through August 28 OFFER GOOD WHILE SUPPLIES LAST

## Texas SCAN

### ADOPTION

#### ADOPTION: DEVOTED COUPLE

longing to share the warmth and happiness of our close extended family with a child of our own. Please call Cathy & John 1-800-686-3015. Allowed medical and legal expenses paid. It's illegal to be paid for anything beyond medical/legal expenses.

#### ADOPTION: LOVE, SECURITY

and a life filled with happiness and laughter await your baby. Allowed expenses paid. Call Paula and Steve at 1-800-631-2644. It's illegal to be paid for anything beyond medical/legal expenses.

#### AUCTION

AUCTION: 7,000 SQ ft home fronting Lake Texoma, 1.4 acres, pool, tennis court, 3-car garage. Also selling furnishings, lots and docks. 918-250-2012, Williams & Williams, Realtors.

#### BUSINESS OPPORTUNITY

FRIENDLY TOYS & gifts has openings for dealers and managers. No cash investment! Fantastic toys, home decor, Christmas items. Call for catalog and information. 1-800-488-4875.

#### DRIVERS WANTED

CDL DRIVERS (TRACTOR/TRAILER): Travel first class with Werner Enterprises. Vans, flats, TCU's, OTR, regional and dedicated opportunities. Full benefit package: first day health/dental, 401K. Solo, all teams and owner-operators welcome, weekly pay/settlements. Paid plates, tolls and scale tickets. 1-800-346-2818. COVENANT TRANSPORT - ALL Conventional Fleet. 435 Detroit 9 speed. Drybox/reefer, avg run 1850 miles, benefits - all the good stuff. Exp. 1-800-441-4394. Grad student 1-800-338-6428.

#### DALLAS CARRIERS \* GREAT benefits \*

Per diem pay \* Miles \* Rider program \* Run with the best \* You need 1 yr. OTR experience and CDL-A \* Call 1-800-727-4374.

#### DRIVER - CALARK INTERNATIONAL

offers great pay, benefits and the chance to get home more often! Must be 22 with CDL and HazMat endorsement. 1-800-950-8326.

#### DRIVER - GET MONEY, miles and more!

\$650+/week average. Great benefits. Generous bonuses - OTR. Owner operators now get improved package. Burlington Motor Carriers. 1-800-JOIN-BMC. EO.

#### DRIVERS - FLATBED 48 state OTR.

Assigned new conventional, competitive pay, benefits. \$1,000 sign on bonus, rider program, flexible time off. Call Roadrunner Trucking 1-800-876-7784.

#### DRIVERS OTR TRACTOR/TRAILER drivers.

Company & lease purchase opportunities for those who qualify. Company drivers up to 28¢ per mile. Lease purchase zero down. Late model walk-ins. Call Arctic Express 1-800-927-0431.

#### DRIVERS... RUN 12,000+ miles/month.

Great pay and benefits. Glass & heavy haul. 3 years OTR, 1 year flatbed required. Regional. Combined Transport - Jim: 1-800-637-4407.

#### DRIVERS WANTED. E.L. Powell & Sons,

Tulsa, OK. We offer late model equipment, good insurance, mileage pay. One year verifiable flat bed experience. 918-446-4447. 1-800-444-3777.

#### DRIVERS WANTED FREE driver training

with 1st year income potential of \$30K Stevens Transport call 1-800-333-8595, or after 5:30 PM, 1-800-445-1714, BOE.

#### DRIVERS WANTED OWNER-operator

fleets need quality drivers. Good miles; get home 7-10 days. Quality equipment. Call Dwayne at 1-800-379-1766.

#### HAROLD IVES TRUCKING

needs motivated individuals to enter our training program. Call 1-888-270-1676 for complete information. Experienced drivers call: 1-800-842-0853.

#### OWNER OPERATORS NEW opportunity

for owner operators in Dallas, TX. Home weekly - paid Fridays, refig. experience required. Company trailers available. Sunco Carriers 1-800-446-2864 Don.

#### OWNER-OPERATORS WE'RE still looking...

for quality owner operators looking to advance their future with a growing carrier dedicated to providing quality service and profitable miles. Call Tom or Liz at Parkway Transport for details. 1-800-765-3952.

#### RAPID FREIGHT OF Texas.

A Texas based carrier seeking OTR teams & singles, 95 or newer conventional. Call Chuck at 1-800-607-5695.

#### EMPLOYMENT

COBOL - C/C++, AN information technology firm, has opportunities in Dallas for COBOL programmers. Call Julie at 1-800-345-7782, x308, forward resume to Julie at: FAX 1-800-919-9951, or E-Mail: julie.young@cig.com EO.

#### EXCHANGE STUDENTS

SHARE AMERICA WITH Scandinavian, European, South American, Asian, Russian high school exchange students arriving August. Become a host family/AISE. Call 1-800-SIBLING.

#### FINANCIAL SERVICES

DEBT CONSOLIDATION FREES. Cut monthly payments up to 30-50%. Reduce interest stop collection calls. Avoid bankruptcy free confidential help NCCS non-profit, licensed/bonded. 1-800-955-0412.

#### FIRST APPROACH PURCHASES

mortgages, annuities, personal injury claims, structured settlements, lottery winnings nationwide! Receiving payments? Get lump sum cash now! Available 24 hours/weekends! 1-800-666-1498.

#### MORTGAGES, ANNUITIES, BUSINESS

options. Receiving payments? Get cash now! Colonial Financial, the nationwide leader since 1984. 1-800-969-1200 ext. 20.

#### NEED MONEY? RECEIVING payments

on a insurance settlement or lottery? We will buy your future payments for cash today. R & P Capital Resources, 1-800-338-5815. Fast closings.

#### FOR SALE

ARE YOU GETTING all the credit you deserve? 100% construction financing plus permanent financing if qualified, even without 20% down payment. Miles Homes 1-800-343-2884 Ext. L.

#### DEALERSHIP FAILING MUST sell

inventory! 25x30, 30x44, 45x70, 50x100, 60x150. New. Still crated. Factory direct, will deliver, up to 50% off! 1-800-462-7930.

#### REPO. FACTORY HAS (2) all steel buildings.

(1) 40x60. Must sell immediately. Call John 1-800-419-5589.

#### STEEL BUILDINGS: 5,000+ sizes.

30x40x10, \$4,835; 40x60x14, \$8,819; 50x60x12, \$9,512; 50x100x16, \$15,670; 60x80x14, \$14,290; 60x100x16, \$17,619. Quality-service. Free brochures. Sentinel Buildings, 1-800-327-0790, Extension 79.

#### WOLFF TANNING BEDS.

Tan at home. Buy direct and save! Commercial/home units

from \$199.00. Low monthly payments. Free color catalog. Call today 1-800-842-1305.

#### HEALTH

20/20 WITHOUT GLASSES! Safe, rapid, non-surgical, permanent restoration 6-8 weeks. Airline pilot developed. Doctor approved. Free information by mail: 1-800-422-7320, ext. 237, 406-961-5570, FAX 406-961-5577. http://www.visionfreedom.com - Satisfaction guaranteed.

#### PSORIASIS SUFFERERS - NEW

approved spray stops itchy flaky, red skin or 100% money back. No side effects. Works when everything else fails. Call now 1-800-61-SPRAY.

#### RAPID WEIGHT LOSS.

"Only \$17.95." Burns fat, calories, stops hunger. Lose 3-5 pounds/week. Money back guaranteed. Call for information. United Pharmaceutical 1-800-733-3288 (C.O.D.'s accepted).

#### INTERNET

WEB PAGE STOREFRONT on the Information Super Highway. We do everything for 50¢ a day. For brochure call Cathy 713-479-4288, FAX 713-479-3690 NWW, P.O. Box 910, Deer Park, TX 77536. http://www.awwin.com.

#### LEGAL

NURSING HOME INJURY. Bedsores, or neglect. For information call Carl Waldman, Beaumont, Board Certified Personal Injury Trial Lawyer by Texas Board of Legal Specialization 1-800-833-9151.

#### REAL ESTATE

53 ACRES JUNCTION/Meard area. Rolling hill country, good cover, borders large ranch, deer, turkey, hogs. \$695/acre, low owner terms. 210-257-5564. SINC@HILCONET.COM.

#### BARGAINS ON GOVERNMENT

foreclosed homes. Save up to 50% or more. Minimum or no down payment. Repossessed properties sold daily. Listings available now! 1-800-338-0020 ext. 299.

#### BUILD YOUR 27 acre estate

in beautiful Burnet County. Trees, deer, turkey, golfing at beautiful Delaware Springs. 20 minutes to five lakes. Owner financed. 1-800-725-3699.

#### GOTTA SELL FAST!

5 acres, prime land near skiing, fishing, hunting & gambling. \$4,990, \$500 down, \$75 month, 10% simple interest. 1-800-223-4763.

#### SOUTH COLORADO RANCH.

86 acres - \$39,900 enjoy BLM access & panoramic views of Sangre de Cristos. Year round access, power, tele. Owner financing. Call now 719-742-5207, 8:30-8:30, Majors Ranch.

#### TRAVEL

DESTIN, FLORIDA. ESCAPE to the world's whitest beaches! Luxury gulf-front 1/2/3 bedroom condos. Call Edgewater Services for free color brochure, rates & availability. 1-800-322-7263.

#### DISNEY VACATION AREA

1, 2 & 3 bdrm condo's, suites & homes as low as \$39/mt. Attractions: 1-800-749-4045 ext. 115. http://www.intersrv.com/fmba

#### WANT TO BUY

WE WANT TO buy convenience stores in Texas. Must have gasoline. Call 1-800-460-1349, Ext. 321.

### Coleman County Court Actions

According to County Judge Sherrill Ragsdale the following action took place in the Coleman County Court during the month of July:

Tommy Wallace Lewis pled guilty to 2nd offense Driving While Intoxicated and to Driving While License Suspended. He was assessed a fine, court costs and placed in county jail.

Israel Luna Longoria pled guilty to 1st offense Driving While Intoxicated and was assessed a fine, court costs and placed in county jail.

Juan Garcia pled guilty to Assault under the Family Code and was assessed a fine, court costs and placed in county jail.

Jason Case LaRue pled guilty to Assault and was assessed a fine, court costs, a jail term and placed on probation.

Joe Keith LaRue pled not guilty to Possession of Marijuana and was released on bond.

Jody York pled guilty to Criminal Trespass and was assessed a fine, court costs and placed on probation.

Calvin Joel Polk pled guilty to Possession of Marijuana and was assessed a fine, court costs and a jail term.

Johnny Kirven, III and Elizabeth Wirtz pled not guilty to Criminal Trespass and were released on bonds.

A docket call was issued for 56 cases with the following results:  
Continuances granted:  
Michael David Densman:

Driving While Intoxicated and Leaving the Scene of an Accident;  
Bobby Ray Diaz: Assault;  
Adrian Slayton: Criminal Mischief;  
Richard Keeney: Violate Protective Order and Criminal Mischief;  
Marcus Ornealas Gonzales: Driving While Intoxicated;  
Shawn Faries: Theft;  
Merrick Joseph Lacaze: Possession of Marijuana;  
Larry Douglas Smith: Assault;  
Tommy J. Reager: Driving While Intoxicated;

Travis Eugene Bollum: Driving While Intoxicated;  
Joe Angel Diaz, Jr.: Driving While Intoxicated;  
Debra K. Ammerson: False Report to a Peace Officer;  
James Vanpelt: Driving While Intoxicated;

The following failed to appear, bonds were revoked and warrants issued:

Christopher Thomas Dyer: Possession of Marijuana;  
Kay Waddle Prince: Driving While Intoxicated;  
Ramon Jose Vasquez: Assault;  
Ira Carraway: Assault;  
Jose Santos Delrio, Jr.: Driving While Intoxicated;  
Rodney R. Newton: Criminal Trespass and Driving While Intoxicated;  
Jose Luis Lozano-Coates: Driving While Intoxicated;  
George Glover Whitaker: Driving While Intoxicated;  
Sharon Ray: Possession of

Marijuana  
William Aubrey Smith: Driving While Intoxicated;  
Patricia Riggan Rice: Possession of Marijuana;  
Nicholas Longina Gonzales: Assault;  
Joe Louis Rosales: Driving While Intoxicated;  
Edna Dianne Wells: Criminal Trespass;

Pretrial Diversion: Krishna Kay Boldin: Driving While Intoxicated;  
Deferred Adjudication: Juliann Jones Page: Possession of Marijuana;  
Dismissals: Cynthia Eakin Oakley: Driving While Intoxicated;

Truly Williams: Theft;  
Vicente Frausto: Driving While License Suspended and Driving While License Suspended;  
Latasha Railsback Watts: Deadly Conduct and Assault;  
Calvin Joel Polk: Speeding Appeal and No Liability Insurance; Guilty Pleas:

Claude Johnson: Driving While Intoxicated—fine, court costs, jail term and probation;

Tommy Lee Larkin: Fail to Yield Right of Way—fine and court costs;

Vicente Frausto: Theft—fine and court costs;  
John Allen Jenkins: Possession of Marijuana—fine, court costs, jail term, probation and community service;

Martin Jesse Arcos: Driving While Intoxicated—fine, court costs, jail term, probation and community service;

Manuel Vasquez, Jr.: Terroristic Threat—fine, court costs, probation and community service;  
Amber Michelle Parks: Possession of Marijuana—fine, court costs, jail term, probation and community service;

Shannon Slayton: Possession of Marijuana—fine, court costs, jail term, probation and community service;

Ben Diaz: Possession of Marijuana—fine, court costs, jail term, probation and community service;

Calvin Joel Polk: Possession of Marijuana—fine, court costs, jail

### Cleveland Chats

By Clara Cupps

Emit and Eunice Terry are at their farm this week doing some farming.  
Bryce Ellis visited Cecil and Nona Bell Wednesday. Cathy dropped by Thursday.

Friday Ivey Hitchcock of San Angelo, Iris, Jeremy and Jessica Seaton of Brownwood, Peggy Sikes, and Megan Sikes of Bangs visited Thelma Fleming. Darrel Cupps dropped in Sunday.

Lou Pierce visited Bobbie Guthrie Thursday. Jennifer Pelton spent a few days with her grandma Lou. Lou visited Cindy and girls Monday.

Ovella Williams visited Aunt Helen and Uncle Emil Williams Saturday and Sunday.

Terry Fleming dropped by Margie's Saturday. Eddie Dillard dropped by Sunday.

Burnice Bilbrey and Ladell were at church and doing ok.

Adurey is enjoying her cards and mail.

Lois Havner and Willie of Ore city came to Bangs Sunday. Tuesday her mother gave her a birthday dinner. Lora went down for it. They came to Santa Anna to visit with Lora and spent Wednesday and Thursday returning home. John and Ronnie Russell of Brady came over Wednesday night and ate dinner with family. Lora talked to Wilmoth Saturday morning and she is doing well.

Syble visited at the nursing home with Mrs. Ruth Hibbits and Hardon Phillips Sunday afternoon. David had Sunday dinner with Lee Ray and Syble Sunday.

Kathleen Avants visited her mother Mrs. Ruth Hibbits Monday and Thursday and might go Monday.

Carmilla visited Ruth Hibbits Monday and Sunday. Wednesday she had supper with Lonnie and Nancy and children. She went to San Angelo with Dixie Joe Bible and while there she visited her sister Nancy Avants.

Stanley and Judy Hartman's granddaughter Hannah visited Edd and Ruby late Friday afternoon. Sunday afternoon Sandra Walker and Cindy and her granddaughter Taylor of Bangs visited Edd and Ruby for Edd's birthday.

Doyle and Juanita Ward visited Clara and Rachel Cupps Sunday afternoon and brought me some nice okra.

We have had nice rain lately.

We really enjoyed the two days of rainy weather that we had last week. It was nice and cool and all of us received some rain, measurements were from one-tenth up to one-half inch.

O. T. and Sue Stacy of Abilene visited on Wednesday with his aunt Mrs. Florence Stearns and her daughter Alice Wells of Coleman visited with her Sunday afternoon. O. T. and Sue visited with his sister Marjorie Sullivan also. We are enjoying having Marjorie back at her place in the community most of the time and attending worship services with us on Sundays. She has visited her aunt Florence several times during the week.

Bryan Smith who has returned from a tour of duty in Korea spent Tuesday with his grandparents Royce and Wanda McIver then the next day they took him to Austin where he caught a plane to Fort Campbell, Kentucky. On Saturday Royce and Wanda enjoyed hamburgers with Gayla and J. W. Sellers at her place by her lake. Others present were Doyne and Wanda McIver of San Angelo and Terry and Helen McIver.

Kit Dean and daughter Jennie of Comanche spent the weekend with his parents Mr. and Mrs. Ray Dean and Windham.

Rankin and Natalie McIver arrived back to their home on Tuesday after spending a few days at Huntington Beach, California with her daughter Brenda Scuncio and her daughter Rachel and also a son Steve Crider and his wife Betty and a son Scott. They report a real nice trip. On Saturday Natalie visited in Brownwood with Darla Gibson, Amy and Ben and also with Janet and Jim Franich. Sherie Blake and Megan visited in the evening a while with Natalie and Rankin.

Leona Henderson visited in Coleman on Saturday with Donnie, Cris and Candice Henderson and Clarissa McElreath and baby Bailey of San Antonio who were visiting over the weekend.

Debra and Mac Boyet and children of Santa Anna visited one day last week with Terry and Helen McIver. Grady Clay McIver was at home over the weekend and Sally McIver spent the day Sunday.

Sunday dinner guests with Talmadge and Laverne McClatchy were Jeannie and Fred Driehofer and Nicholas of the Brownwood lake and a friend Amelia Harvey of Brownwood.

Mrs. Edna Laughlin spent the day Sunday with Billy Roy and Mildred Laughlin in Brownwood. They were helping Charlotte celebrate a birthday.

Jake and Orva Jean Tatum of Houston visited on Monday with Mrs. Mary Lea Mitchell. Mrs. Mitchell visited in Bangs Friday evening with Mrs. Fay Dell White and Lea Mock of Post spent Sunday night with her mother Mary Lea.

Lois and Frank Wallace of Santa Anna were Sunday dinner guests of Reba and Elvis Cozart.

Visitors with Mrs. Annie Lou Vaughn the past week were Joyce Kirk, Tona Holland and children Jonathon and Charity, Helen and Terry McIver, Lenora Alexander, Rodney and Cella Guthrie and Mason, Leona Henderson, Sherie Blake and Megan, Reba Cozart and Wesley and Candi Dockery who were overnight guests Wednesday night.

Paul and Gaynell Martin and children Sabrina and Colt of Santa Anna visited Sunday afternoon with Felton and Betty Martin.

### Whon News

By Mrs. Tom Rutherford

In the beginning we will say our little community did not receive a big rain during the past week. Was a help and we are thankful for all moisture that came our way. We are in need of more rain.

Mr. and Mrs. Bob and Patsy Smith of Abilene were with us here Friday and Saturday night assisting with some work returning to their home Sunday morning. They are

not with us too often since each of them are working. They also visited with Mr. and Mrs. Thomas and Trudi Rutherford in their new home.

Mr. and Mrs. Box and Sylvia Stuart of Arlington were with his mother Mrs. Ethel Radle in Santa Anna Sunday. A few of the Wynn grandchildren had a reunion at the Coleman Club Room in Coleman, not too many present. Mrs. Radle reports they had a nice day together.

Nelda Cox of Midland were with them. Also Mr. and Mrs. Douglas Avant of Brady. Joe Alvin Wynn of Coleman was with the group Sunday and also visited Mrs. Radle Sunday.

Mr. Floyd Morris was in Kerrville the first of the week to see his father. He also drove to Brady Sunday to visit his sisters but they were not at home. He reported a nice day alone.

Was awfully nice to have Mr. and Mrs. Jack and Skeeta Cooper of Rockwood visit with me Sunday afternoon. Always good to see Jack and Skeeta.

Thomas Rutherford drove to Austin Friday morning to meet the plane bringing his wife home from New Hampshire following visiting her family and friends there. He drove to LaGrange and enjoyed eating lunch with his sister Lynda Wheeler before getting his wife. He reports he enjoyed the day. Nice to see Lynda and really nice to have wife home.

Mrs. Loyd Rutherford left Sunday morning to go be with her mother in Oklahoma for a few days. Really don't think any illness, she had a few days off work and like most ladies would like to see her mother.

Do hope all have a nice coming week.

Loyd Rutherford had his grandson Shane with him one day the past week.

There is only one rule for being a good talker: learn to listen.

### About The Santa Anna News

Published each Thursday at 609 Wallis Ave, Santa Anna, Texas 76878 and entered as second class mail under the Act of Congress of March 2, 1879. (USPS 481540) SUBSCRIPTION RATES: \$15.00 per year in Coleman County; \$16.50 elsewhere in Texas; \$17.50 outside Texas.

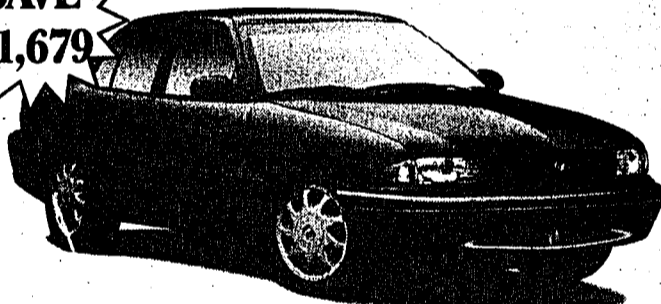
POSTMASTER: Send change of address to:  
Santa Anna News, P.O. Box 399, Santa Anna, TX 76878-0399 (Any erroneous reflection upon the character of individuals, businesses, organizations appearing in this newspaper will be gladly and promptly corrected upon calling the Editor's attention to the article in question.)

POLLY WARNOCK  
PUBLISHER/EDITOR  
CAROL HERRING-ASSISTANT  
(915) 348-3545  
FAX - Same as Telephone No.

MEMBER  
1996  
TEXAS PRESS  
ASSOCIATION

**HENDERSON FUNERAL HOME**  
Donnie & Christina HENDERSON  
"People Who Care"  
SANTA ANNA 348-3131  
COLEMAN 625-2121

## CLEARANCE PRICING BEFORE CLEARANCE TIME!



SAVE \$1,679

### 1996 BUICK SKYLARK LIMITED SEDAN

Stk. #B3296, Automatic, air, p. windows, p. doors, tilt, cruise, AM/FM with cassette, 3.1 liter V6, electric mirrors, remote keyless entry.

MSRP \$17,678  
Discount -679  
Rebate -1,000

Special Price \$15,999<sup>00</sup> +TT&L



SAVE \$2,331

### 1996 BUICK REGAL

Stk. #B3038, 3800 V6 with SF1, automatic, air, p. windows, p. doors, tilt, cruise, cassette, 6 way power driver seat, remote keyless entry, prestige pkg. and more.

MSRP \$21,330  
Discount -1,331  
Rebate -1,000

Special Price \$18,999<sup>00</sup> +TT&L



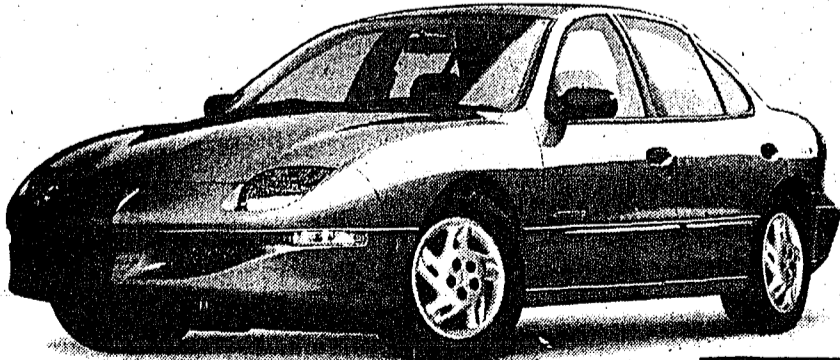
SAVE \$2,294

### 1996 BUICK CENTURY

Stk. #3294, 3.1 liter 3100 V6, p. windows, p. doors, tilt, cruise, cassette & more.

MSRP \$18,593  
Discount -794  
Rebate -1,500

Special Price \$16,299<sup>00</sup> +TT&L



### 1997 PONTIAC SUNFIRE

A/C, tilt, cassette, spoiler, automatic & more.

ONLY \$14,424<sup>00</sup>

#All rebates assigned to dealer

<http://www.autotexas.com>

**HOLLEY**  
Chevrolet \* Cadillac \* GMC \* Buick  
AUTO \* GROUP  
Toyota \* Pontiac \* Geo \* Oldsmobile

300 E. COMMERCE • 1-800-568-CARS • 915-646-9511  
104 E. COMMERCE • 1-800-933-3604 • 915-646-7425