

Your  
Hometown  
Newspaper  
Since 1886

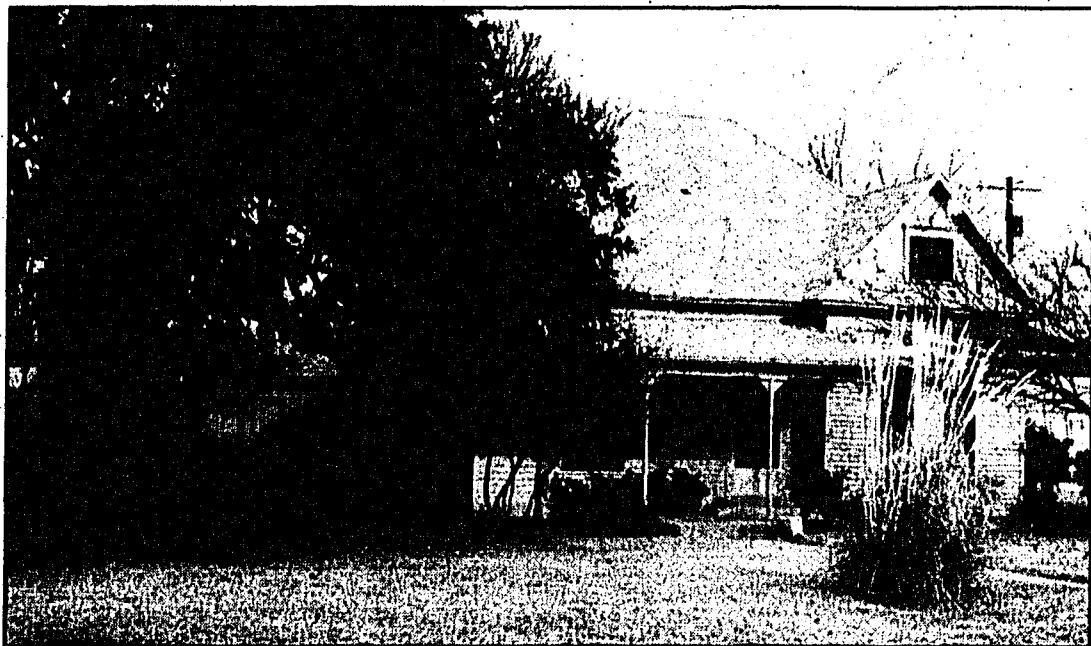
# Santa Anna News

"He Profits Most Who Serves Best"

Newstand Price 50c

Volume 110 Number 49

Thursday, December 14, 1995



The Robert Smith Home Located On Avenue C.

## Robert Smith Home To Be On Holiday Tour

Also Featured In Sunday's Tour will Be Bass, Weaver And Roesch Homes

The Chamber of Commerce is sponsoring a Holiday Tour of Homes, Sunday, December 17, from 2 to 5 p.m.

Tickets for the tour are \$5.00 each and can be purchased at the Chamber of Commerce and various businesses in town. All proceeds will go to the Chamber of Commerce.

Homes to be open for visiting will be the Dean and Susie Bass home located at the west edge of town (former C. D. Bruce home); Lonella Roesch home located on Avenue B; Burgess and Kanjama Weaver home located on Avenue B; and the Robert and Mary Smith home located on Avenue C.

One of the landmark homes in Santa Anna to be featured in the Tour of Homes on Sunday, December 17 is the home of Robert and Mary Smith at 502 Avenue C, built in 1904 by Verner L. and Maggie (Miles) Grady.

The original home on one-half block of land had six large rooms and large attic with few changes made for over half a century. During a remodeling project in the 1970's a huge rock cistern in perfect condition was uncovered beneath

the back porch.

The late V. L. Grady came to Santa Anna from Ballinger in 1894 to become a partner with his brother-in-law, W. R. Kelley, in his mercantile business and bank. His banking career spanned 61 years, the later years with Santa Anna National Bank. In addition to his business career Grady was a deacon and leader in First Baptist Church. Mrs. Grady was a sister of the late Mrs. Lester Guthrie.

Remodeling projects since Smith purchased the property have included the addition of a large room on the west, now used as the master bedroom, and the enclosure of a utility room and porch at the back for a living room. The roofline was also extended for a second story room, now used for craft space for Mrs. Smith. Hall and closet space was rearranged to accommodate two bathrooms.

The formal dining room features intricate carved woodwork above the door and on the cabinets. Furniture throughout the house is antique, complimenting the style of the home. Colors of blue, rose and ivory are used in decorations.

In addition to the renovation and redecorating in the home, the

Smiths enjoy landscaping and gardening, with an enclosed courtyard and patio an attractive outdoor living area during warm months.

For more information call the Chamber office at 348-3535.

### Get News In Early For Next Two Editions

If you have news for next week's Christmas issue or the issue for the Thursday after Christmas, the NEWS staff asks that you have it in by noon this coming Monday.

We will print the Christmas issue and the following issue next week to allow for a holiday for the staff.

### Business Coffee Break At Nutrition Center Dec. 21

The monthly "Coffee Break" sponsored by the Chamber of Commerce, will be held Thursday, December 21st at the Santa Anna

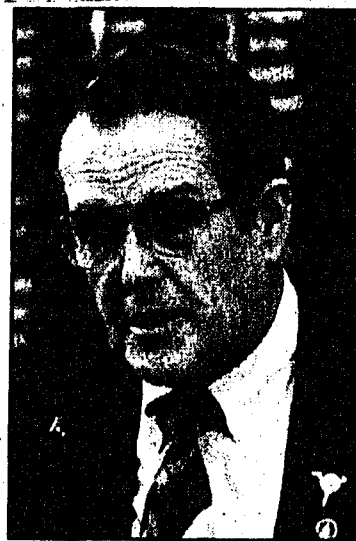
## Turner Makes Election Bid Official

State Representative Robert R. (Bob) Turner has filed for re-election to the State Legislature.

Turner was first elected in 1991, in a special election, from a field of 11 candidates to represent District 65, and served the remainder of that term. Turner was then re-elected to serve the new District 73, after re-districting and is now serving his second full term in the Texas House of Representatives.

Turner will be a candidate for re-election in the Democratic Primary which will be held in March, 1996. Representative Turner and his wife, Ann live at Voss in Coleman County. The couple has three grown sons, two of whom are married and one new granddaughter. Ann Turner is a registered nurse and is employed by several small rural schools as school nurse.

District 73 is equal in size to the



combined states of Vermont, New Hampshire and Rhode Island and consists of the following counties: Llano, Brown, Coleman, Concho,

Menard, Schleicher, Sutton, Crockett, Upton, Crane, Ward, Kimble, Mason, Edwards, Real and Bandera, plus a portion of Ector County.

Turner readily admits he serves "special interests" and those "special interest" are those of rural and West Texas. Such special interests are property rights, rural health care, public education, teachers, the elderly, agriculture and the petroleum industry. These items receive the largest part of his focus and attention. Since the western two-thirds of the state have only 14% of the members of the Legislature, Turner feels that he can play a major role in seeing that the needs of West and rural Texas are properly met.

## HDO Needs To Borrow Tools For Work On Sealy Hospital Building

The Santa Anna HDO needs tool-wheelbarrows, rakes, shovels, levels, any type of tool use to remodel—to furnish to the clients of the T. R. Havins Unit who will begin work on the old Sealy Hospital building in the very near future.

All tools will be given a fresh coat of paint, identified and returned upon completion of the job. Any tools broken will be replaced.

For more information or to donate tools contact Tex Wright, Rod Musick or Mollie Guthrie.

## Letters To Santa Due In News Office By Monday

Area children are invited to write letters to Santa to be published in the Christmas issue of the Santa Anna News.

School children will compose their letters at school and they will deliver to the news office.

Letters should be signed with the child's name.

All letters should be delivered to the NEWS office or mailed to P. O. Box 399, Santa Anna.

**Holiday Events**

Wednesday, December 13.....Youth Caroling  
Thursday, December 14.....Band Concert  
Friday, December 15.....CCTC Open House  
Sunday, December 17.....  
.....Chamber of Commerce Tour of Homes, 2-5 p.m.  
.....Methodist Children's Program, 5 p.m.  
.....First Baptist Children's Program, 6 p.m.  
Monday, December 18.....  
.....Elementary Choral Program, 7 p.m.  
Tuesday, December 19.....School Dismisses, Noon  
Wednesday, December 20.....Santa Anna National Bank  
.....Coleman County Broadcasting Open House  
.....Northside Baptist Christmas Program, 7 p.m.  
Friday, December 22.....  
.....Delta Omicron Senior Citizens Party

Nutrition Center located at the armory. The coffee break will be held from 7:00 to 8:30 a.m. According to Nutrition Center Director Thelma Beloit People associated with the center will hold a bake sale

during the coffee break to help raise funds for the nutrition program.



## Talking About Economic Development

Some of those speaking during an Economic Development planning workshop held here last week were left to right, Quincy Adams, executive director of the Early Business Incubator program; an unidentified gentleman from the Texas Department of Agriculture; Judy Wilhelm of the Small Business Development Center in Abilene; Mike Martindale of WTU; Christy Stehlin with the Texas Department of Commerce; David Scott of WTU; Robert Noriega, local WTU manager; and Nikki Harle, director of Texas Mid-West Community Network. Included among local people taking part in the workshop were Noreiga, Mayor Danny Kellar, Tex Wright, Patsy Wright, Alys Pelton, Joe Ed Wise, Willard Allen, Derriel Warnock, Bobby Morgan, Rod Musick, Polly Warnock, Carol Herring, Tammy Franke, Monte Guthrie, Clint Day. Helping to sponsor the workshop were Coleman County Telephone, Inc., Lone Star Gas, West Texas Utilities, Santa Anna National Bank, Santa Anna Chamber of Commerce, Coleman Development Company, Coleman County Electric Cooperative, Coleman County Chamber of Commerce, American Bank, and Texas Mid-West Community Network.

News Photo by Derriel Warnock



A CHRISTMAS TREE FOREST in downtown Santa Anna received its first decorations a couple of weeks ago from approximately 90 elementary school children who made their own decorations and walked to town to place them on the trees. The 30 plus trees, located in Veteran's Memorial Park are lighted for passers-by to enjoy each night thru the holidays.

## Enriquez, Smith Elected To Chamber Board

As a result of recent balloting by members of the Santa Anna Chamber of Commerce, Shannon Enriquez and Jackie Smith were elected to serve as directors of the Chamber. Mrs. Enriquez is also a member of the Santa Anna Park

Board and is employed as a home health care specialist with MEDIPLEX. Jackie Smith operates IRA Pump & Supply. The two new directors are elected to serve three year terms.

Other members of the Chamber board of directors are Eddie Hartman, Michelle Morgan, Jeannie Franch and Debra Smiley. Hartman is president of the Chamber of Commerce.

Santa Anna — A Town Of Friendly People

Saying "Hello" To  
Darlene G. Blawer of Paris, CA

D  
E  
C  
1  
4  
1  
9  
9  
5

### Emergency Number For City Utility Problems

To report a city utility emergency call City Hall at 348-3403 24 hours a day. The city crew member on call may also be reached by calling the mobile phone 348-7950.

### Birthdays & Anniversaries

**DECEMBER 14**  
Renee Castillo  
Selina Cook Tomlinson

**DECEMBER 15**  
Benny Joe Gerrero

**DECEMBER 16**  
Marty Warnock  
Joey Cupps  
Elizabeth Taylor

**DECEMBER 17**  
Shawn Kerr

**DECEMBER 18**  
Brandon Fitzpatrick  
Jeff Lee

**DECEMBER 19**  
Katharine Simmons  
Chris Cheaney  
Krystal Head  
Liz Warnock

**DECEMBER 20**  
Gayla Pritchard Lishka  
Rodney Duus  
Adolph (Doc) Kelley

**DECEMBER 21**  
Charles Hosch  
Frankie Gregg  
Christi Wade  
Peyton Kuykendall

### Santa Anna Nutrition Center Menu

**FRIDAY, DECEMBER 15**  
Meat loaf, new potatoes, green beans, cake and ice cream

**MONDAY, DECEMBER 18**  
Chicken fried steak, gravy, french fries, tossed salad and fruit cocktail pudding

**FRIDAY, DECEMBER 22**  
Turkey and dressing, ham, potatoes, green beans, cranberry sauce and fruit salad

**FRIDAY, DECEMBER 29**  
Luncheon steak with mushroom gravy, Rosemary Bennie salad and brownies

## Obituaries

### Wannah Herro

**BROWNWOOD**—Services for Hannah Faye (Nabours) Herro, 75, of Lexington, were held at 2 p.m. Sunday, Dec. 10, 1995, at St. Mary's Catholic Church with the Rev. Benedict Zientek officiating. Rosary was at 7 p.m. Saturday at Davis-Morris Funeral Home. Burial was in Santa Anna Cemetery.

She died at 9:45 a.m. Thursday, Dec. 7, 1995 at her home.

She was born Aug. 20, 1920, in Santa Anna, and was a retired secretary for GTE Telephone Co. She had lived in Blue, Texas, for the past few months, and had previously lived in Lewisville for 26 years. She was also a former resident of San Angelo. She was a member of St. Mary's Catholic Church. She was married to Phillip George Herro on Nov. 22, 1941 in Washington, D. C.; he died in October 1965.

Survivors include five daughters, Jane L. Doll and Barbara A. Ratliff, both of Austin, Susan M. Bailey and Margaret J. Gressett, both of Brownwood, and Deborah J. Warren of Lockhart; one son, Jeffrey P. Herro of Blue; two sisters, Nell Sue Price of San Antonio and Dimple Sutton of Junction; 17 grandchildren; and six great-grandchildren. Local survivors include a cousin, Lonella Roesch of Santa Anna.

### Mike Thompson

**BROWNWOOD**—Mike Thompson, 48, of Bangs, died Monday, Dec. 11, 1995 at his home in Bangs.

Graveside services were held Tuesday, Dec. 12, 1995 at 2 p.m. at Eastlawn Memorial Park with Dr. Ron Cook officiating.

He was born June 5, 1947 in Brownwood and lived most of his life in Brown County. He married Barbara Herring Thompson in Brownwood on Dec. 1, 1995.

He was a child care specialist for New Horizons, served in the U. S. Navy and was a member of First Baptist Church in Brownwood.

Survivors include his wife; a son, Michael Thompson of Stephenville; a daughter, Missy Brown of Big Lake; his mother, Jane Brynner of Early; a brother, Donnie Thompson of Brownwood; a sister, Willetta Anderson of Santa Anna; a step-daughter, Leah Herring of Brownwood; a step-son, Allan Herring of Paris, France; a half-sister, Kelly Thompson of Brownwood; a step-brother, Ricky Stokes of Brownwood; a step-sister, Sherry Chapman of Brownwood; three grandchildren; and several nieces and nephews.

He was preceded in death by his father, William (Bill) Thompson and his first wife, Elva Ann Thompson.



Please help the library. Congress is considering cutting funds for the Green Thumb Program. The House of Representatives passed Bill HR 2127 on August 4. The bill simply did not include funds for Green Thumb. If the Senate passes the same bill there will be no funding for the program. Why is this important for Santa Anna? Mrs. Ovella Williams is paid by this program. Our city provides part of the workman's comp. Without our friend, library hours would be cut drastically.

Most small West Texas towns have Green Thumb workers in senior citizens centers, food service centers and among city workers.

The way you can help is to call or write Senator Kay Bailey Hutchison and Senator Phil Graham. The telephone number for Hutchison is 202-224-5922. At this time we can't provide the Graham number. We will do our best to have it and the mailing addresses at the library. Let's let Washington know how much we need our librarian.

Ovella and I were in Coleman last week for a meeting about automation. That includes computers and programs, internet and automatic checking of books. Most very small libraries still do not have these services. Some have part of the services.

When we came home the Coleman Library sent a box of books. These were donated and were duplicated. Some of the authors were Dean Koonze, Michael Crichton, Judith Michael and Danielle Steele. *Mixed Blessings* is one book. It was a TV movie this week. Another Steele book is *Message from Nam*. Those who had friends and family in that war may want to read this fiction. A lovely book is *Leaves of Grass* by Walt Whitman.

Another book from those donated by Mr. and Mrs. Homer Richter is *The Last Jews in Berlin*. I never dreamed that a few people of the Jewish faith had survived the holocaust in Berlin, Hitler's capital.

Carol Herring brought 10 books both paperback and hard bound. A couple of Louis L'Amour, two of Gregory McDonald's mysteries about Fletch and his son, J. Frank Rice *I'll Tell You a Tale*, an anthology with stories of longhorns, mustangs, treasure and characters of Texas. Ed McBain mystery and one called *Fan Mail* by Ronald Munson. This concerns a man obsessed with a TV late night woman.

Cassie and Cynthia Philpott donated a number of books for children. Those were on the shelves before I had a chance to study them. Watch for a description soon. Books arrived from Inter Library Loan. Several went out the first day. I'll review these in the next column.

Thank you to everyone who donated books. This Library is blessed with good friends. Please call before you come in until after New Years. Most of the workers will have visitors. We will try to keep regular hours, but don't take a chance—CALL.

### Santa Anna Meals On Wheels Receives Memorial Gift

The Santa Anna Meals On Wheels program has received the following memorial:  
In memory of Tavy Ford from Edd and Ruby Hartman.

### Postal Service To Open Entrance Examination

The Rural Carrier Associate examination will be open to the general public January 8 through January 19, 1996, for the Brownwood Area eligibility register.

Offices included in the Brownwood AER are Ballinger, Bangs, Brady, Brownwood, Coleman, Goldthwaite, Gouldbusk, Lometa, May, Miles, Mullin, Richland Springs, Rochelle, Rowena, San Saba, Santa Anna, Talpa and Zephyr, Texas.

Individuals interested in applying to take the examination may complete one Application/Admission Card, at one of the postal locations listed above.

No applications will be accepted before or after the above dates.

### 'Round & About

Audrey Wright has returned to her home in Santa Anna and is doing well. She would enjoy visits from all her friends in town.

Glenn and Laura Lawhon, Johnie, Zackary and Kimberly visited in Arlington on Thanksgiving with Laura's sister and family. It was a long awaited visit for the two women who had not seen each other for several years since Laura's sister lives in Russia.

Tex and Patsy Wright, Alys and Sarah Pelton visited over the weekend in Dallas and Aledo with

Pat's dad and sister. They attended a birthday party where the four honorees were Patsy's 90 year-old dad and three aunts all over 80 years old.

### Thank You

We would like to thank all our friends, neighbors and relatives for the food, flowers, cards, memorials, and many other acts of kindness shown us at the death of our loved one, Grace Ellis.

A special thank you to the staff of Twilight Nursing Home for their loving care!  
Cecil & Nona Bell Ellis;  
Jerry & Cathy, Bryce,  
Janie & Alicia Ellis;  
Benny & Anita, Gail & Cheryl Jarvis;  
Tammy Ellis

### WALKER FUNERAL HOME

Pre-Arranged Funerals  
Phone 625-4103  
Coleman, Texas

## Allen & Allen INSURANCE

A Coleman County Authorized Agency For The:

AMERICAN INDEMINITY GROUP

BEACON INSURANCE GROUP

THE TRINITY COMPANIES

Serving Coleman County and the surrounding area since 1922  
200 WEST PECAN STREET 625-4124 COLEMAN, TEXAS

### State Capital



### HIGHLIGHTS

By Lyndell Williams & Ed Starling  
TEXAS PRESS ASSOCIATION

**AUSTIN** — Texas motorists should continue to heed the posted speed limit, although President Clinton has signed into law a bill that repeals the national maximum speed limit.

The Texas Department of Transportation and the Department of Public Safety jointly announced that new speed-limit signs are not expected to start going up on Texas highways until mid-December.

"The best advice for motorists is to abide by the posted speed limit," said Maj. E.C. Sherman of the DPS Traffic Law Enforcement Division. "Some areas will stay 55 mph, so motorists should not assume the speed limit is any higher than the posted limit."

Bill Burnett, executive director of the Department of Transportation, said the agency has anticipated the maximum national speed limit would be lifted.

But the law allows the Texas Transportation Commission to set speed limits lower than 70 mph "if the lower speed is justified by engineering and traffic studies for particular sections of highway," he added.

Engineers with the Department of Transportation have been reviewing the 77,000-mile state highway system since September to determine appropriate speeds.

The study is divided into four phases: interstate and divided highways, undivided highways of four lanes or more, all other highways on the state and U.S. systems, and all other farm-to-market and ranch-to-market roads. Results of the first phase indicate the Transportation Department cannot justify a speed limit lower than 70 mph on the majority of rural interstate and divided highways — which make up about 10 percent of the total highway system in Texas but carry more than 60 percent of the traffic.

**Academic Ratings Upgraded**  
Texas public schools will be held to higher performance standards under the newly revised Public School Accountability System for 1996 to the year 2000, the Texas Education Agency announced early this month.

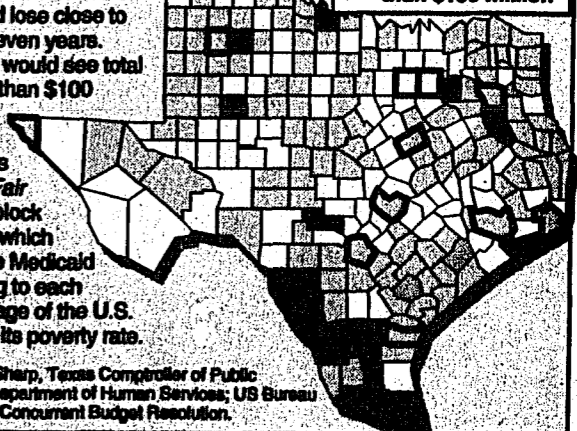
Mandated by the Texas Legislature in 1993 as a method of rating school districts and campuses, the new four-tiered rating system is based on students' scores in the Texas Assessment of Academic Skills (TAAS) exam given to pupils in grades 3 through 8 and 10, and

### Keeping an eye on Texas

### Texas could lose billions in Medicaid funds by 2002

If Medicaid funding formulas proposed by Congress are approved, Texas health care providers could lose close to \$12 billion in seven years. Many counties would see total losses greater than \$100 million. State Comptroller John Sharp has proposed the Fair Share Plan, a block grant proposal which would distribute Medicaid funds according to each state's percentage of the U.S. population and its poverty rate.

**Medicaid, 2002**  
Loss per capita  
■ \$1,000 to \$3,000  
□ \$500 to \$999  
□ \$499 or less  
□ Total loss greater than \$100 million



SOURCES: John Sharp, Texas Comptroller of Public Accounts; Texas Department of Human Services; US Bureau of the Census and Concurrent Budget Resolution.

### MOVIES 4

Heartland Mall--643-3661  
ADULTS \$2.00 CHILDREN \$1.00  
All Shows Before 6p.m. \$1.00

Goldeneye 007 (PG)  
Fri - 4:30  
Sat - Thurs 1:45 4:30

Toy Story (G)  
Fri - 5:00 7:00 9:00  
Sat - Thurs 1:00 3:00 5:00 7:00 9:00

Money Train (R)  
Fri - Thurs. 7:15 10:00

Jumanji (PG)  
Fri 5:00 7:15 9:30  
Sat-Thur 12:30 2:45 5:00 7:15 9:30

Father of the Bride (PG)  
Fri 5:30 7:45 10:00  
Sat-Thur 1:00 3:15 5:30 7:45 10:00

dropout rates and attendance rates. In 1996, districts and campuses will also be acknowledged for high performance on college admission tests.

School districts are rated exemplary, recognized, academically acceptable and academically unacceptable. Campuses are rated exemplary, recognized, acceptable or low-performing.

"Although in many ways, the system remains unchanged for the past years, some performance standards will be substantially increased by the turn of the century. The system expects high performance from all groups of students," said Texas Education Commissioner Mike Moses.

In 1995, for example, a district or campus was rated academically unacceptable/low performing if less than 25 percent of its total students or student groups (African American, Hispanic, white or economically disadvantaged) passed the reading, writing and math sections of the TAAS exam.

Now the bar is being raised. In 1996, districts or campuses will be rated academically unacceptable/low performing if the TAAS passing rate for all students or any

of the four student groups is below 30 percent. And, by the year 2000, any district or campus that has less than a 50 percent TAAS passing rate will receive the lowest rating.

**National Forum Set in Austin**  
Organizers of the National Issues Convention, Jan. 18-21 in Austin, are calling the event "an unprecedented experiment in the American Democratic process."

It is hoped the convention will draw many of the 1996 presidential candidates. Only U.S. Sen. Robert Dole, R-Kan., has said he would not attend.

Creator of the convention is James Fishkin, chairman of the government department at the University of Texas at Austin. Fishkin said he is confident most of the candidates would come, and if they do not, they would be replaced by other political figures.

About 75 percent of the 600 people asked to be delegates have accepted invitations, Fishkin said.

**Grover Challenges LBJ Law**  
Former GOP state Sen. Henry C. "Hank" Grover of Houston filed a lawsuit in Travis County against the Texas Republican Party, claiming that the election rule allowing a person (in this case, Phil Gramm) to run for the presidency and another office at the same time is unconstitutional.

The rule was written in 1960 to allow then-U.S. Sen. Lyndon B. Johnson to run for re-election and president.

He that will have his son have respect for him and his orders, must himself have a great reverence for his son.  
—John Locke

**COW POKES** By Ace Reid

"No ma'am, we don't have no cattle rustlers. If a man can git enough of our cattle together to steal, the boss gives him a foreman's job."

## Santa Anna National Bank

Deposits Insured By FDIC Up To \$100,000  
Ask About Our Interest Bearing-Accounts  
Checking Accounts  
\$1,000 Minimum  
Pass Book Savings  
Certificate of Deposit

Member F.D.I.C.  
Substantial Interest Penalty is Required For Early Withdrawal

## Allen & Allen INSURANCE

A Coleman County Authorized Agency For The:

AMERICAN INDEMINITY GROUP  
BEACON INSURANCE GROUP  
THE TRINITY COMPANIES

Serving Coleman County and the surrounding area since 1922  
200 WEST PECAN STREET 625-4124 COLEMAN, TEXAS

### MOVIES 4

Heartland Mall--643-3661  
ADULTS \$2.00 CHILDREN \$1.00  
All Shows Before 6p.m. \$1.00

Goldeneye 007 (PG)  
Fri - 4:30  
Sat - Thurs 1:45 4:30

Toy Story (G)  
Fri - 5:00 7:00 9:00  
Sat - Thurs 1:00 3:00 5:00 7:00 9:00

Money Train (R)  
Fri - Thurs. 7:15 10:00

Jumanji (PG)  
Fri 5:00 7:15 9:30  
Sat-Thur 12:30 2:45 5:00 7:15 9:30

Father of the Bride (PG)  
Fri 5:30 7:45 10:00  
Sat-Thur 1:00 3:15 5:30 7:45 10:00

### Veterans Encouraged To Join Local VFW

It's not the price you pay to belong, it's the price you PAID to become eligible to join!

All eligible veterans of foreign wars and spouses, mothers, sisters, daughters, granddaughters and nieces, if you would like your voices to be heard to let our lawmakers know we are dedicated to preserving the veterans entitlements, join the local VFW Post 8875 in Coleman.

The meetings are held on the second Monday of each month at 6:30 p.m.

Anyone interested should call 625-3680 or 625-4332 for more information.



### Omer And Vidy Cullins To Celebrate 50th Anniversary

Omer and Vidy (Violet) Cullins of Santa Anna will observe their 50th wedding anniversary over the upcoming holidays. They were married December 18, 1945 in Coleman, Texas. Omer is the son of the late Ray and Beatrice Scott Cullins and Violet is the daughter of the late Ora and Annie Mitchell Sluder. After Omer's discharge from the armed services in November, 1946, they have lived in Coleman County all their married life. The last 25 years they have resided in Santa Anna running a service station and doing carpentry work and painting prior to retiring in 1994. Helping them to celebrate over the holidays will be their children and grandchildren, Ira, Judy and Dee Cullins of Brownwood; Ann, Joe, Julie and Shanna Rutherford of San Angelo; Rickie, Paula, Shawn and Lensey Cullins of Plains; Bobby, Jo Ellen, Amanda and Jennifer Cullins of Bangs; Stephen and Marilyn Cullins and Amy of Santa Anna; and Jason and Gaby Miller of San Angelo. Vidy is the fifth member of her family to have had 50 years of marriage and Omer is the fourth member of his family.

### FBC Children To Present Christmas Program Sunday

By Barbara Kingsbery  
Children of the First Baptist Church will present a Christmas program Sunday evening, December 17, at the 6 p.m. service. Dorothy Stout is directing the program and Leanna Hartman is pianist. Approximately 16 children are taking part in the program to which everyone is invited. The program is called "Follow the Star".

### Senior Citizen Christmas Party Set For Dec. 22

Delta Omicron Sorority will be hosting a Christmas party for all senior citizens on Friday, December 22 from 2 to 4 p.m. in the Mountain City Community Center (Hi-Rise). All seniors are invited to come and enjoy the fun and visiting.

### Children Of Methodist Church To Present "Birth Of Jesus"

By Barbara Kingsbery  
Children of First United Methodist Church and others in the community will present a program Sunday evening, December 17 at the church beginning at 5 p.m. The presentation, directed by Helen McIver, is the story of the birth of Jesus from the account of the Book of Matthew. Following the program, those attending will join in singing Christmas carols. Everyone in the community is invited to attend the program Sunday evening.

### Paul Martin Named To TSTC Fall Honor Roll

Paul Martin of Santa Anna was listed on the Texas State Technical College-Brownwood Campus, fall 95 honor roll. Student must earn a 4.0 grade point average on a 4.0 scale to be recognized on the President's Honor Roll. Martin, an undeclared major, is the son of Felton and Bettie Martin of Trickham and is married to the former Gaynell Hosch.

### County Appraisal Board Handles Routine Business

By Barbara Kingsbery  
The final meeting of the year for Coleman County Appraisal District was held Monday, December 11 at the District office in Coleman. All members were present for the session, being Barbara Kingsbery, Harold Skelton, Charles Scarbrough, D. G. Allen and Billy McCrary. Chief Appraiser Bill Jones reported that 93 percent of the 1994 taxes were collected through September and the October collections for the next tax year were almost 41 percent, both figures above the same period for the previous years, the collections for the nine entities went over tax base of over four million dollars for 1994. Property owners have until the end of December to take advantage of a discount for early payment. The Tax District will operate under the budget again this year despite an extra outlay to purchase a printer for the computer system. Excess funds are returned to the taxing entities each year. Other routine business was attended to by the group. Plaques of appreciation were presented to Barbara Kingsbery of Santa Anna and D. G. Allen of Novice who will go off the Board this year. Mrs. Kingsbery has served the group since it was organized in 1979; Allen is completing two terms with the District. New members of the Board County Judge Sherrill Ragsdale of Coleman and Virginia Mullins of Novice, will begin three-year terms on the Board at the January meeting, with the date to be set later.

### County Commissioners Meet To Cover Agenda Items

The Coleman County Commissioners met on Monday morning to handle the listed agenda items.

A request for DPS Trooper James O'Shields was approved to purchase a wind sock. The wind sock will be placed near the Armory, the site of First Flight helicopter's landing pad. The price of the sock and frame totaled less than \$80. It was also reported that either the City or

### Northside Baptist To Give Christmas Program Dec. 20

Members of the Northside Baptist Church will present "The Real Meaning of Christmas" on Wednesday evening, December 20 at 7 p.m. The program will include children, youth and adults of the church.

### Joe Dan LeMay Files For County Attorney Position

Joe Day LeMay has filed for the office of county attorney as on last Friday. LeMay has served as County Attorney since January, 1977.

Others who have previously filed are Wade Turner, County Sheriff; Willard Allen, Commissioner of Precinct 1; Donna Seymore, County Tax Assessor/Collector;

### Coleman County Crime Stoppers Crime of the Week

On 11-10-95, person or persons unknown entered a residence located approximately 5 miles east of Coleman on FM 568. Taken from the residence was a GE cassette player, a Magnavox VCR, A Springfield rifle with scope, and a 12 gauge shotgun.

If you have information leading to the arrest and indictment of the person or persons responsible for this burglary, you could be eligible for a cash reward of up to \$1,000.

CALL CRIME STOPPERS AT 348-BITE OR 625-BITE. REMEMBER, YOU CAN REMAIN ANONYMOUS.

The Fire Department would stripe the pavement and put reflective tape on all the light standards. They will also put the large "H" on the landing field. All the county will supply will be the wind sock.

Also approved was a letter of agreement with the Abilene Regional Council on Alcohol and Drug Abuse.

Precinct 2 Commissioner Billy Don McCrary addressed the possibility of selling county water to an adjacent land owner whose stock tanks are dry and who is in dire need of a water supply. County Attorney Joe Dan Lemay advised this could not be done legally.

Bill Burns voluntarily resigned as County Jailor accepting a position with the Police Department.

Bills were approved in the amount of approximately \$51,000 as presented by County Auditor Shirley Sansing.

Commissioners agreed to transfer \$10,000 into each precinct to cover expenses.

### Donham Hosts Dorcas Class Christmas Party

Carmen Donham hosted the Dorcas Class of the First Baptist church for a salad luncheon celebrating Christmas on Tuesday, December 12. The home was decorated for the holidays. Gifts, cards and a love offering for the church.

Those attending were Virgie Morgan, Dorothy Harris, Syble Huggins, Edna Adian, Etta Earl Buse, Opal Langford, Sybil Morgan, Lodema Jones, Frances Pearce, Katherine Horner and Carman Donham, teacher.

### Gladys Slayton Hosts Christmas Luncheon

Last Saturday Gladys Slayton hosted a Christmas luncheon for her family and friends. Fun was had by one and all, despite the cold weather. Old fashioned style music accompanied by stereo. Some members played the spoons, one played the rub board, others played improvised drums, tamborines and one tried the comb. Several couples scooted a boot to this joyous music. Others enjoyed different kinds of games with the children braving the cold, for some outdoor playing.

Those joining Gladys in celebration were Roy Montgomery of Giddings, Mike, Mike, Jr., Shannon, Crystal, Ashley and G. J. Montgomery of Austin, Delores Fenton, Sonya Fenton and Josh Unruh of Johnson City, Missy Fenton, Becky Fenton of Austin, Kimp Slayton of Burkett, Kelly and Niki Rush of Brownwood, Christy and Emily Taylor, Richard Ybarra of Bertram, Mindy, Maegan and Chase Avants of Gouldbusk, Rondoe and Fredna Horton of Santa Anna, Billy and Becky Mathews of Lake Coleman, Christine Turner of Cross Roads, Sandra Wilson of Rockwood, John, Tammy, Trey and Cheyenne Casey, Darlene, Guy and Dana McElrath, Willie and Irene Mathews, Sage Brooks, Frankie Mathews, Becky Brooks, Louise Strength, Bonnie and Tyler Ballard, Frances McAlister, Charlie Smith, Lisa and Denny Fulbright, Betty, Tessa, Dustin and Seth Beal, Billy Sikes, Kaci Strength, Bobby Wayne Keeney, Janie and Stony Strength, all of Coleman.

ASK SANTA TO BRING YOU THE BEST CHRISTMAS GIFT EVER - the 18" SATELLITE DISH

PURCHASE PRICE: now \$899-\$699  
LEASE PRICE: \$15.50 A MONTH  
PROGRAMMING: \$15.95-\$29.95

CALL TODAY!  
(800) 618-3951  
(915) 348-3951  
COLEMAN COUNTY BROADCASTING SYSTEMS  
SANTA ANNA, TX

**Concealed Handgun Classes Offered Locally**

Group & Senior Citizen Discounts. Will structure classes to fit your schedule.

For more information Call: 365-2439 (days) or 365-5672 after 5 p.m.

**THE WELLNESS CENTER**

Providing Convenient Family Health Care to residents of Santa Anna and all of Coleman County, Including Women's Health Services

Located at 106 N. 2nd Street, Santa Anna

Services provided by Family Nurse Practitioner Margaret "Peggy" Hensley, MSN, RN, FNP

Open Monday & Wednesday 1 p.m. to 7 p.m. & Tuesday & Thursday 7 a.m. to 1 p.m.

Medicare & Medicaid Accepted All Ages Welcome

Call 348-3566 For More Information

December 1, 1995

Final mailed notification of a premium increase of up to 40% on their Medicare Supplements.

See what We have to offer And Save Money

Tax Sheltered Annuities Life Medicare Supplements Nursing Home Policies

**CHARLES HOSCH INSURANCE AGENCY**  
915-348-3303 1-800-258-2979

**Peddler's**  
CRAFTS • ANTIQUES  
COLLECTABLES • GIFT MALL  
In Heartland Mall  
Lots of popular "Angel" items  
Mon-Sat 10-9 • Sun 1-5

The officers, directors, and employees of Santa Anna National Bank

Invite you to share the joy of the season at

An Old Fashioned Holiday Open House

Wednesday, December 20 ~ 9 a.m. to 3 p.m.

D E C 1 4 1 9 9 5

News For And About Santa Anna Mountaineers



**Local FFA Attends District Banquet**

Several Santa Anna FFA members and guests attended the Big Country District FFA Banquet held at Abilene's Wylie High School on December 11.

FFA members attending the banquet were Brandi Martin, local chapter FFA president; Lee Keeney, local vice president; William Loyd, local chapter secretary; Jennifer Johnson, Randa Watts, Chris Boyet and Jeremy Tomme.

Martin represented the local FFA chapter in the district FFA sweetheart competition and did an excellent job. She was escorted by Keeney in the contest. Candidates were introduced individually from the 19 high schools in the district and were interviewed before being voted on by FFA members from each of the schools present. Martin made the final top three.

Awards were presented from spring and fall FFA contests to FFA chapters. Special guests were recognized and awards presented to adults that have made positive contributions to FFA chapters in this district.

Mr. and Mrs. Willard Allen also attended the district banquet and Willard received the Honorary State FFA Degree. This is the highest honorary degree given in the state.

The Santa Anna FFA group was accompanied to the banquet by Becky Martin and Gary and Connie York.



**School Menu**

Choice of dry cereal, graham crackers, fruit or fruit juice, whole white, lowfat white and lowfat chocolate milk offered daily

**MONDAY, DECEMBER 18**

Breakfast: Pancakes w/sausage, orange or apple juice and milk

Lunch: Comdogs, baked beans, baked potato, orange or apple juice, chilled fruit, milk and mustard

**TUESDAY, DECEMBER 19**

Breakfast: Donuts, fruit and milk

Lunch: Ham and cheese sandwiches, lettuce, apple, orange juice, milk, potato chip and rice krispie treat

**Elementary Students To Present Christmas Music Monday**

By Barbara Kingsbery  
A program entitled "An All-American Christmas" will be presented Monday evening, December 18, by the choral students at Santa Anna Elementary School. Lois Harper is directing the program that begins at 7 p.m.

Approximately 120 children from grades kindergarten through fourth grade are in the singing groups, and eight students from the fifth and sixth grades are narrators.

The public is invited to attend the program Monday.

**Parents Invited To Join Children For Christmas Lunch At School**

Parents are invited to come enjoy a Christmas meal with their children on Thursday, December 14.

If planning to attend, you should contact the school cafeteria as early as possible so that enough food can be prepared.

Teachers should be contacted to determine the time the individual grades have their lunch time.

**School Dismissed Tuesday At Noon**

Students in the SAISD will be dismissed at noon on Tuesday, December 19. Buses will run at that time.

School will resume on Wednesday, Jan. 3, 1996.

**Band Concert Thursday Evening**

The Santa Anna Mountaineer Band and other band classes will be performing their Christmas concert on Thursday evening, December 18 at 7 p.m. in the high school auditorium.

The band will be under the direction of David Powell, band director.

**Applications Being Accepted For Intern Program**

WASHINGTON, D. C.—Congressman Stenholm is now accepting applications from college students and educators interested in participating in the 1996 Washington, D. C. Internship Program.

Completed applications must be submitted in person or postmarked by Jan. 19, 1996, to be considered.

Interns are selected to work in the Congressman's office for one month intervals in June and July. Interns are involved in the daily operation of the congressman's office and will assist the legislative staff and help research constituent inquiries.

The internship program is open to college students from the 17th Congressional District or those attending college inside the district, and teachers and administrators. The interns are paid a \$1,000 stipend to apply toward basic living and travel expenses.

Intern applications and information can be obtained by contacting Elaine Talley in the Abilene district at 915-673-7221 or by writing Raymond McDaniel, Jr., Chairman, Intern Selection Committee, P. O. Box 543, Abilene, Texas 79604.

**Rough Creek Classic Novice High School**

Named to the All-Tournament team of the Rough Creek Basketball Classic were Briana Horner and Tim Abernathy.

Results of the games played by the Mountaineers and Lady Mountaineers were:

**THURSDAY GAMES**

Paint Rock 43  
Santa Anna 27  
Late Thursday  
Girls  
Paint Rock 14 4 17-43  
Santa Anna 6 15-27  
Paint Rock — Matheson 20  
Wilford 11, Petty 4, Sanchez 3,  
Lovell 2, Campos 2, Ruiz 1.  
Santa Anna — Beal 5, Horner 5,  
Frausto 3, Kenney 3, Martin 2,  
Lishka 2, Frausto 2, Guerrero 2.

Santa Anna 53  
Paint Rock 30  
Boys  
Santa Anna 14 14 15 8-33  
Paint Rock 0 11 10 9-30  
Santa Anna — Lewis 11, Mc-  
laur 8, Abernathy 7, Boyette 6,  
Guerrero 5, Dentale 4, Alto 4,  
Chaney 4, Yancy 2, Ruiz 2.  
Paint Rock — Horner 6, Bal-  
deras 6, Keith 6, Martin 4, Ruiz 3.

**FRIDAY GAMES**

Santa Anna 49,  
Baird 45  
Girls  
Santa Anna 9 16 13 31-49  
Baird 8 14 19-45  
Santa Anna — 7, Horner 19,  
Lishka 10, Beal 6, B. Frausto 5,  
Martin 4, Kenney 3, Y. Frausto 2,  
Baird — Beal 11, Kurbow 11,  
John 7, Benton 7, Walker 7,  
Pruitt 2

Baird 75,  
Santa Anna 49  
Boys  
Baird 20 20 10 17-75  
Santa Anna 10 12 18 9-49  
Baird — Strouse 19, Ruffledge  
17, Gomez 10, Santos 4, Barron 6,  
Wall 5, Bailey 4, Barton 3, Aber-  
nathy 3, Scott 2  
Santa Anna — C. Lewis 12,  
Abernathy 10, Alto 5, Balderas 6,  
Chaney 5, J. Lewis 5, Yancy 2.

**SATURDAY GAMES**

Blackwell 40,  
Santa Anna 28  
Girls Consolation  
Blackwell 8 12 11 31-40  
Santa Anna 4 12 2 10-28  
Blackwell — Mullanax 23,  
O'Malley 10, J. Shaffer 7, Beal  
7, Lishka 7, B. Frausto 2, Kenny  
2.

Santa Anna 65,  
Albany JV 60  
Boys 3rd Place  
Santa Anna 14 10 14 27-45  
Albany JV 10 17 12 31-60  
Santa Anna — Abernathy 20,  
C. Lewis 12, Chaney 6, Malfar  
6, Yancy 5, Alto 4, J. Lewis 3,  
Albany JV — Garcia 16,  
Viertel 12, Isbell 12, Gillert 12,  
Fitzgibbons 5, George 2, Gauna 1.

**1995-96 School Calendar**

December 19: End first semester

December 20: Teacher Work Day

December 21-January 1: Christmas/New Year's Holidays

January 2: Beginning second semester; Staff Development Day

January 15-16: Holidays

February 16: End fourth six weeks

February 19: Beginning 5th six weeks

March 8: Holiday

March 15: Holiday

March 22: Holiday

March 29: Holiday

April 4: End fifth six weeks

April 5: Holiday

April 8: Beginning 6th six weeks

April 12: Bad Weather Day

April 19: Bad Weather Day

May 24: End second semester

May 25: Teacher Work Day



**SAHS Girls**

By Melonie Smith  
The Lady Mountaineers traveled to Richland Springs Tuesday, December 5. They were defeated in overtime 64-56. Ami Beal was high point with 16, followed by Yolanda Frausto 15, Briana Horner 8, Bertha Frausto 6, Kristen Keeney 5, Amanda Lishka 4 and Brandi Martin 2. Keeney and Bertha Frausto had 7 rebounds followed by Horner 6 and Beal 5.

The JV girls also played Richland Springs, they were defeated 29-22. Rene Guerrero had 11 points and 10 rebounds, followed by Jennifer Johnson with 9 points and Marty Siller with 2.

On Thursday, December 7, the girls participated in the Rough Creek Classic in Novice. The Lady Mountaineers were defeated in the first round by Paint Rock 43-27; they were victorious in the second round against Baird 49-45 and in the consolation finals were defeated by Blackwell 40-28. Briana Horner was named All-Tournament.

Yolanda Frausto and was named offensive player of the week and Bertha Frausto was named defensive player of the week.

The Lady Mountaineers are now 3-7 on the season.

On Friday, December 15, the girls will host the Mullin Bulldogs.

**Junior High Girls**

The Santa Anna Junior High Tournament was held on Saturday, December 9 in Perry Gym. Teams participating were Cross Plains, Blanket, Rising Star and Santa Anna.

In the first game, the Lady Mountaineers played Rising Star and won 40-15. Tasha Lewis led the scoring with 10 points. Others scoring were Buffy Martin 9, Elena Balderas 8, Kristi Wade 6, Jessica Powell 4, Mackenzie Johnson 2 and Jaci Kuykendall 1.

The Lady Mountaineers played Cross Plains for the championship. They defeated the Lady Buffalos by a score of 20-18. Scoring was Santa Anna were Tasha Lewis 9, Kristi Wade 4, Elena Balderas and Buffy Martin 3.

"I was very pleased with all the girls. They all played very hard and did an excellent job," stated Coach Crissy Isenhower about the team.

Named to the All-Tournament Team were Tasha Lewis and Elena Balderas.

Tournament results were Santa Anna, first; Cross Plains, second; Blanket, consolation; and Rising Star, fourth.

**Junior High Boys**

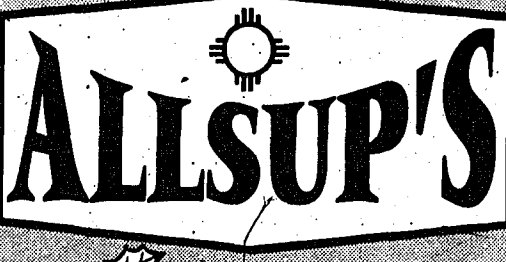
The Santa Anna Junior High boys participated in the Santa Anna Junior High Tournament last Saturday.

In the first game the boys defeated Rising Star 42 to 35. Scoring for the Mountaineers were Boone Cook 5, Jesse Castillo 15, Dustin Maedgen 6, Edgar Mullins 8, Brian Coyle 4, Bobby Hale 2 and Gary Geeslin 2.

In the championship round, Santa Anna played a close game going into overtime with a score of 20-20 against Cross Plains. Cross Plains pulled ahead with the score leaving Santa Anna with 22 and Cross Plains with 24.

On Monday, December 11, Eula defeated Santa Anna's eighth grade by a score of 43 to 30. Jesse Castillo scored 14 followed by Boone Cook 7, Dustin Maedgen 5 and Edgar Mullins 4. Other Mountaineers seeing action were Gary Geeslin, David Gilbreath, John Smiley, Stuart Gibson, Brian Coyle, Bobby Hale and Moses Mata.

**Tell Our Advertisers You Saw It In The Santa Anna News**



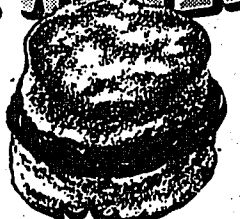
EFFECTIVE DEC. 10-16, 1995

#126--Santa Anna

SAVE ON  
**Coca-Cola**  
6 Pack  
**\$2.39**



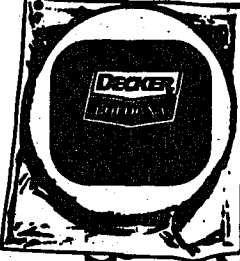
**A WINTER WONDERLAND Of Values**



ALLSUP'S Sausage & Biscuit EACH **79¢**



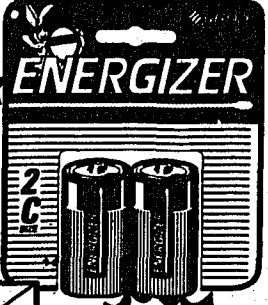
ALL VARIETIES Lays' or Wavy Lays' REG. \$1.59 **99¢**



DECKER Meat Bologna 12 OZ. PKG. **59¢**

ALLSUP'S 1.5 LB. LOAF Sandwich Bread ON EACH OR **2 \$1**

CORD Energizer Batteries 2 PACK **\$2.99**



5-7' Tall **12.99** Your Choice

Ajax - 1.68 lbs. Laundry Detergent **\$1.49**



TIDE Laundry Detergent 99 OZ. BOX **\$5.99**

Crystal Plus Dishwashing Liquid 33 oz. **\$1.59**

- DECKER Cooked Ham..... 10 OZ. **\$2.39**
- BEER NUT PEANUTS..... 5 OZ. **\$1.39**
- SHURFINE ALL VEGETABLE Shortening..... 3 LB. CAN **\$1.99**
- SHURFINE WHIPPED Topping..... 6 OZ. **89¢**

**COUNTYWIDE INSURANCE AGENCY**

214 N. 2ND SANTA ANNA 915-348-3116

- HOMEOWNERS
- WORKER'S COMPENSATION
- FIRE
- AUTO
- LIFE & HEALTH INSURANCE
- LIABILITY
- BONDS

PAUL SKELTON—AGENT

If It's Affordable... We'll Insure It

**HOME VIDEO OUTLET # 2**

615 Walls Ave. Santa Anna 348-3192

**Latest Movie Releases**

Judge Dredd—First Knight

The Land Before Time II

Put a Home Video Gift Certificate under the Christmas Tree for someone special



Continuing to offer you the most caring, professional service  
**Stevens Funeral Home**  
400 Pecan, Coleman, Texas 76834  
(915) 625-2175  
Lana Korzenewski, Funeral Director

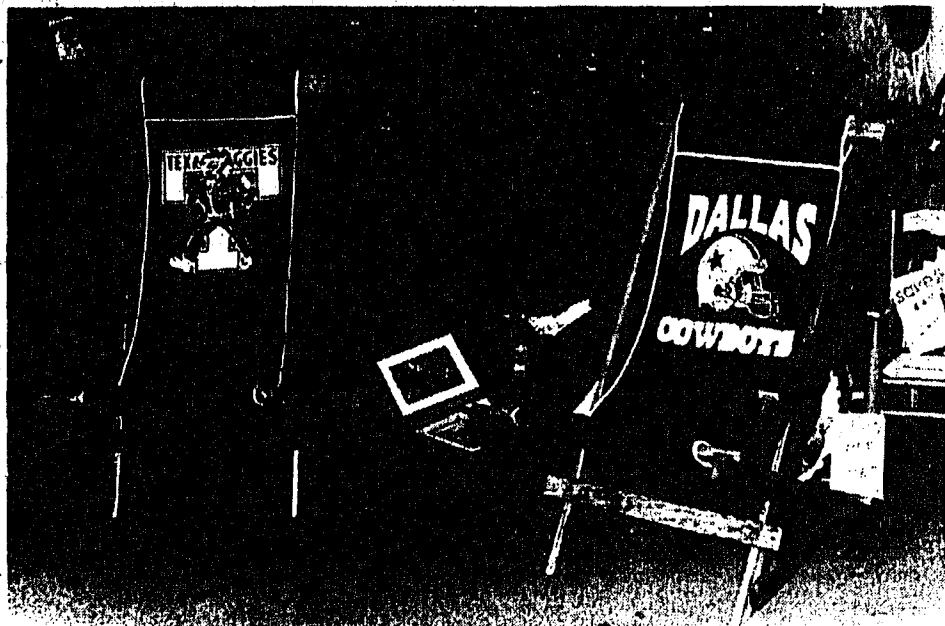
**REED MEMORIAL CO. LIMITED**

Looking for That Special Gift this Christmas?

How about a...

# Sports Rocker

from Bargain House Furniture



In Stock...Texas A&M, Texas Tech, Dallas Cowboys, Texas Rangers & S.F. 49'ers

On Sale for... **\$69<sup>95</sup>**

(Ask us about Special Ordering your favorite team Sports Rocker)...Gift Certificates available!

## Bargain House Furniture

711 So. Concho in Coleman...625-4331  
Store Hours: 8-5, Mon.-Fri.; 8-4, Saturdays



The game of chess is believed to have originated in ancient India under the name of Chaturanga (literally four corps)—the name for four traditional army divisions.

**CLASSIFIED 915-348-3545**

DEADLINE — 12:00 NOON, TUESDAY

**WRANGLER DENIM JACKETS**  
Corduroy collar, blanket lined.  
Sizes 38-50. Reg & tall.  
\$46.99 - Free gift wrap.  
**JOHNSON'S DRY GOODS**  
CROSS PLAINS  
817-725-6211

**OPEN EVERY SUNDAY**  
AFTERNOON  
UNTIL CHRISTMAS  
Noon - 5:00 p.m. Free gift wrap.  
**JOHNSON'S DRY GOODS**  
CROSS PLAINS  
817-725-6211

**BACK PORCH SALE**  
Friday & Saturday, 302 S. 3rd.  
Clothes, all sizes; New jewelry; toys;  
Avon bottles; other old bottles. Lots of  
misc. **REC**

**PLUMBING SUPPLIES**  
**WESTERN AUTO**  
705 WALLIS 348-3771

**AUTO PARTS:** Everything for  
the "do it yourself mechanic."  
**WESTERN AUTO**  
705 WALLIS 348-3771

**FOUND:** Big black dog, Found at  
Allsup's. Somebody's pet! Call 348-  
3352 and identify. **50c**

**CARPET CLEANING AND REPAIR**  
Used carpet for sale. Call Dan Jones,  
915-348-3737, leave message. **43/47p**

**WANT TO RENT**  
Responsible party wishes to rent 2 or  
3 bedroom house. Call 348-9283. **wed**

**TexSCAN**  
Statewide Classified Advertising Network  
More than 300 Texas newspapers for \$250. Call this newspaper for details.

**ADOPTION**  
**CONSIDERING ADOPTION?** WE help  
you choose secure, loving home for your baby  
from our California families. Call Marc/Bonnie  
Gradstein. Any/counselor. Allowed expenses  
paid 1-800-922-0777.

**DRIVERS WANTED**  
**DRIVERS:** FLATBED 48 state OTR. As-  
signed new conventionals, competitive pay,  
benefits. \$1,000 sign on bonus, rider program,  
flexible time off. Call Roadrunner Trucking 1-  
800-876-7784.

**DRIVERS/OTR...** \$1,000 sign-on bonus, new  
conventional equipment, great benefits, lease  
program. Earn up to 29 cents per mile. Stu-  
dents welcome. Cal-Ark International. 1-800-  
950-TEAM, 1-800-889-1030.

**DRIVERS - SOLO & teams,** \$2,000.00 sign  
on. Top teams earn \$103,000+ major benefits/  
motel & deadhead pay. Driving school grads  
welcome. Covenant Transport 1-800-441-  
4394. Students call 1-800-338-6428.

**DRIVERS WANTED.** E.L. Powell & Sons,  
Tulsa, OK. We offer late model equipment,  
good insurance, 22%. One year verifiable flat  
bed experience. 918-446-4447. 1-800-444-  
3777.

**DRIVERS...WE PAY** for experienced Great  
bonuses, top benefits, excellent get-home and  
time-off policy plus paid flatbed training! Mini-  
mum 23, 1 year recent OTR experience. Melton  
Truck Lines, Inc. 1-800-635-8669. M/F/EOE.

**NEW IMPROVED PAY** package offered by  
Beech Trucking for regional drivers. Home  
every weekend. Start at 26¢ with monthly  
bonuses & benefits. Call 1-800-321-0649.  
**BOE.**

**EMPLOYMENT**  
**EXPERIENCED WEB PRESS** operator. NE  
Texas area. Modern air-conditioned shop, day  
shift only. Competitive salary/benefits. Call  
903-885-8663, Johnny P. or FAX resume 903-  
885-8768.

**FINANCIAL SERVICES**  
**FREE DEBT CONSOLIDATION.** Imme-  
diate relief! Too many debts? Overdue bills?  
Reduce monthly payments 30%-50%. Eliminate  
missed interest. Stop collection calls. Restore  
credit. NCCS, non-profit. 1-800-955-0412.

**NOTES, ANNUITIES, LOTTERIES, Re-**

ceiving payments? Get cash now! Colonial  
Financial, the nationwide leader since 1984. 1-  
800-969-1200.

**RECEIVING PAYMENTS** on property  
sold? We pay cash for real estate notes, deeds  
of trust, and land contracts... nationwide! High-  
est prices paid. Texas based. 1-800-446-3690.

**WE BUY MORTGAGES - all kinds.** Call  
K'Reasa in San Antonio. 210-651-9470 or 1-  
800-651-6155.

**FOR SALE**  
**STEEL BUILDINGS:** WINTER sale.  
Painted walls, 5,000+ sizes, 30x40x10, \$4,761;  
40x60x14, \$8,524; 50x60x14, \$10,058;  
50x75x14, \$11,384; 60x80x14, \$13,581;  
60x100x16, \$17,028. Free brochures. Sentinel  
Buildings, 1-800-327-0790.

**SUNQUEST WOLFF TANNING** beds.  
Commercial-home units from \$199. Buy fac-  
tory direct and save! Call today for new free  
color catalog 1-800-462-9197.

**HEALTH**  
**RAPID WEIGHT LOSS.** "Only 17.95"  
burns fat, calories, and stops hunger. Lose 3-  
5 pounds/week. Money back guaranteed. Call  
for information: United Pharmaceutical 1-800-  
733-3288 (C.O.D.'s accepted).

**LEGAL**  
**DOW AND OTHER** breast implant cases  
may be accepted. Free consultation. 1-800-  
833-9121. Carl Waldman, Board Certified  
Personal Injury Trial Law. Texas Board of  
Legal Specialization. Principal office Bea-  
umont. May associate other attorneys.

**REAL ESTATE**  
**EXECUTIVE STYLE HOME** situated on  
nine water-front acres, 2902 sq. ft. 2 years  
new, will sell all or partial. East Texas area -  
Lake Marwan. 903-685-2383.

**KERRVILLE, NESTLED** in the heart of  
Texas Hill Country with scenic and majestic  
overlooks. This 182 acre hideaway has live  
water and good roads. Very private and se-  
cluded. Only 5 minutes from town. Contact:  
James Kerr at 1-800-451-3649.

**TEXAS VETERANS:** 37-100 acres. Beauti-  
ful hill country, hunting/recreational land.  
Water and/or electricity, \$1,000-\$2,200 down,  
\$140-\$328/month (30 years-7.64% to 9.8%).  
1-800-876-9720.

## Local Sales Tax Rebate Shows 6.61% Increase

Santa Anna's December rebate payment was up 30.82% over last year's rebate at this time of year...\$1,898.47 in Dec. 1995 as compared to \$1,451.17 in 1994. Santa Anna's payments to date are indicating an increase of 6.61% over '94 figures.

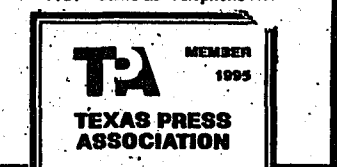
The City of Coleman received a check for \$20,832.35, an increase of 5.4% over last December's payment...which equates to a 5.33% increase in payments to date in 1995 over last year.

State Comptroller John Sharp reported his office has sent cities across Texas \$115 million in local sales tax rebates in December, up 4.1 over last December's payment of \$110.4 million. Counties received a total of over \$11.5 million for their monthly rebates, 1.3% below the 11.6 million payment of a year ago.

**Phillips Insurance Agency**  
Representing The Germania Companies  
\*\*\*\*\*  
For all your Home, Auto and Other Insurance  
203 Commercial, Coleman  
625-3553 or 625-4484  
Archie, Berry, & Evelyn Phillips

**About The Santa Anna News**  
Published each Thursday at 609 Wallis Ave, Santa Anna, Texas 76878 and entered as second class mail under the Act of Congress of March 2, 1879. (USPS 481540) SUBSCRIPTION RATES: \$15.00 per year in Coleman County; \$16.50 elsewhere in Texas; \$17.50 outside Texas.  
POSTMASTER: Send change of address to:  
Santa Anna News, P.O. Box 399, Santa Anna, TX 76878-0399  
(Any erroneous reflection upon the character of individuals, businesses, organizations appearing in this newspaper will be gladly and promptly corrected upon calling the Editor's attention to the article in question.)

**POLLY WARNOCK**  
PUBLISHER/EDITOR  
**CAROL HERRING** ASSISTANT  
(915) 348-3545  
FAX - Same as Telephone No.



**We need your news early for next two weeks!!**

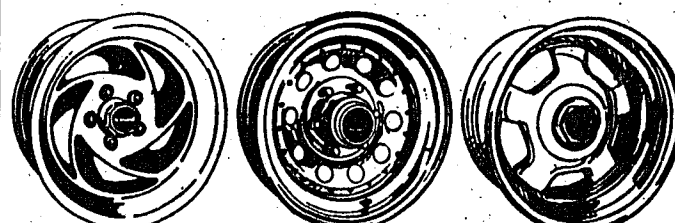
In order for the NEWS staff to take a few days off to spend with their families during the holidays, we need your news items for the next two editions by this coming Monday. We are preparing both editions next week, but the second will be mailed at its regular time on the following week.

## Wheel Deals!

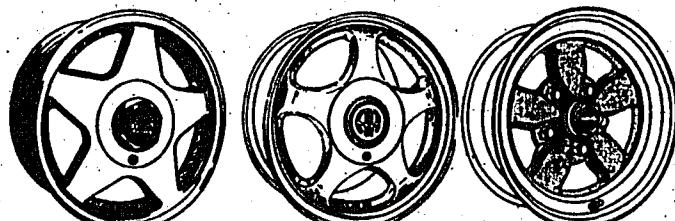
For Christmas!  
**American**

Racing Equipment

Custom Wheels®



AR-8 RWD CHROME NUGGET RWD AR-791 RWD



AR-34 RWD AR-125 FWD CP-200 NAT. RWD

**Order A.S.A.P. for Christmas Gifting...They'll be glad you did!**

## Williams Tire Store

2003 Commercial Avenue in Coleman  
Phone 915-625-5152 or 1-800-588-8473

A SOLUTION TO YOUR HOLIDAY SHOPPING DILEMMA



## The Perfect Gift for Everyone 50 and Older

Can't decide what to give your parents, Uncle Dan or Great Aunt Shirley, your hairdresser or your best friend for Christmas? Well, we've got the answer...a gift membership to Senior Partners. For an annual membership fee of \$15\*, your Christmas gift will provide year-long benefits, including discounts on healthcare services and products, monthly social events and activities, free exercise classes, a monthly

wellness newsletter, free insurance filing, hospital VIP benefits, and more. And with every Senior Partners gift membership you purchase before December 21, we'll throw in a free Senior Partners t-shirt. Now what could be easier? Just call 692-0916 or toll-free 1-800-427-6297 and let us know how many are on your list!



**SENIOR PARTNERS**  
A Program of Abilene Regional Medical Center

6250 Hwy. 83/84 at Antilley Rd., Abilene • Call 692-0916 or toll-free 1-800-427-6297 for more information about Senior Partners  
\* Annual fees are \$15 for an individual one-year membership; or \$25 for two individuals living at the same address.

**LIVEOAK REAL ESTATE**  
115 W. LIVEOAK, COLEMAN, TX.  
(915) 825-4181

**NEW LISTING** — 3 BR, 2B, Double-wide mobile home. 310 Bowie. \$39,500.  
**317.34 ACRES** — S. of Coleman. 150 in cultivation; Hunting. \$300/AC  
**695.75 ACRES** — S. of Santa Anna. Good hunting and grass...\$400/AC  
**ATTRACTIVE 2 BR, 1 B** rock home on huge lot. \$20,000.  
**PRICE REDUCED** — 1440 Sq. ft. 3 BDR, 2B brick home in Santa Anna. \$35,900.  
**REDUCED PRICE** — 188 ACRES south of Santa Anna. \$380/AC.

**JAMES HUNTER, BROKER** 625-2222  
**EARLENE BANKER** 625-2878  
**JOYCE KIRWIN** 625-3945

D E C 1 4 1 9 9 5

## Cleveland News

By Clara Cupps

Carmilla Baugh went up to see Mrs. Ruth Hibbits Friday. J. C. Bible was by Saturday a while.

Anita Jarvis of Johnson City came early Monday morning and took Cecil and Nona Bell shopping. They spent the day, ate out. Anita spent the night before returning home. Cathy Ellis and Alicia is visiting Sunday afternoon.

Pete Moore called Ruby to say he was doing real good. Ruby called Velda Mills, who is also doing well.

Margie Fleming is visiting Thelma Fleming Sunday. Roger, Rita, Amanda, Magan Sikes visited Saturday night. Peggy and Kenneth Sikes visited Wednesday night. Red and Darrel visited the past week.

Syble and Lee Ray Huggins visited at the nursing home the past week with Hardon Phillips, Mrs. Ruth Hibbits and others.

Ovella Williams visited Aunt Helen and Uncle Emil Williams Sunday.

Patty and Clayton Patton from Brownwood visited with Doyle and Juanita Ward Saturday night. Was Clayton's 62nd birthday.

Jennifer Naron of Brownwood came Tuesday to visit the John Naron for lunch. They have been back and forth to Temple to see John's dad Johnny Naron in the Temple Hospital. John and Juanita Naron spent Friday night with the Jodie Naron family.

Betty Joyce and Janice went to Abilene shopping over the weekend.

Kathleen Avants visited her mother Mrs. Ruth Hibbits Thursday and Sunday. Joe Wallace also dropped in to visit her Sunday.

Clara Gibson of Clyde came to take her mother Adury Wright to church. Phil and Judy Chambers visited Saturday.

Lora Russell and Mattie Stovall and her daughter Ruth Haught were in Coleman to visit the beautiful homes Sunday afternoon.

I visited with Winnie the past week.

Hope all you are in Christmas spirit. It is going to be here soon.

## Whon News

By Mrs. Tom Rutherford

We will start off with a nice thought. We feel sure in our area we will not have to write to get the county papers to know we are having some cold weather. Seems reports in our vicinity has been 20 degrees or near that either a little more or less. Anyway cold weather has arrived.

My boys Thomas Hilary and Loyd were with me the first of the week. Loyd was with us most every day at noon. Hilary and Thomas were working. They were not so much working on the house, just trying to get everything to where the builders can work. Looks like its going to be real nice and we are all thankful. Hilary was not with us after Thursday.

Mrs. Ethel Radle in Santa Anna reports her daughter Ruth and her husband Nicky Poldrack of Coleman were with their daughter and her family in the Garland area over the weekend.

Mr. Leon Carter was with his sister Lorene Black in Brownwood some during the week and most sure he was with her Sunday.

## Trickham News

By Anna Turk

Rev. Mike Ebird was with us at church Sunday morning and brought a good message when he preached, we enjoyed having him.

The cold weather sure hit us with a jolt when it blew in Friday evening didn't it? Saturday morning the temperature was down to 18 and Sunday morning 15 degrees at my place, makes us realize winter is here, however most folks say we need rain, the green bugs are bad in the grain, wonder if a freezing rain would kill them, folks need something.

Verna Bolton visited a while Sunday morning with Mrs. Winnie Haynes and Novella Stearns visited in the afternoon.

Talmadge and Laverne McClatchy enjoyed a Christmas dinner at the Church by the Lake at the Brownwood Lake on Saturday.

Rankin and Natalie McIver and Sherrie and Megan Blake were in San Angelo on Saturday to visit Doyle McIver at the Shannon Hospital where he had undergone four way heart surgery, they found him to be doing very well at this time. We wish him a full and fast recovery. On Sunday afternoon Rankin and Natalie went to the Brownwood at attend an open house visitation at the home of Melvin and Mary Lou Storm at the lake which Natalie said was a really nice event.

The quilting ladies met on Monday at the community center and finished a quilt for Tony Watson and will not meet anymore until the first of the year, and the eighty-four club met on Thursday night with sixteen present.

Royce and Wanda McIver were in San Angelo several times last week at the bedside of his brother Doyle and report that he seems to be doing fine. On Sunday afternoon Royce and Wanda attended open house at the home of Mr. and Mrs. Melvin Storm at Lake Brownwood and later visited with her aunt Mrs. Marion Hodges at the lake.

Reba Cozart visited on Tuesday afternoon with Annie Lou Vaughn and Rodney and Cella Guthrie and boys Mason and Michael and Wesley and Candi Dockery were Sunday dinner guests.

Billy Roy and Mildred Laughlin visited Sunday afternoon with his mother Mrs. Edna Laughlin.

New is short this week, maybe

everyone is getting ready for Christmas.

Scottie James of Fort Worth called me Sunday night reporting on her mother-in-law Clara James. She said Clara is doing fine and enjoys hearing from her friends here. Her new address is Mrs. Clara James, 2936 Markum, Haltom Convalescent Home, Haltom City, Texas 76117, phone 817-831-1675.

## Rockwood Women's Club Meets

Contributed

The Rockwood Women's Club met Thursday, December 7, at 2 p.m. in the community center.

The president Skeeta Cooper brought the club to order and read the thought for the day. Minnie Bray led the pledges to the U. S. and Texas flags.

The only business discussed was the Christmas party. It was decided to have it Saturday night, December 16 at 6:30 p.m. at the community center.

Those present were Skeeta Cooper, Minnie Bray, Claudia Rutherford, Sadie Bryan, Vera Faye Wise, LaNell Brusenhan and a guest, Hettie Scarbrough of Santa Anna. The secretary was absent to club reporter LaNell Brusenhan took notes.

## Rockwood Family Christmas Party To Be Held Sat.

Contributed

The Rockwood Women's Club will host a family Christmas Party Saturday night, December 16 at 6:30 p.m. at the community center.

Those attending are asked to bring chips, dips, sandwiches or Christmas cookies.

Women should bring a woman's gift, men a man's gift and children a

child's gift. It is hoped that everyone can come and visit with friends and have a good time. Everyone is welcome.

## Rockwood News

By Sandra Wilson

Saturday. Denny and Louise Densman visited Sunday.

Tuesday evening Darla Wise visited in Coleman with Tanya Barker and Wednesday Darla and Hunter were at youth group in Gouldbusk. Thursday evening Hank and Hunter were at Panther Creek for Hunter's Christmas play and Saturday Hank and Darla were in San Saba for a cattle sale.

Faye Wise attended Hunter's Christmas play at Panther Creek. Korky and Shawn Wise spent the weekend and Joe Ed Wise visited Saturday. Ruth Ann Wise and Faye were in Abilene shopping Saturday.

Friday Blake Williams was a business visitor in Coleman. Sunday Blake was in Brownwood to spend the night with Donald and Lillian Williams and see the doctor on Monday.

Friday afternoon visitors with Claudia Rutherford were Mark Rutherford and his roommate from Tarleton State University L. V. Coffee. Tony Abernathy spent the weekend. Drop-in visitors Saturday were Bob Rutherford and Moon Mullins of Brownwood and Sunday Tony Brashear. Todd Rutherford and a friend stopped by Monday afternoon. Claudia, Nell Brusenhan and Minnie Bray attended the annual Christmas Cantata Sunday evening at the First United Methodist Church in Santa Anna.

Dale Davis of San Antonio is visiting with Gary and Carol Sims and family.

Thursday afternoon Mindy Avants, Lynn Burfield and I were in Abilene to Christmas shop and were met by Denise McDonald. Tammy Casey and Terri Vaughn met us for supper. Friday afternoon Delores and Sonya Fenton and Josh Unruh visited and Saturday Christy and Emily Taylor and Richard Ybarra spent the night with Bo and I. Sunday Mindy and Maegan Avants, Mike, Mike Jr., Shannon, Crystal, Ashley and G. J. Montgomery, Darlene McElrath and Frankie Mathews visited. Monday afternoon Charlie Smith stopped by briefly.

## HENDERSON FUNERAL HOME

Donnie & Christina HENDERSON  
"People Who Care"

SANTA ANNA  
348-3131  
107 S. First

COLEMAN  
625-2121  
1600 S. Concho

# HOLIDAY OPEN HOUSE

Friday, December 16  
9 a.m. — 4 p.m.

The officers, directors and employees of

## Coleman County Telephone Cooperative, Inc.

Invite you to join in celebrating the season at our annual Holiday Open House



215 North 2nd

Santa Anna, Tex.

348-3124

## Fishing Lake Ivie

By Durwood Strickland

We are still encouraging all fishermen in the area to enter our benefit tournament Saturday, December 16th. All money raised will go toward mounting hospital bills for Chase Gift. The Ballinger youngster was critically injured Thanksgiving when he was accidentally pinned between a golf cart and a trailer home. He is a patient at Children's Hospital, Dallas and has undergone intensive surgery to repair his injuries.

Chase's grandmother works here at Concho Park Marina and we can assure you the family is worthy of your support.

If you don't want to fish, you can buy \$1 chances for a drawing for all kinds of fishing gear. You can even mail in your contribution and your name will be entered for you. Chase Gift Benefit, C/O Concho Park, P.O. Box 112, Paint Rock, TX 76866.

We will start receiving entries at 6 a.m. that morning and fishing will begin at 7:00.

Call me or the store for more details. Toll-free from Santa Anna.

915-357-4785

Courtesy of

## Concho Park

On Lake O.H. Ivie

RV Hookups Convenience Store  
Ice, Supplies, Bait, Fishing Tackle  
Licenses, Permits, Gasoline  
Short-order Grill

Motel (915) 357-4467  
Store (915) 357-4486



## Help Your Heart Recipes

This recipe is intended to be part of an overall healthful eating plan. Total fat intake should be less than 30 percent of your total calories for a day — not for each food or recipe.

### Roast Stuffed Cornish Hens

- 1/2 cups uncooked long grain and wild rice combination or 1 package wild rice mix, uncooked
- 2 tablespoons acceptable margarine\*
- 1 medium onion, chopped
- 1 teaspoon sage, thyme, savory or tarragon
- 6 Cornish hens (about 14 ounces each)
- 1/2 cup acceptable margarine\*, melted
- 1/2 cup water
- 1/4 cup brandy
- 1 cup orange sections

Preheat oven to 350°F.

To make stuffing, cook rice until it is still slightly firm. Set aside. In a large skillet over medium-high heat, melt 2 tablespoons margarine. Add chopped onion and sauté until browned. Add rice and sage or other herb; toss gently. Remove from heat and set aside.

Clean, rinse and dry hens. Stuff lightly with rice mixture. Skewer or sew cavities closed. Brush hens with 1/2 cup melted margarine and place breast-side up on a rack in a shallow pan.

Roast uncovered about 1 hour, basting occasionally with melted margarine. Remove hens from pan. Remove rice stuffing and place it in a serving bowl. Cut hens in half and place on warm serving platter.

Place roasting pan, with juices, on top of stove over medium-high heat. Add 1/2 cup water to drippings, stirring to dislodge browned particles from pan. Add brandy and orange sections. Cook 2 minutes, stirring constantly. Serve with hens.

\*Select margarine with liquid oil as the first ingredient and no more than 2 gm of saturated fat per tablespoon.

### Nutrient Analysis per Serving

338 kcal Calories	73 mg Cholesterol	4 gm Saturated Fat
28 gm Protein	181 mg Sodium	4 gm Polyunsaturated Fat
19 gm Carbohydrate	15 gm Total Fat	6 gm Monounsaturated Fat

This Help Your Heart Recipe is from the American Heart Association Cookbook, Fifth Edition, American Heart Association, Published by Times Books, a Division of Random House, Inc. 1973, 1975, 1979, 1984, 1991.

There are many paths to the top of the mountain, but the view is always the same.

—Chinese Proverb

## We Want To Make You A CHRISTMAS LOAN

\$100<sup>00</sup> TO \$428<sup>00</sup>

Why not call or stop in today for the MONEY YOU NEED!

## SECURITY FINANCE

117 West Street  
COLEMAN, TX 76834  
Phone: 625-2485

\*Subject to our usual credit policy.

