

Your Hometown Newspaper Since 1886

Santa Anna News

"He Profits Most Who Serves Best"

Single Copy 50 Cents

Volume 106 No. 36

Thursday, September 5, 1991

Newspaper Ownership Comes Home

By Polly Warnock

As of August 31, 1991 the Santa Anna News came back to hometown ownership once again.

Derriel and Polly Warnock have purchased the 105-year old newspaper from Brownwood Newspapers, Inc., a division of Boone-Narragansett Newspapers of Alabama, which had bought it from Woodson Newspapers about two years ago. Mrs. Warnock has been associated with the NEWS for the past 6 years, four years as editor. Mr. Warnock is employed with the City of Santa Anna as Superintendent of Operations. He plans to remain in that position.

First established in January of 1886, the Santa Anna News remains the oldest continuous business in the community, possibly in Coleman County. The first issues were published in a cave on the

west Santa Anna Mountain.

According to Beatrice Grady in her book, "Into The Setting Sun," Con Rowland came to Santa Anna for his health in the 1880s to recover from "the dread white plague so prevalent on the coast."

Since there was no house on the property on the north side of the mountain, he spent the winter in a dugout. When his health improved, he returned to his former home for his printing press and established the newspaper.

With the coming of the Santa Fe Railroad in 1886, the town was moved from the gap of the mountains (a route of the Military Road and a cattle trail) to the railroad right-of-way a few blocks distant.

Rowland sold out to Charlie Spann, who in turn, sold to Will Hubert and his sons in the 1890s.

They sold to Austin Callan and moved to Coleman to publish the Coleman Democrat.

According to a history of the Santa Anna News, written by Barbara Kingsbery in January of 1881 when the newspaper marked its 95th anniversary, a fire in 1919 destroyed early newspaper files and records of ownership, but R.B. Boyle was known to have been editor and manager in 1919 and was listed as owner in 1920. G.W. Faulkner was publisher for seven years before selling to J.J. Gregg, who later sold to his son, John C. Gregg. From 1920 until 1966, it was under the Gregg leadership.

Bob Parker was editor for a brief period in the mid-1960s.

Johnny Valentine was publisher for two years, selling to W.T. Hays of Bangs in 1969. The paper went from letterpress to offset in 1972. Craco Weeklies, Inc., a division of

Woodson Newspapers bought the NEWS in July of 1979. Barbara Kingsbery was editor from November of 1968 until January of 1984.

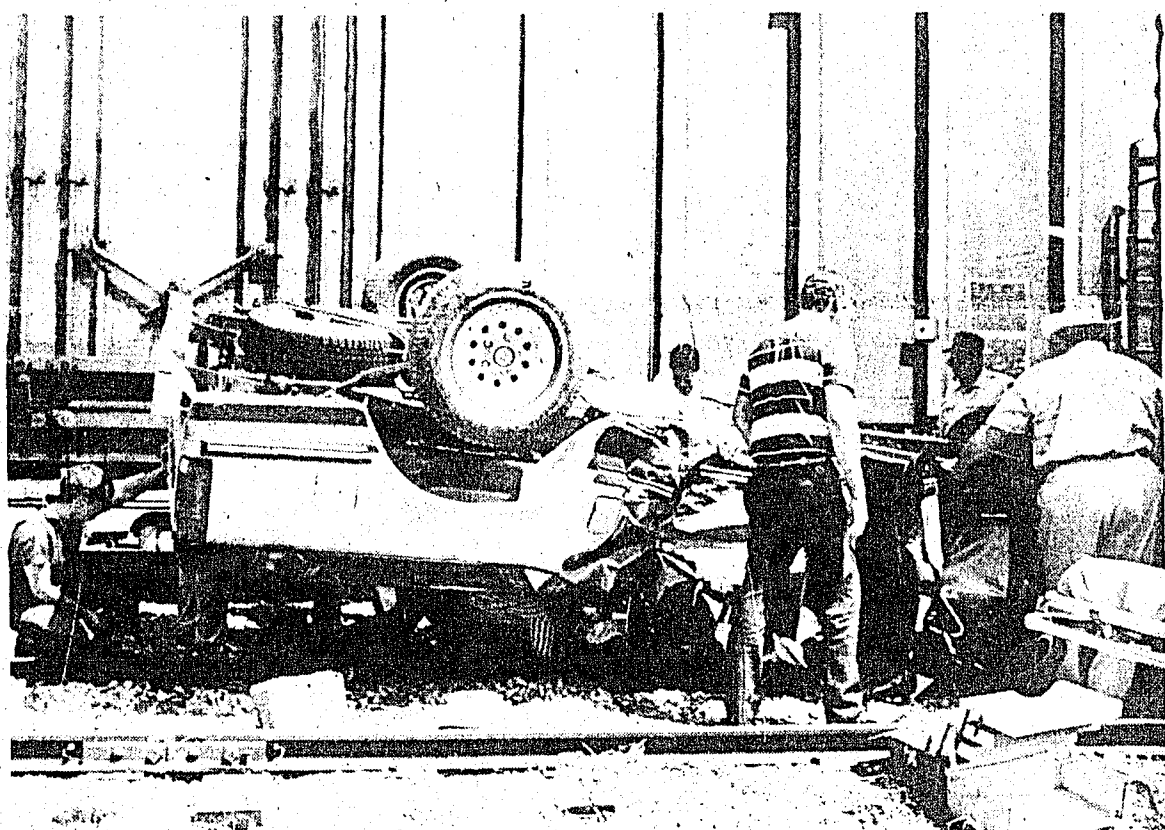
The newspaper was located for 50 years in the downtown building two doors west of what is now Simmons Feed and Seed. A fire in 1982 gutted that building except for the front office space, and the operation was moved to its present office at 214 North 2nd.

Janera Naron Henderson, Linda Bertoni and Dana Turner each served brief periods as editor with Mrs. Warnock taking over the position of editor in 1987 when Ms. Turner married and moved from the community.

The new owners explain that the newspaper will continue to be printed at the Brownwood-Bulletin plant and will retain the same issue date of Thursday of each week.



Polly and Derriel Warnock, new owners of Santa Anna News



Coleman County Medivac EMS staff and several local people working to free Charlie Abbey from pickup which was dragged into the boxcar seen here about a half city block from the initial collision

Photo by Polly Warnock



Rescued! Workers quickly carry Abbey to Ambulance for transportation to hospital.

Photo by Polly Warnock

Close Call For Coleman Man

Even though in critical condition at Brownwood Regional Hospital (as of press time) Charlie Ray Abbey, 57, of Coleman can be thankful things did not go worse for him Tuesday when his 1991 Ford pickup collided with a Santa Fe train at the 3rd Street intersection about noon. Witnesses report that the pickup might have stalled on the track. That possibility is being

investigated. Investigators at the scene were Police Chief Carlos Torres, Highway Patrolman O'Shields and Coleman Co. Sheriff's Dept. The Fire Department was on hand to use their WEPS unit as gasoline was streaming from the pickup's fuel tank. The foam took care of the possibility of a spark setting off a fire or explosion when the pickup was removed

from the track. Abbey remained conscious during his ordeal although he had suffered multiple serious injuries in the accident. He was in surgery most of Tuesday afternoon, according to a report from Chief of Police Carlos Torres. However, it is expected he will recover from his injuries, even though a lengthy recovery period may be in store for him.

School Budget Set, \$1,766,982 \$1,421,455 Coming From The State

The Santa Anna School Board last week adopted a budget for the 1991-92 school year of \$1,766,982 with an expected \$1,421,455 of that to come from state funds. The remainder will come through some federal funds and from CED and local ISD tax collections and gate receipts from athletic events.

The board is considering the adoption of a local ISD tax rate of \$36¢ per hundred dollar valuation. That coupled with CED (County Education District) tax of \$.7849¢ as mandated by the state, will bring the total \$1.14. The current 1990-91 tax is \$1.06. Even though the overall tax will go up, many in the district will see their tax bill drop because of the double exemptions now available. The over 65 age group will see the most noticeable drop. The CED Tax and the ISD Tax will appear on your regular tax statement expected in October of each year.

The Santa Anna school district came in under last years budget of

\$1,656,626 with about \$90,000 placed in surplus funds.

Brister says that one new budgeted item this year will be the hiring of another first grade teacher. There are now 24 students in first grade with 25 the state mandated limit. Since the first grade is such a critical year for youngsters, the board has decided to go ahead and find another teacher so that class may be divided.

He also says that the more the local ISD raises its rate, the more in state funds we will receive. The 8.5¢ raise in local ISD tax will gain the school about an additional \$232,000 from the state to use to benefit the district's 307 students at the local campus, 11 at CAP and 4 in special cooperative classes at Early.

As of the time when this reporter talked with Superintendent of Schools Gerald Brister, the new CED had not yet adopted its budget. However one expense they know for sure they will have is the

purchase of a computer which is expected to cost in the neighborhood of \$29,000 which will be placed in the Appraisal District Office. The CED has contracted with the Appraisal District to do the assessing and

collecting of the CED tax which will be distributed to the four schools within the district, Santa Anna, Panther Creek, Coleman and Novice. Roddy Dean is the local board's representative on the CED board.

If the finance plan just passed by the state Legislature holds up, the overall tax will be \$1.50 per hundred valuation within four years. This is also a mandate from the state for each school CED in Texas. Of course, as Brister says, who knows what the Legislature will do next. They may even scrap this plan and come up with yet another. Also the plan is bound for more tests in court. So stay tuned.

Mountaineers Face Former Coach In Season Opener

The Mountaineers will go up against Cross Plains Friday night in their first game of the football season.

Three seasons ago, Cross Plains was picked to win a district 14-A championship. They had several starters returning that year from a successful previous year when they operated in class 2A. They didn't make their goal that year and ended

Warning From Chief Torres About Dogs Running Loose

This is a reminder from Chief of Police Carlos Torres, that persons whose dogs are permitted to run loose are subject to penalty.

Chief Torres has observed that the number of dogs running loose at night is increasing, indicating that owners are turning them out after dark. He will assist the Animal Control Officer in determining the owner, if possible, and a summons will be issued to the owner or person responsible for the animal.

We request the cooperation of Santa Anna citizens in this matter, states Chief Torres.

up settling for second place, in fact, the Buffalos are still seeking a title, hoping this year will be the one under new head Coach Doug Dallas. Dallas has returned to his hometown where he played high school football. He has been back in coaching for two years now and both of those years helped his teams to the playoffs. First was here at Santa Anna and then Rotan. Dallas' assistant is Monty Jones who also spent a year in Santa Anna under Dallas.

Cross Plains is returning 9 starters on offense and 8 on defense; 11 lettermen.

When asked for a comment on the upcoming game, Mountaineer Coach, Mike Permenter, who previously coached at Cross Plains, said only, "No Comment. We will let our actions speak for us Friday night." Permenter lead the Mountaineers to second place in district last year even after tragedy befell his team; the death of two key players. The last district championship for the Mountaineers came in 1989.

Santa Anna looked impressive at Tolar in a scrimmage two weeks ago and were scheduled to take on Rankin at Robert Lee last week in another scrimmage. However that one never came about due to the "virus bug" hitting several of the Mountaineers. It looks like all will be healthy this week for the season

opener.

Santa Anna has 10 returning lettermen, 2 on offense and 8 on defense.

Returning all-district players are Phillip Hernandez, Rusty Fleeman.

CONTINUED PAGE 4

Local Youth Runner-Up For FFA Award

Tommy Williford of Santa Anna has been named a Gold award winner in competition for the National FFA Turf and Landscape Management Proficiency Award.

Tommy is the son of Mr. and Mrs. Harold Williford and a Member of the Santa Anna High School FFA chapter.

Tommy became eligible for the award when he won the \$100 state FFA Turf and Landscape Management proficiency award. The award is one of 29 agricultural proficiency awards presented annually at local, state, regional and national levels to recognize FFA members

for achievements in activities leading to careers in agriculture. This

CONTINUED BACK PAGE

SEPTEMBER 5 1991

City Employee On Call This Weekend

The City Crew member on call this weekend is Tommy Jackson. Call collect to 625-4753. Watch the Santa Anna News each week for the crew member to call in case of a city utility emergency.

NOTE FROM CITY HALL
You are asked to refrain from calling the City employee on call for the weekend unless in case of a City utility emergency. These people are paid overtime when called out and you can help cut City expenses by not calling unnecessarily. The animal control officer does not work on weekends unless in a dire emergency.

One Bird of Prey Is Strict Vegetarian

Birds of prey include magnificent eagles, California condors, hawks and even buzzards. Would it surprise you to learn one bird of prey is actually a strict vegetarian?

"It's true," laughed Ray Sutton, wildlife manager of the International Wildlife Park in Grand Prairie, Tex. "It's called the Palm-nut vulture, or the vulturine fish eagle. Its primary diet consists of fruit, including the fleshy outside of the African oil nut," he concluded.

If you have a question about wildlife you would like to see answered in this space, write to GNUS YOU CAN USE, 601 Wildlife Parkway, Grand Prairie, Tex. 75050.

SANTA ANNA NEWS
214 N. 2ND
SANTA ANNA, TEXAS
(915) 348-3545
(USPS 481540)

The Santa Anna News is published every Thursday at Santa Anna, Texas 76878 and entered as second class mail under the Act of Congress of March 2, 1879.

SUBSCRIPTION PRICE:
Coleman County, \$15.00 per yr.
All other areas, \$18.00 per yr.

POSTMASTER:
Send change of address to:
Santa Anna News
P.O. Box 399
Santa Anna, Texas 76878

Polly Warnock
Publisher/Editor

MEMBER
1991
TEXAS PRESS ASSOCIATION

Thoughts From Our Pastors

The "Word" for the Week
Dennis Pruto

(In the absence of an article by a local pastor)

WHAT IS A SAINT?

A saint is not someone who is perfect. Not at all. In fact, saints are people who realize they are far from perfect. You see, it's not perfection that makes a saint.

A saint is a person who is set apart to God. And so, saints are individuals who have been transferred by God from the domain of darkness into the kingdom of God's Son. This involves what the Bible calls being "born again." And this means God's Holy Spirit is placed in you. As a result, you repent of sin and trust in the sacrifice of Christ for your salvation. And so, a saint is a person who is set apart to God to a life of holiness. Saints understand the command to be perfect as God is perfect. As a result, saints strive, by God's grace, to live a life worthy of God's holiness.

But saints are also people who, although set apart to God, realize their shortcomings. Saints know that perfection is impossible in this life. They know perfection comes only in heaven. But they do not use this as an excuse for failure. Rather saints confess their failure to meet God's standards. And they gladly accept God's forgiveness. Saints are Christian men and women, and boys and girls on the narrow road of the truly Christian life. Are you a saint?

Around & About

(Contributed)
Pete and Winnie Rutherford returned a week ago from a sight-seeing tour on Dan Deipt Tour Bus. The couple toured nine states.

At Louisville, Ky. they drove by and saw the Kentucky Derby, Churchill Downs.

At Grand Rapids, Mich., they visited Windmill Island where they saw a Dutch windmill over 200 years old. Winnie reports that it still grinds grain if their is plenty of wind. Young girls danced in wooden shoes and one told the couple they had to wear several pairs of socks to protect their feet from the wooden shoes. They also visited the Gerald Ford Museum there. At Indian River they saw the world's largest crucifix. From there they went to Machinaw City and boarded a boat for a seven mile ride across Lake Michigan to Machinaw Island which is a beautiful resort area with lovely homes and hotels. The Grand Hotel there boasts the longest front

porch in the world. Its a very beautiful place that sits on top of a hill where you can look out and see across Lake Michigan. There are no cars allowed on the island. The residents and tourists use horses and carriages, and bicycles for transportation if they don't want to walk. Winnie and Pete toured the island in a horse drawn carriage and then walked around to finish seeing the sights. They saw many shops all along the tour of the island. On the way back to Machinaw City they crossed the world's longest suspension bridge and enjoyed a scenic drive all along Lake Michigan.

From there their travels took them to Green Bay, Wisconsin where they visited the Green Bay Packers Hall of Fame and also toured a cheese factory where they were able to sample the cheese. They were able to determine that they farms they saw in that area were growing corn and soy-

beans, and there were also lots of dairies. They saw the beautiful Wisconsin Dells and took a boat ride up the Wisconsin River. There were many interesting rock formations along the route. They stopped to view into a deep canyon where it was quite cool. At Deh City they attended a Tommy Bartell show where they saw water skiing and a stage show.

Illinois was next. They visited the House of Rocks. "It was fantastic," says Winnie. "I can't describe it." It was nearly a three hour tour. Then on to Springfield, Missouri and a visit to Abraham Lincoln's tomb and home.

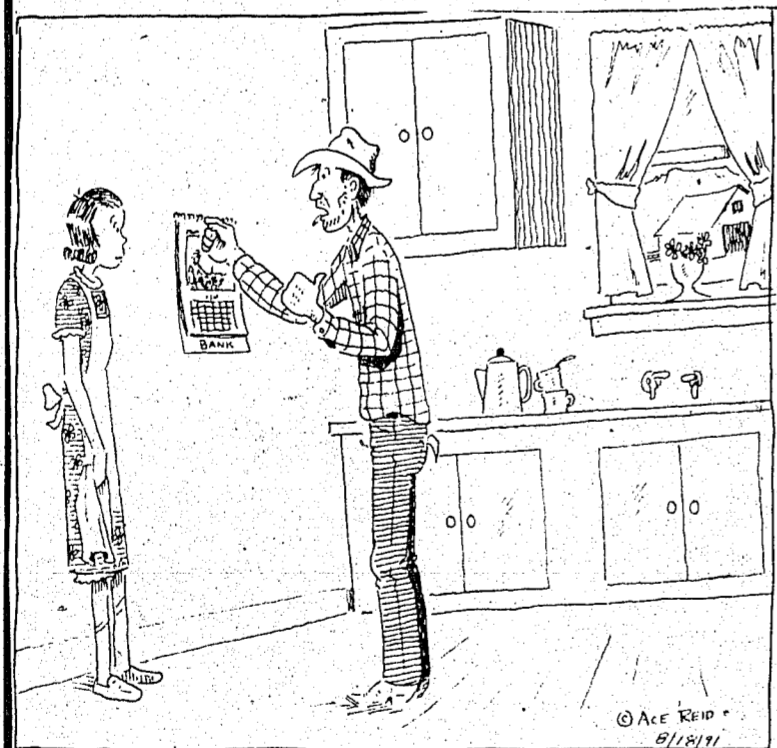
In St. Louis they enjoyed seeing the Gateway Arch and viewed a film that showed the building of the arch. "Very interesting." While in St. Louis they also visited that city's Grand Central Station.

The couple reports that the weather was most pleasant throughout their trip with some rain. nights were about 50 degrees cool and days 70 degrees warm. "Coats felt real good at times."

All in all, a very interesting tour, but glad to be back home again.

Walker
Funeral Home
Pre-Arranged Funerals
Phone (915) 625-4103
Coleman, Texas

COWPOKES By Ace Reid



"Maw, I think our bank is in trouble. President Tufernal is at the front door and wants his calendar back!"

Santa Anna National Bank

Deposits Insured By
FDIC Up To \$100,000
Ask About Our Interest-bearing
Checking Accounts
\$1,000 Minimum
Pass Book Savings
Certificates of Deposit

Substantial Interest Penalty Is Required
For Early Withdrawal

Obituaries

Mildred Ruggles

Services for Mrs. Albert (Mildred) Ruggles, 75, of Santa Anna were Tuesday, Sept. 3 at 2:00 p.m. at Trickham Union Church, Trickham with the Rev. Don Elrod, pastor of Trickham United Methodist Church, officiating. Burial was in Trickham Cemetery. Henderson Funeral home of Santa Anna was in charge of arrangements.

She passed away at 8:10 p.m., Sunday, Sept. 1, 1991 at Humana Hospital, Abilene.

She was born Feb. 19, 1916 in Bellville, Tex., the daughter of the late Joe and Annie Spencer Lyons. She married Albert Ruggles in 1935 in Jennings, La. She had been a Coleman County resident since 1960. She was a graduate of Bellville High School. was a Methodist and a homemaker.

Survivors include her husband, Albert Ruggles of Santa Anna; one son, James Albert Ruggles of San Diego, Calif.; one sister, Ethel Zurzback of Connecticut; two granddaughters, Hillary Jean Ruggles and Danica Ruggles, both of San Diego.

Pall bearers were Bruce Kingsbery, Joe Wallace, Warren Barton, Hilburn Henderson, Buddy Harris and Rankin McIver.

Cemetery Contribution

A memorial for Mr. Dewey Cason has been received by the Santa Anna Cemetery Association, from Tommy and Kay Dyer of Coleman.

A donation in memory of Lora Tisdell was made by Chester and Mildred Galloway and Pauline Eubank.

Friendship Luncheon

The Friendship luncheon was enjoyed by a large group who gathered last week to share a potluck meal.

Fried chicken will be the main course this Thursday as friends and neighbors gather at noon at the Mountain City Community Center.

Everyone is welcome to bring a dish and enjoy the food and fellowship. Friends from neighboring communities have a special invitation to be present.

Lora Tisdell

Services for Lora Tisdell, 98, were held Friday, August 30 at Northside Baptist Church in Santa Anna with the Rev. G.W. McFadden officiating. Burial was in Santa Anna Cemetery. Santa Anna Funeral Home in charge of arrangements.

She died Tuesday, August 27, 1991 in a Brownwood nursing home.

Born in Santa Anna, January 29, 1893, she was the daughter of the late Mr. and Mrs. William L. Day. She was a 1914 graduate of Santa Anna High School.

Mrs. Tisdell was a lifelong resident of Coleman County other than 30 years residing in Brady. She lived 20 years in the Whon Community. She was a homemaker, a Baptist and the widow of E.M. Tisdell.

Survivors include two daughters, Faye (Mrs. Joe) Wise of Rockwood and Beulah (Mrs. Carl) Minton of Lake Worth, Fla.; six grandchildren and 11 great-grandchildren.

Pall bearers were Foy Allcorn, Bill Day, Roland Day, Jack Day, Hank Wise and Nathan Wise.

Mack Wilkins

Mack Wilkins, 59, died Monday, Sept. 2, 1991, at his residence, Rt. 1, Santa Anna.

Services were at 11:00 a.m. Wednesday at Stephens Funeral Home Chapel in Coleman with the Rev. Bill Daniels officiating. Burial followed in Cleveland Cemetery.

He was born Sept. 20, 1931 in May, Brown County, to Albert and Kizzie Caldwell Wilkins. He grew up in Coleman County and attended schools in Comanche and Van Dyke. He moved to Coleman as a young child. He married Sarah Katherine Butler, April 23, 1970, in Oklahoma. He worked in concrete construction and was a member of a local union. He was a Baptist.

Survivors include his wife, Sarah Katherine Wilkins of Irving; one daughter, Yvonne Reed of Tyler; three brothers, Charlie Wilkins of Brownwood, Albert Wilkins of Santa Anna, and a twin, Mark Wilkins of Garland; two sisters, Jane Brooks of Coleman and Dorothy Sinks of Quinlan; four grandchildren; one great-grandchild; and numerous nieces and nephews including Dwayne Wilkins of Brown County, Rita Rozalez and Wanda Hernandez, both of Coleman, and Darrell Wilkins of Goldthwaite.

Library Notes

Check It Out

by Alice Anna Spillman
Someone expressed the doubt that there are many science fiction fans around here. I believe there are plenty. So show up soon at the library. Contributions from several sources have provided a few boxes of these paperbacks and also military adventure.

Leanna Hartman gave us several boxes of books. These must be sorted. Some are children's books. The library gladly receives them.

Do you belong to my club? I know nothing about football. Well, there is a book out now that can help. *Bluff Your Way in Football* costs \$3.95. Might be worth that to be able to talk to husbands, boyfriends, or sons during football season.

Also just released is the long awaited sequel to *Gone With The Wind*. It is titled *Scarlett*. No information is available about it yet.

If you know a romantic female who was in her teens in 1939, this may be the perfect Christmas gift!

Judyth Rigler is still looking for the best first paragraph from a Texas classic. Those of you who read Texana and westerns can send in your favorites. Her September 1 Column had an entry from a Brownwood man.

Send your entry to Judyth Rigler, c/o Lone Star Library, 711 Love Circle, San Antonio, TX 78258.

Have you read *The Sum of All Fears*, *The Kitchen God's Wife*, *The Firm*, *Maximum Bob*, or *Loves Music Loves to Dance*? These are the top 5 fiction books according to Script Howard News Service.

Birthdays and Anniversaries

Birthdays and anniversaries are taken from the Delta Omicron Community Calendar. If you wish to include one which has not been placed on that calendar, please call the Santa Anna News, 348-3545, no later than Monday of the week it should appear in the NEWS.

THURSDAY, SEPTEMBER 5
Debbie Horton Dean
Linda White
Billy Driskell
Mr. & Mrs. Montie Guthrie *

FRIDAY, SEPTEMBER 6
Kelly Simmons
Ashley Bible
Vicki Ford
Leanna Hartman
Darbi Neff
Jacob Pritchard
Missy Moore Lee

SATURDAY, SEPTEMBER 7
Nathan Wise

SUNDAY, SEPTEMBER 8
Ruby Fleeman
Patrick Hosch
Rod Musick II
Janet Neff
Sandra Wilson

MONDAY, SEPTEMBER 9
Mark Turney
Glen Copeland
Lori Diaz
Johnnie Lawhon
Haley Slate
Mr. & Mrs. J.R. Salazar *

TUESDAY, SEPTEMBER 10
Jerry Don Culpepper
Billie Gay Abernathy
Elsa Gay Garza

WEDNESDAY, SEPTEMBER 11
Frank Gray
Jean Kellar

fit upright into half of food chamber; slice into bowl. Mix salad dressing with dill and seasonings. Add enough reserved bean liquid to make a pourable dressing. Pour dressing over vegetables; toss to blend.
Makes about 6 cups.

Barbecue Ideas

A Slaw That Stands Up To A Barbecue

This hearty, highly-seasoned salad has plenty of pizzazz to stand up to all your grilled meat favorites—hamburgers, steaks, ribs, hot dogs, pork chops. Dense and delicious red-kidney beans combine with shredded cabbage, chopped onion, bits of bell pepper and slices of dill pickle, in a dressing pepped up with dashes of seasoned salt, lemon pepper and paprika. It's easy to make with the Presto® Professional SaladShooter® electric slicer-shredder. This premium handheld food processor offers professional power, speed, capacity and versatility. With its four interchangeable cones—for thick and thin slices, shreds and ripple cuts—it makes quick work out of slicing and shredding fresh produce and really streamlines slaw making.

BEANY CABBAGE SLAW

- 1 (15 1/2-ounce) can red kidney beans
- 1/2 medium cabbage head
- 3 small dill pickles
- 1 small red or yellow onion



- 1/2 large green, red or yellow bell pepper, seeded
- 1/2 cup reduced calorie salad dressing
- 1 tablespoon chopped fresh dill or 1 teaspoon dried dill weed
- 1/2 to 1 teaspoon seasoning salt
- 1/2 teaspoon lemon pepper
- 1/2 teaspoon paprika

Drain beans, reserving 1/2 to 3/4 cup liquid. Place shredding cone in Presto® Professional SaladShooter® electric slicer-shredder. Remove core from cabbage and cut to fit into food chamber. Shred into bowl until all cabbage is shredded (about 5 cups). Place slicing cone into SaladShooter. Put pickles upright into half of food chamber; slice into bowl with cabbage. Cut peppers to



MEDICAL EQUIPMENT SALES & RENTALS

Did You Know?

Medicare will pay 80% on medical rental and purchases with a doctor's prescription. There is no out-of-pocket expense if you have supplemental insurance.

Walkers, commode chairs, wheelchairs, hospital beds, trapeze equipment, nebulizers, medication for nebulizers, air compressors, mattresses, oxygen concentrators & more.

Same Day Delivery & Set-Up

South Park Pharmacy

101 South Park Drive 646-5558

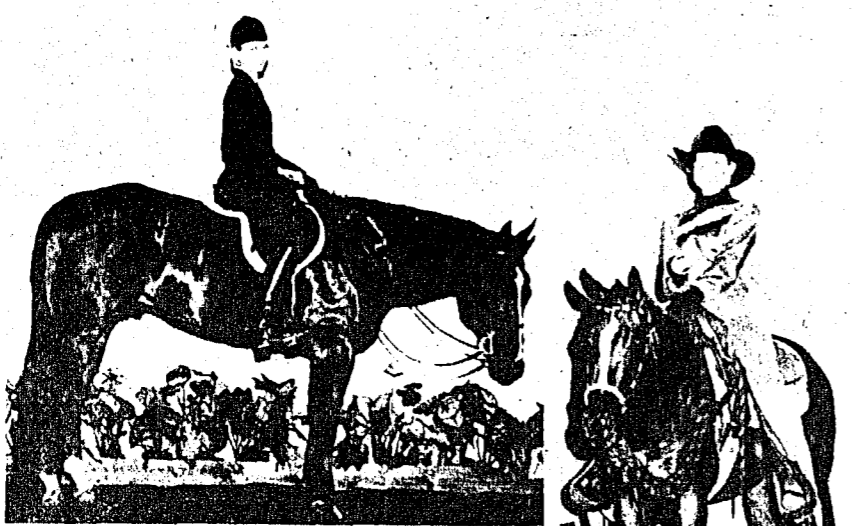
Liveoak REAL ESTATE
115 W. Liveoak, Coleman 915-625-4181

208 N. 6TH Remodeled 3BR home, large corner lot. \$21,000.
901 PINE 3BR house on 1 acre, pecan trees. Only \$11,500.
407 AVE. C 3BR, 1 1/2 story house, large carport. \$21,000.
1208 AVE. B Nice 2BR, vinyl siding, fenced yard. \$20,000.
BANGS Nice affordable 2BR home, large trees, storage building. \$16,500.
BETWEEN SANTA ANNA & BANGS Nice 3BR brick home on 37.97 acres, water well, stock tanks, barns. \$85,000.
BETWEEN COLEMAN & SANTA ANNA Older 2BR house on 5 acres, stock tank, barn. Only \$18,000.

WE HAVE OTHER PROPERTY AVAILABLE • PLEASE CALL FOR DETAILS

JAMES HUNTER, Broker 625-2232
LARRY COLLOM 754-4849
V.J. KEMPER 636-4493
ERLENE BARKER 625-2876
L'NDI ARMSTRONG 625-2924

Jill Hosch Named Runnerup For Overall Showmanship In State 4-H Horse Show



STATE RESERVE CHAMPION—Jill Hosch, a Swisher County 4-Her from Tulla, was reserve champion judged horseman in the 1991 Texas State 4-H Horse Show, held in Abilene. The daughter of Pascal and Joyce Hosch is shown with her state awards in top photo. Miss Hosch is pictured at bottom left after winning first in hunter horsemanship and at bottom right after claiming first in the western pleasure futurity. —Courtesy photo

Jill Hosch of Tulla, daughter of Mr. and Mrs. Paschal Hosch and granddaughter of Mrs. Jewell Hosch of Santa Anna, recently was named runnerup for overall judged horseman in the Texas 4-H Horse Show held in late July at Taylor County Expo Center in Abilene.

"Jill was consistent, placing in all four classes," explained Swisher County Extension Agent, David Gibson. He added it was close between first and second.

Points were based on 10 for first place, nine for second and down to one for tenth place.

The equestrienne, a Tulla High School sophomore, was high point in the District 2 4-H Horse Show and Swisher was the high point County.

Miss Hosch competed with over 350 contestants vying in the qualifying show after the open show which had even more participants.

She placed first place in the two-year-old futurity, won hunter horsemanship and placed fourth in hunter under saddle in the open show events.

In the qualifying show, she was fifth in both western horsemanship and western riding, and sixth in both showmanship and western pleasure. This gave her a place in each of the events.

Her bother, Sam, was also a participant in the horse show, qualifying for the western riding finals but not placing in the top ten.

Class Of '51 Homecoming Reunion

The Class of 1951 is planning their 40th year reunion to be held during 1991 Homecoming which is scheduled for Friday and Saturday, October 4 & 5.

They will be meeting at the annex building of First United Methodist Church on Saturday, October 5 at 1:00 p.m.

The meeting place will also be open on Friday night during the football game for those who do not plan to attend the game.

Friends from other classes are welcome to attend.

If you are a member of that class, be sure to pass the word along to others you may be in contact with.



Barbecue Lunch, Talent Show At FBC Sunday

There will be a barbecue chicken and sausage lunch and a talent show at 12:00 noon Sunday, Sept. 8, at First Baptist Church Christian Life Center.

The cost of the meal will be \$4 for adults and \$2 for children under 12 years of age.

The proceeds will go to help defray the costs of couple attending the Fall Festival of Marriage in Glorieta, N.M.

Everyone in the community is invited to come share the meal and enjoy the talent show.

Rattlers On Both Ends?

That's what it looks like, alright. However you are actually seeing two rattlesnakes, one swallowing the other. You may have a hard time distinguishing the head of the snake that is devouring the other. It is located in the picture directly under Floyd Morris' right shirt pocket. Mr. Morris, who knows about as much about rattlesnakes as anyone in these parts, says this is the first time he has ever seen this happening, in fact, never even heard of such a thing before. And he ought to know, he has been a snake hunter and handler for many years, taking the reptiles to area shows. He found these snakes at his hay barn near the yard of his home near the Whon community. He estimates they are about 4-1/2 foot each in length.

Photo by Polly Warnock

Ambulance Issue Still Up In The Air

By Jim Considine
All the county commissioners were present for the opening of bids for the continuance of ambulance services after Sept. 25 when the current contract expires. The meeting room was packed and visitors spilled over into two adjoining rooms. Four bids were received,

none were accepted. After lengthy discussion, action was tabled and bidders were assured that they would be advised by Sept. 10 of whatever decision is made.

Even before opening the first bid, County Judge W. W. "Pete" Skelton said: "We are undecided whether we can accept any of them" that being because funds are not now available to continue subsidizing the service.

The bids received were from the following: Coleman County Emergency Service, Goldthwaite Emergency Medical Service, Amstar Emergency Medical Service (from Bangs), Amcare (from San

Antonio). Comparisons of the bids was next to impossible because of alternatives and options proposed. The commissioners need an expert to help them understand and compare the bids. Several proposals were more than six pages long. Since they have no expert to call in for consultation, the commission will have to stumble through to a decision on their own. A real possibility is the rejection of all the bids, and then perhaps a new bid request with very narrow guide lines for the services.

Really now, how does one compare a new Lexus 400 with a 1982 Ford? That is the task the commissioners face. One proposal (the new Lexus) asks for a county subsidy of \$240,000 annually for three years. Another (the used Ford) looks for a subsidy of \$26,400 annually for five years.

That is just the money "bottom line" difference in the bids. There are numerous differences in the kinds of proposed service. For example, whether "basic life support" or "advanced life support" will be offered; what response time is promised for emergency calls; what fees will users be charged. Amstar specifies that their location base will be in Bangs not Coleman. Their bid is that the county buy 2

Senator Dickson Will Speak At Chamber Banquet, 14th

The Santa Anna Chamber of Commerce annual banquet has been scheduled for Saturday, Sept 14, at Funtier Square. Officials state, "For those who may be new to town, Funtier Square is the Civic Center area, otherwise known as the old Armory building.

Senator Temple Dickson will be the guest speaker for the occasion. Citizen of the Year will be named and the Rob Cheaney 'Best Dressed' award will be presented.

The banquet will be an informal affair and those attending are encouraged dress casual and comfortable.

The meal will be a catered "western chuck wagon meal with not a lot of frills" but certainly enjoyable.

There will be no advance ticket sales. You will pay at the door. Prices will be announced next week, when further details have been worked out.



SENATOR DICKSON

RESERVOIR CONDITIONS
Ivie Reservoir water levels were: Aug. 19 - 1520.63; Aug. 20 - 1520.63; Aug. 21 - 1520.63; Aug. 22 - 1520.63; Aug. 23 - 1520.63; Aug. 24 - 1520.61, with 1.66 inches of rain; and Aug. 25 - 1520.59. Reservoir water levels remained constant for the first part of the week, because of inflows from rains received on the upper watershed.

All Remaining Straw Hats Including George Straight \$35

Large Sale Rack Rocky Mountain & Silverlake Jeans \$10 Off

All Remaining Short Sleeve Shirts \$15

We Have Hot Pink & Fluorescent Orange Brush Popper Shirts

Southwest Design Purses Starting At \$79.95

This Coupon Good For \$2.00 Off On All 13 MWZ & 936 Denim Jeans Sizes IT to 46 (includes colors) Expires Sept 14, 1991

Red Wing Work Boots & Shoes

JM WESTERN WEAR

108 Commercial, Coleman Phone 625-2433 Open 9:00-5:30, Mon.-Sat.

ALLSUP'S

ALL VARIETIES
COCA-COLA
\$1.99
6-PAK CANS

Enjoy
Coca-Cola
CLASSIC

PRICES EFFECTIVE SEPT. 4-11, 1991

SUGAR BABIES, JR. MINTS, POM POMS, SUGAR DADDIES' CANDIES 3 \$1 FOR	LAY'S® ALL VARIETIES POTATO CHIPS REGULAR \$1.59 \$1.09	REGULAR OR BUBBLE GUM TAPE CAN 2 \$1 FOR
FAMOUS ALLSUP'S BURRITOS 2 89¢ FOR	HOMOGENIZED ALLSUP'S MILK 1/2 GALLON 99¢	BARS FRANKS 12 OZ. PKG. 69¢
EACH HAM, EGG & BISCUIT 79¢	TORTILLA CHIPS & JAL. CH. SAUCE 6 OZ. SIZE \$1.29	NACHO PRONTO

Parkay Margarine	Shurline 16 oz. Crackers	Shurline Napkins	Bounty Paper Towels	Folger's 13 oz. Coffee	Shurline Pitted Olives
2/99¢	59¢	79¢	69¢	\$1.99	\$1.29

2nd ANNUAL
Old Lincoln County
COWBOY SYMPOSIUM
October 3 - 6
Ruidoso Super Select Sales Pavilion
Glencoe, New Mexico
Located 12 miles east of Ruidoso Downs on Hwy 70

For more information and a brochure, call
1-800-545-0402

Old Fashioned Creme Wafers	4/99¢
Campbell Ramen Noodle Soup	2/99¢
Ice Cream Cones	2/99¢
Shurline Frozen Orange Juice - 16 oz.	99¢
Gatorade - 32 oz.	99¢
Oreo Cookies - 20 oz.	\$1.79

ALLSUPS # 126
1000 WALLIS AVE.
SANTA ANNA, TEXAS

Annual FFA Sausage Sale Starts Monday

The Santa Anna FFA chapter will begin its annual sausage sales next Monday, Sept. 9, when members begin to take orders for sausage patties, links and rolls, and a new item this year, pork burger, which can be used in much the same way as beef burger meat.

Some of the students will be calling on you to place orders for these popular items. Be ready to support them in this annual fundraising project. Orders will be taken for two weeks, until Monday, Sept. 23 for later delivery.

Organizational Meeting Tues. For Scouts

(Contributed)

The Boy Scouts and Cub Scouts will hold an organizational meeting Tuesday, Sept. 10 at 7:00 p.m. at the Lions Club building downtown.

We would like to have all Scouts and Cubs, who are now registered, in attendance. We would like for them to be there so they can tell their friends about the fun they can have.

We would like to invite all boys of scouting age (1st grade through 16 years) and their parents to attend the meeting.

We have a very good Cub Pack here and will be trying to organize a Boy Scout Troop.

If you would be interested in a fun and adventure filled program, please come and visit with us.

Having Class Reunion?

Is your class planning a reunion during Homecoming '91? If so, please let us know here at the Santa Anna News, so we can help spread the word.

Write to Box 399, Santa Anna, TX 76878 or call 915-348-3545.

Mountaineers

CONTINUED FROM PAGE 1

Jason Dean, Tommy Williford, Paul Morris and Ray Jones.

Dan Benton, who was backup to quarterback Charles Dixon last year, will probably be seeing plenty of action in that spot this season. He also played receiver last year. Vicente Frausto, running back, may also see some time in the quarterback spot. Its for sure both will be on the field somewhere.

"This team will find its success with its defense," Permenter says. "But our offensive line, although young, could average 225 pounds, so our backs ought to have holes to hit."

Permenter isn't kidding about

size. There's Ray Jones (6-2, 250) and Wesley Dockery (6-4, 244) who are ticketed for the defensive line, while Jason Dean (6-2, 229) and Rusty Fleeman (6-0, 215) will go both ways.

Game time Friday night is 8:00 at Cross Plains.

The Mountaineer junior varsity will be hosting Cross Plains here Thursday evening at 6:00 p.m.

That, too, is expected to be a good game. Plenty of good football on tap this week for local fans.

Assisting Permenter in coaching duties this year will be Dean Bass, David Robinett and first year assistant, Ray Lowe.

Stenholm Seeking Applicants For U.S. Service Academies

WASHINGTON, D. C. - Congressman Charles W. Stenholm has announced that he is currently seeking applicants for nomination to the United States Service Academies. Applications for nomination to the U.S. Military Academy in West Point, New York, the U.S. Air Force Academy in Colorado Spring, Colorado, the U.S. Naval Academy in Annapolis, Maryland, and the United States Merchant Marine Academy in Kings Point, New York, may be obtained by writing to Congressman Stenholm's Stamford office.

Nominations are available to young men and women who will be at least 17-years of age, and not past their 22nd birthday upon entry into the academy in July. Nominees

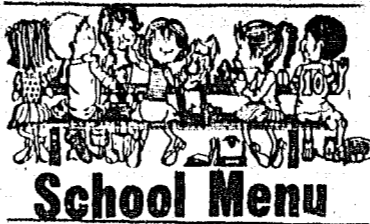
are selected by a competitive process, judged on scholastic aptitude, moral character, leadership ability, and community involvement.

The academies offer a four-year degree in a variety of areas ranging from Civil Engineering and Physics, to American Studies and Behavioral Science. While attending the academies, cadets and midshipmen will earn an annual salary of approximately \$6,500, from which expenses for books, uniforms and incidentals are taken. Tuition, room, board, medical and dental expenses are paid for by the academies. Upon graduation from the academies, the cadets and midshipmen will serve as officers in the service for a minimum of five years.

Any persons who may be interested in applying for a nomination, or who would like to obtain additional information, should write to Congressman Charles W. Stenholm, P.O. Box 1237, Stamford, Texas, 79553. Applications must be submitted, and files completed, no later than December 1, 1991. Nominations will be made toward the end of December.

Don't Forget Homecoming October 4th & 5th. Start Making Plans To Attend!

Attention SAHS Ex Students! Mary Ford Fields asks you to "Start cleaning out those closets and collecting items for the giant Ex-Student Garage Sale to take place at a later date."



School Menu

MONDAY

BREAKFAST: Choice of dry cereal; buttered toast, jelly, choice of apple or orange juice.

LUNCH: Barbecue pork patty; baked beans; coleslaw; macaroni

salad; fruit cup with whip topping; hot rolls; milk.

TUESDAY

BREAKFAST: Waffle; sausage; syrup; fruit; milk.

LUNCH: Steakfingers with gravy; cream potatoes; green beans; cherry cobbler; hot rolls; milk.

WEDNESDAY

BREAKFAST: Buttered toast; jelly; choice of apple or orange juice; milk.

LUNCH: Frito pie with cheese; pinto beans; Mexican salad; fruit; chocolate pudding; cornbread; milk.

THURSDAY

BREAKFAST: Biscuit; sausage gravy; jelly; choice of apple or orange juice; milk.

LUNCH: Taco bowl with taco sauce; refried beans; Spanish rice; shredded lettuce, tomatoes, cheese; brownies; milk.

FRIDAY

BREAKFAST: Muffins; choice of orange or apple juice; milk.

LUNCH: Hamburgers; fries; cookies; milk.

School Yearbooks Have Arrived

Santa Anna High School annual staff sponsor, Sandra Guthrie, has announced that the 1990-91 yearbooks have arrived and may be picked up in room 208 of the high school building between the hours of 1:00 to 3:00 p.m. on school days.

You are asked to bring your order receipt. There are a limited number of extra copies which will be sold on a first come/ first serve basis.

Girls Tennis Teams Keep Active During Summer

Santa Anna girls tennis teams kept active during the summer by participating in three tournaments held in San Saba.

On June 14-15, Briana Horner took 1st place in the 12 year-old singles division. Barbara Hardin placed 2nd in the 18 year-old girl's singles. Brandi Horner and

Claudette Hardin received Consolation in the 18 year-old doubles division. Brandi Horner teamed with Brownwood Cory Howard in the 18-year-old mixed doubles and received 2nd place in that event. Others from Santa Anna participating in the meet were Marixa Longoria, Adel DeLeon and Loreno Padillo.

On July 19-20, Briana Horner once again took 1st place in the 12 year-old singles. Claudette Hardin received Consolation in the 18 year-old singles. Barbara Hardin teamed with Lisa Martin of San Saba and placed 2nd in the girl's doubles. Brandi and Claudette received Consolation in the girl's doubles division. Others participating in the meet were Marixa Longoria and Jeannie Patterson.

The only entry in the August 9-10 tourney were Claudette and Marixa. The team won Consolation in the 16 year-old division of girl's doubles.

Coach David Robinett accompanied the girls to all the meets. The tournaments were sponsored by the San Saba Tennis Association.

Time To Sign Up For Houston Calf Scramble

County 4-H members, who are interested in participating in the Houston Calf Scramble, should notify the local Extension office by Friday, September 13th.

You must be 12 years of age in order to participate. If you are lucky enough to 'catch' you must show your heifer in the 1993 Houston Livestock Show.

Mountaineer Football

SAHS Varsity

Sept. 6	Cross Plains	There	8:00
Sept. 13	Rising Star	There	8:00
Sept. 20	Robert Lee	Home	8:00
Sept. 27	Baird	There	8:00
Oct. 4	Gorman	Home	8:00

(Homecoming)

Oct. 11	Eden *	There	7:30
Oct. 18	Water Valley *	Home	7:30
Oct. 25	Irion County *	There	7:30
Nov. 1	Menard *	Home	7:30
Nov. 8	Miles *	Home	7:30

*Denotes District Games

Junior Varsity

Sept. 5	Cross Plains	Home	6:00
Sept. 12	Ranger	Home	7:30
Sept. 19	Ranger	There	7:30
Sept. 26	Baird	Home	7:30
Oct. 3	Cross Plains	There	7:30
Oct. 10	Eden	Home	7:30
Oct. 17	Water Valley	There	6:30
Oct. 24	Irion County	Home	7:30
Oct. 31	Menard	There	7:30
Nov. 7	Miles	There	7:30

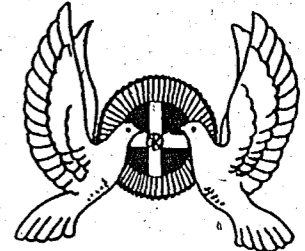
Junior High

Sept. 12	Rising Star	Home	6:00
Sept. 19	Ranger	There	6:00
Sept. 26	Baird	Home	6:00
Oct. 3	Gorman	There	6:00
Oct. 10	Eden	Home	6:00
Oct. 17	Grape Creek	There	6:00
Oct. 27	Irion County	Home	6:00
Oct. 31	Menard	There	6:00
Nov. 7	Miles	There	6:00

Attend The Church Of Your Choice

O Come, let us worship and bow down; let us kneel before the Lord our maker.
Psalms 95:6

Assembly of God
Brady Hwy.
James Ford - Pastor
Sunday School - 9:45
Worship Service - 11:00
Sunday Evening - 7:00
Wednesday Evening - 7:00



Cordero Baptist Church
Ave. C & South 6th
Simon Estrada - Pastor
Sunday School - 9:45
Worship Service - 11:00
Evening Worship - 5:00
Wed. Bible Study - 6:30

Full Gospel Fellowship
2nd St. at North Santa Fe
John Howze - Pastor
Sunday School - 9:45
Worship Service - 11:00
Evening Service - 6:00
Saturday
Fellowship Supper & Gospel Singing - 1st Saturday of Each Month - 7:00

First Baptist Church
106 S. Lee
Dr. Robert L. Smith-Interim Pastor
Sunday School - 9:30
Worship Service - 10:45
Sunday Evening - 6:00
Mission Organizations - 6:00
Wednesday
All Age Groups Bible Study - 6:00

First United Methodist Church
405 South 1st
Don Elrod - Pastor
Sunday School - 9:45
Worship Service - 11:00
UMYF - 5:00
Fellowship Dinner Each 5th Sun.

St. Willow Baptist Church
Brady Hwy.
Rev. R.L. Brown - Pastor
Sunday School - 9:45
Worship Service - 11:00
Wed. Prayer Meeting - 7:30

Presbyterian Church
1001 Willis
Jasper McClellan - Pastor
Sunday School - 9:45
Worship Service - 11:00
Family Night Dinner - 3rd Wed.
Fellowship Dinner Each 5th Sunday

Northside Baptist Church
708 Ave. B
G.W. McFadden - Pastor
Sunday School - 9:45
Worship Service - 10:50
Sunday Evening - 6:30
W.M.A. 1st & 3rd Mon. - 2:00
Wed. Nursing Home Service - 10:00
Wednesday Prayer Service - 6:00

Seventh Day Adventist Church
Ranger Park
Harvey J. Komegay-Pastor
Saturday
Sabbath School - 9:30
Worship Service - 11:00
Vespers - SDA School - 4:00
Tuesday
Prayer Meeting - 7:00 at school

Henderson Funeral Home Coleman & Santa Anna

Coleman County Telephone Coop
Santa Anna, Texas

Sharon's Beauty Salon
Santa Anna, Texas

Santa Anna News
Santa Anna, Texas

Notice Of Comparable Tax Rate And Revenues

The legislature has enacted a statute on school funding to comply with a court mandate enforcing the state constitution. Under prior statutes (S. 3. 1) the tax rate for last year provides \$5,322 per student in state and local revenues. Under this statute (S. 3. 351) that same rate now provides \$6,085 per student in state and local revenues.

State law requires a minimum tax rate of \$.78499 for County Education Districts. State law does not require a school district to adopt additional taxes. Neither does state law require a school district to adopt a tax rate that maximizes the receipt of state funds.

The Board of Trustees of the Santa Anna School District hereby gives notice that it is considering the adoption of a tax rate of \$.36 that will provide \$5,008 per student in state and local taxes.

Alu

The helps and e surp many nique answe confic ening time-

Q. in all A. I micro availite tion, 1 ly use it is i and c factu cernit

Q. ing? A. irregu tend When areas, flecte comes food.

Q. about A. It occ metal wave bi-leve some There betwe wall

Resi were s when t Count with l Bible, Mr. L. Shore. Albe from l Ida Pe Virgin Feli: Janice Cha: Barbar Dot an Lok Elway: Opa Merle Taylor Hende McFac Chran Robins Jack Sorrell Lilli Sorrell Mae McCle Taylor Mar from J and Jo Frar Bill an Chri Merle Taylor and Pe Bul: Jessie Thom Dillar Bauc Luc: Ophel Forr Norm: Cyndi Lett Waide Mar Parker

Mar Miche Logan Allc Aaron Lela Ann W Jimi by Me Taylor Este Merle Taylor Lois visitor and Je

Mar Miche Logan Allc Aaron Lela Ann W Jimi by Me Taylor Este Merle Taylor Lois visitor and Je

Mar Miche Logan Allc Aaron Lela Ann W Jimi by Me Taylor Este Merle Taylor Lois visitor and Je

Mar Miche Logan Allc Aaron Lela Ann W Jimi by Me Taylor Este Merle Taylor Lois visitor and Je

Mar Miche Logan Allc Aaron Lela Ann W Jimi by Me Taylor Este Merle Taylor Lois visitor and Je

Mar Miche Logan Allc Aaron Lela Ann W Jimi by Me Taylor Este Merle Taylor Lois visitor and Je

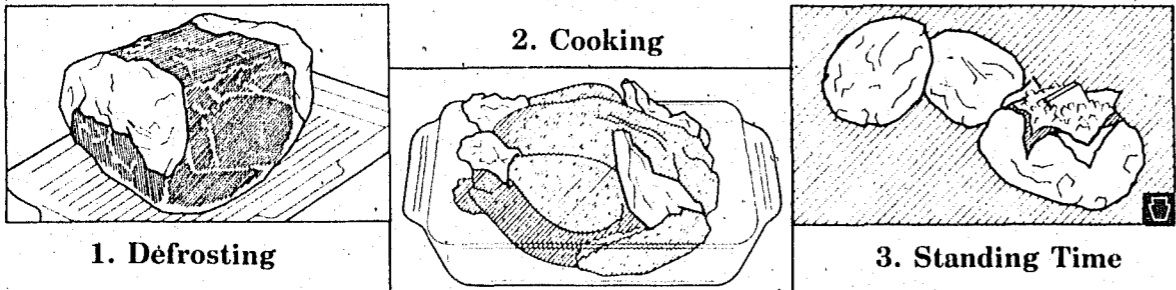
Mar Miche Logan Allc Aaron Lela Ann W Jimi by Me Taylor Este Merle Taylor Lois visitor and Je

cooking

Using Aluminum Foil

the microwave way

Aluminum foil can be used in a microwave oven. The fact that metal reflects microwave energy is a three-way advantage in micro-cookery.



The appropriate placement of foil helps assure more even defrosting and cooking of many foods. It is not surprising that consumers have many questions about this technique. Once their questions are answered, consumers will have the confidence to enjoy the ever-broadening use of the energy efficient, time-saving microwave oven.

including other pieces of foil. The foil should be kept as smooth as possible and close to the food. Q. What is shielding? A. Shielding is the term used to describe the use of foil to protect certain areas of food. Foil shields can be held in place with wooden picks.

Q. Can foil be used in defrosting? A. Yes. Properly placed foil pieces will protect parts of food that thaw faster and prevent browning or cooking on the edges while the center remains frozen. It's nice to know that you can enjoy the roast you have planned for dinner, even if you forgot to thaw it in advance. For a 4-pound roast, place on a microwave oven rack in a glass baking dish. Shield edges with foil strips, securing with wooden picks. Microwave on DEFROST setting for 16 minutes or about half the time listed in the defrost chart provided with your microwave oven.

Ranger Park Inn By Dorothy York

Residents at Ranger Park Inn were surprised Thursday evening when two new members joined our Country Musical Group. Along with Billie Wheatley and Lynn Bible, we are pleased to welcome Mr. Lynn Fulcher and Mr. Jessie Shore.

SCOTT & WHITE OPTIONS FOR HEALTH

Fire Ant Facts Sandra McMahan, M.D. Department of Internal Medicine at Scott & White Hospital and Clinic and Assistant Professor of Internal Medicine, Texas A&M University College of Medicine

Q: My two-year-old son recently got several fire ant bites on his back when playing in the yard. What medical concerns should I have about fire ant bites? How do you treat fire ant bites?

A: Fire ants are members of the group of insects which include bees, wasps, yellow jackets and hornets. Up to 58 percent of the population in fire ant endemic areas are stung yearly. The characteristic "pimple" or sterile pustule that appears approximately 24 hours after a fire ant "bite" results from the venom injected when the ant stings its victim.

Send Us News! CLASSIFIED

If you have information that might make a good article for this paper, send it in and we'll try to use it in an upcoming issue.



348-3545

DEADLINE TO PLACE ADS Tuesday, 12:00 noon

Santa Anna News Classified Policy... Please Read Your Ad The First Day!

All errors should be reported immediately. The Santa Anna News assumes no responsibility for errors other than to re-run the ad one week after the error is called to our attention.

3 Lines, 5 Weeks \$750

Merchandise Garage Sales LADIES SILVERLAKE SHIRTS. INSIDE SALE-Saturday, Sept. 7. 1104 Wallis Ave.

Doing business without advertising is like winking at a girl in the dark. You know what you're doing, but nobody else does.

Texas SCAN Statewide Classified Advertising Network. Advertise in 293 Texas newspapers for only \$250. Reach 3 MILLION Texans. Call this newspaper for details.

DEER HUNTERS SPECIAL: 50 acres, \$595/acre, wooded, excellent hunting, county road. Texas veteran or owner financing, prime acreage. Fox Real Estate, 500 Buchanan Dr., Burnet, Texas. 512-756-6066.

FACTS & FIGURES


Americans consume about 40 million cups or glasses of tea a year. Although tea traditionally has been a "high touch" beverage, with brewing taking on the mantle of ceremony...

REED MEMORIAL CO. LIMITED Monuments of Distinction Ft. Worth Hwy. Brownwood, Texas. Phone: (915) 646-7625

Stevens Funeral Home Since 1889 Member By Invitation of National Selected Morticians 400 W. Pecan Phone: (915) 625-2175 Coleman, Texas

If You Are Elderly & On A Fixed Income, We Have An Ideal Place For You To Live HIGHRISE APARTMENTS of Santa Anna All utilities are included in the rent except telephone & cable TV.

SEPTEMBER 05 91



TAX FACTS

by JOHN SHARP
TEXAS COMPTROLLER OF PUBLIC ACCOUNTS

Lawn care may be taxable

If you hire someone to take care of your lawn and landscaping, you may have to pay sales tax for their services. There is an exemption on lawn services provided by neighborhood kids under the age of 18 and older adults age 65 or older.

Youngsters don't have to collect sales tax on yard work as long as their income is less than \$1,000 during the preceding calendar quarter.

Lawn care services by older adults qualify for tax exemption if their total receipts for lawn care and landscaping during the previous four calendar quarters were \$5,000 or less.

Lawn care services don't include mowing street and highway rights-of-way for government agencies, mowing cemeteries, mowing or fertilizing farm or forest land and trimming trees away from utility lines. Although similar to lawn maintenance, these services are not lawn care and aren't taxable.

For more tax information, call the Comptroller's toll-free tax assistance hotline at 1-800-252-5555.

Pest riddance a taxable concern

This is the time of year when pesky ants, mosquitoes and roaches begin multiplying and causing havoc throughout the state. There are professional pest control services that Texans can call for help, and more

and more of the remedies are non-toxic in nature.

Pest control services must collect sales taxes on the total amount they bill their customers. The taxable amount will also include any charges for related activities, such as inspection.

Taxable pest control services include preventing, controlling or eliminating insects and removing or treating pests or diseases of trees, shrubs or other vegetation.

For more tax information, call the Comptroller's toll-free tax assistance hotline at 1-800-252-5555.

No tax on veggie plants and seeds

Depending upon the plants and seeds you buy, you might not pay any sales tax. Purchases of vegetable seeds and annual vegetable plants—such as onion sets, tomato plants or seed potatoes—are not taxable.

But not all plants and seeds are exempt. Fertilizer, fruit and nut trees, flower seeds or bedding plants, and perennial plants are taxable unless purchased for a commercial farm or ranch.

For more tax information, call the Comptroller's toll-free tax assistance hotline at 1-800-252-5555.

2-for-1 promos— No tax on "free" meal

A lot of families try to stay within their budgets by taking advantage of those 2-for-1 meal deals and restaurant discount coupons. They don't pay sales tax on their savings either.

When you buy two meals for the price of one, tax is only due on the amount charged to you. Tax is not due on the so-called "free meal."

Also, when you present discount coupons to pay for a part of a meal, the value of the coupon is not taxable. You only owe tax on the price that is not covered by the coupon.

For more tax information, call the Comptroller's toll-free tax assistance hotline at 1-800-252-5555.

Trickham News

By Anna York

Reba, Elvis, Phil, Cindy and Kellye Cozart came to Trickham for the Labor Day weekend. Saturday evening they celebrated Elvis' birthday with a fish fry. They were joined by Alvin and Coren Caraway from Goldthwaite, their daughter Jill and Grandsons, also from Goldthwaite; Michelle Morgan and boys from Santa Anna; and Dwan Cozart and Jeannie Hargut from Houston. Lois, Frank, Billy and Darla Wallace stopped by for a short visit on Sunday evening.

Gertrude Martin returned home on Saturday after two weeks visit with a grandson, Mike McSwain, his wife and new baby son, Michael Ray McSwain II at Glenn Allen, Alaska. Mrs. Martin said she had seen lot's of beautiful country and really did enjoy the trip.

Rev. R.E. Suttle and Alene of Bangs visited Monday with Mrs. Florence Stearns. I dropped by Saturday and her Sunday visitors were Alice Wells, Barbara Kirkpatrick, Amber and Jennifer and a little friend of the girls, Farrah Conkel of Coleman.

Roy Miller of Coleman visited Tuesday with Mr. and Mrs. Rankin McIver. Sunday visitors were Dr. Hamilton of East Texas and Ben McIver of Houston.

Brent and Naomi Nicholas and Ted and a friend, Nathan Purvis of Dallas spent the weekend with Naomi's parents, Mr. and Mrs. Hilburn Henderson. Others visiting were Candice and Rodney Henderson, Jim Bob Edington and Payton Mayes of Coleman and Novella Stearns and granddaughter Sabrina. Mr. Daisy McClatchy joined them for Sunday lunch.

Dana and Lavonda Evans and girls Areil and Allison of Kemper visited on Sunday with his grandmother, Mr. Winnie Haynes. Mrs. Myra Cole of Bangs also came by.

Clint and Missy Stearns and Tatia of McGregor spent the weekend with his grandmother, Novella Stearns. On Saturday the group attended the Stearns reunion at Rock visited Friday afternoon with

Riverside Park in Brownwood. There were 49 present.

Mrs. Laverne McClatchy returned to her home on Tuesday after visiting at Garfield, Kansas with Robert McFessel family. Elizabeth McFessel returned home after visiting with her grandparents, the McClatchys.

Reba and Elvis Cozart of Round

Ambulance

Continued From Page 3

ambulances and pay no operating expenses.

Three of those submitting bids were present and attempted clarifying explanations of their submissions. Absent was Goldthwaite EMS. For a Coleman city based operation theirs was the apparent low bid. However, nothing is known of the company and indications are that they have not been operational for several months. They are last reported to have served Mills County in 1990.

A number of the visitors spoke and Max Horne and Judge Skelton were the more vocal of the commissioners. Milton Autry and Don Rhone of the Coleman Economic Development Board and Alisa LeSeuer of the local hospital staff were among those involved in dialogue with the commission. Autry noted that he believes the voters will understand raising taxes to continue ambulance services. Skelton noted that no tax dollar revenue would be available before Oct. 1992 and a decision needs to be made before then.

LeSeuer said she would summarize the conversations from the meeting for the hospital board (?) and would initiate a discussion there, even including the possibility of making some subsidy for the ambulance service.

The meeting report is that no decision was made now. Conversations make clear that the county wants to spend no money for ambulance service. Yet those conversations cause a reporter to think that the commissioners might be willing to vote for a subsidy of about \$5,000 annually if the city, the hospital, the development board or anyone else will "spring for a buck."

The only other business on the agenda was to approve payment of two small bills. That got done!

Big Texas: Three of the nation's ten largest cities are in the Lone Star State. Houston is fourth, following only New York, Los Angeles and Chicago. Dallas is the eighth largest and San Antonio again beat out Phoenix to rank ninth.

4-H Enrollment Time Is Here

By Kerry Shropshire

Yes, it's that time again. September 1 begins the new 4-H year. If you signed up last year, you will need to enroll for this year. If you signed up August 31st of this year, you will STILL need to enroll for this year.

The age to be eligible to enroll is 3rd grade or age 9 through 19. If this is your first year and you have questions concerning 4-H, you can call the County Extension Office at 625-4519.

If you do not enroll, you will stop receiving your 4-H Newsletter - and we would not want that to happen. Also, if you do not re-enroll, you are not considered a 4-H member and will be unable to show in the County Stockshow (Deadline for show is to be enrolled by October 15th). So,

don't let this happen.

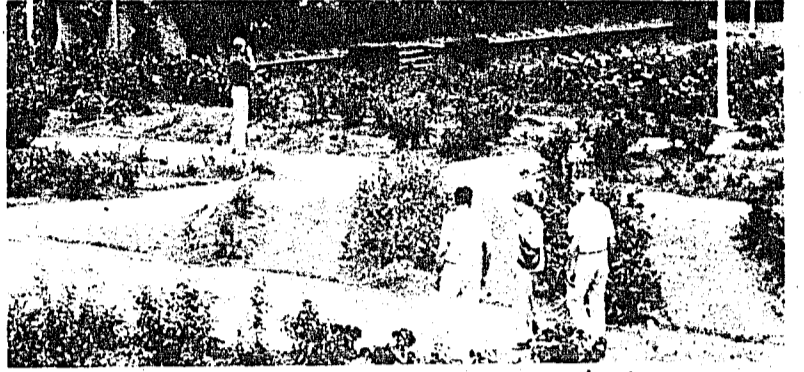
Listed below are dates, places and times of club meetings where you can enroll - or - come by the County Extension Office on the 2nd floor of the courthouse.

Coleman Elementary 4-H: September 10, 6:00 p.m., First Coleman National Bank Hospitality Room. (2nd Tuesday of each month)

Coleman Junior 4-H: September 17, 6:30 p.m., First Coleman National Bank Hospitality Room. (3rd Tuesday of each month).

Santa Anna 4-H: September 9, 6:30 p.m., Lions Club Bldg (2nd Monday of each month).

Panther Creek 4-H: September 18, 6:30 p.m., School. (3rd Wednesday of each month).



The 22-acre Tyler Municipal Rose Garden is the nation's largest rose showcase, featuring 38,000 rose bushes representing nearly 500 varieties. Roses are at their floral peak from May through November, and in October, the Texas Rose Festival is held to pay homage to this noble flower. Commercial growers around Tyler ship hundreds of thousands of bushes to nurseries throughout the nation and to 25 countries, making Tyler one of the largest rose producers in the world. Tourism Division, TX Dept. of Commerce photo.

Henderson Funeral Home

"People Who Care"

Pre-arranged Funerals	Ambulance Service
Counseling & Insurance	Medicare Approved
Coleman	Santa Anna

Whon News

By Mrs. Tom Rutherford

I did talk with Mr. Graham Fitzpatrick. He seems to be doing well. He visits with his wife, Imogene, regularly and the past

Friday. She did recognize him. She suffered a slight stroke a few weeks back and was hospitalized for several days but is back in the Care Center now and her smile is normal. She can also move her foot normally. But the movement of her hand is a little slow, but improving. Mr. Fitzpatrick is also spending some of his time with a dear friend in Brady who is a wheelchair patient and he has some difficulty in doing for himself. Graham loves being able to assist a friend.

Mr. and Mrs. Joe Floyd Morris and Jennifer Morris of Colleyville are with his parents, Mr. and Mrs. Floyd Morris over the weekend. They returned home on Monday. Also Mr. and Mrs. Jamie Lee Morris and girls were with them during the weekend. This family returned to their home Sunday p.m.

Mr. and Mrs. Darwin Lovelady visited with their son, Mr. and Mrs. Randel Lovelady and girls in Brownwood on Friday.

Mr. Leon Carter was with his sister Lorene Black in Brownwood Sunday.

Mr. and Mrs. McInnis and boys, Mike and Jason of Odessa and also Mr. and Mrs. Craig Maria and daughter Terry of Grosvener were with their parents, Mr. and Mrs. Bob Watts during the weekend.

Niel Fitzpatrick and a friend, Jim Wise, of Odessa were with Graham Fitzpatrick during the weekend, returning home on Monday.

Mrs. Darwin Lovelady visited with her sister, Mrs. Elva McDaniel in Brownwood on Tuesday and also with Doris Ruth Stearns.

Mr. Darwin Lovelady visited his cousin, Mrs. Ruth Dodson in Coleman on Wednesday. Mr. s Dodson is recovering from surgery and not doing real well.

Mrs. Janie Morris visited with Charley and Essie Hunter in Coleman on Thursday, and also with her brother, Mr. and Mrs. William Perkins, also in Coleman.

Ora Rutherford of Bangs and my son, Loyd, visited with me Saturday afternoon.

Mrs. Billie Lovelady visited with Lucille Sorrells in Coleman Sunday, p.m.

Mrs. Juanita Branch and daughter, Ora Gene of Willis and area and Mrs. Letha Martin visited with me Sunday afternoon. Mrs. Willis and Ora Gene were here checking on the Bible farm and were weekend guests of Mrs. Martin in Santa Anna. Juanita is recovering from recent eye surgery and will have more in two weeks. We wish her well. The ladies returned home Monday.

Supper guests with Mr. and Mrs. Darwin Lovelady on Tuesday night were Billy Bearden of Brownwood, Jerry Minica of Midland and Juanita Minica of Santa Anna.

I enjoyed a nice visit with Danny Otts and his father, Bob Otts, Saturday morning in the road coming from the pasture checking cows. They had visited Mr. Fitzpatrick for a short time.

Our new neighbors in the community are doing well, Mr. and Mrs. Jim Rushing. I understand Mrs. Rushing is teaching school at Lohn this term.

Williford

Continued from page 1

program is sponsored by O.M. Scott & Sons as a special project of the National FFA Foundation, Inc.

This year's national finalists was Kevin McVeigh of Brownsville, OR who will receive a plaque, a check for \$250 and partially paid travel expenses to the National FFA Convention in Kansas City, Mo. in November. At the convention McVeigh will compete against three other national finalists in the

Turf and Landscape Management proficiency award area selected from reach of the FFA regions.

Tommy was presented a framed certificate recognizing his placing

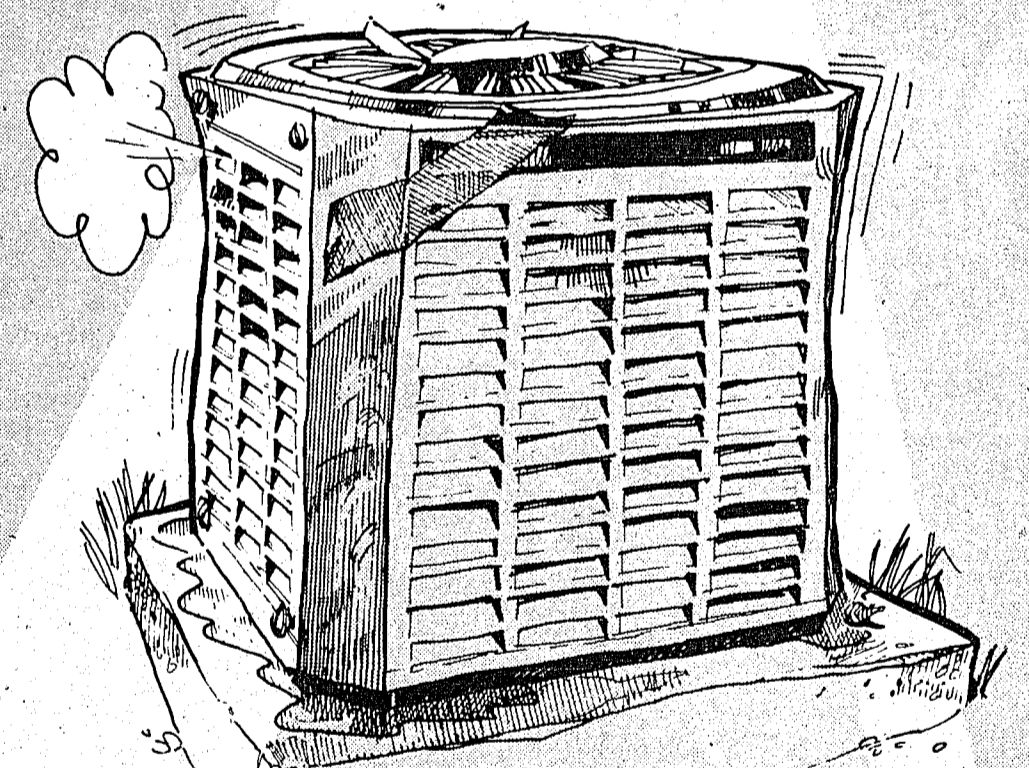
in the competition.

FFA is a national organization of 382,643 members in 7,743 local chapters preparing for leadership and

award programs provide opportunities for students to apply knowledge and skills acquired through agricultural education. FFA members strive to develop agricultural leadership, cooperation and citizenship.

careers in science, business and technology of agriculture. Local, state and national activities and

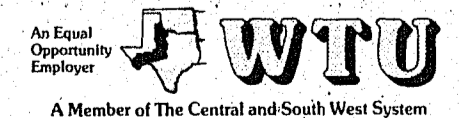
When the heat of too many summers has aged your air conditioner...



...replace it with a system that can help lower heating bills this winter - The DUAL-FUEL HEAT PUMP!

The DUAL-FUEL HEAT PUMP can efficiently cool your home in summer. Then in winter the heat pump provides the most efficient heating for your home during normal winter weather and uses your existing gas furnace to assist during extremely cold conditions.

WEST TEXAS UTILITIES COMPANY



A Member of The Central and South West System

Pay for a new heat pump and its installation on your monthly electric bill with WTU's Finance Plan. Call WTU for details.