

State Capital NEWS

AUSTIN — As the weeks go by and new emergencies arise, Gov. Price Daniel finds more reasons for calling Texas Legislators back to Austin for another special session.

In addition to the Governor's unfinished program, Hurricane Carla has produced other reasons.

It is definite now that the Governor will ask for more money for the Highway Patrol

and for the National Guard. He had to advance money to the Guard, from his emergency fund, to pay salaries and expenses of Guard units called up for hurricane duty.

Major General James E. Taylor, the state adjutant general, said that the 2,300 men and 800 vehicles called out for hurricane duty made up the largest peacetime operation in Guard history. After Governor Daniel's aerial

tour of the hurricane-struck coastal area, he estimated that some 3,000 lives would have been lost had it not been for the organization of civil defense, coordinating with local groups, to evacuate the area.

He also estimated \$400,000,000 loss to public and private property.

"I can see now that we need to provide more money for the National Guard and we need to provide more Highway Patrolmen, too," said the Governor. "I am sure I will add those to the call for a special session."

Rep. C. W. Percy Jr. of Temple proposed that the legislature permit cities and counties to issue bonds to make loans to disaster victims.

Speaker James A. Turman asked the House general investigating committee to start an inquiry into the payment of insurance claims as a result of Carla. He said many hurricane victims were surprised to learn that much of the damage was not covered by insurance. Adjusters held that their windstorm and hurricane policies did not include flood damage even though caused by the hurricane.

Governor Daniel, irked over the adjusters' interpretations, urged policy holders not to be too hasty in settling their claims.

STORM CROP DAMAGE EXTENSIVE

The U. S. Department of Agriculture at Austin says the recent hurricane caused the most extensive wind and rain damage to crops, fields and pastures, ever experienced.

Of the prospective 100,000 bales of cotton in the fields, about \$11,000,000 worth was probably lost, the USDA said. Additional losses will result from grade reductions, the agency states.

JANUARY SESSION TALKED

Chances are that Governor Daniel will have legislators back in Austin during January.

Rep. Murray Watson of Mart suggests that Daniel set up a grass-roots committee of citizens to bring in proposals for removing inequities in the new sales tax law for action at the special session.

Comptroller Robert S. Calvert continues to explain the law. He ruled that the American Red Cross is exempt from the sales tax on its purchases, since it is

an agency of the Federal government.

Calvert is studying a request from some industrial firms that they be allowed to be "direct" payers of the tax. Theory is that life would be simpler if they could keep records and pay the tax once each quarter, instead of paying it hundreds of times a day in the normal course of business.

TAX DOLLAR ANALYZED

Texas Legislative council has taken a new look at where the State's tax dollar comes from and where it goes.

Study reveals that 52 per cent of it is derived from the several types of sales taxes levied in the state, including 15.8 per cent from the new 2 per cent limited sales tax.

Oil and gas production and severance taxes account for 19.1 per cent, business taxes 11.4 per cent, motor vehicle registration fees 9.5 per cent, state property taxes 4.1 per cent, inheritance tax 1.3 per cent, others 2.6 per cent.

Motorists get tapped for 33.9 per cent of the tax dollar, including the motor fuel tax at 21.4 per cent, the sales tax at 3 per cent, and registration fees at 9.5 per cent. Nine per cent comes from tobacco taxes and 2.2 per cent from alcoholic beverage levies.

Our free public school system is taking 33.9 per cent of the tax dollar. Highways and roads are next at 26.3 per cent. Public welfare gets 15.3 per cent. Higher education comes in for 9.6 per cent, while health, hospitals and special schools account for 4.5 per cent.

NEW FARM ROADS APPROVED

A one year program calling for construction of 613 miles of new farm roads costing \$15,200,000 has been approved by the State Highway Commission.

This was approximately half of the usual program authorized by the Commission, as the result of Governor Daniel's veto of the \$15,000,000 for this purpose in the second half of the biennial appropriations bill.

Governor Daniel cut out the second year allocation in order that more flexibility might be attained in providing maintenance for the farm roads system.

Since 1949, under the Colson-Briscoe act \$15,000,000 annually have been earmarked for the construction of farm to market roads, causing all maintenance costs to come out of truck highway funds.

While this arrangement was necessary for many years, to build up farm road mileage, the highway commission says the problem now is financing the maintenance of these roads. Therefore, at least a portion of the earmarked funds needs to go for this purpose.

Action on this matter is expected in the next special session of the legislature.

OIL PRODUCTION CUT

Allowable oil production in Texas for October has been reduced by an estimated 48,490 barrels per day, on order of the

Railroad Commission. Order was based on estimated demands.

An eight-day producing pattern was ordered for most of the state. This will result in a total allowable production of 2,633,214 barrels daily.

Eleven out of 12 major purchasers of Texas crude oil had recommended the eight-day pattern. Sun Oil Company suggested five days of production.

TEXAS GETS MOON ROCKET LAB

Selection of Texas as the site for a laboratory to develop the nation's first moon rocket was hailed by Governor Daniel as one of the most important signs pointing to future progress for the state.

"The Federal government's choice of Harris County for the \$600,000,000 space laboratory means that some of the world's most important work in the peaceful conquest of outer space will be undertaken at the location near Houston," said Daniel.

"It will attract scientific personnel and plants to the state and increase the importance of the Houston area as a center of civilian, military, space and medical research," he observed.

RETAIL SALES INCREASE

Retail sales increased seven per cent during August, the Bureau of Business Research at UT reported.

The impending sales tax which went into effect September 1 was called a major factor in the increase. Namely buying before the tax went into effect.

It was referred to as a "brisk rise" compared to the two per cent decline sales took during July.

Furniture and appliance stores led the field with a 23 per cent increase for August, where the

usual increase from July to August is one per cent.

Apparel stores also increased, primarily with the back to school rush for clothes. Steady increases were forecast because of a Texas birth rate considerably higher than the national average.

Births in the first six months of this year totaled 121,796 compared with 115,730 during the first half of 1960.

NEW MEDICAL SCIENCE

Two University of Texas scientists are looking into a new branch of medical science through which it may some day be possible to determine in advance a person's susceptibility to certain diseases and ailments.


Dr. Robert J. Williams and Frank L. Seigel, reporting on the new science called "propetology" in the American Journal of Medicine, say the technique needs only to be developed, that it must be based on increased knowledge about individuality in the areas of atomy, physiology and biochemistry.

Knowing in advance who might get what, the scientists say it may be possible to avoid such diseases as gout, arthritis, atherosclerosis, muscular dystrophy, multiple sclerosis, cardiac and circulatory diseases, cancer, allergies and numerous other types of diseases and ailments.

"There is probably no single disease among those mentioned which might not be prevented, at least to a substantial degree, if we knew what the roots of resistance are and took appropriate measures," they said.

Fish swim upstream because it is easier to obtain food than by swimming downstream.

Alligators cannot swallow unless completely submerged.



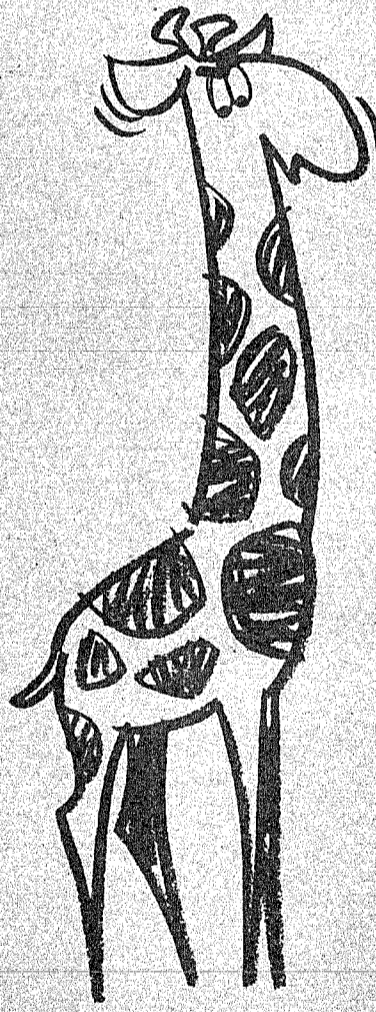
AN IMPARTIAL RECOMMENDATION

THOSE WE'VE SERVED

STEVENS

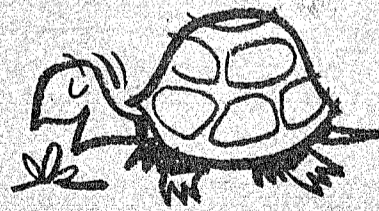
FUNERAL HOME

100 W. Pecan, Coleman Phone 2121



COST OF LIVING?
'way up here!

PRICE OF ELECTRICITY?
'way down here!



21% DOWN

Since 1950, living costs have been going up, up, up.

Since 1950, the average cost of a kilowatt hour of electric service to residential customers served by West Texas Utilities Company has gone down 21%!

Electricity costs so little — you can afford to use lots of it. Start living better electrically, today.



Announcement . . .

We Wish To Announce That

Curtis Lindsey

Is now associated with us as sales manager, and will be in charge of our sales program in Coleman and adjoining counties. We invite you to contact him for your monument needs.

Coleman Monument Works

1301 East 9th St.

Coleman

SHIELD your home
against **WINTER**



- INSULATION
- NEW ROOM
- NEW GARAGE
- NEW ROOFING
- NEW SIDING

Don't let winter catch you cold! Even if you're caught short of cash, you can make those needed, "winter-proofing" home improvements now . . . with the help of a low cost loan from us. Service is quick, confidential, and repayment is easy, in monthly amounts to suit your needs.

Santa Anna National Bank

Member FDIC and Federal Reserve Bank of Dallas

A West Texas House Wife Circles The Globe

By Mrs. Leola Christie Barnes
Copyrights Reserved

VISIT TO THE PHILIPPINE ISLANDS

Three days out from Japan we saw the outlines and beautiful formation of Luzon, as we approached the Philippines — a country whose close ties with the United States, were brought about by two wars: the Spanish American and the tragic circumstances of World War II.

Before us lay one sky blue ridge above another, with crevices of golden ochre like streaks made by an artist's brush; and over all a silver mist that draped it like an enchanted veil. As we drew nearer, the topmost ridges changed to the green of piney woods. Between the Islands and our snowy white ship, were silvered white caps riding in a sea-saw fashion on the cobalt blue of the eternal ocean. Suddenly, there appeared Corregidor and Bataan — those hallowed spots where the blood of brave young Americans mingled with the golden ochre of this now, sacred soil.

Then we were sailing between these two historical landscapes, whose names recall that sneak attack that plunged us into that dreadful war, and as we gazed on the picturesque approach to Manila Bay, the pathos of that December the Seventh, was stirred afresh in our hearts.

Soon our Promenade Deck was swarming with Quarantine and Immigration officials. As soon as we received our landing papers and our Philippine Pesos, we walked down the gang plank to the beautiful strains of welcoming music by a stringed band.

Our Sight-seeing tour the first day was through the City of Manila and I was intrigued by the lovely dress of the graceful Filipino women — with their bouf-

fant sleeves and beautiful Queen Anne necklines. Another sight that fascinated me was the gaudily painted jeepneys that zigzagged through the streets by the thousands. These are converted jeeps sold to the Filipinos at the departure of our military forces from the Philippines. They have been made into taxis and have no regular stops — you wave and the driver picks you up you hiss and he lets you off. The islands have one mode of travel that turns back the pages of time — calesas — drawn by tiny but sturdy ponies. You have to bargain with these drivers until he comes down to a dollar an hour.

Of special interest to us Americans was that part of the city known as Intramuros. The heaviest fighting in the Philippines took place here in 1945, when Manila was liberated from the Japs. This was once the walled capital of the Spanish back in 1571. Before the war it was a charming Old World City with a population of 70,000, but when the fighting was over, Intramuros contained only three repairable buildings. One of these was the Church of St. Augustine, and as we sat in the pews we recalled that our school histories told us that the terms of the American Occupation of the Philippines was signed here in 1898. Adjoining Intramuros, we saw Fort Santiago, which was the military headquarters during the Spanish and American occupation, but it was a torture chamber during the Japanese occupation — it is now nothing but ruins.

The White House of the Philippines is the Palace Malacanan. Here the president lives and maintains his offices. It was formerly the home of the Spanish and American governors; and what a magnificent place it is! I have never seen such enormous crystal chandeliers as adorn the ornate ceiling from end to end. They are formed like huge clusters of grapes and their beautiful prisms scintillate with all the colors of the rainbow. We were overawed by the gleaming lacquer furnishings and the fantastic beauty of the marble floors.

I have never seen so many big universities in one city — sixteen. I was told. Santa Tomas was the oldest American university prior to the Philippines independence. It was founded in 1611. Santo Tomas was used by the Japanese for an internment camp, where they imprisoned American and Allied prisoners during the war. From the numerous Elementary Schools I saw, the Filipinos really believe in education. Most of these schools are Catholic. We drove out to the American

Cemetery with its thousands of white marble crosses; on each of which were these words; "Here lies in glorious memory our comrade-in-arms, whose name is known only to God." On a magnificent white marble archway are inscribed the names of the soldiers buried there.

Manila is an interesting city where the old is mixed with the new; but from the number of gigantic new buildings being constructed, I am sure it will soon be predominantly modern.

The second day we drove through the country-side and saw the rich green valleys resplendent with coconut groves, pineapple fields, and bamboo thickets. Along by the highways, we saw farmers cultivating their fields with antique walking plows drawn by water buffaloes. Farm houses were constructed of bamboo with nipa palm thatching for roofing. These small structures stood on four tall bamboo poles. In visiting one of these, we had to remove our shoes and

climb a slippery bamboo ladder. The natives lived in a small two room arrangement with no furniture except a low bed. In a small kitchen, the meal for this family of eight, was cooking in an iron pot, on an open fire.

We terminated our sight-seeing trip at Taal Vista Lodge, which overlooks the blue waters of scenic Tagatay Lake, from the center of which rises the Taal Volcano. We enjoyed an exotic native lunch in the Taal Lodge Dining Room. The menu consisted of fresh coconut (eaten with a spoon) mandarin oranges, fish, pork, ice-cream and black coffee. I just looked at my coffee — I didn't drink it. I asked the waiter for "una taza de agua caliente." He looked at me and asked, "You want a cup of hot water?" "Si, si, — yes, yes," I stammered in embarrassment. Filipino boys and girls did native dances to the music of an orchestra, while we ate; and as if that were not enough, they entertained us afterward with the native

sport of cock-fights.

On our return trip to Manila, we stopped at an old cathedral to see and hear the handmade organ of bamboo. We were enchanted with the delicate tones and the exquisite melody, as the man rendered several pieces of music for us. This celebrated organ was constructed entirely of bamboo, by a priest who had requested an organ for his church, and was denied by the Spanish officials.

At Silang and Dasmariñas, we held our noses, as we watched the fascinating process of making copra at one of their factories. One of my pleasantest memories of the Philippines, was the call we made at the home of the American Ambassador, whose cordiality to us was most delightful.

Some of the residential section of Manila are extremely attractive with modern homes and lush flower gardens.

As we sailed away toward the Far East, I began to realize that we would soon arrive at Hong Kong, my place of disembarkation, and that there, I would be saying farewell to the S. S. Cleveland and goodbye to the warm personal friends that I had been so closely associated with for the last twenty days as we had sailed across the Pacific Ocean. I would be going down the gang plank alone into a strange city full of strange people, many of them refugees from the connecting country of Red China. I thanked God for our safe journey from the other side of the world, but I kept hoping Bill Wong would meet the boat. Who was Bill Wong? I will tell you in the next installment.

(Continued Next Week)

Accidents in farm homes over the nation killed 2,700 persons in 1959, says the Texas Farm & Ranch Safety Council.

DISCOUNT MART — DISCOUNT MART — DISCOUNT MART — DISCOUNT MART

DISCOUNT MART'S 7TH

ANNIVERSARY 1c SALE

With The Purchase Of Any Merchandise - You Will Receive Something Else For Only 1c

PAY CASH AND GET A DISCOUNT

DELIVER IT YOURSELF AND GET ADDITIONAL DISCOUNT

SPECIAL PRICES ON TV SETS

COLEMAN FURNITURE & APPLIANCE DISCOUNT MART

SMALL ENOUGH TO KNOW YOU — LARGE ENOUGH TO SERVE YOU
406 South Commercial — Coleman, Texas

DISCOUNT MART — DISCOUNT MART — DISCOUNT MART — DISCOUNT MART

SWEATERS

ESTELLE'S
Ladies Shop
Coleman, Texas

Open Thursday,
Friday & Saturday
7:30 to 9:30 p. m.
Sunday — 2 to 4 p. m.

For Private Parties
Call 9-1407

Free Skate on Your Birthday
Thompson Roller Rink
Old Air Port Road
Coleman, Texas

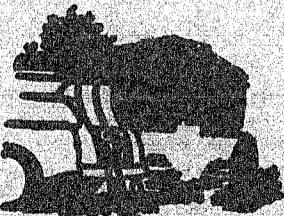
USE

BOTTLED GAS

- Clean and Safe
- Best For Heating
- Higher BTU Rating
- Best For Cooking
- Approved By Architects
- No Muss
- No Fuss

PHONE 9-3551

Night Phone 4599

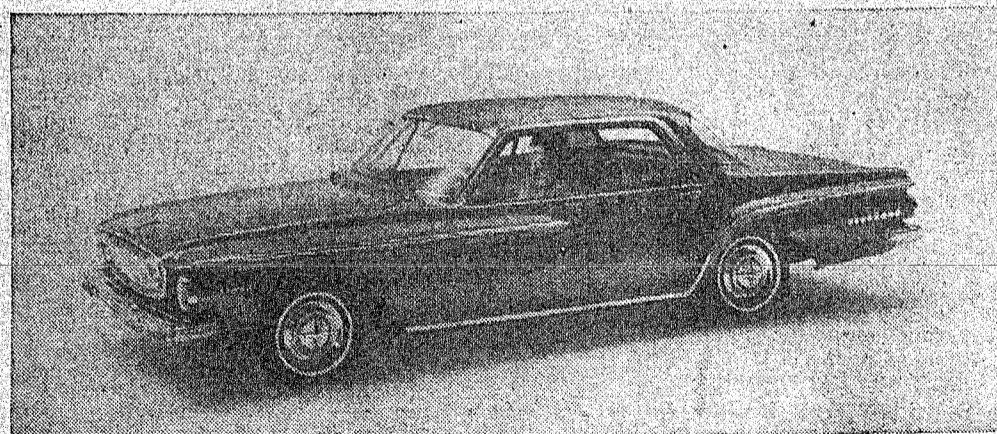


Prompt Delivery

Coleman

Butane Gas Co.

the Car of the Future IS HERE!



NEW LOOK FOR DART—Dodge's popular-price Dart is dramatically restyled for 1962. Dodge engineers say the new Dart features a new concept in standard-size car design which provides the owner with greater performance, economy and ease of handling. All useless weight and extra size has been "engineered out," they say. Pictured above is the deluxe Dart "440" four-door hardtop.

Now On Display At

Taylor Motor Co.

216 WEST LIVE OAK

COLEMAN, TEXAS

**Carolee Campbell,
John W. Monroe
Vows Exchanged**

Miss Carolee Campbell exchanged wedding vows with John Wayne Monroe Friday, September 15, at 7:00 p. m. in the Northside Church of Christ. Austin Siburt, Minister, from Midland, performed the double ring ceremony, before an arch decorated with palm leaves, white wedding bells and baskets of white stock.

The bride is the daughter of Mr. and Mrs. W. L. Campbell of Santa Anna. The bridegroom is a son of Mr. and Mrs. John T. Monroe of Glen Cove Route, Coleman.

Ann Stewardson, soloist, sang "Whither Thou Goest." Jim Rucker, soloist, sang, "The Lord's Prayer." A trio, Mrs. Douglas MacArthur, Miss Stewardson and Mr. Rucker, sang the processional, "Faithful and True" and the recessional, "O Perfect Love."

Given in marriage by her father, the bride wore a formal length gown of white nylon chantilly lace over satin. The bouffant skirt with alternating appliqued flowers of lace, formed a chapel train.

The bodice was traditionally fashioned down the back with tiny self-covered buttons. The long sleeves ended in petal points over the hands. Her veil of illusion draped from a satin crown of seeded pearls. The

bride carried a bouquet of white orchids and stephanate's with streamers of white satin ribbons tied in love knots atop a white Bible. To carry out the old tradition she wore a necklace as something old that her grandmother wore when she was married; something borrowed and something blue was a satin garter; she also wore a penny in her shoe.

Linda Campbell was her cousin's maid of honor. Her dress was turquoise brocaded taffeta with matching head piece, gloves and shoes. She carried an arm bouquet of turquoise feathered carnations. Eddie Monroe was his brother's best man.

Kenneth Carroll of Bangs, cousin of the bride, and Jerry Mitchell of Coleman were ushers. Johnny Pat Campbell of Eastland, cousin of the bride, and Larry Don Monroe, brother of the groom, were candle lighters. Lance Hagler, nephew of the groom, was ring bearer.

The bride's mother wore a rose lace dress with navy accessories. The bridegroom's mother chose a beige brocaded satin dress with white accessories. Their corsages were of white carnations.

A reception was held following the wedding in the home of the bride's parents. In the house party were Mrs. Don Pritchard, Mrs. D. C. Templeton, Mrs. Marshall Campbell and Mrs. Kenneth Owen.

For the wedding trip, Mrs. Monroe wore a navy and pink cotton satin dress with pink and taupe accessories. She is a 1958 graduate of Santa Anna High School and attended one year each at ACC, Howard Payne and SWTS, San Marcos, receiving her degree there August 25. She is now teaching at O'Brien.

Mr. Monroe is a graduate of Centennial High School and served in the U. S. Navy four years. They are making their home at Stamford, where he is employed.

**All Day Meeting
Of TEL Class**

The T. E. L. Sunday School Class of the First Baptist Church held an all-day meeting in the home of Mrs. Will Haynes on Tuesday.

Mrs. Neely Evans, president, opened the meeting by calling on the nominating committee to make their report, for the election of new officers. Mrs. Effie Ferguson, secretary, gave a summary of the year's activities.

Mrs. W. S. Stacy gave a scripture lesson on Exodus 21. Mrs. Carl Ashmore was in charge of the social period.

Mrs. Dovie Chapman gave the closing prayer. Fifteen members were present.

**ROCKWOOD QUILTING
CLUB FIRST MEETING**

The Quilting Club met Thursday, first meeting since the summer recess. Mrs. Hilton Wise, president, urges everyone to come and enjoy the group fellowship.

**ROCKWOOD WMS
REGULAR MEETING**

The Woman's Missionary Society met at the Rockwood Baptist Church Monday for the concluding Mission study, entitled "Christian Sharing of Possessions," with Mrs. Evan Wise directing. Assisting were Mmes. R. J. Deal, Goldie Milberger, A. L. King and Bill Bryan. Opening song, Christ For The Whole World, with Mrs. Deal at the piano was followed by prayer by Mrs. King. Mrs. Bill Bryan gave the closing prayer. Others present were Mrs. Matt Estes, Mrs. Ray Caldwell and Mrs. F. E. McCreary.

The president, Mrs. McCreary, announced the appointment of the following chairman: Mrs. Caldwell, program; Mrs. L. L. Bryan, prayer; Mrs. Walter Yancy, Social; Mrs. Deal, Bible; Mission Study, Mrs. Evan Wise, Community Missions, Mrs. Henry Smith, Benevolence, Mrs. Carl Buttry, Publicity, Mrs. A. L. King, Cards, Mrs. Bill Steward.

The next meeting will be held Monday, October 2, at 2:30 p. m. at the Community Center.

**OES GROUP ATTENDS
TEA IN DeLEON**

Mrs. Carmen Donham, Mrs. Faye Mobley, Mrs. Myrtle Taylor, Mrs. Blanche Grantham, Mrs. Lillian Herndon and Mrs. Edith Golston were in DeLeon Sunday to attend a tea honoring Mrs. Gertrude Joiner, Grand Representative of New York, and Mrs. Velma Sparks, Assistant Grand Warder, Grand Chapter of Texas. Mrs. Sparks and Mrs. Donham were Deputy Grand Matrons in 1956-57.

**Twilight Tea
In Brownwood**

Mrs. Amy Goebel, Grand Warder; Mrs. L. R. Damron, Deputy Grand Matron; and Mrs. Exa Lane, Grand Representative from Iowa to Texas, all of the Grand Chapter of Texas, Order of Eastern Star, were honored with a Twilight Tea at the Adams Street Community Center in Brownwood Saturday from 6:30 to 8:30 p. m.

A refreshment plate was served from a decorated, polished table with silver and crystal appointments. Guests were greeted by Mrs. Lurah B. Keeney.

Those in the house party and attending from Santa Anna were: Mrs. Carmen Donham, Mrs. Edith Golston, Mrs. Blanche Grantham, Mrs. Rosa Bass and Mrs. Lillian Herndon.

About 200 guests registered during the hours.

Mr. and Mrs. R. L. Todd visited his sister, Mr. and Mrs. Grady in Brownwood Sunday.

**\$7.00
Super Special**

With the purchase of \$7.00 or more in groceries, meat and produce (excluding cigarettes) you can buy
SUGAR - Imperial Pure Cane 10 lbs. 69c
Limit One To The Customer

PRICES GOOD FRIDAY AND SATURDAY	
SALAD DRESSING - Best Maid	Quart 35c
WAXED PAPER - Cut Rite	125-ft. roll 29c
BROOM - Reg. \$1.39 Value	Only 1.19
CHEER - Giant Size	Only 69c
SNOW DRIFT	3-lb. Can 79c
TOMATO JUICE - Hunt's	46-oz. Can 35c
PINEAPPLE - Crushed,	in extra heavy syrup 303 Cans 2 for 45c
DOG FOOD - Gaines, tall 1-lb. can	2 for 29c
CHILI - Kimbell's	300 Size Can 49c
BANANAS - Large Golden	Pound 12c
CABBAGE - Fresh Green	Pound 5c
POTATOES - Russet	10-lbs. 39c
HAMBURGER	Pound 39c
BEEF - Round Steak	Pound 79c

HOSCH GROCERY

Weah McCulloch, Sec.-Treas.
Bettie McCulloch, Mgr.
**Standard
Abstract Co.**
City & County Maps For Sale
405 Bank Bldg. Coleman

**Just The Way You
Want It Done**
Coleman Steam Laundry

SPINNING AND CLEANING

SUITS — SLACKS
COATS — DRESSES

**You'll Be Delighted With The Way
We Make The Whole Family's Clothes
Look Spic-and-Span Clean, Fresh,
Crisp . . . In Fact, Like New.**

Dry Clean Often
McKee Cleaners

PERFECT WEATHER

FOR HOME REPAIR

REPAIR THAT LEAKY
ROOF BEFORE THE
FALL RAINS START

SEE US FOR
PLUMBING SUPPLIES — WATER HEATERS
ALL SIZES OF PIPE


BAILEY LUMBER & SUPPLY CO.
Dial 8-3891 **Bob Garrett, Manager**




Humble Broadcasts
**Six S'west Conference
Games, Sept. 29 - 30**
One Friday night game and five Saturday will be in the Humble lineup of Southwest Conference football broadcasts this weekend.
The SMU-USC game will be broadcast on radio from Los Angeles, Calif., by Eddie Hill and John Smith. Radio time will be Friday, 8:45 p. m. over WFAA-WBAP, Dallas-Ft. Worth-820 and other stations.
The Baylor-Pittsburgh game will be broadcast from Pittsburgh, Pa., by Ves Box and Glen Brown. Radio time will be Saturday, 11:15 a. m. over KBWD, Brownwood-1380, WRR, Dallas-1310, and other stations.
The Rice-Georgia Tech game will be broadcast from Atlanta, Ga., by Eddie Barker and Jim Wiggins. Radio time will be Saturday, 12:45 p. m. over WFAA-WBAP, Dallas-Ft. Worth-570, KGKL, San Angelo-960, and other stations.
The TCU-Ohio State game will be broadcast from Columbus, Ohio, by Dave Russell and Stan McKensie. Radio time will be Saturday, 12:15 p. m. over KRLD, Dallas-1080, and other stations.
The Texas A & M-LSU game will be broadcast from Baton Rouge, La., by Bob Walker and Dave Smith. Radio time will be Saturday, 7:45 p. m. over KBWD Brownwood-1380, WRR, Dallas-1310 and other stations.
The Texas-Texas Tech game will be broadcast from Austin by Kern Tips and Alec Chesser. Radio time will be Saturday, 7:45 p. m. over KRLD, Dallas-1080, and other stations.

WOAI, San Antonio-1200 and other stations.
SIDE-WHEELERS AT JEFFERSON
Old side-wheeler boats used to churn up from New Orleans to Jefferson, Texas, in the northeast part of the state.
In 1874 a natural barrier in the Red River was removed. This resulted in a lowering of the water level seven feet in Cypress Bayou, thus making it un navigable for boat transportation.
This ended Jeffersno's standing as the principal river port and gate-of-entry to Texas.

Reg's Trading Post — Coleman
Mr. and Mrs. Hubert Shore of Brownwood were business visitors here Saturday.



Santa Fe
... serving the West and Southwest ... the railroad that is always on the move toward a better way.



Mountaineers Come Up With 22-22 Tie With Bronte

The Santa Anna boys played one of the best games they have played in a number of engagements at Bronte Friday night. All the boys were playing their hearts out to win the game. There was good hard running, good blocking and good tackling throughout the game. This writer would say the boys showed 100 per cent improvement over the other two games this season.

Our boys wanted very much to win this game, and we thought for a while they had made their goal. But they were up against a good team and one that just would not give up — even though a 14-0 lead was taken away from them, then they dropped behind 22-14 near the middle of the fourth period.

Bronte got the breaks in the first half of the game, and they

took advantage of them, but this did not dampen the spirit of the Mountaineers. The breaks went to the Mountaineers in the second half, and our boys took advantage of them.

For us to pick out an outstanding star on either team would be almost impossible, for all played the game good.

The beginning of the game looked as though it might be a punting duel, as Bronte received, failed to make any yardage and punted. The Mountaineers failed to make much yardage and punted and Bronte went through the same process again. However, the Mountaineers picked up a first down, then lost 8 yards, attempted a pass, then lost 10 yards and fumbled with Bronte recovering on the Mountaineer 19-yard line. It just took them 3 plays to cover the distance to pay dirt with 2:45 minutes left in the quarter. The try for extra points was good and they were in the lead 8-0.

The Mountaineers took the ball on their 9-yard line and had worked their way to the Bronte 34 as the quarter ended. In the second quarter they drove on to the Bronte 9, then lost 2 yards and were penalized back to the 16, but gained to the 15 as the ball went over on downs.

Bronte lost 4 yards then gained to the 13-yard line and punted to the Mountaineer 38-yard line. It was at this point the ball touched one of the Mountaineers and a Bronte boy recovered the ball for their second break of the game. After making a first down, one of the Bronte boys fumbled and in the tussle for the ball, the Mountaineers received a personal foul penalty that gave Bronte the ball on the Mountaineer 3-yard line. Just one play was all that was needed for the Longhorns to take a 14-0 lead over the Mountaineers. The try for extra points failed.

As the half ended the Mountaineers were on the Bronte 46-yard line.

The Mountaineers got the break on the kick-off starting the second half. The Longhorns were apparently attempting an on-side kick which backfired and the Mountaineers recovered the ball on the Bronte 41-yard line. The Mountaineers made 2 first downs in their drive to pay dirt with Walker going over from the 4-yard line. Walker also went through left guard for the 2 extra points. The Longhorns took the kick-off and worked their way back to about mid-field and punted to the Mountaineer 16-yard line. After a 5-yard penalty the Mountaineers failed to gain a first down and punted to the Longhorn 42-yard line. The Longhorns attempted to field the ball and failed with the Mountaineers recovering (just 3 yards short of the same place they lost the ball before on a punt) on the 42-yard line. After moving to the 24-yard line the Mountaineers received another 15-yard penalty, putting them back on the 36-yard line. They drove back to the 23-yard line as the quarter ended. Early in the fourth period Brown went wide around left end and traveled 14 yards for the second Mountaineer TD. Dockery made the 2 extra points and the Mountaineers were in the lead 16-14.

On the kick-off Bronte took the ball on their 15-yard line and a hard tackle jarred the boy loose from the ball on the 24-yard line where the Mountaineers recovered it. The boys drove to the 15, then were penalized back to the 10. Dockery and Walker worked the ball down to the 3-yard line and Dockery went over for the score. The try for extra points failed and the

Mountaineers led 22-14.

Bronte took the kick-off on their 16-yard line and through a very determined effort drove all the way to pay dirt, going over from the 1-yard line with less than 2 minutes left in the game. The try for extra points was good and the score was tied at 22-22. The Mountaineers drove to the Bronte 46 as the game ended.

The Mountaineers received several penalties that seemed to baffle everyone there. They were for illegal motion and after the game it was learned that one of the linemen was being penalized for moving his body during the time the play was getting underway. Bronte received only two penalties during the game, one for 10-yards about mid-way in the fourth period and one for 5 yards on the next to the last play of the game.

Game At A Glance

Santa Anna	Bronte
14 First Downs	8
241 Yds. Rushing	136
25 Lost Rushing	17
5 Passes Attempted	3
0 Completed For	0
0 Intercepted	4
2 avg. 40 Punts	4 avg. 44
6 for 47 Penalties	2 for 15
2 Fumbles lost	2

SCORE BY QUARTERS

Santa Anna	0	0	8	14-22
Bronte	8	6	0	8-22

Round Up of Other Games

Albany, Clyde and Early took wins over their opposition in games during the past weekend, while Cross Plains and Eastland fell to opposing teams. The Mountaineers came out with a 22-22 tie with the Bronte eleven.

Albany did not have any easy time in downing the Class AA Winters club, but managed a 14-0 score when the game was over. The half-time score was 0-0 and it looked as though either team could come out the winner. Albany will travel to Coleman Friday night for another Class AA tilt.

Clyde held on to their top spot in district standing by downing the powerful Class B Baird in a Saturday night game at home. This makes four straight for the Bulldogs. They will rest this weekend.

Early brought their standing up to .500 Friday night by downing the Hico eleven 12-0. Early will entertain Rising Star this weekend.

Cross Plains and Eastland both suffered bad losses. The Buffaloes fell to the tough Ris-

ing Star Wildcats 36-7 while Dublin was trouncing the Eastland Mavericks to the tune of 52-0. The Mavericks have been engaged in four games thus far and have failed to cross into touchdown territory. They have given up a total of 128 points in the four games. The Buffaloes have managed to score 3 touchdowns in their four games, but have given up 118 points during the games. Both these teams will rest this weekend.

STANDINGS

Clyde	4	0	0	1000	67	6
Albany	3	0	0	1000	114	8
Santa Anna	2	0	1	834	40	30
Early	2	2	0	500	64	60
C. Plains	0	4	0	000	21	118
Eastland	0	4	0	000	0	128

The Goldthwaite Eagles trounced Evant 50-0 Friday night, giving them a record for four games of 1-1-2.

Rising Star rode high, wide and handsome as they licked the Cross Plains Buffaloes 26-7, to give them a 2-2 record for the season.

Hamilton, Class AA power this year, took San Saba, another Class AA foe to the cleaners, 20-0, giving them four wins for the season.

In the Bangs-May game the fans apparently got too interest-

ed in the game during the final minutes and the officials called the game and forfeited it to Bangs 1-0. Bangs was leading 21-12 at the time with only about three minutes remaining in the game. Some of the Mays fans were on the sideline and got on the field. Apparently the officials could not get them to leave the field and they exerted their authority and awarded the game to Bangs. So far as the record is concerned the score will be entered as 1-0 for Bangs.

THINK ABOUT IT

We would like to urge all the Santa Anna fans never to become so engrossed in a game that they might attempt to get engaged in the game. Regardless of whether you think the officials are calling the game right or not, it is not for you to decide. They are there for a purpose and what they say goes — regardless of what the fans think.

The officials can see that any school whose fans cause them undue trouble or harm are disqualified for participation in the Interscholastic League events for that year and additional years, depending on the circumstances. So, again, let us urge you to control your feelings even though you might be somewhat disgruntled at the actions of the officials.

DR. M. O. SOWELL
CHIROPRACTOR
Phone 2421—615 Commercial
Coleman, Texas

OPTOMETRIST
Dr. E. H. Henning, Jr.
117 Commercial
Avenue
Coleman, Texas
Phone 3944
OFFICE HOURS
9:00 A. M. to 5:00 P. M.
SATURDAYS, 9 to 12

THE SPACE-SAVING GAS HEATER



The Clip-On Invented Wall Heater by Dearborn.
Clip-On heaters are small in size but large in heating ability. They hang on the wall for complete freedom of floor space... easy to install!

Lights Without Matches

GRAY Mercantile Co.
109 W. Pecan Coleman

MOUNTAINEERS LET'S GO!

FOOTBALL

MOUNTAINEER STADIUM
FRIDAY NIGHT
8:00 P. M.

SANTA ANNA
MOUNTAINEERS

vs.

HAMILTON
Bulldogs

TUESDAY, OCTOBER 3rd

Dragon Stadium 7:30 P. M.

JUNIOR MOUNTAINEERS

vs.

JR. BANGS DRAGONS

MOUNTAINEER SCHEDULE

Santa Anna 12 — Goldthwaite 8
Santa Anna 6 — Rising Star 0
Santa Anna 22 — Bronte 22
Sept. 29 — Hamilton, Here
Oct. 7 (Sat.) — Bangs, There
Oct. 13 — Cross Plains, Here*
Oct. 20 — Clyde, Here*
Oct. 27 — Albany, There*
Nov. 3 — Eastland, Here*
Nov. 10 — Early, There*

WIN THIS GAME

This Advertisement Sponsored By The Following Mountaineer Boosters

- | | |
|---|--|
| Clover Grill | Coleman County Telephone Cooperative, Inc. |
| Hosch Brothers | McClellan Radio & TV Sales & Service |
| Gandy's Creamery | Santa Anna Co-op Gin and Elevator |
| Phillips Drug Store | Santa Anna Silica Sand Co., Inc. |
| Linnie's Beauty Shop | Santa Anna Insurance Agency |
| Coleman Gas Company | G & E Hardware & Appliance |
| Elkins Service Company | Santa Anna National Bank |
| Mr. and Mrs. Walter Holt | Mrs. J. R. Gipson, Florist |
| Mel's Texaco Service Station | West Texas Utilities Co. |
| Western Auto Associate Store | The Santa Anna News |
| Santa Anna Tile Company, Inc. | L. A. Welch Garage |
| McCrary Shamrock Service Station | Jane's Beauty Shop |
| Arthur Talley Sinclair Service Station | McKee Cleaners |
| Ozro Eubank & Sons Polled Hereford Farm | |

IN EVERY DIRECTION
The Church's influence is felt



Your Church serves Christ through active members

CHURCH ATTENDANCE ADDS MEANING TO LIFE

Sermon Topics For Sunday, October 1st
MORNING — 11:00 O'CLOCK
"The Guest Room" — Mark 14:14
EVENING — 7:30 O'CLOCK
"His Satanic Majesty, The Devil" — John 8:44

YOU ARE INVITED

First BAPTIST CHURCH
203 SO. LEE STREET
Raymond Jones, Pastor

"The church is subject unto Christ." — Eph. 5:24

Rockwood News

By MRS. JOHN C. HUNTER

L. L. Hallford, 84, a former Rockwood resident, passed away at a Brownwood hospital Saturday. Burial was in Bangs Cemetery on Sunday. He underwent a leg amputation on Wednesday. Local survivors are a niece, Mrs. John Kemp. Mrs. C. H. McCarrell, Mrs. Goldie Milberger, Mr. and

Mrs. Lee McMillan, Harold McCarrell and Mr. and Mrs. John Kemp attended the services. Recent guest with Mrs. Mena Shuford were Buck Stobaugh and sister, Cora, of Lorenzo, Mrs. A. L. Crutcher and Ludy Jane, Mrs. M. D. Byran and Mrs. Kate McIlvain. Saturday visitors were Mrs. Octavia Timmlins of Marshall and Mrs. Brent Jackson of Fort Worth. Mr. and Mrs. R. J. Deal spent last Monday and Tuesday in Fort Stockton with Mr. and Mrs. Ro-

lan Deal and family. Mrs. Deal visited last Thursday evening in Santa Anna with Mrs. W. R. McMinn while Mr. Deal attended Lodge meeting. The Deals visited Mr. and Mrs. M. E. French in Bangs Saturday morning. Mrs. Leon McMillan, a teacher in Devine public school, was home for the weekend. Mr. and Mrs. Carl Ashmore of Santa Anna visited Mr. and Mrs. Bob Steward Sunday afternoon. The R. J. Deals visited Sunday

afternoon with Mr. and Mrs. Tim Siler at Melvin. Recent guest with Mr. and Mrs. Clyde Pittard and girls were Mrs. Eva Metcalf and Alden, Rosa Lockhart of Coleman, Mr. and Mrs. Jack Hallonquith and son of Houston, Mr. and Mrs. L. B. Griffin of Fisk, Mr. and Mrs. W. H. Pittard of Liberty, Mrs. Jack McSwane, Mrs. Jim Rutherford. Mr. and Mrs. Leffel Estes were in Coleman Sunday to attend the Boatright family reunion. Mr. and Mrs. Cecil Day and children of Coleman were Sunday supper guest. Mr. and Mrs. Carl Ashmore and Mrs. Evan Wise visited Sunday afternoon with Mr. and Mrs. F. E. McCreary. Mrs. Era Blackwell was Sunday afternoon visitor with Mrs. Kate McIlvain. Mrs. C. F. Nevans spent Tuesday to Sunday at their home in San Angelo. Mr. and Mrs. E. D. Black, Gary Elaine and Jan: Mr. and Mrs. Lester Bowen and Lee Singleton of San Angelo spent Sunday with Mr. and Mrs. Tom Byran. Billy Maness and his mother, Mrs. Uless Maness of Brownwood were at the farm Saturday. Mrs. Era Blackwell and Mrs. Tom Byran were luncheon guest with them. School folks' home for the weekend were La Quinn Cooper, Mary Rehm, Collins Wise and the Reverend Bruce Hornell. Reed Steward of Lohn visited Sunday afternoon with the Jack Coopers. Mrs. Crutcher and Ludy Jane visited Sunday afternoon with the Sleepy Garner family at Rochelle. Mr. and Mrs. Sam Estes and Kelley of Sweetwater spent Saturday night and Sunday with Mrs. Hyatt Moore and Mrs. Rosa Belle Hellman, Mr. and Mrs. Joe F. Estes and Steve of Abilene and Raymond Estes of Sweetwater were Sunday guest. Mrs. J. W. Wise spent the weekend with Mr. and Mrs. Hilton Wise and Sue. Dr. Ross Owens and Judy of San Antonio were by visiting with Miss Linnie Box Sunday afternoon. Enjoying a chicken supper with Mr. and Mrs. Henry Smith Saturday evening were Mr. and Mrs. P. L. Uistad of Brady, Mr. and Mrs. Bill Byran and Serena, Mr. and Mrs. Lon Gray, Mr. and Mrs. Curtis Byran and Leann and Billie Gaye Rutherford. Mr. and Mrs. Jake McCreary, Sharon and Leslie and Mrs. Era Blackwell visited Sunday afternoon with Mr. and Mrs. Aubrey McSwain. Jack Bostick of Coleman was

working on his house Monday afternoon and greeting friends. Mr. and Mrs. A. L. King were in Coleman last week to visit Mr. and Mrs. Willie King and visited Mr. and Mrs. Lige Lancaster near Trickham Sunday afternoon. T. B. Hallford and son Lloyd of San Antonio spent Tuesday to Monday with Mr. and Mrs. John Kemp while being at the bedside of his brother L. L. Hallford. Mr. and Mrs. Lee McMillan were Sunday dinner guest with Mr. and Mrs. Walter Brandstetter, also visited Mrs. R. L. Brinson, Mr. and Mrs. L. D. Crutcher. The A. L. Kings visited the McMillans Saturday evening.

Trickham News

By Mrs. J. E. York Telephone 2-3259

Reverend James Bridges, Presbyterian pastor from Denton filled his place in the pulpit at church on Sunday. He and his wife were dinner guest of Mr. and Mrs. Wiley McClatchy. Brian Elder of Midland spent the weekend with his aunt, Mr. and Mrs. O. R. Boenicke, Sunday visitors were Rankin and Sherri McIver, Mrs. Minnie Craig and Reverend Walter Allen. Mr. and Mrs. John Haynes were bedtime visitors of Mr. and Mrs. G. K. Stearns on Saturday night. Visitors with Mr. and Mrs. Robert Stearns the past week were Mr. and Mrs. Gordon Stearns of Brooksmith, Mr. and Mrs. Ray Wells and children of Coleman and Mr. and Mrs. Charlie Ray Fleming of Abilene. Those who called on Mrs. Beula Kingston on Sunday were Reverend Bruce Hornell, Mr. and Mrs. O. J. Martin and Reverend James Bridges and wife. Mr. and Mrs. Del Ray Stacy and children of San Antonio were guest of his parents, Mr. and Mrs. Walter Stacy over the weekend. Mrs. Ella Sheffield of Bangs, Mrs. Mable Sheffield of Brooksmith and Mrs. Minnie Wilson called on Mrs. Zona Stacy on Wednesday afternoon of last week. My family and I along with Mrs. Ray Davis and Mrs. Roger Cloud and Peggy and Rickey of Abilene visited on Sunday with Mr. and Mrs. Edger Cole of Santa Anna. Mrs. Davis brought my mother back after a two week's visit with her and her family there. Dr. and Mrs. Jay Touchstone of Dallas spent last weekend here visiting Mr. and Mrs. W. M. (Bill) Vaughn.

Whon News

By MRS. TOM RUTHERFORD

Our last reports from Mr. Babe Gardainer in the VA Hospital in Temple were that he was feeling very well, but had a set back and feared he wouldn't be in condition for surgery the past week. Sunday afternoon and supper guests with Mr. and Mrs. Bert Turney were, Mr. and Mrs. Walter Yancy and children, and Edmond Switzer and Mr. and Mrs. Thomas Switzer and children of Wingate, Mr. and Mrs. Rex Turney, Mark and Becky of Santa Anna. Mrs. Darwin Lovelady visited Thursday in Santa Anna with her father Mr. R. A. Baker and sister, Mr. and Mrs. Lou Minicia. Billy Don Cupps of the Cleveland Community spent Sunday afternoon and Sunday night with Jamie Lee Morris. Mrs. Bert Turney was in Dallas and Arlington from Monday til Wednesday night the past week visiting her children, Mr. and Mrs. Mickey Chelton and family in Arlington and Mr. and Mrs. Leonard Matassie and family in Dallas. Mr. and Mrs. Tom Rutherford and Lynda visited Sunday afternoon with Mr. and Mrs. Hilary Rutherford and Rocky in Brownwood. Mr. and Mrs. Lowell Bearden and children of Snyder, Mr. and Mrs. Lon Minicia of Santa Anna were Saturday night supper guest with Mr. and Mrs. Darwin Lovelady and Randel. Mrs. Pearl Avants has been at the bed side of her sister Mrs. Bean Radle who had major surgery in Coleman Hospital Friday morning. We are glad to report Mrs. Radle's condition is good. Earl Wright Gill of Abilene was greeting friends in our community Monday afternoon and visited his sister Mr. and Mrs. Roy England and children. Mr. and Mrs. Graham Fritzpatrick and children visited relatives in Brady Sunday. Mrs. Darwin Lovelady and Randel visited her father Mr. R. A. Baker in Santa Anna Sunday. One afternoon the past week, Mr. and Mrs. Wesley Tennyson of San Angelo, and Mrs. Tennyson's daughter Mrs. Fayola Campton of Utah visited with Mrs. Campton's uncle, Mr. Bert Turney. These were enroute back to Angelo after going to Oklahoma for Memorial Services for Mrs. Campton's husband who passed away very suddenly in a hospital in Salt Lake City, Utah. The body was brought to his home town in Oklahoma for burial. David Beal of Rockwood spent Thursday night with Mike England. Mr. and Mrs. Warren Gill had a telephone call from their son, Jimmy Lee, Monday informing them he would be leaving San Diego, California Friday night for over seas. Jimmy Lee is with the Navy. Mrs. Dick Inman of Abilene visited Tuesday with her parents, Mr. and Mrs. N. J. Buttry. Miss Bernice Johnson went to McCamey Friday where she will be employed with office work during the ginning season. France was the first country to recognize the United States of America. The alligator is the only animal whose upper jaw is movable.

Shields News

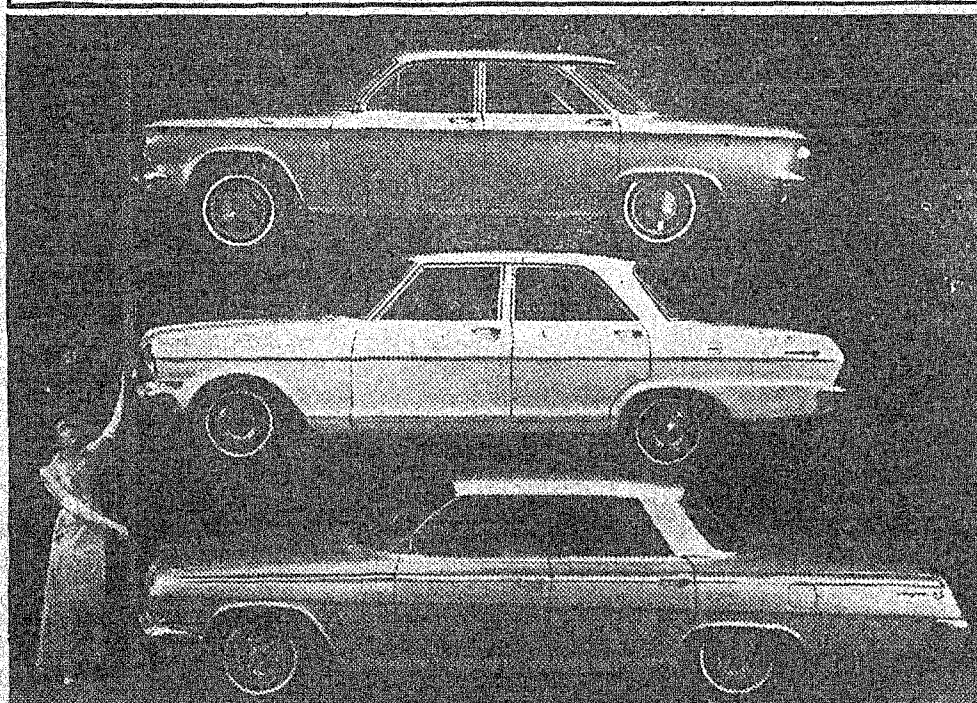
By MRS. E. S. JONES

The quilting club met Tuesday afternoon and finished a quilt which was donated to Holiday Hill Home at Coleman. Also a quilt was given the Salvation Army to be sent to the Carla storm area. Visitors at the meeting were Mrs. George Richardson, Mrs. R. L. Todd and Mrs. J. W. Griffin of Santa Anna. Mrs. Janie Burruo and daughter, Barbara, of Fort Worth and local members of the Eppler family spent Sunday with Mr. E. R. Eppler. Mrs. Ura Dillingham and Richard visited with Mr. and Mrs. George Wheatley and Danney Saturday evening. Rhinard Troup, Minister of Church of Christ and Miss Betty Ellis were guests of Mr. and Mrs. George Allen at Gouldbusk Sunday. Mrs. Lynn Gray of Coleman and her grand-daughter, Jennifer Verches of Brazoria, and Mrs. O. H. Watson visited with Mrs. E. S. Jones Thursday afternoon. The Noble Carpenter family who have lived in the community many years moved to Santa Anna Friday. Mr. and Mrs. Dan Wheatley attended the McCulloch County Singing convention at Placid Sunday afternoon. Mrs. Emma D. McClain was in San Angelo Friday and Saturday visiting her son, Kenneth and family and her son, Varrell, wife and daughters. Thelma D. of Midland are spending this week with her. Mr. and Mrs. Bert Fowler, Mr. and Mrs. Jack Dillingham and the Jesse Williams family attended the Santa Anna - Bronte ball game at Bronte. Mrs. Bessie Stewardson and Mrs. E. S. Jones visited Sunday afternoon with Mr. and Mrs. George Stewardson. Donald Williams and Tommy Watson of Tarleton, Stephenville spent the weekend with home folks.



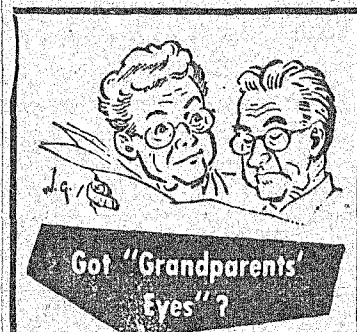
The new cars are here. All makes, all the new model... advanced designs to stun the eyes, stir the imagination. You'll thrill at the sight of the '62 cars. Compacts, convertibles, sedans, sports cars and station wagons are here in exciting array. You'll find the car of your dreams at the '62 Auto Show.

Greater choice as Chevrolet Offers 3 Lines for 1962



The wide range of choices Chevrolet dealers will offer for 1962 is hinted in this three-car photograph. Pictured to compare over-all length are (top to bottom) the 130-inch Corvair 4-Door Sedan; the 133-inch Chevy II 4-Door Sedan, and the Impala Sport Sedan which measures 209.6 inches. They are representative of 32 passenger car models which Chevrolet dealers will start displaying September 29. The new Chevy II's bow in on the same date as other Chevrolet-built cars.

» Tops In Transportation «
Now On Display
— AT —
114 East College
Telephone 2361 Coleman, Texas



You may not have any grandchildren, but if you are past 50 the chances are that you are becoming farsighted... can't see very well to read or do close work. And did you know that only about 4 people in 100 can get the correction they need from self-chosen, "store-bought" glasses? The only safe way is a professional eyesight examination and prescription glasses made for your eyes, alone. *Based on studies by Better Vision Institute

Dr. E. H. Henning
Optometrist
117 Commercial Ave.
Phone 8944
Coleman, Texas



QUALITY MEATS
Fresh and Home Killed Beef and Pork
WHOLESALE — RETAIL
— WE SPECIALIZE IN —
Processing, Cutting and Wrapping
Bar-B-Qued Chicken - Each . . . 79c
Try Our Choice Meats — And Service
GUY & FLIP
GUY CULLINS ARTHUR FLIPPEN
413 West Live Oak — Phone 9-5685 — Coleman

One Enormous Fish Story

Recently we ran across an enormous fish story in one of our exchanges. The Giddings News. With the help of The Giddings News we obtained a picture of the fish and the two men responsible for the catch. Following is the story of the capture of this enormous creature as it appeared in The Giddings News.

The experience that comes once in a lifetime is the way two Electra men described the landing of the biggest catfish ever caught in Texas.

The two men, Noble Etidham and Willie McSpadden landed the fish at the boat ramp on Diversion Lake, recently after a day long battle. They had the help of about a dozen men, who could hardly believe their eyes when the fish was pulled up the ramp and onto a hay truck with the help of three wench trucks.

The two men first got an inkling of the presence of the big fish in the lake about a year ago while running a trotline. Several times they spotted the big fish, and lost several trotlines which they attributed to the fish. They told no one of what they saw for fear that their listeners would call the story ridiculous.

Several weeks ago they decided to make a serious attempt to land the big fish. They had a welding shop make a

huge fish-hook and attached it to a one-inch rope. They baited the hook with a whole beef liver, tied the rope to a tree on the side of the lake, dropped hook and bait in the fish's favorite deep hole and waited. After perhaps an hour's wait, they saw the tree beginning to sway from the tightening of the rope. They started their motor boat, but by the time they arrived at a big disturbance in the water, the fish had straightened the hook out like it had been made of spaghetti.

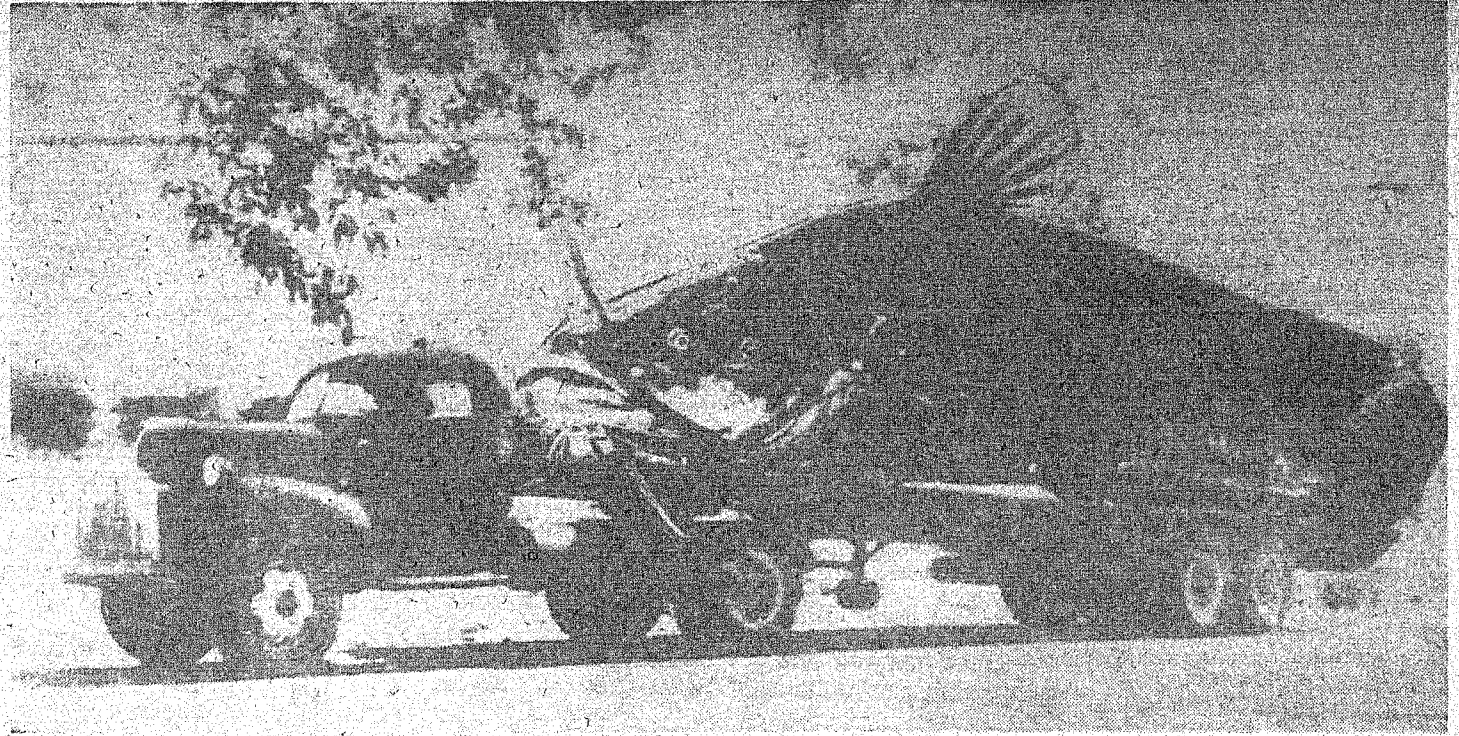
Scarcely believing their eyes they went to town and had a bigger hook made with an 18-inch shank. They attached it to a wire-cable and baited it with half a beef.

Two hours later they crossed the lake and saw the wire cable which they had tied to a tree, being whipped about like a small rope. They knew then that they had their fish. However, when the fish surfaced they came near calling the whole thing off.

A large number of fishermen gathered in their boats to watch the fish struggle and two boats were capsized when they got too close to the big fish.

The giant fish muddied the waters of the lake over an area of half a mile before literally wearing itself out.

The fish is believed to have



THIS IS NO WHALE — but is a truck load of catfish caught in a day-long battle by two Electra men recently. The two men are pictured below with the hook and rope they used to catch this *Amiurus Ponderosus*.

lived in the lake for years. When it was dressed it was discovered that the fish had swallowed three big catfish weighing over 100 pounds each and two calves, which it is presumed ventured too far out in the lake to get a drink of water. Edward Gook, Fish and Game Department Marine Biologist, examined the fish and pronounced it an *Amiurus Ponderosus*, the largest of the Siluridae fish family.

First Baptist Church Leader In Community Program

DALLAS (Spl.) — Leading the way in an outstanding community improvement program and doubling its missions gifts helped the Fairview Baptist Church near Evant earn the district award in the 1961 Texas Baptist Church Achievement Program.

Last year after receiving the top award in District 16 of the Baptist General Convention of Texas, the Fairview church went on to become co-recipient of the state award. The 98-member church, located near Hamilton, sponsored 82 projects this year toward building "a better church," "a better community" and "a better world."

The Fairview church recorded 20 additions during the year in what is considered a static community.

Runners-up in the district were the Baptist Chapel of Brady, the First Baptist Church of Banket, the First Baptist Church of Santa Anna, the Proctor Baptist Church, the First

legally pass on the right in a few specific instances, such as when the vehicle overtaken is making or about to make a left turn, or upon a one-way street with two or more lanes, or upon a four-lane highway.

However, our traffic laws state that even when passing on the right is allowed, it shall be done only under conditions permitting such movement in safety. And, in no event should such passing be accomplished by driving off the pavement or main-traveled portion of the roadway.

Familiar to all are the no passing zones designated by yellow lines placed to one side of the center line on our highways. Not so well known are the restrictions against crossing the center line when approaching within 100 feet of or when traversing any intersection or railroad grade crossing.

A driver should never cross the center line of a highway when the left side of the road is not clearly visible and free of oncoming traffic. Generally speaking, when not engaged in passing another vehicle, one should not drive to the left of the roadway.

(This newsfeature, prepared by the State Bar of Texas, is written to inform—not to advise. No person should ever apply or interpret any law without the aid of an attorney who is fully advised concerning the facts involved, because a slight variance in facts may change the application of the law.)

IT'S THE LAW

Watch It! School Children

Thousands of schoolchildren are now trooping back to school throughout Texas. Many of them will be transported by school buses. Most people are careful when approaching a school bus which may be standing beside the road or school to pick up school children or allow them to alight. However, we have already had some very bad accidents this year because a child or a motorist, or both, were careless at the very time.

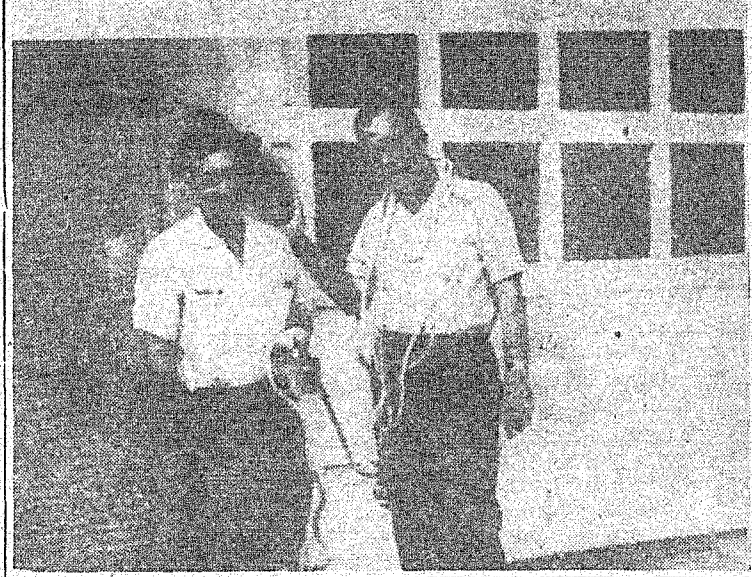
Most Texans are aware of the law which requires a driver to come to a complete stop when overtaking from the rear a school bus which has stopped to receive or discharge school children. After stopping immediately behind the bus, he is then allowed by law to proceed past same at a speed "which is prudent, not exceeding ten (10) miles per hour, and with due caution for the safety of such children."

What many persons do not realize is that the very same rule applies when MEETING a stopped school bus. While everyone is interested in protecting our children, unthinking violators of this simple safety rule greatly outnumber those who comply. Failure to follow the law in this case can lead to fines up to \$200.00 even when no accident occurs. Following an accident in which some child is injured or killed, the penalties are naturally much more serious.

Although the above rule does not always apply when passing a stopped school bus in a business or residential district of a town, the necessity for extreme caution even in those locations is obvious.

When it comes to overtaking and passing moving vehicles, exercise of ordinary common sense to proceed on past it a safe distance before cutting back to the right side of the highway. Also, any driver would realize the danger of increasing his speed while another is attempting to pass him.

In the same category is the prohibition against passing on the right under most ordinary conditions. Of course, you may



Baptist Church of Mertzon, and the Herren Baptist Church of San Saba.

MRS. DEAL ENTERTAINS JUNIOR S. S. CLASS

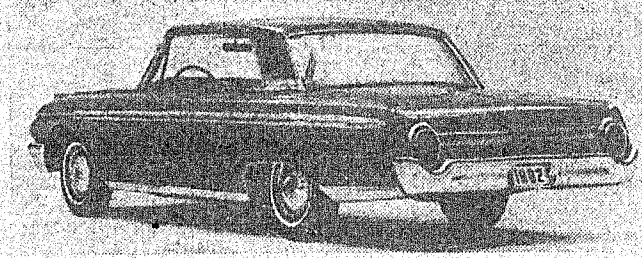
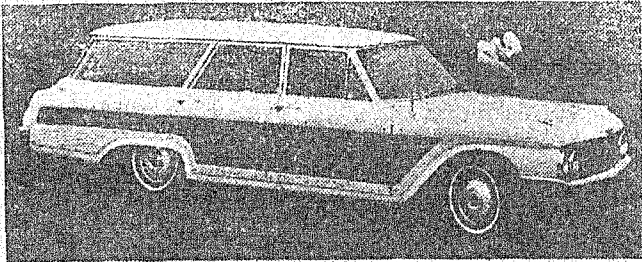
Mrs. R. J. Deal entertained her Junior class of the Baptist Sunday School at her home near Rockwood Saturday evening.

Loretta Broadway and Beth Dean conducted the games.

Refreshments of cup cakes, ice cream and fruit punch were served to the Reverend and Mrs. David Morrison and children, Mrs. Walter Yancy, Larry, Linda and Judy McIntire, Loretta Broadway, Beth Dean, Jo'ed and Korky Wise, Sandra Yancy, and Mike England.

Carbon paper and sales pads at the News office.

NOW
THE NEW,
new, NEW
'62 CARS



The top offering in Ford's station wagon line for 1962 is this four-door, nine-passenger Country Squire (top). The power-operated rear window is standard in this Squire as well as in the six-passenger Country Squire and in the nine-passenger Country Sedan. The Galaxie nine-passenger wagons have the only forward facing third seat in the low-priced car field. Tailgate openings on all of the wagons are more than 50" wide. This Galaxie 500 two-door hardtop (bottom) is one of twelve models being offered in Ford's expanded Galaxie series for 1962. The sculptured body of the 1962 Galaxie gives the appearance of actual motion to its unmistakably classic Ford lines. This appearance of movement is emphasized in the recessed Thunderbird-like rear window and in the forward thrust of the roof itself. The new Galaxie series will feature an industry first—"twice-a-year" maintenance.

On Display Sept. 29, 1961

— AT —

Berry's Ford Sales

415 Commercial
Coleman, Texas

Announcing . . .

THE OPENING ON
MONDAY, OCTOBER 2nd

Inez's Beauty Shop

Next Door To School Store

INEZ BUSE, OWNER

Will Welcome And Appreciate
All Business

WE WILL ACCEPT
NIGHT APPOINTMENTS

Dial FI8-3316

The Abilene Reporter-News

ANNUAL

Bargain Offer

West Texas' leading territorial daily!
Daily & Sunday, 7-days a week \$13⁷⁵
by mail anywhere in West
Texas Plus 28c tax, \$14.03
\$12⁷⁵
Daily only, 6 days Plus 26c tax, \$13.01
Subscribe today through your home town agent.

Week End Specials

TOMATOES Lb. . . . 5c
6 lbs. 25c

ALL BRANDS
CIGARETTES Ctn. 2.69

TEXAN SALT 2 Boxes 19c

WHITE ONIONS 6 lbs. 25c

IMPERIAL 10X — POWDERED
SUGAR 2 Boxes 29c

ROSBOWL
MACKERAL Can 19c

FAB Giant Size 65c

MARSH
PORK & BEANS . . . 12 Cans \$1.00

Williams Fruit Stand

INTEGRITY

How to get just what the doctor ordered



As a professional ally of your physician, your registered pharmacist fills a prescription precisely according to orders. Accuracy is the first rule. May we serve you?

Phillips Drug

We Give S.&H. Green Stamps

EXPERIENCE

Use The News Classified — For Results

The American Way

TWO FINE COMMITTEES

By Rosalie M. Gordon

(Editor's Note: Rosalie M. Gordon is editor of All-American Books, All-American Book Digest and America's Future.)

You may not have noticed it—because they work underground (and, underhand) much of the time—but the communists and their dupes keep up their incessant attacks on two committees of the American Congress. Their objective is to cripple or abolish the House Un-American Activities Committee and the Senate Internal Security Subcommittee. The strange part about this attack is that it has the support of many well-meaning but thoroughly deluded "liberals." But if we look at merely two examples of recent revelations—one from each of these committees—we see quickly the great service they perform for the American people.

Not long ago, for instance, the National Security Agency had to fire 26 so-called sex deviates—the sort of person who is a patsy for

communist blackmail. The National Security Agency is a super-secret Washington Bureau which is supposed to be one of our most important and strategic agencies. You may recall that last year two of its code clerks defected to Soviet Russia. Naturally, you would suppose that after an experience like that, a government agency would be on alert. Actually it should have been on the alert long before the defections occurred, particularly in view of all the terrible experiences we have had in the past with Red infiltration of government bureaus.

But the recent dismissal of the 26 risks did not come about because of original action by the National Security Agency. They were turned up by the House Un-American Activities Committee. It is difficult to credit, but half of these unreliable characters were hired by the Agency in the last year.

Incidentally, the HUAC also revealed that the man in charge of personnel of this super-secret bureau had made what the Committee described as "false and misleading" statements on his own application for government employment. The embarrassed bureaucrat put it down to his own carelessness—"carelessness" mind you, in the National Security Agency! One example of his carelessness: He declared he had a degree from Harvard Law School, whereas he had attended Harvard for only one year.

Perhaps he just couldn't resist involving Harvard's magic name in order to get a job in Washington.

On another front, the Senate Internal Security Subcommittee recently conducted an exhaustive investigation into the Fair Play for Cuba Committee. This is a privately-organized group which has been beating the drums for Fidel Castro, especially on American college campuses. The Internal Security Committee openly branded it a "thriving communist propaganda front." If you have sons and daughters in college, you might like to check to see whether any of the money you put up for their education goes to support this Fair Play for Cuba Committee in the form of dues.

The Internal Security Committee revealed, for example that while declaring that money for one of its ads came from "fair-minded Americans," the Fair Play for Cuba outfit really got money from Castro's government. One of the Fair Play for Cuba Committee's founders and its former director lied under oath about this fact. Then he beat it out of the country to escape indictment for perjury. His name is Robert Taber. He is now in Castro's Cuba. He had quite a background for a man who headed an outfit which propagandizes American college students. He had served a prison sentence in Ohio for armed robbery, auto larceny and kidnapping.

None of these facts would be revealed and backed up with documentation were it not for the House Un-American Activities Committee and the Senate Internal Security Subcommittee. And these are only two examples out of hundreds of the indispensable services they render to our people.

It is for revealing these assaults on, and threats to the security of the United States that these two committees are constant targets of the communists who attack, smear and try to abolish them. This is not hard to understand. What is beyond understanding is why certain "liberals," who believe themselves loyal to their country, should join the communists in the attacks on these two fine committees of the Congress.

Niwot News

By THE NIWOT KIDS

Reverend Bruce Hornell of Tarleton College preached at Cleveland Methodist Church Sunday morning and night. He was dinner guest of Mr. and Mrs. Bruce Hibbetts Sunday.

Mr. and Mrs. Max Nixon and girls of San Angelo spent Sunday with her Sister Mr. and Mrs. Dick Baugh and girls.

Mr. and Mrs. Watt Ingram and children of Sweetwater and Mrs. Ida Ingram of Brownwood were visiting Mrs. Myrtle Wagner and attended Sunday School and Church Sunday morning at Cleveland Methodist Church.

Mrs. Gladys Perry of De Leon, Mrs. Naomi Gibson of Lubin were dinner guests of Mr. and Mrs. Robert Perry in Santa Anna Friday, and they called on Mr. and Mrs. John Perry in the afternoon.

Mr. and Mrs. Bruce Hibbetts, Mr. and Mrs. Charlie Avants and family, Mr. and Mrs. Joe Wagon and family were dinner guests with Mr. and Mrs. Alton Boney, Thursday and Friday Sunday.

Mrs. Jewel Gibson and children were visiting in Coleman Sunday getting acquainted with her new grandson. Mr. and Mrs. Leon Day are the proud parents of a baby boy.

GO TO CHURCH SUNDAY.



Now here—a great new exclusive from Buick

ADVANCED THRUST

Moves power forward for arrow-straight going

It puts the engine ahead like the tip of an arrow • It tames "wind wander" and road sway • It sweeps you forward in a hush of luxury • It turns the floor hump into foot space.

WHAT IT IS—Buick's big new move: It positions the great new Wildcat V-8 and Turbine Drive way up front over Buick's front wheels.

WHAT IT DOES—As the engine went forward, the floor hump went DOWN. And, the forward weight makes wheel response far quicker, cornering far surer, ride far smoother.

WHY YOU'LL LOVE IT—It's the closest you can come to sports car handling in a passenger car. Distances shrink before its 3/4-G thrust. Hills disappear. Lean on curves is gone because the frame's gone wider. Winds don't make you wander. It's going at its Buick best!

'62 BUICK

DAUGHERTY-PRICE PONTIAC-BUICK

401 Commercial Ave. — Coleman, Texas

- FURNITURE NEW AND USED
 - STOVES NEW AND USED
 - GOLD SEAL Inlaid, Vinyl And Printed LINOLEUM
- SEE US BEFORE YOU BUY

Frank Lewis FURNITURE

West of Courthouse Telephone 9-2366 — Coleman

SAVE 'EM!



EXPERT SHOE REPAIR SERVICE

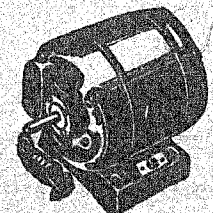
BOOTS

Made to Your Specification Guaranteed To Fit

TOMLINSON

BOOT & SHOE SHOP Coleman, Texas

Electrical Motor And Refrigeration SERVICE



We Repair and Rewind Electrical Motors Of All Kinds And Give You Prompt, Expert Service On Refrigeration

BOZEMAN ELECTRIC SHOP

Coleman, Texas

Service Calls 6281
Night Calls 7399

Mrs. Febba Snow Buried In Coleman

Funeral services for Mrs. Febba L. Snow, 78, were held at the Stevens Memorial Chapel in Coleman Tuesday, September 26, at 2:00 p. m. Mrs. Snow died in the Coleman Hospital at 11:45 p. m. Sunday. The Reverend Ed Bigham, pastor of the Coleman Central Baptist Church and the Reverend Paul Smith, pastor of the Coleman Concho Baptist Church, were the officiating ministers. Burial was in the Coleman Cemetery, under the direction of Stevens Funeral Home.

Mrs. Snow had been a resident of Coleman for 54 years. She was born September 27, 1884 in Gonzales County, Texas. A housewife she was a member of the Baptist Church.

Survivors include one son, Marrion D. Snow of Coleman; six daughters, Mrs. Joe Roberts and Mrs. I. V. Moore of Coleman, Mrs. Jesse Rinn of Borger, Mrs. Elsie Haynes of Abilene, Mrs. Gussie Crain of Weatherford and Mrs. Leon Gilliam of Mesquite; one sister, Mrs. J. T. Kenny of Santa Anna; 19 grandchildren and 24 great-grandchildren.

Bowling Results

Standings in the Channel Cat Housewives' bowling league as of Tuesday of this week is as follows:

TEAMS	W	L
Gill Ranch	17 1/2	6 1/2
Holsum Bakery	16	8
Mack's Sinclair	14	10
The Ten Pins	13 1/2	10 1/2
Windy Four	12	12
Dago Oil Well	9	15
Margie's Beauty Shop	8	16
Bobby's Beauty Shop	6	18

High individual game, Wanda Campbell, 166. High individual series, Wanda Campbell, 429. High team game, Gill Ranch, 524. High team series, Gill Ranch, 1478.

Mr. and Mrs. Roy West visited Mr. and Mrs. Claud Young in Clyde and attended the Clyde-Baird football game Saturday night.

Reg's Trading Post — Coleman

Eddie Hartman, son of Mr. and Mrs. Edd Hartman, left last week for Stephenville, where he will be a sophomore at Tarleton College.

Cole-Anna

Drive-In Theatre

THURSDAY — FRIDAY
AND SATURDAY

SEPTEMBER 28 - 29 - 30

MAUREEN O'HARA in
"The Deadly Companions"

—PLUS—

DAVID JANSEN in
"Ring Of Fire"

SUNDAY AND MONDAY
OCTOBER 1 - 2

SUSAN HAYWARD in
"ADA"

TUESDAY AND WEDNESDAY
OCTOBER 3 - 4

SHIRLEY MacLAINE in
"Two Loves"

OAK

Drive-In Theatre

THURSDAY — FRIDAY
AND SATURDAY

SEPTEMBER 28 - 29 - 30

JACK WEBB in
"The Last Time I Saw Archie"

—PLUS—

JANE RUSSELL in
"Montana Belle"

SUNDAY — MONDAY
AND TUESDAY

OCTOBER 1 - 2 - 3

PATTI PAGE in
"DONDI"

—PLUS—

DICK POWELL in
"Station West"

SANTA ANNA Piggly Wiggly
Big Dollar Specials

LOOK! — RED DELICIOUS
APPLES 8 Pounds 1.00

303 Size Cans Mayfield **CORN 8 cans \$1** 303 Size Cans Kimbell's Whole **POTATOES 8 cans \$1**

ALL IN HEAVY SYRUP BIG 2 1/2 CAN
PEACHES APRICOTS PLUMS 4 Cans \$1 303 Size Cans Kimbell's **BLACKBERRIES 5 Cans \$1**
303 Size Cans Hunt's Fruit **COCKTAIL 5 cans \$1**

GIANT 46-oz. Cans Kimbell's **GRAPEFRUIT JUICE 4 Cans 1.00**

GIANT 46-oz. Cans Diamond **Pineapple Juice 4 Cans 1.00**

300 SIZE CANS AUSTEX **Spaghetti & Meat Balls 4 Cans 1.00**

Spare Ribs 3 lbs. 1.00

Wieners-Rodeo 3 lbs. 1.00

303 Size Cans Kimbell's 9 CANS
MIXED GREENS TURNIP GREENS Mustard Greens \$1 300 Size Cans Diamond — With Tomato Sauce **SPAGHETTI 9 cans \$1**
12-oz. Cans Diamond Pineapple **JUICE 9 cans \$1**

300 Size Cans Allen's Sweet **POTATOES IN SYRUP 7 cans \$1**

303 Size Cans Kimbell's **KRAUT 7 cans \$1**

14-oz. Bottles Sniders **CATSUP 7 for \$1**

303 Size Cans Trellis **PEAS 7 cans \$1**

FINE FOR BARBECUE **BEEF RIBS 4 lbs. \$1**
RODEO SLICED **BACON 2 lbs. \$1**

PIGGELY WIGGLY Gives S.&H. Green Stamps With Every 10c Purchase. Double Stamps On Wednesday With \$3.00 Purchase.