

Santa Anna News

"He Profits Most Who Serves Best"

One Section — 8 Pages

VOLUME LXXIV

SANTA ANNA, COLEMAN COUNTY, TEXAS, FRIDAY, NOVEMBER 4, 1960

NUMBER 45

School Board To Accept Petition Nov. 3

The trustees of the Santa Anna Independent School District will meet in their regular November meeting Thursday evening, Nov. 3, at 7:00 p. m. They will accept the petition that has been circulating throughout the district for about the past month. The petition requests the school trustees to call an election for the adoption of Senate Bill 116, which will enable the school trustees to increase the school tax on the present valuation from \$1.50 per \$100 valuation up to a maximum of \$2.00 per \$100 valuation.

This increase is urgently needed in order to continue the high standard of education that has been being taught in the local public schools.

The board will also take care of the other regular duties during the meeting.

Door Prizes to Be Awarded at Pancake Sale

The Lions Club voted Tuesday to again feature the large number of door prizes usually awarded at the annual Pancake Sale. Elgean Harris, president, appointed a committee to solicit the prizes from the local businessmen.

The sale will be held Friday, December 2. Ticket sales have been brisk during the past ten days, and if there is anyone in the area who does not have them, they can be purchased from any member of the club.

This year a contest developed on an individual basis, with each member attempting to sell more tickets than the others. The ten members who sell the smallest number of tickets are due to march in the annual Christmas Opening Parade, dressed as women.

A lot of fun is planned for all. Everyone is urged to plan to be in Santa Anna for the day.

Juniors End Season Tues.

The Junior Mountaineers completed their 1960 football season Tuesday night at Mason. Although Mason won the game 44-20, the local boys played the best game of the season. Coach A. D. Donham said he was real proud of the fine example the boys set for their final game.

In their previous seven games, only 13 points had been scored against the Mason team. The local boys scored 20 points. Coach Donham said his team was outweighed about 20 pounds to the man on the average, and they had an extra big line.

Santa Anna scored first, then Mason, then Santa Anna, then Mason, then Santa Anna had a TD called back, which seemed to hurt for a while. The half-time score was 14-12 for Mason. In the last half Mason just overpowered the boys.

Mason won the "B" team game 22-0.

The boys were rather late getting home Tuesday night. The bus had a flat in Mason, and they also ate supper there.

UNICEF Drive Collects \$66.92

More than 70 youngsters, all students in the Santa Anna Elementary School, participated in the annual UNICEF drive for funds Monday afternoon. UNICEF is the United Nations Children's Fund, and all the money contributed goes to help underprivileged children in all parts of the world.

The funds collected locally is enough to furnish 33,460 glasses of milk for the needy children of the world.

Mrs. Roy Horne, chairman of the WSCS committee, expressed thanks of the organization to everyone who participated in the drive in any way. To those who gave so generously, the mothers who drove cars and the youths who made the canvas of the town, it all went to make a very successful drive.

Last year about \$37.00 was collected, and each year the drive has been held the amount has increased.

To Speak at First Methodist Church

The Rev. Wallace J. Shelton will be the guest speaker at the First Methodist Church Sunday morning at 10:50 a. m. He will also administer the Sacrament of the Lord's Supper. All members are urged to attend.

The church extends a cordial welcome to visitors at all times.

GENERAL ELECTION TO BE HELD TUESDAY

The General Election will be held throughout the United States on Tuesday, November 8. Polls will be open in every voting precinct in the Nation.

In Coleman County all the voting boxes will be the same as they have been for the past several years. All the boxes will be open from 8:00 a. m. to 7:00 p. m. The boxes in Santa Anna will be located at the City Hall for the Santa Anna North Ward and in the old Payne Building on Wallis Avenue for the Santa Anna South Ward. W. F. Barnes is Election Judge for the North Ward and Roy Stockard for the South Ward.

This is a very important election for every voter in Texas as well as throughout the nation. To be elected are nominees for every office from the President of the United States down through all the county offices. Also included on the ballot are four proposed changes in the Constitution of Texas. We urge every qualified voter to exert his rights as an American Citizen and a Citizen of Texas to go to the polls and cast your ballot. From all indications the Presidential race will be very close, and your vote may be a deciding factor in who is elected as the President of the United States.

We feel most persons have pretty well made up their minds as to who they want for President and Vice President. The main thing is for you to go vote your convictions. We are not going to tell you how to vote. We think all the national coverage that has been given both major party candidates through the daily newspapers, radio and television has been sufficient to let you know who you want for the office.

You have the privilege of voting for any person you choose in the General Election. If you want to "split" your ballot in several places, that is your God given right as an American Citizen. If you want to vote for one party's nominees for every office, you may do so.

The Official Ballot is a very large ballot and may be somewhat confusing to some voters. However, it is rather simple once you see it and know just what you want to do. There is six columns listed on the ballot, with the Democratic Party being listed in the first column, the Republican Party in the second column, then the Constitutional Party, Prohibition Party, a place to write in candidates for the Independent Party, and in the final column is a place to write in the name of any person you choose for any of the offices listed. As long as you do not vote for more than one person for each office and your ballot is legible and otherwise properly marked, your ballot will be counted.

If you want to vote for the Republican nominees for President and Vice President, and then vote the remainder of the ballot in the Democratic column, all you have to do is mark out the names of John F. Kennedy and Lyndon B. Johnson in the Democratic Column, and leave the names of Richard M. Nixon and Henry Cabot Lodge in the Republican Column. Then mark out all the other names in all the columns except the remainder of the Democratic column. If you want to further split your ballot be sure to mark out all the names listed for any office except the one person you want to vote for.

For those of you who will want to vote against Lyndon Johnson all the way, and vote the remainder of the Democratic column, you will find that whoever arranged the names on the ballot has made it as confusing as possible. Generally the office of a United States Senator is listed in the second place on the ballot, above that of Governor and all the other state races. However, this year the office of U. S. Senator has been moved down on the ballot to a position just below that of the Attorney General of Texas. If you want to vote for any of the other candidates, just mark through Lyndon B. Johnson under "For United States Senator" and be sure to leave the name of the candidate you want to vote for in one of the other columns or write in the name you prefer.

If you want to vote the straight Democratic or Republican party tickets, just mark through all the other columns

on the ballot, except the column you want to vote for.

So far as the proposed changes in the Constitution of Texas are concerned, most of them are very misleading. In this instance we feel your editor might offer a suggestion as to how to vote on all four of the proposals. Let us suggest that if you do not understand the proposals that you vote against each one of them by marking out the "FOR" in each one of them. So far as proposal No. 1 is concerned, we think it would be alright for this to pass as it does not affect Coleman County in any way and only affects the counties mentioned on the ballot. And then only if the proposal is voted "for" in the counties concerned.

The second proposal concerns authorizing the Veterans' Land Board to increase the amount of interest paid to money lenders for money to carry on the operation of the office. This would in turn increase the amount of interest veterans would have to pay on loans made for them to purchase land. We do not feel this proposal is in the better interest of the veterans of the state and urge you to help defeat the issue.

The third proposal is one we certainly would urge every voter to vote against. If this issue is voted for it will increase the salary of the members of the Texas Legislature from the present \$3,000 per regular session (which is every other year) to an annual (yearly) salary of \$4,800 and would further allow each member an additional \$12.00 per day for other expenses during the first 120 days of a regular session and 30 days in each special session. This would give each member of the Texas Legislature a total of \$1,440 for the regular sessions and an additional \$360 for each special session. This is in addition to the regular salary of \$4,800 per year. In the General Election two years ago a proposal that would not cost the State as much money was turned down by the voters, but members of the Legislature are bound and determined they are going to stuff a tremendous salary increase down the throats of the Texas voter. Personally, we are just as determined they are not going to do such a thing.

The fourth proposal is what has commonly become known as the "Loan Shark Amendment." We have made an extensive study of this proposal and have come to the conclusion that it is exactly a "Loan Shark" proposal, sponsored by the loan sharks. At present the Constitution clearly states that no one will charge interest at the rate of more than 10% per annum on money loaned to other persons. What this proposal will do if passed by the voters of Texas is remove the 10% limit as now set by the Constitution, and leave it to the Legislature to set interest rates that can be changed by various lending concerns, up to a maximum of 36% interest.

Banks are in the business of lending money. This is their principal way of making money, and none of them charge more than the maximum of 10%, and in many instances the money is borrowed at far less than the 10%. Any person who needs to borrow money and has security for that money can get it at the bank. Other lending agencies have sprung up all over the nation, especially in the medium and larger cities, and some of them make various different kinds of insurance charges and other charges on money lent, but the person who borrows this kind of money is primarily at fault, because he does not read the contract that he signs.

Certainly something should be done to help the person who cannot help himself, but this is not the answer. If this proposal were to be made a part of the Texas Constitution, then the Loan Shark lobby would camp in Austin, and would pressure every member of Congress until they achieved their goal of a maximum of a legal interest rate of 36%. All you have to do to know that this proposal should be voted down is to ask yourself the question — "Could I pay 36% interest on money it is necessary for me to borrow for the operation of my business, my farm, my household, my unexpected medical bills, etc?"

Mountaineers Travel to Eastland Friday

This is the next to the final week of Class A football for most teams over the state. All Class A district championships are due to be decided by the end of next week. And this week the Mountaineers journey to Eastland for their last game away from home.

The Mavericks have played a tough schedule this year, and have won only two games. The first game of the season they won over Class AA Comanche by a score of 22-12 and they have won one conference game, over Early by a score of 14-6. They have lost to Class AA teams like Cisco, Ranger, Dublin and DeLeon. Albany also handed the Mavericks a 59-7 defeat two weeks ago.

This does not mean the Mavericks are weak by any point of view. They are a tough eleven, that has just this year been moved from Class AA competition back to Class A competition.

Exclusive of last week's games, the Mountaineers are the underdogs by several touchdowns in this contest. Cross Plains won over Ranger 12-0 and Ranger won over Eastland 20-8. The Mountaineers played one of their best games of the season against Cross Plains and lost 16-8. Several other comparisons would give the Mavericks more compelling advantages.

However, we believe the Mountaineers can take the Eastland eleven if they play the type of football played last week and the week they played Cross Plains. They certainly cannot if they play like they did against Clyde, Bronte and Bangs.

Leukemia Victim Buried Here Mon.

Funeral services for Charles Glenn Mills, 5-year-old son of Mr. and Mrs. Harold Mills of Olton, were held in the First Methodist Church of Coleman Monday, October 31, at 2:30 p. m. The child died in a Dallas hospital at 2:33 p. m. Saturday, Oct. 29, of Leukemia. He had been ill for about 18 months.

He was born in Coleman November 16, 1954 and had lived at Olton most of his life. He was affiliated with the Methodist Church.

The Rev. Russell McAnally, pastor of the Lockney Methodist Church, officiated, assisted by Rev. Marvin Bledsoe, pastor of the First Methodist Church in Coleman. Burial was in the Santa Anna Cemetery under the direction of Stevens Funeral Home.

Survivors include the parents of Olton; one sister, Gayla of the home; the maternal grandmother, Mrs. C. A. Crump of Coleman, and the paternal grandparents, Mr. and Mrs. C. G. Mills of Coleman.

Pallbearers were Clifford Carlisle, Ernest Hasha, Willie Green, Gerald Allcorn, Bill Collins and Royce Collins.

Band News

Because of the bad weather the past Friday night, the band did not put on their regular performance during the half-time activities. However, they will be at the Santa Anna-Eastland game this week and will perform.

The band is working very hard, preparing for some contests which are coming up pretty soon. Miss Mary Rehm represented the band in the Halloween Carnival Saturday night. Her escort was Tommy Pollock.

The Stage Band continues to meet each Monday afternoon right after school for practice. New vocalists recently selected are Arlene Welch and Don McCullough.

The band had their picture made Wednesday. This picture will be put on the Birthday Calendar, now being sold by the Band Boosters Club.

SON BORN TO MR. AND MRS. ELGEAN HARRIS

A son, Tommy Dale, was born to Mr. and Mrs. Elgean Harris in the Coleman Hospital Wednesday, October 26 at 1:00 p. m. He weighed 8 pounds, 14 ounces. The Harris' have two daughters.

Grandparents are Mr. and Mrs. Milford Harris of Santa Anna and Mrs. Mabel Burrage of Seagraves.

Well, could you? Then do what you know you should and vote against Proposal No. 4 on the ballot on Tuesday.

Ward School Honor Roll

James A. Harris, principal of the Elementary School, announces the following students as being on the honor roll for the first six-weeks period:

FOURTH GRADE
Dorthea Carpenter, Beth Dean, Jimmy Eubank, Janice Langford, Judy McIntire, Clita Pollock, Leta Pollock, Danna Strickland, Eddie Voss and Lynn Wright.

FIFTH GRADE
Carolyn Rowe, Dickie Horner, Kippy Clifton, Mike England, Ted Ford and Roy Joe Harvey.

SIXTH GRADE
Jean Robinett, Barrett Markland, Donnie Campbell, Leanna Pollock, Carlton Watson, Susanna Hays, Marguerette Horner, Sonja Neff, Loretta Broadway, Beth Irick and Becky Hammonds.

SEVENTH GRADE
Annita Ellis, Gary Rider, Eugene Davenport and Mary Haynes.

EIGHTH GRADE
Lies Guthrie, Lawanda Horner, Karen McCluskey, Patricia White, Linda Robinett, Barbara Baucom and Tommy Hays.

North Side Baptists Begin Study of Church Activities

Members of the North Side Baptist Church began a special study of their denominational work the past Sunday evening. The pastor, James L. Rogers, said the study would continue for about the next two months. The study is to be conducted each Sunday evening after the regular services.

The study will concern the work of the Baptist Missionary Association of Texas and the North American Baptist Association. A magnifier-projector will be used to study pictures of the associational work.

The past Sunday evening the pastor showed pictures of the Jacksonville Baptist College, Jacksonville, Texas. The college is affiliated with the Texas Education Agency and approved for teacher training. It was established in 1899 and is owned and operated by the Association of Baptists of Texas.

Sunday evening services begin at 7:00 p. m. The pastor and church extend a cordial invitation to the general public to attend the services and enjoy the visual educational program. This week pictures of the Texas Baptist Orphanage of Waxahachie will be shown. This is another institution owned and supported by the denomination.

New Air Force Enlistment Program In Effect

The Air Force has announced the restoration of the Air Force Prior Service Program. This much favored program will allow many former service personnel (from any service) up to a year to enlist in the Air Force with the same grade formerly held. The plan will also allow former servicemen who have been discharged more than a year to enlist in grades higher than those formerly offered. Under this plan there are 134 career fields listed as needed by the Air Force and if a prior service man does not fall under one of these fields, he may be sent to a school in one of the needed fields if he can pass the test.

Sergeant Mabry, the Air Force Recruiter for this area, pointed out that these prior servicemen may select a base of their choice and will know to which base they are going to be assigned before leaving the Recruiting Office in Abilene. For further information concerning this program, contact the Air Force Recruiter here in Santa Anna every Monday afternoon or call Abilene Collect at OR 28949.

WORK ON YEARBOOK

A committee of the TEL Class of the First Baptist Church met with Mrs. Clarence Gray Tuesday afternoon to work on the 1960-61 yearbooks. The committee was composed of Mrs. Walter Ferguson, Mrs. W. S. Stacy, Mrs. Gray, Mrs. Carl Ashmore and the teacher, Mrs. Dovie Chapman.

After the work was completed, Mrs. Gray served refreshments to the group.

Street cleaners are sometimes known as white wings.

Honolulu is the capital of the Hawaiian Islands.

Rescue Squad Demonstration To Be Sunday

The 20-man Civil Defense Squad of Coleman will put on a demonstration at the Santa Anna City Hall Sunday afternoon, Nov. 6, beginning at 2:00 p. m. The demonstration will be a continuous operation until about 4:30 or 5:00 p. m., just as long as people come to see the rescue team in action. Included in the demonstration will be ten methods of saving human life when some disaster befalls a person.

Some of the demonstrations will be recognized ways of taking persons from burning buildings or buildings that have been partially destroyed by some other disaster. Some of them will be various ways of saving lives of persons who have been injured in disasters such as tornadoes, fires, car wrecks and various other ways. The new method of artificial respiration will also be demonstrated.

The entire demonstration will be very interesting and every individual in Santa Anna and this area is invited to come by and see the action. You will learn by actual demonstration, many of the life saving methods you have many times wished you knew more about.

Mrs. G. K. Stearns Gets \$25.00 On Saturday

Mrs. G. K. Stearns was the lucky person the past Saturday in the Santa Anna Merchant's Fall and Christmas Program. A large crowd was present at 3:00 p. m. when her name was drawn from the big hopper.

Another \$25.00 in merchandise coupons will be given away this Saturday at 3:00 p. m. These coupons may be spent just like cash with any of the local merchants participating in the program.

Edward Wells Buried Wednesday

Edward C. Wells, 50, a ranch employee of the Taylor Ranch near Trickham, died about 5:20 Monday in the Santa Anna Hospital, after suffering a heart attack while working a short while before. He was rushed to the hospital and died about 15 minutes after his arrival.

Wells, a bachelor, was born June 19, 1910 in Brown County. He had lived most of his life in and near the Trickham Community.

Funeral services were held at the Trickham Union Church at 2:30 p. m. Wednesday. Burial was in the Trickham Cemetery under the direction of Stevens Funeral Home of Coleman.

Survivors include five brothers, Richard of Trickham, Jim and John of Santa Anna, DeWitt and Ray of Coleman; and three sisters, Mrs. S. M. Fellers of Trickham, Mrs. Edward Leonard of Coleman and Mrs. Darrell Cupps of Santa Anna.

Happy Birthday

"Happy Birthday" to all who have birthdays during the next week. Below are listed the birthdays we have this week.

NOVEMBER 4

Leffel Estes
Mrs. C. E. McCarrell
Jackie Mobley
Mrs. B. A. Parker
Barrett Markland

NOVEMBER 5

Mrs. Roy Francis
Jackie Dillingham

NOVEMBER 6

Deborah Fae Bowker
Carrie Stacy
Mrs. Evangeline Hottton,
Houston
Bobby Joe Goodwin, Coleman
Travis Moore

NOVEMBER 7

Kim Dunn, Abilene

NOVEMBER 8

Mrs. Bond Featherston
J. D. Kline

NOVEMBER 10

Mrs. Frank Bryan, Rockwood
Sandra DeSha

Would you like for your name to be published on your birthday? If so, please be sure to let us know when it is. Next week we will publish names of those having birthdays between November 11th and November 17th.



Watches on the Blink
Repaired in a Wink

Precision craftsmanship by our experts insures your complete satisfaction with all our watch repairs. Prompt service.

EARLE SMITH'S
 Coleman, Texas

Inside Rubber Base Paint. Reg's Trading Post, Coleman.

Whon News
 By MRS. TOM RUTHERFORD

Burial services were conducted in the Whon Cemetery last Thursday for Mr. Duke Walters. We extend sympathy to the bereaved sister and brothers, friends and other relatives.

Mrs. Bert Turney entertained Mr. and Mrs. James Watson and children Wednesday night in her home with a birthday supper honoring Mrs. Watson.

We received the death message of Mr. Ed. (Son) Wells of the Tricham Community Monday afternoon. Suffering from a heart attack, Mr. Wells passed away only a few minutes after getting to the Santa Anna Hospital. Our sympathy to the bereaved.

Mr. and Mrs. O. C. Yancy and children of Fort Worth were weekend guests with his brother, Mr. and Mrs. Walter Yancy and children. The group were in Mason County at their camp home during the weekend.

Mr. Floyd Morris was up in Colorado State hunting last week. He reported wonderful luck with both deer and elk.

Mr. and Mrs. John David Morris of Coleman and Mr. John D.

Morris of Iraan were Sunday guests in the Floyd Morris home.

Mr. and Mrs. Lee Abernathy and children attended memorial services for Mr. Abernathy's grandfather Monday.

Mr. and Mrs. George Jenkins of Meivin were guests with her sister, Mr. and Mrs. Babe Gardainer Sunday.

Mrs. Zack Bible received word her brother, Mr. B. A. Peeples, had been transferred from the Fort Stockton Hospital to an Odessa hospital, and had undergone surgery. Mr. Peeples was in a car wreck several weeks back.

Mr. and Mrs. Earl Cozart were guests of his sister, Mr. and Mrs. T. K. Carray in Goldthwaite Saturday night. They were joined Sunday by Mr. and Mrs. Howard Lovelady of Gatesville.

Mr. and Mrs. Rex Turney and children of Santa Anna were Sunday guests of his parents, Mr. and Mrs. Bert Turney. Mr. and Mrs. Bert Turney returned home with them and spent Sunday night.

Mr. and Mrs. Babe Gardainer were in San Angelo from Monday to Friday, where Mrs. Gardainer was under treatments of a doctor there. Sorry to report Mrs. Gardainer is not feeling so well, but states she hopes to be improving.

Mrs. Gardiner reported her daughter-in-law, Mrs. Granvil Hext of Albuquerque, N. M., has recently undergone major surgery there. Friends will be glad to hear she is doing fine.

Mrs. Floyd Morris and son, Jamie Lee, of Brownwood were weekend guests in their home here.

Mr. and Mrs. Kenneth Shields and baby of Coleman spent Saturday night with his parents, Mr. and Mrs. Dave Shields and boys.

Mrs. Dave Shields and boys spent Monday night with rela-

tives in Cross Plains.

Mr. and Mrs. Bert Turney received a letter from Mr. Gus Hines of Marshall, who visits in the Turney home quiet often, stating he had recently married.

Shields News
 By Mrs. E. S. Jones

Word was received Saturday morning of the arrival of twin boys, Glenn and Brian, to Mr. and Mrs. Glen Hannah of Detroit, Michigan. Mr. Hannah is a former minister of the Church of Christ here.

Mr. Mac McCright of Amarillo, Mrs. Effie Dalton, Mr. and Mrs. Geo. Wheatley and Danny were weekend visitors with Mrs. Ura Dillingham and Richard.

Mrs. Mabel Byers of Stephenville, who is visiting her daughter, Mrs. Rastus McClure and family spent Monday with Mrs. E. S. Jones.

Mr. and Mrs. Leon Slusher and son, Steve, of Odessa and Ann Stewardson of A.C.C., Abilene, visited over the weekend with the Tom Stewardsons and attended funeral services for Glenn Mills in Coleman Monday.

Bailey Machen of Fort Worth spent Wednesday with his cousin, Bert Fowler and family.

Several groups of spooks visited in our community Monday evening.

Mr. and Mrs. Dan Wheatley visited Sunday in Bangs with Mr. and Mrs. W. W. Rosser.

Visitors with Mr. and Mrs. Bill Price on Sunday were her parents, Mr. and Mrs. Jess Griffith of Santa Anna, Mr. and Mrs. D. D. Griffith and son, Gary, of Fort Worth and Mr. and Mrs. Bill Campbell and Donnie.

Mr. and Mrs. Sam Cobb of Fort Worth visited Saturday with relatives in our community.

Mrs. Odis Bivins returned from Houston Friday. She had been with her sister, Mrs. Kahler Wheatley, who had surgery at the M.D. Anderson Hospital Wednesday.

Mr. Homer Vercher, a patient in the Coleman Hospital is improving, and his mother, a recent patient in the hospital is at her home in Coleman. Her daughter, Mrs. Dan Shufford, is caring for her.

Mr. and Mrs. Leonard Williams visited Mr. and Mrs. Aubrey Scarborough Saturday evening. Rev. and Mrs. Hazen Simpson were Sunday afternoon visitors.

SAVE 'EM!



EXPERT SHOE REPAIR SERVICE
BOOTS

Made to Your Specification
 Guaranteed To Fit

TOMLINSON
 BOOT & SHOE SHOP
 Coleman, Texas

BE SURE YOU GET

Morgan Meat Co.

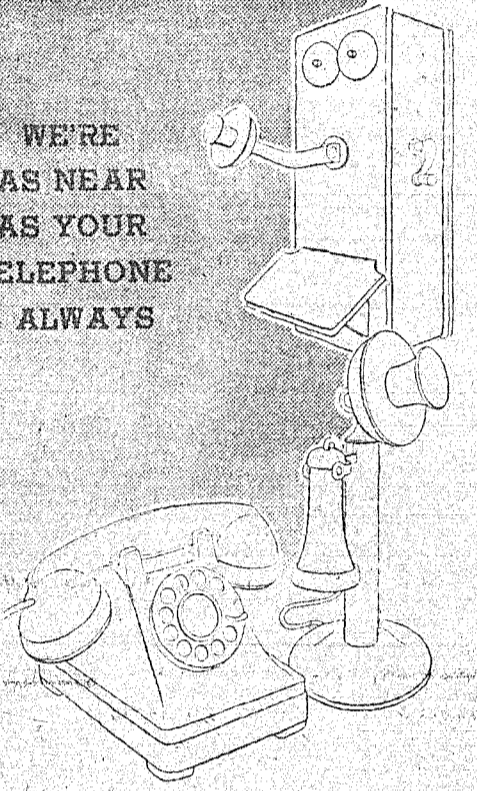
TENDER TOP GRADE MEATS

At Your Favorite Meat Counter In The Santa Anna Markets

If You Have Fat Calves To Sell See
C. O. MORGAN, JR. AT
MORGAN MEAT CO.

106 Roselawn Coleman

WE'RE AS NEAR AS YOUR TELEPHONE - ALWAYS



STEVENS' FUNERAL HOME

400 W. Pecan, Coleman Phone 2121

FURNITURE NEW AND USED

STOVES NEW AND USED

GOLD SEAL LINOLEUM 6 - 9 - 12 FOOT

SEE US BEFORE YOU BUY

Frank Lewis FURNITURE

West of Courthouse Telephone 9-2366 - Coleman

NIWOT NEWS
 BY THE NIWOT KIDS

Mr. and Mrs. Fred Haynes and Billie and Mr. and Mrs. Earl Ellis visited with Mr. and Mrs. John Haynes last Friday night.

Mrs. Mae Flores of Bangs, Mrs. Nancy Nixon and girls of San Angelo, all visited with Mr. and Mrs. Dick Baugh and girls last Saturday.

Mr. and Mrs. Bruce Hibbetts and Mr. and Mrs. Alton Benge and children visited with Mr. and Mrs. Charlie Avants and family and Mr. and Mrs. Joe Wallace and family last Sunday.

SPEND YOUR

Christmas Budget

How Ever You Wish...
BUT DON'T LOSE IT!



Christmas Shopping Is An Old Story to most of us—large crowds, a busy schedule, and lots of running around. It's a time when a billfold or purse lost is most unlikely to be found intact.

LEAVE YOUR MONEY IN THE BANK AND PAY BY CHECK

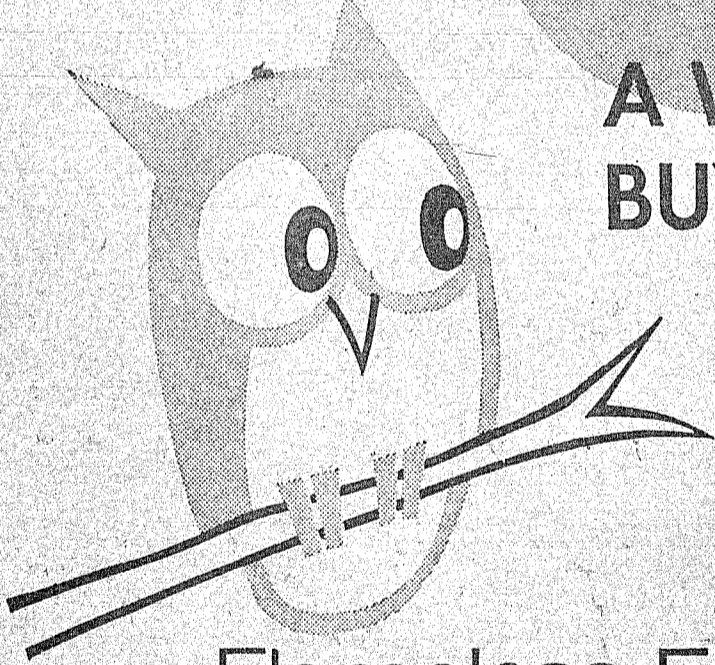
If your checkbook is lost, it's only a momentary inconvenience. Your shopping trip can be continued, using counter checks. When you return home your returned cashed checks can be reconciled and stubs re-written for your own records.

Your Santa Anna National Bank checking account works for you the year 'round—but it's especially valuable in the season that's just starting.

If you don't have a checking account with us, why not start one today? Remember, we're as close as your mail box.

Santa Anna National Bank
 Member FDIC And Fed. Res. System

A WISE BUY...



Flameless Electric Water Heater

Only Electricity Provides Flameless Water Heating

SAFE Flameless electricity heats all the water you need—without flame, without combustion. Just set it, forget it!

CLEAN There's no soot, no soil—when you heat water with flameless electricity. You can install it anywhere.

ODOR-FREE No smells of burning fuel. No need for ventilation when you heat water with flameless electricity.

MODERN Long life-for added value. Install your flameless electric water heater anywhere. No flues, vents or duct work needed!

LOW RATE When you select an electric water heater, WTU will give you a special water heater rate of ONE CENT a kilowatt hour. You do not have to have any other load requirements and the rate applies to residential and commercial customers alike.

FREE WIRING For customers served by WTU, free wiring will be installed for electric water heater (also ranges, clothes dryers and washer-dryer combination) when purchased from local dealer or WTU.

West Texas Utilities Company "an investor owned company"

USE BOTTLED GAS

- Clean and Safe
- Best For Heating
- Higher BTU Rating
- Best For Cooking
- Approved By Architects
- No Muss
- No Fuss

PHONE 9-3551
 Night Phone 4599



Prompt Delivery

Coleman Butane Gas Co.

Super Value SPECIALS

PYREX Percolator
\$3.95 Value
Only **\$3.25**

"Three Little Pigs" Building Bricks
Regular \$2.98
Only **\$2.39**

Fully Padded Baby Car Seat
With Steering Wheel
\$3.98 Value
Only **\$3.47**

17 1/2 Cu. Ft. Aluminum Lined Chest FREEZER
Reg. \$372.00
Only **\$272.88**

White Auto
Coleman, Texas

Acreage Allotments For 1961 Cotton Crops Announced

College Station — The U. S. Department of Agriculture has announced state acreage allotments for the 1961 crops of upland and extra long staple cottons.

The upland allotment for Texas was set at 7,849,198 acres which includes 10,886 acres as the State's share of the national reserve. The Agricultural Act of 1958 authorizes a national acreage reserve of 310,000 acres for apportionment among the states on the basis of the estimated needs for additional acreage to establish minimum farm allotments as provided by legislation.

The extra long staple acreage allotment for Texas was set at 21,893 acres out of the national allotment of 63,740 acres.

The State allotment will be apportioned among the counties to establish county allotments and these will be further broken down among the individual farms of the counties in accordance with the provisions of the law and regulations issued by the Secretary of Agriculture.

Farmers who were engaged in the production of cotton will vote in a national referendum on December 13 to determine whether marketing quotas will be operative for the 1961 crops—upland and extra long staple. At least two-thirds of those voting must approve quotas if they are to continue in effect.

Only one allotment-price support program will be available to upland cotton growers for 1961. If marketing quotas are approved in the referendum, price support will be available to upland growers who comply with their farm allotments at a level within the range of 70 to 90 percent of parity. The exact level of support will be announced at a later date. If quotas are not approved, allotment will remain in effect and price support at 50 percent of parity will be available to upland growers who comply with the allotment program.

The USDA announcement noted that farm acreage allotments will be mailed to operators of cotton farms prior to the December 13 referendum.

Severely Disabled Vets May Get Increase in Pension

Severely disabled veterans may be eligible for an increased rate of compensation as the result of a recent action of Congress, P. J. Mims, Manager of the VA in Waco says.

Mr. Mims explains that the new law provides a special rate of monthly compensation amounting to \$265 for veterans with service-connected total disabilities who also have service-connected disabilities independently ratable at 60 percent or more or who are permanently housebound because of their service-connected disabilities.

The law also provides a special monthly compensation rate of \$212 in cases where the total service-connected disability was incurred in peacetime service.

Neither age nor employability is considered in determining eligibility for the new special rates of compensation. A veteran is considered to be "permanently housebound" if he

is confined for the most part to his house or immediate premises due to his service-connected disability and if the disablement is reasonably certain to remain throughout the veteran's life. Assistance can be obtained at any VA office.

Four S'west Conference Game Broadcasts Sat.

Four Southwest Conference football games will be broadcast Saturday by the Humble Oil & Refining Co. In addition, Humble will co-sponsor the NCAA football telecast.

The Syracuse-Army game will be telecast beginning at 12:15 p. m.

The Arkansas-Rice game will

be broadcast from Little Rock by Bob Walker and Jim Wiggins. Radio time will be 1:45 p. m. (CST) over: KBWD, Brownwood; KRLL, Dallas; and other stations.

The Baylor-Texas game will be broadcast from Waco by Kern Tips and Alec Chesser. Radio time will be 1:45 p. m. (CST) over: WFAA-WBAP, Dallas-Ft. Worth; KOKL, San Angelo; WOAI, San Antonio and other stations.

The SMU-Texas A&M game will be broadcast from Dallas by Ves, Box and Eddie Hill. Radio time will be 1:45 p. m. (CST) over: WFAA-WBAP, Dallas-Ft. Worth; KPEP, San Angelo; and other stations.

The Texas Tech-Tulane game

will be broadcast from Lubbock by Eddie Barker and Jack Dale. Radio time will be 1:45 p. m. (CST).

Inside Rubber Base Paint. Reg's Trading Post, Coleman.

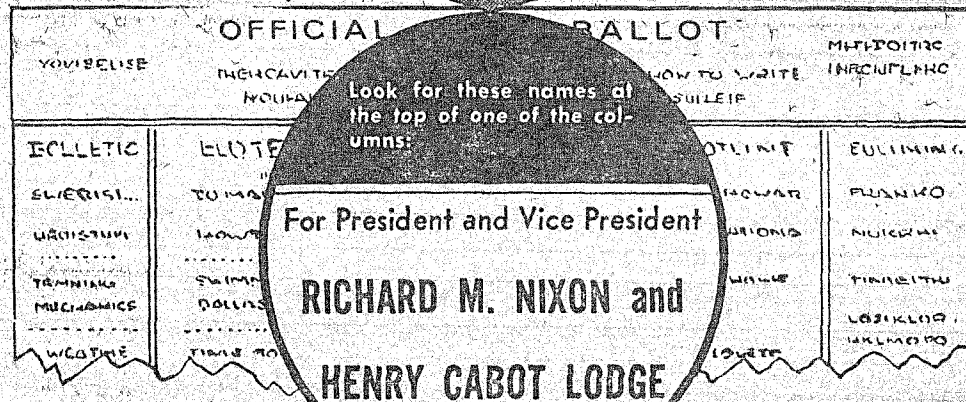
Mr. and Mrs. Jack Allen and Sammy of Midland, spent the weekend with her parents, Mr. and Mrs. Sam Collier.

Mr. and Mrs. Walter Lee, Guy and Joe of Midland, visited her mother, Mrs. Lura Williamson, during the weekend.

Mrs. Hardy Blue spent the weekend in Snyder with her daughter, Mr. and Mrs. Oran Henderson and Orabeth.

Vote as a Free American!

Vote the Ticket that is BEST FOR TEXAS
HERE'S HOW TO DO IT



1. Find the names of RICHARD M. NIXON and HENRY CABOT LODGE at the top of your ballot.
2. Leave the names NIXON and LODGE unmarked on the ballot; scratch all other names for President and Vice President.
3. To complete your ballot, leave the name of the candidate for whom you wish to vote for each office and scratch the rest.

WARNING!

You may be told that you cannot vote for Nixon and Lodge if (1) you voted in the Democratic Primary or (2) your poll tax receipt or exemption certificate is stamped "Democrat." THIS IS NOT TRUE. You CAN vote for any candidate you wish, no matter how you have voted, or not voted, in any previous primary or election. THIS IS YOUR RIGHT AS A FREE AMERICAN.

Vote November 8 for NIXON and LODGE

Texas Democrats for NIXON & LODGE; Allan Shivers, Chairman (Pd. Pol. Adv.)

SAY
"Merry Christmas"
WITH A PERSONAL GIFT



YOUR PHOTOGRAPH
Have Your Portrait Made NOW For Christmas Delivery
Hugh Capps Studio
Coleman Mutual Bldg.
Phone 8161
Coleman, Texas

Anthony's
C. R. ANTHONY CO.

COLEMAN, TEXAS

SUPER VALUE SPECIALS

For Friday and Saturday

Misses and Women's

PENNY LOAFERS

Black leather Penny Loafers, superbly made in every detail. Perfect fitting sizes 4 to 10. Medium and narrow widths — PAIR **2.88**

LADIES WASH DRESSES

Beautiful cotton print wash dresses in sizes 12 to 20 and 14 1/2 to 24 1/2 — 2 FOR . . . **5.00**

DOUBLE COTTON BLANKETS

Size 72x84 Block Plaid Double Cotton Blankets. Pink, Blue, Maize and Green — EACH **3.98**

BOYS SPORT SHIRTS

Long sleeve Plaid Gingham fabrics. Big assortment of colors. Sizes 6 to 16 — EACH **1.00**

Men's Chambray

WORK SHIRTS

Blue or Grey Chambray, 2 pockets, sanforized for perfect fit. Sizes 14 to 17 — EACH **1.00**

Men's Cotton

ARGYLE ANKLETS

Fine Hemphill construction. Assorted patterns and colors. Sizes 10 to 12 — PAIR **44c**

BOYS COTTON ANKLETS

Reinforced toe and heels. Popular patterns and colors. Sizes 6 to 10 1/2 — 5 PAIRS **88c**

White or Pastel Plaid

SHEET BLANKETS

Size 60x76. Lockstitched binding, Deep Nap Cotton — EACH **1.00**

First Quality Solid Color

CORDUROY

Top fashion colors, 36-inch machine washable Corduroy — YARD **88c**

52x52 and 54x54

LUNCHEON CLOTHS

All Cotton and Rayon and Linen Lunch Cloths. Big Assortment of colors to choose from. Ideal for gifts — EACH **1.00**

Are you smoking more now
but enjoying it less?



GIANT AMONG GIANTS. That's Dick Nolan, defensive backfield star of the N. Y. Giants. Nolan is a Camel smoker. He says he's borrowed other brands. But Camel is the cigarette he buys for complete smoking satisfaction.

HAVE A REAL CIGARETTE — HAVE A CAMEL



Dick Nolan

ENJOYS A CAMEL AFTER A GAME
You'll enjoy a Camel anytime and every time. So, if you're smoking more these days, but enjoying it less . . . change to Camels.

B. T. Reynolds Tobacco Company, Winston-Salem, N. C.

The best tobacco makes the best smoke!

Santa Anna News
ESTABLISHED 1880

JOHN C. GREGG
Editor and Publisher

PUBLISHED EVERY FRIDAY
AT SANTA ANNA, COLEMAN
COUNTY, TEXAS

NOVEMBER 4, 1960

SUBSCRIPTION RATES

IN COLEMAN COUNTY
1 Year \$2.00
6 Months \$1.25

OUTSIDE COLEMAN COUNTY
1 Year in Texas \$3.00
6 Months in Texas \$1.75
1 Year outside Texas \$4.00
6 Months outside Texas \$2.25
1 Year outside U. S. A. \$5.00
Advertising Rates on Request



The Publisher is not responsible for copy omissions, typographical errors, that may occur further than to correct it in the next issue. All advertising orders are accepted on this basis only.

Second Class postage paid at Santa Anna, Texas.

CLASSIFIED ADS

Minimum Charge 40c Weekly

FOR RENT

ROOM FOR RENT: Frances Everett, phone Black 230, 1205 Wallis Ave. 39tfc.

FOR RENT: The Collin. Price home, 7 rooms. See Mrs. Knox next door. 45-46c.

FOR SALE OR TRADE

HAVING CURTAIN TROUBLE? See J. E. Stevens Furniture Co., Coleman. Large selection of beautiful draw drapes, tier curtains, café style, bed spread and drapes to match. Also custom made drapes. Bring your curtain troubles to us. 45c.

WANTED: You can split your ticket! Vote as you please! You are not branded or hypnotized! Draw a line through any name you don't want! Leave just one name for each office. Coleman County Republican Committee. 45p.

FOR SALE: Good upright Piano. Billy J. Harvey, phone Black 354. 44-45c.

BUY OR SALE: Good used furniture. W. M. Morgan. 30tfc.

BEGIN NOW making Christmas decorations, gifts and memorials. Buy plastic and supplies from Brown's Plastic Flower Shop, 1008 Wallis Ave. 45-46c.

PUBLIC NOTICE: It doesn't matter what party stamped its name on your poll tax. Just remember what party has the wars, who liked Old Joe, what party cut up Germany and Korea, and all those promises! For good government **VOTE REPUBLICAN!** Coleman County Republican Committee. 45p.

UNUSUAL GIFTS FOR CHRISTMAS: Sewing baskets, buckets and boxes. Many styles. Every woman needs one. Priced from \$4.99 to \$27.50 at J. E. Stevens Furniture Co., Coleman. 45c.

THE ABILENE REPORTER-NEWS can be delivered to your home or business address, mornings and Sundays, by contacting John W. Gregg. Phone 348 or 45. 32tfc.

4-PIECE SECTIONAL SOFA. Unusual value, attractive beige color. Regular \$289.00 value, all four pieces only \$199.00 plus old suit at J. E. Stevens Furniture Co., Coleman. 45c.

FOR SALE: Good heavy oats, cleaned, 90c bushel. S. E. Benton. Call 5411. 44-45p.

PUBLIC NOTICE: Double your pleasure! Double your power! Scratch Lyndon twice! Vote for Tower! Tower wants it, Lyndon hasn't asked for it! Coleman County Republican Committee. 45p.

FOR SALE: Several used TVs in good condition. Geo. D. Rhone Co., Coleman, Texas. 48tfc.

MIRRORS! MIRRORS! Very special offer. Door mirrors \$6.99; Triple Vanity Mirror \$4.99 and \$13.95; Hand Mirror \$1.99; Shaving Mirror \$4.99. See a variety of styles at J. E. Stevens Furniture Co., Coleman. 45c.

FOR SALE: Good used refrigerators, automatic washers, wringer washers, clothes dryers and gas cook stoves. Terms to suit YOU. Geo. D. Rhone Co., Coleman, Texas. 48tfc.

GIFTS FOR MEN: Pole lamp with mirror; spot light and tray \$37.50; Fancy Clip boards \$3.50; Executive Clip Set (3 clips) \$1.99 at J. E. Stevens Furniture Co., Coleman. 45c.

WANTED: 2,000 voters who can read our Sample Ballot ad on Page 3. Coleman County Republican Committee. 45p.

FOR SALE: Portable barbecue, clothes line posts, electric fence posts, farm feeders, and gates. Jones Wrecking Yard. 23tfc.

UNUSUAL CHRISTMAS GIFT: Individual door chimes. Fits any door, self winding, plays assortment of tunes, \$5.99 at J. E. Stevens Furniture Co., Coleman. 45c.

FOR SALE: Hale Manufacturing Co. Stock Trailers. All types and sizes. Most reasonable prices in West Texas. Also several used trailers. James T. Dockery, phone 187, Box 241. 10tfc.

CHAIRS! CHAIRS! This week's special - Plastic covered rocker with solid walnut frame in gold, white, black, tangerine or turquoise. Price only \$39.98, a rare value. J. E. Stevens Furniture Co., Coleman. 45c.

WANTED-TO BUY

WANTED: All kinds of sacks, burlap or cotton feed bags. Top market prices. Coleman Bag & Burlap Co., phone 27, Santa Anna. 4tfc.

CARD OF THANKS

We wish to express our appreciation to all our friends and relatives who were responsible for the nice Golden Wedding Anniversary we were complimented with recently.
Mr. and Mrs. Roy Bledsoe. 45p.

We wish to thank our friends in Santa Anna who were so kind and thoughtful during the loss of our loved one. Our special thanks to the North Side Church of Christ and to those who sent food and flowers.
Mrs. Jasper Robbins,
Mr. and Mrs. Billy Ray Robbins and boys,
Mr. and Mrs. Audrey Robbins and children,
The J. A. Robbins Family. 45c.

LEGAL NOTICES

CITATION BY PUBLICATION THE STATE OF TEXAS
TO: Edward Sykes, Defendant,
Greeting:

YOU ARE HEREBY COMMANDED to appear before the Honorable 119 District Court of Coleman County at the Court-house thereof, in Coleman, Texas, by filing a written answer at or before 10 o'clock A. M. of the first Monday next after the expiration of forty-two days from the date of the issuance of this citation, same being the 5th day of December A. D. 1960, to Plaintiff's Petition filed in said court, on the 2nd day of August A. D. 1960, in this cause, numbered 8446-B on the docket of said court and styled Ruby Sykes, Plaintiff, vs. Edward Sykes, Defendant.

A brief statement of the nature of this suit is as follows, to-wit: Plaintiff is suing for divorce alleging cruel treatment directed at plaintiff by defendant of such nature as to render their further living together as man and wife insupportable. Plaintiff prays for judgment of

Cancer Group to Meet Tuesday

Recently a group of interested citizens from Coleman and Santa Anna met with Mr. Curtis Smith of Austin, a public relations man for the Cancer Society, for the purpose of forming a county organization. The meeting was held in Coleman. A steering committee was appointed at that time.

Tuesday, Nov. 8, at 10:00 a. m. the committee will meet again in the Community Room of the Santa Anna National Bank. All persons interested in learning more about the danger signals of cancer are invited to meet with the group. Purpose of the local program will be educational.

M/Sgt. and Mrs. W. C. Spencer and boys of Abilene, spent Sunday with her parents, Mr. and Mrs. Tom Mills.

GO TO CHURCH SUNDAY

divorce and custody of the minor child, Gary Lee Sykes, as is more fully shown by Plaintiff's Petition on file in this suit.

If this citation is not served within ninety days after the date of its issuance, it shall be returned unserved.

The officer executing this writ shall promptly serve the same according to requirements of law, and the mandates hereof, and make due return as the law directs.

Issued and given under my hand, and the seal of said court at Coleman, Texas, this the 24th day of October A. D. 1960.

Attest:
S/G. A. HENSLEY, Clerk,
District Court
Coleman County, Texas.
(SEAL) 44-47c.

Church Attendance Last Sunday

NORTHSIDE CHURCH OF CHRIST

Enrollment	96
Bible Classes (10:00)	94
Morning Worship (10:50)	105
Youth Class (6:00)	16
Evening Worship (7:00)	71

ASSEMBLY OF GOD CHURCH

Enrollment	52
Sunday School (10:00)	51
Morning Worship (11:00)	51
Children's Service (6:30)	15
Evening Worship (7:00)	75

NORTH SIDE BAPTIST CHURCH

Enrollment	79
Sunday School (10:00)	40
Morning Worship (11:00)	51
Evening Worship (7:00)	34

FIRST BAPTIST CHURCH

Sunday School (9:45)	131
Morning Worship (11:00)	112
Training Union (6:30)	39
Evening Worship (7:30)	75

SHIELDS CHURCH OF CHRIST

Sunday Morning	39
----------------	----

SHIELDS BAPTIST CHURCH

Sunday Morning	36
----------------	----

WILBUR L. SEALE PROMOTED TO AIRMAN FIRST CLASS RECENTLY
HQ. 32nd Air Division, Dobbins, AFB, Ga. - A Santa Anna, Texas, airman assigned to Headquarters, 32nd Air Division (SAGE), Dobbins Air Force Base, Ga., was promoted to airman first class this week.
Wilbur L. Seale, whose parents, Mr. and Mrs. D. A. Seale, live in Stephenville, is a telephone maintenance man. The 32nd is responsible for air

defense of 13 southeastern states.

The salutatorian upon his graduation from Santa Anna High School in 1957, Airman Seale entered the Air Force in June, 1957. While in high school he played varsity football and was a member of the track team. In 1958 and 1959 Airman Seale served in Japan and Iwo Jima. A career airman, he was selected as the airman of the month for Dobbins Air Force Base last August.

Airman Seale lives with his

wife, Donna, at Route 3, Smyrna, Ga.

Series E bonds now mature in 7 years 9 months, get an automatic extension of 10 years. By exchanging them for 10-year income-paying Series H you can defer paying income tax on the E bond interest until you cash the H bond.

A motorist is a person, who, after seeing a bad crash, drives carefully for at least several blocks.



AT HARVEY'S

FRESH PORK
LIVER 2 lbs. **.29**

GOOCH'S THICK SLICED
BACON 2 lbs. **.98**

FRESH LEAN
Pork Ribs lb. **.43**

ZEE TOILET
TISSUE 4 Rolls **.29**

DILL or SOUR
PICKLES Qt. **.25**

KIMBELL'S 3 Lbs.
Shortening **.59**

WHITE SWAN 2 Lbs.
COFFEE **\$1.19**

CALA RIPE ELBERTA - 2 1/2 Cans
PEACHES 4 cans **\$1**

WHITE SWAN 1 Glass Free With
Tea 1/4 Pound **25c**
2 Glasses Free With
1/2 Pound **49c**

BARBECUE
Beef - Pork - Chicken
COOKED DAILY

Fresh Home Made Pies and Cakes
Cooked Daily By Mrs. Jewell Ray

Double FRONTIER STAMPS
On Wednesday With \$2.50 or
More Purchase.

HARVEY'S GROCERY
PHONE 30 WE DELIVER
No Delivery Between 11 a. m. & 1 p. m.
No Delivery After 5 p. m.

CAR GONE BAD? See Us

- Low Gas Mileage
- Slow Starting
- Hard to Steer
- Poor Lights
- Motor Heating
- Bad Brakes

Bring Your Car To Us For A Complete CHECK-UP And MAJOR OVERHAUL. Let Us Put Your Car In SAFE Driving Condition.

COMPLETE AUTO SERVICE


Mathews Motor Co.
L. K. Wardlow, Mechanic

ELECTION ITUS?

The election got you excited? Take a rest, have a cooling, refreshing glass of GANDY'S homogenized, pasteurized milk! A wonderful refresher.

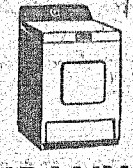
GANDY'S

soft and fluffy...



gently dried by **GAS**

YOU GET FURR-FECT DRYING EVERY TIME WITH A GAS DRYER



COLEMAN GAS COMPANY

ANOTHER EXAMPLE OF HOW TODAY'S STEELS LIGHTEN YOUR WORK, BRIGHTEN YOUR LEISURE, WIDEN YOUR WORLD

ROCKWOOD WMS REGULAR MEETING
 The Woman's Missionary Society met at the Rockwood Baptist Church Monday afternoon. Mrs. F. E. McCreary, president, conducted the business session. The members present, Mrs. R. J. Deal, Mrs. Henry Smith, Mrs. Goldie Milberger, Mrs. L. I. Bryan, Mrs. Ray Caldwell and Mrs. McCreary, visited shut-in friends. Among them were Mr. and Mrs. Bob Steward, Mrs. Pearl Grimm and Mr. and Mrs. Lawrence Brusenhan. The social meeting at the Community Center, Monday, November 7 at 2 p. m. will honor Mrs. Frank Bryan on her birthday.

Effect of Fumigants On Seeds Studied
 College Station — Many seed men have had damage claims filed against them because of the failure of fumigated seed to germinate. This failure could have resulted from poor field conditions, or it could have been the result of fumigant damage. The Texas Agricultural Experiment Station conducted a study to determine the effect that specific fumigants have on germination and vigor of seed and the conditions under which they may be most injurious. The experiment station has published a complete report on this test. This publication, MP-448, may be obtained from the Agricultural Information Office, College Station, Texas.

Plant Disease Short Course Announced
 College Station — A special exhibit of plant disease control equipment is scheduled as part of the Plant Disease Short Course to be held November 21-22 in Texas A&M's Memorial Student Center. The Plant Disease Short Course was first held in 1959 with 133 in attendance. The Department of Plant Physiology and Pathology, headed by Dr. David W. Rosberg, coordinates the sponsorship of the Short Course. Local county agents or the Department of Plant Physiology and Pathology, Texas A&M College, College Station, Texas, can supply additional information regarding the school.

TAX-MAN SAM SEZ:
 The Internal Revenue Service is concerned about taxpayers who have household employees and are failing to file a tax return. Some of these taxpayers are accumulating tax penalties and interest that will cause them serious problems in future years. The rules for paying Social Security taxes on maids, yardmen and other household employees provide that if the employee receives \$50 or more in cash wages in a calendar quarter for household services

UNBEATABLE!

...our Food Values!

SPECIALS FOR FRIDAY AND SATURDAY

MELLORINE - Gandy's	1/2 Gallon	35c
SNOWDRIFT	3 Lb. Can	69c
CHILI - Armour Star	Lge. 1 1/2 Lb. Can Only	59c
PRESERVES - Kimbell Peach or Apricot	4-lb. Jar	89c
PEAS - Trellis Brand	2 Cans	25c
PICKLES - Hamburger Sliced Dills	Quart	25c
SCOT TISSUE - 1,000 Sheet Roll	2 for	25c
NABISCO CHEESE RITZ	8 Oz. Pkg. 25c	SUPREME HONEY GRAHAMS Lb. Box 35c
GRAPEFRUIT - Texas Pink	6 for	39c
LUNCHEON MEAT - Decker's	2 12-oz. Cans	85c
MEXICAN DINNERS - Patio	1-lb. pkg.	59c
HAMBURGER MEAT - Fresh and Lean	Lb.	39c
BEEF - Round Steak	Pound	79c

HOSCH GROCERY

PHONE 56

Super Value Special
 Friday and Saturday — Nov. 4 and 5

DRESSES

Values to \$17.50

ONLY \$6.99

Special Group Of Fall and Winter Dresses In Sizes 7 to 14 Girls' And 6 to 14 Sub-teen

Tots 'n Teens
 Coleman, Texas

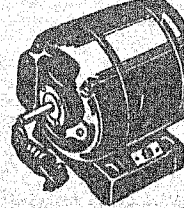
Special Prices

BANANAS	6 pounds	25c
APPLES	lb. 12c or 10 lbs.	\$1
POTATOES	25 pounds	1.19
SORGHUM or RIBBON CANE SYRUP	1/2 Gal.	1.00
LETTUCE	2 Heads	25c
LEMONS	Dozen	35c

Fresh Oranges, Grapefruit, Peanuts, Pecans and Fresh Country Eggs

Williams Fruit Stand

Electrical Motor And Refrigeration SERVICE

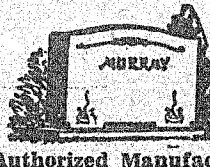


We Repair and Rewind Electrical Motors Of All Kinds And Give You Prompt, Expert Service On Refrigeration.

BOZEMAN ELECTRIC SHOP
 Coleman, Texas

Service Calls 6281
 Night Calls 7399

ARTISTIC MEMORIALS

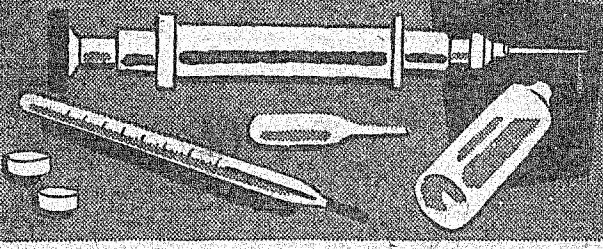


Authorized Manufacturer Of Barre Guild Granite Georgia Granite Winsboro Granite And Marble Memorials

SEE **Horace Slate**

Phone 9-3421 — Coleman Representative For **Coleman Monument Works**

W. A. Finlay, Owner
 1301 East 9th St.
 Coleman, Texas



Rx For The Good Health Of You and Your Family

Your physician brings into focus all of his skill and learning in prescribing for you and your family. Your registered pharmacist fills his prescriptions with the utmost accuracy always.

Phillips Drug

Prescription Specialists

The News, Santa Anna, Texas, November 4, 1960 Page 5


the employer must withhold Social Security taxes from the employee and must pay taxes as an employer on the wages earned by the household employee. If you have a maid, cook, yardman or other household employee, you probably need to review the Internal Revenue Service Publication No. 14, Circular H, which has full and complete instructions on Household Employees' Social Security taxes. You can obtain this publication from any Internal Revenue Service office or write to Internal Revenue Service, 2101 Pacific Avenue, Dallas, Texas.

FARM AND RANCH CREDIT SCHOOL ANNOUNCED
 College Station — A special anniversary program is scheduled for the tenth annual Farm and Ranch Credit School for Bankers, to be held November 28-30 in Texas A & M's Memorial Student Center. The keynote of this year's program is "What Will be the Most Profitable Agricultural Loans in 1961?" Earl Coke, vice president and agricultural officer, Bank of America, Los Angeles, will be the banquet speaker. His topic will be "The World's Biggest Bank's Agricultural Program." Other features will include facts and opinions by leading authorities.

There are 70 volcanoes in the world which are considered active.

OPTOMETRIST

Dr. E. H. Henning, Jr.



117 Commercial Ave. Coleman, Texas Phone 8944

OFFICE HOURS
 9:00 A. M. to 5:00 P. M.
 SATURDAYS, 9 to 12.



NEVER BEFORE SUCH LOW PRICES ON STAR NYLON TIRES!

Star METEOR

\$10.88	\$11.88
BLACK TUBE TYPE 600x16... Plus Tax And Recappable Tire	BLACK TUBE TYPE 6.70x15... Plus Tax And Recappable Tire

100% DUPONT NYLON CORD

GUARANTEE

- Guaranteed against all road hazards, including impact breaks, cuts, blow-outs, etc.
- Guaranteed for tread life against defects in materials and workmanship.
- Guaranteed to give you satisfaction.

Here is the opportunity of the year. New, Nylon Star Meteor tires at amazingly low introductory prices. This offer won't last long... come in right away!

★ FREE INSTALLATION
 ★ EASY BUDGET TERMS

Parker Farm Store

Mountaineers Scare Albany In Close Game In Rain Friday Night

The Mountaineers scared the daylights out of the Albany Lions last Friday night by holding them to a 13-0 score. All the Albany scores were made early in the third period.

Rain started falling just before the game got underway, and continued through the entire game. Naturally, it affected both teams and caused a number of mis-ques with the ball. However, who can say which team it affected the most. Was it the Mountaineers, or was it the Lions? The Mountaineers were high for the game, and it did not take the Lions long to realize it.

Although the Lions gained some 342 yards on the ground, their passing game went almost for naught, as they attempted 11 passes and only completed one for 31 yards. The Mountaineers could not gain any on the ground, but did complete seven of 14 passes for 90 yards.

Game at a Glance

Santa Anna	Albany
7 First Downs	17
29 Yds. Gained	342
56 Yds. Lost	14
14 Passes Attempted	11
7 for 90 Completed for 1 for 31	
1 Had Intercepted	0
4 Fumbles Lost	7
3 for 15 Penalties	7 for 45
9 for 29½ avg. Punts 2 for 36 avg.	

The Game

The Mountaineers won the toss and took the kick-off on their 18 yard line, returning to their 34. A 5-yard penalty and two short gains gave the Mountaineers a first down on their 45-yard line. The Lions received another 5-yard penalty, but the Mountaineers did not gain and punted to the Lions 24-yard line with a return to their 31-yard line. They picked up 5 yards then lost back to their 27 and punted to the Mountaineers 28-yard line with a return to the Mountaineer 33-yard line. The Mountaineers gained to their 41 and punted to the Lions 26, with a return to the Lion 41-yard line. The Lions gained 4 then fumbled with the Mountaineers recovering on the Lion 45-yard line. The Mountaineers completed a 12-yard pass, then lost back to the 39-yard line and punted to the Lion 12-yard line. The Lions gained to the 16 then fumbled with the Mountaineers recovering on the 16-yard line. Four plays lost ground back to the Lion 29-yard line as the ball went over. The Lions gained one yard as the quarter ended with the score 0-0.

The Lions gained another yard, then attempted a pass and then punted to the Mountaineer 39-yard line. The Mountaineers received a 5-yard penalty, then lost another yard and completed a pass to their 44-yard line and punted to the Lions 30-yard line. The Lions got the drive underway and went to the Mountaineers 34, then lost 5 on a penalty then drove to the Mountaineer 31 before losing the ball on downs. The Mountaineers lost 2 yards and fumbled with the Lions recovering on the Mountaineer 29-yard line. In three plays the Lions went over the goal line and fumbled just as they crossed the double stripe, with the Mountaineers recovering. This put the ball in play on the Mountaineer 20-yard line with the local boys in possession. The Mountaineers lost a yard, gained 2 yards and the Lions were penalized 5 yards, but the Mountaineers could not make the first and punted to the Lions 48-yard line. The Lions drove to the Mountaineer 34, lost 5 yards on a penalty, gained a yard, then lost back to the Mountaineer 45 with the ball going over on downs. The Mountaineers completed a 10-yard pass and fumbled with the Lions recovering on their 45-yard line. With time running out, the Lions were trying desperately to score by the passing attack. They completed one to the Mountaineer 41, then another to the Mountaineer 8 and fumbled with the local boys recovering. The Mountaineers gained 3 yards and punted to the Lion 37 yard line. One pass was incomplete, then a ground play was good to the Mountaineer 12-yard line, then on the last play of the first half, the Lions attempted another pass that was no good. Half-time score 0-0.

The Lions came back on the

field with a determination that could not be denied. They took the kick-off on their 22-yard line and returned to their 46. It took them eight ground plays to cross the double stripe for their first TD. They kicked the extra point. The Mountaineers took the kick-off on their 14-yard line and returned to their 34-yard line. On the next play they fumbled and the Lions recovered on the Mountaineer 30. On the next play, the Lions Quarterback broke through the middle and went the 30 yards. Try for extra point was no good and the Lions led 13-0.

The Mountaineers took the kick-off on their 24-yard line and returned to their 29-yard line. They gained to their 32 and punted to their 47-yard line. The Lions drove to the Mountaineer 23-yard line and lost the ball on downs. The Mountaineers gained five yards and punted to the Lion 33-yard line. The Lions got another drive underway that went to the Mountaineer 31 as the quarter ended.

The Lions drove on to the Mountaineer 18-yard line, then were penalized back to the 30-yard line, then drove to the Mountaineer 7-yard line and fumbled, with the Mountaineers recovering. The Mountaineers worked their way to the 14 yard line and punted to the Lions 45-yard line. The Lions bobbled the ball and the Mountaineers recovered again. A 5-yard penalty put the Mountaineers on the 50-yard line. The second pass attempted was intercepted and the Lions went to the Mountaineer 43-yard line. On the next play the Lions fumbled again with the Mountaineers recovering on their 33-yard line. The Mountaineers lost back to their 18-yard line on 4th down and the ball went over. The Lions fumbled again and the Mountaineers recovered on the 18. The Mountaineers completed three good passes and it put them on the Lion 28-yard line. The Mountaineers fumbled and the Lions recovered on their 31-yard line. The Lions attempted two more passes as time run out. The game ended with the score 13-0 for the Lions.

Fumbles cost the Lions at least one TD in the second period and possibly another one in the same period, as they were inside the 10-yard line when the fumble occurred. In the fourth period the Lions fumbled once, inside the 10-yard line and once inside the 20-yard line.

During the 4th period the ball was very wet and all the players were soaked. The ball was changed over every down, but it was still slippery.

Other Games

All the other district games were also played in the rain. Cross Plains laid it on Eastland 34 to 15 and the Clyde Bulldogs upset the Early Longhorns to the tune of 40 to 12. The Santa Anna and Albany score was at least a moral victory for Coaches R. C. Smith and Douglas McArthur and the Mountaineers.

This week the Mountaineers will journey to Eastland; Early will travel to Albany; and Clyde will play host to the Cross Plains Buffalos.

Season Standings

Team	W	L	T	Pct.	Pts	Op
Albany	7	1	0	.875	262	42
Early	5	3	0	.625	169	114
C. Plains	5	3	0	.625	169	133
S. Anna	2	6	0	.250	90	194
Eastland	2	6	0	.250	84	213
Clyde	2	6	0	.250	126	164

District Standings

Team	W	L	T	Pct.	Pts	Op
Albany	3	0	0	1.000	122	14
Clyde	2	1	0	.667	84	68
C. Plains	2	1	0	.667	58	55
Early	1	2	0	.333	50	62
Eastland	1	2	0	.333	36	99
S. Anna	0	3	0	.000	14	66

From Los Angeles Times editorial: "Flagrantly bad driving should be recognized as the crime it really is!"

The Empire State building in New York has 102 stories and is 1,250 feet high.

DR. M. O. SOWELL
CHIROPRACTOR

Phone 2421-615 Commercial
Coleman, Texas

Shirley Upholstering Co.

415 West Live Oak St. Coleman, Texas

- Repairing
- Remodeling
- Seat Covers
- Reupholstering
- Hassocks For Storage — Cedar Chests

FURNITURE RE-BUILT, RE-STYLED, RE-COVERED AT AN ECONOMICAL LOW PRICE.

FOOTBALL

Santa Anna Mountaineers

VS.

Eastland Mavericks

Friday, November 4 - 7:30 p. m. - Maverick Stadium

Congratulations On A Fine Game Last Week

Junior's Schedule

Santa Anna 0	—	Rising Star 50
Santa Anna 0	—	May 32
Santa Anna 0	—	Early 28
Santa Anna 14	—	Goldthwaite 0
Santa Anna 6	—	Blanket 8
Santa Anna 16	—	Bangs 0
Santa Anna 6	—	Jim Ned 28
Santa Anna 20	—	Mason 44

*Conference Games

MOUNTAINEER SCHEDULE

Santa Anna 12	—	Goldthwaite 0
Santa Anna 26	—	Rising Star 6
Santa Anna 6	—	Bronte 42
Santa Anna 12	—	Hamilton 42
Santa Anna 20	—	Bangs 30
Santa Anna 8	—	Cross Plains 16
Santa Anna 6	—	Clyde 37
Santa Anna 0	—	Albany 13

Nov. 4 — Eastland, There*

Nov. 11 — Early, Here*

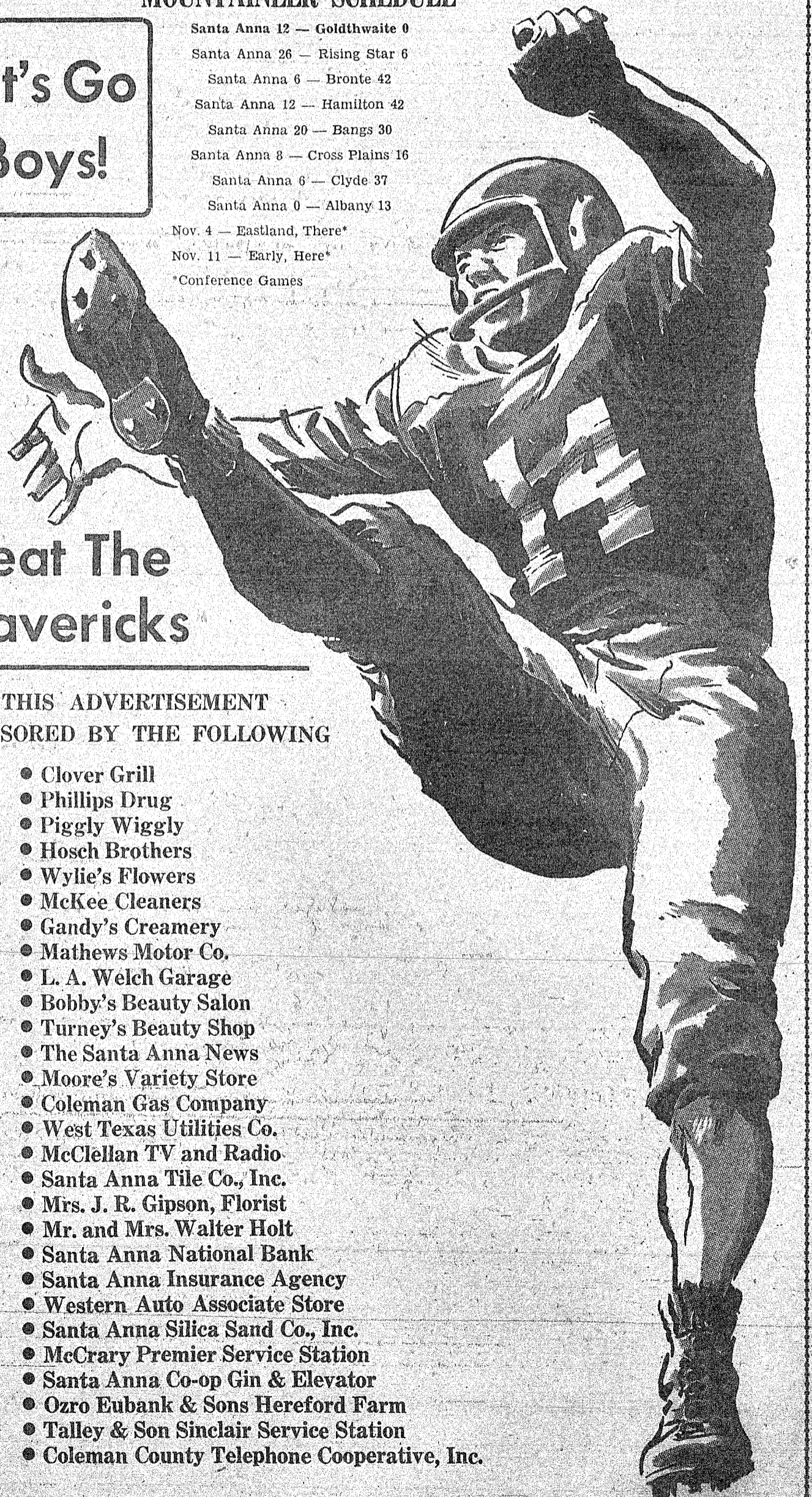
*Conference Games

Let's Go
Boys!

Beat The Mavericks

THIS ADVERTISEMENT
SPONSORED BY THE FOLLOWING

- Clover Grill
- Phillips Drug
- Piggly Wiggly
- Hosch Brothers
- Wylie's Flowers
- McKee Cleaners
- Gandy's Creamery
- Mathews Motor Co.
- L. A. Welch Garage
- Bobby's Beauty Salon
- Turney's Beauty Shop
- The Santa Anna News
- Moore's Variety Store
- Coleman Gas Company
- West Texas Utilities Co.
- McClellan TV and Radio
- Santa Anna Tile Co., Inc.
- Mrs. J. R. Gipson, Florist
- Mr. and Mrs. Walter Holt
- Santa Anna National Bank
- Santa Anna Insurance Agency
- Western Auto Associate Store
- Santa Anna Silica Sand Co., Inc.
- McCrary Premier Service Station
- Santa Anna Co-op Gin & Elevator
- Ozro Eubank & Sons Hereford Farm
- Talley & Son Sinclair Service Station
- Coleman County Telephone Cooperative, Inc.



Rockwood News

By MRS. JOHN C. HUNTER

R. L. Steward, 90, was the oldest of the twenty-five who were present for the first session of the Civil Defense training, conducted by Phil McMinn of Coleman, Thursday evening at the Rockwood Community Center. Other sessions are planned for Tuesday, November 1, Thursday, November 3 and Wednesday, November 9. The meetings are from 6:30 p. m. to 9:30 p. m., with a coffee break.

Mr. and Mrs. Tom Bryan visited Friday to Sunday with Mr. and Mrs. E. D. Black and children in San Angelo.

Mr. and Mrs. Earl Sankey of Del Rio spent Wednesday and Thursday with Mr. and Mrs. John Hunter.

The Hunters were at Winchell Friday for a cemetery working and visited friends.

Mr. and Mrs. C. F. Nevans visited Thursday and Friday in San Saba with Mr. and Mrs. Bailey Hardy and family. They were at their home in San Angelo Monday and Tuesday.

Mr. and Mrs. Bob Nixon of Valera visited Wednesday with Mr. and Mrs. Leffel Estes and family. Mr. and Mrs. Orville Slate of Gouldbusk visited Saturday. Taylor Boatright of Coleman was a Sunday dinner guest, and Mr. and Mrs. Cecil Day and Rickey of Coleman visited Sunday afternoon.

Bruce Estes went to Dallas Sunday on business.

Mrs. Blake Williams of Pasadena visited with Mrs. Kate Mc-

Ilvain and other relatives Saturday to Monday.

Mrs. McIlvain and Mrs. Williams were Sunday dinner guests with Mr. and Mrs. Aubrey McSwane. Mrs. Roy Blackwell and Mrs. John X. Steward were afternoon visitors.

Mrs. Elton Haimon of San Angelo was in the hospital several days last week. Her mother, Mrs. Carl Buttry, visited her Wednesday and Thursday.

Jerry Johnson of Dallas was with homefolks during the weekend.

Recent guests with Mr. and Mrs. Fox Johnson were Mr. and Mrs. Kenneth Brusenhan. Jerry and Nikki Johnson visited Sunday morning.

Mr. and Mrs. M. A. Richardson and the Fox Johnsons visited Sunday afternoon with the Marcus Johnsons.

Mrs. N. J. Bultry was admitted to the Santa Anna Hospital Sunday.

Mr. and Mrs. J. A. Hunter visited Mr. and Mrs. Bee Maples in Coleman Saturday. Herman Trent and Jerrel Aulds of Denver City were Sunday guests with the Hunters.

The J. A. Hunters visited Mr. and Mrs. Tommy Briscoe and children at Waldrip Sunday afternoon, and Don Hunter visited with Frankie Hodges.

Mrs. Roy Stafford of Zephyr, a former Rockwood resident, is a patient in Beverly Hills Sanatorium, 210 Northwest Moreland, Dallas 11, Texas and would appreciate cards from friends.

Mr. and Mrs. John Kemp visited relatives in Coleman Friday afternoon.

The Rev. and Mrs. Morrison visited Sunday afternoon with

Mr. and Mrs. Matt Estes.

Mr. and Mrs. Matt Estes visited during the week with Mr. and Mrs. Drury Estes, Mr. and Mrs. Frank Bryan and Mrs. Pearl Grimm.

Alfred Cooper of Snyder spent Saturday night with the Jack Coopers.

The Rev. David Morrison filled the pulpit at the Baptist Church Sunday morning. The Rev. Bob Webber preached at the evening service. They were dinner guests with Mr. and Mrs. Johnny Steward.

The Baptist WMS social on Monday, November 7, at 2 p. m., will be held at the Community Center, and will honor Mrs. Frank Bryan on her birthday. Mrs. Henry Smith and Mrs. Bill Bryan will host the meeting.

Mrs. McIlvain and Mrs. Aubrey McSwane visited Mrs. M. D. Bryan Monday morning.

Mr. and Mrs. Roger Dudley of Ozona visited with Mr. and Mrs. M. A. Richardson Friday to Sunday.

Mrs. James Watson and Cary of Whon and Mr. and Mrs. Drury Estes went to Coleman last Tuesday for a birthday dinner at the home of Mr. and Mrs. Dee Mankin and Gaylon, in honor of Mrs. Watson.

Mr. and Mrs. Hez Langley of Houston visited Mr. and Mrs. Drury Estes Wednesday to Friday. Sunday guests in the Estes home were the Mankins family and Mrs. Wayne Thompson and Mike of Dallas.

Hyatt Moore was a patient in a Brady Hospital Sunday and Monday.

Mrs. Bruce Snodgrass of Killean and Mrs. Hal Haines of Austin came Friday for the weekend. Mrs. Haines remained for the week with Mr. and Mrs. Moore.

Last Thursday Bailey Machen of Fort Worth visited. Mr. and Mrs. Charles Bengel of Santa Anna were Friday afternoon guests. Edwin Fowler and Mr. and Mrs. Charlie Moore of Coleman and Mr. and Mrs. Lonzo Moore of Brady visited the Moores Sunday afternoon.

Mr. and Mrs. Pat Patterson and Paige of Irving spent the weekend with Mr. and Mrs. Bill Steward and Sonsy. Mrs. J. W. Wise and Mrs. Evan Wise were Sunday luncheon guests with the Stewards.

Mr. and Mrs. Gene Smith and Jeffrey of Tyler were weekend guests with the Tony Rehms.

Mr. and Mrs. A. L. King visited Sunday afternoon in Coleman with Mrs. C. A. Crump. On Monday they attended funeral services in Coleman for Glenn Mills, 6. They also visited in Santa Anna with Mrs. Fred Tur-

Wait Until You See...

Sturges & Gibbs

Coleman's Ladies' Store

Wonderful, Colorful Collection Of Coats

A Special Purchase Compare at \$40.00

ONLY \$24.98

ANOTHER SUPER VALUE

NEW HATS One Lot 1/2 PRICE

The News, Santa Anna, Texas, November 4, 1960

Page 7

ner. Mr. and Mrs. Billy Stewardson of Roswell, N. M., were also guests.

Mrs. Ada Ashmore and Mrs. Salome Nicks of Fort Stockton and Miss Sanmie Stewardson of Coleman were Monday night guests with the Kings.

Mrs. Vera Lovelady of Brownwood spent Friday night and Saturday with Mrs. Claud Box. Rocky Dean was a Saturday luncheon guest with Mrs. Box and visited David and Ronnie Cooper.

Mrs. Junior Brusenhan took Mrs. Bailey Hull to Brownwood Wednesday to return to her home in Dawson. Mrs. Brusenhan visited her mother, Mrs. R. W. Emerson.

Mr. and Mrs. Bill Bryan and Mr. and Mrs. Lon Gray went to their deer lease in San Saba County Sunday, putting up tents, getting ready for the hunting season.

Mr. Maness is still a patient in a Brady hospital and will be

there for several more weeks. He will appreciate cards from friends.

Mr. and Mrs. James Heilman of Coleman spent Saturday night and Sunday with Mr. and Mrs. Sherman Heilman. The John Fulbrights of Coleman were Sunday guests. Denver Ellis of Junction visited Sunday afternoon.

Matt Estes is on the sick list this week.

Jake McCreary, James Steward and Joe Wise spent the weekend hunting in New Mexico. Mrs. McCreary and the girls visited Mr. and Mrs. Bob Mobley and Gregg at Odessa.

Inside Rubber Base Paint. Reg's Trading Post, Coleman.

A guy with a few drinks may become ten feet tall behind the wheel of a car, but he will still fit in a 6-foot box.

Weah McCulloch, Sec.-Treas.
Bettie McCulloch, Mgr.

Standard Abstract Co.

City & County Maps For Sale
405 Bank Bldg. Coleman

Open Thursday,
Friday & Saturday
7:00 to 9:00 p. m.

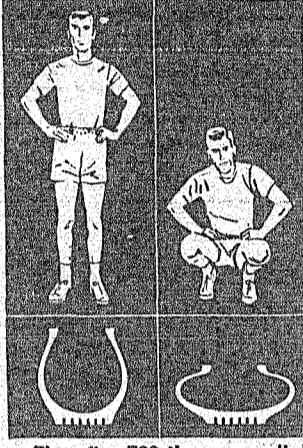
Sunday — 2 to 4 p. m.

For Private Parties
Call 9-1407

Free Skate on Your Birthday

Thompson Roller Rink
Old Air Port Road
Coleman, Texas

1. Too much flexing wears out people...and tires!
2. The new "Low Profile" tire shape flexes less, reduces heat build-up, increases mileage!



Tires flex 700 times per mile!

NOW! THE TIRE THAT DOESN'T GET TIRED!

Safe-Way with **TYREX**[®]

OTHER SIZES NOW IN STOCK
EASY TERMS

2 FOR 31⁹⁰ 6.70-15

Plus Tax and Retreadables
*Tyrex is a collective trade-mark of Tyrex, Inc., for viscose tire yarn and cord.
PIONEERED BY U.S. RUBBER AS THE ANSWER TO GREATER TIRE SAFETY

U.S. ROYAL[®]

LOW PROFILE TIRES

*"Low Profile" is United States Rubber Company's trade-mark for its lower, wider shape tire.

NUNLEY'S

311-313 Commercial

Coleman

Super Value Specials

For Friday and Saturday

100% FALL WOOLENS

Regular \$4.98 and \$3.98 Values

Only **\$3.99** and **\$2.99**

45-Inch Cotton Satins

Regular \$1.29 and 98c Values

Only **88c** Yard

ATTENTION TEENAGERS!

Genuine Leather

CLUTCH BAGS

1/4 off

Beautiful New Fall Woolens, Brocades, Nitelite Satins, Failles, Quilted, Plain and Printed Corduroys and Velveteens Now Available at ESTELLE'S.

FOR THE BRIDE...

White Satin, Taffeta, Chantilly Lace, Net, Tulle, etc.

SEW McCALLS...

For The Latest Up-To-The-Minute Fashions.

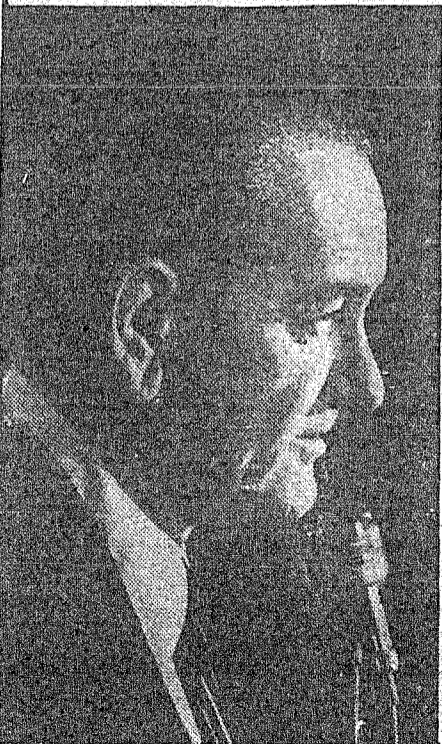
Dressmaking and Alterations at

Estelle's Ladies Shop

121 West Pecan

Coleman

"We Stand Today On The Edge Of A New Frontier"



KEEP THE VOICE OF TEXAS STRONG

Texas' dominant position in the Democratic Party has been a major factor in the amazing growth and prosperity of our State during the past 50 years.

Count our blessings that have come because TEXANS were in the RIGHT party at the RIGHT time.

Count the jobs... educational opportunities... military installations... defense projects... water and soil projects... rural electricity and telephone systems. Count our ultimate potentials for development.

Now the Democratic Party has selected a TEXAN for one of the two top offices our Nation has to offer. As Vice President, Lyndon B. Johnson will be in a position to render the greatest service any Texan has ever been able to give his State, his Party, his Nation.

Our Nation needs the dynamic leadership of John F. Kennedy and Lyndon B. Johnson. And Texas needs to be counted in the Democratic column November 8 to keep its voice STRONG in the party that has honored its sons and nurtured its growth. Texas has no such stake in any other party or any other candidate.

Texas' future — and America's — lies in your response November 8.

Vote Democratic — Vote The Texan's Ticket

JOHN F. KENNEDY / LYNDON B. JOHNSON

(Pol. Adv.—Paid for by Kennedy-Johnson Texas Newspaper - TV - Radio Committee, Gerald Mann, Chairman.)

I. O. James spent Monday night with his daughter, Mr. and Mrs. Curtis Alvey in Coleman, then left Tuesday morning for an indefinite stay at the Veterans Hospital in Big Spring, where he will receive a series of treatments.

Mrs. Mabel Hall of Greenville is visiting her cousin, Mrs. Ben Yarborough and Mr. Yarborough.

Carbon paper and sales pads at the News office.



HERE'S THE BIGGEST TIRE BUY OF A LIFETIME!
SIZE 6.70 x 15

PENNSYLVANIA KEYSTONE

- * NON-SKID SAFETY TREAD!
- * FULL FLEXOMATIC ACTION!
- * LOW PRESSURE CUSHION DESIGN!
- * SUPER ECONOMICAL!

AS LOW AS \$12.95 Plus Tax and Recappable Tire
Exchange BLACK SIZE 6.70 x 15
PENNSYLVANIA TIRES
(White sidewalls available)

WRISTEN'S TEXACO SERVICE

Cole-Anna
Drive-In Theatre
THURSDAY - FRIDAY AND SATURDAY
NOVEMBER 3-4-5
YUL BRYNNER in
"The Magnificent Seven"
—PLUS—
RICHARD DEVON in
"Blood Island"
—SUNDAY - MONDAY TUESDAY - WEDNESDAY
NOVEMBER 6-7-8-9
FRANK SINATRA in
"Ocean's 11"

OAK
Drive-In Theatre
FRIDAY & SATURDAY
NOVEMBER 4-5
DAVID LADD in
"A Dog of Flanders"
—PLUS—
RAY STRICKLYN in
"Young Jesse James"
—SUNDAY & MONDAY
NOVEMBER 6-7
PEGGY WOOD in
"The Story of Ruth"
—WEDNESDAY & THURSDAY
NOVEMBER 8-10
Bargain Night
80c Per Car Load
WALT DISNEY'S
"Kidnapped"

SANTA ANNA Piggly Wiggly

Look What \$1.00 Will Buy At Your Piggly Wiggly Store

--FROZEN FOODS--

JEAN'S ROLLS 3 Pkgs. \$1

BLACK-EYED PEAS
CREME PEAS
FIELD PEAS
GREEN PEAS
CREME STYLE CORN
5 10-oz. Pkgs. \$1

STOKELY'S — CHICKEN, BEEF, TURKEY
MEAT PIES 4 for \$1

NOTE BOOK PAPER 6 25¢ Pkgs. \$1 3 50¢ Pkgs. \$1

FREE COTTON CANDY

Served All Day Saturday
Made With Domino Sugar

DOMINO
SUGAR 10 lbs. \$1

STOCK
SALT 100 lb. Sack \$1

KIMBELL'S — 300 CANS
PORK & BEANS 10 cans \$1

VIENNA
SAUSAGE 10 cans \$1

NEW — 303 CANS
POTATOES 10 cans \$1

White or Golden — 300 Size Cans
HOMINY 10 cans \$1

303 CANS
SPAGHETTI 10 cans \$1

EARLY JUNE — 300 CANS
PEAS 10 cans \$1

RENOWN BRAND — 300 SIZE CANS

Tomatoes 9 Cans \$1

Renown Brand Cut — 300 Cans
GREEN BEANS 9 cans \$1

ALL BRANDS
BISCUITS 12 cans \$1

Oleomargarine 6 lbs. \$1.00

Kimbell's Sweetened Orange — Giant 46 Oz. Cans
JUICE 3 cans \$1

VAL VETA — BIG 2½ CANS
PEACHES 4 cans \$1

White Swan Grapefruit — Giant 46 Oz. Cans
JUICE 4 cans \$1

HI-NOTE
TUNA 6 cans \$1

APPLES Rome Beauty 9 lbs. \$1.00

303 CANS
SPINACH 8 cans \$1

Golden or Cream Style — 303 Cans
CORN 8 cans \$1

LOOK! BABY BEEF

Chuck Roast 3 lbs. \$1

LOOK! DANKWORTH'S COUNTRY CURED

Sliced Bacon 2 lbs. \$1

LOOK!
BEEF RIBS 4 lbs. \$1

LOOK! — PURE PORK
SAUSAGE 3 lbs. \$1

LOOK! — ASSORTED
LUNCH MEAT 2 lbs. \$1

LOOK!
PORK CHOPS 3 lbs. \$1

LOOK! SEVEN STEAK 2 lbs. \$1.00