

Your Hometown Newspaper
Since 1886



See Page 3

Support Group Forming



Drive Carefully
Watch For
School Buses

BEST AVAILABLE COPY

Santa Anna News

"He Profits Most Who Serves Best"

Single Copy 25 Cents

Volume 106 No. 7

Thursday, February 14, 1991

spotlight

Compliments

Dear Editor:

I was very touched by the picture of your community that appeared in the Abilene Reporter News, Sunday, February 3. The men and women from your community who are serving their country must be very proud to call Santa Anna home. My husband, who is a Vietnam veteran, has expressed the importance of home support and the impact it can have on servicemen and women.

A few years ago we found out there was a slight possibility we might be moving to your community or the area. The move did not work out and we were disappointed. Had we become a part of the community, it would have been a pleasure to be a part of your support group to the service people. Your community sounds like a wonderful group of folks.

Glenda Steddum
Albany, TX

On University Honor Lists

Several local students have recently been recognized for their scholastic achievements at their universities during the past fall semester. They are as follows:

ABILENE CHRISTIAN UNIVERSITY

Melissa Buse, daughter of Mr. and Mrs. Roy Buse has been named to the Dean's list for the 1990 fall semester. She is a 1987 graduate of SAHS.

To make the Dean's list at ACU a student must complete at least 12 semester hours and earn a grade point average of 3.45 or higher.

HOWARD PAYNE

Laurie Powers, on the Dean's list. A freshman with an undecorated major, Laurie is the daughter of Mr. and Mrs. Sammie Powers.

Janet Bryan, recognized on the President's list, is a sophomore Academy of Freedom major. She is the daughter of Mr. and Mrs. James Bryan.

Kellye Luera, on the President's list, a senior education major. She is the daughter of Rev. and Mrs. Don Elrod.

Students named to the Dean's list at HPU must earn a grade point average of 3.5-3.64 and 4.0 for the President's list.

TEXAS TECH

Reece McIver, sophomore finance major, named to the Dean's list. Reece is the son of Terry McIver and Orabeth Magin.

Jeremy Hartman, senior telecommunications major, named to the President's list. He is the son of Ronnie Hartman and Leanna Hartman.

Students named to the President's list at Texas Tech have earned a grade point average of 4.0 and those on the Dean's list have earned a 3.5-3.9 grade point average.

Well Said

Humor is a hole that lets the sawdust out of a stuffed shirt.

If you can't laugh at the jokes of this age, laugh at the age of the jokes.

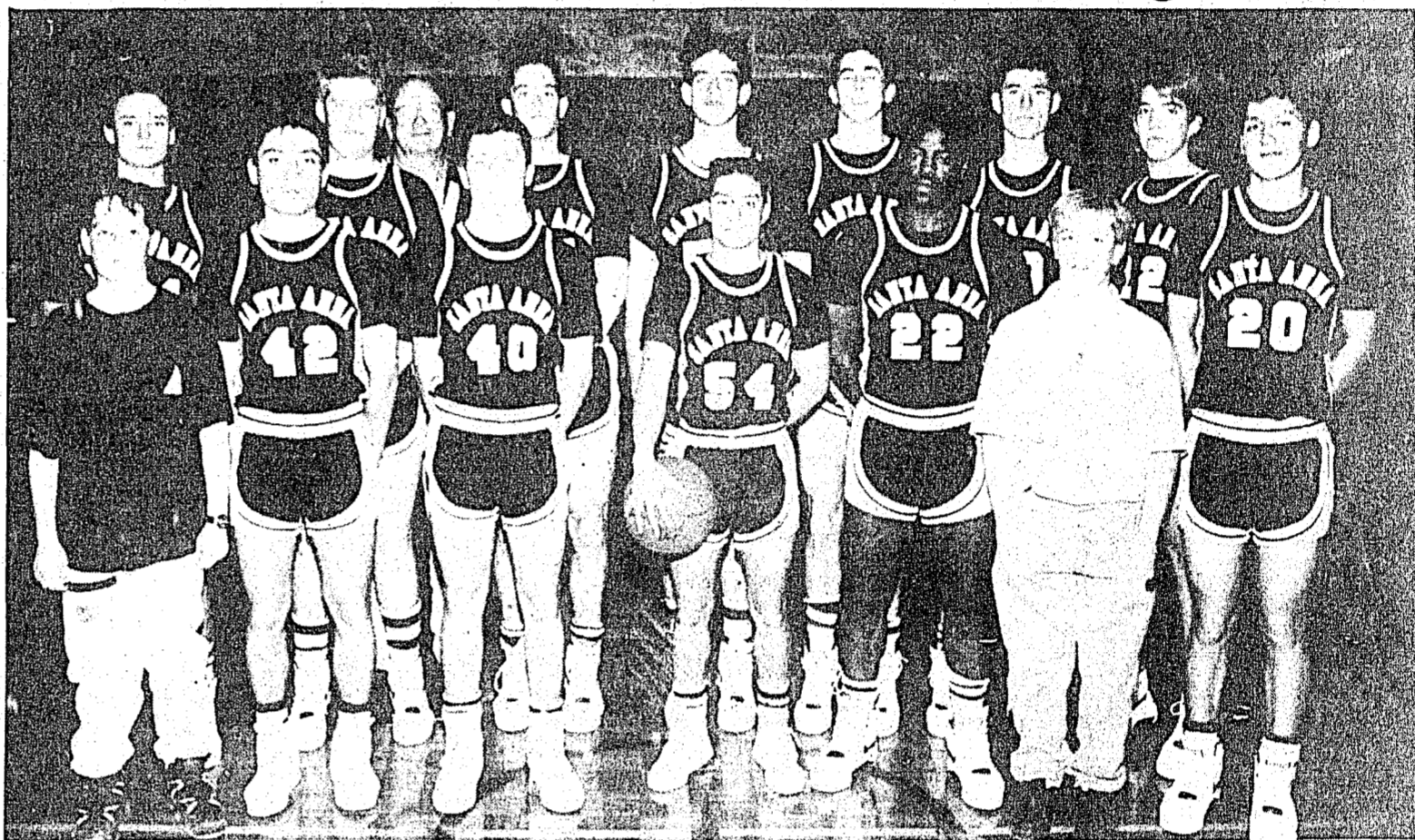
Mountaineers Are Playoff Bound Again

The Mountaineers are playoff bound once more. Finishing district play with 4-2 record, they are right behind Panther Creek in District 29-A basketball. In fact the two Santa Anna losses in district play were to Panther Creek. However, in the second loss which took place last week, the Mountaineers gave the Panthers a run for their money in a game that ended 58 to 53 in favor of PC. Santa Anna is now 14-7 for the season while Panther Creek holds a season record of 10-7.

Panther Creek jumped to a four point lead in the first quarter and held on to lead 33-26 at halftime. They outscored Santa Anna by 3 points in the third. The never-say-die Mountaineer came back with a hot shooting streak to chalk up 19 points in the final period to PC's 14, but not enough to pull off the victory.

Herbert Jackson led the Mountaineer's scoring attack with 19 points while Charles Dixon poured in 12.

The Mountaineers had a practice game at Mason Tuesday night against Harper. A practice game against Rule is scheduled for Friday night, time and place to be announced, as of press time. Next Tuesday, Feb. 19, they will play Baird in a practice game at Bangs, 7:00. CONTINUED PAGE 4

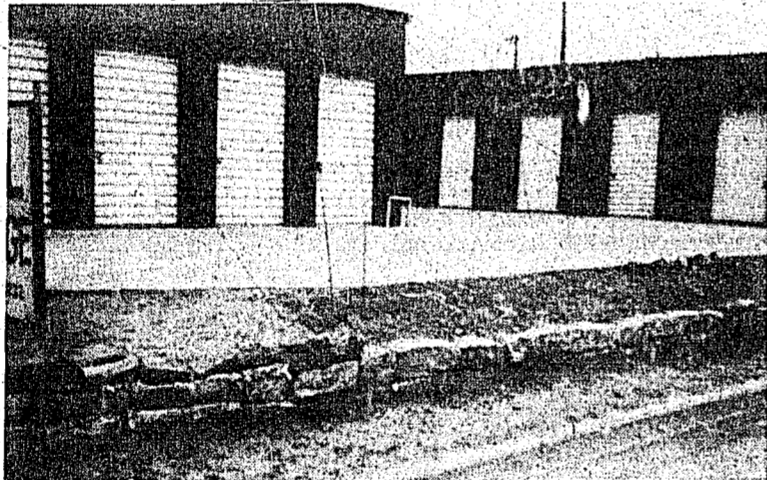


MOUNTAINEERS PLAYOFF BOUND—The Santa Anna Mountaineer basketball team is headed for the playoffs as the number two team in District 29-A, behind Panther Creek who won the championship title outright with a win of Santa Anna last week. Back Row: Dan Benton, Jason Dean, Coach John Smith,

Chris Simmons, Rusty Fleeman, Grady Clay McIver, Charles Dixon, Jeffrey Hartman. Front Row: Josh Daniel(manager), Vicente Frausto, Chris Bryce, Armando Mata, Herbert Jackson, Ryan Keeney (manager), and Alex Frausto.

Pick & Shovel Group Turner, Sudderth In Runoff

"Gets Started"



Rock wall repaired



PEOPLE WORKING TOGETHER FOR THE COMMUNITY

The "Santa Anna Pick and Shovel" group began its "Let's Get Started" for the Economic Development of Santa Anna on Thursday, January 31 on the corner of U.S. Highway 67-84 (Wallis Ave.) and North Third St. an old building had been moved out some years ago and storage facilities built in its place, but the group rock wall in

front of the site had never been repaired. The Pick and Shovel group brought picks, shovels, hoes, and the eagerness to make a nice looking site out of an eyesore on our main street. The rocks in the wall were taken out and the wall was rebuilt. Trash and other debris was gathered and hauled away. The group plans to plant trees, shrubs and flowers in the flower bed above the rock wall. It will make a beautiful spot for our downtown area.

Those helping with this work project included Karen Morris, chairman, Shamey Brand, Andy Ramirez, Cecil Ramirez, Richard Diaz, Corey Brown, Johnny Ray, Devin Morris, Lisa Hornback, Kelly Voss, Tex Wright, Pat Hornbeck, Susie Voss, Jim and Janniece Laubhan, Rita Day, Betty Sue Cupps, and S.D. Fellers.

Bob Turner of Voss and Ben Doyle Sudderth of Blanket will be facing each other in a runoff election for the 65th District Legislative Seat. In Saturday's election,

Turner was the front runner in the field of 11 candidates. The date for a runoff election will be set by Governor Ann Richards after all votes have been canvassed in all the six counties of the 65th Legislative District. A tentative date of March 2 has been suggested.

Turner, a Coleman County farmer and rancher, garnered 2,311 votes, or 20 percent of the vote. Sudderth, who has law offices in Comanche, was second with 1,867, or 16 percent of the total votes cast.

Narrowly missing a spot in the runoff was Brownwood businessman, Richard Gist who finished third with 1,571 votes. Martha Parker of DeLeon, wife of Jim Parker, who had vacated the post to become legislative liaison for the governor, captured 1,223 votes to come in sixth in the balloting.

Both Turner and Sudderth thank the people who voted for them and said they were seeking the support of those who voted for the other nine candidates.

"I would like to say I am very pleased with the showing I made in Saturday's election," Turner said

The group will next be concentrating their efforts on cleaning and repairing the drainage canal that runs along the foot of the mountain.

CONTINUED PAGE 3



Bob Turner



Ben Doyle Sudderth

late Saturday. "I appreciate the support of those who voted for me as well as those who worked for me in getting out the vote," Turner said. "And," he added, "I have thoroughly enjoyed this campaign. The campaign has been clean and the fellowship with the other candidates has been good. Needless to say, I would appreciate the support that any of those could lend in the runoff. I would welcome the opportunity to have a public forum before the runoff, and my effort in the campaign will be totally issue-oriented."

Sudderth also expressed satisfaction with the tone of the election campaign. "I am very appreciative of the vote given me. To the other candidates, I say congratulations on a race that was run well by people who conducted themselves on the highest plane at all times, and I invite the vote of their supporters in the runoff."

Of the 1,492 votes cast in Coleman County, Turner had 1,148 and Sudderth 114, with the remaining votes being split among the other nine candidates.

Appreciation Supper For Wetsel Tuesday

It is not too late to make reservations for a supper which will honor former resident, Charles Wetsel, for the many contributions he made to civic affairs while living in Santa Anna. The former manager of the local West Texas Utilities plant, Wetsel and his wife Diane, a former teacher in Santa Anna schools, are now residing in Cisco, where he was transferred last fall.

While living in Santa Anna for about 12 years, Wetsel was a very active leader in civic affairs. He was a member and held various offices in the Lions Club and the Chamber

of Commerce. He was instrumental in getting Frontier Day off and running and worked tirelessly on that project each year.

The meal for the Tuesday, February 19th affair at the Lions Club building will be Mexican food prepared by the Santa Anna Guadeloupe Society. Cost will be \$4.00 per plate. You are requested to make advance reservations by contacting Gary Absher. Hosts for the affair will be the Lions Club and other members of the community. Serving will begin at 6:00 p.m.

Everyone is invited:



LADY MOUNTAINEERS—The SAHS Lady Mountaineers concluded their basketball season last week, but will be back coming on strong next year. They are left to right: Marixa Longoria, Betsy McIver, Martha Frausto, Candi Daniel, Becky Simmons, Julie Dean, Lori Castillo, Christie Beal, Missy Bryce. At the back is Coach Debbie Jones.

FEB

14

91

News For And About Santa Anna Mountaineers



Mountaineers

Continued from page 1

The Panther Creek ladies kept their untarnished district record clean as they won over Santa Anna by a score of 58-28. The Lady Mountaineers, led by Christie Beal's 12 points fell to 1-5 in district play while Panther Creek ended district play with a 6-0 record. Others contributing to the scoring were Betsy McIver, Julie Dean, Becky Simmons, Sandi Watson and Candi Daniel. Santa Anna girls concluded their season with a 3-18 record.

Just the week before, the girls had pulled an upset over Novice and won that game 44-42 in overtime. Of that game, Coach Jones says, "The girls showed their abilities and character with this win. Being 13 points down with eight minutes left, they gave tremendous effort to tie the game. Accomplishing this, they gave everything in overtime. I was encouraged to see the mental toughness in such a young team. We're going to need that—I asked for 100% and they gave it! A good win!!!"
Look for the Lady Mountaineers to come on strong next year!



Shown here with Coach Dean Bass is the Santa Anna Junior High Boys basketball team who concluded its season Monday night with a win at Novice to end up in 2nd place in district play. They are, back row: Manuel Frausto, Calvin Kirven, Charles Williford, Johnny Diaz, Bobby Diaz, James Balderas, Michael DeLeon. Front row: William Loyd, Tom Guthrie, Joey Cheaney, David Herrod, Lee Keeney, Bobby Malaer.

Junior High Girls Also Take Consolation Trophy At Recent Panther Creek Tournament Finish Season With Win Over Novice

We reported last week that the Santa Anna Junior High boys had taken the consolation trophy at a recent junior high tournament held at Panther Creek. What we did not learn until after press time was that the Santa Anna junior high girls had also come out in third place at that same tournament, Saturday, Feb. 2.

Coach Debbie Jone's girls lost to the host team in their first game of the tournament. Panther creek was the victor by a 27-19 score. Amy Miller led in scoring for the junior Lady Mountaineers with 10 points. Catrina DeLeon hit for 7 and Amy Ellerbe 2.

In the consolation game, Santa Anna came up with their first win of the season with a 23-21 victory over Early in a close, hard played game. With several players getting into the scoring action, Coach Debbie Jones was proud of the overall effort. "Our scoring was spread out among several players," she said, "It felt good to win!"

Amy Miller was leading scorer again, this time with 8 points, followed by Amy Ellerbe with 4, Bertha Frausto 4, Vicki For 4, Catrina DeLeon 2, Katrina Tomlinson 2, and Jennifer Morris with one free shot.

On Monday of last week the young Santa Anna ladies were beaten 37-13 by Brookesmith, with Amy Ellerbe and Katrina Tomlinson leading the scoring with 5 points each. Catrina DeLeon and Amy Miller also contributed to the scoring.

The Junior Ladies were 1-14 for the season following the loss to Brookesmith and 0-5 in district play. The final game was played Monday night of this week against Novice.

The Junior Ladies beat Novice 23-19 this past Monday night in their final game of the season.

Junior High Boys Finish Season In Second Place In District

The Junior High boys defeated Brookesmith at Brookesmith Monday of last week. Sparked by the shooting of Charles Williford and Bobby Diaz, the Junior Mountaineers came away with a 35-30 victory to up their district record to 3-2 and 8-7 for the season.

Johnny Diaz, Manuel Frausto and James Balderas also added points to the total tally.

In their final game of the season, the Junior Mountaineers beat Novice 37-24 Monday night of this week to end with a 3-3 district record.

In their final game of the season.

The Junior Mountaineers beat Novice 37-24 Monday night of this week to end with a 3-3 record to capture second place in district play behind an excellent Panther Creek team.

Behind 18-12 going into the fourth quarter the young Mountaineers turned the game around in that final period by using a full-court press, good defense, and outstanding shooting.

Coach Dean Bass commented that the first three quarters, the boys got many open shots but could not seem to hit the basket. But they found the basket in the fourth quarter to rack up 25 points for the win. Bobby Diaz was high point for

Santa Anna with 17 to his credit; Charles Williford had 12. Johnny Diaz and James Balderas also added points to the tally.

We appreciate the businesses who sponsor the support section for Santa Anna High School and Junior

High Basketball and we hope you will patronize these businesses.

SCHOOL MENU

MONDAY
BREAKFAST: cereal; buttered toast; jelly; fruit; milk.
LUNCH: Taco bowl; Spanish rice; shredded lettuce, tomatoes and cheese; refried beans; brownies; milk.

TUESDAY
BREAKFAST: Pancake with sausage; syrup; juice; milk.
LUNCH: Fish; macaroni & cheese; blackeyed peas; chilled peaches; combread; milk.

WEDNESDAY
BREAKFAST: Breakfast burritos; juice; milk.
LUNCH: Burritos; buttered corn; tossed salad; brownies; milk.

THURSDAY
BREAKFAST: Cinnamon rolls; juice; milk.
LUNCH: Fried chicken with gravy; cream potatoes; green peas; ice cream; hot rolls; milk.

FRIDAY
BREAKFAST: Oatmeal; buttered toast; jelly; juice; milk.
LUNCH: Barbecue on bun; tator tots; salad; cherry cheese cake; milk.

SAHS and JR. HIGH BASKETBALL

Go Mountaineers

Practice Games
SAHS Boys vs Rule, at Jim Ned, Friday, 7:00
SAHS Boys vs Baird, at Bangs, Tuesday, 7:00

Bi-District Game
SAHS vs Lohn, Fri. Feb. 22
Time & Place TBA

Ranger Park Inn
Hwy 67
GO SANTA ANNA
348-3158

B & B Convenience Center
Becky's Blooms & B'looms

Pelton's Fina Service Station
James & Cindy Pelton
348-3104

Coleman County Telephone Cooperative Inc.
215 N. Second
348-3124

Santa Anna National Bank
Member FDIC
618 Wallis
348-3108

Simmons Feed, Seed & Fertilizer
N. First & Wallis
GO SAHS
348-3168

Coleman County Telephone Cooperative Inc.
215 N. Second
348-3124

Wagon Wheel Restaurant
go, fight, win
Wallis Ave • 348-3169

Santa Anna News
214 N. Second
348-3545

Dub's Opera House
619 Wallis
348-3191

SAHS			
Nov. 13	Eden(t)	4 Games	4:00
Nov. 16	Cross Plains(t)	4 Games	4:00
Nov. 27	May(t)	2 Games	6:30
Nov. 29-Dec. 1	ZEPHYR TOURNAMENT		
Dec. 4	Eden(h)	4 Games	4:00
Dec. 7	Priddy(t)	2 Games	6:30
Dec. 11	Blanket(h)	2 Games	6:30
Dec. 13-15	NOVICE TOURNAMENT		
Dec. 18	Blanket(t)	2 Games	6:30
Jan. 3-5	LOHN TOURNAMENT		
Jan. 8	Cross Plains(h)	4 Games	4:00
Jan. 11	Priddy(h)	2 Games	6:30
Jan. 18	Brookesmith(t)	2 Games	6:30
Jan. 22	Novice(t)	2 Games	6:30
Jan. 25	Panther Creek(t)	2 Games	6:30
Jan. 29	Brookesmith(h)	2 Games	6:30
Feb. 1	Novice(h)	2 Games	6:30
Feb. 5	Panther Creek(h)	2 Games	6:30
Junior High			
Nov. 19	Cross Plains(t)		6:30
Nov. 26	Panther Creek(h)		6:30
Dec. 3	Panther Creek(t)		6:30
Dec. 10	Cross Plains(h)		6:30
Dec. 17	Rising Star(t)		6:30
Jan. 7	*Brookesmith(h)		6:30
Jan. 17	*Novice(h)		6:30
Jan. 21	*Panther Creek(t)		6:30
Jan. 24 & 26	SANTA ANNA TOURNAMENT		
Jan. 28	*Panther Creek(h)		6:30
Feb. 2	PANTHER CREEK TOURNAMENT		
Feb. 4	*Brookesmith(t)		6:30
Feb. 11	*Novice(t)		6:30



JUNIOR HIGH GIRLS BASKETBALL TEAM—The Santa Anna Junior High girls concluded their 1990-91 basketball season Monday night with a win over Novice. Shown here with Coach Debbie Jones, they are, back row: Dana Jones, manager, Katrina Tomlinson, Catrina DeLeon, Vicki Ford, Shamey Brand, Chanda Simmons, Dwana Snipes, Jennifer Morris, Misty Bradley, Bertha Frausto, Becky Zabel, and Cynthia Patterson. Front Row: Jamie Ellis, Amy Miller, Brandi Martin and Melonie Smith.

4-H'ers Complete Photo Project

A Santa Anna youth is among county 4-H members who have been practicing their photographic skills, one of many programs offered through 4-H.

A photography contest was held to mark the completion of the project. Members took pictures and then mounted and displayed them as part of the contest. Photographs were judged on quality, clarity, dimension, texture, and uniqueness.

There are two categories in which 4-H members entered exhibits: single photographs and picture stories. The results of the contests were as follows:

Aaron Guthrie of Santa Anna, 1st place picture story. Logan McDonald 2nd place picture story, and Timothy Taylor, 3rd place picture story. Timothy also received first place in individual photo.



RECEIVES SERVICE AWARD—Edwin Hipsher last week received his 30-year Service Award pin to commemorate his years of service to the U.S. Postal Service. He was presented with the award Friday, Feb. 8 by Postmaster Kathy Wagner of Bangs. Edwin began his carrier in the Postal Service as a city carrier in Coleman. In 1982 he transferred to the Bangs Post Office as a clerk. He also works in the Santa Anna Post Office when needed.

Whon News By Mrs. Tom Rutherford

I talked with Don Fitzpatrick. His mother seems to still be a patient in Brownwood Regional Hospital. All the children were here with their dad, Graham Fitzpatrick, over the weekend. The children are Mrs. Cherry Bullion, Neil and Don Fitzpatrick and possibly other relatives during the weekend were here with the family.

Mr. and Mrs. Floyd Morris attended the memorial services for Mr. Alfred Lee Morris in Brady the past Tuesday afternoon. This was a cousin of Mr. Floyd Morris. Mr. and Mrs. Morris had dinner on Tuesday with her sister, Ola Belle Morris and her son Archie and Archie's son in Brady before the afternoon service.

Mr. Amon Otts and son Yancy spent the weekend with Mr. and Mrs. S.A. Otts and Mr. and Mrs. Granvel Otts and other relatives in

Throckmorton, returning home Monday morning. Mrs. Amon Otts and Griffin were with her parents, Mr. and Mrs. Leon Griffin and brother Bryan Saturday and Sunday.

Mr. Watts visited with Mr. and Mrs. Floyd Morris during the week. Loyd Rutherford visited briefly one afternoon.

Mr. Douglas Avant of Brady was a supper guest of his other, Mrs.

Pearl Avant in Santa Anna Saturday afternoon.

Mr. and Mrs. Leon Griffin and Mrs. Amon Otts and son Griffin drove to Tuscola Sunday afternoon and visited with Mr. and Mrs. Wayne Murry. These folks are former Gouldbusk area residents. Marcy reported a very nice afternoon of visiting.

Mr. and Mrs. James Hodges and son of Clyde visited Saturday afternoon with Loyd Rutherford.

Mr. Leon Carter visited his sister, Lorene Black, in Brownwood Sunday.

I talked with my son, Thomas, in New Hampshire Sunday afternoon. All were well and the weather there was great all week. But weather reports say they have a cold front coming in and usually that means

below zero weather. Talked also with Lynda at LaGrange. They are working and doing well. Their weather there was wet the first part of the week.

Around noon Sunday a pickup drove up to my house. The driver of the pickup asked me if I was Hilary Rutherford's mother. I was. The man, Mr. Lonnie Thompsons and his mother, Nay Wilkerson are Mr. and Mrs. Hilary Rutherford's closest neighbors in Coleman. They had missed the road to Trickham and really did not know where they were. I really did enjoy taking to these dear ones for a few minutes. They were enroute to San Saba. In passing, when going to Hilary's, as

Rockwood News By Mrs. John Hunter

Last Wednesday morning Mr. and Mrs. Bill Bryan were in Brownwood visiting Mrs. Jane Wise. Wednesday afternoon, Mr. and Mrs. Tom Ulstad of Buchanan Lk visited the Bryans. Sunday the Bryans attended the Brusenhan and McCreary family reunion held at the community center. Mr. and Mrs. P.L. Ulstad of Brady visited the Bryans on Sunday.

We are happy to report Wayne Bray has been dismissed from the San Angelo hospital and is at home.

Mr. and Mrs. Dick Deal visited at Holiday Hill Rest Home in Coleman several times during the week, with Norene Winstead. The Deals and Roland were in Abilene last Friday on Business. Mrs. Leno Siler and Mrs. Emma Mae Dolburg of Brady visited the Deals Sunday afternoon and all attended the ordination service at the Baptist Church

for Re. Jeff Dean. LaFreda Purcell of Bangs visited Thursday afternoon with Mr. and Mrs. Marcus Johnson. Friday visitors were Don and Wanda Bible, Doc Skelton, Bettie and Roland Dues. Jerry Johnson and Kay of Abilene spent Sunday with the Johnsons.

Bettie Bryan accompanied her parents, Mr. and Mrs. C.W. Hunter of Coleman to Abilene Friday then spent Friday night with them in Coleman.

Jeanette Brock visited Nora Brusenhan Sunday afternoon.

Andy McCarrell of Coleman visited Goldie and her brother, Harold McCarrell, Thursday morning. Mr. and Mrs. Marcus Graves of Coleman visited Sunday afternoon.

Mrs. Leona Henderson visited Sunday morning with Gene McSwane.

Mr. and Mrs. Gene Smith of Richardson spent the weekend with Tony and Wade Rehm.

Mr. and Mrs. Joe Wise visited Sunday at Lake Brownwood with Mrs.

Beulah Minton and in Santa Anna with Mr. and Mrs. Joe Ed Wise and enroute home they stopped for a visit with Mr. and Mrs. Hank Wise and Hunter. Saturday, Mrs. Joe Wise, Mrs. Hank Wise and Hunter visited in Brownwood with Lola Tisdale.

Mrs. Vivian Stewart visited Mr. and Mrs. Joe Wise on Tuesday and Joyce and Bill Mueller of San Antonio, who were spending time at their home here, visited Vivian Thursday.

Mrs. Homer Richter spent last week at Mesquite with her grandchildren while their mothers went on a trip to Tennessee.

Mrs. Mamie Nevans of San Angelo and her sister, Opal of Odessa spent Saturday with Gladys Hunter, an enjoying eating out, then driving to Rockwood visiting the cemetery, which is nicely cared for. They also visited the Jack Cooper family briefly. Several friends dropped by to visit Gladys Hunter during the week, bringing Valentine goodies.

Stevens Funeral Home

Since 1889

Member By Invitation of
National Selected Morticians

400 W. Pecan
Phone: (915) 625-2175
Coleman, Texas

STATEMENT OF NONDISCRIMINATION

Coleman County Electric Cooperative, Inc., is the recipient of Federal financial assistance from the Rural Electrification Administration, an agency of the U.S. Department of Agriculture, and is subject to the provisions of Title VI of the Civil Rights Act of 1964, as amended, Section 504 of the Rehabilitation Act of 1973, as amended, the Age Discrimination Act of 1975, as amended and the rules and regulations of the U.S. Department of Agriculture which provide that no person in the United States on the basis of race, color, national origin, age or handicap shall be excluded from participation in, admission or access to, denied the benefits of, or otherwise be subjected to discrimination under any of this organization's programs or activities.

The person responsible for coordinating this organization's non-discrimination compliance efforts is Jerry C. Hubbard, Assistant Manager. Any individual, or specific class of individuals, who feels that this organization has subjected them to discrimination may obtain further information about the statutes and regulation listed above from and/or file a written complaint with this organization; or the Secretary, U.S. Department of Agriculture, Washington, D.C. 20250; or the Administrator, Rural Electrification Administration, Washington, D.C. 20250. Complaints must be filed within 180 days after the alleged discrimination. Confidentiality will be maintained to the extent possible.

AG-MART

THE PLANT & ANIMAL FOLKS®

10% OFF Your Next Purchase At AG-MART With This Coupon.

Offer Good Through February 23, 1991

2400 Brady Highway
643-3636 Brownwood

Hours: 8 to 5:30 Monday-Friday
8 to Noon on Saturday

Underwood's

Take Out Coupons

Clip And Save This Week

CHICKEN & FIXINGS FOR 2
4 Piece Fried Chicken
½ Pint Mashed Potatoes
½ Pint Cream Gravy
½ Pint Red Beans
½ Pint Cole Slaw
4 Hot Rolls (Offer Good thru Feb. 19, 1991)

CHICKEN & FIXINGS FOR 4
8 Piece Fried Chicken
1 Pint Mashed Potatoes
1 Pint Cream Gravy
1 Pint Red Beans
1 Pint Cole Slaw
8 Hot Rolls (Offer Good thru Feb. 19, 1991)

FREEZER PACS

3# Tenderized Round Steak
4# Family Pak Pork Chops
5# Ground Beef (all beef)
6# Grade "A" Fryers
5# Beef Patties (all beef)
4# Chuck Roast (lean, tender)

27 lbs. ONLY \$44.95

3# Center Cut "Reg." Round Steak
4# Burton's Country Style Sausage Patties
4# "Reg. Cut" French Fries
5# Ground Beef (All Beef)
4# Family Pak Pork Chops
4# Chuck Roast (Lean, Tender)
5# Beef Patties (All Beef)
4# Cured Ham Steaks (Lean, Tender)

33 lbs. ONLY \$58.25

TREAT YOURSELF TO SOMETHING SPECIAL. YOU DESERVE IT. COME SEE OUR STORE

FRESH FROZEN VEGETABLES
15 ct. Corn On Cob \$5.95
4# Broccoli \$4.95
2½# Onion Rings \$4.95

MUCH MORE!

Buy any amount of our luncheon meats and have us custom slice it to your specifications.

Burton's Meats

1016 Early Blvd., Early, Texas • (915) 646-4731
Open Monday thru Saturday from 10 a.m. to 6 p.m.

1st Bldg East of Frontier Fence on Early Blvd. Finest Meats In Brown County 2 Blocks West of Early High School on Early Blvd.

Tenderized Beef Fajitas 3 lb. Box \$9.95	Lean Sliced Slab Bacon 4 lb. Box \$7.95	Breaded Catfish Nuggets 3 lb. Box \$9.95
Beef or Cheese Enchiladas 40 ct. \$9.95	Center Cut or Tenderized Round Steak 3 lb. Box \$9.95	Burton's German Style Smoked Sausage 3 lb. Box \$6.95
Burton's Country Style Sausage Patties 3 lb. Box \$5.95	Tater Tots 4 lb. Box \$2.99	Family Pak Pork Chops 4 lb. Box \$8.95
Breaded Chicken Nuggets 3 lb. Box \$9.95	Lean, Tender Sirloin Steak Bone In 4 lb. Box \$11.95	All Beef Ground Beef 15 lb. #425 10 lb. quantity \$1.39 lb.

"CORN-FED" Feedlot Meats

HOME RAISED • HOME KILLED
Guaranteed Tender

½ Beef \$1.59 lb.
Hindquarters \$1.98 lb.
Forequarters \$1.69 lb.
Hogs (½ or whole) ... \$1.49 lb.
Beef Loins \$3.29 lb.

Prices listed includes processing
Curing Extra

COME SEE OUR CHOICE SELECTION OF SEAFOOD

Smoked Sausages

Our Own Shop Made Smoked Sausages
"Several Varieties"

We have Stew Meat, Chili Meat, Chicken Parts, Beef & Pork Roasts, Steaks, Heat & Eat Items, A VERY WIDE SELECTION of TOP quality meats and much, much more!

Last Chance For Easter Gift Giving

EASTER PORTRAIT SPECIAL

SAVE \$3
on our \$9.95 package
1-8x10, 2-5x7s and 10 wallets
on your choice of a traditional, nursery, spring or fall background

Now Only \$6.95 plus 95¢ sitting fee
(reg. \$9.95)

Bring in any lower-priced advertised offer and we'll match it!

We welcome everyone: babies, children, adults and family groups. No appointment is ever necessary. Satisfaction guaranteed! Poses our selection. White and Black Backgrounds. Double Exposure and other Special Effects Portraits not available in advertised package. Limit one special package per subject. \$2.00 for each additional person in portrait. Minors must be accompanied by an adult. *approximate size

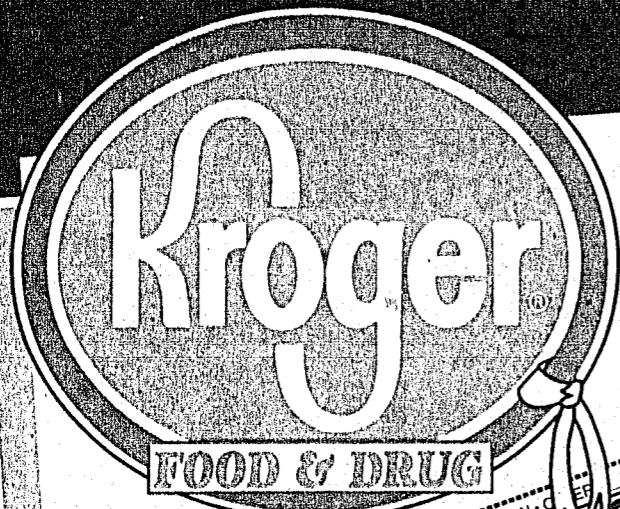
Studio Hours: Daily: 10 a.m. until one hour prior to store closing;
Sunday (where open): store opening until one hour prior to store closing

WAL-MART

Pictureland Portrait Studio

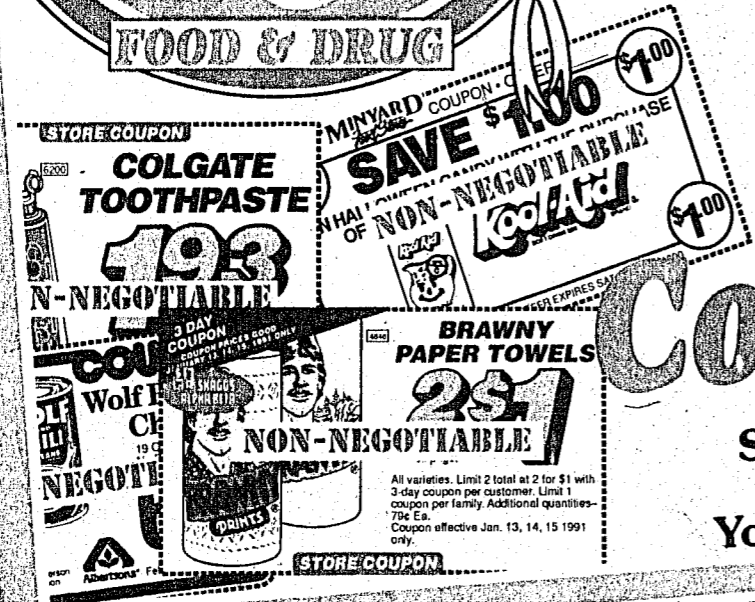
5 Days Only!
Wednesday, Feb. 13 through Sunday, Feb. 17

315 A East Commerce, Brownwood, TX

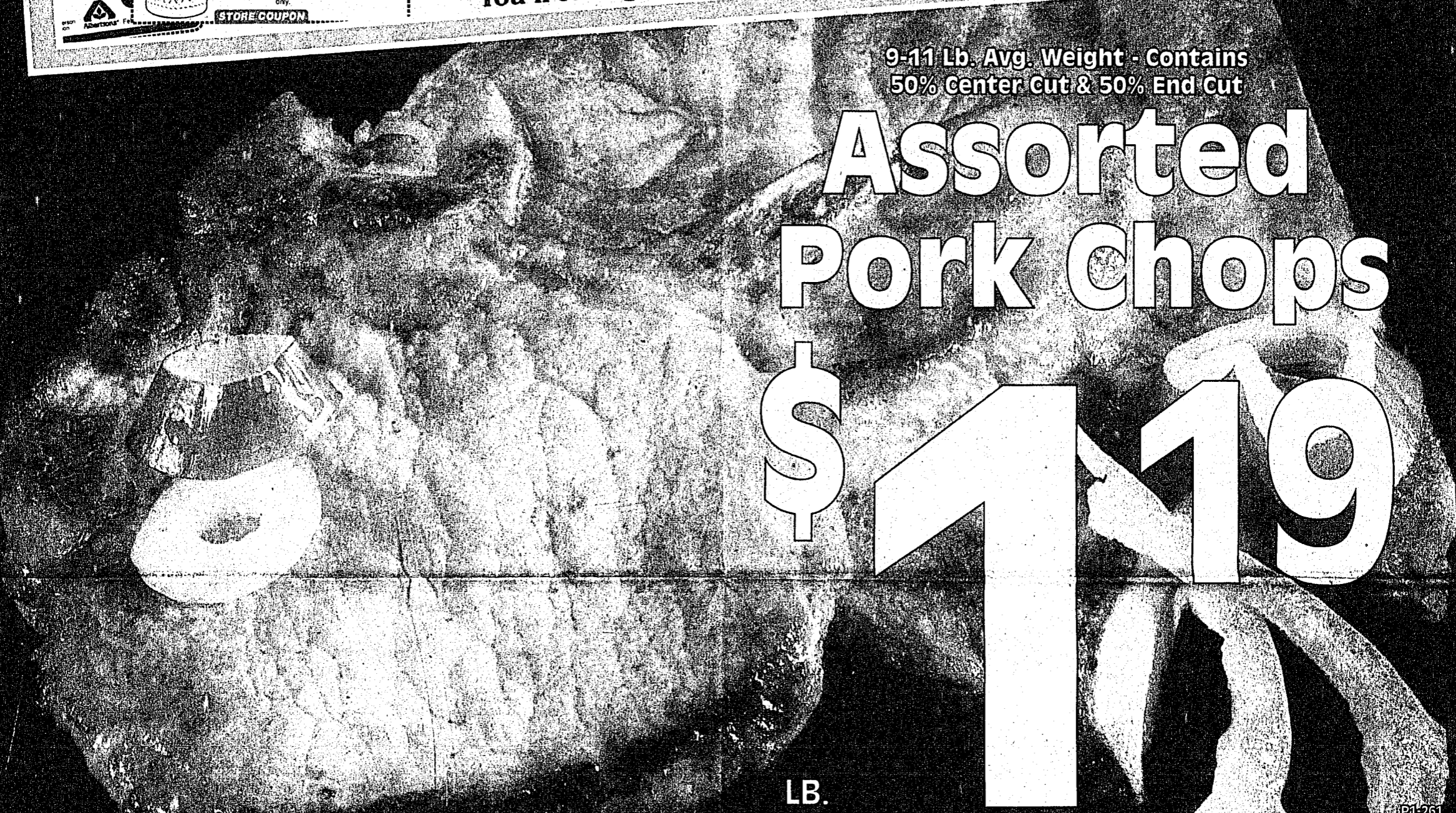


No Need To Shop Anywhere Else!

We Will Gladly Accept All Other Competitors' Coupons!



Simply clip any coupon from our competitors' ad and present them when you check out. We will ring up your item at the specified coupon price. You'll save gas, time and money when you make one stop and shop with us!



9-11 Lb. Avg. Weight - Contains 50% Center Cut & 50% End Cut

Assorted Pork Chops \$1.19

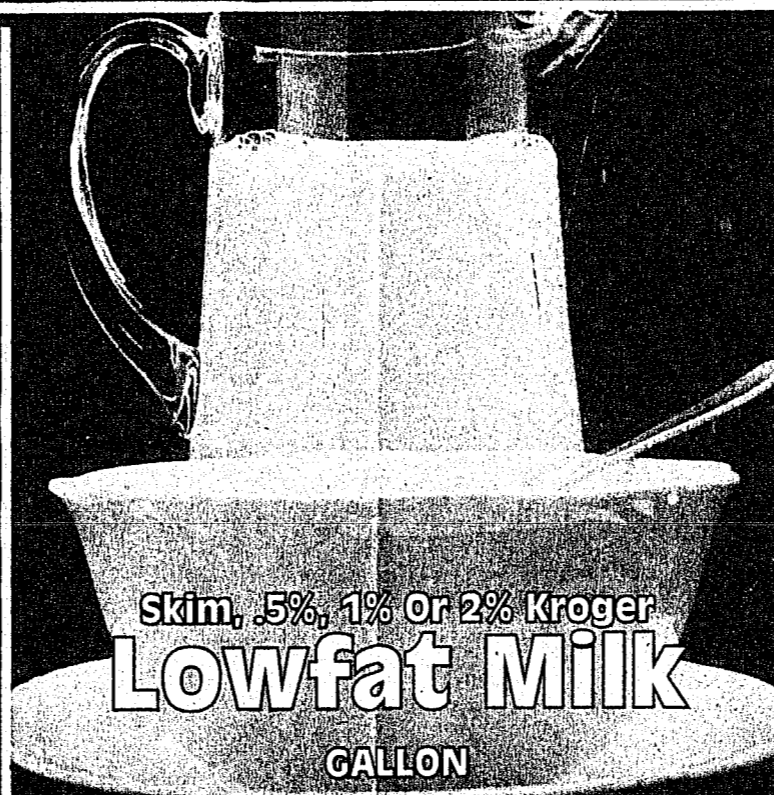
LB.

IP1-261



White Sun Gold Bread 24-OZ. LOAF

59¢



Skim, .5%, 1% Or 2% Kroger Lowfat Milk GALLON

\$1.69



2-LITER BTL. 99¢

Squirt, Crush, RC, Regular Or Caffeine Free Diet Dr Pepper Or Dr Pepper 6/12-OZ. CANS

\$1.29

LIMIT FOUR WITH \$10.00 ADDITIONAL PURCHASE

Plus . . . DOUBLE MFRS.' COUPONS

*DOUBLE UP TO 50¢ COUPONS. SEE STORE FOR DETAILS

This Ad Valid: February 13 14 15 16 17 18 19 OPEN 24 HOURS

Copyright 1991. The Kroger Co. We reserve the right to limit quantities.

Reg., Unsalted Or Whole Wheat - Sunshine

Krispy Crackers

16-OZ. BOX

69¢

SAVE \$1.00 PER BOX

SAVE MONEY.

ORIGINAL KRISPY SUNSHINE

NET WT. 16 OZ. (1 LB.) 454g

SALTINE CRACKERS

NO CHOLESTEROL

Keebler Original, BBQ Or Ranch

Ripplins' Chips

6.5-OZ. BAG

88¢

SAVE 71¢ PER BAG

SAVE MONEY.

Ripplins' Barbecue

NEW! Cholesterol Free!

Rippled Potato Snack Chips

P2-261

Kellogg's

Frosted Flakes

\$2.99

20-OZ. BOX



Price's

Pimiento Spread

\$1.29

7-1/2 OZ. CTN.



Kroger

Pink Salmon

\$1.99

15.5-OZ. CAN

Wydiv Inc. White, Pink, Brut Or Cold Duck

Andre Champagne

750-ML. BTL.

\$3.29

"New" Keebler

Pizzarias

7-OZ. PKG.

99¢

Great For Snacking

Keebler Pretzels

8.5-OZ. PKG.

79¢

Wydiv Inc. Budweiser, Bud Light Or Bud Dry • Miller Genuine Draft, High Life Or Miller Lite • Coors Regular, Light Or Extra Gold

12 \$6.79

12-OZ. CANS



Kroger Frozen

Orange Juice

79¢

12-OZ. PKG.



Individually Wrapped Sliced

Kroger Cheese Food

89¢

8-OZ. PKG.

Wydiv Inc. Regular Or Light Old Milwaukee

12 \$5.59

12-OZ. CANS

Delicatessen

Fresh From The Deli

In-Store Baked 8-Inch

Cherry Pie

\$1.99

EACH

SAVE \$2.00



Deli Baked Whole

BBQ Chicken

2 \$6

FOR

Soft Ripened, Made From Pasteurized Milk - Remy Picot

Brie Cheese

\$3.99

LB.

Made Fresh In The Deli - Single Topping

Combo Pak Pizza

\$7.99

3 CT. PKG.

Fresh Baked Wheat Or White

Italian Bread

99¢

EA.

Baked Ham, Chicken Breast, Turkey Breast Or

Roast Beef

\$3.99

LB.

Regular Or Light
Kraft
Mayonnaise
 32-OZ. JAR

SAVE MONEY

\$1.49

SAVE 50¢ PER JAR



Purina
Hi-Pro
Dog Food
 25-LB. BAG

SAVE MONEY

\$8.99

SAVE \$4.40 PER BAG



Lasagna, Spaghetti, Macaroni Or Noodles
All R & F Pasta
25% OFF
 REGULAR RETAIL PRICE

Kroger
Apple Juice
99¢
 64-OZ. BTL.

SAVE MONEY

Assorted Colors Bath Tissue
Nice 'n Soft
88¢
 4-ROLL PKG.

SAVE MONEY


Full Service Pharmacy
AMES GLUCOMETER III
 SALE PRICE..... \$45.00
 LESS MFRS. MAIL-IN REBATE..... \$45.00
YOUR FINAL COST..... FREE
 "We Care About Your Health"

Trash Bags
Hefty Cinch Sak
\$1.99
 10-CT. PKG.


MANUFACTURER COUPON
SAVE \$1.00
 on any 2 packages of
Hefty® Cinch Sak®
 10 ct. Trash or 10 ct. Tall Kitchen Garbage Bags (two of the same or one of each)
 CONSUMER: Redeem only only coupon on each product purchased. RETAILER: To receive face value plus 8¢ handling, send to HEFTY, P.O. Box 880124, El Paso, TX 88588-0124. Coupon must be redeemed in accordance with Hefty Chemical Company, Consumer Products Division coupon redemption policy. Copies available upon request. Consumer must pay sales tax. Void where prohibited, taxed, or otherwise restricted by law. Cash value 1/20¢.
\$1.00 HD-855JTX THIS COUPON VALID ONLY AT KROGER 699419



Great Value - 2/4.6-Oz. Tubes
Crest Twin Pack
 SALE PRICE..... \$1.79
 LESS MAIL-IN REBATE..... \$1.00
 SEE STORE FOR REBATE DETAILS
FINAL COST 79¢




Assorted Varieties Of 15-Oz. Conditioner Or
Flex Shampoo
 SALE PRICE..... \$1.79
 LESS FLEX MAIL-IN REBATE..... \$1.79
 SEE STORE FOR REBATE DETAILS
FINAL COST FREE



Pull-Ups \$9.99, 60-Ct. Small, 44-Ct. Medium, 32-Ct. Large Or 28-Ct. Extra Large Him/Her
Huggies Diapers
\$9.49
 YOUR CHOICE
 SAVE \$1.40 PER PKG.




4-Oz. Anti-Perspirant, 1.5-Oz. Roll-On Or
Degree Solid
\$1.99
 2-OZ. PKG.
 SAVE 50¢ PER PKG.



Cat Box Filler
Tidy Cat 3
\$3.49
 25 LB. BAG
 SAVE \$2.00 PER BAG



Caplets Or
Nuprin Tablets
\$3.49
 50-CT. PKG.
 SAVE \$1.20 PER PKG.



F E B 1 4 9 1



USDA Grade A Holly Farms Boneless
Breast Tenders
\$2.99
 LB.

USDA Inspected Country Style
Pork Ribs
\$1.49
 LB.

USDC Inspected Farm Raised
Whole Catfish
 PER LB.

Jumbo Alaskan Bairdi
Snow Crab Legs
 PER LB.

\$1.69

\$4.99

Louis Rich Turkey Sticks Or
Turkey Nuggets LB. **\$2.99**

USDA Inspected
Center Loin Pork Chops LB. **\$2.49**

When You Buy One At The Reg. Price Of \$1.99, You Will Receive A Second Pkg. Of Bigger Than Bun Length

All Varieties Hamburgers, Muffins Or Jimmy Dean Biscuits

Rath Wieners

Sausage Biscuits

FREE
 SAVE \$1.99

3 \$5
 8-OZ. PKGS.

Taste-O-Sea
Fish Sticks 26.4-OZ. PKG. **\$2.99**

USDC Inspected Farm Raised Gulf Fresh
Whole Redfish LB. **\$3.99**

Taste-O-Sea
Fried Clams 5-OZ. PKG. **99¢**

Mrs. Paul's Light Cod Or Light
Flounder Fillets 9-OZ. PKG. **\$2.99**

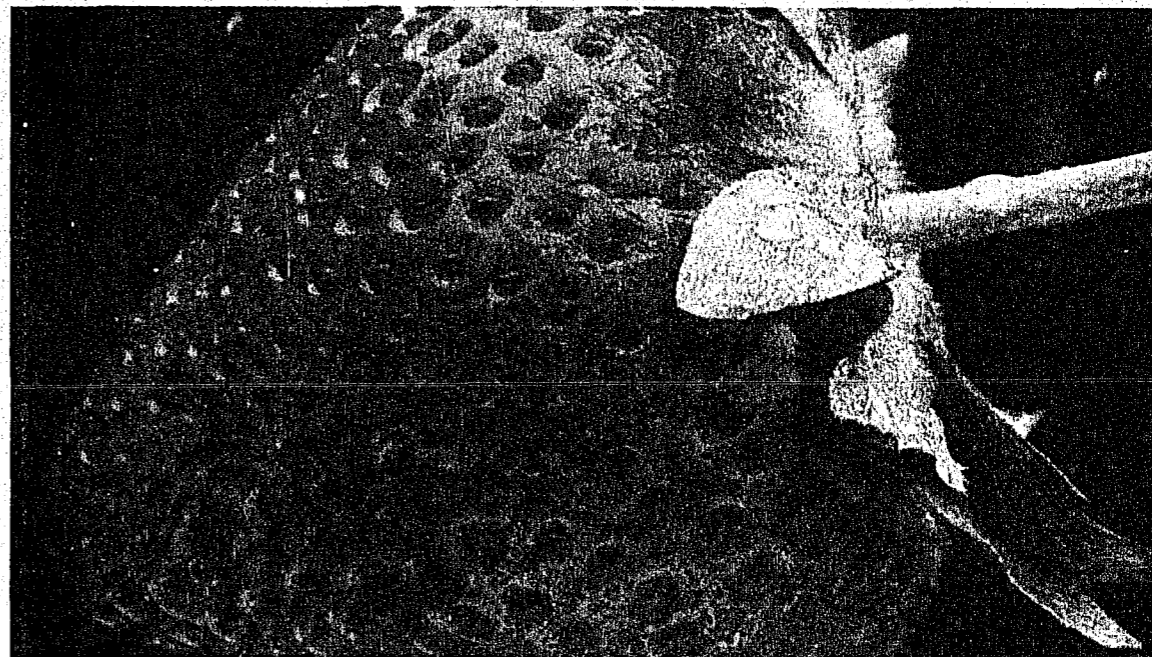
P4-DIV.

The Savings Are Ripe At Kroger

Red Ripe
Strawberries

99¢

PINT



From Our Floral Shoppe... AVAILABLE IN STORES WITH FLORAL SHOPPES

Beautiful Fresh Cut
Bunch Tulips
\$3.99
 5-STEM BUNCH

Fresh Cut
Daffodils
\$1.99
 10-STEM BUNCH

Dole
Bananas
39¢
 LB.

First Of The Season
Tender Asparagus
\$1.99
 LB.

Colorado
Russet Potatoes 20-LB. BAG **\$3.29**

Enjoy The Taste Of Summer Fruit
Plums, Peaches Or Nectarines LB. **\$1.29**

There's Help For Families Of OPERATION DESERT STORM Thru The American Legion's Family Support Network - Call 1-800-786-0901

