

SAHS Mountaineers  
On Top In District  
Basketball Play

Your Hometown Newspaper  
Sinc

Have You Registered  
To Vote? Cards Are  
Available At P. O.

# Santa Anna News

"He Profits Most Who Serves Best"

SINGLE COPY 25 CENTS

VOLUME 105 NO. 5

THURSDAY, FEBRUARY 1, 1990

## For Your Information

### Musical Sat.

The monthly country and western musical with live bands from around the big country, sponsored by the Chamber of Commerce will be held Saturday evening at the Lions Club building on Wallis Ave.

There is no admission and everyone in the community is urged to be present for good family entertainment.

There has been fewer bands on hand the last couple of months, due to the flu that has plagued the area, but the Chamber is hopeful that this time will be up to par with the first two or three events when as many as 8 or 9 bands showed up for your entertainment.

Music starts at 6:00 p.m.

### Groundhog Day

Friday is Groundhog Day, the day we all wonder if the furry little critter will come out of his burrow and see his shadow see his shadow, thus predicting six more weeks of winter. If he doesn't see his shadow, spring will come in about six more weeks. (According to the calendar, the first day of spring is March 20). Either way, it seems to me, we are in for about six more weeks of winter.

### C of C Banquet Set For March

It may seem a little early now to be making plans for an evening out in March but you won't want to miss this year's Chamber of Commerce banquet to be held Saturday, March 17 (St. Patrick's Day). Cowboy humorist/cartoonist Ace Reid will be the featured speaker for an evening that will surely be entertaining. The Citizen of the Year will be named at the banquet.

The Chamber board of directors will hold a meeting Wed., February 7, 6:30 at the Telephone Cooperative meeting room. All interested persons are welcome to attend. Suggestions for activities and projects are always welcome.

### Good News!



TYE VASQUEZ

A report from Jan Brixey, grandmother of little Tye Vasquez, is that he is now doing so well doctors have cancelled plans for future weekly laser surgery. It has been a couple of weeks since he has experienced any bleeding caused by a vascular problem and the physicians are hopeful that time will take care of what remains of the problem.

### Well Said

The safety pin is getting close to a hundred-fifty years old; there have been lots of changes since it was invented.



Chamber of Commerce Officials shown at last week's membership meeting are Mike Simmons, a director; Monte Guthrie II, president; Jasper McClellan, director; Charlotte Moseley, vice president; and Charles Wetsel, sec-treas. Delma Blair, the third director, was unable to be present. (News staff photo)



Signing up for membership in the Santa Anna Chamber of Commerce at last week's annual membership meeting. The C of C is now conducting its annual membership drive and would be happy to sign you up too. (News staff photo)

## State Honor Goes To Floyd Gilbreath

Floyd Gilbreath was elected as the "Outstanding Veterans Service Officer of the Year for 1989" during the Veterans Service Officer School held in Dallas in September.

The award was made by the State of Texas and the Veterans Service Officers Association of Texas, and word of the award reached the Coleman County Commissioners Court this week, in a letter from Karl Axelrad, president of the Veterans County Service Officers Association of Texas.

Comments on the service of Floyd Gilbreath as made by Mr. Axelrad follow:

"His knowledge in veterans and dependents benefits and the overall assistance he rendered to the veterans and dependents in your county and for the great state of Texas is immeasurable. As you may not know, every dollar brought into the County of Coleman by the Veteran Service Officer is spent at a standard rate of 4 times, increasing the overall financial structure of your county."

"Mr. Gilbreath's abilities assisted the veterans in paying for many items of their need, including the county and local taxes. Without these benefits many of your veteran population could not afford to pay these expenses, therefore, proving



FLOYD GILBREATH

his total net worth to your county as a county official, and to the veteran as a financial friend."

"His future in the Veteran Administration program is undoubtedly bright."

"Please convey my sincere appreciation for a 'job well done' to your County Veterans Service Officer, Mr. Floyd Gilbreath."

"Again, congratulations for employing such a valuable Veterans Service Officer."

## Cemetery Association Names New Directors

The annual meeting of the Santa Anna Cemetery Association was held last Friday evening at the Telephone Cooperative meeting room.

Directors present were president of the group, Luther McCrary, Glen Scarbrough, Robert Robinett, Quinton Daniel, and Eddie Hartman. About 15-20 other people were present for the meeting.

Mrs. C.M. Moseley resigned from the board by letter. Charlotte Moseley was appointed to finish out the term. Coyita Bowker was elected to fill a place on the board and Yvonne Halmon was re-elected sec-treasurer.

Charlie Armstrong was re-hired as caretaker.

The board expressed their appreciation for all the memorials and other donations made to the association in the past year, saying "Your generosity has made the difference."

Recent memorials have been from the following:

Mr. and Mrs. M.E. Campbell, Fort Worth, Fern Hoke, Sharon Ragsdale, Wilma Welch, in

## Local Students Test Average On TEAMS

According to recent published reports of the TEAMS testing across the state of Texas, Santa Anna High School juniors and seniors showed up well above average in the math section and about average in the language arts section. The Texas Educational Assessment of Minimum Skills (TEAMS) testing program measures minimum basic skills in the subject area of mathematics and English language arts in grades 11 and 12. The 1985-86 school year marked the beginning of the TEAMS program which was mandated by House Bill 72.

Eleventh and 12th grade students in the state are required to pass both the mathematics and English language arts section of the exit level test in order to be eligible to receive a high school diploma in Texas. Students have as many as four opportunities to master the exit level TEAMS test during their junior and senior years.

According to school counselor Arlene Denning, the TEAMS tests were administered to SAHS students in October, 1989 and results are as follows:

Twenty-five SAHS juniors took the math test with an overall mas-

tery of 83%. Across the state, 178,500 students were tested in mathematics with an overall mastery of 80%.

Twenty-five students in the eleventh grade at SAHS taking the language arts portion of the test showed an 88% mastery.

Santa Anna seniors did quite well in the math portion of the testing. SAHS seniors taking the math portion showed an overall mastery of 80% while the 21,394 students taking the test statewide had an overall average of 68%.

Across the state, 11,743 students tested showed a 68% mastery of the language arts test. No date was given for SAHS seniors taking the test as there were fewer than five students tested.

An overall performance report was recently presented to the Texas Education Agency from the local school district. The TEA is the governing body of education in the state of Texas. The report included findings of the most recent accreditation team visit to the campus in the 198-89 school year which stated that the "Santa Anna ISD as a whole, including the board of trustees, staff, students, parents, and

CONTINUED PAGE 6

## Santa Anna News Begins 105th Year

Few newspapers have as unique a beginning as the Santa Anna News. The first issues were published in a cave on the West Santa Anna Mountain.

As January rolled about, the Santa Anna News began its 105th volume. The first volume began when the first issue was published in January of 1886.

According to Beatrice Grady Gay in her book, "Into the Setting Sun," Con Rowland came to Santa Anna for his health in the 1880s to recover from "the dread white plague so prevalent on the coast." Since there was not a house on the property on the north side of the mountain, he spent the winter in a sort of dugout. When his health improved, he returned to his former home for his printing press and established the newspaper, The Santa Anna News, with the first issue published in January 1886. It remains the oldest continuous business in the community.

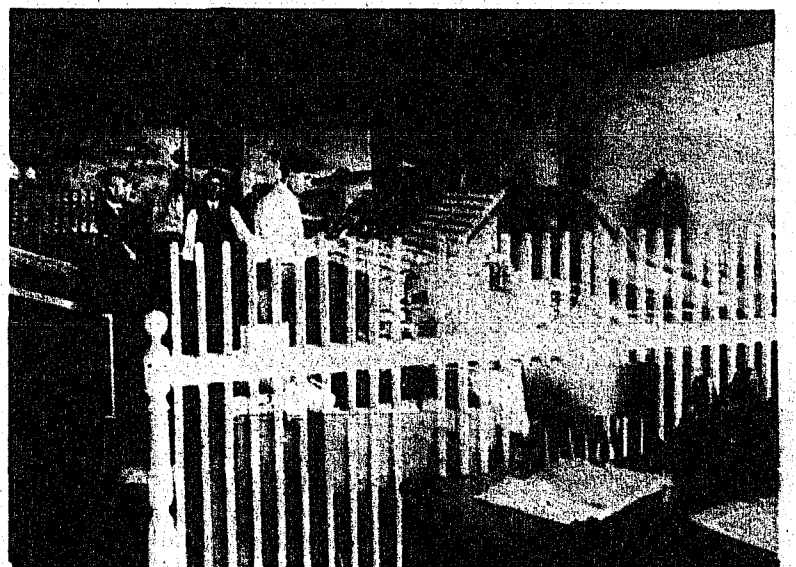
With the coming of the Santa Fe railroad in 1886, the town was moved from the gap of the mountains (a route of the Military Road and a cattle trail) to the railroad right-of-way a few blocks distant.

Rowland sold out to Charlie Spann, who in turn, sold to Will Hubert and his sons in the 1890s. They sold to Austin Callan and moved to Coleman to Publish the Coleman Democrat.

A fire in 1919 destroyed early newspaper files and records of ownership, but according to a 1980 article published in Texas Press Association Messenger, G.W. Faulkner was the publisher for selling to J.J. Gregg, who later sold to his son, John D. Gregg. From 1920 to 1966 it was under the Gregg leadership.

Johnny Valentine was the Publisher two years, selling to W.T. Hays of Bangs in 1969. Craco Weeklies, Inc. a division of Woodson Newspapers, Inc. purchased the paper in 1979 selling to Boone/Narragansett Publishing of the Southwest, in June of 1989.

A fire in 1980 gutted the old brick building on Wallis Ave. that had housed the Santa Anna News for over 50 years and the operation was moved to its present location at 214 North Second Street where typesetting is now done via computer. Printing of the paper is done in Brownwood at the Brownwood Bulletin plant, which is owned by the same corporation.



The Santa Anna News office in 1912. Pictures are, from left to right, G. W. Faulkner, editor-publisher; Dan Boone; and Ben Parker. Sign on the wall reads "Do not use profane language."

### City Employee On Call This Weekend

The City utility crew member on call this weekend is Thomas Davis, 348-3206. Derrell Warnock, Superintendent of City Operations, may be reached at 348-3167 if the crew member is not available.

Watch the Santa Anna News each week for the city employee to call in case of an emergency.

### Santa Anna News Deadlines

In Order to meet our press time, the following deadlines must be adhered to. Regular columns such as Thoughts from Our Pastors, Library Column and announcements of engagements, meetings and other events should be in the News Office no later than noon on Friday prior to the week they will be published. Other news items should be in by no later than noon on Monday. We will not assure that anything brought in past noon on Monday will be published in that week's paper. All advertising must be turned in by 10 a.m. on Tuesday.

SANTA ANNA NEWS  
214 N. 2ND.  
SANTA ANNA, TEXAS  
(915) 348-3545  
(USPS 481540)

The Santa Anna News is published every Thursday at Santa Anna, Texas 76878 and entered as second class mail under the Act of Congress of March 2, 1879.

SUBSCRIPTION PRICE:  
Coleman County and all other areas in the state of Texas and the U.S. \$11.95

CLASSIFIED RATES:  
\$1.50 for the first 15 words; five cents per word thereafter per week for personal items. Rates for business advertising are charged by the rate of 25 cents per agate inch.

POSTMASTER:  
Send change of address to:  
Santa Anna News  
P.O. Box 399  
Santa Anna, Texas 76878

POLLY WARNOCK  
Managing Editor

TANDY HOWARD  
Advertising Manager

BETTY KEY  
Bookkeeper/Circulation



## Dear Editor

Thank you for 52 visits "home" in 1989. Keep up the good work! So many good memories center around Santa Anna and especially the 'mountain'. I hope it will never be abused again and made unsightly. It was a landmark for those early settlers as it is a monument to them today.  
Sincerely,  
Beverly (Stockard) McFadden  
San Angelo

In preparation for the restoration of the Texas Capitol, the Old 1857 General Land Office, and the Capitol grounds, we have some exciting mysteries to solve and are looking for any photographs dating prior to 1920. We also need interior views of the rotunda, dome, corridors, foyers, and offices in the Capitol prior to 1959.

The State Preservation Board invites you to join us in our quest and we ask that your readers help us by searching through their family photographs for snapshots taken while visiting the Capitol. Quite often the building or an interior of a room is only visible in the background, but such a photograph can still provide invaluable details about furniture, carpet patterns, or light fixtures.

Surely, your readers' grandmother, grandfather, aunt, uncle, mother, father, brother or sister took great joy in standing in the middle of the rotunda to have their pictures made. Surely, someone through the years has gone "Kodaking" to the State Capitol and taken just the kind of snapshots we are looking for.

If your readers have any photographs of the Texas Capitol, the Old General Land Office, or the Capitol grounds, we ask them to please forward a xerox copy to us as soon as possible. We will be more than happy to give them credit for any photographs that provide new information.

Thank you for any help you can give us on this joint, statewide effort. Together, we can make Texas' beautiful Capitol second to none in Victorian restoration magnificence and authenticity for the future enjoyment and pride of Texans everywhere.

Sincerely,  
Allen McCree, FAIA  
Architect of the Capitol  
P. O. Box 13286  
Austin, TX 78711

1234 56789012345678901234

The world's largest pizza restaurant chain uses more than 345 million pounds of flour each year, over 200 million pounds of real mozzarella cheese and more than 75 million pounds of tomatoes.

## Community Calendar

THURSDAY, FEBRUARY 1  
SAJH at Panther Creek Tourney

FRIDAY, FEBRUARY 2  
SAHS at Novice, 6:30

SATURDAY, FEBRUARY 3  
SAJH at Panther Creek Tourney  
S.A. Youth & Rodeo Assoc. activities at local arena  
Country & Western Music at Lions Club Bldg, 6:00  
Half Century Dance, old gym, 7:00

MONDAY, FEBRUARY 5  
Fire Dept. Meets  
Eastern Star  
Cub Scouts  
SAJH at Novice 6:30  
Senior 4-H, Courthouse, 6:30

TUESDAY, FEBRUARY 6  
Cub Scouts  
Lions Club 6:00

WEDNESDAY, FEBRUARY 7  
Chamber of Commerce meets

## Friendship Luncheon

(Contributed)

The warm sunny days are bringing our "seniors" out for our Thursday luncheon. We had 28 present last week, which is about our average attendance. Our Coleman friends were here. They are always welcome.

Our pot-luck turned out real good as usual. For this Thursday, Feb. 1., one of the ladies will make meat loaf and we will bring all the vegetables and desserts to accompany it.

Rev. Don Elrod offered grace for our meeting last week. Everyone joined in to sing "Happy Birthday" to Mrs. Irving (Lucile) Dean.

## Granddaughter Of Local Couple On HPU Honor List

Dena Rasch, granddaughter of Mr. and Mrs. Calvin Campbell has been placed on the Dean's List at Howard Payne University after completing the first semester of the school year. To be included on the list, a student must have maintained a 4.00 grade average for the semester.

Dena, a graduate of Brownwood High School is the daughter of Linda (Campbell) Huston of Brownwood.

## Cemetery Assoc—Cont'd

memory of Pearl Arnold.  
Homer Vinson.

Wilburn and A.G. Weaver in memory of Davis Tucker.  
Doris Griffin, Fern Hoke, Mr. and Mrs. Roy West, in memory of Homer (Sye) Burden.

Carolyn G. Holt, of Brownwood, Burgess, Gayle and Ward Ste...

**RED BRANGUS BULLS FOR SALE**  
Contact: DON JOHNSON  
BROWNWOOD, TX  
915-646-1547  
915-646-5707

I'm asking you to employ me.

## Jo Dean Chapman

as your March 13, 1990 choice for

## County Clerk

- \* I need this job and I humbly ask you for the opportunity to serve you.
- \* I DO NOT ASK you for a "POSITION," I do ask for a working clerk's job, so I can help you when you need this office.
- \* My 6½ years EXPERIENCE working with District Judges, the public (under routine, confidential, happy and sad situations) many attorneys, and my various duties at the district court level, will be a added benefit in performing many of the County Clerks duties.
- \* You DESERVE your tax dollars to be spent in the most efficient manner, which would be my goal and OBLIGATION to you.
- \* High school and vocational college graduate and continuing adult education courses. Secretary/bookkeeper/accountant and involved in various phases of farm and ranch operations; since a teenager.
- \* My husband, Corky Chapman, and I are lifetime residents of Coleman County, and very interested in our county.
- \* If I miss seeing you, please accept this a my personal plea for your vote and consideration.

My most sincere thanks and appreciation,

**Jo Dean Chapman**

Political Advertisement paid by Jo Chapman, Rt. 1, Coleman, Texas.

## Thoughts From Our Pastors

### Don Elrod First United Methodist Church

Some years ago a fishing fleet went out from a small harbor on the east coast. In the afternoon there came up a great storm. When night settled down not a single vessel of all the fleet had found its way into the port. All night long wives, mothers, children and sweethearts paced up and down the beach, wringing their hands and calling on God to save their loved ones. To add to the horror of the situation, one of the cottages caught fire. Since the men were all away, it was impossible to save the home.

When morning broke, to the joy of all, the entire fleet found safe harbor in the bay. But there was one face which was a picture of despair...the wife of the man whose home had been destroyed. Meeting her husband as he landed, she cried, "Oh, husband, we are ruined! Our home and all it contained was destroyed by fire!" But the man exclaimed, "Thank God for the fire! It was the light of our burning house that guided the whole fleet into port!"

"And we know that in all things God works for the good of those who love him....." Romans 8:28.

## Around & About

Mr. and Mrs. Paul Wilburn of Big Lake were recent visitors with Blanch Grantham and Ann Stiles. They were joined for lunch at a local restaurant by other friends, Mr. and Mrs. Chester Galloway, Mr. and Mrs. Eric Lomax, Mr. and Mrs. Harry Crews and Wilma Welch. Mr. Wilburn is remembered here as the brother of the late Lillian Herndon.

Word comes to us that a subscriber to the NEWS, Mrs. Frank (Iva Avent) Wright of Williams, Oregon will be soon celebrating her 92nd birthday. The writer tells us that Mrs. Wright spent the first twenty years of her life "on a farm just outside of Santa Anna." She was the eldest child of Mr. and Mrs. Henry Avent, (we wonder if the name clould be Avant), who lived at that time on what was then known as the J.H. Austin property.

Our informant tells us how much Mrs. Wright enjoys the Santa Anna News although having been gone from the area for all those years. She watches for items that will bring back memories of her childhood here. It is hoped someone among our readers may remember her or her family and like to share some memories by correspondence. She has two living sisters, Christina living in Bakersfield, CA. and Theodore "Teddy" of Grants Pass, Oregon. A brother, Sealy is recently deceased. He also was a resident of California.

Mrs. Wright's address is Mrs. Frank Wright, 3650 Cedar Flat Rd., Williams, Oregon 97544.

## Half Century Dance Sat. At Old SAHS Gym

The Santa Anna Half-Century Dance will be held this coming Saturday night at the old gymnasium just west of Santa Anna High School from 7:00 to 10:00.

The Swing Shift Band of Abilene will furnish the music. Admission is \$2.00 per couple. Come join us, we have a good time!

Those attending are asked to bring sandwiches, chips, or cookies for break-time snacks.

All ages are welcome to attend.

Louise McCaughan recently spent a week in Del Rio visiting her daughter Betty and family.

While there she had the opportunity to watch her granddaughter Michelle lead the scoring in the high school basketball game against Loreda, with 14 points. The Del Rio team won the game by a score of 48-19. On another night Michelle scored 10 points for the high point honors as they defeated Eagle Pass 45-17. Michelle is the only freshman starter on the team.

Guess Louise has a right to be proud!

Other proud grandparents are Rev. and Mrs. Don Elrod whose granddaughter Cawley, a first grade student, last week placed 4th in a gymnastics meet at her school. Although a resident of Santa Anna, the youngster attends school in Brownwood since her mother, Kellye Luera, travels there each day as a student at Howard Payne University.

## Delta Omicron Hears Program On College Preparation

What students and parents need to know about college and how to prepare from the time of entering high school through graduation, was the program present for Delta Omicron Sorority January 8.

The group met at the Mountain City Community Center to hear Melissa King, a counselor from Early High School.

The meeting was hosted by Susie Voss. Those attending were Coyita Bowker, Dorothy Harris, Debbie Wheatly, Maribee Pritchard, Kelly Simmons, Gay Martin, Gayle Stewardson, Karen Morris, Karyn Kingsbery, Janette Driskel, Patti Musick, and one guest, Carol Voss.

FRIDAY, FEBRUARY 2  
Oven fried chicken, baked beans, potato salad, jello.

Rest of menu for Feb. not yet received.

## Where To Write

Want to write your state and federal elected officials? Here are their addresses.

**Washington**  
George Bush, President-elect of the United States, The White House, Washington, D.C. 2000.  
Charles Stenholm, Congressman, 17th Texas District, 1226 Longworth Office Building, Washington, D.C. 20515.

**Austin**  
Bill Clements, Governor, Room 200, State Capital, Austin, TX. 78711.  
Bill Hobby, Lieutenant Governor, P.O. Box 12068, Austin, TX. 78711.  
Temple Dickson, State Senator, P.O. Box 12068, Austin, TX. 78711. (Or Box 638, Sweetwater, Tx. 79556).  
Jim Parker, State Representative, P.O. Box 2910, Austin, TX. 78769.

## COLEMAN COUNTY VOTERS

Your vote and support is needed to ELECT

## BOB BURLERSON

Justice of the Peace  
Coleman County

- ☆ Only candidate with 16 YEARS law enforcement experience
- ☆ Dedicated to serving justice
- ☆ Pledge to be fair and impartial

Thanks for your vote!

Political Advertising paid for by Bob Burlerson, Coleman, Tx.

## COWPOKES By Ace Reid



"Is them really earrings er' have they been tagged by the Wildlife Commission?"

## Santa Anna National Bank

Deposits Insured By  
FDIC Up To \$100,000

Ask About Our Interest-bearing  
Checking Accounts

\$1,000 Minimum  
Pass Book Savings  
Certificates of Deposit

Substantial Interest Penalty Is Required For Early Withdrawal

THU  
La  
attent  
the S  
merc  
have  
time  
meet  
Guth  
proba  
a met  
organ  
I, also  
about  
the ab  
conce  
Cham  
these  
preser  
guilty  
taken  
The  
organi  
ideas  
econo  
nity s  
paigu  
hopef  
in the  
busine  
area a  
think  
in wo  
better  
chang  
The  
that a  
goods  
hurt n  
but in  
selves.  
throw  
oursel  
than p  
town  
prove  
One  
sider  
was w  
yes, a  
all join  
it allo  
ticipati  
100%  
Chám  
cials,  
By  
wagon  
goal w  
Cou  
Con  
Rev  
repress  
Santa  
Texas  
ence in  
For  
Tom L  
Texas  
heard a  
rant C  
15,000  
made  
Baptist  
Nitia  
To  
Chri  
St.  
The  
Circle  
annex  
Coyita  
with a  
the 199  
Duri  
secreta  
previou  
gave th  
meetin  
funds  
the Ch  
well as  
Whe  
month  
Christn  
Jude's  
der, Co  
cards  
with th  
cards a  
will be  
ranch.  
Coy  
to Pray  
She re  
Matthe  
"O Go  
childre  
need  
attenti  
S

**Mountainside Viewpoint**

By Polly Warnock

Last Thursday evening this writer attended the membership meeting of the Santa Anna Chamber of Commerce. Although a member, I will have to admit this was my first time to be present at the once-a-year meeting. Chamber president Monte Guthrie III commented this was probably the largest group to attend a meeting since the Chamber was organized a few years ago. However I, along with others in the group of about 30 people gathered, noticed the absence of many who should be concerned about the efforts of the Chamber. As I ran over in my mind those who should have been present, I began to feel even more guilty for not having previously taken the time to attend.

The Chamber of Commerce is an organization which tries to promote ideas that will help improve the economic condition of our community such as "Shop at Home" campaigns, and activities that will hopefully make Santa Anna noticed in the surrounding area. With the business environment as it is in our area at this day in time, one would think all of us would be interested in working toward bringing about better business conditions by exchanging thoughts and ideas.

The thought was brought to bare that as we shop out of town for goods that are available locally, we hurt not only our local businesses, but in the long run, we hurt ourselves. If local businesses owner throws in the towel, we find ourselves, out of necessity rather than pleasure, having to go out of town for shopping, which could prove a hardship for many.

One speaker asked that we consider whether or not our little town was worth saving. If the answer is yes, as it surely would be, we must all join together in the fight to keep it afloat. There must be 100% participation by business owners and 100% cooperation between the Chamber of Commerce, City Officials, and the citizens of our town. By hitching up and pulling the wagon together with a common goal we can make it happen!

**Couple Attends Conference**

Rev. and Mrs. John Stanislaw, representing First Baptist Church of Santa Anna, last week attended the Texas Baptist Evangelism Conference in Fort Worth.

Former Dallas Cowboys coach Tom Landry and the current Miss Texas were among the speakers heard at the conference held in Tarrant County Coliseum with about 15,000 in attendance. The trip is made possible each year by First Baptist Church.

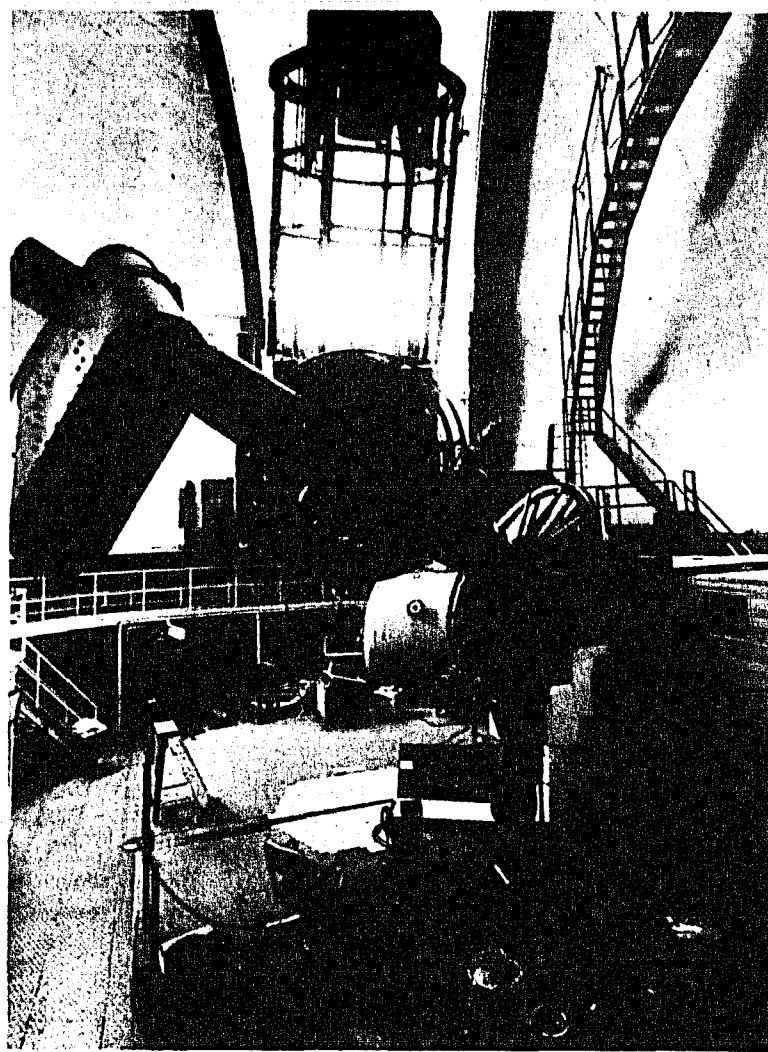
**Nitia Daniel Circle To Collect Used Christmas Cards For St. Jude's Ranch**

The ladies of the Nitia Daniel Circle met at the Methodist Church annex January 22 at 6:00 p.m. Coyita Bowker opened the meeting with a meditation and handed out the 1990 program books.

During the business session the secretary read the minutes of the previous meeting and the treasurer gave the current report. During the meeting the group voted to donate funds to help with the expense of the Children's Valentine party as well as the February youth project.

When the group meets next month each person is to bring old Christmas cards to be sent to St. Jude's Ranch for Children at Boulder, Colorado. The circle will accept cards from anyone wishing to help with the project. You may leave the cards at the News office where they will be collected for mailing to the ranch.

Coyita Bowker presented the Call to Prayer and Self Denial program. She read the scripture from Isaiah, Matthew and Luke. The group sang "O God Our Help." Then stories of children and homeless people who need help were brought to the attention of those present.



This 82-inch reflector is one of three research telescopes in use at the University of Texas McDonald Observatory near Fort Davis. Completed in 1938 after six years of construction, the telescope was the second largest in the nation and cost \$800,000 to build. The other instruments are 107-inch and 30-inch scopes. The site on 6,791-foot Mount Locke was chosen because of the clear air, high ratio of cloudless nights, and distance from large concentrations of artificial lights. Tourism Division, TX Dept. of Commerce photo.

**Low-Income Households May Be Eligible For Energy Assistance**

Some low-income Texans may be eligible for help in paying heating bills this winter through the Home Energy Assistance Program, Ron Lindsey, Texas Department of Human Services Commissioner, said.

Lindsey said the one-time payment is available to many low-income households. Applications for energy assistance were mailed to households that received food stamps, Aid to Families with dependent children or Supplemental Security Income in December.

Other low-income individuals may request an application by calling the toll free number (1-800) 252-8060 during the enrollment period of Jan. 22 to Feb. 28.

Eligibility is limited by gross income and resources. Aid is available for one person household having less than \$589.49 gross income per month. The gross income limits are \$781.49 for households of two persons, \$973.49 for three, \$1,165.49 for four, \$1,357.49 for five and \$1,549.49 for six.

Households are eligible if the cost for heating is included in the rent payment or if the household pays a portion of its home energy costs.

Energy assistance checks are sent directly to the people who are eligible for assistance. However, the checks are made payable to the energy provider.

**Some Say Dropout Plan Isn't Working**

AUSTIN, 1-31— Early indications show the state's highly touted ban on driver's licenses for dropouts isn't keeping students in school, education researchers and law officers say.

But a state lawmaker who authored the no-school, no-license law said it was not meant to cure the dropout problem and that the program needs a few more years to determine if it works.

**Bake Sale To Aid Literacy Council**

The Coleman County Literacy Council will be having a bake sale Friday, Feb. 2, in front of Shopping Basket in Coleman beginning at 8:00 a.m.

"If this law keeps 5,000 students in school, then it's worthwhile," said state Rep. Bill Hammond, R-Dallas.

The Texas Department of Public Safety said there's no evidence that students are staying in school just to obtain a driver's license.

Members of the Southwest Educational Research Association said the Texas law was patterned after a West Virginia law that supporters said could reduce the

**Birthdays and Anniversaries**

THURSDAY, FEBRUARY 1  
Misty Bradley  
Aaron Guthrie  
Scotty Herrod  
Mr. & Mrs. Roy Joe Harvey\*

FRIDAY, FEBRUARY 2  
Ronnie Hartman  
Ruby Halmon  
Darla Jones  
Jimmy Slayton

SATURDAY, FEBRUARY 3  
Doris Knox  
Mr. & Mrs. Gary Hubbard\*

SUNDAY, FEBRUARY 4  
Cody Fellers  
William Loyd  
Shane Taylor

MONDAY, FEBRUARY 5  
Christy Casey  
Kevin Hale  
Brad Peacock  
Mr. & Mrs. Gene Watts\*  
Mr. & Mrs. Dink Wristen\*

TUESDAY, FEBRUARY 6  
Becky Martin  
Dan Benton  
Hannah Collins

WEDNESDAY, FEBRUARY 7  
Barbara Simmons

Birthdays and anniversaries\* are taken from the Delta Omicron Community Calendar. If you wish to add an observance, please call the NEWS office the week before it should appear in this column.

**Rockwood Extension Homemakers To Host Candidate Forum Feb. 10**

The Rockwood Extension Homemakers Club has planned a candidate forum for Saturday, February 10, to be held at the Rockwood Community Center. A covered dish supper will be served starting at 6:00 p.m. All candidates and other interested people are invited to the event.

The forum was planned when the ladies met for their regular monthly meeting on Tuesday, January 23 at the Community Center.

"We Are the Life of Our Nation" was the program lead by Billie Wheatly. The group was urged not to become complacent and were told "we need to stand up for our rights." Mrs. Wheatly said it is time to create a patriotic epidemic.

She was assisted in a demonstration, "Voice for the Unfolding of the Flag" by Minnie Bray and Bettie Duus.

The business meeting was lead by club president Skeeta Cooper who gave a report on the county stockshow.

Mrs. Duus read the minutes of the previous meeting and gave the treasurer's report. Billie Wheatly gave the council report.

Mrs. Cooper served refreshments to those in attendance, who included Minnie Bray, Rose Cooper, Bettie Duus, Pebble Ellis, Shirley Rankin, Jayla, Dava, Stacy and Richard, Billie Wheatly, Wilma Williams, Darla Wise and son, Hunter.

**W.F. Fenton III**

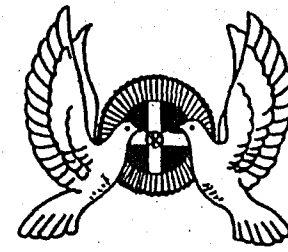
**Qualified and Experienced**

I would like the opportunity to work for YOU the voters of Pct. 2 as your commissioner.

Political advertising paid for by W.F. Fenton III, Gouldbusk, Tx. 76845

**Attend The Church Of Your Choice**

O Come, let us worship and bow down: let us kneel before the Lord our maker. Psalms 95:6



**Assembly of God**  
Brady Hwy.  
James Ford - Pastor  
Sunday School - 9:45  
Worship Service - 11:00  
Sunday Evening - 7:00  
Wednesday Evening - 7:00

**Northside Church Of Christ**  
310 Ave. B  
Linwood Bishop - Minister  
Sunday Bible Classes - 9:30  
Sunday Worship - 0:30  
Sunday Evening - 6:00  
Wednesday Evening - 6:30

**Cordero Baptist Church**  
Ave. C & South 6th  
Simon Estrada - Pastor  
Sunday School - 9:45  
Worship Service - 11:00  
Evening Worship - 5:00  
Wed. Bible Study - 6:30

**Full Gospel Fellowship**  
2nd St. at North Santa Fe  
John Howze - Pastor  
Sunday School - 9:45  
Worship Service - 11:00  
Evening Service - 6:00  
Saturday  
Fellowship Supper & Gospel Singing - 1st Saturday of Each Month - 7:00  
Worship - 7:00 All Other Saturdays

**First Baptist Church**  
106 S. Lee  
John Stanislaw - Pastor  
Sunday School - 9:30  
Worship Service - 10:45  
Sunday Evening - 6:00  
Mission Organizations - 6:00  
Wednesday  
All Age Groups Bible Study - 6:00

**First United Methodist Church**  
405 South 1st  
Don Elrod - Pastor  
Sunday School - 9:45  
Worship Service - 11:00  
UMYF - 5:00  
Fellowship Dinner Each 5th Sun.

**St. Willow Baptist Church**  
Brady Hwy.  
Sunday School - 9:45  
Worship Service - 11:00  
Wed. Prayer Meeting - 7:30

**Presbyterian Church**  
1001 Willis  
Jasper McClellan - Pastor  
Sunday School - 10:00  
Worship Service - 11:00  
Family Night Dinner - 3rd Wed.  
Fellowship Dinner Each 5th Sunday

**Northside Baptist Church**  
708 Ave. B  
G.W. McFadden - Pastor  
Sunday School - 9:45  
Worship Service - 10:45  
Sunday Evening - 6:30  
Monday  
W.M.A. - 3:00  
Wednesday Worship - 6:00

**Seventh Day Adventist Church**  
Ranger Park  
Charlie Klinke - Pastor  
Saturday  
Sabbath School - 9:30  
Worship Service - 11:00  
Vespers - SDA School - 4:00  
Tuesday  
Prayer Meeting - 7:00 at school

**Sponsors**

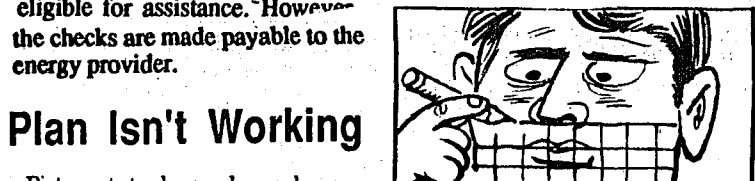
**Henderson Funeral Home Coleman & Santa Anna**

**Coleman County Telephone Coop Santa Anna, Texas**

**Sharon's Beauty Salon Santa Anna, Texas**

**Tomlinson's Feed & Seed Santa Anna, Texas**

**Santa Anna News Santa Anna, Texas**



The average adult has about 3,500 square inches of skin. The skin has roughly a billion pores.

dropout rate by 30 percent.

But that hasn't occurred, according to figures from the Austin school board, said Glynn Ligon, president of the research association.

Ligon said about 40 potential dropouts who stayed in school could be credited to the driver's license program.

"We have about 2,000 kids drop out every year," from the nearly 63,000 students in the school district, he said.

**Happy 70th Birthday**

**Thelma Cupps Fleming**

**February 6**

As **ELMO** the Cowboy says -

Clip the Coupon And Save This Week

**EVERYDAY COUPON SPECIAL!**

*Mama Underwood's*

**TAKE OUT FRIED CHICKEN!**

12 Big Pieces of Fried Chicken  
Pint of Red Beans  
Pint of Slaw or Potato Salad  
Pint of Cream Gravy  
8 Hot Rolls

**\$ 10<sup>99</sup>**

(Serves 4-6 People)

**A \$14<sup>98</sup> Value**  
If Purchased Separately

Valid after Feb. 7, 1990

**Stevens Funeral Home**

*Since 1889*

**Member By Invitation of National Selected Morticians**

**400 W. Pecan**  
**Phone: (915) 625-2175**  
**Coleman, Texas**

FEBRUARY 1 1990

# News For And About Santa Anna Mountaineers



Gold Fever-Catch It!



## School Menu

Editors Note: The breakfast and lunch menus for the week of Feb 5th thru 9th was prepared by the sixth grade art class.

**MONDAY**  
BREAKFAST: Cereal, toast & jelly, fruit, milk.  
LUNCH: Pizza, corn, salad, ice cream.

**TUESDAY**  
BREAKFAST: Donuts, juice, milk.  
LUNCH: Cheese nachos, peppers, Spanish rice, refried beans, Mexican salad, cake, milk, fruit slush.

**WEDNESDAY**  
BREAKFAST: Blueberry muffins, juice, milk.  
LUNCH: Chili dogs with cheese, green beans, macaroni & cheese, carrot & celery chunks, fruit slush, pudding, milk.

**THURSDAY**  
BREAKFAST: Pancakes with syrup, fruit, milk.  
LUNCH: Burritos, pinto beans, salad, popsickle, milk.

**FRIDAY**  
BREAKFAST: Cinnamon Roll, fruit, milk.  
LUNCH: Tuna & pimento cheese sandwiches, lettuce and pickles, pork & beans, potato chips, fruit slush, milk.

## SAHS Boys Continue District Wins; Girls Split Two

**SAHS girls 28-Novice 22**  
The Santa Anna girls played host to Novice here in Perry Gym Tuesday of last week and defeated the Lady Hornets in a game that saw Novice leading until well into the fourth quarter of play. Coach Debbie Nichols, who said this was a good win, was proud of her team's determination in playing hard and pulling the out in the final period. Novice ended the first quarter in the lead by 4 points with the score at 11 for the Lady Hornets and 7 for the Lady Mountaineers. The girls from Santa Anna got into the groove during the second period of play by doubling the shooting of Novice, although neither burned the boards. SAHS girls scored only six points in the quarter, but were saved from a larger Novice lead as the girls from Novice could only find the basket for three points, making the halftime score Novice 14, Santa Anna 13.

The teams played to a tie in the third quarter with each hitting the hoops for 4 points. Santa Anna closed out the fourth quarter with 11 points bringing their total to 28 while Novice again shot four points leaving them with a game total of 22 points. Shannon Brown was top shooter for the Lady Mountaineers with 12 points. This left the Lady Mountaineers at 1-1 in district play having lost their district opener to Brooksmith the week before.

**SAHS boys 59-Novice 27**  
The Santa Anna Mountaineers upped their district games to two wins as they defeated the Novice Hornets Tuesday of last week in Perry Gym with Betts leading SAHS in scoring with 11 points. Santa Anna jumped out in the lead finishing the first quarter with 5 more points than the Hornets and a score of 10-5. They were able to increase their lead in the second with nine more points while

Novice just could not find the basket and only came up with one second quarter point on a free shot.

They came back hitting for 10 points in the third but Santa Anna continued hitting the hoops and added 17 more points to their. Novice had their best shooting spree of the game in the fourth quarter hitting for 11 points, but Santa Anna rose to the challenge by coming up with 23, ending the game at 59 points to 27 for the Hornets.

Following that win the Santa Anna boys held a 2-0 record in district play.

**SAHS girls 27, Panther Creek 46**

The Panther Creek girls came to win Friday night as they defeated the SAHS girls 46-27 at Perry Gym with balanced shooting from the entire team.

Shannon Brown again was the leading Santa Anna scorer in the losing venture. She accounted for 11 of the 27 points. Others scoring were Taylor, DeLeon, L. Fausto, Castillo, Longoria and E. Frausto.

The lady Mountaineers were ahead after one period of play by one point, but the Panther Creek girls soon closed the gap and went ahead to stay. They chalked up 21 points in the third period to put the game away and then returned to only add 3 more in the fourth, but the damage was already done as Santa Anna didn't seem to have much luck at the boards.

The girls held a 10-12 overall record for the season following last week's games and 1-2 for district play. They played Brooksmith Tuesday night off this week and will be in Novice Friday for a 6:30 game.

**SAHS boys 56, Panther Creek 48.**

Herbert Jackson led the way in the shooting war as the Mountaineers claimed an important victory over Panther Creek here in Santa Anna last Friday. Jackson hit the hoops for a total of 21 points with Scotty Anderson adding another 14. Betts and Keas tossed in 8 each. Others scoring for the Mountaineers were Taylor and Dixon.

The game stayed within the reach of Panther Creek throughout the first half, although Santa Anna lead all the way with 12 points in the first period, 15 in the second, and third periods and another 14 in the fourth to tally their 56 points.

Panther Creek shot for 8 in the

## Cross Plains Girls & Panther Creek Boys Winners In Junior High Tournament

The Cross Plains girls and the Panther Creek Boys were named champions of the annual Santa Anna Booster Club Junior High Tournament held here over the weekend.

The C.P. girls defeated Eden 47-11, Santa Anna 50-8, and Panther Creek 31-20 to receive the crown.

MVP in the girls division went to Mandy Sowel of Cross Plains. Other all-tourney picks were Becky Simmons of Santa Anna, Amy Scarbrough and Mitzi White of Panther Creek, Heather Montgomery and Samantha Newman of Cross Plains.

Scoring for Santa Anna in the tournament games were Becky Simmons, Lana Harvey, Sandi Watson, Elisha Blanton, Christy Beal, Amy Ellerbe, Kyra Neff, and Amy Miller.

The Panther Creek girls placed second in the tournament.

The Panther Creek Boys got to the top spot by defeating Santa Anna 53-21, Eden 34-26 and Cross Plains 54-13.

Santa Anna's Glen Donham was named to the all-tournament team as was Monty Boulden of Panther Creek (MVP), Kenneth Kennedy and Kevin Hale both of Panther Creek, Ray Don McIntosh and Ryan McDonald of Eden.

Santa Anna players scoring in the tournament were Carlos Garza who led all scoring for the tournament with 30 points, Glen Donham, Roger Guerrero, Mitch Guthrie, Charles Williford, Bryce Ellis, James Baldaras.

Eden boys placed second in the Tourney followed by Santa Anna, then Cross Plains.

## Elementary Honor Roll First Semester



### 8th GRADE

ALL A'S  
Kyra Neff

A AVERAGE  
Christie Beal  
Amy Boyet  
Bryce Ellis  
Mitchell Guthrie  
Becky Simmons  
Sandi Watson

NO GRADE BELOW B  
Shelly Carter  
Lana Harvey  
Darla Jones  
Karen Lewis

### 7th GRADE

ALL A none

A AVERAGE  
Jodi Dallas  
Jamie Ellis  
Tom Guthrie  
Laura Howze

NO GRADE BELOW B  
Shamey Brand  
Jerry Day  
Vicky Ford  
Manuel Frausto  
Tamica Lewis  
Katrina Tomlinson

### 4th GRADE

ALL A'S  
Beth Eisenhower  
Aaron Guthrie  
Justin Oakes  
Rickie Runyan  
Joshua Throgmorton  
Shane Watson

A AVERAGE  
Josh Daniel  
Chris Keas

NO GRADE BELOW B  
Yolanda Frausto  
Rene Guerrero  
Kristen Keeney  
Jason Lewis

## 4-H News & Notes

**ROUNDUP:** It is not too early to be thinking about Roundup, says Dana Poer of the County Extension Office. The 1990 guides are in the office for the annual speech contest, Roundup. You may pick up your guide at any time before the district contest which will be held in May.

**CITIZENSHIP FOCUS, WASHINGTON D.C.:** 4-H offers a trip to Washington D.C. for senior 4-H members. It is an eight-day trip during the summer. Contact the Extension office if you are interested.

**SENIOR 4-H:** Senior 4-H will meet on Monday, Feb. 5 at the courthouse, 6:30 p.m.

**COUNTY 4-H COUNCIL:** Will meet about 7:30 p.m. at the courthouse following Senior 4-H meeting. All council members and club presidents should be present for the meeting to be held in the courtroom.

**SCHOLARSHIPS:** 4-H members graduating from high school have the opportunity to apply for thousands of dollars in

scholarships. There are many scholarships and three ways to apply: Texas 4-H Foundation, Texas Extension Homemakers Association, and Coleman County Extension Homemakers. This is the very basic information. Specifics are available at the County Extension Office.

## Panther Creek Wins Over Junior High Boys Monday Night

The Junior High boys took it on the chin from Panther Creek Monday night at P.C. when they were defeated by the Panthers 41-15.

Panther Creek hit the net for 6 points in the first quarter and then 12 in the second period. They added 15 more in the third and 8 in the final period to cinch the win. Santa Anna mustered 4 in the first quarter, and nothing in the second. They added four more in the third and then 7 in the fourth.

High point man for Santa Anna was Glen Donham with 7 of the 15 points scored. Also scoring for the Junior Mountaineers were Roger Guerrero, Charles Williford, Mitch Guthrie and Carlos Garza.

We are sorry we were not able to get the results of the girl's game before deadline time. But will publish it next week if available.

TRANS-TEXAS THEATRES

### MOVIES 4

HEARTLAND MALL, BROWNWOOD, TX 643-3661

GIFT CERTIFICATES ON SALE NOW AT BOX OFFICE

**"STEEL MAGNOLIAS"**

PG13 WK ENDS: 12:50-3:00-5:15-7:30-9:40  
WK DAYS: 5:15-7:30-9:40

COMING SOON

**Tango & Cash**

R WK ENDS: 1:25-3:25-5:25-7:25-9:25  
WK DAYS: 5:25-7:25-9:25

**"Always"**

PG13 WK ENDS: 12:50-3:05-5:10-7:20-9:30  
WK DAYS: 5:10-7:20-9:30

NEW PRICES - ADULTS \$4.75 CHILD \$2.75  
ALL SHOWS BEFORE 6 P.M. \$2.75 EVERYDAY  
TUESDAY - ALL SEATS \$2.00

**"Blaze"**

PG13 WK ENDS: 12:35-2:50-5:00-7:10-9:20  
WK DAYS: 7:10-9:20

TRANS-TEXAS THEATRES

### CINEMA 1 & 2

839 W. COMMERCE, BROWNWOOD, TX 643-3661

**"Little Mermaid"**

G WK ENDS: 2:50-4:25-6:00-7:30-9:00  
WK DAYS: 7:30-9:00

COMING SOON

**"TREMORS"**

R WK ENDS: 3:00-5:10-7:20-9:30  
WK DAYS: 7:10-9:30

LIMITED CAPACITY  
NEW PRICES - ADULTS \$4.75 CHILD \$2.75  
ALL SHOWS BEFORE 6 P.M. \$2.75 EVERYDAY  
TUESDAY - ALL SEATS \$2.00

## COUNTRY BASKET!

# \$1.99

FOUR FINGERS  
SALE PRICE  
JAN. 29 - FEB. 18, 1990

Delicious country-fried steak fingers, golden fries, Texas toast, and Dairy Queen's own special gravy.  
Six-finger basket: SALE PRICE \$2.99.

ON SALE IN

COUNTRY

© Reg. U.S. Pat. & Tm. Off. Am. D.Q. Corp. TM Reg. U.S. Pat. & Tm. Off. D.Q. Op. Coun. © Tx. D.Q. Op. Coun. At participating Dairy Queen stores.

**Steve Smith Roofing & Building Construction**

TYPES OF ROOFS:  
• Tar and Gravel  
• Wood Shingle and Shake  
• Concrete Tile and more

TYPES OF BUILDING:  
• New Construction  
• Remodeling  
• Levelling  
• Concrete and more

REASONABLE PRICES  
Labor Financing available for some customers.  
ALSO PLUMBING AND ELECTRICAL AVAILABLE  
FREE ESTIMATES  
**(918) 625-6108**

THU  
Ever Friday bingo at On volunteers and 42 visitors Rose B. cile Wy Russell. Wedn by Rev Fadden, Maggie The conduct senior here Th noes and Frida and pop great jo music w phy on die, Bill Carriger on the b guitar. Mrs. J. Murphy Harper, Haire There urday a ducted S Presto Cude. Red C Joe W R.W. Ba N Dillar sell and Shirle ited Lol also visi Merle Taylor Maples, Sanders, Gregor, Edens, F tell Todd Ila an Lillie Kr Albert Timmy I John Gu Stamper, Castanue Salazar a Felix and Mrs. Janet Ho Opal I Simons, Thompsc Parker, E ing and C Cleo Rogers, R.W. B Billie Gu Vila I Leavell a Lois H Benge, J Annie N Hull, N Donham, Snodgras Edna Estu Myrtle Alta Ben Estes, N Donham, Mae Hull Gladys S Balke. Allene nie Brim Bradley, Cole of Fedetion, an subject 1964, S ed, the rules at which p race, co from pa of, or of organiz The nondisc Manage feels th may obt listed at nization Washing cation, in 180 d be main 215

# CLASSIFIEDS

## 15 WORDS \$1.50

## Call 348-3545

### Ranger Park Inn

Phyllis Bradley

Every Monday, Thursday and Friday we start activities with bingo and then we do exercises.

On Monday afternoons we have volunteer to come to play dominoes and "42" with the residents. Some visitors playing last week were Rose Bass, Carmen Donham, Lucille Wylie, Herman Estes, and Lora Russell.

Wednesday devotion was brought by Rev G. W. McFadden, Pat McFadden, Doc McFadden, Robert and Maggie Robinett.

The Thursday devotional was conducted by Rev. Don Elrod. The senior citizens of Coleman were here Thursday afternoon for dominoes and "42".

Friday afternoon we had music and popcorn with Joe Green doing a great job popping the corn. The music was furnished by Billy Murphy on guitar, Nuat Cooper on fiddle, Bill Spradlen on fiddle, James Carriger on harmonica, Bobby Hair on the banjo, and Terry Harper on guitar. Singers included Mr. and Mrs. John Chesser and Peggy Murphy, Thelma Carriger, Linda Harper, Mrs. Bobby Haire, Pamela Haire and Bobbie Haire.

There were Sabbath services Saturday and Rev. James Ford conducted Sunday devotional services.

LIVING CENTER  
Preston Cude was visited by Cleo Cude.

Red Cupps received visits from Joe Wallace, Tom Wristen and R.W. Balke.

NURSING HOME  
Dillard Gregg visitors were Russell and Linnie Neal.

Shirley and Elwayne Taylor visited Lola Taylor. Glenda Taylor also visited with Lola.

Merle McClellan, Ben and Myra Taylor visited Mae Tyson, Opal Maples, Viola Morris, Christine Sanders, Eula Hunter, Jimmie McGregor, Frances Horton, Connie Edens, Fred and Ima Rudolph, Estelle Todd, Red Cupps.

Ila and Jack Todd visited with Lillie Knotts.

Alberto Stamper visitors were Timmy Perry, Ida Perry, J.J. Perry, John Guana, Mary Guana, Mona Stamper, Debbie Stamper, Adilite Castanuela, Delia and Stephanie Salazar and Virginia Stamper.

Felix Horton visitors were Mr. and Mrs. Horton, Cora Lee Evans, Janet Horton.

Opal Maples visitors were Billy Simons, DeWitt Simons, Ruby Thompson, Jeanie Guerrero, Ruby Parker, Edna Thomas, Bulah Fleming and Christine Sanders.

Cleo Cude visitors were Doris Rogers, Jim Leavell, Ola Thomas, R.W. Balke, Della Wristen, and Billie Guthrie.

Vila Morris visitors were Jim Leavell and Ola Thomas.

Lois Haines was visited by Alta Bengue, Jewell Hosch, Joe Estes, Annie Mae Brimer, Bettie Mae Hull, Nell Brusenhan, Carmen Donham, Herman Estes, Gladys Snodgrass, Pat DeWitt, Herman and Edna Estes, and R. W. Balke.

Myrtle Estes received visits from Alta Bengue, Jewell Hosch, Herman Estes, Nell Brusenhan, Carmen Donham, Annie Mae Brimer, Bettie Mae Hull, Joe Estes, Janet Morris, Gladys Snodgrass, Edna Estes R.W. Balke.

Allene Barnett visitors were Annie Brimer, Shala Guthrie, Heather Bradley, Tom Guthrie, Sharon and

Lane Guthrie, Jim Leavell, Alta Bengue, R.W. Balke, Della and Tom Wristen, Carmen Donham, Monte Guthrie.

Mary Joe Lovell visitors were Sharon Watson, Dorothy Watson, Luther McCrary, Joe D. Watson, Velma Dieterich, R.W. Balke, Cora Lee Evans, Newell Taylor and Lela Cross.

Charlie Bruce visitors were Karyn and Emma Kingsbery, Clarence and Fannie Gilbert, Rose Bass, Carol Kingsbery Ottmers, Bruce Kingsbery, Harry Crews.

Fred and Ima Rudolph visitors were Jim Gill, Ebbie Seals, Jim Leavell, Ola Thomas, Ben, Pat and Jennifer Rudolph, Joey Dacius and Mary Smith.

Madora Gilmore was visited by Pauline DelaRosa, Rose Bass, Carmen Donham, Wilmoth Russell, Lora Russell, Jewell Hosch, Buna Baucom, Mary West, Davie Nichols, Helen and Arnold Frauk.

Bula Fleming received visits from Mary West, J.A. Fleming, Carmen Donham, Lora Russell, Rose Bass, Bill and Patricia Cox, Barbara Kingsbery, Bessie Parish, Gladys Day, Buna Baucom, and Charlie Fleming.

Viola Morris received visits from Barbara Kingsbery, Ruby Parker, Linwood and Lillie Bishop, Fanny and C.C. Gilbert, Syble Martin, Shauna Martin, Annie Mae Brimer, Luther McCrary, Ben and Myra Taylor, Carmen Donham, Bill and Patricia Cox, Peggy Johnson.

Christine Sanders was visited by Linwood and Lillie Bishop, Shauna Martin, Syble Martin, Ben and Myra Taylor, Merle McClellan, Barbara Kingsbery, Peggy Johnson, Annie Mae Brimer.

Thelma Bollinger visitors were Johnnie Lanier, C.J. Bollinger, Velma Dieterich.

Ora Caldwell visitors included Annie Mae Brimer, Gladys Day, LaNell Brusenhan, Frances Weems, Carmen Donham, Johnnie Lanier, and Velma Dieterich.

Faye Casey received a visit from Barbara Kingsbery.

Onnie Edens was visited by George Herrington, Mr. and Mrs. Ben Taylor, Marion Kennedy, Carrie Howard, Harry and Margaret Crews, Merle McClellan, Lera Guthrie, Velma Dieterich.

Bobbie Wilson visitors included Mother and Daddy Moneyhun.

Tavy Ford was visited by Peggy Miller, Jim Leavell, Ola Thomas, James and Mildred Ford, Bessie Parish, R.W. Balke.

Frances Horton visitors were Jim Leavell, Ola Thomas, Merle McClellan, Ben and Myra Taylor, Lera Guthrie, R.W. Balke, George Herrington.

Martin Wallace received visits from Nita Minica, Gladys Day, Bessie Parish and Joe Wallace.

Estella Todd was visited by Jerry Todd and R.W. Balke.

Lessie Guyer received visits from Ora Lee Bolton, Aunt Lessie Guyer, Jim Leavell, Ola Thomas.

Othel Egbert visitors were Jim Leavell, Ola Thomas.

Eula Hunter was visited by Bill and Shirley Hunter.

Mr. and Mrs. Fred Rudolph received visits from Mary Smith, Buna Baucom, R.W. Balke, Jim and Sara Lee Gardner, Mary Alice Stringer, Era Collins.

### Political Calendar

The following persons have authorized the Santa Anna News to announce their candidacy and they ask your consideration of their candidacy for the offices as listed. This is political advertising, paid for by the candidates.

#### County Judge

Pete Skelton, re-election

#### County Clerk

Glenn Thomas, re-election  
Jo Dean Chapman

#### Justice Of Peace

Juanita Jackson  
Bob Burleson  
Rodney Musick

#### Commissioner Precinct No. 2

D. Carroll Holt  
Raymond E. (Eddie) Jones  
Bruce Estes  
W.F. Fenton  
Jerry Ellis  
Billy Don McCrary

#### Congressman 17th District

Charles Stenholm  
re-election

#### Card of Thanks

Heartfelt thanks for the many people who have done so much while Tye has been ill. Thanks for the prayers, your generosity, and your concern.  
Parents & Grandparents of Tye Vasquez

We want to thank everyone who has helped us in our time of need since our house burned. The money, the shower, the home that has been opened for us to live in. To everyone who has helped in any way, thank you so much.  
Coleman County is a great place to live when you need help and friends.  
A special thanks to the Santa Anna Fire Department.

Thanks again,  
John, Earlene  
and Wes Dockery

We extend our grateful appreciation for all expressions of sympathy and loving kindness shown to us in the loss of our dear loved one.  
God bless each of you,  
The family of Jap McClellan

#### Miscellaneous

WANTED: Your vote for County Commissioner, Precinct 2. 19 years in dirt construction and business management.  
W.F. FENTON III  
(Paid Political by W.F. Fenton III)

TREES FOR SALE  
Pecan Trees, Fruit Trees, Shade Trees. Fresh! Grown in Runnels County and sold at wholesale prices.  
Phone 365-5043

"ATTENTION: EARN MONEY TYPING AT HOME!"  
32,000/yr income potential  
Details, 1-602-838-8885  
EXT. T-14191

#### Lost & Found

FOUND: The candidate with Judges experience. Rod Musick for Justice of the Peace, Coleman Co. (Paid Political by Rod Musick, Box 724, Santa Anna, Tx.)

#### Services

CAKES, PIES, COOKIES made to order. Let me do your spring sports wear alterations. 348-3682.

ELECTRICIAN-Commercial & residential. New construction, remodeling. Dryer plugs, ceiling fans, computer plugs. Cross Plains. (817) 752-6261.

#### MOUNTAINEER PLUMBING

Repair and new work. Electric sewer and sink machine. Call anytime.  
Days - 348-3193;  
Nights - 348-3645 or 752-6736

#### IRONING WANTED-\$5 doz.

Will pick up and deliver.  
Margaret Simmons  
348-3504

#### Vote

Every One Matters.

#### Help Wanted

WANTED-Nurses aids for 6-2 and 10-6 shifts. Apply in person at Ranger Park Inn.

TEXAS REFINERY CORP. needs mature person in Santa Anna area. Regardless of experience, write W.K. Hopkins, Box 711, Ft. Worth, TX 76101.

#### Real Estate

FOR SALE  
2 bdr house; wall to wall carpet. Large rooms. Comp roof. Fenced yard. Pecan trees. 2 lots. 903 Ave. B. \$2900 down. Ross Kelly, 348-3486.

#### FOR SALE

Two BDR/ one bath on 2 acres. Place for horses. \$3,000 down and take over note, or \$22,000 cash. Call 643-4003.

BE WISE, ADVERTISE  
CALL 348-3545

Let Us Help You With A Classified Ad Call Today! 348-3545

### Whon News

By Mrs. Tom Rutherford

I was called by a representative of the Rockwood Community and asked to invite everyone from our community and encourage ones of the Rockwood Community. That on February 10th, which is Saturday night, there will be a Candidate meeting at the Rockwood Community Center at 6 p.m. Remember a covered dish refreshment of supper for everyone. Don't forget this date for you are invited to attend.

Mr and Mrs L.H. Johnson of Coleman came by Mrs May McFarlin home Sunday afternoon and Mrs McFarlin accompanied them to visit with Mrs McFarlin's daughter, Mr and Mrs George Daniel Wheatly of the Shield Community.

Mrs Billy Lovelady visited with Mrs Doris Ruth Stearnes in Brownwood on Friday.

Mr and Mrs Neil Fitzpatrick and children of Greenwood were with his parents, Mr and Mrs Greham Fitzpatrick on the past Saturday. Also Mr Bob Gillispie of Baird and Mr Tommy Stansberry. Neil and family were guest of her mother in Coleman Saturday night. Neil returned to be with his parents Sunday. The family returned home late Sunday afternoon.

Mr and Mrs Amon Otts and Yancy left home early Friday morning for Fort Worth where they were until Sunday. Mr and Mrs Otts and Yancy attended the 50th Wedding Anniversary for her grandparents, Mr and Mrs Bill McMillan Senior of Fort Worth, formerly of Coleman. The anniversary was at the Hallmark Baptist Church Gym where the couple attend church. It was a large building where the family and attendance could play games and also plenty of room for

visitor with Thomas and Myself on Friday night and also a white Sunday. Loyd is feeling much better. He was back to the doctor Friday afternoon.

My son Thomas R. Rutherford and myself attended graveside services in Coleman Cemetery Thursday afternoon for Mr Dennis Harnes of Houston. A large crowd was present. Our deepest sympathy goes to the bereaved family. He clung to life for two months following a heart attack in Fort Worth but never regained consciousness. He was a nephew of my daughter-in-law and a friend to all.

Mr Douglas Avant of Brady was with his mother, Mrs Pearl Avant, Saturday afternoon in Santa Anna and enjoyed supper with her.

Mr Leon Carter was with his sister, Lorene Black, in Brownwood Sunday.

Mr and Mrs Darwin Lovelady have visited and checked on his aunts needs during the week. Mrs Myrtle Roberson who makes her home in Ranger Park Inn.

Mrs Amon Otts and son Yancy and her mother Mrs Billy Griffin were in Abilene on Wednesday of the past week.

Mrs May McFarlin enjoyed a nice telephone visit with her sister, Mrs Vernie Bennett of Mexia one day the past week.

Mr and Mrs Darwin Lovelady visited with their son, Mr and Mrs Randel Lovelady and girls in Brownwood on Thursday of the past week.

Mr and Mrs Floyd and Jamie Morris were in Kerrville on Friday where Mr Morris had an appointment with his doctor at the Veterans Hospital there.

Loyd Rutherford was bed time

Walker Funeral Home  
Pre-Arranged Funerals  
Phone (915) 625-4103  
Coleman, Texas

### ON YOUR FEET

Podiatrist DR. GENE NICHOLS

CIRCULATION PROBLEMS IN FEET  
If you've been feeling a coldness or numbness in your feet, you may have a circulation problem. Other symptoms may include a tingling or burning sensation in your feet and legs. Sometimes the skin will be unusually dry or discolored, or the hair that was there before is suddenly gone.

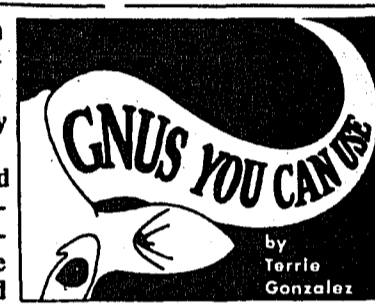
Standing and walking are normal activities that you should be able to perform in comfort. But foot problems can quickly interfere with these activities. In an average day you will take hundreds of steps. Each time you take a step, a gravity-induced pressure brings up to four times your body's weight to bear on each foot. For someone who weighs 150

pounds, that means more than 600 pounds of pressure is being exerted on each foot. Think what this pressure does to your foot when the blood is not circulating normally.

Keeping your feet warm and getting enough exercise may help improve circulation. But if an improperly balanced foot is interfering with normal circulation, treatment may be needed.

"Remember, Your Feet Don't Have To Hurt"  
From The Office of  
Dr. Gene Nichols  
120B South Park Drive  
646-0715

GNUS YOU CAN USE  
by Terrie Gonzalez



### Largest Wild Horse Is Black & White

Q. Which species of zebra is largest?  
Of all members of the wild horse family, Greys zebras are largest. "They average approximately five feet tall," said Ray Sutton, wildlife manager of the International Wildlife Park in Grand Prairie, Tex. "Without question, they are more wary of humans than the other species."

If you have a question about wildlife you would like to see answered in this space, write to GNUS YOU CAN USE, 601 Wildlife Parkway, Grand Prairie, Tex. 75050.

BEST HAMBURGERS IN TOWN  
1/4 Lb. Hamburger Cheeseburger  
99¢ \$1.29  
100% Beef  
Pickup - Call - In 646-6149  
Mon. - Sat. 11-3 5-8  
Texaco On Circle

### Save up to 67% off\*

For the first time in a long time, I'm bursting with confidence. I'm going out again - to movies, restaurants and baseball games.  
Nutri/System helped me come out of my shell and become a new person. They gave me support when I needed it - they were always there for me. Now I enjoy my life, and I enjoy being me.  
Diane Wallons  
The Nutri/System® Weight Loss Program includes a variety of delicious meals and snacks, nutritional and behavioral counseling, light activity, and weight maintenance.  
Don't Wait, Call Today.  
Our client, Diane Wallons, lost 111 lbs.  
We Succeed Where Diets Fail You!  
nutri/system weight loss centers

Save up to 67%\*  
\*by paying for only 1/3 the weight you want to lose. Discount applies to program cost only.  
Open Wed., Thurs., Sat. 216 Early Blvd. Early, TX 76801 915-643-4299  
Terri Moon Manager 1-800-592-4772  
Open Mon., Tues. 2285 N. W. Loop Stephenville, TX 817-968-0366

### Coleman County Telephone Cooperative Inc.

#### STATEMENT OF NONDISCRIMINATION

Coleman County Telephone Cooperative, Inc. is the recipient of Federal assistance from the Rural Electrification Administration, an agency of the U.S. Department of Agriculture, and is subject to the provisions of Title VI of the Civil Rights Act of 1964, Section 504 of the Rehabilitation Act of 1973, as amended, the Age Discrimination Act of 1975, as amended, and the rules and regulations of the U.S. Department of Agriculture which provide that no person in the United States on the basis of race, color, national origin, age, or handicap shall be excluded from participation in, admission or access to, denied the benefits of, or otherwise be subjected to discrimination under any of this organization's programs or activities.

The person responsible for coordinating this organization's nondiscrimination compliance efforts is Danny Kellar, General Manager. Any individual, or specific class of individuals, who feels that this organization has subjected them to discrimination may obtain further information about the statutes and regulations listed above from and/or file a written complaint with this organization; or the Secretary, U.S. Department of Agriculture, Washington, D.C. 20250; or the Administrator, Rural Electrification, Washington, D.C. 20250. Complaints must be filed within 180 days after the alleged discrimination. Confidentiality will be maintained to the extent possible.

Coleman County Telephone Cooperative Inc.  
215 North Second St., P.O. Box 608, Santa Anna, Texas 76878

BELOW B

BELOW B

BELOW B

BELOW B

BELOW B

BELOW B

1  
9  
0

### Rockwood News

By Mrs. John Hunter

Rockwood is planning a big candidate rally and covered dish supper at the Rockwood Community Center Saturday, February 10 at 6:00 p.m. Everyone is invited. The candidates will be happy to meet you.

Davia, Jala and Stacie Rankin spent Saturday night in Coleman with their grandmother, Bonnie Rankin. The Rankin family visited in Coleman Sunday with Mr. and Mrs. Howard Stephenson and their guests, Mr. and Mrs. Frank Guice of Eden.

Claudia Rutherford and Nell Yancy spent Friday in San Angelo shopping and visiting with Billie Eckels and Jennifer Rutherford. Claudia Rutherford spent Saturday evening in Brownwood visiting Mr. and Mrs. Larry Rutherford and family and at Brownwood Care Center visiting with Linnie Box, who is reported doing nicely.

Jerry and Kay Johnson of Abilene visited Marcus and Dorothea Johnson Saturday, January 20, announcing they were just married as they came through Coleman. Congratulations!

Saturday afternoon visitors with Goldie Milberger and her brother,

Harold McCarrell, were Mr. and Mrs. Andy McCarrell of Coleman and Edmond McCarrell, a local relative.

Mrs. Howard Pearson and Mrs. Vivian Steward visited Sunday evening with Mr and Mrs Bill Mueller, who are spending the weekend at their Rockwood home, and their guests from San Antonio, Mrs. Stoney Mueller and children who visited the Pearsons Saturday.

Mr and Mrs Jack Cooper spent Friday to Monday in Temple visiting Mr and Mrs Arlen Allen and Wesley. Others joining them to help celebrate Wesley's birthday anniversary were Mr and Mrs Gil Gregory and Mr and Mrs Don Gregory and Christi and Donny Gregory and boys of Austin.

Judy and L.C. Harrison of Fort Worth spent Tuesday with Gladys Hunter.

Mr and Mrs Wayne Bray spent Saturday in Coleman with Mr and Mrs John W. Gregg, Carla and Lucy and their guests, Mr and Mrs John C. Gregg of Santa Anna and Kim Bloom and Clay of San Angelo.

Hank Wise was in a business meeting Thursday evening and Mrs. Wise and Hunter visited her mother, Mrs. Janet Barker in Coleman.

### Registration Begins For Coleman County Soccer

Registration for the upcoming Coleman County Soccer Association spring season of beginning. Forms were to have been placed in Coleman County schools this week and they will need to be returned by February 16. The draft will be held on the 20th.

First games of the season will be played Saturday, March 3 at the soccer fields in Coleman, located south of Coleman High School. It is hoped that Santa Anna can field one full team in each age group although it will not be mandatory. Having Santa Anna teams would certainly help as the children could practice at home rather than traveling to Coleman for each practice session.

Fees for registration are \$22.50

### TEAMS - CONTINUED FROM PAGE ONE

patrons, are commended for their successful harmonious efforts to provide positive student outcomes.

The team was favorably impressed by the Curriculum documents written by teachers under supervision of their respective principals. "The district has an exceptionally well-developed curriculum system.

They also found that the "personnel employed by the district are qualified for their assignments, and their professional growth is encouraged. All teachers and administrators, at both the elementary and secondary levels, appear to be a close-knit group of professionals dedicated to the premise the ALL CHILDREN CAN LEARN. Seemingly they know their students on a personal basis and are able to identify student problems, both academic and personal, during early stages of development." The team recognized the close rapport between staff members and a "Strong commendation is offered for developing a close working relationship.

Commendations also came from the team for the local ISD participation in the CAP school, The six-school cooperative effort for at-risk students located at the old Centennial school campus. CAP offers instruction in English, mathematics, social studies, childcare and parenting, building maintenance, carpentry, and food preparation.

The financial condition of the SAISD is not unlike that of any other district in the state. With unfunded mandates and a shrinking tax base, the district is using part of its fund balance to meet expenditures each year.

for new players. However, if your child played in the fall session at Coleman, no additional fee is required.

Next fall, the fee will be \$12.50 for the fall session and \$10 for the spring session. New players in the spring will be charged a \$22.50 fee. This will cover costs of insurance, shirts, socks and insurance for the player.

The fundraising project for this year is the sale of the World's finest Chocolate. This was a very good fund raiser last year and it looks to be an even better prospect for this year. Several Coleman Businesses have donated prizes for the best sellers in several categories: Top Seller overall will receive a jam box; second best seller will receive a fishing rod and reel; third place seller will receive \$25 cash. High selling team will receive a personal pan pizza at Pizza Hut; top seller in each age group will receive a soccer ball. The top seller on each team will receive a T-shirt with the Coleman County Soccer Association logo imprinted on it.

All of these prizes are in addition to awards the children will receive from the color brochure given to each child when they receive the candy to sell.

Organizers say, lets have a good turnout and enjoy this fun and exciting game of soccer.

### Cleveland News

By Carol Herring

Pete and Iona Moore were visited by Ruby Hartman on Friday. Iona visited with Mrs. Eubanks at Holiday Hills Nursing Home in Coleman one day.

Hardin Phillips visited with Bruce Alsobrooke on Sunday. Lou Pierce visited with Cindy Pelton and girls on Saturday morning.

Mrs. Amanda Perry was visited by James and Delores Perry on Wednesday night. On Saturday afternoon Amanda visited with Mr. and Mrs. James Ellerbe.

Mrs. Lora Russell and her daughter Billie Haught of San Angelo went to Georgetown and returned home on Sunday.

Recent visitors with C.E. and Vera Wise have been Raymond and Alta Haynes of Wichita Falls, Billy Wayne, Dacey and Stan Lowry of Plano, Jim Ellerbe, and Dorothy Lee Alsobrooke.

The Emit Williams have their son Duane of Pensecola, Florida spending some time with them. Other visitors have been Inez and Marvin Guthrie and Mrs. Joe Wise.

Dick and Carmilla Baugh were visited by Nancy and Lonnie Lowry and children of Bangs on Saturday. On Sunday they visited with Rev. and Mrs. Don Elrod.

Coy and Myra Brooke visited

with Frances Densman of Coleman and Mrs. and Mrs. Weldon Perkins of Abilene. Mrs. Lorene Beeler stopped in. Gary Ford visited during the weekend. Coy visited Sidney Sackett on Saturday morning.

Calvin and Margaret Campbell had Lance Rasch visit over the weekend. Dena Rasch and friend Jill of Brownwood visited on Saturday.

Cecil and Nona Bell Ellis visited Jerry and Cathy Ellis, Bryce and Alicia Friday afternoon. Mrs. Grace Ellis had lunch with them on Sunday.

Tuesday afternoon, Margie Fleming was visited by Mrs. J.L. McDaniel and Jeremy of Carbon. Sunday visitors were Bula Fleming, Phyllis and Eddie Dillard, Donna and Jason Mapson and Pat Boyett.

Charlie and Thelma Fleming were visited by Peggy and Kenneth Sikes of Bangs on Sunday afternoon.

Lee Ray and Syble Huggins had Phil and Gwen Huggins over for lunch Sunday. David and Amber also visited.

Mrs. Birdie Miller was visited by Mr. and Mrs. Howard Sikes in Bangs one day.

Racheal and Clara Cupps were visited by Lucille and George Tectors of Bangs on Saturday evening.

### Trickham News

By Anna York

Mrs Annie Lou Vaughn visited Mrs Mary Boenicke at the Twilight Nursing home in Bangs on Saturday and found her to be doing pretty well, which was nice to hear. Other visitors with her were Mrs Alta Beng and Mrs Annell Clark of Santa Anna. Visitors with Mrs Vaughn last week were Mrs Bess Beasley on Friday and Mrs Joyce Kirk and Mrs Winnie Haynes on Saturday.

Mr Charles Sikes of Weatherford visited one day last week with Mr and Mrs Talmage McClatchy Jr. Sunday afternoon Mr and Mrs Fred Drienhofer and boys of Brownwood Lake visited with them.

Mr and Mrs Billy Roy and Mildred Laughlin, Mrs Sherry Campbell and Shelly, Mr Dale Lemon, Dr. Charlotte Laughlin and children, Susan and Clifton of Brownwood were Sunday visitors with her mother and grandmother, Mrs Edna Laughlin.

Mrs Mary Lea Mitchell returned home on Monday from Post where she had spent a week visiting with her daughter and family, Mr and Mrs Loyd Mock and children, and said one day while she was there she saw both sleet and snow but it didn't last too long.

Mrs Novella Stearns visited Thursday afternoon with Mrs Leona Henderson, Mr and Mrs Hilburn Henderson attended funeral services

for Mr J.D. King in Coleman Sunday afternoon.

Mr and Mrs Ben and Rowe Billbrey and Elizabeth of Goldsmith spent a couple of days last week with Mr and Mrs Warren Barton. On Sunday Mr and Mrs Barton attended the Golden Wedding Celebration for Williford and Wylene Thomas in Weatherford.

Mrs Verna Mae Bolton returned to her home in Rockwall on Monday after spending the weekend with her mother, Mrs Florence Stearns and her son Stan Calcote. Other recent visitors in the Stearns home have been Mr Irvin Ray Wells, Stefanie Wells and Amber Kirkpatrick of Coleman.

Frontier Pharmacopeia: To ease the pain of arthritis, early settlers made a poultice of grape juice, honey, dried pokeberries, carrot juice and ripe tomatoes and applied it to the affected area.

**Henderson Funeral Home**  
 "People Who Care"  
**Offering At Your Request**  
 Pre-Arranged Funerals  
 Funeral Insurance & Counseling  
 Ambulance Service  
 Coleman 625-2121 Santa Anna 348-3131

### SOUP, BEAUTIFUL SOUP

Nothing warms the soul faster on a cold wintry day than a delicious bowl of steaming soup. And who can resist the comforting flavors of broccoli, potato and Cheddar cheese? Pureed in a food processor or blender this soup has a marvelous, silken texture. But, it is the toasted slivered almonds that make Broccoli Cheddar Soup Almondine memorable. The rich, toasted nutty flavor complements the vegetables perfectly while adding pleasing crunch.

#### BRUSCHETTA

- 3/4 cup blanched slivered almonds
- 2 Tablespoons butter
- 1 cup thinly sliced onions
- 1 box (10.5 oz.) frozen broccoli spears, thawed
- 1 large potato, cut into 1-inch cubes (2 cups)
- 1 can (14.5 oz.) chicken broth
- 1 cup water
- 1/2 teaspoon thyme
- 1/2 cup milk
- 1-1/4 cups grated Cheddar cheese

Spread almonds in a single layer in shallow pan. Place in cold oven; toast 350°F, 9-11 minutes, stirring occasionally, until lightly toasted. Cool. Grind 1/2 cup almonds in food processor or blender until fine. Save remainder for garnish. Melt butter in large saucepan. Stir in onions; cook until soft and lightly browned, about 5 minutes. Stir in broccoli, potato, chicken broth, water and thyme; cover and bring to a boil. Simmer 20 minutes, until potatoes are tender. Puree soup in food processor or blender. Return soup to pan; stir in milk and heat just to boiling. Remove from heat and whisk in 1 cup grated Cheddar cheese; continue whisk-



ing until smooth. Whisk in ground almonds. Ladle soup into serving bowls. Garnish with remaining 1/4 cup toasted almonds and 1/4 cup grated Cheddar cheese just before serving. Makes 4 servings.

**REED MEMORIAL CO. LIMITED**  
 Monuments of Distinction  
 Ft. Worth Hwy.  
 Brownwood, Texas  
 Box 265 Phone (915) 646-7625  
 Sylvia Herring - Local Rep.

**NOTICE**  
 If you are under 65, good health and think your group insurance is too high or have no health insurance, you may be eligible for a NO deductible - up to \$10,000 coverage.  
 Example: Man (25 yrs) \$ 38.25  
 Wife (25 yrs) \$ 38.25  
 3 additional kids \$ 45.90  
**TOTAL \$122.40**  
 Call 1-800-828-3270 for family quote - NO OBLIGATION you may be surprised what you can save.

**WAL-MART**  
**Auto Center**  
 ALWAYS THE LOW PRICE ON THE BRANDS YOU TRUST. ALWAYS!

**FREE BALANCE** With Purchase of ANY Wal-Mart Tires Thru Feb. 3

**CHAMPION**  
 Up To 700 Cold Cranking Amps  
**49.96** No Exchange Required  
 72 Month Champion® Battery Maintenance free. 12 Month free replacement. 72 Month total warranty. Florida States - \$51.96 includes \$130 Sales Excise Tax

**36.96** P165/60R13 EVEREADY  
 General® AmeriWay XT Tires  
 Polyester ply for smooth ride. Steel belted radial for better wear. 50,000 Mile tread wearout warranty. All season, computer designed tread with wide deep grooves.

Size	Price
P165/60R13	43.96
P175/60R13	45.96
P185/60R13	48.96
P195/75R14	49.96
P195/75R14	52.96
P205/75R14	54.96
P215/75R15	56.96
P205/75R15	58.96
P225/75R15	62.96
P235/75R15	65.96

(FREE With Tire Purchase)  
 \*Flat Repair \*Rotation \*Road Hazard Warranty \*Tire Mounting \*Free Valve Stem (Excluding Split Rims)

**Thank You For Shopping Wal-Mart's Automotive Center.**

STORE LOCATION: EAST COMMERCE, BROWNWOOD  
 SALE DATES: JAN. 29 - FEB. 3, 1990  
 WAL-MART'S ADVERTISED MERCHANDISE POLICY - It is our intention to have every advertised item in stock. However, if due to any unforeseen reason, an advertised item is not available for purchase, Wal-Mart will issue a Rain Check in request for the merchandise to be purchased at the same price whenever available, or will sell you a similar item at a comparable reduction in price. We reserve the right to limit quantities. Limitations used in New Mexico.

STORE HOURS: MON - SAT 9 - 9, SUN 12:30 - 5:30  
 AUTO SERVICE CENTER: MON - SAT 8 - 6  
 WAL-MART'S AUTOMOTIVE POLICY - It is our endeavor to satisfy all our customers. Wal-Mart reserves the right to decline any service, whether advertised or not, where an automobile has related worn parts, which in Wal-Mart's sole discretion would seem to create or continue an unsafe or unsatisfactory condition. Upon notification of the unsafe or unsatisfactory condition the customer may sign a written waiver of the replacement of such needed parts. Wal-Mart reserves the right to accept or decline any such waiver, or to refuse such service.

REPORT OF CONDITION

Consolidating domestic and foreign subsidiaries of the

SANTA ANNA NATIONAL BANK of SANTA ANNA in the state of TEXAS,

at the close of business on DECEMBER 31, 1989, published in response to call made by Comptroller of the Currency, under title 12, United States Code, Section 161. Charter Number 13854 Comptroller of the Currency Eleventh District

Statement of Resources and Liabilities

ASSETS:	Thousands of dollars
Cash and balances due from depository institutions:	
Noninterest-bearing balances and currency and coin.....	537
Interest-bearing balances.....	892
Securities.....	3,878
Federal funds sold and securities purchased under agreements to resell in domestic offices of the bank and of its Edge and Agreements subsidiaries, and in IBFs.....	600
Loans and lease financing receivables:	
Loans and leases, net of unearned income.....	11,799
LESS: Allowance for loan and lease losses.....	184
Loans and leases, net of unearned income and allowance.....	11,615
Premises and fixed assets (including capitalized leases).....	34
Other real estate owned.....	250
Other assets.....	401
Total assets.....	18,409
LIABILITIES:	
Deposits.....	16,770
Noninterest-bearing.....	2,606
Interest-bearing.....	14,164
Other liabilities.....	147
Total liabilities.....	16,917
EQUITY CAPITAL:	
Common stock.....	50
Surplus.....	200
Undivided profits and capital reserves.....	1,242
Total equity capital.....	1,492
Total liabilities and equity capital.....	18,409

We, the undersigned directors, attest to the correctness of this statement of resources and liabilities. We declare that it has been examined by us, and to the best of our knowledge and belief has been prepared in conformance with the instructions and is true and correct.

*I. Burgess Stewardson*  
*J. Kay Martin*  
*Jim Ridd*  
 Directors

I, C. STEPHEN CULLINS  
 CASHIER  
 of the above-named bank to hereby declare that this Report of Condition is true and correct to the best of my knowledge and belief.

*C. Stephen Cullins*  
 signature  
 date: January 9, 1990

Sun Mon  
 Jan./F  
 4 5

1/2-CO PAPER CTR.

ADVERTISED ITEM we will offer you 30 days. Only on