

# Santa Anna News

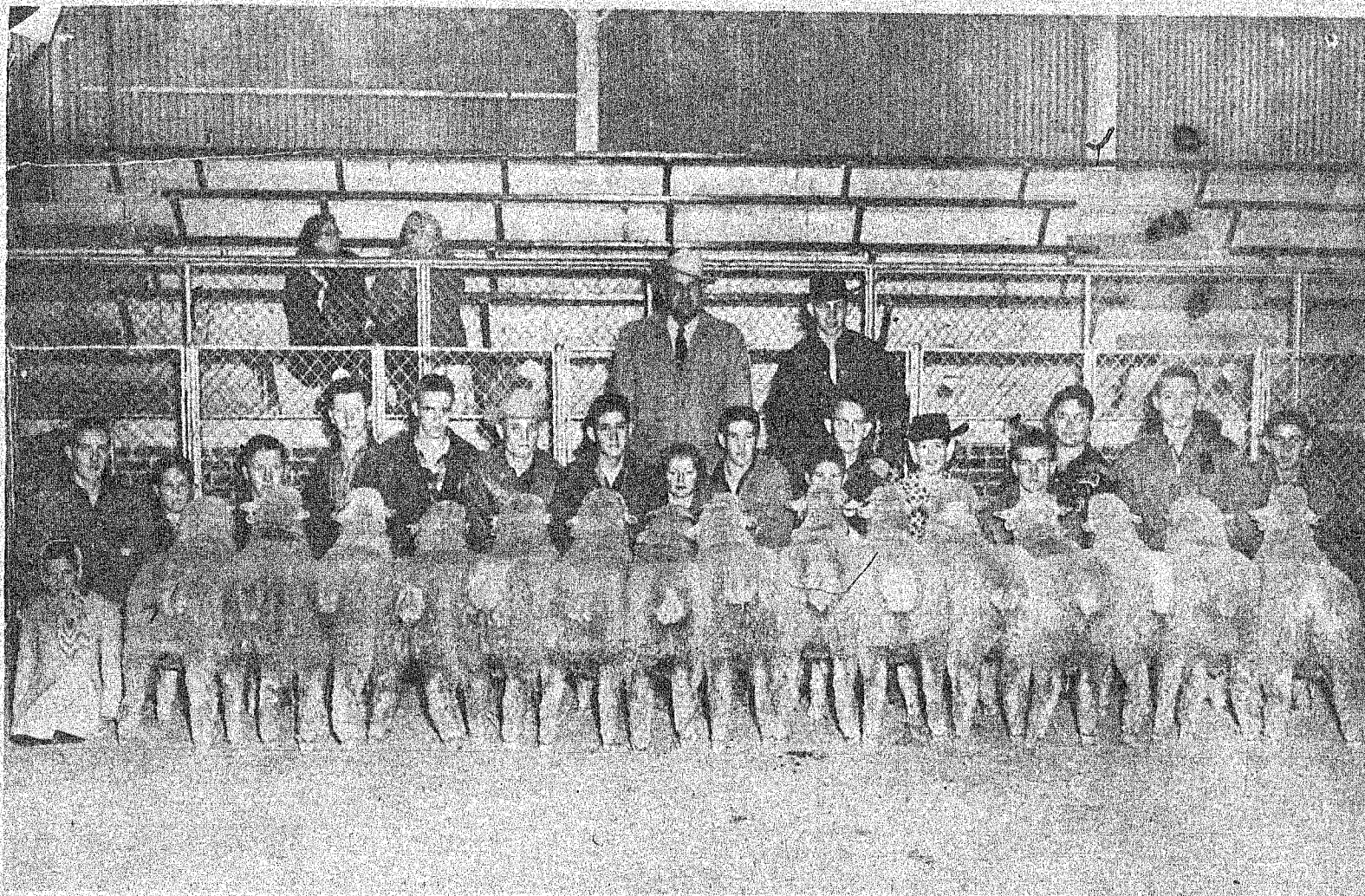
"He Profits Most Who Serves Best"

Single Copy 25 cents plus tax

Volume 103, No. 1

JANUARY 7, 1988

J  
A  
N  
U  
A  
R  
Y  
7  
1  
9  
8  
8



We are fast approaching stock show time for local youngsters. The Santa Anna stock show and food fair will take place January 15 and the Coleman County Stock Show will begin January 16. Shown above is a group of Santa Anna FFA members from thirty years ago when the local chapter had the first place pen of 15 finewool lambs at the Fort Worth Fat Stock Show. Included in the group at Fort Worth in

January of 1958 are front row from left, Cindy Hartman, Kenneth Harris, Ronnie Hartman, Bill Tucker, Randy Brown, Travis Buse, Donnie Henderson, Sonly Steward, Elaine White, Eddie Hartman, Stanley Hartman, Dayton Jackson, Sandra Hartman, Tommy Stewardson, Denny Densman, J.C. Bible and Jimmy Blanton. Standing at the back are A.D. Petit, the vocational agriculture teacher and Milford Blanton.

## Hords Creek 1988 User Fee Collection In Force

The U.S. Army Corp of Engineers began on January 1, the 1988 collection program which includes Hords Creek Lake.

Since 1961, basic camping fees ranged from \$3 to \$6 per day, but will increase to from \$5 to \$8 for the 1988 season. Fees for group camping areas, which may be reserved in advance, vary from \$14 to \$125 per day.

Electrical hookups are available at some parks for a \$2 fee in addition, to the basic camping fee. The Corps of Engineers will provide at least one free camping area, without electrical hookups, at each lake.

The Fort Worth district lakes are also implementing a new district-wide group shelter reservation program effective with the new year. Persons wishing to reserve group shelters will now be able to do so for any date during that current calendar year.

Holders of the "Golden Age" or

"Golden Access" passports will still receive 50 percent reduction of basic camping and electrical hookup fees. This discount does not apply to group facilities unless all members of a group have such passports.

At Hords Creek Lake, the period of collection started January 1 at Lakeside Park and Friendship Park and will begin May 1 at Flatrock Park and Flatrock II (tent sites).

There are 112 camp sites at Hords Creek Lake.

## Thibodeaux Resigns As Pastor Of First Christian Church

Anthony Thibodeaux, pastor of the First Christian Church of Santa Anna for many years, has resigned the position to accept the pastorate of a church in Missouri.

According to a member of the congregation, the church is in search of a minister to fill the position. Although there is a possibility there may be no services held at the church in the interim, the facilities will be available for weddings, funerals and other functions if the need arises.

## Fire Dept Responds To Grass Fires

On Thursday of last week, the Santa Anna Volunteer Fire Department responded to a call on a grass fire at the Gladys Day place east of Santa Anna. The fire which started from a flare on a well was quickly put out but had burned 3 or 4 acres.

Sunday afternoon they put out a grass fire at the Otis Fowler place 2 miles northwest of Rockwood. That fire burned about 10 acres and was started from a trash fire that got out of control.

We are once again reminded to be cautious about circumstances that can cause costly grass fires.

## Fire Department Elects Officers

The Santa Anna Volunteer Fire department met Monday, January 4 to elect new officers for the year. Those elected were Donald Strickland, Chief; Lee Ray Huggins, Ast. Chief; Clint Day, President; Scott Patterson, Vice-President; Freddie Dodson, Sec.-Treas. Captains are David Huggins and Marty Donham. Assistant Captain is Lane Guthrie. Chaplin is John Stanislav and the mascot is Boone Cook.

The department also recognized two new members, Nikki Donham and Rodney Guthrie.

The decision was made to purchase 5 more new bunker coats, giving each fire fighter a new coat.

You are reminded that the Volunteer Fire Department will soon be kicking off their membership and fund drive. Letters will be sent out in February. Chairman for the drive will be Scott Patterson and Co-chairman is Lane Guthrie.

## New Candidates File For District 14 State School Board Seat

In the state board of education race, 14th district, four Democrats have filed for the office. These include Charles McDonald of Bangs, William Hudson of Wichita Falls, Ben Doyle Sudderth of Comanche, and James Wilks of Sweetwater.

Sudderth is a lifelong resident of

Comanche and Brown counties and graduated from Howard Payne University and the University of Texas law school. He served in the Legislature from 1957 through 1960.

On the Republican side Peter Micalo of San Angelo and Donald Ray Dorsett of Stevensonville have filed for a seat on the board.

## Fire Dept. Aux. Elects Officers

The Santa Anna Volunteer Fire Dept. Aux. met Monday, January 4 for their regular meeting with the president, Gail Horner presiding. Other members present were Edith Dodson, Rita Day, Syble Huggins, Nikki Donham, Donna Bradley and Janette Strickland.

Election of officers was held and the new officers are Nikki Donham, president; Syble Huggins, vice president; Edith Dodson, secretary-treasurer; Donna Bradley, chaplin; and Janette Strickland, reporter.

## Fund Set Up At Bank For Malvin Sharp

A fund has been set up for Malvin Sharp who lost her home and all belongings in a fire last week. Contributions may be made at the Santa Anna National bank or taken to Ranger Park Inn. Mrs. Sharp is an employee of Ranger Park Inn.

Syble Huggins furnished refreshments and the door prize which was won by Edith Dodson.

Syble Huggins was acting president in the absence of Gail Horner, when the group met for their December meeting. Rita Day furnished refreshments for that gathering.

The next regular meeting will be Monday, Feb. 1 and the annual Mexican supper for the fire department will be held Feb. 15.

## Agenda Set For City Council Meeting

The Santa Anna City Council will meet Thursday night at 7 p.m. at the Mountain City Community Center. The announced agenda will include a discussion and possible action on the Hotel Ordinance which was tabled at the last meeting.

A sewer contract and resolution with Dr. Jones will be discussed with possible action to be taken.

An executive session is also on the agenda.

## Fenton Files For Constable Spot

There is more political activity in the county, with the development of a race for the office of Constable of Coleman County. Rondoe Horton

had filed for re-election to the post and last week H.F. Fenton filed for Constable.

Fenton is serving out his term as Sheriff and will not seek re-election to that office, but made the decision recently to file for Constable.

Corky Chapman, former Coleman County sheriff, advises that he has

filed as a candidate for Sheriff. Other candidates for that office are Chief deputy Sheriff Wade Turner and Eddie Odom. Odom is running on the Republican ticket. Filing on the last day for the office of sheriff was William F. (Bill) Kerr.

Democrat Billie Baker has filed for re-election to the post of county tax assessor-collector and is running un-opposed.

Vernon Slate has filed for re-election as Commissioner for Precinct 3. Also filing for the position is Jerry Allen and Gary Castleberry.

In the Precinct 1 Commissioner's race, Jack Strickland, running for re-election will be opposed by Charles Coburn

Joe Dan Lemay will be un-opposed in his bid for re-election as County Attorney.

Baker Rudolph has filed for re-election as Democrat County Chairman

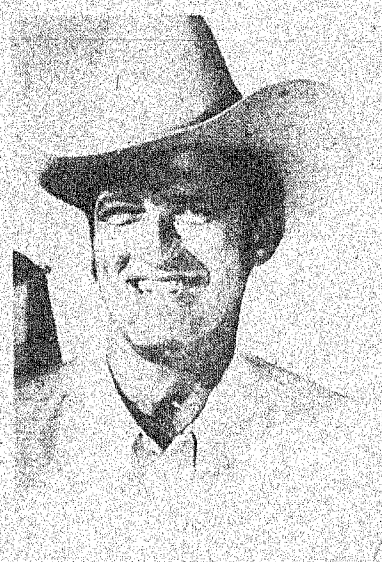
Due to the late filing, a picture of Bill Kerr was not available.



**BILLIE BAKER**  
Candidate for Tax Assessor



**WADE TURNER**  
Candidate for Sheriff



**EDDIE ODOM**  
Candidate for Sheriff



**CORKY CHAPMAN**  
Candidate for Sheriff



**H.F. FENTON**  
Candidate for Constable



**RHONDOE HORTON**  
Candidate for Constable

## Patrolman Jay Moses Promoted

Trooper Jay Moses of the Texas Department of Public Safety, stationed in Coleman since Feb. of 1978, has been promoted by the DPS and will be working in the Criminal Intelligence Service of the Criminal Law Enforcement Division effective January 15. He will be moving from Coleman.

Moses has been with the Depart-

ment of Public Safety since 1975 and his first station was at Brownwood. Another trooper will be assigned to Coleman to replace Moses.

At this point Moses does not know where his new station will be and expects that assignment shortly. In his new service in criminal intelligence he will not be in uniform, but will be wearing suit and tie.

## Membership Meeting For Cemetery Asoc.

The annual membership meeting of the Santa Anna Cemetery Association will be held Friday, January 22, 1988 at 6:30 p.m. at the meeting room of the Coleman County Telephone Cooperative.

Directors whose terms expire this year are President, Luther McCrary, Robert Robinett, and Quinton Daniel. An election of directors and planning for the new year will be on the agenda.

All members and interested persons are encouraged to attend.

Other directors are Mrs. C.M. Moseley, Glen Scarborough, Dickie Horner, and Eddie Hartman.

Caretakers is Charlie Armstrong and secretary-treasurer is Yvonne Halmon.

**Holiday Visitors In P.A. Radle Home**

Visiting in the home of Mr. and Mrs. P.A. Radle during the Christmas holidays were Billy Radle, his son Chris, and a friend, of Cushing, Okl.; Weston, Danita and Brandt Batla of Dallas; Nick and Ruth Plodrack of Coleman; Mr. and Mrs. Bob Stewart of Baltimore, Md.; and Mr. and Mrs. Russell Stewart of Dallas.

Also visiting were Mr. and Mrs. Bill Radle of Eldorado, their daughter Shirley and her daughter Kelly of Eldorado and granddaughter Andrea of San Angelo.

**FUNERALS**

**Allie Woodard**

Services were held at Henderson Funeral Home Chapel at 2:00 p.m. Saturday, January 2, for Mrs. Buster (Allie) Woodard, age 80. Rev. Gary Lawrence officiated. Burial was in the Santa Anna Cemetery under the direction of Henderson Funeral Home of Santa Anna.

Mrs. Woodard passed away at 12:05 a.m. December 31, 1987 at Ranger Park Nursing Home. She was born June 16, 1907 in Bell County, Texas to John W. and Gerta Belle Hardin Price. She attended Mayo Schools and was a lifetime resident of Coleman County. She married E.C. (Buster) Woodard April 19, 1928. He preceded her in death in 1977. Mrs. Woodard was a housewife and a member of the Baptist church.

Survivors include 2 daughters, Mrs. Earl Jean Alexander of Atlanta, Ga. and Mrs. Billie Joyce Perry of Santa Anna and a foster daughter, Mrs. Virginia Casey of Beaumont, California; a foster son, Floyd Joe Woodard of Lake Jackson, Tx.; three sisters, Mrs. Elmer Woodard of Seminole, Okla., Mrs. Bobbie Burbank of San Mateo, Calif., and Mrs. Velma Woodard of Bakersfield, Calif.; two local sisters-in-law, Adrian Price and Gertrude Williams both of Coleman; five grandchildren and three great-grandchildren. Pallbearers were Billy Campbell, James Dieterich, Alfred England, James Price, James Williams and Donald Williams.

**Library Notes Check It Out**

**Saving Our Libraries From Acid Paper**

Acid paper: Like acid rain, it's a destructive force—a force that threatens the future of our nation's libraries and the preservation of our national heritage.

In libraries everywhere, books are deteriorating even as they sit on the shelves. As many as half of those in some collections show signs of decay. The reason: The paper they are made from contains acids that cause the books to disintegrate over a period of time.

The first paper was made by hand from cotton and linen rags, to which few, if any, acid-producing chemicals were added. That paper was strong and long-lasting. As demand for paper increased during the 1800s, paper-making became mechanized. Wood pulp replaced rags as raw material. The paper producing machines, which used chlorine and aluminum sulphate, left behind destructive acids in the paper.

In some cases, microfilm is used to preserve valuable books and written documents. Still, microfilming costs a lot and takes a great deal of time. Many experts at our nation's libraries, including the National Library of Medicine, in Bethesda, MD., the world's largest health-science library, believe that



**Paper chase:** Librarians are rushing to rescue thousands of books from deteriorating on the shelves.

the best solution is to print books on acid-free paper in the first place.

Studies show that if journal and book publishers switched to acid-free paper, their publications would last anywhere from 300 to 400 years compared with the lifetime of present papers, which is not more than 50 years. In the case of very valuable historical documents, printing them on acid-free paper and storing them in clean air at freezing temperatures could preserve them for up to 40,000 years.

Acid-free paper can help us win a very important "paper chase," experts agree—the "chase" to ensure that today's books will be available to future readers.

**Mrs. Pearl Arnold Has Out Of Town Guests**

Weekend guest in the home of Mrs. Pearl Arnold were Mrs. Charlyne Griffith of San Angelo, Mrs. Jackie Ginsberg of Dallas and Mr. and Mrs. Billy Mills of Ozona.

**Othal Warnock Has Visitors**

Othal Warnock has returned home from a visit of several weeks with her daughter and family, Glenda and Lawrence Merworth of Midland.

Upon her return she was visited by her other daughter and husband, Wanda and Belvin Spurlock of Lake Jackson.

The three joined the Derriel Warnocks for dinner on New Year's Day.

**Memorials To Santa Anna Cemetery Assoc.**

The latest memorials to the Santa Anna Cemetery Association have been from Doris Griffin, the Calvin Campbells and the Homer Vinsons, in memory of Thelma Upchurch.

Katie Gilbert Pluger in memory of Mildred Strother.

Lois G. Dye of San Angelo in memory of Dr. Carroll Holt.

Laura Carpenter in memory of J.Y. Brannon.

Mrs. T.J. McCaughn in memory of Laverne Simmons and Margaret Herring.

Mr. and Mrs. Homer Vinson in memory of Laverne Simmons.

A memorial from the estate of Mrs. L.E. Abernathy. The directors and the staff of the Santa Anna Cemetery Association have expressed their thanks and appreciation to those who have given memorials and to others who have been helpful; Leland Thompson, Mrs. Gilbert Pluger and Elgean Gilliam and maybe others who clean lots other than their own, to help make the cemetery look better and a special thanks to the unknown person who fixed a water leak.

People like these and those who pay annual care and put their lots into perpetual care help make the cemetery look nice.

**Santa Anna News Deadlines**

Articles Monday, 4:00 p.m.

Advertising Tuesday Noon

Regular articles that are run each week should be in the office on Thursday or Friday prior to the week they are to be used.

We can not guarantee that news articles brought in later than 4:00 p.m. on Monday will appear in that week's edition.

Thank you for observing the deadlines and helping us to serve you more efficiently.

Office hours are 8-5 on Monday and Tuesday.

Thursday office hours are 9-2. Friday 9 to noon.

SANTA ANNA NEWS  
214 N. 2ND.  
SANTA ANNA, TEXAS  
(915) 348-3545  
(USPS 481540)

The Santa Anna News is published every Thursday at Santa Anna, Texas 76878 and entered as second class mail under the Act of Congress of March 2, 1879.

SUBSCRIPTION PRICE: Coleman County and all other areas in the state of Texas, \$11.95

SUBSCRIPTION PRICE for out of the state of Texas is \$11.95.

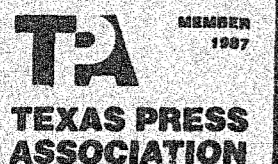
CLASSIFIED RATES: \$1.50 for the first 15 words; five cents per word thereafter per week for personal items. Rates for business advertising are charged by the agate inch at the rate of 25 cents per agate inch.

POSTMASTER: Send change of address to Santa Anna News Box 399 Santa Anna, Texas 76878

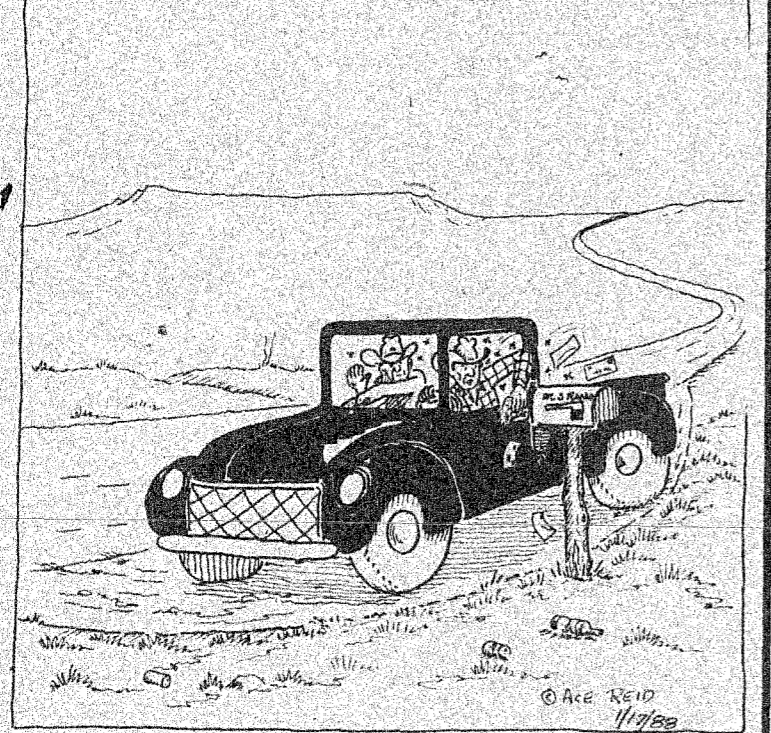
POLLY WARNOCK  
Managing Editor

TANDY HOWARD  
Advertising Manager

BETTY KEY  
Bookkeeper-Circulation



**COWPOKES By Ace Reid**



"I have pulled hot checks and hot letters outta this box, but this is the first time I've ever pulled outta hot wasp nest!"

**Santa Anna National Bank**

Deposits Insured By FDIC Up To \$100,000  
Ask About Our Interest-bearing Checking Accounts \$1,000 Minimum Pass Book Savings Certificates of Deposit

Substantial Interest Penalty Is Required For Early Withdrawal

**Fannies Funnies**

By Fannie Gilbert

Two men were walking in the woods when they met a big old grizzly bear. One of them said, "What are we going to do?" The second replied "Hand me my tennis shoes out of that sack." The first man said, "Man are you crazy? You can't outrun that bear." Second man, "I don't have to outrun him. I just have to outrun you".

Another feller was hunting when he met two bears. He took a shot at them but missed. The bears started toward him so he turned and started running. He ran until he was unable to run any more so he fell to his knees and started praying. "Lord, we thank you for the food we about to receive."

My nephew and his neighbor were talking about how hard it is to make ends meet these days. "Now", the neighbor sighed, "my wife thinks she has to have a dishwasher." "Just be thankful" Nephew said, "my wife thinks she married one".

What's the difference between a cat and a frog? A cat has nine lives and a frog croaks every night.

**Tips To Quit Smoking Without Weight Gain**

As the new year begins many of us begin thinking about doing something in the new year for the betterment of our lives and health. We think about how much better we would feel if we lost weight, quit smoking, or exercised more. Weight gain often occurs when a person quits smoking.

"But, pound for pack, you better off giving up smoking", according to Michael H. Crawford, M.D., President of the Texas Affiliates of the American Heart Association.

"Putting on pounds need not be a consequence of putting down cigarettes," Crawford said. By looking at the reasons that lead to the weight gain, you can develop action plans to avoid an expanded waistline.

REASON 1: Increased appetite. When you quit smoking, you may experience an increase in appetite and food consumption. Choose foods that require work to eat. Since you no longer smoke after dinner, you may decide to have an extra veggie, or a dessert. Suggested counteractions: cut food into smaller pieces to extend the dinner time; eat more slowly so that you are not the first person finished; and get up from the table immediately after eating. Also, you can save dessert for later; substitute low-calorie treats for rich desserts; and brush your teeth as a signal that eating has stopped.

REASON 2: Oral craving. You are accustomed to having a cigarette in your mouth; food may become a replacement. Counteractions: carry sugarless gum or mints. Occupy your hands with activities other than nibbling, such as puzzles, gardening or home repairs.

REASON 3: Munching. Associated with the oral craving is the onset of the "munchies". You put food, rather than a cigarette in your mouth. Counteractions: keep a supply of raw vegetables, crackers, unbuttered popcorn or dry cereal on hand, but watch your in-

**Thoughts From Our Pastors**

Anthony Thibodeaux  
First Christian Church

**THE FORGOTTEN BIRTHDAY**

It is human nature to think of life being so sacred and important that even though we had no choice pertaining to our birth, we feel that such an event as our birthday should always be remembered. We make too much over birthdays. We celebrate with dinners, gifts and parties. We know children are hurt if their birthdays are forgotten. Even older people feel neglected if that great day is overlooked. They feel that it means that someone does not care.

I enjoy reading the 'Family Circus', the wholesome comic in the daily newspaper. A few days ago I enjoyed the one which read, "Bethsa Jesus missed out on a ton of presents 'cause His birthday and Christmas were on the same day". Let me point out a few pertinent thoughts.

First, let me remind you that 2,000 years ago people forgot that Jesus was to be born. Although from the beginning of human history, it had been prophesied that a Saviour would come into the world...yet by the time for Jesus to come, the majority of the people had completely forgotten such an event was to take place.

Moses had emphasized the fact. (Deut. 18:15-18) "The Lord thy God will raise up unto thee a Prophet from the midst of thee, of thy brethren, like unto me; unto him ye shall hearken".

Daniel, looking forward through the pages of the future, foretold the age in which He was to come so accurately that no reader could be mistaken. Micah let the people know even the place in which the Messiah was to be born.

True, the people had no access to the Scripture, nevertheless, the scrolls of the prophets were read in the Temple and Synagogues...and the Rabbis should have kept this event before the people constantly.

Then after Jesus was born, they forgot about Him. Strange as it may seem, nobody kept in touch with the family of Jesus. After their return from Egypt, they were once more at their home in Nazareth. We hear nothing of them until the boy Jesus was 12 years old. Then 18 years passed in silence...then Palestine was thrilled to hear a strange prophet named John announce that the Messiah was in their midst. The earthly ministry of Jesus took place. A ministry ending with His death on the cross and the glorious resurrection. So important was this event, (the resurrection) that the early Church forgot the day of His birth, and it was several centuries later before a day was set aside to celebrate His birth.

We can't overlook the fact that His birth is forgotten today. The day is preceded by such a mad rush shopping for appropriate gifts and the mailing of millions of Christmas cards, and most of the cards today have no message about the birth of a Saviour. The idea is business and not religion.

The family often forget it is Christ's birthday. We spend many dollars for each other, but very little or nothing to the Christ. Imagine a boy having a birthday party and everybody getting presents but the one whose birthday it is. It has been said that the special offerings churches make for the NEEDY, THE AGED, AND THE ORPHANS won't average 50 cents per member. What child would be satisfied with a 50 cent present...JUST A THOUGHT.

Let the people give generously of their means; a gift which is worthy of the Kings of Kings. It is time for all Christians to re-evaluate their priorities. Jesus taught His disciples that when one decided to embrace the truth and the gospel he should count the cost.

**Birthdays & Anniversaries**

THURSDAY, JANUARY 1  
Betty Beal  
Alfred McCrary  
Laura Thornton  
Liz Morris Williams

FRIDAY, JANUARY 8  
Larry Rutherford  
Jackie Davison

SATURDAY, JANUARY 9  
Mr. & Mrs. Don Bible

SUNDAY, JANUARY 10  
Betty Martin  
Raina Ann Walker  
Kimberly Reed

MONDAY, JANUARY 11  
Tonya DeLeon  
Tammi Morrow

TUESDAY, JANUARY 12  
Patti Musick  
Rodney Guthrie  
Scott Patterson  
Mr. & Mrs. Judd Stewardson

WEDNESDAY, JANUARY 13  
Travis Slate  
Adam Marney  
Jeanette Brock



**Meeting Your Goals**

Q: I'm a married working woman. I have three main financial goals: to buy a home, give my children a college education, and have a comfortable retirement. What types of life insurance policies would you recommend?



A: A Universal Life (UL) insurance policy might be a good idea. This type of policy lets you vary the amount of money put into it each year. You can also withdraw money whenever you want to—pay for tuition, for example. You get a current market interest rate, and your insurance representative can design your policy with your needs in mind, whether they be cash accumulation, good interest on your money or tax deferred earnings. You should also get a long-term disability income policy. You're a major contributor to the family's income, and their lifestyle could be seriously jeopardized if that income stopped coming in.

**The Santa Anna Funeral Home**  
**Emergency Medical Service**  
Serving Santa Anna & Coleman County  
We would like to invite you to come by and fill out an Emergency Medical Form to keep in our file.  
**SANTA ANNA FUNERAL HOME**  
Wallis at N. Lee **PHONE 348-3153**

**Reed Memorial Co. Limited**  
Monuments of Distinction  
El. Worth Hwy.  
Brownwood, Texas  
Box 269 Ph. 644-7625  
Sylvia Herring  
Local Representative

# Noodle's Foggy On Town Name

### EDITOR'S NOTE

Ever wonder how area towns got their names? Perhaps this article taken from the Dallas Morning News some time back will enlighten you. Written by Ken Biffle, it is at the least enjoyable reading. It was sent to us by a reader in Dallas.

**NOODLE**-Anything ever happen around here?

"Plenty," says Sterling Ramzy, 32, who whoppily fleshes out the definition of the term roughneck. He tells me about the Exxon man at the drilling rig nearby who discharged his mud logger for sleeping on the job.

"The Exxon man comes to get a cup of coffee," says Ramzy, indicating the Ramzy family's Noodle grocery, a sort of siding salesman's dream.

"While the Exxon man's inside, the mud logger snuck up, grabbed a rock and put it through the Exxon man's windshield. He thought."

The mud logger didn't know Noodle had two black pickup trucks. He busted the windshield of the wrong coffee drinker, Buck Wilder.

Buck rushed out. He saw his smashed windshield and the mud logger's getaway dust. Buck jumped into another pickup with Tip Carter, a bystander. Tip and Buck overtook the fugitive at the edge of Merkel, 10 miles to the south. The mud logger had to pay damages plus a fine, says Sterling.

Shattering! When did it happen? "Oh, about a year ago."

On this day there's less excitement in the air than cotton gin dust. A cloud, blown from the gin across the road, mulches Sterling and me. Given the dust, anyone could bust the wrong windshield.

A Noodler shows me a city plat, proving Noodle was born at 11:00 a.m., Feb. 20, 1909. Others say the town once had three filling stations and a school. The football team was the Noodle Woa-Tons. Ha. Just kidding.

The population is 45, or 46 when I'm in town. One of us came here to learn why it is called NOODLE.

See, I got a letter from writer-photographer Andy Wasowski of Dallas, who with his wife Sally just completed a 16,000 mile excursion through Texas.

Andy wrote: "We have come across an amazing assortment of odd or humorous, but always mysterious place names. Now I'm trying to put an article together on the origins of these names, but have little luck talking to locals (who seem to be remarkably uninformed about their areas)."

I pointed Andy toward East Texas State University, where Fred Tarpley, the last word on proper nouns is a prof. Since 1980 his 1001 TEXAS PLACE NAMES has been a UT Press hit. The book helped.

Take Toenail Trail in Schleicher County. Andy sadly showed me a letter from librarian Betty Jane Smith at Angelo State University in San Angelo: "I wish I could tell you how the town of Toe Nail (or Toenail) got it's name, but the person who could tell me died before you called."

Fred to the rescue: "Toenail, named because families would send their children on horseback to get the mail, and a ranch hand, seeing all the barefoot children, thought that Toenail would be a good designation."

Another puzzler was Tin Top in Parker County. Fred's ready: "The community took it's name from a gin established here. The galvanized iron roof could be seen for many miles..."

Then came Llano County's Baby Head. Fred's got the grisley origin: "At the end of an Indian attack, the head of a baby belonging to one of the settlers was placed on a pole."

Noodle didn't make Fred's cut. But the Handbook of Texas, reports: "Noodle, in Western Jones County...was named for Noodle Creek..."

Why Noodle Creek? I drove west through odd named places.

In Somerville County was Nemo...Latin for "no one" or "no name", suggested by a nameless scholar in the 1890s.

And Rainbow, where the settlers saw a rainbow in 1895.

Brown County has Zephyr, so dubbed when a blue norther whistled through a surveying party back in 1850. Some party.

And Blanket, where surveyors in 1852 found Tonkawasa Indians drying their blankets after a downpour.

Brown County explodes with Bangs... (population 1,716)...quietly located in the Sam Bangs survey before the turn of the century.

On a Coleman County mountainside is Santa Anna...and no one would name a town for that burn. The 1,535 citizens aver their town was named for a Comanche Chief, tolerant of early Texans. In 1846 he met President James Polk in Washington, D.C.

Near Speck Mountain (dot on the map) is ghostly Trickham...or Trick'em, named in the 1870s for a merchant who watered whiskey.

At Novice I chatted with postmaster Ann Dunn, who confirmed that the owners of a store in 1910 wanted everyone to know they were novices in the business. (And at naming cities). The town is cooling off from last week's beer election. The dries won again, 53 to 41.

At Lawn in Taylor County, postmaster Brenda Earnest said the place was once known as Ned from nearby Jim Ned Creek. Jim Ned Creek was named for an Indian. But he wasn't a Creek. He was a Delaware. The place was renamed Lawn in 1910...shortened from Oak Lawn by postal officials...and today it's the turf of 390 folks.

In Tuscola, Mary Ann Kelley at the City Hall said she didn't know the origin of the name but Mrs. Donald McIntyre at the First State Bank in Tuscola would.

I crossed the charmingly named Kent Avenue to the bank. Mrs. McIntyre said Tuscola was named in 1881 by Dr. C.M. Cox in honor of his hometown, Tuscola, Ill., which was derived from an Indian word meaning "grassy plain".

When I reached Noodle, I found yet another Indian word blamed for the town's name. Sterling and his father, whose name is, hi ho, Silver Ramzy, got the word from an octogenarian Noodler who told of some

thirsty Indians passing that way. Nearing the little creek, they glumly saw that it was drier than Novice. One sighed, "Noodle"...an Indian term for "dry". Sterling's mother said that story was old A.B. Parham's.

I sought Sylvia Moreland of Anson, chairman of the Jones County Historical Commission. Anson and Jones are sensible place names...Dr. Anson (the county seat) Jones was president of the Republic of Texas.

Sylvia said "Noodle residents tell of an Indian word meaning 'void, empty or dry'. But Jones County district clerk Poochie McDonald, told me that a Mr. Noodle was one of the settlers and that the post office was named for him. Poochie didn't know his first name." Sylvia likes Poochie's account.

## Self Culture Club To Meet January 13

The Santa Anna Self Culture Club will meet Wednesday, January 13 at the hospitality room at the First Baptist Church. Bettie Henderson, president, and Gladys Barnes will be hostesses for the meeting.

## Fred Oakes Visits In Santa Anna

Fred B. Oakes of Dallas, spent the Christmas holidays with relatives in Santa Anna, Abilene and Robert Lee.

Can't sing, but can dance a little: International Wildlife magazine reports that, in the jungles of Panama, one kind of male katydid became silent to avoid being eaten by bats who used the insect's love songs to home in on a meal. The problem was that their silence also made them harder for the female katydids to find. So, the males substituted music with ballet, dancing to send vibrations through the leaves and wood of tree trunks and branches.

## McClellans Visit In Abilene

Mr. and Mrs. Jasper McClellan spent from Christmas to Sunday afternoon at the home of their daughter and husband, Mr. and Mrs. J. Don Simmons in Abilene.



## CONSUMER ALERT

by Jim Mattox Attorney General

## Common Traps In Medi-Gap Insurance

Medicare has been a godsend to older Texans (and to certain disabled persons who qualify), but Medicare does not pay 100% of all medical bills. There is an annual deductible and then there is the 20% of "reasonable" charges that you must pay. In addition, Medicare does not pay for self-administered medications, for most nursing home charges, and for the amount of a bill above what Medicare deems "reasonable."

These gaps in Medicare coverage can be very expensive and for this reason many insurance companies are offering Medicare supplemental insurance, commonly called "Medi-Gap" insurance. But be careful. There are pitfalls and traps to watch out for in buying Medi-Gap insurance just as there is for other kinds of insurance.

### COMMON TRAPS

Some of the most common traps in Medi-Gap insurance are:

• **The elimination period.** Some policies have elimination periods, a span of several days in the hospital before coverage begins.

• **The pre-existing illness exclusion.** This provision excludes coverage for an illness or condition for a set time period if you have been treated for it for a specified period prior to the effective date of the policy. There are policies with six month exclusions, three month exclusions, and no exclusions. Which would be best for you depends upon your particular circumstances, but you should never buy a policy with an exclusion period greater than 6 months.

• **Mail order policies.** Be careful with unsolicited policies you receive in the mail. If you learn of a policy through the mail and it looks good, check it out with the State Board of Insurance or your nearest Consumer Protection Office.

• **Senior's associations.** A number of organizations of seniors or retired persons endorse Medi-Gap insurance. Sometimes these are sound policies, but far too often the alleged organization is merely a front for an insurance company bent on selling poor quality, overpriced insurance. Again, check it out. And even legitimate policies

may not offer as a good deal as you could get elsewhere.

• **Right to renew.** Don't buy a policy which gives the company the right to cancel you on an individual basis. They might do this if your claims are high or if you have a dispute with them about payment. Most policies have a provision that says you won't be canceled unless the company cancels all policies of that type in the state. And you should have the automatic right to renew each year.

• **Cash.** Never pay cash. Always make your premium payments by check or money order. Always make them out to the insurance company, not to the agent.

• **Short-time enrollment periods.** Do not succumb to "once in a lifetime offers" or any other high pressure sales tactic. If the company is reputable, the policy will be available tomorrow at terms very similar to those they are offering today.

### THE FEDERAL CERTIFICATE

The U.S. Department of Health and Human Services certifies all policies that meet minimum standards for Medi-Gap insurance. These standards include things such as:

- minimum coverage
- limits on exceptions
- disclosure of renewal provisions.

In addition, certified policies must prove that they pay out their policy holders an amount equal to or greater than 75% of all premiums taken in on group policies, and 60% of all premiums taken in on individual policies.

Don't buy a Medi-Gap policy that does not have a certification seal or emblem.

### FOR MORE HELP

If you have questions about Medi-Gap insurance, call the State Board of Insurance or your nearest Consumer Protection Office. Offices are in Austin, Dallas, Houston, San Antonio, McAllen, Lubbock and El Paso. The Attorney General's Office is the people's law firm. We're here to help you.

## Welcome Recent Subscribers

- Fleda Asta, Bristol, Pa.
- Mrs. C. F. Austin, Fort Worth
- Rick Beal
- T. L. Bentley, Enid, Okla.
- Wanell Blount, Cisco
- Joe M. Box, Freepport
- M.E. Campbell, Fort Worth
- Ruth Current, Amarillo
- Mrs. J.M. Dietz, Houston
- Dewitt Dunaway, Dallas
- Felicia Flerbe
- Lillie Featherston, Brownwood
- Joe Ford
- Doris Griffin
- Jerry Haynes, Odessa
- Tom Kondrat, Taylor
- Evelyn Oaks James, Sanger
- Lavelle Jones
- Claude Langford
- Howard Lovelady, Temple
- Leman Lowry, Hurst
- Steve Malear
- Dr. Francine Merritt, Baton Rouge, La.
- Bob Morgan, Grapevine
- Mountain Reading Service, Provo, Utah
- Pat McCullough, Coleman
- Russell McGough
- Jewel McMinn, Coleman
- Robert Oaks
- Burgess Stewardson
- Billie Ruth VanHuss, Houston
- Brad Wardlow, Temple
- Betty Williams, Pasadena
- C.E. Wise
- Mrs. G. R. Anderson
- W.D. Ashmore, Levelland
- James D. Bass, Tyler
- Charles Bengé
- Linwood Bishop, Coleman
- Eurell Blair
- Mrs. Claude Box, Rockwood
- Linnie Box, Rockwood
- Marilyn Bryce
- Jim Burchfield
- Lee Roy Casey, Slaton
- Coleman County Extension Office
- Stephen Cullins
- J.D. DeShay, Amarillo
- Richard Dillingham
- Benny C. Estes, San Antonio
- Mrs. Frank Garey, Burkholtz
- Ted Ford
- Burton Gregg, Marble Falls
- Danny Guerrero
- Bill Gustavus
- Cynthia Hancock, Denison
- Mrs. I.E. Hartman, Midland

- J.L. Haynes, Brownwood
- Lela Hays
- Thomas Wayne Horton, Houston
- Gaylyn Kline, East Greenwich, R.I.
- Mrs. D.K. Moore, Brownwood
- Mrs. T.J. McCaughan
- A.L. McGahey, Jr.
- Larry McIntire, Alvarado
- Frances Nugent, Roseville, Ca.
- Donald Ray Owen, Kemp
- Mrs. Ace Reid, Sr., Fredericksburg
- Santa Anna National Bank
- Jaennie Sawyer, Brownwood
- Wendell Sparkman, Houston
- Mrs. R.B. Stearns
- Mrs. J.S. Tinkle, Abilene
- Mrs. C.P. Wenzel
- Viola West, Fort Worth
- Mrs. M.E. Williams, Bisbee, Ariz.
- Joe Ed Wise
- T.J. Wright, Coleman
- Mrs. Jack Yates, Abilene
- Richard Zable, Bangs
- Laura Barsch, New Braunfels
- George Baucom, Robbins, Ca.
- Mack Baucom, Hurst
- Ken Bowker
- Daryl Boyle, Bangs
- G.H. Close, Austin
- Billy Ray Conley, Seagoville
- Omer Cullins
- Carl Flores, Varnon
- Harvey Goodgoin, Brownwood
- Jesse Fletcher, Graham
- Mrs. Grady Griffin, Austin
- Raul Guerrero, El Paso
- Bobbie Guthrie
- Henderson Funeral Home
- Mary Henke, Pasadena
- Dale Herring
- D.W. Johnson, Aledo
- R.W. Johnson, Fort Worth
- Sue Johnson, Midland
- Mrs. Leon Jones, Hurst
- Terry Lishka
- W.B. Lowry
- Harley Maynor, Brownwood
- Terry Moore, Fort Worth
- Carrie McClatchy, Bangs
- Rankin McIver
- Fred Oakes, Dallas
- Tony Owen, Coleman
- Janie Payne
- Mevin Pollock
- Don Pritchard
- Mike Pritchard
- Martin Robbins, Coleman
- Ray Switzer, Brownwood

- Jack Todd
- Davis Tucker
- Danny Walker, Abilene
- Sandra Walker, Bangs
- Walter Robbins, Odessa
- Mrs. D.E. Willis, Poway, Ca.

**Lappe Law Office**  
709 Wallis  
(Inside Patterson Ins. Building)  
Law Office Open On Wednesdays Only.  
PHONE: 348-3157

**A GREAT DEAL ON A SAFE BUY!**

**\$13.95 PLUS TAX**

- PUT IT ON YOUR ELECTRIC BILL
- THREE MONTHLY PAYMENTS
- NO INTEREST CHARGES

PICK IT UP AT ANY WTU OFFICE ... OR ... IF MORE CONVENIENT, ORDER BY MAIL

Please send me \_\_\_\_\_ portable electric heater(s).  
(number)

NAME \_\_\_\_\_  
ADDRESS \_\_\_\_\_ CITY \_\_\_\_\_  
STATE \_\_\_\_\_ ZIP \_\_\_\_\_

I agree to pay \$13.95 plus tax.  
 I want to put this on my electric bill and pay for it in three monthly installments.  
 I want to put this on my electric bill and pay for it in one installment.  
I understand I am *not* paying any interest or carrying charges.

Signed \_\_\_\_\_

MAIL TO: West Texas Utilities Company  
P.O. Box 841  
Abilene, Texas 79604  
Attn: Bill Baxter

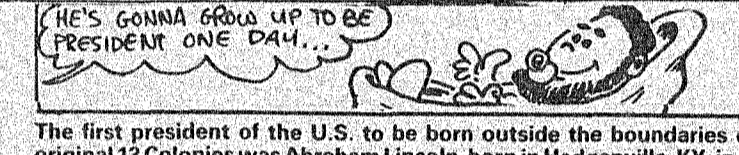
WEST TEXAS UTILITIES COMPANY  
**WTU**  
A Member of The Central and South West System

JANUARY 7 1988

# SAHS Girls And Boys Participate In Eula Christmas Tournament

The Santa Anna High School boys and girls basketball teams were involved in the Eula Christmas Tournament during last week while they were out of school for their Christmas break. Following is the results of that Tournament action.

<b>Clyde 56, ACHS 20</b> Girls first round Clyde 20 25 15 9-56 ACHS 4 4 9 3-20 Clyde - Burton 13, Guy 20 ACHS - Coody 10	<b>Clyde 65, Santo 34</b> Girls second round Clyde 23 14 15 12-65 Santo 12 14 15 13-34 Clyde - Burton 11, Barnes 10 Guy 14, Burns 12, Howie 14 Santo - Slump 13	<b>Ranger 50, Anson 34</b> Girls semifinal Ranger 14 11 14 11-50 Anson 22 13 3 16-34 Ranger - Lucky 24 Anson - Thomas 13	<b>Cisco 33, Ranger 29</b> Boys seventh place Cisco 10 13 10 10-33 Ranger - Needham 10 Cisco - J. Phillips 12
<b>Abilene High JV 76, Clyde 39</b> Boys first round Abilene 24 15 15 19-76 Clyde 12 5 9 13-39 Abilene High JV - Garrett 18 Mosley 14 Clyde - Howie 8, Cooper 8	<b>Abilene High JV 76, Santo 66</b> Boys second round Abilene JV 24 15 12 25-76 Santo 22 18 11 15-66 Abilene High JV - Garrett 19 Mosley 12, Horton 14 Santo - Edwards 18 McDonald 10, Armstrong 12	<b>Cisco 55, Clyde 42</b> Boys consolation Cisco 17 17 5 13-42 Clyde 22 12 15-35 Cisco - Wallace 13, Patton 12 Clyde - Cooper 12	<b>Santo 44, Santa Anna 37</b> Girls consolation championship Santo 18 13 4 9-44 Santa Anna 10 10 7 10-37 Santo - D. Castillo 13
<b>Hawley 84, Santa Anna 38</b> Girls first round Hawley 23 21 10 10-44 Santa Anna 8 10 8 12-38 Hawley - Kayla Cooley 23 Edmunds 15, Beasley 12 Santa Anna - Castillo 9	<b>Ranger 51, Eula 49</b> Girls first round Ranger 6 15 12 17-51 Eula 8 16 13 12-49 Ranger - Lucky 15, Rogers 12, Nee 12 Eula - Keesee 18	<b>Santo 52, Ranger 41</b> Boys consolation Santo 16 10 10 16-52 Ranger - McDonald 12, Hen drick 10 Ranger - Brister 11	<b>Santo 87, Santa Anna 68</b> Boys consolation championship Santo 18 27 24 22-87 Santa Anna 13 11 7 37-68 Santo - Hendrick 20, Edwards 22, Armstrong 18, Glover 12 Santa Anna - Davidson 19, McIver 19, Hartman 15
<b>Hawley 61, Santa Anna 43</b> Girls first round Hawley 22 15 8 16-61 Santa Anna 8 10 8 12-43 Hawley - Cooley 19, Elliott 12 Edmunds 12, Blackwell 11 Cisco - Wages 18, Collarman 10	<b>Eula 70, Ranger 48</b> Boys first round Eula 18 18 20 14-70 Ranger 10 12 14 12-48 Eula - Burton 14, Cummings 14, Swisher 11, Carpenter 10 Ranger - Lund 14, Brister 13, Needham 10	<b>Santo 52, Ranger 41</b> Boys consolation Santo 16 10 10 16-52 Ranger - McDonald 12, Hen drick 10 Ranger - Brister 11	<b>Clyde 61, Anson 38</b> Girls third place Clyde 18 16 20 9-61 Anson 6 8 12 10-38 Clyde - Barnes 12 Anson - A. Blackwell 11, Richmond 10
<b>Anson 50, Cisco 47</b> Girls first round Anson 12 15 8 14-50 Cisco 4 14 14 15-47 Anson - Richmond 10 Stanford 12, Blackwell 11 Cisco - Wages 18, Collarman 10	<b>Hawley 58, Clyde 44</b> Girls semifinal Hawley 8 22 11 17-58 Clyde 10 12 9 13-44 Hawley - Kayla Cooley 22 Carla Cooley 16, Edmunds 11 Clyde - Howie 17	<b>Santo 52, Ranger 41</b> Boys consolation Santo 16 10 10 16-52 Ranger - McDonald 12, Hen drick 10 Ranger - Brister 11	<b>Anson 38, Cisco 33</b> Boys first round Anson 10 6 16-38 Cisco 4 4 10 15-33 Anson - Douglas 12, Thomas 10 Cisco - Phillips 13
<b>Anson 38, Cisco 33</b> Boys first round Anson 10 6 16-38 Cisco 4 4 10 15-33 Anson - Douglas 12, Thomas 10 Cisco - Phillips 13	<b>Santa Anna 46, Cisco 27</b> Girls consolation Santa Anna 5 6 7 9-27 Cisco 10 13 13 10-46 Santa Anna - T. Morrow 10	<b>Santo 52, Ranger 41</b> Boys consolation Santo 16 10 10 16-52 Ranger - McDonald 12, Hen drick 10 Ranger - Brister 11	<b>Hawley 54, Ranger 42</b> Girls championship Hawley 18 18 20 14-54 Ranger 10 12 14 12-42 Hawley - Allen 22, Elliott 12 Overkamp 11, Campos 11 Eula - Burton 15, Valdez 12 Cummings 10



The first president of the U.S. to be born outside the boundaries of the original 13 Colonies was Abraham Lincoln, born in Hodgenville, KY, in 1809.

## Stevens Funeral Home

### Since 1889

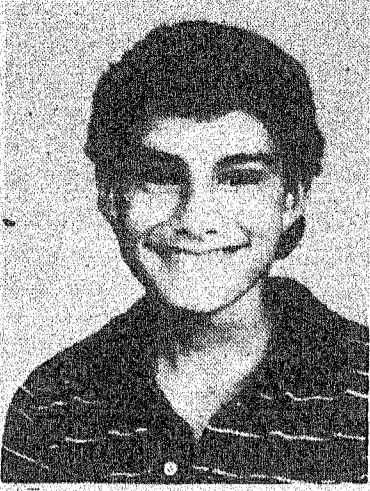
Member By Invitation of National Selected Morticians

400 W. Pecan 625-2175

### Texas A&M project concludes that teachers should be allowed input

COLLEGE STATION — If Texas wants to improve mathematics and science education, teachers should be included in the decision-making process in schools, new teachers should be mentored by "master" teachers and effective teachers need to be rewarded monetarily.

These are the findings of a project of the Texas Alliance for Science, Technology and Mathematics Education at Texas A&M University. The al-



## SANS Citizen Of The Week

Armando Mata has been selected as the Santa Anna High School citizen of the week. As has been explained, part of being a good citizen is doing for others. Armando is an example of this in action. "He is always doing something nice for others and just generally being a good citizen," says Counselor Nanette Newbern.

## Search For Rural Hero Underway

The search is underway for the rural hero for 1987, according to Ben Bullard of Waco, president of the Texas Farm & Ranch Safety Council which presents the annual rural heroism award.

The 1987 recipient will be announced March 7, 1988, at the 49th annual Texas-Southwestern Safety Conference and Exposition to be held at the Marriott Hotel in San Antonio. Deadline for submitting 1987 entries will be Feb. 15, 1988, Bullard said.

## School Menu

**MONDAY**  
BREAKFAST: Cereal, Juice, Milk  
LUNCH: Corn dog with mustard, potato salad, pinto beans, oranges and milk.

**TUESDAY**  
BREAKFAST: Biscuit with jelly, juice, milk.  
LUNCH: Fish with tartar sauce or catsup, blackey peas, coleslaw, peaches, cornbread, milk.

**WEDNESDAY**  
BREAKFAST: Cinnamon rolls, juice, milk.  
LUNCH: Steak fingers with gravy, cream potatoes, green beans, peanut butter and syrup, hot rolls, milk.

**THURSDAY**  
BREAKFAST: Pancakes, syrup, juice, milk.  
LUNCH: Enchalida casserole, Spanish rice, refried beans, Mexican Salad, pineapple pudding, crackers, milk.

**FRIDAY**  
BREAKFAST: Cereal, raisins, milk.  
LUNCH: Cheeseburger, salad with onions and pickles, french fries with catsup, cookies, milk.

## Organization For Sports Enthusiasts

Good health is no longer a blessing—it's hard work. Many people belong to health clubs, in addition to practicing favorite sports, to exercise away stress and excess pounds.

Busy schedules mean that sports gear is often toted along with briefcases to work. Here are a few tips to make the transition from the work-a-day world to working athlete easier.

- Store clean workout clothes in Ziploc® brand storage bags. Later, repack shirt, running shorts, socks and other apparel in the plastic resealable bag to protect other items in your sports bag.
- Many clubs offer whirlpool, sauna and pool facilities. Pack your water gear in plastic resealable bags to protect other clothes from getting damp when packing your sports bag for home.
- Before packing sports shoes, sprinkle insides with deodorant powder to absorb moisture and odor. Place in jumbo storage bags before putting in your sports sack.
- Carry an extra plastic resealable bag as a medicinal aid. To help reduce the pain and swelling of bumps, bruises and scrapes, fill bag with ice and use as a compress. To avoid ice burn, place a cloth on wounded area before applying ice bag.

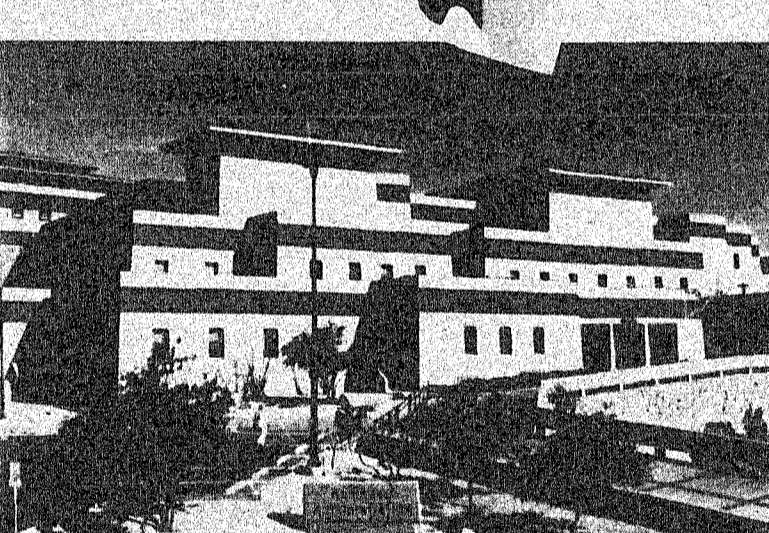
Plastic resealable storage bags are great for eliminating bulky, irregular-sized containers. Place tennis balls and racquet balls in resealable bags to avoid awkward canisters.

Energizing snacks are important, whether they are the vitamins you take each day, or a dried fruit mix you eat between gym and office. Plastic resealable storage bags are great for keeping foods safe from sports gear odor—especially in your locker or gym bag.

Sports equipment often becomes "lost" in bags and lockers. Organize individual equipment pieces together in plastic Ziploc storage bags for easy access. Have different bags for each sport—ear and nose plugs, bathing cap, eye drops and goggles combine to form a swim bag; for tennis, put your head and wristbands, suntan lotion and tennis balls together.

Store personal items together for convenience. Shampoo, soap, deodorant and powder fit neatly into a Ziploc storage bag and keep other sports bag items moisture-free.

## TRAVELING TEXAS



The unusual Tibetan-style architecture on the campus of the University of Texas at El Paso resulted from a 1916 fire which destroyed half of the buildings there. The wife of the Dean at that time borrowed the design from National Geographic. Three of the oldest buildings were designed in pure "Bhutanese eclectic," a style seen in a Tibetan monastery and fortress in the Himalaya. Most of the later buildings are variations on this style. Tourism Division, Texas Dept of Commerce photo.

The missing lynx: An important symbol of the wilderness may soon roam the peaks of New York's Adirondak Mountains once again. According to National Wildlife Magazine, biologists plan to import 24 lynxes from the Yukon in hopes of establishing a native population in the northeastern Adirondacks. The cats disappeared from New York a century ago when widespread timbering destroyed their habitat.

How did the reptile cross the road? Very Carefully. According to National Wildlife magazine, every time a snake crosses the road, there's one chance in 12 he won't make it. In one experiment, biologists placed plastic reptiles on highways and studied 22,000 attempted road crossings. His findings: 87 percent of motorists went out of their way to avoid the animal, 6 percent went out of their way to hit it, and 7 percent scored accidental hits. Not surprisingly, twice as many drivers made a special effort to hit a snake than to strike a turtle.

### FIRST COLEMAN NATIONAL BANK

All Types of Savings Accounts Member F.D.I.C.

"Always Willing-Always Prepared" Your Good Neighbor Bank

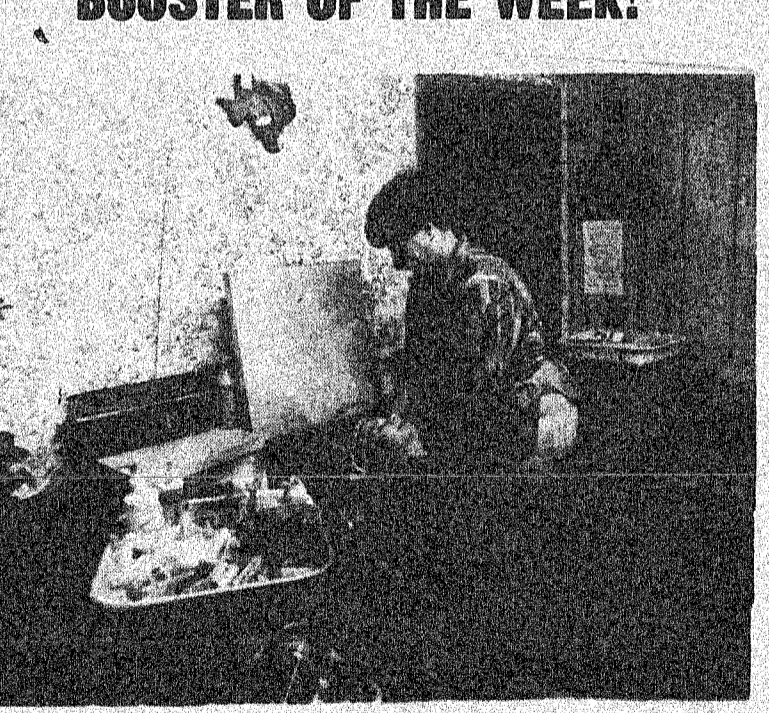
You can bank anytime when you bank by mail!

We Sponsor The News Each Day At 12:30 Over KSTA

## SANTA ANNA BASKETBALL

### 1987-1988

### BOOSTER OF THE WEEK!



Our featured business of the week is Jo Ann's Kurl & Kurl owned and operated by Jo Ann Buse and located at 502 Ave. B. Jo Ann features the latest in cuts for men and women. She also carries a complete line of Redkin hair care products and makeup. Jo Ann is shown in the picture above giving a permanent to University of Texas coed Monique Spillman. Monique knew where to go for that hairdo that will compliment her during the next semester at the University. Others can also get that special attention by calling JoAnn at 348-3298.

### Henderson Funeral Home

'People Who Care'

Conveniently Located in Santa Anna & Coleman.

Coleman 625-2121  
Santa Anna 348-3131

### FRAMES & THINGS

Your Custom Frame Shop... It's Not Finished... Until It's Framed

301 Center 646-8911  
Brownwood, Tx.

### PHILLIPS DRUG

We're Not Just A Drug Store... We Have Something For Everyone

Santa Anna

### H & H Food MART

'Your Affiliated Food Store In Santa Anna'

Locally Owned by Stanley Hartman & Eddie Hartman

Downtown Santa Anna

### Tomlinson Feed & Seed

Purina Dog Chow \$2.00 OFF 50 Lb. Bag

### Jo Ann's Kut & Kurls

'Designer Cuts For Men & Women'

PHONE: 348-3298  
502 Ave. A

### Glenn's Car Sales

Corner of Wallis & Brady Hwy.

1986 PONTIAC FIERRO Like New Condition  
20,000 Miles  
One Owner  
Loaded- Fuel Injected V-6

### SANTA ANNA NEWS

'Proudly Serving The Santa Anna Area For Over 100 Years'

348-3545

### Coleman County Telephone Coop

Owned By The People It Serves

Backing The Mountaineers!

### Santa Anna National Bank

Your Hometown Bank

Backing the Mountaineers!

# CL RAN

The Melody Ma in songs Tuesd large number of ting the program Aderholt, Wan Boyle, Allene Net Gladys Creek, J. Whittington, Vir Sanges, and Mag Brother P.A. Mrs Nolen, Mrs J Steffey sang h songs for thirty evening.

Joe Green p Thursday aftern Edna Taylor donated quilt scr use.

The first Sun conducted by Re and Stena Mitc preached a vety to a large numbe

The 42 games v noon. Peggy Jo this a fun time.

We are happy Clure, Ruby H Hover make their sure hope you all enjoy living at R Dicy Dowe and be missed so mu and staff membe buried Thursday Woodard was January 2.

The lobby is beautiful flower: Allie Woodard brought to the nu residents to enjoy

Malvin Sharp, Ranger Park Inn fire on Decemb would like to help their gift at the where a fund has at Ranger Park I be deeply apprec

Junior Denms for the residents.

LIVING CENTE Preston Cude Smith and Cleo Edna Wells vi Rowe and Jo Ann Minnie Greer Maurine Roundtr Thelma Whitel Cleo Canady and NURSING HOME Maye Tyson v Tyson, Ben and Hubert McCar Mark Norris and Lillie Knotts vis Ila Todd.

### Check

DEAR CO NABERS: Just I, as a private b a criminal bac on a prospective make any differ tive employee investigation in w -F.T., SONOR

DEAR F.T.: to your question The Texas De Safety is the s criminal record are not accessi public. Now r regulatory or lic can access the course, criminal forement entit

I discovered Department of F school districts criminal back But all of these tions to the ge that such record sofar as the D them.

And it makes individual autho tion. DPS still v information.

Original court criminal charge those charges a ter of public rec anyone who has in the first plac records exist at located. But this cess is, as a prac nesses to most Thanks for a tion. Maybe employers out wondered the sa



