

Santa Anna News

"He Profits Most Who Serves Best"

Single Copy 25 cents plus tax

Volume 103, No. 2

THURSDAY, JANUARY 14, 1988

Sales Tax Receipts Up 39 Percent

Santa Anna's sales tax receipt for the month of November was up 39 percent over the previous month's figures.

The good news was received last Friday when State Comptroller Bob Bullock sent checks totaling \$53.7 million in local sales tax to 891 cities that levy the one-percent city tax.

Bullock said this month's allocation showed an increase of \$5.1 million over last year's allocation for the same period, an increase of 10.6 percent and represents sales for

the month of November, 1987.

However, Bullock warned, the unusually large increase is a fluke.

"Last year, we received a late sales tax report of about \$2.3 million from a large statewide corporation, so January 1987 allocations were seasonally smaller. That's why this year's increase appears to be so large," Bullock said.

The actual increase in statewide sales tax allocations was about \$2.8 million, or 5.6 percent, Bullock said.

"This year's increase is also due to the wider tax base enacted by the legislature and the slow but steady healing of our state's economy," Bullock said.

The January Checks represent taxes collected in November and reported by December 20. October was the first month that the broadened tax base went into effect.

Santa Anna's check was for \$1,152.65 showing an increase of 39 percent over the previous month's total of \$826.17.

No School Monday

The Santa Anna Schools will be closed Monday for a teacher workday. Students will complete the first semester of the school year this Friday. Semester examinations have been taking place this week.

Bank And P.O. Closed Monday

The Santa Anna National Bank and the Post Office will both be closed Monday, January 8 in observance of Martin Luther King's birthday.

Register Now To Vote In Super Tuesday Primaries

According to election laws, voters must be registered 30 days prior to any election in order to be eligible to vote in that election. You must be registered by February 7 to be eligible to vote in the "Super Tuesday" primaries on March 8.

Those voting in recent elections have probably received their new voter registration cards by this time and need not re-register.

Local Show Saturday — County Show Begins Sunday

Livestock Shows On Tap For This Weekend

The Santa Anna Rural Youth Fair will take place at the High School this Saturday and the Coleman County Livestock Show will begin Sunday.

The local FFA and 4-H youngsters will show their livestock at the agriculture barn on the High School campus starting at 10:30 a.m. with the judging of the lambs.

There will be a noon break for a barbecue lunch served free of charge by the Santa Anna Livestock Association. The food has been donated by merchants and individuals of Santa Anna and Coleman. Everyone is invited.

Judging will resume at 1:00 with the showing of the market hogs followed by the rabbits.

Oran Egger will be the show judge. William Hightower is Agriculture teacher at Santa Anna High School and sponsor of the FFA.

Hightower expects that the number of entries in the show will be comparable to those of last year.

Prizes are furnished by the Santa Anna Livestock Association.

The Food Fair will take place in the Agriculture building classroom. The judging is expected to be finished and the show items ready for viewing by the public at approximately 11:30 to 12 noon. Sheryl Fuller, the Home Economics teacher, will be the director of the food fair.

The Santa Anna Lions will have a concession stand set up during the

local show.

The youngsters will move their animals to Coleman at the conclusion of the local show. Sifting for the County show will begin at 6:00 p.m. Saturday evening and the Coleman County Livestock Show is scheduled to begin at 1:00 p.m. with the judging of the swine, followed by the rabbits.

Lambs will be shown at 8:00 a.m. Monday and the steer show will follow the lamb show.

Scotty Windham of Abernathy will be the judge for the swine show. Judging of lambs will be done by Rex Stultz of Eden and the steer show judge will be Doug Sims of Fort Worth.

The premium sale will begin Tuesday noon.



James Hartman



Reece McIver

Hartman And McIver On All West Texas Team

Two Santa Anna High School football team members have been named to the All-West-Texas honor football team as chosen by sportswriters of the San Angelo Standard Times.

Reece McIver and James Hartman, both junior students of SAHS were picked for the honor. McIver

was chosen in his position of linebacker and Hartman for safety.

Both young men are honor students as well as being outstanding athletes. Reece is the son of Orabeth McIver and Terry McIver. James is the son of Eddie and Mary Ann Hartman.

Local Students To Become Involved In "Sadd"

Members of the student council are looking at the organization SADD (Students Against Drunk Drivers) in anticipation of forming a local chapter of the alcohol awareness organization. Several of the students are planning to attend a conference in Feb. to learn more about the organization and to further their knowledge in alcohol related issues. Some of you may soon be receiving a letter from the Student Council informing you of their plans and asking for your support.

It is a known fact that alcohol addiction is a major problem among teenagers and adults and these students are willing to take steps to inform their peers of the dangers and try to find out the best ways of prevention and overcoming the problems related to alcohol usage.

In regard to the issue, the following article from the Fredericksburg Standard was sent to local school superintendent Gerald Brister by his daughter Debbie Rathke who is a coach in the Fredericksburg Schools. There have been several alcohol related deaths among teenagers in that area recently. Deb-

bie knew of the desire of the Santa Anna students to attack the issue before it becomes a greater problem here than it already is. Within the last few months there have been 4

deaths of teenagers within a thirty mile radius of Santa Anna, all alcohol related. Some of those teens were acquaintances of local students, bringing the issue closer to home.

Dear Editor:

November 14, 1987 at 1:30 a.m. my son, Chad Rietz, was killed in an automobile accident. Chad was on his way home after spending an evening with some close friends. The nightmare every mother shudders at began for me.

Finding out my son was intoxicated was as shocking as his death. We were so close. He always met his curfew. We talked about the terrible effects of alcohol on the body. He was well informed. We'd talk when he came in at night. I had no reason to doubt my son's words when he'd say, "Mom, I've got more sense than to waste my life away by drinking. Trust me, okay? Don't worry about me."

Parents, open your eyes wider than mine were. I wanted to believe Chad so desperately. I didn't see.

Chad was only 18 years old. Where did the large supply of liquor come from? Someone knows. In our quiet, protected community, there are "adults" supplying our precious children with alcohol. Our community must wake up to this fact and scream for the help our children need. We must STOP these "adults" who so easily take possession of our precious ones' lives.

Our "tradition" in Fredericksburg has turned into placing young lives six feet under our soil.

I'm begging for help from responsible adults. Help me put an end to our children being supplied with alcohol.

Help me get programs in our school system to help our children. It's such a gigantic problem, where do we begin?

To those of you who perhaps contributed to my son's death by being the one who supplied the kids with the alcohol that Friday evening—you will never be able to feel my pain.

Sandra Rietz Doss, Texas

City To Re-negotiate Sewer Contract

The Santa Anna City council spent almost two hours in executive session, during their regular monthly meeting last week, discussing their contract with Dr. J.P. Jones concerning the sewer farm. Upon returning to regular session the council voted to re-negotiate and draw up a new contract with Dr. Jones. The City has been negotiating with Dr. Jones

for several months regarding an easement on the land he owns on which the sewer farm is located. So far they have not been able to reach an agreement suitable to both parties.

The Council also heard the second reading of a hotel occupancy ordinance that had passed on first reading but failed to pass on second

reading and was tabled. Within non-action, the ordinance will not be passed.

The council voted to again retain Collier Watson CPA of Brownwood to work with the budget and also signed a contract with the Coleman County Tax Appraisal District for the collection of city taxes.

After some discussion the council



These elementary students are enjoying a sunny day earlier

this week and happy to be outside after being confined indoors

during last week's cold weather.

Lone Star Files for Rate Change

Lone Star Gas Company manager, Scott Williams, filed for a rate change that will raise the average winter monthly residential gas bill by \$2.44. In contrast, the average summer monthly gas bill will increase only \$3.08 in Santa Anna.

"This rate change is necessary to continue the high performance levels our customers are accustomed to receiving," says Williams. "It will cover necessary operating expenses, such as maintaining, improving and extending the local pipeline distribution system, all vital to dependable service."

The last time Lone Star filed for a rate change in Santa Anna was in May, 1985.

"Lone Star will continue to work for reductions in the cost of the gas purchased for our customers and any savings achieved are passed on to customers each month through the gas cost adjustment," says Williams. "General increases in the cost of doing business make this request necessary," he says.

Based on Lone Star's application, a residential customer using an average of ten thousand cubic feet of gas a month in the winter would see

a change in the monthly bill from \$57.41 to \$59.85. The same customer using three thousand cubic feet of gas during a summer month will see the bill change from \$19.06 to \$22.16.

"No one likes rising prices, but any business must earn enough money to cover its cost of service.

Even though our expenses have gone up, Lone Star still has the lowest average operating cost per customer compared to the other five major gas utilities serving Texas. We will always strive to provide the best possible service to our customers," Williams concluded.

Coleman County To Be Etched On Great Walk

The Capitol Committee and the State Preservation Board has announced that Coleman County will be represented among those etched on the Great Walk leading to the Texas Capitol in Austin. The Coleman County Commissioners had earlier voted funding to participate in the project.

The Texas Association of Counties is sponsoring the project to have all 254 Texas County's names included in a special section of the walk.

Over the past several years, plans have been underway for the restoration of the state Capitol, which will celebrate its 100th anniversary on May 16, 1988. To complete the first phase of the restoration, the Capitol Committee has enlisted the support of all Texans to share in this historic restoration by means of "A Walk in

History" project.

Years of continued use and weather have deteriorated the Capitol's walkways. These approaches to the capitol will be restored using 28 inch concrete diamond-shaped pavers upon which will be etched the name of each contributor.

Completion of the "Walk in History" is scheduled prior to the May 16, 1988 centennial celebration of the Capitol's completion and dedication.

Anyone interested in participating should contact the Capitol Committee, 1507 West 6th, Austin, Texas 78703, 512-477-6499. Pavers are available on the Great Walk and the names of individuals, families, associations, clubs and businesses may be inscribed on the pavers.

Report Your News

Call 348-3545 with news of club meetings, engagements, weddings, new babies, social gatherings, visits and general news around and about town. You are our reporters, and we are always happy to hear from you. Regular articles should arrive at the news office by no later than Friday prior to the week they are to be used. News items are needed by 4 p.m. on Monday of each week. Only late breaking news can be accepted on Tuesday morning.

Office hours are 8-5 on Monday and Tuesday.

Thursday office hours are 9-2. Friday 9 to noon.

SANTA ANNA NEWS
214 N. 2ND.
SANTA ANNA, TEXAS
(915)348-3545
(USPS 481540)

The Santa Anna News is published every Thursday at Santa Anna, Texas 76878 and entered as second class mail under the Act of Congress of March 2, 1879.

SUBSCRIPTION PRICE: Coleman County and all other areas in the state of Texas...\$11.95

SUBSCRIPTION PRICE for out of the state of Texas is \$11.95.

CLASSIFIED RATES: \$1.50 for the first 15 words; five cents per word thereafter per week for personal items. Rates for business advertising are charged by the agate inch at the rate of 25 cents per agate inch.

POSTMASTER: Send change of address to Santa Anna News Box 399 Santa Anna, Texas 76878

POLLY WARNOCK
Managing Editor

TANDY HOWARD
Advertising Manager

BETTY KEY
Bookkeeper-Circulation

MEMBER 1988
TEXAS PRESS ASSOCIATION

FUNERALS

Chris Brimer

Services for Chris Brimer, 73, formerly of Coleman County, were held Saturday at Stevens Funeral Home. Burial was in Coleman Cemetery. He died Wednesday, Jan. 6 in a Goliad nursing home.

He was born in Valera, where he graduated from high school. A veteran of World War II, he served in the U.S. Army, he was employed by the Soil Conservation Service and was a member of the Methodist Church.

Survivors include one son, Robert "Bob" Brimer of Dallas; one sister, Bessie Cobb of Kilgore; one brother J.C. Brimer of Valera; two grandchildren; and three stepgrandchildren.

Letter To The Editor

In a letter to the local library, a Nebraska man is seeking information on some of his relatives and the inquiry was forwarded to the NEWS in order that we might help in his search. The letter is as follows.

Because of the handicaps of my two children and the possibility that a recessive gene carried by chance by both myself and my wife is the underlying cause, I am eager to learn about the health history of blood relatives. My search has led to your city.

In November, 1920, Mr. Albert Fussell, originally from Santa Anna, Texas, and his wife, Martha Ellen (Deen) Fussell, had their sixth child born in Santa Anna. Her name was Mamie Fussell. Later the family moved to the area around Asher, Oklahoma, where they lived in the 1940's. Albert Thomas Fussell was born in 1880 and his wife in 1883 (in Logan, Arkansas). I am most interested in the daughter, Mamie.

Would anyone in your area know about the health history of the Fussell family, especially the incidence of brain-injured conditions such as mental retardation-cerebral palsy? Would anyone know of living relatives of the people mentioned above and how I might contact them?

Thank you for your help. Sincerely, Jerry Baugh 2900 Garfield Lincoln, Nebraska, 68502

Support Your Santa Anna Merchants

Library Notes Check It Out

The following books are on loan to the Santa Anna Library from the Big Country Library System.

WESTERN
Desperation Valley, Willis T. Ballard
The Fallen Badge, John E. Lewis
Ambush at Soda Creek, Lewis B. Patten

MYSTERY
Elery Queen's Maze of Mysteries
Experiment With Death, E.X. Ferrars
A Streak of Light, Richard Lockridge

FICTION
I Heard the Owl Call My Name, Margaret Craven
The Great Alone, Janet Dailey
Yesterday's Spy, Len Deighton
The Doctor Takes a Wife, Elizabeth Seifert
Love's Sweet Design, Frances Engle Wilson

NON FICTION
Pimpernel Gold, Dorothy Baden-Powell
Cosell, Howard Cosell
The Sports of Queens, Dick Francis
Please Don't Eat the Daisies, Jean Kerr

These books will be on the shelves until about the first of Feb. A new selection of books arrive each month.

Fannie's Funnies

By Fannie Gilbert

THE GOOD OLD DAYS
Sister and I went shopping one day. We decided we would see a movie to rest our feet and relax for a while, but when we got inside we found it to be one of those x-rated movies. We were so embarrassed but we hated to just get up and walk out. It got worse and worse. She said, "what must we do, Samantha, recon we ought to pray?" "Oh, no," I says, "just be quiet. We sure don't want God to know we are in a place like this." But we did get up and hurry away from there.

We got to remembering the days when we were young. I'll say one thing, we didn't have any identification problems. Our parents told us who we were and that was it, and a boy's hand-me-down clothes went to his younger brother; not to his sisters.

Our meal time menus had nothing like the menus we have now. We had just two choices, take it or leave it.

Friendship Luncheon Group To Host Musicians Jan.21

Eighteen persons braved the cold weather to attend the first Friendship luncheon of 1988 on Thursday Jan. 7. Table grace was given by Frank McCary. All enjoyed visiting and reporting on Christmas trips; some prolonged by the bad weather and some cancelled for the same reason.

The third Thursday (Jan. 21) the luncheon gathering will be given a treat by a group of musicians. They are: Bill Spradlin of Lake Brownwood who plays the fiddle; Orvell Newcomb of Gorman, a singer; Janny Newcomb who strums the guitar; and "Georgia from Deleon, a pianist.

Everyone is invited to come and bring an extra dish for our guests and to enjoy the special music.

Locals Grandson On All District Football Team

Wesley allen has been named to the All District 9-4A offensive team for 1987.

Wesley, a 6'3" senior is the son of Mr. and Mrs. Arlen Allen of Temple. He has also been nominated for Cent-Tex Academic All District Honors and has recently received an academic letter for scholarship achievements.

He is the grandson of Mr. and Mrs. Gene Allen of Santa Anna and Mrs. Jack Cooper of Rockwood.

Birthdays & Anniversaries

THURSDAY, JANUARY 14
Elaine Brown

FRIDAY, JANUARY 15
Michelle Morgan
Katrina Tomlinson
R.V. Baker

SATURDAY, JANUARY 16
Ray Kirk
Melinda Bouldin
Ward Stewardson
Janette Strickland
Gloria Williams
Frank Reed

SUNDAY, JANUARY 17
Maggie Robinette
Jo Ashworth
Christi Beal

MONDAY, JANUARY 18
Sandy Williams
Amber Johnson

TUESDAY, JANUARY 19
Gary Don Cannon II

WEDNESDAY, JANUARY 20
Sonya Fenton
Susan Snipes

Horton Officially Announces To Run For Re-election

Rhondoe Horton has officially announced his intentions to seek re-election to the place of Constable of Coleman County, the position he has held for the past eight years. When he was elected to the post, it was to Precinct one, but now the job covers the whole county.

Thoughts From Our Pastors

In the absence of a message from one of our pastors, we hope you will enjoy the following by Dennis Prutow from "The Word".

Radical Heart Surgery

Why are some people Christians and others are not? "Some folks determine to follow Christ," you say. "They accept Him as God's son sent into the world to pay the penalty due to their sins. And they accept Christ as their Lord. But I do not accept Christ." But why do these people choose to follow Christ? "That's easy," you answer. "They look at the evidence and think it's the only logical thing to do. But I don't think it is logical!"

Of course, you don't. The Bible says, "A natural man does not accept the things of the Spirit of God; for they are foolishness to him, and he can not understand them" (1 Corinthians 2:14). Look at that again! Non-Christians "cannot understand" the Good News about Jesus Christ. Why? "The mind set on the flesh is hostile toward God, for it is not even able to do so" (Romans 8:7).

Here is the problem! The same evidence is logical to one person and totally irrational to you. This is a deep problem involving both your mind and your heart. Christ recognized this problem in His disciples. He performed radical surgery on them when they failed to understand the Bible. "He opened their minds to understand the Scriptures" (Luke 24:45).



ENGAGEMENT ANNOUNCED Mr. and Mrs. Jack Cooper of Rockwood and Mr. and Mrs. Eugene Allen of Santa Anna wish for their friends and relatives of Coleman County to know of the engagement and approaching marriage of their granddaughter, Elizabeth Allen to Gil Gregory, both of Temple. The couple's parents, Mr. and Mrs. Arlen Allen and Mr. and Mrs. Don Gregory, all of Temple, announce that a February 27, 1988, wedding is planned in the St. Luke's Catholic Church in Temple.

Not So In Coleman County Vietnam Veterans Outnumber Others In Texas

The number of America's older veterans is rising dramatically, and many are moving to Sunbelt states according to Veterans Administration (VA) projections based on current U.S. Census data, said Waco VA Regional Office Director Stephen L. Lemons.

The VA estimates the current number of U.S. veterans at just over 27.4 million, compared to 27.8 million the previous year. There are 1,782,800 veterans living in Texas. Counties with the largest veteran populations are Harris with 318,920, Dallas with 206,900, Tarrant with 133,640, and Baxar with 127,090.

An estimated 1,120 veterans currently live in Coleman County, including 70 Vietnam era veterans, 510 World War II veterans, and 10 World War I veterans.

Unlike most other states, Texas has more Vietnam era veterans—628,000—than there are World War II veterans—585,500. Nationwide, the number of Vietnam veterans is expected to surpass the number of World War II veterans by 1992, Lemons said.

He noted that the number of Texas

veterans 65 and older will increase significantly during the next ten years, and nationally, the number of veterans 75 and older will triple by the end of the century.

"Our veteran population projections predict a dramatic increase in the numbers of older veterans seeking assistance from the VA," Lemons said. "Our work is cut out for us. Our current veteran population, plus veterans' dependents and survivors, represents some 79.3 million people—one third of America's population—all potentially eligible for VA services or benefits."

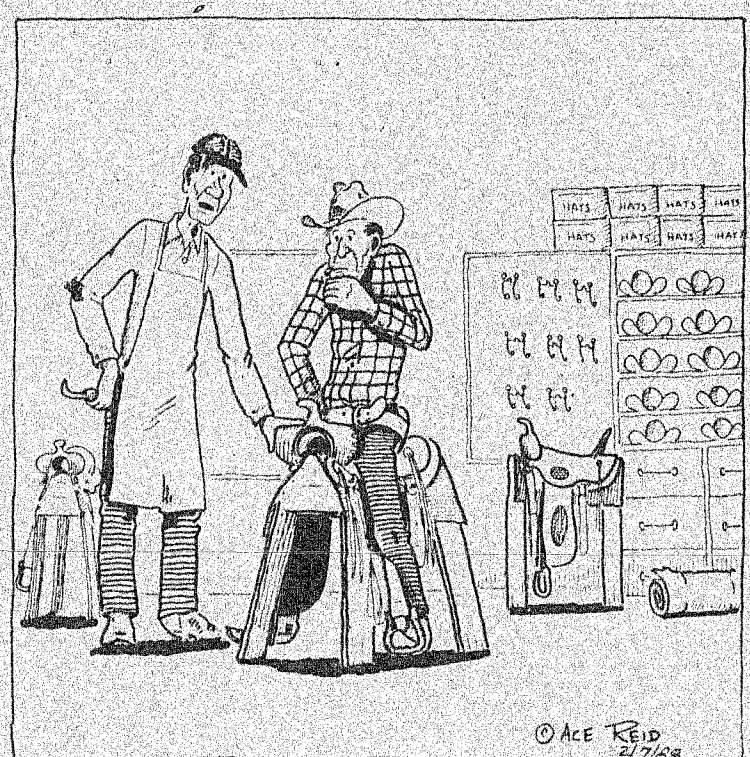
Those seeking information or assistance in applying for VA benefits may contact the VA Regional Office in Waco.

Firemen Answer Call Monday Morning

The Santa Anna Volunteer Fire Department answered a call to the Armando Matta residence on Ave. B in the early morning hours on Monday.

It turned out to be a minor incident and the fire was contained to a mattress. When the firemen arrived the fire had already been extinguished. There was some fire damage done to carpet under the bed and there was some smoke damage according to a spokesman for the fire department.

COWPOKES By Ace Reid



"Jake, that seat belt is the greatest invention since red beans!"

Santa Anna National Bank

Deposits Insured By FDIC Up To \$100,000
Ask About Our Interest-bearing Checking Accounts \$1,000 Minimum
Pass Book Savings
Certificates of Deposit

Substantial Interest Penalty Is Required For Early Withdrawal



WAGON WHEEL RESTUARANT
6:00 A.M. to 2:00 P.M.

Now Open On Sunday For Breakfast and Noon Buffet! Includes Drink, Dessert and Tax!
3.49 Salad Bar With Buffet 1.25 EXTRA

SALAD BAR ALL YOU CAN EAT! 2.50

FRIDAY NIGHT FRESH WATER CATFISH 4.75 ALL YOU CAN EAT! Plus Drink & Tax

Reed Memorial Co. Limited
Monuments of Distinction
P.O. Box 100
Brownwood, Texas
Box 265 Ph. 646-7625
Sylvia Herring
Local Representative

The Santa Anna Funeral Home

Emergency Medical Service
Serving Santa Anna & Coleman County
We would like to invite you to come by and fill out an Emergency Medical Form to keep in our file.
SANTA ANNA FUNERAL HOME
Wallis at N. Lee PHONE 348-3153

RECOR Wayne with 1 has no that if been f Boone Mornin

Pam I Gradu

Tarleton graduates winter com held at the 1 December 11 Among the Herring Mo Anna, rece science degr Pam is th Mrs. Casey David Morg Gus Morgan

Daughte Larry B

Larry and Springs are daughter, D born Decem at Scott and ple. The info onces at bi inches long. Grandpare Benton of St Richard Kra

This re feeding al



RECORD BOOK BUCK was taken in Coleman Co. Nov. 28 by Wayne Jones of Longview. The rack has a 27 inch spread, with 10 points. The buck field dressed at 140 pounds. It has not been learned where the buck was killed, except that it was on a private lease. Although scoring has not been finalized, it is understood that the rack will make the Boone and Crockett listing. (photo courtesy Longview Morning Journal)

Pam Morgan Graduates

Tarleton State University graduates were honored during winter commencement exercises held at the University on Saturday, December 19.

Among those graduating was Pam Herring Morgan formerly of Santa Anna, receiving a bachelor of science degree in Home Economics. Pam is the daughter of Mr. and Mrs. Casey Herring. Her husband is David Morgan son of Mr. and Mrs. Gus Morgan.

Daughter Arrives To Larry Bentons

Larry and Dena Benton of China Springs are the parents of a baby daughter, Danae Nicole Benton, born December 2, 1987 at 1:07 a.m. at Scott and White Hospital in Temple. The infant weighed 8 pounds 5 ounces at birth and measured 19 1/2 inches long.

Grandparents are Carl and Bobby Benton of Santa Anna, Betty and Richard Krassow of China Springs,

Lions Club Plans Chili Fandango

The Santa Anna Lions Club has scheduled their annual Chili Fandango for Friday, February 12. Make plans now and put that date on your calendar of things to remember.

On Dean's List

Julia McClellan, a freshman student at Bee County College has been notified of being on the Dean's list. For the fall semester, she maintained a 3.77 grade point average with an eighteen semester hour course load.

She is a drama major and was selected to be a member of the cast in "The Crucible", their most recent stage production.

Julia is the daughter of Jasper and Jean McClellan and the granddaughter of Mr. and Mrs. J.W. McClellan of Santa Anna.

and James Clark of Ashland, Ohio. Great-grandmothers are Mrs. Jessie Benton of Brownwood, Daycie Harrison and Martha Harrison of Ashland, Ohio, and Esther Krassow of Monroeville, New Jersey.



CONSUMER ALERT

by **Jim Mattox**
Attorney General

A New Twist On Credit Card Fraud

Recently, a number of Texans have been the victims of a new twist in the ever creative world of the telemarketing con artist.

THE PITCH

You receive a telephone call from someone claiming to represent a travel agency. You are offered a vacation package—travel, accommodations, meals, entertainment—at a bargain price.

Sounds interesting, doesn't it?

But you've heard about travel package frauds so you start to refuse. Before you can finish, the salesperson says they will send the materials for your consideration. There will be no bills for 30 days.

What have you got to lose? You have 30 days to check out the package. If you don't like it, it hasn't cost you a cent.

You tell them to send you the material.

"Fine," says the salesperson, "now if you'll just give us a credit card number for verification I'll have your information materials in today's mail."

THE SCAM

You look over the materials, decide the package is not for you, and return everything before the deadline.

But on your next credit card bill you are billed for the vacation you declined. Not only are you billed for it, but you have never heard of the company listed on the statement.

HOW IT WORKS

In order to use credit card services, companies must show a bank they are credit worthy. This allows them to become part of a bank card system and get a merchant identification number. Many of these "travel companies" cannot qualify, so they contract with a third party who can get a merchant identification number and can borrow money from a bank. These third party companies process the vendors' charge slips for a fee, which can be as much as ten per cent.

VIOLATIONS OF THE LAW

The sudden appearance of the processor's name on your bill creates a problem—obviously, it makes it very difficult for you to dispute the unauthorized charges since the name on the billing slip is different than that of the merchant who called you.

The use of a new name may violate the provisions about full disclosure of the *Truth in Lending and/or Fair Credit Billing* acts, as well as the *Texas Deceptive Trade Practices Act* and the national rules promulgated by the credit card industry.

Moreover, in all likelihood, charge slip processors are violating more than full disclosure provisions; several have been found to sell their slips to other processors in different parts of the country. This means that you can get double or triple billed for products or services you never ordered or used.

WHAT TO DO

Since processing charge slips is lucrative—one processor handled more than \$500,000 in slips in less than two weeks, for a 10% cut—it is unlikely to go away any time soon. You must, therefore, be on your guard constantly. Check out all telemarketing sales pitches before you agree to anything.

To dispute any unauthorized charges, notify the credit card company in writing as soon as possible. You must describe the problem and indicate that you have tried to correct the situation with the merchant/vendor. Most banks do their best to investigate charge back requests and honor the legitimate ones.

Low-Income Households May Be Eligible For Energy Assistance

AUSTIN—Some low income Texans may be eligible for help in paying heating bills this winter through the Home Energy Assistance Program, according to Texas Department of Human Services Commissioner Marlin Johnston.

Johnston said the one-time payment is available to many low-income households. Applications for energy assistance were mailed to households that received food stamps, Aid to Families with Dependent Children, or Supplemental Security Income in December. Other low-income individuals may request an application from local DHS offices during the enrollment period of Jan. 15 through Feb. 18.

Eligibility is limited by gross income and resources. Aid is available for a one-person household having less than \$389.49 gross income per month. The gross income limits are \$781.49 for households of two per-

sons, \$973.49 for three, \$1,165.49 for four, \$1,357.49 for five, and \$1,549.49 for six.

Households are eligible if the cost for heating is included in the rent payment or if the household pays a portion of its home energy costs.

Energy assistance checks are sent directly to the people who are eligible for assistance. However, the checks are made payable to the energy provider.

Persons receiving one of these energy assistance checks should mail it or take it in person to the energy provider business office with their regular energy bill. The check can be cashed only by the energy provider. If the HEAP check is more than the energy bill, the additional amount will be credited to the person's account for the next month's bill. If the energy bill is higher than the check, the person is responsible for paying the difference.

Most important, *treat your credit card numbers as carefully as you treat your cash. DO NOT* give your numbers to anyone except reputable business you know and trust.

FOR MORE HELP

If you have a problem with a notary or any other consumer matter, call the nearest Consumer Protection office. Offices are in Austin, Dallas, Houston, San Antonio, McAllen, Lubbock and El Paso. The Attorney General's Office is the people's law firm. We're here to help you.

Mrs. McCaughan Sees Thrilling Game

Mrs. T. J. McCaughan visited her daughter Betty Henderson in Del Rio last week.

While there she got to see her great-granddaughter, Michelle Ricks, score the winning basket in a basketball game to make her team the champions in the Del Rio Invitational Tournament for the seventh grade.

Lappe Law Office
709 Wallis
(Inside Patterson Ins. Building)
Law Office Open On Wednesdays Only.
PHONE: 348-3157

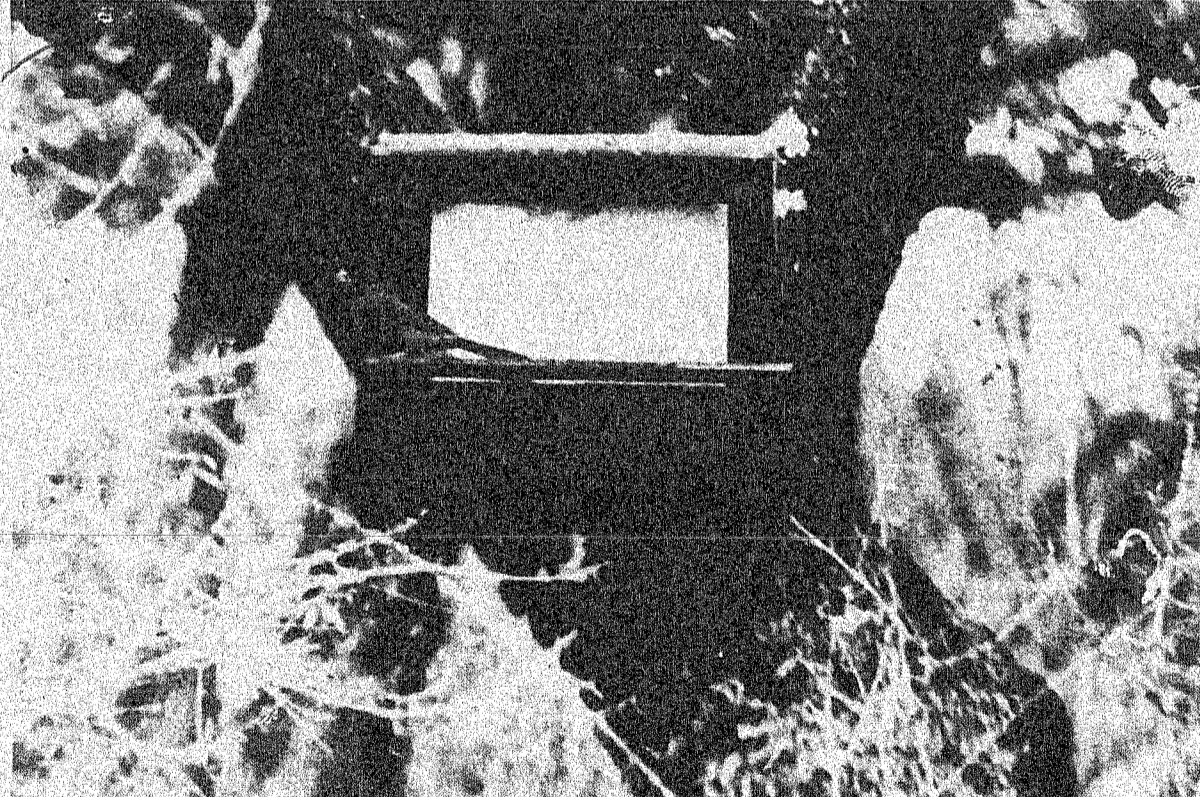
Country Basket
SALE \$1.89

Crisp, tender, chicken-fried fingers of 100% beef, golden fries, Texas toast and creamy country gravy. That's the one and only Dairy Queen Country Basket. So come on by for the Texas taste that's just this side of heaven — now at a heavenly sale price!

Monday, January 18 thru Sunday, January 31
at participating stores.

Dairy Queen
"better than ever..."

© Copyright 1985 The D.Q. Co. Council. All Rights Reserved. ® TM Trademarks of The D.Q. Co. Council. ® Registered Trademark Am. D.Q. Corp.



This redbird was found feeding at the feeder in the back yard of the Warnock home during last week's frosty weather. It is important to remember to care for our feathered friends during harsh weather times.

COME ONE. COME ALL.
THIS IS YOUR CHANCE TO TALK DIRECTLY TO YOUR CONGRESSMAN.

SATURDAY, JANUARY 16, 1988
1:00-3:00 P.M.
CULLEN AUDITORIUM, ACU CAMPUS

WE ARE PLEASED TO HOST CHARLIE'S ANNUAL TOWN HALL MEETING.

W. J. Teagu
DR. WILLIAM J. TEAGUE
PRESIDENT, ABILENE CHRISTIAN UNIVERSITY

Photo by Anthonio for Congress Committee

J
A
N
1
4
8
8

SAHS Girls And Boys Win One And Lose One

In last week's basketball action for the local teams, both ladies and gents won one and lost one. On Tuesday night of last week they met the teams from Eden and both came away with victories.

Both will begin district play Friday night at home against Lohn at Santa Anna.

Girls

S.A. 49-Eden 40

The Lady Mountaineers coached by Kathy McGough defeated the girls from Eden 49-40. Diana Castillo led the shooting effort by racking up 13 points and Niki McGough followed with 10. The ladies were only able to put up two points in the first period of play when Eden tossed in 14. However they soundly outscored Eden throughout the rest of the game.

The halftime score was Eden 23, S.A. 16, due to that lazy first quarter, but the local girls pulled away in the third period to come away with the victory. Their record following that game was 11-6.

Boys

S.A. 60-Eden 55

The Santa Anna Boy's team came out victors over Eden with a score of 60-55. That was a close game all the way with Santa Anna scoring 14 in the first period and Eden 17. The local boys racked up 12 points in the second period with Eden 9. The halftime score was tied at 26 all.

In the third period Santa Anna outshot Eden 16 to 10 and the final quarter was almost even with Santa Anna 18 and Eden 19.

Kendall led the pack in scoring for 21 points for Santa Anna. Reece McIver got in the double digits with 10.

The Santa Anna JV defeated Eden 56-29.

Girls

Priddy 46-S.A. 41

In Friday night action the Santa Anna girls lost a close one to Priddy, 46-41. The first period ended with Santa Anna 7 and Priddy 6. The local girls tallied 12 points to Priddy's 11 in the second quarter to lead at halftime 19-17.

Priddy came back in the third period to take the lead by outscoring the local girls 16-12 and again in the final period 13-10.

Castillo again led in shooting with 15 points.

Santa Anna's record is now 11-7 and will begin district play Friday night against Lohn at Santa Anna.

The Santa Anna boys were defeated by Priddy on Friday night by the score of 65 to 59. Priddy led all the way until the final period when Santa Anna outshot Priddy 38-15, but the effort was not enough to pull out the victory. The first period ended with Priddy 12 - S.A. 8, and the halftime score was Priddy 31 - Santa Anna 28.

James Hartman led the Mountaineers in the close encounter with 21 points. Reece McIver got into the double digits with 16 and Eddie

Tomlinson 10. The boys are now 9-9 for the season and will begin district play Friday night against Lohn at Santa Anna.

School Menu

MONDAY
No school

TUESDAY
BREAKFAST: cereal, juice, milk.
LUNCH: Meat & Spaghetti, green beans, peaches, hot rolls, milk.

WEDNESDAY
BREAKFAST: donuts, juice, milk.
LUNCH: stew, cheese chunks, apples, crackers, milk.

THURSDAY
BREAKFAST: cereal, milk, juice
LUNCH: fried chicken with gravy, cream potatoes, English pea salad, jello with fruit, hot rolls, milk.

FRIDAY
BREAKFAST: cinnamon toast, juice, milk.
LUNCH: ham and cheese sandwiches, lettuce and tomato, french fries with catsup, cookies, milk.



SAHS Citizen Of The Week

Jenny Benton, a sophomore student at Santa Anna High School has been named the SAHS Citizen of the Week. She was chosen because of her outstanding work as an aid in the elementary physical education program.

Jenny is the daughter of Kathy Keeney.

Mentorship program at Texas A&M encourages minorities to go to college

COLLEGE STATION — A new program developed at Texas A&M University encourages minority pupils to attend college and helps prospective teachers get a handle on minority concerns while also providing academic and social interests for minority students, say project directors.

"Minority Mentorships" is the name for the long-range project. Dr. Pat Larke and Dr. Donna Wiseman have developed, as a part of the curriculum in education, a mentorship program for local elementary minority students who will link up with teacher education majors and College of Education faculty at the university.

"The project is two-fold because not only are the Texas A&M students willing to help the minority children, but they are willing to learn from them as well. Both of them will gain experiences to help them grow," said Wiseman.

Larke said the program will give education undergraduates insight into students' learning styles and a base for developing teaching strategies and instructional techniques they will be able to use in their future classrooms.

"Our ultimate goal is to increase the percentages of minorities pursuing higher education by increasing the pool of students qualified to attend a university. We feel confident that spending time with the minority children will let them know they can accomplish anything because they will have the support they need for success," she said.



WENDY WEATHERS, 5-year-old daughter of Jay and Sandra Weathers, recently competed in The Little Miss Texas Christmas Pageant held in Fort Worth. Wendy won second alternate and also the title for most beautiful in the 4-6-year-old division. She now qualifies for the state pageant in June. She is the granddaughter of Mr. and Mrs. D.K. Whitmire of Fort Worth, Joyce McKenney of Santa Anna, and Jay F. Weathers of Brownwood.

Anti-Aging Creams Don't Make Anything Disappear But Money

HOUSTON—(Baylor College of Medicine)—Those anti-aging creams touted at the cosmetic counter don't make anything disappear but money.

Though such skin creams claim to prevent or remove wrinkles, the only thing that has been proven about these cosmetics is that they moisturize the skin surface, said Dr. John E. Wolf Jr., professor and chairman of dermatology at Baylor College of Medicine.

"These products are not sold as drugs, so they're only required to prove that they're safe...not that they work," Wolf said. "Virtually none of these companies publish the research that goes on to develop the creams, so the scientific community can't investigate the industrial 'trade secrets'."

Wolf said an understanding of the aging process should make people skeptical about skin products that

cushion to sit on," Wolf said. "This is a natural consequence of aging. It's often controlled by genetics, and there's not much you can do about it."

Deep wrinkles and furrows in the skin are caused by damage to the dermis. The skin doesn't snap back into place because of the damaged elastic tissue.

Skin creams containing collagen and elastin that are rubbed into the outer skin layer cannot replace damaged collagen and elastin tissue. Even if these ingredients filter down into the dermis, the body will treat them as foreign particles and dissolve them, Wolf said.

The most common cause of premature damage to the dermis is excessive exposure to sunlight, which penetrates the skin surface and destroys collagen and elastic tissue in the middle layer.

Wolf said wearing a sunscreen



Before use



After use

supposedly turn back the wrinkles of time. Youthful skin can only be maintained through the use of

sunscreens, following a well-balanced diet and avoiding chemicals and pollutants.

Skin has three layers. The epidermis is the outer layer, which is formed of cells that constantly grow and get replaced by new cells. This layer determines the texture and surface appearance of skin.

The middle layer, or dermis, is formed of two fibrous proteins that work together: collagen and elastic tissue. The collagen enables skin to stretch; the elastic tissue causes the skin to snap back into position.

The inner layer, called subcutaneous fat tissue, consists of fat cells that provide a cushion for the top two layers to rest on, and gives skin its depth and softness.

As people age, their subcutaneous fat tissue gets thinner, causing the skin to seem looser.

"The whole contour of the face may change because the outer skin no longer has a nice, soft fatty

with an SPF (sun protection factor) of 15 or higher will offer maximum protection from the sun's harmful rays.

Because vitamin C promotes production and growth of collagen, Wolf said a well-balanced diet also protects the dermis. He cautioned, however, that scientific studies have shown that "megadoses" of vitamin C are of special benefit to the dermis.

Exposure of the outer skin to chemicals and pollutants in the water and air, irritants in abrasive soaps, and bad weather can result in rough, dry, scaly skin with tiny fine

lines. These may become more noticeable because the oil glands secrete less oil on the skin surface as the body gets older.

Whether expensive or not, any skin cream that adds moisture to the outer layer can help resolve the problem of dry skin, Wolf said.

Using "super-fatted" soaps that are abrasive to the skin can also help minimize damage to the epidermis.

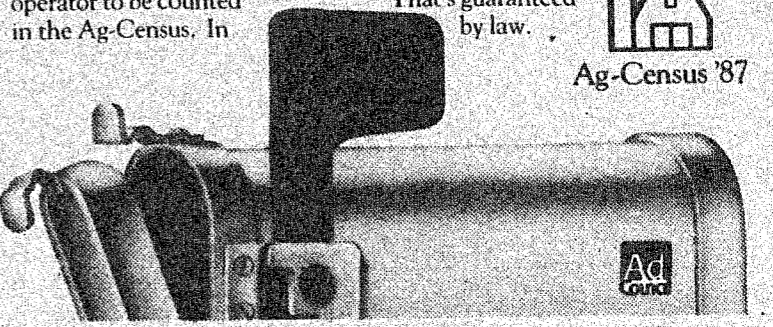
The Census of Agriculture is coming.

The 1987 Census of Agriculture is coming to a mailbox near you. Take the time to fill out your Census of Agriculture report form and return it by February 1, 1988. Why?

It's vital to our farm economy. You don't have to be a big operator to be counted in the Ag-Census. In

fact, you don't even have to be farming now. But if you receive an Ag-Census form in the mail, we want to hear from you.

So fill out and return your Ag-Census form early. All the information you give is completely confidential. That's guaranteed by law.



SANTA ANNA BASKETBALL 1987-1988

BOOSTER OF THE WEEK!



The Santa Anna National Bank was established in December of 1933 and has been the backbone of the community since that time. Joe Ed Wise is President of the bank and Executive Vice President is Rob Cheaney. Both are always ready to discuss your banking needs with you. See them for commercial, personal or farm and ranch loans. Pictured

are Vicki Aldridge, Cathy Privitt and Dorothy Dillingham. The three ladies will greet you with smiles and cheerful conversations as you take care of banking business at the teller windows. All of the staff at the Santa Anna National bank are friendly hometown people who make your needs and interests their professional concerns.

Henderson Funeral Home
'People Who Care'
Conveniently Located in Santa Anna & Coleman.
Coleman 625-2121
Santa Anna 348-3131

FRAMES & THINGS
Your Custom Frame Shop... It's Not Finished... Until It's Framed
301 Center 646-8811
Brownwood, Tx.

PHILLIPS DRUG
We're Not Just A Drug Store... We Have Something For Everyone
Santa Anna

H & H Food MART
'Your Affiliated Food Store In Santa Anna'
Locally Owned by Stanley Hartman & Eddie Hartman
Downtown Santa Anna

Tomlinson Feed & Seed
Purina Dog Chow
\$2.00 OFF
50 Lb. Bag

Jo Ann's Kut & Kurls
'Designer Cuts For Men & Women!'
PHONE: 348-3298
502 Ave. A

Glenn's Car Sales
Corner of Wallis & Brady Hwy.
1986 PONTIAC FIERRO Like New Condition
20,000 Miles
One Owner
Loaded- Fuel Injected V-6

SANTA ANNA NEWS
'Proudly Serving The Santa Anna Area For Over 100 Years'
348-3545

Coleman County Telephone Coop
Owned By The People It Serves
Backing The Mountaineers!

Santa Anna National Bank
Your Hometown Bank
Backing the Mountaineers!

FIRST COLEMAN NATIONAL BANK
All Types of Savings Accounts Member F.D.I.C.
"Always Willing-Always Prepared"
Your Good Neighbor Bank
You can bank anytime when you bank by mail.
We Sponsor The News Each Day At 12:30 Over KSTA

Stevens Funeral Home
Since 1889
Member By Invitation of National Selected Morticians
400 W. Pecan 625-2175

