

Extended Hours for Window Service At Santa Anna Post Office  
7:00 A.M.-4:30 P.M. Monday-Friday Through Dec. 24

# Santa Anna News

"He Profits Most Who Serves Best"

Single Copy 25 cents plus tax

Volume 102, No. 50

THURSDAY, DECEMBER 10, 1987

## Mountaineers Place Four On First Team, 8-A



All-district Honors Top row left to right: Ken Brixey, Robby Pritchard, Scotty Anderson, Clarence McDowell. Middle row: Bobby Pritchard, James Hartman, Alonzo Hernandez, Jacky Duquette. Bottom row: Paul Mata, Vernon Valdez, Bobby DeLeon and Reece McIver.

The Santa Anna Mountaineers placed 4 players in five positions on the 8-A first team All-District. Selected to the honors from Santa Anna were Reece McIver, Robby Pritchard, Scotty Anderson, and James Hartman.

McIver, a 6 ft. 200 pound junior was selected for first team running back on offense and was a unanimous choice for linebacker on defense. James Hartman, also a junior, at 5 ft. 11 and 190 pounds, was also a unanimous choice in the defensive secondary.

Robby Pritchard, 5 ft. 10, 150 pound senior was selected at wide receiver offense and Scotty Anderson, 6 ft. 1, 175 pound sophomore received 6 votes at his defensive end position.

Second team offense selections from Santa Anna were: James Hartman, QB; Bobby DeLeon, TE; Paul Mata, C; Vernon Valdez, T; and James Hartman, Punter.

Honorable mention of offense went to Jacky Duquette, RB and Alonzo Hernandez, RB. Named honorable mention of defense were Bobby Pritchard, line; Charles McDowell, DE; and Ken Brixey, line.

Following are the complete teams as selected for the all-district honors.

**First Team Offense**  
Kelly Corn, Baird, Jr., QB.

Reece McIver, Santa Anna, Jr., RB.  
Burk Robinson, Baird, Soph., RB.  
Derrick White, Rising Star, Soph., RB.

Robby Pritchard, Santa Anna, Sr., WR.  
sTee Barton, Baird, Soph., WR.  
Richard Payne, Baird, Sr., TE.  
Steve Goggans, Lometa, Sr., TE.  
Lupe Pavon, Rising Star, Sr., T.  
Cannon Emmons, Baird, Sr., T.  
Adam Puckett, Baird, Jr., G.  
John Flores, Rising Star, Sr., G.  
Danny Bell, Baird, Jr., C.  
Ray Morales, Blacket, Jr., Punter.  
Stacy Green, Rising Star, Jr., Kicker.

David White, Rising Star, Sr., MVP.  
**First Team Defense**  
Taggart Williams, Baird, Soph., Line.

Holman James, Rising Star, Sr., Line.  
Pavon Cups, Rising Star, Sr., Line.  
Scotty Anderson, Santa Anna, Soph., E.

Danny Bell, Baird, Jr., E.  
Reece McIver, Santa Anna, Jr., LB.  
Sheldon Bennight, Evant, Soph., LB.  
Stacy Green, Rising Star, Jr., LB.  
Dan Rodgers, Gorman, Sr., LB.  
James Hartman, Santa Anna, Jr., Sec.

David White, Rising Star, Sr., Sec.  
Scott Gressett, Gorman, Sr., Sec.  
James Straley, Evant, Sr., Sec.  
Guy Duncan, Baird, Sr., MVP.

**Second Team Offense**  
James Hartman, Santa Anna, Jr., QB.

Sheldon Bennight, Evant, Soph., QB.  
Nicky Craft, Evant, Sr., RB.  
Don Rodgers, Gorman, Sr., RB.  
Guy Duncan, Baird, Sr., RB.

Dennis Ryan, Blanket, Sr., RB.  
Scott Kirkland, Baird, Soph., WR.  
Reil Barron, Rising Star, Jr., WR.  
Bobby DeLeon, Santa Anna, Jr., TE.  
James Diaz, Blanket, Sr., TE.  
Paul Mata, Santa Anna, Sr., C.  
Ronson Childers, Gorman, Jr., C.  
Brant Zink, Blanket, Jr., G.  
Tommy Curb, Gorman, Sr., G.  
Scooter Morrison, Baird, Jr., T.  
Vernon Valdez, Santa Anna, Sr., T.  
Scott Campbell, Gorman, Sr., T.  
David White, Rising Star, Sr., Punter.  
James Hartman, Santa Anna, Jr., Kicker.

**Second Team Defense**  
Paul Mata, Santa Anna, Sr., Line.  
John Parrish Event, Jr., Line.  
H.S. Grisson, Blanket, Soph., Line.  
Scott Campbell, Gorman, Sr., Line.  
Dennis Ryan, Blanket, Sr., DE.  
Adam Puckett, Baird, Jr., DE.  
Freddie Betts, Rochelle, Jr., LB.  
Ray Morales, Blanket Sr., LB.  
Shane Deal, Baird, Soph., LB.  
Derrick White, Rising Star, Soph., LB.

Easton Rex, Baird, Sr., Sec.  
Eddie Ganter, Baird, Sr., Sec.  
Kelly Corn, Baird, Jr., Sec.  
Russell Joy, Baird, Soph., Sec.

**Honorable Mention Offense**  
Jacky Duquette, RB;  
Alonzo Hernandez, RB.

**Honorable Mention Defense**  
Bobby Pritchard, Line;  
Clarence McDowell, DE.  
Ken Brixey, Line.

## Santa Anna Opens Christmas Season

Downtown Santa Anna was a festive place last Friday afternoon. Christmas decorations were in place as the town celebrated the opening of the Christmas Season. The Lions Pancake Feed and the open house at WTU saw a steady stream of visitors. The bake sale, rummage sale and craft sale seemed to be busy just before parade time.

The Christmas Parade was the highlight of the day's activities. The parade, probably the largest Christmas parade in 10 years, was led by the Mighty Mountaineer Marching Band. The band filled the air with Christmas music as they marched down the street in their uniforms with flags flying. Next came 23 decorated cars and floats, 8 ambulances, tractors, and fire trucks and finally, Santa Clause riding on a fire truck.

The first prize of \$75 for the best float went to Delta Omicron for their float "Caring and Sharing" which

featured a large group of Care Bears. Second prize of \$50 went to the Santa Anna Fire Department Ladies Auxillary which carried "Granny" in a rocking chair and a children's choir singing Christmas carols. Third prize of \$25 went to the Seventh-Day Adventist Church for their float with a nativity scene.

Delta Omicron awarded cash prizes for the best decorated cars carrying pageant contestants. First prize of \$15 went to the car carrying Brandi Martin and Tim Abernathy. Second prize of \$10 went to Heather Bradley and Shylar Farley. Third prize of \$5 went to Brandi Horner and Jason Dean.

Organizations competed for prizes by decoration windows in the downtown area. First prize of \$35 went to The Santa Anna Fire Department Auxillary for their window in the Western Auto Store. The Eastern Star took the second prize of \$25. The \$15 third prize went to Delta

Omicron. At the end of the parade drawings for 4 groups of \$25 "Santa Anna Dollars" were held. Winners were: Leo Shields who got his ticket from Hardin's Texaco, Dorothy Alsbrook who shopped at Western Auto, Gail Horner with a ticket from Horner Fina, and Bernice Hardin with a ticket from Hardin Texaco.

## Letters To Santa

The Santa Anna News will be printing the children's letters to Santa Clause again this year. They will be in the December 24 issue of the paper. Parents and teachers are asked to turn the children's letters in now. December 17 is the last day letters will be accepted. To be sure they get in the paper, turn them in by December 15.

## WTU Announces Rate Increase

Residential customers of West Texas Utilities Co. will pay about 16 per cent more for their electricity as the result of a rate increase granted by the Public Utility Commission of Texas.

The Commission approved an increase of about \$28.5 million annually, which amounts to a 12.9 per cent average. The Company had filed last May for a \$50.4 million rate increase, which would have been a 23 per cent increase.

Under the Commissions final order, the typical residential customer would see his bill increase by \$7.24, or from \$43.95 to \$51.19. This is an average between the summer and winter differentials. The new summer rate will raise residen-

tial bills by 15.7 per cent, while the winter rate will raise bills by 17.4 per cent.

The new rates are scheduled to go into effect Dec. 22. The rates will be prorated, so that all customers will be treated equally no matter what time of the month their meters are read.

The rate increase, which had been sought to help pay for WTU's new Oklaunion Power Station, was accepted by Company officials as "fairly reasonable."

"Although we didn't get everything we needed, the results are acceptable," a Company spokesman said. As of now, it appears that another rate increase

won't be necessary before the early or mid-nineteen nineties.

## County Stock Show Entries Needed Now

4-H'ers planning to enter the County Stock Show need to do so in the County Extension Office this week, Tuesday, Dec. 8 thru Friday, Dec. 11. The cost this year is: \$6.50-calf; \$4.50-lamb; \$4.50-rabbits (Pen of 3).

No late entries will be accepted. Those having questions should call the County Extension Office at 625-4519.

## Amy Sauveur and Dan Benton Chosen Miss and Mr. Christmas

The 1987 Christmas Pageant sponsored by Delta Omicron Chapter of ESA International was held Sunday afternoon, December 6, 1987. Over \$1,000 was raised to be used by the organization to help community families.

Winners in the Christmas Belle and Beau division were: fourth place Heather Bradley, daughter of Dale and Donna Bradley escorted by Shylar Farley, son of Shelly Farley and Scott Farley; third place winner was Christina Trichel, daughter of Dorthea Trichel, escorted by David Gilbreath, son of Bill and Tanna Gilbreath and David Strickland; second place was Chantel Salazar, daughter of Sylvia Salazar, escorted by Jesse Castillo, son of Mr. and Mrs. Ramon Castillo, Sr. 1987 Belle and Beau are Sabrina Martin, daughter of Paul and Gay Martin and her escort Erwin Loyd, son of Lynn and Gail Loyd.

Winners in the Little Miss and Mr. Christmas division were: fourth place Brandi Martin, daughter of Bill and Rocky Martin, escorted by Tim Abernathy, son of Ricky and Billie Gay Abernathy; third place was Bernice Cook, daughter of Danny and Glenda Cook, escorted by David Howard, son of Glen and Glida Howard; second place Melissa Stark,

daughter of Gary and Donna Stark, escorted by Bobby Malaer, son of Steve and Kelly Malaer. The 1987 Little Miss and Mr. Christmas are Kristen Keeney, daughter of Roy and Glenda Keeney, escorted by Aaron Guthrie, son of Lane and Sharon Guthrie.

Junior Miss and Mr. Christmas winners are fourth place: Cheree Halmon, daughter of Lloyd and Elyonnie Halmon, escorted by Michael Griffin, son of Mr. and Mrs. Woodrow Griffin; third place Misty Bradley, daughter of Dale and Donna Bradley, escorted by Corey Brown, son of Betty Sue Brown; second place is Tai Munick, daughter of Rodney and Patti Musick, escorted by Glen Donham, son of Marty and Nikki Donham. The 1987 Junior Miss Christmas is Shamey Brand, daughter of James and Karan Morris, escorted by Tom Guthrie, son of Lane and Sharon Guthrie.

Runner up for Miss Christmas is Honey Fraim, niece of David and Kay Yancey, escorted by Rod Munick, son of Rodney and Patti Musick. Miss Christmas 1987 is Amy Sauveur, daughter of Jo Ann Sauveur, escorted by Dan Benton, son of Robby Sauveur.



Amy Sauveur



Dan Benton



Shamey Brand



Tom Guthrie



Kristen Keeney



Aaron Guthrie



Sabrina Martin



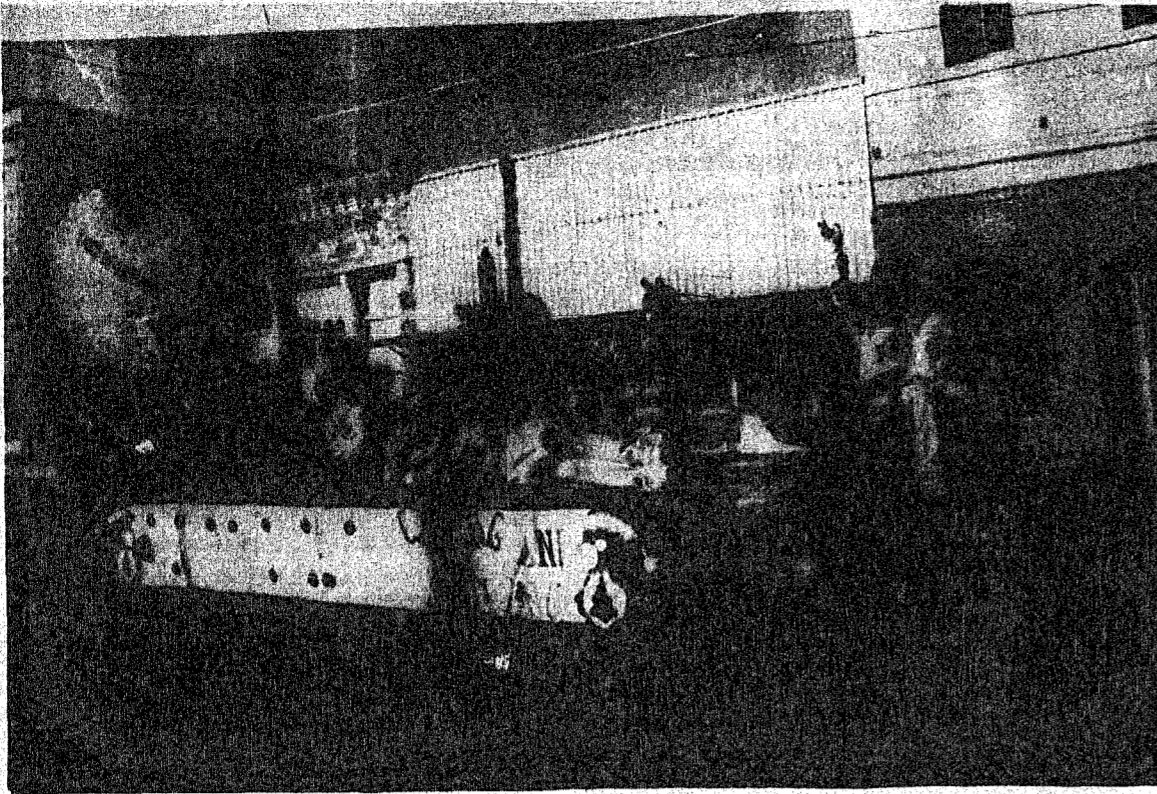
Bernice Cook

Little Miss and Mr. Christmas

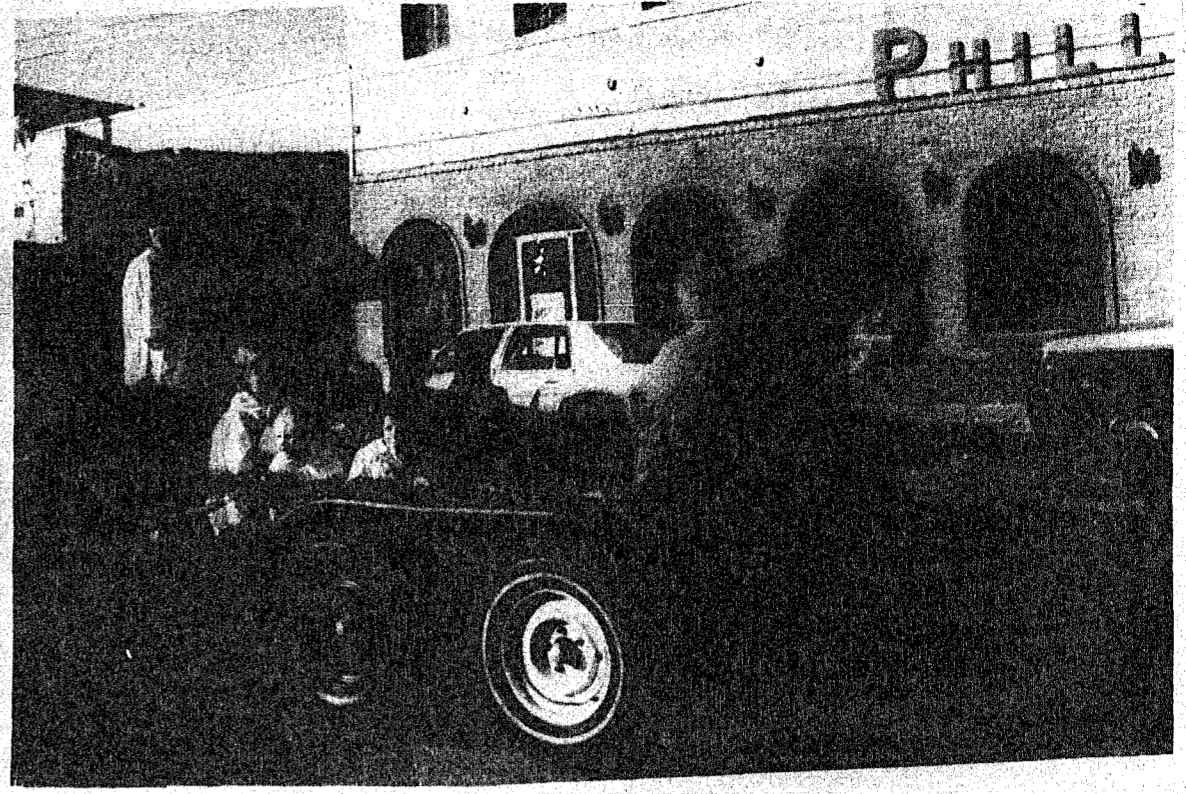
Christmas Belle and Beau







Downtown Santa Anna was a festive sight Friday afternoon. The first prize of \$75 for the best float went to Delta Omicron for their float 'Caring and Sharing' which featured a large group of Care Bears.



The largest parade in probably 10 years opened the Christmas Season in Santa Anna Friday. The Santa Anna Fire Department Ladies Auxiliary float which carried 'Granny' in a rocking chair and a childrens choir singing Christmas carols won \$50 for second place.

### Booster Club News

The next meeting of the Athletic Booster Club will be on Wednesday December 16, at 7:00 p.m. in Perry Gym. The purpose of the meeting is to set up the concession stand for the Basketball Tournament on December 17, 18, and 19. Anyone wishing to volunteer to work or donate concessions would be welcomed. Contact Robert Pritchard or Mary Ann Hartman. Recent projects of the Booster Club have been the boys and girls Championship Banners, the Texas and American flags hanging in the gymnasium, and two portable basketball goals.

### Work At Stacy Site Progressing

Ron Hayes, project manager reports that work is progressing well on Stacy dam construction. Currently there are 164 people on the Brown & Root payroll. Excavation of the tunnel has reached the 574 feet mark, with about another 800 feet to go for completion. Currently, with one crew, they are moving ahead about 15 feet a day with blasting. Plans are to add another crew and that should up the progress to 30 feet a day. There is continued back-filling of the core trench sector north of the

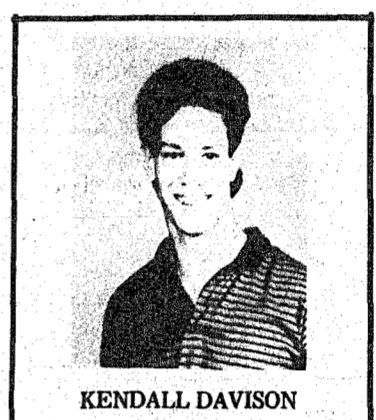
spillway area. Most of this should be brought to ground grade around the first of the year. This will set the stage for random fill on the earthen slopes of the major portion of the dam. They will begin excavating rock from the bluff at the south anchor for the dam around January 1, 1988. This material will be used to supply the crusher-batching plants which are now operational. Currently the plants are using rock removed from the core excavation as well as stockpiled gravel. Just north of the river channel, excavation of the trench for a 72 inch concrete conduit is nearing grade, and it is here that the first concrete pours of the project will be made on the conduit in early January. Also, to be installed in the trench is a 12 inch pipe. These two will become the outlet works for normal controlled releases from the reservoir, also serve for diversion of the Colorado River during the final closing of the plug. The main spillway will be for flood control releases.

**Stevens Funeral Home**  
Since 1889  
Member By Invitation of National Selected Morticians  
400 W. Pecan 625-2175

### School Menu

- FRIDAY  
BREAKFAST: Cereal, raisins, milk.  
LUNCH: Bar-B-Q on bun with pickle relish, tator tots with catsup, pork and beans, decorated cookies, milk.
- MONDAY  
BREAKFAST: Cereal, juice, milk.  
LUNCH: Pizza, buttered corn, salad with dressing, ice cream, milk.
- TUESDAY  
BREAKFAST: Cinnamon roll, juice, milk.  
LUNCH: Taco Bowl with Taco sauce, refried beans, lettuce and tomato salad, Spanish rice, oranges, milk.
- WEDNESDAY  
BREAKFAST: Biscuit with bacon, juice, peanut-butter and syrup, milk.  
LUNCH: Baked ham, creamed potatoes, English peas, fruit cup, hot rolls, milk.
- THURSDAY  
BREAKFAST: Buttered toast, jelly, juice, milk.  
LUNCH: Turkey dressing with giblet gravy, sweet potatoes, green beans, cranberry Jello with fruit and topping, hot rolls, milk.

**FRIDAY**  
BREAKFAST: Cereal, raisins, milk.  
LUNCH: Bar-B-Q on bun with pickle relish, tator tots with catsup, pork and beans, decorated cookies, milk.



### SANS Citizen Of The Week

Kendall Davison has been chosen Santa Anna High School Citizen of the Week. Kendall is a member of the Senior class and is the son of Rev. and Mrs. Claude Davison. Kendall was selected for this honor because of the outstanding leadership qualities he has exhibited this year.

### "Thots"

By J.C. Weathers  
It seems that lies cannot accept the futility of figleaf coverage for their nakedness. When an issue gets into politics it is never resolved, never returns, but is given the spider treatment and anesthetized so it may remain a morsel for political feast at political convenience.

### Is This Toy Fun?

Next time you are in a crowded toy store considering the educational, creative, interactive, or inventive value of a toy, ask yourself, "Is this toy fun?" Dr. Stevanne Auerbach spent three years evaluation more than 150,000 toys, visiting 1,000 toy showrooms and interviewing hundreds of parents and children, and she says that sometimes we forget to put a toy to this simple test. Her book, THE TOY CHEST, A SOURCEBOOK OF TOYS FOR CHILDREN, offers practical advice, and this premise is important, "With so much to choose from, confusion is quite understandable," she says, "Look at a toy in terms of high PLAY value. Will a child return to it for hours-chatting, building, thinking?"

## SANTA ANNA BASKETBALL 1987-1988 BOOSTER OF THE WEEK!



Stanly and Eddie Hartman, are the owners and operators of H & H Food Mart in downtown Santa Anna. They are native sons and are graduates of Santa Anna High School. Both men are active in community, church, and school affairs and are dedicated boosters of the Santa Anna School athletics as well as all other phases of the school program. H & H Food Mart is an Affiliated food store and carries a wide variety of fresh fruits and vegetables and a full line of grocery items. They also have the reputation of carrying the best beef in the area. The store is open from 7:00 a.m. to 6:00 p.m. six days a week.

### SANS Boys Sweep Past Baird, 80-59

In Santa Anna High School basketball action in Tuesday of last week, the Mountainers downed Baird 80-59. Reece McIver led the scoring by accounting for 18 points on the board. Kendall Davison added 12 and Scotty Anderson 11. Balanced scoring from the team showed James Hartman with 9 points; Eddie Tomlinson, 9; Jerry Wells, 7; Herbert Jackson and Clarence McDowell, 6 each; and Bobby DeLeon with 2. There were 22 free throws made out of 37 attempts for 59 percent. James Hartman accounted for the only 3 pointer of the evening for the Mountainers.

### JV Boys 47 Baird 30

JV BOYS 47-30 OVER BAIRD  
The Mountaineer junior varsity boys also defeated Baird last week with a final tally of 47-30. Coach Russell McGough received balanced scoring from the squad as Bradley Wise led with 9 points. Salvador Perez and Dennis Absher both contributed 8 points each. Others were Chris Simmons, 6; Chad Davis, 6; Gary Keas, 4; and 2 each from Alex Frausto, Jeffrey Hartman and Jody Patterson.

### Lady Mountaineers Defeat Baird, 62-35

The Santa Anna Lady Mountaineers got in the winning column Tuesday of last week by defeating Baird 62-39. Coach Kathy McGough's team was led in scoring by Sylvia Castillo with 18 points and Diana Castillo gave 15 points to the winning effort. Others contributing to the team effort when every Santa Anna player on the team scored were: Amy McGough, 3; Tammi Morrow, 4; Rhonda Fleeman, 3; Shannon Brown, 4; Niki McLaughlin; Maria Moreno, 7; Sheri Lewis, 2; and Kristi Morrow, 1.

### Baird Outscores JV Ladies, 35-33

The girls JV squad fell to Baird last Tuesday in a close 35-33 game. Eva Frausto led the Local team with 10 points while Sherry Michon was right behind with 9. Selina Cook scored 5 points; Delia DeLeon 2; Gloria Frausto 2; Tonya Ford 2; Glenda Taylor 2; and Carrie Keeney 1.

### Santa Anna Boys 40 Bronte 64

In High School basketball action Friday night, Santa Anna fell to Bronte 40-64. Kendall Davison led the team with 14 points. Reece McIver made 7 points. Other points were scored by Jerry Wells, 6; James Hartman, 5; Eddie Tomlinson and Scotty Anderson 4 each.

### Girls Varsity 47 Bronte 53

The varsity girls were ahead at the half but lost to the Bronte girls later in the game. The scores were evenly divided among the team members with Tammi Morrow leading with 10 points. Shannon Brown was close behind with 9. Others scoring points were: Amy McGough with 6, Diana Castillo, Maria Moreno, and Silvia Castillo with 5 each, Kristi Morrow with 4, Sheri Lewis with 2 and Rhonda Fleeman with 1.

### JV Girls 22 Bronte 46

Santa Anna Junior Varsity Girls lost their game Friday night to Bronte. The final score was Santa Anna 22-Bronte 46. High point girl was Sherry Michon with 4 points followed by Eva Frausto with 4. Other points were scored by Delia DeLeon, 4; Lynn Frausto, 3; Lee Ann Mitchell and Sheri Ford, 2 each.

**Henderson Funeral Home**  
'People Who Care'  
Conveniently Located in Santa Anna & Coleman.  
Coleman 625-2121  
Santa Anna 348-3131

**FRAMES & THINGS**  
Your Custom Frame Shop... It's Not Finished.... Until It's Framed  
301 Center 646-8811  
Brownwood, Tx.

**PHILLIPS DRUG**  
We're Not Just A Drug Store... We Have Something For Everyone  
Santa Anna

**H & H Food MART**  
'Your Favorite Food Store in Santa Anna'  
Locally Owned by Stanley Hartman & Eddie Hartman  
Downtown Santa Anna

**Tomlinson Food & Seed**  
We have Christmas Plants and gifts for everyone from your pet to your grandpa!  
Phone 646-8888

**Jo Ann's Kut & Kurls**  
'Designer Cuts For Men & Women'  
PHONE: 646-3258  
602 Ave. A

**Glenn's Car Sales**  
Corner of Wallis & Brady Hwy.  
1986 PONTIAC FIERRO Like New Condition  
20,000 Miles  
One Owner  
Loaded- Fuel Injected V-6

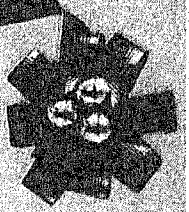
**SANTA ANNA NEWS**  
'Proudly Serving The Santa Anna Area For Over 100 Years'  
348-3545

**Coleman County Telephone Coop**  
Owned By The People It Serves  
Serving The Mountaineers!

**Santa Anna National Bank**  
Your Hometown Bank  
Serving the Mountaineers!







**16.99** PLAIN POCKETS SALE

Reg. \$24. Plain Pockets' straight leg silhouette cotton denim jeans for the style and fit you want. For young men.

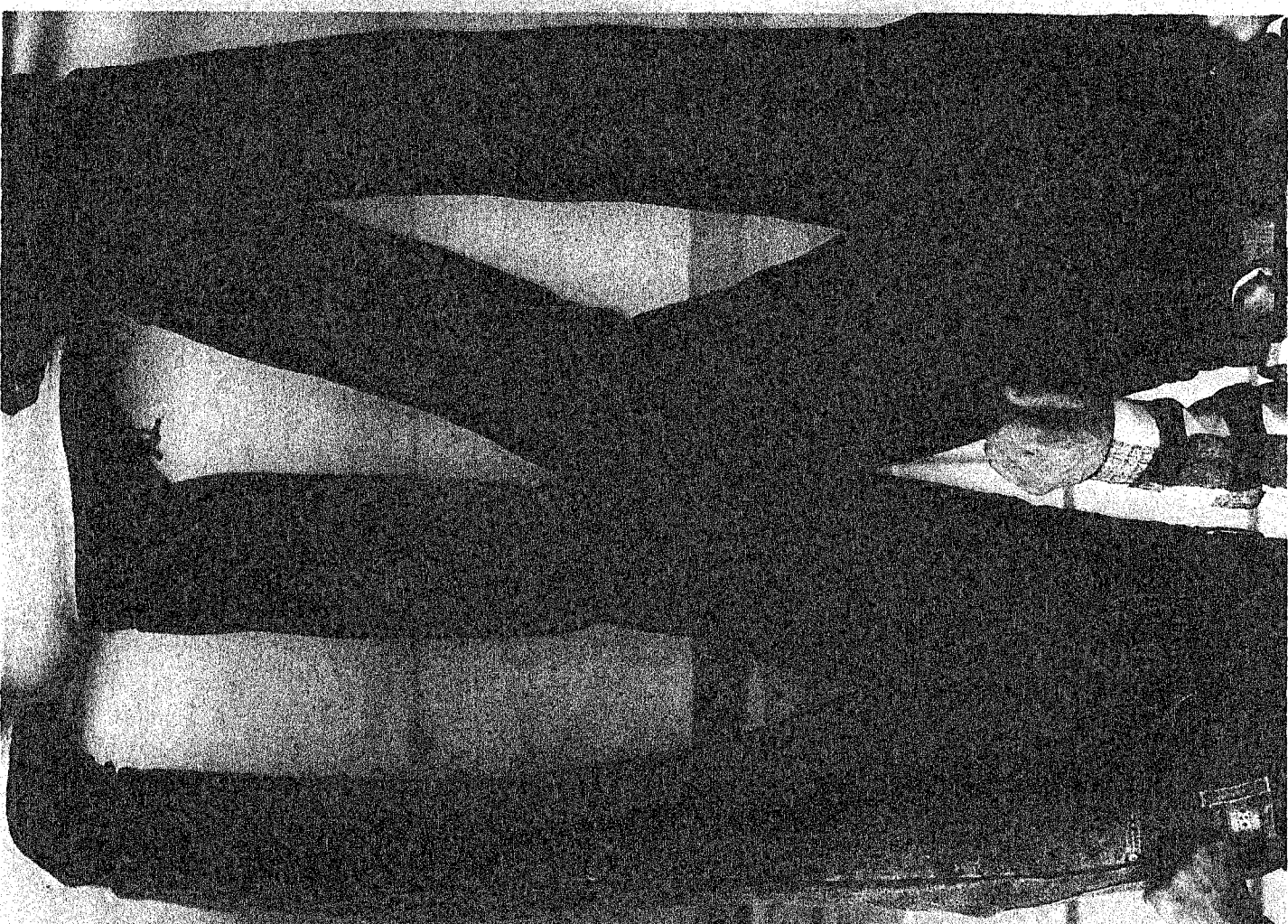
**21.99** LEVI'S SALE

Reg. \$32. Levi's® Shrink-to-Fit™ 501™ button-fly jeans of cotton denim for young men.

Sale prices on jeans effective through Saturday, Jan. 9th.



**SALE 39.99**  
Warm-up suit, Reg. \$80. Live the sporting life all winter in body-ester/nylon/cotton double-faced Nordic Fleece™ Warm-up suits. The zip-front jackets have handy pockets. Men's S-XL, Misses S-L.



**15.99** HOLIDAY MESSAGE SHIRTS, 20% OFF

Reg. \$20. Show off your holiday spirit in our polyester/cotton fleeces sweatshirt or oversized cotton T-shirt. Screen printed with delightful Christmas messages and animal characters. Fun to wear for sleeping or lounging. For Junior sizes.



**SALE 7.50**  
A stockingful of bikini's, Reg. \$10. Save 25% on a quartet of cotton bikinis decorated with Christmas prints and holiday messages. Cleverly packaged in clear plastic stocking. S-M-L.

Also prices on regularly priced merchandise shown throughout this entire section through Saturday, December 15th, unless otherwise labeled. Immediately following this page, items shown are regular priced merchandise. Exceptions from originally priced merchandise effective with such in separate. Some exclusions shown items designated as "Promoted Item". Merchandise of remaining savings may appear later.

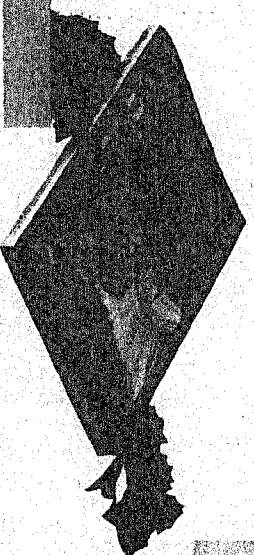
**SPECIAL BUY 16.99**

**PASTELS ARE TOPS WITH JUNIORS**  
Here are two of Juniors' all-time favorite topplings - now dished up in luscious pastels. The striped rugby shirt and the Hunt Club® French terry 4-button Henley neck top. Both in comfortable, easy-care polyester/cotton.



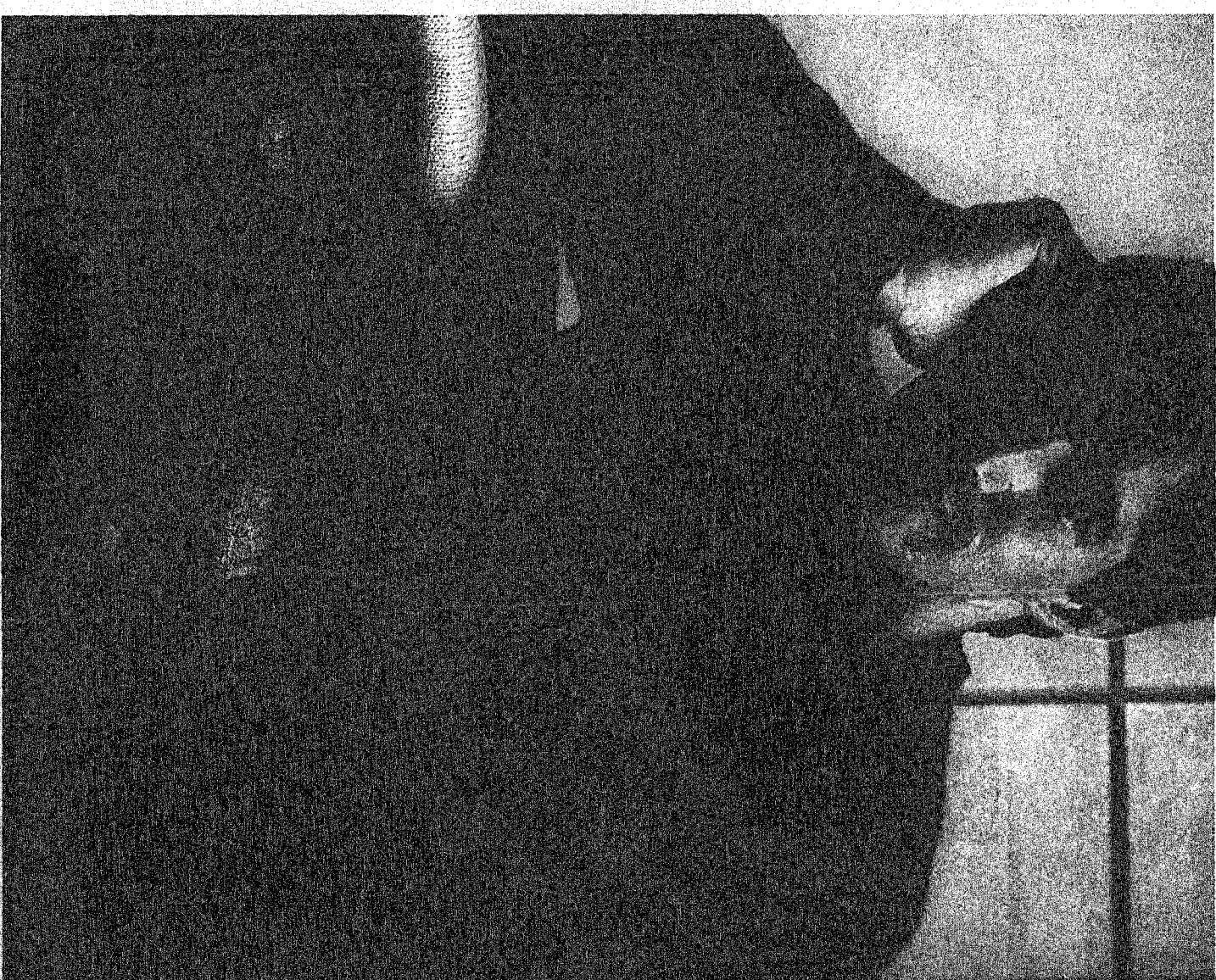
**SALE 16.99**  
Shaker stitch sweater. Orig. \$26. Juniors make news in a cropped rami/cotton sweater. With Johnny collar and track stitching on the shoulders. In pastels.

**THE JCPENNEY CHRISTMAS CATALOG**  
Shop our Christmas Catalog for hundreds of great toys. From furry friends like Teddy Ruxpin™ and Pound Puppy™ to sporting goods, bikes, electronics, more. Visit the Catalog Department and shop by phone. Get home delivery, if you wish.



**YOUR CHOICE 14.99**

**SWEATER SALE**  
Reg. \$26. Give him the season's essential sweater - The Fox® cotton crewneck with full-fashioned raglan shoulder. In winter-warming shades. Men's S-M-L-XL.



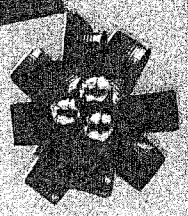
**SALE 14.99**

St John's Bay® Shaker sweater, Reg. 19.99. A head and true winter classic - the shaker sweater with raglan pattern. Great color selection. Men's S-XL.

**SALE 14.99**

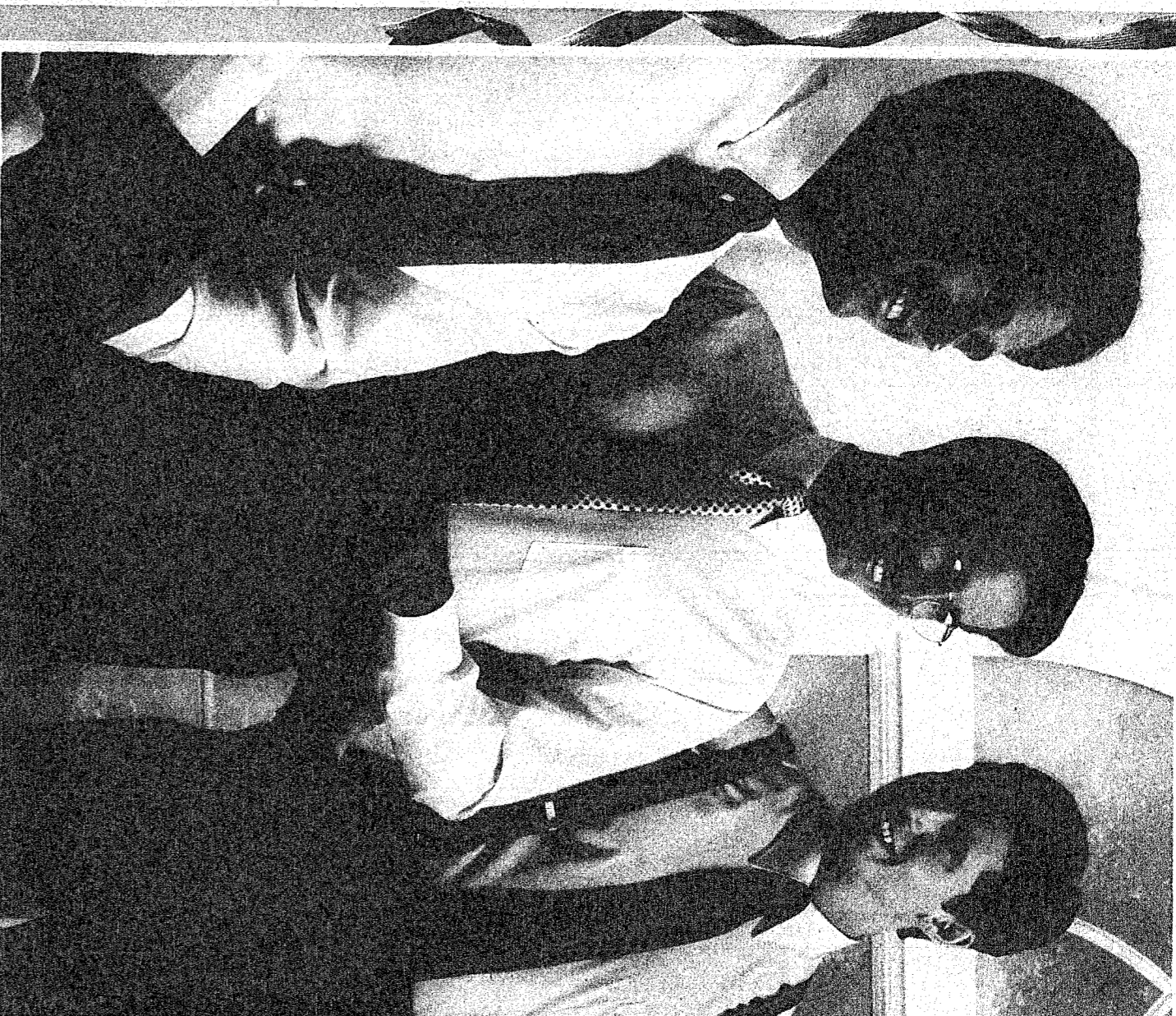
Par Four® sweater, Reg. 19.99. Present perfect. The acrylic crewneck sweater in soft or grid. Available in bright patterns. Great color selection. Men's S-XL.

THE FOX® • ST. JOHN'S BAY® • PAR FOUR®



# SALE 12.99

ALL STAFFORD AND GENTRY SHIRTS  
Reg. \$16 to \$19. Handsome cotton/polyester blend dress shirts in button-down  
25% off. Regular color styles. Choose from solids or fancies, basic and fashion colors.  
25% off. Regularly priced ties in traditional and updated patterns, solids.  
Sale price effective through January 20th, 1988. See stores of Gentry and Stafford.

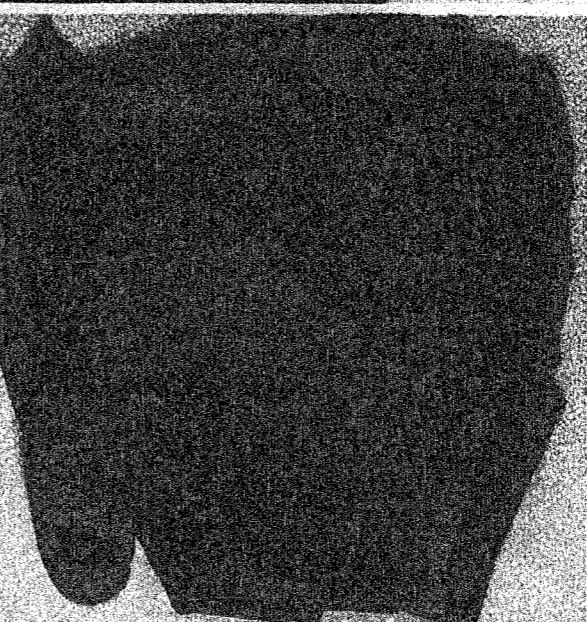


STAFFORD • GENTRY • ROYAL COMFORT™



### SALE 39.99

Stafford dress shoes. Reg. \$50. Step into well-  
crafted leather shoes like these versatile moccasins or  
laced wing tip slip-ons. Men's 7-11.

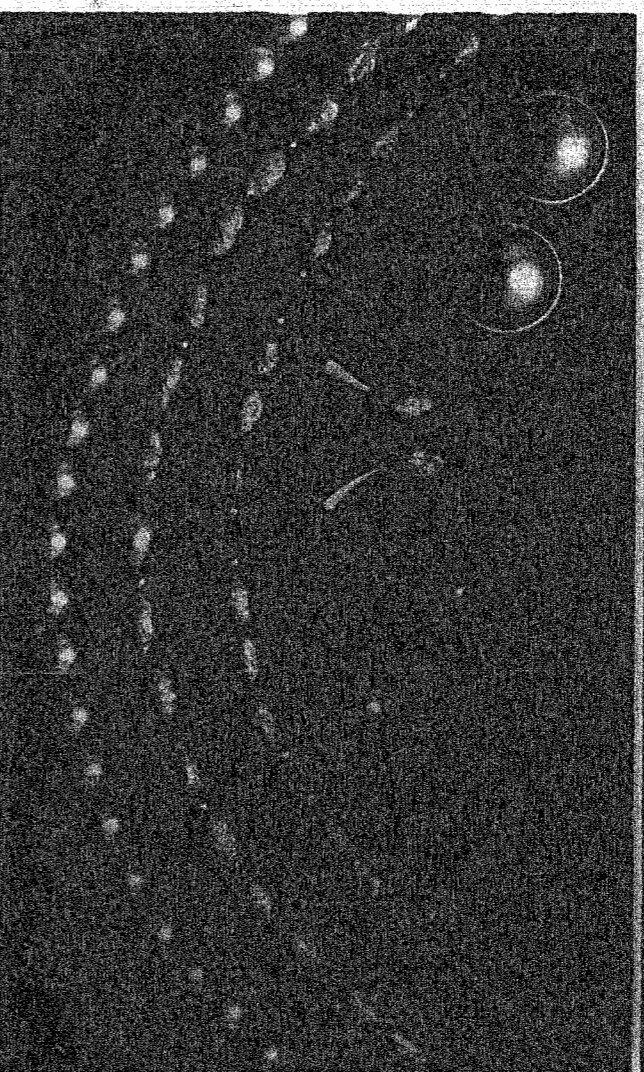


### 20% OFF

Royal Comfort™ cotton briefs. Reg. 4.50 each. Sale 3.60  
Royal Comfort™ cotton tees. Reg. \$6 each. Sale 4.80  
Royal Comfort™ crew socks. 1 pr., Reg. 2.75. Sale 2.20

# SAVE 40%-50% SAVE ON 14K GOLD PEARLS, TOO.

Heading your gift list - at 50% off! 14K gold chains, charms and  
earrings. 40% off cultured pearl necklaces, pendants and earrings.  
through Saturday, January 20th, 1988. Prices may be subject to some slight  
variations only at Gentry stores with Fine Jewelry Departments.

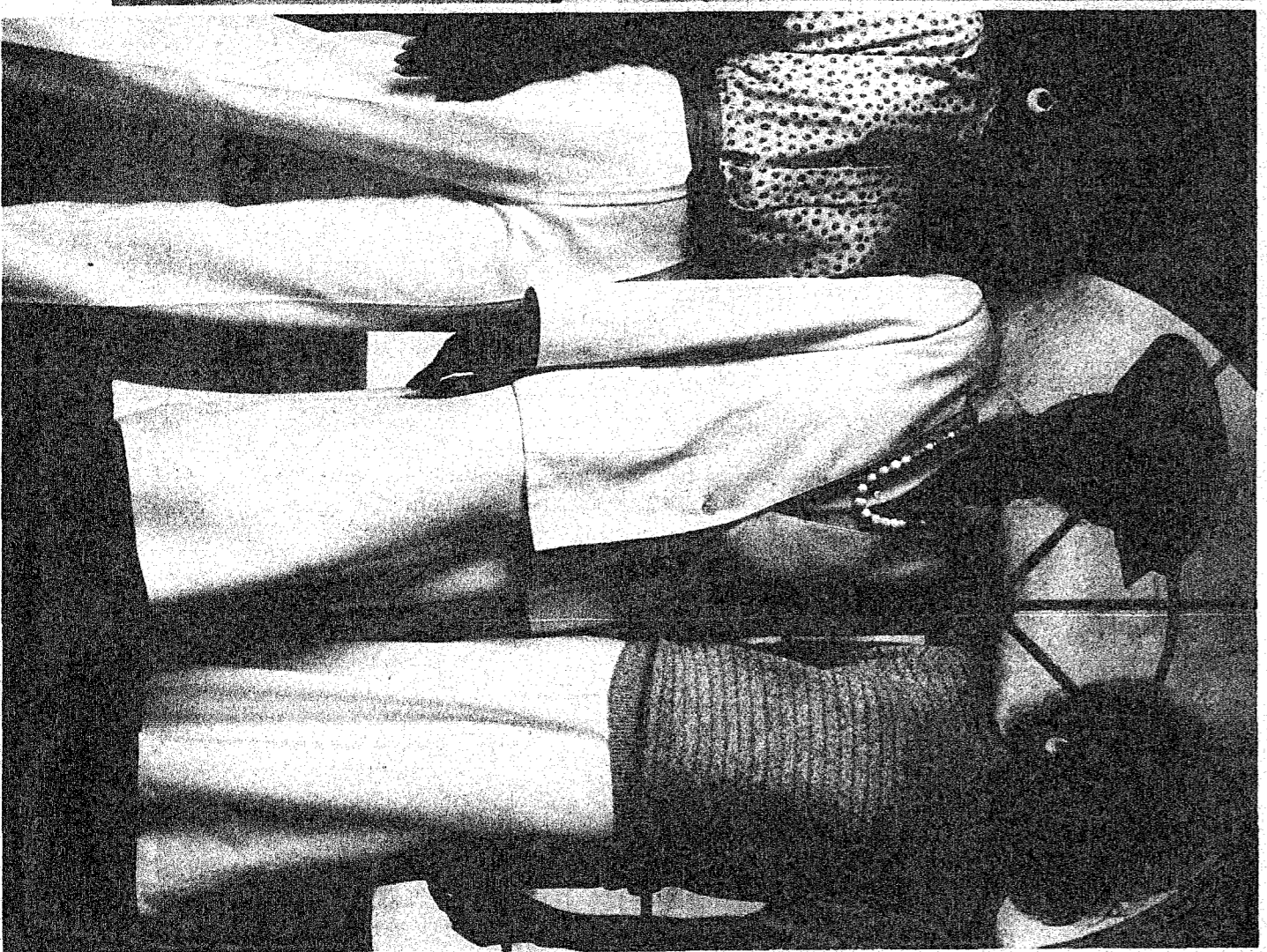


### SPECIAL BUY 39.99

Dramatic dressing for the holidays at a special  
price. Choose the appliqued draped neck  
charmeuse dress in black or the red and black print  
bouison style. In polyester, for misses.

# SAVE 25% PASTEL HOLIDAY COORDINATES

Sale \$19.50 to \$39. Reg. \$26 to \$44. Misses' New Attitudes™ coordinates in  
delicate pastels. Put together a polyester/cotton cardigan jacket, A-line skirt or  
fly-front pants with coordinating print or solid blouses or a cotton sweater.

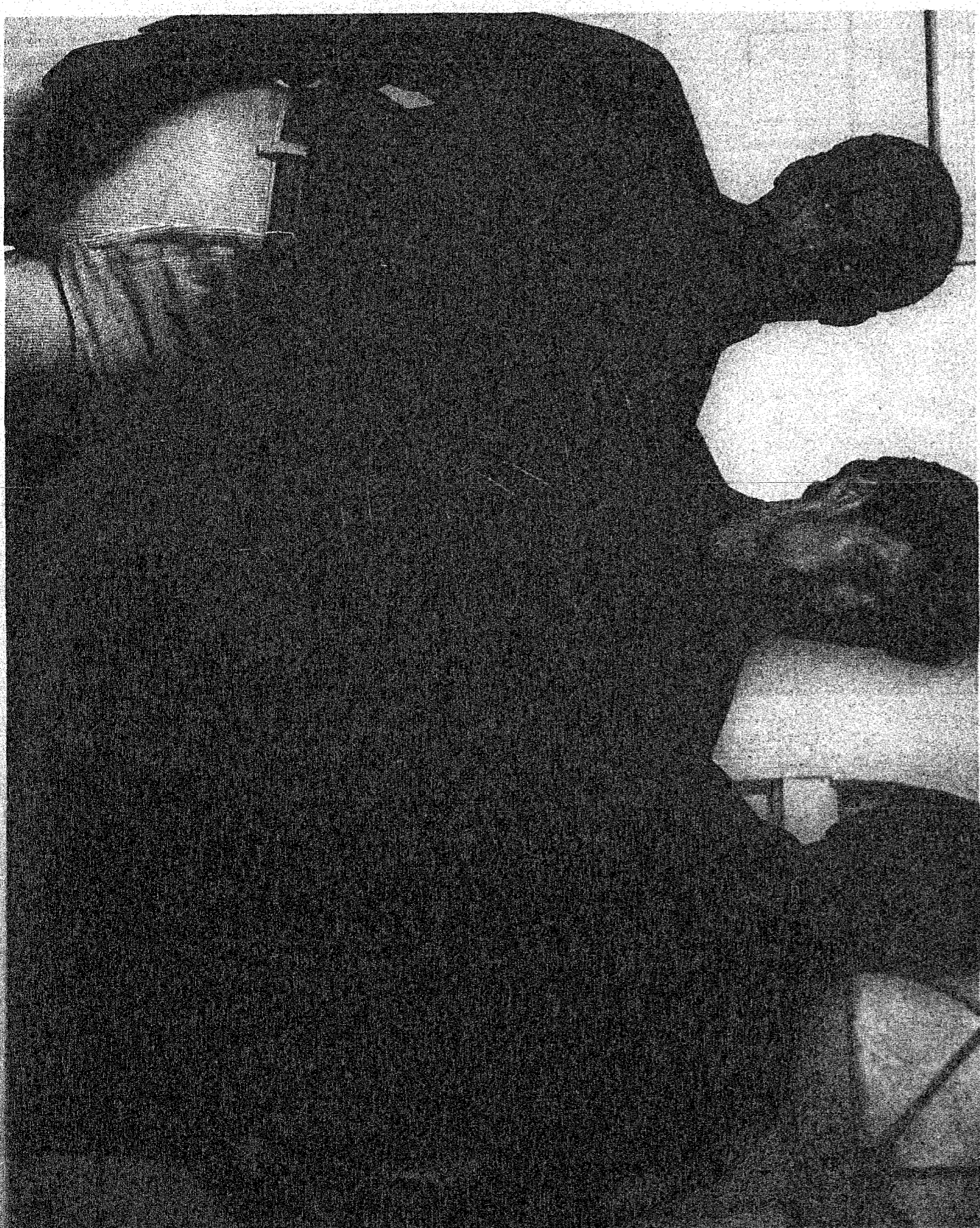


### SALE 18.99

Misses' separates. Reg. \$24 to \$28. Cabin Creek™ matches up  
classics: the cotton rousers topped with a cotton tuggy shirt.  
Or with the polyester/cotton oxford cloth solid or striped shirt.

# SALE \$9-19.99 WARM SHIRTS FROM OUR TOP NAMES

The Fox® yarn dyed cotton flannel shirt, Reg. \$16. Sale \$12.  
Par Four® contemporary cotton flannel shirt, Reg. \$12. Sale \$9.  
St. John's Bay® heavy cotton flannel shirt, Reg. \$18. Sale \$13.99.  
St. John's Bay® cotton corduroy vest, Reg. \$24. Sale \$19.99.



THE FOX • PAR FOUR • ST. JOHN'S BAY™



SAVE **25%** SPORT SHIRTS FOR HIS CASUAL LIFE

Treat him to the comfort and style of sport shirts like these at savings.

A. The Fox® boldly striped cotton/polyester shirt, Reg. \$20 Sale 14.99

B. Royal Aire® luxury cotton/polyester/linen shirt, Reg. \$24 Sale 17.99



SAVE **25%** JR. DUCK PRINT SLEEPWEAR

Cotton flannel duck print night shirt, Reg. \$18 Sale \$12

Cotton flannel duck print pajamas, Reg. \$22 Sale 16.50

Polyester/cotton print sleep shirt, Reg. \$15 Sale 11.25

**25% OFF**  
Nightshirts, Sale 10.99 Reg. \$14. Sweet dreams in our snuggly Mickey Mouse® or Garfield® print nightshirts of cotton or cotton/polyester for junior sizes.

**25% OFF**  
Birnies, Sale 1.97 Reg. 2.50 For Mickey Mouse® or Garfield® print cotton Birnies.

**25% OFF**  
Socks, Sale 1.25 Reg. \$1.66 For 5-Century nylon socks in assorted colors.

14

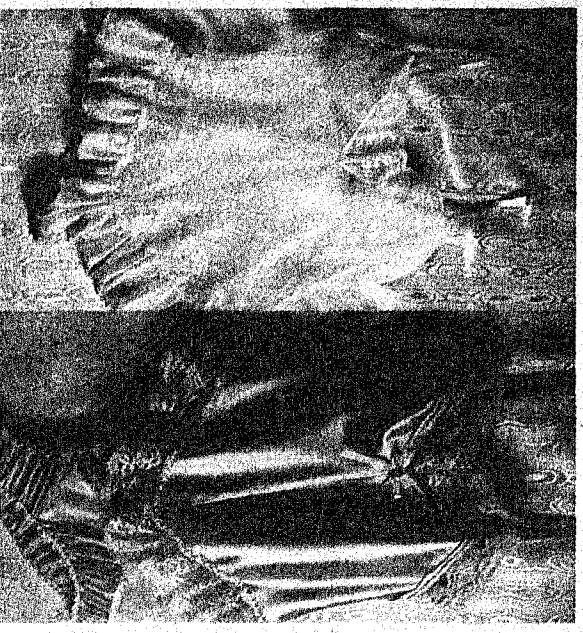
SALE 13.99

Sport shirts, Reg. \$18, \$19. Casual oxford or chambray cotton/polyester men's sport shirts from Par Four® and The Fox®. In solids, stripes, plaids.

THE FOX® • PAR FOUR® • ROYAL AIRE®

SALE 29.99

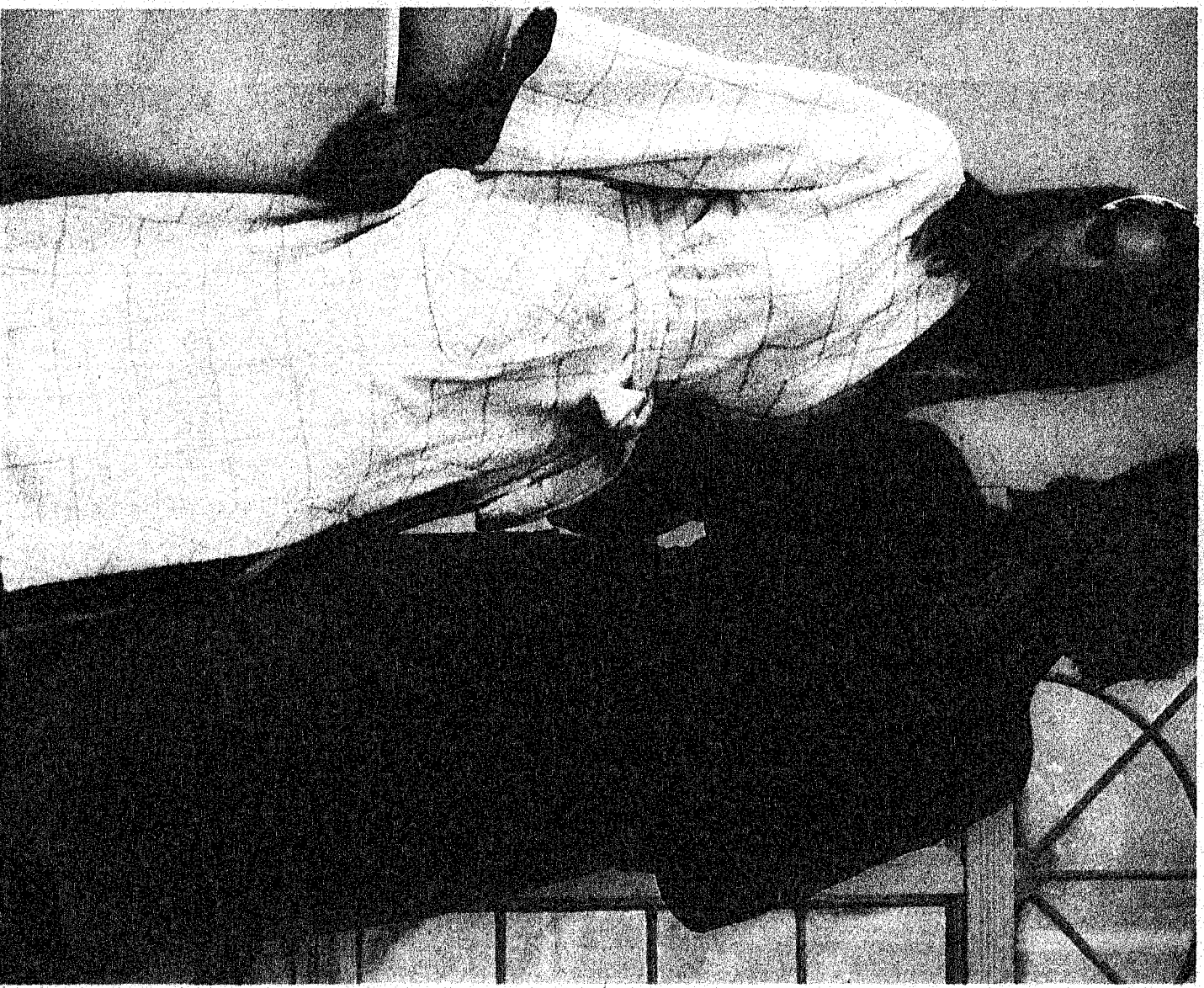
33% OFF SELECTED ROBES  
Reg. \$45 each. 'Tis the season for savings on some of our most luxurious robes. Choose mid-length cotton Terry jacquard or kimono style in plush cotton terry, S.M.L.



SAVE 20% AND 25%  
Sheer teddy, Sale 13.60 Reg. \$17. Nylon teddy with floral lace trim at V-neck, hip, lounge shirt, S.M.L.  
Satinseer® nylon lace babydoll, Reg. \$15 Sale 11.25



25% OFF  
Babydoll, Sale \$13.50 Reg. \$18. Sheer nylon, S.M.L.  
3-pc. dainty nylon mini babydoll ensemble with lace detail, party, sheer coat, XS-L, Reg. \$16 Sale \$12



SAVE 20%-25% HIS FAVORITE CASUAL SLACKS

A. Hunt Club's pleated cotton twill pants, Reg. \$25 Sale 17.99  
B. Duke's® belted fr-blend Euro-style slacks, Reg. \$20 Sale 14.99  
C. Par Four® cotton/polyester sailcloth slacks, Reg. \$25 Sale 18.75



SALE 13.99  
Gator® slacks, Reg. \$18. Put him in the spirit of things with a cotton/polyester knit pant from the Par Four® and save 20% in assorted colors. Men's G.A.T.

PAR FOUR® • DAKS® • HUNT CLUB®

6

ASK ABOUT THE JCPENNEY GIFT EXCHANGE POLICY



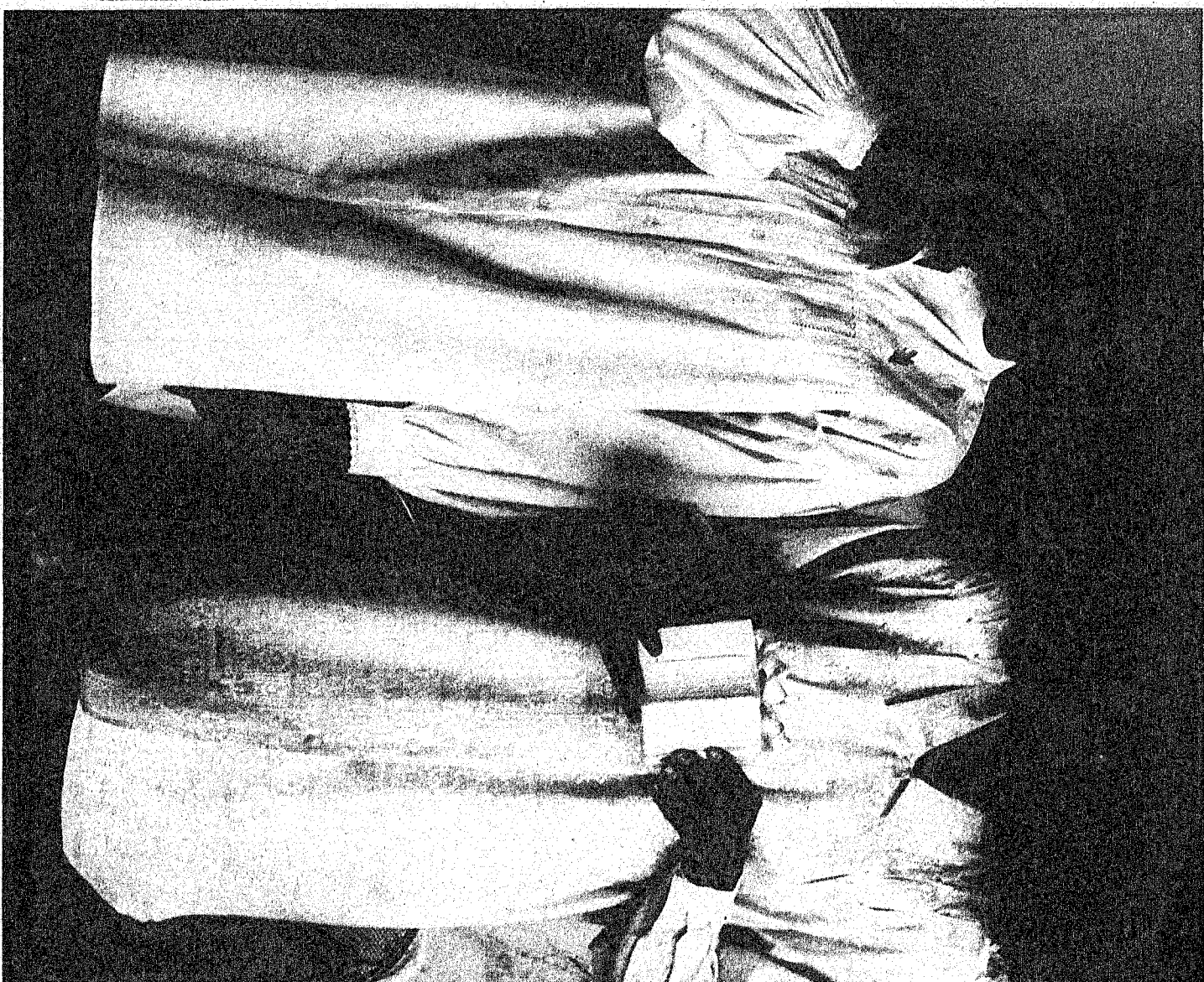
# SAVE 20% ELEGANT SLEEPSHIRTS

Sale \$16 Reg. \$20. Ultra feminine cotton sleepshirt in stand-up collar, cap sleeve, square yoke or V-neck styles. Misses' S,M,L. Sale \$22.40 Reg. \$28. An oversized jacquard sleepshirt of rayon/polyester with delicate pleated yoke detailed with sea pearls.



**20% OFF**  
■ Sheer Carass® pantyhose, Reg. 2.50 Sale \$2  
■ Sheer Carass® Control top, Reg. \$3 Sale 2.40  
■ Sheer Carass® queen sizes also on sale.

**20% OFF**  
Swiss dot pantyhose, Sale \$2 Reg. 2.50 pr. Get a leg up on holiday fashion in festive swiss dot pantyhose. Sheer nylon sandalfoot style in great colors. S,A,L.



# SALE 2 FOR \$9 THE JCPENNEY BATH TOWEL

Reg. \$9 each; bath. The JCPenney® Towel® in 20 glorious colors. Absorbent cotton loops/filling and durable polyester/cotton base. Hand towel, Reg. 5.50 Sale 3.99 Washcloth, Reg. 2.75 Sale 1.99



**25% OFF**  
■ Shower curtain, Reg. \$27 Sale 20.25. Textured Kodal® polyester in colors that coordinate with The JCPenney® Towel®.

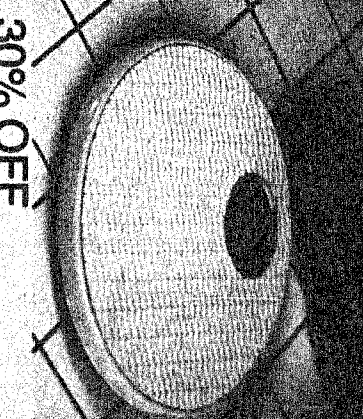
**25% OFF**  
Ceramic accessories, Reg. \$8 each. Sale \$3.75. Scent towel holder, toothbrush holder, barbers, soap dish.

**30% OFF**  
■ Bath mats, Reg. \$13 Sale 9.10 ea. Dupont nylon contour or oblong mats. Lid cover, Reg. \$7 Sale 4.90

**25% OFF**  
■ Adhesive rug, Reg. \$11 Sale 8.25. 21x36". Patterned border nylon rug. 25% off all regularly priced ceramic tiles.

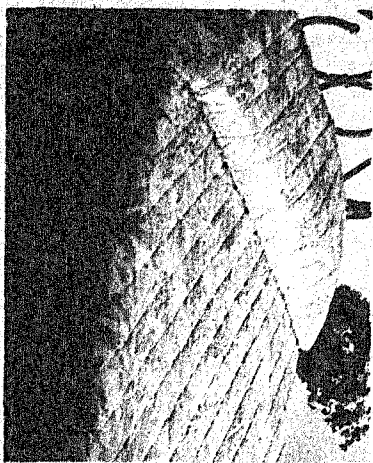
**30% OFF**  
Oval scale, Reg. \$25 Sale 17.50. Sleek wicker-look oval scale. Sale prices on pages 12 and 13 effective through Monday, January 18th.

**30% OFF**  
■ Window-look bath accessories: Upright hamper, Reg. \$25 Sale 17.50. Wastebasket, Reg. \$18 Sale 12.25. 2-shelf unit, Reg. \$25 Sale 17.50.

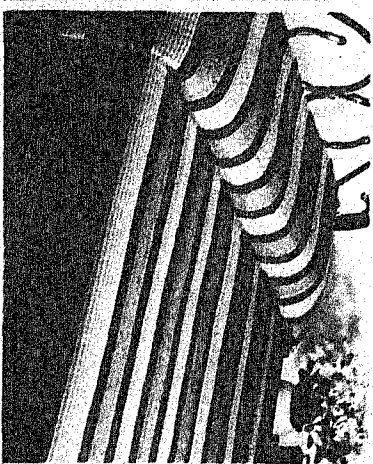


SAVE 10%-50%

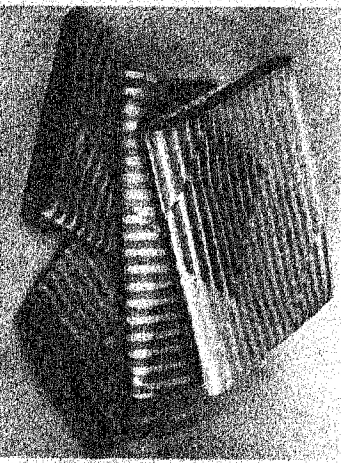
- ALL BED/BATH COORDINATES □ ALL SHEETS
  - ALL BLANKETS □ ALL CURTAINS/DRAPERIES
  - ALL DECORATIVE AND BED PILLOWS
- Sale excludes JCPenney Smart Values.



**SALE 34.99** twin  
Peaches bedspread, Reg. \$50. Peach/beige polyester/cotton bedspread. Full, queen sizes also on sale.



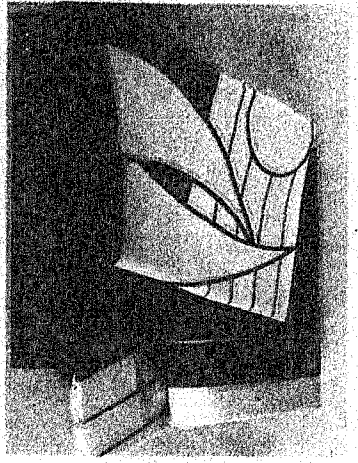
**SALE 34.99** twin  
Tailored Choice bedspread, Reg. \$45. Of polyester/cotton quilted to Kodol® polyester. Full, queen also on sale.



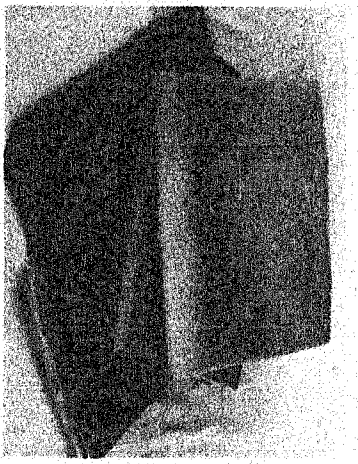
**SALE 12.99** twin set  
Percale sheets, Reg. \$19. Cotton/polyester. Twin set: 1 flat, 1 fitted, 1 case. Full, queen sets also on sale.



**SALE 9.99** twin set  
Sheet set, Reg. \$12.99. Cotton/polyester. Twin set: 1 flat, 1 fitted, 1 case. Full, queen sets also on sale.



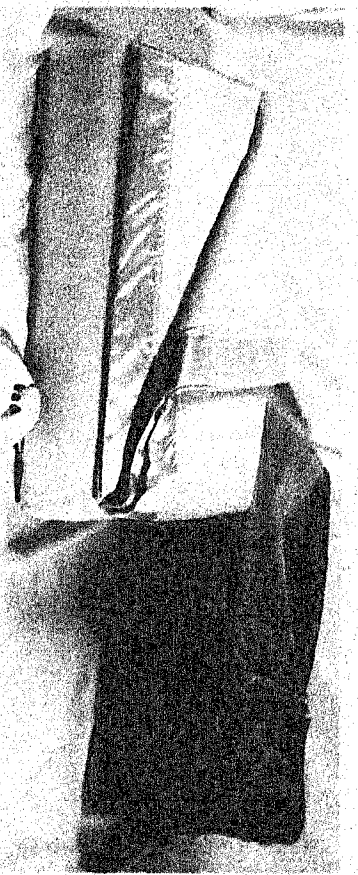
**SALE 23.99** any size  
Waterbed sheet sets, Reg. \$23.99. Queen, king or super single cotton/polyester waterbed sheet sets.



**2 FOR \$9** twin  
Plain hem sheets, Reg. 4.99 ea. Solid color or print cotton/polyester sheets. Full, queen, king sizes also on sale.



**SALE 44.99** twin  
Reg. \$60. Claret polyester/cotton comforter. Our mini-floral bed coordinates with English country charm.



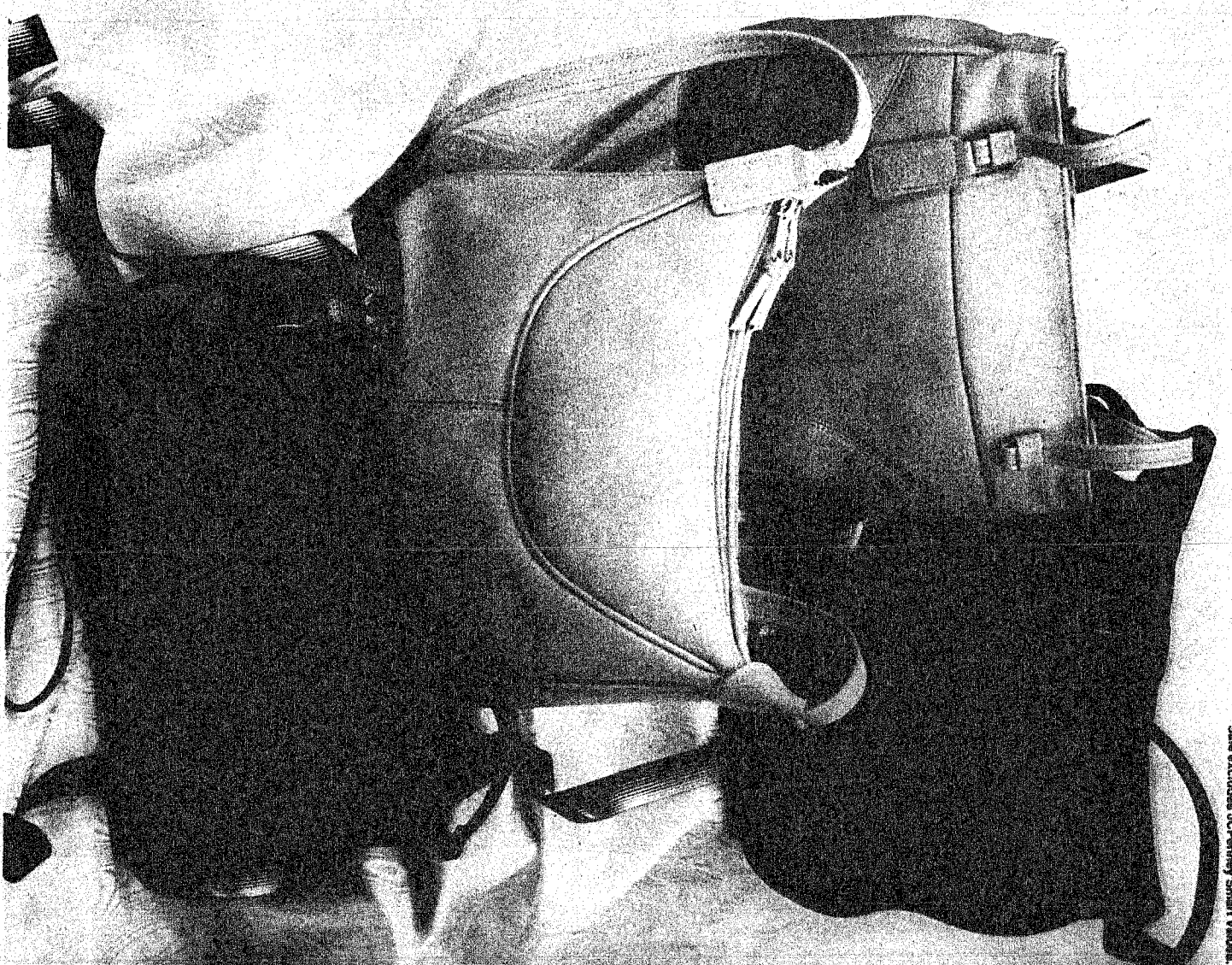
**SALE 25.99** twin  
Electric blanket, Reg. \$40. Single control blanket of acrylic/polyester. Full single, queen dual also on sale.



**SALE 13.99** twin  
Vellux® blanket, Reg. \$20. Nylon flocking over polyurethane foam. Full, queen sizes also on sale.

SAVE 25%-30%

- ALL OUR LEATHER HANDBAGS
- Wonderful gift ideas. For example: Cabin Cruise® shoulder or double handle sport leather bags, Reg. \$35 Sale 23.99. Worthington® multi-compartment hobo, Reg. \$40, Sale 29.99. Soft neppa leather convertible clutch, Reg. 19.99 Sale 14.99. Sale excludes JCPenney Smart Values. Handbags on sale through September 15th, 1994.



**SALE 24.99**  
Sutton Plaza™ shoes, Reg. \$22, \$24. Stop out for the holidays in leather mid-heeled pumps or suede leather slippers. In odors to wear now through spring.

SAVE 20% ELEGANT SLEEPSHIRTS

- Sale \$16 Reg. \$20. Ultra feminine cotton sleepshirt in stand-up collar, cap sleeve, square yoke or V-neck styles. Misses' S,M,L.
- Sale \$22.40 Reg. \$28. An oversized jacquard sleepshirt of rayon/polyester with delicate pleated yoke detailed with sea pearls.

SAVE 2 FOR \$9 THE JCPENNEY BATH TOWEL\*

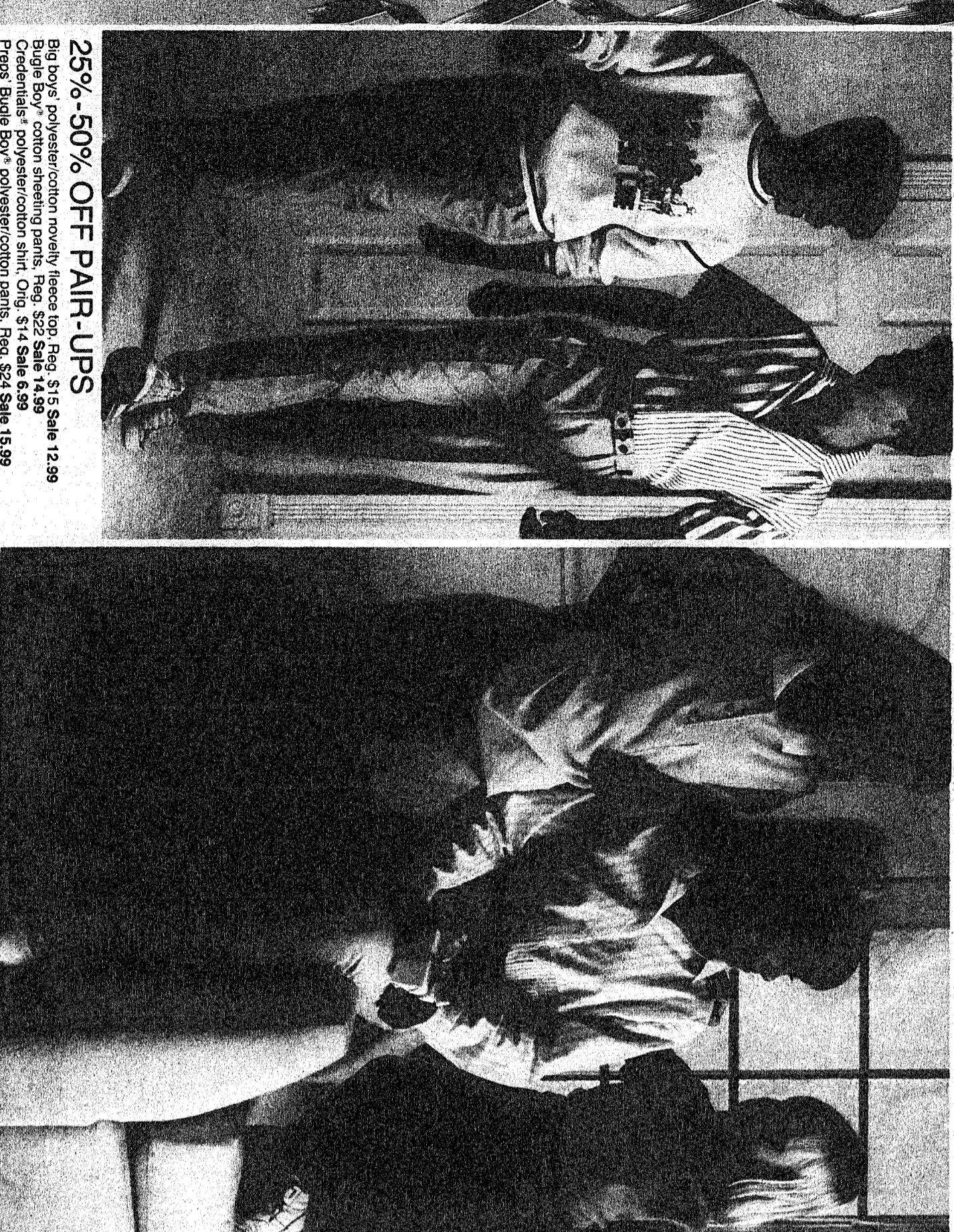
- Reg. \$8 each: bath. The JCPenney Towel® in 20 glorious colors. Absorbent cotton loops, filling and durable polyester/cotton base.
- Hand towel, Reg. 5.50 Sale 3.99 Washcloth, Reg. 2.75 Sale 1.49



SAVE 25%-50%

BIG GIRLS' FASHION SEPARATES

Cotton pique knit collar/placket shirt, Orig. \$14 Sale 6.99  
 New Moves™,™ laundered cotton striped shirt, Orig. \$16 Sale \$12  
 Plain Pockets™ cotton denim jeans, Reg. \$17 Sale 12.75  
 Toddlers' cotton Johnny collar pique shirt, Reg. \$8 Sale \$6  
 Toddlers' stonewashed cotton denim jeans, Reg. \$11 Sale 8.25



25%-50% OFF PAIR-UPS

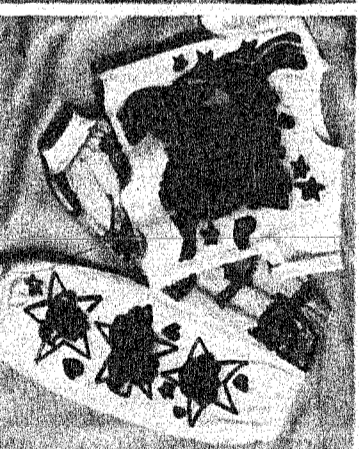
Big boys' polyester/cotton novelty, fleece top, Reg. \$15 Sale 12.99  
 Bugle Boy™ cotton sheening pants, Reg. \$22 Sale 14.99  
 Credentialis™ polyester/cotton shirt, Orig. \$14 Sale 6.99  
 Preps Bugle Boy™ polyester/cotton pants, Reg. \$24 Sale 15.99

SAVE 25% GIFTS FOR INFANTS, TODDLERS

Toddler girls' polyester/cotton turtleneck top, Reg. \$8 Sale \$6  
 Toddler girls' cotton/polyester cord crawler, Reg. \$16 Sale \$12  
 Toddler boys' polyester/cotton mascot shirt, Reg. \$9 Sale 6.75  
 Toddler boys' cotton/polyester cord overalls, Reg. \$14 Sale 10.50



SALE 10.50 set  
 Reg. \$14, Tot boys' oversized polyester/cotton top, cotton sheening pants.



SALE \$9 set  
 Reg. \$12, Toddler girls' cotton sheening pants/top, screen printed.



SALE 7.50 set  
 Reg. \$10, Infant boys' polyester/cotton suspender pants/print top.



SALE 8.25 set  
 Reg. \$11, Infant/toddler girls' polyester/cotton angel top/pants.



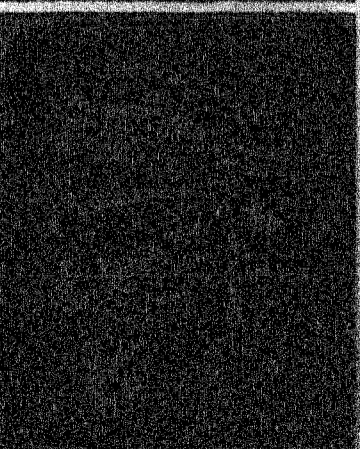
SALE 7.50 set  
 Reg. \$10, Print suspender set of polyester/cotton. For infant girls.



SALE 5.62 set  
 Reg. 7.50, Infants' 3-pc. woven polyester/cotton diaper/toilette set.



SALE 9.75 set  
 Reg. \$13, Polyester/cotton shirt, cotton sheening pants for toddlers.



6.99 every day  
 Infant/toddler girls' polyester/cotton 2-pc. pajamas dress set.