



# BAILEY COUNTY JOURNAL

The Community of Opportunity-Where Water Makes the Difference

## Weather

	HIGH	LOW	PREC.
Jan. 10	13	7	.05
Jan. 11	22	3	.17
Jan. 12	32	0	
Jan. 13	45	11	

Moisture to date .80, Snow for year 6 1/2

VOL. 10 No. 2

12 PAGES

Published Every Sunday at Muleshoe, Bailey County, Texas 79347

10 CENTS

Sunday, January 14, 1973

# Weather Loosens Frosty Grip On Area

## City, County Receive Second Revenue Checks

## Temperatures Rise Above Freezing Mark

### Checks Smaller Than First Ones Received

The City of Muleshoe and Bailey County received their second Revenue Sharing checks Wednesday. Both checks were smaller than the first ones.

These checks are for the second half of 1972.

Bailey County Judge Glen Williams reported that Bailey County received a check for \$37,823 this week. The first check, received in November, was in the amount of \$39,422 for a total of \$77,250 received last year from Revenue Sharing.

No specific use for the money has been decided on at the present time.

City Manager Albert Field reports that the City of Muleshoe received a check for \$24,919 Wednesday. The City's first check was for \$25,968 making the total Revenue Sharing funds for the city \$50,887.

No use for this money have been definitely decided upon.

The county and the city have 24 months in which to use

the funds. Guidelines have been sent to both the county and city explaining how the money can be used.

### A.W. Gober Elected To Water District

A.W. Gober of Farwell was unofficially elected District Director for Precinct 3 in the 1973 elections for the High Plains Underground Water Conservation District No. 1 on January 9. District Director's Precinct 3 includes Bailey, Castro and Parmer Counties.

The Board of Directors will meet on January 16 to canvass the votes and officially declare the winners.

Gober won election to the seat soon to be vacated by Ross Goodwin of Muleshoe, President of the Board of Directors, by defeating Wade Mills of Nazareth and John Gunter of Muleshoe.

Residents of Bailey County winning an unofficial four-year term in the District's County Board are: Eugene Shaw, Muleshoe; Joe (Archie) Sowder, Goodland, and Jessie Ray Carter of Muleshoe. Gober will serve a two-year term.

The Water District also held elections this year in Castro, Parmer, Armstrong, Deaf Smith, Potter and Randall Counties.



**CATTLE FINALLY SEE PASTURE.....**Area cattle have been fed by their owners by truck all this week since the onset of one of the worst winter storms in many years, that it was a treat for both the cattle and the cattlemen when the sun finally came out Thursday and melted some of the snow off the pastures. Cattlemen across the

state have said that this past storm was the worst in 50 years as far as cattle go. It has been reported that across the state of Texas about \$1,000,000 has been lost in the cattle industry due to heavy snow and sub-freezing temperatures. Losses were minimum in Bailey County, but the cattlemen were out a great deal of expense since they had to feed the cattle that were normally on wheat pasture.

The sun finally shown in the Muleshoe area Thursday for only the second time this year, ending a long cold spell. Snow accumulated over a week's period piled up to five inches in some areas.

Area citizens had been looking at snow and cloudy skies for almost a week. Temperatures rose to the low 30's Thursday and low 40's on Friday taking the area out of the sub-freezing deep freeze. Temperatures had not rose above the teens for several days.

Hazardous ice and snow packed roads began thawing on Thursday and by Friday most of the major highways in the area were almost dried out speeding up traveling and making area roads much safer. Streets in Muleshoe are still packed with ice in spots and are potentially dangerous.

Cattlemen in the area were really hurt due to the worst winter storm experienced in this part of the country in many years.

Although losses were minimum in this area, cattlemen had to feed their cattle for almost a week due to the heavy cover of snow.

In the state of Texas, the storm was responsible for almost a 100,000 loss in cattle with the monetary loss extremely high.

At one point in the storm it reached from the Texas panhandle to the gulf coast, covering almost the entire state with snow. Galveston experienced their worst snow storm since 1969 when three inches piled up there. Houston and the Rio Grande Valley also received snow.

As the winter storm spread across the state a shortage of fuel and gas hampered cities. Schools and businesses were forced to close due to the shortage in some areas.

No shortages were reported in Muleshoe in gas, fuel or electricity.

The storm finally loosened its icy grip on the area Thursday with the sun shining, but temperatures plummeted to one and two degrees above zero in the early morning hours Thursday and Friday.

This winter storm has been reported as one of the worse for this area in many years.

There was still many farmers who had crops in the field. There is still quite a bit of cotton in the fields around Muleshoe and if the clear, sunny weather holds out, it will be the middle of the next week before farmers can get machinery into the fields to finish the 1972 harvest.

### Land Bank Has Record Year

Ernest Kerr, Manager of the Federal Land Bank Association of Muleshoe, announced today that the Federal Land Bank of Houston closed 3,701 loans for more than 164 million dollars during 1972. "This has been a record year for new loan business and represents an increase of more than 60% over 1971 which was the largest year

Cont. on Page 3, col. 3

## Farmers Union Continues Fight To Save Loan Program

The Farmers Union today continued its fight to save the Farmers Home Administration's emergency loan program

in 243 Texas counties.

Jay Naman, state president of the farm group, announced that he has written the White House urging that the federal government "live up to its promise to farmers that the program would continue through June 30, 1973."

Naman said, "We applaud the reversal announced by President Nixon and Secretary Butz in honoring those applications for emergency loans which has been filed in the county office prior to December 27 but which had not been processed by the Temple office; however, we still believe that there are hundreds if not thousands of farmers who had not filed for emergency loans which have been deprived of their rights and guarantees by these broken promises."

The Administration announced December 27 that it was suspending the Farmers Home Administration emergency program in 243 Texas Counties. "I do not know what the exact number is but there are still farmers who will be excluded from the program. Some of them were advised to wait until after the first of the year or after completion of harvest operations to file because of the heavy load of applications in county Farmers Home Administration offices. There was absolutely no warning given that the program would be cut off six months before the promised date," Naman said.

Naman said that he thinks that the suspension has created an

"alarming feeling of mistrust" of the federal government among farmers. "In a democracy like ours, people ought to be able to trust what the government says as well as what is put in writing," Naman said.

## Conservation Society Will Have Meeting

John Hunter of the Texas Tech University Range Department will be featured speaker at the annual meeting of the South Plains Chapter of the Soil Conservation Society of America. The meeting will be at 7:30 p.m. Friday, January 19, at Furr's Cafeteria in Town and Country Shopping Center.

New officers will be installed and special committee assignments made for the 1973 program year.

Clois Cobb of Gifford Hill, Inc. is the new president with Jimmy Lewis of the Soil Conservation Service as president elect and Robert Fewin of the Texas Forest Service as new council member.

Anyone interested in conservation of natural resources and a quality environment for a better America is urged to attend. For further information contact Henry Stoneham of the Soil Conservation Service of Muleshoe.

## Jaycees Plan Radio Day For Jan. 26

The Muleshoe Jaycees met Monday at noon in the XIT Steak House with 35 members present.

It was announced that the annual Jaycee Radio Day will be held Friday, January 26. Chairman of the project is Randy Kelly with Gene McGuire assisting.

Radio Day is a part of the annual Jaycee Week that will be observed this year January 21-27. Ad prices for Radio Day when the Jaycees take over Radio Station KMUL for the day are as follows: one for \$5; two for \$7.50; three for \$10; four for \$12.50; and five for \$15. The ads will be 15 to 20 seconds in length.

At the regular Jaycee meeting Monday, January 15, the Jaycee will select by secret ballot the Outstanding Merchant and the Boss of the year. These awards will be presented at the Bosses Night Banquet along with the Outstanding Young Man Award and the Outstanding Young Farmer.

## Governor Smith Releases 1973 Criminal Justice Plan

AUSTIN—The state's police officers are better qualified to cope with the crime problem than they ever have been, Governor Preston Smith said today in releasing the "1973 Criminal Justice Plan for Texas."

In a letter prefacing the updated five-year plan, developed by the Criminal Justice Council staff, the governor noted that CJC funding has helped to develop peace officer training programs statewide.

He said that updated communications enable law enforcement officers to send messages across the state in seconds, where hours or days were required before.

Criminal justice information systems have been developed, with on-line teletype access to computer-stored data at both state and national levels, the governor said.

The 1973 plan projects spending of more than 29 million dollars in federal funds to support crime-fighting projects in the state this year. On approval of the plan by the Law Enforcement Assistance Administration, that agency will award the state its annual block grant. This year for the first time

## Texas Farm Bureau For REAP Program

Texas Farm Bureau President J.T. (Red) Woodson has said that the federal cost-sharing program for most soil and water conservation practices should be continued.

Commenting on the Administration's cut-off of funds for the Rural Environmental Assistance (REAP) and Water Bank programs, and disaster loans to farmers, the state farm leader said that agriculture should not be expected to bear an unequal portion of federal spending cuts.

Under the REAP program, annual payments have been offered land owners covering part of the cost of installing approved conservation and pollution control practices.

"This program, which is cost sharing and not an income supplement, benefits all people," Woodson said. "It is an investment in the future of this country and not a subsidy solely for the benefit of land owners." "The soil and water conservation practices not only contribute to pollution control, but also help provide Americans with a bountiful food supply at reasonable prices."

Woodson said farmers and

ranchers do support measures to reduce inflationary pressures because they are hurt more than most groups by higher production costs since they cannot pass along cost increases. If the Administration is determined to cut federal spending, it should be across the board in all departments of government, the state farm leader said.

## SPAG Board Will Meet On Tuesday

The Board of Directors for the South Plains Association of Government will meet Tuesday, January 16, at 9:30 a.m. in the South Plains Electric Cooperative, Inc., 110N. Amarillo Road, Lubbock.

The agenda includes a pre-application conference for HUD and State of Texas Planning Grants with representatives from those agencies. Criminal Justice advisory Committee Bylaws Ratify bylaws governing com-

Cont. on Page 3, col. 1



**4 FOOT ICICLE. . .** M's, Eula Banta of 917 Gum in Muleshoe is shown with the giant sized icicle on her front porch. This icicle formed after the temperatures finally began rising after a severe winter storm that hit the Muleshoe area and the entire state of Texas. Many people awoke Thursday morning to clear skies, sunshine and icicles. Until Thursday, the sun had only shone in Muleshoe two days of the entire New Year.

## Water District Begins Water Measurements

Personnel of the High Plains Underground Water Conservation District No. 1, assisted by several Texas Water Development Board (TWDB) staff members, have begun the annual measurement of depths to water in the more than 800 observation wells in the 15 counties comprising the District.

The coordinated and systematic measurement of the depths to water in the observation wells constitutes the only method of determining changes in the volume of water stored in the Ogallala aquifer beneath the land surface. The water level records obtained through the observation wells with in Bailey County constitute the foundation

for the District's cost-in-water depletion, income-tax allowance program.

An observation well is a well that has been selected for inclusion in the annual water-level measuring program. All wells are privately owned -- the District does not own any wells-- and are measured with the permission of the well owners.

District personnel will be measuring in Bailey, Castro, Cochran, Deaf Smith, Floyd, Parmer, Potter, and Randall Counties. Wells located in Armstrong, Crosby, Hale, Hockley, Lamb, Lubbock and Lynn Counties will be measured by the TWDB staff.

Cont. on Page 3, col. 2

CONGRESSMAN

**Bob Price**

18th Congressional District

Congressman Bob Price announced early today that he has joined with other Representatives in calling for a bipartisan caucus of all interested House Members to meet this afternoon to discuss recent Administration actions leading to the termination of certain programs within the department of Agriculture. These programs include the 2% REA loan program, the Farmers Home Administration Emergency Loan Program for farms hit by natural disasters, the Water Bank program, and the Rural Environmental Assistance Program.

"The purpose of this meeting," Price stated, "will be to find out what alternate procedures could be worked out to allow for budget control without destroying those ongoing programs which have proven of great benefit not only to agriculture, but to the Nation as a whole in the areas of water and soil conservation."

Price will also be joining the other Members of the House Agriculture Committee tomorrow in meeting with the Secretary of Agriculture to discuss this matter at further length. "I am hopeful

these meetings will lead to a satisfactory solution for all concerned," Price said.

**Hospital Briefs**

ADMISSIONS

Mrs. L. E. Testerman, Mrs. Gary Smith, Mrs. Ira Smith, G. L. Dale, Michael D. Russell, Mrs. Daniel Amador, Pete E. Wileman, Mrs. Howard Splawa, Rodney Gonzalez, Mrs. James Embry, Epidro Costillo, Sr., R. H. Sneed, Mrs. Donald Dale, Jay Donald Moore, Mrs. Frank Perez, Jefferson Hamilton, Mrs. Gilbert Recio, Joe F. Albro, Mrs. Tommy Black, Mrs. Geronima Rosas and Blas Cabazos.

Gale Church, Mrs. Gary Smith, Mrs. Daniel Amador, Mrs. L. E. Testerman, M.S. Howard Splawn, William Byers, Mrs. Carolyn Taylor, Michael D. Russell, Mrs. James Embry, Mrs. Zela Furr, Mrs. Rodolfo Carrillo, Alton M. Ray, Thad J. Weaver, Mrs. John West, Rodney Reynolds, Jay D. Moore, Mrs. Bill Hail, Mrs. Donald Dale, Mrs. Gilbert Recio, and Mrs. Willie M. Nichols.

AIRLINES & PRESENTS

NEW YORK—Christmas gift packages that travelers carry aboard planes during the holiday season may be opened and searched as an anti-hijacking measure airline officials say.

**WASHINGTON NEWS REPORT**

Nixon's Statistics—The Blue Collars—Catholics—Blacks—

WASHINGTON, D.C.—The latest Gallup Poll provides a wealth of significant information on President Nixon's landslide victory November 7th.

The most striking finding is that one of three Democrats abandoned their party to vote for the Republican candidate; this is a greater party switchover than the late President Eisenhower achieved. However, Eisenhower won over more independents than did Nixon in November. But Nixon came close. He won 69 per cent to the late General's record 70 per cent.

Mr. Nixon, expected to do well among blue collar workers, did just that. They supported him by a 57 to 43 per cent margin, even though being traditionally Democratic. Since they compose a third of the electorate, this alone probably would have elected the President. The 57 per cent contrasts strikingly with the 35 per cent blue collar support given Nixon in 1968.

The President received a majority vote from organized labor—about 54 per cent—

the first time this has happened in many decades. But he didn't win a majority of the youth vote, as some have recently claimed. He and Senator George McGovern split it about evenly. Yet

even this was something of a surprise, for the youth vote had been the big hope in the McGovern camp.

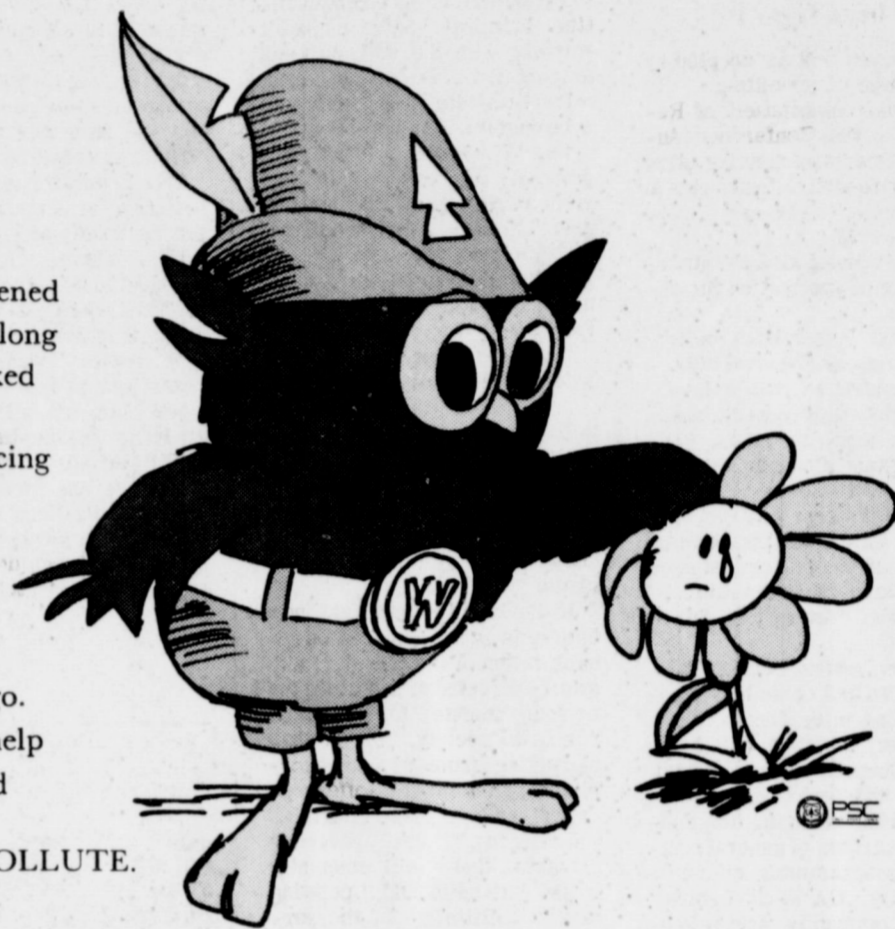
Among Catholics, who traditionally vote heavily Democratic, Mr. Nixon registered

impressive gains. In 1968 he received only one in three Catholic votes but in last November's voting he won a majority—52 per cent.

Only among blacks did the President fail to make sig-

nificant inroads, which prompts questions as to future campaigns. Nixon lost about 87 per cent of the black vote to Hubert Humphrey in 1968 and about the same percentage to George McGovern.

The birds, animals & flowers are dying to tell us... "Give a hoot, don't pollute."



Everywhere you look, our environment is being threatened by pollution. Wild flowers along our roadsides are being picked rather than admired.

Smog is killing trees, it's forcing birds to find new homes. Fish are running out of clean water. Just what's being done about it?

A lot. But we've got a lot more to do, a long way to go. Let's all do our part. And help keep the birds, animals, and flowers alive.

GIVE A HOOT, DON'T POLLUTE.

Join Woody Owl's fight against pollution. Today.

**COME WITH US ON EXPO '73**

**International Factory Tour**

Guided Tours **PLANE LEAVES JAN. 31<sup>st</sup> RETURNS FEB. 1<sup>st</sup>**

**FARMALL COMBINE WORKS**

SEE 40 acres of automated assembly-line under one roof

**FARMALL TRACTOR WORKS**

SEE Forage Harvesters Ciyco Air Planters

We Want You To Go With Us  
SEE US FOR DETAILS

**WOOLEY-HURST, INC.**

272-5514 Muleshoe

Y.L. METHODIST CHURCH  
Rt. 1, Muleshoe  
Arron L. Mitchell, Minister

ZION REST  
PRIMITIVE BAPTIST CHURCH  
207 E. Ave. G  
Glen Williams, Elder

PRIMITIVE BAPTIST CHURCH  
621 S. First  
Afton Richards, Elder

FIRST CHRISTIAN CHURCH  
130 W. Ave. G  
Ken Cole, Pastor  
Sunday Morning—9 a.m.  
First & Third Sunday Evening—  
7p.m.

LATIN AMERICAN  
METHODIST MISSION  
Ave. D & 5th Street  
Esteban Lara, Pastor

FIRST PRESBYTERIAN  
Morton Highway  
Edwin L. Manning, Pastor  
Sunday Morning Service -

CHURCH OF  
THE NAZARENE  
Ninth & Ave. C

CALVARY BAPTIST CHURCH  
1733 W. Ave. C  
Charles Kenneth Harvey, Pastor

TRINITY BAPTIST CHURCH  
314 E. Ave. B  
V.L. Huggins, Pastor

MULESHOE  
ASSEMBLY OF GOD  
517 S. First  
H.D. Hunter, Pastor

FIRST BAPTIST CHURCH  
220 W. Ave. E  
Douglas DuBose, Pastor

SPANISH  
ASSEMBLY OF GOD  
East 6th and Ave. F  
Rev. Hipolito Pecina

ST. MATTHEW  
BAPTIST CHURCH  
W. Third  
E. McFrazier, Pastor

NORTHSIDE  
CHURCH OF CHRIST  
117 E. Birch Street

**On Top**

The Bible, "God's holy word," is still the best seller, and most quoted book. From the original Greek and Hebrew this book has been translated into many languages. Through the centuries men have devotedly studied and sought out the truth in the Bible. When one reads the Bible with an open mind. God's word is "as sharp as a two edged sword."



The Church is God's appointed agency in this world for spreading the knowledge of His love for man and of His demand for man to respond to that love by loving his neighbor. Without this grounding in the love of God, no government or society or way of life will long persevere and the freedoms which we hold so dear will inevitably perish. Therefore, even from a selfish point of view, one should support the Church for the sake of the welfare of himself and his family. Beyond that, however, every person should uphold and participate in the Church because it tells the truth about man's life, death and destiny, the truth which alone will set him free to live as a child of God.

SPANISH BAPTIST MISSION  
E. 3rd and Ave. E  
John Jaquez, Pastor

FIRST UNITED  
METHODIST CHURCH  
507 West Second  
J.B. Fowler, Jr., Pastor

MULESHOE  
BAPTIST CHURCH  
8th Street & Ave. G

ST. JOHN LUTHERAN  
Lariat, Texas  
Herbert E. Peiman

PROGRESS  
BAPTIST CHURCH  
Progress, Texas  
Murrell Johns, Pastor

SIXTEENTH & D  
CHURCH OF CHRIST  
Sunday—10:30 a.m.  
Evening—6 p.m.  
Wednesday—6 p.m.  
Ivan Woodard, Minister

IMMACULATE  
CONCEPTION  
CATHOLIC CHURCH  
(Fr.) Robert O'Leary  
Northeast of City

JEHOVAH'S WITNESS  
Friona Highway  
Boyd Lowery, Minister

RICHLAND HILLS  
BAPTIST CHURCH  
17th & West Ave. D  
J.P. Jones, Pastor

MULESHOE  
CHURCH OF CHRIST  
Clovis Highway  
Royce Clay, Minister

The following business firms urge you to your choice this Sunday and every Sunday.

Charles Lenau  
Lumber Co.  
202 E. Ash

Brock Motor  
Company  
422 N. First

First National  
Bank  
224 S. First

Bratcher Motor  
Supply  
107 E. Ave. B

White's Cashway  
Grocery  
402 Main

Muleshoe  
State Bank  
304 W. Second

Muleshoe  
Motor Company  
106 S. First

Dari Delite  
Drive-In  
210 N. First

St. Clair's  
110 Main

B & S  
Irrigation  
Company

Spudnut Shop  
328 Main

Cobb's  
Department  
Store  
218 Main

Fry & Cox  
401 S. First

Western Drug  
114 Main

Art Craft  
Printing Co.  
105 E. Ave. D

Muleshoe  
Co-Op Gins

# Price Daniel Jr. Elected Speaker Of The Texas House

AUSTIN -- State Representative Price Daniel, Jr., of Liberty, was elected Tuesday as Speaker of the Texas House of Representatives.

Daniel, 31, was selected by an overwhelming majority of his fellow House members to serve a two-year term in this legislative leadership position. Daniel announced his candidacy for Speaker on June 21, 1971, in the wake of the Texas stock fraud scandal. At that time he promised to devote himself to cleaning up state government and to take his campaign to the people of Texas.

Never before in history has a candidate for Speaker carried his campaign to the citizens of the State.

Daniel campaigned on a program to reform the legislative process and make the House of Representatives more

open and democratic. Among the reforms advocated by Daniel were an Ethics Code, providing for financial disclosure by state officials, and a strong lobby Regulation Act.

Although opposed by most lobbyists and special interest groups, Daniel's only opponent in his campaign for Speaker withdrew from the race more than six months prior to his election.

Daniel was nominated by Representative Dave Finney of Tarrant County. The nomination was seconded by Representatives Matt Garcia of Bexar County and Eddie Bernice Johnson of Dallas County.

In his acceptance speech, Daniel told his fellow members and the people of Texas, "Let us all resolve to have the courage to oppose the most powerful when they are wrong and let us all have the compassion to support the most helpless when they are right."

Daniel also advised the members of the House of Representatives to "make use of the best advice available....But let us all determine to listen to our constituents, because the best and ultimate wisdom of the state is there."

He pledged to the people of Texas, "I will be as much a listener as a Speaker. I intend to listen to the democratic will of this House and the people it represents. I intend to listen to the hopes and aspirations of Texans for a new morality in State government and a better life for all."

Daniel was sworn in by his father, Judge Price Daniel, Sr., of the Texas Supreme Court, Judge Daniel, formerly U.S. Senator, Governor, and Attorney General of Texas, also served as Speaker of the Texas House, from 1943 to 1945. Young Daniel is also the great-great grandson of Governor Sam Houston.

## Justice...

Cont. from Page 1

development of the regional planning concept, in which problems and needs are determined at the local level and assistance for meeting them is provided from federal funds administered by the Governor's Office.

"Each of the 24 regional councils and four of the major metropolitan areas now has full-time criminal justice planners working with the CJC staff and helping units of local government translate their needs into meaningful action projects."

To December 1, 1972, the governor announced, CJC had funded 1,241 projects, totaling more than 55 million dollars, for improving the state's criminal justice system, using funds made available under the Omnibus Crime Control Act.

"Many of these projects," he said, "are far-reaching."

Aside from improvement of police capabilities, he said, strides have been made in providing resources for courts "to enable them to render judgments more equitably and to keep pace with crowded dockets."

In the correctional field, new emphasis is being placed on rehabilitation of the offender, with efforts directed at preparing the prison inmate for eventual return to society, "rather than extracting from him an exorbitant price for his offense."

Referring to these efforts as "pioneering," the governor predicted that "still other new trails will be blazed," pointing toward fulfillment of the purpose of the legal system -- social order with justice.

In his forward to the plan, Judge Brown said provisions for financial audit and project evaluation are built into the CJC staff operation. He added: "Our goal is to justify every expenditure of public funds, and to show that every project's achievements are commensurate with its costs."

## Bank...

Cont. from Page 1

in the bank's 54-year history", Kerr stated.

"A number of factors account for this substantial increase in volume of new loans", said Kerr. "Probably the greatest factor was the new lending authorities made possible by the Farm Credit Act of 1971, which was implemented this year", he said. He also reported that the interest in buying farm and ranch land sharply increased during the year. "This interest covered all facets of Texas agriculture, the part-time farm and the farm and ranch units, both large and small", he stated.

The Federal Land Bank Association of Muleshoe, which serves Bailey and Parmer counties, closed 71 loans for \$2,395,400.00 during 1972.

The Federal Land Bank of Houston makes farm and ranch real estate loans throughout Texas and on December 31 had more than 675 million dollars in loans outstanding to over 35,000 farmers and ranchers.

Officers and directors of the local association are Gordon Duncan, president; Morris Douglas, vice-president; Jim Claunch; A. L. Hartzog and James Glaze.

Each of the 24 regional councils and four of the major metropolitan areas now has full-time criminal justice planners working with the CJC staff and helping units of local government translate their needs into meaningful action projects."

To December 1, 1972, the governor announced, CJC had funded 1,241 projects, totaling more than 55 million dollars, for improving the state's criminal justice system, using funds made available under the Omnibus Crime Control Act.

"Many of these projects," he said, "are far-reaching."

Aside from improvement of police capabilities, he said, strides have been made in providing resources for courts "to enable them to render judgments more equitably and to keep pace with crowded dockets."

In the correctional field, new emphasis is being placed on rehabilitation of the offender, with efforts directed at preparing the prison inmate for eventual return to society, "rather than extracting from him an exorbitant price for his offense."

Referring to these efforts as "pioneering," the governor predicted that "still other new trails will be blazed," pointing toward fulfillment of the purpose of the legal system -- social order with justice.

In his forward to the plan, Judge Brown said provisions for financial audit and project evaluation are built into the CJC staff operation. He added: "Our goal is to justify every expenditure of public funds, and to show that every project's achievements are commensurate with its costs."

Each of the 24 regional councils and four of the major metropolitan areas now has full-time criminal justice planners working with the CJC staff and helping units of local government translate their needs into meaningful action projects."

To December 1, 1972, the governor announced, CJC had funded 1,241 projects, totaling more than 55 million dollars, for improving the state's criminal justice system, using funds made available under the Omnibus Crime Control Act.

"Many of these projects," he said, "are far-reaching."

Aside from improvement of police capabilities, he said, strides have been made in providing resources for courts "to enable them to render judgments more equitably and to keep pace with crowded dockets."

In the correctional field, new emphasis is being placed on rehabilitation of the offender, with efforts directed at preparing the prison inmate for eventual return to society, "rather than extracting from him an exorbitant price for his offense."

Referring to these efforts as "pioneering," the governor predicted that "still other new trails will be blazed," pointing toward fulfillment of the purpose of the legal system -- social order with justice.

In his forward to the plan, Judge Brown said provisions for financial audit and project evaluation are built into the CJC staff operation. He added: "Our goal is to justify every expenditure of public funds, and to show that every project's achievements are commensurate with its costs."

Each of the 24 regional councils and four of the major metropolitan areas now has full-time criminal justice planners working with the CJC staff and helping units of local government translate their needs into meaningful action projects."

To December 1, 1972, the governor announced, CJC had funded 1,241 projects, totaling more than 55 million dollars, for improving the state's criminal justice system, using funds made available under the Omnibus Crime Control Act.

"Many of these projects," he said, "are far-reaching."

Aside from improvement of police capabilities, he said, strides have been made in providing resources for courts "to enable them to render judgments more equitably and to keep pace with crowded dockets."

In the correctional field, new emphasis is being placed on rehabilitation of the offender, with efforts directed at preparing the prison inmate for eventual return to society, "rather than extracting from him an exorbitant price for his offense."

Referring to these efforts as "pioneering," the governor predicted that "still other new trails will be blazed," pointing toward fulfillment of the purpose of the legal system -- social order with justice.

In his forward to the plan, Judge Brown said provisions for financial audit and project evaluation are built into the CJC staff operation. He added: "Our goal is to justify every expenditure of public funds, and to show that every project's achievements are commensurate with its costs."

Each of the 24 regional councils and four of the major metropolitan areas now has full-time criminal justice planners working with the CJC staff and helping units of local government translate their needs into meaningful action projects."

To December 1, 1972, the governor announced, CJC had funded 1,241 projects, totaling more than 55 million dollars, for improving the state's criminal justice system, using funds made available under the Omnibus Crime Control Act.

"Many of these projects," he said, "are far-reaching."

Aside from improvement of police capabilities, he said, strides have been made in providing resources for courts "to enable them to render judgments more equitably and to keep pace with crowded dockets."

In the correctional field, new emphasis is being placed on rehabilitation of the offender, with efforts directed at preparing the prison inmate for eventual return to society, "rather than extracting from him an exorbitant price for his offense."

Referring to these efforts as "pioneering," the governor predicted that "still other new trails will be blazed," pointing toward fulfillment of the purpose of the legal system -- social order with justice.

In his forward to the plan, Judge Brown said provisions for financial audit and project evaluation are built into the CJC staff operation. He added: "Our goal is to justify every expenditure of public funds, and to show that every project's achievements are commensurate with its costs."

Each of the 24 regional councils and four of the major metropolitan areas now has full-time criminal justice planners working with the CJC staff and helping units of local government translate their needs into meaningful action projects."

To December 1, 1972, the governor announced, CJC had funded 1,241 projects, totaling more than 55 million dollars, for improving the state's criminal justice system, using funds made available under the Omnibus Crime Control Act.

"Many of these projects," he said, "are far-reaching."

Aside from improvement of police capabilities, he said, strides have been made in providing resources for courts "to enable them to render judgments more equitably and to keep pace with crowded dockets."

In the correctional field, new emphasis is being placed on rehabilitation of the offender, with efforts directed at preparing the prison inmate for eventual return to society, "rather than extracting from him an exorbitant price for his offense."

Referring to these efforts as "pioneering," the governor predicted that "still other new trails will be blazed," pointing toward fulfillment of the purpose of the legal system -- social order with justice.

In his forward to the plan, Judge Brown said provisions for financial audit and project evaluation are built into the CJC staff operation. He added: "Our goal is to justify every expenditure of public funds, and to show that every project's achievements are commensurate with its costs."

Each of the 24 regional councils and four of the major metropolitan areas now has full-time criminal justice planners working with the CJC staff and helping units of local government translate their needs into meaningful action projects."

To December 1, 1972, the governor announced, CJC had funded 1,241 projects, totaling more than 55 million dollars, for improving the state's criminal justice system, using funds made available under the Omnibus Crime Control Act.

"Many of these projects," he said, "are far-reaching."

Aside from improvement of police capabilities, he said, strides have been made in providing resources for courts "to enable them to render judgments more equitably and to keep pace with crowded dockets."

In the correctional field, new emphasis is being placed on rehabilitation of the offender, with efforts directed at preparing the prison inmate for eventual return to society, "rather than extracting from him an exorbitant price for his offense."

Referring to these efforts as "pioneering," the governor predicted that "still other new trails will be blazed," pointing toward fulfillment of the purpose of the legal system -- social order with justice.

In his forward to the plan, Judge Brown said provisions for financial audit and project evaluation are built into the CJC staff operation. He added: "Our goal is to justify every expenditure of public funds, and to show that every project's achievements are commensurate with its costs."

Each of the 24 regional councils and four of the major metropolitan areas now has full-time criminal justice planners working with the CJC staff and helping units of local government translate their needs into meaningful action projects."

To December 1, 1972, the governor announced, CJC had funded 1,241 projects, totaling more than 55 million dollars, for improving the state's criminal justice system, using funds made available under the Omnibus Crime Control Act.

"Many of these projects," he said, "are far-reaching."

Aside from improvement of police capabilities, he said, strides have been made in providing resources for courts "to enable them to render judgments more equitably and to keep pace with crowded dockets."

In the correctional field, new emphasis is being placed on rehabilitation of the offender, with efforts directed at preparing the prison inmate for eventual return to society, "rather than extracting from him an exorbitant price for his offense."

Referring to these efforts as "pioneering," the governor predicted that "still other new trails will be blazed," pointing toward fulfillment of the purpose of the legal system -- social order with justice.

In his forward to the plan, Judge Brown said provisions for financial audit and project evaluation are built into the CJC staff operation. He added: "Our goal is to justify every expenditure of public funds, and to show that every project's achievements are commensurate with its costs."

Each of the 24 regional councils and four of the major metropolitan areas now has full-time criminal justice planners working with the CJC staff and helping units of local government translate their needs into meaningful action projects."

To December 1, 1972, the governor announced, CJC had funded 1,241 projects, totaling more than 55 million dollars, for improving the state's criminal justice system, using funds made available under the Omnibus Crime Control Act.

"Many of these projects," he said, "are far-reaching."

Aside from improvement of police capabilities, he said, strides have been made in providing resources for courts "to enable them to render judgments more equitably and to keep pace with crowded dockets."

In the correctional field, new emphasis is being placed on rehabilitation of the offender, with efforts directed at preparing the prison inmate for eventual return to society, "rather than extracting from him an exorbitant price for his offense."

Referring to these efforts as "pioneering," the governor predicted that "still other new trails will be blazed," pointing toward fulfillment of the purpose of the legal system -- social order with justice.

In his forward to the plan, Judge Brown said provisions for financial audit and project evaluation are built into the CJC staff operation. He added: "Our goal is to justify every expenditure of public funds, and to show that every project's achievements are commensurate with its costs."

Each of the 24 regional councils and four of the major metropolitan areas now has full-time criminal justice planners working with the CJC staff and helping units of local government translate their needs into meaningful action projects."

To December 1, 1972, the governor announced, CJC had funded 1,241 projects, totaling more than 55 million dollars, for improving the state's criminal justice system, using funds made available under the Omnibus Crime Control Act.

"Many of these projects," he said, "are far-reaching."

Aside from improvement of police capabilities, he said, strides have been made in providing resources for courts "to enable them to render judgments more equitably and to keep pace with crowded dockets."

In the correctional field, new emphasis is being placed on rehabilitation of the offender, with efforts directed at preparing the prison inmate for eventual return to society, "rather than extracting from him an exorbitant price for his offense."

Referring to these efforts as "pioneering," the governor predicted that "still other new trails will be blazed," pointing toward fulfillment of the purpose of the legal system -- social order with justice.

In his forward to the plan, Judge Brown said provisions for financial audit and project evaluation are built into the CJC staff operation. He added: "Our goal is to justify every expenditure of public funds, and to show that every project's achievements are commensurate with its costs."

they are right."

Daniel also advised the members of the House of Representatives to "make use of the best advice available....But let us all determine to listen to our constituents, because the best and ultimate wisdom of the state is there."

He pledged to the people of Texas, "I will be as much a listener as a Speaker. I intend to listen to the democratic will of this House and the people it represents. I intend to listen to the hopes and aspirations of Texans for a new morality in State government and a better life for all."

Daniel was sworn in by his father, Judge Price Daniel, Sr., of the Texas Supreme Court, Judge Daniel, formerly U.S. Senator, Governor, and Attorney General of Texas, also served as Speaker of the Texas House, from 1943 to 1945. Young Daniel is also the great-great grandson of Governor Sam Houston.

The new Speaker is married to the former Diane Ford Womack of Austin, the great-granddaughter of Texas Governor Thomas M. Campbell, who served from 1907 to 1911.

The Daniels have one son, Thomas Houston Daniel, 2, who is named for the three Texas Governors from whom he is descended.

Other reforms advocated by the Liberty lawmaker include: a strengthened campaign contribution and finance reporting law; an open meetings law; a law guaranteeing public access to government documents; legislation to limit Speakers to one consecutive term of office; a law to prevent the use of threats or promises of favor in Speaker-ship campaigns; a law to require the disclosure of campaign contributions and expenditures in Speaker-ship races; a law to limit the jurisdiction of conference committees; and rules reforms.

## Chamber Corner

The Chamber of Commerce and Agriculture office received a letter last week announcing that the West Texas Chamber of Commerce will host its annual dinner for the entire Texas Congressional Delegation and their wives in Washington on March 12. Hotel site, registration fee, and other details will be announced later.

At these dinners, West Texas presents to the honorees, some 26 in all, gifts of West Texas origin. In the past, these gifts have been rugs, women's apparel, processed foods, women's purses, jewelry, chair, muzzle loading gun, lamps, ect., all produced in West Texas.

In order to give an opportunity for every town in West Texas to be represented, an invitation has been extended for the chamber to nominate some firm or individual from this city who would like to present a West Texas gift. This could entail 26 identical gifts for each honoree or one gift of a retail value of \$25.00 or more.

The chamber here is planning to send something to the dinner from Muleshoe.

The Chamber also received a letter from William D. Wittliff, publisher of the Encino Press that asked for the earliest possible photograph of each county courthouse and perhaps a photograph of some special event in Muleshoe from the same period.

This publishing company is gathering material for a pictorial book on Texas at the

turn of the century.

Two scheduled events that would be of interest to area people that are coming up in the near future include the WTCC Agriculture and Ranching Committee meeting in Plainview on January 16; and the Leaders Workshop in Plainview on February 13, 1973.

**Tattle Tale**  
"What's Caroline so mad about?"  
"She stepped on one of those scales with a loud-speaker and it called out, 'One at a time, please.'"

**Tough**  
Judge--Only married a week and beat your wife? A month's imprisonment will cure you.  
Husband--It's a bit tough spoiling our honeymoon like that."

## SPAG...

Cont. from Page 1

mittee operation as adopted by the Advisory Committee.

National Association of Regional Councils Conference-Authorize President and Executive Director to attend Conference in Minneapolis, February 25-March 1, 1973.

HUD Planning Grant-Authorize filing of application for assistance.

National Association of Regional Councils Bylaws-Authorize President to cast a favorable ballot on proposed amendments to NARC's Bylaws.

Consultant Contract on FHA Water and Sewer-Authorize president to sign contract with Clifford Cason and Associates, Inc., to do the planning studies under Farmers Home Administration's Water and Sewer Grant.

Project Review Docket: Ratify Reviews and comments handled by Executive Committee in December; GA 72-91-Community Action Council of Crosby, Floyd, Dickens and Kent Counties-Application for refunding their on-going programs of general community programming and family planning; GA 72-92-Central Plains Community Action Program, Inc.-Application for refunding their on-going programs including administration, economic development, manpower planning housing project Retardation Center Drug Abuse Project - to provide treatment facilities and services for a drug abuse treatment and rehabilitation program in the nine county Central Plains catchment area.

mittee operation as adopted by the Advisory Committee.

National Association of Regional Councils Conference-Authorize President and Executive Director to attend Conference in Minneapolis, February 25-March 1, 1973.

HUD Planning Grant-Authorize filing of application for assistance.

National Association of Regional Councils Bylaws-Authorize President to cast a favorable ballot on proposed amendments to NARC's Bylaws.

Consultant Contract on FHA Water and Sewer-Authorize president to sign contract with Clifford Cason and Associates, Inc., to do the planning studies under Farmers Home Administration's Water and Sewer Grant.

Project Review Docket: Ratify Reviews and comments handled by Executive Committee in December; GA 72-91-Community Action Council of Crosby, Floyd, Dickens and Kent Counties-Application for refunding their on-going programs of general community programming and family planning; GA 72-92-Central Plains Community Action Program, Inc.-Application for refunding their on-going programs including administration, economic development, manpower planning housing project Retardation Center Drug Abuse Project - to provide treatment facilities and services for a drug abuse treatment and rehabilitation program in the nine county Central Plains catchment area.

mittee operation as adopted by the Advisory Committee.

National Association of Regional Councils Conference-Authorize President and Executive Director to attend Conference in Minneapolis, February 25-March 1, 1973.

HUD Planning Grant-Authorize filing of application for assistance.

National Association of Regional Councils Bylaws-Authorize President to cast a favorable ballot on proposed amendments to NARC's Bylaws.

Consultant Contract on FHA Water and Sewer-Authorize president to sign contract with Clifford Cason and Associates, Inc., to do the planning studies under Farmers Home Administration's Water and Sewer Grant.

Project Review Docket: Ratify Reviews and comments handled by Executive Committee in December; GA 72-91-Community Action Council of Crosby, Floyd, Dickens and Kent Counties-Application for refunding their on-going programs of general community programming and family planning; GA 72-92-Central Plains Community Action Program, Inc.-Application for refunding their on-going programs including administration, economic development, manpower planning housing project Retardation Center Drug Abuse Project - to provide treatment facilities and services for a drug abuse treatment and rehabilitation program in the nine county Central Plains catchment area.

mittee operation as adopted by the Advisory Committee.

National Association of Regional Councils Conference-Authorize President and Executive Director to attend Conference in Minneapolis, February 25-March 1, 1973.

HUD Planning Grant-Authorize filing of application for assistance.

National Association of Regional Councils Bylaws-Authorize President to cast a favorable ballot on proposed amendments to NARC's Bylaws.

Consultant Contract on FHA Water and Sewer-Authorize president to sign contract with Clifford Cason and Associates, Inc., to do the planning studies under Farmers Home Administration's Water and Sewer Grant.

Project Review Docket: Ratify Reviews and comments handled by Executive Committee in December; GA 72-91-Community Action Council of Crosby, Floyd, Dickens and Kent Counties-Application for refunding their on-going programs of general community programming and family planning; GA 72-92-Central Plains Community Action Program, Inc.-Application for refunding their on-going programs including administration, economic development, manpower planning housing project Retardation Center Drug Abuse Project - to provide treatment facilities and services for a drug abuse treatment and rehabilitation program in the nine county Central Plains catchment area.

mittee operation as adopted by the Advisory Committee.

National Association of Regional Councils Conference-Authorize President and Executive Director to attend Conference in Minneapolis, February 25-March 1, 1973.

HUD Planning Grant-Authorize filing of application for assistance.

National Association of Regional Councils Bylaws-Authorize President to cast a favorable ballot on proposed amendments to NARC's Bylaws.

Consultant Contract on FHA Water and Sewer-Authorize president to sign contract with Clifford Cason and Associates, Inc., to do the planning studies under Farmers Home Administration's Water and Sewer Grant.

Project Review Docket: Ratify Reviews and comments handled by Executive Committee in December; GA 72-91-Community Action Council of Crosby, Floyd, Dickens and Kent Counties-Application for refunding their on-going programs of general community programming and family planning; GA 72-92-Central Plains Community Action Program, Inc.-Application for refunding their on-going programs including administration, economic development, manpower planning housing project Retardation Center Drug Abuse Project - to provide treatment facilities and services for a drug abuse treatment and rehabilitation program in the nine county Central Plains catchment area.

mittee operation as adopted by the Advisory Committee.

National Association of Regional Councils Conference-Authorize President and Executive Director to attend Conference in Minneapolis, February 25-March 1, 1973.

HUD Planning Grant-Authorize filing of application for assistance.

National Association of Regional Councils Bylaws-Authorize President to cast a favorable ballot on proposed amendments to NARC's Bylaws.

Consultant Contract on FHA Water and Sewer-Authorize president to sign contract with Clifford Cason and Associates, Inc., to do the planning studies under Farmers Home Administration's Water and Sewer Grant.

Project Review Docket: Ratify Reviews and comments handled by Executive Committee in December; GA 72-91-Community Action Council of Crosby, Floyd, Dickens and Kent Counties-Application for refunding their on-going programs of general community programming and family planning; GA 72-92-Central Plains Community Action Program, Inc.-Application for refunding their on-going programs including administration, economic development, manpower planning housing project Retardation Center Drug Abuse Project - to provide treatment facilities and services for a drug abuse treatment and rehabilitation program in the nine county Central Plains catchment area.

mittee operation as adopted by the Advisory Committee.

National Association of Regional Councils Conference-Authorize President and Executive Director to attend Conference in Minneapolis, February 25-March 1, 1973.

HUD Planning Grant-Authorize filing of application for assistance.

National Association of Regional Councils Bylaws-Authorize President to cast a favorable ballot on proposed amendments to NARC's Bylaws.

Consultant Contract on FHA Water and Sewer-Authorize president to sign contract with Clifford Cason and Associates, Inc., to do the planning studies under Farmers Home Administration's Water and Sewer Grant.

Project Review Docket: Ratify Reviews and comments handled by Executive Committee in December; GA 72-91-Community Action Council of Crosby, Floyd, Dickens and Kent Counties-Application for refunding their on-going programs of general community programming and family planning; GA 72-92-Central Plains Community Action Program, Inc.-Application for refunding their on-going programs including administration, economic development, manpower planning housing project Retardation Center Drug Abuse Project - to provide treatment facilities and services for a drug abuse treatment and rehabilitation program in the nine county Central Plains catchment area.

mittee operation as adopted by the Advisory Committee.

National Association of Regional Councils Conference-Authorize President and Executive Director to attend Conference in Minneapolis, February 25-March 1, 1973.

HUD Planning Grant-Authorize filing of application for assistance.

National Association of Regional Councils Bylaws-Authorize President to cast a favorable ballot on proposed amendments to NARC's Bylaws.

Consultant Contract on FHA Water and Sewer-Authorize president to sign contract with Clifford Cason and Associates, Inc., to do the planning studies under Farmers Home Administration's Water and Sewer Grant.

Project Review Docket: Ratify Reviews and comments handled by Executive Committee in December; GA 72-91-Community Action Council of Crosby, Floyd, Dickens and Kent Counties-Application for refunding their on-going programs of general community programming and family planning; GA 72-92-Central Plains Community Action Program, Inc.-Application for refunding their on-going programs including administration, economic development, manpower planning housing project Retardation Center Drug Abuse Project - to provide treatment facilities and services for a drug abuse treatment and rehabilitation program in the nine county Central Plains catchment area.

mittee operation as adopted by the Advisory Committee.

National Association of Regional Councils Conference-Authorize President and Executive Director to attend Conference in Minneapolis, February 25-March 1, 1973.

HUD Planning Grant-Authorize filing of application for assistance.

National Association of Regional Councils Bylaws-Authorize President to cast a favorable ballot on proposed amendments to NARC's Bylaws.

Consultant Contract on FHA Water and Sewer-Authorize president to sign contract with Clifford Cason and Associates, Inc., to do the planning studies under Farmers Home Administration's Water and Sewer Grant.

Project Review Docket: Ratify Reviews and comments handled by Executive Committee in December; GA 72-91-Community Action Council of Crosby, Floyd, Dickens and Kent Counties-Application for refunding their on-going programs of general community programming and family planning; GA 72-92-Central Plains Community Action Program, Inc.-Application for refunding their on-going programs including administration, economic development, manpower planning housing project Retardation Center Drug Abuse Project - to provide treatment facilities and services for a drug abuse treatment and rehabilitation program in the nine county Central Plains catchment area.

mittee operation as adopted by the Advisory Committee.

National Association of Regional Councils Conference-Authorize President and Executive Director to attend Conference in Minneapolis, February 25-March 1, 1973.

HUD Planning Grant-Authorize filing of application for assistance.

National Association of Regional Councils Bylaws-Authorize President to cast a favorable ballot on proposed amendments to NARC's Bylaws.

Consultant Contract on FHA Water and Sewer-Authorize president to sign contract with Clifford Cason and Associates, Inc., to do the planning studies under Farmers Home Administration's Water and Sewer Grant.

Project Review Docket: Ratify Reviews and comments handled by Executive Committee in December; GA 72-91-Community Action Council of Crosby, Floyd, Dickens and Kent Counties-Application for refunding their on-going programs of general community programming and family planning; GA 72-92-Central Plains Community Action Program, Inc.-Application for refunding their on-going programs including administration, economic development, manpower planning housing project Retardation Center Drug Abuse Project - to provide treatment facilities and services for a drug abuse treatment and rehabilitation program in the nine county Central Plains catchment area.

mittee operation as adopted by the Advisory Committee.

National Association of Regional Councils Conference-Authorize President and Executive Director to attend Conference in Minneapolis, February 25-March 1, 1973.

HUD Planning Grant-Authorize filing of application for assistance.

National Association of Regional Councils Bylaws-Authorize President to cast a favorable ballot on proposed amendments to NARC's Bylaws.

Consultant Contract on FHA Water and Sewer-Authorize president to sign contract with Clifford Cason and Associates, Inc., to do the planning studies under Farmers Home Administration's Water and Sewer Grant.

Project Review Docket: Ratify Reviews and comments handled by Executive Committee in December; GA 72-91-Community Action Council of Crosby, Floyd, Dickens and Kent Counties-Application for refunding their on-going programs of general community programming and family planning; GA 72-92-Central Plains Community Action Program, Inc.-Application for refunding their on-going programs including administration, economic development, manpower planning housing project Retardation Center Drug Abuse Project - to provide treatment facilities and services for a drug abuse treatment and rehabilitation program in the nine county Central Plains catchment area.

mittee operation as adopted by the Advisory Committee.

National Association of Regional Councils Conference-Authorize President and Executive Director to attend Conference in Minneapolis, February 25-March 1, 1973.

HUD Planning Grant-Authorize filing of application for assistance.

National Association of Regional Councils Bylaws-Authorize President to cast a favorable ballot on proposed amendments to NARC's Bylaws.

Consultant Contract on FHA Water and Sewer-Authorize president to sign contract with Clifford Cason and Associates, Inc., to do the planning studies under Farmers Home Administration's Water and Sewer Grant.

Project Review Docket: Ratify Reviews and comments handled by Executive Committee in December; GA 72-91-Community Action Council of Crosby, Floyd, Dickens and Kent Counties-Application for refunding their on-going programs of general community programming and family planning; GA 72-92-Central Plains Community Action Program, Inc.-Application for refunding their on-going programs including administration, economic development, manpower planning housing project Retardation Center Drug Abuse Project - to provide treatment facilities and services for a drug abuse treatment and rehabilitation program in the nine county Central Plains catchment area.

mittee operation as adopted by the Advisory Committee.

National Association of Regional Councils Conference-Authorize President and Executive Director to attend Conference in Minneapolis, February 25-March 1, 1973.

HUD Planning Grant-Authorize filing of application for assistance.

National Association of Regional Councils Bylaws-Authorize President to cast a favorable ballot on proposed amendments to NARC's Bylaws.

Consultant Contract on FHA Water and Sewer-Authorize president to sign contract with Clifford Cason and Associates, Inc., to do the planning studies under Farmers Home Administration's Water and Sewer Grant.

Project Review Docket: Ratify Reviews and comments handled by Executive Committee in December; GA 72-91-Community Action Council of Crosby, Floyd, Dickens and Kent Counties-Application for refunding their on-going programs of general community programming and family planning; GA 72-92-Central Plains Community Action Program, Inc.-Application for refunding their on-going programs including administration, economic development, manpower planning housing project Retardation Center Drug Abuse Project - to provide treatment facilities and services for a drug abuse treatment and rehabilitation program in the nine county Central Plains catchment area.

mittee operation as adopted by the Advisory Committee.

National Association of Regional Councils Conference-Authorize President and Executive Director to attend Conference in Minneapolis, February 25-March 1, 1973.

HUD Planning Grant-Authorize filing of application for assistance.

National Association of Regional Councils Bylaws-Authorize President to cast a favorable ballot on proposed amendments to NARC's Bylaws.

Consultant Contract on FHA Water and Sewer-Authorize president to sign contract with Clifford Cason and Associates, Inc., to do the planning studies under Farmers Home Administration's Water and Sewer Grant.

Project Review Docket: Ratify Reviews and comments handled by Executive Committee in December; GA 72-91-Community Action Council of Crosby, Floyd, Dickens and Kent Counties-Application for refunding their on-going programs of general community programming and family planning; GA 72-92-Central Plains Community Action Program, Inc.-Application for refunding their on-going programs including administration, economic development, manpower planning housing project Retardation Center Drug Abuse Project - to provide treatment facilities and services for a drug abuse treatment and rehabilitation program in the nine county Central Plains catchment area.

mittee operation as adopted by the Advisory Committee.

National Association of Regional Councils Conference-Authorize President and Executive Director to attend Conference in Minneapolis, February 25-March 1, 1973.

HUD Planning Grant-Authorize filing of application for assistance.

National Association of Regional Councils Bylaws-Authorize President to cast a favorable ballot on proposed amendments to NARC's Bylaws.

Consultant Contract on FHA Water and Sewer-Authorize president to sign contract with Clifford Cason and Associates, Inc., to do the planning studies under Farmers Home Administration's Water and Sewer Grant.

Project Review Docket: Ratify Reviews and comments handled by Executive Committee in December; GA 72-91-Community Action Council of Crosby, Floyd, Dickens and Kent Counties-Application for refunding their on-going programs of general community programming and family planning; GA 72-92-Central Plains Community Action Program, Inc.-Application for refunding their on-going programs including administration, economic development, manpower planning housing project Retardation Center Drug Abuse Project - to provide treatment facilities and services for a drug abuse treatment and rehabilitation program in the nine county Central Plains catchment area.

## Welcome to Muleshoe



MR & MRS FLOYD GAFFORD

Newcomers to Muleshoe are Floyd Gafford, his wife Bettie, and their three sons; Rocky, 14, Scotty 12, and Monty 11.

The Gaffords moved here from Mesa, Arizona where they lived for a year and a half, but they are originally from Texas.

Gafford is the market manager for Piggly Wiggly and Mrs. Gafford is a wrapper there.

The Floyd Gafford family receives a warm welcome to Muleshoe.

THE FOLLOWING FIRMS ARE PROUD TO WELCOME THE GAFFORDS TO MULESHOE.

<p><b>James Crane Tire Co.</b></p>	<p><b>MULESHOE STATE BANK</b></p> <p>MEMBER FDIC</p>
<p><b>DAMRON DRUG CO.</b></p> <p>REXALL</p> <p>308 MAIN PH. 272-4210</p>	<p><b>James Glaze Co.</b></p> <p>INSURANCE REAL ESTATE LOANS</p>

# BUDGET STRETCHERS

Let us Serve you. good Jan. 14 thru 20

Mrs. Tuckers

**SHORTENING**

3 lb. can

**69¢**

Shurfine

**COFFEE**

1 lb. can

**79¢**

Shurfresh

**BISCUITS**

each **5¢**

20 lb. bag

**WHITE POTATOES.....**

**\$ 09** Love these VALUES

**T-BONE STEAK.....** 1<sup>29</sup> lb.

PEYTONS Pure

**PORK SAUSAGE.....** 2 lb. 1<sup>39</sup> pkg.

---

**NOTEBOOK 500 ct. 49¢**

**PAPER.....**

4 Roll pkg.

**SOFTEX BATHROOM TISSUE...39¢**

SHURFINE Whole Kernel Golden

**CORN.....** 5 17 \$ oz. Cans

Big Roll

**CHIFFON PAPER TOWELS.....** 39¢

CHIFFON 200 ct. box

**Facial TISSUE.....** 29¢

8 oz. can HUNT'S

**TOMATO SAUCE.....** 10¢

**TEXAS ORANGES**

49¢ 5 lb. bag

JIM'S LOW, LOW PRICES

WE GIVE GUNN BROS. STAMPS

**REGULAR HEAD & SHOULDERS SHAMPOO**

**56¢**

**Jim's Pay N' Save**

FRIENDLIEST STORE IN TOWN

8 a.m. till 9 p.m. 6 Days A Week Sundays 9 a.m. till 9 p.m.

201 S. 1st. Street

QUALITY MERCHANDISE AT LOWEST PRICES

**Bailey County Journal**  
Established March 31, 1918  
Published by Muleshoe Publishing Co., Inc.  
Every Sunday at 304 W. Second Box 449  
Muleshoe, Texas 79347  
Second class postage paid at Muleshoe, Texas  
Muleshoe, Texas 79347

L.R. Hall, President  
Jessica P. Hall, Sec.-Treas.  
L.R. Hall, Managing Editor  
Katie Fisher, News Reporter  
Jesse Gilliland, Society Editor  
Dolly Kewell, Office  
Gayla Robinson, Advertising

SUBSCRIPTIONS:  
Zone I-Bailey-Parmer-Cochran-Lamb counties: \$4.00 per year,



# Luling Vows Unite Miss Webb, Pitts

Miss Nora Anne Webb, daughter of Mr. and Mrs. Billy Richard Webb of Luling, and John Wilson Pitts, son of Mr. and Mrs. Henry Kirk Pitts of Earth, were united in marriage at the Church of the Annunciation, Episcopal, in Luling, Saturday, January 6, at 4:30 p.m.

The rites were read before the altar which was decorated with ivory tapers and brass urns holding arrangements of ivory chrysanthemums, plume flowers, cattails, baby's breath and fern. Ivory satin bows marked the family pews.

The bride, given in marriage by her father, selected a gown of heritage design displaying the charm of an early 19th century wedding. The lines of the dress were simple with the exception of hand-done crewel embroidery on the modified Bishop sleeves and around the hemline.

The embroidery of Queen Anne's lace, lunaria, wheat shafts and mushrooms was done in moss green, white, ecru and beige, with accents in rust and rosy beige. The ivory-colored sheer wool had a decollete neckline and sleeves that arched gently above the shoulder line and curved into a flair at the wrist. The bride carried a spray of fresh white roses accented with dried wheat, plume flowers, starburst, lunaria, Oregon fern, bleached aspidistra leaves, cattails, and baby's breath tied together with an ivory satin ribbon. She wore an ecru lace mantilla which was draped to fall just below the shoulders.

The maid of honor, Miss Ruth Ann Bearden of Abilene, and the bridesmaid, Miss Kay Crowell of Austin, wore predominantly moss green paisley print gowns fashioned in the same simple lines as those of the bridal gown. The gowns were topped with old-fashioned aprons of ecru organdy. The attendants carried sprays of fresh golden chrysanthemum daisies accented with dried wheat, plume flowers, cattails and baby's breath, tied with moss green velvet ribbon. They wore simple headbands of moss green velvet.

Serving the groom as best man was his brother, Aubrey Pitts of Earth. Groomsman was James Pitts of Arch, N.M., brother of the groom.

Ushers were Jim Webb and Billy Webb Jr. of Luling, brothers of the bride, and Delane Bassett, also of Luling, cousin of the bride. Crucifer was Rick Carter. Acolyte was Carl Carter. Both are cousins of the bride from Luling.

The mother of the bride wore a floor length gown of antique cornflower blue with matching accessories. Her corsage was a white Japhet orchid.

The groom's mother chose a floor length gown of ivory, gold and brown floral design. She wore a gold tipped, tan Cymbidium orchid.

A reception at the parish hall followed the ceremony. The hall was decorated to carry out the early 19th century heritage theme.

The bride's table, covered with an ecru embroidered cloth, was centered with a brass candelabra holding 18 ivory tapers and the bride's bouquet. Standing 12 layers high, the butter-cream wedding cake displayed thistles, sunflowers, and mushrooms of meringue and iced almond lunaria with chocolate leaves and stems. A fruit punch was served from brass punch bowl. Meringue mushrooms were served.

The groom's table was covered with a moss green linen cloth. In the center was an antique brass candy scale holding lighted candles ringed by grapes, leaves and the bouquets of the attendants. Sausage biscuits, sandwiches, cheese balls, nuts and chocolate mints were served. Coffee was poured from a brass coffee service.

Guests were registered by Carolyn Hinds and Denise Fitch, cousin of the bride. Other members of the bride, other members of the houseparty were Margaret Reese, Kathy Steglich and Mrs. Joseph Martin, Houston; Mrs. Franklin Zoeller, Dallas; Mrs. John Davenport, Victoria; Mrs. Paul Hervey, College Station; Mrs. James Pitts, Arch, N.M.; and Mrs. Robert Allen, Mrs. Don Fearn, Mrs. Thomas Wilson III, Mrs. Floyd Hinds, Mrs. George Walker III, Mrs. Charles Fitch, and Mrs. Jack Carter all of Luling.

Music was played throughout the reception by Mrs. Ronald Rossberg and Carl Carter

cousins of the bride.

For the wedding trip Mrs. Pitts wore a burgandy ultra suede jumper layered over a soft sheer-beige dress sprinkled with gossamer threads burgandy, rose and canary with beige accessories and a beige and burgandy cymbidium orchid corsage. Upon their return, they will make their home in Lubbock, where both are senior finance majors at Texas Tech University.

Following the wedding rehearsal Friday night, January 5, Mr. and Mrs. Henry Kirk Pitts, parents of the groom, were hosts to the bridal party for a champagne dinner at the Silver Derrick in Luling.

Parties given to the bride before her marriage included a luncheon in Lubbock given by Margaret Reese and Kathy Steglich; an "Around the Clock" miscellaneous shower given by Mrs. Marion Crowell, Mrs. Floyd Hinds, Mrs. Paul Hervey, Mrs. Thomas Wilson III, Kay Crowell, and Carolyn Hinds; a miscellaneous shower in the home of Mrs. Robert Allen Jr. with Mrs. George C. Walker III as co-hostess; a Swedish Smorgasbord for the couple by Mr. and Mrs. Jack Carter; and an open house in Earth hosted by Mr. and Mrs. Henry Kirk Pitts.

## TOPS Hold Weekly Meeting

TOPS Chapter No. 34 met at 4:30 p.m. on Thursday, January 11, in the Bailey County Electric meeting room. Eighteen members weighed in. Members repeated the pledge and sang the Friendship song.

Queen for the week was Evelyn Moore with Lela Helmer as first runner-up and Selma Redwine as second runner-up.

Next week the TOPS will meet at their regular time for a salad supper. The December queen and the six months queen will be crowned.

The meeting was dismissed with the singing of the goodnight song.

*Fashion*  
There is much traveling done at this season of the year and the girl who has luggage in which she can pack her dresses will make a much better appearance when she arrives at her destination than the one who is carrying garments on hangers.

Houndstooth, dots and print fabrics are used for tailored suits.



MRS. JOHN WILSON PITTS, the former Nora Anne Webb

**WEDDING PLANS REVEALED....** Mr. and Mrs. Glenn Spivey of Asheboro, North Carolina, announce the engagement and approaching marriage of their daughter, Linda Gail Pierce, to Keith W. Turner, son of Mr. and Mrs. Darrell Turner of Muleshoe. Turner is a 1970 graduate of Muleshoe High School and is now serving in the U. S. Marine Corps stationed in Beaufort, South Carolina. The couple plans a June wedding.

## Friendship Club Installs Officers

The Friendship Club met Thursday evening at the home of Mrs. J. W. Witherspoon with Mrs. E. W. Johnson as co-hostess.

The members and one guest were served salad plates and pie.

Mrs. Bert Mathis, out-going president, conducted a short business meeting, Mrs. John Watson installed the officers for 1973-74 using as her theme "Awards of Friendship". After the installation, the group joined hands and sang "What A Friend We Have in Jesus".

The following officers were installed: Mrs. Charlie King, president; Mrs. Jewell Griffiths, vice-president; Mrs. W. T. Andrews, secretary; Mrs. W. E. Young, treasurer; Mrs. Scott Swafford, reporter; and Mrs.

J. W. Witherspoon, program chairman.

### BIBLE VERSE

"All we like sheep have gone astray, we have turned everyone to his own way; and the Lord laid on him the iniquity of us all."

1. To whom do the above words apply?
2. Who is the author of these words?
3. Who is the sin-bearer to whom the writer refers?
4. Where may these words be found?

### Answers to Bible Verse

1. To all mankind.
2. Isaiah, the great prophet.
3. Jesus Christ.
4. Isaiah 53:6.

## Lazbuddie Class Of 1965 Has Reunion

The 1965 graduating class of Lazbuddie High School held a class reunion on December 31, 1972, in the home of Mr. and Mrs. Kenneth McGehee of Lazbuddie. Twelve of the original class members were present.

Special recognition was given to Mr. and Mrs. Bill Cooper (Patsy Radford) from Duncan, Okla., for traveling the farthest distance; to Mr. and Mrs. Kenneth McGehee and Mr. and Mrs. Scotty Windham for having the most children, each couple has three; to Mr. and Mrs. Lloyd Bradshaw for becoming parents most recently; and to Max Eubanks for having the best beard.

The combined total of years married for all the class members is 60 years. Class members have a total of 18 children combined.

Refreshments of English tarts, pecan tassies and a class cake decorated in the school colors of black and orange were served.

Plans were discussed for having another reunion in five years. Several of the couples stayed and watched the New Year in with a fireworks display.

Those attending were Mr. and Mrs. Lloyd Bradshaw, Amarillo; Mr. and Mrs. Kenneth McGehee (Joyce Hudson), Lazbuddie; Mr. and Mrs. Gary Coker (Johnnie Ivy), Friona; Mr. and Mrs. Max Eubanks, Farwell; Mr. and Mrs. Ronald Ashford, Muleshoe; Mr. and Mrs. James McDonald (Katie Blackston), Memphis; Mr. and Mrs. Johnny Mabry, Big Springs; Mr. and Mrs. Eugene Houston (Frances Myers), Muleshoe; Mr. and Mrs. Harold Redwine (Charlotte Seaton), Muleshoe; Mr. and Mrs. Don Bentley (Janette Slaton), Lubbock; Mr. and Mrs. Bill Cooper (Patsy Radford), Duncan, Okla.; and Mr. and Mrs. Scotty Windham, sponsor, Lazbuddie.

Anyone interested in the addresses of any of the class of 1965 may contact Mrs. Kenneth McGehee. She also has available pictures made at the reunion.

MORE OF A GOOD

JANUARY

# Clearance Sale

### LADIES FALL DRESSES

LARGE SELECTION OF STYLES & FABRICS. ALL FAMOUS BRANDS REDUCED TO 1/2 PRICE

### LADIES FALL DRESS & CASUAL SHOES

GROUPS REDUCED TO 1/2 PRICE

### PIECE GOODS SPECIAL GROUP

VALUES TO \$2.49 yd.

2 yd. for \$1

ALL OTHER MATERIAL GREATLY REDUCED TO CLEAR.

SHOP EARLY

### LADIES SPORTSWEAR

VALUES FROM \$3.25 to 38.00

NOW

1<sup>99</sup> to 22<sup>99</sup>

### BOYS SUITS

Val. \$9.50 to \$35 NOW \$5.99 to \$19.99

### GIRLS SPORTSWEAR

Val. \$4.50 to \$30

NOW \$2.49 TO \$18.99

### SPECIAL GROUP MENS LOW RISE CASUAL PANTS

VALUES TO \$14.00

OTHER CASUALS

GREATLY REDUCED NOW 1/2 PRICE

### MENS COATS & JACKETS

Val. \$7 to \$56

NOW \$4.49 TO \$32.99



Muleshoe

If you're farsighted you'll switch to electric heat

electric heating estimate



An electric heating system has staying power and maintenance is practically unheard of. It's the modern way to heat, now and in the future. Operating cost? Why not find out? Get the whole story. Call us this week for your free operating estimate. It's a real eye-opener.



FOR SO MANY PEOPLE



## Area Young Homemakers To Attend Convention

"YHT...Reach Out in '73 is the theme of the 1973 convention of the State Association of Young Homemakers of Texas, January 19-20, in the Baker Hotel, Dallas.

Members of the Lazbuddie Chapter of Young Homemakers of Texas who will be attending the meeting are Mrs. Joyce M. Gehee, vice president; and Mrs. Tommie Savage.

Attending the convention from the Muleshoe Young Homemakers Chapter will be Mrs. Kenneth Powell, Mrs. Doyle Eubanks and Mrs. Jay Harbin, sponsor.

Mrs. Eileen Coffield, noted writer from Drumright, Oklahoma, will be the main speaker for the opening session Friday morning. In her talk, "Reaching out for Your Heritage," Mrs. Coffield will bring out the characteristics of the pioneer woman and how they are needed today.

The annual Young Farmer-Young Homemaker Award Luncheon will be held at noon Friday at the Dallas Memorial Auditorium.

"The Polyfoniks," a singing group from Temple High School, will make a return appearance to entertain. This group has performed throughout Texas and is a favorite with Young Farmers and Young Homemakers.

Young Homemakers of Texas Achievement Awards will be presented during the luncheon program. The Outstanding Chapter, the Outstanding New Chapter, and the State Little Sister of YHT will be recognized.

The Outstanding Chapter and New Chapter awards are presented annually to chapters judged to have contributed most toward the growth of YHT members and the community. The State Little Sister Award is given to a Future Homemaker of America who has been outstanding as a member of her family, school, church, and community, and who plans to become a home economics teacher.

"When You Reach Out, Reach Out All the Way" will be the theme of a talk by Frederick McClure, State Future Farmers of America President, San Augustine, at the Friday afternoon general session.

Phyllis and Bryon Barnes, a well-known singing-comedy team from Irving, will provide the entertainment at the "Gay Nineties" event on Friday night.

"The Reflection", a triple trio of girls formerly from Dallas now enrolled in Texas colleges will highlight the Saturday morning general session. The group will present a patriotic program of music accented by visuals.

Also on Saturday morning the Young Homemakers will elect and install a new president for 1973 to succeed Mrs. Rita Travis of Houston.

During the two-day meeting, Texas leading manufacturers will exhibit modern homemaking equipment and appliances.

## Nursing Home News by Myrtle Guinn

Mr. and Mrs. Mike Miller and their three small children visited Mrs. Perry during the holidays. Mrs. Miller is the daughter of Mr. and Mrs. Irvin St. Clair and the great-granddaughter of Mrs. Perry.

Mrs. Ruth Timms spent Saturday with her mother, Mrs. Perry.

Mr. and Mrs. Merle Stevenson visited Mrs. Nicholson on Saturday. Mrs. Nicholson is Mrs. Stevenson's mother.

Mrs. Stovall spent Saturday at the Nursing Home visiting Mr. Stovall, who had not been feeling well.

D. O. Smith, brother of Miss Anna Long, reports that she is slowly improving in Methodist Hospital in Lubbock where she is recovering from a broken hip and arm. Mrs. Epperly, also in Methodist Hospital, is reported to be slowly improving.

Mrs. Coppidge visited her mother, Mrs. Hawkins, on Saturday and shampooed and set her hair for her.

Mrs. Mae Provence and Mrs. Jeanne McVicker came each day to visit with their mothers who share the same room.

Mrs. O'Hair from Lazbuddie came for a visit with her mother, Mrs. Davis, Saturday evening.

Mrs. Vivian White came Monday to see her mother, Mrs. Harris, and Mrs. Perry.

Ben Williams comes every day to see his wife, Mrs. Williams.

Mrs. Dorothy Brock came Monday through the snow to see her mother, Mrs. Emmanuel.

Mrs. Bryant visited her father, Mr. Denny, on Sunday.

Rev. Du Bose and Mr. and Mrs. Timms all visited Mrs. Perry Sunday afternoon.

Mrs. Haney Poyner and Mrs. Jeanne McVicker, Pink Ladies, served juices to us Wednesday morning. We do appreciate the effort of all the Pink Ladies who do so many things for us.

Mrs. Vivian White came again Wednesday to see her mother, Mrs. Harris, and brought her a pretty robe.

Several of the nurses and personnel have had to remain in the Hospital and Nursing Home overnight because of the snow, cold weather and bad roads.

"There is a time in every life, I think; A time of the star, a moment very dark when one must look up and -- if he is wise -- follow the light as the magi did; A light that leads to love and hope". This little verse has made an impression on my mind for I too have failed to look up for the star of hope. When I do, which is often, I feel divine love, gladness, and hope covering my footsteps.

## TV COMMENTARY

By John Smiley

WHAT DO YOU SAY after you say goodbye? Some folks just say it over again. On January 18 on NBC Jack Benny will host an hour-long show he's calling his "First Farewell Special" -- a hint that many more may be coming before he's going, going, gone.

RECENTLY Harry Reasoner used a half hour of ABC's time to make a sharp, intelligent appraisal of pets in America. It was an interesting show, presenting such facts as Americans spend \$5-billion a year on over 32 million dogs, and pets often reflect the personality and tastes of its owner.

WALT DISNEY and The National Geographic Society, like the Lone Ranger, Tarzan, or Superman, can be counted on for that which is good. The NGS will be involved in a TV show on Wednesday, January 17, on CBS entitled "Strange Creatures of the Night." Based on the reputation of the National Geographic Society, one can say that this program will be worth viewing.

LIKE THE ORIENTAL contending forces yin and yang, the Nixon Administration's proposed new legislation related to the content of television network programs has spawned both praise and attack, out of which healthy growth may occur. Some with interests in broadcasting say it violates the First Amendment guarantees of free speech. Others say it will give a needed stability in the broadcasting industry.

AS THE NEW YEAR bounces upon us with due saturation of fresh outdoors, one reflects that surely there must be something better than the steady clutter of commercials jammed into all-too-frequent program interruptions.

Common sense is the measure of the possible: it is composed of experience and prevision; it is calculation applied to life.

-H.F. Amiel.

## Local Artists Show Paintings In Lubbock

Three Muleshoe artists, Ruth Hammock, Mattie Hicks, and Elizabeth Black, are sharing a show of their paintings at the Methodist Hospital in Lubbock through March 6, 1973. All three artists are primarily realistic painters, and the show includes a wide variety of subject matter including portraits, florals, still life and landscapes executed in oils, acrylics, watercolors and drawings. Each of the artists is a member of the Muleshoe Art Association, Lubbock Art Association and Texas Fine Arts Association.

Ruth Hammock works in all art media but prefers the simplicity and spontaneity achieved with watercolor and drawing. Her favorite subjects are the people, places and animals of the Southwest. Recent area honors include being one of three top winners at the Lubbock Art Association's Membership Show. She currently has

two paintings accepted in the West Texas Watercolor Association Show which is hanging at the Texas Tech Museum.

Mattie Hicks began painting while living in Colorado for six years, where the scenery created an irresistible desire to share on canvas the beauty of the mountains. After returning to her native Texas she began formal art studies. Using oils and acrylics she has no favorite subject, painting florals and still life as well as landscapes and familiar things around her.

She currently has paintings in South Plains Circuit Show and the Mum Show, both sponsored by the Lubbock Art Association. Elizabeth Black, who paints under the name of "Valentine", began her art education in Arapahoe at the age of fourteen. She majored in art for her Bachelor's Degree and received her Master's Degree in 1969 from Eastern New Mexico University. During the years in which she reared her four children, she kept alive her interest in art through study, painting and teaching. She is currently employed as art instructor for Muleshoe High School where she is completing her tenth year in this capacity.

## From the Journal

### 10 Years Ago

Muleshoe Home Demonstration Club met Tuesday in the home of Mrs. Willie Reeder.

A slide film on obesity was shown to the following: Dorothy Bowers, Zula Carlyle, Leona Reeder, Opal Robinson, Norene Thomas, and two guests, Ethel Harding and Glenda Haley.

Officers installed in the Pleasant Valley 4-H Club were: President, Kathryn West; Vice President Sam Allison; Secretary-Treasurer Carolyn Allison; Reporter Sheryl Stevens; Parliamentarian Bobby Allison; Council Delegate, James Pitts; Alternate Council Delegate Carolyn Allison; Song Leader Lyna Pitts and Pianist Veta Allison.

Mr. and Mrs. S. K. Flatt, Ilene and Collin, went to Earth to visit with Mr. and Mrs. Paul Poyner. The group went to Plainview Sunday for dinner.

Mrs. Cass Stegall, Mrs. Cecil Cole and Mrs. Tommy Galt were Lubbock shoppers Monday.

Lauretta Baker was hostess for the January meeting of the Progress Home Demonstration Club.

Bob Kershner, owner of Kershner Nursery, Clovis, N.M. was guest speaker. His topic was pruning shrubs.

Present were Fern Davis, Lena Kelso, Phebe Gray, Alice Mitchell, Ada Murrah, Veta Self, Norma Seymour, Myrtle Wells, Iva Smith, Juaree Smallwood, Betty Carpenter, Lela Mardis and the hostess.

### 20 Years Ago

Mrs. Laura B. S. Cox returned to Excelsior Springs, Mo., after spending the Christmas holidays here with the C. D. Hoovers.

The Muleshoe Lions Club was entertained Wednesday noon by a group of students from the Muleshoe Schools. Several vocal selections by the young ladies were much enjoyed.

W. Q. Casey visited the club and reminded them that this month is the month for the 1953 Polio drive. He asked for the cooperation of the Lions Club in helping to raise funds as well as contribute.

The Muleshoe Methodist Church Program was given Sunday night under the direction of Mrs. Noel Woodley. It featured a pageant of the Christmas story with Ann Woodley as Mary and Stanley Fox as Joseph.

Van McCormick, son of Mr. and Mrs. L. F. McCormick, returned to Kerrville, Texas last week where he is a Bible student. He was accompanied by his parents.

## NEW ARRIVALS



### Anita Perez

Mr. and Mrs. Francisco Perez of Earth are the parents of a daughter born at 9:59 p.m. on January 8 in the West Plains Memorial Hospital. The baby was named Anita and weighed seven pounds four ounces.

### Belinda Lee Dale

Mr. and Mrs. Donald Gene Dale of Friona are the parents of a daughter born in the West Plains Memorial Hospital at 4:37 p.m. on January 8. The little miss weighed seven pounds and 13 ounces and was named Belinda Lee.

### Anna Amador

Mr. and Mrs. Daniel Hernandez Amador of Muleshoe are the parents of a daughter born in the West Plains Memorial on January 6 at 3:41 a.m. The baby weighed seven pounds four ounces and was named Anna Hernandez.

### Julie Recio

Mr. and Mrs. Gilbert Lopez Recio of Muleshoe are the parents of a daughter Julie, born at 4:52 on January 9 in the West Plains Memorial Hospital. Julie weighed six pounds 15 ounces.

## Caring For Small Electric Appliances

Proper use and care of appliances insures their greatest value, according to Mrs. Robin Taylor, county Extension agent. Detailing general rules of thumb for small electrical appliances, she suggested the following:

Always use the appliance's own electrical cord, connect cord to appliance before plugging into wall, don't use extension cords, unplug immediately after use, clean after each use, don't use scouring pads or cleaners on non-stick coating, don't put cold water on hot griddles, saucepans or fry pans--it may cause warping, and store appliances under cover or keep free of dust.

"Other small appliances require special-care tactics. These include blenders, can openers, coffee makers, toas-

ters and waffle irons," the agent said.

For blenders--don't overflow the jar, clean by filling with warm detergent water and running on low speed or by removing the blades.

Can openers--wipe with damp cloth, remove cutter wheel assembly and clean occasionally.

Coffee-makers--wash interior or thoroughly, use brush for spout.

Toasters--empty crumb tray frequently, never use fork to dislodge particles.

Waffle iron--brush grids with pastry brush, they don't require washing (the brown film helps prevent sticking). If sticking is a problem, recondition by covering grids with unsalted vegetable oil and letting them heat for about 10 minutes.

Next --Buying Appliances'

JANUARY

CLEARANCE!

Sale!

ALL SALES FINAL  
NO EXCHANGE OR REFUNDS  
NO LAY-AWAY  
NO ALTERATIONS  
NO GIFT WRAP

STARTS TUESDAY  
JANUARY 16th  
WE WILL BE CLOSED MONDAY  
JANUARY 15th  
TO PREPARE FOR GIANT SALE!

**Ladies PANTSUITS**

SIZES  
Regular-Junior-Half Sizes

VALUES FROM  
20.00 to 90.00

**REDUCED**  
**13<sup>20</sup> to \$60**

**Ladies DRESSES**

SIZES  
Regular-Junior Half Sizes

Values from  
14.00 to 58.00

**REDUCED**  
**9<sup>30</sup> to 38<sup>60</sup>**

**LADIES COATS**

Regular and  
Junior Sizes

VALUES FROM  
30.00 to 72.00

**NOW**  
**\$20 to \$48**

**LADIES PURSES AND GLOVES**

**1/2 price**

**ALL FALL MATERIAL**

Dacron-Acrlar

**REDUCED 1/3**

**Ladies SPORTSWEAR**

BLOUSES-PANTS-SHRINKS  
SKIRTS-VESTS 4.50 to 20.00

**REDUCED NOW**  
**\$3 to 13<sup>20</sup>**

**Ladies LINGERIE**

GOWNS-ROBES  
PAJAMAS

**REDUCED 1/3**

**GIRLS COATS**

SIZES 3 to 14  
Values from \$7 to \$32

**REDUCED**  
**4<sup>66</sup> to 21<sup>33</sup>**

**GIRLS LINGERIE**

**REDUCED 1/3 OFF**

**SHOES**

Mens & Ladies

**REDUCED UP TO 50%**

**Childrens DRESS**

Sizes 1 to 14  
5.00 to 14.00

**REDUCED**  
**3<sup>33</sup> to 9<sup>33</sup>**

**GIRLS SPORTSWEAR**

Pants-Blouses  
Sizes 3-14

**REDUCED**  
**1/3 off**

**BOYS SPORT COATS & SUITS**

SPECIAL GROUP  
Broken Sizes Values to 36.00

Your Choice **7<sup>77</sup>**

**Boys Longsleeve SWEATERS CARDIGANS & PULLOVERS**

**REDUCED Up to 50%**

**Boys WINTER COATS**

Good Selection of styles  
from ages 4-18

**REDUCED**  
**1/3 or MORE**

**BOYS SHIRTS**

ASSORTED KNITS & WOVENS  
MARKED

**1/3 to 1/2 OFF**

Special Group  
**BOYS JEANS**  
Blue denim-No Iron-Slim & Reg.-Huskies-PRETICKETED to 5.00 WHILE THEY LAST 1.99

**MENS SUITS**

KNITS-WOOLS & WOOL BLENDS  
Save over 50% on some patterns  
OTHERS AT LEAST

**1/3 off**

**MENS JACKETS**

Large Selection Corduroys  
Leathers-Nylons,  
assorted styles & Lengths

**MARKED AT LEAST**  
**1/3 off**

**MENS SLACKS**

ASSORTED FABRICS  
Knits- Wools & Silks  
flared or straight leg  
Values to \$25.00

**CLEARANCE PRICE**  
**\$12**

**MENS PANTS**

SPECIAL GROUP  
Knits-Wool & Wool Blends.  
Values to 22.50  
broken sizes

**While They Last**  
**7<sup>77</sup>**

**DRESS SHIRTS**

Solids-Stripes & Patterns  
Longsleeve

**1/3 to 1/2 off**

**Mens SPORTS SHIRTS**

KNITS & WOVENS  
Reg. 4.00 to 11.50

**SALE PRICE 2<sup>66</sup> to 7<sup>67</sup>**

**MENS NOVELTY DRESS HATS**

ASSORTED FABRICS

**50% off**  
Some at only 1.00

**Young Mens FLARE PANTS**

LARGE GROUP  
ASSORTED FABRICS

**1/3 OFF**

**MENS SPORT COATS**

Knits-Wools-Blends

**REDUCED**  
**50%**  
a few at 5.00

St. Clairs'

Muleshoe

# STATE CAPITAL Highlights AND Sidelights

by Bill Boykin  
TEXAS PRESS ASSOCIATION

AUSTIN, Texas.--The State Board of Insurance had good news for homeowners as the new year turned. Insurance rate cuts which will total an estimated \$25 million a year in savings for coverage on dwellings were ordered effective January 1. Gov. Preston Smith commended the Board and claimed

that debate on insurance rating issues during the special legislative session he called last fall figured in the reductions. Board members first announced these reductions for extended coverage and homeowners' package policies. North-northwest territory--30 per cent for extended coverage and 20 per cent home-

owners' policies. Central inland area----eight per cent and seven per cent. Seacoast' first tier' counties on the Gulf-- four per cent reduction for extended coverage but a four per cent hike for homeowners' policies. Seacoast "second tier" counties-- 18 per cent and 10 per cent less. Announcement of the first reductions were followed three days later by fire rate cuts for dwellings. The statewide fire rate slashes amount to 12 per cent for brick veneer, asbestos and stucco houses and nine per cent for frame dwellings. A three per cent increase was directed for all brick dwellings, but the Board noted this category accounts for only two per cent of Texas housing. BUDGET REFORM URGED--

Legislators returning to work in regular session Tuesday found five budget reform proposals designed to save at least \$50 million a year. Texas Manufacturers Association unveiled the recommendations and announced a statewide campaign to win support for them. These proposals are expected to be introduced by prominent legislators, TMA said; as chief state executive officer, to review state spending on a quarterly basis. Authority for the governor, as chief state executive officer to review state spending on a quarterly basis. Authority for the legislative budget board to conduct biennial performance audits of agency and program operational efficiency. Limiting compromise powers of free conference commi-

tees on appropriations to adjusting reasonable differences between House and Senate spending recommendations, rather than permitting addition of new items or deletion of others previously agreed on by both houses. Establishing a 'price-tagging' system, under which the legislative budget board must project cost estimates for a five-year period on all spending legislation before committee hearings. Creating a two-year study by a 15-member gubernatorial commission of the practice of earmarking 80 per cent of total state revenues, free of direct legislative control. TRIED AGAIN--Lawmakers also found the 1973 version of Texas penal code revision as proposed by the State Bar on their desks at the capitol.

The new code, first proposed overall revision since 1857, was rejected by the legislature in 1971, but sponsors feel it may pass this year. Changes have been made in controversial sections, and provisions on drug laws and abortion left out. The new code would retain the death penalty for eight classifications of murder. Sixteen hundred sections of the old penal code have been boiled down to 246. It contains four felony punishment classifications and three classes of misdemeanors, with penalties specified for each. AG OPINIONS--A San Antonio school teacher is ineligible to serve as a member of the State Board of Education, the attorney general's office held. In other recent opinions, the attorney general concluded: County commissioners must be petitioned by one per cent of county voters before they can call a countywide road bond election. An advertising scheme where by merchants award prizes by drawings and punch-cards is a lottery in violation of the law. A requirement of persons applying for a marriage license appearing together or separately before the county clerk may be waived, and ceremonial marriages may be performed by proxy where there is a valid marriage license issued. Refinery units constructed on land owned by gas companies are determined to be real property. A vehicle designed primarily for application of fertilizer and herbicides is an "implement of husbandry" (used for agricultural purposes) and is not required to be registered for highway usage. APPOINTMENTS -- Governor Smith designated V. Larry Teaver Jr. of Austin, a longtime friend and aide, as secretary of State to serve until January 16 when Gov. Dolph Briscoe takes office. Teaver succeeds Bob Bullock who resigned after January 1. Other Smith appointments include: Judge Edward D. Coulson of Houston as associate justice of the 14th court of civil appeals; Sam Lane of Austin to Texas Employment Commission; Bob Lilly of San Antonio as chairman of Texas Animal Health Commission; David McAngus of Austin as 201st district judge; Judge Jackson B. Smith Jr. of Houston as 189th district judge; Mrs. Ruby Kless Sondock of Houston to domestic relations court no. 5 in Harris County; Murray L. McWhorter (reappointment) to the Veterans Land Board; and Bill Tippen of Abilene and Richard C. Ingram of Dallas to the Commission on Law Enforcement Officer Standards and Education. Brad O'Leary of Austin was designated executive director of the Texas Republican Party and Harrison Vickers of Houston executive director of the State Democratic Party. SHORT SNORTS Law Enforcement Academy of the Texas Department of Public Safety, named for the late

UPS director from 1938-1968, was officially dedicated here January 4 and hailed among the best equipped in the United States. Gross agricultural income for Texas during 1972 may exceed \$4 billion, according to Agriculture Commission John C. White. Court of Criminal Appeals declared unconstitutional a law (since amended) providing that 17 year old males could be tried for felonies, while females must be 18 to face trial. Revenue from cigarette taxes dropped \$2.5 million - to \$17.4 million--from December 1971 to last month.

Animal Health Commission announced quarantines in portions of Nueces and Webb counties for fever tick infestation and exposure. Governor Smith said state government will have a \$300 million "nestegg" of unexpended fund balances when he leaves office. Texas Education Agency received a national leadership award for developing performance-based teacher education programs. Rep. Frances (Sissy) Farenthold, unsuccessful candidate for governor last year, announced she will maintain a permanent Austin office and monitor the legislature.

## Economic Stabilization

## Questions and Answers

Q. May a firm increase its merit plan more than 5.5 per cent for new control years beginning after Nov. 14, 1972?  
A. No. Wage increases under merit plans are now subject to the 5.5 percent standard. Previously, the Pay Board permitted an additional 1.5 percent above this standard for employee units with qualified merit plans.  
Merit exceptions already granted may operate until the current control year expires. However, this exception will not be permitted in any control year starting on or after November 14, 1972.  
Merit exceptions already granted may operate until the current control year expires. However, this exception will not be permitted in any control year starting on or after November 14, 1972.  
Q. Can an employer still get the 1.5 percent exception to the Pay Board's guidelines for employees with a history of below average wage increases?  
A. No. The so-called "Catch-up" exception expired on Nov. 13, 1972.  
Q. Is there a short form Category III employers can use to request pay increases above 5.5 percent?  
A. Yes. The short form PB-3A may be used by both employers and employees to request approval for pay increases in excess of 5.5 percent from employee units of fewer than 1,000. Forms are available at all local Internal Revenue offices.  
Q. Must a 30-day notice be given if rents are increased by only 2.5%?  
A. Yes. The landlord must notify each tenant of any proposed rent increase, with respect to any transaction after December 1971, at least 30 days before the date the increase is to become effective. A landlord would be in violation of notice requirements even if the rent increase charged without proper notification was lower than that allowed by the rent regulations.  
However, if a landlord is exempt from controls, he is exempt from the rent increase notification requirements.

For more information on these notice requirements, see IRS Publication S-3026, "How to Spot a Rent Violation." It's available free by dropping a postcard to your Internal Revenue district office.  
Q. What procedure must a public utility follow before it can raise rates?  
A. Price increases are subject to approval of the state or local regulatory body that controls the particular public utility. If the regulatory body has received a certificate of compliance from the Price Commission, then any decision made by the regulatory body is binding. If a regulatory body has not received a certificate of if the certificate has been revoked by the Price Commission, then decisions on rates are subject to Price Commission review.  
Q. Are there any special provisions in the stabilization regulations for organizations which are exempt from income tax?  
A. Prices and wages of tax exempt organizations are controlled; however, the dues paid to these organizations are exempt. Also, the prenotification and reporting requirements are waived in certain instances.  
Life  
Life is really more what you make it than what you make.  
-Courier, Waterloo.

  
©PARRISH  
I'LL TELL YOU WHY IT'S OK FOR ME TO MAKE CRACKS ABOUT RELIGION--BECAUSE I'M A DEEPLY RELIGIOUS PERSON, THAT'S WHY. BESIDES, I'M INSURED BY POOL INSURANCE.  
**POOL Insurance Agency**  
Joe Smallwood  
Bob Blackwood  
MULESHOE Ph 272-4531

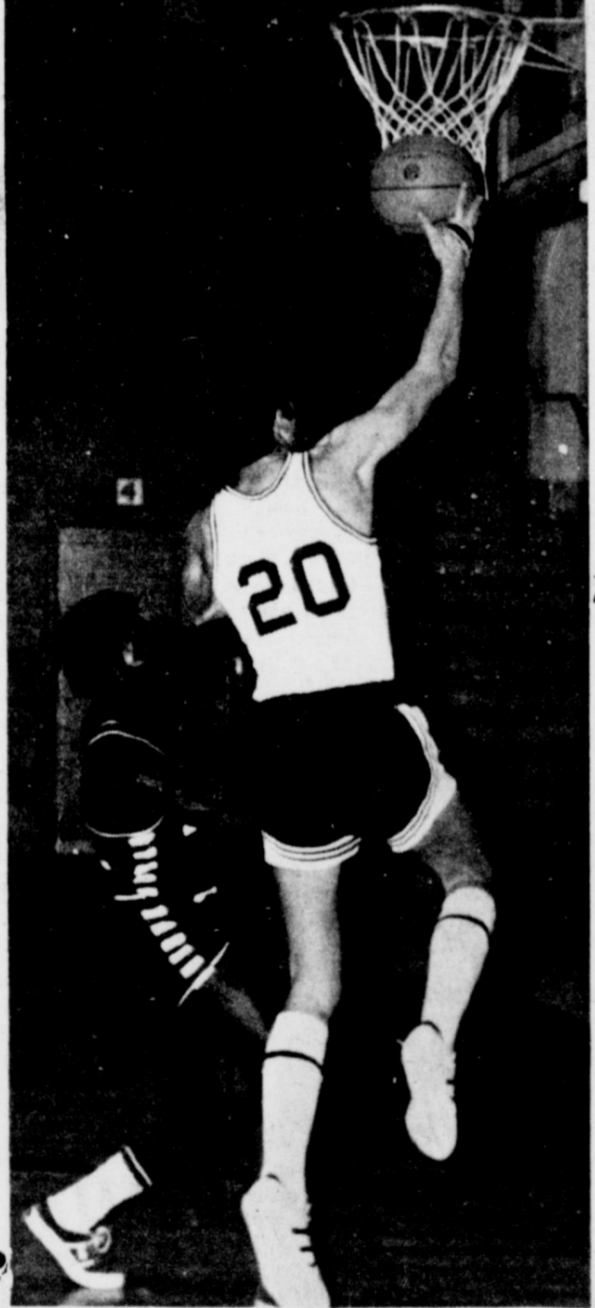
# Game Time!

"SUPPORT THE MULES and MULETTES" IN 1972-1973


**MULESHOE HIGH SCHOOL BASKETBALL SCHEDULE 1972-1973**

**VARSITY & B Boys Teams**  
JAN. 16 LEVELLAND A&B H  
\*\*\*\*\*  
JAN. 18,20 CANYON TOURNEY  
JAN. 19 CANYON A&B H  
*Cobbs*  
*Dari Delite*  
*Nowlin Studio*  
*Texas Sesame*  
*Dinner Bell Cafe*  
*XIT Steak House*

**VARSITY & B Girls Team**  
JAN. 18,20 CANYON TOURNEY  
\*\*\*\*\*  
JAN. CANYON A&B H 5:00  
*James Glaze Co.*  
*Western Drug Co.*  
*Dr. B. R. Putman*  
*First National Bank*  
*Johns Custom Mill*  
*Beaver's Flowerland*  
*West Plains Pharmacy*  
*El Nuevo Leal's Restaurant*  
*Lowe Pump Service & Supply*  
*San Francisco Cafe*  
*Bailey County Electric Cooperative Association*



## DEEP RIPPER



- Opens Soil, Leaves Trash On Top
- Helps Prevent Blowing
- Better Water Absorption
- Internal Reinforcements At Strategic Points In Frame

SPECIFY **THE Hamby COMPANY** DEEP RIPPER WHEN YOU BUY

**Wooley & Hurst, Inc.**  
Muleshoe

**Tri-County SAVINGS AND LOAN ASSOCIATION**  
MULESHOE, TEXAS 79347

OPEN AN ACCOUNT Certificate Rates up to .06% **NOW!**



# MULE'S TALE



Official Publication of Muleshoe High School Written and Edited by Students of the Muleshoe Schools

VOL. 9 NO. 2

EDITOR Marcus Puente

SUNDAY, JANUARY 14, 1973

## MHS Basketball Homecoming Set Friday

### Senior Basketball Boys Spotlited

The Mule's Tale staff wishes to acknowledge the senior players of the Mighty "M" Varsity basketball team.

**David Faver**  
David Faver, a senior, is the son of Mr. and Mrs. Creston Faver. They reside at 528 W. 9th Street and attend the First Baptist Church.

**Paul Bell**  
As Senior player for the Mules is Paul Bell. His parents are Mr. and Mrs. E.M. Bell. The Bells reside at 224 W. 8th Street. They attend the First Christian Church.

**Raymond Davenport**  
one of the Senior players is Raymond Davenport. Raymond is the son of Mr. and Mrs. Marvin Davenport. The Davenports attend the First Baptist Church of Circleback. They live in the

**Jacque Turner**  
The DECA Student of the Month for January is Jacque Turner. Jacque is the 17 old daughter of Mr. and Mrs. Darrell E. Turner. They reside at 92 West 7th Street and attend the First Baptist Church. Jacque is an active church member.



JACQUE TURNER

**Raymond's position** on the team is Post guard. In school he enjoys basketball, FFA and FTA. In his free time he enjoys hunting, playing pool, and girls.

**Roger Williams**  
Roger's special interests include Water skiing and riding horses. His school activities include football, basketball, and FFA.

**Kerry Wagnon**  
Kerry Wagnon, son of Mr. and Mrs. Joe Mack Wagnon, is a Senior forward for the Mules. He resides at 1722 West Ave. D and attends the Muleshoe Church of Christ.

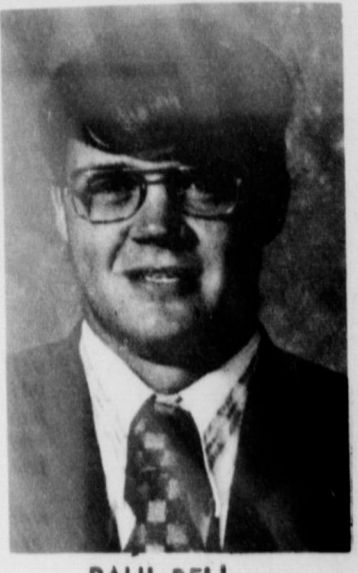
**Eddie Wilson**  
Eddie Wilson is the 18 year old son of Mr. and Mrs. Bobby Ray Wilson. They reside at 320 West 5th Street and attend the First Baptist Church of Muleshoe.

**Monday Will Be Holiday, In Muleshoe**  
Muleshoe High School Students are enjoying a short vacation following semester tests which were held Thursday and Friday.

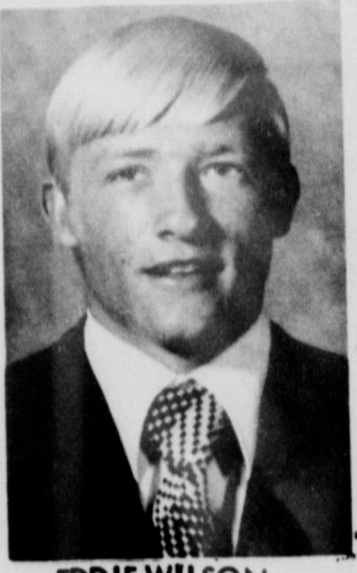
**"212912"**  
The spring instruction on the topics of crime and drug education started on January 9, 1973, with the showing of a film entitled 212912. This film was prepared by the Department of Corrections of the State of Texas.

**Contest Play Tryouts Set**  
Tryouts for the UEL Contest Play will be held Monday, January 15, in the High School Auditorium, at 7:00 p.m.

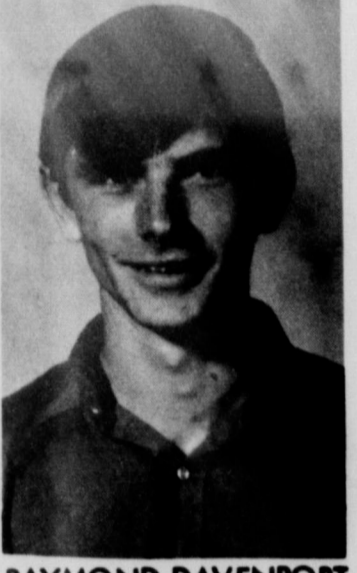
**Contest Play Tryouts Set**  
Tryouts for the UEL Contest Play will be held Monday, January 15, in the High School Auditorium, at 7:00 p.m.



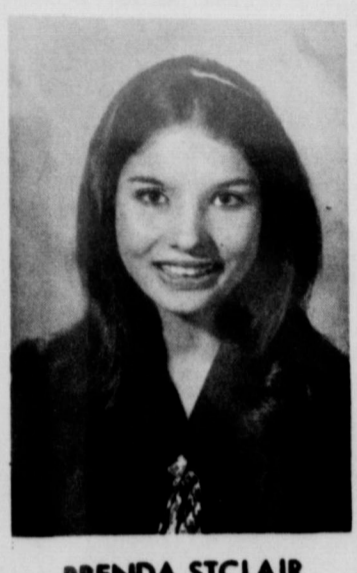
PAUL BELL



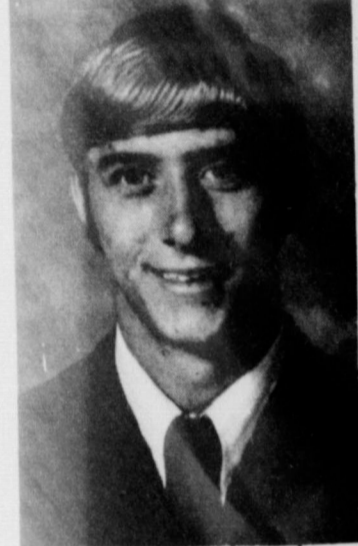
EDDIE WILSON



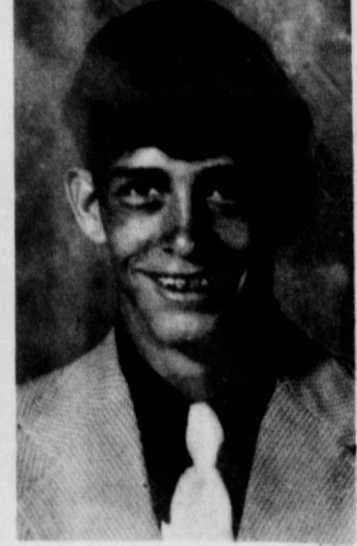
RAYMOND DAVENPORT



BRENDA STCLAIR



DAVID FAVER



ROGER WILLIAMS



KERRY WAGNON



FRED LOCKER

### Monday Will Be Holiday, In Muleshoe

Muleshoe High School Students are enjoying a short vacation following semester tests which were held Thursday and Friday. The teachers spent Saturday, January 13, in In-Service Training. Saturday was records day, planning for the second semester, and examining new materials. Departmental meetings and a high school faculty meeting were held.

### MHS Calendar Of Events

- MONDAY, JAN. 15
  - 5:00 p.m., 9th grade girls Friona There
  - 5:00 p.m., 9th grade boys Friona Here
  - Teacher Workday NO SCHOOL
- TUESDAY, JAN. 16
  - 6:30 p.m., Varsity girls--Queen Bees--Here
  - Varsity and B team boys--Levelland--Here
- THURSDAY, JAN. 18
  - B boys and girls--Canyon Tournament
- FRIDAY, JAN. 19
  - B boys and girls--Canyon Tournament
  - 9th grade boys--Hereford--Tournament
  - 9th grade girls--Hereford--Tournament
  - Midland Speech Tournament 5:00 p.m., Varsity and B team boys and girls--Canyon--Here
  - Basketball Homecoming Saturday, Jan. 20
  - B boys and girls Canyon Tournament
  - 9th grade boys Hereford Tournament
  - Midland Speech Tournament

Opinions are necessary in life, but it is not necessary that anyone else agree with yours.



JEANIE PUTMAN Is Thespian Best Of Week

Jeanie Putman, seventeen year old daughter of Dr. and Mrs. B. R. Putman of 618 W. 7th Street has been selected as the "Best of MHS" for this week. Jeanie has been named to the all-tournament team at the Slaton Tournament and the Olton Tournament. She list as her activities Band, Speech, FFA, and Basketball. She also attends the Muleshoe Baptist Church. Jeanie expresses her attitude towards baseball in the following statement:

### School Menu

- Jan. 15-19-1973.
- MONDAY NO SCHOOL
- TUESDAY Milk Hamburger Pickles Onions Lettuce and Tomatoes Tater Tots Pineapple Crisp
- WEDNESDAY Milk Spagetti and Meat Balls Green Beans Buttered Corn Corn Bread Peanut Butter Confection
- THURSDAY Milk Corn Dogs--Mustard Veg. Beef Soup Crackers Cinnamon Rolls Peach Halves
- FRIDAY Milk Fried Chicken Cream Gravy Creamed Potatoes Blackeyed Peas Hot Rolls Apricot Cobbler

### Coach Graves Recognized

The Mule's Tale Staff is recognizing Coach Bob Graves, Mulette basketball coach, and MHS assistant principal. Coach Graves has a Bachelor of Science from Southwestern State University of Weatherford, Oklahoma, and a Master of Education, from Eastern New Mexico University, Portales, New Mexico. Coach Graves commented, "I have really enjoyed working with the girls."



BOB GRAVES

### Homecoming Pep Rally Is Friday Afternoon

Friday is an important day at M.H.S. It is the time to crown the basketball homecoming Queen and King. The Queen candidates are Tracy Cowan, Glenda Harlin and Brenda St. Clair. Running for king are Roger Williams, Kerry Wagnon and Fred Locker.

Tracy, a senior, is the daughter of Mr. and Mrs. Harold Cowan. Tracy is a forward for the Mulettes. She is treasurer for the National Honor Society and enjoys sewing, cooking, and water skiing.

Glenda, a forward for the Mulettes is a junior this year. Her parents are Rev. and Mrs. Glen Harlin. Glenda is a Varsity Cheerleader and Junior Class Secretary.

Brenda, a guard, is the daughter of Mr. and Mrs. Bill Jim St. Clair. She is Junior Class Treasurer, Varsity Cheerleader, FFA Plover Girl and a member of FTA. She enjoys swimming and water skiing in her free time.

At 3:15, MHS invites everyone to attend the Homecoming Pep Rally January 13. The candidates will be introduced along with the Varsity boys and girls basketball teams.

That night at 6:30 the Varsity Girls open the action by playing the Canyon Eagles. At 8:00 the Mules will play the Eagles with the crowning of the king and queen at half-time of the boy's Varsity game.

Friday is an important day at M.H.S. It is the time to crown the basketball homecoming Queen and King. The Queen candidates are Tracy Cowan, Glenda Harlin and Brenda St. Clair. Running for king are Roger Williams, Kerry Wagnon and Fred Locker.

Tracy, a senior, is the daughter of Mr. and Mrs. Harold Cowan. Tracy is a forward for the Mulettes. She is treasurer for the National Honor Society and enjoys sewing, cooking, and water skiing.

Glenda, a forward for the Mulettes is a junior this year. Her parents are Rev. and Mrs. Glen Harlin. Glenda is a Varsity Cheerleader and Junior Class Secretary.

Brenda, a guard, is the daughter of Mr. and Mrs. Bill Jim St. Clair. She is Junior Class Treasurer, Varsity Cheerleader, FFA Plover Girl and a member of FTA. She enjoys swimming and water skiing in her free time.

At 3:15, MHS invites everyone to attend the Homecoming Pep Rally January 13. The candidates will be introduced along with the Varsity boys and girls basketball teams.

That night at 6:30 the Varsity Girls open the action by playing the Canyon Eagles. At 8:00 the Mules will play the Eagles with the crowning of the king and queen at half-time of the boy's Varsity game.

### Spanish Club Will Present Play Jan. 20

"La Paloma Blanca" The Spanish Club of Muleshoe High School will present a play entitled "La Paloma Blanca" (White Dove) on January 20, 1973, at the High School Auditorium at 8:00 P.M. The admission will be 75¢ for adults, 50¢ for students, and children under six will be admitted free. Tickets can be bought at the door or from Spanish Club members.

Juan's great talent and is certain he can be one of the greatest young matadors. Maria, Juan's beautiful wife, is intuitively convinced her husband will be killed and tries desperately and with every device she knows to dissuade him from his purpose. Maria Rosa, likewise knows that death on the horns will be the inevitable outcome.

### MHS Honor Students Of The Month Named

The National Honor Society students of the month of January have been selected by the faculty. Senior student of the month is Miss Sharon Kellon, daughter of Mr. and Mrs. Robert Kellon. She is Co-editor of the Miletram Annual Staff, Muleshoe FFA Chapter Sweetheart and Littlefield District FFA Sweetheart, 1st Vice-President of the FFA Rose Chapter, a member of the Mighty "M" Band being selected recently as Band favorite and also representing the band as queen of the Fine Arts Halloween Carnival.

Junior student is Miss Jeanie Putman, daughter of Dr. and Mrs. B.R. Putman. They reside at 618 W. 7th. Who is president of the Blackburn-Moore Future Teacher's of America Chapter, District President of FTA, on the Mulette Varsity basketball team and was named to the All-Tournament teams at both the Slaton and Olton tournaments. Jeanie attends the Muleshoe Baptist Church.

Orders Is Orders! Lady (to marine sentry)- I left my pass at home, but I am one of the regimental commanders' wives. Sentry--Sorry, ma'am, but I couldn't let you pass even if you were his only wife.

Met Half-Way "I understand that you've been studying methods for increasing your salary. How did they turn out?" "Not so well. The boss was studying how to cut expenses at the same time."

### ONE MINUTE SPORTS QUIZ

- Who was America's first great tennis champion?
- Where is America's oldest tennis club?
- In what state were the first two pro football teams organized?
- What President threatened to abolish football as too brutal?
- Who is Reggie Jones?

### Answers to Sports Quiz

- Richard Sears, who won the U.S. Lawn Tennis title seven years (1881-87).
- New Orleans, La. (N.O. Lawn Tennis Club)
- Pennsylvania-- Jeannette and Latrobe, 1898.
- President Theodore Roosevelt in 1905.
- Light heavyweight of Newark, robbed of victory in Olympics by general consensus.

If everyone worked as hard as he described it, there would be no undone work.

# Good Cattle Prices, Economy Boost Area Bank Deposits

GOOD CATTLE prices increased flow of crude oil, and just plain good business conditions resulted in the greatest amount of money on deposit in Texas' reporting cities in history, a survey showed Thursday.

The sharpness of the rise was somewhat unexpected since deposits have been mounting for almost all the quarterly reports for years.

That records were set was not surprising, since year-end totals always are higher, yet the size of the increases could be considered by some as outstanding.

"The Best Ever"

Said one banker of business, "It looks the best I've ever seen it."

And conditions may have improved even more since the year-end, the date for which the U.S. comptroller asked reports Thursday.

At Childress, for instance, a banker said deposits of a half million a day have occurred since the first of the year from farmers who presumably held their cotton checks until after Jan. 1 for income tax purposes.

(Deposits in Lubbock banks zoomed to an all-time here at the close of 1972, peaking at \$596,697,439. The figure is more than \$69 million larger than the previous record, set at the end of 1971. "A combination of positive economic factors" was cited for the phenomenal gain.)

For the first time in several years, Dallas won the quarterly race with Houston to be the banking capital of Texas after Houston took the lead some time ago.

Fourteen banks in Travis County, counting the busy financial houses in Austin, had deposits on Dec. 31 of \$1,118,901,000 to boom over the billion-dollar mark, reflecting a 15.4 per cent gain from some \$969 million at the end of '71.

Austin bankers said they expected deposits to be harder to get in 1973 due to anticipated federal efforts to tighten the money supply.

Here were some comments on the deposits, considered by

some as one measure of the state's economic health:

O. Roy Stevenson, vice chairman of the board of the Fort Worth National Bank, the city's largest in deposits, said, "The figure just reflects the normal growth in this area... The outlook for banking and other businesses in Fort Worth looks good. In fact, it looks the best I've ever seen it."

At Palestine, a banker attributed the record to good sales, good cattle prices, general business conditions and new jobs. Jeff Austin Sr., of the First State Bank at Frankston near Palestine and former president of Texas Bankers Association, attributed much of the rise to the increased oil allowances this year.

Midland Shows Life

Midland reported one of the largest increases in several years, up \$36 million to \$342 million.

In Gainesville and Cooke County, the totals exceeded \$50 million for the first time.

Odessa's deposits have more than doubled in the last 10 years.

Amarillo and adjoining Canyon together went over the half billion mark for the first time ever.

Rockwall County's record was credited partly to growth around relatively new Lake Ray Hubbard.

Farming, Ranching Good

Del Rio reported an exceptionally good year in agriculture and ranching with good weather helping range conditions. Tourism mounted around Lake Amistad, and it was a good year for heavy construction.

Paris' figures would have been even better had the bad weather not slowed or stopped cotton harvest.

Cashier Bob Hedrick of the First National Bank of Harlingen credited tourists, inflation and industrial activity. Cashier J.E. Tarr of the Harlingen National Bank said, "The (Rio Grande) Valley has been discovered by the rest of the country. Hold on to your hat because here we go!"

Reports with the Dec. 31, 1972 figure first and year-ago totals

But in the eyes of the law, the anonymous spectator, far from intruding, actually plays a useful role in our scheme of justice. It is his very anonymity that makes him effective. Judges, lawyers, witnesses, and jurors, not knowing who the stranger might be, have an extra incentive to be conscientious.

People may also be court-shy because they just do not realize how remarkably open our courts are. The United States Supreme Court once observed: "We have been unable to find a single instance of a criminal trial conducted (in secret) in any federal, state, or municipal court during the history of this country."

True, access may occasionally be limited for some special reason: to prevent overcrowding, to keep order, to protect children.

But as a rule, you may walk into a court as freely as into a church, with no one at the door to check your name or ask your business. When the judge in a murder trial ordered that "respectable citizens only" would be admitted to the courtroom, his order was thrown out by an appellate court as "preposterous."

Of course, around Law Day each May many people do go to court to watch justice in action. But the courts are just as open (and just as interesting) all year long. In a sense, that is what Law Day is all about.

A public service feature of the American Bar Association and the Texas State Bar Association. Written by Will Bernard.

© 1972 American Bar Association



## "Greatest Show on Earth"

Day after day after day in a Los Angeles courtroom, an elderly gentleman sat attentively in a back row seat. He had no stake in any of the cases. He knew none of the participants. But when asked why he was there, he had a ready reply:

"Because this is the greatest show on earth."

Courtroom scenes do provide the central drama in countless movies, plays, and television programs. Yet, surprisingly few people go to see the real thing. Unless highly publicized, trials often take place with no spectators at all.



Why don't more people visit courtrooms? Perhaps they feel reluctant to "listen in" on the private lives of others.

Paris \$77,058,491 and \$69,723,990.

Anderson County (Palestine) \$47,080,684 and \$42,965,178.

Cooke County (Gainesville) \$50,260,469 and \$43,162,664.

Sherman \$97,422,140 and \$84,978,264.

Grayson County (Sherman and Denison) \$213,642,429 and \$184,905,663.

Marshall \$77,268,799 and \$70,793,859.

Harlingen \$110,339,041 and \$93,675,323.

Odessa \$160,652,465 and \$139,064,150.

Big Spring \$68,582,162 and \$62,915,648.

Kerrville \$62,833,193 and \$48,817,300.

Amarillo-Canyon \$515,165,796 and \$440,831,554.

Rockwall County \$16,756,214 and \$11,657,238.

Rains County \$9,025,652 and \$7,148,569.

Tyler \$260,492,448 and \$210,603,447.

Corsicana \$84,934,404 and \$72,649,111.

second:

Dallas county \$8,277,416,603 and \$6,844,649,491.

Harris County (Houston) \$8,065,840,282 and \$6,883,527,824.

Tarrant County (Fort Worth) \$2,242,749,919 and \$1,931,593,162.

San Antonio \$1,969,249,460 and \$1,735,170,404.

Pecos \$34,420,073 and \$29,978,780.

Midland \$342,809,204 and \$306,028,237.

Snyder \$44,920,374 and \$40,997,244.

Vernon \$62,522,968 and \$53,679,868.

Ablene \$271,219,330 and \$226,158,572.

Taylor County (Ablene) \$281,886,036 and \$236,054,911.

Del Rio \$44,992,588 and \$37,973,923.

Brownwood \$60,820,018 and \$51,707,518.

Hunt County (Greenville) \$107,935,499 and \$92,717,238.

Childress \$32,384,958 and \$685,562,715.

El Paso \$818,977,346 and \$26,408,474.

## GOLDEN GLEAMS

Reflect that life, like every other blessing, Derives its value from its use alone.

-Samuel Johnson.

Life is like a school of gladiators, where men live and fight one another.

-Seneca.

Life is half spent before we know what it is.

-George Herbert.

A useless life is an early death.

-J.W. Goethe.

## Welding Now Available At South Plains

Two different welding courses will be offered during the Spring semester at South Plains in the Evening College, beginning January 15.

Basic Welding I will be taught each Monday evening from 7:00 to 10:00 p.m. in the Welding Shop at SPC. This class will be under the instruction of Timothy Walker, Welding instructor of this class.

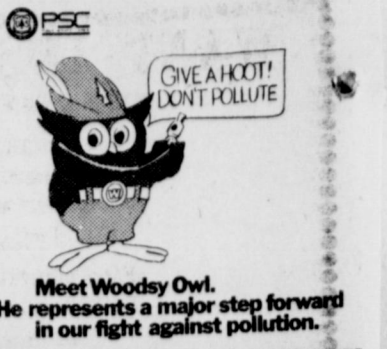
South Plains College is currently in its fifth year of training students in occupational welding. The Occupational Welding Program is designed to train the student in the fundamentals of oxyacetylene and electric arc welding with emphasis on layout and design. Three programs in welding are presently available to the student: Welding Technology-

a four semester integrated program including specialized welding courses and related courses that lead to an Associate in Applied Science Degree; Apprenticeship Welding a four semester program of specialized welding courses lead to a Certificate of Proficiency at completion; and Job Entry Welding--a one semester program of specialized training for production line or structural welding that leads to a Certificate of successful course completion.

After completing the two year program as a certified welder, the graduate may become employed in almost any industry. According to many area employment agencies, a welding technician can expect to earn up to \$12,000 annually,

depending upon location and type of industry.

For further information about the welding programs at SPC, interested persons may contact Frank Hunt, Dean of the Vocational-Technical Division, South Plains College, Paris 831-4921.



**Singleton-Ellis Funeral Home**  
24 Hour Ambulance Service  
Ph. 272-4574 Muleshoe

**GIBSON'S DISCOUNT CENTERS**

WHERE YOU ALWAYS BUY THE BEST FOR LESS

**Store Manager's Sale**

PRICES GOOD MONDAY THROUGH WEDNESDAY

Buy Now and Save

MENS 10 SPEED BICYCLE <b>69<sup>97</sup></b>	WESTMARK BUTTER TOP POPCORN POPPER #11864 <b>8<sup>66</sup></b>	FILLER PAPER 300 Ct. PKG. <b>37<sup>c</sup></b>	
THROW RUGS DECORATOR STYLES OUR REG. 2.87 <b>1<sup>77</sup></b>			

<p>SKIN CARE LOTION 16 oz. <b>49<sup>c</sup></b></p> <p>PRELL LIQUID SHAMPOO Family Size <b>77<sup>c</sup></b></p> <p>BRECK 14 oz. FRESH HAIR INSTANT SHAMPOO NOW ONLY <b>49<sup>c</sup></b></p> <p>SCOPE MOUTHWASH FAMILY SIZE <b>86<sup>c</sup></b></p>	<p>NEW! KIMBLES DISPOSABLE DIAPERS NEWBORN DAYTIME OVERNIGHT <b>1.13 1.33 73<sup>c</sup></b></p> <p>COLEMAN #220F 2 Mantel LANTERN <b>11.99</b></p> <p>COLEMAN #425 E 2 Burner CAMP STOVE <b>11.99</b></p> <p>MENS Pkg. of 8 WHITE HANDKERCHIEFS <b>76<sup>c</sup></b></p> <p>STUART HALL #3920 Pkg. of 100 HOME &amp; OFFICE ENVELOPES <b>26<sup>c</sup></b></p> <p>LIBBY'S EMERALDS #219 4 to Set COOLER GLASS SET <b>88<sup>c</sup></b></p> <p>TOILET SEAT TOWN &amp; COUNTRY #M100 <b>2.27</b></p>	<p>COCA COLA 28 oz. No Return Bottle 4 for <b>88<sup>c</sup></b></p> <p>KLEENEX 200's Facial Tissue 4 BOXES FOR <b>\$1</b></p> <p>KLEENEX TERI TOWELS 3 ROLLS FOR <b>\$1</b></p> <p>DELSEY 4 Roll Roll Pkg. BATHROOM TISSUE 2 FOR <b>\$1</b></p>	<p>OUR Darling CANNED TOMATOES <b>17<sup>c</sup></b></p> <p>INSTANT TEA GIBSONS 3 oz. jar <b>79<sup>c</sup></b></p> <p>PRELL CONCENTRATE FAMILY SIZE 5 oz. <b>73<sup>c</sup></b></p>
---	--	--	--

<p>PRAK-T-KAL VAPORIZER No. 909 <b>5<sup>97</sup></b></p> <p>Decorators WALL MIRRORS 497 EACH</p> <p>MEN AND BOYS BASKETBALL SHOES YOUR CHOICE <b>2<sup>17</sup></b></p> <p>MEN AND BOYS ORLON BLEND SOCKS BOYS SIZE <b>39<sup>c</sup></b> MENS SIZES <b>49<sup>c</sup></b></p> <p>Ladies PANTY HOSE SPECIAL #499 Big Girl <b>84<sup>c</sup></b> #441 Tummy Control <b>87<sup>c</sup></b> #964 ONE SIZE <b>37<sup>c</sup></b> #494 Crush Nude Look <b>67<sup>c</sup></b></p>	<p>30 gallon PLASTIC TRASH CAN WITH LID <b>2<sup>77</sup></b></p> <p>THICK N THIRSTY TOWELS BATH Our Reg. 1.67 <b>99<sup>c</sup></b> HAND Our Reg. 77<sup>c</sup> <b>67<sup>c</sup></b> WASHCLOTHS Our Reg. 47<sup>c</sup> <b>37<sup>c</sup></b></p> <p>REVERSIBLE THROW RUGS 18x30 size <b>66<sup>c</sup></b> 22x40 size <b>1.17</b> 30x50 size <b>1.88</b></p> <p>QUILTED BED SPREADS Full or Twin <b>8.88</b> Queen Size <b>10.99</b> King Size <b>11.99</b></p>	<p>GIBSONS WHITE SHEETS MUSLIN 72x108-Flat or Fitted <b>1.66</b> 81x108 or Full Fitted <b>1.77</b> PERCALE 72 x 108 or TWIN FITTED <b>1.99</b> 81x108 or FULL FITTED <b>2.17</b></p> <p>RED WINE BROOM <b>1<sup>09</sup></b></p> <p>WHITE RAIN HAIR SPRAY <b>59<sup>c</sup></b></p> <p>CAROCELLE PORTABLE TABLE-TOP DISHWASHER Great for mobile homes <b>18<sup>88</sup></b></p> <p>LETTERS GALORE BOXED STATIONARY 18 SHEETS 14 MATCHING ENVELOPES <b>39<sup>c</sup></b></p>	<p>WORK SOCKS 4 Pair Pkg. <b>73<sup>c</sup></b></p> <p>GIANT SIZE DOWNY FABRIC SOFTENER <b>63<sup>c</sup></b> JOHNSONS REGARD FOR WOOD PANELING 14 oz. <b>1.19</b></p> <p>SECRET 7 oz. DEODORANT OR 6 oz. ANTIPERSPIRANT YOUR CHOICE <b>84<sup>c</sup></b></p> <p>LP RECORD ALBUMS 2.98 mfg. suggested retail <b>1.77</b> 3.99 mfg. suggested retail <b>2.27</b> 4.98 mfg. suggested retail <b>2.99</b> 5.98 mfg. suggested retail <b>3.57</b> 6.98 mfg. suggested retail <b>4.37</b> 7.98 mfg. suggested retail <b>4.88</b> 8.98 mfg. suggested retail <b>5.77</b></p> <p>FROST KING PLASTIC STORM WINDOW COVERS PKG. OF 1 SET <b>13<sup>c</sup></b> PKG. OF 2 SET <b>24<sup>c</sup></b></p>
--	---	---	---

## Henry Block has 17 reasons why you should come to us for income tax help.

Reason 1. We specialize in income tax preparation. We know the wrinkles. We dig out every honest deduction. There is very little chance we will let you overpay your taxes.



**HENRY BLOCK**  
THE INCOME TAX PEOPLE

306 West 2nd  
9:00 - 6:00 WEEKDAYS & 7:00 - 5:00 SAT. PHONE 272-3283  
COME IN SOON NO APPOINTMENT NECESSARY





# CLASSIFIED ADS

## FIND IT QUICK

### WANT ADS PH. 272-4536

#### CLASSIFIED RATES

##### OPEN RATES

First insertion, per word-9¢  
Second and additional insertions-6¢

##### NATIONAL RATES

First insertion, per word-11¢  
Second and additional insertions-7¢  
Minimum Charge-

CARD OF THANKS.....\$2.00

Classified Display \$1.12 per col. inch

Double rate for Blind Ads \$1.15 per col. inch for Reverses

#### DEADLINE FOR INSERTION

Thursday's Muleshoe Journal-Noon Tuesday  
Sunday's Bailey County Journal-Noon Friday

The Journals reserve the right to classify, revise or reject any classified ad.

Check advertisement and report any error immediately. Journals are not responsible for error after ad has already run once.

**SAVE - SAVE - SAVE - PVC Plastic Pipe and fitting in size from 3/4" to 12". All pipe meets or exceeds SCS specification. Save money by installing your own. See State Line Irrigation in Littlefield and Muleshoe. 1-47t-tfc**

**WE PAY CASH for tractor and equipment of all kinds, Tom Flowers Auction, Inc. Day 272-4145 Night 10-2s-tfc**

**12 HOUSEHOLD GOODS**

**Records, Sheet Music, Accessories Guitar Lessons PH. 272-3616 VENABLE MUSIC CO. 213 Ave. B, Muleshoe**

**It's inexpensive to clean an upholstered chair with BLUE LUSTRE Rent electric shampooer \$1. Perry's, 128 Main. 12-50t-tfc**

**Lost bright carpet colors... restore them with BLUE LUSTRE. Rent electric shampooer \$1. Higginbotham - Bartlett 215 Main. 12-50t-tfc**

**FOR SALE New & Rebuilt Kirby's Carolyn Duncan ph 272-4182 220 W. 10**

**SHAKLEE 5 Superb Organic Lines.. Food Supplements Skin Care Household and Industrial Products, Baby Products Men's Items Call Mrs. Alsup 272-4471 after five. 15-1s1tc-3s1tc**

**SPINET PIANO in your vicinity. Will sacrifice new Spinet for cash or responsible party may assume \$33.00 monthly. Write Channer Music Sterling, Colorado. 11-2s-1tp**

**14 FARM PROPERTY TO RENT 80 A of land for Rent Bailey County. Call 765-9798, Lubbock, Texas Call before 11A.M. 14-1t-tfc**

**15 MISCELLANEOUS Would like to buy 320 acres of dry land. Would consider 160 acres. Prefer to pay cash but would assume some debt. No agents or brokers please. Lewis Sanders 925-3156. 15-53s-tfc**

**Loomax Liquid Feed Contact: C. R. BLACK Distributor Phone- 965-2680**

**Mr. farmer... Plant MACHA Cotton for profit.. There is a variety proven and adapted for your area. Book your seed early with your ginmer or seed dealer or call Macha Seed Co. in Littlefield, 385-3870. 17-2s-tfc**

**MULESHOE INDEPENDENT SCHOOL DISTRICT 514 WEST AVE. G, MULESHOE, TEXAS 79347, December 12, 1972. THE TRUSTEES OF THE MULESHOE INDEPENDENT SCHOOL DISTRICT WILL RECEIVE SEALED BIDS ON THE FOLLOWING DESCRIBED PROPERTY: PROPERTY: 1- Used 1958, 1 1/2 Ton Flat-bed Truck Motor no. F50J812-64 1-Used 1963 Plymouth 4 Door Sedan Motor no. 31852065H Used Tires, size 7.50 x 20 and 8.25 x 20 The above items may be inspected at the bus barn. THE BOARD RESERVES THE RIGHT TO REJECT ANY AND ALL BIDS IN THE BEST INTEREST OF THE DISTRICT. BID OPENING DATE January 15, 1973 TIME 9:00 P.M. J.M. BROWN, BUSINESS MANAGER MULESHOE IND. SCHOOL DIST. 1s-2sc**

### Lazbuddie News

By Mrs. C.A. Watson

Loy Dale Clark from South Plains Junior College, Levelland, will return to college this week after visiting several days with his parents, Mr. and Mrs. Wayne Clark.

Mrs. Gary Albertson and son are here visiting her mother, Lorand Gallman. The Albertsons live at Copperas Cove near Ft. Hood where Dr. Gary Albertson is in the U.S. Army. David Gallman will go back to Levelland Junior College the weekend when classes will resume.

Mr. and Mrs. Gary Hicks and children accompanied by his parents, Mr. and Mrs. J.E. Hicks from Friona, have recently returned from a trip to Indianapolis, Ind., where they visited with Gary's brother and family, the Larry Hicks. They reported traveling through ice and snow most of the way home.

Lazbuddie fire truck was called to the Glen Scott place when a small building had caught fire. The firemen had put the fire out before it reached the Scott residence and other building near by. The maintainer drivers were at work early Monday morning clearing snow from the highways and county dirt roads-helping school to be able to go on, as well as other travel that was necessary.

The C.W. Dale family have returned from North Central Arkansas where they visited a number of relatives during the holiday season.

Mr. and Mrs. E.A. Parham and Mr. and Mrs. John Neil Agee were in Dallas recently to visit Terry Parham and family.

You can travel all around the world and you'll find no better people than your neighbors in your home town.

**I CAN'T GET THE HANG OF US - ING CATSUP IN A NON GRAVITY SITUATION**

Income Tax and Quarterly reports Mary Porter Davis South of Catholic Church Morrison addition 272-4676 15-1s-30tc

Skin disorders? Try Toco-1260 IU per tube at Western Drugs. 15-2t-35tp

ALFALFA HAY - For Sale \$50.00 per ton. Dial 272-4842 17-2s-tfc

### SCHEDULE OF EVENTS

**MONDAY, JAN. 15**  
Progress WACS School Board Music Teachers

**TUESDAY, JAN. 16**  
Progress H. D. Nursing Home Birthday Party  
Goodland Bible Study 7:30 p.m. BSP 8 p.m. ESA 7:30 p.m. OES Masonic H

**WEDNESDAY, JAN. 18**  
Hobby Club 8 p.m. KKI DeMolay

**THURSDAY, JAN. 19**  
6: p.m. TOPS-REA meeting room 5:30 p.m. Weight Watchers. First Presbyterian Church

**Compliments of: MULESHOE STATE BANK MEMBER FDIC**

Mrs. Jack Smith was in Lubbock Methodist Hospital Sunday at the bedside of Mrs. Ben Foster Sr. Mrs. Smith reports that Mrs. Foster is holding her own.

Mrs. Lola Goodnough is recuperating in the Methodist Hospital from surgery. The Goodnough home was broken into Friday night where several valuable items were taken.

**APPLY NOW**  
We Train Men to Work As **LIVESTOCK BUYERS**

If you have some livestock experience we will train you to buy cattle, sheep and hogs. For a local interview, write today with your background. Include your complete address and phone number.

**CATTLE BUYERS, INC.**  
4420 Madison Kansas City, Mo. 64111 Training Cattle and Livestock Buyers

**CARD OF THANKS -** We would like to take this means to thank everyone for the food, flowers and cards sent to us during the loss of our loved ones, The Family of Robert McNeil 1-2s-ltc

**CARD OF THANKS:** Words cannot express our appreciation for the kind words, thoughts, deeds, prayers, and beautiful flowers during the loss of our loved one, The Roy Farley Family. 1-2s-ltc

**TELEX. Hearing Aids**

**Clovis Hearing Aid Center**  
Batteries & Molds. Free Tests. Service All Makes.  
416 Mitchell Phone 763-6900  
Clovis, N.M.

**EARN UP TO \$750 PER MONTH**

## U.S. POSTAGE STAMP MACHINES

• Highest Return on Your Capital • NO Selling • Manage Your Own Business  
We Obtain Your Locations. Minimum Cash Investment Of \$1,595.00 - up to \$5,000.00 Secured By Equipment  
Planter's Peanut and Welch's Juice routes also available from \$495 up  
• WOMEN OR MEN • ANY AGE • PART TIME, approximately 7 hrs. per month  
• NO OVERHEAD • DEPRESSION PROOF • REPEAT INCOME  
New Distributorships Still Available In Many Areas Throughout This State  
Send References Name, Address and Phone No. to: **POSTAGE STAMPS, INC. - Dept. B-1**  
300 Interstate North, N.W. / Atlanta, Georgia 30339  
Interstate I-75 and I-285

**Lions Club**  
meets each Wednesday, 12 Noon  
**XIT RESTAURANT**  
J.W. Coppedge, President

**LODGE NO. 1237 AF & AM Masonic Lodge**  
meets the second Tuesday of each month practice night each Thursday  
Ross Mick WM  
Elbert Nowell Sec.

**VFW**  
Walter A. Moeller  
Post #8570  
8:00 p.m. 2nd & 4th Mondays  
**VFW Hall**  
Joe T. Gonzales, Commander

**Jaycees**  
meets every Monday, 12 Noon  
Max King, Pres.

**Muleshoe Rotary Club**  
meets every Tuesday at 12:00  
**DINING ROOM**  
XIT Restaurant  
Kerry Moore, President

**Muleshoe Oddfellows**  
meets each Thursday 7:30 p.m.  
Ray Quisenberry, Grand Noble

**HELP WANTED**  
WE ARE GOING TO PUT A LOCAL MAN IN BUSINESS FOR HIMSELF. Must be ambitious and willing to work, who wants to earn \$15,000-20,000 or more a year in the near future. College graduate preferred. Contact Ron Donelson No. 7 Briercroft Office PK, Suite 104 Lubbock, Texas 79412. (All inquiries will be kept confidential.)

Need some extra Christmas money or money to help with college expenses? Call on established Fuller Brush customers in Muleshoe and surrounding territory. Requirements: neat appearance, car, and phone. Excellent part time job for students or housewife. Write Box 667; Littlefield, Texas or call 385-5543. 3-45t-tfc

Full Time Permanent Employment  
**CLOVERLAKE DAIRY FOODS INC.**  
We have openings in the following classifications:  
\*Route Salesman  
\*Route Salesman Trainee  
\*Route Manager  
\*Route Manager Trainee  
We offer the following employee benefits:  
\* Paid Vacations  
\* Group Health and Life Insurance Plan  
\* Employee Profit Sharing Plan  
\* Employee Retirement Plan  
Apply in Person  
**CLOVERLAKE DAIRY FOODS, INC.**  
711 Austin Street  
Plainview, Texas  
3-1s-4tc

**WANTED:** Beauty Operator. Write to Box 244, Farwell, Texas 79322 3-1t-3tc

**HELP WANTED:** Salesman - Texas Oil Company has opening in Muleshoe area. No experience necessary. Age not important. Good character a must. We train Air Mail, A.S. Dickerson, Pres., Southwestern Petroleum Corp., Ft. Worth, Tex. 3-47t-tfc

**WANTED:** Ranch hand familiar with cattle. Call 272-3056. 3-31t-tfc

**HELP WANTED:** Clerk typist with good telephone personality. Must be productive and dependable. Call Bovina Feeders Inc. 806-825-2103. 3-2t-2tc

**APARTMENTS FOR RENT**  
FRIONA APTS. now have available 1, 2, & 3 bedrooms. Call 247-3666 or come by 1300 Walnut Street. 5-29s-tfc

**FOR RENT:** 2 bedroom unfurnished apartment. Phone 272-4838 Smallwood Real Estate. 5-47s-tfc

**WANTED TO RENT**  
WANTED TO RENT: Irrigated land. Contact John Mitchell, 965-2160. 15-33s-tfc

**JAMES GLAZE COMPANY**  
REAL ESTATE AND FARM & RANCH LOANS  
Phone 272-4549 219 S. 1st. 42t-tfc

**FOR SALE:** 369 acres dry land. Call 272-4692. Poice Garth 8-2s-2tp

**FOR SALE:** Near Muleshoe 140 Acres with one 10 inch well on natural gas and underground gas pipe. All in cultivation. Call J.B. McPherson. 806-765-8825 Nights: 765-3265 8-2s-4tp

**KREBBS REAL ESTATE**  
100 Acres of Irrigated Land on payment. Good Terms  
**210 W. 1st 272-3191**

**FOR SALE:** Feed lot. Phone 272-4819. 11-44t-tfc.

**29% DOWN 320 Acres** all in cultivation. 2-10" wells. One 8 inch natural gas and underground pipe. Good cotton and grain base. 1/2 mile from city limits of Muleshoe. Call days 806-765-8825 Nights - 765-3265 8-2s-4tp

**IF YOU WANT TO SELL OR buy see Lee Pool or Woody Gorforth**  
**Pool Real Estate**  
Ph. 272-4716  
214 East American Blvd. 8-44s-tfc

**FOR SALE:** 160 acres of irrigated land. Phone 946-2415. 11-1s-tfc

**10 FARM EQUIP FOR SALE**  
**FOR SALE:** John Deere 70 Tractor, Planters, cultivators, tool bars, crust buster, gang hoes, 14' crouse disc sand fighter, chisels, air compressor, lots of small items. Chester Wilson 272 3309. 10-49t-tfc

## Something Laying Around Your House That You Would Like To Get Rid Of?

**Call 272-4536**

### For a JOURNAL Classified. Our Classified Ads Get RESULTS!!!

# COTTON TALKS

FROM PLAINS COTTON GROWERS, INC.

The present Administration's rapid - fire announcements of drastic cuts in federal spending for a variety of rural and agricultural programs in 1973 shows a dangerous, devil-may-care attitude that looks only at immediate dollar savings to the treasury with no concern for long range consequences," according to Donald Johnson, Executive Vice President of Lubbock-based Plains Cotton Growers, Inc.

Agriculture Secretary Butz following the announcement that REAP was being killed, said "We understand the need for restraint in government spending. We do not, however, believe that the need is so great as to justify striking down the Rural Environmental Assistance Program which has long been an integral part of the foundation supporting America's living standard and highly livable environment."

Riley urged immediate reconsideration of the REAP decision, saying "Without REAP we will be restricted to these farm ac-

tivities which promise short-term returns, and when we reduce our involvement in anti-pollution practices, all Americans including farmers will suffer accordingly."

Beyond the 1973 effects of the Administration's raid on farm program funds, Johnson sees ominous implications for the development and passage of farm legislation to succeed the Agriculture Act of 1970 which expires at the end of this year.

"If the Administration continues its short-sighted concentration on agriculture in its economy moves," he says, "we are going to have an extremely hard time getting legislation through an urban-minded Congress that will permit farmers to maintain a semblance of financially sound operations."

"And if we fail to get a farm bill to maintain this country's production of food and fiber," he concludes, "farmers, consumers and the national economy all will be losers."

## SPC Offers Automotive Courses Now

South Plains Evening College will offer a course in Basic Automotive Mechanics as well as Diesel Fuel Injection Systems for the 1973 Spring Semester. The Automotive Mechanics course is intended for both the person who is unfamiliar with the field and for the one who is more experienced. The Diesel Fuel Injection course will deal with the maintenance and repair of diesel fuel injection systems.

These courses will be taught on a practical and individual basis with each person obtaining actual shop experience.

The Basic Automotive Mechanics Class will meet each Tuesday evening from 7:00 to 10:00 p.m. in the Diesel-Automotive Building on the SPC campus, beginning January 16.

How to tune a car, general trouble shooting and as many other areas as is possible to cover in the allotted time will be covered. Jesse Hiltson, Auto Mechanics instructor at South Plains College, will serve as instructor of the Basic Auto Mechanics Class.

Hollis Shewmake, Diesel Engine instructor at SPC, will be instructing the class on Diesel Semester at South Plains Evening College. This class will meet each Thursday evening from 7:00 to 10:00 p.m. in the Diesel-Automotive Building at SPC, beginning January 18.

Registration for these two courses will be held on Monday, January 15 at 7:30 p.m. in the Technical Arts Center on the college campus. Late registration may be completed in the Central Office of the Technical Arts Center, between the hours of 8:00 a.m. and 4:45 p.m. during the day and 6:30 to 8:30 p.m. in the evening. For further information, interested persons should contact Don

Yarbrough, Dean of Continuing Education at South Plains College.

## News of Our SERVICEMEN Gary Ethridge

Pvt. Gary Ethridge, son of Mr. and Mrs. S.M. Ethridge of Muleshoe, has been transferred to a station in Germany. He is a equipment reports clerk in the U.S. Army. His wife, Melita, will join him soon in Germany. Ethridge is a 1970 Muleshoe High School graduate and attended Texas Tech for two years. He received his basic training at Fort Ord, Calif.



GARY ETHRIDGE

In The Dark  
Boy: Why were the Middle Ages called the Dark Ages?  
Girl: Because there were so many knights.

steri steam  
**CARPET STEAM CLEANING**  
Extracts the grime from all carpet-gently, safely completely.  
Pulls up carpet fibers-rotary shampooers pack them down.  
Removes residues and detergents left by other machines.  
Revitalizes original color and texture.  
Lengthens carpet life up to 40% with regular use.  
DRAPERY CLEANING  
PICK-UP & RE-HANGING  
ON REQUEST.  
**LAMBERT CLEANERS**  
MULESHOE

This was followed shortly by details of the feed grain program which will top off another \$530 million from payments to producers of grain sorghum, corn and barley.

Emergency Farmers Home Administration loans are being sharply curtailed and may be completely stopped. The Rural Environmental Assistance Program (REAP), which gave financial aid to farmers carrying out conservation practices aimed at preserving the quality of our nation's air and water, has been canceled. Federal financing of Rural Electrification Administration operations is being shifted to private financing at much higher interest rates.

And there are many other unpublicized areas in agriculture that are getting squeezed. All told, it is estimated the Administration has slashed more than \$2 billion of congressionally authorized funds for rural and agricultural programs.

Farm organizations and farm belt Congressmen are up in arms.

PCG President Ray Joe Riley of Hart, in a letter to

## Evening Classes Offered At South Plains College

A number of various evening courses will be offered at South Plains College, during the Spring semester, that will be of interest to persons either considering, or already engaged in, secretarial work. Registration for these various classes will be held on January 15, beginning at 7:30 p.m. in the Technical Arts Center on the SPC campus.

Elementary typing is for the very beginner and for the person who knows typing, but has been away from it for some time and needs to refresh his or her skill.

Intermediate courses in both Shorthand and Typewriting are available for the more experienced persons but who need additional training in these areas. As many secretaries must deal with various types of business machines, a course in Business Machines is taught and it is very practical with proficiency obtained on many essential types of office equipment.

A Basic Accounting course is available for those needing help in that particular area. Courses in Key Punch, Medical Terminology, Business Law, and Transcription Procedures will also be available in the Evening College at South Plains.

For further information about any of the above mentioned courses, interested persons may contact Don Yarbrough, Dean of Continuing Education at South Plains College, Phone 894-4921.

South Plains Evening College will be offering two classes in Radio and Television Servicing during the 1973 Spring Semester, which gets underway on January 15.

A beginners' class is scheduled for Tuesday evenings from 7:00 to 10:00 p.m. and an advanced class is set for Thursday from 7:00 to 10:00 p.m. Odus Hawkins, Radio and Television instructor at South Plains College, will serve as instructor of these two special evening classes.

Persons wishing to register for these courses may do so on January 15 beginning at 7:30 p.m. in the Technical Arts Center on the SPC campus. Late registration will be held in the Central Office of the Technical Arts Center, between the hours of 8:00 a.m. and 4:45 p.m. during the day and 6:30 to 8:30 p.m. in the evening.

For further information, interested persons should contact Don Yarbrough, Dean of Continuing Education at South Plains College, phone 894-4921, Ex. 253.

**PIGGLY WIGGLY WIN FREE JACKPOT CASH!**

Get your card punched today! No purchase necessary

THIS WEEKS JACKPOT **\$200**

King Size 6 Bottle Carton Plus Deposit <b>Dr. Pepper</b> <b>39</b> ¢	Boneless and Lean <b>Stewing Beef</b> <b>98</b> ¢ Lb.	USDA Inspected <b>TUB O CHICKEN</b> <b>38</b> ¢ Lb.	Lean Beef <b>Ground Chuck</b> <b>89</b> ¢ Lb.	Little Boy Blue <b>Corn Dogs</b> 12-oz. Pkg. <b>69</b> ¢ Piggly Wiggly Longhorn Cheddar <b>Cheese</b> 10-oz. Pkg. <b>73</b> ¢ Blue Mallow Quick Fixin <b>Veal Patties</b> 16-oz. Pkg. <b>\$1.09</b>
Sudden Beauty <b>Hair Spray</b> 12.5 oz. Can <b>39</b> ¢	Betty Crocker Layer Varieties <b>Cake Mixes</b> 18 1/2 oz. Boxes <b>\$1.31</b>	USDA Choice Valu Trim <b>Boneless Chuck Roast</b> Lb. <b>1.09</b>	Lean <b>Meaty Beef Short Ribs</b> Lb. <b>49</b> ¢ Piggly Wiggly <b>Cream Cheese</b> 8-oz. Pkg. <b>37</b> ¢ Patrick Cudahy Boneless <b>Canned Ham</b> 3-Lb. Can <b>\$3.69</b> Farmer Jones Wafer Thin <b>Sliced Meats</b> 3-oz. Pkg. <b>3 \$1</b>	Lean <b>Meaty Beef Short Ribs</b> Lb. <b>49</b> ¢ Piggly Wiggly <b>Cream Cheese</b> 8-oz. Pkg. <b>37</b> ¢ Patrick Cudahy Boneless <b>Canned Ham</b> 3-Lb. Can <b>\$3.69</b> Farmer Jones Wafer Thin <b>Sliced Meats</b> 3-oz. Pkg. <b>3 \$1</b> Gulf Gem Breaded <b>Tidbit Shrimp</b> 16-oz. Pkg. <b>93</b> ¢ Grade A-Snow Hill 4-7 Lb. Avg. <b>Stewing Hens</b> Lb. <b>55</b> ¢
Bayer <b>Aspirin</b> 100-ct. Btl. <b>67</b> ¢ Vick's <b>Formula 44</b> 3.25-oz. Btl. <b>77</b> ¢	Piggly Wiggly <b>Orange Juice</b> 6-oz. Can <b>19</b> ¢ <i>Your Choice</i> Piggly Wiggly 18-oz. Bags <b>2 Frozen Poly Bags 79</b> ¢ Cut Broccoli Piggly Wiggly 20-oz. Bags <b>2</b> Mixed Vegetables Piggly Wiggly 20-oz. Bags <b>79</b> ¢ Stew Vegetables Piggly Wiggly 20-oz. Bags <b>79</b> ¢ Sliced Squash Piggly Wiggly 20-oz. Bags <b>79</b> ¢	Soft, Lb. Tub <b>Churngold Margarine</b> 29¢ Chef's Pride <b>Pinto Beans</b> 2-Lb. Bag <b>29</b> ¢ Piggly Wiggly <b>Tomato Sauce</b> 8-oz. Cans <b>10</b> ¢ Piggly Wiggly Buttermilk <b>Pancake Mix</b> 2-Lb. Box <b>39</b> ¢	<b>CRISCO SHORTENING</b> 3 Lb. Can 1st Cans Price Thereafter <b>99</b> ¢	<b>DOUBLE STAMPS</b> every Wednesday with \$2.50 purchase or more excluding beer, wine and cigarettes.
Golden Delicious <b>Apples</b> Lb. <b>33</b> ¢ Baking <b>Potatoes</b> Lb. <b>2/35</b> ¢ Sweet Juicy <b>Tangerines</b> Lb. <b>32</b> ¢ Cello Bag <b>Carrots</b> 1-Lb. Pkg. <b>2/45</b> ¢ Rome Beauty <b>Apples</b> Lb. <b>35</b> ¢ Garden Fresh <b>Green Onions</b> Bunch <b>2/35</b> ¢	Delicious <b>Pineapple</b> Ea. <b>78</b> ¢ Creamy <b>Avocados</b> Ea. <b>30</b> ¢ California <b>Navel Oranges</b> Lb. <b>3/\$1</b>	<b>CRISCO SHORTENING</b> 3 Lb. Can 1st Cans Price Thereafter <b>99</b> ¢	<b>CRISCO SHORTENING</b> 3 Lb. Can 1st Cans Price Thereafter <b>99</b> ¢	<b>CRISCO SHORTENING</b> 3 Lb. Can 1st Cans Price Thereafter <b>99</b> ¢
<b>Bananas</b> Golden Ripe <b>25</b> ¢ Lb.	<b>Bananas</b> Golden Ripe <b>25</b> ¢ Lb.	<b>Bananas</b> Golden Ripe <b>25</b> ¢ Lb.	<b>Bananas</b> Golden Ripe <b>25</b> ¢ Lb.	<b>Bananas</b> Golden Ripe <b>25</b> ¢ Lb.
Fresh <b>Grapefruit</b> 5-Lb. Bags <b>65</b> ¢ <b>Long Crisp Stalks Celery</b> ea. <b>25</b> ¢ 2 Lb.	<b>Bananas</b> Golden Ripe <b>25</b> ¢ Lb.	<b>Bananas</b> Golden Ripe <b>25</b> ¢ Lb.	<b>Bananas</b> Golden Ripe <b>25</b> ¢ Lb.	<b>Bananas</b> Golden Ripe <b>25</b> ¢ Lb.
<b>Bananas</b> Golden Ripe <b>25</b> ¢ Lb.	<b>Bananas</b> Golden Ripe <b>25</b> ¢ Lb.	<b>Bananas</b> Golden Ripe <b>25</b> ¢ Lb.	<b>Bananas</b> Golden Ripe <b>25</b> ¢ Lb.	<b>Bananas</b> Golden Ripe <b>25</b> ¢ Lb.
<b>Bananas</b> Golden Ripe <b>25</b> ¢ Lb.	<b>Bananas</b> Golden Ripe <b>25</b> ¢ Lb.	<b>Bananas</b> Golden Ripe <b>25</b> ¢ Lb.	<b>Bananas</b> Golden Ripe <b>25</b> ¢ Lb.	<b>Bananas</b> Golden Ripe <b>25</b> ¢ Lb.
<b>Bananas</b> Golden Ripe <b>25</b> ¢ Lb.	<b>Bananas</b> Golden Ripe <b>25</b> ¢ Lb.	<b>Bananas</b> Golden Ripe <b>25</b> ¢ Lb.	<b>Bananas</b> Golden Ripe <b>25</b> ¢ Lb.	<b>Bananas</b> Golden Ripe <b>25</b> ¢ Lb.
<b>Bananas</b> Golden Ripe <b>25</b> ¢ Lb.	<b>Bananas</b> Golden Ripe <b>25</b> ¢ Lb.	<b>Bananas</b> Golden Ripe <b>25</b> ¢ Lb.	<b>Bananas</b> Golden Ripe <b>25</b> ¢ Lb.	<b>Bananas</b> Golden Ripe <b>25</b> ¢ Lb.
<b>Bananas</b> Golden Ripe <b>25</b> ¢ Lb.	<b>Bananas</b> Golden Ripe <b>25</b> ¢ Lb.	<b>Bananas</b> Golden Ripe <b>25</b> ¢ Lb.	<b>Bananas</b> Golden Ripe <b>25</b> ¢ Lb.	<b>Bananas</b> Golden Ripe <b>25</b> ¢ Lb.
<b>Bananas</b> Golden Ripe <b>25</b> ¢ Lb.	<b>Bananas</b> Golden Ripe <b>25</b> ¢ Lb.	<b>Bananas</b> Golden Ripe <b>25</b> ¢ Lb.	<b>Bananas</b> Golden Ripe <b>25</b> ¢ Lb.	<b>Bananas</b> Golden Ripe <b>25</b> ¢ Lb.
<b>Bananas</b> Golden Ripe <b>25</b> ¢ Lb.	<b>Bananas</b> Golden Ripe <b>25</b> ¢ Lb.	<b>Bananas</b> Golden Ripe <b>25</b> ¢ Lb.	<b>Bananas</b> Golden Ripe <b>25</b> ¢ Lb.	<b>Bananas</b> Golden Ripe <b>25</b> ¢ Lb.
<b>Bananas</b> Golden Ripe <b>25</b> ¢ Lb.	<b>Bananas</b> Golden Ripe <b>25</b> ¢ Lb.	<b>Bananas</b> Golden Ripe <b>25</b> ¢ Lb.	<b>Bananas</b> Golden Ripe <b>25</b> ¢ Lb.	<b>Bananas</b> Golden Ripe <b>25</b> ¢ Lb.
<b>Bananas</b> Golden Ripe <b>25</b> ¢ Lb.	<b>Bananas</b> Golden Ripe <b>25</b> ¢ Lb.	<b>Bananas</b> Golden Ripe <b>25</b> ¢ Lb.	<b>Bananas</b> Golden Ripe <b>25</b> ¢ Lb.	<b>Bananas</b> Golden Ripe <b>25</b> ¢ Lb.
<b>Bananas</b> Golden Ripe <b>25</b> ¢ Lb.	<b>Bananas</b> Golden Ripe <b>25</b> ¢ Lb.	<b>Bananas</b> Golden Ripe <b>25</b> ¢ Lb.	<b>Bananas</b> Golden Ripe <b>25</b> ¢ Lb.	<b>Bananas</b> Golden Ripe <b>25</b> ¢ Lb.
<b>Bananas</b> Golden Ripe <b>25</b> ¢ Lb.	<b>Bananas</b> Golden Ripe <b>25</b> ¢ Lb.	<b>Bananas</b> Golden Ripe <b>25</b> ¢ Lb.	<b>Bananas</b> Golden Ripe <b>25</b> ¢ Lb.	<b>Bananas</b> Golden Ripe <b>25</b> ¢ Lb.
<b>Bananas</b> Golden Ripe <b>25</b> ¢ Lb.	<b>Bananas</b> Golden Ripe <b>25</b> ¢ Lb.	<b>Bananas</b> Golden Ripe <b>25</b> ¢ Lb.	<b>Bananas</b> Golden Ripe <b>25</b> ¢ Lb.	<b>Bananas</b> Golden Ripe <b>25</b> ¢ Lb.
<b>Bananas</b> Golden Ripe <b>25</b> ¢ Lb.	<b>Bananas</b> Golden Ripe <b>25</b> ¢ Lb.	<b>Bananas</b> Golden Ripe <b>25</b> ¢ Lb.	<b>Bananas</b> Golden Ripe <b>25</b> ¢ Lb.	<b>Bananas</b> Golden Ripe <b>25</b> ¢ Lb.
<b>Bananas</b> Golden Ripe <b>25</b> ¢ Lb.	<b>Bananas</b> Golden Ripe <b>25</b> ¢ Lb.	<b>Bananas</b> Golden Ripe <b>25</b> ¢ Lb.	<b>Bananas</b> Golden Ripe <b>25</b> ¢ Lb.	<b>Bananas</b> Golden Ripe <b>25</b> ¢ Lb.
<b>Bananas</b> Golden Ripe <b>25</b> ¢ Lb.	<b>Bananas</b> Golden Ripe <b>25</b> ¢ Lb.	<b>Bananas</b> Golden Ripe <b>25</b> ¢ Lb.	<b>Bananas</b> Golden Ripe <b>25</b> ¢ Lb.	<b>Bananas</b> Golden Ripe <b>25</b> ¢ Lb.
<b>Bananas</b> Golden Ripe <b>25</b> ¢ Lb.	<b>Bananas</b> Golden Ripe <b>25</b> ¢ Lb.	<b>Bananas</b> Golden Ripe <b>25</b> ¢ Lb.	<b>Bananas</b> Golden Ripe <b>25</b> ¢ Lb.	<b>Bananas</b> Golden Ripe <b>25</b> ¢ Lb.
<b>Bananas</b> Golden Ripe <b>25</b> ¢ Lb.	<b>Bananas</b> Golden Ripe <b>25</b> ¢ Lb.	<b>Bananas</b> Golden Ripe <b>25</b> ¢ Lb.	<b>Bananas</b> Golden Ripe <b>25</b> ¢ Lb.	<b>Bananas</b> Golden Ripe <b>25</b> ¢ Lb.
<b>Bananas</b> Golden Ripe <b>25</b> ¢ Lb.	<b>Bananas</b> Golden Ripe <b>25</b> ¢ Lb.	<b>Bananas</b> Golden Ripe <b>25</b> ¢ Lb.	<b>Bananas</b> Golden Ripe <b>25</b> ¢ Lb.	<b>Bananas</b> Golden Ripe <b>25</b> ¢ Lb.
<b>Bananas</b> Golden Ripe <b>25</b> ¢ Lb.	<b>Bananas</b> Golden Ripe <b>25</b> ¢ Lb.	<b>Bananas</b> Golden Ripe <b>25</b> ¢ Lb.	<b>Bananas</b> Golden Ripe <b>25</b> ¢ Lb.	<b>Bananas</b> Golden Ripe <b>25</b> ¢ Lb.
<b>Bananas</b> Golden Ripe <b>25</b> ¢ Lb.	<b>Bananas</b> Golden Ripe <b>25</b> ¢ Lb.	<b>Bananas</b> Golden Ripe <b>25</b> ¢ Lb.	<b>Bananas</b> Golden Ripe <b>25</b> ¢ Lb.	<b>Bananas</b> Golden Ripe <b>25</b> ¢ Lb.
<b>Bananas</b> Golden Ripe <b>25</b> ¢ Lb.	<b>Bananas</b> Golden Ripe <b>25</b> ¢ Lb.	<b>Bananas</b> Golden Ripe <b>25</b> ¢ Lb.	<b>Bananas</b> Golden Ripe <b>25</b> ¢ Lb.	<b>Bananas</b> Golden Ripe <b>25</b> ¢ Lb.
<b>Bananas</b> Golden Ripe <b>25</b> ¢ Lb.	<b>Bananas</b> Golden Ripe <b>25</b> ¢ Lb.	<b>Bananas</b> Golden Ripe <b>25</b> ¢ Lb.	<b>Bananas</b> Golden Ripe <b>25</b> ¢ Lb.	<b>Bananas</b> Golden Ripe <b>25</b> ¢ Lb.
<b>Bananas</b> Golden Ripe <b>25</b> ¢ Lb.	<b>Bananas</b> Golden Ripe <b>25</b> ¢ Lb.	<b>Bananas</b> Golden Ripe <b>25</b> ¢ Lb.	<b>Bananas</b> Golden Ripe <b>25</b> ¢ Lb.	<b>Bananas</b> Golden Ripe <b>25</b> ¢ Lb.
<b>Bananas</b> Golden Ripe <b>25</b> ¢ Lb.	<b>Bananas</b> Golden Ripe <b>25</b> ¢ Lb.	<b>Bananas</b> Golden Ripe <b>25</b> ¢ Lb.	<b>Bananas</b> Golden Ripe <b>25</b> ¢ Lb.	<b>Bananas</b> Golden Ripe <b>25</b> ¢ Lb.
<b>Bananas</b> Golden Ripe <b>25</b> ¢ Lb.	<b>Bananas</b> Golden Ripe <b>25</b> ¢ Lb.	<b>Bananas</b> Golden Ripe <b>25</b> ¢ Lb.	<b>Bananas</b> Golden Ripe <b>25</b> ¢ Lb.	<b>Bananas</b> Golden Ripe <b>25</b> ¢ Lb.
<b>Bananas</b> Golden Ripe <b>25</b> ¢ Lb.	<b>Bananas</b> Golden Ripe <b>25</b> ¢ Lb.	<b>Bananas</b> Golden Ripe <b>25</b> ¢ Lb.	<b>Bananas</b> Golden Ripe <b>25</b> ¢ Lb.	<b>Bananas</b> Golden Ripe <b>25</b> ¢ Lb.
<b>Bananas</b> Golden Ripe <b>25</b> ¢ Lb.	<b>Bananas</b> Golden Ripe <b>25</b> ¢ Lb.	<b>Bananas</b> Golden Ripe <b>25</b> ¢ Lb.	<b>Bananas</b> Golden Ripe <b>25</b> ¢ Lb.	<b>Bananas</b> Golden Ripe <b>25</b> ¢ Lb.
<b>Bananas</b> Golden Ripe <b>25</b> ¢ Lb.	<b>Bananas</b> Golden Ripe <b>25</b> ¢ Lb.	<b>Bananas</b> Golden Ripe <b>25</b> ¢ Lb.	<b>Bananas</b> Golden Ripe <b>25</b> ¢ Lb.	<b>Bananas</b> Golden Ripe <b>25</b> ¢ Lb.
<b>Bananas</b> Golden Ripe <b>25</b> ¢ Lb.	<b>Bananas</b> Golden Ripe <b>25</b> ¢ Lb.	<b>Bananas</b> Golden Ripe <b>25</b> ¢ Lb.	<b>Bananas</b> Golden Ripe <b>25</b> ¢ Lb.	<b>Bananas</b> Golden Ripe <b>25</b> ¢ Lb.
<b>Bananas</b> Golden Ripe <b>25</b> ¢ Lb.	<b>Bananas</b> Golden Ripe <b>25</b> ¢ Lb.	<b>Bananas</b> Golden Ripe <b>25</b> ¢ Lb.	<b>Bananas</b> Golden Ripe <b>25</b> ¢ Lb.	<b>Bananas</b> Golden Ripe <b>25</b> ¢ Lb.
<b>Bananas</b> Golden Ripe <b>25</b> ¢ Lb.	<b>Bananas</b> Golden Ripe <b>25</b> ¢ Lb.	<b>Bananas</b> Golden Ripe <b>25</b> ¢ Lb.	<b>Bananas</b> Golden Ripe <b>25</b> ¢ Lb.	<b>Bananas</b> Golden Ripe <b>25</b> ¢ Lb.
<b>Bananas</b> Golden Ripe <b>25</b> ¢ Lb.	<b>Bananas</b> Golden Ripe <b>25</b> ¢ Lb.	<b>Bananas</b> Golden Ripe <b>25</b> ¢ Lb.	<b>Bananas</b> Golden Ripe <b>25</b> ¢ Lb.	<b>Bananas</b> Golden Ripe <b>25</b> ¢ Lb.
<b>Bananas</b> Golden Ripe <b>25</b> ¢ Lb.	<b>Bananas</b> Golden Ripe <b>25</b> ¢ Lb.	<b>Bananas</b> Golden Ripe <b>25</b> ¢ Lb.	<b>Bananas</b> Golden Ripe <b>25</b> ¢ Lb.	<b>Bananas</b> Golden Ripe <b>25</b> ¢ Lb.
<b>Bananas</b> Golden Ripe <b>25</b> ¢ Lb.	<b>Bananas</b> Golden Ripe <b>25</b> ¢ Lb.	<b>Bananas</b> Golden Ripe <b>25</b> ¢ Lb.	<b>Bananas</b> Golden Ripe <b>25</b> ¢ Lb.	<b>Bananas</b> Golden Ripe <b>25</b> ¢ Lb.
<b>Bananas</b> Golden Ripe <b>25</b> ¢ Lb.	<b>Bananas</b> Golden Ripe <b>25</b> ¢ Lb.	<b>Bananas</b> Golden Ripe <b>25</b> ¢ Lb.	<b>Bananas</b> Golden Ripe <b>25</b> ¢ Lb.	<b>Bananas</b> Golden Ripe <b>25</b> ¢ Lb.
<b>Bananas</b> Golden Ripe <b>25</b> ¢ Lb.	<b>Bananas</b> Golden Ripe <b>25</b> ¢ Lb.	<b>Bananas</b> Golden Ripe <b>25</b> ¢ Lb.	<b>Bananas</b> Golden Ripe <b>25</b> ¢ Lb.	<b>Bananas</b> Golden Ripe <b>25</b> ¢ Lb.
<b>Bananas</b> Golden Ripe <b>25</b> ¢ Lb.	<b>Bananas</b> Golden Ripe <b>25</b> ¢ Lb.	<b>Bananas</b> Golden Ripe <b>25</b> ¢ Lb.	<b>Bananas</b> Golden Ripe <b>25</b> ¢ Lb.	<b>Bananas</b> Golden Ripe <b>25</b> ¢ Lb.
<b>Bananas</b> Golden Ripe <b>25</b> ¢ Lb.	<b>Bananas</b> Golden Ripe <b>25</b> ¢ Lb.	<b>Bananas</b> Golden Ripe <b>25</b> ¢ Lb.	<b>Bananas</b> Golden Ripe <b>25</b> ¢ Lb.	<b>Bananas</b> Golden Ripe <b>25</b> ¢ Lb.
<b>Bananas</b> Golden Ripe <b>25</b> ¢ Lb.	<b>Bananas</b> Golden Ripe <b>25</b> ¢ Lb.	<b>Bananas</b> Golden Ripe <b>25</b> ¢ Lb.	<b>Bananas</b> Golden Ripe <b>25</b> ¢ Lb.	<b>Bananas</b> Golden Ripe <b>25</b> ¢ Lb.
<b>Bananas</b> Golden Ripe <b>25</b> ¢ Lb.	<b>Bananas</b> Golden Ripe <b>25</b> ¢ Lb.	<b>Bananas</b> Golden Ripe <b>25</b> ¢ Lb.	<b>Bananas</b> Golden Ripe <b>25</b> ¢ Lb.	<b>Bananas</b> Golden Ripe <b>25</b> ¢ Lb.
<b>Bananas</b> Golden Ripe <b>25</b> ¢ Lb.	<b>Bananas</b> Golden Ripe <b>25</b> ¢ Lb.	<b>Bananas</b> Golden Ripe <b>25</b> ¢ Lb.	<b>Bananas</b> Golden Ripe <b>25</b> ¢ Lb.	<b>Bananas</b> Golden Ripe <b>25</b> ¢ Lb.
<b>Bananas</b> Golden Ripe <b>25</b> ¢ Lb.	<b>Bananas</b> Golden Ripe <b>25</b> ¢ Lb.	<b>Bananas</b> Golden Ripe <b>25</b> ¢ Lb.	<b>Bananas</b> Golden Ripe <b>25</b> ¢ Lb.	<b>Bananas</b> Golden Ripe <b>25</b> ¢ Lb.
<b>Bananas</b> Golden Ripe <b>25</b> ¢ Lb.	<b>Bananas</b> Golden Ripe <b>25</b> ¢ Lb.	<b>Bananas</b> Golden Ripe <b>25</b> ¢ Lb.	<b>Bananas</b> Golden Ripe <b>25</b> ¢ Lb.	<b>Bananas</b> Golden Ripe <b>25</b> ¢ Lb.
<b>Bananas</b> Golden Ripe <b>25</b> ¢ Lb.	<b>Bananas</b> Golden Ripe <b>25</b> ¢ Lb.	<b>Bananas</b> Golden Ripe <b>25</b> ¢ Lb.	<b>Bananas</b> Golden Ripe <b>25</b> ¢ Lb.	<b>Bananas</b> Golden Ripe <b>25</b> ¢ Lb.
<b>Bananas</b> Golden Ripe <b>25</b> ¢ Lb.	<b>Bananas</b> Golden Ripe <b>25</b> ¢ Lb.	<b>Bananas</b> Golden Ripe <b>25</b> ¢ Lb.	<b>Bananas</b> Golden Ripe <b>25</b> ¢ Lb.	<b>Bananas</b> Golden Ripe <b>25</b> ¢ Lb.
<b>Bananas</b> Golden Ripe <b>25</b> ¢ Lb.	<b>Bananas</b> Golden Ripe <b>25</b> ¢ Lb.	<b>Bananas</b> Golden Ripe <b>25</b> ¢ Lb.	<b>Bananas</b> Golden Ripe <b>25</b> ¢ Lb.	<b>Bananas</b> Golden Ripe <b>25</b> ¢ Lb.
<b>Bananas</b> Golden Ripe <b>25</b> ¢ Lb.	<b>Bananas</b> Golden Ripe <b>25</b> ¢ Lb.	<b>Bananas</b> Golden Ripe <b>25</b> ¢ Lb.	<b>Bananas</b> Golden Ripe <b>25</b> ¢ Lb.	<b>Bananas</b> Golden Ripe <b>25</b> ¢ Lb.
<b>Bananas</b> Golden Ripe <b>25</b> ¢ Lb.	<b>Bananas</b> Golden Ripe <b>25</b> ¢ Lb.	<b>Bananas</b> Golden Ripe <b>25</b> ¢ Lb.	<b>Bananas</b> Golden Ripe <b>25</b> ¢ Lb.	<b>Bananas</b> Golden Ripe <b>25</b> ¢ Lb.
<b>Bananas</b> Golden Ripe <b>25</b> ¢ Lb.	<b>Bananas</b> Golden Ripe <b>25</b> ¢ Lb.	<b>Bananas</b> Golden Ripe <b>25</b> ¢ Lb.	<b>Bananas</b> Golden Ripe <b>25</b> ¢ Lb.	<b>Bananas</b> Golden Ripe <b>25</b> ¢ Lb.
<b>Bananas</b> Golden Ripe <b>25</b> ¢ Lb.	<b>Bananas</b> Golden Ripe <b>25</b> ¢ Lb.	<b>Bananas</b> Golden Ripe <b>25</b> ¢ Lb.	<b>Bananas</b> Golden Ripe <b>25</b> ¢ Lb.	<b>Bananas</b> Golden Ripe <b>25</b> ¢ Lb.
<b>Bananas</b> Golden Ripe <b>25</b> ¢ Lb.	<b>Bananas</b> Golden Ripe <b>25</b> ¢ Lb.	<b>Bananas</b> Golden Ripe <b>25</b> ¢ Lb.	<b>Bananas</b> Golden Ripe <b>25</b> ¢ Lb.	<b>Bananas</b> Golden Ripe <b>25</b> ¢ Lb.
<b>Bananas</b> Golden Ripe <b>25</b> ¢ Lb.	<b>Bananas</b> Golden Ripe <b>25</b> ¢ Lb.	<b>Bananas</b> Golden Ripe <b>25</b> ¢ Lb.	<b>Bananas</b> Golden Ripe <b>25</b> ¢ Lb.	<b>Bananas</b> Golden Ripe <b>25</b> ¢ Lb.
<b>Bananas</b> Golden Ripe <b>25</b> ¢ Lb.	<b>Bananas</b> Golden Ripe <b>25</b> ¢ Lb.	<b>Bananas</b> Golden Ripe <b>25</b> ¢ Lb.	<b>Bananas</b> Golden Ripe <b>25</b> ¢ Lb.	<b>Bananas</b> Golden Ripe <b>25</b> ¢ Lb.
<b>Bananas</b> Golden Ripe <b>25</b> ¢ Lb.	<b>Bananas</b> Golden Ripe <b>25</b> ¢ Lb.	<b>Bananas</b> Golden Ripe <b>25</b> ¢ Lb.	<b>Bananas</b> Golden Ripe <b>25</b> ¢ Lb.	<b>Bananas</b> Golden Ripe <b>25</b> ¢ Lb.
<b>Bananas</b> Golden Ripe <b>25</b> ¢ Lb.	<b>Bananas</b> Golden Ripe <b>25</b> ¢ Lb.	<b>Bananas</b> Golden Ripe <b>25</b> ¢ Lb.	<b>Bananas</b> Golden Ripe <b>25</b> ¢ L	

