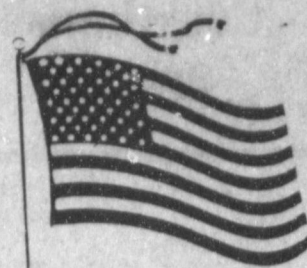


WEATHER

January 14 70 22
January 15 60 22
January 16 36 19 .06
January 17 27 12 .05 1 inch snow

BAILEY COUNTY JOURNAL

The Community Of Opportunity-Where Water Makes the Difference



Vol. 25, No. 3

10 Pages Today

Published Every Sunday at Muleshoe, Bailey County, Texas 79347

20¢

Sunday, January 18, 1987

AROUND
MULESHOE

Muleshoe Nursing Home will be sponsoring a free Nurse's Aid course in the near future. There will be a charge for the manual.

All interested persons should contact Olga Serna at the nursing home at 272-3861 ext. 172.

Jim Swanner, nursing home administrator, said that if you are interested and meet entrance requirements please apply before Monday, Jan. 26.

The youth of the First United Methodist Church will be sponsoring a brisket dinner today, Sunday, January 18 at 12 (noon).

Adult plates are \$5.00 and pre-school children \$2.00. Carry outs are available.

Muleshoe Fine Arts Boosters will meet at 7:30 p.m. Monday, Jan. 19 in the band hall and everyone is urged to attend. Plans will be made for the Sweetheart Festival, which will be held Saturday, Feb. 7.

Notice is hereby given that a special meeting of the governing body of the Muleshoe Independent School District will be held on the 19th day of January, 1987, at 11 a.m., in the School Administration Building at 514 West Avenue G, Muleshoe, at which time the following subjects will be discussed, to-wit:

1. Inspect physical facilities and observe school operations in the secondary schools.

No action will be taken at this meeting.

The seventh grade girls basketball team finished second in the Sudan Tournament this past weekend. They defeated Anton 42 to 7. Audrey Williams was high scorer with 16 points. They defeated Sundown 25 to 9 and Chandra Kemp was high pointer with seven points.

The Mullettes lost out in the final game to Abernathy. The score was 27 to 28, D'Anne Box was the high scorer with eight points.

The Mullettes are 10 and 2 for the season. Their next game will be here tomorrow, Monday at 5 p.m. against Tulia.

Cont' Page 6, Col. 3

Soil Fertility Study

Proves Nutrients Need

A study was conducted in the spring and summer of 1986 to determine if low soil fertility level could be limiting crop yields and water-use efficiency of field crops grown in the area served by the High Plains Underground Water Conservation District No. 1.

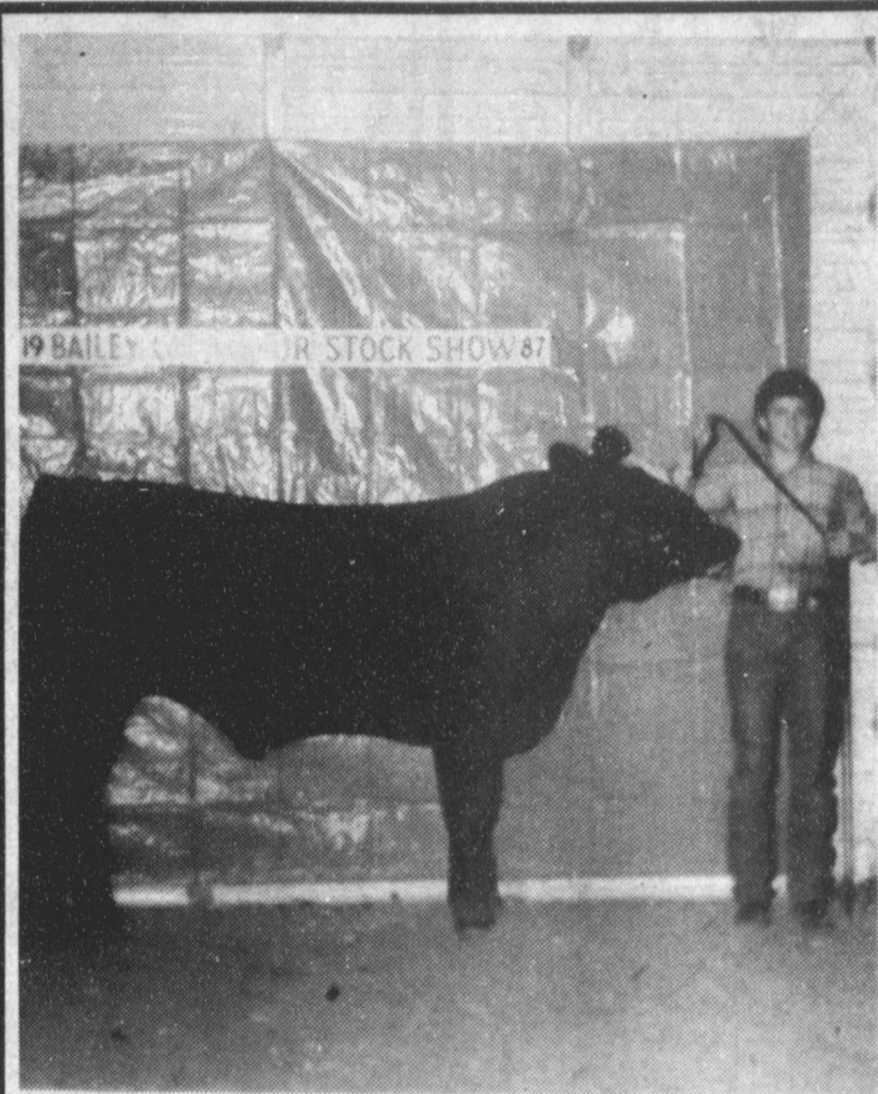
A total of 853 soil samples were collected at one-foot intervals to a depth of four feet on 217 farms located in the Water District's Service area. Plant nutrient levels measured included: nitrogen, phosphorus, potassium, calcium, magnesium, zinc, iron, manganese, copper and sodium. Soil pH and salinity were also measured.

The soil sample analyses revealed that only nitrogen and phosphorus levels were commonly low enough to limit crop production and water-use efficiency of field crops grown in the area.

NITROGEN REQUIREMENTS

It requires about 90 pounds of available nitrogen per acre to produce 80 bushels of corn, about 40 pounds per acre to produce 300 pounds of lint cotton, about 40 pounds per acre to produce 1500 pounds of grain sorghum and about 50 pounds per acre to produce 20 bushels of wheat. Three hundred of the 434 soil samples (69 percent) taken from the top two feet of soil were rated as "low or very low" in nitrate-nitrogen. The average available nitrate-nitrogen content in this group of soil samples was 4.77 parts per million or 19.08 pounds per acre.

The High Plains Underground Water Conservation District said this would indicate that the average available nitrogen content in the top two feet of soil would be about 38 pounds per



GRAND CHAMPION STEER---Greg Young is shown here with his Tall Cross Breed Steer that was the Grand Champion at the Bailey County Junior Livestock Show Friday evening. The steer was also the Breed Champion of its division.

Wheeler, Young Win
'Best' Cattle, Sheep

Stock Show Winds Up Saturday With Swine

Mother Nature turned on the weather and let a wintry blast cool down former balmy, spring-like weather preceding the annual Bailey County Junior Livestock Show.

Animals were weighed in and classified on Thursday afternoon as the snow started. At the time judging started in the sheep division Friday afternoon, the temperature had never made it above the 17-degree mark. It was sitting on 12 degrees when the cattle judging was over shortly before 11 p.m. Friday night.

Jodie Wheeler was the grand champion winner in the sheep division and Greg Young exhibited the grand champion steer.

Showmanship winner in the lamb division was Colin Tanksley, while Jodie Wheeler was the showmanship winner in the Cattle Division.

Winners were as follows:

SHEEP
FINEWOOL

Brooke Sinclair, first and breed champion; Casie Dodd, second and reserve breed champion; Lisa Black, third; Angel Pearson, fourth; Jesus Agundis, fifth; Corie Dodd, sixth and Jason Harmon, seventh.

FINEWOOL CROSS

Kasey Whatley, first and reserve breed champ; Samantha Caswell, second; Charles Latimer, third; J.J. Duarte, fourth; Charles Latimer, fifth; Casie Dodd, sixth; Jodie Gibbins, seventh and Jodie Gibbins, eighth.

FINEWOOL CROSS

MEDIUM WEIGHT

Colin Tanksley, first; Brent Black, second; Casie Dodd, third; Lori Hodges, fourth; Courtney Tanksley, fifth; Darrell McCamish, sixth; Shawn Wheeler, seventh and Coleen Dodd, eighth.

FINEWOOL CROSS

HEAVYWEIGHT

Holly Huckaby, first and breed champion; Brooke Sinclair, second; Lisa Black, third; Casie Dodd, fourth; Suzy Hodges, fifth and Suzy Hodges, sixth.

SOUTHDOWN

Samantha Caswell, first and breed champion; Angel Pearson, second and reserve breed champion; Kourtnee Magby, third; Coleen Dodd, fourth and Jason Harmon, fifth.

MEDIUM WOOL

CLASS I

Monty Black, first, reserve breed champion and reserve grand champion; Angel Pearson, second; Brooke Sinclair, third; Darrell McCamish, fourth; Kourtnee Magby, fifth; Charles Latimer, sixth; Jimmy Mardis, seventh; Nick Duarte, eighth; Denise Duarte, ninth and Lisa Lowe, tenth.

Cont. Page 6, Col. 1

City Sales Tax Check
Still Showing Decline

State Comptroller Bob Bullock late last week sent checks totaling \$48.95 million in local sales tax to 1,038 cities that levy the one-percent city tax. Bullock said that the first payment for 1987 were down almost nine percent as compared to last year's first payment.

Muleshoe's payment for the first period this year was \$10,964.78, down 12.94 percent from the first payment in 1986 of \$12,594.43.

In Cochran County, the first payment from Morton also reflects a decrease, with a payment in January, 1987 of

\$2,786.86, down by some 11.44 percent from last year's first payment of \$3,781.61.

At Littlefield, an increase has been noted in city tax rebates. Their first check for this year was in the amount of \$15,147.71, up by 7.76 percent over the first check for 1986, which was for \$13,590.52.

Friena, in Parmer County, also showed a decrease in the first check received in the new year. The 10.83 percent decrease is reflected in their current payment of \$5,106.59, down from the \$5,726.89 of a year ago.

Houston's check for \$7.6 million was the largest, down eight percent from last year's payment of \$8.4 million. Dallas' payment was \$6 million, a six percent decrease from last January's payment of \$6.4 million.

San Antonio's payment of \$2.9 million was down 11 percent from 1986's figure of \$3.3 million. Austin's check for \$2.5 million was down two percent from the \$2.6 million payment made in January of

Cont' Page 6, Col. 3

5-Area Telephone

Annual Member

Meet Scheduled

Five Area Telephone Cooperative, Inc. will hold its 30th Annual Membership meeting on Saturday, February 7, at the cooperative building in Muleshoe. Registration starts at 9 a.m. and the meeting begins at 10 a.m.

Drawing will be held for many prizes donated by area merchants and industry suppliers, as well as some furnished by the cooperative. All members at the meeting will also be presented a door prize. At noon, a meal will be served by Bigham's Smokehouse Bar-B-Que.

Voting will be for directors in Districts Five, Six and Seven. Bob Foley and Mike Abbe have been nominated from District Five, Maple. Foley is the present director and is eligible for re-election. Gary Pickrell and Billy Tiller have been nominated from District Six, Bula. Richard Black is presently director from District Six, but is ineligible to run due to the limited tenure of four consecutive three year terms, or 12 years. Rex Griffiths, Wallace Stalcup and R.A. Stevens have been nominated from District Seven, Lehman. Griffiths is the present director and is eligible for re-election.

Cont. Page 6, Col. 3

Wintry Blast
Makes Driving
Very Hazardous

Deceptive driving conditions were found by many travelers early Friday morning, and continuing through the day on secondary highways that weren't traveled as much as the major highway through Muleshoe.

Before 8 a.m. Friday, three vehicle accidents had occurred, and each of them was on Highway 214 south of Muleshoe. No injuries were reported in the one-vehicle accidents caused by ice-packed highways.

During the day and on Friday evening, several other accidents were reported, each being a one-vehicle accident, but no injuries were reported to have been serious enough to summon an ambulance.

Snow, that started falling late Thursday, had only left about an inch and a half or two inches on the ground, with very light snow being reported throughout the day on Friday in this area.

By Friday midnight, no accidents had been checked within the city limits of Muleshoe, as drivers were apparently taking necessary precautions to compensate for the slick roads and highways in the city.

National Weather Service predicted the heavy snows would be continuing through the weekend and into the first of next week, with possible accum-

Cont Page 6, Col. 4

Area Deaths
Of Waterfowl
To Be Reported

Landowners and others in the playa lakes region of the Texas Panhandle are asked to report any sighting of dead or dying waterfowl in those areas, according to TPWD officials.

The Interagency Playa Lakes Disease Council reports that the shallow playa lakes are important waterfowl habitat, but they can present a threat by supporting disease organisms deadly to ducks and geese.

The council, formed to coordinate waterfowl disease investigations, is made up of representatives from the U.S. Fish and Wildlife Service, Texas Parks and Wildlife Department, Texas Tech University and the Texas Waterfowlers Association.

Suspected waterfowl die-offs should be reported to local wildlife officials or the Muleshoe National Wildlife Refuge, Box 549, Muleshoe, TX 79347, 806/946-3341.

Budget, Planning Meets Set

Bailey County Extension Agent Spencer Tandsley had announced a series of educational programs scheduled for the month of January.

On Tuesday, January 20 and 27, Financial Management Workshops will be conducted at 7:30 p.m. on each of the nights at the Bailey County Civic Center.

Tanksley said Dr. Jackie Smith, Extension Economist from Lubbock will be in Muleshoe on each of the nights to direct and give the training for each of the workshops.

Tuesday, January 20, will include an Overview of the Planning Process, including Enterprise budgets, break-even analysis; gross margin analysis; whole farm planning; cash flow budgeting; partial budgeting and evaluation.

Under financial statements on the 20th, are description, including balance sheet; income statement and cash flow and use of each in evaluation of financial position and/or financial progress.

The program on the 27th, is Whole Farm Planning-Example farm used; typical enterprise budgets; break-even analysis; a ply gross margin analysis to example; look at alternative whole farm plans; cash flow of alternative plans and partial budgeting.

On January 29th, at 9:30, and in the Bailey County Civic

Center, Dr. Wayne Hayenga, Farm Economist - Management Specialist with the Texas Agricultural Extension Service will conduct an Estate Planning meeting.

Dr. Hayenga's program will consist of all phases of farm estate planning relating to tax

Cont' Page 6, Col. 5

Local Teachers,

Administrators

Attend Workshop

Approximately forty teachers and administrators were involved in a very successful Gifted! Talented Workshop, Saturday, January 10, 9 a.m.-4 p.m. at Dillman Elementary School.

Bonnie Heatherington, a G/T teacher from Lubbock ISD, and Gayle Fuller, the Elementary G/T coordinator from Muleshoe ISD, were the presenters.

The consultants trained teachers in techniques of teaching creative writing and presented motivational activities to be used in the classrooms. The teachers created questions based on the six levels of Bloom's taxonomy by using regular textbooks and library books.

Two additional workshops are scheduled for Saturday, February 6, and Saturday, March 28.



GRAND CHAMPION LAMB---Jodie Wheeler is shown here with her Medium Wool Lamb which was the Grand Champion Lamb at the Bailey County Junior Livestock Show Friday evening. The lamb was also the Breed Champion of his division.

Courthouse News

MARRIAGE LICENSE
Wbaldo Perez and Irma Ramos, Muleshoe
Dennis Lee Bush, Muleshoe and Lisa Ann Miller, Levelland
William Clarence McMahan and Lillie Fae Barnhouse, Muleshoe

David Lance Payton and Dorothy LaVerne Collins, Portales, N.M.
Mike Anthony Norman and Lisa Ann McDonald, Muleshoe
Darren Roger Albertson and Rebecca Vela, Muleshoe

WARRANTY DEEDS
James H. Jennings and wife, Frances E. Jennings to Clifton B. Allen--All of a certain lot, tract, or parcel of land beginning at a point 150 feet West of the Northeast corner of Tract (1), Hart's Acres to the town of Muleshoe, Bailey County, Texas.

Stanford M. Barrett and Rheba Barrett, husband and wife, to the City of Muleshoe--A 2.12 Acre Tract of land out of the (SE/4) of Section (54), Block Y, WD&FW Johnson Subdivision, Bailey County, Texas.
Jerry Don Gregory and wife, Linda Charline Gregory to Winston Allison and wife, Dianne Allison--Lots (10), (11), and (12), Block (7), Warren Addition Number (1), to the City of Muleshoe, Bailey County, Texas.

Tommy Lee Gibbins and wife, Phyllis Jane Gibbins to Walter W. Lackey and wife, Brenda F. Lackey--All of Lot Number (9), in Block Number (3), Warren Addition Number (1), to the Town of Muleshoe, Bailey County, Texas.
Lettie Fern Gilbreath to Don McDaniel--All of Lots (13), and (14), in Block Number (1), Original Town of Muleshoe, Bailey County, Texas.

R.N. Edwards and wife, Elizabeth L. Edwards to Donald McDaniel and wife, Jeanie McDaniel--All of Lots Numbers (15), (16), (17), (18), (19), and (20), in Block Number (1), Original Town of Muleshoe, Bailey County, Texas.
Stanley Edward Williams and wife, Betty Williams to Bob Clark--All of the (NE/4) of Section 15, Block "Y", WD&FW Johnson Subdivision, Bailey County, Texas.

Scott Saylor and wife, Sharla Saylor; David Lee Saylor and wife, Patti Saylor; and Johnny Saylor and wife, Diane Saylor to Saylor Investments, Inc.--All of the (NW/4) of Section 44, Block

"Z", WD&FW, Johnson Subdivision, Bailey County, Texas.
Charles L. Saylor and wife, Billie June Saylor to Saylor Investments, Inc.--All of the (NW/4) of Section 44, Block "Z", WD&FW Johnson Subdivision, Bailey County, Texas, except for a two acre tract.

Grady Lee Free and wife, Valorie Free; Faith Morgan, and Hope Free to Saylor Investments, Inc.--All of the (NW/4) of Section 44, Block "Z", WD&FW Johnson, Bailey County, Texas, except for a two acre tract.

Wilota Richardson to Homer Wallace Richardson--All of the (SW/4) of Section Number (21), League Number (144), Hansford County School Lands, Bailey County, Texas.

Sawnie Mac Branscum to Joan Murrell Branscum--A one acre tract of land out of the (N/2) of the (SE/4) of Section 42, Block "Y", WD&FW Johnson Subdivision No. 2, in Bailey County, Texas.

COUNTY COURT
Carl Scott Harris, DWI, \$250 Fine, 1 Year Probation
Boyd Magby, DWI, \$250 Fine, 1 Year Probation
Joyce Thomas, Theft By Check, \$200 Fine

DISTRICT COURT
Sunwest Bank of Roswell, NA VS Pivot Products Distributors, Inc., Judgement
West Plains Medical Center, Inc.--Agreed Order For Contenance of Temporary Restraining Order

Joan Murrell Branscum and Sawnie Mac Branscum DV
Warren Kim Gable and Margaret Joyce Gable DV
Bailey County Appraisal District ET AL Vs John D. Adrian ET AL, Notice of Dismissal

Joy Lynette Rutherford and Dennis Dee Rutherford DV
Lynn Copley and Juanean Copley DV
Antonio Rojas Jr. and Kimberly Rojas DV

Appointments for a "good time" are rarely broken.

Appointments for a "good time" are rarely broken.

Bailey County Journal USPS 040-200
Established March 31, 1963. Published by Muleshoe Publishing Co., Inc. Every Sunday at 404 W. Second, Box 449, Muleshoe, Texas, 79347. Second Class Postage paid at Muleshoe, Texas 79347.

MEMBER 1987
TEXAS PRESS ASSOCIATION

L.B. Hall, President & Publisher
Sammy J. Hall, Vice President & Controller
C. W. Williams, News Editor
Evelyn Harris, Society Editor
Holly M. Hagg, Advertising Editor
L. B. Hall, Circulation Manager

SUBSCRIPTIONS
Muleshoe Journal and Bailey County Journal
Bailey and surrounding counties
Muleshoe Journal and Bailey County Journal
Elsewhere in Texas \$14.75
Muleshoe Journal and Bailey County Journal
Outside of Texas \$16.50
Yearly by Carrier \$12.50
Advertising rate card on application.

Enochs News by Mrs. J.D. Bayless

There was a shower given in the honor of Mrs. Maribel (Rodney) Vasquez at the fellowship hall of the Baptist Church 7:30 Friday night Jan. 2

Funeral service for Curt Joahson of Littlefield formally of Enochs was 2:00 p.m. Saturday at the Enochs Methodist Church, burial was in Enochs Cemetery.

Mrs. Wilma Petree of Lubbock and Mrs. Omas Petree of Levelland visited in the home of Mrs. Winnie Byars Saturday afternoon.

The college students from Three Way are leaving for college this week.

A&M FivePoint

\$9.00 50 Lb. Bag

HI PROTEIN DOG FOOD

- A 26% crude protein dog food
- Formulated for hard working dogs
- For Peak conditioning and performance.

Eastern New Mexico Neurological Center

Is Proud To Announce Their Association With

Dr. John L. Collins, P.H.D.

Certified Clinical Psychologist
Appointments Now Being Accepted For:

Cronic Pain Management, Behavior Medicine, Headache, Stress Management, Learning Disability, Individual Counseling, Psycho-Therapy, Individual Personality Assessments.

2000 W. 21st Suite A2
Clovis, N.M.
1-505-762-4715

POARCH'S FURNITURE

WALL TO WALL CLEARANCE!

JANUARY

SALE ENDS SATURDAY JANUARY 31ST

"New Markdowns!"

DESCRIPTION	WAS	NOW
5-pc. Universal Game Set	\$1199	\$699
One Group Swivel Rockers	\$299	\$149
5-pc. Glass-Top Dinette	\$249	\$149
Athens Entertainment Ctr.	\$649	\$299
5-pc. Benchcraft Sectional	\$1899	\$998
5-pc. Burlington Bedroom	\$1288	\$699
Oak Curio Cabinet	\$389	\$199
Wood 2-Drawer Filing Cab.	\$299	\$149
2 ONLY Glass-Top Sofa Table	\$299	\$149
100 Lane Recliners		25% to 50% Off Reg. Retail
Discontinued BEDDING		1/2 Off
One Group SOFAS		\$299
One Group Queen Sleepers		\$399
ODD Dining Chairs		\$49.00
ODD BAR STOOLS		\$49.00
'Flexsteel' Queen Sleeper	\$799	\$399
Riverside Queen Sleeper	\$899	\$399
ODD LOVESEATS	\$399	\$199
Maple China Cabinet	\$399	\$199
Brass Plate Headboards	\$109	\$49
Crestline Sofa "Stripe"	\$499	\$299
Mayo Sofa "Plaid"	\$499	\$299
3-Pc. Oak Bedroom Set	\$1299	\$649
Broyhill Student Desk	\$189	\$99
Odd END TABLES		\$69
Table Lamps		1/2 OFF
Sealy Bedding		40% Off Reg. Retail
100 Lane Recliners		25% to 50% Off Reg. Retail

"Damaged" CHAIRS \$99.00

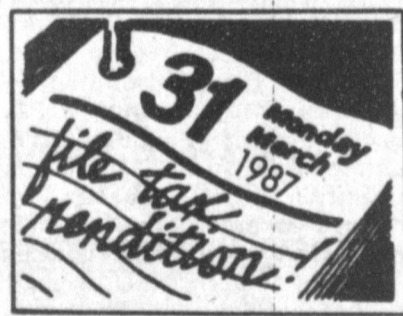
OAK GUN CABINETS 1/2 Off!

"Bank Financing With Approved Credit"

STORE HOURS
9-6 Mon. thru Fri.
9-3 Saturday

POARCH'S FURNITURE
"Where only the look is expensive"
503 W. 11th • Friona, Texas Phone: 247-2035

PROPERTY TAX RENDITIONS



HELP YOU PROTECT YOUR RIGHTS AS A TAXPAYER

A rendition is a report to the appraisal district that lists all the taxable property you own or control on January 1, 1987. You may also give your opinion of the property's value, if you wish.

You must file a rendition if you own tangible personal property used to produce income--such as the machinery and equipment used by a business.

The appraisal district may require any taxpayer to file a rendition by sending the taxpayer a written notice and a rendition form.

You may want to file a rendition, even if you aren't required to file, to preserve some of your rights as a taxpayer:

- You put your correct mailing address on record so your tax bills will go to the right address. Even if your bill goes to the wrong address, the law still holds you responsible for paying your taxes on time or else paying extra charges for late payments.
- You can put your own opinion of your property's value on record. If the

appraisal district then places a higher value on your property, it must notify you in writing of the higher value and explain how you can protest that value to the appraisal review board.

By filing a special type of rendition called a report of decreased value, you can notify the appraisal district of significant damage to your property that occurred in 1986. The district will send someone to verify the damage and take it into account when assigning a 1987 value to your property.

File renditions with your local appraisal district at the address shown below. Forms are available at this office.

The new deadline for 1987 renditions is March 31. You can get an extra 30 days if you ask for it in writing before the March 31 deadline.

For more information, get a free copy of the pamphlet, Taxpayers' Rights, Remedies, Responsibilities, at your appraisal district office or from the State Property Tax Board in Austin.

Bailey County Appraisal District

104 E. Ave. C.

272-5501

Home Ceremony Unites Brenda Cole, Harlin

Brenda Lee Gatling Cole and Delbert Dale Harlin were united in marriage Saturday, Dec. 27 in the home of Mr. and Mrs. Dale Hill of Littlefield. The Rev. Travis Allen, a Baptist minister from Artesia, N.M. read the double ring vows.

The bride is the daughter of the late Roy and Alice Gatling of Corpus Christi. Harlin is the son of Mr. and Mrs. Lindel Harlin of Sudan and the grandson of Ruth Callaway of Sudan and Ethel Harlin of Littlefield. The bride has two brothers, Roy Gatling of Austin and Robin Gatling of San Antonio.

Vows were exchanged before a white brick fireplace. Three brass candelabras featuring 15 red tapers, encircled with red silk poinsettias completed the decorations on the mantle. Two large white baskets filled with white silk gladiolas, red silk roses and poinsettias, accented with red bows flanked the sides of the hearth.

Miss Linda Kay Hodge of Lubbock provided the special music, including Lara's Theme from "Dr. Zhivago" and selections from "Love Story" and "The Lord's Prayer."

The bride was attired in a street length silver fialle dress featuring a peasant style off the shoulder neckline, fitted princess style bodice with a soft flared skirt. She wore a keepsake penny in her shoe.

Her bouquet consisted of white silk sweetheart roses, bridal wreath, silver baby's breath amid satin bows and streamers.

Mrs. Gail Lara of Lubbock served as matron of honor and Kyle Hill of Littlefield was best man.

Immediately following the ceremony, a reception was held. Rene Hill designed the three tiered heart shaped wedding cake. Mrs. Anita Murray presided at the punch and coffee while Ms. Hill served the wedding cake.

Guests attending the wedding were: Mr. and Mrs. Lindel Harlin, Mrs. Ruth Calloway, Mr. and Mrs. Dale Hill and Kyle, Gail and Al Lara and Cynthia, Derek, Rene, Stephen and Jason Hill, Anita and Charles Murray and Amanda, Robert Hodge, Rose and Buster Hodge, Linda Kay Hodge, David Cook, Gladys and Travis Allen, Ben Calloway, Mr. and Mrs. Percy Harlin, Tim Boatright, Marissa and Kevin Peterson, Patty and Nicole Newsom, Scotty Richards, James Newsom.

Surprise Birthday

Party Honors

Dwayne Powell

Mrs. Dwayne Powell hosted a surprise party Monday night in honor of her husband's birthday, in their home.

Guests were served Mexican Fiesta supper and birthday cake. The honoree opened many gifts, which consisted of gag and regular gifts.

Those attending were: Mr. and Mrs. Gail Gregg, Mr. and Mrs. John Williams, Mr. and Mrs. Charles Burnett, Mr. and Mrs. Philip Gordon, Mr. and Mrs. Troy Moss, Mr. and Mrs. Donald Powell, Marley Hall, Frances Gardner, Linda Summer, Sam Merryman, Dan Foley, Sherri and Kathy Powell and the hostess all of Sudan.

Also Mr. and Mrs. Alton Burton and Maxine Donaldson of Muleshoe. He received calls from his granddaughters, Brandi and Heather, who live in Georgia, and also from Mage Nelson of Littlefield wishing him a happy birthday.



MARCH DATE SET--Mr. and Mrs. Roy Sterling Donaldson of Farwell announce the engagement and approaching marriage of their daughter, Twila Ronayne Donaldson to Brad "Cheyenne" Bickel, son of Benny Bickel and Helen Bickel, both of Muleshoe. Vows will be exchanged at 7 p.m. Saturday, March 14 in the Farwell First Baptist Church. Miss Donaldson is a 1986, graduate of Farwell High School and attends Wayland Baptist University. Bickel is a 1984, graduate of Muleshoe High School and attends Texas Tech.



ENGAGEMENT ANNOUNCED--Mr. and Mrs. Raymond J. Gonzales of Muleshoe announces the engagement and approaching marriage of their daughter, Della to Balty Orozco, son of Mr. and Mrs. Dolores Orozco, also of Muleshoe. A Feb. 14 wedding is being planned at 2 p.m. in the Immaculate Conception Catholic Church in Muleshoe.

A wicked man's gift hath a touch of his master.—George Herbert

There's small revenge in words, but words may be greatly revenged.—Benjamin Franklin

WMU Weekly Meeting

WMU of the Trinity Baptist Church met at 2 p.m. Tuesday, Jan. 13 at the church for Bible study. Wenona Spears led the opening prayer and Pearl Dunlap dismissed the group.

Those present included: Clara Coffman, Eva Ashford, Rosie Martin, Pearl Dunlap, Dora Barber and Wenona Spears.

Muleshoe Squares News By Elizabeth Ann Tabor

Muleshoe Squares met Thursday night, January 8th, for regular club dancing. The attendance was down because of family illness, members out of the area, and the dense fog. We did miss you and we do hope to see you very soon.

With the new set of square dance lessons which began January 15th, we extend this invitation to you to attend. Possibly you are new to our area, come and let us make your acquaintance. Need a bit of relaxation to ease the tension, or maybe a bit of exercise?—Well, come spend the evening with us and learn how to square dance. Perhaps you have square danced a few years back and need a brush-up course, or you began lessons and didn't get to finish--this is your opportunity to visit our club. Bring your partner and to the American Legion Hall, Thursday night at 8:00 P.M. The welcome mat is always out. With the square dance instruction of James Pettus and our club angels, you and your determination you will be surprised how easy it is to learn to square dance. Also, you will have an enjoyable evening. For more information call our Club President James and Shelly Turnbow at 272-5719 after 5:00 P.M. We will be hoping to see you there.

Jan. 17 X L Y & M's Anniversary Dance Civic Center--Amarillo, TX Cuer Leonard & Arlene Marchbanks, Callers Freddie McKee & Lem Gravelle Rounds 7:30 P.M. Grand March 8:00 P.M.

Jan. 22 Square Dance Lessons American Legion Hall, Muleshoe, Tx 8:00 P.M.

Jan. 29 Square Dance

Lessons at 7:00 P.M. Club Dancing 8:00 P.M. American Legion Hall, Muleshoe

Jan. 31 Hub City Wheelers Anniversary Dance 2305-120th Street Lubbock, Caller Paul Infanti, Albuquerque, N.M., Cuer Don Dillard

Feb. 3 Starlight Swingers Special Memorial Building, Portales, N.M. Caller Tom Roper, Omaha, Illinois, Cuer Jack and Dale Orio, Rounds 7:00 P.M. MST Squares 7:30 P.M. MST

Feb. 13 Y-Squares Valentine & Anniversary Dance YMCA--Clovis, N.M. 7:30 PM MST Caller Bobby Graham

Feb. 14 MULESHOE SQUARES Anniversary Dance Bailey County Civic Center, Muleshoe, TX Sid Perkins, Plainview and Ellen Spoon, Lubbock Callers Don Dillard, Cuer, Salad Supper--6:30 Rounds--7:30 P.M. Squares--8:00 P.M.

BIBLE VERSE



"We are troubled on every side, yet not distressed."

1. Who wrote the above statement?
2. To whom was he writing?
3. Where was he at the time of this writing?
4. Where may this statement be found?

Answers To Bible Verse

1. The Apostle Paul
2. The Christians located at Corinth, Greece.
3. In Macedonia.
4. 2 Corinthians 4:8

Congratulations



GRAND CHAMPION LAMB--Jodie Wheeler is shown here with her Medium Wool Lamb which was the Grand Champion Lamb at the Bailey County Junior Livestock Show Friday evening. The lamb was also the Breed Champion of his division.

Muleshoe Livestock Auction Inc.

New Classes In Beginner's Tole Or Decorative Painting

Tues. 9 a.m.-12 Jan 27-Feb. 24

or

Thurs. 9 a.m.-12 Jan. 29-Feb. 26

Afternoon or Night Classes

Can Be Arranged

To Enroll Call

Syble Hewitt

247-3632

Friona

LAND PRODUCTIVITY VALUATION



MAY LOWER THE PROPERTY TAXES ON YOUR FARM OR RANCH

Texas law provides farmers and ranchers with a way to lower their property taxes, known as productivity valuation.

If you qualify, your agricultural land will be taxed on its capacity to produce crops or livestock, instead of its value on the real estate market. Productivity valuation can lower the taxable value of your land, and lower your property taxes as a result.

If your land has never received productivity valuation, you must apply to the appraisal district by April 30 to get tax benefits for 1987. You can choose from two types of productivity valuation.


If your land already receives open-space (1-d-1) valuation, you don't need to reapply unless the chief appraiser requires you to reapply.

For more information and application forms, contact the appraisal district office at the address shown below:

Bailey County Appraisal District

104 E. Ave. C.

272-5501



Happy 37th Anniversary
Andres & Palestina Perez
Love,
Your Family

Ben Franklin

2104 W. Amer. Blvd. 272-3855
Mon. - Sat. 8-8 Sun. 12-5

Girls, With Pom Pom	
Sport Socks 3 Pair	\$288
Boys Over Calf Tube Socks Reg. 4.97 6 Pair Asst. Colors	\$399
Boys Black Dress Socks Reg. 2.25	\$129 Pair
Misses White Sport Sock 3 Pair	\$297
Misses Anklets Pair	\$100
Misses Hide A Sock Sport Sock Size 9-11 Terry Cushioned 3 Pair	\$300
Mens 9-14 Tube Socks Reg. 5.27	\$499
Boys Flannel Shirts Reg. 5.97	\$299
Flame Safe Toddle Care By Regal S-M-L-XL Blanket Sleepers	\$499
 <h3 style="text-align: center;">Joggers</h3>	
Converse Children	Reg. 18.88 \$888
Track King	Reg. 14.97 \$799
Men & Womens Converse	Reg. 19.99 \$999
Velco Closare Converse	Reg. 18.88 \$888
Ladies Puma Cyclones	Reg. 14.97 \$799

Creative Living

by Sheryl Borden

A discussion of a new book on the market that deals with some usual "recipes" and a demonstration on making pants adaptations for persons confined to a wheelchair will be presented on "Creative Living" this week. Due to the governor's State of the State address, "Creative Living" will not be seen at its regular time on Tuesday, January 20 at 12 noon, but this show will be seen on Saturday, January 24 at 2:00 p.m. (All times are Mountain).

Catherine Kanner, Santa Monica, California, is an author and an illustrator and serves as a spokesperson for Zest. Her latest book is called "The Book of the Bath", and it features unusual "recipes" for over 100 different baths. According to this gourmet of baths and showers, everyone can turn bathing into a simple luxury. Ms. Kanner will discuss some of these interesting and relaxing baths and share some colorful history about bathing in this country.

Special needs individuals are actively participating in today's society. Unfortunately, comfortable, functional clothing which is fashionable remains a problem. Dr. Betty Campbell, Chairman of the Home Economics Department of Eastern New Mexico University in Portales, N.M. will show how to make adaptations on pants -- either ready-made or home-made--so they're more comfortable for persons who require a wheelchair.

On Tuesday, January 20 at 9:30 p.m. Della Pottberg-Steineckert, a clothing instructor at Brigham Young University in Provo, UT will demonstrate a new approach to pattern alteration. This new technique is called the repositioned seam allowance method. Dr. Pottberg-Steineckert has devised this method, which has now been published in a textbook and is being used in clothing construction classes throughout the country.

Want a centerpiece that tastes as good as it looks? The vegetable bouquets Carol Koenig makes are edible and attractive at the same time. Carol is a food stylist for her company, Celebrations, and lives in Mesilla Park, New Mexico. She will demonstrate making several different vegetable bouquets.

On Thursday, January 22, Christy Waters, Marketing Home Economist with Southwestern Public Service Co. in Lubbock, TX., will tell about the interesting history of creole or cajun cooking and will prepare some delicious and very typical canun recipes.

At least 45 percent of all Americans haven't been to the dentist in the last year. Why? The main reason is fear of pain. But now, a study indicates that there is a new treatment which can cut down on pain. The show will begin with a report on this new treatment.

"Creative Living" is produced and hosted by Sheryl Borden. The show airs on more than 95 PBS stations in the United States, Canada, Guam and Puerto Rico and is distributed by Pacific Mountain Network, Denver, CO. Viewers can request copies of printed materials offered on the show by calling on KENW-TV's toll-free telephone lines. In New

Mexico, the number is 1-800-432-2361, out-of-state: 1-800-545-2359 and Portales and Roosevelt County: 562-2112.

CREOLE COOKING

Creole cooking has evolved from a mixture of French and Spanish with a touch of African and American Indian. This is a special brand of cooking not found anywhere else in the world.

The Choctaw Indians' word for "sassafras" is "kombo", from which we get "gumbo." Sassafras leaves were dried and powdered to make file. File is never added during cooking; instead it is sprinkled on just before serving.

COOKING TERMS

1. Roux: A richly flavored sauce base essential to Cajun cooking. Roux is made by combining equal parts of oil and flour. Cook slowly over medium-low heat, stirring frequently until mixture turns a caramel color. Do not burn.

2. Jambalaya: Derived from

the French word for ham, but also contains vegetables, seafood, and other leftover meat. Jambalaya is generally a thick tomato base.

3. Seafood Boil: When a recipe calls for cooked seafood, it should be dropped into a large pot of boiling water and cooked only until seafood turns pink. As the water is heating, add a tablespoon of salt, some celery leaves, black peppercorns, and a bay leaf.

4. Etouffee: Means "smothered." This dish uses a cooked roux and spicy sauce with various types of seafood.

CREOLE SEASONING

1 box (26 oz.) free flowing salt, 1 box (1 1/2 oz.) ground black pepper, 1 bottle (2 oz.) ground red pepper, 1 bottle (1 oz.) chili powder, 1 carton (1 oz.) monosodium glutamate (Accent), 1 bottle (1 oz.) pure garlic powder

Mix well and use like salt. When it is salty enough, it's seasoned to perfection. If too peppery for children, add more salt to mixture; then season to taste.

BLACKENED FILLETS

2 lbs. fish fillets, 1/2-3/4 inches thick, 1 cup butter, melted, 1 tablespoon paprika, 1 tsp. salt, 1 tsp. onion powder, 3/4 tsp.,

black pepper, 3/4 tsp. white pepper, 1/2 tsp. cayenne pepper, 1/2 tsp. dried thyme leaves, 1/2 tsp. dried oregano, 1 tsp. garlic powder

Mix all dry ingredients in a flat pan. Heat a large cast-iron skillet over high heat. Turn on hood vent. Do not use light-weight or nonstick skillet. Melt about 3 tablespoons butter in skillet. Dip each fish portion in remaining butter, then in the dry ingredients, patting them in by hand. Cook fish on each side for 2 to 3 minutes, being careful when turning. The fish will look charred. There will be some smoke, but not excessive. This recipe may be cooked outdoors if preferred. Makes 5 to 6 servings.

RECIPE

Legend has it that hush puppies originated around the campfire when they were tossed to the hounds to keep them quiet. They are a must to compliment fried seafood dishes.

Hush Puppies

2 c. corn meal
1 t. soda
1 t. salt
6 T. chopped onion
2 T. flour
1 T. baking powder
1 egg
2 c. buttermilk
Red pepper, to taste

Mix all dry ingredients, add chopped onion; then milk and egg. beaten together. Drop by small teaspoonfuls into very hot, deep fat. They will float when done. Drain on brown paper. Recipe will make 8 generous servings.



GOLDEN ANNIVERSARY CELEBRATION--Mr. and Mrs. Elwood Autry will be honored with a 50th wedding anniversary reception Saturday, Jan. 24 from 2 to 5 p.m. in the Morton Branch of Andrews Savings and Loan on Morton. Hosting the event will be their children, Jo Ann Autry of Morton, Mr. and Mrs. Mike Ramans of Houston, Mr. and Mrs. Mitch Autry of Lazbuddie, and Mr. and Mrs. Ray Butler of Bruceton, Tennessee. Autry and the former Mattie "Mutt" Robertson were married Jan. 23, 1937.

Three-Way News by Mrs. H. W. Garvin

The Three Way High School basketball teams played Sunday on the home court Tuesday night with Three Way losing both games. Friday Three Way High School played Smyer at Smyer with Three Way girls losing and boys winning.

school held their fat stock show and arts and craft show with a very good show. It was well attended.

Mr. and Mrs. George Tyson were in Lubbock Thursday on business.

Mrs. J.T. Lemons from Roswell, N.M. spent the weekend with her daughter, the Bobby Kindle family.

Mr. and Mrs. Jack Lane were in Lubbock Thursday on business and shopping.

Congratulations



RESERVE CHAMPION STEER--Jodie Wheeler is shown here with her Medium Cross Breed Steer which was the Reserve Champion at the Bailey County Junior Livestock Show Friday evening. The steer was also the Reserve Breed Champion of the show.

Farmer's Co-Op Elevators

FILM RENT A VCR **PERRY'S HOME VIDEO CENTER** **VIDEO ACCESSORIES MOVIE RENTALS**

GET A FREE LIFETIME MEMBERSHIP AT PERRY'S VIDEO And Get Your First Movie RENT FREE!

KODAK VHS BLANK VIDEO TAPES 4.97	VIDEO BANK STORAGE CASE 99¢
---	--

1/2

Off

Levi 501 Jeans15⁹⁹
Men's Wrangler Jeans13⁹⁹

Mens & Ladies Boots\$40 To \$80

LEE & ELLA DUNBAR

ee's WESTERN WEAR, INC.

1910 W. American Blvd. Phone 806/272-4663
MULESHOE, TEXAS 79347

Anthony's Mid-Winter Sale

Ladies Soft Sole	
Hush Puppies	Reg. \$39.99 25% Off Reg. Price
Mens Red Wing Boots	Ladies Fall Purses
20% Off Reg. Price	\$2⁹⁷ To \$7⁹⁷
Insulated Coveralls	Mens Acme Western Boots
Reg. \$44.99 \$34⁹⁷	\$39⁹⁷ To \$71⁹⁷ 20% Off Reg. Price
Leather Work Gloves	Mens Wrangler Western Denim Shirts
Reg. \$8.99 \$4⁹⁷	Reg. \$19.99 \$15⁹⁷
Jr. & Women's Fall Dresses	Mens Basic & Fashion Color Sweatshirt & Pants
30-50% Off	Just Arrived \$7⁹⁹ Each
Assorted Junior Tops	Mens Tri-Blend Dress Slacks
Savings Up To 50% \$6⁹⁷ New Styles Have Been Added	Reg. \$28.99 \$14⁹⁷ Sizes 28-42
Ladies, Pams Closet Denim Skirts	Junior Wrangler or Chic Jeans
Values To \$24.99 \$16⁹⁷	Reg. \$28.99 \$16⁹⁷
Entire Stock Maternity Sportswear	Ladies Applique Jog Suits
50% Off Reg. Price	Reg. \$24.99 \$19⁹⁷
ANTHONY'S	
Mon.-Sat. 8 a.m.-6 p.m. Sun 1 p.m.-5 p.m. 321 Main 272-3478	

Stock Show

Cont. from Page 1

CLASS II
Lori Hodges, first; Jamie Wheeler, second; Darrell McCamish, third; Monty Black, fourth; Jesus Agundis, fifth; Kasey Whatley, sixth; Jodie Wheeler, seventh; Cynthia Bennett, eighth; and Cynthia Bennett, ninth.

CLASS III
Shawn Hodges, first; Suzy Hodges, second; Mike Dunham, third; Jason Harmon, fourth; Shawn Branscum, fifth; Steven Wayne Wauson, sixth; Ron Foley, seventh and Melissa Bennett, eighth.

CLASS IV
Dusty Rhodes, first; Jamie Wheeler, second; Brent Black, third; Kasey Whatley, fourth; Mike Williams, fifth; Cynthia Bennett, sixth; Jesus Agundis, seventh; Steven Wayne Wauson, eighth; Coleen Dodd, ninth and Jimmy Mardis, tenth.

CLASS V
Jodie Wheeler, first, breed champion and grand champion; Holly Huckaby, second; Brent Black, third; Monty Black, fourth; Chad Cockrell, fifth; Monica Locke, sixth; Cory Dodd, seventh; Melissa Bennett, eighth; Paul Williams, ninth and Lisa Lowe, tenth.

CLASS VI
Jodie Wheeler, first; Stacey Kindle, second; Lori Hodges, third; Jamie Wheeler, fourth;

Kourtnee Magby, fifth; Carrie Kindle, sixth; and Lisa Black, seventh.

CLASS VII
Holly Huckaby, first, Stacey Kindle, second; Mike Dunham, third; Dusty Rhodes, fourth; Mike Dunham, fifth and Chad Cockrell, sixth.

At 7:30 p.m. Thursday, the cattle judging got underway, with the following results:

HEIFERS
Amy Harrison, first and breed champion; Shawn Wheeler, second and reserve breed champion.

SHORT PURE BREEDS
CLASS II
Courtney Tanksley, first and reserve breed champion; Colin Tanksley, second; Wade Wheeler, third; Courtney Tanksley, fourth; Brittany Kirby, fifth; Scott Bickel, sixth; Troy Watson, seventh and Shawn Rejino, eighth.

CLASS III
Greg Young, first and breed champion; Courtney Tanksley, second; Lisa Black, third; Russell Brown, fourth; Monty Black, fifth; Kourtnee Magby, sixth and Troy Watson, seventh.

CLASS IV
Shawn Wheeler, first; Todd Bessire, second; Brittany Kirby, third; Chris Young, fourth; Mike Dunham, fifth; Chris Young, sixth; Jamie Wheeler, seventh.

AMERICAN CROSS
Kourtnee Magby, first and breed champion; Colin Tanksley, second and reserve breed champion; and Greg Young, third.

CLASS VI
Todd Bessire, first; Jamie Wheeler, second; Scott Bickel, third and Brenna Roberson, fourth.

CLASS VII
Jodie Wheeler, first and breed champion and reserve grand champion; Colin Tanksley, second; Jamie Wheeler, third; Chris Young, fourth; Amy Harrison, fifth and Russell Brown, sixth.

CLASS VIII
Greg Young, first, breed champion and grand champion steer; Jodie Wheeler, second; Todd Bessire, third; Wade Wheeler, fourth; Jodie Wheeler, fifth and Amy Harrison, sixth.

Judge for both the lamb show and the cattle show was Ed Puckett, vo-ag instructor from Sweetwater.

The swine show was getting underway Saturday morning as The Journal went to press. Swine results will be in the Thursday Muleshoe Journal.

Underground Water Depth Testing Underway

On January 5, personnel at the High Plains Underground Water Conservation District No. 1 began measuring the depth to water in more than 950 water-level observation wells scattered throughout the Water District's service area. The measurements will record what effect 1986, pumpage had on the water level of the Ogallala aquifer within the Water District's 15-county service area. In Bailey County, Dan Seale will be measuring observation wells for the Water District. District employees hope to complete the water level measurements by the middle of February.

Data gathered from the water-level measurements will be compared to water-level data from previous years to ascertain

changes in the Ogallala's water level within the District's service area. Hydrologic maps showing the saturated thickness of the Ogallala Formation, the elevation of the water table and both annual and long term changes in water levels are compiled using this information. Annual water-level measurements are also used to calculate the amount of water depletion for landowners who wish to claim a cost-in-water income tax depletion deduction on their federal income tax.

Geohydrologic Division Director Don McReynolds expects that last year's trend, in which water-level changes averaged a zero net change throughout the District's service area, will continue because of the wet growing season in 1986, and other factors.

The water-level measurements determine the distance from the land surface to the water table in each well measured. A blue and white tag containing the state-assigned well number and the measured depth to water in feet will be attached to some conspicuous part of the well-head equipment after the measurement is taken.

The tag informs the landowner or well operator of the depth of water in the well and the date that a Water District employee visited the well.

Publication of the 1987, water-level measurements and the changes in water levels as compared to measurements in previous years is scheduled during the first quarter of 1987.

Tax Check...

Cont. from Page 1

1986. Fort Worth's first payment in 1987 was \$2.1 million, a 10 percent decrease from \$2.3 million in 1986. El Paso's check for \$1.4 million was up eight percent from January of 1986.

Bullock also sent checks totaling \$23.2 million to the state's six Metropolitan Transit Authorities.

Houston's MTA received \$9.2 million, compared to last January's payment of \$9.6 million. Austin's Capital Metro received \$2.5 million down from \$2.6 million in January of 1986. VIA in San Antonio received a check for \$1.6 million, down from last January's payment of \$1.7 million. Fort Worth's MTA received \$482,964, compared to a \$570,344 payment in 1986. Corpus Christi's MTA check was for \$412,673.

January checks represent checks collected on sales made in November and reported to the Comptroller by December 20.

Soil Study...

Cont. from Page 1

service area that they should not assume that their soils contain adequate plant nutrients to support minimum acceptable crop yields. It is recommended that the farmer collect soil samples from each field on each of his farms, have the soil samples analyzed and obtain a recommendation from a competent source as to the kind and amount of fertilizer, if any, he should apply to provide adequate nutrients for the type of crop he wishes to grow to support the level of yield he desires to produce.

Muleshoe...

Cont. from Page 1

Rick Copp, vo-ag instructor at Lazbuddie High School, said the Lazbuddie Junior Livestock is scheduled for Saturday, January 24, beginning at 1 p.m. in the ag barn at the school.

No limit is set on entries, and each is \$5, he said. Trophies, buckles and ribbons will be presented. The senior class will have a concession stand.

Judge for the show will be Brian Smith, judging team coach at West Texas State University, Canyon.

Eight students from Muleshoe have been named to the President's and Dean's Honor lists for the fall 1986 semester at South Plains College.

Melissa Sanchez has been named to the President's Honor List.

Persons' from Muleshoe named to the Dean's Honor List are Andy Copley, Yolanda Garcia, Caice Hendrix, Vana Pruitt, Charyl Shairrick and Martina Valdez.

Army Private James E. Sides, son of Mack Sides of Shamrock and Laneida J. Mills of Maple, has completed one station unit training (OSUT) at the U.S. Army Infantry School, Fort Benning, Ga.

OSUT is a 12-week period which combines basic combat training and advanced individual training.

Students were taught to perform many duties in a rifle or mortar squad.

His wife, Shannon, is the daughter of H.E. and Barbara Reeder of Muleshoe. The private is a 1986 graduate of Muleshoe High School.

A reminder has been issued by the Bailey County Appraisal District as follows: "As of February 1, 1987, all 1986 taxes will become delinquent, and a seven percent penalty will be added."

Enochs News

by

Mrs. J.D. Bayless

Brian Roberts of Calif. visited his grandmother, Mr. and Mrs. Billy McDaniel in Lubbock also his parents, Mr. and Mrs. Burley Roberts the past week and went to Three Way to the fat stock show Saturday and visited friends who he went to school with.

Budget...

Cont. from Page 1

laws, gift tax legislation, how to separate farm "land" from the operating business and other farm assets, added Tanksley.

"Now that profits from farming and ranching are slimmer," said the county agent, "estate tax planning becomes more necessary because the profits are just not there in many operations to afford estate tax payments."

"Dr. Hayenga is an expert in the field of estate planning and this is a golden opportunity for you to receive first-hand information here in Muleshoe. This type of program will only come our way every five to 10 years."

For additional information on any of the programs call the Bailey County Extension Office.

Mrs. Ruby Nichols of Lubbock came Friday for a visit with her sister, Mrs. Winnie Byars. They also visited Mrs. Inez Sanders and Mrs. Ellen Bayless.

Mr. and Mrs. Dale Nichols and Mr. and Mrs. Quinton Nichols are at home after a weeks trip to visit their brother and family, Mr. and Mrs. Sammie Nichols, at Clearmore, Okla. Mr. and Mrs. Dale Nichols also visited with Enoch's friends who live at Bellavista, Ark.

Claud Ball of Abilene, spent Monday night with Mr. and Mrs. Goldman Stroud.

Mr. and Mrs. E.N. McCall visited her 95 year old aunt at the Retirement Ranch Home in Clovis, N.M. Saturday.

Mr. and Mrs. Bennie Goss of Littlefield visited Mrs. Inez Sanders. They are relatives of Mrs. Sanders.

Louie Key and his girl friend from North Pole, Alaska have visited here with his grandparents, Mr. and Mrs. Bill Key and his dad, Sid Key. While here they celebrated Louie's 24th birthday, guests were Mr. and Mrs. Bud Huff, Mrs. Bonnie Long, Marcus Huff and Mr. and Mrs. Bobbie Adams. Sunday Louie and Mary left the airport and flew to Old Mexico.

Lutheran Church Dinner-Open

House Date Set

St. John Lutheran Church, Lariat will feature Evangelist Rev. Robert Hill, as guest speaker, during their 10:30 a.m. worship service on Sunday, January 25.

The Rev. Hill is pastor of Faith Lutheran Church, Plano. According to the Rev. Mac Bessars, pastor of St. John Lutheran Church, the Rev. Hill is well known in the Dallas area for his love and sharing of Christ with the public through the "On Going Embassadors For Christ", a group of young people who witness for Christ, of which Rev. Hill is director.

"His message will be on how 'We are to be Fishers of Men'. After the service, a dinner-open house will be held."

Following dinner, Pastor Hill will organize and make neighborhood evangelism calls.

"St. John's congregation wishes to invite the community to attend this special service and open house" he continued. If you have any questions you are asked to please contact the Rev. Bessars at 825-2409.

HOMESTEAD EXEMPTIONS



CAN LOWER THE PROPERTY TAXES ON YOUR HOME

A homestead exemption lowers the property taxes on your home by lowering its taxable value. For example, if your home is valued at \$50,000 and you receive a \$5,000 homestead exemption, your home will be taxed as if it were worth only \$45,000.

You qualify for a homestead exemption if you owned your home on January 1 and used it as your primary residence on January 1. It doesn't matter whether your home is a house, a condominium or a mobile home.

Exemptions are available to all homeowners on their school taxes. Additional exemptions are available to homeowners who are disabled or age 65 and over. Other exemptions may be offered to homeowners by school districts, counties, cities, and special districts. All taxing units offer exemptions to disabled veterans.

Apply to your local appraisal district office at the address shown below for all exemptions you may qualify for. Application forms are available at this office.

If you received a homestead exemption on your present home in 1986, you won't need to apply again for 1987 unless the chief appraiser requires you to reapply.

However, if you passed your 65th birthday or became disabled before January 1, file a new application to receive the additional exemptions.

If you haven't received an exemption on your present home, or if you've moved to a new home, make a new application for 1987.

The deadline for applications is April 30, 1987. Contact your appraisal district before then if you need more time.

For more information, get a free copy of the pamphlet, *Taxpayers' Rights, Remedies, Responsibilities*, at your appraisal district office or from the State Property Tax Board in Austin.

Bailey County Appraisal District

104 E. Ave. C.

272-5501

The Chamber Is Working For A Better Tomorrow For Muleshoe!

Jessie & Erma Leal

Leal's El Nuevo Restaurant



Snow...

Cont. from Page 1

ulations of up to a foot of snow, as slow moving arctic cold fronts make their way through this area.

Motorist who do not absolutely have to be on the highways were discouraged from travel due to icy, dangerous conditions, hampered by temperatures staying below the 20 degree mark, not giving the snow and ice a chance to melt.

Better Business

Bureau Issues

New Dual Warning

South Plains consumers are presently receiving a rather attractive offer from a company called CONTINENTAL MARKETING of Marina del Rey, California. The company offers consumers a "free" Kamasura 250 VRX motor cycle. The letter includes the consumer's "title". The BBB of Los Angeles has found out that although the name of the motorcycle would infer that it has a 250 cc size engine; in fact, the motorcycle is a motor bike that legally can only be used off the road. The big "catch" is that when consumers call to claim their motorcycle, they find that they must pay \$334 for transportation and insurance. Consumers are urged to be cautious about accepting this offer.

BOGUS INVOICE

South Plains businesses are presently receiving phoney invoices from a company called AMERICAN BETTER BUSINESS PUBLICATIONS of Alameda, California. The fake invoice is for a manual entitled, "Entrepreneurialship Within The Corporate Structure". The invoice is for \$197.50. Business managers are encouraged to inform their bookkeepers in order to avoid mistakenly paying the bogus invoice.

I belong to, and support the Chamber. By its continuous promotions my business is helped tremendously. Through the Chamber, we try to maintain a healthy and competitive business climate in the community and surrounding trade area. Its benefits all businesses and residents.

The Chamber is in charge of the 4th of July celebration and the annual Christmas parade and many other activities. All of these events bring in visitors to Muleshoe and helps the town people enjoy the holiday more.

The Chamber assists with other festivals and happenings, such as the Bailey County Fair, the Christmas Bazaar and the Mule Days celebration. These events bring hundreds of people to Muleshoe and more dollars to our economy.

I commend and congratulate the President, directors, management, the committees and all involved past, and present, in making our Chamber a success. Thank you all for your time and efforts. I'm proud of our Chamber of Commerce.

Time and money spent with the Chamber is an investment with guaranteed returns.

We ask that if you are not already involved, to get involved and help us. Your ideas and suggestions are welcomed and appreciated.

SUPPORT YOUR CHAMBER!!!

The Chamber Needs You, To Help Muleshoe Grow

Muleshoe Chamber Of Commerce & Agriculture

215 S. 1st Box. 356 272-4248

KEEP THAT GREAT GM RIDE

AND SAVE!
Offer Good Thru January

Now's a great time to replace those worn shock absorbers. With genuine GM shock absorbers. Save on our winter service special... available for a limited time only.

Four GM Shock Absorbers Installed \$69⁹⁵ Tax Included

Struts Not Included

And they come with a Lifetime Limited Warranty, so you know they're going to work right. See us for details.

Robert D. Green

272-4588 2400 W. Amer. Blvd.

Mr. Goodwrench
No One Knows your GM Vehicle Better... No One!



GENERAL MOTORS CORPORATION



MULES TALE



Mules Tale Editor: Melissa Martel

Sunday, January 18, 1987

Official Publication of Muleshoe High School Written and Edited by Students of the Muleshoe Schools

Band Has A Good Year!



Band Members: Glenda Willoughby, Carmen Espinoza, Greg Garcia, Richard Muyschondt, Brandon Carpenter & Brenna Matthews

Mules' Tale Spotlights Math Department

Britt Gregory, head of the math and computer departments and assistant principal, was recently interviewed concerning the math and computer programs at MHS. He is very optimistic about the programs in the math department.

The three new classes that are offered this year are computer math, informal geometry, and Honors Algebra I. Computer math can be counted as either a computer credit or a math credit. The honors courses being offered this year are Honors Algebra I and trigonometry. The college-bound courses are Algebra I, II and geometry or preferably trig. For an advanced student diploma, three math credits are required and for the regular student diploma, two credits are necessary.

A new IBM compatible lab, with twenty new computers, has just been installed. The students will be switching from Apple to IBM computers. Computer courses have been well received by students and approximately ninety students are enrolled in these classes.

Not only are classes offered to challenge the advanced or college-bound students, but those students who need remedial work are helped through tutorial sessions. These are offered each day, both in the

morning at 7:45 and at 3:45 in the afternoon. An average of ten students per day are assisted by three teachers. Future remediation work include the use of Apple computers in the F.O.M. (fundamentals of math) class.

When asked about the statewide TEAMS test, which is required for every student who graduates from a Texas high school, Gregory stated that of the 90 juniors who took the test, 90% passed in October. The remaining nine will take another test in the spring; these students will be tutored in necessary skills areas before the test.

Algebra I and Algebra II students are currently piloting new books by John Saxon. According to Gregory, "We are hoping to provide long-term retention of the math concepts taught." With the addition of new books and new teaching ideas, this is a feasible goal for students of MHS. Another positive comment about the math department at MHS reveals that on the 9th grade math TEAMS test, 93% of Muleshoe students showed mastery of skills; this compares with 81% statewide.

In addition to Gregory, other teachers in the math department include Stephanie Barrett, Gaylord Latham, Jim Stewart, Colleen Tollett.

Play Cast Chosen For District Competition

MHS speech/theatre department has begun work on the one-act play for district competition. Kerry Moore and his students will be producing Shakespeare's *MACBETH*, and those chosen to portray the various characters include:

Macbeth...Brent Black; Lady Macbeth...Jodie Wheeler; Macduff...Jeff Hicks; Banquo...Dennis Hayes; 1st Witch...Susan McCarty; 2nd Witch...Melissa Martel; 3rd Witch...Jamie Wheeler; Malcolm ... Mark Underwood; Lennox ... John Chamberlin; Doctor / Porter...Lance King; Gentlewoman...Tracy Long; Ross/2nd Apparition...Kevin King; Angus/1st Murderer...Edward Olivar

ez; Seyton/3rd Apparition .. Andy Langfitt; Duncan/Messenger/1st Apparition/2nd Murderer...Rudy Gonzalez

ALTERNATES:
Stephanie Cox, Casey Williams, Jerry Mendoza and Timmy Shipman.

STAGE CREW:
Michael Angeley, Paul Chamberlin, Roy Ramos, Shannan Berry and Beth Sanders.

ALTERNATES:
Greg Young, Russell Brown, Pat O'Grady.

Congratulations to these people. They have worked hard but they will have to work harder because the real test is in the future. TAKE STATE!

Who Knows?

1. What is the meaning of pacaan?
2. What was significant about the Apollo 8 crew?
3. When was the first national election held?
4. What is an erg?
5. Name the capital of Kentucky.

Answers to Who Knows?

1. A song of joyful praise or triumph.
2. The first humans to orbit the moon (Dec. 25, 1968).
3. January 7, 1789.
4. A unit of electrical energy.
5. Frankfort.

The Mighty "M" Band has started off this school year with a ton of energy and enthusiasm. The enthusiasm grew when they were graced with thirty excited fish!!!! These young 'uns were as anxious to learn that they made the year pleasant. The hard work at the first left the band with time to have fun instead of always being serious. These times of fun kept the students involved and interested!!!!

One fun time was when the band competed in the South Plains Fair Parade. The morning was the serious and hard part of the day, as the band was in competition. The fun, of course, followed shortly afterwards. The band went to the fair and later participated in the Tech Band Day. The students did set goals, however, and these goals were not close to being easy. After making a II at the Tech Marching Festival, the band pulled together to improve enough to make a I, thereby making them eligible once again for Sweepstakes. Needless to say, it worked!!!! This is the third year in a row that Muleshoe has done this, and it is a tradition everyone wants to keep up.

The band then started concert

Art Class Paints Backdrop

The Art III and IV class was invited to paint the backdrop for the 1987 Chamber of Commerce banquet. So what do you paint that will represent the Muleshoe Chamber of Commerce and fill a space of 10' x 18'? How about Muleshoe? Downtown Muleshoe, that is.

With the help of Mr. Lonnie Adrian, who did some Polaroid photographs for reference, the class went to work drawing the proportion, the scale, making adjustments, and adding detail. The work had to be done on the floor - that's the only space that is big enough - and instead of rulers, they used 1x2 lumber for straight edges.

After the design was drawn off, the backdrop was painted. The businesses were added in chalk, detail for detail as nearly as possible.

The clock ticked on - time was running out. Mrs. Adrian was panicking!! Friday afternoon saw Armando Del Toro and Jitendra Patel working "overtime". Then Saturday morning, the completed work was delivered to the Civic Center.

The mural was carefully unrolled to reveal the weeks' worth of work. While the adults present delivered the appropriate "ohs" and "ahs", little Mikala Eagle asked, "Where is our Surburban?"

Comments overheard at the banquet recorded the success of the artists, even to the extent that the scene will be saved and displayed for a time in the meeting room at the Civic Center.

Down The HALLS Of MHS

Hope everyone did well on their finals and enjoyed your long weekend; we deserved it!

All-Region Band Tryouts are on January 22. Good luck!

Bailey County Stock Show was held January 15, 16, and 17.

Fine Arts Boosters will hold the Sweetheart Festival in February. Date will be announced.

The English Department will be going to the Globe Theater in Odessa on February 20. The Shakespearean Company from New York City will perform *The Taming of the Shrew*.

On February 19-21, the TFTA State Convention will be held in Arlington. All district officers will attend.

When you flee temptation, don't leave a forwarding address.

season and Jazz band after the final football games. These games were wild, and totally just for fun. For example, on Halloween, they dressed in costume to march. This was quite a half-time, considering they had been on a bus for around two hours. Also, the annual band football game was held, although no one was quite sure who won. It was a great and unique game. But the fun and games could not last long because Christmas was just around the corner!!

The band started somewhat intense rehearsals so they could put on an awesome concert. Boy did they! It was held the night before they were out for the holidays, and almost everyone had the holiday spirit. The symphonic band played "Alleluia! Laudamus Te, "Hallelujah Chorus," "Christmas Festival," "Angus Dei," and "Dona Nobis Pacem." The Jazz Band also performed that night. "Gospel John" and "Big Niose From Winnetka" were two of their selections.

This concert still was not all they did! They marched in the Christmas parade, and they had a free day. This free day was

Friday after the concert. The music was passed in and there was still time left. As it has snowed earlier in the week, people were wanting to be out of doors. They got their wish. Someone driving by would have had to have laughed. Kids were everywhere! Snowmen were being made; of course, one could not forget the occasional snowball fights. With all this behind them, the Mighty "M" anxiously awaited the start of the second semester.

The new half of the year started off great! Matter of fact, several area band members played with the Texas Tech Court Jester, or basketball band. The college was still out for Christmas break, and many of their band was gone. Students from area bands were invited to participate in this group, and not only did they receive a Tech Band shirt and certificate, they also had a blast. Of course, they also had some "on hand" experience of "being" in a college band. The first game was Wednesday January 7. Glenda Willoughby, Carmen Espinoza, Greg Garcia, Richard Muyschondt, Brandon Carpenter, Brenna Matthews, and Lisa Triana went to represent Muleshoe that night. The next game was Saturday January 10, and it was also the last one high schoolers participated in. Those who went included: Glenda Willoughby, Greg Garcia, Lisa Hamilton, Carmen Espinoza, Ana Mendoza, Melissa and Susie Leal, Shawn Green, Brandon and Toby Carpenter, Richard Muyschondt, Michelle Finney, and Mr. Heidel. It was a BLAST!!

Coming up next is the all-District tryouts on January 22 in Littlefield. This year the band has been changed. Instead of Class A through Class 3-A bands trying out, it will be only the north zone 3-A bands competing with each other. Students are given the music during the first semester. They practice individually until after Christmas, then the whole band plays the songs in rehearsal. Students tryout on their instrument in a spot on the music designated by the judge. The best players are then picked to perform in a concert. The students compete to gain high chairs, or even to have the most students present in the band. The students go to Lubbock for a Friday night rehearsal, and fun and games. The next

morning is also scheduled for a rehearsal. The afternoon is a free time for bands to go and do whatever they choose to, and that night is the concert. This is a trip looked forward to by all as it is an overnigher. It is also a tremendous honor to be chosen as one of the best in the district.

The band will soon be having new Jazz Band tryouts for the second semester. They are planning to compete in the Tech Jazz Fest in April. Also coming up is the Big Brother-Big Sister party. The seniors and a few juniors are given a little sibling (fish) at the first of the year. They watch out for them, help them, and set examples for them to follow in future years. By the end of the year, these fish actually fit in as "one of the crowd"! They know all the tricks and all the dedication needed to have a fabulous year.

The band's final goal is to go to Six Flags for their spring trip. This concert contest is one of the toughest in the state. The band is working to raise the money needed to go to Dallas for a few days. The trip is fun and really great for the band because of the stiff competition. The Mighty "M" Band has a quality program and the determination to do well in Dallas and anywhere else they compete.

This year was a year of changes, but the band toughed it out, and they have made the year a good one! Hopes are high that this year will end as good or even better than it started out.

Student Council News

On Wednesday, January 7 the Student Council attended a District Convention in Leveland. From Muleshoe there were fifteen students from high school, thirteen students from junior high and three sponsors participating. The students were involved in a workshop on leadership and organized their plans and objectives for next year. District officers were also elected. The M.H.S. Student Council was elected Secretary of District 5. Although the bus did break down twice, the trip was an overall success. Congratulations to all who participated!

Rosemary Bell Citizen Of The Month

On December 19, 1986, the Student Community Action Club met in Greg Young's home for the annual Christmas party.

The meeting was opened by Debbie Isaac at 8:00 p.m. Debbie Lackey gave the prayer, Casey King read the minutes and Mrs. Allison gave the treasurer's report. She reported that \$400.00 had been taken in at the concession stand and that S.C.A.C. would receive 50% of that profit at the close of basketball season. At this time, donations were taken up for the light fund, which was used to purchase decorative Christmas lights for the Muleshoe Depot. (These lights twinkled brightly

all through the holiday season giving the depot a "Christmasy look." Armando Del Toro was elected as the new treasurer at the meeting, also.

Debbie then introduced the guest speaker, Mrs. Rosemary Bell. Mrs. Bell complimented the club and spoke about the things that make a good community. She was then presented with a corsage and honored as Citizen-of-the-Month.

Finally, members of the club exchanged inexpensive gag gifts to celebrate the season. A merry time was had by all and the meeting was adjourned.

MHS Basketball News

Congratulations to the Mulettes as they started off the New Year by capturing a victory over the Denver City Fillies. The Denver City Fillies came to Muleshoe to meet their doom. The Mulettes then, travelled to Spring-Lake Earth to take on the Wolverines. The dominant Mulettes came out on top of the pack with a victory. The 3 1/2 hour wait at Olton proved to be a detriment to the mental playing of the Mulettes as they were defeated by the Fillies. The long bus ride to Floydada carried the Mulettes to their first district game. The Mulettes were enthusiastic but the Whirlwinds whirled the Mulettes to their first district defeat with the score 61 to 44. Although defeated in the first district game, the Mulettes are sure to not let the team spirit die.

Muleshoe School Menu

- JANUARY 19-23
BREAKFAST
MONDAY
Milk, Toast, Cereal, Fruit
TUESDAY
Milk, Honey Buns, Juice
WEDNESDAY
Milk, Cheese Toast, Fruit
THURSDAY
Milk, Toast, Jelly, Fruit
FRIDAY
Milk, Breakfast Burritos, Fruit
LUNCH
MONDAY
Milk, Pizza, Mixed Vegetables, Pickles, Fruit
TUESDAY
Milk, Juicy Burgers, Lettuce & Tomato, Pickles & Onions, Tater Tots, Cookies
WEDNESDAY
Milk, Beef & Gravy, Creamed Potatoes, Eng. Peas, Hot Rolls, Fruit
THURSDAY
Milk, Burritos, Cheese Stick, Tater Tots, Fruit, Cake
FRIDAY
Milk, Taco's, Lettuce & Tomato, Cheese, Beans, Crackers, Fruit
COMBO LINE
MONDAY
Milk or Tea, Steak & Gravy, Creamed Potatoes, Green Beans, Hot Rolls, Fruit
TUESDAY
Milk or Tea, Hamburgers, Lettuce & Tomato, Pickles & Onions, Tater Tots, Cookies
WEDNESDAY
Milk or Tea, Spaghetti with Meat Sauce, Cole Slaw, Corn Bread, Corn, Fruit
THURSDAY
Milk or Tea, Hot Dogs, Pork & Beans, Tater Tots, Cake
FRIDAY
Milk or Tea, Chalupas, Lettuce & Tomato, Cheese, Crackers, Fruit



Rosemary Bell, Citizen Of The Month

In Fashion

Ponchos are on the fashion scene this winter. They are especially attractive and comfortable worn over the new broad-shoulder dresses and suits.

A poncho in winter white wool with self scarf is quite elegant.

The soft leather jacket, worn with pants, is still on the fashion scene. The newer one-button jacket features broad shoulders and push-up sleeves.

If the average person thought less about getting and more about giving, this might be a better world for everyone.

Bailey County Journal

Classified

Call 272-4536

CLASSIFIED RATES
 First Insertion Per Word.....\$15
 Minimum Charge \$2.30

Consecutive Insertions Per Word.....\$13
 Minimum Charge \$2.00

CLASSIFIED DISPLAY RATES
 \$1.75 Per Column Inch

Blind Ad Rates 50% More

DEADLINES
 12 Noon Tues. For Thursday Paper
 12 noon Friday For Sunday Paper
 We reserve the right to classify, revise, or reject any ad. Not responsible for any error after ad has run once.*

1. Personals

Kenneth Evins' Handyman & Sharpening Serv.

Knives 1.00
 Circular Saws 2.00-3.00
 Chain saw 3.00-5.00
 Scissors 1.50
 Call 965-2759
 Muleshoe, Tx 79347

STORAGE
 Rooms Available For Storage
 \$25.00 - \$30.00 per month
 Ted Barnhill 272-4903
 b1-42s-tfc

3. Help Wanted

PLAINS MEMORIAL HOSPITAL RN positions available, full & part time, shift preference, excellent salary 10.50 to 12.50 per hour, plus shift differential, D.O.E. New progressive management, increased utilization, excellent staff & working conditions. Contact Vicki Buckley RN, BSN, DON, at 1-806-647-2191 or send resume to P.O. Box 278, Dimmitt, Texas 79027. p3-2s-4tc

LVN OR RN needed for private duty nursing case in Muleshoe. Excellent pay call collect 795-3166. Alpha Good Samaritan Health Care Services in Lubbock. a3-2s-3tc

LICENSED NURSES Roosevelt General Hospital has openings on all shifts for RN's, LPN's, in the PRN's nursing pool. Prefer hospital experience and must have current New Mexico Licensure. If interested contact Susan Walliser, director of nursing, Roosevelt General Hospital, 1700 S. Ave. O., Portales, N.M., 88130. 505/356-4411. E.O.E. r3-3s-2tsc

4. Houses For Rent

SMALL unfurnished home for rent. Call 272-3107. m4-1s-tfc

RUIDOSO CHALET: 4 bedroom for rent by day, weekend, or weekly. Call 505-257-2622. Owner Dr. Albertson. a4-49t-tfc

HOUSE FOR RENT Brick, 3 bdrm, 2 bath, utility room, new carpet & storage, in Muleshoe, \$300 monthly. 385-5982, references. 4-3s-4tp

FOR SALE or rent, large 3 bedroom house in country 946-3417. k4-3s-2tsc

5. Apts. For Rent

FOR RENT unfurnished 2 bedroom apartment call 965-2188 or 272-4754. s5-37t-tfc

8. Real Estate

HOUSE for sale 3 bdrm, 2 bath, storage shed, Geo-thermal heat & air conditioning, in ground swimming pool. 272-3117. 18-1t-tfc

8. Real Estate

2,048 SQ. FT. Brick 3-2-2 1 acre tract 30x40, fab steel barn, paved drives, 6 ft. block fence. Nicely landscaped. Located Intersection highway 54 & Farm market 1731- 1/2 north of Maple. 793-7734 or 946-3452. 18-43s-tfc

FOR SALE: Two lots in the Country Club Addition. Call 272-5241 after 5:00 & weekends. 8-2s-3tsp

FOR SALE BY OWNER: small house on 1 acre of land reasonable 272-3600. c8-2s-3tsc

ENERGY EFFICIENT BRICK HOME

Beautiful view on top of hill. Southside of Muleshoe Park. 3300 Sq. Ft. under Roof, 3-2-2. Den with fireplace kitchen/dining room, finished basement, study, attached shop, 2 porches. 1515 W. Ave. J. 272-5334. b8-25s-stfc

HOUSE FOR SALE located in Lazbuddie 3 bdrm, 2 baths, utility, garage, brick, big lot, private well. If interested call 965-2126 or 965-2191. f8-32s-tfc

FOR SALE by owner- Nice home in Richland Hills addition, corner lot, 1716 W. Ave. H., priced to sell. 272-5497. m8-50s-10tsc

A reputation, acquired through publicity, isn't to be confused with character, acquired through living.

8. Real Estate

HENRY REALTY
 111 W. Ave. B
 Muleshoe, Texas
 272-4581

BRICK Home North of Muleshoe on Hwy 214. 3 bedroom, 2 bath, fireplace, central air/heat. One acre. Large Hobby Shop and apartment on premises. Fruit Trees. ***

4 Br, 2 bath, 2 car garage, central heat/air, large utility, carpet, near down-town. Excellent condition. ***

ONE ACRE sites for home construction. 3 miles East of Muleshoe on HWY. 3 lots remain. ***

JUST COMPLETED 3 bedroom, 2 bath, large living room, kitchen and dining. Excellent condition, near high school. Priced to sell. ***

COMPLETELY remodeled 2 bedroom home. Ideal first home, must see to appreciate. Nice location with F.H.A. loan. ***

COMMERCIAL PROPERTY on Main Street, over 4,000 sq. ft., income producing property. ***

COMMERCIAL PROPERTY-Excellent rental income from 4 separate offices. Lease agreements in force. ***

3 Br, 2 bath, spacious home- outside city limits, near city on highway. 29'x40' metal building. Lot 85'x62'. ***

3 Br, 1 bath, completely remodeled, edge of city on highway. ***

VACANT LOT for Mobile home immediate possession. ***

COMMERCIAL PROPERTY on West American Blvd. ideal location Building ready for occupancy. ***

15. Misc.

Custom Draperies - Mini Blinds - Fabric Custom Bedspreads Window Treatments of all Kinds

Morna's Interiors

Lisa Holt 946-3352 805 Utica
 Morna Holt (806) 296-7951 Plainview, Texas 79072

8. Real Estate

116 E. Ave. C. BINGHAM & NIEMAN REALTY 272-5285 --- 272-5286

We have homes for as little as \$600.00 total move-in cost in payment scheduled according to income for qualified buyers!!!!

COUNTRY HOMES

3-1-1 Home on 1 acre, workshop-storage. \$30's.. *****

3-1-2 Home on pavement, 1 acre, Owner-financing.. *****

3-2-2 Brick, 3.3 acres, built-ins, barn & pens!!! *****

3-3-2 Brick, 3.86 acres, Geothermal A&H, built-ins, loads of extras, energy efficient!!! *****

3-2-3 carport home, built-ins, Geo. A&H, storm cellar, barns, corrals, 11 acres... *****

RICHLAND HILLS

IMMACULATE 3-2-2 Brick, corner lot, Cent. A&H, built-ins, FP, energy efficient, loads of storage & closet space, sprinkler sys.!!! *****

3-1-1 Brick, Cent. heat, Evap. air, built-ins, fenced yard. \$40's... *****

COUNTRY VIEW-3-2-2 Brick, corner lot, total elec., built-ins, Cent. A&H, & more!!! *****

3-1-2 Brick, corner lot, Cent. A&H, built-ins, fireplace, utility, nice home \$70's... *****

LENAU ADD

3-1-1 carport home, fenced yard \$30's *****

2-1-2 Brick, Cent. A&H, built-ins, fireplace, sprinkler system. PRICED TO SELL!!! *****

4-2-2 carport home, built-ins, fireplace, many more extra's. CALL FOR DETAILS...\$50's... *****

3-2-2 carport, corner lot storm windows & doors, concrete cellar. \$30's... *****

JUST LISTED-3-2-2 Brick, cent. evap. air, cent. heat, built-ins, fenced yards. \$40's.. *****

3-2-2 carport home, Cent. A&H, DW fireplace, nice carpets, spacious. \$50's!!!! *****

2-1-1 carport, built-ins, Cent. heat fireplace, & more. \$20's!!! *****

DIANNE NIEMAN, BROKER **GEORGE NIEMAN, BROKER**
 "WE APPRECIATE YOUR BUSINESS"

11. For Sale Or Trade

BEAUTIFUL PIANO Spinnet styled console in excellent condition stored locally. Assume low monthly payment balance. Full warranty. Call extension 244 toll free at 1-800-342-5587. 11-3t-2tpts

Too Late To Classify

ARE YOU looking for someone to do housework for you? Please call 925-6795. 1-3s-4tc-tlfc

Who Knows?

1. What does loquacious mean?
2. Who was the Republican presidential nominee in 1952?
3. Name the largest natural lake in New Hampshire.
4. Name the largest lake in the world.
5. What was the Coinage Act of 1965?

Answers to "Who Knows?"

1. Talkative or fond of chatting.
2. Dwight D. Eisenhower.
3. Winnepesaukee Lake.
4. Caspian Sea
5. A bill for silverless dimes, quarters and reduced silver in half dollars.

In Fashion

Spark up your wardrobe with metallic accessories which are the fashion rage this year.

For the office or after-five glamor, the braided gold or silver metallic belts enhance one's outfit.

Women who know fabrics and good tailoring will find good buys at this season of the year. In buying for the season ahead, stick to classic styles in suits and coats.

8. Real Estate

SMALLWOOD REAL ESTATE BROKER

272-4838

3 Bedroom, 2 bath, stucco. Central heat, evaporative cooling, carpeted, 1360 sq. feet. \$24,500. This is a good price. ***

Investment Property ON one lot-2 Bedroom, 1 Bath, New Carpet in living room, and 1 Bedroom Furnished. Both are now rented.
FOR RENT-2 Bedroom, 1 Bath

CHARLOTTE PIERCE BROKER
 400 Craig Street
 Texico, N.M.
 (505) 482-9188

PIERCE REAL ESTATE
 482-9188
 TEXICO, N.M.

Fully Licensed in New Mexico & Texas

OWNER MOVING and must sacrifice to sell a very nice 3-bedroom brick home at 914 Hickory. Price reduced to 34,000. Could qualify for any type loan, including FmHa, or existing loan could be assumed with individual lienholder's approval. If interested, lets negotiate!

R. Sudderth Realty, Inc.

Realtors/Auctioneers / APPRAISERS

Farwell, Texas
 481-3288

Drawer 887 109 5th St
 Licensed in Texas, New Mexico

J.B. Sudderth, Broker **Daren Sudderth, Broker**
Jimmie Mace, Sales Associate

Country living at it's best. 10 acres with extra nice brick, 4 bedroom, 3 bath 2 car garage, T.V. Dish, large shop building, barn with fence, storm cellar, sprinklers pipe. Located near Muleshoe city limits. Priced to sell immediately. ***

On one acre nice 2 bdrm, 1 bath home with garage, large shop building and large storage building on hwy West Camp area priced for immediate sale.

JAMES F. HAYES & CO. AGRICULTURAL REAL ESTATE
 Vic Coker-Agent
 (806) 965-2468

335 Acres-Southwestern Castro County Good soils, excellent water, nice home on pavement, Look and make an offer! ***

160 Acres Lazbuddie. Beautiful 3000 sq. ft. brick home on pavement. Land lays like a table top, 2 wells, Excellent soils. House and acreage can be sold separately. ***

80 Irrigated Acres in Lamb County on Bailey County Line. Good prospect for part time cattleman or farmer. \$400/Acre. ***

639 Acres Northwest of Earth very good water, good soils, 2 electric sprinklers, Home, corrals, small feed lot. Barn & other out buildings. \$550/Acre. ***

Country Elevator-Pleasant Valley. 138,000 bushel capacity, round tanks with hopper bottoms, 3000 bu./hr. leg, excellent areation system, cyclone fenced, and also has a 80'x90'x16' steel barn with 30 foot doors, office, rest rooms, ect. Whole facility has had very little use. \$80,000. ***

1-15,000 Head feed yard complete with mill, homes, 1000 Acres of grass modern FACILITY. ***

5 Sections-adjacent to above feedlot. Excellent soils, good water, 3 sprinklers. Combined with feedlot, this is a vertically integrated operation. Call Vic for details. ***

1-15,000 Head feed yard complete with mill, homes, 1000 Acres of grass. MODERN FACILITY. ***

640 Acres Pleasant Valley on pavement. 3 electric sprinklers, 5 wells, excellent water & soils. \$700/Acre. ***

14,000 Head feedlot near Muleshoe. Good opportunity call Vic for details. ***

550 Acres with 3 electric sprinklers. Adjacent to above feedlot. Excellent water, & soils. \$675/Acre. ***

160 Acres very good soils, electric sprinkler, modern home. ALL for \$700/Acre. ***

1. Personals

MARY KAY COSMETICS Josie Flowers 272-3865. fl-49s-tfc

HOME REPAIRS R.M. Saldana Construction, licensed and bonded plumber. Specialized in cement, carpenter work, remodeling, painting, acoustical ceilings, 272-4995. s1-16s-tfc

IF YOUR house needs a face lift - call the House Doctors - Betty or Curtis Carpenter, 272-4686 or 965-2485. We will give free estimates on acoustical ceilings, wall texturing, wall papering, taping and bedding, interior and exterior painting, and misc. handy man jobs! 1-3s-4tp

OPEN YOUR OWN beautiful shoe store. LADIES - CHILDRENS- MENS. All first quality merchandise. Over 200 top name brands-Over 1500 styles *Gloria Vanderbilt *9 West *Evan Picone *Andrew Geller *Liz Claiborne *Capeizo *Bardolino *Bass *Bear Traps *Calico *Reebok *Stride Rite *Buster Brown *Candies *L A Gear *Cherokee *Florsheim *Freeman *Bostonian and many more. \$12,900 to \$39,900 includes beginning inventory-training-fixtures and grand opening promotions. Call Today, Prestige Fashions 501-329-2362. 1-3s-2tpts

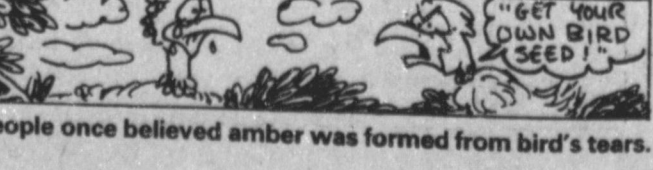
PRETTY PUNCH embroidery now available. Free instructions - call Nelda 925-6634. 1-3s-4tp

DAVIS COMMERCIAL PUMPING SERVICE

Cess pools, Grease pits, Mud pits, Septic tanks. 20 ft. elevator boots. Bacteria & Enzyme. Digestant - stocked.

We stress maintenance for your best results. Call us. 806-272-4673 806-272-3467 Muleshoe, Texas TX. Dept. of Health reg. #TDH-02009 1-8s-stfc

CONCERNED About Someone's Drinking? HELP IS AVAILABLE through Al-Anon Call 227-2350 or 965-2870 or come to visit Tuesday nights, 8:00 p.m. or Saturday mornings at 10:30 a.m. at 1116 W. American Blvd., Muleshoe



People once believed amber was formed from bird's tears.

Three Way School Menu

THREE WAY MENU
JANUARY 19-23
BREAKFAST
MONDAY
 Hot Cereal, Juice, Milk
TUESDAY
 Toast/Jelly, Juice, Milk
WEDNESDAY
 Cinnamon Toast, Fruit, Milk
THURSDAY
 Bacon / Jelly / Biscuits / Gravy, Juice, Milk
FRIDAY
 Waffles/Syrup, Juice, Milk
LUNCH
MONDAY
 Burritos/Chili, Corn / Salad, Milk, Pudding
TUESDAY
 Goulash, Green Beans / Cream Potatoes, Hot Rolls, Milk, Honey/Butter
WEDNESDAY
 Pinto Beans, Tomato & Macaroni/Spinach, Corn Bread, Milk, Fruit
THURSDAY

Cheese Enchiladas, Spanish Rice/Salad, Milk, Jello
FRIDAY
 Hamburgers with Cheese, Frys / Lettuce / Tomatoes / Onions / Pickles, Buns, Milk, Cookies
Healthier, more productive goat developed by A&M scientists, computers
COLLEGE STATION—Texas A&M
 University animal scientists have developed a new breed of goat with the aid of computers that is healthier and more productive than its parents and other predecessors.
 The project could be a boon to Third World farmers and holds promise for the livestock industry in Texas and elsewhere around the United States. While the goats may not be imported to the United States, the importance of the project is the method used for developing the new breed, which can be applied in Texas.
 "The goat we have developed tends to stay healthier and thrives better under harsh conditions, which makes it more productive," said Dr. Thomas Cartwright of Texas A&M's College of Agriculture and leader of the breeding program. "We believe it will be a popular breed around the world and that improved breeds could be developed in the U.S. using the same technique," he added.

Lazbuddie School Menu

LAZBUDDIE MENU
JANUARY 19-23
BREAKFAST
MONDAY
 Cereal, Juice, Milk
TUESDAY
 Cinnamon Rolls, Juice, Milk
WEDNESDAY
 Biscuits, Sausage, Juice, Milk
THURSDAY
 Doughnuts, Fruit, Milk
FRIDAY
 French Toast, Bacon, Juice, Milk
LUNCH
MONDAY
 Chicken Nuggets, Mashed Potatoes/Gravy, Green Beans, Hot

Rolls, Fruit, Milk
TUESDAY
 Spaghetti, Green Beans, Green Salad, Garlic Bread, Fruit, Milk
WEDNESDAY
 Ham, Baked Potatoes, Broccoli/Cheese, Hot Bread, Cobbler, Milk
THURSDAY
 Hamburger Casserole, Green Salad, Green Beans, Hot Rolls, Fruit, Milk
FRIDAY
 Hamburgers, French Fries, Lettuce, Pickles, Brownies, Milk
 The Salad Bar will be served daily.

Golden Gleams

Habit is a sort of second nature.
 —Cicero.
 Too much talk loses most arguments.

Who Knows?

1. Who was Clara Barton?
2. When was Hawaii discovered?
3. What was Hawaii's original name?

Answers to "Who Knows?"

1. U.S. Civil War nurse
 2. January 15, 1778
 3. Sandwich Islands
- Modesty is usually only skin deep.

Congratulations



RESERVE CHAMPION LAMB—Monty Black is shown here with his Medium Wool Lamb that was the Reserve Champion Lamb at the Bailey County Livestock Show Friday night.

Bailey County Farm Bureau

8. Real Estate 8. Real Estate

WHITT - REID

201 Main Office 272-3611

REAL ESTATE

- HOMES \$10,000 to \$200,000
- FARMS Dry-Irrigated
- RANCHES (San Angelo) Trade
- COMMERCIAL - 25 to 50¢ On A Dollar.

LIFE INSURANCE (That Fits)

- Estate Planning
- Savings Plans
- Retirement Plans
- Mutual Funds
- Securities

"We Don't Plan To Fail

We Fail To Plan"

LET'S TALK- You Will Be Pleased

Home

Roy Whitt Broker 272-3058
 Thursie Reid 272-5318
 Joy Whitt 272-3058
 Lucille Harp 272-4693
 Charles D. Jones (nights) 246-3200
 (Sudan) (Littlefield)

15 Misc.

15. Misc.

UNTIL APRIL 1, 1987, BOB'S PUMP & MACHINE OF FRONA WILL CONTINUE CHARGING .95 PER FOOT FOR PULLING AND SETTING OF 6-INCH AND 8-INCH IRRIGATION PUMPS. \$1.25 A FOOT FOR 10-INCH PUMPS. WE ALSO HAVE A FEW GOOD USED BOWLS, GEAR HEADS, AND SO FORTH.....

Call Bob Clark

Day 247-3236 Night 247-2252
 c15-2s-4tc

Make a 1986 IRA investment? BRILLIANT DEDUCTION!

With the upcoming tax-law changes regarding IRAs, it's more important than ever to make the smart decision now.

Act fast, and not only will any growth of your investment occur tax-deferred, but you'll also get a full tax deduction for your 1986 contribution, regardless of your income or a company pension plan!

And to make your retirement dollars work best for you in 1986 and beyond, you need an IRA offering a variety of investments. Gone are the days when you could just tie your IRA investment to CD's and expect a good interest rate.

A Chubb Securities IRA allows you to invest in a money market fund, any of 300 mutual funds, or limited partnerships. It's flexible enough to fit anyone's investment style—and that flexibility means your IRA investment works harder. Works better.

Security. Flexibility. And an IRA that works better for you. Contact your Chubb Securities registered representative today.

1986 contributions must be made by April 15, '87

CLIP AND MAIL TO:

ROY WHITT

(806) 272-3611
 201 MAIN
 MULESHOE, TEXAS 79347

YES! I want to enjoy the advantages of a Chubb Securities IRA, in 1986 and beyond. Please send me more information, including charges and expenses.

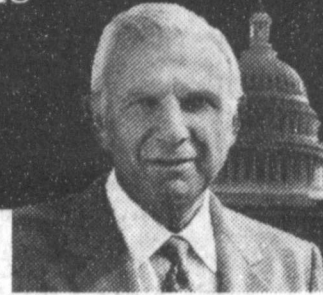
Name _____
 Address _____
 City _____ State _____ Zip _____

Chubb Securities Corporation is a registered broker-dealer.
 One Granite Place, Concord, NH 03301

"H&R Block finds more Americans a bigger refund."

—Henry Block

At H&R Block we know you're concerned about the most sweeping tax law changes in history. This year put us on your side. We're pledged to find you the biggest refund you're entitled to.



H&R BLOCK
 THE INCOME TAX PEOPLE

WHAT CAN WE FIND FOR YOU?

Weekdays 9-6

Sat. 9-5

224 W. 2nd

272-3332

For Your Classifieds Call Bailey County Journal 272-4536

True Value HARDWARE STORES

Mid-Winter Cleanup

<p>EZ DOES IT.</p> <p>Paint Now... Pay Later! Make buying paint as easy as using it! These cards are welcomed at participating stores.</p>		<p>4.98 qt. Polyurethane Varnish for a protective coat on wood. Flat, satin, gloss. 01279/935</p>	<p>2.98 Stripz-Em Paint & Varnish Remover works fast. Penetrates. Quart. 5E1</p>	<p>1.88 Hi-O Spray Enamel for a durable, glossy finish on interior/exterior surfaces. 16 fl. oz. U</p>	
<p>9.98* Gallon E-Z Kare Latex Flat Finish for walls and ceilings. Ideal for bedrooms, more. 62F</p>	<p>12.98* Gallon E-Z Kare Latex Flat Enamel leaves a tough, beautiful low-sheen finish. 62</p>	<p>12.98* Gallon E-Z Kare Semi-Gloss Enamel is ideal for kitchens, bathrooms. Scrubbable! 62S</p>	<p>3.66 3-Pc. Orel Brush Set has poly bristles to spread paint smoothly. 1 1/2, 2 in. 007</p>	<p>2.58 Gloss Rust Enamel protects metal and wood. Crack and peel resistant. 1/2 pt. X0</p>	<p>2.78 Spray Enamel puts a glossy finish on wood and metal. Ass't colors. 16 fl. oz. X0</p>
<p>7.98 Gallon Latex Flat Wall Finish is high-hiding, fast-drying. Easy to clean up. White. A9</p>	<p>28.88 5-Ft. Aluminum Step-ladder with braced top and bottom steps, pail shelf. 36S</p>	<p>19¢ 2-In. Foam Brush is economical, disposable. For a smooth job on trim. 397158</p>	<p>2.88 9-In. Paint Shield Roller protects against roller specks to avoid messes. 500-PSR-90</p>	<p>3 for 1.89 Metal Grill Furnace Filter keeps system running more efficiently. All 1 in. thick.</p>	
<p>4.99 EMPIRE Outdoor Upright Broom with a wider flare to clean indoors or out. 62-3042</p>	<p>5.99 Nylon Dust Mop has a fleece backing to polish while it dusts. 48-in. handle. 32-0508</p>	<p>3.99 Corn Broom sweeps up around the house. Sewn five times for strength. 2704</p>	<p>1.39 170-Watt Soft White Light is the gentle light that's ideal for close-up work. 170WLSW</p>	<p>2.69 Pair Working/Driving Gloves are unlined leather with fastener. In medium or large. 7000ML</p>	<p>2.29 Murphy's Oil Soap cleans wood surfaces, leather, vinyl and more. 32 oz. 510255</p>
<p>3.99 Clamp-On Lamp swivels to bring the light wherever you need it. 3 1/2 x 5 1/2 in. 555196E</p>	<p>5.58 Gallon All Purpose Cleaner for many washable surfaces. Leaves no residue. CC-11</p>	<p>1.49 Quart All Purpose Cleaner for many washable surfaces. Leaves no residue. CC-11</p>	<p>3.98 Gallon Ammoniated Glass Cleaner for all washable surfaces. Concentrated. CC-9</p>	<p>98¢ Quart Ammoniated Glass Cleaner cuts grease without streaking. CC-9</p>	<p>3.33 15-Qt. Bucket is sturdy and convenient. With spout and measuring scale. 73157VALC</p>



Fry & Cox, Inc.

401 S. 1st

