

AREA

Community Banquet

See Below

DEMOCRATIC POLITICS REPUBLICANS

March 8 Is Super Tuesday

See Below

Foreman Company
Box 68
Manmouth Ill. 61452

WEATHER

Snow 'Kicks' Spring



BAILEY COUNTY JOURNAL

'The Community Of Opportunity-Where Water Makes the Difference'



Vol. 26, No. 10

14 PAGES TODAY

Published Every Sunday at Muleshoe, Bailey County, Texas 79347

20°

Sunday, March 6, 1988

Super Tuesday; Election Day For Texas Voters

Sudan CofC Sets Banquet

Dr. Marvin Baker, president of South Plains College, Levelland, will be the guest speaker for the annual Sudan Chamber of Commerce Banquet, to be held Saturday, March 19, at 7 p.m. in the Sudan High School Cafetorium.

Tickets are \$7.50 for adults and \$5 for children under the age of 12, and theme for the banquet this year is "Sudan, Going Great in '88!"



Watson Junior High School Principal Bob Graves said the weekly Principal's Awards went to Ruben Saldana, sixth grade; Becky Donaldson, seventh grade and Misty Sawyer, eighth grade.

Were you a 1979 graduate of Muleshoe High School? Guess What!! It's time to be planning for the 10 year reunion of the class.

If you were a graduate or know the location of a graduate, or graduates, who have moved from Muleshoe, please contact one of the following after 6 p.m. in the evening:

Keith Hawkins, 965-2896; Gina (Burden) Smith, 965-2629 or Terie (Wilemon) Snell, 272-5453.

Can you spare 30 minutes one day a week for a very rewarding experience.

Meals on Wheels needs volunteer drivers for Monday and Thursday of each week, to deliver meals to local shut-ins.

You provide your own vehicle and spend some 30 minutes being one of the route drivers. Cont. Page 7, Col. 1

In Profile

A country/western group from the South Plains College Music Department will provide entertainment during the evening.

The top three nominees in each category to be honored during the banquet are:

Farm Family of the Year - James Synatsch, Gene Bartley and Freddie Maxwell.

Man of the Year - Rick Hill, Mike McDonald and Jerry Ray.

Woman of the Year - Jonelle Bandy, Francis Gardner and Jean Harvey.

Citizen Through the Years - Lulu Burnett, Mary Tollett and Adrian Martin.

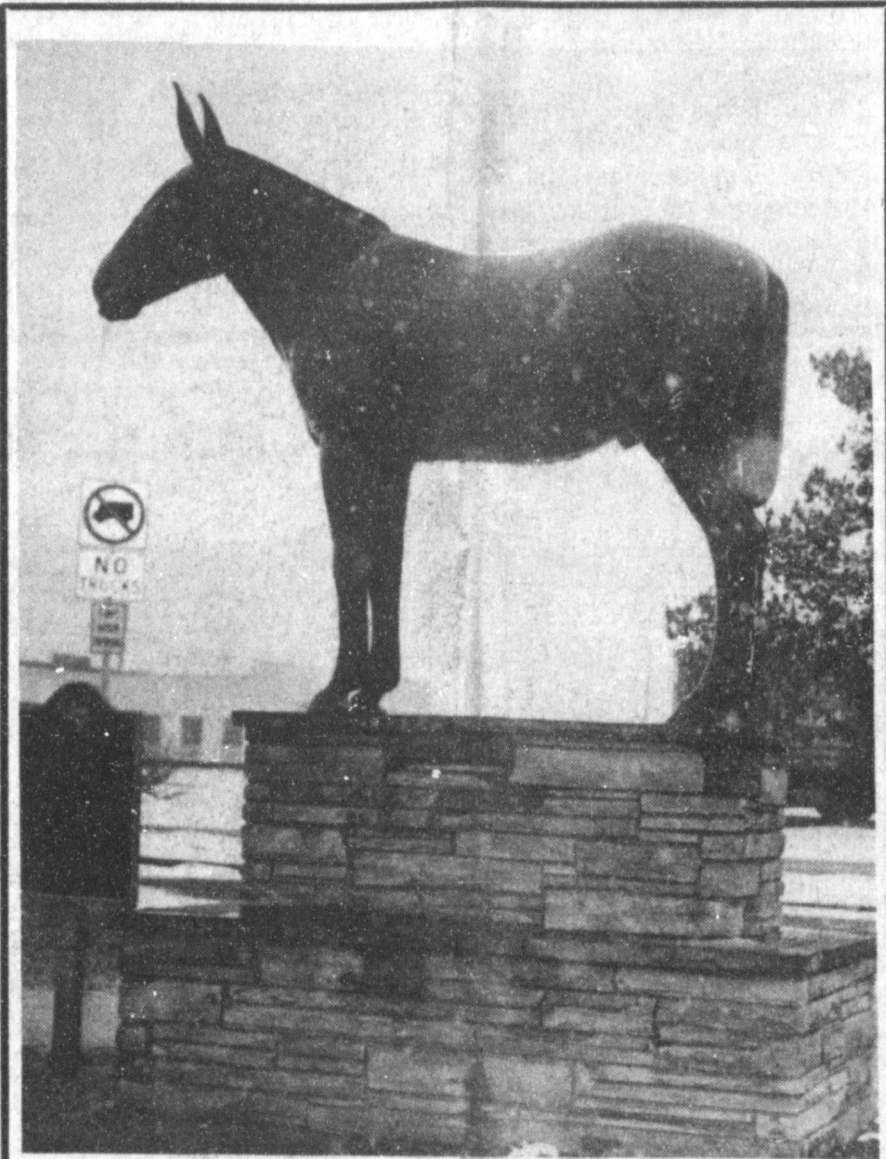
Teacher Duo At Convention In Fort Worth

Mary Helen Perez and Alice Liles were two of the participants who attended the Annual State Convention of the Texas Classroom Teachers Association (TCTA) in Fort Worth, February 19-21.

TCTA is an organization representing 25,000 teachers with headquarters in Austin. Its annual convention provides delegates with an opportunity to become better informed regarding current education issues and to make policy decisions for the Association.

Teachers attending the three-day convention heard Mrs. George Bush speak on the issue of adult literacy. Participants also had an opportunity to attend mini-conferences on paperwork reduction, career ladder and the teacher appraisal system, adult literacy, stress management, public relations and student achievement.

Muleshoe Classroom Teacher member Carol Williams, a first grade teacher at Dillman, won a weekend trip to the Habitat Hotel at Highland Mall in Austin, for participating in the January membership drive.



EVEN OLD PETE DIDN'T ESCAPE THE COLD SNOW--Icicles dripped from Old Pete's nose and underneath his 'belly' early Thursday afternoon, as the snow was beginning to slack off. Heavy snow fell all day, melting from roads and sidewalks, but two inches and more was left clinging to grass and the ground and trees. Most of the snow had melted by early Friday afternoon as the temperature edged up into the high 60's.

Democratic Polling Places

- Box 1...Bailey County Courthouse
- Box 2...Bailey County Coliseum
- Box 3...Three Way School Cafeteria
- Box 4...Methodist Church Fellowship Hall
- Box 5...Bula Community Center
- Box 6...Needmore Community Center
- Box 7...Muleshoe City Hall

Polls Open 7 a.m. to 7 p.m.

Precinct I Commissioner, Sheriff's Office Contested

The die has been cast, and the stage has been set and is all ready--for Super Tuesday--the first Tuesday in March for a Texas Primary Election.

Both Democrats and Republicans will be trekking to the polls on Tuesday to cast their votes for their choice of the menu of many candidates for various offices -- and to help narrow the ballot down for the General Election in November.

On Tuesday, March 8, polls will be open in several places throughout Bailey County for both the Democrats and the Republicans to cast ballots for the candidates of their choice.

Also, the polls will be open 7 a.m.-7 p.m. and immediately following closing of the polls, Precinct meetings will be conducted at the respective polling places.

It is very important to remember that you will vote either Republican or Democrat in the Primary election.

You will not be allowed to vote for any candidate in the Primary not listed on your ballot, such as county commissioner, sheriff, etc.

Only two Bailey county races are contested. As incumbent Bailey County Sheriff Bob Henderson did not elect to seek re-election as sheriff, Deputy Sheriff Jerry Hicks and Ray Ruthardt are seeking that post.

Commissioner of Precinct One, R.L. Scott, is opposed by H.E. Newsom and James W. Meason.

Eleven names are on the Democratic Ballot seeking the President's position. They are W.A. Williams, Paul Simon, David E. Duke, Al Gore, Bruce Babbitt, Michael S. Dukakis, Norbert G. Dennerl Jr., Jesse L. Jackson, Gary Hart, Lyndon H. LaRouche, Jr. and Dick Gephardt.

The six candidates on the Republican ballot for President are Jack Kemp, Alexander M. Haig, Jr., Pete du Pont, George

Bush, Pat Robertson and Bob Dole.

Republicans seeking the 'nod' for United States Senator are Ned Snead, Milton E. Fox, Beau Boulter and Wes Gil-Cont. Page 6, Col. 4

MAC Bucks Numbers Listed In This Issue

The numbers have been drawn, and this weekend, are included in four display advertisements in *The Bailey County Journal*.

If you are the lucky holder of one of the winning ticket stubs, you may pick up your \$25 at Western '66' Company; \$100 at C. R. Anthony; \$100 at Muleshoe Antenna or \$150 at KMUL Radio.

Remember, you will have until 5 p.m. on Tuesday to claim your prize. Other local media are also publicizing the numbers.

County Attorney Linda Elder

Asks Re-Election

Linda Elder, who has served as County Attorney for Bailey County for the past six years, is currently seeking re-election.

Mrs. Elder was appointed to fill an unexpired term, then has been elected two times to her position.

She commented, "I have fulfilled the duties of my office to the best of my ability, and would like to thank everyone in the county for their past support."

"I would like to solicit your vote, and your continued support for another term as your county attorney."

Pd. Pol. Adv.

Deeply Buried; Under A Paper 'Blizzard'

(Editor's Note: Have you ever been buried deeply under a paper 'blizzard'?

Muleshoe City Police Department

Secretary Cissy Parker, and the MPD officers and investigative officers really know the feeling of being buried. This

week, we are trying to fight out of that type of 'blizzard')

"Mondays are a paperwork nightmare," says Cissy Parker, secretary at the Muleshoe City Police Department. "With a 72-hour accumulation from Friday afternoon to Monday morning, and officers and judges clamoring for their paperwork by 9 a.m., you had better believe it can be a nightmare."

However, the pleasant, smiling secretary wouldn't really have it any other way.

When she first started to work as MPD Secretary in August, 1984, she already had six years in the records division of the Clovis City Police Department, so knew just exactly what she was getting into.

A native of Bovina, Cissy went to work for the Clovis Police Department shortly after graduation from high school, and quickly learned that law enforcement -- or anything connected with it -- is an entire life all to itself.

But still, she left MPD in June, 1985, and says she "worked at a couple of other jobs -- and was completely bored -- so returned to the police department in September, 1987, back at her old job -- hiding beneath, behind and around a paper blizzard."

And, essentially, that's just what it is to keep up with all the tremendous amount of reports required in modern day law enforcement.

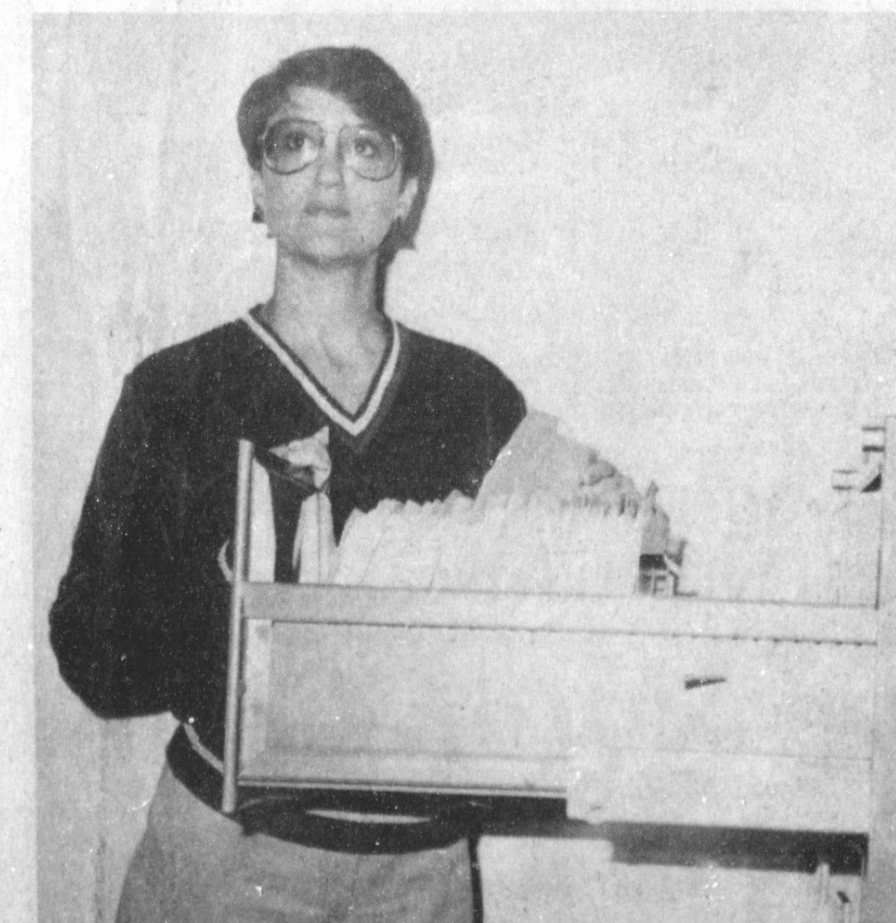
And -- what does a police secretary do on a day to day basis?

First, it's reports and more reports, on each and every

contact made by a local officer in any capacity.

There are Offense Reports-In-

Cont. Page 6, Col. 1



CISSY PARKER, POLICE SECRETARY

Republican Polling Places

Voting Box 1&2...Muleshoe Library, Rear Meeting Room

Voting Boxes 3,4,5,6,7...Muleshoe Fire Station

Polls Open 7 a.m. to 7 p.m.



SGT. JULIAN DOMINGUEZ, DETECTIVE

Letter To The Editor

Dear Editor,

A search is presently underway for "Orphan Train" riders, now living in Texas, or were brought to Texas as children.

Between 1854 and 1929, over 150,000 orphaned, abandoned and homeless children were taken out of the institutions of New York City, and transported by trains to rural America. At stops along the way, the children were lined up on a railway station platforms, churches, schools, and opera houses for local residents to look them over and perhaps choose a child to take into their homes.

Those not chosen were loaded back on the train, traveling to the next stop where the entire procedure was repeated. Many brothers and sisters became separated for the rest of their lives.

This became known as the "placing-out" system and the trains were often called "Orphan Trains."

Texas had received 1,527 of these children by 1910, according to a New York Children's Aid Society report.

"Baby Trains" or "Mercy Trains" carried infants up to the age of three years old from the New York Foundling Hospitals to pre-arranged foster homes. A numbered cloth tag was sewn onto the infants' underclothing and a corresponding number given to the potential new parents. When the train arrived, folks holding a

number card would board the train and find their child.

Federal child welfare reform laws were enacted in 1929. The "Orphan Trains" were stopped forever.

The Orphan Train Heritage Society of America, Inc. (OTHS) is a nationwide clearinghouse for information concerning the history of the placing-out programs from 1854 until 1929.

Your readers are invited to share any information they have about Orphan Train riders, or if they would like a free OTHSA newsletter, send an SASE to: OTHSA, Rt. 4 box 565, Springdale, Ar. 72764.

Thank You,
Mary Ellen Johnson, Director
Orphan Train Heritage Society of America
Route 4 Box 565
Springdale, Ar 72764
Tel. (501) 751-7830-electronic message receiver

Dear Journal Personnel:

On Saturday, February 27, the Muleshoe High School Mock Trial team participated in the regional Mock Trial competition held at the Texas Tech Law School. This competition is sponsored by the Dallas Bar Association, and teams all over the state compete using the same case on the way to the state competition. Muleshoe Mock Trial team members were Jennifer Green and Greg Garcia, attorneys for the plaintiff; Deborah Lackey and Richie Tillema, attorneys for the defendant; Beth Sanders and James Ziegenfuss, witnesses for both the plaintiff and the defendant; Elizabeth Posadas and Art Murillo, alternates. The team was taken to the competition by their sponsor, Jean Allison, and Barbara Milburn, high school librarian and supporter of the team.

The team gave a public presentation of the case at the Bailey County Courtroom on Thursday, February 25, with Mrs. Linda Elder, County Attorney, acting as judge. Mrs. Elder gives many hours assisting the team with courtroom procedure, and the team members express their sincere appreciation for this help. The Mock Trial team members spend many hours preparing for the regional competition, as they know they must face competition from much larger schools which have already competed in district competition. Muleshoe does not get this needed competition, as no other teams enter from this district.

At the regional competition this year, the Muleshoe team did not win, but the team members had a sense of accomplishment. They had tackled a very difficult task and did the best they could. They gained valuable skills and will be better citizens after par-

ticipating in this stiff competition. This is one of the most intense learning situations possible, and students must be very dedicated in order to participate.

The team members and myself would like to express appreciation to you for the valuable advertising you so freely gave to the team. Your support is encouragement for future endeavors.

Sincerely yours
Jean Allison, sponsor

Dear Sir:

As a member of the West Texas State University Foundation Board, I feel it is time we recognize what a real asset WTSU is, not only to Amarillo and Canyon, but to the entire region. A large percentage of our graduates stay in the Amarillo and Canyon area and make major contributions to the area of banking, nursing, technology, teaching, agriculture, accounting, computer science, and management.

West Texas State University plays a major impact on the cultural enhancement of the Amarillo area through its faculty involvement in such groups as the Amarillo Symphony. More than 50% of the Symphony's

principal musicians are derived from the Department of Music and Dance. The Harrington String Quartet is funded by a grant from the Harrington Foundation, and performs regularly throughout the Panhandle area.

Independent of the jobs that are filled from our graduates at West Texas State and the cultural impact this university has, it is important to point out that WTSU has an economic impact of 100 million dollars to the Amarillo area on an annual basis. It is critical that business get behind this university and help it grow, if for no other reason than the economic impact it continues to have. It is a matter of history as to what Texas Tech has become because of the support of its city and area citizens. We're all overdue to make that same commitment to West Texas State University.

Sincerely,
Pauline M. Hefley

Ms. Clea Williams
P.O. Box 449
Muleshoe, Texas 79347

Dear Clea:
I certainly appreciate your taking the time to come to the recent Legislative Update held

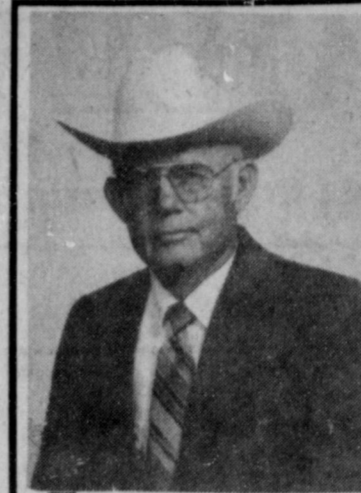
in Muleshoe. It was good to see you there.

As the 100th Congress turns its attention to the difficult problems facing our nation, your input will be very important to me. I hope you will stay in touch in the coming months on any issue of mutual concern.

With kind regards.

Sincerely,
Larry Combest

West Plains Medical Center
272-4524



Re-Elect
R. L. Scott
County Commissioner
Precinct-1-Bailey County
Democrat
March 8, 1988

For Efficient
Courteous And
Unselfish Service
Your Vote And Support Will Be
Sincerely Appreciated Pd. Pol. Adv.

MEET THE CANDIDATES

The Journal has been authorized to announce the following candidates for public office:

SHERIFF

Jerry Hicks
Ray Ruthardt

COMMISSIONER

Precinct 1
R. L. Scott
H. E. Newsom
James Meason

Precinct 3

TAX ASSESSOR

Kathleen Hayes

COUNTY ATTORNEY

Linda Elder
Democrat

Our new riders won't leave you lurching in the clutch



Forget about rolling back while clutching on hills. In fact, you can pretty well forget about clutching at all except when you want to reverse. New John Deere RX and SX Riders let you shift through seven forward speeds without clutching... and let you slow down by depressing a pedal. Other new features: an adjustable tilting seat. Easy-reach controls. 17-inch turning radius. And high torque 9- and 12 1/2-hp engines. Come choose from five models, 30- or 38-inch cut.

Nothing Runs Like a Deere®



Dent & Co.

West Hwy. 84 Muleshoe 272-4296

GET OUR BIGGEST CASH BACK EVER!



CHRYSLER
FIFTH AVENUE

\$1,000 Cash Back!

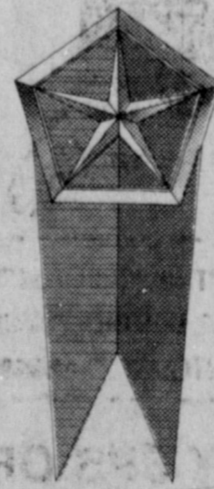
While other luxury cars become more alike, Fifth Avenue stands out as a rare value.



CHRYSLER
LeBARON COUPE

\$1,500 Cash Back!

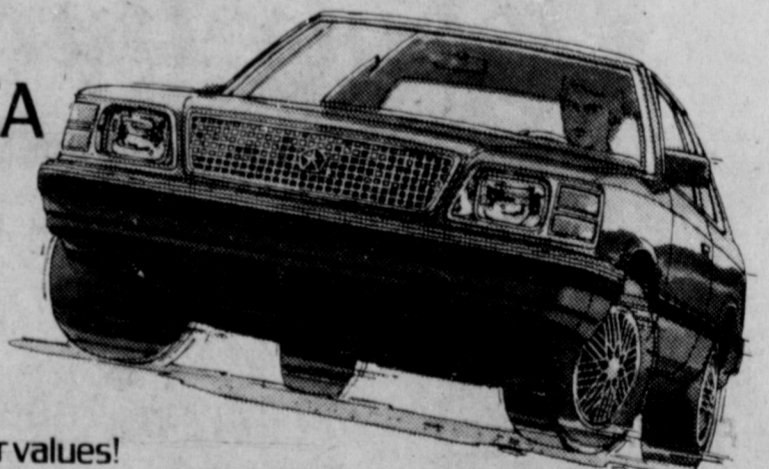
Beauty...with a passion for driving.



PLYMOUTH
RELIANT AMERICA

\$6995
-500 CASH BACK
\$6495**

Discover one of America's best car values!



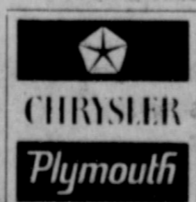
*Cash back for retail buyers on new 87 and 88 models in dealer stock

**Base sticker price minus cash back allowance. Excludes title taxes and destination charges.



Covers 7 years or 70,000 miles on powertrain and 7 years or 100,000 miles against outer body rust-through. See a copy of this limited warranty when you visit your dealer. Certain restrictions apply.

We want to make you an American Winner.
See your Chrysler-Plymouth Dealer today!



Muleshoe Motor Co.

1225 W. Amer. Blvd.

272-4251

"Car Capital Of The West Plains"

Congressman Introduces Bill Repealing Diesel Tax

"Farmers, oil field drillers, shrimpers, and builders are having a hard time understanding the logic of a law which requires them to pay a tax they do not owe, prove to the government they do not owe it, then apply to the government, who will hopefully refund the payment," Congressman Larry Combest (R-Texas) said Thursday during a congressional hearing on his legislation.

The Subcommittee on Energy and Agriculture of the Small Business Committee held hearings on Combest's bill, H.R. 3865, to restore the tax-exempt status for off-highway diesel purchasers. A new tax law, which takes effect April 1, 1988, requires off-road diesel users to pay a 15 cents per gallon tax at the time of purchase and later apply for a government refund.

"For multi-million dollar corporations, an extra 15 cents a gallon for diesel fuel will not matter that much. But, it could mean the crucial difference for many small businesses in my district and throughout the nation," Combest stated.

"Many small business owners and farmers will be the ones to feel the pinch if we do not repeal this ludicrous provision."

During the hearing, Combest noted that one oil driller in his district estimated that this tax will cost him a total of \$377.50 per day, \$11,325.00 per month, \$137,787.50 per year, plus interest cost. "This is absurd.

By forcing off-road diesel operators to pay a tax they do not owe, we may force them out of business," said Combest.

"Quite simply, this tax law is bad policy resulting only in serious cash flow burdens and paperwork headaches."

H.R. 3865 has been cosponsored by more than 90 members of Congress and is supported by dozens of organizations, including: American Farm Bureau, Texas Farm Bureau, Permian Basin Petroleum Association, North Texas Oil and Gas Association, American Soybean Association, National Cattleman's Association, National Cotton Council of American, the Associated General Contractors of America, National Grange, National Corn Growers Association, National Council of Farmer Cooperatives, National Association of Wheat Growers, American Waterways Operators Association, American Shrimpers Association, and others.

Testifying in behalf of Combest's bill was S. M. True, president of the Texas Farm Bureau; Harry Spannaus, Executive Vice President of the Permian Basin Petroleum Association, U. S. Senator Phil Gramm (R-TX), House Agriculture Chairman E. Kika de la Garza (D-TX), and other congressional officials and small business representatives.

Sudan News by Evelyn Ritchie

Bill Gardner of Dallas visited during the weekend with his mother, Frances Gardner.

Mrs. W.L. Rice fell recently and broke a hip, she was taken to the Methodist Hospital in Lubbock for surgery.

Robert DeLoach underwent heart surgery Monday at Methodist and it was reported that he had 5 bypasses, but is doing well.

More than 1,200 students at Texas Tech University received degrees in fall 1987 commencement exercises.

Degree recipients included: Scott Ballew, Bachelor of Science in Electrical Engineering son of Brenda Kirby and grandson of Mrs. Mildred Chisholm.

Jerry Fisher, son of Mr. and Mrs. Edward Fisher, received Bachelor of Business in Adv. Marketing.

Tim Nix, son of Mr. and Mrs. Bill Nix received Master of Business Administration, He and his wife, Joan have two sons, Camron and Marc.

More than 2,000 Texas Tech University Students qualified for the academic honors lists at the end of the 1987 fall semester.

Students on the President's Honor List earned a perfect 4.0 (A) grade-point average while enrolled in 12 or more semester hours of classwork. Students finishing 12 or more hours with a grade-point average of 3.5-3.0 qualified for the Dean's Honor List.

Students making the honor rolls included the following: Wade Donnell, son of Mr. and Mrs. Gery Donnell Agricultural Economics, Blake Lacewell, Wildlife Management son of Mr. and Mrs. Tommy Lacewell, Kim Moss daughter of Mr. and Mrs. Dwayne Powell, Secondary Education (married to Troy Wayne Moss), Lisa Wood, daughter of Mr. and Mrs. Dan Wood, Physical Education. Shawnda Masten, daughter of Danny Masten and Donna Masten, Elementary Education was named to the President's List.

Mr. and Mrs. Halgert Harvey, returned home Sunday afternoon from Fort Worth where they visited several days with his sister, Marie Rhodes who has been seriously ill.

Almon Ritchie of Amarillo visited Sunday in the home of his brother, Mr. and Mrs. G.C. Ritchie and Paul Corley and also visited with them were Mr. and Mrs. Dewayne Phillips and children and Melinda Landrum all of Farwell.

Linda Cox visited during the weekend in Dallas with her son, Jamie.

Girl Scouts

One of the best organizations for youngsters in America is scouting—Boy Scouts and Girl Scouts.

On March 12, in 1912, Daisy Gordon and ten other young girls met in an unused stable of Daisy's aunt, Mrs. Juliette Low. That was in Savannah, Georgia, where they founded the first patrol of Girl Guides in the United States.

Mrs. Low had married an Englishman and they lived in London and Savannah. She knew sir Robert Baden-Powell, the founder of the Boy Scouts.

She obtained his help for the Girl Guides—which became the Girl Scouts.

The headquarters of the Girl Scouts was moved to Washington in 1915, after other groups began forming in other cities.

Later it was moved to New York and in the span of only a few decades, there had grown up in this country a national Girl Scout organization with members numbered in the millions.

Scouting is one of our noble youth organizations, teaching and stressing good deeds, helping others, courtesy, learning, and cleanness in word and deed.

ABOUT YOUR HOME

When parents with small children plan their vacation trip, prepare an activity bag for the youngsters. Fill it with suitable games, toys, paper, pencils and crayons. Not only will the children be happier, but the adults also.

Add lemon juice in the cooking water to keep cauliflower, potatoes, turnips, etc., white.

You can put tomato plants out 3 or 4 weeks before the danger of frost is over by covering plants with large plastic bags. Use a guard to keep bag away from plant. Anchor securely.

Bread crumbs added to scrambled eggs add volume as well as a different flavor.

Avoid a long delay in spotting your luggage by pasting a personal decal on both sides.

If you have limited space for vegetables, plant several cucumber seeds at the base of a trellis and train the vines over it.

Avoid Cancer

The American Cancer Society has listed several precautions the average citizen can take to reduce the risk of several forms of cancer.

While the suggestions are good for all, they're most important for those considerably overweight. And they agree with precautionary steps suggested by the National Academy of Sciences.

Avoid serious obesity. Avoid excessive fat. Eat more fruits, vegetables and whole grain foods. See that you get your daily vitamins A and C are in your diet.

Avoid a heavy intake of smoked meat or fish and salt-cured and nitrite-cured meat or fish. Avoid a heavy alcoholic intake.

Exercise is helpful. But experts warn that strenuous exercise should be achieved gradually for those who have not been physically active for some time.

Finally, the Society says there's not enough substantiated evidence as of now to recommend any of the current anti-cancer-diets, or specific foods.

But in recent years it has been found that aspirin is a probable preventative.



Helen Hayes for POLIOPLUS:

"Have you heard of the wonderful Rotary project of a polio-free world? I personally know the devastation of polio because I lost a daughter to that dreaded disease some years ago. Even though the Rotarians are providing most of the money to purchase the polio vaccine, they want everyone to have the opportunity to participate in this world-wide project. Will you help?"

To help simply contact: Clifton Finley, Box 584, Muleshoe, Texas 79347

8601

SOFT SUPPORTIVE LIGHTWEIGHT
CUSHION-WEDGE COMFORT FOR WORK OR PLAY
MADE IN U.S.A.

Fair Dept. Store
120 Main 272-3500

RED WING SHOES

Elect H. E. Newsom Commissioner Precinct 1

H. E. Newsom has announced his candidacy for the of Commissioner for Bailey County Precinct One.

"I have been in the Dirt Moving Business for forty years in Bailey County," said the candidate.

"I am retiring this year and will be a full time commissioner."

"I plan to see as many people as possible prior to the election on March 8th."

"It will be almost impossible to see everyone, and I earnestly solicit your vote and support in the Democratic Primaries on March 8th." Pd. Pol. Adv.

Ben Franklin

Better quality for less

2104 W. Amer. Blvd. 272-3855 Mon. - Sat. 8 a.m.-8 p.m. Sun. 12 p.m.- 5 p.m.

VISA DISCOVER MasterCard

Easter Values

Easter Baskets. Multi-color vinyl in round or oval shape. Available in 6 sizes.

Easter Grass in bright green is non-flammable and safe for the kids! 2-oz. size.

1.49 to 1.99 **33¢**

A GREAT DEAL ON A SAFE BUY!

\$1395 PLUS TAX

- PUT IT ON YOUR ELECTRIC BILL
- THREE MONTHLY PAYMENTS
- NO INTEREST CHARGES

PICK IT UP AT ANY SPS OFFICE ... OR ...

IF MORE CONVENIENT, ORDER BY MAIL

Please send me _____ portable electric heater(s).
(number)

NAME _____

ADDRESS _____ CITY _____

STATE _____ ZIP _____

Customer Account Number (if available) _____

I agree to pay \$13.95 plus tax and \$1.50 shipping and handling for each heater.

I want to put this on my electric bill and pay for it in three monthly installments.

I want to put this on my electric bill and pay for it in one installment.

I understand I am *not* paying any interest or carrying charges.

Signed _____

Mail order offer and monthly payout available to SPS customers only.

Southwestern Public Service Company
P. O. Box 1261
Amarillo, TX 79170
Attn: Dan Redd

MAIL TO:

SPS SOUTHWESTERN PUBLIC SERVICE COMPANY

NEW PAAS

Easter egg color kit

Paas Easter Egg Color Kit. Everything you need for an afternoon of coloring fun!

99¢

MAC TICKET NO. 0201715 = \$150.00 = KMUL

Jelly Bird Eggs. What would Easter be without them? In 22-oz. bags. What a value!

89¢

Cadbury Creme Eggs look like real eggs inside! An unforgettable Easter treat.

3 \$1

Candy Filled Dump Truck, now with even more candy! 4.7-oz. of Easter candy in a truck.

3.99

Large Crowd Attends Students/Parents Night

Approximately 100 to 125 students and parents attended the High School Students/Parents Night Thursday night, March 3 in the high school cafeteria. This event was sponsored by the Jennyslippers, Women's Division of the Muleshoe Chamber of Commerce and Agriculture.

Among those on hand to help the students were Donna Kirk,

president of the Jennyslippers; Leo Hatten, Director of Financial Aid from Eastern New Mexico University at Portales, N.M.; and Neal B. Dillman, representative of the Opportunity Plan, Muleshoe.

Also Sgt. Larry Gilliland, U.S. Armed Services, Clovis, N.M.; Mrs. Pat Prater, from the Student Loan Department of Muleshoe State Bank; Mrs. Linda Marr, counselor of Muleshoe Ind. School Dist.; and Billie Downing, chairman of the Chamber of Commerce Essay Contest.

Mrs. Kirk gave a report on the Jennyslippers Scholarship and Mrs. Downing gave a report on the Chamber of Commerce Essay Contest.

The Jennyslippers Service and Cultural Growth Committee would like to thank the parents, and students for attending this workshop and stated that they wish you success in your future plans and attaining your goals in life.

Members of this committee include: Billie Downing, Joyelene Costen, Carol DeLaney, Cari Kidd, Nancy Kidd, Frieda Locker, Marjorie Merritt, Diane Nieman, Fern Warren and Helen Free.

Others who helped to organize this meeting included: Norma Bruce, Bobbie Harrison, Judy Watson and Evelyn Peat.

55 And Alive Group Meeting Held Saturday

The 55 and Alive Group met Saturday, Feb. 27 in the family room of the 21st Street Church of Christ with 16 members and five guests present.

It was reported that the second round of Skip Bo with the Jr. and Sr. High was enjoyed by everyone. Guests present were Jody Field, Monica Clemmons, Mickey Trussell, Lori Hodges and Gary Stancell.

Following the meal of hamburgers and dessert a short business meeting was held. Several expressed the desire to go to Midland to attend the "39" Yorkshop March 4 and 5.

The next meeting will be on March 12 and everyone is reminded to observe the "Wearing of the Green" or you will pay the penalty.

Guests are expected and a program is being planned.



ENGAGEMENT ANNOUNCED—Mr. and Mrs. Andy Rogers of Antlers, Okla., formerly of Lazbuddie, announce the engagement and approaching marriage of their daughter, Jana of Norman, Okla. to Ernie Miller of Norman, Okla., son of Sue Neal of Bethany, Okla. and Doyle Miller, Sr. of Oklahoma City, Okla. Vows will be exchanged at 6 p.m. Saturday, March 19 at the Antlers Church of Christ. The bride-elect is a 1984, graduate of Anglers High School and Miller is a 1984, graduate of Putman City, west of Okla. City, High School.

Senior Citizens Plan Day's Activities

If you are a Senior Citizen, living in the Muleshoe area, you are encouraged to go out to the Old Depot Wednesday, March 9 and enjoy a noon meal with other senior citizens.

Lunch will be served beginning at 12 (noon) and the menu will be all you can eat of chili, beans, cornbread and all the trimmings...all for only \$2.50, and this will include tea or coffee.

Following lunch, everyone is welcome to stay the afternoon for games of cards or dominoes, and it is hoped that all senior citizens will attend and enjoy the fun, food and fellowship. Nora Burch will be in charge of the event and will be assisted by Bertie Thompson and Mae Wilterding and others.

The event is being sponsored by the Muleshoe Heritage Board and it was reported that it is not a money-making project but for the purpose of bringing senior citizens together for a day of activity.

Rebekah Lodge News

Muleshoe Rebekah Lodge No. 114 met in regular session Tuesday night, March 1 with Noble Grand Novella Price presiding. Dimple Sims gave the opening prayer and June Green, secretary called the roll and read the minutes of the previous meeting.

A few members were reported to be ill.

Representatives of the pre association meeting was a success. Thirty-Eight members met in the Lodge Hall Saturday night, Feb. 27 to plan the South Plains Association meeting which will meet in Muleshoe on Saturday, April 16th. Lodges represented were from Lubbock, Abernathy, Plainview, Leveland, Brownfield, Circle 176 and Muleshoe.



of a son, Urian Ulysses, who was born at 6:08 p.m. Tuesday, March 1 in West Plains Medical Center.

The young man weighed ten pounds and six ounces. He is the first child for the couple.

Grandparents, are Mr. and Mrs. David Salinas of Friona and Mr. and Mrs. Francisco Garcia of Mexico.

Great grandparents are Mr. and Mrs. Salvador Garcia and Mrs. Marcela Hernandez, all of Mexico.

Safety Advice

Drive carefully. Better to be late than late-lamented.

—Sun-Times, Chicago.

Urian Ulysses Salinas
Mr. and Mrs. Serafin Salinas
of Friona are the proud parents

WEIGHT WATCHERS® NEW 1988 QUICK SUCCESS® PROGRAM

**LOSE WEIGHT
20% FASTER**

**Lighten up
with the
fastest, easiest
approach to
weight loss ever!**

Not only will you lose weight 20% faster in the first few weeks than on any previous Weight Watchers program, you can actually customize a plan that will fit your personal needs and lifestyle.



Sheila Falk,
Area Director

Join now for only

\$12

Registration Fee \$17.00
First Meeting Fee \$ 8.00
Regular Price \$25.00
YOU SAVE ... \$13.00
Offer Ends March 13, 1988.

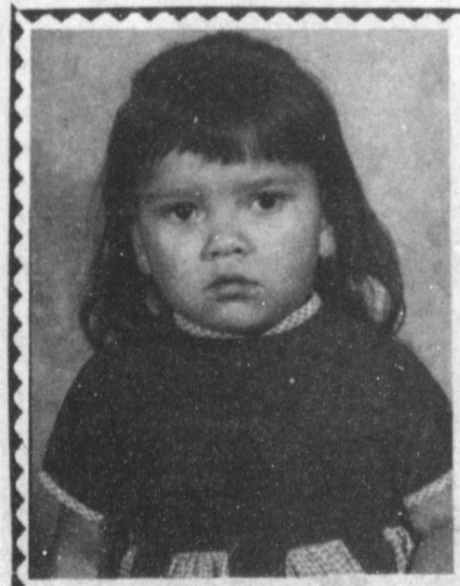
**Come to the Weight Watchers meeting nearest you.
PLEASE ARRIVE AT TIMES LISTED.**

**MULESHOE
Church of Christ
16th and Avenue D
Thur:**

6:00 pm

NOTHING WORKS LIKE WEIGHT WATCHERS!
Other valid February 21 through March 13, 1988. Offer valid at locations listed (Areas 37, 107, 363) only. Other valid for new and renewing members only. Offer not valid with any other offer or special rate.
Weight Watchers and Quick Success are trademarks of WEIGHT WATCHERS INTERNATIONAL, INC.
©WEIGHT WATCHERS INTERNATIONAL, INC., 1988

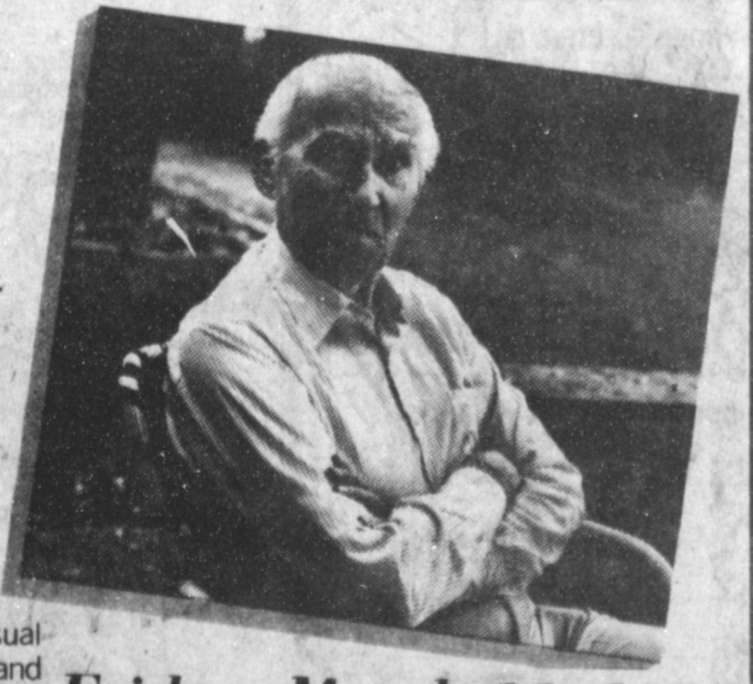
TEXAS TOLL FREE
1-800-692-4329



**Happy
?
Birthday
Gina**

*All Our Love,
The Family*

**You said it
was cold...
He thought
you called
him old.**



**Friday, March 11, 1988
10 A.M.-12 P.M.
Bellone®
Call Now For An Appointment To Avoid Waiting
Bailey County Coliseum
272-4114**

To someone with a hearing loss, a casual remark can often lead to misunderstandings and hurt feelings. Feelings you may never be able to set right. Because even though a friend or relative may hear what you say, he or she may have trouble understanding certain words. And one misunderstood word is all it takes.
Why take the chance? Be a good friend. Show someone how much you care. Call Bellone and make an appointment for a loved one now. Many hearing problems can be helped.

IRA
Individual
Retirement
Account

IRS
Internal
Revenue
Service

THE CHOICE IS YOURS

Don't Pay Unnecessary Taxes.
Put Your Money To Work For You.
Last Chance To Save On 1987 Taxes.
See Us By April 15th.

MULESHOE STATE BANK
MEMBER FDIC
101 West American Blvd. Phone 806/272-4561
MULESHOE, TEXAS 79347

Creative Living

by Sheryl Borden

A discussion with the hair-stylist of many of the world's richest and most famous women and a demonstration on using spices to "spice up" a meal will be featured on "Creative Living" on Tuesday, March 8 at 12 noon and repeated on Saturday, March 12 at 2:00 p.m. on KENW-TV. (All times are Mountain.)

Charles Nicholas not only has an exclusive hair salon in New York City, but also serves as a spokesperson for Pantene Hair Care Products. Charles is going to share some "inside" secrets concerning the hair care of some of the world's richest and most famous women. He'll also explain why women spend over \$2 billion a year on shampoos and conditioners, hairspray, mousse and styling gels as he talks about hair care being big business.

Without concern about good health, nutritious foods and proper diet, it becomes even more important to learn to season foods to cut down on our sodium intake. Polly Murray is the Manager of Consumer Affairs for McCormick and Co. in Baltimore, MD, and she will demonstrate spice cookery as she prepares quick recipes for a full dinner—seasoned just right.

Due to Festival '88, "Creative Living" will not be seen on Tuesday evenings, March 8 and March 15 at 9:30 p.m., but will return to its regularly scheduled time on March 22.

On Thursday, March 10, Sandy Alison, former Texas Extension Agent will explain how to have a profitable "cottage industry" in your home. She will present several alternatives that can range from hobbies to a full scale of business offering and talk about the advantages and disadvantages of such a business. Sandy lives in Littlefield, TX.

Jean Benson, owner of Critter Crafts in Pasco, WA will demonstrate making stuffed toys for gifts for adults and children. Jean's business is one example of a very profitable "cottage industry" and, she's also written a Farm Journal Craft book entitled "Soft Toys to Stitch and Stuff".

Also, Cecile Lamalle will demonstrate making spice chili

stacks. Cecile represents the American Spice Trade Association.

"Creative Living" is produced and hosted by Sheryl Borden. The show airs on more than 100 PBS stations in the United States, Canada, Guam and Puerto Rico and is distributed by Pacific Mountain Network, Denver, CO. Viewers can request copies of printed materials offered on the show by calling on KENW-TV's toll-free telephone lines between 8 a.m. and 5 p.m. In New Mexico, the number is 1-800-

Girl Scouts

Celebrates

76th Birthday

Girl Scout Week begins today, Sunday, March 6 and to get the week off to a good start the Girl Scouts and their families attended the annual Girl Scout fair at the Lubbock Memorial Civic Center on Saturday, March 5 from 1 to 5 p.m. Booths were set up with troops demonstrating different Girl Scout crafts and activities. It was reported that this was fun as well as a learning event to show everyone what the girls do in Girl Scouting.

Saturday, March 12 is Girl Scouts Birthday and Muleshoe Girl Scouts will celebrate having an Out of Doors Day at the Girl Scout Hut from 2:30 to 4:30 p.m. and the activity for the day will be a clean up at the hut.

There will be a promise circle at 4 p.m. on the 12th. The ceremony will be done by the girls and leaders to recognize the 76th Birthday of Girl Scouting.

All families and friends are encouraged to attend these events, so go on out and help celebrate Girl Scout Week.

Muleshoe Girl Scout Troop 322 attended the church services at Calvary Baptist Church on March 6.

Shop
Muleshoe First!

Happy 1st
Birthday

Brianne

Love From
All The Family

432-2361, out-of-state: 1-800-545-2359 and Portales and Roosevelt County: 562-2112.

STACKED MEAT AND CHEESE ENCHILADAS (Chili Stacks)

8 oz. ground beef, browned, drained, 2 cans (15 oz. ea.) tomato sauce, 2 Tbsp. chili powder, 12 corn or flour tortillas 12 oz. (3 cups) shredded Cheddar or Monterey Jack Cheese

Preheat oven to 350 degrees F. In a large skillet over high heat, cook and stir beef until browned; drain off drippings. In a medium bowl combine tomato sauce and chili powder. Spread

1/4 cup sauce in the bottom of a 9-inch baking or pie pan; top with tortilla. Spread with 1/4 cup sauce, covering tortilla completely. Sprinkle with 1/4 cup of the cheese and about 2 tablespoons of the meat. Repeat layering remaining tortillas, sauce, cheese, and ground beef, ending with sauce and cheese. Cover with foil. Bake for 20 minutes. Or, cover with plastic wrap and microwave on high until hot, about 7 minutes, giving pan 1/4 turn after 3 minutes. Remove to a serving platter. Cut into wedges. Serve with sauce remaining in pan. Yield: 6 portions.



GIRL SCOUT WEEK—Today, Sunday marks the beginning of National Girl Scout Week and girls from all over the nation are planning special events for the occasion. Back row: (From Left) Angie Gable, Renee' Rudd, leader, and April Franklin. Front row (From Left) Bobbie Hutchinson, Rebecca Flores and Shawna Delaney, all members of Girl Scout Troop No. 190

Library News

by Anne Camp

Thirty six were on hand Wednesday morning (despite the weather) for storyhour at the library. Appropriately the weather was the topic of the session...The story "The North Wind and the Sun" was told and two songs "Jolly Old March, and The Windmill" were sung. Two folk-tale movies were shown the children, and a shamrock-treat was given them as they left.

The next storyhour will have an Easter theme, set for March 16th.

We have Beth Watson's antique children's tea-sets in one display case and a St. Patrick's collection of Irish books in the other.

The library has magazines galore the give-away - pick up as many as you like..we don't have room to keep them.

Many people are taking advantage of the free Income-tax forms we have available. If we don't have the form(s) you

need, we may be able to make a copy for you to use.

It will be "business as usual" for the Library on Election Day, March 8. The election will be in the activity room of the library.. please use the back door. There is plenty of parking area there too.

The library has made space available to the History Book Committee, during the last year, for the compilation of the Bailey County History Book. Many work sessions have been held, and we are happy to be of service for this worthy project. This has been a giant undertaking, and a cooperative effort by people from all over the county, and hopefully it will be completed by fall of this year! By the way have you reserved a copy of the History Book for yourself or for a special gift at the pre-publication price now offered? If not, now is the time to do so! For further information, call the library or Vivian White or Thursie Reid.



HAPPY 99th BIRTHDAY—Dora Chaney celebrated her 99th birthday Friday, March 4. She was born March 4, 1889, in Wood County, TX. She was a resident of the Baileyboro Community until 1934, when she moved to Plainview. Five years ago, she moved to Muleshoe and made her home with a daughter, Mrs. Dee Clements, until entering the Muleshoe Nursing Home. She had four children, two of which are surviving, Ruth Clements of Muleshoe and Mae Chambers of Denton. She also has 13 grandchildren, 32 great grandchildren, and 21 great great grandchildren. Mrs. Chaney was the recipient of a birthday card shower and received numerous cards including one from the governor and another from President Reagan.

Bailey County Journal USPS 040-200
Established March 31, 1963. Published by Muleshoe Publishing Co., Inc. Every Sunday at 304 W. Second. Box 449, Muleshoe, Texas. 79347. SECOND CLASS POSTAGE paid in Muleshoe, Texas. 79347. U.S. Post Office approved.

Member NATIONAL NEWSPAPER ASSOCIATION WEST TEXAS PRESS ASSOCIATION

TEXAS PRESS ASSOCIATION

L.B. Hall—President & Publisher
Sammye Hall—Vice President & Controller
Cleria Williams—News
Danett Bunch—Advertising
Evelene Harris—Society
Lillie Nino—Bookkeeping

SUBSCRIPTIONS
Muleshoe Journal and Bailey County Journal
Muleshoe By Carrier \$12.50
Muleshoe Journal and Bailey County Journal
Bailey County & Surrounding Counties By Mail \$14.75
Muleshoe Journal and Bailey County Journal
Elsewhere in Texas \$16.50
Advertising rate card on application

BLAZERS

Poly-Wool
Navy, Blue, Tan, Gray
Sizes 34S to 50L

\$69.95

reg. \$105.

52L & 54L available.

BOB'S M R. shop

502 Main

LOOK

What We Have:



Fajitas

Also



T-Bone \$7.95 14 OZ.

Ribeye \$5.95 8 OZ.

Buy 3 - Get 1 FREE

Come In And Meet Iris Clements, Hostess

Coffee 25¢ everyday

Sage's Restaurant

1902 W. American Blvd.

Muleshoe, Texas

POFF DEMOCRAT FOR STATE SENATE

AS OFFICE SEEKERS THE OTHER CANDIDATES CAN ONLY MAKE PROMISES

AS A 2 TERM STATE REPRESENTATIVE AND 3 TERM DISTRICT JUDGE, BRYAN POFF HAS A PROVEN RECORD OF FULFILLING HIS PROMISES.

AS A STATE REPRESENTATIVE IN 1971-1974 BRYAN POFF WAS A LEADER IN THE FIGHT AGAINST INCREASED STATE SPENDING AND HIGHER TAXES

AS A STATE REPRESENTATIVE AND DISTRICT JUDGE BRYAN POFF EARNED A REPUTATION AS A STRONG SUPPORTER OF LAW AND ORDER AND AS AN ADVOCATE OF SWIFT SURE JUSTICE.

AS A SENATOR FOR THE 90s BRYAN POFF WILL:

- * Oppose increases in State Spending
- * Oppose an Income Tax and any other tax increases.
- * Support rural development funding to attract new industry.
- * Support new programs and tax incentives for the Agri-Industry and the oil and gas industry.
- Support the economic and physical well being of young children and older Texans.
- * Support local control of public schools with adequate State funds to maintain excellence in education.
- * Support building enough prisons to keep violent criminals behind bars.

IF YOU WANT AN EXPERIENCED AND EFFECTIVE SENATOR WITH A PAST RECORD OF ACCOMPLISHMENT AND NEW VISION AND BOLD PROGRAMS FOR THE FUTURE VOTE FOR BRYAN POFF FOR STATE SENATOR

Pd. Pol. Adv. by B. Poff,
1110 5th Ave., Canyon, Tx 79015

Rip's

IN TEXICO
Open 8:00 A.M.-6:30 P.M. C.S.T.

WESTERN WEAR
With A Flair

Spring Specials
Just For Ladies

40% off all Noah's Flood Coordinates

30% off all Hamilton Skirts

30% off all Panhandle Slim

10% off all Rocky Mountain Jeans & Dusters

Fashion Boots now only \$14.98

WE ACCEPT: Ph. 482-3363

In Profile

Cont. from Page 1

cident Reports-Accident Reports - Investigation Reports and Miscellaneous Reports.

Gentle reminders to her officers that she needs their reports such as "I'll break every bone in your body if you don't get your reports in to me -- NOW!!" See, it's easy, once you get a busy officer's attention. Of course, he's bogged down with paperwork, as well.

Any incident can mean hours of paperwork -- and not only for the secretary. The officer must take the time -- even out of his sleep, or family time -- and get his reports written.

And, as Cissy reminds, six officers may answer a call, depending on the nature of the incident. That means six reports or one from each officer, and each and everyone, although it may be essentially the same report, be typed up and filed properly.

She says each report requires a minimum of three sets of reference cards. A card for each suspect; a card for the crime, plus a card for the complainant. If there are six suspects, there has to be a set of cards for each suspect.

While the secretary is buried beneath her paper barrage, the city officers are busy accumulating more reports and more cases for her to handle.

Some of the reports are for local files, others are for the Department of Human Resources; others for Juvenile Officers and Juvenile Court.

Then there's the monthly Uniform Crime Reports (UCR) which must be compiled and sent in to state and federal officials.

There are monthly reports for the chief; monthly reports on citations, which go to the chief and city manager.

Now, if that's not enough, there's the time cards to keep up with, tabulate, keep up with vacation time, sick leave, and

time off for the other 13 employees of the Muleshoe Police Department.

There's the liability reports to be made; the reports on breathalyzer results for the state, for the officers and for the judges.

There's also helping with the budget, to get a proposed budget compiled, typed and ready for presentation; periodically be called upon to take statements from witnesses; take typed complaints; and, at times, the secretary is called in to type up search warrants -- such as on New Year's Eve, when Cissy was called from a holiday party at a friend's house to type up a search warrant.

And, if that's not enough, each Friday, the secretary -- in this case, Cissy Parker, is the dispatcher for the day at the police radio. And handling all calls for the local law enforcement officers -- operating the teletype -- all the emergency telephones -- the burglar alarms -- fielding radio calls from the city workers -- the fire department -- and the ambulance service, certainly doesn't leave much time for anything else.

Cissy says that in the four years since she first started working for the Muleshoe City Police Department, the paperwork has at least tripled. Where the officers formerly made few reports on 'casual' contacts while on duty, each and every contact is now documented -- and that means more and more paperwork.

Since judges need their paperwork by 9 a.m. on Monday, it is nothing unusual for Cissy to go to work for at least a couple of hours on Sunday afternoons, two to three Sundays a month, to be sure that paperwork is ready for Monday morning, when city officers are taking prisoners to be arraigned before the judges.

Although they realize that paperwork is vital and necessary

to modern law enforcement, it would be safe to say that over 90 percent of the patrol officers, or the investigative division of any law enforcement department harbors a grudging resentment to the time they are forced to spend behind a desk, just catching up on paperwork.

From small case to major case in the detective division, all the small notes, all the information vital to that case must be brought together by the officer involved, and correlated into a report to be typed and filed by the secretary.

Her records can only be as good as the reports submitted by the officers, and even with the time spent off the street and in the office, laboring over reports, the officers all know it is vitally important to have every detail possible documented for future court use.

Oh -- and back to the beginning -- just when is Cissy beginning to catch up on all the work she finds on Monday morning? She says that by 3 p.m. on WEDNESDAY she is beginning to just about catch up with her reports.

Paperwork may be boring -- and seemingly never-ending -- but for MPD Secretary Cissy Parker, it's just a way of life -- and one she wouldn't trade.

Skirts range from straight and form fitting to full-flared circles. Shoes feature higher heels although lower heels will continue to be favorites of many. Jewelry is less important to costumes this season than in past years.

Election...

Cont. from Page 1

breath. Democrats seeking the same position are Lloyd Bentsen and Joe Sullivan.

Democrat Gerald McCathern is challenging Republican Larry Combest for U.S. Representative, District 19.

Several candidates are seeking election, or the right to be on the ballot for the November general election for the position of Railroad Commissioner. Democrats seeking election include James E. (Jim) Nugent,

John Thomas Henderson and Jerry J. Langdon. On the Republican ballot are Ed Emmett, Ralph E. Hoelscher, Dale W. Steffers, and P.S. (Sam) Ervin. Seeking the unexpired term for the Republicans, is Kent Hance, who is opposed by Democrat Clint Hackney.

In other closely watched races on a state level, Democrats Nancy Garms, Mel Phillips and H. Bryan Poff are seeking the bid to be on the November ballot. Republicans seeking the position as State Senator are Ron Slover and Teel Bivins.

Unopposed Bailey County candidates include: Johnny W. Actkinson, District Attorney; Linda Elder, County Attorney; Kathleen Hays, County Tax Assessor-Collector; Joey R. Kindle, County Commissioner, Precinct Three; Rich Magby, Constable, Precinct One; Gerry Pierce, Constable, Precinct Three; Kay S. Graves, County Chairman; Jerrel L. Otwell, Precinct Chairman, Precinct One; R.T. Newlin, Precinct Chairman, Precinct Five and Jerry Damron, Precinct Chairman, Precinct Six.



15,000 MILES GOODWRENCH TRANSMISSION CHECKUP

Maintain maximum driving performance by regularly having your transmission checked. Let our GM-trained Service Technicians check and service your vehicle's transmission. We will:

- Drain the transmission fluid
- Replace transmission filter
- Adjust the throttle linkage
- Replace the pan gasket
- Clean the pan
- Replace/refill transmisson fluid
- Check the vacuum system
- Conduct a thorough road test.

**ALL FOR ONLY:
\$47.95**

*Additional parts extra if required
OFFER GOOD UNTIL March 31, 1988

Mr. Goodwrench  **GM QUALITY SERVICE PARTS**

"NO ONE KNOWS YOUR GM VEHICLE BETTER... NO ONE!"

Robert D. Green
2400 W. American Blvd.
272-4588

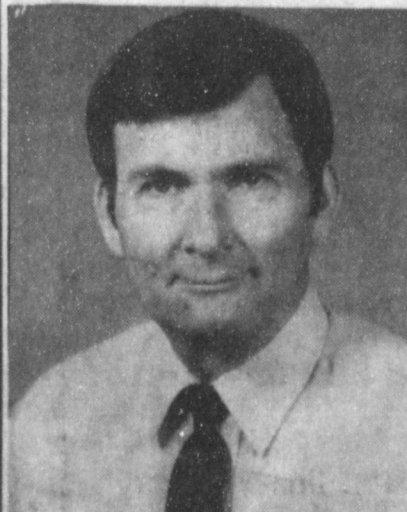


NOW, I BELIEVE IT IS FILED RIGHT IN HERE--Unknown to Cissy Parker, secretary for the Muleshoe City Police Department and Sgt. Julian Dominguez, a photographer from *The Journal* was lurking nearby when they were looking for an accident report Thursday afternoon at the MPD. (They found the report.)

For A Professional Approach To Law Enforcement

ELECT

Jerry Hicks Sheriff of Bailey County



- Over 9 years law enforcement experience
- Over 6 years with the Bailey County Sheriff's Department
- Have completed many schools involving Criminal Law and Investigations
- Advanced Law Enforcement Certification
- College degree in Business Management

Pd. Pol. Adv.

True Value HARDWARE STORES

Hardware Week Savings

 <p>5-year limited warranty</p> <p>49.99</p> <p>28-In. De-Thatcher has the power of 16 wire lines and stable 6-in. wheels. DT281-BH</p>	 <p>24.88</p> <p>5-Ft. Stepladder with slip-resistant 3-in. steps, pail shelf and Saf-Fit™ shoes. 356</p> <p>6-Ft. Stepladder. 356 26.88</p>	 <p>4.99 Gallon</p> <p>High-Hiding Flat Latex Wall Paint</p> <p>19-1 Acrylic. Yellow. 02R 02 19</p>		
<p>Savings on energy-efficient water heaters</p> <p>40-Gal. Energy-Saving Gas Water Heater features heat-saving Foamlock™ insulation, heat traps to prevent heat from escaping. Special vacation setting saves energy while you're away. Low BTU input pilot uses less gas. Flue baffle designed to maximize heat absorption.</p> <p>50-Gal. Fuel-Saver Electric Water Heater provides extra effectiveness with Foamlock™ insulation. Heat traps help reduce standby heat loss. Copper Duraseal™ disc inhibits corrosion. Durable heavy-gauge steel, Thermo-Glas lining. An assortment of models to choose from.</p>	 <p>1.69</p> <p>Hi-Q™ Spray Enamel for a glossy finish on interior/exterior surfaces. Assorted colors. U</p>	 <p>2.99</p> <p>3-Pc. Painter's Set prepares you for interior painting with a 9" roller frame, durable roller cover and a handy paint tray. 3241930</p>		
 <p>49.99</p> <p>28-In. De-Thatcher has the power of 16 wire lines and stable 6-in. wheels. DT281-BH</p>	 <p>49.99</p> <p>Trailer Spreader has a 50-lb. capacity and spreads up to a 12-ft. width. B5T-501</p>	 <p>99.99</p> <p>10-Cu. Ft. Metal Dump Cart with removable rear panels. HDC-101-BH</p>	 <p>2.99</p> <p>23-Oz. Carpet Protector repels stains before they soak in! Easy-to-use spray formula. FC203</p>	<p>Savings Coupon Coupon Expires March 09, 1988</p> <p>with coupon FREE without coupon 70¢</p> <p>1-Oz. Simple Green™ All-Purpose Cleaner removes grease and grime. Convenient trial size. 13010</p> <p>Limit: one coupon per customer</p>
 <p>12.44</p> <p>11-Pc. Bullet™ Pilot Point™ Drill Bit Set keeps the bit on course for fast, accurate drilling. Crafted of high-speed steel. 1430</p>	 <p>6.77 Your choice</p> <p>Entry Lockset with turn-button interior, keyed exterior, secure dead latch. 402-CP3</p> <p>1-In. Single-Cylinder Deadlock with revolving guard that resists prying. 402-CP3</p>	 <p>99.95</p> <p>¾-HP Chain-Drive Garage Door Opener offers solid-state electronics, automatic safety reverse, timed light delay and solid-state T-rail. With transmitter. 140TV</p>		
 <p>344</p> <p>Press-In-Place™ Tub & Sink Caulk for a water and mildew-resistant seal. 17 in. 2159</p>	 <p>34.88</p> <p>Pronto 48-In. Trac Lighting Kit includes aluminum track, metal lampholders and hardware for quick, easy installation. Versatile white enamel finish. UL listed. P1600</p>	 <p>8.88 Bulbs not incl.</p> <p>48-In. Fluorescent Workshop Fixture incl. 3-wire cord, plug, and hanging chain set. Ideal for garage, laundry room. F40</p>		

Fry & Cox, Inc.

401 S. 1st 272-4511

Muleshoe

Cont. from Page 1

Meals are ready about 11:30 a.m. at the West Plains Medical Center kitchen, and you are all through for the day about noon.

Five days a Week, Meals on Wheels provides hot noon meals for 25-30 local shut-ins.

You are encouraged to become a part of the Meals on Wheels, by being a volunteer driver.

Contact Robin Taylor at 272-3196, or Marjorie Merritt at 272-3998.

Pat O'Grady, Muleshoe High School student and son of Jim and Fran O'Grady, has been named to the United States Achievement Academy for 1987-88.

He was nominated for his honor by his science teacher, Mike Summers.

This award is a prestigious honor recognizing less than 10 percent of all American High School students.

Mia Jennings, daughter of Mr. and Mrs. Joe Bryan Jennings of Lazbuddie, has been selected finalist for Texas' Eighth Annual Homecoming Queen selection to be held April 9-10 at the Dalias/Fort Worth Airport Marriott in Irving.

She is the Lazbuddie High School Homecoming Queen.

Texas' Homecoming Queen will receive a cash scholarship plus an expense paid trip to compete with queens from the other states for America's Homecoming Queen July 20-26 in Honolulu, Hawaii.

Bailey County EMS is attempting to have an EMT class in Muleshoe.

It takes at least 15 students in order to set up a class, and once 15 members are registered, the teacher will be obtained.

For additional information reference attending an EMT class, call the Bailey County EMS at 272-4390, 8 a.m.-5 p.m., Monday through Friday.

South Plains Health Providers of Muleshoe will conduct a free Blood Pressure Screening Clinic on Thursday, March 11, 2-4 p.m. at Pay And Save Grocery.

Phillips Puts

'No Taxes' In Writing

Mel Phillips, Democratic candidate for the 31st District State seat vacated by Bill Sarpalus, announced Thursday that he is filing a public notice.

This declaration states that under no circumstances will he support an Income Tax.

"I, Mel Phillips, declare my intention never to support or vote for a state income tax, and further declare my complete opposition to any proposal for a state income tax under any other name, form or guise."

Phillips declared, "Many candidates have vague positions and I want the voters to know that I am a Texas Democrat opposed to more taxes."

Phillips is the first and only Democratic Party candidate to put his no vote for any income taxes in writing and file it at the courthouse.

The Lazbuddie Senior Class will be sponsoring a volleyball tournament Thursday-Saturday, April 7-9 in the Lazbuddie High School Gym.

The three divisions listed will be Men's, Women's and Mixed.

A mixed team may consist of any number of women, but not more than three men.

Entry fee per team is \$30 to be paid when entry form is returned. Make entries payable to Lazbuddie Senior Class. Deadline for entry is March 31.

For more information, call Belinda Steinbock at 965-2152 (daytime) or 965-2474 at night. Or, you may call Rick Copp at 965-2806 at night.

Proceeds will be used to help finance the seniors 1988 Senior Trip to Florida.

Higginbotham

Now Affiliated

With HWI, Inc.

Higginbotham-Bartlett Co. has become an affiliate member of Hardware Wholesalers, Inc., a member-owned buying organization, consisting of over 2,600 independent merchants.

HWI's home office is located in Fort Wayne, IN. HWI serves Retail Hardware and Building Material dealers and has an annual sales volume of over 900 million dollars.

Eddy Morris, manager of H-B Co., said his firm will now be an outlet for more than 36,000 items in the HWI Distribution Center. Morris said the Muleshoe H-B Co. will be able to offer the local market a complete selection of building materials, builders hardware, brand-name tools, plumbing, and electrical.

Other departments include lawn and garden supplies, housewares, appliances, and sporting goods, which will be carried in stock, or may be ordered from the HWI catalog.

Deliveries are made each Wednesday from the Distribution Center in Waco, TX. Special orders can be delivered during the week in which the order is placed, if the item is ordered before 12 noon on Saturday. There is no shipping charge for special orders delivered to the store.

John Laird has been assigned as the area supervisor for the local firm. His responsibilities include employee training, inventory control, management training, and product knowledge training.

In addition, training meetings are conducted periodically for specialized instruction of all phases of retailing.

HWI is known in the industry as "The Friendly One" and Eddy says he believes the Muleshoe area should have a "friendly" place to shop with good service and low prices.

Harnessed

He who horses around too much some day may find himself a groom. -Gosport, Pensacola.

Everything

Notice in a loan office window: "For the man who has everything and hasn't paid for it." -Enterprise, Lisbon, Me.

Cheesecake Dates Back To Ancient Times

Cheesecake is so well established as a favorite dessert that you might think it's an American invention. In fact, though, history tells us that cheese was popular in cake-making as far back as the first centuries, long before butter came into use and well before the Middle Ages.

Cheesecakes were made in ancient Greece and Rome. There were so many versions of cheesecake on the Greek island of Samos that it became known as "the Cheesecake Island." Today cheesecake recipes are plentiful and representative of almost every cuisine in the world. The Germans, Austrians and French each has their own variations, and many American favorites are based on these recipes. In Russia, cheesecakes became an Easter tradition of the Orthodox Church. By the time "The Art of Cookery Made Plain and Easy" (by Hannah Glasse) was published in England in 1747, its cheesecake repertoire boasted a variety of flavors including saffron and lemon.

Today, as in earlier times, the cheese used in making cheesecakes varies. It is an important factor in the resulting texture and flavor of the cake. Most frequently used cheeses today are cream, farmer's, pot and cottage cheese which yield cakes that vary from light to airy, to dry or creamy, to rich and dense.

For the busy cook who wants an elegant cheesecake for dessert but doesn't have time to bake, try Chocolate Marbled Cheesecake. The crust is a simple mixture of melted butter and chocolate cookie crumbs which complements both the flavor and texture of the filling.

The filling is made with cottage cheese which has been beaten until light and creamy. Whipped cream, teamed with gelatin and eggs, adds volume and a smooth, silky texture to the cottage cheese. Creating the marbled effect is simple. Just melt chocolate in cream to give it the proper consistency for swirling, then layer it with the cottage cheese base in the

prepared crust and swirl with a spoon.

CHOCOLATE MARBLED CHEESECAKE

Crust

2 cups chocolate cookie wafer crumbs, 1/2 cup confectioners sugar, 1/2 cup (1 stick) butter, melted.

Filling

2 envelopes unflavored gelatin, 1/2 cup cold water, 1/2 cup all-purpose flour, 3/4 cup granulated sugar, divided, 1 1/2 cups milk, 4 egg yolks, slightly beaten, 1 package (6 ounces) semi-sweet chocolate pieces, 1 cup whipping cream, 2 cups cottage cheese, 1 teaspoon vanilla extract, 1/2 teaspoon almond extract, 4 egg whites.

For crust, combine crumbs

and sugar; stir in butter. Press mixture firmly and evenly against the bottom and halfway up the sides of a 9-inch springform pan. Chill. For filling, sprinkle gelatin over water to soften. Combine flour and 1/4 cup sugar. Stir in milk. Cook over medium heat, stirring constantly, until mixture thickens. Add small amount of hot mixture to egg yolks; return all to saucepan. Cook 1 additional minute. Add softened gelatin; stir until dissolved. Cool to lukewarm. Melt chocolate pieces with 1/2 cup whipping cream over low heat, stirring constantly, until chocolate is melted. (Refrigerate remaining cream until used.) Remove from heat; cool to lukewarm. Beat in

vanilla and almond extracts and gelatin mixture. Beat egg whites until foamy; continue beating and gradually add remaining 1/2 cup sugar. Beat until stiff peaks form. Fold beaten egg whites into gelatin mixture. Whip remaining 1/2 cup cream in a chilled bowl with chilled beaters until stiff peaks form; fold into gelatin mixture. Spoon about one-third of filling into crust; drizzle thin stream of chocolate over filling; swirl with spoon in marble pattern. Repeat until filling and chocolate are used. Chill several hours or overnight. To serve, place cake on serving plate; carefully remove sides of pan.

Serving size: One-sixteenth of recipe.



TRIUMPH SEED CO., INC.

Food Grade Corn

1595 "SUPER CORN"

- Proven seedling vigor and cold tolerance.
- High food corn quality with excellent yields.
- Grows fast and stays healthy.

1650FG "WHITE COB YELLOW"

- Bred for high yield on food corn acres.
- Very lush green growth and stay green.
- Excellent food corn quality with very heavy test weight.

1990W "EARLIER SEASON WHITE"

- Food corn quality and kernel texture excellent.
- Outstanding productivity and very good stalk.
- Dries down about 5 days quicker than other whites.

Wiedebush & Company

1620 W. American Blvd.
272-4281


1/2 PRICE MATTRESS SALE



STARTS AT \$99
2 pc. set

Built by
PALO-DURO MATTRESS, INC

Discount Furniture
272-5023



GARMS

FOR

- ★ Fairly-financed education which retains local control
- ★ Affordable, accessible health care, especially for senior citizens
- ★ Solid policies allowing farmers/ranchers to manage their own business
- ★ Economic diversity through trade, processing and new industry

A CREDIBLE DEMOCRAT FOR STATE SENATE

Pol. Ad paid for by supporters of Nancy Garms for State Senate. Bailey County Committee: Harvey Bass, Chairman, Nelda Merrriott, Secretary, Glen Williams, Elizabeth Watson, Billie Downing, Bud Street, Thursie Reid, Evelyn Peat, Joy Williams, Vivian White, Sandy Robinson & Kathryn Taylor

Attention Muleshoe

Get HBO In Your Home

For 2 Days FREE!!

Saturday and Sunday, March 5 & 6

Tune in on Channel 23 to watch such shows as: Project X, Lethal Weapon, The Color Purple, and much more

This weekend of entertainment, compliments of:

Muleshoe Antenna and HBO

MAC TICKET NO. 0079489
\$100.00

Lower Estate Taxes Area Workshop Focus

Farmers and ranchers have been concerned for years about high taxes that erode their estates. To help take the bite out of their high estate taxes, the Texas Agricultural Extension Service is planning several educational programs.

A two-day seminar is planned for Amarillo, March 28-29, 1988, which will help farmers and ranchers learn how to reduce taxable estates and learn new methods for passing their operations to the next generation without tax and administrative burdens.

"Of major importance is how every farm estate will be affected after the recent estate tax law changes," points out Dr. Wayne Hayenga, a lawyer and Extension Economist. "The best tax planning of the past may be the worst under the new

TFU Boosts Tax Repeal For Diesel

A new requirement in the Omnibus Budget Reconciliation Act requires agriculture producers to pay the diesel fuel tax (of 15.1 cents per gal.) up front at the time of purchase, effective April 1, 1988, but the farmer or rancher may then apply for a tax credit and get the money back.

Under current law a farmer or rancher is exempt from paying taxes on the purchase of wholesale diesel used strictly for on-farm and off-highway purposes.

The delegates at the 84th annual State Convention of Texas Farmers Union in Fort Worth, January 28-30, 1988, passed a special order of business requesting Congress to repeal the change and reinstate the previous provisions exempting on-farm and off-highway use of diesel fuel from tax collection.

Given the amount of diesel fuel that many farmers use in the planting, care and harvesting of crops each year, then to add the time-consuming burden of applying for a refund at a later date, creates a major cash flow problem for the American farmer. In many cases of family-sized farm operations which are on the brink of cash flow difficulties this increased tax burden could well be the "last straw" which forces them out of business.

The TFU convention delegates felt that if the full impact of this change had been known, it would not have been enacted. Rep. Jim Jantz, D-IN, has introduced House Resolution 3850 to maintain the standard exemption for diesel used on-farm.

law." The seminar will begin with a discussion on estate taxes, including deductions, expenses and tax rates.

Basic estate planning devices will be explained in depth. Among these are wills, by-pass trusts, gifts, disclaimers and property titles.

Relating estate plans to income tax savings can be of even greater benefit than just thinking about an estate plan. In fact, sometimes income tax savings can even be greater than estate tax savings for people with commercial farm and ranch businesses.

Farm Bureau Asks Repeal Of Tax Act

Texas Farm Bureau has asked the Texas delegation in Congress to work for the repeal of a provision in the 1986 Tax Reform Act which "adversely affects livestock producers."

In a letter to all Texas members of the U.S. House of Representatives, TFB President S.M. True pointed out that prior to the 1986 tax changes, producers could expense the cost of raising the animal in the year the expense was incurred.

"This new requirement has caused a nightmare because of the definition of pre-productive period and the allocation of costs of raising livestock," True told congressmen.

Pat Smith, TFB national affairs director, in an action-requested letter to county Farm Bureaus, said the capitalization requirements under the tax changes affects livestock producers who raise breeding, draft, and sporting animals with a pre-productive period of two years or longer.

TFB policy calls for annual expensing of pre-productive expenditures. The state's largest general farm organization supports H.R. 3907 by Reps. Byron Dorgan of North Dakota and Hal Daub of Nebraska that would repeal the capitalization rules and permit the old method of expensing costs.

The problem with the new regulations, True pointed out, is that if the pre-productive period of an animal, such as a heifer, is deemed to be from the time of its own breeding until it is placed in the herd, the pre-productive period is over two years and the costs must be capitalized.

On the other hand, True noted, if the period begins at the animal's birth and runs until it is placed into the herd, the period is less than two years and the expenses can be deducted in the year they are incurred.

"H.R. 3907 will provide important relief in regard to this problem. We urge your support on this issue," True informed the lawmakers.

when you have an active and growing business, when you still have time to take tax-saving actions, when you have minor children, and when your children marry or divorce."

For more detailed information about the seminar, contact your local County Extension Agent or Wayne A. Hayenga, Agricultural Economics Department, Texas A&M University, College Station, TX 77843, phone: (409) 845-2226.

Another discussion will center on estate planning tools for agriculture and will deal with corporations, partnerships and selling part of the business to heirs.

The second day of the program will be devoted to special estate tax rules for agriculture. These include special farm land valuation, deferred estate tax payment rules, life insurance, "flower" bonds and other property.

"Estate planning is a step toward reduced taxes," points out Hayenga. "This process should start when you plan to inherit substantial property,

Going to school or college in the spring may be tough, but not as tough as paying for someone to go.

Why does a man work so hard that he kills himself trying to earn the leisure time that he doesn't live to enjoy?



A message from this newspaper and the Texas Department of Public Safety

ferti-lome
WEED and FEED SPECIAL
Before you see the weeds
ferti-lome
Baker Farm Supply
1532 W. American Blvd.
272-4613

DEMOCRATIC PARTY PRIMARY ELECTION (ELECCION PRIMARIA DEL PARTIDO DEMOCRATICO) (CONDADO DE) BAILEY COUNTY, TEXAS MARCH 8, 1988 (8 de marzo de 1988) SAMPLE OFFICIAL BALLOT (BOLETA DE OFICIAL)

INSTRUCTION NOTE: (NOTA DE INSTRUCCION:)

Vote for the candidate of your choice in each race by placing an "X" in the square beside the candidate's name. (Vote por el candidato de su preferencia en cada carrera marcando con una "X" el cuadro al lado del nombre del candidato.)

"I am a Democrat and understand that I am ineligible to vote or participate in another political party's primary election or convention during this voting year." ("Yo soy Demócrata y comprendo que no estoy elegible para votar o participar en la elección primaria o la convención de algún otro partido político durante este año electoral.")

- Preference for Presidential Nominee**
(Preferencia para un candidato nombrado para presidente)
You may vote for one presidential candidate whose name appears on the ballot by placing an "X" in the square beside the candidate's name. (Usted puede votar por un candidato para presidente cuyo nombre aparece en la boleta por marcar con una "X" el cuadro al lado del nombre del candidato.)
- W. A. WILLIAMS
 - PAUL SIMON
 - DAVID E. DUKE
 - AL GORE
 - BRUCE BABBITT
 - MICHAEL S. DUKAKIS
 - NORBERT G. DENNERLL JR.
 - JESSE L. JACKSON
 - GARY HART
 - LYNDON H. LaROUCHE, JR.
 - DICK GEPHARDT
- United States Senator**
(Senador de los Estados Unidos)
- LLOYD BENTSEN
 - JOE SULLIVAN
- U. S. Representative, District 19**
(Representante de los Estados Unidos, Distrito Num. 19)
- GERALD McCATHERN
- Railroad Commissioner**
(Comisionado de Ferrocarriles)
- JAMES E. (JIM) NUGENT
 - JOHN THOMAS HENDERSON
 - JERRY J. LANGDON
- Railroad Commissioner, Unexpired Term**
(Comisionado de Ferrocarriles, Termina no Completado)
- CLINT HACKNEY
- Chief Justice, Supreme Court, Unexpired Term**
(Juez Presidente, Corte Suprema, Termina no Completado)
- TED Z. ROBERTSON
 - JOHN E. HUMPHREYS
- Justice, Supreme Court, Place 1**
(Juez, Corte Suprema, Lugar Num. 1)
- MARSHA ANTHONY
 - LLOYD DOGGETT
- Justice, Supreme Court, Place 2**
(Juez, Corte Suprema, Lugar Num. 2)
- BILL KILGARLIN
 - CAROL R. HABERMAN
- Justice, Supreme Court, Place 3**
(Juez, Corte Suprema, Lugar Num. 3)
- RAUL A. GONZALEZ
 - ART VEGA
- Justice, Supreme Court, Place 4, Unexpired Term**
(Juez, Corte Suprema, Lugar Num. 4, Termina no Completado)
- JACK HIGHTOWER
- Presiding Judge, Court of Criminal Appeals**
(Juez Presidente, Corte de Apelaciones Criminales)
- RON CHAPMAN
 - MIKE McCORMICK
- Judge, Court of Criminal Appeals, Place 1**
(Juez, Corte de Apelaciones Criminales, Lugar Num. 1)
- CHARLES F. (CHUCK) CAMPBELL
- Judge, Court of Criminal Appeals, Place 2**
(Juez, Corte de Apelaciones Criminales, Lugar Num. 2)
- CHUCK MILLER
- Member, State Board of Education, District 15**
(Miembro de la Junta Estatal de Instrucción Pública, Distrito Num. 15)
- PAUL C. DUNN
- State Senator, District 31**
(Senador Estatal, Distrito Num. 31)
- NANCY GARMS
 - MEL PHILLIPS
 - H. BRYAN POFF
- State Representative, District 85**
(Representante Estatal, Distrito Num. 85)
- JAMES E. "PETE" LANEY
- Justice, 7th Court of Appeals District, Place 1**
(Juez, Corte de Apelaciones, Distrito Num. 7th, Lugar Num. 1)
- RICHARD N. COUNTISS
- Justice, 7th Court of Appeals District, Place 2**
(Juez, Corte de Apelaciones, Distrito Num. 7th, Lugar Num. 2)
- JOHN T. BOYD
- District Attorney, 287th Judicial District**
(Procurador del Distrito, Distrito Judicial Num. 287th)
- JOHNNY W. ACTKINSON
- County Attorney**
(Procurador del Condado)
- LINDA ELDER
- Sheriff**
(Sherife)
- RAY RUTHARDT
 - JERRY HICKS
- County Tax Assessor-Collector**
(Asesor-Collector de Impuestos del Condado)
- KATHLEEN HAYES
- County Commissioner, Precinct 1**
(Comisionado del Condado, Precinto Num. 1)
- JAMES W. MEASON
 - H. E. NEWSOM
 - R. L. SCOTT
- County Commissioner, Precinct 3:**
Joey R. Kindle
- Constable, Precinct 1:**
Rich Magby
- Constable, Precinct 3:**
Gerry Pierce
- County Chairman:**
Kay S. Graves
- Precinct Chairman, Precinct 1:**
Jerrell R. Otwell
- Precinct Chairman, Precinct 2:**
- Precinct Chairman, Precinct 3:**
- Precinct Chairman, Precinct 4:**
- Precinct Chairman, Precinct 5:**
R.T. Newton
- Precinct Chairman, Precinct 6:**
Jerry Damron
- Precinct Chairman, Precinct 7:**

FOR (POR)
 AGAINST (CONTRA)

"Texans shall maintain their right to select judges by a direct vote of the people rather than change to an appointment process created by the legislature."
(Los Texanos deberan de conservar su derecho de seleccionar jueces por el voto directo de la gente en lugar de cambiar a un proceso que la legislatura establezca en el cual los jueces se seleccionan por nombramiento.)

This Ballot Is Presented In The Public Interest By:



202 S. 1st

Member FDIC

272-4515

NIX'S QUICK

Chili Mixins

New!

He will keep in perfect peace all those who trust in Him whose thoughts turn often to the Lord.
Isaiah 26:3

Recipe from Matt Nix, Jr. of Sudan, Texas
Marketed By: Marilyn Cox of Muleshoe, Texas & Debbie Norwood of Austin, Texas

Now Available at
Serv-All Thriftway, Pay-N-Save,
James Roy's Meat Market

"THE BEST CHILI YOU'VE EVER MADE!"

QUICK AND COMPLETE!
JUST ADD MEAT!

Nursing Home News

By Joy Stancell

Thelma Stearns has returned to the Nursing Home after being hospitalized in Lubbock. We are so pleased she is back and looking well.

Dora Chaney has received many birthday greetings and we feel will continue to get more. Her 99th birthday will be March 4th.

Jennifer James helped put up the St. Pat's Day decorations around the Nursing Home Tues. We really appreciate her doing this for us.

We wish to thank the A.A.R.P. for their donation to our activity fund.

Ruby Lee Kerr, Goldie Baker and Ruth from Indiana visited Ernest Kerr Tues. afternoon.

Effie Smith is taking real good care of our new baby fish, hatched last week in our aquarium. We are enjoying watching them grow. Effie was visited by her niece Billy Jean Whalin last week.

Ora Roberts was visited by her daughter, Ruby Clark, and son, J.D. Duncan.

Lois Ethridge was visited by Mr. and Mrs. Wayland Ethridge and Peggy Buhrman.

Friday Effie Smith, Ora Roberts and Julia Hawkins attended the monthly A.A.R.P. meeting at the Civic Center. We really appreciate the warm and friendly hospitality that they show to us.

Fri. afternoon David McAdams, pastor of The Richland

Hills Baptist Church, and one of his members, came to share a Devotional with the residents.

We were thrilled to have the Little Mission Friends from the 1st Baptist Church to come visit and bring us fresh fruit last week.

Laverne James was one, that helped the residents play Bingo Sat. The local Supermarkets furnished bananas for refreshments for all the residents each Sat. at the Bingo party.

Fri. morning Lena Ruthardt came to show the residents films from the library.

Members of the Progress Baptist Church came Sunday afternoon to sing and play gospel music for the residents.

Among those visiting Mr. Buford are Mr. and Mrs. Joe Smallwood, his wife Willie and Ruby Garner.

Residents having a birthday in the month of March are: Eric Smith 3-20-1918, Clara Weaver 3-24-1919, Dora Chaney 3-4-1889.

Employees birthdays: Ruth Riley, March 24th. Happy Birthday to each one and happiness always.

Among those visiting the Nursing Home recently are Helen Free, Ollie Sebring, Lena Hawkins, Ruby Green and J.E. Embry.

Julia Hawkins' son and daughter-in-law Mr. and Mrs. Delbert Hawkins, from Dallas are here visiting.

Emma Schuster spent the day Monday, visiting in the home of her daughter, Johanna Wrinkle.

Joe Lee Truelock visited in the home of her daughter, Shug Killough, Mon.

Ruby McCamish visited in her daughter, Barbara Billbry's home Sunday.

We are enjoying the nice warm days that enables us to get out more.

Kiwanis Views Helicopter Video

By: R.A. Bradley
Sixteen members, one guest and sweetheart Sue Haire met Friday morning at the Old Corral. President Max Crittenden called the meeting to order, pledge to the flag was led by J.O. Parker and the invocation was given by Howard Watson.

R.A. Bradley said he couldn't find a friend because he had lost the friendship coin. So, Brad has one more week to find the friendship coin and also find a friend.

We welcome a new member J'Don Kube to our club. We are very proud to have such dignitaries as Sweetheart Sue Haire as Student of the Week at Muleshoe High School.

Also, we are proud of Kiwanian J.O. Parker who was Fireman of the Month for February. We are very proud of both of these fine people.

Howard Watson was in charge of the program. Howard showed a video about the helicopter. A brief description of how the helicopter began and how it has advanced to the new Tiltrotor planes.

The film was "The Third Wave of Technology," and showed how the twin tiltrotor could be a helicopter and within 15 seconds could be a fixed wing, propdriven airplane, then back to a helicopter. Could more than double the speed and distance on the same fuel as a helicopter.

This was a very interesting and informative film and was enjoyed by all present.

City Police Report

It was a moderately busy week for the Muleshoe City Police Department, with four arrests for Failure to Appear in answer to citations leading the list of arrests.

Two reports received concerned Criminal Mischief. In one incident, someone shot out

the window of a residence with a B-B gun and the other involved unknown persons entering a vacant house and smashing light fixtures through-out the home.

The theft of a wallet containing \$200 was reported, as well as the theft of \$70 in aluminum cans stolen from a storage shed.

Reports were also received on a forged check; a child who received a dog bite; a hit and run accident.

Two vehicle accidents were

investigated, neither involved injuries.

Other arrests were for a Capias; no driver's license and no insurance; DPS warrants from Amarillo; revocation of probation; public intoxication; worthless checks and driving while license suspended.

Life shouldn't be all work. Everyone is entitled to some recreation and amusement, whether everyone gets it or not.

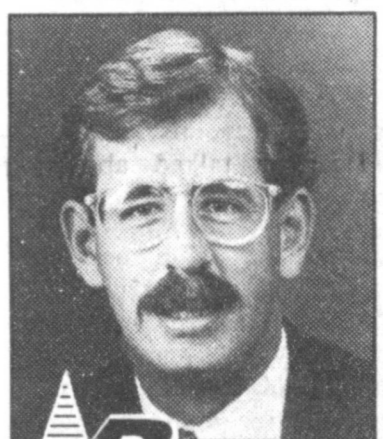


There are more state government employees than there are people in . . .

Amarillo, Plainview, Borger, Pampa, Dalhart, Canadian, White Deer, Perryton, Levelland, Canyon, Miami, Muleshoe, Stratford, Fritch, Booker, Darrouzett, Spearman, Panhandle, Sunray, Cactus, Littlefield, Dumas, Stinnett, Channing, Texline, Friona, Wheeler, McLean, Clarendon, Gruver, Claude, Wellington, Umbarger, Tulia, Hartley, and Hereford.

Teel Bivins says that's wrong.

Texas has more state government employees per capita than almost all other large states. It's wasting tens of millions of our dollars a year! As our State Senator, Teel Bivins will sponsor a law to force cuts in the state bureaucracy, like Gramm-Rudman forces cuts in the federal deficit. It's a common sense answer to the problem of a state government that's too big and too expensive. That's the Panhandle way. That's the conservative way.



BIVINS
TEXAS SENATE

A Panhandle Conservative for the Texas Senate
POLITICAL AD PAID FOR BY BIVINS FOR SENATE COMMITTEE, JOHN CHANDLER, TREASURER, 3405 S. WESTERN, AMARILLO, TX 79109

MAC TICKET NO.
0196000
\$100.00
Anthony's
321 Main 272-3478

BIBLE VERSE
"Humble yourselves in the sight of the Lord, and he shall lift you up."
1. Who was the author of the above statement?
2. To whom was he writing?
3. What relation was he to Jesus Christ?
Answers to Bible Verse
1. James.
2. The early Christians.
3. He is believed to have been the half brother of Jesus.

OUR "IN LIKE A LION" SALE
Good Through March 12th '88
Turtle Wax Paste Wax
For Just: **399** Reg. '4.39
SUPER HARD SHELL PASTE WAX KIT. The only kit you need to wax your car. Comes complete with applicator. 14 oz paste.

Garden Hose
5/8" x 80'
Only: **\$14.99** Reg. '17.95
• 3 ply 100% vinyl reinforced construction.
• 1/2" I.D. will withstand 300 lbs. pressure.
• Solid brass couplings.

Trop-Artic
Motor Oil 10W40
79¢
THE PREMIUM QUALITY MOTOR OIL IN THE CLASSIC GOLD BOTTLE.

Precision Structural Broadcast Spreader
Just: **\$22.99**
Featuring a Non-Corrosive, Structural Foam, 50¢ Cap. Hopper
8" x 1.50 Rubber Tired semi-pneumatic wheels
4' x 8' Spreading width
Totally enclosed Gear Box with Nylon Gears
1/4" Plated Steel Tubular Hand and Leg Stand

ENFORCER FLEA KILLER FOR PETS
SHAMPOO only: **\$3.99**
POWDER
• Pyrethrin Formula
• Kills Fleas & Ticks
• Pleasant deodorizing fragrance
• Non-irritating formula
Just: **\$3.79**
No. Ps-16 No. PP-10

NEILSON The Rain Train Does The Work For You
No. 1860
1980 RAIN TRAIN™ 200 traveling sprinker with die-cast metal body features 2 forward speeds and a neutral for stationary use. The 1860 propels itself across the lawn, following the pattern laid out by the hose. Patented 2-piece front wheel design and rear wheel chaise give the Rain Train™ maximum tracking ability and traction on hills and corners.
• Maximum coverage 16,000 sq. ft.
• Adjustable arms give coverage width from 15 to 55 ft.
• Direct-gear transmission gives continuous motion in high and low speeds. Neutral for use as stationary sprinker.
• Die-cast body.
• Extra powerful — pulls hose easily up grades, around corners.

Automatic Transmission Fluid
Dexron II or Type F
Your Choice: **99¢** reg. 1.09
No. 1841 No. 1876

The "Poppy" Whirling Sprinkler
Only: **\$8.99**
NEILSON N-54 RAINSWIRL™ 45 Poppy™ — square pattern sprinker. Covers area 5 ft. x 5 ft. to 45 ft. x 45 ft. The first and most popular whirling square sprinker ever built. Easy-to-move one-wheel base, rustproof construction.
Pull it Anywhere.

REBATE TIME
Sale Price **\$49.99**
Mfg. Rebate **- \$5.00**
Your Final Cost **\$44.99**
Reg. **\$61.99**

NEILSON Oscillating Sprinkler
At: **\$6.99**
1015 RAINSHOWER™ 40 non-puddling sprinker (Turbo-Heat™)
• Exclusive Turbo-Heat™ heart-shaped cam eliminates puddling for uniform coverage in all watering positions.
• Powerful turbine drive mechanism outlasts standard oscillators.
• 50 position Dial-A-Rain™ coverage control.
• 15 precision-punched water openings.
• Rugged ABS housing. Maximum coverage: 2000 sq. ft. (40 x 66 ft.)

SUPER LAWN FOOD
For: **\$6.49**
Turf Magic Lawn and Garden Products Are Specially Formulated for Soil Conditions in Our Southwestern Area.
16-4-4 Plus Iron and Sulfur
SIZE: 40 LB. BAG
CRABGRASS CONTROL
For: **\$8.99**
Plus 15% Nitrogen
SIZE: 40 LB. BAG

Five Point Hi-Protein Dog Meal
Made For The Working Dog.
27% Protein
Now: **\$8.99**
50# Bag

2600 Mabry Dr. Clovis, N.M. 1-505-762-7717
1601 S. Ave. D, Portales, N.M. 1-505-356-8543
1302 W. American Blvd., Muleshoe, Texas 1-806-272-5571
All Stores Open Monday-Saturday 7:30 A.M. - 6:00 P.M.
Sundays 12:30 - 5:00 P.M.
All Are Welcomed
A&M Farm & Ranch Supply



President H.E. Reeder called the business meeting to order, Bill Kinard read the minutes of the February meeting they were approved as read.

The Firemans Ball will be held April 16, 1988 at Earl Ladd Fire Station 9:00 P.M. to 1:00 A.M. Tickets are available from any of the firemen at the price of \$5.00 per couple or at the door at the same price. We would like to invite you to come and enjoy the Country & Western Music and Dance. The Ladies Auxilliary of the Fire Department will be serving breakfast after the dance at the price of \$2.50 per person, plan to stay and eat with us.

Training Officer, J.O. Parker received a letter from the Department Of Public Safety, this letter was about the hazards of some of the new cars that are equipped with the shock absorber type bumpers. At the scene of a car fire, the intense heat generated can cause the shock absorbers on the bumpers to explode causing the bumpers to become detached from the car and have been known to be hurled as far as sixty feet.

Severe injury or death can be caused should one of these bumpers strike a person. Therefore if an approach is to be made to a burning vehicle, it should be made from the side and an effort should be made to keep onlookers and others at a safe distance.

This letter was written by Roger P. Mayard, Trooper III, Texas Highway Patrol, Sulphur Springs Texas, and made available to all District Supervisors.

Lubbock Area Fire Training School will be held April 4,5,6,7, at the Lubbock Fire Training Field. We will have a number of firemen involved as students as well as instructors. Donald Harrison talked about the rescue school that is in the planning stage to be held in Sudan June 4 & 5, 1988. Wavne Wauson reminded

everyone about the EMT class that Bailey County Ambulance Service was planning for the near future.

Thanks, Larry Rasco
MFD Reporter

Gary Toombs is the fireman for the month of March 1988. Gary, Gayla and family live at 213 Elm Street here in Muleshoe, and is employed by Ladd & Sons Inc. Gary became a member of the Muleshoe Fire Department in Marcy 1976. He has been to Lubbock & Canyon Area Fire Training Schools several times during the Twelve Years of fire fighting service.

In these schools Gary has taken Rescue Operations, Fire Stream Practices, Ladder Practices, and other training that is required to become a Certified Fireman. The schools that were held in Muleshoe in which he was involved with are, Texas Fire Incident Reporting System, Arson Detection, Fire Stream Practices, Fire Department Officer Training, Staff and Command Course.

The members of Muleshoe Fire Department would like to say "Thanks" to Gary & Gayla for being part of its family.

Larry Rasco
MFD Reporter

J.O. Parker is the fireman for the month of February 1988. J.O., Leavell and Benny live at 909 E. Fir Av. here in Muleshoe, and is employed by Bailey County Electric Co. J.O. became a member of Muleshoe Fire Department in May 1967 and a Certified Fireman in 1976. He has spent most of that time in the training area for himself and other members of the department, and is presently the Certification Coordinator, Training Officer for Muleshoe Fire Department. J.O. has held many offices with the department during the twenty years of service to the City of Muleshoe and Bailey County. Some of the offices are Lieutenant, Captain, Executive Board Member, Certification Coordinator, Training Officer. Instructing other people in the proper use and safety of tools and other fire fighting equipment takes a truly dedicated person and J.O. is that person. The list below will show the dedication of this man.

Canyon Fire School, student and instructor; Lubbock Fire

School, student and instructor; Radiological Monitoring School; A&M University Fire School; Student and Instructor; Hereford Fire School; Jaws Of Life School; Air Craft Familiarization School; Texas Forest Service; Floydada Agro, Rescue, Student and Instructor; and Emergency Care Attendant.

This is the kind of dedication that it takes to have a good training program. From the members of Muleshoe Fire Department THANKS to J.O. and Leavell for being part of Muleshoe Fire Department Family.

Muleshoe Fire Department was very busy in 1987 with a total of 92 calls, these calls range from grass fires to auto fires. With this amount of calls there is very little time for anything else, time was found for training and maintenance on the equipment. The list below gives a run down of the calls.

Dwelling Fires, 3; Mobile Home Fires, 0; Auto Fires, 7; Rescue, 0; Vehicle Accidents, 5; Fuel Fires, 2; Grass Fires, 32; Trash Fires, 6; Smoke Scares, 4; Railroad Right Away Fires, 1; and Dumpster Fires, 2.

Also Fuel Washdown, 2; False Alarm, 7; Storm Watch, 3; Hay Fires, 4; Cotton Burrs, 6; Animal Waste Washdown, 1; Elevator Fires, 1; Commercial Buildings, 2; Mock Wrecks, 1; and Cotton Trailer Fires, 2.

Forty-nine of the calls were in the county, 33 were in the

city limits, and ten were out of the county.

With all the dryness of the grass land and pastures, grass fires took the prize for 1987. Muleshoes Fire Department would like to say thanks for the support of the citizens of Muleshoe and Bailey County.

I recently visited my brother's auto salvage yard in Lubbock, as I shuffled around between the twisted and rusted vehicles I discovered something that had never registered in my mind before, I'm sure this newly-registered knowledge has been part of the auto graveyards since the car was invented, and yet for the first time it became apparent to me that many of these wrecked vehicles were trying to tell a story: a story of unnecessary injuries and death to the people who drove them.

How? By their windshields, I suddenly realized those round spider webs of shattered glass were scrambling out messages. They were pouring out mute testimony to unsecured occupants being slammed forward at high speeds, smashing head first into a wall of glass. For every force there is a counter force, so as damage is inflicted upon the glass, so it is inflicted upon the person.

Unfortunately, in many crashes lacerating contact with the windshield is only the first step. As the car begins to disintegrate or roll, everything which is not tied down flies in

the direction of travel and keeps on pinballing until the vehicle comes to rest. If a person is ejected it will usually be in the same direction the vehicle is traveling precious inches ahead of a ton of oncoming metal. Its during these short, violent, irreversible moments that the human damage is painfully inflicted.

Isn't it interesting that most windshields, when rammed by a head, shatter in a circle. That's nearly the same shape as a seatbelt. Are those windshields trying to tell us something?

BUCKLE YOUR SEAT BELTS

AND LIVE LONGER
MULESHOE FIRE
DEPARTMENT

THANKS
Larry Rasco



The Journal has been authorized to announce the following candidates for public office:

Parmer County

Tax Assessor

Doris Herington

SHERIFF

Larry Cox



The Bell X-1 was the first plane to officially exceed the speed of sound. It was flown on October 14, 1947 by Major Charles E. Yeager. The plane was nicknamed "Glamorous Glennis."

Time To Use



Kills weeds & feeds your lawn

ferti-lome®

Baker Farm Supply

1532 W. American Blvd.

272-4613

Get The Most For Your Fertilizer Dollar

- ★ Complete, Computerized Formulations Including Micronutrients, Tailored To Your Soil Test On Your Farm
- ★ Only Fluids Can Be Custom-Blended And Assure Complete Uniformity Throughout The Mix (Think About It-- You Can't Apply Fertilizer Evenly On The Ground With An Uneven Mix In The Hopper)
- ★ Only Fluids Give You This Much Flexibility In Application Methods:

- Our Custom Broadcast Application. (No Dry Applicator Can Match It) Even Enough To Add Herbicides If You Wish.
- Our Custom Surface Banding Concentrates Your Fertilizer To Minimize Nutrient Tie Up In The Soil.
- We Can Help You Gear Up To Apply Fluids Yourself-- While You're Doing Another Tillage Operation.
- Only Fluids Are Acceptable For Fertilization Through Your Center Pivot.

Let's Visit About Fluid Fertilizers
The Modern Alternative For Your Farm

MAC TICKET
NO. 0160787

\$25.00

Western "66" Co.

Earth Hwy.

Muleshoe

272-4556

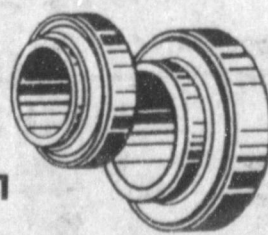
Happy
50th
Birthday,
We Love You



John Deere Disk Parts... The Real Thing at Real Savings

Well-known John Deere quality . . . made in America. Cross-rolled disk blades resist breakage. Carefully controlled heat-treating assures uniform hardness where it counts.

ANTI-FRICTION DISK BEARINGS

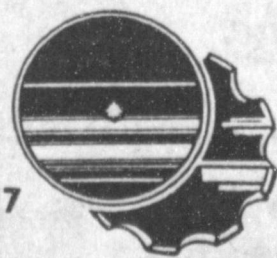


29⁴¹

PART NO. AB12603

4-lip seal keeps dirt out for dependability and long life.

DISK BLADES



16⁷⁷

PART NO. B31316 20 in.

Made from cross-rolled high-carbon steel for long wear, resistance to breakage. Custom heat-treating for uniform hardness.

John Deere disk parts... quality and price.

Dent & Co.

West Hwy. 84 Muleshoe 272-4296

Muleshoe Menu

MARCH 7-11-88

BREAKFAST MONDAY
Milk, Cooked Cereal, Toast, Fruit

TUESDAY
Milk, Whole Wheat Muffins, Juice

WEDNESDAY
Milk, Biscuits, Jelly, Sausage, Fruit

THURSDAY
Milk, Honey Buns, Juice

Amanda Wells Funeral Services Held Saturday

Funeral services for Amanda Wells, 92, of Lubbock were held at 11 a.m. Saturday, March 5 in the First United Methodist Church of Morton with the Rev. Al Jennings, pastor, officiating. Burial was in Morton Memorial Cemetery under the direction of Ellis Funeral Home of Morton. Mrs. Wells died at 12:10 a.m. Thursday in Sherwood Nursing Home in Lubbock.

Born Dec. 20, 1895, in Kentucky, she had been a resident of Lubbock eight years moving there from Cochran County. She was a homemaker and a member of the Morton Methodist Church. She married G.D. Wells on Oct. 14, 1911, in Denton. He died in 1972.

Survivors include a son Ural Wells of Morton; three daughters, Marie Cox of Portales, N.M., and Helen Caffey and Hazel Newberry, both of Lubbock; and a number of grandchildren and great grandchildren.

She was preceded in death by a son, Troy, in Nov. 1979.

Arthur Bass Local Man's Brother Dies

Services for Arthur Bass, 71, of Lubbock were held at 2 p.m. Saturday in the Lubbock Primitive Baptist Church with Elder Bernard Gowens from the Primitive Baptist Church of Friona, officiating, assisted by Elder George Johnson of the Lubbock Primitive Baptist Church.

Burial was in Peaceful Gardens Cemetery in Lubbock under the direction of Franklin-Bartley Funeral Home.

Bass died at 10:25 a.m. Wednesday in Lubbock General Hospital following a lengthy illness.

He was born in Owens and had been a longtime Lubbock resident. He married Maxine Powell on April 9, 1943. She died on June 20, 1987. He was a veteran of World War II serving in the U.S. Army. He was a custodian for Lubbock schools and a member of the Primitive Baptist Church.

Survivors include a son, Jerry Lynn of Lubbock; three brothers, Jesse of Elgin, Henry of Lubbock and Harvey of Muleshoe; and four sisters, Minnie Gowens of Lubbock, Donie Weldon of Crosbyton, Lomie Hopper of Arlington and Tisha Watson of Muleshoe.

The family suggests memorials be made to the Primitive Baptist Church.

FRIDAY
Milk, Cooked Cereal, Toast, Fruit

LUNCH MONDAY
Milk, Burritos, Corn, Cheese Stick, Rolled Wheat Muffins, Fruit

TUESDAY
Milk, Juicy Burgers, Lettuce & Tomato, Pickles & Onions, Tater Tots, Cobbler

WEDNESDAY
Milk, Enchallada Casserole, Beans, Cole Slaw, Corn Bread, Pudding

THURSDAY
Milk, Corn Dogs, Veg. Beef Soup, Crackers, Cinnamon Rolls, Fruit

FRIDAY
Milk, Fish, Macaroni & Cheese, Eng. Peas, Hot Rolls, Fruit

COMBO MONDAY
Milk, Pigs-In-Blanket, Corn, Cheese Stick, Roll Wheat Muffin, Fruit

TUESDAY
Milk, Hamburgers, Lettuce &

Tomato, Pickles & Onions, Tater Tots, Cobbler

WEDNESDAY
Milk, Chili & Beans, Cole Slaw, Cheese Stick, Crackers, Fruit

THURSDAY
Milk, Corn Dogs, Veg. Beef Soup, Crackers, Cinnamon Rolls, Fruit

FRIDAY
Milk, Fried Chicken, Gravy, Eng. Peas, Creamed Potatoes, Hot Rolls, Fruit

Patients At West Plains Medical Center

FEBRUARY 29
Imelda Salinas.

MARCH 1
Melanie Stanberry, Imelda Salinas, and Baby Boy Salinas.

MARCH 2
Lisa Johnson, Melanie Stanberry, Dianne Allison, Imelda Salinas and Baby Boy Salinas.

Three-Way Menu

MARCH 7-11

BREAKFAST MONDAY
Cereal, Juice, Milk.

TUESDAY
Cinnamon Toast, Juice, Milk.

WEDNESDAY
Toast & Jelly, Juice, Milk.

THURSDAY
Biscuit, Bacon, Gravy, Jelly, Juice, Milk.

FRIDAY
Pancakes & Syrup, Juice, Milk.

LUNCH MONDAY
Steak Bytes, High Tech Green Beans, Software Potatoes, Graphic Rolls, Basic Milk, Natural Honey & Sweet Butter.

TUESDAY
No Way Jose Enchiladas, Galaxy Salad, Booster Rocket Corn,

Planet Milk, Body Pleasing Fruit.

WEDNESDAY
Texas Prime Beef Helper, Carrot & Celery Logs, Vegetable Dippers, Quick Energy Rolls, Milk, Time Travel Cake.

THURSDAY
Rope Pasta And Texas Beef Sauce, Ranch Style Salad,

Bright Eyed Vegetable, Fence Post, Milk, Quivering Fruit Cup.

FRIDAY
Visionary Fish Fillet, Star System Salad, Orbit Potatoes, Space Explorer Rolls, Milky Way Milk, Fortune Brownies.

Caring For Muleshoe Area Families Since 1959

Ellis Funeral Directors

272-4524

Pre-Need Funeral Plans

Monuments Granite-Marble-Bronze

- Immaculate Conception Catholic Church**
Father Patrick Maher
Northeast of City
- First Baptist Church**
220 West Ave. E.
Barry Bradley, Pastor
- Emmanuel Baptist Church**
Iglesia Bautista Emmanuel
107 East Third
Isaias Cardenas, Pastor
- Trinity Baptist Church**
314 E. Ave. B.
Rev. V.L. "Buster" Huggins
- Circle Back Baptist Church**
Joel E. Stafford
Intersection FM 3397 & FM 298
946-3676
- Calvary Baptist Church**
1733 W. Ave. C.
Rev. Darrel Martin
- Muleshoe Baptist Church**
8th and Ave. G.
Bob Dodd, Pastor
- Progress Baptist Church**
Paul Brigham, Pastor
Progress, Texas
- Richland Hills Baptist Church**
17th and West Ave. D.
David McAdams, Pastor
- St. Matthews Baptist Church**
Corner of West Boston & West Birch
M.S. Brown, Pastor
- Progress Second Baptist Church**
1st and 3rd Sunday
Clifford Slay, Pastor
- The Community Church**
Morton Hwy.
Jim Cope, Pastor, 272-5992

FIRST STEP

Baby's first step is always an exciting occasion. Fathers often argue about whose child walked earliest because the first step is a landmark of growth. There are other first steps that must be made in life, sooner or later, if one is truly to grow to maturity. The spiritual step is one of them. Sometimes the first step spiritually is made very late in life - when this happens to a person he is always sad about the years that have been wasted without knowing God, but thanks be to Him, it is never too late to be accepted by Him. If your first step is still to come, make it now - Go to Church this very week.

EVERYONE IN THE CHURCH
THE CHURCH IN EVERYONE

Is something wrong with your life - an inner restless dissatisfaction? The only answer to every human problem comes from God our Maker. He alone can forgive and reassure. Through the church God has committed His forgiveness and redeeming love. Without a church relation no one is securely related to God. Everyone should be in the Church and the Church in everyone!

- Longview Baptist Church**
965-3413
B.C. Stonechipper, Pastor
- Primera Iglesia Bautista**
223 E. Ave. E.
Roy Martinez, Pastor
- Lariat Church Of Christ**
Sunday School 10:00 a.m.
Worship 11:00 & 6:00 p.m.
Wednesday Services 7:00 p.m.
Sam Billingsley, Minister
- Muleshoe Church Of Christ**
Clovis Hwy.
Bret McCasland, Minister
- 16th & Ave. D. Church Of Christ**
Sunday 10:30 a.m.
Evening 6:00 p.m.
Wednesday 8:00 p.m.
- First Assembly Of God**
Rev. David C. McCune
9:45 Sunday School
11:00 Morning Worship
6:30 Evening Services
7:30 Mid Week Services
272-3984
- Primitive Baptist Church**
621 South First
Elder Cleveland Bass, Pastor
- Spanish Assembly Of God**
East 6th and Ave. F.
Luis Campos, Pastor
- First United Methodist Church**
507 W. 2nd Street
Richard Edwards, Pastor
- El Divino Salvador Methodist Church**
5th and Ave. D
Jose M. Fernandez, Pastor
- 1st Baptist Church**
Lazbuddie, Tx. 965-2126
Gary Wilcox, Pastor
- Lazbuddie Church Of Christ**
United Pentacostal Lighthouse Church
207 East Ave. G.
Rev. J.A. Torres

Western Drug 114 Main 272-3106	Baker Farm Supply 202 W. Amer. Blvd. 272-4918	American Valley, Inc. 1532 W. Amer. Blvd. 272-4613	Dairy Queen 1204 W. Amer. Blvd. 272-3412
Little Gulf 202 W. Amer. Blvd. 272-4918	Farmers Spraying Service Lazbuddie 965-2624	Bob Stovall Printing 221 E. Ave. B. 272-3373	Robert D. Green, Inc. 2400 W. Amer. Blvd. 272-4588
Main Street Beauty Salon 115 Main 272-3448	1st Bank 202 South First 272-4515	James Roy Meat Market 506 W. Amer. Blvd. 272-4361	Lookin Good 206 Main 272-5052
Irrigation Pumps & Power West Hwy. 84 272-4483	Farmers Co-Op Elevators 113 N 1st 272-4490	Bratcher Motor Supply 107 E. Ave. D. 272-4288	Five Area Telephone Cooperative, Inc. 302 Uvalde 272-5533
		Foster Fertilizer Lazbuddie 965-2921	Richland Hills Texaco 1914 W. Amer. Blvd. 272-4875



Ted Turner for POLIOPLUS:

Rotary International has pledged \$120 million to buy enough vaccine to prevent polio from ever striking any child in the world again. But we can help, too. When the Rotarians of your city ask for support of an effort they call PolioPlus, I hope you'll give to it generously. Thank you!

To help simply contact:
Clifton Finley
Box 584
Muleshoe, Texas 79347

