

# Santa Anna News

Phone 348-3545

"He Profits Most Who Serves Best"

Single Copy - 20¢

Volume XCVI

Santa Anna, Coleman County Texas Thursday April 22, 1982

Number 16

## May 1 is Deadline For 1982 Tax Exemptions

Property owners in Coleman County have until May 1, 1982 to claim homestead exemptions, Over-65 exemptions and Agricultural -Open Space exemptions for their 1982 taxes. These exemptions must be claimed by signing applications available at the Coleman County Tax Appraisal District office in Coleman.

Signing these forms could mean a considerable savings on

taxes for 1982, and property owners who have not completed the required forms are urged to do so.

Also May 1 is the deadline for rendering personal property exemptions and business personal property.

Those wishing more information or questions are asked to call the office in at 625-4155 or go by the office at 105 Commercial in Coleman.

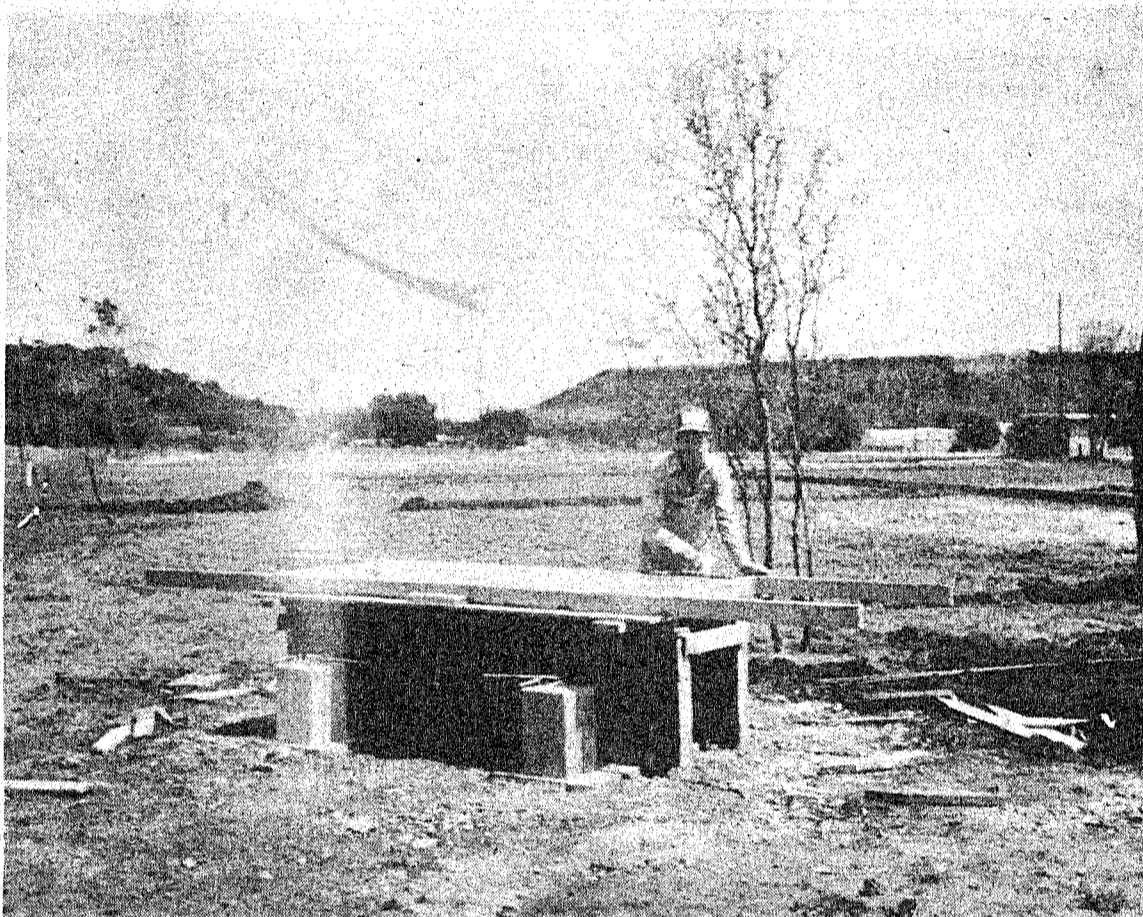
## S-Anna FFA Judging Team To State Contests

Santa Anna Future Farmers of America will be represented at the State FFA Judging Contests at Texas A&M University this week. The Poultry Judging Team from the local chapter will travel to College Station Friday to take part in the Saturday event.

Randy Casey, Jeannie Radicke and Mike Hartman compose the team that qualified for the state contest recently. The team is coached by Scott Patterson, vocational agriculture teacher, and Ricky Gamblin, student teacher from Tarleton State University.

Parents of the three are Mr. and Mrs. Bo Wilson, Mr. and Mrs. Bill Tucker and Mr. and Mrs. Eddie Hartman.

The team placed second in district competition and won fourth in the Area IV contests in Stephenville earlier this month.



CONCRETE PICNIC TABLES are being completed at the new city park, with Joe Deal, concrete contractor, donating part of the labor cost and Wilburn Bible donating the materials.

Mr. Deal is shown here finishing the three-by-eight-foot table top, with benches to be attached. The new park is a joint effort by the Lions Club and City of Santa Anna.

## City Sales Tax Increases Again

The City of Santa Anna received a check for \$1,188.96 from State Comptroller Bob Bullock last week as the city's share in the sales tax. The figure for the period ending

April 9 brings to \$9,084.09 the total for 1982. This is an increase of 65 percent over the same period last year when \$5,503.05 had been collected.

## Robbie Clifton Qualifies For State UIL Event

Robbie Clifton, a junior at Santa Anna High School, will be Santa Anna's only entry in the Interscholastic League literary contests in Austin Saturday, May 1. She advanced to the state contest after winning first in district spelling and plain writing, then qualified in the regional contest in Abilene last week.

Qualifying for the state event wasn't easy for Robbie, as she tied for third in the event, and after two additional spell-offs, was still tied with the other contestant. Judges of the event termed the results a real tie, and both will advance to the state meet.

Robbie, the daughter of Mr. and Mrs. Don Clifton, is making her second trip to the state UIL



ROBBIE CLIFTON  
To State UIL Contest

meet, having won fourth place in the state event last year.

## Workday Slated At Ball Park

Parents of children in the summer ball program and others interested are requested to be at the ball park at 2 p.m. Sunday, April 25, for a workday.

Roberta Tomlinson, secretary of the sponsoring organization, said that the ball parks must be cleaned and cleared of weeds and rocks before the games start. Representatives of the area Little League program visited the fields recently and said they will not qualify for competition if not cleaned and prepared for the coming season.

Anyone willing to work is asked to be on hand with wheelbarrows, hoes, rakes and other equipment.

Practice has started for the local teams, and games are scheduled beginning in early May.

## Dog Leash Law Enforced

City of Santa Anna has started enforcing the new leash law that prohibits dogs from running loose in town, and local residents are reminded again of the penalties that can be assessed for failure to comply with the law.

Dogs that are not confined and picked up by the local authorities will be impounded and destroyed within three to six days if not claimed. Pet owners must pay a fee for recovering their dogs, and proof of vaccination and city dog license is required. A fine of up to \$200 can also be imposed on pet owners who disregard the

law.

Registered letters will be sent to owners of dogs on whom there are complaints, with measures then taken to impound the dogs or assess a fine.

Residents who have complaints about stray dogs are urged to call City Hall.

## New Hours Set At City Library

Santa Anna Public Library has changed the hours, with the facility open from 9 to 12 a.m. and 1 to 5 p.m. each weekday.

The library contains hundreds of books, including paperbacks that can be exchanged, and a special books-by-mail system that provides any book available from area libraries upon request. Also available are many large-print books and films.

There is no charge for the services at the library except return postage on books on order and films.

Everyone is urged to use the library and take advantage of the services offered here.

## Senior-Faculty

### Games Set Tonight

The annual Senior - Faculty basketball games will be held at Perry Gymnasium Thursday night (tonight) at 6:30 p.m. The annual fund-raising event is good entertainment, as members of the senior class play members of the school faculty and their spouses.

# Mountain Echoes

By Barbara Kingsbery



A regular contributor to the DeLeon weekly paper is J. A. - otherwise known as "the Sabanna Creek Philosopher."

The column, notes the Editor, comes from the Johnson grass farm on Route 2, and last week took a look at life in space.

The column, written upon the recent return of the space shuttle, reads thus:

Dear Editor:

After watching the space shuttle blast off and watching it come down after eight days aloft and after reading about the astronauts experiences while aboard, I got to thinking about space.

Some people say man's future is in space. They envision colonies out there where people live and work in giant enlosures, free from the pull of gravity and unbothered by gnats, flies, mosquitoes and possibly even politicians.

You reckon this is merely daydreaming I mean, life in space may turn out to be about like life here on heath, judging by the experiences the astronauts had on this space shuttle.

## Foreign Students To Visit In Santa Anna Next Week

Foreign Exchange Students have long been a part of many communities, and Santa Anna people have an opportunity to become acquainted with two foreign students and the program that arranges their visits.

Judy Baskey of Arlington, consultant with American Field Service will be in Santa Anna Tuesday, April 27, and Wednesday, April 28, bringing two students who will visit at school and meet with interested people. A meeting Tuesday evening at 7 p.m. at the high school will acquaint local people of the program that provides homes for foreign students through AFS and also gives local high school

For example, the plumbing stopped up, their radio went out, two of their television cameras malfunctioned, duplicating what is known here on earth as network difficulty, they came down with motion sickness with no doctor available, sloppy carpentry or something caused tiles to peel off the outside of their space house, a home incidentally which, like a home here on earth, cost about twice what it would have a few years ago. Also, they were a day late getting back because of bad weather.

And furthermore, the whole trip was financed with borrowed money, at the highest interest rate in history.

It doesn't seem to me this life on space is going to be any different from life on earth.

Yours faithfully, J. A.

students an opportunity to spend some time in a foreign country.

Included in the information for local people is the financial arrangements for host families and students as well as opportunities for serving as good will ambassadors in the community.

Coming with Ms. Baskey will be Stewart Ranson of New Zealand and Hannah Eliassen of Norway. Accompanying the group here will be Mrs. David (Margaret McCaughan) Karthausser of Arlington, formerly of Santa Anna, who with her family has hosted foreign students through the AFS.

The public is invited to attend the meeting, especially those interested in taking part in the program.

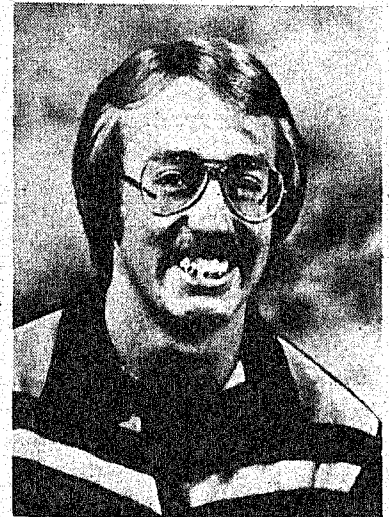
## Former Santa Anna Student Heads State Technical Group

David Chaffin of Las Vegas, New Mexico, formerly of Santa Anna, will be in Nashville, Tenn. for a week taking part in the national competition of Office Education Association.

David, a second-year student at Luna Vocational Technical School in Las Vegas, is president of the New Mexico group of OEA and was first place winner in the business math contest and scored highest in the cost accounting competition at state level this year.

He was a state winner in the business math and accounting practice I competition last year, placing 15th in math and 10th in accounting in national competition at Corpus Christi

David, son of Rev. and Mrs. Richard Chaffin, is a 1977 graduate of Santa Anna High School where he was



DAVID CHAFFIN

salutatorian of his class. He will complete work in accounting and computer programming at the New Mexico school in a year.

### ATTENDS STATE MEETING

Pearl Wilson was in Bryan last week to attend a state-wide meeting of the Women's Missionary group of General Bpist Association, representing the Progressive West Texas Association. The local area includes membership from San Angelo and Ballinger.

## Daniell Group To Meet Monday

The Nitia Daniell Group of United Methodist Women will meet Monday, April 26, at the church annex at 7 p.m.

Mrs. Thelma Upchurch will be program leader, assisted by Mrs. Lillian Herndon.

Program topic will be "Who Are Members of the Family?". Hostesses for the social hour will be Mrs. Glenn Pope and Mrs. Gus Morgan.

All women of the group are invited to attend the meeting.

**"Steaks and Chops"**  
Coffee - 25¢ - All You can Drink  
- Free With Meals

5:00 a.m. - 8:00 p.m.

Where Old Friends Meet  
★ ★ (Young Ones, Too) ★ ★

Complete Salad Bar  
Through Summer

Seating Capacity of 1,000  
(32 at a time)

# W.B.'s

The Best Little Cafe in Texas



(Windy B's)  
Coffee Shop  
& Cafe

### COW POKES

By Ace Reid



"Maw I can't help it that yore wardrobe is sufferin' since they started puttin' feed in paper sacks!"

## Santa Anna National Bank

Deposits Insured by FDIC Up to \$100,000

PASS BOOK SAVINGS

MONEY MARKET 6 MONTH CERTIFICATES OF DEPOSIT

Substantial Interest Penalty is required for early withdrawal

### JHS Girls Track Team Wins District Title

The Santa Anna Junior High girls track team won their fourth consecutive district championship last week at Comanche, scoring 144 points in the competition. Barry Miles is coach of the local team.

In the field events, Dilcy Kirven won first in both long jump and triple jump. Leslie Martin was fourth, and Melissa Buse fifth in triple jump, and Melissa won sixth in high jump. Laura Gray was sixth in discus.

The running events had a number of local winners, with Laura Gray, Melissa Buse, Jackie Weathers and Dilcy

Kirven winning first in both 400 and 800 meter relays. The 1600 meter relay team of Bertha Garza, Leslie Martin, Laura Gray and Melissa Buse won second.

Michelle Malone won first in the 2400 meter run, with Irma Castillo placing third.

Lynne Dockery won first in the 1600 meter run, with Michelle Malone second and Irma Castillo fourth.

Leslie Martin and Lynne Dockery were second and third respectively in the 800 meter run; Bertha Garza was sixth in 400 meter dash.

Dilcy Kirven was first in the 200 meter dash; Jackie Weathers won third in the 100 meter dash. Leslie Wilson was fourth in the 100 meter hurdles.

The JHS team advances no farther than district in the UIL events.



**BUFFALO HIGH SCHOOL BASKETBALL TEAM** of 1935 is pictured here in a photo belonging to Adolph Kelley of Santa Anna. Members of the team, standing from left, are Coach M. A. Smith, Elmer McCary, Edward (Eddie) Smith and Adolph (Doc) Kelley; and

kneeling, Calvin McCary, Clayton Sawyers, Edwin Stinson and Theodore Halford. Former students of the Buffalo School will be meeting for the annual reunion June 26 and 27 at the Santa Anna Civic Center.

### V. H. Russell Earns

### Masonic Degree

Verna H. Russell was initiated into the 32nd Degree Scottish Rite of Masonic Lodge in a ceremony in San Angelo last week. This is the highest earned degree in the Masonic Lodge.

Also attending the Friday and Saturday sessions in San Angelo was R. W. Balke, who last December was initiated into 32nd Degree Scottish Rite in Waco.

The two men are members of Mountain Lodge No. 661.

### Santa Anna News

(USPS 481540)

P. O. Box 399 348-3545

Santa Anna, Texas 76878

Published every Thursday at Santa Anna, Texas 76878 and entered as second class mail under the Act of Congress March 2, 1879.

Subscription price: Coleman County - \$8.95 per year; other areas in Texas - \$9.95 per year; outside Texas - \$10.95 per year.

BARBARA KINGSBERY

Editor

RONNI RUSSELL

Advertising Manager

Member of

TEXAS PRESS ASSOCIATION

Dr. E. H. Henning, Jr.

**OPTOMETRIST**



117 Commercial

Coleman

Ph. 625-2228

OFFICE HOURS

9:00 a.m. to 5:00 p.m.

### SAHS Girls Track Team To Regional Meet Today

Patricia Jackson, a senior at SAHS, won two first place awards at the district track meet in Comanche last week, winning both the triple jump and long jump events. Another first place medal was given Pam Jacobsen, who won the 3200-meter run.

JoAnn Collins placed second in the discus event, and the

880-meter relay team also qualified for the regional meet by winning second place. Those on the relay team are Patricia Jackson, JoAnn Collins, Brenda Jackson and Robbie Clifton.

The Santa Anna girls will be in Abilene Thursday (today) and Friday for the Region II contests, with top winners to advance to the state meet.

### No Regional Qualifiers From SAHS Boys Track Team

The Santa Anna High School boys track team had no qualifiers at the district meet in Brownwood Tuesday. The regional competition will be in Abilene the first week in May.

The Mountaineer track team was in Goldthwaite last week for a warm-up meet for district events.

The Mountaineers scored a total of 10 points from among the 21 Class AA and A teams participating.

Placing in the top three of the events was Brad Wardlow who won second in high jump with a 5'10" jump. The Junior High team also scored 10 points in their division at the meet.

### Boys Golf Team In District Meet

The SAHS boys golf team took part in the district tournament at Coleman Country Club on April 13, winning second in the meet.

Although the group qualified for the regional competition, they do not plan to compete.

Members of the team are Mike Wetsel, Damon Harper, David Strickland, Bodie Stark and James Pelton. Scott Patterson is coach.

### Girls Doubles Teams In Regional Tennis Finals

The SAHS girls tennis doubles teams, Julie Jones and Karen Wetsel, Holly Smith and Robin Hartman, both won their preliminary matches in the Regional Tennis Meet in Abilene Tuesday and were to play in the finals Wednesday. The girls were champions and runners-up in the district meet two weeks ago and

are seeking a place in the State Tennis Meet in Austin.

Janis Weathers, an entry in the singles division, won her first match but was defeated in the second round of play Tuesday.

Julie Jones, a senior, competed in the state meet last year with Lori Smith.

**FOLK ART PAINTING**  
 Saturday Workshop May 1st  
 9:00 a.m. - 3:00 p.m.  
 Teacher Fee and all Supplies  
 \$20.00 Come by and see the display -



Call for Information  
**HOBBY TOWN**  
 103 N. Center 646-8722

**UNIROYAL**

Home of  
 the Tiger Paw

**Williams  
 Tire Store**


2003 Commercial  
 Coleman, Texas  
 Phone 625-5152

**It's easy as pie to have your cake  
 and eat it too. Invest in a savings  
 account with us**

All Types of Savings Accounts

**First Coleman  
 National Bank**

Member F.D.I.C.

"Always Willing - Always Prepared"  "Your Good Neighbor Bank"

We Sponsor The News Each Day  
 At 12:38 Over KSTA



SAHS TENNIS ENTRY in the April 26 - 27 District competition will include Mike Hartman in the singles division. Mike is the son of Mr. and Mrs. Eddie Hartman and a junior at SAHS this year. Qualifiers at the tournament will advance to the Regional competition in Abilene. (Photo by David Moxley)

## Coleman County Regulation Changes Beauty Pageant Proposed by Texas Agency Is Cancelled

The 1982 Miss Coleman County beauty pageant has been cancelled, it was announced this week. Only eight contestants had been enlisted for the event that was scheduled Saturday night in Coleman.

A minimum of 15 participants were required for the pageant to be staged, with entries sought from Coleman County junior and senior high school students.

### Youth Group Has Recent Rally

A youth rally was held last week at New Hope Baptist Church in an effort to enlist young people in the church.

Other activities are planned, and interested persons are urged to contact Pearl Wilson with ideas on reviving the church that has been inactive in recent years.

### A&M has largest increase in scholars

COLLEGE STATION — Texas A&M has the largest net increase in number of National Merit Scholars in the country this year, and its number of new National Merit Scholars is exceeded only by Harvard and Radcliffe combined, reveals an assessment of listings in the annual report of the National Merit Scholarship Corp.

Overall, Texas A&M moved up to 12th among the nation's 3,000 colleges and universities in enrollment of National Merit Scholars, generally considered the brightest young men and women coming out of the nation's high schools.

"We are pleased with our ranking and hope to attract even more of these students to Texas A&M, where our faculty and facilities offer exceptional opportunities," said Dr. Frank E. Vandiver, Texas A&M president.

"Every quality institution in the country is vying for outstanding students, and we are grateful to our alumni and other supporters for assisting us in offering highly competitive scholarships to attract these students," Vandiver added. "They do not come here — or go anywhere else — just because of the value of the scholarship; they come because they can get a quality education, but scholarship considerations are usually a definite consideration."

A number of amendments to the state's hunting regulations have been proposed by the Texas Parks and Wildlife Department, some subject to approval by local county commissioners courts.

Public hearings were held in 241 counties under the Parks and Wildlife Department's regulatory authority during March to review the proposed changes and receive public comment.

Hunters are advised to check regulations in the county to be hunted by obtaining the department's 1982-83 Guide to Hunting Regulations brochure, which will be available in early fall from hunting license outlets and department offices prior to the opening of the hunting seasons.

The following is a brief summation of recommendations that would affect the central Texas area:

-Antlerless deer permits no longer would be attached to a foreleg of the animal. The regulation requires only that the permit be attached to the carcass.

-In counties offering the either-

sex deer hunting season, the department would issue special antlerless deer tags to landowners on an unlimited basis. The antlerless deer tags differ from antlerless deer permits now required in most counties, as the tags could be issued on an unlimited basis to landowners while permits are issued on a compartment and acreage basis.

-The bag limit for squirrels in 32 Central Texas counties would be eliminated, since existing hunting pressure is low.

-As in the past, the commission will delay setting quail bag limits until late summer production surveys are completed.

**SOLVE THE PUZZLE**  
Go by Bangs Drug Mart  
or  
Check Next Weeks Paper  
For Answer  
And New Puzzle

Answer to last week's  
puzzle: Lucky days are  
here again

### County Extension Agent Takes Position in Del Rio

Coleman County Extension Agent Roger Blackmon has accepted the position as Extension Agent at Del Rio and

will assume his duties there June 1.

Blackmon came to Coleman February 1, 1969 from Dickens County, and during the 13 years here has had a very successful program and received many awards for his services.

County Judge Pete Skelton said last week that a replacement for the post should be named by early summer.

#### HOME FROM TRIP

Mr. and Mrs. Vernon Herring are back at home after spending several days at Lake Amistead with a group of relatives and friends. They went with a son, Jerry Herring, of Dallas, and were joined by Mr. and Mrs. Dany Bryan of Abilene. Others there for boating, fishing and sightseeing included Mr. and Mrs. Vernon Rice of Malakoff.

### New Subscribers

- A. G. Weaver, Dallas
- C. W. Hemphill, Valera
- Mrs. B. H. Joplin, Lovington, N.M.
- Christine Brown, San Jose, Cal.
- Charles Hosch
- Lone Star Gas, Coleman
- Dickie Horner
- Linda Slusher, Brownwood
- Bryan Shield, Albuquerque, N. M.
- Mrs. B. E. Phillips, Fort Worth
- Ruby Gibbons, Garland
- Thomas Carter, Abilene
- Ione Caton
- Ozell Powers, Midland
- Pearl Wilson

### The Trading Post

- Rubber Raincoats
- Pith Helmets For Gardeners
- Enamel Coffee Pots & Cups
- Igloo Coolers 3 Sizes 3, 5 & 10 Gal.
- Evaporative Cooler Supplies & Motors

114 E. Pecan 625-4950 Coleman

**Mufflers**

• Custom Deals •

See Jimmy At

**D & R Automotive**

Low Prices

280 E. Pecan  
Coleman, Tex.  
Call 625-5140

**Henderson Funeral Homes**  
"People Caring For People"

OFFERING AT YOUR REQUEST

Pre-Arranged Funerals

Funeral Insurance And Counseling

Ambulance Service

Coleman 625-2121 Santa Anna 348-3131

Announcing....

**Mike's Produce**

611 N. Neches ★ Phone 625-4622

3rd. bldg. North of Railroad Tracts  
COLEMAN

Open for Business

Garden & Bedding Plants

Produce ● Shrubs ● Milk and Bread

---

●●● Specials ●●●

Fresh Gr. Onions 4/1<sup>00</sup>

Med. Yellow Onions 4/1<sup>00</sup>

Lettuce 2/1<sup>00</sup> or .59 each

Large Tomatoes .69



## Elaine Newman Taxes Are Used Only For Social Security

Elaine Newman, bride-elect of Chester McDaniel Jr., was honored Saturday, April 17, with a gift tea at Mountain City Center.

In the receiving line with the honoree were her mother, Mrs. Tom Newman, and the mother of the prospective bridegroom, Mrs. Chester McDaniel Sr. of Pear Valley.

Registering guests was Susan Fritz of Fredericksburg, sister of the honoree.

The tea table was covered with a floor-length ecru cloth with heirloom lace overlay. An arrangement of silk flowers in shades of blue centered the table, and pastel blue napkins completed the motif in the honoree's chosen colors.

Cake squares, nuts and mints were served with fruit punch from crystal appointments.

Hostesses for the party were Mmes. Glen Copeland, Tommy Blanton, Quinton Daniel, Ronnie Daniel, David Huggins, Tom Kingsbery, Bobby Lee, Charles Greenlee, Rob Cheaney, Gary Hubbard, Donnie Neff, Elgean Harris, Cecil Richardson and Ken Bowker.

Miss Newman and Mr. McDaniel will be married at Coleman First Baptist Church Saturday, June 12.



Noah Webster spent 20 years working on his famous American Dictionary of the English Language.

## Taxes Are Used Only For Social Security

From time to time people in the Brownwood area have asked whether Social Security taxes have ever been used for purposes other than payment of Social Security costs. The answer is no, not directly, Priscilla Tercero, Social Security branch manager in Brownwood, said recently.

Social Security taxes automatically go into the Social Security trust funds. Money from these funds can be used only to pay benefits and administrative costs of the programs.

Any excess funds, however, are invested in U. S. Government obligations which earn interest. The Government can use this money, which it has borrowed, to pay for other programs and activities. This borrowed money has always been repaid with interest.

In recent years, reserves have had to be liquidated and the Government has had to return the money it has borrowed to pay benefits and other Social Security program costs. This is because incoming Social

Security taxes have not been enough to pay all the costs.

The U. S. Treasury Department has never been able to spend Social Security taxes for any other specific or general function of the Federal Government.

The investment of the assets of the Social Security trust funds in U. S. Government securities, just like any purchase of government securities by a private individual, creates an obligation on the part of the U. S. Government.

The trust funds are owed this money plus interest, just as an individual who buys Treasury notes is owed the principal and interest on the investment after a specified period of time.

A representative of the Brownwood office visits Santa Anna once a month on the second Thursday from 1 - 2 p.m. The representative can be found at the Mountain City Center, and no appointment is necessary.

**JUNE WEDDING PLANNED**— Mr. and Mrs. Harvey W. Jones of Valera and Mr. and Mrs. Gerald W. Peterson of Greenville, Tenn. announce the engagement and approaching marriage of their daughter, Sheila Diane Peterson, to Brent Jay Hamlin, son of Mr. and Mrs. Joel Hamlin of Santa Anna. The bride-to-be is a 1981 graduate of Talpa-Centennial High School and is employed at Ranger Park Inn. Her fiance is a senior at Santa Anna High School and employed at Santa Anna Machine Shop. The couple will be married June 12 at Santa Anna First Baptist Church at 2 p.m. All friends and relatives of the couple are invited to attend.



The common cold is communicable two days before to two days after symptoms appear.

re-elect ★★★★★★★★★★

**REAGAN V. BROWN**

Democrat for Texas  
Agriculture Commissioner

Vote for experience and good government—vote for Reagan Brown.

Pol. Adv. Pd. by Reagan V. Brown Election Campaign Committee.  
Reagan Brown, Treasurer, P.O. Box 26856, Austin, TX 78755

**SPECIALISTS IN RANCHES & FARMS**  
also COMMERCIAL

• INVESTMENT PROPERTIES  
• RECREATIONAL

**UNITED FARM REAL ESTATE**

WE HAVE LISTINGS THROUGHOUT CENTRAL TEX.

ADVERTISING LOCALLY & NATIONALLY  
"WE PROVIDE A LARGER MARKET"

DIAL **643-4541**

**CLIFF WADDELL**  
Representative  
511 EARLY BLVD. BROWNWOOD

**Anthony's**  
C. R. ANTHONY CO.  
Coleman

**Super Value Sidewalk Sale**

**Friday and Saturday**

### CONDENSED STATEMENT OF CONDITION OF The Santa Anna National Bank

Santa Anna, Texas  
At Close of Business March 31, 1982

RESOURCES	LIABILITIES
Loans & Discounts ..... \$ 4,470,090.84	Capital Stock ..... \$ 50,000.00
Overdrafts ..... 7,142.17	Surplus ..... 200,000.00
Stock Fed. Res. Bank ..... 7,500.00	Provision for Loan Losses ..... 58,646.34
Banking House F&F ..... 19,519.91	Res. for Contingencies & Deferred Tax BRD ..... 25,420.51
<b>QUICK ASSETS:</b>	Outstanding Expense ..... 600.00
Bonds & Warrants ..... 6,544,805.41	Undivided Profits ..... 775,875.55 (209,609.89 Unearned Int.)
Cash & Due from Banks ..... 1,291,654.95	Dividends Payable ..... .00
	Deposits ..... 11,230,170.88
<b>\$12,340,713.28</b>	<b>\$12,340,713.28</b>

- DIRECTORS**
- Mrs. O. L. Cheaney
  - A. G. Weaver
  - Neal R. Oakes
  - A. D. Pettit
  - Wess Wise, M.D.
  - Burgess Stewardson
  - Pat H. Hosch
  - Robert J. Cheaney II
  - Glen Copeland

- OFFICERS**
- A. D. Pettit ..... President and Chairman of the Board
  - Robert J. Cheaney II ..... Executive Vice President
  - Dawson See ..... Senior Vice President
  - Dorothy Dillingham ..... Vice President
  - Laverne H. Evans ..... Vice President
  - Charlotte Moseley ..... Asst. Vice President
  - Stephen Cullins ..... Asst. Vice President
  - Glen Copeland ..... Cashier
  - Denise McElrath ..... Asst. Cashier
  - Patrick H. Hosch ..... Asst. Cashier

# Rockwood News

By MRS. JOHN C. HUNTER

The Extension Homemakers Club is slated to meet at the Rockwood Community Center Tuesday, April 27, at 2 p.m. County Extension Agent Roger Blackmon will present a program on insect identification and control for home gardens. Mrs. Jack Cooper and Mrs. Bert Fowler will serve as hostesses.

Mrs. Tom Walker, Tim Walker and Mary Anderson of Walker Funeral Home in Coleman presented a program on CPR demonstration and training at Rockwood last Wednesday evening. Sandwiches, cookies and coffee were served.

Am sorry I omitted the names of Mr. and Mrs. Glenn Thomas when typing the report on the candidates rally held at Rockwood Community Center Thursday, April 8. Please forgive me and come again....

Ward Lentz was dinner guest of Mr. and Mrs. Blake Williams Sunday. Mrs. Lon Gray and Mrs. Hilton Wise visited Mrs. Williams Saturday afternoon.

John Shero of Brownwood and Bo Shero, a student at ACU in Abilene, visited Saturday and again Sunday with Mr. and Mrs. A. D. Eppler.

Mr. and Mrs. Boss Estes were in San Angelo Friday and Saturday visiting Weldon Estes, Mr. and Mrs. Gordon Estes and Shane. Also visited Sam Alexander, who has been ill, but is improving. Mr. and Mrs. Sam Estes and Mrs. Claud Box visited in the Estes home Sunday afternoon.

Mrs. Lois Reeves of Lubbock returned home Thursday after several days visiting her sisters, Mrs. Box and Mrs. Boss Estes.

Mrs. Box and Mrs. Estes took Mrs. Reeves to Coleman to take the bus home, and enroute home they visited in Santa Anna and were dinner guests of Mr. and Mrs. Herman Estes and their guest, Mrs. Effie Copeland.

Judy and Serena Bryan and Paul Shia of Dallas and Jim Driver of San Francisco spent the weekend with Mr. and Mrs. Bill Bryan. The Bryans visited in Brady Wednesday with Mrs. Arlue Davis.

Mr. and Mrs. W. B. McCutcheon were in Brownwood Saturday attending an Art Seminar, conducted by Mrs. Georgia Feazle of Pasadena. She is author of many books on a different approach of art, creating different types of painting, using oil paints.

Mr. McCutcheon got together with cousins for a reunion, among them were Raymond Feazel, Earline Poole and Sherrill Rainbolt, who is Mayor of Early.

Mr. and Mrs. Carl Buttry spent Sunday in Bangs with her sister, Mrs. Dora Crutcher, and her guests, daughters and families, Mr. and Mrs. F. E. Suttle and family and Mr. and Mrs. Bill Haney and family.

Douglas Estes of Fort Worth visited Tuesday evening with

Mr. and Mrs. Sam Estes, and Herman Estes visited Saturday. Mrs. Lois Haines was Sunday luncheon guest and Mr. and Mrs. Boss Estes visited Monday evening.

Mr. and Mrs. Stanley McSwane of Arlington spent Saturday with his mother, Mrs. Gene McSwane, and they visited the Aubrey McSwains.

Jennifer Rutherford and Mrs. Gussie Wise of San Angelo spent Sunday with her parents, Mr. and Mrs. Jim Rutherford. Other Sunday afternoon visitors were Mrs. Ricky Abernathy and Tony, Mr. and Mrs. David Huggins and Amber and Mr. and Mrs. Bobby Lee and J.J.

Paige Patterson, a student in Texas University at Austin, visited Friday to Sunday with her grandparents, Mr. and Mrs. Bill Steward.

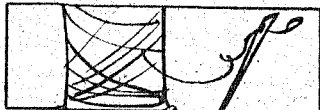
Mr. and Mrs. John Robertson of Eden spent Tuesday with Mrs. John Hunter.

Mr. and Mrs. Elec Cooper spent Saturday night with friends, Mr. and Mrs. C. F. Roberts, at Kingsland.

Mr. and Mrs. Joe C. Deal and Belinda of Santa Anna visited Saturday with his parents, Mr. and Mrs. R. J. Deal. Mr. and Mrs. Johnny Deal of Brownwood were Sunday visitors. Mr. and Mrs. Deal went to Coleman Monday morning for a medical checkup and visited at Holiday Hill with Mrs. Norine Winstead and at Ranger Park Inn with his brother, Leo Deal.

Mr. and Mrs. Kenneth Brusenhan visited Monday morning in Coleman with his brother, Ernest Brusenhan.

Mr. and Mrs. Stan Martin of Denver, Colo. came Saturday to spend several days with her parents, Mr. and Mrs. Junior



The first needles, historians say, were made about 30,000 years ago.

"No one has ever died an atheist." Plato

**Sensible, Affordable Protection for Today's Families...**

that's Life Insurance the State Farm Way!

I offer a life insurance program to help you meet today's needs and tomorrow's goals... one that protects your family's way of living and builds financial security for your retirement years. Call me for details.



McANALLY  
Phone 625-4343

117 West Street  
Coleman  
[West of Courthouse]

State Farm  
Life Insurance Company  
Home Office: Bloomington, Illinois

**Walker Funeral Home**  
625-4103  
Coleman, Texas  
Ambulance Service

Brusenhan. Jody Brusenhan of College Station spent Saturday and Sunday with the family, and Mr. and Mrs. Bailey Hull of Dawson visited briefly Saturday. Other Sunday visitors were Mr. and Mrs. Bailey Hull, Mrs. Freddie Polk of Brady, Mrs. Ricky Moore and children of Salt Gap, Mr. and Mrs. Frank Brusenhan of Eden, Mrs. Anita Brown and Meca of Menard and Mrs. R. W. Emerson. Afternoon callers were Sam Estes, R. J. Deal, Mrs. Jim Rutherford and Mrs. Gussie Wise.

The Rev. Ricky McClatchy, pastor, conducted Sunday morning services at the Baptist Church. Mrs. Stan (Judy) Martin sang a special song accompanied by Mrs. Claud Box at the piano. Cash donations to the Rock-

wood Cemetery fund are from Mrs. Bruce Snodgrass, Mr. and Mrs. R. J. Deal, Mrs. O. W. Winstead and Mr. and Mrs. Bailey Hull.

Mr. and Mrs. Douglas Milligan accompanied Mr. and Mrs.

James Milligan of Denver, Colo. to Texas A&M University at College Station Friday to Sunday for Parents' Day with their daughter, Lori. Also visiting at Katy with another daughter, Julie.

**ABERNATHY**  
**Dirt & Conservation Work**  
Specializing In Tanks And Land Clearing  
After 6:00 PM Call  
Lee 785-4401 Rickey 785-4235

## REPORT OF CONDITION

Consolidating domestic subsidiaries of the

Santa Anna National Bank of Santa Anna

In the state of Texas, at the close of business on March 31, 1982, published in response to call made by Comptroller of the Currency, under title 12, United States Code, Section 161.

Charter number 13854 National Bank Region Number 11

### Statement of Resources and Liabilities

		Thousands of dollars
ASSETS	Cash and due from depository institutions	992
	U. S. Treasury securities	2,381
	Obligations of other U. S. Government agencies and corporations	1,755
	Obligations of States and political subdivisions in the United States	2,409
	All other securities	7
	Federal funds sold and securities purchased under agreements to resell	300
	Loans, Total (excluding unearned income)	4,268
	Less: Allowance for possible loan losses	59
	Loans, Net	4,209
	Lease financing receivables	none
	Bank premises, furniture and fixtures, and other assets representing bank premises	19
	Real estate owned other than bank premises	none
	All other assets	none
<b>TOTAL ASSETS</b>	<b>12,072</b>	
LIABILITIES	Demand deposits of individuals, partnerships, and corporations	3,561
	Time and savings deposits of individuals, partnerships, and corporations	7,270
	Deposits of United States Government	3
	Deposits of States and political subdivisions in the United States	396
	All other deposits	none
	Certified and officers' checks	none
	<b>Total Deposits</b>	<b>11,230</b>
	Total demand deposits	3,640
	Total time and savings deposits	7,590
	Federal funds purchased and securities sold under agreements to repurchase	none
	Interest-bearing demand notes (note balances) issued to the U. S. Treasury and other liabilities for borrowed money	none
	Mortgage indebtedness and liability for capitalized leases	none
	All other liabilities	13
<b>TOTAL LIABILITIES (excluding subordinated notes and debentures)</b>	<b>11,243</b>	
Subordinated notes and debentures	none	

### MEMORANDA EQUITY CAPITAL

Preferred stock	No. shares outstanding	none	(par value)	none
Common stock	No. shares authorized	2,500		
	No. shares outstanding	2,500	(par value)	50
Surplus				200
Undivided profits and reserve for contingencies and other capital reserves				579
<b>TOTAL EQUITY CAPITAL</b>				<b>829</b>
<b>TOTAL LIABILITIES AND EQUITY CAPITAL</b>				<b>12,072</b>
Amounts outstanding as of report date:				
Standby letters of credit, total				none
Time certificates of deposit in denominations of \$100,000 or more				100
Other time deposits in amounts of \$100,000 or more				none
Average for 30 calendar days (or calendar month) ending with report date:				
Total deposits				11,335

We, the undersigned directors attest the correctness of this statement of resources and liabilities. We declare that it has been examined by us, and to the best of our knowledge and belief is true and correct.

*a. s. Sittel*  
*Neal R. Papes*  
*Burgess Stewardson*

Directors

Stephen Cullins  
Name  
Asst. Vice-President  
Title

of the above-named bank do hereby declare that this Report of Condition is true and correct to the best of my knowledge and belief.

*Stephen Cullins*  
Signature

April 13, 1982  
Date

# Who is JIM PARKER ???



Jim was born in Gorman, Texas, grew up in the DeLeon area and attended public schools in DeLeon. Jim worked in the residential construction industry both as an employee of construction firms and as an independent contractor. Jim attended Ranger Junior College and Tarleton State University, graduating from Tarleton with a B.A. Degree in Government, History and Economics. Jim was accepted into the University of Houston School of Law and graduated with a j.d. degree in 1976. While at the University of Houston Jim worked as a Construction Superintendent, supervising construction projects on the Texas Gulf Coast. After graduation Jim and his family returned to DeLeon and Jim established a law practice in Comanche in association with John Gleaton and Howell Cobb.



Farming is a part of everyday life of the Parker family, and Jim is deeply concerned with the situation the farmers of our district face on a daily basis. Jim is also co-owner of a business in Eastland and a manufacturing concern in DeLeon. Jim realizes the plight of the small businessman and the benefits business and commerce bring to our local communities. Jim feels that State government MUST be run much as any sound and efficient business.

Vote  
May 1  
Democratic Primary



Jim has been married for 20 years to the former Martha Wade Hamrick of Comanche. Jim and Martha are parents of Shane Parker, age 19 and a student at Ranger Junior College, and Kent Parker, age 17, a student at DeLeon High School. Jim and Martha are members of the Baptist Church and make their home on a farm 2 miles south of DeLeon. Jim and Martha are well acquainted with the many problems -- moral, economic and otherwise -- encountered in rearing children in today's complex society. Jim can, because of his family background, offer maturity and good judgment in dealing with education, economic reality and social problems of our time. Jim and Martha firmly believe the family unit has been our strength in the past and is our best hope for the future.



Jim, Martha and boys have a family owned cow/calf operation and, because of personal experience, Jim is well aware of the problems of the livestock producer in our rural district.

## JIM PARKER For STATE REPRESENTATIVE

**65th Legislative District-McCulloch,  
Runnels, Coleman, Brown, Eastland and Comanche Counties**

Paid Political Advertising by JIM PARKER Campaign Fund  
JIM PARKER, Treasurer, Box 762, Comanche, Texas 76442

# Whon News



By Mrs. Tom Rutherford

On Sunday, April 11, Floyd Morris attended the Golden Wedding Anniversary for his brother, Mr. and Mrs. Clarence H. Morris in Brady. Mr. and Mrs. C. H. Morris' only child, a son, was killed near San Angelo several years back. Their grandchildren sponsored the occasion for their grandparents. A large crowd attended and Mr. Morris reported a wonderful occasion. Mrs. Floyd Morris has not been so well, but is better now. At the time was physically unable to attend.

Mr. and Mrs. Tom Rutherford visited briefly with a son, Mr. and Mrs. Hilary Rutherford, in Coleman late Sunday afternoon. Then we all visited our granddaughter and the Hilary Rutherfords' daughter, Mr. and Mrs. Bobby Boatright. The Boatrights have recently moved into a new home and it is a very nice home and we congratulate them on their new home.

On Easter Sunday Mr. and Mrs. Darwin Lovelady of Santa Anna took a tour of the beautiful country south of us. They toured around Llano, viewing the beautiful flowers and really drank in the beauty of the Llano River. They enjoyed the tour and felt the day was well spent.

Mr. and Mrs. Ray Perkins and Clois and granddaughter Brandy of Benbrook were guests of Mr. and Mrs. Floyd Morris on Wednesday and Thursday of the past week.

Mr. and Mrs. Darwin Lovelady were transacting business in Ballinger Wednesday.

Mr. and Mrs. Glen Grote and girls, Jenny and Jennifer, visited briefly with Mr. and Mrs. Tom Rutherford Friday night.

We are sorry to report Mrs. James (Fay) Avants of Coleman is a patient in the Coleman hospital. We wish her a speedy recovery. Fay is the daughter-in-law of Mrs. Pearl Avants of Santa Anna.

Mrs. Barbara Morgan and daughter Loraine, Rena and Russ Morgan, Lee Daisy of Brownwood, John David Morris of Eldorado and Mrs. Jacky Morris and children, Jeffery and

Jennifer of Santa Anna were Sunday guests of Mr. and Mrs. Floyd Morris.

Talking with Mrs. Pearl Avants in Santa Anna, she and her sisters have not heard from their brother-in-law, Gaines Smith, who had surgery at Hendrick Hospital in Abilene Friday. Shortly after the surgery they received word he stood surgery and was in intensive care ward. No word since Friday afternoon.

Mr. and Mrs. Floyd Morris visited with Mr. and Mrs. Norman Floyd Morris in Brownwood Monday morning.

Mr. and Mrs. Randel Lovelady and girls of Brownwood visited his parents, Mr. and Mrs. Darwin Lovelady, one night last week.

Mrs. Dougy Avants and son Geormy of Odessa visited with their grandmother and great-grandmother, Mrs. Pearl Avants Friday afternoon.

Mr. and Mrs. Darwin Lovelady of Santa Anna were in the home of Mr. and Mrs. Cecil Elkins in Brownwood recently. The occasion was honoring Randel Lovelady and daughter Melanie on their birthdays. This was in the home of Mrs. Randel Lovelady's parents. A large crowd attended and all reported a wonderful time.

Mr. and Mrs. Tom Rutherford really enjoyed a nice visit from Mr. and Mrs. John Richard Deal of Brownwood Sunday afternoon. We really appreciate dear ones stopping and chatting with us for a short time. Almost a shame to make this statement, but it had been quite a while since we had seen the couple, and I made the remark to John Richard, seeing him made me realize my age. I guess you would say I played a small part in his education, since I was school bus driver. Now the Deals have a married daughter attending Howard Payne, a son in Fort Worth who will be getting married soon, and a daughter who is a senior in Bangs High School. Thanks so much to the young folks for stopping, and do this again soon, or let us say any

# VFD Membership Drive Continuing Here

Donations are continuing to be received by the Santa Anna Volunteer Fire Department by area citizens enrolling in the Associate Membership drive.

The following made donations to the Department during the past two weeks and are added to the list:

- Gary Patterson
- Dessa Patterson
- C. O. Ford
- Clyde Davenport
- Jeff Moore
- Bessie Pallett
- Vernon Rowe
- John C. Gregg
- Jim Brown
- John Hensley
- Mrs. Walter Seals
- C. R. Owen
- Roy West

- Janie Payne
- Edd & Ruby Hartman
- Ronnie Hartman
- Mrs. Fred Turner Estate
- Helen Goodloe
- Mrs. Allie Smith
- Johnnie M. Martin
- Fred Williams
- Levi Smith
- Lillian Herndon
- Ann Stiles
- Mrs. J. R. Stacy
- Signmor Corporation
- George Havens
- Charlotte Moseley
- Mrs. Inez Moseley
- W. W. Means
- Susie Moredock
- R. V. Rodgers
- Cleo Edington
- Charlie Avants
- Wesley Isenhower
- Wilburn & A. G. Weaver
- Gordon Monsey
- Alvie Clark
- Earl Simmons
- Wayne Bray

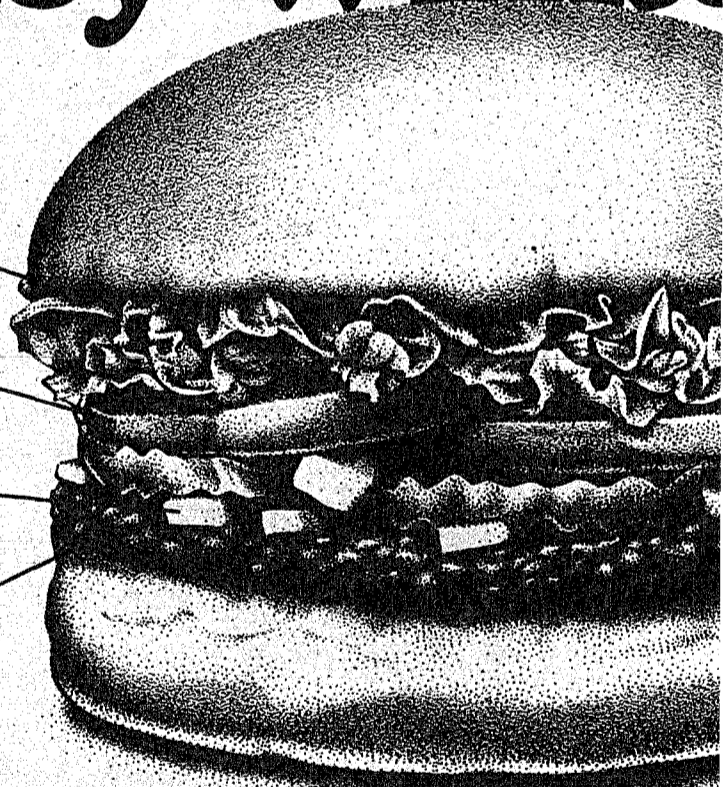
- C. W. Hemphill Jr.
- C. E. McCarrell
- Thomas C. Newman
- W. T. Gustavus
- Wendell Rice
- Forrest Gaffin
- C. W. Fleming
- J. Ross Kelley
- Bill Lowry
- Edd Schrader
- Bobbie Guthrie
- Walter Stacy
- Annie Lou Vaughn
- J. N. Buse
- B. N. Myers
- C. E. Kingsbery
- Mrs. L. A. Battles
- Dorthea Wells
- Rice Drilling Co.
- M. E. (Boots) Morris



The U.S. Silver depository is at West Point, New York.

Lloyd Rutherford and son Todd were dinner guests with his parents Saturday, the Tom Rutherfords.

# The Hamburg Texans told they wanted



- Mustard or mayonnaise? The choice is yours.
- Red, ripe tomato slices across the board.
- Plenty of fresh onions.
- We start with a quarter-pound of lean, 100% pure beef. Want more? Our half-pound Beltbuster's for you.

## Introducing Dairy Queen's all-new quarter-pound' Hungr-buster® & half-

At Dairy Queen we're out to treat you like a Texan. With the big told us they wanted.

Our all-new Hungr-buster and Beltbuster start with a full of 100% pure, lean beef. Then we top them with plenty of your fresh lettuce, red, ripe tomato, juicy pickles, onions, mustard or mayonnaise of course, your hamburger is made to your order — hot, fresh and the way you like it.

Come taste our all-new Hungr-buster and Beltbuster at any of more than 750 Dairy Queen locations all across Texas. They're the hamburgers Texans told us they wanted.

And that's why they're the best.

We treat you like a Texan

**Now Open for Business!!**

## Burkett Tire Co.

2 Blocks South Of Cemetery in Burkett, Tx.

Dealer In **Armstrong Tires**

All Sizes Of **Hard-To-Get-Tires**

WHOLESALE AND RETAIL

**Buddy Thate** Owner-Operator  
Phone (915) 624-5451



# Trickham News

By Mrs. Oscar Boenicke



There were 240 people attending the annual Trickham Cemetery meeting here Sunday. Rev. Bobby Weathers brought a good memorial sermon at 11 a.m. Also James Haynes, his wife, son and daughter sang two special songs, and James gave the opening prayer. Joe Stacy led the opening and closing songs.

A short business meeting was led by President Grady McIver, and Lou Vaughn gave the secretary's report. Three directors were re-elected, Virgil Lancaster, Russie James and Albert Cole.

Rev. Weathers gave thanks for the meal and the closing prayer. There was lots of food brought in as usual, and served at the Community Center. There were people here from so many places. A singing was held in the afternoon at the church.

The regular Community Game Party will be held at the community center Saturday night at 6 p.m. Everyone is invited to attend.

Visitors with the Walter Stacys last week and weekend were Bill and Tavy Marie Heidbrier and daughter and children, Barbara Haun, Chris and Tiffany of Fort Worth, who visited Wednesday night and Thursday. Del Ray Stacy had dinner with them Thursday, and Tommy Stacy will be coming home this Thursday from Korea. Marjorie and son Robert Sullivan of San Antonio came Sunday morning and were here for the Cemetery meeting. Noah and Lorena Stacy of Rankin visited in the Stacy home Saturday evening and spent Saturday night with Joe and Ora Stacy and attended the meeting Sunday. O. T. Stacy spent Saturday with

them. Lois and Gene Sheehan of Burleson and Patsy and Calvin Grubbs of Grand Prairie visited the girls' parents, the Bernice McIvers, over the weekend. Other visitors Sunday were Mary Lou Storm, Lou Featherston, Roy and Inez Miller and Irene Durham of Coleman. Also Ethel Mathews of Brownwood and Charles Mathews of Austin visited Saturday evening.

Ethel Mathews and Charles Mathews visited the Bond Featherstons Saturday.

I was happy to have my nephew and his wife, Bill and Doris Shield of Bonham, come Saturday evening and they stayed until after the Cemetery meeting Sunday with me.

Visitors with Rankin and Natalie McIver after the Cemetery meeting were Roy and Inez Miller and Irene Durham of Coleman, Sherrie and Jim Blake of San Angelo.

Verna Bolton of Rockwall came Friday evening and stayed until Sunday evening with her mother, Florence Stearns. They visited Oma Lee Dockery Saturday night. Sunday evening Alice Wells, Barbara Kirkpatrick, Jennifer and Amber of Coleman visited their mother and grandmother. Charlie Ray Fleming of Alice came by on his way to Plainview to work and visited his mother-in-law, Florence Stearns, Sunday night.

Visitors with Ilene Haynes were Reba and Elvis and granddaughter, Carley Ellis, and Lois and Frank Wallace and grandsons, Michael and Jeremy Rader of Palmer. Oma Lee Dockery and Jim and Mattie Lineberry were by Saturday.

Linda Meckfessel and children, Elizabeth, Lara and Sara, ate lunch with the Howell Martins Friday. They also had dinner with their other grandparents, the Talmage McClatchys, Tuesday. They went home Saturday to Garfield, Kansas.

Mr. and Mrs. Clive Brewster of Blanket visited Sunday evening and had supper with the Charles Brewsters. Monday night Dr. Chuck Press and Colen of Brady had supper with them.

Visitors with Hilburn and Leona Henderson last week were Sug Stearns, Russie James and Candice Henderson. Sunday evening Donnie and Chris Henderson, Rodney and Candice of

## Green Thumb Workers Attend Coleman Event

Three Santa Anna people were in Coleman last Tuesday to take part in a training session for Green Thumb workers in the area. U. S. Representative Charles Stenholm of Stamford was speaker at the meeting attended by more 120 of the senior employment program workers.

Texas Farmers Union Green Thumb program employs almost 1000 low-income, rural

persons aged 55 and over, in 106 counties. It is currently funded along with other senior employment programs, and in his address to the group, Stenholm stated he believes "funding will be restored" for the program despite President Reagan's proposed budget cut for the Title V program of the Older Americans Act.

The Green Thumb program provides workers for the City Library, City of Santa Anna and home health services in our community. In other towns there are workers in senior citizens centers, museums and schools.

Stenholm predicted the current budget problems would eventually be resolved by making some cuts in defense spending and by increasing taxes to offset the big deficits anticipated by most economists.

In earlier comments, Texas Farmers Union President Mike Moeller said that Green Thumb had a good chance of survival, adding that Texas has the best Green Thumb program in the nation.

Those from Santa Anna at the session last week were Letha Martin, Ormie Slate and Evelyn McSwane.

Coleman visited them.

Sunday evening late visitors in the Grady McIver home were the Terry McIver family and Doyme McIver and family and Rankin and Natalie McIver and Jim and Sherrie Blake of San Angelo.

Mary Lea Mitchell had all her family with her over the weekend except Loyd Mock and Pamela Miller. Those here were Lea Mock, Jennie and James of Post, Betty and Damon Miller and their family of Austin.

Visitors with Russie James over the weekend were Cindy and Kelley Hoffman of Lubbock, Roberta and Pat McShan, Joe and Ai James, Mr. and Mrs. R. J. Cason and Yevie Cole of Brownwood, and Lyndall Moore of Winchell.

Visitors with Lou Vaughn were Marvin and Ruth Smith of Coleman and Oma Lee Dockery, and Russie James was a Sunday night visitor.

We are having some cloudy weather, but no rain. We need a good one.

"Consistency is the last refuge of the unimaginative."  
Oscar Wilde

# Burgers and us ted!



A fresh, toasted bun is the topper.

A big helping of garden-fresh lettuce.

Lots of crisp dill pickles.

Made to your order, just the way you like it.

ew  
alf-pound' Beltbuster.®

he bigger, better hamburgers Texans

a full quarter-pound or half-pound our freshest favorites. Like crisp mayonnaise, all on a toasted bun. And, h and just



ea Texan.

mark Am. D.O. Corp. 1 Pre-cooked weight

### NEED A PLUMBER?

Back Hoe Work      Call      Septic Systems

**Roy Early**  
Early Enterprises  
Licensed Master Plumber  
752-9972      Bangs

Heartland Mall      Ripleys      Brownwood

## Pet Emporium

643-3451

### BIRDS :

African Gray-Congo	\$450 <sup>00</sup>	African Gray-Timic	235 <sup>00</sup>
Orange Wing Amazon	195 <sup>00</sup>	India Hill Mynah	199 <sup>50</sup>
Cherry Crown Conure	89 <sup>95</sup>	Fisher Love Birds	31 <sup>95</sup>
Peach Face Love Birds		49 <sup>95</sup>	pr.

### DOGS :

Alaskan Malamute	Reg. 250 <sup>00</sup>	199 <sup>00</sup>
AKC Female Collie	Reg. 195 <sup>00</sup>	175 <sup>00</sup>
1 Chow	Reg. 250 <sup>00</sup>	225 <sup>00</sup>
Cocker Spaniel	Reg. 195 <sup>00</sup>	175 <sup>00</sup>
Keeshound	Reg. 195 <sup>00</sup>	165 <sup>00</sup>
West Highland Terrier	Reg. 250 <sup>00</sup>	199 <sup>00</sup>

## Martha Group Has Meeting In Cheaney Home

The Martha Group of United Methodist Women held their monthly meeting Monday, April 12, in the home of Mrs. O. L. Cheaney. The home was decorated with flowers of the season, and an altar table was set with Bible and lighted candle.

The topic of study was "Christ, the Liberator," and Mrs. Leland Thompson of the Nitia Daniell Group was narrator for the study. She listed the characteristics which the Christian should have - love, joy, peace, longsuffering, gentleness, goodness, faith, meekness and temperance, which are in reach of all of us and against which there is no law, she stated.

Mrs. Cheaney served strawberry shortcake and coffee to the members, Mmes. Grace Short, Lucille Smith, W. B. Griffin, Xuma Jones, Ora Hunter, Opal Little, Blanche Harris, Ethel Williams, Mae Blue, and the guests, Mrs. Thompson and Mrs. Annelie Shield Clark of Wisconsin.



The Alamo, which you may remember, was so called because it stood in a grove of cotton-wood trees, called *Alamo* in Spanish.

The saxophone was invented by Adolphe Sax in the year 1846.

### For Your Insurance Needs

Come See  
**Archie Phillips**  
Representing  
Germania Farm Mutual  
Aid Insurance  
and G.I.C.  
Located at  
216 1/2 COMMERCIAL  
(In Man's Shop Building)

**Coleman  
Monument Works**  
1309 East 9th  
Coleman, Texas  
  
**DAVID HUFF**  
Phone 625-5352  
Night 625-2719  
30 Years in Coleman

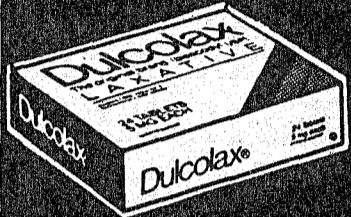


# OWL

Jim and Linda  
Caldwell

"Where Friends Meet"

# DRUG Super Savers



**Dulcolax  
Tabs**  
24's--Reg. \$2.78  
**Sale--\$1.59**



**Dramamine  
Tabs**  
12's--Reg. \$2.77  
**Sale--\$1.59**

## Vidal Sassoon

Regular SHAMPOO, 8 oz.-Reg. \$3.48--Sale \$1.99  
Regular FINISHING RINSE, 8 oz., Reg. \$3.48--Sale \$1.99  
Regular HAIR SPRAY, 7-oz. Aero, Reg. \$3.44--Sale \$1.99



**Vaseline  
Intensive Care  
Lotion**  
Reg. 6-oz.--\$2.16  
Reg. 10-oz.--\$3.05  
Reg. 15-oz.--\$4.34  
**Buy One--  
Get Same  
Size FREE**



**Q-Tips**  
54's--\$1.00  
88's--\$1.46  
125's--\$2.21  
170's--\$2.28  
300's--\$3.15  
**Buy One--  
Get Same  
Size FREE**

## All Pro Toothbrushes

**Buy 1 Get 1 Free**

**Buy 6 Get 6 Free**

No Limit....Stock up for the entire family now!

One selection--Close-out

**Sunglasses** Values up to \$13.00 **\$1.99** or 1/2 price

50th Anniversary Sale--Solid Brass

## Zippo Lighters

One Time Only **\$9.50**

### MAKE AMERICAN HISTORY



When you purchase any three of these.



#### OFFICIAL MAKE AMERICAN HISTORY REFUND CERTIFICATE

MUST BUY ANY 3 OF THE FOLLOWING	SIZE	PROOFS OF PURCHASE
VASELINE Intensive Care Lotion	10 oz.	Copy code # from bottom of bottle plus tracing of front label.
Q-TIPS Cotton Swabs	170 count	Cut the words "170 Double-tipped safety swabs"
VASELINE Petroleum Jelly	7 1/2 oz.	Copy code # from bottom of jar, plus tracing of front label.
CUTEX Polish Remover	3, 4 or 6 oz.	Soak off front label (lukewarm water)
RAVE Hairspray	7 oz. Aerosol or 4 oz. Pump	Copy # from the bottom of the can plus tracing of front label. The word Rave from the front of the box.

Get \$2.00 by mail when you send proofs-of-purchase from three different participating brands, a dated cash register tape with the purchase price of each of the items circled, plus an official refund certificate to:

MAKE AMERICAN HISTORY, P.O. Box 4054, Jefferson City, MO 65102

Name \_\_\_\_\_  
Address \_\_\_\_\_  
City \_\_\_\_\_ State \_\_\_\_\_ Zip \_\_\_\_\_

Offer expires April 30, 1982. Limit one refund per name or address. Refund rights may not be assigned or transferred. This certificate may not be reproduced mechanically or otherwise. Please allow 6-8 weeks to receive your refund. Void where prohibited.

# Years Ago In The News

The following stories are from the April 20, 1951 issue of the NEWS:

Local students who placed in the literary events at Interscholastic League meets recently including the following:

Shorthand: Joyce Rowe, first; Paula Holt, second.

Declaration: R.D. Hartman, first (senior boys); Alan Shield, third (junior boys) Anabelle Price, third (senior girls), and Kay Steward, third (junior girls).

-31-

During the last week directors to serve on the Community Chamber of Commerce were named from Liberty, Shield, and Rockwood. They are A. B. Carroll, Rayford Evans, and Tom Stewardson, Shield; Howard Norris, and W.H. Pittard, Liberty; and A.L. King, J.P. Hodges and Hilton Wise, Rockwood. Rankin McIver and Marvin Whitley had been named from Trickham at an earlier meeting. Directors from Buffalo, Mayo, Whon, and Cleveland-Cross Roads are yet to be named.

-31-

R.K. Green, superintendent of Santa Anna Schools, states that only 23 children were enumerated by the end of March as being of age to start school during the 1951-52 semester.

The list includes Linda Evans, Ronald Chesser, Carol Sue Campbell, Perry Hawkins, Richard Hoyt, Cante Jaramillo, Hazel Lewis, Margaret Mobley, Elaine McClure, Billy McCrary, Douglas Patton, Sue Pritchard, Stephen Rice, Carol Stiles, Marcia Stovall, Glenda Vineyard, Larry Wardlow, Arlene Welch, Travis White, Clara Lou Wright, and Tom R. Yancy.

-31-

Mrs. Paul Pembroke was elected president of the P.T.A. for the ensuing year at the regular meeting Tuesday, Mrs. Milton House was elected vice president; Mrs. Clyde Haynes, treasurer; Mrs. J.A. Harris was re-elected secretary. Outgoing officers are Mrs. Jack Mobley, president; Mrs. Tom Simpson, vice president; and Mrs. Roscoe Hosch, treasurer.

-31-

A gas well fire that raged for more than two hours was snuffed out shortly before midnight Saturday about three miles north of Trickham on the Joe Glark farm.

Firetrucks from Santa Anna, Brownwood and Bangs were used in fighting the stubborn blaze. Cause of the fire had not been determined at last report.

Gas was encountered in the well a few days ago during drilling operations below 700 feet, reports indicate. The rig belongs to Ray Benhart of Brownwood and was badly damaged but was pulled away from the roaring gas fire in time to save it from complete destruction.

-31-

Thomas M. Hays was elected president of the Santa Anna School Board at a meeting of members Tuesday night, April 10. Other officers elected were W.B. Griffin, vice president; and Jack Mobley, secretary.

Two new members, Ozro Eubank and Dick Baugh were sworn into office. Bruce Snodgrass is retiring president.

-31-

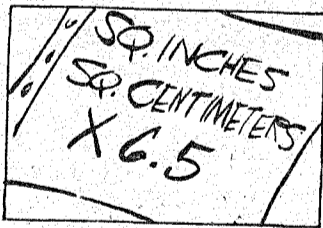
After having completed six weeks of basic training at Camp Chaffee, Ark., Pvt. Howard Lovelady, son of Mr. and Mrs. H.D. Lovelady of Gatesville, has been transferred to Fort Sill, Oaka, where he reported for additional training.

Pvt. Lovelady was a teletype operator for Santa Fe prior to entering the service.

-31-

Miss Coyita Griffin, daughter of Mr. and Mrs. Bill Griffin, was listed as being one of 49 students at McMurry College on the honor roll. Coyita is a junior at McMurry.

Doretha Faye Casey, daughter of Mr. and Mrs. Arthur Casey, was listed as being on the among honor students at John Tarleton College with an A average for the semester.



To convert square inches to square centimeters, simply multiply by 6.5.

# Ranger Park Inn News

The April birthday party was enjoyed by a large number of residents Thursday afternoon. Thank you, Eunice Longbrake, for such a wonderful party. Birthday cake, ice cream and chocolate-covered eggs were served to Nola Hopper, visitors and other residents. We appreciate Mrs. Longbrake hosting the party each month.

A most enjoyable program was presented Monday afternoon by the first grade students of Santa Anna Public Schools for the residents at Ranger Park Inn. It was such a delight to have the children visit the nursing home. A special thank you to Mrs. Dorothy Harris, Mrs. Coyita Bowker, Debbie Dean and Mr. and Mrs. Fleeman for making this program possible for us to enjoy.

The song service of the Northside Baptist Church was enjoyed by the residents Sunday afternoon. Thank you Bro. and Mrs. John Hix, Selma Hasserodt, Adelle Vinson, Imo Herring, Etheleen Stewart, Robert Robinett, Mrs. L. E. Storey and Mr. O. C. Barker. It's a joy to have you share your talents and time with us.

We are so happy to have Major Mulanax and Harry Canady come to Ranger Park Inn to live. We hope they enjoy their stay with us.

Major Mulanax has had Kenneth Mulanax of Fort Worth, Fred, Christene and Ken Watson of Mathis, Kate Cagle, Doris and Les Aderholt, Nell Mulanax, Marie Britton, Pauline Ransberger and J. C. Brimer visit him. The group also visited with Sally Brimer while at the Inn.

Thank you Bro. Scott and Marge Bell of Plano for the inspiring service Tuesday afternoon. It's always a joy for you to visit our nursing home.

A special thank you to Bro. and Mrs. P. A. Lindley, Mrs. Keeney, Mrs. Thomas and Mrs. Nowlin for the song service Tuesday evening. The residents enjoy your visit each week.

The movie, "The Lady and the Owl," was enjoyed by the residents Friday afternoon.

Thank you, Herman and Edna Estes, for the beautiful roses you brought for the residents to enjoy. We also thank Rose Moxley for sharing the beautiful flowers she brought to the nursing home. They are lovely.

Visitors with Mary Miller have been Marie Britton, Pauline Ransberger of Voss and Tom Miller, a son from San Antonio.

Those visiting Annie Barrington have been Nell, Johnny and Tracy Hunt of McCamey, Ofelia Proctor, Brenda Rumbow and children, Lesa, Dolphas and Christie, and a sister, Ila Todd.

Visitors with Maud McCarrell have been Mr. and Mrs. Ronny McCarrell and family of Brownwood, Lawanda Clark of San Marcos, Vernon and Gertrude McCarrell of Fort Worth, and the Edwin McCarrells of Santa Anna. Others have been Velda Hosges and Edwina Hodges.

Visiting with Mabel Burrage during the past week have been Lou Story, Imo Herring, Etheleen Stewart, Debbie Nixon, Dorothy Harris, Herman and Edan Estes, Blanche Harris, Bobbie Guthrie, Leta Parker and Myrtle Chapman.

Scott and Marge Bell of Plano, Pauline Scott, Patricia Watson, Dorothea Trichell and children of Nachitoches, La., Herman and Edna Estes have visited with Susie Snider.

Visiting with Bessie Thomas have been Barbara Simmons, Mike, Celeste, Becky and Chris, Wanda Seifert, Blandhe Harris, Bobbie Guthrie, Roland Deal, Laverne Simmons, Wayne and Donna Morgan and Doris Morgan.

Barbara Jones of Weatherford was a visitor with her grandmother, Ollie Estes.

Elmer Woodard and Nancy Culppeper of Coleman visited Mrs. Woodard's sister, Allie Woodard. Billie Joyce Perry is a frequent visitor with her mother, Mrs. Woodard.

Jim and Toni Lovelace of Pecos visited an aunt, Virgie Casey.

Jo Ann and John King,

# Boating Safety Is Encouraged

"Don't overload the boat," the specialist emphasizes. Most stern plates indicate the maximum safe load. If in doubt, don't go out. If the boat overturns, stay with the boat. It is usually farther to shore than it appears.

Around the farm pond or near the fishing dock, a safety station should be established. A post set about 15 feet from the water and near the dock serves as a place to hang a rope, doughnut life preserver, inner-tube, pole or board. A 12 to 15-foot long fishing pole is very effective for rescuing someone who falls in the water near the shore.

For rescuing someone slightly farther from shore, a rope that can be easily thrown works best.

A "doughnut" life preserver can be thrown 30 to 40 feet by most people. An inflated inner-tube can also be used but is difficult to throw any long distance. As an emergency measure, a dry wood board about six to eight inches wide and six feet long can be scooted across the surface of the water for someone to hold onto until help arrives.

Whatever rescue method is used, all persons should be familiar with the equipment available and how to effectively use the equipment. Davis says the objective is to rescue the person in trouble and any delay can be tragic.

Wesley and Katie Kile of Coleman visited Maury Cathey.

Visitors with Jay McCoy have been Rolan Deal, Leona Lobstien of Brownwood, May Jones of Bangs, and a daughter, Billie Hipp of Santa Anna.

Melida Hertz of Eola visited her cousin, Cora Mideska.

Alta Campbell of Lubbock visited her brother-in-law, Herman Howard.

Visiting with Harry Canady were his wife, Cleo Canady of Glen Cove, and his children, H. D. Canady of Temple, Warren Canady and wife of Odessa and Stena and Charles Mitchell.

## Santa Anna

**SCHOOL MENU**

Monday - Friday, April 26 - 30:

**MONDAY**— Ravioli, pinto beans, spinach, cornbread, cinnamon rolls and milk  
**TUESDAY**— Fish, cheese potatoes, green beans, peach cobbler, hot rolls and milk  
**WEDNESDAY**— Burritos, Mexican salad, buttered corn, apples and milk  
**THURSDAY**— Fried chicken with gravy, creamed potatoes, pea salad, hot rolls, jello and milk  
**FRIDAY**— Cheeseburgers, lettuce leaf, tomato slices, onions and pickles, potato chips, fruit cup and milk

[Menu Subject to Change]

## MID-TEXAS FENCE CO.

JERRY MOBLEY - Owner

COMMERCIAL

RESIDENTIAL

CHAIN LINK & WOOD FENCING  
 SHOWROOM DISPLAY OF VARIOUS STYLES  
 • FREE ESTIMATES •

643-2591

Standing Behind Our  
Guarantee Since 1973

1303 Main  
Brownwood



**ENGAGEMENT ANNOUNCED**— Mr. and Mrs. Wamon Upchurch of Weatherford have announced the engagement and forthcoming marriage of their daughter, Melanie Ann, to Mr. Roy Shackelford, son of Mr. and Mrs. G. L. Shackelford of Tolar. Ann is the granddaughter of Mrs. Thelma Upchurch of Santa Anna and is a 1977 graduate of Millsap High School and a 1981 graduate of Tarleton State University. She is presently teaching agriculture in Rochester. Roy is a 1975 graduate of Tolar High School and a 1979 graduate of Tarleton State University and currently teaching agriculture in Winters. The wedding will be held June 19 at First United Methodist Church in Baird at 2 p.m. Friends and relatives are invited to attend.

## Aerial Hunting Requires License

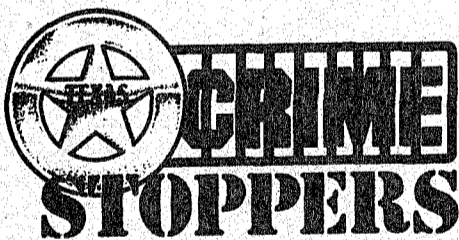
**AUSTIN**—The Texas Parks and Wildlife Commission has made some alterations to regulations governing predator control by use of aircraft.

In a public meeting here recently, the commission amended the regulation to make the violator, rather than the permittee, liable for any violations which might occur in the course of aerial predator

control activities.

Another added provision requires the permittee to include the names of all pilots to be employed in predator control on his permit, but the requirement does not apply to gunners assisting the pilot.

The amended regulations are expected to go into effect within approximately 30 days, officials said.



For an enterprising thief, Texas' oilfields offer endless opportunity. Thirty to fifty million dollars worth of oilfield equipment was stolen in Texas last year. These losses are pushing the cost of pumping oil sky high, and that affects each of us.

The drilling boom in Texas has created a demand for materials which are hard to come by. Any tool, large or small, can catch the eye of a thief, as it represents a pocket full of money. This problem is running rampant in Texas and is hard to detect. Items are often taken to another state where they are stripped of serial numbers, given a fresh coat of paint and resold, sometimes back to the original owners.

The industry is fighting back with rewards, recovery systems and better identification methods. Governor

Clements and the Texas Legislature have implemented new laws to stop the growing crime wave in the oil patch — but they can't do it alone.

For the month of May, 1982, the Crime Stoppers Advisory Council is focusing its statewide "Crime of the Month" program on oilfield theft. Any citizen having information about oilfield theft is asked to call the anti-crime hotline at 1-800-252-TIPS. Cash rewards are available for information leading to the arrest and indictment of oil field thieves. Citizens do not have to reveal their name, just their information, and they will be given a unique code number for identification purposes.

Let's get these people out of our society! Call 1-800-252-TIPS today to help stop oilfield theft in Texas.

## Weights and Measures Are Checked Often

People in Coleman County can count on getting their money's worth in weight through the year if the products are weighed on local scales or gas pumps, Agriculture Commissioner Reagan V. Brown said last week.

In Coleman County there are 165 weighing devices of different types, ranging from 92 fuel pumps to 62 supermarket scales.

"Our department regularly checks the commercial scales in the county and has found that they conform to our previous surveys across the state. Of those that were above or below tolerance, not many scales were off by significant amounts. Also, as many were giving the customer too much of the product as were giving too little. Because of frequent checks, scales are not out of calibration very long," Brown

said.

"Business owners are glad to see us come in because as often as not, they have been losing money if their scales were not accurate," Brown added.

The Texas Department of Agriculture has inspectors assigned to every county. They are trained to check all different types of scales — from those for medicines in a pharmacy to those for livestock and grain.

The inspectors also spot check packaged goods, such as cereals and crackers, to make certain that the weight stated on the label is accurate. If on the average the weights of the packages are below the amount stated on the label, the shipment is put on a Stop-Sale order. The store owner than either returns the items to the processor or as is the case very often, gives them to charitable

## Richard Horners Move to New Home

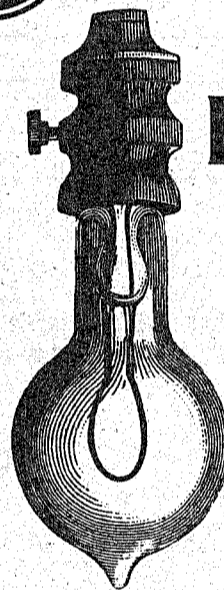
Mr. and Mrs. Richard Horner have moved recently into their new home in the Plainview Community southwest of Santa Anna.

The four-bedroom, two and one-half bath brick home was built by Pritchard Construction Co. and is located on the former Dodgen place.

The Horners sold their place nearer town last year to the Jim Armstrongs of Odessa, and have been living in the former Pete Simmons home that is owned by Mr. and Mrs. W. W. Gatlin of Odessa.

organizations. Meat packaged in the supermarket as well as processor packs are also checked by Department inspectors.

A canned vegetable you should open from the bottom is asparagus. That way the tender tips are protected.



## WHAT TO DO IF YOUR LIGHTS GO OUT

*We'll do our best to keep it from happening, but let's face it. Even with the miracles of modern technology, it sometimes occurs in the best of systems.*

*So, if your power goes off, we hope you'll help us get it back on as quickly as possible.*

### HERE'S WHAT YOU SHOULD DO:

1. Check your neighbors. Call them or go outside and see how widespread the outage is.
2. If your house is the only one affected, check your breaker box.
3. If the trouble is not on your side of the meter, call us — your local WTU office — and give us the following information:
  - Your name and address
  - Time of the outage
  - The area affected (as many addresses as possible)

**We'll take it from there. Please don't prolong the call with questions that can't be answered. We'll be getting many other calls, depending on how widespread the outage is. And, if you're answered by a recorded message, it means that the dispatcher already has been swamped with calls and that we're working on the problem.**

WEST TEXAS UTILITIES COMPANY



A Member of The Central and South West System

*Remember, our goal, as always, is to provide reliable electric service at the lowest practical cost. And if an outage does occur, we aim to restore service without delay. We appreciate your help.*



**WEDDING DATE SET**— Re'Genna Traweck and Ricky Gamblin will be married May 29, 1982 at Bangs First Baptist Church. Parents of the couple are Mr. and Mrs. Ray Traweck and Mr. and Mrs. Billy Gamblin, all of Bangs. The bride-elect is a 1978 graduate of Bangs High School and is presently employed at First State Bank of Bangs and at Bangs Flowers & Gifts. Her fiance is also a graduate of Bangs High School and a senior agriculture education major at Tarleton State University, doing his student teaching at Santa Anna High School.

### Gary Millers Have Baby Girl

Mr. and Mrs. Gary Miller of Snyder are parents of a baby daughter, Alesha Lynn, born Friday, April 9, in a Sweetwater hospital. The little girl weighed six pounds at birth. Grandparents are Mr. and Mrs. David Key of Santa Anna

and Mr. and Mrs. Clyde Miller of Snyder. The new mother will be remembered here as the former Linda Key. Mrs. David Key was with her daughter and family for a week, returning home last weekend.

# Area Oil News

McMillan Operating Co. of Abilene staked two regular field locations six miles south of Santa Anna.

Each venture is located on the R. O. Mathews 592-acre lease and slated for 1,900 feet.

The No. 1 Mathews and No. 2 Mathews will be drilled in the Creed T. Pendleton Survey 274, Lot 97.

Comanche Resources Inc. of Odessa will re-enter and deepen to 1,300 feet No. 1-A John R. Geer, abandoned regular field project four miles north of Trickham.

Location is on a 334-acre lease in the E. Humphreys Survey 96.

The project was originally drilled in 1959 to a total depth of 820 feet.

Furry Producing Co. of Brownwood completed No. 1 F. S. Turner and Mary Jane Bauer in the Betlin (Fry) Field 12 miles southeast of Santa Anna.

Wellsite is in William Skirlock Survey A-595.

Daily potential was five barrels of 42 gravity oil, plus five barrels of water, pumping from perforations at 1,279½ - 82½ feet, treated with 600 gallons of

acid. Operator set the 4½ inch casing at 1,360 feet, total depth.

Bee-Jay Energy from Whiteface completed No. 1 J. Y. Brannan in Coleman County Regular Field in Santa Anna townsite.

Location is in Section 57, HT&B Survey.

Daily potential was seven barrels of 45 gravity oil, plus eight barrels of water.

It is pumping from perforations at 1,700 - 84, treated with 520 gallons of acid.

Operator set the 4½-inch casing at 1,990 feet, total depth.

Terry L. McIver of Santa Anna completed No. 1 Markham in the Trickham (Lower Cross Cut) Field 12 miles south of Santa Anna.

Wellsite is in James O. Butler Survey 214.

Absolute, open flow was 250,000 cubic feet of gas daily with a gas-liquid, hydrocarbon ratio of 390,000-1 of 61 gravity.

Production is from perforations at 1,065-75 feet, treated with 750 gallons of mud acid. The pay was fractured with 75 sacks of sand.

The 4½-inch casing is set at 1,205 feet. Total depth was 1,385 feet and plugged back to 1,165 feet.

ATI Oil Co. of Wichita Falls staked No. 1 Alma A. Stearns in the Trickham (Capps) Field four miles southeast of Trickham.

The planned 1,990-foot venture is located on a 177-acre lease.

It is in the S. Perry Survey 193.

Pautsky Energy Inc. of Wichita Falls completed No. 18-A T. M. Hays Estate in Coleman County Regular Field four miles north of Trickham.

Wellsite is in Bonds & Sanders Survey 92.

Daily potential was 10 barrels of 38.6 gravity oil, plus 42 barrels of water, pumping from perforations at 1,123-32 feet,

treated with 250 gallons of acid. The pay was fractured with 15,000 pounds of sand and 250 gallons of fluid.

Operator set the 4½-inch casing at 1,262 feet, and the hole is bottomed at 1,323 feet.

Precision Drilling Co. Inc. of Coleman has staked three wildcat locations three miles southeast of Santa Anna. Each venture is located on a 240-acre lease and slated for 2,900 feet.

The three are No. 7, 8 and 9 Mrs. Eula Weaver, located in Section 60, HT&B Survey.

James D. Rice of Santa Anna has filed application to drill two Coleman County projects, each venture slated for 1,990 feet.

No. 3 Rankin McIver is located two miles southeast of Trickham on a 240-acre lease. It is in S. Perry Survey 82, A-561.

The other test is No. 3 Tavy Ford, located two and one-half miles southeast of Trickham on a 378-acre lease in A. Lipscomb Survey 80, A-478.

J. W. Rathke and R. J. Fowikes of Brownwood will drill three Coleman County wildcats eight miles northwest of Bangs in the Buffalo area. Each venture is located on a 287-acre lease and slated for 2,980 feet.

The sites are No. 2, 3 and 5 Bullard in W. H. Terrell Survey 83, A-827.

O&S Energy No. 1 S. M. Fellers was completed in the Proler (Marble Falls) Field two miles southwest of Trickham. Wellsite is in Bonds & Sanders Survey 78.

Daily potential was six barrels of 34.2 gravity oil, plus 13 barrels of water, pumping from perforations at 1,568 to 1,624 feet, fractured with 22,000 gallons of foam.

Operator set the 4½ inch casing at 1,720 feet, total depth.

Since the sixth century, the same family has occupied the Japanese throne.

ETTA HULME N.E.A.



"Mortgage payment... seed bill... fertilizer invoice... tractor repair... taxes... irrigation equipment... fuel... feed..."

**Repairs or Remodeling**  
**Plumbing & Supplies**  
**Lee's Plumbing**  
 Call 348-3417  
 Santa Anna, Texas  
 Free Estimates

Don Fitzpatrick  
 Owner

**CEMETERY MEMORIALS**

**SANTA ANNA MONUMENT COMPANY**  
 "Complete Memorial Service with Personalized Attention"

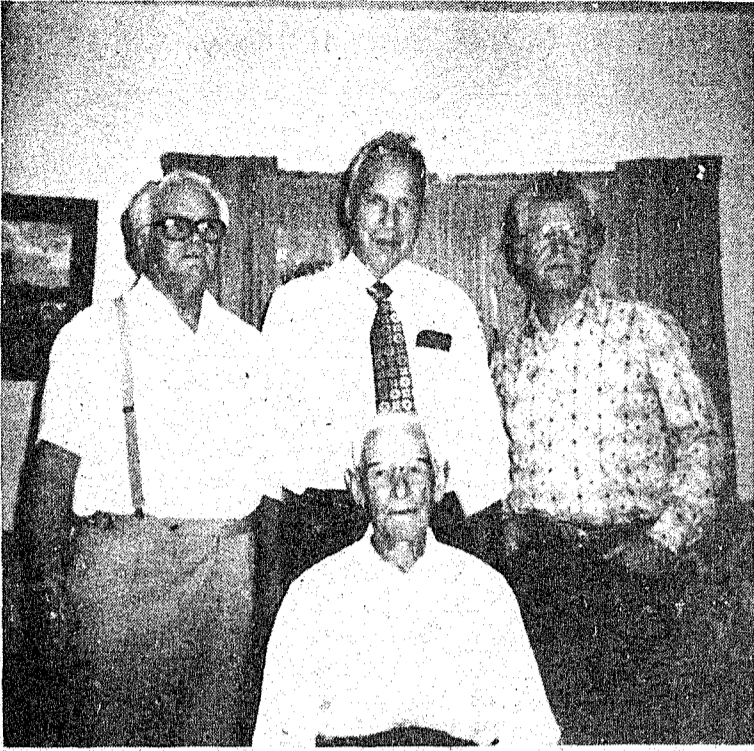
P. O. Box 98  
 Santa Anna, Texas 76878 (915) 348-3670

**PRESCRIPTIONS**  
 Daily Deliveries to Santa Anna

**Owl Drug Store**  
 "Where Friends Meet"

Telephone 625-4514

312 Commercial Coleman, Texas



**HONORED ON BIRTHDAY--** O. C. Barker, front, was honored Saturday on his 88th birthday with a luncheon and get-together at his home. Hosting the occasion were his sons and their families.

## O. C. Barker Feted On 88th Birthday

O. C. Barker was honored Saturday, April 17, with a family get-together for his 88th birthday. The party and luncheon were held in the Barker home.

Here for the occasion were

## AARP Holds Luncheon

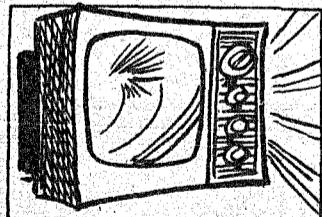
The American Association of Retired Persons met at Bangs in the community center for a luncheon on Monday, April 19 with 48 attending.

Tom Williams voiced the invocation and also led in the Pledge of Allegiance to the flag.

Mrs. Essie Wagner was in charge of decorating. She also baked the delicious birthday cake for those having birthday in April. Happy birthday was sung to Beulah Williams, Mrs. Leona Vardeman and Mrs. Sallie Stewardson.

Guest Speaker was Mr. Robert Bentson from San Angelo. He is AARP new Assistant Director.

Mrs. Dola Cate presented the program. They were the Sixtet men from the Methodist Church of Bangs. They sang several beautiful numbers accompanied by Mrs. Gravell at the piano.



A prototype television was invented in the 1890s by an Austrian named Szczenanik.

**Reed Memorial Co.**  
Limited

Monuments of Distinction

Fort Worth Highway  
Brownwood, Texas  
Box 265 Phone 646-7625

Sylvia Herring  
Local Representative

## Dr. Cabansag Speaker For Self Culture Club

Dr. Fil Cabansag was guest speaker when the Self Culture Club met last Wednesday in the home of Mrs. Norval Wylie, with Mrs. Gus Morgan as co-hostess.

The Seventh Day Adventist church started a hospital and clinic in the jungle of Honduras, and soon after that Dr. and Mrs. Cabansag went there to superintend the building and clearing of the land, and also to treat medically the sick of the area. This was in the late 1960's, and the Cabansags served there for five years.

The wage paid the workers was fifty cents a day, and they thinned the trees and erected buildings. The people of the area were very poor, the few having employment making one dollar a day or less. Many would come to the headquarters at evening, claiming to have worked all day, and Dr. Cabansag hired men to keep these away.

From the very first, there were many sick to treat, the consultation fee being fifty cents; some of them walked for two days to get there, and their diseases were mainly related to anemia and intestinal parasites, which were universal among the people. On some days, there was no money to pay the labor until the close of the day. Dr. Cabansag came to the United States for donations of medicines and food to give them. One time while flying eight tons of medical supplies, he and Mrs. Cabansag led a convoy of cars, also loaded, having to stop many times to pay bribes to a sort of militia.

Honduras has public schools, but those finishing the sixth grade are considered to be educated, going into doctoring or other careers. The mer-

chants are all Arabs, Jews, or Lebanese, and are rich. The country has the Pacific on the west, the Gulf of Mexico on the other, and there are many rivers flowing from the beautiful mountains. Fruits and other foods are plentiful, but the people do not eat the fruits and most are undernourished. The government is unstable, with many groups and changes. Bribing is everywhere, all officials taking part; doctors have to pay bribes to get into the country, even where the need is greatest. Foreign Aid from the United States has paid for all the magnificent government buildings, and to provide water systems, highways and schools.

All rich people are armed or have body-guards. The land of the United Fruit Company has been divided and given to the peasants, who do not know how to operate it.

Much frontier land is still available, but the Indians are nomads, do not like work. All the poor have pistols, which they would pawn for hospital treatment. There are islands of ethnic groups, like the negroes who are descended from slaves of the British who once owned the land. These are cleaner and more prosperous; they still speak an African dialect, and their customs and diet are African, their religion not clear but probably African also. On the Nicaraguan border is a large area of pure Indians, who have never mixed with Spanish or any other.

The youngest child of the Cabansags was born in the clinic they had built, and Dr. Cabansag remarked that they would still have been in Honduras if the government had been more stable.

## The Mail Box

Dear Barbara,

Enclosed please find my check for the Santa Anna News for the coming year. I sure do enjoy reading about the hometown folks and happenings.

Was very sorry to read about Mrs. Maude Evans' death, in the article of Wayne Horton. She was a very dear person. Wayne expressed very well the way so many of us felt about her. She had taught my father, K. W. Campbell, my sister, Wendolyn and myself.

Yours truly,  
Rita Campbell Meeks  
Slaton, Texas

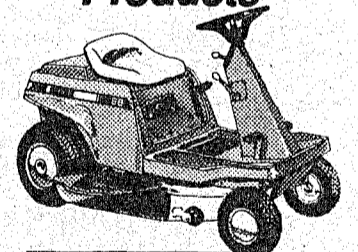
Following the talk by Dr. Cabansag, refreshments were served by the hostess. At a business meeting of the club, plans were completed for the observance of Liberty Day on the 21st. Officers elected for the new term are Mrs. Jim Spillman, president; Mrs. Earl Simmons, vice president; Mrs. Wylie, secretary; Mrs. J.L. Sparkman treasurer; Mrs. Fred Williams, parliamentarian; Mrs. Hardy Blue, timekeeper; and Mrs. Jasper McClellan, reporter.

There were twelve members present for the meeting.



The Milky Way can be easily seen as a bright haze on a clear summer night.

Save \$85 on this 68 rider, up to \$400 on other popular John Deere Lawn and Leisure Products



It's our biggest sale of the season! Here's what you'll find. Save \$100 toward the purchase price of a new 108 or 111 Lawn Tractor. Save \$15 toward the purchase price of a new 30 Dump Cart, which attaches to the 68 Rider. Save up to \$400 toward the purchase price of a John Deere lawn and garden tractor. Hurry, offers expire May 31.

Nothing Runs Like a Deere®



Delma Johnson  
Implement Co.

203 Needham

Phone 625-2126

# Lee Haney

For

## State Representative

- ★ Brownwood Attorney
- ★ Brown County Native
- ★ Son Of The Late Ira Haney, Formerly of Santa Anna
- ★ Hard Working
- ★ Qualified

Paid Political Advertising By Lee Haney 311 N. Center Brownwood

**IT PAYS TO ADVERTISE... ADVERTISE WHERE IT PAYS...  
WANT ADS!**

**Notice**

The City of Santa Anna is now taking bids on Health Insurance for City employees. Interested parties wishing to make bids should contact City Secretary Pat Rutherford at City Hall on or before Thursday, April 29.

**Employment**

**JOBS OVERSEAS**— Big money fast. \$20,000 to \$50,000 plus per year. Call 1-716-842-6000, Ext. 3719. 16-2tc

**For Sale**

**FOR SALE** - New 2 bedroom home on double lot in edge of Santa Anna. Built-in stove and dishwasher, beamed ceiling, fully carpeted. Extra nice, see to appreciate. Daryl Pannell, 348-3228. 15-tfc

**FOR SALE**— Gas cook stove in excellent condition, electric large-capacity dryer. Used lawn mowers. At Western Auto - Santa Anna. 14-tc

**For Sale**

**FOR SALE**- Model L-100 Hammond spinet organ. Excellent condition. Contact Mrs. L. M. Guthrie, 348-3618. 16-2tc

**PIANO IN STORAGE**

Beautiful spinet-console stored locally. Reported like new. Responsible party can take at big saving on low payment balance. Write Joplin Piano, Inc., Joplin, Missouri 64801. Include home phone number. 16-1tp

**REBUILT BATTERIES**- \$22.50. Guaranteed 30 days. Burkett Tire Co. 16-2tc

**FOR SALE** - 1 Easy Go Golf Cart - Needs Repairs. 1 Westinghouse Golf Cart - Excellent Condition. Will sell both for \$800.00. Call 348-3462 after 4 p.m. 50-1nc

**SNAPPER LAWN MOWERS** Now in stock at Western Auto. Downtown Santa Anna. 14-tc

**FOR SALE**— 160 x 180' lot. Has sewer, water and gas taps. On paved street. Call 348-3228. 4-tfc

**NOTICE**— Due to the increase in postage, subscribers will receive only one notice that subscriptions are expiring. Prompt payment will insure you receive every issue of the Santa Anna News.

**Homes For Rent**

**FOR RENT**- 2 bedroom house, 1003 S. Santa Fe, \$95 monthly; house at 306 S. Second, \$100 monthly; 706 Ave. D., \$100 monthly; and 104 N. 8th (furnished), \$150 monthly. Two months rent in advance required. Make application with Dr. Cabansag, 348-3122. 15-tfc

**Miscellaneous**

**BUY, SELL OR TRADE**—New and used furniture. Travis Trading Pst, 402 N. Colorado, Coleman, Texas 25-tfc

**NOW IS THE TIME** to apply **LAWN FOOD** containing iron on your lawn. Beal's Garden Center in Coleman. 37-1tc

**Services**

**B & B BUILDERS** All phases of building construction, new and remodeling. Electrical, carpentry, plumbing, painting, roofing, concrete work. Call Coleman (collect) 625-4867. After 6 p.m. 348-3635. 26-tfc

**CUSTOM FARMING** - Chiseling, offsetting and sowing. 100 acres or more. Contact James Stewardson, Rt. 1, Gouldbusk. Call 785-4230. 9-tfc

**Political Column**

The following persons have authorized this newspaper to announce their candidacy for offices as listed, subject to the action of the Democratic primaries. This is political advertising, paid by the candidates listed unless otherwise indicated.

**FOR U.S. REPRESENTATIVE**  
Charles Stenholm  
(For Re-election)

**FOR STATE REPRESENTATIVE**  
Lee Haney

**FOR COUNTY JUDGE**  
W. W. (Pete) Skelton  
(For Re-election)

**FOR COUNTY TREASURER**  
Barbara Freeman  
(For Re-election)

**FOR COMMISSIONER Pct. 2**  
Jake McCreary  
(For Re-election)  
Bruce Estes

**Miscellaneous**

**MOVING AND PAINT SALE**—one refrigerator, matching child's desk, night stand and chest of drawers, two lamp shades, clothes, two older cookstoves, \$10 each. Thursday - Friday, April 22 - 23. 505 Wallis, across from Mobil Station. No sales before 8 a.m.

**REDUCE SAFE & FAST** with GoBese Tablets & E-Vap "water pills." Phillips Drug. 15-2tp

**TAKING A TRIP?** Having visitors or giving a party? Call or go by the NEWS office with items of interest for our weekly paper!

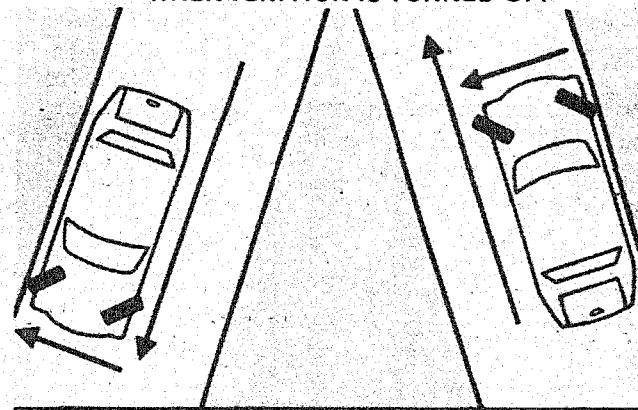
**NEED A GIFT?** Give a subscription to The Santa Anna News. Rates are \$8.95, \$9.95 or \$10.95.



**Your Highway Safety**

Tips From Experts At United Parcel Service

SAFE DRIVING DOESN'T END WHEN IGNITION IS TURNED OFF



When parking on a grade, always angle the front wheels toward the curb on a downgrade and away from the curb on an upgrade. Don't forget to put the car in park and to engage the parking brake.

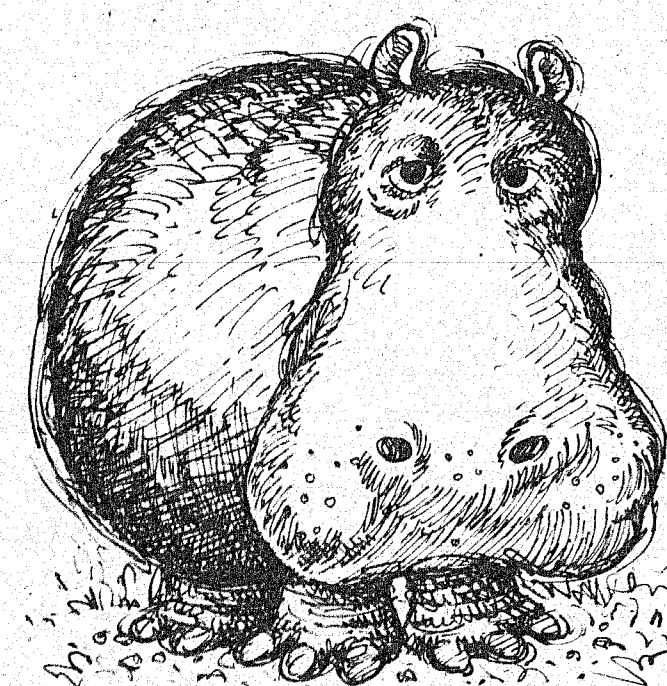
Most good drivers realize that safe driving doesn't end when you turn off your ignition. That's why it's surprising that so many drivers still think that the possibility of a parked automobile becoming a driverless runaway could happen only in a hilly city, such as San Francisco. Actually, a parked car could become a runaway on an ever-so-slight grade, whether on a Dallas street, or in other cities with flat terrain.

When parking on a grade, there are certain obvious things to do in addition to turning off the ignition:  
• Angle the front wheels toward the curb on a downgrade; away from the

- curb on an upgrade.
- Put the car in park, or the lowest forward gear.
- Engage the parking brake.

**Cervenka Electric**  
Residential,  
Commercial  
Industrial  
Ceiling Fans  
414 Commercial  
Coleman, Texas 625-3085

**Beal's Garden Center**  
"We're More Than Just a Garden Center"  
FERTILOAM DEALER  
For Weed Killer & Lawn Fertilizer for Spring  
SELECT FROM LARGE VARIETY  
TROPICAL PLANTS A LARGE LINE OF CONCRETE  
HANGING BASKETS BIRD BATHS, FOUNTAINS,  
Bodding Plants STATUARY, NOVELTY ITEMS  
Vegetable Plants AND PLANTERS  
Pecan and Fruit Trees  
Rose Bushes and Shrubbery  
410 Commercial Coleman



wanna buy a pet?

Looking for something cuddly to love? Like a four-legged friend, or a fine feathered pal? Or a purr-fect playmate for the kids? You'll find your special pet listed in our classifieds! From popular pedigrees to the unusual and exotic! Find 'em here!

LOOK IN THE CLASSIFIEDS...  
**The Santa Anna News**  
348-3545

## Stamford Man Promoted To New WTU Post

Don Welch was elected vice president and member of the Board of Directors of West Texas Utilities Company last week, effective June 1.

Welch will succeed Dick Brooks, who will move to Corpus Christi to become vice president of engineering for Central Power and Light Company.

A native of Stamford, Welch has been an executive assistant to Brooks since February 1, after serving as WTU's district manager at Stamford for a number of years. As a vice president, he will be director of customer services, with executive supervision over WTU's district operations, merchandise sales, customer technical services and area development.

Welch, 42, is a graduate of Stamford High School and attended North Texas State

## Turkey Season Shows Promise All Over State

AUSTIN - Turkey hunters should enjoy the biggest and best spring turkey gobbler hunting season ever in Texas this month, according to officials of the Texas Parks and Wildlife Department.

High turkey populations resulted in a record harvest by hunters during the fall hunting seasons, at an estimated 53,500 birds. Favorable nesting conditions during the past spring boosted turkey populations in most areas, including the 127 counties or portions thereof offering a spring season this year.

In most counties, the spring gobbler season opened April 17 and continues to May 2, with a one gobbler limit.

The spring season is viewed by biologist as an opportunity to offer hunting recreation without harming the resource, since the limited harvest of surplus occurs after most breeding activity has occurred and before nesting gets underway.

Spring gobblers respond well to calls, opening a new dimension for hunters with the patience to try their skill at calling.

"Shampoo" comes from the Hindu word shampu, meaning "to press." A good shampoo involves pressing the fingers against the scalp so the original meaning still applies.

### IRA PUMP & SUPPLY CO.

General Oilfield Supplies

Santa Anna, Texas  
Box 580 - Ph. 348-3179  
Box 21, Ira, Texas  
Bus. 915-573-6403

## Sale of Armadillos Won't Jeopardize Species

AUSTIN- Texas Parks and Wildlife Department officials say the recently publicized harvest of about 20,000 armadillos for commercial purposes probably poses no threat to the species in the state.

Nongame Program Leader Bruce Thompson said armadillos range over at least 100,000 square miles in Texas, and their population density is estimated at between one armadillo per three to ten acres, depending on soil conditions.

"Assuming the conservative figure of one per 10 acres, the

estimated armadillo population statewide is in excess of 10 million," Thompson said. "A harvest of 20,000 would be just three-tenths of one percent of that population."

Although a hunting license is required to take armadillos outside the county of residence, there are no closed seasons or bag limit restrictions on the animals.

Thompson said this does not mean that excessive harvest would be permitted, or is likely in this instance. "The department will continue to monitor



The earmuff was invented in 1873 by Chester Greenwood of Farmington, ME. He called them "ear mufflers."

the effects of any such armadillo harvest and make recommendations for further control if there is any indication the species is being subjected to undue pressure," he said.

Thompson said the current harvest is occurring over a rather large portion of Central Texas, thus reducing the likelihood of noticeable reduction in specific areas.

**Spring Warehouse Sale**



**KRAFT REAL MAYONNAISE**  
**\$1.39**  
QUART



**BORDEN'S CHOCOLATE MILK** ..... QUART **69¢**

2 liter reg. 1.95  
**Coke 1.39**

**Fountain Drink .45**



**BORDEN'S BUTTER MILK** ..... 1/2 GAL. **\$1.19**

Shurfine  
**Fruit Cocktail 2/1.10**

**Chicken Fried Steak Sandwich .99**



**HICKORY SMOKED OR SMOKY MAPLE RATH BACON** ..... 1 LB. PKG. **\$1.59**



**DELICIOUS RATH FRANKS** ..... 12 OZ. PKG. **89¢**



**CHEESE SPREAD KRAFT VELVEETA**  
**\$1.89**  
1 LB. BOX



**BORDEN'S NUTTY BUDDYS OR ICE CREAM SANDWICHES**  
**\$1.19**  
6 CT. PKG.

**Spring Warehouse Sale**



**SWIFT VIENNA SAUSAGE**  
**2 79¢**  
5 OZ. CANS



# ALLSUP'S

CONVENIENCE STORES

"THERE'S ONE NEAR YOU"

PRICES EFFECTIVE APRIL 22-24, 1982  
WHILE SUPPLIES LAST