

Microfilm Center Inc.
P.O. Box 45436
Dallas Texas 75235

Santa Anna News

Phone 348-3545

"He Profits Most Who Serves Best"

Single Copy - 20¢

Volume XCV

Santa Anna, Coleman County Texas

Thursday, November 12, 1981

Number 46

Mountain Echoes

By
Barbara
Kingsbery



Voting was very light in the Tuesday, November 3, election, with only 90 votes cast in Santa Anna for the constitutional amendments.

In Coleman County, 717 votes were cast, with county voters approving six of the seven, while state-wide five were approved.

In Coleman County -- and Santa Anna -- the amendment concerning the management of state expenditures was rejected.

Montie Les Guthrie III served as election judge at the local election last week.

bk

Our community has had frost several mornings this week -- with temperatures at the freezing point.

The weather this fall has been delightful, and the good rains have given the countryside the look of spring. Even lilacs are in bloom -- or were until damaged by the frost.

A pretty sight in our rural area is livestock grazing on green grain fields!

Routine Business For City Council

Santa Anna City Council met Thursday, November 5, at City Hall for the monthly session. Mayor Edd Hartman led the meeting.

Following routine reading and approval of minutes and approval of bills and accounts for the month, the group voted to make a donation of \$50 to the Cub Scouts from the Revenue Sharing funds.

The need for a dog catcher was discussed, with Humane Society regulations needed before a decision can be made.

The need for a desk for city hall was discussed, and the use of an office desk is sought, as there are no funds available to purchase one. Anyone with a used desk to loan or give the city is asked to contact Pat Rutherford at City Hall.

The next meeting of City Council will be Thursday, December 10.

1981-82 Basketball Season Gets Underway Next Week

The dust is barely settled on the football stadium before basketball season gets underway. The Mountaineer varsity teams have their first games Tuesday, November 17, at Bangs.

Coach Charles Brewster will have eight returning lettermen on the varsity squad this year. They include returning starter Brad Wardlow, and also Ricky Anderson, Mike Simmons, Albert Collins, Randy Casey, Tony Culpepper, Ernest DeLeon and David Strickland.

The Mountaineers were Bi-District Champions last year with a 31-6 season record. They opened the season last year with Bangs, losing the game to the Dragons. The first game comes soon after their first full practice Monday, but is also rushing the Dragons, who have an additional football game on their schedule this week.

Coach Brewster will have his team in Rising Star today at 6 p.m. for a scrimmage session.

Gerald Brister, coach of the girls team, is expecting a good season with six returning lettermen on the squad. They are Julie Jones, Robbie Clifton, Holly Smith, Gay Hosch, Patricia Jackson and JoAnn Collins.

The girls team had their first scrimmage with Coleman last week and looked very good. They had another practice session at Goldthwaite Monday night in preparation for the opening game.

Coach Brister will also have the junior varsity girls team, with Barry Miles coach of the boys Jayvee squad.

Dean Bass will be coach of the Junior High boys team, and Miles will coach the girls team from seventh and eighth grades. Their schedule will begin later this month.

Santa Anna College Student To Receive FFA Honor

Jody Naron, son of Mr. and Mrs. John Naron, has been nominated to receive the American Farmer Degree, the highest degree presented by the National Future Farmers of America. Naron was nominated for the degree by the Texas FFA Association.

A former student at Santa Anna High School, Naron graduated from Ozona High School and is now a student at Tarleton State University where he is an honor student and active in judging team and other activities. Judged on the basis of his supervised farming program and leadership activities, he has advanced through a system of degrees, beginning with Greenhand (after one year of membership), and continuing through Chapter Farmer and State Farmer. Only two percent of the State's FFA membership receives the State Farmer degree, and those winners are eligible for the American Farmer Degree.

Naron's nomination was ap-



JODY NARON
Gets Highest FFA Honor

proved at a recent meeting of the National FFA Board of Directors in Alexandria, Va. He is one of 778 FFA members to be nominated this year.

Jody will receive the degree in a special ceremony this week at the National FFA Convention in Kansas City.

Ex-Students Football Game November 28

All former Santa Anna High School football players are being enlisted for the 'Super Bowl 1981' -- the local game that pits the Santa Anna Ex-Students against the Bangs Ex-Students as a Booster Club benefit. The game will be Saturday, November 28, at 2 p.m.

Although many former SAHS stars have been enlisted for the team, others will be welcomed. The group will meet for practice each Saturday and Sunday at 2 p.m. at the SAHS football field.

The Santa Anna team was defeated last year by the Bangs group, and this year plan to even



HUNTING SEASON TO OPEN— Brown County Gazette Editor Travis Priddy snapped this 'shot' of a wild turkey hen near the Coleman-Brown County line this week. Hunting season for turkey, deer and quail opens Saturday, November 14, with hunting expected to be excellent. The turkey and deer season will end January 3, with quail season continuing through February 14.

Holiday Events Planned

Christmas Opening
Being Planned Today

Christmas Pageant
Slated December 6

All Santa Anna merchants and interested persons are urged to attend a meeting of the Chamber of Commerce Thursday (today) at 6:30 p.m. at the C of C office downtown.

According to Clint Day, president of the group, plans will be made for the Christmas opening scheduled Friday, December 4.

Initial plans call for a downtown parade, contests for decorated floats and store windows, and a visit from Santa Claus.

The Lions Club pancake sale will be held that day, and several clubs and organizations are planning events during the day.

The annual ESA Christmas Pageant will be held Sunday, December 6, at 2:30 p.m. at the high school auditorium. Four divisions will compete for the titles of Christmas Belle, Little Christmas Miss, Junior Christmas Miss and Christmas Miss.

Entries in the divisions are to be made by contacting Donna Bradley, 348-3185, or Pam Morgan, 348-9112, before December 1. Each contestant will be responsible for collecting the penny-per-vote, with money to be turned in by 10 a.m. Saturday, December 5.

Anyone interested in taking part should contact Mrs. Bradley or Mrs. Morgan for more information.

More Rainfall Here

The Santa Anna area had another good rain last week, with .90 inch recorded in Santa Anna early Monday morning, November 9.

Measurements varied throughout the community, with as little as .25 inch in some areas.

S-Annans Granddaughter With Trains For New Post

Lorna Clevenger, 23, the granddaughter of Mrs. Delinda Smith of Santa Anna, has recently completed training to join the staff of Campus Crusade for Christ International.

Miss Clevenger is the daughter of Mr. and Mrs. Haskell Clevenger of Coleman and a graduate of Mozelle High School.

She was among 373 persons to become staff members of the interdenominational Christian organization during its summer training for new staff held at Colorado State University in Fort Collins, Colo. The organization currently has approximately 14,500 full-time and associate staff of many nationalities working in 150 countries and protectorates around the world.

Miss Clevenger's assignment with Campus Crusade will involve working with the Mail Systems Department at the organization's international headquarters in San Bernardino, Calif.

Miss Clevenger earned a bachelor of science degree in geology from Stephen F. Austin



LORNA CLEVINGER
With Campus Crusade

State University in Nacogdoches. While in the Coleman area, Lorna is available to speak with church and civic groups about her work with Campus Crusade, now in its 30th year, working with pastors and churches throughout the world in various divisions and outreach programs involving laymen, college students, the military, prisoners and others.

REA Loan is Approved For Coleman Electric Coop.

Coleman County REA has been approved for a \$4,660,000 loan, according to an announcement last week from the office of Senator John Tower. The REA loan will be used for expansions in the system during the next two years. The loan is at a low interest rate.

According to James Barr, manager of the Cooperative, the application for the loan had been made months ago. The funds from the loan will be used to expand service to an additional 910 customers, with 171 miles of distribution lines to be built, 15 miles of transmission line to be constructed, plus other improvements.

Most of the new lines are to be extensions of present lines, many to serve the oil industry in the seven-county area that serves most of Coleman and Runnels counties, and parts of five adjoining counties.

According to Mr. Barr, 15 miles of transmission line will be in the Gouldbusk area where the existing line is inadequate.

The Coleman County Electric Cooperative is continuing to expand and improve the service for the customers in the rural areas.

Clarence Fords Plan Open House

Clarence and Billie Ford are inviting all friends to an open house Sunday, November 15, at their new home 13 miles south of Bangs on Farm Road 586. The event will be from 2 - 5 p.m., and your presence will be their gift. Everyone is invited to attend.

Dalia DeLeon New Secretary At Extension Office

Miss Dalia DeLeon has been employed as secretary at the Coleman County Extension Office. She assumed her duties Monday.

Miss DeLeon is the daughter of Mr. and Mrs. Raymond DeLeon and a 1980 graduate of Santa Anna High School. She is also a recent graduate of Central Texas Commercial College in Brownwood.

The Extension office is located in the County Courthouse.

Cub Scouts Plan Mexican Supper

Santa Anna Cub Scouts will benefit from a Mexican supper to be served Saturday, November 21, at the Lions Club building from 5 - 8 p.m.

Tickets are available from members of the Cub Scout group or at the door that evening. Cost will be \$4 for adults and \$2 for children under 10.

The Cub Scouts have recently been reorganized and are to use the proceeds from the supper for their group activities. Everyone is invited to attend.

Oil, Gas Discoveries Top Last Year's Total

AUSTIN— Railroad Commission Chairman Jim Nugent announced last week that Texas operators reported 103 gas and 48 oil discoveries in October.

In the year-earlier month, 99 gas and 58 oil discoveries were filed with the state's energy regulatory agency.

Gas discoveries in the tenth month of the year included 37 in deep South Texas, 24 in the Refugio area, 17 in Southeast Texas, seven in the San Antonio area, five in West Central Texas, four in the Lubbock area, and one each in East Central Texas and East Texas.

Oil discoveries included 13 in deep South Texas, ten in West

Central Texas, six in North Texas, and three each in Southeast Texas, San Angelo and Midland areas and two each in East Central Texas, East Texas and San Antonio, Lubbock and Panhandle areas.

In October, operators reported 427 exploratory and field tests wound up as dry holes. New applications for permits to drill oil and gas tests totaled 3,146 in October, an increase of 58 over the same period last year.

Santa Anna News

(USPS 481540)

P. O. Box 399 348-3545

Santa Anna, Texas 76878

Published every Thursday at Santa Anna, Texas 76878 and entered as second class mail under the Act of Congress March 2, 1879.

Subscription price: Coleman County - \$8.95 per year; other areas in Texas - \$9.95 per year; outside Texas - \$10.95 per year.

BARBARA KINGSBERY

Editor

RONNI RUSSELL

Advertising Manager

Member of

TEXAS PRESS ASSOCIATION

Football...

(Continued from Page 1)

Salvador Salazar, Rusty Buzzard, Mike Salazar, Rocky Dean, Roddy Dean, Bruce Pape, Mike Warnock, Jerry Don Culpepper, David Horner, Billy Diaz, John Rendon, Paul Martin, Albert Salazar, Curtis Fellers, Tommy Harris, Jody Day and Stevie Beal.

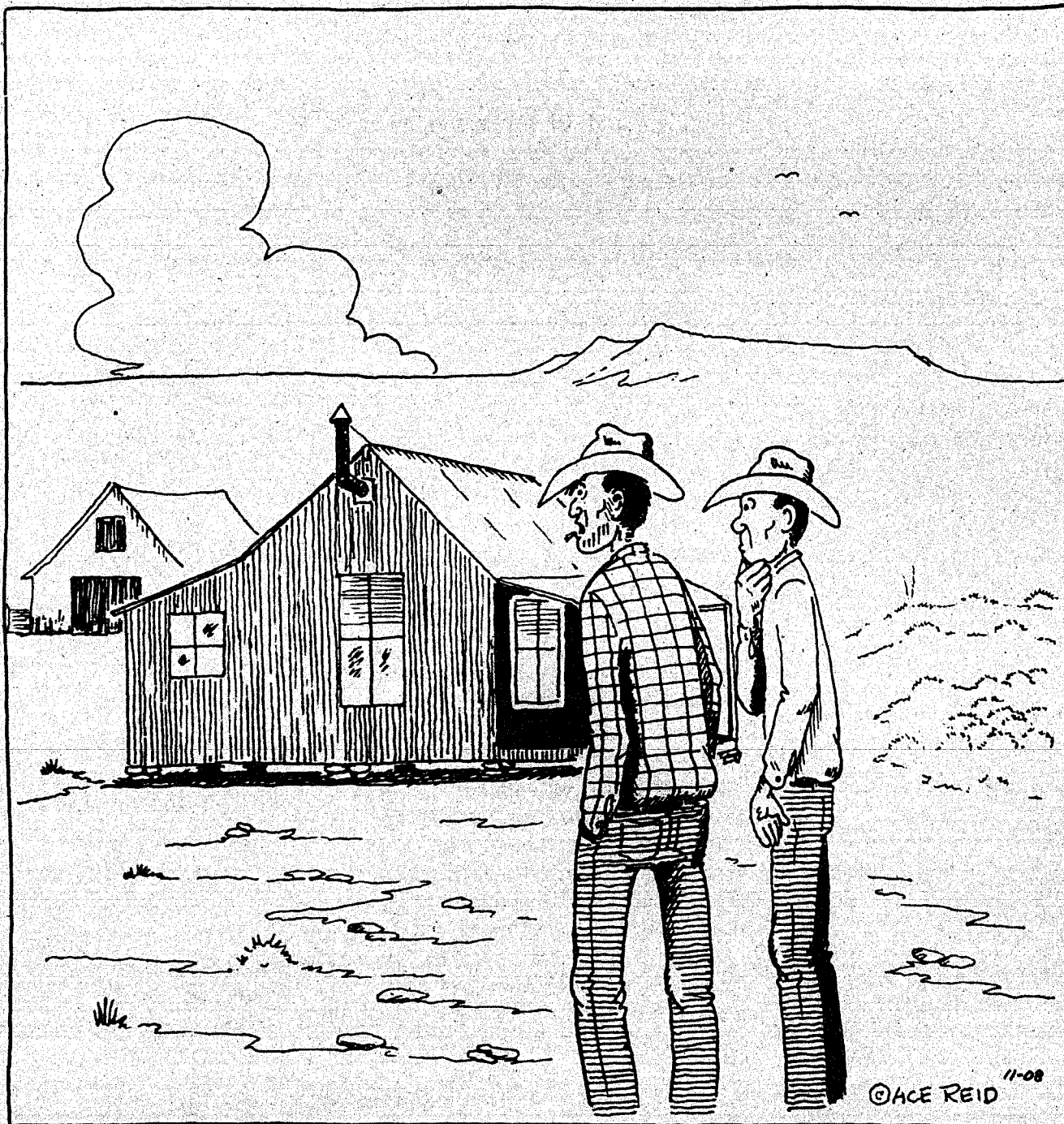
Others already on the list are Lane Guthrie, David Guthrie, David Beal, Jimmy Clifton, Ricky Perry, Duane Aldridge, Terry Day, Norris Lewis, W. T. Young, Tommy Lewis, Tony Malaer, Steve Malaer, Lee Wristen, Wayne Kuykendall, Tommy Niell, Ronnie Daniel, Marty Warnock, Tony Beal and Davey Beal.

Others are Robert Barton, Robbie Young, Dick Smith, Phil Johnson, Jay Weathers, Timmy Benge, Joe Joe Morris, Gary Morris, David Robinett, Sam Allen, Mark Turney and Robbie Drake.

Local people are reminded of the big event November 28 and invited to attend.

COW POKES

By Ace Reid



"It ain't a bad little house, we got heatin' and coolin', it's hot in the summer and cold in the winter!"

Santa Anna National Bank

Deposits Insured by FDIC Up to \$100,000

PASS BOOK SAVINGS

MONEY MARKET 6 MONTH CERTIFICATES OF DEPOSIT

Maximum Rates Allowed by Law

Substantial Interest Penalty is required for early withdrawal

Henderson Funeral Homes

"People Caring For People"

OFFERING AT YOUR REQUEST

Pre-Arranged Funerals

Funeral Insurance And Counseling

Ambulance Service

Coleman 625-2121 Santa Anna 348-3131



JULIANN JONES
Band Sweetheart



MAURICE CASTILLO
Band Beau

Band Favorites Named For Current School Year

Mountaineer Band favorites were announced Friday, October 30, at the halftime performance of the final home football game.

Juliann Jones, a senior, was presented as Band Sweetheart, and Maurice Castillo, a sophomore student, was introduced as Band Beau.

Juliann, the daughter of Mr. and Mrs. William E. Jones, has been in the band six years and plays flute. She is also a member of the Stage Band, playing flute and piano. She also serves as an accompanist for the solo and ensemble entries each year.

Miss Jones is also head cheerleader this year and was named 1981 football Sweetheart by members of the Mountaineer team.

Maud Lovelady, 81, Buried at R-wood Last Friday

Funeral services were held at Rockwood Baptist Church Friday, November 6, for Mrs. Lilly Maude Lovelady, 81, who died in Ft. Madison, Iowa on Monday November 2. Interment was in Rockwood Cemetery under direction of Henderson Funeral Home.

Mrs. Lovelady, the daughter of the late Robert Lee and Ada (Patterson) Cozart, was born in Calhoun County, Mississippi on December 2, 1899. She married Howard D. Lovelady who preceded her in death.

She lived most of her life in Coleman County, living in Santa Anna several years before moving to Ft. Madison two and one-half years ago. She had resided in a nursing home there in recent months.

Survivors are one son, Howard L. Lovelady of Ft. Madison; one sister, Mrs. Ruby Holland of Stephenville; two brothers, Etoile Cozart of Brownwood and Earl Cozart of Granbury; and one granddaughter.

IRA PUMP & SUPPLY CO.

General
Oilfield Supplies

Santa Anna, Texas
Box 580 - Ph. 348-3179
Box 21, Irs. Texas
Bus. 915-573-6403

Mountaineers End Season With Loss To Bronte

The Santa Anna Mountaineers played a defensive game Friday night, scoring only once and losing to the Bronte Longhorns 14-6 in the final game of the season.

The Santa Anna team had six turnovers that led to the defeat as both teams had approximately the same yards offense and the Mountaineers led in first downs.

Bronte picked off four Santa Anna passes and recovered two fumbles. The Mountaineers recovered two Bronte fumbles.

Bronte scored in the second

quarter with both touchdowns, and made the two-point conversion on the second score.

The Mountaineers made their only score in the last quarter when quarterback Bodie Stark tossed a 35-yard pass to Tommy DeLeon. The PAT failed.

Santa Anna ended the season with a 3-8 record and 2-3 in district. Bronte was 3-2 in district and 5-5 for the season.

The Miles team defeated Eden 22-6 to win the West Zone championship and will meet Gorman in the District 7-A playoff Friday night.

Coach Roger Goodwin named James Pelton and Maurice Castillo as outstanding defensive players in the game.

Steve Hughes was injured in the game Friday night, but has returned to school.

Although the Santa Anna Mountaineer football team ended the season with an unimpressive record, they deserve lots of praise.

The games were all very good, with most of the losses by one touchdown or less. The Mountaineers provided local fans with fine action this season, and we congratulate the team and coaches for their representation of our school and community.

New Business Now in Coleman

A ribbon-cutting ceremony was held Monday, November 2, for one of Coleman's newest businesses - Jim 'n Me. The new store, located at 302 Commercial, is owned by James and Wilma Cawthon of Cedar Hill and is managed by Mrs. Melton (Anna) Kennedy of Coleman.

The store features quality clothes at outlet prices.

On hand for the opening ceremony were Stan Brudney, President of the Chamber of Commerce, Mayor Hugh Stempel; Mary Briggs, Chamber director; Anna Kennedy, store manager; and Rick McCulloch, Chamber director.

Coleman Burial Slated Friday For Mrs. Sparkman

Funeral services will be held in Missouri City, near Houston, Thursday (today) for Mrs. Wendell (Lela Ruth) Woolf Sparkman, 65, who died at 6 a.m. Monday, November 9, in St. Luke's Hospital in Houston following a long illness. Interment will be in Coleman City Cemetery Friday, November 13, at 10 a.m.

Mrs. Sparkman was born on a farm near Eldorado, Okla. October 13, 1916, the daughter of the late Pearl and Roy Woolf. The family moved to Oklahoma City in 1919 where she spent her childhood.

She was a graduate of Central High School in Oklahoma City and Draughan's Business College. She worked as an office secretary in Oklahoma City and married Wendell B. Sparkman July 22, 1944. They lived in Oklahoma City until 1964, moving to Gallup, N. M., and in 1967 to Houston. She was a homemaker and member of Missouri City Baptist Church.

Survivors are her husband; two sons, Dr. John Sparkman of Pampa and Roy Sparkman of Austin; a daughter, Mrs. Don (Mary Beth) Kennedy of Richmond; a brother, Andrew Woods of Oklahoma City; three granddaughters, Kimberly Sparkman of Pampa and Stephanie Jo and Karen Kennedy of Richmond; and 15 nieces and nephews.

The Sparkmans have also maintained a home in Santa Anna for several years and have many friends here.

Castillo, son of Mr. and Mrs. Fernando Castillo Sr., plays trumpet with the band. He has been in the group four years.

Guy Allen Wins One Go-Around At San Angelo

Guy Allen was winner of one go-around at the Sunday San Angelo Steer Roping, tying the fastest steer at the roping in 10.95 seconds.

Allen and 19 other top steer ropers from all over the country competed for about \$20,000 in prize money, with Tim Prather the winner of the four-head average with a total time of 67.34 seconds. Phil Lyne was second and Charles Goode was third.

Allen, along with his father and brother, James and Gip, took part in the two day (roping weekend). Guy is a two-time World Champion Steer Roper and runner-up for the 1981 title.

BACK IN SANTA ANNA

Mr. and Mrs. Luther May are back in Santa Anna after spending the summer at their home in New Hampshire. They arrived here November 1.

"No man's credit is as good as his money." E. W. Howe

Rental Notice

The Santa Anna Housing Authority

is accepting applications for rental of

24 new apartments located at Jefferson and Clark

(just east of the school). Apply at 702 Wallis Ave.

bringing documentary evidence of income, such as W-2 Form. There will be no discrimination because of race, color or national origin.

Jesse L. Sparkman
Executive Director

Fourth Grade To Give Program For PTO Meeting

The Santa Anna Parent Teacher Organization will meet Tuesday, November 17, at the high school auditorium at 7 p.m.

The fourth grade classes of Gail Loyd and Ann Fisher will present a Thanksgiving program, and Mrs. Terry McIver, president, will lead the business session.

Plans will be completed for the bake sale set Friday, December 4, in conjunction with the Christmas opening in Santa Anna.

"A hen is only an egg's way of making another egg."
Samuel Butler

November Safety Corner



Operation Lifesaver

"Operation Lifesaver" is a nationwide effort by the National Safety Council to educate motorists on the hazards of highway railroad crossings. Because many railroad crossings are in rural areas, "Operation Lifesaver" recommends these safety tips:

- Never race a train to a crossing.
- Be prepared to stop at un-guarded crossings.
- Stop before entering a crossing when warning devices are blinking or ringing. Never drive around lowered gates.
- Allow extra time when crossing in a slow-moving vehicle. Open the cab window so you can hear a train coming.

We do Deer Processing

Pork for Deer Sausage on Hand

Have Your Deer Sausage Made here Here

Lockers Available for Rent

CASTLEBERRY Meat Processing

Coleman, Texas

Phone 625-4823

On Abilene Highway



ANNIVERSARY CELEBRATION PLANNED— Mr. and Mrs. W. A. Hudler of Fort Worth will celebrate their 50th wedding anniversary Sunday, November 22, with a reception at Ridgela Country Club in Fort Worth from 2 - 4 p.m. Hosting the reception are their children, a son, Duane, and daughter, Mrs. Bob Branham. There are three grandchildren.

Mr. and Mrs. Hudler were married November 24, 1931 in Santa Anna. She is the former Daisy Thigpen. Mr. Hudler is a native of McDade, Texas. He is retired from the City of Fort Worth and she is retired from Stripling's Dept. Store. They are members of Ridgela West Church of Christ and reside at 4113 Southwest Blvd. in Fort Worth.

Friends of the couple are invited to attend the reception.

Well-known WTU Leader Retires Recently

James L. (Curly) Hays, farm and ranch supervisor for West Texas Utilities Company, retired November 1 after serving the company for 43 years.

Hays does not have any immediate plans for his retirement, but if he is true to form, he will be too busy to know he has reached 65. In fact, at the occasion of the 25th anniversary with WTU in 1964, it took his boss, R. E. Kennedy, and others a week to locate him. They finally caught up with Curly in Roby where he was guest speaker at a Lions Club.

Curly came to work for WTU in 1938 after a very successful early life. He was born in Clarksville in 1916, but spent his younger life in San Angelo where he attended schools. He was an outstanding athlete in football, and was named to the all-state team for two years. He was also a member of the National Honor Society for two years.

Following high school graduation, he attended Tulsa University and received a bachelor of arts degree in business administration. He also received a bachelor of science degree from Dartmouth.

During World War II Curly served with the U. S. Navy and reached the rank of lieutenant-commander. He was active in the Naval Reserve as full commander, and served as a commandant's personal representative in West Texas.

For many years he was busy during football and basketball season, flying all over the Southwest to officiate at athletic

contests. He was a member of the Southwest Conference Football Officials Association and other affiliated organizations.

Hays has always been a big booster for West Texas towns and often seen at local events supporting agriculture and affiliated organizations. He worked

many years with the West Texas Fair Stock Show, serving as superintendent.

Working with 4-H youth has been his first love, and when 4-H members get together for a district meeting, banquet, style show or other event, Curly is always there. He served many years as trustee of the Texas 4-H Foundation.

Hays and his wife, Jean, were married in Abilene in 1948. She is employed by Southwestern Bell Telephone Co. in Abilene.

Why Carry Cash? Bank here,

and take your checkbook along.

Pass Book Savings 5% — Compounded Daily

First Coleman National Bank

Member F.D.I.C.

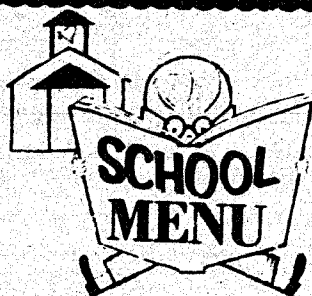
"Always Willing — Always Prepared"



"Your Good Neighbor Bank"

We Sponsor The News Each Day At 12:30 Over KSTA

Santa Anna



Monday - Friday, November 16 - 20:

MONDAY— Corndogs with mustard, pork and beans, potato rounds, walk-to-school cookies and milk

TUESDAY— Fish with tartar sauce, macaroni and cheese, coleslaw, cornbread, banana pudding and milk

WEDNESDAY— Meat and spaghetti, mixed vegetables, peaches, hot rolls and milk

THURSDAY— Turkey and dressing, giblet gravy, sweet potatoes, green beans, cranberry jello, hot rolls and milk

FRIDAY— Charcoal burgers, lettuce, tomato, onions and pickles, potato chips, fruit cup and milk

VISITS FRIENDS

Rev. John Gordon of near Fort Worth visited in Santa Anna Tuesday and was a guest at Lions Club. The former pastor of United Presbyterian Church is now retired, moving to the Fort Worth area from Tennessee.

Mrs. Gordon is teaching in the Hurst -Bedford-Eules school system. Daughter Karen is out of college and employed in Dallas, and the two younger children are both students at the University of Texas at Austin.



An Accident Can Be Disastrous

IN MORE WAYS THAN ONE

Don't suffer financial loss... drive insured and feel assured... protected against everything from repair costs to liability.

We provide complete coverage... call for details.

Call Us Collect **625-4126**

Countywide Insurance Agency, Inc.

211 Commercial Coleman

Monthly News

NOVEMBER 1981

NOV. 13 TO 20 — DIABETES WEEK

About one out of every fifty persons has diabetes and those who know they have it lead normal healthy lives, as long as they observe proper care.

THERE ARE MANY UNKNOWING DIABETICS.

Unfortunately, no painful discomforts disclose the beginning of diabetes. It can cause serious harm before it becomes known.

URINE SUGAR A WARNING SIGNAL.

By dipping a testing paper in the urine, you can tell if sugar is present. This indicates the possibility of diabetes and a quick visit to a physician for further tests is a "must." We have these inexpensive testing papers in our Diabetes-Aids section.

DIABETES IS OFTEN HEREDITARY.

It is not contagious, but if there are diabetics in the family, diabetes is a hazard. This danger is increased by overweight.

DIABETICS CAN LIVE LONG LIVES.

But, they must have regular physician checkups and carefully follow instructions. Insulin can control the most serious cases. And, now we have oral antidiabetic drugs. The important rule is to always observe diet restrictions. We carry in stock the drugs or testing material any physician may specify.

BRINKS
PHARMACY

"Dedicated to Good Health and Good Values"

Trickham News

By Mrs. Oscar Boenicke



Rev. Mike Alexander, the Methodist minister, preached at 9:30 Sunday morning. Next Sunday Rev. Swanner, the Baptist minister, will preach at 11 a.m.

The Saturday night community supper will meet at 6 p.m. since the time has changed. Games will be played after supper. Bring stew and a sweet.

Open house is slated Sunday, November 15, from 2 - 5 p.m. at the new home of Clarence and Billie Ford, 13 miles south of Bangs on Farm Road 586. Refreshments will be served during the party hours. Your presence will be your gift to them.

Those from Trickham attending the Golden Wedding Anniversary for George and Goldie Haynes at their home on the Bangs and Brownwood Highway Sunday were Ilene Haynes, Sug Stearns, Oma Lee Dockery, Leona Henderson, Russie James, Grady and Genia McIver, Rankin and Natalie McIver, and Mary Boenicke. It was all very nice and a large crowd was there. All seven of their children and 16 grandchildren were present, one girl and her husband did not come.

I went with Rankin and Natalie McIver, also Ethel Johnson came and went with us. Ethel spent last week with Inez and Roy Miller at Coleman. Inez had surgery at Abilene the week before, and Ethel came to be with them after Inez got home. Inez seems to be doing fine.

Sunday evening Rankin and Natalie and Grady and Genia went to Coleman to visit Inez and Roy Miller. Also Ethel and Irene were there. Bernice and May McIver visited one evening last week.

Mr. and Mrs. Marvin Smith of Coleman visited in our community last Wednesday evening with the Rankin McIvers, the Grady McIvers, the Walter Stacys and Oma Lee Dockery. Some of us were in Brownwood and missed them.

Mr. and Mrs. Clive Brewster of Blanket visited their son and family Saturday, the Charles Brewsters, and their son and girl friend from ACU at Abilene were weekend visitors.

Mr. and Mrs. Emory Rider of Santa Anna visited the G. K. Stearns Sunday night.

Ronnie and Cindy Proler, David and Ryan of Houston spent the weekend with Lou Vaughn. Carrie Stacy and Russie James also visited her.

The old landmark, the old Vaughn home, built by Mr. W. F. Guthrie about 1909, the old part of it, and the Vaughns moved a

two room house on the north side of it while they lived there. The old part is being torn down this week. Those two rooms may be moved together to Bangs. A man from Bangs bought it. Lou Vaughn sold it.

Visitors with the Walter Stacys were Marjorie Sullivan of San Antonio who came Friday on Carrie's birthday. She was 81. Marjorie took Carrie and Walter out for dinner and spent Friday night with them. She and Sammie LaDouceur went to Granbury and met Bill and Tavy Marie Heidbrier and they spent the day together and had a big time. Del Ray and Patsy Stacy visited Sunday night with his parents.

Mary Mitchell is home from Ranger Park Hospital at Santa Anna after having surgery there Saturday a week ago. Her family, or most of them, were with her over the weekend, Betty and Damon Miller and family of Austin and Lea Mock of Post. Lea came thinking her mother would go home with her to spend a week, but Mary Lea is doing so good she is able to take care of herself. They all went home Sunday evening. I visited her awhile Sunday evening.

Sunday afternoon Hilburn and Leona Henderson went to Abilene to a Golden Wedding anniversary for Mr. and Mrs. J. B. Brooke, a cousin of Hilburns. They also went by Hendrick Hospital and visited Mozelle Kirby. Daisy McClatchy visited the Hendersons Wednesday.

Friday night Russie James and Lyndall Moore went to the high school football game at Brownwood and spent the night with their sister, Yetive Cole. Sunday Roberta and Pat McShan of Brownwood spent the day with Russie James, and Lou Vaughn visited Sunday evening.

Last Wednesday Russie James, Lou Vaughn and Mary Boenicke went to Brownwood and did some visiting and shopping. As we went through Bangs we stopped at Bangs Rest Home and visited Carrie McClatchy, Carl and Mabel Sheffield. They were all doing better than they were last time we saw them. Before we left Brownwood we visited Yetive Cole, and she served refreshments while there, and came by the Care Center and visited Mamie Lancaster. She is just out of the hospital and doing very well. We also visited Mrs. Dora Davis, and she seemed to be doing fine.

Visitors with Ilene Haynes over the weekend were Reba and Elvis Cozart, Philip and Cindy Cozart of Round Rock, Danny and Dorothy

THE SANTA ANNA NEWS

Oil, Gas Exploration Increases Over 1980

A proposed 1-995-foot wildcat will be drilled two miles west of Trickham in the Proler Field.

It is Proler Energy Inc. of Houston No. 33 Vaughn, located on a 937-acre lease.

Site is in the Brooks & Burleson Survey 1, A-64.

James D. Rice of Santa Anna has completed No. 4 Featherston, a re-entry project, in the Proler (Breneke) Field two miles west of Trickham.

Location is in the J. S. Martin Survey 221-A-490.

Absolute, open flow was 300,000 cubic feet of gas daily with a gas-liquid, hydrocarbon ratio of 280,000 - 1 of 69 gravity.

Production is from perforations at 973 to 982 feet. Operator set the 4 1/2 inch casing at 1,084-feet, total depth.

Apex Petroleum Inc. of Plano will drill two proposed 2,650 foot wildcats five miles southeast of Santa Anna.

Each test is located on the E. Leroy McFarland 80-acre lease with No. 2 McFarland located in the J. A. H. Cleveland Survey 495

Ferguson and Jenny, Robert and Juanita Haynes, all of Brownwood, Oma Lee Dockery and Sug Stearns.

We got a little rain Sunday morning early. One-third of one inch. It is cold this Monday night. We look for frost in the morning.

Visitors with Oma Lee Dockery were Barbara Dockery and children and Ilene Haynes. Leona Henderson visited Friday, and Dan Dockery spent Friday night and Saturday with her. Dan and Wesley Dockery had dinner with their grandmother Sunday.

and No. 3 McFarland in the same survey.

Pautsky Engery, Inc. of Wichita Falls has filed application to drill No. 1 Raymond Harrell as a Coleman County wildcat.

Location is four miles west of Santa Anna on a 230-acre lease in GH&H Survey Section 4, Block 1.

Permit depth applied for is 2,100 feet.

New Subscribers

Wayne Whitley, Big Lake
Frank Valdez, Brownwood
Wanelda Morton, Cisco
W. D. Scarbrough
Helen Taylor
Mrs. Charles Bengel
Linwood Bishop
Mrs. J. S. Tinkle, Abilene
Frank Garey, Buckholts
Eugene Allen
Roger Collins, San Francisco, Cal.

Helen Goodloe
Doug Moore, Rosebud
Ray McSwain, Hico
Mrs. I. E. Hartman, Midland
Artie Berry, Richardson
Mrs. Jewel McMinn, Coleman
Mrs. E. M. Tisdell
Mrs. E. L. Taylor
Tom Vinson, Whon
Joe Bertoni
Linnie Box, Rockwood
Rodney Dean
Woodrow Niell
Mrs. G. R. Anderson
Susan N. Fritz, Fredericksburg
Pete Simmons, Littlefield

Mrs. C. M. Loggins, Midlothian
T. J. Wright, Coleman
M. E. Williams, Bisbee, Ariz.
Nathan Price, Brownwood

County Baptists To Meet Tuesday

The monthly meeting of the Coleman County Baptist Association will be Tuesday, November 17, at Harmony Baptist Church near Flak.

The meeting will begin with a meal served at 6 p.m. The meeting of the Executive Board begins at 6:30 p.m.

Aceens of First Baptist Church of Coleman directed by Amy Hinds will present the program, a drama on foreign missions.

Several from First Baptist Church will be attending the meeting, and everyone is invited.

Mary F. Oakes
Leroy Stockard, Brownwood
Johnnie Martin
Eurell Blair
Gerald Sitterle, Houston
Mrs. Ace Reid
Harold Brown
Elgean Shield Jr., Houston
Donnie Neff
R. C. Smith
Maurice Curry, Fort Worth
Mrs. W. J. Ogle, Lubbock
Ronnie Hartman
Elmer Kleman
Richard Zable, Bangs
Luther May
Walter Stacy
Mrs. W. F. Black, Fort Worth
Joe Riley

Cervenka Electric
Residential,
Commercial
Industrial
Ceiling Fans
414 Commercial
Coleman, Texas 625-3085

Dale & Donna **Bradley** 348-3185
LUMBER & BUILDING SUPPLY
*** Why Go Out of Town To Remodel Your House ***
We Cut What You 'Need — FREE
★ **We Are Cheaper**
★ **We Deliver FREE**
★ **No Restocking Charges on What You Don't Use**
Try To Beat Our Quality and Prices
New Stock Arriving Daily
Check our Full Line of Cement
Come See Our Paneling Samples

LOOK!!!
\$3.89 \$3.89 \$3.89
1/2 LB. T-BONE STEAK
Includes baked potato or fries & salad bar.
For Only **\$3.89**
ROAST BEEF **\$3.95**
ENCHALADAS
SPECIAL ALL DAY LONG!
FREE SOFT DRINK FOR THE KIDS!
THE SECTION HAND STEAK HOUSE
ON THE BRADY HIWAY 643-1581

Cleveland News

By CLARA CUPPS

Charles Spencer, the son of the late Mr. and Mrs. Ted Spencer, passed away last Sunday. Charles lived in Washington State. Mrs. Lena (Spencer) Williams also passed away in California one day last week. Lena was buried in California beside her parents, Mr. and Mrs. Thomas Spencer. Her funeral was Saturday evening. We send our sympathy to Loleta and Ralph Lemes and other kinfolks.

Mrs. Carmilla Baugh went to Bangs Wednesday and Saturday to visit her mother, Mrs. Mac Flores, who lives at Twilight Rest Home. Mr. and Mrs. Baugh visited Mrs. Margaret Campbell at Brownwood Regional Hospital Saturday.

Mrs. Vera Wise spent Sunday Monday and Tuesday night with the Adolph Kelleys.

Monday and Saturday Mrs. Lucille Cupps and Justin went to Coleman to visit Richard Wells and Maggie Leonard. Bob and Sydney Burleson and children ate Sunday dinner with her parents, the Darrel Cupps.

Those visiting in the L. V. Cupps home during the week were Gladys Haynes, Jerry and Joey Cupps.

Mr. and Mrs. J. L. McDaniel of Carbon came Wednesday for a visit with her mother, Mrs. Beulah Fleming and girls.

Mr. and Mrs. John Howard went to see their doctor Monday and both got pretty good reports. Ruby had arthritis in her foot.

Ruby called Tom on his birthday November 4, and wished him a Happy Birthday.

Sandra Walker and Stacy of Bangs visited her parents, the Edd Hartmans, Sunday afternoon.

Mr. and Mrs. Bill McDonald of View visited her parents, the Buck Mills. A little granddaughter, Janna Jameson of Dallas, spent a few days with her grandparents.

Troy Pierce of Brownwood spent the weekend with his grandparents, the A. C. Pierces.

Michael Cupps and Janice Fellers spent Sunday with their mother, Mrs. Betty Joyce Cupps.

I visited the J. E. Williams Friday evening awhile.

Billy Don and Kasha Cupps visited awhile Sunday evening with the R. W. Cupps.

Ruth Manor of Brownwood visited Eveline and Casey Herring Friday. Pam Morgan and John came Wednesday night to visit her parents.

Mavis Campbell of Fort Worth and Mrs. Claud Box visited the W. L. Campbells. Other visitors during the week were Mrs. Sue Moredock who visited Thursday afternoon.

Syble Huggins visited Hardon Phillips, and Hardon visited Bruce Alsbrook Saturday night. He also dropped by Hoyt Gilleys Sunday night.

Juanita Naron visited last weekend at Sonora and Ozona with John Naron and Jan and Forest Henderson and baby Rachel. Jennifer spent the weekend at Bangs with some friends at Bangs.

Sunday night Mr. and Mrs. Lee Ray Huggins gave a birthday supper for David Huggins. Those attending were Phil and Gwen Huggins, Dana and Adam, David and Jimmie Gail Huggins and Amber.

Friday Mr. and Mrs. C. T. Moore went to Hurst to visit Melvin and Patsy Pollock and family. Terry Moore from Bedford visited the group. The Moores returned home Saturday. Iona visited Mrs. D. R. Hill at Ranger Park Inn Wednesday afternoon. She also dropped by to see Jenny Brock, and visited Roxie and Benji Allison Tuesday morning.

Marsha, Calvin and Shannon Brown went to Zephyr Saturday night for a hay ride and weiner roast.

Mr. and Mrs. Cecil Ellis visited Mrs. Grace Ellis Sunday evening.

Mr. and Mrs. John Perry visited the James Perry family Friday night.

Visitors through the week with Mrs. Tavy Ford were Peggy Lancaster and Mrs. Sammie LaDoucer of Brownwood who Mrs. Ford and Mrs. LaDoucer went to Coleman to Holiday Hill to visit Mrs. Lula Hancock.

Ted and Diana Ford, Scotty and Brent of Lingleville came Saturday and spent the day with his parents, Mr. and Mrs. James Ford. They had supper late and returned home that night.

Mr. and Mrs. Coy Brooke visited the E. A. Densmans in Coleman Tuesday. J. B. Brooke dropped by and Joe C. Brooke visited the Coy Brookes one evening.

Nikki and Anna Laura York visited Mrs. Winnie Haynes Monday evening.

Mr. and Mrs. Lawson Battles had a big surprise. Lawson's first cousin, Creath Battles and wife of Smithville, came up last Monday for a visit.

Jim Edd and Jeff Lovelace of Wichtia Falls spent the weekend with their grandparents, the C. E. Wises. Leroy Stockard of Abilene was a dinner guest of the group Sunday.

Mr. and Mrs. Stanley Russell, Michael and wife and baby of New Mexico visited the V. H. Russells Thursday afternoon.

Those visiting the Ercell Ellises last week were Mr. and Mrs. Eugene Walker and children, Heather and Wade of Brownwood, and the Denver Ellises dropped by for a visit Sunday. Mrs. Doyle Ward came out last Monday, and Rev. Mike Alexander and son David visited. Ann Ellis went to Brownwood to her eye doctor for a checkup and is doing well now. For our weather this Monday night: Supposed to frost, and it is cold and windy. I picked up lots of pecans, and so did Kasha.



By Billie Wheatley

Nobody loves me, everybody hates me, think I'll go off and eat worms!

I can't find anything better to fit my feelings last week. Besides, I couldn't have managed anything harder than a worm.

While you have a problem, look for help. I always head for Daniel Webster, and this is what I learned:

--false means, not true:
That's what he thinks! My dentist guaranteed them not to gossip, nag, tell lies, or eat caramel candy.

--not faithful or loyal:
He missed this one too. They're stuck to me like a blood brother all week. Of course, the dentist's threat to cut my throat if I left them out over ten minutes at a time could have had a little to do with it.

--treacherous, as a false friend:
Zonked again. Only a 'true' friend would look you in the face and say, 'Eat your heart out, Farrah Fawcett-Majors!'

--not real or genuine:
They are so! They're genuine store-bought!

--artificial, as false teeth:
I can't argue with that except I'm just artificial in the upper berth. The lower is still me. In a case like this, I wonder if the tooth fairy only gives you half

your wish? Let's everybody think peasheller for a few days. Clara, did you ever get one?

To say the least, this has been quite an experience. One thing that gets my goat: All the time I've been making seven course dinners of mashed potatoes and melted jello, the tube has not advertised one thing except beef steak and peanut brittle! It's not fair!

The worst part of all has been the butterflies that got in the mid-section at the thought of going out in public for the first time. You just know everybody is going to be looking at you!

Well, as usual, I worried for nothing. Despite all the ice packs, guess who developed a black eye? Take it from me, there's nothing like a good shiner to take people's minds off your mouth.

Anybody want to buy a good used potato masher?

5-4-78

Increase in abortions

Three out of every 10 pregnancies are now being terminated by abortions.

In 1977 there were 1.32 million legal abortions and in 1978 there were 1.37 million. — CNS

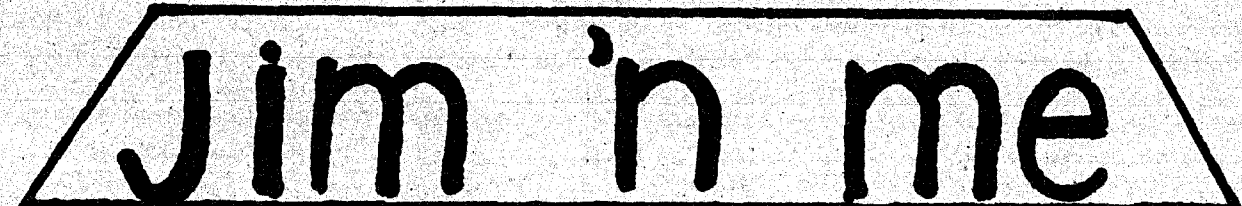
Can vitamins prevent cancer?

HOUSTON, TX. — Vitamins are proving more than mere breakfast supplements. Scientists are studying compounds found in several common vitamins to learn more about the growth and development of cancer cells.

Dr. Guy R. Newell, director of cancer prevention programs at The University of Texas M. D. Anderson Hospital and Tumor Institute, explains that retinoids, components of vitamin A, are attracting considerable scientific interest for their ability to control cell growth in certain body organs.

"Retinoid deficiency may improve the ability of a carcinogen (cancer-causing agent) to act on the cell's DNA," he says. "DNA serves as the blueprint for normal cell replication. Scientists hope eventually to find ways to supplement the diet to prevent, slow down or even reverse the development of cancer at this basic cellular level."

ATTENTION BARGAIN HUNTERS WISE SHOPPERS



"Quality Clothes at Outlet Prices"

Many items below Wholesale Cost

NEW SHIPMENT BLAZERS

Fully Lined Velveteen Sizes 5-13 **\$43⁰⁰**

Fully Lined Corduroy Juniors and Misses **\$34.00**

Sweaters Cardigans & Slipovers

Also **JEANS \$12⁰⁰-\$15⁰⁰**

Skirts, Blouses, Blazers (Wool blends, Plaids, Gabardines)

Open Every Mon. - Sat.

302 Commercial

Coleman

Repairs or Remodeling
Plumbing & Supplies
Lee's Plumbing
Call 348-3417
Santa Anna, Texas
Free Estimates

UNIROYAL
Home of the Tiger Paw
Williams Tire Store
2003 Commercial
Coleman, Texas
Phone 625-5152

Ranger Park Inn News

The singing of the Pentecostal Church group was enjoyed by a large number of residents Tuesday evening.

The Songbirds sang for us Wednesday afternoon. A large number of residents enjoyed the music of Wanda Wallace, Kate Cagle, Doris Aderholt, Mr. and Mrs. H. O. Trent, Mr. and Mrs. Neal Smith, Virgie Woods, Allene Needham and Jo Grant. It is a joy to have them visit us each Wednesday.

Thank you, Lillian Herndon, for the corn we enjoyed while watching the movie 'Golden Lizard' Friday afternoon.

Thank you, Bro. and Mrs. Lindley, Jay Irvin, Helen Wright, Bonnie Norway, Mrs. Keeney, and Mrs. Thomas for the singing and devotion time Sunday evening. We appreciate you coming each second Sunday afternoon.

We are happy to have Mrs. Mabel Burrage of Santa Anna and Mrs. Etta Barrington of Coleman come to live with us. We hope they enjoy their stay with us.

The Adventure Campfire Girls brought birthday cards they made for the residents having birthdays in October and November. Thank

you, girls. We appreciate your sharing with us.

We are happy to have Mrs. Ruby Horton home from a stay in the hospital.

Keetie Haynes visited with Mrs. D. R. Hill one day last week.

Bob McCowen of Cross Plains was a visitor of his uncle, Hubert McCarty.

Leta Parker visited with her sister-in-law, Pearl Abernathy. Another visitor was a friend, Dorothy Brown.

Mrs. Sloan Wells came to the Inn and played the piano for the residents. They enjoyed it very much.

Rev. John Holmes of Coleman visited one afternoon with residents. Come back to see us any time as we enjoyed your visit.

Susie Snider had several visitors during the week, including Nota Snider, Bertha McQueen, W. F. Fenton, Pauline Ransberger, Marie Britton, Dessid Dickenson, Herman and Edna Estes.

We are sorry Lily King, Jay McCoy and Mary Cruger are in the hospital. Mrs. Cruger has been transferred to the Brownwood hospital. We wish them a speedy recovery.

Tag Your Game Before Travel

Tag a deer or turkey carcass immediately after the kill.

Tags can be attached to any part of the carcass so that it will not become detached or defaced during handling or transporting.

Tags must remain on the carcass until it reaches the final destination, which is the permanent residence of the hunter or a commercial processing facility.

In counties where taking both gobblers and bearded hens is legal, the beard must remain on the turkey until reaching the final destination.

No tag may be used more than once; no person may use a tag taken from the hunting license of another person.

A deer or turkey tag should have both sides properly completed, showing the name of the hunter on the front, and the name of the ranch and county where the animal was killed, with the month and date of the kill cut out on the reverse side.

factory to the homesites.

Another convenience extends to financing. Terms are considerably more favorable than they were five or six years ago. The Federal Home Loan Bank Board's new rule eases financing by Federal savings and loan associations of mobile/manufactured home purchases. The Bank Board increased the lending authority for such transactions from 10 percent to 20 percent of an S & L's total assets. Furthermore, the Bank Board extended the maximum terms of maturity on new mobile/manufactured homes to 20 years.

But, back to the home itself, where the convenience of moving in, and a relaxed, non-pressured lifestyle can prevail because the home can come completely furnished and so little needs to be done in the way of interior and exterior maintenance. This opens up more opportunity for pleasurable use of leisure as Gershwin's tune has it so that "the livin' is easy."

Betty Sue Brown, Frank Kennedy Married Recently

In an afternoon ceremony September 5, Betty Sue Brown became the bride of Frank C. Kennedy in the home of the bride's parents, Mr. and Mrs. Harold Brown of Santa Anna. The Rev. John D. Stanislaw, pastor of Santa Anna First Baptist Church, officiated at the ceremony.

Close relatives of the couple attended the ceremony.

The bridegroom is the son of Mrs. Josephine Disko of Park Ridge, Illinois.

The bride is a graduate of Melvin High School and attended Angelo State University and San Angelo Business College. The newlyweds are making their home at 13225 St. Lawrence Circle in Farmers Branch.

HOSPITAL NEWS

The following patients were admitted to Ranger Park Hospital November 2 - 9:

- Pablo Diaz, Coleman
- Lilly King, Ranger Park Inn
- Mary Cruger, Ranger Park Inn
- E. J. McCoy, Ranger Park Inn
- Lorene Wright, Coleman

These patients were dismissed from the hospital November 2 - 9:

- Clarinda Menges, city
- Mae Henderson, city
- Jewel Lee, city
- Mable Burrage, city
- Nola Hopper, Ranger Park Inn
- Mary Mitchell, city
- Paul Diaz, Coleman
- Ethel Wood, Coleman

VISITING IN SANTA ANNA

Mrs. Maria Robles of Mexico City arrived Thursday for a visit with Mr. and Mrs. C. D. Bruce. She will also visit in the Joe K. Taylor home in Coleman while on her trip.

Lifestyle Tips



Mobile/Manufactured Homes Built With Convenience In Mind

By Lisa Drake
Consumer Affairs Advisor
Manufactured Housing Institute

A memorable Gershwin tune speaks of summertime when the "livin' is easy." This is an apt phrase the year round for people who cherish the convenience of both moving into and living in today's mobile/manufactured home.

These homes are built fully equipped. All you have to move in are your dishes, groceries, and personal effects. The home comes completely furnished with carpeting, draperies, furniture and appliances.

Convenience of living is intrinsic to the design and construction of mobile/manufactured homes, says the Washington, D.C. area-based Manufactured Housing Institute. These homes are built with a minimum of wasted space, making them

easier and faster to clean. Exterior maintenance is practically nil so that minimal seasonal maintenance and yard care is about all there is to do.

The typical mobile/manufactured home has a range and refrigerator, an automatic central heating system, a water heater, plus any other appliances you might choose to have installed.

In the matter of community facilities, says the Institute, times have indeed changed. Once relegated to the boon-docks, usually by restrictive zoning, where normal facilities were hard to come by, today's mobile/manufactured homes are in communities convenient to shopping, schools, transportation, and recreation. They are well-planned communities with all the homes on permanent sites. The "mobility" aspect of these homes is simply a means of getting them from the

PRESCRIPTIONS

Daily Deliveries to Santa Anna

Owl Drug Store

"Where Friends Meet"

Telephone 625-4514

312 Commercial

Coleman, Texas



Perfect for Dad's Christmas!
UNCIRCULATED
Morgan (Pre-1922) 90% Silver
SILVER DOLLAR
In Handsome Protective Case
Dates
Our **\$49.95** Tax Inc.
Choice 10 Day Money Back Guarantee

NUMISMATIC INVESTMENTS
OF BROWNWOOD
P.O. BOX 3231
EARLY, TX. 76801
Enclosed is \$..... for
Silver Dollars.
Name
Address
City State Zip

Frame Master

Framing Done for Christmas

DO IT NOW TO AVOID CHRISTMAS RUSH

Custom Framing & Matting Mirrors

Needlepoint Framing

Ready Made Frames

Limited Edition Prints To Order

Have Your Class Pictures

Framed & Matted

10% Off

Charles Vanpelt - Owner

Mon. - Sat. 415 W. LIVEOAK Phone 625-3269
11 a.m. - 6 p.m. COLEMAN, TEXAS Nights 625-3357

Announcing All New

Trade Winds Restaurant

Regal Enterprises Owners

Bob Griffis

Andy Anderson

All New Kitchen

New Menus

New Staff

Completely Re-decorated

Hours 5:30 a.m. - 9:30 p.m.

7 Days A Week

Sunday Buffet - 11:30 - 2:30

Daily Luncheon Buffet

For Elegant Dining Visit

ALL NEW REGAL ROOM

Available For Private Parties And Meetings

Phone 625-5859

Coleman

At The Ablene-Cisco Y

Social Security Claims May Need Legal Advice

Although most people rely on the advice of local office personnel for help with their Social Security-related problems, a person has the right to be represented in his or her dealings with the Social Security Administration by someone of his or her choice. The representative may be an attorney or other qualified individual. On request, the local Social Security office will even

help a claimant locate an attorney, using community resources such as the local bar association, Legal Aid Society, or other organization.

However, there are some restrictions on the appointment of a representative. A person cannot be represented by a corporation or an organization, or by an individual who has been barred from representing Social Security claimants because of prior involvement in fraudulent activities, charging unauthorized fees, or violating other provisions of the Social Security law. Moreover, special rules apply where the prospective representative is a present or former employee of the United States Government.

The appointment of a representative, and his or her acceptance of the responsibility, must be in writing. This can be accomplished by submitting Form

SSA-1696 (Appointment of Representative). The representative's authority ends at the claimant's request or when final action is taken on a case.

In general, appointment of a representative gives that person permission to obtain information from the claimant's file, with his or her written permission; to submit evidence to support a claim; to be present at any interview with Social Security Administration personnel; to request a reconsideration, hearing or Appeals Council review; to notified of all decisions made on a claim, with the claimant's written permission; and to submit a request to the Social Security Administration for the claimant to pay an appropriate fee.

The representative does not have authority to sign an application for benefits for the claimant, or to charge or collect a fee without written permission from the Social Security Administration. A representative who

does charge or collect an unauthorized fee for services may be subject to prosecution. Any fee due the representative is the claimant's responsibility. Request for permission to charge a fee may be made even if the claim is denied.

Should a claim be approved, payment of the fee generally is made from any retroactive benefits due the claimant. In such cases, the representative must file a "fee petition" within 60

days from the date of the notice that the claim was approved. The petition must show the amount of the fee, and describe the services rendered and the dates they began and ended.

For additional information about the right to representation and the extent of the representative's authority, contact your local Social Security office.

Almost all social security matters can be handled by phone. For general information or to

report a change, call toll free 800-392-1603. Medicare questions or filing of medicare claims can be taken care of by calling toll free 800-442-2620. If you wish to file an application to establish you eligibility you may call collect 915/646-7533 in Brownwood.

A representative of the Brownwood office visits Santa Anna once a month on the second Thursday from 1 - 2:30 p.m. The representative can be found at the Mt. City Center.

Eastern Star Plans Program In December

The Santa Anna Eastern Star Chapter met Monday, November 9, at the Masonic Hall.

The meeting was led by Billie Guthrie, worthy matron, and R. W. Balke, worthy patron.

Mrs. Hope Bearden, Deputy Grand Matron of District 3, Section 5, from Comanche will make her official visit December 14. A Christmas dinner will be served at 6 p.m. in the fellowship hall, with the business meeting and official visit to follow.

Mrs. Guthrie also announced the Eastern Star School of Instruction will be held March 18, 1982. The worthy matron also gave some Thanksgiving remarks.

After the business meeting, members assembled in the fellowship hall where Mrs. Ethel Williams and Mrs. J. T. Avants served pumpkin pie, coffee and punch to the group. An orange linen cloth covered the table, and an arrangement of gold and orange flowers and Thanksgiving motif centered the table.



Somethin' Fishy
"The World of Fin & Feathers Brought To Your Door Step."

Swordtails from South America
Betas from Thailand
Rainbow's from South America
Leaf Fish from Africa

Hamsters
Canaries
Parakeets
Finches

GET YOUR PETS

Hours 9-6 Mon.-Sat. 401 Early Blvd.

THE SANTA ANNA NEWS

THANKS YOU

For reading your hometown newspaper! We hope you enjoy being informed about your community and the surrounding areas.

We believe The Santa Anna News can offer you a real service—we can keep you up with what's happening-not in Washington or on the New York Stock Exchange, but what's going on right here that will directly affect your life, your tax dollars, your shopping facilities, your church activities, your environment, your schools.

We have served Coleman and surrounding counties for 95 years Our roots go deep, but we're a brand new paper each week. We're really proud that we're a local, community newspaper, small enough that we can still care about the people who read our paper.

A local subscription to the News is only \$8⁹⁵ a year—and it's mailed to your home every Thursday. Clip out the coupon below or call and give us your address. Our phone number is 348-3545, better yet, drop in at our downtown office and say hello. We'd be proud to have you as a subscriber.

Clip and mail to

The Santa Anna News

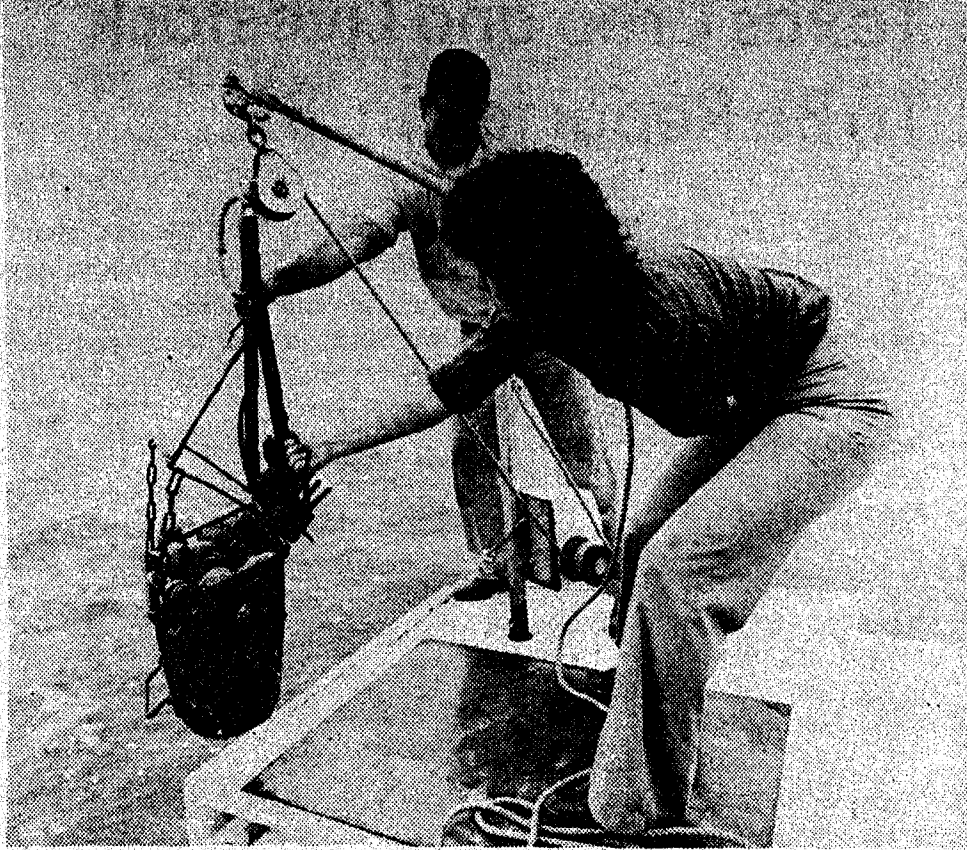
P. O. Box 399, Santa Anna, Texas 76878

NAME

ADDRESS

CITY STATE ZIP

\$8⁹⁵ Enclosed



The Texas Department of Health maintains boats for the year-round surveillance of oyster beds.

Accent On Health

Texas Department of Health
Robert Bernstein, M.D., Commissioner

Among the things that Texans look forward to each year is the opening of oyster season November 1 along the Texas Gulf Coast.

The versatile oyster, which can be eaten raw in cocktail sauce, fried, baked, made into stew or used to turn a dressing into a happening, is a gourmet delight.

The Texas Department of Health (TDH) also has a strong interest in oysters, but for a different reason. It attempts to make certain that all oysters made available to the public through normal channels are fit to eat. The TDH operates an on-going, year-round program which includes the testing of bay waters, certification of processors, and periodic testing of shucking houses and the finished product.

Major oystering activities along the Texas Gulf Coast are in Galveston Bay, Lavaca Bay, Matagorda-Tres Palacios Bay, and San Antonio Bay.

The Shellfish Sanitation Control Division of the TDH is based in Austin, but it has regional sub-offices in La Marque and Corpus Christi. Each sub-office maintains a boat for use in year-round shoreline surveillance and samplings. Six employees are based in La Marque and three in Corpus Christi.

The oyster is an unusual animal which is entirely the victim of its environment.

Once the tiny, immature oyster settles to the bottom and attaches itself, its location is fixed for life.

"At this point," says Neil B. Travis, Director of the Shellfish Sanitation Control Division, "the animal be-

comes stationary and depends on what food is brought to it in the water to live and grow. Because it does not move, the oyster is unable to escape from any pollutants or toxic materials present in the water."

Because of the feeding mechanism of the oyster, it is very important that the oysters people eat come from safe waters. "The oyster is a filter feeder, pumping large amounts of water through its system and filtering out food particles," said Travis.

"In addition, the oyster's filtration system also filters out bacteria, chemicals, heavy metals and other contaminants which may be present in the water," said Travis. "These contaminants or pollutants are concentrated in the oyster. For this reason, waters which may be satisfactory for swimming, boating, fishing or other water activities may not be safe for the harvesting of oysters for people to eat. It is absolutely essential that oysters taken for food come from waters

approved for this purpose."

In addition to its affinity for collecting harmful substances, the oyster is highly perishable. It must be handled and stored properly from the time it is

harvested in safe water until it is shucked, packed and sold to the consumer. Improper storage of shellstock, exposing it to contamination, or poor refrigeration can result in high levels of bacteria, as can the improper shucking or storage of shucked oysters.

Health Department inspectors look for any breakdown in the process.

Based on its sampling techniques, which follow nationally accepted standards, the TDH annually publishes maps of the Texas coast designating which areas are safe for oyster harvesting and areas which are polluted.

The Texas Department of Health certifies oyster processors which meet its critical standards and gives each a number. The certification number, such as

Tex-123 or Tex-345 SP, and the name of the plant must be permanently displayed on all containers of oysters they produce. Consumers should look for a certification number to ascertain if the oysters come from a certified processor. This will give the oyster lover a sense of security in making a purchase.

For more information, contact Neil B. Travis, Shellfish Sanitation Control Division, Texas Department of Health, 1100 West 49th Street, Austin, Texas 78756.

Dr. E. H. Henning, Jr.

OPTOMETRIST



117 Commercial

Coleman

Ph. 625-2228

OFFICE HOURS
9:00 a.m. to 5:00 p.m.

Andy Machak tells Bill Cosby: "A CPR-trained guard brought me back from the dead."

Andy Machak:

"Luckily, a guy with Red Cross CPR training works where I do. A security guard. Don Guarino. He saved my life, no foolin'!"

I'd checked tin-plating lines a hundred times before, but that day was different.

A boom came around from behind and pinned me to a T-bar... lifted me right off my feet."



Bill Cosby:
"That's a big ouch."

Andy Machak:

"Last thing I remember was trying to find a kill switch..."

Three days later - in the hospital - Don told me it took six guys to get me down; somebody said *no pulse or breathing*, and Don remembers saying, 'I gotta try anyway.'"

Bill Cosby:

"Sounds like you had them worried!"

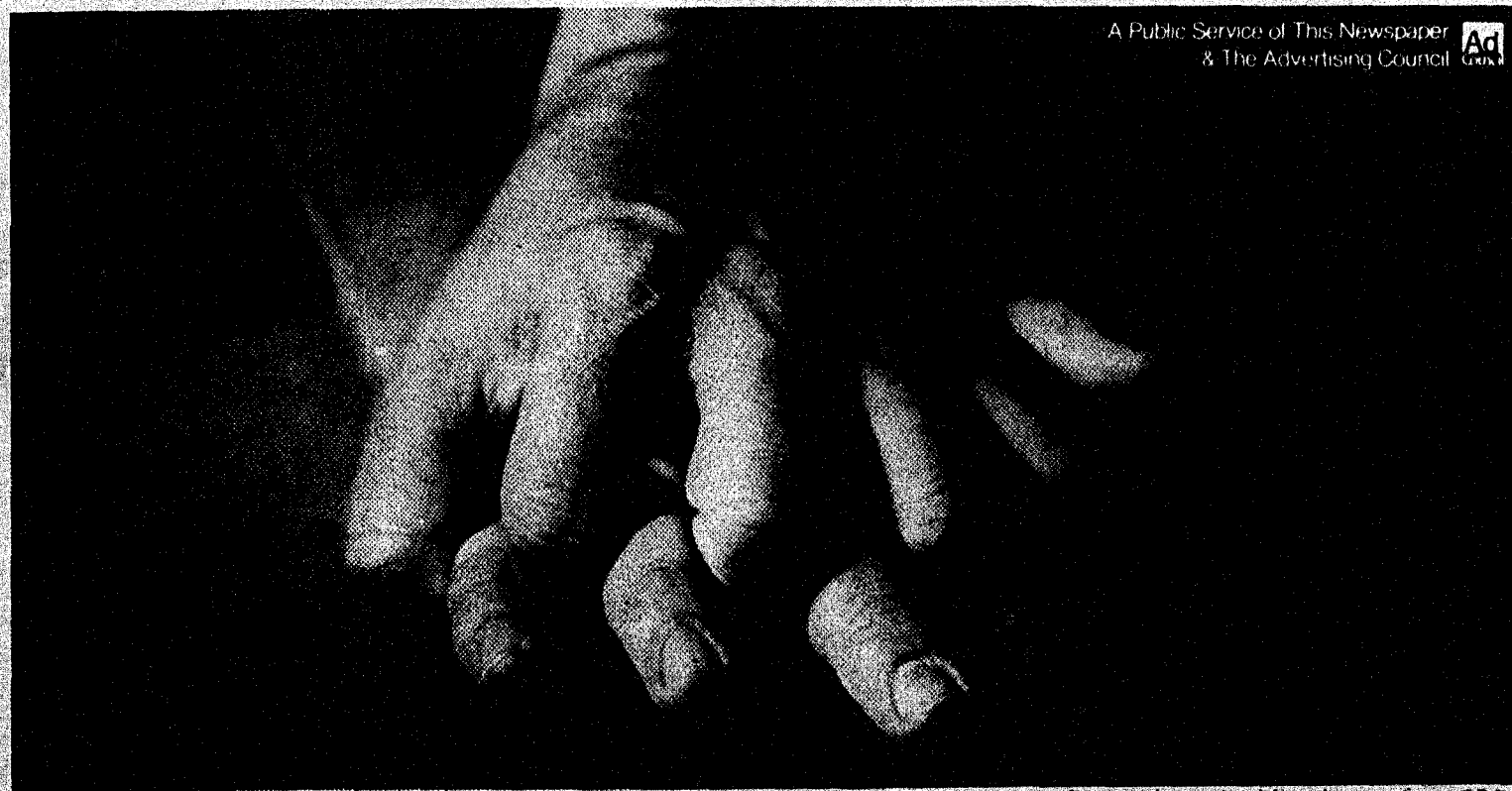
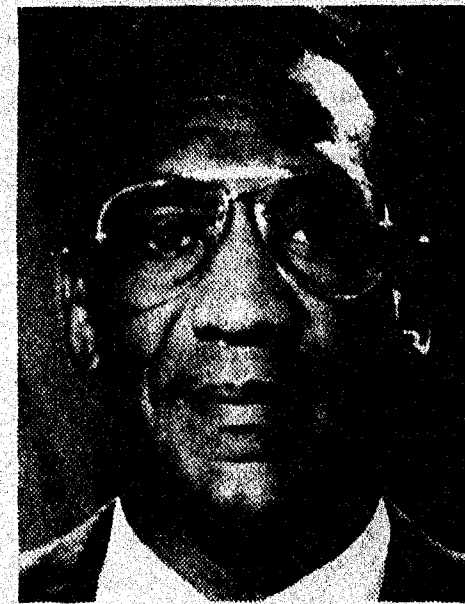
Andy Machak:

"Well, I was clinically dead. Can't believe it myself, Bill. But thanks to Don's CPR training, I'm alive... thanks to Red Cross, I'm alive."

Bill Cosby:

"CPR training can make the

difference between life and death. Take it from Andy Machak. Help keep Red Cross ready."



A Public Service of This Newspaper & The Advertising Council

It takes steady, trained hands to perform CPR.



Coleman Monument Works
1309 East 9th
Coleman, Texas

DAVID HUFF
Phone 625-5352
Night 625-2719
30 Years in Coleman

Rockwood News

By MRS. JOHN C. HUNTER

The family night supper was well attended, with lots of food and visiting and playing games.

Mr. and Mrs. Wayne Bray spent Sunday in San Angelo visiting their daughter, Kim, and visiting at St. John's Hospital with Owen Rudolph.

Mr. and Mrs. Bill Bryan recently enjoyed a hunting trip to Canon City, Colo., reporting good luck.

Mrs. Bryan and Mrs. Lon Gray were business visitors in Brownwood last Tuesday. Mr. and Mrs. Bryan were in Florence Sunday to attend funeral services of an aunt, Mrs. Lewis Hall.

Mr. and Mrs. Bert Fowler were Sunday supper guests of Mr. and Mrs. Jack Cooper.

Mrs. Mike Ray and Casey of Coleman visited Tuesday afternoon with Mr. and Mrs. Johnnie Steward.

Mr. and Mrs. W. B. McCutcheon and Mrs. Gladys Isaacs of Fife recently attended the Daniel Baker College Alumni Reunion at the McArthur Freedom Foundation, with some 150 alumni in attendance.

Mrs. Bill Steward, Mrs. Johnnie Steward and Mrs. Howard Pearson were business visitors in Brownwood Friday.

Mr. and Mrs. Junior Brusenian visited via phone Friday night with Mr. and Mrs. Stan Martin in Denver, Colo., and Sunday night with Mr. and Mrs. Jody Brusenian at College Station. Mrs. R. N. Emerson spent Sunday with her daughter and family.

Mr. and Mrs. Blake Williams visited Sunday afternoon with Mr. and Mrs. Sam Estes.

Mrs. Hilton Wise, Mrs. Jack Cooper and Mrs. Williams were at Shields Quilting Club Monday afternoon helping complete a quilt, as the club will disband for the winter.

Mr. and Mrs. R. J. Deal visited Saturday in Brownwood with Mr. and Mrs. Terry Thomason and Mr. and Mrs. Johnny Deal and herri.

Mrs. Marshall Campbell of Fort Worth came Thursday visiting her mother, Mrs. Claud Fox, to Monday when Mrs. Box accompanied her home to visit a few days. Sunday they visited in Santa Anna with Mr. and Mrs. Dutch Campbell and all went to visit Mrs. Calvin Campbell, who is a patient in Brownwood Hospital, and to visit Mr. and Mrs. Bostick as Mr. Bostick is a patient in the hospital. The Bosticks were longtime residents in Rockwood before moving to Coleman.

Mr. and Mrs. Elec Cooper spent Sunday at McGregor visiting with Mr. and Mrs. Robert Lee Estes, visiting with Mr. and Mrs. Ronnie Cooper and children in Brownwood enroute home.

Mr. and Mrs. Joe Wise were in

Bronte Saturday attending funeral services for Mr. Ed Rawlings, who had ranching interests at Rockwood many years.

Tuesday afternoon B. A. McSwain of Brownwood, Mr. and Mrs. Ray McSwain of Hico, Mrs. Milford Harris and Mrs. Jack McSwane of Santa Anna visited Mr. and Mrs. Aubrey McSwain; Wednesday afternoon visitors were Mr. and Mrs. Carl Hoffman of Odessa, Mrs. Oleta Mobley and her son, Greg of Austin. Sunday guests were Mrs. Jake McCreary, Mrs. Mobley and Greg and Bobby Pliska of Austin.

Mrs. Minnie Jackson of Archer City came Friday to spend several days with Mrs. Goldie Milburger and Harold McCarrell. They visited Sunday with Mrs. Carrie McCarrell at Ranger Park Inn.

Amber Huggins of Santa Anna spent Friday night and Saturday with her grandparents, Mr. and Mrs. Jim Rutherford. Mrs. Huggins came for her Saturday. Mrs. Bill Gustavus and Mika visited the Rutherfords Saturday morning.

Mr. and Mrs. W. B. McCutcheon are in Austin this week attending the Family Land

THE SANTA ANNA NEWS

Heritage Program, sponsored by the Texas Department of Agriculture. Mrs. McCutcheon's maternal great-grandfather, Alex Mitchell, was the first owner of this family farm at Fife in McCulloch County.

Mrs. Box and her guest, Mrs. Campbell, visited Mr. and Mrs. Sam Estes Monday morning; Jerry Bruce Snodgrass of Garland visited Mr. and Mrs. Estes Monday afternoon.

Mr. and Mrs. Joe C. Deal and Belinda of Santa Anna were Thursday supper guests of his parents, Mr. and Mrs. R. J. Deal and Rolan.

Ann Bryan and Tina Black Stanley of Brownwood visited Linnie Box Wednesday. Mrs. Stanley is moving to Brownwood after living in other states for many years. She will be remembered as Tina Black.

Mrs. Gary Maedgen and Dustin of Glen Rose spent last week with her parents, Mr. and Mrs. Roland Duus and Robert. Mr. Maedgen came for them Saturday.

The Rockwood Extension Club is sponsoring a birthday party at Holiday Hill in Coleman Tuesday, November 17, and members are invited to attend.

Mrs. Howard Pearson and Mrs. Bill Steward were business visitors in Brownwood Monday. Mr. and Mrs. Pearson and Mrs. Steward spent Tuesday in Win-

Texas Crop and Livestock To Be Reported in '81

AUSTIN— The Texas Crop and Livestock Reporting Service will begin interviewing Texas farmers and ranchers in mid-November on 1981 acreage, yield, and crop production, and end-of-the-year poultry and livestock inventories for Texas and individual counties.

The confidential interviews will be conducted through the mail or phone or in person by field enumerators. Data collection will end in early January.

Farmers and ranchers are urged to complete and return the questionnaires promptly. All information is kept confidential and combined with other reported

gate visiting Mr. and Mrs. Brent Mikeska.

Mr. and Mrs. Carl Buttry were in San Angelo Sunday to visit Clyde Wright, a patient in Community Hospital, suffering from a light heart attack. They also visited with Mrs. Wright, Jerry Halmon and Ondria and the Danny Sturgills.

information for state and county estimates. These estimates give farmers and ranchers information on which to plan their production and marketing activity for the most benefit.

The reports help in transporting, storing and marketing and processing farm products to maintain an orderly flow from producer to consumer. This is a cooperative effort between the Texas Department of Agriculture and the U. S. Department of Agriculture.

*** Mufflers ***

*** Custom Duals ***

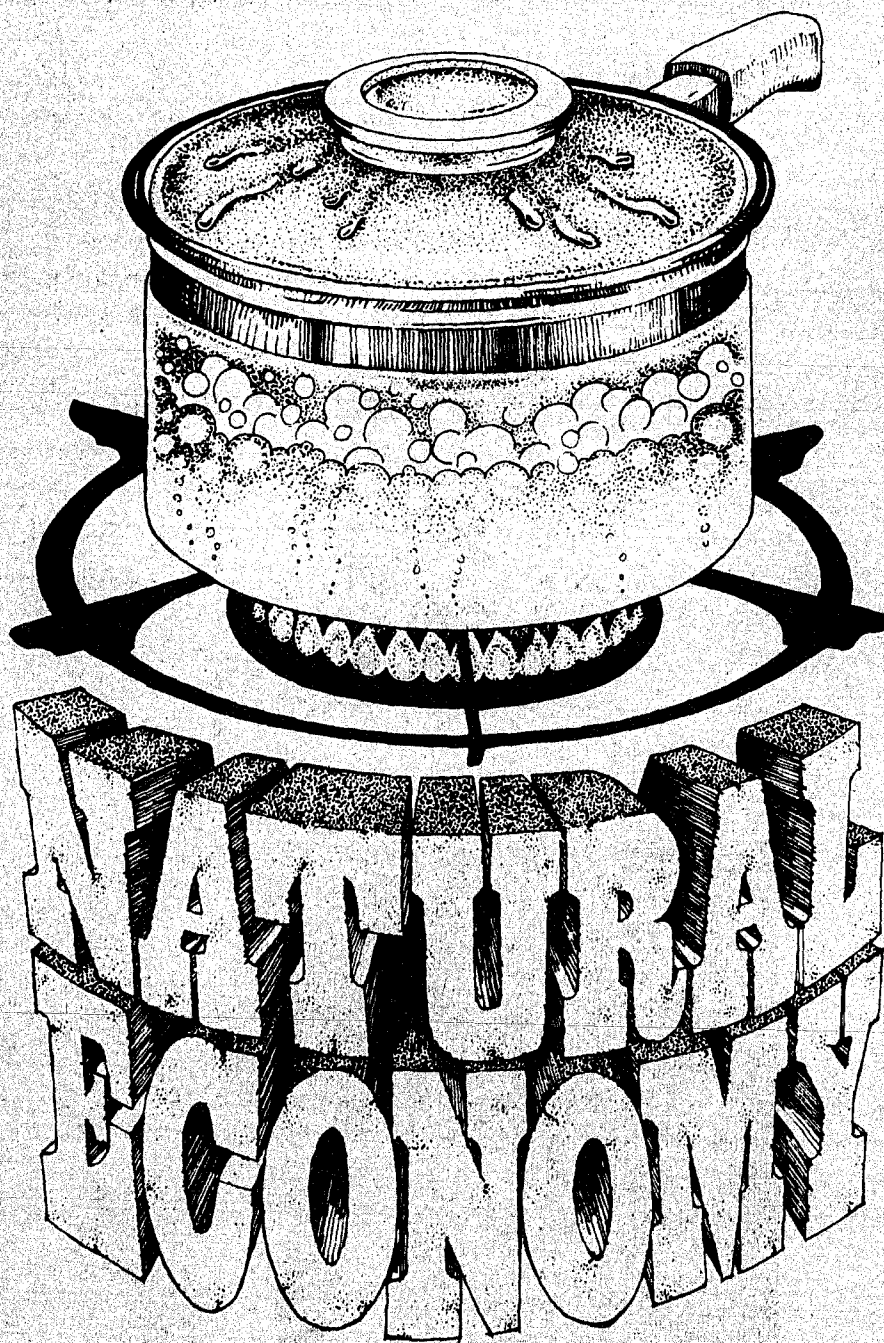
See Jimmy At

D & R Automotive

Low Prices

200 E. Pecan
Coleman, Tex.
Call 625-5140

Why gas is so efficient:



Gas is a natural fuel, not a manufactured energy. By using gas directly in your appliances, you get natural economy and natural efficiency to help

you hold down utility bills. And Lone Star can deliver all the gas you need for your home. It's another reason to be glad you're served by the Lone Star system.

Gas. It's plentiful, efficient and right for the times.



Lone Star Gas Company

For Your
Insurance
Needs
Come See
Archie Phillips
Representing
Germania Farm Mutual
Aid Insurance
and G.I.C.
Located at
216 1/2 COMMERCIAL
(In Man's Shop Building)

London Minister Founded The Salvaton Army

The Salvation Army is well-known for its charitable work at Christmas. Providing toys for children who would otherwise receive none, serving hot Christmas meals to families who cannot afford them, singing to shut-ins in retirement homes -- these are just a few of the ways the Salvation Army tries to spread a little happiness at Christmas. But how did it all begin?

It was on Christmas Day, 1868. A minister preached his Christmas sermon, then walked home through the dismal drunken squalor of the London slums. When he reached home, his household was beaming with the festive spirit of the season. But he could not enjoy it himself. After a long time spent pondering this strange absence of joy, he finally

boomed out: "I'll never spend another Christmas Day like this again! The poor have nothing but the public house, nothing but the public house!"

He and his family never spent another Christmas Day at home. The very next year his wife and a friend cooked -- and he and his son delivered -- 300 Christmas dinners for the poor.

That was just the beginning. Today, his successors serve millions of people around the world with a variety of social services, not just at Christmas but throughout the year.

The man who walked through those London slums on Christmas Day in 1868 was named William Booth -- the father of the Salvation Army.

Hunting Safety No Accident

Accidents with firearms do not just happen. They are caused by ignorance, carelessness or disregard for safety rules. Abide by the following Ten Commandments of Firearm Safety each time you handle a firearm. Do not

let a needless hunting tragedy mar your hunting pleasure.

1. Treat every gun with the respect due a loaded gun.
2. Watch that muzzle! Be able to control the direction of the muzzle even if you should stumble.
3. Be sure the barrel and action are clear of obstructions and that you have only ammunition of the proper size for the gun you are carrying.
4. Be sure of your target before you pull the trigger; know identifying features of the game you hunt.
5. Unload guns when not in use. Take down or have actions open; guns should be carried in cases to the shooting area.
6. Never point a gun at anything you do not want to shoot; avoid all horseplay with a firearm.
7. Never climb a fence or tree or jump a ditch with a loaded gun; never pull a gun toward you by the muzzle.
8. Never shoot a bullet at a flat, hard surface or water; at target practice, be sure your backstop is adequate.

UMW Group Has Meeting Last Monday

The Martha Group of the Santa Anna Methodist Church met Monday afternoon with Mrs. O.L. Cheaney, hostess in her home.

Mrs. John Hunter, president, presided during the business session. Mrs. Xuma Jones read the minutes of the previous meeting, Mrs. W.B. Griffin gave the treasurer's report. Plans were made for the Christmas party, a joint meeting of the Methodist women, planned for Monday, December 7, at the Church annex, at 6 p.m.

Mrs. Lucile Smith presented the Thanksgiving program, 'praise for Light, Praise for Darkness,' assisted by Mrs. Griffin and Mrs. John Hunter. coffee to Mmes. Jones, Ora Hunter, Griffin, Fred Williams, Opal Little, Lucile Smith, John Hunter, and Misses E. Lee and Ruby Harper.

heart -- the aortic valve -- so her heart could not pump enough blood.


Mary was only nine when she had a heart attack that damaged another heart valve. With two valves malfunctioning, her heart began to fail. She underwent emergency open-heart surgery in which both damaged valves were replaced with artificial devices.

As scientists continue to study families with high rates of heart disease, they are finding ways to help. For example, Dr. Bilheimer predicts that new, more effective drugs will be available in the near future for controlling high blood cholesterol levels. It's the promise of such advances that keeps hope alive in Mary's family and others in the same predicament.

9. Store guns and ammunition separately beyond the reach of children or careless adults.
10. Avoid alcoholic beverages before and during shooting.


"I back the family insurance I sell with good neighbor service."

CALL ME.




117 West Street
Coleman **JIM McANALLY**
Phone 625-4343

[West of Courthouse]
Like a good neighbor,
State Farm is there.



STATE FARM
Fire and Casualty Company
Home Office:
Bloomington, Illinois

Help Your Heart



American Heart Association

Mary VS Cholesterol

The exact causes of coronary heart disease remain a mystery. But scientists have made much progress in understanding the disease, which is the number one killer in the United States. Among the important research findings: some people seem to have a natural susceptibility to heart disease rooted in their genes, their individual family inheritance. In other words, heart attacks tend to cluster in families.

If you had close relatives who died before age 60 from heart attack, it could mean that a tendency to the disease runs in your family. You may or may not inherit this tendency, but even if you do, it is not inevitable that you will have the disease.

Your way of life will have a great influence on your prospects. If you have uncontrolled high blood pressure and if you add the risks of smoking, overeating, a diet rich in animal fats and cholesterol and lack of exercise, you may set the disease process in motion. Or you can turn your family history to good advantage by heeding its warning early and taking steps

to reduce the risks that are within your control. *Help your heart!*

Scientists continue to search for the exact mechanism that causes family clustering of heart attacks. They have discovered one genetic disease that raises the cholesterol in the blood to high levels and results in early heart attacks.

David W. Bilheimer, M.D., of the University of Texas Health Science Center at Dallas. Dr. Bilheimer has studied several families with FH. He has traced the defective FH gene from one generation to the next.

The most severe type of FH occurs only when an individual inherits a "double dose" of the FH gene -- one from each parent. That's what happened to eight of Dr. Bilheimer's patients, including Mary, a young girl from a small town in Texas. When she was five years old, she had the heart of an old man. The inadequate blood supply to her heart muscle due to blocked coronary arteries caused intense chest pain. Cholesterol deposits also partially blocked the blood's main exit from her

Ripleys

Pet Emporium

Ask About our Puppy Layaway

AKC Puppies

Birds Mice
Feeds Fish
Reptiles Gerbils
Hamsters Guinea Pigs
Hermit Tree Crabs

643-3951
Heartland Mall Brownwood

1/2 Price Close-Out

All Sewing Machines in Stock
New Home--25 Year Warranty

50% Off
Cash & Carry

Coleman TV Sales & Service

203 Commercial • Phone 625-3020



TWO PESO GOLD NECKLACE
Authentic 22K Mexican Gold Coin on 18" 14K Gold Chain

Only **\$69⁹⁵** tax inc.
10 Day Money Back Guarantee

NUMISMATIC INVESTMENTS OF BROWNWOOD
PO BOX 3231
EARLY, TX. 76801

Enclosed is for
Two Peso Gold Necklace.

Name
Address
City State Zip

24 Hour Service On Location Welding

Phillips Welding Service



Owner **Jerry Phillips**

Rt. 1 Box 26
Santa Anna, Tex. 915-348-3834
or 348-3333

Serving Oil Field, Ranchers & Farmers


November

Thurs. 19th 6:30 - 9:30 Christmas Wreath With Silk Flowers Tis the season for pretty things!!!
Fee \$20.00 Dep. \$3.00

December

Tues. 1st. 6:30 - 9:30 -- Braid-a-Belt--
Fee \$3.00 plus supplies Dep. \$3.00

Sat. 5th Paint Along "A Christmas Picture"
9am till ---
Fee \$15.00 plus supplies Dep. \$15.00



HOBBY TOWN

103 N. Center - 646-8722
Brownwood, Tex.

Years Ago In The News

The following stories are from the October 27, 1933 issue of the NEWS.

Under the auspices of the two Parent Teachers Associations and Santa Anna Volunteer Fire Department, Coach Binion of the High School Athletics has arranged, by the aid of several committees, for an outdoor Halloween and Spook party out at the Hill Crest Golf Club on Tuesday night, October 31.

A varied program of fun and entertainment has been arranged, and those interested hope to have the largest party of the season. Singing, dancing, spook parade, story telling and many other phases of fun, amusement and entertainment will be carried on.

Plainview School has made plans for a sock supper Saturday night, October 28. This will be the same as a box supper except that a pair of socks is used instead of a box. Everybody come and have a pleasant evening.

The editor and several other members of the family drive out to Trickham last Sunday to enjoy the music and social activities on the occasion of the singing convention.

V. O. Stamps and his quartet rendered a splendid program Saturday night to a packed house, and Sunday a very small percent of the people could find room in

the building. The Trickham community does things in the right way. According to the committee, more than 1,000 pounds of barbecue was served, and evidently no one left there hungry.

It was worth driving miles to hear that fine class render such music. Prof. G. W. Bobo lives at Trickham, and is the recognized song leader of the community. We believe he has the best singing class to be found in Central Texas.

WARD SCHOOL HONOR ROLL
For the first Six Weeks Period.
Grade 2A: Allie Cille Garrett, Mary Mills, Ruth Morris, Jean Mobley, Melba Robbins, Eula Todd, Harrell Banks, and Roy England.

Grade 2B: Helen Ray Harris, Maurine Seale, Fredna Watkins, Elgean Harris, Jerald Pruitt, J. G. Williamson Jr.

Grade 3: Beryl Taylor, Cleta Mae Wristen, Doris Zenor, Jeanne Marie Hefner, James Price, Arnold Williams, Dorris Belle Turner, Winston Conley, Emma Kate Parsons, Jackie Simpson.

Grade 4B: Don Engel
Grade 4A: Mary John Wade, Mary Field Mathews and Ruth Lovelady.

Grade 5: Bettie Ruth Blue, O. L. Cheaney Jr., J. T. Garrett, Walter Hough, Margaret Mobley, Vernon Oakes, Willyne

Ragsdale, Bettie Sue Turner and Dorothy Ross.
Grade 6: Ara Belle Ragsdale, Emma Sue McCain, Helen Oakes, Nannie Robbins and Ima Niell.
Grade 7: Ellen Taylor, Louise Oakes and Mary Todd.

HIGH SCHOOL HONOR ROLL
First Six Week Period
FRESHMEN: Carline Ashmore, Marilyn Baxter, Jane Catherine Burden, Pauline Eubank, Ruby Lee Price, Annette Shield, Doris Spencer, Irene Stiles
SOPHOMORES: Mary S. Garrett, Emma John Blake, Creighton Morgan, Alton Diserens, Ted Bradford

JUNIORS: Beth Barnes, Rheba Boardman, May Campbell, Frances Gregg, Dosh T. McCreary, Eddie V. Mills, Leon Morgan, Mineola Price, Elizabeth Rollins, Bess Inez Shield, Ernestine Thames, Kathryn Wylie

SENIORS: Lena Jane Barlett, Russell Hale, John David Harper, Francine Merritt, Ruth Niell, Armenta Ragsdale, Irene Rountree and Louise Watkins.

Survivors are his wife, Mae Smith of Midland; a son, Kelly Bob Smith of Denver, Colo.; a granddaughter, Allison Kelly Horton of Alexandria, La.; a brother, Roy Smith of Austin; and a sister, Era Box of San Angelo.

Local survivors are a nephew, Darwin Lovelady of Santa Anna, and a niece, Doris Stearns of Brownwood.

Weekend specials at Red & White Grocery Store:
Pinto beans - 5 lb. sack - 23 cents
Tomatoes - 3 cans for 25 cents
Bacon - 17 cents per lb.
Seven Steak - 10 cents per lb.
Apples - 1 cent each
Chocolate bars - 1/2 lb. bars - 24 cents
Red & White coffee - 32 cents Lb.
Olives - 4 oz. bottle - 8 cents
Salad dressing - pint bottle - 9 cents
Flour - 24 lb. bag - 99 cents
Lettuce - 5 cents per head

Midland Funeral Held Saturday For R.J. Smith

Funeral services were held in Midland Saturday, November 7, for Roger J. Smith, who died November 4 in Midland Memorial Hospital. Burial was in Resthaven Memorial Park in Midland under direction of Ellis Funeral Home.

Mr. Smith was born in Upshur County November 6, 1893.

Survivors are his wife, Mae Smith of Midland; a son, Kelly Bob Smith of Denver, Colo.; a granddaughter, Allison Kelly Horton of Alexandria, La.; a brother, Roy Smith of Austin; and a sister, Era Box of San Angelo.

Local survivors are a nephew, Darwin Lovelady of Santa Anna, and a niece, Doris Stearns of Brownwood.

Former S-Annan Has Baby Daughter

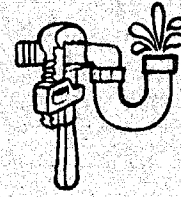
Mr. and Mrs. Henry Stewart of Abilene are parents of a baby daughter, Steffany Lynn, born October 7, in an Abilene hospital weighing eight pounds, four ounces.

Grandparents are Mr. and Mrs. M. S. Ward of Brownwood, Carl Stewart of Brownwood and the late Mrs. Naomi Stewart of Santa Anna.

China's population growth
China is preparing to tax its families with more than one child in an effort to slow population growth.

China's population growth rate dropped from 23.4 per thousand in 1971 to 12.05 per thousand in 1978. — CNS

NEED A PLUMBER?



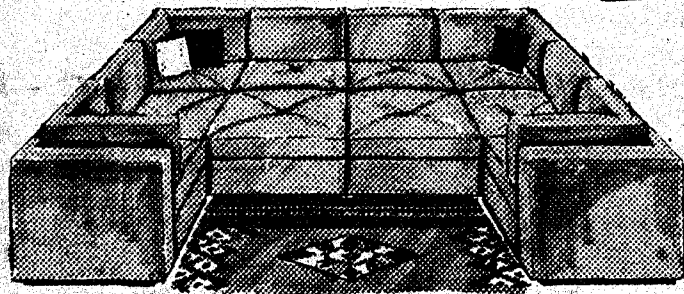
Call
Roy Early

Licensed Master Plumber
752-9972

National Brands

20% - 50% OFF Retail Price

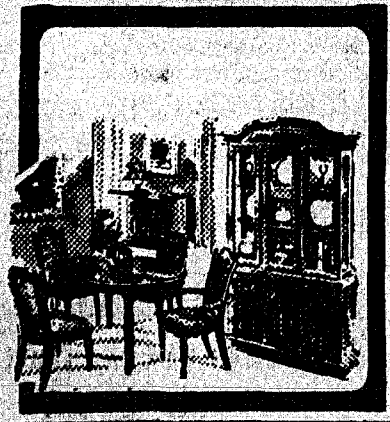
Market Samples



Living Room Suites
2 and 3 piece Groups

FURNITURE SALE

Metal Cabinets
NEW Shipment



Dining Room Furniture
China Cabinets

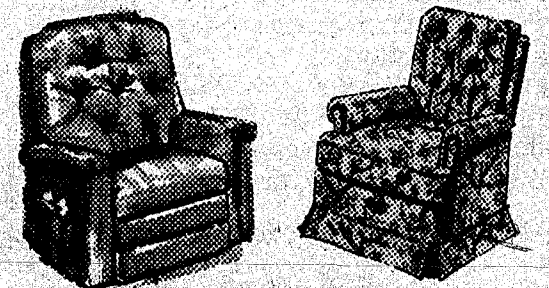
Bargains

\$ 200.00 Off
on King & Queen

Matching Mattress & Box Springs

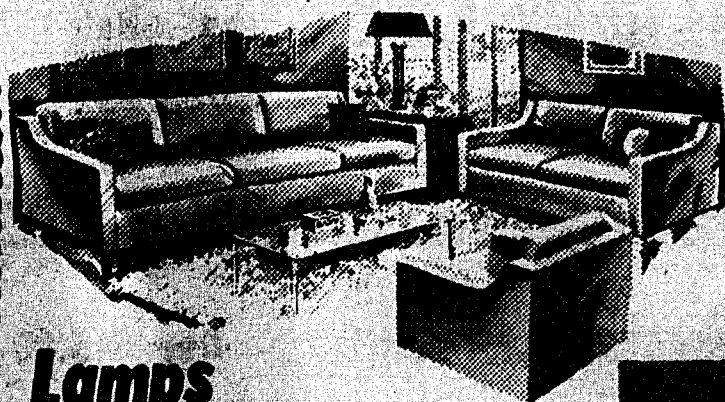
Bargains

Canopy Beds
Brass Headboards



Recliners
Swivel Rockers

We Bought at Market Prices
So We Can Pass these Savings On To You



Stoves Refrigerators
Freezers

Bedroom Suites

Water Beds

Lamps
Occasional Chairs
Beautiful Bean Bags

Recliners
Bunk Beds

"Where Your Dollar Buys More"
715 Concho St. - Box 133
Coleman, Tex.

Whon News

By Mrs. Tom Rutherford

Our community received two-tenths inch of rain during Saturday night. We had a norther blow through Sunday afternoon. Getting close to winter.

Our deepest sympathy is extended to the son and family of Mrs. Maud Lovelady and other relatives. Mrs. Lovelady was buried in the Rockwood Cemetery Friday afternoon following services at Rockwood Baptist Church. Mrs. Lovelady passed away Monday, November 2, in Fort Madison, Iowa.

Mrs. Floyd Morris was shopping and taking care of business in Coleman Monday morning.

Mr. and Mrs. Bruce Holoman of Grand Prairie were Saturday night and Sunday guests of her brother, Mr. and Mrs. Graham Fitzpatrick.

Mrs. Darwin Lovelady and her sister, Juanita Minica of Santa Anna, were called to the bedside of their brother, L. C. Baker, a patient in a Midland hospital, who is suffering from a heart attack. The ladies were in Midland Tuesday and Wednesday, and Mrs. Lovelady reports her brother is improving at this writing, but remains a very



sick man.

Loyd Rutherford was with his parents, the Tom Rutherfords, most of the past week, helping haul hay. Our daughter, Mrs. Bob Smith of Abilene, was with her parents and brother Friday night.

Darwin Lovelady of Santa Anna and Mrs. Doris Stearns of Brownwood were in Dallas on Thursday where they met Mr. and Mrs. Howard Lee Lovelady of Iowa at the air port there. Howard Lee is the son of the late Mrs. Maud (Cozart) Lovelady.

Thursday night guests of Mr. and Mrs. Darwin Lovelady in Santa Anna were Mr. and Mrs. Howard Lee Lovelady of Iowa, Mrs. Ruby Holland of Stephenville, Ruth Dodson of Coleman, Mrs. Doris Stearns and Randel Lovelady and girls of Brownwood and Mr. and Mrs. Sikes of Amarillo.

Mr. and Mrs. Rex Turney of Santa Anna and her parents of Killeen were on the Turney farm here during the weekend. Her parents are Mr. and Mrs. Alfred Bible.

Mrs. Jacky Morris and children, Jeffery and Jennifer of Santa Anna, were guests of Mr. and Mrs. Floyd Morris during the past week.

Douglas Avants of Brady and Mr. and Mrs. Dougy Avants and son of Midland were Sunday afternoon guests of his mother, Mrs. Pearl Avants of Santa Anna.

Mrs. Barbara Morgan and daughters, Tracy and Loraine of Brownwood were Sunday guests in the home of Mr. and Mrs. Floyd Morris.

Billy Radle of Moore, Okla. spent one night the first of the week with his parents, Mr. and Mrs. Bean Radle. Billy was enroute to Houston.

Mr. and Mrs. Darwin Lovelady of Santa Anna and Mrs. Doris Stearns of Brownwood were in Midland for the memorial service for Rodger Smith Saturday morning. Mr. Smith was buried in the Midland Cemetery. Mr. Smith had been in failing health for several years, and his wife, Mrs. Mae (Gilmore) Smith, is also in poor health. Rodger Smith was the brother of the late Mrs. Oscar (Ava) Lovelady and also the late Mrs. Carroll (Vera) Lovelady and others.

Mr. and Mrs. Don Fitzpatrick and Brandon were guests of his parents, Mr. and Mrs. Graham Fitzpatrick, during the weekend.

Leon Carter visited different times with Mr. and Mrs. Floyd Morris, and Mr. Morris visited Mr. Carter during the past week.

Mrs. Elvia McDaniel, Mrs. Oleta Baker and Norman Moore of Brownwood visited with Mr. and Mrs. Darwin Lovelady in Santa Anna Sunday afternoon. The ones mentioned were enroute home from Midland where they had visited with L. C. Baker, a patient in Midland Hospital. They reported it seemed Mr. Baker was a little better. Mrs. McDaniel is a sister of Mrs. Lovelady.

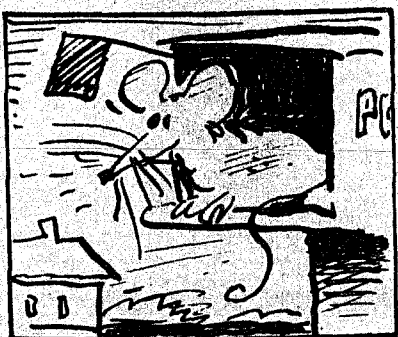
Special Program To Be Given At Nov. 19 Meeting

Everyone is invited to attend the meeting of the Annual Program Building Committee to be held November 19 at the Recreation building at the Coleman Rodeo Grounds at 7 p.m.

The theme for this year's program is 'Energy Efficiency in the Home,' and the program will feature speakers on insulating and remodeling homes, solar home design, and heating and cooling homes with a heat pump.

Each family is asked to bring a salad or vegetable or meat or dessert.

Following the program, committee members will have a business meeting.



The first mailboxes were erected in Paris in 1653. However, messengers, fearful for their livelihood, put mice in the boxes to destroy the mail; thus, no further attempt to install mail boxes was made in Paris until 1758.

Coleman Automotive Supply

Shop and Compare Our Prices

Custom Made Hydraulic Hoses

Freddie Garner — Owner

Phone: 625-2512 Coleman Nights & Holidays 625-3029

Santa's LAYAWAY SALE

We have a terrific selection of
Great Christmas Gifts--
Toys, Stereos, Rifles, etc.

Layaway Now!

These McGraw-Edison "Evap" Coolers Must Go!

4000
CFM

Reg. \$373.95
\$299⁰⁰

4000
CFM

Reg. \$373.95
\$299⁰⁰

4200
CFM

Reg. \$429.95
\$329⁹⁵

4800
CFM

Reg. \$498.95
\$398⁹⁵

Coke Six-Pack **\$1²⁹**

Shotgun Shells
Box **\$4²⁹**

White Auto

Home Owned by Mac and Joyce Anderson



SANTA ANNA HIGH SCHOOL BAND is shown here in the late 1930s during a downtown parade. The banner announces the annual rodeo. The

parade was heading west, with building nearest right Spencer Pharmacy (now Longhorn Feed & Seed).

Brownwood Woman Gives ESA Program

The Delta Omicron Chapter, Epsilon Sigma Alpha, met Monday, November 9, at the Methodist Annex for the monthly business meeting. Bernidine Watson, president, presided.

A program on Child Abuse was given by Jeannie Davis from Brownwood.

The Christmas Pageant was discussed as well as the Christmas parade.

At the close of the meeting refreshments of fruit bread, coffee and punch were served, with Pam Morgan as hostess. Each member was given a small loaf of bread to take home.

Others present for the meeting

were Kathy Pearce, Jo Ashworth, Pattie Musick, Geneva Garrett, Sylvia Brewster, Susie Voss, Coyita Bowker, Gail Horner, Donna Bradley, Sharon Goodwin, Sharon Greenlee, Gayle Stewardson, JoAn Day, Sarah Beal, and Kathy Alexander.

MOVE TO SANTA ANNA

Mr. and Mrs. Earl Chapman have moved to Santa Anna from Springfield, Ohio where they have lived the past two years. They have purchased the former Mary Morrow home on Wallis Ave. and completed remodeling in recent weeks.

COMMUNITY CALENDAR

THURSDAY— NOVEMBER 12:

Social Security Rep., M- City Center, 1 - 2 p.m.

FRIDAY— NOVEMBER 13:

SATURDAY— NOVEMBER 14:

SUNDAY— NOVEMBER 15:

Attend Church

Community Choir rehearsal, Adventist Church, 4:30 p.m.

MONDAY— NOVEMBER 16:

Campfire Girls, Civic Center

Boy Scouts, Civic Center, 7 p.m.

TUESDAY— NOVEMBER 17:

Lions Club, Lions building, 12 noon

PTO meeting, High School Auditorium, 7 p.m.

Basketball games, at Bangs, 5 p.m.

WEDNESDAY— NOVEMBER 18:

Whirly Birds, UMC Basement, 2:30 p.m.

Choir rehearsal, Methodist Church, 6 p.m.

Drugs, Older Texans: A Special Need For Safety

First of a two part series

Drugs and older Texans are a "combination" with a special need for safety, reminds Judith Warren, a family life education specialist-aging.

Warren, on the home economics staff of the Texas Agricultural Extension Service, The Texas A&M University System, says older adults take 25 percent of the prescribed drugs sold in the United States, yet they make up only 11 percent of the population.

They are at a special risk in the use of medicines because they take a higher percentage of drugs than other age groups and because of other reasons, Warren notes.

OLDER ADULTS, DRUG THERAPY

Older adults take more drugs than other age groups for two reasons, Warren says: --partly because they tend to have more and longer illnesses and -- partly because drug therapy is the help usually offered by doctors--to physical and even social-psychological concerns instead of other alternatives.

DRUG INTERACTIONS

Other reasons older adults face special risk with drugs include possibilities of drug interactions and harmful reaction, the specialist says.

Some illnesses and disorders may effect the action of a particular drug just as some drugs may interact with each other when taken together.

FOOD, DRUG INTERACTIONS

Also, various foods and beverages can interact with drugs.

Results can include failure of the body to

absorb vitamins and other nutrients from the food and in some cases failure to absorb the drug itself.

For example, the calcium in milk interferes with the body's ability to absorb the antibiotic tetracycline.

Alcohol seems to affect many drugs--from aspirin to antihistamines.

BODY CHANGES

Medications can have different effects on older persons than they would on younger persons because of normal changes that occur in body weight and composition as a person gets older.

With age, the ratio of body fat to muscle tissue and body water increases. This change affects how much and how fast or slowly drugs are taken into the body.

Studies show that drugs remain four or five times longer in an older person's body than they do in a younger person's body.

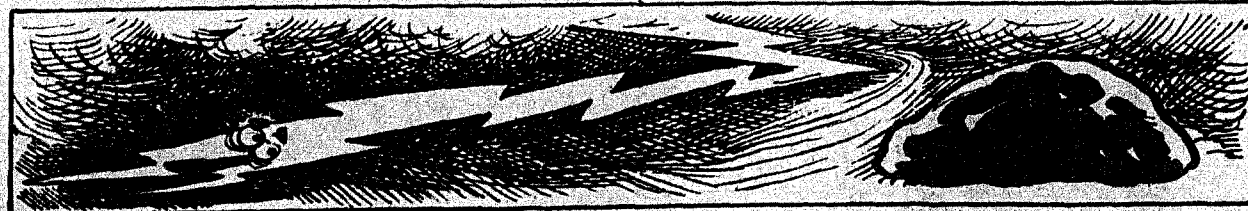
Drugs also tend to remain in the body when such body organs as the kidney and liver become less efficient in their job of breaking down and removing drugs from the body.

PAY SPECIAL ATTENTION

Because of the special risks that older adults face with drugs, special attention in taking drugs is necessary, Warren Says.

Following the physician's instructions is the first important step among many others, she adds.

NEXT: COPING WITH SPECIAL RISKS.



Some say black jasper will prevent lightning.

Reed Memorial Co.
Limited

Monuments of Distinction

Fort Worth Highway
Brownwood, Texas
Box 265 Phone 646-7625

Sylvia Herring
Local Representative

June's Gift Shoppe

Layaway NOW for Christmas

Good Selection Jewelry

1/2 Price Table

14 Kt. Gold Chains

Musical Sculptures

207 Commercial Coleman

Have That Portrait Made Now



You have put it off for years and still delay. Have a family or individual portrait made for Christmas this year...one that your family and friends will be proud of. Call today for an appointment. Christmas delivery deadline Thanksgiving weekend.

Ralph Jerry
studio of photography

302 W. College Coleman, Texas 76834 915-625-5317

Advertise the Action Way! The Want Ad Way!

ODD CHALKINS

THE EMERALD IS THE SOFTEST OF ALL PRECIOUS STONES.

LIFE INSURANCE is The SUREST WAY OF ALL TO PROTECT LOVED ONES... We Have The WISEST PLANS OF ALL And Can COUNSEL YOU WISELY!

HOSCH Insurance Agency
348-3115
709 Wallis Ave. Santa Anna

For Sale

FOR SALE— Historic two-bedroom home in lovely neighborhood. Unusual all-masonry construction. Also have buyer for 3-bedroom home in Santa Anna. Max Eubank Real Estate. 348-3636. 41-tfc

FOR SALE— Three bedroom, one bath frame house. Carpeted, well insulated. Double carport, extra-modern kitchen, on large lot next to mountain. Very nice. Modora K. Gilmore, broker, 348-3161. 40-tfc

FOR SALE— 4 White spoke Chevy pickup wheels with caps. \$50. .45 automatic pistol, real nice, \$300. Two color TVs, \$150, \$110. Inquire at 903 Wallis Ave. 46-1tp

FOR SALE— 1978 Chevrolet Suburban 350. Air, radio, good condition. Call 348-3496. 46-1tp

FOR SALE— Hamsters. \$2.00 each. Call 348-3638. 46-1tc

FOR SALE— Chairs, table, wringer washing machine, other items. See at 302 N. Parker Street. 46-1tp

Garage Sales

PORCH SALE— Thursday and Friday, Apt. 37, South Santa Fe Street, 9 a.m. Lots of clothes, cheap. New sun lamp. 46-1tp

YOU CAN FIND

Heater Radiants
Rubber Rain Suits
Foot Lockers & Trunks

AT
The
Trading Post

625-4950
114 E. Pecos Coleman

Services

SEWING MACHINE AND VACUUM Sales & Service. Curtis Price, Route 5, Box 42-B, Brownwood, TEX. 915-752-7269. 45-tfc

B & B BUILDERS

All phases of building construction, new and remodeling. Electrical, carpentry, plumbing, painting, roofing, concrete work. Call Coleman (collect) 625-4867. After 6 p.m. 348-3635. 26-tfc

SHOP BEAL'S GARDEN CENTER for Christmas. Layaways accepted. Windmills, Bird Baths, Wicker, Martin Houses, Plant Stands, etc. 40tfc

NOW IS THE TIME to apply **LAWN FOOD** containing iron on your lawn. **Beal's Garden Center** in Coleman. 37-1tc

BUY, SELL OR TRADE—New and used furniture. Travis Trading Pst, 402 N. Colorado, Coleman, Texas 25-tfc

WILL DO IRONING and mending. Call after 5 p.m. 348-9161. 46-4tc

Help Wanted

NEEDED - Active or retired RN to work two days a week. Light work load. Ranger Park Inn, 348-3158. 40-tfc

Taking applications for nurses aides at Ranger Park Inn

Card of Thanks

I appreciate so much the cards, prayers and other thoughtful gestures while I was in the hospital. Thank you so much for your interest and concern. Shirley Eubank 46-1tc

I want to express my heartfelt thanks for the many kindnesses shown during the illness and death of my husband. The calls, cards, flowers, prayers and food were most helpful, and I am truly grateful. Thanks to the nurses at the hospital and to Dr. Jones. God bless each one of you. Mrs. L. E. Storey 46-1tc

I want to express my thanks for the cards, flowers and kindnesses shown me while in the hospital and at home. Mrs. Aubrey McSwain 46-p

Homes For Rent

FOR RENT— Three bedroom unfurnished house, 306 S. Houston, \$135 per month, plus deposit. Make application at the office of Dr. Cabansag, 348-3122. 44-tfc

THERE'S BIG GAME... IN THE WANT ADS

160 Dresses

New arrivals at Mode O' Day, 310 Commercial. D25-C50c.

Santa Anna Electric Co.

348-3505

SHOP AT HOME

Blair Products

Gift Items, Christmas Greeting Cards, cosmetics, decorations, jewelry and many other items.

Shown at Your Home

Call Kay Cooper

348-3772

Before 8 a.m. - After 5 p.m.

Beal's Garden Center

"We're More Than Just a Garden Center"

FERTILOAM DEALER

For WEED AND FEED FERTILIZER FOR GRASSES

SELECT FROM LARGE VARIETY TROPICAL PLANTS A LARGE LINE OF CONCRETE BIRD BATHS, FOUNTAINS, FALL BULBS FOR SALE STATUARY, NOVELTY ITEMS WE BUY PECANS AND PLANTERS We Wrap Plants For All Occasions.

410 Commercial Coleman We also Make Deliveries.

Brazos Pipeline Corp.

PULLING UNIT

- *Oilfield Generators for Lease
- * Test Tanks * Roustabout Crew
- * Will be Rigged Up With Casing Crew
- * Bonded and Insured

Paul Martin, Mgr.
Day (915) 348-3046

Trickham, Tex. 76878
Night (915) 348-3066

ABERNATHY

Dirt & Conservation Work

Specializing In Tanks And Land Clearing

After 6:00 PM Call

Lee 785-4401

Rickey 785-4235

WESTERN AUTO

Layaway Now for Christmas While Selections are Good

Low Down Payment holds your Purchase until Dec. 24th

Western Auto Santa Anna



REAL ESTATE
625-4181

V. J. Kemper 625-5794
James Hunter 625-2232



115 W. Liveoak Street
Coleman, Texas
Office 625-4181

In The Santa Anna Area

455 Acres of improved grasses, oak trees, 4 good stock tanks, excellent fences, county roads on 2 sides, deer, turkey, quail and dove.

36 Acres, housing for a large family, work shop, garages, out buildings, city water, stock tank, 1/2 minerals.



PEAK ANTI-FREEZE \$3.99 1 GAL.

PRICES EFFECTIVE NOV 12-14, 1981 WHILE SUPPLIES LAST



"THERE'S ONE NEAR YOU"

SELF-BASTING 10-14 LBS. AVG. SHURFRESH TURKEYS 69c LB. WITH BUILT-IN TIMER. Includes image of a turkey.

BUY A DELICIOUS HAM SANDWICH AND RECEIVE A 24 OZ. COKE FREE!

SHURFINE STRAINED CRANBERRY SAUCE 2.99c 16 OZ. CANS. Includes image of a cranberry sauce can.

- SHURFINE CUT GREEN BEANS 3 16 OZ. CANS 99c
SHURFINE WHOLE PEELED TOMATOES 2 16 OZ. CANS 99c
SHURFINE FRESH SHELLS BLACK EYE PEAS 2 15 OZ. CANS 69c
SHURFINE WHOLE KERNEL GOLDEN CORN 2 17 OZ. CANS 89c
SHURFINE EARLY HARVEST SWEET PEAS 2 17 OZ. CANS 89c
SHURFINE SPINACH 2 15 OZ. CANS 79c
SHURFINE TOMATO SAUCE 4 8 OZ. CANS 89c
SHURFINE PORK 'N BEANS 3 16 OZ. CANS 99c

ALL GRINDS FOLGER'S COFFEE \$1.99 1 LB. CAN. Includes image of a Folger's coffee can.

- SHURFINE ALUMINUM FOIL 2 12" x 25" ROLLS 99c
SHURFINE BLACK PEPPER 4 OZ. CAN 79c
SHURFINE FLOUR 5 LB. BAG 79c
SHURFRESH HONEY BUNS 9 OZ. PKG. 59c
SHURFRESH FROZEN ORANGE JUICE 12 OZ. CAN 69c
SHURFINE WAFFLE SYRUP 32 OZ. BTL. \$1.09
SHURFINE CATSUP 32 OZ. BTL. 99c
SHURFINE FANCY TOMATO JUICE 48 OZ. CAN 89c

GRANULATED SHURFINE SUGAR \$1.15 5 LB. BAG. Includes image of a sugar bag.

- SHURFINE CHUNK STYLE LIGHT TUNA 6 1/2 OZ. CAN 79c
SHURFINE PINK SALMON 15 OZ. CAN \$1.99
SHURFINE ASSORTED FLAVORS COLA 2 LITER BTL. 89c
BORDEN'S BUTTERMILK 1/2 GAL. CTN. \$1.19
SHURFINE FROSTED 60/75/100 WATT LIGHT BULBS 2 CT. PKG. 69c
SHURFINE CHUNK STYLE DRY DOG FOOD 25 LB. BAG \$3.99

FOLGER'S FLAKED COFFEE \$1.69 13 OZ. CAN. Includes image of a coffee can.

6 PACK PEPSI-COLA 16 OZ. BTLs. Includes image of Pepsi bottles.

- SHURFRESH BUTTERMILK/SWEETMILK BISCUITS 6 8 OZ. CANS 99c
SHURFRESH QUARTERS MARGARINE 2 1 LB. PKGS. 79c
SHURFRESH AMERICAN FOOD CHEESE 12 OZ. PKG. \$1.49
SHURFRESH COLBY LONGHORN CHEESE 10 OZ. PKG. \$1.39
SHURFINE SALTINE CRACKERS 1 LB. BOX 59c
SHURFINE DEVIL'S FOOD/YELLOW/WHITE CAKE MIXES 18 1/2 OZ. BOX 69c
SHURFINE STRAWBERRY PRESERVES 18 OZ. JAR \$1.19
SUNSHINE COOKIES CHIP - A - ROO'S 12 OZ. PKG. \$1.29

ASSORTED FLAVORS ALLSUP'S ICE CREAM \$1.49 1/2 GAL. RD. CTN. Includes image of an ice cream container.