

# Santa Anna News

Phone 348-3545

"He Profits Most Who Serves Best"

Single Copy - 20¢

Volume XCV

Santa Anna, Coleman County Texas Thursday, November 26, 1981

Number 48

## Mountain Echoes

By  
Barbara  
Kingsbery



The Santa Anna basketball teams are off to a good start, and local people are encouraged to attend the games and support the young people.

A new attraction is planned for the varsity home games -- small basketballs, compliments of the Santa Anna National Bank, will be thrown to the spectators during the games. There will probably be quite a scramble to get them, too.

bk

Following up on the football season, the Gorman team won their bi-district game Saturday night 28-22 over the Meridian team. As you remember, the Meridian squad is coached by David Horner, son of Richard and Oma Dean Horner, and last year defeated the Mountaineers in a close game in the play-offs.

Gorman will meet the Wink High School team Friday night in San Angelo as they advance to the State championship.

bk

A very happy Thanksgiving to all of you. We will be pleased to share your news of visitors or out of town trips for the next issue, so call at the office early next week to report your news!

## Rate Increase Requested By West Texas Utilities

West Texas Utilities Company has filed for a general increase in its retail rates, citing inflation, high interest rates and an essential major construction program as the reasons for the action.

The official filing was made last Wednesday in Santa Anna by Charles Wetsel, local manager.

Wetsel said the application is a systemwide request for higher rates. Simultaneous filings were made in other incorporated towns for retail customers within their jurisdiction and with the Public Utility Commission of Texas for an increase to retail customers outside incorporated towns. The

## SAHS School Favorites Are Chosen

Santa Anna High School favorites were selected last week in elections by the student body.

Brad Wardlow, son of Mr. and Mrs. L. K. Wardlow, was chosen as 'Mr. SAHS', and Julie Jones, daughter of Mr. and Mrs. William E. Jones, was chosen 'Miss SAHS.' Both students are seniors this year and active in many organizations.

Julie was also selected as 'Most Athletic Girl.' Albert Collins, son of Mrs. Katie Collins, was named 'Most Athletic Boy.'

Chosen as 'Most Likely to Succeed' were James Pelton, son of Mr. and Mrs. D. D. Wright, and Angie Day, daughter of Mr. and Mrs. Clint Day.

Selected as 'Most Friendly Girl and Boy' were Tessa Clawson, daughter of Mr. and Mrs. Bobby Clawson, and Charlie Lewis, foster son of Mrs. Pearl Wilson.

Lisa Rolfe, daughter of Mr. and Mrs. Roy Rolfe, was chosen (Most Beautiful Girl), and Ward



BRAD WARDLOW  
Mr. SAHS



JULIE JONES  
Miss SAHS & Most Athletic Girl



ALBERT COLLINS  
Most Athletic Boy

Stewardson, son of Mr. and Mrs. Burgess Stewardson, was chosen 'Most Handsome Boy.'

The students will be featured in the 1982 edition of the school yearbook. No runners-up were named this year for the honors.



JAMES PELTON  
Most Likely to Succeed



ANGIE DAY  
Most Likely to Succeed

## Annual Football Classic Slated Next Saturday

Hometown football will be seen at its best Saturday, when the Santa Anna and Bangs Ex-students meet in an annual clash at Mountaineer Stadium. The game will start at 2 p.m., with tickets available at the gate.

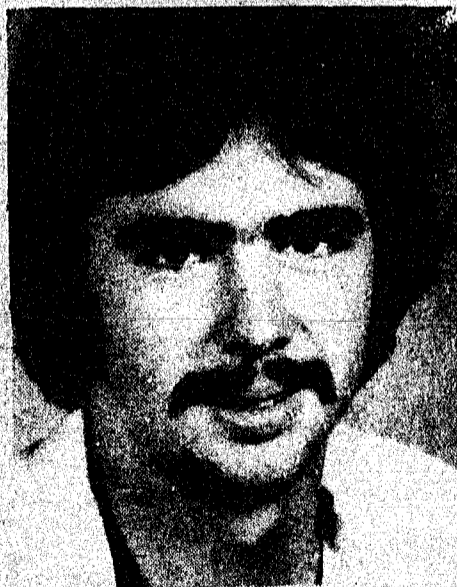
Teams from the two neighboring towns will be in full force, with the Santa Anna delegation numbering about 50 and coached by former SAHS football stars Randy Brown and Roddy Dean. The Bangs team won the 1980

game, so the Santa Anna team will be seeking revenge in the Saturday contest.

The annual game benefits the athletic booster clubs, with the proceeds divided between the two groups.

The Santa Anna club will use their proceeds to renovate the track at the stadium.

Besides the action on the field Saturday, former cheerleaders will be on hand to boost the spirit of the team and spectators. Everyone in the community is urged to attend the game and support their home team.



WARD STEWARDSON  
Most Handsome Boy



LISA ROLFE  
Most Beautiful Girl

## Rehearsals Set For Cantata

The final rehearsals for the Community Christmas Cantata are scheduled, with the musical program to be given Sunday night, December 13, at the Seventh-day Adventist Church.

Ray Switzer, music director at First Baptist Church, is directing the cantata. Soloists are from the participating churches.

The annual musical program will start at 7 p.m., and people of the community are urged to attend.



CHARLIE LEWIS  
Friendliest Boy



TESSA CLAWSON  
Friendliest Girl

(See WTU RATES, Page 5)

# Mountaineers Win Tourney; Girls Get Consolation Title

The Santa Anna High School boys basketball team won the championship trophy in the Talpa Tournament last weekend, and two players, Mike Simmons and Brad Wardlow, were chosen for the all-tournament team.

The girls team won two of three games in the tourney and the consolation title.

Holly Smith was named to the all-tournament team at the close of the event.

In the first round of play, Santa Anna boys defeated the Eden team 62-51 with Randy Casey leading the scoring with 14 points and Mike Simmons the leading rebounder with 12. Casey also led with eight steals. Others scoring in two figures for the Mountain-

eers were Ricky Anderson and Simmons with 12 each.

In the second game with Novice, Simmons scored 22 points for the 87-57 victory. David Strickland scored 16, and Ricky Anderson, Brad Wardlow and Randy Casey had 15, 14 and 13 respectively. Anderson and Wardlow were leading rebounders, and Strickland led with six steals.

The Santa Anna boys won the championship trophy by defeating the Divide team 79-65. Anderson led with 20 points and Wardlow led with 12 rebounds. Casey had 11 steals. Others scoring in two figures were Casey, 18; Simmons, 15; Strickland and Wardlow, 12 each.

The Santa Anna girls defeated the Eden girls 49-26 Thursday, with Robbie Clifton scoring 19 points. Connie Culpepper led the team with 10 rebounds. Others scoring at the top of the list were Julie Jones, 10; and Connie Culpepper, 8.

The local girls lost to the Mozelle girls 33-25 on Friday, hitting only eight percent of their field goal attempts in the second half.

Robbie Clifton led with 14 points and eight rebounds.

In the consolation game, Santa Anna defeated Eola 54-35. Clifton again was leading scorer with 17 points and eight rebounds. Holly Smith scored 10 and Julie Jones added 10 to the total.

The Santa Anna high school teams will be idle the rest of this week, then host the Cross Plains teams Tuesday night at Perry Gymnasium with B Team games starting at 4 p.m.

# SAHS Teams Win Over Early H.S.

In games at Santa Anna Monday night, Santa Anna won over the Early boys 62-55. Randy Casey led with 17 points, with Ricky Anderson having 13.

Brad Wardlow and Randy Casey each had 11 rebounds, and Wardlow led with five steals.

The victory Monday brought the Mountaineer record to 4-1 for the season.

The Junior Varsity boys team won over Early 61-49, with Don Warrick scoring 19 points. James Bass and Doug Warnock each scored nine, Paul Vasquez and Mike Hartman scored six each.

The girls varsity team was led by Patricia Jackson with 18 points to win over Early 51-45. Robbie Clifton added 14, and Gay Hosch scored nine.

# Diann Dillingham Selected For Lubbock Hospital Post



DIANN DILLINGHAM

Diann D. Dillingham, daughter of Mr. and Mrs. Herschel Dunn of Coleman and daughter-in-law of Mr. and Mrs. Jack Dillingham of Gouldbusk, has been named Director of Education for West Texas Hospital in Lubbock, announces Arthur W. Hastings, Administrator of the hospital.

She will coordinate and direct inservice trainings and plan continuing education courses for physicians, nurses and hospital staff. West Texas Hospital is owned by American Medical International.

Mrs. Dillingham had taught

technical writing and English at Texas Tech University for three years. She earned her B.S. degree in education from the University of Mary Hardin Baylor and her M.A. degree in English from Texas A&M University where she taught two years. She and her husband, Dr. John Dillingham, live with their two children, Sandi and Mark, southwest of Lubbock. Dr. Dillingham is a professor of agricultural education at Texas Tech. He is a Santa Anna High School graduate.

### Santa Anna News

(USPS 481540)

P. O. Box 399 348-3545

Santa Anna, Texas 76878

Published every Thursday at Santa Anna, Texas 76878 and entered as second class mail under the Act of Congress March 2, 1879.

Subscription price: Coleman County - \$8.95 per year; other areas in Texas - \$9.95 per year; outside Texas - \$10.95 per year.

BARBARA KINGSBERY

Editor

RONNI RUSSELL

Advertising Manager

# JHS Ball Teams Have Games With Rising Star

The Santa Anna Junior High girls won two games over the Rising Star juniors Monday night, while the two boys teams lost to the junior Wildcats.

The A Team won 24-11 with Dilcy Kirven and Melissa Buse each scoring 10 points.

The B Team game was a defensive battle, with the winning score being made by Melissa Stanislaw. The total score was 1-0 for Santa Anna.

The Boys A Team lost 25-14 to Rising Star with Doug Warnock scoring 9 and James Wray adding 7. The B Team lost 13-11 with Fernando Castillo the leading scorer with 8 points.

The JHS teams will play at Blanket Monday at 6 p.m.

# Holiday Program Planned Monday

There will be a Lone Star Gas Co. Christmas program at the Homemaking Cottage at high school next Monday, November 30, at 6:30 p.m. Holiday ideas and recipes will be given to all attending, and everyone in the community is welcome to attend the program next Monday.

## COW POKES

By Ace Reid



"Now git outta here!"

## "Super Salad Bar"

Cool, Crisp Salad

Served alone or with your favorite entree

5 a.m. - 10 p.m.

FEATURING

Lunches To Go

Open For Breakfast 5 a.m.

Seating Capacity of 1,000

(32 at a time)

# W.B.'s

The Best Little Cafe in Texas



(Windy B's)  
Coffee Shop  
& Cafe

# Santa Anna National Bank

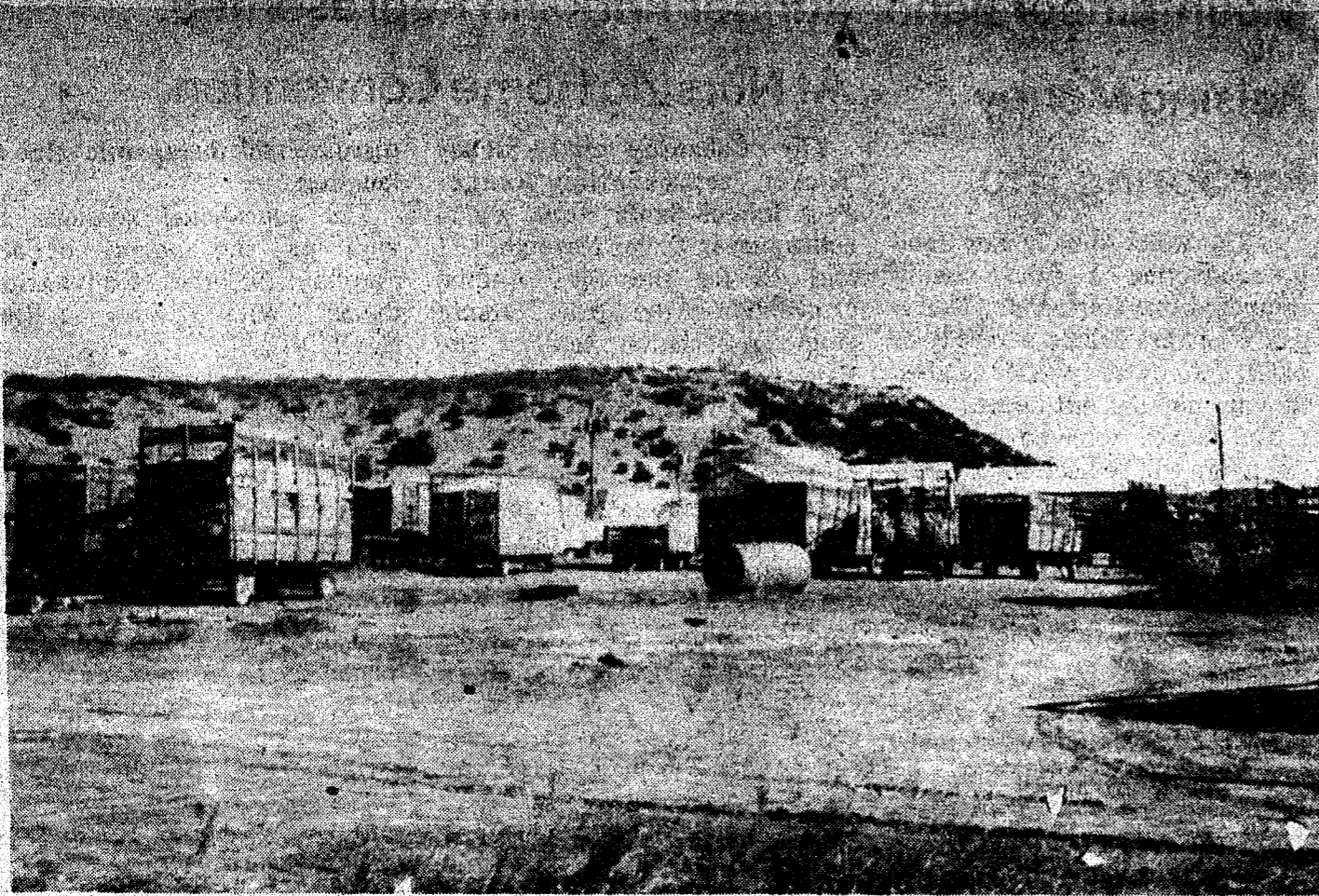
Deposits Insured by FDIC Up to \$100,000

PASS BOOK SAVINGS

MONEY MARKET 6 MONTH CERTIFICATES OF DEPOSIT

Maximum Rates Allowed by Law

Substantial Interest Penalty is required for early withdrawal



WAITING IN LINE .....Many trailers of cotton have been on the gin lot this week, with the ginning in full swing. Cotton was defoliated by the recent frosts, and the harvest should be

completed in a few weeks. Over 500 bales of cotton have been ginned at the Santa Anna Co-Op Gin since the season started.

### Plans Progressing Well For Christmas Opening

The annual Christmas opening in Santa Anna will be held Friday, December 4. Several activities are planned during the day to welcome the holiday season.

Decorated windows in the downtown area will be unveiled that day, and the Lions Club pancake sale will be held during the noon and supper hours.

A highlight of the day will be

the Christmas parade at 2:30 p.m. Decorated floats, the band, children in costume, and Santa Claus will take part, with cash prizes to be given the winning floats.

There will be a bake sale sponsored by the PTO during the day, and the Meals on Wheels group will have an open house at the Chamber of Commerce office. Other clubs and organizations will also have special events during the day.

### Four Students Win Places In District Band

Four Santa Anna Band students took part in the District Band tryouts last Saturday in Coleman, and all four were placed in the group.

Teresa Rolfe was placed as first chair trumpet, and Charlotte Garrett was a second chair trumpet selection.

Monique Spillman was judged as fifth chair flute, and Deborah Bodine was seventh chair French horn.

The four students will take part in the Regional Band tryouts in Stephenville December 4, and probably others from the local band will try out for places.

In the recent Interscholastic League twirling contests in Brady, Lisa Rolfe and Gay Hosch received Division I ratings with their solo routines, and Casey Anderson received a II Division rating. The three girls received a Division I rating with their trio twirling routine.

**IRA PUMP & SUPPLY CO.**  
 General Oilfield Supplies  
 Santa Anna, Texas  
 Box 580 - Ph. 348-3179  
 Box 21, Ira, Texas  
 Bus. 915-573-6403

### Christmas Pageant Planned Dec. 6 By ESA Chapter

The Christmas Pageant being planned by the Epsilon Sigma Alpha sorority will be held Sunday afternoon, December 6, at the school auditorium. Winners will be chosen from four divisions, with the groups being Christmas Belle for ages three through kindergarten; Little Christmas Miss for grades one through four; Junior Christmas Miss for grades five through eight; and Christmas Miss for those from grades 9 - 12.

Contestants are to enter by calling Donna Bradley or Pam Morgan. Each contestant will be responsible for placing containers in town to collect votes, and also for taking their money to the pageant leaders by 10 a.m. Saturday, December 5.

Admission to the pageant will be \$1 for adults and 50 cents for students. Pre-school children will be admitted free of charge.

All local girls are invited to enter the pageant, with all entries due by Tuesday, December 1.

### Salad Supper Slated Monday For FBC Women

Ladies of First Baptist Church will meet Monday night, November 30, at the church annex for a salad supper. The supper will be served at 6:30 p.m. followed by a mission program presented by visitors from out of town.

The nursery will be provided for small children, and all women of the church are urged to attend.

\*\*\*\*\*  
**Bill's Garage**  
 in Santa Anna  
**Now Open for Business**  
 Your business will be appreciated.  
 Wrecker Service 24 Hours a Day  
 Across from Gene's Car Lot Highway 84 East.  
 Call or come by and say Hi.  
 6 days a week  
 Hours 8:30 - 5:30 After 5:30 Call 752-6557  
 \*\*\*\*\*

### Open House Set By Meals' Group

An event planned in conjunction with the Friday, December 4, Christmas opening will be an open house sponsored by the Meals on Wheels leaders. The event will be at the Chamber of Commerce office from 1 - 4 p.m. that afternoon.

Gladys Barnes, coordinator of the Meals on Wheels program, has said the event is being held to show appreciation to those who have helped with the community project in any way. Refreshments will be served, and those stopping by will have an opportunity to

visit with friends while in town for the parade and other activities.

The Meals on Wheels program is conducted with donations by clubs, individuals and church groups, and each contribution is greatly appreciated. Everyone is urged to continue their support of the program that provides hot lunches to residents who are not able to prepare for themselves.

Mrs. Barnes also stated that there will be a few bazaar and gift items available for sale, and other donations for the sale will be appreciated.

**Somethin' Fishy**  
 "The World of Fin & Feathers Brought To Your Door Step."

Swordtails from South America  
 Betas from Thailand  
 Rainbow's from South America  
 Leaf Fish from Africa

Hamsters  
 Canaries  
 Parakeets  
 Finches

**GET YOUR PETS**

Hours 9-6 Mon.-Sat. 401 Early Blvd.

**ARTIFICIAL TREES**  
 Lasting Christmas Beauty...

Shop Early Special  
**\$29.95** 6 foot -  
 Reg. 47.95  
 Mountain King

Also Available  
 4 - 7 foot sizes  
 \$11.99 - \$125.00

We Also Have  
 Lights, Gift Wrapping Paper, Bows, Ribbons

**J. E. Stevens Co.**  
 111 W. Live Oak • Phone 625-2124  
 "SERVING COLEMAN SINCE 1889"

# County Farm Bureau Presents Group's Policies

The Coleman County Farm Bureau recently held its annual meeting and convention at the recreation building at the rodeo grounds with a capacity crowd attending with guests from Taylor and Runnels Counties.

The meeting opened with the invocation given by Victor Cardinas, County President, followed by a barbecue supper.

The three students who attended the Student Citizenship Seminar at Baylor University this summer were presented with a certificate of their attendance after they each gave a brief report of their trip. The students were Carrie Hale, Juanita Diaz and Mike Wetsel.

Pat Smith, Director of State Affairs, Texas Farm Bureau was the main speaker for the evening. He gave a report on the accomplishments of the 67th Legislature. He gave a detailed account of Amendment No. 5. This was Mr. Smith's first visit to Coleman County and his speech was very informative.

Bob Turner conducted the nomination for the new directors from the four precincts. Those directors elected were as follows: Prec. 1, Jack Knox, Anthony Strawn; Prec. 2, Charles Greenlee, John Vance; Prec. 3, Curtis Jamison, Harrell Jewell; Prec. 4, Oliver Calk, Uictor Cardinas.

The main order of business was the presentation of new policies at the county level to be presented to the state level for possible adoption. This portion of the program was presented by the County Policy Development Chairman, Uack Knox. The following policies wer voted on and passed and will be sent to the state office.

1. To encourage after January

1, 1982 the closing of the Coleman County Tax office and the Coleman Independent School District Tax Office which will provide upon their closing a more economical and efficient Central Appraisal Office for the complete taxing and collecting of ad valorem taxes in Coleman County.

2. To Encourage the widening and re-surfacing of Highway 283 North of Coleman, better known as the Baird Highway, from Coleman to the county line to provide wider and safer traffic of farm equipment and promote safer lake traffic to Coleman to encourage more income to the community.

3. To oppose and work against the use of Federal and State funds for Super highways that provide locations for shopping malls therefore eliminating useful and vital farmland and in turn leading to the deterioration of downtown retail businesses.

4. Work toward the passing of a law which after seven years all unclaimed royalties being held in escrow by the purchasing agent will revert to the land owner instead of the State of Texas as the law now reads.

5. To work toward the encouragement of a law passing a token tax on non-producing minerals for ad valorem taxes so future royalty owners are clearly identified and their rights protected.

6. Whereas much of the information needed to properly understand our complex tax programs and make recommendations to properly advise Texas Farm Bureau members is contained in computer files in Austin and elsewhere and whereas Texas Farm Bureau owns through its

# Mountaineer Band Ranger Park Inn Represented At Nursing Home Convention Raising Money For Spring Trip

The Santa Anna Senior Band is conducting a fund raising campaign that started last Thursday. They are selling a variety of pillar, votive and cylinder candles that are popular gift items.

The money received from the campaign will be used for a group trip to Astroworld. In order to reach their goal, they need the help of everyone in the community. Band members will be calling on friends and neighbors to sell the unique candles.

service companies some of the best computer equipment in Texas, Be it resolved that Texas Farm Bureau move immediately to transfer to its own computer systems such public information as may be helpful to our legal, commodity and legislative divisions.

7. Whereas Texas Farm Bureau now owns and operates excellent computer systems and whereas small business units are now within the price range of many county offices, Be it resolved that counties be encouraged to transmit information directly, computer to computer rather than by mail, as soon as possible.

8. As a united group to campaign and lobby against all efforts the passing of any windfall profit tax on natural gas which will further prevent royalty owners of their rightful income, and communities of their income from royalty owners and a lowered tax base of ad valorem taxes.

The Santa Anna High School band, directed by Denise Waltrip, played a number of selections to conclude the program.

Lily Cabansag and Sidney Tucker, representing Ranger Park Inn of Santa Anna joined colleagues in Dallas November 11 and 12 for the 31st Annual Convention of the Texas Nursing Home Association held at the Fairmont Hotel.

While there they attended four sessions of lectures to earn six official hours of credit toward the continuing education requirements of the Texas Board of Licensure of Nursing Home Administrators. Faculty for the study sessions included: Care Schaeffer, musical therapist of Tucson, Arizona; Joyce Severs, creative painter of Austin, Texas; and Sandra Bunch of Tyler who

discussed the therapeutic value of laughter.

The educational sessions as well as the social events emphasized the Convention theme "With a Song in Our Hearts."

A featured luncheon speaker was television personality Virginia Graham. An awards luncheon honored top achievements by those within the profession and other who had aided it objectives.

Educational and commercial displays in the Fairmont Hotel numbered more than 100, all related to the newest equipment and innovative techniques for the longterm care profession.

The House of Delegates of TNHA elected a slate of officers.

At an Installation banquet/dance last Thursday evening, President Sid Rich announced that the Texas Association had reached its peak membership this year with 780 member facilities having a total of 79,288 licensed beds, making the State group the largest of its kind in the nation.

# VFD, Families Enjoy Supper Monday Night

The Santa Anna Volunteer Fire Department, Auxiliary and their families had their annual turkey supper Monday, November 16, at the Fire Hall. About 40 people attended the event that included the meal of turkey, dressing and all the trimmings.

Following the supper, the Ladies Auxiliary held a meeting to make final plans for their bazaar and garage sale to be held at the Fire Station December 4.

Old and new items, baked goods and hand crafts will be sold, and spaces for dealers and individual will be rented for \$5. Each person must furnish their own table.

Plans were also made for the annual Christmas party at Ranger Park Inn, sponsored by the Auxiliary.

For Your  
**Insurance Needs**  
Come See  
**Archie Phillips**  
Representing  
**Germania Farm Mutual Aid Insurance and G.I.C.**  
Located at  
**216 1/2 COMMERCIAL**  
(In Man's Shop Building)



**Western Auto in Santa Anna**

**Has Gifts for Teens**

- In Dash Car Stereos
- Car Accessories
- Total Auto Sound System
- Bikes
- Curling Brushes
- Calculators
- Hair Dryers
- Wrist Watches
- Head Phone Radios

*Something for Everyone!*

**WESTERN AUTO**  
Santa Anna

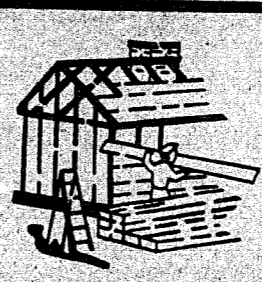
Dale & Donna **Bradley** Santa Anna

**LUMBER & BUILDING SUPPLY**

- ★ Ameri Glas Hot Water Heaters  
5 yr. Guarantee ! \$112.95 - Gas \$110.95 Electric
- ★ Insulation - All sizes in stock  
Sold in any amount
- ★ Complete line of Stanley Tools
- ★ King Automatic Wood Circulator  
**\$398.00**

Try To Beat Our Quality and Prices

New Stock Arriving Daily



Check our Full Line of Goods

**Come See Our Paneling Samples**

# Trickham News

By Mrs. Oscar Boenicke



The Fifth Sunday Singing will be held next Sunday at Trickham Union Church, November 29, from 1:30 to 4 p.m. Joe Stacy in charge. We hope to have a good singing and lots of good singers here, and a good crowd to hear them.

Thanksgiving will be Thursday of this week. We all have so much to be thankful for. We still have peace and not war.

I want to wish everyone a Happy Thanksgiving Day and a happy year.

The Quilting Club meets this Tuesday afternoon at the Community Center. We hope to finish a quilt for Lyndall Moore and more work done on Sug Stearns quilt.

Walter and Carrie Stacy went to Brownwood to Del Ray Stacy's birthday dinner Sunday. Their family was all there except Tommy who is in the service stationed in Hawaii. Also Sammie LaDoucer had dinner with them. Doug Perkins visited the Walter Stacys Saturday evening.

Dr. Norman Fry and his mother, Mrs. Fry, and son from Midland spent the weekend at their home. Jeff was doing some hunting. I visited them Saturday evening.

Saturday Mr. and Mrs. Charles Brewster and Brad and his girlfriend went to the basketball tournament at Talpa and the Santa Anna boys won.

The Charles Brewsters, Brad and his girlfriend went to church at Brady at the Church of Christ Sunday and had dinner with a group of people at the Bible Camp out of Brady. Also a group of young people were there for a retreat and they had dinner there. Sunday evening Mr. and Mrs. Clive Brewster of Blanket visited the Brewsters and Brad and his friend.

I went to Bangs Thursday morning and visited Jeff and Kathleen Fitzgerald. Glad Jeff is doing better. He has been pretty sick, also had surgery on his nose in the Veterans Hospital in Temple. They went with me to Laura Harris and we had dinner with her.

My brother went home Tuesday after visiting with me and Rankin and Natalie McIver since Thursday night. He had hard luck with his hunting but enjoyed his visit at Trickham.

Saturday Genia Melver had a birthday dinner for Grady, Grady Clay, Mindy McIver and Keetie Haynes who all had birthdays this month. Others there were Doayne and Wanda McIver from San Angelo and their family, Terry and Orabeth McIver and family and Betty Henderson, all there for the dinner Saturday.

I took my pickup to Santa Anna Friday to have it checked and went by and saw Vera Shield and her daughter, Annelle Clark, who returned home Monday after spending over a month with her mother.

Yette Cole and Lyndall Moore visited Russie James, also Pat and Roberta McShan visited Sunday evening.

Russie visited at the Brownwood Hospital with Mrs. Ted Stewardson. I was sorry to hear she had fallen and broken her leg in three places. Also visited Ted Vance while there.

Ray and Barbara Dockery and family and Rodney Guthrie and Wesley Dockery all had dinner with Oma Lee Dockery Sunday. Mrs. Boyd Stewardson of San Saba visited Sunday afternoon.

Oma Lee Dockery visited Ilene Haynes and Anna Laura York visited one day. Sunday evening Janie Haynes and Justin Haynes of Brookesmith visited Ilene. It was Justin's 11th birthday Sunday.

Howell and Gertrude Martin had all their children and their families at home Sunday for a reunion and dinner, also made a family group picture there, 37 in all. They were Felton and Betty Martin and Paul of Trickham; Delbert and Janice Snow and Tiffany of Brownwood; Ann Martin of Houston; Bill and Becky Martin and Brandi of Trickham; Talmage and LaVerne McClatchy of Bangs; Fred and Jeannie Driehof, Nicholas and Nathan of Brownwood; Robert and Linda Meckfessel, Elizabeth, Lara and Sara of Garfield, Kansas; Merridee McClatchy of Austin; Ray and Minola McSwain of Hico; James McSwain of Grapevine; Mike and Patricia McPherson, Mendi and Chris of Tolar; Donna McSwain, Mike and Elaine McSwain of Stephenville; and also Howell's sisters, Yette Cole of Brownwood, Lyndall Moore of Winchell and Russie James of Trickham. They had a big day together.

Ilene Haynes visited Leona Henderson one day last week.

Saturday morning Dr. Norman Fry visited the Rankin McIvers, and after Sunday School Grady and Genia came by for a little while. After they left, Rankin and Natalie went to San Angelo and had dinner with Sherrie and Jim Blake, and also his mother and father were there from Del Rio.

We are having some pretty weather for this time of year. We had a little norther today, but not cold. We are beginning to need rain.

## WTU Rates....

(Continued from Page 1)

rates become effective January 1, 1982. Wetsel said that a rate increase granted WTU last year 'did not get the job done.' That increase was for an average of 8.3 percent and was only the second in the Company's entire history.

'The relief you granted us has been overrun by inflation and high interest rates and the need to build additional facilities,' Wetsel said.

Growth in demand for electric energy, caused by a steady increase in new customers and higher usage by old customers, is forcing WTU to expand its facilities.

WTU's newest power plant was completed in 1977, and since then the summer peak demand has grown to a point termed 'uncomfortably close' to the system generating capacity.

The current construction program includes a coal-fired station at Oklaunion, near Vernon. Although ownership of this plant will be shared by two sister companies in the Central and South West Corporation, Oklaunion will be the most costly project ever undertaken by WTU.

So far, WTU has lagged well behind most of the industry in increasing its rates. A recent report from the Public Utility Commission shows WTU rates to be second lowest in the state among investor-owned companies and fifth lowest among all utilities.

Under the proposed rates, an average bill for basic residential service would be increased by 19.1 per cent. For example, a residential customer using 600 kilowatt-hours per month would pay \$40.95, compared to \$34.39 under the present rates -- a difference of \$6.56. This would include fuel costs.

The City of Santa Anna has

## Local Winners In 4-H Food Show Last Saturday

Several Santa Anna girls were among the Coleman County 4-H group taking part in the County Food Show Saturday, November 21, in Coleman.

Casey Anderson was one of the blue ribbon winners in the Snacks and Dessert division for senior members, and Jetta and Taffy Rutherford, Jodi Watson and Lee Ann Musick were in the junior division. Jetta was a blue ribbon winner in the Fruit and Vegetable group, and Taffy was a red ribbon winner. Jody and Lee Ann each won a red ribbon in the Main Dish group.

Casey, daughter of Mr. and Mrs. Norman Anderson, will advance to the district show in San Angelo December 5.

several options in responding to WTU's request. It may deny the increase, suspend the increase for a certain period of time, or approve the increase. The city

also has the option of denying the request and ceding future jurisdiction to the Public Utility Commission. Eight municipalities in the WTU service area chose to cede jurisdiction last year.

**Cervenka Electric**

**Residential  
Commercial  
Industrial  
Coiling Fans**

414 Commercial  
Coleman, Texas 625-3085

## Daniell Group Has Meeting Monday Night

The Nitia Daniell Group of United Methodist Women met Monday, November 23, at the Church Annex.

The meeting opened with sentence prayers of Thanksgiving. Mrs. Lillian Herndon presided during the business meeting.

Minutes of the October Meeting were read by Mrs. Dick Baugh. Reports were given on friends and members who are in the hospital. Miss Pauline Eubank reported 10 cards were sent last month.

The Christmas project was discussed, and Mrs. Harry Crews and Mrs. V. I. Dean were

appointed to the committee.

Mrs. Crews accompanied the group singing and introduced the program, 'Praise for Light; Praise for Darkness.' Mrs. Chester Galloway and Mrs. Gus Morgan spoke, emphasizing thanks for the ordinary, the bleak and the joyful.

After the business and program, the hostess, Mrs. Herndon, served a fruit cup, sandwiches, cake, punch and coffee to the ones mentioned and also Mmes. Norval Wylie, Modora Gilmore and Lucille Dean.

The serving table was laid with a white cloth and centered with a miniature turkey surrounded by corn, apples, and autumn leaves. Thanksgiving napkins completed the motif.

The next meeting of the group will be December 7 in conjunction with the Martha Group.

### VISITS IN SANTA ANNA

John H. Blue of Lafayette, La. has been a recent visitor with his mother, Mrs. Hardy Blue, and his sister, Mrs. Betty Henderson, and other relatives.

All New

|                      |          |
|----------------------|----------|
| Sofa Love Seat       |          |
| Chair.....           | \$198.00 |
| 5-piece dinette..... | \$89.00  |
| Bunk Beds            |          |
| (Complete).....      | \$198.00 |
| Twin Size mattress   |          |
| and box.....         | \$89.00  |
| Full Size mattress   |          |
| and box.....         | \$129.00 |
| Queen Size mattress  |          |
| and box.....         | \$169.00 |
| King Size mattress   |          |
| and box.....         | \$219.00 |

**J & L Furniture**

1518 Flak  
Brownwood, Texas  
915/643-4949

**Enchiladas**

**MEAT & CHEESE**

**\$3.95**

With real chilli  
includes Salad bar

---

**T-BONE SPECIAL**

**\$3.89**

SPECIAL ALL DAY LONG.

FREE SOFT DRINK FOR THE KIDS!

**THE SECTION HAND STEAK HOUSE**

ON THE BRADY HIWAY 643-1581

**Coleman Automotive Supply**

**Shop and Compare Our Prices**

**Custom Made Hydraulic Hoses**

**Freddie Garner — Owner**

Phone: 625-2512 Coleman Nights & Holidays 625-3029

What place could be safer  
to keep valuables than a bank...our bank!!!

---

Pass Book Savings 5% — Compounded Daily

**First Coleman National Bank**

Member F.D.I.C.

"Always Willing — Always Prepared" "Your Good Neighbor Bank"

We Sponsor The News Each Day  
At 12:30 Over KSTA

# Ranger Park Inn News

The singing was enjoyed by a large group of residents Tuesday evening. Thanks to Rev. and Mrs. P. A. Lindley, Mrs. Keeney, Bonnie Norway, Jay Irvin, Mrs. Keenty and Mrs. Nowlin.

The Songbirds sang some beautiful hymns Wednesday afternoon. Thank you, Jim Boyles, Virgie Wood, Allene Needham, Mr. and Mrs. Henry Hext, Doris Aderholt, Kate Cagle and Wanda Wallace.

Mary Cruger, Hubert McCarty, Bunk Wagner, Katie Wagner, Susie Snider, Claudia Davis, Cora Mikeska were honored Monday afternoon with a birthday party. Thanks to Mr. and Mrs. Dick Longbrake for the birthday cake and gifts. Our thanks to Mrs. Myrtle Chapman and Herman and Edna Estes for helping with the party. A large number of residents attended and enjoyed the party.

A large number of residents enjoyed the movie, 'Grand Canyon - National Broadcasting', Friday afternoon.

Jackie Hopper was here Sunday afternoon and gave a wonderful devotion. Cassi Osmon and friend Don picked guitars and sang hymns. It was good to have Milinda Smith and Sherrie Laws visit with us.

We are sorry Billy Alcorn and Dan Shuford are in the hospital. We hope they are well soon.

Mr. and Mrs. Steve Valdez of Brownwood visited a friend, Mrs. Ollie Estes.

Scooter Tucker of Big Springs

visited his grandmother, Ethel Matthews.

Mrs. R. W. (Barbara) Baker of Taos, N. M. visited her mother, Mrs. Demp Baker.

Elmer Woodard of Coleman and Lorrie Perry were visitors with their sister and grandmother, Allie Woodard.

Edna and Herman Estes of Bovina visited Susie Snider.

Marie Britton visited her aunt, Mary Miller, and with Susie Snider and Sally Brimer.

Sharon Guthrie and children visited Susie Snider.

Visiting with Mrs. Mable Burrage during the week have been Mr. and Mrs. Chet Holcombe of Coleman, Marsha and Mary Jo Dahlberg of Austin, Mr. and Mrs. Don Estes of Brownwood, Dessa Patterson, Dorothy Harris, Blanche Harris, Leta Parker and Elmer Davis and Lois McNeil of Dallas.

Wallace and Chris Ann Brimer of Stamford visited their grandmother, Sally Brimer, and Nell Mulanax of Valera was also a visitor.

Rev. John Holmes of Coleman visited with friends at the Inn Wednesday morning.

### VISIT IN SANTA ANNA

Hazel (Copeland) Perkins and a friend, Mabel Dollery, both of Alvin, spent several days in Santa Anna visiting an aunt, Miss Effie Copeland, and other relatives and friends. Miss Copeland is in Brownwood Regional Hospital for tests this week.

# Don Fitzpatricks Have Daughter

Mr. and Mrs. Don Fitzpatrick are parents of a baby daughter born Thursday, November 19, in San Angelo Community Hospital. The baby weighed seven pounds, six ounces and has been named Steffany DeShea.

Grandparents of the new baby are Mr. and Mrs. Graham Fitzpatrick of Whon and Mr. and Mrs. Charles Hosch. Mrs. Mary Snowden of Brady and Mr. and Mrs. Roscoe Hosch of Bangs are great-grandparents of the new arrival.

Also greeting the new baby is a brother, Brandon, aged two.

# Toby Dyers Have Baby Girl

Tommy and Kay Dyer of Coleman are proud to announce the arrival of their second granddaughter, Brandi Renee Dyer, born Sunday, November 15, at Hendrick Medical Center in Abilene. The proud parents are Toby and Beverly Dyer of Buffalo Gap.

The baby girl weighed eight pounds, eight ounces at birth.

Grandparents are Mr. and Mrs. Bill Oats of Abilene and Mr. and Mrs. Charles Winn of Midland, Tommy and Kay Dyer of Coleman.

Great-grandparents are Mr. and Mrs. C. R. Owen of Santa Anna, Mr. and Mrs. J. W. McGinnis and Myrtle Winn, all of Abilene. Mrs. Ica Potter of Coleman is great-great-grandmother.

# Ranger Park Hospital

The following patients were admitted to Ranger Park Hospital November 16 - 23:

Paula Ferguson, Brownwood  
Dorothea Hernandez, city  
Billy Allcorn, Ranger Park Inn  
Benito C. Garza, Brownwood  
Leonard Evans, Coleman  
Dan Shuford, Ranger Park Inn  
Nora Goen, city

These patients have been

dismissed from the hospital November 16 - 23:

E. J. McCoy, Ranger Park Inn  
Inez Meldanado, Brownwood  
Sabas Reyna, Brownwood  
Paula Ferguson, Brownwood  
Benito Garza, Brownwood  
Nora Goen, city

Another patient still in the hospital November 23:

Frank Salas, Coleman

## PUBLIC NOTICE

In compliance with Sec. 43(a) of Art. 1446c, V.A.C.S., West Texas Utilities Company hereby publishes NOTICE that it has filed, on November 25, 1981, its statement of intent to make changes in its rates charged for electricity and services sold and rendered inside and outside municipal jurisdictions, such proposed changes to be effective January 1, 1982. Such Statement of Intent includes the proposed revisions, tariffs and schedules, and a statement specifying in detail each proposed change, the effect the proposed change is expected to have on the revenues of the Company, and the classes and numbers of utility customers affected. Gross revenues are expected to be increased 15.4 per cent over adjusted test year revenues by the new rates. Statements of intent were filed with the Public Utility Commission of Texas and with the following municipalities:

|              |            |                 |
|--------------|------------|-----------------|
| Abilene      | Hawley     | Quitaque        |
| Alpine       | Hedley     | Rankin          |
| Anson        | Impact     | Rising Star     |
| Aspernont    | Iraan      | Roaring Springs |
| Baird        | Jayton     | Rochester       |
| Balmorhea    | Junction   | Rule            |
| Ballinger    | Knox City  | San Angelo      |
| Benjamin     | Lawn       | Santa Anna      |
| Big Lake     | Lueders    | Shamrock        |
| Blackwell    | Marfa      | Sonora          |
| Bronte       | McCamey    | Spur            |
| Buffalo Gap  | Melvin     | Stamford        |
| Childress    | Memphis    | Sterling City   |
| Cisco        | Menard     | Talpa           |
| Clarendon    | Merkel     | Throckmorton    |
| Clyde        | Mertzson   | Trent           |
| Cross Plains | Miles      | Turkey          |
| Crowell      | Moran      | Tuscola         |
| Dodson       | Munday     | Tye             |
| Eden         | O'Brien    | Valentine       |
| Eldorado     | Paducah    | Weinert         |
| Estelline    | Paint Rock | Wellington      |
| Goree        | Presidio   | Winters         |
| Hamlin       | Putnam     | Woodson         |
| Haskell      | Quanah     |                 |

Areas affected by the filing with the Public Utility Commission of Texas are in the following:

| Cities        |            |              |
|---------------|------------|--------------|
| Albany        | Lakeview   | Roby         |
| Chillicothe   | Matador    | Rotan        |
| Dickens       | Robert Lee |              |
| Counties      |            |              |
| Baylor        | Foard      | Pecos        |
| Brewster      | Gillespie  | Presidio     |
| Briscoe       | Hall       | Reagan       |
| Brown         | Hardeman   | Reeves       |
| Callahan      | Haskell    | Runnels      |
| Childress     | Iron       | Schleicher   |
| Coke          | Jeff Davis | Shackelford  |
| Coleman       | Jones      | Stephens     |
| Collingsworth | Kent       | Sterling     |
| Concho        | Kimble     | Stonewall    |
| Cottle        | King       | Sutton       |
| Crane         | Knox       | Taylor       |
| Crockett      | Mason      | Throckmorton |
| Dickens       | McCulloch  | Tom Green    |
| Donley        | Menard     | Upton        |
| Eastland      | Motley     | Wheeler      |
| Edwards       | Nolan      | Wilbarger    |
| Fisher        |            |              |



A snake's fangs fold back when its mouth closes.

# Jim 'n me

"Quality Clothes at Outlet Prices"

Many items at Wholesale Cost

## NEW SHIPMENT - JUST ARRIVED

- ★ Velveet
- ★ Velveteen & Corduroy Blazers
- ★ Wool Blend Plaid Skirts
- ★ Blouses
- ★ Velveet
- ★ Velveteen Skirts
- ★ Misses Jeans

Convenient Lay-A-Way Plan

Open Every Mon. - Sat.

302 Commercial

Coleman

# Meet Our Correspondents

Rockwood News is Written

By Busy Local Historian

By Travis Priddy  
Brown County Gazette Editor  
Gladys Hunter, correspondent for the Rockwood News, has been writing for the Santa Anna and Coleman newspapers since April of 1948. In addition to being the community correspondent for the county newspapers, she is also local correspondent for the Abilene Reporter News and has authored two historical books, 'Discord, Texas on Camp Creek and Other Stories' - a volume of stories on the history of the Rockwood community, and also a

book of Coleman County history entitled 'Historically Speaking.'

Born in Lampasas County, Mrs. Hunter spent her childhood at Winchell, south of Brownwood. She married John C. Hunter in San Angelo, and they spent the next 40 years farming south of Rockwood on their Colorado River stockfarm.

A couple of years after her husband's death in 1965, Mrs. Hunter moved to Santa Anna. In 1975 she built a new home on Avenue A where she currently

resides.

Mrs. Hunter enjoys spending her free time doing historical research of the area and exploring old cemeteries. She also enjoys traveling, touring different areas of the country. She recently returned from a Fall foliage tour of New England.

A Methodist, Mrs. Hunter is chairman of the United Methodist Women organization and is a leader in the Rockwood Extension Homemakers Club. She does not believe in the term 'Senior Citizens'. She does not think anyone, regardless of their age, should be restricted in what they can do, and she proves this daily in the active life she leads.

'This is a wonderful old world that we live in,' she states, 'with too many interesting things in it to explore them all.'

And our newspaper patrons will have the advantage of sharing her activities and interests, as Mrs. Hunter writes about the activities and interests that fill her busy days.



MRS. JOHN C. HUNTER  
Rockwood Community Correspondent

## Stocker Gain Contacts Provide Price Insurance

Small grain crops will likely produce an abundance of forage this fall and early winter due to good moisture conditions over most of the state. To get the most from this forage, producers may want to consider grazing stocker cattle under a gain contract.

'With continued high interest rates and uncertain livestock prices, a stocker gain contract can provide some price insurance,' points out Dr. Ashley Lovell of Stephenville, economist in management with the Texas Agricultural Extension Service, Texas A&M University System.

'However, a producer needs an accurate estimate of his costs before entering into such a contract,' cautions the economist. 'This is essential for determining the price needed per hundredweight of gain to make the agreement profitable.'

Assuming 1.25 acres of small grain pasture per head (in the Central Texas Blacklands), Lovell estimates per acre forage costs (variable and fixed) at \$102.50 and livestock costs (fee, labor, death loss and related expenses) at \$47.77, for a total of \$175.90 per head.

As net gain per head increases from 150 to 300 pounds, total variable cost of gain per hundredweight declines from \$87.58 to \$43.79 while total cost of gain per hundredweight drops from \$117.27 to \$58.63.

So, depending on the expected average daily gain per animal and total days of grazing, a producer can determine his position regarding a stocker gain contract. Armed with his cost figures, he can make sure the contract entered into is reasonable and

offers some assurance of covering all costs, including a return for management time.

'Of course, in accepting the minimum compensation as determined by cost estimates, producers need to consider the likelihood of lower than anticipated net gains per head, unexpected forage production costs or higher than normal stocker death losses,' cautions the economist.

In addition to considering a stocker gain contract, producers also have several other options, including grazing owned stockers until small grains play out or grazing them for a shorter period and then harvesting small grains for grain or hay.

'Whatever the choice regarding small grains and stocker cattle, first identify all the alternatives and the expected rewards for each,' advises Lovell.

### VISIT IN WRIGHT HOME

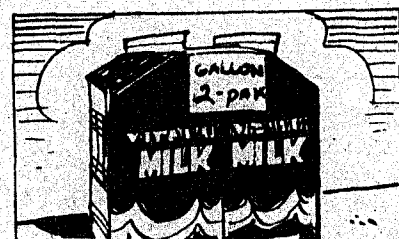
Visitors with Mrs. Audrey Wright last weekend for a family Thanksgiving get-together were Mr. and Mrs. Darrel Wright, James and Alys and Cindy Pierce, Mr. and Mrs. Bill Gibson, Greg and Debra of Early, Mr. and Mrs. Lynn Wright and Nicole of Lamesa; Mr. and Mrs. Phil Chambers, Amy Randy and Jamie of Hobbs, N. M.; Nilene Gleaton and Lisa of Early. They also attended the shower for Danna Turner Saturday.

## NEWS OF NUTRITION

### Vitamins In Milk

Milk in a Gallon 2-pak gives you even more vitamins than milk in plastic or glass jugs.

Some 38 scientific studies show that milk retains more of its valuable nutrients when it's packed in paper containers.



Milk in glass or plastic exposed to supermarket or kitchen lights, or sunshine, can lose vital nutrients in an amazingly short time. According to Robert L. Bradley, Jr., professor of food science at the University of Wisconsin, as little as ten minutes exposure to light can produce discernible differences in whole milk.

For instance:  
• Thirty percent loss of

riboflavin (Vitamin B2) in only half an hour.

- Rapid oxidation of ascorbic acid (vitamin C).
- Loss of 15 percent of tryptophane, an amino

acid, in only two hours.

Losses can be even greater in low-fat and skim milks. The studies conclude that paper cartons best protect milk from light rays.

## Henderson Funeral Homes

"People Caring For People"

OFFERING AT YOUR REQUEST

Pre-Arranged Funerals

Funeral Insurance And Counseling

Ambulance Service

Coleman 625-2121 Santa Anna 348-3131

Toyland is Open

at

Western Auto

with

Hundreds of Gifts



for Girls and Boys

Gifts They'll Love...  
COME CHRISTMAS MORN'

Dr. E. H. Henning, Jr.

OPTOMETRIST

117 Commercial

Coleman

Ph. 625-2228

OFFICE HOURS

9:00 a.m. to 5:00 p.m.

## PRESCRIPTIONS

Daily Deliveries to Santa Anna

# Owl Drug Store

"Where Friends Meet"

Telephone 625-4514

312 Commercial

Coleman, Texas

# Whon News

By Mrs. Tom Rutherford



Mr. and Mrs. Don Fitzpatrick of Santa Anna are proud parents of a little baby daughter who arrived to make her home with her parents and also a little brother, Brandon, on Friday, November 20, at 7:55 a.m. in Shannon Hospital in San Angelo. The little miss has been named Steffany DeShea and weighed seven pounds, six ounces and was 21 and one-half inches in length. Grandparents are Mr. and Mrs. Graham Fitzpatrick of our community and Mr. and Mrs. Charles Hosh of Santa Anna. The mother and baby are doing fine and hopefully will be dismissed from the hospital Tuesday.

Mr. and Mrs. Floyd Morris entertained in their home Sunday enjoying their Thanksgiving dinner. With them were their children, John David Morris of Eldorado, Mr. Joe Floyd Morris and Jamie Lee Morris, Mrs. Jacky Morris and children, Jeffery and Jennifer of Santa Anna, Mrs. Morris' sister, Mrs. Ola Bell Morris of Brady and Norman Floyd Morris of Brownwood, Mr. and Mrs. Elwayne Perkins and Christi of Grand Prairie and a cousin, Mrs. Delma Morris of Brady.

Mr. and Mrs. Darwin Lovelady and Mrs. Juanita Minica of Santa Anna enjoyed a family Thanksgiving dinner in the home of Mr. and Mrs. A. L. Minica of Blanket. Several members of the family were present and other relatives, and all enjoyed an abundance of food.

Mr. and Mrs. Jacky Bullion and Michelle of O'Donnell were with her parents, Mr. and Mrs. Graham Fitzpatrick, on Sunday, the 15th. Mrs. Bullion entered the Brownwood Regional Hospital Sunday and spent the entire week in the hospital having tests run. Mr. Bullion and Michelle came this past Saturday when she was dismissed and with her parents this week. Her family returned home Sunday afternoon, but she will return Wednesday for the Thanksgiving holidays here.

Mrs. Floyd Morris reports her grandson, Jeffery Morris, had the good luck of getting a six-point buck the first day of deer season. But Jeffery's luck was not so good probably Tuesday when he had the misfortune of getting his arm broken while playing on the school ground at Santa Anna.

Mrs. Katie Holoman of Grand Prairie spent several days the first of the week and last week end with her brother, Mr. and Mrs. Graham Fitzpatrick.

Mr. and Mrs. Elmo Hudson of Leaday have recently spent the afternoon with Mr. and Mrs. Floyd Morris.

Mr. and Mrs. Larry Rutherford

and boys of San Angelo were with her parents, Mr. and Mrs. Lee Abernathy, during the weekend.

Mr. and Mrs. Leonard Matassa of Dallas and Mr. and Mrs. Rex Turney of Santa Anna were on the Turney farm here during the weekend.

Mark Worthington and Dr. Brad Strud of Weatherford were guests of Mr. and Mrs. Floyd Morris Sunday night and were in our community and Rockwood on Monday.

We enjoyed a nice telephone visit with our daughter, Mrs. Rick (Lynda) Wheeler Sunday night, who lives at LaGrange. All were well, but could not come for Thanksgiving. Her husband, Rick had foot surgery in April and was back to the doctor at Pasadena Wednesday. The pin was removed from the ankle, but he still endures lots of pain.

Mr. and Mrs. Darwin Lovelady of Santa Anna were bedtime visitors with Mr. and Mrs. Elec Cooper in Rockwood Saturday night.

Mrs. Lovelady in Santa Anna reports her brother, L. C. Baker of Midland, is improving following a heart attack several weeks back. The Midland doctors told him if everything went well, just maybe he could take Thanksgiving at home. All friends are very glad to hear this news.

Mr. and Mrs. Tom Rutherford chatted awhile Friday afternoon with their son, Mr. Hilary Rutherford, in Coleman. Hilary was on vacation last week and also this week. He is getting caught up with work around the home.

Mr. and Mrs. Graham Fitzpatrick were transacting business in Abilene Monday.

Etoile Cozart of Brownwood and some of his children or grandchildren were on the Cozart farm here on Saturday.

Mr. and Mrs. Darwin Lovelady of Santa Anna were transacting business in Brownwood Monday afternoon.

S. D. Fellers of the Trickham community visited briefly with Mr. and Mrs. Floyd Morris on Friday. On Sunday Mr. Fellers was a dinner guest in their home.

We do wish for each and every one a very happy and enjoyable Thanksgiving Day, and the holiday season. We do trust no misfortune will come to anyone.

### IN ABILENE HOSPITAL

Mrs. Bill Griffin is in West Texas Medical Center in Abilene and to have surgery this week. She was admitted to the hospital last week for tests and had the surgery Tuesday.

## SAFETY SENSE

### Mower Rider: Make It Safe

It may be fun cutting your grass with a rider mower, but it's no toy. To help you make a safe trip around your property, the Outdoor Power Equipment Institute offers this advice:

1. Inspect the work area carefully—remove objects which may be thrown, keep bystanders and pets away.



2. Cut up and down slopes to diminish chance of tipping over.

3. When dismounting, make sure the engine's off and has stopped completely.

4. Never let a "passenger" ride with you. That could put you off balance or prove distracting.

5. Each spring, reread your owner's manual. You can forget important safety practices from year to year.

With the help of these tips—and a little common sense—you can have the neatest lawn in town. And safe driving to you!

### Scientists hope to find ill-fated liner

COLLEGE STATION — Scientists from Texas A&M University will be involved in this summer's search for the ill-fated Titanic that sank on its maiden voyage in 1912, killing more than 1,500 crew and passengers.

Part of the equipment to be carried on the research vessel Gyre is a side scan sonar, which uses sound waves to locate and map submerged objects.

Abilene oilman Jack Grimm, the adventurer who has vowed to find the Titanic first and salvage its riches, contracted for the Gyre to assist in the search because the Texas A&M research ship was already scheduled to be in the North Atlantic for two other scientific cruises at the time, said university officials.



FIVE GENERATIONS— Little Neill Kelley is held by his great-great-grandmother, Mrs. Ica Potter, seated right, and Mrs. Ray (Ann) Owen, the great-grandmother, is seated left. Standing back are Renee (Norwood) Kelley of Weatherford and her father, Milton Norwood, also of Weatherford. The family was together recently in Santa Anna and with Mrs. Potter who now resides in a Coleman nursing home.



Birds, in proportion to their size and weight, are about 75% stronger than are human beings.

## Have That Portrait Made Now



You have put it off for years and still delay. Have a family or individual portrait made for Christmas this year...one that your family and friends will be proud of. Call today for an appointment. Christmas delivery deadline Thanksgiving weekend.

Ralph Jerry  
studio of photography

302 W. College, Coleman, Texas 76834 915-625-5317

"I back the family insurance I sell with good neighbor service."

CALL ME.

117 West Street  
Coleman  
Phone 625-4343

JIM McANALLY

[West of Courthouse]  
Like a good neighbor,  
State Farm is there.

STATE FARM  
Fire and Casualty Company  
Home Office:  
Bloomington, Illinois

Tues. 1st. 6:30 - 9:30 -- Braid-a-Belt--  
Fee \$3.00 plus supplies Dep. \$3.00

Sat. 5th Paint Along "A Christmas Picture"  
9am till ---  
Fee \$15.00 plus supplies Dep. \$15.00

**HOBBY TOWN**  
103 N. Center - 646-8722  
Brownwood, Tex.



# Cleveland News

By CLARA CUPPS

Lucille Blanton and Leslie of Fort Worth came home for the weekend. She and the baby came over and visited Clara and Kasha. Also Jack and Ruth Banta of Coleman dropped by.

Mr. and Mrs. Edd Hartman were dinner guests of the Harry Walkers and sons in Bangs Sunday. Cindy Boyle, Shannon and Matthew also joined the group that afternoon.

Those visiting in the W. L. Campbell home were Mavis Campbell and Mrs. Claud Box who dropped by Tuesday on their way to Rockwood. Others visiting were Calvin Campbell, C. E. Wise and David Coffman of Novice.

Those visiting the L. V. Cupps during the week were Clara and Kasha and Billy Williams.

Juanita Naron visited Doris and Adolph Kelley Saturday evening.

Mrs. Carmilla Baugh went to Bangs Tuesday to visit her mother, Mrs. Mae Flores. She also visited Christine Smith Wednesday afternoon. The Dick Baughs drove down to Brownwood Regional Hospital Saturday to visit Mrs. Margaret Campbell, and came back by to visit her mother and Nancy and Lonnie Lowry. Thursday Bob Flores of Annadale, Va. arrived and spent the night with the Baughs. They all visited in Bangs with his grandmother, Mrs. Flores, and other relatives.

Mr. and Mrs. Gene Gascamp and Tammy Ellis of Bellville spent the weekend with the Cecil Ellises. Mrs. Grace Ellis spent Sunday with the group. Jerry and Cathy Ellis, Bryce and Jamie of Shreveport, La. came Sunday and spent a few days with the Ellises. J. C. and Happy Wells of Loraine came Sunday afternoon and had supper with the group.

Mr. and Mrs. Verna Russell visited the John Howards Sunday afternoon. Mrs. Fannie Gilbert visited Ruby last Monday.

Mr. and Mrs. Russell went to Highland near Houston last week to visit their daughter, Mr. and Mrs. Jimmy Carter and girls. They also visited her brother, Mr. and Mrs. J. D. Alley and her sister, Mr. and Mrs. Joe McGinty of Houston.

Donna Mapson and Jason came out Sunday to visit Mrs. Beulah Fleming and girls.

Janera Henderson and baby Rachel of Ozona spent the weekend with her parents, the John Narons and Jennifer. Jody spent last week in Kansas City to receive the American Farmer Degree at the National FFA convention.

Miller D. Fleming visited

Thelma Fleming Saturday afternoon. Mrs. Peggy Sikes and Randy, Iris and Glen Mooney of Brownwood visited Sunday afternoon with the Charlie Flemings.

Mrs. Lucille Cupps took Bobbie and Justin home Sunday afternoon and visited with the Bob Burlesons and baby. Justin came back with Lucille. She visited Maggie Leonard and Richard Wells and Ricky Cupps Sunday

afternoon also.

Mrs. Anna Laura York visited Mrs. Winnie Haynes awhile Sunday afternoon. Winnie and Grace visited Mr. and Mrs. Paul Jennings Wednesday and helped pick up pecans.

Mrs. Burnice Battles visited Mr. and Mrs. John Perry Tuesday.

Michael Cupps, Sherry and Shane, Janice and Curtis Fellers spent the day Sunday with Mrs. Betty Joyce Cupps. She went to Brownwood Regional Hospital Sunday evening and brought Mrs. Byrdie Miller home. She had surgery last week. Aunt Beulah Wagner from San Angelo came Sunday to stay a few days with Mrs. Miller.

Jimmy and Toni Lovelace from Pecos came Friday night and spent a few days with the C. E. Wises. Charles and Sharon Taylor and children of Abilene were Sunday dinner guests of her parents. Gladys Haynes visited with the group Sunday night, and other visitors during the week were Jim Lovelace of Wichita Falls and Leamon Lowry of Hurst who came Tuesday night for a visit.

Troy Pierce spent the weekend with the A. C. Pierces. Lou received word from her sister, Mrs. Edna Sanders, who was in ICU after having a heart attack

## THE SANTA ANNA NEWS

### RETURNS TO SANTA ANNA

Michael Switzer is at home with his parents, Mr. and Mrs. Ray Switzer and family, arriving Sunday from Wichita, Kansas. He has been in school and employed there.

and is in the Gonzales hospital.

Dale Herring and boys, David and Pam Morgan and John had Sunday night supper with their parents, the Casey Herrings. John Morgan spent Saturday night with his grandparents. Ruth Hayes and boys of San Angelo and Pam Morgan came to get John and visited awhile.

Leon Phillips of San Angelo visited Hardon Phillips Saturday. Syble Huggins dropped by Sunday. Hardon visited Bruce Alsbrook Saturday night and dropped by to see Hoyt Gilley Sunday night.

Mrs. Sammie LaDouceur of Brownwood came by Sunday afternoon and she and Mrs. Tavy Ford went to visit their sister, Lula Hancock, at Holiday Hill in Coleman. Mrs. Ruby Hartman visited Tavy Ford one evening, also Mrs. Lee Boardman visited her Wednesday morning.

Mrs. Eppie Lowry and Mrs. Ruby Parker went to Bangs Saturday morning and visited with Nancy and Lonnie Lowry a few minutes enroute to Brownwood.

For our weather this Monday night: Nice fair weather.

Hope all of you have a nice Thanksgiving. We have a lot to be thankful for.

Announcing A New

# Trade Winds Restaurant

Regal Enterprises Owners

Bob Griffis

Andy Anderson

All New Kitchen

New Menus

New Staff

Completely Re-decorated

Hours 5:30 a.m. - 9:30 p.m.

7 Days A Week

Sunday Buffet - 11:30 - 2:30

Week Day Luncheon Buffet

Travelers Breakfast Buffet 5:30 - 8:30

For Elegant Dining Visit

ALL NEW REGAL ROOM

Available For Private Parties And Meetings

Phone 625-5859

Coleman

At The Abilene-Cisco Y

# Radio Shack

## BARGAIN DAYS SALE!

PRICES REDUCED 13% TO 33%

Save \$10.07 on Our "Mini" All-Electronic Telephone

ET-100 by Radio Shack

20% Off 39<sup>88</sup> Reg. 49.95

as seen on TV

- Compact One-Piece Design—Just 7" Long
- Auto-Redial of Busy or Unanswered Numbers

You get features ordinary phones don't have, like a pleasant-sounding tone ringer instead of a harsh-bell. Universal Dial System for pushbutton convenience on any line without extra charges. Mute switch—no need to place your hand over mouthpiece. Ready to plug in. FCC approved. White Mist, #43-284. Dark Brown, #43-285



Not for coin, party or multi-line use

Register for FREE Remote Control Timer Center and Dimmer \$86.95 Value To be given away Nov. 30 6:00 p.m.

Radio Shack DEALER

The New

# FUN-tier

Radio Shack Dealer, Toys, Sporting Goods, Records and Tap

UNIROYAL

Home of the Tiger Paw

Williams Tire Store

2003 Commercial Coleman, Texas Phone 625-5152

## Rental Notice

The Santa Anna Housing Authority

is accepting applications for rental of

24 new apartments located at Jefferson and Clark (just east of the school). Apply at 702 Wallis Ave.

bringing documentary evidence of income, such as W-2 Form. There will be no discrimination because of race, color or national origin.

Jesse L. Sparkman Executive Director

# Rockwood News

By MRS. JOHN C. HUNTER

Mr. and Mrs. Marcus Johnson visited Friday afternoon with Mr. and Mrs. Kenneth Brusenhan.

Joe F. Estes of Abilene spent Thursday night with his parents, Mr. and Mrs. Sam Estes. Sunday visitors in the Estes home were Mr. and Mrs. Leffel Estes of Coleman and Mr. and Mrs. Blake Williams, who had attended the Methodist Church services.

Mr. and Mrs. D. W. Whittenburg of Lohn visited Mr. and Mrs. Williams after Methodist services Sunday morning.

Mrs. Claud Box returned home last Wednesday after some ten days visiting in Fort Worth with Mr. and Mrs. Marshall Campbell and a sister, Mrs. Garnet Reeves of Lubbock who was visiting with Mr. and Mrs. Boss Estes. Mrs. Box and Mrs. Campbell visited in the Estes home. The three sisters, Mrs. Box, Mrs. Reeves and Mrs. Estes, and Mrs. Campbell attended Sunday services at a Dallas Baptist church where Rev. Douglas Estes is pastor and Mrs. Box was guest pianist.

Visitors in the Box home have been Mrs. Mary Emerson, Mrs. Bill Steward, Mrs. Angie Hernandez. Willard Harkey called Monday night that he would be there Tuesday to spend the Thanksgiving holidays with her.

Mrs. Marshall Campbell brought her mother home and they visited in Brownwood with Mrs. Calvin Campbell in the hospital enroute and again as she returned home.

Mr. and Mrs. Boss Estes came Monday to spend the holidays in their home here.

The Boss Estes visited Monday evening with Mr. and Mrs. Sam Estes and Tuesday morning with Mrs. Box.

Cemetery donations made in memory of Mrs. Maud Lovelady were from Mrs. Lon Gray, Blake Williams, B. B. Bryan, Mrs. Claud Box, Mr. and Mrs. Boss Estes, Mrs. Ray Caldwell, Charm and Frankie, Mr. and Mrs. Ewing Lovelady who also made a donation in memory of Mr. and Mrs. John H. Lovelady, and Travis King.

Donations in honor of Lily King were from Robert Stewardson, Mrs. Fred Turner Estate and Helen Goodloe. Mr. and Mrs. Bob Floyd, Mr. and Mrs. Tom Norton, Mrs. Ray Caldwell, and Charm and Frankie, Ida Mae and Alice Allen, Mr. and Mrs. Robert Steward, Pebble Arnold Gregroy, Mr. and Mrs. E. K. Featherston,

Mary Lou Arnold Johnson and Mrs. Faynell Apperson.

Mr. and Mrs. Boss Estes visited Mr. and Mrs. Sam Estes Monday evening and Mrs. Box Tuesday morning.

Last Monday Mr. and Mrs. Claude Tucker of Bakersfield, Calif. and Mr. and Mrs. P. L. Ulsd of Brady were supper guests of Mr. and Mrs. Bill Bryan. Tuesday Mr. and Mrs. Dick Tucker of Bakersfield and Mr. and Mrs. Wilburn Tucker of Brady were supper guests of the Bryans. The Bakersfield kin were here with relatives from Monday for several days.

Johnnie Steward is on the sick list this week.

Mr. and Mrs. Joe C. Deal and Belinda of Santa Anna were Friday supper guests of his parents, Mr. and Mrs. R. J. Deal. The Deals visited in Coleman Monday afternoon with Mrs. Norine Winstead at Holiday Hill.

Mr. and Mrs. Robert Perry, Rae Anne and Chad of Baton Rouge, La. came Monday to spend the holidays with the Deals and the John Perrys in Santa Anna. Greg Perry, a student at LSU, will fly in Wednesday night for the holidays.

Mr. and Mrs. Bryan Hodges of Abilene spent Saturday night and Sunday with his parents, Mr. and Mrs. J. P. Hodges.

The members of the Rockwood Extension Homemakers Club sponsoring a birthday party at Holiday Hill last Tuesday were Mmes. Roland Duus, Bert Fowler, Jack Cooper, Johnnie Steward, R. J. Deal, John Hunter, Blake Williams and Joe Wise.

Mrs. Ewing Lovelady of Ballinger and son Kenneth of Tennessee visited Linnie Box recently.

Mr. and Mrs. Elec Cooper visited in Brownwood Friday with Mr. and Mrs. Ronnie Cooper and family. Mr. and Mrs. Alton Davis of Snyder spent Monday night with the Elec Coopers. Mr. and Mrs. C. F. Roberts of Kingsland were Saturday night visitors and Mr. and Mrs. Darwin Lovelady of Santa Anna visited Saturday afternoon. Mr. and Mrs. Jack Cooper visited Monday evening.

Mrs. John Hunter spent Saturday in Brady with Mrs. Bill Nevans.

Other memorial gifts for Mrs. King made to the Rockwood Cemetery fund are from Mr. and Mrs. J. R. Hendrix of Paris, Texas and Mrs. C. B. Cheaney of San Angelo.

# Puzzled?



**TRY 55...  
AND MAYBE YOU WON'T BE.**

Some drivers are still puzzled over the National 55 MPH speed limit. A recent survey shows that nearly 75 per cent of the drivers say they want to keep 55 because they know it SAVES LIVES and conserves fuel. But many drivers still exceed the limit on occasion.

Speed increases the severity of injuries when a crash occurs, and often causes tension. So slow down, relax...and ENJOY TEXAS.

**Coleman Monument Works**  
1309 East 9th  
Coleman, Texas

**DAVID HUFF**  
Phone 625-5352  
Night 625-2719  
30 Years in Coleman

**Walker Funeral Home**

625-4103

Coleman, Texas

Ambulance Service

**NEED A PLUMBER?**

Call **Roy Early**  
Licensed Master Plumber  
752-9972

Bangs

**RANCH HOUSE MEAT CO.**

HEARTLAND MALL  
EARLY, TEXAS

**RANCH HOUSE MEAT CO.**

★ **Featuring** ★

- ★ Mesquite-smoked meats
- ★ All meat Sausages
- ★ Special peppered hams
- ★ Old Fashioned hand-rubbed hams & bacons

Ask about our delicious Party Trays

Gift Packages For Everyone on Your List

Remember those special friends and important business associates with one of the Many Ranch House Meat Co. meat and cheese gift boxes. Perfect for everyone on your gift list.

# Years Ago In The News

The following stories are from the November 1941 issues of the NEWS:

Gale Collier, daughter of Mr. and Mrs. Sam Collier, has been chosen as one of five students representing Daniel Baker College of Brownwood in the 1941-42 edition of 'Who's Who Among Students in American Colleges and Universities.'

Miss Collier has played the saxophone in the Bill Hillie Band for two years and was president of the group as a sophomore. She has been a member of various choral organizations, a member of the Footlight Players and was editor of the Collegian last year.

Ward School Honor Roll:  
**EIGHTH GRADE:** W. H. Blake, James England, Alice Anna Guthrie, Betty Sue Hair, Calice Jane Overby, Sybil Simpson, Bonnie Gene Balke  
**SEVENTH GRADE:** Betty Ann McCaughan, Rita Campbell  
**SIXTH GRADE:** Jim Tom Simpson, Estel Mae Dixon, Elgean Shield  
**FIFTH GRADE:** Elaine Burgett, D. H. Moore, Nancy Morgan, Anne Priddy  
**FOURTH GRADE:** William Adams, Julia Ann Bailey, Helen Day, Frank Holt, Margaret McCaughan  
**THIRD GRADE:** Myrtle Bible, Geraldine Lewellen, June Parker, Ineta Fay Hudler, Sarah Jane Davis, Max Eubank, Lora Morris, Mary Frances Williams

From the Mountaineer School Page:  
 Saturday evening Wilma Jo Spencer was crowned Queen of the Halloween Carnival by King Carrol Holt, representing the Junior Class.

Attending the Queen were the following duchesses: Seniors - Emma Kate Parsons and Haskell Hunter; Sophomores - Marjorie Hope Nickens and J. Cecil Grantham; Freshmen - Joyce Richardson and J. D. Dunn.  
 FFA - Mary Frances Rutherford and Wayne Haynes; Debate Club - Ruth Morris and J. P. Richardson; Pep Squad - Jean Hefner and Arnold Williams; Football - Lorene Featherston and Rex Turney; F. H. T. - Tavy Marie Stacy and Bobby Joe Cheaney; Band - Jimmie Sue Henderson and Virgil Stewardson; Press Club - Gloria Hensley and Billy McCormick.

CLASSIFIED ADS:  
 Who wants a bouncing Buff Orkington cockerel, hatched in Sebetha, Kansas early in May at \$1.50 if taken soon? Or will exchange for equal weight in 6 months old pullets. J. E. McClellan.

Santa Anna News, one year for 50 cents in county, 75 cents out of county.

FOR RENT—Furnished room for man, woman or couple. In quiet neighborhood. No mud.

FOR SALE—Equity in East Mountain. About 66 acres. Phone Black 151, Santa Anna, Bartlett Estate.

FOR SALE—My home place and 21 acres in the Gap. G. A. Shockley.

WEEKEND SPECIALS AT THE PIGGLY WIGGLY GROCERY STORE:

Folgers Coffee - 2 lbs. for 59 cents  
 Pork Roast - 25 cents a pound  
 Tamales - 10 cents a can  
 Chili - 25 cents a pound  
 Pure lard - 4 lb. carton - 59 cents  
 25 oz. baking powder - 15 cents  
 Flour - 24 lb. bag - \$1.59

Rev. H. C. Bowman, local Methodist pastor, who has served the Santa Anna Church for three years, will remain with us this next year, according to an announcement at the recent Methodist conference in Fort Worth.

The Santa Anna Lions Club was well represented at Zone meeting in Coleman last Friday night. Five members were in attendance accompanied by their wives. These were Roy Reid, R. R. Lovelady, D. D. Byrne, Rex Golston and Hardy Blue. The Band Master and his lady were also present, guests of the local club on the program.

## New homes should include energy features

COLLEGE STATION — If you're building a new home, why not build in some energy-saving features, suggests a Texas A&M University professor.

Dr. Larry Degelman, architect and building construction professor, recommends two to two-and-one-half foot roof overhangs that shade windows during the summer, ridge vents, slab insulation, double pane windows and green houses on south walls or south-facing windows.

The kingpin to energy savings is a structural orientation on north-south lines, Degelman says.

"People who plan to build and stay in a home 10 to 13 years or longer can amortize larger expenses," Degelman advises.

## Treasure ships carried roaches, archaeologist says

COLLEGE STATION — Treasure ships sailing between Spain and Mexico in the 1500s hauled one not-so-treasured commodity — cockroaches — says a Texas A&M University archaeologist.

Dr. Don Hamilton, an expert on artifact preservation who has studied objects from the famous 1554 Spanish treasure fleet that sank off Texas' Padre Island, said remains of roaches were found in concrete-like encrustations that formed around cannon, anchors, coins and tools. Remains of both New World

## VISIT IN BARKER HOME

Visitors in the O. C. Barker home the past week were Gerald and Esther Barker of Mountain City, Tenn. and Wayne and Jeanette Barker of Santa Anna. They all enjoyed a trip to Kerrville to visit the Nixon Barker family.

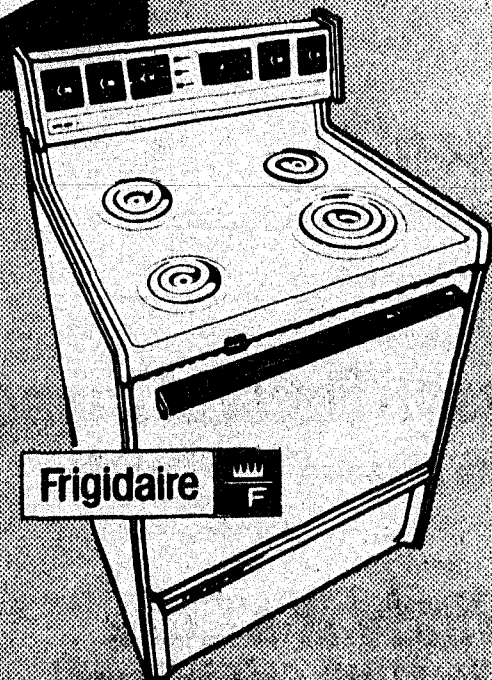
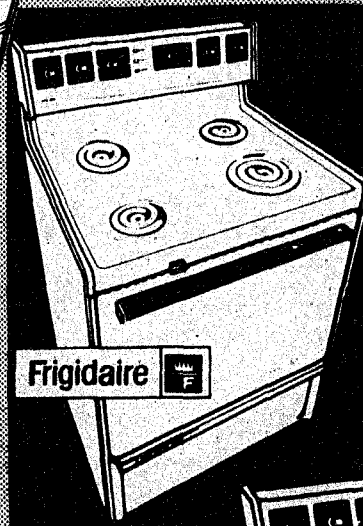
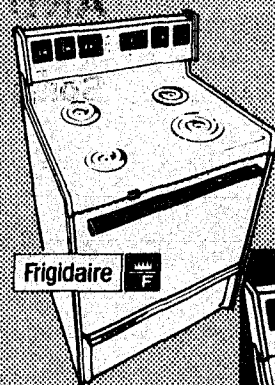
and Old World varieties of the loathsome insect have been found in 16th century wrecks.

proving the ships were taking part in an unwitting cargo exchange of pests, Hamilton said.

## 1981-82 High School Basketball

|                 |   |                         |           |
|-----------------|---|-------------------------|-----------|
| Nov. 23         | Early   | Here                    | 5 p.m.    |
| Nov. 24         | Lometa  | There                   | 7 p.m.    |
| Dec. 1          | Cross Plains  | Here                    | 4 p.m.    |
| Dec. 3-5        |   | Cross Plains Tournament |           |
| Dec. 8          | Lohn  | Here                    | 6:30 p.m. |
| Dec. 10-12      |   | Santa Anna Tournament   |           |
| Dec. 15         | Novice  | There                   | 6:30 p.m. |
| Dec. 17         | Early   | There                   | 5 p.m.    |
| Dec. 29         | Bangs   | Here                    | 5 p.m.    |
| Jan. 5          | Talpa   | Here                    | 6:30 p.m. |
| Jan. 8          | Mozelle   | There                   | 6:30 p.m. |
| Jan. 12         | Brookesmith   | Here                    | 6:30 p.m. |
| Jan. 15         | ACHS  | There                   | 4 p.m.    |
| Jan. 19         | Rochelle  | There                   | 6:30 p.m. |
| Jan. 22         | Lohn  | There                   | 6:30 p.m. |
| Jan. 26         | Novice  | Here                    | 6:30 p.m. |
| Jan. 29         | Talpa   | There                   | 6:30 p.m. |
| Feb. 2          | Mozelle   | Here                    | 6:30 p.m. |
| Feb. 5          | Brookesmith   | There                   | 6:30 p.m. |
| Feb. 9          | ACHS  | Here                    | 4 p.m.    |
| Feb. 12         | Rochelle  | Here                    | 6:30 p.m. |
| District Games: | Lohn, Novice, Talpa, Mozelle, Rochelle, Brookesmith |                         |           |
| Boys Coach:     | Charles Brewster                                    |                         |           |
| Girls Coach:    | Gerald Brister                                      |                         |           |

## Why settle for less? Choose Frigidaire Quality And Dependability...



### Frigidaire 30" Range

Offer you so much more in

- Value
- Quality
- Dependability

- You can program the oven to start baking or roasting at the time and temperature you desire — even tell it when to stop — thanks to automatic Cookmaster controls.
- Put the drudgery of oven cleaning behind you. The Electric-Clean oven can clean itself automatically.
- For better, more uniform broiling, a self-cleaning Broiler Shield reflects heat from the broiler unit away from the top of the oven and back across the broil area.

WEST TEXAS UTILITIES COMPANY



A Member of The Central and South West System

Qualified Factory-Trained Servicemen Offer You The Finest In Appliance Service

24 Hour Service

On Location Welding

## Phillips Welding Service



Owner

Jerry Phillips

Serving Oil Field,  
Ranchers & Farmers

Rt. 1 Box 26  
Santa Anna, Tex.

915-348-3834  
or 348-3333

## A Warm Welcome Is Extended You and Your Family At These Santa Anna Churches

### Northside Baptist Church

John Hix, Pastor  
Avenue B & North Third  
Sunday School - 9:45 a.m.  
Morning Worship - 11:30 a.m.  
Training Union - 5:30 p.m.  
Wednesday Serice - 6:30 p.m.

### First Baptist Church

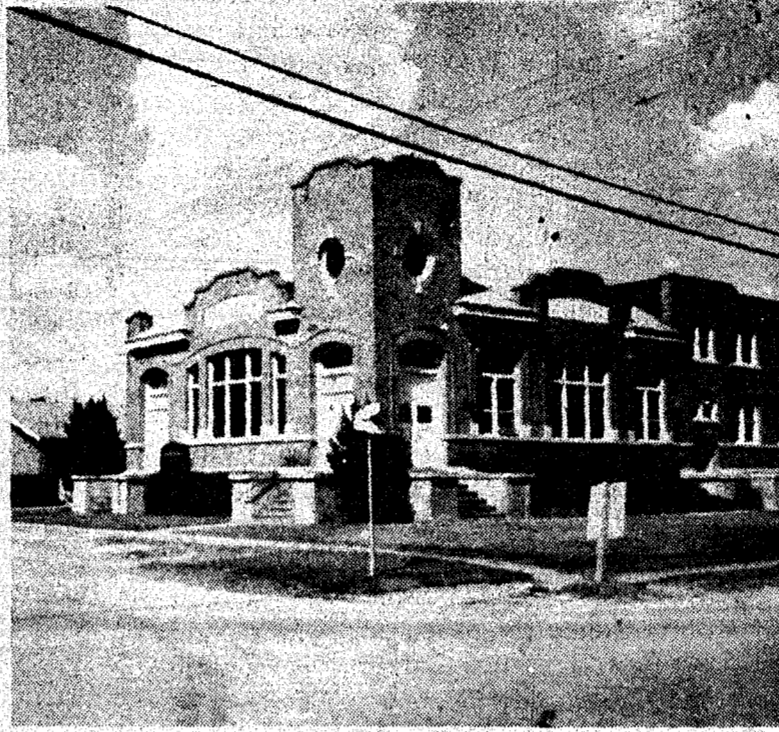
John Stanislaw, Pastor  
203 South Lee St.  
Sunday School - 9:45 a.m.  
Morning Worship - 11:00 a.m.  
Sunday and Wednesday - 6 p.m.

### St. Willow Baptist Church

J.H. Robinson, Pastor  
Moahoney St. & Highway 283  
Sunday School - 9:45 a.m.  
Morning Worship - 11 a.m.  
Sunday Evening - 3 p.m.

### Seventh-Day Adventist Church

Tom Good, Pastor  
Behind Hospital  
Saturday Sabbath School - 9:30 a.m.  
Morning Worship - 11:00 a.m.  
Saturday Evening Vesper &  
Wednesday Evening - 7:00 p.m.



### United Methodist Church

Mike Alexander, Pastor  
South First & Bowie  
Sunday School - 9:45 a.m.  
Morning Worship - 10:50 a.m.  
Evening Worship - 5:45 p.m.

### Southside Church of Christ

South Fourth & Willis  
Call C.E. Wise for information  
Sunday Worship - 10:30 a.m.

### First Christian Church

Anthony Thibodeaux, Pastor  
South First & Avenue C  
Sunday Schol - 10:00 a.m.  
Morning Worship - 11:00 a.m.

### Northside Church of Christ

Linwood Bishop, Minister  
Avenue B at North First  
Bible Study - 9:30 a.m.  
Morning Worship - 10:30 a.m.  
Sunday Evening - 6:00 p.m.  
Wednesday Evening - 6:00 p.m.

### Assembly of God Church

James Ford, Pastor  
Avenue C. and South Eighth St.  
Sunday School - 9:45 a.m.  
Morning Worship - 11:00 a.m.  
Sunday Evening - 6:30 p.m.  
Wednesday - 7:00 p.m.

### United Presbyterian Church

Dr. Clyde Maiors, Interim  
Avenue C and South Eighth  
Sunday School - 10:00 a.m.  
Morning Worship - 11:00 a.m.

**This Page Sponsored by your Friendly Santa Anna Merchants**

**Santa Anna National Bank**  
618 Wallis 348-3108

**Bradley Lumber**

**Wylie's Flowers**  
507 Wallis 348-3301

**Western Auto**  
705 Wallis 348-3771

**Coleman County Telephone Co-op.**  
215 N. Second St. 348-3124

**H & H Grocery**  
348-3148 Santa Anna

**Pine Tree Nursery**  
1306 Wallis 348-3292

**Modern Way Laundry**

**Tomlinson's Transport**  
N. Lee & Wallis 348-9146

**Ford Welding & Repair**  
Third & Wallis 348-3405

**G & E Hardware**  
606 Wallis Ave. 348-3373

**Henderson Funeral Home**  
107 South First 348-3131

**Cabansag Medical Center**  
Brownwood Highway 348-3122

**Horner Real Estate**  
348-3715

**Windy B's Cafe**  
"The Best Little Cafe in Texas"  
348-3864

**Ken & Jean's Dairy Queen**  
Wallis Ave. 348-3123

**Huggins Exxon Station**  
819 Wallis 348-3515

**Ranger Park Hospital  
& Nursing Home, Inc.**  
Brownwood Highway 348-3105

**Hartman Construction Co.**  
348-9112

# Life in the country

Is it as healthful  
as many city residents think?

**LIFE IN THE COUNTRY** often evokes visions of blue skies, clean air and wholesome value systems among Texans who live in more congested urban areas.

In fact, the mental and physical health of rural Texans is markedly worse than that of city-dwelling citizens, according to a lecturer in the School of Nursing at The University of Texas at Austin.

Dr. Mary Walker directs the Texas Rural Health Field Services Program at UT Austin. The program was established in 1978 to provide information, technical assistance and monitoring services to rural Texans. Dr. Walker also serves as a liaison between Federal and State health agencies, interested private groups, rural residents, health-care providers and policymakers.

If "health" is defined in terms of environmental, physical, mental and social factors, Dr. Walker believes it is inaccurate to say that rural residents are receiving health care.

"Rural residents do have some access to medical care, but even this is often limited by poverty, lack of health insurance or coverage under public programs, cultural barriers, racial discrimination and limited education," she reported recently.

Rural Texans are less educated, poorer and likely to die sooner than urban Texans, Dr. Walker has found. In general, she continued, rural residents can expect more days of disability and chronic illness than their urban counterparts.

### So-Called City Problems Also Occur in the Country

Even problems often associated with city life, such as drug abuse, occur just as frequently in rural areas as in urban areas, she said. The same is true for child abuse, battered wives, depression and teen-age pregnancy.

In 1980, the Texas Rural Health Program issued a report titled "Rural Health Care in Texas: The Facts - 1980." Among the findings published in the report are:

- As of August 1978, there were 97 counties in Texas where nutrition projects serving meals to the elderly were nonexistent. All of those counties were nonmetropolitan. (Nonmetropolitan is defined by the Census Bureau as all farms, open countryside and places of less than 50,000 residents outside Standard Metropolitan Statistical Areas.)

- Of Texas nonmetropolitan counties, 94 counties or 47 per cent had no public family planning service.

- In Texas in 1978, the maternal death rate for the state was 11.8 per 100,000 live births. When nonmetropolitan areas were compared, researchers found 15.5 maternal deaths per 100,000 live births in rural areas, against 10.96 in Texas cities.

- The tuberculosis death rate in nonmetropolitan counties was 24 per cent higher than in metro areas in 1979.

- Cerebrovascular disease death rate for rural counties was 86 per cent higher than in metro counties, and pneumonia and influenza death rates were 60 per cent higher.

- Of 31 counties in Texas without hospitals, and 32 counties without nursing homes, all are in nonmetropolitan areas.

"Health resources and services, like other resources and services, follow people," Dr. Walker commented. "Where the population is sparse, there have also been few or no health professionals, facilities or services."

### Information Requests Show Marked Increase

However, she added, consumers and providers are becoming increasingly interested in improving the delivery of health care in rural areas of Texas. In 1980, the Texas Rural Health Field Services Program had 600 requests for information, a 300 per cent increase over requests received in 1979.

## DKG Chapter Has Meeting in Coleman

The Delta Alpha chapter of Delta Kappa Gamma met in Coleman November 16. A co-host at the meeting was Ruth Dodson. Dr. Jeri Pfeifer of Abilene Christian University was guest speaker, telling of the challenges of future education.

Coyita Bowker, president, led a short business meeting. Three new members were elected to membership in the chapter.

Santa Anna members and former teachers in the local school attending the meeting were Lucille Dean, Margaret Crews, Winnie McQueen, Gail Loyd, Mrs. Bowker and Mrs. Dodson.

### IN BROWNWOOD HOSPITAL

Mrs. Norman (Pam) Anderson is in Brownwood Regional Hospital for tests and treatment. She was in the hospital several days last week, then admitted again Sunday.

### HERE FOR WEEKEND

Mr. and Mrs. Buddy Forsyth of Denton and Scott Bowker of San Angelo were weekend visitors with their parents, Mr. and Mrs. Ken Bowker.

"These requests ranged from 'where can we get money to build a clinic?' to 'how can we get rabies shots for the dogs in our community?'" she noted.

More than 20 health professionals looking for employment in rural areas were counseled and directed to rural communities and clinics in need of health providers, she added.

Other activities conducted through the program in 1980 included publication of the first issue of the Texas Rural Health Journal; preparation of a policy paper on Federal health programs and their impact on rural Texas; serving as a resource on rural health needs to three State Senate committees, including the Senate Human Services Committee, and sponsorship of workshops and seminars on all aspects of rural health-care delivery throughout Texas.

Located in the UT Austin School of Nursing, the Texas Rural Health Field Services Program is funded by the Sid Richardson Foundation, the Moody Foundation and the Meadows Foundation.

—MARY BALDESCHWILER

## The Mail Box

Barbara

Thanks for your prompt attention to my problem. I received the three back issues of the paper this morning and am leisurely enjoying them between phone calls

here at my office. I like everything about your Santa Anna News, but here are some of my favorites:

News items of the 1930s (that is when my dad was a cotton farmer there), and the late 1920s. One year, probably about 1928, he had the first bale of cotton and was awarded a premium of about \$87. My copy of the article gives all the names of the donors.

Your column of Years Ago in the News.

I really liked the 10-27-33 grocery specials of Red & White Grocery. I plan to use that on a local radio talk show.

Ace Reid cartoons!

Thanks again and I look forward to each issue.

Sincerely,  
Dorothy Maltese  
Pueblo, Colo.

# AUCTION

SAT. - NOV. 28 1:30 P.M.

## Walters Home

Santa Anna, Texas  
1 Mi. North on Farm Rd. 1176

Due to the death of Norman Walters, Mrs. Walters is moving to an apartment & will sell the following by Public Auction.

### FURNITURE & MISC.

Antique oak 3 pc. bedroom suite - washstand, 5 ft. hi bed, dresser w/oval bevel mirror (nice)  
Antique burled walnut rope sleigh bed w/matching massive highboy dresser  
Cherry wood rocker w/needle point cover  
Small round Shaker table  
Dark mahogany shaving stand w/wash bowl & pitcher  
Rush bottom ladder back chair  
Burled walnut mantle clock  
Plain older china cabinet  
Frigidaire Frost-proof refrigerator  
Japanese prints on silk  
Oil lamp on milk glass base  
Old Kodak camera on stand  
3 - Crochet bedspreads w/bolsters  
Oriental type rugs app. 5x6 ft.  
Cook books Golf clubs  
Hand tools Shoe last  
Pictures and frames Yard tools

Cherry wood dressing table  
Burled Walnut mirror  
Old Boston rocker  
Deer-head clock shelf  
Small cane rocker  
Small tables  
Victorian walnut chair  
Cogswell chair  
Childs chair  
Royal manual typewriter  
Walnut cane rocker  
Older vacuum  
Trunks  
Small oil lamp  
Godey prints  
Baskets Linens  
2 Quilts Books  
Metal cabinet  
Small work bench  
Large Dearborn heater  
Kitchen items

### STERLING - GLASSWARE - JEWELRY

App. 50 pc. Sterling flatware & misc.  
Quadruple plate Tea Set  
Sterling sugar and creamer  
Quadruple plate sugar and creamer  
App. 25 Stick Pins - Gold-Diamond-Ruby  
One mans and 2 ladies watches  
Cut Glass Water Set  
Cut glass vase  
Cut glass & Sterling powder jars  
Older Cut Glass pieces  
Feather & Celluloid Folding Fans  
Cloisonne & Nippon vases

Lg. ornate silverplate coffee Pot  
Jugs  
Trays and misc. silver  
Collar buttons  
Ear rings  
Small Pin knives  
Figurines  
Limoges Tea pot  
Rosewood jewelry box  
Asst. England & Austria plates  
Lots of Collectible misc.

### ALSO

Horse drawn iron wheel wagon chassis

## HENRY R. STOREY & Associates

Brownwood, Texas

TXS 012-0005

For information call 915-646-3956

**Ripleys Pet Emporium**  
Ask About our Puppy Layaway

**AKC Puppies**

**Birds**

**Reptiles**

**Hamsters**

**Gerbils**

**Guinea Pigs**

**Hermit Tree Crabs**



**Fish**

**Feeds**

**Mice**

Heartland Mall 643-3951 Brownwood



BEN WILSON AND BOB PEARSON

## SCS Employees Honored On Retirement

A retirement party Saturday night at Conger's Restaurant honored Bob Pearson and Ben Wilson. Pearson will be retiring from the Soil Conservation Service December 26 with more than 32 years of service, and Wilson retired last month with 15 years service on the board of Central Colorado Soil and Water conservation District.

Some 40 people, including SCS employees and soil and water district board members, and spouses, were in attendance.

Plaques of hand-tooled leather were presented to Pearson and Wilson, each citing and depicting with artwork the work and activities of each of

the men. The plaques were made by Bill Leftwich of Fort Davis, a western artist.

Pearson also received a book of personal letters from SCS personnel, a camera from the SCS co-workers, friends and associates, and a picture of improved rangeland presented by Dale Herring.



Wasps may be divided into two groups, solitary and social insects such as the hornet and the yellow jacket.

## COMMUNITY CALENDAR

THURSDAY— NOVEMBER 26:

Thanksgiving Day

FRIDAY— NOVEMBER 27:

School Holiday

SATURDAY— NOVEMBER 28:

Booster Club football Game, SAHS Stadium, 2 p.m.

SUNDAY— NOVEMBER 29:

Attend Church

Community Choir, SDA Church, 4:30 p.m.

MONDAY— NOVEMBER 30:

Campfire Girls, Civic Center

Christmas program, Homemaking Cottage, 6:30 p.m.

Boy Scouts, Civic Center, 7 p.m.

OHS basketball, at Banket, 6 p.m.

TUESDAY— DECEMBER 1:

Lions Club, Lions building, 12 noon

SAHS Basketball, Perry Gymnasium, 4 p.m.

WEDNESDAY— DECEMBER 2:

Whirly Birds, UMC Basement, 2:30 p.m.

### Mufflers

• Custom Deals •  
See Jimmy At

D & R Automotive  
Low Prices

200 E. Pecan  
Columbus, Tex.  
Call 625-5140

### Repairs or

### Remodeling

Plumbing & Supplies

### Lee's Plumbing

Call 348-3417  
Santa Anna, Texas  
Free Estimates

## Charlie's Truck Haven

BANGS, TEXAS

### Menu Of The Week

Wednesday

**\$2.85**

Chicken Fried Steak  
Bar-B-Q Sausage

Lima Beans Buttered Potatoes Broccoli  
Combread Hot Rolls Dessert

Thursday

**\$2.85**

*Traditional*  
**Thanksgiving Dinner**

Friday

**\$2.85**

Chicken Fried Steak  
Stuffed Peppers

Green Beans, Corn Creamed Potatoes  
Combread Hot Rolls Dessert

Sunday

**\$2.85**

Chicken Fried Steak  
Breaded Pork Chops

Blackeyed Peas Corn on cob Creamed Potatoes,  
Hot Rolls Dessert

Monday

**\$2.85**

Chicken Fried Steak  
Bar-B-Q Beef Tips

Pinto Beans, Carrots Baked Potatoe  
Dessert Hot Rolls Combread

Tuesday

**\$2.85**

Chicken Fried Steak  
Meat Loaf

English Peas Beets Mashed Potatoes  
Dessert Hot Rolls Combread

**Cat Fish Fry**  
**Every Friday Night**  
**All You Can Eat**  
**\$3.85**

# Advertise the Action Way! The Want Ad Way!

NEED A GIFT? Give a subscription to the Santa Anna News.

**Reed Memorial Co.**  
 Limited  
 Monuments of Distinction  
 Fort Worth Highway  
 Brownwood, Texas  
 Box 265 Phone 646-7625  
 Sylvia Herring  
 Local Representative

**ODD CHALKINS**

HEAVIEST RAINFALL IN THE U.S. IS AT TILLAMOOK ORE WHICH HAS 120 INCHES A YEAR

HEAVIEST RAINFALL Can Cause HEAVY PROPERTY DAMAGE But OUR HOMEOWNERS POLICY ASSURES No Leakage In COVERAGE And SAVES YOU UP TO 35%!

**HOSCH Insurance Agency**  
 348-3115  
 709 Wallis Ave. Santa Anna

**Services**

**SEWING MACHINE AND VACUUM Sales & Service.** Curtis Price, Route 5, Box 42-B, Brownwood, TEX. 915-752-7269. 45-tfc

**B & B BUILDERS**  
 All phases of building construction, new and remodeling. Electrical, carpentry, plumbing, painting, roofing, concrete work. Call Coleman (collect) 625-4867. After 6 p.m. 348-3635. 26-tfc

**SHOP BEAL'S GARDEN CENTER** for Christmas. Layaways accepted. Windmills, Bird Baths, Wicker, Martin Houses, Plant Stands, etc. 40tfc

NOW IS THE TIME to apply **LAWN FOOD** containing iron on your lawn. **Beal's Garden Center** in Coleman. 37-1tc

**BUY, SELL OR TRADE--New and used furniture.** Travis Trading Pst, 402 N. Colorado, Coleman, Texas 25-tfc

**WILL DO IRONING** and mending. Call after 5 p.m. 348-9161. 46-4tc

**Santa Anna Electric Co.**  
 348-3505

**For Sale**

**FOR SALE—** Three bedroom, one bath frame house. Carpeted, well insulated. Double carport, extra-modern kitchen, on large lot next to mountain. Very nice. Modora K. Gilmore, broker, 348-3161. 40-tfc

**FOR SALE—** Historic two-bedroom home in lovely neighborhood. Unusual all-masonry construction. Also have buyer for 3-bedroom home in Santa Anna. Max Eubank Real Estate. 348-3636. 41-tfc

**FOR SALE—** 4 1/2 x 7 ft. vinyl-covered foam board. Great insulating and sound proofing wall covering. For vans, game room or den. **BRADLEY LUMBER CO.** 48-2tc

**Afghan's For Sale Several On Hand Or Made To Order Mrs. Charles Denge 348-3418**

**NOTICE—** Due to the increase in postage, subscribers will receive only one notice that subscriptions are expiring. Prompt payment will insure you receive every issue of the Santa Anna News.

**Beal's Garden Center**  
 "We're More Than Just a Garden Center"  
 FERTILOAM DEALER  
 For WEED AND FEED FERTILIZER FOR GRASSES  
 SELECT FROM LARGE VARIETY WE BUY PECANS A LARGE LINE OF CONCRETE BIRD BATHS, FOUNTAINS, FALL BULBS FOR SALE STATUARY, NOVELTY ITEMS AND PLANTERS  
 Until Christmas - All items 10% OFF  
 410 Commercial Coleman LAYAWAY FOR CHRISTMAS

**Brazos Pipeline Corp.**  
 PULLING UNIT  
 \*Oilfield Generators for Lease  
 \* Test Tanks \* Roustabout Crew  
 \*Will be Rigged Up With Casing Crew  
 \* Bonded and Insured  
 Paul Martin, Mgr. Trickham, Tex. 76878  
 Day [915] 348-3046 Night [915] 348-3066

**ABERNATHY**  
 Dirt & Conservation Work  
 Specializing In Tanks And Land Clearing  
 After 6:00 PM Call  
 Lee 785-4401 Rickey 785-4235

**Garage Sales**

**BAZAAR & GARAGE SALE,** Friday, Dec. 4, at Fire Hall. Sponsored by Ladies Auxiliary, Volunteer Fire Department. Old and new items, baked goods & handcrafts. Spaces rented for \$5.00. 48-2tc

**YARD SALE—** Cook stove, works good. Hamster and cage, bicycle parts, miscellaneous. 207 Mathews, Sunday only, starting 9 a.m. 48-1tp

**Santa Anna SCHOOL MENU**

Monday - Friday, Nov. 30 - Dec. 4;  
**MONDAY—** Ravioli, pinto beans, spinach, cornbread, orange and milk  
**TUESDAY—** Salisbury steak with mushroom gravy, creamed potatoes, blackeyed peas, hot rolls, peanut butter and syrup and milk  
**WEDNESDAY—** Taco casserole, Spanish rice, tossed salad, pineapple and cheese bread and milk  
**THURSDAY—** Cheese nachos, seasoned beans, shredded lettuce, cornbread, peaches and milk  
**FRIDAY—** Sloppy Ooes on bun, pickle relish, French fries, tomato sauce, peanut butter cookies and milk  
 Menu Subject to Change

**1980 Chevrolet Silverado**  
 C30 one ton, Dual wheel pickup, one owner, like new, 454 Engine, air, power, power windows, door locks, tilt, cruise, AM/ FM stereo, 8 track tape, sliding rear glass, red and white, red veloure seats. Immaculate. \$8295.00

**1980 Jeep CJ7**  
 Like new, only 19,000 miles. 6 cylinder, 4 speed transmission, tilt steering, power steering, four wheel drive, lock-out hubs, fancy wheels and tires. \$6495.00

**1980 Chevrolet Blazer**  
 Custom Deluxe, local, one owner, X-tra clean. 350 V8 track tape, CB radio, white spoke wheels, special order high back seats with carpet and console. 4x4, Like New. \$8995.00

**1980 Datsun**  
 4X4 1/2 ton pickup, only 6,000 miles, 4 speed, air, lockout hubs, stripes, gauges AM/FM, only \$6995.00

**1979 Bronco Ranger XLT**  
 Super nice, loaded with air, power, auto, tilt, cruise, AM/FM stereo, cassette tape, chrome running boards, white spoke wheels, new high dollar tires, swing out spare. Nicest one in captivity, baby blue and white. 4 wheel drive, lock out hubs. \$7995.00

**1977 Chevrolet Suburban**  
 An exceptionally nice vehicle, low miles, 350 V8 air, power, auto, tilt steering wheel, cruise control, AM/FM stereo, 8 track tape, luggage rack, 3 seats. Beautiful baby blue and white, 4 tone... \$4195.00

**1976 Chevrolet Custom Deluxe**  
 4x4, heavy duty 1/2 ton long wide bed pickup, fancy wheels, big tires, chrome running boards, V-8, 4 speed, lockout hubs, well worth \$2995.00

**Eagle Auto Sales**  
 400 E. Commerce Brownwood

**Card of Thanks**

We want to express our thanks for the many kindnesses shown during the illness and death of our loved one. Your calls, food, flowers and prayers are deeply appreciated. We love you all.  
 Jim Elder family  
 Bonnie Owen 48-1tc

**Miscellaneous**

**ATTENTION HUNTERS & TRAPPERS**  
 Fur buyer will be in Santa Anna at Fina Station each Saturday from 4:15 p.m. till 4:45 p.m. beginning Dec. 5. We buy green and dry furs of all kinds. Skin case all furs, (like opossums), not open up the middle. We also buy deer hides. Well handled furs brint top prices!  
 Northwestern Fur Co.  
 Colorado City, Texas  
 ROY VEALE  
 48-4tp

**SHOP AT HOME Blair Products**  
 Gift Items, Christmas - Greeting Cards, cosmetics, decorations, jewelry and many other items.  
 Shown at Your Home  
 Call **Key Cooper**  
 348-3772  
 Before 8 a.m. - After 5 p.m.

**YOU CAN FIND**  
 Heater Radiants  
 Rubber Rain Suits  
 Foot Lockers & Trunks  
 AT  
 The  
**Trading Post**  
 625-4950  
 114 E. Pecos Coleman

# High School Annual Staff Preparing the 1982 Edition

The Santa Anna High School annual staff has completed the first portion of the school yearbook, the Mountaineer, and sent it to the publishing company in Dallas.

Beth Rhoades is editor of the yearbook, and Holly Smith is assistant editor. Business manager is Angie Day.

## New Subscribers

- Amy Rowe
- W. D. Ashmore, Levelland
- Dale Bradley
- Donnie Neff
- Mary Bordeaux, Mountain View, Cal.
- Roy Haynes, Hobbs, N. M.
- William Johnson, Fort Worth
- James B. Bass, Tyler

### VISIT DURING WEEK

Mr. and Mrs. Eugene Ferguson of McAllen and friends from Bandera were in Santa Anna last week visiting relatives and friends. The Fergusons have recently moved to south Texas from Kansas, but will return there each year for the summer.



romantic caftans \$15

One size fits all, regularly 19.99. A gift to treasure in richly colored holiday prints, some accented with gold, or in dramatic solid colors. Polyester is machine washable - and the pleats are permanent! Gorgeous!

MODE O' DAY Coleman

# Windfall Profit Tax Changes To Benefit Coleman County

The economists of 24 West Central Texas counties will get a \$2.9 billion boost between 1982-1986 due to recently enacted amendments to the "windfall profit" tax, according to the a study released today by the West Central Texas Oil & Gas Association (WeCTOGA) in Abilene.

Harry Bettis of Graham, president of WeCTOGA, estimated that independent oil producers in the 24-county area will receive \$981,916,308 in extra revenue because of the amendments. He said independents have historically spent the equivalent of 105 percent of their gross wellhead revenues in exploration-development activities.

"Based on the established

theory that every dollar invested in an oil venture results in a \$3 benefit to the area economy, the West Central Texas area will benefit to the tune of \$2,945,748,924", Bettis said.

For Coleman County is it estimated the benefits to independents will be \$11,544,276, while the benefits to area economists will be \$34,632,828.

"This is money that would otherwise have gone to the federal treasury", he said.

Bettis noted that those figures do not include the \$2,500 tax credit royalty owners will receive in 1981, their two-barrel-per-day exemption in 1982-1984 and their three-barrel-per-day exemption in 1985 and thereafter.

"We just could not determine

how many royalty owners were out there and how many would take the full exemption (if they took an exemption at all)", Bettis said.

Bettis explained that the tax rate on new oil will decline from 30 percent in 1981 to 27 1/2 percent in 1982, 25 percent in 1983, 22 1/2 percent in 1984, 20 percent in 1985 and 15 percent in 1986 where it will remain constant. Stripper oil (wells producing 10 barrels or less per day) will be exempted completely from the beginning January 1, 1983.

WeCTOGA used 1980 production figures (the most recent available) from the Texas Railroad Commission, and estimated the price of oil at \$35 per barrel.

"Approximately 50 percent of the oil produced in West Central Texas is stripper oil, and about 25 percent is new oil," Bettis said. "The remaining 25 percent is old oil."

### IN BROWNWOOD HOSPITAL

Mrs. W. T. Stewardson is in Brownwood Regional Hospital where she had surgery Friday to repair a broken hip. Mrs. Stewardson is getting along well at this time.




## OPEN THANKSGIVING DAY



**MOUNTAIN DEW/DIET PEPSI OR**  
**PEPSI** 2 LITER BTL. **\$1.25**



**BORDEN'S EGG NOG**  
**\$1.19**  
QT. CTN.



**WE CARRY A COMPLETE LINE OF THESE ITEMS: ICE, FILM, FLASH CUBES, A LARGE SELECTION OF FRESH PRODUCE, ROLLS, MILK AND BREAD!**

**WE HAVE EVERYTHING YOU NEED TO MAKE THANKSGIVING DAY - THANKSGIVING!!**



**POTATO CHIPS**  
**RUFFLES**  
**99¢**  
REG. \$1.29

SELF-BASTING WITH BUILT-IN TIMER



**SHURFRESH TURKEYS** 10-14 LBS. AVERAGE **69¢ LB.**



**ALLSUP'S SPARKLING ICE**  
**99¢**  
LARGE BAG

**SHOP ALLSUP'S FOR ANY LAST MINUTE ITEMS YOU MAY HAVE FORGOTTEN TO COMPLETE YOUR THANKSGIVING DINNER!**

**PRICES EFFECTIVE NOVEMBER 26-28, 1981 WHILE SUPPLIES LAST WE RESERVE THE RIGHT TO LIMIT**



**CORN CHIPS**  
**FRITOS**  
**\$1.29**  
REG. \$1.59



**ALLSUP'S CONVENIENCE STORES**

**"THERE'S ONE NEAR YOU"**