

# Santa Anna News

Phone 348-3545

"He Profits Most Who Serves Best"

Single Copy - 15¢

Volume XCIV

Santa Anna, Coleman County Texas, Thursday, October 16, 1980

Number 42

## Mountain Echoes

By

Barbara  
Kingsbery



Plants don't like me. It takes only a few weeks for a perfectly healthy plant to turn pale, wilt and die at my house, and if it weren't for Mrs. Virgil Priddy, Edith Dodson, Betty Joyce Cupps and my mother who keep furnishing me with plants or re-potting and rotating them, I wouldn't have any pretty plants in the office window.

Now a plant has even made a liar of me! A couple of weeks ago I had a picture of the unusual philodendron at the West Texas Utilities Co. office and mentioned the plant was blooming -- a rare occurrence in its 14 years at the local office. Well, it immediately put on more and more buds and has had at least four blooms in the last two weeks.

Or did fame and fortune -- such as one small picture in a weekly newspaper -- go to its roots?

We were pleased with our Homecoming edition of the NEWS and enjoyed sharing the issue with former students in the community for the weekend.

A few errors we'll admit. Our apologies to Syble, Rob and Sharon for having their names mis-spelled!

## Christmas Bazaar Is Planned To Benefit "Meals on Wheels"

A Christmas bazaar and sale is being planned for the "Meals on Wheels" program in Santa Anna, with the event set Friday, December 5, the day of the Christmas opening.

The bazaar last year was a success, with dozens of local people donating craft items, baked goods and gift items for the sale, and a large crowd shopped at the bazaar. Funds from the sale have helped finance the project this year along with donations and memorial gifts.

Mrs. Joe C. Barnes, coordinator for the program, is asking people to start collecting items for the bazaar and bringing them to the Chamber of Commerce office at

## Mountaineers Win Again; Travel To Miles This Week

The Santa Anna Mountaineers pleased the Homecoming crowd Friday night by defeating the Eden Bulldogs 33-6, starting the district schedule with a victory.

Dwayne Warnock carried the ball 28 times for 139 yards and two touchdowns, while Rusty Buzzard ran for one TD, kicked two field goals and passed to Jim Clifton for another score.

Santa Anna led 20-0 at halftime, with Eden scoring their only touchdown in the fourth quarter.

The Mountaineer defense was led by Mike Salazar, Randy Casey, Ricky Perry, Albert Collins and David Strickland, while the entire offensive line received praise from Coach Roger Goodwin for their excellent performance.

Santa Anna led with 22 first downs to Eden's four. The Mountaineers had a total of 266 yards rushing and 55 passing, while the Bulldogs had 57 and 38.

## City Sales Tax Down Slightly

The City Sales Tax receipt for Santa Anna for the period ending October 3 accounted to \$656.56, according to a report from State Comptroller Bob Bullock. The month's total was less than the \$911.54 for the same period last year, but the total for the year, \$12,684.12, is only three percent less than the total for 1979.

The City Sales Tax is collected with the State Sales Tax and remitted to the cities in which it was collected.

## City Library Closed Tuesday

The Santa Anna City Library will be closed Tuesday, October 21, so that librarians Letha Martin and Gene McSwane may attend a workshop in Goldthwaite. The library is open four and one-half days a week with several services available at no charge to library patrons.

Santa Anna will travel to Miles Friday night for the Miles Homecoming game at 7:30 p.m. It will be a crucial contest for the Mountaineers as the Miles team, Bronte and Santa Anna each won their games for the 1-0 district tally. The Friday night game will put the winners in the district lead.

Miles has an identical 5-1 record for the season and won over Irion County last week. Coach Goodwin is urging all local football fans to travel to Miles Friday night to support the Mountaineers.

## Bonnie Phillips Crowned Queen

Bonnie Phillips, the nominee from the Sophomore Class, was crowned Santa Anna High School Homecoming Queen Friday night during halftime activities at the Homecoming football game. Bonnie, the daughter of Mr. and Mrs. Dwayne Phillips, was escorted by Tommy DeLeon and presented a banner and bouquet of red roses. Her picture will be featured in the 1981 school yearbook.

Other nominees for the title were Casey Anderson, freshman, daughter of the Norman Andersons; Sherry Wilson, junior, daughter of Bo Wilson and Mrs. Linda Wilson; and Tara Stark, senior, daughter of Mr. and Mrs. Mance Stark.



HOMECOMING QUEEN for 1980 was Bonnie Phillips, daughter of Mr. and Mrs. Dwayne Phillips. The sophomore nominee was crowned at halftime of the Friday night football game, escorted by Tommy DeLeon, son of Mr. and Mrs. Thomas DeLeon. (Brownwood Bulletin photo by Richard Cook)



SPECIAL PEOPLE at the 1980 Santa Anna Ex-Student Homecoming were, from left, Patrick Hosh, Ex-Student Association president; LaVelle McClintock Haynes of Kermit, the "Coming Home Queen"; and Bernie Vinson Davis of Fort Worth, "Ex-Student of the Year." (List of Ex-Students registered and class reunion reports elsewhere in this issue.)

## First Bale of 1980 Cotton Ginned In S-Anna Tuesday

Marcus Guerrero brought the first bale of cotton to the Santa Anna Co-op Gin this week. The cotton was raised on the Calvin Campbell farm east of Santa Anna and ginned Tuesday.

Many cotton producers defoliated their crops last week, and the cotton is expected to start coming to the gin in a few days. The quality should be good on most cotton despite the dry weather this summer. More acres were planted than last year, but no estimate has been made on the yield.

The local gin has had lots

of work and repair done this year which will benefit the quality of the cotton processed there.

## PTO "Men's Night" Slated Tuesday

The Santa Anna Parent Teacher Organization will meet Tuesday, October 21, at the school cafeteria at 7 p.m. The meeting will be "Men's Night" with a program of special interest to men of the community.

Roy Winburn, a game warden with Texas Parks and Wildlife Department, will present the program, and hosting the social hour will be Janet Neff's second grade class.

The attendance award will be given the class with the most men in representation.

## Halloween Event Planned By Juniors

The annual Halloween carnival and coronation has been set Saturday, November 1, according to leaders of the Junior Class, sponsors of the event.

Representatives from the clubs and classes are being chosen for the coronation, with the Halloween Queen to be crowned and elementary princesses presented.

A number of carnival attractions will be at the gymnasium to conclude the activities.



## First Baptist Church Celebrates Anniversary

A capacity crowd filled the auditorium of First Baptist Church Sunday morning as the 100th anniversary of the church was observed in special services. The Rev. John Stanislaw, pastor, was speaker for the morning service that included special music by the church choir directed by Leo Oliver Jr. and a solo by Pete Simmons of Littlefield, a former music director of the church.

A catered lunch at the school cafeteria was hosted by men of the church and over 500 attended.

In the afternoon program, former pastors were introduced and spoke to the group. They included Rev. Harry Wigger of Missouri, pastor from 1949 to 1953; Rev. H. G. Verner of Fort Worth, pastor in 1954; Dr. Maurice Smith, now Regional Director of the Department of Inter-faith Witness with the Home Mission Board in Fort Worth, pastor here in 1958-59; and Rev. Raymond Jones pastor of Sunnyside Baptist Church near Amarillo, pastor from 1960 - 66.

Others recognized were Dr. Robert Sartain of Brownwood

and Jimmy Benton of Kingsville, former music directors.

Also recognized were former members of the church and families of early-day members. Among those present were Fred Sparks of Coleman, great-grandson of Rev. John C. Averitt who organized the church in January 1880, and Cora Rothermel Green of Stephenville and Mineola Rothermel Swenson of Fort Worth, the granddaughters of George Washington Price who built the church's first building in 1889 at the site of the present building that was constructed in 1921.

Special music was presented by the church choir, solos by Mrs. Harry Wigger and Dr. Robert Sartain, and selections by the men's ensemble and members of the youth singing group when the late Rev. Bill Brewer was pastor, directed by Jimmy Benton.

Greetings were read from former pastors Rev. W. M. Price and Rev. Elmer Dunham, now of El Paso.

A reception at the church annex concluded the day's activities.

## R-Park Medical Center To Observe Anniversary

The year 1980 marks the tenth anniversary of Ranger Park Hospital and Ranger Park Inn, under ownership of Dr. and Mrs. Fil Cabansag. One event slated to show appreciation and recognition of the employees will be "Appreciation Day" on October 28.

The special program will feature the Buffalo Gals from Buffalo Gap, to be held at the Elementary School cafeteria at 7 p.m.

Special honorees with ten or more years service at the medical center will be Audrey Wright, Gertrude French and Lucille Squyres.

Those with five or more years service are Teddy Ballard, Annie Mae Brimer,

Vera Cullins, Leota Griffin, Rita Luera, Mary Mitchell, George Osburn, Malvin Sharp, Maymie Taylor, Velma Henderson, Mary Oakes and Sidney Tucker.

Also receiving honors for five years service will be Linda Osburn, currently on leave of absence, with Clifford Searcy and Opal Cope, part-time employees.

Dr. and Mrs. Cabansag extend an invitation to the community to join with Ranger Park in showing appreciation to these and all the faithful employees at the medical center.

## Tractor Repair Course Next Week

Four sessions are planned in the Tractor Maintenance short course set here Monday through Thursday of next week. Richard Pivonka of Texas A&M University will teach the class at the Vocational Agriculture building starting at 7 o'clock each evening.

Tractor owners interested in attending the course are asked to pre-register by contacting Scott Patterson or R. C. Smith. Cost for the course is \$5 per person.

## R-Park Hospital Conducts Blood Pressure Tests In Mall

Ranger Park Hospital of Santa Anna recently conducted a blood pressure screening clinic in the Brownwood-Early area during the grand opening of the Heartland Mall. The data that emerged may be a source of interest and stimulation for everyone.

One hundred and twenty-nine individuals were tested during the two and one-half day clinic. Fifty-five per-

sons were tested on the first day, and 40 percent were known to have high blood pressure from previous diagnosis. Another nine percent were seriously elevated, making a total of 49 percent probable hypertensives. In addition, an average of twenty-six percent were found to have borderline readings.

According to the American Heart Association, high blood pressure is a leading cause

of disease and death in this country. One of each six adults has some elevation of blood pressure. High blood pressure can result in stroke, congestive heart failure and kidney failure and is a major risk factor in coronary artery disease.

Some studies have detected hypertension in children as young as four years old.

Losses sustained by cardiovascular diseases are felt not only by the families involved but the entire community. Preventive efforts might well be considered a matter of community interest and community participation.

## Santa Anna News

(USPS 481540)

P. O. Box 399 348-3545  
Santa Anna, Texas 76878

Published every Thursday at Santa Anna, Texas 76878 and entered as second class mail under the Act of Congress March 2, 1879.

Subscription price: In Coleman and surrounding counties, \$7.95 per year; other areas of Texas, \$8.95 per year; outside Texas, \$9.95 per year.

BARBARA KINGSBERY

Editor

SANDRA A. WALKER

Advertising Manager

Member of

TEXAS PRESS ASSOCIATION

## Tax Board Leaders

### To Be In Coleman Oct. 20

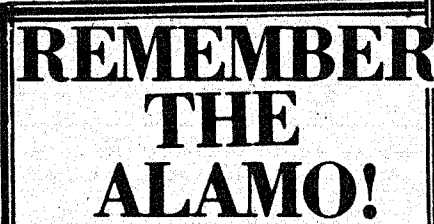
Coleman County people are invited to attend a public meeting Monday, October 20, at the County Courthouse to learn more about the new County Tax Appraisal District and the services it will perform.

Kenneth E. Graeber, Executive Director of the State Property Tax Board, and Larry Luedtke, Assistant Director, will be present for the 7 p.m. session to answer questions concerning the newly formed tax district.

Harold Pittard of Novice is chairman of the County Tax

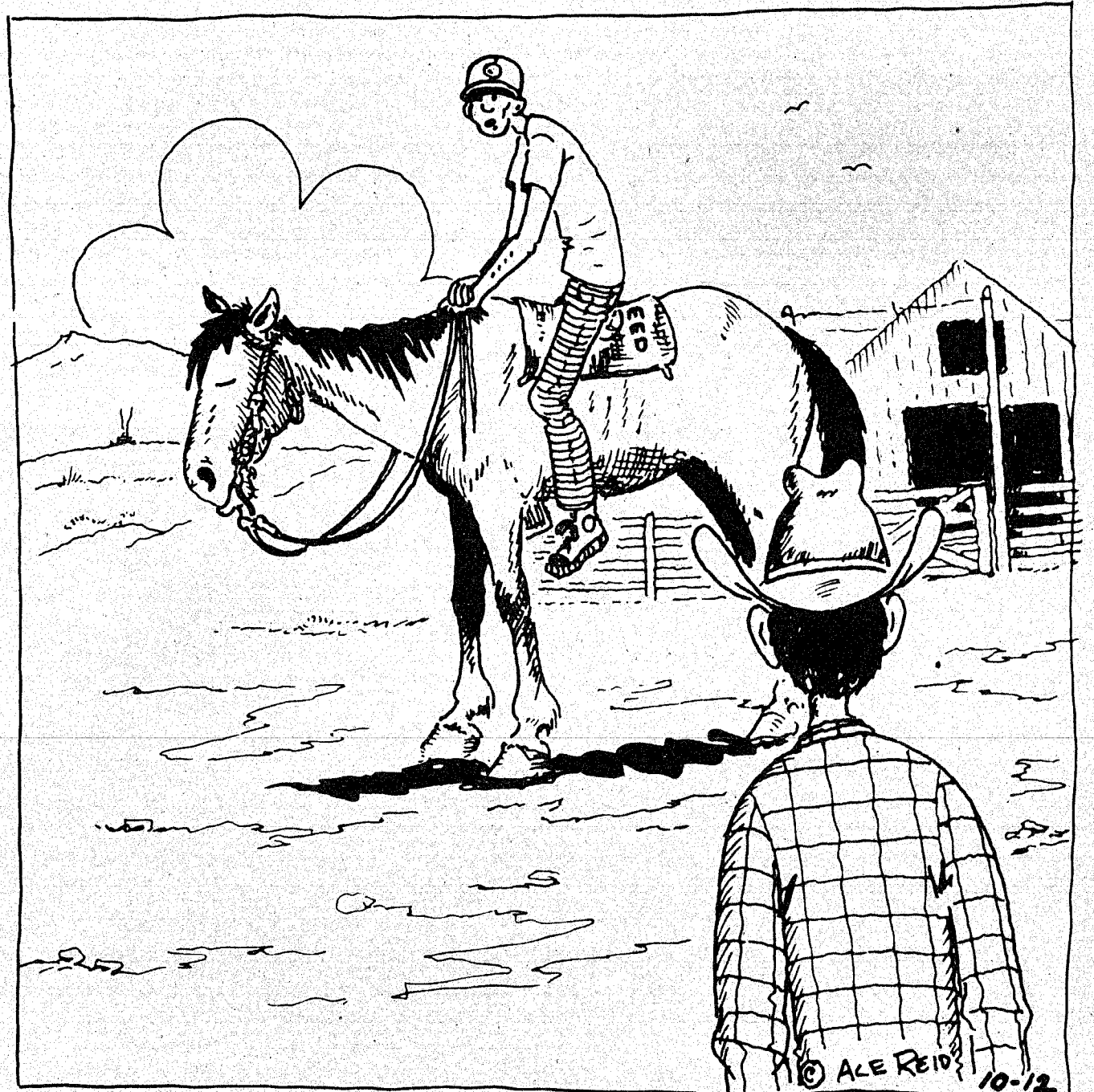
District Board that is composed of five members. John Skelton of Coleman has recently been chosen Chief Appraiser for the office.

Representatives from the taxing entities in the county have a special invitation to attend.



## COW POKES

By Ace Reid



"Wul with the price of saddles, hats, and boots, its kinda hard to look like a cowboy anymore."

## Santa Anna National Bank

Deposits Insured by FDIC Up to \$100,000

PASS BOOK SAVINGS

MONEY MARKET 6 MONTH CERTIFICATES OF DEPOSIT

Maximum Rates Allowed by Law

Substantial Interest Penalty is required for early withdrawal

## ABERNATHY

Dirt & Conservation Work

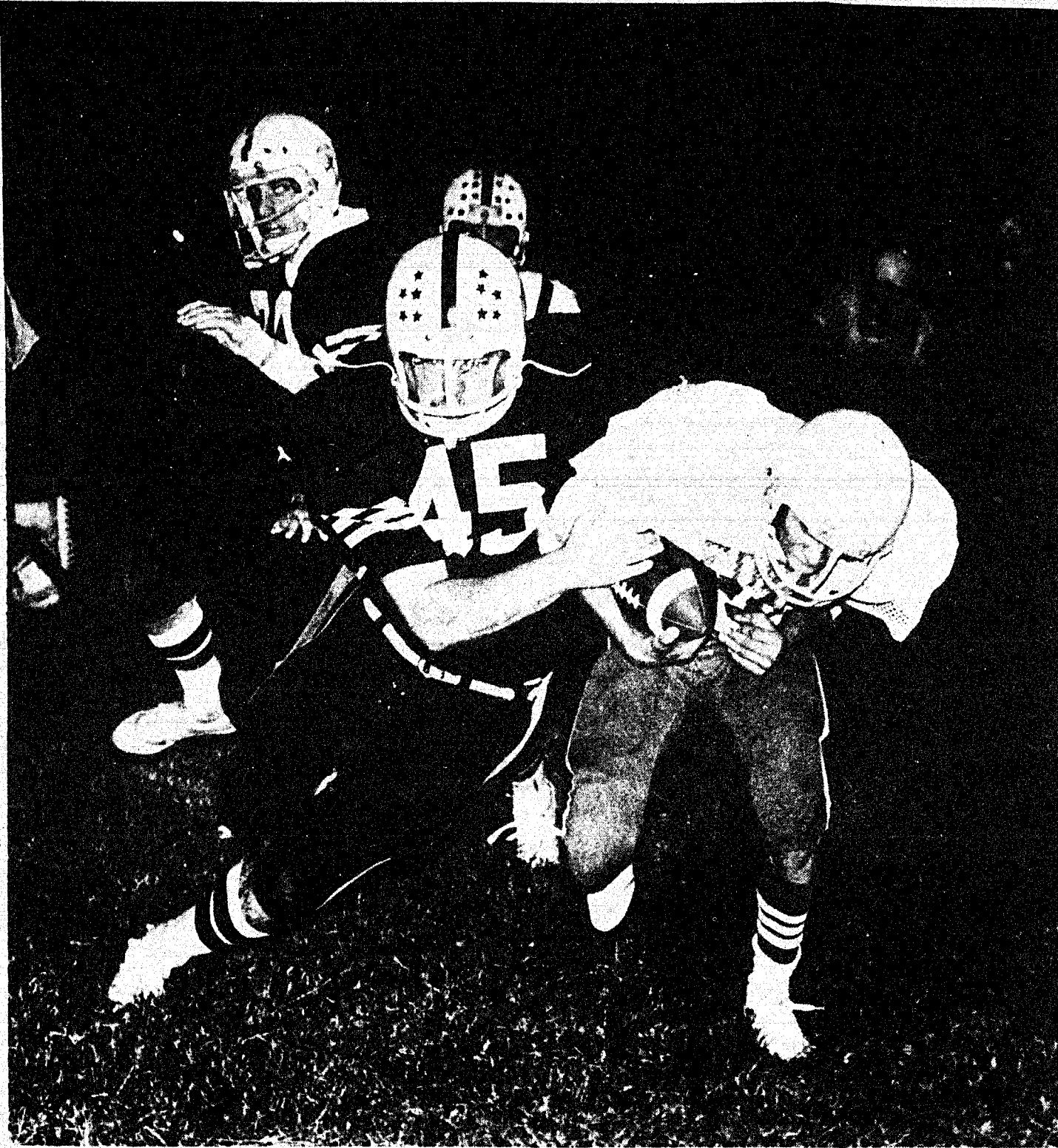
Specializing In Tanks And Land Clearing

After 6:00 PM Call

Lee 785-4401

Rickey 7854235





**MOUNTAINEER DEFENDERS.....**Dwayne Warnock pulls down the Eden ball carrier aiding the Mountaineers in their 33 - 6 victory over the Bulldogs Friday night. Behind Warnock is Randy Casey (70) and an unidentified Santa Anna player. The Mountaineers will be in Miles Friday night for an important district game. (Brownwood Bulletin photo by Richard Cook)

## Breast Self-exam Clinic Slated Here Next Monday

A breast self-examination clinic and program will be presented in Santa Anna Monday, October 20, at the school cafeteria. The program will be sponsored by the Santa Anna Epsilon Sigma Alpha chapter and directed by the self breast examination clinic of Brownwood. Dr. Michael Schultz of Brownwood will be speaker and a film will be

shown followed by a question and answer period. refreshments will be served at the close of the meeting. All women in the community are urged to attend the free program Monday night.

## Blood Pressure Clinic Is Scheduled Today

People in the Santa Anna area who wish to have a free blood pressure test may go by the Chamber of Commerce office Thursday (today) from 9 to 11 a.m. The clinic is held twice each month by the Committee on Aging, and all are welcome to go by during those hours.

## SDA Service Center Serves Community

The Seventh-day Adventist Church reports that during July, August and September there were 70 volunteer hours given in maintaining the Community Service Center. Eighty-four persons came to the center requesting aid which was provided in the form of 12 pieces of bedding, one piece of furniture, 121 miscellaneous items such as purses, dishes, etc., and more than 1200 pieces of clothing were distributed. The clothing given away included 115 pieces sent to Africa and 164 pieces sent to help re-supply the SDA disaster van.

### FAMILY VISITS

Mr. and Mrs. W. F. Rutherford had all their children at home for the weekend. They were Rev. and Mrs. Don Rutherford, Kevin and Holly of Arlington, Mr. and Mrs. Joe Rutherford, Julie and Shanna of San Angelo and Mr. and Mrs. Larry Rutherford, Stacie and Jackie of Abilene. They all attended the anniversary at First Baptist Church Sunday. The Joe Rutherfords also visited her parents, Mr. and Mrs. Omer Cullins and family and were joined by Richie Cullins and family of Plains.

### VISIT IN PARKER HOME

Visitors in the home of Mrs. B. A. Parker Sunday and attending the anniversary program at First Baptist Church were Mr. and Mrs. Durwood Hartsfield, Mrs. Carl Autry and Miss Althea Ragsdale, all of San Angelo.

## Class of 1926

### Has Reunion

### Last Weekend

Members of the Class of 1926 met for their annual reunion Friday at Presbyterian Church annex for a salad supper and get-together. Mae Allen Blue, a sponsor of the class, was a special guest.

Those present for the occasion were Mable Newman Parish of Fort Worth, Lila Belle Smith White and Bob White of Odessa, Cora Rothermel Green and Ray Green of Stephenville, Fay Atkinson Hill of Comanche, Charlie and Jeanette Burris of Killean, Leta Ragsdale Parker of Santa Anna, Lucille Lowe Balke and R. W. Balke of Santa Anna, Olivia Land Carrell of Fresno, Calif.

The group had an enjoyable time, and greetings werer read from Eula Grady Edington of Brownwood who was unable to attend because of a broken arm, Grace McMinn Short of Brady and Lorene Burris Monty of San Antonio who were ill.

## Methodist Activities Slated For The Week

Several activities are planned at United Methodist Church during the coming week.

The Finance Committee, of which Garland Powell is the chairman, will meet Tuesday, October 21, at the Church office for their regular meeting. All members are requested to be present.

Wednesday, October 22, the Nominating Committee will meet at the church office at 7:30 p.m. with Mike Alexander, pastor, leading the meeting.

The adult choir will meet for rehearsal at the regular 6 p.m. hour Wednesday.

### ATTEND HOMECOMING

Mr. and Mrs. Lyndon Haynes of Kermit and Becky Haynes of Texas A&M University were weekend guests of her mother, Mrs. E. E. McClintock, and with his parents, Mr. and Mrs. J. R. Haynes. Other guests in the McClintock home were Jesse and Yvonne Walls of Leveland.

## Band To Participate In ASU Parade, Game

The Santa Anna Mountaineer Band will take part in Angelo State University's eleventh annual Band Day Saturday, October 18.

Scheduled in conjunction with ASU homecoming activities, the event will draw 22 local and area units to the traditional parade set for 3 p.m. in downtown San Angelo. Parade leader will be the "Golden Ram" Band.

First place awards will be made in each class on the basis of quality and precision in marching and playing. Winners will be announced during the half-time ceremonies of the Angelo State and Abilene Christian University football game.

In addition to the parade participation, visiting bands

will be treated to a barbecue. Capping the day will be the joint half-time performance featuring the visiting units.

Other participants will include San Angelo's Lincoln Junior High, Lee Junior High, John Glenn Junior High, Edison Junior High, Lakeview High and Central High, and bands from Buena Vista, Bronte, Robert Lee, Wall, Center Point, Rock-springs, Roscoe, Winters, Coleman, Coahoma, Wylie, Colorado City and Abilene Christian.



# PRESCRIPTIONS

## Owl Drug Store

"Where Friends Meet"

Telephone 625-4514

312 Commercial

Coleman, Texas

**REMEMBER THE ALAMO!**

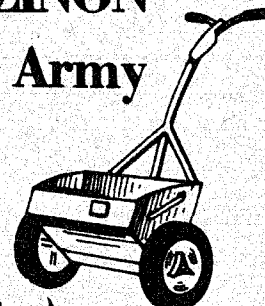
## FERTILOAM W/DIAZINON

For Grubs, Fleas, Ticks & Army

Worms.

## FERTILOAM WEED KILLER

(Both come in spray & granules)



Our Spring Bulbs Are In

Now is the time to put on turf builder

We also have a new supply of wrought iron & Old Mexico pottery & figurines.

"We're not just a garden center"

## Beal's Garden Center

410 Commercial Coleman 625-4623

**\* Mufflers \***  
**\* Custom Duals \***  
 See Jimmy At  
**D & R Automotive**  
**Low Prices**  
 200 E. Pecan  
 Coleman, Tex.  
 Call 625-5140



# "County Fair" Atmosphere Abounds in Venice, Italy

By Barbara Kingsbery

After the Alpine area of Italy, with beautiful mountains, clear streams and quaint little villages, I was really disappointed with the country as it quickly changed to flat farming land-looking so much like the Winter Garden area or the "Valley" of South Texas. Vineyards stretched for miles with fields of corn and fruit orchards also along the way.

We passed by the city of Milan and through an area with fields of alfalfa, wheat and corn in abundance, all irrigated.

Near Verona there were more vineyards, all in neat long rows.

Farms were all built in compounds, with two-story houses connected to the barn and machinery and hay sheds. Many of the farmsteads looked deserted, and most in poor repair, their owners perhaps living in the nearby towns.

Although I had always heard of Venice--with canals for streets--I had thought of perhaps a few canals in a conventional city. What a surprise!

We arrived at the city by way of a long causeway, parking in a city-block-sized parking lot where we and our baggage were unloaded. Our baggage was loaded onto a boat for delivery at our hotel while we walked the four or five blocks--across two footbridges--to our hotel.

The city of Venice is built on some of the 120 islands in the Lagoon of Venice on the Adriatic Sea coast area. There is no vehicle traffic whatsoever. Even bicycles are prohibited in the city. Boat-buses are available along the

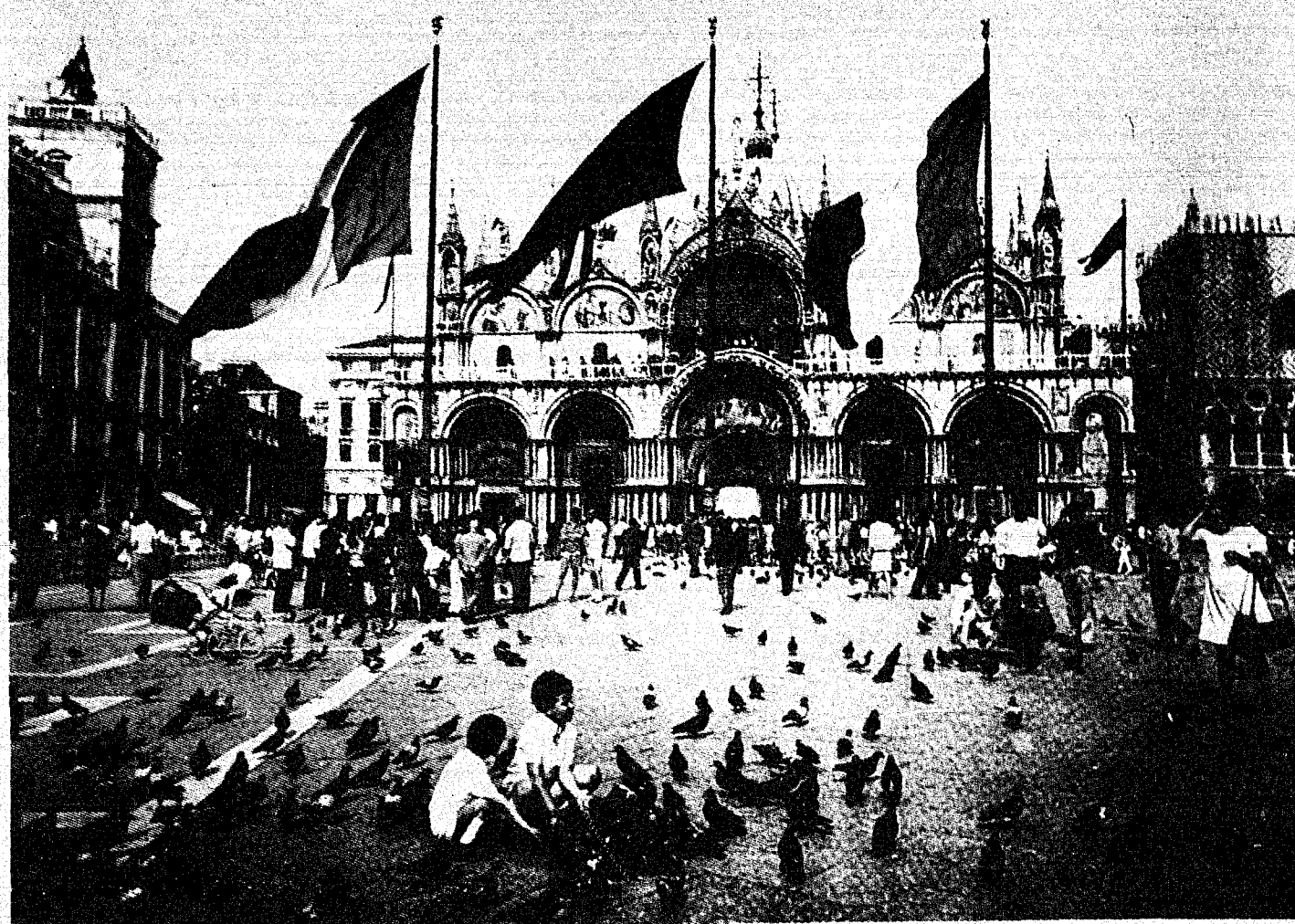
three-mile-long Grand Canal (main street), just like any city bus system. Only three bridges cross the Grand Canal, but many small bridges link the islands.

Venice is one of the oldest cities in the world and an important seaport since ancient times. The main attraction of the city is Saint Mark's Square with the ornate cathedral built in the 11th century. The remains of St. Mark, the evangelist, are buried in the cathedral that is awe-inspiring with the elaborate wall mosaics, and stained glass windows and ornate furnishings.

One of the most interesting sights is a clock, constructed before Columbus discovered America, facing St. Mark's Square. The structure is housed in a tall building with the clock face about three stories high. Besides the numerals on the regular clock face, there is a digital clock with the minute numeral changing every five minutes! Chimes on the hour are sounded by life-sized bronze figures striking a huge bronze bell with mallets. We were told the clock has stopped only once since it was constructed in the 14th century. No wonder we say, "They don't make things like they used to!"

A tower that once housed the city's lighthouse is near the cathedral and now has an elevator to take sightseers to the top to see the bay and city.

Our tour group visited a glass-blowing exhibit and saw the fragile and beautiful items made by the craftsmen, and shopped along the narrow streets for the famous Venetian lace and linen work. The city has a carnival-like



ST. MARK'S CATHEDRAL in Venice, the Doge's Palace and courtrooms. The Italy dominates St. Mark's Square. Tallest open bay is less than a block from the building at left is the unique clock with square. bell and figures on top, and at right is

atmosphere, and tourists were shoulder-to-shoulder. Merchants and shop keepers were all friendly and helpful--no doubt realizing where their business came.

Again, prices seemed very high with 800 Italian lira exchanged for each American dollar. Someone said shopping in Venice was like playing Monopoly--you spend several thousand lira for a meal or souvenir. Since the weather was so warm, I bought a sleeveless tee-shirt on sale costing \$10 in American money. It would have cost \$4 or \$5 in our shops here.

We stayed two night at the Pricipe Hotel, a lovely old building that once was a

family mansion. The front faced a narrow street or alley, and the back--or was it the front--was on the Grand Canal. Some of our meals were served on a lovely open dining area on the canal where we watched luggage and other deliveries come and go from the hotel.

Many of our group took a gondola ride the first evening in Venice, with our group of gondolas having a accordion player and singer!

I visited the Doge's Palace--a huge compound near the Cathedral that once housed the rulers of Venice in the early times and is now a museum. Adjoining were the many courtrooms and prison that were used until the 19th century. Hundreds of paintings are on the walls, many depicting the coronation of the rulers and battle scenes with the cathedral and lighthouse shown in the background.

Our tour group attended a musicati (musical) taking a boat to the concert hall near St. Mark's Square and hearing the traditional Italian music.

I wanted to walk from St. Mark's Square back to the hotel but found there was no main route, so had to

back-track and take the taxi-boat along the Grand Canal. I couldn't tell the size of the islands, but most seemed several city blocks in size. In the residential areas, boats were tied to the back doorsteps like our cars are parked in our garages! Buildings were two to three story, very ornately decorated.

It was interesting to note all services--garbage pickup, police, firemen, etc., travel by boat.

Venice was one of the most interesting places we visited--partly because of the "county fair" atmosphere and the difference in looks and pace.



Nevada is the nation's leading producer of gold.

**REMEMBER THE ALAMO!**



One of Venice's many small canals

## Class Of 1970 Enjoys Reunion

Patrick and Sandi Hosch were hosts for a reunion of the Class of 1970 last Saturday at their home.

Members of the class attending included Pascal Hosch of Tulia, Jerry and Barbara Jones Horner of Paint Rock, Glenda Gilbreath Cook, Bernadine Culpepper Watson and Betty Sue Hipp Brown, all of Santa Anna, Vicki Jo Neff Caldwell of Crane, Sue Kingsbery Porter of Round Rock, Ann Martin of Houston, Boots Walker Shelton of Dallas, Bobby Allcorn of Odessa, Danny Williams of Brownwood, Don Fitzpatrick of Crandall, Dianna Blackwell Ford of Lingleville, Ronnie Pete Cooper of Rockwood and Patrick Hosch.

**TURKEY FEEDERS**

Wind Powered & Battery Powered

The **Trading Post**

114 E. Pecan, Coleman

We Would Like To Lend Money To People Who Need It-- Consult Us Soon.

Pass Book Savings 5% — Compounded Daily

**First Coleman National Bank**

Member F.D.I.C.

"Always Willing — Always Prepared"



"Your Good Neighbor Bank"

We Sponsor The News Each Day At 12:30 Over KSTA

**Henderson Funeral Homes**  
"People Caring For People"

OFFERING AT YOUR REQUEST

Pre-Arranged Funerals  
Funeral Insurance And Counseling  
Ambulance Service

Coleman 625-2121 Santa Anna 348-3131



# Ranger Park Inn News

We are happy to have Lura Martin come to live with us from Bangs. We hope she will enjoy her stay at the Inn. Welcome, Lura.

It's good to have Bessie Thomas and Margaret Beckham back at the Inn after a stay in the hospital.

We wish Homer Boyd, Cecil Curry and Annie Barington a speedy recovery. They are in the hospital this week.

A large number of the residents enjoyed the singing of the Pentecostal Church group Tuesday evening.

We were made sad Wednesday to hear of the death of Mr. Nowlin, a brother-in-law of Mrs. P. A. Lindley from the Pentecostal Church. He will surely be missed each Tuesday evening. He was faithful to come each week.

Thank you, Lillian Herndon, for the popped corn we enjoyed eating while watching the movie, "Light Here Kindled," Friday afternoon. The movie was well attended. Thanks again, Lillian.

We had a very enjoyable afternoon Sunday. The Pentecostal Church group brought a wonderful message and song service. Thanks to Bro. and Mrs. P. A. Lindley, Jay Irving, Bonnie Norway, Doris Reed, Merrie Reed, and Mrs. Thomas. They come to the nursing home each second Sunday.

Those visiting with Cecil Curry the past weekend were his children, Mary Ogle of Lubbock, Mr. and Mrs. Gus Morgan of Santa Anna and Mr. and Mrs. Maurice Curry of Fort Worth.

Visitors with Bessie Thomas have been her grandson, Mr. and Mrs. Kevin Morgan, her daughter-in-law, Doris Bell of Brownwood, and Ruby DeSha, and Nell Thate.

Mr. and Mrs. C. J. Mikeska of Bangs visited a sister, Cora Mikeska.

Myrtle Parker and Mary Neal of Wichita Falls and Vera Mae Craig of Coleman

### MOVES TO SANTA ANNA

Mrs. A. D. (Carmen) Donham Jr. has returned to Santa Anna to make her home after living in Erick, Oklahoma the past 10 years. Her father, G. O. Lewis, is also making his home here.

The Marty Donham family has moved to Avenue A after living in the Donham home several years.



Some species of gulls drop shellfish from heights onto rocks, cement and macadam roads to break their shells.

**Coleman Monument Works**  
1309 East 9th  
Coleman, Texas  
W. A. FINLAY  
DAVID HUFF  
Phone 625-5352  
Night 625-2719  
30 Years in Coleman

were visitors of a brother and uncle, Homer Boyd.

C. D. Leach Sr. of Azle visited with Ethel Matthews.

Billie Clay of Aspermont visited her mother, Mrs. Lola White, last weekend.

Mrs. Ed Jones and Mrs. Juanita Stephens of Lometa visited Addie West and Mrs. McCoy.

Scooter Tucker, Jeannie Tucker and Jeanette Brock were visitors of Mrs. Ethel Matthews.

Clem Campbell had as visitors Glen Campbell and Ruby Halmon of Coleman.

Visiting with Lily King have been a son, Travis and Opal King of Paris, a sister, Artie Mae Crump of Coleman, and Billy and Kathleen Stewardson of Plainview, Vince and Becky King of Longview.

Winnie Lane of Coleman visited Susie Snider. Other visitors were Herman and Edna Estes of Bovina and Donnie Estes of Brownwood who also visited their mother, Ollie Estes.

## Reunion Is Enjoyed By Class of 1930

Fifteen members of the Class of 1930 met for a reunion Friday and Saturday during the Ex-Student Homecoming. The group met for a salad supper Friday at United Methodist Church annex, and on Saturday sat in a group at the business meeting and program.

Lonella Taylor Roesch hosted a get-together at her home following the supper and again Saturday afternoon.

A special guest at the reunion was Olivia Land Carrell of Fresno, Calif., a sponsor of the group during their high school years.

Class members present included Mary Lela Woodward Clifford of El Paso and Ina McDonald Williams of Santa Anna who planned the party, and also Odis Fowler of Fort Worth, Eris Gregg Jones of Bishop, Arthur Hill of Alpine, Buna Myers Baucom and Margaret Donham Campbell of Santa Anna, Christine Marshall Watkins and Eugene Watkins of Nashville, Tenn.,

Bernie Vinson Davis and Maurice Curry of Fort Worth, Wendell Sparkman of Houston, Dean Ashmore of Colorado Springs, Colo., Dimple Nabours Sutton of Junction, Elon Cheatham of San Antonio, and Velma Oder Herring of Austin.

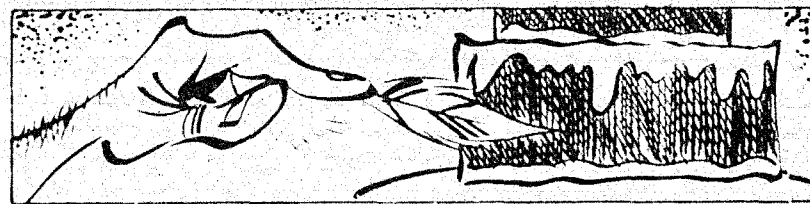
Other guests were Mrs. Odis Fowler, Mrs. Arthur Hill, Calvin Campbell, Linda Rasch, Dena and Lance of Brownwood, Mrs. Maurice Curry, Harry Oder of Abilene, Mrs. Wendell Sparkman, Mrs. Elon Cheatham and Rev. and Mrs. Mike Alexander.

Following the supper the class members and guests sang songs from their school days with Mrs. Watkins accompanying on the piano.

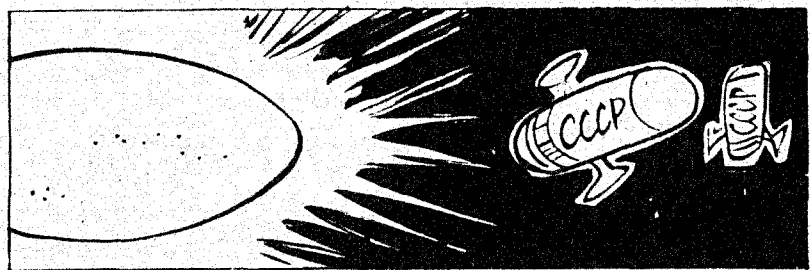
School yearbooks, pictures and mementoes were enjoyed and reports given on class members who were not present.

Mrs. Davis, a nurse and surgical assistant, was honored as "Ex-student of the Year" at the Saturday meeting. Others of the class and their occupations include Mary Clifford, retired teacher; Odis Fowler, retired Air Force pilot; Eris Jones, homemaker and clerk; Arthur Hill, retired Texas Ranger; Margaret Campbell, homemaker and retired bookkeeper for Gulf Oil Corp.; Buna Myers Baucom, homemaker; Velma Herring, homemaker; Christine Watkins, retired teacher; Eugene Watkins, retired chemical engineer.

Others are Maurice Curry, retired contractor; Wendell Sparkman, civil engineer; Dean Ashmore, retired pilot; Ina Williams, homemaker and clerk; Dimple Sutton, retired beautician; and Elon Cheatham, insurance agent.



Icing was originally applied to a cake with a bunch of feathers.



The two Soviet spacecraft that visited Venus in late 1978 reported temperatures as high as 860°F. and as many as 25 lightning impulses per second.

**BOOKS! BOOKS!**

**BOOKS!**

We have about 5000 paperback books in stock for your reading pleasure.

**WE TRADE BOOKS**

\$2.00 value for \$1.00 value  
or sell our books for 1/2 price.

We are very proud to carry a selection of pottery from **Comanche Pottery Co.**

We also carry finished and unfinished plaster castings, plus the supplies to finish them yourself.

Painting classes are opening for children so call or stop in for full details and have plenty of time before Christmas.

**THE ALAMO**

508 Ave. B Santa Anna 348-3217  
[Next to Northside Church of Christ]

## We Receive A Faith That Works By Love

For in Jesus Christ neither circumcision avaleth any thing, nor uncircumcision; but faith which worketh by love. Gal. 5:6.

When you present your petitions to the Lord, it should be in humility, without boasting of superior attainments, but with real soul hunger for the blessing of God. Christ always knows what is cherished in the heart. We must come in faith that the Lord will hear and answer our prayers; for "whatsoever is not of faith is sin." Genuine faith is the faith that works by love, and purifies the soul. A living faith will be a working faith. Should we go into the garden and find that there was no sap in the plants, no freshness in the leaves, no bursting buds or blooming flowers, no signs of life in stalk or branches, we would say, "The plants are dead. Uproot them from the garden; for they are a deformity to the beds." So it is with those who profess Christianity, and have no spirituality. If there are no signs of religious vigor, if there is no doing of the commandments of the Lord, it is evident that there is no abiding in Christ, the living vine.

Faith and love are the essential, powerful, working elements of Christian character. Those who possess them are one with Christ, and are carrying forward His mission....We are to sit at Christ's feet as continual learners, and to work with His gifts of faith and love. We shall then wear Christ's yoke, and lift His burdens, and Christ will recognize us as one with Him; in heaven it will be said, "Ye are labourers together with God." Will our youth remember that without faith it is impossible to please God? and it must be faith that works by love and purifies the soul.

We cannot overestimate the value of simple faith and unquestioning obedience. It is by following in the path of obedience in simple faith that the character obtains perfection.

**SPONSORED BY**  
**Seventh Day**  
**Adventist Church**



# Cleveland News

By CLARA CUPPS

Joe and Dorothy Wallace visited awhile Saturday evening with her parents, Mr. and Mrs. Bruce Hibbetts.

Mr. and Mrs. A. L. McGahey of Houston visited Mr. and Mrs. W. L. Campbell Saturday afternoon. They were here for homecoming.

Doug and Doris Penny of Colorado City spent the weekend with Mr. and Mrs. Edd Hartman. Odell and Marie Box of Brady spent Saturday and the ladies all attended the homecoming.

Mrs. Carmilla Baugh went to Bangs Monday to visit her mother, Mrs. Mae Flores, at Twilight Rest Home.

Mr. and Mrs. Cecil Ellis and Tammy were dinner guests of Mrs. Grace Ellis Sunday.

Mrs. J. L. McDaniel and Johnny of Carbon visited her mother and family, Mrs. Beulah Fleming and girls, Saturday. She attended the homecoming and the reunion of her class of 1940.

Linda Rasch, Dena and Lance of Brownwood and Mr. and Mrs. Calvin Campbell attended the homecoming over the weekend.

Mr. and Mrs. Billy Don Cupps and Kasha were out Sunday evening seeing about the cattle. Kasha spent Friday with me. Bubba Swindell and wife of Beaumont spent the weekend with Billy Don and Jean and Kasha in Brownwood.

Leon Phillips visited Harden Phillips Saturday.

Mrs. Ovella Williams visited Mrs. Dorothy Wallace Thursday evening awhile. Hi, Dorothy.

Mr. Verna Russell is in Brownwood Hospital. He has been there since Monday a week ago. Mr. and Mrs. Jimmy Carter of Houston and Mrs. Larry Bunn of Arkansas arrived in Brownwood by plane Sunday to be with their father.

Those visiting with Winnie Haynes the past week were Mr. and Mrs. W. R. McCormick of Fort Worth, Mrs. Dorothy Brandt, Mrs. Russie James and Clara Cupps.

Brownie Brooke of Comanche spent Saturday with his parents, Mr. and Mrs. Coy Brooke. The Brookes visited Sunday evening with Mr. and Mrs. E. A. Densman in Coleman. They visited the Brown Brooke family last Tuesday.

Mr. and Mrs. Odell Box of Brady spent Friday night and part of Saturday with Mr. and Mrs. Buck Mills. Mr. and Mrs. Bill Mills of San Antonio spent Saturday night with his parents, the Buck Mills, and were here for the Homecoming.

Visitors in the home of Mr. and Mrs. L. V. Cupps the past week were Billy Williams, Brad Welch of Abilene, and Sunday morning L. V. visited Billy Williams. Mrs. Bledsoe, her daughter and daughter-in-law also visited.

Mrs. Lucille Cupps went to Coleman to visit Richard Wells at Leisure Lodge Tuesday. Friday Maggie

Leonard came home with Lucy and visited, and she and Lucy went up and visited Micky Wells and stayed with Mrs. Carpenter while Micky went to the doctor in Abilene. Justin is spending a few days with his grandparents.

C. E. Wise ate supper one night last week with the Adolph Kelleys. This weekend Adolph and Doris Kelley went to San Angelo to spend the week with Mr. and Mrs. Travis Smith. Mr. and Mrs. Casey Herring visited the Kelleys Sunday night.

Mrs. Ilene Haynes and Mrs. Zeldia Walker of Bangs spent the day Wednesday with Mrs. Byrdie Miller.

Mr. and Mrs. Jack Banta of Coleman visited the R. W. Cupps one night last week.

Terry Blanton and his wife and little girl and her parents spent the weekend with Terry's mother, Mrs. Lucille Blanton of Bangs.

They attended the Santa Anna homecoming.

Mr. and Mrs. Daniel Chapman of Grants, N. M. visited Mr. and Mrs. John Perry Friday night and part of Saturday. She is the former Gladys Perry. Mrs. Annie Huey of Albuquerque, N. M. also visited the group, and they all attended the football game Friday night.

Mr. and Mrs. John Naron visited Mrs. Peggy Sikes and family in Bangs Saturday afternoon.

Pam Morgan and John were dinner guests of her parents, Mr. and Mrs. Casey Herring, Sunday. Monday Craig and Kenneth ate dinner with them, and Dale was a supper guest.

Nancy Lee Lowry dropped by the Bill Lowrys late Sunday afternoon.

Mrs. Fields visited Ann Ellis Saturday.

This Monday was a little cloudy. The world sure cooled off some. Sure hope I don't have to mow anymore. I am sure we will.



## ESA Chapter Has Meeting Last Monday

Cherry McCarrell was hostess for the Monday, October 13, meeting of Delta Omicron Chapter, Epsilon Sigma Alpha sorority. Donna Bradley, president, led the business session, and Geneva Garrett introduced the guest speaker.

Mrs. Oma Lee Dockery of Trickham gave an interesting program on African violets, displaying several from her collection. In a drawing of those present, Pattie Musick won an African violet plant.

Others present for the session were Debbie Dean, Barbara Patterson, Nikki Donham, Kay Thompson, Sue Pinkerton, Vikki Wristen, Jo-An Day, Bernadine Watson, Susie Voss, Sylvia Brewster, Ramona Myers, Sarah Beal, Sharon Greenlee, Gayle Stewardson, Gail Horner, Pam Seale, Kathy Alexander, Sharon Goodwin and Coyita Bowker.

## FFA NEWS

By David Strickland

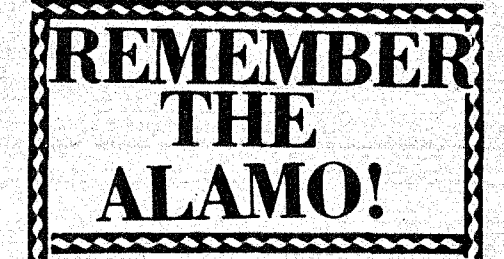
The Santa Anna Future Farmers of America met Monday, October 13, for the first meeting of the year. Eighteen members attended the meeting along with Scott Patterson, Chapter Advisor.

The new officers had their first opportunity to preside at a meeting and the opening and closing ceremonies.

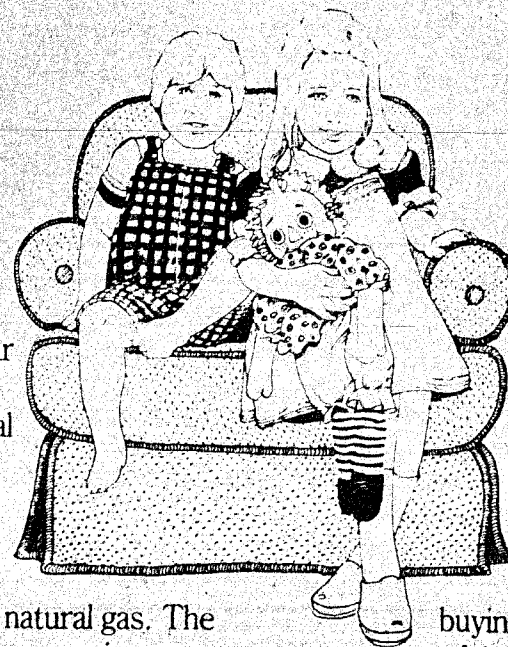
Tara Stark was elected the 1980-81 FFA Sweetheart. She is the daughter of Mr. and Mrs. Mance Stark.

The chapter had reports on the membership drive and a discussion of program work.

The November meeting is planned for Monday, November 3. At this meeting, officers are planning to discuss the FFA-FHA barbecue.



# LIKE YOU, THEY'LL HAVE ALL OF THE NATURAL GAS THEY'LL NEED.



Just as you do today, your children will have a dependable supply of natural gas for their homes — if they're served by Lone Star Gas Company.

In other words, we aren't about to run out of natural gas. The facts are strong and very reassuring.

Our supply is based on purchase contracts for the gas from more than 19,000 wells in Texas and Oklahoma. And because no well lasts forever, we prepare for your future needs by steadily buying new long-term reserves.

The fact that we're well established in Texas and Oklahoma also works in your

favor. Nine basins in these two states are estimated to contain 50% of the nation's remaining onshore gas reserves.

And Lone Star's pipeline system gives us excellent buying opportunities in eight of them.

Producers drilled thousands of wells in these major basins last year. They're drilling more this year. And we'll be shopping hard, just as we always have, for the best energy values for your future.



Texas Office of Traffic Safety



**GAS. IT'S PLENTIFUL, EFFICIENT AND RIGHT FOR THE TIMES.**



# Trickham News

By Mrs. Oscar Boenicke



Rev. Mike Alexander, the Methodist minister, preached at 9:30 Sunday morning. Next Sunday Rev. Swanner, the Baptist minister, will preach at 11 a.m.

The Quilting Club meets this Tuesday afternoon at the Community Center. Ethel Storm has up a quilt.

The 84 party was held at Annie Lou Vaughn's Thursday night with 12 present. Saturday night the Community Supper was held at the Community Center. Some that usually come were not there on account of the Homecoming at Santa Anna. There were 12 there. Dr. Fry and son Jeff and his friend from Midland had supper with us and were here over the weekend.

Oma Lee Dockery and Lou Vaughn went to Brownwood after church Sunday. They visited Stafford Stevens and Mannie in Brownwood Hospital and also visited H. B. and Ernestine Dockery at their home. They came back by Bangs and visited Mary Ola and Elmer Woods on their way home.

Marjorie Knox of San Antonio came Friday to visit her parents, the Walter Stacy's, over the weekend and attended the Homecoming in Santa Anna Saturday.

Walter and Carrie Stacy visited me Sunday afternoon. I visited with Lillie Featherston one morning last week, and this Monday morning Bond and Lillie visited me and Bond helped me with my car.

Visitors with Ilene Haynes were Jerry and Donna Haynes and Britt of Odessa, Billy and Carole Haynes and Tim of Hermleigh, Reba and Elvis Cozart of Round Rock, Mattie and Jim Lineberry of Bangs, Sug and G. K. Stearns and Sherman and Dortha Stearns, Clint and Sabrina, Oma Lee Dockery and Tracy.

Mary Lea Mitchell had all her family with her over the weekend. Lea and Loyd

Mock, Jennie and James, Betty and Damon Miller and family of Austin. Lea and Loyd, Betty and Damon attended the Santa Anna homecoming Saturday and Saturday night.

Sherman and Dortha Stearns, Clint and Sabrina visited his parents, the G. K. Stearns, over the weekend. Sunday evening Darwin Lovelady visited them.

Doyle and Wanda McIver and family of San Angelo and Terry McIver visited the Grady McIvers Saturday and Saturday night. Also Marvin and Ruth Smith visited one day last week. Grady and Genia visited the Terry McIver family Sunday evening.

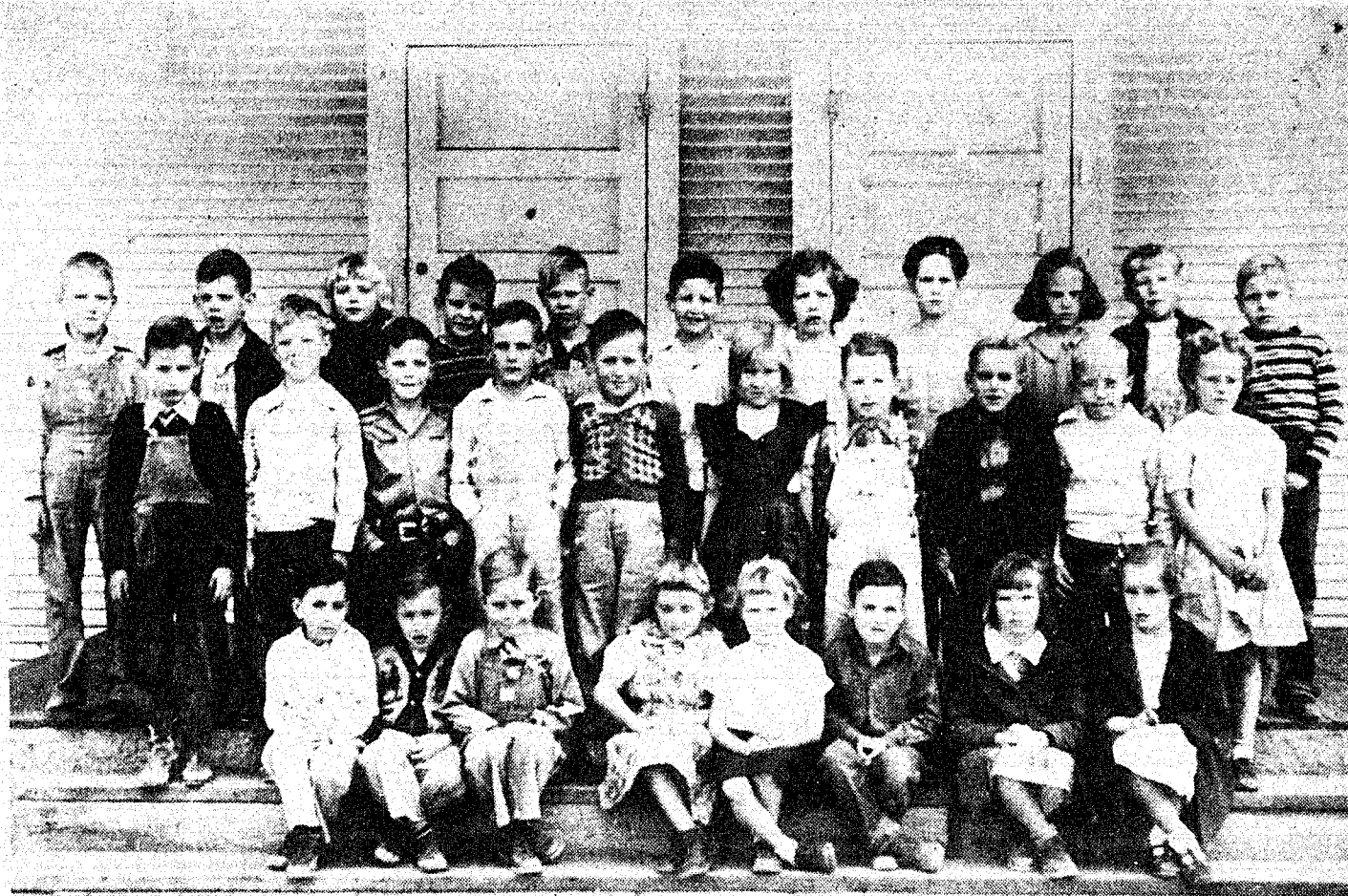
Oma Lee Dockery and Lou Vaughn visited the Marvin Smiths Friday night, and Dr. Norman Fry and Rankin McIver visited them Sunday evening.

Ruth and Wayne Whitley of Big Lake visited the Hilburn Hendersons Saturday evening. Their grandchildren, Clarissa and Rodney Henderson of Coleman spent Saturday and Sunday with them, also Mr. and Mrs. Eugene Ferguson of Wichita, Kansas visited the Hendersons Sunday evening and also attended the Santa Anna School homecoming at the weekend.

Russie James and Roberta McShan went to Lubbock Friday afternoon to visit their daughter and granddaughter, Cindy and Kelley Hoffman. They also visited an art show and other places of interest and attended church there Sunday morning and came home Sunday evening.

Florence Stearns went last week to her daughter's, Verna and Arvil Bolton at Rockwall, and came home Monday. Sug and G. K. Stearns visited Florence this Sunday evening.

We are having some pretty fall weather. Everyone is busy working in fields and gardens and yards. If it stays dry another week, a lot of work will be done.



CLASS OF 1960 is pictured here during the first grade in Santa Anna Elementary School. They include, front row from left, Dickie Ferguson, Jimmy Crews, Orvel Hall, Willene Caldwell, Mary Teague, Arthur Windham, Evelyn Matthews, unknown; and middle row: Unknown, unknown, Kenneth Haynes, Dean Constable, J. C. Bible,

Nancy Wallace, Danny Taylor, Travis Buse, Jimmy Bell and Judy Johnson; and back row: Larry Cooksey, Joe Riley, Darlene Mercer, Vardell Woodard, Sammy Bouchillon, Coy Pierce, Linda Owen, Reta Ing, Sonja Dunn, LaVelle McClintock and Gene Close.

## Class of 1960 Enjoys Weekend Reunion

The Class of 1960 celebrated their 20th class reunion Saturday night with a get-together at the Homecoming Cottage. Plans were discussed for a reunion next year to include the classes of 1955 through 1960.

Those attending the reunion were Mr. and Mrs. Eddie Hartman, James and Michael, Frances Biggs Maione and Michelle of Santa Anna; Sandra Fowler McClelland and Susan of San Antonio; Mr. and Mrs. Byrl Fellers of Fort

Worth; Mr. and Mrs. Travis Buse of Early; Mr. and Mrs. Loyd Rutherford of Bangs; Mr. and Mrs. Donald Williams and daughter of Coleman; John and Carolyn Bates Pricer and Dorothy Brien Beal.

Others were Mr. and Mrs. Kenneth Haynes and Scott of Kansas City; Sue Wise Riley of Santa Anna; Roy John Payne; Lyndon and LaVelle McClintock Haynes and Becky of Kermit; Mr. and Mrs. James Hodges of Abilene;

Mr. and Mrs. Glendon Eppler of Austin; Herbert and Ginger Haynes Graham; Mr. and Mrs. Tony Tucker of Snyder; Charles Wells; Bobby and Carolyn Pricer Clawson of Santa Anna; Mr. and Mrs. Arlen Allen of Temple; and James Curtis.

Others were Mrs. Bert Fowler, Mrs. E. E. McClintock, R. C. Smith, Pat Taylor McCullough and Mr. and Mrs. Hilary Rutherford.

## Migration of Monarch Butterfly

by Diana Edwards

The monarch lays eggs only on milkweed plants, North American species native to Mexico. A striped caterpillar emerges three to twelve days later and immediately starts feeding on the milkweed plants. After a period of two weeks, the caterpillar weaves an intricate pouch, blue green in color. After two more weeks, the pouch becomes transparent and an adult butterfly appears. The process from egg to adult takes about five weeks, thus the migration journey begins.

Until 1975, the wintering grounds of the autumn-colored butterfly was not known but was thought to be somewhere in Mexico. On January 9, 1975, Kenneth Brugger and his wife from Mexico City located the monarch's winter home high in the Sierra Madre Mountains.

They along with Dr. Fred A. Urquhart, a zoologist from the University of Toronto's Scarborough College climaxed a four-decade study and search for the 20-acre Mexican enclave of the monarch butterfly.

The monarch's selection of the Sierra Madre for their winter haven was understandable to experts as butterflies were known to adjust their body temperatures to the moving air which, at a 9,000 foot elevation, hovered from just below freezing to just above—ideal for monarchs.

It has been proven with the successful tagging of the butterflies that a monarch can wing its way south to Mexico in the autumn and again fly back north in the spring before their life-span comes to an end, the male monarch dying first.

Monarchs travel during daylight hours and roost on tree limbs or foliage at night.

Many Bangs residents have been commenting in the last week about the beautiful spectacle the colorful insects have been displaying as they once again make their historic journey to Mexico's Sierra Madre.

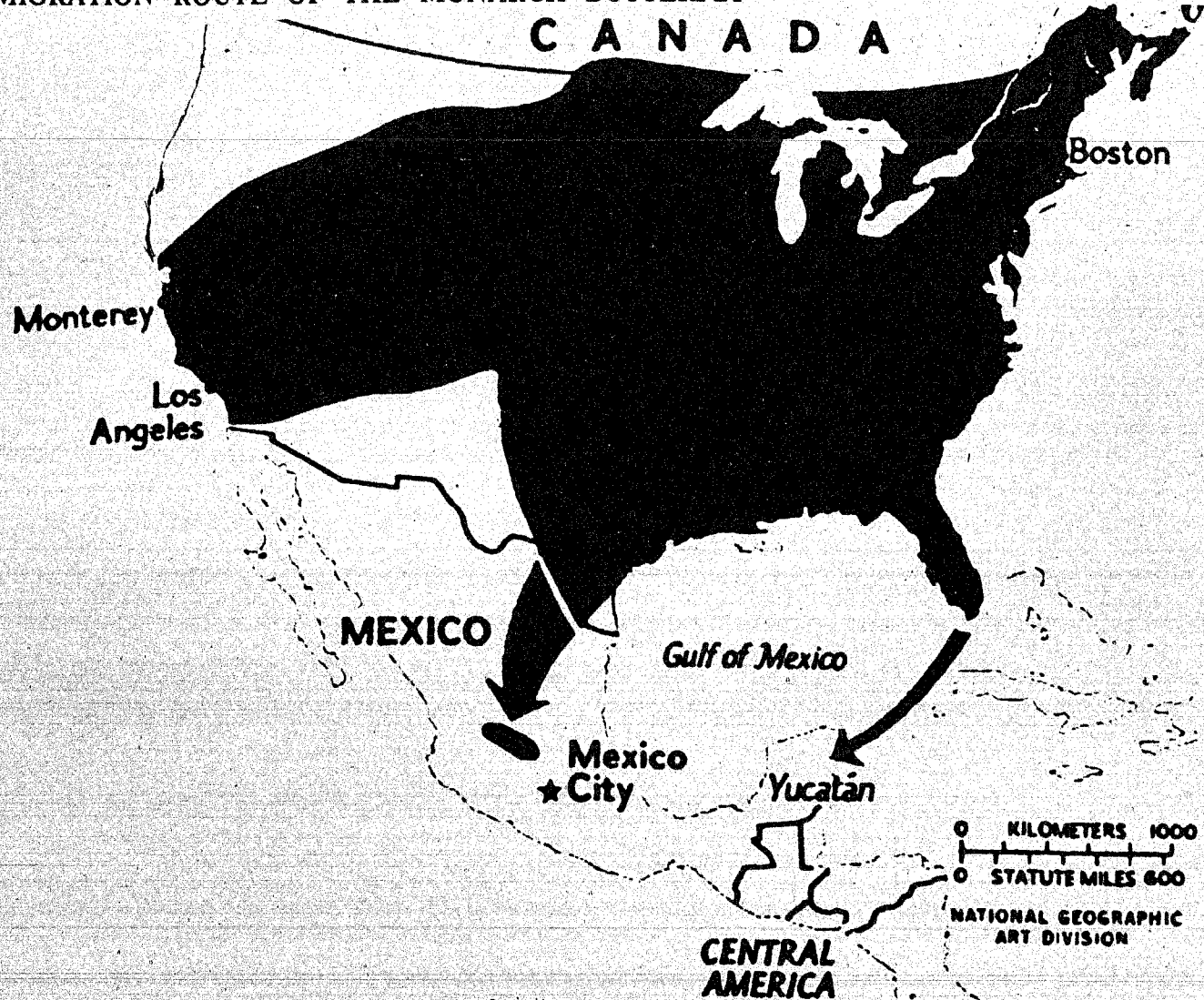
This is just another phenomenon of beauty and mystery that "Mother Nature" provides for the entertainment of we creatures called "humans."



The warmest sea on earth is the Red Sea in Asia Minor. Its average temperature is 95 degrees F.

**REMEMBER THE ALAMO!**

MIGRATION ROUTE OF THE MONARCH BUTTERFLY







# 1980 Santa Anna H

## ★ Game of the Week ★

SAHS vs Miles

Friday, October 17

At Miles

7:30 P.M.



1980 Mountaineer

### Santa Anna National Bank

Your Hometown Bank 348-3108

### Wylie's Flowers

348-3301 Santa Anna  
If no answer call 785-4451

### Clark's 100,000 Parts

625-2168 Coleman

### Santa Ann

Reporting the New

### Southern Savings

Home Office Brownwood 646-4561  
Coleman - 625-4176    Bangs - 752-7343

### Hosch Insuranc

Don & Bettie Hosch 348

### Williams Tire Store

Coleman, Texas

### Derriel & Poll

### Hatler Motor Co.

Full Line General Motors Dealer  
625-4144 Coleman

### Walker Funeral Home

625-4103 Coleman

### Westerr

"Home Owned and I  
348-3771 Santa

### Texas Ranger Motel

915-348-3150 For Reservations

### Longhorn Feed & Seed

Downtown Santa Anna

### Ken's Dair

348-3123

### Sye & Myrtle Burden

Santa Anna

### Stevens Funeral Home

Since 1889

Coleman, Texas    625-2168

### First Coleman National Bank

Coleman, Texas

### Edd Hartman Con

Pipeline & Util  
915-348-3481 or 348-366

### Windy B.'s Cafe

1104 Wallis Ave.    Santa Anna

### Robinett's Garage

Santa Anna 348-3383

### Larson's E

TV Re  
216 S. Conch

### Coleman Building Materials

Coleman, Texas

### Ira Pump & Supply

348-3179 Santa Anna

### Hosch Furniture Co.

Downtown Santa Anna

### McCrary Fina

348-3331 Santa

### Watson-Copeland Construction Co.

1005 W. Cedar    Coleman 625-4419

### Rockwell Brothers Lumber

Kenneth Newman, Owner    Coleman 625-2168



# High School Football



Senior Football Team

## 1980 SAHS Varsity Football Schedule

Sept. 5	Bangs	There	8:00
Sept. 12	Evant	Here	8:00
Sept. 19	Lometa	There	8:00
Sept. 26	Blanket	There	8:00
Oct. 3	Rising Star	Here	7:30
Oct. 10	Eden (Homecoming)	Here	7:30
Oct. 17	Miles	There	7:30
Oct. 24	Irion County	Here	7:30
Oct. 31	Cross Plains	There	7:30
Nov. 7	Bronte	Here	7:30
Nov. 14	Zone Play-off		

Coaches  
Roger Goodwin, Barry Miles, David Pinkerton & Dean Bass

Santa Anna News  
News Since 1886

Friendly  
**Coleman Bank**  
Coleman, Texas

**Foster Miller Insurance Co.**  
Coleman, Texas

Insurance Agency  
348-3115 in Santa Anna

**Huggins Exxon Station**  
348-3515 Santa Anna

**Phillips Drug**


Downtown Santa Anna 348-3151

Wally Warnock

**Whites Home & Auto**  
Mac & Joyce Anderson  
217 Commercial - Coleman

**Herrings Flowers & Gifts**  
348-3461 Santa Anna

Home Auto  
and Home Operated  
Santa Anna, Texas

**T & T Farm Services**  
 625-2015 Coleman, Texas

**R. E. Horner Real Estate**  
348-3715 Santa Anna

Beauty Queen  
Santa Anna

**Conger's Cafe**  
213 Commercial - Coleman  
O. C. & Ann Fuller 625-5312

**Brownwood Health Food Store**  
Edie Harth - 643-1717

Utility Cont.  
**Construction Co.**  
3662 Santa Anna

**Henderson Funeral Home**  
"People Caring for People"  
Santa Anna & Coleman

**Geo. D. Rhone Co. Hardware**  
RCA - Frigidaire - Litton  
Phone 625-4141 Coleman, Texas

Electronic Service  
Repair & Service  
Box 305 Coleman

**G & E Hardware**  
348-3373 Santa Anna

**Tomlinson's Transport**  
348-9146 Santa Anna, Texas

Radio Station  
Santa Anna

**Coleman County Telephone Coop.**  
Serving Coleman County

**Nell's Fashions**  
Coleman, Texas

**Taylor Motor Co.**  
Coleman, Texas

**Countywide Insurance Service**  
211 Commercial Coleman 625-4126, 625-3117

**J. E. Stevens Co. Furniture & Hardware**  
Where You Shop With Confidence Coleman, Texas







MRS. RICHARD GUZY  
The former Diane Henderson

## Couple Known Here Wed In San Antonio Ceremony

Miss Diane Henderson and Mr. Richard Guzy were married Saturday, October 4th in the Margarite B. Parker Chapel, Trinity University in San Antonio, Texas at 12:00 noon with Father John Peters officiating. The bride is the daughter of Betty Henderson and Bob Henderson of Del Rio. The groom is the son of Mr. and Mrs. John Guzy of Yorktown.

The bride wore a Maurer Original in the candlelight color. The satin bodice was overlaid with French lace, sprinkled with hand-sewn seed pearls, and highlighted by a Queen Anne collar. The long sleeves were of the same lace and cuffed at the wrist in satin. The skirt of chiffon over taffeta fell from an empire waist and was accentuated with a chapel-length train. The bride wore baby's breath in her hair, and her bouquet was of white roses and baby's breath. She wore her wedding dress as something new, something old was

a 1949 dime which was also borrowed from Mrs. H.H. Petty of Del Rio. Her garter was blue.

The matron of honor and only attendant was Mrs. Liz Ricks, sister of the bride. Mrs. Ricks wore a floor length flowered dress with

full pleated skirt, spaghetti straps and a matching jacket and carried a bouquet of fall colors. Don DuBose of Yorktown was best man. Serving as ushers were James Noster and Steven Sievers, both of Yorktown. Junior Bridemaids were the nieces of the bride, Michelle Ricks and Sarah Henderson. Their dresses were peach taffeta with beige lace, floor length with empire waistlines and puffy sleeves. They carried baskets of fall flowers.

Sharon Ragsdale of Fort Worth, cousin of the bride sang "The Lord's Prayer," "Jesu, Joy of Man's Desiring" by Bach and "Can Two Walk Together" by Jeffery Leech.

For her daughter's wedding, Mrs. Henderson wore a dusty rose floor length dress with a corsage of white roses. Mrs. Guzy, mother of the groom, wore a smoky blue floor length dress with lace trim and a corsage of white roses.

The reception was held in the Southwest Craft Center. The bride's table was centered with a three tier wedding cake decorated with peach colored silk flowers. The groom's cake was in the shape of an Otis elevator, the groom's occupation. The houseparty was under the supervision of Mrs. Cora Beth Henderson, sister-in-law of the bride. The bride's cake was served by Mrs. Linda Worley of San Antonio and the groom's cake was served by Mrs. Denise Storwd of San Antonio. The punch was poured by Mrs. Helen Stewart of Pleasanton. Other members of the houseparty included Mrs. Cathy Stauffer of Conroe and Mrs. Frances Villa of Yorktown, sisters of the groom.

Decorated net bags filled with bird seed instead of the traditional rice were distributed by Sarah Henderson, Michelle and Christel Ricks.

Distinguished guests at the wedding were the bride's great-grandmother, Mrs. J.L. McCaughan of Santa Anna and her grandmother, Mrs. T.J. McCaughan of Fort Worth.

The rehearsal dinner was hosted by the groom's parents, Mr. and Mrs. John

## COMMUNITY CALENDAR

**THURSDAY— OCTOBER 16:**  
Blood Pressure clinic, C of C office, 9 - 11 a.m.  
JHS Football, at Rising Star, 6:30 p.m.

**FRIDAY— OCTOBER 17:**  
Pep Rally, Perry Gymnasium, 3:15 p.m.  
Football game at Miles, 7:30 p.m.

**SATURDAY— OCTOBER 18:**

**SUNDAY— OCTOBER 19:**  
Attend Church

**MONDAY— OCTOBER 20:**  
Campfire Girls, Civic Center  
Boy Scouts, Civic Center, 7 p.m.  
Booster Club, Vo-Ag building, 7 p.m.  
Tractor Maintenance course, Vo-Ag shop

**TUESDAY— OCTOBER 21:**  
Lions Club, Lions building, 12 noon

**WEDNESDAY\* OCTOBER 22:**  
Whirly Birds, Methodist Church basement  
Choir rehearsal, Methodist Church, 6 p.m.

Guzy on Friday, October 3rd at 8:30 p.m. A buffet was served in the Sterling Tea Room. Family and wedding party members attended.

After a wedding trip, the couple will be at home at 8331 Fredericksburg Road, #106, in San Antonio.

Guests attending from Santa Anna were Mrs. J.L. McCaughan, Mrs. Fern Hoke and Mrs. J.W. McClellan. Also attending was Mrs. Donnie Simmons of Abilene.

**ATTEND HOMECOMING**  
Weekend guests in the home of Mr. and Mrs. Donnie Clifton were his sisters' and brother, John and Judy Tidwell of Abilene, Shirley Hamlin and Todd Mr. and Mrs. Harold Clifton of Midland. Mrs. J. D. Clay of Aspermont was a weekend visitor with her daughter and family and other visitors.

H. COSELL  
ATTORNEY AND  
SPORTSCASTER

Sportscaster Howard Cosell is also a lawyer.

REMEMBER  
THE  
ALAMO!

## "CERAMIC BUTTERFLY"

15% off SALE  
Greenware  
Oct. 14-17



Tuesday, Oct. 14  
will be the last night of  
classes due to conflicting  
school activities. Classes  
will resume in the spring.

If special help is needed, extra  
supplies or if you need to come in  
after hours please call in advance  
& we will be happy to assist you.

Phone 625-3392

All finished items marked down. We are  
now taking orders on finished pieces for  
Christmas.

Kathy Rose

Dorothy Vineyard

715 N. Neches Coleman

## Listen To The Voice Of Prophecy

Every Sunday

9:30-10:00 a.m.

## Over KSTA

AM-FM  
Coleman

### FREE CLASSES

Furniture Construction  
Mini Board House

Purchase of Material  
Required.

Call For Information  
643-3266

MINIATURE  
TREASURY

109 E. Anderson



# Former Students, Teachers Register At Homecoming

The following ex-students and teachers were registered at the Saturday Homecoming activities. Other guests and visitors also attended.

Pete Simmons, Littlefield  
Linda Horner Simmons, Littlefield  
Joe Barnes  
Margaret Jones Reid, Austin  
Juanita Alexander Stephens, Lometa  
LaVelle McClintock Haynes, Kermit  
Lyndon Haynes, Kermit  
Arthur Hill, Alpine  
Marjorie Stacy Knox, San Antonio  
Del Stacy, Brownwood  
Lea Mitchell Mock, Post  
Betty Mitchell Miller, Austin  
Gladys Perry Chapman, Grants, N. M.  
Winnie McQueen, Coleman  
Glenda Strickland Keeney  
Oma Dean McDonald Horner  
Leanna Pollock Hartman  
Patrick Hosch  
Bessie Smith Pallett  
Maurice Curry, Fort Worth  
Sue Milligan Newman  
M. L. Guthrie Jr.  
Frances Bragg, Dallas  
Ruth Lovelady Dodson, Coleman  
Margaret Mobley  
Shirley Jefferys Bissett, DeSoto  
Garland Bissett, DeSoto  
Debbie Horton Dean  
Mary Lela Woodward Clifford, El Paso  
Eugene Watkins, Nashville, Tenn.  
Christine Marshall Watkins, Nashville, Tn.  
Jack Watkins, Kingsville  
Annie Louise Watkins Smith, Odessa  
Audus Smith, Odessa  
David Pinkerton  
Margaret McCaughan Karthaus, Fort Worth  
Louise Boyd McCaughan, Fort Worth  
Helen Vinson Ingram, Corpus Christi  
J. C. Ingram, Corpus Christi  
Manon Evans Keeter, Fort Worth  
Bessie Watkins Stanley, Odessa  
Betty Hipp Brown  
Clarence Smith  
Betty Vasquez Rolfe  
Boots Walker Shelton, Dallas  
Montie Les Guthrie  
Sybil Fellers Dean  
Melinda Dean Horner, Meridian  
David Horner, Meridian  
Byrl Fellers, Fort Worth  
Richard Horner  
Tommy Johnson, Canyon Lake  
Neal Oakes, Coleman  
Helen Upton Oakes, Coleman  
Eugene Ferguson, Wichita, Kan.  
Jewell Brown Schrader  
Reba Hardy Loggins, Midlothian  
Wendell Sparkman  
Bessie Brandon McDonald  
Alton Brandon, Fort Worth  
Ruby Moore Hartman  
Ruth Marie Moore Box, Brady  
Edd Hartman  
Fannie Blanton Anderson, Bangs  
Odis Fowler, Fort Worth  
Nowlin Myers  
William Sheffield, Odessa  
Eunice Wheeler Longbrake  
Era Oakes Walters  
Veva Oakes McClellan  
Opal Pritchard Little  
Nettie Yancy Vinson  
Tom Vinson  
J.D. DeSha, Amarillo  
Evelyn Evans Cliett  
Mark Sheffield, Brownwood  
Charlie Burris, Killeen  
Ina McDonald Williams  
Thelma Lowe Lowry  
Lewis M. Guthrie  
Jesse L. Sparkman

Billy Joe Parish, Tucumcari, N.M.  
Billie Lewellan McDonell, Plains  
Shirley Lewellen Merryman, Coleman  
Bessie Alford Lewellen, Plains  
Lucile Kirkpatrick Wylie  
Modora Kirkpatrick Gilmore  
Gene Rice, Duncanville  
Kathryn Williamson Lee, San Angelo  
Hays Hefner, Lubbock  
Evanell Arrant Hefner, Lubbock  
Vernon Oakes, Hobbs, N.M.  
Lolly Arrant Oakes, Hobbs, N.M.  
Belva Heilman Rutherford, Coleman  
Hilary Rutherford, Coleman  
Max Eubank  
JoAnn Morris Stevens, Pampa  
Mattie Ella McCreary Gray, Rockwood  
Dosh McCreary, Austin  
Donnie Neff  
Jenny B. Conley DeSha, Amarillo  
Bernie Vinson Davis, Fort Worth  
Bill Vinson McElliott, Hollywood, Calif.  
Velma Oder Herring, Austin  
Harry Oder, Abilene  
Olivia Land Carroll, Fresno, Calif.  
Lee Land, Dallas  
Elon Cheatham, San Antonio  
Doris Moore Penney, Colorado City  
Dimple Moore Penney, Colorado City  
Dimple Nabours Sutton, Junction  
Voncille Taylor Estes, Weatherford  
Mildred Boardman Tinkle, Abilene  
Cullen W. Perry, Brownwood  
Lorene Fiveash Wynn, Coleman  
Joe Wynn, Fort Worth  
Virginia Holt Austin, Fort Worth  
Louise Oakes Konze, Abilene  
Wilnette Mills Spencer, Abilene  
Udell Windham Copeland  
Glen Copeland  
Jane Burden Clark, Olathe, Kan.  
Leona Banister Bruce  
Pat Taylor McCullough, Coleman  
H. A. Burden  
Arvella Shamblin England, Amarillo  
Melvin Pollock, Hurst  
Leroy Pollock, Austin  
Ford Barnes  
Howard Norris, Brownwood  
Eris Gregg Jones, Bishop  
William Brown  
Mae Allen Blue  
Nancy Wylie Tillman, Grapevine  
Sandra Davis Guthrie  
Emily Wells Beal, Brownwood  
Leta Ragsdale Parker  
Janice Donham Cozart  
Iris Dixon Williams  
Ford Holt, Bangs  
Doris Newman Freeman, Fort Worth  
Coyita Griffin Bowker  
A. L. (Hap) Newman, Leakey  
W. C. (Bill) Burden, Lubbock  
Alice Jane Lovelady Mayfield, Abilene  
Lee Etta Fleming McDaniel, Carbon  
Evelyn Bruce Kingsbery, Crystal City  
Lila Belle Smith White, Odessa  
Dean Ashmore, Colorado Springs, Colo.

### VISITS FAMILY

Mr. and Mrs. Kenneth Haynes and daughter Robin of Kansas City visited his parents, Mr. and Mrs. Clyde Haynes of Brookesmith last weekend and attended the Santa Anna Homecoming and the reunion of the Class of 1960.

Thursday nine-month-old Robin was a guest of the Brownwood High School's Child Development Class. She was sponsored by her brother, Scott of Brownwood, a junior. Homemaking teacher Mrs. Lancaster introduced Robin to her class of juniors and seniors.

Saturday Robin's maternal grandmother, Mrs. Jo Alton of Houston, and great-grandparents, Mr. and Mrs. J. Brigrance of Boling, came for a visit in the Haynes home.

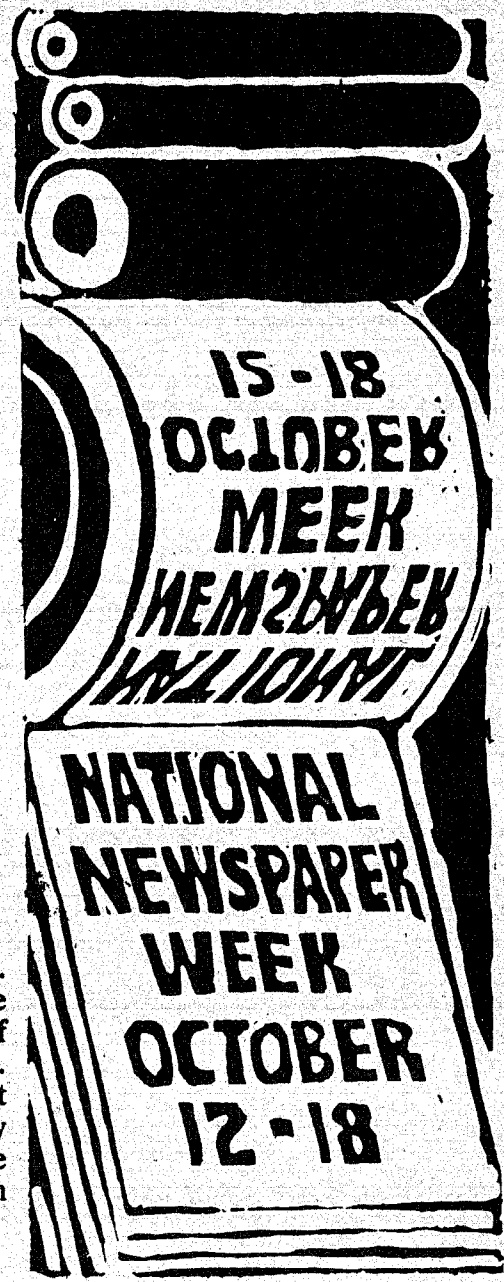
### VISIT IN SANTA ANNA

Mr. and Mrs. C. E. Hollowell of Temple were visitors in the home of friends, Mr. and Mrs. W. F. McCary, Wednesday night and Thursday. Visiting Sunday night in the McCary home was a cousin, Myrtle Allen of Stephenville.

### VISITS HERE

Mrs. Nye Reid of Austin spent the weekend with her mother, Mrs. Ed Jones, and attended the homecoming and Baptist church anniversary programs. Also here for the weekend was Mrs. Otho Stephens of Lometa, remembered here as the former Juanita Alexander.

Margaret Donham Campbell  
Faye Routh Mobley  
A.L. McGahey, Houston  
Lillie Stewardson King  
Travis King, Harris  
Suzanne Renegar Smith  
Dean Bass  
Joe Buse, Gordon  
Roy Buse  
Jim Everett, Houston  
Joe Bell, Euless  
Bobby Allcorn, Odessa  
Evans Burden, Elgin



Central Texas  
**INSULATION**  
Service  
Free Estimates  
Contact  
**Buddy Mays**  
Daytime Ph. 625-2332  
Nite Ph. 625-5414

**REMEMBER  
THE  
ALAMO!**

**FAMILY DAYS SALE**  
Fri. Oct. 17 - Sat. Oct. 25

**WESTERN AUTO**

Savings In Every Dept.

20-IN.  
BMX  
"DIRT  
DUSTER"

**\$69<sup>99</sup>** In carton 34-2758-0  
Reg. 84.99

**Repairs or  
Remodeling**  
Plumbing & Supplies  
**Lee's Plumbing**  
Call 348-3417  
Santa Anna, Texas  
Free Estimates

Business, Home, Life, Health, Auto,  
Crop-Hail

**HOSCH**  
Insurance Agency

348-3115 Santa Anna, Texas

Santa Anna's Only Home-Town  
Insurance Agency, Owned & Operated  
By Don & Bettie Hosch

Professional Service Easy Terms  
Major Companies Maximum Discounts

"The Agency you'd buy all your Insurance  
from, if you could buy it after a loss."



# Rockwood News

By MRS. JOHN C. HUNTER

The Rockwood Extension Homemakers Club is invited to attend the CPR (Cardio Pulmonary Resuscitation) session in joint meeting at Mozelle Tuesday, October 21, at 7 p.m. to 10 p.m. with certified instructors.

Mr. and Mrs. Dosh T. McCreary of Austin spent the weekend with Mrs. Lon Gray and all attended the Santa Anna Ex-Student Homecoming. Mrs. Bessie Standley of Odessa and Mr. and Mrs. Eugene Watkins of Nashville, Tenn. were Saturday supper guests.

Mrs. Claud Box visited with Mrs. Sam Estes Tuesday afternoon, and Mrs. Bill Bryan was a Wednesday visitor. Joe F. Estes of Abilene and Steve Estes of Midland visited Sunday and James Estes visited Sunday afternoon.

Mrs. Carl Buttry went to San Angelo last Tuesday for a medical checkup and visited Mrs. Danny Sturgill and Christy.

Mr. and Mrs. Kenneth Brusenhan visited in Coleman Thursday afternoon with Ernest Brusenhan and his guests, Mr. and Mrs. Ted Cox of Weatherford, visiting again Friday morning.

Mr. and Mrs. Glendon Eppler, Eric and Jerrod of Austin spent Friday to Sunday with Mr. and Mrs. A. D. Eppler. Other Sunday visitor was Kent Sutton of Abilene who had directed the Shields Church of Christ service.

Mr. and Mrs. John McClelland, Susan and Jim of San Antonio spent Friday to Sunday with Mr. and Mrs. Bert Fowler, also visiting Mrs. Bonnie McDonald in Holiday Hill in Coleman and with relatives in Ballinger. Saturday Mrs. McClelland and Susan and Mrs. Fowler attended the 20th anniversary of Sandra's class at the Santa Anna Homecoming. Mr. and Mrs. Odis Fowler of Fort Worth spent Friday night with the Fowlers and attended the 50th reunion of his graduating class.

Mr. and Mrs. Larry Smith of Austin and Kim Bray of Coleman spent the weekend with Mr. and Mrs. Wayne Bray. Other Sunday visitors were Mr. and Mrs. Mack

Hambright, Jan, Jill and Mark and Viki Johnson, Mr. and Mrs. John W. Gregg, Carla and Lucy of Coleman and Mr. and Mrs. Lance Vaughn of Early.

We regret to announce the death of Aaron Bray of Brady. Funeral services were Tuesday at 2:30 at Brady with burial in Brady Cemetery. He was an uncle of Wayne Bray and a long-time Lohn resident.

We are happy to announce Linnie Box is able to be back in the store after recuperating from recent surgery. Mrs. Ann Bryan of Brownwood visited with Linnie Sunday and Mrs. Blake Williams joined Linnie for frosted Cokes Sunday afternoon.

Visiting Mrs. Claud Box for the weekend family reunion were Mr. and Mrs. V. O. Bowden of San Angelo, Mr. and Mrs. Bob Floyd, Mr. and Mrs. Dean Fox and Avis Fox of Dallas, Mrs. Paul Riddle of Coleman, Mr. and Mrs. Elon Cheatham of San Antonio and Mr. and Mrs. Woodrow Blackwell of Richardson, and Mrs. Marshall Campbell of Fort Worth. Also Dean Ashmore of Colorado Springs was a Saturday guest before going to Brady to visit his sister and family, Mrs. Kathrine Kennedy. Mr. Ashmore and Mr. Cheatham were members of the 1930 Santa Anna High School class and attended the Homecoming. R. J. Deal visited the group Sunday morning. A brother, Joe Box of Abilene, was the only family member unable to attend.

Mrs. Frankie McCarthy spent the weekend at Lampasas with Mr. and Mrs. Wayne Kendrick and Mark and their guests, Mrs. Ray Caldwell of Austin, Mr. and Mrs. Robert Steward of Huntsville, Mrs. Alice Allen of Newport Beach, Calif. who accompanied Mrs. McCarthy to Santa Anna Monday visiting a few days before going to Huntsville and Dallas visiting relatives.

Weekend visitors with Mr. and Mrs. Tony Rehm and Wade were Mr. and Mrs. Gene Smith, Jeff and Todd of Richardson and Mr. and Mrs. Wayne Esslinger, Kyn-dall and Kurt of Midland. Mrs. Bill Bryan spent Sat-

urday in Brady with Mrs. Arlue Davis.

Jody Brusenhan, a student at A&M, spent the weekend at home. Mr. and Mrs. Bob Brown and Meca of Menard and their guests, Jim and Frank Boni of Austin, were also weekend visitors. Mike Pritchard of Santa Anna, Rhonda Brown of Rising Star and Mrs. R. W. Emerson were Saturday guests. Mrs. Emerson spent Sunday with the Brusenhans.

Last Tuesday Ray Gleaton and Jerry Don Gleaton of Brownwood visited Mrs. Emerson, and Mr. and Mrs. Brusenhan also visited. The Brusenhans visited by telephone Sunday with Mr. and Mrs. Stan Martin in Denver, Colo.

Mr. and Mrs. Charles Sheffield and Montie and Mr. and Mrs. Arlen Allen, Elizabeth and Wesley of Temple spent the weekend with their parents, Mr. and Mrs. Jack Cooper.

Mr. and Mrs. Joe C. Deal and Belinda of Santa Anna and their guest, Johnny E. Deal of Nazareth, Penn. were Saturday supper guests of the R. J. Deals. Mr. and Mrs. Deal were Sunday dinner guests in the Joe Deal home.

Mr. and Mrs. James Hodges of Clyde spent Saturday and Sunday with his parents, Mr. and Mrs. J. P. Hodges.

Mr. and Mrs. Joe Ed Wise, Nathan and Bradley of Lamesa visited Mr. and Mrs. Joe Wise Saturday.

Mrs. Gertie Wise and Mrs. Bobbie Valicek have returned to San Antonio. Mr. and Mrs. Joe Wise honored Mrs. Wise with a birthday anniversary party Wednesday evening. Attending were Mr. and Mrs. Bill Steward, Mr. and Mrs. Howard Pearson, Mrs. Valicek and the honoree and the hosts.

Mrs. C. H. McCarrell was admitted to Ranger Park Hospital Monday afternoon. Mrs. Lon Gray visited in the McCarrell home last Tuesday afternoon.

Cody, Cari, Casi and Cory Cooper visited with their grandmother, Mrs. Elec Cooper Saturday while their parents attended the Santa Anna Homecoming. Mr. and Mrs. Denny Densman of Brady

## Eastern Star Has Meeting Monday Night

The Santa Anna Eastern Star chapter met Monday night at the Masonic Hall with Billie and Montie Guthrie, worthy matron and patron, leading the meeting.

Reports were given on the meals served for the class reunions at homecoming. The group discussed the Christmas banquet.

Reports were given members who are ill, and Rose Bass, chairman of the Community Service Committee, reported on 3,124½ hours turned into the Grand Chapter.

R. W. Balke and Rose Bass led the study hour.

Refreshments of sandwiches, cookies, chips, punch and coffee were served by Eula McCary and Ann Stiles.

The next meeting will be hosted by Viola Morris and Billie Guthrie.

## Cub Scout News

By Rhett Guthrie

The Cub Scouts met at the Civic Center Thursday, October 9, 1980. We learned a game with paper plates. We went outside to see who could toss them the farthest.

We made number plates for our bikes in the Homecoming parade, and we talked about the parade.

Mrs. Ann Kleman served punch and cookies to the group.

### HERE FOR WEEKEND

Mr. and Mrs. John Porter and Diana of Round Rock were weekend visitors of her parents, Mr. and Mrs. Tom Kingsbery. They attended the reunion of the Class of 1970 and were here for the anniversary at First Baptist Church.

REMEMBER THE ALAMO!

# Congratulations

## Allsup's Convenience Store

### Is Now Under The New Management of

# PATRICIA PANNELL



Patricia Pannell

Best Wishes from her friends and relatives on her new position.

Like a good neighbor, State Farm is there.

"Many homeowners come to State Farm for our rates. They stay for our service." CALL ME.

**JIM McANALLY**  
Phone 625-4343  
117 West St., Coleman

State Farm Fire and Casualty Company  
Home Office: Bloomington, Illinois

## Loyd & Bertoni Associates

Santa Anna, Texas

### Building Contractors

All Phases Building Construction

CARPENTRY • PLUMBING • ELECTRICAL  
CONCRETE WORK • PAINTING • ROOFING

RESIDENTIAL - COMMERCIAL

New or Remodeling Free Estimates

### All Work Guaranteed

Terry Loyd 625-4308 Coleman

Joe or Lee Bertoni 348-3635, 348-3528 Santa Anna



# Whon News



By Mrs. Tom Rutherford

Douglas Avants of Brady came to spend the day with his mother, Mrs. Pearl Avants of Santa Anna, last Friday. They spent a portion of the day on the Avants farm in our community and also did some work on the family grave in the cemetery.

Norman Floyd Morris and son Ronnie of Brownwood were guests of Mr. and Mrs. Floyd Morris Saturday.

Mrs. Nicky Poldrack of Coleman was a dinner guest of her parents, Mr. and Mrs. Bean Radle in Santa Anna on Saturday.

Mr. and Mrs. Rick Wheeler and girls, Christi and Erica of LaGrange came Friday night and were with her parents, Mr. and Mrs. Tom Rutherford, until Sunday afternoon. Mr. and Mrs. Wheeler attended her class reunion in Santa Anna Saturday afternoon.

Mr. and Mrs. Floyd Morris were guests of Mr. and Mrs. H. C. Jernigan and Mr. and Mrs. George Rodden and boys at Lake Buchanan on Sunday.

Mrs. Pearl Avants, Mrs. Fannie Alsup and Mrs. Bean Radle of Santa Anna have heard from their sister, Mrs. Stella Smith of Rotan, who has been able to return to the rest home after a stay in Fisher County Hospital.

Mr. and Mrs. Don Fitzpatrick and Brandon of Crandall and Mr. and Mrs. Neil Fitzpatrick and Josylin of Blackwell were Saturday guests of their parents, Mr. and Mrs. Graham Fitzpatrick. The boys were here again Sunday with their parents.

Mrs. Floyd Morris visited Saturday morning with Mr. and Mrs. Walter Stacy of Trickham and their daughter of San Antonio who was visiting her parents and attending the Santa Anna Homecoming.

Mrs. Floyd Morris was in Santa Anna Thursday morning and enjoyed a nice visit with Mrs. Joe C. Barnes at the Chamber of Commerce office.

Mr. and Mrs. Buster Wynn of Coleman and their son, Joe Alvin Wynn of Fort Worth, visited during the weekend with Mr. and Mrs. Bean Radle, Mrs. Pearl Avants and Mrs. Fannie Alsup in Santa Anna. Douglas Avants of Brady also visited the Radles Friday.

Mrs. Floyd Morris was shopping in Brownwood Monday morning. Ricky James and a friend of Zephyr visited with Mrs. Morris

Saturday morning.

Mr. and Mrs. Bean Radle were Sunday dinner guests with their daughter, Mr. and Mrs. Nicky Poldrack in Coleman. The ladies visited with Mrs. Hettie Turney at Holiday Hill rest home and found her feeling reasonably well.

Mrs. Leonard Matassa of Dallas was on the Turney farm here over the weekend and visited her mother, Mrs. Hettie Turney, at Holiday Hill while here.

Mr. and Mrs. Bean Radle and Mrs. Pearl Avants were visitors with Mr. and Mrs. James Avants in Coleman Sunday afternoon. Our deepest sympathy to Mrs. James Avants over the death of her mother Friday in a Goldthwaite hospital.

Mr. and Mrs. Hilary Rutherford and Rocky, Patricia McDorman and son Reese and Mr. and Mrs. Bobby Boatright of Coleman were Sunday dinner guests of Mr. and Mrs. Tom Rutherford and the Rick Wheeler family. Deborah Smith of Texas Tech University at Lubbock and Barry Smith of Abilene were guests of their grandparents, the Tom Rutherfords and guests, Saturday.

Mr. and Mrs. Bob Smith, parents of Deborah and Barry attended the homecoming at Bryson Saturday.

Mr. and Mrs. Neil Fitzpatrick and baby in Blackwell and assisted with some helpful duties Tuesday.

Mrs. Graham Fitzpatrick spent Monday night with her son, Mr. and Mrs. Neil Fitzpatrick and baby in Blackwell and assisted with some helpful duties Tuesday.

Mrs. Leonard Matassa of Dallas was on the Turney farm here over the weekend and visited her mother, Mrs. Hettie Turney, at Holiday Hill while here.

Mr. and Mrs. Hilary Rutherford and Rocky, Patricia McDorman and son Reese and Mr. and Mrs. Bobby Boatright of Coleman were Sunday dinner guests of Mr. and Mrs. Tom Rutherford and the Rick Wheeler family. Deborah Smith of Texas Tech University at Lubbock and Barry Smith of Abilene were guests of their grandparents, the Tom Rutherfords and guests, Saturday.

Mr. and Mrs. Bob Smith, parents of Deborah and Barry attended the homecoming at Bryson Saturday.

### ATTEND WEEKEND EVENTS

Mr. and Mrs. Jack Kingsbery of Crystal City were in Santa Anna last weekend to attend the Homecoming activities and the anniversary celebration at the First Baptist Church. They were guests in the home of her parents, Mr. and Ms. C. D. Bruce.

## Medicare Available To People With Kidney Failure

Medicare health insurance, including both hospital and medical insurance, is available to people in the Brownwood area who have permanent kidney failure and need regular kidney dialysis treatments or a kidney transplant, Priscilla Tercero social security branch manager in Brownwood said recently.

A person, regardless of his or her age, who needs dialysis or a transplant because of permanent kidney failure is eligible for Medicare if he or she worked long enough to be insured under social security, already gets social security benefits or is the husband, wife, or dependent child of someone insured or getting social security benefits.

Only the person who has permanent kidney failure is eligible for Medicare.

Medicare coverage for an eligible person generally begins on the first day of the third month after the month the person starts receiving maintenance dialysis treatments.

Medicare coverage can begin in the first month of a course of dialysis if the person takes part in a self-dialysis training program in an approved facility before the third month of dialysis and the person expects to complete training and self-dialyze afterwards.

Coverage can also begin the month the person is admitted to an approved hospital for a kidney transplant or preliminary procedures for a transplant if the transplant takes place that month or within the next 2 months.

Medicare coverage generally ends 12 months after the

month a person no longer needs maintenance dialysis or 36 months following a kidney transplant.

Almost all social security matters can be handled by phone. For general information or to report a change, call toll free 800-392-1603. Medicare questions or filing of medicare claims can be taken care of by calling toll free 800-442-2620. If you wish

to file an application to establish your eligibility you may call collect 915/646-7533 in Brownwood.

A representative of the Brownwood office visits Santa Anna once a month on the second Thursday. The representative can be found at the Mountain City Center from 1:00 - 2:30 p.m.

\*\*\*\*\*  
**REMEMBER**  
**THE**  
**ALAMO!**  
 \*\*\*\*\*

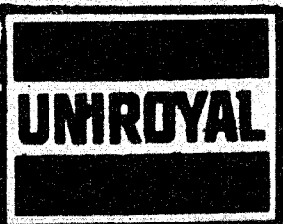
## PUBLIC NOTICE

In compliance with Sec. 43(a) of Art. 1446c, V.A.C.S., West Texas Utilities Company hereby publishes NOTICE that it has filed, on September 30, 1980, its statement of intent to make changes in its rates charged for electricity and services sold and rendered inside and outside municipal jurisdictions, such proposed changes to be effective November 4, 1980. Such Statement of Intent includes the proposed revisions of tariffs and schedules and a statement specifying in detail each proposed change, the effect the proposed change is expected to have on the revenues of the Company and the classes and numbers of utility customers affected. Gross revenues are expected to be increased 8.27 per cent by the new rates. Statements of intent were filed with the Public Utility Commission of Texas and with the following municipalities:

Abilene	Haskell	Quitaque
Albany	Hawley	Rankin
Alpine	Hedley	Rising Star
Anson	Impact	Roaring Springs
Aspermont	Iraan	Robert Lee
Baird	Jayton	Roby
Balmorhea	Juncton	Rochester
Ballinger	Knox City	Rotan
Benjamin	Lakeview	Rule
Big Lake	Lawn	San Angelo
Blackwell	Lueders	Santa Anna
Bronte	Marfa	Shamrock
Buffalo Gap	Matador	Sonora
Childress	McCamey	Spur
Chillicothe	Melvin	Stamford
Cisco	Memphis	Sterling City
Clarendon	Menard	Talpa
Clyde	Merkel	Throckmorton
Cross Plains	Mertzon	Trent
Crowell	Miles	Turkey
Dickens	Moran	Tuscola
Dodson	Munday	Tye
Eden	O'Brien	Valentine
Eldorado	Paducah	Weinert
Estelline	Paint Rock	Wellington
Goree	Putnam	Winters
Hamlin	Quanah	Woodson

Areas affected by the filing with the Public Utility Commission of Texas are in the following counties:

Baylor	Fisher	Nolan
Brewster	Foard	Pecos
Briscoe	Gillispie	Presidio
Brown	Hall	Reagan
Callahan	Hardeman	Reeves
Childress	Haskell	Runnels
Coke	Irion	Schleicher
Coleman	Jeff Davis	Shackelford
Collingsworth	Jones	Stephens
Concho	Kent	Sterling
Cottle	Kimble	Stonewall
Crane	King	Sutton
Crockett	Knox	Taylor
Dickens	Mason	Throckmorton
Donley	McCulloch	Tom Green
Eastland	Menard	Upton
Edwards	Motley	Wheeler
		Wilbarger



Home of  
the Tiger Paw

## Williams Tire Store

2003 Commercial  
Coleman, Texas  
Phone 625-5152

Listen To

# The Hour Of Prophecy

6:15 to 6:30 a.m.

and

# Focus On Faith

from 11:55 to 12:00

**Monday - Friday**

Over

# KSTA AM & FM

Coleman



## Homemakers Club To Organize In S-Anna

There will be an organizational meeting for an Extension Homemaker Club on October 24, 1980, from 10:00 to 11:30 a.m. at the Mountain City Community Center in Santa Anna.

What is an Extension Homemakers' Group? It is a group of people who meet on a regular basis to receive up-to-date information about home and family life. Some groups are small, other are quite large.

Who may join? Anyone who wishes may join. It is a nondiscriminatory group. Meeting places may restrict the size of a group. When the group becomes too large for the meeting place, another group should be formed.

When do they meet? Any time the group likes..morning, afternoon, or evening.

How often do groups meet? Some groups meet monthly during nine months of the year. Others have seven or eight meetings. Most do not meet during the summer, except for recreation.

Where to meet? In homes, churches, schools, town halls, or community rooms.

Are officers needed? Some groups are quite formal: other are not. Many groups have the following officers: president, vice-president, secretary, treasurer, and council members.

How much does it cost? Local groups may have small dues to cover operating expenses. There is no set amount.

How do groups receive lessons? Leader training lessons provide Extension Home-economists and other qualified persons present this information to leaders. The groups select one or two members to receive this special training with the understanding that they present the information to their local group.

What is the County Extension Homemakers' Council?

The County Council is made up of one or two representatives from local groups and communities. It assists and supports the local groups by helping to plan the year's program, including leader training sessions and special workshops. It also may sponsor community service activities and special events.

Anyone in the Santa Anna area who would be interested in joining an Extension Homemaker Club can obtain further information by calling the Extension Office 625-4519 or Ludy Bryan 348-3260 in Santa Anna.

### VISIT IN SANTA ANNA

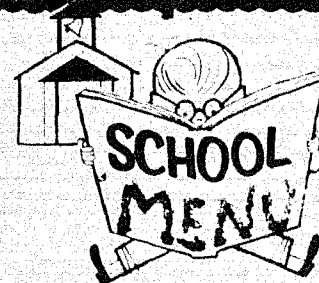
Dr. and Mrs. Jimmy Barnes of San Antonio, Quincy Barnes of The University of Texas at Austin and Mrs. Terry Sanders of Dallas were weekend visitors of their parents, Mr. and Mrs. Ford Barnes, also visiting with Mr. and Mrs. Joe C. Barnes and Mr. and Mrs. Billy Barnes.

### HERE FOR WEEKEND

John Bob Sparkman of Mineral Wells was a weekend visitor in Santa Anna and attended the Homecoming and First Baptist Church anniversary. He visited his brothers, Mr. and Mrs. J. L. Sparkman and Mr. and Mrs. Wendwil Sparkman.

"Nature is stronger than rearing." Irish Proverb

## Santa Anna



MONDAY— OCTOBER 20 - FRIDAY— OCTOBER 24:

MONDAY— Burritos with chili and cheese, tossed salad, corn, chocolate cake and milk  
TUESDAY— Pinto beans, ravioli, French fries, cornbread, raisins and milk  
WEDNESDAY— Turkey and noodle casserole, blackeyed peas, rolls, pineapple cake and milk  
THURSDAY— Western burger, salad, sweet peas, jello cup and milk  
FRIDAY— Ham and cheese sandwich, tomato and lettuce, tator tots, peanut butter cookies and milk

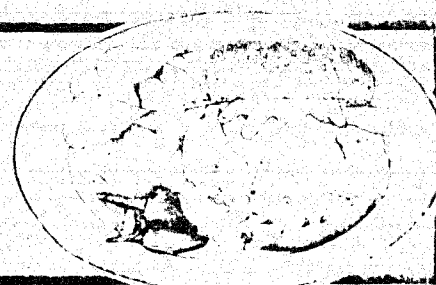
# FOOD SPECIALS

ALLSUP'S DELICIOUS

**BAR-B-QUE SANDWICH**

BUY ONE  
GET ONE

**FREE!**



BORDEN'S  
**NUTTY BUDDIES** ..... 6 CT. PKG.

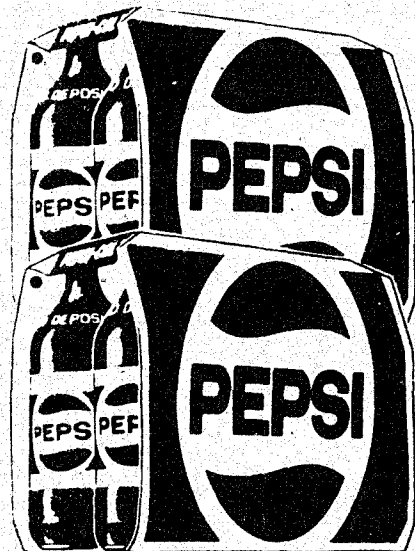
**99¢**  
**\$1.09**

BORDEN'S ICE CREAM  
**SANDWICHES** ..... 6 CT. PKG.

**99¢**  
**69¢**

BORDEN'S  
**BUTTERMILK** ..... 1/2 GAL. CTN.

BORDEN'S  
**CHOCOLATE MILK** ..... 1 QT.



16 OZ. NON-RETURNABLE BOTTLE

# PEPSI-COLA

**\$1.99**

6 PACK

FOLGER'S FLANKED

**COFFEE** ..... 13 OZ. CAN

**\$2.69**

GIANT SIZE

**TIDE** ..... BOX

**\$1.89**

**COCA-COLA** ..... EACH

**49¢**

Cigarettes all brands

**6<sup>00</sup> Carton**

**Downy 64 oz**

**1.99**

**Charcoal Briquets 10 lb, Bag**

**99¢**

**Prestone Anti Freeze 1 gal.**

**3.99**

**Armor Vienna Sausage**

**53¢**

**Kraft Grape Jelly 32 oz**

**73¢**

**Cracker Jack 6 oz.**

**99¢**

WE RESERVE THE  
RIGHT TO LIMIT

SPECIALS GOOD  
WHILE SUPPLY LAST  
LIMITED SUPPLY



PRICES EFFECTIVE  
OCTOBER 16-18, 1980

SAVE MORE BY  
SHOPPING WITH US!



Florida's name comes from the Spanish meaning "feast of flowers."

**REMEMBER  
THE  
ALAMO!**



# Advertise the Action Way! The Want Ad Way!

## For Sale

**FOR SALE**— Almost new cornet. Played three months. Also good used clarinet. Both reasonable. Call 348-3301 or 785-4451. 38-tfc

**FOR SALE**— 1972 Ford. \$850.00. See at J. D. Steffey Garage, Colorado St., Coleman. Phone 625-2721. 42-2tp

## Real Estate

**FOR SALE**— Large four bedroom house, 1307 Wallis Ave. \$10,950. Ross Kelley Real Estate. Phone 348-3486. 33-tfc

## Miscellaneous

**FOOTBALL FANS**— Don't go through another football season without a Game Bag. It's a cushion -- it's a snug bug -- it's great. See it at the New Frontier in Coleman. Your Radio Shack Dealer, 213 W. Pecan, in Coleman. 37-tfc

**REDUCE SAFE & FAST** with GoBese Tablets & E-Vap "water pills." Phillips Drug. 39-4tp

**RELEIVE DRY, chapped, flaky skin** with GoBese Vitamin E Cream. Phillips Drug. 39-4tp

## For Sale

**8 TRACK TAPES** now available. Top recording artists. \$2.98 each. Western Auto, 348-3771. 40-tfc

**FOR SALE**— Rebuilt used tvs. Color and Black and White. Cash. Coleman TV Service, 203 Commercial, Coleman, 625-3020. 35-tfc.

**FOR SALE**— Used refrigerator in good condition. WESTERN AUTO, 348-3771. 42-tfc

**FAMILY DAYS SALE**— Fri., Oct. 17 - Saturday, Oct. 25. Watch for your circular in the mail. WESTERN AUTO in Santa Anna 42-2tc

**FOR SALE**— 18-foot Travel Trailer. Self-contained, sleeps 6. Refrigerated air. \$1,500. Come by Apt. 37, South Santa Fe or call 348-9132, Santa Anna, Texas. 42-1tp

**A FINE CHRISTMAS GIFT**— The Good Methodist Cookbooks. A limited supply still available for \$5 each. Contact Modora Gilmore, 348-3161. 41-2tc

**SADDLE BLANKET DESIGN** seat covers with gun scabbards for all vehicles. Great gift item. Western Auto in Santa Anna. 40-tfc

## Garage Sale

**SIX FAMILY GARAGE SALE**— Friday - Saturday, Oct. 17 - 18. 305 South 2nd, north of Baptist Church in Bangs. 12 x 15' carpet with pad, drapes, curtains, rugs, aquarium, bedspreads, children's and adult's clothes, sewing machine, 3 1/2' x 6' wooden dining room table with chairs, and many more items. No sales before 9 a.m. 42-nc

**GARAGE SALE**— Sunday, October 19. Beautiful wedding dress and matching set wedding rings for bride and groom, nice winter coats for women, boys Wranglers, children's and women's clothes. Come by and see all the extras. 403 Bowie Ave. 348-3228. 42-1tp

## Services

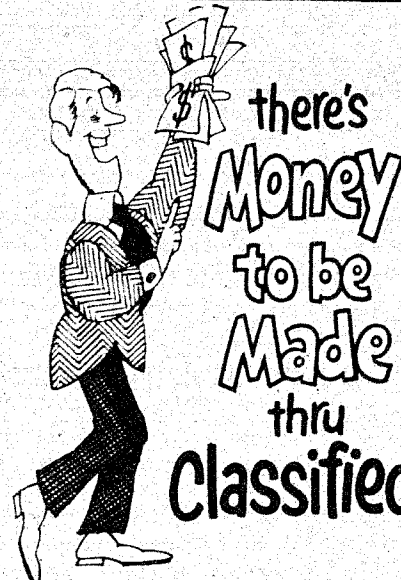
**BUY, SELL OR TRADE**— New and used furniture. Travis Trading Post, 402 N. Colorado, Coleman, Texas. 25-tfc

## Employment

**CITY OF SANTA ANNA** is taking applications for Sanitation Dept. employee. Apply at City Hall 8 a.m. - 5 p.m. weekdays. 42-2tc

## New Subs

Ruth Dodson, Coleman  
Gene McSwane  
Selma Russell, Baltimore, Md.  
Ercell Ellis, Bangs  
Mountain Reading Service, Provo, Utah  
Ronnie McCarrell  
Gene Robbins  
Roy Buse  
Leroy Pollock, Austin  
Ralph Gregg, Marble Falls  
Robert Haynes, Brownwood  
Allene Allen, Ballinger  
William Ragsdale, Dallas  
Lynn Wright, Fluvanna



**REMEMBER THE ALAMO!**

## News From Ranger Park Hospital

The following patients were admitted to Ranger Park Hospital October 6 - 13:

Bessie Thomas, Ranger Park Inn  
Houston Rutledge Jr., Brownwood  
Margaret Beckham, Ranger Park Inn  
C. A. Curry, Ranger Park Inn  
Nola Morgan, city  
Charlie Hall, city  
Bobby Keeney, Coleman  
O. J. Allred, Brownwood  
Michael Alvey, Coleman  
Clarence Clay, city  
Edna Estes, Bovina  
Homer Boyd, Ranger Park Inn

These patients were dismissed from the hospital October 6 - 13:

Lura Martin, Bangs  
Violet Gabyrsh, Bangs  
Jim Watson, city  
Houston Rutledge Jr., Brownwood  
Nola Morgan, city  
Charlie Hall, city  
Judy Jackson, city  
Michael Alvey, Coleman  
Another patient still in the hospital October 13:  
Annie Barrington, Ranger Park Inn

**OPPORTUNITY  
RIGHT IN THE  
PALM OF  
YOUR  
HAND**

**BUY • SELL • RENT • HIRE  
WITH**

**WANT ADS**

**The Santa Anna News**

## IRA PUMP & SUPPLY CO.

General Oilfield Supplies

Santa Anna, Texas  
Box 580 - Ph. 348-3179  
Box 21, Ira, Texas  
Bus. 915-573-6403

Dr. E. H. Henning, Jr.

**OPTOMETRIST**



117 Commercial

Coleman

Ph. 625-2228

OFFICE HOURS  
9:00 a.m. to 5:00 p.m.

## Reed Memorial Co. Limited

Monuments of Distinction

Fort Worth Highway  
Brownwood, Texas  
Box 265 Phone 646-7625

Sylvia Herring  
Local Representative



# H & H FOOD MART

Downtown Santa Anna



AROUND THE WORLD IN '80

State Fair of Texas

\*\*\*\*\* OCTOBER 5-19 \*\*\*\*\*

STATE FAIR OF TEXAS  
DISCOUNT TICKETS  
\$1.79  
(ADULTS ADULT OR CHILD)  
REG. ADMISSION \$1.00  
YOU SAVE \$1.21  
WITH EACH \$5.00 PURCHASE EXCL. CIGARETTES

Hefty Super  
Trash Bags

15 ct. **269**

ROUND SWEET RELISH... 12 OZ. JAR **69¢**

CLOREX BLEACH... 64 OZ. SIZE **69¢**

MRS. SMITH'S  
APPLE PIE... 26 OZ. SIZE **1.29**

FISHER BOY  
FISH STICKS... 8 OZ. PKG. **53¢**

Du Pont Silverstone Cookware  
BY CHEF MATE

This Week's SilverStone Feature Piece  
1 Qt. Covered Saucepan

**\$5.99**  
only

with each and every \$10 purchase all week

Tom's  
Chips  
69¢ size  
**2/1.00**

EGGS  
Large  
**65¢**

Booth  
Breaded  
Shrimp

**249**  
10 oz

GREEN GIANT WHOLE  
MUSHROOMS... 2 1/2 OZ. SIZE **55¢**

HUNT'S  
TOMATO SAUCE... 4 8 OZ. CANS **1.10**

PUSS 'N BOOTS RESTD.  
CAT FOOD... 3 15 OZ. CANS **89¢**

PIONEER REG./BUTTERMILK  
BISCUIT MIX... 2 LB. PKG. **1.29**

## BEEF SPECIALS

Arm  
Roast **2.09** lb

Chuck Cut  
ROAST **1.49** lb

7-Bone Cut  
ROAST **1.89** lb

GROUND BEEF **1.59** lb

Gooch German 12 oz pkg.  
SAUSAGE **1.49**

Sizzlean 12 oz pkg.  
BACON **1.39**

CHILI MEAT **1.89** lb

Kraft American  
CHEESE **2.09** lb

## PRODUCE SPECIALS

GREEN BEANS **59¢** lb

X Fancy Red  
APPLES **49¢** lb

Green  
CABBAGE **15¢** lb

POTATOES **99¢**  
5 lb Bag

CRANBERRIES **69¢**  
12 oz

Honey Dew  
MELLONS **99¢**  
Each

## FRESH PUMPKINS

DETERGENT  
**CHEER**

49 OZ. BOX **1.39**  
LIMIT 1 PER FAMILY  
WITH \$10.00 MINIMUM  
PURCHASE  
[Excluding tobacco]

DELL MONTE CUT  
GREEN BEANS... 16 OZ. CAN **39¢**

RESTD. FLAVORS  
BAMA DRINKS... 5 10 OZ. BTL. **1.10**

WE GLADLY  
ACCEPT  
★ FOOD ★  
STAMPS

Prices Good Oct. 16th-17th-18th

**AFFILIATED**

Specials Good While Supply Lasts  
Free Delivery-10.00 Minimum

QUANTITY  
RIGHTS  
RESERVED