

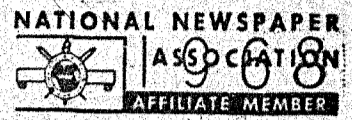
Microfilm Center Inc.  
P.O. Box 45436  
Dallas Texas 75235



# Merry Christmas



## Santa Anna News



Phone 348-3545

"He Profits Most Who Serves Best"

Single Copy—10c

VOLUME LXXXII

SANTA ANNA, COLEMAN COUNTY, TEXAS, DECEMBER 26, 1968

NUMBER 52

### Santa Anna Greet Joyful Christmas Season



Throughout Santa Anna, the Christmas spirit finds expression, as once again, people are proving that this happiest of holidays is a time of tradition. A modern Christmas, just like a good old-fashioned Christmas, calls for gatherings of family and friends, with much merriment, fun and feasting. Gifts and Santa Claus express the mood of the season, especially for the youngsters. Trees and other decorations, music and song, light and laughter set the scene. As a Christian holy day, celebrated in church services and private devotions, Christmas glows with the spirit of good will, and "peace and good will" is the wish and prayer, for all mankind.

All of these traditions of Christmas are wrapped up in one. The true spirit of Christmas is most happily expressed in the exchange of greetings. "Have a Merry Christmas." That says it all — the heartfelt hope for good things for others, the good feeling that prevails, the happiness of the season rising above problems and crises, the wish to give and to share all the holiday joys and blessings.

As a special custom that symbolizes the spirit of Christmas, the exchange of greetings takes many forms. "Merry Christmas" is said person-to-person, with smiles of gladness, wherever friends & family meet. "Merry Christmas" is the message of millions of greetings cards which travel across the miles. And "Merry Christmas" is the theme of today's edition of the Santa Anna News, in which businessmen offer their special greetings and good wishes, their words of appreciation to patrons and friends.

villagers of Greccio in singing hymns of praise to the Christ Child when in the 13th century he created a manger scene in this Italian town.

#### Tracing Santa

Santa's source legend says goes back to the fourth century when St. Nicholas, a bishop of Asia Minor, was noted for his generosity and gift-giving.

In some countries, St. Nicholas still retains his role as gift-bearer. His day is, traditionally, December 6th, and European children await him on St. Nicholas Eve, December 5th.

A gray horse and a white donkey have each been credited with the honor of transporting him on his gift-giving journeys.

#### Giving Gifts

Like greetings, gifts are synonymous with Christmas, as part of a custom that probably has its beginning in the Wise Men's presentation of gold, frankincense and myrrh to the Christ Child.

Some researchers trace the gift-giving tradition to even earlier, pre-Christian times. During pagan holidays observed at about the same time as the modern Christmas, ancient Romans and Britons exchanged gifts in token of the season.

#### Lighting The Way

Light and Christmas go together, for the deepest meaning of the holiday represents Christ, the Light of the world. From the bonfires and candles of yesteryear ornaments of today, light symbolizes Christmas.

According to Irish legend, a candle should always be placed in the window on Christmas Eve. Each Christmas, it was said, Christ wanders the earth in search of a welcome, and a candle should light the way.

### Donald Makuta Receives Medal

S-4 Donald W. Makuta, the son of Mrs. T. Morris, has recently been awarded the Army Commendation medal for distinguishing himself by exceptionally meritorious achievement in ground operations in Viet Nam. The award stated he had performed in a highly professional and efficient manner, accomplishing his assigned mission with exceptional results. His initiative, sound judgment, and loyalty reflect credit upon himself, his unit, and the United States Army. The award was given for his service from March until the end of August this year.

### Spacemobile Will Not Be Here As Planned

Supt. Cullen Perry received word recently that the NASA Spacemobile will not be available to come to Santa Anna next month as was scheduled. The Spacemobile was to be here for a day with exhibits and programs for students of all ages. Supt. Perry stated that the special exhibit will be rescheduled for later in the year, if possible.



### Mountain Echoes

By Barbara Kingsbery

Rev. and Mrs. Vernon Parnell have made Spanish luminaries to decorate their yard and drive-way at their home at the corner of Ave. D and South 2nd Street. The luminaries are used extensively in far west Texas but are quite a novelty here. The Parnells will have them lighted Christmas eve night and Christmas night and local people may wish to drive by and see the traditional Spanish decoration.

Dr. Charles Henner returned home from Viet Nam recently and thoughtfully brought gifts to many of his friends and neighbors. The hand-painted pictures on the pure silk fabric are of typical Vietnamese scenes, and each painting bears the signature of the artist.

### Funeral Services Held Thurs. For Jack Amarine

Funeral services were held last Thursday afternoon at the Hosh Funeral Chapel for Jack Amarine, aged 68, who died suddenly at his home Tuesday.

Mr. Amarine was born on June 22, 1900 in Mason County. He married Vera Wanda Telens in Brady on November 10, 1922. He was a farmer and rancher and a Baptist. Survivors are the wife of Trickham Route, Santa Anna, one daughter, Mrs. Darlene Shamblyn of Abilene; 5 sisters, Mrs. C. E. Frost of Waltrip, Mrs. Fred Dobbs of Mason, Mrs. Sam Watson of Artesia, N. M., Mrs. A. A. Heath of Lamesa, and Mrs. W. D. Jones of Arnold, Calif. Also surviving are three grandchildren and four great grandchildren.

Burial was in the Santa Anna Cemetery.

### Service Time Change At First Baptist Church

The regular mid-week service at the First Baptist Church will not be held this week since Wednesday is Christmas day. The other activities and schedules at the church will remain the same.

### Mrs. Montie Guthrie Conducts Business Session

Santa Anna Delta Omicron Chapter of Epsilon Alpha met at the City Library Wednesday, December 11. Mrs. Montie Guthrie conducted the business session.

Mrs. Harold Gouge reported that 80 Thanksgiving Turkey plate favors were made and distributed to the hospital patients and those residing at the Ranger Park Inn.

A thank you note was received from Pfc James L. Wells who received one of the six boxes mailed to area service men in Vietnam. PFC Wells also included a colored picture of the dwellings in Vietnam.

Pallas Athehe Awards presented to Sue Riley, Betty Martin, Imogene Fitzpatrick, Sammie McCreary, Gayle Stewardson, Gale Allen, Sylvia Herring and Carolyn Pricitorum last Thursday night. Upon arriving, class members were served sandwiches, cookies, and candy from a long table covered with a blue felt cloth trimmed in silver. An arrangement of pink, blue and silver centered the table. A silver punch fountain was on a small table also covered in blue felt.

### 7th and 8th Grade Entertained With Christmas Party

The 7th and 8th grade classes of Santa Anna Junior High School were entertained with a Christmas party at the elementary school cafeteria last Thursday night.

Games of bingo and "name that tune" were played and gifts were exchanged. Sponsors of the two classes present were Principal J. A. Harris, Dwight Hudson, and Mrs. Ruth Dodson. About 85 students and parents attended.

A check will be donated to the Santa Anna Fire Department for their annual Christmas cheer baskets.

Members had a Christmas party at the Ranger Park Inn Monday, December 16 at 5:30 p. m. There was the annual stringing of cranberries and popcorn for tree decorations after which refreshments and Christmas carol singing was enjoyed.

Mrs. Felton Martin presented the program on the United State Constitution.

### 16 Years Ago In The News

Burgess Stewardson, FFA member entered three steers in the Houston Stock Show in 1952. One of his entries was chosen Grand Champion steer at the Santa Anna Livestock Show.

Pfc Leo T. Shields, the son of Mr. and Mrs. Fred Shields was serving in the army in Korea.

Earl Hardy was seeking reelection as Commissioner of Precinct 2, in 1952. Another seeking reelection was W. E. "Bill" Burney, County Treasurer.

Miss Joyce Rowe and Billy Joe Scott were married in the home of Rev. and Mrs. Carroll Thompson on December 19, 1951. Following the wedding trip Cpl. Scott returned to Ft. Jackson, S. C. Mrs. Scott continued working at the Santa Anna National Bank.

Coach Dow McBride announced the 18 boys who received football letter jackets. They included Dean Bass, Alton Bengt, Teddy Clifton, Aubrey Goodwin, Bill Jack Harris, Roy Henderson, Billy McClellan, Charles McClellan, Royce McIver, Gary Patterson, Melvin Pollock, Jimmy Priest, Jimmy Region, Billy Ray Robbins, Jimmy Robinson, Charles Scarborough, Jay Steward, and Mack Baucum, manager. Teams in the UIL Conference District with Santa Anna were Bangs, Dublin, Cross Plains, Wylie, Eastland, Rising Star, and De Leon.

Charles Nolan Perry was born January 18, 1952 to the High School Principal and Mrs. Cullen Perry.

Donna Fay Moore was born January 8 1952 at the Brooke Army Hospital in San Antonio to Sgt. and Mrs. D. H. Moore Jr.

The Rockwood Elementary School Honor Roll was announced by M. B. Williams, principal. Included on the honor list were: First grade: Carolyn Williams, Mickey Steward and Kay Davis.

Second grade: Betty Straghan and Louise Cooper.

Third grade: LaQuinn Cooper, Peggy McIntire, Mary Rehm, and Barbara Collins.

Fourth grade: Dixie Deal, Vita Rehm, Don Hunter, and Billy McIntire.

Sixth grade: Patricia Bryan and Belva Dene Heilman.

### High School Basketball

The Santa Anna High School girls basketball team came from behind in their game Tuesday night to defeat Rising Star 58-54. The Santa Anna girls were ahead in the first quarter but were out-scored during the second and third periods and were behind 13 points. During the last period of play the local girls scored on field goals and free shots to win by four points. Vicki Jo Neff was high-point with 33, Frankie Bray scored 16, and Gay Rutherford, 9. Also playing in the game were guards Willie Lee Terrell, Sue Kingsbery and Melinda Dean.

The Santa Anna boys were defeated by the Rising Star boys 52-29. High scorers in the game were not available.

It has long been the custom for local children to send their letters to Santa Claus care the NEWS. Although we did not ask for letters to be published this year, we received two. We hope Johnnie and Angie know we forwarded their letters right on to Santa at the North Pole.

A cute young bride was complaining last week because all of her grocery money has been spent with very few purchases actually being food. According to Wanda Meyer, extension home management specialist at A & M University, 20 cents of each dollar spent at the grocery store is for laundry soap, paper towels, sox, encyclopedias, potted plants, etc. About 90 per cent of all sales of cat and dog food go over the super-market checkout counter, along with about half of the hair spray, aspirin and toothpaste.

According to the home management specialist, food is actually a bargain—it's the "incidentals" that play havoc with the grocery budget.

The nicest things do happen! Helen Turner Stepp brought sliced cake, whipped cream topping and hot coffee to the NEWS office last Thursday for Johnny, D'Linda Grady Steen and myself. It was her "thank-you" for the mention in this column. We recommend Helen's coffee and cake both.

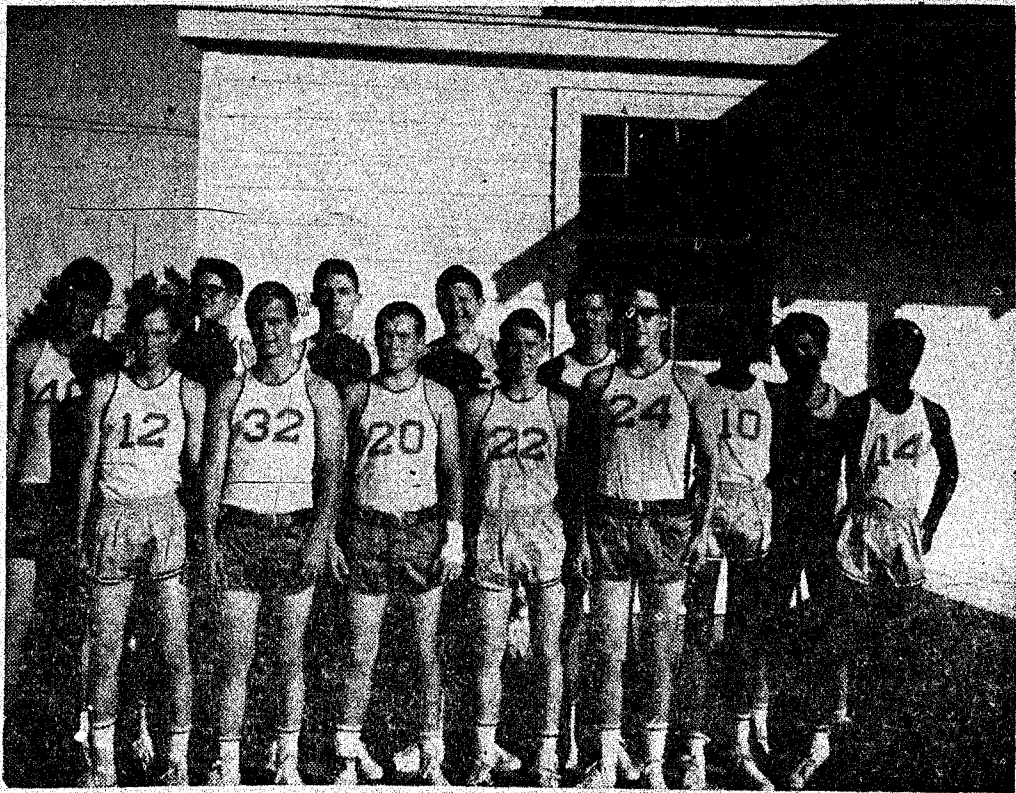
Many people will have visitors or make out-of-town trips during the holidays and we would like to have these personal items for the paper next week. Be sure to call NEWS office next week before Wednesday, or you may call me at my home. We hope each of you have a joyous holiday season.

# SANTA ANNA MOUNTAINEER

ATTEND  
EVERY  
GAME

## BASKETBALL

SUPPORT  
OUR  
TEAMS



1968 - 69 BOYS BASKETBALL TEAM



1968 - 69 GIRLS BASKETBALL TEAM

### Mountaineer Schedule

Boys and Girls

- NOV. 26 — ZEYHYR ..... HERE
- DEC. 3 — RISING STAR ..... THERE
- DEC. 10 — TALPA ..... THERE
- Dec. 12-14 — DeLeon Tournament—There
- DEC. 17 — RISING STAR ..... HERE
- DEC. 19-21—Rising Star Tournament—There
- JAN. 2-4 Huckabay Tournament—There
- JAN. 7 — DELEON ..... HERE
- JAN. 10 — TALPA ..... HERE
- JAN. 14 — BANGS\* ..... THERE
- JAN. 17 — ZEPHYR ..... THERE
- JAN. 21 — CROSS PLAINS\* ..... HERE
- JAN. 24 — GOLDTHWAITE\* ..... THERE
- JAN. 28 — EARLY\* ..... HERE
- JAN. 31 — BANGS\* ..... HERE
- FEB. 7 — CROSS PLAINS\* ..... HERE
- FEB. 11 — GOLDTHWAITE\* ..... HERE
- FEB. 14 — EARLY\* ..... THERE

\* Denotes District Games

JANUARY 2-4  
HUCKABAY TOURNAMENT  
THERE

### SUPPORT THESE MOUNTAINEER BASKETBALL TEAM BACKERS

Santa Anna News  
Santa Anna, Texas

Santa Anna National Bank  
Santa Anna, Texas

Burden Mobil Station  
Santa Anna, Texas

West Texas Utilities  
Santa Anna, Texas

Wylie's Flowers  
Santa Anna, Texas

Moore's Mercantile  
Santa Anna, Texas

Santa Anna Medical Center  
Santa Anna, Texas

Steak House & Truck Harbor  
Service Station  
Santa Anna, Texas

Talley Sinclair Station  
Santa Anna, Texas

Santa Anna Texaco  
Santa Anna, Texas

Santa Anna Co-op Gin  
Santa Anna, Texas

Coleman County Telephone Cooperative  
Santa Anna, Texas

Santa Anna Insurance Agency  
Santa Anna, Texas

Joe's Pharmacy  
Santa Anna, Texas

G & E Hardware  
Santa Anna, Texas

Federal Land Bank Association  
Coleman, Texas

Tradewinds Restaurant  
Coleman, Texas

Penneys  
Coleman, Texas

Stevens Hardware & Furniture  
Coleman, Texas

Coleman Steam Laundry  
Coleman, Texas

First Coleman National Bank  
Coleman, Texas

Western Motor Inn & Restaurant  
Coleman, Texas

Estelle's Ladies Shop  
Coleman, Texas

Welch Chevrolet-Cadillac  
Coleman, Texas

Coleman Bank  
Coleman, Texas

Bob Turner's  
Coleman, Texas

Bobby's Beauty Salon  
Santa Anna, Texas

McCrary Premier Service Station  
Santa Anna, Texas

Santa Anna Tile Co.  
Santa Anna, Texas

Sam H. Collier Insurance Agency  
Santa Anna, Texas

E. O. Rider Garage  
Santa Anna, Texas

Stevens Funeral Home  
Coleman, Texas

Goodyear Service Store  
Coleman, Texas

# Art, Too, Shows 'Illumination' To Light Up Christmas Scene

**Illumination.**  
The very word seems to belong to Christmas, the season of light. Like the star that guided the wise men, Christmas illuminates the spirit of man.

In an artistic sense, illumination has another meaning that is also linked to Christmas: the decoration of books and manuscripts with colorful illustrations, initial

letters and borders, "lit" by gold or, occasionally, silver.

Like all the arts the ancient art of illumination was often employed by man in his efforts to capture some portion of the wonder of Christmas, to retell and to picture the story of the Nativity and related events.

"The Annunciation," "The Nativity," "The Adoration of the Magi," "The flight into

Egypt" — these and other scenes from the well-loved Christmas story appear again and again in the hand-lettered, individually-illustrated books known as illuminated manuscripts.

### When It Began

In the early Christian era, the illuminated manuscripts were generally the products of monasteries and cathedral schools. The first examples of illumination appeared, however, centuries before the birth of Christ.

The Egyptian "Books of the Dead," manuscripts intended for tomb burial to serve as guides for the deceased in the afterworld, offer examples of gold-lit vignettes dating back to 1350 B. C.

These "books" written on papyrus scrolls, envisioned afterlife as a continuation of life on earth. People and

animals were pictured, along with decorative lettering showing swirls of gold and sometimes silver.

### To Spread Learning

The coming of Christianity brought a continuing concern with religious subjects as the text for illuminated manuscripts. Monasteries of Egypt and Syria were early dedicated to the creation of art, the development of crafts, the spread of learning.

In the Western world, these aims gained impetus with the founding of the Benedictine monasteries in the sixth century A. D. Artists and craftsmen worked devotedly to preserve sacred texts through their hand-copied, hand-illustrated, elaborately bound vellum manuscripts.

From time to time, secular texts — scientific treatises, for example, were also copied

and illustrated.

**How It Grew**  
Just as the celebration of Christmas gathered together many customs and rituals of earlier holidays, so too the monastery artists drew upon techniques evolved by pre-Christian craftsmen.

Influence of classic Greek and Roman style is evident in the early illuminated manuscripts of the Christian era. This gradually gave way to the decorative, abstract Byzantine style.

With the approach of the Renaissance, more natural, realistic techniques came into use, in illumination as in other forms of art.

### Treasured Today

In the preparation of illuminated manuscripts, a mas-

ter artist often set the style for copyists and assistants to follow, since even the decoration of an initial letter could be a major project.

A single letter might occupy an entire page, and a complete scene or miniature painting might be contained within the boundaries of, for instance, an initial "C" or "D."

Some manuscripts, in fact, represent the work not only of more than one artist but of more than one generation of artists.

Today, illuminated manuscripts are treasures of libraries and museums, and rightly so, for throughout a thousand years of Christian history, the art of illumination brought an extra dimension of beauty to manuscripts that are, in themselves, precious works of art.

**Fast Efficient Service**  
**Joe K. Cervenka**  
**Electric**  
111 Commercial - 625-4212  
Coleman, Texas

Come on over... Join the 'Slim-Set'  
**Lose Pounds...  
Reduce Inches**

Start this slimming plan today! Here is an up-to-the-minute concept to help you shed those extra pounds, get rid of those extra inches without harmful drugs, fad dieting or strenuous exercises. Today is the day to start. One capsule before meals helps control your appetite, supplies important vitamins. It's up to you, a slimmer, more attractive figure. Get **FIGURE-AID Slimming Plan Capsules** at your druggist today. You'll enjoy making the scene... slim.  
**Figure-Aid**

**Cross Pharmacy**  
Coleman, Texas

**DEPENDABLE CREDIT**

For Farmers and Stockmen  
34 Years of Service to Agriculture

**Coleman Production Credit Association**

Offices in  
Coleman, Texas      Brownwood, Texas  
Ph. 625-2181      Ph. 642-2123



**A Christmas Prayer**

May the beautiful meaning of Christmas... living through the ages to inspire men everywhere... continue to live in your own heart and mind. And may your Christmas be filled with joy.

**Penneys**  
ALWAYS FIRST QUALITY  
Coleman, Texas




**NOEL**

May happiness and contentment lead you, as the Star led the Wise Men to the Manger.

Our thanks for your continued good will.

**BOZEMAN ELECTRIC & REFRIGERATION SERVICE**  
Coleman, Texas

In this season of joy,  
we'd like to extend our best wishes.



And thank you,  
customers,  
for your  
loyal  
support.

**Santa Anna News**

|  |  |
|--|--|
| <b>JOHNNY VALENTINE</b><br>Publisher                 | <b>D'LINDA VALENTINE</b><br>Advertising                      |
| <b>GRADY H. STEEN</b><br>Mechanical Superintendent   | <b>BARBARA KINGSBERY</b><br>Editor                           |
| <b>MRS. OSCAR BOENICKE</b><br>Trickham Correspondent | <b>MRS. TOM RUTHERFORD</b><br>Whon Correspondent             |
| <b>MRS. E. S. JONES</b><br>Shield Correspondent      | <b>MRS. LILLIAN HERNDON</b><br>Ranger Park Inn Correspondent |
| <b>MRS. BRUCE HIBBETS</b><br>Cleveland Correspondent |  |

# FAST RESULTS WITH WANT ADS

## For Sale or Trade

**FOR SALE:** Latex interior wall paint, \$2.98 gallon. Matching enamels, \$4.65 a gallon. Outside oil base paint, \$3.98 gallon. Outside Latex, \$4.75 gallon. Winstead's Paint & Paper Store, 107 East Pecan, in Coleman, Texas. 12tfc

**FOR SALE:** Good used TV's and refrigerators, automatic washers, wringer washers, clothes dryers and gas cook stoves. Terms to suit you. Geo. D. Rhone Co., Coleman, Texas.

**FOR Sale:** Ruth Berry Water Pump, plastic and steel pipe. Geo. D. Rhone Co., Coleman, Texas.

**KEEP CARPET** cleaning problems small—use Blue Lustre wall to wall. Rent electric shampooer \$1.00. G. & E. Hardware.

**OPEN FOR BUSINESS:** Will buy used furniture. We buy, sell or trade. 602 S. Houston, 348-3802. W. M. Morgan.

**TITCH** for Athletes Foot. \$1.00 Money back guarantee. Phillips Drug, Santa Anna. tfc

**REDUCE SAFE,** simple and fast with GoBese tablets. Only 98c Phillips Drug. 50-8p

**FOR SALE:** 78½ acres, 6½ miles southwest of Santa Anna. Contact Glen Copeland or call 348-3890. 47-tf

## Miscellaneous

**REPAIRING:** Check with us for builders tile, sewer fittings, fire brick, pipe and connections. Also miscellaneous items and new steel. Jones Wrecking Yard. 4t

**WHEN YOU THINK** of grinding, mixing and pelleting, think of Hollingsworth Feed Mill, Coleman, Texas. 50tfc

## Special Notices

**LODGE MEETING** Mountain Lodge No. 661 AF & AM will meet on Third Thursday each month at 7:30 p. m. Visitors are welcome. Milford Blanton, Worshipful Master and H. A. Burden, Secretary.

## Norris & Holmes

has a complete line of Name Brand Carpet Expert Installation for the Lowest Prices **Norris & Holmes** CARPET & FURNITURE Phone 643-4820 Highest Quality Carpet

## BULK FEED GRAIN

Corn ..... \$2.60  
Oats ..... \$2.60  
Milo ..... \$2.10  
10,000 Lb. Lots  
5c cwt. discount

**BULK Planting Oats** 88c Bushel

**PUBLIC WEIGHING**

**Geo. D. Rhone Elevator**

5-5714 Nite Phone 625-4835 Coleman

## Northside Baptist Church Honor Pastor

Members of the Northside Baptist Church and their families honored their pastor, Rev. Vernon Parnell and Mrs. Parnell, with a pounding Wednesday night following the mid-week service at the church.

Those present were served coffee and hot chocolate following the presentation of the gifts which included food, canned goods and money.

Rev. Parnell has been pastor of the Church for just over a year, coming to Santa Anna from Pecos.

## Eddy Edmondson Completes Practice Teaching Here

Eddy Edmondson, Texas A. & M. senior from Cross Plains has completed his practice teaching in the Santa Anna High School Vocational Agriculture Department this

past week. He has been in the local school the past nine weeks under the supervision of A. D. Pettit.

Eddy is the son of Mr. and Mrs. O. B. Edmondson of Cross Plains, and will graduate from A & M at midterm and plans to begin teaching when a position is available. He has been a member of the Collegiate FFA Chapter at A & M as he was in high school. While doing his practice teaching here Eddy lived with a friend in Coleman.

**Q—How do I report the money I received for trees I cut from my property and sold?**

**A—**You may elect to treat the cutting of the trees as a sale or exchange of a capital asset. For details send a post card to your District Office requesting IRS Documents 5048, Sales and Exchange of Assets, and 5050, Depreciation, Amortization, Investment Credit, Depletion.

The Department of Agriculture also has a publication on this subject. It is Handbook No. 274.

## LETTER TO THE EDITOR

Dear Editor and others, I have enjoyed getting the dear old home paper. I lay everything else aside and read it over. Though I have been away so long, there are quite a few of my old neighbors and friends still there. There is always a longing to come back to the dearest little spot any one ever called "home."

Thanking you for every copy, also to my nephew Garland Close for sending it to me as a Christmas gift last year.

May this Christmas bring you and yours good health and happiness throughout 1969.

Paralee Rutherford  
502 W. Simmons Rd.  
Tuscon, Ariz. 85705

Attend Church Regularly

## OPTOMETRIST

Dr. E. H. Henning, Jr.

117 Commercial Coleman

Ph. 625-2228

OFFICE HOURS  
9:00 A. M. to 5:00 P. M.  
SATURDAYS, 9 to 12

**FLOOR COVERINGS  
DRAPERIES  
MINNESOTA PAINTS  
ARTISTS SUPPLIES  
CUSTOM PICTURE  
FRAMING  
WALLCOVERINGS**

**McMinn's House  
Of Color**

West of Post Office  
Coleman

## REG'S TRADING POST

118 E. Pecan

Coleman, Texas

## THIS CHRISTMAS SEASON

### DON'T FORGET YOUR CAR...

Christmas is a busy, happy time, and you need your car perhaps more than any other time of the year.

In the rush, however, don't forget to keep your car in top driving condition. Drive in today and let us check your battery, anti-freeze, and tires, and also grease and change the oil.

**And Remember: Drive Safely!**

WE GIVE SCOTTIE STAMPS

**Burden Mobil Station**

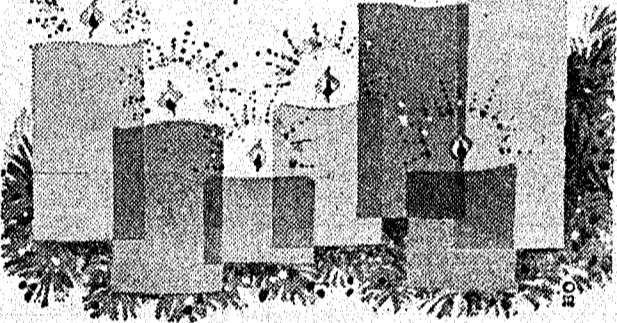
DELCO BATTERY HEADQUARTERS

510 Wallis Ave

Phone 348-3191

## MERRY CHRISTMAS

Like the glow of the candle, happiness lights this Christmas season. May it shine for you every hour!



## Winstead Paint & Paper

Coleman, Texas

## THE SANTA ANNA NEWS

Established January 1, 1886

Business Address Telephone  
607 Wallis Ave.—Box 337 348-3545  
Santa Anna, Texas 76878

THE NEWS, SANTA ANNA, TEXAS, DECEMBER 26, 1968

PUBLISHED EVERY THURSDAY AT SANTA ANNA,  
COLEMAN COUNTY, TEXAS 76878

Second Class Postage Paid at Santa Anna, Texas

### SUBSCRIPTION RATES

|  |       |          |
|--|-------|----------|
| One Year in Coleman County                 | ..... | \$3.00   |
| One Year in Texas (Outside Coleman County) | ..... | \$5.00   |
| One Year Outside State of Texas            | ..... | \$7.00   |
| One Year Outside United States             | ..... | \$10.00  |
| Service Personnel Anywhere, Per Year       | ..... | \$3.00   |
| Single Copies                              | ..... | 10¢ cent |



—STAFF—

Johnny Valentine ..... Publisher  
D'Linda Valentine ..... Advertising  
Barbara Kingsbery ..... Editor  
Grady H. Steen ..... Mechanical

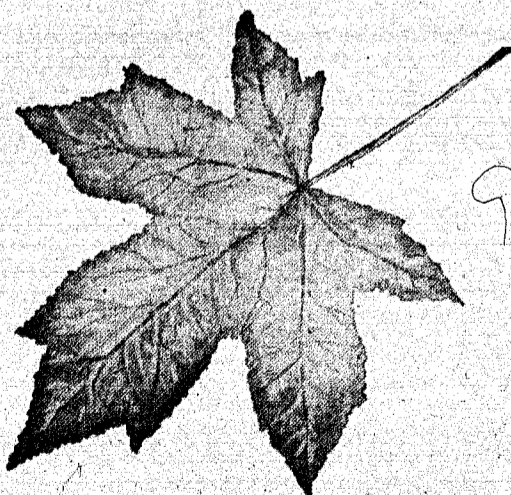
The publisher is not responsible for copy omissions or typographical errors that may occur, further than to correct them in the next issue. All advertising orders are accepted on this basis only.

**NOTICE TO THE PUBLIC:** Any erroneous reflection upon the character, standing or reputation of any person or firm appearing in these columns will be gladly and promptly corrected upon calling the attention of the editor or publisher to the article in question.

DISPLAY ADVERTISING RATES ON REQUEST

### CLASSIFIED ADVERTISING RATES

|                                      |       |    |
|--------------------------------------|-------|----|
| First Insertion — Per Word           | ..... | 4c |
| Each Additional Insertion — Per Word | ..... | 2c |
| <b>MINIMUM CHARGE — 50c PER WEEK</b> |       |    |



Precious is the memory...

**STEVENS  
FUNERAL HOME**

400 WEST PECAN, COLEMAN

PHONE 625-2175

## Wheelchairs and Rehabilitation Aids

Rentals & Sales

## BRINK'S PHARMACY

PHARMACISTS—Eddie Brink - Bob Tyson  
Phone 625-4136 215 W. Pecan Coleman, Texas

## YOU ARE INVITED TO A WELCOME HOME TEA

at the

**EL RANCHO HENNER**

7:00-9:30 p. m., Dec. 24, 1968



## Calvin & Margaret Campbell BUTANE and GAS



## Merry Christmas

The best of hopes are extended to you for a warm, happy holiday with friends you hold near and dear. And it is time to thank you for your loyal patronage.

## ALEX MAYERS

Coleman, Texas



## CHRISTMAS

To all our fine friends, we extend our very best wishes for a most joyous holiday and offer our appreciation for your patronage.

## Hartman Plumbing & Electric

Santa Anna, Texas

### Local Students To Have Two Weeks Vacation

Santa Anna School students will return to school on Thursday, January 2. The third six-weeks tests will be

given the week after the holidays and semester examinations will end on January 10.

Mr. and Mrs. Lee Woodward of Mineral Wells spent last Thursday in Santa Anna visiting relatives.

Cardboard for posters at The News office.

Mr. and Mrs. Tom Robin and Houston arrived Saturday for a holiday visit with their parents, Mr. and Mrs. C. D. Bruce, Mr. Robin of Rolling Hills Lodge in Coleman, and with other relatives. Other visitors in the Bruce home are Mr. and Mrs. Jack Kingsbery and children of Crystal City.

Attend Church Regularly

### Local Sorority Receives Letter Of Thanks

Members of the Delta Omicron Chapter, Epsilon Sigma Alpha, sent boxes of baked goods and miscellaneous items to all the local servicemen who are now serving in Viet Nam. The boxes were mailed about the middle of November. The following is a letter received last week by the sorority.

Dear Members of ESA:

I was real surprised, but thrilled when I got the package from you. I want to thank each and everyone of you for thinking about all of us local G. I.'s over here. It really gives me courage to know that people at home are thinking about us.

I don't know who made the cookies but they were delicious. I went over to our mess hall for a quart of milk and had a fine time. I enjoyed the home town newspaper. I also enjoy reading in my spare time, so thanks for the paper backs.

I want to thank you all again. Now I must close. If you don't mind I'm sending along a picture of some of the Vietnamese and living quarters for you to look at. I say again thanks loads for your gift.

Sincerely,  
Pfc James Lyndon Wells

### Susan Newman To Show Lambs

Susan Newman, the daughter of Mr. and Mrs. Tom Newman, will have two Rambouillet lambs competing in the 1969 Southwestern Exposition and Fat Stock Show in Fort Worth January 24 through February 2.

The entry deadline for cattle, horses, sheep and swine has just passed, and Stock Show President - Manager W. R. Watt and other officials are in the midst of tab-

ulating the mound of entries.

Susan is a member of the Santa Anna FFA, and has showed lambs and swine in many shows in the past few years.

Mr. and Mrs. Johnny Valentine and daughters are spending this week in West Texas visiting relatives.

During the past ten years I have had the high honor and satisfying experience of serving you as your District Attorney. On December 31, I will complete my tenure in office and resume the private practice of law. For the opportunity of service you have given me and the confidence you have expressed in me I shall always be grateful.

My family joins with me in wishing for all a Joyous Christmas season.

**GORDAN GRIFFIN, JR.**

District Attorney, 35th Judicial District

### T-M Implement Company



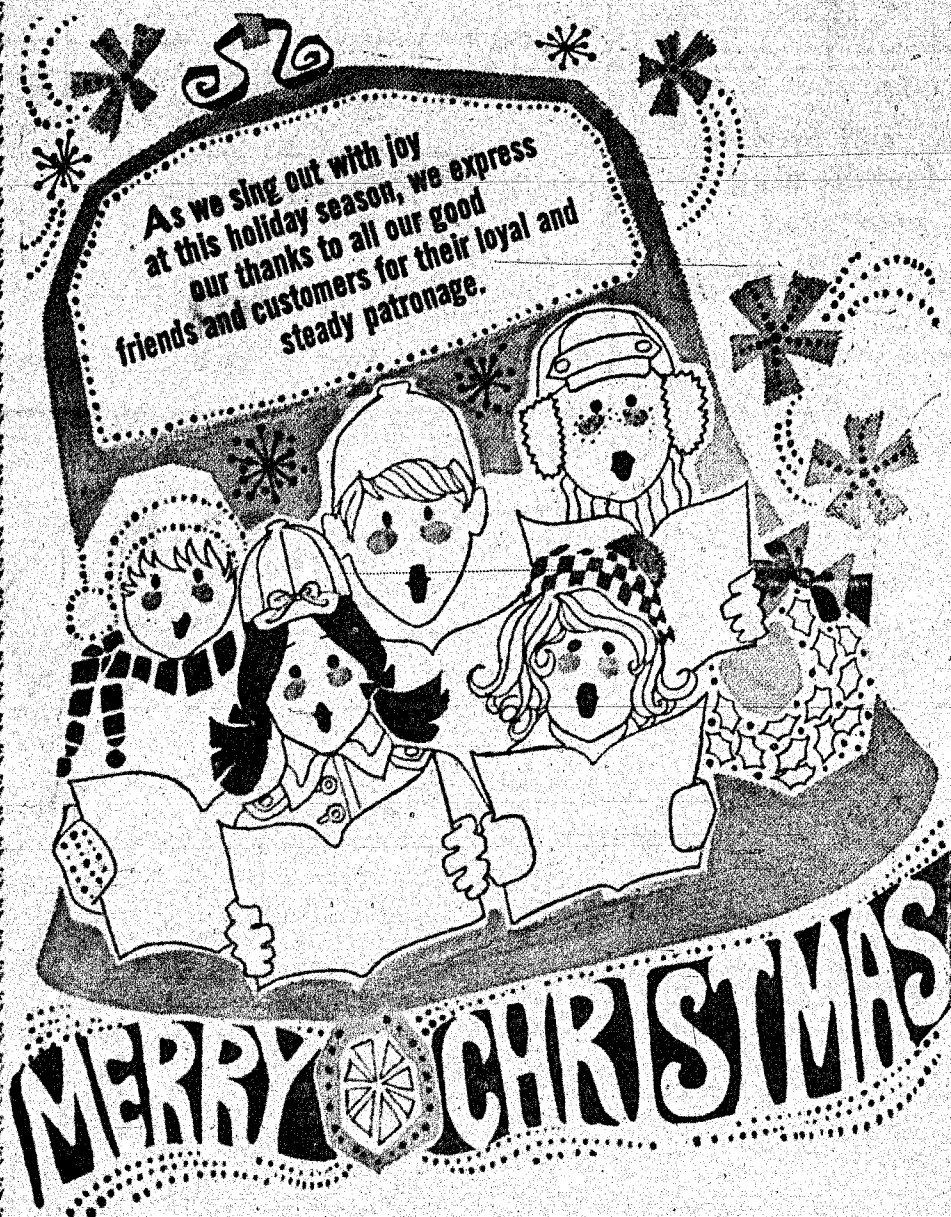
INTERNATIONAL FARMALL TRACTORS AND EQUIPMENT  
Phone 625-4409  
Mobil Phone 348-3853  
Coleman, Texas

### Rite-Way

PEST CONTROL

Call Cliff Morris

Dial 348-3428



**GOODYEAR SERVICE STORE**  
Coleman, Texas

### BLESSINGS OF CHRISTMAS



"When they saw the Star, they rejoiced with exceeding great joy." As the message of the manger shines anew, we wish for all a truly wondrous Christmas. May your blessings be bountiful. Grateful thanks to you.

**SANTA ANNA HOSPITAL**

**SANTA ANNA CLINIC**

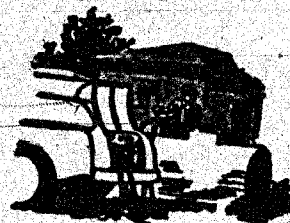
**RANGER PARK INN**

### USE



- Clean and Safe
- Best For Heating
- Higher BTU Rating
- Best For Cooking
- Approved By Architects
- No Mess
- No Fuss

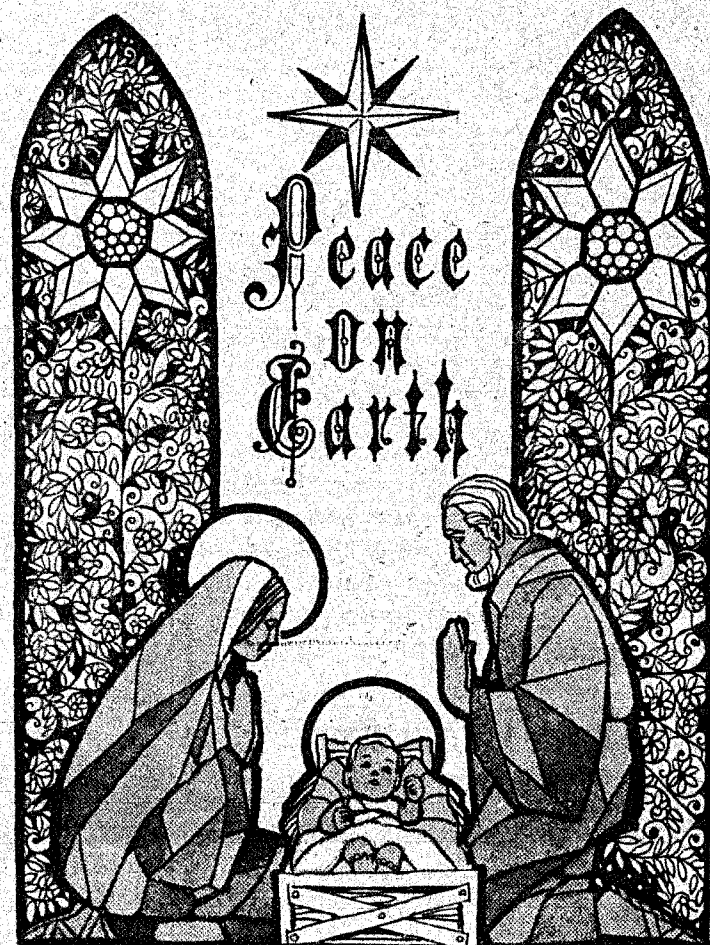
Phone 625-2925  
Night 625-2849



Prompt Delivery

**Coleman**

Butane Gas Co.



A Child lies in a manger. A Star shines brightly upon the earth, reflecting the glory of His birth. May this eternal light of love shine into every heart, bringing peace to all men and a holy, happy Christmas to you and yours.

**HOSCH BROTHERS**  
Santa Anna, Texas

### Silent Night



May the light of joy and good will shine brightly into the hearts of all mankind, as on the Holy Night when the Prince of Peace was born. During this Christmas season, we wish you and yours an abundance of holiday blessings. And at this time we say a special "Thank You" for the privilege of serving you.

**CITIZENS NATIONAL BANK**  
Brownwood, Texas

NEWS FROM

**RANGER PARK INN . . .**

Weah McCulloch, Mgr.

**Standard Abstract Co.**

City & County Maps for Sale  
405 Bank Bldg. Coleman

The Christmas party for residents at the Inn will be held Monday evening, December 23. Members of the Epsilon Sigma Sigma Alpha Sorority came to the Inn last week and decorated the Christmas tree. They brought pop corn for the residents to eat and to string for the tree decoration. Decorated cookies and punch were serv-

ed after the tree was trimmed. Those present to help were Coyita Bowker, Gayle, Kim, and Theola Stewardson, Romaine and Marly Gouge, Sue Riley, Sammie, Leslie and Sharon McCreary, Dorothy, Debbie and Sandra Harris.

The local sorority chapter has sponsored the tree trimming party for many years and residents of the Inn look forward to it each year.

Mrs. Harry A. Bremer of Amarillo visited recently with her mother, Mrs. Emily Crowder.

Webb Golston has visited his mother, Mrs. Rex Golston.

Matt Estes and other members of the family were visiting the Drury Estes' recently.

Mr. and Mrs. Frank Bray visited at the Inn last Monday. They brought boxes loaded with gifts from the Council of Church Women. Ladies on the gift committee this year were Mrs. Hel-

en Petry, Mrs. Louise Moore and Mrs. Bray.

Some of the residents that have been hard at work recently making Christmas gifts for relatives and friends are Dora Kennedy, Lula Harvey, Alma Cannon, Alice Horner, Lillie Archer, Minnie Lane, Irene Triplett, Annie Smith, Bernice Herring, Elizabeth Reynolds, Winnie Tucker, and Marie Avenger and possibly others. They have made Christmas stockings, covered coat hangers, dolls

of many kinds, pillows, and

some beautiful crochet rugs.

Mr. and Mrs. Emmett Smith, son and daughter of Mrs. Annie Smith and Mrs. Alice Horner, have spent their vacation here. They left last week for their home in New Mexico and Mrs. Smith and Mrs. Horner accompanied them home to spend Christmas.

Mrs. Danny Bryan of Abilene visited her mother, Mrs. Ben Herring. Vernon Herring has also been a visitor. Young people having the Sunday morning devotional

last week were Leta and Cleta Pollock, Patrick and Pascal Hoshch.

The women from the Rockwood W. M. S. visited last week and brought boxes of Christmas candies and cookies. They were presented to Mr. and Mrs. Drury Estes, Mrs. Tina Steward, Mrs. Ester Bryan and Mrs. Iva Mc-

Millan, Rockwood residents now making their home at the Inn.

**TIRES ARE ALWAYS A BARGAIN**  
**RUDOLPH'S**  
Coleman, Texas

**"REITA'S BEAUTY SHOP"**

405 1/2 Wallis Ave.

Santa Anna

(Formerly Modern Beauty Shop)

Has recently been purchased by Reita Tucker.

Reita would like to invite you to call for appointment or just come in and get acquainted.

(To Open Jan. 2)

For Prompt  
**Plumbing & Electrical Service**  
Heating & Air Conditioning  
DITCH DIGGING MACHINERY  
**Hartman Plumbing & Electrical**  
DIAL 348-3344  
AFTER HOURS PHONE — 348-3481  
617 Wallis Ave. Edd Hartman, Owner

**PRESCRIPTIONS**  
**Owl Drug Store**

"Where Friends Meet"

Telephone 625-4514

312 Commercial Ave.

Coleman

*It's Christmas!*



It's that time of year when Santa's gifts are given out. And when best wishes for a happy holiday are given out to one and all. Thanks for your patronage!

**WHITE AUTO STORE**

Coleman, Texas

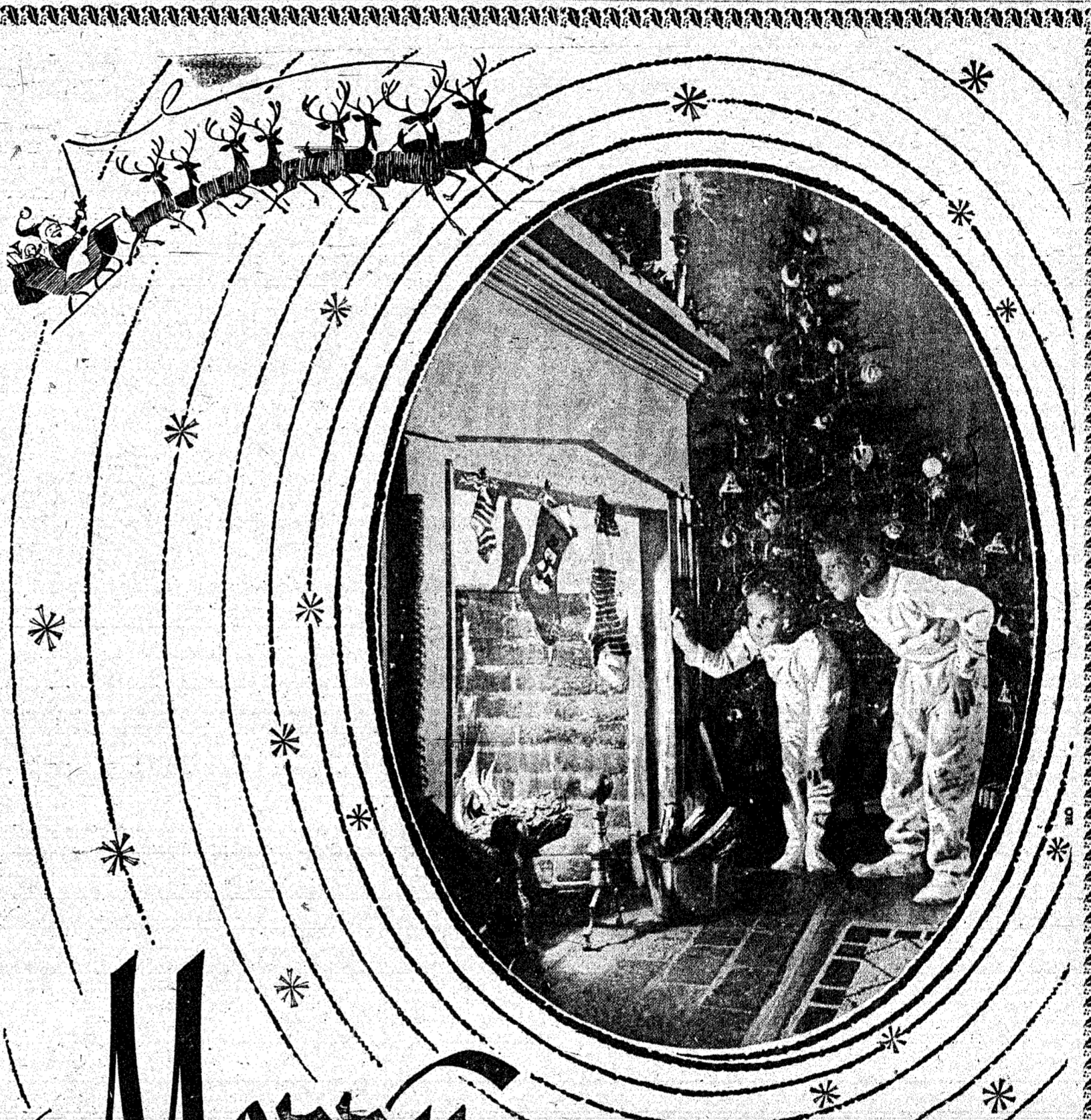


**BRIGHT CHRISTMAS WISHES**

Our thoughts at this time give rise to many wishes . . . bright Christmas wishes for you and your family. May this be the happiest, most fun-filled holiday you've ever had. And for your patronage, our thanks!

**GRAY MERCANTILE**

Coleman, Texas



**Merry Christmas**

The stockings are hung by the chimney with care . . . there's an air of breathless expectation as the children eagerly listen for the sound of Santa's sleigh bells. As this glad spirit of Christmas spreads through every home, we wish for you and your family all the joys of giving and receiving, all the true blessings of the season. May your holiday be rich in good health and good cheer. To everyone, sincerest "Merry Christmas" greetings . . . and "Thank You."

Member FDIC

A FULL SERVICE BANK

FRIENDLY  
**Coleman Bank**

5 to 6 1/2%  
Guaranteed  
Interest On  
Certificates  
Of Deposits

**December Last Month For Filing Medicare**

Everyone of the some 2500 Coleman contains covered by the doctor bill insurance part of Medicare since 1966 should spend part of this December reviewing whether the program owes him some money.

That is the advice of R. R. Tuley, Jr., Social Security's Abilene district manager, who added that this is most important for those older people who had medical ex-

penses between October 1, 1966, and September 30, 1967. Any claim for payment of such expenses must be filed by December 31, 1968.

Tuley pointed out that, in the past, some Medicare beneficiaries who were unable to supply evidence of having paid the doctor or the medical supplier, though they could not file a claim. "These people are in danger of short-changing themselves," Tuley said. "The 1967 amendments of the Medicare law provide that an itemized bill, showing the services or medical goods received an charges therefor, even if unpaid, is now sufficient for collecting from Medicare."

He issued a reminder that if the annual \$50 deductible is not met until in the last

3 months in any year, that part can be carried over to the following year as part of the deductible for that year.

All social security offices are now prepared to help people make these last minute claims for doctor bill insurance payments on services and goods received between October 1, 1966, and September 30, 1967, on which no Medicare claim has yet been filed.

The Abilene district office is located in the Federal Building, Room 2321. The phone number is 677-5262. Office hours are 9:00 a. m. to 5:00 p. m. weekdays, and each Tuesday evening until 7:00 p. m.

If not convenient to come to Abilene, a representative of that office will be at Agricultural Building in Coleman next Monday.

**How Many Wise Men? Answers Are Many!**

Three wise men? In New Testament stories of the Nativity, only St. Matthew tells of "wise men from the east" — and how many wise men followed the star to the manger is not stated. The tradition that there were three probably comes from St. Matthew's description of three gifts — gold, frankincense and myrrh.

Another explanation for the number three is the legend that the wise men symbolized all humanity, in turn represented by the races of Shem, Ham and Japhet, according to the editors of The New Book of Knowledge.

Early traditions mention varying numbers of wise men. Twelve was the number traditional in the Eastern church, while in the West, mosaics and paintings showed sometimes two, sometimes three, four or more wise men.

During the sixth century, the idea that there were three seem to be generally accepted. In legends, the wise men were given names: Melchior, Gaspar, Baltasar. Although St. Matthew did

not use the name "Magi", he implied it when he wrote of "wise men," for "magi" was commonly used in Palestine to mean "great, illustrious." Today, Nativity scenes show three wise men or Magi present at the manger along with the shepherds, who hastened to Bethlehem on the night Christ was born. Some historians, however, believe that the visit of the Magi didn't take place until much later — perhaps a year or even two years after the birth of Christ.

THE NEWS, SANTA ANNA, TEXAS, DECEMBER 26, 1968

**KENNETH WISE STEAK HOUSE AND CAFETERIA**

OPEN 6:00 A. M. TILL MIDNIGHT

407 FISK

BROWNWOOD, TEXAS

**For Finer Monuments**

**COLEMAN MONUMENT WORKS**

1301 East 9th St. Coleman, Texas

**TIRES ARE ALWAYS A BARGAIN**

RUDOLPH'S Coleman, Texas

The Little Critter Says...  
**DRIVE AND ARRIVE SAFELY**  
TEXAS HIGHWAY DEPARTMENT

**WEATHERMAN QUIT- HE LIKED OUR TOWN BUT THE WEATHER DIDN'T AGREE WITH IN**



**GREETINGS**

At this joyous time of year we extend our greetings to our friends, whose confidence we highly value. Thank you.

**HIGGINBOTHAM'S**

408-410 Fisk

Brownwood, Texas



Best Wishes for the

**CHRISTMAS SEASON**

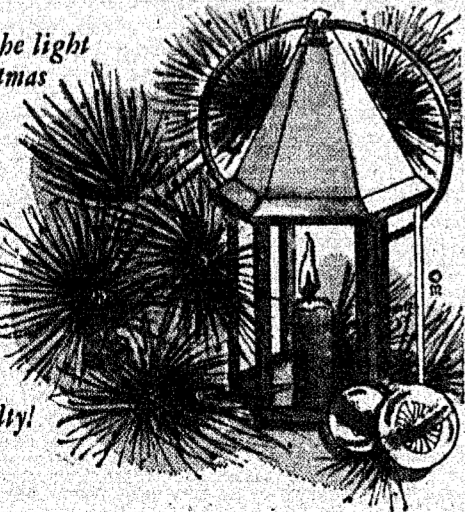
Thanks to the support of friends old and new, everyday business is a special pleasure. Best wishes for the holiday season.

**HOLLINGSWORTH FEED MILL**

Coleman, Texas

**CHRISTMAS CHEER**

May the light of Christmas shine on you and your loved ones. May its bright warmth fill each day. We appreciate your loyalty!



**SANTA ANNA SKELLEY STATION**

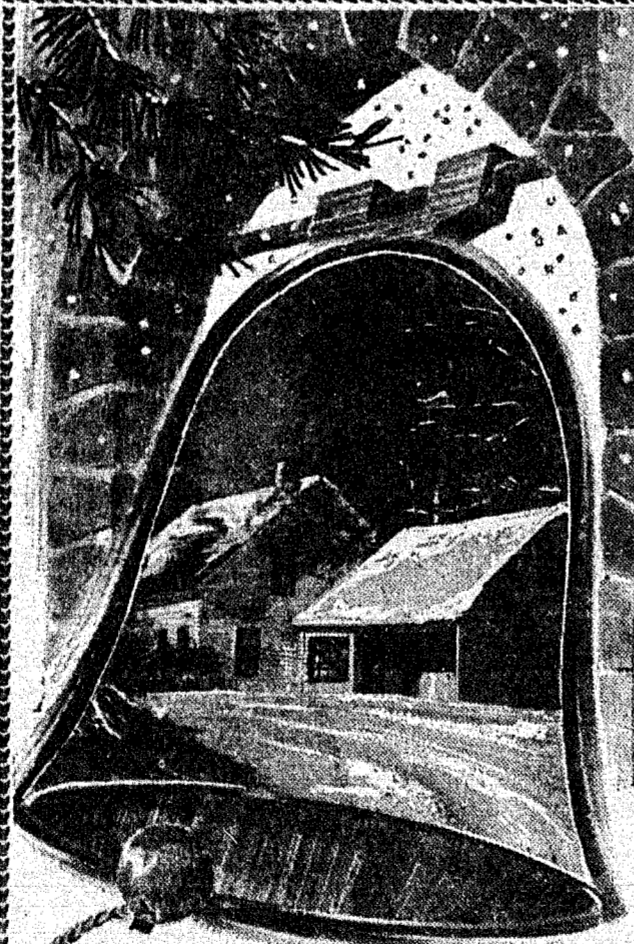


**CHRISTMAS GREETINGS**

We're taking this opportunity to say "Hello" and to thank our customers for their patronage. Have a merry Christmas!

**Merle Norman Cosmetic Studio**

Owner Thelma DeBusk  
207 1/2 Commercial Ave. Coleman, Texas



**Merry Christmas**

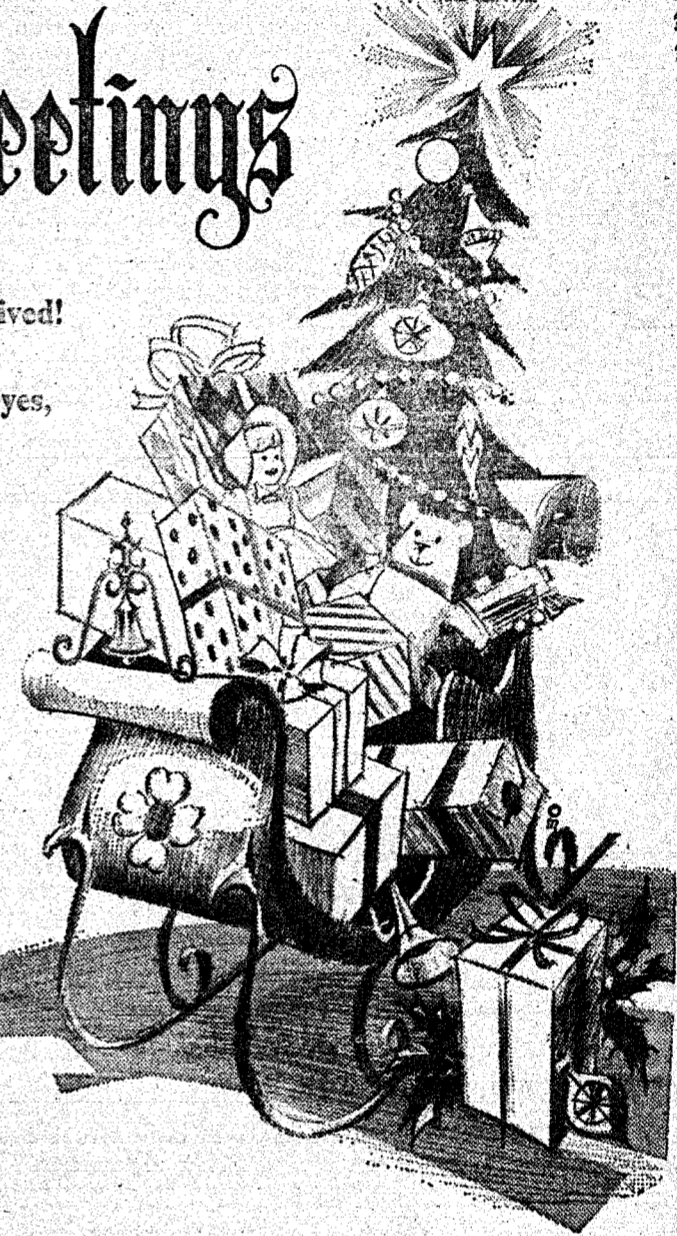
It's time once again to take pause, in the spirit of the beautiful Christmas season, to greet fine friends and neighbors with best wishes. And to add deep appreciation for your favors, good will.



Coleman, Texas

**Greetings**

Christmas has arrived! A time for gaily-wrapped goodies, yes, but also a time to count our each and every blessing... and to say thanks to all those whom we are privileged to serve.



**WELCH CHEVROLET - CADILLAC**

Coleman, Texas



**Merry Christmas**

It's here again... the season to be jolly... the season of warm enjoyment shared with friends and loved ones. And a wonderful time for us to express our thanks for your loyalty and consideration. Merry Christmas!

**COLEMAN BUTANE GAS CO.**

Coleman, Texas

## Leanna Pollock Becomes Bride Of Ronald Gene Hartman Nov. 21

In a double ring ceremony at the First Baptist Church last Saturday night, Miss Leanna Pollock became the bride of Ronald Gene Hartman. Rev. Bill Brewer per-

formed the ceremony before the altar decorated with twin branched candlebras flanking an archway entwined with greenery. A tall basket of white gladiolas stood be-



★ ★ ★ ★ ★

neath the archway and just behind the white satin prayer bench.

Mrs. James Gilbreath of Dimmitt was soloist accompanied by Janie Thornton of Houston. Traditional wedding music was played and vocal selections were "Wither Thou Goest" and "The Lord's Prayer."

Given in marriage by her father, the bride wore a white satin empire dress with bodice and sleeves of lace. The train extended from the shoulders and was trimmed with lace appliques re-embroidered with seed pearls. Her veil of illusion was attached to a tulle of pearls. She carried a bouquet of white carnations and pink roses on a white Bible which was a gift of the W.W.A. of the First Baptist Church. The bride wore a heart-shaped brooch belonging to her aunt.

Miss Cindy Hartman, sister of the groom, was Maid of Honor and attired in a floor-length dress of deep pink satin fashioned after that of the bride. She wore a matching headdress held by a pink satin bow and carried a single long-stemmed pink rose. Other attendants were Cleta and Leta Pollock, sisters of the bride. They wore pale pink gowns styled like the bride's and wore matching head pieces and carried long-stemmed roses. Robin Hartman, niece of the groom served as flower girl.

Phil Huggins served as the best man and Tommy Wardlow and Marty Donham were groomsmen. Ushers were Stanley Hartman, brother of the groom, and Tommy Pollock of Austin, brother of the bride. Judy Brusenhan of Rock-

wood and David Huggins lighted candles. The bride's mother wore a turquoise blue suit of bonded knit with black accessories. Her corsage was of carnations. The groom's mother wore a blue suit of dacron knit with black accessories and a carnation corsage.

Immediately following the ceremony a reception was held in the church annex. The bride's table was covered

with a floor-length cloth of white net over pink satin, centered with a bride's bouquet. Pink punch and wedding cake were served from crystal appointments by Kathy Brown of Denison and Sherry Pitman of Muenster. Susie Thompson of Corpus Christi registered guests.

For the short wedding trip the bride wore a shocking pink coat dress, white accessories, and a corsage from her bouquet.

The bride is the daughter of Mr. and Mrs. M. R. Pollock and the groom's parents are Mr. and Mrs. Edd Hartman. They are both graduates of Santa Anna High School and the bride is presently attend Howard Payne College. The groom attended Angelo State College and now employed at the Santa Anna Tile Co.

They will make their home on South Jefferson Street in Santa Anna.

We Wish You A Merry Christmas!

If you want what you want when you WANT IT... then WANT ADS are for you!

### LIVE THE CAREFREE ELECTRIC WAY

**Total-Electric Living is so clean you can use colors you never dared use before.**



Use glamorous white-on-white, even!

Because electric heating, cooling, cooking and cleaning is flameless the new pastels, even white-on-white, stay clean. Choose furniture, draperies, carpets and walls in the colors you want—they stay clean in a modern total-electric Gold Medallion home.

Any home can be converted to electric Gold Medallion.



Call your electric contractor or West Texas Utilities



**West Texas Utilities Company**

Equal Opportunity Employer  
an investor owned company

WATCH FOR  
**FABRIC SALE** STARTING

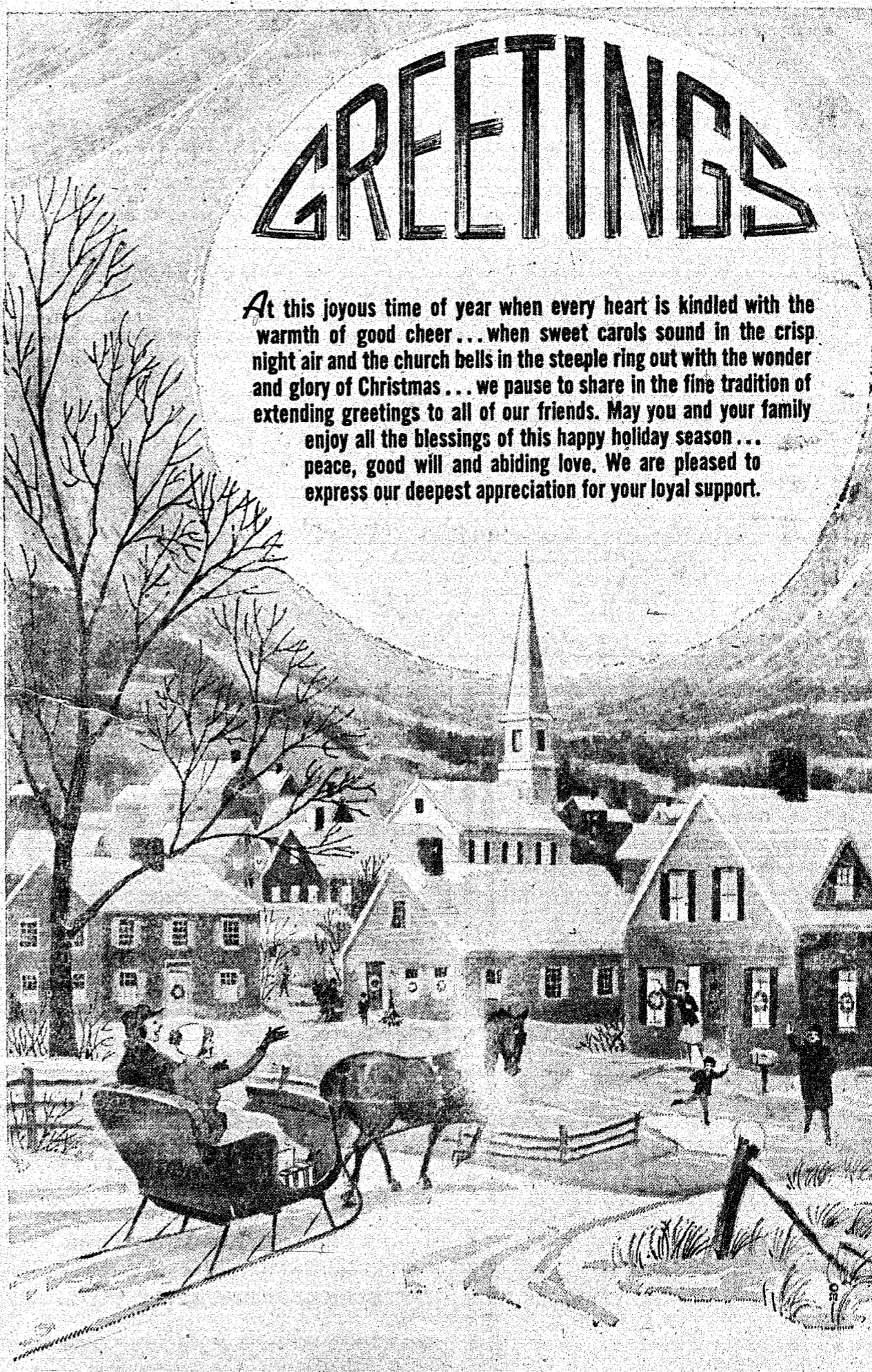
DECEMBER 26

**Estelle's Ladies Shop**

Coleman, Texas

# GREETINGS

At this joyous time of year when every heart is kindled with the warmth of good cheer... when sweet carols sound in the crisp night air and the church bells in the steeple ring out with the wonder and glory of Christmas... we pause to share in the fine tradition of extending greetings to all of our friends. May you and your family enjoy all the blessings of this happy holiday season... peace, good will and abiding love. We are pleased to express our deepest appreciation for your loyal support.



*Warm Wishes*

Christmas is a winter wonderland, covered by a blanket of pure white snow. We send you our sentiment during this brisk season through our warmest wishes and a hearty "Thanks." Merry Christmas.

**COLEMAN PRODUCTION CREDIT ASS'N.**

Coleman, Texas

**West Texas Utilities Company**

Equal Opportunity Employer  
an investor owned company



# SANTA ANNA NEWS

Section II Page 1

## Annual Christmas Edition

THE NEWS, SANTA ANNA, TEXAS, DECEMBER 26, 1968



**R** for  
a  
very  
**Merry**  
**Christmas** At this wonderful time of year, we prescribe the most merry of Christmases for you, our customers, and your families. And thanks for your patronage... it's most appreciated!

**JOE'S PHARMACY**  
Santa Anna, Texas



**WE'RE DELIVERING BEST WISHES**

To serve you is indeed a pleasure. Thanks for the privilege, and happy holidays.

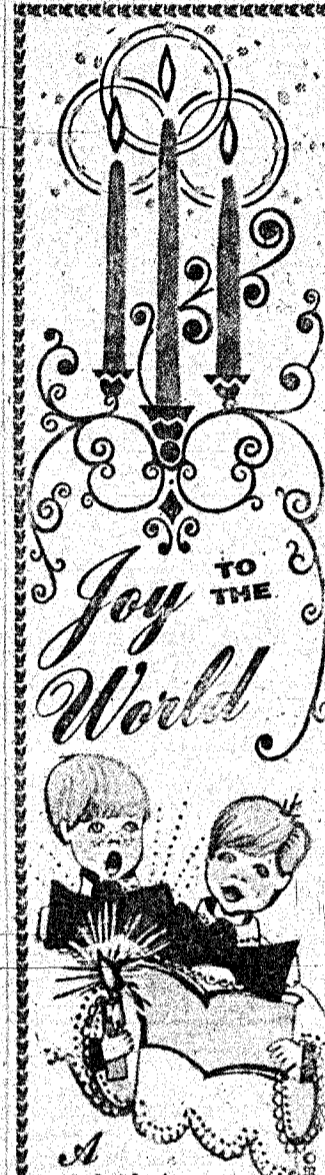
**GEO. D. RHONE ELEVATOR**  
Coleman, Texas



### A Joyous Christmas

Take these flowers, gemm'd with dew-drops,  
As a loving gift from me;  
May thy heart reflect their brightness  
And thy Christmas joyous be!

### Flowers Speak Language Of Love In Modern Or Victorian Era



Like holly, ivy and mistletoe, flowers share in the legend and lore of Christmas. In terms of the Victorian era, the floral legend is an especially meaningful one.

A Victorian lady who received a bouquet from her admirer could either smell it or read it as if it were a letter. Often, it was a letter.

Young engaged couples, strictly chaperoned, found a way to communicate words of affection via flowers. Each flower had a special meaning. Flowers in sequence could be used to spell out a fervent pledge of love. To help in composing — and translating — these messages, there were numerous tiny dictionaries listing flowers and their meanings.

The flowering honeysuckle for instance, spoke of "bonds of love." A red rosebud told a lady that she was "pure and lovely." Red double pink meant "woman's love." And hellebore carried a bold message, "I love you."

This Victorian language of flowers greatly influenced the design of Christmas cards of the time — witness the card illustrated here, from the Norcross Historical Collection of antique cards.

The lush summer blooms are typical of the Victorian admiration of flowers, regardless of the season.

Though sentiments may be expressed differently, flowers still bloom on modern Christmas cards. A current card offers one example. Poinsettias flower on a background of mistletoe, and the message reads, "Just for you, honey, all my love at Christmas."

### Yesteryear's Customs Live At Christmas Time

Candles and carols, trees and treats, gifts and greens — and Santa Claus, of course. Wherever Christmas is celebrated, these symbols seem to appear.

In the modern era of rapid communication, there is a growing uniformity in the ways that people everywhere choose to mark the holiday.

Yesteryear's customs however, still have their place in modern celebrations. It's a case of "the more things change, the more they stay the same," as countries, communities and individuals seek to cherish and preserve their own special holiday traditions.

Some of these traditions, as treasured in memory or kept alive in holiday ritual, are compiled in the following paragraphs, according to information from the editors of Encyclopedia International.

#### BAKING CAKES

If the weather on St. Nicholas Day, December 6th, is misty, a Dutch legend can explain it. St. Nicholas is baking his cakes.

Traditional cakes — Zelten or Klossen — are adorned with different figures. These, children are told, are the marks made by St. Nicholas' donkey as he steps over the cakes on his way through the mist.

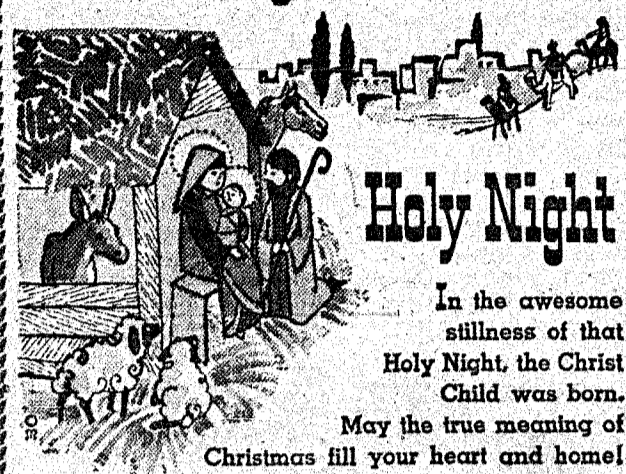
**MERRY**  
**Christmas**  
**TO ALL!**



Carolers sing the joys of Christmas... and may those joys be yours. Your generous support and trust is really appreciated. Many, many thanks!

**Sam Collier**  
**Insurance**  
**Agency**  
Santa Anna, Texas

### Silent Night,

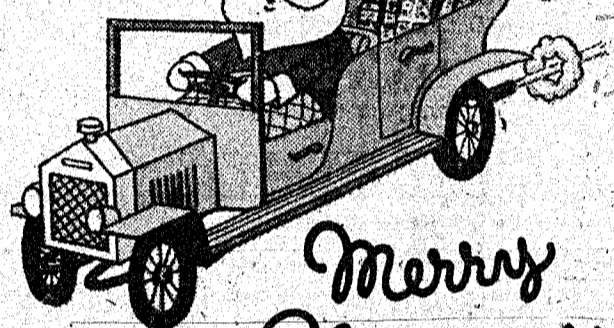


### Holy Night

In the awesome stillness of that Holy Night, the Christ Child was born. May the true meaning of Christmas fill your heart and home!

**JANES BEAUTY SHOP**  
Santa Anna, Texas

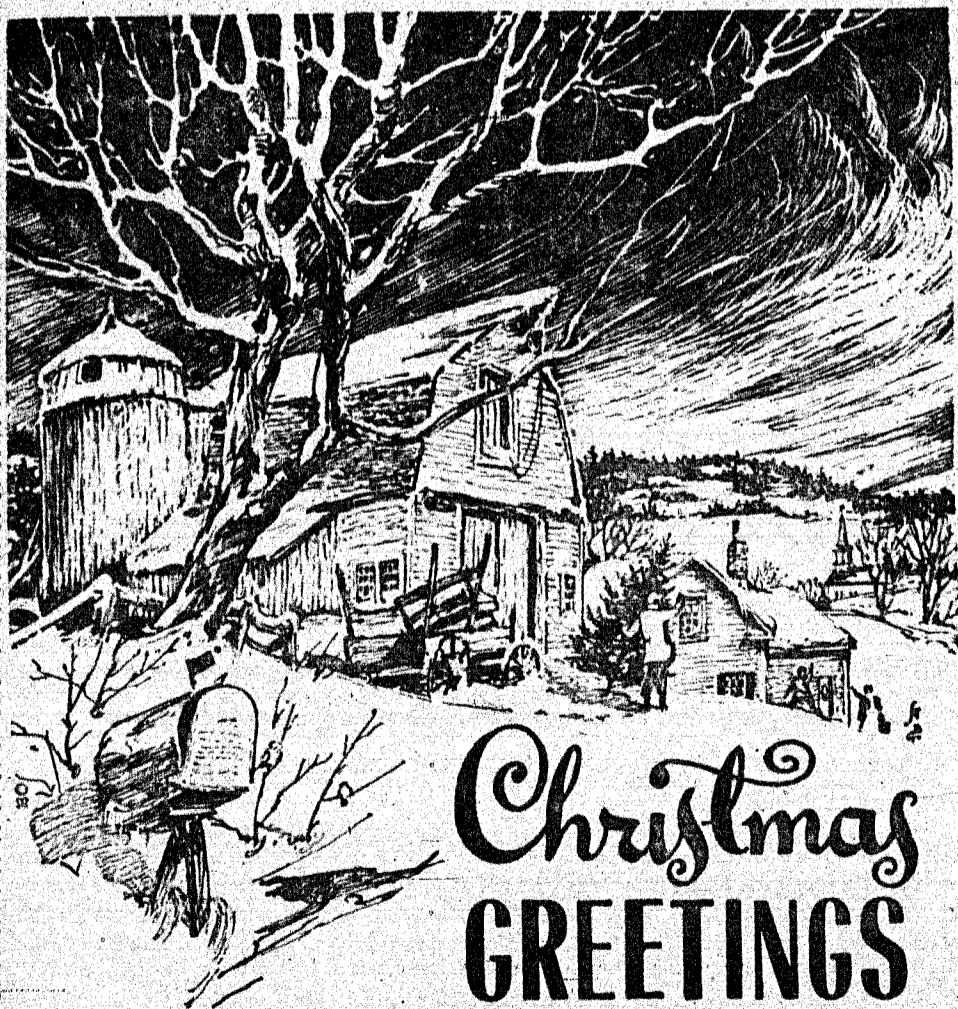
Here's hoping that Santa brings lots of good things your way! Thank you.



**Merry**  
**Christmas**

**TALLEY SINCLAIR**  
Santa Anna, Texas

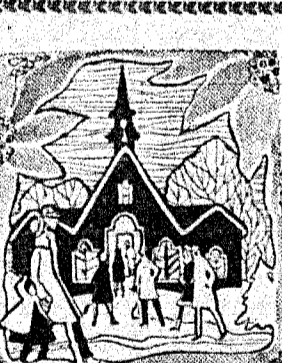
All kinds carbon paper at The News office.



## Christmas GREETINGS

At this crisp and exciting time of year, we are hopeful that your holiday will be filled with joyous warmth, richly shared with those you hold dear. And to you, our customers, we express our thanks and appreciation for your continued patronage. Merry Christmas!

**SANTA ANNA CABLE TV**  
Santa Anna, Texas



At Christmas, join the heartfelt prayer that peace and good will may reign forevermore. And at Christmas, be joyful, with all the happiness and harmony of the season.

### A Christmas Prayer

Warmest gratitude for your loyal patronage!

**G & E**  
**HARDWARE**  
Santa Anna, Texas

## Joy at Christmas



We heartily hope that the true joy of Christmas may light the way for you and yours throughout the year.

**SANTA ANNA TILE COMPANY**  
**AND EMPLOYEES**  
Santa Anna, Texas

# Christmas Tree Radiates Yule Meaning

is the Paradise Tree with its apples, lights, tinsel, angels, a star on top, ornaments and other "good things" reflect the Christmas Light.

The Christmas tree, a universally recognized symbol of the merriest season, radiates the meaning of the Christmas story.

For many people, the tree recalls the atmosphere of the holiday home and thus reflects the joyful warmth of the season.

As a religious symbol, the tree with its lights and greenery represents both the story of the garden of Eden and the belief in Christ as the "Light of the world."

Although only a century and a half old in America the custom of the tree has a history that is measured in many centuries. The forerunner of today's Christmas tree was seen in medieval miracle plays, which were produced as religious instruction for the illiterate — in

an era when illiteracy was common and the ability to read a rarity.

A play about Eve's eating the forbidden fruit in the garden of Eden was enacted with only one prop on stage, a single, apple-laden fir that became known as the Paradise Tree. The Play ended with the promise of the coming of Christ and was usually presented just before Christmas.

At about the same time, people also decorated for the Christmas season with Pyramid-shaped frames of light, symbolizing the birth of Christ as the Light of the world.

Early efforts to combine the Paradise Tree and the Christmas Light pyramid are recorded in manuscripts from Germany dating to the 16th



BOTH ELEMENTS THAT LED TO TODAY'S Christmas tree—the Paradise Tree and the Christmas Lights Pyramid — are shown in this antique Christmas card of the 1880's. The card was published by Opbacher Brothers of Munich, Germany, and is part of the Hallmark Cards Historical Collection.

century, collected by the Hallmark Cards research library.

The first tree was thought to have been brought to the United States by Hessian soldiers during the American Revolution. These homesick soldiers and other immigrants carried — the tree throughout the country.

A major setback almost occurred in Cleveland in 1851 when a pastor decorated a tree in his home. His parishioners condemned the tree as pagan, but relented after an explanation of its religious aspects.

Conservation-minded President Theodore Roosevelt again nearly stamped out the practice when he banned trees in the White

religious elements. The evergreen with glass, plastic or House. After 1 of his sons sneaked a Christmas tree into the White House, a forger convinced the President that thinning helped forests.

The tree that is common today is a combination of the metal balls hanging from it



A sleighful of greetings is coming your way with wishes for a merry Christmas day. May candles shine brightly and each heart be filled with joy, peace and good will. We take this opportunity to thank you for being an honored customer all year.

**THE MAN'S SHOP**

Coleman, Texas

THE NEWS, SANTA ANNA, TEXAS, DECEMBER 26, 1968

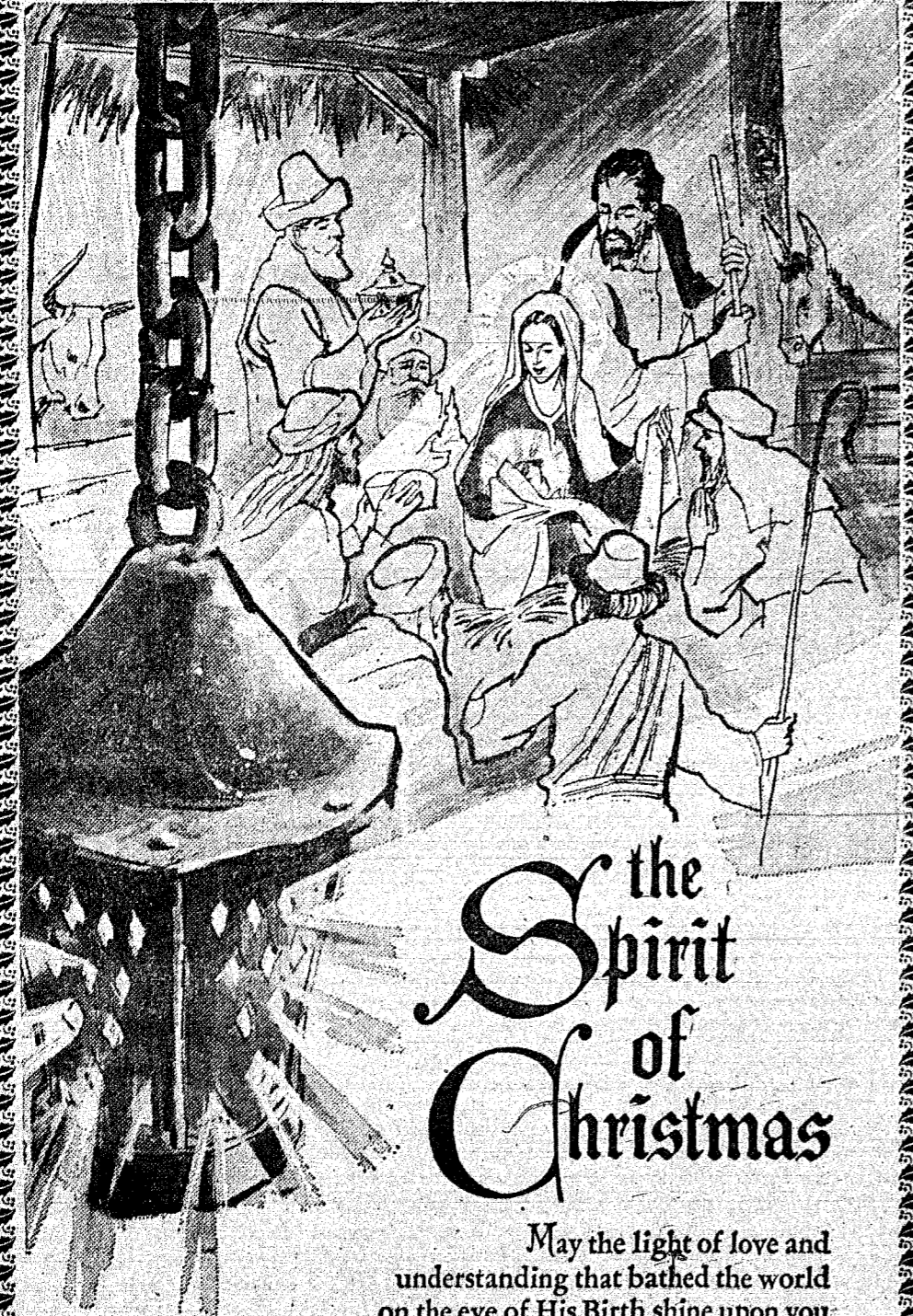


Greetings and "Thank You..."

For a Christmas sparkling bright, fresh and merry, we extend our sincere wishes to you. We'll do our best, always, to deserve your valued good will.

**CITY CLEANERS**

Santa Anna, Texas

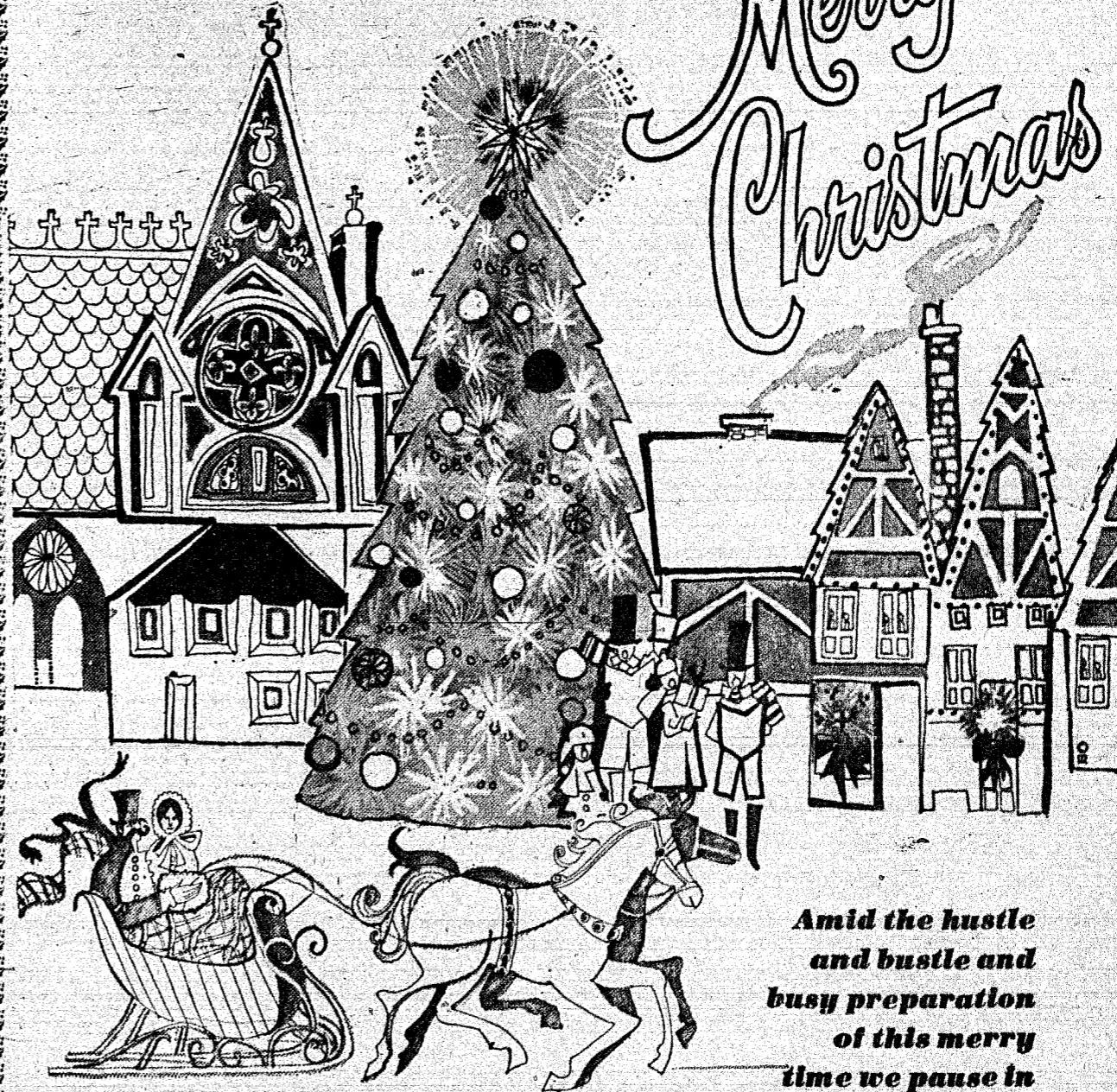


the Spirit of Christmas

May the light of love and understanding that bathed the world on the eve of His Birth shine upon you and kindle your heart with everlasting joy. Let us rejoice as we cherish the blessings of this holy season.

**BOB TURNER'S**

Coleman, Texas



Merry Christmas

Amid the hustle and bustle and busy preparation of this merry time we pause in the happy tradition of the season to wish our many fine friends and neighbors all the long-lasting happiness of an old-fashioned Yule. Thanks for your loyal support.

FROM THE FOLLOWING ELECTED COUNTY OFFICIALS

- FRANK LEWIS ..... County Judge
- JOHN SKELTON .... County Tax Assessor-Collector
- G. A. (Tode) HENSLEY ..... District Clerk
- LEE CRAIG ..... County Clerk
- MONTE GIDEON ..... County Treasury
- CORKY CHAPMAN ..... County Sheriff
- D. H. WILLIAMS ..... County School Superintendent
- JAKE McCREARY ... County Commissioner Prec. 2

# Pageant Has History In Medieval Dramas

As young actors and actresses of Santa Anna rehearse their roles for their special Christmas play or pageant, they take part in a custom treasured through the ages.

Since the Christmas story first was told, mankind has sought and found countless ways to create it again and anew, in song and story, in art and drama. The modern Christmas pageant, a feature of church observances in communities near and far,

may well trace its history to early religious dramas — the mystery, miracle and morality plays of the Middle Ages.

Where did church drama actually begin? One possible source is the tradition of the Christmas crib or manger scene, but scholarly research indicates that medieval religious drama probably had other, separate origins, according to the editors of Encyclopedia Americana.

**Easter Plays Came First**  
Representations of the manger scene began with the use of doll figures, and history offers no evidence that people were ever substituted for the dolls. Living "actors" did, however, play a part in some early elaborations of

church rituals. In the 10th century, special chants written to accompany church music on festival occasions began to take the form of simple dialogues. These were little more than dramatic inserts in the church services, but here, researchers believe, religious plays had their start.

Easter dialogues and plays probably came first, with Christmas plays developing as a natural result. Other religious dramas or mystery plays soon followed, until there were series or cycles of plays devoted to telling the entire story of the Scriptures.

**Covered Many Subjects**  
Mystery cycles of the 16th

century included as many as 40 dramas, which might be presented over a period of several days. The cycles developed in virtually every European country.

Typical plays dealt with such subjects as "The Creation of the World and the Fall of the Angels," "Noah and the Flood," "The Annunciation," "The Passion of Christ," "The Death of Pilate," "The Resurrection and Ascension," "The Harrowing of Hell and the Coming of Antichrist."

Along with the mystery cycles were miracle and morality plays. Miracle plays recounted the miracles of the saints, while the moralities presented allegorical mes-

## PICTURING THE NATIVITY

The Christmas crib or presepio is an especially treasured part of the Portuguese holiday celebration. Every home and church seems to have one, and some of those in the churches are masterpieces of art.

Especially famous is the presepio in Estrelia Church, Lisbon. This Nativity scene depicts the people of Bethlehem, in terra cotta figures. Unlike among the crowd are the figures of an elephant and a bagpiper.

## HE PROTECTED ROBBERS

Legends about St. Nicholas are many, but they all relate in some way to his reputation for generosity. Pawnbrokers took him for their patron, and robbers looked to him as their protector. In the Middle Ages, robbers were sometimes called Knights or Clerks of St. Nicholas, says the New Book of Knowledge.

## COST WAS HIGH

When Christmas greetings cards first came into their own in the United States, about 1875 some of the more elegant cards were encrusted with blown glass frosting and sold for as much as 3 dollars each.

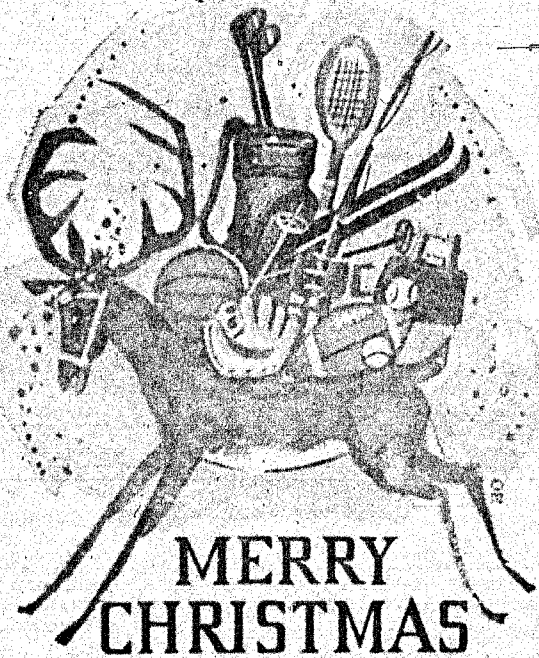


## GREETINGS

To our fine patrons, sincere thanks, and warmest greetings to your and yours for a Merry Christmas.

### SANTA ANNA TEXACO

OMER CULLINS  
Santa Anna, Texas



## MERRY CHRISTMAS

To all good sports, glad greetings. Here's hoping you'll have a great Christmas. And for your patronage, our warm thanks.

### WESTERN AUTO STORE

Santa Anna, Texas



## MERRY CHRISTMAS!

We wish to extend our warmest holiday greetings to all the wonderful people in our town who make day-to-day business a special pleasure. Heartfelt thanks for your loyal trust and support. Merry Christmas.

### PAT'S FASHION SHOP

318 Center Brownwood, Texas

**BEST WISHES FOR**

# Christmas

In the peace and quiet of this snow-laden countryside, the air is a tingle with the crisp freshness of winter, and we see the familiar signs and symbols of the good old-fashioned Christmas spirit... a spirit ever new. For you and yours, we wish a bounty of traditional pleasures, of serenity and contentment. At Christmastide, we pause in warmest appreciation of your continued loyalty, trust and confidence to wish you the very best of the season. It is our continuing pleasure and wish to be able to serve you.

YOUR FRIENDLY

## SANTA ANNA NATIONAL BANK

Member FDIC and Federal Reserve Bank of Dallas

| OFFICERS          |                          | DIRECTORS        |  |
|-------------------|--------------------------|------------------|--|
| W. T. Stewardson  | President                | W. T. Stewardson |  |
| Mrs. B. Weaver    | Vice President           | Mrs. B. Weaver   |  |
| O. L. Cheaney     | Executive Vice President | O. L. Cheaney    |  |
| Dawson See        | Vice President           | J. L. Boggus     |  |
| Glen Copeland     | Cashier                  | C. H. Wise       |  |
| LaVerne H. Evans  | Assistant Cashier        | Robert Markland  |  |
| Grothy Dillingham | Assistant Cashier        | Glen Copeland    |  |

# Why Pick Chimney? St. Nick Has Reasons

Why does Santa come down the chimney?

Of all the traditions connected with Santa, his unconventional mode of entry might seem the most puzzling. Surely the magical gift-giver, who has the power to drive reindeer through the

skies and who can cover the earth in a single night, could find an easier way to enter a house.

Like most of the lore of Christmas, Santa's choice of the chimney has several explanations. For instance, legend has it that the original

Santa, St. Nicholas, presented three maidens with gifts of gold for a dowry. Modestly concealing his generosity, he tossed the gold down a chimney, in secret.

Another theory claims that Santa copied a goddess, who was the first to deliver gifts

via a chimney. According to this legend, when the Vikings of Norway celebrated the Yuletide of winter solstice in their great halls, a festive feature of the occasion was the appearance of the goddess Hertha in the fireplace. As her name indicates Hertha was goddess of hearth

and home, and most appropriately arrived by way of the chimney, to deliver her Yuletide gifts of good luck and good cheer.

Still another explanation takes a practical point of view. Housewives of Northern Europe, cleaning house for the New Year, used to coax children to help with the chores by saying, "Let's clean the hearth. St. Nicholas will soon be coming down the chimney."

The children willingly set to work, and thus, says legend, a tradition was born. Even when he takes to helicopter or jet plane, Santa delivers his gifts by way of the chimney!



ACTING OUT the story of the Nativity, youngsters play the role of angels in the Christmas pageant at St. Croix, Virgin Islands. Traditional wherever the holiday is celebrated, the Christmas pageant has history in religious drama. Photo by Henle-Photo Researchers; from editors of Encyclopedia Americana.



## Christmas Greetings

Here's wishing you a merry old-fashioned Christmas. And to you, warm thanks for your confidence and trust! It has been a pleasure to serve you.

**SANTA ANNA CO-OP GIN**  
Santa Anna, Texas



## Yuletide Greetings

With deep appreciation of your loyalty and good will, we're wishing you all the pleasures of a fine old-fashioned Yule. Be merry!

**Halmon Feed Store**  
Santa Anna, Texas

### IT'S A MYSTERY

Mysterious things happen on Christmas Eve, say country legends of Switzerland. Young people may foretell the future, if they drink from nine different fountains while the midnight church bells chime. Then, if they hasten to the church steps, their future mates will await them there.

Somewhat less romantically, older folk seek to predict the weather for the coming year, using onion peels filled with salt.

### WRAPPING GIFTS

When German tradition is followed, unwrapping a Christmas gift can be an amusing but complicated process.

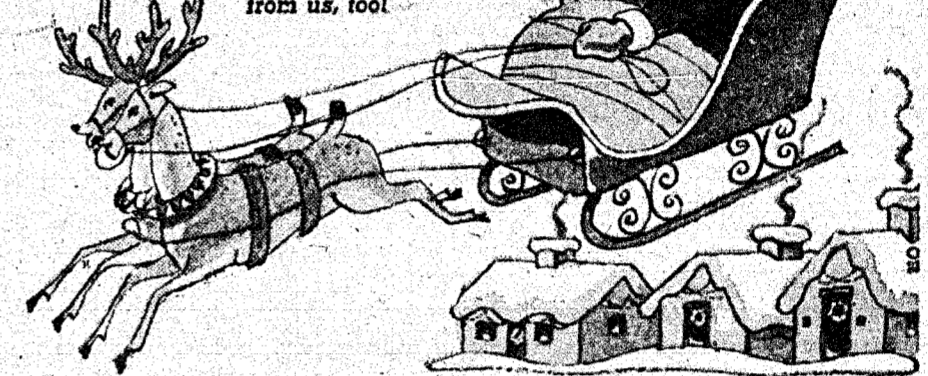
One gift may have many consecutive wrappings, each with a different name on it, and the final wrapping may reveal not a gift, but a card telling where the gift is hidden.

Other cards in other hiding places lead to a treasure hunt, ending in the discovery of the gift.

All kinds carbon paper at The News office.

## GREETINGS

Santa's on his way with a sleighful of merry wishes for you, plus a hearty "Thank you" from us, too!



## HICKS HUMBLE STATION

Santa Anna, Texas



## At Christmas...

We pray that the miracle of His birth in a humble manger will once more spread its wonders, its promise across the land, bringing peace on earth, good will to men. In the joyous spirit of the holiday we offer our thanks to our customers for your many kindnesses. We greatly value and enjoy the privilege of serving you. Merry Christmas.

## CRAIG'S FOOD MART

Santa Anna, Texas



# Merry Christmas

Christmas is in the air everywhere! Family and friends join to rejoice, trees are being trimmed, carols are sung, gifts exchanged, bells ring out a merry tune and hearts are filled with peaceful happiness. These are the very special joys of the season. May each and every one be yours. And we add our grateful thanks as we wish you a Merry Christmas.

The **Southwest State Bank**  
BROWNWOOD, TEXAS • Member F.D.I.C.

# Cardboard Castle Is Easy To Make For Holiday Fun

"Too pretty to throw away." On Christmas Eve or Christmas morning, as beautifully-wrapped packages are opened, this remark is likely to be often repeated. Though the gift wrappings do indeed seem "too pretty to throw away," they must usually be consigned to the wastebasket. After all, what can be done with used gift wraps, once Christmas is over?

One answer might be: build a castle!

Save the most beautiful and colorful of the gift wrappings, find some laundry cardboard, follow a simple plan — and the result is a cardboard castle.

Suggested by a manufacturer of gift wrapping papers, this castle building plan might be a Christmas-afternoon project for the children. After the first gift-exchange excitement is over, youngsters may appreciate a quiet pastime, and the card-

board castle offers an extra advantage in that it's as much fun to take apart as it is to build. The castle can be assembled and disassembled many times.

Although the plan is simple, adult guidance may be required — or at least, the adults can pretend that it is, so they can get in on the fun. Scissors, a ruler and rubber cement are the only equipment required, in addition to the gift wraps and cardboard.

Begin by cutting 24 pieces of cardboard, each five inches by seven inches. Cement gift wraps to each side and trim the edges.

To make Type "A" cards, cut one and one-quarter inch slits in 22 of the cards. Each card should have six slits, and the slits should be placed as follows: one slit on each five-inch side of the card, at

the center or two and one-half inches from the outer edge; two slits on each seven-inch side of the card, with each such slit placed one and a quarter inches from the outer edge.

For the remaining two Type "B" cards, the slits can be omitted on the five-inch side. Two slits should be cut as described on one seven-inch side of the card. On the other seven-inch side, the slits should be diagonal — placed two and a quarter inches from the outer edge and cut on a slant to two and one-eighth inch depth.

Assemble the castle by joining Type "A" cards at right angles, alternating pairs. At intervals, insert cards horizontally for an interesting, balconied effect.

Reserve two Type "A" cards for roof.

## ESTABLISHING CRIB

Through legend says that St. Francis of Assisi first introduced the Christmas crib in the 13th century, history records that the first manger scene was created by Pope Liberius in 354 A.D.

## IT'S TOO COMMON

In most of the United

States, the poinsettia is a prized Christmas flower. In Hawaii, however, it grows so profusely that it is considered too common for such an important holiday. Potted orchids, anthurium or the orange-and-blue flower called "bird of paradise" are Hawaiian holiday favorites.

THE NEWS, SANTA ANNA, TEXAS, DECEMBER 26, 1968



## To wish you MERRY CHRISTMAS

Deck your homes with mounds of holly, trim the tree with care ... for 'tis the merry season of Christmas. Many heartfelt thanks for your friendly good will. We're proud to be able to serve you.



**TAYLOR MOTOR CO.**

Coleman, Texas

## WARMEST WISHES

May your holiday be blessed with the sounds of joy, laughter.

Heartfelt thanks for your loyalty and friendly good will.



**SPECK BARBER SHOP**

Santa Anna, Texas



## A Blessed Christmas

The inspiration of that Holy Night lives anew. May all its spiritual blessings be yours, of this Christmastide.

**MCCRARY Premier Station**

Santa Anna, Texas



## Greetings



Happiness, kindness, and tidings of good will are what we wish you on this holy and happy holiday. We send you our best through this little message to show our appreciation.

**BEN FRANKLIN**

Home Owned, Nationally Known  
Coleman, Texas



To wish you joy... Have a happy holiday, and accept our pleased thanks!

**COLEMAN MONUMENT WORKS**

Coleman, Texas

## IT'S CHRISTMASTIME!



This is the season of good cheer when family and friends gather to celebrate the holiday amid sounds of music and laughter, the smell of good foods to eat, presents for all. To faithful friends old and new we offer a "Merry Christmas" and our thanks for your generous consideration.

**STEAK HOUSE**

Mr. and Mrs. Roy Murray

Santa Anna, Texas



## Best Wishes for Christmas

Christmas is a special time filled with merriment for everyone. We hope yours is exceptionally happy since you made us happy by being a customer and becoming a good friend.

**E. O. RIDER GARAGE**

SANTA ANNA

TEXAS

# Children Show Generosity, Treat Santa To Surprises

As a certain white bearded, jolly old gentleman makes his rounds on Christmas Eve, delivering happy surprises to children the world over, he may look forward to being, in turn, surprised.

In the legend and lore of Christmas, giving to Santa is a time-honored tradition, with the gifts usually taking the form of food or beverage. Today, many families encourage children to be generous, by observing the custom of setting out treats for Santa — perhaps some candy, a dish of cookies, a glass of milk.

Through the ages, the gift-giver now known as Santa Claus has been called by many different names, but Santa's predecessors, like Santa himself, were often greeted with special treats.

After taking out the treats, Befana refills each pocket with gifts for the children.

**Filling Pockets**  
In Italy, Befana is the gift-giver who preceded Santa. She took her name from the name for Twelfth Night — Epiphania, or Epiphany — and brought her gifts on Epiphany Eve, January 5th. To make ready for Befana, tradition says, Italian children empty their pockets and hang up their clothes. Then into each pocket goes a surprise — something good to eat.

**Another legendary guest** at Swedish holiday celebrations is Tomte, a kind-hearted elf who guards the home. A dish of food is placed in a quiet corner, so that Tomte may feast as he secretly observes the family fun.

**Enjoying Pudding**  
In Denmark and Norway the legendary good spirit of the house is Nisse, who watches over the home and farm and is sometimes said to be the gift-bringer, too.

His Christmas treat, the rice pudding traditional at Scandinavian holiday feasts, is placed beside the kitchen door or, on farms, in the hayloft.

**Treating the Donkey**  
Today's Santa relies on his reindeer for transport, but the gift bringers of yesterday had other animal helpers, who usually shared in

the holiday giving and receiving.

In Holland, for instance, legend says that St. Nicholas arrives early — on St. Nicholas Eve, December 5th — riding a white donkey.

For the refreshment of the good saint's donkey, children stuff their shoes with hay and set out a dish of water. Carrots and a potato are some times added.

**Feeding the Horses**  
Twelfth Night is, in Spanish tradition, the time for giving gifts, and the traditional gift bearers are the Wise Men, who as they journey each year to Bethlehem bring gifts for good children.

To feed the Wise Men's horses on their long pilgrimage, Spanish children fill their shoes with straw and set them on balconies or window ledges.

**Send George Washington to Viet Nam**



Or Abraham Lincoln. Or Alexander Hamilton. Or better still, write a check.

U.S.O. needs your dollars today for its vital work in Viet Nam and all the distant, lonely places where young Americans are serving.

Wherever they go, U.S.O. welcomes them, serves them, entertains them. Gives them friendship and the next best thing to home.

Your dollars will help provide 165 clubs, a dozen in Viet Nam. Plus 91 U.S.O. shows across the world.

Won't you give now? U.S.O. gets no government funds, depends on your contributions to your United Fund or Community Chest.

Someone you know needs U.S.O.



**Greetings**

with every good wish for a beautiful Christmas! And may we express our sincere joy in serving you. Your patronage is appreciated.

**BOBBY'S BEAUTY SHOP**

Santa Anna, Texas



**Rolling your way with GOOD WISHES**

To all our customers, sincerest wishes for a Christmas that hums with complete joy and happiness. And for the pleasure of having served you, our thanks!

**BURDEN'S MOBIL STATION**

Santa Anna, Texas



**PEACE on EARTH**

At Christmas, a special prayer: May mankind be blessed with "Peace on Earth." And a special wish: May your personal Christmas be a most happy one.

**SANTA ANNA INSURANCE AGENCY**

Santa Anna, Texas



**CHRISTMAS GREETINGS**

As we share with you in the joys of the Christmas season, we'd like to express our thoughts and our thanks to every friend and neighbor. Our thoughts are warm with hearty wishes for a holiday brimful of excitement and enchantment. And our thanks are most sincere, for your steadfast patronage and good will. We always appreciate the privilege of serving you.

**First Coleman National Bank**

Coleman, Texas

# Carols Express Yule Joy, Echoing Across The Ages

Voices rise in songs of joy and praise. As the joyous season arrives, the vibrant sound of carolers is heard in churches, at family gatherings, in groups going from house to house to celebrate with song.

Carols are as much a part of the Yuletide as the tree, gifts and Santa himself. It all began with the first carols in the 13th century, says the Encyclopedia Americana.

The earliest English carols were composed anonymously, perhaps by clergymen or court musicians. Simple tunes

and strong rhythms were characteristic, and the musical form featured a refrain, to repeat before and after each stanza.

Words were written, generally, in the English vernacular or in "macaronic" form — a combination of English and Latin.

The first printed collection of carols appeared in 1521. It included the "Boar's Head Carol," still sung during Christmas dinner at Queen's College, Oxford, England.

Even then, however, the practice of passing on carols orally, from generation

to generation, continued. Among these were carols in ballad form, such as "I saw Three Ships" and "The Cherry Tree Carol."

Caroling fell into disrepute in the 17th century, and carol singing was forbidden by the English Puritans. Those who colonized America carried this disapproval with them.

After the Restoration, in 1660, caroling was once again permitted and the custom

## CARDS WERE GENERAL

Most of the popular Christmas cards of the later 19th century in Europe had no particular Christmas significance. There were some manger scenes and others of religious nature, but these were far outnumbered by landscapes, flowers, kittens, and similar subjects.

slowly revived.

Some of the most popular carols date from the 18th and 19th centuries. These include "Adeste Fideles," possibly by Francis Wade; "Hark! The Herald Angels Sing," with words by Charles Wesley and music by Felix Mendelssohn;

"Joy to the World," with words by Isaac Watts, music by George Frederic Handel.

Probably the most popular of all carols is the 19th century "Silent Night," with words by Joseph Mohr, the

village priest of Hallein, Austria.

Many stories are told about the way this carol came to be written. One legend says that on a snowy Christmas Eve in 1818, Father Mohr went to

bless the newborn baby of a poor parishioner.

On that night he was so inspired by the beauty of the mother and child that he wrote the poem "Silent Night."


THE NEWS, SANTA ANNA, TEXAS, DECEMBER 26, 1968



## GREETINGS

The beauty and spirit of the season brings to mind most wonderful gifts... friendship, loyalty and good will. We thank you for yours and wish you a Merry Christmas.

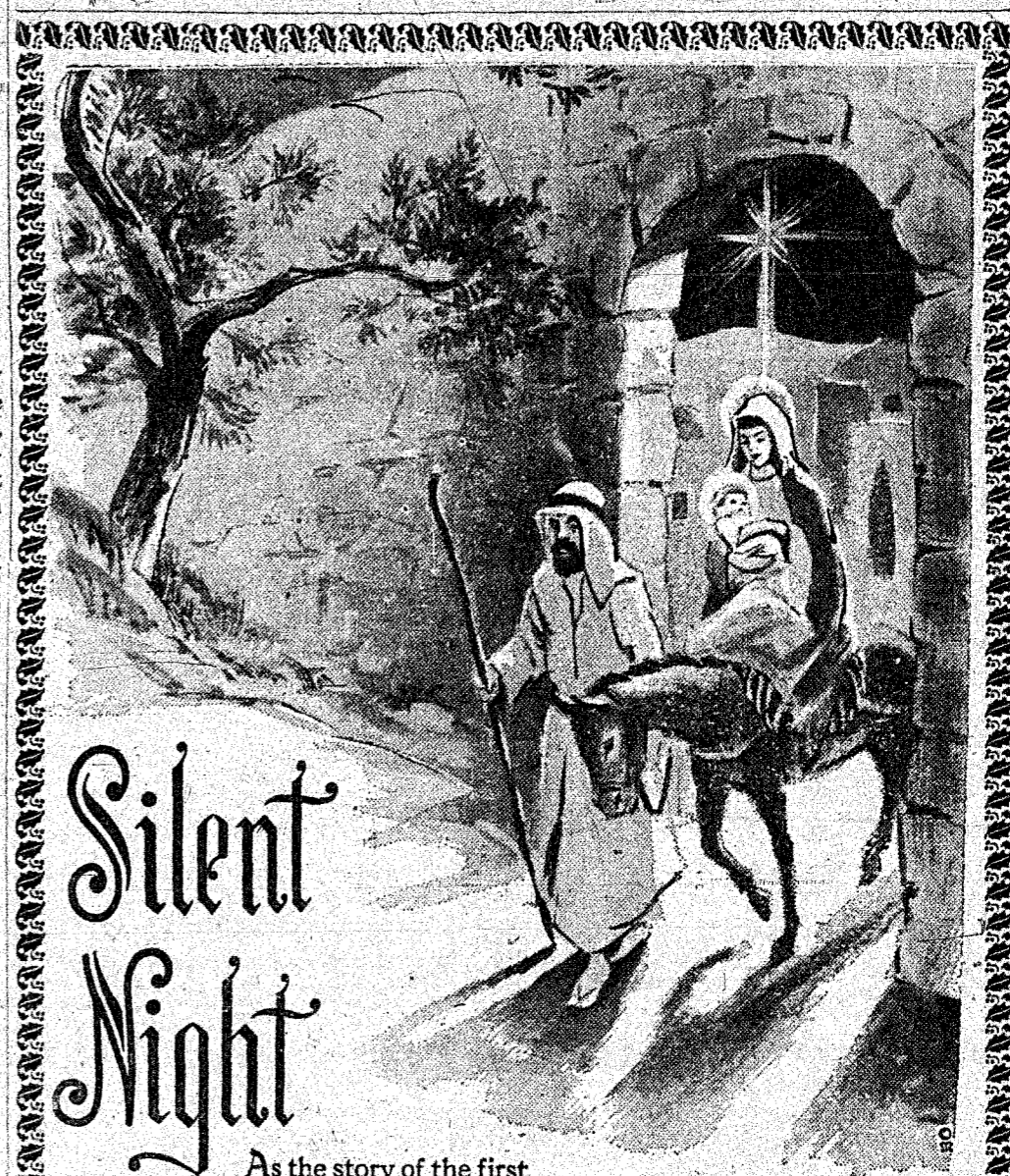
**Coleman County Telephone Co-op Inc.**  
Santa Anna, Texas



We wish you a Merry Christmas

We would like to extend our warmest holiday greetings to our friends. Thank you, Merry Christmas.

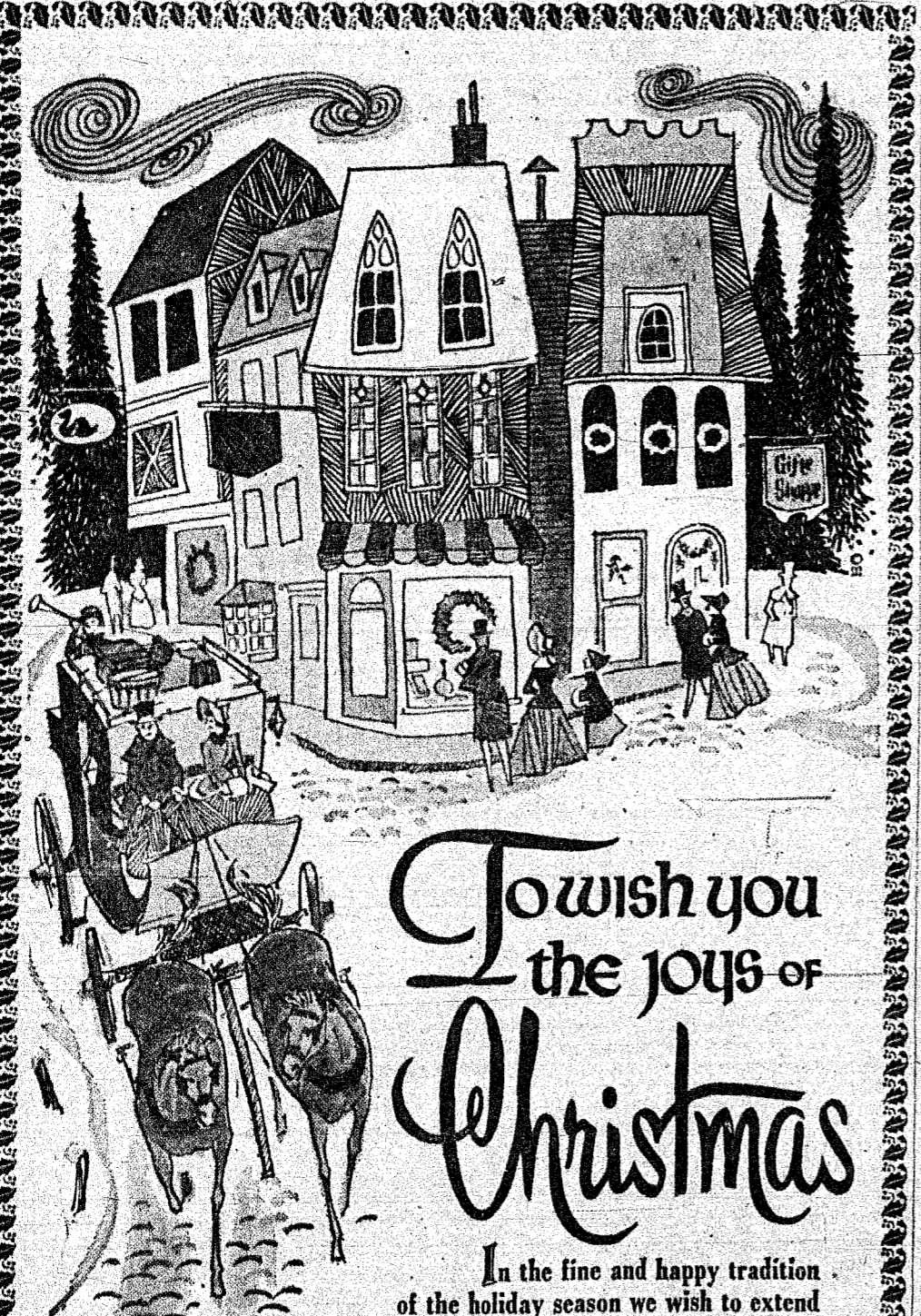
**LADIES SHOP**  
Santa Anna, Texas



## Silent Night

As the story of the first Christmas unfolds in churches and homes across the land, may you and yours share in its hope for "Peace on Earth, Good Will to All Men."

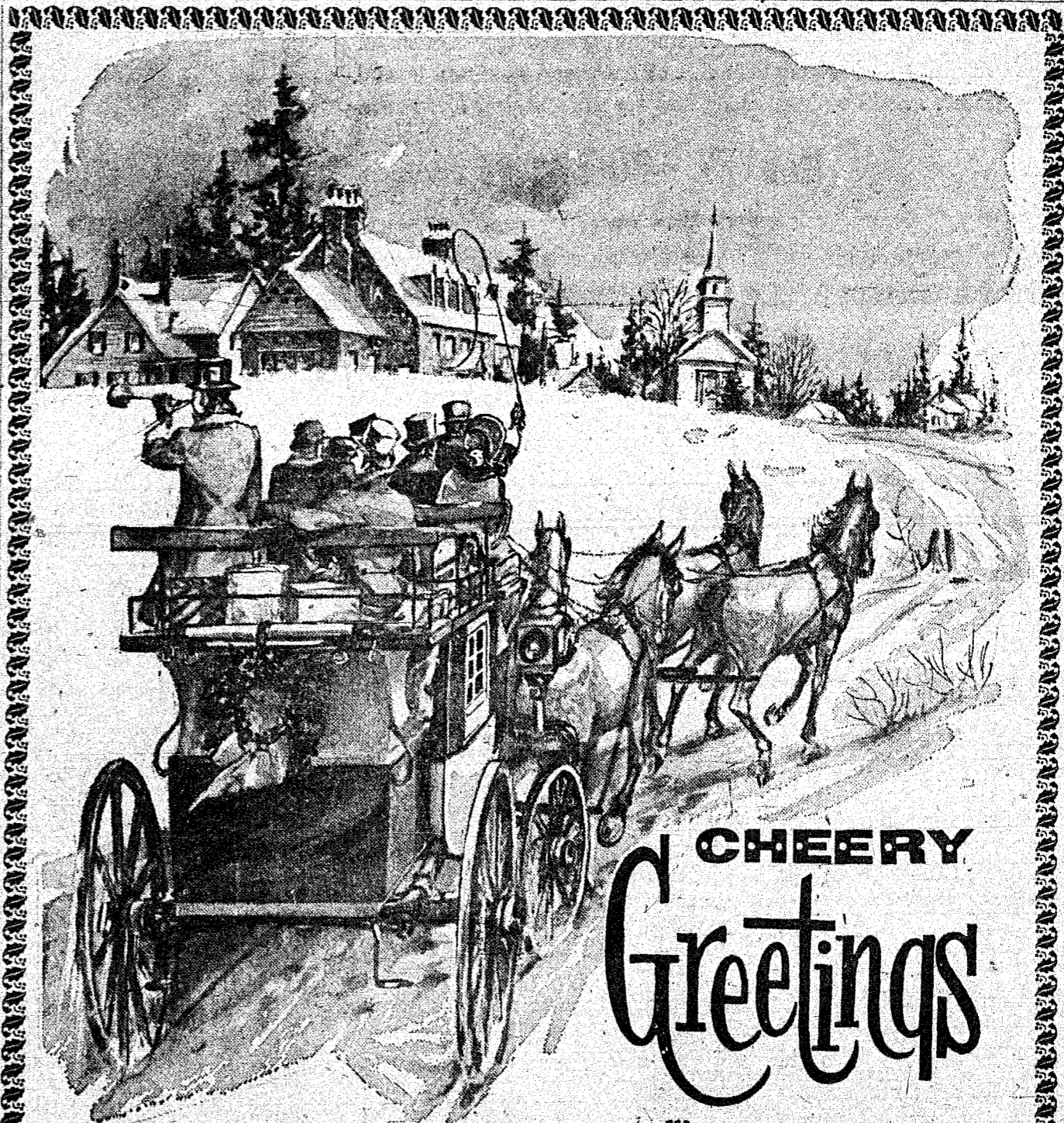
**LOUDAMY'S FASHION SHOPPE**  
Brownwood, Texas



## I wish you the joys of Christmas

In the fine and happy tradition of the holiday season we wish to extend our greetings to our customers, old and new. May you enjoy the festivities and delights of this special time as your families gather in joyous celebration. Thank you for your loyal trust and support. Your warm friendship makes us feel very proud. Merry Christmas.

**DELMA JOHNSON IMPLEMENT**  
Coleman, Texas



## CHEERY Greetings

We put aside our business to greet all our fine patrons with sincere best wishes for a Merry Christmas and to express our deepest appreciation for your continued friendship and many kindnesses.

**Coleman County Electric Co-operative, Inc.**  
Owned By Those It Serves  
Coleman, Texas

# Churches Celebrate Holy Day

With special services, churches of this community celebrate Christmas—a holiday that is, first of all a holy day. Festivals of light, music and prayer are dedicated to the birth of a Holy Child in Bethlehem, nearly two thousand years ago.

For Christian believers, each of these—light, music, prayer—has a special meaning associated with Christmas.

"And lo, the star, which they saw in the east, went before them, till it came and stood over where the young child was. When they saw the star they rejoiced with exceeding great joy." Matthew 2:9-10.

The Star that guided the Wise Men shines as symbol of Christ, the Light of the world, and it in turn is symbolized by all the bright lights that twinkle at Christmas today.

Candlelight services reflect the radiance of the holiday, in Christian observances everywhere.

"And suddenly there was with the angel a multitude of the heavenly host praising God, and saying, Glorify to God in the highest, and on earth peace, good will toward men." Luke 2:13-14.

Since the angelic chorus brought "glad tidings of

great joy" to shepherds watching in the fields, hymns and carols of rejoicing have told of the wonder and glory of Christmas.

That the words of the angels composed the first of all Christmas carols is a thought repeated again and again in favorite songs of the season.

"Hark! the Herald Angels Sing" makes this thought its theme, and another familiar carol, "It Came upon the Midnight Clerk," is devoted to "that glorious song of old," on the night when "the world in solemn stillness lay to hear the angels sing."

Christmas music in the

churches celebrates the joy of the Nativity.

"And when they were come into the house, they saw the young child with Mary his mother, and fell down, and worshipped him." Matthew 2:11.

"And the shepherds returned, glorifying and praising God for all the things that they had heard and seen, as it was told unto them." Luke 2:20.

Thus wrote two of Christ's disciples, Matthew and Luke, telling of the awe and wonder, the joy and reverence experienced alike by wise men and shepherds.

Especially at Christmas, in church services and private devotions, Christians give prayerful thanks to God, for the miracle of the manger.

# Santa's Moving To Take Lead As Gift - Giver

More and more, Santa becomes the favored gift-giver in countries around the world, replacing a host of legendary figures who were said to bring gifts at this same season of the year.

Gift-giving time, too, is now more likely to be Christmas Eve although the traditional date in European countries once ranged from St. Nicholas Eve, December 5th, to Epiphany Eve, January 5th.

## DRIVING YULE OUT

St. Knut's Day, January 13th, is the traditional time for taking down Christmas greens in Sweden. According to custom, as the tree is dismantled, young folk dance while their elders sing "Twentieth day Knut driveth Yule out."

This custom is believed to be derived from the laws of King Canute, written in the early 11th century.

Among the many who set the trend for Santa Claus is the German gift-giver, Kris Kringle. The name is a variation of Christkind—not the Infant Jesus himself, but his messenger who came to earth at Christmastime.

Christkind was represented by a child dressed in white robes, with a crown and

## HOW MANY HOLIDAYS?

Traditionally, Belgians celebrate three holidays at the Christmas season—beginning with St. Nicholas Day, December 6th, when the good saint brings gifts for children.

Then comes St. Thomas Day, December 21st. It's a sort of "trick or treat" day for school children, who try to play tricks on their teachers.

The third holiday, of course, is Christmas.

wings of gold. In Japan, the traditional gift-giver is a native god, Hotelesho. Represented as a kindly old man with a pack on his back, he is much like visions of the traditional Santa.

He is said to have eyes in the back of his head, the better to see whether boys and girls have been naughty or nice.

In Yugoslavia, Grandfather Frost—"Dede Mraz"—replaces Santa Claus.

The Yugoslavian trend is to combine Christmas and New Year holidays, and celebrate them together with Grandfather Frost Day.

## CAROLING EVERYWHERE

In every country where Christmas is celebrated, carols are a part of the celebration.

THE NEWS, SANTA ANNA, TEXAS, DECEMBER 26, 1968



This season, it is our wish that your spirit be moved by the inspiration and hope that distinguished the first Christmas. And that its meaning then . . . of peace and good will toward men . . . will be its meaning now for you and your loved ones.

## HARVEY GROCERY

Santa Anna, Texas

# Merry Christmas to All!

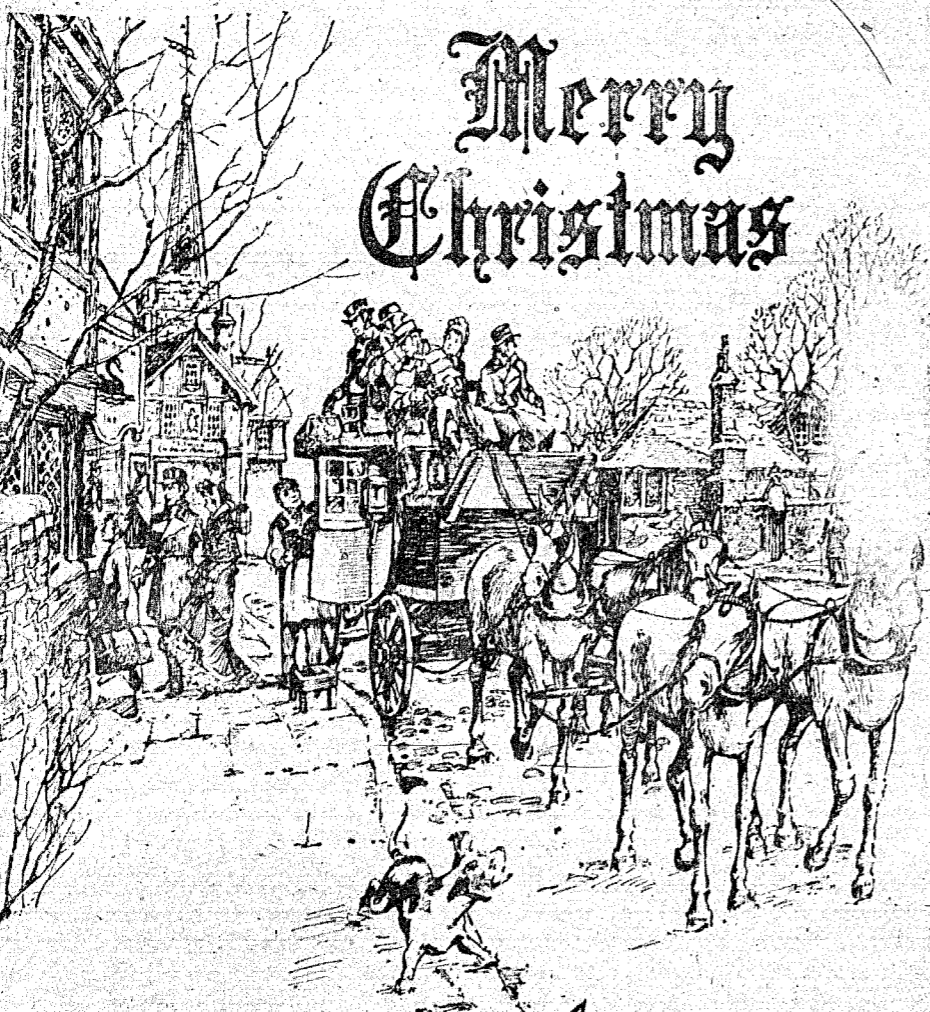


Like the sparkling beauty of a snowy landscape, hearts are filled with peace and good will. Over the mountains, through the woods or wherever you'll be at Christmas, we wish you a merry one and sincere "Thanks" for your continued support.

## SOUTHERN SAVINGS & LOAN

401 CENTER

BROWNWOOD



# Merry Christmas

It's time once more to turn aside from the routine of day-to-day business and greet our fine patrons and neighbors with hearty wishes for a merry, old-fashioned Yule. May your holiday be filled with the happy sounds of laughter as you rejoice in the company of family and friends. Sincere thanks for your loyal trust and support.

## J. E. STEVENS HARDWARE DEPT.

Coleman, Texas



# Greetings

To you and your family, our wish is for all the merriment and excitement of this festive season . . . all the joy and warmth of a Yuletide celebration. And may we thank you for your much appreciated patronage.

## TEXAS FURNITURE

101 Fisk

Brownwood