

Santa Anna News

"He Profits Most Who Serves Best"

One Section — 8 Pages

VOLUME LXXVI

SANTA ANNA, COLEMAN COUNTY, TEXAS, FRIDAY, AUGUST 31, 1962

NUMBER 35

THE
AMERICAN
WAY

NOT SO SOUND ADVICE

By Rosalie M. Gordon

(Editors Note: Rosalie M. Gordon is editor of All-American Books, All-American Book Digest and American's Future.)

Americans recently found themselves on the receiving end of some unsought advice from a source whose advice on another subject we, or rather our Supreme Court, once accepted with resultant untold miseries ever since. A gentleman named Gunnar Myrdal gave an interview to the New York Times to which that journal devoted several columns and an approving editorial. Dr. Myrdal is a Swedish economist who is also known for the socialist slant of both his economics and his sociology. In his New York Times interview, he was taking Americans to task for what, in his superior way, he called our "superstitions." One to our superstitions, according to Dr. Myrdal, is believing that the government should not constantly pile up deficits and debt, that it should balance its budgets. Another of our superstitions is concern over our loss of gold. Dr. Myrdal thinks that if we Americans could only rid ourselves of these silly superstitions, then the government could go in for massive spending on all sorts of things like schools, housing, medical care, etc. This, he says, would save us from the "economic stagnation" from which he says we are now suffering.

Background

Before we take a closer look at this latest advice from Dr. Myrdal, it might be well to recall that this is the same gentleman on whom the Supreme Court of the United States depended eight years ago when it rendered its unconstitutional decision in the school segregation cases — a decision from which has flowed so much of the racial dissensions and hatreds which have plagued us ever since. In that famous decision, the Supreme Court wrote a law — something it had no right to do under our Constitution. In so doing it ignored all previous American historical, judicial and constitutional precedents and turned instead to a book written by this same Swedish economist (he was then a sociologist) on the race question. Dr. Myrdal, knowing little or nothing about racial problems in the United States — problems which Americans had been trying to solve over long and trying years — came to write his book under a grant from the Carnegie Foundation. He had as collaborators 16 or those fuzzy-minded "thinkers" who have caused so much havoc in America in the last quarter century. Every one of these 16 collaborators had had affiliations with communist-front organizations and causes.

Our Constitution

As to the United States Constitution, Dr. Myrdal freely expressed his contempt for it. He said it was "impractical and unsuited to modern conditions" and that its adoption was "nearly a plot against the common people." This is the man who now tells us how we can get rich by spending ourselves into bankruptcy. We would not need to be so concerned about Dr. Myrdal's advice save it is likely to receive a warm welcome by influential New Frontier advisers.

Dr. Myrdal's native Sweden of course had no race problem which he could mess up with his weird sociological theories. But it does have an economic problem stemming pretty much from its adoption of his equally weird economic theories. Mr. Tore Brodahl, head of Sweden's largest bank, says that the course his country has followed is a warning example of what happens to a nation whose government continually refuses to balance its budget. Sweden is suffering from an inflation which has brought about a 68 percent rise in prices in the last dozen years. Its industry is caught in a squeeze between rising costs and declining profits. Its so-called "growth rate," which is supposed to be pepped up by government deficits, is slowing down instead and expenditures by industry on new plants and equipment show a sharp drop.

Same Problem

In other words, Sweden is suffering from the very stagnation from which Dr. Myrdal would save us with his deficit-spending nostrums — and she is suffering from it as a result of her adoption of those same nostrums. A sick economic system isn't going to get better, either in Sweden or America, by imbibing more of the quack medicine

Polls Set Up For Wheat Quota Vote

Polling places for the August 30 referendum on marketing quotas for the 1963 crop of wheat were announced today by Vernon Bullard, Chairman, Agricultural Stabilization and Conservation County Committee. The wheat quota ballots may be cast from 8:00 a. m. to 6:00 p. m. on Thursday, August 30, at the following places:

Agricultural Building in Coleman, Santa Anna National Bank in Santa Anna.

The Chairman explains that the 1963 wheat program to be voted on in general will be the same as for the 1961 wheat crop, as directed by "permanent" legislation. The 1962 wheat stabilization program was authorized by special legislation affecting the wheat crop for 1962 only.

Farm acreage allotments in 1963 will be based on a minimum 55-million-acre national wheat allotment, and growers have already received notices of their farm allotments.

If at least two-thirds of the growers voting approve quotas for 1963-crop wheat, price support available to growers who comply with their allotment will be at a national average of at least \$1.82 per bushel (75 percent of parity). Marketing quota penalties will apply to the "excess" wheat of growers with more than 15 acres of wheat who do not comply with their farm wheat allotments.

If the quotas are not approved by the necessary two-thirds of those voting, there will be no quotas or marketing penalties for the 1963 crop of wheat, but the price support available to growers who comply with their wheat acreage allotments will drop to 50 percent of parity, or a national average of about \$1.21 a bushel.

In either case, no price support will be available on the 1963 wheat crop to growers who do not comply with their farm wheat acreage allotments.

Proclamation of wheat marketing quotas is directed by legislation whenever the supply of wheat is more than 20 per cent above the normal supply. Actually the total supply for 1962-63 is estimated at 2.4 billion bushels — 66.5 per cent above normal.

Marketing quotas have been in effect for the past nine wheat crops as approved by growers voting in referendums held annually on the question.

Polio Vaccine To Be Given Here

Plans are underway for Santa Anna to join most of the towns and cities in this part of Texas in the polio immunization program now under way. First date for the program is set for Sunday, September 16.

More information will be available here within the next few days. We will publish all available information as it comes to us.

The program is being sponsored by the Lions Club locally.

High School Annual and Senior Rings Arrive

The 1962 Annual of the Santa Anna High School and the Senior Class Rings have arrived and may be picked up by students at the pre-school party, to be held Friday evening, August 31, at 7:00 p. m.

All students who have payments due on the annuals or rings are to bring the balance due with them.

The pre-school party is sponsored by the Student Council and will be held at the high school. Games will be enjoyed and refreshments will be served.

All high school students and teachers are invited to attend. Included in the invitation is all 1962 graduates, all freshmen entering high school this year and all new high school students in the high school system.

which made it sick in the first place. What we need is a change of doctors. The Myrdals, the Schlesingers, the Rostows, the Hellers and others should be told to pack up their snake oil and go elsewhere.

Revival To Begin At Assembly of God Church Sun., Sept. 2



REV. D. C. OGDEN

Rev. James Ford, pastor, announces a revival meeting will begin at the Assembly of God Church Sunday, Sept. 2, and continue through Sunday, Sept. 16. Services are scheduled at 7:30 p. m. each evening.

Evangelist for the two-week meeting will be the Rev. D. C. Ogden of Tulsa, Oklahoma, who is a musician, minister, singer and chalk artist.

The pastor and church extend a cordial invitation to everyone to attend each and every service.

An Appreciated Letter

Your editor received the following letter from a subscriber last week and we would like to reproduce the letter here:

Mr. John C. Gregg:

Enclosed please find my check for one year's subscription to The News. It has been forty-three years since I was in your town but I still enjoy the paper.

I was in and near Santa Anna from 1900 to 1919 and graduated with the Class of 1916.

Respectfully,
Riley Avent.

With the approach of the season when thoughts are turning to the annual Homecoming, to be held October 5 and 6, we would like to extend an invitation to Mr. Avent to attend the annual affair. We know you will enjoy the time spent here among your former classmates, as there will likely be several here you will know and remember well.

And while we are extending the above invitation, we would also like to invite all former students of the Santa Anna schools to attend. It is not just for graduates, but for all former students of either of the Santa Anna schools.

There are usually about 300 former students here, and most every class is represented. Everyone has a great time. If you are a former student, make plans now to be present. You do not need a personal invitation — just be here.

Attendance At Church Services

Reports of attendance at local churches during the weekend are as follows:

FIRST BAPTIST CHURCH	
Enrollment	287
Sunday School (9:45)	139
Morning Worship (11:00)	129
Evening Worship (6:00)	55
Training Union (7:00)	25

The Rev. David Morrison of San Angelo, a former pastor of the Reckwood Baptist Church, will deliver both Sunday services. The pastor, Rev. Raymond Jones, is holding a revival meeting at the Alta Mere Baptist Church in Fort Worth.

Tommy S. Starnes Receives Degree For Undergraduates

Tommy S. Starnes, son of Mr. and Mrs. Tommy Starnes and a grandson of Mrs. O. L. Garrett, received an undergraduate Bachelor of Arts degree from Texas Tech Friday evening, Aug. 25. The school had more than 500 candidates for degrees at the summer commencement exercises.

Tommy's degree was from the school's Arts and Science Department and was in mathematics.

Hand punches at the News office.

Labor Day Is Local Holiday

Labor Day, Monday, September 3, will be observed as a holiday in Santa Anna, and it is assumed that all local stores will remain closed for the day. You are urged to keep the holiday in mind while doing your weekend shopping.

Labor Day Weekend is one of the times when accidents on the highways are at their peak. Everybody, it seems, wants to get out for the last time before fall and winter sets in. Let us urge each of you to remember the traffic will be heavy, so start a little early and drive carefully. Do not be one of the 30 Texans expected to be killed on the highways over the weekend.

It's Your P-TA

Join It,
Serve It,
Grow With It

This past year, through the teamwork of thousands of devoted PTA membership chairmen and their committees, membership in the National Congress of Parents and Teachers again, reached a new high. As of March 31, memberships totaled 12,107,507.

"You can be proud of this record because you made it," said Mrs. Elgean Harris, president of the local organization. "Through your efforts more persons than ever before 'teamed up' in the nationwide PTA program of work for the welfare of children and youth."

"Now that another PTA year is approaching, we must realize all over again how much the PTA can and should mean to all parents and other interested persons. As our 1962-63 membership theme we have chosen 'It's Your PTA — Join It, Serve It, Grow With It.'"

Annual Co-op Gin Meeting To Be Friday Night

The annual meeting of the stockholders of the Santa Anna Co-op Gin will be held in the Cafeteria of the Elementary School Friday, August 31, announces Pierre Rowe, manager of the gin and Co-op Elevator.

All stockholders of the gin are urged to attend. A cordial invitation is extended to all the customers of the gin and other visitors are invited.

A free barbecue supper will be served at 7:30 p. m. The annual business meeting and election of directors for the coming year will follow.

An unusual transaction of this meeting will be a \$2.00 dividend per bale of cotton ginned at the Co-op in 1961. Every person who ginned a bale of cotton there in 1961 will receive a check for \$2.00 for each bale ginned. The checks will be distributed during the business meeting.

Mrs. Ozro Eubank Purchases Local Ladies Shop

Mrs. Ozro Eubank this week announces she has purchased the Ladies Shop from Elsie Lee and Ruby Harper. The change of ownership is effective Saturday, September 1.

The Harper girls have operated the Ladies Shop for the past 14 years. Previous to that time they owned and operated the Phillips Drug Store for a number of years. Miss Ruby Harper said they plan to retire from business life and after a rest of a few weeks, they plan to take care of their farming operations.

Mrs. Eubank said they will continue to operate the business at the same location, with the same popular priced lines of merchandise the store has handled in the past.

Some remodeling will be done to the store and a formal opening is planned for a later date.

CORRECTION

The name of Lewis Evans was accidentally omitted from the list of pallbearers who served at the funeral of Charles Evans, in last week's News. We apologize for the omission.

Attend church regularly.

Schools To Open Tuesday, Sept. 4th

The Santa Anna Schools will open for the 1962-63 school year Tuesday morning, Sept. 4th, with a general assembly of all students and visitors in the high school auditorium at 8:45 a. m. All school buses will operate on the first day as nearly as possible to serve all children on the routes. The lunchroom will operate on the same basis as it has for the past few years.

Cullen N. Perry, Superintendent, said the faculty is complete and the school is looking forward to a successful year. Although one teacher was lost due to the average daily attendance last year, it seems the teaching load can be divided to where it can be handled adequately.

Mrs. Gloria Chandler of Coleman, has been employed as the English and Speech instructor. She has a major in English and a minor in speech and has several years experience in both fields. She received her Bachelor of Arts degree from Sam Houston State College in 1948 and has been teaching since 1947.

Mrs. Chandler is a member of the Delta Kappa Gamma and American Association of University Women. Mr. Chandler is with an oil company and is presently working on a flood control project in the Novice area.

The other new teacher on the faculty this year is Don W. Davis. He will be the Eighth Grade Sponsor. He will also coach the Junior High football boys and act as assistant coach to the high school team.

Priests at the lunchroom will be the same as in the past years, 30 cents for elementary students, 35 cents for high school

students and 40 cents for adults. Mr. Perry said the general assembly would last for about 20 minutes. Then all students will go immediately to their home rooms. The high school registration is almost complete and all elementary classes will register as soon as they arrive in their class rooms. Tuesday will be a regular day of school.

A number of improvements have been completed at the school during the summer months. Included is the re-finishing of desks and chairs in the elementary school, new lunchroom equipment including a new stove, steam table and hot water storage. The new physical education field is now being used and further improvements are planned for the physical education department. The Parent-Teachers Association has added four more air conditioners to the elementary school, and every effort is being made to get the three remaining rooms air conditioned as soon as possible.

A new school bus has been approved for the school and will arrive here about November 1. Mr. Perry said this bus would be used as a standby to be put in service where needed.

Other members of the faculty are: Elementary School, James A. Harris, Principal, and Margaret Crews, Ruth Dodson, Mattie Beth Davenport, Maud Harris, Nadean Harris, Gertrude Martin, Ruth Odem, Lucille Dean and Martha Perry and Mr. Davis.

High School, Roy B. Mathews, Principal, and A. D. Bowen, Beth Manning, T. K. Martin, Winnie McQueen, A. D. Pettit, R. C. Smith, Dan Tindal, and Mrs. Chandler.

Ed Bryson Named To County FHA Committee

Mr. J. Ed Bryson of Coleman has been appointed as a member of the three-man Coleman County Farmers Home Administration committee, the agency's County Supervisor, John H. Curry, announced this week. The appointment is for three years and began July 1.

Mr. Bryson succeeds Edgar Shelton whose term expired this year. The other two members serving with Mr. Bryson are R. V. Rodgers of Mozelle and Everett Evans of Talpa.

The local Farmers Home Administration county committee reviews applications by farmers and other rural families for six different types of agricultural, housing and water loans made in Coleman County. In addition the committee advises with the County Supervisor regarding adapting of national loan policies to local conditions.

Mr. Bryson has been a successful livestock farmer in Coleman County for a number of years and served eight years on Coleman County ASC Committee.

This experience will enable him to make a real contribution to the county committee's actions when they review loan applications.

Large Crowd Attends Annual Telephone Meeting

A crowd estimated at 800 people was present for the annual meeting of the Coleman County Telephone Cooperative, Inc. Friday evening of last week. Members registering numbered 211.

A program of varied entertainment was presented by the Skyliners, the Santa Anna Stage Band under the direction of T. K. Martin. Other entertainment was furnished by a group from Brownwood.

Directors elected during the business meeting were: Tom Kingsbery and Glen Copeland from the two Santa Anna areas, and Grady McIver from the Trickham area. These directors will serve two years. One year directors are: Frank Gillespie, Gordon Monsey, Jake McCreary and W. T. Nixon.

New officers will be elected at the September meeting of the directors. Present officers are: President, Tom Kingsbery; Vice President, Grady McIver; Secretary, Frank Gillespie.

Father of Trickham Woman Buried Sun.

Funeral services for Carrol J. Bowden, 32, of Cherokee, father of Mrs. Fred Haynes of Trickham, were held at 3:00 p. m. Sunday in the Cherokee Church of Christ. Burial was in the Hanna Cemetery, under the direction of Howell-Doran Funeral Home.

Mr. Bowden died Saturday morning in a San Saba rest home, where he had been a patient for a month.

He was born Feb. 7, 1880, in Williamson County and was a retired stock farmer. Mr. Bowden was married to the former Miss May Miller August 30, 1908 in Coleman and they made their home there until 1929, when they moved to Cherokee.

He is survived by his wife; a son, Cecil Bowden of Cherokee; one daughter, Mrs. Haynes; three brothers, Henry, Charles and Thomas Bowden, all of Brownwood; a sister, Mrs. Lily Nichols of Brownwood; six grandchildren and six great-grandchildren.

Happy Birthday

"Happy Birthday" to all who have birthdays during the next week. Below are listed the birthdays we have this week.

- AUGUST 31
Fletcher Carter, Midland
- SEPTEMBER 1
Mrs. Theo Kirkpatrick
John Wayford Gregg
- SEPTEMBER 2
Homer Goodgoin
Mrs. Mary Jane Payne
- SEPTEMBER 3
Mrs. Moya Cole, Brooksmith
Mrs. Ozro Eubank
Gloria Jane Henderson
- SEPTEMBER 4
Riley Avent, Huntington
Beach, Calif.
Mrs. John Lowe
Jack Mobley
J. Hays Dixon
- SEPTEMBER 5
Mrs. W. J. Steward
Karl Pittard
Linda Robinett
Mrs. Elmer Hardy, Abilene
Mrs. Wilma Welch
- SEPTEMBER 6
Mrs. Floyd Morris
Joe Harvey
Leanna Pollock

Would you like for your name to be published on your birthday? If so, please be sure to let us know when it is. Next week we will publish names of those having birthdays between September 7th and September 13th.

Rockwood News

By MRS. JOHN C. HUNTER

Recent guests with Mr. and Mrs. Drury Estes were Mr. and Mrs. Woodrow Estes and Rosemary of Abilene, Mrs. Ralph Briles Jr., of Cedar Rapids, Iowa, Mr. and Mrs. Clifton Bryan and girls of Houston, Mrs. Wayne Bray of Lohn and Louise Cooper.

Mr. and Mrs. Estes visited in Bangs last Friday with Mr. and Mrs. Dee Smith and Mr. and Mrs. Clyde Horsman.

Mr. and Mrs. Travis King and boys of Nacogdoches visited Friday to Tuesday with Mr. and Mrs. A. L. King. They all attended the Telephone meeting in Santa Anna Friday evening. Sunday afternoon they enjoyed an outing at the Brownwood Lake, then to Brownwood where Mr. and Mrs. Travis King honored his parents with a dinner marking their 42nd wedding anniversary.

The Rev. Jan Daehmert, was Sunday dinner guest in the Billy McIntire home. He filled the pulpit at the Baptist Church

at both Sunday services. Mr. and Mrs. Carl Ashmore of Santa Anna visited Sunday afternoon with Mr. and Mrs. F. E. McCreary.

Mr. and Mrs. James Sluder came Friday to spend the weekend with Mr. and Mrs. Leffel Estes and family. Mr. and Mrs. James Estes and children were Friday and Sunday guests. Boss Estes and grandsons, Mike and Gordon visited Friday. Mr. and Mrs. Cecil Day and children of Coleman were also Sunday dinner guests.

Mrs. Carl Buttry and granddaughter, Lana Kay, visited last Wednesday with Mrs. Uless Maness in Brownwood.

Mrs. Sherman Heilman was in Colorado City Wednesday to Monday with her mother, Mrs. Dena Ellis, at the home of Mr. and Mrs. Doc Ellis. Mr. and Mrs. Hilary Rutherford and children of Brownwood, Mr. Heilman and grandson, D. L. Fulbright, went for Mrs. Heilman on Monday.

Claud Box and Hilton Wise were business visitors in Brownwood last Friday.

Mrs. Curtis Bryan announces the birth of a niece, Dana, born to her sister, Mrs. Roger Stutz-

man in Stillwater, Okla., recently. Mrs. Stutzman is the former Ann Hunter.

George Rutherford was admitted to the Santa Anna hospital Monday.

Mr. and Mrs. John Kemp visited Hamilton Friday and Saturday.

Mrs. Leroy Casey and Jerry of San Angelo came Friday for Lana, who spent several weeks with her grandparents, Mr. and Mrs. Carl Buttry. Mr. Casey and Jerry spent Saturday night and Mrs. Casey and Lana came for Sunday. The Caseys have been living in Waco this summer.

Sunday guests with Mr. and Mrs. N. J. Buttry were Mr. and Mrs. Carl Ashmore of Santa Anna, Mr. and Mrs. Matt Estes, Mr. and Mrs. Marcus Johnson. Mrs. Carl Buttry visited Monday morning.

Dick Inman of Abilene came Wednesday and he and Mrs. Inman returned home Thursday after several days with her parents, Mr. and Mrs. N. J. Buttry.

Mr. and Mrs. Martin Burk-lund and Connie Gail of Brady were Sunday supper guests with Mr. and Mrs. Carl Buttry.

The WSCS of the Rockwood Methodist Church served luncheon for the Santa Anna Lions Club Tuesday. Committee in charge was Mrs. Aubry McSwain, Mrs. Marcus Johnson and Mrs. Tom Bryan.

Amos Caldwell of Dallas spent Sunday with his aunt, Mrs. Mena Shuford. Other callers were Mr. and Mrs. George Cullins and Mrs. Kate McIlvain.

Mr. and Mrs. Joe A. Hodges, Eddie Joe and Ellen of Coleman spent Sunday with Mrs. A. L. Crutcher and Ludy Jane. Mrs. Crutcher visited Monday with Grandmother Crutcher in Coleman. She and Ludy Jane visited Mr. and Mrs. J. W. McDonald and girls and June Calhoun Monday afternoon.

Mrs. R. J. Deed and Mr. and Mrs. Robert Perry and Gregg visited last Thursday in Wood-son with Mrs. Bangle Ellis and Mr. and Mrs. Carl Ellis. They spent Sunday and Saturday at Abilene with Mr. and Mrs. Gene Deed and family and Mr. and Mrs. J. C. Deed.

Mr. and Mrs. O. W. Winstead of Woodson spent Sunday in the Woodson home.

Mr. and Mrs. Perry and Gregg left for their home in Brown-ville Monday afternoon.

Misses Sue and Colleen Wise of Fort Worth and Wes Wise of Dallas spent the weekend with Mr. and Mrs. Hilton Wise.

Forman Fowler of Coleman visited Sunday afternoon with Mrs. Hyatt Moore and Mrs. Rosa Belle Heilman.

Mr. and Mrs. Jack Cooper and LaQuinn spent the weekend at Midland with Mr. and Mrs. Charles Sheffield and Mike. LaQuinn remained for a longer visit. Sunday guests in the Cooper home were Reed Steward of Lohn and Mr. and Mrs. Alfred Cooper and Tommy of Brady.

Mr. and Mrs. Jerry McAllister of Coleman were Sunday guests with Mr. and Mrs. Bill Bryan, Judy and Serena.

Mr. and Mrs. Iru Bray were in Brownwood Saturday to visit Mrs. J. D. Knight who is very ill in the Medical Arts Hospital. They attended the Richter funeral services last Wednesday. Mr. and Mrs. R. E. Brisco were Sunday dinner guests with the Brays.

Mr. and Mrs. Weldon Estes of San Angelo were weekend guests with Mr. and Mrs. Boss Estes and Mike Gordon returned home with them after a weeks visit with his grandparents.

Lewis Bryan and Boss Estes attended the District 16 Baptist Brotherhood meeting at Lake Brownwood, Monday and Tuesday.

Whon News

By MRS. TOM RUTHERFORD

Several families were present Saturday night at the community center for the get-together. Some enjoyed playing dominoes, while others just enjoyed visiting together. Refreshments were served.

Mrs. Floyd Morris and Mrs. Darwin Lovelady were supervisors for the social hour.

I was notified Tuesday night of the sudden passing of my uncle, Mr. Jess Smith of Brownwood, who died very suddenly following a heart attack Tuesday afternoon around 2:00 o'clock. Apparently he was in good health, having worked all morning. But death came following about 30 minutes illness. Tom and I attended memorial services at Davis Morris Funeral Chapel in Brownwood Wednesday. Burial was in Ebony Cemetery.

Mr. and Mrs. Walter Stacy of Trickham, visited Sunday afternoon with Mr. Sammie Shields.

Mr. R. A. Baker was in the home of his daughter, Mr. and Mrs. Darwin Lovelady and Randal, most of the past week.

Lyndon Wells and Roger Beard of Santa Anna, spent the weekend with Jamie Lee Morris.

Jackie Lynn and Doug Jr., returned home with their parents, following a weeks visit with their grandparents, Mr. and Mrs. Aaron Avants. Roger Beard of Santa Anna, visited in the Avants home a portion of the past week.

Randel Lovelady visited with Ricky Abernathy one afternoon the past week.

Mrs. Wagie Langer and son of San Angelo, and Mr. George Rutherford of Rockport, visited in the Tom Rutherford home Sunday afternoon. Mr. Rutherford was admitted to Santa Anna Hospital Monday morning. The ones mentioned, visited with Mrs. Carter and Leon Sunday morning.

Mrs. Jim Wells and her mother, Mrs. Carpenter of Santa Anna, visited with Mrs. Floyd Morris Monday.

Mr. and Mrs. Hilary Rutherford and children of Brownwood, Mr. L. L. Fulbright of Coleman, Mr. and Mrs. Loyd Rutherford of Santa Anna

visited in the Tom Rutherford home during the weekend.

Mr. and Mrs. Walter Stacy of Trickham, visited in the Floyd Morris home Sunday afternoon. Rev. Perkins of Brownwood visited Mr. Sammie Shields Monday afternoon.

Mr. and Mrs. John David Morris of Grand Prairie were weekend guests with his parents, Mr. and Mrs. Floyd Morris and boys.

Fred Shields of Santa Anna and Billy Holder of McCamey visited with Mr. Sammie Shields Friday afternoon.

Mr. and Mrs. Johnnie James and children visited in the Floyd Morris home Thursday night.

Mr. and Mrs. Rob Sheffield of Brookesmith visited in the Tom Rutherford home and with Sammie Shields Friday afternoon.

COMMUNISM DISCUSSED AT ROCKWOOD WMS MEETING

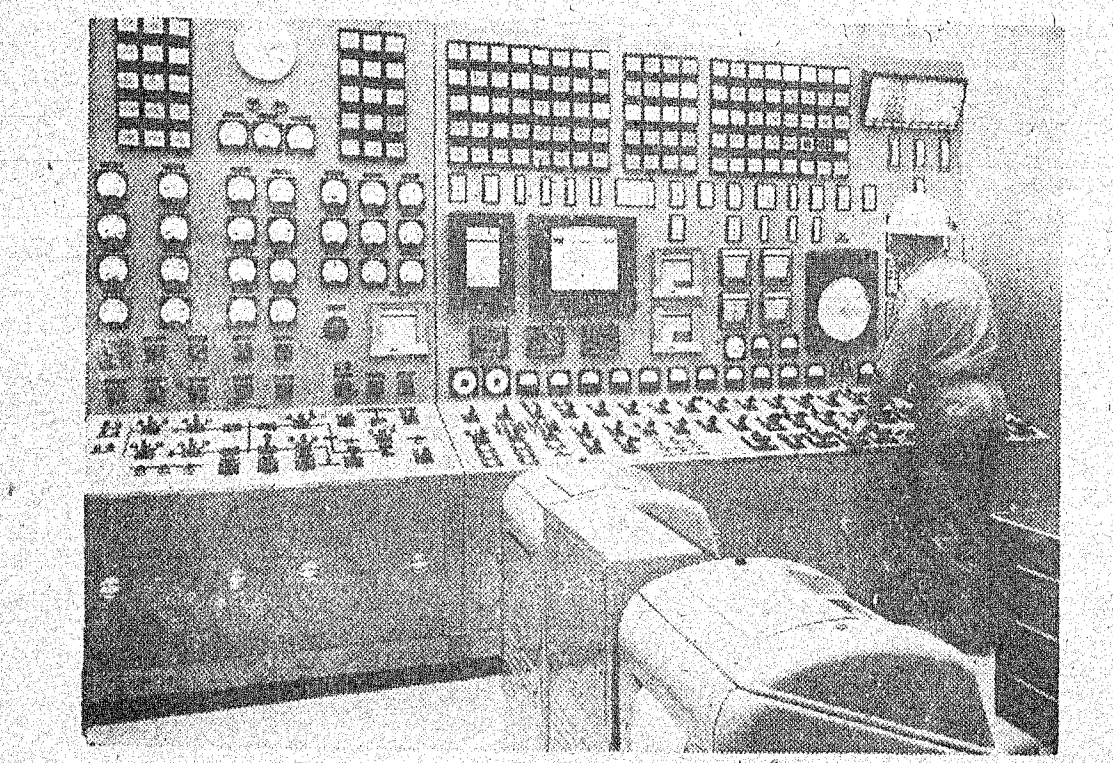
"Communism" was discussed when Mrs. Ray Caldwell directed the Royal Service program for the Woman's Missionary Society at the Rockwood Baptist Church Monday. It is announced there will be no meeting on Monday, Labor Day, and no social meeting in September.

Members assisting on the program were Mrs. Lon Gray, Mrs. Bill Bryan, Mrs. Evan Wise, Mrs. Henry Smith, Mrs. Matt Estes and Mrs. F. E. McCreary.

J. J. Knowlton, a Santa Anna resident in the early part of the century, was a visitor here last week. Now living in Waxahachie, he is 91½ years of age and enjoys good health.

For Finer Memorials
SEE
Coleman Monument Works
1301 East 9th St. — Phone 625-5352 — Coleman, Tex.
W. A. (Bill) Finlay, Owner
Curtis Lindsey, Salesman

Festival of Fabrics
FOR **Win a FREE**
BACK **Vecchi Automatic**
TO **Sewing Machine**
SCHOOL
Come in and find out how thrilling and smart it is to outfit your youngsters in all new fall wardrobes when you take advantage of our big festival of fabrics "Back to School" event!
The Easiest Contest You Ever Entered. Be Sure To Sign Up While Doing Your Back-to-School Shopping.
Estelle's Ladies Shop
121 West Pecan - Coleman



THROUGHOUT THE CENTER OF THE SOUTHWEST IN CONTROL ROOMS LIKE THIS, THERE'S AN...
INCREASING FLOW OF ELECTRICITY

The demand for electricity in our service area is growing rapidly. The reason is simple — there are more people, more businesses, more industries coming here into the Center of the Southwest.

That is why we are investing millions in new electric generating capacity and in new distribution facilities to keep pace with this area's exciting growth.

But of more significance, this fact explains why we are planning vast additional expenditures in anticipation of even greater growth to come.

Because the Southwest is growing 25% faster than the Nation, we are convinced that our service area — the Center of the Southwest — faces **GROWTH UNLIMITED.**



DRIVE SAFELY! KIDS EVERYWHERE!

KIDS LOVE LIFE

Now That School's About To Open
We Urge You To

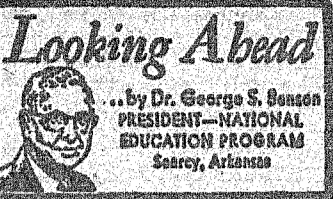
Drive Lovingly

- Obey All Traffic Regulations
- Be Prepared To Stop When Driving Near Schools
- Look For The Unexpected

YOUR FRIENDLY

Santa Anna National Bank
Member FDIC and Federal Reserve Bank of Dallas





WHEN THE STATE OWNS ALL

Occasionally we notice a comic opera effect when persons in more-or-less socialized countries have to put up with an all-embracing government. Some life, an American might say, when the government gives you a job, pays your bills and shares your burdens from cradle to grave! But what happens when the government fails to meet its obligations? It may come as a shock to realize that the so-called "public sector" also can have its problems. What in that event, happens to modern, socialized man?

played from Argentina by the Associated Press a few weeks ago. The incident grew out of the election crisis last March which brought inflation and serious economic crisis. The story involves one Miguel Angel Ortiz, who for three months had not received one centavo of his salary from his state job as professor. The state-owned telephone company wanted to take out the professor's telephone because he hadn't paid his bill.

Socialist Plight
The professor objected. He filed suit against the state-owned telephone company to prevent its taking out his phone, on the grounds that he had not been paid his state salary. This is ironic enough, but what followed shows the crazy pattern of crisis in the plight of many thousands of Argentines who also had not been paid by the government. The suit went to Judge Jorge Moras. Mom, who had to disqualify his court because he found himself in similar straits. The Judge said:

"I am indebted to the national government through the Bank of the Nation which has made me a personal loan of 50,000 pesos. As federal judge, I have not nor can I have another job, except to work at the law school (a government institution), where I receive 3,800 pesos (about \$30) monthly. The national government, for profound reasons known to all, has not paid me for either of my jobs — I must renew my loan and pay extra interest for another 90 days — I feel that in all objectivity, your (the professor's) case is similar to mine.

Modern Bondage
This little drama would be funnier if it were not such a serious indictment of modern man. Since the renaissance, perhaps even since his deceit in the Garden, of Eden, man has been seeking liberation from whatever oppresses body and soul. The irony of our age is that man today creates the all-encompassing State and everywhere puts himself in bondage to it. In this space age, man becomes each day more like the serf with no life to call his own, more subservient to the State and less a man in his own right and in the sight of God who offers freedom.

BURDEN MOBIL STATION
510 WALLIS AVE.
TELEPHONE FI8-3191

Children Request Pupil Packages Of Game and Fish

Austin — Every day the Information-Education Branch of the Texas Game and Fish Commission receives a large number of letters from youngsters of the state requesting colored pictures of game and fish.

The pictures are available in a package of five to all students of Texas. These student packets are especially designed for youngsters in elementary grades but are available to students of all grade levels. Teacher packets of wildlife conservation materials are also available from the Commission.

Commission policy requires individual students to write instead of allowing teachers to request bulk packets for their students, although some exceptions are made for first and second grade students. The aim is to make the request and education-

al experience for children.

For many, the note to the Commission is their first attempt at a business letter. Scores of youngsters quickly and efficiently state their business, as this one, "I would like to have some bird pictures you have. I would like to get them as soon as possible."

Others begin with a business-like air but drift into a more shabby tone. One wrote, "My name is — I am 11 years old. If I may ask may I have some of those game and fishing picture. I hope you like my letter. I try my best for yow. I think I better go now because I have nothing to say. Good-by, thank yow for everything."

After a polite request, another offered, "I have a opossum, and if you would like to see him, come on down."

The salutation children choose vary widely. Some use a business-like, "Dear Sir," or "Gentlemen." Others choose "Friend," or a simple, direct, "Dear Game

and Fish and Game Commission." Perhaps the most original is "Dear Mr. Who ever you are."

The mailbag sometimes contains letters from children who remember their friends or brothers and sisters in their requests. This little fellow was particularly thoughtful when he wrote, "Would you please send me two copies of each picture for

me and a friend who has polio." Through the scrawls and unconventional spelling and grammar, the sincerity and charm of childhood shine in every letter.

A new Moon Map, at a scale of 1 to 1 million, has been issued by the Department of the Interior "to aid moon exploration."

MEMORIALS OF DISTINCTION
Stone Eternal — Other Fine Monuments
— SEE —
Murray Cooper
SANTA ANNA, TEXAS
PHONE FI8-3131 P. O. BOX 411

OPTOMETRIST
Dr. E. H. Henning, Jr.
117 Commercial Avenue
Coleman, Texas
Phone 625-2228
OFFICE HOURS
9:00 A. M. to 5:00 P. M.
SATURDAYS, 9 to 12

MAN
ON DUTY 24 HOURS A DAY
BOZEMAN REFRIGERATION SERVICE
Coleman, Texas
TELEPHONES
Office — 625-4623
Night 625-4037
Night 625-5144

- FURNITURE NEW AND USED
- STOVES NEW AND USED
- GOLD SEAL Inlaid, Vinyl And Printed LINOLEUM

SEE US BEFORE YOU BUY

Frank Lewis FURNITURE
West of Courthouse
Telephone 625-5501—Coleman

For Sale
USED
Frigidaire Refrigerator
Gas Cook Stoves
Electric Ranges
Portable Electric Ironer
Air Conditioners
EASY PAYMENTS
GRAY
Mercantile Co.
109 West Pecan St.
Coleman, Texas

CAUTION!
SCHOOL OPENS SEPT. 4th
★
DRIVE WITH CARE

Coleman Steam Laundry
506 East Walnut — Coleman, Texas

BACK TO SCHOOL

SCHOOL DAYS ARE HAPPY DAYS DON'T RUIN THEM!

Drive Carefully
FRIENDLY

Coleman County State Bank
Member Federal Deposit Insurance Corporation
Coleman, Texas

SEE US FOR YOUR FINANCIAL PROBLEMS

THE SANTA ANNA NEWS

Established January 1, 1886

JOHN C. GREGG — Editor and Publisher

Post Office Box 337

Dial FI8-3545

PUBLISHED EVERY FRIDAY AT SANTA ANNA, COLEMAN COUNTY, TEXAS

AUGUST 31, 1962

SUBSCRIPTION RATES

One Year in Coleman County	\$2.00 Plus 4c Tax
One Year in Texas (Outside Coleman Co.)	\$3.00 Plus 6c Tax
One Year Outside State of Texas	\$4.00
One Year Outside United States	\$5.00

The Publisher is not responsible for copy omissions or typographical errors that may occur, further than to correct them in the next issue. All advertising orders are accepted on this basis only.

Second Class Postage Paid at Santa Anna, Texas
DISPLAY ADVERTISING RATES ON REQUEST



CLASSIFIED ADVERTISING RATES

First Insertion — Per Word	4c
Each Additional Insertion — Per Word	2c
MINIMUM CHARGE — 50c PER WEEK	
COPY DEADLINE — 10:00 A. M. WEDNESDAYS	

CLASSIFIED ADVERTISING

FOR RENT

FOR RENT: Three bedroom unfurnished house at 304 Avenue A, Call Dr. A. B. Strozler phone NA4-2390. 351c

FOR SALE OR TRADE

FOR SALE: Two story, four bedroom house on Avenue A, Double garage, Patricia Davis, 3011c

FOR SALE: Good used refrigerators, automatic washers, wringer washers, clothes dryers and gas cook stoves. Terms to suit YOU. Geo. D. Rhone Co., Coleman, Texas. 4311c

FOR SALE: Several used TVs in good condition. Geo. D. Rhone Co., Coleman, Texas. 4811c

UPHOLSTERING

Shirley Upholstering Co. 1504 North Nueces, Coleman

MISCELLANEOUS

LAWN MOWING wanted. W. M. Morgan. Phone FI8-3802 3311c

POSTED: Hunting, fishing or trespassing are prohibited on all lands owned by C. E. Kingsbury in Coleman County. 1811c

GO TO CHURCH SUNDAY.

DR. M. O. SOWELL

CHIROPRACTOR
Phone 625-4824
615 Commercial, Coleman

Weah McCulloch, Sec.-Treas.
Bettie McCulloch, Mgr.

Standard Abstract Co.

City & County Maps For Sale
405 Bank Bldg. Coleman

Open Thursday,
Friday & Saturday
7:30 to 9:30 P. M.

Sunday — 2 to 4 p. m.

For Private Parties
Call 625-5564

Free Skate on Your Birthday
Thompson Roller Rink
Old Air Port Road
Coleman, Texas

HUNTERS

PROTECT YOUR LOVED ONES WITH

Accident Insurance

Our Special Hunters Accident Insurance Covers Medical Expense, Accidental Death, Dismemberment, and Permanent Total Disability.

Get Details Today

Santa Anna Insurance Agency

Billie and Monte Guthrie
615 Wallis Avenue Dial FI8-3881

HEALTH AND SAFETY TIPS FROM THE AMERICAN MEDICAL ASSN.

Back To School

School bells are ringing this month all over the nation as America's youngsters begin the annual return to the classrooms.

The last days before school opens are the time for making certain that the youngsters are ready physically for another nine months of learning.

The pre-registration physical examination is a must in all well regulated families and is even required in some school districts. Ask your doctor to look over the children before they report for classes just to make certain that no ailments have cropped up during the summer that demand attention.

Ask your doctor to give your children their necessary immunizations. These might include boosters for polio, smallpox, tetanus, whooping cough and diphtheria. Your doctor will know which shots your child should have. Some schools require vaccination certificates upon registration.

The physical exam should include tests of sight and hearing. Many a child has been tabbed a slow learner or not very bright when actually he doesn't see the blackboard or doesn't hear much of what the teacher says. A young child often won't realize what's wrong and will be baffled and frustrated.

A dental checkup, including having teeth cleaned, also is an important part of preparing for school opening. The dentist often can fill small cavities and save a tooth before the decay becomes serious.

While you're getting junior ready for school, don't overlook the fact that mom and dad need checkups too. When you're taking the children in for their physical, make an appointment for the older folks in the family too. Regular physical check-ups are even more important for adults.

4-H's Go To The Market Place

Older 4-H members are centering themselves more and more with the economics of farming, particularly supply and demand. In addition to learning how to grow quality crops, the young agri-businessmen are eager to learn how to sell their products at the peak profit periods.

The 4-H Grain Marketing program is an example of this kind of activity. And it is the consensus of 4-H leaders that the various phases of the program "provide an excellent opportunity to learn about the economics of market processes."

To make learning more realistic, the Chicago Board of Trade will sponsor trips for two grain project members and an adult 4-H leader to Chicago where they will participate in a three-day educational grain marketing tour and clinic. The offer is made annually to a total of 13 states in the grain and corn belts. The project is supervised by the Cooperative Extension Service.

The next clinic is scheduled for January 29 through 31. Arrangements for the event are made by the National 4-H Service Committee.

One of the highlights for the young people is to watch the

opening of the trading pit at the Board of Trade, and later to mingle with the traders and witness the exciting trading procedures. The delegates will see educational films, exhibits, and visit some of the testing and grading labs.

To be eligible for a trip, the 4-H'er must be over 14 years of age, and have completed three years of club work with emphasis on crop production and marketing.

Besides the Chicago trip, the Board of Trade recognizes members for doing a good job by providing handsome gold-filled medals to as many as four winners in each county. All winners are selected by the extension service.

Destroy Cotton Stalks — The Earlier The Better

College Station — This year early cotton harvest makes possible early stalk destruction and farm cleanup by Texas producers, says R. L. Ridgway, Entomology Department, Texas A-&M College.

According to the entomologist, stalk destruction and farm cleanup not only lower the pink bollworm population but destroy the food supply of the boll weevil and reduce the number that survive the winter. Heavy insect infestations next year can be prevented by doing a good job of early stalk destruction now.

The use of stalk shredders is recommended by Ridgway because these machines kill many of the pink bollworms left in the field after harvest. He also advises plowing under the shredded residue to the depth of 6 inches within 5 days of cutting. Stripper harvesting aids greatly in reducing the number of pink bollworms because large amounts of the infested material is stripped from the stalks and carried to the gins where pink bollworms are killed in the ginning process, the entomologist adds.

An exception to the recommendations to shred stalks is made in the northwest part of the state where low temperatures will generally kill the pink bollworms in exposed bolls on the stalks, says Ridgway. Since deadlines for the destruction of stalks is fast approaching in some parts of the state, cotton producers should begin plans now, he suggests.

For additional information on stalk destruction, refer to L-219, "Ways to Fight the Pink Bollworm in Texas," and MP-444, "Pink Bollworm Control as Re-

lated to the total Cotton Insect Control Program of Central Texas." These publications may be obtained from the Agricultural Information Office, Texas A&M College.

Complete Masterpiece School Supplies. Moore's Variety Store.

R. W. Hardy Elected To Board of Directors Of WTU Company

At a regular meeting of the Board of Directors of the West Texas Utilities Company held in Abilene Friday, R. W. Hardy was elected as a member of the Board of Directors. Hardy, who has been a vice president since 1960, was also named controller of the Company. He previously had assumed the duties of controller on July 1 following the retirement of Dan A. Gallagher.

The new board member is a native of Abilene and has been employed by WTU for 27 years.

He attended the Abilene public schools and Hardin-Simmons University. In 1958, he completed the Public Utilities Executive Course at the University of Michigan. He is a veteran of World War II.

Complete Masterpiece School Supplies. Moore's Variety Store.

Static Electricity which is hazardous in an operating room where potentially explosive oxygen and anesthetic gases are administered, can be effectively policed with a new alarm system called the "Statorator." An antenna, connected to a wall-mounted control box instantly detects any increase in the atmosphere's static change and sets off a buzzer and blinking light to warn attendants.

Water lost from reservoirs in the 17 western states by evaporation and consumption by trees and plants is twice the amount used for public supplies in the entire country.

SPECIALS

GOOCH CURED HAMS - 10-13 Lb. Avg. Lb. 45c

BEEF CUTLETS Pound 69c

LIMIT ONE COFFEE - Folger's Lb. Can 59c

LIMIT ONE FLOUR - Gladiola 5-lb. Bag 39c

FOREST APRICOTS Gal. Can 79c

HUNTS - NO. 2 1/2 CAN PEACHES 3 cans 69c

MORTON'S - PEACH, APPLE, CHERRY, COCONUT FRUIT PIES - 22-oz. Each 29c

KEITH'S - FROZEN GREEN PEAS 2 10-oz. Pkgs. 29c

CARNATION MILK 6 tall cans 89c

LIBBY'S CRUSHED PINEAPPLE 2 No. 1 cans 49c

BARBECUE - Beef, Chicken, Pork

Try Our Homemade Pastry By Mrs. Jewel Ray

Harvey's Grocery

MEMBER INDEPENDENT GROCERS, INC. PHONE FI8-3632 WE DELIVER

LOOK SMART WITH Quality DRY CLEANING

We Invite Your Patronage And Assure You Of Satisfaction.

McKee CLEANERS

Announcing Change of Ownership OF THE LADIES SHOP

We have sold our shop to Mrs. Ozro Eubank and she will continue the business in the same location and will continue to sell popular lines of dresses, lingerie and accessories for ladies and children.

We want to express our appreciation for the support that we have received from our friends and customers and sincerely solicit your continued support of the Ladies Shop.

Elsie Lee and Ruby Harper

I have bought the Ladies Shop and will continue to operate the business in the same location. We will have popular priced lines of merchandise for ladies in popular brands.

We will strive to render the same courteous and efficient service that you have always received in the past.

We invite all old customers and new to visit our store and see the new Fall Merchandise that we already have in stock.

After a period of remodeling we will have a formal opening, which date will be announced later.

Mrs. Ozro Eubank

Emmerson - Rutherford Vows Exchanged

Miss Patty Jo Emerson of Brownwood, niece of Mr. and Mrs. Robert B. Pittman of 611 Cedar St. Brownwood and Loyd Earl Rutherford, son of Mr. and Mrs. Tom Rutherford of Whon,

exchanged marriage vows in the home of Mr. and Mrs. Winfred Eugene Pittman of 204 Sunny Dale Drive in Early, Friday, August 24, at 7:30 p. m. The Rev. Charlie Myrick of Cottonwood officiated for the double ring ceremony, before decorations of White Candelabras and baskets of red and white gladiol, carnations and greenery.

The bride, given in marriage by her uncle, Robert B. Pittman, wore a white imported satin dress, featuring a bateau neckline accented with scalloped Chantilly Lace. The street length skirt of Chantilly Lace over satin was scalloped at the hem line.

Mrs. Gloria Eudy, cousin of the bride, was Matron of Honor, and Mrs. Hilary Rutherford, sister in law of the bride groom, served as bridesmaid. They wore dresses of red brocaded taffeta, with full skirts and white lace dummies at the neck.

Hilary Rutherford, brother of the bride groom was best man and Jerry Johnson served as groomsman.

The brides mother wore a beige suite with white accessories and a white carnation corsage.

A reception was held in the home immediately following the ceremony.

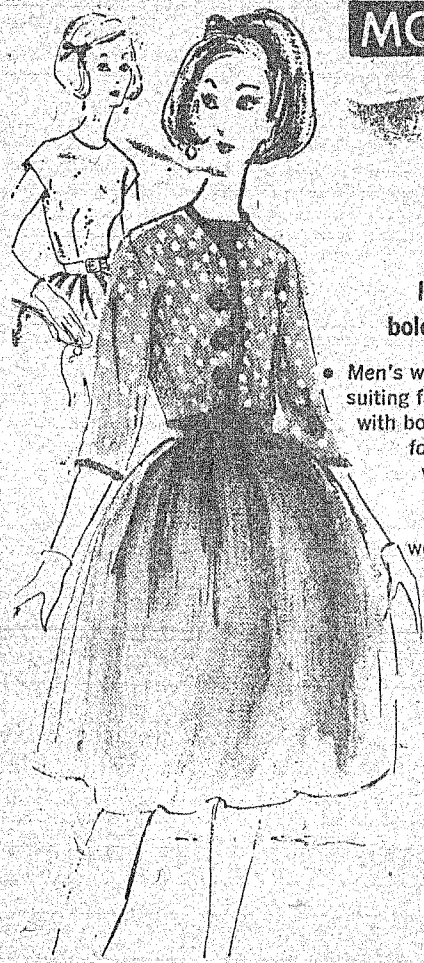
The brides table covered with white lace over red linen, was centered with an arrangement of red and white roses, flanked by red candles in gold holders, and silver.

Miss Linda Pittman and Mrs. Sandra Pittman, cousins of the bride served cake and punch.

For her wedding trip to Abilene, the bride chose a beige and white sheath dress with white accessories. She wore a corsage from the bridal bouquet. Following the wedding trip the couple will reside in Santa Anna.

The bride is a 1961 graduate of Stratford High School. The groom is a 1960 graduate of Santa Anna High School, and is employed at the Santa Anna Tile Plant. The bride is employed in Brownwood.

GO TO CHURCH SUNDAY.



MODE O'DAY

30 years of fashion

lively and young... bolero jacket dress...

Men's wear type rayon/acetate suiting fashions a simple dress with box pleated skirt. Perfect for daytime or date time with or without its own polka dot bolero with three quarter sleeve. A wonderful companion to girls on the go. Sizes: 10 to 16.

8.99

111 West Pecan Coleman, Texas

Super \$7.00 Special

With the purchase of \$7.00 or more in groceries, meat and produce (excluding cigarettes) you can buy

TIDE - Giant Size For Only 39c

Limit One To The Customer

PRICES GOOD FRIDAY AND SATURDAY

TOWELS - Scot Big Roll 29c

PICKLES - Sour or Dill Quart 29c

CORN BREAD MIX - Aunt Jemima 10-oz. Pkg. 35c

BEANS - Mission, Cut Green 2 303 Cans 29c

SALMON - Honey Boy Tall Can 69c

COFFEE - Folger's Lb. Can 69c

FAB - Giant Size, 10c off You Pay 69c

PREM - Swift's 12-oz. Can 55c

SUPREME CLUB CRACKERS Lb. Box 37c | **NABISCO ONION THINS 8 1/2-oz. Box 33c**

SUNSHINE KRISPY CRACKERS Lb. Box 29c | **ALL FLAVORS KOOL-AID 6 Pkgs. 25c**

CHEESE SPREAD - Swift's 2-lb. Box 59c

BISCUITS - Kimbell's 3 cans 25c

FRANKS - Deckers All Meat Pound 49c

MELLORINE - Gandy's 1/2-Gal. Ctn. 35c

HOSCH GROCERY

IT'S Back-to-School TIME



PARENTS: TEACH YOUR CHILDREN SAFETY MOTORIST:

WATCH FOR CHILDREN AT SCHOOL CROSSINGS. THE NEXT TIME YOU TAKE THE WHEEL, REMEMBER THAT A CHILD'S LIFE MAY BE IN YOUR HANDS.

COLEMAN BUTANE GAS CO.

Burkett Highway

Coleman, Texas

All zipper binders reduced. Note book filler Special Price. Moore's Variety Store.

Mrs. W. A. Pritchard and Sue of Slaton spent the weekend with her son, Mr. and Mrs. Don Pritchard and her parents, Mr. and Mrs. W. E. Vanderford. Her son Robert, is now stationed at Fairless AFB, near Topeka, Kansas.

Complete Masterpiece School Supplies. Moore's Variety Store.

Mr. and Mrs. W. P. Aldridge and Van attended church at Lawn Sunday and visited his brother and family, Mr. and Mrs. J. D. Aldridge, near Winters.

Ladies Nylon Hose, 2 pair \$1.00. Moore's Variety Store.

Burt Gregg and daughter, Helen, of San Antonio, visited with his mother, Mrs. J. J. Gregg.

The News, Santa Anna, Texas, August 31, 1962

Page 5

Hospitalized Vets To Get Faster Pension Payments

Hospitalized veterans with dependents will get faster service in receiving pension payments as a result of a new law enacted by the 87th Congress, P. J. Mims, Manager of the Veterans Administration Office in Waco, said today.

The law previously specified that when these veterans were in VA hospitals more than two months, their pension payments would be reduced to \$30 a month, with the balance sent to their families in a separate check. This often resulted in delayed payments.

Under the new law, Mims said, the veteran with dependents will continue to receive the full amount of his pension while in a VA hospital. The \$30 pension limitation still applies to hospitalized veterans

with no dependents.

All zipper binders reduced. Note book filler Special Price. Moore's Variety Store.

Breakfast visitors in the home of Mr. and Mrs. John Gregg Tuesday morning were Mr. and Mrs. J. C. Lee of Houghton, La., Mr. Buster Blevins of Joaquin, Texas and Mrs. Scott Cole, Gary and Pat of Coleman.

Mr. and Mrs. Donald Hosch and Darla of Longview and Mr. and Mrs. Charles Hosch and Sandra of San Angelo, visited with their parents, Mr. and Mrs. Roscoe Hosch last week.

NO DEFROSTING EVER!



Model FPI-14T-62 13.83 cu. ft. net capacity 4 colors or White

- Frost never forms—with exclusive Frigidaire Frost-Proof system!
- Freezer stores 100 pounds!
- Instant ice service with Flip-Quick Ice Ejector.
- Luxury features galore—Butter Conditioner, Roll-To-You shelves, Meat Tender and more!

Famed Frigidaire Dependability!

\$299.95

And A Usable Refrigerator

EASY TERMS

FRIGIDAIRE PRODUCT OF GENERAL MOTORS

GRAY MERCANTILE CO.

109 West Pecan Coleman, Texas

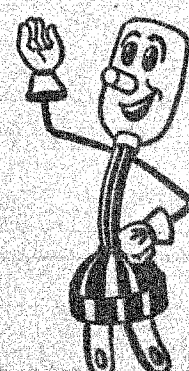
BACK TO SCHOOL

MOTORISTS - SCHOOL OPENS SEPTEMBER 5th

Children May Take Chances... **DRIVERS, DON'T YOU!**



GO SLOW



Coleman County Electric Co-op

OWNED BY THOSE IT SERVES

About Your Health

Cancer is often spoken of as the "silent" disease. This is because in many cases cancer grows without giving any symptom. And pain, which is most often thought of as accompanying diseases, is not generally present until cancer is far advanced.

Most cancers can be cured when detected and treated in the early stages. The difficulty in cancer, then lies with the detection of the disease.

Only a physician can tell if cancer is present. Any suspicious symptom should always be examined by the family physician. But often, by the time any symptoms of cancer show, it is too late. Treatment of advanced cancer is difficult.

The only insurance against this silent growth is a regular, at least yearly physical examination.

All physician's offices should be cancer detection centers, so the family doctor is most often the front line against cancer. For a physical check-up, whether cancer is suspected or not, the personal physician is the person to see.

If cancer is suspected, the family doctor may refer his patient to one or more specialists to confirm or rule out the possibility of cancer.

A top-to-toe physical examination will include inspection of the body surface, followed by examination of various organs such as the heart, blood vessels, lungs, mouth, nose, ears, eyes, throat, abdomen, rectum, sex organs and breasts.

The blood, urine, uterine cells, or other body fluids may also be examined or tested. X-ray's of the chest and other parts of the body and a proctoscopic examination (visual inspection of the lining of the rectum and lower bowel with a lighted tube) may also be performed by the physician.

A proctoscopic examination has increased in importance because 70 percent of cancer of the colon and rectum can be discovered in this way.

If a physician suspects cancer a biopsy is performed and a sample of the suspected tissue sent for microscopic examination by a pathologist (a specialist in human tissue examination). Only a biopsy can definitely establish the diagnosis of cancer.

The individual is the key to the prompt diagnosis of cancer. For only if a person presents himself to his physician can a diagnosis be made.

Simply through regular check-ups can the "silent" disease be heard.

(A feature from Public Health Education Division, Texas State Dept. of Health.)

HOW TO KEEP POULTRY FEED COSTS DOWN

College Station — No one today would consider it efficient business to trade a farm animal for a month's groceries. Yet the poultryman who figures his feed costs on the basis of so much a bag or a truck load is just as far behind the times, according to J. H. Quisenberry, Poultry Science Department, Texas A&M College.

The skillful poultryman today expresses feed costs on the basis of the cost per pound of meat or dozen eggs, Quisenberry says. The poultryman should do business with a feed dealer who can tell him how much to expect from a pound of his feed, he adds.

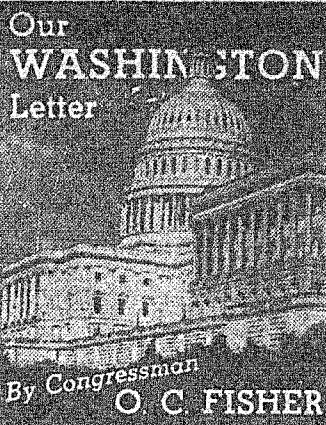
Here are some points Quisenberry feels will insure minimum feed costs. Buy feed and not service because your labor is much cheaper than the dealer's service. Quisenberry recommends that you buy your feed in bulk and pay cash for it.

Next, buy a feed that is right for the purpose and not one that contains a lot of unnecessary and expensive vitamins and medicines. However, one that does not contain enough fortification for the proper health of the birds can cause reduced growth rates and lowered efficiency.

No feed can do its best if poor management is practiced by the poultryman, says Quisenberry. This is the factor that can account for the greatest additional return for his efforts.

Another important point is to avoid wastage by use of the properly designed troughs, correct feed depth, prevention of loss to wind, and to use care in filling the troughs.

Keeping feed costs down is the first step in efficient and economical poultry production, concludes Quisenberry.



OUR MOHAIR MARKET, which has been relatively sluggish the past year, remains uncertain due chiefly to continued lack of interest being displayed by foreign importers.

At the same time, USDA reports indicate the world outlook is favorable for continued consumption, which in recent years has been increasing steadily.

Increased production is noticeable in all mohair-producing countries. In the U. S. it has jumped from 14 million pounds in 1955 to 26.4 million last year. In Turkey it increased during the same period from 16.4 million to 19.6 million. And in South Africa production went up from 5 million to 10 million pounds. Total world production last year was 57.2 million pounds.

Most of our domestic fleeces are exported. Between 1957 and 1961 exports have averaged 75% of production, with the U. K. taking between 55 and 65%. The Netherlands, Belgium and Japan are our chief customs, in that order.

The USDA reports that future demand will depend largely upon foreign economic prosperity, and fashion trends; also upon

price, as man-made fibers can be substituted in apparel fabric, which is at present mohair's principal use, to achieve similar results.

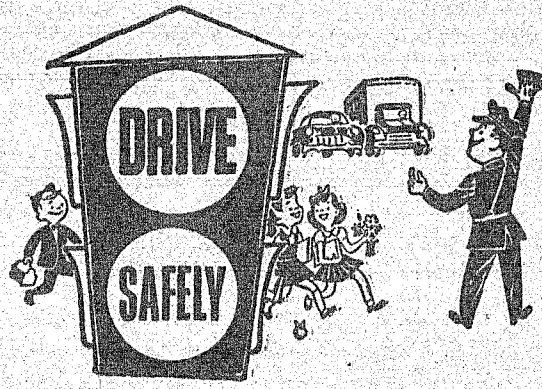
BEEF IMPORTS are up. This year they're taking almost 12% of the U. S. market, compared with 7.9% in 1961, 5.9% in 1960, 8.6% in 1959, and 3.9% in 1958. It is estimated that at times imports have depressed cattle prices as much as \$2 per cwt.

THIS ELECTRONIC AGE is giving some people the jitters. A

West German court recently sentenced a mechanic from a village near Nuremberg to three years in prison for attempted witch burning. In an attempt to rid himself of a witch who brought bad luck whenever she appeared, he tried to burn down her house. At the trial the burgomaster testified that even he believed in witches and a physician asserted that the belief in witches was widespread and growing as a result of the magic that technology made manifest every day.

THE U. S. A. IS NOW PRODUCING about 52% of the world's automobiles, but in Italy, West Germany and France each export more of them each year than we do.

At the beginning of last year there were 127 million motor vehicles registered in the world, of which the U. S. had 73,928,000 of them. We averaged 2.4 people per vehicle; the Soviet Union registered 3.9 million, or 52 people per vehicle.



The School Children of Today Will Govern The Nation Tomorrow

Drivers:

You Are Responsible For The Safety of Our Children!

Drive Careful

Coleman Gas Company

SAVE 'EM!



EXPERT SHOE REPAIR SERVICE **BOOTS**

Made to Your Specification Guaranteed To Fit **TOMLINSON** BOOT & SHOE SHOP Coleman, Texas

School Days Are Here Again!



- ★ Keep Down Accidents
- ★ Observe All Traffic Signs
- ★ Drive With Caution Near Schools

Children Should Be Seen - Not Hurt!

It Doesn't Cost Much, Mr. Motorist to Take a Little Extra Care in Driving, to Slow Down at Intersections, To Watch the Curbs More Closely and With That Little Extra Bit of Precaution, You May Save the Life of a Child.

First Coleman National Bank

ALWAYS WILLING — ALWAYS PREPARED
Member FDIC and Federal Reserve Bank of Dallas
Coleman, Texas

USE



- Clean and Safe
- Best For Heating
- Higher BTU Rating
- Best For Cooking
- Approved By Architects
- No Muss
- No Fuss

PHONE 625-2925

Night Pho. 625-2849



Prompt Delivery

Coleman

Butane Gas Co.

for

AN IMPARTIAL RECOMMENDATION

ask

THOSE WE'VE SERVED

STEVENS

FUNERAL HOME

400 West Pecan, Coleman

Phone 625-2175

Shields News

By MRS. E. S. JONES

Glen Hannah, who has been preaching at the Church of Christ this summer, received his Masters Degree at ACC Abilene, last week and returned to his home in Michigan. The present minister is Jerry Harper of San Angelo.

Mr. and Mrs. Edgar Shelton were in Stephenville during the weekend visiting relatives.

During football practice at Santa Anna Saturday morning, Larry Fowler had three teeth knocked out. He is doing alright though will not practice for several days.

Merle Mishue of Azle visited Sunday with Glendon Eppler. They will be room mates at ACC, Abilene, this term.

The Quilting Club will meet Tuesday afternoon, Sept. 4, at the Community Center, after a recess of three months. Visitors are always welcome.

Mr. and Mrs. Geo. Cobb and Mr. and Mrs. Geo. Stewardson attended summer Commencement at Howard Payne College, Friday evening. Stanley Cobb of Midland, son of Mr. and Mrs. Geo. Cobb, received his

Masters Degree. He is assistant coach at Midland High. Rev. A. B. Lightfoot of Odessa, who was awarded the honorary degree of Doctor of Divinity is a nephew of Mrs. Stewardson.

Mr. and Mrs. Audrey Eppler visited in Abilene Saturday with their daughter, Elizabeth and Mr. Bert Fowler, a patient at Hendrick Hospital. Bert was released and came home Friday.

The revival at the Baptist Church closed Sunday night.

The Junior Choir of the Santa Anna Baptist Church had charge of the song service Saturday night and after services, attended a Youth Fellowship Meeting at the Community Center.

Mrs. Jesse Evans of Brownwood visited last week with her daughter and family, Mr. and Mrs. John Loyd and children. Sheila and Sharon went home with her on Sunday.

Saturday Mr. and Mrs. Hardy Stewardson of San Saba, Mrs. Bessie Stewardson and Mr. and Mrs. Ted Stewardson attended the Munn reunion at Bastrop.

Mr. and Mrs. Leonard Williams were business visitors in Brownfield on Wednesday and Thursday.

The family of Mrs. J. A. Scarborough met at the Coleman Park Sunday. During the day, Mrs. Kinch McClain of San Angelo, T. L. of Coleman and Mrs. R. A. Milligan, Mrs. John Stewardson and Aubrey visited with their mother at Holiday Hills.

Malcolm Wilson of Brownwood, Mrs. Katherine Watts and boys of Everman and Mr. and Mrs. Rob Sherrfield of Brookesmith, Mrs. Doris Watson and little granddaughter of San Francisco, California, spent a couple of days last week with her parents, Mr. and Mrs. A. L. Cozart.

Mr. and Mrs. Marvin Whitley were dinner guests of Mr. and Mrs. Grady McIver, Gayla and Terry on Sunday.

Mrs. Gertrude Martin and grandson, Bill Martin spent the weekend in Fort Worth with Mr. and Mrs. Ray McSwain. Mike McSwain returned to his home with them after visiting here a week.

Mr. and Mrs. Dayle Nolen and children, Trecla and Mickael of Sweeney, spent Sunday afternoon with Mr. and Mrs. J. E. York and boys. Mr. and Mrs. Fred Haynes and Billy, Stanley James and Wendell Rice also visited in our home.

Mr. and Mrs. Jack Gartman of Brady, spent Sunday afternoon with Mr. and Mrs. Bill Vaughn.

Mr. and Mrs. Grady McIver were bedtime visitors of Mr. Rankin McIver, Sherri and Minnie Craig on Sunday night.

Visitors last week with Mrs. Zona Stacy were Mrs. Desta Bagley, and Trecla of Brownwood, Mrs. Lula Hancock of Zephyr, Mrs. O. T. Stacy and Annie and a friend of Clyde, Mr. and Mrs. Joe Stacy of Brookesmith, Mr. and Mrs. Walter Stacy and Mrs. Mary Lea Mitchell, Mrs. Betty Miller and children of Killen and Mrs. Lea Mack of Post.

Mr. and Mrs. O. V. Mitchell spent the weekend at their home here. Their children spent the weekend with them. We were happy to hear that Buck is improving quite a lot after his siege of illness.

Visitors with Mr. and Mrs. Oscar Boenicke the past week were Mr. and Mrs. Paul Pierce and Mrs. Irene Durham of Coleman, Mrs. Lou Featherston of Plainview, Mrs. Jewell Stearns, Mrs. Oda Taylor and daughter, Mrs. Estell Griffin and son of Fort Worth, Mr. and Mrs. Clifford

Stephenson, Mrs. Violet Walker and son, Mrs. John Naron and children of Santa Anna, Mr. and Mrs. Floyd Eoff of Blanket, Mrs. Arnold Boenicke of Bangs, Gary Caraway of Richland Springs, Mr. Arthur McIver of Carlsbad, New Mexico and several local people. We are also glad that Mrs. Boenicke is able to be up on her feet some.

Mr. and Mrs. John C. Gregg attended funeral services for her uncle, D. O. Sholar, in San Angelo Saturday morning. Mr. Sholar was a veteran of World War I and had been in ill health for a number of years. He was a frequent visitor in the Gregg home.

GO TO CHURCH SUNDAY.

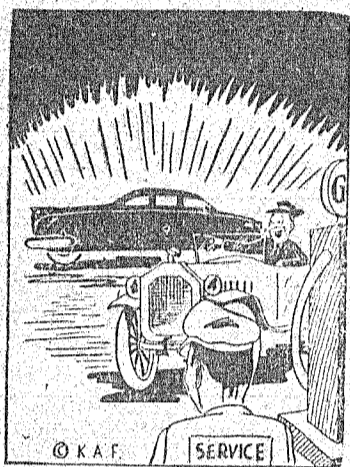
Mr. and Mrs. Audrey Robbins, Mrs. Irene Buckley of Marietta, Okla., visited Tuesday to Friday of last week with her mother, Mrs. John Ellis.

**LOOK FRESH
FEEL FRESH**

Coleman Steam Laundry

Telephone 625-4121 Coleman, Texas

MEL SAYS...



"I want a 1949 polish job."

We can't do the IMPOSSIBLE — but every possible sparkle in your car can be brought out by our polishing job. Give us a trial — brighten up your car.

Mel's Texaco Service

If You Can't Stop
Wave As You Go By

Trickham News

By Mrs. J. E. York
Telephone 2-3250

We here in the Trickham community missed a good chance for rain on Friday night. Those south of us a few miles however, received 1 1/2 inches. Most tanks here are dry or very low. So with the next cool front headed our way, we're hoping it will bring in more rain.

Mr. and Mrs. S. M. Fellers and Mary Katherine Watts and boys spent last Sunday in Sladco, visiting Mr. Fellers mother, Mrs. Alice Fellers and Mrs. M. M. Adams and family.

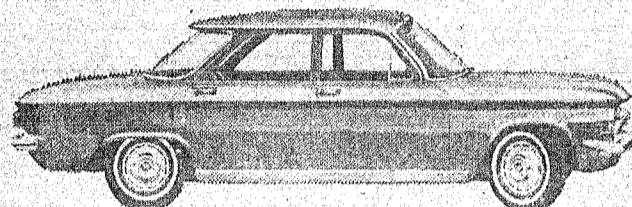
Mr. Geo. Cox of Byrds was dinner guest of Mr. and Mrs. Felton Martin and family on Sunday.

Mr. and Mrs. Hollis Watson and Bill and Mr. and Mrs. Norman Pautsky of Brownwood, spent a week in Cloud Croft, N. M., sightseeing.

Visitors with Mrs. Beula Kingston last week were, Mrs. Calvin Shields, Mr. and Mrs.

No Such Thing As A Bad Road!

Corvair owners are always bragging how a Corvair keeps it's footing on any surface. It's rear-engine design puts weight where wheels want it when the going's rough. Its independent suspension takes starch out of the stiffest road.



Ask Your Chevrolet Dealer For A Chance To Put This Road-Lover Through Its Paces.

R. T. Caperton Chevrolet Co.

114 East College — Phone 625-4145 — Coleman, Texas

Annual Meeting

OF THE STOCKHOLDERS OF THE

SANTA ANNA CO-OP GIN

Will Be Held At The Santa Anna
Elementary School Cafetorium

Friday, August 31st

All Stockholders Urged To Attend
Customers and Visitors Welcomed

Free Barbecue Supper
Served at 7:30 P. M.

Business Meeting and Election of Directors Will Follow

\$2.00 Dividend

A Dividend of \$2.00 Per Bale Will Be Paid to Each Customer Who Ginned Cotton at the Santa Anna Co-op Gin in 1961. Checks Will Be Distributed During the Business Meeting.

Santa Anna Co-op Gin

Pierre Rowe, Manager

PRESCRIPTIONS

Owl Drug Store

"Where Friends Meet"

Telephone 625-4514

218 Commercial Ave.

Coleman

STOP AT RUDOLPH'S

— FOR —

TRACTOR and FARM

TIRES

WE HAVE THE BEST DEAL IN
THE COUNTRY ON ALL TIRES—
BUT ESPECIALLY ON

Farm Tires

See Us And Trade Us Your

Used Tractor Tires



**F. B. Rudolph
Tire Service**

420 Commercial Avenue

Coleman, Texas

Amanda Says...



INEZ'S BEAUTY
SHOP

Amanda Perry, Operator
Dial FIS-3316

It's Time For...
EYE CARE

Dr. Newton K. Wesley

"EYES...WEAK OR STRONG?"

The question is often asked—
"How weak and delicate are the
eyes... or are they considered
strong?" The answer is—the eyes
are not as delicate as one might
think—on the contrary they are
quite sturdy. For instance, the
muscles in the eyes are from 50
to 100 times as
strong as they
need to be. I have
often thought
the size and
strength of the
eye muscles
compared to
muscle-use in
the other parts
of the body is
very much like using a crane to
lift a woman's purse!



Wesley

A leading ophthalmologist once
said the eyes were made to work
and it would be difficult to hurt
them by over work or too much
reading.

Generally speaking, this is true
as long as the eyes are healthy
and normal. If there is strain,
however, an eye doctor should be
consulted.

It is a good thing the eyes are
not as delicate and sensitive as
some believe because most of us
neglect the care of our eyes. In
schools, for example, eyes are
not examined as often or as thor-
oughly as they should be. A stu-
dent's eyes should be examined
at the beginning of a semester
and again during the middle of
the term. This latter examination
would determine the effect a
heavy schedule of reading and
study would have on the eyes.

The National Eye Research
Foundation recommends that all
of us, no matter what age, should
have our eyes examined at least
once every six months.

THIS MESSAGE
SPONSORED BY

Dr. E. H. Henning
Optometrist
117 Commercial Ave.
Phone 625-2228
Coleman, Texas.

Cole-Anna

Drive-In Theatre

THURSDAY - FRIDAY
AND SATURDAY

AUGUST 30-31-SEPT. 1

"King of Kings"

SUNDAY & MONDAY
SEPTEMBER 2-3

"The Miracle Worker"

TUESDAY & WEDNESDAY
SEPTEMBER 4-5

DEBORAH KERR in

"The Innocents"

OAK

Drive-In Theatre

THURSDAY - FRIDAY
AND SATURDAY

AUGUST 30-31-SEPT. 1

GEORGE MONTGOMERY in

"SAMAR"

—PLUS—

STERLING HAYDEN in

"SHOTGUN"

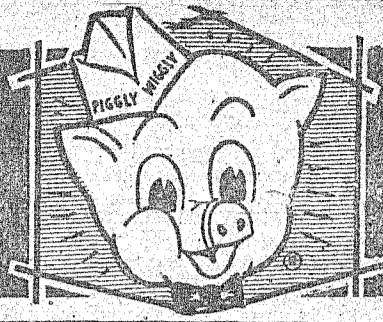
SUNDAY - MONDAY
AND TUESDAY

SEPTEMBER 2-3-4

MICKLE MANTLE and
ROGER MARIS in

"Safe At Home"

Piggly Wiggly



Back-to-School Specials

REGULAR 50c SIZE

Note Book Paper 3 Pkgs. 1.00

LOOK!

300 Sheets Note Book Paper 1.00

LARGE 300 SIZE CAN

TOMATOES 10 cans \$1

HUNTS — BIG 2½ SIZE CANS

PEACHES 4 cans \$1

BIG 2½ SIZE CANS

PURPLE PLUMS 4 cans \$1

300 SIZE CANS

PORK & BEANS 10 cans \$1

DIAMOND CRUSHED — 7-OZ. CANS

PINEAPPLE 10 cans \$1

MISSION — 303 SIZE CANS

GREEN BEANS 8 cans \$1

TURNIP GREENS AND — 303 SIZE CANS

MIXED GREENS 8 cans \$1

KIMBELL'S RSP — 300 SIZE CANS

PIE CHERRIES 5 cans \$1

DIAMOND — BIG 46-OZ. CANS

TOMATO JUICE 3 cans \$1

COMSTOCK — No. 2 SIZE CANS

PIE APPLES 4 cans \$1

CHUCK WAGON — LARGE SIZE 24-OZ. CANS

BEANS 5 cans \$1

KIMBELL'S — 300 SIZE CANS

BEEF STEW 3 cans \$1

DIAMOND — 300 SIZE CANS

CORN 7 cans \$1

KIMBELL'S — 300 SIZE CANS

Black-eye Peas 8 cans \$1

DIAMOND — 300 SIZE CANS

SPAGHETTI 8 cans \$1

KIMBELL'S — 303 SIZE CANS

SPINACH 7 cans \$1

BIG 16-OZ. CANS

MACKERAL 6 cans \$1

DIAMOND — BIG 46-OZ. CANS

Pineapple Juice 3 cans \$1

IMPERIAL PURE CANE

SUGAR 10 lbs. 1.00

LUNCHEON MEAT Market Sliced 2 lbs. 1.00

Longhorn Cheese 2 lbs. \$1 | PORK CHOPS 2 lbs. \$1

SPECIAL PRICE On Swift's Premium Fully Cooked HAMS and PICNICS

Our store will be closed for Labor Day

PIGGY WIGGY Gives S.&H. Green Stamps With Every 10c Purchase.
Double Stamps On Wednesday With \$3.00 Purchase.