

State Capital NEWS

Austin — When Jim Leonard, executive secretary of the Republican Party in Texas, asked Atty. Gen Will Wilson to impound ballots in Duval, Zapata and Starr counties, after the general election in November — the Fall political campaign immediately got under way.

It was a quaint, but telling legal order of impoundment that Wilson filed in the 98th District Court in Austin. It cited the vaults of Duval County's district and county clerks as "not as adequate, accessible and safe" as the vaults of the Corpus Christi State Bank.

Some charges were levied against county vaults in Starr and Zapata counties.

Court order instructs election judges and officials in the three South Texas counties to turn ballots, poll lists and all other election records over to a Texas Ranger. He then would deliver them to the Corpus Christi bank for safe keeping until the 98th District Judge, or his appointed representative, could examine them.

With this sort of preamble, it looks like the Fall campaign might be a little more exciting than the democrat-dominated ones in past years.

TEXAS IN TOP THREE

Texas returned to the No. 3 spot among the "Top Ten" states, in industrial expansion, as the Texas Industrial Commission announced the addition of 28 new industries.

Although the big Houston and Dallas areas captured 17 of the new plants, 11 companies picked non-metropolitan towns as industrial sites: Bushland, Comfort, Crockett, Denton, Jacksonville, Kaufman, Lewisville, Malakoff, Marfa, Mount Pleasant and Quanah reported new industries.

TIC is a state agency dedicated to stimulating more business in Texas by cooperating with chambers of commerce and other local-level groups in bringing more industries to the state. Allen Seargent, commission's community coordinator, will speak at several industrial development meetings over the state during the month.

DOUBLE TAXATION

Texas Commission on state and local tax policy has suggested that virtually all intangible personal property held by Texans be exempt from taxation. This includes taxes on bank accounts, securities, mortgages and similar financial assets.

HIGHWAY COSTS LOW

Texas is building its Interstate Highway system for almost \$400,000 a mile less than the national average, according to the Texas Highway Department.

U. S. Bureau of Public Roads figures show Texas will complete its portion of the Interstate system at an estimated \$600,000 per mile, compared to the national average of about \$1,000,000.

MENTAL HOSPITALS CROWDED

County judges are blamed for cramming state mental hospitals by committing too many old people, who really just need rest-home care.

Board for State Hospitals and Special Schools reports that some mental institutions — especially the Kerrville State Hospital and the Confederate Home at Austin — are so crowded with old people there isn't enough room to care for the state's mentally ill.

Board member W. G. Kirklind of Odessa said he has been told that some juvenile delinquents, who aren't mentally ill also are being routed into mental hospitals by judges.

Corrective legislation is being studied.

Dr. C. J. Ruilman, director of mental health and hospitals, says facilities for 9,000 elderly people would be needed if the Legislature decides to care for them somewhere other than the mental hospitals.

PARKS PLAN DEBATED

State budget officials and park experts differed on the popularity of the state's 50-plus public parks.

Parks Board told the Legislative Budget Board it wants \$2,100,000 to improve four parks and increase funds for others.

Reese Martin, vice-chairman of the board, claims record attendance. His optimism about public use of state parks was shared by Elo Urbanovsky and Charles Doell of Texas Tech, who are working on a master plan for Texas recreation facilities.

But Jess M. Irwin, governor's budget director and Vernon A. McGee, director of the Legislative Budget Board, were reluctant to recommend the Legislature's approval of a plan to spend \$600,000 to improve the newly-donated Wheatly Ranch in Blanco County (which already has a state park); \$550,000 at Lake Whitney State Park; \$650,000 for a new park in the Big Thicket; and \$300,000 for a new park at Falcon Lake.

WILDLIFE FAIR FARES WELL
State Game and Fish Commission's wildlife exhibit is such a prized attraction at fairs, sport shows and other community events that its being booked on a first-come first-serve basis so everyone will have a chance to see it.

T. D. Carroll, G&F Commission's coordinator of information, said the exhibit made up

of live birds, mammals, reptiles and fish of Texas — will go on the road September 4. First showing is scheduled for the Floyd County Fair on September 6-8.

Exhibit will travel west from Floyd County; then move to East Texas for October dates; and to South Texas in November.

A & M GETS REPRIEVE

"For Men Only" apparently will continue to be the policy, for at least one more year, at Texas A&M College. The touchy matter of admitting women students has been temporarily side-stepped by the Texas Commission on Higher Education.

On the Commission's July meeting agenda, the issue was suspended when the Commission staff pleaded more time was needed for the study. Another school year will be underway before the matter can be given any further consideration.

AMENDMENTS STIR CAMPAIGNS

At least two of the 14 proposed constitutional amendments Texas voters will consider on November 6 appear to be firing campaigns.

Proposal No. 14 appears to be stirring opposition from Texas Municipal League which asserts that this amendment as presently written "could virtually destroy municipal government in Texas, except for certain of its police powers."

Proposal No. 4 on the ballot would permit the state to buy conservation storage in locally or federally-owned reservoirs. Gov. Price Daniel has called a special meeting of his statewide water advisory committee for September 10, for the express purpose of organizing support for the amendment.

SCHOOL PRAYER RULING

Atty. Gen. Will Wilson has been asked to advise Texas public schools regarding the U. S. Supreme Court's highly controversial prayer opinion.

Request for an interpretation from Wilson came through Dr. J. W. Edgar, commissioner of education, on a query from school officials at Port Arthur.

Wilson was asked:
1. Whether a school board can permit a student or teacher to say the blessing before meals in a public school, without running afoul of the Supreme Court decision?
2. Whether school may authorize "a period of silent meditation, during the meal period?"
3. Whether the court's opinion permits public prayers at football games involving public school teams, or at other school-sponsored events?

WHOPPER DROUGHT
Texas will have another mighty drought by 1970, is the prediction of Judge J. E. Sturrock, of the Texas Water Conservation Association.

Gigantic sunspots, many months old, still are raging at the center of our solar system, says Judge Sturrock.
When the great gusty winds of the universe die down, and the solar tumbleweeds stop tumbling, about 1970, Texas will have another mighty drought.
Meanwhile, Texas' rains and its "little droughts" like the

current one, will follow each other in their normal seasons, says the leading authority on Texas water.

TEXAS OR MEXICO

Gov. Price Daniel says it will be up to the officials of El Paso whether the claim of Mexico to a section of El Paso will be honored.

The dispute over a section called Chamizal involves about 400 acres of land, and stems from a change in the course of the Rio Grande which flows through El Paso.

COTTON PICKING MONEY

Cotton picking is brightening the outlook for a lot of people who are concerned with the State's budgetary problems — especially those in the Texas prison system.

Dr. George F. Beto, director reports that fair weather for the next month during harvest would mean a \$2,000,000 crop from the system's 10,000 acres of cotton.

GOLD PLUSH

House members returning to the Capitol this winter will be walking softly in the House chamber whether they intended to or not.

A plush new gold carpet is replacing the old tattered and threadbare one.

Plyboard was laid over the 1,000 square feet of floor to add strength and provide a smooth even base for the new carpet.

In addition to the carpets and fresh paint, the ancient oak paneling has been restored to its natural finish.

CUT LEG WORK

Some of the hustle, bustle and leg work of next spring's State Legislative session may be replaced electronically if the idea of one delegation catches on.

Rep. Don Garrison of Houston and his cohorts are experimenting in the capitol with compact transistorized walkie-talkies.

"We intend to use it mainly for liaison between delegation members to announce committee meetings, phone calls, ect., he said.

MORE ROAD FUNDS

Contracts for building Texas

highways may be stepped up by \$5,000,000 a month under an order unfreezing \$1,900,000,000 from a backlog in the federal highway trust fund.

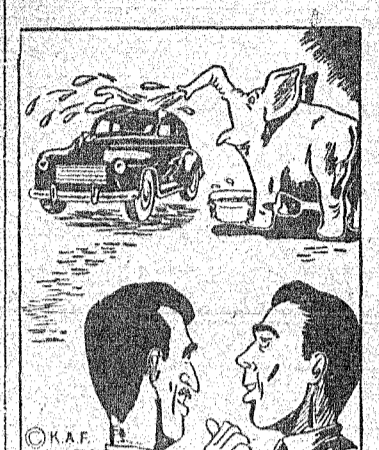
J. C. Dingwall, assistant chief highway engineer, estimates that \$91,000,000 more federal funds will be released to Texas as a result.

NOT A FAIR DEAL

Land Commissioner Jerry Sadler opposes renewing the state lease of Matagorda Island to the federal government for a bombing range.

Of the 15,250 acres the U. S. Corps of Engineers has leased through condemnation since 1950 (for a rental of 6c per acre), the Air Force has subleased 13,342 acres of the tract to an individual for 19c per acres.

MEL SAYS...



"And all he costs me is peanuts."

We have a huge car-washing business, too. We clean your car inside and out, and we're proud of all the satisfied customers we have. Drive in for service.

Mel's Texaco Service

If You Can't Stop Wave As You Go By

DEPEND ON YOUR PHARMACIST
for Professional Health Services

Years of study and experience are behind every prescription we compound.

Accuracy and dependability are always yours when you shop at our store.

Call Us For Every Drug Need
PHILLIPS DRUG
We Give S&H Green Stamps

1963 FRIGIDAIRE



- 2 Speeds, 2 cycles! Tailors washing to the fabric! Choice of wash water temperature!
- New 12-lb. "big wash" capacity!
- Spins clothes drier than any other automatic!
- New Automatic Soak cycle. Beats overnight soaking by far — for diapers, problem wash loads!
- 3 Ring Agitator action cleans clothes inside and out — pumps lint away automatically.

Ask about the Frigidaire 15-Year Lifetime Test! FREE WIRING — to customers served by WTU — FREE installation (220 Volt) for ranges, water heaters and clothes dryers, when purchased from local dealer.

West Texas Utilities Company
an investor owned company

Live Better ELECTRICALLY!

Ride The Waves Over



"Riding The Waves" of Life, Can Sometimes Be Rough Going, Because of Lack of Ready Cash to Meet Emergencies. That's When To See Us For A Low-Cost Loan.

When You Need Cash In A Hurry To Meet Medical Expenses, Pay Off Overdue Bills or Any Other Important Purpose, We'll Arrange A Personal Loan For What You Need, On Convenient Terms.

YOUR FRIENDLY

Santa Anna National Bank
Member FDIC and Federal Reserve Bank of Dallas

36th Division Reunion To Be Held In Abilene Soon

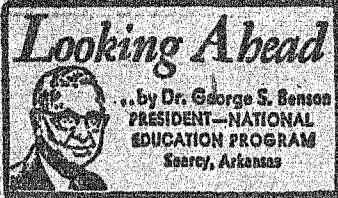
Maj. Gen. Everett S. Simpson, commander of the 36th Division, Texas National Guard, has been announced as keynote speaker for the 1962 Reunion of the 36th Division at Abilene, on Labor Day weekend.

In addition to serving as a reunion for the 36th, Pete Evans, a member of the Lost Battalion, is attempting to contact all members of the Lost Battalion in order to urge their attendance at the reunion. Members of the Lost Battalion were captured in the Pacific during World War II and spent some 44 months as prisoners. If you were a member of this battalion, of if you know anyone who was a member, contact Evans at Hotel Windsor, Abilene, site of the reunion.

Registration for the reunion will begin at 3 p. m. Friday Aug. 31, on the mezzanine of Hotel Windsor. Registration will reopen at 8 a. m. on Saturday with a Board of Directors meeting and committee meetings scheduled at 9. The first general session will convene at 10 a. m.

Gen. Simpson has had a long and distinguished military career in the T-Patch Division. During World War II he distinguished himself in combat, winning numerous decorations, while serving with the 142 Infantry. He was appointed assistant division commander in February of 1960, and promoted to brigadier general the following April. He became division commander in September of 1961, and has since been promoted to the rank of major general.

Hand punches at the News office.



SENATOR BYRD'S OBJECTIONS

When a warning about government policies comes from a man who has spent 30 years in Congress, much of it as chairman of the Senate Finance Committee, it ought to carry some weight. Actually, a series of warnings have been issued lately in several dramatic statements from Senator Harry F. Byrd of Virginia. The Senator is not given to histrionics, but this "watchdog of the treasury," as he has been called, has been yelping with pain as a result of recent events.

In his 30 years service the Senator has seen the national debt rise from \$19 billion to \$300 billion. He has recently seen the end of a fiscal year in which the federal government paid out, according to Treasury reports, some \$6.3 billion more than it took in. (He had predicted \$6 billion, not being given to exaggeration.) This happened in a year in which the nation enjoyed the highest revenue ever but still could not keep its expenditures within its income.

Two Reprimands
Is it any wonder that Senator Byrd, in opposing the Administration's successful effort to lift the limit on the national debt to \$308 billion, should ask:

"Is it possible for us to destroy ourselves from within?" Senator Byrd firmly believes that it will be impossible for our system of government or our system of enterprise to survive if we bring about fiscal insolvency. This is a sobering thought, when one considers that if the U. S. should go broke freedom could not be preserved anywhere in the world.

Again, Senator Byrd spoke out against the action of the Chamber of Commerce of the United States in calling for an immediate tax cut without a commensurate cut in expenditures. Once a member of the Chamber's board of directors, the Senator said he was both sorrowful and angry. The Chamber's position was "fiscal irresponsibility in the highest degree" that would reduce federal revenue by \$9.5 billions and the proposal was untimely, dangerous and panicky. It could build up deficits by the end of the next fiscal year amounting to well over \$15 billions. The Chamber got its knuckles rapped.

Startling Figures

But that was not all. Perhaps the most startling statement came from Senator Byrd when he reported, after some pencil work, that the U. S. is right now committed to obligations totaling \$1 1/4 trillion, not including "untold billions" of commitments that were impossible to calculate. In other words, no one really knows just how much the federal government does owe. But the Senator can see \$1,250 billion, or \$1 1/4 trillion. This is far above the assessed value of all the real and tangible property in the nation, as estimated by the Department of Commerce at \$300 billion.

For most of a generation the government has been spending more than it "makes" in taxes and other income. In fact if present prospects materialize for the next fiscal year, the Congress will have allowed 27 federal budgets to run into deficits during 33 years. This means that the budget has been balanced only six times in nearly a third of a century. You could not live like that. Neither can Uncle Sam, and Senator Byrd seems to be one of only a few persons in Congress who realize this and are courageous enough to speak up about it.

Our Security Imperiled

The Senator views our whole fiscal situation, the drain on our gold, the continued shortage in our international balance of payments, and the inflationary deficit spending as extremely dangerous. Foreign interests could claim all our gold, a situa-

tion Senator Byrd sees as imperiling our security like an atomic bomb. It has been very costly to be "the policeman, the banker and the Santa Claus for the Free World," he declares.

The needs of defense are usually considered as coming first in the nation's budget. Waste and extravagance should be eliminated there whenever possible so that these costs may be kept at a minimum. But large as defense costs are, they could

not have unbalanced our budgets except for our mushroom growth of non-defense spending. It may come as a surprise to you to learn that such costs have grown three times as fast as defense spending since 1954. The answer is not to be found in dept ceilings nor in tax cuts. Somehow we must learn to practice prudence and thrift. These qualities form the basis

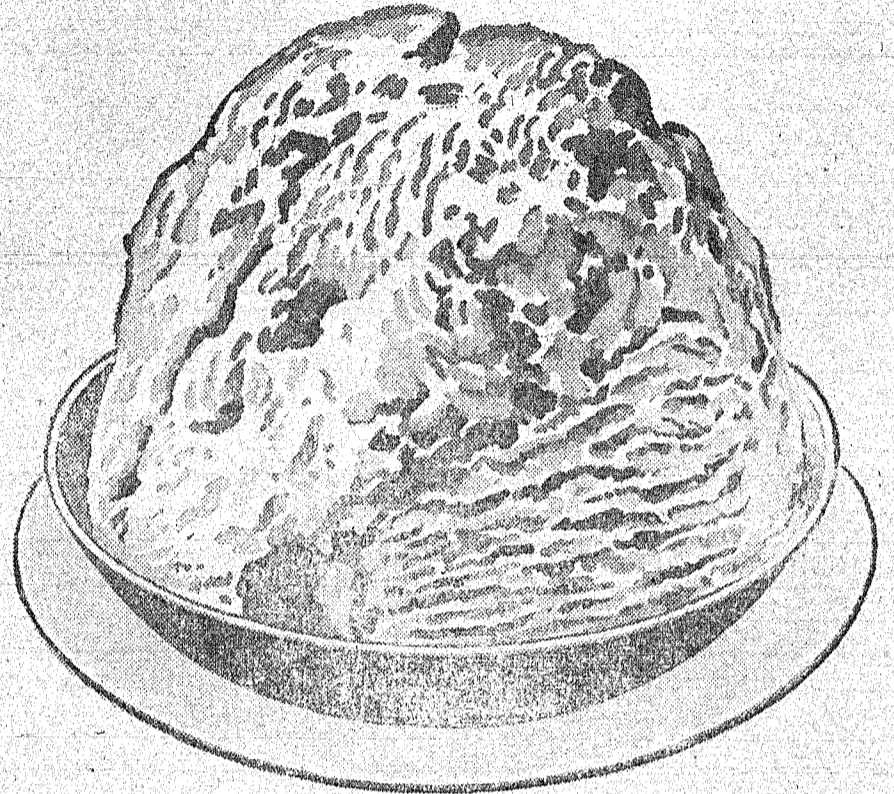
of fiscal responsibility in our national affairs when combined with integrity and good judgment.

One whale yields little whale-bone since it is taken from his jaw.

Herbert Hoover is the only man of Swiss descent to be president of the United States.

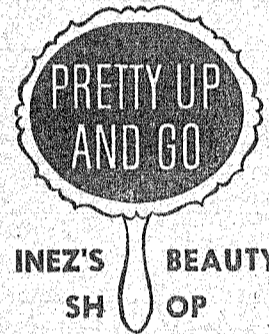
Treat Everyone At Your Table To The Delicious Taste Of Gandy's Tempting New Flavor

BLACK WALNUT CRISP ICE CREAM



On Sale At Your Favorite Food Store

Amanda Says ...



Amanda Perry, Operator
Dial FIS-3316



We Invite Your Patronage And Assure You Of Satisfaction.

McKee
CLEANERS

TOM KINGSBERY
President

GRADY McIVER
Vice President

FRANK GILLESPIE
Secretary-Treasurer

Coleman County Telephone Cooperative, Inc.

Allyn W. Gill, Manager

210 NORTH SECOND STREET

DIRECTORS

Frank Gillespie, Burkett
Tom Kingsbery, Santa Anna
Robert Markland, Santa Anna
Gordon Monsey, Mozelle
Jake McCreary, Rockwood
Grady McIver, Trickham
W. T. Nixon, Valera

Santa Anna, Texas



P. O. BOX 607

TELEPHONE
Fireside 8-3124

NOTICE OF ANNUAL MEETING

The annual meeting of the members of the Coleman County Telephone Cooperative, Inc., will be held at the Santa Anna Football Stadium at Santa Anna, Texas, on Friday, August 24, 1962, at 8:00 p. m. to take action on the following matters, to-wit:

Report of officers

Election of three directors of said Cooperative

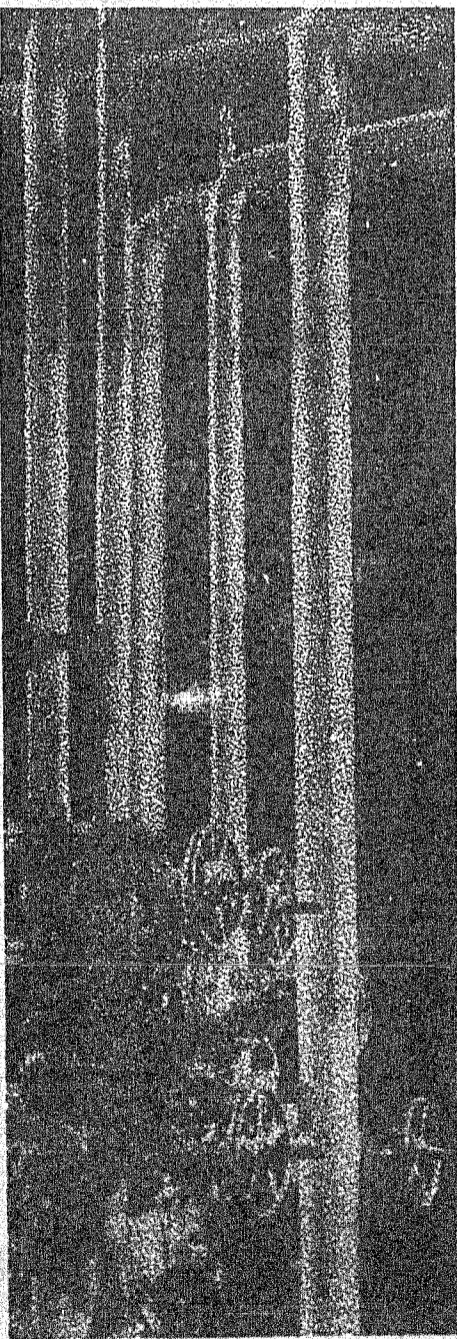
All other business which may come before the meeting or any adjournment thereof

FRANK GILLESPIE,
Secretary

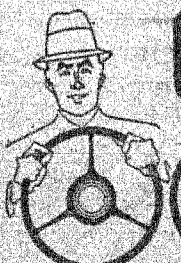
REGISTRATION AND ENTERTAINMENT FROM
7:00 P. M. UNTIL 8:00 P. M.

Entertainment - Drawing For Gifts
Door Prizes To All Members
Free Cold Drinks

ALL MEMBERS URGED TO ATTEND - VISITORS WELCOME



DESTINATION QUALITY



QUALITY YOU CAN MEASURE BY YOUR CAR'S PERFORMANCE.

