

Community Fair and Rodeo Edition

THREE SECTIONS — 28 PAGES

SANTA ANNA NEWS

SECTION ONE
TWELVE PAGES

SECTION ONE
TWELVE PAGES

VOLUME 52

SANTA ANNA, COLEMAN COUNTY, TEXAS, FRIDAY SEPTEMBER 17, 1937

NUMBER 38

"He Profits Most Who Serves Best"

FAIR AND RODEO BEGINS TUESDAY

SMOKE

FROM THE MOUNTAIN

With this issue, The News presents the Santa Anna Fair and Rodeo Edition of 28 pages, the largest paper ever published in this city.

We wish to extend to the business men of Coleman and Santa Anna, our sincere thanks and deep appreciation for the fine patronage and cooperation given us. With the distribution of 5,000 copies in this and adjoining counties, we feel sure that gratifying results will be derived from their advertising.

To Harry Schwenker, publisher of the Brady Standard, we also express our thanks for loaning us one of his printers to help in disposing of the work and being out on time.

We have done our best to make this edition one of which Santa Anna would be proud. How we have succeeded rests with our readers. We will save some copies for those desiring to send them to friends in other parts.

As one citizen remarked who contributed to the Iron Lung fund "I am contributing in the hope that I or none of my family will ever have to use the fund and in the hope that others will not have to, but who knows, when you contribute to that, you may be saving the lives of your own children in the future."

That has been the sentiment expressed by many of the contributors to the Iron Lung Fund campaign now being sponsored by local citizens to try to check the epidemic of infantile paralysis. All have given willingly to save the lives of our children and several have volunteered their services in assisting in raising the fund next week.

The Sealy Hospital and its staff are known all over the state and outside the state for a great amount of charity work. Local citizens who have contributed and those who are planning to contribute feel that their contribution is not only a means of securing the lung, which is definitely needed, but is a tribute of appreciation to Dr. Sealy and his assistants.

Bring your contribution now. The bank or this office will place it in the fund.

A reprint of the editorial of last week in regard to the Iron Lung is on the first page of section two of this issue.

MERCHANTS AND BUSINESS FIRMS ARE ADVISED to look to the condition of your roof occasionally, since one business man Thursday discovered that a hole had been deliberately sawed in the roof, possibly with the intent of entering the building. Discovery was made when workers were looking for the cause of a leaky roof and they discovered the hole. Since the roofer in Santa Anna business houses recently have all been made through roofs, it might be well to use this hint.

These purple shirts, orange kerchiefs and cowboy boots appearing on local men lately have turned this town into a

(continued on page six)

SANTA ANNA GAS RATE

By a vote of 2 to 1 the City Commission of Santa Anna on September 14th rejected the request of the Coleman Gas & Oil Company for permission to raise the gas rate from 50c to 55c per M. The granting of permission would have saved the citizens of Santa Anna about five or six thousand dollars per year.

The City of Santa Anna put a rate of 35c per M. in

the year 1932; and this rate was contested by the Santa Anna Gas Company through all the courts in the Federal Court and in the State courts, and finally the Coleman Gas & Oil Company established in the Supreme Court of Texas on the 31st day of December, 1933, its legal right to charge a 35c rate.

Shortly afterwards, however, and in June, an appeal was made to the Railroad Commission to have the rate increased to 50c and the Coleman Gas & Oil Company was then forced, over its protest, to raise its rate to 50c per M.

The City of Coleman which is served by the same line and from the same gas supply has been enjoying a 35c rate for five years, and the City Commission has been very glad indeed to permit the lowest rate at which they can secure gas supply for its citizens.

The Coleman Gas & Oil Company regrets very much its inability to give to the citizens of Santa Anna the benefit of the reduced rate that is being received and enjoyed by the neighboring City of Coleman, but under the law cannot do so without the permission of the City Commission.

The Coleman Gas & Oil Company would appeal to the Railroad Commission for permission but the law does not permit a gas company to appeal for the purpose of lowering a rate but only for the purpose of raising a rate. Therefore the Coleman Gas & Oil Company has to abide by the requirements of the City Commission of Santa Anna that it should charge the citizens of Santa Anna 15c per M. more than it charges the citizens of Coleman.

Sellers Enters 18 Broncos for Big Rodeo Event

Entries Promise Riders and Spectators Thrills; Good Performances

Eighteen bronco entries in the rodeo bronco riding had been received by Wednesday of this week and the group promises to give the spectators of the rodeo a real thrill. Earl Sellers, manager of the rodeo, gives each rider and each member of the audience, plenty for his money on the horses he furnishes since they have a reputation of unseating their riders.

The list of names entered include: Centennial, Spike, Snip, Choppe, Boraggio, Oharro, Bing Crosby, Bolego, Cap Rock, Wimpy, Socks, Bear Creek, Beaver Lake, Little Doctor, Sun Beau, Al Capone, Durango and Beaver Boy.

Included in this list of bucking horses, among the best in West Texas, are some outstanding outlaws, and some which the boys on the San Miguel ranch in Mexico just couldn't ride.

Sun Beau and Spike, who appeared in the Junction and Midland rodeos respectively, proved that they could live up to a "bucking" reputation. Little Doctor was named after a doctor friend of Sellers.

Wimpy has a bad reputation and disposition. One is named "Barrega" because he came from a sheep ranch.

Beaver Lake is the only white horse in the string. Centennial

RODEO PROGRAM

Earl Sellers, Arena Director
Each Night at 7:30 p. m.
Football Field
Sept. 21-22-23

1. Grand Entry and Introductions.
2. Championship Calf Roping.
3. Championship Bronc Riding.
4. Cow Girls Flag Race. Coleman Rules.
5. Trade Territory Calf Roping.
6. Championship Steer Riding.
7. Boys (12 to 16 years old) Calf Roping.
8. Match Calf Roping — 5 Calves Each Night.
9. Roy Mathews Jack Sellers Del Rio Championship Wild Cow Milking.

Wednesday Night Following Grand Entry — Parade of Winners of Horse and Mule show and awarding prizes. Potato race for boys 12 to 16 years old. Five boys to side. Purse \$5.00.

The annual cheese consumption of Scandinavians amounts to 198 pounds per capita.

was so named because he appeared in so many rodeos during 1936 and the centennial celebrations.

Bing Crosby is the crooner of the bunch. If he does not groan while bucking, it's only because he's getting his rider loosened up without trouble, stated Sellers.

The string was used last at the August Rodeo in Junction.

W. Lee O'Daniel, Hill Billies to Attend Fair Tues.

W. H. Thate, Owner of Piggly Wiggly Store Personally Responsible for Added Attraction

W. Lee O'Daniel and his famous Hill Billy Boys will visit Santa Anna Tuesday, Sept. 21 under the sponsorship of W. H. Thate, owner and manager of the local Piggly Wiggly store. Mr. Thate has secured Mr. O'Daniel and the Hill Billies to appear down town Tuesday, the opening day of the fair, and the popularity of these musicians, who have become renowned in this state and other states, will be a big drawing card for the opening celebration.

The Hill Billies will be in the opening parade and will play in front of Piggly Wiggly all afternoon Tuesday.

O'Daniel, author of the song, "Beautiful Texas," has a large following of audiences in his personal appearances and his radio programs. His many friends here will welcome the opportunity of seeing and hearing him, particularly under sponsorship of a local business man.

Mr. Thate has secured these entertainers personally and is donating their program as one of his contributions in making this third annual fall fair and rodeo the best Santa Anna has ever had.

This appearance will be the first of this band of singing boys in Santa Anna.

Reserved Seat Tickets Now on Sale for Rodeo

Walker's Pharmacy and Phillips Drug Co. Now Selling Reserved Seat Tickets;

With the completion of additional bleachers on Mountaineer Field spectators at the forthcoming football games and Rodeo are assured adequate seats. Seven hundred twenty seats have been built just north of the old bleachers, and a similar number just south of the old section. The old section seats 288.

For the three nights of Rodeo the old section of 288 and the new section of 720 to its north will be reserved. Reservations are being made at Walker's Pharmacy and Phillips Drug Co. and all are urged to make their reservations now. Price of reserved seat is \$0.25 each night.

No general admission tickets are being sold until nights of rodeo. Ticket booths will be established at the Cheaney Northwest corner of the high school campus for entrance at west gate, and at the Stockard Northeast corner for entrance at the east gate.

If spectators have not previously purchased reserved seats by the time of the night's performance, and there remain unsold reservations, these may be secured at the north entrance to the grandstand.

A definite system of parking automobiles will be enforced all three nights but details are not available at this time.

Gala Parade to Open Fall Fair Tuesday at 5 P. M.

Cowboys, Cowgirls, All Citizens Plan to Ride in the Procession; Thousands to Attend Three-Day Event

Several thousand people in Santa Anna, Coleman County and adjoining counties are anticipating the gala opening of Santa Anna's biggest and most spectacular Fall Fair and Rodeo Tuesday afternoon, when a colorful parade initiates the three day program.

Cowboys and cowgirls dressed in the colorful regalia of the rodeo arena will be led in the parade starting at 5 p. m. by Earl Sellers of Del Rio, arena director of the Rodeo. Others in the parade will include the local band, cars and floats sponsored by business firms and local citizens, who have been invited to join in the parade. W. Lee O'Daniel and his Hill Billy Boys will be present Tuesday afternoon for a program. They are being brought here by W. H. Thate, owner of the local Piggly Wiggly Store.

Chief attraction Tuesday evening will be the first rodeo performance at the Mountaineer football field at 7:30 and several thousand seats and plenty of standing room has been provided for a record breaking crowd. Sellers, who has charge of the arrangements for the rodeo, has planned, as usual, a fine performance each night with true bucking broncos, and daring riders have placed their names in the entry list.

The rodeo program each night will include grand entry, calf roping, bronc riding, cowgirls flag race, trade territory calf roping, steer riding, match calf roping by Jack Sellers, Del Rio and Roy Mathews, Fort Worth, and wild cow milking. Special attractions will be included in the rodeo Wednesday night with the introduction of the winners of the horse and mule show, and with a featuring of a potato race for boys, ages 12-16.

Fair exhibits will be the main attraction Wednesday and Thursday morning and afternoon, with judging of horses and mules, cattle, sheep and poultry taking place. Other farm exhibits to be judged will include farm exhibits of grains, culinary exhibits of breads, cakes, canned goods, pickles, preserves and jelly. Craft and

(continued on page seven)

QUEEN THEATRE

PHONE 44

Fri.-Sat., Sept. 17-18
The Three Mesquiteers in
"Heart of the Rockies"
"Dick Tracy" Final Episode

Sun. & Mon., Sept. 19-20
SPENCER TRACY in
"They Gave Him A Gun"
With GLADYS GEORGE

Tues., Sept. 21
BARGAIN NIGHT 5c & 10c
FAT O'BRIEN in
"San Quentin"
ANN SHERIDAN

Wed. & Thurs., Sept. 22-23
EDWARD ARNOLD in
"Toast of New York"
With FRANCES FARMER

THE SANTA ANNA NEWS

ESTABLISHED 1886
ISSUED FRIDAYS AT SANTA ANNA, TEXAS
FRIDAY, SEPTEMBER 17, 1937

James R. Gregg Editor & Business Manager
Mrs. Elizabeth Gregg Associate Editor
J. J. Gregg Owner

MEMBER
Texas Press Association
South Texas Press Association
Heart of Texas Press Association

Notices of entertainments where a charge of admission is made, obituaries, cards of thanks, resolutions of respect, and all matter not published as news items will be charged for at the regular rates.

Entered at the post office at Santa Anna, Texas as second class mail matter.

Subscription Rates
Coleman County year \$1.00
Outside County year \$1.50

WELCOME, FAIR VISITORS

Welcome to our city and our Annual Fall Fair and Rodeo. Each visitor from out-of-town and all residents of our community are welcomed heartily by the town and its citizens to enjoy with us our Fair and Rodeo, which we believe to be by far the best ever staged.

We have tried to provide accommodations for you to make your stay here comfortable at all exhibits and entertainments. We are offering to you special shopping bargains during your stay and trust that you will not hesitate to call on any business firm to assist you in making these three days pleasant.

Our Fair and Rodeo is a reminder of the progress which our community has made during the previous year, since each year we try to make the Fair better and more beneficial than the one of the year before. We believe that for a city of this size our livestock and poultry exhibits, and our community booth exhibits are exceptionally good and this year we are going to have a rodeo unequalled in Santa Anna under the directorship of Earl Sellers of Del Rio.

Therefore, with a feeling of pride in our exhibits and with the hope that we can furnish you three enjoyable days with us, we again extend a hearty greeting to each of you and hope for your return for our next year's Fair and Rodeo.

Local Market

Thursday Noon
GRAIN

No. 1 Wheat	92
No. 3 Oats	36
No. 2 Barley	58
Threshed Maize	\$1.05
Threshed Hygeria	\$1.05
Dry White Corn	.60
Dry Headed Maize	\$13.50
Dry Headed Hygeria	\$12.50

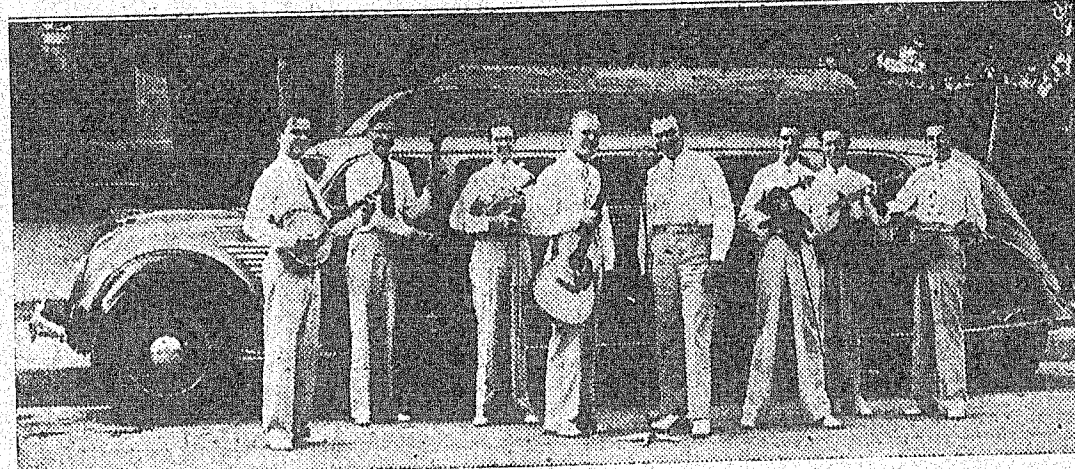
"He who would do some great thing in this short life must apply himself to work with such a concentration of his forces as to idle spectators, who live only to amuse themselves, looks like insanity."—Parkman

Lions Hear Talks by County Agents

Miss Chrystene Trowbridge, home demonstration agent, and County Agent C. V. Robinson spoke before the Lions Club Tuesday telling of their trip to College Station recently for a meeting of county agents and demonstration agents.

C. L. Peterson also spoke briefly to the club. Members present were A. D. Pettit, J. T. Garrett, R. L. Hunter, W. H. Thate, J. W. Riley, C. F. Campbell, W. M. Bell, W. R. Mulroy, Geo. M. Johnson, Rex Golston, J. C. Scarborough,

W. Lee O'Daniel and His Hill Billy Boys



To Play Here Tuesday Afternoon

This group of radio musicians and personal appearance entertainers is being personally sponsored by W. H. Thate, Piggly Wiggly Store all the afternoon, Tuesday, September 21, 1937.

W. H. Ragsdale, Loyd Burris, Jim Bob Gregg, W. B. Griffin, Hardy Blue, John F. Turner, M. L. Womack, Alan Lynch, D. L. Pieratt, F. C. Woodward, C. A. Walker.

Miss Trowbridge and C. V. Robinson were guests of Lion Walker; Howard Kingsbery was a guest of Lions Woodward; C. L. Peterson and O. L. Cheaney were guests of Lion Pieratt; Lion Pettit had as his guest Chas. Matthews.

EUREKA CHURCH

We wish to express our deepest thanks and appreciation to the kind people of this and surrounding communities who have aided us this summer in the building of an additional wing to our church. Your help in both a financial way and in the donation of services calls for our deep gratitude.

We invite all residents of Eureka and other communities to our church Saturday night to hear Brother Kellam, evangelist, who will deliver a sermon beginning at 8 p. m. Come and be with us. You will be helped by his stirring message.

Sunday morning service will begin promptly following the Sunday School beginning at 10 a. m. Sermon topic Sunday morning will be "Neither Give Place to the Devil." The sermon Sunday night will be on "Christian Home."

B. T. U. Sunday night will meet at 7:30.

Rev. and Mrs. J. S. Markham and son of Stephenville and Dr. and Mrs. Hugh B. Smith of Tarleton College were guests of Mrs. Pauline Harper and family one day last week. Miss Aline Harper accompanied them home and will also visit in Comanche before returning home.

Mrs. Hettie Pearson and daughter, Elsie Mae of Coleman spent the week-end with Gus Martin.

MOUNTAINEER SPORTS

SANTA ANNA VS. ROCKWOOD

Tonight at 8 o'clock the Santa Anna High School Mountaineers will blast the lid off the 1937 football season in a non-conference game with the Rockwood Yellow Jackets on the local gridiron. Little is known about the strength of the current Yellow Jacket squad, but remembering the material they had left from last season they should be fairly tough. This will be the initial game for the Mountaineers under the leadership of Coach Johnny Little, and from this game a good insight can be had as to what this year's Mountaineer eleven will have.

On the morning day of practice twenty-five huskies reported to Coach Little, among the bunch being nine lettermen; namely, Hill, Richards, M. L. Guthrie, Blanton, Lackey, Gregg, Brewer, Jackson, and Henderson. Out of this group there were six linemen and three backs. The rest of the boys that will take the field against the Rockwood aggregation will be more or less inexperienced, but will make up in fight and determination for this disadvantage. This veteran aggregation of rugged, determined, and fighting boys are due to show the home folks some good old fashioned football for sixty minutes in their initial game tonight. It is far too early in the season to predict just what the Mountaineer club will do this season, but there is one thing, sure, and that is in every game Mr. Little will put on the field eleven boys that will be in there fighting, and doing their best.

Headman Little has spent many long and hard hours in the past two weeks in whipping these boys into shape for the opening game, and when they take the field tonight they should be in fair playing condition. Of course the boys will make lots of mistakes in this opening game, but after another week or two of practice and of ironing out kinks, the Mountaineers should develop into an exceptionally smooth running team that will give their opponents plenty of trouble. This game will give Coach Little an insight as to just what his boys can do under fire, and will afford him a chance to see where corrections and changes should be made.

Next week the Mountaineers will go into their conference play by tackling the strong Moxelle team next Friday night on the home field. From then on the Mountaineers will encounter conference teams in an exceptionally hard schedule.

The eleven men that will take the field tonight for the Santa Anna team, when the opening whistle blows will be: Hill and Blanton at the wing position; Stapleton and M. L. Guthrie at the tackle positions, with L. M. Guthrie and Richards at guards. The pivot position will be manned by Ray Lovelady. In the Mountaineers secondary will be Lackey at quarterback; Gregg and Nichols at halves, with Captain Bo Brewer, a two year letterman and senior, at fullback.

Other members of the 1938 Mountaineer squad are West, W. Rowe, Lancaster, O. Henderson, McGahey, Speck, Stacy, Oakes, Wristen, Oakes, Woodruff, and L. V. Cupps, all linemen; Schattel, Garrett, Reid, and Hudler, backs. All of these men will probably see some action before the night is over with. LeRoy Nichols will be the only Freshman to start the game.

The local fans will be afforded the opportunity of trying out for the first time the newly erected bleachers at the High School field. These bleachers will accommodate around 2200

customers and plenty of good sitting room will always be available for the spectators.

Coach J. E. Little



New Mountaineer football coach. The Mountaineers, under the direction of Mr. Little, will play their first game of the season here tonight against the Rockwood Yellow Jackets.

You don't have to be an accomplished musician to play on your neighbor's nerves.

P. T. A. MEETING TUESDAY

The first meeting of the Ward P. T. A. for the fall term will be held Tuesday afternoon at 3 p. m. at the Ward School, according to Mrs. Glen Williamson, president. All old and new

members are urged to be present.

Mr. and Mrs. Jim Williams of Houston visited relatives and friends here and at Coleman last week.

New Fall Wool Dress Materials Are Here

If you are planning on making your own dress or suit this fall, you should come in and look over the new arrivals in woolen materials. They are smart and serviceable.

Fall Dresses



The season's newest creations in wools and silks. There are models for all ages and a complete size range.

Fall Coats

Fair visitors should come in and see the new coats that have just arrived. All are very reasonably priced.

Fall Shoes

Smart styles for women of all ages, in oxfords and pumps. All heel styles and sizes.

We wish to extend a cordial invitation to everyone to come to the Santa Anna Fair and Rodeo next week and to make this store their headquarters.

GEHRETT DRY GOODS CO.

Santa Anna — Texas

HOWDY FRIEND!

SEPTEMBER 21-22-23rd — Santa Anna and vicinity will unite in three days of association, EDUCATIONAL AND FUN MAKING.

We insist that you make our store Headquarters while you are here. Tell your friends and acquaintances to meet you at Kelley's at some specified time.

We will have plenty of ICE WATER and will certainly be glad to visit with you.

The Santa Anna Community Fall Fair & Rodeo is progressing with great success and we want to urge you to take part, as this is your program, so resolve now to join us for the entire three days.

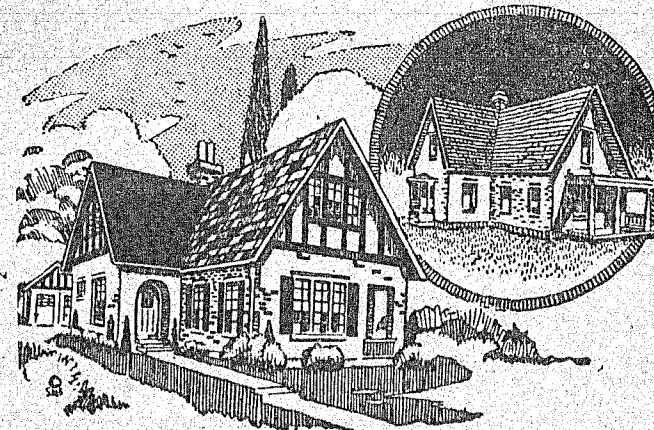
Yours Truly

W. R. KELLEY & CO.

Groceries Hardware

In Santa Anna Since 1889

SANTA ANNA FAIR and RODEO September 21 - 22 - 23



IT'S SURPRISING HOW LITTLE IT COSTS TO REMODEL

The above illustration shows what a wonderful transformation can be made from a shabby looking home to one of beauty and charm. It is possible that your home might be one that could be as easily improved, making it more endearing to the family and more comfortable and convenient.

Probably you hesitate in making such improvements, not knowing what it would cost, and fearing it might cost too much for your means. Should this be the case, we invite you to allow us to give you an estimate, and it might surprise you how reasonably it can be done.

Regardless of what building or improvements you may be considering, you will find it will pay you to come in and let us discuss the matter with you. Building materials is our business, and our long experience has given us much valuable information in building.

Burton-Lingo Lumber Co.

Santa Anna — Texas

1937 Fair Visitors Welcome 1937



The Mountaineer
—S-A-H-S—

FRESHMAN CLASS
The freshman class of Santa Anna High School chose officers and class colors last Friday. Our officers are as follows:

President, Mary John Wade; vice president, Lilly Pearl Neill; secretary-treasurer, Thomas M. Hays; reporter, Mary Feild Mathews. Our colors are green and yellow.

We are very proud of our freshman class for it is the largest class in high school and also the largest freshman

class in several years. Our sponsors are Miss Harvey and Mr. Jackson, the new teacher.
—S-A-H-S—

SOPHOMORE NEWS

Officers for the sophomore class were elected for the year last Friday, Sept. 10. Those elected to offices were Walter Verner, president; Mickie Parker, vice president; James Kilgo, secretary; O. L. Cheaney, treasurer; Willyne Ragsdale, reporter.

—S-A-H-S—

JUNIOR NEWS

Dorothy Sumner was elected president of the junior class when officers were chosen by the class in a meeting last Friday.

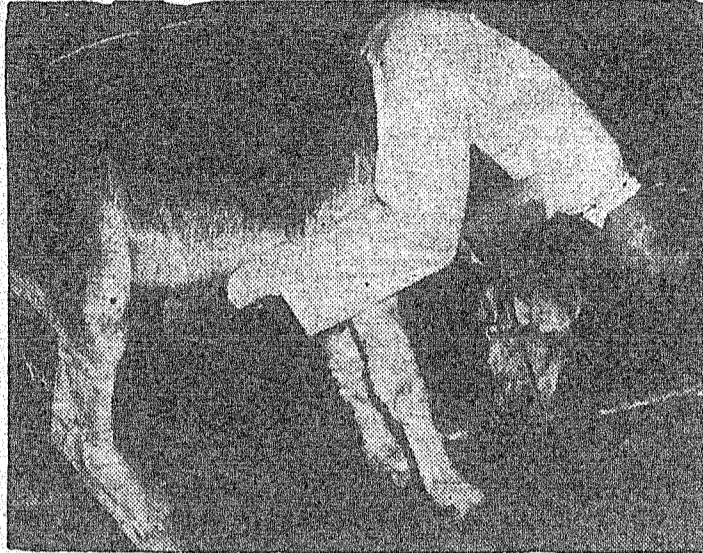
Others elected to lead the class were Dorothy Pettit, vice president; Ara Belle Ragsdale, secretary; Ima Niell, reporter; Helen Oakes, sergeant at arms.

Learn by Imitation

It is by imitation, far more than by precept, that we learn everything; and what we learn thus, we acquire not only more effectually, but more pleasantly. This forms our manners, our opinions, our lives.—Burke.

Expert Job Printing—News.

MEMBER DONKEY GAME OCTOBER 4



A Donkey Baseball Game is scheduled here for Oct. 4 with local men riding the

mounts. The donkeys are coming from Dallas and are guaranteed not to bite, kick or paw.

The University of Pavia, Italy, was founded by Lothaire, grandson of Charlemagne, in 825, and celebrated its 11th centenary in 1925.

The News Aims to Please.

The father was introducing his family of boys to a visiting Governor.

"Seventeen boys," exclaimed the Governor. "And all are Republicans but John, the little rascal. He got to readin'."

Athletic Ass'n. Sponsors Donkey Baseball Game

Mounts to Be Furnished from Dallas in Game Scheduled Here for October 4

The Athletic Association is sponsoring a Donkey Baseball Game to be played on the Mountaineer Field, Monday night, Oct. 4th. Contract between the association and the TEXAS RANGER DONKEY BASEBALL CLUB of Dallas was recently made wherein the Club furnishes 14 real donkeys, and the association furnishes the players, and the receipts are divided 50-50 up to \$100, and 75-25 for excess of \$100.

The above likeness is only one

of the donkeys on which few scores can be made. In his four seasons of ball playing he has permitted only 3 runs. A few of the donkeys are of this type which will furnish plenty of fun for the spectators, and for those players taking to this type of mount. The others are more docile and orderly. It is guaranteed that none of the donkeys will kick, bite or paw. They average about 425 pounds, are up-and-going donkeys, and the owner, W. A. Mangum, teacher of mathematics in Forest Avenue High School of Dallas, guarantees that it will be the fastest and most thrilling donkey ball game ever witnessed by any of our fans.

The admission prices will be \$0.25 and \$0.10 and the Association's big task just now is to devise some means of selecting the two teams from the many available players who have indicated a desire to play on one of the donkey teams.

Rockwood News

Bro. Shaw filled his regular appointment in the Baptist pulpit.

Miss Cecile McCreary of Brady visited her parents, Mr. and Mrs. Cecil McCreary recently.

Miss Alpha Mae Johnson left Thursday for Abilene where she will attend McMurry College.

Those who have gone to Texas Tech are Marie McCreary, Willdon McCreary, Francis Allison, Glen Blackwell, Harold Steward and Vernon Estes.

A shower was given for Mr. and Mrs. Frank McCreary Jr. Tuesday evening. Many useful gifts were presented.

Greenville, Texas, was the first town in the United States to adopt the red and green light system to control traffic.

SATURDAY SPECIALS

AND ALL NEXT WEEK

WELCOME TO OUR FAIR

LOOK OUR STORE OVER

FOR REAL BARGAINS

Post Toasties 3 For 25c													
<table style="width: 100%;"> <tr> <td>TOMATOES No. 2 2 for</td> <td style="text-align: right;">15c</td> </tr> <tr> <td>MILK Small Can</td> <td style="text-align: right;">3c</td> </tr> <tr> <td>MILK Large Can</td> <td style="text-align: right;">6c</td> </tr> </table>	TOMATOES No. 2 2 for	15c	MILK Small Can	3c	MILK Large Can	6c	<table style="width: 100%;"> <tr> <td>HOMINY No. 1</td> <td style="text-align: right;">5c</td> </tr> <tr> <td>PORK & BEANS</td> <td style="text-align: right;">5c</td> </tr> <tr> <td>LARD One Lb.</td> <td style="text-align: right;">12c</td> </tr> </table>	HOMINY No. 1	5c	PORK & BEANS	5c	LARD One Lb.	12c
TOMATOES No. 2 2 for	15c												
MILK Small Can	3c												
MILK Large Can	6c												
HOMINY No. 1	5c												
PORK & BEANS	5c												
LARD One Lb.	12c												
Pinto Beans 4 lbs. 25c													
<table style="width: 100%;"> <tr> <td>BANANAS Doz.</td> <td style="text-align: right;">10c</td> </tr> </table>	BANANAS Doz.	10c	<table style="width: 100%;"> <tr> <td>GRAPES California Per Lb.</td> <td style="text-align: right;">5c</td> </tr> </table>	GRAPES California Per Lb.	5c								
BANANAS Doz.	10c												
GRAPES California Per Lb.	5c												
48 lb. FLOUR per sack \$1.25													
NO. 1 SPUDS 10 lbs. 17c													
<table style="width: 100%;"> <tr> <td>SALT PORK lb.</td> <td style="text-align: right;">20c</td> </tr> <tr> <td>BOLOGNA Per Pound</td> <td style="text-align: right;">10c</td> </tr> </table>	SALT PORK lb.	20c	BOLOGNA Per Pound	10c	<table style="width: 100%;"> <tr> <td>CHEESE Longhorn Per Lb.</td> <td style="text-align: right;">20c</td> </tr> <tr> <td>Hamburger Meat Lb.</td> <td style="text-align: right;">10c</td> </tr> </table>	CHEESE Longhorn Per Lb.	20c	Hamburger Meat Lb.	10c				
SALT PORK lb.	20c												
BOLOGNA Per Pound	10c												
CHEESE Longhorn Per Lb.	20c												
Hamburger Meat Lb.	10c												
PORTER'S FOOD STORE													

A Quarter of a Century of Faithful Service

This year we look back over the twenty-five years that it has been our privilege to serve the good people of Santa Anna, with the hope that our efforts have been such as merit the continued satisfaction and good will of every one of them.

We know that as many of you sit before the glowing gas fires in your homes, especially during the cold periods, must at least once in a while think of our service which with the touch of a match is ever ready to radiate warmth and brightness.

We, too, often think of the comfort and happiness that our service brings to your homes, and always with the purpose to keep it safe and efficient. It is also our purpose to render it at the least possible cost to the consumer. We thank you sincerely for your patronage, and hope that in coming years we may be privileged to continue in your service.

THE SANTA ANNA FAIR AND RODEO

To every one who takes part in Santa Anna's Third Annual Community Fair and Rodeo, we extend greetings, and our sincere wishes that this year's fair will surpass every one of the past and set new standards for future years.

Coleman Gas & Oil Co.

ALEX CLARKE, Manager
"USE GAS — BUT DON'T WASTE IT"

Smoke

(continued from page one)

bevy of "drug store cowboys." We haven't seen any of them trying to rope calves or ride broncos in the streets yet, but we wouldn't put it past them, they are getting so "rodeo conscious." We just hope they quit before they get so enthusiastic they enter the contests—it might be rodeo "unconscious" in that case.

The local band is really having

nightly workouts for the coming fair and football season and we'll venture to say that they are as hard as the fair committees or the football boys in doing their part in boosting both events. The school songs they were practicing the other night and the other snappy tunes ought to pep any team to make a good showing. The excellent reception on the boosters trips is due in a big part to the band music.

The girl who marries a man with money to burn makes a good match.

1937 Senior Class Has Reunion With Miss Lula Harvey

Thursday night, September 9 the senior class of 1937 had a class reunion at the home of their ex-sponsor, Miss Lula Jo Harvey, who was assisted by Doris Spencer and Carlene Ashmore.

Various games were enjoyed throughout the evening. Refreshments of ice cream and cake were served to Raymond Holland, Stuart Williams, Alene Hardy, Sealy Ferguson, Ruby Lee Price, Martha Belle Harvey, P. B. Lightfoot, Doris Spencer, Carlene Ashmore, Alvin Newman, Bill Mitchell, Margaret Jones, Annette Shield, Julian Kelley, Marilyn Baxter, Anita Kirkpatrick, Rosalie Niell, Marjorie Pope, Frank McGonagill, Dolphus Ashmore, Jack Howard, Bill Early, Ruth Conley, Veoma Newman, and the sponsor, Miss Lula Harvey.

Informal Party Honors Student Nurses Friday

Entertaining the student nurses of the Sealy Hospital Training School, Dr. T. Richard Sealy sponsored an informal party Friday evening, September 10, at the Nurses Dormitory.

Misses Nina Williams and Oleta Thate received the guests. The reception room was decorated with subdued colored lights and flowers. This gala event marks the closing of summer for the students, who began their class work Tuesday of this week. Those present included the following: Miss Ruth Cozart, Superintendent, Misses Elizabeth Fletcher, Dortha Todd, Frances Gregg, Verda Morrison, Tula Mae Sides, Helen Younlove, Jo Ella Henderson, Thelma Younglove, Cleo Harwell, Celesta Freeman, Nina Williams, Oleta Thate, Hyla Teel, Olney Fillingim, May Campbell, and Anne Keith; and Messrs. Hubert Turner, Pat Hosh, Buddy Weaver, Garland Close, Norman Hosh, and Lewin Clayton, Raymond Dockery, Sam Stanford and Chick Rehm of Coleman.

It is estimated there are about 37,000,000 enrolled in the Sunday Schools of the world.

Gulf Sound Truck Will Be at Rodeo

Gulf Products Sound Equipment truck will broadcast all events of the rodeo during the nights of Sept. 21, 22 and 23, according to Calvin Campbell, local distributor.

The truck will make the rodeo events much more enjoyable since all spectators can hear from the truck which can give good service to a crowd of 50,000. It will be placed so that all spectators can hear the broadcast of each event.

Barbecue Honors Softball Team

Phillips Drug Co. honored the members of their Softball team last Wednesday night with a barbecue and party at the Ranger Park.

Twenty four guests, including the boys and their girl friends were present to enjoy the delicious supper and an evening of string music and singing.

Cotton Raisers

Try The New Hardwicke - Etter Gin

With your next bale of cotton for good ginning on your cotton and seed.

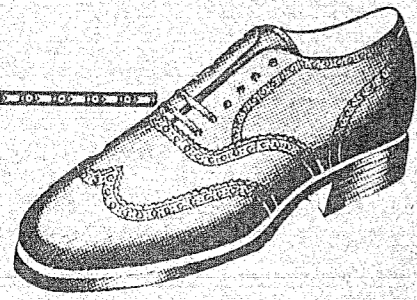
WE BUY COTTON

Welcome to the Santa Anna Fair

We hope that you will find time to be here every day and that you will enjoy every feature.

CAMPBELL GIN

Santa Anna — Texas



PETERS BRAND SHOES

Known throughout the length and breadth of the land for—

Quality Comfort Service

TRAVIS FORM FITTING WORK SHIRTS

They fit right, feel right, look right and give you the right kind of lasting service

HAWK BRAND WORK CLOTHES FOR MEN AND BOYS

We Also Have —

A complete line of Wool Jackets and corduroy suits for men and boys.

FALL SUITS

Before your order see our new samples

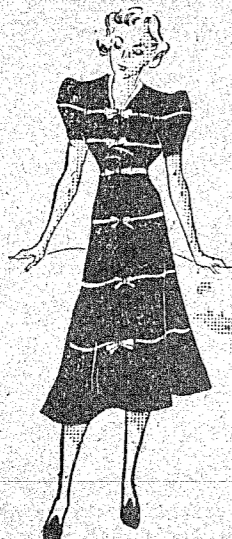
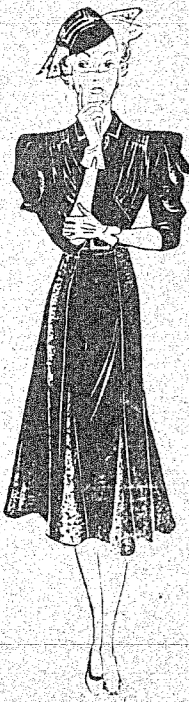
WORTH HATS

The very latest in styles

The Man's Store

JEWEL HILL, Prop. Santa Anna Texas

Fair Visitors Should See Fall's Newest Creations



A few minutes visit at this store will give you an opportunity to inspect an exceedingly smart collection of New Fall Dresses. Materials that are very popular this season, models that are exceptionally clever and trimmings that lend a very attractive finish.

Very Moderate Prices

Hats Your Friends Will Admire

Here you'll also see the prettiest assortment of Fall Hats that you have yet looked over. There are shapes suited to every feature and head sizes for all.

All Reasonably Priced



Beauty Shop

While you are here attending the Fair and Rodeo, likely you will need some beauty service, and we invite you to come here where you will be sure of the best.

Highly skilled operators will give you a friendly service, and particularly if you should want a new permanent. We have all the most modern equipment for the highest quality of work.

The Santa Anna Fair

We invite every one in Coleman County to come to our Fair and Rodeo, September 21, 22 and 23. For weeks Santa Anna has been making preparations to make exhibits and programs interesting. Make this store your resting place.

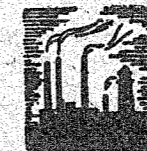
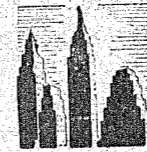
MRS. G. A. SHOCKLEY

Ready to Wear Millinery Beauty Shop Santa Anna — Texas



ELECTRICITY Builds

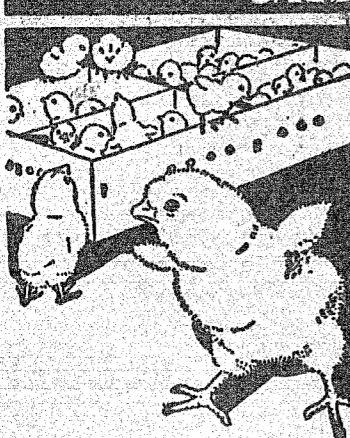
Each year marks the anniversary of individuals, institutions, firms, newspapers, even towns, counties and states. The passing of years makes each, whether a person or a business establishment, a pioneer in the opinion of those who view life with more youthful eyes. Outstanding accomplishments are recalled on the event of every anniversary. This tendency to point out our feats so that we may appear in a better light before our fellowmen is a very human trait that had its origin in the dim past. This desire for recognition has served as the greatest stimulant to progress, causing us to build! build! build! bodies . . . minds . . . institutions . . . commercial endeavors.



When we remind you that "Electricity Builds", we are acting in a human sort of way. We are proud that Electric Service has helped West Texas—your town and 159 others—to build into a region of prosperous communities where men and women each are occupied with their individual problem of building. It doesn't take a skyscraper to allow Electricity to demonstrate its ability to build. The humblest West Texas home provides ample opportunity. Nor is actual construction necessary. Electricity builds communities by bridging communication between them, by sending light into dark places, by furnishing businesses and industries with light and power, by providing men and women with work—work in which the basic idea is service to others.

West Texas Utilities Company

CHICKS FOR SALE



BABY CHICK Announcement

We wish to announce that within the next Four Weeks we will have

**8,000
BABY CHICKS
For Sale**

It should be a good plan for you to have your orders in early so they may be booked up and we will notify you when to come and get them.

YES, — WE WILL BE AT THE SANTA ANNA FAIR AND RODEO EVERY ONE OF THE THREE DAYS, AND HOPE TO MEET YOU THERE.

EVERYBODY SAYS IT WILL BE THE BEST FAIR AND RODEO EVER HELD IN A SMALL TOWN

Griffin Hatchery

W. B. Griffin, Prop.
Santa Anna — Texas

HUDGINS SERVICE STATION

Wishes to join in extending to all a cordial invitation to come to the

**SANTA ANNA FAIR AND RODEO
September 21-22-23**

Stop at our station and let us fill your tank with that good

MAGNOLIA GASOLINE

More power, more pep, more mileage and it will make your motor purr like a kitten.

Magnolia Lubricating Oils

Are also of a superior quality and will give your motor lubrication that makes longer life.

WASHING — GREASING
BATTERY CHARGING

**"Zip Service" Friendly
Treatment Await You Here**

Gala Parade

(continued from page one)

Fancy work and art and flower exhibits will be among the other interesting shows.

Many Community Booths have been arranged and plans for attractive and original displays are being made. Prizes will be awarded in all divisions, many of them to be cash prizes.

The largest number of entries for the Fair Exhibits that has ever been displayed is expected and accommodations have been amply provided to care for these exhibits. Livestock will be cared for in stalls and pens placed in the rear of the Shield buildings and other blocks on that street. Poultry will be housed in one of the vacant

Shield buildings. Another Shield building will house the community booths and artistic and culinary exhibits.

The exhibits planned will be not only artistic and attractive, but highly educational and will deeply impress the visitors of the work being done in our communities by the people.

Say you saw it in the News.

WANT - ADS

UNFURNISHED Apartment For Rent. See J. S. Gilmore.

FARM LOANS: Money to loan on farms and ranches. Will also buy your cotton at the I. O. Shield Cotton Office. S. W. Childers. 38-33c

FOR SALE: German Roller Canary Birds. Prices reasonable. Will trade for chickens or chicken feed. Phone 329. Mrs. Lula Harvey. 38-38p

LOST: Wednesday afternoon, Sept. 8, between Santa Anna and dEureka Church, one 5-25x17 or 5-50x17 Chevrolet wheel equipped with tire. Satisfactory reward to finder if returned to the Santa Anna News or J. J. Gregg.

TWO ROOM APARTMENT FOR RENT. See Mrs. Dora Bell. 37tn

FOR SALE: My home in the south part of town for \$2,000, filling station north of town for \$800 and Ideal Cafe fixtures, stock and music box for \$500. See Ben Wallace. 37tn

FOR SALE: One Sow and three shoats. See H. J. Parker. 36-38p

FOR SALE: 1929 Model A Ford Sport Coupe, A-1 mechanical condition, good rumble seat, good tires, a bargain at \$145.00. See Jack Gregg at the Santa Anna News.

MAN WANTED for Rawleigh Route of 800 families. Write today. Rawleigh's, Dept. TXI-676-SA, Memphis, Tenn. 36-38

FOR SALE: Rambouillet Ewes. See Carrol Kingsbery. tn

POSTED—All lands owned or controlled by us are posted according to the law. No trespassing, fishing or hunting allowed. S. E. and L. M. Weaver. 31tn

**Expert
Watch, Spectacle and
Jewelry Repairing
SEE
John T. Payne
Jeweler
Phillips Drug Co.**

DR. R. A. ELLIS



**Optometrist
Brownwood, Texas**

Red & White BREAKFAST FOODS Sale

COFFEE Early Riser, 1 lb.	19c	Pork & Beans B & W, Tall Can	5c
COFFEE Early Riser 3 lbs.	55c	MILK Red & White, 4 small cans	15c
COFFEE 2 lb. Vacuum Tin	60c	Potted Meat R & W, 4 for	17c
FLOUR Red & White 24 lb. sack	95c	Compound - Special Price	
FLOUR Red & White 48 lb. sack	\$1.75	Matches Blue & White Carton, Six boxes ..	19c
Corn Flakes R & W Large Box	10c	Pickles Del Dixi, Sour or Dills, Full Qt.	17c
Pineapple Red & White No. 1 can	10c	Fruits and Vegetables	
SYRUP Steamboat No. 10 can	61c	Grapes Thompson's Seedless, 2 lbs.	15c
Apple Butter Quart Jar	22c	SPUDS Smooth White, 10 lbs.	21c
SALT Blue & White Reg. 5c size, 3 for	10c	Carrots Large Bunches 2 for	9c
Soap Chips Blue & White 5 lb. box	39c	Bananas Golden Fruit, 1b	5c
SOAP Red & White Laundry Giant Bars, 6 for	25c	Quality Meat - Good Values	
Peaches Red & White No. 2 1/2 tin	18c	Swiss Steak Tender, 1/2 lb.	25c
Pinto Beans Recleaned, New, 5 lbs.	29c	Cheese	21c
FLOUR Honeycomb 24 lb. sack	74c	JOWLS	18c
FLOUR Honeycomb 48 lb. sack	\$1.35	BRAINS	12 c
Hominy Standard, No. 2 1/2 can, 2 for	19c	ROAST	17c

THE RED & WHITE STORES



WELCOME TO Santa Anna Fair & Rodeo September 21 - 22 - 23

And while you are here drop in and see our modern machine shop, equipped and manned to give you an unusually good service in our line.

MACHINE SHOP WORK

We are finished machinists and do all classes of work including Spine work on tractors.

BLACKSMITHING

Complete blacksmith service by mechanics who know how to do you first class work.

WELDING

When you have a welding job to be done send it here where a first class acetylene welder is at your command.

SHEET METAL AND TIN WORK

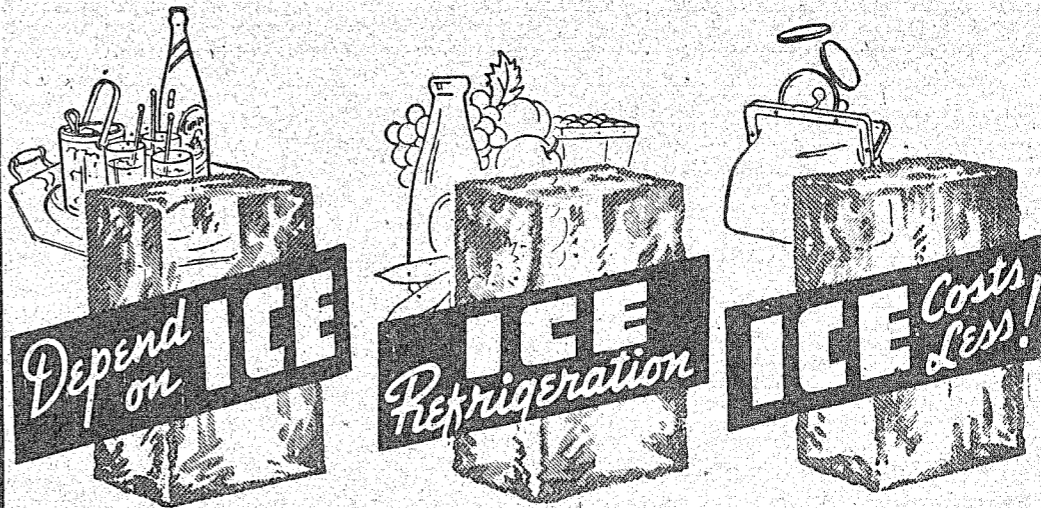
We do everything in this line and solicit your patronage when you have such work.

SWITZER MACHINE SHOP

Across From Depot
Santa Anna — Texas

WELCOME

TO THE
SANTA ANNA FAIR and RODEO
SEPTEMBER 21, 22, 23



THERE ARE MANY POINTS IN FAVOR OF ICE REFRIGERATION

Dependency

Few who make their ice at home can make enough for all purposes, but owners of ice refrigerators never know a shortage.

Ice Refrigeration

Keeps foods garden fresh and guarantees safety and economy. All perishable foods should be kept in a well iced refrigerator.

Save With Ice

Ice costs less and will pay for itself in the food it saves. This is well known by housewives.

**Santa Anna
Ice & Cold Storage Co.**

Phone 96

COURTHOUSE NEWS

Marriage Licenses
 Paul McDonald and Edna Crooms.
 J. R. Stewart and Mrs. Jwynet Anthony.
 D. E. Fenton and Myrtle Gibson.
 Albert L. Mansell and Jewel Inez Gideon.

Buster B. Cannon and Juanita Beatrice Hill.
Warranty Deeds
 Frank Brown and wife, Claudia Brown, to Ely Simmons, following parcels of land in Coleman county described as: tract one, parcel of land in town of Glen Cove, being block No. 19; second tract, block of land 15 feet east and west by 20 north and south, near town of Glen Cove, beginning at northeast corner of what is known as Gin block; third tract, parcel of land in Coleman county, being part of block No. 12 in town of Glen Cove. For \$1 and other considerations.

Mrs. Alne Byrne et al to S. H. Gray, tract of land in Coleman county described as being G. H. & H. R. R. Co. survey No. 29, abstract No. 275. For \$10,240.
 Jack M. Gordon and wife, Winnie L. Gordon, to W. J. Coulson, parcel of land in Coleman county, being east one-half of lot No. 2 in blocks Nos. 5 and 6, Clow's second addition to town of Coleman. For \$500.
 Thomas J. Hudson and wife, Nella Hudson, to Joe Hudson, tract of land in Coleman county, containing 2.36 acres, more or less, off south side of A. M. Shuler survey No. 74. For \$10 and other valuable considerations.

J. W. Waits and wife, Clara Waits, of Mohave county, Arizona, to H. C. Glenn, Receiver for Temple Trust Co., parcel of land in Coleman county described as being 62 1-2 feet by 125 feet, being west one-half of southwest one-fourth of block No. 20 of a subdivision of farm block Nos. 5, 6, 15, 18 and 19 of Clow's second addition to town of Coleman. For \$10.
 E. C. Edens, trustee, to First Coleman National bank, parcels of land in Coleman county, described as first tract, 75 feet east and west by 33 1-3 feet north and south off east side of north one-third of block No. 10, Clow's second addition to town of Coleman; second tract, lot No. 4 in block No. 13, Beakley's addition to town of Coleman, being southeast one-fourth of said block; third tract, lot No. 3 in block No. 13, Beakley's addition to town of Coleman, being southwest one-fourth of said block; fourth tract, south one-half of lot No. 4 in block No. 9, Beakley's addition to town of Coleman, being south one-half of southeast one-fourth of block

Athletic Ass'n. Announces Rules for Local Games

The Executive Committee of the Santa Anna Athletic Aid Association has announced regulations regarding the ensuing football season. Prices of admission to football games at Mountaineer Field where ample seats are now provided will be 50 cents for adults and 25 cents for students.
 Complimentary tickets have been authorized for the following:
 1. Coaches and players of Santa Anna High School.
 2. Coaches and players of competing teams.
 3. Members of Pep Squad and Band of Santa Anna High and competing school, when in uniform.
 4. Two representatives from any newspaper.
 5. Officials of game.
 6. Santa Anna physicians and wives.
 7. Guest team's physician and wife.
 8. Local peace officers.
 9. West Texas Utilities Lighting Engineer.
 10. Committees working the game; e. g. Gates and Tickets, Parking and Patrol.
 All concessions at the games were left in the hands of the high school to be dispensed to the high school organizations at the discretion of the school executives. Those handling concessions will pay regular admission.

Mrs. L. M. Foster of San Antonio spent the week with Mr. and Mrs. Sam Brown on her way to visit her parents in San Angelo for a while before returning to San Antonio to continue study of journalism.

O. E. S. MEETING
 Regular meeting of the O. E. S. Chapter will be held Monday night, Sept. 20 at 8 p. m. full attendance is requested. Edith Golston, Worthy Matron.

Where's the FAIR and RODEO?

AT . . . SANTA ANNA!
 September 21-22-23

Who's Behind It?

Everybody in Coleman County!

Where Can Visitors Get A Good Shave or Hair Cut?

At
PHILLIPS BARBER SHOP
 Always Ready to Serve You

Magnolia Petroleum Company

MOBILGAS

MOBILOIL

Extends hearty Greetings to all Santa Anna Fair and Rodeo Visitors and hopes that they will enjoy every feature during the three days.

If you need anything in our lines, you will find courteous service awaiting you.

Come To See Us

Stafford Baxter

AGENT



YOU'LL ENJOY EVERY FEATURE OF THE SANTA ANNA FAIR

All we ask of the people of this part of the great State of Texas, is to favor us with their presence during our Community Fair and Rodeo.

Without a good attendance, all our work and expense has been in vain. So make your plans to be here every day.

We assure you that every apportionment of this company will be at your command, and that we are looking for more means to serve you.

LEEPER - CURD LUMBER CO.

Santa Anna — Texas

Mattie Hartman et al to V. W. Curry, undivided interest to certain 160 acres, more or less, being southwest one-fourth of E. T. R. R. Co. survey No. 88, certificate 212. For \$100.
 H. W. Broome, substitute trustee, to Home Owners Loan Corporation, part of block No. 28 of Clow's addition No. 1 to town of Coleman, described as: first tract, beginning at southeast corner of Ed Creel lot; second tract, beginning at southwest corner of block No. 28. For \$1,200.
 George Thurmon et al to B. E. Nunley, tract of land in Coleman county, described as lots Nos. 1 and 2 in Block No. 4 of Powell's subdivision of block No. 28 of Clow's first addition to town of Coleman. For \$150.
 Anchor Building and Loan association, to T. C. Hart, parcel of land described as being south 39 feet by 125 feet of north one-half of southwest one-fourth of block No. 34 in original town of Coleman, Coleman county. For \$500.

New Cars Registered
 Floyd Jenkins, Coleman, Ford fordor sedan.
 M. M. Mulaneaux, Valera, Chevrolet sedan.
 G. W. Teagle, Coleman, Buick sedan.
 Mrs. Emma Golson, Burkett, Plymouth coupe.
 Byron Joiner, Santa Anna, Ford tudor sedan.
 H. A. Robertson, Coleman, Studebaker sedan.
 Mrs. R. R. Hubert, Coleman, Dodge four door sedan.
 E. Briggs, Valera, Plymouth four door sedan.
 Miss Ruby Harper, Santa Anna, DeSoto four door touring.
 Mrs. Sherman Gehrett, Santa Anna, Plymouth four door sedan.

Eureka News

Mr. and Mrs. B. L. Hamlett visited Mr. and Mrs. Arthur Martin of Grosvenor Sunday.
 Mr. and Mrs. G. O. Wells visited Mr. Wells' sister, Mrs. C. M. Drake and Mrs. Rosa Pruitt of Brownwood recently.
 Miss Eula Lovell of Alvin is visiting her parents, Mr. and Mrs. H. L. Lovell.
 Mrs. Lucille Vinson of Corpus Christ is visiting this week with her parents, Mr. and Mrs. Dave Banks.
 Mr. and Mrs. Idolph Drake of Breckenridge were dinner guests in the W. L. Swan home last Thursday.
 Mr. and Mrs. Hillary Burnet of Fry visited Mr. and Mrs. B. L. Hamlett.
 Visitors in the W. M. McCary home Sunday were Mr. and Mrs. Elmer McCary and baby and Mr. and Mrs. Herman Meroney and baby of New Braunfels, Mr. and Mrs. Fred Bates and son, Mr. and Mrs. Frank McCary and daughters, and Mr. and Mrs. Clint Meroney all of Santa Anna.
 Mrs. Jim Ferguson and baby are visiting her son, Alfred Brown at Houston.
 Mrs. R. N. Bouchillon and Mrs. Alvey Modawell and baby spent Saturday morning with Mr. and Mrs. Homer Bouchillon near Santa Anna.
 Miss Lillie Mae McCary returned home from New Braunfels Sunday after a two weeks visit with her brother and con-

USED CARS

WE HAVE ON HAND A COLLECTION OF UNUSUALLY GOOD VALUES IN USED CARS, AND WE URGE EVERY READER OF THIS ADVERTISMENT WHO IS IN THE MARKET FOR A GOOD USED CAR, TO COME IN AND EXAMINE THEM. WE LIST BELOW SOME OF THEM.

- 1935 . . DODGE 4-Door Sedan
An Extra Clean Car **ASK TO SEE IT**
- 1934 . . CHEVROLET 4-Door Sedan
In First Class Condition **ASK TO SEE IT**
- 1934 . . FORD Coupe
New Factory Reconditioned Motor **LET US SHOW IT**
- 1934 . . PLYMOUTH Coupe
In First Class Condition **LET US SHOW IT**
- 1935 . . PLYMOUTH 2-Door
In First Class Condition **PRICED VERY LOW**
- 1933 . . FORD 2-Door Sedan
New Factory Reconditioned Motor **PRICED VERY LOW**
- 1934 . . CHEVROLET Coupe
An A-1 Car in every way **PRICED VERY LOW**
- 1928 . . PONTIAC 2-Door
In Very Good Condition **ASK TO SEE IT**
- 1929 . . CHEVROLET 4-Door
Lots of mileage remains **TRY IT OUT**
- 1934 . . INTERNATIONAL TRUCK
1 1/2 Ton Capacity . . Heavy Duty **\$400**
- 1929 . . MODEL-A FORD
With Plenty Miles Left **\$125**
- 1929 Model-A FORD 4-Door Sedan
And It Still Runs Fine **\$90**
- 1929 . . PONTIAC 2-Door
Runs Good **\$65**
- 1929 . . PUDDLE JUMPER
May Now Be Bought For Only **\$50**
- T - Model FORD TRUCK
With Good Rubber **\$45**
- 1928 . . STRIP DOWN
Now offered at Only **\$35**

Mathews Motor Company

PLYMOUTH & DESOTO Santa Anna, Texas PHONE 13

Bob Burns Will Star At Pan American Exposition



Bob Burns, bazooka-playing screen and radio star, will be presented by the Pan American Exposition in Dallas in two big free shows in the Cotton Bowl Sept. 25-26. The affair will be in the nature of a reunion of Burns' famous family, including Aunt Boo and Grandpa Snazzy from Arkansas. Free to Exposition visitors, the show will be held nightly in the Cotton Bowl seating 47,000.

The Apache Indians of Arizona haven't signed a peace treaty yet. They are still prisoners of war.

Santa Anna Has Had Many Doctors During Last Fifty Years

By Miss Luella Chambers

Fifty years ago three doctors were here. Two of them were Drs. Mathews and Cannon, who were friends in Medical School in Missouri. Dr Cannon fell in love with pretty Etta Carter and when her family moved away he went with them and shortly after married Etta.

The boys here told that a 16 year old boy who was smitten with Etta went as far as Brownwood and squeezed in the seat between her and the doctor who weighed about 200 pounds.

The third doctor was Dr. W. L. Mayes, an English doctor. He often sang with us. His house was up near the mountain and the buildings and sheds of the back were low and brats would come from the mountain and run all over the house.

We heard that if the doctor spilled anything at the table he threw salt over his left shoulder. A short time ago the Rector of the Episcopal church in Brownwood came to the hospital here to ask Dr. Sealy to find some one who remembered this family and the birth of a baby girl 50 years ago. I signed up the papers and she wrote me that this stopped all deportation proceedings which the officers had started. I wrote her the address of Mrs. John M. Kinnebrew (Nora Herndon) of Shreveport who was her sister's chum and she too signed up. She had been in California

since 1921, coming there from Africa where she had been a nurse.

Doctors Standlee and Hays came next. Drs. Davis and Mullins who were here, soon returned to East Texas.

Drs. Sessions and Miller only stayed a short time. I guess it was too healthy for them.

Dr. Tyson at this time was studying medicine and later practiced here many years.

Drs. Savage and Long were here, but Dr. Savage died here and Dr. Long moved to Sweetwater. Dr. Holland had a good practice here for several years.

Dr. Sealy finished his course and had a fine practice here. He went to France and served his country during the World War and now owns the hospital here which is a blessing to the whole country. Drs. Lovelady and McDonald are connected with this hospital.

Other doctors came but stay-

ed only a short time. They had a hard time in the olden days since they had to go in cold weather in buggies or horse back to make calls twenty miles away night and day.

Christian Church

Woman's Council

The Woman's Council of the Christian Church met at the church Monday afternoon in a quilting session. A lovely quilt was finished and was presented with a shower of pretty and useful gifts to Mrs. Clebert Willis, whose home was recently destroyed by fire.

Those present were Mrs. J. R. Gipson, Mrs. W. W. Stephenson, Mrs. Clifford Stephenson, Mrs. A. L. Oder, Mrs. Will Bell, Mrs. J. W. Kirkpatrick, Mrs. S. W. Childers, Mrs. Ed Baxter, Mrs. E. W. Marshall, Mrs. Alpheus Boardman, Mrs. C. F. Freeman, Mrs. Johnnie Richardson, Mrs. Norval Wylie and Mrs. Floyd Herring.

The State of Mississippi has highest birth rate of any State the lowest death rate and the in the South.

NOTICE!

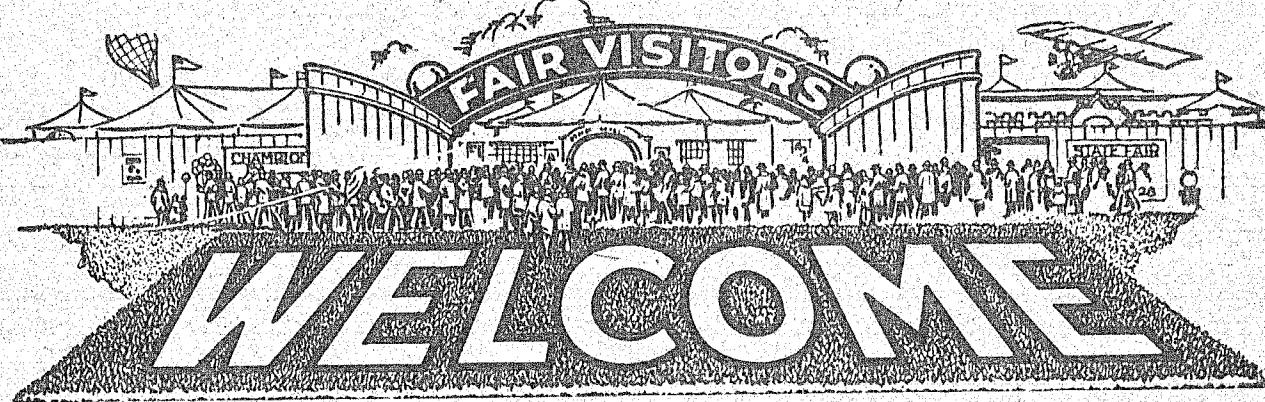
Why pay a Salesman \$175.00 for a scholarship when you can get the same thing for \$100.00 and save the difference?

You Can Buy a Secretarial Scholarship

for less. You can also pay by the month. All tuitions are reasonable. Farm produce accepted on tuition. Fall term opens now. See us before entering elsewhere.

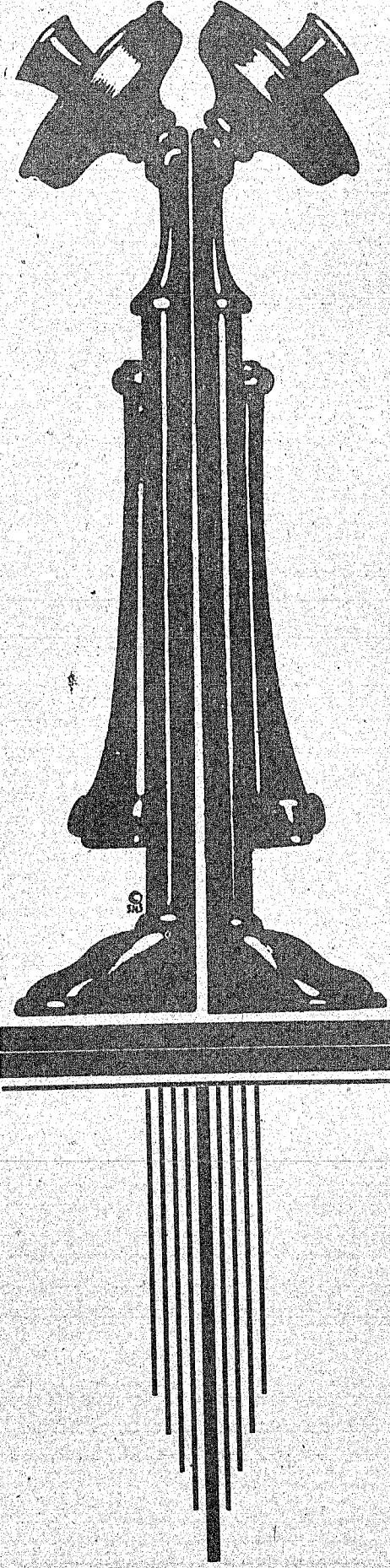
Mc's Business College

100 1/2 CENTER AVENUE DAY AND NIGHT SCHOOL



To SANTA ANNA'S FAIR and RODEO

SEPTEMBER 21-22-23



YOUR TELEPHONE COMPANY EXTENDS CORDIAL GREETINGS TO FRIENDS AND CUSTOMERS

The occasion of the holding of Santa Anna's Third Annual Community Fair and Rodeo, gives us an opportune time in which to extend to all our patrons and friends our most cordial greetings and our invitation to come to the fair each of the three days with our assurance that you will fully enjoy it.

Owing to our instantaneous communicative facilities with many homes in this community, we naturally feel that we are an integral part of each of them, prepared to put them into instant conversation with not only local homes and business places, but with almost any place in America.

We want our service to be everything that our patrons could wish, and it is our aim to constantly improve and expand it for greater usefulness. Should your telephone need any attention, please notify us at once and the matter will receive our immediate attention. We want you to know that we are your servants, and all-desirous of rendering greater service.

Santa Anna Telephone Company

GEO. M. JOHNSON, Manager

LET US PUT A NEW 1938



ZENITH RADIO
LONG DISTANCE RADIO
WHERE YOUR OLD SET STANDS NOW

Compare ZENITH in YOUR HOME at No Cost or Obligation

Yes, make this startling test in your own home! Let us set up a new 1938 Zenith alongside your old set—without any obligation, of course. Then try it out—try out BOTH sets! Only then will you realize how much you're missing—how completely Zenith's New Personalized Acoustic Adapter improves tonal fidelity.

ZENITH'S AMAZING FEATURES

- Robot Dial
- Electric Target Tuning
- Electric Automatic Tuning
- Local Station Indicators
- Personalized Acoustic Adapter
- Between-Station Silencers

SEE OUR DISPLAY AT THE FAIR

We will have a beautiful collection of the New 1938 Zenith Models at the Fair for your examination, and an attendant on hand to explain their many outstanding features.

Radio Electric Shop

GEORGE M. JOHNSON, MANAGER

Phone 24

Santa Anna, Texas

MAIL THE COUPON TODAY

(Dealer's Name)
 (Dealer's Address)
 Please send me information on the New 1938 Zenith Radio.
 Without obligation, have an opinion value my old set.
 Name _____
 Address _____
 Phone No. _____

If you are interested in hearing the most remarkable Radio the world has yet produced—hear Zenith.

ZENITH SHORT WAVE RECEIVERS OF 3 BANDS OR MORE ARE SOLD WITH ZENITH DOUBLET ANTENNA

AMERICA'S MOST COPIED RADIO . . . AGAIN A YEAR AHEAD

In The United States District Court In And For The Western District Of Texas, Waco Division

J. M. HUBBERT VS TEMPLE TRUST COMPANY NO. 236 - IN EQUITY

NOTICE IS HEREBY GIVEN that the undersigned has filed his application with the Clerk of the United States District Court in and for the Western District of Texas, Waco Division, for an order authorizing him to sell and convey to Jas. L. Harris, and wife, Maude Harris, 4 3-4 acres of land, more or less, out of the H T & B Ry Company Survey 57, and being a part of Block 13 of G C & S P Ry Company Addition to the town of Santa Anna, Coleman County, Texas, and being more particularly described by metes and bounds as follows:

BEGINNING at the N E Corner of Block No. 14, of said Addition, same being the N W Corner of said Block No. 13;

THENCE E 396 6-10 feet to corner, said corner being 70 feet W of the N E Corner of said Block No. 13;

THENCE South 120 feet for corner (Internal corner);

THENCE E 70 feet for corner on the E line of said Block No. 13, and on the W line of the Street;

THENCE S 346 6-10 feet for the S E cor of said Block 13;

THENCE W 466 6-10 feet to the S E Corner of Block 14, and the S. W. Cor of this Block No. 13;

THENCE N 496 6-10 feet to the place of beginning, being all of Block No. 13, except a strip 70 feet by 120 feet in the N E Corner of said Block;

and for a consideration of \$1250.00, and of which amount \$88.00 will be paid in cash, and the balance, \$1162.00, to be evidenced by one note in said sum, to be executed by said purchasers, payable, to the order of the undersigned at his office in the city of Temple, Bell County, Texas, and said note to be due and payable in 108 monthly installments of \$14.51 each, the first installment to become due and payable October 1, 1937, and one each on the first day of each succeeding 107 months, to bear interest from September 1, 1937 at the rate of seven per cent per annum, the interest to become due and payable monthly, and each payment when made to be applied first to the accrued interest on said note, and the balance to the principal, and to provide that failure to pay any monthly installment of principal or interest thereon when due shall at the option of the holder mature said note; to stipulate for ten per cent additional as attorney's fees, and said note to be secured by a vendor's lien and deed of trust lien on the property and premises above described.

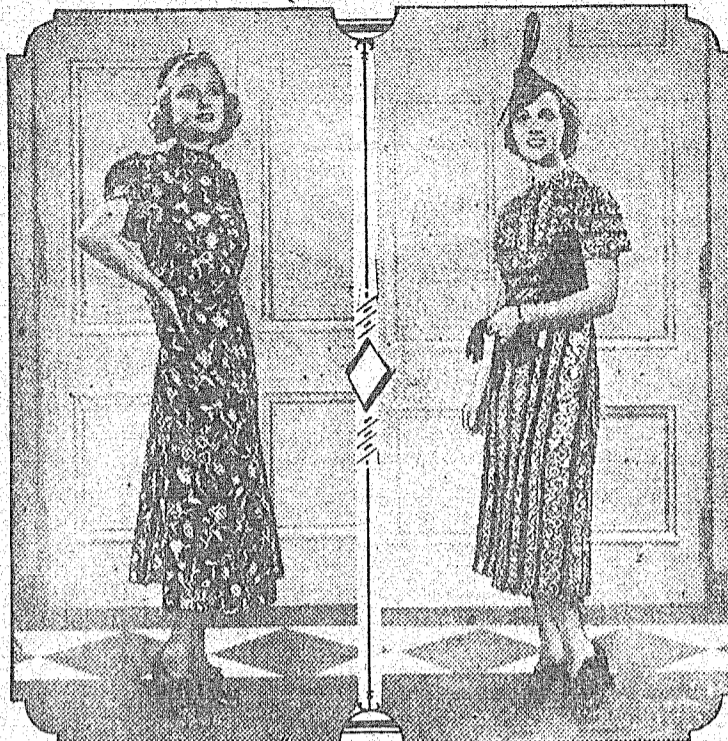
Said application will be heard by the Honorable Charles A. Boynton, Judge of said court, after this notice shall have been published for a period of ten days, and any person interested in said Receivership Estate may contest this application.

WITNESS my hand at Temple, Texas, this 7 day of Sept. A D 1937.

H. C. GLENN, as Receiver for Temple Trust Company, Temple, Texas.

Read the advertisements.

New Fall, Winter Washable Styles Deceive Experts With Their Beauty



WAIT washable clothes all Fall and Winter!

That is the word from the style dictators, but it does not mean that the new fashions resemble the typical wash garments of summertime.

Only the expert eye of the most clever shopper can detect that any of these new garments are washable. Cotton, for example, appears in forms from corduroy and twill to luxurious nubby fabrics, with French crepes, alpaca and even tweed effects and surprising reproductions of wools. But although they look like styles that cost many times the price of these, the new dresses can be kept fresh and spic-

and-span by a quick trip to the household washing machine and a few moments of finishing on the family ironer.

The youthful, smart flowered crepe and the lovely spun rayon shown here, the latter with its cleverly contrasted stripes, horizontal in the blouse and vertical in the skirt, were exhibited at a recent style show that introduced the new fashions to store representatives from throughout the country. Both costumes, the spectators were told, can go into the household washer as successfully as the most unpretentious kitchen apron.

GUARD YOUR SECURITIES INVESTMENTS

(This is the fourth of a series of articles prepared by D. Leon Harp, Securities Commissioner of Texas, President of the National Association of Securities Commissioners and Director in the National Association for the Prevention of Fraud in the Sale of Securities. These articles will appear in the Santa Anna News from time to time as they are received from the office of the Commissioner at Austin).

The Securities Commissioner does not wish to burden the reader of the Santa Anna News with a lecture on the Texas Securities Act, yet, every Texan should know about some of its provisions. Every day "grief mail" is placed upon the desk of the Commissioner, and in

this mail there is sounded the depths of financial distress and worry. Widows write about the loss of the last dollar of life insurance left by husbands. Fathers and mothers tell about years of skimping and saving to educate the children to find later that their savings have been swept away because of misrepresentations of those from whom they bought securities. Other letters paint despair and loss of faith because of violated trust and confidence. Much of this trouble could be avoided through a fair know-

ledge of the Texas Securities Act, and I shall tell in a simple and as few words as possible what the Act is and how it works.

The Securities Act was passed by the Forty-fourth Legislature and became the law of the State of Texas on May 23, 1935. The administration of the Act was placed in the office of the Secretary of State, and is under the direct supervision of the Securities Commissioner. It makes it the duty of the Attorney General and District and County Attorneys to enforce its provisions in the courts. It repealed the Blue Sky Law enacted in 1923. The present Act provides a definition of Securities as follows:

"The term 'Security' or 'securities' shall include any share, stock, treasury stock, stock cer-

tificate under a voting trust agreement, collateral trust certificate, equipment trust certificate, preorganization certificate or receipt, subscription or reorganization certificate, note, bond, debenture, mortgage certificate or other evidence of indebtedness, any form of commercial paper, certificate in or under a profit sharing or participation agreement, certificate or any instrument representing any interest in or under an oil, gas or mining lease, fee or title, or any certificate or instrument representing or secured by an interest in any or all of the capital, property, assets, profits or earnings of any company, investment contract, or any other instrument commonly known as a security, whether similar to those herein referred to or not."

There are certain exemptions contained in the Act too numerous and lengthy to mention here. The principal one of which, applying to the average citizen, provides that one may sell his own securities in isolated transactions, where he is not engaged in the business of selling securities either temporarily or permanently.

The Act deals with two main features: (1) the issuance of securities, and (2) the marketing of securities. Space will not permit a discussion of marketing of securities in this article, but I will mention some things

about the issuance provisions. Before the passage of Blue Sky Laws, all a man or a group of men had to do in the issuance of securities was to concoct their scheme, print the stock certificates or other securities in the form they thought to be to their best interest, and go after the trusting public. High-sounding names were applied to hundreds and perhaps thousands of unincorporated companies by men of no financial responsibility or moral worth. One Texas lawyer tells

(Continued on page twelve)



COME TO THE SANTA ANNA FAIR AND RODEO NEXT WEEK

And while here we invite you to take your meals and lunches at this cafe, where we are sure you will find everything to your liking.

Here you may have either counter or table service, and we are always glad to make special arrangements for families or parties.

SERVICE CAFE

Santa Anna - Texas

HERE'S BIG NEWS! U. S. ROYAL TIRE

SIZE 29x4.40 \$4.50

WE HAVE A COMPLETE LINE OF U. S. ROYALS IN ALL SIZES

DISTRIBUTORS OF PANHANDLE PRODUCTS

With a Complete Line of Oils, Gasoline, Greases etc. For Farming Tractors.

WE WHOLESALE AND RETAIL THE FOLLOWING OILS

Quaker State Panolene Kendal Penn Seal

SANTA ANNA FAIR & RODEO We have done everything in our power to help make this year's Fair and Rodeo the best yet. Come and join us. Without your attendance, all our efforts will be in vain.

Fred Watkins

DISTRIBUTOR FOR PANHANDLE PRODUCTS

ASSOCIATE DEALERS

- REG. OWENS CASH GROCERY Santa Anna
COLLIN PRICE GROC. & SER. STA. Santa Anna
THOS. BOWDEN GROC. & SER. STA. Cross Roads
M. W. POWERS SERVICE STATION County Line
DOSS SMITH GROC. & SER. STA. Whon
FRED WATKINS SERVICE STATION Santa Anna

REGISTERED ANXIETY 4th HEREFORD CATTLE AND RAMBOULETT SHEEP C. E. KINGSBERY

Fair Visitors Will Find Many Attractive Values At This Store



NEW DRESSES

Just received this week, a new shipment of Long Sleeved Dresses of Extra Grade Quality. All are well made and are fast to washing. Sizes 12 to 44. UNUSUALLY GOOD VALUES AT Each \$1.00

ANNIE ROONEY "CLEVER FROCKS"

In big splashy prints, dots and checks. Especially clever styles. VERY REASONABLY PRICED AT Each \$1.95

ACETATE CREPE DRESSES

You'll just love the beautiful plaids, for as you know plaids are "Tops" this fall. YOU'LL LIKE THESE AT ONLY Each \$2.95

We Have An Unusually Good Stetson Special This Week. Ask Us About It.

Don't fail to attend the Santa Anna Fair and Rodeo next week.

Blue Mercantile Co. Santa Anna - Texas



By Using Best Grades of Gasoline And Lubricating Oils

There are many wise motorists who will use no other gasoline and lubricating oils, but Gulf if they are obtainable. They know from experience, that these products are of superior quality and that better motor operation is always assured when they are used. Come in and try them while you are attending the Santa Anna Fair and Rodeo.

We handle a good line of automobile accessories and batteries and do washing and greasing.

Leave the servicing of your car in our care while you are attending the Santa Anna Fair and Rodeo and be sure that it will be well cared for.

BOARDMAN SERVICE STATION SANTA ANNA - TEXAS

SEE AND HEAR W. LEE O'DANIEL'S HILL BILLIES ALL AFTERNOON TUESDAY, SEPT. 21 AT PIGGLY WIGGLY

College Students Leave This Week

This week has seen the departure of many of the high school graduates of the local schools off to college for the beginning or continuance of their year's work.

Of this spring's graduating class ten have left for college.

Doris Spencer will attend Mary Hardin-Baylor College in Belton.

Jullan Kelley, Marilyn Baxter and Duane Moore will attend John Tarleton at Stephenville. These students left Monday.

Carlene Ashmore has enrolled in Texas Technological College at Lubbock.

State University has been chosen by Anita Kirkpatrick and she left the early part of the week.

Rosalie Niell and Jack Howard will enroll in Howard Payne College. Thelma Vinson will attend a business college in Abilene. H. W. Kingsbery is the only one of the class who will go out of the state. He has enrolled in the University of Oklahoma.

Another graduate, Raymond Holland, is taking a post graduate course at the local high school.

Among those who are returning for advanced work at colleges where they have attended are Billy Baxter, who left last week for Lubbock to enroll in Texas Tech.

Willie C. Revel, daughter of Mr. and Mrs. W. C. Revel of Shield, entered Howard Payne this week.

Harry and Clifford Oder left this week to enroll in Howard Payne College at Brownwood.

Miss Marjorie Pope left Thursday morning for San Marcos where she will attend San Marcos State Teacher's College.

Miss Mary Gladys Pope left Friday morning for Brownwood where she will be a junior in Daniel Baker College.

J. C. Haynes, son of Mr. and Mrs. Joe H. Haynes, went to Austin Wednesday where he is enrolled in the Texas School for the Deaf for this term of school.

Marvin Davis returned to Southwestern University at Georgetown this week.

Russell Hale left Wednesday for Palo Alto, California, where he will attend Leland Stanford University.

Drive carefully, save a life.

Phillips Drug Installs New Soda Fountain

Modern, Air Cooled Marble Fountain Ready for Use

A new marble fountain with stainless steel fixtures has been installed at Phillips Drug Co. this week and has been ready for use since Thursday.

The fountain, in brown and black marble, is much larger than the old fountain and has all the most modern improvements. It is air cooled. New stools covered with green leather have also been added.

The fountain can serve more customers more efficiently than the one formerly used.

TRICKHAM H. D. CLUB

The Trickham Home Demonstration Club met Sept. 9 at 2:30 o'clock at the club room with 8 members present.

"Child Training as a Basis for Good Citizenship" was the subject for discussion.

Several of the members discussed different parts of the program.

Mrs. Howell Martin was elected to fill Mrs. Noah Stacy's place on the Educational Committee. The president, Mrs. Bud Laughlin had two letters she had received from Miss Young which we enjoyed hearing read.

The club is planning a community booth at the Santa Anna Fair.

The Home Demonstration club members, their families and a number of friends enjoyed their annual club picnic last week.

There were about 100 present. The evening was spent very pleasantly in playing games and singing songs. A delicious picnic lunch was enjoyed at the close of the evening.

City Rejects Proposal for Lower Gas Rate

At a meeting of the City Council last Tuesday night the proposal of the Coleman Gas & Oil Co. to lower the gas rates was rejected and discussion of the traffic lights proposed for the city was not settled.

RECREATION DEPT. TO OPEN NEW PARK

The Recreation Department will open up a new park next Monday on the south side of town by the Presbyterian Church. Basketball courts and softball diamond will be prepared here. Sandbeds for the younger children also will be made.

Tap dancing classes are now being held at 4 p. m. and will

last until 7 p. m. A special class for beginners is now being started.

Mrs. Joe Kirkpatrick of Taft and Mrs. James Kirkpatrick of Sinton visited with Miss Grace Mitchell this week after taking Mrs. Joe Kirkpatrick's son to Abilene where he entered school. Mrs. James Kirkpatrick is Miss Mitchell's sister.

Say you saw it in the News.

Christian Church

Alan Lynch, Pastor
Sunday School begins at 10 o'clock. Communion and preaching service at 11 a. m. Evening preaching service at 8 o'clock.
Woman's Council Meeting Monday at 4 p. m. at the church.

Scott Jackson New Teacher in Science Position

Scott Jackson of Brownwood has been chosen as the new high school science teacher, and assistant football coach, filling the position left vacant by the

resignation of Bill Stevens, who is now teaching in Coleman.

Mr. Jackson is a 1937 spring graduate of Howard Payne. He was assistant in the science department of Howard Payne for two years and was sports writer for the "Yellow Jacket," weekly publication of the college.

As matters stand in the millenary world, if she says she has a hat on her guess is as good as yours.

EXPRESSING OUR DEEP APPRECIATION

We wish to thank the business people and citizens of our town for their good judgement in opposing a cut throat price on Gas.

You will remember that prior to 1931, the rate was 60 cents per thousand with an added 50 cents per month service charge, and that the Gas Company officials told you that if you didn't like it you could burn wood.

You realize that as long as SANTA ANNA GAS COMPANY is allowed to make a fair profit the community will benefit with a reasonable gas rate.

WELCOME FAIR AND RODEO VISITORS

We are looking forward with pleasure, to meeting all of our out-of-town and in town friends and neighbors at the Santa Anna Fair next week. We hope that they will all enjoy the exhibits and the entertainment, and will find time to pay us a social visit.

SANTA ANNA GAS COMPANY

ROY D. GOLSTON
REX GOLSTON

T. RICHARD SEALY
BETTIE BLUE

Santa Anna, Texas

Be Particular About Who Works On — YOUR CAR

Often an inexperienced mechanic costs automobile owners a lot of money by their mistakes and poor workmanship. The good mechanics that reputable garages always employ are the cheapest in the end.

FENDER — BODY WORK RADIATORS

We do all kinds of repair work on Fenders, bodies and radiators, and repair them in first class shape. Give us a trial.

AUTO PAINTING

When you decide to have your car painted, let our highly skilled men do the job in a way that will be most pleasing.

WASHING — GREASING

This is one of our specialties and we guarantee you a first class job.

WRECKING SERVICE

We have the only wrecking car in the city.

MATHEWS MOTOR CO.

Phone 16

SOCIETY

Miss McCaughan Becomes Bride of W. F. Hoke Sunday

In the soft twilight hours in a setting of candlelight, Miss Fern McCaughan, daughter of Mr. and Mrs. J. L. McCaughan of Santa Anna, became the bride of W. F. Hoke of Henderson Sunday at 6:30 o'clock at the home of the bride's parents. Rev. R. Elmer Dunham, pastor of the Baptist Church read the impressive ring ceremony, before a small group of friends and relatives.

The improvised altar in the living room was decorated with beautiful pink rosebuds intermingled with beautiful ferns and Queen's wreath. Above the altar, on the fireplace mantle, roses and ferns formed a background of beauty. On either side of the altar, also adorned with ferns and vines, stood white candleabra in which burned white cathedral tapers.

Prenuptial music was given by Mrs. Jasper McClellan who played several piano selections. Mrs. Era McClellan sang as a prenuptial solo, "I Love You Truly," accompanied by Mrs. Jasper McClellan. During the entrance of the wedding party the pianist played Mendelssohn's Wedding March. "The Rosary" was played softly during the ceremony.

The groom and the officiating minister entered the room and awaited for the bridal party at the altar.

Little Misses Betty Ann and Margaret McCaughan, nieces of the bride, and her only attendants entered and took their places near the altar. They were gowned in beautiful floor length dresses of white net over satin and were styled with full ruffled skirts. They carried miniature bouquets of pink rosebuds, similar to the bride's bouquet.

The bride entered alone. She wore a gown of white lace over satin made in semi-Empire lines. A beautiful floor length veil of illusion was held in place by a Juliet cap of orange blossoms. She carried a beautiful bouquet of pink rosebuds and bridal wreath. Her only ornament was a string of small pearls.

Following the beautiful service, an informal reception was held in the dining room of the home. Pink and white rosebuds formed the decoration there and the centerpiece of the table was a beautiful bride's cake of pink and white adorned with miniature bride and groom. Candles burned at either end of the table.

After the bride cut her cake, the guests were served a refreshment plate of punch, bride's cake and sandwiches by Mrs. T. J. McCaughan.

The bride's book was presided over by Miss Mary Lee Ford.

After the reception the couple departed for a wedding trip to New Orleans and upon their return they will be at home in Henderson. The bride chose for traveling a dress of Dubon-

net lace with accessories to match.

Mrs. Hoke is a graduate of the local high school and was connected for some time with the Sealy Hospital as secretary. She attended Tyler Commercial College.

The groom is the superintendent of the Granite Oil Co. of Henderson.

Out of town guests for the wedding were Mr. and Mrs. H.

P. Leverett and Mr. and Mrs. Herbert Smith of Henderson; Mr. and Mrs. W. B. McCaughan and son and daughter, Bailey and Fairey, and Miss Hortell Coward of Winters; Mr. and Mrs. W. D. Leverett of Goldthwaite; and Mr. and Mrs. Seth Ford of College Station.

Prenuptial Party Given Friday by Mrs. T. J. McCaughan

Honoring Miss Fern McCaughan, who Sunday became the bride of W. F. Hoke, her sister-in-law, Mrs. T. J. McCaughan entertained last Friday evening.

The evening was spent in working several clever contests, all pertaining to the coming bridal occasion. A reading, by Betty Ann McCaughan, little niece of the honoree, was given entitled, "How to Find Happiness," and Mrs. Seth Ford also presented a clever reading.

Following the delightful entertainment, a refreshment plate of punch and cake was served to the guests.

Those invited were Mr. and

Mrs. Elucian Niell, Mr. and Mrs. Arthur Casey and Dorethea Fay, Mr. and Mrs. Seth Ford, Mr. and Mrs. Paul Arnold, Mr. and Mrs. Jasper McClellan and daughters, Novelle and Frances, Mrs. Charles Oakes and Gwendolyn, Miss Lena Boyd, Mr. and Mrs. J. L. McCaughan and the hon-

Mr. and Mrs. W. J. Moore of Henderson visited Mrs. Moore's parents, Mr. and Mrs. Don Ewing. Mrs. J. H. Moore accom-

panied her son home for a visit also and Mrs. W. L. Burdic of Coleman visited with the Ewings recently.

Boggus Grocery Robbed Recently

Burglars entered J. L. Boggus & Co. store, one of the local red & white firms, between closing time Saturday night and Monday morning, broke into

the safe and took approximately \$250 in cash, a brooch belonging to Mrs. Boggus and other valuables.

Entrance was made through the roof by sawing, the ceiling was kicked out, similar to other entries in the Phillips Drug and W. R. Kelley & Co. stores several months ago.

The robbery was not discovered until opening time Monday.

No trace has been found of the men who made the entry.

FOR SALE

15 Registered Rambouillet Yearling Rams
For Sale at My Place 3 Miles South of Town.

B. SMITH



Fair and Rodeo Specials

Khaki
Work
Clothes



Sanforized . . . Fast Colors . . . Just the neatest work clothing that you can wear. Two colors from which to choose.

SPECIAL—PER SUIT
Pants & Shirt **\$2.49**

We earnestly invite every one to come to the Fair and Rodeo and to watch our windows for daily specials.

THEY WILL OFFER YOU MONEY-
SAVING OPPORTUNITIES

REID VARIETY STORE
Santa Anna — Texas

PIGGLY WIGGLY

SANTA ANNA - LOCATED NEXT TO DEPOT

Friends we welcome you to our big Fair and Rodeo 21-22-23. Hear W. Lee O'Daniel and His Hill Billy Boys Tuesday afternoon. See the big parade.

SHORTENING Hill Billy Bought a Carload 8 lb carton **.89**
We will have Hill Billy **FLOUR** and **COFFEE**

MATCHES 6 boxes **.19** **Crackers** 2 lb box **.15**

Pinto Beans 5 lbs **.34** **MACARONI & SPAGHETTI** Buy in bulk pound **.10**

DUCKING Piggly Wiggly Follows the Market yd. **.12**

PUFFED WHEAT Hill Billy **PUFFED RICE** What a bargain 3 pkgs **.25**

Don't forget the Hill Billy Boys will be here Tuesday

PRUNES Dried Fruit The Healthy Food pound **.05**

CIGARETTES All popular brands package **.15**

Flavoring 24c btl. **.16** **YAMS** per pound **2½c**



HAMS

Cut one time

per lb **.25**

CHILI

Regular Price 21c per pound

2 lbs for 35

SLICED BACON

Dexter Brand

pound **34**

OYSTERS

DRESSED FRYERS & HENS

HOT PIT BARBECUE

FREE FREE FREE 300 Sets **\$300.00** Value

Piggly Wiggly offers FREE, Tuesday, Wednesday and Thursday, the Fair days, with each \$8.00 purchase, Aluminum wear, Floor Lamps, Casserole sets and Dishes All on Display in Our Store

Three Big Days of Fun And Fellowship



"Better than ever" That's what you'll say when you come to the Santa Anna Fair and Rodeo this year.

For Santa Anna is leaving nothing undone to give Fair visitors three days of continuous interest.

We invite everyone to join us in this annual celebration.

THIS STORE WILL BE GLAD TO HAVE YOU MAKE IT YOUR REST AND REFRESHMENT PLACE

And should you desire to replenish your home medicine cabinet, you will find everything here at reasonable prices. Also one of the most complete stocks of Drug Sundries to be found in Coleman County.

Walker's Pharmacy

Phone 41

Santa Anna,

Texas

Community Fair and Rodeo Edition

SANTA ANNA NEWS

SECTION TWO
EIGHT PAGES

SECTION TWO
EIGHT PAGES

VOLUME 52

SANTA ANNA, COLEMAN COUNTY, TEXAS, FRIDAY SEPTEMBER 17, 1937

NUMBER 38

"He Profits Most Who Serves Best"

"The Rest of the Record"

BY JAMES V. ALLRED
Governor of Texas

This past week I met with certain members of the Senate committee which has been studying State expenditures. According to some newspaper articles we don't need any new tax money; also, that the Comptroller and Treasurer have said our deficit was only ten million dollars. The State Auditor has fixed it at fifteen million dollars as of September 1st of this year; at approximately twenty million dollars September 1, 1938; and approximately twenty-four million dollars September 1, 1939, if no new taxes were levied.

When I met with members of the Senate committee we had the State Auditor and a representative of the State Comptroller with us. It developed that the Comptroller's figures and the Treasurer's figures were based on an actual deficit at the time but that they were not taking into consideration appropriations and expenditures that have already been made and not yet charged on the books just because the warrants had not been issued for them.

For instance, they hadn't taken into consideration an appropriation of \$821,000 for an insane asylum in West Texas. The Board of Control has already located this hospital at Big Springs, where the people voted a bond issue to furnish the land and water supply; and the Board is preparing to let the contract for building now. Certainly no one could argue that items of this kind are not chargeable against the State for which money should not be raised. At the end of the conference the representative of the Comptroller's Department agreed with the State Auditor's figures, so there is no actual difference.

Some members of the Senate committee have been quoted as saying that we should cut appropriations down and consolidate departments. I pointed out to them that at the beginning of the Regular Session I recommended department consolidations and states that I could not recommend increases in appropriations, other than a little over a million dollars for the insane asylums. These recommendations of mine were ignored. Efforts to consolidate certain departments of government were killed in committee, and appropriations were substantially increased without revenues being provided.

The time to cut appropriations was during the Regular

FREE FAIR

TEXAS COTTON FESTIVAL
Oct 4-9
Spiced with Entertainment
CROWDION OF TEXAS
Cotton Queen
GORGEOUS WEST TEXAS DUCHESSES
HORSE RACES
ATTRACTION PURSES
HANDICAPS
ARABIAN NIGHTS
LIVE STOCK & HORICULTURE
WEDNESDAY--THURSDAY
ARILENE

Announces for Attorney-General



BOB CALVERT

Speaker of the House of Representatives who will run for Attorney-General in next state election.

Bob Calvert to Run for Atty. General

Speaker of House in Austin Announces for Race

Austin, Sept. 16.—Bob Calvert of Hillsboro, speaker of the house of representatives, today said definitely that he will announce for the office of attorney general of the state of Texas.

"I regard the office of attorney general as the key position of the state government," Calvert said. "It should be filled by a man, free from entangling alliances, who can serve the interests of the great majority of the people of Texas faithfully and conscientiously."

The man who occupies the office, Calvert said, should not be "a stooge for the major oil companies" or other special interests, dominated by his connections or retainers.

Such a man, Calvert asserted, would be unable to represent the people of the state of Texas honestly when called upon to bring suits against his former clients.

"My experience in a country law office and in the legislature have fitted me for the office of attorney general," Calvert declared. "I know that I can fill the office capably and fairly."

The young speaker graduated from high school at the state orphan's home at Corsicana, Tex., worked his way through the University of Texas law school.

He is serving his third term in the legislature from the 60th district, Hill and Navarro counties.

NANA, ART MIRACLE, DISPLAYED AT FIESTA

Ft. Worth, Sept. 15.—"Nana," world famous painting which is so lifelike that it almost breathes is on display on Sunset Trail at the Fort Worth Frontier Fiesta.

The exhibition at the Fiesta marks the forty-fourth year that "Nana" has been shown in the United States. Purchased by John Sutton and now owned and exhibited by his son, H. F. Sutton, "Nana" was brought to the United States in 1893 to be displayed at the Chicago World's Fair. "Nana" was purchased for \$33,000 and the present owner has refused offers as high as \$85,000 for the picture. It's exhibition history has caused it to be referred to as "the little gold mine."

"You keep 'Nana,' son, and she will keep you," John Sutton told his son soon after the picture was purchased. And H. F. Sutton has found his father's advice literally true for "Nana" has earned more than \$2,000,000 for the Sutton family since the picture was purchased 56 years ago from the Russian artist, Suhorowsky, who painted it. More than 9,000,000 persons have paid admissions to see the painting.

Sealy Hospital In Need Of Iron Lung. Will You Contribute?

A few days ago a twelve year old boy died in the local hospital of infantile paralysis. An iron lung might have saved him. Doctors and nurses did everything in their power to save the child, but without the iron lung equipment, it was only a matter of time. The nearest "iron lung" is in Fort Worth and is not available for use except to citizens of the Fort Worth communities and it is now in continual use. Cases in this community are steadily increasing and unless the iron lung equipment is acquired many of our local children may suffer.

Citizens of Abilene are now donating toward the purchase of a lung in a hospital there. The News is asking the citizens of Santa Anna and friends of the Sealy Hospital to begin contributing to a similar fund. The hospital serves hundreds of people in this section of Texas and has been one of the foremost in Texas in donating services to charity work. In fact so much charity work has been done here at the Sealy Hospital that the purchase of such equipment as the iron lung by the hospital itself would be almost impossible.

The "iron lung" can be purchased for \$1650. The equipment can be used not only for infantile paralysis victims, but for all types of paralysis of respiration and for artificial respiration. It is fast becoming a necessity for the safety of the community and of your family since infantile paralysis cases have reached epidemic proportions.

Contributions should be sent or brought either to the Santa Anna National Bank and deposited in the "Iron Lung Fund" or brought to the News office, where it will be carried to the Bank. The name of each donor and the amount contributed will be published in the paper each week.

Contributors are urged to begin donations now and raise the funds immediately so that more cases can be treated before we have more tragedies here. Several more cases are existent in our community.

(Reprinted from Santa Anna News, Sept. 10, 1937)

Student NYA Aid May Be Secured

Austin, Texas — The National Youth Administration recently began approving schools of Texas for participation in the 1937-38 Student Aid program, under which part-time employment will be provided this year for about 10,000 needy Texas students. The first approval letters were sent out on September 3, ten days ahead of the date of the first approval letters last year.

J. C. Kellam, Texas Youth Director, announced that more than 60 secondary schools and 20 colleges had already been approved for participation in the Student Aid program.

"We are acting upon the applications as rapidly as they are received in our office," Mr. Kellam said. "In a great many cases the program will be ready for operation on the opening day of school. Youths may be employed on and after that day, but not before, provided the application of the school for participation has been formally approved by the National Youth Administration."

Officials of schools approved by the NYA for participation in the program select the students to be employed, Mr. Kellam said. Selections are made on a basis of need, and the students employed on the Student Aid program will be those who otherwise would not be able to attend school.

A supply of NYA application forms for the secondary schools have been sent to each County Superintendent, who has been requested to organize a local committee to make recommendations regarding the distribution of School Aid jobs to the various schools within the county. College application forms have been distributed directly to the colleges.

Concentrate on your job and you will forget your other troubles.

Guard Your Securities Investments

(This is the third of a series of articles prepared by D. Leon Harp, Securities Commissioner of Texas, President of the National Association of Securities Commissioners and Director of the National Association for the Prevention of Fraud in the Sale of Securities. These articles will appear in the Santa Anna News from time to time as they are received from the office of the Commissioner at Austin.)

Your Securities Commissioner would like to lead the reader of this article along the dim winding path beaten by the feet of departed Legislators who brought about the enactments of early securities laws. The history of securities legislation is interesting even though disconnected, but it would consume too much space in this paper and might lead to the confusion of the reader. Suffice to say, the first license law applying to dealers in securities was passed in England more than two hundred and fifty years ago. It required every dealer and salesman to pay certain fees and to carry upon his person certain tokens that would readily identify him. From time to time, laws were passed to prevent certain abuses by promoters and traders in securities. The first Securities Act, worthy of the name, was passed by the Kansas Legislature in 1911. The State of Kansas, like all other States, had for years been overrun by tricksters and promoters without conscience who duped and film-flamed the credulous and inexperienced into parting with their life savings. A member of the Kansas Legislature in his argument for the passage of a remedial act stated that "the thieves and swindlers who annually invaded the farms of Kansas to sell fake stock would undertake to sell shares in the

(continued on page four)

Cotton Grade and Staple Report

The grades of cotton from current ginnings in Texas are somewhat lower than those of the past few weeks. For the season, the trend towards lower grades has not been so pronounced even though this trend has been evident for several weeks. For the state in general, grades this season are very similar to those of last year to corresponding date.

Strict Middling and higher grades represented 24 percent for the current week compared with 40 percent for the season; Middling constituted 40 percent and 35 percent, whereas Strict Low Middling and Low Middling constituted 13.5 percent and 10 percent respectively. Some increase is shown for the Spotted grades, these representing about 22 percent for the week against about 14 percent this season to date.

A wide range in certain grades is shown this season in different districts. The proportion of the grades Strict Middling and higher to date is 61 percent for district 4; 49 percent for district 7; 48 percent for district 6; 46 percent for district 10; 38 percent for district 11; slightly less than 30 percent for districts 3, 8, and 9; and 13 percent for district 5. Proportions of the grades Strict Low Middling and Low Middling range from 31 percent in district 5 to 4 percent in district 10. All spotted grades range from 44 percent in district 5 to about 8 percent in district 11. Measured by the proportions of the grades Middling and above, higher grades are shown so far this season over last season in only districts 4, 10, and 11, whereas grades are much lower in districts 3 and 5, and are moderately lower in the other districts.

Of the cotton classed this season, about 6 percent has been shorter than 7-8 inch; 34 per-

Resources and Progress of Coleman County Makes Rich and Prosperous Communities

Stops Gasoline Tax Evasion



GEORGE H. SHEPPARD

State Comptroller who has tightened up enforcement of gasoline and cigarette taxes, according to a recent check-up.

ABUSE OF MOTORISTS' TAXES HITS NEW HIGH LAST YEAR

Although state receipts from automotive levies upon highway users reached an all time high last year, amounting to \$1,066,341,000, approximately 16 percent, or \$169,340,000 of that sum, was not spent on highways; figures compiled by the U. S. Bureau of Public Roads show. For every five dollars spent last year for highways, the Bureau found nearly one dollar was taken from the highway fund and used for purposes entirely dissociated from highways.

In announcing that state receipts from registration fees and licenses amounted to \$359,784,000, that gasoline taxes amounted to \$691,420,000 and special taxes on motor carriers to \$15,137,000, the Bureau stated:

"These taxes have been justified on the grounds that they are for the building and maintenance of good roads over which the vehicles must travel. Any other use of these funds detracts materially from the upkeep of the highways for which the motoring public is paying."

The Bureau found that New York State was a worst offender than any other state in using highway-user tax money for non-highway purposes. New York collected \$102,000,000 from motor vehicle operators and used only \$40,266,000 for state and local roads and streets. New Jersey diverted \$13,275,000 last year, the second largest amount. As a result of the misuse of its road funds, New Jersey has recently been penalized by the U. S. Bureau of Public Roads by loss of part of its federal aid allocation.

Two other states diverted more than \$10,000,000 last year, Pennsylvania diverting \$12,607,000, and Ohio diverting \$11,470,000.

The Bureau reported that in thirteen states — Colorado, Delaware, Idaho, Iowa, Kansas, Maine, Mississippi, Montana, Nevada, New Hampshire, Vermont, West Virginia, and Wyoming — all the money collected from highway taxes was used solely for highway maintenance and construction, and in six other states — Arizona, Arkansas, Missouri, North Dakota, Utah, and Virginia — the sums diverted were comparatively small.

cent has been 7-8 inch and 29-32 inch; 49 percent has been 15-16 inch and 31-32 inch; 10 percent has been 1 inch and 1-32 inches; and slightly over 1 percent has been 1-16 inches and longer in staple length. Nearly 24 percent of all cotton classed has been tenderable.

By Sam W. Cooper, Secretary of Coleman Chamber of Commerce

Did you know that Coleman County is the hub of seven Central West Texas counties included in a radius of fifty miles, which has:

1. Population over 131,000.—Extremely small per cent colored—277,000 people conveniently served by direct rail weather highways.
2. Assessed Valuations \$106,529,744. Generally 40 to 50 per cent actual value.
3. Value of Live Stock, \$19,559,000.
4. Value of crops \$19,755,000.
5. Value of Manufactured products, \$12,450,000.
6. Retail Sales \$72,550,000.
7. 67,000 Horses and Mules.
8. 233,000 Cattle.
9. 552,000 Sheep and Goats.
10. Leading Turkey and Poultry section of Central West Texas.
11. Wheat, corn, oats, barley, and rice common to this area.
12. Beautiful groves of native pecans.
13. Approximately quarter million bales of cotton annually.
14. Over two million acres farm land with little more than half in actual cultivation.
15. Excellent fruit and truck sections producing apples, pears, plums, peaches, grapes, berries, etc., and various kinds of vegetables.
16. Producing oil and gas wells in every county in the area.
17. Fifteen highways lead into the six highway inlets to Coleman County.
18. Numerous Bus and Truck lines serving the territory.
19. Ten railroad outlets. Direct railroad connections to Texas' greatest live stock, grain sections, and principal market centers. One day direct railway freight service to seaports.
20. In addition to the direct all-weather highway facilities into each county, a complete loop highway connection is formed around Coleman County, within the fifty mile radius, providing an extraordinary advantage in covering or serving the territory from Coleman County. One of the best systems for distribution purposes to be found anywhere.

Coleman County is recognized as a leading agricultural county of Central and West Texas; diversified farming gaining in importance each year. Increase in number of farms has passed the 2500 mark, with more than one-third of the county's fine farming area still untouched by the plow. Live stock is a very important industry in the county and is not handicapped by the increase in farming. Look at the census—20,000 head of cattle in 1920 and over 40,000 head in 1930; sheep population over 85,000 with other live stock sharing liberal proportions. Coleman is a leading poultry

(continued on page eight)

New LYRIC
Brownwood, Texas
FRIDAY AND SATURDAY
THE ROAD BACK
with JOHN HENRI
Richard Cromwell
Midnight Saturday
SUN.--MON.--TUES.
WEDNESDAY--THURSDAY
MADELINE CARROLL
FRANCIS LEDERER
Challenger



Visit The Livestock and Poultry Shows

Three Day Exhibits

Representative of the Best in Coleman County



Comptroller Sheppard Checks Gains Made in Strict Law Enforcements

Austin, Texas, Sept. 16.—State Comptroller George H. Sheppard ran a total on his books today and found that by plugging up the holes in the Motor Fuel and Cigarette tax laws, he had saved the State of Texas approximately \$10,000,000 in three years.

There are, everybody agrees, only two ways to raise money to carry on the many functions of government: Enact new tax laws; or the less painful method of enforcing the existing taxes so that the state gets a maximum return.

The second method may sound easy; Comptroller Sheppard found it anything but easy.

Sheppard's employees occupied in collecting gasoline taxes will testify it's not easy. They will tell you of working nights—something almost unprecedented in state government—because at night is when the gasoline racketeer works. And the Comptroller wanted, most of all, to get the gasoline tax evader, the man who takes the pennies from the gasoline consumer and drops them in his own pocket.

It was with this idea in mind that Sheppard, coming to Austin from Sweetwater after serving thirteen years as Tax Assessor of his County and Mayor of Sweetwater, started back in 1932 to plug up the leaks in the state's taxing structure.

leaks; then discover why; and finally, obtain legislative assistance in plugging them.

The two "leakiest" laws were found to be the cigarette tax and the gasoline tax. Funds from the cigarette tax are divided between the schools and the Old Age Assistance funds of government. Schools likewise get one penny out of every four cents tax you pay for gasoline.

Turning first to the gasoline tax law, Sheppard found that the first essential was to maintain the closest watch over East Texas refineries; to require exact and sworn reports so that the gasoline could be watched from the moment it came out of the crude oil until it reached somebody's gasoline tank. The maximum penalty for evasion of the tax was \$200, the minimum \$25—and obviously, it was a very worthwhile business for the racketeer to make \$1,000—by evading taxes, for an investment of \$25 to \$200, in fines.

To sympathetic legislators, just as anxious as the Comptroller to see that the 'ax laws applied to all alike, Mr. Sheppard took his problem. A new law, one with teeth in it was enacted. On the refineries in East Texas, Comptroller's men were placed in three eight-hour shifts to check every drop moving out.

Again, the figures tell the story most convincingly:

During the year 1934, consumption of gasoline increased in the United States 7.51 per cent; yet, in Texas, for the comparable period, tax collections showed an apparent increase of 14.09 per cent. The only possible inference was that \$4,184,204 in tax leaks had been stopped.

During 1935, national consumption was up 14.94 per cent over 1933; while in Texas, the increase in consumption plus the stoppage of leaks made a showing of an increase of 25.11 per cent. In money, this was \$7,457,266.

In 1936, national consumption was 27.08 per cent above 1933; while in Texas the increase was shown to be 38.71 per cent, and the total income from the gasoline tax was \$41,190,011.

Figures on national consumption for 1937 have not yet been compiled; but for Texas' fiscal year, ending August 31, 1937, gasoline tax collections amount to the new high mark of \$46,430,562.33.

On a percentage basis, this is 36 per cent more than four years ago, and demonstrably this percentage—which adds up to \$16,735,117.93 was largely due to plugging up leaks. Divided between the funds and enforcement cost, it meant \$9,753,515.50 additional for roads and \$3,251,273.81 additional for the public schools for the year 1937, over the amount which likely would have been collected (on the basis of 1933 figures) had not the Comptroller determined to make the tax fall on all alike.

The same story is applicable to the cigarette tax law, to which Sheppard turned his attention as soon as the gasoline tax law had been corrected by the Legislature. Although a smaller total amount is involved, the showing is even more impressive—an income more than doubled without any increase in price. While a small part of the increase may be due to increased consumption of cigarettes, most of the increase is due to the halting of tax evasions.

Four years ago, when Sheppard took hold, the counterfeiters of cigarette tax stamps and the itinerant peddler of untaxed cigarettes were making unbelievable inroads into the state's collections. Even making a substantial allowance for increased consumption, it is estimated that the state was losing \$3,000,000 annually to these racketeers.

An examination of the law disclosed many defects. As was true with the gasoline tax law, the enforcement provisions were entirely inadequate. The stamp then in use was readily adaptable to counterfeiting.

The new cigarette tax law and the new gasoline tax law were enacted by the same session of the Legislature, in 1933. A new type of cigarette tax stamp, a serially numbered decalcomania stamp, which could not be duplicated or re-used, was devised. Numerous other leaks of a technical nature likewise were corrected.

This year, the cigarette tax will show an income of \$6,660,000; in 1933, the last year under the old law, the net income to the state was approximately \$3,000,000. That's a gain of more than 100 per cent.

One further phase of the tax collection program:

A corps of auditors was put on the books of gasoline and cigarette distributors, with instructions to find whether the state had been cheated in any instances. As a result, the state found claims of more than half a million dollars in delinquent taxes, and suits were filed through the Attorney General. Several thousands of dollars have been collected through this work, and several offenders have been convicted under the new felony statutes.

Comparison of the collection costs on these two tax laws with other tax laws shows the tax has been collected at remarkably little expense to the state. The cost of collecting the gasoline tax amounts to 1 per cent; of collecting the cigarette tax, 2 1-2 per cent, while to collect ad valorem or property tax, the cost is 5 per cent. In dollars and cents, to collect \$46,000,000 in gasoline taxes cost \$423,944.00, while to collect \$16,000,000 in ad valorem taxes cost the state approximately \$800,000.

A glance through the note case of a closed bank often explains why the fellow who made a practice of paying his bills had so much difficulty keeping up with the Jones.

"The Rest of the Record"

BY JAMES V. ALLRED
Governor of Texas

Quite a few of the newspapers have carried statements lately to the effect that we didn't need any new taxes. It's hard for me to understand this contention. When the Legislature met in regular session this year I told them that the general fund deficit would be approximately fifteen million dollars on August 31st. It has turned out to be just about that.

The trouble is, as I pointed out in my message to the regular session of the Legislature, that expenditures at that time (last January) exceeded income about two and a half million dollars per year. I specifically stated that I could not recommend increases in appropriations other than a little over a million dollars for the insane asylums and other eleemosynary institutions. In the face of these recommendations the Legislature increased appropriations approximately four million dollars per year and not a single penny of additional revenue was finally provided to take care of either the deficit or the increased appropriations.

In addition to the money necessary to wipe out the deficit and to take care of these in-

creases in appropriations, I recommended that additional monies be raised for old age assistance. This, too, was not done. I still think we need more money in the old age assistance fund to take care of many worthy cases. In my opinion, the trouble isn't so much with the law. We just need more money in the fund.

Besides we owe \$1,627,000.00 on old age assistance warrants issued before the tax laws went into effect. Claude Teer, Chairman of the Commission, says we need more money for old age assistance. Unless new money is raised before the first of January, we are going to get into a tight and more people will have to be cut off.

Besides all this, the people recently adopted several constitutional amendments. I am sorry they didn't adopt the amendment to authorize the Legislature to pay public officers out of fees or salaries. This would have saved at least half a million dollars a year, but the people have spoken and I'm always willing to abide by the will of the majority.

Two amendments adopted authorized the State to completely cooperate with the Federal Government in its social security program. One authorized aid to the needy blind, and the other to dependent, neglected children. As yet I have no exact figures on how much aid to

(Continued on Page Six)



Fall Brings New BEAUTY DEMANDS

Fall winds are always severe on the skin, and women should protect against its effects. Our facial treatments will prevent chapping and keep the skin soft and smooth.

And by the way, while you are here attending the fair, it might be a good idea to get a new permanent wave. Our operators are all specialists in permanent waving, and prices are very moderate.

Ladies should not forget the importance of well manicured hands. It costs but a trifle to have them properly attended to and they should not be overlooked.

Mrs. Hall's Beauty Shop

Telephone 137

SEEDS

The Best Investment for Any Farmer Is
GOOD SEED

We Have Seed
Wheat, Oats, Barley

**GEO. D. RHONE
ELEVATOR**

We are paying Market Prices
Daily for Your Grains

GASOLINE 15c

I have opened my new place of business on the corner of the Farmer's Gin No. 2 lot, the last station on the east end of town.

I have a good Service Station, Groceries, Fresh Meats and a dandy little Lunch Stand. We serve Hamburgers, Chili, Coffee and all kinds of Sandwiches.

I will appreciate the business of all the old customers and we are ready to take care of many new ones.

YOU ARE WELCOME AT OUR PLACE.

**Price Grocery and
Service Station**

Collin Price, Mgr.

24 HOUR SERVICE

RENEW NOW

To Your
Favorite Daily

During the
Fall Bargain Rates

Save 50c

On Your Santa Anna News by Renewing Now With A Daily Paper.

FORT WORTH STAR TELEGRAM	- - - -	\$7.45
Daily and Sunday		
FORT WORTH STAR TELEGRAM	- - - -	\$6.45
Daily Without Sunday		
ABILENE REPORTER-NEWS	- - - -	\$4.95
Daily and Sunday		
SAN ANGELO MORNING TIMES	- - - -	\$5.95
Daily and Sunday		
SAN ANGELO MORNING TIMES	- - - -	\$4.95
Daily without Sunday		
SAN ANGELO WEEKLY STANDARD	- - - -	\$1.00

ADD 50c to any of these prices and renew your Santa Anna News for another year.

Other daily newspapers will announce Bargain Rates soon.

SANTA ANNA NEWS

Youth In the Conservation Movement

(By Robert Page Lincoln)

The statement has been variably made to the effect that if our wildlife and nature's resources on this continent are to be saved, then it will be at the hands and at the will of the rising generations. On them depends what is to transpire, not alone within the next few decades, but in the immediate future. The hope that is held is that they have become conservation-minded to the extent that they will be willing to lend aid along the whole line in the perpetuation and protection of the wild kindred and all those same and reasonable methods that have been suggested by the leading authorities in the country. Just what advance has been made along the front in the youth movement toward conservation? If, at this late date, with our resources dangerously drained, no accomplishments have been checked up, then indeed one would have cause to doubt. But there have been gains, great gains, and there will be continued gains in the future. I would say that the 4-H movement, banding together the farm youth of the nation, is one of the most thorough-going and valuable units in the conservation world. Its future and its educational campaign can indeed be taken as an example to model after.

In the 4-H movement those boys and girls on the farms and close to the woods and waters have been enlisted in the campaign to save the often riddled ranks of nature's keepers. A few years ago but little was heard about conservation among the young people on the farms. Now it is a common topic of debate. Every village, it seems, has its growing num-

ber of active boys and girls who are engaged in every conceivable project toward nature betterment, such as planting trees; weeding out and preserving a five to ten acre woodland on the farm; holding back water that has been bled off of the land by a system of iniquitous drainage; raising and releasing game birds on the land; arranging proper cover for the same, and, in many instances, actually making a township by township census of the game within those areas; feeding the various songbirds, and in every way aiding nature in its task at holding her own along the whole front of preservation. At one time we doubted that our boys and girls would ever rise to the point where they would take an active interest in these various projects. We hoped, as did so many others, that something would come of it. Now we are forced to admit that the "something" has been gained. Probably in many sections of the country there has been little more than a foothold established, whereas in other sections, great gains have been realized. By and large the conservation movement, more comprehensively emphasized in 4-H endeavors than in any others, has been the chief contributing educational factor. It takes the lead, and justly so.

The conservation movement among our farm youth is attractive from many angles. Chief among these is the outlet that it gives these boys and girls for making a name for themselves in their home localities, through the state, and, to a certain extent, throughout the nation. Other outlets may be lacking whereby the boy or girl

(continued on page four)

Uncle Jim Says



Heavy losses from dust storms show the need for grasses, strip cropping, contour furrowing, shelterbelts, and other control measures.

In the Texas Panhandle, 1,738,762 acres of land were listed on the contour in the spring of 1936 to cut down losses from wind erosion. The results of this program in lessening the severity of dust storms and wind erosion damage were quickly apparent, but the financial benefit can only be estimated.

Extension Service specialists have conservatively estimated that from five to eight million bushels of wheat were saved for harvest by the wind erosion control campaign, besides the saving of more than a million acres of land from severe damage.

County agricultural agents continue to send in reports of exceptional crops in the so-called "dust bowl" area as the result of saving moisture through various conservation practices. From Randall county comes the example of R. A. Adcock, who has 400 acres of wheat that was contour listed and will make 12 bushels an acre as compared with a six bushel per acre yield on 100

acres that was not listed on the contour. More than 100,000 acres of wheat land in Randall county were contour listed, and it is estimated that this acreage will yield 50 percent more wheat than the remaining area.

In Parmer county, 806 farmers have contour listed 154,449 acres of land as of May 15, 1937. These, and similar figures, show that many panhandle farmers are in a position to catch and hold rainfall on their farms.

Every going business, small though it may be, contains the germ of a bigger business.

TEXAS FARMERS AND RANCHMEN APPROVE GAME CONSERVATION PLAN

College Station — That Texas farmers and ranchmen approve the game management demonstration plan offered by the Extension Service of Texas A and M College is evident from the enrollment of 1,597,600 acres in 30 counties, according to R. E. Callender, game management specialist.

The plan, which has been in operation less than a year, calls for demonstrations featuring deer, wild turkey, antelope, beaver, prairie chicken, quail,

fish and other forms of wild life. Farmers and ranchmen who enter the game management program organize into associations and set aside their land as game preserve demonstrations.

In most cases the preserves will be open to restricted hunting. Hunters will pay a nominal fee, part of which will go to the owner of the land, and the remainder to the association to be used to provide cover, feed, and protection for the game.

Dallas county leads in number of individual demonstrations as well as in total acreage

involved with 648 land owners and 150,000 acres. Other counties listed by Callender as high in the state ranking include Stephens, with 124 demonstrators and 110,000 acres; Baylor, with 98,077 acres; Young, 83,586; Callahan, 76,500; Kaufman, 42,000; and Colorado, 40,000 acres. In Wheeler county 36,000 acres along Sweet Water Creek are devoted to beaver management.

In addition to working with farmers and ranchmen on the plan, county agricultural agents have a number of demonstrations with 4-H club members, Callender said.

RODEO

SEPTEMBER 21-22-23

SANTA ANNA

Night Shows
--- ONLY ---

7:30 P. M.

EARL SELLERS
Manager

Plenty Good Seats

Match Roping
Jack Sellers-Roy Mathews

Del Rio Ft. Worth
15 Calves-5 Calves Each Night

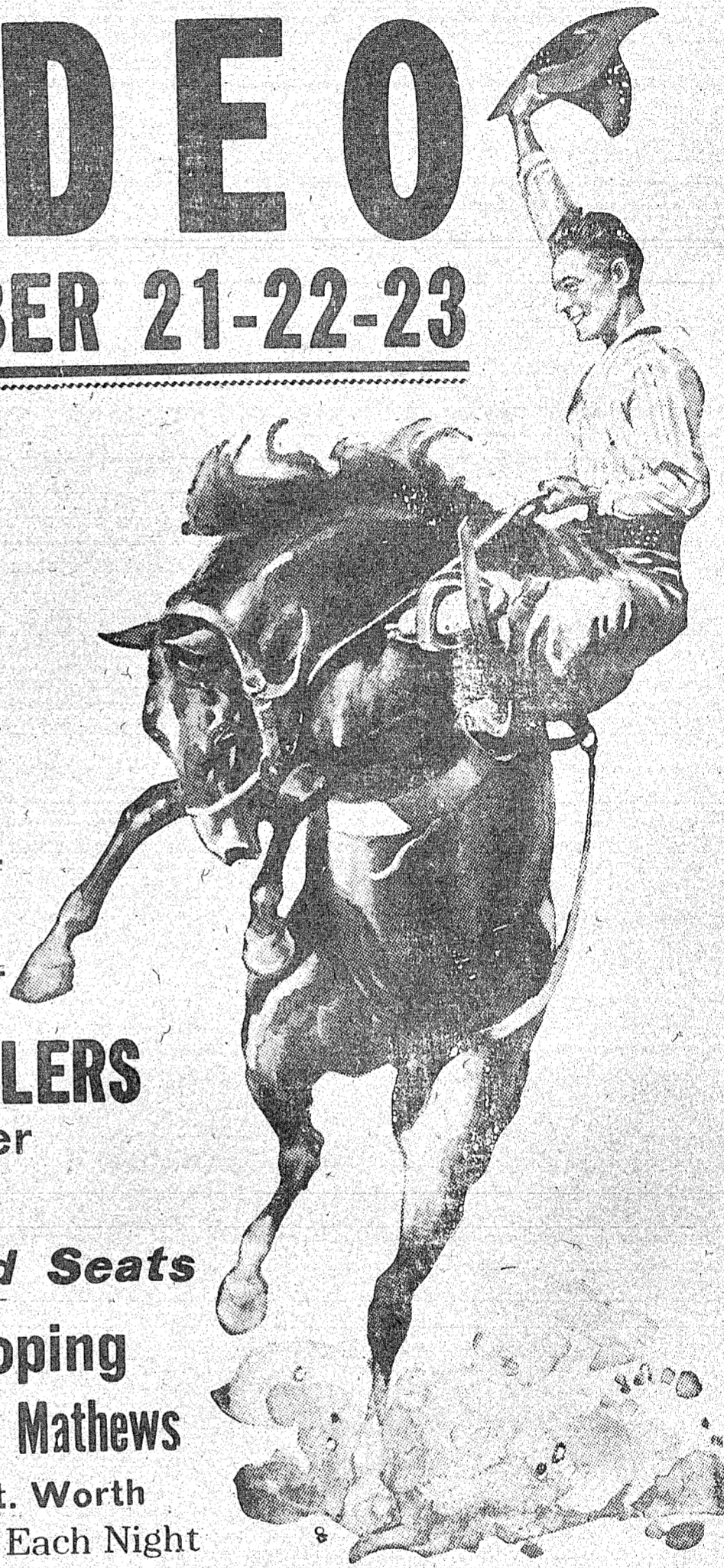
SPECIAL ATTRACTION

W. LEE O'DANIEL
AND HIS

HILL BILLY BOYS

Will be in Santa Anna on the First Afternoon
SEPTEMBER 21

Don't Fail To See Them



Extraordinary Values In Good USED CARS



Another Ford Nation-Wide Sale!

The Big Ford Dealers' Annual Nation-Wide Used Car Clearance Sale is now in full swing in Santa Anna, and we are honest in saying that never before in the history of our business have we offered such sensational Used Car Values. Below we list only a few of the outstanding bargains that are now to be had. Your present car will probably make the Down Payment and you can use the Ford Easy Payment Plan on the balance. Come in and let us show you a remarkable collection of makes and models.

RECONDITIONED USED CARS
That Will Give Many More Thousands of Miles
Of Good Service

1932 FORD V-8 COUPE

New set 6-ply Tires, new paint. . . Good condition.

\$265

1934 FORD V-8 COUPE

Factory reconditioned motor. . . New Tires.

\$315

1935 CHEVROLET TUDOR

Completely Reconditioned

\$395

1936 FORD TUDOR

With RADIO
An exceptionally good car now going at only

\$445

Santa Anna Motor Co.

Santa Anna — Texas

Air-Conditioning

(continued from page 6)

11th, respectively. In contracts awarded for installations in the same period, Houston was the fifth-ranking city, Dallas ninth. El Paso, Fort Worth and Beaumont also are among cities listed in national surveys as being "active areas" in air-conditioning progress.

With these six cities as the statistical guide, the amazingly rapid growth of air-conditioning in Texas is revealed in the fact that in the last two-and-a-half years there have been let 70 contracts for installation, nearly three-and-a-half times as many as all the air-conditioning jobs there were in Texas up to the start of 1935 (226).

Furthermore, in the first six months of this year contracts (317) exceeded those for the whole year of 1936 (304), which indicates that 1937 will at least "double the score" on 1936, as that year did—on 1935—by 304 to 149. The 104 per cent gain in Texas installations for 1936 over 1935 far exceeds the national average gain of 63 per cent for that year.

Although the air-conditioning equipment manufacturing industry is still largely confined to northern industrial centers where refrigeration, electrical and automobile firms have branched out into this field, the engineering, assembling and construction work incidental to installations have brought much new employment and wages to Texas, the survey shows.

In this connection it is estimated that probably 1,500 persons are employed directly in the air-conditioning industry in Texas now, whereas three years ago there probably were less than 100; and that workers in plumbing, sheet metal working, electrical wiring, carpentry and plastering trades have been given at least 500,000 man-hours of work in the first six months of this year, on air-conditioning jobs.

An auxiliary to this modern development where machine-cooled store interiors are gradually displacing the traditional Texas canopied sidewalks and the need for studiously seeking the "shady side of the street, if any," is the parallel growth of insulation. Here native Texas products such as gypsum, plaster and synthetic wallfillers are finding increased use, for insulation is a vital part of air-conditioning.

The University of Texas is one of 38 colleges in the country now including air-conditioning engineering in their curricula, and Polytechnical High School of Fort Worth this fall will open a preparatory course in this subject.

At the halfway point of 1937, an air-conditioning "standings" of Texas (subject to change from month to month), would show Dallas in first place with 374 installations and 12,265 connected horsepower; Houston second with 298 and 10,500; San Antonio, 152 and 8,661; Fort Worth, 81 and 3,329; El Paso, 50 and 834, and Beaumont, 41 and 1,300.

A local woman reader of this paper, who was in the office yesterday, said that few wives need to resort to the bending over exercises prescribed for the movie stars for the reduction of the waist line. She says she gets more than the required amount of bending exercises picking up after the children and their father.

Don't be ashamed of your business—advertise it.

Resources and

(continued from page one)

and turkey shipping county. Coleman County has a general variety of fertile soil suitable for almost every kind of field crop, fruit and vegetables. Heavy production of native pecans along the streams.

Manufacturing advantages and conditions very favorable with raw materials, labor, housing, transportation, fuel, accessibility, etc., meeting exacting requirements. Natural resources play an important part in development—oil, gas, brick and glass sands have brought extensive investments in development, brick and glass plants, refineries, etc. A number of other manufacturing establishments operate here. Special opportunities for certain manufacturing establishments at this time—

Coleman County has 56 public schools—excellent educational organization and facilities throughout the county.

In addition to over 100 miles paved state highways, the county has many miles of all-weather roads. Coleman County has a population of over 23,000 with between 2,000 and 15,000 people on the farms and ranches. This means approximately:

Three head of cattle to each person
Better than five head of sheep to each person

One horse or mule to each; one milch cow to each two persons.

and approximately seventeen acres of crop land to each rural citizen.

Agricultural advantages of the county, with its large amount of undeveloped farm lands, warrant a continuous increase in population for many years to come.

The foregoing statistics represent a check-up of a few years ago and census of 1930 and 1935. There have been some outstanding changes since these figures were compiled, among them being over 135,000 head of sheep, greatly increased production of wool, and a much greater number of cattle.

Probably one of the most important forward steps for Coleman County is the development of its rural schools with many consolidations, rural high

schools organized, large number of buses on to take care of the student body, and a general and rapid upward trend of the educational facilities for the boys and girls of this area.

Another matter which is of interest to everybody is the recreational advantages being given citizens of Coleman County and those who visit. Various points of interest are being developed, among them Lake Scarborough, 4 miles north of Coleman, City Park, Camp Colorado Replica and Historical Museum, and the Highway Park by Santa Anna mountain east of Santa Anna.

For those who are unfortunate enough to need hospitalization, they are fortunate in having excellent facilities in the county, the Sealy Hospital at Santa Anna and the Overall Memorial Hospital in Coleman. These hospitals have expanded and increased their facilities for taking care of people's health needs. Although efficiently and effectively serving for many years, they are steadily increasing their facilities. One of the most outstanding probably for any section of the state is the recent addition to the Overall Memorial Hospital, which is being modernized in every respect.

Natural resources of the county, including oil and gas and building clays, limestone, silica, coal, kaolin, and other deposits, play an important part in the independency and progress of the county—some of these have not been developed, but the future years will no doubt bring about their development.

Another very recent and important progressive step for Coleman County is a well planned water and soil conservation program, which is being directed by the Extension Service, Department of Agriculture and other agencies, with county organizations cooperating. The Central Colorado River Authority was set up by act of Texas Legislature for the specific purpose of carrying out a water and soil conservation program. This is the most important of all mercenary needs of the county.

Future generations and the future development of Coleman County will depend upon how we take care of our water and soil through the present generation. A year ago September 8, ground was formally broken for

the first project under supervision of the Central Colorado River Authority through the Works Progress Administration. This project, known as Gould-busk lake, was completed the first of January this year and has already proved the extreme value of water conservation. A lake at Talpa is rapidly taking the form of a completed project under the same plan as Gould-busk. It will be a realization during the fall. Mud Creek has received final approval of authorities at Washington and appropriation made for same. This will be built after completion of the Talpa project. In addition to the large community projects listed above and numerous others which will be built, the Authority is using its machinery to build large farm and ranch tanks at a nominal cost, charging only sufficient amount to take care of machinery operations and expense. This machinery is used some on the major projects, but is being used more on the farm and ranch projects. It will be interesting to the public to know that the Authority has acquired about \$15,000 worth of equipment, and this equipment actually belongs to Coleman County. It does not belong to any individual or farm, but is purchased for the sole purpose of solving the water problems of individuals and communities. The machinery has up to present built 35 independent projects and will have the big new 7-yard scraper on independent projects next week and the 5-yard scraper also on independent projects at an early date. It will pay farmers and ranchmen to keep in touch with the Central Colorado River Authority and let their needs be known. The Authority Board consists of Leroy Stockard, Dr. T. Richard Sealy, Santa Anna; Arthur Young, Burkett; C. W.

Woodruff, W. J. Stevens, Joe B. Pouns, Coleman; George Pauley, Valera; H. E. Evans, Talpa; and H. S. Willey, Novice. These men are giving their time to the management of the program without charging a penny for their services, and are doing all they can to cooperate with the farmers, ranchmen and communities in solving the serious

problems of inadequate water supply.

The citizenship of Coleman County should individually boost their county. Strive to make it a better place in which to live. Cooperate with every agency and every individual who may be working for the common good of all. Let us make Coleman County one of the largest,

most independent, self-sustaining, and most pleasant place all to live.

We've tried everything, going to bed early, but don't seem to come any closer.

Too many people dispose of all their problems by saying, "I'll take care of it next year."

BUY THAT USED CAR OR TRUCK RIGHT NOW!

FORD DEALERS' ANNUAL NATION-WIDE USED CAR CLEARANCE SALE

USED CARS & TRUCKS R&G ALL MAKES

Many of the Used Cars and Trucks offered by Ford Dealers are R&G Quality—Renowned to Ford Factory specifications, and Guaranteed in writing... 100% satisfaction, or 100% refund!

Your Ford Dealer's entire stock of used cars and trucks is offered at attractive prices. Don't miss this opportunity to pick up a real value. Many makes and models. Liberal trades and terms. Come in today!

See your **FORD DEALER TODAY**

VISIT OUR FALL FAIR and RODEO

And Bring Us Your

SHOE and BOOT REPAIRING

And Be Assured of

Getting the Best in

Material and Workmanship

The Prices Are Right

SHOE HOSPITAL

FINE SHOE REBUILDING

Santa Anna, Texas

TO THE LEFT IS THE EMBLEM OF SERVICE AND CO-OPERATION WHEREVER FOUND

The Santa Fe Railroad fully realizes the good that will be derived from the Santa Anna Fair and Rodeo, and wishes it every success.

The Santa Fe joins with Santa Anna and every one of the trade area, in working for the common interest of all. We appreciate the responsibility that rests with us in the handling of your freight and passengers, and are always desirous of meeting your every requirement.

Santa Fe employes in Santa Anna are glad they live here, glad to be a constructive element in the advancement and progress of this section, and only ask that they may be able to give you more and better service year after year.

THIS SPACE CONTRIBUTED BY EMPLOYEES OF THE

SANTA FE RAILWAY

Write On Your Next Order: Ship Via Santa Fe



Dad Likes It



Mother Likes It



Junior Likes It

Delicious FOUNTAIN REFRESHMENTS

There's a reason why our fountain is so popular with the people, and we believe it's because of the superior quality of everything served, the immaculate cleanliness that is so evident and the friendly service given every customer. You, too, will like our service and always like to patronize us, we hope.

We Welcome You to the Santa Anna Fair & Rodeo

Next week Santa Anna stages its Third Annual Fair and Rodeo. We are all working to make it the greatest we have yet had, and we trust that everyone in Coleman County will find time to attend. The exhibits will be exceptionally good, the rodeo will have many new thrills for all and there will be plenty of other entertainment.

Make This Store Your Headquarters While at the Fair

This store is making special arrangements to accommodate Fair visitors, and we invite all to come and make themselves at home. Extra seating will be provided, plenty ice water free, tables for party service and other things to add to your comfort and convenience. You'll find a friendly welcome and every effort to make you enjoy coming to Santa Anna.

To Those Who Are Decorating Display Booths, We Wish to Announce that We Have A Good Stock of Crepe Paper in All Colors Priced at Only 5c per Roll.

Phillips Drug Co.

Santa Anna — Texas

Community Fair and Rodeo Edition

SANTA ANNA NEWS

VOLUME 52

SANTA ANNA, COLEMAN COUNTY, TEXAS, FRIDAY SEPTEMBER 17, 1937

NUMBER 38

"He Profits Most Who Serves Best"

Three Days of Education and Entertainment Sept. 21-23

GOLDEN DAYS OF CATTLEMEN WHEN FORTUNES WERE MADE OVER NIGHT, ENDED IN 1884

Prices Rose From \$8.00 to \$10.00 a Head To \$30.00 And \$35.00; St. Louis "Celebration" Marked Close of Era

The largest cattle convention on record—held in St. Louis in 1884—"celebrated" the passing of the golden days of the cattle industry. It marked the end of the period when frenzied investors sought recklessly to spend money in Texas cattle, as had been done from 1878 to 1882. During those years the money they made had never been equalled in an agricultural venture in America.

In 1882 range cattle rose from \$8 to \$10 a head of \$30 to \$35 a head. It was not to be duplicated again until that mad and merry year of 1928 when everybody who had cattle saw prices marked up overnight.

Colonel Ike T. Pryor of San Antonio was one of the men who was in St. Louis at the big convention, when the most amazing display of wealth met the eyes of the astounded St. Louisans.

No Regard For Money
What did a cowman care for money? Wasn't credit liberal, were not profits seemingly assured to every man?

There was the famous \$20,000,000 band, from Dodge City, Kan., that paraded the streets with a banner advertising the wealth of the members.

That meeting of the cowmen formed the National Cattle and Horse Grower's Association of the United States. One of its first resolutions was to ask congress to provide for a national trail for cattle from the Red River of Texas to the border of Canada. That trail was never built for the country through

which the cattle had been trailed for years was becoming farm lands. There were other factors contributing to that crack-up of the cow business. The country was becoming overstocked. For many years breeding stock had been at a premium and many male animals were raised for bulls that usually would have been converted into steers. England and the continent which had been heavy buyers of American beef were now turning for the first time to Australia, South America and New Zealand.

In Texas laws had been passed first requiring payment of 8 cents an acre for dry grazing and 20 cents an acre for watered lands, these prices later to be changed into a 4 cent rental for all lands. Fencing was beginning and big outfits were acquiring large tracts of land. Texas tick fever laws were on the books of many northern states.

All Had Hopes

What an aristocratic meeting that was at St. Louis. Nearly everybody present was a "captain" or a "colonel." By 1885 the cattle marketing which had begun to weaken in 1883 had become bogged in a depression into which it sank further until by 1887 there was little market at all. Congress was importuned to find markets for cattle and even if the packers did develop canning processes and refrigeration for fresh meats, still the market refused to rise for several years.—San Angelo Standard Times.



WPA Constructs 122 Schools in State of Texas

SAN ANTONIO, Sept. 16.—One hundred and twenty-two school structures, accommodating 30,000 students, have been constructed by WPA workers in Texas, it has been reported by E. A. Baugh, state director of operations for the Federal agency.

Operated at a Federal cost of \$973,227, to which local governmental agencies have added \$664,710, the WPA school building program includes 99 buildings ready for occupancy and 23 which are nearing completion.

Among the newly-constructed buildings are 47 class room structures, 21 additions to existing buildings, 49 gymnasiums, 5 home economics buildings, 5 stadiums and athletic plants.

(Continued on page five)

WE APPRECIATE COLEMAN'S SUPPORT

Coleman business men have shown their cooperation in making the Santa Anna annual fall fair and rodeo a success by contributing to the Fall Fair Edition and by promising support by frequent attendance at all the festivities.

Many interested in farm exhibits and stock judging are expected from Coleman and a great deal of interest has been shown in the rodeo planned this year, which is to be managed by Earl Sellers of Del Rio, well-known rodeo manager.

Citizens of Santa Anna and the Fair and Rodeo Committees appreciate the cooperation given by the Coleman firms and residents in the event and cordially invite each one to attend all of the attractions.

"Safe" Drivers Cause Accidents

Ninety per cent of traffic accidents are caused by experienced, supposedly safe drivers, not by the inexperienced motorist, said Ralph Lee, safety expert, at the recent Western Safety Conference. He cited a California survey which showed that 75 per cent of traffic fatalities in that state were chargeable to drivers with an average of eight years experience, who had never had a previous accident.

Finally, he said, before accidents can be prevented, the popular belief that the great bulk of them are caused by a relatively few congenitally reckless or incompetent persons, must be corrected. It is no longer true.

Over-estimating safety factors has turned many a driver who used to be careful, into a dangerous menace on the highway.

(continued on page eight)

Cotton Classing to Aid Texas Farmers in 1938

College Station — The drive for improvement in the quality of Texas cotton will be aided in 1938 by the terms of the cotton classing act, E. A. Miller, agronomist of the Texas Extension Service, believes. The act was passed by the present Congress and signed by the President on April 13 of this year.

Designed to correct the "hog round" system of cotton buying, the act requires that the Department of Agriculture, upon request from any group of producers organized to promote the improvement of cotton, determine and make promptly available to the producers the classification of any cotton they produce.

The act, as explained by Miller, also provides that the Department of Agriculture shall collect and publish timely information on the market prices of the various classes of cotton. Information on the current prices for grades and staple lengths of cotton will be posted at gins and other public places in cotton growing communities.

When the services provided by the new act are started, samples will be sent to central offices for classing, and Miller indicated that growers should receive their classing turnout within four days after ginning.

There are now 51 organized one variety communities, involving approximately 3,000 farmers, in the State, according to Miller. He also estimated that some 2,000 Texas 4-H club boys have organized into groups for the production of quality cotton. On the basis of the interpretation of the act, these farmers and club boys will be in a position to take advantage of the services outlined in the cotton classing act.

The faults we see in others would seem small to us if we could but see our own.

Big Event Starts Off With Parade Tuesday at 5 P. M.

Main Attraction on Opening Day is First Rodeo Performance at High School Field

Santa Anna will take on the atmosphere of the "wild and woolly west" next week when the Annual Fall Fair and Rodeo opens with its big parade Tuesday, Sept. 21 at 5 p. m. Every horse rider, bronco buster, automobile driver and pedestrian is asked to join in the fun for the entire three days.

The chief event of the opening day will be the initial performance of the Rodeo, managed by Earl Sellers of Del Rio, and a large crowd is expected to witness the many fine entries of both broncos, steers and other livestock and the performance of riders, who really are anticipating a real rodeo on the broncos which Sellers is providing. The show will be held at the football field and plenty of seats have been provided.

Farm and community exhibits will be the main attractions during the day with stock judging taking place each day. Several scores of prizes will be awarded in the several divisions of the exhibits.

The largest crowd in the history of the local fair is anticipated.

SANTA FE REPORT

Santa Fe System carloadings for the week ending September 4th, were 24,093 compared to 21,127 for the same week last year.

Received from connections, 6,046 compared to 5,764 for same week last year.

Total cars moved 30,139 compared to 26,891 for the same week of 1936.

Santa Fe handled total of 29,228 cars preceding week this year.

Achievement

WE ARE SURE THAT EVERYONE
ATTENDING THE SANTA ANNA
COMMUNITY FAIR AND RODEO
WILL SEE THE RESULTS OF

A piece of work well planned, well financed, well advertised,
well staged and well organized.

Santa Anna is to be greatly commended for its civic pride
and progressive spirit. That this Fair and Rodeo will be
another great success is taken for granted by every one who
has attended other Santa Anna Fairs.

We heartily join with other Coleman business interests in
extending our most genuine congratulations, and our wishes
that Santa Anna will continue in still greater achievements.

Taylor Motor Company

Coleman

Texas

We Commend

The cooperation of the business and
agricultural interests of the Santa Anna
trade territory in bringing together at
the Santa Anna Fair and Rodeo your
finest work. Your combined efforts as-
sure a successful Fair and Rodeo.



COLEMAN COUNTY STATE BANK

Coleman

Texas

Fire Prevention Week Scheduled for October 3-9

AUSTIN—Urging State-wide observation of the annual Fire Prevention Week, Marvin Hall, fire insurance commissioner, has written over 425 mayors of Texas cities and towns requesting their continued support of what he terms a "most profitable and worthwhile civic project." The week of October 3 to 9 has been chosen and appropriately named, Fire Prevention Week of 1937.

Adding impetus to the movement will be a proclamation issued by Governor Allred requesting cooperation and support from "every Texan interested in performing a distinct service to his State, to his community, and to himself."

"Fire uncontrolled is one of the most serious problems that confronts us today," Hall declared in his letter to Texas mayors. "For years it has taken far too heavy a toll in life and property. May we suggest that you and your city officials, fire marshal, fire chief and his department begin making preparations at once for the proper observance of Fire Prevention Week this year."

Tersely expressing the theme of the Week's activities, Hall wrote: "The fire that NEVER starts will NEVER get out of control. Fires can be controlled, but not until every single Texas citizen accepts fire prevention as his individual responsibility."

"Since fire losses have a dir-

ect bearing upon the fire insurance rates which the people pay," Hall explained, "there are a great many practical benefits accruing from effective fire prevention. Fire prevention is a habit and easily acquired; and it is most pleasant to practice, for by practicing it, a life may be saved or a disastrous fire prevented."

Calling for immediate action, Hall said: "Today, not tomorrow—for tomorrow it may be too late—is the time for you to call a fire prevention meeting. We suggest that you invite representative business men and women of your community as well as school teachers, preachers, civic and patriotic workers, and boy scouts. It is everyone's obligation to prevent fires. Act today!"

Varied Activities Interest W. Texas Home Makers

Varied home activities have interested West Texas home demonstration club members during the hot, dry summer time, according to reports from county home demonstration agents in that territory.

Eight women's clubs in Runnels county with an attendance of 87 women studied summer care of the yard. Their aim was to learn how to conserve moisture, how to make the water strike deep and to learn how to mulch. Other factors brought out in keeping a yard attractive were watering once a week, cultivating every three or four days, not more than two

inches deep, keeping grass out of beds, and watching for insects in order that they might be controlled.

In McCulloch county, 93 women recently studied furniture refinishing. As a result, Mrs. Dolye Cates, cooper in the Rochelle home demonstration club, has removed the old finish from a four-piece bedroom suit with lye paste. She is now busy sandpapering with coarse and fine sandpaper getting the surface ready for the new finish. "It's a hard job, but well worth it," says Mrs. Cates. Mrs. Will Dutton of the East Sweden home demonstration club has refinished an old walnut china cabinet in the natural wood. She uses this cabinet for her collection of pictures and is proud of her refinished heirloom.

Mason county home demonstration club women recently answered roll call with a list of kitchen time savers. Among the items named were: time schedule of work in the kitchen, recipe file, nest of measuring spoons and nest of measuring cups, tea strainer that fits teapot spout, double boiler, clothes sprinkler, and rotary egg beater with fitted bowl.

WHAT'S WRONG AT HOME?

After hearing a lot about the waywardness of children of the present, it occurred to Rev. Clinton D. Cox of Chicago to get the viewpoint of the youngsters themselves, which he did through asking 175 boys to write freely their ideas on "What's wrong with the home?"

Among the answers given by these boys, who ranged from 14 to 16 years of age, were the following:

"A boy wants a mother who can keep a secret and not tell the neighbors everything about him."

"The girl's word is always taken and the boy's word is always doubted."

"Home is court room and every member in the family tries to take a hand in raising the boy."

"Parents never admit it when they are wrong."

"People who led the wildest life before they were married are the strictest parents."

"Mothers try to hold other boys up as models too much."

These are only a few of the answers, but they indicate that boys believe there are a good many faults on the parents' side of the case, and doubtless that is true.

Young persons will usually acknowledge their shortcomings and accept reproof without resentment if they feel that the parent is right and fair. But it is often difficult for parent and child to see things from the same angle.

To deal with children firmly when necessary, is not always easy.

A crew of NYA youths working on a land improvement work project on the Marshall High School grounds are laying an asphalt top of a tennis and volley ball court, H. Ray Roberts, district supervisor, has reported to J. C. Kellam, State Youth Director. The program also includes levelling the entire campus, installing a drainage system, constructing a concrete sidewalk, and sodding the grounds to grass.

As the average citizen views it, the greatest invention of the age would be a mechanical taxpayer.

It is easier for most women to make up their faces than it is for them to make up their minds.

Major Health Problem Stated

Austin, Texas, Sept. 16.—"The eradication of syphilis is today's major health problem and our children will hold us incompetent if we fail to control syphilis within this generation," said Dr. Geo. W. Cox, State Health Officer.

Since inauguration of the national campaign, the public has been made aware of much of the truth about syphilis. While the vast importance of syphilis in general has been stressed, further emphasis needs to be placed on hereditary or prenatal syphilis, one of the most readily preventable types of the disease. Prenatal syphilis is an innocently contracted form, transmitted by an infected expectant mother to her unborn child. The disease in the child can be prevented in almost every instance, provided the mother receives proper treatment during pregnancy. Syphilis, in a sense, is chivalrous; it deals more kindly with women than with men. The early signs of infection are usually not manifest in women; this is especially true during pregnancy. Blood tests, therefore, are all the more essential in the early recognition of syphilis in women.

It has been determined that syphilis affects approximately two to three and a half percent of the white children attending hospital clinics. People should appreciate also the fact that many cases of syphilis are contracted innocently, in marriage and before birth. Syphilis in itself, is not a disgrace. Disgrace lies rather in the failure of people to take advantage of modern medical science and in failure to assure an equal chance in life for all of Texas' children.

To eradicate prenatal syphilis and thereby give the newborn child its rightful heritage of a sound mind and a sound body, health authorities urge observance of the following measures: (1) blood tests for syphilis, affecting both parties who contemplate marriage; (2) a blood test for syphilis on every expectant mother, and (3) thorough treatment if necessary for the benefit of both mother and child.

PRINTING THE NEWS

When to print a disagreeable story and when to leave one out of the paper is one of the most troublesome problems of a smalltown editor. In the case of a person who is unfaithful to a public trust, or one who is guilty of serious crime, it is not difficult to decide, because the public interest, as well as the public's right to have the news, demands that it be printed.

There are some cases, however, in which the offense is entirely of a personal nature, and in which publishing the story would bring sorrow and embarrassment to innocent persons without serving any beneficial purpose. In these the making of a proper decision is often not easy. If the story is printed, relatives and friends of the person concerned will feel that it is unnecessary; if it is suppressed, the scandal-mongers will be disappointed, and many will insinuate that the editor was "bought off."

These same scandal-mongers would howl the loudest, however, if their own shady actions were held up to public gaze.

So it's hard to please everybody and no editor of sense tries to please everybody. He must let his own judgment and his own conscience be his guide.

If he errs on the side of kindness and sympathy for the unfortunate, his error will be forgiven by the more enlightened readers of his newspaper.

One Year Ago

(Taken from the Files of the Santa Anna News of Sept. 18, 1936)

Misses Ruby and Elsie Lee Harper spent Sunday visiting in Big Spring.

Jack DuBois of Cameron visited friends here the first of the week.

Miss Mary Strand Dellinger left Thursday afternoon for Abilene where she is taking a business course at Dranghon's Business College.

Last Friday, Sept. 11, Maudie Kathryn Ashmore celebrated her 11th birthday with a party at the home of her parents, Mr. and Mrs. C. B. Ashmore.

Dr. and Mrs. A. H. Montgomery of Burnsville, Miss., are visiting in the J. P. Vinson home.

Mr. and Mrs. Archie Hunter and family have moved back to Santa Anna. Mr. Hunter operated a grocery store in Ballinger this summer.

TERRACING PROVES OF VALUE IN WEST TEXAS

Terracing has proved its value in West Texas and many terraces are under construction at the present time, according to reports of county agricultural agents in that region.

So urgent is the demand for terracing of stubble land in Brown county that double crews consisting of two rod men and two stake men are being used for each farm level in order to expedite the work. By this method, two days' work can be done in one day.

The farmers are pleased with this method because large areas can be covered in a short time. By following this method, 18.3 miles of terrace lines were laid out in three days' time recently.

"I have seen a lot of terraces work for the other fellow; now I'm going to have some work for me," says Jim Mann, McCulloch county farmer and rancher who has recently had 75 acres of field terraces and 40 acres of pasture terraces run on one of his farms.

McCulloch county farmers plan to terrace some 5,000 acres under the 1937 agricultural conservation program, and ranchers plan to contour, ridge, and put spreader terraces on some 2,500 acres of grazing land.

The real value of terraces and contour farming and their relation to water conservation was demonstrated recently on the farm of Stafford Smith of Bandera county. Soil moisture was checked in two adjoining fields. One of the fields was terraced and high beds had been thrown up on contour lines while the other field had straight rows. After a 3 1/2 inch rain in which fell in less than an hour, practically all the water had run off the unterraced field and it was possible to pick up dry dirt in the tops of the beds. In the terraced field, water had penetrated to a good depth and very little water had run off. Smith reported that each row in the terraced field stood level full of water and that no more water ran in the terrace water ditch than there was in any of the single rows.

A National Youth Administration highway beautification work project has been approved for Archer County. This project will employ 20 youths improving and beautifying roadside parks, safety devices, mail box turn-outs, side road approaches, slopes, ditches, and shoulders, all on the state highway right-of-way. J. C. Kellam, State Youth Director, announced.

Lands ruled by a dictator have one advantage. They can act without waiting for everybody to get mad.

Read the Advertisements.

Ten Years Ago

(Taken from the Files of the Santa Anna News of Sept. 18, 1927)

Miss Kathryn Baxter left Wednesday for Waco to begin work as a teacher in the public schools. She was accompanied by Wilbourne Weaver who goes for his third year in Baylor University.

Clinton Lowe, wife and daughter, Miss Lucille, made a business trip to Fort Worth last week.

Burgess and Tom Sealy left Wednesday for Austin where they go to enter State University.

Mrs. T. T. Perry, accompanied by Mr. and Mrs. H. T. Cate Sweetwater visited relative San Antonio this week. Miss Alice Hays left Sunday for Denton to enter C. I. A.

Certificates have been awarded to 137 girls assigned to the National Youth Administration Work and Training Project at John Tarleton College. Each girl who completed the six weeks course worked 85 hours at the College to earn living expenses, while, during her spare time, she attended a specially planned farm home training course in home economics, horticulture, health education, poultry husbandry, English, and community recreation.

HANDELMAN'S

Where Quality Merchandise Sells For Less

Coleman

Texas



Your Friendly Store

You will always find at Handelman's a friendly and helpful service, and the desire to make every customer leave the store glad he or she came and with the desire to come back.

The Santa Anna Fair

We want to meet you at the Big Santa Anna Fair which is always one of the best in the State. We also sincerely congratulate the Santa Anna people for their progressiveness and wish them every success this year and future years.

The Standard Abstract Company, Inc.

Coleman, Texas

Extends greetings and best wishes to Santa Anna Community people and wishes that their Fair and Rodeo will be a great success.

We will be there and we trust that a large attendance every day will be present.

Miss Bettie McCulloch, Mgr.

Office 54 Telephones Res. 529-J

GREETINGS TO SANTA ANNA

You will always find a warm welcome at this store.

PLENTY OF ICE WATER AND COMFORTABLE CHAIRS

Cudney Furniture Co.

Owned and Operated by Mr. and Mrs. R. L. Clayton Coleman, Texas

Howell - Gem and Dixie THEATERS

Offering the finest motion picture entertainment that is available.

COLEMAN

TEXAS

WE TAKE PLEASURE IN SENDING GREETINGS TO THE PEOPLE IN AND AROUND SANTA ANNA AND WISHING THEM EVERY SUCCESS WITH THEIR COMMUNITY FAIR AND RODEO.

We are sure that you may count on a large attendance from Coleman and all other parts of the County, and that all will be pleased.

FORWARD

-WITH-

Santa Anna

For more than a quarter of a century, we are Pioneers in every sense of the word. We were Pioneers in the early "Brick-Breaking" merchandising days of Texas. Pioneers always in forward aggressive merchandising, we gladly join the Santa Anna News and Santa Anna in its great Fall Fair.

Quality Merchandise at Lower Prices

Higginbotham Bros. & Co.

COLEMAN, TEXAS

The CORNER Poetry Club
 Edited by **Elsie Parker**
 ©1937
 W.M.T. TARDY

The volume consists of Southwestern poetry. Contributions welcomed. Enclose return postage. Address: Wm. T. Tardy, publisher, Liberty Bank Building, Dallas.

MOCKING BIRD
 What have you to make you sing
 Wild troubadour of the thickets?
 What to make your matins ring
 Above the rails and pickets?
 Have a nest in the wild plum tree
 I sing for the mate who is nesting;
 I sing for the heirs we soon shall see,
 And beauty, high, arresting.
 There is food by the garden ways,
 And strength for all our labors,
 Bright hope for many passing days,
 And love for proven neighbors."
 —Grace Dupree Ridings, Sherman

HONORED GUEST
 Turn the forest, drain the rivers,
 Flow the meadows; melt the shares,
 Every field and every hillside
 Make with bars for human shares.
 The firebrands caught from woodlands,
 Light our homesteads, light the piers,
 From the throbbing hearts of mothers
 Lead a toast of blood and tears.
 On the highways, start the

prevail
 France the Colonels up and down,
 Nail our Youth on cross-beamed timbers,
 MARS the God has come to town!
 —Ruth Bransford Wilson, Wichita Falls

GRIEF ALWAYS STRIKES ME DUMB
 When pleasure comes, I grow intense,
 Delight just sets me wild!
 A spark of joy can make me glow
 And prattle like a child.
 I tell my joys to all the world
 But let deep sorrow come . . .
 And suddenly, my lips are sealed—
 Grief ALWAYS strikes me dumb!
 —Pearl Owen Gentry, Malakoff
 Author of Memories

GETHEMANE
 This I know:
 That when the morrow comes
 That we shall go as others
 When the shadows darken
 And the candle's low,
 And each shall beg his own release.
 "Dear father, give me peace."
 —Edythe Stokes Cramer, Terrell

COMMITTEE NAMED
 Six local residents have been appointed as members of the Constitution Committee of the United States Constitution Sesquicentennial Committee which is making plans for the 150th anniversary of the formation of the United States Constitution. The celebration begins Sept. 17. Those chosen are Leman Brown, J. T. Garrett, Dr. R. R. Lovelady, Mrs. D. J. Johnson, Miss Ruby Harper, and Mrs. Ford Barnes, according to a letter received this week from Sol Bloom, director general, who is also United States representative from New York. The recommendations were sent in by Mayor E. D. McDonald.

Wilson Grain and Elevator Co. Offers Great Public Service
 The Wilson Grain & Elevator Company was organized in February, 1918, as a partnership composed of the late H. Bird Wilson and Charles R. Wilson, then known as the Wilson Grain Company with a capital stock of \$4,000.00, doing business in the store now the main building. The senior member of this firm was well known as a grain buyer as he first became interested in a grain store in 1908 under the firm name of Wilson Bros., and occupied the building where the Owl Drug store is now located. Shortly afterwards his brother's interest was purchased by D. J. McNamara, who in turn sold his interest later to C. F. Rahn and the Coleman Grain & Mercantile Company was organized as a partnership with several parties interested and business was done on the East Side of the Square, Mr. Wilson still retaining an interest throughout the various changes, and remained connected in an active way until December 1918, when he sold out to his partner, Mr. Rahn. During the boom post-war years when wheat sold for \$2.50 per bushel and higher, oats above \$1.00 per bushel and corn around \$2.00 per bushel the Wilson Grain Company continued to grow in a small way and in 1923 bought an adjacent lot, upon which a building was erected, and in 1926 when it was realized more space was needed, an additional 100 foot frontage was acquired on the Santa Fe tracks and adjacent to the other property.
 As the poultry industry began to prosper during the years 1928 and 1929, it became apparent that the chick hatchery business should be profitable in connection with a feed store, so two Mammoth 12,000 egg incubators were installed by this company and chicks turned out by the thousands, practically all the chicks being sold to Coleman county people.
 The feed manufacturers had begun to experiment with feeds for baby chicks to make quick growth, and with the Purina Mills doing the greatest experimental work ever undertaken with baby chicks, cod liver oil and other high vitamin ingredients were tried and proved to be the secret for quick development.
 Along with these chicken incubators, the Wilson Grain Co.'s hatchery now has a Jamesway Turkey Incubator which is used strictly for hatching turkeys. In addition to having day-old chicks and started chicks for sale, custom hatching is done by this hatchery on both chicken and turkey eggs.
 Coleman rapidly becoming a real grain marketing center, an elevator and storage facilities were needed, so the Wilsons decided to provide a grain elevator early in 1935, and it was completed in July of that year. While it has a capacity of only 25,000 bushels, the facilities for handling the grain greatly hastens the movement during the rush of harvest and the new up-to-date machinery which dumps the truck or wagon, takes the grain and loads it into the box car, is a big improvement over the old scoop method, the two fast moving elevator legs being able to handle about one thousand bushels of wheat per hour each.
 Chas. R. Wilson, the present and efficient manager, invites one and all to call and see him. He has built a splendid business and made numbers of friends in doing so.

will be merged at night in a headliner show in the 46,000-seat Cotton Bowl.
 J. L. Kraft will be keynoter of the day, and Henry W. Stanley of the Southwest Chamber of Commerce Trade Extension Department will speak.
 Texas restaurant men, who are meeting the same day, will serve a unique dinner to honor guests, with flying waiters coming by airplane with various courses from the Rio Grande valley, the Gulf coast and the far-distant panhandle.

WETTABLE SULPHUR DIP GAINING FAVOR WITH WEST TEXAS RANCHMEN
 The use of wettable sulphur dip to control goat lice is gaining favor with the West Texas ranchmen, county agricultural agents in that section reports.
 In Coke county, R. R. Davis dipped 648 head of mutton goats in wettable sulphur. This was a continuation of last fall's demonstration, when he dipped his flock twice. The hair at shearing time was much brighter and no lice were found.
 The wisest thing a pedestrian can do is buy a suit of armor, insure his life, and then stay at home.

Success to the Grain Farmers

For larger YIELDS and bigger PROFITS
 SOW extra quality SEEDS

Come and look over our assortment of
 Pure Ferguson No. 922 seed oats
 Local grown seed oats
 Black Hull seed wheat, and other varieties
 Winter seed barley

For Prevention of smut treat your seeds with NEW IMPROVED CERESAN, the cost is small

Wilson Grain & Elevator Co.
 Coleman, Texas

COMPLIMENTS
 OF
FISCHER
 Chiropractic Clinic

Coleman Office Building
 Coleman Texas

SINCLAIR HC GASOLINE

REG. U.S. PAT. OFF.

SINCLAIR OPALINE MOTOR OIL
SINCLAIR PENNSYLVANIA MOTOR OIL

Extra Protection for your car
 NO EXTRA COST

Sinclair Oil Co.
 J. E. GRAY, Agent
 Coleman TEXAS

Texas Foods to Be Exhibited at Dallas Sept. 19

The prize products of field and garden, for the first time during Texas' two world fairs at Dallas will be featured on Food Industries Day, Sunday, September 19.
 On that Sunday the butcher, the baker and all the other makers and marketers of our daily food and drink will hold a national Foodfest, with the Pan American Exposition at Dallas the focal point. Agricultural Agents also are arranging special exhibits.
 Three nights before the event, which is expected to draw more than 100,000 visitors to Dallas, rallies will be held by merchants in more than fifty key cities and towns over Texas and the Southwest, to arrange special trains, chartered busses and autocades for the visit to Dallas on Food Industries Day. Bargain rates are in effect.
 The bands and entertainment features from the radio programs of some thirty concerns will be presented throughout the day at various exhibits, and

Greetings From Coleman County Court House To Santa Anna People!

We Hope Your Community Fair and Rodeo Will Be a Great Success

We want you to know that every one of your public servants at the court house feels a genuine interest in the affairs of every section of the county, and that your Community Fair and Rodeo is considered one of the major events in the county and considered a constructive and progressive movement.

We know that Santa Anna will leave nothing undone that will add to the success of its fair, and we are all looking towards a visit filled with interest and education when we attend it. Coleman as your county seat, we are sure, will be glad to co-operate in every way possible.

We urge that every one in Coleman County who possibly can will attend this fair. The Santa Anna section of this county is its richest agricultural area, —you have everything to your advantage for a good fair and we know that your rodeo will furnish plenty of thrills and entertainment.

John O. Harris County Judge	J. L. P. Baker County Superintendent of Schools
Frank Lewis Tax Assessor-Collector	Hunter Woodruff County Treasurer
George Robey County Sheriff	Mrs. Ora West County Clerk
W. J. Evans County Surveyor	J. B. Hilton District Clerk
W. B. "Billy" Baker County Attorney	Curtis Collins Commissioner, Precinct No. 7

SANTA ANNA
TEXAS

FAIR WEEK

SANTA ANNA
TEXAS

Research Bureau to Determine Volume of State Employment

Austin, Texas, Sept. 16.—In a vigorous effort to increase the proportions of its State-wide cross section of Texas business, the Bureau of Business Research at The University of Texas has sent ten thousand schedules to as many Texas firms to gauge the volume of employment over the State.

Increasing demand of Texas business men to obtain an index to business trends of the State has made it imperative that the size of the Texas business thermometer—now embracing approximately two thousand firms—be increased, it was stated by Dr. F. A. Buechel, assistant director of the Bureau, which is the national Bureau of Labor Statistics' only agency in Texas.

The schedules, going in the main part to thirty large Texas towns, will be in the mails before the middle of September, it is intended by the Bureau, and will be received by almost every representative retail and wholesale business house in the State. Houston, with one thousand firms to be contacted, heads the mailing list, followed by Dallas, Fort Worth, San Antonio, and El Paso. Other Texas cities included in the research are: Abilene, Amarillo, Austin, Beaumont, Big Spring,

Brownsville, Corpus Christi, Corsicana, Denison, Galveston, Harlingen, Laredo, Longview, Lubbock, Lufkin, Marshall, McAllen, Palestine, Paris, Port Arthur, San Benito, Sherman, Temple, Tyler, Waco, and Wichita Falls.

From the monthly reports of cooperating firms, the Bureau compiles data of the increase and decrease in both employment and payroll. Reports of the status of State business from the employment and payroll standpoint are released monthly to cooperating firms.

All material from individual firms is handled by sworn employees, and the data gathered appears only in the form of totals, averages and percentages, Dr. Buechel said.

AN INSPIRATION

"I shall pass this way but once. Any good thing, therefore, that I can do or any kindness that I can show to any human being, let me do it now."

It's a wise motorist who realizes that moment saved at a railroad crossing may save all the rest of his life.

Advice Given for Successful Fall Gardens

"Fresh vegetables, as supplied by fall gardens, are necessary to supply variety in the fall and winter diet," says J. F. Rosborough, horticulturist of the Texas Extension Service, who gives a series of suggestions which will make the fall garden more successful.

Rosborough divides vegetables into three groups, early, medium and slow maturing plants. Central and North Texas gardens may carry the medium and early maturing plants. Only the early group can reasonably be expected to mature in the Panhandle and Plains section.

Groups Listed

Included in the early group are mustard, radishes, turnips, leafy lettuce, and similar vegetables which will be ready for harvest in around 45 days. The medium group is made up of Irish potatoes, beets, onions from sets, Swiss chard, collards, and the like, which will mature in 60 to 70 days. The slow maturing group includes spinach, cabbage, carrots, beans, and similar types, which require about 100 days to reach maturity.

Summer weeds should be cut and removed from the garden site, Rosborough said, as they will dry out the soil through heat generated by decay. From three to four wagons of well rotted manure per half acre of garden will hold moisture and help growth.

Rosborough warned that fall gardens should not be planted until rains had provided plentiful subsoil moisture. To insure a fair stand of fall vegetables under unfavorable fall conditions, fall sown seed should be planted at a much thicker rate than is necessary in the spring.

Health Dept. Warns Against Appendicitis

Austin, Texas, Sept. 15.—During the past year 786 persons died of appendicitis in Texas, according to Vital Statistics compilations of the State Department of Health. Many of these deaths might have been prevented had the patient been more aware of the disease and its symptoms.

There are two forms of appendicitis, acute and chronic. The form that appears suddenly, with great pain and sickness is acute. Chronic appendicitis may extend over a long period of time and consists of slight attacks at intervals, but, at some time, there will usually occur an attack worse than any before and the disease may then become serious.

"In the presence of abdominal pain, give nothing by mouth. Never give laxatives. Apply an ice pack. Call your family physician. Abdominal pain which persists over a period of six hours is usually serious," advises State Health Officer Geo. W. Cox.

Hospital records show that the above advice has reduced appendicitis deaths 75 per cent. When otherwise healthy people are operated upon soon after the beginning of the "pain in the stomach" caused by appendicitis, little danger is experienced, but the surgeon's work is made more difficult and the patient's chance of recovery considerably lessened when there is a long delay in seeking medical help, and especially if a cathartic has been given.

How to prevent appendicitis? Keep the body in perfect health as long as possible. Watch your teeth, your tonsils, any place where an infection may occur. Get plenty of good food, plenty of sleep, plenty of exercise. Have a thorough medical examination at least once a year and have your teeth examined and cleaned by a dentist at least once every six months.

This kind of watchfulness will not only help you to avoid appendicitis, it will help you to avoid many other illnesses as well.

Drive carefully, save a life.

AVIATION LEADERSHIP

Pre-eminence of the United States in the aviation world soon may be lost, we are told on high authority, because several European countries have entered more actively into fundamental research and are spending heavily to build up both their commercial and military aviation. After the World War this country assumed a definite lead in airplane design and construction which it has been able to maintain through

careful research and planning. Dr. Joseph Ames, chairman of the national advisory committee on aeronautics, cites the numerous advantages derived by American aeronautics from the scientific investigation at Langley Field, but agrees that foreign countries have borrowed many of our ideas and are now engaged in developing some for themselves. At other times we have been told that American leadership in plane development was in danger; but there is more evidence in sup-

port of that idea now. The large appropriations of Russia, Germany, Italy, France and England for military aviation are a matter of record. To the advantage of several of these countries, too, are the tests to which their planes have been put under the actual fighting conditions in Spain, and the improvements which are sure to grow out of this. Many new types of fighting, bombing and combination craft have been introduced and are being put to severe trial under the eyes

of military experts and scientists. To the United States goes largely the credit for the new "sea clippers" and "flying fortresses" but Dr. Ames believes that the United States will have to be very alert to hold the lead as changes take place. —New Orleans Times-Picayune

Another thing wrong with the world, is that a lot of people who have one-track minds don't even have that in the right direction.

POWER FARMING PAYS REAL DIVIDENDS THE FARMALL WAY



Above: The biggest Farmall—Model F-30—supplies efficient all-purpose power for the larger farm. There are three Farmalls—F-12, F-20, and F-30.

See Us Before You Buy

See Us Before You Buy

It's Time to GO AHEAD . . . with a NEW FARMALL to HELP You

There Is NO Substitute

QUALITY DURABILITY

There Is NO Substitute

REPAIR SERVICE



AFTER SALE



POWELL-CAVANAGH

Truck & Tractor Co.

Coleman

Phone 555

Texas

Elastic Piston Rings....

When your car needs a new set of Piston Rings, have a set of the new

Elastic X Steel VENTED Rings

Installed and be sure that you are getting the best rings made.

CENTRAL AUTO SUPPLY

Telephone 630

Coleman, Texas



Let 'Er Buck

THIS RIDER IS COMPARATIVELY SAFE IF HE IS RIDING IN ONE OF OUR SUPERIOR SADDLES

Hundreds of the best riders in West Texas are using our Handmade Saddles and know that none better are to be had.

THE SANTA ANNA FAIR AND RODEO

Has our best wishes for success, and we hope that every one in this county will attend. Greetings to every one in that vicinity.

J. H. Nance & Son

Harness . . . Saddlery

Shoe Repairing

Coleman

Texas

Community Fair Santa Anna Texas

September 21 - 22 - 23



Spectacular Rodeo Contests Featuring Well Known Cowboys

The Greatest Event in Santa Anna's History

Health Units Begin Work in 6 Districts

Austin, Texas—September 1 was a red letter day for Texans who value their health...

The paramount purpose of the State Health Department is control communicable diseases...

more adequate the health protection.

By the creation and maintenance of these new health districts we hope to standardize health procedures...

The area of Texas made imperative the adoption of this plan dividing the state into six miniature health departments...

swimming pools, tourist inns, and the homes of Texas; better supervision and enforcement of state health laws...

District headquarters are located at Floydada, Mineral Wells, Kaufman, Bryan, Kingsville and San Angelo.

Each district headquarters office has a personnel of medical director, two nurses, sanitary engineer, two sanitarians, food inspector, and clerical help...

COTTON LOAN IS ASSURED: WILL START SEPT. 15

While no authorized information has been received by the county agent's office, farmers in Coleman county are assured of a government cotton loan for 1937...

Participation in the loan-subsidy arrangement, designed to bolster prices on this year's large production, will be limited to growers who agree to comply with control measures...

The government will lend up to 9 cents a pound on the 1937 crop, depending on the grade, and will grant subsidies of up to 3 cents a pound on 65 per cent of the growers base production...

Read the advertisements.

Cattle Improvement of Interest to West Texans

Improving beef cattle herds and the feeding out of calves are receiving the attention and interest of West Texans at present...

The quality of range cattle will be greatly improved in the next few years by the recent purchase in Brewster and Jeff Davis counties of 26 head of range bulls selected from an outstanding herd...

Despite the hot, dry weather, 53 Mason county 4-H club calves being fed out by 20 club boys made an average daily gain of two and one-half pounds during the past 30 days...

Ed Moseley, Hudspeth county 4-H club boy, has selected three calves from his father's herd with the understanding that if they place in the prize money at the fall shows...

A new self feeder for his calves has just been completed by Frank Hord, Presidio county 4-H club boy. The self feeder is four feet long, three feet high and two feet wide...

NOT HIS PEERS

Prosecuting attorney: Are you acquainted with any members of the jury?

Witness: Yes, sir, with more than half of them.

Attorney: Are you willing to swear that you know more than half of them?

Witness: If it comes to that, Mr. Attorney, I'm willing to swear I know more than all of them put together.

WPA Constructs

(continued from page one)

and 6 miscellaneous buildings. Sponsors in the Dallas WPA district with 23 buildings which cost \$304,615 lead other sections of the state in this type of construction. Other WPA districts include: Marshall, 17 buildings, \$147,327; Houston, 3 buildings, \$125,749; Fort Worth, 17 buildings, \$276,726; Waco, 12 buildings, \$279,394; Austin, 6 buildings, \$220,846; San Antonio, 14 buildings, \$206,061; Laredo, 3 buildings, \$24,267; Amarillo, 5 buildings, \$84,253; Lubbock, 4 buildings, \$16,761; San Angelo, 7 buildings, \$81,230; El Paso, 6 buildings, \$70,105.

These figures involve only new construction and do not include the hundreds of school repair and landscaping projects undertaken by the WPA in Texas, Baugh said.

COULSON'S DRUG STORE The REXALL Store Prescription Druggist For 50 Years GLOBE Poultry and Animal Vaccines Coleman, Texas

Announcement

I am pleased to announce to the people of Coleman County, my appointment as a representative of the

Southwestern Life Insurance Company

(Succeeding Mr. Jack McClure, Deceased)

We are equipped to handle all kinds of Insurance and bonds, and will appreciate an opportunity to serve you.

J. Cecil Landrum

Manager of the

Coleman Insurance Service

Coleman

Texas

Phone 133

Santa Anna's Community Fair and



Extends to its many users in the vicinity of Santa Anna, greetings and congratulations on their

Third Annual Community Fair and Rodeo September 21 - 22 - 23

We know that it will be an event reflecting the fine spirit of your people, and that every visitor will be pleased with exhibits and entertainment.



In Bottles

Will also be there, ice cold, pure, and wholesome. It is truly America's favorite beverage. You may drink it freely with the knowledge that it is refreshing and invigorating. For Coca-Cola is made under the most exacting sanitary conditions.



MAKE YOUR PLANS NOW TO ATTEND THE SANTA ANNA FAIR BRING THE WHOLE FAMILY ALONG TOO!

The Coca-Cola Bottling Co.

JACK BARKER, Mgr.

Fake Health Racketeers Rob Citizens

Austin, Texas, Sept. 17.—In speaking of health racketeers, Dr. Geo. W. Cox, State Health Officer, said, "There is no meaner method of hitting below the belt than by holding out false promises to incurables. This fact, however, does not in the least deter the unscrupulous who thus heartlessly prey upon thousands of unfortunates who are in a hopeless stage of illness. Thousands of dollars are extracted annually from individuals whose conditions direct their hopes to the promises made by the endowed laboratories to cures for cancer, diabetes, tuberculosis, epilepsy, pellagra, and other serious conditions.

"Unfortunately, it is words rather than deeds that create the miracle. A miracle which, instead of being related to a cure, is entirely associated with the transfer of large sums of money from innocent persons to those whose only interest in health and health matters stops at the cash register.

"It is the sad and killing fact that in addition to the incurables, there are thousands of believing persons who become the victims of this type of racketeer, and thus through self-diagnosis and self-treatment,

postpone a real investigation of their ailments until the incurable stage is reached.

"Two main rules should be followed in this connection. The first is to have an annual physical examination by a reputable physician. In this way incipient conditions can be discovered and by proper treatment the disease can frequently be conquered. The second rule is to mistrust all high promising statements of 'amazing discoveries'."

STOCK SHIPMENTS SHOW BIG ADVANCE

Shipments of all classes of Texas livestock during June totaled 8,177 cars, compared with 4,321 cars last year, an increase of 90 per cent, according to a report from the University of Texas Bureau of Business Research.

Cattle shipments of 5,786 cars increased 112 percent over June last year; calf shipments, 587 cars, increased 33 per cent; and sheep shipments, 1,221 cars, increased 136 per cent. Hog shipments totaled 412 cars, a decrease of nearly 20 per cent.

Aggregate shipments of Texas livestock during the first six months of the year were 46,681 cars, against 32,748 cars during the corresponding period last year, an increase of 40 per cent.

Shipments of cattle to the Fort Worth market were more than double those of June last year and shipments of sheep to this market increased 67 per cent over a year ago.

Gay Nineties Pictured at Exposition

Dallas, Sept. 17.—Ladies on the Gay Nineties, with such glamorous characters as Lillian Russell, "Little Egypt," and "Two Little Girls in Blue," create the colorful background of the most popular scene in "Cavalcade of the Americas," stellar free attraction of the Pan American Exposition. It is a brief street promenade presenting a miraculous miniature of the mauve decade.

There are far more momentous scenes in the dramatic outdoor spectacle than this hilarious bit, having to do with the main theme of the show—liberation of the Americas, but there is no part of Cavalcade that wins such a spontaneous reception as "The Gay Nineties."

The scene is one of amusement and for no other purpose. It is a thumb nail sketch of "that most famous and amusing era of the past generation—the day of mutton leg sleeves, bustles, the first automobile, votes for women—and the Hoochie Kootchie!"

Center of attraction in the scene is "Dr. Rucker's Korak Medicine Show," ably demonstrated with the gyrations of "Little Egypt" to the awe-struck Gay Nineties group, climaxed by a fire alarm which is answered by horse-drawn fire engines tearing across the stage. Color and mirth abound in this "hit" of the 24 thrilling scenes of "Cavalcade of the Americas," which carries the most popular appeal of any attraction on the Exposition grounds.

POULTRY SHIPMENTS SHOW INCREASE

Almost a 100 per cent increase in poultry shipments from Texas to interstate points over the shipments of June, 1936, was reported for June of this year by the University of Texas Bureau of Business Research. A total of 63 cars of poultry were shipped out of the State, compared with 32 cars in June, 1937. Egg shipments for the month totaled 43 cars, against 44 cars a year ago.

Interstate receipts of eggs totaled eleven cars, against seventeen cars in June last year. Of these receipts nine cars came from Kansas and two cars came from Nebraska. In June last year fourteen cars were brought into the State from Kansas, one from Missouri and two from Oklahoma.

After you have weeded the garden, a good way to get the kink out of your back is to whitewash a ceiling.

Food Dealers to Visit Exposition

Dallas, Sept. 16.—More than 100,000 food dealers of the Southwest, their families, employees and friends, will invade the Greater Texas and Pan American Exposition Sunday, September 19, for a day of jollification and get-together.

Every branch of the food industry will be represented, from the primary producer on the farm, to the consumer wherever located.

Railroads of the Southwest are offering an extremely low week-end rate for the occasion, which consists of 75 per cent of the one-way fare for round trips. Visitors may leave their homes on trains departing Saturday night or Sunday morning and return not later than Tuesday night.

Among the outstanding events of the day will be massed attendance at the various presentations of the Cavalcade of the Americas, a free performance, and the most outstanding show ever presented on an outdoor stage. The Pan American Casino, the world's largest indoor stage, also will be a mecca.

At night there will be an old-time dance in the Hall of Agriculture, free to the visitors. Short business meetings will be held there and in the Hall of Foods and Beverages during the day.

Granville Moore, general chairman, announces that big name performers will be on hand for the amusement of the handlers of the No. 1 American necessity.

Exposition officials are laying plans to provide every possible courtesy to the many thousands of visitors, and will offer facilities to insure housing at reasonable rates.

SODA JERKER SLANG COLORFUL AS WELL AS APPROPRIATE

(Ballinger Ledger) When the young man in the drug store says "shoot a pair with hydrophia outside" to the boy behind the fountain, the killing of two mad dogs doesn't enter his mind. He's merely using the slang peculiar to drug stores to tell him customers in a car outside want to frosted coca-colas and two glasses of water.

A plain coca-cola in a glass, most popular drink sold locally, is "shoot one." A bottled colk is "break one in the neck," and a cherry colk, "shoot one honest," because of George Washington's well known honesty in connection with the cherry tree episode. A lime colk is "shoot one frowning" and for lemon "shoot one sour." A few people drink chocolate colks, known to the soda slinging fraternity as "muddy water."

Because of its origin in that city, a Dr. Pepper is called a "Waco" and sometimes "prune juice." The same terms for various flavors are used for colks, such as an "honest Wage" for a cherry Dr. Pepper.

A grape juice is a long or a short "vineyard," or a "W. J. B." the latter the initials of William Jennings Bryan. John D. Rockefeller has a niche in the soda world, "J. D." being the term for a milk chocolate. A "J. D. without" is a "400" or milk chocolate made with ice instead of ice cream.

The lowly glass of water is an "81," two glasses "82," and so on. A "coast-to-coast" is a combination lemonade and orangeade, and straws are "elevators," or "a pair of drawers." To "stump one" is to make a small limeade; "squeeze one" a tall limeade. "Dust one chocolate malted milk." Similarly "shake one chocolate" is a chocolate milk-shake. A "stack of piney" is a dish of pineapple ice cream and a "Palm Beach on" a pimento-cheese sandwich.

LOAFERS IN COLLEGE

The growing idea that a large percentage of young men now in college would be better off elsewhere was emphasized by no less an authority than Chief Justice Charles E. Hughes, in an address at Brown University, from which he was graduated in 1881.

He roundly criticized the many modern college activities which have nothing to do with education, and which attract the mental loafers whose only ambition is to get by and obtain a diploma. Referring to such a student Mr. Hughes said: "I should take him out at once and tell him to make his own way. Those who are not disposed to make good use of their college years would be better off elsewhere."

Neither Mr. Hughes nor any other sensible person would disparage the value of a college education, but the fact that our colleges are encumbered with many students who have neither

er the capacity, the energy nor the ambition to profit by college training. They might as well quit school and engage at once in whatever simple tasks their mentality happens to fit.

CARE OF CLOTHING STRESSED BY 4-H GIRLS

The selection of adequate and appropriate clothing and the proper care of this clothing are receiving a great deal of attention from West Texas home demonstration club women and 4-H club girls, reports from county home demonstration agents in that territory indicate.

Mrs. Palmer West of Schleicher county has built a closet 8 feet by 3 1-2 feet by 2 feet with three removable shelves across one end; a top space for storing quilts, luggage, and out of season things; a shoe rack; a hat rack; and a rod for hanging clothes. The inside of the closet is papered to match the room and the woodwork is varnished. The closet cost \$7.65.

Mrs. West has made 15 garments. For these she either cut the garments by a foundation pattern or checked them by one. They consisted of nine dresses, a suit made from one of her husband's suits; a pair of pajamas; a slip; a house coat; a blouse; and a dress made from an old evening dress.

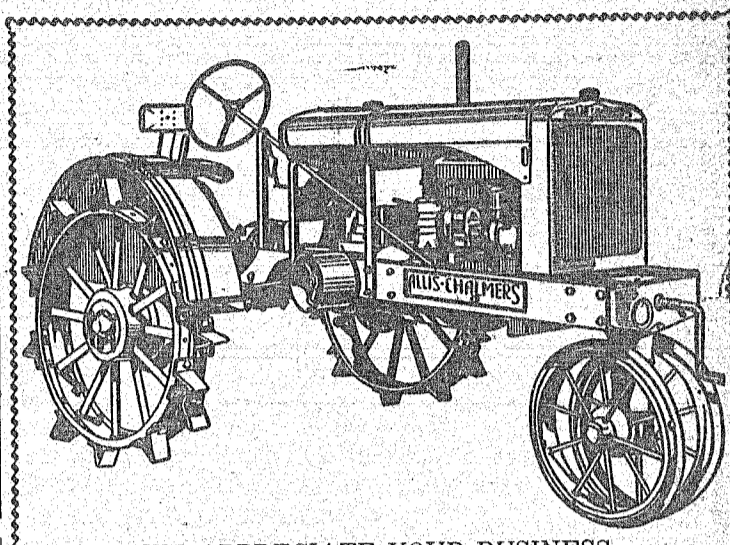
"I'm so proud of my new clothes closet. Now I can take good care of my clothes," says Christine Holland, Ward county 4-H club girl. Her closet is

made of three ply veneer wood, reaches to the ceiling, and has a rod for hanging clothes and also has plenty of shelf space.

Fifty-one Brown county 4-H club girls report having achieved all of their clothing goals. Individual clothing accounts were kept by 35 girls who spent \$265.47 for their clothes. These girls made 59 cotton dresses and 20 silk and wool dresses with a total value of \$204. They also built 8 new clothes closets at a

cost of \$7.74 and remodeled others at a cost of \$3.99.

J. C. Kellam, State Youth Director, has approved an NY Work Project to employ 14 NYA girls in the school cafeteria in San Antonio. This project will enable girls who have been attending maid-training classes to obtain further practical training in preparing and serving food. Uniform for the 140 girls will be made in the NYA sewing room.



WE APPRECIATE YOUR BUSINESS

Freeman Tractor Company

Coleman

Texas

GREETINGS and Congratulations

To the people in the Santa Anna vicinity on the staging of their Third Annual Community Fair and Rodeo.

We know that it will be a great success and that every one who attends will enjoy many interesting exhibits and much thrilling entertainment.

J. E. Stevens Company

Morticians — Hardware Implements, Furniture, Floor Coverings, Draperies
Coleman, Texas

Chrysler and Plymouth G M C Trucks and Pickups

Will meet every requirement and satisfy every wish in motoring comfort and enjoyment. Ask for demonstration.

THE FEDERAL TIRE

has a guarantee of satisfactory service—play safe with a new set of Federals.



PRICED LOW Easy Payment Plan

You can enjoy your motoring fully when riding on Federal Tires because of their dependability. Compare their service record.

COMPLETE SHOP SERVICE

When your car needs a paint job, fender repair, motor reconditioning, battery service, washing and greasing—any kind of mechanical work, let us serve you. We are prepared to sell you a new car or service your old one, and assure satisfaction.

PHONE 602

Ray Gilliam Motor Company

CHRYSLER-PLYMOUTH SALES & SERVICE

G. M. C. Trucks and Pickups



To SANTA ANNA'S GREATEST COMMUNITY FAIR and RODEO

You are assured that nothing is being left undone to provide for your entertainment during the three days.

WE ALSO WISH TO ANNOUNCE That we are now retailing Wheat - Oats - Barley Milo - Hygeria and Chicken Feed

We Are In the Market Daily for Your Grain

Geo. D. Rhone Elevators

Coleman

Santa Anna

FOR YOUR ROYAL RECEPTION

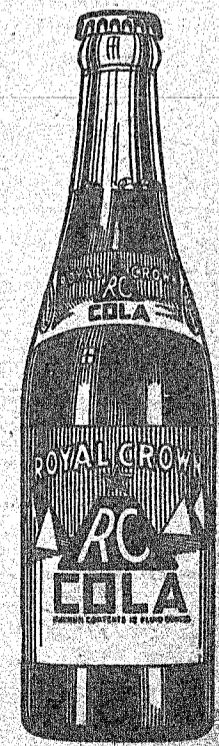
THANKS

Thanks, Folks, Thanks a Million

You have been wonderful in your overwhelming acceptance of ROYAL CROWN Cola. Wherever this drink has been introduced it has, almost overnight, become an acclaimed favorite.

We are proud that your discrimination has proved the superiority of ROYAL CROWN Cola as well as the accomplishment of the NEHI Organization in supplying you with the best.

We honestly believe you will continue to prefer ROYAL CROWN because of its purity of quality, its refreshing flavor, and its uniform excellence.



\$100 FOR A SLOGAN! The many compliments people are paying ROYAL CROWN Cola have made us feel that a slogan contest would be fun. Write a slogan about the extra fine flavor and extra value found in each bottle and mail it to ROYAL CROWN Cola, Nehi, Inc., Columbus, Ga. The best slogan submitted wins \$100. Contest closes October 30. All slogans become the property of Nehi, Inc., and the judges' decision will be final.

NEHI BOTTLING COMPANY

Coleman, Texas

Home Demonstration Notes

HOW I FIXED MY BEDROOM

By Mrs. J. W. Roberts of Brown Ranch First Prize Winner of County Bedroom Contest

I began the improvement on my bedroom early in February in order to have plenty of time to do my work thoroughly. Miss Alice Glenn Young, County Home Demonstration Agent, came to see me before the work was started to explain the demonstration and outline the things to be done. Together we planned what improvements were needed and how they should be done.

First, we took all furnishings from the room so that the walls, floors, woodwork and the closet could be fixed. Then the baseboards and quarter rounds were torn away. As the walls had never been papered, all we had to do was give the room a good cleaning and everything was in readiness.

As there was no closet in the room, I had a spacious one built, two feet wide and six feet long, that extends to the ceiling. The closet is divided into two divisions, the lower one for clothing, and the upper one for quilts and other bedding. In this way I can keep my cover clean and out of sight. There is a shelf in the center of the closet and rods on either side, running from the front to back for dresses, coats, etc. There is also a shoe rack in the bottom of the closet to keep the shoes out of the dust.

Putting the canvas on the walls was our next job and the paper was put on a week later. I chose a paper with a light cream background, figured with small, rose colored medallions. The paper gives the room a cleaner, lighter, more spacious appearance. After the paper was hung the baseboards and quarter boards were replaced.

Painting the woodwork was the next step in our improvement plan. The doors, windows, facings, and the baseboards were cleaned with gasoline and sandpaper. The two coats of ivory enamel were applied. The new closet received two coats of

light oak varnish stain and a final coat of clear varnish. The floor presented my worst problem as it was rough and splintery. To keep the wood from taking up so much of the paint we gave the floor a coat of linseed oil. When this was thoroughly dried, a good grade of light brown deck paint was applied in two coats. This light, golden brown paint was chosen as it does not show dust or tracks badly. To protect the surface of the paint and make it wear better a coat of paraffin and one of Johnson's Wax were applied. This smooth waxed surface will also make the floor easier to clean.

All the furnishings used in my room were remodeled or refinished. The dresser was an old fashioned one with carving around the mirror. The carving was removed and the stand that held the mirror was removed. Then the dresser was cleaned, sandpapered, and varnished, and the mirror hung on the wall by a cord. The rocker, straight chair, library table, and book rack were also cleaned, sandpapered and varnished to match the dresser. As I had no place in the room for bathing, we built a small table from scrap lumber and varnished to match the rest of the furniture. On top of the table is placed a pitcher, wash pan, and a soap dish and on either side are racks for towels and wash cloths. This gave me a good bathing center that is necessary part of a bedroom when the house has no bath room. We also built a bench for the dresser out of scrap lumber and upholstered it in flowered cretonne and varnished it. The iron bedstead was cleaned and received a coat of light brown enamel to go with the other furnishings. Several new slats were added to the bed so there would be one under each coil of springs. This is one good way to have a comfortable bed and keep springs in good shape over a longer period of time.

The bed is equipped with slats, springs, a good mattress, and two pillows. I made a

spring cover from two old mattress tickings to help keep both mattress and springs clean and in good condition. A mattress cover of unbleached domestic was bought and the pillow protectors were made from old pillow cases. An old quilt was cut the size of the mattress and the edges bound to make a good mattress pad.

Two buff colored window shades were added and thin ecru colored curtains. Two home made rugs were used on the floor and quilt block chair cushions that I had made were used in the chairs.

Thus by using what I had at home plus a small amount of cash, \$21.90, I changed my old room into one which is cool, light, pleasant, and easy to clean.

After my bedroom was nearly finished I decided that I would see what could be done to improve my kitchen. For several years I had planned to remodel my kitchen, and since I started on my house, I decided to fix it up as I had planned.

My kitchen is fairly large and I had a spacious cabinet built across the entire west end of the 14x14' room. There are two large windows, one on the south and one on the west that was cut down so it was only 18 inches above the sink. This window gives enough light so that I can see well when working at the sink or cabinet.

I chose green and ivory as the color scheme for my room as it is cool, pleasing and restful. We painted the new cabinet, the doors, window-frames, baseboards, and work table a clear green and trimmed it in ivory.

The wall paper has a light, creamy background with some green in design and the ceiling paper was ivory. The coat of papering was low as we did all the work ourselves. The floor is covered with new linoleum that has a tiny green check in it.

I bought new window shades and made some frilly white curtains for the windows. A new green towel rack and a cup towel rack added other nice touches.

As a result of our home improvement work in the home demonstration club I now have two clean, fresh, attractive rooms that my whole family can enjoy.

I intend to fix up the rest of my house as soon as possible since I have found out how economically and efficiently such work can be done by a person and her family. Being bedroom demonstrator for my club has been both a pleasure and education.

Below is a list of all improvements made and all money spent:

Wall paper	.90
Ceiling paper	.72
Border paper	.66
Lining	.15
Canvas	\$3.52
Tacks	.40
Mattress cover	\$1.40
Paint, enamel, flat, Deck	\$4.98
Material for closet	\$6.65
Curtains	\$1.05
Shades	.70
Dresser scarfs	.69
Upholstering for bench	.08
Total Cost	\$21.90

THE STORY OF MY 4-H CLUB WORK

By Dorothy Douglas Trickham 4-H Club Wardrobe Demonstrator and Second Prize Winner in the Clothing Contest

It was not until October 1935 that my dreams of becoming a 4-H Club girl were realized when Miss Alice Glenn Young, Coleman County Home Demonstration Agent, made a first official

visit to our school to organize the Trickham 4-H Girls' Club. At that first meeting we elected officers and Miss Young gave us the plan for our first year of 4-H Club Work.

Our work was divided into two divisions, first year clothing that included making a cup towel, slip and dress; and production and preservation of leafy, green or yellow vegetables. We were to plant enough row space, 2 ft. for each 1 lb. to be produced, to produce a yearly supply of 100 lbs. per person in family and conserve 5 containers of vegetables for personal use. I reached all goals in 1935, and did, in addition quite a lot of sewing and canning.

Our club being the only one in the county that lived through the entire year, we were very proud of our record. We have worked, we think, very faithfully to make our club one of the best and one of which we will always be proud.

Talks were given at the beginning of each new problem by Miss Young, County Home Demonstration Agent, and also helpful advise and criticisms as we progressed, have made our work very interesting. Help and demonstrations given by my two older sisters who are taking Home Economics work at C. I. A. in Denton, have been beneficial.

We have learned too, along with other things to be economical and use the material we have at home. For example, when we made our cup towels we used flour sacks and feed sacks that had been washed, bleached. They are nice and soft, about a yard long, and cost very little. In making slips we chose very closely woven cotton materials in pastel shades. We used French seams on the sides and whipped or blind stitched in hems. Our school dresses were plain or printed cotton materials, in which we chose colors most becoming to complexions and hair. By the time these articles were finished we had learned to use a machine; to make evenly whipped hems, plain, and French seams; put on pockets, collars, and cuffs; methods for finishing facings, bindings, and hems.

Through the summer of 1936 we sometimes met at the girls' homes and after the meetings had recreation. For one meeting we had a big picnic on the creek and all went swimming. Everyone had a grand time.

With the cooperation of the Women's Club we sent two girls to Short Course at A & M College in 1936; they are still talking about all the things they did and saw. I think these girls have done much to interest other girls in club work by this enthusiasm over the Short Course.

The club interest almost died during the very hot summer months, but became intense with the election of new officers in the fall of 1936. At that time I was elected Secretary of the club. I have enjoyed the work and feel that it has been most helpful to me.

Our goals in Clothing for 1937 were to: 1. Equip a sewing box and make a clothing plan; 2. Provide closet with 12 hangers and make a shoe rack. Check D-105 each week. 3. Make kitchen apron, gown or kimono, and a sport dress to wear to the Countywide Contest in June.

The goals in Gardening were to: 1. Make a garden plan to provide enough row space to produce 200 lbs of other vegetables for each member in the family; 2. Conserve 15 containers of canned quality products, 4 qts. in glass jars for judging and scoring contest; 3. Prepare and serve these vegetables at least 6 times during the year.

In January 1937 we made our kitchen aprons, which called for the making straps, strings, pockets, and the damask stitch. These aprons were made from cotton prints and from discarded sacks.

Our February program was on making garden plans and how to deal with insects. Miss Alice Glenn Young, County H. D. A., gave the program on the garden plans. By this time everyone was much interested in club work. I was much pleased when the club elected me wardrobe demonstrator, as I enjoy sewing very much.

I had an old closet in our hall that we use to house shoes and old coats. It was very dark inside and outside, and located in a dark corner—really, I didn't think that it could be remodeled. The height of my ambition was to see if I could make it into a nice adequate closet. That was one of the reasons that I wanted to be wardrobe demonstrator.

Other goals to work toward were the prizes to be offered at Rally Day to the three demonstrators who had done the best work during the year. I will tell you something about Rally Day later, but just now, I will continue with our work. We made gowns or kimonos

in March, either one that we wanted to make. We chose closely woven cotton materials, in soft colors that would wear and launder well.

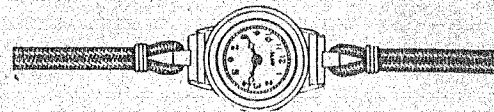
During April we worked on our sport dresses and learned quite a lot about making suitable finishes for necks, sleeves, hems, seams and pockets. My dress is a two piece one, a dress with a long sleeved coat, made of blue basket weave cotton material.

In May Miss Young gave us a talk on the care of teeth, hands hair and skin. I enjoyed this very much as I want to look as nice as possible.

At our meeting in June we had all garments we had made checked and OKed. Then we discussed the plans for the Rally Day, which was to be held on June 19th at the City Park in Coleman. We planned to put all aprons, gown or kimonos on display for the visitors to see and we were to wear our sport dresses for the judges and later in the Style Show. The Demonstrator who scored the

highest on her work for the year was to go to Short Course to be in the District 7 Clothing Contest. Besides my apron, gown and dress, I made a slip to wear with my dress in the

Style Show. I remodeled my closet and added a top shelf for hats, a rod for dresses and coats, and a (Continued on Page Eight)



LARGEST and FINEST Stock of DIAMONDS - WATCHES - SILVERWARE

In Coleman County

EARLE SMITH'S Jewelry

Coleman

117 Commercial

Texas

Mr. Farmer:

We solicit and will appreciate your ginning business. We have modern equipment, and will render you efficient and satisfactory ginning service.

We Will Buy Your Cotton

AT TOP MARKET PRICE

If Your Are Ready to Sell It.

Here to Serve You.

FARMERS GIN COMPANY

GUY HIPHSHER, Mgr.

Coleman

Texas

Holley Chevrolet Co.

Complete Automobile Service

Coleman

Texas



Extends Greetings and Best Wishes To Our Neighbors in the Santa Anna Vicinity and Wishes Them Great Success with Their Third Annual Community Fair and Rodeo.

We believe that this event will further demonstrate the progressiveness of your people and the richness of your agricultural resources.



Jerseys Sheer Wools Smooth Satins Alpaca

And many other wanted materials in styles and sizes for all.

Blue Bonnet Dress Shop

Vista Leverett, Prop.

Next Door to the Owl Beauty Shop

Coleman, Texas

Announcing . . .

Our

First Anniversary Fall Showing

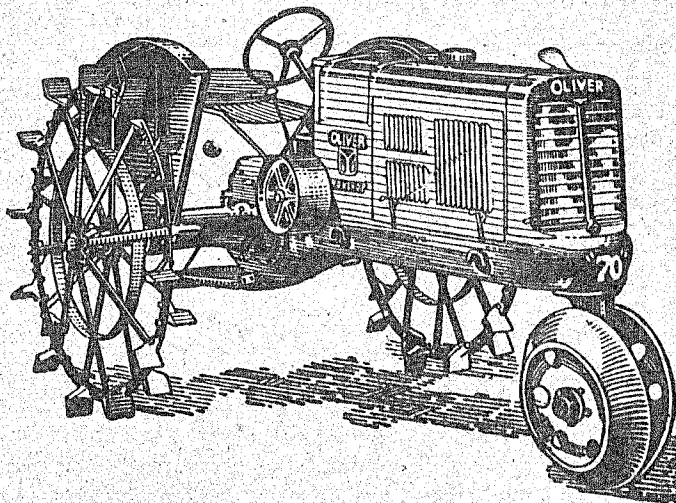
Of the season's smartest creations in Dresses . . . Coats . . . Suits Hats and Accessories

AT POPULAR PRICES

The new Fall Styles are prettier this year than ever, and we invite you to come in and examine them.

6--CYLINDER POWER

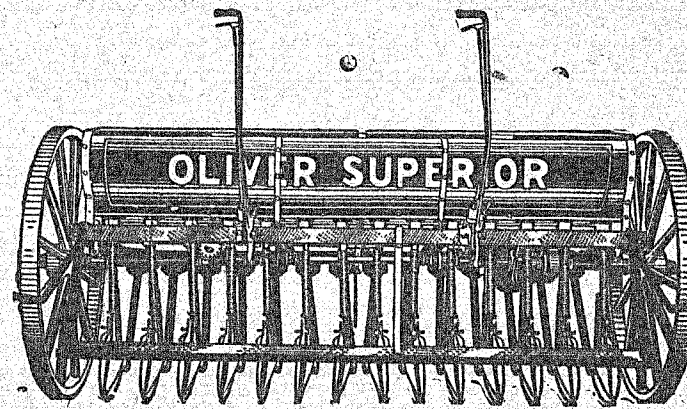
The Oliver Row Crop "70" Is The Most Efficient Tractor Ever Built By The Oliver Company. A Six-Cylinder, two-plov Tractor weighing 3,000 lbs. A Light-Weight Tractor That Will Do Big Work.



With its six cylinders giving over-lapping power, the Oliver "70" motor runs more smoothly and with less vibration than any two or four-cylinder engine.

Let Us Show the New Oliver Superior Grain Drill

Now the finest drill that money can buy. All steel Big Capacity hopper—New superior variable speed running in oil transmission. Roller bearing axles.



We Will Also Be Glad to Have You Call and Let Us Explain to You the Superior Advantages of the Oliver Plow. It is a Plow That Is Guaranteed to Give You the Best Work That Can Be Done Regardless of the Kind of Soil.

Coleman Farm Machinery Co.

COLEMAN

Phone 52

TEXAS



Roundup

"Let 'Er Buck" and "Ride 'Er Cowboy"

Will Be the Orders of the Day at Santa Anna's Big Rodeo and Fair

Towns Asked to Send Girl to Abilene Fair

ABILENE, Sept. 15.—(Sp)—Cities and towns of West Texas have been asked to send Duchesses to participate in the coronation of King Cotton and the Texas Cotton Queen at the Texas Cotton Festival, scheduled here October 5 and 6 during the West Texas Free Fair.

To compose the Texas Cotton Festival court along with the two hostess princesses, Eloise Ely, daughter of Judge and Mrs. W. R. Ely, and Marjorie Munger, daughter of Mr. and Mrs. L. S. Munger, the Duchesses will take part and become guests of honor in a round of social events, climaxed by the Coronation of the Texas Cotton Queen and King Cotton. Names of the King and Queen will be disclosed on the day of the Coronation.

In honor of visiting Duchesses, the Texas Cotton Festival Ball is to be held in one of the downtown ballrooms on the night preceding the Coronation. The Coronation Grand Ball will be the finale to Texas Cotton Festival on Coronation Night.

The Texas Cotton Festival, as a part of the West Texas Free Fair, is to be one of the most elaborate affairs of its kind ever to be held in West Texas, and the only one of its kind attributed to cotton.

Staged on setting 253 feet in length with a gorgeous pictorial background, the Coronation will be held along with "Arabian Nights," a colossal pageant with a cast of 400 people.

In charge of the Coronation are Howard McMahon and Mrs. Ernest Grissom.

On The Move In West Texas

The biggest liar, or the most accommodating cuss in the world, was the oil field worker in the Crane section who drove his Ford car into the bar pit while traveling at 85 miles per hour, to permit an oil tank being hurled along the highway by a high wind, to pass. —Jay-ton Chronicle.

Drive carefully; save a life.

A TALE OF TWO CITIES

Many Americans have visited Shanghai and retain vivid memories of that great metropolis and its busy harbor, crowded with the shipping of every nation. Many Americans also know Madrid, and closing their eyes can recall the splendid hotels, and great stores which used to line the Gran Via, as well as the magnificent palaces, art galleries and churches, which formerly characterized the Spanish capital. There are even a few of us—for Americans are great travelers—who know both Shanghai and Madrid, for all the 10,000 miles that separate them. And to them the current devastation in the two cities comes home with almost sickening force. The destruction of modern warfare is fortunately an abstraction to most people. Imagination is totally unable to picture the effects of bombs and high explosive shells unless it can also construct an actual background for the setting. But when the Gran Via and Nanking Road can both be visualized, and when the effect of a shell bursting on the busiest street corner is superimposed, a faint shadow of what is now actually happening in the world will come to mind. A mind touched even by the wing of such a shadow is not likely to harbor any great optimism for the future of our civilization. —Washington Post.

MORE INDUCEMENTS FOR YOUTHS TO JOIN TREE ARMY

More bars were let down this week by the Texas Relief Commission to youths who wish to enroll in the Civilian Conservation Corps, according to an announcement made by Mrs. Frankie Sedwick, county case worker.

"A youth may now be selected who has been out (of the CCC) only six months, if other rules covering eligibility are met," stated Adam R. Johnson, director of the Texas Relief Commission, in a letter to Mrs. Sedwick.

It is pointed out, too, that the educational and recreational programs for the coming months far surpass those of the last months. Everything from the Three R's to higher courses will be taught.

Special Rates to Pupils For Exposition Trip

Dallas, September 16.—The Santa Fe Railroad has planned a special train for scholastics, their teachers, relatives and friends from portions of District 14 to the Greater Texas and Pan American Exposition.

The special is scheduled to originate at Coleman at 7:00 A. M., October 23, and arrive at the Exposition at 2:00 P. M. the same day. Returning, it is scheduled to leave Dallas at 9:00 P. M., October 24, arriving in Coleman at 5:00 the following morning.

The train is one of a series of specials planned by all railroads to the Pan American Exposition to accommodate the educational movement, which began on September 10 and will end on October 31. The Exposition has offered numerous price

concessions to the groups, and a two-day holiday for the groups has been proclaimed by Governor James V. Allred. An optional two-day all-expense tour has been provided for \$2.25, which includes housing, meals, admission and major attractions.

Special day coach rate from Santa Anna for the round trip on this train is \$2.00.

Home Dem.

(Continued from Page Seven)

shoe rack. Then I painted the inside with cream enamel to make it lighter. I found that my closet wasn't nearly as impossible as it looked in the beginning. Now, I have a good closet in which to keep my clothing.

The Rally Day came off according to schedule on June 19 at the City Park. All had looked forward to the day and it came up to all of our expectations. Eight of the ten demonstrators in the county were present to take part in the

contest. I won second place in the demonstrator group and was awarded a manicuring set. I feel that my work this year was most successful. The Rally Day was one of fun and excitement and one that I shall always remember.

Don't worry when you stumble. Remember that a worm is about the only thing that can't fall down.

The "forgotten man" is probably by this time on a government payroll and driving around in a fine car.

Safe Drivers

(continued from page one)

ways. Where the cars of a few years ago gave you a thrill at 40, the cars of today do 60 and 70 with ease. That makes for comfortable motoring when all goes well—but lack of vibration, and motor smoothness doesn't help when you careen head on into another car at a mile-a-minute clip. And the fact that today's highways are safe, from an engineering standpoint, when compared to the roads of yesterday, doesn't

help when you experience a blow-out while you're hitting it up—or speed around a curve to find the road blocked and insufficient room to stop.

It is the average, experienced, "safe" driver who is causing today's accidents. This is the driver who must be reached by law enforcement agencies, and who must be appealed to by safety campaigns that are to get results.

Old-time fables started with "once upon a time" but nowadays they start out with "here will be no new taxes."

You're Invited To STURGES & GIBBS Coleman, Texas

Get Into "NELLY DON" Out'n About Fall Frocks

New Shipment Today Priced \$1.98 TO \$13.98 Exclusive with Sturges-Gibbs



Yes!

Teacher goes Back to School Smartly

If she chooses her clothes at STURGES & GIBBS

It's the one store where she can be assured of finding all the smart, young clothes she wants . . . and needs . . . at affordable prices.

Camel Hair Coats up from . . . \$16.98 New Fall Dresses up from . . . \$4.98

TWEED TOPCOAT SUITS \$7.95 to \$35.00

Mannish Suits Up To \$4.98



Dresses and Suits

Exclusive With Sturges & Gibbs

- Franklin
- Peter Pan
- Nelly Don
- Geo. Hess
- Campen (Half Size)
- Queen Make Reich
- Mayfair
- Doris Dodson
- Ellen Kaye

Princess Coats

Folks--- You Will Find a Mighty Friendly Welcome



AT SANTA ANNA'S

Third Annual Community Fair and Rodeo

Tuesday, Wednesday, Thursday September 21-22-23

And if your clothes get soiled while there just bundle them up and send them to us. We use the latest, most modern, sanitary methods and feature our prompt service.

Coleman Steam Laundry

PHONE Safe—Sanitary Always 65



Santa Anna is achieving a most commendable purpose each year as its Community Fair and Rodeo becomes better and better, and we know that this year's event will surpass all in the past.

ACCEPT OUR CONGRATULATIONS AND BEST WISHES . . . EVERY ONE IN COLEMAN COUNTY SHOULD PLAN TO ATTEND.

M. K. Witt Motor Co.

Coleman Texas