

# Tech Students Go To Polls Today

## THE DAILY ADOR

TEXAS TECHNOLOGICAL COLLEGE

Vol. 41

Lubbock, Texas, Wednesday, February 16, 1966

No. 85

### Coordinating Board

## Rigby Elaborates On Effects Of Decision

By Vy Townsend  
Staff Writer

Dean of the Graduate School Dr. Fred Rigby expressed pleasure Tuesday in the State College Coordinating Board's decision to make Texas Tech one of the four state-supported institutions to be allowed to maintain doctoral programs.

He elaborated on the efforts which this decision will have in the college's graduate program. He indicated probable increases in funds, enrollment, new programs and prestige.

The Board's decision will allow plans for doctoral programs in new departments as well as approval of plans already completed.

Tech now has operating doctoral programs in 14 departments, with two already approved to begin in two years and others in the planning stage. By 1968 a Ph.D. is to be offered by the biology department and a D.B.A. in the business administration school.

Plans for a Ph.D. in Spanish are now complete and await approval for instituting the programs.

Tech now has an 8-year plan which projects in what year departments will be ready for new doctoral programs or expansion into new sub-areas for those departments which already have a program. The decision may move up such dates and increase the scope of such a plan.

Concerning the monetary increase, Rigby explained that Tech receives funds now through a formula system set up by the board. Under this system different weights are assigned to students according to the cost of their study, the greater weights being for students under a doctoral program.

The enrollment number, hours of study and depth of study all count toward a formula by which the legislature determines the amount of appropriations. According to this, if the Board's decision brings more students to Tech for the doctoral programs to be exclusively offered, then the appropriations will be increased.

Rigby anticipated no sudden effect on receiving grants. A proposal must first be made for a grant for any study. A reviewing panel of the agency applied to compares the applications and then decides. The resulting effect of the decision will be that people will be encouraged to initiate proposals, not that agencies will start offering grants.

Asked if this decision would greatly accelerate the growth of the graduate school, Rigby said, "If it does we will have trouble keeping up." The enrollment now increases 20-25% a year doubling about every four years.

He prefers to project a gradual increase as out-of-state students receive word that Tech is one of the Texas schools offering advanced programs, and as students forced to end study in one of the programs of other schools terminated by the Board, consider Tech in determining which of the four schools to enter.

Rigby concluded that "this is not a blanket approval for us to do as we please." All planning must still be approved by the Board and appropriated for by the legislature.

The Board's decision which recognizes Tech as a university was, according to Rigby, "a logical step in viewing all the facts and a load off my mind to have established that they see things the way we see them."

## Schlesinger To Speak Friday

Pulitzer Prize winner Arthur Schlesinger, Jr. wants to know: "What about the new nations? What are the basic problems of a peaceful world?"

These questions and others will be answered Friday at 7:15 p.m. in the Municipal Auditorium as he speaks on "The World We Want—And How To Get It?"

The "Chicago Times" says Schlesinger "combines a fine mind with the ability to put his ideas into clear, comprehensible English . . . . In his personality he is just as direct and clearcut as in his writing, and he can cover a lot of ground quickly."

In 1946 at the age of 28 he was the youngest historian to win the Pulitzer Prize when he received it for "The Age of Jackson." He is considered to be one of America's leading historians.

"The New York Times," says "Mr. Schlesinger writes history with relish and élan as well as with scholarship. He can be both witty and entertaining."

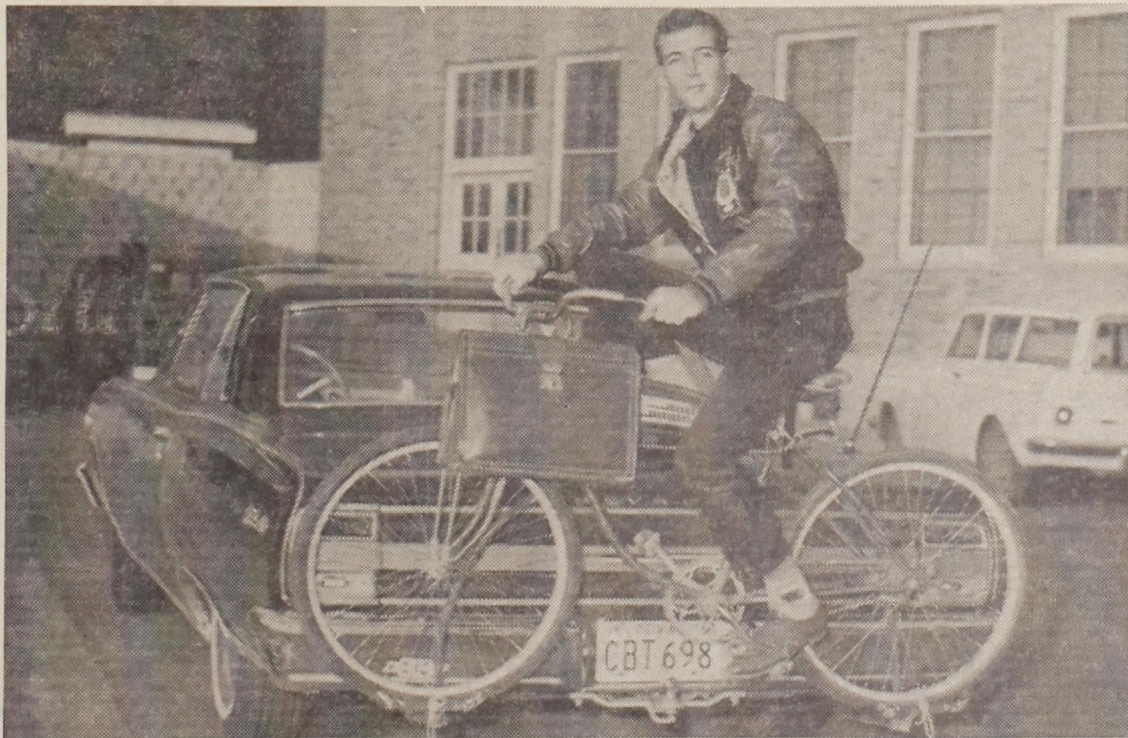
He was born in Columbia, Ohio. His father, Arthur M. Schlesinger, was also a distinguished historian.

Schlesinger, was brought up in a family that migrated from Ohio State University to the University of Iowa to Harvard. He graduated summa cum laude from Harvard in 1938.

During the war Schlesinger served in the Office of War Information in Washington and in the Office of Strategic Services in London, Paris and Germany.

In 1961, Schlesinger went to Washington as special assistant to the President. He served President Kennedy until his death

and thereafter President Johnson. He left the White House in March 1964 to write a book on the Kennedy Administration.



LICKS PROBLEM—David Bradshaw, Tech sophomore is shown with his solution to the problem of saving wear and tear on shoes. According to Bradshaw he got tired of walking so far to classes

from the off-campus parking lots so he devised a method of bringing his bicycle to school to "economize on steps."

(Staff Photo)

## Several Items Put On Voting Agenda

A small turnout of Tech students is expected at the polls today to choose six senators, Mr. and Miss Texas Tech, Top Techsans and vote on amendments to the Senate Constitution.

For the first time in Tech's history, a senator will be selected to represent the Graduate School. Senators will also be elected from the School of Business Administration, Arts and Sciences and Agriculture.

### TOP TECHSANS

Four men and four women will be chosen Top Techsans from each of the classes. The traditional two class favorites are being eliminated so more outstanding students can be recognized, Sara Cox, secretary of the Senate said.

Miss Cox also said all ballots for Top Techsans which do not have the voter's classification indicated in the appropriate column will not be counted.

The four proposed constitutional amendments are:

### Article II, Sec. 3:

"No Senator shall be seated or allowed to continue in his seat unless he is a registered member of the school his seat purports to represent. A candidate for senator need not be a registered member of the school he proposes to represent at the time of an election."

### Article II, Sec. 4, Part 3:

"Senators shall be elected by plurality vote of students voting for each of the positions in question."

### Article II, Sec. 4, Part 2:

"The executive officers of the Senate shall be elected by majority vote of the students voting in that election."

### Article II, Sec. 4, Part 4:

"Vacancies shall be filled in a manner prescribed by the Election Committee and approved by the Student Senate."

### POLLS

Polls will be set up in six buildings: Ad Building, Business Administration, East Engineering, Agriculture, Home Economics and Tech Union. Top Techsans, Mr. and Miss Texas Tech, Senate graduate representative and the Constitutional amendments may be voted on in any of the buildings.

Ballots for Senate representatives from A&S will be in the Ad Building, Business Administration representatives in the BA Building and representatives for Agriculture in the Ag Building.

The polls in the Tech Union will be open from 8 a.m. to 5 p.m. and in the other buildings from 8-12 a.m. and 1-5 p.m. Student IDs are required for voting.

Runoffs for Student Senate positions will be Friday. Top Techsans and Mr. and Miss Texas Tech will be revealed during the halftime of the Tech-Rice basketball game March 1.

## MUN Council Meets Today

A special session of the Model UN Security Council will meet today to discuss the resolution submitted by the United States delegation to the Model United Nations requesting the Council to discuss the Viet Nam conflict.

The subject of the resolution is restoration of peace in Viet Nam. The resolution reads: The United States, recognizing that a state of armed hostility exists in Viet Nam calls upon the Security Council to consider means through which a negotiated settlement of the dispute in Viet Nam may be reached in accordance with the provisions of the Geneva Conference of 1954 and 1962.

Secretary-General, Chris Hickey, announced that the Security Council will meet at 7 p.m. in the Union Ballroom. Spectators are encouraged to come according to Hickey.

## Old Problem Gets Solved

It's a long walk from parking lots for off-campus students to academic buildings, but sophomore David Bradshaw thinks he has the problem licked.

He carries his bicycle with him, switches from car to bike in the parking lot, and peddles his way on to class.

Bradshaw, who lives seven miles north of Idalou and 22 miles from campus, had a "bike rack" welded to the back of his car. The crossbar is bolted on so it can be easily taken off.

Total cost of the job, Bradshaw said, was \$10.20. He expects to save that much in wear and tear on shoes.

## Six Flags Begins Search For Campus Review Talent

Talent Scouts from Six Flags will audition at Hardin-Simmons in Abilene March 5, seeking performers for their 1966 musical variety show.

Auditions for West Texas collegians are scheduled to begin at 1 p.m. in Caldwell Hall, room 210 at Hardin-Simmons.

The show, Campus Revue, is especially written, professionally directed and is fully staged. It is presented annually from mid-June until Labor Day at Six Flags in Arlington.

Several Tech students have worked at the park during past summers. One of these, Bob

Black, sang with a folk group in the show.

"Although the work was hard and the hours long, the experience was well worth it," Black said.

Besides the performers making up the cast for the Campus Revue, the park employs approximately 1,600 other college students who work on the various rides, attractions and shows.

### SCORN CONTINUES

MOSCOW (CP)—As denunciations of the sentences given to two Soviet writers mounted abroad, the official Soviet press heaped more scorn on them Tuesday.

Communist parties in Britain, Denmark and Italy deplored the terms at hard labor given to Andrei D. Sinyavsky and Yuli M. Daniel because of novels and stories critical of the Soviet Union they published abroad under pen names. Writers' organizations and others also criticized the trial.

### Study in Guadalajara, Mexico

The Guadalajara Summer School, a fully accredited University of Arizona program, conducted in cooperation with professors from Stanford University, University of California, and Guadalajara, will offer June 27 to August 8, art, folklore, geography, history, language and literature courses. Tuition, board and room is \$265. Write Prof. Juan B. Rael, P.O. Box 7227, Stanford, Calif.



DEBATE WINNERS — Pictured above are sitting: Robert Trapp and David Bradley; standing: Hal Upchurch, Janine Coats and Carl Moore. Moore won an award for the highest ranking speaker; Upchurch won second place. Miss Coats won sec-

ond place in women's extemporaneous speaking. Bradley and Trapp came in first in the junior men's debate competition at Abilene Christian College.

Put a little bit  
of  
SPICE  
in your life  
  
Vote  
GINGER  
VIETS  
A&S

## Hulen Hall Receives Namesake's Portrait

"Working for the general was some how different than just working."

These were the words used by

Wright Armstrong, chairman of the Texas Tech Board of Director to describe his former boss, General John A. Hulen for whom Hulen Hall is named.

A portrait of the general was presented to the college in ceremonies Sunday with President R. C. Goodwin accepting the picture

on behalf of the college.

The portrait which hangs in the dorm's Formal Lounge was presented by former Tech president Clifford B. Jones.

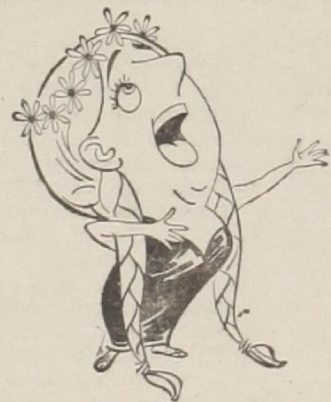
Armstrong said "Hulen always had the ability to inspire loyalty." Armstrong had worked with the general both in the railroad business and the Texas National Guard and served as an aide to Gen. Hulen during World War I.

Hulen, born in 1871 in Centralia, Mo., moved to Gainesville at the age of three. He was active most of his life in military and railroad circles in Texas.

He served on the Board of Directors at Texas Tech for four years from 1931-1935.

He died in 1957 at the age of 86. The principal of his estate will go into a trust fund for Tech.

Board members, friends and associates of the general and college officials were guests at a luncheon in the dormitory's dining room preceding the ceremonies.



# LONG PLAY ALBUMS...

WHERE THERE IS MUSIC... THERE IS ACTION.

GET WITH THE ACTION WITH OUR LATEST LONG PLAY ALBUMS.

**Book & Stationery Center**  
1103 College Ave. PO5-5775

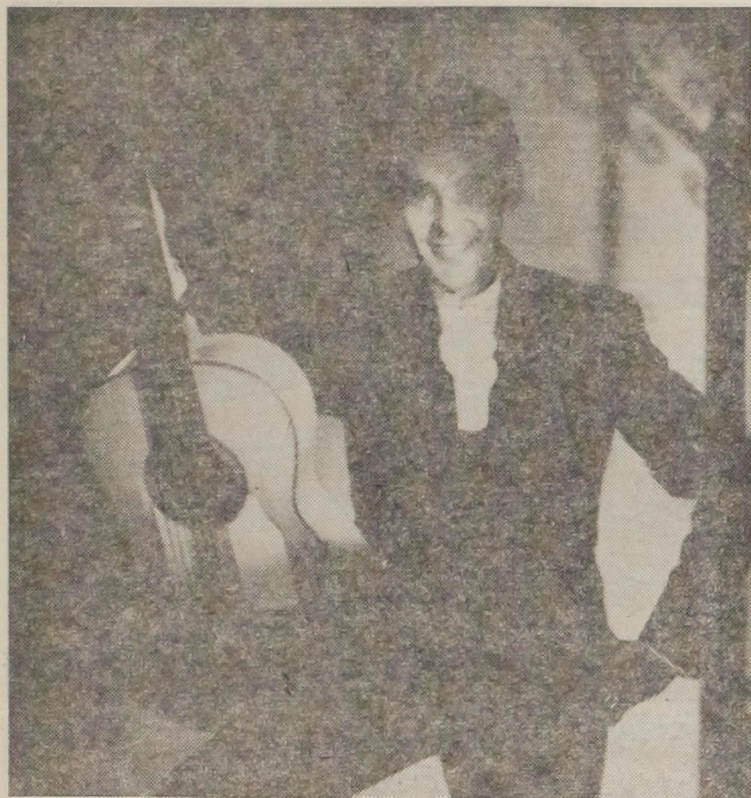
**Opal's Western Wear**  
1110 Avenue K between Picadilly and Pioneer Hotel PO2-8432  
"A complete line of western wear for the entire family"



QUALITY WORK AT ECONOMY PRICES  
2415 - A MAIN

Cash & Carry  
**20% DISCOUNT**  
on amount over \$1.00

**Quality STEAM LAUNDRY AND DRY CLEANERS**



FRANCISCO ESPINOSA, one of Spain's most celebrated young guitarists, is a featured performer with Jose Molina's Bailes Espanoles, appearing in Lubbock at 8 p.m. today in the Lubbock Municipal Auditorium. The company is presented by Civic Lubbock, Inc.

## Flamenco Company To Perform Today

One of Spain's most popular song-and-dance companies and the number one Flamenco touring company in the U.S. will appear in Lubbock at 8 p.m. today in the Municipal Auditorium.

Jose Molina's Bailes Espanoles, a presentation of Civic Lubbock, Inc., brings to the city a company of dancers and guitarists robed in costumes valued at \$80,000 and performing songs and dances not only of Spanish origin, but by such composers as Ravel and Rimsky-Korsakov.

Molina, the company's founder and feature performer, began

dancing in his native Madrid at the age of three and by the time he was nine was enrolled as a student of Clasio Espanole with Pilar Monterde.

During his first appearance in the United States, on the Steve Allen show, he was seen by Jose Greco and immediately invited to join the master's company as first dancer.

This is the first Lubbock performance for the company.

Tickets for the performance are on sale from 9 a.m. until performance time today. Special discount tickets for students are priced at \$1.50.

## Olivier's 'Othello' Film Begins Two-Day Run

Laurence Olivier stars in the title role in the Warner Bros. filming of the National Theatre of Great Britain's production of "Othello," opening today for four showings at the Lindsey Theater.

Olivier, whose performance has already won high praise for its deep interpretation, heads a cast which includes such other noted performers as Frank Finlay, Maggie Smith and Joyce Redman.

This is the first time a British stage production has been transplanted to a motion picture studio and shot without any structural changes. Similar in scope to the Electronovision filming of Burton's "Hamlet," it includes the entire text of the play filmed while being performed, in Olivier's words, "against backgrounds offering as little visual distraction as possible."

The great speeches of the Shakespearean drama were shot

without the interruptions common to conventional photography. Instead, it was photographed simultaneously by three cameras to sustain the dramatic flow of the performances.

In performing Othello, Olivier handles his richest Shakespearean film role as the Moorish general tormented by jealous love for his young bride. Using the traditional Olivier combination of great strength and great realism in bringing Shakespeare's characters to life, he brings the play up to modern times in emotional and idealistic appeal.

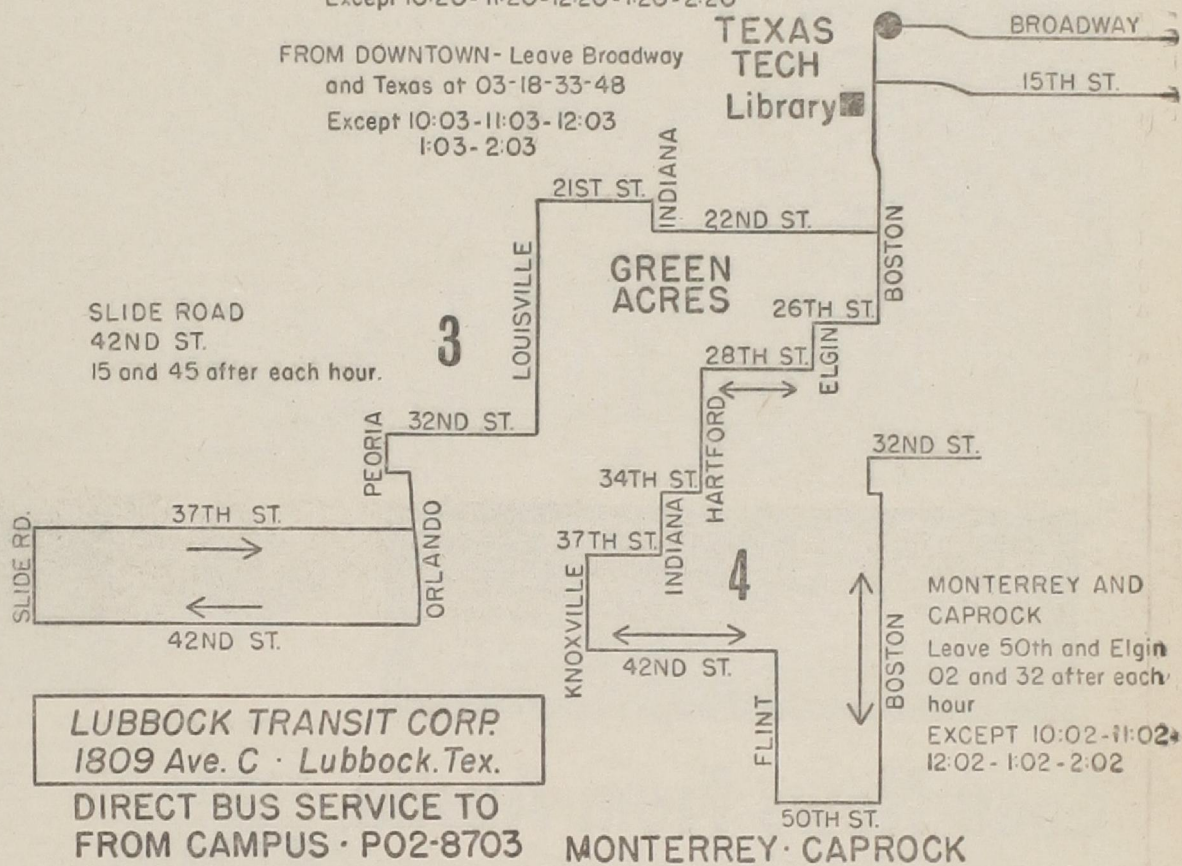
The motion picture cast is exactly the same as that which made the National Theatre stage presentation in London such a success.

The Lubbock showings will be at 2 and 8 p.m. today and Thursday, and admission is \$2 for adults and \$1.25 for students. Advance tickets are now on sale in the Lindsey Theater box office.

## CAMPUS BUS SERVICE

TO DOWNTOWN - Leave Circle at 05:20-35:50  
Except 10:20-11:20-12:20-1:20-2:20

FROM DOWNTOWN - Leave Broadway and Texas at 03:18-33:48  
Except 10:03-11:03-12:03  
1:03-2:03



### 2 UNITS

# Char-King

## DRIVE-UP RESTAURANT

**Conveniently Located**

UNIT NO. 1  
**4411 BROWNFIELD HWY.**

UNIT NO. 2  
**48th ST. and AVE. Q**

**ORDER STATIONS**  
FOR SPEEDY ELECTRONIC SERVICE!

- NO CAR HOPS! NO TIPS!
- NO LONG WAITING!
- PLENTY OF PARKING SPACE

*A Complete Menu of America's Most Popular Foods, Expertly and Tastefully Prepared!*

INSIDE BOOTHS

AT UNIT NO. 2 ONLY

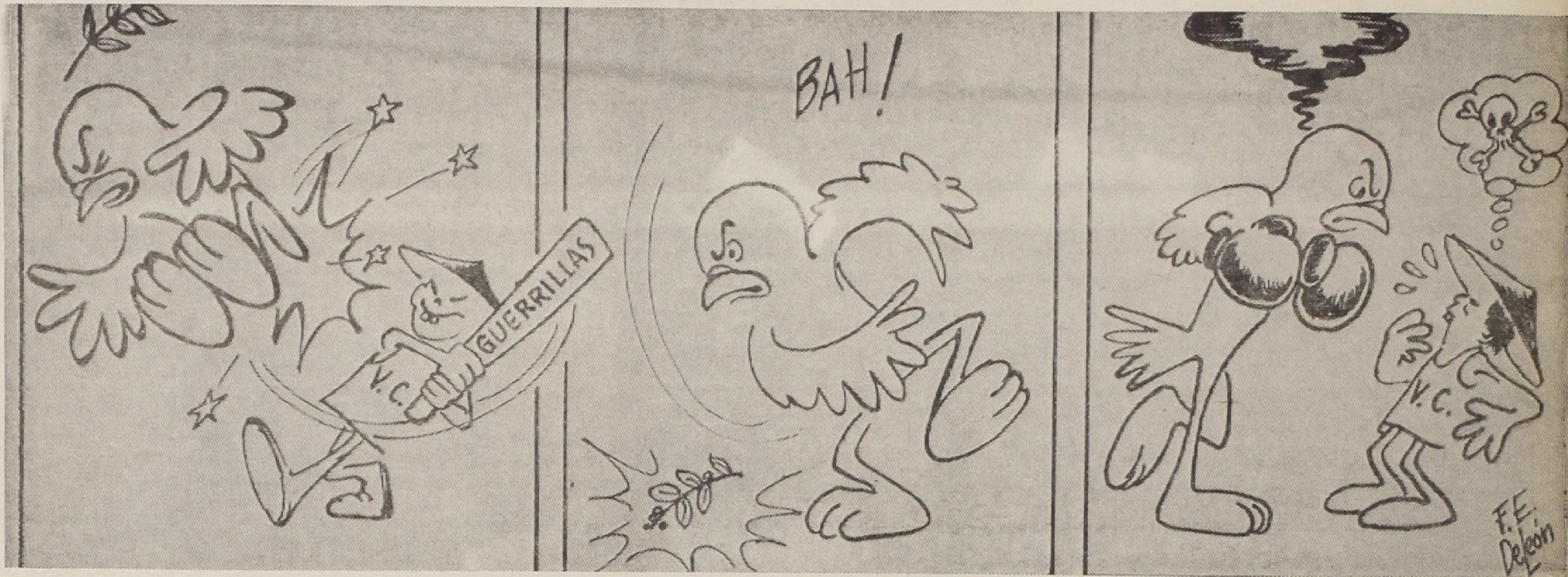
Deluxe Char-Grilled HAMBURGERS

## CHRIS' REXALL DRUG

Town & Country Shopping Center.  
PO2-2033 PO2-0321

**GALLONS and GALLONS**  
of

- JADE EAST
- RUSSIAN LEATHER
- ENGLISH LEATHER



*Editorial Page*



david snyder  
**A.M.E.N.**  
(assistant managing editor's notes)

## Good News From Austin

IT SEEMS AS IF THE State College Coordinating Board knows more about Texas Tech and its role in the state's higher education system than does Gov. John Connally.

In action Monday, the Coordinating Board began streamlining the higher education machine, and Tech came in for a good share of the good news:

- We will be one of four state-supported institutions to have doctoral programs (others are the University of Texas, A&M and the University of Houston).
- We will be one of three state schools with a law school (others are the University of Texas and the University of Houston).
- We will be one of the four to have architecture programs (others are UT, A&M and UH).
- Out of a total of \$7,097,742 in federal grants given to seven schools, Texas Tech received \$4,565,066 for the new business administration building.

The Coordinating Board also recommended that the next legislature raise higher education expenditures by \$159.4-million. This means that \$429.1-million may be available for tax-supported colleges and universities.

More money for higher education was definitely one of Connally's platforms last year, although it seems as if the Coordinating Board is not preparing the state schools for the "super-system" setup the governor proposed last year.

When Connally made his recommendations for the super-system organization of state schools, he had Tech working with A&M in one system, and the University of Houston under the University of Texas in another.

At that time, the University of Houston was not pleased with that arrangement, and we definitely weren't.

Now, it looks like Tech and UH may be heading their own systems, as will A&M and UT—if the system organization is ever initiated.

THE 49-YEAR-OLD MAN had been on the campus of Texas Technological College less than five hours. Three months ago, he probably knew little more about Tech other than it was "somewhere in West Texas," and he surely knew nothing of the specific problems of this institution. And yet Friday, making his first visit here as president-elect of Texas Technological College, he faced a barrage of pointed questions fired at him by two Toreador reporters.

All in a span of less than fifteen minutes, Dr. Grover E. Murray was asked such things as "What is your position on the name-change? Do you favor a Faculty Senate? Will you try to do anything about the AAUP censorship? and What are your views on the battle of quality vs. quantity in education today?" These problems and others, took Tech 41 years to cultivate, and Dr. Murray is confronted with them in less than 15 minutes!

And although he could not have been too well acquainted with any of them. The new president gave each a brief but honest answer, not evading the question or "beating around the bush," as he certainly would have had the right to do. He made no cut-and-dried commitments or promises, but was not expected to. But Dr. Murray did make it clear that something would be done in these and other areas, that they would not be ignored with the hope they would quietly go away.

If this short interview is any indication of what is to come, Texas Tech may be preparing to shed its shackle of conservatism. Reports describe Dr. Murray as a "man of action," and it certainly appears he is preparing to meet the problems facing the College head-on.

Retiring President Goodwin aptly paralleled the situation Friday when he referred to Tech in an address to the Tech Foundation: "Observe the turtle, he only makes progress when he sticks his neck out." Dr. Murray appears to be the man to carry this out, and at the same time not to carry it to too distant extremes.

Dr. Murray is the first person to take over the presidency directly after coming from another school since 1948. He is undoubtedly one of the youngest men ever to become president of Texas Technological College. Coming from a field of more than 80 candidates, it is obvious the Board of Director's Selection Committee could have selected an older man, or one from Tech. But they didn't, which shows a change of trend in the thinking of the Board.

Today students, more than anything else, clammer for action and results. One hundred thirty-seven years ago Andrew Jackson was elected President of the United States, created a minor revolution in the administration of government, and was referred to as the "People's President." Dr. Grover E. Murray could well become the "Student's President."

★ ★ ★  
BEARING OUT FURTHER that the Board is leaning toward younger men in top administrative positions is the Saturday appointment of a dean for the new law school, to open in the fall of 1967. He is Richard D. Amandes, who is but 38

years old, but whose past credentials make him aptly qualified for the challenge of the position. He is considerably younger than any of Tech's academic deans, although several of them became deans at an age comparable to Amandes'.

The new dean will have but 14 months to compile a library, select a faculty and take care of a multitude of other details involved in beginning a school from scratch. The mere fact he is young enough to reap some of the benefits to be derived from hard work and now before he reaches retirement age should furnish considerable motivation for the young dean.

IMMEDIATELY FOLLOWING LAST WEEK'S announcement that an Entry Station System (formerly called ports of entry, but changed because of a psychological link with military bases) will go into effect next fall, the Toreador assigned a reporter to write a "Campus Comment" concerning the new policy.

She was instructed to ask several students, "What is your opinion of the Entry Station System (ESS) which will be used next fall, and to what extent do you think it will alleviate the problem?" The story never was printed because the majority of those interviewed did not want the new system, not because they had a valid reason, but because they did not understand it.

Most objected to it because boys could not pick up dates at dorms during the day, because they could not go and come from dorms to run errands during the day, because they would no longer be able to park on campus, or because it would increase the off-campus parking problem.

None have an inkling of truth in them, and, if this is anywhere near a fair sample of the campus population, few persons really understand EES.

The entry stations as presently planned will in no way prohibit traffic to and from dormitories, except possibly Knapp Hall. It will not block off entrances to any reserved lots, nor will it increase the number of cars parking off-campus because no present parking spaces will be lost.

The four stations, in addition to the closing of the Bookstore intersection, will be placed only to prohibit unnecessary traffic from entering the central campus, especially in the vicinity of Memorial Circle. They will be near Textile Engineering on Boston, near the Music Building on Boston, at the Broadway entrance near the Museum, and on 15th Street, somewhere near the Ag Building.

The target date has been set for next fall to allow such problems as the possible blocking off of Knapp to be solved. Possibly, a new street will be built, since present streets would necessitate keeping the street in front of the music building open, and this is one of the busier student areas on campus. Or cars could be allowed to drive to Knapp from the Bookstore intersection, but not continue around in front of the Music Building.

The only persons who should be unhappy about the whole thing are those who "must" have rides directly to academic buildings, or who pick up passengers after classes. To them, the only words of consolation are "tough luck."



Editor \_\_\_\_\_ Cecil Green  
 Managing Editor \_\_\_\_\_ Mike Ferrell  
 Assistant Managing Editor \_\_\_\_\_ David Snyder  
 News Editor \_\_\_\_\_ Eugene Smith  
 Editorial Assistant \_\_\_\_\_ Pauline Edwards  
 Feature Editor \_\_\_\_\_ Mack Sisk  
 Fine Arts Editor \_\_\_\_\_ Barbra Worley  
 Sports Editor \_\_\_\_\_ Mike Lutz  
 Assistant Sports Editor \_\_\_\_\_ George Chaffee  
 Copy Editors \_\_\_\_\_ Judy Fowler, John Armistead,  
 Brenda Greene, Carmen Keith, Janyth Carpenter  
 Head Photographer \_\_\_\_\_ Allyn Harrison  
 Advertising Manager \_\_\_\_\_ Bill Shrader

★ ★ ★  
 THE DAILY TOREADOR is financed by a student matriculation fee, advertising and subscriptions. Letters to the editor represent the views of their writers and not necessarily those of THE DAILY TOREADOR. Letters must be signed, but may be published without signatures in justifiable instances. The views of THE DAILY TOREADOR are in no way to be construed as necessarily those of the administration.  
 THE DAILY TOREADOR, official student newspaper of Texas Technological College, Lubbock, Texas, is regularly published daily, Tuesday through Saturday.

## Letters To The Editor

All commentary letters for publication should be addressed to "Editor, The Daily Toreador, Campus."  
 Letters on any topic are welcomed and encouraged, but will be rejected for publication if they are libelous or too long for practical use. All letters will be edited for spelling, grammar and minor mistakes.  
 Letters mailed through the intra-campus mailing service require no postage.

## TOREADOR PHONES

Editor . . . . . 4251  
 News Room . . . 4254  
 . . . . . 4255  
 Sports . . . . . 4252  
 Advertising . . . 6138  
 Hours: 1-5 p.m. daily

# Raider Roundup

## CHI RHO

Chi Rho, service fraternity for Catholic men, will host an open rush smoker on Monday. The coat and tie event will be in the Tech Union Coronado Room from 7-8:30 p.m.

All Catholic men are eligible to apply for membership, pledges are taken by invitation. All men that attend the smoker are asked to bring an expendable photograph.

A history and other information on the fraternity will be presented to men interested in being invited to the pledge program.

\*\*\*

## AFROTC

Air Force Officer Qualifying Tests will be given Wednesday in S. SC. 24 from 2-6 p.m.

\*\*\*

## MORTAR BOARD

Forum Chapter Mortar Board will present this month's service award at 8 p.m. when they meet in the Tech Union Executive Room.

\*\*\*

## BLOCK AND BRIDLE

Penrose Metcalf will speak on the history of short-horn cattle at the Block and Bridle meeting scheduled for 8 p.m. today in the Agriculture Auditorium.

\*\*\*

## AMERICAN SOCIETY OF CIVIL ENGINEERS

Mr. Cash of Litton Industries will speak today at 7:30 p.m. in room 52 of C&ME Building.

\*\*\*

## ARMY ROTC INFORMATION STAFF

The Army ROTC Information Staff will meet in room 24 of the Social Science Building Saturday at 1 p.m.

\*\*\*

## ARMY CORPSDETTES

Orientation for new members will be Sunday in the Union. Practice sessions will be Feb. 21-23. Tryouts will be Feb. 24 with interviews Feb. 25.

## PRESBYTERIAN STUDENT ASSOCIATION

The Presbyterian Student Association will have a social Saturday from 7:30-12 p.m. at the P.U.B. The theme will be a Coffee House with entertainment, relaxation and exotic coffees and other refreshments offered in a coffee house atmosphere.

\*\*\*

## JUNIOR COUNCIL

Applications for Junior Council are now available in the Dean of Women's office in the Ad Building. Applications must be turned in to Marsha Meyers, 224 Clement Hall, by Monday.

## TECH UNION OFFICERS

Applications for Tech Union officers, chairman and assistant chairman to serve during the 1966-1967 school year are now open.

Executive officers include president, vice president, secretary-treasurer, public relations director and personnel director.

Committee chairman assistant chairman positions include Hospitality, Dance, Special Events, Entertainment, Fine Arts, International Interest and Ideas and Issues committees.

Also being selected are members of the Public Relations Council and a newly organized Art and Design Council.

Applications are available in the Tech Union Program Office from 8 a.m. to 5 p.m.

# Scholarships Available

Tech has a substantial amount of money available in the form of tuition scholarships for students that are eligible.

Ivan Little, Assoc. Dean of Arts and Science, said that sufficient money for rather considerable financial assistance to Tech students was available. Students interested should pick up applications in Room 206 of the Ad Building.

Requirements for students are: Must show evidence of financial need. Must be a resident of Texas, and maintaining an overall 2.00 grade point average.

Students meeting these requirements can receive \$50 providing they were enrolled at Tech in the Fall of 1965.

Students may receive \$25 if they enrolled at Tech in the Spring semester of 1966.

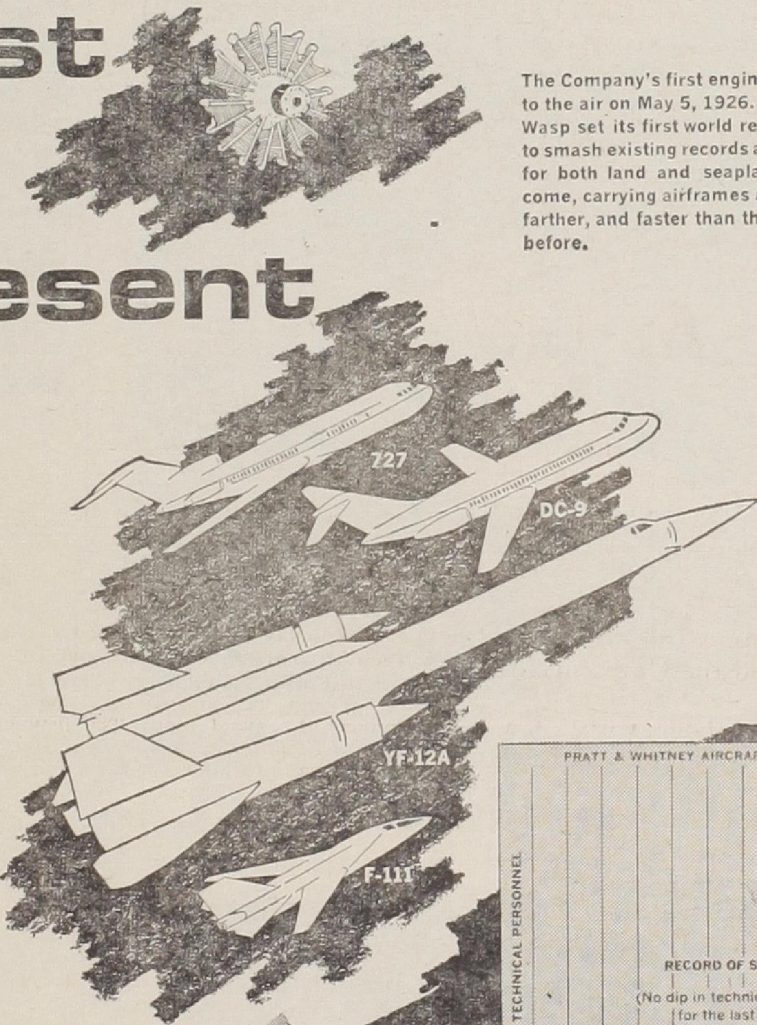
## TECH GRADS JOIN NAVY

Two Tech graduates and one ex-student were sworn into the Navy this month at the Naval Air Station in Dallas.

The two graduates are Ronald Hubbard and Larry Tipton. The former student is Richard Newth.

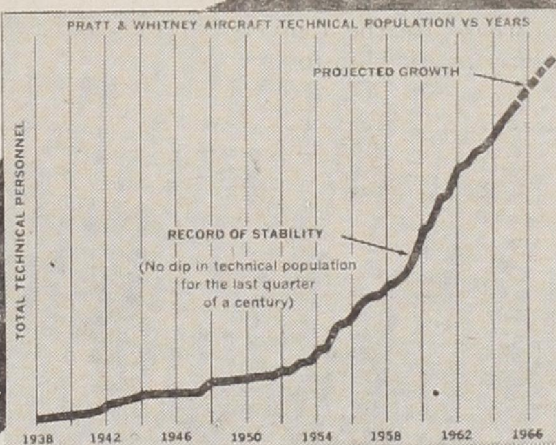
All three men will be assigned to the Naval Air Basic Training Command at Pensacola, Fla. They will undergo 14 weeks of pre-flight training and upon completion of training they will be commissioned ensigns in the Naval Reserve. They will then be assigned further duties to qualify them as Naval aviators.

# Past Present



The Company's first engine, the Wasp, took to the air on May 5, 1926. Within a year the Wasp set its first world record and went on to smash existing records and set standards for both land and seaplanes for years to come, carrying airframes and pilots higher, farther, and faster than they had ever gone before.

In recent years, planes powered by Pratt & Whitney Aircraft have gone on to set new standards of performance in much the same way as the Wasp had done in the 1920's. The 727 and DC-9 are indicative of the new family of short-to-medium range jetliners which are powered by the highly successful JT8D turbofan. Examples of current military utilizations are the J58-powered Mach 3 YF-12A which recently established four world aviation records and the advanced TF30-powered F-111 variable-geometry fighter aircraft.



# Your and the Future

Take a look at the above chart; then a good long look at Pratt & Whitney Aircraft—where technical careers offer exciting growth, continuing challenge, and lasting stability—where engineers and scientists are recognized as the major reason for the Company's continued success.

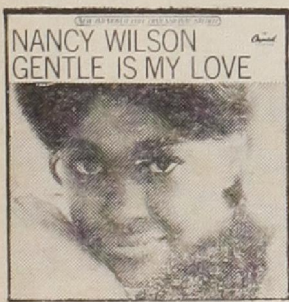
Engineers and scientists at Pratt & Whitney Aircraft are today exploring the ever-broadening avenues of energy conversion for every environment... all opening up new avenues of exploration in every field of aerospace, marine and industrial power application. The technical staff working on these programs, backed by Management's determination to provide the best and most advanced facilities and scientific apparatus, has already given the Company a firm foothold in the current land, sea, air and space programs so vital to our country's future. The list of achievements amassed by our technical staff is a veritable list of firsts in the development of compact power plants, dating back to the first Wasp engine which lifted the United States to a position of world leadership in aviation. These engineering and scientific achievements have enabled the Company to obtain its current position of leader-

ship in fields such as gas turbines, liquid hydrogen technology and fuel cells.

Should you join us, you'll be assigned early responsibility. You'll find the spread of Pratt & Whitney Aircraft's programs requires virtually every technical talent. You'll find opportunities for professional growth further enhanced by our Corporation-financed Graduate Education Program. Your degree can be a BS, MS or PhD in: MECHANICAL • AERONAUTICAL • ELECTRICAL • CHEMICAL ENGINEERING • PHYSICS • CHEMISTRY • METALLURGY • CERAMICS • MATHEMATICS • ENGINEERING SCIENCE OR APPLIED MECHANICS.

For further information concerning a career with Pratt & Whitney Aircraft, consult your college placement officer—or write Mr. William L. Stoner, Engineering Department, Pratt & Whitney Aircraft, East Hartford, Connecticut 06108.

**SPECIALISTS IN POWER... POWER FOR PROPULSION—POWER FOR AUXILIARY SYSTEMS. CURRENT UTILIZATIONS INCLUDE AIRCRAFT, MISSILES, SPACE VEHICLES, MARINE AND INDUSTRIAL APPLICATIONS.**



plus

OTHER TOP ALBUMS

LATEST HIT SINGLES

Wayne's RECORDS

3117 34th

SW5-0601

Open 9 til 9



## Pratt & Whitney Aircraft

CONNECTICUT OPERATIONS EAST HARTFORD, CONNECTICUT  
FLORIDA OPERATIONS WEST PALM BEACH, FLORIDA



AN EQUAL OPPORTUNITY EMPLOYER, M & F

# Atlanta Falcons Study Names

PALM BEACH, Fla. (AP)—Top-echelon officials of the Atlanta Falcons studied a list of 154 names Tuesday as they got down to the vital business of acquiring experienced players for their new National Football League team.

The selections won't be made known until Wednesday, when at least half the choices will be announced.

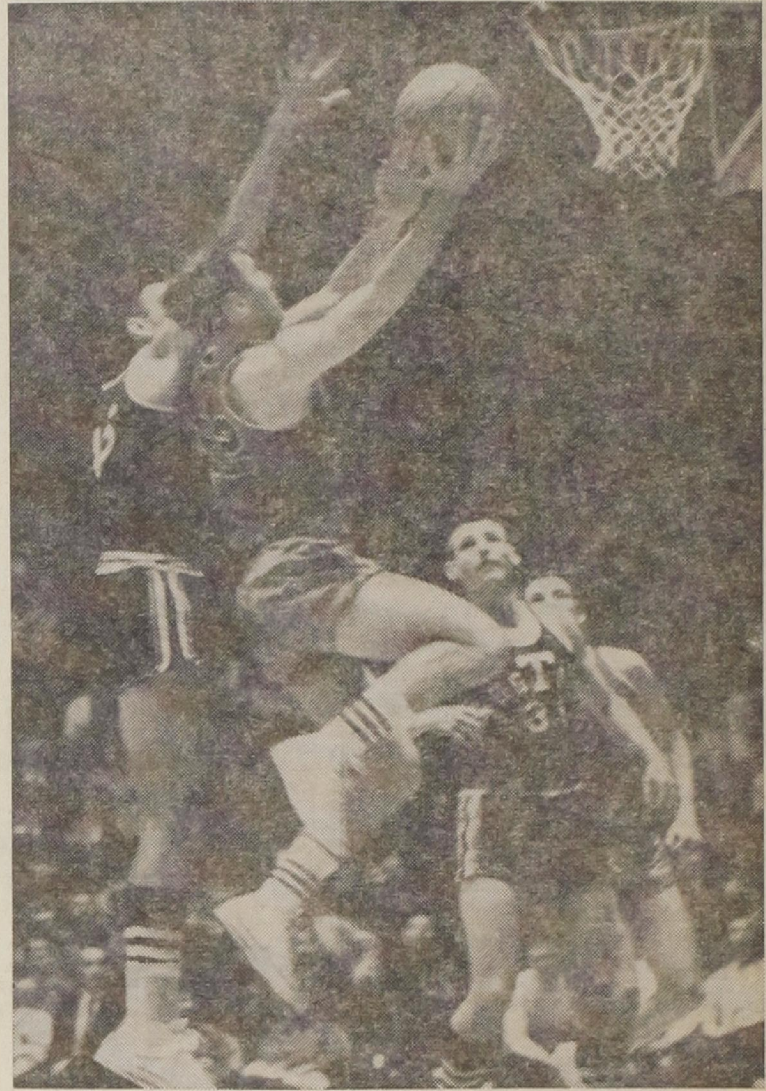
Under the plan devised at the annual NFL meeting, each of the

14 established clubs froze 29 players who were on the 40-man rosters that opened last season, and made the 11 others available to the Falcons.

Atlanta will pick one of the 11 from each club, two more will choose two more. That will give them 42—three from each of the 14—for which the Falcons paid an estimated \$8.5 million when they were given an NFL franchise last summer.

The Falcons, who begin play in the league this coming season, already have signed a number of rookies—either picked in the player draft last December or free agents.

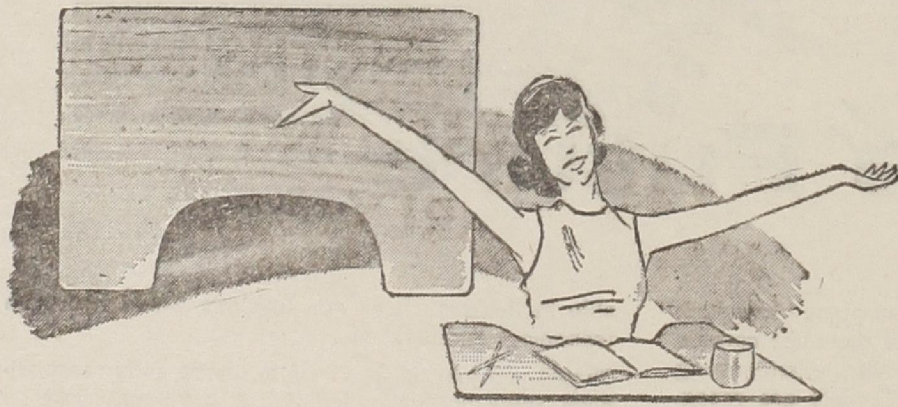
"I'm very pleasantly surprised at some of the names on the list," said Rankin Smith, owner of the Falcons, who is making selections with Coach Norb Hecker and Gene Cronin, player personnel director.



LEADING SCORER—Dub Malaise goes in for a shot to boost his total pointage to 40 points Tuesday night against the Aggies. John Beasley (45) attempts to block the score while Aggie Wyley Jenkins (31) looks on.

NEW! PRACTICAL! & FUNCTIONAL

## 'JIFFY' DESK TRAY



READY IN A JIFFY . . . for TV viewing while eating . . . for working, playing, sewing, writing, or drawing. Plasticized martone finish . . . conveniently large, yet stores easily.

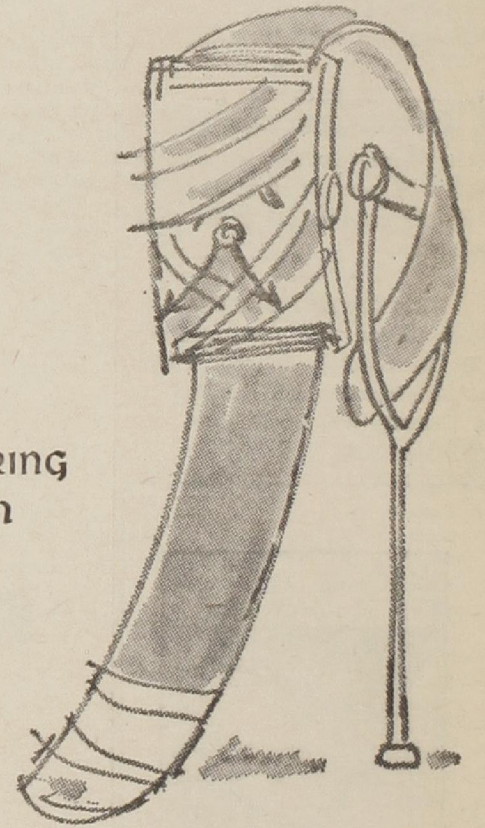
ONLY

98<sup>c</sup>

**Varsity**  
**BOOK STORE**

1305 College Ave.

FIRST  
AID  
FOR  
THE  
FALTERING  
WATCH



Chances are it needs cleaning and oiling. Maybe some repair. In any case, it needs expert attention. Our watch and jewelry repair service offers excellent workmanship, finest replacement parts, and guaranteed performance. Entrust your fine watch and jewelry to experts. Our charges are truly moderate.

\$5.95  
Including Parts and Labor

Delivery Service — Frontier Stamps — Layaway — Charge

FURR'S JEWELRY DEPT  
**Furr's Family Center**

34TH & QUAKER

# Raiders Blast Aggies, 98-85

## Malaise Leads Scoring To Win Over Farmers

The latest joke on the Texas Aggies materialized before a light crowd last night as the Red Raiders pounded them 98-85 in Municipal Coliseum.

The victory snapped a three-game losing streak which began in the coliseum ten days ago with a defeat at the hands of the Texas Longhorns.

Dub Malaise led all scorers in the contest, turning in his second best performance this year with a total of 40 points. Norman Reuther, Billy Tapp and Bob Glover also hit the double figure mark with 24, 13 and 10 points respectively.

Randy Matson turned in a surprising 15 total points. However, his total only ranked third to John Beasley with 28 points and Dick Rector with 21.

### Early Lead

The Aggies jumped to an early lead when Rector scored on a field goal. However, as both teams went down to the other end of the court, Rector fouled Dub Malaise. Malaise hit both charity tosses and the Aggies watched their lead vanish for a while.

The Raiders had a few surprises in store for the Farmers which included a zone defense with Reuther guarding Beasley man-for-man and a high powered offense which saw plenty of outside shooting by Malaise and Tapp.

Although A&M was getting the rebounds early in the game, Tech turned in a brilliant defensive job and was able to keep the game close.

Then a lay-up by Glover with 9:44 left in the first half put the Raiders ahead to stay.

With 8:08 left in the half Reuther put Tech further out of reach, 26-22, with five Raider points coming in less than one minute.

Long field goals by Malaise ran up the lead even further and a jump shot by Reuther put the Raiders ten points ahead at the half, 46-36.

The second half scoring drought which has cost Tech four games this season failed to materialize as the Raiders hit from every position on the court. The entire team played heads up ball on both defense and offense.

Fantastic steals by Tapp and Malaise kept the Raiders in control of the game as their lead in-

creased by 19 points with only six minutes gone in the second half.

With 11:02 left in the game, the Aggies began hurrying their shots and the Raiders kept grabbing the rebounds. When Tech went completely out of reach with 3:22 remaining, the Raiders went into a stall which cost the Aggies several valuable points gained by the Raiders in the free-throw circle.

Several hook shots by Matson drew the score closer, 94-83, but the game was lost for the Farmers and the crowd began singing the A&M funeral dirge, "Poor Aggies."

Beasley attempted a 50-foot field as the final buzzer sounded, but the ball bounced crazily off the backboard and the jubilant fans stormed the court.

### Rebounding

The rebounding problem which has also plagued the Raiders was solved as Tech out-grabbed the Farmers 56-36.

The victory may not give Tech the SWC championship, but it does put the trophy closer in reach. A&M would have to lose two more contests and Tech would have to win all of their remaining games.

Tech is now 5-4 in conference warfare which puts them in third place behind Southern Methodist with a 6-3 record.

In other SWC action Texas beat TCU 85-77, Arkansas tripped Rice 73-67 and SMU slipped by Baylor, 68-66.

## Bowl League Has Opening

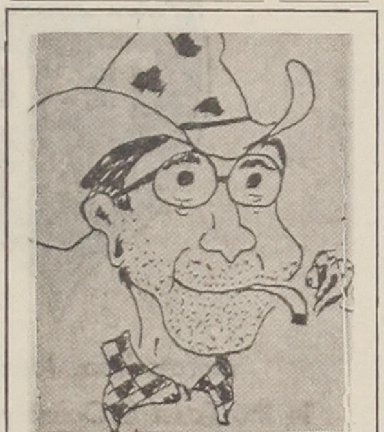
The intramural office announced an opening for another team in the married couples bowling league.

Each team is composed of two couples. The league bowls at 9 p.m. every Wednesday.

More information is available at the intramural office, Ext. 3113.

### Tech-A&M Box Score

Texas A&M	fg	fga	ft	fta	rb	pf	tp
Beasley	13	25	2	3	13	3	28
Stringfellow	3	8	0	0	2	4	6
Matson	6	9	3	4	7	3	15
Dominguez	2	8	2	2	2	4	6
Rector	9	15	3	3	5	3	21
Trippet	3	11	0	2	4	5	6
Timmerman	0	1	1	1	2	0	1
Payne	0	2	0	0	0	4	0
Jenkins	1	3	0	0	1	0	2
Totals	37	82	11	15	36	26	85
Team rebounds—8							
Texas Tech	fg	fga	ft	fta	rb	pf	tp
Reuther	10	18	4	8	11	1	24
Tapp	5	12	3	3	10	2	13
Glover	5	14	0	2	16	4	10
Malaise	12	24	16	18	4	1	40
Measells	1	2	1	1	1	0	3
Paul	3	11	2	2	13	3	8
Olsen	0	0	0	1	1	0	0
Totals	36	81	26	35	56	11	98
Team rebounds—3							



### Vote

**RICHARD (SKINNY) EDWARDS**  
AGRICULTURAL SENATOR

## Washington Leads 'Shirts In Win Over Frosh Team

Gary Washington sparked the Tech Redshirts to a 68-64 victory over the Freshman squad Tuesday night.

Washington played the entire game and never fouled. He scored his game high on eight field goals and four free throws.

Picadors to score in the double figures included Larry Lewis with 19 and Bob Evans with 15. High point men for the Redshirts were Washington, Joe Dobbs with 16 and Ronny Banks with 13.

The game was a close one until the final minutes when the Redshirts pumped in four charity tosses to pull out of reach. Both teams used a man-for-man defense.

### PBA

The Professional Business Association will conduct a business meeting at 8 p.m. today in the Reddy Room of the Southwestern Public Service Co., in the Monterey Shopping Center.

**15¢ HAMBURGERS in the Ku-Ku**

Corner of 4th & X

1 Block East of Football Stadium

Cheeseburgers—.20      Fish Sandwiches—.25  
 French Fries—.13      Onion Rings—.25  
 Apple, Cherry, Peach Fried Pies—.15  
 Thick Delicious Shakes—.20  
 Coke, Orange, Root Beer, Iced Tea,  
 Lemonade—.10 & .15  
 Milk & Coffee—.10

**Stop In Between Classes**

Exciting Music Happens When the

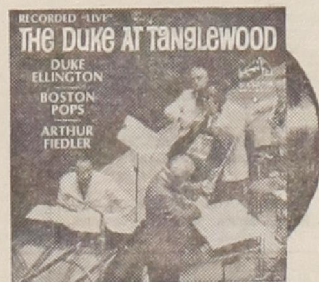
# Duke Meets the Maestro

Meets the

and the Boston Pops



Recorded "live" at Tanglewood—the musical meeting of America's foremost interpreter of popular classics with the man who created so many of them. In this new album, Arthur Fiedler and Duke Ellington play 12 of the Duke's tunes, arranged to make the most of the combined talents of the Boston Pops, the Duke's own sidemen on bass and drums, with the Duke himself at the piano. Here's a new "big band sound" that really takes off. Included in this swinging study of essential Ellingtonia are "Caravan," "Mood Indigo," "Sophisticated Lady" and "Satin Doll," with liner notes by the Duke himself. You'll love it madly.



**RCA Victor**  
The most trusted name in sound

Choose your own pharmacist—Have your physician write your prescription and hand it to you so that you may exercise your own choice of a pharmacy.

The Texas Medical Society and the Texas Pharmaceutical Assn. have in a joint Code of Inter-professional Relations adopted the position that the patient should have free choice of pharmacist and physician.

## HULL & RIDDLE

SH 7-1681 **DRUG** College at 23rd  
PRESCRIPTIONS

OPEN: Weekdays 7:30 a.m.—10 p.m.  
Sundays 9:00 a.m.—10 p.m.



A Complete Family Drug Store  
We Deliver

Plenty of Parking Across the Street.

# Placement Service Interviews Scheduled

Interviews for 1966 graduates are now being conducted through The Placement Service. The organizations, interview dates and fields desired are listed below.

- Feb. 24,25**  
Socony Mobil Oil Company, Inc.  
Geol., GeoPhys., Acct., BusEd.,  
Eco., Fin., Mgmt., Mkt., Ret.,  
ChE, CE, EE, IE, ME, PetE.
- Feb. 22-24**  
Pan American Petroleum Corp.  
Geol., GeoPhys., Phys, Engr-  
Phys, Math, Acct, ChE, CE, EE,  
ME, IE, PetE.
- Feb. 21**  
Trunkline Gas Company  
CE, EE, ME.
- Feb. 21-22**  
Continental Grain Company  
AgEco, Eco, Mkt, Mgmt.
- Feb. 21**  
Eastman Kodak Company  
Chem, ChE, EE, ME.
- Feb. 23**  
Ralston Purina Company  
AgEco, ME, IE.
- Feb. 21**  
Hewlett-Packard Company  
EE, ME.
- Feb. 22-23**  
Arthur Andersen and Company  
Acct.
- Feb. 21**  
Southwestern Public Service Co.  
EE, IE, ME.
- Feb. 22-23**  
General Motors Corporation  
AgE, Math, Phys, EngrPhys,  
Acct, EE, ME.
- Feb. 21-22**  
Gulf Oil Corporation

- Feb. 22**  
AgE, Acct, Eco, Fin, Mgmt,  
ChE, CE, EE, ME, PetE.
- Feb. 24-25**  
U.S. Marine Corps.  
All majors.
- Feb. 21**  
Northern Natural Gas Company  
ChE, ME, PetE.
- Feb. 21-22**  
Houston Lighting and Power  
Company.  
ChE, CE, EE, ME.
- Feb. 22-23**  
Swift and Company  
Chem., AnHus, AnSci, AnBus,  
Agron, AgEco, Mkt, Ret, Advt,  
Eco, Fin, ChE, CE, EE, IE, ME.
- Feb. 22**  
Bell Helicopter Company  
EE, ME.
- Feb. 22**  
The Actna Casualty and Surety  
Company  
AgEco, Engl, Hist, Govt, BusEd,  
Eco, Fin, Mkt, Ret, Mgt, ChE,  
CE, IE, ME.
- Feb. 24**  
Johnson and Johnson  
Govt, Hist, Engl, BusEd, Eco,  
Fin, Mkt, Ret, Advt, Mgmt,  
Acct, IE, ME.
- Feb. 21-22**  
Armco Steel Corporation  
AgEco, Mkt, Ret, Advt, Eco,  
Mgmt, BusEd, CE, EE, IE, ME.
- Feb. 23**  
Cosden Oil and Chemical Com-  
pany  
CE.
- Feb. 21**

- Factory Mutual Engineering Di-  
vision  
ChE, CE, EE, IE, ME, PetE.
- Feb. 24-25**  
Texas Instruments, Incorporated  
Chem, Phys, GeoPhys, Math,  
Geol, Mgmt, ChE, EE, IE, ME.
- Feb. 23**  
Zerex Corporation  
Govt, Hist, Engl, Mkt, Ret,  
Advt, Eco, Fin, BusEd, Mgmt.
- Feb. 22**  
Corpus Christi Independent  
School District  
Elementary Education
- Feb. 24**  
El Paso Natural Gas Products  
Company  
Acct, Eco, Fin, CE, ME.
- Feb. 24-25**  
U.S. Naval Laboratories in Cali-  
fornia  
EE, ME, Phys.
- Feb. 24-25**  
U.S. Department of Agriculture  
EE, ME.
- Feb. 24**  
McDonnell Aircraft Corporation  
CE, EE, IE, ME.
- Feb. 24**  
Donrey Media Group  
Engl, Journ, Speech, Acct, Mkt,  
Ret, Advt.
- Feb. 25**  
California State Personnel Board  
CE.
- Feb. 24**  
Cheyenne Public Schools  
Elementary, Secondary Educa-  
tion.
- Feb. 25**  
Magnolia School District  
Elementary Education.
- Feb. 25**  
Las Cruces Public Schools  
Elementary, Secondary Educa-  
tion.
- Feb. 25**  
The Lubrizol Corporation  
ChE.
- Feb. 25**  
Pittsburgh Plate Glass Company  
Chem, ChE, ME.


**THE CENTURY HOUSE**  
**Lubbock's ECONOMY Apartments**

We Invite Comparison! We Welcome Your Inspection! We offer:

1. Low, Low Monthly Rent (Why Pay More?)	5. Walking Distance (3 blocks from Downtown)
2. All Utilities Paid by Us	6. All Bachelor Apartments Contain Refrigerators
3. Heated Swimming Pool	7. Washers & Dryers
4. Ample Off-Street Parking	8. Weekly or Monthly Rates

**1629 16th St. Call PO 3-7572**  
(Just off Ave. Q)

If You Want Good Quick Service  
Gas & Oil  
Frontier Stamps  
Then You Should Trade At



Across from Jones Stadium  
in the Town & Country Shopping Center

**Owned & Operated by Tech Students**

**Tech Ads**

**TYPING**

Fast, dependable typing of all kinds. Mrs. Penny, 832-4587 or Mrs. Evans, 832-4280.

Typing: Themes, thesis, research papers. 4519 40th, SW5-4565, Mrs. McCullough.

Typing: Experienced, term papers, and research papers. Fast service. Mrs. McMahan, 1412 Avenue T, PO3-7620.

Typing done by experienced typist. Work guaranteed. Mrs. Don Glass, PO3-8689.

Typing done by experienced legal secretary. Electric typewriter. Mrs. Hughes, SW5-7604.

Typing in my home, electric typewriter, paper furnished; fast, dependable. Mrs. Robert King, PO3-1445.

**Horseshoe**  
62nd & College Ave.  
SW5-5248

— Front —

**Boeing Boeing**  
Jerry Lewis  
Tony Curtis

**The Naked Jungle**  
Eleanor Parker  
Charlton Heston

**FOR RENT**

\$50.00 monthly—All bills paid—Near Tech Special Student Area. 1, 2, & 3 bedrooms—Private entrances. Stove, refrigerator upon request. Full services. Tech Gardens—50 North Avenue U, Phone PO3-8801.

**EXCLUSIVE TO MARRIED TECH STUDENTS.** One-bedroom furnished apartments, air-conditioned, carpeted. Effective March 1, \$87.50 per month., utilities paid. UNIVERSITY VILLAGE APARTMENTS, 3102 4th, PO3-8822.

Apartments available to Tech married students at Tech Village. Effective March, \$85 per month. Bills paid. PO2-2233.

Bedroom and private bath, 7 blocks from campus. for 2 girls preferred, SW5-7863.

Bedroom for Tech student, twin beds, T.V., kitchen use, garage, convenient, SH4-9771 after 6 p.m.

Television rentals—Weekly or monthly rates, portable models, stands available. Call SW5-1354 or PO3-7226.

Garage apartment for student, furnished and bills paid. Very clean. \$35 per month. PO3-2631.

Two room apartment for couple or working lady. 1611 Ave. X, PO5-6114.

— Back —  
Thursday - Saturday

**Sons of Katie Elder**  
John Wayne - Dean Martin

**Elephant Walk**  
Elizabeth Taylor  
Dana Andrews

**FOR SALE**

1965 Red, air-conditioned Volkswagen. Excellent condition, 5100 miles, Ext. 5267.

Fender Guitar and amplifier, good condition, \$210 after 5 p.m. Phone SW2-3415.

Must sell: 1965 Honda "Super 90" motorcycle. Perfect condition. \$325. SH7-1068.

**Red Raider**  
Erskine & North College  
PO3-7466

— Front —

**Beach Ball**  
Edd Barnes - Cris Noel  
and The Supremes

**A Place in the Sun**  
Montgomery Clift  
Elizabeth Taylor

**MISCELLANEOUS**

Alterations, Men's ladies, knits. Fittings by appointment, your home or mine. Nadine Berry, 3117 Jarvis, PO2-8566.

German tuition offered by native speaker. Phone PO5-6453 after 6 p.m.

Math Tutor: Certified experienced teacher. Full time tutoring by appointment. 3117 22nd, SW5-2632.

**WANTED:** Registered nurse for general floor duty in small private hospital. Call SW5-7171 between 8 a.m. and 4 p.m.

**BORN PLAYERS!** Trumpet and tenor sax needed for work in rock band. SH7-4387 or Ext. 4041.

Two blocks south of campus. ABC Nursery. Children of all ages. Student rate. SH7-1027.

I gather and compile research bibliographies for Tech students and professors. SW5-7707.

I do sewing and ironing for students, also dress making and alterations of all kinds. Mrs. Sanchez, 2422 Baylor, PO3-6001.

— Back —

**CLOSED**

**LOST AND FOUND**

Lost: Senior ring—Sundown High School—1962—Initials BHK. Call SW9-8485.

**Fine Arts Drive-In**

Formerly  
Westerner Drive-In

**Adults Only**

**The Erotic Touch**

**Love on the Riviera**

**ROBERTS**



**are sewn by hand\* to flex on your foot like a glove**



The penny loafer's back to campus with a foam cushioned insole making Trujuns feel as good as they look. And look at all the ways they're up and coming: black cherry, black forest or golden harvest Scotch grain leather. Black cherry, palamino or black smooth. All leather lined. Roberts Trujuns \$13.00 to \$18.00.

\*Handsewn fronts

Wouldn't you like to be in our shoes? Most of America is. International Shoe Co., St. Louis, Mo.

**Available at these fine stores:**

Latham's Dept. Store, 3111 34th St., Lubbock, Tex.  
Lena Stephens, 3405 34th St., Lubbock, Tex.  
Bobs Family Shoe Store, Levelland, Tex.