

Romantic Production Unfolds Once Again

By LANE CROCKETT
Toreador Fine Arts Editor

The age-old romance of "Romeo and Juliet" will once again unfold before an audience when the Speech Department presents the play tonight to initiate the opening of the new University Theater.

William Shakespeare's immortal tragedy concerns the star-crossed lovers Romeo and Juliet. The couple are split apart by the dissention of their families — the Capulets and the Montagues.

ONE-SIDED AFFAIR

At the opening of the play, Romeo is desperately in love with a young woman named Rosalind, but the affair seems one-sided. When he sees young Juliet Capulet at a masquerade party in the Capulet home, he falls instantly in love with her.

Ironically, Juliet, not knowing that Romeo is a Montague, returns his ardent passion. Upon the discovery of identities, the two lovers are driven to secrecy.

NOCTURNAL NOTES

Juliet's nurse is used as a "go between," taking nocturnal messages to the enamored Romeo. The lovers cast aside the animosities of their

parents, and in an act of rebellion, they secretly marry.

Juliet's cousin Tybalt, Romeo's greatest foe, meets the young bridegroom on the street, and because of the family feuds, the two young men become engaged in a fight. Romeo kills Tybalt, and is pressured to leave the city of Verona.

COMMITTS SUICIDE

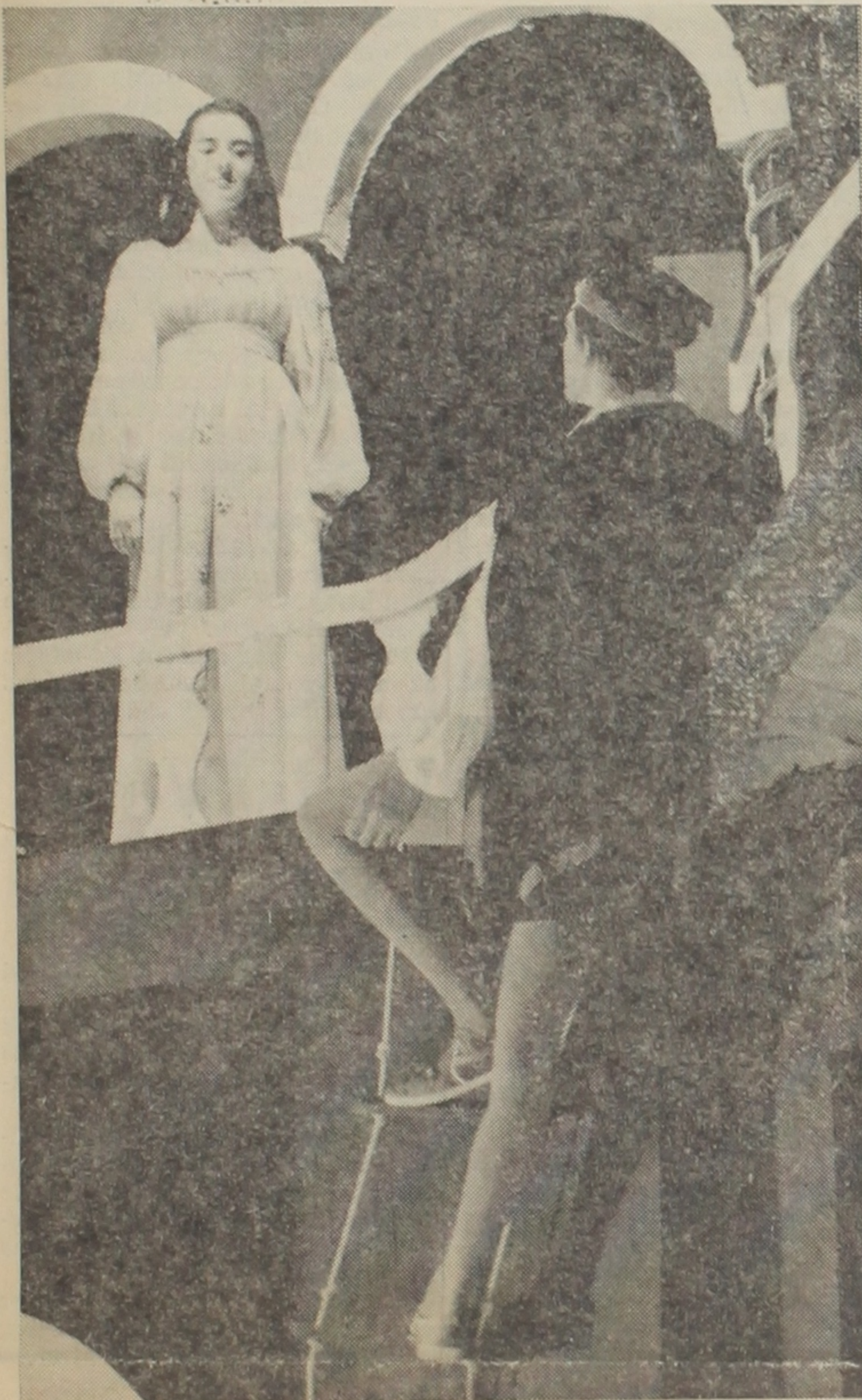
Through a series of complications and misunderstandings, Romeo hears that his young wife has died. He returns to Verona and finds his love in the Capulet vault, apparently dead. In his grief he commits suicide.

Juliet, who has actually taken a temporary potion to give her the appearance of death, awakes and finds Romeo dead. The grief for her, too, is unbearable and she in turns kills herself.

The young couples are found by the feuding families, and after tragedy the feud comes to an embittered end.

Through the years, this immortal love story has not lost its knack to capture the emotions of its audience.

Performance time is 8:15 p.m. in the University Theater. Tickets may be obtained for students on the presentation of Tech I.D. cards.



Photos by Bill Williams

STAR-CROSSED LOVERS — In the famed balcony scene from Shakespeare's "Romeo and Juliet," Elyse Soape and Charles Benton rehearse for tonight's performance. The play will bring up the curtain for the first time in Tech's new University Theater. Marking the 400th anniversary of the birth of William Shakespeare, the play will begin at 8:15 p.m. The play runs each night through Wednesday, except Sunday.

Speech Theater Is 'Joy'

By MARGARET EASTMAN
Toreador Staff Writer

Tech's speech department has moved from the confinement of the old Speech Building to the spaciousness of the new University Theater.

"The building is a joy," said Ronald Shultz, director of the theater's premier production — "Romeo and Juliet."

Every aspect of audience comfort and convenience has been considered in the University Theater. These range from air conditioning to the continental seating arrangement, with all seats contained in only 13 rows to create intimacy between the audience and the actors.

Plaster "acoustical clouds" are suspended from the upper ceiling at angles, making it possible to hear easily actors using their normal speaking voices without the use of microphones.

The Ruth Pirtle Green Room serves multiple purposes in providing rehearsal space, classroom space and room for intimate workshop theater productions. It also serves as an informal reception room where audiences may join cast and crew for coffee after performances.

The theater's sound system provides backstage connections with dressing rooms, the make-up room and the Green Room. Thus waiting actors may hear the scene on stage and follow the performance in progress.

Men's and women's dressing rooms provide ample space for wardrobing large casts. There is a connecting restroom with shower facilities for after-performance cleaning up.

The University Theater is carpeted and modern — quite a contrast from the old building with its wooden floors and lack of equipment.

Schultz commented, "It's a great privilege to have so fine a building to work in."

AF - ROTC Chooses 'Topflight' Finalists

One of three Texas Tech coeds will be crowned "Miss Topflight" and reign as queen at the annual Air Force ROTC Ball Saturday at Lubbock's Koko Palace.

Sheila Helbing, Linda Nuttall and Karen Jobe have been chosen as finalists in the contest. All three girls are juniors.

Theme of this year's ball is "We Point With Pride". Dean Killion and the Tech Court Jesters will furnish music for the dance.

Miss Helbing, from Richardson, is majoring in secretarial studies. A member of Delta Delta Delta social sorority, she has been a member of Angel Flight for two years. She was chosen Horticulture Queen and Tech Ski Queen in 1963. In addition Miss Helbing was a finalist in the 1963 Miss Topflight contest.

A three-year member of Angel Flight, Miss Jobe has also served as Sweetheart of Tech's Arnold Air Society chapter for two years. She was a finalist in this year's Miss Playmate contest.

Currently an executive officer-elect for the Angel Flight, she is a physical education and English major from Texas City.

Miss Nuttall, from Midland, is studying foods and nutrition. She is a two-year Angel Flight member and was a runner-up in the Delta Tau Delta Playmate contest this year.

She will serve as social chairman of Angel Flight next year.

The ball will be a full dress affair, according to Lt. Col. George R. Hull, professor of air science at Tech. The dance will begin at 8 p.m.

Dance Slated

Horn Hall cafeteria will be the scene of an informal all-school Spring Dance from 8 p.m. to midnight today.

Kris Kroener, social chairman of Horn Hall, said the Velvetens will furnish music for the dance, which is free to all students.

— At 'Mortgage' Day —

Bankers Speak Here

Several outstanding men in the mortgage banking field will be on campus Monday to participate in Tech's Mortgage Banking Day.

The program, sponsored by the Tech Finance Assn. and the Lubbock Mortgage Bankers Assn., is designed to acquaint the student with the mortgage banking industry.

All students are invited to attend. The program will begin at 9 a.m. in the main ballroom of Tech Union.

Carey Winston, president of the Mortgage Bankers Assn. of America, Washington, D.C., will arrive in Lubbock Sunday. Other outstanding men on the program are W. M. Zuendt, president of the Texas Mortgage Bankers Assn. and of the Home Mortgage Co. of El Paso; Lewis O. Kerwood, director of education and research, Mortgage Bankers Assn. of America, Chicago; and Tom E. Sargeant, vice president of Southwestern Life Insurance Co., Dallas.

Jerome L. Howard, president of Mortgage and Trust, Inc., Houston, will also speak.

Representing Tech will be President R. C. Goodwin; George Heather, dean of the School of Business Administration; Robert L. Rouse, head of economics and finance; and Delmar D. Hartley, faculty advisor of the Tech Finance Assn.

Jack Gauld, asst. vice president of Lubbock National Bank and Tommie Richardson, Lubbock senior, are in charge of arrangements for the program.

MUN Positions Open For 1965

Applications for next year's Tech Model United Nations secretary-generalship are now being accepted according to Karen Moore, Tech Union program director.

This year's secretary-general, Alan Henry, said applications for secretary-general and six bloc leader positions may be obtained in the Program Office of Tech Union.

Deadline for applicants is 5 p.m. April 28.

Grad Given Fellowship

A National Science Foundation fellowship has been awarded to David Watkins.

A graduate of Lubbock High School, Watkins plans to work toward his masters degree and Ph.D. degree in physics at Yale University.

Watkins, a member of last year's College Bowl team from Tech, plans to continue his work in elementary particles.

Watkins is a member of Phi Eta Sigma, freshman honorary for men; Phi Kappa Phi, national honorary for junior and senior students; Sigma Pi Sigma, national physics honorary; and the Society of Lynchnos, Tech scholastic honors organization.

MINISTER NAMED

NEW DELHI, India (P) — A new minister with Cabinet status has been named to deal with the influx of non-Moslem refugees from Moslem East Pakistan into India. He is Mahavir Tyagi, 64, who formerly headed ministries of revenue and expenditure and defense organization.

Phi Upsilon Names Officers For 64-65

The Omega chapter of Phi Upsilon, honorary home economics fraternity, elected new officers for the 1964-65 school year.

Election results are president, Helen Foster; vice president, Karen Tomfohrde; recording secretary, Sherran Phillips; corresponding secretary, Jeanette Elmore; and treasurer, Jeanette Tidwell.

Also elected are: historian, Jo Ann Ray; chaplain, Gayle Mc Nerlin; marshal, Ann Dennison; librarian, Zafer Cetinkaya; candle editor, Janet Meyers; moneymaking chairman, Sandra Wood; A.W.S representative, Jo Hansen; B.S.O. representative, Kay Arend; and social chairman, Betty Jo White.

New initiates are Kay Arend, Grace Ann Badgett, Elizabeth Baker, Helen Brittin, Zafer Cetinkaya, Linda Crowder, Jeanette Elmore, Judy Fite, Jo Hansen, Betty Huffman, Jeannie Madsen, Rebecca Meadows, Janet Meyers and Juanna Jo Moore.

Other initiates include Alta Fay

Moss, Sara Rajnus, Patsy Rannefeld, Nancy Sowell, Janet Stark, Tanya Tarkington, Sue Thompson, Sydna Tidwell, Marsha Todd, Lottie Wade, Betty Jo White and Sandra Wood.

Contest Opens

The Block and Bridle livestock judging contest will begin at 9 a.m. Saturday at the west end of the Aggie Pavillion.

All Tech students, except seniors and agricultural students who have previously enrolled in junior or senior judging, are eligible.

First place trophies will be awarded to high point individuals in the following divisions: swine, sheep, horses, beef cattle, and dairy cattle. Winners will be honored at the Block and Bridle Banquet.

One Show Scheduled

The special Events Committee of the Tech Union notified THE DAILY TOREADOR of changes in the scheduled appearance of Peter, Paul and Mary.

Camille Keith, assistant chairman of the Tech Union Special Events Committee, notified the Toreador that only one performance is scheduled. It was originally printed that three performances would be given.

Time for the performance is 3 p.m. in the Lubbock Municipal Auditorium, Sunday, May 3.

Students purchasing tickets for the performance are limited to no more than two tickets purchased at one time. A current I.D. card must be presented for each ticket purchased, and it will be stamped to show that a ticket was purchased with a card.

Persons attending the performance must show the stamped I.D. card along with their ticket at the door for the show.

Price for the student tickets is \$2 and general admission tickets are available for \$3 and \$3.50.

Reds Veto LBJ's Plan

GENEVA (AP) — The United States explained Thursday in detail President Johnson's proposed freeze on nuclear delivery weapons saying it could be carried out without inspection of stockpiles.

The Soviet Union at once cold-shouldered the idea, although it apparently was designed to overcome in part Soviet objections to international inspection of various stages of disarmament.

U. S. delegate Adrian S. Fisher emphasized that while existing stockpiles would not be subject to inventory, tight international checks would be kept on production facilities and launching sites.

REDS MOVE TROOPS

HONG KONG (P) — Red China has sent substantial troop reinforcements to Sinkiang and has cleared and fortified a belt 20 miles deep along hundreds of miles of the disputed border with the Soviet Union, White Russian refugees said Wednesday.

Lindsey
PO5-7122 MAIN E.J.

75c Matinee - Evening 90c
Children 25c
PERFORMANCES:
1:15 - 3:10 - 5:20 - 7:35 - 9:45

WILLIAM HOLDEN **AUDREY HEPBURN**
GO ABSOLUTELY APE IN
PARIS WHEN IT SIZZLES
PRINTS BY TECHNICOLOR

Village
SW5-6560 2329 341b

75c Matinee - Evening 90c
Children 25c

"SUPERB!"
—Life Magazine

★★★★★
"EXPERT SHOCKER!"
—NY DAILY NEWS

WILLIAM GOLDING'S
LORD OF THE FLIES

Arnett BENSON
PO2-4537 1st & COLLEGE

75c Matinee - Evening 90c
Only the mature will enjoy this!

TOM JONES

WINNER OF 4 ACADEMY AWARDS...

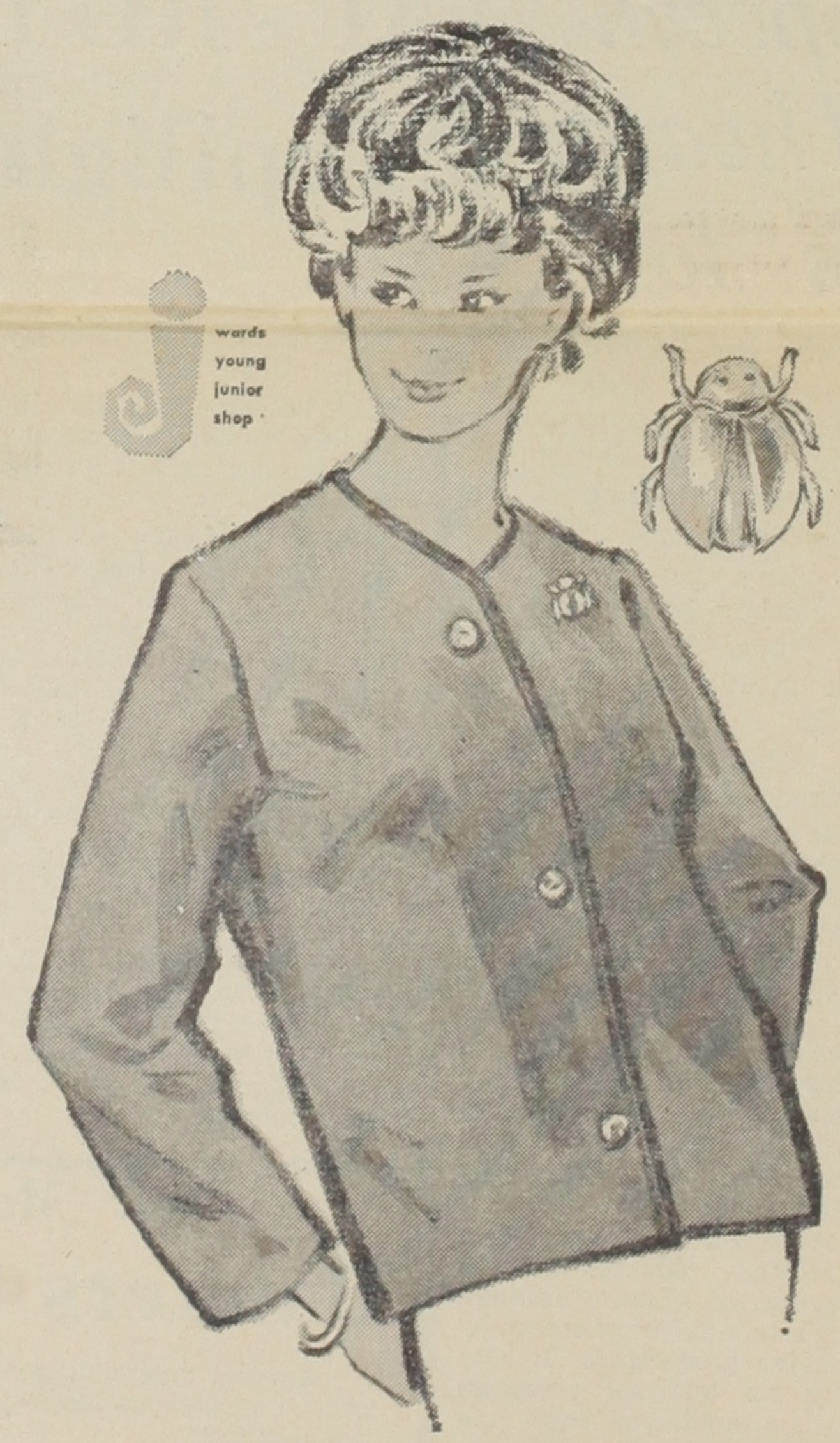
Best Picture Of The Year

★ DIRECTION ★
★ MUSIC SCORE ★
★ SCREEN PLAY ★

50th & Boston
CAPROCK CENTER
SW5-8221

MONTGOMERY WARD

wards young junior shop

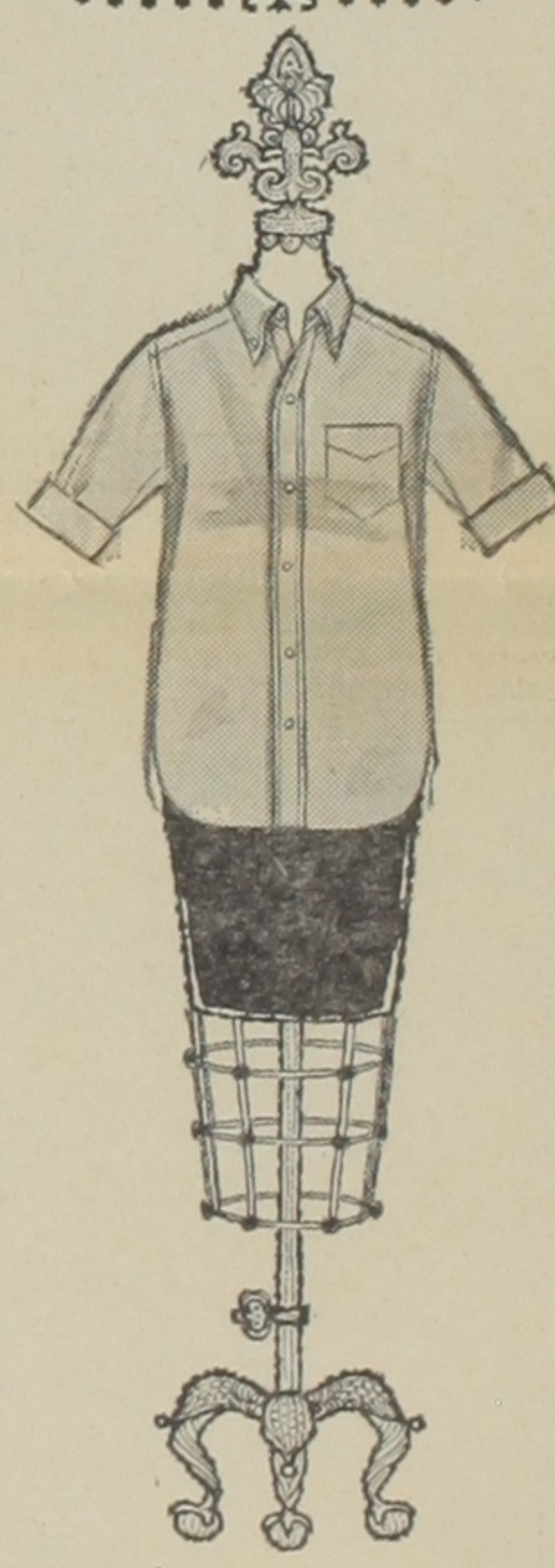


THE LOOK!
YA-YA! THE "BUG" JACKET,
TEENS' RECORD-BREAKING HIT

2⁹⁸

It's the look that's bounced to the top in teen favor. It's the "bug" jacket with British flair that's getting rave notices! Of cotton duck in contrast-piped red, white or blue, sparked by a real bug pin. Sizes S, M, L.

The Villager



Abundance


above the waistline calls for your consideration of some estival additions — those that make you a part of spring and summer. New colors, soft as an unfurling leaf or fierce as fire-engines. Luxuriate, during the easy months ahead, in an abundance of Villager Oxford cloth shirts, both roll-sleeved or cuffed. Sizes 8 to 14.

Open A Charge Account
JEAN NEEL'S

The Traditional Shop
WEST TEXAS FINEST

1105-07 College

NEW!
Just For You



Gibson
COLLECTION OF INSPIRATIONAL VERSES
by Helen Steiner Rice...

Beautifully illustrated poems lend themselves to a thoughtful presentation of inspiration and devotion. This booklet will make ideal gifts of inspiration to loved ones, friends, and to those to whom these comforting thoughts would offer solace.

Texas Tech College
BOOKSTORE "ON THE CAMPU'S"

'Romeo' Presents Problem

By MARGARET EASTMAN
Toreador Staff Writer

Rehearsals for Tech's production of "Romeo and Juliet" have included fencing lessons as well as acting lessons — since there are 12 characters in the play who have to fence.

And fencing was one of many problems incurred by those working on the production.

Costumes were another problem because there are more than 50 costumes used in "Romeo and Juliet." Each of these costumes was designed by Edgar Webb, graduate student from Plainview, as his project for his master's thesis. The student crew making the costumes worked for three months in their spare time.

In addition to the costumes many props to go along with them had to be made. Some of these props include swords, special shoes, jewelry and headpieces.

Males in the play had to grow beards and long hair. Some of them are wearing artificial beards. Charles Benton, who portrays Romeo, had to have his hair tinted light blond.

Make up for "Romeo and Juliet" takes one hour to apply. Some special effects are being done with make-up, such as extending Tybalt's eyes to give them a cat-like expression. Tybalt, played by Gerald Hanners, is the cunning slayer of Romeo's best friend in the story.

Setting also presented special problems. Dr. Clifford Ashby, who designed the set, said that it was a "modified Elizabethan playhouse." He said that Mosher Steel in Lubbock made structural steel especially for the set and loaned it to Tech. Ashby said that he had to call in a civil engineer to plan the steel structure for the set.



Photo by Bill Williams
PREPARING FOR A PERFORMANCE — J. Edgar Webb, graduate student from Plainview, assists a character in "Romeo and Juliet" in applying her makeup. Webb is in charge of costume designs as his project for his master thesis.

TECH ADS

Fast, accurate typing in my home. PO 3-0573.

MATH TUTOR: Certified experienced teacher. Full time tutoring by appointment. SW5-2632.

TYPING: Themes, thesis, research papers, 4519 40th, SW5-4565, Mrs. McCullough.

TYPING: Experienced. Thesis, term papers and research papers. Fast service. Mrs. McMahan, 1412 Ave. T, PO3-7620.

MALE HELP WANTED: Advertising Manager wanted for Agriculture newspaper. Prefer Junior or Senior Advertising major. Salary plus commission. Car essential. For details—PO3-1094.

Washing and Ironing—Shirts 20c, pants 25c; Iron only—shirts 15c, pants 20c. 2811 Auburn. PO5-6014.

Slide Rule, K & E Log Duplex Trig, Instruction, \$9, SW9-4006.

Sports Car for Sale — '63 Austin-Healy Sprite, 6,000 miles, Good gas mileage. Ext. 2420 or 2393.

FOR RENT: VERY NICE APARTMENT. COUPLES ONLY. QUIET. TWO BLOCKS FROM CAMPUS. RENT \$110 MONTH. BILLS PAID. CALL MANAGER PO3-9719. MATADOR APARTMENTS, 7th & W.

TYPING: Extremely fast and accurate service. Reasonable rates. SW5-7972. Carole Turner.

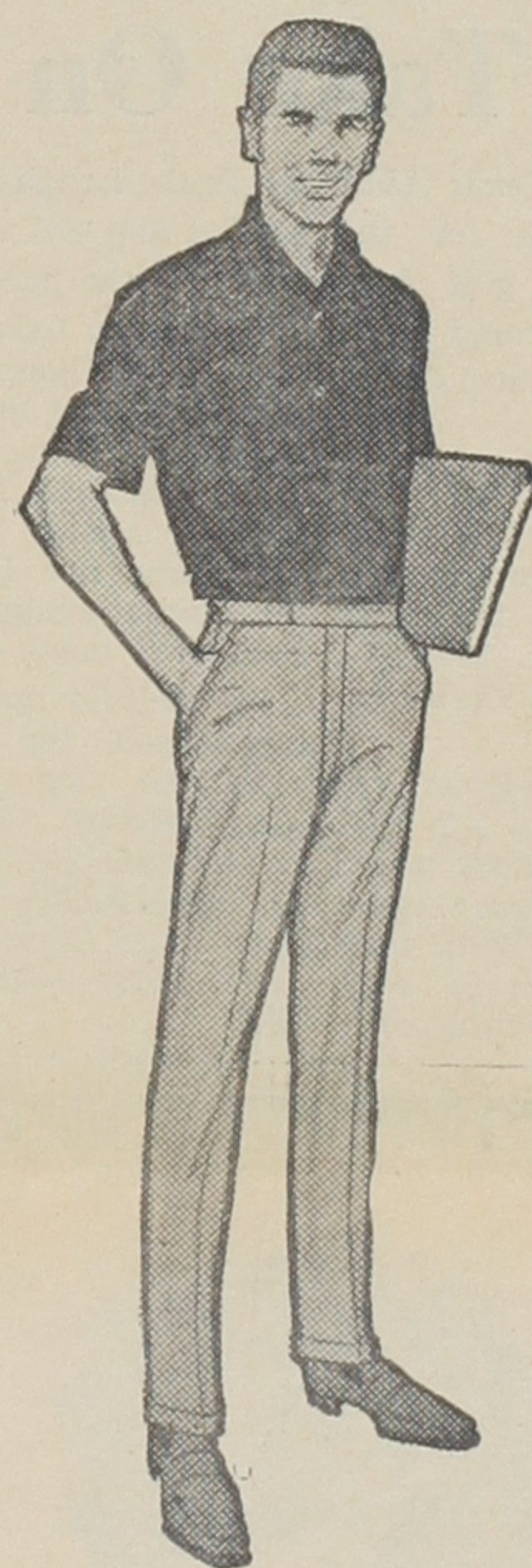
Wanted: Two boys for full-time employment during summer. Must be a softball pitcher. SH7-3154.

Beautiful platinum wedding band, set with diamonds. Size 8. \$75.00 cash. PO3-3038.

FOR SALE: Three bedroom home near Tech. Quiet neighborhood. Payments \$122. 3317 21st. SW5-5785.

NEW!

LEVI'S®
STA-PREST®
Sportswear
Never Needs Ironing!



LET THE DRYER DO YOUR IRONING

GUARANTEED NO-IRON!

CONTINENTAL MARK I

or

TRIMCUT STYLING

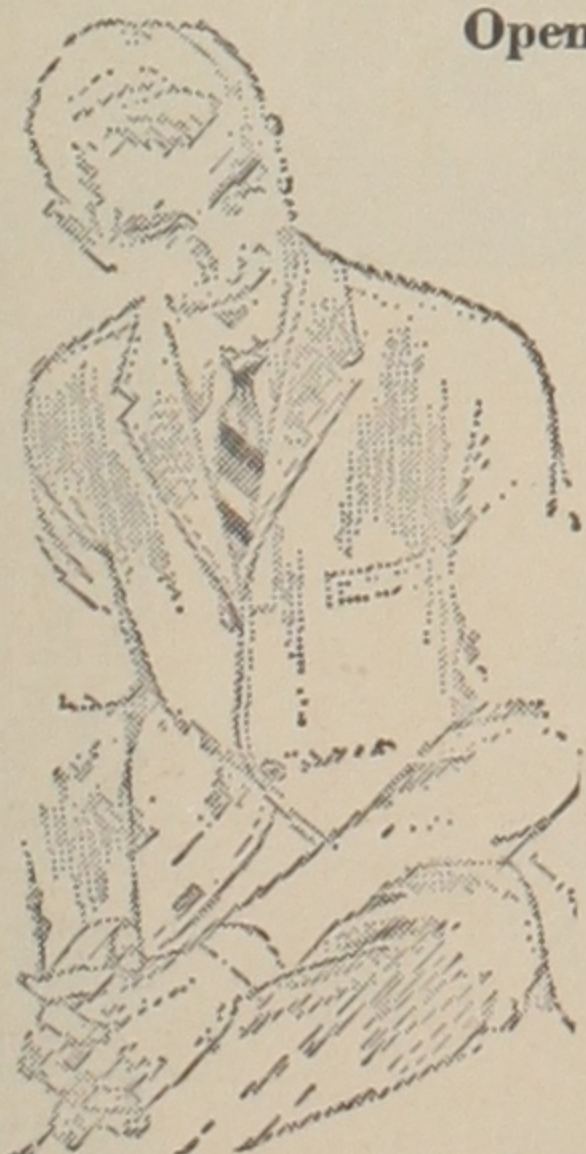
The snappiest dressers on the campus are stocking up on the smart new STA-PREST casual slacks by Levi. All cotton and never, never need ironing. Choose from colors of Black, Beige or Olive. Belted and cuffed or unbelted and uncuffed, sizes 29-38. It'll be a move you'll be glad you made — 6.98



Town and Country—North of Jones Stadium
Downtown—1301 Broadway
Caprock—50th at Elgin
Family Park—34th at Ave. H

Dom's Ltd.

2420 BROADWAY
Open a Charge Account



is a sport coat needed?

DENIM?
SEERSUCKER?
DACRON/WOOL?
ARNEL/COTTON

\$19.95 to \$50.

Where else would you find such a range of selection . . . than you will find today at DOMS . . . where there is a choice of fabric, a choice of colors, a choice of pattern? Each coat allows you to acquire a cool demeanor for spring and summer wearing. As for fit . . . leave it to natural shoulder tailoring!

Baseballers Seek Win Against ENMU Today

A pair of right-handers, David Tarter and Joe Fox, are scheduled to pitch for the Tech baseballers against Eastern New Mexico University at Portales today.

Fox, a junior from Gainesville, was winning pitcher in the Red Raiders' 16-2 victory over the Greyhounds here March 23. Tarter, a Muleshoe junior, finished up the early-season game. Fox is currently 1-3, and Tarter, a reliefer in five games, starting in only one so far, has no won-loss record.

Texas Tech also won the nightcap with ENMU, 16-0, and those two victories represent half of the Red Raiders victory total. Against their four victories (Abilene Christian and Texas Christian were also victims) are 10 losses — to Abilene Christian, TCU, New Mexico High-

lands (four), Texas A&M and Sul Ross (three).

Centerfielder Bob Fielder of Abilene still paces the Red Raider batters with 19 hits in 46 trips for a .413 mark. He also leads in run-batted in, 12; runs scored, 10; and total hits.

Other starters against ENMU will be Richard Perry of Hobbs, third base (.194); Jim Miller of Amarillo, left field (.229); John Dudley of Lubbock, first base (.273); Doug Cannon of Levelland, catcher (.311); Ronnie Ayers of Lubbock, left field (.171); Foy Williams of Lubbock, shortstop, (.345); Ronny Holly of Lubbock, second base (.184).

Tech's next home game will be with Abilene Christian Tuesday.

Golfers Take On A&M

Defending champion Texas A&M and Texas Tech battle for the Southwest Conference golf lead here today, but they could hand the No. 1 spot to the University of Texas.

Only one point separates pace-setting Texas Tech from third place Texas. After three matches, Texas Tech is 13-5, a half-point ahead of Texas A&M's 12½-5½, and a point better than Texas' 12-6.

Texas Tech can stay in front with anything better than a 3-3 split with A&M. Such a deadlock would boost University of Texas into a share of the lead with Tech, since the Raiders would then be 16-8, with the same .667 percentage fig-

ure as the Longhorns. It would give A&M a 15½-8½ record, still a half-point off the pace.

To stay in first place more than four days, however, virtually a clean sweep of the six points is required of Texas Tech or A&M. That's because Texas next meets Rice in Austin Tuesday, and the Longhorns are likely to take all six points against the Owls and send their mark to 18-6.

No mutual opponents furnish a comparison for Friday's match, scheduled for 12:30 p.m. at Meadowbrook. Tech has beaten Baylor and Rice and split with Texas. Texas A&M's record shows wins over Texas Christian and Arkansas and a draw with Southern Methodist.

RAIDERS BLANK MINERS, 6-0

Netters Whip TWC

Tech's tennis team evened up their season won-lost record yesterday by blanking the Texas Western team, 6-0.

The Miners never gave up, however, and played the Raiders down to the wire in every match.

Don Draper finally overcame Walter Romine in the first singles match after losing the first set 4-6. Draper stormed back in the next two sets to take the match, 6-3 and 6-4.

Robert Peterson had little trouble downing Gary Schmoeller in the first set of their match, 6-1. But the next set proved a little tougher for the junior from Tech and the game went to 8-6 before Peterson finally took the set.

Greer Kothman from Tech then took to the courts to squeeze out a narrow win over Ernie Merrick in the first set, 7-5, but had little trouble in the second, taking it, 6-2.

In the final singles match, Beau Sutherland beat Jerry Pratt in two sets, 6-2 and 6-3.

Peterson and Draper teamed up in the first doubles match to take a 6-4 victory in the first set, but were hard pressed to down the Romine and Schmoeller combination in the second. They finally downed the Miner duo, 9-7 to take the match.

Kothman and Sutherland teamed up for the second doubles match to down Merrick and Pratt in straight sets, 6-1 and 6-4.

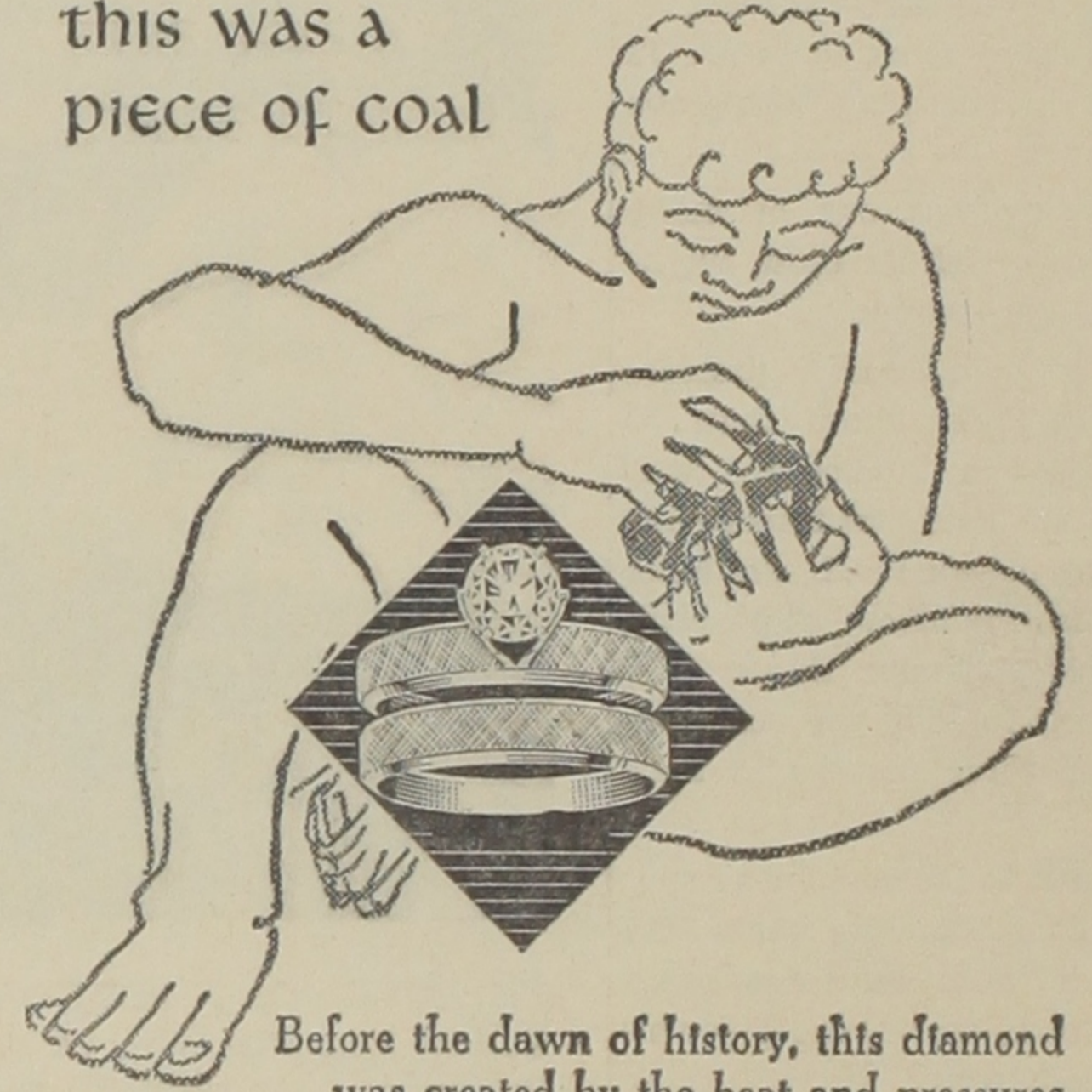
The win left the Raiders with a 3-3 season record and set the stage for their next Southwest Conference match against the Baylor Bears in Waco Saturday.

Sutherland and Draper were

named as co-captains for the team for, Texas Christian on May 2, and will lead the team into the Southern Methodist on May 6 and coming SWC matches against Baylor the SWC tournament on May 7-9.

2,000,000 YEARS AGO—

this was a
piece of coal



Before the dawn of history, this diamond was created by the heat and pressures of a volcano. Today, cut and polished and exquisitely mounted, this most precious of elements is part of our fine diamond collection. Let us show you how easy it is for you to choose and own a superb diamond ring.

Furr's Family Center - Jewelry Dept.
34th & Quaker

Bray's

campus
toggery

India Madras

The proprietor's mastery in sportshirts is due to the authenticity of cut, tailoring and detail. This is the Authentic Bleeding Madras. The craft of hand weaving these cottons with their soft textures and subdued coloration has been passed on from father to son for centuries.

Were 8.95
YOUR CHOICE

2 for 9.95

THE
LARGEST
SELECTION
EVER
SHOWN!

