

Coeds Vie For AWS

Tech coeds will go to the polls Wednesday to elect officers for the Assn. of Women Students.

Candidates for top offices and their qualifications are Mary Behrends, senior, unopposed for president, AWS representative for Knapp Hall, AWS Judiciary Chairman, Junior Council; and Betty Newby, junior, unopposed for first vice president, AWS General Council, IAWS representative, Junior Council.

Candidates for second vice president are Rosemary Paterson, junior, AWS representative for Dorm 7, vice president of Knapp, AWS Women's Day Committee Chairman; Carol Lee Paige, junior, president of Dorm 6, chairman of Women's Residence Council; and Susan Wood, junior, president of West Hall, vice president of Dorm 7, program chairman for "Carol of the Lights."

The unopposed candidate for third vice president is Nelda Laney, junior, AWS General Council, president of Drane Hall, Junior Council.

Women vying for secretary are Carol Dennison, junior, AWS secretary, President's Hostesses; Judy Glover, sophomore, secretary of the Wesley Foundation, Alpha Lambda Delta; Sharon Mangum, sophomore, treasurer of Town Girls, Union Decorations Committee; and Judy Wimbish, junior, secretary of Tech Union Entertainment Committee, corresponding secretary of the Student Education Assn.

The three candidates for treasurer are Patty Powner, sophomore, legislator for Knapp, Dad's Day Luncheon Chairman; Gena Odell, sophomore, legislator for Dorm 6, Alpha Lambda Delta; and Carolyn Traylor, junior, legislator for Knapp, sorority treasurer.

Judiciary chairman candidates are Jane Deaver, sophomore, AWS representative for Drane, member of AWS First Vice President's Committee, President's Hostesses; Martha Sue Hollar, junior, AWS representative for Knapp Hall, sorority secretary, member of Tech Band and Orchestra; and Jane Loughmiller, junior, AWS representative for Doak Hall, member of AWS First Vice President's Committee, Dad's Day Chairman.

IAWS candidates are Jenny Matthews, sophomore, member of AWS General Council, sorority efficiency chairman, President's Hostesses; Ann Hemphill, sophomore, member of AWS General Council, legislator for Drane Hall, Alpha Lambda Delta; and Ann Moore, junior, AWS General Council, secretary of Forensics Union, Alpha Lambda Delta.

Dormitory occupants may vote 11 a.m.-2 p.m. and 5-7 p.m. in their residence halls. Lubbock girls may vote 11 a.m.-2 p.m. in Tech Union.

I.D.'s must be presented at the polling places.

-In Athens-

Screaming Cypriots Burn LBJ In Effigy

ATHENS, Greece (AP) — Thousands of wildly screaming demonstrators raged through the streets of Athens Tuesday night and burned an effigy of President Johnson in front of the U. S. Embassy.

AT THE SAME time Prime Minister George Papandreu issued an order to police not to interfere with demonstrations on the Cyprus issue. But in a public statement he also said he wanted all foreign embassies and other institutions protected from "every act of violence and vileness."

The demonstrators shouted for self-determination of Cyprus and yelled "Johnson-Al Capone," "Bravo Russia," and "Out with the fleet."

AN ESTIMATED 2,000 persons converged in front of the U. S. Embassy. A small effigy of Johnson quickly went up in flames.

Other thousands demonstrated in front of the British Embassy while still others marched through downtown streets, blocking traffic.

A NUMBER of clashes between

demonstrators and police broke out but there were no reports of injuries.

Demonstrations on the Cyprus problem began Saturday when students fought with police in front of the U. S. Embassy.

YD's Show Two Films

Young Democrats will show two movies representing two viewpoints on communist-inspired riots at 7 p.m. today in the Biology auditorium.

The first movie "Operation Abolition" presents the view that a student riot in California was communist inspired. Directly contradicting the first movie, "Operation Correction" holds that the riot was definitely not inspired by communists.

Admission is free and non-members are invited by the club to attend the two films.



Staff photo—Moore

BAND SWEETHEART — Miss Katy Sue Meredith, National Maid of Cotton, presents a bouquet of roses to Carole Brashear, Petersburg junior, who was elected band sweetheart during halftime ceremonies at the Tech-Rice basketball game last night.

Miss Brashear is a Home Economics major and a Tech majorette. After crowning Miss Brashear sweetheart, Miss Meredith was presented an honorary citizenship certificate.

World News at a glance

TAN CHAU, South Viet Nam (P) — Red gunfire ripped into two Vietnamese airborne battalions stalking Communist guerrillas Tuesday near the Cambodian frontier and dropped 100 men — 15 dead and 85 wounded. The quarry had turned on the hunter.

Among the dead in an hour-long battle was a U.S. captain, an adviser to forward troop elements.

Seventy miles away to the east, another American officer perished in a guerrilla attack on a Vietnamese ranger unit to which he was assigned.

Killing of the two Americans increased to 114 the roll of American combat deaths since the United States stepped up its aid in the anti-Communist war Dec. 1, 1961. American deaths from all causes rose to 192.

"The damndest firefight I have seen since World War II," was a U.S. adviser's description of the action, which cost the government its heaviest casualties in any single engagement in months.

DALLAS (P) — The jury for the Jack Ruby murder trial was completed today with selection of the 12th juror.

A fourth woman, Mrs. Louise Malone, became the final juror. She is a white-haired widow, an accountant in an oil company.

Mrs. Malone was the 162nd person examined in 14 days. The defense tried to have her disqualified "for cause" but Judge Frank Wilson overruled this attempt. Defense lawyers then asked for an additional peremptory challenge in order to reject her.

Wilson also denied this.

Mrs. Malone was sworn in at 2:20 p.m. Wilson then recessed the trial until 9 a.m. Wednesday.

Brown, who had a heavy cold, was replaced by Wilson. The defense protested the change.

GENEVA (P) — France formally voted Tuesday for the admission of Red China in the World Health Organization, a U.N. specialized agency. In Paris, a French spokesman said France also would back Peking's bid for a seat in the United Nations and its affiliated bodies.

It was the first time since France recognized the Peking regime on Jan. 27 that the issue has come up in a major international body.

The French action dismayed U.S. officials who had hoped that President Charles de Gaulle's government would at least abstain when the issue is debated in such nonpolitical bodies as the health organization.

The American officials saw the vote as a sure indication that France will line up with the Soviet bloc and the Afro-Asian neutrals at the U.N. General Assembly this fall in voting to oust Nationalist China from the United Nations in favor of Red China.

Carole Brashear Crowned

Miss Carole Brashear, Petersburg junior, was crowned band sweetheart Tuesday night during halftime activities of the Tech-Rice game. She was crowned by Katy Sue Meredith, the 1964 National Maid of Cotton.

Three Finalists

MISS BRASHEAR was chosen from three finalists by members of the Tech band. Other finalists were Barbara Sperberg, 19-year-old music education major from Odessa and Pat Martin, junior from Hale Center majoring in elementary education.

Tech Majorette

MISS BRASHEAR is one of Tech's majorettes and has been for the past three years. She is 19 years old and majoring in home economics. She was one of the homecoming duchesses. Miss Brashear was also a finalist in the Miss Playmate contest and the Beauty and Beast contest.

AFTER CROWNING Miss Brashear band sweetheart, Miss Meredith was presented an honorary citizenship certificate by Lubbock Mayor Jack Strong.

Taken On Tour

MISS MEREDITH will be taken on a tour of the campus today from 2 to 3 p.m. Her tour will include trips to the museum and library. From 6 to 7 p.m. she will be honoree at a tea in the lobby of Dorms 6 and 7. All coeds are invited to the AWS-sponsored tea.

For State College Professors

Commission Proposes Raise

Professors in 20 state colleges may soon benefit from a salary hike recommended by the Texas Commission on Higher Education Saturday.

At the meeting in Austin, the Commission also adopted several formulas for financing operation of colleges and universities that could boost and the cost \$86-million during the next two years.

Newspaper wire services reported that the Commission approved a pay raise of \$12.2-million that could go into effect by 1966.

Increases Vary

This would be an average increase of 23.8 per cent—ranging from 16.3 per cent at Tarleton State College to 33.24 per cent at Texas A&M University.

The Commission said current Texas faculty salaries averages \$7,740. That is \$960 below the national average.

These figures are estimates based on cost formulas adopted Saturday and would take effect in the 1965-67 biennium. The schools must use the formulas in making their requests to the 59th Legislature which convenes in 1965.

Large Appropriations

The new formulas would result in appropriations of \$63,465,060 in 1966 and \$66,638,312 in 1967, based on present enrollment. All schools would get a 5 per cent increase from 1966 to 1967, informed sources said.

The salary estimates, on the other hand, are based on a com-

plex formula that takes into account the numbers of credit hours taught in undergraduate and graduate courses, student-teacher ratios and numbers of students.

The formulas were worked out by the committee's staff and the advisory committee of presidents of state colleges and universities.

The only entirely new formula was the one used in determining appropriations requests for research.

Tech Profits

This formula is based on an "institutional complexity factor." In addition, the University of Texas, Texas A&M, the University of Houston and Texas Tech would get a special bonus of 5 per cent of the amount of their research grants from outside sources.



PIO photo—Williams

A BALE FOR THE ENTRANCE — Saddle Tramp member Tom Edwards accepts a bale of cotton which Mr. and Mrs. Arch Lamb donated to the entrance marker fund sponsored by the Tramps. Lamb, left, is a long-time Lubbock area farmer and a former Tech student.

BUSY? WHY WASTE AN HOUR WASHING AND DRYING WHEN HALF THAT TIME WILL DO? TRY THE COMPLETELY DIFFERENT

UNIMAC WASHERS

WASH 20c (15 MIN.)
DRY CLEANING

DRYERS 10c (10 MIN.)
FINISH LAUNDRY

GONZALEZ WASHATERIAS

2819 Clovis
PO 2-9644

718 4th St.
PO 2-9632

Film Festival Shows 'Ikiru'

"Ikiru," the third movie in the Tech Union "Film Festival" series will be shown at 3:15 p.m. and 7:15 p.m. today in the Agricultural Auditorium.

The movie, a Japanese film, tells the story of a search for the meaning of life by a man who knows he has only a short time to live.

Admission is 25 cents.

COLLEGE TALENT CALL!!



3rd ANNUAL CAMPUS REVUE

Here's the chance of a lifetime for college students to display their talents in a lively one-hour variety show under professional direction. The SIX FLAGS CAMPUS REVUE is one of the top attractions at America's Foremost Theme Amusement Park. All types of theatrical talent are needed.

Accompanist will be provided at auditions or you may bring your own. A full summer employment at SIX FLAGS OVER TEXAS, Dallas-Fort Worth, will be offered those registered college students selected. Rehearsals begin Saturday, May 30.

SIX FLAGS
OVER TEXAS

AUDITIONS WILL BE HELD MARCH 15
IN THE TECH UNION.

Tech Profs End Studies On Fallout Shelter Needs

A trio of Tech professors returned Monday from Houston after participating in a Civil Defense workshop.

C. H. Kehd, associate professor of civil engineering; Norbert Pointer, instructor of architecture; and Richard Duran, associate professor of architecture and allied arts, received Civil Defense certificates last summer qualifying them in fallout shelter analysis.

Each attended a six-week course on shielding analysis sponsored by the Defense Department last week. The meeting in Houston was con-

ducted to relay technical information to qualified participants and to conduct experiments in determining new standards for fallout shelters.

NOMINATIONS SOUGHT

Nominations are being accepted for class favorites and Mr. and Miss Texas Tech, according to Pat Hamilton, executive secretary of the Student Council.

Nomination forms may be obtained at the Council office. They must be returned by March 13.

Candidates for the honorary positions must be nominated by organizations. The election will be March 18.

TECH ADS

TYPING: Themes, thesis, research papers, 4519 40th, SW 5-4565, Mrs. McCullough.

MATH TUTOR. Certified experienced teacher. Full time tutoring by appointment. SW 5-2632.

TYPING WANTED: BBA degree . . . statistical, legal and patent experience . . . SW 5-9050.

Furnished or unfurnished apartments for married couples. No pets. Air conditioned summer and winter. Beauty parlor, laundry, commissary, hobby and recreation rooms, all in building. A quiet place to study. West Lake Manor, 26th Street and York Avenue, SW 5-1062. Mr. Hale.

Fast, accurate typing in my home. PO 3-0573.

Typing: Experienced. Thesis, term papers and research papers. Fast service. Mrs. McMahan, 1412 Ave. T, PO 3-7620.

ROOM AND BOARD: College boys. \$65.00 a month. 2115 Main.

ARTISTS — Get your work in the public eye. Take it to THE LITTLE GALLERY. 19th Street & Ave. T. PO 3-8552.

WANTED: Typing — thesis, term papers, etc. Quality work. Phone SW 5-4733 after 3 P.M.

One room air-conditioned for mature student. Can pay part rent with maintenance work. Also apartment for couple. Both apartments furnished. Reasonable rent. Bills paid. Between Tech and downtown. PO 3-3038.

Tutor in accounting. Call SH4-5876 for appointment.

Poloroid model-80 plus flash and light meter, also Brownie Bull's-Eye with flash. After 3 P.M. SH 4-3085.

For Sale: 15' Yellow Jacket motorboat with 25hp Johnson engine & trailer. See beside Tech Press. Ext. 2803.

QUALITY IS THE KEYNOTE AT

- When you deal with Modern Chevrolet you get QUALITY Transportation at a Reasonable Price.
- QUALITY Personnel to assist you selecting the new Chevy that's just right for you.

MODERN CHEVROLET

- QUALITY Service backed by Factory Trained Mechanics that knows your Chevy best.
- MODERN'S Bargain Selling Policy assures you of not just a good deal but a great deal when you purchase a new or used Chevy car or truck.

"SEE MODERN and SAVE"



"SEE MODERN and SAVE"

19th & Texas Ave.

Phone SH 7-3211

Dr. Berlie J. Fallon

Education Prof Speaks Out On School Dropout Program

Casey at the Bat, in the famous poetic baseball game, had nothing on the high school dropout, Dr. Berlie J. Fallon, a Texas Tech professor of education, has concluded.

Dr. Fallon says that the potential high school dropout usually has two strikes against him by the time the teacher has him in class.

"In the first place, the dropout generally has a hostile home environment, which is one strike against him," Dr. Fallon explained. "The second strike comes when he finds hostility in his other relationships outside the school and home."

"So the school gets to throw the last ball," Dr. Fallon continued. "And it is generally up to the teacher, whether the student 'strikes out' or gets a home run!"

Challenge To Schools

Dr. Fallon says this is a tremendous challenge to the schools and to the individual teachers; and that it is one they are growing more aware of and continuously meeting.

Dr. Fallon quotes some frightening statistics regarding the school dropout.

"Only slightly more than half of all fifth-grade pupils finish high school; less than two-thirds of those in the ninth grade remain through grade 12.

"Persons lacking a high school diploma are the first to feel the results of the diminishing demand for unskilled labor, and are at the greatest disadvantage in periods of high unemployment.

"Juvenile delinquency is 10 times more frequent among dropouts than among high school graduates."

Dropouts 'Mark Time'

Dr. Fallon describes the "typical" dropout as being about 16 years old; often marking time, waiting to reach the age when he may legally quit school.

"He is most likely to quit between the ninth and tenth or between the tenth and eleventh grades. It is especially likely that he will not return after a summer vacation.

"Usually his relationships with his teachers and many of his fellow students indicate tension, suspicion and strain. His poor attendance record, lack of interest and failure to cooperate have contributed to his being behind his class.

Schools Are Friendly Places

"Most of the time school is one of the friend-

liest places, if not the only friendly place the potential dropout knows, even though he may find himself in conflicts there, too," he said. "The teacher can capitalize on this, and with a little guidance and understanding, one teacher showing interest can make the difference."

Another aspect of the dropout problem is educating the public to the importance of keeping students in school.

For instance, there are the obvious financial benefits of education — the high school graduate can expect to earn an average of \$30,000 more, in a lifetime, than a high school dropout; his earnings will exceed by \$50,000 those of persons who quit at the end of the eighth grade; a college graduate's income will be \$178,000 higher over a lifetime.

Society Encourages Youth

Also, because of the correlation between juvenile delinquency and school dropouts, society has a real interest in encouraging all youth to finish school.

"It is better — and less expensive — to build classrooms for the boy, than to build cells and galleys for the man," Dr. Fallon warned.

Dr. Fallon cites, as an encouraging sign of growing awareness of the dropout problem, the work being done by the West Texas School Study Council, composed of 23 area schools and Tech.

The Council is doing a regional analysis on the causative factors of dropouts which will be completed in July.

The survey is designed to find out why the former student dropped out of school, how his schooling helped, current income, the jobs he's held since leaving school and his current occupation and interests.

Self-Evaluation Program

At the same time schools in the Study Council are doing a self-evaluation, and conducting personal interviews as well as mailings. In all, the study is in greater depth than any particular study of its type conducted in Texas in the past, Fallon said.

In the meantime, the ominous game of "baseball" goes on in the public schools of Texas, with the teacher pitching, the school catching, and the potential dropout always at bat — waiting for the "home run" of success, or the third strike that will send him "back to the dugout" and into oblivion.

Edwards AFB Produces Supersecret Fighter Plane

EDWARDS AIR FORCE BASE, in identifying a high-flying plane climbing rapidly over its 100-square-mile area.

Heat in the summer and cold in the winter keep casual visitors away from this base, where during World War II the government began secretly testing a number of aircraft.

Why hadn't the public seen or heard of this 2,000-mile-per-hour fighter plane, the A11, before Saturday when its existence was announced?

Chances are the public had sighted it, but didn't know what it was.

This base lies in the desolate Mojave Desert, 70 miles northeast of Los Angeles. It's 20 miles from the nearest town or major highway.

The base is so large that even binoculars would be of little help

climbing rapidly over its 100-square-mile area.

Huge hangars lining the 15-mile-long dry lake bed, which serves as a runway, have housed such research craft as U2 and RB57F.

The hangars also effectively shield the runway from the administration area three miles away.

The mastermind behind the A11 is unofficially said to be Lockheed's Clarence Kelly Johnson, who designed the U2 and several other secret military planes.

Attention SENIOR and GRADUATE MEN Students

who need some FINANCIAL HELP in order to complete their education this year and will then commence work.

Apply to STEVENS BROS. FOUNDATION, INC.
A Non-Profit Educational Fdn. 610 Endicott Bldg., St. Paul 1, Minn.

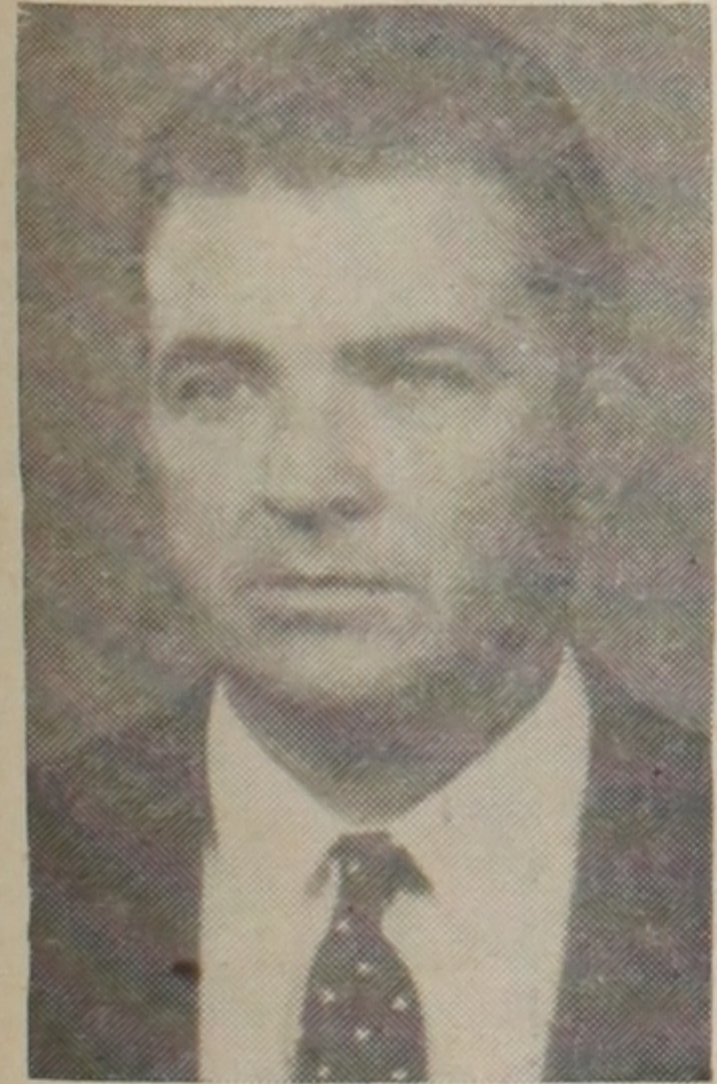
UNDERGRADS, CLIP AND SAVE

BENNETT SECRETARIAL & BOOKKEEPING SERVICE
2218 Broadway PO 3-1006

CUSTOM TYPING MIMEOGRAPHING
PUBLIC STENOGRAPHER LETTER SERVICE

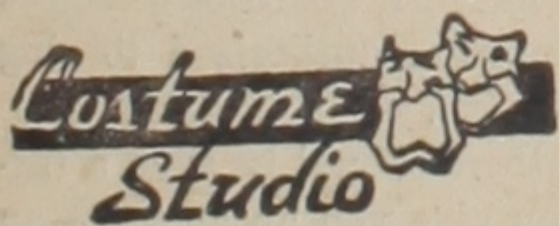
★ Specializing In Thesis, Research Papers, Themes
And Statistical Typing.

2 1/2 Blocks Off Campus BETTY BENNETT, Owner



DR. FALLON

COSTUMES FOR ALL OCCASIONS TUXEDOS



- Party Novelties
 - Make-up-Masks
 - Wigs — Mustaches
- 2422 Broadway — PO 3-2388

HOLT'S Sporting Goods Company
601 COLLEGE of Lubbock, Texas

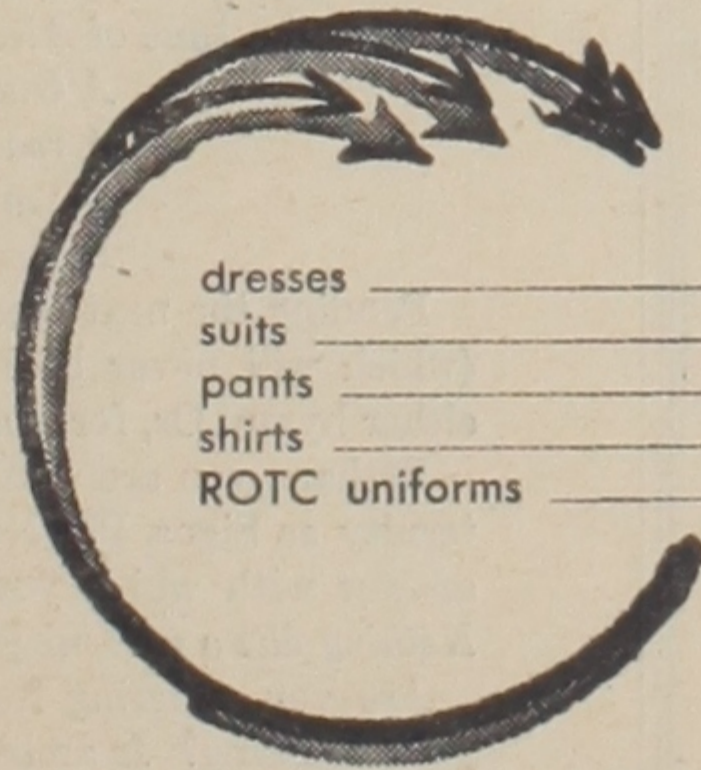
SAVE ON DRY CLEANING AT

MARCY'S

5 CONVENIENT LOCATIONS

Town & Country
4445 34th Street
Family Park

121 North College
412 Ave. L.



dresses	_____	65c & up
suits	_____	65c
pants	_____	35c
shirts	_____	35c each
ROTC uniforms	_____	50c

When You Need Glasses You Need Them now
Broome Optical Gives One Day Service
Bring Your Present Prescription
Or Present Lense Duplicated

Broome Optical

1214 Broadway

PO 3-4141



Houston's Great Store

foley's

for a career that offers

TRAINING — Planned programs provide know-how and lead quickly to management experience in positions of real responsibility.

RECOGNITION — Promotion is based on performance and capacity for growth rather than an inflexible timetable for advancement.

EARNING POWER — Department store managerial salaries rank with the best in U. S. industry and business, and often are more quickly reached.

OPPORTUNITY — Foley's is growing more rapidly than the general economy, providing unusual opportunities for personal growth.

with opportunities in

MERCHANDISING — Merchandising executives are responsible for planning, buying, presentation, selling, personal leadership, sales promotion and the generation of profits.

CONTROL AND FINANCE — Here executives develop and analyze operating and financial reports to improve management effectiveness; direct auditing and accounting procedures for the control of funds; and develop and administer credit plans.

STORE OPERATIONS — Operations executives direct the flow of merchandise from the resource through the store to the customer. They are responsible for developing and administering customer services; for maintaining and operating the physical plant; for analyzing, planning and purchasing supplies and materials.

AND MANY OTHER AREAS — There are challenging management careers in research, method analysis, advertising, personnel, and other fields requiring diversified skills and talents.

Foley's will be on your campus

FOR COMPLETE INFORMATION, CONTACT YOUR PLACEMENT OFFICE

Second Place Raiders Clip Sad Owls

By MIKE WALL
Toreador Sports Editor

Senior Tom Patty decided to make his last appearance before the home crowd a good one Tuesday as he dunked in 30 points to lead the Raiders past the Rice Owls, 77-70.

The big senior couldn't seem to miss from the outside and his 20-foot jump shot proved to be the difference for the Raiders.

KENDALL RHINE, Rice's leading scorer and the Southwest Conference point leader, managed to collect only 21 points before fouling out with more than half of the second period to go.

The game was touch and go all the way for the Raider team until five minutes were left in the game. Glen Hallum sank a freethrow to knot the score at 63-all and

★ ★ ★ ★ ★

TOREADOR ★ Page 4

Wednesday, March 4, 1964 ★ **SPORTS**

from then on it was strictly Texas Tech.

IN THE FIRST half, it appeared as if it were going to be strictly Rice and Rhine. The Owls twice held a nine point lead only to see it chopped away by a determined Raider crew.

Finally, just before the half, Patty hit one of his jump shots to send the Raiders into a one point 29-28 lead. Then Malaise and Patty both connected on shots to send the Raiders into their biggest lead of the half, 33-28.

RICE JUST KEPT coming though and the stanza ended with the Owls only two points behind, 39-37.

In the second half, Rhine again lead an Owl charge that saw them first take a one point lead on one of Rhine's dunks, and build it into a seven point lead. It was at this

point, however, that Rhine made his last Lubbock mistake and left the ballgame.

THE RAIDERS chopped steadily at the Rice lead and with five minutes to go, Dub Malaise hit a jump shot to send the Tech team into a one point lead.

The lead changed hands twice after that and the score was tied

once more, but the Raiders took Trenton Bonner from Graham command and it was "So Long, er just long enough to score 40

USING THEIR familiar stall, the Raiders forced Rice to commit the foul and with almost a perfect average from the charity

The Picadors downed the Rice line, the Tech team cinched their tenth SWC victory against three defeats.

The Rice loss dropped the Owls to a seven and six won-loss SWC record.

IN THE FRESHMAN game, freshmen.

Sports — — Briefs

TEXAS TECH'S surprising golfers next tackle the Border Olympics tournament at Laredo this weekend.

Coach Jay McClure saw his linksmen rally sharply the second day of the Southwestern Recreation Meet, moving from sixth to second behind perennial power North Texas State.

The Raiders finished ahead of all of the other Southwest Conference teams entered — Texas A&M, Baylor, Rice, Southern Methodist and Texas Christian.

SOUTHWEST Conference swimmers will assemble at Texas Tech for the conference meet here Thursday through Saturday, March 12-14.

This will be the second year for Tech to be host to the SWC Meet. Southern Methodist is heavily favored to repeat.

Texas Tech will also be the site of the state high school swimming meet March 21 and of the Southwest Conference track, golf, and tennis meets May 8-9.

THREE WEST TEXAS high schools are competing in the state tournaments at Austin this weekend after capturing regional titles at Texas Tech last week.

Graham is in the Conference AAA meet after defeating Seminole in the finals 62-41. Canyon repeated as Conference AA champion taking Dimmitt 52-44 in the last game, and Sanford-Fritch grabbed the A title with a 64-57 victory over Aspermont.

BOX SCORE						
TECH	FG	FT	RES	PF	TP	
Patty	14	2-2	2	3	30	
Denney	9	4-7	14	2	22	
Hallum	3	7-8	15	4	13	
Malaise	3	2-2	4	3	8	
Rentier	2	0-2	7	3	4	
Murren	0	0-0	1	2	0	
RICE						
Rhine	9	3-3	15	5	21	
Steinkamp	5	5-5	4	2	15	
Phillips	4	6-6	16	3	14	
Spradling	2	3-5	8	3	7	
Siegmund	3	0-0	3	3	6	
Rodrique	2	0-1	5	1	4	
Hill	0	2-2	0	0	2	
Tiner	0	1-2	0	0	1	

SAVE 75% ON LAUNDRY & DRY CLEANING

Blue Bonnet
COIN OPERATED LAUNDRY & DRY CLEANERS



CORNER 34th and BOSTON
PLENTY OF FREE PARKING

DRY CLEANING

Full Load **\$2.00** Laundry Load 20¢

Open Daily 7:00 a.m. to 10:00 p.m.
Open Sunday 1:00 p.m. to 7:00 p.m.
Pick-Up Station For Complete Laundry & Dry Cleaning Service

HULL & RIDDLE

SH 7-1681 **DRUG** College at 23rd

PRESCRIPTIONS

OPEN: Weekdays 7:30 a.m.—10 p.m.
Sundays 9:00 a.m.—10 p.m.

A Complete Family Drug Store
We Deliver

Plenty of Parking Across the Street.

On Campus with Max Shulman

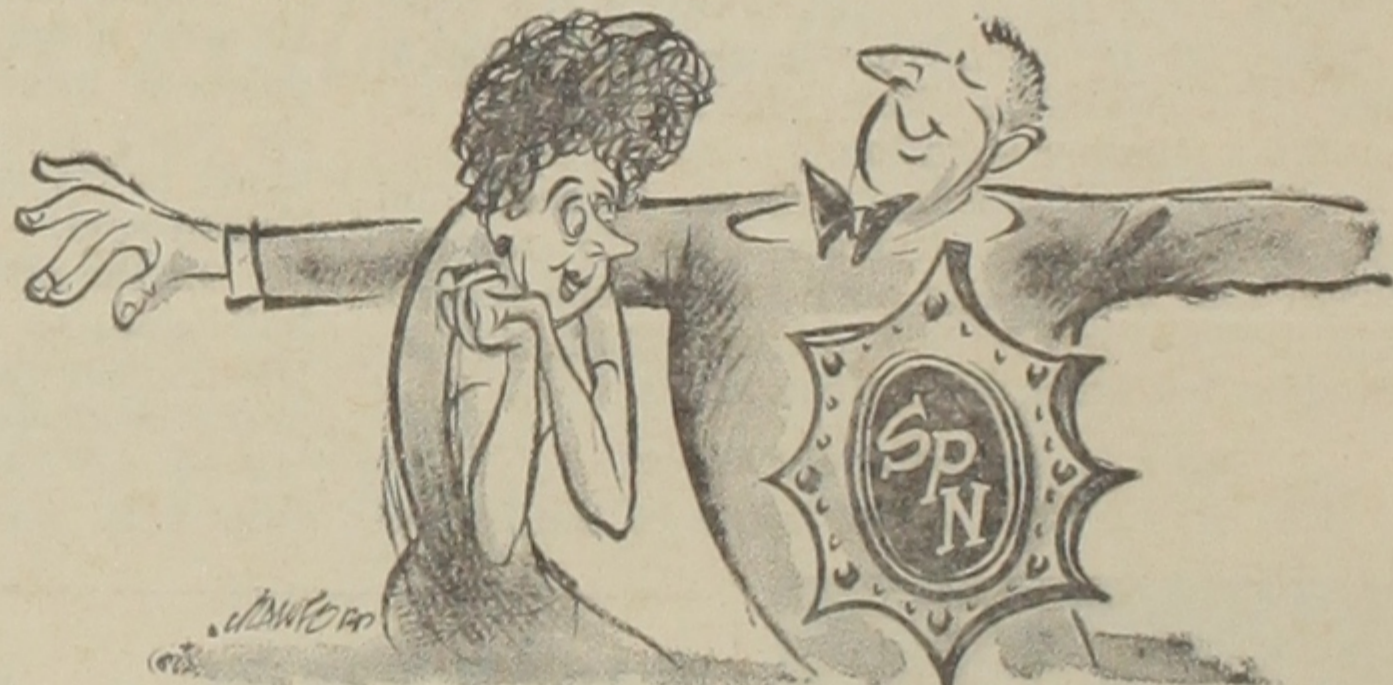
(Author of "Rally Round the Flag, Boys!" and "Barefoot Boy With Cheek".)

THE SLOW RUSH

Illustrated below is the membership pin of a brand-new national fraternity called Signa Phi Nothing. To join Signa Phi Nothing and get this hideous membership pin absolutely free, simply take a pair of scissors, cut out the illustration, and paste it on your chest.

Let me hasten to state that I do not recommend your joining Signa Phi Nothing. The only thing I recommend in this column is Marlboro Cigarettes, as any honest man would who likes good tobacco and a good filter, whose heart is quickened by a choice of soft pack or Flip-Top Box, and who gets paid every week for writing this column.

I am frankly hard put to think of any reason why you should join Signa Phi Nothing. Some people, of course, are joiners by nature; if you are one such, I am bound to tell you there are any number of better organizations for you to join—the Cosa Nostra, for example, or the Society for the Placing of Water Troughs in Front of Equestrian Statues.



cut it out and paste it on your chest

But if you insist on joining Signa Phi Nothing, let me give you several warnings. First off, it is the only fraternity which admits girls. Second, there is no pledge period; each new member immediately goes active. Perhaps "inactive" is a more accurate word: there are no meetings, no drives, no campaigns, no sports, no games, no dues, no grip, and no house.

The only thing Signa Phi Nothing has in common with other fraternities is a fraternity hymn. In fact, two hymns were submitted to a recent meeting of the national board of directors (none of whom attended). The first hymn goes:

*Signa Phi Nothing,
Shining star,
How we wonder
If you are.*

The second hymn, rather more poetic in content, is to be sung to the tune of *Also Sprach Zarathustra*:

*A Guernsey's a cow,
A road is a lane,
When you're eating chow,
Remember the mein.*

Pending the next meeting of the national board of directors (which will never be held) members are authorized to sing either hymn. Or, for that matter, *Frenesi*.

Perhaps you are wondering why there should be such a fraternity as Signa Phi Nothing. I can give you an answer—an answer with which you cannot possibly disagree: *Signa Phi Nothing fills a well-needed gap.*

Are you suffering from mental health? Is logic distorting your thinking? Is ambition encroaching on your native sloth? Is your long-cherished misinformation retreating before a sea of facts? In short, has education caught up with you?

If so, congratulations. But spring is upon us and the sap is rising, and the mind looks back with poignant longing to the days when it was a puddle of unreason.

If—just for a moment—you want to recapture those care-less vaporings, that warm, squishy confusion, then join Signa Phi Nothing and renew your acquaintance with fecklessness. We promise nothing, and, by George, we deliver it!

© 1964 Max Shulman

We, the makers of Marlboro Cigarettes, promise smoking enjoyment, and we think you'll think we deliver it—in all fifty states of this Union. Marlboro Country is where you are.

SALE

ALL Books during March REDUCED 1/2 PRICE

(Does not include modern library...
paperbacks technical or textbooks)

**Book & Stationery
Center**

1103 College Ave. PO5-5775