



### Dangers of pain relievers

Dr. Sandra Sabatini, an expert in the study of kidney diseases, spoke Tuesday on some harmful effects non-prescription drugs can have on users.

See story, page 3



### Slow and country

After meeting at Clarendon College, the former members of the Clarendon College Cowboy Band now live in different Panhandle cities but still come together as Slow Motion to perform country and western music.

See story, page 5



### Series on hold

The Oakland A's and San Francisco Giants await word today on when and where the World Series will resume following Tuesday night's earthquake that rocked Candlestick Park.

See story, page 7

# THE UNIVERSITY DAILY

Texas Tech University

WEDNESDAY  
September 18,  
1989

Vol. 65, No. 37 8 pages

**WEATHER**  
Cloudy skies with a 30 percent chance for precipitation; snow flurries possible. Temperature: low of 32 and the high reaching 47.

## Quake jolts Northern California; at least 47 dead in Bay Area

By The Associated Press

**SAN FRANCISCO** — A major earthquake rocked Northern California Tuesday night, killing at least 47 people, caving in a section of the San Francisco Bay Bridge, forcing World Series fans to evacuate Candlestick Park and causing widespread damage.

Lt. Gov. Leo McCarthy said at least 40 people had been killed in a highway collapse in Oakland.

Six people were crushed to death in their cars when part of an old four-story brick building toppled onto the vehicles on Bluxome Street in San Francisco, said Police Lt. Jerry Kilroy.

One person died of a heart attack and four people were injured in San Jose, 50 miles south of San Francisco, according to Willis Jacobs of the National Earthquake Information Center in Golden, Colo.

Three hours after the 7:04 p.m. CDT quake, the magnitude of the disaster began to emerge as reports came in of widespread death and destruction.

McCarthy said a section of Interstate 880 in Oakland had caved in, killing at least 40 people who were in their cars.

"The rubble is so bad that they still don't have an accurate count of the fatalities," McCarthy said.

The California Highway Patrol said six were killed in the collapse of part of City Garden Mall in Santa Cruz.

No major injuries were reported at Candlestick, where Game 3 of the World Series was canceled and about 60,000 fans were evacuated.

The quake, which registered 6.9 on the Richter scale, apparently was centered about 10 miles north of Santa Cruz and about 65 miles south of San Francisco.

Mayor Art Agnos' press secretary, Eileen Mahoney, said as many as 20 people had been injured at a fire in the Marina section. Another fire was blazing near downtown Berkeley.

"The thing struck just as everyone was going home," said Tom Mullins, a spokesman for the California Office of Emergency Services in Sacramento. "We've got reports coming in from San Benito and Santa Clara

counties of heavy damage."

Hundreds of people fled Bay Area Rapid Transit subway and elevated stations in San Francisco and East Bay suburbs. The system was shut down.

Two hours after the quake struck, thousands of commuters who reside in the East Bay area were trapped in San Francisco as darkness fell. All forms of transport leading to the east were shut down. People were asking police whether certain streets were open, looking at road maps and trying to figure out a way to get out of the city.

One major fire was blazing in San Francisco's Marina District and another in downtown Berkeley. A huge plume of smoke was visible for miles over Berkeley.

## Tech student assaulted, beaten until unconscious

By BETH GEORGE  
The University Daily

A Texas Tech student was beaten by about 10 men early Sunday while two physically restrained witnesses watched helplessly, the Lubbock Police Department reported.

Timothy Dettle, 19, was beaten until he was unconscious in the parking lot of a University Avenue restaurant about 1 a.m. Sunday, police reports indicated.

Dettle was released after being treated in the Lubbock General Hospital emergency room, according to hospital personnel.

According to police reports, the dispute started at the Baja Bar and Grill on Fourth Street and continued in the parking lot of the restaurant at Third Street and University Avenue.

As Dettle and two companions turned onto Third Street after leaving the north parking lot of the bar, they were cut off by the other men's vehicle, police reports indicated.

One of Dettle's companions told

police Dettle may have been in an argument with one of men while inside the club. The witness gave the officer no details about the argument but said the man hit Dettle in the face before bouncers were able to break up the fight.

According to police reports, Dettle and his companions pulled into the restaurant parking lot and exited their vehicle. They were surrounded by about 10 men from three vehicles who followed them into the lot, police reported.

Four of the men held one of Dettle's companions against the car, and three others apparently restrained the other man, reports indicated.

One witness told police he watched as two of the men beat Dettle. One man grabbed Dettle's hair and slammed Dettle's head into the asphalt of the parking lot, police reports indicated.

The two witnesses yelled at the men to stop, and the group of men left the scene. Dettle's companions took him to Lubbock General Hospital, police reported.

## Tubbs rites today

Services for Darla Denise Tubbs, 31, of Lubbock will be at 10 a.m. today at First Baptist Church of Littlefield with the Rev. Harold Brown, pastor of Missionary Baptist Church of Littlefield, officiating.

Burial will be at Littlefield Memorial Park under direction of Hammons Funeral Home.

Tubbs was one of five people who died Sunday night from injuries suffered in a two-vehicle accident at the intersection of FM 1585 and Slide Road near Lubbock.

She was a native of Amarillo and graduated from Littlefield High School before moving to Lubbock to attend South Plains College and then Texas Tech University. She completed both her undergraduate and graduate work in psychology at Tech, and she was working on her doctorate

in counseling psychology.

Tubbs was an employee of the University Counseling Center, where she served as a therapist. She had worked as a teaching assistant in the psychology department.

In April 1988 Tubbs was awarded a teacher of the year honor, and she had been nominated for the same honor in 1987. As a student at Tech, Tubbs was on the President's List and was nominated for Who's Who Among American College and University Students. She had made several presentations before professional groups and had had several articles published in professional journals.

Memorials are suggested to the American Cancer Society or to the Janis Aaron Scholarship Fund in Littlefield.

## Bush wants guidelines eased in coup involvements

By The Associated Press

**WASHINGTON** — The Bush administration said Tuesday it is seeking an understanding with Congress to ease restrictions on American involvement in foreign coups that might result in the death of a country's leader.

White House Press Secretary Marlin Fitzwater said the proposed changes would not alter a longstanding executive order banning U.S. involvement in assassinations but would allow the CIA to have contact with plotters of a coup in which a foreign leader might be killed.

"There's a wide variety of interpretations and issues to be discussed," Fitzwater said.

The issue took on new urgency in the wake of the failed coup attempt against Panamanian ruler Manuel Antonio Noriega on Oct. 3.

Administration officials complained that CIA officers in Panama were essentially prevented from advising the coup plotters because of the possibility that Noriega might be killed.

President Bush, at a news conference last week, signaled he wanted to see the restrictions relaxed. "I want as broad a power as possible and I think under the Constitution, the president has it," he said last Friday.

U.S. officials are extremely reluctant to publicly discuss intelligence matters, particularly subjects such as coups and assassinations. However, CIA Director William H. Webster, in an interview with *The New York Times*, openly said he would like to see the restrictions eased.

Quickly endorsing the comments, Fitzwater said, "We certainly are in agreement with everything Judge Webster said yesterday."

"What he said was that there are interpretations and discussions and understandings with the Hill that should be reconsidered in light of their impact on coup activities," the spokesman added.

Webster was quoted as saying he wanted rules devised so that CIA officers' authority was so clearly defined that "they can go right up to the edge of that authority and not worry if they or their agency is going to get in trouble."

Webster said that under the current interpretation of the executive order, the United States could not devise a plan for the assassination of Noriega or hire an individual or group who wants to kill him.

"Now it begins to get a little tighter when you say, 'Here's a group that says it doesn't plan to kill him, but they're going to have to play rough and it could happen,'" Webster said.

"Now we're in the area that has to be addressed."

Fitzwater confirmed that the administration was discussing the situation with congressional leaders, but said "we're not willing to talk about details" publicly.

However, asked whether he was talking about a situation in which the United States would not carry out an assassination but might be a party to a coup that might lead to the death of a foreign leader, Fitzwater said, "Yes, that's right."

The executive order prohibiting U.S. involvement in assassination attempts was signed by President Ford in 1976 after congressional investigations detailed the CIA's role in assassination plots against Cuban President Fidel Castro and others.

The order was strengthened by President Carter and adopted without change by President Reagan.



Totem pot

Kenny Duggan, a senior one-man mudfight from Navasota, gets in some hot pottin' for an experimental ceramics class project in

the basement of the art building. The design communications major is building one of five pieces for a totem pole.

## Senate funds Nicaraguan aid

By The Associated Press

**WASHINGTON** — Under heavy White House pressure, the Senate Tuesday approved President Bush's proposal to spend \$9 million to boost the chances of Nicaragua's struggling political opposition in next February's national election.

The legislative package, which Bush said would give opponents of the leftist Sandinista government "a fighting chance," was approved on a vote of 64-35 after the Senate fended off a series of weakening amendments. The House had passed the measure 263-156 on Oct. 4, and it now goes to the president for his signature.

## Cummings third chosen for faculty recognition

By LEANNA EFIRD  
The University Daily

Pamela Cummings, an associate professor of restaurant, hotel and institutional management, has been selected as an outstanding faculty member at Texas Tech.

She will be honored by members of Mortar Board and Omicron Delta Kappa, which sponsor Faculty Recognition Week.

Cummings has been at Tech for six years and was nominated for the Excellence in Teaching Award for New Faculty at Texas Tech in 1984. She teaches several courses at the graduate and undergraduate levels in home economics education and the restaurant, hotel and institutional management (RHIM) program.

She received her bachelor of arts degree in secondary education and home economics from Arizona State University in 1966 and received a doctorate in home economics education and administration in 1982 from Oklahoma State University.

Cummings has had extensive experience in her field, including a legislative internship in the Oklahoma State Legislature with the chairwoman of the House Budget and Appropriations Committee, being a consultant and speaker for human resource development and motivation, and serving as coordinator of

experience-based career education for Millwood High School in Oklahoma City. She came to Tech in 1983 as an assistant professor and served as associate dean for home economics for the 1987-88 academic year.

Since coming to Tech, she has become involved in many groups, including the University Recruitment Task Force, the Hospitality Management Society, the Home Economics Council, the Home Economics Recruiters and the Texas Tech University Who's Who Selection Committee. She has been United Way representative for the education, nutrition and RHIM departments and faculty director and newsletter editor of the Hospitality Management Alumni Society.

Cummings has completed and presented extensive research in home economics and has received grant money from the Lubbock Visitors and Convention Bureau for the past two years to study Lubbock tourist tracking. She was involved in research funded by the Texas Education Agency to research a program to prepare single parents and homemakers for job training and employment in a rural economically depressed area. She also researched the developmental intervention experiment for pre-national and provisional students in the College of Home Economics.



## Expert discusses harmful effects of pain relievers

By LEANNA EFIRD  
The University Daily

Dr. Sandra Sabatini, an expert in the field of nephrology, the study of kidney functions and diseases, Monday discussed the harmful effects non-prescription drugs can have on users.

The lecture, "What You Should Know About Over-the-Counter Pain Pills," was delivered to members of Sigma Xi, Texas Tech's National Research Honor Society.

Sabatini is a professor of internal medicine and physiology at the School of Medicine in the Texas Tech University Health Sciences Center and director of the Nephrology Fellowship Training Program in the department of internal medicine. Since the mid-1960s, she has done extensive research on the causes of drug-induced renal disease.

As early as 4,000 B.C., evidence was found that opium was used as an analgesic or pain reliever, Sabatini explained. In the early 1900s an extract of willow bark, now known as aspirin, also relieved pain. Since then, other drugs have been introduced and used throughout the world as non-narcotic analgesic or over-the-counter drugs.

Sabatini said that in the 1950s, scientists discovered that chronic use of over-the-counter pain relievers caused kidney disease. By then, however, the drugs were used throughout the world.

Renal disease is common in people



Sabatini

who take 10 to 20 pain relief pills daily for three to 10 years and was found more often in women than men, Sabatini said. Clinical and experimental research indicates that all non-narcotic analgesics have the potential to cause kidney damage, with the most common being aspirin, acetaminaphen, ibuprophen and motrin.

"A majority of the victims take aspirin for minor aches and pains or just to feel better," she said. "It is the chronic users that renal disease is common in. A dose of aspirin a day is not going to do it."

Sabatini explained that chronic use of non-narcotic analgesics can result in a number of kidney disorders, with the most acute cases being death of the cells of the innermost part of the kidney, called papillary necrosis.

## Committee to examine teaching at Tech

By CORTCHIE WELCH  
The University Daily

A committee has been appointed by Faculty Senate President Julia Whitsitt to identify the strengths and weaknesses of the state of teaching at Texas Tech and make recommendations on areas in need of improvement.

John Howe, committee chairman and an associate history professor, said although good teaching exists at Tech, the university is moving to a greater emphasis on research and the graduate school.

He said universities across the nation are moving in the same direction as Tech and that

underclassmen throughout the nation are suffering at the expense of the stress on graduate programs.

"Some universities who have done this are shortchanging the undergraduate students," Howe said. "I don't want to name names, but I can think of a number of big universities where this has taken place. The quality of undergraduate education goes way down."

Although admission into required classes is easy compared to other large schools, Howe said several classes with large undergraduate tallies have a tendency to prevent some students from getting into needed classes. When students do get into the classes, they are taught

by teaching assistants. Too much emphasis on graduate programs without regard for undergraduate teaching, he said, can undercut teaching of underclassmen.

"What we want to do is identify our strengths and weaknesses right now and preserve what is good, and correct what is wrong before we move too much in the wrong direction," he said.

The effort to improve research and the quality of undergraduate education is a way to advance Tech as a whole, said Virginia Sowell, associate vice president for academic affairs.

Sowell, who serves on the com-

mittee, said the purpose of the university is to educate students.

She said that with an emphasis on undergraduate teaching, she does not recognize a problem with the university improving or giving emphasis to the graduate program because both the undergraduate and graduate programs can progress.

Howe said that on paper, the concern is with the quality of teaching. Before faculty members are considered for tenure, he said, they have to be effective teachers.

Students have greater access to faculty members than students at large universities have, Howe said, which is a strength Tech can boast.

**PRACTICAL JOKES**  
Male, female strip-a-grams, big mama biker strip-a-gram, stripping gorilla's, harem dancers, custom balloon deliveries. Little Hollywood, 806-747-2656.  
We Travel

**U.B. Ski™**  
**Breckenridge**  
**\$239**  
plus \$20 tax  
**1-800-U.B.SKIING**

**THE LOOK THAT WON THE WEST**  
The not so typical denim jacket with a western flair.. Chamois fringe!  
Your denim collection won't be complete without it!  
S-M-L \$140

**skibells**  
South Plains Mall  
Sunshine Square

Don't be **SPOOKED** when your organization isn't in the yearbook!

If your organization is listed here, it is in danger of being left out of the 1990 **La Ventana**. Come by Room 103 of the Journalism Building between 8 a.m.-12 noon, 1-5 p.m. and buy your page **TODAY!** Deadline Tuesday, October 31.

- Accounting Society  
Administration  
Ag Council  
Ag Communicators of Tomorrow  
Ag Economical Assoc.  
Aggies of the Month  
Agronomy Club  
Aikido Club  
Air Force ROTC  
Alpha Chi Omega  
Alpha Delta Pi  
Alpha Epsilon  
Alpha Epsilon Delta  
Alpha Epsilon Rho  
Alpha Gamma Rho  
Alpha Kappa Alpha  
Alpha Kappa Delta  
Alpha Kappa Psi  
Alpha Lambda Delta  
Alpha Phi  
Alpha Phi Alpha  
Alpha Phi Omega  
Alpha Sigma Beta  
Alpha Tau Omega  
Alpha Zeta  
Am. Assoc. of Petroleum Geol.  
Am. Inst. of Arch. Students  
Am. Society for Microbiology  
Am. Society of Ag. Engineers  
Am. Society of Landscape Arch.  
American Advertising Federation  
American Chemical Society  
American Home Economics Assoc.  
American Society of Civil Eng.  
American Society of Int. Design  
Amnesty International  
Angel Flight  
Animal Rights Coalition  
Anthropological Society  
Army ROTC  
Arnold Air Society  
Art History Association  
Arts & Sciences Ambassadors  
Arts & Sciences Student Council  
ASHRAE, West Texas Student Branch  
Assoc. for Students with Learn. Disab.  
Assoc. of Agro. Hort. and Ent. Grad. Students  
Associated General Contractors  
Association for Childhood Education  
Association for Computing Machinery  
Association of Biologists  
ATO Little Sisters  
ATO Lubbock Cup Queen  
B.A. Council  
Band  
Baptist Student Union  
Beta Alpha Psi  
Beta Theta Pi  
Bible Study Center  
Bilingual Education  
Biology Club  
Black Student Association  
Bledsoe Hall  
Block & Bridge  
Board of Baristas  
Bowling Club  
Business Administration Council  
Business Graduate Student Society  
Campus Advance  
Campus Alcohol Advisory Board  
Campus Christian Fellowship  
Campus Crusade for Christ  
Campus Libertarians  
Canterbury Association  
Cardinal Key  
Carpenter Hall  
Catholic Student Association  
Cheerleaders  
Chi Delta  
Chi Epsilon  
Chi Omega  
Chi Psi  
Chi Rho  
Chinese Students Associations  
Chilwood Hall  
Christian Legal Society  
Christian Science Organization  
Circle K  
Classical Society  
Clay Club  
Clement Hall  
Col. of Ed. Dean's Hosts and Hostesses  
Coleman Hall
- College of Education Student Council  
College Republicans  
Collegiate 4-H  
Collegiate FFH  
Collegiate Secretaries  
Contractors Guild  
Courtgaerilla Unit  
Cricknet Club  
Criminal Trial Association  
Cycling Club  
Data Processing Management Assoc.  
Delta Chi  
Delta Chi Queen  
Delta-Delta-Delta  
Delta Gamma  
Delta Phi Alpha  
Delta Phi Epsilon  
Delta Psi Kappa  
Delta Sigma Beta  
Delta Sigma Pi  
Delta Sigma Rho  
Delta Sigma Theta  
Delta Upsilon  
Doak Hall  
Double T Body Building  
Double T Dolls  
Double T Fencing Club  
DPMA  
Doak Hall  
Engineering Ambassadors  
Entomology Club  
Environ. & Nat. Resour. Law Society  
Eta Kappa Nu  
Eta Sigma Delta  
Experimental Psychology Council  
Family Studies  
Farmhouse  
Fashion Board  
Federalist Society  
FEH  
Phi-Olympics-Queen  
Finance Association  
Flag Line  
Food Technology Club  
Forensic Union  
Freshman Council  
Future Secretaries Association  
Gamma Phi Beta  
Gaston Hall  
Gates Hall  
German Dancers  
Golden Key  
Gordon Hall  
Graduate English Club  
Graduate Toastmasters  
Great Commission Students  
Greek Council  
Guardian Gold  
Hands Across Nations  
Health Organization Management  
High Riders  
High Tech Fashion Group  
Higher Education Student Assoc.  
Hillel  
Hispanic Student Society  
Home Economics College Council  
Home Economics Recruiters  
Hong Kong Student Association  
Honors Council  
Horn Hall  
Horse Judging Team  
Horsemen's Association  
Horticulture Society  
Hospitality Management Society  
Hospitality Management Society  
Housing and Interiors  
Hulen Hall  
Human Factors Society  
IEEE  
India Students Association  
Institute of Business Designers  
Institute of Industrial Engineers  
Inter-Varsity Christian Fellowship  
Interfraternity Council  
International Philippine Society  
Junior Greek Council  
KA/Phi Delta Rodeo Queen  
Kappa Alpha Order  
Kappa Alpha Psi  
Kappa Alpha Theta  
Kappa Delta  
Kappa Delta Chi  
Kappa Delta Pi  
Kappa Kappa Gamma  
Kappa Mu Epsilon
- Kappa Sigma  
Knapp Hall  
Korean Karate Student Association  
Korean Tae Kwon Do Student Assoc.  
KTXI-FM  
Lacrosse Club  
Lambda Chi Alpha  
Lambda-Sigma  
Latter-Day Saints Student Assoc.  
Livestock Judging Team  
Lutheran Student Association  
Major/Minor Club  
Malaysian Student Association  
Marketing Association  
Mass Comm. Student Advisory Committ.  
Masters in Tax Association  
Meats Judging Team  
Mechanized Agriculture Club  
Men's Volleyball  
Mexican American Student Association  
Miller Girls  
Minority Law Students Assoc.  
Mis Fall Rush  
Model United Nations  
Mortar Board  
Mu Phi Epsilon  
Murdoch Hall  
Museum Science Student Assoc.  
National Agri-Marketing Assoc.  
National Art Education Assoc.  
National Organization for Women  
Naval ROTC  
Naval Tenders (The)  
Navigators  
National Student Agricultural Council  
NSSUA  
Omega Delta Phi  
Omega Delta Pi  
Omicron Delta Epsilon  
Omicron Delta Kappa  
Order of Omega  
Orienteers  
PAL  
Panhellenic Association  
Panther Rifles Drill Team  
Phi Alpha Theta  
Phi Delta Beta  
Phi Delta Kappa  
Phi Eta Sigma  
Phi Gamma Nu  
Phi Kappa Phi  
Phi Mu Alpha Sinfonia  
Phi Psi  
Phi Sigma Tau  
Phi Theta Kappa  
Phi Theta Psi  
Phi Upsilon Omicron  
Philosophy Club  
Photographic Resource  
Pi Alpha Alpha  
Pi Beta Phi  
Pi Delta Phi  
Pi Delta Phi  
Pi Kappa Alpha  
Pi Omega Phi  
Pi Sigma Alpha  
Pi Tau Sigma  
Pike Dream Girl  
Pistol Club  
Pompon Squad  
Pre-Law Society  
Pre-Veterinary Society  
President's Hostesses  
Printer's Club  
Progressive Student Alliance  
PRESSA  
Psi Chi Honorary Society  
Racquetball and Handball Club  
Raider Recruiters  
Raiderettes  
Range and Wildlife Club  
Real Estate Association  
Red Raider Orienteers  
Residence Hall Association  
Rho Lambda  
Rodeo Association  
Rodeo Club  
Rugby Association  
Russian Club  
Sabre Flight Drill Team  
Saddle and Siroin  
Saddle Tramps  
SATT
- Scabbard and Blade  
Semper FI Society  
Sig Ep Knockout Queen  
Sigma Alpha Epsilon  
Sigma Chi  
Sigma Chi Derby Doll  
Sigma Delta Chi  
Sigma Delta Phi  
Sigma Gamma Epsilon  
Sigma Iota Epsilon  
Sigma Nu  
Sigma Phi Epsilon  
Sigma Phi Epsilon Little Sisters  
Sigma Tau Delta  
Sigma Tau Gamma  
Sigma Theta Kappa  
Sneed Hall  
Soc. for Ind. and Applied Math.  
Soc. of Hispanic Prof. Eng.  
Soc. for Advancement of Management  
Soccer Club  
Social Welfare Association  
Societas Hispanica  
Society for Tech. Communication  
Society of Arch. Historians  
Society of Automotive Engineers  
Society of Engineering Technology  
Society of Manufacturing Engineers  
Society of Petroleum Engineers  
Society of Physical Scientists  
Soils Team  
SPJ/SDX  
Stanger Hall Association  
Student Action for Christ  
Student Agricultural Council  
Student Association/Gamble  
Student Council for Excep. Children  
Student Council of Teachers of English  
Student Dietetic Association  
Student Foundation  
Student Landman Association  
Student Occupational Therapy Assoc.  
Student Physical Therapy Association  
Students Against Driving Drunk  
Tau Alpha Pi  
Tau Beta Pi  
Tau Beta Sigma  
Tau Kappa Epsilon  
Tau Sigma Delta  
Texas Music Educators Association  
Texas Student Education Assoc.  
Texasans  
The Trident Society  
Theta Chi  
Timestas  
Toastmasters International  
Turkish Student Association  
Twister Gymnastics Club  
UC Programs  
UCP Cultural Exchange Committee  
UCP Firms Committee  
UCP Fine Arts Committee  
UCP Ideas and Issues Committee  
UCP Texas Tech Today  
Univ. Plaza Student Organization  
University Bahai Therapy Association  
University Ministries  
Upsilon Pi Epsilon  
Vietnamese Student Association  
Voc. Home Ec. Teachers Assoc.  
Wall Hall  
Water Ski Club  
Weeks Hall  
Wells Hall  
Weymouth Hall  
WIG  
Windsurfing Association  
Women's Service Organization  
Wood Judging Team  
Wrestling Club  
Young Democrats  
Young Entrepreneur Society  
Zeta Tau Alpha  
ZIT (Zeta Iota Tau)

Send your special goblin a **HALLOWEEN HELLO**

Tuesday Oct. 31

Deadline Thur., Oct 26, 5 pm  
Bring this completed form by Journalism Rm 102  
or call 742-3384 for more information

\$4 for 15 words or less  
15¢ for every word thereafter

Name \_\_\_\_\_ Phone No \_\_\_\_\_

Address \_\_\_\_\_

City \_\_\_\_\_ State \_\_\_\_\_ Zip \_\_\_\_\_

Please print your ad one word per box:

1	2	3
4	5	6
7	8	9
10	11	12
13	14	15
16	17	18

All campus organizations must buy their page by October 31,  
**Don't be left out!**

### Campus Briefs

#### Engineering college gets \$8,000 grant

Texas Tech's College of Engineering Tuesday received an \$8,000 grant from ARCO Oil and Gas Co. ARCO designated \$3,000 for minority scholarships in chemical and petroleum engineering. The remaining \$5,000 is an unrestricted grant for use in the chemical, petroleum and mechanical engineering departments. Recipients of the minority scholarships are Stephen Martinez, a sophomore petroleum engineering major from Littlefield, and Jesus Montez, a freshman chemical engineering major from Idalou.

#### Ex-students Association honors couple

Harold and Margaret Wood Brannan of San Antonio were honored at the Texas Tech Century Club Dinner with the Ex-Student Association's Distinguished Service Award for 1989.

After organizing a \$32,000 fund-raising drive to cover travel expenses for 255 Tech band members to perform in the 1988 San Antonio Fiesta Parade, the couple also arranged for former Tech President Lauro Cavazos to serve as grand marshal of the parade.

The Brannans, both Tech graduates, have been active members of the Ex-Students Association for 25 years.

#### Continuing ed to offer review of SAT

The Texas Tech Division of Continuing Education will offer a Scholastic Aptitude Test review Saturday through Nov. 11. The class will be from 8:30 a.m. to 12:30 a.m. on four consecutive Saturdays. Time will be spent reviewing the format and taking sample tests.

The \$75 registration fee, which includes the textbook, may be paid by check, money order, Visa or MasterCard.

#### Family studies major crowned queen

Andra Jackson, a senior human development and family studies major from San Angelo, was crowned Saturday night as the 1989 Texas Tech Homecoming Queen. Jackson is active in Alpha Chi Omega, Kappa Sigma, Chi Psi and Delta Chi.

#### Group accepting blood drive donations

The Sigma Chi fraternity will sponsor a blood drive today through Thursday to benefit United Blood Services. Donations will be taken from 11 a.m. to 7 p.m. today in the Sigma Chi chapter room at 16 Greek Circle.

## Early marriages hamper education plans

By FRANCISCO RODRIGUEZ  
The University Daily

A Texas Tech professor says premature marriages affect the educational advancement of both men and women.

George Lowe, a sociology professor, co-authored "Changes in the Influence of Early Marriage on the Educational Attainment of Men and Women," a paper that was published recently in the magazine *Sociological Spectrum*.

Lowe defined premature marriage as people who marry before the age of 22. The younger the people are, he said, the greater the negative effect of lacking an education will be.

"Most people are 22 when they graduate from college," Lowe said. "Any marriage prior to that age can diminish the chances of completing college. We came up with an index of early marriage which said essentially that if one marries at 22, that's not early. Anything prior to that will affect educational attainment."

Lowe said the question he wanted to answer was whether that situation had changed with time. He said the study was based on four generations

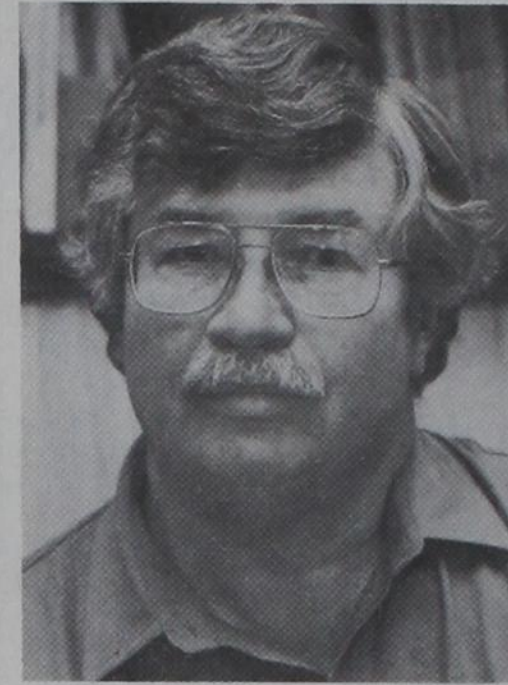
of premature marriages.

"Our study used data from the combined 1977, 1978, 1980 and 1982 General Studies Surveys conducted by the National Opinion Research Center," he said. "The sample was divided into four cohorts — those born prior to 1911, those born between 1911 and 1929, those born between 1930 and 1945 and those born after 1945."

Lowe said most of the survey's subject were past their mid-20s and were not involved in early pregnancies. He said he used such varied data to compare present-time premature marriages to those that occurred at the turn of the century.

"We made some interesting finds," he said. "Generally speaking, women do not go as far in school as men, all things considered. We found that in the oldest cohorts, women were more likely to stay in school than men. In the later groups, the problem grows to be the same in men and women. Our interpretation of that was that higher education did not affect one's occupation much back then."

Lowe said people at the turn of the century could get a job with a high school education. The idea of staying in school to get a better job did not ap-



Lowe

ply as much as it does now, he said.

"You went to school for cultural reasons," Lowe said. "When it was for cultural reasons, women attended more often. When it began having occupational implications, males were more willing to stay in school. Families were more willing to pay for the boys to go to college."

If a person marries early, Lowe said, it has the same effect on both

males and females. He said women are more likely to marry early than men; therefore, they are affected more often than males.

"The impact of early marriage on women is just the same in the youngest cohort as it was back before anybody thought women should be considered equal," Lowe said. "It takes a college education to get middle-class status nowadays. The fact that these women are less likely to get it may be the reasons for the feminization of poverty."

Lowe said his research concluded that as society gets more technological, education becomes more important to achieve middle class status.

"Earlier generations did not have this problem," he said. "At the time, it seemed to us that the cultural norm favoring marriage is a strong one. We really thought that young women would be less likely to do this. That was not the case. Women still continue to put a damper on their education by marrying early. There is every reason to think that in the latest generations, marriages have declined but premature marriages have not."

## Commentator says Soviet TV portrays new image

By AMY LAWSON  
The University Daily

Opening with a Soviet morning workout program, a national television commentator on Soviet life and politics introduced a new image of Soviet television to students Tuesday during a lecture at Texas Tech.

Nicholas Hayes, an author, professor and national television commentator on Soviet life and politics

for KCTA Minnesota Public Television and the "MacNeil/Lehrer NewsHour," delivered a lecture, "Glasnost: The Politics of the New Soviet Media," which showed the changes in Soviet television since Mikhail Gorbachev became general secretary in the Soviet Union.

Hayes emphasized that Gorbachev has used the media with more effectiveness than past Soviet leaders.

"The new image rests upon a whole

cultural change," Hayes said. "We in the United States understand that television, in fact, may be the instrument in mass culture in our times. In the case of Gorbachev, there was a clear, objective use of television, both in its effect on you and in his own country. He established a different image to let us know that something had changed."

He said Gorbachev has used glasnost, the Russian word for voice,

as an emphasis for candor and the right to print negative information about the Soviet government or Russian culture.

"It's a remarkable testament to Gorbachev that the American public even knows the words 'perestroika' and 'glasnost.' I've tried to emphasize that all of this is a change of image," Hayes said. "It is a portrait of a leader who directly projects an image of himself as highly educated."

LET US DO  YOUR LAUNDRY	<b>LAUNDRY CLUB</b> Machine Wash Dry Fold  <b>50¢</b> A LB. FREE PICK & DELIVERY <small>Handwashing, Dry Cleaning, Ironing Not Available</small> Call: 796-8222 24 Hours - 7 Days A Week
--	---

**PROBLEM PREGNANCY?**  
Are you considering  
Abortion?  
Confidential  
Free Pregnancy testing & referrals  
Call (806) 792-6331  
Lubbock, Texas

Texas Tech has for sale surplus items from the presidents home consisting of chairs, sofas, desk, bar stools, tables, etc. Items will be sold on a first come basis at the University's warehouse located at 4600 Erskine Rd. from 12:15-6 p.m. Oct. 19, 1989.

**Wednesday**  
**OPEN BAR 10pm-12:30pm**

Free Draft Beer, Wells & Calls  
\$3<sup>00</sup> Cover at <sup>soak</sup>~~NO FRILLS GRILL~~  
LUBBOCK'S  
Premier Late Nite Open Bar  
After 12:30 specials 2420 Broadway

**Thursday**  
Remember \$1<sup>00</sup> nite at the diner? It's Back!  
**\$1<sup>00</sup> Diner Nite**  
ACCUSTIC JAM (Sorry, no jelly)  
\$1<sup>00</sup> Drafts, Wells, Bottled Beer, Calls  
&  
CORONA'S <sup>soak</sup>~~NO FRILLS GRILL~~  
What do you think? 2420 Broadway

Fri & Sat  
Nite <sup>Band</sup>~~ESKIMO PIE~~  
NO FRILLS,  
NOW WITH MEGA SPECIALS  
LOOK FOR LADIES NITE ON FRIDAY or SAT. Coming Soon.

**MOVIES, MUNCHIES  
...EVEN BOOKS  
AND SCHOOL  
SUPPLIES.**

**SAVE LIVES  
AND MAKE  
EXTRA MONEY**

Earn \$12 & 2 movie tickets  
(Mann Theatre) on 1st Donation.  
\*Other bonus programs available

**Alpha Plasma Center 2415-A Main St. 747-2854**

**COUNTRY BASKET®!**

**\$1.99\*** FOUR-FINGERS  
SALE PRICE  
OCTOBER 16-29, 1989

Delicious steak fingers, golden fries, Texas toast, and DAIRY QUEEN's own special gravy.  
Six-finger basket: SALE PRICE \$2.99.

ON SALE IN  
**DQ**  
COUNTRY

\*Reg. TM Tex. D.Q. Op. Coun. \*Reg. TM Am. D.Q. Corp. ©1989 Tex. D.Q. Op. Coun. \*At participating Dairy Queen stores

## Panhandle band plays country and western music

By LYNN GAUSE  
The University Daily

Having started out as the Clarendon College Cowboy Band, the members of Slow Motion now are spread out across the Texas Panhandle with members living in Lubbock, Amarillo and Plainview.

The five-member group met at Clarendon College and started out just as fun. Not long after that, Clarendon College put together a music department that helped them quite a bit.

Slow Motion performs progressive country music; the band plays a little rock, but for the most part it plays country and western.

The band has been together more than five years and plans to make music for a long time. Slow Motion has played in several clubs and at several rodeos across the Panhandle, Oklahoma and Eastern New Mexico. The members of the band are Earl Brosech, lead vocals, rhythm and lead guitar; Becky Webb, vocals and keyboards; Don Bode, vocals, rhythm

and lead guitar; Keith Owens, drums; and Daron Brown, vocals, bass and fiddle.

The band has opened for several country music stars such as Mel McDaniel, Patty Loveless and Ricky Van Shelton. Slow Motion has original material but also covers hits by such recording artists as Eddy Raven, Randy Travis, Reba McEntire and Alabama.

So far the band has not had any serious offers to record but has been contacted by agents from Nashville and Dallas. The members said they are content with what they are doing now and are not ready to make any risky moves.

"We're not ready to throw everything aside for this and take the risks," Brosech said. "It's hard, and we don't feel we are quite ready."

Slow Motion recently played at the Kappa Alpha/Phi Delta Theta Kalf-Fry and got what the members thought was a good reception from the people there.

Owens said the band's main objective is "getting known."

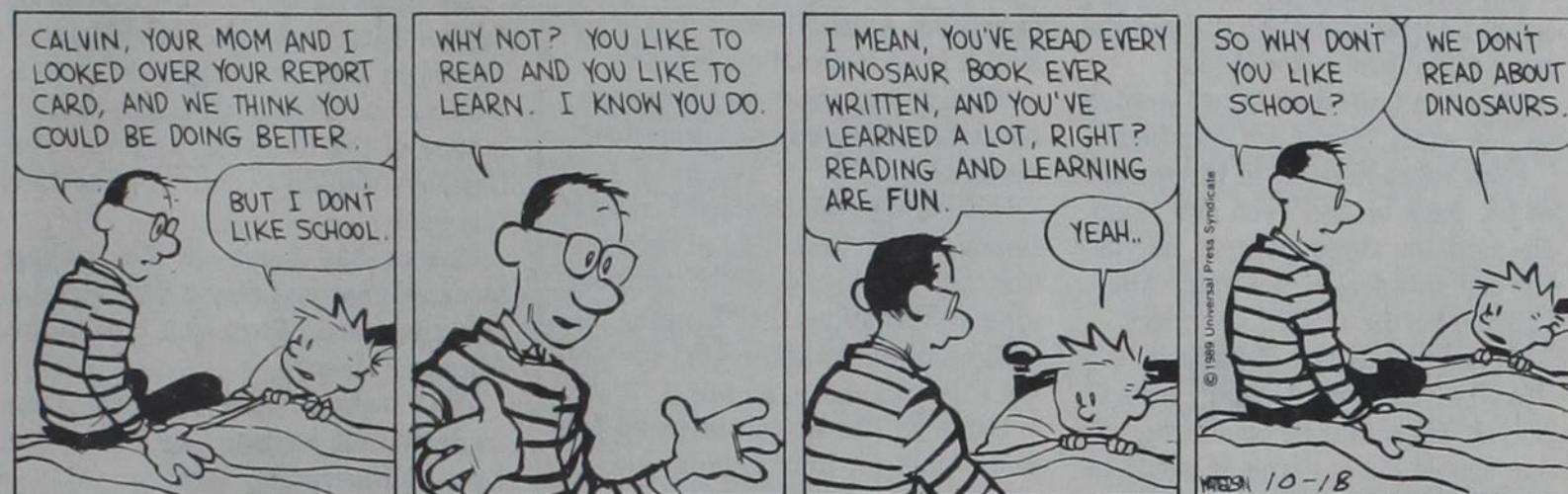


### Not too fast

With members Becky Webb, top left, Earl Brosech, Don Bode, Keith Owens, bottom left, and Daron Brown spread out over three Panhandle cities, Slow Motion covers a large area with its progressive country and western music. The band's most recent Lubbock gig was at the Kappa Alpha Kalf-Fry.

by Bill Watterson

### Calvin and Hobbes



### Actress Gabor faces possible jail sentence

BEVERLY HILLS (AP) — Zsa Zsa Gabor deserves 30 days in jail for hitting a policeman, Los Angeles County's top prosecutor said Monday in castigating the actress for mocking the judicial system.

She made her bed and she can lie in it, and that's at Sybil Brand," the women's jail, said District Attorney Ira Reiner.

Later Monday, Gabor won a one-week delay in sentencing after her new attorney argued she wasn't properly defended during her trial.

"She created this situation for herself with her celebrated mouth."

**LSAT  
GMAT  
GRE**

The Test Is When?  
Classes Forming Now.

**STANLEY H. KAPLAN**  
Take Kaplan Or Take Your Chances

763-0005  
2421 3rd Place  
Classes Start Oct. 21  
For other locations call 800-KAP-TEST

**TATTOOS**  
Fraternalities • Sororities  
your design or mine  
Military & Non-Greek  
by female tattooist  
747-2657

**LAST CHANCE!**  
THANKSGIVING WINTER BREAK

**CRESTED BUTTE**  
NOVEMBER 22-26 4 NIGHTS from \$144

**STEAMBOAT**  
JANUARY 2-12 5 OR 6 NIGHTS from \$168

**BRECKENRIDGE**  
JANUARY 2-7 5 NIGHTS from \$173

**WINTER PARK**  
JANUARY 2-7 5 NIGHTS from \$176

**VAIL/BEAVER CREEK**  
JANUARY 5-12 5 OR 7 NIGHTS from \$209

Hurry - Call Today!

AMERICAN EXPRESS VISA MasterCard DISCOVER

LODGING • LIFTS SKIING • PARTY • MORE!

Sunchase 8TH ANNUAL COLLEGIATE WINTER SKI BREAKS 1990

LAST CHANCE FOR THANKSGIVING AND WINTER BREAK SKIING!  
Hotel or fully equipped condominium lodging for 4, 5, 6 or 7 nights, all lift tickets, parties, barbecues, ski races, all taxes and a "goodie bag" full of local information and corporate sponsor product samples! There's only space for the first 6,000 to sign up for the Sunchase 8th Annual Collegiate Winter Ski Breaks - and at these low discount prices available space is filling fast!  
Ski break by yourself, with friends, or organize a group of 19 and SKI FREE! Consider flying and we'll arrange the best fare and airport to check in site shuttle. Need a group charter bus - no problem, we'll provide the best possible price.

Crested Butte over Thanksgiving, Steamboat, Vail/Beaver Creek, Winter Park or Breckenridge in January. The hardest part is choosing which mountain to "conquer" this coming season!  
Don't Delay - call Sunchase toll free TODAY for your complete color Ski Breaks '90 brochure and reservations. And now, you may FAX your ski break reservation to us 24 hours a day at (303) 225-1514.

8th ANNUAL COLLEGIATE WINTER SKI BREAKS  
TOLL FREE INFORMATION & RESERVATIONS  
**1-800-321-5911**  
or contact our local Sunchase campus representative or your favorite travel agency

**FREE!**

2 FREE tanning visits with 10 visit package. New high intensity bulbs. Full professional staff. Ask about our other services.

**D.B. DYNASTY**  
794-1717 6701 Aberdeen (Behind Slide Rd., Albertsons) Matrix

**ENTRE**  
COMPUTER CENTER™

**FALL SPECIAL**  
for students, faculty and staff

NEC Powermate 286 Plus  
VGA Color Monitor  
20mb Hard Disk  
DOS 3.3

**\$1929<sup>00</sup>**

4621-C South Loop 289  
799-5400  
Offer good through December 31, 1989

NEC Printers  
P5200.....\$549<sup>00</sup>  
P5300.....\$719<sup>00</sup>  
P2200.....\$349<sup>00</sup>

**WANTED:**  
ALL INTERESTED TECH MEN

Casual Open Rush Smoker Information Meetings

Sun., Oct. 22 5-6:30 pm  
University Center Mesa Ballroom  
Mon., Oct. 23 7:30-9 pm  
University Center Lubbock Room

For Information Call:  
Brent Cooper 742-5171  
or  
Allen Harvan 762-1856

**SUCCESS THROUGH BROTHERHOOD**

### Recipe Box

There's nothing tastier than French onion soup, unless it's that same soup with beef added. The meat makes it satisfying enough to be a main dish for two in just 10 minutes.

**FRENCH ONION BEEF SOUP**  
Two 1-inch-thick slices French bread  
¼ cup shredded Swiss cheese (1 ounce)  
1 small onion, thinly sliced and separated into rings  
2 tablespoons margarine or butter  
One 10½-ounce can condensed French onion soup

1 soup can (1¼ cups) hot water  
4 ounces cubed cooked beef

Place the bread slices on the unheated rack of a broiler pan. Broil 4 inches from the heat about 1 minute or until toasted. Top bread with Swiss cheese and broil about 1 minute more or until cheese melts.

Meanwhile, in a medium skillet cook onion rings in margarine about 5 minutes or until very tender. Stir in condensed soup, hot water and beef. Bring to boiling, stirring occasionally. To serve, ladle soup into serving bowl. Top with bread. Makes 2 servings.

### WEDNESDAY OCTOBER 18

	KTXT (5)	KCBD (11)	KLBK (13)	KAMC (28)	KJTV (5)
7 AM	Today		6:00 CBS This Morning	Good Morning America	Ninja Turtle Mario Bros.
8 AM	1:45 Wthr		Joan Rivers		Muppet Baby Dennis
9 AM	Mr. Rogers Square One	Geraldo	Family Feud Wheel	Sally	700 Club
10 AM	321 Contact Homestretch	Gold Girls 227	Price Is Right	Home	Success N Life
11 AM	Reliving Lindbergh	Generations Scrabble	Young & Restless	Strangers Loving	Joan Lunden Divorce Ct.
12 PM	MacNeil Lehrer	News Days Of Our	News Beautiful	All My Children	Jury Trial Judge
1 PM	Comm. Ground My Studio	Lives Another World	As The World Turns	One Life To Live	Talk About Jackpot
2 PM	Victory Gdn	Santa Barbara	Guiding Light	General Hospital	Last Word 3rd Degree
3 PM	Mr. Rogers	In Edition	Highway To Heaven	Donahue	DuckTales Chip & Dale
4 PM	Square One 321 Contact	Oprah Winfrey	Schoolbreak Spc. CrimeWatch	People's Ct.	World of Disney
5 PM	Sit & Be Fit	News NBC News	Jeopardy! CBS News	Win, Lose ABC News	Webster Belvedere
6 PM	MacNeil Lehrer	News Who's Boss?	News Wheel	News Cosby	Family Ties Curr. Affair
7 PM	One Plus One	Unsolved Mysteries	Peaceable Kingdom	World Series	Mov Gunfighters
8 PM	Van Cliburn Comp.	Night Ct. Nutt House	Mov Trenchcoat In Paradise		
9 PM	Painting	Quantum Leap			Hunter
10 PM	Body Elect	News Carson	News Hard Copy	News	Cheers Star Trek: Next
11 PM	Sign Off	Letterman	Pat Sajak Show	M*A*S*H Love Connect	G. Arsenio Hall

**CASH**

**VARSITY GOLD 7 SILVER EXCHANGE**

We pay the highest CASH prices for your Gold & Silver jewelry. We pay cash for anything gold or silver, even if it is broken.

Watch and calculator batteries replaced.

1311 University 747-0929  
(next to Henry's & Varsity Bookstore)

**CASH**

**DANCE TONITE**  
urban sound lounge  
**OPEN BAR**  
POE: PROGRAMMER  
The Virgin Club • 2408 4th Street • 744-CLUB

**GO RAIDERS GO!**

Students, let your spirit show. The quarterback cocks his arm and lets it fly. The ball sails down the field. Watch as the ball splits the uprights for the extra point. Girls, show your spirit and follow the big watch and leather strap fashion of the day. This unique watch is especially designed with the player in black and red uniform. The watch is seasonal and in limited supply. Order yours now. Guaranteed against manufacturers defects for one year. Delivery in three or four weeks

Please send me \_\_\_\_\_ Watche(s) \_\_\_\_\_  
I enclosed \$29.95 with \$2.00 shipping and handling charges.  
Check or money order.  
Name \_\_\_\_\_  
Address \_\_\_\_\_  
City \_\_\_\_\_ State \_\_\_\_\_ Zip \_\_\_\_\_

G&CC Sales  
P.O. Box 93363  
Lubbock, TX 79413



**Makes the grade**

Texas Tech golfer Randy Fink finds time to fulfill his duties not only on the golf course but in the classroom.

Allen Rose/The University Daily

## Staying on course

### Fink excels academically despite golf team's demands

By CAMERON MAUN  
The University Daily

Golfer Randy Fink will just miss a hole-in-one — by about six inches. But one place Fink never misses the mark is in the classroom.

Fink, a senior finance major, is in his fourth year as a member of the Texas Tech golf team. During his career at Tech, Fink has been considered an average player.

But his GPA is far more impressive. After six semesters, Fink has an overall 3.96 GPA. That's straight A's save for one B in an ISQS class his sophomore year.

Fink said he got his B because he missed a test, ironically to play in a golf tournament, and the teacher would not allow him to retake the test.

Does coming so close to perfection but realizing it cannot be grasped bother Fink? Not at all, he said.

"At first I tried to fight it, but I gave up after awhile," he said. "I knew I'd get a B sooner or later.

"Later I found out that there were some different things I could have done to appeal it, but it's no big deal."

Fink tries to practice at least two to three hours each day. He said it sometimes is hard to manage his time between studying and golf.

"I try to at least hit some balls for a couple of hours every day," he said.

"It's hard, when we have to

travel, to study. One time we left on a Tuesday for a tournament that began on Thursday. I try to bring a book when we're traveling."

Fink was born in Denver but has lived in Coeur d'Alene, Idaho, since he was 10.

He said he learned of Texas Tech through Mary DeLong, a former Tech women's player who has played on the Ladies Professional Golf Association (LPGA) tour. DeLong's brother was a golf pro where Fink played when he was in Coeur d'Alene.

Fink said he wanted to try a school away from home, and DeLong told him about Tech.

Fink said he is on both academic and athletic scholarships. The academic scholarship allows him to pay in-state tuition. The athletic scholarship covers room and board.

Fink, who considers 75 or below a pretty good score for most courses, said he has not progressed in golf at Tech like he felt he could have. When he was young, he had aspirations of the professional tour.

"I haven't attained what I wanted to," he said. "But I am satisfied."

Fink rates himself in the middle of the pack on the Tech golf team. He said the three players playing the best this season are Mark Allen, Chance Blythe and Jim Sanders.

He said he thinks of himself as a "pretty consistent and smart" player. He said if he could improve one aspect of his game, it would be his concentration.

Tech coach Tommy Wilson said Fink is a better-than-average putter but that he tends to over-think some, "as all scholars are probably inclined to do."

Wilson said Fink has been nothing but a plus for the Tech program.

"It's Randy's senior year, and he's working hard to make it a good year academically and golf-wise," Wilson said. "Of course, he has proven himself academically, but he is working just as hard on his golf as his academics."

The 6-foot, 2-inch Fink said he has noticed a big difference between golf courses in this part of the country and in Idaho.

"There's many more trees up there," he said. "I play really well when I play tight courses."

"I've never played in wind like here, but you can't worry about it. You have to know that everybody is playing in it and just try your best."

The Tech players often compete against each other in qualifying for upcoming tournaments, and Fink said it is an unusual experience.

"You're cheering each other on, but it's not like you're teammates," he said.

Fink said he would like to enter a finance department in a corporation or possibly work in banking after he graduates this summer. He said he would be interested in "going East" to obtain an MBA.

While he has no job lined up for now, bank on him finding one. It would be par for the course.

## Chiefs trade for Pelluer

By The Associated Press

IRVING — Dissident holdout quarterback Steve Pelluer, a former starter who didn't get along with the new Dallas Cowboys' regime, was traded to the Kansas City Chiefs Tuesday for draft picks in the 1990 and 1991 seasons.

The wheeling-dealing Cowboys, who traded Herschel Walker to Minnesota last week for five players and seven conditional draft picks, also picked up running back Paul Palmer from the Detroit Lions for a 10th round pick in 1990.

Then, just minutes before the trading deadline ended, the Cowboys traded running back Darrin Nelson, obtained in the Walker trade, to the San Diego Chargers for Minnesota's sixth round pick in 1990 and the Vikings' second round pick in 1991, activated by conditions in the Walker trade. Minnesota got a fifth round, 1990 pick from San Diego.

The picks for Pelluer were believed to be a third round pick in 1990 and a second in 1991 that might move to a number one depending on the performance of the five-year veteran. The Cowboys wouldn't confirm what they received.

Pelluer had been on the trading block all year and at one time nixed a deal that would have sent him to the Atlanta Falcons.

The Cowboys signed Pelluer, then traded him to Kansas City to beat the 3 p.m. NFL trading deadline.

Dallas coach Jimmy Johnson said the 1990 draft pick is "solid" and that the 1991 selection depends on Pelluer's performance.

Pelluer, whose new contract was not disclosed, will practice with Kansas City this week but isn't expected to play against the Cowboys when they try to snap their winless streak Sunday at Arrowhead Stadium. Instead, former Cowboy quarterback Steve DeBerg will start for the Chiefs.

The Cowboys went after Palmer because Nelson said he didn't want to play in Dallas. Nelson, who makes \$500,000 this year, then was shipped off to the Chargers, who are short of running backs.

## Anonymous letter tips off Florida officials of gambling activity

By The Associated Press

GAINESVILLE, Fla. — In bold, red letters, a sign posted inside the door to the training center reads: "DO NOT GAMBLE."

Florida quarterbacks Kyle Morris and Shane Matthews should have known better, interim coach Gary Darnell said. They should have known the consequences of betting on college

and pro games. They should have known they'd be kicked off the team for violating the NCAA rule.

Darnell, who took over the Gators' scandal-ridden program when Galen Hall resigned 10 days ago, told a news conference Tuesday that Florida officials became aware of a possible gambling problem through an anonymous letter sent to athletic director Bill Arnsparger.

Darnell learned of the allegations

Sunday and said Morris, who threw for 1,098 yards and nine touchdowns before being suspended for the rest of the season, should have realized what he was doing.

A sign posted just inside the door to the training center warns athletes of the penalties they could face for either providing information to gambling interests or betting on intercollegiate athletics.

"I don't feel like the NCAA views

anything any more severe than that type of violation for an individual because it violates the whole nature of amateurism and what we all stand for."

Morris, 20, and reserve quarterback Shane Matthews, 19, admitted betting between \$25 and \$100 on NFL and college games between late August and Oct. 7.

Two other walk-on, non-scholarship athletes, wide receiver Brady Acker-

man and quarterback G.A. Mangus, were declared ineligible by the NCAA for unspecified reasons, the university announced.

The suspensions came on the heels of Hall's resignation amid allegations that he violated NCAA rules by helping a former player with child-support payments and providing unauthorized salary supplements to two assistant coaches.

**SAVE UP TO 1/2**  
**TEXAS TECH CLASS RINGS**  
**Buy Direct From The Manufacturer!**

MORE STYLES!

MORE OPTIONS!

**HENRY SILVERMAN JEWELERS**

7310 QUAKER - JUST OUTSIDE THE LOOP

*Santa Fe*  
sandwiches

A healthy concept using all natural food products to provide the best taste possible without all the calories!

**GRAND OPENING SPECIAL**  
**Buy One Sandwich and Get Second One FREE!**  
(Of equal or lesser value. Show ad or Tech I.D. for Special.)

Also serving specialty salads, soups, pasta, muffins, fresh fruit and Columbo Frozen Yogurt... (Free Drink Refills)

*This deal expires on Halloween*

Checks are welcome

South Plains Mall 793-7012 (next to Bealls)

**LADIES NITE**  
WEDNESDAY...  
**ALL LADIES DRINK FREE BEER & RITAS**  
FROM 9 TILL 12 MIDNITE  
(WE ACCEPT A SMALL DONATION OF \$2 FROM LADIES FOR 3 HOURS OF FREE BOOZE)

**GUY'S PAY NO COVER CHARGE!**

baja bar and grill

2414 4th Street  
763-SURF

**Speeds** Billiards & Games 791-0377

4009 19th CROSSROADS PLAZA PRESENTS the first annual, exciting, competitive, & fun

**GREEK eight-ball LEAGUE**

form a team to represent your fraternity in the one & only **ALL GREEK** Eightball League.

**TEAMS:** 5 players, 3 substitutes per team  
**FORMAT:** Tuesday nights 5 players from one fraternity play 5 from another, in a round robin of one game matches. Then doubles matches in the same manner.  
**FOR THE WINNER:** trophies & CASH PRIZES will be presented to the winning team. Also the single player with the most number of wins will receive special prizes.

\*Sat. October 21 Roster deadline  
\*Tues. Oct. 24 meeting at 6:30, play will begin at 7:30.

Wear your Greek letters on league night & receive Happy Hour prices plus shot specials.

Call **Randy 791-0377** with questions.

**SPEEDS**  
Rent a table with this coupon for **7.95 & play** ALL NIGHT LONG exp: Nov 15, 1989

**BEST COUNTRY & WESTERN CLUB** in West Texas with the best mix of Country, Rock & Dance Music

**Tech Rodeo Week...Join us.**  
Thursday Night "LADIES" No Cover with College ID  
\$.75 Drinks and \$1.00 Beer  
**ALL NIGHT!**  
"Bud Contest" Cash Prizes

FRIDAY & SATURDAY NIGHT  
**FREE** Draft Beer  
8:00 pm (until it's gone)  
\$1.00 Can Beer, \$1.00 Drinks, \$2.50 Call Drinks  
**ALL NIGHT!**  
18 years & up welcome

**COW POKES**  
1708 4th Street  
765-6069

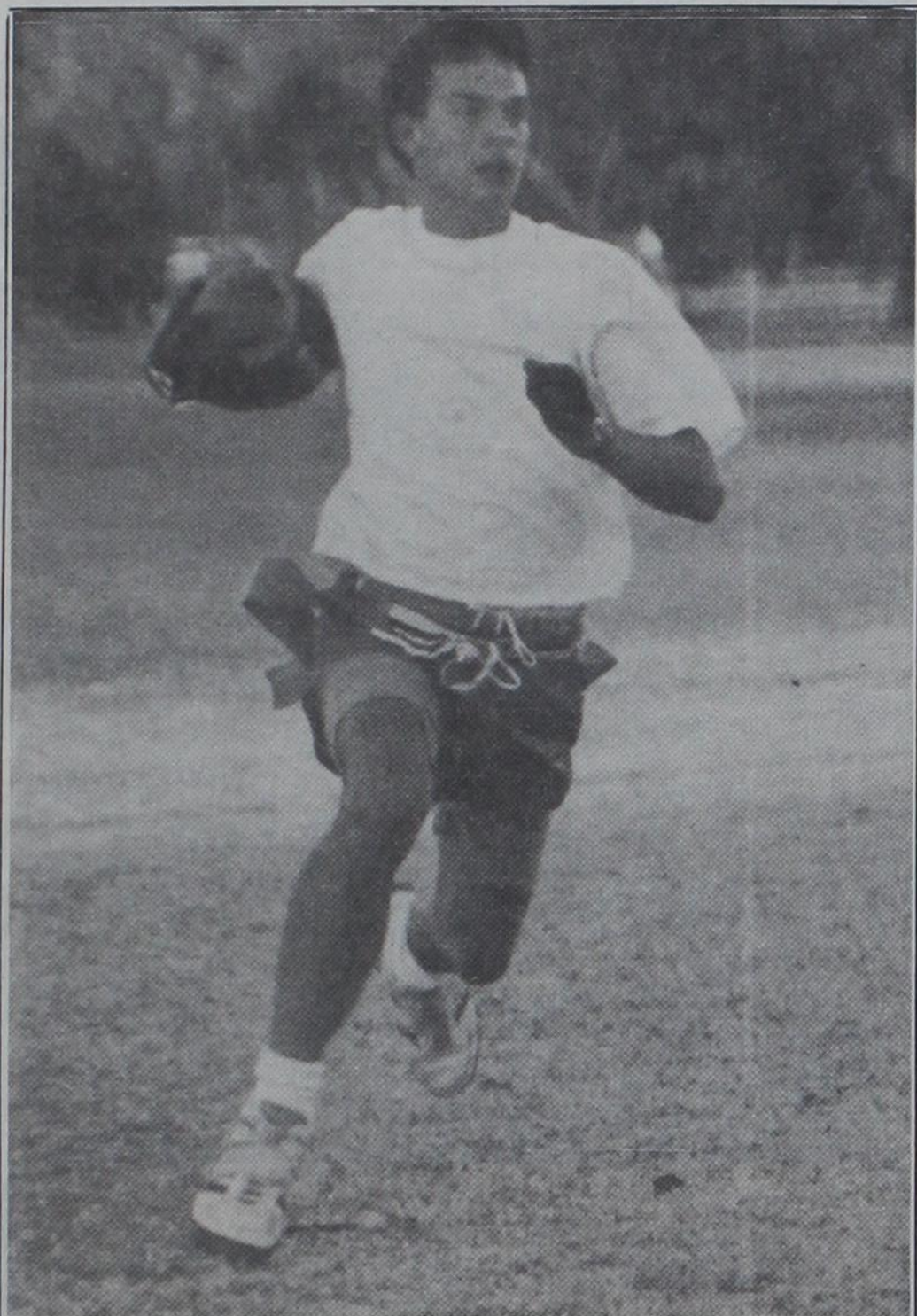






# Recreational Sports

Articles on this page are provided by Recreational Sports and are paid by the advertiser. Cindy Pandolfo, editor.



### Touchdown!

An intramural football player runs upfield during a playoff game held on the rec fields last Thursday. During this game the Hultzmanics defeated Too Long 20 to 6.

### 1989 flag football playoffs provide excitement

The Men's Greek Division playoffs are indicative of the exciting games to see during the 1989 flag football playoffs. One of the top seeds, Sigma Chi 'Blue' breezed past ATO 'B', 35-0. Another top seed SAE 'A' suffered a 20-16 defeat to Pike 'Gold', who now advances to the quarterfinals. Other quarterfinalists are Sigma Chi 'Gold', Farmhouse 'A', Theta Chi, KA 'Crimson', Pike 'Garnet' and Sig Ep 'B'. The Men's Residence Hall Division playoffs have not seen any top seeds go down to defeat as of yet. Boomer's Bombadeers have-

outscored their two opponents 68-7 advancing to the quarterfinals. Ruthless Posse, Murdough 1st West, Untouchables, Hultzmaniacs, Murdawgs, Vic's Young Guns and 3rd Floor Associates are also in the quarterfinal round.

The Men's Club Division can be characterized as "surprising." Both top seeds have been eliminated from contention as of Oct. 15. FFA held off BGSS to win by penetration after the final score remained 0-9 advancing into the quarterfinal round.

### Aquatic Center Activities

#### Long Course

For those people interested in uninterrupted lap swimming the Aquatic Center's lane lines will be set up for 50-meter swimming from noon until 1:45 p.m. Saturday. Only lap swimmers may use the pool at this time.

#### Stroke Mechanics and Flip Turn Clinic

If you need help on any of your swimming strokes or would like to learn a flip turn this is the clinic for you. An instructor will be available from 6 p.m. to 7 p.m. Monday to assist and instruct.

#### Water Safety Instructors Course

Due to many changes in the American Red Cross Aquatic program persons interested in keeping current should take this new WSI class. The class meets from 6 p.m. to 9 p.m. Monday and Wednesday at the Aquatic Center. The cost is \$27 which includes books and materials. Please come by the pool or call 742-3896 to register.

## IM BRIEFS

### 2 The Y - Office 12 Take 3-on-3

The Men's and Women's 3-on-3 Basketball tournaments came to a close as Office 12 downed T.S.F. and 2 the Y defeated last year's defending champion Sportsform in Women's and Men's action respectively by identical scores of 30-20.

In Women's play, Office 12 advanced to the finals after easily handling the Super Shooters 28-16 and downing the Aces 30-20 in semi-final action while T.S.F. was the number one seed and having a bye in the first swept right by the Terminators 24-14 in semi-final action. Members of Office 12 were Cari Grace, Debbie Hendricks, Crystal Kitten and Becky Lane.

Burrell Cleucland was hot outside the 3-point line to lead the 2 the Y's to their 30-20 win over the Sportsform in the men's final. Moving easily through their half of the bracket by defeating each of their opponents by 10 or more points. They advanced from semi-final action by downing Keystone 32-19. Sportsform, the defending champions and number one seed, moved through tournament play with much tighter scores until they defeated High and Wide 31-17 in their semi-final game. Members of 2 the Y were Stan Bostik, Burrell Cleucland, Lane Lee and Eric Peterson.

### Soccer entries now due

The last day to enter a team for Intramural Soccer is before 5 p.m. Thursday in the Rec Sports Office. Divisions include men's, women's and co-rec. Co-rec is a new division for soccer this year. Co-rec teams will include five five men, five women and a goal keeper (male or female). Team managers are reminded that they need a \$25 forfeit fee, players full name, addresses and phone numbers to register.

### Equipment offered in Outdoor Shop

Planning to leave town for a camping trip? Do not leave without stopping by the Outdoor Shop for all your equipment needs and information on camping and hiking areas of New Mexico and Texas.

The Outdoor Shop, located in 206 SRC, maintains the largest selection of outdoor equipment of any Texas univeristy. With more than 50 sleeping bags, 35 tents, as well as many other camping necessities, the Outdoor Program offers students, faculty and staff an excellent opportunity to enjoy the outdoors. All equipment is of the highest quality and is available for a nominal fee. Equipment can be reserved up to two weeks in advance with payment of fee.

The annual Steamboat Ski Trip has twenty spots remaining. The spots are sure to fill up quickly so come by the Outdoor Shop and sign up now.

### Indoor soccer tournament scheduled

Recreational Sport's Saturday Morning 'Live' tournament program will conduct a one day indoor soccer tournament Oct. 28 in the SRC. All students, faculty and staff are eligible to participate.

Each team will consist of six people — five players and one goalie. No more than two players can be from the Tech Soccer Club. The games will consist of two six-minute halves with all games scheduled to be played on Saturday.

Information and entry forms are available in the SRC. All entries must be complete and turned into 202 SRC by Oct. 26. For more information please call 742-3351.

### Flag football officials recognized

Each week Recreational Sports likes to recognize flag football officials for outstanding service. They are judged for their effective administration of games, appearance, mechanics and knowledge of rules. For the week of Oct. 2-8, Rec Sports has named the following as Recognized Officials: Brian Maxey, a Houston sophomore; Marty Lehman, a Dallas freshman business administration major; Monty Rogers, a business administration major from Crane; and Tom Boyd, a Vernon freshman English major.

### Racquetball singles upcoming

All students, faculty and staff eligible to participate in intramural sports are encouraged to sign-up for the Racquetball singles tournament set to begin at 4 p.m. Oct. 20. Individual entries will be taken from 8 a.m. to 5 p.m. Oct. 17 in SRC 202. A \$5 ball fee must accompany each entry.

Available divisions for men and women are as follows: Open (A,B,C) and Campus Community (minimum of 4 entries). The Match will consist of the best 2 of 3, 15-point games or an hour limit (play an 11-point 3rd game if time runs out).

### Cholesterol Seminar scheduled tonight

A reminder to those who had blood drawn for cholesterol testing last week — results will be available at a seminar tonight at 5:30 p.m. in SRC 201. Carol Plugge, the Student Health Educator, will conduct the seminar. Anyone interested may attend. Results will be available in the Rec Sports Office from 8 a.m. to 5 p.m. Monday through Friday beginning Oct. 19.

### Fitness testing begins next week

Fitness testing begins Tuesday and Wednesday in the SRC Lower Level Multipurpose Room. There are five tests — a 3-minute cardiovascular step test, blood pressure, percent of body fat (using skinfold calipers), a flexibility test and an abdominal strength (sit-ups) test. You can stop by for one test or do them all. We will keep your scores on file if you desire to return in October and November when we will test again. Times for fitness testing are:

Tuesday, Oct. 24.....noon-1:15 p.m., 4:30 p.m.-5:45 p.m.  
 Wednesday, Oct. 25.....4:30 p.m.-5:45 p.m.

It is very helpful if participants wear shorts and do not have on leg tights.

### Texas Tech rugby team hosts Austin

The Texas Tech rugby team will host Steven F. Austin at 2 p.m. Oct. 28 on the Recreational Sports fields South of the Student Rec Center.

### Soccer rules clarification meeting scheduled

There will be a soccer rules clarification meeting for participants conducted by Charles Kellogg, soccer referee coordinator for the South Plains Soccer Officials Association. The meeting will at 5:15 p.m. Oct. 24 in 201 SRC. Each team is urged to have at least one representative present to avoid unnecessary conflicts during the season.

## Coming Soon

Activity.....	Entries Due
<b>Intramurals</b>	
Racquetball.....	Oct. 18-19
Soccer.....	Oct. 18-19
Table Tennis.....	Oct. 24-26
Badminton.....	Oct. 24-26
Archery.....	Oct. 24-26
<b>Special Events</b>	
Injury Clinic.....	Tonight
Outdoor Photography.....	Tonight
Indoor Soccer.....	Oct. 26

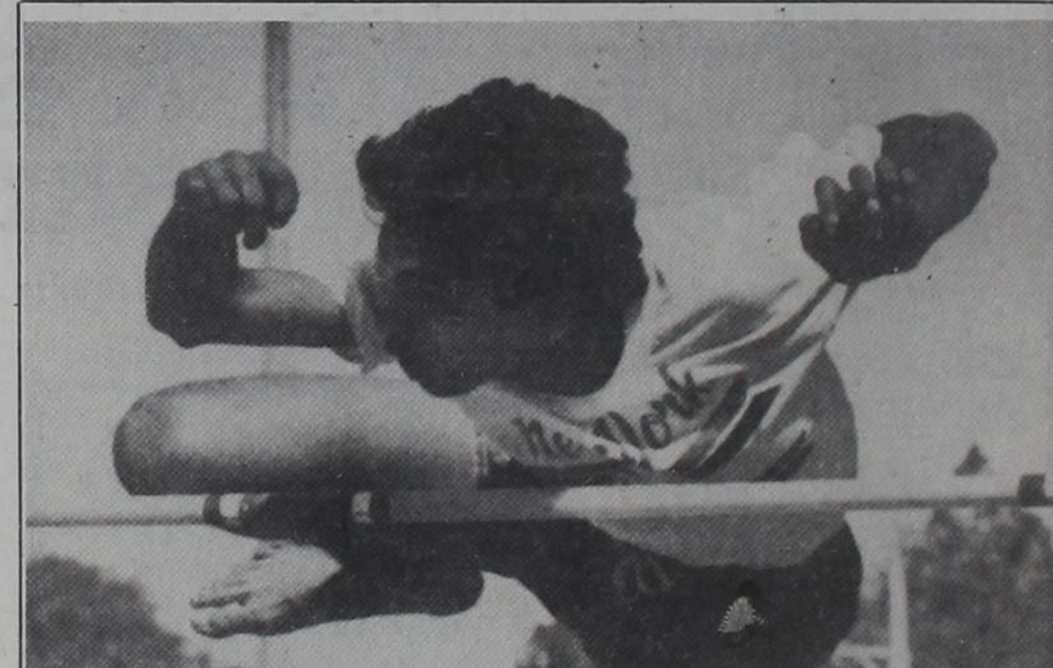
### Long Goners take baseball championship

The Long Goners broke open a tight ballgame with five fifth inning runs on their way to a 9 to 4 win over the Cubbies and the Championship of the first Recreational Sports Fall Baseball Tournament. Ducks on the Pond won three games Saturday and Sunday including a 7 to 2 Sunday triumph over the Silver Bullets to claim the consolation championship.

Art Marcelino led the Long Goners at the plate in the final

game by scoring three of the teams in nine runs. Steve Bohanon went the distance on the mounds giving up only four hits and was backed by sparkling defensive play throughout the game. In semifinal action the Long Goners slipped by the Mits 4 to 1 while the Cuibbies outmaned the Good Guys 11 to 1.

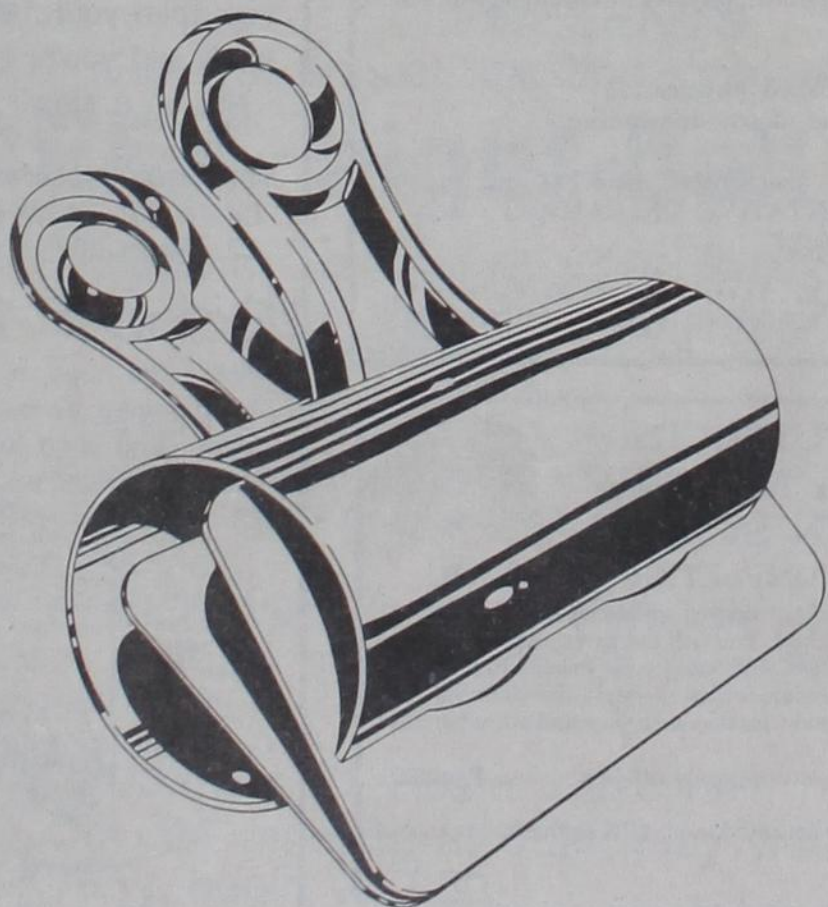
Wayne Fleitman and John Brimberry combined on a five hitter to help ducks on the Pond win the consolation finals.



### Look ma, no hands!

R. Adesh of India clears the crossbar on his way to 3rd place in the high jump during International Olympic competition. The Olympics are being conducted all this week at several campus locations.

# GET ORGANIZED



LET TEXAS TECH  
 BOOKSTORE HELP  
 YOU GET ORGANIZED

- On Campus Convenience
- Full Service Bookstore
- Helpful and friendly staff

