

University Theater today

'Desire' opening combines experience and excellence

By BARBRA WORLEY
 Fine Arts Editor
 Theater history and one of Eugene O'Neill's most notable production as Ephraim Cabot and his unfaithful bride Abbie. Appearing in the roles of Osmond, Richie Williamson, Venita Turcotte, Rose Lee Head, Sue Skulley, Bill Stuart, Bob Breeze and Steve Maddox.

had been doomed by a plan to widen College Ave. and secured permission from the city of Lubbock to use them.

THE DESIGN and construction of the unusual set is the work of Fred March in conjunction with his work on a master's degree. The play calls for an old-fashioned, two-story New England farmhouse.

It is an intense tale of love and hate on a New England farm. The influence of a son's dead mother, lust for the farm itself by all the play's characters and a violent emotional conflict unite to create the terrifying story of love and infanticide.

To create a safe and practical support for the second story of the cut-away house, March devised a special lever and suspension system.

REMAINING performances of the production are set for 8:15 p.m. Saturday and Monday and 3 p.m. Sunday in the Theater. Admission prices are \$2 for adults, \$1 for students of high school and other colleges and 50 cents for Tech students.

Also called for in the setting are "two realistic elm trees." Tackling this problem with Kilmer's poem in mind, March proceeded to locate a pair of real elm trees which



FA briefs

One-acts to provide finals

Enjoy a final exam? Not often do students enjoy their own finals, but in the next few days they will have a chance to enjoy the efforts of students in the Speech Department's Stage Directing Methods class.

IN PARTIAL fulfillment of a final examination, 11 student directors will present a series of one act plays which they have directed. Three of the plays will be presented Sunday, two Wednesday, three Saturday, May 17 and three Tuesday, May 23.

All performances are scheduled to begin at 7:00 p.m. in the Laboratory Theater of the Speech Building.

THERE IS NO charge for admission, and the public is invited to attend.

Because of its length, the Union's Popular Film Series feature, "The Longest Day," will be shown at 7 p.m. today and 3 p.m. Sunday only.

THE FILM, last in this series for the year, will be shown in the Coronado Room and is sponsored by the Special Events Committee of the Union. There is no admission charge.

A dramatic enactment of D-Day, the invasion of Normandy during World War II, the film features a cast of internationally-known stars, including John Wayne, Robert Mitchum, Henry Fonda, Richard Burton, Curt Jergens and many others.

COMEDIAN JONATHAN Winters, along with the Levee Singers of Dallas, will appear at 8:15 p.m. Saturday in Municipal Auditorium as a presentation of Civic Lubbock, Inc.

Tickets for the performance are priced from \$3-\$5 and are available through Civic Lubbock, Box 5486, Lubbock. This is the only personal appearance currently scheduled in the Southwest for Winters.

The Texas Tech Symphony Orchestra directed by Paul Ellsworth will be presented in a Commencement Concert at 3:30 p.m. Sunday in the Student Union Ballroom.

Soloists will be Edward Elkner, Tyler senior, and Emile Pandolfi, senior from Greenville, S.C. Both are piano students of Dr. Thomas Redcay.

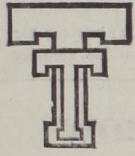
The program will include music by composers Debussy, Beethoven, Rachmaninoff, and Smetana.



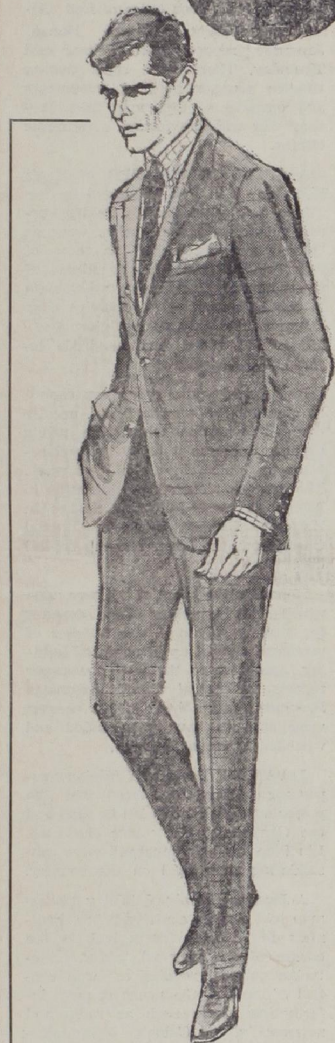
DESIRE UNDER THE ELMS—Abbie Putnam played by Marilyn Miller and Ephraim Cabot played by Arthur Prickett kneel in a scene from Eugene O'Neill's play "Desire Under the Elms." The University Theater's last production of the season opens tonight.



BROWN'S TECH APPRECIATION



SALE



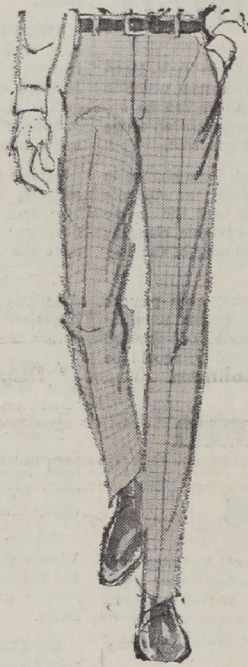
SUITS

Silk sharkskin suits by Bardstown ...
 \$75 suit for \$59.95
 Dacron and wool as low as ...
 \$44.00

SPORT COATS

Bardstown authentic traditional sport coats. Springs newest styles and colors.

\$45 Coat for \$36



CASUAL PANTS

ONE GROUP

1/2 PRICE

LONG SLEEVE SHIRTS

\$5 and \$7 Shirts
 3 for \$9.41

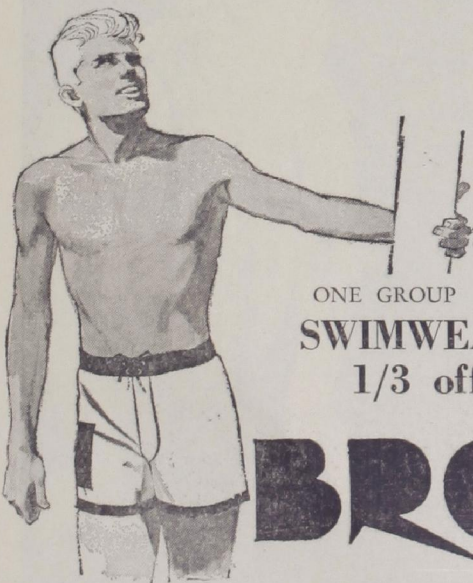
Nylon Jackets

\$10 Jacket \$7.95



BURMUDA SHORTS

ONE GROUP
 \$3.95



ONE GROUP
 SWIMWEAR
 1/3 off

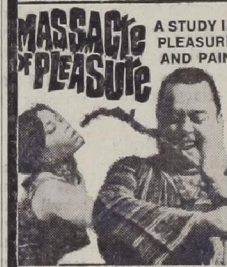
BROWN'S Varsity Shop

CORNER OF COLLEGE AVE. AT BROADWAY

CONTRAVAL Cinema

Now Showing

Never before have we burned the screen with such ADULT ENTERTAINMENT
 BOX OFFICE OPENS 6:00 P.M.



—SECOND FEATURE—
 HOT-BLOODED WOMAN

Musicians in recital

The Texas Tech department of music will present a senior recital featuring Ronald Johnson, percussionist, and Miss Carol Jessup, clarinetist.

Johnson will play an assortment of instruments including the marimba, vibraphone, and the timpani. Miss Jessup will play one solo piece and accompany Johnson on another. The program will be presented in room 1 of the Music Building at 8:15 today.

The Texas Tech Symphony Orchestra will present the seventh annual Commencement Concert at 3:00 p.m. Sunday in the Student Union Ballroom.

The program will feature pianist's Kilner and Emile Pandolfi. Kilner and Pandolfi were selected by audition and are students of Dr. Thomas Redcay.

Miss Virginia Kollegg, Asst. Professor of violin, will give a recital at 8:15 p.m. Tuesday in the West Texas Museum Auditorium. Assisting her will be Mrs. Keith McCarty, pianist.

Miss Kellogg is a graduate of the Eastman School of Music.

EFFECTIVE JUNE 1st
 Low Low Rates
 For Coming Year
 40⁰⁰ Per Student Per Month

Raider Villa

PO3-6151
 1612 Ave. Y

1/2 Block
 From Campus

Comedy headlines KTXT-TV

Cyril Ritchard and Cornelia Otis Skinner will head a Broadway musical cast as KTXT-TV presents "The Irregular Verb to Love," Thursday.

The 9 p.m. presentation on Channel 5 concerns an unconventional family and the situations in which the wife and mother, Hedda Rankin, finds in its members when she returns home after serving a prison sentence for setting off bombs in fur shops in protest against trapping animals.

The weekly adult science series, "Spectrum," will present at 8:30 p.m. Monday the full story of the lost nuclear bomb and its recovery off the coast of Spain.

In January, 1966, a hydrogen bomb was lost off the coast of the sleepy village of Palomares following a mid-air collision during a routine refueling mission of two aircraft.

"The Way It Is," an intimate view of a slum school initiates a five week study of education—its challenges and achievements — on the "N.E.T. Journal" at 9 p.m. Monday.

This first program focuses on Junior High School 57 in the Bedford-Stuyvesant section of Brooklyn, which was chosen last fall for a special learning project by New York University. Filmed over an entire school term, beginning in Sept. 1966, the program un-

derlines the problems of the NYU project—and any slum school teaching experience—in human terms.

INTERNATIONAL opera and concert soprano Leontyne Price reviews her musical career in an exclusive interview on "Musically Speaking" at 8:30 p.m. Tuesday.

Recalling her childhood in Laurel, Mississippi, the soprano tells of her early interests in singing as a grammar school student, reflects on how she began serious voice study when awarded a schol-

arship at Julliard and talks of some of her more personally rewarding professional performances such as singing the role of Bess in "Porgy and Bess."

THE EFFECT of the Vietnam war upon America's national and world roles is effectively demonstrated on "News in Perspective," Wednesday, by Timesmen Lester Markel, Tom Wicker, and Max Frankel.

A major portion of the program is devoted to recent escalation of the war in the air

in Vietnam. It also discusses domestic and international reaction to the war.

THE AMERICAN Conservatory Theatre performs the George Bernard Shaw comedy "Misalliance" on "N.E.T. Playhouse" at 9 p.m. next Friday.

The main theme of the play is love, interwoven with the relationships of husbands and wives, and parents and children, with some interesting observations on the rapidity with which advanced ideas become out of date.

Architect Schmidt to talk to retail internship class

Howard Schmidt, consultant architect for Texas Technological College, will speak at the Retail Internship class luncheon today for the businessmen who participate in the Tech Marketing "Analysis of Retail Operations" course.

THE COURSE, styled to promote Retail Management, offers the student the opportunity to observe first-hand the business operations that he has been studying. Students work in various stores in Lubbock four and a half hours a week, and meet in the classroom one hour weekly.

Guests at the luncheon will be Tom Hoskins and Franklin Grant, representing Dunlap's; J. Culver Hill, Newton Robinson, Mark Creed, and Bill Collins, representing Hemphill-Wells; Tom Shaw and Ennis Chafin, Sears; Robert Hurmance and Don Furr, Furr's Supermarket; Mr. and Mrs. Ken Abraham, Intimate Apparel; George Heather, Dean of the School of Business; Dr. John Ryan, head of the marketing department, and Mrs. L. L. Luchsinger, Marketing professor.

STUDENTS participating in the program are Margaret Foster, Norval Thomas, James Birdsong, James Braddock, Billy Shine, Vicki Nichols, Shirley Franklin, Camille Gar-

nett, David Murray, Glenda Weaver, and Randall McGee. The luncheon will be held at noon in the Tech Union.

Ex Tech professor dies

Dr. Charles H. Mahoney, search Bureau of the National former professor of horticulture at Tech, died May 3 in a Washington hospital.

Mahoney, a member of the original faculty, taught at Tech for six years. He then went to Michigan State University and the University of Maryland. He later became head of the Raw Products Re-

search Bureau of the National Horticultural Association in Washington, D. C. He retired last year.

Mahoney flew back to Washington April 30 after contracting hepatitis while in Spain with his wife.

He was buried Tuesday in a Georgetown cemetery near his home.



CHILDREN'S SERIES — After leading students from the international School on a special tour of the United Nations, guide Marie Zeheri sits in on a language class and observes how children from 67 different countries around the world are taught. The tour and school are featured in N.E.T.'s "What's New" children series at 6 p.m. and 7:30 p.m. daily on Channel 5.

Saddle Tramps to wash cars

Tech's Saddle Tramps are sponsoring an all day car wash Saturday.

Ammon and McAdams Texaco Station at 15th St. and College Ave. are furnishing their washing facilities free of charge for the event. The station also supports the Saddle Tramps by furnishing gas to them for their out-of-town trips.

The Saddle Tramps are charging \$1 to wash only the exterior of a car and \$1.50 for the Saddle Tramp Special, that is, cleaning both the inside and outside of a car.

Proceeds from the car wash will go toward supporting Tech athletics, particularly next year's football team.

MARRIED STUDENTS ONLY

| | | |
|--|---|--|
| Tech Village \$85.00 2902 - 3rd Place PO2-2233 | University Village \$87.50 3102 - 4th Street PO3-8822 | Varsity Village \$92.50 3002 - 4th Street PO2-1256 |
|--|---|--|

All 1-bedroom, Furnished, Utilities Paid
 Pool — Full Laundry — Month to Month Rentals
 Children Welcome — No Pets

GENERAL ELECTRIC

Heat • Cooling • Ranges • Disposals
 Refrigerators • Water Heaters

AT VARSITY BOOK STORE

HIGHEST PRICES PAID...

FOR YOUR USED TEXTBOOKS

With our expanded textbook department we can serve you better than ever. This includes paying you the highest prices in cash for your used text books. Remember, the sooner you bring your used textbooks in, the higher their value.

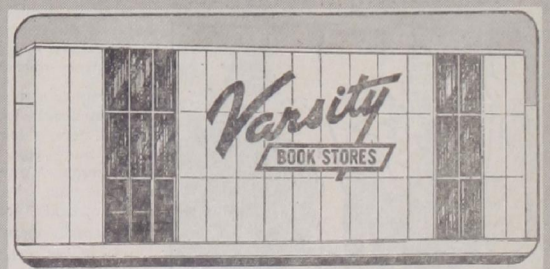
Tech Appreciation Sale

| | | |
|---|---|---|
| LARGE GROUP Spring and Summer DRESSES 1/2 Price | LARGE GROUP Spring and Summer SPORTS WEAR 1/2 Price | All Weather COATS 1/2 Price |
| SLACKS 1/4 off LARGE GROUP SKIRTS 1/2 Price | LARGE GROUP SWIM SUITS 1/2 Price | SHORTS (Burmuda, Jamaca & Short) 1/4 off Matching Tops 1/4 off |

1301 COLLEGE AVE.

In appreciation of the many wonderful Tech customers we have enjoyed this year the Coed is offering these specials for a short time only.

1301 COLLEGE AVE.



Your College Book Store On College Avenue

Officers selected

New officers for several fraternities have been announced on campus for the 1967-68 school year.

At their May 8 meeting, SAE members elected Bill Mabus president, Newall Squyres, vice-president, Jim Layton, treasurer, Larry Morgan, secretary, Mike Bickley, herald, Ronnie Salmon, correspondent, Don Owens, historian, Murphy Yates, chaplain, Pat Acton, warden, John Hutt, pledge trainer, and Johnny Keeton, IFC representative.

Alpha Pi Mu, National Industrial Engineering Honorary Society recently elected Pete LoPresti, president, Jay Doran, vice president, Don Meador, treasurer, Tarek Khalil, secretary, and Don Spencer, corresponding secretary.

Beta Delta chapter of Beta Alpha Psi, National Honorary Accounting Fraternity will install John Larson as president, Don Williams, vice president, Tim Howells, secretary, Barry Lewis, treasurer, Dr. Fred Norwood, faculty vice president, and Dr. Wayne Chapin as faculty vice president elect.



ARMY ROTC AWARDS — Dr. W. M. Pearce, Tech executive vice president, presents Jerry D. Peek with the President's Award for the best overall performance on a four-year basis. Peek also received

the National Defense Transportation Association Award for military excellence and academic achievement. Melvin VanLoh (in background) received the Distinguished Military Student Award.

ROTC cadets win awards

Three cadets in Tech Army ROTC received the highest awards went to students of military science in the United States.

TOP AWARDS went to Jerry D. Peek, Lubbock; William N. Mabus, Dallas; and Glen M. Schlather, San Antonio at ceremonies on the Tech drill field Thursday.

Peek received the President's Awards and the National Defense Transportation Association Award. The President's Award is given for the best over all performance on a 4-year basis. Given for military excellence and academic achievement, the NDTA is presented annually to 20 senior students throughout the nation.

RECEIVING THE American Military Engineers Award of Merit were William N. Mabus, Dallas and Glen M. Schlather, San Antonio.

This is awarded annually to 20 senior Engineering students participating in the ROTC program. This was the first time the AMEA of M and the NDTA had been awarded at Tech.

The Distinguished Military Student Awards went to Melvin D. VanLoh, Vernon and James E. Dobson, Coleman. These are given for scholastic achievement in ROTC and overall academic standing.

STEPHEN C. RACKETS, Dallas was given the Texas Sons of the American Revolution Award. Competition for

this was by written examination.

Receiving the Association of the United States Army Award was James L. Haney. This is awarded annually to the outstanding MS III cadet.

RESERVE OFFICERS Association Medals were given to Edward C. Bland, Albuquerque, N.M.; James F.

Scott, San Francisco, Calif; and Gary A. McMillan, Waco. These are awarded annually to the senior, junior, and sophomore cadet who has achieved a standing within the top 10% of his ROTC class.

Chris L. Rochl, Bellaire was cited as the Best Drilled Individual.

Egyptians believe despot a hero

CAIRO (AP)—Wednesday a symbol of royal despotism, today a hero of socialism; that is ex-King Saud, as seen by Egyptian eyes reflecting one of those political evolutions that ripen in the Middle East.

Once he tried to buy the assassination of President Gamal Abdel Nasser. All that is forgotten now.

Saud came to Cairo last January from his Athens exile.

Raider Roundup

DELTA PHI ALPHA
Delta Phi Alpha, German honorary, will meet at 7 p.m. Monday in room 209, Tech Union.

AGRONOMY CLUB
Horace McQueen, farm and ranch reporter for KLBK, will speak on agriculture in Australia, at 8 p.m. Monday in the Aggie Auditorium. The public is invited. The event is sponsored by the Agronomy Club.

BETA ALPHA PSI
Beta Alpha Psi will have its spring picnic tomorrow at Mackenzie Park in the "Little Party House," from 3:30 p.m. to 7:00 p.m.

BAND PERFORMANCE
On the Green in front of Drane Hall Sunday, Dean Kilion's Second Band will perform a musical array entitled "A Sunday Afternoon in the Park."

The 4:30 p.m. open-air concert, sponsored by the Fine Arts Committee, will include in its selections the Girl from Ipanema, On a Clear Day You Can See Forever, One Note Samba, the Gloria, Thunderer, and Blazes Marches, and the Joyce's 7st New York Regiment.

Think the sand blows here?

Grains of sand hard and fast enough to knock a man down! And you think you have seen dust storms!

LIVING IN LUBBOCK can acquaint one right away to what a dust storm can really be like. There are some days when people swear that dead sinners go to Lubbock, not hell. But to Arthur Stevens of Abqaiq, Saudi Arabia, Lubbock weather is all but unnoticeable.

Stevens, a junior A&S student, says that if a choice has to be made, Lubbock storms are preferable.

ACCORDING TO STEVENS, in Arabia, blowing wind usually brings more sand than dust. Arabia's storms are less frequent than Lubbock's, but rising to gale force in a matter of minutes, are infinitely worse.

"You really have to wear something over your face, and on bad days, if you get outside, you can be blinded," Stevens said.

AN ARABIAN DUST storm usually lasts three to five hours, but sometimes lasts intermittently for days.

Dust on everything is not as much a headache in Arabia however, since particles tend to be larger. Housewives solve much of the dirty work by using fine mesh screens on doors and windows.

THE MAJOR PROBLEM

is not dust in the linens but a matter of hours. As Stevens puts it, Lubbock weather in the spring, is high enough to knock a though not exactly paradise, man down, the wind can literally strip a car of paint in from Saudi Arabia.

the Books your Mother wants are at Varsity

Something to Live By . . . \$4.95
Forget-Me-Nots of Love . . . \$2.95
Leaves of Gold . . . \$4.95, \$8.00, & \$10.00
Flowers for Mother . . . \$2.75
Just for You . . . \$2.95

The Greatest of These is Love . . . \$2.95
Bibles of Every Description
Also Hallmark Greeting Cards

Varsity BOOK STORES



LADY SHRINER COLLEGIANS... THEY'RE WHAT'S HAPPENIN'!

Handsewn loafers with little details and great fit that make the big difference.

- a. navy grained-leather classic
- b. antique olive with fringed tassels
- c. cordovan smooth-leather classic

14.95 pr

Ladies' Shoes
Downtown
Monterey

Hemphill-Wells



FIELDS UNIVERSITY SHOP

THE TRADITIONAL MEN'S STORE FOR THE TECH CAMPUS

1/2 PRICE



QUALITY BRAND NAME MERCHANDISE

ALL DEPARTMENTS REDUCED

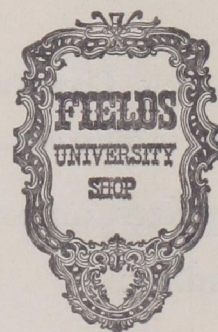
10% to 50%

| | | | |
|--|----------------|------------------------------------|---------------------------------|
| ONE GROUP SPORT SHIRTS | ONE GROUP TIES | ONE GROUP SPORT COATS | ONE GROUP PERMANENT PRESS PANTS |
| 1/2 PRICE | 1/2 PRICE | 1/2 PRICE | 1/2 PRICE |
| ONE GROUP SOX . . . Reg. \$1.50 . . . Sale 89c | | Robes, Shave Coats . . . 1/2 Price | |
| ONE GROUP SHOES 1/2 PRICE | | | |
| ONE GROUP BELTS 1/2 PRICE | | | |
| LONG SLEEVE DRESS SHIRTS ON SALE | | | |

DON'T MISS THIS SALE

NO REFUNDS OR EXCHANGE ON SALE MERCHANDISE.

CHARGE FOR ALTERATIONS



THE SHAKE SHINGLE SHOP ON COLLEGE AVENUE
ONE-HALF BLOCK SOUTH OF BROADWAY

**SOLITAIRE
DIAMOND
RINGS**
stand alone
in clarity,
brilliance
and cut



Only diamonds of fine quality are worthy of your love! When you inspect the clarity, brilliance and cut of these diamonds, plus the riches of the extra precious 18-karat gold settings, you'll know these rings are the choice of a lifetime.

Payne's A \$150 B \$200 C \$300
JEWELERS
Briercroft Center — 5302 Ave. Q

Get Mickey Thompson
13" Mag Wheels for 66-67
Mustang — 5 bolts & Knock Offs
\$100.00

Auto Accessories . . . must go
Includes: Tail Pipe Extensions
Wheel Covers
Rims
Rear Speakers
Roto Sets
Auto Chemicals
Points, etc.

Show Tech ID & get Extra Discount
MAJOR OIL BRANDS AT DISCOUNT
Come By
KERSH TURF SUPPLY
4122 W. 19th SW 2-2294

Eddy Arnold to be at South Plains Fair

Eddy Arnold will be the feature attraction of the golden anniversary edition of the Panhandle South Plains Fair in Lubbock.

Appearing with the "Tennessee Plowboy" will be "The Kids Next Door," who performed in Lubbock last year with Ernie Ford as the Young American Singers, and Jimmy Nelson and his dummies—Danny O'Day, Humphrey Hibsby, Farfel and Ftataateeta.

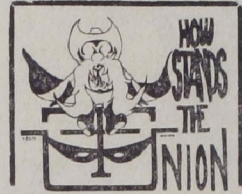
The 1967 exposition slated Sept. 25-30 will be celebrating its 50th consecutive year and saluting A. B. Davis, long-time general manager.

Arnold has sold over 20 million singles and over two million albums. In the past 18 years, he has had 16 No. 1 tunes and 60 records in the Top 10. In 1965 and 1966 his recordings of "Make the World Go Away" and "I Want to Go With You" have been rated No. 1 in the nation.

Jimmy Nelson achieved stardom as master-of-commercials on the Milton Berle Show.

Although the 1966 Fair drew more than a quarter million for the first time and honored its five millionth visitor, officials expect at-

tendance marks to crumble again.

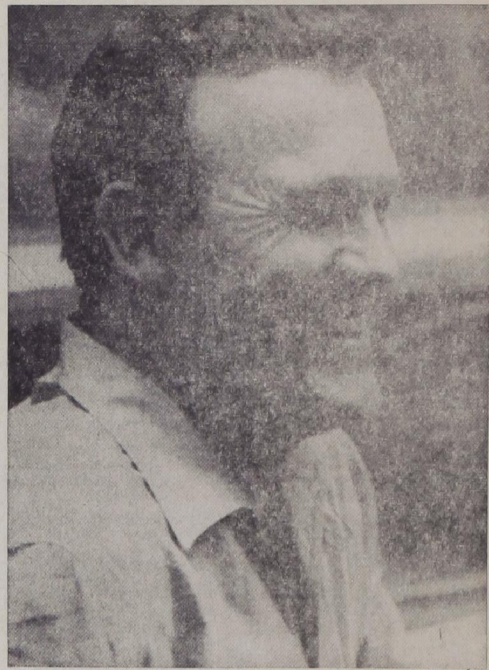


May 12—Popular Film Series, "The Longest Day," 8 p.m., Coronado Room, sponsored by Special Events Committee.

May 14—Popular Film Series, "The Longest Day," 3 and 7 p.m., Coronado Room, sponsored by Special Events Committee.

LAST ISSUE

Tuesday's issue of The University Daily will be the last of the spring semester. All copy concerning events of the next two weeks should be turned in by 4 p.m. Monday. The University Daily will publish each Friday during the summer sessions, beginning June 9.



HERE NEXT FALL—Western singer Eddie Arnold will be the feature attraction of next fall's South Plains Fair. Arnold, a well-known recording star, will be joined by "The Kids Next Door" and Jimmy Nelson and his dummies. The fair will be staged Sept. 25-30, the second week after the fall semester begins. It will be the fair's golden anniversary.

Dom's Summer Clearance

MERCHANDISE FROM ALL DEPARTMENTS REDUCED

up to 50%

SHOES

SHIRTS

SUITS

STA-PRESS PANTS

KNIT SHIRTS

SPORT COATS

DRESS PANTS

SHORTS

SOX

Charge Accounts Welcome

Doms



2420 Broadway

LTD

EXAMS COMING?



WE HAVE THE WIDEST SELECTION OF CONCENTRATED STUDY AIDS

- MONARCH NOTES
- CLIFF NOTES
- SCHAUMS OUTLINES
- STUDY MASTER
- COLLEGE OUTLINE SERIES
- DATA GUIDES



The Jonathan Winters Show With The LEVEE SINGERS



LUBBOCK COLISEUM
SAT., MAY 13 . . 8.15 p.m.
Coliseum Box Office
Open Mon. thru Sat.,
9 A.M. - 5 P.M.
TICKET PRICES:
\$3 . . . \$4 . . . \$5
CIVIC LUBBOCK, INC.
Dial PO2-4616 Box 5486

Job for counseling center

Students have many problems

Student problems—academic, emotional, career—can be alleviated or possibly eliminated with the help of the University Counseling Service.

THIS FREE service to all Tech students staffs five full or part-time counselors directed by Dr. James Kuntz. It was organized in 1947 as the Veteran Administration Guidance Center, and its facilities have expanded to enable about 1,000 students to be counseled this year.

When a student comes in seeking help in finding a suitable career for himself, he fills out a survey of his family background, hobbies, school subjects, plus grades made in high school. "This information is used directly by the counselor in deciding on an appropriate series of tests," Kuntz explained.

THE TESTING PHASE is next, consisting of six to eight hours of examinations. The student may take the tests when he wants, either in 20-minute, hour or two-hour sessions.

"Besides the aptitude tests, there are interest, personality,

and study habit 'inventories,'" he said. These are designed to see the student at his "leisure" rather than under strict mental exercise.

BASED ON this "sizing up", the counselor meets with the student and examines major courses in the academic program that would lead to suitable occupations. "There are over 40,000 careers, and the student is given facts about some of these to help sift through them," Kuntz said.

This second phase of counseling involves many hours of reading occupational literature and talking to people in the various occupations. "This is all done in the student's free time, and naturally, the more effort he exerts the better we will be able to help him," the counseling director said.

BESIDES THE ACADEMIC counseling, the Service works with Tech students on their more serious personal problems.

These meetings are held in conference, and when the Counseling Center feels the problem is too serious for its facilities, the student may be referred to a local psychiatrist or to the South Plains Guidance Clinic.

THE UNIVERSITY Counseling Service is separate from the psychology department which has its own clinic that is free to Tech students as well as area residents. The psychology clinic functions as a training ground for graduate students who frequently work with emotionally disturbed children. "We are

both situated in the psychology building, but any connection with each other ceases there," Kuntz emphasized. "The Counseling Service is only for Tech students."

"The student need not have an appointment to line up counseling work. Although some people are referred to us by various professors or deans most of the students come of their own accord," Kuntz added. "We want the student to come in whenever he feels the problem is getting too much for him to handle. After clearing the air, we set the student back on his feet and get him functioning again as a good university student."



SIGMA CHI SWEETHEART—Lin Blackwell was selected Sigma Chi Sweetheart at the annual Sweetheart Ball. She is a sophomore psychology major from Lubbock, and a member of Alpha Phi sorority.

Saddle Tramps Announce

Outside Only \$1.00

"Get Acquainted"

Saddle Tramp Special \$1.50

CAR WASH

All day Saturday, May 13, beginning at 9:00 a.m.

Facilities furnished by Ammon & McAdams Texaco Station
Home of "Banging Bertha"
Corner of 15th and College

Tech's new Cheerleaders and Twirlers will be present, so come out and meet them!

Special prices on all fine Texaco Products

Including:

Texas Green Chief Fertilizer
Texaco Tire Inflator - Puncture Sealer

All proceeds go to support Texas Tech Athletics

*Tech
Appreciation
Sale*

1321 College Ave.

Large Group
Spring and Summer
DRESSES
1/3 off

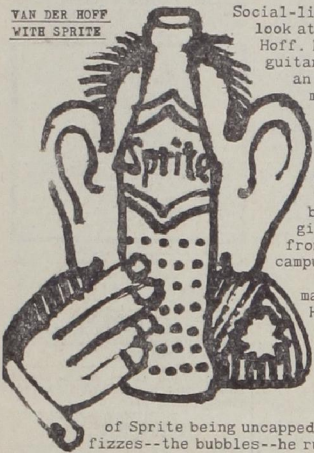
SKIRTS
1/3 off

Large Group
Spring and Summer
SUITS
1/2 off

Accessories
One Group
1/2 off

Don't laugh at Charles Van der Hoff's big ears. He can hear a party a mile away, thanks to Sprite.

VAN DER HOFF WITH SPRITE



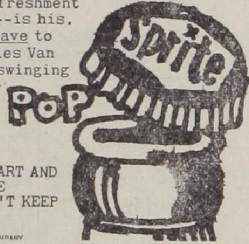
Social-life majors, take a look at Charles Van der Hoff. He can't play the guitar. Never directed an underground movie. And then look at his ears! A bit much? Yes! But—Charles Van der Hoff can hear a bottle of tart, tingling Sprite being opened in the girls' dormitory from across the campus!

What does it matter, you say? Hah! Do you realize that Charles Van der Hoff has never missed a party in four years? When he hears those bottles

of Sprite being uncapped—the roars—the fizzes—the bubbles—he runs! So before you can say anti-existentialism, he's getting in on that tart, tingling, slightly tickling taste of Sprite. And delicious refreshment—as well as a good time—is his.

Of course, you don't have to have ears as big as Charles Van der Hoff's to enjoy the swinging taste of Sprite. You may just have to resign yourself to a little less social life.

SPRITE, SO TART AND TINGLING, WE JUST COULDN'T KEEP IT QUIET.



Tech meets Pan American today

By GARY TILORY Sports Writer

Texas Tech and the Pan American Broncos meet head on today at 1 p.m. at the Varsity Field for the final baseball series of the season for Raiders.

Tech, now 10-16, will send lefthander Eldon Fox (1-6) against the Broncos today. John Guzman (4-0) righthander will do the mound chores for the Broncos.

"WE ARE a young team with only one senior on the starting team," said Pan Am

coach Larry Enaminger. "Basically we are a sophomore ballclub. That's why we make a lot of mistakes.

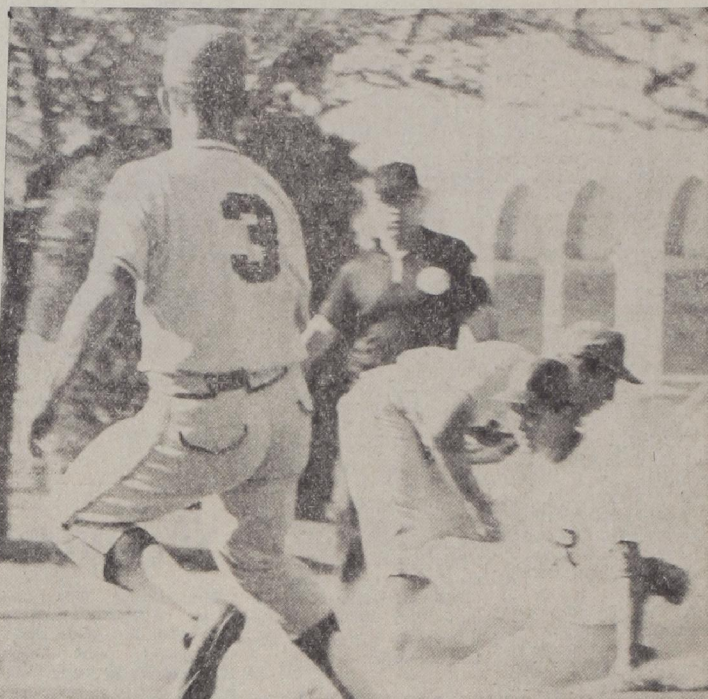
"We have to scramble for our runs. We have good over all speed and we are definitely slow at a couple of positions. We don't hit the long ball much; although we have eight men on the team that have hit at least one homer," he said.

GENERALLY we have to bunch our hits together to score our runs," he added. The Broncos have had a

somewhat difficult season but yet a good season. They have played two schools in the Southwest Conference and two from the Big Ten Conference.

THEY SEEM to emphasize baseball down there and they have had some mighty fine ball teams," said Tech Coach Burl Huffman.

The past four games have been nothing but frustration for the Raiders. David Callerman saw sheer nightmare as he lost a one hitter to Abilene Christian College 4-2. Don Champion had trouble with the timber, getting but one hit in 10 times at bat. He also came up with four errors in four games.



ANOTHER CLOSE PLAY—It's another close play for the Texas Tech baseballers as they close out their season with a two-game series with Pan American College here today and Saturday. The Raiders have won eight of their last 11 games. The action begins at 1 p.m. at the Varsity Field.

Starting lineups

PAN AMERICAN

| Name | Pos. | Avg. |
|-----------------|------|------|
| Bucky Rodriguez | 2B | .324 |
| Danny Wills | RF | .300 |
| Hector Salinas | LF | .333 |
| Bill Lentz | 1B | .275 |
| Glenn Hill | SS | .260 |
| Allan Jones | C | .250 |
| Rene Torres | CF | .250 |
| Richard Cortez | 3B | .200 |
| John Guzman | P | 4-0 |

TEXAS TECH

| Name | Pos. | Avg. |
|-------------------|------|------|
| Ralph Cox | 2B | .157 |
| Eldon Frost | SS | .235 |
| John McIntyre | CF | .278 |
| Don Champion | 1B | .338 |
| Joe Saunders | C | .345 |
| Norman Schuessler | RF | .270 |
| Eddie Stiles | 3B | .227 |
| Jim Murrell | LF | .192 |
| Eldon Fox | P | 1-6 |

Pitching stats

| Name | W | L | IP | R | H | SO | BB | ER | ERA |
|-----------------|---|---|--------|----|----|----|----|----|------|
| David Callerman | 5 | 3 | 71 | 38 | 64 | 50 | 28 | 15 | 1.90 |
| Pat Abbott | 4 | 2 | 35 1/2 | 11 | 22 | 26 | 6 | 7 | 1.77 |
| Phil Stephenson | 2 | 3 | 36 | 21 | 36 | 26 | 18 | 8 | 2.00 |
| Eldon Fox | 1 | 6 | 40 2/3 | 24 | 39 | 46 | 20 | 14 | 3.20 |
| Burt McCauley | 0 | 0 | 13 | 9 | 11 | 4 | 9 | 3 | 2.08 |

JOHN MCINTYRE is still stealing the spotlight as he is leading in most hits with 25, most homers with two and most stolen bases with 16. He is second in doubles with seven and runs-batted-in with 12.

Champion leads in two categories, with 13 rbi's and eight doubles. He is second in total hits with 22 and tied with Jerry Kolander for second in triples with one. Champion is also third with 3 stolen bases.

The leading hitters are Joe Saunders, .345, Champion, .338, Kolander, .321, McIntyre, .278 and Schuessler at .270.



End of Semester SALE

SUITS
ENTIRE SELECTION

| REG. PRICE | NOW | REG. PRICE | NOW |
|------------|-------|------------|-------|
| 55.00 | 38.50 | 75.00 | 52.50 |
| 60.00 | 42.00 | 80.00 | 56.00 |
| 65.00 | 45.50 | 85.00 | 59.50 |
| 70.00 | 49.00 | 90.00 | 63.00 |

ONE GROUP 1/2 PRICE
ONE GROUP 30% OFF

| REG. PRICE | NOW | REG. PRICE | NOW |
|------------|-------|------------|-------|
| 55.00 | 38.50 | 75.00 | 52.50 |
| 60.00 | 42.00 | 80.00 | 56.00 |
| 65.00 | 45.50 | 85.00 | 59.50 |
| 70.00 | 49.00 | 90.00 | 63.00 |

JACKETS
ENTIRE SELECTION 40% OFF

BELTS
Very Large Selection
40% OFF

| | |
|------|------|
| 4.00 | 2.80 |
| 5.00 | 3.50 |
| 6.00 | 4.20 |
| 6.50 | 4.55 |
| 7.00 | 4.90 |

SPORT COATS
ENTIRE SELECTION

| REG. PRICE | NOW | REG. PRICE | NOW |
|------------|-------|------------|-------|
| 35.00 | 26.35 | 47.50 | 35.63 |
| 37.50 | 28.13 | 50.00 | 37.50 |
| 40.00 | 30.00 | 55.00 | 41.25 |
| 45.00 | 33.75 | 60.00 | 45.00 |

ONE GROUP 1/2 PRICE
ONE GROUP WERE 23.95!
DOUBLE BREASTED BLAZERS 35.00
ONE GROUP 25% OFF

| REG. PRICE | NOW | REG. PRICE | NOW |
|------------|-------|------------|-------|
| 35.00 | 26.35 | 47.50 | 35.63 |
| 37.50 | 28.13 | 50.00 | 37.50 |
| 40.00 | 30.00 | 55.00 | 41.25 |
| 45.00 | 33.75 | 60.00 | 45.00 |

SHOES
LARGE GROUP 20% OFF

SOCKS
Very Large Selection
ONE GROUP WERE 1.50 99¢

SPORT SHIRTS
ENTIRE SELECTION 30% OFF

| REG. PRICE | NOW | REG. PRICE | NOW |
|------------|------|------------|------|
| 5.00 | 3.50 | 8.00 | 5.60 |
| 6.00 | 4.20 | 8.50 | 5.95 |
| 6.50 | 4.55 | 9.00 | 6.30 |
| 7.00 | 4.90 | 9.50 | 6.65 |
| 7.50 | 5.25 | 10.00 | 7.00 |

LONG SLEEVE SHIRTS 1/2 PRICE

| REG. PRICE | NOW | REG. PRICE | NOW |
|------------|------|------------|------|
| 5.00 | 3.50 | 8.00 | 5.60 |
| 6.00 | 4.20 | 8.50 | 5.95 |
| 6.50 | 4.55 | 9.00 | 6.30 |
| 7.00 | 4.90 | 9.50 | 6.65 |
| 7.50 | 5.25 | 10.00 | 7.00 |

DRESS SHIRTS
ENTIRE SELECTION LONG SLEEVE DRESSSHIRTS 1/2 PRICE

| Reg. | Now | Reg. | Now |
|------|------|------|------|
| 5.00 | 3.50 | 7.00 | 4.90 |
| 6.00 | 4.20 | 7.50 | 5.25 |
| 6.50 | 4.55 | | |

DRESS SLACKS
CHECKS, PLAIDS, STRIPES, SOLIDS
25% OFF

CASUAL SLACKS
ONE GROUP HIP HOGGERS
WERE TO 9.00 NOW 2.99
ONE GROUP 20% OFF

TIES
LARGE GROUP 40% OFF

BERMUDA SHORTS
ENTIRE SELECTION 30% OFF

| REG. PRICE | NOW |
|------------|------|
| 6.00 | 4.20 |
| 7.00 | 4.90 |
| 8.00 | 5.60 |
| 9.00 | 6.30 |



2422 Broadway
Free Parking just east of store

You are invited
TO OPEN A BRAY'S "CUSTOMERS OPTION"
CHARGE ACCOUNT. USE AS A 30 DAY ACCOUNT OR WITH CONVENIENT EXTENDED TERMS

Please... NO LAY-A-WAY OR PHONE ORDERS
NO EXCHANGES, APPROVALS OR GIFT WRAPPING
PLEASE NOTE: CHARGE MADE ON ALTERATIONS ON SALE ITEMS
ALLOW APPROXIMATELY 2 WEEKS FOR DELIVERY ON ALTERATIONS