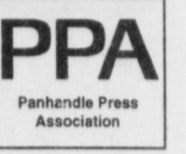




BAILEY COUNTY JOURNAL



Volume 76, No. 36

50¢

Published Every Sunday at Muleshoe, Bailey County, Texas 79347

50¢

Sunday, September 6, 1998

PAGE ONE

A QUICK READ OF THE NEWS

Labor Day closings

Local schools, banks and pharmacies will be closed Monday for the Labor Day holiday.

Muleshoe, Lazbuddie and Three Way will resume their regular school hours on Tuesday.

Grocery stores and many local retail businesses the Journal contacted said they would conduct normal hours over the holiday weekend.

Bailey County Sheriff Coy Plott and Muleshoe Police Chief Don Carter said patrols will be stepped up during the weekend to help ensure safe motoring.

Talking about nuts

According to an article in the September 3 Washington Post, the U.S. Department of Transportation has informed airlines that it must provide peanut-free buffer zones of at least three rows for any passenger who declares in advance a medically documented severe allergy to peanuts.

"I just cannot understand why the big brother Clinton administration insists on taking away another thing America loves . . . eating peanuts on planes," said Rep. Saxby Chambliss (R-Ga.)

County singer jailed

UVALDE — Country singer Johnny Rodriguez, who performed during Muleshoe's Fourth of July celebration two years ago, faces a charge of murder in connection with the shooting death of an acquaintance.

Rodriguez's lawyer said his client mistook the man for a burglar. Police have not discussed a motive.

Rodriguez was released on \$250,000 bond.

Almanac too helpful

DALLAS — The Texas Almanac is banned from Texas prisons for fear that escaped convicts will find the detailed county maps a little too useful.

Larry Fitzgerald, spokesman for the Texas Department of Criminal Justice, said the almanac has been banned for years.

Other banned reading material include pornography, hate writings, and outdoor magazines that show how to build weapons or hide in the woods.

LOCAL WEATHER

| | High | low | Pre. |
|---------------|-------------|-----|------|
| Tuesday | 93 | 56 | — |
| Wednesday | 94 | 57 | — |
| Thursday | 96 | 56 | — |
| Friday | 94 | 58 | — |
| Total to date | 7.27 inches | | |

EXTENDED FORECAST

Partly cloudy Labor Day through Weds. Highs in the 80s with lows in the 60s.

County adopts budget with farmers in mind

By RICK WHITE
Managing Editor

Farmers have already been hit hard enough by the drought, according to Bailey County Judge Marilyn Cox.

That is why the Bailey County Commissioners Court maintained its current tax rate while adopting its 1999 budget despite sorely-needed courthouse renovations, Cox said. The County also faces

the expense of two costly murder trials during the next fiscal year.

The Commissioners Court adopted a \$2.28 million budget Wednesday after holding a public hearing. The combined tax rate for the county is .4597 cents per \$100 of property valuation.

The budget does not include a pay raise for any of the County's employees or elected officials.

"This is not the year to raise

taxes because we have a lot of farmers who won't even be able to pay them this year," Cox said.

County farmers have had only one good year in the last five, Cox explained. "And this is the worst year of them all. We're going to lose some farmers because of it."

Commissioners will have to find another way to fund an estimated \$200,000 in courthouse repairs, according to Cox.

Cox said the courthouse still has the original electrical wiring from when it was built in 1925 and "chunks of concrete" are falling off the outside of the 73-year-old building.

"Something has to be done," Cox said.

The County has applied for a grant through the Bailey County

see COUNTY on page 2



Fully loaded

Muleshoe quarterback Matt McClanahan drags several Portales defenders while fighting for extra yardage Friday during the Mules' 23-0 win at Greyhound Stadium in Portales.

MHS pounds Rams

PORTALES, N.M. — It took a while for Gilbert Vela and Muleshoe to get going.

A notorious slow starter, Vela rushed for 177 yards and a touchdown and Muleshoe wore down an overworked Portales defense Friday, giving the Mules a season-opening 23-0 win at Greyhound Stadium.

Muleshoe held the Rams (1-1) to 52 total yards and three first downs.

"We reached a lot of our goals as far as rushing and passing totals," Muleshoe head coach David Wood said. "But we played a little flat. We weren't finishing off our runs and blocks, especially in the red zone, where we just couldn't

| | |
|----------|----|
| Muleshoe | 23 |
| Portales | 0 |

punch it in."

Muleshoe finished with 387 yards and 17 first downs.

"We did a lot of good things," Wood said. "But none of the kids we're content with the way we played. You could see it in their faces."

The game was interrupted for nearly 10 minutes late in the fourth quarter when Portales defensive back Michael Doerr suffered a serious neck injury. Doerr collided with a teammate while making an end zone interception. He was taken by an ambulance to a local hos-

pital as a precautionary measure.

Vela was held in check until ripping off a 41-yard run on his 10th carry of the game. The run that set up the Mules' first touchdown late in the first half.

"We learned last year that you have to just stick with him and he will get you a 100 yards," Wood said.

Two Portales punting miscues broke the game open in the second half.

Pinned deep in its own territory to start the second half, Portales snapped the ball out of the back of the end zone trying to punt. The safety gave Mule-

see MULES on page 5

State board meeting in Muleshoe

AUSTIN — Interested in seeing where its money is going, the Telecommunications Infrastructure Fund Board is holding a series of board meetings Sept. 11 in Muleshoe.

State Sen. Teel Bivens of Amarillo and Texas Speaker of the House Pete Laney have been invited to make opening remarks.

The libraries and telemedicine committee will meet at 9 a.m. at the Muleshoe Public Library, a \$10,000 TIF grant recipient. The 9 a.m.

finance committee meeting and the 10 a.m. regular board meeting will be held at the Muleshoe Independent School District, a recent TIF grant recipient as a member of the Five Area Community Telecommunications Consortium.

The meetings are open to the public.

"It's a real plus for the community to have them come in and take a look what is going on in rural West Texas," said Muleshoe school superintendent Bill Moore. Moore put a bug in the said ear of TIF executive director Albert Viramontes earlier this year about coming to Muleshoe while serving on an advisory committee.

On Aug. 14, the TIF Board awarded a grant to the Five Area Community Telecommunications Consortium, a distance learning partnership involving the school districts of Muleshoe, Lazbuddie, Morton, Olton, Springlake-Earth, Sudan and Three Way.

The total award amount is currently being negotiated, but Moore believes it is in the neighborhood of \$1 million.

The money will be used to build interactive video classrooms.

The Austin-based agency periodically holds its board meetings in a community that is representative of the kind of rural and remote communities it was designed to serve.

"The TIF Board meets outside of Austin to demonstrate its commitment to meeting the needs or rural, remote, and underserved communities," explained TIF Board member Gwen Stafford of Lubbock.

Created in 1995 by the Texas Legislature, the board is charged with disbursing \$1.5 billion in grants and loans to assist in developing telecommunications capabilities in public schools, not-for-profit healthcare providers, higher education institutions and public libraries.

As of August of 1998, the state organization has funded 11 discovery of "model" collaborative projects, 775 school districts, 57 community colleges, 158 public libraries and has recently released two grant opportunities for not-for-profit healthcare facilities, two additional grant opportunities for public libraries, and two addi-

see BOARD on page 2

Texas drivers have little regard for speed limits

Texas motorists have little regard for posted speed limits.

According to a poll released Tuesday by Texas Department of Transportation, more than half of Texas drivers (55 percent) admit speeding most of the time.

The study, conducted by Savitz Research Center, polled about 500 licensed Texas drivers. Among its findings:

■ Only half of all drivers feel they are speeding when they exceed posted speed limits.

■ Ten percent of all drivers and 20 percent of young males age 16 to 24 believe they are speeding only when they drive more than 10

miles over the official speed limit.

■ Drunk drivers and speeders are the greatest concerns drivers have about driving in Texas.

■ Of the Texans who go out drinking, only 25 percent use a designated driver.

■ One-fifth of poll participants would never wear a safety belt if there were no laws requiring them to do so.

Background

The Texas Department of Public Safety issued a report last month that statewide traffic fatalities for 1997 were down from 1996 by 6.2 percent.

Crashes and serious injuries can

be prevented if motorists practice safe driving habits: travel at a speed appropriate for conditions, obey the speed limit, use safety belts properly, pay attention to traffic around you and never drink and drive.

Since the federally mandated speed limit was repealed in December 1995, TxDOT has taken several steps to improve safety on Texas highways:

Last spring, a series of public meetings were held across the state to get public input about speed limits and the process used to set them.

New speed zoning procedures

have been adopted which allow greater flexibility in setting lower limits.

The new procedures have been in place for less than a year and their impact is likely to increase as Department of Transportation engineers continue to review speed limits on the 77,000-mile highway system.

The Texas Transportation Commission recently approved the department's annual highway safety plan which continues TxDOT's strategy to help combat drunk driving and encourages safety belt use and compliance with posted speed limits.

AROUND MULESHOE

MHS junior class supper Sept. 11

The Muleshoe High School junior class will serve a spaghetti supper on Friday, Sept. 11 before the Denver City football game.

The meal will be served from 5:30-7:30 p.m. in the high school cafeteria. Tickets are \$5 for adults and \$3.50 for students.

Included in the meal is spaghetti, salad, bread, dessert and drinks. For free delivery is available by calling 272-4360 between 5-7 p.m. Friday.

Tickets can be purchased from junior class members.

16th & D Church luncheon Thursday

Muleshoe school superintendent Bill Moore will be the featured speaker Thursday, Sept. 11 at the 16th & D Church of Christ's monthly luncheon.

The luncheon is from 12-1 p.m. and is open to the public on a free-will donation basis.

Moore will speak on a variety of education topics, including what is on the horizon for the Muleshoe Independent School District.

Muleshoe Boosters Club meeting

The Muleshoe Athletic Boosters Club will meet at 7:30 p.m. Monday in the science wing of the high school. A highlight film of Friday's game at Portales will be shown.

Christian Center children's festival

The Christian Center Church of Muleshoe will be sponsoring an Autumn Children's Festival at 10 a.m. on Sept. 26 in the parking lot of the old Gibson building at 1723 W. American Blvd.

There will be games for children of all ages and free hot dogs. If you need a ride or more information, call the church office at 272-3877.

MISD Local Pass available to seniors

Senior citizens who are residents of the Muleshoe Independent School District may obtain free admission to school events through the use of the MISD Local Pass.

The pass was designed to give school employees, school board members, news media and senior citizens no cost admission to school events. Seniors who wish to obtain a MISD Local Pass may contact Jean Richardson in the MISD Superintendent's office at 272-3389.

The pass is good only for events sponsored by MISD. Certain district and regional UIL activities held in Muleshoe are not covered. The pass is not acceptable for dinner theater productions, suppers, etc.

Deadline for Around Muleshoe items is 5 p.m. Monday for Thursday's edition and 5 p.m. Thursday for Sunday's edition.

School lunch menus

FOR WEEK OF SEPT. 7-11

MULESHOE

High school & Junior high

Monday

Labor Day Holiday

Tuesday

Breakfast — Breakfast pizza fruit or juice, milk. **Lunch** — Nachos, rice, ranch style beans, sliced apples, milk.

Wednesday

Breakfast — Waffles, fruit or juice, milk. **Lunch** — Spaghetti, corn, garden salad, Italian bread, milk.

Thursday

Breakfast — Cinnamon roll, fruit or juice, milk. **Lunch** — Breaded chicken sandwich, lettuce & tomatoes, tator tots, fruit cocktail, milk.

Friday

Breakfast — Breakfast hot pocket, fruit or juice, milk. **Lunch** — Grilled chicken nuggets, au gratin potatoes, sliced carrots, hot roll, milk.

DILLMAN & DESHAZO

Monday

Labor Day Holiday

Tuesday

Breakfast — Breakfast pizza, fruit or juice, milk. **Lunch** — Nachos, rice, ranch style beans, sliced apples, milk.

Wednesday

Breakfast — Waffles, fruit or juice, milk. **Lunch** — Spaghetti, corn, garden salad, Italian bread, milk.

Thursday

Breakfast — Cinnamon roll, fruit or juice, milk. **Lunch** — Breaded chicken sandwich, lettuce & tomatoes, tator tots, fruit cocktail, milk.

Friday

Breakfast — Breakfast hot pocket, fruit or juice, milk. **Lunch** — Grilled chicken nuggets, au gratin potatoes, sliced carrots, hot roll, milk.

LAZBUDDIE

Monday

Labor Day Holiday

Tuesday

Lunch — (PK - 1) Burritos and steak patties. Tacos, burritos, tuna sandwich, mashed potatoes, gravy, green beans, carrots, fruit, salad, jello, and milk variety.

Wednesday

Lunch — Tamales school wide, chili, pinto beans, corn, fruit, salad, jello and milk variety.

Thursday

Lunch — (PK - 1) Pizza, and Chicken Teriyaki. Pigs-in-a-blanket, pizza, frito pie, rice, msd. veg., hominy, fruit, salad, jello, and milk variety.

Friday

Manager's special, milk variety (Menu subject to change)

THREE WAY

Monday

Labor Day Holiday

Tuesday

Breakfast — Waffles, Cocoa Puffs **Lunch** — Tacos/grated cheese, Spanish rice, Pinto Beans, lettuce and tomatoes, pears and mild.

Wednesday

Breakfast — Biscuits, sausage and Luckey Charms **Lunch** — Country fried steak, Scalloped potatoes, mx. veg., rolls, jello w/ whipped topping and milk.

Thursday

Breakfast — French toast, Apple cinnamon **Lunch** — Spaghetti w/mearnalls, Garlic bread, corn, tossed salad, fruit cobbler and milk.

Friday

Breakfast — Breakfast burritos Frosted cheerios **Lunch** — BBQ on a bun, pickle spears, potato salad, corn cabot, pears and milk.

COUNTY

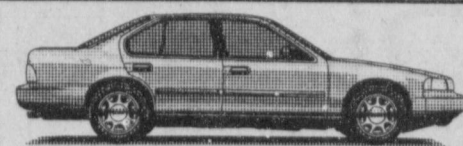
From page 1

Historical Society, but even if it did receive a grant, it would only pay for about a third of the project, Cox said. Certificates of indebtedness or obligation are possibilities. Cox said a bond issue is not an option.

The County is severely handicapped because it has an extremely low tax base "but are the same time still has to provide the same services as counties with a high tax base," Cox said.

There is an estimated \$663,307 in the County's reserve fund, "but I think there is a good chance will have to tap into the reserve fund this year," Cox said.

The Journal brings you local news you can use 52 weeks a year! Call 272-4536 to subscribe.



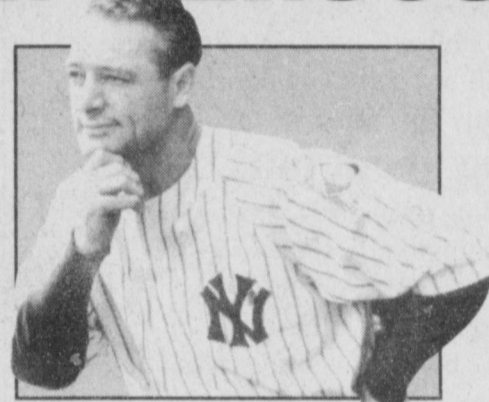
Come Check Our Rates!

WE HAVE MONTHLY AUTO INSURANCE

Delton E. Wilhite & Associates
INSURANCE AND FINANCIAL SERVICES

1631 West American Blvd. • 272-3652 or 272-5988

TOUGH ISN'T ENOUGH



Lou Gehrig

Big, strong, seemingly indestructible. Then ALS sapped his strength and stole his life. Tough isn't enough to win this fight.

MDA is working to find treatments and a cure for ALS. Be part of our team.

MDA

Muscular Dystrophy Association
1-800-572-1717 • www.mdausa.org

People Help MDA...Because MDA Helps People

Catch all the latest local sports news in the Journal

Sharp delivers sales tax rebates

State Comptroller John Sharp today delivered a total of \$255.8 million in monthly sales tax payments to 1,094 Texas cities and 118 counties, a 12.4 percent increase over the \$227.6 million allocated in August 1997.

This month's sales tax rebates include local sales taxes collected by monthly filers on June sales and by quarterly filers for April, May, and June and reported to the Comptroller in July.

"The Texas job market and new businesses are still growing steadily and retail sales continue to soar, as consumers show confidence in a rosy outlook for the Texas economy,"

Sharp said. "Year-to-date, rebates to cities and counties are up 11.5 percent over last year."

Sharp delivered monthly sales tax rebates totaling \$235.6 million to Texas cities, 12.7 percent higher than last August's payments of \$209 million. Rebates of \$20.2 million to Texas counties were 8.6 percent higher than allocations of \$18.6 million in August 1997. Another \$7.1 million went to 33 special purpose districts around the state.

The city of Houston's

economy continues its growth with a sales tax rebate of \$32.2 million in August, 12.4 percent above the previous August's \$28.6 million. Payments to the city of Houston year-to-date are up by 12 percent.

The \$20.7 million local sales tax allocation to the city of Dallas for August reflects a 13.4 percent increase from the \$18.2 million sales tax rebate for the same month last year. The year-to-date increase in payments to Dallas is 10.6 percent.

Bailey County Journal USPS 040-200

Established March 31, 1963. Published by Triple S Publishing, Inc.
Every Sunday at 304 W. Second, Box 449, Muleshoe, TX 79347.

Second Class Postage paid at Muleshoe, TX.
POSTMASTER: Send address changes to the Bailey County Journal, P.O. Box 449, Muleshoe, TX 79347.

We are qualified members of:
Panhandle Press Association, National Newspaper Association,
West Texas Press Association and Texas Press Association

WEST TEXAS PRESS ASSOCIATION

PPA

Panhandle Press Association



Scot Stinnett, Publisher
Lisa Stinnett, Vice-President/Comptroller
Rick White, Editor
Leah Bell, Classifieds
Leah Bell, Advertising

© 1998

SUBSCRIPTIONS: Muleshoe Journal and Bailey County Journal
By Carrier Yearly - \$22.00
Bailey County — by mail - \$24.00
Elsewhere - \$26.00
Advertising Rate Cards on Application

Advertisers should check their ad the first day of insertion. The Journals will not be liable for failure to publish an ad or for a typographical error or errors in publications except to the extent of the cost of the ad for the first day of insertion. Adjustment for errors will be limited to the cost of that portion of the ad where the error occurred.

BOARD

From page 1

tional public school distance learning and Internet connectivity grants. By the end of the year, all Texas public schools and public libraries will have an opportunity to receive TIF Board funding.

Muleshoe has also submitted an application for an \$80,000 non-competitive grant. Awards are scheduled to be announced Dec. 1.

Rip's in Texico

Has A New Look

Announcing, in addition to our western apparel for men - the finest in men's casual and dresswear. As always we carry casual and career clothing for ladies, along with our Brighton accessories.

After 55 years in business we know customer service:

- Free alterations
- Complimentary wrapping
- We deliver

This coupon entitles the bearer to **10% off** storewide if you catch one of our employees not smiling!



Rip's

314 Wheeler • Texico
(806) 482-3363



Degree of difficulty
Tisha Lovelady (left) and Jodi Hawkins team up to figure out the angle of the a local landmark Thursday during science class. The Watson Junior High School eighth-graders will use the homemade Astro-labes later to measure the altitude of stars. The class is taught by Sandi Chitwood.

DOES YOUR CORN HAVE SMUT?



Contact Wiedebush & Co. to find out about the 1999 corn line-up

Call **272-4281**

We Can Help!

WIEDEBUSH & CO.
1516 W. American Blvd.

- SMUT Resistant
- Drought Tolerant
- High Yielding

TB in Michigan deer

A pan of trouble is simmering on the stove in northern Michigan. An army of private and public infantry are engaged in a fierce battle to keep it from boiling over. Tuberculosis is on the rise in whitetail deer and threatening the cow population.



BAXTER BLACK
ON THE EDGE OF COMMON SENSE

That news sends chills down the spine of any cattle people who had to deal with brucellosis in their herds twenty years ago. It leaves a sinking feeling in the bellies of those ranchers who had to deal with Yellowstone Park buffalo two winters ago.

This part of Michigan is a hunter's paradise with large stands of woods and forest and lakes. It has abundant grass, lots of farming with cleared pasture and cropland plus people who appreciate and enjoy wild-life, cold winters and mosquito summers.

At the heart of the TB problem seems to be supplemental winter feeding of wild deer. This practice has become common particularly by sportsman and hunting clubs. It has allowed deer populations to stay above the natural carrying capacity for many years. Large piles of feed like corn, carrots, sugar beets, or hay are dumped at feeding sites. The deer congregate and the TB bacteria is passed on by coughing and inhalation.

Much is at stake and everybody from the Michigan Dept. of Agriculture to the local Bait and Bullet Shop is getting involved. At the pinnacle of this mountain of special interest is the public health of human beings. Followed by the threat to the industries of dairy, beef, captive deer and elk. Then hunting and tourism.

They have a plan in motion that began this summer with testing, isolation, and eradication of the cattle and captive deer within the "Hot" five county area. Plus discontinuation of supplemental feeding. And encouragement of hunting wild deer to the point of "over-kill."

So, who's to blame? Since the organism is Mycobacterium bovis, the deer probably caught it from cows decades ago. But we eradicated it in cattle. Do feeding the wild deer has kept the infection active. Of course, if sportsmen didn't insist on hunting every fall no one would have ever known TB was still out there.

There's plenty of blame to go around, however, it all goes back to the steady encroachment of civilization. We humans are staking claim to the land. We use to fence wild animals out. Now we fence them in.

DPS urges caution for holiday drivers

AUSTIN — The Department of Public Safety estimates that as many as 34 people could die on Texas roadways over the long Labor Day holiday weekend.

Operation Motorcade, which includes stepped-up traffic enforcement by the DPS, runs from 6 p.m. Friday, Sept. 4 through midnight, Monday Sept. 7.

Last year, 40 people died in 36 traffic crashes during the 78-hour period. Half of those fatalities were alcohol related, far above what is considered the norm for Texas. The lack of seat belt usage also played a prominent role in the fatality crashes.

"Unfortunately, two of the usual factors contributed to the high death toll last Labor Day," said DPS Director Col. Dudley M. Thomas. "Twenty people died as a result of alcohol-related crashes. Meanwhile, 19 of those who died were not wearing their seat belts. That means that 61 percent of those who died in wrecks where seat belt usage was applicable were not wearing safety belts. These numbers are simply too high."

Not only will DPS troopers be out in force, but local law enforcement agencies also are encouraged to increase man-

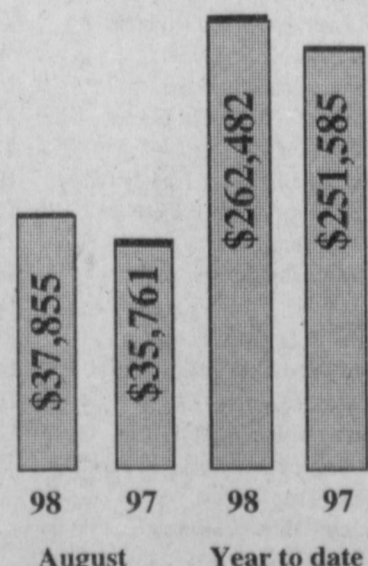
power during this heavily traveled holiday. DPS troopers will continue their no-warning policy for seat belt violations that was announced earlier this summer.

"Labor Day is a family holiday and we're concerned about safety as people enjoy the three-day weekend," Thomas said.

"The Labor Day weekend is traditionally one of the worst holidays in terms of traffic deaths. People need to take their time and not drive aggressively, keep away from alcohol if they're driving and keep themselves and their children buckled up."

TAKING A CLOSER LOOK

Bailey County August tax rebates



August sales tax rebates in Bailey County were up 5.85 percent compared to last year.

For the year to date, rebates are up by 4.33 percent to \$262,482.

Rebates delivered in August are based on local sales tax collected in June.

Note: Sales tax rebates are 1.5% of the gross taxable sales. Items like food and medicine are not taxable. SOURCE: STATE COMPTROLLER

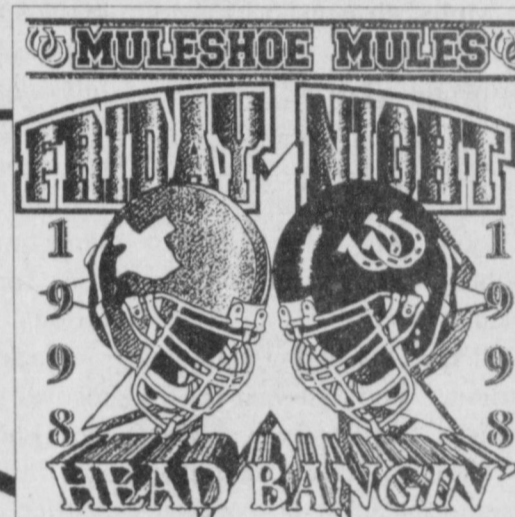
Have a suggestion? Call the Journal at 272-4536

Williams Athletics
272-MULE • Fax 272-4615 • 322 Main St. • Muleshoe

Now here's something to cheer about! Williams Athletics has plenty of HEAD BANGIN' T-shirts for everyone!

Support the Mules!

Krystal Heathington
Varsity Cheerleader



Home Folks Caring For Folks At Home.

MULESHOE AREA HOME HEALTH Agency

Featured Patient

Jim Hartline was born on March 19, 1932 in Illinois. He and his three siblings grew up in Cobden, which is in the southern region of the state. Mr. Hartline finished high school and went to work. He traded in his job to serve his country in the Air Force from 1951 to 1955. Jim achieved the rank of Staff Sergeant during the Korean War. Eventually, Mr. Hartline was transferred to Reese A.F.B. in Lubbock. In 1955, he was honorably discharged from service and moved to Levelland where he managed a meat market/supermarket. In 1965, Mr. Hartline moved to Muleshoe. Jim managed a local grocery store and worked at Protein Processors. He began what has turned out to be a lengthy stint working to provide affordable housing for individuals in Muleshoe. 1998 marks the 20th year Jim Hartline, Executive Director, has overseen operations at the Muleshoe Housing Authority. Jim comments that he enjoys his job, although keeping track of paperwork remains a challenge. When asked how he keeps all the mandatory forms straight, Mr. Hartline simply says, "I just do." Jim takes care of 124 dwellings in total.

While still at Reese A.F.B., Jim met and fell in love with Shirley Rankin. The couple wed in November of 1954. They parented four children: James of Littlefield, Mark, Bruce and the late Lori Leal, all of Muleshoe. The couple has 10 grandchildren.

Mr. Hartline enjoys fishing. He sets his line for Crappie and says that Ute Lake in Logan, N.M. is his favorite fishin' hole. Jim is convinced that the key to fishing success is in the bate. He uses minnows. When asked what kind of fisherman he is - casual or serious, he replies "There's nothing casual about it." He looks forward to a quick recovery and hopes to spend some time at Ute before the summer ends.

Mr. Hartline is a member of the American Legion. Jim is an ardent supporter of M.A.H.H.A. He comments that the staff members are "very, very efficient" and that the nurses always act in a "professional manner." Jim concluded his interview by saying that Muleshoe is very lucky to have this service.

Jim Hartline

Home Care

Home is where the heart is

Affiliated with Lubbock Methodist Hospital Systems

Out-Of-Hospital Do Not Resuscitate Packets/ Bracelets Now Available. Call us at 272-3346 or come by 623 W. 2nd for information.

24 Hour # 272-3346
Local Nurse on call 24 hours a day to offer prompt service.

We accept Medicare, Medicaid and Private Insurance
It Is Your Right To Choose The Home Health Agency You Prefer.

To receive Home Health Services, talk with your physician or talk with hospital personnel when you are hospitalized.

Success is never final and failure is never fatal.

Muleshoe CC numbers up

If there truly is strength in numbers, then both the Muleshoe High School girls and boys cross country teams will be much improved this season.

Muleshoe opened its cross country season Saturday at Brownfield.

The Lady Mules have 13 runners on the team, led by two-time state qualifier Stacy Locker and fellow juniors Bobbie Benham and Lysie Black.

"I'm really happy with the turnout," said first-year coach Jill McCall.

The Lady Mules had trouble fielding a team at most of their meets in 1997, one year after winning the district title and qualifying for state.

Right now, McCall has been

stressing longer distances during practice to get in shape. "We're trying to build a good base and prevent injuries."

Locker, who finished third in the 800 meters at last year's Class 3A state meet, is carefully working herself back into shape while recovering from mononucleosis.

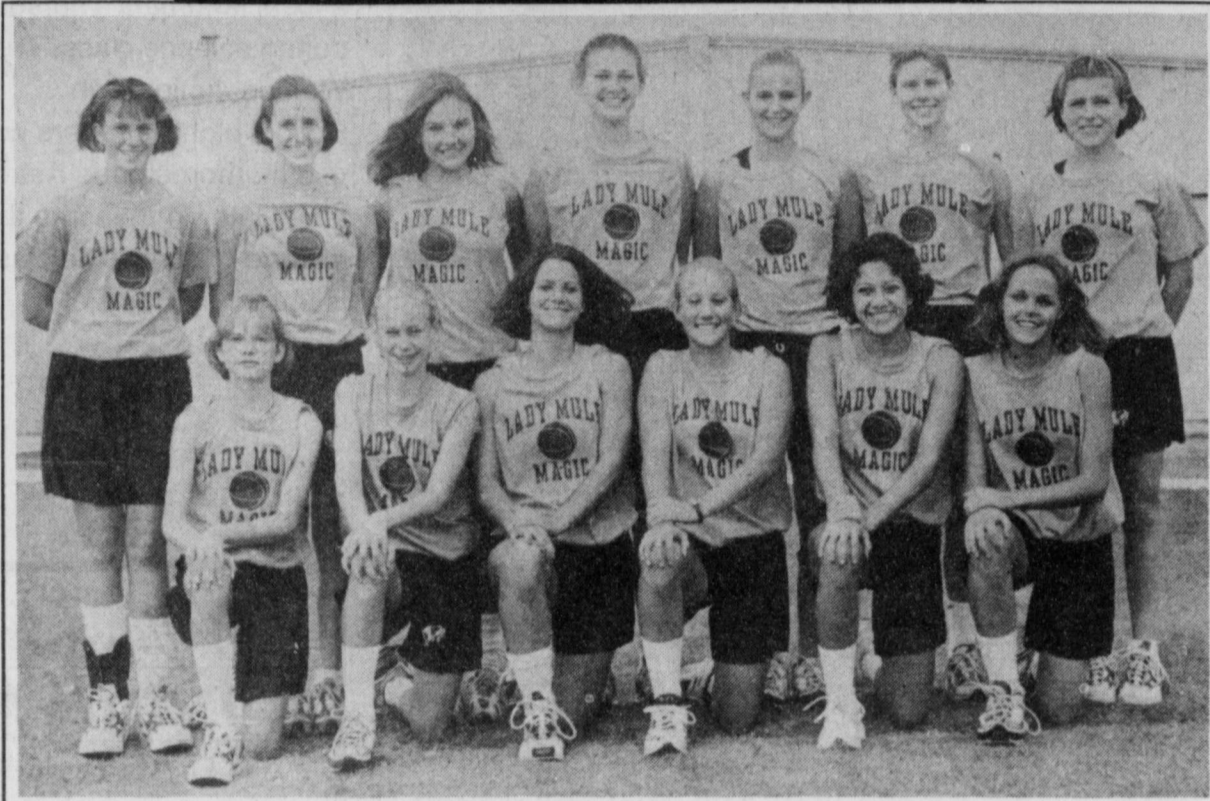
"She's doing well and at the same time still setting a precedent for the other girls to follow," McCall said.

Black took last year off to recover from injuries suffered during her freshman year when she finished in the top 10 at district.

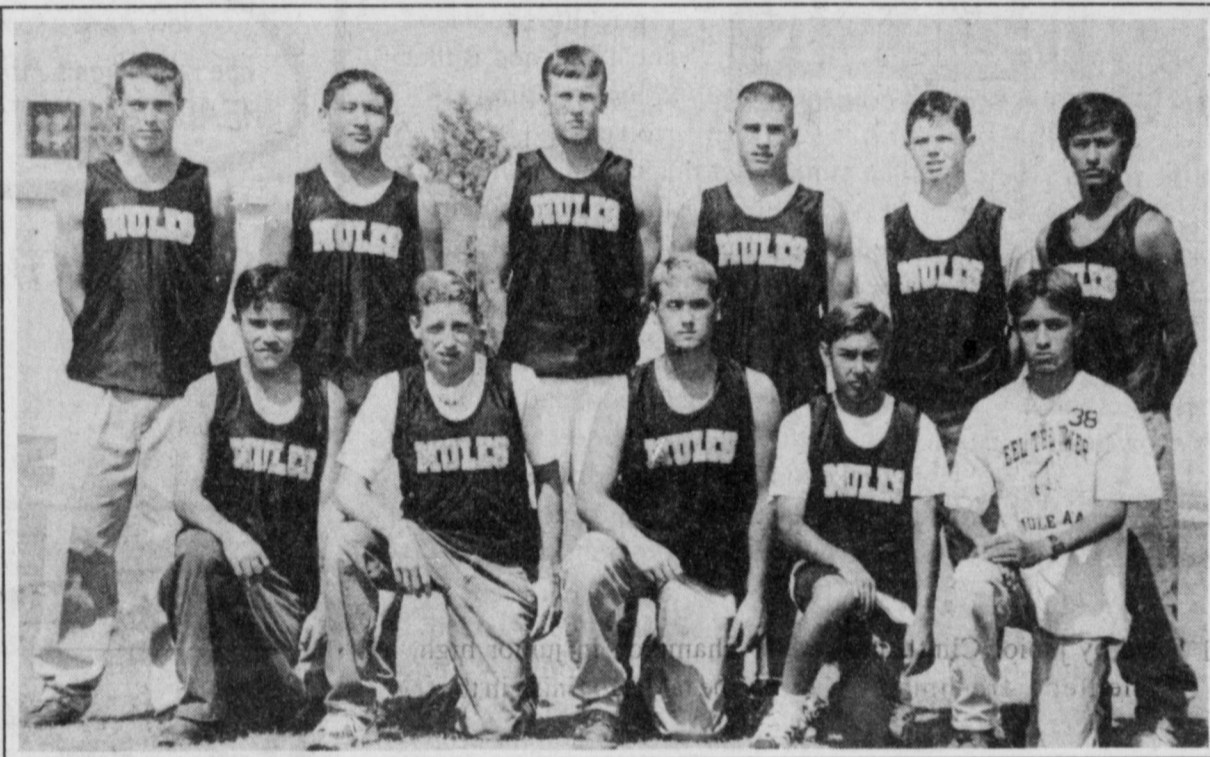
"She's such a good all-around athlete and has such a

see **IMPROVED** on page 5

MULESHOE CROSS COUNTRY



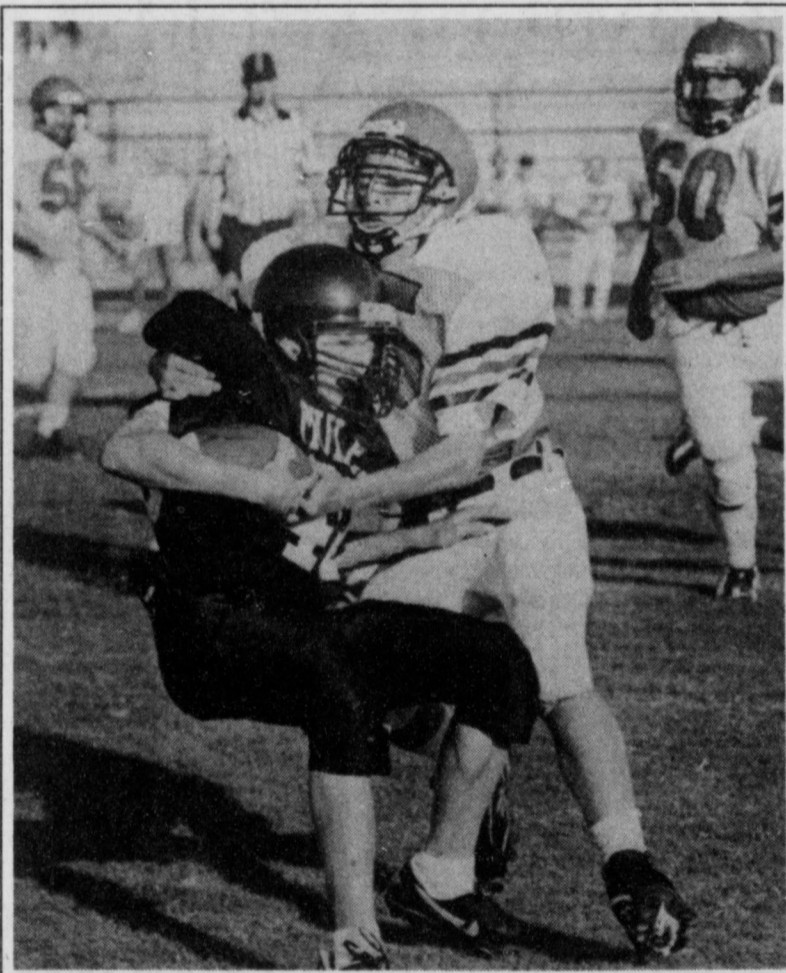
Lady Mules
Members of the 1998 Muleshoe High School Lady Mules cross country team are (back row, l-r) Candace Hutto, Stacy Locker, Lysie Black, Erin Wilhite, Myndi Heathington, Megan Tipps and Bobbie Benham. (Front row) Terrell Herington, Kayla Glover, Kala Johnson, Megan Barrett, Melissa Flores and Jessica Carpenter.



Mules
Members of the 1998 Muleshoe High School Mules cross country team are (back row, l-r) Jerrell Otwell, Lindy Pineda, Clint Black, Dan Williams, Chris Vaughn and Lucio Soto. (Front row) Juan Olguin, Kyle Atwood, Randy Bohler, Matt Lopez and Matt Luna.

Muleshoe cross country schedule

| | |
|----------|---------------------|
| Sept. 5 | Brownfield |
| Sept. 12 | Plainview |
| Sept. 19 | Abernathy |
| Sept. 26 | Olton or Clovis |
| Oct. 3 | Lubbock |
| Oct. 10 | Sundown |
| Oct. 17 | Muleshoe |
| Oct. 24 | Levelland |
| Oct. 31 | District 2-3A meet |
| Nov. 7 | Region I meet |
| Nov. 14 | Class 3A state meet |



Ram tough
A Portales defender tackles Muleshoe's Kyle Atwood Thursday during a freshman football game at Benny Douglass Stadium.

Mendoza scores five TDs in Muleshoe's 45-0 romp

Jaime Mendoza was a scoring machine Thursday for the Muleshoe High School freshman.

Mendoza ran for five touchdowns and D.J. Dominguez kicked a 23-yard field goal, leading the Mules to a 45-0 romp against Portales in their season-opener at Benny Douglass Stadium.

Mendoza even scored on runs of 67 and 42 yards in the second half when the Mules were trying to run out the clock

in the lopsided game. The stocky but speedy fullback scored on runs of 44, 62 and 19 yards in the first half,

helping the Mules build a 30-0 lead.

MHS also scored in the first half on a 38-yard pass from Lincoln Riley to tight end Stephan Shelburne.

Dominguez also kicked two extra points in addition to his third-quarter field goal.

The Mules play at Denver City next week.

David Wood and the Muleshoe Athletic Department would like to extend their appreciation to the businesses and individuals for your support of the Muleshoe Mules in the recent high school football publications. A special thanks goes to those who purchased ads.

- American Valley, Inc.
- Bananas Video
- Barrett of Texas
- Caprock Telephone Coop.
- Delmer, Pat and Bret Clements
- Dent & Co. - Muleshoe
- Dr. Mark McClanahan
- Ellis Funeral Home
- Farm Bureau Insurance
- Farm Mutual Insurance
- First Texas Federal
- Five Area Telephone Coop.
- Henry Insurance Agency
- Hereford Feed Ingredients, Inc.
- Higginbotham-Bartlett Co.
- Irrigation Pumps and Power, Inc.
- James Crane Tire Company
- Joe's Boot Shop
- Main Street Beauty Shop
- Mark Morton, State Farm
- McCormick Seeds, Inc.
- Muleshoe Animal Clinic
- Muleshoe Athletic Booster Club
- Muleshoe Motor Co.
- Sain Irrigation and Machine
- Silver Screen Video
- Skaggs Motor Machine
- Springlake Potatoes, Inc.
- Viola's Mexican Food Restaurant
- Winkler Meat Company

A Very Special Thanks to Those Who Purchased Ads

A big thanks to these Mule Supporters

- Dick, Cindy, Greg and Clay Pena
- Robert, Kay, Kate and Sterling Leopard
- James, Terry, Riley and Russell Byers
- Reggie, Sue, Chad, Jana and Kate Johnson
- Jane and Scotty Mills
- Jim, Linda and Tad Lutz
- Charles, Pam, Brandon and Bradley Thomason
- Gary, Joy, Keetha, Judd and Kayla Glover
- Joe, Patricia, Melissa, Joey and Stacey Mata
- Barry, JoEllen, John Bryan, Robin, Joel and Amber Cowart
- Steve, Keila and Ky Kennedy
- Bruce, Connie, Amber and Jeff Bruns
- Joel, Gwen and Mason Sinclair
- Corky, Donna and Rhett Green
- Leslie, Susan, Rhett, Landon, Gunner and Roper Kerby
- Kenneth, Matt, Chance and Lindsey Turney
- Dr. Bruce, Cindy, Aaron, Tyson and Derek Purdy
- Jerrell, Becky, Josh, Meagan and Jerrell Otwell
- Cindy, Dustin, Johnna and Logan
- Thurman, Rhonda, Madison, Jackson and Garrison Myers
- Mike, Terr, Amanda and Kyle Hahn
- Garland, Susan, Chelsey and Matt Conklin
- Wayne and Sandy Peterson
- Mike, Rachel, Michael, Matthew and Amanda Lopez
- Holly, Hadley and Kylie Henderson
- Darrell and Barbara Mutschler
- Clarence, Sadi, David, Marthella, Carlton and Darrell Lewis
- Gaylord, Linda, Galin, Lance, Colby and Delwyn Latham
- Circle E Pets: Sean, Renee, Zach and Dakota
- Cindy and Jennifer Barnes
- Sandy Peterson: Bookkeeping and Tax Service
- Muleshoe Body Shop: Jimmy and Scotty Mills
- Irrigation Supply
- Harvey Bass Appliance
- Shafer Nursery
- Wilson Appliance
- Megan, Laura, Suzanne, Stephanie and Nikki
- Steve, Vicki, Fara and Clint Black
- James, Pam, Kyle and Kory Atwood
- The Kenmores
- Weldon, Rhonda and Rendi
- Bruce, Cindy, James and Megan Barrett
- The Carters
- The Carpenters
- Hal and Linda Wood
- Charleson, Belinda, Montana, Brock and Mariah Steinbock
- David and Sharry Jenkins
- Delton and Nelda Wilhite
- Ron, Robin, Garrett and John Welch
- Lacie, Donna, Shane and Stephanie Kirk
- Danny, Robin, Matthew and Kimberly Dickerson
- Larry and Deanna Rasco
- The Rex Blacks

Your support is greatly appreciated!



Sports

JV Mules open with 34-6 win

Danny Ramirez caught a pair of touchdown passes and returned a punt 36 yards for a third score, leading the Muleshoe junior varsity to a season-opening 34-6 win against Portales Thursday at Benny Douglass Stadium.

Junior quarterback James Barrett ran for one touchdown and passed for another for the Mules.

Muleshoe took a 28-6 half-time lead when Ramirez hauled in 30-yard halfback option pass from Chris Vela with 1:09 left in the second quarter. The score was set up Darrell Lewis' interception.

Barrett and Ramirez hooked up for 26-yard score in the second quarter that gave MHS a 20-6 lead. Barrett added a 70-yard run in the third quarter.

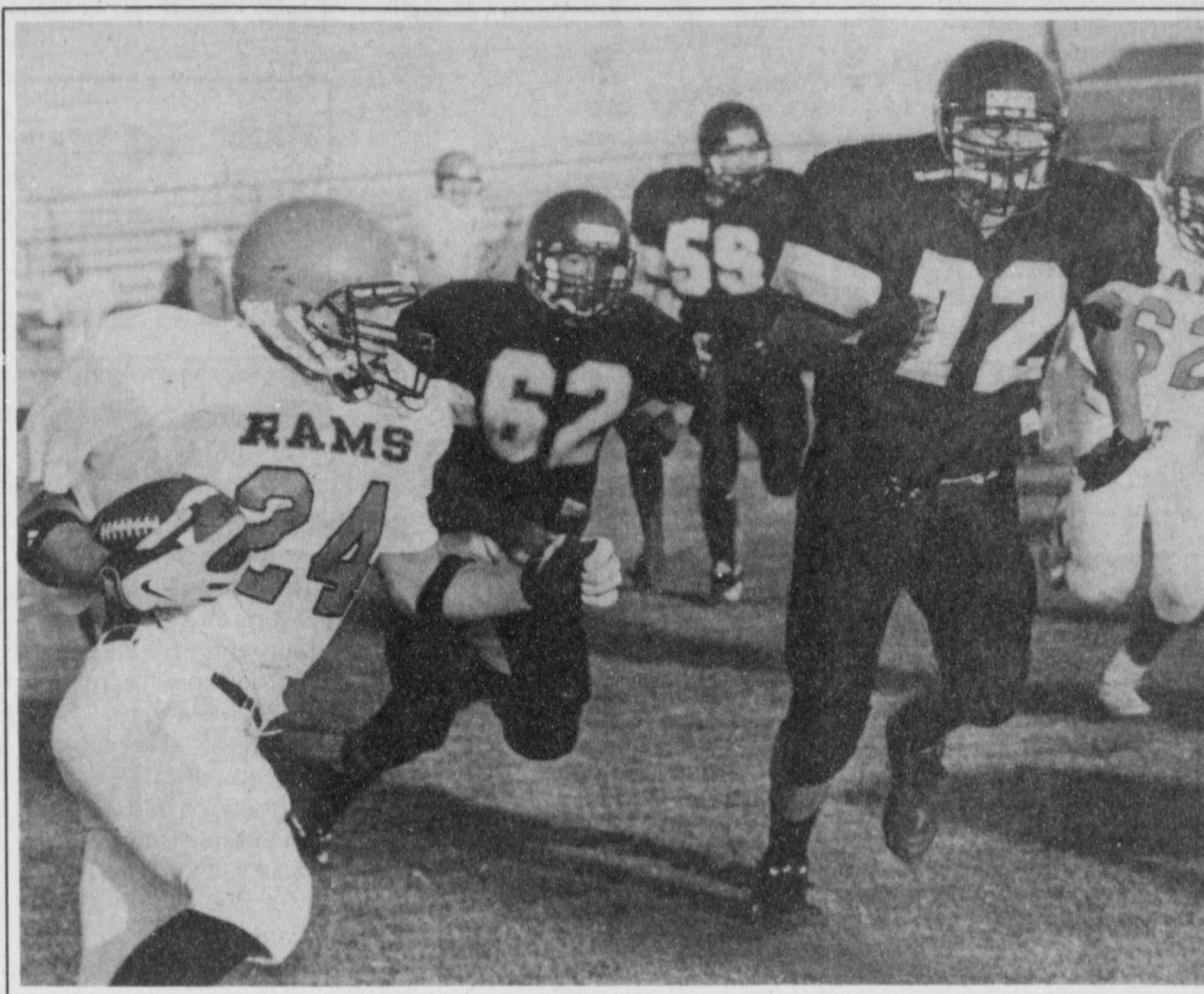
Vela gave Muleshoe a 6-0 lead on the Mules' first offensive series of the game with a 15-yard run.

Ramirez' punt return made it 12-0. The sophomore broke two tackles near the 10-yard line to reach paydirt.

Muleshoe plays at Denver City next week.

WJHS 8th, 20-14

PORTALES — Micah Ruthardt ran for two touchdowns Thursday as the Watson



Closing in

Muleshoe's Tommy Barrera (72) and Lucio Soto (62) pursue a Portales runner Thursday during a junior varsity game at Benny Douglass Stadium. The Mules won 34-6.

Junior High School 8th-graders edged Portales 20-14 in their season-opener.

WJHS took the lead for good, 14-8, when Philip Field raced 65 yards for a score early in the third quarter. The Mules padded their lead to 20-8 on a 52-yard run by Ruthardt.

Portales made it 20-14 with two minutes left in the game on a 34-yard touchdown pass. The Rams had one more chance late after recovering a WJHS fumble, but Cory Hunt ended the threat with an interception.

Portales returned the opening kickoff 80 yards for a touch-

down. Muleshoe tied the game at 8-8 on Ruthardt's five-yard run in the first quarter.

The WJHS 7th-graders played to a scoreless tie in a 20-play scrimmage.

The Mules host Denver City next week.

IMPROVED

From page 4

positive attitude," McCall said. McCall said Benham has improved simply by keeping up with Locker.

Junior Kala Johnson and several sophomores and freshmen figure to fight it out for the remaining varsity spots.

McCall said she will hold either a mile or two mile time trial each Thursday and the top seven will run varsity each weekend. "I think it's safe to say the varsity team will change from week to week."

The Mules also have about a

baker's dozen out for the team, led by junior Clint Black and talented freshman Kyle Atwood.

After that, first-year coach Flint Bigham said it's hard to tell right now what he has because several runners also play football, which doesn't allow the whole team to work out at the same time. "But we'll find out what we can and can't do this weekend," Bigham said.

Bigham was also pleased by the turnout because the Mules haven't been able to field a full team for the last two years.

Atwood, a two-time district champion in junior high, has the talent to finish in the top 10 at most meets and should get better as the season wears on.

Muleshoe will host its first cross country meet in years this season on Oct. 17.

McCall said they'd like to incorporate the high school track into the course, but most of the race would be at the new city park.

Organizers also plan to hold a mile fun run for elementary school students during the meet.

MULES

From page 1

shoe an 8-0 lead.

Muleshoe took the ensuing kickoff, and despite a holding penalty on the first play, drove 76 yards in eight plays for its second touchdown.

Vela and quarterback Matt McClanahan had back-to-back runs of 24 and 17 yards to push the ball into Ram territory.

Vela picked up a key first down with a nine-yard run on third down, and three plays later, McClanahan waltzed in from nine yards out for the touchdown on an option keeper. McClanahan ran for the two-point conversion after a bad snap to make it 16-0 a minute into the fourth quarter.

Junior fullback Mitch Mason capped the scoring when he scored on a three-yard run on a counter play with 6:18 left in the game.

The 41-yard drive was set up by a fumbled snap on a fake punt attempt after Portales had crossed into Muleshoe territory for the only time in the game.

"Getting banged on play after play by those big guys takes its toll," said Portales first-year

Local scores

District 2-3A

Friona 18, Lockney 14
Lamesa 19, Cooper 6
Seagraves 29, Shallowater 7
Snyder 21, Littlefield 20

Six-man

Lazbuddie 70, New Home 22
Three Way 36, Meadow 6

head coach Glenn Johnson. "Our game plan was to try and hold the ball as much as possible to keep them off the field. But it just didn't work."

Muleshoe ran 69 offensive plays to 29 for Portales, which did not complete a pass. Ram quarterbacks were a combined 0 for 4 and sacked three times.

Coach Wood gave plenty of credit to a Ram defense that stunted and swarmed to the ball most of the night.

"They had a great game plan," Wood said. "They did some things that we haven't seen and it took a while for us to adjust. Sometimes they guess right. Sometimes they didn't."

Vela had most of his success running draws and the toss sweep, using the same slither-

ing running style that produced an 1,100 yards as a junior.

McClanahan finished with 69 yards rushing and completed 6 of 16 passes for 69 yards. He was intercepted once.

James Elms led Portales with 38 yards on 11 carries.

Muleshoe dominated the first half only to bog down in the red zone, giving the ball up on downs at the Portales 16, 34 and 32 on its first three drives.

After a Dustin Cleavinger sack forced the Rams to punt midway through the second quarter, Muleshoe took over at its own 44.

Vela broke clean through the middle of the line on the toss sweep on the first play and darted all the way to the Portales 15 before being caught by safety Dathan Culpepper.

On third-and-goal from the six, Vela burrowed his way into the end zone to give the Mules a 6-0 lead with 2:12 left in the half.

Happy Labor Day

Read the latest local sports news in the Journal

FIRST TIME EVER! VALLEY REBATES PLUS FINANCING

CASH REBATES WITH LOW DOWN PAYMENTS

■ \$200 per Drive Unit - Aug. & Sept. delivery (example: 8 towers = \$1600 rebate)

■ \$150 per Drive Unit - Oct. delivery

■ PLUS Valley offers cash rebates in addition to special financing!

5-Year
5% down

OR

7-Year
7% down

Both at 8.75% APR with no annual payment 'til January 2000!

OR

EVEN LOWER % RATES

5-Year, 6.9% APR
5% down

OR

7-Year, 7.5% APR
7% down

Both with no annual payment 'til January 2000!
(Rebate not available with this offer.)

SEE YOUR VALLEY DEALER TODAY.
OFFER ENDS SEPT. 30.



The most trusted name in irrigation

VALMONT IRRIGATION
QUALITY SYSTEM
100 YEAR REGISTERED

AMERICAN VALLEY INC.
Hwy. 84 • Muleshoe, TX • 272-4266

On new orders only, purchased between Aug. 17 and Sept. 30, 1998. Must take delivery by Oct. 31, 1998 or at Valley's discretion. Limited time/quantity offer, subject to change without notice. Standard finance programs may be used with cash rebates. Financing subject to credit approval and only available in the United States. Certain restrictions apply.

www.valmont.com

One house. One dish. Someone has to miss their show, right?

PRIMESTAR
SATELLITE TV

PRIMESTAR

\$149 Reg. SRP
-\$50 Mail-In Rebate
= \$99 After Rebate*

\$99⁺ Installed.

One Dish, Two Receivers

NOW EVERYBODY'S HAPPY!

Get two PRIMESTAR receivers installed for the price of one—watch different satellite programs on two TVs!

- Free first month of PRIMEVariety® with 89 channels—a \$37.99** value*
- FREE first month lease fee***
- Monthly program/movie guide

†Price is for installation only. Equipment lease or purchase extra.
*Free month available with One-Dish/Two-Receiver offer only.

WILSON APPLIANCE
117 Main St. • Muleshoe • 272-5532

Or get a single-receiver system at 67% OFF!

Just **\$49** Installed
Monthly programming extra

\$149 Reg. SRP
-\$100 Mail-In Rebate
= \$49 After Rebate*

RadioShack
You've got questions. We've got answers.®

Good at participating RadioShack stores and dealers for new residential subscribers only. Credit check may apply. *Assumes installation price of \$149 and use of mail-in rebate coupon for PRIMESTAR installation. Monthly programming is extra. **Free first month PRIMEVariety programming, valued at \$27.99 per month, is with 2 for \$99 offer only. ***Free first month equipment lease fee of either \$3.00 or \$10.00, depending on lease option selected. Additional fee for 2nd receiver is \$8.99 per month. Allow 8 to 10 weeks after submitting rebate coupon for credit to be applied to your account. Offer expires 10/31/98, but may be extended up to 60 days at PRIMESTAR's discretion and may not be combined with any other offer. Blackout restrictions apply. Broadcast networks available only in areas not served by local network affiliates. PRIMESTAR and PRIMEVariety are registered service marks of PRIMESTAR Partners L.P.

Service not available outside continental U.S. Residential subscriptions only.

\$50 AWARDED EACH WEEK



**YOU PLAY!
WE'LL PAY!**

BAILEY COUNTY JOURNAL'S FOOTBALL CONTEST

**1ST PRIZE \$25
2ND PLACE \$15
3RD PLACE \$10**

NAME: _____
ADDRESS: _____
PHONE: (____) _____

GAMES OF SEPT. 11-14, 1998

• RULES •

- Circle your choice as the winning team in each of the 18 games below.
- The entry with the most correct selections will win. In the event of a tie, the entry which picks the closest to the actual tie breaker score will win.
- Entries may be mailed to Muleshoe Journal, P.O. Box 449, Muleshoe, TX 79347 or dropped off at the office during business hours (8:30-5:00). Please mark the envelope FOOTBALL CONTEST.
- Entries for this week's contest must be received by the Muleshoe Journal or postmarked by **5 P.M. FRIDAY, SEPT. 11, 1998.**
- Muleshoe Journal employees are not eligible to win the contest.
- Decision of the judges will be final.

TIE BREAKER




**ARIZONA
AT
SEATTLE**

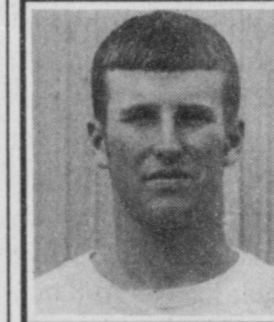
Combined Total
of Both Teams: _____



**DECORATORS
FLORAL & GIFTS**
616 1st • 272-4340
**DENVER CITY
AT
MULESHOE**




**SUDDUTH
FIELD & Co.**
104 W. 2nd • 272-4291
**LAZBUDDIE
AT
MEADOW**




**WES TEX
FEED YARDS**
Custom Cattle Feeding • 272-7555
**JESUS CHAPEL
AT
THREE WAY**



**MCCORMICK
SEED, INC.**
400 E. Ash Ave. • 272-3156
**FLOYDADA
AT
LUBBOCK COOPER**



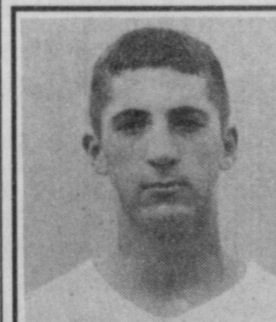
**BOB STOVALL
PRINTING**
221 E. Ave. B • 272-3373
**ABERNATHY
AT
LUBBOCK ROOSEVELT**



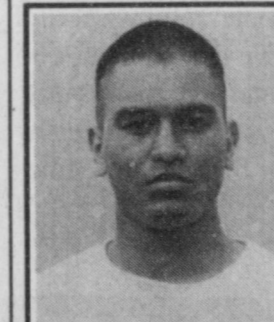
**JOE'S
BOOT SHOP**
106 E. American • 272-7504
**SHALLOWATER
AT
IDALOU**

**HI-PRO
MULESHOE
FEED BARN**
311 W. American • 272-5626
**LAMESA
AT
DIMMITT**




**MULESHOE AREA
HOSPITAL DISTRICT**
708 S. 1st • 272-4524
**CROSBYTON
AT
FARWELL**



**WEST CAMP
GIN, INC.**
West Camp • 925-6681
**MORTON
AT
LORENZO**

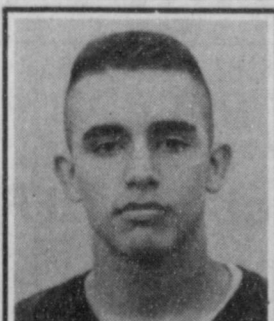
**TERRA
DISTRIBUTION**
Mgr. Bruce Bruns • 272-4203
**SUNDOWN
AT
SPRINGLAKE-EARTH**




**BAILEY COUNTY
FARM BUREAU**
1612 W. American • 272-4567
**TEXAS
AT
UCLA**




**MAPLE
COOP GIN**
Maple • 927-5501
**TEXAS TECH
AT
NORTH TEXAS**

**SHERLEY-ANDERSON
GRAIN ELEVATOR**
Lazbuddie • 965-2922
**SYRACUSE
AT
MICHIGAN**



**MULESHOE
MOTOR CO.**
1225 W. American • 272-4251
**NOTRE DAME
AT
MICHIGAN ST.**




**MCDONALD'S
OF MULESHOE**
1315 W. American • 272-3333
**BUFFALO
AT
MIAMI**

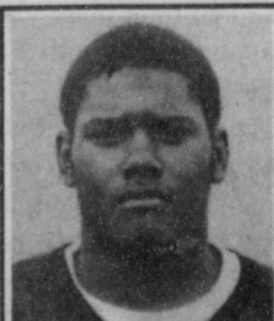
meet me at
DQ DAIRY QUEEN
1204 W. American Blvd. • 272-3412
**KANSAS CITY
AT
JACKSONVILLE**



**JAMES CRANE
TIRE Co.**
107 Main St. • 272-4594
**DALLAS
AT
DENVER**



**HIGGINBOTHAM-
BARTLETT CO.**
215 Main • 272-3351
**TAMPA BAY
AT
GREEN BAY**



OBITUARIES

ETHEL GIPSON

FARWELL — Ethel V. Gipson, 93, of Farwell died Wednesday, Sept. 2, 1998 at Farwell Convalescent Center.

A church service was held Saturday at Hamlin Memorial Methodist Church of Farwell, with Rev. Beth Harrington, pastor, officiating. Burial was in Hawkins Chapel Cemetery in Loving, Texas under the direction of Ellis Funeral Home of Muleshoe.

She was born Feb. 17, 1905 in Young County, Texas and married William Richard Gipson, Sr. in Young County on March 1, 1925. She was widowed Nov. 17, 1988.

Mrs. Gipson moved to Farwell in 1987 from Bovina. She was a homemaker and a member of Hamlin Memorial Methodist Church.

She is survived by two sons, Howard Wayne Gipson of Roswell, N.M. and E.C. Gipson of Lubbock; two daughters, Wyvonna Haney of Farwell and Eudora Craft of Ruidoso, N.M.; 10 grandchildren, 19 great grandchildren, and five great, great grandchildren.

She was preceded in death by one son, William Richard Gipson, Jr. in 1991.

TERESA GARCIA

Teresa Garcia, 66, of Muleshoe died Wednesday, Sept. 2, 1998 at Methodist Hospital in Lubbock.

Mass was held Saturday at St. Ann's Catholic Church in Bovina, with Father Eddy

Kieran, officiating. Rosary was held Friday. Burial was held in Bovina Cemetery.

She was born Nov. 2, 1931 in Monterrey, Mexico and married Julio Garcia in 1948 in Los Indios, Mexico. She was widowed in 1995.

Mrs. Garcia lived in Muleshoe for 26 years and is a former Bovina resident. She worked as a seamstress for Excel in Friona and was a lifelong Catholic.

She was preceded in death by a daughter, Dora Alice Garcia, and two sons, Jose and Juanito Garcia.

She is survived by three sons, Jabier Garcia of Grand Prairie, Texas, James Garcia of Florida and Julio Garcia, Jr. of Muleshoe; four daughters, Mary Ann Arzola of Muleshoe, Rosalinda Martin of Tyrone, Okla., Janie M. Sherbon of Bovina and Beatrice Morin of Fort Worth; four brothers, Jesus Martinez of Midlothian, Texas, Thomas Martinez of Sheldon, Texas, Guadalupe Martinez of Abilene and Ovidio Martinez of Reserve, Texas; three sisters, Olivia Longoria of Earth, Maria Garza of Sheldon and Lourdes Rodriguez of Abilene, 21 grandchildren and 16 great grand children.

NOLAN H. HARLAN

Nolan H. Harlan, 78, of Bula died Thursday, Sept. 3, 1998 at University Medical Center in Lubbock.

Church services were scheduled for 10 a.m., Monday, Sept.

7 at Sudan Church of Christ in Sudan, with Terry Wilson, minister, officiating. Burial was scheduled to be held in Littlefield Cemetery.

He was born Oct. 5, 1919 in Carrizozo, NM and married Betty Britt in 1953 in Amherst.

Mr. Nolan had lived in the Bula Community since 1928. He served in the US Army during WWII. He was a member of the American Ex Prisoners of War, the Purple Heart Association and the Disabled American Veterans. He was a member of the Church of Christ in Sudan and he was a farmer.

He was preceded in death by a grandson, Rhys, in 1996.

He is survived by his wife, Betty Harlan of Bula; one son, John Harlan of Grand Forks, N.D.; one daughter, Ann Nixon of New Orleans, LA; one sister, Ruth Corder of Redmond, OR and 7 grandchildren, Melanie, Christin, Jennifer, Allen, Rhea, Nevannah and Tyce.

The family suggests memorials be made to the New Mexico Children's Home in Portales, NM or to the American Ex Prisoners of War: High Plains Chapter, Box 82, Earth, Texas 79051.

Waldrof-Astoria rolls back prices on honeymoon suite

DELRAY BEACH, Fla. — It was May 1948 when George Selby took his bride, Ruth, to the Waldorf-Astoria hotel in New York for a honeymoon.

They wanted to go back this summer for their anniversary, but times - and prices - have changed. While their room 50 years ago cost \$15 per night, Selby was told the cheapest accommodations now

would cost \$435.

When she mentioned the honeymoon, the hotel operator put her on hold. "She came back and said, 'We'd like to have you stay at the \$15-a-night rate if you have the original receipt,'" Selby said.

They did. The couple returned to Manhattan last month and stayed seven nights for \$18.75 a night - the 1948 rate plus tax.

1998 Medicare Update

January 1st many Medicare Supplement Insurers increased their rates up to 30% on Medicare Supplement coverage.

There is now available a plan to supplement Medicare at lower rates for those over 65 years of age, policies A through F are available.

To find out how to qualify, call or come by Delton E. Wilhite and Associates.

Delton E. Wilhite & Associates

INSURANCE AND FINANCIAL SERVICES

1631 West American Blvd. • P.O. Box 567 • Muleshoe, TX
806/272-3652 806/272-5988

We are not affiliated with any government agency.

HOSPITAL ADMISSIONS

Aug. 28 — Arnold Beckett, Mario Flores, Gary Freman, Bernardo Herrera, Fabiola Legarreta, Baby girl Leggarreta, Daniel Patterson, Brandon Rowand.

Aug. 29 — Arnold Beckett, Annette Bonds, Sandra Espinosa, Bernardo Herrera, Fabiola Legarreta, Baby girl Leggarreta, Alicia Montejano,

Irma Montejano, Daniel Patterson.

Aug. 30 — Annette Bonds, Bernardo Herrera, Alicia Montejano, Irma Montejano.

Aug. 31 — Annette Bonds, Alicia Montejano, Irma Montejano.

Sept. 1 — Annette Bonds.
Sept. 2 — no patients
Sept. 3 — Myrtle Carter.

BIRTHS

JAMES CARTER BARNHILL

Mr. and Mrs. Gant Barnhill of Wolfforth announce the birth of their son, James Carter Barnhill.

James was born at 11:23 p.m. on Aug. 31, 1998 at St. Mary Hospital at Lubbock. He weighed 7 lbs., 5 oz. and measured 20 1/2 inches long.

Grandparents are Nola Stockard of Garland, Texas and Ted and Nancy Barnhill of Muleshoe.

POLICE REPORT

MULESHOE POLICE

Aug. 25 — Alvaro Ernesto Perez, 29, charged with assault of a family member.

Aug. 26 — Larry Darnell Richardson, 41, arrested with a warrant for revocation of probation.

Aug. 27 — Alejandro Regelado, 21, charged with assault of a family member.

Aug. 30 — Ismael "Mayo" Guterrez, 18, charged for DWI (first offense).

BAILEY COUNTY SO

July 24 — Amador Mendoza, 26, arrested for unauthorized use of a vehicle.

Aug. 23 — Carlos Arciniega Muniz, 52, charged for DWI (3rd, felony).

Aug. 25 — Juan Pena Garza, 25, charged for assault Class A misdemeanor.

Aug. 28 — Kelley Don Shortes, age unknown, arrested on a Lubbock city warrant.

BENDER CHEVY
Luxury For Less!!

All Cadillacs have 7 Year - 70,000 Mile Factory Warranty
You Could be Driving One of These!



1997 BUICK LESABER



1997 BUICK PARK AVENUE



1996 CADILLAC SEDAN DEVILLE

Special Price



1996 CADILLAC ELDORADO



1994 CADILLAC SEVILLE STS



1996 CADILLAC SEVILLE



1997 CADILLAC SEDAN DEVILLE



1996 CADILLAC FLEETWOOD



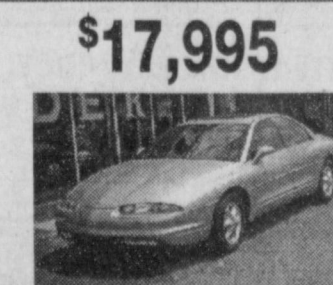
1998 CHEVY CREW CAB



1997 CHEVY EXT CAB 4X4



1997 OLDS AURORA



1995 OLDS AURORA

BENDER


You're going to like our family!
CHEVROLET • OLDSMOBILE • CADILLAC
2500 Mabry Drive • (505) 763-4465

In appreciation of your support and prayers. May God be with each of you.
The Medalene Grace Peterson Family

Have A Great Day!

BAILEY COUNTY DEVOTIONAL PAGE

1315 W. American Blvd.
272-3333
Muleshoe, TX 


 **Decorators Floral & Gifts**
616 South First 272-4340
Muleshoe, TX

◆◆◆◆ **TINO'S** ◆◆◆◆
104 W. American Blvd.
272-7528 • Muleshoe, TX
Daily Specials Owners: Tino & Linda Campoya

MULESHOE AREA HEALTHCARE Center
"Committed to Caring"
106 W. Ave. H Muleshoe 272-7578

SHERLEY-ANDERSON LAZBUDDIE ELEVATOR
965-2922 Lazbuddie, TX

Leal's Tortilla Factory, Inc.
"Serving West Texas since 1957"
107 E. Ash 272-5772 Muleshoe, TX

TERRA DISTRIBUTION
Hwy. 84 • 272-4203
Muleshoe, Texas 

MULESHOE FEED BARN
311 W. American Blvd.
Muleshoe, TX 272-5626 


Shipman's Body Shop
Auto Painting • Wrecker Service • Free Estimates
Tractor Glass & Windshields
410 N. 1st Muleshoe, TX
272-4408 FAX 272-3366

MAPLE COOP GIN
927-5501
Maple, Texas

—Two locations to serve you—
1900 W. American Blvd. 107 E. American Blvd.
272-5337  272-3978
Muleshoe, TX

Christian Center Church
Morton Hwy. South 272-3877
Senior Pastor  Sun. 10:00 AM
Reydon Stanford Wed. 7:00 PM

WEST CAMP GIN, INC.
Better Ginning & Courteous Service
 Route 2 Box 1000 • 925-6681
James Shepard / Phyllis Shepard Muleshoe, TX

PINNACLE THERAPY SERVICES
Speech/Language, Physical & Occupational Therapies
 305 5th St. • Farwell, TX • (806) 481-CARE

BRUCE, INC. 
AIR CONDITIONING
Hwy. 214 North 272-5114
Muleshoe, TX TAEL-B003350C, LP08638

BAILEY GIN COMPANY, INC.
946-3397
Sudan, TX
Peanut Hawkins, MGR

Henry Insurance Agency, Inc.
"Serving You Since 1964"
 111 West Avenue B 272-4581
Muleshoe, TX

DALE OIL COMPANY, INC.
413 W. American Blvd.
272-5576 
Muleshoe, TX

WINKLES TRUCKS, INC. 
Box 757 (806) 247-2724
Frona, TX

WESTERN DRUG 
114 Main 272-3106 Muleshoe

Facts About The BIBLE BY JOHN LEHTI

I WILL CRY OUT UNTO THE LORD
THE PATRIARCHS AND THE PROPHETS OF OLD TOOK ALL THEIR JOYS AND SORROWS TO THE LORD IN PRAYER. THEY WERE COMPLETELY CONVINCED THAT GOD HEARD ALL THEIR UTTERANCES WHETHER OF SADNESS OR OF REJOICING. WE CAN SAY THE BOOK OF PSALMS HAD ITS BEGINNINGS IN THE PETITIONS OF THESE EARLY WORSHIPERS. IT TOOK MANY, MANY CENTURIES BEFORE THIS BOOK OF SACRED POETRY WAS FORMULATED. PRAYER SEEMS INSTINCTIVE WITH ALL MEN. AND IN HIS EXTREMITY OF NEED MAN CRIES OUT TO GOD. "DRAW NIGH TO GOD," SAYS THE PSALMIST, AND THIS WAS WHAT MEN SOUGHT TO DO. EVEN JESUS RESORTED TO PRAYER FROM THE PSALMS ON MANY OCCASIONS. HE FREQUENTLY PRAYED BEFORE MEALS OR BEFORE THE WORKING OF MIRACLES. EVEN HIS HUMAN NATURE IS EVIDENT IN PRAYER IN THE GARDEN OF GETHSEMENE AND ALSO ON THE CROSS. "MY GOD, MY GOD, WHY HAST THOU FORSAKEN ME?" THIS UTTERANCE FROM JESUS ON THE CROSS WAS THE START OF PSALM 22:1. HOW MANY PROPHETS BEFORE JESUS MADE THIS SAME CRY CAN NEVER BE KNOWN. PATRIARCHS, PROPHETS, KINGS, POOR MEN, ALL KNEW THAT COMMUNION WITH GOD WOULD BRING THEM THE HELP THEY NEEDED.



SAVE THIS FOR YOUR SUNDAY SCHOOL SCRAPBOOK
This devotional & directory is made possible by these businesses who encourage all of us to attend worship services.

ASSEMBLY OF GOD
FIRST ASSEMBLY OF GOD
521 South First Street • 272-3017
Jack Stone, Min. • 272-3984
S.S. 9:45 a.m., W.S. 11 a.m. & 6:30 p.m., Wed. 7:30 p.m.

BAPTIST
CALVARY BAPTIST
1733 W. Ave. C. Rev. Jeff Coffman
CIRCLE BACK BAPTIST
Intersection FM 3397 & FM 298
Jessie Shaver, Min • 946-3676

FIRST BAPTIST
220 West Ave. E.
Stacey Conner, Min.
FIRST BAPTIST
Lazbuddie • 965-2126
PRIMERA IGLESIA BAUTISTA
223 E. Ave. E. Rev. Greg Guzman

PRIMITIVE BAPTIST
621 South First
Elder Cleveland Bass, Min.
PROGRESS BAPTIST
Progress, TX
PROGRESS SECOND BAPTIST
Arthur Hays, Min.

1st & 3rd Sundays
RICHLAND HILLS BAPTIST
17th & West Ave. D
George Malis, Pastor
ST. MATTHEWS BAPTIST
Corner of W. Boston & W. Birch
Floyd R. Monroe, Min.

THREE WAY BAPTIST
927-5467
James Sinclair, Pastor
TRINITY BAPTIST
314 E. Ave. B
Robert Brown, Min.

CATHOLIC
IMMACULATE CONCEPTION
CATHOLIC
805 E. Hickory
Joseph Augustine, Min.
CHRISTIAN
THE CHRISTIAN CENTER
Morton Hwy. • 272-5105
Reydon Stanford, Min.

CHURCH OF CHRIST
LARIAT CHURCH OF CHRIST
Sam Billingsley, Min.
S.S. 10 a.m.; W.S. 11 a.m. & 6 p.m., Wed. 7 p.m.
LAZBUDDIE CHURCH OF CHRIST
Nathan Crawford, Min.
S.S. 9:30 a.m.; W.S. 10:20 a.m. & 5 p.m.; Wed. 7 p.m.

CHURCH OF CHRIST
LARIAT CHURCH OF CHRIST
Sam Billingsley, Min.
S.S. 10 a.m.; W.S. 11 a.m. & 6 p.m., Wed. 7 p.m.
LAZBUDDIE CHURCH OF CHRIST
Nathan Crawford, Min.
S.S. 9:30 a.m.; W.S. 10:20 a.m. & 5 p.m.; Wed. 7 p.m.

SAIN IRRIGATION & MACHINES
Complete Pump Service
W. American Blvd. 272-4397
Walt Sain Muleshoe, TX 272-4148

Springlake Potatoes, Inc.
P.O. Box 280 • Springlake, TX
262-5542

MULESHOE CHURCH OF CHRIST
22nd & W. American Blvd.
John Knox, Min.
S.S. 9:30 a.m.; W.S. 10:20 a.m. & 6 p.m.;
Wed. 7:30 p.m.
16th & AVE. D
CHURCH OF CHRIST
Curtis Shelburne, Min. • 272-4619
W.S. 10:30 a.m. & 1:30 p.m.;
Wed. 7:00 p.m.

LUTHERAN
ST. JOHN LUTHERAN
Lariat, TX
Richard Greenhaner, Min.
S.S. 10:30 a.m.; W.S. 9:30 a.m.

METHODIST
FIRST UNITED METHODIST
HISPANIC MINISTRIES
E. 5th and E. Ave. D
Pastor Benito Cavazos
FIRST UNITED METHODIST
507 W. 2nd St.
Pastor Brad Reeves
LAZBUDDIE METHODIST
965-2121
EL DEVINO SALVADOR
814 W. Ave. C, Muleshoe, TX
Guadalupe Ballinas, Min.

NAZARENE
NEW VISION CHURCH OF THE NAZARENE
814 W. Ave. C • 272-3622
David R. McIntire

PENTECOSTAL
UNITED PENTECOSTAL LIGHTHOUSE
207 East Ave. G • 1-800-454-6051
Pastor McKibben, 10 am Sunday Service
Thursday, 7 pm Bible study

INTER DENOMINATIONAL
NEW COVENANT
Plainview Hwy. Jimmy Low, Min.
Steve Claybrook, Assoc. Pastor
W.S. 10 a.m.; Wed. 7 p.m.

INTER DENOMINATIONAL
NEW COVENANT
Plainview Hwy. Jimmy Low, Min.
Steve Claybrook, Assoc. Pastor
W.S. 10 a.m.; Wed. 7 p.m.

INTER DENOMINATIONAL
NEW COVENANT
Plainview Hwy. Jimmy Low, Min.
Steve Claybrook, Assoc. Pastor
W.S. 10 a.m.; Wed. 7 p.m.

SIMNACHER NATIVE GRASSES
Darwin Simnacher (505) 762-7817
Vince Simnacher (806) 946-3461
Thomas Simnacher (806) 285-2491

MENDOZA IRRIGATION SERVICE
 272-5511
Sprinkler Erect, Repair & Move Muleshoe, TX

LEO'S BLACKSMITH & MACHINE SHOP
310 W. AMERICAN BLVD.
272-4418
MULESHOE, TX 

Lowe's 
MARKETPLACE 515 W. American Blvd.
401 W. American Blvd. Muleshoe
Muleshoe 272-4585 Muleshoe 272-4406

WES-TEX FEED YARDS, INC.
Custom Cattle Feeding
272-7555 Muleshoe, TX

Muleshoe Area Medical Center
"Your Hospital"
708 S. First St. • 272-4524
Muleshoe, TX

"THE FIVE AREA TELEPHONE COOPERATIVE ORGANIZATION"
West Plains Telecommunications Co.
Five Area Systems, Inc., Plateau Cellular Network
Five Area Long Distance - Five Area Internet
302 Uvalde Muleshoe, USA (806)272-5533

JAMES CRANE TIRE CO., INC.
107 Main 272-4594
Mike Hahn Muleshoe, TX 

IRRIGATION PUMPS & POWER
ZIMMATIC CENTER-PIVOTS
W. Hwy. 84 272-4483

O & C 
Erection Sprinkler Ser.
Repair & Assemble
Lupe Olivarez 272-5018
OSONS 
Welding & Repair
909 W. American Blvd.
272-3475

AMERICAN AVI 
INC. 
West Hiway 84
272-4266
Muleshoe

1ST BANK 
MEMBER FDIC
202 South First 272-4515


BOBO INSURANCE AGENCY
108 E. Ave. C 272-4264

FIRST TEXAS FLBA MULESHOE
"Serving Farmer & Bailey Counties"
272-3010 • Fax 272-5388
316 Main • P.O. Box 424 • Muleshoe, TX

PACO FEED YARD, INC.
Commercial Cattle Feeders
P.O. Box 956 265-3281
Frona, TX
Feller Hughes-Mgr.

NEEDMORE Co-op Gin Company
946-3361 • Sudan, TX

SILVER SCREEN VIDEO 
VCR, PSX, N-64 & Camcorder Rentals
803 W. American Blvd. • 272-5540 • Muleshoe, TX

MULESHOE PEA & BEAN, INC.
 RR 2 Box 297 272-5589
Muleshoe, TX

DAMRON DRUG, INC.
308 Main St. 272-4210
Muleshoe, TX

MULESHOE LIVESTOCK AUCTION
Muleshoe, TX • Sale Every Saturday
Clayton Myers • 272-4201

Risinger Plumbing
Serving Muleshoe Area
All Plumbing Repairs
272-6772

FARWELL CONVALESCENT CENTER
"In Christ's Love, Everyone Is Someone Special"
305 5th St.
481-9027 • FARWELL, TX 

MULESHOE MOTOR CO.
1225 W. American Blvd. 272-4251 

Bennett, Blasingame wed in July

Kristi Dawn Bennett became the bride of James Ike Blasingame on July 17, 1998 in the Church of the Nazarene of Muleshoe. Officiating at the ceremony was Rev. David McIntire.

Kristi is the daughter of R.G. and Ronnie Bennett of Muleshoe. James is the son of Bobbi and the late Bill Blasingame of Earth.

Grandmothers of the couple are Mike and Joan Christensen of Mystic, Conn. and Tommy and Joyce Blasingame of Hereford.

Attending as maid of honor was Jenny Railsback of Muleshoe. Serving as bridesmaids were Priscilla Bennett, Brenna Farley and Stephanie Marlow. The flower girl was Brittany Railsback.

Attendants wore sleeveless burgundy satin flower gowns featuring an empire waist and a matching back drape with trailing chiffon ties gathered

together with burgundy roses.

Attending as best man was Clint Janisch. Groomsmen were Sonny Bennett, Shannon Bennett and Jamie Perry. The ring bearer was Michael Railsback. The groom wore a classic black tuxedo with a tail, and a burgundy vest with a matching bow tie.

The bride wore a sleeveless gown designed and made by the bride and her mother. The gown was made of ivory Baroque satin. The gown had a fitted bodice with a full softly pleated skirt. The back was enhanced by an oversized bow with floor length ties. The center of the bow featured a small bouquet of handmade burgundy and mauve satin roses. Her chapel length veil was made of bridal illusion net trimmed in ivory seed pearls. Flowers for the wedding party and the church were made by Cindy Magby.

The traditional "something



Kristi Bennett and James Blasingame at July wedding

new" was her dress. "Something old" was her pearl necklace given to her by her great grandmother, Lorena Dumas, as well as the pennies in her shoes dated 1979 and

1980 in honor of the couples' birth years. "Something blue" was a garter worn on her right leg made by a family friend, Charlotte Holt. "Something borrowed" was her pearl bracelet belonging to her grandmother.

Music was provided by Terry Baker, the bride's cousin. The bride and groom sang "From this Moment" to each other.

The reception took place at the Church of the Nazarene Fellowship Hall. Serving at the reception were Linda Baker, Heather Barbaro, Bette Freeman, and Kristi Mennick. The rehearsal supper was held at Headquarter's Restaurant on July 16, and was hosted by the groom's mother and his grandparents, Harold and Belva Greenhouse.

After a honeymoon in Lubbock, the couple will reside in Muleshoe. He works for Springlake Feedyards. She works at the Clovis News Journal.

Follow the Mules
in the Journal

Cox, Young united in August wedding

Tara Michelle Cox became the bride of Gregory Scott Young on August 5, 1998. The wedding took place at the home of Mr. & Mrs. Marvin Urbanczyk of White Deer, Texas. Officiating at the ceremony was Judge Roselius of Panhandle.

Tara is the daughter of Mr. & Mrs. Terry Cox of White Deer. Gregory is the son of Mr. & Mrs. Jim Young of Muleshoe.

Attending as maid of honor was Lorena Burkett of Grand Prairie, Texas. The flower girl was Leslie Barbier, cousin of the groom, of Keller, Texas.

Attending as best man was Chris Young, brother of the groom, of Lubbock. The ring bearer was Michael Cox, nephew of the bride, of Collinsville, Oklahoma.

Ushers for the occasion were Jeff Cox of Amarillo and Jerod Cox of Collinsville, both brothers of the bride. Registering guests was Angela Finley of Lubbock.

Music was provided by vocalists Tonita Cox, sister-in-law of the bride, of Collinsville, and Jim Shadle of Clarendon.



Tara Cox and Greg Young were married Aug. 5

A reception was held following the ceremony with Rachelle King and Valinda Miller, both of Muleshoe and Geneva Rumbaugh of Levelland serving the guests.

The couple enjoyed a honeymoon trip to Cancun, Mexico, and will make their

home in Muleshoe.

Tara is a graduate of Frank Phillips College and Amarillo College. She is employed by Rehabworks in Lubbock. Gregory attended Texas Tech University and is self-employed in the farming and ranching industry.

NURSING HOME NEWS

Thursday morning, Pastor David McIntire, Zona Gatewood and Karen Cook directed our Devotional Time. Thursday afternoon, Scott Pace and the J.O.Y. Choir of the First Baptist Church, entertained at the Aug. Birthday Party. Bootie Tiller's brother and sister-in-law, Mr. and Mrs. Donald Gilreath, were her guests at the August birthday Party on Thursday.

Melvin Griffin directed the weekly bingo games, Friday afternoon.

Each Sunday morning, the Muleshoe Church of Christ directs the Communion Service. Buster Kettrell was the teacher for the Sunday School Class/Bible Study Sunday morning. Singers from the Farwell Menonite Church came to sing gospel songs and hymns Sunday afternoon.

Tuesday afternoon, Beverly Wagon, Pat Watson, Pat Kirk, Lanell Stancell, Claudine Embry, Mary Jo Burge, Beverly Wagon, Ozell Cherry, Karen

Cook, Kimberly Dickerson and Joy Stancell, shampooed and set the ladies hair, gave haircuts and nail care.

Up Coming Events: End of Summer Ice Cream Social: at 6:30 p.m., Thursday, Sept. 17 and at 3 p.m., Thursday, Sept. 24.

Happy September birthdays to Aline Locke, Sept. 10, Billy Crouch, Sept. 16, Lillian Riddle, Sept. 19, and Ruth Lackey, Grace Scarbrough, and Altha Turner, Sept. 26.

Joe Embry and Harold Burge visited the residents in and out of their rooms Tuesday. Buster and Wanda Kettrell and Harold

and Mary Jo Burge, as well as Jane Reeder, served coffee and donuts to the residents Wednesday morning. Buster and Harold led the "around the table" discussion.

Steve Claybrook, Loyce Killingsworth and Buster Kettrell directed the Singspiration Devotional time. Anna B. Lane, visited her mother, Nettie Quensenberry, Wednesday afternoon. Jean O'Brien participated in the Glenda Jennings Sing-a-Long/Puppet Show Wednesday afternoon.

We wish to express our heartfelt sympathy to the family and friends of Patricia Orozco.

REBEKAH NEWS

Noble Grand Bernie Marts open the Sept. 1 meeting with seven members present. Mrs. Reid reported on the illness of her Gary Toombs.

We also send a get well card to John Gulley, who had an accident in school last week, and Sister Addie Kirby, who had major surgery and is now at home.

Plans were discussed on setting up a booth during the motorcycle rally next year.

There being no further business, Chaplain Bonita Rainey closed the lodge with love to all until next week.

PUBLIC AUCTION

Special! Big!
Two Day
Consignment Sale!

Friday & Saturday
Sept. 11th & 12th
9 a.m.

3 MILES NORTH OF PORTALES
ON U.S. HIGHWAY 70

If you wish to consign any equipment, vehicles, etc., please contact us as soon as possible so we will be able to properly advertise your merchandise. WE APPRECIATE OUR CUSTOMERS! CALL DAY OR NIGHT!

Complete Set-Up or One Item-Bring it on in! When only the best will do call:

Bill Johnston Auctioneers

Portales, NM • (505) 356-5982 Days

Nights - Mike (505) 760-6195 or Clint (505) 356-5368

Dayhoff's Shoes

*NAOT
New horizons
in comfort!



"Put Yourself In Our Shoes"

DAYHOFF'S SHOES

403 Main St. • Downtown Clovis, NM

1633 AMERICAN BLVD.
MULESHOE • 272-3998

HAPPY HOUR 2-5 p.m. Everyday
Buy 1 Get 1 Free Fountain Drinks

SINGLE (#1 or #2) BURGERS 99¢
All Day Every Tuesday

WACKY PACK
KID MEAL just
\$1.79
in September!

SONIC
America's Drive-In.

REGISTER TO WIN A BIKE!

Return completed entry to the Sonic of Muleshoe. Winner will be notified by phone.

NAME: _____

ADDRESS: _____

CITY/ZIP: _____

PHONE: _____

Not valid with any other special offers. Available at Muleshoe location only. Offers good for a limited time, subject to change. Cheese on burgers extra.

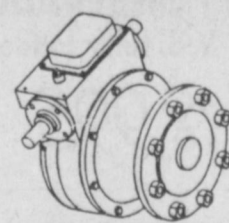


Missed Your Paper?

Don't Know What To Do About It?!!!
Call 272-4536 weekdays
or 272-6719 weekends

September Specials

Prices Good Through Sept. 30



Model 725U
2.25"

Short Shaft

50:1 Gear Ratio

\$200⁰⁰

1 to 5

each.....

6 & more

each.....

\$185⁰⁰

Center Drive
Gear Boxes & Motors



Power Saver

3/4 HP Motor

40:1 Gear Ratio

\$275⁰⁰

1 to 5...\$300.00
6 & more...\$275.00

Model 101A....1" Round x 7/8" Square
Model 101C....1" Round x 1" Square
Model 101L....1" Round with Key Way x 3/4" Square

HIGH TORQUE
Driveline Coupler

Model 101A....1" Round x 7/8" Square
Model 101C....1" Round x 1" Square
Model 101L....1" Round with Key Way x 3/4" Square

\$775

1 to 10...\$8.25
11 & more...\$7.75

SEE US FOR YOUR:

- Electrical Contracting
- Motor Rewinding
- Authorized Dealer for Powerhorse
- Lockwood Pivot Irrigation Systems

56-C Face
50:1 Ratio
\$135⁰⁰

1 to 5...\$145.00
6 & more...\$135.00

56-C Face
1.5 HP Motor
Thermally Protected
\$142⁵⁰

1 to 5...\$155.00
6 & more...\$142.50



VALLEY ELECTRIC CO.

Specializing in Sprinkler Repair (All Brands)
700 E. 2nd • Portales, NM
(505) 356-8372 • (505) 276-8353

FOCUS ON AGRICULTURE

Wheat farmers push for free trade

By STEWART TRUELSEN
American Farm Bureau

In the fall of 1996 the cover of a national farm publication said, "Wheat growers get a shot at the jackpot." The story in the magazine went on to say the market for wheat was the best since 1973.

Today, however, there is no jackpot. And if the market were a slot machine, we'd have to say there's not even a cherry showing.

"Two years ago we were looking at prices of wheat around \$5 a bushel, that's \$5 a bushel Portland price," says Washington wheat farmer Steve Appel. "Right now we're looking at a price of around \$2.70 a bushel." Appel blames bumper crops around the world, a strong U.S. dollar and the Asian financial crisis for the price slump.

Appel, who is also president of the Washington Farm Bureau, farms in the Palouse region of the state. The dune-like hills of the Palouse are unique in all the world for growing wheat. The hills have a pitch of 30 to 45 degrees, requiring combines to have a leveling system that adds about \$80,000 to their cost. Farmers here are used to the ups and downs of farming — if you pardon the pun.

"Two years ago we were looking at prices of wheat around \$5 a bushel, that's \$5 a bushel Portland price. Right now we're looking at a price of around \$2.70 a bushel."

— Washington wheat farmer Steve Appel

While the market price is disappointing, this year's crop is not. "The winter wheat crop has come off with real good quality. Yields are up to over a hundred bushels per acre," says Appel. The wheat grown here is soft white wheat which is generally used to make noodles and cake flour.

More than 80 percent of it is shipped overseas. By river barge, the wheat is only about 300 miles away from the Pacific Ocean. It is exported to southeast Asia and the Middle East, the two major landing points.

Standing by piles of grain on the ground

outside a river terminal, Appel explains what went wrong with the export market. "The money problem that they have in Asia is a big part of it, along with the sanctions situation that we faced for awhile in India and Pakistan."

As a member of the American Farm Bureau trade advisory committee, Appel has a clear idea of what is needed.

"Anything that would push us more toward free trade is what we have to be after," he says, citing a number of items that Farm Bureau seeks action on.

First, Congress can grant the president fast-track negotiating authority to hammer out trade deals.

It can also permanently exempt agricultural exports from all non-war trade sanctions and embargoes. As soon as possible, it needs to fund the International Monetary Fund. The IMF can

help restore financial stability in Asia so they can keep buying U.S. farm products. Congress will have a chance to vote on all these measures soon. Favorable action will be a "jackpot" for Washington wheat farmers, other U.S. farmers and the American economy as a whole.

(Stewart Truelsen is the director of broadcast services for the American Farm Bureau.)

Lawn expert urges care using herbicides

DALLAS — One of the most frequently asked questions lately is whether it's safe to use a pre-emergent herbicide (weed killer) on your lawn after this unusually hot, dry summer weather.

There's no easy answer, according to Dr. James McAfee, turfgrass specialist at Texas A&M Dallas.

"No doubt, winter weeds are going to be a major problem," he said. "On the other hand, any herbicide on a severely stressed lawn could make things worse. Deciding whether or not to use a fall pre-emergent herbicide this year is going to be a lawn-by-lawn decision.

The condition of the lawn will determine whether to use a pre-emergent herbicide this fall.

Lawns still holding color and actively growing should not be adversely affected by a pre-emergent herbicide. If a pre-emergent is used, the lawn should be watered thoroughly before and right after the application, McAfee said.

"On the other hand, if your lawn is brown, thin or not actively growing, there's a good chance of damage from an herbicide under these conditions. In this case, it might be better to forego treating now and risk more weeds this winter to protect your turf in the long-run," he said.

"Recent research to evaluate the impact of temperature and moisture on the potential burning from pre-emergents on St.

Augustine grass showed that dry soil conditions caused more damage to turf than high temperatures. If the lawn can't be watered before and after the herbicide application, then it would be best to not use one this fall," McAfee added.

McAfee advised the best way to help lawn recover this fall from this extended hot, dry summer is to do proper maintenance.

"Water deeply, at least one inch at a time to promote strong deep roots, but as infrequently as possible," he said. "Don't water 15 minutes every day or two. Once fall temperatures start to drop, mow slightly lower and more often. This will encourage the turfgrass plants to grow laterally and form a thicker,

healthier lawn.

He suggested fertilizing in late September to early October with a 3-1-2 to 4-1-2 ratio fertilizer.

Step on a Crack, and You'll Break Your Mother's Back!

Step on a crack and you'll break your mother's back!"

Really? No, not really. That's a mistaken belief that most of us discarded with childhood. But, if you love your mother, believing that old rhyme makes a real difference in how you walk down sidewalks!

Our lives and viewpoints are affected much more than we often realize by the assumptions we hold to be true. They seem so obvious to

word is/is not simple?

3) interpretation of Scripture is/is not completely unavoidable?

4) for someone to interpret a Scripture differently from me is/is not to be less studious or less honest or less intelligent than I am and/or my religious tradition is?

5) it is/is not possible for people of good will to honestly and reasonably read the same verse of Scripture and draw different conclusions?

6) I am/am not a person of faith just like other people of faith in that I am very much molded and affected by my religious tradition and heritage in many ways of which I am aware and in many ways of which I am not, just like folks from other traditions?

7) many other people of faith who disagree with me on "issues" are/are not at least as sincere in their desire to know and follow God's will and to understand Scripture as I am?

8) an area of silence in Scripture should be approached primarily as an area of freedom/prohibition?

9) I stand/do not stand in exactly the same relation to the Lord as do all people of Christian faith, neither better nor worse, completely, utterly, totally dependent upon God's grace and justified by nothing else and nothing less?

10) As a person of faith who stands in a particular religious tradition, I can be justifiably proud of much of my heritage in that regard. I believe/do not believe that people of faith from other Christian traditions also should be proud of what their religious forbearers have contributed to the rich heritage of Christianity?

How we answer says a lot.

Curtis Shelburne is minister of the 16th & D Church of Christ in Muleshoe.



Focus On Faith
Curtis Shelburne

us that we long ago quit questioning them. We believe them, so we take it for granted that others do, too.

"How in the world did that person or group read Scripture and get that idea?" you might wonder. You might wonder less if you brought the same presuppositions to Scripture that they bring. Don't kid yourself, all of us bring some. We must.

The "quiz" that follows might not say much about your assumptions unless you come from the same religious tradition I do. But the way folks in my group answer says a lot about the way we're conditioned to read Scripture and relate to others. You might want to make your own quiz for your own tradition. Here's mine:

- Would you say that . . .
- 1) The New Testament is/is not a book of law serving the same function for Christians that the Old Testament served for Israel?
 - 2) understanding God's written

Journal Classifieds REAL ESTATE AUTOMOBILES HELP WANTED GARAGE SALES

STOP & SHOP

Deadlines are 5 p.m. Monday and Thursday Call 272-4536 Deadlines are 5 p.m. Monday and Thursday

HELP WANTED

SEASONAL EMPLOYMENT OPPORTUNITIES! Texas Migrant Council, Inc. Migrant Headstart Program

The Texas Migrant Council, Inc., a non-profit organization with over 25 years experience providing child care services to low-income families, has the following SEASONAL positions available in its MULESHOE Head Start center in the Panhandle Region:

- WORK LOCATION: MULESHOE
- HEALTH SERVICES WORKER**
General Responsibilities: Responsible for implementing the Health, Nutrition, and Mental Health program areas at region centers. Responsible for the coordination and delivery of medical, dental, nutrition, and mental health activities to meet Head Start Performance Standards and the program plans. Provides health, nutrition, and mental health training to parents, staff, and volunteers. Work requires travel.
Minimum Qualifications: (1) Certified Medical Office Assistant or Thirty (30) college credit hours with 9-15 hours in Human Services, Nursing, medical-related courses in a related field, (2) Four years experience in providing health, nutrition, or mental health services in a Head Start setting or a social service agency to children and families, (3) Bilingual English and Spanish both verbal and written communication, (4) Ability to communicate effectively with migrant families and all applicable constituencies.
- SOCIAL SERVICES/PARENT INVOLVEMENT COORDINATOR**
General Responsibilities: Responsible for implementing the Social Services and Parent Involvement program areas at the centers with enrollment of 100 or more children. Responsible for the coordination of parents and other volunteers at the center. Ensures compliance with its program governance and oversees the organization of Center Parent Committee. Work requires travel.
Minimum Qualifications: (1) Thirty (30) college credit hours in social work, human services or related courses, (2) Four years experience in delivery of social services in a Head Start setting or a social service agency to children and families, (3) Bilingual in English and Spanish, (4) Good oral and written communication skills, (5) Ability to communicate effectively with migrant families and all applicable constituencies.
- BUS DRIVER/CUSTODIAN (S)**
General Responsibilities: Insures that the highest possible safety standards are followed while transporting children in the agency vehicles, including following all state, local, and organizational requirements for transporting children and using agency vehicles. Perform general maintenance duties, as well as, responsible for the daily care and upkeep of the Head Start center. Responsible for keeping facility clean and sanitary.
Minimum Qualifications: (1) Must have High School Diploma or GED, (2) Must be at least 24 years of age AND insurable, (3) Must have a valid commercial driver's licence (CDL) in the state of employment and meet state laws required to operate school buses, (4) General vehicle and custodial maintenance skills, (5) Bilingual in English and Spanish (preferred), (6) Certified in First Aid and CPR, (7) Ability to complete basic required daily paperwork.
- BUS AIDE (S)**
General Responsibilities: Responsible for the safety of children enrolled at the center while traveling in an agency vehicle, maintaining order in the bus and keeping a current log of children on the bus.
Minimum Qualifications: (1) High School Diploma or GED, (2) Must have minimum of 8 hours in First Aid and CPR training, (3) Experience working with preschool children in a day care setting.
- TEACHER (S)**
General Responsibilities: Responsible for planning and implementing a child development program for a Migrant Head Start classroom that conforms with developmentally appropriate practice and meets Head Start Performance Standards and other federal, state and local requirements. Implement the educational program adopted for the center.
Minimum Qualifications: (1) Child Development Associate and 18 months of early childhood experience OR 2-4 years degree in related field, (2) Bilingual in English and Spanish preferred, (3) Good oral and written communication skills, (4) Must be at least 18 years of age.
- TEACHERS AIDE (S)**
General Responsibilities: Responsible for assisting the teacher in the planning and implementation of the classroom program. This includes but is not limited to assisting children with self care activities, indoor and outdoor learning activities, and meal and snack time activities.
Minimum Qualifications: (1) High School Diploma or GED, (2) Bilingual in English and Spanish preferred, (3) Good oral and written communication skills, (4) Must be at least 18 years of age.

FOR IMMEDIATE CONSIDERATION, PLEASE SUBMIT APPLICATION AND / OR RESUME WITH CURRENT SALARY BY FRIDAY, SEPTEMBER 18, 1998 TO:

Texas Migrant Council Attn: Panhandle Regional Director
1210 Ave. R • Lubbock, TX, 79401 • (806) 763-4187
An Equal Opportunity Employer

In The Dark About Who Has The Best Prices In Town?
Come By and Check Out Our Deals!

NEW ARRIVALS

1996 CHEVY SILVERADO extended cab, V-8, fully loaded only \$18,995

1995 CHEVY S-10 extended cab only \$10,895

1994 CHEVY SILVERADO extended cab, 4x4, low miles only \$17,995

1991 CHEVY C-2500 extended cab only \$9,995

1991 CHEVY C-1500 extended cab, fully loaded with tool box and bed rails only \$9,195

1992 CHEVY SILVERADO extended cab only \$10,995

1994 DODGE 2500 CUMMINS low miles only \$17,995

1994 FORD RANGER S/C XLT PDL, power sliding rear window only \$9,995

1990 TOYOTA STRETCH CAB automatic, low miles only \$8,195

TRADER HORN MOTOR COMPANY
Portales' Premier Pre-Owned Vehicle Headquarters
620 S. Ave. C • Portales, NM • (505) 359-0947 or (505) 359-1775

Clovis Community College holding College Day Sept. 17

High school seniors will have the opportunity to talk to representatives of 34 colleges, universities and organizations at the annual College Day, Thursday, Sept. 17, at Clovis Community College. Students and their parents are encouraged to talk with representatives from a variety of regional colleges and universities from 1-2:30 p.m. in the Student Activity Center.

Thirty-four institutions, including community and junior colleges and universities, will participate in College Day. New Mexico colleges and universities are as follows: Clovis Community College; College of Santa Fe; College of the Southwest and New Mexico Junior College; Hobbs; Eastern New Mexico University, Portales; Luna Vocational/Technical Institute and New Mexico Highlands University, Las Vegas; Mesa Technical College, Tucumcari; New Mexico Military Institute, Roswell; New Mexico State University, Las Cruces; New Mexico Tech, Socorro; University of New Mexico, Albuquerque; and Western New Mexico University, Silver City.

Texas colleges and universities participating are: Amarillo College; Clarendon College, Clarendon; Hardin-Simmons University and McMurray, Abilene; Frank Phillips College, Borger; Lubbock Christian College, Methodist Hospital of Nursing, and Texas Tech University, Lubbock; South Plains College, Levelland; University of Texas, El Paso; Wayland Baptist University, Plainview; and West Texas A&M University, Canyon.

Schools from Colorado include: Adams State College, Lamosa; Colorado School of Mines, and Golden; Westwood College, Denver. Additional institutions and organizations participating include: Air Force ROTC Scholarships, Albuquerque Job Corps Center, Department of the Army, High Tech, Inc., and the New Mexico Educational Assistance Foundation.

For more information about College Day, please contact the CCC Counseling Office at 769-4015.

For more information about College Day, please contact the CCC Counseling Office at 769-4015.

Journal Classifieds

Deadlines are 5 p.m. Monday and Thursday

Call 272-4536

Deadlines are 5 p.m. Monday and Thursday

REAL ESTATE
AUTOMOBILES
HELP WANTED
GARAGE SALES

STOP & SHOP

HELP WANTED

minsa southwest corporation

hiring
Quality Control Analysts
Must have initiative and be a fast learner. Good mathematical skills to figure basic equations and basic computer knowledge are required. High school diploma or equivalent preferred. Also hiring Production Operators. Apply today 1 1/4 miles east on Hwy 84.

Conservation Careers Forest Rangers, Game Wardens, maintenance, etc. No exp. necessary. Now hiring. For info: call (219) 794-0010, ext. 9689, 8 a.m. to 10 p.m. 33s5tspd

Help Wanted!

Reporter/Photographer with Journalism background. Must have good people skills. Experience a plus, but not needed. Apply in person at **Muleshoe Journal** 304 W. 2nd St. Muleshoe, TX

BEANIE BABIES

BEANIE BABIES SEPTEMBER SALE
Many current Beanie Babies sale priced at \$6.95 (includes tax and tag protector). Drastic reductions on Glory Fortune and others. Vendor #350 at Treasures from the Heart. I have all of the new, current, newly retired and many older retired in stock. 36t-4tch

We're cute and fuzzy too! Advertise in the Journal! 272-4536

FRESH VEGETABLES

SWEET CORN, 1015 sweet onions, squash, cabbage and cucumbers. DVJ Farms, 202 7th st., Farwell, TX, (806) 481-9420. 28t-23tch

MISCELLANEOUS

Round Up Applications
Pipe-wick mounted on high-boy 30" or 40" rows. Cotton, Milo, Soy Beans and Corn. Call Roy O'Brian, (806) 265-3247. 23t-tfc

SEED

Winter Wheat and Fall Forage Seeds
For ALL varieties of Wheat, Rye * Barley * Triticale
Grazing Blends* Oats
Call 1-800-299-9273
Gayland Ward Seed Co., Inc.
Hereford, TX 79045
www.wtr.net/~gws1998
Your choice of Registered, Certified, or Select Seed. Bagged or Bulk. Delivery Available

FOR SALE

1991 Peterbilt Truck/Tractor, w/400 cummins, 13 speed. In good condition. Call after 7 p.m. (806) 272-3266. 36s-4tspd

Big Screen TV for sale. Take on small payments. Good credit required. 1-800-398-3970. 36s-4tspd



Advertise!!!
If you want to sell it, we hold the key! Call 272-4536

AUCTION • AUCTION • AUCTION

AUCTION WOOD REFINISHING EQUIPMENT

Wednesday, September 9, 1998 ----- SALE TIME 10:00 A.M.
Located: Muleshoe, Texas - 319 East American Blvd.
From intersection of U.S. Hwy. 84 & U.S. Hwy. 70 & Texas Hwy. 214, 3 blocks East on U.S. Hwy. 84 (Northside of Hwy.)
Throckmorton Refinish Shop - Owner
The following will be sold at Public Auction. For information, Call Cruce & Fletcher Auctioneers (806) 296-5050 or (806) 866-4201. NO PREVIEW OF SALE ITEMS UNTIL DAY OF SALE - THANK YOU.

| EQUIPMENT | STORAGE VAN |
|--|--|
| 1-Mirror & Glass Reglazing & Refinishing Machine & Table | 1-8 ft X 27 ft Enclosed Dry Van Body for Storage |
| 1-3 H.P. 3 Cylinder Shop Air Compressor | PIANO • FURNITURE |
| 1-Delta 10" Contractors Saw | 1-Solo Concerto Piano |
| 1-Craftsman 10" Radial Arm Saw | 1-Oak Dresser |
| 1-Craftsman Jig Saw | 1-Blonde Bedroom Suite |
| 1-Wards 7" Table Saw | 1-Unfinished Rocker |
| 1-Reliant Air Power Stapler | 1-Lot Small Childrens Desks & Chairs |
| 1-Sharpie Paint Gun | 1-Lot Chairs, Tables & Cabinets |
| 1-Double Arbor Bench Grinder 1/4 h.p. | 2-Ice Cream Parlor Chairs |
| 1-Small Wood Lathe | 1-Lot Unfinished Furniture |
| 1-Lot Work Tables & Benches | 1-Unfinished Antique Parlor Table |
| 2-Adjustable Working Lamps & Stands | 1-Lot Mirrors, Frames, Pictures & etc. |
| 1-Small Bench Vise | 1-Small Oak Buffet |
| 1-3 ft X 5 ft Vat | 1-Lot Chairs, Stools, Tables & Bed Steads |
| 1-High Pressure Washer | OFFICE EQUIPMENT |
| 6-P C Electric Sanders | 1-PC III Computer |
| 1-Central Pneumatic Air Control Valve | 1-Mr Coffee Machine |
| 1-Lot Hand Tools, Saws, Screw Drivers, Pliers, Hammers, Files, Squares, Levels, C Clamps, Bar Clamps, Wood Clamps, Small Tools & Sockets | 1-First Aid Kit |
| 1-Lot Sanders & Polishers | 1-5 Tier Book Shelf |
| 1-Orbital Polisher | 1-Oak Swivel Desk Chair |
| 2-Paint Room Lamps | 1-Lot Furniture Moving Dollies |
| 1-Lot Box Fans | 1-Lot Furniture Wraps & Covers |
| 2-Metal Saw Horses | 1-Wizard Refrigerator-Freezer |
| NON CLASSIFIED | 2-Metal Storage Cabinets |
| 1-Lot Furniture Chemicals-Spray Paint-Glue-Finish | 1-Lot Trash Cans |
| 1-Lot Furniture Wraps & Covers | 1-Lot Floor Pads |
| 1-Lot Furniture Handles-Hardware-Screws-Dowels | 1-Lot Items Too Numerous To Mention |
| 1-Lot Various Size & Type Lumber | Announcements Sale Day Take Precedence |
| | Terms: Cash or Check With Proper Identification |

James G. Cruce Plainview, TX (806) 296-5050 Lic #6704
Cruce & Fletcher Auctioneers and Real Estate Brokers PO BOX 609 - WOLFFORTH, LUBBOCK CO., TX 79382
Bobby Fletcher Wolfforth, TX (806) 866-4201 Lic #7131

REAL ESTATE • FARM & LIVESTOCK EQUIPMENT • VEHICLES AUCTION

Tuesday, September 15, 1998 ----- SALE TIME 10:00 am
Real estate sells at 10:00 am.
Located: Muleshoe, Texas 2 miles North on Texas Hwy 214 then 1/2 mile West.

Mr. & Mrs. J. H. "Buster" Evins - OWNER
We are retiring and will sell the following at public auction.
For information call Mr. Evins (806) 272-4934 or Cruce and Fletcher Auctioneers (806) 296-5050 or (806) 866-4201.

| | | |
|---|--|--|
| REAL ESTATE: Sells at 10:00 am DESCRIPTION: 72 acres being described as the East 1/2 of the NW 1/4 of Section 41, Block Y, Bailey County, Texas. Save & except 6 acres out of the NE corner of property. IRREGULAR: 1-4" irrigation well w/ gear head, Ford, 6 gal., 300 cu. in. irrigation engine. One Valley 7 lower center pivot system. Farm is plowed and seven to wheat for early grazing. Possession of crop will pass with possession of land. TERMS: 10% in escrow day of sale, remainder at closing. Terms available to qualified buyer. Qualifications must be met prior to sale day. Call Cruce & Fletcher Auctioneers (806) 296-5050 to qualify. Possession will be upon closing, closing in 30 days or less. Taxes will be prorated to closing. Owners share of mineral interest will be conveyed to buyer. Any announcements sale day take precedence. Owner will have 10 minutes to accept or reject bids. | 1-Eckroat Gopher Plow 1-Libson 2 row Peanut Digger, Wind Row Attachment 1-40 ft. Gopher Mound Dr. 1-3 pt. Shank Stubble Munch Plow 1-Swather Gopher Mound Drag 1-20' Big 12 4 wheel Pipe Trailer 2-2 wheel Metal Box Bed Trailer 2-300 Gallon Sprayer Tanks, One 3 pt, One FM 1-12 wheel Pickup Bed Trailer, 3/4 Ton Axle 1-500 Gallon Poly Upright Tank 1-280 Gallon Diesel Fuel Tank 1-200 Gallon Propane Tank 1-4 wheel Tractor Transport Trailer 1-20 Gallon 12 Volt Spot Sprayer 1-20 Gallon Propane Bottle 2-Seat Sprayer Carting 1-21 ft. BM Sprayer Boom | 1-Lot Water Furrow Bullets 2-Beard Portable Irrigation Fittings, Various Sizes 1-40 ft. Gopher Mound Dr. 1-Injecto-Meter Pump 1-Irrigation Motor Drive Shaft 1-Lot Sprinkler Drives HAY & LIVESTOCK EQUIPMENT 2-Beard Portable Grinder-Mixers, Hyd Augers 1-6 ft. Metal DS Hay Rack 1-12 ft. Metal DS Hay Rack 1-3 pt Round Hay Bale Mover 1-Portable Round Hay Bale Feeder 1-30 ft. Portable Bale Loader 1-Cool Waterer 1-Lot Tee Post 1-Lot Creakie Post 1-Lot Barbed Wire 1-PTO Wire Roller, DT 1-Lot Electric Fence Wire, Post, Insulators 2-Fence Chargers 1-Lot Spring And Jank Iron And Aluminum 1-Lot Veterinary Supplies |
| TRAILERS - TANKS - SPRAYERS 1-Corbin Pup Trailer, TA, DW, 24 ft Bed, Hyd Lift 1-500 Gal Water Nurse Tank On 4 wheel Chassis 1-Cobey 4 wheel Trailer Chassis, Steel Runners 1-Big 12 4 wheel Trailer Chassis, Steel Runners 1-20' Big 12 4 wheel Pipe Trailer 2-2 wheel Metal Box Bed Trailer 2-300 Gallon Sprayer Tanks, One 3 pt, One FM 1-12 wheel Pickup Bed Trailer, 3/4 Ton Axle 1-500 Gallon Poly Upright Tank 1-280 Gallon Diesel Fuel Tank 1-200 Gallon Propane Tank 1-4 wheel Tractor Transport Trailer 1-20 Gallon 12 Volt Spot Sprayer 1-20 Gallon Propane Bottle 2-Seat Sprayer Carting 1-21 ft. BM Sprayer Boom | TOOL MAKEUPS 1-2 Ford Cultivar Shanks 1-Lot IHC Orchard Shanks 1-Lot Tractor & Plog Weights 1-3 pt Tool Bar Hitch 1-Set Aluminum 6 Hole Wheel Spacers 1-Lot Saws, Knives, Chisels, Disc 1-Lot Water Furrow Bullets 1-Lot Power & Hay Equipment Parts | NON CLASSIFIED 1-875 5hp Gas AC Engine 1-GP Caseport Pump 1-20 Ton Hyd Jack 4-Tool House Tires & Rims 1-220 Volt 70 ft. Electric Extension Cord 1-Lot 2" Galvanized Pipe 1-Cast Iron Bath Tub 1-Spinner Hand Pump 1-Creastone Top For 1 Ton Flatbed Pickup 1-Shop Air Compressor (No Motor) 1-Portable Air Compressor (No Motor) 1-Lot Chains 1-Lot Tires And Wheels 1-Lot Scoops, Spades, Etc 1-Lot Spray And Jank Iron And Aluminum 1-Lot Power & Hay Tools 2-Cherry Packer Hyd Floor Jacks 1-Hydraulic Shop Press 1-Shop Air Compressor 2-Handyman Jacks 1-Lot Sprayer Parts-Pumps 1-Tool House Tires & Rims 1-Lot Yard & Garden Items 3-Standard Size Garage Doors 1-Garage Door Opener 1-Spades Forks-Scraper-Posthole Diggers, Etc 1-Lot Items Too Numerous To Mention |

James G. Cruce Plainview, TX (806) 296-5050 Lic #6704
Cruce & Fletcher Auctioneers and Real Estate Brokers PO BOX 609 - WOLFFORTH, LUBBOCK CO., TX 79382
Bobby Fletcher Wolfforth, TX (806) 866-4201 Lic #7131

FOR RENT

Mini Storage Units 8X10 or 10X12. Call (806) 227-2325 or (806) 933-4347. 30t-18tch

STORAGE

Two story, portable office/storage building. 12x16, insulated and wired. To be moved. \$2,495. 902 Juniper. Call 1-800-505-1452. 35t-4tch

REAL ESTATE

James F. Hayes & Co.

AGRICULTURAL REAL ESTATE SERVICES

- 320 Acres Northwest of Muleshoe. Lays good, good soil, 2 center pivot sprinklers, modest home.
- 320 Acres with exceptional 3 or 4 bedroom home. Large barn, 2 center pivot sprinklers adjacent to above farm.
- 181 Acres, Bailey County. Center pivot, 2 wells, fronts U.S. Highway 84. Joins 320 acre tract above.
- 160 Acres - Park County, Northwest of Muleshoe, Excellent Water. **SOLD** Immediate possession.
- 78 acres North of Muleshoe on Highway 214. Has pad for pivot. Lays good. 2 wells.
- 450 Acres - Arch, New Mexico area. C.P. sprinklers. Modest home.*
- Portales Area Dairy - Double 14 parallel parlor. 875 lock ups. Commodity barn, 2 hay barns, 360 cows, rolling stock. **COMPLETE DAIRY.** Very good condition.*
- 480 Acres northwest of Earth. 3 wells, 1- sprinkler nice farm.
- 160 acres of grass Northeast of Muleshoe. Didn't get back in New C.R.P. Call for details
- 160 Acres just north of Muleshoe. 2 irrigation well with new pumps. New underground pipe and wire. Late model Valley Sprinkler. Good F.S.A. payment. Immediate possession possible.

* In cooperation with a New Mexico Broker

Vic Coker, Agent
310 Main St. Suite 103 Muleshoe
Office 272-3100 Home 965-2468
WHEN LAND INVOLVES COWS AND PLOWS

For Sale By Owner. 3 or 4 bedroom, utility room, 2 3/4 baths, livingroom, dining room, detached garage with storage, 2 covered carports, 1968 sq. ft. Call (505) 437-1985. 36s-4tspdun

145 acre farm, good water, good allotment, excellent grazing. 272-5536 day. 272-5134 night. 35s-tfc

Nice 3-1-1 brick home, Country Club addition, central heat and refrigerated air, new roof, wooden deck, \$37,000. 272-5879 evenings or leave message. 36t-tfc

Nieman Realty

116 E. Ave. C • George Nieman, Broker • 272-5285 or 272-5286

RICHLAND HILLS - PARK RIDGE
• We have several single and multi-family lots in this area!!!!
• NICE 3-2-2 Brick, Cent. A&H, built-ins, FP, cov. patio, fenced yd. \$50's!!

HIGHLAND AREA
• JUST LISTED -NICE 2-1-2 carport Mobile home, Cent. heat, evap. air, stove, 2 stor. bldgs., MORE!!! \$10K!!! HL-2
• 3-2-2 Brick, Cent. A&H, built-ins, gas log FP, fenced yd., stor. bldg., MORE!! Price Reduced!! HL-5
• Nicely Remodeled 3-2-1 Brick home, 2100' + lv. area, Cent. A&H, built-ins, large den w/FP, fenced yd., stor. bldg. \$50's!!! HL-3

• 2-1-1 carport home, wall furnace heat, evap. air, DW, 5 fans, cov. patio, gas grill, fenced yd., MAKE OFFER!!!
• 3-2-2 Brick Home, corner lot, wall furnace heat, Cent. Evap. Air, fenced yd., stor. bldgs., MORE!!! HL-4

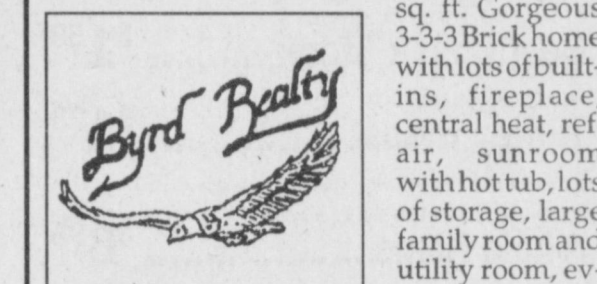
LENAU - COUNTRY CLUB AREA
• 2-2-2 Brick Home, Cent. A&H, nice carpets, fenced yd. \$40's!!! L-4
• PRICE REDUCED 2-1-1 Carport Home, wall furnace, nice carpet, storm shelter, stor. bldg., fenced yd. \$19K!!! CC-3

• 2-1-1 Home, floor furnace, win. ref. air, fenced yd, stor. bldg., \$18,500 !! L-1
• PRICE REDUCED -NICE 3-2-2 CP Mobile Home and lot, Cent. A & H, built-ins, nice yd, with large pecan & fruit trees!!! CC-1

COMMERCIAL
• Established Business: Land, Bldg. & Equip., \$75K!!
• 56' x 140' tract, approx. 4700' bldg., \$35K!!!
• NICE R.V. STORAGE, 14' X 40' metal bldg. 12' doors, 50X140 corner lot!
• SNACKSHACK - Lot, Buildings, furniture & fixtures!!!

REAL ESTATE

Country Living at It's Best - 6 miles west of Muleshoe on Highway 1760. Approx. 3500 sq. ft. Gorgeous 3-3-3 Brick home with lots of built-ins, fireplace, central heat, ref. air, sunroom with hot tub, lots of storage, large family room and utility room, every woman's dream. All on 2 1/2 acres. Also 30x50 metal barn with corrals. If you want it, this place has it! PRICE DROPPED \$5,000!!



32 acres with nice brick home and large steel barn. 6th irrigation well and domestic well. All highway frontage. Call for more details.

Just Listed-20 prime lots for sale in Country Club addition. Priced to sell.

Great Investment Opportunity-25 acres with 3 rent houses. 6 complete mobile home hook-ups with electric, low tear & replace. Just west of Muleshoe. Reasonably Priced!! Call for more details!!

South of Clay's Corner-160 acres, 2-8" irrigation wells, electric sprinkler system, lays well. Reasonably Priced. Call for more details!!

(806) 481-3846 • Toll Free: 1-888-999-3846
Ronald Byrd, GRI Licensed Broker
Home: (806) 481-9318
Crista Bass, Sales Associate • Home: (806) 925-6464

SERVICE

Sewing and alterations. Letters on jackets, cheerleader suits, prom dresses-all sizes. 272-6764. 35s-tfc

1991 Chevy S-10 Blazer, 4 wheel drive, Tahoe package, 1 owner-local, 52,000 miles, excellent condition, \$8500. (505) 356-5509

BUY IT • SELL IT • TRADE IT

In the Classifieds! 272-4536

VEHICLES

1991 Chevy S-10 Blazer, 4 wheel drive, Tahoe package, 1 owner-local, 52,000 miles, excellent condition, \$8500. (505) 356-5509

NATIONAL BRANDS Bumper Crop Of Savings

Don't forget to pick up your collectible "Blue Willow Dinnerware" pieces at Lowe's!

PRICES EFFECTIVE SEPTEMBER 2-6, 1998

MEAT

| | |
|---|---------------|
| 10 lb. bag First (2) 10 lb. bags @ 29¢ lb. Thereafter ea. bag 39¢ lb. | |
| Fresh Fryer | |
| Leg Quarters | 29¢ |
| Preferred Trim Boneless | |
| Arm Charcoal Steak | \$1.69 |
| Preferred Trim Boneless | |
| Chuck Tender Steak | \$1.99 |
| Cubed Beef | |
| Stew Meat | \$1.89 |
| Preferred Trim Boneless | |
| Beef Arm Roast | \$1.49 |
| Fresh | |
| Ground Chuck | \$1.49 |
| Preferred Trim Boneless | |
| Beef Chuck Steak | \$1.59 |
| Grade A Marval | |
| Turkey Breast | \$1.29 |
| 5 lb. Net Wt. Bar S | |
| Smoked Boneless-\$1.39/lb. | |
| Whole Hams | \$6.95 |
| Preferred Trim Boneless Beef | |
| Chuck Roast | \$1.39 |
| Decker Smoked or | |
| Cooked Ham | \$2.19 |
| Decker Regular or Thick Sliced | |
| Meat Bologna | 89¢ |
| Decker | |
| First (6) 12 oz. pkgs. 3 for \$1 | |
| Thereafter 39¢ each | |
| Meat Franks | 3/\$1 |
| Advance Country Fried Beef Steak | |
| Fingers or Patties | 89¢ |
| Advance Breaded Chicken Nuggets, Strips or | |
| Chicken Patties | \$1.39 |
| Hillshire Farm Assorted Varieties | |
| Smoked Sausage | \$1.79 |
| Hillshire Farm | |
| Lit'l Smokies | \$2.49 |
| Jimmy Dean Regular or Hot | |
| Breakfast Sausage | \$3.39 |
| Jimmy Dean 12 oz. Light or Asstd. | |
| Breakfast Sausage | \$1.79 |
| Oscar Mayer Meat Cotto Salami or Red Rind | |
| Meat Bologna | \$1.49 |
| Oscar Mayer Rst. White Turkey, Ham & Cheese or Chopped Ham | |
| Luncheon Meats | \$2.39 |
| Louis Rich Assorted | |
| Variety Pack | \$1.79 |
| Oscar Mayer | |
| Cooked Ham | \$3.49 |
| Louis Rich | |
| Ground Turkey | 89¢ |

| | |
|--|---------------|
| Libby's | |
| Potted Meat | 3/89¢ |
| Kosher, Regular or Zesty Crunchy | |
| Vlasic Dills | \$2.19 |
| Libby's Regular or Chicken | |
| Vienna Sausage | 5/\$2 |
| FAC Perfect Balance, Reg. or French Roast | |
| Hills Bros. Coffee | \$5.69 |
| Plain or Iodized | |
| Morton Salt | 3/\$1 |
| Lay's® Adobadas, Asstd. Lay's® Wavy Lay's® | |
| Potato Chips | 89¢ |
| All Types Dr. Pepper, Sprite or | |
| Coca-Cola | \$1.37 |
| All Types Dr. Pepper, Sprite or | |
| Coca-Cola | 2/\$3 |

PRODUCE

| | |
|------------------------------------|---------------|
| Golden Ripe | |
| Bananas | 4/\$1 |
| Red or White | |
| Seedless Grapes | 69¢ |
| Fresh | |
| Jalapeno Peppers | 59¢ |
| American Blend | |
| Dole Salad | \$1.59 |
| Garden Fresh | |
| Broccoli | 69¢ |
| Garden Fresh | |
| Sno White Cauliflower | 99¢ |
| Fresh Cello Pack | |
| Mushrooms | 99¢ |
| Juicy Ex-large | |
| Peaches | 79¢ |

| | |
|---|---------------|
| Kleenex | |
| Viva Paper Towels | 69¢ |
| Oil or Water Pack | |
| Starkist Chunk | |
| Light Tuna | 59¢ |
| Kraft Original or Smoked | |
| Barbecue Sauce | \$1.99 |
| Kraft Assorted | |
| Cheez Whiz | \$2.99 |
| Kraft Assorted | |
| Grated Parmesan | \$3.39 |
| Kraft Assorted Reg. or Fat Free | |
| Pourable Dressings | \$1.99 |
| Kraft Regular or Light | |
| Mayo or | |
| Miracle Whip | \$1.99 |
| Kraft Orig., Cheesy Alfredo or Thick N' Creamy | |
| Mac & Cheese | 3/\$2 |
| Reg./4 Cheese or Light Deluxe Dinners Kraft | |
| Mac & Cheese | 2/\$4 |
| Kraft Assorted | |
| Velveeta Dinners | 2/\$4 |
| 19-20 oz. Frosted or Honeynut Shredded | |
| Wheat, 17.2 oz. Spoon Size Shredded | |
| Wheat or 20 oz. Raisin Bran | |
| Post Cereals | 2/\$4 |
| Liquid | |
| Clorox Bleach | 99¢ |
| Clorox | |
| Clean-Up | \$1.69 |
| Regular or Soap Scum Remover | |
| Tilex Cleaner | \$1.69 |
| Assorted | |
| Pine-Sol Cleaner | \$1.69 |
| Regular or with Mesquite | |
| Kingsford Charcoal | \$2.99 |
| Original | |
| Ranch Style Beans | 5/\$2 |
| Old El Paso White or Yellow | |
| Taco Shells | \$1.39 |
| Old El Paso Regular or Fat Free | |
| Refried Beans | 69¢ |
| Old El Paso Chopped or Whole | |
| Green Chilies | 89¢ |
| Ocean Spray Asstd. Grapefruit/Cranberry | |
| Juice or Cocktail | 2/\$5 |
| Pace Mild, Hot or Med. | |
| Picante Sauce | \$1.79 |
| Reg. Lightly Tangy, or Picante | |
| V-8 Juice Cocktail | \$1.69 |
| Tropical, Berry Blend or Strawberry Kiwi | |
| V-8 Splash | 2/\$5 |
| Family Size • Chicken Noodle • Vegetable Beef • Chicken | |
| w/Rice • Vegetable • Cream of Chicken • Cream of | |
| Mushroom • Low Fat Cr. Of Mushroom • Tomato | |
| Campbell's Soup | 2/\$3 |
| Campbell's Soup Vegetable or | |
| Chicken Noodle | 3/\$2 |
| Santa Fe 8 Inch | |
| Flour Tortillas | 99¢ |
| Santa Fe | |
| Corn Tortillas | 99¢ |
| Aunt Jemima Butter Lite/Lite/Original Waff. or | |
| Pancake Syrup | \$1.99 |
| Aunt Jemima Original | |
| Pancake Mix | \$1.19 |
| Old Fashioned or Quick | |
| Quaker Oats | 99¢ |

FROZEN & DAIRY

| | |
|--|---------------|
| Banquet Assorted | |
| Select or Value | |
| Menu Meals | 99¢ |
| Assorted | |
| Banquet Pot Pies | 2/\$1 |
| Banquet Assorted | |
| Cream Pies | 99¢ |
| 30 oz. Old Fashioned Cinnamon Rolls or Asstd. Dinner | |
| Rhodes Rolls | \$2.69 |
| Price's 13 oz. Light or Reg. Pimiento | |
| Cheese Spread | \$1.99 |
| Jimmy Dean | |
| Sausage & Biscuits | \$1.99 |
| Reg. or 1/3 Less Fat Kraft | |
| Philadelphia | |
| Cream Cheese | \$1.19 |
| Kraft Assorted | |
| Shredded Cheese | \$1.79 |
| Kraft Cheddar, Colby, or Colby Jack Halfmoon | |
| Longhorn Cheese | \$1.79 |
| Assorted Varieties | |
| Kraft Singles | \$1.89 |
| Plains Snack Attack | |
| Chocolate Milk | 99¢ |
| Plains Slim N' Trim Non-Fat or Regular | |
| Cottage Cheese | \$1.89 |
| Jello Assorted 4 ct. Cheesecake Snacks, Reg., Fat Free | |
| Pudding or | |
| Gelatin Snacks | 2/\$4 |
| Oscar Mayer Assorted | |
| Fun Pack | |
| Lunchables | \$1.79 |
| Assorted | |
| Jeno's Pizza | 69¢ |
| Pillsbury Assorted | |
| Grands! | |
| Sweet Rolls | 2/\$5 |
| Reg. or Light | |
| Kraft Velveeta | \$3.99 |

| | |
|--|---------------|
| Quaker Masa | |
| Harina Preparada | \$3.99 |
| Quaker Assorted | |
| Instant Oatmeal | 2/\$5 |
| Regular/Less Salt/Lite or Smoke Flavored | |
| Spam® Meat | \$1.79 |
| Dinty Moore | |
| Beef Stew | \$1.99 |
| Regular or Hot No Beans/Reg. w/Beans | |
| Hormel Chili | 99¢ |
| Select Group • Mr. Goodbar • Almond Joy • Hershey's Almond | |
| • Mounds • Hershey's Krackel • York • Caramello | |
| • Hershey's Milk Choc. • Twizzler Strawberry • Kit | |
| Kat • 5th Avenue • Reese's • Reese's Cookie | |
| • Symphony Toffee Almond | |
| Hershey's Candies | 5/\$3 |
| American Beauty • Alphabets • Small Elbows | |
| • Small Shell Macaroni • Fideo | |
| La Belia Rosa Pastas | 4/\$1 |
| Citrus or Mango | |
| Tampico Punch | 99¢ |
| Van Camp's | |
| Pork and Beans | 3/\$1 |
| Select Group Peanut Butter Creamy/Crunchy | |
| Peter Pan | \$1.79 |
| Hunt's | |
| Tomato Ketchup | 89¢ |
| Regular | |
| Ultra Surf Liquid | \$4.99 |
| Reg. or w/Bleach | |
| Ultra Surf Detergent | \$4.99 |
| Reg./Spring Blossom | |
| Snuggle Ultra Liquid | \$2.99 |
| Reg. Fabric Softener | |
| Snuggle Sheets | \$2.99 |

HEALTH & BEAUTY

| | |
|--|----------------|
| Select Group Facial | |
| Kleenex Tissue | 99¢ |
| Assorted Double Roll Kleenex Cottonelle | |
| • White • Ultra White • Print | |
| Bath Tissue | \$1.99 |
| Asstd. New Freedom | |
| Maxi Pads | \$2.99 |
| Assorted | |
| Kotex Maxi Pads | \$2.99 |
| Huggies Regular, Natural or Unscented | |
| Baby Wipes | \$3.29 |
| Pull-Ups/Supreme/Overnite or Ultratrim | |
| Huggies Diapers | \$6.89 |
| Assorted | |
| Depends | \$14.99 |
| Kleenex Viva | |
| Scrub Cloths | 89¢ |
| Select Group Reg./Slender | |
| Kotex Tampons | \$2.99 |
| 2 Bar Pack | |
| Lever 2000 Bath Bar | \$1.79 |
| • 15 oz. reg. w/Corn Starch, Medicated Powder | |
| • 15 oz. Bath • 14-15 oz. Asstd. Oil or Lotion • 6.5 oz. | |
| Oil Gel • 15 oz. Conditioner or Asstd. Shampoo | |
| Johnson's | |
| Baby Products | 2/\$5 |
| Assorted | |
| Shower to Shower | \$1.99 |
| • 30 ct. Sens. Asstd. Medicated Wide • 80 ct. Sheer | |
| Asstd. • 20 ct. Antibiotic Asstd. • 30 ct. Asstd. Water | |
| Block • 30 ct. Flex Asstd. Size or Wide | |
| Band Aid Bandages | \$1.99 |
| Caps or Tabs | |
| Motrin IB Sinus | \$3.49 |
| Gelcaps/Caplets or Tablets | |
| Motrin IB | \$4.39 |
| Assorted Varieties | |
| Mylanta Liquid | \$3.69 |
| Acid Controller | |
| Pepcid AC Tablets | \$5.19 |
| • 20 ct. MS Sinus Gelcap • 20 ct. Allergy Sinus | |
| Gelcap • 24 ct. Sinus MS Caplet/Tablet/Geltab | |
| • 24 ct. Allergy Sinus Caplet/Gelcap • 24 ct. Allergy | |
| Sinus Night Time Caplet | |
| Tylenol | |
| Pain Reliever | \$3.89 |
| Ex. Str. Caplets/Gelcaps or Gelcaps | |
| Tylenol P.M. | \$5.89 |
| Caplet/Gelcap or Gelcap | |
| Tylenol Ex. Strength | \$4.39 |
| Advance Chewable Tabs or Caplets | |
| Imodium AD | \$3.99 |
| Powder or Gel | |
| Sunlight Auto Dish | \$1.99 |
| Dish Detergent | |
| Sunlight Liquid | 99¢ |
| Regular or Multi-Cat | |
| Tidy-Cat Cat Litter | \$3.29 |
| Purina 7 lb. bag | |
| Cat Chow or | |
| Meow Mix | \$5.49 |
| Purina 17.6 lb. Lamb & Rice/22 lb. | |
| Dog Chow or | |
| Little Bites | \$6.99 |
| Culligan | |
| Drinking Water | 2/\$1 |
| Luzianne Family | |
| Tea Bags | 99¢ |
| Schilling 1.3 oz. Garlic Powder | |
| Garlic Salt | 2/\$3 |
| Schilling | |
| Black Pepper | 2/\$3 |
| Schilling Reg./Thick & Zesty Spaghetti Sauce | |
| Sloppy Joe Seasoning | 79¢ |

National Brands CUSTOMER APPRECIATION MAIN EVENT SWEEPSTAKES

Register to
Win a 1998
Chevy Blazer!

1st Prize
\$12,500
2nd Prize
\$5,000
3rd Prize
\$2,500

Registration August 30 thru September 12, 1998. See details at your participating Affiliated Foods member store. No purchase required. Must be 18 years or older to register. Store employees & immediate family not eligible to participate.

WESTERN MONEY
UNION TRANSFERSM
The fastest way to send money.

Lowe's
MARKETPLACE



401 W. American Blvd.
Muleshoe 272-4585

WE RESERVE THE RIGHT
TO LIMIT QUANTITIES
IN TEXAS

515 W.
American Blvd.
Muleshoe
272-4406