



© 1990

# BAILEY COUNTY JOURNAL

'The Community Of Opportunity-Where Water Makes The Difference'

## WEATHER

		Soil Temp.		
March 25	83	33	55	48
March 26	80	36	57	50
March 27	70	38	54	51

Vol. 32, No. 12

Published Every Sunday At Muleshoe, Bailey County, Texas 79347

Member  
**TA** TEXAS PRESS ASSOCIATION **25¢**

Sunday, March 28, 1993

# Superintendent Explains Ammendments

## Election Set May 1

**EDITORS NOTE:** The following article was written by Bill Moore, superintendent of the Muleshoe Independent School District. According to Moore these are his opinions and do not necessarily reflect the opinion of the Board of Trustees.

Once again the subject of school finance is the focus of a great deal of attention and concern across the state. After three unsuccessful trips to the Texas Supreme Court in the last 10 years, the Legislature is now trying a different approach to solving this problem. On May 1 the voters of Texas will have the opportunity to decide on three constitutional amendments, all of which have some impact on school finance.

Proposition I is the one that will have the greatest impact on all districts in Texas because it is the one that effects the basic funding system for schools in Texas. If approved, the Legislature would have the authority to redistribute taxes from rich school districts to poor school districts using the mechanism they feel would best meet accomplish the objective funding equity. One possibility for doing this would be the County Education Districts under which the schools have operated for the last two years. This proposition also limits the amount that can be recaptured state-wide and exempts the Available School Fund from recapture. The Available School Fund consists primarily of earnings from the permanent School Fund as well as taxes dedicated to the fund by the constitution. Most of the fund is distributed to all schools on a per student basis.

While approval of Proposition I would allow the legislature to redistribute taxes among districts, just how this would be done has not yet been decided. Several bills that are the "enabling legislation"

for Proposition I have been introduced. I believe that it is very important that we pass Proposition I, but I also feel it is just as important that the enabling legislation be passed before May 1. I say this for two reasons: (1) every school district needs to know what effect the legislation will have on it and that there are no new mandates or sanctions against local districts contained in the enabling legislation, and (2) I don't believe the voters will pass the amendment without knowing what the enabling legislation contains. Many equate the amendment without enabling legislation to giving the legislature a blank check.

Across the state there is a wide diversity in the taxable wealth of school districts. If we choose to use the property tax as the method of funding our schools, there seems to me to be no way around redistributing funds from rich districts to poor districts in some way. The second proposition is an amendment that would exempt school districts from complying with unfunded state educational mandates. It would not be retroactive and would not go into effect until December 31, 1993. I Cont. Page 6, Col. 3

## Local Cadet Takes Command At West Point

Cadet Adelaido Godinez III, son of Adelaido and Rayitos Godinez of Muleshoe, is serving a term as an Executive Officer during Plebe-Parent Week, thereby achieving one of the highest positions in the cadet chain-of-command at the U.S. Military Academy. In his position, Godinez is third in command of the freshmen class.

The relatives and friends of plebes (freshmen) are invited to West Point for Plebe-Parent Week to tour the grounds, meet with staff and faculty members and learn first-hand about the regimen followed by the Academy's newest cadets.

A 1990, graduate of Muleshoe High School, Godinez, one of more than 1,100 plebes at West Point, plans to graduate in 1996 and be commissioned as a second lieutenant in the U.S. Army.

The U.S. Military Academy is a four-year educational institution that provides the nation with leaders of character who serve the common defense. The Academy stresses excellence in academics, military training and physical development in an environment of discipline, high moral and ethical standards, and tradition and personal growth.



**SPRINGTIME IS IN THE AIR---** Showing the signs of spring, these trees are in full bloom. Area temperatures also show that spring is here. For the past week the temperature has been in the upper 70's and lower 80's. (Journal Photo)

## Parents Face Serious Problems, Program Offered

Not one day passes without one of our children becoming victims of neighborhood violence: drive-by shootings, stabbings, rape, murder, and suicide. Our parents are in a panic or they go placidly on their way because these things don't or won't happen to their children. Too late do these parents realize that no child is exempt from the violence that permeates our daily life.

Alcoholism, drug abuse and teen pregnancies are but a few of the very serious problems that parents reluctantly face everyday. Then, parents must also be ready to help their children stay in school and to succeed. No wonder being a parent today can be a major undertaking.

What to do? Here is where Benito Rodriguez, Parent Involvement Specialist, has quite a few ideas, practical ideas, that can help parents face up to the challenges of parenthood. Rodriguez has spent these last 15 years speaking all over the state, and different parts of the country to parent audiences eager to hear his simple but effective message: We cannot solve the problems of the world, the country, or our city but we can and must learn to solve the problems in our home-especially, the problems of educating and protecting our children.

With non-stop humor, Rodriguez drives home his main points: That we must teach our children respect, responsibility, morality, honesty,

the value of work and the need to read, write and speak English effectively.

Rodriguez is a fourth-generation El Pasoan, and obtained his B.A. and M.A. in Applied English Linguistics. He is currently working on a Ph.D. in Spanish

Linguistics from the University of Chihuahua. He has trained Peruvian teachers in Lima, Peru, under a Fulbright Lecturer Fellowship; He did graduate work in linguistics at UCLA and SMU; and has written numerous articles on culture conflicts in education. His main focus is parent involvement, and in the last 15 years Rodriguez has given dozens of presentations a year in El Paso and around the state.

## Rotarians Hear Program On Home Health Care

A hospital report and program on the Home Health Care Agency was heard by Rotarians at the Tuesday noon meeting.

Richard Murphy, hospital administrator of the Muleshoe Area Medical Center, began the program with his 'annual' update on the hospital. He explained the new ultra-sound equipment that has been purchased for the hospital, emphasizing the importance of the new system and improvement out here in the "Metro-Sticks" (a Murphy phrase).

Murphy states that "hospital assets, liabilities and fund balance have risen considerably on the average this year, in comparison to 1991." He puts the recognition on good utilization and good support of the facilities.

Murphy introduced Lisa Wright, who is in charge of the Home Health Care Agency. She introduced the agency to the audience, presenting the purpose of the agency, to provide skilled health care in the patients homes, and eligibility, which is based on an evaluation visit to the home-bound individual. (home-bound meaning that the patient is basically at home most of the time)

Wright stated that "The skilled nursing visits would include observation, wound care, lab work, injections, patient teaching, and preventative education." She said, "Patients would also receive help in taking baths, dressing, shaving, light housekeeping, and shopping." "Physical therapists would also be able to help patients with exercises," she added.

Wright explained that the patients would be able to acquire a visit from a Home Health Care official from as often as once a day

Upon request, he gives speeches in either English or Spanish, although he prefers Spanish because he says "Humor in Spanish has a life of its own."

"Deja que Llegue tu Papa" is the title of Rodriguez's speech which is planned for Friday, April 2, in the evening at the auditorium at Muleshoe High School beginning at 7 p.m.

The role of the father in today's Hispanic families is dealt with, but fathers do not escape Rodriguez's sense of irony a latino humor.

Everyone is talked about; the mother, the father, the children, teachers and administrators, and how they must all learn to speak the same language—the language of mutual respect and friendship.

to as little as once every other month as needed.

The Agency has its first "trial" patient, and after April 18, 1993, upon receipt of their Home Health Care survey, will be certified.

To find out about the Home Health Care Agency, contact your local physician, hospital or health Cont. Page 6, Col. 3

## Fine Arts Night To Shine

Fine Arts Night To Shine will be held on Monday, April 5 at the Muleshoe High School Auditorium.

The schedule of events include: 6:30, Cadet Band and Intermediate Band (Junior High) and Mighty "M" Band.

7:15, Desserts, coffee, tea in the cafeteria. 8:00 One Act Play, Don Juan Tenorio.

Art will be displayed in the cafeteria from both the Junior High and High School.

Tickets are \$3.00 for adults, and \$1.00 for students.



**REGIMENTAL OFFICERS LEADING CADETS TO REVUE---** Cadet Adelaido Godinez III served as Executive Officer during Plebe-Parent Week, one of the highest positions in the cadet chain-of-command at U.S. Military Academy. Godinez is third in command of the freshmen class. Pictured along with Godinez is Regimental Commander Charlie Hall. (Journal Photo)

## around muleshoe

\*\*\*  
Lori Hasseloff was named Educator of the Week this week at Watson Junior High Ms. Hasseloff teaches reading and journalism.

Principals awards went to Jonas Alfaro, sixth grade; Gabriel Almonza, seventh grade; and Raquel Pasadas, eighth grade.

\*\*\*  
Memorial services for Willie Drake, 72, of Woodland, Calif. formerly of Muleshoe, were held March 20, in Woodland, Calif.

He married Ruth Heard of the Longview community in January 1945. They lived in the Muleshoe Area in the early 1950's and owned and operated Drake Grocery Store.

Survivors include his wife; a daughter, Janis Paschke of Woodland, Calif.; one granddaughter; one grandson, one niece and two nephews

Condolences may be sent to Ruth Drake 120 Imperial, Woodland, Calif. 95695.

\*\*\*  
Amanda Messenger, age 11, a student at Watson Junior High School, Muleshoe ISD, represented Texas school children recently when the Texas Bluebonnet Award was presented to Brian Selznick, author of *The Houdini Box*.

The award ceremony took place in San Antonio during the annual conference of the Texas Library Association.

Amanda and nine other young Texans took part on behalf of 223,635 students who voted in an election to choose the favorite Bluebonnet book of 1993.

Accompanying Amanda were Watson Junior High librarian, Mrs. Jane Rudd; Diana Harrison, teacher, and Virginia Bowers, librarian.

The Texas Bluebonnet Award is a project of the Texas Library Association and is co-sponsored by the Texas Association of School Librarians and the TLA Children's Roundtable.

\*\*\*  
Parents of Junior and Seniors will be sponsoring Friends Day Pictures on Wednesday, April 7th from 4 to 9 p.m. in the Muleshoe State Bank Community Room.

For an appointment students should see Lanelle Skaggs at the high school, Sandy Chitwood or Pat King at junior high, and Mary Janice Brantley at DeShazo. Flyers will be distributed at Dillman Elementary.

You may also call Vicki Sharp at 272-5340 or 272-5337 or Mary Ann Ramirez at 272-3918. Drop ins will also be welcome.

Adrian Photography will be taking the pictures and no setting fee is required. Two 5 X 7's, and 4 wallets will be \$8.50; four 5 X 7's, and eight wallets will be \$14.50 and two 8 X 10's, 2 5 X 7's, and eight wallets will be \$22.50.

\*\*\*  
The Rebekahs will host a baked goods and garage sale Friday, April 2 from 9 a.m. to 5 p.m., and Saturday, April 3 from 9 a.m. till ...at the Rebekah Lodge 308 W 2nd. All proceeds will go to the Cont. Page 6, Col. 1

## MASH Needs Your Help

"MASH" needs your help!!! Sharon Grant told the Journal Tuesday morning that the Meals on Wheels organization is very short on funds and since MASH funds go to Meals on Wheels, they need your assistance.

Any business in town who would consider putting a jar on their counter for donations are asked to contact Sharon Grant.

Even though all funds donated at the local restaurants are appreciated, more are needed. Mrs. Grant stated that if a business would put a jar on the counter a board member of MASH would go by and put a sticker on it.

All donations stay here in Muleshoe to feed the local people.

## Annual Easter Egg Hunt Set At City Park

Calling all boys and girls between the ages of one and 10 to the annual Easter Egg Hunt on Saturday, April 3 in the new City Park.

Again this year, the hunt will be broken up into four age groups. Boys and girls between the ages of eight and 10 will hunt between 1:30 and 2 p.m.

The second ones to hunt will be the five to seven year old age group from 2:30 to 3 p.m.

Between 3:30 and 4 p.m. those between the ages of three and four will hunt.

The last hunt will get underway at 4:30 p.m. for boys and girls between the age of one and two years. Those hunting must be able to walk on their own.

Parents will not be allowed on the ground where the hunt is in progress. If the child will not stay by themselves they will not be allowed to stay.

"Again this year, the merchants Cont. Page 6, Col. 3



### Research Funding Approved For 1993 At San Antonio Corn Producers Board Meeting

The Texas Corn Producers Board met in San Antonio, Texas for a quarterly directors meeting in conjunction with the Corn Classic Convention.

As part of the TCPB's promotional campaign, the board sponsored a booth at the convention trade show displaying the uses of corn in Texas.

booth also gave samples of different corn food items including tamales and corn chips. The booth was attended by over 2,000 farmers, agriculture related businesses, and food processors.

"I felt like the Corn Classic was a huge success and certainly benefited the farmers of Texas, and also the Texas Corn Producers Board by allowing our (the TCPB's) directors and staff to meet farmers from all over Texas and the nation," stated TCPB director and Corn Classic Chairman Neal

Burnett of Plainview, Texas.

At the Texas Corn Producers Board meeting, over \$156,000 was approved for research funding. This funding included studies for more practical irrigation and fertilizer practices, aflatoxin prevention, Northern Corn Leaf Blight and Southern Rust Control, mite and corn borer control, and corn density studies.

Chairman of the Board Bert Williams, a farmer from Farwell, Texas stated, "The TCPB is proud of the advances being made by the research we are funding. This is Texas corn farmer's money and we are doing our best to make growing corn more profitable."

Vice-Chairman Gerald Donaldson

of Wharton County added, "With the continual decline of corn prices over the last several years, the market development and promotional strategies of the TCPB are high on our list of priorities because the bottom line is that corn prices must rise."

The Texas Corn Producers Board is the statewide checkoff board representing over 50,000 corn farmers in Texas.

#### There Are

There are three kinds of people: those who make things happen, those who watch things happen, and those who have no idea what happened.

-Wall Street Journal.

### Get Your Refund Fast

You can get your federal income tax refund weeks ahead of the crowd. File your return electronically.

Last year, nearly 11 million taxpayers chose electronic filing. By doing so, they eliminated the hand processing of their returns and many of the errors that held up other tax returns — errors such as missing schedules and arithmetic mistakes.

If you are due a refund, you may get it in as little as three weeks, two weeks if you have your refund deposited directly into your checking or savings account. If you owe additional tax, you can file now and pay by April 15. In either case, you will have the benefit

of IRS confirmation that your return was received.

Many tax professionals in your area offer electronic filing to their clients. Some will even transmit returns that you have prepared yourself. Contact a tax professional in your area to ask about electronic filing services and fees.

#### Best of Press



#### Where?

There must be a lot of good in some people, when you consider how little ever comes out of them. -National News.

### Muleshoe Menu

March 29-April 2, 1993

#### MONDAY BREAKFAST

Waffles W/Syrup, Juice and Milk

#### LUNCH

Homemade Burrito, Fajitas, Seasoned Beans, Chilled Fruit, Spanish Rice Milk

#### TUESDAY BREAKFAST

Blueberry Muffins, Juice and Milk

#### LUNCH

Stromboli, Chicken Nuggets, Whipped Potatoes, Chilled Fruit, Homemade Roll, Milk

#### WEDNESDAY BREAKFAST

Donuts, Juice and Milk

#### LUNCH

BBQ Chicken, Chicken Fried Steak, Mashed Potatoes, Green Beans, Homemade Roll, Hot Cobbler, Milk

#### THURSDAY BREAKFAST

Biscuits W/Jelly, Juice and Milk

#### LUNCH

Steakfingers, Frito Pie, Whipped Potatoes, Sweet Peas, Dinner Roll, Milk

#### FRIDAY BREAKFAST

Breakfast Burrito, Juice and Milk

#### LUNCH

Grilled Ham & Cheese, Corn Dog, Cheesy Potatoes, Green Beans, Chilled Fruit, Milk

### Lazbuddie Menu

March 30-April 2, 1993

#### TUESDAY BREAKFAST

Cereal, Toast, Juice, Milk

#### LUNCH

Baked Potatoes with Ham, Broccoli & Cheese, Hot Rolls, Milk

#### WEDNESDAY BREAKFAST

Biscuits, Gravy, Sausage, Juice, Milk

#### LUNCH

Pork Chop Patty, Mashed Potatoes & Gravy, Mixed Vegetables, Hot Rolls, Milk

#### THURSDAY BREAKFAST

Breakfast Pizza, Juice, Milk

#### LUNCH

Fish, Corn on the Cob, Cole Slaw, Hush Puppies, Milk

#### FRIDAY BREAKFAST

Cinnamon Rolls, Juice, Milk

#### LUNCH

Chili Dogs, Baked Beans, Fritos, Fruit, Milk

SALAD BAR SERVED DAILY

### Three Way Menu

March 29-April 2, 1993

#### MONDAY BREAKFAST

Waffles, Sausage, Juice, Milk

#### LUNCH

Burrito's, Salad, Corn, Milk, Chocolate Oatmeal Cookies

#### TUESDAY BREAKFAST

Biscuit, Gravy, Juice, Milk

#### LUNCH

Green Chicken Enchiladas, Salad, Carrot & Celery Sticks, Spanish Rice, Milk, Jello

#### WEDNESDAY BREAKFAST

Biscuit, Sausage, Juice, Milk

#### LUNCH

Fajitas, Green Beans, Celery W/Cheese, Tortilla, Milk, Ice Cream

#### THURSDAY BREAKFAST

Malt-O-Meal, Juice, Toast, Milk

#### LUNCH

Cheeseburger, French Fries, Milk, Peaches

#### FRIDAY BREAKFAST

Two Pancakes, Juice, Milk

#### LUNCH

Pizza, Salad, Peas, Milk, Green Apples

OPEN TODAY - SUNDAY 11 A.M. to 5 P.M.

# SPRUCE UP FOR SPRING SALES

**Get great gardening results—and save money—with HYPONEX.**

- Recommended for more vigorous plant growth
- Helps loosen hard soil

**Hyponex, Compost Plus Organic Peat**  
40 lbs.

Now at special savings!  
After Rebate **\$1 19**

\$8.00 PER CALENDAR YEAR LIMIT PER FAMILY/HOUSEHOLD ON ORGANIC PLANTING, POTTING, AND BARK PRODUCTS

**Get great gardening results—and save money—with HYPONEX.**

- Excellent for topdressing, seeding, or patching

**Hyponex, Top Soil**  
40 lbs. 1 cu. ft.

Now at special savings!  
After Rebate **\$1 19**

\$8.00 PER CALENDAR YEAR LIMIT PER FAMILY/HOUSEHOLD ON ORGANIC PLANTING, POTTING, AND BARK PRODUCTS

**Dog Biscuits**  
Multi-Flavor Or Large, 5 Lb. Bag

**\$2 99**  
Per Bag

**Hi-Protein Dog Food**

Five Point is comparable to Purina Dog Chow but costs about 40% less. With superior palatability you can be assured that your dog will like the taste and you will like the price!

**GUARANTEED ANALYSIS**

Protein (Min.)	27%	50 Lb. Bag
Fat (Min.)	10%	<b>\$11 49</b>
Fiber (Max)	4%	
Moisture (Max)	10%	

**Cat Food**

Five Point Premium Cat Food is specially blended for cats with finicky appetites. Chicken, fish and liver flavors help enhance palatability. Odor block has been added to reduce litter box odor.

**GUARANTEED ANALYSIS**

Protein (Min.)	30%	20 Lb. Bag
Fat (Min.)	10%	<b>\$7 49</b>
Fiber (Max)	4%	
Moisture (Max)	10%	

**Chunk Style Dog Food**

21% Chunk Style—Five Point Chunk Style Dog Food is comparable to Purina Dog Chow but cost about 40% less. With superior palatability, you can be assured that your dog will like the taste and you will like the price!

**GUARANTEED ANALYSIS**

Protein (Min.)	21%	50 Lb. Bag
Fat (Min.)	8%	<b>\$9 89</b>
Fiber (Max)	5%	
Moisture (Max)	10%	

**Large Dog House**

- Shingled Roof
- Exterior Siding
- Solid Wood Frame
- Raised Floor with treated wood

**\$49 99**

**SOLID COMFORT™ DOG HOUSE**  
Large 24" x 36"

**Weed-B-Gon**

**WIPE OUT WEEDS COMPLETELY.**

- Kills dandelions, chickweed, plantain, wild onion... and dozens of other lawn weeds.
- Kills entire weed tops and roots without harming the grass.
- Works fast—easy to apply.

1 Qt. **\$6 99**

**ORTHO**

**Get great gardening results—and save money—with HYPONEX.**

- Helps maintain soil moisture through dry summer months

**Hyponex, Compost and Manure**  
40 lbs.

Now at special savings!  
After Rebate **\$1 19**

\$8.00 PER CALENDAR YEAR LIMIT PER FAMILY/HOUSEHOLD ON ORGANIC PLANTING, POTTING, AND BARK PRODUCTS

**Sprayer**

2 Gallon #2702 **\$14 69**

3 Gallon #2703 **\$16 19**

**Broadcast Spreader**

**TRUE TEMPER™**

Homeowner Spreaders: Push Broadcast Spreader, precalibrated, nylon enclosed gear box, handle-mounted flow control, vinyl grip, cane handle for storage ease, POP hot stamp, packed KD in POP carton. **SPREAD WIDTH/FT.: 4-8; CAPACITY LBS./CU. IN.: 40-60/1100; HOPPER COLOR: black; HOPPER TYPE: polypropylene; GEAR TYPE: nylon; WHEELS: 8" poly. STD. PACK: 1. WT. PACK LBS.: 9.7; PRODUCT NO.: SB1500; UPC CODE: 027997 402303**

**\$23 49**

**Hoffco Mini-Tiller**

Completely portable

- WEIGHS UNDER 25 LBS.
- FOLD DOWN HANDLE BARS
- EXTRA CARRYING HANDLE
- MADE IN THE U.S.A.
- LIF HOE WILL FIT IN YOUR CAR TRUNK!
- 6" QD CULTIVATING WIDTH

**FIVE (Quick-Attach) ATTACHMENTS**

- De-thatcher/Aerator
- Border/Edger/Transpot Kit
- 6" n Garden Seeder

**\$189 99**

**HOFFCO®**  
Since 1949 Hoffco's L'I' Hoe can go anywhere you need it to go!

**Nothing Kills Weeds Better Or Easier Than Roundup®**

1 Qt. Concentrate **\$21 69**

Always read and follow label directions. Roundup® is a registered trademark of Monsanto Company.

**SUNSHINE Peat Moss**

4 Cu. Ft. **\$8 69**

Select grade Canadian peat, naturally moist. Patented wetting agent added for watering benefit. 70585.

**Sprinkler Hose**

50 Ft. **\$5 99**

- Adjusts from Mist to Soak
- Ideal for Watering Narrow Areas
- Comes with Connecting Fitting #23W/cap

**Ross Fertilizer Stakes**

**25¢** Ea.

**Garden & Flower Seeds**

**10 FOR \$1 00**

Choose from an assortment of the most popular flower and vegetable seeds. 75985

**Crabgrass Control**

Controls crabgrass and 25 other annual weeds as you seed your lawn.

**\$11 99**

**Hyponex 20 Lb. Potting Soil**

**\$1 49**

**Basic Garden Hose**

50 Ft. **\$4 99**

- 3-Ply Construction
- Tire Cord Reinforced #7500

**1860 RAIN TRAIN® 200**

Traveling sprinkler with die-cast metal body

- 1 per display box (1 20 cu. ft.)
- Carton wt.: 20.8 lbs.
- Box dimensions: 21" x 9" x 10"

- 16,000 sq. ft. max. coverage
- Rust-resistant cast iron body
- Durable brass hose connection
- Powerful two-speed transmission
- Adjustable spray arms with regular nozzles
- Patented rear wheel cleats
- Made in the USA.

**\$48 59**

**Super Lawn Food**

40 Lb. Bag **\$7 49**

Specially formulated for alkaline soils of the Southwest

**All Purpose Sprinkler Hose**

80 Ft. **\$12 99**

- 5-Ply Radial Construction
- All Weather Flexibility
- Longer Length for use around the home & garden

**1015 RAINSHOWER® 40**

Non-puddling sprinkler

- 12 display boxes per carton (2 65 cu. ft.)
- Carton wt.: 10.9 lbs.
- Box dimensions: 16" x 5-1/2" x 3-1/2"

- 40' x 66' (2600 sq. ft.) max. coverage
- High impact-resistant plastic
- Aluminum spray tube
- 16 precision-punched water openings
- Turbo-Heart® non-puddling action
- 59-position Dial-A-Rain® coverage control
- Powerful turbine drive mechanism
- Made in the USA - 5 year guarantee

**\$4 99**

**N48FC** - 30" diameter max. coverage  
**N48SC** - 30" x 30" max. coverage

- Durable cast metal
- Non-clogging, no moving parts
- Fast, precise, gentle watering
- Made in the USA
- 5 year guarantee

**\$4 99**

**Weed & Feed**

Covers 5,000 Sq. Ft. Applicator Included

For the best in liquid lawn care, keep your lawn in tip-top shape with the proven performer, Green Sweep®. There's no mixing or measuring. Just look it up to a hose and spray for a lush, beautiful, healthy lawn.

**\$5 99**

**A&M FARM & RANCH SUPPLY**

3 AREA LOCATIONS

2600 Mabry Drive, Clovis, NM 1601 S. Ave. D, Portales, NM 1302 W American Blvd., Muleshoe, TX

1-505-762-7717 1-505-356-8543 1-806-272-5571

VISA MasterCard DISCOVER



## Pork Prices Drop Again In March

by Edith A. Chenault

The piggy's coming to market at a lower price again in March.

Supermarket pork prices will continue to decline due to record feed grain harvests, lower feed prices, and more hogs, according to a food marketing specialist with the Texas Agricultural Extension Service.

The number of hogs coming to market has increased about 4 percent over the last six months, and current prices that farmers received have dropped to their lowest levels of the past five years, said Dr. Richard Edwards of College Station.

"Retailers have passed the savings on to consumers, so consequently pork prices are very attractive and will remain so through 1993," he predicts.

Advertised pork specials for the month will focus on popular cuts. The price for pork steaks and picnic hams will drop below 85 cents a pound. There will be few sales on "regular" hams, as most will be saved for Easter specials, but those on sale will be less than \$1 per pound, he said.

Pork chops will be offered from \$1.19 to \$1.29 per pound, and rib prices will vary according to cuts. The small, more tender ribs will be priced about \$1.50 per pound, while the larger ones will cost 10 to 15 cents per pound less. The "country style" cut will be even lower at \$1.25 per pound. Bacon and sausage also will be on sale below \$1 per pound.

Low feed prices and low pork prices also helped beef and poultry prices in check. Beef supplies coming to market in the previous months were down due to winter weather, which interferes with normal shipping schedules. This backlog will be marketed during March, and prices should drop. To move excess, Edwards said, prices of all cuts will be lowered, with the more expensive cuts providing the best bargains.

Consumers will see specials on rib and T-bone steaks at \$3.50 per pound. "This price will be even lower when the steaks are bought in the larger 'family pack', Edwards said.

Ground beef will often be marketed at less than \$1 per pound, and some retailers may even go

below 90 cents. Fresh briskets will be priced from \$1 to \$1.25 per pound. Round and sirloin steaks marked down to \$1.75 to \$1.85 per pound will not be hard to find.

Poultry price reductions will be restricted as fewer birds are grown during the winter months. Specials will be confined to whole birds for 59 cents per pound and the bone-in breast at \$1.25 per pound, he said.

Seafood sales will climb because of Lent, and consumers will look to shrimp and other high-priced products for their seafood needs. Typical specials will feature shrimp at \$4 per pound for the medium size, orange roughy fillets at \$4 per pound, red snapper at \$4.50 per pound, and salmon steak for \$5 per pound. Look for specials on canned tuna and salmon.

St. Patrick's Day is a major promotional event, and consumers will see specials on corned beef, cabbage, potatoes, imported Irish cheese, Irish beef, and domestic beers colored green. All of these items will be discounted at least 25 percent for this event, he said.

Some fresh, domestically grown produce will return for the year during March. Strawberries will be the most widely featured item, and prices will range from 49 to 79 cents per pound. The lower prices will be found late in the month as supplies increase.

The supply of tomatoes not grown in green houses also will increase, but prices will remain relatively firm at 79 to 89 cents per pound. The lower prices will be found late in the month as supplies increase.

The supply of tomatoes not grown in greenhouses also will increase, but prices will remain relatively firm at 79 to 89 cents per pound.

Other items that will appear in greater quantities are green beans, green peas, green onions, radishes, cucumbers, squash, corn on the cob and eggplant.

Reaching their season peak will be grapefruit, oranges, artichokes, broccoli, asparagus, and brussels sprouts, with the best buys on citrus.

Orange juice remains plentiful, and the low prices of the last few months will continue. Look to pay \$1.75 per half-gallon of refrigerated juice and less than \$1 for the 12-ounce frozen concentrate.

"Marketers of apple and pineapple juices are hoping to ride on OJ's popularity and will have specials on both fresh and frozen products at about the same level," Edwards said.

Sales on canned and frozen vegetables will reach a fevered pitch right before the "fresh" season begins. Broccoli, carrots, peas and spinach are the frozen items that will be discounted. Peas, carrots, and tomato products head the list of canned products.

Other frozen food products that will be promoted during the month include pizza, frozen potato products, pot pies, and dinner entrees. All of these, except for pizza, lose market share as the weather warms, and this sales blitz will attempt to capture as much business as possible before sales drop.

## Combest Searches For Senior Citizen Volunteers

U.S. Representative Larry Combest (R-Texas) is encouraging senior citizens to apply for a one-week government study program the week of May 8-15 in Washington, D.C. In the past five years, seniors from the West Texas-Permian Basin area have traveled to the nation's capital to participate in discussions with members of Congress and administration officials.

"During their visit, these senior ambassadors observe and comment on the process of government," said Combest. "It is important to have opportunities to share viewpoints in our representative democracy. Seniors often give their time and energy with valuable suggestions that strengthen our country."

In addition to discussing issues with Congressman Combest, seniors will participate in on-site study visits to Capitol Hill, the Supreme Court and the Library of Congress. Time will also allow for visits to many of Washington D.C.'s historical sites.

The congressman said that seniors interested in applying for an internship must be at least 60 years of age, in good health, active in local senior citizen projects and willing to share what they learn with others back home.

Since the program is funded without taxpayer money, interns are responsible for their own

## Panhandle Residents Eager To Try Fuel Alternatives

A new statewide study released by the Texas Railroad Commission has some surprising news about Panhandle residents and their interest in helping the environment. A remarkable 87 percent of those surveyed in the Panhandle are now willing to drive a propane-powered car if performance and cost are the same with gasoline.

The news about propane is encouraging because it is a clean-burning fuel that will help the city begin to address its air pollution problems. And, according to the survey, 47 percent of all Panhandle residents feel that something should be done about air quality in their

communities.

The survey also revealed a strong bias for Texas products: 91 percent want energy alternatives that are Texas-produced. That may be because 89 percent believe that they will personally benefit from improvements in the Texas economy.

Some other findings:  
\* 82 percent of Panhandle residents agree that reducing foreign oil dependence is important.

\* 56 percent of Panhandle residents think that "doing your part for the environment" is a good reason to switch to alternative fuels.

The study also evaluated propane's growing popularity for outdoor grilling. Results of the survey, however, show that:

\* 36 percent of outdoor grills in

use in the Panhandle rely on charcoal or wood, which are known to contribute to air pollution.

\* Despite strong feelings for the environment, Panhandle residents report that cost savings are the single most important motivation to switch to propane gas grills.

Propane is designated a clean-burning alternative fuel by State and Federal clean air legislation, making it a fuel of choice for vehicle fleets. Besides its cost and environmental advantages, propane is readily available at more than 1,100 propane vehicle refueling stations in Texas alone. Propane is used safely in home heating and cooking, outdoor grilling, camping, and industrial equipment. A by-product of oil and gas refining, propane is the most widely used alternative fuel in Texas, the United States, and the world. One third of the nation's supply of propane comes from Texas. For more information call 1-800-64-CLEAR.

## Bailey County Journal

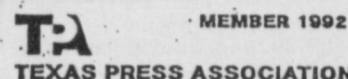
USPS 040-200  
Established March 31, 1963. Published by Muleshoe Publishing Co., Inc. Every Sunday at 304 W. Second. Box 449, Muleshoe, Tx. 79347. Second Class Postage paid at Muleshoe, Tx. POSTMASTER: Send address changes to the Bailey County Journal, P.O. Box 449, Muleshoe, Tx. 79347.

We are qualified members of:  
Panhandle Press Association, National Newspaper Association, West Texas Press Association and Texas Press Association



National Newspaper Association

WEST TEXAS PRESS ASSOCIATION



L.B. Hall, Publisher  
Sammye Hall, Vice-President/Comptroller  
Evelene Harris, News  
Annette Bottlesman, Society  
Holly Millamp, Advertising  
Tammy Vae, Classified  
SUBSCRIPTIONS  
Muleshoe Journal and Bailey County Journal -  
By Carrier Yearly - \$15.00  
Bailey and surrounding counties  
By Mail - \$16.75  
Elsewhere - \$18.50

Advertising Rate Cards on Application  
\* Advertisers should check their ad the first day of insertion. The Journals will not be liable for failure to publish an ad or for a typographical error or errors in publications except to the extent of the cost of the ad for the first day of insertion. Adjustment for errors will be limited to the cost of that portion of the ad where the error occurred.\*

**COMBO OF THE MONTH**  
CHICKEN BREAST SANDWICH & A TALLSUP FOR ONLY \$1.99

ALLSUP'S HOT LINKS  
2 FOR 99¢  
Shurfine 6 1/8 oz. Tuna oil or water 69¢

COOKED FOODS SPECIAL OF THE WEEK  
ALLSUP'S FAMOUS BURRITO & 16 OZ. COKE (NON-RETURNABLE BOTTLE) FOR ONLY 99¢

318 W. Amer. Blvd. 272-4862  
**ALLSUP'S**  
PRICES EFFECTIVE MARCH 28-APRIL 3, 1993

ALL VARIETIES LAY'S® POTATO CHIPS REGULAR \$1.49 FOR ONLY 99¢

Enjoy Coca-Cola CLASSIC  
ALL TYPES COCA-COLA 6 Pk. 12 oz. cans 2.09

LIBBY'S VIENNA SAUSAGE 5 OZ. CAN 2 FOR 89¢

HAM, EGG & BISCUIT FOR ONLY 79¢

DECKER CHOPPED HAM 10 OZ. PKG. \$1.49

BATHROOM TISSUE SOFT 'N GENTLE 4 ROLL PKG. 99¢

DECKER MEAT BOLOGNA 12 OZ. PKG. 79¢

ALLSUP'S 1 1/2 LB. LOAF SANDWICH BREAD 69¢ EACH OR 2 FOR 1.09

SHURFINE CORN/GREEN BEANS 4/1.00

FITTI MED OR LG. DIAPERS 5.99

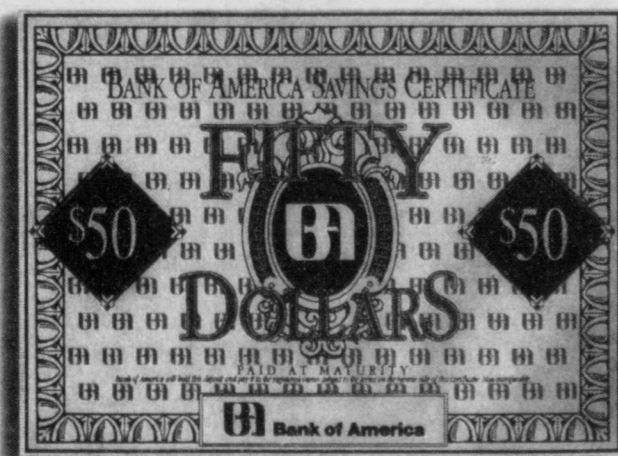
SHURFINE 32 OZ. TOMATO KETCHUP 69¢

**HOT FOODS MENU**

BARBECUE BEEF SANDWICH	99¢	9 PIECE BOX CHICKEN	\$5.99
BARBECUE PORK RIBS (LB.)	\$3.99	BEEF & CHEESE CHIMICHANGA	\$4.19
BARBECUE WHOLE CHICKEN	\$3.99	(MEAT) CORN DOG	69¢
ALLSUP'S BURRITO	79¢	DELICIOUS HAMBURGER	69¢
BREAKFAST BURRITO	99¢	WILSON HOT LINKS	99¢
BURRITO BEEF & SALSA	\$4.19	SAUSAGE ON A STICK	\$1.39
DELICIOUS CHEESEBURGER	89¢	SAUSAGE & BISCUIT	79¢
CHICKEN FRIED STEAK	\$1.59	SAUSAGE EGG & BISCUIT	\$1.09
3 COUNT CHICKEN STRIPS	\$1.49	SAUTEYEA SAUSAGE	99¢
W/POTATO WEDGES/CHICKEN (2 PC.) BISCUIT	\$1.99	4 COUNT STEAK FINGERS	\$4.00

CALL IN ORDERS WELCOME CHECK OUR WEEKLY SPECIALS

Come in for a new checking account and walk out with a \$50 Savings Certificate.



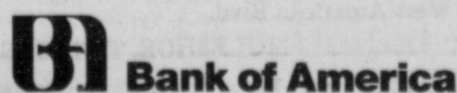
Stop by any branch of Bank of America today and leave with a brand new \$50 Savings Certificate.\* All you have to do is open a new checking account. We'll also give you 150 free checks, the convenience of 260 branches statewide and free access to 250

VERSATELLER® ATMs all over Texas. It's one of the best incentives ever to switch banks. Open your new checking account today at your nearest branch or call 1-800-442-6630.

BANKING ON AMERICA™

Muleshoe 304 Main St., 272-5527

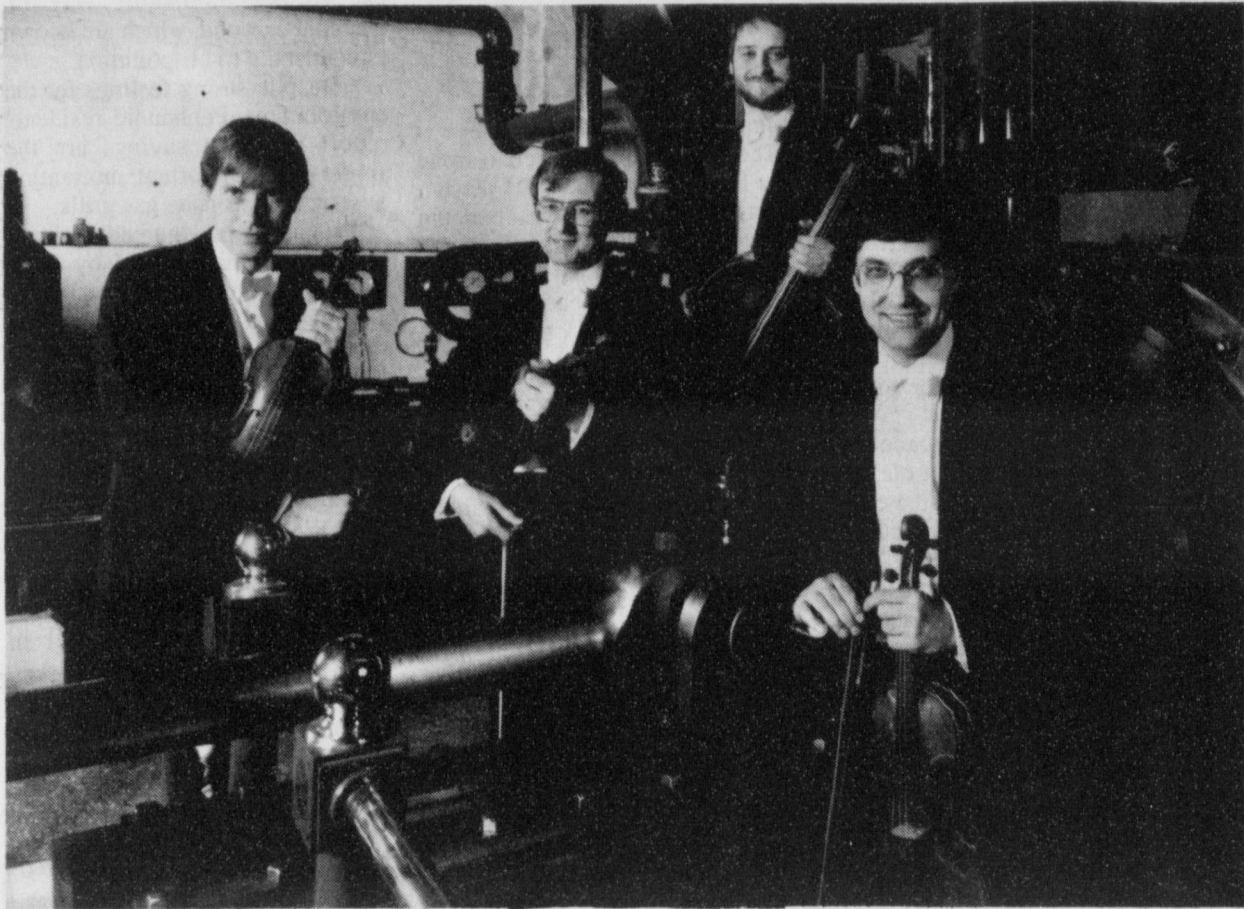
Farwell 203 Avenue D, 481-3353



1-800-442-6630

\* Available to new personal checking customers. Pays \$50 after 7 years. Has current value of \$10. Substantial penalty for early withdrawal. For interest-bearing checking accounts, federal regulations require us to report the \$10 as interest. Offer expires May 31, 1993. Bank of America Texas, N.A. Member FDIC





The Maggini String Quartet

## The Maggini Quartet Performs In Concert

Who are the Maggini? Four inspired musicians whose sheer delight in playing chamber music is irresistible.

In four short years the Maggini Quartet has won international acclaim, performing in the most prestigious venues and festivals in Great Britain, the US, Eastern and Western Europe and the Far East. But at least as important to the Maggini Quartet is the rapport they've established with their audiences.

The Maggini's recording activities reflect the wide range of their musical interests; new releases include the Haydn op.33 quartets on the Simax label and a CD of quartets by the contemporary Spanish composer Angel Barja. The Maggini Quartet also commission new music. One of their latest projects is a work by the brilliant young Jamaican composer Eleanor Alberga.

Alongside regular European visits, in Spring 1993 the Maggini Quartet makes its first appearance at Tokyo's prestigious Casals Hall as part of a major tour of Japan and Korea.

Following the success of its American debut at the Frick Collection in New York, the Quartet has expanded its American schedule to include two tours per season and is now accepting engagements until the end of 1995.

The Maggini String Quartet was formed in 1988 when violinist Thomas Bowes, whose recent London debut received unqualified acclaim from public and critics alike, gave up a flourishing solo career to join three members of the well-known Bochmann Quartet.

In a remarkably short time, the Maggini has established an artistic identity recognized and praised by

critics and audiences alike, both throughout the U.K. and all over Europe. They have performed at major British festivals, broadcast extensively on the BBC, and were tumultuously received while touring Spain. Already their London following is such that they play to capacity halls whenever they perform there.

Members of the quartet have become well known for their amusing and anecdotal spoken introductions at concerts.

The name Maggini comes from one of the very earliest violin-makers, who made part of the instrument played by quartet-member David Angel. They make their New York Debut on Nov. 24, 1991 at the Frick Collection.

The Maggini Quartet recently performed a concert, sponsored by the Hereford Community Concerts Friday, March 26, 1993 in the Hereford High School Auditorium.

## Creative Living

by Sheryl Borden

Information on quilted garments, shortcuts desserts and easy cleaning will be the featured topics on "Creative Living" on Tuesday, March 30 at 12:00 and Saturday, April 3 at 2 p.m. (All times are mountain). "Creative Living" airs on public broadcasting station, KENW-TV, from Eastern New Mexico University in Portales, NM.

Donna Wilder, representative of Fairfield Processing Corp., will show how three quilt have been incorporated into beautiful wearable garments. Ms. Wilder is from Danbury, CT.

Lynne Trolley, proprietress of Miss Mary Bobo's Boarding House in Lynchburg, TN., will demonstrate some delicious desserts using convenience products to cut down on time.

Sheryl Flomenhoff, representative of Black and Decker Household Products Group, will demonstrate how to "bust the dust" out of housework and make cleaning easier. Ms. Flomenhoff is from Shelton, CT.

On Tuesday, March 30th at 9:30 p.m. and on Thursday, April 1 at 12:00 "Creative Living" will feature information on gift baskets for newlyweds, paper shopping bags and spoon desserts.

Deborah Durham, creative consultant with J.C. Penny Home, will demonstrate how to assemble the perfect gift basket for newlyweds. Durham is fro Malibu, Ca.

Owen Edwards, representative of the American Paper Institute, will discuss the importance of the paper shopping bag as a marketing tool top enhance the environment. Edwards is from New York City.

Lynne Nusom, cookbook author and newspaper columnist, will demonstrate how to prepare spoon desserts just like the ones grandmother used to make. Nusom, is from Las Cruces, NM.

"Creative Living" is produced and hosted by Sheryl Borden. The show is carried on more than 100 PBS stations in the United States, Canada, Guam and Puerto Rico and is distributed by Pacific Mountain Network, Denver, Co. Viewers can request copies of materials offered on the show by sending one 29 cent stamp for each handout requested. Send the stamp, along with your name and address and booklets requested to:

"Creative Living" Requests  
% KENW-TV  
52 Broadcast Center  
Portales, NM 88130

### The New Banana Pudding

12 twinkies  
1 6-ounce box instant French Vanilla Pudding  
1 4-ounce carton cool whip

3 bananas  
Milk

Split Twinkies lengthwise; place cream-side up in bottom of a 15x9x2-inch cake pan. Peel banana and slice; cover the top of Twinkies with sliced bananas. Spread pudding to cover. Spread Cool Whip over top of pudding. Cover and chill, allow enough time before serving to let the flavors meld together. Cut into squares and serve. Makes 12 servings.

### Egg Nog Cakes

1 loaf-shaped angel food cake  
1 16-ounce box confectioners' sugar  
1/2 pound crushed pecans

1 stick butter  
1/2 c. Jack Daniel's Whiskey  
1/2 pound crushed vanilla wafers

Cut angel food cake into 1-inch pieces and set aside. Melt butter; mix with confectioners' sugar until smooth. Add whiskey to dipping consistency. Mix pecans and vanilla wafers in a large bowl; set aside. Dip cake pieces in dipping mixture until well coated. Layer in candy tins and seal. Let stand for at least 3 days. Makes approximately 4 to 5 dozen.

**IN TEXICO**  
**314 Wheeler**  
482-3363 or  
(800) 748-2459

# Rip's

**YOUR ONE STOP  
EASTER SHOP**

**20% Off!**

All Straw Hats  
All Men's Suits  
All Men's Shirts  
All Sterling Buckles  
All Men's Sport Coats

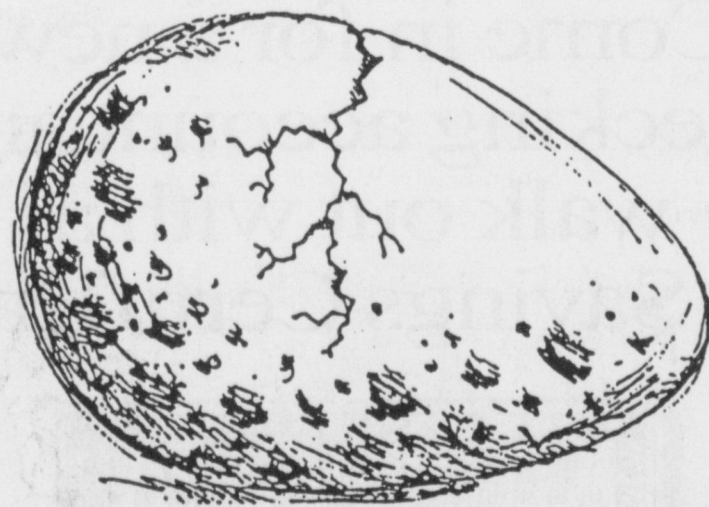
**20% Off!**

All Jewelry & Accessories  
All Ladies' Blouses  
All Ladies' Jackets  
All Ladies' Slacks  
All Ladies' Skirts

*Unbelievably  
Low Prices!*

Layaways Welcome  
No charge for alterations • Complimentary gift wrapping  
Hours: 9 a.m. - 6:30 p.m. csl Monday through Saturday  
We accept Visa, MasterCard, American Express & Discover

For Your  
Mary Kay Cosmetics  
**Josie Flowers**  
272-3865  
8 a.m. - 12 noon  
8 after 6 p.m.



## Are taxes chipping away at your nest egg?

It's tax time. Time to plan a little tax strategy to help you build your nest egg rather than having it chipped away by taxes.

An IRA from Muleshoe State Bank allows you to earn interest on your investment that is tax-deferred until you begin withdrawing your funds. So, until April 15th, most wage-earners can still choose between deducting all or part of their IRA contribution from their taxes or paying it to the IRS.

If you don't presently have an IRA or haven't made your contribution to an existing IRA, now is the time to begin, add-to or roll over to an IRA at the Muleshoe State Bank.

An IRA at Muleshoe State Bank is a wise investment and a great way to make your

money work for you and protect your nest egg, too!

Stop in at Muleshoe State Bank and let us show you how an IRA can meet your future investment needs.

\* Personal Services. We're here to answer any IRA questions you may have.  
\* FDIC Insurance. Your IRA is separately insured to \$100,000 by the FDIC.

\* Rate subject to change weekly. Substantial penalty for early withdrawal. Some restrictions may apply.

## Lawn & Garden Headquarters

Now is the time to prepare your ground with Soil Conditioners, Organic Mulch, Peat Moss & Pre-emerged Weed Killer!



Kristy's Plants has a large selection of Bulk Garden Seed and Onion Sets!

Some Trees & Shrubs in stock with many more still to come!

Look for a full selection by April 15th!



Order Your Easter Lilies Now!

# Kristy's Plants

710 E. AMer. Blvd. Muleshoe 272-5536



**MULESHOE STATE BANK**

101 West American Blvd. Phone 806/272-4561  
MULESHOE, TEXAS 79347

And Farwell Branch

801 Ave. A Farwell, Tx. 806-481-9580

MEMBER FDIC





Zonell Gatewood (bride elect of Rodney

## Bridal Shower Honors Zonell Gatewood

A bridal shower honoring Zonell Gatewood, bride elect of Rodney Baker, was held at the Old Depot Saturday March 20, 1993 from 3-4:30 p.m.

Zonell's corsage was made of small raspberry and amethyst orchids.

Refreshments of raspberry punch, assorted cookies, mints and nuts were served from crystal appointments. The table was adorned with a silk organza tablecloth with a floral pattern, accented with amethyst candles in crystal candleholders. The arrangement decorating the table

was mauve amaryllis with accents of raspberry and amethyst. Special guests attending were Zona Gatewood, mother of the bride-elect; Nadene Baker, mother of the groom to be; and Argilee Millen, grandmother of the bride-

Come, gentle Spring, ethereal mildness, come!  
-James Thomson.

Spring makes everything young again save man.  
-Jean Paul Richter.

When lovers are far apart they are made even sadder by the loveliness of Spring.  
-Bhartrihari.

elect. Zonell was presented with a Sunbeam mixer from the hostesses.

Hostesses for the occasion were Barbara Mills, Brenda Lackey, Vannett Field, Linda Low, Kathie Tolston, Julia Rojas, Jody Ellard, Doris Lackey, Tammy Killough, Tracy Pyle, Diane Grumbles, Laura Helton, Janice Snell, Peggy Burhman, and Judy Louder.

## Tops News

Tops Chapter No. 34 met at the Muleshoe Church of Christ Thursday, March 25, 1993 at 6:00 p.m. Leader Laverne James called the meeting to order. The Tops pledge was recited and the fellowship song was sung. Mrs. James led the group in a prayer.

Betty Jo Davis, weight recorder, called the roll, with 17 members answering with the amount they had lost or gained. Minutes of the previous meeting were read by Aurora Mata, and approved as read.

Best loser for the week is Ruth Clements. Runners-up are Alene Bryant, first runner-up and Aurora Mata, second runner-up.

Next week will be awards and fruit night. We will also have a salad supper.

## Nursing Home News

by Joy Stancell

Friday afternoon Rev. Dean Reid from the First Assembly of God Church directed our music and Devotional time.

Clara Lou Jones showed the residents a film from the Library Friday morning.

Sunday afternoon the New Covenant Church came for church services and fellowship.

Tuesday morning, Louise Legg and Juanita made and brought ceramics for the residents. Residents participating were Janetta Hukill, Vera Downing, Modean Graves, Gladys Pierce, Rosemary Pool, Thetal Criswell, Lillie Wuerflein, Pearl Cox, Clara Weaver, Stella Morgan, Lib King, Obana Snider.

Tuesday afternoon Beth Watson, Bonnie Green, Claudine Embry and LaVerne James came to shampoo and set the ladies' hair. Mandy Edwards gave manicures.

Wednesday morning Melvin Griffin hosted the Men's Coffee Time.

Wednesday morning, Lona Embry hosted a New York party with artifacts from her trip to the "Big Apple" city. Refreshments of bagels, cream cheese and blue berry muffins and fresh fruit was served.

Vera Downing visited with her daughter in the home of her son and daughter-in-law Elmer and Billie Downing, during the weekend.

Ruby Garner visited the Healthcare Center Wednesday. She assisted with our New York party.

August (Ed) Edmiston has returned to the H.C.C. after being hospitalized in the local hospital. Welcome back Ed, we missed you.

The March birthday party was held March 25, 1993 at 3:00 p.m. Hostesses for the party were the Eastern Stars. Flowers were by Kathy's Kreations. Honorees were Felicita Leyja 3/4/14; Clara Weaver 3/24/19; and Otilie Wisian 3/15/05. Happy Birthday!

### One Day

A sobering thought for every youth to ponder is that someday he will know as little as his father knows now.

-Record, Columbia, S.C.

### Fish Story

Yeah, the fish was too small to bother with, so I got a couple of guys to help me throw it back in the lake.



Otilie Wisian



Clara Weaver



Felicita Leyja

## Muleshoe Rebekah Lodge Meets

Muleshoe Rebekah Lodge Number 114 met on March 23, 1993, Noble Grand Louise Allen opening the Lodge with 23 members present. Mildred Kendrick gave the opening prayer. June Green read the minutes of the previous meeting.

Ruby Green gave a report on Schuyler Colfax, the founder of the Rebekah Lodge.

There will be a bake sale and garage sale at the Lodge on April 2, 1993, beginning at 9:00 a.m.

George Gross passed away and the Lodge will serve lunch on Thursday.

Rebecca Venzar was initiated into the Lodge at the Tuesday meeting.

Refreshments were "pot luck" with all members serving.

George Miller, M.D., London: "If you take fat out of your diet, you don't have to wait years to lower the risk of heart disease."

Anatoly Chubais, Russian deputy prime minister: "We are deeply convinced that inflation is problem number one."



The Board of Directors from the Farmers Cooperative Association in Enochs would like to invite all friends and family of Bob and Louise Newton to a retirement party on April 3, 1993, from 3-5 p.m. at the Community Activity Room in Morton, Texas.

# GARDENERS' Specials

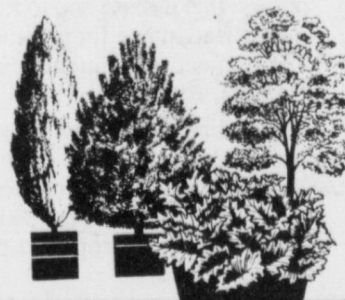
## Fruit Trees

4-9 Feet Tall  
Five Gallon

Anna Apple, Haralson Apple, MacIntosh Apple  
Red Rome Beauty Apple, Wealthy Apple,  
Indian Free Peach Sam Houston Peach,  
Desert Gold Peach

## Evergreens

Arborvitae



## Shade Trees

4-9 Feet Tall  
Five Gallon

Arizona Ash, Bold Cypress, Cottonless  
Cottonwood, Silver Maple, Fruitless Purple  
Leaf Plum, Oklahoma Redbud, Globe  
Willow, Maple Leaf Mulberry



## All Garden Seed

50% off



## Bedding Plants

Early Girl Tomato, Petunias, Pansies  
Jalapeno & Bell Peppers & Much More

77¢ 4 pack



## Onion Sets

White, Red Or Yellow

77¢ Bunch



## Hand Pruners

W/Handy Carrying Strap

\$2.97



## Garden Hose

1/2", 50 ft. Vinyl

\$3.73



## Potting Soil

By Hyponex  
20 Qts.

2 Bags \$3



# Ben Franklin

Our Variety Shows

2104 W. Amer. Blvd Muleshoe 272-3855  
Mon. - Sat. 8 a.m. - 8 p.m. Sun. 12 - 5 p.m.



## Red & Yellow, Black & White

"... we are precious in His sight." Generations of children have sung those words together, acknowledging the beauty and diversity of God's human creation.

The United Methodist Church opens its doors to all who wish to join us for worship and Christian fellowship. You'll find that our hearts are opened in caring ministries to people in every corner of God's world.

If you've been looking for the place where you belong, the place where you will be a precious part of a body of people who work together to build a better world for one and all, come on home.

Come on home to the United Methodist Church. We're a colorful and caring bunch!



Your Friends at the United Methodist Church

Come On Home.

First United Methodist Church  
Box 505 - 507 West Second  
Muleshoe, Texas 79347  
806-272-5517



## Muleshoe

Cont. From Page 1

building fund.

\*\*\*  
The Board of Trustees of the Muleshoe Independent School District will meet Monday, March 29 at 7 p.m. in the School Administration Building. The meeting will be held in compliance with Art. 6252-17 V.T.S. The meeting is also being conducted in accordance with the Americans with Disabilities Act (42 U.S.C. 12101 (1991)). The facility where the meeting is to be held is wheelchair-accessible, and handicapped parking is available at the rear. Requests for sign interpretive services are available upon request received at least 48 hours prior to the meeting. To make arrangements for those or other handicapped services, please call 806-272-3389.

The following agenda sets forth the subjects of the meeting. The order in which the agenda is followed is subject to change by the board.

If a topic on the agenda is permitted by law to be discussed in executive session, the board may or may not, at that time, close the meeting as to such topic.

### AGENDA FOR THE MEETING

1. Call to order
2. Invocation
3. Recognition of Support Staff Member of the Month and Student Recognition

4. Approval of minutes of the regular meeting held on March 8, 1993 and the workshop held on March 9, 1993.

5. Open Forum/Audience Participation

6. Financial Items

6.1 Discussion of Academic Achievement Awards to be sponsored by Muleshoe State Bank.  
6.2 Consider the bids for the high school addition and school air conditioning and take appropriate action.

6.3 Consider a proposal from the Muleshoe High School Student Council to place a time capsule in the new classroom addition and take appropriate action.

6.4 Receive the recommendations from the district Textbook Committee and take appropriate action.

6.5 Consider campus and program budgets for 1993-94 and the proposed calendar for budget development and take appropriate action.

6.6 Receive Update 43 to the Policy Manual

6.7 Continue discussion of the District Goals and Objectives

7. Informational Reports

7.1 Board President

7.2 Superintendent

7.3 Assistant Superintendent for Instruction

7.4 Assistant Superintendent for Operations

- 7.5 Business Manager
- 7.5a Tax Report
- 7.5b Bank Balances
- 7.5c Fund Balances
- 7.5d Payment of Current Bills

7.5e Other business items

8. Personnel Considerations

8.1 Executive Session

8.2 Take appropriate action following Executive Session

9. Announcements

10. Adjournment

\*\*\*  
The Bailey County Commissioners Court will meet in special session Monday, March 29 in the Bailey County Courthouse.

The meeting will begin at 10 a.m. and will continue until all business is concluded, with the following items on the agenda.

1. Approve the minutes of the previous meeting.

2. Review, approve and order payment of County bills.

3. Consider Budget Amendment No. 6 to FY 1993 Budget.

4. Approve payroll.

5. Representatives from South Plains Emergency Medical Services (SPEMS) to give update.

6. Consider restructuring Coliseum worksheets.

7. District Clerk Nelda Merriott to discuss sheriff fees in felony cases.

8. Approve soil conservation worksheets.

9. Consider constructing speed bumps in alley between the courthouse and law enforcement center.

10. Authorize County Judge to publish public notice of changes in election precincts as pre-cleared by the Justice Department.

\*\*\*

Marine Pvt. Joe L. Gutierrez, a 1992 graduate of Muleshoe High School recently completed recruit training.

During the training cycle at Marine Corps Recruit Depot, San Diego, recruits are taught the basics of battlefield survival, introduced to typical military daily routine, and personal and professional standards.

All recruits participate in an active physical conditioning program and gain proficiency in a variety of military skills including first aid, rifle marksmanship and close-order drill. Teamwork and self-discipline are emphasized throughout the cycle.

He joined the Marine corps in October, 1992.

Airman Javier H. Cruz has graduated from the missile maintenance specialist course at Chanute Air Force Base in Rantoul, ILL.

Students are taught the operation and maintenance of missile silo equipment, including hydraulic, pneumatic, electronic, and mechanical systems.

opportunity, spoke longer than normal. He preached until midnight!

Eutyclus tried valiantly to stay awake, but he was tired from the day's work and perhaps the room was stuffy and hot. So he sat by the open window to try to catch some of the breeze. He caught "Z's" instead! As he succumbed to sleep, his head fell sideways and the rest of him followed, which would not have been serious if he'd been near a wall and not an open window! As it was, the sleepy Christian fell three stories and very abruptly became a crumpled corpse.

Thus Eutyclus earned his place in history as the first man to be killed by a lengthy sermon!

Thankfully, Paul was the preacher and by God's power was able to raise the young man from the dead. (You modern worshipers had better be more careful! Though some of us who preach are undoubtedly capable of committing homiletic homicide, I don't know any who are able to undo such serious damage!)

We should thank God for those mountain-top worship experiences where every part of the service seems to bring us into close communion with the living God. But even preachers realize that most of us also have some Sundays when we feel more than a little kinship to poor Eutyclus.

Curtis Shelburne is minister of the 16th & D Church of Christ in Muleshoe.

He is the son of Inocencio C. and Tomasa Cruz of Friona and a 1990 graduate of Friona High School.

\*\*\*  
Tech Sgt. Jerry L. Ford has graduated from an Air Force major command non-commissioned officer academy having received advanced military leadership and management training.

Ford is a support section supervisor at RAF Bentwaters, Woodbridge, England. He is the son of Harold Ford and Marjorie Ford, both of Vevay, Ind.

His wife, Brenda, is the daughter of C.D. McDaniel of Clovis, N.M. and Joyce M. McCormick of Farwell.

### Egg Hunt...

Cont. From Page 1

of Muleshoe have again been SUPER!!!" said Renaee Rudd, Easter Egg Hunt chairman. "There are many toys, prizes and coupons to be given away. Our thanks to all those merchants and individuals who have made donations to make this hunt successful."

The annual hunt is sponsored by the Jennyslippers and they would like to see all of the boys and girls at the park ready to have some fun and win prizes.

### Rotary...

Cont. From Page 1

care agent.

The meeting was adjourned by president David Tipps. Mark Morton was the Polio Plus winner.

## Texas Panhandle, South Plains All Kids Count Program

The city of Lubbock Health Department has received \$132,926 from the Robert Wood Johnson Foundation, the nation's largest health care philanthropy, to develop a comprehensive plan for assuring immunization of preschool children. The All Kids Count Initiative generated 114 proposals for funding. Forty-one applicants were invited to participate in reverse site visits. Lubbock is one of the 23 national competitors to receive funding from the Foundation.

In 1989 11 percent of all the measles cases which were reported in Texas were reported in Region 2 of the Texas Department of Health. This percentage is more alarming when one considers that Region 2 contains only four percent of the total population of the state.

The average rate of immunization for the communities located in this region is 58 percent. Because we do not have a reliable method to track immunizations among preschoolers in the Region, we need to develop a system which monitors the immunization status of very young children throughout all 41 counties, according to a project summary report.

The Texas Panhandle and South Plains All Kids Count Project will link the communities of this 38,000 square mile region in an effort to determine how best to lower the incidence of vaccine-preventable disease and to raise the immunization rate for preschoolers. The project will utilize outreach workers, local task forces, and a regional advisory committee in the planning process. Public and private, for-profit and not-for-profit health care providers have agreed to cooperate in developing a plan for this large area.

A subcontract with the Amarillo Bi-City-County Health Department will be entered into by the City of Lubbock Health Department which will provide an additional staff person to perform outreach specifically in the Panhandle area.

The Project Director and Outreach Workers, with the assistance and guidance of the local task forces and the regional advisory committee, will develop and conduct a needs assessment, a survey of current providers, retrospective immunization surveys, and brain-storming sessions

### Election...

Cont. From Page 1

very much support this proposal-if the state mandates anything, they should not pass the cost of the mandate on to the local taxpayers.

The third proposition, if passed, would authorize the legislature to issue \$750 million in bonds to assist poor, fast-growing schools that have already incurred debt in building new facilities. Currently, any funds for facilities are furnished by the local district either from fund balance or by borrowing by seeking bonds. Although MISD would not benefit from this amendment, I support it.

### Briefs

Vatican condemns Clinton on abortion stand.

## Muleshoe Farmer Named Winner In National Contest

Bill Hunt of Muleshoe has been recognized as a winner in the 1992 National Corn Yield Contest (NCYC), sponsored by the National Corn Growers Association (NCGA).

Hunt placed third in the state of Texas in the Irrigated Class. A total of 2,470 farmers successfully completed the contest. Each entry was a field of at least 10 acres of continuous corn. Qualified supervisors were present at harvest to verify the accuracy of yields.

"NCYC was established 28 years ago to recognize farmers for innovative production practices designed to improve profitability," says NCGA President Randy Cruise, a Pleasanton, Nebraska farmer. "Entries continue to grow each year as U.S. farmers prove they are the most efficient producers in the world."

Inspiring NCYC statistics include: Seven farmers produced more than 300 bushels per acre yields. The average yield of contest entrants was 183 bushels per acre compared with the national average of 131. Farmers from 46 U.S. states submitted 3,495 entries in the 1992 contest.

Want to learn the secrets of the 508 state and national NCYC winners? The 1993 Corn Yield Guide, outlining the agronomic information of winners from across the U.S. will be mailed to all NCGA members and also appear

in the March issue of Farm Journal magazine. The 1993 guide is published by NCGA.

Contest winners were honored at NCGA's 1993 Corn Classic, February 22, in San Antonio, and awarded custom-designed trophies.

Entry forms and contest rules for the 1993 NCYC contest are now available. If you'd like to receive this information, please contact NCGA at 1000 Executive Parkway, #105, St. Louis, Missouri 63141, phone 314-275-9915.

NCGA is a national commodity association with more than 27,700 members in 47 states and 24 affiliated state associations.

---  
U.S. textile exports rose in 1992.

## ONE MINUTE SPORTS QUIZ

By Christian Thorlund

1. Who won the Oklahoma-Nebraska football game last year?
2. Who won the Georgia-Georgia Tech game last year?
3. Who won the Ohio State-Michigan game in 1992?
4. How long did Diger Pehlps coach basketball at Notre Dame?
5. Who won the Cy Young award (National League) in 1990?

Answers:

1. Nebraska, 19-14.
2. Georgia, 18-15.
3. Michigan, 31-3.
4. 20 years, 1972-91.
5. Doug Drabek, Pittsburgh, 22-6 (2.76 ERA).



### FREE SEED for 1993

## G-4673B

All Seed Sizes

### Buy 12, Get 3 FREE

Other Corn Hybrids  
Flat 15 & 16 - Round 25 & 26  
Plateless Planter 2

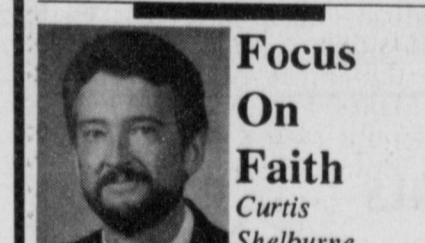
### Buy 10, Get 2 FREE

## Wiedebush & Co.

1516 W. Amer. Blvd. Muleshoe 272-4281

## Sleeping in Church Is Dangerous

Sleeping in church can be hazardous to your health! Just ask Eutyclus!



**Focus On Faith**  
Curtis Shelburne

Though Eutyclus' name is hardly a household word, this young man holds a well-deserved place in history. He was the first man ever to literally be killed by a church service that ran too long! (You knew it could happen, didn't you? I've wondered myself if a preacher could be held legally liable if an especially dull sermon threw a member into a fatal coma!)

In this case, though, the problem was almost certainly not a boring sermon. The preacher was none other than the Apostle Paul himself!

Paul and his companions were in Troas and were about to move on, but before departing Paul was eager to meet with the Christians there on the first day of the week. The meeting was held at night, probably to allow slaves and others who had to work all day to be present. No doubt Eutyclus and his fellow Christians were eager to hear what Paul had to say. And Paul, himself wager to share with them on this last

# Diesel Truck Days

- Crew Cabs
- Club Cabs
- Super Cabs
- 2 & 4 Wheel Drives
- Dual Rear Wheels

## Over 50 Diesel Trucks in Stock

### ALL SPECIALLY PRICED!

1993 Ford 1 Ton Crew Cabs  
And 3/4 Ton Super Cabs



35 To Choose From

1993 Dodge Club Cabs  
Cummins Turbo Diesel



22 To Choose From

\* All Vehicles Subject To Prior Sale

### The Best Selection In Eastern New Mexico & West Texas

There Will Never Be A Better Time To Buy Than RIGHT NOW!

## TEAGUE-STREBECK

Ford • Mercury • Chrysler • Plymouth • Dodge

1115 N. Chicago, Portales NM

356-8581

(On the first curve into Portales)

762-3845



**News Views**

*U.N. Legal Office:*

"The no-fly zones established by the United Nations in Iraq make no reference to the use of military force," agreeing to objections by France and Russia that President Bush overstepped the U.N. mandate in military attacks on Iraq.

four age categories, age 8-10 will hunt between 1:30 and 2; age 5-7 between 2:30 and 3; age 3-4 between 3:30 and 4; and age 1-2 between 4:30 and 5.

It was reported that PUSH will be in Muleshoe on July 13.

The annual Walk-A-Thon was also discussed and the meeting was adjourned.

It is important to build character. And, sometimes, it is important to rebuild.

-News, Brunswick, Ga.



**EMPLOYEE OF THE MONTH**---Marcos Lopes, a city employee, was named Employee of the Month of March by the Muleshoe Chamber of Commerce and Agriculture. He was presented the Travelling Trophy and a plaque Wednesday morning. Jack Wilson, chamber manager made the presentation as co-workers, chamber members and two members of the Around Muleshoe Organization look on. Lopes and his wife, Tomasina, have four children, Albert, Becky, Gilbert and Ashley. Lopes has been employed by the city 17 years. (Journal Photo)

**Jennyslippers To Sponsor Annual Egg Hunt**

Donna Kirk called the regular meeting of the Jennyslippers to order at noon Tuesday. Minutes of the previous meeting were approved as read.

Julie Cage, Chamber of Commerce Banquet decorations chairperson, met with the Jennyslippers to discuss the decorations.

Kay Graves, representing the Friends of the Library, also met with the Jennyslippers. She discussed the upcoming book sale at the library, asking the Jennyslippers to help with the sale. The sale will be open to the general public on April 23 and 24.

The budget for 1993 was discussed with no action taken.

Mrs. Kirk read a letter from the Women's Protective Services, which serves 12 area counties, including Bailey County.

Ranee Rudd reported on the Easter Egg Hunt which will be held Saturday, April 3 in the new City Park. The hunt will be divided into

**PCG Producer Director Election Set**

Bailey County cotton producers and agribusiness representatives will elect a Producer Director to Plains Cotton Growers, Inc. at a 7:30 p.m. meeting on Tuesday, March 30 at the Bailey County Civic Center, Muleshoe. A program will be presented by the Texas Agricultural Extension Service.

Announcement of the election comes from John Saylor of Muleshoe, current Bailey County Producer Director to the 25-county cotton organization, and Bob Newton of Enochs, Business Director.

Each county in PCG's Service area has two directors, one a business person and the other a cotton producer. They are elected on alternate years for two-year terms. Each is eligible for re-election every second year.

All producers and business people are encouraged to attend the meeting. However, under PC G By-Laws, only current dues-paying members of PCG will be eligible to be elected a director or to vote in the election. This provision of the by-laws will be fully explained at the meeting.

A PCG representative will

conduct the election, review and answer questions about recent and planned PCG activities.

**Home Prices Jump In 1992**

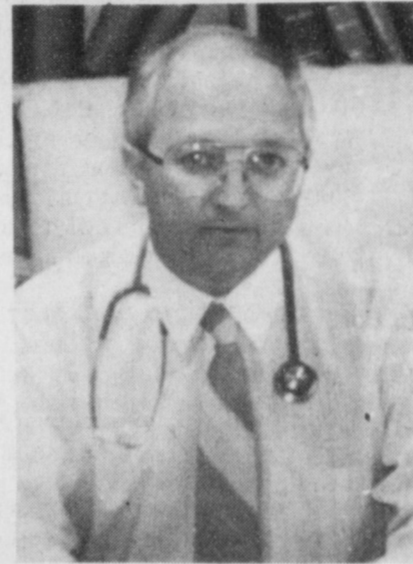
Median prices for existing homes in Texas' 35 largest metropolitan areas jumped 9.5 percent during 1992, according to the Real Estate Center at Texas A&M University. The 1992 median sales price was \$77,100.

Texas homes remain a bargain when compared to homes nationally. The 1992 median for an existing U.S. home was \$102,500.

According to data collected from Multiple Listing Services (MLS), more than 104,800 homes were sold during 1992 in the state's largest markets. This was 6.7 percent more than the previous year. Sales nationally totaled 3.4 million, an increase of 4.6 percent.

Northeast Tarrant County reported the highest median sales price for 1992 -- \$94,600. The lowest median price was Abilene \$48,000. Amarillo recorded the biggest percentage increase -- up 42.8 percent from 1991 -- to \$58,900. Odessa's MLS reported the biggest decline, down 7.8 percent to \$48,500.

Texas ended 1992 with 69,125 previously owned homes for sale in its 35 largest metropolitan areas.



**Dr. Bruce Purdy, Family Practice and Obstetrics**

Homegrown Muleshoe product, husband of Cindy, and father of three, active, school aged sons, 3 hunting dogs and 2 calico cats, avid hunter, Boy Scout leader, thankfully recovering from heart surgery and resuming daily 3 mile walks & work as a reformed workaholic in his office across from the hospital.

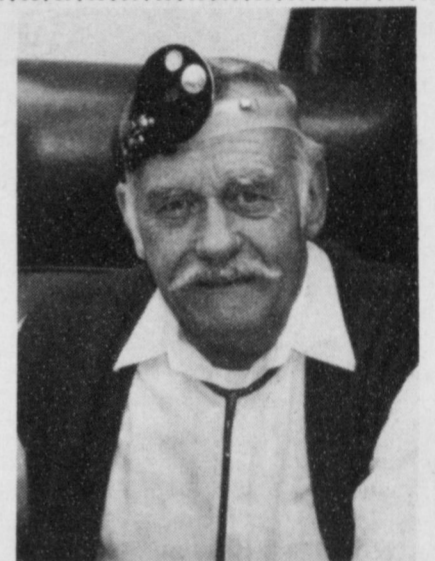


**Dr. Mark McClanahan, Family Practice**

Enjoys hunting and fishing and long weekends snowskiing with his three active school aged sons. Husband to Robin, who is his office manager and wife of 15 years. Raised in Plainview and transplanted to Muleshoe, now practicing in a brand new office location near the hospital.

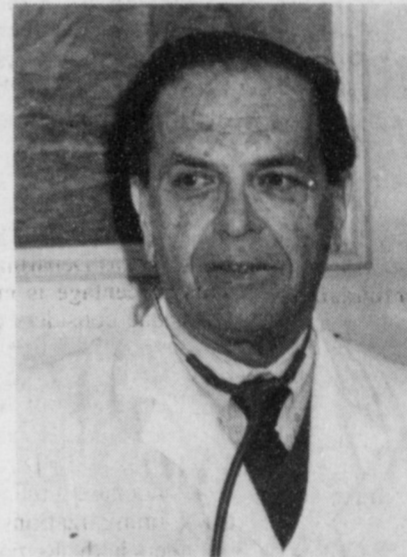
**Happy Doctors Day**

**March 30, 1993**



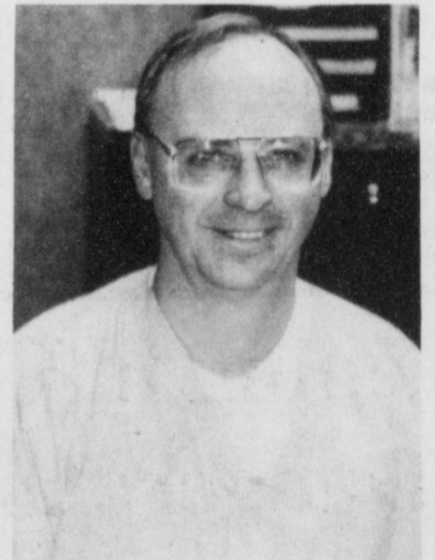
**Dr. Homer Allgood, Family Practice**

Hunter extra ordinaire, Southern Gentleman, husband of Anita Schmidt Allgood for 17 years. Father of four sons and 'Bugger the cat'. His sons are involved in a variety of occupations and include a physician, a tugboat captain, an employee of Scott Paper company and a son who works in advertising.



**Dr. Austin Dixon, Surgeon**

Married to Marleen Dixon who is his office manager and companion of many years. Father of four successful adult children, a lawyer, a medical school student, a doctor, and a financial planner.



**Dr. Frank C. Kretsinger, Family Practice, Farwell**

Avid Horseman and owner of four beautiful cutting horses. Married to his own pharmacist, Lisa, & is the father of four daughters. Makes his home in Muleshoe, enjoys skiing, horse shows and doing emergency room physician care at several hospitals.



*On Doctors Day 1993*

*We don't often take time to say  
How really special is "Doctor's Day" ...  
To say "we thank you" seems so small  
After countless nights of your "being on call".*

*Your being in Muleshoe means so much  
We thank you for your healing touch...  
On this day set aside just for you  
We trust you'll feel our appreciation anew!  
-eileen '93-*

**From All Of Us At:**



**MULESHOE AREA MEDICAL**

*Center*

**MULESHOE AREA**

**HEALTH CARE**

*Center*

**Announcing the arrival of a brand new Weight Watchers for a brand new you.**

**the new**  
*Weight Watchers*

**Pay just \$59 for 8 weeks. That's a savings of \$41.**

We're coming to your town. And we're bringing with us a simple, sensible approach to losing weight -- including all the great new changes we've made for 1993. So join Weight Watchers today. Attend our pre-paid 8-week series for the low price of \$59 -- that's less than \$7.50 a week.

Come and see what Weight Watchers is all about. Attend a FREE meeting in MULESHOE

The Depot  
2200 Ash St.  
Tuesday, March 30, 6:30 p.m.  
Call 1-800-359-3131  
For More Information

**Weight Watchers**

Offer valid in participating areas 37, 96 and 107 only. (South Texas, West Texas, and Santa Barbara County, CA.) ©1992 Weight Watchers International, Inc. All rights reserved.



# Muleshoe Roadriders Annual Motorcycle Rally





## Cook Hamburgers Well-Done To Avoid Raw Deals

by Sandra Avant

People who like their hamburgers rare or medium rare instead of well-done may be setting themselves up for foodborne illness.

The recent rash of illnesses caused by tainted hamburger at a fast-food restaurant in Washington was more than likely abetted by inadequate cooking of food contaminated with the bacterium E. coli, said Dr. Peggy Gentry-Van Laanen, a nutritionist and food safety specialist with the Texas Agricultural Extension Service. This bacterium, like others, naturally occurs in animals, but can be easily killed.

"Whether preparing ground beef

products or any meat and poultry product at home, or purchasing them from commercial establishments, they should be adequately cooked to a 'done' status", she said.

According to Texas A&M food safety experts, ground beef products should be cooked to an internal temperature of at least 140 degrees--an industry standard that will adequately destroy E. coli bacteria as well as others that may cause foodborne illness. Ground meat products are most vulnerable to contamination because of the additional handling and mixing they receive during processing.

"Anytime we're dealing with rare or medium-rare meat products, there's some risk involved," Gentry-Van Laanen said.

The recommendation for people considered to be in high risk categories of contracting foodborne illness is to make sure that meats are cooked thoroughly. Those who are more susceptible to any foodborne illnesses are children, the elderly, or people who have weakened immune systems because of chronic diseases such as cancer, heart disease, diabetes, or AIDS.

"Pregnant women are also at a greater risk because their immune system is already weakened," Gentry-Van Laanen said. "We recommend that they do not eat rare meat."

Bloody diarrhea is the most common symptom of the illness caused by E. coli, she said, and the young and the elderly are particularly susceptible to the risks associated with this organism. Infection may cause a severe condition known as hemolytic uremic syndrome, the leading cause of kidney failure in young children. In elderly adults, the most dangerous situation is a condition where blood clots affect the brain.

Even so, it's not always easy for a customer to tell whether the hamburger presents a raw deal.

"There are spoilage bacteria, you usually can tell by the smell, the appearance and taste. However, the problem with foodborne bacteria is that there may be no signs of danger."

Commercial establishments should have controls to monitor internal food temperature, but consumers can tell if meat is done by a brown color throughout the product.

The U.S. Food Safety Inspection Service recommends that consumers cook ground meat to a temperature slightly higher--160 degrees F., Gentry Van-Laaden said. This temperature has a safety factor.

Besides cooking meat thoroughly, a second important step in avoiding foodborne illness is good hygiene, cleanliness, and sanitation when handling food, she said.

"Another factor is time and temperature abuse," she said. "For instance, foods should not be left at room temperature for more than two hours."

According to Gentry Van-Laaden, the safety of foods at home boils down to this:

\* Cooking to a high enough temperature to kill bacteria.

\* Preventing cooked foods from coming into contact with raw foods, and unclean hands and utensils.

\* Storing the leftovers in sealed containers and placing them in the refrigerator as soon as possible after the meal.

It's not always easy to tell whether an eating establishment is reputable. However, Gentry Van-Laaden offers a simple tip that could save you from something

worse than heartburn--observe hygiene practices and cleanliness of employees, especially when they're handling your food.

## Hospitals Advocate For Health Insurance Reform

The Texas Hospital Association joined Gov. Ann Richards in endorsing House Bill 2055 by Rep. Mike Martin (D-Galveston). THA registered its support for the health insurance reform bill, presented to the insurance Committee on March 17.

An element of the bill which the hospital association strongly supports is the creation of affordable health insurance for small employers.

House Bill 2055 applies to employers with three to 50 employees. The legislation creates three benefit plans: preventive and primary care; in-hospital; and standard health benefits, which include preventive, primary and in-hospital care, plus all other state mandates. An employee may buy one or more coverage plans either individually or through group purchasing cooperatives.

"Many small employers want to provide health insurance benefits for their employees, but simply are unable to afford the premiums," said Joe DaSilva, THA's senior vice president of public affairs. "The Texas Hospital Association has worked with the Governor, the leadership and Rep. Martin to address this problem, and we think Texan employed by any small

business, and their dependents will have improved health and better access to care as a result," DaSilva added.

The bill also mandates uniform claim procedures. "Some large hospitals employ as many as 200

people to deal with the claims/billing process of health insurers. Standardization will allow hospitals to streamline and simplify their internal billing process, which will reduce administrative costs," DaSilva said. "Texas hospitals want to reduce administrative costs wherever possible, so that our scarce resources can be spent on providing direct patient care to ill or injured Texans."

Robert Dole, Senate Minority Leader (R-Kan):

"He understands our tough problems can only be solved by bipartisan cooperation," commenting on confirmation of former Senator Lloyd Bentsen as treasury secretary.

### Introducing OPTIMUM INCOME<sup>SM</sup>

Series 93-3

6.13% Current Rate

6.31% Yield\*

\* Yield if held for 12 months and no withdrawals are taken during this period

- ✓ High Monthly or Annual Income
- ✓ Like a CD, there are no sales charges and your money is safe.
- ✓ Like a Bond or Income Mutual Fund, you receive a high yield.
- ✓ Like a Passbook Account, you can automatically reinvest your interest if you don't need it for current income.
- ✓ However, unlike these accounts, our Rate is Guaranteed to never drop below 4.5%.
- ✓ Plus, significant tax advantages.

Call or write today for more information

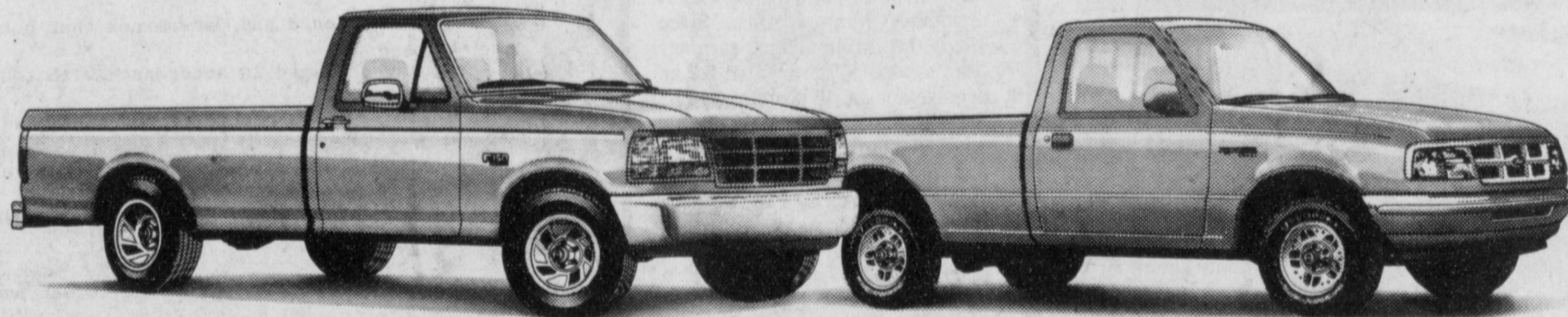
Optimum Income Series 93-3 is a Single Premium Deferred Annuity (902A) offered by London Pacific Life & Annuity Company, Raleigh, North Carolina.

### Scott Financial Services

201 West Avenue C  
Muleshoe, Texas 79347  
(806) 272-3049



# Get A New Ford Truck For A Song



F-150  
\$266/month<sup>(1)</sup>

• Air • Automatic • AM/FM Stereo • Styled Steel Wheels

Ranger  
\$199/month<sup>(2)</sup>

• Air • Stereo/Cassette • Deep-Dish Aluminum Wheels

## During Truck Month At Your Texas Ford Dealer.

Head into your Texas Ford Dealer during Truck Month and the prices will be like music to your ears. Choose from hundreds of F-150s, Rangers, Explorers, Broncos, Aerostar wagons and Econoline vans.

During the whole month of March, each dealer will have their

absolute lowest selling price and that's why now is the best time to buy. If you go anywhere else you'll be singing the blues, so come over to your Texas Ford Dealer and save hundreds, maybe even thousands, before you make your best deal. All during Truck Month!

## Muleshoe Motor Co.

"Car Capitol of the West Plains"

1225 W. Amer. Blvd.

806-272-4251

<sup>(1)</sup> 1993 F-150 XL Regular Cab 4x2 with 4.9L and Automatic Transmission SVT 500A. \$266 payment based on \$14,212 MSRP. SVT 500A available on models delivered and registered in states of Texas, Oklahoma and Louisiana. Tax, title and license extra. Example based on 11.71% APR Ford Credit financing for 60 months, qualified buyers with 15% down. Dealer participation may affect savings. See dealer for his payment and terms. <sup>(2)</sup> 1993 Ranger XLT 4x2 with 2.3L engine and manual transmission PEP 86-E. \$198.99 payment based on \$11,184 MSRP less \$500 cash back. For cash back take new retail delivery from dealers stock by 3/31/93. Tax, title and license extra. Residency restrictions apply. Example based on 11.71% APR, Ford Credit financing for 60 months 15% down to qualified buyers. Dealer participation may affect savings. See dealer for his payment and terms.

### Enochs News

by Mrs. J.D. Bayless

Mr. and Mrs. Dale Nichols and son, Jerry attended the grave side services of Cecil Brashear at the Rest Haven in Lubbock Wednesday.

Mrs. Kay Abney and daughter Kristen of Lockney were guests in the home of Kay's mother Mrs. Margie Peterson the past week.

Mr. and Mrs. Roger Jones and children Jenna and Brady of Luders visited his mother and brother. Mrs. Lorella Jones and Wendell during the school spring break.

Visiting Mr. and Mrs. Dennis Turney and Monty last Sunday was her parents Mr. and Mrs. Trueman Nix of Littlefield. Other guests during spring break was their daughter, Mr. and Mrs. Chris Locke and baby of Canyon.

Mrs. Ellen Bayless drove to Lubbock Saturday morning and visited in the home of her sister and husband, Rev. and Mrs. Olene Cunningham, in the afternoon Olene and Ellen drove to Weatherford and spent the night and drove to Azle, attended the funeral service of a sister, Mrs. Ida Henderson at First Baptist at Briar, Texas. They they drove to Arlington, Texas and spent the night with a niece Mrs. Juanita Parsons in the home of her son, Mr. and Mrs. Jim Parsons, before returning home Monday.

Mrs. Paula Grant and children Ashley and Chandler of Amarillo spent the weekend with her parents, Mr. and Mrs. Dale Nichols and were at the First Baptist Church Sunday morning.

### Three Way News

by Mrs. H.W. Garvin

Mrs. Robert Kindel visited Mrs. H.W. Garvin Monday afternoon.

Mr. and Mrs. R.L. Davis attended the funeral of a friend Mrs. Winson in Spur Thursday.

Eric Simpson from Shallowater spent part of the week with his grandparents.

Mery Kindel, Paula Foley, and Ginger Damron with a sister from Seminole and brother from Hobbs, visited a sister in the Roswell hospital Friday.

Mr. and Mrs. Bill Dolle and Darla were in Lubbock Friday on business.

Robin Kindel from Lamesa spent part of the weekend with her parents the Bobby Kindles.

Mrs. Adolph Wittner spent part of the past week in Plainview with her daughter the Baxter Vaughns.

Mr. and Mrs. Bobby Kindel, Mr. and Mrs. Mitcher Abbe and Mr. and Mrs. L.S. Scoggins returned home Thursday after attending the Co-op ginner convention in San Antonio.

Mr. and Mrs. Nelson Carlisle attended the R.E.A. meeting in San Antonio the past week.

Darlene and Darla Dolle visited Mrs. H.W. Garvin Saturday afternoon.

The C.J. Dareick family from Hobbs, NM, brother of Mrs. Robert Kindel spent Sunday with the Robert Kindel family.

The Jack Lane family visited their daughter the Rodger Hatcher family in Clovis Saturday.

Mr. and Mrs. Obie Standard spent the weekend in Clovis with her sister the Rodger Hatcher family.





**BUSINESS OF THE MONTH**--Western "66" was named Business of the Month for the Month of March. Making the presentation to Joe King was Charles Bratcher, president of the Chamber of Commerce and Agriculture, as other members of the chamber and employees of Western "66" look on. Joe and Melba King are owners and managers and their employees are Phyllis Angeley, Wade King, Leon Warren, Lee Atwood, and Ramie Garner. (Journal Photo)

## Spiders On The Loose Aid Cotton Fields

by Kathleen Davis

Spiders. The mere sight of the leggy critter causes the urge to smash, scream, and sprint.

Spiders aren't hip on humans, either. In fact, spiders don't hobnob, even with other spiders, in the creepy crawler world. But, they aren't all bad. They're just busy, according to a team of entomologists at the Texas Agricultural Experiment Station.

"Spiders are not social, but we can make a strong case that spiders are as economically important--if not more so--than some beneficial insects," says Dr. Winfield Sterling, sounding like an arachnid attorney.

To build the case, Dr. Martin Nyffeler, Allen Dean, and Sterling spent hundreds of hours in cotton fields in Central and East Texas and in the lab, to get a spider's eye view of its lifestyle.

"The cotton field is a world itself," Nyffeler said. "People can walk through a field and never notice the spiders and insects which are preying on others. But that's only because they don't take the time to look."

What Nyffeler saw--and collected--were lots of young spiders that had dined on fleahoppers, often a key pest on newly emerging cotton plants.

Fleahoppers in Central Texas often begin their life on a lemon horsemint, a wild plant that grows in the winter along roadsides, pastures and field edges, thus providing temporary shelter until a cotton crop is planted and sprouts. When horsemint dries up, usually in late spring, the minute hoppers simply move to the cotton fields.

But horsemint also attracts spiders with an appetite for fleahoppers, said Nyffeler, whose study is aimed at understanding

which spiders live on horsemint and how they interact with insects there. The entomologists said such information may help farmers understand a broader picture of biological control, which relies on natural enemies to consume pests to reduce chemical pesticide use.

"About 90 percent of the spider individuals found on horsemint plants represent species known to attack and kill cotton fleahoppers," Nyffeler noted. More than 40 spider species were found on flowering horsemint in two Texas locations. Most were lynx, crab and jumping spiders, all known predators of cotton insect pests.

After collecting field observations and specimens, the team analyzed the data on TEXCIM50, a computer program that assesses the economic impact of insects on agricultural crops. The program found that spiders are of value as predators of the cotton fleahopper in Texas fields.

But the team said releasing spiders intentionally into fields is not yet viable.

Spiders have to be reared individually, Dean noted, because they are cannibalistic. They're loners who would just as soon swallow another spider as a pesky fleahopper. They also are "general" predators, meaning they may eat lots of different insects, including beneficial ones.

"Also, farmers can predict what will happen when insecticides are sprayed, but we are only now beginning to predict what natural enemies will do," Sterling said. "What we have to do now is figure out how it all works together dynamically through the season, then calculate the economic impact."

He said fire ants are known to eat boll weevils, black widow spiders eat fire ants, and mud daubers eat black widows, but people couldn't be convinced to unleash that type of miniature insect war in a cotton patch.

"It's a very complex world, and the value of spiders will vary in every field, every year", Sterling said. "But ultimately, we want the farmer to be able to scout the field, tell the computer what's out there and have it provide instructions for the best, most economical treatment."

## PCCA Announce Distributions To Members

Plains Cotton Cooperative Association (PCCA) has announced a cash distribution to members totaling almost \$12 million for retirement of 1987 per-unit capital retains and a progress payment on the 1992 West Texas/Oklahoma marketing pool.

"The retirement of capital retains totaling \$4.2 million is an important milestone for PCCA," says PCCA President Van May. "When we initiated this program in conjunction with our purchase of the denim mill at Littlefield in 1987, there were some skeptics and critics," May adds. "This payment is on schedule and in line with the projections we made back in 1987, and it reinforces the decisions made by our board of directors and members at that time."

The annual \$5-per-bale capital retain is required for PCCA members who wish to share in the denim mill's earnings and is withheld from their cotton sales proceeds. The retains are revolved back to the members after five years, and members have an opportunity to sign in or out of the mill option each year. South Texas PCCA members may sign into the program in February, while West Texas and Oklahoma members may sign in during April.

"The mill option has been a great investment for participating PCCA members," May explains. "Since 1987, the mill's annual earnings have totaled \$47.3 million, for an average annual dividend of \$10.65 per bale in cash and stock." Based on figures through seven months of the current fiscal year, the mill's earnings are expected to approach record levels this year.

The balance of the current cash distribution, \$7.4 million, is a progress payment on PCCA's 1992 West Texas/Oklahoma marketing pool. Progress payments, including the premium-for-strength payment, now total \$16.2 million for the 1992-crop pool.

Cotton producers seeking more information about participating in PCCA's mill option or its marketing programs, should contact their local cooperative gin.

## Farmers Can Delay Reporting Disaster Insurance Proceeds

Farmers who receive insurance proceeds for crop damage due to floods or other natural disasters, or the inability to plant crops because of these events, may qualify to report this income in the year after receipt.

Since farmers often report the income from crop sales in the year after the crops were harvested, this provision allows farmers whose crops are destroyed to avoid reporting two years' income in the same year.

To qualify, farmers must use the cash method of accounting and must establish that the proceeds from the sale of the destroyed crops would have been reported in a year following the destruction.

More information on disaster losses can be found in free IRS Publication 225, *Farmer's Tax Guide*. Call 1-800-829-3676 to order the publication.

### ORDER FOR ELECTION PROCEDURE IN

### HOSPITAL DISTRICT DIRECTORS ELECTION

THE STATE OF TEXAS

COUNTY OF BAILEY

On this the 25 day of March, 1993, the Board of Directors of MULESHOE AREA HOSPITAL DISTRICT, a Hospital District, convened in regular session, open to the public, with the following members present, to-wit:

Tim Campbell, President

Derrell Jennings, Vice President

Bob Finney, Secretary

\_\_\_\_\_, Member

\_\_\_\_\_, Member

and the following absent: Joe King and Raul Trevino

constituting a quorum, and among other proceedings had by said Board of Directors was the following:

WHEREAS under the terms and provisions of the acts authorizing the creation of this Hospital District and the Texas Election Code an election shall be held in this district on the first Saturday in May, 1993, for the purpose of electing members to the Board of Directors;

WHEREAS the laws of the State of Texas do not fully set forth the procedure to be followed by candidates filing for said office of Directors of said District, and this Board has the power and authority to establish said procedure;

THEREFORE be it ordered by the Board of Directors of Muleshoe Area Hospital District

1. That an election be held in said District on May 1, 1993 for the purpose of electing to the Board of Directors of said District two Directors, Places 2 & 4, full two year terms.
2. That all candidates for the Board of Directors of said District at the above mentioned election shall file their application to become a candidate with the Secretary of this Board at Muleshoe Area Hospital on or before 25 days before the date of said election.
3. That all of said applications shall be substantially in the following form:
4. All candidates shall file with said application the loyalty affidavit required by Article 6.02 of the Election Code.
5. All candidates shall also file with the Secretary at least 25 days before the election, a petition signed by at least 25 qualified electors asking that his/her name be printed on the ballot.
6. The Secretary of the Board of Directors shall conduct a drawing for the order in which names of the candidates for the above mentioned election are to be printed on the ballot and shall also post notice of the time and place of said drawing in accordance with the terms and provisions of Article 6.05, Subdivision 3 of the Election Code.
7. It is further found and determined that notice of the date, place and subject of this meeting was posted in accordance with the terms and provisions of Article 6252-17 at least 72 hours preceding the scheduled time of this meeting and that the terms and provisions of said Article 6252-17 have been complied with and copies of said postings and return shall be attached to this order and become a part thereof.

The above order being read, it was moved and seconded that same do pass. Thereupon the question being called for, the following members of the Board voted AYE:

Tim Campbell, Derrell Jennings, Bob Finney

\_\_\_\_\_, and the following voted no:

None

PASSED, APPROVED AND ADOPTED this the 25th day of March, 1993.

T. Campbell  
Tim Campbell  
President, Board of Directors  
Muleshoe Area Hospital District

ATTEST:  
Robert E. Finney  
Robert E. Finney  
Secretary, Board of Directors  
Muleshoe Area Hospital District

### OIL & FILTER SPECIAL



- Install up to 5 qts. Havoline, Pennzoil, Quaker State, Valvoline, Phillips, Castrol Oil
- Install new Mastercraft Oil Filter
- Includes Labor

**\$18.99**



Disc Brake Pads

Sizes for most cars and trucks. 4 organic pads per set for 2 wheel installation. 1 year limited warranty. (740-5020 thru 6960)



Relined Bonded Brake Shoes

Sizes for most cars and trucks. 4 shoes per set for 2 wheel installation with exchange. (Excludes 740-7760) (740-7307 thru 8099)

**P O Y N O R S**

103 Main

Muleshoe

272-4552



State Capital



HIGHLIGHTS

By Lyndell Williams  
TEXAS PRESS ASSOCIATION

AUSTIN - A second crack has appeared in the House Republican Caucus, which with 58 unified members can control more than one-third of the votes.

A small group, 10 to 20 members, convened privately last week, apparently to discuss splitting off from the larger group and to clear the air over pressure to march lock-step as a party.

Caucus leaders, some members complain, are too rigid in striving for solidarity.

Many also are concerned that hard line stances on public school finance, abortion and other issues go against the wants and interests of their districts.

Caucus chairman Rep. Tom Craddock of Midland, and other lieutenants were going to meet with the disenchanted members, probably to attempt to reach a new consensus, sources said.

Many GOP members regard the discussion as part of the rebuilding now occurring in the Texas Republican Party in the wake of the presidential election.

Filing Deadline Near

The filing deadline for the May 1 special election is March 31, with early voting to start April 12.

Richard Fisher, an unknown but well-funded candidate for the U.S.

Senate, told reporters about his planned \$2 million TV campaign and quipped: "You'll be sick of me by May 1."

A Dallas businessman and former advisor to Ross Perot, Fisher draws the connection by holding a copy of Perot's book, "United We Stand."

Democrat Jose Angel Gutierrez unveiled the endorsements of state Reps. Ron Wilson, Mario Gallegos and Roberto Alonso.

Gutierrez, founder of the '60s La Raza Unida movement, is popular in the Valley and probably the most underestimated candidate in the race.

Barton Previews Ads

Meanwhile, GOP Congressman Joe Barton previewed TV ads attacking interim U.S. Sen. Bob Krueger as pro-tax, pro-spending, and pro-gays in the military.

The normally mild-mannered Krueger is not his usual self this campaign: He promptly counterattacked, charging that Barton "blatantly lies that the senator is 'pushing billions in government spending and new taxes.'"

Krueger noted that he supports a balanced-budget amendment and a line-item veto for the president and that he has cut his own salary by 20 percent - while Barton voted to raise his congressional salary by \$35,000.

Sunset May Sunset

State Rep. Mark Stiles, D-Beaumont, has Speaker Pete Laney's support on his bill to abolish the Sunset Advisory Commission, which reviews state agencies every 12 years.

The bill has been endorsed by leaders of the House and Senate and by Gov. Ann Richards. "The sunset process has become lobbyists' full employment act," Richards said.

Laney said the current process is abused by special interest lobbyists, and the comptroller and budget

writers are probably better qualified to review state agencies.

The House Committee on Judicial Affairs heard debate on two child welfare bills: one called for adults accused of child abuse to be removed from the home, rather than the victim; another prohibits consideration of race as a primary factor in adoption cases.

The House public safety panel considered a bill penalizing parents who store guns where children can have access to them.

Another bill, by Rep. Karyne Conley, D-San Antonio, would allow prison inmates to get on-the-job training and wages by helping build new state prisons.

Half the wages would be paid to their dependent family and half would go to the victim's crime fund. If they have no family, all would go to the victim's crime fund.

Anti-crime Bills Passed

The Senate approved anti-crime measures:

- Extending the death penalty for murderers of children under 6;
- Shortening to 6 months the redemption claim period for owners of tax foreclosed property, a measure aimed at crack houses; and
- Suspending for six months the drivers licenses of persons convicted of felony drug offenses.

Senate Passes DFW Bill

The Senate last week passed a bill by Sen. Ike Harris, R-Dallas, that would give Dallas-Fort Worth International Airport control over its land, regardless of zoning laws in the cities where the land is located.

Sen. Jane Nelson, R-Flower Mound, charged that the bill would allow the airport to infringe on the rights of hundreds of homeowners. The vote was 26-3.

Other Highlights

■ The Senate committee approved legislation that would deregulate long-distance giant AT&T's rates in Texas. Despite opposition by consumer advocates and small long distance companies, the panel voted 6-2 in favor of the bill by Sen. Bill Haley, D-Center.

■ Roger Henson, a Garland engineer and a member of Ross Perot's United We Stand, America, filed as a candidate for the May 1 special U.S. Senate election.

Perry Praises Boll Weevil Bill

Texas takes a giant step toward eliminating a plague on the cotton industry, Agriculture Commissioner Rick Perry said as Governor Ann Richards signed the boll weevil eradication bill.

"This is a great day for Texas agriculture because we strengthen the cotton industry while protecting the environment," Perry said.

"Cotton farmers have been fighting the boll weevil, one of the

most destructive agricultural insects, for over 100 years. The fight has seen increasing pesticide usage and reduced yield. Today, Texas begins turning that battle around."

The bill will make Texas cotton farmers eligible for some 45 million dollars in U.S. Department of Agriculture funds to help the state eradicate boll weevils over a period of five to seven years.

A Texas Agricultural Experiment Station study estimates that without one regional eradication effort, the High Plains Containment Program located just east of Lubbock, insecticide use in that area would increase by eight to 20 million pounds each year. That same study says growers could reduce pesticide applications 70 to

75 percent within five years after eradication begins.

Boll weevils cost the state's cotton industry more than \$20 million in crop losses and \$22.5 million for boll weevil control. Texas is the leading cotton producer in the country, generating \$1.5 billion in direct annual sales and adding \$4.5 billion to the state's economy overall.

Similar eradication efforts in other cotton-producing states have already produced significant results. Both North and South Carolina have eradicated the boll weevil and growers use 70 percent less pesticide than before the program began.

The legislation, sponsored by Rep. Pete Patterson, D-Brookston, and Sen. Bill Sims, D-San Angelo, allows farmers to vote on creating a Texas cotton foundation that will administer eradication efforts by zone. Local cotton producers in each zone will select board members.

Journal Files

1933-60 Years Ago

The Department of Agriculture has agreed not to require waivers as to Panhandle farmers wishing crop production loans from the Federal Government according to statement made last Saturday by Congressman Marvin Jones.

1953-40 Years Ago

Harold King won first place in the Muleshoe Golf Club's Handicap Tournament with a sizzling 67 for the 18 holes. A.S. Stovall won second place. For third place, three golfers tied with an even par: Houston Hart, Elmo Evans, and Troy Wilkerson.

1963-30 Years Ago

Fourteen acts featuring top talent of West Texas will make up Monday night's Variety Show at the High School Auditorium, sponsored by the Muleshoe Lions Club. Gil Lamb will be Master of Ceremonies. Altogether, more than 150 persons will appear on the two hour program.

1973-20 Years Ago

If you see students planting trees on a school campus or catching frogs from a miniature pond, don't panic. They are probably studying nature from an outdoor classroom-a new concept in environmental education. At last count 343 outdoor learning areas had been installed in Texas.

Also available as an IRA

Earn

6.40 Percent

Guaranteed for one year upon issue, subject to change on policy anniversary dates.

Superior ratings by prestigious independent organizations confirm our company's financial strength.

Southern Farm Bureau Life has been rated A+ (Superior) by A.M. Best for all the 17 years such ratings have been awarded.

Wells Research, Inc. has rated our Company A- which ranks us among the top 12 of all U.S. life and health companies with over \$1.5 billion of assets.

Information used by such independent rating services comes from each insurance company's financial statements. Such ratings are not a warranty of an insurer's ability to meet its contractual obligations.

Helping You In What We Do Best.

Our current Flex II Annuity interest rate.

The guaranteed rate is 4% for life of your Annuity.

Southern Farm Bureau Life Insurance Company offers Flex II, a Flexible Premium Retirement Annuity designed for periodic as well as single premiums. Your contributions, less any applicable maintenance fees, accumulate wealth for the future. Early surrender charges apply.



Southern Farm Bureau Life Insurance Company  
Jackson, Mississippi

Bailey County Farm Bureau

David Tipps, Mgr.  
1612 W. Amer. Blvd. 272-4567

Donate Blood!

Date TUESDAY, MARCH 30, 1993

Time 10:00 a.m. - 7:00 p.m.

Place FIRST ASSEMBLY OF GOD CHURCH  
521 S. FIRST, MULESHOE

Contact GLENDA POWELL at 272-5676  
TO SCHEDULE APPOINTMENTS

United Blood Services



Parenting Pointers

...from your friends at De Shazo Elementary.

*A Quote: "Few things help an individual more than to place responsibility upon him, and to let him know you trust him," Booker T. Washington*

From 101 Ways Parents Can Help Students Achieve.



TRUSTEE ELECTION ORDER AND NOTICE<sup>1</sup>  
(ORDEN Y AVISO DE ELECCION DE REGENTES)

The Muleshoe Independent School District Board of Trustees hereby orders and gives notice of an election to be held on May 1, 1993, for the purpose of<sup>2</sup> Electing one trustee each for Precincts 2, 3, and 5 for full three-year terms.

(Por la presente la junta de regentes del distrito escolar independiente ordena y da aviso que se llevará a cabo una elección el día 1 de Mayo de 1993 con el propósito de<sup>2</sup> elejir uno regente para precinctos 2, 3, & 5 para un termino de 3 años.

ABSENTEE VOTING by personal appearance will begin on April 12, 1993, (day) (date) and continue through April 27, 1993 from 8:00 a.m. to 5:00 p.m. on each day which is not a Saturday, Sunday, or an official state holiday.<sup>3</sup> (VOTACION POR AUSENCIA en persona comenzara el 12 (día) el Abri (fecha) de 1993 y continuara hasta el 27 (día) el Abri (fecha) de 1993 desde las 8:00 a.m. hasta las 5:00 p.m. en todos los días que no sean sabado, domingo, o día oficial de vacaciones estatales.)

514 West Avenue G is the address of the place for absentee voting in person and to mail applications for an absentee ballot. (La dirección indicada es del sitio para votar por ausencia en persona y para hacer solicitud para boleta de ausencia por correo.)

The POLLING PLACE(S)<sup>4</sup> designated below will be open from 7:00 a.m. to 7:00 p.m. on the day of the election. ( Los sitios de votación indicados abajo se abrirán desde las 7:00 a.m. a las 7:00 p.m. el día de la elección.)

Pct. No. (Núm. de precincto)	Location (Colocación)	
<u>Precinct #2</u>	<u>High School Cafeteria</u>	<u>300 Block Avenue G</u>
<u>Precinct #3</u>	<u>High School Cafeteria</u>	<u>300 Block Avenue G</u>
<u>Precinct # 5</u>	<u>High School Cafeteria</u>	<u>300 Block Avenue G</u>

Signatures of trustees: Cudy L. Parady, [Signature], [Signature], [Signature], [Signature], [Signature].

Don't wait to open your IRA...



The younger you are when you open your IRA, the more money you will have when you retire. That's pretty obvious, but when you see how much difference a year can make in an IRA, it's almost shocking.

If you are 24 years old and you wait until you are 25 to open an IRA, you'll have \$100,000\* less when you retire. How can that be? Well, there is a geometric progression that occurs with the principal and interest. One year can make all the difference in the world. Open an IRA today. Don't wait. Substantial penalty for early withdrawal.

We've got the Hometown Spirit... nothing else comes near it!



Member F.D.I.C.



**Travelling With The Texas Angler**  
by: Keith R. Warren

Travelling throughout the State of Texas I have the opportunity to meet a lot of fishermen. Some prefer freshwater fishing while others prefer to fish saltwater. There are anglers that crossover and enjoy both; however, these people are few and far between.

It is a fact that more Texans participate in freshwater fishing than saltwater. This is calculated by comparing total fishing licenses sold to the number of saltwater stamps issued.

It has been my experience more often than not that saltwater fishermen are not as likely to try new methods to increase their catch as freshwater fishermen. Old standby tactics like different types of live or dead bait and a limited few artificial lures make up the average saltwater angler's box. Such lures as the plastic shrimp tail, Johnson Sprite & Silver Minnow spoons and broken back lures are found in virtually any bay fisherman's tackle box. These are good lures, but there are many others available that will work just

as well or better in certain situations. These lures are freshwater bass lures. Yes, they will catch bass, but they will work great on trout and redbfish as well. Just because you've never heard of someone catching fish on a particular lure shouldn't be a reason not to try it.

Years ago I started using curly tail soft plastic (bass) worms for trout, redbfish and founder with unbelievable results. Rigged on a lead jighead, these worms looked totally different than shrimp tails and they outperformed them.

Another example of an excellent artificial bait in saltwater is the new topwater lure (bass) from Arbogast called the Phydeaux (pronounced Fido). This wooden cigar shaped lure has two large

treble hooks hanging from its belly. It also has a weight in its tail that allows it to sit more diagonally in the water. Redfish have a hard time getting hooked on most topwater lures because their mouths are on the bottom of their heads. They must come down on top of the lure to get hooked, but not with the Phydeaux. The tail is positioned below the surface, allowing a higher percentage of hook-ups. The lure, worked properly, walks along the surface darting from side to side like a swimming mullet.

Bass lures can catch more than just bass, but you need to experiment with different ones to see what works best for you. My suggestion is to wait until the fishing action is pretty good, then change to a new product. Many times you'll notice a big difference either in the way fish strike it or how far they try to eat it.

**Statewide Effort**

The American Association of Retired Persons (AARP) announced today that it will join with the American Cancer Society in a statewide campaign to raise community awareness of the importance of mammography screening for women over 50.

AARP Health Advocacy Services volunteers from throughout Texas recently completed a workshop on community education and building community coalitions to help increase the use of mammography screening programs by older women. In communities without trained AARP volunteers, local American Cancer Society chapters will be working on community education and outreach.

"One in every ten women in the United States will develop breast cancer, and the majority of those affected will be older women,"

according to Doris Black, Texas AARP Associate State Coordinator for Health Advocacy Services. "However, when found in early stages, 90 percent of breast cancers can be treated successfully. Deaths from breast cancer could be reduced

by up to one-third if women over 50 would have mammograms each year--along with an annual clinical breast exam by a health professional and monthly breast self-examination."

**For Your  
Customized Caps  
Call  
Area Cap Company  
1-800-238-1486  
We Appreciate Your Business  
Dickey Garner  
and  
Bob Stafford**

**Services For Ray  
Burnett Held  
Friday**

Services for Ray Burnett, 70, of Causey, NM were held at 2:00 p.m. Friday at Causey Baptist Church.

Burial was in Sudan Cemetery, under the direction of Ellis Funeral Home of Muleshoe.

Burnett died March 24, 1993 at 11:45 p.m. at Roosevelt General Hospital in Portales, NM.

He was born December 7, 1992 in Sulphur Bluff, Texas, and married Laverne Phillips August 2, 1982 in Causey, NM.

Mr. Burnett had been a resident of Causey, NM since 1982, moving there from California. He was a member of the Causey Baptist Church, and a retired paper maker.

Survivors include his wife, Laverne Burnett of Causey; one step-daughter, Loretta Singletary of Ruberindale, FL; one son, Ralph Burnett of Brentwood, CA.; three step-sons, Jimmy Lee of Hanson, ID, Jearl Lee of Portales, NM, and Jorby Lee of Portales, NM; five sisters, Billie Paulson of Willows, CA, Tommie Miller of Oakdale, CA, Ollie Mae Walker of Empire, CA, Emma Nance of Groesbeck, TX, Myrtle Davis of Empire, CA.; two brothers, Gene Burnett of Wheatland, MI and David Burnett of Jackson, MS; two grandchildren and seven great-grandchildren.

**Services For  
T.C. Rowan  
Held Saturday**

Services for T.C. Rowan, 70, of Austin, Texas were held at 2:00 p.m. Saturday at First Baptist Church in Springlake, TX.

Burial will be in Dreamland Cemetery, Canyon, Texas under the direction of Parsons-Ellis Funeral Home of Earth, TX.

Mr. Rowan passed away March 24, 1993 at Breckenridge Hospital in Austin, Texas after an illness.

T.C. Rowan had been a resident of Austin for two years where he was owner of Rowan Antiques. He was a lifelong resident of Springlake and Amarillo, and was a very active member in the Baptist Church serving as Minister of Music at Borger and Springlake. He was a veteran of WW II serving in the U.S. Navy.

Survivors include a sister and brother-in-law, Lucille and Joe Arnette of Austin; a brother and sister-in-law Bob and Frances Rowan of Springlake; numerous nieces and nephews.

Nephews will serve as pallbearers.

**Immaculate  
Conception  
Catholic Church**  
805 E. Hickory  
Father Joseph Augustine

**First Baptist Church**  
220 West Ave. E.  
Pastor, Stacey Conner

**Emmanuel Baptist  
Church**  
Iglesia Bautista Emmanuel  
107 East Third  
Isaias Cardenas, Pastor

**Trinity Baptist  
Church**  
314 E. Ave. B  
Rev. Dale Berry

**Circle Back  
Baptist Church**  
Intersection FM 3397 &  
Fm 298  
Rev. Jessie Shaver  
946-3676

**Calvary Baptist  
Church**  
1733 W. Ave. C.  
Pastor B.G. Hill

**Progress Baptist  
Church**  
Alan Petersen  
Progress, Texas

**Richland Hills  
Baptist Church**  
17th and West Ave. D  
Rev. Terry Taylor

**St. Matthews  
Baptist Church**  
Corner of West Boston  
& West Birch  
Pastor,

**Progress Second  
Baptist Church**  
1st and 3rd Sundays  
Rev. Arthur Hayes

**Primitive Baptist  
Church**  
621 South First  
Elder Cleveland Bass, Pastor  
965-2126

**The Christian Center**  
Morton Hwy  
Reydon Stanford  
272-5163 or 227-2136

**PARROTS DO TALK... But!**



**SO DOES A RECORD PLAYER**

Our Nation faces a serious threat of communism just off our shores. At the same time within our nation, they are seeking to undermine our faith in God. There are many sayings and expressions going around in our country that are communist inspired. In order to prevent "parroting" these sayings, that weaken our nation... attend church regularly, and study God's word so that the truth is more easily recognized.

*"Put on the whole armour of God, that ye may be able to stand against the wiles of the devil."*

The Church is God's appointed agency in this world for spreading the knowledge of His love for man and of His demand for man to respond to that love by loving his neighbor. Without this grounding in the love of God, no government or society or way of life will long persevere and the freedoms which we hold so dear will inevitably perish. Therefore, even from a selfish point of view, one should support the Church for the sake of the welfare of himself and his family. Beyond that, however, every person should uphold and participate in the Church because it tells the truth about man's life, death and destiny; the truth which alone will set him free to live as a child of God.

Coleman Adv. Serv.

**Primera Iglesia  
Bautista**  
223 E. Ave. B  
Roy Martinez, Pastor

**"Iglesia Pentecostal  
Unida"**  
207 East Ave. G  
272-5944  
Pastor: Wenceslado Trevino

**Lariat Church  
of Christ**  
Sunday School 10:00 a.m.  
Worship 11:00 & 6:00 p.m.  
Wednesday Services 7:00 p.m.  
Sam Billingsley, Minister

**Muleshoe Church  
of Christ**  
Clovis Hwy

**16th & Ave. D  
Church of Christ**  
Sunday 10:30 a.m.  
Evening 6:00 p.m.  
Wednesday 7:30 p.m.  
Curtis Shelburne, Minister  
272-4619

**Lazbuddie Church  
of Christ**  
Minister, Keith Courmier  
Sunday School 9:30 a.m.  
Morning Services 10:20 a.m.  
Evening Services 5:00 p.m.  
Wednesday Night 7:00 p.m.

**First Assembly  
of God**  
Rev. G. Dean Reid, Pastor  
Sunday School 9:45 a.m.  
Morning Worship 11:00 a.m.  
Evening Services 6:30 p.m.  
Mid-Week Services 7:30 p.m.  
272-3984

**Spanish Assembly  
of God**  
East 6th and Ave. F.  
Antonio DeAquino

**First United  
Methodist Church**  
507 W. 2nd Street  
Richard Edwards, Pastor

**El Divino Salvador  
Methodist Church**  
5th and E. Ave. D  
Leonard Gonzales, Pastor

**St. John Luthern**  
Sunday School and Bible  
Classes 9:30 a.m.  
Church Services 10:30 a.m.  
Rev. Richard Greenthaner

**Jehovah Witness**  
Friona Hwy  
Jack Tiffin, Minister  
Warren Meeks, Minister

**Lazbuddie Methodist  
Church**  
965-2121  
Doug Chapman, Pastor

**New Covenant  
Church**  
Plainview Hwy  
Sunday 10:00 a.m.  
Wednesday 7:00 p.m.  
Jimmy Lowe, Pastor

**Templo Calvario**  
507 South Main  
Sunday 10:00 a.m.  
Sunday Evening 7:00 p.m.  
Evangelistic Services

**New Vision Church  
of the Nazarene**  
814 W. Ave. C  
272-3622  
Pastor David R. McIntire



*Attend The Church  
Of Your Choice!*

<b>Decorator's Floral &amp; Gifts</b> 616 S. 1st. 272-4340	<b>Irrigation Pumps &amp; Power</b> W. Hwy 84 272-4483	<b>American Valley Inc.</b> W. Hwy 84 272-4266	<b>Bobo Insurance Agency</b> 108 E. Ave. C 272-4264	<b>Bratcher Motor Supply</b> 107 E. Ave. B 272-4288	<b>5-Area Telephone Cooperative Inc.</b> 302 Uvalde 272-5533
<b>Viola's Restaurant</b> 2002 W. Amer. Blvd. 272-3838	<b>Bob Stovall Printing</b> 221 E. Ave. 272-3373	<b>Lookin' Good</b> 206 Main 272-5052	<b>Throckmorton Refinishing Shop</b> 319 E. Amer. Blvd. 272-5345	<b>Western Drug</b> 114 Main 272-3106	<b>Lowe's Marketplace</b> 401 W. Amer. Blvd. 272-4585
<b>Bailey County Farm Bureau</b> 1612 W. Amer. Blvd. 272-4567	<b>Richland Hills Texaco</b> 1914 W. Amer. Blvd. 272-4875				

**Patients In  
Muleshoe Area  
Medical Center**

MARCH 23, 1993  
Joshua Estrada, Kellie Anderson,  
Richard Fabela, Jr., Cecil Osborne,  
Elmer McKay, Felicitas Serna

MARCH 24, 1993  
Bianca Vanegas, Richard Fabela Jr.,  
Cecil Osborne, Elmer McKay,  
Felicitas Serna

MARCH 25, 1993  
Bianca Vanegas, Richard Fabela,  
Cecil Osborne, Elmer McKay,  
Felicitas Serna



# CLASSIFIEDS 272-4536

## CLASSIFIED RATES

15 Words & Under  
Minimum Charge  
\$2.30  
Thereafter  
\$2.00  
16 Words & over  
1st Insertion  
15 cents per word  
2nd Insertion  
13 cents per word

CLASSIFIED  
DISPLAY RATES  
\$1.75  
Per Column Inch

DEADLINES  
12 noon Tues.  
For Thursday Paper  
12 noon Friday  
For Sunday Paper

To receive the reduced  
rate after the first  
insertion, ad must run  
continuously.

We reserve the right to  
classify, revise, or reject  
any ad. We are not  
responsible for any error  
after ad has run once.

For more information and  
assistance regarding the  
investigation of get-rich-  
quick, work-at-home and  
other financial/business  
opportunities. The Mule-  
shoe and Bailey County  
Journals urges its readers  
to contact the Better  
Business Bureau, 1206  
14th St., #901, Lubbock,  
TX 79401 or call  
(806)763-0459.

## 1. Personals

CONCERNED  
About Someone's  
Drinking?  
HELP IS  
AVAILABLE  
through Al-Anon  
Call 272-2350 or  
965-2870 or come to  
visit Tuesday and  
Thursday nights, 8:00  
p.m. & through AA call  
965-2870 or come visit  
Tuesday nights, 8:00 at  
620 W. 2nd, Muleshoe

Classifieds!  
Bigger and Better  
Than Ever  
272-4536

DIET MAGIC  
Burns Fat, Curbs  
Appetite, Increases  
Energy. All Natural  
Guaranteed. \$35-30 days.  
806-272-3463  
H1-13s-10tp

## 3. Help Wanted

APPLICATIONS BEING  
TAKEN (For April 12  
Employment date)  
Church Secretary  
First United Methodist  
Church, Muleshoe  
28 1/2 Hrs. per week  
Need computer, accounting,  
word processing, telephone,  
and public relation skills.  
Pick up applications from  
First UMC Office 507 W.  
2nd between 8:30 am and  
3:30 pm Mon-Thur or  
8:30am and 1:00pm Fri.  
F3-13t-2tc

Wanted truck drivers and  
tractor operators. Must  
have CDL. Contact SCB  
Farms (in Bovina),  
238-1206  
S3-13t-2tc

HOUSE INSPECTORS  
No experience necessary  
up to \$800 weekly. Will  
train. Call 219-769-6649  
ext. H5589 8 a.m. to 8  
p.m. 7 days  
3-12S-4tp(ts)

Classify!

## 5. Apts. For Rent

Apartment for rent.  
272-4622  
K5-12t-tfc

Apartment For Rent  
Good Location, Water  
Paid, Call 272-7575  
P5-11t-tfc

## 7. Wanted To Rent

I would like to rent or  
lease 3 Bdrm. house in  
country Near Muleshoe.  
806-296-5051  
J7-13t-10tc

## 11. For Sale or Trade

FOR SALE  
6 Row John Deere Buster  
Planter. 806-925-6717.  
M11-13s-tfc

Portales Mobile Homes  
offers the widest selection  
of Fleetwood homes in  
the area! We'll make it  
worth the drive to shop  
with us! Ask for Pati  
Elder - (505)-356-5639.  
Immediate delivery,  
financing available.  
E11-6s-8tc(S)

## 9. Automobiles For Sale

Automobile for Sale  
1978 Oldsmobile, New  
Tires, Runs Good, Uses  
No Oil. See at  
1918 W. Birch Ave.  
Phone 272-3696 for  
further details.  
B9-12t-4tc

## 8. Real Estate

Home For Sale  
901 Juniper 3-2 Brick,  
\$42,000 FHA qualifying  
Assumable.  
Days 293-3888,  
Nights 293-9706  
G8-12s-tfc

Home For Sale  
2 Bedroom, 2 Bath,  
Fireplace  
comfortable/affordable,  
Financing available.  
contact: Steve Oliver  
285-2022, 285-3184.  
O8-11t-tfc

FOR SALE  
320 Acres--South Bailey  
County. \$250 per acre.  
OBO Call 272-4622  
K8-6t-tfc

3 Bedroom Brick Home  
for Sale by owner  
Garage, Central Heat,  
Corner, Paved Streets on  
both sides. 272-5679  
C8-12s-4tp

FOR SALE  
2100 sq. ft. 4 bedroom  
brick with new timber-  
line roof. Total electric-3  
year old heat pump-(heat  
& cool). 2 baths, double  
garage, lots of closets.  
Call 272-4793 or 5531.  
C8-6t-tfc

2 Bdrm. 1 Bath, 2 Car  
carport on a corner lot.  
Fenced-in back yard.  
Close to school and park.  
Call 817-663-2084  
B8-10t-8tc

For Sale Nice 3-2-2 Brick  
Home on 1 Acre, 2 Miles  
North on Highway 214.  
Call 272-5664  
B8-10s-8tc

For Sale  
3-3-2, 1819 W. Ave. H  
By Appointment only.  
272-5097  
C8-11s-8tc

Home For Sale  
901 Juniper 3-2 Brick,  
\$42,000 FHA qualifying  
Assumable.  
Days 293-3888,  
Nights 293-9706  
G8-12s-tfc

## Farms & Ranches For Sale

SOUTH CASTRO COUNTY  
Good quarter electric well sprklr. & steel pens. All in  
permanent pasture. Allotments intact.  
LENDER OWNED  
157 acres. Sprklr. 2 electric wells & U.G. pipe. Gully  
allotted. North Lamb County

Approximately 13 sections on Swisher Castro County  
line. We can divide to fit your operation & your  
pocketbook.  
SCOTT LAND COMPANY  
Ben G. Scott  
Dimmitt, TX 79027  
806-647-4375 day or night  
tfc(S)(ts)

## 18. Legals

LEGAL NOTICE

The City Of Muleshoe Is  
Taking Applications For  
A Secretarial/Clerical  
Position. Applications  
May Be Filled Out At  
City Hall, 215 South  
First Sreet, Muleshoe,  
Texas, Between The  
Hours Of 8:00 A.M. And  
5:00 P.M. The City Of  
Muleshoe Is An Equal  
Opportunity Employer.  
C18-13s-3tc

MAKE YOUR PITCH!

You'll touch all the bases with an  
ad in the classifieds. For "grand  
slam" impact 272-4536  
Muleshoe  
Journal

## 8. Real Estate

For Sale 3 Bdrm., 2  
bath, 1 carport brick  
home over 2,100 sq.ft.  
Near High School 214  
W. Ave J. Gas grill and  
light, large covered patio,  
concrete block fence.  
Partial owner financing  
possible. Call (806)  
578-4413 or (806)354-  
2733 for further  
information.  
G8-12s-4tc

Home For Sale  
901 Juniper 3-2 Brick,  
\$42,000 FHA qualifying  
Assumable.  
Days 293-3888,  
Nights 293-9706  
G8-12s-tfc

FOR SALE  
320 Acres--South Bailey  
County. \$250 per acre.  
OBO Call 272-4622  
K8-6t-tfc

3 Bedroom Brick Home  
for Sale by owner  
Garage, Central Heat,  
Corner, Paved Streets on  
both sides. 272-5679  
C8-12s-4tp

FOR SALE  
2100 sq. ft. 4 bedroom  
brick with new timber-  
line roof. Total electric-3  
year old heat pump-(heat  
& cool). 2 baths, double  
garage, lots of closets.  
Call 272-4793 or 5531.  
C8-6t-tfc

2 Bdrm. 1 Bath, 2 Car  
carport on a corner lot.  
Fenced-in back yard.  
Close to school and park.  
Call 817-663-2084  
B8-10t-8tc

For Sale Nice 3-2-2 Brick  
Home on 1 Acre, 2 Miles  
North on Highway 214.  
Call 272-5664  
B8-10s-8tc

For Sale  
3-3-2, 1819 W. Ave. H  
By Appointment only.  
272-5097  
C8-11s-8tc

Home For Sale  
901 Juniper 3-2 Brick,  
\$42,000 FHA qualifying  
Assumable.  
Days 293-3888,  
Nights 293-9706  
G8-12s-tfc

You can't lose--or  
get lost--with  
THE ROADS OF NEW  
MEXICO

Get your copy at  
The Muleshoe Journal  
Only \$12.95

CLASSIFY  
Call 272-4536

## 8. Real Estate

James F. Hayes & Co.  
AGRICULTURAL REAL ESTATE SERVICES

1280 Acres in Lamb County.  
8 Center pivot electric sprinklers. 13 wells with electric  
motors. Good water & productive soil. Assumable loan.  
A farm with lots of potential.

Parmer County--Southeast of Friona. 320 Acres. 3  
wells. Underground pipe. A lot of depreciable assets.  
Excellent for livestock farm.

C.R.P. 5 Years Left. 741 Acres of C.R.P. on 848  
Acres total. Parmer County. \$70,000 in depreciable  
assets. Located on pavement. Might be divided. Call  
Vic for other details.

193 Acres Northeast of Muleshoe in Parmer County. 2  
wells--Excellent water--late model center pivot sprinkler.  
Full Allotted. Call for further details.

310 Main Street, Suite 103  
Office Muleshoe Home  
272-3100 965-2468  
tfc(S)

## SMALLWOOD REAL ESTATE

232 Main 272-4838  
3 Bedroom, 1 Bath, Living Room, den with  
wood stone. Nice carpet, 1 car garage, fenced  
back yard. Priced To Sell!!

2 Bedroom, 1 Bath, Central Heat and Air, all  
Carpeted. \$750.00 Down, \$250.00 a Month,  
144 Payments.

3 Bedroom, 2 Bath, Brick, Central Heat and  
Air, Corner Lot in Country Club Addition. A  
Qualified Buyer Can Assume the Loan,

Joe L. Smallwood, Broker  
tfc(S)  
\*\*\*

## Nieman Realty

116 E. Ave. C George Nieman, Broker 272-5286 or 272-5285

CHECK WITH US FOR AVAILABLE HUD PROPERTIES!!!!

### RICHLAND HILLS

NICE RESIDENTIAL LOTS...\$5,000 UP

4-2-2 Brick, Large living/dining combined...  
\$50's!!!! RH-5

3-2-1 Brick, Cent A&H, with fenced yard...  
\$50's!!!! RH-6

3-2-2 Brick with fireplace, 5 ceiling fans, new  
carpet & paint, new dual fuel heat pump,  
abundance of closet space...\$90's...RH-8

### HIGH SCHOOL

IMMACULATE LARGE BRICK HOME 3-2-2  
Heat Pump, built-ins, Whirlpool, loads of  
storage, lg. shop-storage, \$70's!!!! HS-2

PRICE REDUCED 3-2 Remodeled,  
heat pump, built-ins, fenced yd.,  
storage bldg. \$23,000!!! HS-3

JUST LISTED-3-2 Home Cent. A&H, built-ins,  
fans, st. bldg., fenced yd. \$30's!!!!HS-5

### HIGHLAND AREA

3-2-1 Brick, Cent. A&H, FP, built-ins.  
MAKE OFFER!!!! HL-1

NICE 3-2-2 Brick, Cent. A&H, built-ins, FP,  
sunroom, auto. spklr., fenced yd., MORE!!!  
\$70's!!!! HL-2

FmHA Financing To Qualified Buyer -NICE  
3-1-1 Brick Home, Cent. A&H, ceiling fans,  
storage bldg., fenced yd. \$30's!!!!HL-3

### LENAU ADDITION

PRICE REDUCED-3-1 1/2-1 Home, Cent.  
heat, evap. air, cov. patio, st. bldg.,  
fenced yd. \$30's!!!! L-1

REMODELED BRICK-3-2-1 With Cent.  
heat, built-ins--PRICE REDUCED!!!L-2

JUST LISTED-2-1-1 Home with Heat Pump,  
has extra insulation in attic & floors...\$20's...L-4

3-2-1+carport, Brick, ceiling fans. Approx. 2060  
sq. ft...\$40's!! L-6

4-3 Bath, Brick, on 2 acres, built-ins, FP,  
Geothermal Ht. pump, horse stalls, pens & tack rm.  
Also income producing shop on location or use for  
your own needs...\$80's!! PRICE REDUCED!!!!

VERY NICE 4-2-2 Brick home on 6 ac., Cent.  
A&H, 2300'+lv. area, Much More!! \$70's!HR-4

3-2-2 Brick, btl.-ins, Ht. pump, FP, 2.5 acres  
on pavement. \$60's!!!! HR-3

3-2-3 Carport Mobile home on 11 ac. edge of  
town, MAKE OFFER!!!! HR-5

3-2-1 on 1 acre, Cent. Heat, Evap. Air,  
Remodeled, \$30's!! HR-6

3-1-2 Home on 1 1/2 acres storm cellar &  
storage bldg...\$20's!!!! HR-8

3-2 home on 1/2 acre and more...  
In Contract and more...  
\$30's!!!! HR-9

### RURAL HOMES

NICE 3-2-2 carport Home, one acre tract, Cent.  
A&H, built-ins, fenced, on pavement close  
to town. \$40's!!!! HR-2

### ASK ABOUT OUR COMMERCIAL LISTINGS!!!!

JUST LISTED--Property on Hwy. 84--Can be  
used as residential or commercial, large shop, storm  
cellar, two story home, lot size 140'x100'...C-1

Circle Back Area-177 acres of good dryland...  
Fully Allotted!!!

PLEASANT VALLEY-160 acres, 8" well.  
Lindsey circle!!!!

354 ac. S. of town, good allot. &  
yields!!!!

## HOROSCOPE

By B.J. CROWLEY

Week of March 29, 1993

ARIES--March 21 to April 20--  
Learn to be honest, not only with  
others, but with yourself as well.  
A project which you will soon un-  
dertake for your own pleasure will  
be of great interest to others.

TAURUS--April 21 to May  
20--Let a lost love go. It is ridicu-  
lous to try to hold on to something  
you can never have. Be happy in

this moment. This is the only way  
you can ever know real happiness.

GEMINI--May 21 to June 20--  
You now move up a notch on the  
social ladder. New interests and  
new friends are in the picture.

CANCER--June 21 to July 22--  
Growing plants, especially those  
which bloom, are a source of great  
pleasure to you. A small garden  
could be very productive this  
year.

LEO--July 23 to Aug. 22--An  
outing in a rural area gives you re-  
newed vigor. A picnic with your  
family may be on the agenda, if  
weather permits.

VIRGO--Aug. 23 to Sept. 22--  
Take a second look if you are con-  
sidering a job change. The grass  
may not be greener. Weigh the ad-  
vantages and disadvantages.

LIBRA--Sept. 23 to Oct. 22--  
You can be very lucky with fi-  
nances at this time. This is a good  
time to take a chance. Sign up for  
any drawings that you come  
across.

SCORPIO--Oct. 23 to Nov.  
22--Don't take chances with your  
reputation. A good opinion of you  
by others is essential if you are to  
have good feelings about yourself.

SAGITTARIUS--Nov. 23 to  
Dec. 22--Spend the late after-  
noons this week preparing special  
foods. Have company over for  
dinner. Invite special friends  
whose company you truly enjoy.

CAPRICORN--Dec. 22 to Jan.  
19--Stop being so vocal about  
your likes and dislikes. A quieter  
approach to life will help you get  
where you want more quickly.

AQUARIUS--Jan. 20 to Feb.  
18--Curb the tendency to be  
greedy. When you harbor feelings  
of selfishness, they breed distrust,  
suspicion, and sometimes hate.

PISCES--Feb. 19 to March 20--  
Your financial picture improves  
greatly. Business is on an up-  
swing. You should be able now to  
buy those extras you have been  
longing for.

Job Situation  
Up in the Air?

Whatever your situation,  
whether you're looking for a job  
or offering one, classifieds can  
help. It's a fact, classifieds are the  
most popular method of match-  
ing the right people to the right  
jobs. Let classifieds help you and  
your job situation!

Muleshoe  
Journal  
272-4536

Classifieds! Bigger  
& Better Than Ever!

Portales  
Livestock Auction

South Floyd Highway \* Box 218  
Portales, NM 88130  
(505) 356-4740 or 356-8524

Next Dairy Sale  
Tuesday, April 6

Expecting . . .  
500 Holstein heifers  
including  
300 springer heifers  
and  
200 open heifers!

Accepting consignments  
for the next  
Big 2-Day Special  
Holstein Heifer Sale  
Monday and Tuesday,  
May 3 and 4  
Expecting 2,000 Holstein heifers

Tommy Bouldin currently has sever-  
al customers in need of open heifers for  
summer grazing. For buyers not want-  
ing to wait until May for their replace-  
ments, Tommy offers his assistance in  
marketing your cattle either in the sale  
or at private treaty.

Call Tommy Bouldin  
at Portales Livestock Auction  
(505) 356-4740 or (505) 276-8643

Call any of the Bouldins any time!



Check Our Insert In Today's  
Bailey County Journal  
For More Specials!

AVAILABLE AT PARTICIPATING STORES  
4 PIECE PLACE SETTING \$2.99  
WITH EACH \$20.00 GROCERY PURCHASE  
Including: Dinner Plates, 12" x 18" Dish, Cup & Saucer, LATE IN MICROWAVE FREEZER, DISHWASHER AND OVEN

all types  
**Coca Cola**  
**\$1.59**  
3 liter bottle



# NATIONAL BRANDS

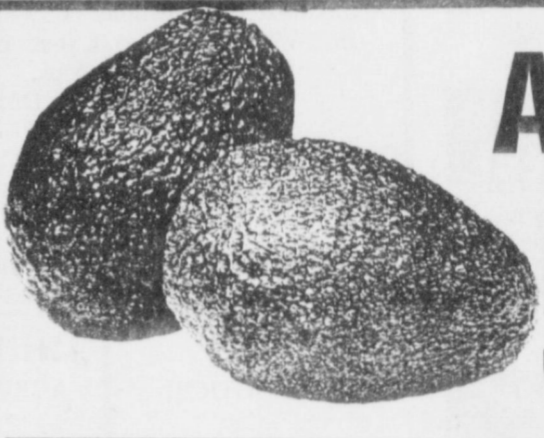
S ★ A ★ L ★ E

HEAVY GRAIN FED BEEF BONELESS  
**Round Steak**  
**\$1.99**  
LB.



HEAVY GRAIN FED BEEF  
**Round Steak**  
**\$1.79**  
LB.

FARMLAND REG. OR PORK & BACON  
**Link Sausage**  
**99¢**  
12 OZ. PKG.



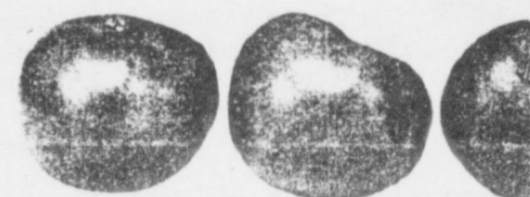
CALIFORNIA HASS  
**Avocados**  
**5 \$1**  
FOR

HEAVY GRAIN FED BEEF BONELESS  
**Rump Roast**  
**\$2.39**  
LB.

EXTRA LEAN  
**Ground Round**  
**\$1.99**  
LB.

HEAVY GRAIN FED BEEF BONELESS SIRLOIN TIP  
**Steak or Roast**  
**\$2.59**  
LB.

VAN DE KAMPS - FILLETS OR REG. J.C.  
**Fish Sticks**  
**\$3.99**  
20 OZ. BOX



RED RIPE  
**Tomatoes**  
**69¢**  
EA.  
4-PK.



WRIGHTS - HICKORY SMOKED SLICED SLAB  
**Bacon**  
**99¢**  
LB.

HORMEL REGULAR OR GIANT SLICED  
**Pepperoni**  
**\$1.19**  
3.5 OZ. PKG.

SCHOONER CRUNCHY PORTIONS OR  
**Fish Sticks**  
**\$1.19**  
1 LB.

DECKER 4 X 4  
**Cooked Ham**  
**\$2.19**  
10 OZ. PKG.

RED OR GOLDEN DELICIOUS  
**Apples**  
**\$1.29**  
3-LB. BAG

NEW CROP TEXAS WHITE  
**Onions**  
**49¢**  
LB.

GARDEN FRESH  
**Broccoli**  
**69¢**  
LB.

SWEET JUICY  
**Mango**  
**2 \$1**  
FOR

WRIGHT'S BRAND SLICED  
**Ham**  
**\$1.89**  
1-2 LB. PKG. LB.

WILSON'S  
**Smoked Sausage**  
**\$1.49**  
LB.

CORN KING  
**Meat Franks**  
**49¢**  
12 OZ. PKG.

CORN KING  
**Meat Bologna**  
**79¢**  
12 OZ. PKG.

THOMPSON SEEDLESS  
**Grapes**  
**89¢**  
LB.

CALIFORNIA NAVAL  
**Oranges**  
**10 \$1**  
FOR

ASSORTED VARIETIES  
**Fritos Corn Chips**  
**2 \$3**  
11 OZ. BAG

CLASSIC - HAMBURGER  
**Dill Pickle Chips**  
**\$1.59**  
12 OZ. JAR

CLASSIC - STUFFED  
**Spanish Olives**  
**\$1.29**  
5.5 OZ. JAR

KRAFT  
**Parkay Spread**  
**\$1.69**  
1 LB. TUB

on any 7oz. jar of Taster's Choice  
Taste Freeze Dried Coffee  
**\$2.00 OFF**

KRAFT - ASSORTED REG. OR THICK N' SPICY  
**Sauce**  
**99¢**  
18 OZ. BTL

ASSORTED VELVETA & SHELLS OR DELI MAC & CHEESE  
**Kraft Dinner**  
**\$1.79**  
10-14 OZ. PKG.

KRAFT MACARONI & CHEESE OR ASSORTED SHAPES  
**Dinners**  
**5 \$3**  
6.5-7.25 OZ. BOXES

KRAFT  
**Mini or Regular Marshmallows**  
**79¢**  
16 OZ. PKG.

KRAFT FREE ASST  
**Salad Dressing**  
**\$1.39**  
8 OZ. BTL

ASSORTED  
**Hills Bros. Coffee**  
**\$1.69**  
12-10 1/2 OZ. CAN

SAVE \$1.00  
ANY NESTEA INSTANT TEA PRODUCT

12 TACO SHELLS  
**Taco Shells**  
**99¢**  
7.5 LB. BAG

CHEEZ-IT  
**Krispy Crackers**  
**89¢**  
16 OZ. BAG

RICH N' READY - ASST  
**Fruit Drinks**  
**\$1.69**  
1 GAL. JUG

ASSORTED  
**Vienna Sausage**  
**\$1.59**  
12 OZ. CAN

ASSORTED  
**V-8 Juice**  
**\$1.99**  
5 \$3

CASA FIESTA  
**Taco Seasoning**  
**99¢**  
10-14 OZ. PKG.

SUNSHINE ASSORTED  
**Snack Crackers**  
**\$2.29**  
16 OZ. BAG

UNDERWOOD ASST  
**Meat Spreads**  
**\$1.19**  
1 LB. TUB

DEL MONTE ASST  
**Canned Vegetables**  
**2 88¢**  
12-17 OZ. CANS

ASSORTED  
**Tomato Ketchup**  
**99¢**  
28 OZ. BTL

BISQUICK  
**Gold Medal Flour**  
**\$3.69**  
75 LB. BAG

LOCKY CHARMS  
**Lucky Charms**  
**SAVE \$1.45**  
when you buy 14 oz. Lucky Charms

ASSORTED DETERGENT  
**Ultra Tide**  
**\$5.99**  
98 1/2 OZ. BOX

WHOLE PEELLED OR DICED  
**Del Monte Tomatoes**  
**69¢**  
16 OZ. CAN

ASSORTED  
**Pudding Cups**  
**99¢**  
3 OZ. PKG.

GENERAL MILLS  
**Gold Medal Flour**  
**\$3.69**  
75 LB. BAG

ASSORTED  
**Ultra Liquid Tide**  
**\$2.29**  
87 OZ. BTL

ASSORTED  
**Softener Refills**  
**\$2.19**  
29 OZ. CTN

VIVA  
**Baby Fresh Wipes**  
**89¢**  
175 CT. BOX

CAMPBELL'S ASST  
**Ramen Noodles**  
**99¢**  
3 OZ. PKG.

BETTY CROCKER ASST  
**Creamy Deluxe Frosting**  
**\$1.49**  
16 OZ. CAN

ASSORTED  
**Softener Refills**  
**\$6.99**  
100 OZ. PKG.

ASSORTED  
**Ultra Liquid Tide**  
**\$2.29**  
87 OZ. BTL

NEW! FABRIC SOFTENER  
**Snuggles Singles**  
**\$2.19**  
40 CT. BOX

ASSORTED  
**Bath Bar**  
**\$1.99**  
2 BAR PKG.

BISQUICK  
**Baking Mix**  
**\$2.69**  
86 OZ. BOX

ASSORTED  
**Softener Refills**  
**\$2.19**  
29 OZ. CTN

ASSORTED  
**Ultra Liquid Tide**  
**\$2.29**  
87 OZ. BTL

JOHNSON'S  
**Cotton Balls**  
**\$1.69**  
160 CT. PKG.

HALSA - ASSORTED  
**Shampoo or Conditioner**  
**99¢**  
15 OZ. BTL

BETTY CROCKER ASST  
**Betty Crocker Potatoes**  
**\$1.19**  
5 OZ. BOX

ASSORTED  
**Softener Refills**  
**\$2.19**  
29 OZ. CTN

ASSORTED  
**Ultra Liquid Tide**  
**\$2.29**  
87 OZ. BTL

JOHNSON'S  
**Pooch & Pals Bath Time Buddies**  
**\$3.49**  
13.5 OZ. BTL

ASSORTED  
**Bath Bar**  
**\$1.99**  
2 BAR PKG.

MINT-GOLD  
**Corn on the Cob**  
**\$1.19**  
ONE 10A MINI

ASSORTED  
**Softener Refills**  
**\$2.19**  
29 OZ. CTN

ASSORTED  
**Ultra Liquid Tide**  
**\$2.29**  
87 OZ. BTL

ASSORTED  
**Bath Bar**  
**\$1.99**  
2 BAR PKG.

ASSORTED  
**Bath Bar**  
**\$1.99**  
2 BAR PKG.

**Lowes** **Pay-n-Save**  
515 W. Amer. Blvd. Muleshoe 272-4406  
**MARKETPLACE**  
401 W. American Blvd. Muleshoe, TX 79347 (806) 272-4585  
Prices effective March 28 - April 3, 1993  
WE RESERVE THE RIGHT TO LIMIT QUANTITIES IN TEXAS