

BAILEY COUNTY JOURNAL

"The Community of Opportunity-Where Water Makes the Difference"

Weather

	High	Low
March 17	67	26
March 18	76	33
March 19	51	26
March 20	56	18

Moisture
Total for year 0.47

VOL. 9 NO. 12

8 PAGES

PUBLISHED EVERY SUNDAY AT MULESHOE, BAILEY COUNTY, TEXAS 79347

PRICE 10 C.

SUNDAY, MARCH 21, 1971

around muleshoe with the journal staff

Mrs. Harry Garrison, who has been staying with Mrs. G.H. Kennedy for the last three weeks, returned to her home in Vanderbilt Thursday.

Friday morning, Mrs. Kennedy left for Wheeler, where she will be a guest in the home of her brother and his wife, Mr. and Mrs. Harry Swofford.

Cleta Williams was released from the hospital in Muleshoe Wednesday and returned to her job at The Journal Thursday afternoon.

Mrs. Williams was injured in an automobile accident on Thursday, March 11 near her home.

Mr. and Mrs. T.A. Loter of Childress and Mrs. Jerry Barlow and son of Hereford, visited in the J.G. Arnn home Thursday.

Mrs. Loter is a sister of Mrs. Arnn and Mrs. Barlow is a niece.

Visiting with Joyce Raney and her family, the Edd Edmestons, and in the Buck Creamer home Tuesday night and Wednesday was Jerry Frank Olds of Cozad, Neb.

Sheriff's officers arrested one person for driving while intoxicated and one person for having no driver's license during the past several days.

City officers jailed two persons on drunk charges and held two runaways from Levelland during the last five days.

Also turned in to Bailey County Sheriff's Deputy Bud Street, was a number of electrical blasting caps which were found beneath a culvert. The blasting caps were given to a local paving and dirt moving firm as the owner could not be located.

Larry Davis of Lazbuddie Farmers Supply has been attending a management course at Farmland Industries School in Kansas City, Mo.

He attended the school March 15-19 which trains employees of local cooperatives from throughout mid-American. Students are selected by local managers and sent to the center.

Miss Ann Douglass, daughter of Mr. and Mrs. Morris Douglass was given a certificate for being on the Dean's Honor List at Texas Tech University for the past semester.

Local Ginners At Convention Last Weekend

Mr. and Mrs. J. A. Nickels, Mr. and Mrs. Willard Tibbets and Mr. and Mrs. B. J. Darnell, all of Muleshoe, were among the more than 400 independent ginners and their wives and representatives who attended the Texas Independent Ginners Association meeting last weekend.

The ninth annual meeting was held in Corpus Christi.

Named president of the association for 1971 was Joe Ellison of Sudan and Lynn Gillespie of Stamford was elected vice president.

Ellison replaces Charles Hester, a Wharton area ginner, as president of TIGA. Prior to being elected as president, Ellison served on the board of directors representing the Alaska for two years.

Speakers at the meeting included Senator John Tower, Republican Senator from Texas; Dr. Heartsill Wilson, motivational speaker; Milton Schiller, vice president of the Rio Grande campus of the Texas State Institute; Joe Moss, policy director of the Cotton Division of USDA and W. H. Townsend of the Texas Employment Commission.

Members of the association also approved resolutions to support legislation restricting the import of textiles into the United States and approved a resolution to return the decision of out of county cotton allotment transfers to a referendum of producers.



SIGNING AUTOGRAPHS--Muleshoe Athletic Director Fred Hedgecoke, standing left, and Athletic Booster Club President Jim Shafer, standing right, watch as Houston Oiler Quarterback Charlie Johnson, seated, signs autographs Friday night. Johnson was the special guest speaker at the annual Athletic Banquet in the Muleshoe High School cafeteria. More than 200 athletes, coaches, school officials, parents and sports fans attended the banquet. Johnson commended the athletic program in the Muleshoe School system. He said he was brought to Muleshoe to speak by his cousin, Mrs. Fred Mardis.

Richardson; Hays And Putman MVP

"I was impressed as I watched the Muleshoe athletes working out this afternoon," commented Charlie Johnson, quarterback for the Houston Oilers, "not so much impressed with their enthusiasm, but the look in their eye. They were enjoying what they were doing." Johnson opened his talk at the annual Muleshoe Athletic Banquet Friday night with those words after he thanked the local Athletic Booster Club for inviting him to Muleshoe.

"I have been very fortunate to have played with and to have played against famous athletes," he added and said there are three ingredients for a good athlete. He listed the ingredients as dedication, integrity and faith; then explained how the ingredients worked together to build an athlete.

He stressed that a good athlete strived to be as good as possible; was honest with his practice and his work; showed responsibility to his teammates and said most important, "he has faith in God."

Muleshoe Athletic Director Fred Hedgecoke introduced the

Three Local People Attend Houston Meet

Mr. and Mrs. Gordon Duncan and Ernest Kerr, manager of the local Federal Land Bank have just returned from Houston where they attended the annual stockholders' meeting of the Federal Land Bank of Houston. The meeting was attended by representatives of 68 Federal Land Bank Associations located throughout Texas. About 450 persons were present for the meeting.

Members of the board of directors in Muleshoe are Gordon Duncan, Morris Douglass, A. L. Hertzog, Jim Claumch and James Glaze.

Delegates, alternates and guests heard President Herbert H. Decker give the annual report to the stockholders and addresses by Fred Gilmore, Deputy Governor of the Farm Credit Administration, Washington, D. C., and William E. Pettigrew, Financial Economist for the Fiscal Agency of the Farm Credit Banks, New York.

Muleshoe coaching staff and commended their wives as he introduced them.

The Muleshoe football captains for 1970 were introduced. They were Mike Riley, Bobby Hayes and Donnie Wheat.

Coaches told of the football team's accomplishments during

MAIF Officers Decline New Director Term

During the annual meeting of the Muleshoe Area Industrial Foundation Wednesday, both Chairman Harmon Elliott and Director Dr. Charles Lewis announced they would not be available to serve a new term, although both were nominated for re-election to their present posts.

Terms of both men were due to expire this year, and elections were scheduled to be held during the annual report meeting Wednesday. Following announcement by the two men that they would not be available to serve on the board of MAIF for the next year, a 15 minute caucus was held, during which time it was decided to re-schedule the election of officers for Thursday, April 1.

Chairman Elliott reported on activities of the MAIF during the past year and contacts with industrial prospects which were made. He also said that no money would be sought this year, as it was thought MAIF had adequate operating funds available at this time.

MJHS Planning Talent Show Tuesday Night

The Muleshoe Junior High School will present their annual talent show Tuesday, March 23, 7:30 p.m. in the Muleshoe High School auditorium.

Students promise an evening of enjoyment for all ages during the show.

Advance tickets are on sale at MJHS for \$1 for adults and 50 cents for children. Tickets at the door will be \$1.25 for adults and 75 cents for children.

the past year and named boys on the 1970 All-District team. All-District players were Bobby Hays, Donnie Wheat, Rand Baker and Mike Riley. Honorable mention All-District football boys were Johnny Hayes and Tommie Clements.

Receiving the Most Valuable Player award for 1970 was Bobby Hays.

Jerry Putman, Randy Field and Mike Riley were introduced as basketball captains for 1970 and All-District basketball players were Johnny Hayes, Don Heathington and Leroy Medlock.

The Most Valuable basketball player for 1970 was Jerry Putman.

Vickie Julian and Ricki Richardson were named as the girls' basketball captains for 1970. All-District players were Judy Winn and Ricki Richardson. Ricki was also named to the All-Star team and will play in a tournament in Amarillo on Saturday, March 27.

Cont'd on Page 2, Col. 6

Hospital Board Reviews Resume Of Past Actions

A relatively light agenda faced the members of the Bailey County Hospital District Board for their Tuesday night meeting.

Mrs. J. G. Arnn presented a resume of activities of the Hospital District Board since its inception; a report was given on the court action filed against the board; Mrs. Kenneth Powell was named as a voting judge to replace Betty Oliver and a planned special canvassing board for absentee board was discontinued.

Discussions were held on the possibility of building the new hospital in Muleshoe through Hospital Corporation of America and the upcoming election for board members.

The hospital board reminded that absentee voting is presently underway and will continue through March 30. Absentee ballots may be cast at the Muleshoe City Hall. Candidates are present incumbents D. O. Burlesmith, Mrs. J. G. Arnn, Sam Damron and Freddie Parkman; and A. R. McGuire, C. G. (Grundy) Lewis and Earnest W. Locker.

Community Action Fails To Win Public Approval

H-B Hospitals Pass 500 Mark Since '60

Because of the great interest in Hill-Burton funds which are being sought to construct the hospital authorized to be built in Muleshoe, a list of hospitals which are being constructed under a Hill-Burton grant was obtained from the Texas State Department of Public Health.

The hospitals listed below are either in the planning stages or have been completed under H-B since 1960, and all are regular patient hospitals. Nursing homes, mental hospitals and hospitals for chronic illnesses are not included.

More than 526 hospitals in Texas have been recipients of Hill-Burton funds. A complete list of Hill-Burton hospitals in Texas is available in The Journal office for anyone interested in checking with the hospitals to see how they operate under Hill-Burton specifications.

The Bailey County Hospital District presently has plans to obtain Hill-Burton matching funds to build a 50-bed hospital in Muleshoe.

Following is the list of H-B hospitals constructed or in the planning stages since 1960 in Texas:

Flow Memorial Hospital, Denton, Denton County, 70 beds; Memorial Hospital, Floresville, Wilson County, 29 beds; McAllen General Hospital, McAllen, Hidalgo County, 94 beds; Mercy Hospital of Brownsville, Brownsville, Cameron County, 66 beds; Spohn Hospital, Corpus Christi, Nueces County, 118 beds; St. John's Hospital, San Angelo, Tom Green County, 35 beds; St. Elizabeth Hospital, Beaumont, Jefferson County, 217 beds; Northwest Texas Hospital, Amarillo, Potter County, 98 beds; Mercy Hos-

Levelland Plans V-Ball Tourney For 64 Teams

The Levelland Jaycees will host their second annual volleyball tournament in the Levelland High School gymnasium, March 30 through April 31. A Jaycee spokesman said it is hoped that this year's tournament will be the best in West Texas.

Any team wishing to enter should send \$10 (check or money order) entry fee to Levelland Jaycees, Box 403, Levelland, Texas 79336.

Along with the entry fee send the names, addresses and telephone numbers of at least two team members. Entries must be in by March 24.

Brackets for 32 men and 32 women teams have been drawn and individual trophies will be given to each team member on the first, second and third place teams in each division.

NOTICE

Muleshoe Postmaster Spencer Beavers announced that beginning Monday, March 22, all mail is scheduled to leave Muleshoe's Post Office at 5 p.m.

He said that in order to make the last mail, letters and packages must be in the post office by 4:45 p.m.

This will enable the mail driver to make the last flight out of Lubbock he explained, and will help speed up mail service.

The postmaster asked cooperation of all mail patrons in Muleshoe to help expedite outgoing and incoming mail.

Citizens Turn Down Program At Meeting

Riding on a majority of three-to-one, Bailey County citizens turned "thumbs down" on re-instating the Community Action Program in Muleshoe, by soundly defeating the proposal, 131-46, during an open meeting Thursday night.

The action came after some 20 persons spoke during the meeting in the Bailey County district courtroom. They were among the more than 200 persons who jammed the entire courtroom, lined the walls and stood in the hallway near the big double doors into the room.

Although the decision was not final, the action was taken after a group of Spanish-American people requested the Bailey County Commissioners Court to meet in joint session with the Muleshoe City Council in an effort to reestablish the program which was discontinued at county request in December 1970.

Also attending the meeting were all members of the school board of the Muleshoe Independent School District, elected county officials, school administrators and a wide cross-section of county residents.

Judge Glen Williams was moderator of the session and officially welcomed the group to the meeting. He commented, "This meeting was called as a result of some citizens who have asked for a public hearing and public vote to attempt to reinstate the Community Action Program in this county."

The judge then explained that he had checked as far as the Community Action Program was concerned, the functions and services available. He said the program is funded by OEO (Office of Economic Opportunity) and is intended to help the poor people alleviate their standards of living. He explained, "Community action is a program

designed to reach the poor, and it is no dishonor to be poor." The judge also outlined many of the programs available through the program, how it is formed and how it is governed.

Judge Williams then asked for Alfonso Posado, spokesman for the persons wanting the program reinstated, to explain why the program is being sought again.

Posado explained that he was Muleshoe resident, had been for the past 13 years and is employed by Morris Douglass Implement Co. He commented, "I called the judge and asked him to have a public meeting as we thought it would be better that all people meet and decide if we will set Community Action in Bailey County if possible."

"We need emergency medical care and emergency groceries. We have had quite a few Spanish people telling us to see Bailey County Commissioners, City Council and School Board to try to get Community Action here."

"We want to have a vote for Community Action, and know it would be possible in good friendship to have Community Action here."

Following a question by Delbert Barry as to what part of this program (CAP) is not presently available in Muleshoe and could not be available if persons put there minds to it, Judge Williams said there are basically four things persons talked about needing. One was school training, another training Spanish persons to speak English and English speaking persons to speak Spanish, emergency medical services and emergency food services. He explained a \$20 emergency food voucher, a one time only voucher unless continuing emergency is proven, and said that this was

Cont'd on Page 3, Col. 1



MOST VALUABLE PLAYERS--Named Most Valuable Players for 1970 in basketball and football were this trio. They were named during the annual Athletic Banquet at Muleshoe High School last Friday night. From left are Jerry Putman, Most Valuable Boys' Basketball Player; Ricki Richardson, Most Valuable Girls' Basketball Player and Bobby Hays, Most Valuable Football Player. The trio was chosen by their teammates.

Hospitals...

Cont'd from Page 1

El Paso County, 200 beds; Woodland Heights General Hospital, Lufkin, Angelina County, 25 beds; Newton Memorial Hospital, Cameron, Milam County, 25 beds; The Methodist Hospital, Houston, Harris County, 351 beds; St. Elizabeth's Hospital, Houston, Harris County, 20 beds; Archer County Hospital, Archer City, Archer County, 20 beds; New Braunfels Hospital, Inc., New Braunfels, Comal County, 11 beds; Galveston County Memorial Hospital, LaMarque, Galveston County, 130 beds; Scott and White Memorial Hospital, Temple, Bell County, 306 beds; Torbett - Hutchings - Smith Memorial Hospital, Marlin, Falls County, 80 beds.

Also Muenster Memorial Hospital, Muenster, Cooke County, 30 beds; Ennis Municipal Hospital, Ennis, Ellis County, 36 beds; Corpus Christi Osteopathic Hospital, Corpus beds; Ballinger Memorial Hospital, Inc., Ballinger, Runnels County, 30 beds; Memorial Hospital, Beeville, Bee County, 68 beds; Hall County Hospital, Memphis, Hall County, 30 beds; Memorial Hospital of Garland, Garland, Dallas County, 100 beds; East Town Osteopathic Hospital, Dallas, Dallas County, 65 beds; Santa Rosa Medical Center, San Antonio, Bexar County, 156 beds; Medina Memorial Hospital, Hondo, Medina County, 23 beds.

Also Grimes Memorial Hospital, Navasota, Grimes County, 30 beds; Sweeney Community Hospital, Sweeney, Brazoria County, 26 beds; St. Mary's Hospital, Galveston, Galveston County, 131 beds; Franklin County Hospital, Mt. Vernon, Franklin County, 28 beds; Memorial Hospital, Denison, Grayson County, 84 beds; Wilson N. Jones Memorial Hospital, Sherman, Grayson County, 25 beds; San Antonio Osteopathic Hospital, San Antonio, Bexar County, 28 beds; Plains Memorial Hospital, Dimmitt, Castro County, 30 beds; Irving Community Hospital, Irving, Dallas County, 98 beds; Santa Rosa Medical Center, San Antonio, Bexar County, 140 beds.

Also Providence Hospital, Waco, McLennan County, 72 beds; Panola General Hospital,

Carthage, Panola County, 42 beds; Dolly Vinsant Memorial Hospital, San Benito, Cameron County, 25 beds; Plains Memorial Hospital, Dimmitt, Castro County, 16 beds; St. Elizabeth Hospital, Beaumont, Jefferson County, 77 beds; Southwest Texas Methodist Hospital, San Antonio, Bexar County, 171 beds; Citizens Memorial Hospital, Greenville, Hunt County, 98 beds; Medical Center Hospital, Tyler, Smith County, 82 beds; St. John's Hospital, San Angelo, Tom Green County, 23 beds; Seton Hospital, Austin, Travis County, 200 beds.

Also, John Peter Smith Hospital, Fort Worth, Tarrant County, 104 beds; Swisher Memorial Hospital, Tulla, Swisher County, 19 beds; Johnson City Hospital, Johnson City, Blanco County, 15 beds; Memorial Hospital, Uvalde, Uvalde County, 48 beds; Sam Rayburn Memorial Hospital, Bonham, Fannin County, 64 beds; Atlanta Memorial Hospital, Atlanta, Cass County, 65 beds; Hospital - in - the - Pines, Inc., Lone Star, Morris County, 40 beds; Memorial Hospital, Denison, Grayson County, 60 beds; Newton County Memorial Hospital, Newton, Newton County, 46 beds; Santa Rosa Medical Center, San Antonio, Bexar County, 30 beds.

Also, Irving Community Hospital, Irving, Dallas County, 80 beds; Memorial Hospital, Floresville, Wilson County, 6 beds; Brownfield General Hospital, Brownfield, Terry County, 37 beds; Waller County Hospital, Hempstead, Waller County, 32 beds; Harris Hospital, Fort Worth, Tarrant County, 106 beds; Lynn County Hospital District, Tahoka, Lynn County, 24 beds; Culberson County Hospital, Van Horn, Culberson County, 15 beds; Parkland Memorial Hospital, Dallas, Dallas County, 308 beds; Space Center Memorial Hospital, Houston (Nassau Bay), Harris County, 130 beds; St. Mary's Hospital-Gates Memorial, Port Arthur, Jefferson County, 87 beds.

Also, Goodall-Witcher Hospital Foundation, Clifton, Bosque County, 60 beds; Campbell Memorial Hospital, Weatherford, Parker County, 100 beds; Youens Memorial Hospital, Weimar, Colorado County, 26 beds; Teague Hospital,

County, 30 beds; Hotel Dieu Hospital, El Paso, El Paso County, 140 beds; Christian Home for the Aged, Houston, Harris County, 214 beds; McAllen General Hospital, McAllen, Hidalgo County, 48 beds; and Memorial Hospital, Nacogdoches, Nacogdoches County, 65 beds.

Also, Holy Cross Hospital, Austin, Travis County, 107 beds; Hardin Memorial Hospital, Kountze, Hardin County, 30 beds; Mercy Hospital of Laredo, Laredo, Webb County, 100 beds; Red River County Hospital, Clarksville, Red River County, 22 beds; Brewster Memorial Hospital, Alpine, Brewster County, 16 beds; Tyler County Hospital District, Woodville, Tyler County, 10 beds; Huntsville Memorial Hospital, Huntsville, Walker County, 29 beds; Hamilton Hospital, Olney, Young County, 30 beds; Mother Frances Hospital, Tyler, Smith County, 130 beds; Guadalupe Valley Hospital, Seguin, Guadalupe County, 63 beds.

Also Memorial Hospital, Floresville, Wilson County, 12 beds; Leon County Hospital, Leon, Leon County, 32 beds; Lee Memorial Hospital, Giddings, Lee County, 12 beds; Edgar B. Davis Memorial Hospital, Luling, Caldwell County, 30 beds; Providence Memorial Hospital, El Paso, El Paso County, 132 beds; Huth Memorial Hospital, Yoakum, Lavaca County, 61 beds; The Community Hospital of Brazosport, Freeport, Brazoria County, 107 beds; Fort Worth Children's Hospital, Fort Worth, Tarrant County, 78 beds; All Saints Episcopal Hospital, Fort Worth, Tarrant County, 56 beds; St. Joseph Hospital, Fort Worth, Tarrant County, 252 beds.

Also Navarro County Memorial Hospital, Corsicana, Navarro County, 63 beds; Driscoll Foundation Children's Hospital, Corpus Christi, Nueces County, 42 beds; Spohn Hospital, Corpus Christi, Nueces County, 20 beds; St. Joseph Hospital, Houston, Harris County, 109 beds; West Coke County Hospital District, Robert Lee, Coke County, 18 beds; St. Joseph's Hospital, Paris, Lamar County, 106 beds; L. P. McCuiston Community Hospital, Paris, Lamar County, 137 beds; Hardeman County Memorial Hospital, Quanah, Hardeman County, 50 beds; Linden Municipal Hospital, Linden, Cass County, 21 beds; Jasper Memorial Hospital, Jasper, Jasper County, 43 beds.

Also, Overall-Morris Memorial Hospital, Coleman, Coleman County, 32 beds; Caprock Hospital, Floydada, Floyd County, 36 beds; New Braunfels Hospital, Inc., New Braunfels, Comal County, 31 beds; St. David's Hospital, Austin, Travis County, 144 beds; Flow Memorial Hospital, Denton, Denton County, 104 beds; Methodist Hospital, Lubbock, Lubbock County, 40 beds; Bexar County Hospital, San Antonio, Bexar County, 476 beds; Wilbarger General Hospital, Vernon, Wilbarger County, 97 beds; Fayette Memorial Hospital, La Grange, Fayette County, 60 beds; Mason Memorial Hospital, Inc., Mason, Mason County, 18 beds.

Also Hi-Plains Hospital, Hale Center, Hale County, 15 beds; Brownwood Community Hospital, Brownwood, Brown County, 100 beds; Central Plains General Hospital, Plainview, Hale County, 126 beds; Hopkins County Memorial Hospital, Sulphur Springs, Hopkins County, 100 beds; Wichita General Hospital, Wichita Falls, Wichita County, 7 beds; Stamford Me-



WILDCAT LETTERMAN--Mickey Wilson, senior basketball player from Muleshoe, has earned his second letter for the Abilene Christian College Wildcats. Wilson, who transferred to ACC after a highly successful career in junior college, helped the Wildcats post a 15-9 record and a second place finish in the Southland Conference. The 6-2 wingman was considered one of the top ball handlers and clutch players on the squad by head coach Garnie Hatch.

morial Hospital, Stamford, Jones County, 50 beds; Matagorda General Hospital, Bay City, Matagorda County, 77 beds; The Good Shepherd Hospital, Longview, Gregg County, 48 beds; Shamrock General Hospital, Shamrock, Wheeler County, 38 beds; Jack County Hospital, Jacksboro, Jack County, 26 beds.

Also Collin Memorial Hospital, McKinney, Collin County, 74 beds; Edinburg Municipal Hospital, Edinburg, Hidalgo County, 50 beds; Southwest Osteopathic Hospital, Amarillo, Potter County, 52 beds; Brackenridge Hospital, Austin, Travis County, 156 beds; Wadley Hospital, Texarkana, Bowie County, 89 beds; Palo Pinto General Hospital, Mineral Wells, Palo Pinto County, 80 beds; Childress County Hospital District, Childress, Childress County, 75 beds; Maverick County Hospital, Eagle Pass, Maverick County, 43 beds; San Jacinto Methodist Hospital, Baytown, Harris County, 44 beds; St. Joseph Hospital, Bryan, Brazos County, 96 beds.

Also Johnson County Memorial Hospital, Cleburne, Johnson County, 42 beds; Wichita General Hospital, Wichita Falls, Wichita County, 104 beds; Wilson N. Jones Memorial Hospital, Sherman, Grayson County, 48 beds; Hall County Hospital, Memphis, Hall County, 18 beds; Tyler County Hospital District, Woodville, Tyler County, 17 beds; Harris Hospital, Fort Worth, Tarrant County, 174 beds; Fort Worth Osteopathic Hospital, Inc., Fort Worth, Tarrant County, 226 beds; St. Mary of the Plains Hospital, Lubbock, Lubbock County, 129 beds; Nan Travis Memorial Hospital, Jackson-

New Research On Tillage Being Planned

Research studies on minimum tillage practices are being expanded for 1971 at the High Plains Research Foundation. Since the Foundation began the studies two years ago, several problems have been noticed and several questions have been raised. That minimum tillage can be a solution to reducing production costs has been demonstrated in some cases. Research scientists explain that there are still many questions which arise over methods to handle minimum tillage.

Cooperating with Chevron Chemical Company and Geigy Chemical Company, research scientists at the Foundation have established studies in dryland minimum tillage on grain sorghum and cotton, irrigation methods and herbicide residue from previous years in off-station sites.

Participating in the off-station tests are Bobby McBeth, Hale Center, Larry Witten, Olton, and Dennis Mooney, Hale Center.

At the Foundation, scientists Jim Schrib and Dennis Mooney will conduct a minimum tillage study in water penetration. Three methods of minimum tillage plowing will be used. One method will be to use one chisel in the bottom of the furrow. A second method will utilize stubble mulch type sweeps and a third method will use a combination sweep and chisel in the furrow.

Mooney said one problem that has been noticed is trash and stubble residue, especially in cotton planted between grain sorghum stubble rows. "If the herbicide does not work effectively, then it is almost impossible to control weeds by conventional tillage," Mooney pointed out.

Another area of study will concentrate on reducing the amount of herbicide needed to control weeds. All methods will be compared to conventional tillage methods.

Mooney said that results from the past two years of study indicate that minimum tillage practices with grain sorghum can maintain present yields, and possibly increase cotton yields. Complete information on studies conducted in 1970 will be available to Foundation members in the Annual Research Report to be released soon.

Chamber

Jerry Hottel
C of C
Manager

We appreciate Larue Edwards and Iris Clements for their work as co-chairman of the money tree. The project was very successful with more than 45 merchants participating. Linda Murray and his membership committee are continuing to sign up new Chamber of Commerce members with eight new members being signed this past week.

If you know of available rent houses or apartments please call the Chamber Office at 4248. We have helped a number of new comers find housing and we need your help in keeping a current complete listing.

Muleshoe...

Cont'd from Page 1

Joe Carroll, owner of the Dinner Bell Restaurant announced Saturday morning that the Dinner Bell would close Wednesday night, March 24 and remain closed until they open in their new location on April 1.

ON FARM-DECLINE

The Agriculture Department has reported the number of farms in the United States are not declining at the rate of the long-term slide in the past. Department experts estimate farms in the United States are down less than two per cent this year from 1970 figures.

BIG SAVINGS

on

AUTOMOBILE LOANS

MEMBER FDIC

First National Bank

MULESHOE

FRIONA APARTMENTS

NOW OPEN!

1300 N. WALNUT

UTILITIES PAID. AIR CONDITIONED. STOVE AND REFRIGERATOR FULLY CARPETED

1-2 & 3 BEDROOMS

FHA APPROVED
LOW RENTAL

Phone Area Code 806
247-3666

ACID DELINTING SERVICE SEED & DELINTING CO.

EARTH, TEXAS

SOUTH AMHERST HIGHWAY

MOST ALL VARIETIES SELECT AND CERTIFIED COTTON SEED

PHONE 257-3340 HOME BELEW 5-B
NIGHT 257-3877 OF COTTONSEED

NOTICE! NOTICE! NOTICE!

GET YOUR 1971 TEXAS LICENSE PLATES NOW!

BE SURE TO BRING YOUR RENEWAL RECEIPT

(Absolute Deadline For Having 1971 License Plates Affixed Is April 1st)

MAY 1 DEADLINE ON HOMESTEAD EXEMPTION

Jean Lovelady
Bailey County Tax Assessor-Collector

COME IN SOON!

ARIES

(MARCH 21-APRIL 20)

HOROSCOPE FOR YOUR INCOME TAX

Tired of locking horns every year with your tax return? Gallop over to your nearest BLOCK office and let us help straighten things out. We'll prepare, check, and guarantee your return. Try us. We won't pull the wool over your eyes.

COMPLETE RETURNS \$5 UP

GUARANTEE OF every tax return. If we make any errors that cost you any penalty or interest, we will pay that penalty or interest.

H&R BLOCK Co.

AMERICA'S LARGEST TAX SERVICE WITH OVER 5000 OFFICES

CORNER MAIN E. AM. BLVD.

Weekdays 9 a.m.-6 p.m., Sat. 9 a.m.-5 p.m.

Phone 272-4816

NO APPOINTMENT NECESSARY

MOBILE HOMES

ARE CONVENIENT... EFFICIENT... LUXURIOUS...

COMFORTABLE AND WELL EQUIPPED!

Shouldn't Your Family Have One?

12' and 14' Wides - 1-2-3 and 4 Bedrooms

Double Wides Available

Authorized Dealers For HOLIDAY RAMBLER AND SHASTA TRAVEL TRAILERS!

SALES - SERVICE - ACCESSORIES

FOR PRICES UNCOMPARABLE!

See Us At

FOUR SEASONS TRAILER SALES

Located At KOA Campgrounds-2 Miles West of Clovis On US 60-84

Phone 763-4650 Clovis, N.M. Open 7 Days A Week

WHO is Rubber Ducky?

Community...

Cont'd from Page 1

one of the main things asked for by the people seeking the program. He did mention that he had heard of some Bailey County people going to Littlefield for the \$20 voucher, then to Plainview and to Hereford for the same vouchers during the same week, although he added this had not been verified.

Morris Nowlin, veteran service officer for the county, explained programs available to veterans and Neal Dillman, superintendent of schools told of adult education classes, which have been conducted in Muleshoe for the past several years, and that the classes have never been filled. He added that the classes are both for those who are literate to obtain a general education certificate and for those who need to start from scratch.

Superintendent Dillman also explained that the school has a referral service for vocational-technical training where

a person may make application and can be referred for classes.

A young man, Jerry Harrison, who identified himself as a lifetime resident of the county, said he didn't wish to alarm anyone here, but that money other people have been asked to fund into a CA program has been used to subsidize the Southwest Conference of La Raza as well as the Watts (Calif.) rebellion. He added, "I think anyone here would go out of their way to help someone who actually needed help. I am not saying this would happen here, but, remember, anytime the federal government subsidizes a program, they have the right to regulate it." He reminded that with the government-subsidized farm programs, the federal government imposes regulations governing the program.

Merlyn Noel, a local businessman asked how the money used, how is it handled and can it be used for programs other than how it is originally intended. The judge explained that cash would not be available to

recipients, but services would. He also added that he started checking the program when several county people brought in food vouchers to be signed that had been obtained through the Community Action Program in Littlefield. He said he signed a few, then there got to be so many, that he saw it was 'getting to be bigger than I was' and started checking.

Judge Williams asked Jane Morgan of the local commodity food office to give the figures on how many Bailey County people are presently receiving commodity foods. Mrs. Morgan said that in February 847 persons, representing 258 families were receiving commodity foods. She added that this figure approaches the number of commodity food recipients in all of Hale County (Plainview). She also explained how a person is decided to be eligible to receive commodity food and added that the number is lessening slightly as spring planting and farming activities are being resumed.

She refuted a statement that a person needing emergency food cannot receive it and stated that anyone can receive emergency foods one time on a simple statement declaring there is an emergency and said she has been called from her home at night to issue such orders.

Walter Sain asked what method was used to determine if a person needs commodities. He said he had talked to one businessman who said his employee is taking home \$112 weekly after deductions and still is taking home 'free groceries.' He also commented on the liberalized free school lunch program and Judge Williams explained that school officials have to take a statement from persons wishing their children to be on the free lunch program, and by federal laws, are not allowed to check the veracity of the statement. Rev. Ed Manning of the First Presbyterian Church in Muleshoe said the "so-called minority groups are not very well represented in Bailey County and found there is no Legal Aid Society." He also stressed the fact he felt there was a need for medical and emergency treatment because "a person who could not pay their medical bill could not receive aid."

He said, "We need to set up a medical service and have some form of legal society for people who get in trouble," adding that he needed documentation to prove that OEO programs were subversive. Delbert Barry offered the minister copies of the Congressional Record which he said documented the fact that OEO funded programs were filled with subversives.

Bailey County Journal
 Established March 11, 1953
 Published by Muleshoe Publishing Co., Inc.
 Every Sunday at 304 W. Second Box 440
 Muleshoe, Texas 79347
 Second class postage paid at Muleshoe, Texas
 Muleshoe, Texas, 79347.

TEXAS PRESS ASSOCIATION
 Member 1971

L.B. Hall, President
 Jessica Perry Hall, Secretary-Treas.
 L.B. Hall, Publisher & Managing Editor
 Cleta Williams, News Reporter
 Katie Foster, Society Reporter

SUBSCRIPTIONS:
 Zone I - Bailey-Parmer-Cochran-Lamb counties: \$4.00 per year; \$4.50 per year by carrier. With Thursday Muleshoe Journal, both papers \$5.50 per year; \$6.00 per year by carrier.
 Zone II - Out-of-Territory: \$4.50 per year With Thursday Muleshoe Journal, both papers, \$4.25 per year.
 Monthly, by carrier \$5; single copies 10¢
 Advertising rate card on application.

Mayor Irvin St. Clair asked if Community Action was a prerequisite before medical aid could be sought. When assured that it was not, he said the way he understood it, Community Action was a vehicle, by which people could get together and see the person who heads the program. The head of the program then tells the person where to go to get medical service or other services. He said he thought the problem was a communication problem, and neither the Anglo or the Mexican - American understands each other too well.

"What we are talking about tonight," he said, "does not come under Community Action. I feel that we can do this ourselves."

A.F. Robertson stated, "Almost anybody can work if they want to," and told of some of his experiences as a landlord, explaining that he has several rental properties.

A Parmer County resident, Ray Precure, said the Lazbudie community, where he lives has a system of helping someone who needs help, but they do not seek outside help or fed-

eral funds. He added, if the people want to control a welfare program, they should be willing to finance it.

Speaking for the Spanish congregation in the courtroom, Alberto Daniel, said, "I think a lot of people don't understand anything. They have questions to ask, but they don't understand enough to ask them."

"Nobody knows better about poor people than we do. We'll find a way to get somebody from outside to speak for us."

He then requested another public meeting in two weeks.

Larry Combs asked if whatever decision was made, would it be concrete and binding. Judge Williams explained that it would merely be an expression of the people with the final decision to be made by the commissioners court at a later meeting.

Alfonso Posado then explained the proceedings in Spanish to the Spanish speaking people in the audience.

City Council member Alex Williams asked for the people of the community to back the commissioners in whatever decision was made and said,

"If you do not want Community Action, you will have to back your commissioners."

He also stated that about the only two things the people here seem not to be getting are emergency food and emergency medical services.

Short statements were also made by Commissioners Bill Eubanks, Matt Dudley and Loyd Stephens, Councilman Kenneth Heathington, R.A. Bradley, and J.C. Gatewood.

Mayor St. Clair also commented that he was happy to see so many people and asked for the people to tell the governmental officials present what programs they would like to institute in the city and suggest what the city should do.

Judge Williams said that although the public vote during the meeting was not binding on the Bailey County Commissioners Court, they wanted to get an idea of how the general public felt about the Community Action program before making a final decision.

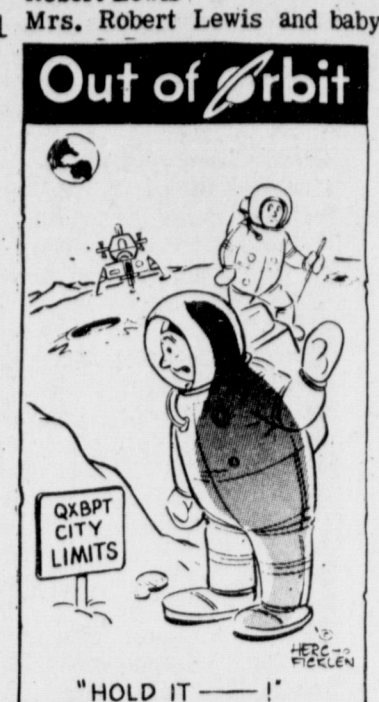
Note to graduates: Life is too short for a complete education.

Hospital Briefs

WEST PLAINS MEMORIAL

- ADMISSIONS**
 Kelly St. Clair
 John Holt
 Guy Nickels
 Miss Donna McMakin
 Sanford Gilbreath
 Bill H. Wright
 Mrs. Joyce Faver
 Mrs. John Seid
 Miss Kathy Pena
 Mrs. Mattie Hammons
 Mrs. Victoria Duarte
- DISMISSALS**
 Mrs. G. D. Browning
 Mrs. Minnie Moore
 Mrs. Elsie Taack
 Roy Carpenter
 Mrs. Mamie Miller
 Mrs. Inez Kennedy
 Mrs. Minnie Speck
 Mrs. Cleta Williams
 Mrs. Sarah Kelton
 Sanford Gilbreath

Noah Kinser
 Mrs. Refugia Daniel
 Robert Lewis
 Mrs. Robert Lewis and baby



Singleton-Ellis Funeral Home
 24 Hour Ambulance Service
 Ph. 272-4574 Muleshoe

PIONEER 3306

It's PIONEER again this year.

Here's why:

W.G. HARLAN, Muleshoe, produced 168.6 bushels of corn per acre last year from 14.6 acres of Pioneer brand 3306.

"This was as clean and pretty a corn as I've ever seen," Mr. Harlan said.

Because of its excellent yield and profitability, he plans to plant 3306 again this year. Naturally, we're proud that good farmers like W.G. Harlan plant Pioneer year after year.

PIONEER SORGHUM

Pioneer is a brand name; numbers identify varieties.
 Reg. trademark of Pioneer Hi-Bred Corn Company, Des Moines, Iowa U.S.A.

DISCOUNT BEEF PRICES!

FEED LOT BEEF
ROUND STEAK Lb. 98¢
 FOR CHARCOALING OR BROILING

T-BONE STEAK Lb. 89¢
 FOR THE BUDGET MINDED

RIB STEAK Lb. 73¢

PAN FRY A
CLUB STEAK Lb. 83¢

LEAN & JUICY
CHUCK ROAST 69¢ Lb.

TREAT YOUR FAMILY TO A JUICY, TENDER
SIRLOIN STEAK Lb. 83¢

COMPANY COMING? GET FOR
GROUND BEEF 2 lb. pkg. ONLY \$1.09

MADE FROM THE FINEST CUTS
GROUND BEEF EXTRA LEAN Lb. 89¢

FINE FIXINS FOR A POT ROAST
ARM ROAST Lb. 79¢

STEW MEAT Lb. 89¢
 EXTRA LEAN BONELESS
 FIX A POT OF DELICIOUS
 HOMEMADE STEW LATELY!

AVOCADOS EACH 15¢

CELERY HEARTS CELLO PKG. 39¢

WHITE POTATOES 20 Bag 69¢

BANANAS GOLDEN RIPE Lb. 10¢

GRAPEFRUIT RUBY RED 5 Lb. Bag 49¢

HUNT'S 20 OZ. BTL. FOR 3\$1

BEANS RANCH STYLE #300 CAN 5 FOR 89¢

ICE CREAM 1/2 GAL. 57¢

PINESOL 28 OZ. BTL. 89¢

KLEENEX 280 COUNT 3 FOR \$1

HUNT'S TOMATO SAUCE 8 OZ. CAN 10¢

For Aerial Application Of

INSECTICIDES---FUNGICIDES

HERBICIDES--SEEDING

SEE

OK Spraying Service, Inc.

Route 2 Box 317 Phone (806) 272-4718
 MULESHOE, TEXAS 79347

JIM O'GRADY 806-272-3974

KENNETH HANKS 806-965-2471

Jim's Pay N' Save

FRIENDLIEST STORE IN TOWN

Specials Good Sun., March 21 thru Sat., March 27

8 a.m. till 9 p.m. 6 Days A Week Sundays 9 a.m. till 7 p.m.

QUALITY MERCHANDISE AT LOWEST PRICES

201 S. 1st. Street



MAYOR PROCLAIMS ESA CONCERN FOR POW AND MIA WEEK . . . Mayor Irving St. Clair is shown signing the proclamation designating the week of March 21-27 as the "ESA Concern for Prisoners of War and men Missing in Action Week." The ESA sorority has challenged the local chapter of Beta Sigma Phi to a contest to see which can get the most POW letters signed on March 24. These letters are already written and need only to be signed. ESA members will be at the Muleshoe State Bank and Piggy Wiggly. Beta Sigma Phi members will be at the First National Bank and Cashway with the letters for interested persons to sign. All letters will be flown to Paris, France. Shown with the Mayor are ESA members, Mrs. Gene McGuire, left, and Mrs. Dick Chitwood.

Mayor Proclaims "ESA Concern For POW's And MIA's Week"

Mayor Irving St. Clair has proclaimed March 21-March 27 as ESA Concern for Prisoners of War and men Missing in Action Week.

The ESA sorority has challenged the local Beta Sigma Phi chapter to see which can collect the most letters asking for humane treatment for POW's and MIA's.

Beta Sigma Phi members will be stationed at the First National Bank and Cashway on March 24. Epsilon Chi members will be at the Muleshoe State Bank and Piggy Wiggly. They will be stationed there from 9 until 6 at the grocery stores and from 9 until 3 at the banks.

The chapter that gets the most letters signed that day will receive five dollars for their treasury.

The letters are already printed and all the people have

to do is sign their name and address the envelope. There is no need for a stamp as ESA will box all the letters and send them to the Dallas office of the United We Stand organization where on March 31 Dallas millionaire Ross Perot of United We Stand Organization will fly the letters to Paris.

The World Press has been invited on April 1 to be present when the letters are presented to Minister Xuan Thuy of the delegation from the Democratic Republic of Vietnam.

The letters are addressed to him and read: "I, the undersigned, urgently request the immediate release of all American prisoners of war being held by your government. All the world is saddened by the reports of the cruel and inhumane treatment being accorded these men. All peoples, including those for and against the conflict in Southeast Asia, feel great compassion for these men being held. Failure to release these men can only prolong the conflict and bring down the wrath of humanitarians upon the leaders responsible for the imprisonment of these men."

A husband or wife may sign for their spouse but others must be signed in person. The

age of a person doesn't matter and students of all ages are encouraged to sign a letter.

Mrs. Jerry Hutton, chairman of the letter writing campaign, stresses that this is not a political campaign either for or against the war but to see that our prisoners receive humane treatment.

Pleasant Valley Social Club Has Progressive Meal

The Pleasant Valley Social Club enjoyed a progressive dinner Tuesday evening beginning at the Kirk Pitts home where Mrs. Pitts served appetizers consisting of tomato juice cocktail, fruit juices, cheese and fruit.

The group proceeded to the Enos Galyon home where an elaborate salad course was served with Mrs. Galyon, Mrs. Ida Collins and Mrs. Vesta Fyie acting as hostesses.

The main course was served in the Kenneth Duncan home with Mrs. Duncan and Mrs. Jack Calhoun as co-hostesses.

The last stop was the home of Sena Stevens for dessert and a social evening.

Other members participating were Lily Wuertlien, Lenore Wells, Hazel West, Sammie Allison, Jean Allison, Bonnie Haberer and one guest, Estelle Wittingham of El Cajon, California.



MRS. DON BARNES AND MRS. JOE PAT WAGNON

Introductory Coffee Honors Mrs. Barnes

Mrs. Don Barnes was honored at an introductory coffee given in the home of Mrs. Joe Pat Waggon Friday morning, March 19, from 10:00 until 11:30 a.m. Paula and her husband recently moved to Muleshoe from

Lubbock. They will be opening the XIT Steak House the first of April which is now under construction and renovation. In the receiving line with the honoree was her sister, Mrs. Gary Miller, and their mother, Mrs. E.G. Howard.

Hostesses for the coffee were Mrs. Paul Poyner, Mrs. Charles Lewis, Mrs. Royce Turner and Mrs. Joe Pat Waggon.

The hostesses served the guests from a table laid with an ecru linen and lace cloth and centered with an artificial flower arrangement in shades of pink and red in a cut glass and gold bowl. Coffee was served from a silver coffee service. A tropical fruit plate with a pineapple in the center was on the table along with assorted fruit breads and fingercookies. On the side table, hot apple cider was served to the guests. Silver and crystal appointments were used.

ESA Birthday Social Held Tuesday Night

An ESA birthday party was held in the home of Mrs. Cooper Young with Mrs. Leon Wilson as co-hostess Tuesday night, March 16. The special guests for the evening were the rushees.

After several get-acquainted games were played, the secret sisters exchanged birthday gifts. The hostess had written a rhyme for each member telling her where she would find her gift.

The hostess served birthday cake and ice cream to the following rushees: Mrs. Gary Smith, Mrs. Gene McGuire, Mrs. John Blackwell, Mrs. Bill Howard and Mrs. Jerry Harrison. Members served were Mrs. Mac Brown, Mrs. John Gentry, Mrs. Jerry Hutton, Mrs. Jack Rennels, Mrs. Hugh Young, Mrs. Ronnie Johnson, Mrs. Leon Wilson, Mrs. Cooper Young, Mrs. Dick Chitwood, Mrs. Paul Wilbanks and Mrs. Steve Young.

preference tea to honor new pledges and Miss Lee Ann Yerby, who is the recipient of the ESA scholarship this year, on March 21.

Mrs. Hugh Young was also presented the first degree of Pallas Athene Award.

Graves' To Be Honored On Anniversary

Mr. and Mrs. Arthur Graves will be honored with a Golden Wedding Anniversary Reception at their home in Progress from 2:00 until 5:00 p.m. Sunday, March 21.

Hosting the reception will be Mrs. L. Byrd, Mrs. Charlie Walker and Mrs. Eldridge Graves.

All friends and relatives of the couple are invited to attend.

Mrs. Hugh Young Earns Pallas Athene Award

Mrs. Hugh Young has achieved the First Degree in the Pallas Athene awards program of ESA.

Epsilon Sigma Alpha is a leading educational and service organization for dynamic women. Founded in 1929, ESA members more than 32,000 women in 1,700 chapters in 39 states and four foreign

countries. A member of Epsilon Chi chapter here, Mrs. Young has earned the Pallas Athene scroll by her outstanding contribution to the growth, progress and community service of the local chapter.

Mrs. Young received her scroll at a special ceremony Tuesday evening during a

chapter meeting at the home of Mrs. Cooper Young. The award was presented by Epsilon Chi chapter president, Mrs. Jack Rennels.

Mrs. Young, a beautician at Chubby's Beauty Shop, is currently chaplain and Jonquil Girl of the local ESA chapter. In addition to the organization's philanthropic work, each ESA chapter is an action-minded group which provides leadership training for its members.

Areas of chapter interest include educational development, leadership training, parliamentary procedure, social etiquette, interior decorating, plus many others.

It Depends on Supply
A new bride asked the butcher the price of his hamburger meat. "Fifty cents a pound," he told her.

She complained and said she could get it down the street for 40 cents a pound, and he asked why she didn't get some there.

"They're out of it today," she said.
"When I'm out of it," the butcher replied, "I sell it for 20 cents a pound."

TOPS News

The Muleshoe Jenny TOPS met Thursday night, March 18, with 29 members weighing in.

The leader, Mabel Wolfe, opened the meeting and the members sang the club song and repeated the club pledge. Members discussed the state meeting which will be held April 30 and May 1 in Amarillo. All members who are going should turn in the money for their room and registration fee at the next meeting.

Crowned queen for the week was Lilly Bell Baker. First runner-up was Jewel White and second runner-up was Ann Newman.

Ann Vinson gave the pep talk encouraging members not to be quitters.

Next week will be the installation of new officers. Everyone is asked to attend. The new officers are as follows: Eric to June Vinson, leader; Selma Sweetwater, co-leader; Ruth to June Holmes, secretary; and Tani to Baileyboro and carried that meeting, the new president will appoint duties.

All members are asked to bring a bath towel for the present contest now in progress. Next Thursday is measurement night and dues night.

The club was dismissed with the singing of the goodnight song.

Mrs. Troutman Wins Tree

Mrs. Ruby Troutman was the winner of the money tree given away on St. Patrick's Day, March 17, by the BAC. Mrs. Troutman said that there was \$190 on the tree.

Mrs. Troutman and her husband, the late O. D. Troutman, moved to Muleshoe in 1935 from Eric, Oklahoma where they ran the mail route from Eric to June Vinson, leader; Selma Sweetwater. They took over Redwine, co-leader; Ruth to June Holmes, secretary; and Tani to Baileyboro and carried that meeting, the new president will appoint duties.

All members are asked to bring a bath towel for the present contest now in progress. Next Thursday is measurement night and dues night.

The club was dismissed with the singing of the goodnight song.

Special Customer's Offer!

We invite you to come in for a

COMPLIMENTARY PH BALANCED HAIR TREATMENT

given for a limited time with a

PROTEIN BODY WAVE

which also includes shampoo and set at **\$10**

Wellborn Beauty Shop

101 Ave. J Ph. 272-3404

Welcome to Muleshoe

Kenneth Millsap

We are happy to present Kenneth Millsap, newcomer to Muleshoe. He and his wife, Gracie, reside at 102 E Ave. H with their daughter Kena who will be 5 years old in June. They attend the Baptist Church. Millsap is a bookkeeper at Farmer's Co-op Elevator. He was formerly data of processing manager for City of Clovis, has been manager of Clovis Computer System, Inc., and was associated with Al Collins Construction Co., Clovis.

The following firms extend a cordial welcome to the Millsaps:

James Crane Tire Co. GOOD YEAR TIRES	James Glaze Co. INSURANCE REAL ESTATE LOANS
DAMRON DRUG CO. REXALL 308 MAIN Ph. 272-4210	MULESHOE STATE BANK MEMBER FDIC

WINS ESA HONOR . . . Mrs. Hugh Young has achieved the First Degree in the Pallas Athene awards program of Epsilon Sigma Alpha. She is the chaplain and Jonquil Girl of the Epsilon Chi chapter of Muleshoe. She was presented the award at a special ceremony Tuesday evening in the home of Mrs. Cooper Young.

WINS ESA HONOR . . . Mrs. Hugh Young has achieved the First Degree in the Pallas Athene awards program of Epsilon Sigma Alpha. She is the chaplain and Jonquil Girl of the Epsilon Chi chapter of Muleshoe. She was presented the award at a special ceremony Tuesday evening in the home of Mrs. Cooper Young.

Buy Carpet at a DISCOUNT Every Day at JOHNSON FURNITURE

10th Anniversary Special!

OUR GIFT TO YOU
MONDAY & TUESDAY ONLY
MARCH 22-23

10% OFF
ON ANY ITEM IN THE STORE

Queens N' Teens Dress Shop
500 Main
Clovis, N.M.

BANKAMERICARD
master charge

Progress HD To Host District Two Meeting

The Progress Home Demonstration Club will host the District Two meeting in Muleshoe April 1. It is the first district meeting to be held in the county. The Progress Home Demonstration Club was organized in 1935 with Alma Stewart then the County Home Demonstration Agent. At that time there were 12 other clubs in the county including Baileyboro, Bula, Circleback, Enochs, Goodland, Joyland, Longview, Maple, Muleshoe, Progress, Watson and West Camp. The Progress Club is the only one in existence at this time. The state is divided into 12 districts and Bailey County is in District Two which consists of 20 counties of which 18 of them have home agents. Mrs. Aubrey Russell is the district agent and Mrs. Wilton Blair of Lamesa is the district director. Mrs. Russell, Mrs. Blair and Mrs. Lambright, the credential committee, were in

Muleshoe the fourth of this month looking over the facilities for the district meeting. The meeting will begin at 10:00 a.m. in the High School Auditorium. A luncheon will follow in the Fellowship Hall of the First United Methodist Church. There will be three workshops - membership, conducted by Hale County; cultural arts, Garza; and family life, conducted by the Swisher County club. The theme of the Texas Home Demonstration Association will be "Stairway to Progress".



MARCH BIRTHDAYS . . . Celebrating birthdays at the Muleshoe Nursing Home this month are left to right, Mrs. Laura Gilbreath, Mrs. W. E. Myers and Mrs. Jesse Lewis. They were feted with a birthday party at the home by the Mary Martha Circle of WSCS of the First United Methodist Church.

Saddletramps Win First Place

The YL 4-H Saddletramps rode in the 29th annual ABC Rodeo parade and grand entry Wednesday, March 17, at Lubbock. There were 23 riders and the club won first place. After the grand entry, the club stayed and watched the rodeo which featured Lorne Greene of "Bonanza".

Smart Girl
He: "I'd get down on my knees and die for you."
She: "Would you stand on your feet and work for me?"

Good Stuff
Butler: "Did the master smack his lips after drinking that fine old whiskey I served him yesterday?"
Maid: "No sir. He smacked mine."



BETA SIGMA PHI OFFICERS . . . Newly installed officers of the Alpha Zeta Pi chapter of Beta Sigma Phi are pictured after the luncheon installing meeting at the Corral Tuesday, March 16. They are left to right, Mrs. Doyce Turner, corresponding secretary; Mrs. Benny Splawn, treasurer; Mrs. C. J. Feagley, recording secretary; Mrs. Joe King, vice-president; Mrs. Don Rempe, extension officer; and Mrs. Max King, president.

Progress Home Demonstration Club Meets, Hears Program

The Progress Home Demonstration Club met March 9 with Mrs. Harold Mardis, president. She read a poem entitled "I Know Something Good About You". The roll call was answered with "Something I Would Like To Do In Club Next Year". Mrs. George Gross led a question and answer session. A program on "Mental Illness" was given by Robin Taylor. A recording by Dr. Murray Banks was used. He is a psychiatrist. The following are the nine ingredients of a well-adjusted person: First, make the most of what you have; second, a well-adjusted person knows how to stay; third, always set up new and interesting goals; fourth, live each day of your life as if it was your last on earth; fifth, your happiness depends on your attitude toward life; sixth, know how to live with yourself; seventh, a well-adjusted person is never a perfectionist; eighth, a well-adjusted person knows

The program was given by Mrs. Jack Wood of Retain Credit Association. After the program, green punch and cookies were served to Mrs. Jack Wood, Mrs. Albert Davis, Mrs. Harold Mardis, Mrs. O. M. Self, Mrs. W. E. Meyers, Mrs. Eunice Crume and the hostess, Mrs. Davis Gulley.

In Fashion
Plaid tweed coats are high fashion this season. They have a fitted look, lapels, and a double row of buttons in front.

Wide collars are in this season. Some are reminiscent of the ones worn on middie blouses years ago.

Some of the longer dresses have skirts that button up from the bottom as far up as the wearer desires.

Mary Phipps Has Prize-Winning Poem

"SLIM GYM"
See & Try & You Will Buy The Fantastic Exerciser
Lucille Cherry
Muleshoe Beauty Salon
272-3258 or 272-3632

Mary Phipps of Muleshoe won first place in the President's Prize for March from the Mule Memorial Chapter of the Poetry Society of Texas. Marion McDaniel is the sponsor of the President's Prize. The winning

poem is entitled "True Love" and is printed below:

"Love is like a raging storm, Or the sun, all bright and warm, It's full of virtues still untold, A thing that can't be bought or sold. Like a rainbow, full or promise So does love our hearts encompass; Full of forgiveness, blind to faults, Nothing but tenderness given, or sought. Real true love is deeper than the Sea; Higher than a mountain ever could be, Wider than all the rolling plains, Richer than diamonds and earthly gains. Like an everflowing waterfall, Or the loftiness of a pinetree tall; Measured not by depth, or height Love is a treasure of pure delight. Brighter than the jewels, and precious stones, Greater than kings on royal thrones; Sweeter than perfumes extremely rare, Love is to give, to cherish, to share."

WHERE EVER YOU GO THERE'S FRIENDSHIP
When You Stay at Owner-Managed
FRIENDSHIP INNS

IN RUIDOSO, NEW MEXICO
Your Friendship Inn is The HOLIDAY HOUSE

The HOLIDAY HOUSE has attractively furnished rooms, within walking distance to Ruidoso Downs, Miniature Golf course, Bowling alley, Excellent Restaurant. Lower Rates now in effect. On 5th St. Phone 505-257-4003

There is a difference in attitude and personal attention when you stay at a Friendship Inn and many luxury features for you to enjoy.
• Sparkling Clean Rooms • Free TV • Free Ice • Wall to Wall Carpeting • Swimming Pools • Fine Restaurants on premises or close by

USE ANY OF THESE WORLD FAMOUS CREDIT CARDS TO CHARGE YOUR ACCOMMODATIONS

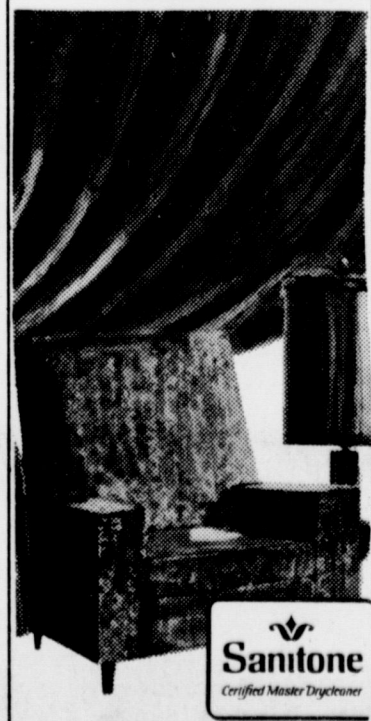


Now more than 800 FRIENDSHIP INNS COAST TO COAST plus Canada - Alaska & Mexico

If You Are Planning A Trip WRITE FOR COMPLIMENTARY TRAVEL GUIDE (Use Coupon Below) or pick one up at your nearest Friendship Inn.

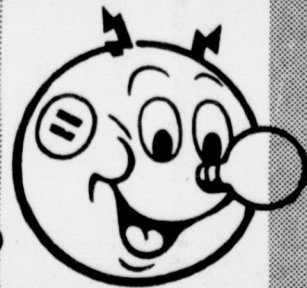
FRIENDSHIP INNS INTERNATIONAL
245 West on North Temple Street
Salt Lake City Utah 84103
Please send me COMPLIMENTARY TRAVEL GUIDE.
NAME _____
ADDRESS _____
CITY _____ STATE _____ ZIP _____
Please include self-addressed stamped #10 envelope.

Sanitone. The best drapery and slipcover drycleaning there is.



Lambert Cleaners

WE
• SELL
• SERVICE
• INSTALL
• FINANCE
• AND
GUARANTEE



Hot Water Heaters CALL US 272-4578

GOLDEN ANNIVERSARY
Modern ELECTRIC Water Heating
1921-1971

9-2

WHERE YOU ALWAYS BUY THE BEST FOR LESS
GIBSON'S DISCOUNT CENTER

MULESHOE TEXAS
PRICES GOOD THRU WED.

Loose Leaf Notebook
FILLER PAPER
300 ctn. **39¢**

MTD-20"
TRICYCLE \$10.97
No. 619-670

Men's & Boys Sportstar
SHOES \$4.57
Boys 2 1/2 to 6-Men's 6 1/2 to 12 \$6.98 value

Hankcraft Cool Vapor
VAPORIZER HUMIDIFIER #242 \$5.97

Lustre Cream
SHAMPOO
Liquid or Lotion
16 oz. Size \$2.25 value **99¢**

Safeguard
BAR SOAP
Bath Size **18¢**

Camay
BAR SOAP
Bath Size **15¢**

Kleenex
Jumbo
TOWELS 3 Rolls 92¢

NEW
REMINGTON LECTRO BLADE™
CORD/CORDLESS SHAVERS
RECHARGES IN MINUTES
Gibsons \$22.97
Low Price

Norelco LADYSHAVE 10

Mens Cotton & Nylon
CREW SOCKS 44¢
69¢ Value
Sizes II to 13
Boys 100% Nylon Stretch
CREW SOCKS 37¢
Sizes 6 to 8 1/2 & 9 to 11 59¢ Value

Brillo 10's
SOAP PADS 23¢

Sudden Beauty
HAIR SPRAY 49¢
16.2 oz.

Close-up TOOTH PASTE
Family Size \$1.05 val. **59¢**

12 oz. Dep
HAIR STYLING GEL 73¢

DELSEY BATHROOM TISSUE
2 Roll Pkg. **23¢**



MULE'S TALE



Official Publication of Muleshoe High School Written and Edited by Students of the Muleshoe Schools

Vol. 6 NO. 12

EDITOR Betty Chandler

SUNDAY, MARCH 21, 1971

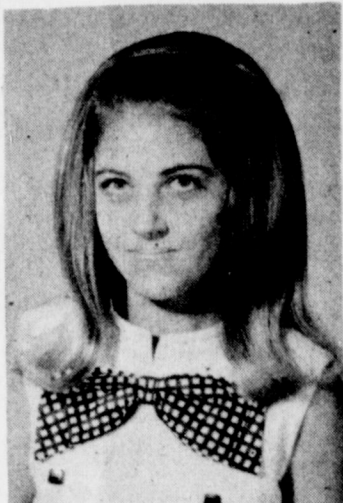
MHS Speech Department Wins Trophies At WTSU

Congratulations 71-72 Student Council Officers

By Babs Haire

The student body will have very capable leaders for the 1971-72 school year. The Student Council officers for the coming year were elected Friday, March 13, with run offs Tuesday, March 16.

Bryan Brady won the election for President. The new Vice-President will be Brent Blackman, and Tani Murrah will be Secretary. Cynthia Gable will be Treasurer and Patty Murray will be Reporter. Kathy Schuster will be Historian, Jeanie Putman will be Parliamentarian, and Jan Jinks will be Chaplain. Congratulations to these new officers.



Cynthia Gable, Treas.



Patty Murray, Rep.



Kathy Schuster, Hist.



Jeanie Putman, Parl.



Jan Jinks, Chaplain

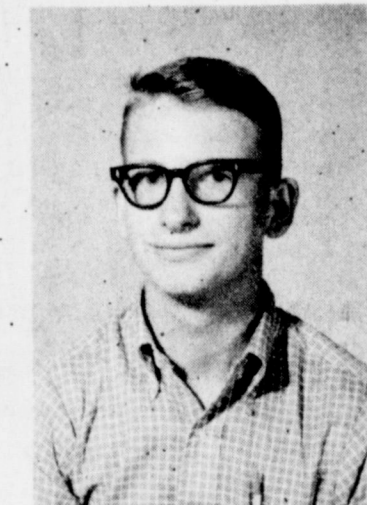
Cool Clear Water

by Babs Haire

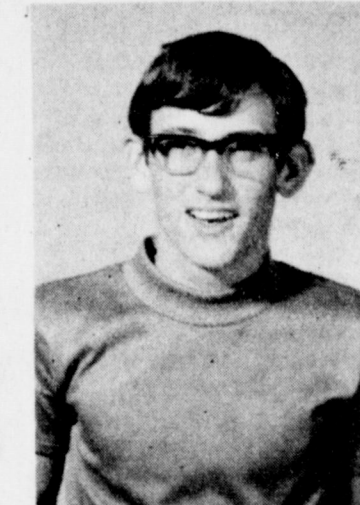
The new water cooler in the front hall is a gift from the senior class of 1970. The fountain was installed this week, and the students are really enjoying using it. We wish to thank the seniors of 1970 for a gift that can be used by the entire student body.



Burel Block, Sponsor



Bryan Brady, Pres.



Brent Blackman, V. Pres.



Tani Murrah, Sec.

Bamert & Duke First In Acting

The Speech Department competed in the West Texas State University High Plains Speech Tournament this past weekend. Greta Bamert and Joe Duke won first place in duet acting and Joe was selected as the tournament's outstanding actor. Joe received the coveted Margaret Echols Moore Dramatic Trophy for his achievement. Fourteen students reached the semi-finals in the tournament and three reached the finals. The debate teams had a record of eight wins and four losses. The speech department will compete at the Spearman District Warm-Up Tournament March 27.

Block, boys debate; Christy Ford and Mike Tibbets, informative speaking; Ed Mason and Jennifer Davis, persuasive speaking; Bryan Brady and Donna Woodard, prose reading; John Garth and Greta Bamert, poetry interpretation.

MHS Students Participate In Survey

The Jaycees distributed community Development Survey Sheets at MHS. The forms were filled out during Orientation period Wednesday morning by MHS students. The students were encouraged to give sincere and responsible answers.

College Days

by Babs Haire

On Monday, March 15, Victor Contreras and Fred Bara visited South Plains College in Levelland.

Rickie Stockard, Becky Sain, and Beverly Evins traveled to West Texas State University on Friday, March 19.

Also on Friday, Betty Chandler, Randa Sutton, and Dovie Reynolds attended Nurses' Day at Northwest Texas School of Nursing.

Senior Girls Attend Nursing Career Day

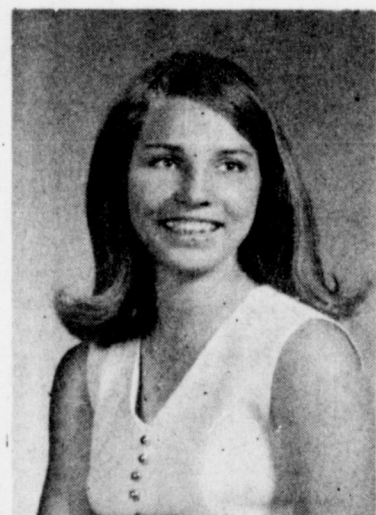
By Betty Chandler

Four seniors of MHS attended the Nursing Career Day held by the West Texas State University School of Nursing and the Northwest Texas Hospital School of Nursing in Amarillo. They were Randa Sutton, Dovie Reynolds, Janice Head and

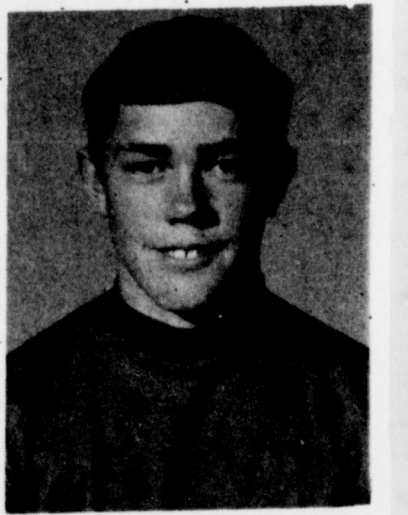
Betty Chandler, a contestant in the Miss Future Nurse 1971 contest.

Registration began at 9:00 a.m. Lunch was at 11:00 a.m. and at 12:45 p.m. the contestants for Miss Future Nurse of 1971 were presented.

Honor Students For February, March



Brenda St. Clair, Fresh.



Stephen Bell, Soph.

Choir News

The MHS Choir went to contest Monday, March 15, at Brownfield, Texas. The choir participated in sight reading and concert. The choir is now busy planning for the "Spring Festival," where they will sing the popular song, "We've Only Just Begun."

Band Attends Hale Center Competition

by Cynthia Wrinkle

Last Saturday afternoon the Mighty "M" Band attended a band contest in Hale Center. The main object of this contest was to receive criticism on the selections to be played at UIL contest in six weeks.

The band played their concert selections and were criticized by three critics. Before the band sightread, one of the three critics talked to the band and gave his criticisms. The band then sightread a selection and a critic made comments.

The judges were Dean Kilion, Texas Tech; Harlin Lamkin, Amarillo; and Ben Gollehon, Hereford. The sight reading judges were Bill Wood, Seagraves, and Robert Davidson, Plainview.

Annual FHA Week To Begin March 29

By Brenda Tiller

The new officers from the Rose Bud, Rose Blossoms, and the Rose Chapter met to discuss plans for the annual FHA week, which will take place March 29-April 2. The week will start with the FHA girls attending church together Sunday. To show appreciation for the teachers the FHA will be supplying cakes each day for the Teacher's Lounge. Some suggestions for the remainder of the week were made such as having a tea for the eighth graders, red and white day, dress-up day, Mr. Irresistible Day, hat day, and doing a skit telling the history of the FHA. The FHA is looking forward to a busy week.

New Bill Will Allow Teachers To Negotiate

A bill giving Texas teachers the opportunity to negotiate, through their chosen representatives, with school boards was introduced in the Legislature by Senator Joe Bernal, San Antonio, and Representative Clyde Haynes, Vidor. The bill was developed in cooperation with Texas Classroom Teachers Association.

"Teachers who are willing to get involved in seeking solutions to educational problems should have the assurance that their recommendations will be considered by local school boards," said Bernal and Haynes in a joint statement.

Under the existing 'permissive' legislation, professional consultation may take place only

with the consent of the local school board.

If the proposed bill passes, local boards and teachers will be required to enter into professional consultation when requested to do so by either party.

At the present time, only some 70 of the 1,250 school districts in Texas have formal agreements between teachers and school boards. Consequently, less than half of the teachers in Texas can enter into discussion with boards even if the majority of teachers are willing to undertake such talks.

"There is a lot of talk about holding teachers accountable for the success or failure of the student," reported TCTA Legislative Chairman, James Leeper of Midland.

"How can we be held accountable when the majority of Texas teachers have no control over the materials or programs put into the schools?"

"Teachers have years of training and experience but little means of making these qualities count at the decision making level.

"If we are going to be accountable, we must have the opportunity to be responsible. This bill will give us that opportunity through professional negotiation", Leeper said.

SC Prepares For Convention

by Becky Sain

The Student Council meeting was held Monday, March 15. The meeting was called to order, followed by a devotion given by the Chaplain, Betty Chandler.

The Council is preparing to attend the annual State Student Council Convention to be held in Austin. Those delegates planning to attend this meeting are Jerry Putman, Vicki Julian, Monica Griffiths, Lee Ann Yerby, and Betty Chandler. The convention will be held April 1, 2, and 3. Muleshoe is running for the state office of Parliamentarian. Several committees have been assigned to prepare for the election.

Bandmaster and cheerleader sponsor, Jim Harvey, presented new ideas for the election of cheerleaders for next year.

Sophomores Talk Of Cheerleader Election Rules

by Rhonda Bland

The sophomore class held their regular class meeting Tuesday, March 16, in the cafeteria. President David Harris called the meeting to order. Mr. Mardis talked to the class about paying class dues. The deadline for paying the class dues is March 29. If the dues aren't paid before the deadline the students will not be able to attend any more class meetings or the Junior-Senior Banquet. Then Mr. Harvey explained about cheerleading tryouts. This year five sophomore girls

will be the cheerleaders for the Junior Varsity. The varsity cheerleaders will be six girls from the Junior and Senior class. Each girl is required to do a yell by herself and then one in a group.

The girls are going to be elected on how well they can perform. Coach Didway closed the meeting by challenging everyone to pay their class dues and pay more attention during the meeting. The meeting was then adjourned.



SADDLETRAMPS WIN FIRST . . . Kathy Boren and Wendell Vernon of the YL 4-H Club Saddletramps are pictured with the first place trophy the club won at the ABC Rodeo parade and grand entry at the ABC Rodeo in Lubbock Wednesday, March 17.



Shirley Lang, Sr.

Handicapped To Contact Easter Seal

Persons with physical handicaps who need treatment and service in Bailey County may find the services they need through Jimmie Crawford who is the Bailey County Representative of the Easter Seal Society for Crippled Children and Adults of Texas.

The Easter Seal Society offers rehabilitation services to children and adults with physical disabilities including speech and hearing problems, according to Crawford.

The Society also operates an information and referral service that will direct residents of Bailey County to other appropriate sources of health and welfare aid in the area, he said.

He urged parents, doctors, nurses, clergymen and other individuals and organizations to refer handicapped persons who need assistance to the Easter Seal Society by contacting him at the Muleshoe State Bank.

The Texas Easter Seal Society helps support 20 treatment centers where services are provided to crippled children and adults regardless of their ability to pay. Physical, occupational and speech therapy are offered to help the handicapped to overcome their disabilities.

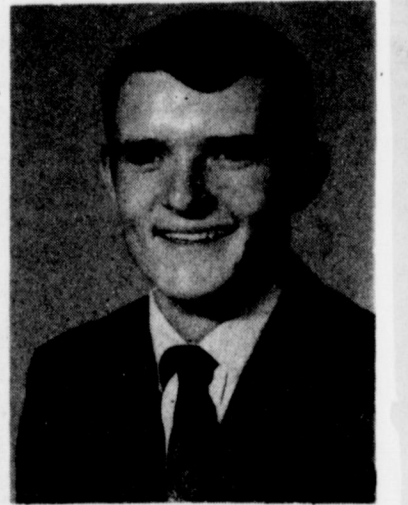
The Easter Seal program is financed by contributions made during the Easter Seal Campaign which is now underway and will continue until April 11, Easter Sunday.

During 1970, the Texas Easter Seal Society provided treatment and services to over 21,000 children and adults with a variety of physical handicaps.

Crawford urged that contributions to the Easter Seal Appeal be made as soon as possible.



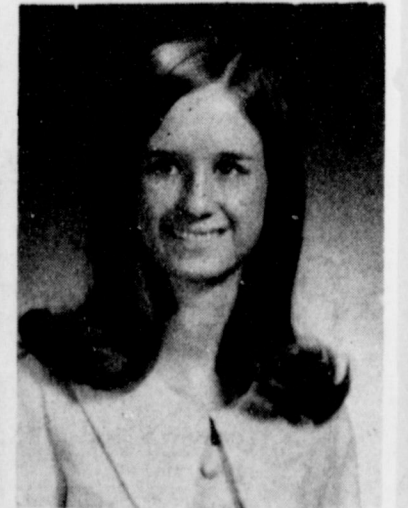
Mary Lou Mercado, Jr.



Jerry Scoggin, Sr.



Donna Grimsley Soph.



Glenda Harlin, Fresh.

School Menu

- MONDAY
 - Milk
 - Hot Dogs-Hot Dog Sauce
 - Macaroni and Cheese
 - Carrot Sticks
 - Fruit Cup
- TUESDAY
 - Milk
 - Hamburgers
 - Pickles and Onions
 - Lettuce
 - Tater Tots
 - Buns
 - Apple Crisp
- WEDNESDAY
 - Milk
 - Fish and Chips
 - Beans
 - Tossed Green Salad
 - Corn Bread
 - Cherry Pie
- THURSDAY
 - Milk
 - Corn Dogs and Mustard
 - Cheese Sticks
 - Crackers
 - Vegetable Beef Soup
 - Cinnamon Rolls
 - Jello Fruit Salad
- FRIDAY
 - Milk
 - Chicken Fried Steak and Gravy
 - Creamed Potatoes
 - English Peas
 - Hot Rolls
 - Peach Cobbler

Happiness is an open fire-place, soft music combined with the golden nectar of a Wild Turkey bourbon, and making you feel good all over.

WANT ADS DO THE JOB FAST!

WANT ADS PH. 272-4536

CLASSIFIED RATES

OPEN RATES

First insertion, per word-7¢
Second and additional insertions-5¢

NATIONAL RATES

First insertion per word-9¢
Second and additional insertions-6¢

Minimum charge-75¢

Card on Thanks-\$1.50 Double rate for blind ads

Classified Display-95¢ per col. inch

\$1.05 col. inch for reverses

DEADLINE FOR INSERTION

Thursday's Muleshoe Journal-Noon Tuesday
Sunday's Bailey County Journal-Noon Friday

The Journals reserve the right to classify, revise or reject any classified ad.

Check advertisement and report any error immediately. Journals are not responsible for error after ad has already run once.

FOR SALE: 72 acres - 8 in. well located at Clay's Corner. Engine and pipe goes with land. \$475 an acre. Call 385-3373, Littlefield, Tex. or write Box 547. 8-47s-tfc

FOR SALE: 188 acres dryland, also a 4 bedroom house next to school. E. H. Hall Real Estate, phone 272-4784. 8-11t-2tc

FOR SALE: 3 bedroom brick in Richland Hills. Call 272-3594. 8-3s-tfc

See us before you buy. Can save you money. POOL REAL ESTATE, 214 E. American Blvd., Phone 272-4716 8-6t-lfc

Three Way News

Mrs. H. D. Garvin

Mr. and Mrs. Carrol Fleming and son from Post were supper guests in the H. W. Garvin home Sunday night.

Leo Powell from Tatum, N.M. visited in the Paul Powell and Dutch Powell homes Thursday afternoon.

Mrs. Freddie Parkman and daughter, Prynness were medical patients in Cochran Memorial hospital last week.

Cass Stegall is a medical patient in Cochran Memorial Hospital in Morton.

Mrs. C. B. Hightower is a medical patient in Cochran Memorial Hospital in Morton.

H. W. Garvin is a medical patient in Cochran Memorial Hospital in Morton.

Mrs. Charlie Locke is a patient in a Littlefield hospital.

Mr. and Mrs. Johnnie Wheeler were in Floydada Thursday on business.

Mr. and Mrs. T. D. Davis and Mr. and Mrs. Joe Sowder spent last week fishing at Lake Hemstead.

Mrs. Hope Poe from Munday is visiting her daughter, the Ronald Bruce family.

Mr. and Mrs. George Tyson were supper guests in the home of their daughter and family, the D. A. Williams Thursday night.

The Hicks Chapel Baptist Church had a supper Thursday night honoring the Three Way senior class.

Mr. and Mrs. Bennie Dunlap and children from Amarillo spent the weekend in the C. B. Hightower home.

Mr. and Mrs. Jimmy Taylor and children from Odessa spent the weekend in the C. B. Hightower home.

LEGAL NOTICE

LEGAL NOTICE NOTICE OF CITY OFFICERS' ELECTION

THE STATE OF TEXAS CITY OF MULESHOE TO THE RESIDENT QUALIFIED VOTERS OF THE CITY OF MULESHOE, TEXAS:

TAKE NOTICE that an election will be held on the 3rd day of April, 1971, at the City Hall in the City of Muleshoe, Texas, for the purpose of electing two City Councilmen. The Polls at the above designated polling place shall on election day be open from 8:00 A.M. to 7:00 P.M.

(s) L. L. St. Clair Mayor, City of Muleshoe

Will do interior painting, 272-4784 or 272-4108. 1-11t-2tc

FOR SALE: 100 head full blood Charolais cows and bulls and 100 head of young black angus cows and one bunch of young Hereford cows. Call or see Randy Johnson 272-3056. 16-10S-tfc

KREBBS REAL ESTATE Good buys in 160, 80, 40 and 20 acres. 160 and 320 acres dry. 8-9t-tfc

FOR SALE: 3 bedroom brick, 1 3/4 bath, 9 2/10 acres of land, 5 6/10 acres of cotton allotment. Near Sudan. Will sell house without the land. Call 806-659-3642 Spearman, Texas. 8-7t-tfc

FOR SALE: Two bedroom house, 4 1/2% interest, low equity. Phone 272-4380. 8-12s-4tc

FOR SALE: 160 acres irrigated land, 3 bedroom home, 8 miles N.W. of Muleshoe. Call A.G. Taylor after 6 p.m. 965-2646. 8-52t-tfc

10. FARM EQUIP. FOR SALE

FOR SALE - good used trimomatic, with two drags. Used 4" sprinkler pipe. H.B. King 927-3655, Enochs. 10-3t-tfc

FOR SALE: Good used aluminum pipe in sizes from 4" through 8". Also good assortment of all kinds of used fittings -- New systems of all types. We will buy or trade for your used aluminum pipe. STATE LINE IRRIGATION -- LITTLEFIELD and MULESHOE. 10-47t-tfc

12. HOUSEHOLD GOODS

GRET'S a gay girl-ready for a whirl after cleaning carpets with BLUE LUSTRE. Rent electric shampooer \$1. Higginbotham-Bartlett, 215 Main. 12-15-ttc

SPOTS before your eyes-on your new carpet-remove them with BLUE LUSTRE. Rent electric shampooer \$1. Perry's 128 Main. 12-15-ttc

15. MISCELLANEOUS

FOR SALE: Model H Ft. Worth spudder. Mostly steel. With or without tools. Also, Tulsa winch 19. H. L. Stratton, 321 E. Dallas. Phone 272-3925. 15-12s-4tc

WOULD LIKE TO BUY some cows. Call Randy Johnson 272-3056. 16-10S-tfc

KIRBY SALES & SER
New & Rebuilt
CAROLYN DUNCAN
Phone 272-4182
220 W 10 Muleshoe

WANTED pasture for cows. Will take alfalfa fields or wheat for cattle grazing 272-3056 Randy Johnson. 15-10S-tfc

FOR SALE: Several large creosoted posts 25 feet long. Call 272-3465 15-9t-tfc

FOR SALE: A. K. C. Reg. Scottish Terrier puppies, 806-481-3878, Farwell, Texas. 15-11t-4tp

FOR SALE: 2 boats and 2 Hondas, a 150 and 350. Phone 272-4014. 15-10S-tfc

3. HELP WANTED

NEEDED IMMEDIATELY: Full or part time hair stylist. Main Street Beauty Salon, Phone 272-3448. 3-34s-tfc

WANTED: Diesel farm equipment mechanic. Pay \$2.60 an hour, 40 hours a week plus 20 hours overtime. Housing furnished. Contact Max Steinbock 965-2258. 3-12s-3tc

WANTED: WAITRESS, apply in person. Corral Restaurant. 3-40s-tfc

KITCHEN HELP NEEDED: Apply in person at the Old Fashioned Malt Shop. 3-12s-2tc

WORK AT HOME: We pay cash. Send stamped, self addressed envelope. Newlife, Box 85, La Grange, Texas 78945. 3-12s-4tp

TIME ON YOUR HANDS? Then use it to earn money - have fun - make friends - the AVON way. AVON Representative's sell in their own localities. Write Box 98, Plainview or call after 5:00 for Betty Jackson, 296-2526. 3-12s-ltc

4. HOUSES FOR RENT

FOR RENT: Furnished, 3 large rooms and bath. Bills paid. \$70.00 mo. Ill Ave. J or call Mrs. Loyd Routon at Oklahoma Lane. 825-3555. 7-5t-ltc

FOR RENT: Nice 3 bedroom house near Muleshoe. Couple only. 4314 46th St. Lubbock, Texas. SW5-0365. 4-12s-4tc

5. APTS. FOR RENT

FOR RENT: Furnished apartments large or small. Trailer space. Bills paid. Phone 272-3465, Briscoe Apartments. 5-34t-tfc

6. ROOMS FOR RENT

FOR RENT: Bedroom. 807 W. 7th. Call 4166 or 4903.

8. REAL ESTATE FOR SALE

FOR SALE: 3 bedroom home refrigerated air conditioning. Ed Nickles. 8-42s-tfc

FOR SALE: Newly redecorated two bedroom house at 114 West 6th Street, Muleshoe. Interior completely paneled. Reasonable down payment and monthly installments. Contact Mr. Freeman at First Federal Savings and Loan Association in Clovis, phone 505-762-4417. 8-9s-4tc

FOR LEASE OR SALE: 320 acres, 2-8" wells, sprinkler system. Call 806-983-2943 or J.D. Cates, Box 60, Dougherty, Texas 79231. 8-3s-tfc

HOLLAND REAL ESTATE
*Have irrigated and dryland farm.
*Two and three bedroom homes.
121 American Blvd.
8-40s-tfc

meets every Tuesday at 12:00
FELLOWSHIP HALL
Methodist Church
Muleshoe Rotary Club
Harvey Bosz, President

meets every Monday, 12 Noon
Jaycees
Derrall Oliver, Pres.

Lodge No. 1237 AF AAM
Masonic Lodge
meets the second Tuesday of each month practice night each Thursday
Roy Cline, W.M.
Elbert Nowell, Sec.

Lodge No. 58
Muleshoe Oddfellows
meets each Thursday 7:30 p.m.
Bill Henexion, Noble Grand

meets each Wednesday, 12 Noon
Lions Club
FELLOWSHIP HALL Methodist Church
Don Harmon, President

Walter A. Moeller Post # 85 70 8:30 p.m. 2nd & 4th Moods
VFW
Old Priblitz Skating Rink
D.T. Garth, Commander

Meets Every Fourth Monday 8:00 P. M.
Fine Art Booster
MULESHOE HIGH SCHOOL BAND HALL
DON BRYANT, President

Mary Myers income tax preparation and quarterly reports, 107 W. Ave. D. Phone 272-4621. 1-11t-tfc

Bras & Girdles By PENNYRICH at Main Street Beauty Salon

PHOTOGRAPHY by Oecia
FOR APPOINTMENT CALL 385-6083, Littlefield 409 W 2nd 12s/STFC

ELECTROLUX Sales & Service. Authorized factory representative Robert Nelson, Box 571, Sudan, Texas. Phone 227-3972. 1-7t-tfc

2. LOST & FOUND

STRAYED from my place 20 miles north of Earth eight head mixed breed steers branded bar backward K on left hip weighing about 400 pounds. Call James Welch 647-5647 or C. C. Graff 965-2266. 2-9t-8tc

April Draft Call Set For 17,000 Men

AUSTIN, Texas--The April draft call by the Department of Defense is for 17,000 men, all for the Army. Colonel Nelvin N. Glantz, State Director of Selective Service for Texas, today announced the April draft call in Texas as 1,033.

Most of the men selected for induction in April will come from the first priority group for 1971, however a few men in the extended priority group, who were needed by their local boards to fill the March call, but who were unavailable for induction in March for several reasons, will be included.

Glantz said the limitation on lottery numbers for April would be the same as in earlier months of 1971. He explained that no one is the 1971 first priority group with a lottery number above 100 would be inducted.

The State Director said the pre-induction physical examination call for Texas in April will be 4,001 men.

Glantz pointed out that the special call by the Department of Defense for Doctors and Dentists, which is being processed within the next few days, is separate and apart from the regular draft call.

He Did? God bless women without a sense of humor so that they could love men instead of laugh at them.
-Eagle, Dothan, Ala.

CARD OF THANKS

To all of my friends who put forth their every effort.

To the medical and nursing staff of West Plains Hospital. I would like to express my appreciation and sincere thanks to Doctor B. E. Sanderlin and the medical staff and nursing staff and hospital personnel for their expert professional services in ministering to my physical well being during my stay in West Plains Memorial Hospital. To all my friends for their visits, flowers and cards and personal concern I want to say I am deeply grateful.

May the Lord richly bless each of you.
Mrs. E. H. Kennedy
lfc

CARD OF THANKS

At times like these, words seem inadequate to express our appreciation to our many friends for their thoughtfulness.
Thank you,
Jim Claunch and family,
Joe Claunch

CARD OF THANKS

We would like to take this opportunity to thank all our friends for the prayers, cards, food and visits during Zora Mae's stay in the hospital. Words cannot express our appreciation to all of you.

Mr. and Mrs. D. E. Bellar
12s-ltp

Poland cuts meat exports to meet shortages.

NEED A HOME LOAN?
SEE **FIRST FEDERAL**
FIRST FEDERAL SAVINGS
AND LOAN ASSOCIATION
801 Pile St. 762-4417
Clovis, New Mexico

TOWEL CLOSE OUT

50 BRAND NEW TOWELS-\$5.95

NOT SECONDS BUT NEW UNWOVEN COTTON AND RAYON. DELUXE QUALITY - PASTEL COLORS.

100 TOWELS only \$10.95 - 200 for \$20.95

OR

24 TURKISH BATH TOWELS-\$8.95

REGULAR RETAIL PRICE OVER \$30.00. BEAUTIFUL ASSORTED COLORS. FULLY GUARANTEED DELUXE QUALITY.

48 TOWELS \$16.95 - 96 TOWELS \$32.95

Enclose 25c for Postage With Each Order--No C. O. D.'s
Samples Sent on Request. Please Send 50c for Each Sample. Covers Cost and Postage.

TEMPLE TOWEL CO., TEMPLE, GA. 30179

MULESHOE JAYCEE COMMUNITY DEVELOPMENT SURVEY

Have you received your form for the Jaycee's community survey?

If not, the Jaycees would appreciate you mailing in this form to the Muleshoe Journal, Box 449 Muleshoe.

1. Do you plan to live in Muleshoe in 1985? Yes [] No [] Why? _____
2. What do you estimate the population of Muleshoe will be by 1985? _____ What resource can we offer to obtain population growth? _____
3. Do you believe Muleshoe as a town is adequately meeting the competition from other area towns? Yes [] No [] Why? _____
4. Do you believe Muleshoe is slow in making needed changes? Yes [] No [] Why? _____
5. Do you feel that Muleshoe is attractive? Yes [] No [] Would you feel the same if you were a tourist? Yes [] No [] As a tourist, what would you remember most about Muleshoe? _____
6. What types of new businesses is Muleshoe ready to add to its economy? _____
7. Do you believe residential housing in Muleshoe is adequate? Yes [] No [] What do you recommend? _____
8. What suggestions do you have for recreational facilities? _____
9. What would you recommend to improve the Highways through Muleshoe? (attractiveness, efficiency, up-to-date) _____
10. What improvements are most needed in your neighborhood? _____
11. What improvements or additions would you make to Muleshoe's educational facilities? _____
12. Should Muleshoe remain an agriculturally dependent town? Yes [] No [] Why? _____
13. What would be the reasons an industry would want to locate in Muleshoe? _____ Why would an industry not want to locate in Muleshoe? _____
14. How can Muleshoe improve its image? _____
15. What do you like most about Muleshoe? _____ How can it be improved? _____
16. What do you like least about Muleshoe? _____ How can it be avoided or overcome? _____
17. In what ways may the Civic and Service organizations or Muleshoe be most beneficial? _____
18. Please comment on other ideas or suggestions you may have. _____

Dear Editor:

Dear Editor:
If you and your readers will bear with me for two more letters concerning the hospital situation (after this one) then I will be out of your hair. I know that many of your readers are tired of hearing and reading about this situation but win, loose or draw on April 3, I will turn in my typewriter. I am confident that we will win but should we loose, from there on it will be a battle in court.

Wilbarger County (Vernon) population about 12,000, authorized a hospital district in an election in 1966 and approved the issue of \$1,500,000 in bonds. With a Hill-Burton grant of \$1,000,000 construction was started on a 108 bed hospital. The hospital board ran out of money before the structure was completed and a second bond election of \$500,000 was necessary. With \$300,000 contributed by individuals the hospital was completed in 1968 at a cost of \$3,300,000.

There were 11 doctors on the staff when the hospital opened. There are now six. The hospital is running well below 50% capacity and overhead and depreciation is costing more than \$70.00 per patient per day.

The tax rate was set at 30¢ per hundred the first two years but was raised to 50¢ before the hospital was completed. With a county tax base of \$38,000,000 the hospital district receives about \$190,000 per year in tax revenue. The hospital has had three administrators in the past 18 months.

Baylor County (Seymour) is a hospital authority rather than a hospital district. This means that it has no tax support. A 51 bed hospital was completed in August of 1969 at a cost of \$950,000, and was financed by the sale of revenue bonds to the Housing and Urban Development. These bonds have to be paid for out of revenue generated by the hospital.

The hospital has lost one doctor and gained one doctor since it was completed. There are now three doctors on the staff. It is meeting it's obligations on time and has had no serious financial crisis since it opened.

When asked why this hospital only cost \$950,000 when most districts were paying \$1,500,000 to \$2,000,000 for the same facilities the president of the hospital board replied that it was out of necessity. They had no tax support.

When asked how Baylor County Hospital Authority could operate without tax support when most hospital districts were raising taxes each year the administrator said that it had to be run as a business. He added that the hospital re-

ceived about \$4,000 per year from the county for indigent patient care.
Yours truly,
Richard E. Black

Dear Editor:
We want to thank you for the coverage you gave our Area Barbecue Supper. We feel your coverage played a big part in the nice crowd we served.

Thanks go to all the NFO members who helped prepare this event, the 4-H girls from Lazbuddie, who sang, also the F. H. A. girls (Uncle Sams Nieces) from Bovina who enter-

ained, Mr. Harris, for setting up the P. A. system, all the radio and T. V. stations in the area for the coverage they gave. Special thanks go to the Bovina cafeteria ladies who prepared a wonderful meal, also Ross Terry for donating the pinto beans.

Our supper was a success, thanks to all the NFO neighbors in surrounding counties. Parmer County National Farmers Organization

Soviet opens business school for administrators.

Obituaries
B. Coppedge

Funeral services for Mrs. Bessie Coppedge, 80, of Estelline, who died at 7:34 a.m. Thursday, March 11 in the Hall County Hospital, were held at 10:30 a.m. Saturday in the First Baptist Church in Estelline. Officiating were the Rev. Elvis Pitts, pastor, assisted by the Rev. V. L. Huggins, pastor of the Trinity Baptist Church of Muleshoe. Burial was in

the Estelline Cemetery under direction of Spicer Funeral Home of Memphis.

Mrs. Coppedge was born March 25, 1890 in Upshur County and moved to Hall County in 1919.

She was a member of the First Baptist Church of Estelline and the Rebekah Lodge. Survivors include one son, J. W., of Muleshoe; one brother, Robert Butler of Cleburne and one granddaughter.

J.H. Johnson

Jacob H. Johnson, 83, died

at 3:58 p.m. (MST) Thursday, March 18, in the Roosevelt General Hospital in Portales, N.M. He had been a Portales resident for the past four years, moving there from Muleshoe. He was born July 4, 1887 in Navarro County (Tex.) and was a retired farmer and a member of the Muleshoe Trinity Baptist Church.

Funeral services were held at 3 p.m. Saturday in the Trinity Baptist Church with Rev. Troy Walker, minister of Eastridge Baptist Church, Amarillo, officiating. Burial was in Sudan Cemetery under direction of

Singleton-Ellis Funeral Home, M. E. Kidd, Portales; Mrs. Survivors include three sons, D. D. Scott, Brownfield and Roy Lee, Lake Charles, La.; Mrs. Charles Cagle, Indianap-Fred, Muleshoe; Milburn, olis; 23 grandchildren and 46 Graham; three daughters, Mrs. great-grandchildren.

TELEX
Hearing Aids
Clovis Hearing Aid Center
Batteries & Molds. Free Tests.
Service All Makes.
416 Mitchell Phone 763-6900
Clovis, N.M.

Compare these Penny Pinchers!

KLEENEX FACIAL TISSUE 200 ct. **25¢**

TOILET TISSUE Soft Ply, Assorted Colors 4 Roll Package **25¢**

MARGARINE Churn Gold Soft 1 lb. ctn. Tab Pack **29¢**

PENNY PINCHIN' MEAT BUYS

CHUCK ROAST USDA Choice Beef, Blade Cut, Valu-Trimmed **49¢** Pound

RIB STEAK USDA Choice Beef, Valu-Trimmed **89¢** Pound

SLICED BACON Farmer Jones, First Grade Quality, 2-Pound Package **59¢** Pound

FRYERS USDA GRADE A WHOLE **29¢** Pound

Chicken Fried Beef Patties 1 lb. **89¢**

Lunch Meat 6-Ounce Package **35¢**

Shrimp Cocktail 3 4-Ounce Glasses **\$1**

Roasting Chickens USDA Grade A, 3 to 4 Pound Average **34¢** Pound

Franks Farmer Jones, All Meat **59¢** Pound Package

Longhorn Cheese 8-Ounce Package **53¢**

Chicken Livers Armour's Star USDA Grade A **69¢** Pound Package

PORK 'n' BEANS Libby's Deep Brown **10¢** 14 oz Can

SPAM Luncheon Meat **63¢** 12-Ounce Can

Fish Sticks Captain Hook, Heat and Eat 8-Ounce Package **29¢**

Swiss Steak USDA Choice Beef, Round Bone, Shoulder Cut **68¢** Pound

Ground Chuck Dated to Assure Freshness, Lean, USDA Choice Beef, Excellent for Boiling or Braising **79¢** Pound

New York Cut Steak USDA Choice Beef, Valu-Trimmed **\$1.99** Pound

Short Ribs **38¢** Pound

DOUBLE S&H GREEN STAMPS EVERY WEDNESDAY... With \$ Purchase or More

Orange Juice Libby's, Frozen 2 6-Ounce Cans **29¢**

Waffles Breakfast Treat 5-Ounce Package **10¢**

Sego Liquid Diet Supplement 4 10-Ounce Cans **\$1.00**

Pork & Beans Van Camp #2 Can **25¢**

Cookies Keebler Sugar Giants, Fig Bars, Fudge Site, Old Fashion Oatmeal, Iced Raisin Bar Your Choice 2 Packages **69¢**

Macaroni American Beauty 12-Ounce Package **23¢**

Sauce Mix Schilling, Spaghetti 1 1/2-Ounce Package **25¢**

Crisco Oil Pure Vegetable 1-Gallon Size **\$3.07**

Miracle Whip Qt. Jar **59¢**

Instant Coffee Maxwell House, Chunks 6-Ounce Jar **\$1.13**

Ammonia Parson's, Sudsy or Lemon 28-Ounce Bottle **36¢**

ALUMINUM FOIL Arrow Standard, Household 25-Foot Roll **19¢**

GREEN BEANS Carol Ann Cut 303 Can **6 for \$1**

DETERGENT Carol Ann, With Enzymes Giant Box **49¢**

GLADE DEODORIZER Room Deodorizers, All Scents 7-Ounce Can **39¢**

APPLES Delicious Red or Golden **15¢** Pound

Navel Oranges Sunkist **17¢** Pound

Yellow Onions Mild Flavor **5¢** Pound

Non-Food Specials!

GLEEM TOOTH PASTE, Large Size 12c Off Label, Mfg. Suggested Price 69c **39¢**

Colgate Instant Shave 11-Oz Size **44¢**

Pepsodent Toothbrush **33¢**

HOUR AFTER HOUR Deodorant, Mfg. Suggested Price \$1.59 **\$1.09** 7-Ounce Size

PIGGLY WIGGLY 1st in Savings!

SCHEDULE OF EVENTS

MONDAY
March 22, 1971
7:30 p.m. - Rainbows, Masonic Hall.
7:30 p.m. - Wesleyan Service Guild meets with Mrs. Marcus Laney at 318 W. 5th.

TUESDAY
March 23, 1971
9:30 a.m. - Esther-Dorcas Circle of WSCS meets in Methodist Church parlor.
2:30 p.m. - Goodland Bible Study.
2:30 p.m. - Mary Martha Circle of WSCS, Chapel.

7:30 p.m. - Alcoholics Anonymous, South First.
8:00 p.m. - Rebekahs, IOOF Hall.
8:30 p.m. - Junior High Talent Show, MHS auditorium.

WEDNESDAY
March 24, 1971
1:30 p.m. - Joyce Hill Circle of WSCS meets with Mrs. Buddy Black.

THURSDAY
March 25, 1971
4:00 p.m. - Study Club, Muleshoe State Bank.
6:00 p.m. - TOPS, Bailey County Electric.

FRIDAY
March 26, 1971
6:30 p.m. - Youth Basketball, Junior High gymnasium.

Any upcoming community event for Schedule of Events, please report to the Journal office.

Compliments Of:
MULESHOE STATE BANK
MEMBER FDIC