

WEATHER

|              |    |    |      |
|--------------|----|----|------|
| September 13 | 72 | 41 | 1.02 |
| September 14 | 51 | 39 | Tr.  |
| September 15 | 74 | 40 | .00  |
| September 16 | 83 | 45 | .00  |

# BAILEY COUNTY JOURNAL

*'The Community Of Opportunity-Where Water Makes The Difference'*



Vol. 27, No. 38

12 PAGES TODAY

Published Every Sunday At Muleshoe, Bailey County, Texas 79347

20¢ Sunday, September 17, 1989

## MAHD Sets 1990 Tax Rates; Make Plans

### School Tax Increase Explained

By Dr. Lawrence Ward,  
MISD Superintendent

"With great reluctance" is the phrase the Muleshoe ISD board of trustees used when they voted to support a 16 cent school tax increase. The reluctance was based on several factors. No one like to impose additional taxes on themselves and their neighbors. It was even more difficult after the community voted to establish the new hospital district with its new tax. One might conclude that there is no good time to ask for money.

According to the former assistant superintendent of business, Tom Jinks, the Muleshoe ISD has always operated on a very conservative budget. Dr. Lawrence Ward, superintendent of schools, and the school board acknowledges that the new budget, even though higher, is more conservative than other recent budgets. Why then is more money needed?

Dr. Tom Alvis, assistant superintendent of business for the Muleshoe ISD, has compiled the following figures to illustrate the need. These are some of the same figures the board evaluated.

For the 1989-90 school year the state legislature mandated pay raises for all professional personnel. For the non-professional staff a pay raise of five percent, which is less than a cost of living increase, was given. This alone was an increase of over \$400,000.

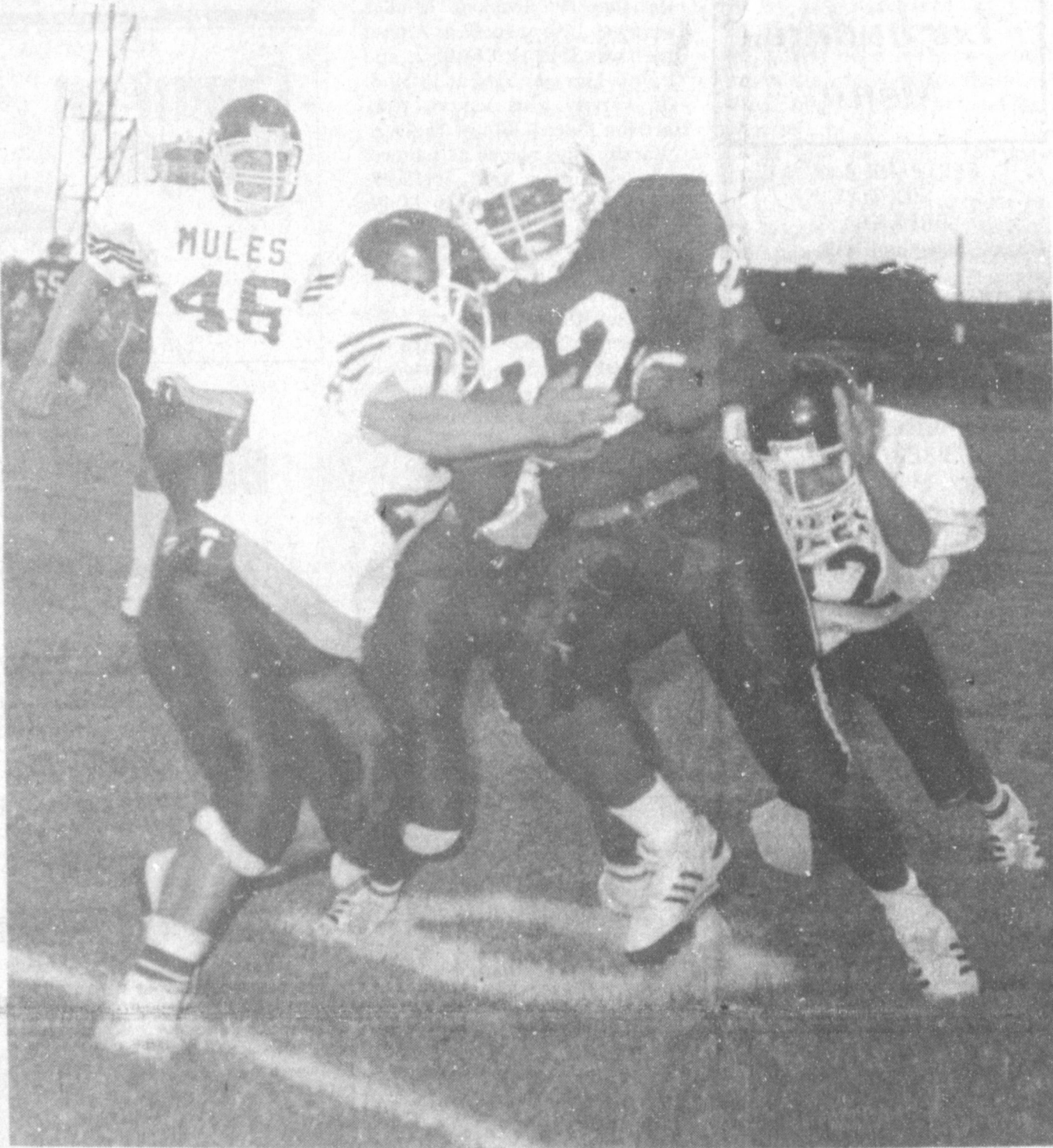
To comply with the 22 to 1 ratio requirement, additional personnel accounted for another \$25,000. With these mandates the state allotted the MISD an additional \$145,100 for 1989-90. Additional personnel costs alone put the MISD over \$280,000 in deficit financing.

All other operating costs, such as food services, transportation, supplies and materials, contracted services, etc., increased at a rate near to the inflation rate. Budget cuts kept the total increase down.

Putting this information into total dollars, it adds up as follows: The increases have created a total school budget of \$6,699,159 for the 1989-90 school year. The budget for the preceding year was \$6,242,721. The projected income from federal, state and local sources totals \$6,170,545. That leaves the school district in a deficit mode of \$528,614. These figures included the original six cent tax increase.

These problems are magnified for 1990-91. State law mandates

Cont. Page 6, Col. 5



IT WAS A 'HARD ROW TO HOE'--Friday night, the Muleshoe Mules made a vain attempt to contain powerful Shallowater Mustang runner Timmy Taylor, No. 22. Pictured is Juan Perez, No. 20, slowing down the runner waiting for A. J. Liles, No. 46 and Robert Martinez, No. 82, and an unidentified Mule in the background attempt to bring the runner down. It was to no avail as the Shallowater Mustangs defeated Muleshoe, 28-6. (Journal Sports Photo)

### Shallowater Mustangs Take Win From Muleshoe Mules On Friday

It was a perfect night for football -- little to no wind, the temperature was just right -- but the Mules failed to 'get the handle' on the ball, and dropped their second game of the season when they traveled to Shallowater to take on the Mustangs.

The Mustangs scored in each of the four quarters to take the win, 28-6.

Muleshoe's only TD came in the second, when Juan Perez latched onto a QB Larry Gonzales

pass that was nearly picked off before Perez got to it.

With just :33 left in the first half of the Muleshoe-Shallowater football game, a nearly intercepted pass resulted in a 20 yard TD for the Muleshoe Mules, who were trailing in the game at that point 14-0.

Mule quarterback Larry Gonzales completed a 20-yarder to Juan Perez, who quickly slid into the end zone after the ball was nearly picked off by a Mustang.

The score capped off a drive that began when the Mustang punter had the ball blocked, then picked up by Juan Perez who returned it to the Mustang 48. Three plays later, Colin Tanksley recovered a Gonzales fumble,

which was good for a first down, then in a steady drive, the Mules finally drove into the end zone, and posted their first score for the 1989 football season.

Going for two, the Mules failed, and stayed with 6 points.

After watching the Brownfield Cubs get off to a very slow start last Friday night, the Mules were a little stunned when the Mustangs had first possession of the ball in the first quarter, and drove from their own 30 yard line in seven plays to the end zone.

The Mustangs first score came on a 20-yarder from QB Jim Blair to Blade Corzan in the end zone. Timmy Taylor booted in the extra

Cont. Page 6, Col. 2

### Bells Across America Celebration Here Monday

Bailey County citizens are reminded of an observance of Constitution Week and the continuing five year celebration of the Bicentennial of the United States Constitution scheduled the week of September 17-23.

Locally, Muleshoe Mayor Darrell Turner and Bailey County Judge Jim Watson have designated Monday, September 18, as "Bells Across America" day and are calling on all citizens to join with bells, chimes and carillons in a 200-second ringing tribute to the Constitution of the United States.

The community observance of "Bells Across America" will be held at the east entry to the Bailey County Courthouse at 3

p.m. Monday, where the American flag is posted each day.

Dr. Fred Ivy, principal of DeShazo Elementary School, will lead fifth graders to the courthouse to participate in the ceremonies.

A brief program will begin at 2:45 p.m. Monday, led by public officials and leaders. The bells will begin ringing at 3 p.m.

Included among spectators and participants will be special visitors from Australia and public officials and leaders, Veterans of Foreign Wars, American Legion, and members of the U.S. Military services.

This years' focus events will be

Cont. Page 6, Col. 3



JUDGE, MAYOR SIGN PROCLAMATION--Wednesday, Bailey County Judge Jim Watson, left, and Muleshoe Mayor Darrell Turner, right, seated, signed a proclamation designating Monday, September 18, as "Bells Across America" day in Muleshoe. Looking on from left, standing, are Jennyslippers representatives Nelda Merriott and Billie Downing. (Journal Photo)

Following a discussion and hearing Wednesday night, the Muleshoe Area Hospital District voted on the tax rate for their first year.

Medicare-mandated improvements and a projected operating loss of \$438,000 for the hospital will force the first year's tax rate for the MAHD to be the maximum \$.25 per \$100 valuation, according to board members. That rate is expected to generate approximately \$500,000 in tax money.

The board was asked if appraisals were dropped, could the rate go to \$.30, and the reply was "NO" as the maximum rate that can be allowed is the \$.25 assessed.

MAHD President said when the first tax starts coming into the Appraisal offices in Bailey and Parmer Counties in November, the hospital district will already be in debt \$400,000.

Medicare money has not started arriving at the hospital yet, and insurance funds run from 45-90 days behind. What money is being received, or most of it, goes to West Plains Medical Center board. They are using the money to pay off debts.

Interim administrator Rita Mason gave a financial report for the hospital. She said in August, the hospital billed a total of \$159,101.48, and had expenses of \$136,433.46. Virtually none of the billing has been paid, waiting for Medicare and insurance payments.

She said in July, there were 104 patient days, and this had increased to 254 for August. Some 3.5 percent of the admissions to the hospital right now are Medicare patients.

She also said the hospital's goal of a daily average census of 8.0 patients was reached in August.

Reporting for the nursing home, Administrator Rachel Snider said they currently have a census of 47 patients, and will soon have 48.

Billings for August for the nursing home were \$58,859.00 and expenses totaled \$50,773.00.

Architect Michael Landers presented a five year plan for renovations of the current nursing home, along with Medicare-mandated improvements to the hospital.

The five-year plan includes a

### Jennyslippers

### Will Sponsor

### Area Meeting

The Eighth Annual Regional Conference of Chamber of Commerce Women will be hosted by the Muleshoe Jennyslippers on Saturday, September 23, at the Bailey County Civic Center.

The day long meeting/workshop for all area chamber women will begin following registration at 9 a.m.

Women from Amarillo, Brownfield, Memphis, Spearman, Dumas and Borger and others are expected to become acquainted during a session preceding the general session scheduled to begin at 10 a.m.

A luncheon catered by the Blue Goose will be served at noon.

Of special interest will be the history and tour of the Depot and Janes Ranch House conducted by Cara Juan Schuster. Guest speaker for the afternoon session will be Magann Rennels of Channel 6, Muleshoe.

Closing session of the conference will begin at 2:30 p.m. with the announcement of the 1990 meeting site and presentation of awards.

Anyone interested in attending and for further information, please contact Norma Bruce, Pat Langfitt or Sandi Robinson.

number of improvements, including a new laundry facility, which will cost \$100,000. Medicaid requires that the laundry be moved from its present location in the west end of the nursing home.

Oxygen storage will have to be relocated to a remote location fenced in; heating coils will have to be replaced for the hospital heating system; the heat exchanger/cooling tower will have to be removed from the roof of the hospital and a new package chiller installed. The incinerator will have to be relocated; and areas over central supply will have to be reroofed.

Canopies will be added to cover drives at the emergency room entrance and front entrance. Also scheduled is upgrading the H.V.A.C. pneumatic control system to modern energy conservation standards.

The architect outlined plans to add beds to the nursing home. Part of the addition will require demolition of the former Dr. L. T. and Dorothy Green home which is currently a part of the nursing

Cont. Page 6, Col. 3

### HERO To Serve

### Pre-Game Dinner

### Here Next Friday

Friday night, prior to the Muleshoe Mule-Denver City Mustang football game in Benny Douglass Stadium, the Muleshoe High School HERO Club will serve their annual pre-game dinner.

HERO said the meal will be homecooked and will consist of Bar-B-Q brisket, potato salad, pinto beans, hot rolls, cherry and apple cobbler, ice tea, coffee and water.

Serving hours will be 5:30-7:30 p.m. in the high school cafeteria. Tickets will be \$5 for adults and \$3 for children under the age of 12. Orders will be delivered. You may call 272-4360 to place your order to be delivered.

### Mule-Plex Co.

### To Elect Officers

### Monday Night

YOU ARE WANTED!!! To become a member of the Mule-Plex Production Co., that is.

Anyone interested in participating in any manner in upcoming productions, is cordially invited to be at the Muleshoe State Bank community room at 7 p.m. on Monday, September 18.

If you attended either, or both, of the "Family Fun Nights" presented by the company in late June, you know what a wonderful time everyone had -- regardless of what capacity, participant or spectator.

The large crowds both nights proved that it was a successful beginning for Mule-Plex Production Co., whose ultimate goal is to present a musical drama about Bailey County's own colorful history.

Mule-Plex Production Co. asks that all present members attend, as well as anyone interested in becoming a member.

Dues are only \$1 a year, and that gives you voting rights at the meetings. Part of the Monday meeting will be the election of new officers for the coming year.

There's lots of planning to do as Mule-Plex Production Co. planning for an expanded production for next year.

Be present -- become a member for \$1 -- and give the Mule-Plex Production Co. the benefit of your ideas and suggestions.

The company is looking for more entertainers, actors, actresses and general members. There's something for everybody to do.



## Muleshoe Menu

SEPTEMBER 18-22  
**MONDAY BREAKFAST**  
 Milk, Cheese Toast and Fruit  
**LUNCH**  
 Milk, Pizza, Mixed Vegetables, Pickles and Fruit  
**COMBO**  
 Milk, Skillet Dinner, Corn, Green Beans, Corn Bread and Fruit  
**TUESDAY BREAKFAST**  
 Milk, Honey Buns, Sausage and Fruit  
**LUNCH**  
 Milk, Juicy Burgers, Lettuce & Tomato, Pickles & Onions, Tater Tots and Cobbler  
**COMBO**  
 Milk, Hamburgers, Lettuce & Tomato, Pickles & Onions, Tater Tots and Cookies  
**WEDNESDAY BREAKFAST**  
 Milk, French Toast, Syrup, Sausage and Juice  
**LUNCH**  
 Milk, Enchallada Cass., Beans, Salad, Corn Bread and Jello  
**COMBO**  
 Milk, Taco's, Beans, Cheese,

Salad, Corn Bread and Fruit  
**THURSDAY BREAKFAST**  
 Milk, Toast, Jelly, Hash Browns and Fruit  
**LUNCH**  
 Milk, Burritos, Cheese Stick, Buttered Corn, Crackers and Fruit  
**COMBO**  
 Milk, Pigs In Blanket, Corn, Cole Slaw and Fruit  
**FRIDAY BREAKFAST**  
 Milk, Biscuits, Gravy, Sausage, and Fruit  
**LUNCH**  
 Milk, Fish, Macaroni & Cheese, Eng. Peas, Hot Rolls and Fruit  
**COMBO**  
 Milk, Fish, Macaroni & Cheese, Eng. Peas, Hot Rolls, and Fruit



### MICROWAVE TIPS

There are many things which should never be placed in a microwave oven. Those who think all Corning ware is safe are mistaken. Corning Centura shouldn't be put in a microwave oven (Corelle dinnerware by Corning can be).

## Three Way Menu

SEPTEMBER 18-22  
**MONDAY BREAKFAST**  
 Waffles/Sausage and Milk  
**LUNCH**  
 Veal Parmajon, Mashed Potatoes/Green Beans, Hot Roll, Milk and Banana Pudding  
**TUESDAY BREAKFAST**  
 Biscuit & Gravy w/Sausage and Milk  
**LUNCH**  
 Hamburger, Tater Tots/Corn, Milk and Cookies  
**WEDNESDAY BREAKFAST**  
 Hash Browns/Eggs and Milk  
**LUNCH**

## Lazbuddie Menu

SEPTEMBER 18-22  
**MONDAY BREAKFAST**  
 Cereal, Juice and Milk  
**LUNCH**  
 Steakfingers, Potatoes w/gravy, Steakfingers, Potatoes w/Gravy, Green Beans, Hot Rolls, Fruit and Milk  
**TUESDAY BREAKFAST**  
 Blueberry Muffins, Juice and Milk  
**LUNCH**  
 Tacos, Green Salad, Corn, Pudding and Milk  
**WEDNESDAY BREAKFAST**  
 Toast, Bacon, Juice and Milk  
**LUNCH**  
 Beef Stew, Corn Bread, Crackers, Peach Halves and Milk  
**THURSDAY BREAKFAST**  
 French Toast, Juice and Milk  
**LUNCH**  
 Chalupas, Pinto Beans, Green Salad, Cake and Milk  
**FRIDAY BREAKFAST**  
 Cinnamon Rolls, Fruit and Milk  
**LUNCH**  
 Hamburgers, French Fries, Lettuce, Tomatoes, Onions, etc., Cobbler and Milk  
**SALAD BAR SERVED MONDAY-THURSDAY**

Lasagna, Green Beans, Hot Roll, Milk and Rice Crispy Delight  
**THURSDAY BREAKFAST**  
 Pancakes/Sausage and Milk  
**LUNCH**  
 Burritos, Mixed Veg/Tossed Salad, Milk and Jello  
**FRIDAY BREAKFAST**  
 Biscuits/Eggs and Milk  
**LUNCH**  
 Fish, French Fries/Coleslaw, Hot Roll, Milk and Cake

## Cross Country Teams Perform At Brownfield

Coach Bob Davis took the MHS cross country boys and girls to Brownfield on September 9, including three JV girls and one varsity girl and five varsity boys. In the JV division, Monica Swint was 14th at 16:42.4; Amber Green was 35th with 18:05.2; and Virginia Lira was 53rd at 18:59.8. In varsity girls action, Amy Harrison placed 30th at 15:49.2. Varsity boys placed as follows: Corley Hutton, 43rd, 20:12.97; Andy Crawford, 51st, 20:27.49; Adam Villa, 58th, 20:37.71; Albert Garza, 82nd, 22:52.69 and Jeff McGuire, 87th, 25:17.86.

**One on Mike**  
 Pat--Moike do yez know why an Irishman hits the pepper box on the bottom an' a Dutchman hits it on the side?  
 Mike--Bogorra, Pat, Oi don't. Why is it?  
 Pat--Shure, an' it's to get the pepper out, Moike.

## Enochs News

by: Mrs. J.D. Bayless

Mrs. Ellen Bayless was in Muleshoe Tuesday and was a dinner guest in the home of Helen and Bobby Free. She also visited in the home of Mrs. Clara Coffman and stopped and visited Mrs. Olive Cox.

Sid Key and Vonna Hamilton drove to Roswell, N.M. Friday and spent the night with Vonna's grandparents, Mr. and Mrs. Claude B. Hamilton and attended the wedding of her brother, C.W. Hamilton and Shauena Fowler in the back yard of his grandparents the Claude Hamiltons, home Saturday. They had a sundown wedding.

Mrs. Winnie Byars drove to Seminole to be with her son, Tom and Patsy Byars, and family to celebrate her birthday Thursday August 31st.

Bro. and Mrs. David Graves spent Labor Day visiting her mother, Mrs. Nova Louise Thomas, at Smyer.

Mrs. Myrna Turney has been staying with her sister, Florene and Billy West at Tatum, N.M. after Florene came home from the hospital.

Mrs. Ellen Bayless was in Littlefield Tuesday and visited Mrs. Alberta Bryant and had lunch with her. Mrs. Vera Hodges came over and visited with them Wednesday. Mrs. Bayless was in Muleshoe to see Mrs. Juanita Snow, who was in the hospital.



## Count on Cargill!

BH122

Superior performing hybrids that are genetically different to spread your risk and fit the way you farm. Count on your Dealer to recommend several hybrids that match your needs.

## Don Bryant Seed

Rt. 1 Box 835  
 Muleshoe, Tx. 79347  
 Ph. 965-2464  
 or 965-2229



**Bailey County Journal** USPS 040-200  
 Established March 31, 1961. Published by Muleshoe Publishing Co., Inc. Every Sunday at 304 W. Second, Box 449, Muleshoe, Tx. 79347. Second Class Postage paid at Muleshoe, Tx. 79347.

**Member 1989 TEXAS PRESS ASSOCIATION**

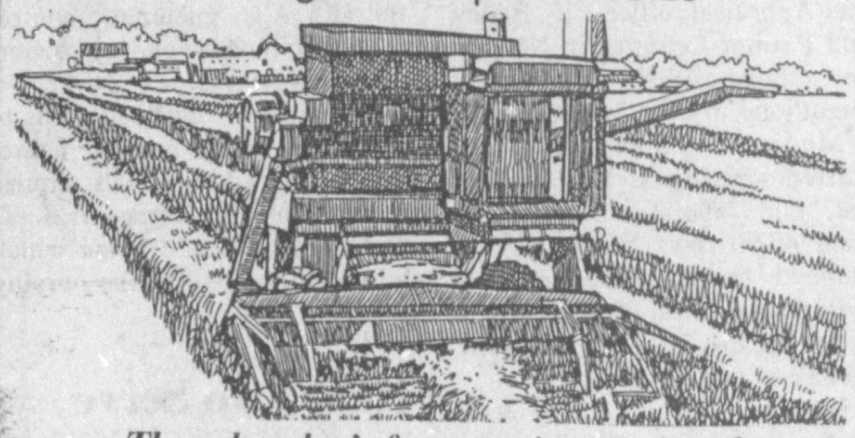
L. E. Hall, Publisher  
 Sammie Hall, Vice President/Controller  
 Clara Williams, News  
 Evelyn Harris, Society  
 Holly Millage, Advertising  
 Dora Toscano, Classified

**SUBSCRIPTIONS**  
 Muleshoe Journal and Bailey County Journal  
 Bailey and surrounding counties  
 Muleshoe Journal and Bailey County Journal  
 Elsewhere in Texas \$14.75  
 Muleshoe Journal and Bailey County Journal  
 Outside Texas, \$16.50  
 Yearly By Carrier \$12.50

Advertising Rate Card on Application  
 Advertisers should check their ad the first day of insertion. The Journals will not be liable for failure to publish an ad for a typographical error or error in publication except to the extent of the cost of the ad for the first day of insertion. Adjustment for errors will be limited to the cost of that portion of the ad where the error occurred.

## FARM SAFETY

Farm Safety Week Sept. 17 Thru 23



Though today's farm equipment is safest ever from an engineering standpoint, tractors still are involved in many agricultural accidents. Most could be prevented. Do your share by practicing good safety habits in your daily work.

**Bailey County Farm Bureau**

1612 W. Amer. Blvd. 272-4567

**FARM HANDS ARE HARD TO REPLACE!**

**FARM SAFETY**  
 An Important Part Of Farming!

We'd like to remind you of the importance of farm safety. The week of September 17th through 23rd has been designated as National Farm Safety Week. Remember: Accidents Eat Profits.. Apply Safety!

As long-time neighbors and friends in your farming community, we stand ready to help in every way we can. Let our farm management professionals help you in the financial safety you must have. Stop by soon!

**Farm Safety Week Sept. 17 - 23, 1989**

**MULESHOE STATE BANK**  
 MEMBER FDIC  
 101 West American Blvd. Phone 806/272-4561  
 MULESHOE, TEXAS 79347

**BENTLEY'S MULESHOE**

**QUITTING BUSINESS!**

Front to Back  
 Wall To Wall  
 Everything Storewide  
**50% to 75%**  
 Off Regular Price

Shoes • Suits • Dresses • Jumpsuits • Coordinates  
 Skirts • Blouses • Boys Jeans • Girls Dresses  
 • Shorts • Shirts • Jackets • Sweaters • Purses •  
 Sport Coats • Dress Pants • Knit Shirts • Boots  
 Lingerie • Slacks  
 Plus Much Much More!

Everything Is Going Quick! Hurry In Now!  
 The Doors Will Soon Close On These Fantastic Bargains!

**Bentley's**  
 Smart Fashion  
 Open Mon.-Sat. 9-6  
 No Approvals - No Holds

Personal Checks  
 All Sales Final - No Layaways  
 110 S. MAIN ST., MULESHOE, TX. PHONE 272-4119



## Kiwanis Club Hosts Speaker On 'Indians'

By: R. A. Bradley

Three guests, Ryan Clapp, son of Don Clapp; David Lutz, son of Jim Lutz; Robert Lepard; two honorary members, Jon Keith Turner and Chad Johnson; and 16 Kiwanians were at the Friday morning meeting of the Kiwanis Club at the Old Corral.

We were sorry to hear that honorary member, Stacy Morris was home sick. Hurry up and get well as we sure miss you.

President Keith Turner, on one of his visits to Muleshoe, called the meeting to order. Robert Montgomery led the club in the pledge to the flag, and the invocation was given by James Roy Jones.

Huck, who has had the friendship coin, finally found the coin, but couldn't find a friend -- Huck's wife and daughter, Linda and Holly, found a friend for him, so he gave the friendship coin to Scott Churchman. Scott, we hope you have better luck than Huck did.

Reggie Johnson, who was in charge of the program for the day introduced Dr. Robert Lepard, who has studied up on archaeology and Indian artifacts.

It seems we think of the Indian, astride a horse, chasing the white man or buffalo, but it seems that the first Americans were foot people trying to survive. The horse wasn't introduced to the Indian until about the 1700s.

Also, up until the Indian met the white man, his only weapons or tools were stone or wood. He became quite a craftsman on making knives, axes and arrowheads.

Robert stated that there was no native flint stone for this area. If you found any flint artifacts, it was brought in from some other area. Lots of artifacts have been found in the Blackwater Draw close to Portales. Robert has found most of his artifacts close to Brownfield where he grew up.

Robert also stated that to hunt artifacts, you need to hunt on private land with permission from the owners. Do not hunt on federal land. There is a law against picking up anything on federal land.

Dr. Robert told about the four periods of the first Americans and showed a small part of his collection.

Robert, your program was very good and enjoyed by all. "Thank you!"

Keith Turner presented J. O. Parker and Scott Churchman, on behalf of the Muleshoe Voluntary Fire Department, a check for \$100. The Kiwanis Club is proud of our fire department.

On behalf of the Muleshoe Heritage Foundation, R. A. Bradley accepted a check for \$100.

Since Brad is the ancient member of the Kiwanis Club, he also accepted a check for \$100 for the Senior Citizens of Bailey County.

For the Heritage Foundation and Senior Citizens, we say "Thank You" to the Kiwanis Club.

Tuesday night, September 19,

## Three Way Eagles Down Midland Christian

Three Way head football coach Greg Jeffcoat was justifiably proud of his Three Way Eagles Friday night after their 58-25 win over Midland Christian. But, he was a little nervous before the end of the game. Starting out with 10 players, Coach Jeffcoat's team had three injuries, including a knee injury to Chris Locke in the third, and ended the game with a total of seven players. It was the "Guillen Show" throughout the evening. With a total rushing yardage of

is the Kiwanis Installation Banquet at the Civic Center at 7 p.m. Jim Lutz will become our fearless leader.

The Kiwanis Club wishes to say "Thank You" Keith Turner, for a job well done. Keith, we give you a hard time, but we do appreciate you.

## Athletic Boosters Praise Mules

By: Alton Parker

Bill Liles, president, called the Muleshoe Athletic Booster Club to order Tuesday night.

Joella Flowers talked to the club about this year's film theme for the banquet. The Booster Club voted for her to do the film again this year.

Coach Duncan stated that he remembers that the first homegame as a coach in Muleshoe where everyone was yelling 'Mule Mania' and that he still remembers that night, and that it would be great if the fans would start doing it again.

The Muleshoe Athletic Booster Club is encouraging everyone to start yelling 'Mule Mania' and get behind these boys and coaches all the way.

Each week, Coach Stewart will select a 'Player of the Week' and Walter Lackey was selected as the first 'Player of the Week' for this year.

163 and passing yards at 284, they were posted mostly by Mario and Afrain Guillen.

In the first, Efrain Guillen scored on a 75 yard pass at 3:45 of the first. Efrain scored again on a 12-yarder from Mario with 17 left in the first.

Leading 12-0 after one quarter, Chris Locke made it over from the one at 2:25 of the second and scored again with 1:40 left before halftime on a blocked punt.

Three Way went into halftime with a 26-0 lead.

Coming back in the third, at 9:23, Mario passed a 34-yarder to Jesus Flores. Then, Mario scored on a 40 yard run with 6:52 left in the third stanza. His final score for the third quarter was a 45 yard pass to Efrain at 5:54. Roy Guiron added the extra point.

The final two TDs for the Eagles came in the fourth, both by Jesse Haros.

He lobbed a 60 yard TD pass to Mario Guillen at 8:14 of the fourth, then Jesse returned a kickoff 55 yards to paydirt with 2:47 left to play.

Mario rushed 10 times for 97 yards and one TD and completed 6-14 passes for 207 yards and four TDs.

Mario Guillen had 19 tackles and one fumble recovery and Efrain Guillen had 17 tackles and intercepted two Midland Christian passes.

Coach Jeffcoat also expressed the community's appreciation for the Bailey County EMS having an ambulance at the game. He said a good crowd attended Three Way's first home game.

\*\*\*  
Words of Wisdom  
It is hard to believe that America was founded to avoid taxation.

## Sudan News

by Evelyn Ritchie

The Sudan 4-H Club had a meeting Monday at the Community center. They discussed all new business, then Delbert Hollis brought the evening's program.

## around Muleshoe

According to a board member for the Muleshoe Memorial Cemetery, a new well will not have to be dug, as the old well was repaired and the five acres needed for the cemetery have already been purchased.

The board member also said Bob Palmer, who has been taking care of the cemetery for the past two months, was being paid for his work.

Although the county commissioners will be approached to help furnish caliche for roads in the cemetery, that item has not been placed on a commissioners court agenda as yet, so has not been voted on.

Doris Palmer and Joe Mac Wagon will be heading up an auction, to be scheduled at a later date, to help obtain operating funds for the cemetery.

\*\*\*  
Watson Junior High School principal's awards for the past week went to Chad Johnson, sixth grade; Stephanie Perez, seventh grade and David Lewis, eighth grade.

Educator of the Week named was Sue Espinoza.

They decided to paint house numbers on the curbs. They will do this on Sept. 16th and 23rd. If you would like your curb painted contact Pam Morris at 227-2593.

New members were also enrolled and total members and adult sponsors present were 37.


\*\*\*  
Mr. and Mrs. O'Don Bellar were in Pasadena Tuesday to attend funeral services for Jimmy Dale Bellar.

\*\*\*  
Bonita West has returned home from Houston where she visited her daughter, Mr. and Mrs. Rory Glidewell and daughter.

\*\*\*  
Roy Engram of San Antonio has been here visiting his parents, Mr. and Mrs. Jack Engram. He left Thursday morning for a business meeting in Dallas.

\*\*\*  
Mrs. Jerry McKibbin of Tahoka visited recently with her daughter, Mr. and Mrs. David Quisenberry and family.

\*\*\*  
Lisa Walser and family were in Olney during the weekend to visit her grandparents while her grandfather is critically ill.



**Jana Is Back At Ana's**

Jana specializes in perms & haircuts.  
Jana will be available on Wed, Thurs. & Fri.

**Ana's House of Beauty**

109 Ave. B. 272-4152



**FARM BUREAU SPONSORS FIREMAN TO FIRE SCHOOL**--Each year, the Bailey County Farm Bureau sponsors a Muleshoe fireman to attend the Texas A&M Fire School at Bryan. This year, John McCutcheon was the Muleshoe Fire Department firefighter, who attended the school. He was reimbursed for his expenses to attend the school. The presentation was made by Ronald Scott, president of the Bailey County Farm Bureau. (Journal Photo)

**CALL ROBERT TAYLOR**      **'89 CLOSE-OUT SALE**      **CALL LEE KIMBROUGH**

|  |  |
|--|--|
| <br>Stock #20-401<br><b>1989 Pontiac 6000 LE Sedan</b><br>A/C, Tilt, Cruise, Power Windows, Power Locks, AM/FM Cass.<br>List Price \$16,325.00<br>*Sale Price \$13,500.00 | <br>Stock #10-581<br><b>1989 Chevrolet Suburban Silverado</b><br>A/C Front & Rear, Power Window, Power Door Locks, AM/FM Cass., Tilt, Cruise.<br>List Price \$22,127.00<br>*Sale Price \$19,450.00            |
| <br>Stock #20-404<br><b>1989 Grand AM LE, 2 Dr.</b><br>Quad-4, A/C, Tilt, Cruise, AM/FM, Aluminum Wheels.<br>List Price \$14,077.00<br>*Sale Price \$11,600.00            | <br>Stock #10-587<br><b>1989 Chevrolet Silverado Pickup</b><br>Loaded With A/C, P. Window, P. Locks, AM/FM Cass. Stereo, Tilt, Cruise. (No Rear Bumper).<br>List Price \$15,613.00<br>*Sale Price \$13,250.00 |

**G.M.A.C. FINANCING**      **Robert D. Green, Inc.**      \*Dealer Keeps Rebate & Allowances


First Time Buyer Program to qualified buyers      **2400 W. American Blvd.**      \*T.T.&L. Not Including

Muleshoe, Texas 806-272-4588            **CALL JACK NUTTALL**

**CALL CHUCK SLUDER**      Toll Free From NM      **1-800-367-0261**

**Farm Safety Week - Sept. 17-23**

**Precautionary Measures Against Fire**




Search out your home and farm or ranch outbuildings for potential fire hazards and -- eliminate them! Here are a few likely spots for danger and the procedure to be taken for their removal.

- Remove unnecessary combustible materials.
- Check electrical wiring and equipment.
- Do not over-fuse or by-pass protective fusing.
- Inspect and service all heating equipment before cold weather starts.
- Install and operate a woodburning stove properly.
- Place all heaters away from combustibles.

**Bailey County Electric Co-op Association**

305 E. Ave. B. 272-4504

**INCE FINA KICKS IN FOR THE MULES.**



Ince Oil Company is proud to support the Muleshoe Booster Clubs. To show our support, for every gallon of gas sold at Muleshoe Fina, Ince Fina will donate a penny to a Muleshoe Booster Club. The donation for September will go to the Football Booster Club, and October the Fine Arts Booster Club.

Show you're backing the Mules -- Fill up with Fina Quality.

Your friends at Ince Fina, supporting the Mules!

**MULESHOE FINA**

102 W. AMERICAN BLVD. • MULESHOE • 272-5278



# Miss Moore, Elliott Repeat Marriage Vows



MR. AND MRS. BART ELLIOTT  
[nee Trestia Charmane Moore]

Miss Trestia Charmane Moore became the bride of Bart Lee Elliott in a candlelight ceremony July 29 at 7:30 p.m. in the Lazbuddie Baptist Church.

Gary Wilcox read the double ring vows.

Parents of the couple are Wayne and Nealy Moore and Ronald and Linda Elliott, all of Lazbuddie.

Musical selections included "On The Wings of Love" sung by the boys quartet, made up of Les Barnes, Blane Smith, Brad Johnson and Scott Hides. "Up Where We Belong", and "All in His Own Sweet Time" were sung by Alba Wilcox and Kerry Winders. Winders sang a special song that he wrote.

Vows were exchanged before a stage decorated with 18 Boston ferns and 78 candles on five candelabras. Each candelabra held a centerpiece of flowers which consisted of apricot mums, ivory and white roses, lavender and grape carnations and tiger lilies, and sea foam green ting tang. Every window had a votive candle with a lavender cornsilk ribbon bow. Every other pew was marked by a lavender cornsilk ribbon.

Given in marriage by her father, the bride wore a dress designed for her by Peggy Haseloff of Farwell, TX. The bodice was detailed with sequins and seed pearls, and big sleeves. The back was open with sting pearls dropping along her back. The bodice came to a pointed dropped waist that lead into a full skirt and train of illusion ruffles. The bride carried a bouquet of calli lilies surrounded by white baby's breath and greenery.

In keeping with tradition, the bride wore a string of pearls from her mother, that was given by the bride's late grandfather. Something new was her dress. Something borrowed was a handkerchief that was made by the groom's late grandmother and something blue was the traditional blue garter.

Mrs. Candy Nowlin of Lubbock served as matron of honor. Bridesmaids were Tracy Elliott of Lazbuddie, Mrs. Jamie Moore of Lubbock and Mrs. Lori Bearden

of Muleshoe.

The attendants wore tea length dresses made of purple taffeta. They were sleeveless and the ruffles came up into a big bow in the back of the dress. They carried long bouquets of apricot, lavender and purple, which were tied with long streamers of apricot, and lavender ribbon.

Kyla Elliott, cousin of the groom, of Amarillo served as flower girl. She wore a purple taffeta dress with short sleeves. The skirt had ruffles also that came up into a bow in the back.

Matthew Elliott of Lazbuddie served as best man. Groomsmen were Steffan Moore and Danny Powell, both of Lubbock, and Rickie Dale of Lazbuddie. Garrett and Tyler Nowlin, nephews of the bride, of Lubbock were ring bearers.

The groom wore a black tux with tails and a white vest and white tie. The groomsmen wore a black cutaway tux with purple tie and cummerbund. The ushers wore the same attire.

Ushers were Martin Nowlin of Lubbock and Scott Elliott of Amarillo. Following the ceremony, a reception was held in the church fellowship hall. Jennifer Stancell-Garza registered the guests. Members of the house party were Jennifer Stancell-Garza, Kimbra Carson, Sharon Williams, Jamie Moore and Gay Elliott, serving.

The bride's table and the groom's table were put together. On the center table was the bride's cake, three cakes in the middle setting up on pedestals with a fountain underneath it. Off of the middle cakes on either side, were stairs that came down to two other cakes. The stairs were accented with the little bridesmaids and groomsmen figures. The cake was topped off with a topper that had two swans and a heart made of glass.

The tables on either side of the bride's table held the groom's cake. The cake was a two layer German chocolate accented with masapan fruit. Crab and chicken salad, grapes, cheese and crackers were also served on a side table. Two types of punch were served from brass appointments. Following a wedding trip to San Antonio, the couple are making their home in Lubbock.

Out of town wedding guests included: Gwenn and Lori Moore of Sterling, Co.; Debbie and Danielle of Denver, Co.; Patrice Mezzo and Rian Marshall of Lubbock; Todd Marshall of Houston; and Jim and Jackie Garrison of Clovis, N.M.

A rehearsal party was held on the patio at the home of the groom's parents following the rehearsal.

A bridesmaid luncheon was held on the patio of the bride's grandmother Mrs. J.W. Mad-

#### Etiquette

Mother (to small boy who is going to a party)-  
"Now, dear, what are you going to do when you've had enough to eat?"

Little Tommie--  
"Come home."

dox. The luncheon was hosted by the matron of honor, Candy Nowlin and the bride's grandmother, Gladys Maddox. Those attending were the bridesmaids, Linda Elliott, mother of the

groom, Mildred Bartley, grandmother of the groom, Jennifer Stancell-Garza, Jackie Garrison Stacy Ivy, Jamie Moore, Lari Bearden, Nealy Moore, mother of the bride, and Tracy Elliott.



GARDEN SPOT OF THE WEEK--These petunias, which are in full bloom, in the front yard of the home of Darlene and Kenneth Henry, 1901 W. Ave. G, were chosen as the Garden Spot of the Week by the Jennyslipper judges. (Journal Photo)

### Brownie Scout News

Brownie Troop No. 200 met Tuesday, Sept. 5 at the Little Girl Scout Hut. Each girl drew a picture of something that they had done during the summer. Then each girl stood up and told the group about her picture.

The Girl Scout Ways, which includes the Girl Scout Handshake, the Friendship Circle, the Girl Scout Sign and the Girl Scout Squeeze, was reviewed.

All the girls said the Girl Scout Promise, then it was off to the

Shop  
Muleshoe  
First!

kitchen to make their own ice cream sundaes.

Those attending were troop leaders, Cherie Maddox and Pam Hancock, Brownies, Chelyn, Lela Marissa, Kristal, Leesa, Bobbi and Latisha.

### IN FASHION

Early school days reveal the fashion trend among students. Clothes feature colorful combinations and accessories.

First, we notice that boy's wear definitely has a tweedy look with lots of leather on sweaters and jackets.

Girl's wear has a wider variety. Hot pink is coupled with purple skirts and purple shoes. Shoes in all colors are available to match costumes.

Study details depression's disabling effects.

**Ben Franklin**  
Better quality for less

2104 W. Amer. Blvd. Mon. - Sat. Sun.  
272-3855 8 a.m. - 8 p.m. 12-5 p.m.

Create Your Own  
Mum or Garters!



Ribbons, Decals, Letters & All The Accessories Available In All The Area School Colors To Make Yours Unique & One Of A Kind.

Come By & Order Yours Today!!

### English, Duncan Engagement Announced

Mr. and Mrs. Raymond Dale English of Clovis, N.M. wish to announce the engagement and approaching marriage of their daughter, Amy Michell and Michael Floyd Duncan, son of Mr. and Mrs. Sidney Duncan of Clovis, N.M., formerly of Muleshoe.

Vows will be exchanged at 7 p.m. Friday, September 22 in the 16th and Pile Church of Christ in Clovis, N.M.

Miss English and Duncan are both graduates of Clovis High School and Duncan is presently attending South Plains College in Levelland.

## THE ORIGINAL ROPER BY JUSTIN

# \$7998

wide variety of colors .....



**Justin Juniors Children's Ropers**  
Children's sizes 8 1/2 to 6  
**\$46<sup>98</sup> to \$49<sup>98</sup>**

**Justin Hi-Tie \$9998**

We also carry EXOTIC ROPERS. Men's and Ladies JUSTIN BELTS

We Accept: 

**Rip's IN TEXICO**  
314 Wheeler  
482-3363  
1-800-748-2459

OPEN 8:00 a.m. - 6:30 p.m. C.S.T.  
Lowways Welcome  
Complimentary Gift Wrap  
Alterations

## Special!

# \$3 Treatments!

Minimum of 25 Treatments  
Come In For Details


Offer Expires  
September 29th, 1989

### Pat Walker's

Figure Perfection Salons  
International

2401 N. Main  
Suite C  
769-2105

## PROTECTION FROM PESTICIDES



Having an accident-free farm requires great caution in the use of pesticides.

Chemicals are a valuable agricultural must but extreme care should be taken in its handling to avoid lung damage. You'll need a respirator with many of today's commonly-used chemicals. Always buy the right one for the pesticide you're using.

Farm Safety Week Sept. 17-23

### James Crane Tire Co.

322 N 1st 272-4594





**YOUNG HOMEMAKER OFFICERS**--Lazbuddie Young Homemakers installed new officers at their September meeting. New officers are (From Left) Mandi Seaton, president; Kim Kimbrough, vice president; Sarah Black, secretary; and Jana St. Clair, reporter/historian. (Guest Photo)

**Young Homemakers**

The Lazbuddie Young Homemakers met for their first meeting of the year Tuesday, Sept. 5 in the Lazbuddie Home Economics room. New officers were installed for the coming year. They were: Mandy Seaton, president; Kim Kimbrough, vice-president; Sara Black, secretary; and reporter-historian, Jana St.Clair. Other members present were: Barbara Lust, Judy Steinbock, Rita Mimms, Debbie Magby, Tonya Gartin, Lana Copp, JoDonna Terry, and Pat Randolph. Secret pals for the past year were revealed and each one

opened a gift and told what all they had received during the year. Programs for the year were discussed. The next meeting will be in October and this will be the membership tea. Rita Mimms, fund raising chairman, reported that the pecan sales would begin soon. This is the main fund raiser for this non-profit organization and all money helps to provide the Lazbuddie school system with needed supplies. Anyone interested in purchasing pecans should contact one of the members. Each Young Homemaker will be calling the people who have purchased pecans in the past. "Be thinking about the up and coming holidays and baking you will be doing and help support the Lazbuddie Young Homemakers."

**Tops Club**

TOPS chapter No. 34 met at 6:30 p.m. Thursday, Sept. 14 in the Heritage Thrift Shop with leader, Lavene James presiding. The meeting was called to order with the TOPS pledge, fellowship song and a prayer. Ordyie Burris called the roll with 13 members answering with the amount they had lost or gained. Minutes of the previous meeting were read and corrected. During last week's awards night, Alma Robertson received a charm for 24 weeks consecutive attendance. The minutes were accepted as corrected. Final plans were made to attend the meeting in Amarillo on Saturday, Sept. 16. Best loser for the week was Rama Smalling. First runner-up was Evelene Harris and second runner-up was a tie between Virginia Paez and Clela Robertson. The meeting was adjourned with the signing of the goodnight song.

*Over The Hill & Still Going Strong!*

*Happy 55th Birthday Noe from, Your Family*

*Latest Arrivals*

**Garrett Travis Riley**  
Mr. and Mrs. Mike Riley are the proud parents of a son, Garrett Travis Riley, who was born at 8:14 a.m. Monday, Sept. 11. The young man weighed eight pounds and 11 ounces and was 21 and half inches long. He has a brother, Lincoln, six years of age. Grandparents are Mr. and Mrs. Claude Riley, Mary Pool, and Myron Pool of Clovis, N.M. Maternal great grandmother is Mrs. Roy Jordan, and paternal great grandmother is Mrs. W.M. Pool of Clovis, N.M.

**Harris & Mallow**

Come In And See Our New Selection Of **Wall and Mantle Clocks** Starting As Low As **\$24<sup>99</sup>**

**Fry & Cox, Inc.**

401 S. 1st Muleshoe 272-4511

**Creative Living**  
by: Sheryl Borden

Information on Festive Food recipes and Ukrainian Easter Eggs will be the featured topics on "Creative Living" on Tuesday, September 19 at 12 noon and on Saturday, September 23 at 2 p.m. (All times are Mountain.)

Connie Moyers, Marketing Home Economist with Southwestern Public Service Co. in Clovis, N.M. will share the 25th anniversary celebration of Festive Foods. Each year the company's ten home economists collect outstanding recipes, but only the best ones become a part of the current year's collection of Festive Food Recipes. Connie will share some of the current year's favorites that are quick, easy to prepare, and ones which make use of energy-efficient electrical appliances.

Ukrainian Easter Egg decorating has been handed down through generations of the Ukrainian people. They are famous the world over for their colorful Easter Eggs. The flashback segment will feature Mary Johnson who will demonstrate making and decorating eggs as well as tell about the interesting history behind the Ukrainian Easter Eggs. Mary is a homemaker from Portales, N.M.

On Tuesday, September 19 at 9:30 p.m. and repeated on Thursday, September 21 at 12 noon, "Creative Living" will present information on cajun cooking, selecting an encyclopedia, and making a Mexican taco buffet.

Anne O'Malley, from World Book Encyclopedia, will share some guidelines for selecting an encyclopedia. She will be presenting eight key points which will prove to be very informative especially if you're in the market for making this type of purchase for your family. Anne is from Chicago, IL.

Spice Co. Jane lives in New York, but presents cooking schools in Santa Fe, N.M. each year on Tex-Mex cookery. Jane will review the history revolution of the taco and demonstrate how to fry tortillas three different ways. Jane will also demonstrate flavorful, authentic New Mexican beef taco filling, among several other fillings she's made.

The flashback segment will feature Christy Waters, the Marketing Home Economist with Southwestern Public Service Co. in Lubbock, TX. Christy will show three different table settings to make your table reflect the atmosphere of cajun cooking. These table settings ranged from very casual--using colored comic strips to cover the table, to a very formal setting--complete with silver and china.

**FAMOUS CHOCOLATE CHIP COOKIES**

2 cups butter  
2 cups sugar  
2 cups packed brown sugar  
4 eggs  
2 teaspoons vanilla  
4 cups flour  
5 cups blended oatmeal  
1 teaspoon salt  
2 teaspoons baking powder  
2 teaspoons soda  
2 pks (12 oz. each) semisweet chocolate chips  
1 (9 oz) Hershey Bar, grated  
3 cups nuts, chopped  
Cream butter and both sugars; add eggs and vanilla. Mix together with flour, oatmeal, salt, baking powder, and soda. Add chips, candy, and nuts. Roll into balls and place 2 inches apart on cookie sheet. Bake for 6 minutes at 375F. Makes 112 cookies; recipe can be halved.

Bush: Hostages could be freed if Iran is willing.

**Seniors!!**  
*Don't Be Left Out Of The Annual Or The Composite!*

**Call For An Appointment Today!!**  
(Deadline Is November 1)

Lonnie D. Adrian *Adrian Photography*

218 W. 2nd Muleshoe 272-3487

**ANTHONY'S ONCE & FOR ALL SALE!**

**IT'S GOT TO GO!**  
We've got to make room for fall merchandise arriving daily. Every piece of spring and summer merchandise is marked down to one of four low prices to move out today. Don't miss out! Tables and racks of fashions for men, women, juniors, kids and the home. You have to see it to believe it!

**VALUES UP TO \$10 NOW ONLY \$3**

**VALUES UP TO \$15 NOW ONLY \$5**

**VALUES UP TO \$20 NOW ONLY \$7**

**VALUES UP TO \$30 NOW ONLY \$9**

**ANTHONY'S**  
We're Good at Making You Look Great!  
321 Main Muleshoe 272-3173



**around  
Muleshoe**

The Snyder Western Texas College theatre department will open its season with the production of "Hamlet ESP" Oct. 13-15, Jim Rambo, director, has announced.

"Hamlet ESP" is an adaptation of Shakespeare's "Hamlet" by Paul Baker.

Jeff Hicks, son of Jerry Hicks and Shirley Hicks, Muleshoe, has been cast as one of the three Hamlets in the play. Brandon Neely of Snyder and Scott Weaver of Levelland will appear as the other two.

Information about tickets for "Hamlet ESP" can be obtained by calling the box office at 915-573-8511, extension 234.

Muleshoe Area Medical Center does not discriminate on the basis of race, color, national origin, age or handicap in admission or access to or treatment or employment in its programs and activities.

Rita Mason has been designated to coordinate all efforts to comply with Section 504 of the Rehabilitation Act of 1973 and its implementing regulations which prohibits discrimination on the basis of handicap.

Pat Prater said the annual meeting of Mule-Plex Production Co. will be Monday, September 18 at 7 p.m. in the Muleshoe State Bank meeting room.

Mrs. Prater said this will be election of officers, and all members and prospective members are urged to attend.

The Moonlight Homemakers Club announce their Eleventh Annual Arts and Crafts Bazaar to be held Friday and Saturday, December 1 and 2, at the Bailey County Civic Center.

Booth applications are being accepted until November 23. For information, please contact the Moonlight Homemakers Club, 902 W. 8th Street, Muleshoe, TX

**MISD Trustees  
Set Tax Hearing;  
Discuss Repairs**

Two special meetings of the Board of Trustees have been set for Monday, September 18, in the school administration building.

Dr. Lawrence Ward, superintendent, said the first meeting will be at 6:30 p.m. and will be to review information on modifications to Dillman windows, and take appropriate action.

At 7:30 p.m. at the same location, the board will conduct a public hearing for the proposed school tax rate increase.

They will also set the date, time and place of the meeting to set the tax rate.

79347.

The Bailey County EMS is conducting an informal Farewell Reception for Randy and Richelle Watkins from 2-4 p.m., Sunday, September 17, at the Bailey County Civic Center.

They will be moving to Brownfield where Watkins has accepted a position with the Brownfield Police Department and Richelle will be employed at the hospital.

Richelle Watkins resigned as director of the Bailey County EMS Ambulance Service on September 1.

Parents are reminded that school pictures will be taken at Watson Junior High School on Tuesday, September 19; Mary DeShazo, Thursday, September 21 and at Dillman Elementary on Friday, September 22.

Adrian Photography will be taking the pictures.

A PTA meeting will be held at Dillman Elementary School on Monday, September 18 at 7 p.m. Babysitting will be available.

**Muleshoe Mules**

Cont. from Page 1

In their first possession of the ball, the Mules failed to gain over six yards, then punted to the Mustangs.

When the first quarter ended, it was Mustangs 7-Mules 0.

At 11:02 of the second, the Mustangs scored again, when Jeff Dalton powered through from the two yard line, and again Taylor kicked the extra point.

In their next possession, the Mules again failed to move the ball, so punted it away, but held the Mustangs.

Doug Chitwood was removed from the field by ambulance after being injured. It was reported that he had a dislocated elbow.

In the first half, the mules had four first downs, and three penalties for 25 yards. The Mustangs had 11 first downs and two penalties for 10 yards.

Taking the opening kickoff in the third quarter, the Mules only managed to get four yards before punting the ball to the Mustangs.

The Mustangs moved the ball to the Mule 34 yard line, and on a fourth down, attempted a field goal with 6:39 left in the third. The field goal went into the end zone, but fell short so the Mules took over.

Moving the ball fairly well for four plays, the Mules fumbled to the Mustangs on the fifth play of the series, and that proved to be a costly fumble for the Mules.

Taylor slammed through after four plays to go into the end zone from the four. He also made it good on the PAT and the Mustangs were leading at the end of the third at 21-6.

Going into the fourth, the Mustangs again recovered a Mule fumble on the Mules' first play from the line of scrimmage starting the fourth.

However, it took the Mustangs

home. It currently has office spaces which will be rebuilt into nursing home rooms.

If all the five-year phase is carried out, the nursing home will be expanding by 1995 to approximately a 70-bed nursing home.

If and when approved, the entire project, estimated at more than \$2 million, will be financed by FHA.

CPA Larry Anderson from Mason, Warner & Co. of Lubbock made several recommendations to the board concerning setting up new accounting methods for the hospital. He explained some of the critical areas, including the fact that there is no general ledger in the hospital right now, and accounts payable are being done manually. He said much better control and faster access could be provided electronically.

Another visitor at the board, Cecil Maddox, explained proposals on insurance for employees.

**Hospital District**

Cont. from Page 1

He reported on two bids for the insurance package for hospital and nursing home employees.

Kay Swint, director of nurses, said the first question she is asked by prospective nurses is, "What insurance is available for the employees?"

She added that hospitalization insurance is vitally important to all prospective nurses.

The MAHD Board voted to pay all hospitalization insurance premiums for employees, and leave it open for dependent coverage. The insurance would also be made available to doctors and their staffs, who would pay their own insurance.

For a six month trial period, all physicians who cover the emergency room at any time after regular office hours will be paid \$40 per call. The board also extended staff privileges to Dr. Jerry Gregory, who is currently working some weekends in emergency room coverage.

A report on TEC unemployment insurance was given by Vickie Villarreal. She said the rate for MAHD is .6 as it is a government entity, adding that is considerably less than the 1.41 regular rate.

The meeting concluded with a decision by the MAHD Board on hospital and nursing home wage scales.

Next Wednesday, September 20, will be the regular monthly meeting for the board. They will meet at 8 p.m. in the "yellow dining room" at Muleshoe Area Medical Center.

**MHS Sophomores  
To Serve Dinner  
Before Home Game**

Mothers of Muleshoe High School sophomore students are encouraged to attend a planning meeting for the pre-game supper to be sponsored by the sophomore class.

This year will be the first time for the sophomores to sponsor a dinner.

The meeting will be held in the high school library on Monday, September 18, 3:45-4:30 p.m.

For further information, contact Alice Liles, 272-5200 or Barbara Milburn, 272-3814.

nine plays to punch over from the four, when Jeff Dalton powered through for the Mustangs fourth and last TD for the night. Taylor again made the PAT.

The Mules stopped a Mustang threat at 4:05 of the fourth, when they recovered a Mustang fumble on the Mule eight yard line, but failed to move the ball.

As time ran out in the game, the Mustangs were on the Mules eight yard line and threatening again.

**AREA FOOTBALL SCORES**

|                  |              |
|------------------|--------------|
| Perryton 13      | Dumas 13     |
| Levelland 14     | Snyder 13    |
| Slaton 21        | Dimmitt 19   |
| Brownfield 51    | Friona 3     |
| Littlefield 12   | Abernathy 7  |
| Tulia 21         | Canyon 0     |
| Denver City 10   | Kermit 7     |
| Post 35          | Idalou 0     |
| Reagan Co. 21    | Greenwood 0  |
| Farwell 40       | Farwell 40   |
| Farwell 40       | New Deal 13  |
| Hale Center 6    | Crosbyton 6  |
| Olton 0          | S-Earth 0    |
| Morton 58        | Meadow 6     |
| Sudan 53         | Anton 6      |
| Bovina 22        | Silverton 20 |
| Cotton Center 39 | Smyer 16     |

**Bells...**

Cont. from Page 1

the Bicentennial of the election of George Washington, first U. S. President; the first Congress elected; and appointment of the Supreme Court.

The Muleshoe Jennyslippers said they would like to invite and encourage all citizens to let your pride show and get involved in an American legacy -- Constitution Week! Join in the community observance or ring those bells at your home or place of work.

The Jennyslippers also ask that everyone display your flags on Monday, September 18.

**School Tax**

Cont. from Page 1

another professional salary increase of \$1140 per eligible person. That will figure close to \$250,000 for next year. State estimates project the MISD will receive \$34,000 new dollars to cover these costs. It can not be done.

The board is requesting a tax increase of 16 cents to help reduce the deficit mode. This really means 10 cents added to the previous six cents. This will produce an additional \$180,000. Now the deficit mode is reduced to approximately \$348,600. The school board believes the school district can absorb this loss by using school reserve funds.

The schools reserve fund, an important part of any major budget, is about \$2,000,000. School finance "experts" recommend that schools maintain a reserve fund equal to 90 to 120 days operating costs. Last year, earnings from these reserve funds alone produced \$153,000 in revenues. That was equal to a tax rate of eight and one-half percent. Subtracting the \$348,000 deficit from the reserve will leave the school approximately \$1,652,000. That will leave the district with almost exactly 90 days worth of funds.

The Muleshoe ISD has been

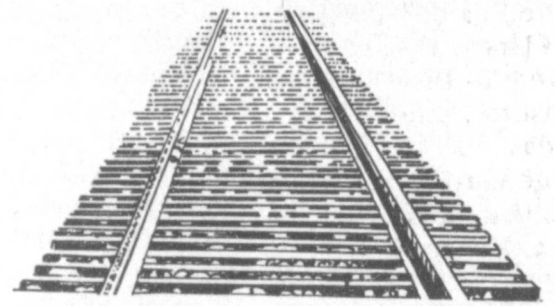
committed to a pay-as-you-go policy. The reserve has been used to maintain and add facilities as needed. Maintenance is a major item. Additional space is also a major item. There are two classes at Dillman Elementary School that do not have a classroom. One meets in a hall area that has been partitioned off.

The other special class meets in a corner of the cafeteria. To meet TEA recommended standards, the junior high school needs three new modern science laboratories, a large computer laboratory, and a larger, better equipped library/media center. The architect for the school district has estimated the junior high additions will cost approximately \$650,000.

According to the board president Howard Watson, "It is with great reluctance that we ask for this tax increase." Every board member present, one member absent, supported the action to do what needed to be done.

Recent research shows that 62 percent of the American people support raising taxes to support education. Curtis Shelburne said, "I don't like raising taxes either, but I still believe education is a bargain, even at the new rate."

**MAKE SURE YOUR  
FARM HAS A GOOD  
TRACK RECORD...**

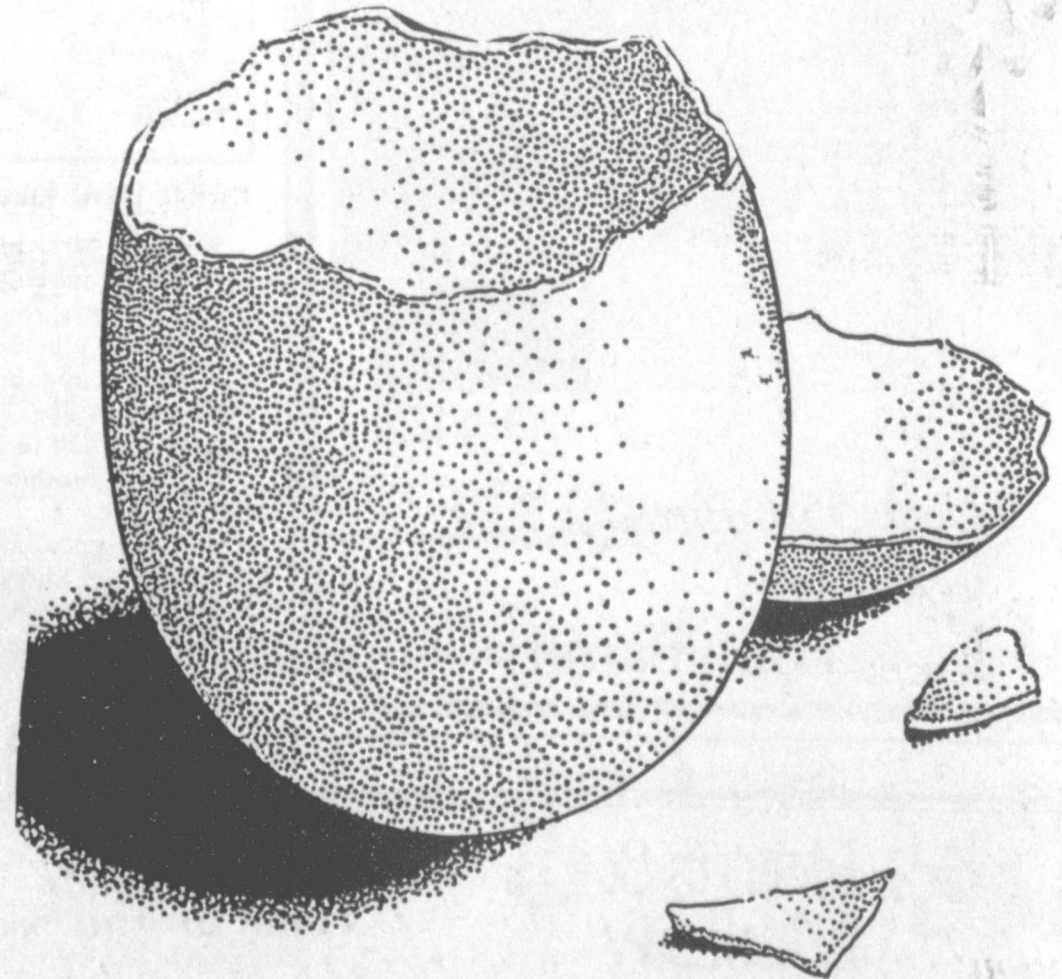


Farm Safety Week Sept. 17th thru 23rd

Valley Grain Product Inc.  
272-5545

**Farm Safety Week**

September 17 thru 23



**PREVENTION**

... the best method of avoiding accidents!

Protection when working with any liquid chemicals means wearing the proper protective goggles.

To keep eyes safe from toxic mists, sprays and splashes, make sure your workers have proper eye protection.

**Farmer's Co-Op Elevators**

272-4335

Clays Corner Enochs Muleshoe Old Griffith Pleasant Valley

**Getting You Back  
In the Game...**

The Sports Medicine Center of the Southwest is a comprehensive treatment program for the competitive athlete as well as the general sports enthusiast. It features a state-of-the-art diagnostic and rehabilitation facility equipped to care for most any sports related injury. The center is operated under the direction of a team of physician specialists, plus registered physical therapists and an exercise physiologist. The entire team is in tune with the special needs of athletes and their desire and determination to excel. They understand the frustration an injury can impose on them. But more important, this team has the know-how to treat an injury and put the athlete back in condition as quickly as possible.

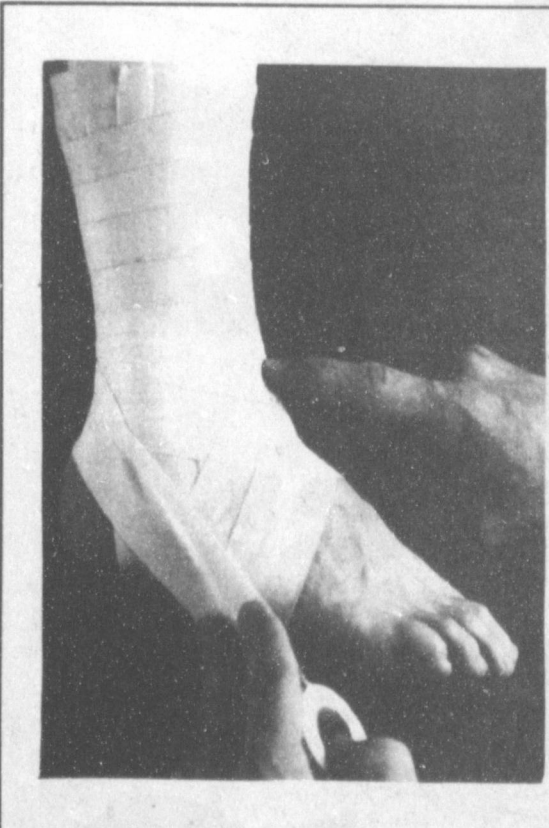
- Pre-season Physical Exams
- X-ray Equipment
- Body Composition Assessment
- Body Mechanics Evaluation
- Rehabilitation
- Sport Specific Screenings
- Sport Specific Injury / Fitness Clinics
- Weight Training
- Physical Therapy
- Diet & Nutrition Counseling
- Coach / Trainer Clinics

**GO!  
MULES  
GO!**



**SPORTS  
MEDICINE CENTER**  
of the Southwest

6602 South Quaker Avenue  
(806) 792-0777



SATURDAY MORNING INJURY CLINIC OPEN  
EACH WEEK 9AM - 11AM MINIMAL CHARGE



Outside Lubbock Call 1-800-942-5111



# 1989 Bailey County Fair Winners Are Listed

**DIVISION III  
TEXTILES**  
Quilts--Family--Luease Bennett, adult; Appliqued--Victoria Hendricks.  
Pieced--Margrethe Taylor, Rosette; Betty Griswold and Betty Griswold, adult.  
Miscellaneous--June Vaughn, Betty Wuerflein and June Vaughn, adult.

**RUGS, PILLOWS AND  
WALL HANGINGS**  
Latch Hook--Machelle Standard, Rosette, Kristi Bennett, adult.  
Punchwork--Holly Huckaby, 4-H.

**CROSS STITCH**  
Counted, Pictures--Terry Byers, Rosette, Ronnie Bennett and Carren Black, adult; and Holly Huckaby, 4-H.  
Counted, Pillows--Jenny Bennet, youth.

Counted, Nursery Accessories--Marilyn Gable, adult.  
Miscellaneous--Jo McCray, Jo McCray and Lavon Hunt, adult.

**WEAVING/LOOMING**  
Miscellaneous--Betty Griswold and Sandi Robinson, adult.

**WOMEN'S CLOTHING**  
Dress, Casual--Courtney Tanksley, adult.

Skirt, Suit--Holly Huckaby, Rosette, Best of Show, youth.  
Blouse or Shirt--Rachelle Rice, youth.

Skirt--Betty Wuerflein, adult; Rachelle Rice, youth.  
Apron--Janie Moraw, Rosette, adult.

Miscellaneous--Anna B. Lane, Luease Bennett and Luease Bennet, adult.

**NOVELTY FASHIONS**  
Painted T-Shirts, Leslie Radford, Rosette, Jared Clarkson, and Audra Clarkson, youth.  
Appliqued T-Shirt--Erald Gross, Rosette, and Linda Huckaby, adult.

Miscellaneous--Irene Dilts, Luease Bennett and Evelene Harris, adult; Kourtnee Magby, 4-H.

**CHILDREN'S CLOTHING**  
Child's Plain Dress--Luease Bennett, Luease Bennett, adult.  
Child's Fancy Dress--Terry Marricle, Rosette; and Miscellaneous--Peggy Dodd, adult.

**OILS AND ACRYLICS**

**FINE ARTS**  
Landscape (Prof)--Betty Embry, Eithel Allison and Betty Embry, adult.

Still Life--(Prof)--Betty Embry.  
Animals (Prof)--June Gore and Betty Embry.

Floral (Prof)--Betty Embry and Betty Embry, adult.  
Misc. (Prof)--Barry L. Freeman, adult.

Landscape (Non-Prof)--Victoria Hendricks, Rosette, Best of Show, Doretha Nelson and Doretha Nelson, adult.

**WATER COLOR**  
Still Life (Prof)--Betty Embry and Betty Embry, adult.  
Landscape (Non-Prof)--Sara Watson, youth.

**PASTELS**  
Misc. (Non Prof) Tisha Young, 4-H.

**CHINA PAINTING**  
Erald Gross and Erald Gross, adult.

Hanging Plates, (Prof)--Erald Gross, Rosette; and Misc. (Prof)--Erald Gross, adult.

**PHOTOGRAPHY**  
Portrait (Prof)--Twyla Woodring, Twyla Woodring, adult.  
Still Life (Prof)--Twyla Woodring, Rosette, Peggy Dodd and Twyla Woodring.

Misc. (Prof)--Twyla Woodring.  
Portrait (Non-Prof)--Sharon Thomas, Peggy Dodd, adult; and Holly Huckaby, 4-H.

Still Life (Non-Prof)--Peggy Dodd, adult.  
Animals (Non-Prof)--Sharon Thomas, JoAnn Davenport and JoAnne Davenport, adult; and Holly Huckaby, 4-H.

Landscape (Non-Prof)--Carolyn Willoughby, Rosette, and Sharon Thomas, adult.

**PEN & INK**  
Animals (Prof)--Clifford Black; and Still Life (Non-Prof)--Tisha Young, 4-H.

**CRAFTS AND HOBBIES**  
**HOLIDAY PARADE:**  
Christmas Tree Skirt--Anna B. Lane; Christmas Tree Ornament--Anna B. Lane, adult; and Leslie Radford, 4-H.

Christmas Stocking--Kay Graves, Rosette, Margrethe Taylor and Kay Graves, adult.  
Wall Hanging--Margrethe Taylor, adult.

Table Decorations--Nettie Quesenberry, and Doris Lawis,

adult. Miscellaneous--Doris Lawis, adult.

**PICTURES**  
String Art--Sara Watson, Rosette, Audra Clarkson and Audra Clarkson, youth.

Miscellaneous--Peggy Dodd, Naomi Black, adult; Sara Watson, youth; and Jonathan Bennett, 4-H.

**CERAMICS**  
Animals--Debbie Dasher, Debbie Dasher and Linda Wimberly, adult; Jonathan Bennett and Jonathan Benntee, 4-H.

Statue--June Gore, Debbie Dasher and Cindy Magby, adult.  
Plaque--Jonathan Bennett and Melissa Bennett, 4-H.

Kitchen Accessories--JoAnne Davenport, Rosette, Best of Show, and JoAnne Davenport.

Miscellaneous--Debbie Dasher, June Gore, Cindy Magby, adult; Cynthia Bennett, Rosette, and Cynthia Bennett, 4-H.

**MISCELLANEOUS**  
Dolls Handmade--Peggy Dodd, Lucille Gross and Nadine Hawkins, adult.

Dolls, Dressed by Exhibitor--Sara Watson, Youth.  
Jewelry--Holly Huckaby, Rosette, Best of Show, 4-H.

Sculpture, Metal--Bill Bruce, adult.  
Sculpture, Other--Holly Huckaby, adult; Holly Huckaby and Holly Huckaby, 4-H.

Models--Mickey Merriott, Rosette, Tom Ladd and Brian Kidd, adult.  
Toys--Lucille Gross, Betty Groswood and Nadine Hawkins, adult.

Stained Glass--Sharon Thomas and Sharon Thomas.  
Woodworking--Obie Standard and Linda Wimberly, adult.

Wreaths--Kandy K. McWhorter, adult.  
Miscellaneous--Evelyn Mitchell, Wesley Hawkins and Luease Bennett, adult; Kristen Magby, youth; and Kourtnee Magby, Holly Huckaby and Kayla Magby 4-H.

**FLOWERS**  
Petunias--Courtney Tanksley, 4-H.  
Marigolds--Eatsy Lindley, Mildred Wicks and Patsy Lindley, adult.

Roses--JoAnne Davenport, Clifton Finley and Luease Bennett, adult.

net, adult.  
Chrysanthemums--Mildred Wicks, adult.

Container-grown Houseplants--Holly Huckaby, youth.  
Fresh Flower Arrangements--Luease Bennett, adult.

Miscellaneous--Nadine Hawkins, adult; Courtney Tanksley, Rosette, and Courtney Tanksley, 4-H.

**DOGS**  
Best Costume--Jenny Clark and Jim Watson, youth; JoAnne Davenport, adult.

Best Trained--JoAnne Davenport, Jean Woodson and Sandi Robinson, adult.

Smallest Pet--Daniel Watson, Jim Watson, and John Watson, youth; Sandi Robinson, Tina Koenig, Rick Koenig and Jean Woodson, adult.

Ugliest--Jason Rasco and Shane Kirk, youth; Sandi Robinson, Tina Koenig, Rick Koenig and JoAnne Davenport, adult.

**OTHER PETS**  
Best Trained--Laura Freeman and Leslie Radford, youth.  
Smallest Pet--Joshua Pyle, Scott Churchman and Laura Freeman, youth.

Ugliest--Scott Churchman and Joshua Pyle, youth.

AZT for AIDS could cost \$5 billion.

*In sincere appreciation we would like to thank Adrian Photography for supplying The Journals with the Muleshoe Varsity football pictures.*

The Muleshoe & Bailey Co. Journals

## Letter To The Editor

Courthouse  
300 South First Street  
Muleshoe, Texas 79347-3621  
806-272-4583

OUR SINCERE "THANKS":  
Dear Co-Worker for the 1989 Fair:

We would like to take this opportunity to say "thank you" to all of you who gave of your time and help to make the Bailey County West Plains Fair possible.

It takes a lot of work by many people to have a fair for our county. Your cooperation when you were called on to help is very much appreciated...we couldn't do it without you. So, whatever part you played in the preparation was important, and we express our sincere thanks.

Sincerely,  
Kandy K. McWhorter  
CEA-HE  
Spencer Tanksley  
CEA-AG

**Every Day Low Prices**

**Oil Change & Lube**

For Only

**\$14.95**



Includes AC Oil Filter, 5 Quarts Quaker State 30W Oil, Check Fluid Levels


**Robert D. Green, Inc.**

2400 W. Amer. Blvd.  
272-4588



*Mr. Goodwrench*

# SAFETY



**NATIONAL FARM SAFETY WEEK SEPT. 17-23**

*A farmer or rancher must keep informed about safety and health and how to prevent or at least avoid injury and illness.*

*And, as important as anything, everyone should simply try to do things right - to work, drive, and play in ways that minimize the risk of injury.*

**Five Area Telephone Cooperative Inc.**

272-5533

# FARM SAFETY



One very important aspect of farm safety is maintaining farm equipment — keeping tractors, combines and other implements in top operating shape.

We're at your service — don't take a chance on ailing equipment!

**It's Nat'l. Farm Safety Week - Sept. 17 thru 23**

**1ST BANK MULESHOE**

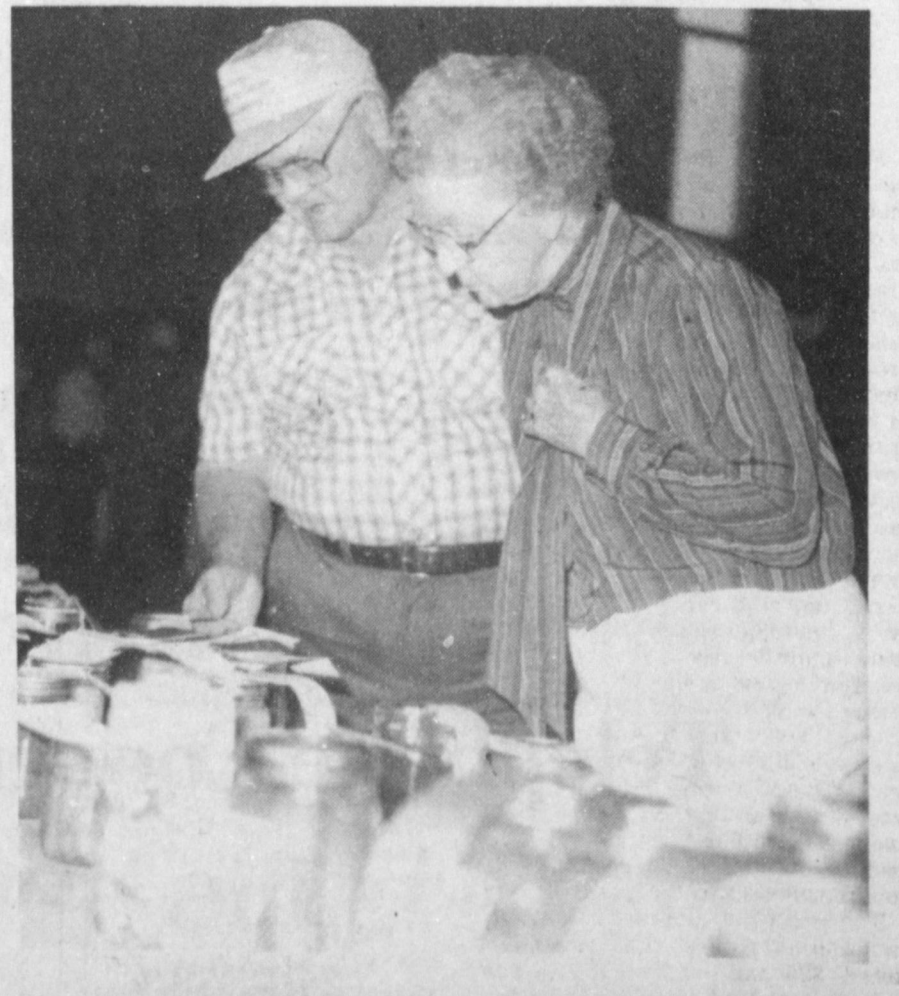
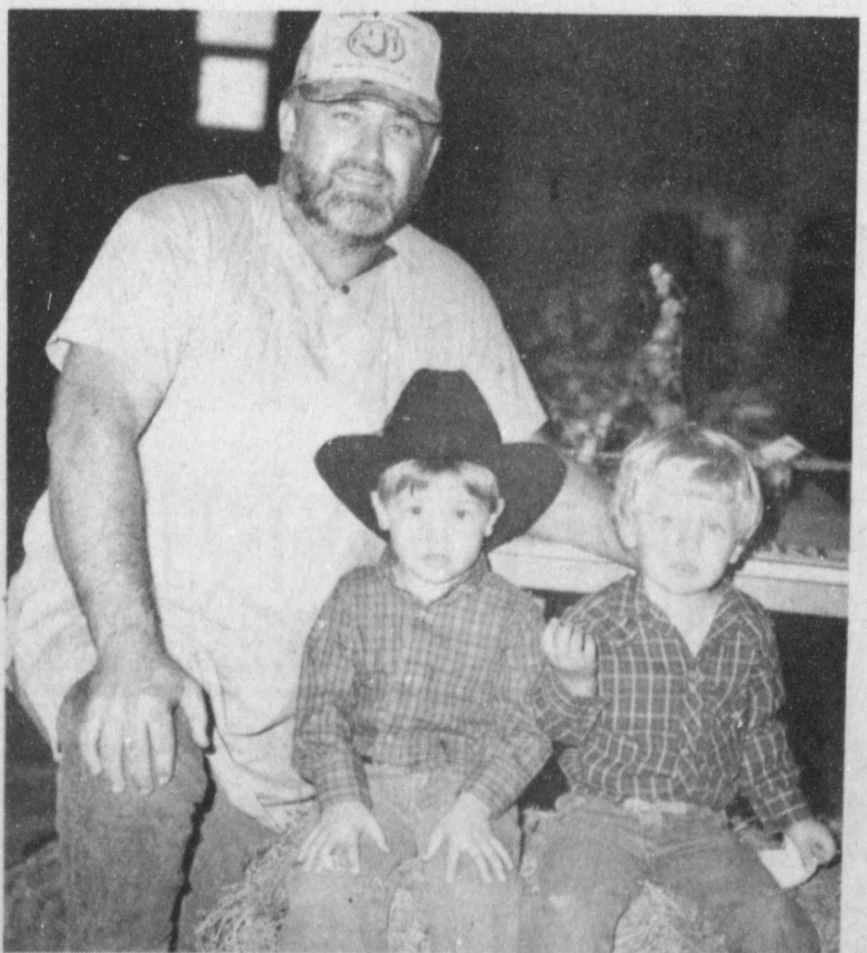
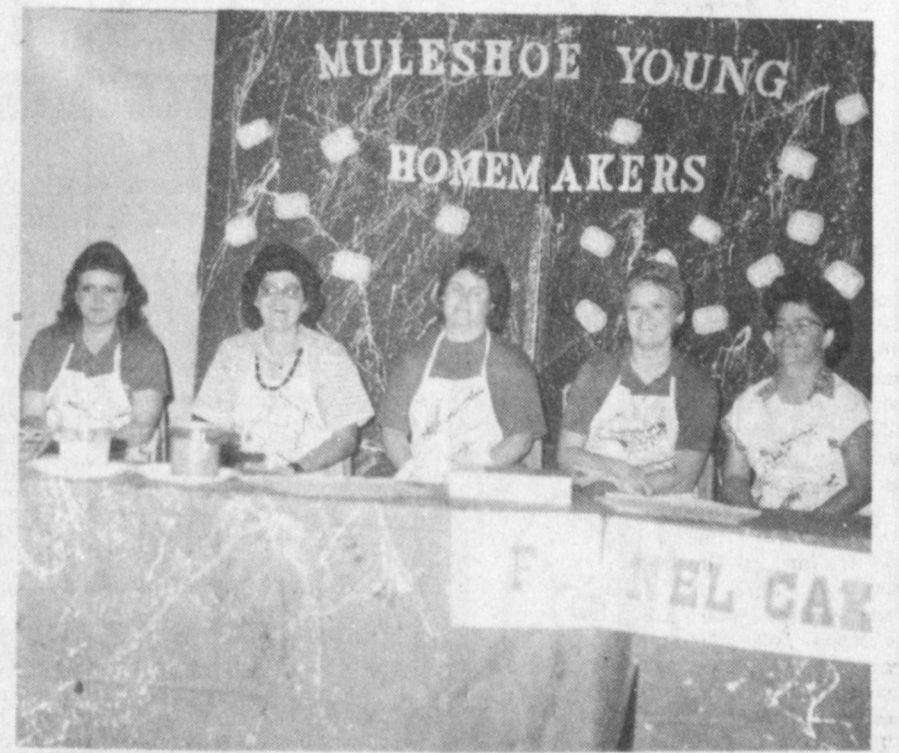
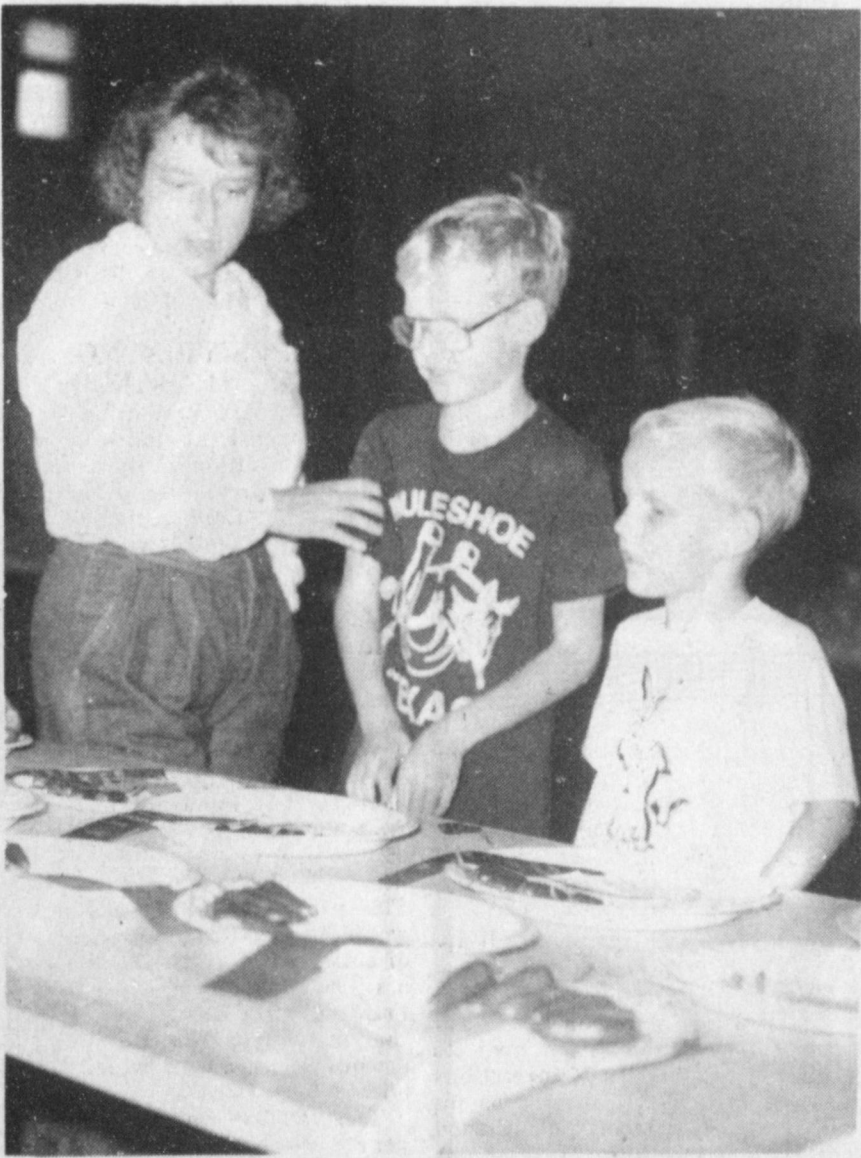
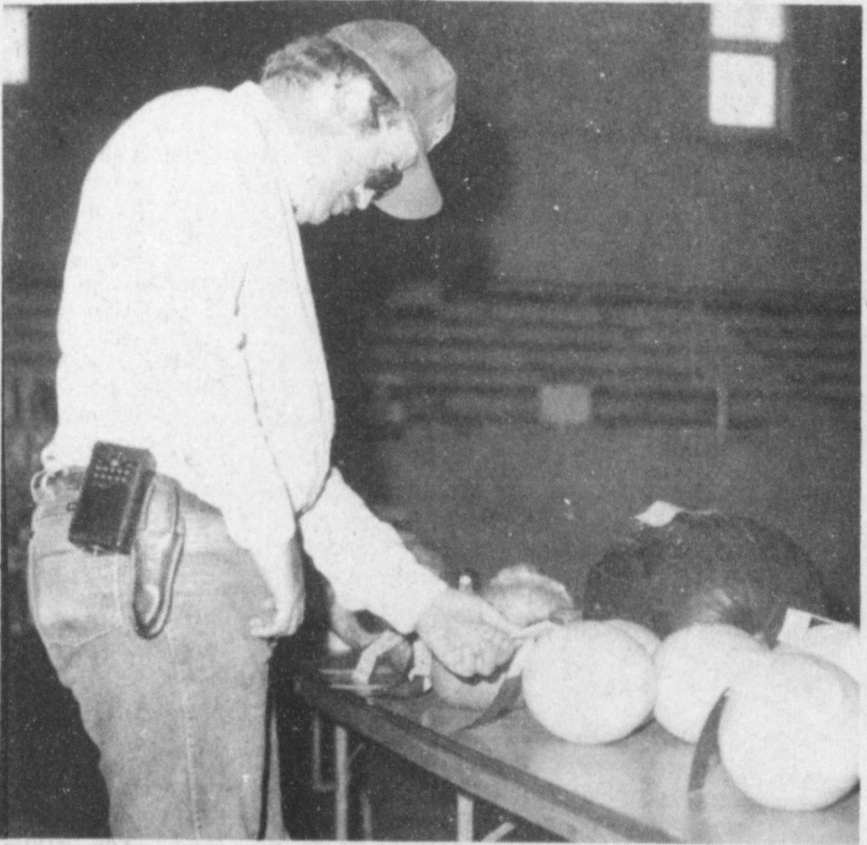
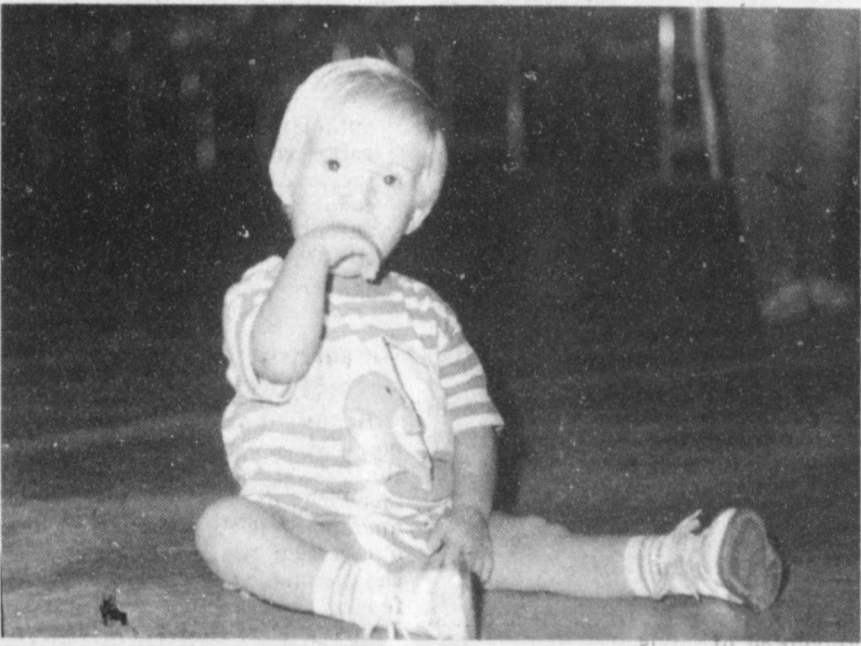
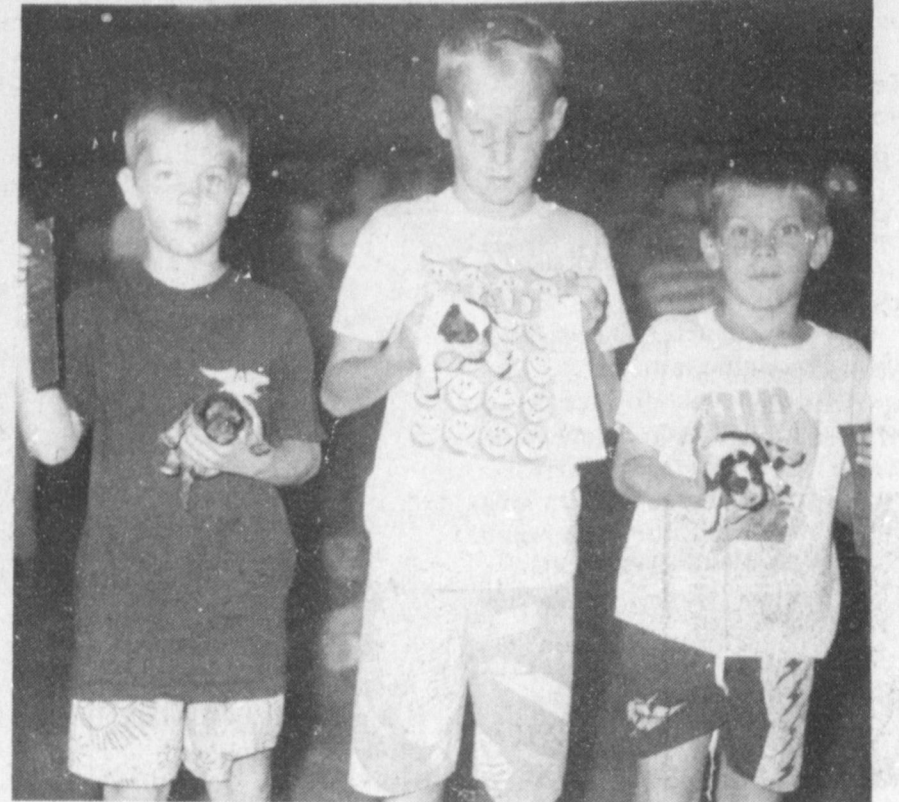
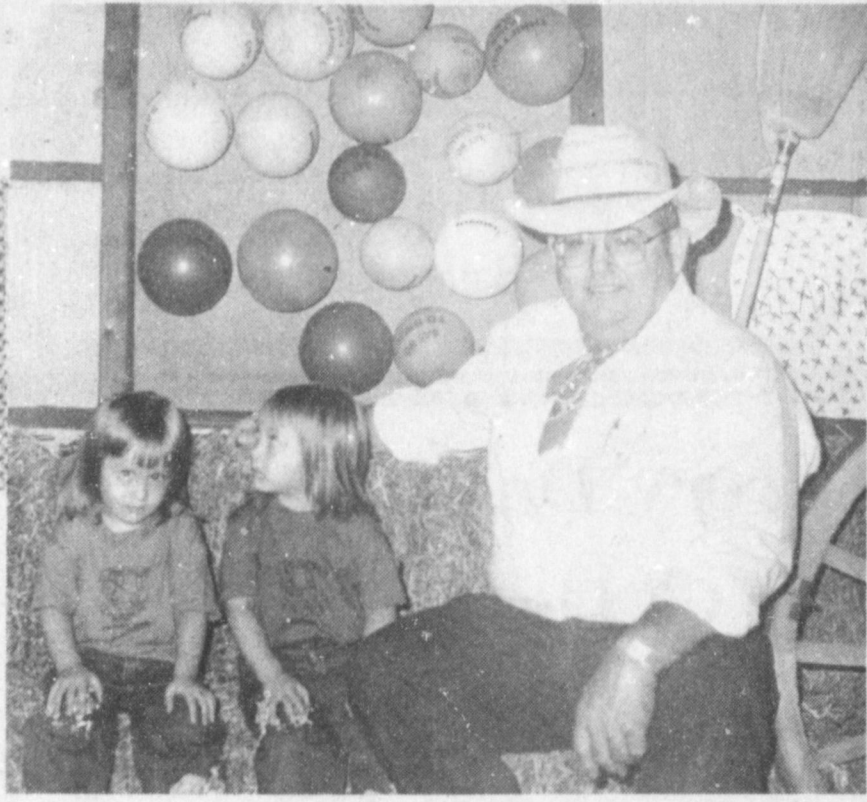
Member F.D.I.C.

202 S. 1st 272-1515





# Scenes From The Bailey County West Plains Fair September 8th & 9th





# High School Football Wrap-Up

By Coach Tom Duncan

On Thursday evening, the JV Mules traveled southward to do battle with the Brownfield JV team. When the smoke cleared and the smell of battle had drifted, the MHS squad had given the best account of themselves that a person could hope to have.

But, unfortunately, through a combination of breaks and missed opportunities, the JV Mules went down battlin' 0-10.

The effort and attitude was there, it was much more like the Mules of 10 years ago, that old Mule Mania lived in the heart of our kids.

One thing was definitely evident -- they are destined to improve and win our share of games. I don't know when that winning will come along for sure, but I know that when the JV Mules will be coming to play a little "Mule Ball" against Shallowater.

The offense with which the Mules outgained the Cubs was spearheaded by Center Kevin Morris, guard Damon Parker, tackle J. P. Dorger, tackle

Manuel Elizarraraz and guard Victor Lira, with a few plays rest, these young men stayed on their blocks and saw great improvement with the hard running of David Quintana and Sergio Garcia and the Mules began to 'click' early.

Dustin Elliott, John Villa and Luis Avina provided that springing block and big play capability for our offense.

On our defensive effort, more than four scores contributed to our effort. Defensive ends Josh Alanis and Steven Noble provided containment of the Brownfield outside game. TNT Corp. of Steve Garcia, Jason Harmon, Adam Lopez got in on some terminal action and began to play better which will help down the road.

The highlight of the defense was our secondary led by "Ball Hawking" safety Galin Latham and "Bone Crusher" Kip McCall. Along with "Cool" Chris Dominguez and "Bustin" Brent Hernandez, they played the best secondary I have had in 17 years.

This season we are playing hard regardless of sweat and bumps to be a great team and I

could not be any prouder of these kids because they are improving and doing well.

## FRESHMEN

In a trip to Brownfield last week, the Freshmen Mules fell 0-52 to powerhouse Brownfield.

However, Coach Leon Hagerman said there were defensive standouts, as well as offensive standouts in the game.

Outstanding defensive plays were made by Tracey Puckett and David Serrano.

Proving to be outstanding offensively were Kyle Kenmore, Robbie Gauna, Robert Rodriguez and Bryan Rasco.

**Cash Rewards  
Up To \$1,000  
For Information!**

**Call  
Bailey County  
Crime Line  
272-HELP**

# Farm Bureau Wants Congress To Back Law

Texas Farm Bureau President S.M. True has urged the Texas delegation to Congress to support legislation that would provide a complete revision of the present legal services system.

In letters to all of the Texas delegation, the president of the state's largest general farm organization asked for their support and co-sponsorship of H.R. 2884, a bill that would create a new legal services administration within the Department of Justice and that would abolish the current Legal Services Corporation.

According to True, the bill would continue necessary legal services for the indigent but would eliminate many of the harassing tactics currently condoned by the Legal Services Corporation.

Four Texas Congressmen are current sponsors of the legislation. They include Larry Combest (R-Lubbock), Charles Stenholm (D-Stamford), Marvin Leath (D-Waco) and Dick Armye (R-Lewisville).

The agency under H.R. 2884 would be allowed to represent eligible clients in a wide variety of local situations, but would be precluded from lobbying or other political activity, True said in his letter to the Congressmen. Other methods of dispute resolution including arbitration or mediation would also be encouraged.

In addition, True wrote, all grants of over \$20,000 in the new administration would be awarded on a competitive basis and be available to individuals, corporations or nonprofit organizations. Those grants of less than \$20,000 would be awarded subject to regulations governing sole source awards.

"In summary, H.R. 2884 is a comprehensive revision of the

present legal services system, and merits your co-sponsorship," True wrote.



## BEST OF PRESS

**Definiton**  
Diplomacy: A synonym for discretion when the other guy is bigger.

-Missile, Red Bank, N.I.

---  
**Life Vs Funds**  
Life is really more what you make it than what you make.  
-Courier, Waterloo.

**RONNIE HOLT  
INSURANCE  
AGENCY**

SPECIALIZING IN CROP,  
LIFE & HEALTH INSURANCE

**Ronnie Holt**  
P.O. Box 304  
Western 66 Office Building  
Muleshoe, Texas 79347  
Office: (806) 272-3614  
Residence: (806) 965-2842

**PUBLIC NOTICE**  
BRIEF EXPLANATORY STATEMENTS  
OF PROPOSED  
**CONSTITUTIONAL AMENDMENTS**  
SPECIAL ELECTION  
NOVEMBER 7, 1989

### PROPOSITION NO. 1 ON THE BALLOT

House Joint Resolution 102 proposes a constitutional amendment that would increase the salary of members of the legislature to one-fourth of the Governor's salary and increase the salary of the Lieutenant Governor and the Speaker of the House of Representatives to one-half of the Governor's salary. The annual salary of members of the legislature, the Lieutenant Governor, and the Speaker of the House of Representatives is currently \$7,200. Under this provision, the annual salary of the Lieutenant Governor and the Speaker would be \$46,716, and the annual salary of members of the legislature would be \$23,358, based on the Governor's current annual salary of \$93,432. The increase for the Speaker and the members of the legislature would take effect when the legislature convenes for its regular session in January 1991. The increase for the Lieutenant Governor would take effect when the term of that office begins in 1991. The salary increase for the Lieutenant Governor would not make members of the legislature ineligible to run for the office of Lieutenant Governor.

The proposed amendment will appear on the ballot as follows:  
"The constitutional amendment to limit the salary of the lieutenant governor and the speaker of the house of representatives to not more than one-fourth of the governor's salary and to limit the salary of a member of the legislature to not more than one-fourth of the governor's salary."

### PROPOSITION NO. 2 ON THE BALLOT

Senate Joint Resolution 5 proposes a constitutional amendment that would authorize the Texas Water Development Board to issue an additional \$500 million of Texas water development bonds. The additional bonds are to be used as follows: \$250 million of the bonds are to be used for water supply loans and facilities acquisition; \$200 million of the bonds are to be used for water quality enhancement projects; and \$50 million of the bonds are to be used for flood control. The legislature may provide that \$100 million be used for subsidized loans and grants to economically distressed areas of the state for water and wastewater facilities.

The proposed amendment will appear on the ballot as follows:  
"The constitutional amendment to authorize the issuance of an additional \$500 million of Texas water development bonds for water supply, water quality, and flood control purposes."

### PROPOSITION NO. 3 ON THE BALLOT

House Joint Resolution 51 proposes a constitutional amendment that would authorize the legislature to provide for the issuance of general obligation bonds to provide money to establish a Texas agricultural fund, a rural microenterprise development fund, a Texas product development fund, and a Texas small business incubator fund in the state treasury. The Texas agricultural fund would be used to provide financial assistance to develop, increase, improve, or expand the production, processing, marketing, or export of crops or products grown or produced in Texas by Texas agricultural businesses. The rural microenterprise development fund would be used to stimulate the creation and expansion of small businesses in rural areas. The Texas product development fund would be used to aid in the improvement and production of new or developed products in this state. The Texas small business incubator fund would be used to stimulate the development of small businesses in the State.

The principal amount of bonds outstanding at one time could not exceed \$25 million for the Texas agricultural fund and \$5 million for the rural microenterprise develop-

would enable the legislature to provide, by general or special law, that members of a hospital district board may serve terms not to exceed four years. Currently, hospital district board members' terms are two years.

The proposed amendment will appear on the ballot as follows:  
"Authorizing the members of a hospital district governing board to serve four-year terms."

### PROPOSITION NO. 7 ON THE BALLOT

House Joint Resolution 40 proposes a constitutional amendment that would change the format of the oath of office for officeholders in this state. All elected and appointed officers would be required to take an oath or affirmation swearing to faithfully execute the duties of office and to preserve, protect, and defend the constitution and laws of the State and the United States. In addition, each elected and appointed officer would be required to sign a sworn statement that he or she had not paid, offered, or promised anything of value for a vote or to secure appointment to an office, as applicable. The written, sworn statement would be filed with the secretary of state. The information in the statement is currently contained in the oaths of office taken by elected and appointed officials.

### PROPOSITION NO. 10 ON THE BALLOT

Senate Joint Resolution 4 proposes a constitutional amendment that would authorize the legislature to enact laws requiring or permitting judges to advise juries that a defendant convicted of a criminal offense can receive credit for good conduct that results in a shorter prison term and that eligibility for parole or mandatory supervision can also affect the length of time a convicted criminal serves in prison.

The proposed amendment will appear on the ballot as follows:  
"The constitutional amendment authorizing the legislature to require or permit courts to inform juries about the effect of good conduct time and eligibility for parole or mandatory supervision on the period of incarceration served by a defendant convicted of a criminal offense."

The proposed amendment will appear on the ballot as follows:  
"The constitutional amendment to require that a member of the legislature, the secretary of state, and an elected or appointed officer, before assuming office, sign a written oath stating that the member, the secretary of state, or the officer did not engage in bribery to obtain the office."

The proposed amendment will appear on the ballot as follows:  
"The constitutional amendment to set the amount of per diem received by a member of the legislature at the amount allowed for federal income tax purposes as a deduction for living expenses incurred by a state legislator. The per diem of \$30 would increase to \$81, which is the current maximum living expense deduction."

### PROPOSITION NO. 14 ON THE BALLOT

Senate Joint Resolution 71 proposes a constitutional amendment that would require the district attorney in Fort Bend County to be elected and serve terms at the same times as criminal district attorneys in the state. Currently, criminal district attorneys are elected in gubernatorial election years and district attorneys are elected in presidential election years.

### PROPOSITION NO. 17 ON THE BALLOT

House Joint Resolution 32 proposes a constitutional amendment that would authorize the legislature, by general law, to permit charitable raffles conducted by qualified nonprofit organizations. The amendment would require that the raffles be conducted, promoted, and administered only by members of the qualified nonprofit organizations and that the proceeds from the sale of raffle tickets must be spent for the charitable purposes of the organizations.

### PROPOSITION NO. 15 ON THE BALLOT

House Joint Resolution 32 proposes a constitutional amendment that would authorize the legislature, by general law, to permit charitable raffles conducted by qualified nonprofit organizations. The amendment would require that the raffles be conducted, promoted, and administered only by members of the qualified nonprofit organizations and that the proceeds from the sale of raffle tickets must be spent for the charitable purposes of the organizations.

### PROPOSITION NO. 16 ON THE BALLOT

Senate Joint Resolution 34 proposes a constitutional amendment allowing the legislature to pass general laws authorizing the creation of hospital districts upon approval of a majority of the qualified voters of the district. The amendment would also permit the legislature to authorize the creation of hospital districts by general or special law in counties with populations of 75,000 or less and to authorize the commissioners courts of such counties to levy ad valorem taxes and issue general obligation bonds for the support and maintenance of such districts.

### PROPOSITION NO. 11 ON THE BALLOT

House Joint Resolution 102 proposes a constitutional amendment that would increase the per diem members of the Legislature. The amount of per diem allowed during a calendar year would be equal to the maximum amount allowed for federal income tax purposes as of January 1 of that same year as a deduction for living expenses incurred by a state legislator. The per diem of \$30 would increase to \$81, which is the current maximum living expense deduction.

### PROPOSITION NO. 18 ON THE BALLOT

House Joint Resolution 33 proposes a constitutional amendment that would allow the legislature, by general law, to authorize the use of public money to provide local fire departments and other public fire-fighting organizations loans or other financial assistance to purchase fire-fighting equipment and to aid in complying with federal and state law. The legislature would also be allowed to authorize the use of public money for scholarships and grants to educate and train members of these organizations. Part of the money could be used for administrative costs of this program. The legislature would provide for the terms and conditions of all such scholarships, grants, loans, and other financial assistance.

### PROPOSITION NO. 8 ON THE BALLOT

Senate Joint Resolution 24 proposes a constitutional amendment that would allow the legislature to authorize the issuance of up to \$400 million in general obligation bonds. The proceeds of the bonds could be used to acquire, construct, or equip new corrections institutions, mental health and mental retardation institutions, youth corrections institutions, and statewide law enforcement facilities and to repair and renovate existing facilities of those institutions. The bonds would constitute a general obligation of the state. The bonds and interest on the bonds would be paid from the first money coming into the treasury that is not otherwise appropriated by the constitution, less any amount in a sinking fund at the end of the preceding fiscal year that is pledged to payment of the bonds or interest.

### PROPOSITION NO. 12 ON THE BALLOT

Senate Joint Resolution 53 proposes a constitutional amendment that would authorize the legislature to provide for the use of the permanent school fund and the income from the permanent school fund to guarantee bonds issued by the state for the purpose of providing loans or purchasing the bonds of school districts to acquire, construct, renovate, or improve instructional facilities. If the permanent school fund were required to make payment as a result of its guarantee of bonds issued by the state, the fund would have to be reimbursed immediately from the state treasury. The amount of bonds guaranteed by the permanent school fund could not exceed \$750 million unless a higher amount was authorized by a two-thirds vote of both houses of the legislature. If a school district were to become delinquent on a loan, the amount of the delinquency would be offset against other aid to which the district was entitled.

### PROPOSITION NO. 19 ON THE BALLOT

Senate Joint Resolution 59 proposes a constitutional amendment that would allow local governments to invest their funds as authorized by the legislature. Currently, the constitutional prohibition against a grant of public money to an individual, association, or corporation or against becoming a stockholder in a corporation, association, or company prevents local governments from making some kinds of investments. This proposed amendment would allow local governments to make any investments authorized by the legislature.

### PROPOSITION NO. 4 ON THE BALLOT

House Joint Resolution 13 proposes a constitutional amendment that would authorize the legislature, by general law, to exempt from ad valorem taxes property owned by nonprofit veterans organizations that are chartered or incorporated by the United States Congress.

### PROPOSITION NO. 13 ON THE BALLOT

House Joint Resolution 19 proposes a constitutional amendment that would provide a bill of rights for crime victims. This constitutional amendment would give crime victims the right to be treated with fairness and respect and to be reasonably protected from the defendant. On his request, the crime victim would have the right to notification of court proceedings, the right to be present at all public court proceedings unless a court determines that the victim's testimony would be affected by hearing other testimony, the right to confer with a representative of the prosecutor's office, the right to restitution, and the right to information about the conviction, sentence, imprisonment, and release of the defendant. The legislature would be authorized to enact laws to define the term "victim," to enforce the rights of crime victims, and to provide that certain public officers and agencies are not liable for a failure to protect a victim's rights.

### PROPOSITION NO. 20 ON THE BALLOT

Senate Joint Resolution 16 proposes a constitutional amendment which, if passed, would abolish the office of county surveyor in Cass, Ector, Garza, Smith, Bexar, Harris, and Webb Counties. A majority of the voters in an affected county must vote in favor of this proposed amendment before the office is abolished in that county. If the office of county surveyor is abolished in any of these counties, the powers, duties, and functions of the office are transferred to a county officer or employee designated by the commissioners court of the county in which the office is abolished.

### PROPOSITION NO. 9 ON THE BALLOT

House Joint Resolution 101 proposes a constitutional amendment that would authorize the legislature to pass laws to organize and combine state agencies that perform criminal justice functions. The legislature could combine into one or more agencies all agencies that have authority over the confinement and supervision of convicted criminals, that set standards for or distribute state funds to political subdivisions with authority over the confinement and supervision of convicted criminals, and that gather information about criminal justice administration. Agencies that could be combined would include the Texas Department of Corrections, the Board of Pardons and Paroles, and the Texas Adult Probation Commission. The amendment would also authorize the legislature to pass laws authorizing the appointment of members of more than one department of government to serve on the governing body.

### PROPOSITION NO. 10 ON THE BALLOT

The proposed amendment will appear on the ballot as follows:  
"The constitutional amendment authorizing the legislature to organize and combine various state agencies that perform criminal justice functions."

### PROPOSITION NO. 21 ON THE BALLOT

Senate Joint Resolution 74 proposes a constitutional amendment that would authorize the legislature to enact laws authorizing the Texas Higher Education Coordinating Board or its successor to provide for, issue, and sell an additional \$75 million in general obligation bonds as college savings bonds. The form, terms, and denominations of the bonds would be prescribed by law. The interest rate and installments would be prescribed by the Texas Higher Education Coordinating Board or its successor. The maximum net effective interest rate would be set by law. Proceeds from the sale of the bonds would be credited to the Texas opportunity plan fund, which is used to make loans to students to attend institutions of higher education in Texas. The bonds and interest on the bonds would be payable from the first money coming into the treasury in each fiscal year that is not already appropriated by the constitution, less the amount remaining in the sinking fund at the close of the prior fiscal year.

### PROPOSITION NO. 6 ON THE BALLOT

House Joint Resolution 4 proposes a constitutional amendment that

tion bonds in an amount not to exceed \$200 million, if two-thirds of the members of each house of the legislature approve. Under subsection (e), this authority will expire in November, 1989. Repeal of subsection (e) by passage of this amendment would continue in effect the authority to issue and sell the bonds.

The proposed amendment will appear on the ballot as follows:  
"The constitutional amendment to eliminate certain time limitations relating to the issuance of Texas agricultural water conservation bonds."

### PROPOSITION NO. 19 ON THE BALLOT

Senate Joint Resolution 59 proposes a constitutional amendment that would allow local governments to invest their funds as authorized by the legislature. Currently, the constitutional prohibition against a grant of public money to an individual, association, or corporation or against becoming a stockholder in a corporation, association, or company prevents local governments from making some kinds of investments. This proposed amendment would allow local governments to make any investments authorized by the legislature.

### PROPOSITION NO. 20 ON THE BALLOT

Senate Joint Resolution 16 proposes a constitutional amendment which, if passed, would abolish the office of county surveyor in Cass, Ector, Garza, Smith, Bexar, Harris, and Webb Counties. A majority of the voters in an affected county must vote in favor of this proposed amendment before the office is abolished in that county. If the office of county surveyor is abolished in any of these counties, the powers, duties, and functions of the office are transferred to a county officer or employee designated by the commissioners court of the county in which the office is abolished.

### PROPOSITION NO. 21 ON THE BALLOT

Senate Joint Resolution 74 proposes a constitutional amendment that would authorize the legislature to enact laws authorizing the Texas Higher Education Coordinating Board or its successor to provide for, issue, and sell an additional \$75 million in general obligation bonds as college savings bonds. The form, terms, and denominations of the bonds would be prescribed by law. The interest rate and installments would be prescribed by the Texas Higher Education Coordinating Board or its successor. The maximum net effective interest rate would be set by law. Proceeds from the sale of the bonds would be credited to the Texas opportunity plan fund, which is used to make loans to students to attend institutions of higher education in Texas. The bonds and interest on the bonds would be payable from the first money coming into the treasury in each fiscal year that is not already appropriated by the constitution, less the amount remaining in the sinking fund at the close of the prior fiscal year.

The proposed amendment will appear on the ballot as follows:  
"The constitutional amendment providing for the issuance of general obligation bonds as college savings bonds to provide educational loans to students and to encourage the public to save for a college education."

*Estos son los informes explicativos sobre las enmiendas propuestas a la constitucion que apareceran en la boleta el dia 7 de noviembre, 1989. Si usted no ha recibido una copia de los informes en español, puede obtener una gratis por llamar al 1-800-251-8281 o por escribir al Secretario de Estado, P.O. Box 1,000, Austin, Texas 78711.*



**Winford Payne**

**Local Man's  
Brother Dies**

Funeral services for Winford Payne, 63, of Floydada were held at 2 p.m. Friday, Sept. 15 in the First Baptist Church with the Rev. Floyd C. Bradley, former pastor, officiating.

Burial was in Floyd County

**Courthouse  
News**

**MARRIAGE LICENSE**  
Thomas Joseph Manchester and Amy Kathleen Garvin  
Robin Clair Renchler and Patricia Aguilar  
Jose Angel Salinas and Laura Ann Arzola, Muleshoe

**WARRANTY DEEDS**

Tommy Keith Bonds and wife, Annette Jordan Bonds to Aubrey Leon Hagerman and wife, Valerie Irene Hagerman--Lot 9, Block 3, Muleshoe Park Addition, to the City of Muleshoe, Bailey County, Texas.

Grady E. Edelman to Jim Hartline--All of Lot No. 26, Block No. 10, Lenau Subdivision to the City of Muleshoe, Bailey County, Texas.

First Federal Savings Bank to Eulless Barry Wilson and wife, Sondra Helene' Wilson--TRACT E: all of the North 150 feet of Lot No. 28, K.K. Krebs Subdivision of a portion of the East 155 acres of Section No. 58, Block Y, WD&FW Johnson's Subdivision No. 2, Bailey County, Texas.

TRACT 2: All of the easterly 50 feet of the North 150 feet of Lot No. 27, K.K. Krebs Subdivision of a portion of the East 155 acres of Section No. 58, Block Y, WD&FW Johnson's Subdivision No. 2, Bailey County, Texas.

Sam P. Barnes and wife, Lillie H. Barnes to William J. Savuto--All of Lot 1, and the Easterly 1/2 of Lot 2, Block 15, Country Club Addition to Muleshoe, Bailey County, Texas.

Paula J. Clements to Frank D. Salinas and wife, Rosa Linda Salinas--All of Lot 8, Block 7, Warren Addition 2, to the Town of Muleshoe, Bailey County, Texas.

Ely J. Shafer and wife, Mary Joyce Shafer to Mario Flores and wife, Anita Flores--All of Lot 16, Block 7, Highland Addition to the Town of Muleshoe, Bailey County, Texas.

Myrtle Carter to Mildred Harrison--Fourty Acres out of Labor Number (20) League (178), of the Montley County School Land, in Bailey County, Texas.

Hurshel R. Harding and wife, Joyce Y. Harding to Forche Maline Development, Inc.--All of the South (1/2) of Section (78), in Block "Z" in WD&FW Johnson's Subdivision in Parmer and Bailey Counties, Texas.

Sandra J. Robinson to Jewel L. Perry--The (E'ly 50') of Lot Number (26), and the (W'ly 10') of Lot Number (27), in Block Number (5), Pool Subdivision Re-Plat, a Re-Plat of Blocks Numbers (5), (6), (7), and (8), Pool Addition to the Town of Muleshoe, Bailey County, Texas.

W.B. Kittrell and wife, Wanda Kittrell to Roberto Gonzalez and wife, Maria Nelly Gonzalez--All that certain lot tract, or parcel of land, lying and situated in Bailey County, Texas.

**COUNTY COURT**

Alfredo Castro Soto, DWI, \$300 Fine, 1 Year Probation  
Armando Ortega, DWI, \$300 Fine, 1 Year Probation  
Alvaro Alvarado, Possession of Marijuana, Under two ounces, \$300 Fine

Jose Ines Maldonado, Motion to Dismiss

Jose Luis Gardena, DWI, \$300 Fine, 1 Year Probation

Juan Gallardo Mendoza, DWI, \$300 Fine, 1 Year Probation

Jose Neponuseno Pineda, DWI \$300 Fine, 1 Year Probation

Jose Enrique Rodriguez, DWI Second Offense, 60 Days Jail

Jose Enrique Rodriguez, Work Release

Juan Pablo Adame, DWI Second Offense, \$600 Fine, 30 Days Jail

Jesus Gonzales, DWI, \$350 Fine, 1 Year Probation

Jesus Gonzales, Motion To Dismiss

Salomon Hernandez Morales, DWI, \$300 Fine, 1 Year Probation

Armando Herrera-Rozo, DWI, \$300 Fine, 30 Days Jail

Memorial Park under the direction of Moore-Rose-White Funeral Home. Payne died Tuesday morning in Amarillo's Veterans Administration Hospital following a brief illness.

Born in Floyd County, Payne married Wilma Smith. He served with the U.S. armed forces in World War II. He was a retired automobile dealership shop foreman and a member of the First Baptist Church.

Survivors include his wife, Wilma; a daughter, Lynette Crump of Ralls; two sons, Ronnie of Wolforth and Randy of Floydada; three brothers, C.J. of Floydada, Gene of Muleshoe, and James Truitt of Biloxi, Miss.; five grandchildren; and two great grandchildren.

Jeep is prestige vehicle in Japan.

Algae chemicals said to work against AIDS.

**Juanita Snow  
Funeral Services  
Held Saturday**

Funeral services for Juanita Snow, 85, were held at 2 p.m. Saturday, Sept. 16 in the First United Methodist Church of Muleshoe with the Rev. Richard Edwards, pastor, officiating.

Burial was in Enoch's Cemetery under the direction of Ellis Funeral Home. Mrs. Snow died at 9:05 a.m. Thursday in Muleshoe Area Medical Center.

Born April 15, 1904, Mrs. Snow had been a resident of Bailey County since 1926, moving here from Crosby County. She was a homemaker and school teacher, a member of the Muleshoe Rebekah Lodge and the Muleshoe Methodist Church. Her husband, Hilrey Herbert Snow died on July 23, 1981. Survivors include four sisters,

Mrs. Etta Layton of Morton, Mrs. Marieta Crume of Bula, Mrs. Vida Cash of Hereford, and Mrs. Lily Hazard of Eastland; a

brother, Robert Lee Parker of Portland, Maine; and several nieces and nephews.

**Dog Team**  
Jim: Why do you call your dog Baseball?  
John: He catches flies, chases fowls, and runs for home when he sees the catcher coming.

**Convenient**  
What people really want is a religion that will make them feel respectable without requiring them to be respectable.  
-Times-Star, Cincinnati.

**Patients In The  
Muleshoe Area  
Medical Center**

SEPT. 12-14  
TUESDAY  
Mildred Nieman, Addie Lancaster, Clemmie Ladd and Robert Holden

WEDNESDAY  
Kevin Rodriguez, Mildred Nieman, Addie Lancaster, Clemmie Ladd and Moneake Brewer Moneake Brewer

THURSDAY  
Kayla Kimbrough, Kevin Rodriguez, Olura Barrera, Anita Allgood, Addie Lancaster, Joline Franklin, Robert Holder and L. H. Lewis

**CATTLE FEEDERS GRAIN COTTON  
TRADING & HEDGING  
FUTURES & OPTIONS**

Wes Tex Futures, Inc.

P.O. Box 324 • 114 East Avenue C  
Muleshoe, Texas 79347  
Telephone 806/272-5585

Roderick Moss

Immaculate Conception Catholic Church  
Father Patrick Maher  
Northeast City

First Baptist Church  
220 West Ave. E.  
Barry Bradley, Pastor

Emmanuel Baptist Church  
Iglesia Bautista Emmanuel  
107 East Third  
Isaias Cardenas, Pastor

Trinity Baptist Church  
314 E. Ave. B.  
Rev. Dale Berry

Circle Back Baptist Church  
INTERSECTION FM 3397 & FM 298  
946-3676

Calvary Baptist Church  
1733 W. Ave. C.  
Rev. Rick Michael

Muleshoe Baptist Church  
8th and Ave. G.  
Bob Dodd, Pastor

Progress Baptist Church  
Charles Fist, Pastor  
Progress, Texas

Richland Hills Baptist Church  
17th and West Ave. D.  
Allen Petersen, Pastor

St. Matthews Baptist Church  
Corner of West Boston  
West Birch  
M.S. Brown, Pastor

Progress Second Baptist Church  
1st and 3rd Sunday  
Rev. Arthur Hayes

The Community Church  
Morton Hwy  
Mort Cross, Pastor  
272-5992

Church Of The Nazarene  
9th and Ave. C.  
Dennis Hayes, Pastor

Lazbuddie Methodist Church  
965-2121  
Larry Reid Farris, Pastor

St. John Luthern  
Sunday School and Bible  
Classes 9:30 a.m.  
Church Services 10:30 a.m.  
Rev. Mac Bearss, Pastor

Templo Calvario  
507 South Main  
Sunday 10:00 a.m.  
Sunday Evening 7:00 p.m.  
Evangelistic Services  
J.L. Soto, Pastor

El Divino Salvador Methodist Church  
5th and Ave. D.  
Jose M. Fernandez, Pastor  
965-2932

Truth Tabernacle Pentecostal Church  
200 E. Ithaca & Fir  
Pastor: Les James  
272-3391

Jehovah Witness  
Friona Hwy.  
Boyd Lowery, Pastor

United Pentacostal Lighthouse Church  
207 East Ave. G.  
Rev. J.A. Torres

New Covenant Church  
Plainview Hwy.  
Sunday 10:00 a.m.  
Wednesday 7:00 p.m.  
Jimmy Lowe, Pastor

First United Methodist Church  
507 W. 2nd Street  
Richard Edwards, Pastor

1st Baptist Church  
Lazbuddie, Tx. 965-2126  
Gary Wilcox, Pastor

Primitive Baptist Church  
621 South First  
Elder Cleveland Bass, Pastor

Lazbuddie Church Of Christ  
202 W. Ave. B.

Spanish Assembly Of God  
East 6th and Ave. F.  
Mike Doyle, Pastor

Longview Baptist Church  
965-3413  
B.C. Stonecipher, Pastor

Primera Iglesia Bautista  
223 E. Ave. B.  
Roy Martinez, Pastor

Lariat Church Of Christ  
Sunday School 10:00 a.m.  
Worship 11:00 & 6:00 p.m.  
Wednesday Services 7:00 p.m.  
Sam Billingsley, Minister

Muleshoe Church Of Christ  
Clovis Hwy.  
Bret McCasland, Minister

Church Of Christ  
Sunday 10:30 a.m.  
Evening 6:00 p.m.  
Wednesday 8:00 p.m.

First Assembly Of God  
Rev. David C. McCune  
9:45 Sunday School  
11:00 Morning Worship  
6:30 Evening Services  
7:30 Mid-Week Services  
272-3984

Spanish Assembly Of God  
East 6th and Ave. F.  
Mike Doyle, Pastor

First United Methodist Church  
507 W. 2nd Street  
Richard Edwards, Pastor

1st Baptist Church  
Lazbuddie, Tx. 965-2126  
Gary Wilcox, Pastor

Primitive Baptist Church  
621 South First  
Elder Cleveland Bass, Pastor

Lazbuddie Church Of Christ  
202 W. Ave. B.

**The STRENGTH  
of a Nation...**

At this time, our thoughts are turned to our nation and the war that was fought to bring freedom to our land. Pictured here is a monument to the leader of our people at that time. The people were willing to give their lives that we might be free from tyranny, and have the right to worship as we please. God was with us then as he was with the children of Israel when Moses led them from Egypt. Upon receiving their freedom they sang... "The Lord is my strength and song, and he is become my salvation: he is my God, and I will prepare him an habitation; my father's God, and I will exalt him." Exodus 15:2

Help keep our Nation strong by relying on the strength of the Lord. Attend Church Regularly.

EVERYONE IN THE CHURCH  
THE CHURCH IN EVERYONE

The Church is God's appointed agency in this world for spreading the knowledge of His love for man and of His demand for man to respond to that love by loving his neighbor. Without this grounding in the love of God, no government or society or way of life will long persevere and the freedoms which we hold so dear will inevitably perish. Therefore, even from a selfish point of view, one should support the Church for the sake of the welfare of himself and his family. Beyond that, however, every person should uphold and participate in the Church because it tells the truth about man's life, death and destiny; the truth which alone will set him free to live as a child of God.

Coleman Adv.

Longview Baptist Church  
965-3413  
B.C. Stonecipher, Pastor

Primera Iglesia Bautista  
223 E. Ave. B.  
Roy Martinez, Pastor

Lariat Church Of Christ  
Sunday School 10:00 a.m.  
Worship 11:00 & 6:00 p.m.  
Wednesday Services 7:00 p.m.  
Sam Billingsley, Minister

Muleshoe Church Of Christ  
Clovis Hwy.  
Bret McCasland, Minister

Church Of Christ  
Sunday 10:30 a.m.  
Evening 6:00 p.m.  
Wednesday 8:00 p.m.

First Assembly Of God  
Rev. David C. McCune  
9:45 Sunday School  
11:00 Morning Worship  
6:30 Evening Services  
7:30 Mid-Week Services  
272-3984

Spanish Assembly Of God  
East 6th and Ave. F.  
Mike Doyle, Pastor

First United Methodist Church  
507 W. 2nd Street  
Richard Edwards, Pastor

1st Baptist Church  
Lazbuddie, Tx. 965-2126  
Gary Wilcox, Pastor

Primitive Baptist Church  
621 South First  
Elder Cleveland Bass, Pastor

Lazbuddie Church Of Christ  
202 W. Ave. B.

New Covenant Church  
Plainview Hwy.  
Sunday 10:00 a.m.  
Wednesday 7:00 p.m.  
Jimmy Lowe, Pastor

First United Methodist Church  
507 W. 2nd Street  
Richard Edwards, Pastor

1st Baptist Church  
Lazbuddie, Tx. 965-2126  
Gary Wilcox, Pastor

Primitive Baptist Church  
621 South First  
Elder Cleveland Bass, Pastor

Lazbuddie Church Of Christ  
202 W. Ave. B.

New Covenant Church  
Plainview Hwy.  
Sunday 10:00 a.m.  
Wednesday 7:00 p.m.  
Jimmy Lowe, Pastor

First United Methodist Church  
507 W. 2nd Street  
Richard Edwards, Pastor

1st Baptist Church  
Lazbuddie, Tx. 965-2126  
Gary Wilcox, Pastor

Primitive Baptist Church  
621 South First  
Elder Cleveland Bass, Pastor

Lazbuddie Church Of Christ  
202 W. Ave. B.

New Covenant Church  
Plainview Hwy.  
Sunday 10:00 a.m.  
Wednesday 7:00 p.m.  
Jimmy Lowe, Pastor

First United Methodist Church  
507 W. 2nd Street  
Richard Edwards, Pastor

1st Baptist Church  
Lazbuddie, Tx. 965-2126  
Gary Wilcox, Pastor

Primitive Baptist Church  
621 South First  
Elder Cleveland Bass, Pastor

Lazbuddie Church Of Christ  
202 W. Ave. B.

New Covenant Church  
Plainview Hwy.  
Sunday 10:00 a.m.  
Wednesday 7:00 p.m.  
Jimmy Lowe, Pastor

First United Methodist Church  
507 W. 2nd Street  
Richard Edwards, Pastor

1st Baptist Church  
Lazbuddie, Tx. 965-2126  
Gary Wilcox, Pastor

Primitive Baptist Church  
621 South First  
Elder Cleveland Bass, Pastor

Lazbuddie Church Of Christ  
202 W. Ave. B.

New Covenant Church  
Plainview Hwy.  
Sunday 10:00 a.m.  
Wednesday 7:00 p.m.  
Jimmy Lowe, Pastor

First United Methodist Church  
507 W. 2nd Street  
Richard Edwards, Pastor

1st Baptist Church  
Lazbuddie, Tx. 965-2126  
Gary Wilcox, Pastor

Primitive Baptist Church  
621 South First  
Elder Cleveland Bass, Pastor

Lazbuddie Church Of Christ  
202 W. Ave. B.

New Covenant Church  
Plainview Hwy.  
Sunday 10:00 a.m.  
Wednesday 7:00 p.m.  
Jimmy Lowe, Pastor

|  |   |   |  |
|--|---|---|--|
| <b>Western Drug</b><br>114 Main 272-3106                   | <b>Ana's House of Beauty</b><br>109 W. Ave. B. 272-4152     | <b>American Valley, Inc.</b><br>Hwy. 84 W. 272-4266         | <b>Dairy Queen</b><br>1204 W. Amer. Blvd. 272-3412           |
| <b>Sain Irrigation</b><br>Clovis Hwy. 272-4397             | <b>Bob Stovall Printing</b><br>221 E. Ave. B. 272-3373      | <b>James Roy Meat Market</b><br>506 W. Amer. Blvd. 272-4361 | <b>Robert D. Green, Inc.</b><br>2400 W. Amer. Blvd. 272-4588 |
| <b>Fry &amp; Cox, Inc.</b><br>401 S. First 272-4511        | <b>1st Bank Member F.D.I.C.</b><br>202 South First 272-4515 | <b>Bratcher Motor Supply</b><br>107 E. Ave. B. 272-4288     | <b>Lookin' Good</b><br>206 Main 272-5052                     |
| <b>Main Street Beauty Salon</b><br>115 Main 272-3448       | <b>Farmers Co-Op Elevators</b><br>113 N. 1st 272-4335       | <b>Bentley's</b><br>110 Main 272-4119                       | <b>5-Area Telephone Co-Op</b><br>302 Uvalde 272-5533         |
| <b>Irrigation Pumps &amp; Power</b><br>W. Hwy. 84 272-4483 | <b>Richland Hills Texaco</b><br>1914 W. Ave. B. 272-4875    |   |  |



# CLASSIFIEDS 272-4536

### CLASSIFIED RATES

15 Words & Under  
Minimum Charge \$2.30  
Thereafter \$2.00  
16 Words & Over  
1st Insertion 15 cents per word  
2nd Insertion 13 cents per word

CLASSIFIED DISPLAY RATES \$1.75  
Per Column Inch

DEADLINES  
12 noon Tues.  
For Thursday Paper  
12 noon Friday  
For Sunday Paper

To receive the reduce rate after the first insertion ad must run continuously.

We reserve the right to classify, revise, or reject any ad. We are not responsible for any error after ad has run once.

### 1. Personals

Call your local used cow dealer for 7 day a week dead stock removal. 965-2903 or 1-800-692-4043. cl-37t-tfc

**CONCERNED About Someone's Drinking? HELP IS AVAILABLE through Al-Anon**  
CALL 272-2350 or 965-2870 or come to visit Tuesday nights, 8:00 p.m. or Saturday mornings at 10:30 a.m. and through AA call 965-2870 or come visit Tuesday nights, 8:00 at 620 W. Second, Muleshoe.

Mary Kay Cosmetics

Josie Flowers  
272-3865  
Call 8-12 a.m. and after 6 p.m.

PAINTING: Interior & Exterior. Call 272-4874 H1-30s-tfc

### 3. Help Wanted

### OCCUPATIONAL HEALTH NURSE

Excel Corporation is accepting applications for a Registered Nurse for the Plainview, Texas Plant. Two years experience in supervision, orthopedic and/or emergency room preferred but will train qualified applicant.  
Send resume to:  
Jim Maher  
Personnel Director  
Excel Corporation  
P. O. Box 910  
Plainview, Texas 79072  
EOE M/F  
N3-38s-1tc(ts)

LICENSED Beauty Operator wanted. Call Helen at Main Street Beauty Salon, 272-3448. M3-38s-tfc

### 3. Help Wanted

**WANTED: DISPATCHER** for Muleshoe Police Dept. Applicants must be able to type and have some computer experience. Job shifts will be from 4 p.m.-12 midnight and 12 midnight-8 a.m. Applicants must apply in person at Muleshoe Police Department from 9:00 a.m.-4 p.m. Monday-Thursday. H3-37t-2tc

Needed full time and part time LVN's for 11 p.m.-7 a.m. and 3 p.m.-11 p.m. shifts. Contact Jo Blackwell, Administrator or Joan Ahrhart, Director of Nursing, Prairie Acres Nursing Home, 201 E. 15th, Friona, (806) 247-3922. P3-37s-4tc

### 4. Houses For Rent

**HOUSE FOR RENT:** 3 bedroom, 2 bath, fenced yard. Country Club Addition. Call 925-6767. S4-35t-tfc

### 9. Automobiles For Sale

**AUTOMOBILE** For sale. 1984 DELTA 88 Royal Brougham, 54,000 miles. Fully Loaded, V-8. Clean. Blue-book Wholesale, \$5,400.00. Call after 6:00 p.m. 272-5205. 9-38s-2tp

1977 Chevy Van. Carpet on the inside. Runs good. Automatic transmission. V8. \$2,000. C. J. Tiller. 946-3691. T9-35t-6tp

### 10. Farm Equip. For Sale

**FOR SALE: TRACTOR** 83 Allis-Chalmers. Front Wheel drive. 2400 hours. 20.8X38 Radials. Very clean. \$23,500. (817) 495-2566. K10-38s-2tc

### 11. For Sale Or Trade

**PIANO FOR SALE**  
Wanted: Responsible party to take on small monthly payments on piano. See locally. Call Manager at 800-635-7611 anytime. M11-38s-7tps(ts)

**FOR SALE:** Tomatoes, Bell Peppers, Okra on Highway 84 By-Pass - Littlefield. B. E. Turner. (806) 385-5980. T11-36t-tfc

### 15. Misc.

**FOR RENT: TRAILOR** lot, located at 406 W. 8th. Call 272-3015. B15-38s-tfc

### Ernie's Roofing

Specializing in flat roofs, shingles and Build-up roofs. Residential-Commercial  
Free estimates, References, work guaranteed. L1s-33s-tfc

Bus. 505-762-6510

### 15. Misc.

**ROUND-UP APPLICATION**  
Pipe-wick mounted on high-boy. Row Crops. CRP. Vol. Corn, 30" or 40" rows. Roy O'Brian, 265-3247.  
15-20s-tfc

**NOMINATIONS**  
'Business of the Month' Anyone can nominate the "Business of the Month" as long as that business is a member of the Chamber of Commerce.

'Employee of the Month' Anyone can nominate the "Employee of the Month" as long as the employee works for a business that is a member of the Chamber of Commerce.

Nominations can be made at the Chamber of Commerce office, 215 S. 1st or call 272-4248. 15C-37t-2tc

### 17. Seed and Feed

**SELECT-TAM 105** Wheat Seed. Call 965-2695 or 965-2266. 17-38s-6tp

**Think Classifieds Call 272-4536**

### Who Knows?

- How is the Harvest Moon determined?
- What is the full moon called after the Harvest Moon?
- When were the first cadets graduated from the Air Force Academy?
- Define perigee?
- Where is the Grand Canyon?

### Answers:

- It's the full moon nearest the Autumnal Equinox. This year September 15.
- Hunter's Moon, October 14.
- June, 1959.
- The point in the orbit of the moon nearest the earth.
- Arizona.

### BIBLE VERSE

"God is our refuge and strength, a very present help in trouble."

- Where may this verse be found?
- Who is credited with its authorship?
- What other well known Old Testament character also wrote some of the Psalms?
- How many Psalms are there?

Answers:  
1. Psalm 46:1.  
2. David.  
3. Moses.  
4. 150.

### 18. Legals

**LEGAL NOTICE**  
The City of Muleshoe will accept bids on a hydraulic sewer cleaner with trailer mounted jet sprayer. The bids will be opened at the City Hall at 10:00 a.m. on Friday, September 29, 1989. Specifications may be obtained in the office of the City Secretary during normal business hours. The City reserves the right to accept or reject any or all bids. C18-38s-2tc

**ESTATE SALE**  
PLEASE TAKE NOTICE THAT RUBY GARNER AND FLOYD DAMRON as Co-Independent Executors of the Estate of Walter R. Damron, Deceased, will sell at the north door of the Bailey County Courthouse, Muleshoe, Bailey County, Texas, at 10:00 o'clock a.m., September 18, 1989, all right, title, and interest of Ruby Garner, Floyd Damron, Carolyn Damron Sabbe, and Tammy Damron in the following property:  
Lot Eight (8) and the Southerly Half (S/2) of Lot Nine (9), Block Number Three (3), Pool Addition to the town of Muleshoe, Bailey County, Texas, and being in the form of a rectangle 75 feet by 140 feet.  
Labor Twenty-Two (22), League Two Hundred One (201) Roberts County School Lands, Bailey County, Texas.  
Labor Twenty-Three (23), League Two Hundred One (201), Roberts County School Lands, Bailey County, Texas.

The sale shall be to the highest bidder for cash.  
**RUBY GARNER FLOYD DAMRON**  
18-26s-6tc

### NOTES, COMMENT

We're now ready to see a few good football games.

Good music often achieves surprising results.

Sunshine friends can rarely stand the heat.

Mother's little man usually turns out to be just that.

Memory is the product of intelligence and work.

There's little honesty left in conversations these days.

Friends are people you read about in stories, usually.

Balance your life as you would balance your bank account.

An emotional person is usually easily led--the wrong way.

The human race has its problems, including you and me.

Most people mistake authoritative talk for intelligence.

### 8. Real Estate

**FOR SALE GOVERNMENT INVENTORY**  
TWO BEDROOM, ONE BATH HOUSE  
\$7,425.00  
SUBJECT TO DEED RESTRICTIONS  
INQUIRE AT 115 E AVE D MULESHOE, TX 79347 272-5549  
DEPARTMENT OF AGRICULTURE FARMERS HOME ADMINISTRATION  
TO BE SOLD AS IS  
EQUAL HOUSING OPPORTUNITY

### Smallwood Real Estate

232 Main Muleshoe 272-4838  
Lenau Addition-3 Bedroom, 1 Bath, Wood stove in den, living room, 1-car Garage, Storage bldg., Fenced Yard NICE. Priced to sell.  
Longview Area--1 Labor of red, sandy, dry land. This is productive land.  
1 Block South of Hospital--2 Bedrooms, 1 Bath, \$500.00 Closing cost. \$170.00. Monthly payments include taxes and insurance.

4 BRDM. TRAILER 3 lots, 2 car garage, \$22,000 Call Carl Houston, 385-4605. 8-31s-21tp  
6 ACRES, BRICK house, double bath, double garage. 3 miles NE of town. Earl Peterson, 965-2938. P8-37t-2tp

### Bingham & Nieman Realty

116 E. Ave. C. 272-5285 or 272-5286  
RICHLAND HILLS  
BEAUTIFUL COUNTRY VIEW OVERLOOKING AREA - 3-2-2 Brick, Cent. A&H, built-ins, FP, 2000+ sq. ft. of lv. area, loads of storage, auto. spkrl., fenced yd., & MUCH MORE. \$70's!!!!!!

4 NICE RESIDENTIAL LOTS PRICED FROM \$5,000.00!!!!!!

JUST LISTED-Nice 3-2-2 Brick on large corner lot, Cent. A&H, built-ins, storm windows & doors, large basement, much more!!!!!!

IMMACULATE 3-2-2 Home, corner lot, Cent. A&H, built-ins, FP, loads of storage & closet space, much more!

VERY NICE 3-2-3 Home, Cent. A&H, built-ins, FP, fans, spkrl. sys., fenced. PRICED TO SELL!!!!

HIGHLAND AREA  
NICE 3-2-2 Brick home (2 story), on corner lot, Cent. A&H, built-ins, and much more. LET'S LOOK TODAY!!!!160's

NICE 3-2-1 Brick Home. Cent. A&H, built-ins, large den w/fireplace. Fenced yard, storage bldg. \$50's!!!!!!

PRICE REDUCED 2-2-2 Brick, corner lot, Cent. A&H, spacious rooms, utility, cov. patio, fenced yard, & much more. 40's!!!!

VERY NICE 3-2-1 Brick, Cent. A&H, built-ins, FP, storm windows & doors, covered patio, fenced yard, corner lot. 50's!!!!!!

HIGH SCHOOL  
JUST LISTED-COZY 2-1 Home, nicely remodeled, fenced yard, & More \$17,000!!!

2-1 1/2-1 Brick, fl. furnace, CA, fenced yard & more. \$20's!!!!!!

NICE 2-1 1/2-1 Home, corner lot, built-ins, nice carpet, heat pump, fenced yard, storage bldg. & more!!!!

\$600 TOTAL MOVE-IN POSSIBLE to qualified Buyer on this 3-1-1 Brick, Cent. Heat, Evap. Air, built-ins, fenced yard. \$27,000!!!!!!

PRICED REDUCED FOR QUICK SALE! Nice 2-1-1 Home, Cent. Heat, carpets, workstorage area, and much more. \$19,950.00!!!!!!

DIANNE NIEMAN, BROKER

### 8. Real Estate

**James F. Hayes & Co. Agricultural Real Estate**  
310 Main Street, Suite 103  
Vic Coker Agent  
Sales & Appraisals

FOR RENT OR SALE: Double Wide, 3 bedrooms, 2 baths, formal dining, extra large living room. Call 965-2856 after 8 p.m. 8-36s-8tp

### WHITT - REID

201 Main Muleshoe 272-3611  
Real Estate Insurance  
Sales & Appraisals  
1/2 section in strong waterbelt. 2-8' wells. Modern house on pavement. Priced for quick sale.  
Home Phones  
Roy Whitt, C.R.E.A. 272-3058  
Certified Real Estate Appraiser  
Thursie Reid George Poteet Sandra Chancy  
272-5318 272-4047 925-6727  
We have buyers for farm land...

### 8. Real Estate

FOR SALE: Charming 3 BR house; new carpet; 1 bath; covered patio; shop; single garage. 272-3262. 405 E. Dallas. 8-37s-8tp

Double Wide Mobile Home for sale. During day 272-4613 and after 8 p.m. 272-4081. Scoggin Ag Center. P. O. Box 452. S8-37s-tfc

FARM LAND FOR SALE: 177 acres dryland with full allotment. 177 acres irrigated with full allotment. 946-3474. C8-35t-tfc

### Bingham & Nieman Realty

PRICE REDUCED-IMMACULATE 3-2-3 Brick Home, Heat Pump Sys., built-ins, nice finished basement w/FP, spkrl. sys., & much more. \$50's!!!!!!

PRICE REDUCED- 3-1-1 Home earthtone carpets, fenced yard, storm cellar & workshop!!!!

3-1 1/2-1 Brick, Cent. A&H, DW, fenced yd. & more. \$30's!!!!!!

COUNTRY CLUB-VERY NICE 3-2-2 brick, Cent. A&H, built-ins, Earthtone carpet, large fenced yd., storage-workshop, corner lot. \$50's!!!!

LENAU ADD.  
Very nice 3-1-1 Home, WB stove enclosed patio, storm windows & doors, well insulated, beautifully landscaped. LET'S LOOK TODAY!!!!

JUST LISTED - 3-1-1 Home, nicely remodeled, fenced yd. & more. \$30,000.00!!!

COUNTRY HOMES  
\$4,250.00 CASH, "AS IS, WHERE IS" - 2-1 Stucco on .21 acre at edge of town!!!!!!

JUST LISTED 3-2-2 Home on 1 acre on pavement close to town, Cent. A&H, built-ins, FP, et. \$40's!!!!

VERY NICE-3-2-1 Home on 1 acre, close to town. Cent. Heat, Evap. air, nice carpets, nicely remodeled. \$30's!!!!!!

2-1 home, 20 acres, sub. pump, sprinkler, barns & corrals. \$40's!!!!!!

EXCELLENT COMMERCIAL TRACT 175' x 100', Hwy. 70 & 84, railroad spur access at rar, approx. 1200 sq. ft. bldg. PRICED TO SELL!!!!!!

NICE 3,500 sq. ft. office bldg. across from Courthouse. PRICED TO SELL!!!!!!

JUST LISTED-NICE COMMERCIAL BLDG. ON MAIN HIGHWAY, Approx. 2800 feet of area, suitable for various types of business. Possible Owner Financing to qualified Buyer. \$20's!!!!

GEORGE NIEMAN, BROKER