

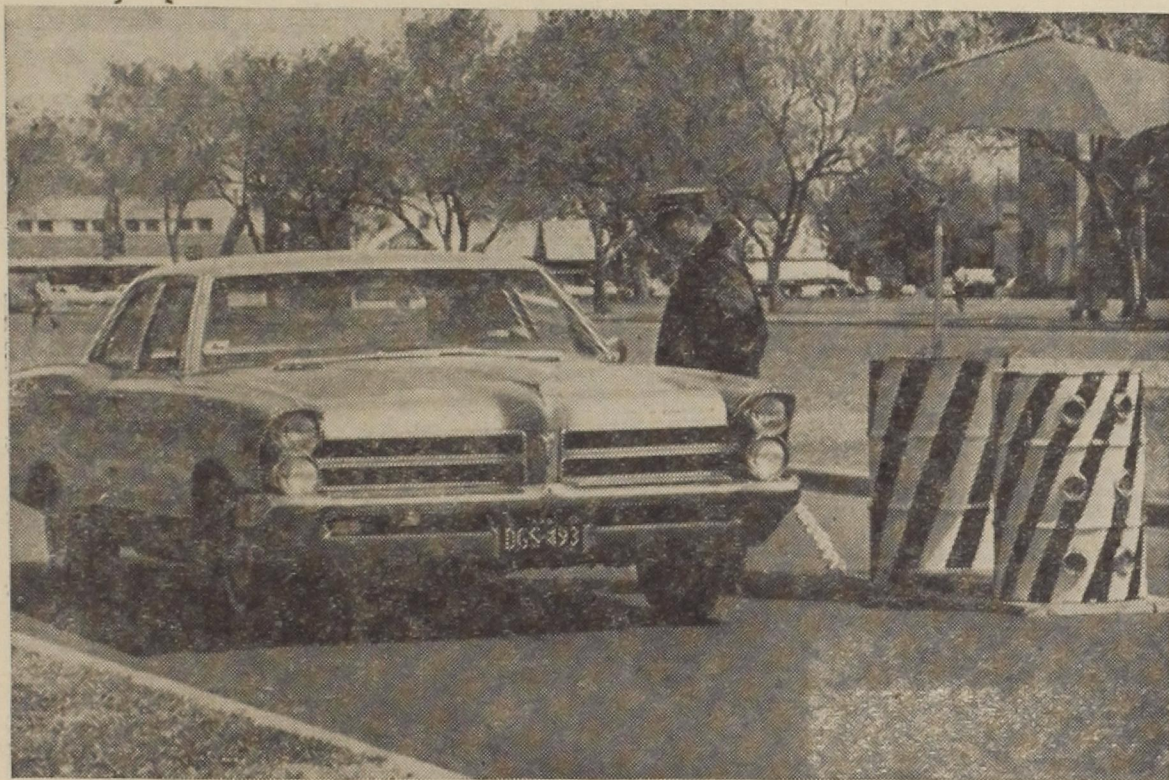
# THE DAILY TORNADOR

TEXAS TECHNOLOGICAL COLLEGE

Vol. 41

Lubbock, Texas, Friday, April 15, 1966

No. 121



**ENTRY DUTY**—Campus Security Patrolman Allan Summers stops another car at entry station number 1 on the Soapsuds Pavilion. The entry stations were erected and used first on April 7.

Thursday was the first school day they were in use. The temporary stations are being used as experimental ones with permanent stations to be built before the fall semester begins.

## Anna Chennault To Speak At Women's Day Banquet

### Senate Approves Budget

The Student Senate met Thursday to reconsider the Student Senate and Student Association Budgets for 1966-67.

Both budgets were passed as they were presented to the Senate by the Allocations Committee.

Although the budget for 1966-67 was passed at the March 31 meeting, the Senate reconsidered the budget upon recommendation by the Supreme Court.

The Student Supreme Court, in a writ of mandamus, commented that Senators shirked their duty as elected officials during the March 31 meeting when they voted to accept the Allocations Committee's budget as it would be completed rather than voting on a prepared budget.

The only item in the Student Senate budget which drew any criticism was the increase in salaries for Student Association officers. However, the Senate passed the budget with the recommended increase, and all four officers will receive \$75 a month next year. In the past only the president received \$75 a month and the other three received \$60 per month.

The total Senate budget for next year will be \$8,303 as compared to \$6,018 this year.

The Senate approved the committee's recommendations for allocating funds among various student organizations after a short discussion.

Jane Edwards reported that the Senate banquet will be May 6 at the Women's Club.

Nominations for Texas Tech's Women of the Year are due Monday, according to Janis Langley, elections chairman.

Tech's outstanding Woman of the Year and Faculty Woman of the Year will be elected May 2. Any woman's organization on campus may nominate candidates for the 1966 awards which will be announced at the 34th annual Woman's Day Banquet May 3.

Banquet speaker will be Mrs. Anna Chennault, widow of Lt.

### New Professor Named At Tech

Dan E. Feray, chairman of the geology department at Texas Christian University, will join the Tech faculty June 1 as professor of geosciences, President R. C. Goodwin said Tuesday.

Dr. Feray, who held the Magnolia Chair of Geology at Southern Methodist University, joined the TCU faculty in 1962. He also has taught at the University of Tulsa.

He has served as geologist with the Bureau of Economic Geology in Texas, was head of geological research for the Magnolia Petroleum Company and headed his own geological service.

His memberships include the American Association of Petroleum Geologists and the Society of Economic Paleontologists and Mineralogists. Dr. Feray was a Distinguished Lecturer for the AAPG and spoke in 25 states, Canada and Mexico.

A native of Beaumont, he is a graduate of Lamar Junior College and the University of Tulsa, holds a master's degree from the University of Illinois and a Ph.D. from the University of Wisconsin.

Widely published in his field, Dr. Feray's articles have appeared in the "Journal of Paleontology" and the "Journal of Sedimentary Petrology."

Gen. Claire Lee Chennault who was Flying Tiger Commander in China during World War II. She will speak on "Our Challenge in Asia" at the 6 p.m. dinner in Tech Union Ballroom.

A native of China and graduate of Ling Nan University, Mrs. Chennault became the first woman to serve as a war correspondent for China's largest news agency, a career that led to meeting the famed war hero who became her husband. She is the author of numerous books in both Chinese and English, including "A Thousand Springs" published in 1962.

Woman's Day activities, sponsored by the Association of Women Students, will include a luncheon in Wall Hall honoring Mrs. Chennault and open house in the Dean of Women's office from 1:30 to 4 p.m.

A red carpet welcome is planned for Mrs. Chennault at the Lubbock Municipal Airport, said Sandie Clegg, project secretary.

AWS officers for the coming year will be installed at the banquet and new officers and legislators in the residence halls will be introduced.

Women students are urged to wear white in recognition of Woman's Day at Tech.



DR. DAN E. FERAY

## Entry Stations Get First-Day Approval

The new traffic entry stations received campus-wide approval Thursday as they were put in use for the first time on a school day.

The stations were opened April 7 in order to help reduce the possibility of pedestrian injury on campus.

Traffic Security Chief Bill Daniels said the stations ran into no problems and would not be moved for the next few days.

Patrolman Allan Summers,

working entry station No. 1 at the Broadway entrance said he had had only a few people who seem displeased at the new stations.

Patrolman Carl Francis at entry station No. 2 near Tech bookstore said he had had no problems and had heard only praise from students, faculty and visitors.

Patrolman Bill Fuller, relieving Dwain Higgins at the Boston Ave. entry station said the traffic problem had been helped greatly and he had had no problems at that post.

At entry station No. 4 near Men's 9, Patrolman N. L. Barr said his station had had no problems and added that students had not given him any trouble about wanting to get on campus.

Chief Daniels also said motorcycles would not be allowed past the entry stations and would need to find a different parking place.

On the student side of the story Jack Reames, a junior dairy industry major from Lankester said he thought the entry stations would really help the traffic situation on campus.

Steve Roberts a finance major from Corpus Christi said he liked the new stations, and noted that it was still possible to get to the post office to pick up packages.

Toni Sellers, a sophomore psychology major from Del Rio said she thought the stations would lead to increased congestion at the entry stations and probably wouldn't be beneficial to the traffic situation.

Warren Waggoner, a sophomore business major from College Station said he liked the entry stations because they made it much safer for the student.

Dr. Faye Bumpass, a foreign language professor said she liked the entry stations because they kept unnecessary traffic off campus and added that there were more parking places available in the Administration Building parking lot.

Chief Daniels said the entry stations are to be in operation from 7:15 a.m. to 3:15 p.m. daily except from 7:15 to 11:15 on Saturdays. Thirty-minute parking is allowed in the Bookstore parking lot.

### MAY GRADUATES

Tuesday is the last day for May graduates to complete correspondence courses. Instructors must file grades by May 4. Tuesday is also the last day for May graduates to remove grades of "I" and "P".

## G.I. Bill Benefits

### Available

Applications for students eligible for subsistence payments under the new Cold War G. I. Bill are now available in the Veterans Administration offices in the Federal Office Building at 1600 19th St.

The new bill, effective June 1, 1966, will provide money for the education of veterans having served at least 181 days on active duty since February 1, 1955.

Single veterans can receive \$100 a month to attend high schools, colleges or vocational trade schools throughout the nation.

Married men with no children are eligible for \$125 a month under the new program, while married men with one or more children can receive \$150 a month to further their educations.

Separation papers (form DD-214) must be presented as proof of service when the form is filed. Married men are required to bring a marriage certificate when the application is filed; those with a child must present the child's birth certificate.

The monthly allotments will be paid directly to the prospective students.

## Tech Scientists, Engineers Display Wares May 22-23

The 34th annual Texas Tech Science and Engineering Show, April 22-23, will display the famous X-15 aircraft along with demonstrations and exhibits of students in all phases of science and engineering.

The show is an annual project of senior students in science and engineering and is designed to inform area high school students, Tech students and Lubbock residents on the functions of Tech's School of Engineering and new developments in the world of science and engineering.

The show, coordinated by Jay Carter, will bring to the campus Brig. Gen. McNabb, commander general and director of the X-15 training program.

Gen. McNabb will speak at 2 p.m. April 22 at a specially constructed platform by the X-15 near the flagpole at the Industrial Engineering building.

Also present for the show will be Charles Feltz, 1940 mechanical engineering graduate of Tech who

is project engineer for North American Aviation, the corporation that built the X-15.

The show will be opened by the landing of helicopter from Reese Air Force Base which will be on display throughout the show.

The demonstrations and exhibits will be on display in Chemistry, Science, Electrical Engineering, Petroleum Engineering, Textile and Industrial Engineering and Civil and Mechanical Engineering buildings and the various research labs of these programs.

The Army and Air Force R.O.T.C. will also participate in the show.

### TECH RODEO

Deadline for turning in entry blanks for the Tech Rodeo, April 28-30, has been set for April 15. Entry blanks are available now and can be obtained from Bob Bradley or Sue Yates or by calling extension 6437.

"The Wonderful Inventions of Leonardo da Vinci" opened Tuesday in the Auditorium Gallery of West Texas Museum.

Twenty-two of the famous artist's inventions, scale models built from his own drawings, will be on display through May 1.

The Museum is open free to the public from 9 a.m.-5 p.m. daily, and 2-5 p.m. Sundays.

**CATHOLIC STUDENT CENTER**

Dr. W. T. Zyla will speak at the Ukrainian Rite of the Catholic Church, Sunday at 7:15 p.m. at the Catholic Student Center.

\*\*\*  
MRC

Men's Residence Council will meet at 5:05 p.m. Thursday in the Housing Office.

# Regulations Set To Govern Use Of New Entry Stations

The following criteria will be in effect the rest of this semester to regulate vehicles coming through the newly installed campus entry stations.

Chief Security Officer Bill Daniels asks that any discrepancies or oversights in the rules be reported to his office so that any necessary changes can be made.

"The stations, as they are set up now, are working on a trial and error basis until permanent stations can be built later this summer," Daniels said. "We've got to work all the bugs out of the system this semester, and we're going to need everyone's cooperation and ideas."

The entry stations will be in operation from 7:15 a.m.-3:15 p.m. Mondays through Fridays, and from 7:15-11:15 a.m. Saturdays.

\*\*\*  
**PERSONS ALLOWED TO ENTER**

- Faculty and staff.
- College service vehicles.
- Business vehicles delivering and servicing college equipment.
- Public transportation vehicles, including commercial buses and taxicabs. These are to be used only for pick up and delivery of passengers to the inner part of the campus and not to be used for chartered buses or for taxicabs passing through.
- Private vehicles will not be allowed to enter the entry stations for the purpose of a short cut through the campus to other parts of the city.
- Visiting school buses and chartered buses will be allowed through the entry stations for loading and unloading only and will not be allowed to park in the inner part of the campus.

- Salesmen from business firms—not to include magazine or book salesmen calling on students—and insurance representatives—not to include those calling on students—will be allowed through the stations.
- Visitors:

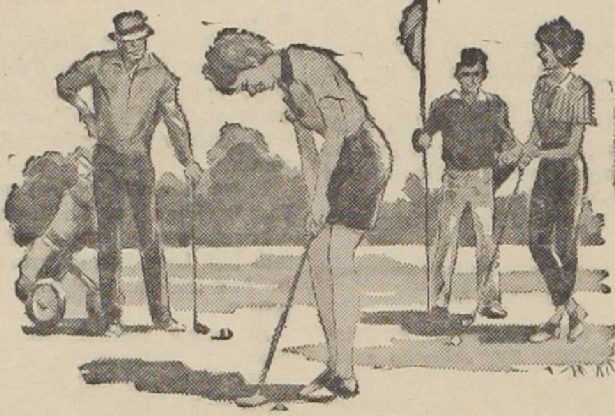
1. To visit the museum, private vehicles will not have to enter the entry stations. School buses with school children visiting the museum will be allowed to unload in front of the museum and then move the bus outside of the entry stations while school children are visiting there.
2. Post office patrons will be given special parking permits until all of the post office boxes are taken by the college or college employees. The special parking permits will be issued for the 10-minute post office zone only.
3. Library visitors will be routed to the parking lots designated for off-campus students.
4. Visitors to the bookstore will be those who are not students.
5. Persons attending conferences or seminars in campus buildings on the inner part of the campus should be sent a special parking permit by the faculty or staff member in charge of such conferences or seminars. When all of the parking places on the inner part of the campus are filled to capacity these persons will be sent to other parking facilities available on the campus.
6. Visitors attending any sports event will be directed to

parking lots adjacent to the football stadium, the track field or the tennis courts. There should be no occasion for persons attending any sports event to enter the campus at any entry station.

7. Guest speakers, lecturers or other invited guests who have been invited to the campus by any administration, faculty or staff will be allowed to enter at any of the entry stations and will be issued a permit validated for one day only.
8. Persons visiting students on the inner part of the campus, with the exception of parents, will be directed to parking lots outside of the entry stations.
9. Parents from outside of Lubbock County will be allowed to enter the entry stations to visit with their sons or daughters on the inner part of the campus and will be issued a visitors permit and directed by the officer at the entry station as to parking space available.
10. Parents living in Lubbock coming to the campus for the purpose of delivering college students to class will let such students off at the entry station.
11. Visitors will not be allowed to enter the entry stations for the purpose of driving through and looking over the campus between the hours of 7:15 a.m.-3:15 p.m. Monday through Friday and 7:15-11:15 a.m. Saturdays.

**STUDENTS ALLOWED TO ENTER ENTRY STATIONS**

- Handicapped students who require the use of a wheel chair or any other handicapped student, will be required to furnish a letter from a licensed M.D. to the Traffic-Security Department to obtain a special parking permit that will allow them to gain entrance at the entry stations.
- No student will be allowed to enter entry stations for the purpose of bringing his car to the inner part of the campus for field trips.
- No student shall enter the inner part of the campus between the hours of 7:15 a.m.-3:15 p.m. Monday through Friday or 7:15-11:15 a.m. Saturdays for the purpose of picking up or delivering projects to any department or building on the campus.
- No special parking permits will be issued for graduate students or undergraduate students for the inner part of the campus for the reason that he or she is working for any department that is located on the inner part of the campus. (Permits already issued this year will still be honored, and certain jobs will require the special permit, Daniels said.)
- No student car will enter the inner part of the campus between the hours of 7:15 a.m.-3:15 p.m. Monday through Friday or 7:15-11:15 a.m. Saturdays for the purpose of delivering merchandise for a private business or doing any kind of work for a private business. Also, no student will be allowed to enter the inner part of the campus during the designated hours in any business vehicle for the purpose of attending classes.



Holt's Sporting Goods NEW ENLARGED golf department is now complete.

Come in and see HOLT'S wide selection of McGregor, Spalding, Wilson, and H&B woods and irons; the outstanding Conally Kanga Par shoe; HOLT'S full stock of Atlantic golf Bags.

HOLT'S "Bargain Barrel" features all irons at \$4.95 and all woods at \$6.95.

**HOLT'S** Sporting Goods Company  
601 COLLEGE of Lubbock, Texas

**ROAD SHOW**

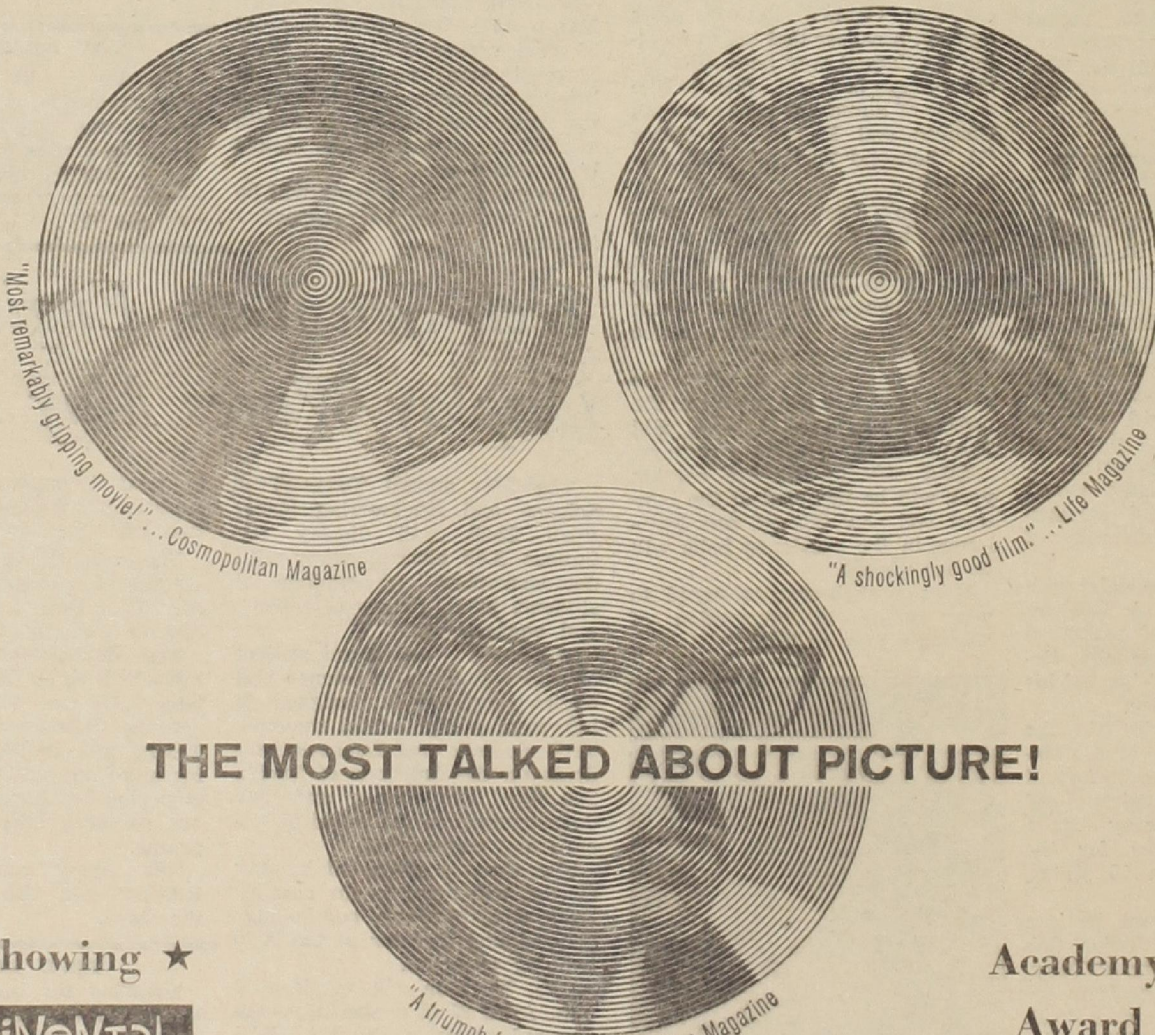
Performances  
7:30 9:30

Limited

## ROD STEIGER THE PAWNBROKER

**ENGAGEMENT**

Adults 1.25  
Students 1.00



"Most remarkably gripping movie!"...Cosmopolitan Magazine

"A shockingly good film."...Life Magazine

**THE MOST TALKED ABOUT PICTURE!**

"A triumph for Rod Steiger"...Time Magazine

★ Now  
Showing ★  
**CONTiNental  
CiNema**  
1805 BROADWAY PO2-9413

Academy  
Award  
Winner!



**Gray's**  
**Service Center**  
3rd and College  
Automotive Service  
Domestic & Foreign Cars  
State Inspection Station  
Corvaair Specialists  
Serving Texas Tech and  
Surrounding Area

# ● Raider Roundup ●

### MONMOUTH DUEL

Kappa Kappa Gamma and Phi Beta Pi will sponsor a "Monmouth Duel," 2 p.m. Saturday on the Drane lawn.

### NACS

The National Collegiate Association for Secretaries will meet today in the BA Building room 324 at 4 p.m.

### HOOTENANNY

West Hall is having an all-school hootenanny April 19 at 8 p.m. Groups who want to sing should call 3688.

### OPTIMATES CLUB

The Optimates Club, Greek and Latin Clubs, will have a banquet April 19 at 6:30 p.m. in the Coronado Lounge of the Union. Tickets can be obtained from Dr. P. G. Christiansen or Mr. Leonid Jirgensons for \$1.00.

### BUSINESS MEETING

The International Trade Society will have a meeting Wednesday at 7:30 p.m. in room 209 of the Union. The creation of a Professional Foreign Service Fraternity will be discussed. Government economic majors are invited.

### AWS

There will be an AWS General Council Meeting Wednesday in the Anniversary Room of the Union at 5 p.m.

### AFROTC

The 820th AFROTC Cadet Wing will have its spring semester Field Day Saturday, 1:30 p.m. behind the swimming pool at Mackenzie Park. Contests among the flights will be held with Angel Flight serving as hostess.

## Mosher Steel Offers Grants To Engineers

Establishment of two annual scholarships by the Mosher Foundation of Houston for Texas Tech students majoring in civil engineering was announced here Thursday by R. Trent Campbell, a 1932 Tech graduate and vice president of Mosher Steel Company.

Campbell said the annual \$500 awards would be called the James H. Murdough Scholarships, in honor of the former head of the Tech Department of Civil Engineering.

Professor Murdough was an original member of the Tech faculty, serving until his retirement in 1962.

Present for the announcement in addition to Professor Murdough and Campbell were Tech Engineering Dean John R. Bradford; Dr. Keith R. Marmion, Head of Civil Engineering; James L. Kindred, a former Tech student and now contracting manager for Mosher Steel in Lubbock; and James Chapman, a 1953 Tech graduate now contracting engineer for Mosher in Lubbock.

Campbell, in announcing that the scholarships would go to Tech undergraduates interested in building construction, said Professor Murdough had made "great contributions" to the 641 students who had studied under him.

Professor Murdough, who holds degrees from the Massachusetts Institute of Technology and the University of Michigan, taught at MIT and Oklahoma State before coming to Tech where he became department head in 1927.

Memberships in professional organizations include the American Society of Civil Engineers, the American Society for Engineering Education and Tau Beta Pi.

He is the author of a textbook, "Elements of Dynamics," and co-author of "Elements of Statics."

TREMENDOUS VALUES

EXCITING SELECTION

Doms



LTD

SURPRISING SAVINGS

MOST-WANTED STYLES



# THIS IS A SALE

## TO MOVE EXCESS STOCKS

Select at Savings — Suits, Slacks, Shoes

### 242 Tropic-weight SUITS

grouped and re-priced to give you a bargain

We believe sales stem from quality and value. We believe these suits have both quality and value because of their fashionable tailoring and correctness of style and color. In the three price groups you'll select dacron/wool, other tropic weight fabrics and a few all wool fabrics in black, brown, olive and blue and the new muted colors that you will wear with confidence. Regularly priced to \$79.50.

\$44<sup>88</sup>

\$54<sup>88</sup>

\$68<sup>88</sup>

# THIS IS A SALE

198 PAIRS

## SHOES

If you're looking for the real deal in shoe styling and pricing, then you'll find it in this group of slip-on and penny loafers in black or brown calfskin or golden scotch grain. The values are so great you'll buy more than one pair!

MAKE YOUR SELECTION EARLY!

\$12<sup>88</sup>

173 PAIRS

## SLACKS

Indispensable are slacks for a change of appearance, and more so when you want to wear them with your best sport coat or jacket. These plain front dress slacks come in brown, black, navy olive and the blue/olive, blue/black colors.

MAKE YOUR SELECTION EARLY!

\$8<sup>88</sup>

IMPORTANT FASHIONS

Use Your Charge Account

OUTSTANDING QUALITY

Doms

2420

Broadway



LTD

Editorial Page

# The Cooling-Off Period..

**D**URING HEATED ARGUMENTS at the national level, a cooling-off period of several days or weeks is almost always suggested and imposed by arbitrators.

And, although it wasn't purposely intended that way, that's what the spring vacation break turned out to be.

True, it has always been intended to allow everyone involved with the campus to sit back, calm quivering nerves, catch up on back work, and make plans for the rest of the semester.

But during this spring break, we looked at some of the past problems plaguing Texas Tech and, specifically, at those that need to be cured quickly.

First on our list was the antique Code of Student Affairs and the equally outmoded decisions made on the basis of that all-encompassing document.

After reading the Code again, we had to look at the calendar to make sure that we are living in the mid-20th century and laying the groundwork for future generations.

We don't feel that 1920 rules and regulations apply to the society of the 1960's, and we wonder how they will be accepted in the 1970's or even the 2000's.

Yes, the spring vacation cooling-off period gave us time to look over the gist of the argument, and our opinions haven't changed. The only question is, "How does the rest of the student body feel about it?"

## LETTERS

### Views Of The Reader

#### Perry Questions Abrupt About Face

Dear Editor,

In the article "Students Object to Philosophy" in the Toreador, April 5, James G. Allen, Dean of Student Life, is quoted as saying "I want you to remember all the considerations involved, for it seems as of late that rules are being held not only to what they mean, but also to what they say."

Pray, how is one to interpret what rules mean except on the basis of what they say? To what omnipotent being does one turn for an interpretation of what rules "mean" in spite of what they "say?"

One of the principles of our society is rule by law. This means that the regulations society expects its members to observe are written down or are in some way codified so that individuals may know what is expected of them, and so that they may not be subjected to the arbitrary whims of the body empowered to enforce the law.

I realize that strict rule of law is impossible, for laws cannot be written to cover every conceivable situation to which law might be applied. Yet we strive to make the stated law explicit enough for the persons abiding by it to do more than guess what it means.

I fail to see what relevance Dean Allen's statement has in any but a totalitarian society.

The Toreador reports that Dean Allen said his statement had reference "to the fact that fraternities have not always specifically followed rules already laid down, such as no unchaperoned women in lodges." This involves a clear infraction of the rule as stated in the Code of Student Affairs and there has been no claim by anyone that the fraternities were operating under a rule which allowed

them to follow the letter while ignoring the spirit. If Dean Allen's statement had reference to the situation which he claimed it did, then it had reference to nothing. The statement and the situation are unrelated.

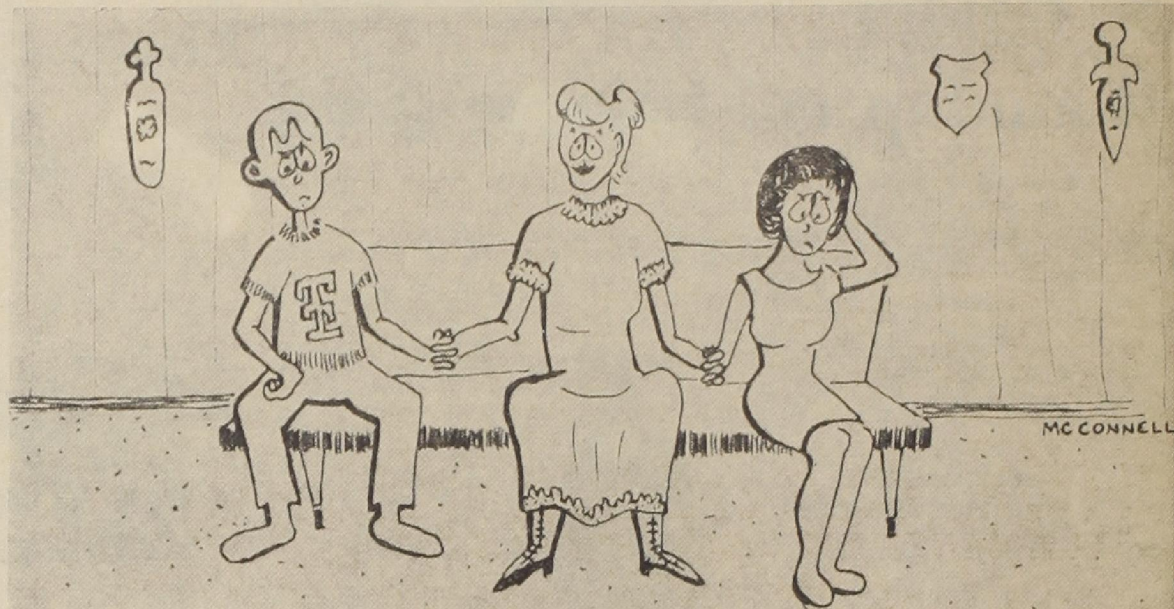
I suggest that the statement was made in reference to the incident which Dean Allen, in the Toreador claimed it was not. This is the Interfraternity Council Court decision that Sigma Alpha Epsilon was not guilty of an infraction of the rule in the Code of Student Affairs which prohibits fraternities from serving alcoholic beverages, on the basis that SAE was not serving the same. (What the court was supposed to do was find SAE guilty because the rule meant that fraternities may not consume alcoholic beverages—right?)

As a fraternity member who went before the Committee of Student Organizations in an attempt to change the lodge use rule, I talked to Dean Allen on numerous occasions concerning the legitimacy, reasonableness and desirability of the rule change. Dean Allen led me and others to believe that he supported the change—until the IFC announced the SAE decision, at which time he did an abrupt about face.

It is obvious to me that the IFC court dared to make an interpretation contrary to the one Dean Allen desired. In his ire, he stabbed IFC in the back on the lodge use proposal, breaking the 4-4 tie in the CSO to defeat the rule change.

He now tries to cover his action with this bit of verbiage. How much longer will Tech students submit to being managed and manipulated in this shameful and insulting manner?—A great deal longer if we, the weak-minded student body, accept such explanations without comment.

Sincerely,  
M. Collier Perry



WATCHING TV AT THE LODGE - 1966

# Home Economics' Research 'Just Scratches Surface'

(EDITOR'S NOTE: The following story is one of a series exploring the types of research being carried on in the various schools at Texas Tech.)

By PAULINE EDWARDS  
Editorial Assistant

Although working under the triple load of not enough space, not enough money and not enough time, the School of Home Economics carries on considerable research each year.

However, Dr. Willa Vaughn Tinsley, dean of home economics, believes that Tech needs much more research and that "we hardly scratch the surface. Research is not increasing as rapidly as it should at Tech," she added.

Dean Tinsley listed three handicaps to research in the School of Home Economics.

Since the School of Home Economics is the smallest school, it only gets a small portion of the state appropriations allotted to Tech for research. This year home economics will get \$16,000 from the \$200,000 state funds allotted to Tech. In addition, the department of food and nutrition receives some outside grants for research and a few faculty members and graduate students sponsor and pay for individual research projects themselves.

However, Dean Tinsley emphasized that many more funds will be necessary to carry on a truly effective research program.

Time is also an important handicap to research because all of the faculty members in home economics are carrying heavy teaching loads and have little time left for research.

In addition, there is a problem of space. The Home Economics Building is too small to provide adequate space for research, Dean Tinsley said.

Among research programs presently underway in the School of Home Economics is one on the food aversions of teenagers and another on consumer purchases in Lubbock.

Typical of the research programs is a profile study presently being conducted in the applied arts department. The purpose of the research is to study the effects of creative performance regarding success factors in college. The subjects for the research are the 325 students enrolled in freshman design 131, and the researchers are four faculty members—Dr. Bill Lockhart, department head; Dr. Clarence Kincaid; Dr. Stanley S. Madeja; and Jack Davis.

The researchers will follow the subjects over a period of years to see which factors have an effect on performance in college. The

program started in September and will last two or three years.

The purpose is to get an overall view of incoming freshmen in design class. Four categories will be under special consideration—abilities and attitudes toward art, areas of general creativity, personality characteristics and the idea of certain motivating factors.

Considerable data will be collected on each student and used and compared in a number of ways. For instance, personal data sheets will be compiled from each subject including the type of high school he graduated from, his academic standing, grade point average, etc.

As a smaller part of the profile study Davis and Dr. Madeja conducted an investigation of the effects of different teaching methods on creative thinking, art attitudes and the aesthetic quality of art products. Of the 300 students, 126 were used in this study.

The effects of two teaching methods were observed. The first was the breadth method or traditional approach which gives a short segmented series of art experiences without relating them in terms of material and technique. The breadth method is a broad general overview.

The second method was the depth study where selected material was taught and studied in depth. The Minnesota test of crea-

tive thinking and several other skill tests were given before and after the program started to see which teaching method was most effective. However, the results have not been compiled yet.

The profile study was used here as an example of the research programs that are being carried on in the School of Home Economics. Some research projects last for only a few months while others, such as the profile study, take two or three years to complete. Some projects are relatively inexpensive, while others require outside grants before they can even be started.

However, regardless of the amount and variety of research now being carried on, "we still do not have enough research in Home Economics and have only begun to scratch the surface," Dean Tinsley reminds.

### TOREADOR PHONES

Editor . . . . . 4251  
News Room . . . 4254  
                                  4255  
Sports . . . . . 4252  
Advertising . . . 6138  
Hours: 1-5 p.m. daily



Editor \_\_\_\_\_ Cecil Green  
Managing Editor \_\_\_\_\_ Mike Ferrell  
Assistant Managing Editor \_\_\_\_\_ David Snyder  
News Editor \_\_\_\_\_ Eugene Smith  
Editorial Assistant \_\_\_\_\_ Pauline Edwards  
Feature Editor \_\_\_\_\_ Mack Sisk  
Fine Arts Editor \_\_\_\_\_ Barbra Worley  
Sports Editor \_\_\_\_\_ Mike Lutz  
Assistant Sports Editor \_\_\_\_\_ George Chaffee  
Copy Editors \_\_\_\_\_ Judy Fowler, John Armistead,  
                                  Brenda Greene, Carmen Keith, Janyth Carpenter  
Head Photographer \_\_\_\_\_ Allyn Harrison  
Advertising Manager \_\_\_\_\_ Bill Shrader

★ ★ ★  
THE DAILY TOREADOR is financed by a student matriculation fee, advertising and subscriptions. Letters to the editor represent the views of their writers and not necessarily those of THE DAILY TOREADOR. Letters must be signed, but may be published without signatures in justifiable instances. The views of THE DAILY TOREADOR are in no way to be construed as necessarily those of the administration.

THE DAILY TOREADOR, official student newspaper of Texas Technological College, Lubbock, Texas, is regularly published daily, Tuesday through Saturday.

# Syracuse University Prof To Conduct Seminar Today



Dr. Michael M. Szwarc, research professor of physical and polymer chemistry at the State College of Forestry at Syracuse University, will conduct a seminar at Tech today.

Dr. Szwarc will discuss "Reactivities of Ions and Ion-Pairs in Aprotic Solvents" at a 5 p.m. meeting in the Chemistry Building.

Born in Poland in 1909, Szwarc received a degree in chemical engineering from Warsaw Polytechnic College, a Ph.D. in organic chemistry from the Hebrew University in Jerusalem, and a Ph.D. and DSc from the University of Manchester in England.

Dr. Szwarc won the Sigma Xi Award for significant research work in methyl radical affinities in 1955. He was appointed by the Royal Society as a visiting profes-

sor to the University of Liverpool during 1963-64.

He was awarded the title of distinguished professor of chemistry by the State University of New York in 1964, and was elected a Fellow of the Royal Society in London this year.

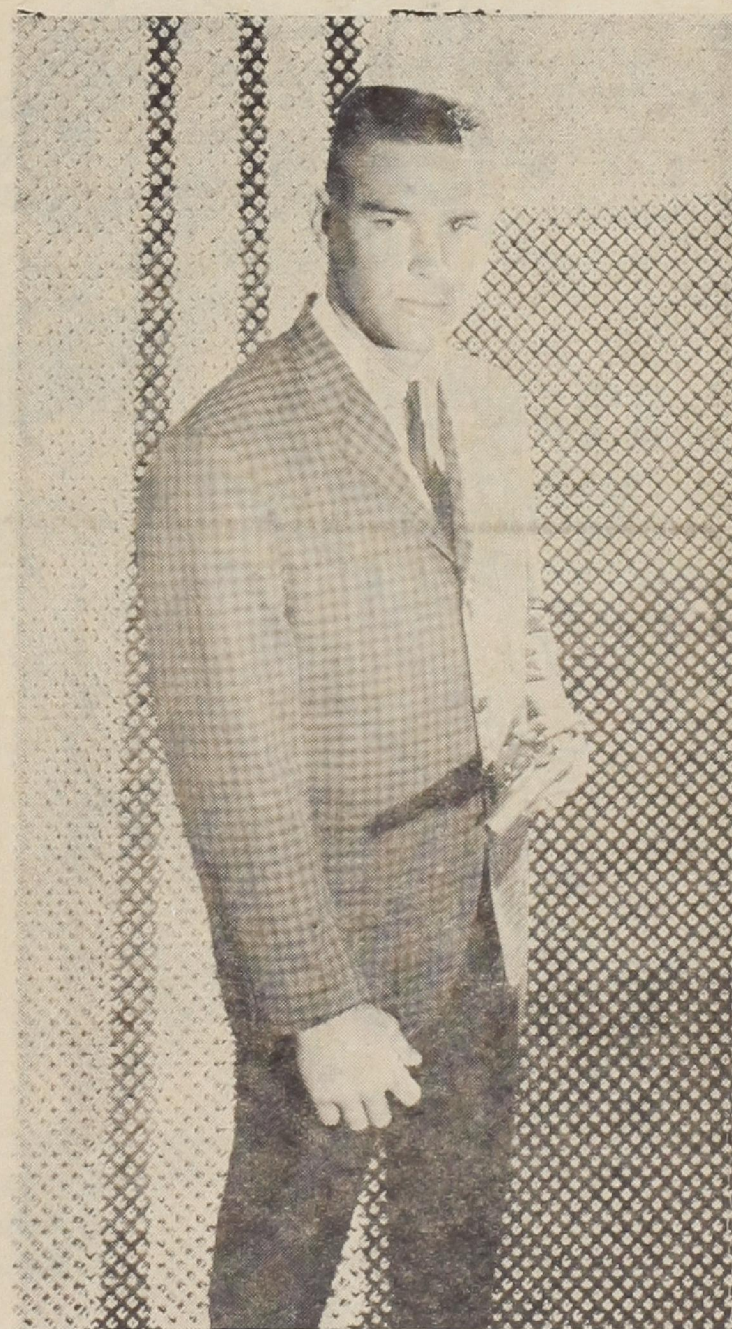
Dr. Szwarc's work during the

past several years has dealt with studies of reactivities of free radicals in the gas phase and in solution, studies of cage reactions, photochemistry, anionic polymerization, studies of ions and ion-pairs in aprotic solvents, electron transfer reactions in aprotic solvent and chemistry of radical-ions.

**SEMINAR SCHEDULED**—Freshman Kay Hayden of Midland and senior marketing major Frank Eikenburg of Dallas check plans for Texas Tech's Marketing Seminar Day April 19 in the Tech Union. Miss Hayden, daughter of Mr. and Mrs. L. R. Hayden of (3308 Fannin) Midland, has been named official hostess for the event which is expected to attract more than 300 persons. Eikenburg, son of Mr. and Mrs. Frank Eikenburg of (7109 Westlake) Dallas, is program and publicity chairman for the sponsoring chapter of the American Marketing Association. (Tech Photo)

**WAR ON POVERTY CRITICS**  
WASHINGTON (AP) — Representatives of the poor of the nation's three largest cities criticized today the handling of the "war on poverty."  
Leaders of the poor of the burned out Watts section of Los Angeles, Chicago's West Side and New York's Harlem asserted it is time to stop making surveys and start spending money.

## TAKE A HELPFUL HINT FROM TOM AND BE FASHION-RIGHT FOR SPRING



Tom Wilson models a handsome multi-colored check sport coat with true traditional styling. The trim natural shoulders and tapered body present the All-American look. The slacks are of dacron and wool in a perfect summer weight hopsack.

*All brides should start with the best...*

*many of them do!*

From the time she opens the Anderson box and sees her diamond, she will know that whatever the size, it represents Anderson's finer quality. Her joy will be boundless, for an Anderson diamond has a magic all its own. It whispers, it sings, it dances with fiery splendor that mirrors the fathomless depth of your love.

We take exceptional pride in the quality of Anderson diamonds and the fine craftsmanship of our mountings. That's why Anderson's name on the box means so much

more. It's an assurance of quality and value. Has been for over 55 years!

What about price? Let us know your range . . . we have the diamond that fits . . . from \$50.

**Anderson Bros.**  
Lubbock's Oldest and Finest  
**jewelers**  
13th AND J DOWNTOWN • MONTEREY CENTER

**BROWN'S**  
Varsity Shop

Corner College Ave. at Broadway

30-90 DAY CHARGE OR TWELVE MONTH BUDGET

# Engineering Lectures Begin Today

Stanford University Electrical Engineering professor Gerald L. Pearson will speak at Texas Tech today at the Engineering Lecture Series.

Dr. Pearson, also associated with the Solid-State Electronics Laboratory at Stanford, will speak at 4 p.m. in the Architecture Auditorium. His talk will be open to the public.

Dr. Pearson will conduct a semi-

nar on conversion of solar to electrical energy by means of photovoltaic cells and the effects of composition and uniaxial stress on microwave oscillations in certain alloys.

After receiving his bachelors degree from Willamette University in 1926, and his MA from Stanford in 1929, he joined Bell Telephone Laboratories as a research physicist. Dr. Pearson remained at Bell

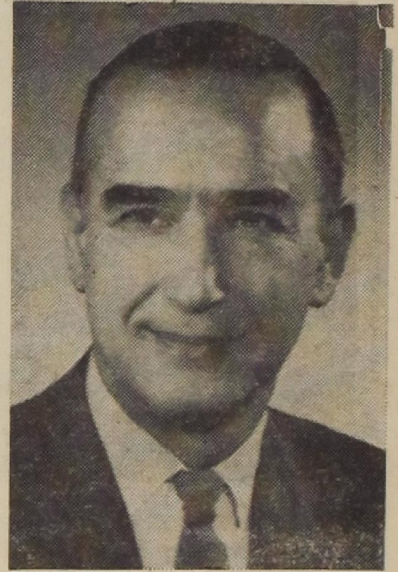
for 31 years, retiring in 1960 to join the faculty at Stanford. He accumulated 32 patents upon such semiconductor devices as thermistors, silicon alloy diodes, silicon diffused power rectifiers, the backward diode, drift transistors, the solar battery and special tunnel diode structures. His writings have been widely published in scientific journals.

Among Dr. Pearson's honors are

the honorary ScD by Willamette, and the John Scott Award by the City of Philadelphia, both in 1956; directorship of a group specializing in the applied physics of solids from 1957-1960; and the John Price Wetherill Medal from The Franklin Technical Institute, and Gold Plate Award from the American Academy of Achievement, both in 1963.

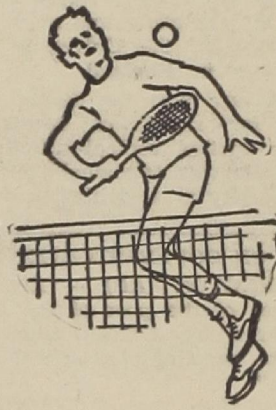
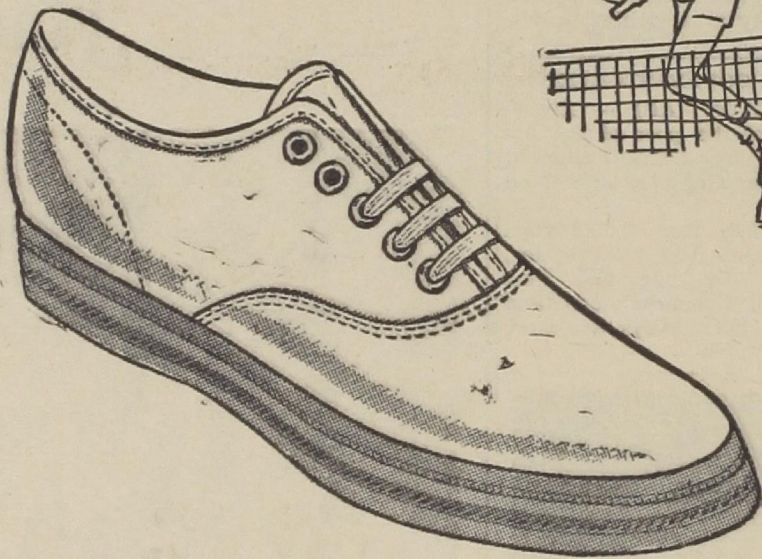
He is a member of the American Physical Society, a Fellow of the Institute of Electrical and Electronics Engineers, a member of the New York Academy of Sciences, of the Solar Energy Society and Sigma Xi. He is a consultant to Varian Associates, TRW Space Technological Laboratories, Douglas Aircraft and Electro-Nuclear Laboratories.

At the Solid-State Electronics Laboratory, Dr. Pearson directs graduate students in investigations relating to the diffusion of impurities in compound semiconductors and other solid-state electronics research projects.



DR. GERALD L. PEARSON

**PENNEY'S**  
ALWAYS FIRST QUALITY



LAST 2 DAYS!

our own  
**J&P**  
casuals

**REDUCED!**

NOW **2** FOR **\$5**

**For Women . . .**

A favorite with all the girls . . . the classic, cut-low tennis shoe in rugged cotton army duck! Correct balance arch supports, cushioned insoles, and bouncy buff crepe design rubber outsoles! White, black, chino, red, and blue!

NOW **2** FOR **\$7**

**For Men . . .**

What a way to go: in light-weight, comfortable sneakers that are right for just about any outing. Cotton duck uppers are air cooled and Sanitized® for longer, fresher wear. Cushion insoles have special arch support. Crepe rubber outsoles.

DOWNTOWN 1102 BROADWAY  
MON., TUES., WED., FRI. . . . 9:00 to 5:30  
THURS. 9:00 to 9:00 SAT. 9:00 to 6:00

MONTEREY CENTER  
MON. THROUGH SAT. . . . . 9:30 to 9:00  
MONTEREY Store OPEN SIX Nites a Week

**VIET NAM**

SAIGON, South Viet Nam (AP)—A casualty count showed Thursday the inhibiting effects of political agitation on the Vietnamese war effort. For the first time in a seven-day period, combat deaths in the U.S. armed forces exceeded those of their Vietnamese allies.

Jean Neel's Traditional Shop . . . 1105 College

**BARGAINS BY THE ARMFUL**

*After Easter*

**SALE**

**FOUR TABLES FULL BLOUSES**

Select from an assortment of Floral Prints, Tucks, Peter Pan Round Collars, Traditional 1-Style Button-Down, Long Sleeve, Roll Sleeve, Sleeveless, Stripes, and Voile.

**\$5.50 to \$15.00**  
Now  
**\$3.66 to \$9.99**

**TIMELY PRICE REDUCTIONS**

COATS SUITS  
DRESSES

**1/3 off**

JEAN NEEL'S

1105 College



All Sales Final!

A Distinctive Store for Women

# Coed Wins Award For Study In Spain

Janyth Ann Carpenter, a sophomore Spanish major, won an Institute of European Studies Scholarship for study next school year in Madrid.

The award, valued at \$1,500, is one of 10 announced yesterday by the Institute's international administration in Chicago. Two scholarships are being given for study in each of five European academic centers—in Freiburg, West Germany; Madrid; Nantes and Paris, France, and Vienna.

"I'm very excited about the scholarship," said Janyth. "Since I first became interested in Spanish, I have dreamed of going to Spain to study. Through the scholarship, that dream is coming true."

Janyth, daughter of Mrs. C. M. Carpenter of 402 E. Texas, Sweetwater, placed among the top 1 per cent of high school Spanish students in a national test sponsored in 1963 by the American Association of Teachers of Spanish and Portuguese. She has done summer study in Spanish at the National University of Mexico, and has a 3.83 grade average.

The Institute's Madrid center, for which Janyth will leave early in autumn, is on the campus of the University of Madrid and is sponsored by the University's faculty of political science. The Institute expects to enroll about

40 U.S. students in the coming year.

Liberal arts and social-science courses are conducted in Spanish at the center by Spanish university professors. Students also receive intensive Spanish language training, and those who are qualified may take specialized courses within the university itself.

Janyth and other Institute students will live in supervised private European homes or in European student dormitories. During normal university vacation periods, they will go on field trips under the guidance of Institute lecturers.

Janyth will return to Texas Tech to begin her senior year after completing her junior year abroad.

## CAMPUS ART CONTEST

The entries in the Campus Art Contest, sponsored by the Fine Arts Committee of the Tech Union, will be judged Saturday. The contest was opened to all graduate and undergraduate art majors and non-art majors. Prizes will include awards of \$25, \$15, and \$10 in each of the categories.

Pictures of first and second place prize winners along with other winning exhibits, will be sent to various colleges in Region XII as part of the Region's Conference Art Exhibit.

James Pinson of James Pinson Interiors, Dean Pearce, an architect, and Mrs. R. A. Pollard of the art department of Lubbock Christian College will judge the entries.

Winners will be announced at an open house in the Tech Union, April 17 from 2:30-3:30 p.m. Entries will be on exhibit.

# Choir Gives Concert

The Texas Tech Choir, conducted by Gene Kenney, will perform in concert at 8:15 tonight in the Tech Union Ballroom.

Featured works on the program will be the motet *Jesu Meine Freude* by J. S. Bach and the *Liebeslieder Walzer*, Op. 52 by Brahms. The program will also include works of other periods and styles of choral music.

## Special Education

The Special Education Department of Tech is looking for students interested in teaching mentally retarded children upon graduation.

Qualifications are:

1. Senior as of September, 1966
2. Elementary Education Program
3. Interest in teaching mentally retarded children
4. Desire to work in Special Education upon graduation

Four senior-level traineeships are available through the auspices of the U.S. Office of Education and provide each recipient a grant in the amount of \$1,600 plus tuition and fees for the academic year 1966-67.

Deadline for submitting applications for these traineeships is May 1, 1966.

Application forms are available from Dr. Bruce D. Mattson, Chairman of the Special Education Section of the Department of Education, in Room 253A in the Administration Building.

Sunday the department of music will present the Texas Tech Bands—the Varsity Band, Section 1, conducted by Dean Killion, the Varsity Band, Section 2, conducted by Anthony Brittin, and the Concert Band, conducted by Killion—in concert at 3 p.m. in the Municipal Auditorium. This combined concert is presented annually in the spring by the Tech Band.

Soloists with the concert band will be a cornet quartet, composed of Richard Grady, Albert Moore, Tom Bennett, and Jean Young. They will be heard in Cornet Carillon for cornet quartet and band by Ronald Binge. This selection will be conducted by Richard Tonney, trumpet teacher at Tech.

The clarinet section of the Concert Band will present the *Finale* from the *Sonatina* by Malcolm

Arnold. This has been transcribed from the original piano score and will be conducted by Keith McCarty, clarinet teacher at Tech.

There is no admission charge and the public is invited to attend both events.

Paul Ellsworth, conductor of the Texas Tech Symphony Orchestra, has named the students who will appear as soloists with the orchestra in its annual Commencement Concert, May 10, at 8:15 p.m. in the Tech Union Ballroom.

They are Richard Grady, trumpet, Billy Watt, flute, Robert Ashby, cello, Suzie Wilson, soprano, and Betty Lowder, mezzo-soprano. They were selected by audition. To be eligible to appear as a soloist, a student must be either a senior or a graduate student.

*Sigma Kappa Sorority Presents*  
"The Best Fraternity Pledge"

**MR. PLEDGE DANCE**

**TONIGHT — APRIL 15**

**8 'til 11**

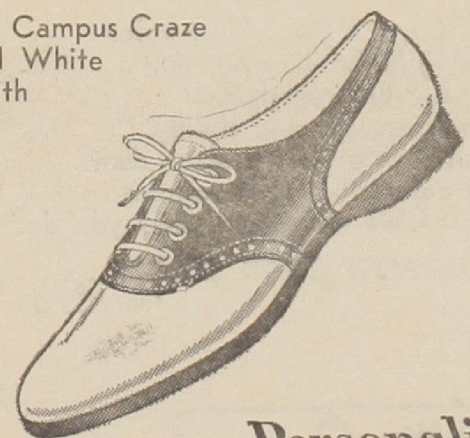
**Rimrock City**

**"MY ROOMMATE CAN BORROW ANYTHING BUT!"**

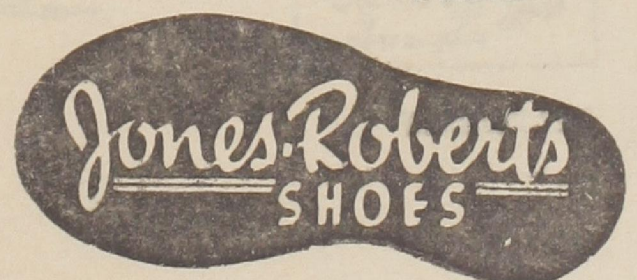
**MY NEW**

**RAH RAHS**

The latest Campus Craze  
Black and White  
Saddle with  
Cushiony  
Crepe  
Sole  
\$8.95



**Personality Shoes**



1205 Broadway

Town and Country

34th at Indiana



JANYTH CARPENTER

SW 5-5271

4105 19th St.

TOM NOBLES



**Country Inn**

MOTEL & RESTAURANT  
LUBBOCK'S 24-HOUR HOST  
FEARLESSLY FORGING AHEAD



4106-19th  
OPEN - 8 'til 12:00

FRIDAY, APRIL 15 **THE CINDERS**

SATURDAY, APRIL 16 **THE TIARAS**

**Students Only**

\$1.50/Couple  
\$1.00/Person

**No Drinking**

# Diamondmen Suffer Losses Over Holidays

Scoring 40 runs over the holidays the Tech Red Raiders could manage only one victory in four games against the TCU Horned Frogs and the SMU Mustangs.

The Raiders started off last Friday by losing in the bottom of the eleventh to the Frogs 4-3. The Raiders tied the game in the ninth inning on singles by Don Champion and Eldon Frost. On the single by Frost there was an error by TCU's left fielder that let Champion and Frost both score.

In the eleventh the Frog's Richard Hooper opened with a single and was scored from first on a double by Pat Peebles.

On Saturday the Frogs won again in the eleventh. This time Jan Olson singled and scored on a single

by Hooper. In this game the Raiders had to score three runs in the ninth to tie the game in regulation play. The final score read TCU 5-Tech 4.

For the TCU series Jim Miller and Champion were the big guns for the Raiders as each got three hits in nine times at bat. Eddie Driggers was big man for the Frogs as he had five hits in nine trips to the plate and he had one of the three doubles hit in the series.

In Dallas the Raiders took on the Mustangs in a double header Tuesday.

In the first game it was the Mustangs who had to come from behind to win. Leading 7-2 the Raiders fell into a last inning slump

as the Mustangs picked up six runs to overcome the Raiders. Mike Gillett hit a three run triple that pushed the winning run across the plate.

The second game started off like most other Tech games. The Raiders opened up with a fast run in the first and was followed by a quick run by the Ponies in their half of the first. From this point the Raiders completely clobbered and ran the boys from Dallas out of the ball park.

In the second inning the Raiders picked up five runs. In the third seven more were added. Tech picked up four more in the fourth, six in the fifth, one in the sixth and two in the seventh. When the final tally was taken it showed


26 runs for Tech and 5 for SMU. Tech stole nine bases and seven of them came in the third inning. John McIntyre was another big man as he had three hits in five including three doubles, two triples and two home runs. Don Champion was the big man for the Raiders as he had five hits in five

trips to the plate. Champion had 10 runs-batted-in for his five hits. John McIntyre was another big man as he had three hits in five including three doubles, two triples and two home runs. Don Champion was the big man for the Raiders as he had five hits in five

## Tech Linkmen Tie Hogs

Steve LeCrone and Jerry Hrnciar won their singles and doubles matches at Lubbock Country Club Thursday to lead the Texas Tech golfers to a 3-3 split with the University of Arkansas.


LeCrone defeated the Hogs' No. 1 player, sophomore David McCauley, 2-up and Hrnciar blasted Mike Hastings by 5 and 4. The Tech duo then teamed up to trounce McCauley and Hastings, 4 and 3 in doubles competition.



WHITE, WHITE, WHITE  
IS THE COLOR  
OF CASUAL SLACKS . . . . .

by far, it's the coolest color going in the very popular h.i.s. Press-free slacks. The lean, tapered styling comes in a terrific assortment of colors that never crinkle or crease no matter what you do.

*h.i.s. POST GRAD SLACKS . . . . .*  
from \$7.00



2422 BROADWAY

**Tech Chapter**  
of  
*American Marketing Association*

Wishes to invite you to it's yearly  
Seminar

**Marketing Innovations — Are You In Step?**

April 19, 1966 9:30-2 P.M.  
Union Ballroom

Speakers:

- Mr. Floyd Schnieder  
Vice President  
Lone Star Brewing Co.
- Mr. L. O. Luther  
Branch Manager  
National Cash Register Co.
- Mr. Terry Condrey  
Division Sales Manager  
Investors Diversified Service


BUFFET LUNCHEON 12-1:00 PRICE \$1.50

**BE THE FIRST...**

TO GET ONE OF THE NEW  
COMING AND GOING SWEATSHIRTS.

IT HAS A RED RAIDER RIDING TOWARDS  
YOU ON THE FRONT; AND HE IS RIDING  
AWAY ON THE BACK.

The Coming and Going  
Sweatshirts are IN.



**Book & Stationery Center**

1103 College Ave. PO5-5775