

# War has been declared!



Peggy Carroll, regardless of how it looks, is not making ready to strike Frances Loftin with that machete. She has just finished off another weed. These two declared a war on the weeds, Tuesday.

Two energetic, civic-minded ladies, Frances Loftin and Peggy Carroll started out late Monday evening armed one with a butcher knife and the other with a machete. If weeds could be animated, surely as they watched these two approaching they would have up-rooted themselves and headed for parts unknown, before they fell to an unmerciful swing of the blade. The two ladies worked alone into the evening hours wielding their weapons as they waged war upon the botanical pests which had invaded and nearly secured Spearman's downtown sidewalks.

They were joined Tuesday morning by other forces, in the two forms of young Larry Hagerman and Ross Bulls who were equipped with heavier artillery, two garden hoses. As the battle raged on there may have been some doubt as to who would be the victor, but the human forces were soon joined by more manpower from Baker & Taylor who brought in more sophisticated warfare equipment such as sprayers to launch a deadly chemical campaign against the wild plant life. The latest progress of the battle was decidedly in favor of the human forces when city employees brought in the big guns and started mopping-up procedures in the lesser accessible alleys where the plant life had rooted in with its strongest resistance. In the latest check on the battle front, Main Streets sidewalks had been reclaimed and surrounding sidewalks were being fought for with the plant life not fairing so well, and the alleys were being completely swept clean of alien plant life.

Casualties on the human side were held to a minimum of blisters, cuts, broken fingernails, and sore arthritic joints, while the plant life can hope for nothing better than complete obliteration!

## Markets

Wheat	\$2.02
Milo	\$2.90
Corn	\$1.89

## Hospital News

Patients in the Hansford Hospital are Chelly Rigdon, Penny Crooks, Lisa Carlisle and daughter, Clydene Boden, Mary Hutton, Joe Cummings, Wanda Jones, Connie Garcia and Deanna Beavers.

Dismissed were Gordon Parrish, Wanda Lyon, James Haskins, John Hutton, Mary Howard, Carolyn Spears, A. N. Weant, Kay McFarlin. James Riley was transferred to Amarillo.

## Rain Helps

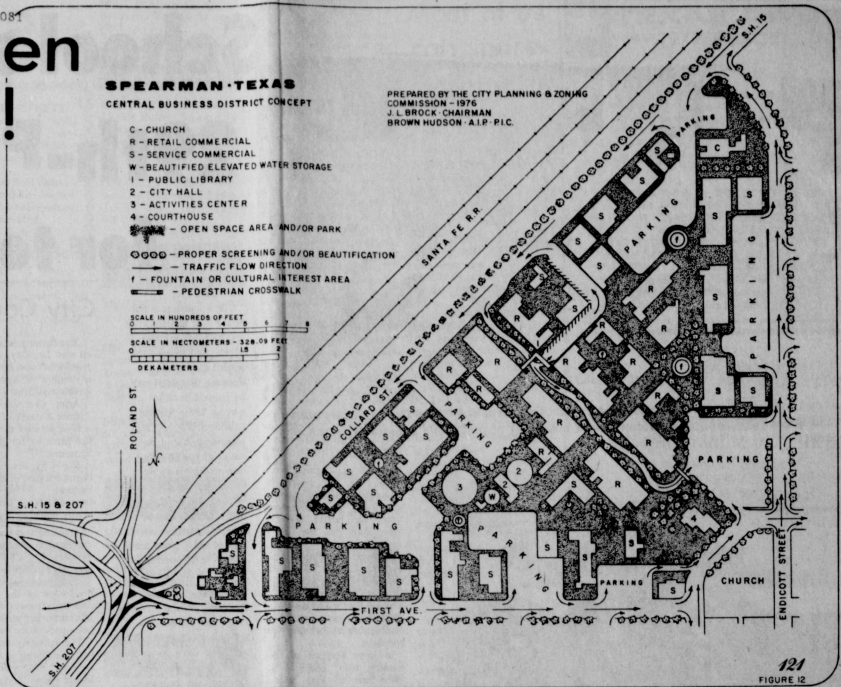
Area Farmers and Home-owners

The city of Spearman received 1.90 on the Reporter gauge, 1.55 in the official report, and up to 3.50 in the Grover area in a thunderstorm that fell early Tuesday morning. Damp, cloudy weather has prevailed in the area since the rain fell, with more in prospect. The heat and humidity have been TERRIFIC!

## SPEARMAN, TEXAS CENTRAL BUSINESS DISTRICT CONCEPT

- C - CHURCH
- R - RETAIL COMMERCIAL
- S - SERVICE COMMERCIAL
- W - BEAUTIFIED ELEVATED WATER STORAGE
- 1 - PUBLIC LIBRARY
- 2 - CITY HALL
- 3 - ACTIVITIES CENTER
- 4 - COURTHOUSE
- - OPEN SPACE AREA AND/OR PARK
- - PROPER SCREENING AND/OR BEAUTIFICATION
- - TRAFFIC FLOW DIRECTION
- F - FOUNTAIN OR CULTURAL INTEREST AREA
- - PEDESTRIAN CROSSWALK

SCALE IN HUNDREDS OF FEET  
SCALE IN METERS - 328.09 FEET  
DEKAMETERS



PREPARED BY THE CITY PLANNING & ZONING COMMISSION - 1976  
J. L. BROCK CHAIRMAN  
BROWN HUDSON A.P. P.I.C.

The Chamber dinner was well attended last week in Spearman, as Brown Hudson brought the program on projected growth, and civic improvement for Spearman. Chairman of the civic improvement committee J. L. Brock and several members of the local Chamber were on hand to enjoy the discussion by Mr. Hudson. The projected growth includes trees, one-way streets, clean-up campaign and overall beautification of the downtown Spearman area.

# The Spearman Reporter

VOLUME 68, NO. 37

THE SPEARMAN REPORTER, SPEARMAN, TEXAS 79081

THURSDAY, JULY 28, 1977

## Hospital Board cuts tax rate

In the recent Hospital Board meeting a tax cut proposal and regular business were discussed. The discussion on regular business included the replacement of damaged roof through insurance, getting quotes on the cost of replacing the sliding vinyl doors on the patient room closets, the need to check into the cost of a new incinerator, and a study of the feasibility of repainting some of the patient rooms.

The board looked at the financial condition of the hospital and worked up next year's budget. The Hospital Board Financial Committee turned in a recommendation that the tax rate be cut from 50 cents on the hundred, to 35 cents on the hundred, which would be a 30% decrease in the tax rate.

The Hospital Board voted unanimously in favor of adopting the tax cut, feeling that such action was justified by a sounder hospital financial condition, and a desire to lessen the tax burden on Hansford County citizens. Hospital officials feel that this tax cut will not endanger the hospital's financial state for the coming year, while it will make a sizable and welcome difference in the individual citizen's tax bill.

## Paper to run Children's Feature

This newspaper plans to publish pictures of local children (rural included) for a human interest story. Pictures will be taken in full, natural color FREE With No Obligation By Wolz Studio.

Help us make this a good feature - take your children to the B & B Industries Friendship Room, July 29, 1977. Appointments can be made by calling Sandy Bowar (Twinkle Toes) at the Spearman Reporter - 659-3434 or at her home, 659-3038 for an appointment so that enough photographers can be on hand if the demand warrants extra photographers.

A Professional Child's photographer from Wolz Studio will take the pictures in COLOR. Please dress your children to take Full

## Corn Growers Referendum Friday

The local ASCS office reminds farmers that acreage reports are due by August 1. Farmers need to report acreage of wheat, corn, barley, and grain sorghum by this date. Farmers waiting until the last day may get to wait in line.

The Spearman Chamber of Commerce is sponsoring the Schaffer Shows Carnival Wednesday through Saturday this week with action at the carnival to begin each night at 7 p.m.

## Reports Due August 1

The local ASCS office reminds farmers that acreage reports are due by August 1. Farmers need to report acreage of wheat, corn, barley, and grain sorghum by this date. Farmers waiting until the last day may get to wait in line.

## Teen-age Dancers To Graduate

The Spearman Spinners Square Dance Club will host the teen-age graduation class at 8:00 p.m., Thursday, July 28, in the County Barn. Paul Lopez, who is the instructor, will be calling the dance. All square dancers are invited and the public is invited to come and watch. Come one, come all!

## Car-Train Fatality

A car-train crash in Leadville, Colorado, took the life of Myles Nuttall, son-in-law of Grover editor Fran Maudlin. Sunday night at 10:30 that Texas time, Myles and his wife, Merilee, were returning from a concert near Leadville, with Merilee in a different car in front of Myles. Merilee passed over the tracks and looked back to witness the accident. Their daughter, Megan, was with a baby sitter, and neither Myles or Megan were involved in the crash.

Memorial services will be held in Leadville, Colorado, this morning (Thursday) at 10:30 a.m. Myles was 29 years old. He is survived by his wife, Merilee, and one daughter, Megan, 5 years old; his mother and father of Denver, Colorado; one sister. Myles was the son-in-law of Mr. and Mrs. W. L. Maudlin, who lives east of Grover.

## AT THSCA MEETINGS

# Spearman, Wheeler State Football Favorites

By GARET VON NETZER  
Globe-News Sports Editor

Dallas - The Texas Panhandle hasn't brought home a state eleven-man football championship since Dumas succeeded in 1962, but if sports writers from around the state are right, that drought will be over this fall. Using district favorites selected by loop coaches, sports writers yesterday here predicted Spearman and Wheeler will win the 1977 Class AA and B state football titles this fall, respectively. The projected finishes came during opening-day activities of the Texas High School Coaches Assn.'s 45th Coaching School which attracted 6,898 coaches by day's end, endangering the record of 7,021 which is expected to be broken by Thursday. Spearman which hasn't

lost a District 1-AA game during the last four football seasons, was projected into the finals against 1976 titlist Rockdale, while Wheeler is predicted a winner over 1976 state runner-up Ben Bolt. Rockdale beat Childress, 23-6, in last year's Class AA state championship game. The Bobcats nudged Spearman, 16-14, in their bi-district tussle, and while both bi-district foes are projected loop champions again, Spearman is the projected winner this fall. Some of Spearman's District 1-AA opposing coaches agree the Lynx will be formidable. "They haven't lost a district game in four years, and it's going to be real tough for anyone to beat them the next two years," said Dalhart

assistant coach Earl Smith. "They've got so much back that I can't see any AA club around besting them." Spearman is a projected bi-district winner over Childress, then victorious against Idalou, Kermit in the quarter-finals followed by Bowie in the semifinals. Idalou is a projected bi-district winner over Dimmit. Wheeler, reclassified last year from Class A, is predicted to beat Sundown for the bi-district title, then Borden County and Italy en route to the finals. The other projected state champions are Seagraves in Class A, Mount Pleasant in Class AAA and Bryan in Class AAAA.

Bryan head football coach Merrill Green was surprised by his team's projection. "At least you let me finish this meal before telling me," he said. "Now I probably won't be able to enjoy another meal until it's settled one way or the other." The coaches' choices for district winners included Amarillo High and Lubbock Moneters the son-in-law of 4-AAAA respectively, and Monterey is projected over the Sandies in their bi-district meeting as was the case a year ago. Sanford-Fritch, Wellington, Farwell and New Deal are predicted Class A district winners with Farwell topping S-P in the regional game. Perryton is the predicted 1-AA winner and is projected to defeat Ardmore, then Brownwood in the playoffs before falling, as a year ago, in the semifinals.



Larry Hagerman and Ross Bulls joined Frances Loftin and Peggy Carroll in an effort to rid Spearman's downtown sidewalks of botanical pests, more commonly known as weeds.



Spearman's first attempt at getting industry was made in the 50's when a group of local business men flew to the Mooney aircraft center to try and persuade them to move to Spearman. This Thursday a group will go to Aust in to attend a seminar on "getting industry in your community!" Pictured above, left to right, editor Miller, Pilot Chalmers Porter, Chip Martin and E. J. Copeland.

# School starts Aug. 29th - Pay increase for teachers

**BULLETIN:**

The Spearman school board met in session at the high school Tuesday, July 26, night, and revised the school calendar. The opening of school will be moved back to August 29th, instead of August 22nd. This was necessitated because of the Legislature striking five days off of the regular school year for 1977-78.

The budget was reviewed, and the board agreed that "good teachers" in the Spearman system, will receive "good pay." This will be done, if other cuts in the budget become necessary. The board reviewed the new state school laws, and indicated that the pay increase for teachers in Spearman will be 8.5% approximately.

The board is now looking for a Distributive Education Coordinator, and think possibly that this job will be fulfilled by one of the local teachers.

Special Ed. teacher Wally Price resigned to move to Bovina, Texas, where he will serve as high school principal. Parents are reminded once again, that school will start on August 29th, instead of August 22nd.

**ART MUSEUM**  
The Metropolitan Museum of Art was opened in a rented house in New York City on Feb. 20, 1872.

## City Council Holds Regular Session Action Due On Health Bill

The Spearman City Council met Tuesday, July 26, in regular session during which a number of agenda items were considered and passed.

After due consideration, Ronnie Antalek of Spearman was appointed to the job of fire marshal for the City of Spearman. The city also moved to become a part of the NIMLO Federal Unemployment Compensation Tax suit, a highly complex legal matter concerning the status of the city and its liability, as of January 1, 1978, for unemployment compensation tax. There was also informal discussion of the utilization and expansion program for the municipal airport as had been previously proposed. The meeting was opened with the Pledge of Allegiance led by Brad Beedy and Mayor Ralph Blodgett giving the invocation.

**STATE 4-H TRAP, SKEET SHOOT TO BE HELD**—Some 100 4-H members from throughout Texas are expected to participate in the second annual State 4-H Trap and Skeet Shoot, Aug. 5-6, at the Winchester Public Shooting Center at Fort Worth. The shoot will feature a junior and a senior division, and 4-H'ers may enter either trap or skeet shooting or both. Practice shooting and registration will be on Aug. 5, with the shoot beginning at 9 a.m. the next day, says a fisheries specialist with the Texas Agricultural Extension Service.

Be sure and watch for the opening ad of J. G.'s store in the Sunday paper. This is one of Spearman's newest and finest. Our congratulations to Glenda Guthrie and Judy Nelson...

Senator Lloyd Bentsen said Monday he is hopeful that the Senate will take action soon, possible before the August recess, on legislation he is pushing to make medical care available to elderly and disabled residents in many of the 23 Texas counties that have no medical doctors. At Bentsen's urging, Senator Herman Talmadge (D-G.), Chairman of the Senate Finance Subcommittee on Health, has called hearings on the legislation for this Thursday. The proposal could be reported to the full Senate as early as the latter part of next week.

"Many rural areas in Texas have been unable to attract medical doctors. For example, when someone in Olton, Texas -- a South Plains town of 2,000 -- gets sick or is injured, he has to either drive 30 miles to Littlefield or 23 miles to Plainview for medical care. This is a special hardship on the elderly and disabled," Bentsen said. "The fact is that as of the last count, on December 31, 1973, there were 23 Texas counties that had no medical doctors. We lead the country in the number of counties without physicians."

The legislation Bentsen is backing provides that in rural areas where no medical doctors are available, Medicare can reimburse health clinics for service provided by either physician assistants or nurse practitioners. Under present law such Medicare payments can be made only to physicians. Bentsen, a member of the Health Subcommittee, introduced the House version of the health care legislation Monday in a parliamentary maneuver. It was cosponsored by Senators Talmadge and Robert Dole (R-Ka.) to facilitate the coming hearings, which will include both House and Senate versions of the legislation. "I am hopeful the Senate will take action quickly on this legislation. The present Medicare reimbursement policy make it difficult -- and in some cases impossible -- for the elderly and disabled residents of many rural areas to receive and Medicare benefits at all," Bentsen said. "The issue in these areas is not the quality of health care, but the very existence of it," Senator Bentsen said.

**GREENHOUSE GROWERS CONFAB**—Greenhouse vegetable growers attending a recent conference at Texas A&M University heard about Small Business Administration (SBA) loans for financing their operations and about the proper construction of greenhouses. SBA can provide up to a 90 percent loan when it works with banks and other lending agencies. Greenhouses should be located in a north-south direction for better sunlight and air circulation. During the summer, air should be changed once every minute by fans.

**FARM SAFETY WEEK**—National Farm Safety Week is July 25-31, with the theme, "Safety Is a Good Investment." The theme emphasizes that, in addition to saving lives and preventing injuries, small investment in accident prevention may prevent larger insurance and medical costs, equipment damage, and associated production loss expenses involving lack of labor and equipment or time delays resulting from accidents, says a safety engineer with the Texas Agricultural Extension Service.

## Health of Local Population

How often do Hansford County residents have to take time out because of illness or injury? What is the record, in the regard, among people in other parts of the country? Surveys to determine the degree of such disability are made annually for every region of the United States by the Health Resources

Administration, a division of the Department of Health, Education and Welfare. The extent to which residents of a community are able to pursue their usual daily activities, without interruptions caused by illness, is taken as an indicator of their general health. A measurement called a "disability days index" is used for the survey. It takes into account the number of days of restricted activity when a person is unable to go to work or to school, must stay at home or in a hospital, or otherwise cut down on his normal routine. Not included in the tabulation are those with long-term, chronic illnesses.

On the basis of data recent-

# END OF MONTH Furniture Sale

## 30% TO 40% OFF

**SOFAS - SLEEPERS - CHAIRS - RECLINERS - LAMPS - BEDROOM SUITES - DINING ROOM - GRANDFATHER CLOCKS & MANY MORE ITEMS...**

**SALE ENDS SATURDAY, JULY 30TH**

"SHOP EARLY FOR BEST SELECTION"

**HOURS: 9 TO 6 MON. THRU SAT. TERMS AVAILABLE**

**BRING PICKUP-TRUCK-STATION WAGON TO PICK UP MERCHANDISE. DELIVERY AVAILABLE AT EXTRA CHARGE.**

**Walt's FURNITURE CO**  
HOME OWNED - HOME OPERATED  
"Good Quality Furniture At A Price You Can Afford"  
800 S. MAIN PERRYTON, TEXAS PHONE 435-2312

**RCA Scanning Monitor**  
Home and Mobile  
B Channel - 3 Band  
VHF-LO • VHF-HI • UHF

**RCA Scan-Aire**

**\$99.95 WHILE THEY LAST**

Special rates on 10 channels.....  
659-2121  
**EARL'S T.V.** 106 E. KENNETH

# WANTED

**Boxwell Bros.**  
Funeral Home and Flower Shop  
FURNAL HOME - 659-3802  
FLOWER SHOP - 659-2212

**AMPHIL PAVING**  
Large or small jobs.  
Bill Tom Chitwood  
Ph. 273-9699 night or day  
Borger, Texas  
325-8tp

**FLIGHT INSTRUCTION** Private, commercial, instrument. Aircraft rental, Ken Harris, 733-2686, Gruver. 355-8tc

## Miscellaneous For Sale

Control hangers and lose weight with New Shape Diet Plan. At Spearman Retail Drug. 35-6tp

**FOR SALES** Top quality show lamb. Stacy Hutson, 806-435-3206. 355-4tc

Reduce safe and fast with Goodie capsules and E-Vap "water pills" Spearman Drug. 335-8tc

**GARAGE SALE:** At 612 S. Evans, on Saturday, July 30th and Sunday, July 31st. 37-1tc

**FOR SALE:** 12ft. boat, motor and trailer. 659-2418 or come by 719 Stevie Drive. 365-4tp

**FOR SALE:** Use Maytag automatic washing machine, small refrigerator. 659-3485. 37-1tc

**FOR SALE:** 4 chester white pigs in good shape. 659-3100. 37-2tp

## Real Estate For Sale

**FOR SALE:** 1 year old, 3 bedroom, 2 full bath, large den with fireplace, large basement, playroom, double car garage with genie door. Large lot, 2750 sq. ft., 14 Glover Place. Call for appointment. 659-2453. 365-4tc

**Mayfield Real Estate**  
John Mayfield - Broker  
Ruby Lalr - Salesperson  
659-2188

2 - two bedroom, 2 bath, garage, carpet, drapes, central heat and air, fenced yard. 211 S. Bernice. \*\*\*  
1973 Trailer Home, 2 bedroom, 1 bath, to be moved. \*\*\*

Vintage Mobile Home, 72' x 14, 3 bedroom, 2 bath, furniture, to be moved. \*\*\*

1974 Mobile Home, 14 x 86, 2 bath, 3 bedrooms, built-in kitchen, washer-dryer, central heat and air, furniture, on 125 ft. lot, fenced storage house, 10 x 40 corner cellar. 311 N. James. \*\*\*

Commercial building on Highway 207 on 186 front foot lot. \*\*\*

Three acres, four bedroom house, four miles North of Spearman, call Bonnie Bateman Realty, Dumas, Texas 806-935-5038. 345-45only

## OFFERED BY: Emmett R. Sanders Realtor

Price cut 10% for 3 bedroom, 2 bath home, den & office, nice carpets, paneling. E. Kenneth St. \*\*\*

Older 3 bedroom house with basement on 2 lots. \*\*\*

Two new 3 bedroom brick homes, closing costs paid by builder. Each house has double garage, refrigerator, air, carpets throughout, built-in dishwasher, disposal, range, beautiful kitchen cabinets, marble vanity tops in baths. \*\*\*

**EMMETT R. SANDERS REALTOR**  
659-2516  
659-2601 (nights)  
345-rtn

**HANSFORD HILLS**  
2 1/2 acres or 5 acres restricted home sites available for building now. Located on Hiway 15. \*\*\*

**Mayfield Real Estate**  
John Mayfield - Broker  
Ruby Lalr - Salesperson  
659-2188  
32-rtn

**FOR SALE:** 2 bedroom house with furnished apartment and new carpet and siding. \$23,000.00. Phone 659-2063 or 1-316-376-4800. 36-rtn

**FOR SALE:** 160 acres, irrigated, 8" well, underground pipe with immediate possession. \*\*\*

160 acres, all grass, well located (next to the golf course). Exclusive. \*\*\*

Contact Don Patton Realtor  
Phone 806-537-3131  
Panhandle, Texas  
365-8tc

## Automobiles For Sale

**FOR SALE:** 1976 Lincoln Town Coupe loaded 31,000 miles call 659-3642. 32-rtn

**FOR SALE:** 1970 Chevy two door, four speed, good engine and tires. 523 W. Third, Chuck Steice. 659-3510. 365-rtn

## WANTED

Will do Baby Sitting in my home for working mothers, Monday thru Friday from 8 a.m. to 5 p.m. Call 659-2382. rtn-nc

## NOTICE

Effective Saturday, July 23, 1977 we will be closed on Saturday, but will be open Monday-Friday, 7:00-5:30.



These hours will stay in effect throughout the remainder of the summer.

**THANKS, MAC-DYE PACKING CO.**  
Booker, Texas  
806-658-4582 Hwy. 15 West

## ED WHEELER REAL ESTATE

Homes - Farms Commercial

Large lot with nice two bedroom home in front, nice one bedroom house in the back. Double garage with efficiency in the rear. One year rental on one bedroom house paid at time of sale. \*\*\*

Four unit apartment complex. Two, two bedrooms and two, one bedroom. Good rental property. \*\*\*

One three bedroom, one two bedroom older homes. \*\*\*

28 Hazelwood, 3 bedroom, single bath, frame, nice livable house, priced to sell. \*\*\*

1029 Dreesen, 3 bedroom, brick veneer, good carpet, excellent storm cellar, extra nice home. \*\*\*

720 Cotter, extra nice 3 bedroom, large den, fireplace, carpeted throughout, nice yard, patio, storage building. \*\*\*

735 Cotter, 3 bedroom, asbestos siding, corner lot, storage building, nice home. \*\*\*  
Ed Wheeler 659-2613, Office  
659-2951, Home  
Jerry Gee 659-3618

**WANTED:** lady to come to house, to do babysitting. 3903. 36S-3tc

## MOBILE HOME FOR SALE

**FOR SALE:** 1976 Wayside Mobile Home. Small equity plus payments. Furnished or unfurnished. 733-5055, Gruver. 31-rtn

**FOR SALE:** 14X80 trailer house, 3 bedroom, 2 baths. Call 733-2117, or a/c 501-463-2564. 36S-3tp

## FOR RENT

**FOR RENT:** Trailer spaces. 659-3805, 219 N. Hoskins. 33-rtn

**LBL Trailer spaces:** \$40 monthly 50' X 150' lots. Trailers also for rent. Call Manager, 659-3551, 206 S. Bernice. 37-rtn

**FOR RENT:** Small lots. 2 60' X 150', \$40 a month. One 50' X 150' with garage, \$50 a month. Call 659-2105. 37-rtn

## LOST

**LOST:** Two male stag Greyhounds, one - black and white spotted; one - brindle. Six miles west of Gruver at Sparks Bros. pens. Each has collar and nameplates with address. 733-2735. Reward. 37-1tc

## Garage Sale

**GARAGE SALE:** Saturday, July 30, 1106 Walter Wilmet Drive, 9:00 a.m. 37-1tc

**GARAGE SALE:** Friday, 1 p.m. and Saturday, 9 a.m. 1108 S. Haney. 37-1tc

**SANTA ANA DEFEATED**  
Gen. Zachary Taylor's U.S. forces defeated Gen. Santa Ana in the Battle of Buena Vista, Mexico, on Feb. 23, 1847.

**FLAG ON SURIBACHI**  
On Feb. 23, 1945, six U.S. Marines planted the American flag atop Mt. Suribachi in Iwo Jima.

leave your name, address, and phone number with the person of number listed below, and you will be contacted by a member of the Housing Department staff. Phone 659-2626, Spearman. 355-4tc

## Help Wanted

Northern Natural Gas Company will take applications for a Clerk I on July 28, between the hours of 9:00 a.m. and 3:30 p.m. Involves preparation of reports and correspondence related to District activities, requires good typing, filing, and arithmetic functions.

Applications for a Clerk II will be taken on July 27 between the hours of 9:00 a.m. and 3:30 p.m. Involves ordering, receiving, and storing material periodically audits material, prepares special reports, some accounting required. Apply at the Spearman District Office, 8 miles south and 7 miles east of Spearman on Highway 281.

We offer an exceptional employee benefit program and challenging future. We are an equal opportunity employer and welcome applications from men or women of any race who can pass a physical. 36-3tc

**Garage Sale**  
Saturday, July 30, 1106 Walter Wilmet Drive, 9:00 a.m.

**GARAGE SALE:** Friday, 1 p.m. and Saturday, 9 a.m. 1108 S. Haney. 37-1tc

**SANTA ANA DEFEATED**  
Gen. Zachary Taylor's U.S. forces defeated Gen. Santa Ana in the Battle of Buena Vista, Mexico, on Feb. 23, 1847.

**FLAG ON SURIBACHI**  
On Feb. 23, 1945, six U.S. Marines planted the American flag atop Mt. Suribachi in Iwo Jima.

Most of us can spare a pint of blood

WHEN YOU OR A MEMBER OF YOUR FAMILY NEED BLOOD IN A HOSPITAL NOT SERVED BY RED CROSS YOU SHOULD DO THE FOLLOWING:

1. Contact the Red Cross Representative in your organization, the Blood Program Chairman in your community, or the Red Cross Office.
2. Give full name of patient and home address.
3. Full name and location of hospital where recipient is a patient and date of hospitalization.

THE RED CROSS WILL DO THE REST YOUR HELP IS NEEDED!

Call your Red Cross Chapter and make an appointment to donate blood.

The America Red Cross Blood Program is everyone's program. Its existence depends upon you. A Blood Program is only as good as the people who support it...

The Bloodmobile will be in August 17 at the Catholic Parish Hall, 901 S. Roland, from 10:00 a.m. to 3:15 p.m.

## Back-To-School wardrobe

In school clothes, it's the Who, Why, What, When and Where that counts-and it can be a meaningful occasion when children are part of the planning and shopping, says Mrs. Marlene Odle-Kemp, clothing specialist with the Texas Agricultural Extension Service, The Texas A&M University System.

"Style is important. Young people want to wear what their friends wear," she emphasizes.

Other factors are the child's growth rate and activities-along with fabric types and garment care, she says. In planning, make a list of

# TEXAS PRESS MEMBER 1977 ASSOCIATION

VOLUME 68, NO. 37  
SPEARMAN, TEXAS 79081 659-3434  
213 Main Box 458  
Published Weekly at 213 Main Street  
Spearman, Texas 79081  
Owner-Publisher.....William M. Miller  
Second Class Postage Paid at Spearman, Texas

ANY ERRONEOUS REFLECTION UPON THE CHARACTER OF ANY PERSON OR FIRM APPEARING ON THESE COLUMNS WILL BE GLADLY AND PROMPTLY CORRECTED UPON BEING BROUGHT TO THE ATTENTION OF THE MANAGEMENT. SUBSCRIPTION RATE--Hansford, adjoining counties, combination with the Hansford Financier, \$10.92 Tax included. Other points \$15.12 Tax included.

## FOR THE ULTIMATE IN STORM DOORS

CUSTOM BUILT, DESIGNED, AND IN COLORS TO FIT YOUR HOME..... CONTACT **HOWARD MOYER AT ONLY ALUMINUM INDUSTRIES**  
405-338-6966 or 338-6170  
P. O. BOX 471  
GUYTON, OKLAHOMA 73942

**U.S. STEEL FOUNDED** SEATO SESSION  
The U.S. Steel Corp. was founded in New Jersey by J. P. Morgan on Feb. 25, 1901. The Southeast Asia Treaty Organization Council held its first session in Bangkok, Thailand, on Feb. 25, 1955.

many washings. "If a child needs costumes, uniforms or any special clothing for activities, budget for them, too-they can be important to children. They can wreck budgets if unplanned, though. Decide if perhaps mis-and-match will serve here, also, if parts of these special buys could be everyday wardrobe-extenders," Mrs. Odle-Kemp suggests. Be especially careful of shoes, she cautions. No hand-me-downs; this forces a child's foot to conform to the footprint in the shoe. Have a reputable shoe salesman determine the child's size.

# MR. FARMER

We hope you get top yields and top prices for your grain!!! You see, without you, we can't make it either!!!

## Harvest Specials

### 8 Grain Trucks - rigged and ready to go





# GMC'S PONTIAC'S BUICK'S

We have 3 1/2 acres of grain trucks, Pontiacs, Buicks, and GMC's PLUS a very good selection of used cars and trucks. We appreciate your patronage!!!

## HERGERT PONTIAC, BUICK, GMC

HWY 207 659-3722 SPEARMAN, TEXAS

"It's the service after the sale that counts!!!"

THE BEST FOR SALES, SERVICE, AND BODY SHOP!

## Hansford County Planned Parenthood

26 S. Haney 659-2483  
Spearman Mon. - Fri. 8 a.m. to 12 noon 305-rtn

## SERVICES

**HANSFORD LODGE #1040 A.F. & A.M.**

37-1tc

37-1tc

37-1tc

30-rtn

30-rtn

35-rtn

35-rtn

35-rtn

35-rtn

35-rtn

35-rtn

35-rtn

35-rtn

35-rtn

35-rtn

35-rtn

35-rtn

35-rtn

35-rtn

35-rtn

35-rtn

35-rtn

# Letter to the President

Attention:  
Mr. Jimmie Carter  
President of the U.S.

Please do not veto the farm bill.

Sincerely,

Citizens of  
Hansford Co. Texas  
supporting our farmers

These professional and businessmen of Spearman would like to thank WIFE and congratulate them on their tremendous success. They would also like to urge every reader to write to President Carter and ask him to please not veto this farm bill. We need this \$2.90 target price!

**EQUITY**  
104 COLLARD 659-2420

**TG&Y**

521 HWY. 207 S. 659-3741



J. L. Brock  
Insurance  
Agency

206 MAIN 659-2514

RCA WHIRLPOOL

**Spearman Electronics  
Center**

313 MAIN 659-3858  
LITTON BILLY GILES  
MOTOROLA

**4 Tex Grain Inc.**

659-3796

**Baker's Dept. Store**

216 MAIN  
659-3213

Spearman Reporter

**W. M. MILLER**

**Chambers**

300 MAIN  
659-3424

**Hansford Plainsman**

Gruver Statesman

WE ARE ALL PROUD OF THE  
WIFE ORGANIZATION FOR  
THEIR INTEREST IN FARM  
PRICES FOR THE AREA....





### McIntyre-Adams Vows Read

Wedding vows were exchanged July 22, 1977 in the Stephens College Chapel, Columbia, Mo. by Nanette McIntyre and Shaun Marian Adams III. Miss McIntyre is the daughter of Mr. and Mrs. Ben McIntyre of rural Spearman.

Cathy Dear, Spearman, Texas served as maid of honor and Michael Lange, Tucson, Ariz., was the best man.

Barbara Jaskot provided organ music for the ceremony.

The couple are vacationing in Puerta Vallarta, where Mr. Adams will resume his

### Local Women Working Longer

How many years of his life does the average man in Hansford County spend working and how many not working, under normal conditions? As for local women, what part of their lives is spent in jobs outside the home?

A male child, born at the present time in the local area, can be expected to put in fewer years at work during his lifetime than was the case a generation or two ago.

His young sister, however, has the prospect of being on the labor force much longer than her mother or grandmother were.

That is the trend. It has been developing nationally for a number of years, according to Government statistics.

Currently, as a result, American men are spending smaller and smaller portions of their lives at work while women are spending greater portions of theirs.

The American Council of Life Insurance reports, based upon Labor Department studies, that the work-life expectancy of women has increased by about 66 percent since 1950. During the same period, the expectancy of men has dropped nearly 4 percent.

Adapting these overall findings to Hansford County, local women, who represent 50 percent of the population, are putting in an average of

25.1 years of work during their lifetime, compared with 15.1 years in 1950.

The average working life of the male population, on the other hand, has decreased from 41.5 to 39.8.

Various factors are attributed by the Labor Department as contributing to the earlier withdrawal of men from the work force.

It cites improved pension plans, higher social security payments, broader Government benefits and the greater labor force participation by wives.

Thus, it points out, older workers who either wanted to retire or found it difficult to get new jobs, became better able to get along financially without continuing to work.

At the present rate, the average Hansford County man has about 29 years of non-work during his lifetime and the average woman, 51 years. It is spent in growing up, in going to school, in rearing a family -- when most women are out of the job market -- and in eventual retirement.

### Bridge Club

The Grand Slam Bridge Club met Wednesday, July 20 in the home of Mrs. Brad Beedy.

High score was won by Mrs. Judy Nelson; second high, Mrs. Barbara McClellan; and traveling, Mrs. Ann

Flowers. Delicious refreshments were enjoyed by members, Mesdames: Albert Baker, Ted Godfrey, Roy Flowers, Brad Beedy, Clark Mires, Ed Zschiesche, Joe T. Venne-

### Rotary Governor Visitation Set

Details of the visit of Rotary International District 573 Governor A. B. (Duke) Martin to Spearman Sunday and Monday were completed during the regular luncheon session Monday of the Spearman Rotary Club at Martin's Steak Garden.

Martin of Amarillo, who will be in this region of the Texas Panhandle for visits to Rotary Clubs will meet with Spearman Rotary Club President John Hutchison and Secretary Don Wirsdorfer starting at 5:30 p.m. Sunday at the First State Bank.

This session will be followed by a Club Assembly of all members, and spouses, at 6:30 p.m. at the bank.

Monday's regular luncheon session will be open to spouses of Spearman Rotary Club members.

The purpose of the District Governor's visit is to give individual clubs special guidance for the year to come. His experience comes through having usually worked within the framework of his own club and the district for several years. In addition, his education is received at a special one week school of an intensive nature conducted by Rotary International each summer.

man, Lynn Cook, and guests: Mrs. R. L. McClellan, Mrs. Don Floyd, Mrs. Dennis Nelson and Mrs. Bill Strawn.

The next meeting will be August 18 in the home of Mrs. Mack McCormack.

You are cordially invited to

a bridal shower honoring

Mrs. James Pope  
nee Patricia Pond

in the B & B Friendship Room

Saturday, July 30, 1977

7:00 P.M. to 9:00 P.M.

Hostesses: Mmes.

Betty Graces  
Wilma Lackey  
Lorene Burke  
Doris Jean Pipkin  
Laura Ann Mackie

Adalyn Barnes  
Tony Pond  
Patsy Burress  
Ann Bowen  
Iola Smith

36S-2tp

### Charter bus planned to see "Texas"

Mr. and Mrs. Ike Richeson are the grandparents of a new baby girl, born July 16 at Irving, Texas, to Mr. and Mrs. Don Gordon. She has been named Ashley Dawn and weighed 8 lbs. 11 1/2 oz. at birth.

Mr. and Mrs. Sam Graves, Continental Bus Agent here, announced this week that a charter bus is being reserved to go to "Texas" in the Palo Duro Canyon for August 19th.

The cost of \$16.00 which includes tickets for the performance and busfare. The bus will be leaving Spearman at approximately 4 p.m. giving enough time for dinner in Amarillo at Farris. For further information or reservations call 659-3446.

### Gladiola Flower Club Met

The Gladiola Flower Club met Thursday, July 21 at the home of Mrs. Kenneth Evans.

Roll Call was answered by "Timely Tips"

Mrs. Doyle Jackson won 1st with a home-grown arrangement of marigolds in a copper container. Mrs. Garland Head won 1st with a specimen of a peach.

Mrs. Lloyd Buzzard gave the program on "Decorating Indoor and Outdoor Tables" and "Arrangement of Cut Flowers".

Members present were Mesdames: Billy Baker, Wallace Berner, Gerald Head, Bill Jackson, Claude Newell, Roy Flowers, Lloyd Buzzard, Gordon Cummings, Kenneth Evans, Doyle Jackson, Don Kammel, Ed Haner and guest Mrs. Don DeArmond.

The next meeting will be August 4 in the home of Mrs. Tom Sutton with the change of time to be set at 2:30.

### Sorority Sets New Tourney Dates

The Alpha Mu Psi Sorority will sponsor another summer Tennis Tournament July 30th and 31st. Men's Doubles and Women's Doubles will be the theme for this late July tourney.

For information call Mrs. Tony Harper, 733-2063. Out-of-town tennis players may enter the tournament but one of the players must be from Gruver.

### Arts & Craft Guild Met

Arts and Crafts Guild met Friday, July 22 in the home of Mrs. Joe Traylor.

Delicious refreshments were served to members, Mesdames: F. J. Daily, Garrett Allen, Seda Hoakins, Pope Gilmer, Deta Bloodgett, Bruce Sheets, Ned Turner, Clay Gibner, P. A. Lyon, Sr., and Bill Gandy.

The next meeting will be July 29 in the home of Mrs. Ned Turner.



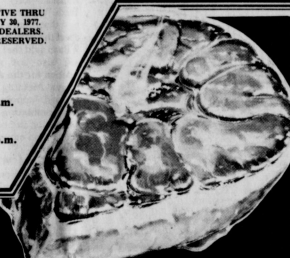
The first umbrella in the U.S. is believed to have been used in Windsor, Conn. in 1740. It provided a first of waterproof and durable.



PRICES EFFECTIVE THRU SATURDAY, JULY 28, 1977. NONE SOLD TO DEALERS. LIMIT RIGHTS RESERVED.

MON.-SAT. 8:00 a.m.-9:00 p.m.

SUN. 10:00 a.m.-7:00 p.m.



### BONELESS Round Steak

BOTTOM ROUND \$1.19 LB.

HICKORY SMOKED ... SLAB CUT

**Sliced Bacon**

BULK PACK \$1.09 LB.

MEADOWDALE ... HICKORY SMOKED 5-LB. PKG. \$1.39

WILSON'S ... REGULAR OR POLISH 5-LB. \$1.89

Smoked Sausage 89¢

WILSON'S ... CHUNK BRAUNSCHWEIGER 89¢

4 Green Beans 89¢

GREEN GIANT ... WHOLE KERNEL 3

12-OZ. CANS

Niblets Corn 85¢

LINDY

4 Sweet Peas 96¢

16-OZ. CANS

5 Tomato Sauce 86¢

CAMELOT

STAR-KIST ... LIGHT MEAT

65¢ Chunk Tuna

NESTEA

Instant Tea \$1.46

3-OZ. JAR

46¢ Flour

CAMELOT ... ENRICHED

KEEBLER

53¢ Vanilla Wafers

KEEBLER

68¢ Club Crackers

14-OZ. BAG

SKINLESS FRANKS 69¢

MEAT OR BEEF

BAR-S

FRESH ... EXTRA LEAN GROUND CHUCK 89¢

IN 3-LB. PKGS. OR MORE

BONELESS ROAST 89¢

BUTCHER BLOCK BEEF BEEF CHUCK

U.S.D.A. CHOICE BUTCHER BLOCK BEEF

Boneless Rump Roast 99¢

Boneless Chuck Steaks 89¢

Boneless Beef Brisket UNTRIMMED 89¢

BLUE MORNOR COOKED BEEF FRITTERS OR Steak Fingers 99¢

Sliced Bologna 89¢

94¢ Mayonnaise

KRAFT ... IMITATION

32-OZ. JAR

Shortening \$1.19

42-OZ. CAN

Jewel

679¢ CANNED POP

MISSION ... ALL FLAVORS

12-OZ. CAN

48¢ LAYER CAKE MIX

BETTY CROCKER ... ALL FLAVORS

18 1/2-OZ. BOX

Ultra-Brite Toothpaste 79¢

EXTRA-STRENGTH CAPSULES OR YOUR CHOICE

93¢ Tynol Tablets

STL. 99¢

SHAMPOO 99¢

6 Cat Food \$1.00

CAMELOT ... ALL FLAVORS

6 DOG FOOD \$1.28

SOLE

3 Kool-Aid Mix \$1.00

HERSHEY'S

2 Chocolate Syrup 89¢

18-OZ. CANS

\$1.48 BIZ LAUNDRY PRE-SOAK

38-OZ. BOX

\$1.86 TIDE LAUNDRY DETERGENT

DIXIE ... EASY DAY ... FINCH

84-OZ. BOX

Cold Cups

SHOP DEAL...WHERE THERE'S MORE VALUE IN STORE

*Judge and Mrs. Johnnie C. Lee*  
request the honour of your presence  
at the marriage of their daughter  
*Johnnie*  
to  
*Mr. Robert D. Caldwell Jr.*  
on Saturday, the thirtieth of July  
nineteen hundred and seventy-seven  
at half after seven o'clock  
First Baptist Church  
Spearman, Texas

Reception following

### Shower Honors Mrs. Russell

Mrs. Mike Russell, nee Ann Lackey, was honored with a bridal shower at the Hospitality Room, First State Bank on July 23, from 3:00 to 4:30 p.m. The honoree was presented with a yellow and white daisy corsage. Guests were registered by Mrs. Ronnie Antalek. Guests who alternated at the serving table which was covered with a white cloth and centered with a yellow and white daisy flower arrangement, flanked on either side with crystal candelabras with yellow tapers. Tasty party cookies complimented with fruit punch and nuts was served. Hostesses were Mesdames: Bernice Brown, June Day, Lois Moore, Betty Uptergrove, Dorothy Chevalier, Millie Craig, Norma Holland, Lynnane Maitre, and Juanita Kemper.



Among the Chinese it is forbidden for a son to use in writing the second character of his father's given name.

## Bloodmobile Here August 17

### Goal Is 150 Pints

The Red Cross Bloodmobile will be in Spearman August 17 at the Catholic Parish Hall, 901 S. Roland, from 10:00 a.m. to 3:15 p.m. Hansford County did not meet its quota of blood donated last year by 4 pints. The need for blood in this region has increased due to more population which leads to more accidents and other cases needing blood. The procedure for donating will be the same as that used last year. For an appointment to donate blood you may contact Gayle Smith, 2202; Lorene Kunselman, 3138; In Graver, Charlene McClellan, 733-2341. The quota for Hansford County for this year is 150 pints so you are urged to donate blood if you are physically able to do so, so that others may live and people in this area will have a blood bank when the necessity arises for blood transfusions.

### Golden Spread Circle meeting held

Those attending the GOLDEN SPREAD CIRCLE Tuesday evening July 19th enjoyed homemade ice cream and cake, and they did do justice to it. Forty three people came, including several visitors, who were: Clifford Brown from Cleburne, a guest of his sister Francis Williams, Carroll & Chloe Cone from Black Canyon City, Ariz., guest of her sister Cleo Denman and her husband Lowell, Mrs. L.L. Finney of Gruber who lives in Eleanor Reed, and Vinta Brown from California a guest of Tex Davis. The evening was spent visiting and playing various table games. Thanks goes to Joyce Lackey, Frances Cudd, Virginia Head, Ada McLain and Eleanor Reed for the freezers of ice cream, and to Ruth Shaver and Estelle Jackson for the nice cakes. Our next meeting will be August 2nd, bring a covered dish.



## Artist of the Month

Mrs. Carl Carter, Postmaster of Waka, was selected as Artist of the Month of August. Mrs. Carter has studied water-color under Amelito Cabellero of Canyon, oil painting under Mrs. Winifred Bozeman of Perryton, and china painting under Elmira McGarrath of Perryton. A varied selection of Mrs. Carter's works will hang in the library this coming month for everyone's inspection. Mrs. Carter who has been married to husband, Carl, for 43 years is the granddaughter of the late Bud Smith who lived north of Farnsworth. She has lived in Ochiltree County for all of but 9 years of her life. The Carters have two children: a daughter, Mrs. Cieta Weemes of Hereford; and a son, Howard Carter of Palestine, Ill. They also proudly claim five grandchildren, 1 girl and 4 boys.

### Women's Softball Tournament Set

S & A Welding and Construction and Longhorn Music Co. are sponsoring a women's fast pitch softball tournament Aug. 5-6-7 in Borger. Entry fee is \$30 and must be turned in by Aug. 1. Trophies will be presented to first, second, and third place teams. An all-tournament team will be chosen. More information may be obtained by contacting Derk Brittain, 306 Dolomite, Borger 79007 or calling 273-3657 or Linda Thurman at 1202 Jackson, Borger, 273-7238. Entry fees may be sent to either of the above.

### Peggy's Pointers

Use Honey for Canning and Preserving.

Honey, more than any other form of sugar, helps to bring out natural fruit flavors. For that reason it has been used very successfully in the preservation of fruits. Fruits canned with honey keep very well. In appearance they compare very favorably with those canned in cane or beet sugar.

In using honey as a preservative and sweetening agent in canning, a syrup is made of 2 cups of honey and 3 cups water (this makes enough syrup to can approximately 2 quarts of fruits). If using the cold pack method of canning, place the fruit in the jar, cover with the syrup and process the required length of time. Honey is particularly useful in canning the more juicy fruits such as berries, and the more tart ones such as plums.

Honey may also be used in jams and jelly making. It is usually more pleasing if used with a combination of fruits or with spices. In making preserves, the produce usually has to be cooked a little longer to obtain the desired consistency, since honey is in itself a liquid and sugar is not. Honey may also be used in the making of jellies, particularly in combination with very acid fruit juice. Plums lend themselves to this process very nicely. The proportions used are 1 cup fruit juice to 3/4 c. honey. A few seconds longer for cooking are required than when sugar is used.

Fabric Finics - Two new knits boast split personalities - they look "jersey" on one side and entirely different on the flip side. One - all cotton - is baby sweater texture; the other is cotton/polyester and looks like linen sweater knit. Both fabrics can go casual or classic.

Water Conservation - Conservation is of prime importance as we're having so little rainfall and such hot (and windy) weather. Here are some interesting conservation ideas you might like to try.

1. The water used to boil macaroni or potatoes can be saved and used to boil vegetables and even later for soup base.
2. Some women are collecting rain water and using it to wash their hair.
3. While waiting for hot water from the faucet, collect the running water for later use.
4. Taking showers requires less water than bathing. Turn it off except when wetting down and rinsing off soap.
5. If you leave the water running while you brush your teeth, it could take 10 gallons; only 3/4 gallon if you turn it off while brushing.

"IMMUNIZATION" isn't just kid stuff - adults need to be immunized against diphtheria and tetanus.

On a postman's uniform a red ink star means 15 years of service.

SWIFT'S PREMIUM

# TURKEY DRUMSTICKS

2 TO 2 1/2 POUND PKG.

## 33c

LB.

OSCAR MAYER ... MEAT OR BEEF

**Sliced Bologna 99c**

12-OZ. PKG.

BLUE BOY BREADED PRE-COOKED

Fish Fillets, 1/2 OZ. PKG. \$1.39

GORTON'S VALUE PACK Fish and Veggies, 1/2 OZ. PKG. \$2.09

FRESH FROZEN - MEDIUM SIZE Shrimp, 1 LB. \$3.59

## WIN UP TO \$1,000 CASH

### CASH KING \$1,000<sup>00</sup> WINNER!

MARJORIE M. MYERS

EMHD, OKLA.

NEW 100 WINNERS

- OPAL KENT ... Pampa, Texas
- JENNIE DITMORE ... Pampa, Texas
- BARBARA DICKHUT ... Scott City, Kans.
- GLORIA LIMON ... Ulysses, Kansas
- CLARIS GREEN ... Liberal, Kans.
- JUDY CREE ... Lawverne, Oklahoma

PLAY CASH-KING...

PLAY CASH KING

ODDS CHART

HYDE PARK

### 1% Low Fat Milk \$1.34

GALLON

DANKRAFT

Whipping Cream 43c

CRIFTON ... SOFT STICK

Margarine 52c

1-LB. CTN.

CAMELOT

American Singles \$1.28

14-OZ. PKG.

MEL-O-CRUST ... SWEET MILK OR BUTTERMILK

Canned Biscuits 5 59c

6-OZ. CANS

FRESH DAIRY

FROZEN FOODS

SAUSAGE • CHEESE • PEPPERONI OR • HAMBURGER

## Jeno's Pizza 67c

13 1/2-OZ. PKG.

WELCH'S

Grape Juice 32c

6-OZ. CAN

MEADOWDALE

French Fries \$1.14

5-LB. BAG

CAMELOT ... WHOLE KERNEL

Golden Corn or Peas 4 100

18-OZ. PKG.

CAMELOT

Leaf Spinach 4 100

10-OZ. PKG.

Chopped Broccoli 39c

10-OZ. PKG.

NEW

## Red Potatoes 20 159

20 -LB. BAG

GOLDEN Sweet Corn 6 59c

6 EARS

CRISP, CALIFORNIA Celery EACH 39c

TROPICANA, FLORIDA Orange Juice 1/2 GAL. \$1.09

N.S.B. Salad Crunchies 2-OZ. PKG. 49c

FINE FOR PIES New Crop Apples 4 1

4 LBS.

IDEAL FOOD STORES

THE HOME OF THRIFTY PRICES

RED-RIPE

## Watermelon 6c

NOW ONLY

LB.

CALIFORNIA Valencia Oranges 4 1

4 LBS.

SHOP IDEAL FOR SUPERLATIVE SAVINGS, 7-DAYS A WEEK ... WE WELCOME FOOD STAMP CUSTOMERS.

WE GLADLY ACCEPT U.S.D.A. (FOOD STAMPS)

Not much of a world—when you consider all its human imperfections. Yet it's the world we are giving our children—the world in which they must grow up and find their destiny. And we keep hoping that theirs will be a finer generation—one able to improve this world.

these truths and ideals with them. By encouraging faith and showing them right from wrong, our children can become the finest generation, destined to change the world—for the better.

Is there a church in your life? There should be!

What our children eventually do with the world depends upon *our* spiritual resources and how we share

**OUR  
CHILDREN'S  
WORLD**



**Philanthropy  
Has Many  
Dimensions.  
Rodney  
Is One Of Them**

The Cystic Fibrosis Foundation has plans for you who help save dollars while you help save children's lives. Children like Rodney, who are born with the incurable disease cystic fibrosis, are depending on your help—for their hope.

You can become a philanthropist and a lifesaver, through personal financial planning guidance available through the CF Foundation. Let us show you how to plan a lifetime income with accompanying tax advantages.

For details, call your local Cystic Fibrosis Chapter, or contact:

Cystic Fibrosis Foundation  
3379 Peachtree Road, N.E.  
Atlanta, Georgia 30326  
(404) 262-1100, ext. 50

**GIVE WISELY—TO GIVE LIFE.**



**Cystic Fibrosis Foundation**  
Fighting Children's Lung Diseases

Scriptures Selected By The American Bible Society  
Copyright 1974 Keister Advertising Service, Inc., Strasburg, Virginia



<i>Sunday</i> Matthew • 5:13-16	<i>Monday</i> 1 Corinthians • 9:16-23	<i>Tuesday</i> Mark • 1:29-39	<i>Wednesday</i> Psalms • 138:1-8	<i>Thursday</i> 1 Corinthians • 15:1-11	<i>Friday</i> 1 Corinthians • 2:6-10	<i>Saturday</i> Matthew • 5:17-37
------------------------------------	--	----------------------------------	--------------------------------------	--	---	--------------------------------------



**Equity Elevators**

659-2420

104 Collard  
Spearman, Texas



**Speartex Grain Co.**

659-3711

514 Collard  
Spearman, Texas

**Gruver  
Statesman**

**Consumer Sales Co.**

421 W. Kenneth Ave.  
Spearman, Texas

See you in church  
this Sunday  
The  
Spearman Reporter

**Jr. Lusby "Cats"**

659-3766

W. Gruver Hwy.  
Spearman, Texas

Your office supply  
Headquarters  
Hansford  
Plainsman



PLAY United's No Purchase Necessary.

NEW SERIES

SPOT CHECK

Introducing United's Winners!

NEW SERIES

SPOT CHECK

DOUBLE STAMPS WEDNESDAY AND SATURDAY WITH \$2.50 OR MORE PURCHASE

**DELTA TOWELS**  
JUMBO ROLL  
**39**

**HUNT'S 32 OZ. JUG KETCHUP**  
**69**

**BABY RUTH OR BUTTER FINGER** 6 CT. PKG. **69c**  
**WELLA BALSAM SHAMPOO** 8 OZ. **\$1.39**  
**HOLLY WOOD CANDY ASSORTED BARS** 10 CT. PKG. **79c**

**FLOUR** GOLD MEDAL 5 LB. BAG **59c**  
**MILK** 13 OZ. CANS **3**  
**TISSUE** 6 ROLL PACK **98c**  
**INSTANT TEA** 3-OZ. **\$1.68**  
**SAUCE** MOUNTAIN PASS 7 8 OZ. CANS **\$1**  
**COFFEE** MARYLAND CLUB **\$2.98**

**20 EXPOSURE SLIDES AND 8 SUPER 8 MOVIES** **\$1.09**

**KRAFT SANDWICH SPREAD** 24 OZ. JAR **98c**



**BORDENS ICE CREAM** 1/2-GAL. ASST. FLAVORS **98c**

**DR. PEPPER 7-UP** 6 BTL. CTN. **\$1.37 PLUS DEPOSIT**

**BEANS** ALMA PORK AND 14 1/2 OZ. CANS **96c**  
**BEANS** CUT GREEN DOUBLE LUCK 16 OZ. CANS **96c**  
**PEAS** SWEET GLEN PARK 16 OZ. CANS **96c**  
**CORN** SEASON-ALL 7 1/2 OZ. PKG. GLEN PARK 5 14 1/2 OZ. CANS **96c**

**YOU TOO COULD BE A WINNER WIN... CASH! WIN STAMPS!**

WE RESERVE THE RIGHT TO LIMIT QUANTITIES **U** PRICES GOOD THRU JULY 30TH  
**UNITED**  
SUPER MARKETS PERRYTON, TEXAS  
WE GIVE GREEN STAMPS

**FINE FARE CHEESE** \$1.09 SINGLES 12 OZ. PKG. AMERICAN OR PIMENTO

**FRESH BABY BEEF LIVER** 59c \*SKINNED \*DEVINED LB.

**"UNITED'S TRU-TENDR BEEF"**  
**STEAK** ROUND OR RIB LB. **\$1.09**  
**STEW** "EXTRA LEAN" CUBES OF BEEF LB. **\$1.09**  
**ROAST** BONELESS SHOULDER WASTE FREE BEEF LB. **\$1.09**

**UNITED TRU-TENDR CHUCK ROAST** 58c LB.  
**TURBOT FISH FILLETS** WASTE FREE LB. **\$1.39**

**FROZEN FOOD BUYS**  
MORTON'S \*BEEF \*MEAT LOAF \*CHICKEN \*TURKEY \*SALIS STEAK  
**DINNERS** **39**

**FINE FARE BACON** VACUUM SEALED LB. **\$1.49**  
**BAKING HENS** 5 TO 7 LB. AVG. **59**

**CUDANY GOLD COIN PICNICS** BONELESS FULLY COOKED LB. CAN **\$3.89**

**FROZ-N-GOLD WHOLE KERNEL CORN** 20 OZ. BAGS **\$1**

**"DAIRY CASE SPECIALS"**  
**BISCUITS** BUTTERMILK OR SWEETMILK FINE FARE 10 CT. CAN **10c**  
**CRISPERS** ORE IDA 20-OZ. **59c** BELL CHOC. BREAK GAL. **\$1.29**

**KRAFT BAR-B-CUE SAUCE** 18-OZ. JAR **49c**  
**NAPKINS** FINE FARE ASSORTED COLORS 200 CT. PKGS. **69c**  
**CHILI** WOLF BRAND NO BEANS 19 OZ. CAN **2/99c**

**CALIF. ICEBERG LETTUCE** 3 HEADS **\$1**  
**SALAD TOMATOES** LB. **29c**

**CALIF. ITALIAN RED ONIONS** 2 LBS. **49c**  
**CALIF. NECTARINES** LB. **49c**  
**CALIF. KY. GREEN BEANS** LB.

THURSDAY, JULY 28, 1977

## Beef Referendum Fails To Pass

O.J. Barron, Jr., chairman of the national Beef Development Taskforce (BDT), issued a statement July 21 conceding that the Beef Referendum fell short of the necessary two-thirds affirmative vote.

A preliminary count from county ASCS offices indicates that over 100,000 producers, or about 55% of those voting, supported the program.

The BDT, a broad-based group comprised of leaders from nearly every producer organization in the U.S., has worked over three years for the industry self-help program.

A full text of Barron's statement follows:

"This is a dark day for the American cattle industry. The Beef Referendum has failed to receive the necessary two-thirds majority. We have passed up an opportunity for a research and information program aimed at helping all cattlemen. This opportunity may never come again.

"Ironically, while it was a self-help program aimed at keeping the government out of our business and producers in control, some opponents falsely labeled it as a government program and scared many cattlemen into voting against it.

"It would be inaccurate to say that cattlemen don't want this program. A majority of all cattlemen voting did want it. And an overwhelming majority of the cattle industry leaders, who had studied our current plight and understood the objectives of this program, vigorously supported it.

"Never before has more problems than we have now. Never before has the industry united behind a program as did the one we have now. Never before has a cattle industry program received so much favorable publicity and editorial support.

"Yet a few self-serving people chose to shoot it down with unfair and misleading statements. In this case, a minority won.

"For all cattlemen, who think that the cattle business should and could be better, I would like to thank the more county ASCS offices that have unselfishly devoted their time, energy and finances toward helping their fellow cattlemen.

"Such efforts were not in vain. For we have a new unity of our industry and we have learned much that can help us in the future. We have pinpointed many problems. We have uncovered new leadership. We have learned how to make our voice heard in Washington.

"As we look to the future, we hope that leaders in our industry, who are dedicated to a better future for all cattlemen, will not be too discouraged.

"Also, we hope that other organizations which opposed this self-help program but claim to support research and promotion for commodities, will join with us now in searching for workable solutions to cattlemen's problems.

"We must continue our search for a way to stabilize our industry, to increase profits for all cattlemen and to build a better future-together."

## Immunization Clinic Set

A clinic offering vaccines that give protection against several childhood diseases are scheduled for August 1 at the Spearman Elementary School, 511 S. Townsend from 10 to 12 a.m.

Protections against polio, diphtheria, lock jaw, whooping cough, measles and rubella. There will be no charge.

## 2 Collisions Investigated

Spearman Chief of Police Steve Wisniewski has announced his department has completed investigation of two vehicular collisions, one on private property and the other at 7th and Bernice, in which there was total property damage of approximately \$1,350, but no injuries to occupants of the automobiles.

The private property mishap occurred at 700 Borger Highway on July 19 and involved two vehicles with an estimated damage of \$250 to one and none to the other.

## Morse announces meeting Federal Land Bank Lowers Interest

The Morse Independent School District has announced that the Board of Equalization will meet on August 1 at 10:00 a.m. at the Morse School. Members of the Board of Equalization are Bill Jenkins, Frank Pittman, and H. B. Parks. Alternates are Robert Giblin and Tahme McCloy.

It was announced that the industrial taxpayers will meet August 1 at 10:00 a.m. and the local taxpayers will meet August 2 at 10:00 a.m.

Bob Williams, Manager of the Spearman-Pampa Federal Land Bank Association of Pampa, announced today that the Federal Land Bank of Houston will reduce the interest billing rate on variable rate loans to 7 1/2%. This reduction will be effective on August 1, 1977, and will affect \$1.04 billion on variable rate loans to 18,026 Texas farmers and ranchers. The variable rate loan was introduced by the Houston Bank in July, 1969 and provided for the rate to fluctuate with the variation in the cost of money. A more favorable money market has made this billing reduction possible. Williams stated, "This continues to demonstrate the Bank's policy to furnish credit to Texas farmers and ranchers at the lowest possible cost consistent with sound business practices."

The Federal Bank of Houston makes long-term real estate loans on farm and ranch land and rural residences throughout Texas and now has \$1.3 billion in loans outstanding. The local association makes a.d. services loans in Gray, Roberts, Hemphill, Hutchinson and Hansford Counties. Officers and directors of the association are W. B. Jackson, O. C. Holt, B. W. Renner, Wayne Maddox, Carl Jahnel and Lynn Davis.

## Commencement Ceremonies To Be Held

West Texas State University will hold its summer commencement ceremonies Aug. 13 beginning at 4:30 p.m. in the Southwest Church of Christ in Amarillo. WTSU summer school will end Aug. 11, and classes will resume for the regular fall semester on Aug. 29. Fall registration will be Aug. 26 and 27 in the WTSU Activities Center.

Summer commencement rehearsal is scheduled for 10 a.m. that day in the same location. Approximately 237 bachelor's degrees and 127 master's degrees will be presented in the afternoon ceremonies.



## Swim Team News

The Spearman Swim Team traveled to Burlington, Colorado for the League Championships of the West Kansas Swim League on Friday and Saturday. The members did one of the finest jobs of the season, with most lowering their times. They lived up to the ideal we seek to instill in them in the swimming program. You give the best you have whether you win or lose. Winning in fact, is only a small part of your goal. To learn to do your best, develop your skills, and give 100% is what counts.

They lived up to this. As you must realize that this is a young team, a majority under 12 years old and with only one or two years experience, we can say to them a job well done. Our community can be proud of them, for they represented us well. Results are as follows: Stacey Thomas - girls 13-14 4:00 yd. Free - 3rd Donna Wirsdorfer - g 15-18 4:00 yd. Breaststroke - 4th Tuwana Byrd - girls 13-14 5:0 yd. Free - 5th

Girls 13-14, Free Relay (Marjetta Davis, Julie Farr, Stacey Thomas, Tuwana Byrd) - 6th Then on Sunday the Swim Club held its picnic for members of the Swim Team and parents. Awards were presented to all team members for the year. We would like you to know the members for this year: Jane Ann Wirsdorfer, Christine Martin, Teresa Miesner, Robbie Heinrich, Stacey Thomas, Tuwana Byrd, Marietta Davis, Julie Farr, Donna Wirsdorfer, Jim Everson, Jamie

Heinrich, Scott Russell, Nick Wirsdorfer, Eric Martin, Carl Bynum, Gary Thomas, Greg Farr, Kirk Davis and Tracy Verson. Some psychologists say that you'll live longer if you worry less. They've found that people far away from the pressures of modern civilization often live to be very old.

## Cotton Demand May Improve in 1978

Hansford county farmers are urged to report their 1977 acreage of barley, corn, grain sorghum and wheat to the Agricultural Stabilization and Conservation Service. "The importance of correctly reporting acreages cannot be overemphasized," Elizey Vanderburg, executive director of the local ASCS office, said. Crops should be reported on a field-by-field basis. He explained that the information may be needed to determine eligibility for participation in 1978 programs. If a set-aside is required for 1978, proposed farm legislation provides that it may be based on a specific percentage of the acreage planted in 1977.

Increased supplies of cotton from the 1977 crop and an improving economic outlook may improve cotton's position in the U.S. fiber market, according to a summary of the Cotton and Wool Situation, released by the U.S. Department of Agriculture early July. In most of 1977, limited supplies will restrict cotton's share of the U.S. fiber market to from 25-27 percent, an all time low. The short supply resulted in a poor price relationship between cotton and man-made fibers. Cotton has suffered a 20-cent per pound price disadvantage during most of this season. The higher prices prompted farmers to plant 13.4 million acres, compared to 1976's 11.7 million. Plantings in Texas, where weak sorghum prices encouraged a 29-percent increase in cotton acreage, made up much of the increase.

Relatively favorable weather throughout the cotton belt suggests that yields will exceed those of last year. If yields fall between 480-500 pounds per acre, production would total 12 1/2 to 13 million bales, compared with 10.6 million in 1976. U.S. mills, benefiting from larger supplies, may use 6 1/2 to 7 1/2 million bales in 1977/78 as the price disadvantage for cotton relative to man-made fibers narrows. Consumption for 1976/77 may total 6.7 million bales, off about 8 percent from the previous season. Cotton exports during 1977/78 may total 4 to 5 million bales, not quite matching the estimated 5.1 million bales exported in 1976/77.

General George A. Custer, famous for his last stand at the Little Big Horn, was a redhead.

## High blood pressure

We are hearing much these days about high blood pressure, known medically as hypertension. For several years concerned national programs have discovered and treat this most common of human ills have been under way, and the American Medical Association and others have kept up the educational push. What is blood pressure? A pamphlet from the AMA explains that your heart and blood vessels make up your body's blood distribution (circulatory) system, upon which all life processes depend. Under pressure, your blood carried food and oxygen to and removes waste products from every cell in your body. Blood pressure is maintained by your heart in your arteries, and blood is pumped through your lungs where it picks up fresh supply of oxygen and eliminates carbon dioxide. It then flows to the left side of your heart and is ready for another trip through your body.

What causes high blood pressure? In most cases the answer is not known. In at least 90 percent of the people with high blood pressure no underlying disorder can be found. These people are said to have "essential hypertension." In other 10 per cent, some of the causes are diseases of the kidneys, conditions affecting the adrenal glands atop each kidney, narrowing of the body's largest artery (aorta), defects in other arteries, and disorders of the nervous system. Whatever its cause, untreated hypertension can do irreparable damage to vital body organs and result in early death. The heart is the organ most commonly damaged. The higher the pressure, the harder the heart must work. Hypertension also contributes to fatty deposits in the arterial walls (atherosclerosis). Thus the blood supply to the heart will diminish. This change may result in chest pain on exercise (angina) or even in serious injury to part of the heart muscle (myocardial infarction, or heart attack). How can you tell if you have high blood pressure? Unless you see your doctor, the chance is very small. Hypertension usually is detected during a routine physical examination.

UNDERGOES SURGERY Supt. James Cunningham left for Lubbock early Wednesday morning to visit his father, who underwent surgery on Tuesday. He reported that his father is doing fine. James Riley, of Spearman is in the intensive care unit at High Plains, and is doing as well as could be expected.

HAY POTENTIAL STILL GOOD - Dry weather has limited hay making in some sections of Texas this year, but there is still plenty of time for good hay production, says a pasture and forage specialist with the Texas Agricultural Extension Service. Due to the long growing season and the fact that most of the state generally receives good late summer and early fall rains, a good hay crop is still possible. It's important to fertilize hay meadows now so that the grass will be able to make good growth once the rains come. Cutting grass at the proper stage of growth will also insure top quality, high protein hay.

## You can save energy in each room of your house.



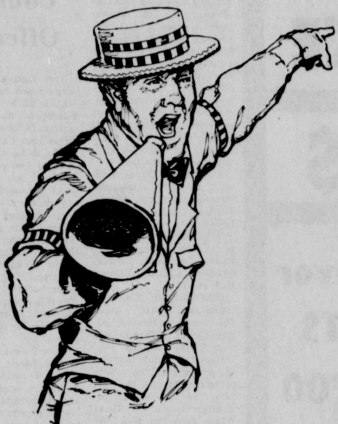
### Let's look at the kitchen:

- 1 DISHWASHER.** Load your dishwasher to capacity before running it. Turn off the dishwasher after the final rinse cycle instead of allowing it to run completely through the drying cycle.
- 2 RANGE.** Be certain you choose the proper size burner for each pan. The pan should be the same size or slightly larger than the surface unit. Use the least amount of water possible when cooking vegetables. Check to see that all burners are turned off when you're through.
- 3 OVEN.** Cook several dishes at once when baking. Avoid the temptation to open the oven door for a "peek" — each time you do, your heat loss can be 20%. Preheat only

- the required amount of time. Don't line your oven with foil — it interferes with the heating process.
- 4 REFRIGERATOR/FREEZER.** Keep both your refrigerator and freezer full, without overcrowding. A half-empty unit uses more electricity because air is harder to keep cold than chilled foods and liquids. When frost buildup reaches 1/4", defrost promptly. Keep the doors closed — frequent and prolonged door opening lets in warm air and makes the appliance work harder.

**COMMUNITY PUBLIC SERVICE**  
Your Electric Light & Power Company

# CARNIVAL



## The Spearman



## Chamber of Commerce

will present



# SCHAFFER SHOWS

# CARNIVAL



Downtown Spearman -- Rides & Fun



★ BOOTHS FOR THE WHOLE FAMILY ★

*Proceeds to go to the  
Spearman Chamber of Commerce*

*Carnival starts at 7 each evening*



## thru Saturday



ussell, Nick  
ic Martin,  
ry Thomas,  
Davis and

ologists say  
longer if you  
ey've found  
way from the  
dern civiliza-  
to be very.

se.

ine your  
ie

both  
hout  
s more  
sep cold  
frost  
tly.  
nd  
air  
r.



### W. C. Lust Elected President of TRCCA

W.C. "Bill" Lust of Tyler, Republican county chairman in Smith County, was elected president of the newly-formed Texas Republican County Chairman's Association at its July 16-17 organizational meeting in Austin.

The new association, authorized by State Republican Executive Committee action

earlier this year, has been formed to provide better communication between GOP country organizations throughout the State.

In commenting on the formation of TRCCA, Republican State Chairman Ray Hutchison said, "We have long needed a channel for discussion of programs, both

successful and unsuccessful, between our chairmen. We feel this can be beneficial in those district races where more than one county is involved."

Other officers elected were Bill Perrin of Brownsville, county chairman in Cameron County, vice-president Mrs. Nancy Canion of League

City, chairman in Galveston County, secretary; Bill Cooper of Clyde, chairman in Callahan County, treasurer; and Mrs. Jacque Allen of Wichita Falls, chairman in Wichita County, the TRCCA representative and spokesman on the State Republican Executive Committee.

The newly-elected officers

held a meeting with Hutchison and GOP Vice-chairman Polly Sowell on Sunday following the close of the meeting to discuss plans for the group's future activities.

Outstanding Republicans who spoke to the group during the meeting were former Governor John Con-

ally, United States Senator John Tower, Congressman Bill Archer of Houston, Congressman Jim Collins of Dallas and James A. Baker III of Houston, former Under Secretary of Commerce and the chairman of the President Ford Committee during the 1976 election.

### Wheat Producers Board Election Set

The Texas Wheat Producers Board formed in 1971 to support wheat research and market development will hold its third biennial election on September 15, 1977 according to Dwight Hamilton, Olney, Chairman. The terms of three current board members, elected at the formation of the organization, expiring at that time include: Ken Kendrick, Stratford; Otis Harman, Tulia; and Dwight Hamilton, Olney. Those with terms expiring drew a six-year stint of two, four and six-year terms in order to establish a rotating board at the initial formation. Board members are eligible for re-election to one additional consecutive term.

Any wheat farmer producing within the 34-county commercial wheat area, is eligible to vote for a board member for that district.

Counties included are: DISTRICT I: Dallam, Sherman, Ochiltree, Lipscomb, Hansford, Roberts, Moore, Hartley, Hutchinson and Gray.

DISTRICT II: Carson, Potter, Oldham, Deaf Smith, Randall, Armstrong, Briscoe, Swisher, Castro, Farmer, Hale and Floyd.

DISTRICT III: Childress, Hardeman, Foard, Knox, Throckmorton, Haskell, Archer, Baylor, Wilbarger, Wichita, Young and Clay.

Hamilton points out that any person qualifying to vote in the election may place his name in nomination for membership on the Texas Wheat Producers Board by application to the organization, signed by himself and at least ten other persons eligible to vote in the election, at least 30 days prior to the election date, in order to have his name placed on the ballot.

The election will be held by mail ballot, which will be provided to all eligible voters 15 day prior to the election, Hamilton said. He also indicates that any person qualified to vote who does not receive a ballot 15 days before the election date, may obtain one at Agricultural Extension Service Offices in the 34-county area.

Wheat producers fund TWPB with a 1/2 cent assessment on their deliveries of wheat at commercial handlers. Proceeds from such participation supports such programs as foreign and domestic market expansion, food and feed wheat technical service, insect control demonstrations and other activities designed to strengthen wheat producers income. In addition to Hamilton and the three members with expiring terms, other TWPB members are: Delbert Timmons, Perryton; Leo Wit-

kowski, Hereford; Winston Wilson, Quanah; C.L. Edwards, Panhandle; W.R. Moore, Jr., Munday; and Troy Sloan, Spearman. Applications for names to be placed on the ballot should be sent to the organization headquarters office, 600 Bank of the Southwest, Amarillo, 79109.

### Training Courses Offered

Two legal assistant training courses are being offered this fall by the Business Education/Office Administration Department at West Texas State University. "Legal Assistant Training in Legal Research and Brief Writing" will instruct students to use the published sources materials of the law. Training will include research case problems using the primary sources of the law, finding tools and search books essential for research.

The course, taught by Amarillo attorney Bill Ralph Moses, will run from 7 to 9:40 p.m. Tuesday beginning August 30.

"Legal Assistant Training in Real Estate and Mortgages" will provide instruction in how to work under the supervision and control of a lawyer to obtain and record basic information from the client on real estate transactions, to draft simple real estate contracts and to prepare all documents necessary for conveying the property and closing the deal. Special emphasis will be given to the preparation and filing of all documents normally used in oil and gas leasing.

The real estate and mortgages course, to be taught by Dumas attorney R.A. Renfer Jr., L.L.B., is scheduled from 7 to 9:50 p.m. Thursdays beginning September 1. Individuals enrolling in either of the courses must be on junior standing, or have legal office experience and the approval of the instructor. Students completing a course will be given a certificate showing that they have completed three college hours in legal assistant training. A series of courses must be completed to become a qualified legal assistant. Additional information on any of the legal assistant training courses may be obtained by contacting Mrs. Willie J. McCall at 659-3136 or 352-2268, or writing to: Mrs. McCas, School of Business, WTSU Canyon, Texas 79016

**TG & Y**  
521 HWY. 207 S. SPEARMAN OPEN 9 A.M. to 9 P.M. MON. & SAT.  
PRICES GOOD JULY 28, 29, & 30

**MID-YEAR CLEARANCE**

**MUST!! CUT INVENTORY READ & SAVE \$**

**LADIES SLACKS**  
100% POLYESTER ELASTIC WAISTBAND by HAMILTON 8  
REG. '9" **\$5.00**

**MEN'S SUIT OR SPORT JACKET**  
100% POLYESTER NAVY & BROWN REG. '2" ONLY **\$15.00**

**Men's Pullover KNIT SHIRTS**  
TWO RACKS VALUES TO '8" **\$5.00**

**SHOP OUR ENTIRE CLOTHING DEPARTMENT FOR RACK AFTER RACK OF "IN SEASON" WEARABLES - MERCHANDISE REDUCED 10% - 20% - 30% AND UP TO 50%**

**LOOK FOR THESE EXTRA SAVINGS IN CENTER AISLE**

**CHILDRENS SHORTS AND TOPS**  
SIZES 2 - 6x  
**LITTLE GIRL'S HALTERS**  
**KITCHEN HAND TOWELS**  
**BILLFOLDS**  
**PHOTO CASE & CARD HOLDER**  
**2 FOR \$1.00**

**BATH TOWELS**  
**HAND TOWELS**  
**LADIES KNIT TOPS**  
**TATAMI SANDALS**  
**COLORED BRAS**  
**LADIES HALTERS**  
**YOUR CHOICE \$1.00**

**BOY'S TANK TOPS**  
**BILLFOLDS**  
**INFANT'S COVERALLS**  
**MEN'S TIES**  
**LADIES KNIT TOPS**  
**SHORTS**  
**GREAT BUYS \$2.00**

**MEN'S BATHING SUITS**  
**SHOWER WINDOW CURTAINS**  
**ROPE PURSES**  
**BEACH TOWELS**  
**SANDALS**  
**\$3.00**

**LADIES PURSES & INFANT'S SANDALS**  
**\$4.00**

**PETS PAL**  
**Cedar Bedding**  
MAKES PERFECT OUTDOOR  
PET BEDDING FOR ALL ANIMALS  
5 LB. BAG  
REG. '11" 2 BAGS **\$1.00**

**Mr. Farmer**  
New low prices on **Feedlot Manure from Caprock 1 or 2, \$1.80 per ton plus 7¢ a ton a mile.**  
If you can use any Fertilizer  
**Call or see Billy Baker 659-3642**

**Spearman Moose Lodge Dance**  
Spearman Community Bldg  
FEATURING **EDDIE MARTIN AND BAND**  
**JULY 30TH 9:00 P.M. TILL 1:00**  
MEMBERS AND GUEST  
Also we will have drawing for the shotgun to be given away.  
**Come Join us!**