

## DON'T NAME IT

By HONEST BILL

All I know this week is wheat allotment. I've had it fifteen hours per day for ten days—and I am convinced the farmers of this section can qualify as public accountants when they graduate from the wheat allotment this year. They also might qualify as surveyors. The government is insisting that they figure out how much land is used up in private roads, public roads, turn rows, pastures and etc. One thing is sure—Uncle Sam does not want any land that is not wheat, covering the period upon which the allotment is based. Fact is he does not intend paying for any, and the allotment board is trying terribly hard to see that each farmer registers only the correct acreage not cultivated in wheat acreage.

Confidentially I have heard it rumored that one of the big boys in the wheat allotment organization has stated that Hansford county has more excess acreage than any county in Texas. Really this is only his opinion, but I believe that each farmer has a right to the mark on his applications for figures that go to Washington. County Agent Frank Wendt stated that the state of Texas will give a new allotment. Doubtless the county will profit from readjustment—but the new allotment is based on wheat—not guess work.

Just to give you folks an idea of a newspaper man that is a bit different from the one you have to endure.

Man Stein, over at Perryton, president of the state American Legion, and at the same time President of the Panhandle Press Association. He really is a man in the Press and Legion circles, but to my certain knowledge, Van never has written a word that would even reveal this honor, in his weekly publication. That's just too much modesty for a good newspaper man. To cap the climax, Van attended the National of the Legion held in this year, and received special engraved invitation to attend at dinner at the Palmer Hotel in Chicago for DISTINGUISHED guests only. The incident and also Van about the meeting we know that it is an honor for a country boy. Only four people of the state of Texas were invited.

It is to go to such a guarantee that you will know all about it from the desert. And I'll frame the invitation in a public place in my office.

Before we get off the subject of wheat allotments I want to thank the wheat allotment board, the county wheat organization and all the community cooperation and employed help for their cooperation in preparing the legal notice for publication. They have made possible the large 16 page issue of the paper. In doing so they have done extra work as a favor to the publication. Thanks.

Understand several have sighted geese. Reports coming in are to the effect that the geese are restless and only tarry a night or so around some of the large lakes in the county. Seems that no one has located the feeding grounds as yet. Just as soon as the season opens this writer is offering a one dollar reward to anyone who can take him to a place where he will get a shot at a goose. Remember the writer does not have all the geese, but just get in sighting range.

This is too good not to tell if a bit moved. When A. H. Word moved to Spearman he brought one of the cats with her that she had to the county. The cat is a sort of neighbor and recently Mrs. Word and her husband, "Doc" you children better Doc, replied, "I always no to teach step-"

find a silver cloud. This so busy paper

## THREE ARE KILLED IN CAR CRASH

PERRYTON ACCIDENT FATAL TO FARM FAMILY FOUR INJURED.

Three persons were killed and four injured as their car collided with a truck early Saturday night, 21 miles south of here, on highway 4.

The dead are: Arthur Slavin, 44; his son, Don, 10; and J. C. Helton, a neighbor.

The injured are: Mrs. Arthur Slavin; Arlene Slavin, 16; Ted Slavin, 14, and Wilma Helton, 12.

The tragedy occurred as the Slavins, accompanied by the Helton children, were returning from Perryton to their home in the south part of Ochiltree county.

None of the injuries suffered by Mrs. Slavin or the three children are believed to be serious enough to prove fatal.

Funeral services for the dead were held at Perryton on Monday.

Surviving Mr. Slavin besides his wife and two children, are his mother, Mrs. George Slavin, and two brothers, John and Jim Slavin, all pioneer citizens of Ochiltree county; and two sisters, Mrs. Chester Jackson, Vanderpool, Texas and Mrs. W. N. Rhea, Westerville, Oklahoma.

J. C. Helton is survived by his father, Charley Helton, and a sister, Wilma, one of the injured.

## Goodwill Freshmen Win Over Lynx 48-0

Spearmen Lynx met their second defeat of the season when they were hopelessly defeated by the Goodwill College "B" team in Spearmen last Friday afternoon.

The local high school players were pitted against men who outweighed them and out played them. The college team was able to tear holes through the Lynx line at will, and skirt the ends with long gaining plays.

Several players evidently accustomed to playing with the first string players of the college were run in the game, and the final score was 48 to 0.

## Lynx Football Team Resting For Follett

This week will be a rest period for the Lynx team and the boys will play their first conference game at Follett next Friday afternoon.

Coach Gunn is making medicine to win the first conference game, and anticipates a strong contest. The Follett team defeated the Canadian team 20 to 0, while the Lynx only won the big end of a 19 to 0 score.

## CARD OF THANKS

I wish to express my sincere thanks to the many friends of Spearman who were so kind and considerate during the recent bereavement in my family. You will never know how much your kindness and sympathy helped in this hour of sorrow.

Mrs. Joe Perry.

## PENALTY AND INTEREST IS REMOVED FROM STATE TAX.

Under the regulations passed by the recent session of the Texas legislature, penalties and interest on delinquent state and county taxes will be remitted until July 1, 1934. This information was announced by Sheriff Wilbanks, tax collector of Hansford county. At the present time until January 1, 1934, a two per cent charge is made on all delinquent payments, on January 1, and continuing until April, 1934, the charge is increased to four per cent; on April 1, it advances to six per cent. Taxes paid on or after July 1, 1934, will carry the full ten per cent penalty with interest charges added.

## PERMANENT VISITOR AT BRYAN HOMESTEAD

Little Wilda Joan Bryan arrived in Spearmen October 23rd. The tiny visitor who only weighed 10 pounds when she came to the home of Mr. and Mrs. Louis Bryan, an of Spearmen made known her intention of becoming a permanent visitor in Spearmen.

LOST:—One pair of single and double trees. Leave at Bert Brileys or see W. M. T. Leach, one mile southwest Spearmen.

the Lynx, and the record the writer has maintained of not missing a single football game played by the Lynx remains unbroken.

Wish the parents reading this paper would read the article carried in this issue about diphtheria. This information comes from the state department of health, and certainly should be observed. If we should wait until diphtheria breaks into the community be-

## Just Another Halloween

By Albert T. Reid



## Federal Land Bank Makes Over Million Dollar Loans Daily

Houston, Oct. 25th.—Moving at a record rate with a greatly enlarged staff, the Federal Land Bank of Houston is meeting the challenge of recovery with an unprecedented volume of farm loans. During the past two weeks 4,273 loans totalling \$12,435,120 were approved by the Federal Land Bank and Land Bank Commission.

This represents more than twice the amount approved during the year 1932. "During the past three weeks," said A. C. Williams, President of the Federal Land Bank of Houston, "we have reached a volume of loans which will be felt through the various channels of trade. A large percentage of the money going to Texas farmers is to refinance on much more liberal terms and at lower rates of interest farm mortgages held by banks, insurance companies and individuals. This money will help thaw the frozen assets of many institutions which must resume their activities as a part of the program for improvement in agriculture. In many instances our borrowers are paying their debts to individuals who will in turn use the money to pay their obligations to others."

"Since the Federal Land Bank and Land Bank Commission were given the task of meeting the demand for emergency farm credit, we have expanded every department in the bank, have trained scores of new appraisers and office employees, and have been disposing of a steadily mounting volume of applications. We are now handling applications in greater number and with greater dispatch than ever before. During the past week we have approved loans by the Federal Land Bank and the Land Bank Commission at the rate of approximately \$1,000,000 for each working day. This is our response to the emergency call for service to agriculture, and shows what may be expected in the months to come."

## Local O. E. S. Chapter Represented At Amarillo

The local chapter of the Order of Eastern Stars was well represented at State of Texas Grand Chapter, which opened its session in the Municipal Auditorium in Amarillo Tuesday morning. Monday night more than 2,000 members of the largest women's fraternal organization in the world were welcomed with ceremonies there.

Six representatives of the international order were present, with delegates from every corner of the state, from towns so small that their names are unfamiliar and from cities so large that special trains were needed to accommodate the delegations.

Spearmen members attending the State Chapter are: Mesdames Chas. Chambers, Worthy Matron Olin Sheets; C. A. Gibner; Vera Campbell; G. P. Gibner; R. E. Burran; Bob White; H. C. Campbell; J. C. Tuttle; R. L. Porter; W. R. Finley and Mrs. W. R. Finley.

## Death Claims Life Of Loved Citizen

Last Friday afternoon at 3:30 P. M., October 20th, 1933, the grim reaper took another friend and loved citizen from the community, when Grandpa W. R. Massey succumbed to months of lingering illness. Few people indeed have lived a more useful life to humanity than Mr. Massey and none have lived who were more eager to be of service than he.

Mr. Massey was 77 years old at the time of his death, born in McMinn County, Tennessee, December 10th, 1856. He was married to Miss Eliza Emerson February 23rd, 1878, and to this union there were born three children: Claude Massey, deceased; Mrs. C. R. Oldham, New Mexico; and Mrs. W. E. Pittman, Spearmen.

Wherever he lived, the deceased was a civic leader and served fifteen years in McMinn County, Tennessee as sheriff, and was marshal of Spearmen for eight years. He was a member of the Odd Fellows lodge, and was a member of the Methodist Church in Spearmen, having been a member of that church for about fifty-four years.

He is survived by his wife, two daughters, Mrs. Cal Oldham, Mrs. Earl Pittman and a host of friends and acquaintances who are saddened by his passing. Funeral services were held at the family residence in Spearmen Saturday morning, October 21st, officiated by Rev. H. A. Nichols, Methodist pastor, assisted by Rev. A. F. Loftin, of the First Baptist Church. At the close of the services the remains were taken to Tyrone, Oklahoma by Wilson Funeral Home for burial, near the grave of his only son.

## BLODGETT NEWS

Mr. and Mrs. L. W. Austin were business visitors to Perryton recently.

Mr. and Mrs. W. E. Prutsman and children were Saturday evening visitors in the W. C. Harbour home.

E. H. Brainard of Canadian visited in the home of Mr. and Mrs. E. S. F. Brainard Monday and Monday night.

Mrs. Virgil Wilbanks and little daughter visited in Dallas and Fort Worth recently, returning home Friday.

Miss Madaline Riggs returned to her home in Pawhuska, Oklahoma recently, after a several weeks visit in the home of her sister, Mrs. O. J. Williams.

W. C. and H. L. Harbour are visiting with home folks in Roscoe this week.

Earl and Charles Prutsman were Berger visitors Saturday.

Mr. and Mrs. J. B. Monroe visited Mr. and Mrs. Perry Hawkins Sunday.

Mr. and Mrs. Cecil Crawford, Miss Gladys Williams and Don Bennett visited in the W. C. Harbour home Sunday afternoon.

## Texas-La. Company Pay Premium To Be In Allotment Paper

Due to a misunderstanding as to the date the Spearman Reporter Allotment issue would be published, The Texas-Louisiana Power and Light Corporation had not planned to turn in their copy for the advertisement which appears in this issue until November 1st. When the local manager, O. G. Collins learned that the publication date was October 26th, he wired the advertising department at Fort Worth, and that department immediately prepared the large advertisement that appears in this issue and telegraphed it to the Spearman office.

We sure appreciate this cooperation and the fact that men capable of judging the value of advertising think enough of the Reporter medium to spend a premium in telegraph fees to assure publication of their advertisement.

## Loss From Diphtheria Can Be Avoided

Hansford county lost several of its children last year from just one preventable cause. The disease responsible for this loss was diphtheria. Dr. J. E. Gower, City Health Officer, in commenting on this loss, said, "Diphtheria could be practically eliminated if parents would take their children to their family physician and have them immunized as soon after they reach six months of age as possible."

Parents would not allow their children to walk in front of a moving train or expose them to any other such danger, so why will they allow them to run the danger of contracting diphtheria. This immunization should be done as soon as possible as the winter months are the ones in which the most deaths occur and it takes some time for immunity to develop. Last year there were 812 deaths in Texas caused by diphtheria. This is an increase of 300 deaths above the average year. The increase in diphtheria deaths can possibly be attributed to one or all of the following facts:

First: Parents are waiting until the third or fourth day of illness to call a doctor.

Second: The prevention of diphtheria by toxoid has not been general enough to protect all the children from 6 months to 10 years of age (58 per cent of the deaths are under the age of five years.)

Third: The active cases are not kept quarantined and the spread of diphtheria is increased by convalescent carriers.

Lets all do our part to eliminate the factors in this city.

## CARD OF THANKS

We sincerely thank our friends and neighbors for their many kindnesses, and their helpfulness in our bereavement, in the loss of our daughter and sister, Ada May Johnson.—J. R. Johnson and Children.

Burl Brockus and Paul Loftis attended at "Old timers' Cele-

## Wheat Allotment Review Board Appointed For Plains Count

### TRUCK LICENSE FEE REDUCTION

### FIFTY PER CENT REDUCTION ON FARM TRUCKS USED FOR HAULING OWN PRODUCE, ETC.

Farmers and ranchmen of the Panhandle and the entire state should feel very grateful to Representative B. L. Rogers of Ochiltree county for the effective work which he put forth in securing the passage of the bill in the last session of the legislature, reducing by fifty per cent the license registration fee of commercial motor vehicles when same is used by the owner thereof only in the transportation of his own poultry, dairy products, livestock and farm products to market, or to other points for processing, or the transportation by the owner thereof of supplies, to his own ranch or farm, exclusively for his own use.

Special license applies only to motor vehicles with a registered gross weight of from one to six thousand pounds or from six thousand pounds and one to eight thousand pounds, consisting of a truck without a trailer or semi-trailer.

Special license will be provided for this sort of motor vehicles so that they may readily be distinguished from other trucks who use or allow their trucks to be used in violation of this regulation are subject to conviction on a misdemeanor charge carrying a fine of not less than \$25.00 or more than \$200 each use of vehicle or each permission for use constituting a separate offense. This law became effective at once on passage.

At the present time license fees for commercial or 1000 pounds, covering most pick-up bodies, runs about \$13.00. Trucks weighing 3,000, carrying a 3,000 load, require a \$24.00 license, while \$40 is charged for the 8,000 pound trucks. These amounts will be reduced one-half for farm vehicles. The new law will save the farmers of Hansford county hundreds of dollars each year.

## Local Talent Give Splendid Program Tues.

Despite the absence of the Boss Lion and Taittwister, or perhaps in view of this absence, Program Leader, Lion Clay Gibner presented one of the most entertaining programs of the year at the regular luncheon Tuesday noon. Miss Reba Barkley gave three splendid piano numbers, including that ever popular "Last Round-Up."

Rock McLeod, tap dance artist, extraordinary, entertained with two numbers and encore. In the business session following the program the membership of the club voted to change the date of the Lion Ladies Night to Monday night October 30th, instead of Tuesday night, October 31st.

## Red Cross Poster of 19 Appeals for Help for

# JOIN



Burl Brockus and Paul Loftis attended at "Old timers' Cele-

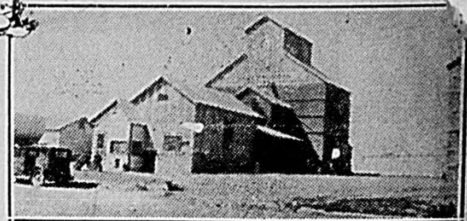


from Page No. 4, Section A

Table with multiple columns and rows listing names and numerical data, likely a directory or record book. Includes names like Gelnar, Frank, D. and Willard, N. W., etc.

Stitch and... The Stitch and... met at the home of Mrs. ... Thursday afternoon. We quilted on a beautiful quilt. Refreshments of sandwiches, cake and cocoa were served to Mesdames. Walter Gillispie, Virgil Hull, Earl Cooley, Huffman, W. A. Van Cleave, Web Sheets, Main, Frank Jones, C. D. Riggs, O. L. Williams, Jess Edwards, Kenneth Williams, Maxine Allen, Ruth Jane Van Cleave and the hostess, Mrs. Tom Allen.

STRAYED: One bald face brindle one half Jersey steer, weight about 600 pounds. Reward for information. Otto Reimer.



FANCY SOOTLESS COAL

On track Monday, Tuesday and Wednesday. On hand at all times. dependable Cold Weather Colorado lump.

NEW CROP OF MAIZE AND OIL MEAL

Northern Yellow Corn, Oats, Barley, Rye, Seed Wheat, and Soft Cake.

SUPER QUALITY EGG MASH

We especially invite your attention to the quality, low price and freshness of our high producing egg mashes.

ENID MAID FLOWER

Fresh supply of Gold Crown Cornmeal and Flour. Mill run, Middlings, Shorts and Bran; Malt, Smoke Salt, Stock Salt, Oyster Shell, Meal and Tankage. We try to secure best products obtainable and sell them at genuine values. Highest market prices paid for all sorts of grain and feed. With the Spearman you are cordially invited to call.

R. L. Porter Grain And Seed Co.

Radios

NEW CROSLLEY 5-Tube Battery Set Complete

less batteries \$23.95

Our Used Sets are a BARGAIN

Radio Accessories and Radio Repairing

We Sell Champlin and Inland Tires

We Handle the Famous Fluor Batteties

Jimmie Davis

Extra-Fast Relief Demand and Get



GENUINE BAYER ASPIRIN

BECAUSE of a unique process in manufacture, genuine Bayer Aspirin Tablets are made to disintegrate—or dissolve—INSTANTLY you take them. Thus they start to work instantly. Start "taking hold" of even a severe headache, neuralgia, neuritis or rheumatic pain a few minutes after taking. And they provide SAFE relief—for Genuine BAYER ASPIRIN does not harm the heart. So if you want QUICK and SAFE relief see that you get the real Bayer article. Look for the Bayer cross on every tablet shown above and for the words GENUINE BAYER ASPIRIN on every bottle or package you buy. Member N.R.A. GENUINE BAYER ASPIRIN DOES NOT HARM THE HEART

FOR ECONOMY AND LONG SERVICE USE ONLY GENUINE Coleman Generator

GOOD LIGHTING SERVICE can be guaranteed on Coleman Lamps and Lanterns only when GENUINE Coleman Generators and Mantles are used. They are made with great care, factory tested, perfect fitting, and insure good service. Always insist on the Genuine—look for the name "Coleman" on the box. The following types fit Quick-Lite Lamps and Lanterns: No. 855 ROTARY with automatic cleaner, Each \$3.00; No. Q99 standard for many years, Each \$2.50; No. Q77 STRAIGHT TYPE (like Q99), Each \$2.50. THE COLEMAN LAMP & STOVE COMPANY, Wichita, Kans.; Chicago, Ill.; Philadelphia, Pa.; Los Angeles, Calif.

Coming Attractions At RIG THEATRE Borger, Texas

October 29 - 31 "DR. BULL" --- Will Rogers, Marion Nixon November 1 - 2 "ACE OF ACES" Richard Dix. November 3 - 4 "I COVER WATER" Herbert, B. Ernest



# Extra Service

backed by the

## Federal Tire Bond

AT NO EXTRA COST

WE Trade

## FEDERALS

For Extra Service

# Allen Tire Shop SPEARMAN - - - Texas

YOUR

Or rather a small portion will BUY Thousands of miles of tire satisfaction if you buy



FEDERAL TIRES



Federal Tire Guarantee Bond No. 363643

The Federal Rubber Company guarantees the purchase of any Federal Tire of the brands named herein for the period designated against any condition which may render the tire unfit for service, provided such condition results from ordinary wear and tear or road hazards, road hazards being insured as outlined in the conditions.

PASSANGER SERVICE ONLY  
Federal Heavy Duty 4 Ply 12 Months  
Federal Blue Pennant 4 Ply 12 Months  
Federal Low Pennant 4 Ply 12 Months

COMMERCIAL SERVICE  
Federal Commercial Double Blue Pennant 4 Months  
Federal Standard Truck 4 Months

Complete protection. Covers tire damage from cuts, blow-outs, bruises, faulty brakes, under-inflation, wheel misalignment. Investigate the Federal Tire Bond. It will save you money.

### National Sunday School Lesson

By DR. J. E. NUNN

**October 29th, 1933**  
**Lesson**  
The Temperance Sunday Lesson  
13:12-14, 14:7-9, 15-21.  
The night is far spent and day is at hand; let us therefore cast off the works of darkness and let us put on the armour.

It is sin for him to engage in acts, practices, detrimental to his fellow men. If a man will not accept this point of view, whether he be a church-member or an out-right unbeliever, it is of little avail to argue with him about temperance.

**The Book of Romans**  
Paul's letter to the Christians of Rome is one of the noblest Books of the Bible. It was written from Corinth at the close of his second missionary journey and when he was intending to visit Rome—a visit which he made only later and as a prisoner. The Epistle is Paul's chief doctrinal composition, setting forth in a masterly manner the way of life, that it lies through faith in God; and so it is one of the most important of the Bible Books. The letter closes with many strong practical teachings for daily life, and our lesson is taken from this section.

**The Temperance Sunday**  
"The World's Temperance Lesson is especially important at this time. In our own country the forces of evil are making, as we write, the most strenuous effort they have yet made to overthrow the Eighteenth Amendment to the Constitution. They are seeking by every form of falsehood and specious pleading to bring about a return of the saloon. The present generation has been brought up with no knowledge of the evils of the saloon, and is especially

open to these misleading statements. There is every reason for reviving the reasons for prohibition and setting forth its enormous advantages and blessings. This our lesson aims to do."  
**The Day Is At Hand**  
"The night is far spent and the day is at hand." Paul means by night, ignorance of God; and all who are kept in it wander, and sleep as in the night, for unbelievers suffer from blindness and stupidity; and this last is indicated by sleep, which is the image, as the apostle says, of death.

**The Day of Reckoning**  
This section ends with a solemn warning. A day of reckoning is coming for all. "We shall all stand before the judgment-seat of God." In that day of reckoning we shall have to answer such questions as "What have you done with your muscles, your nerves, your brain, the wonderful fabric of your body? your talents? your possessions? your friends? your home? your opportunities in life? your spiritual impulses? What answer can the drunkard make to those stern questions? Is it any wonder that

the Bible emphatically says (1 Cor. 6:10) that drunkards shall not inherit the kingdom of God?"  
**Be Not A Stumbling Block**  
"It is good not to eat flesh, nor to drink wine, nor to do anything whereby thy brother stumbleth." This sums up the whole story, and Paul gives a beautiful reason in the verses of the next chapter which are appended to our next lesson: "Let each one of us please his neighbor for that which is good, unto edifying. For Christ also pleased not Himself." If our Saviour had had the same aim, He would have remained in the glory and delights of heaven. The agony of Gethsemane was His conquest over the last remnants of self-pleasing that adhered to His human frame and the sacrifice on Calvary was the glorification of the self-giving into which he came. No one who enters into the spirit of the cross and is crucified with Christ will ever plead his "personal liberty" to use intoxicants.

**Some Practical Applications**  
Those who stand for the manufacture, sale and use of strong drink do so in the face of the fact that it is plainly grievous "stumbling block" to innumerable individuals—and therefore in the face of Jesus' awful warning of Luke 17:1, 2. "It were better for him that a millstone were hanged about his neck and he cast into the sea, than that he should offend one of these little ones. Granted that the use of alcoholic beverages is not harmful to you (of course we do not grant it) if it is to be a large number of your brother men, Paul would say—and Christ does—it's up to you as a Christian (we would add as a generous hearted man) to cut it out, to abstain.

Some supposedly good Christians still talk about their right—their "personal liberty"—to indulge in alcoholic drinks. Paul's teaching, and it is good gospel, is that you have no right to any right whose exercise works harm to your fellow men.  
"There are two kinds of freedom, the false, where a man is free to do as he likes, and the true where he is free to do as he ought."—Charles Kingsley.  
**GRUVER NEWS**  
Mrs. Guy Cooper, Reporter  
Mr. and Mrs. Rogers Francis had as their dinner guests Sunday Mrs. Mary Spivey and son W. F. Mr. and Mrs. Bill McRee and daughter visited with friends at Amistad, New Mexico last week end.  
Mr. and Mrs. D. S. Cooper and daughter Maxine visited in the Over Wallin home Sunday. Mr. and Mrs. Wallin will leave soon for Clayton, New Mexico to spend the winter.



Harmodio Arias, President of Panama, had a glad reception on the former's arrival in New York, England to visit President Roosevelt. The boy, who is pictured with his distinguished father, is the liner Querigua.

Whether we live, we live in the Lord; or whether we die, we die in the Lord; whether we are here, or die, we are the Lord's.  
to this end Christ died rain, that he might be with the dead and the living.  
or if because of meat thy brother is grieved, thou walkest not in love. Destroy not for him for whom Christ died, that thou shouldst not then your good be destroyed.

kingdom of God is by righteousness and peace, and joy in the Holy Spirit.  
For he that herein serveth the flesh is well pleasing to God, and loveth men.  
then let us follow after peace, and let us make for peace, and thereby we may edify one another.  
Overthrow not for meat's sake the work of God. All things are clean howbeit it as long as that man who eateth with a clear conscience.  
It is good not to eat flesh, nor to drink wine, nor to do anything whereby thy brother stumbleth.

### Identical Twins Plan Double Wedding



Martha and Marjorie Hines, identical twins of Philadelphia, have shared measles, and chickenpox and falling in love—as well as twenty-three birthdays. Now they are planning a double wedding. Martha is to be married to John J. Kelly and Marjorie to John J. Kelly. Just now they are preparing for a party. Just now they are preparing for a party.

**NRA**  
**and the National W**  
**Allotment is In**  
**ing Your**  
**BUY IN**  
**POWER**

The increase in country town buying power is currently estimated at a billion dollars. Before long that figure promises to be doubled.  
Two billion dollars MORE in the pockets of small town and farm people.  
Think of it!  
We do not feel that we should be considered selfish if we suggest that the first obligation aside from the necessities of life will be the payment of your indebtedness to firms in this county who have been carrying you over the depression period. This firm will greatly appreciate a partial payment of those accounts which have been registered on our books for a number of months.

JOHNNY (TARZAN) WEISSMULLER says  
BOYS! GIRLS! GET MY NEW ACTION PHOTO OF THE CRAWL FOR THE TOP OF A PACKAGE OF WHEATIES, MAILED TO MANUFACTURER PER PKG. 15c  
FREE! BEE! CROCKER'S SET OF 4 BEELEWARE MEASURING CUPS 2 Package Tops from 70c  
BURRAN BROS.



RED CROSS AIDS DISTRESSED IN 120 DISASTERS

Help in Floods, Earthquake, Fires and Tornadoes in Year's Record

The American Red Cross has reached into the homes of six million families in the past year with unemployment and disaster relief...

Mrs. Clarence Broadhurst will leave Wednesday for Oklahoma City where she will visit several weeks with relatives...

Weber home. Mr. and Mrs. Kell. Mrs. Merle We... home Sunday from where she has been with her parents...

Table with columns for names and numerical data. Includes names like C. Sealy, J. L. Sanders, C. D. Alexander.

OSLO, PRECINCT NUMBER SEVEN—Community Committee—Jay Jones, Chairman; Robert Alexander, States W. Hamby. Table with columns for names and numerical data.

HITCHLAND, PRECINCT NUMBER FIVE—Community Committee A. L. Thoreson, Chairman; LeRoy Satterwhite, H. D. Lewis. Table with columns for names and numerical data.

Philco Rabios

There is assurance when you have a Philco radio that you have the finest constructed radio made...

\$24. to \$200.

NEW STOCK -B- Batteries

Let Us Repair Your Magneto

RADIO TUBES Tested Free

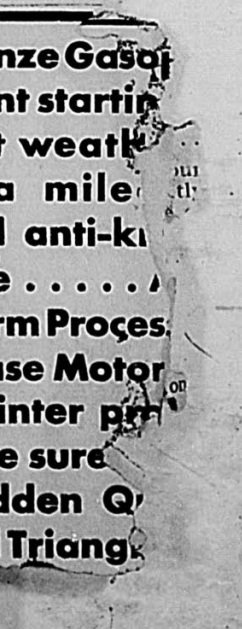
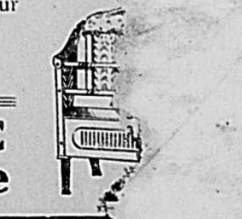
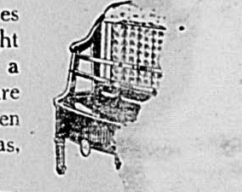
Delon Kir

STOVE Headquarters

It is time for heating stoves again and let us say right here that if you need a stove, Womble Hardware has the stove you've been wanting...

WOMBLE Hardware

Conoco Bronze Gasol gives instant starting the coldest weather and extra mile power and anti-knock all the time... Conoco Germ Process Paraffin Base Motor is a real winter protection... At Red Triang Station





# CHURCHES

## CHURCH OF CHRIST

Bible Study, 10 a. m.  
 Preaching 11 a. m.  
 Evening Service 7:30 p. m.  
 Mid-Week Bible Class 7:30 p. m.

We have confidence in the simplicity of the New Testament teaching and of the New Testament church as sufficient for the accomplishment of the Lord's Work. Many worthy, capable and earnest disciples, who have been led to believe that they could accomplish more with the addition of human organizations and experiences in the work and worship of the church are discovering that these additions to the simple New Testament order of things is not what they had supposed, and they are coming back to the simplicity of Apostolic precept and precedent.

Two more ministers of the First Christian Church have reached their conclusions and have had the courage to break away and do what their Bible tells them is right—namely to identify themselves with the Church of Christ and no longer uphold man made doctrines.

Also both a Baptist and Methodist preacher were shown the error in their doctrines and obeyed the gospel at a recent revival in Clinton, Oklahoma.

The gospel is the power of God to save—it is the only way God can save according to what the Bible teaches. Then the problem is to preach the word, and to get more and more people to listen. I am not unmindful of the fact that the most vigorous opposition is ever present among people who are misguided or who love the institutions of men more than the truth of God.

swly married couple are at the home of Mr. and Mrs. Louis Bryan in Spearman.

erty. True man has "Seems So" and "thinks we are to be judged by able, not what we think, or at you think.

The purpose of the Church of ist is to save the souls of men and women.

Subject: "Watch the World grow Smaller."  
 Leader—Craig Davidson.  
 "New Wings of the Wind."  
 chardson.

otions in Your Daily  
 Davidson.  
 "KITE"  
 Davidson.

ontagion For Good  
 Clyde.  
 Friend Through Correspondence."  
 Ida Mae.  
 "Suggestions for Program Com-  
 e."  
 Bruce.

SEMBLY OF GOD  
 re is a saying, "opportu-  
 knocks at your door but  
 This may be true."

ortunity  
 opportunity.  
 "The Assembly of God and hear Evangelist he converted news boy, gospel of Jesus Christ, been blessed in their who have heard Mr. ve enjoyed the meet-  
 er Millsap is a talent-  
 and singer. He is  
 the services each night  
 instrumental music and  
 singing. A mixed  
 nature of the

the young  
 the city have been  
 and take part. An  
 program will be ren-  
 young people, after  
 list McCann will

ool at 9:45 a. m., Mrs.  
 tudent.  
 hip at 11:00 a. m.  
 nassadors 6:30 p. m.  
 Service 7:30 o'clock.  
 dially invited to wor-

ship  
 A. Coxe, Minister

FATHER  
 Y CLUB

A meeting was called by Mrs. M. W. McCloy, president of the Parent Teachers Association on Saturday evening, October 21st, for the purpose of organizing a mens study.

Mr. R. H. was elected president. Ralph Fortney was secretary.

The see November 8th, was decided first meeting

members Rich-  
 W. T. Womb, G. E.  
 W. J. Warren, S. H.  
 W. McCloy, W. M.  
 Weatherford, C. F.  
 W. Henderson and W.

## METHODIST

Sunday School  
 Preaching at 11  
 Boys' and Girls' W  
 p. m.  
 Intermediate League 6 p. m.  
 Senior Young People 6:45  
 Evening Worship 7:30 p. m.  
 Stewards Meeting Monday  
 night 7:15.  
 Both Circles of W. M. S. Wed-  
 nesday 2:30 p. m.  
 Prayer Meeting Wednesday  
 night at 7:15.  
 Choir Practice Thursday night.  
 Last Sunday was a good day.

The evening services were conducted by the adults climaxing the observance of Childhood and Youth week. The talks were to the point and helpful. An effort is being made to better understand the child by adults. The results of this will be a more sympathetic attitude toward the child.

We were glad to have your presence last Sunday—so try again this Sunday. We hope to be of some service to you—and your presence will be helpful to someone too. Let's stay right in there until the last whistle is blown—for your loyalty counts, and we are expecting each one of you to do his best in every way to close out the year in a fine way.

H. A. Nichols, Pastor.

## PHELPS-BURKHART

Miss Bernice Phelps of Perryton and Carter Burkhardt of Hardisty, Oklahoma, were quietly married at Guymon, Oklahoma, by the Methodist minister of that city, Saturday evening, October 21st, 1933. Both of the contracting parties were well known in Spearman and have many friends here who will wish for them much happiness. The bride is a sister of Mrs. Louis Bryan of Spearman and a daughter of Mr. J. R. Phelps of Perryton. The groom is a son of Mr. Sam Burkhardt of Hardisty, Oklahoma.

swly married couple are at the home of Mr. and Mrs. Louis Bryan in Spearman.

## Bid A Bit Club

Mrs. J. D. Hester delightfully entertained members of the Bid A Bit Club with a bridge party in her home Friday afternoon, at 2:30, October 13th.

In the games played Mrs. E. C. Womble won high score. Those present were Mesdames: Bruce Sheets, D. W. Holland, R. E. Lee, C. D. Foote, Bill Vasey, Wm. J. Whitson, Max Lackey, W. L. Russell, T. E. Johnson, E. C. Womble, Miss Reba Barkley and the hostess, J. D. Hester.

Members of the Bid-A-Bit Club gathered at the home of Mrs. Bruce Sheets on Tuesday night of this week and were joyfully entertained with a bridge party, with Mrs. Sheets as hostess. A Hallowe'en motif was tastefully carried out in the room decorations and refreshment course. In the games of bridge high score awards went to Mrs. Max Lackey and Mr. L. B. Campbell. A gallop was awarded Mr. Bill Vasey for trumping and catching the number of tricks at the evening, using the trump suit.

Invited guests were as follows: Messrs and Mesdames W. L. Russell, W. W. Merritt, Wm. J. Whitson, B. Campbell, J. D. Hester, R. E. Lee, J. M. Lackey, D. W. Holland, T. E. Johnson, Mrs. C. E. Foote, and Bruce Sheets.

## DAHLIA FLOWER UNIT

Mrs. E. C. Womble will entertain on Monday, October 30th, for the Dahlia Flower and Garden Club, at an afternoon social gathering that is scheduled to be the final meeting of the club year.

Activities of the club will be resumed with the coming of spring.

Mr. J. D. Hester was quite sick a

## CHURCH

Loftin, Pastor

### Another Record Broken

And was Superintendent Collins happy? I should say he was. The largest attendance in Sunday School Sunday morning than for about twelve months before, was the thing that made him smile all over his face. And, well, others smiled too. We were all happy that two records were broken in succession. Look out! The first thing you know Children, "OLD SANTA" will be coming. We are getting ready for him now.

That Other Man  
 That was our B. T. S. General Director, Bro. Hoskins, who was happy over seeing the men and the women and the young people and the boys and the girls in B. T. S. Sunday evening. He says, "It makes me happy to see our people come to B. T. S." Bro. Hoskins, I know another man, our good pastor, happy to see the interest growing in every department of our church life.

That Woman  
 That is Mrs. Gillispie, who is interested in the young ladies of the community and church. That's why she invited them to meet in her home last Monday to organize a Y. W. A.

And How is Another Woman  
 Mrs. Loftin President of the W. M. S., who is happy that the good women are so interested in Mission Study Work and Buckner's Orphan Home. This afternoon, Wednesday, a large group of the women are meeting in the home of Mrs. Gillispie to sew for the orphans.

SUNDAY MORNING  
 In the absence of the pastor who is to preach at Perryton, Bro. Horan will preach for us. You will hear him with pleasure. He has a "Heart Message" for you.

Night Services—as usual—6:30 and 7:30. Worship with us.

Now, that is exactly what it is. A "surprise of your life" awaits you for Sunday morning November 5th. Don't miss it. You will be "delighted!" A word of warning, you six who know now what that "surprise" is to be, please, please keep it to yourselves. We will have it at the church for you. Members and friends, early Sunday morning, November 5th. Don't Forget!

Our Revival is to begin third Sunday in November.

Mrs. Bob White  
 Honored With Party

Mrs. Bob White was honored with a party given in her honor Monday evening, October 23rd, at the home of Miss Lorene Morton, who was hostess.

Games of bridge furnished the entertainment followed by delicious refreshments. Those present were: Mesdames L. B. Campbell, Marvin Chambers, Delon Kirk, J. B. Cooke, R. W. Morton, the honoree, Bob White, Misses Virginia and Reba Barkley, Opal Cline and Willie Helen Lamb.

Home Demonstration Club  
 The Home Demonstration Club met in the home of Mrs. J. B. Monroe with Miss Dyara Crowder in charge. The subject was cheese making. Five pounds of cheese was made under the supervision of Miss Crowder.

At the close of the meeting Mrs. Monroe served hot chili, crackers, pumpkin pie and coffee. She was assisted by Mrs. Uptergrove.

Those attending the demonstration were: Mesdames Sims, Hale, Uptergrove, Hawkins, Haun, Will Deck, Kenney, Church, Blodgett, Othel Haun, Brainard, Wilbanks, Merle Beck, McAllister, Harbours, Monroe and Miss Crowder.

HOUSE FOR RENT:—6 room house, modern, for rent. Furnished or unfurnished. See Arnold Wilbanks.

Mrs. Alpha Banister spent Wednesday with Mrs. Cecil Crawford. Vera Harbour was an afternoon caller.

Subscribe for the Reporter.

## Entertained Octo

Members of the La Jueda Club at the home of Mrs. E. C. Womble Thursday for their regular meeting with Mrs. Womble as hostess. Games of bridge furnished the entertainment for the members, followed by delicious refreshments served by the hostess. Mrs. S. McNabb, Mrs. Eugene Womble and Mrs. Robt. Meade were there as new members. Their first attendance. High score was made by Mrs. D. W. Holland. Invited guests were the following: Mesdames D. W. Holland, Eugene Richardson, Robt. Meek, T. E. Johnson, L. B. Campbell, W. S. McNabb, F. J. Daily, Marvin Chambers, J. C. Jones, Delon Kirk, S. B. Hale, R. W. Morton, Wm. J. Whitson and J. D. Hester.

## Attend Funeral Of Relative Wednesday

Mayor W. D. Cooke, accompanied by Deputy and Mrs. J. B. Cooke, left Spearman on Monday of last week to attend the funeral of John Cooke in McKinney, Texas, Wednesday. The deceased was a brother of Mayor Cooke.

John Cooke, aged 70, was living in St. Louis, Missouri, at the time of his death, with his son and daughter-in-law, Mr. and Mrs. Jess Cooke. He died early Monday morning, October 16th, from a stroke of paralysis. The remains were brought to McKinney for burial Wednesday at 10 a. m. Rev. Cozart of that city having charge of the services.

The Spearman folks were joined at Gainsville with Mr. and Mrs. J. H. Cooke, another brother of the deceased, who attended the funeral.

Mr. and Mrs. John Douglas, Mr. and Mrs. Clyde Windom visited Monday with Ed Howerton's.

Remedy Removes Cause Of Stomach Gas

Most stomach GAS is due to bowel poisons. For quick relief use Adierika. One dose cleans out body wastes, tones up your system, brings sound sleep.

Spearman Drug Co.

Subscribe for the Reporter.

## Is your rest disturbed?

If bothered with bladder irregularities, getting up at night and nagging backache due to disordered kidney or bladder function, don't delay. Use Doan's Pills. Merit only can explain Doan's worldwide use. Get Doan's today. At all druggists.



## SPECIAL

Oct. 27 to Nov. 4

PERMANENT \$1

If customer has hair already Shampooed  
 Prices on Other Work Reduced During Week.

Mrs. ROBERT WILBANKS

Subscribe for the Reporter.

# ELLIS THEATRE PROGRAM PERRYTON, TEXAS

## Friday and Saturday, October 27 and 28 "Midshipman Jack"

Drama, Romance, and Hallowed Tradition, Pictured in U. S. Naval Academy Setting  
 With Bruce Cabot and Betty Furiness

Sunday, Monday, Tuesday October 29, 30 and 31

## "My Woman"

Starring Helen Twelvetrees and Victor Jory  
 A beautiful man discovers a simple caress is more than a brilliant career

# Your Wheat Allotment

Is expected to place several billion dollars in circulation in the United States. It will greatly stimulate living conditions in this section of Texas.

With road work opening in Hansford County, the feed crop turning out much better than expected. . . . It seems that we have made the turn towards more normal times.

GALLON GOODS, quality merchandise in price range from 39c to 65c gal ALL STAPLE canned goods are reasonably priced for quick sale at our store Q MACARONI, while the present supply lasts at only 5 cents per package.

Come into our store with the assurance that you can spend your allotment money to the best advantage.

**THE "Safety-Sealed" QUALITY COFFEE ONLY**  
 IN 3 POUND TINS, per 89c  
 ONE POUND TINS 31c

**MONEY SAVER SPECIAL**  
**WASHBURN'S PANCAKE FLOUR**  
 BLUE WHITE MEY

**Free!** AUTOGRAPHED ACTION PHOTOGRAPH OF **JOHNNY (TARZAN) WEISSMULLER** WORLD'S SWIMMING CHAMPION  
**FREE for the TOP of a PACKAGE of WHEATIES 25c**

Orders will be taken Home Made Cakes at Our Store.

# New System Grocery

## "POINTING THE WAY TO A RETURN OF FARM PROSPERITY"

"The first adjustment payments under the wheat adjustment plan are to be made soon. Thousands of Dollars CASH will be turned loose in Hansford County at a time when it is sorely needed.

The Federal Government is to be commended for the steps it is taking to assure an adequate return for wheat raisers. The processing tax and the reduction in acreage are calculated to raise farm income to a profitable level within the next few years.

Here is looking forward to a return of prosperity for wheat raisers of Hansford County."

ANSWERING THE CALL FOR SERVICE

TEXAS LOUISIANA POWER COMPANY

ECONOMIC QUALITY MERCHANDISE



Statement of Members of the Wheat Producers of Hansford County, State of Texas

This is a statement of the wheat production in Hansford County, Texas, for the years 1930-1932. It is based on the reports of the farmers who have been asked to furnish evidence of production and evidence of sale, such as threshermen's certificates, elevator certificates, or other records and receipts. Satisfactory evidence will be required of any farmer whose statement is questioned.

Any person may make a confidential report if he deems any statement which he believes to be inaccurate. Such report should be made to the community or county Allotment Committee, either in writing or verbally. The report will be strictly confidential. A farmer whose statements are said to be inaccurate will be required to prove production figures.

Signed: JAY JONES, R. V. CONVERSE, WILLIAM F. C. EYING

Table with columns: NAME OF APPLICANT, SEC-TION, Total Acres On Farm, 1930 Wheat (Acres, Bu.), 1931 Wheat (Acres, Bu.), 1932 Wheat (Acres, Bu.), 3-Yr. Average (1930-32) (Acres, Bu.), 1933 Wheat (Acres, Bu.). Rows include names like Allen, Homer; Allen, Garrett; Allen, Frank L.; etc.



Cannot Be Found In Hansford County Than Are Available To You Every Day of the Year at Spearman Equi

We feel sure that among the many checks that will be mailed to wheat growers of Hansford County, your own FARMER organization share in the expenditures you will make with this money.

Free! BETTY CROCKER'S SET OF 4 BEETLEWARE MEASURING CUPS for 2 Package Tops from SOFTASILK CAKE FLOUR 2 Pkgs. 65c

Mother! YOUR BOY OR GIRL WILL LIKE THIS ACTION PHOTO OF THE WORLD'S CHAMPION SWIMMER JOHNNY (TARZAN) WEISSMULLER IT'S Free FOR TOP OF A PACKAGE OF Two pkgs for 25c

The One and Only Bisquick 29c

SPEARMAN EQUITY EXECUTIVE

Motor Replacement FOR FOUR CYLINDER MOTOR \$37.50

For all Ford Owners with Model A, AA, Model B and BB. Model "18" as as Model "40".

For V-8 Cylinder Replacement \$40.00

The Replacement Motors - The replacement motors are built by FORD MOTOR COMPANY...

R. W. MORTCO Sales Service and Triangles



**SPEARMAN REPORTER**

**One Year F**

**\$ 1.50**

**For 10 Days Only**



the one...  
 have agreed...  
 or auto-knock quality...  
 Mr. and Mrs. A. L. No...  
 visitors to Spearman 8



Undoubtedly many states will remain dry under their old prohibition statutes. Will the old Webb-Kenyon law, making it illegal to ship liquor into those dry states, be continued, amended or repealed? There is going to be a lot of debate on that when Congress meets again in January.

As for the purity of whiskey, old-timers here remember when President Taft, himself a good judge of whiskey, took the matter into his own hands and forced the setting up of regulations under the Department of Agriculture, requiring "rectified" whiskey to be so labeled. If that rule still holds, practically all whiskey publicly offered after repeal will have to be labeled "blended" for there is not a third enough "straight" whiskey to supply the expected demand, and it will have to be stretched by the admixture of raw alcohol and prune juice.

It will be a long time before the liquor question is again settled. Also a long time before any real straight whiskey will be available.

**MATTER FROM MOTION**

A famous group of scientists who have been studying the effect of radium emanation have come to the conclusion that all matter is the product of mere motion. They found that rays given off under certain conditions become transformed into elemental substances.

This sounds at first glance, like confirmation of the belief of certain schools of metaphysics who deny the existence of matter. I certainly throw a new light on the way in which our universe came into being, though it does not help us any in the effort to discover how the primal motion started, what urge set it going.

We cannot help thinking of some people we know who have always had about the same idea, although they did not express it in scientific terms. Most of us know men—and women, too—who seem to think that if they keep moving fast enough, something will come of their efforts, no matter whether they are in a given direction or not. The world contains many, sometimes we think too many, people who imagine that running around rapidly in circles is a sign of being busy. They are trying to produce matter from motion, but we have never seen any important material results from their aimless activities.

We often think there are not enough people in these days of stress who are content to pursue one single objective and stick to that, no matter how slow their apparent progress. In the long run he ones who come out on top are not the busy bodies and loud talkers who think they are entitled to look after everybody's affairs but their own and who are moving so rapidly from one of conversation to another, and from this place to that, that nobody can keep track of them.

We come more and more around to the idea that the ancients who first wrote down the familiar proverbs, drawn from long experience, had pretty good sense. We are thinking particularly of the old story of the hare and the tortoise.

Recent announcement of the Phillips Petroleum Company that the anti-knock rating of the Phillips "66" gasoline has been raised to 70 octane has brought a deluge of inquiries regarding octane number and its significance, according to H. O. Starks, manager of the Phillips' plant.

We sincerely hope that the many encouraging reports coming from different sections of our country are correct and that we have all turned the corner towards better times.

Doubtless the allotment will be a great benefit to the individual wheat growers, and we would like to suggest that you can spend a portion of this money very beneficial in making needed repairs at your farm home or out-buildings. Lumber has not taken the sharp advance that many other commodities have taken in the recent months. You can still make repairs at depression prices.

This firm does not consider itself selfish in insisting that those individual wheat growers who have been listed on our books for a number of months and even years, come in to our office and make a payment on their account out of the allotment money.

**White House Lumber Company**

**REMEMBER!**  
 Wheat Growers the merchants who carrying you for a number of years do allotment. While we know that you have used uses for the money you receive from government, we feel that we should let you we expect a little help from those of you who carried on our books.

Come in and give us a break when you get your allotment money.

**Mother!** YOUR BOY OR GIRL WILL...  
 THIS ACTION PHOTO OF THE...  
 WORLD'S CHAMPION SWIMMER  
**JOHNNY (TARZAN) WEISSMULLER**  
 IT'S Free FOR TOP OF A PACKAGE OF...  
**Two pkgs for 25**

**Free** BETTY CROCKER'S SET OF 4 BEL...  
**SOFTASILK**...  
**CAKE FLOUR**  
 MAILED TO BETTY CROCKER, INC.  
**F. W. BRANDT &**

**TEXAS LEADING NEWSPAPER**

**TODAY'S DALLAS NEWS**  
 —Tells you what is going on. Things are these days that only by close and regular newspaper can you keep abreast of conditions. Newspapers are being read today more than ever.

**THE RATE**  
 —Daily and Sunday one year \$6.60. Daily \$6.25. Mail orders for subscription to the Dallas News or see the Spearman Reporter.  
 —On request, complimentary copies will be sent for a few days.

THE DALLAS NEWS, DALLAS, TEXAS  
 Enclosed herewith remittance \$6.60 in full payment of subscription to the DALLAS NEWS one year daily and Sunday by Mail.

Name \_\_\_\_\_  
 P. O. \_\_\_\_\_  
 State \_\_\_\_\_

THIS SPECIAL OFFER...  
 TEXAS, OKLAHOMA, ARK...  
 MEXICO.

**Dallas Morning News**

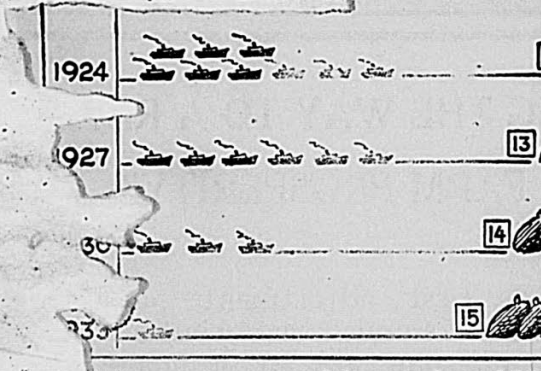
PUBLISHED...  
 MANAGER, Editor and...  
 ASSISTANT...  
 Subscription Rates  
 Year—\$2.00 Six Months—\$1.25 Three Months—75c  
 All subscriptions must be paid in advance

**Notice to the Public**—Any erroneous reflection upon the reputation or standing of any individual, firm or corporation that may appear in the columns of the Spearman Reporter will be corrected when called to the attention of the management.

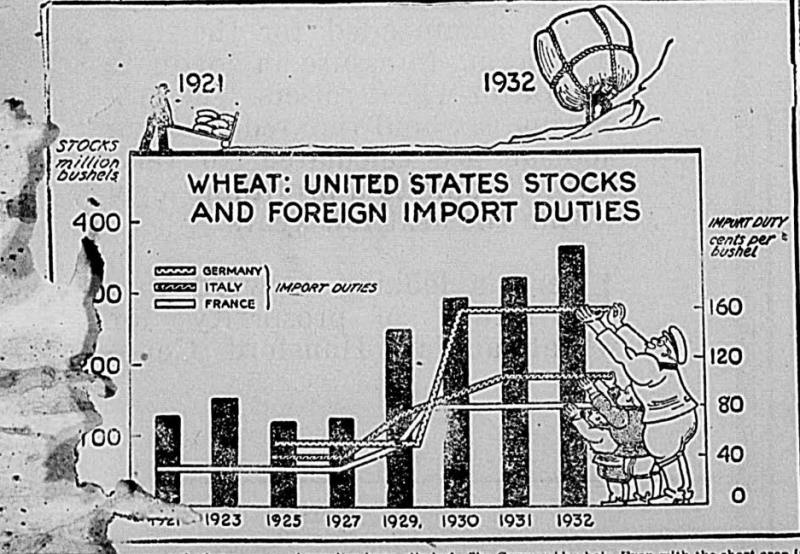
**About Liquor Taxes**  
 As to the present whiskey problems, first, there doesn't seem a chance that the present tax on alcohol diverted for beverage purposes will be continued. That tax is \$6.50 a gallon. The pre-war tax was \$1.10 a gallon. Under that tax rate, even with half the states officially dry, the revenue to the Federal Government ran to upward of \$15,000,000,000 a year. Besides the tax on whiskey produced, there were Federal license fees, and heavy ones for distillers, wholesalers and retail...

whiskey acquires only from several years in charred oak barrels. So a tax on whiskey that would make it profitable to manufacture it from industrial alcohol, which is mainly distilled from molasses, and bootleg it for less than the tax, would not only deprive the Government of much of the expected revenue as well as depriving the growers of rye, barley and corn of the whiskey market for their products, but also would call for as large a policing force as was ever in use for the enforcement of prohibition.

Smugglers too...  
 liquor. The effort to fix it enough higher to protect domestic distillers, but not high enough to encourage smuggling. England has never had prohibition but the smuggling of liquor is a baffling problem still on that island. Some thirty foreign syndicates are reported to be in operation for the purpose of smuggling whiskey into the United States from England, Scotland, Ireland and Canada. They will find it easier to sell their goods after repeal than they do now—if the tax is high enough to make it worth while to continue their operations. So the Coast Guard has got an appropriation of \$125,000,000 for new high speed revenue cutters,



Europe produces more of herself she buys less from the United States. That is the problem of the world wheat market. In fact, efforts of European countries to supply their needs, and their buying wheat from other countries has just about cut off our wheat exports, as the lone boat for 1933 represented in the chart indicates. The United States doesn't want to withdraw from the export trade, but more than have grain pile up in the United States or be sold at less than cost, the Agricultural Adjustment Administration has begun a wheat plan which will reduce acreage in the United States and bring production down to the point where it can all be marketed at a profit to the farmer.



Recent restrictions on our wheat...  
 supplies have climbed. The German duty of \$1.62 is highest of all, as the picture shows. Next comes Italy with a duty of \$1.07 a bushel and finally France is lowest with a duty of \$0.85. The black bars, representing the wheat stocks in the United States, show that we have been increasing our wheat stocks...



VER NEWS

oper, Reporter

Red Cross mater- those who are in... Mrs. Frank Fleck... Mrs. R. C. Bennett and Don Bennett were Sunday dinner guests at the home of Frank Hardin.

Mr. and Mrs. H. M. Shede were Sunday dinner guests at the home of Frank Hardin. Mr. and Mrs. Cecil Crawford, Mrs. R. C. Bennett and Don Bennett were Sunday dinner guests at the home of F. K. Banister.

Mr. and Mrs. Johnnie Close spent several days last week at the home of Archa Morse, during which time Mr. Morse and Mrs. Close were cutting feed.

Mrs. R. C. Bennett was severely cut on one leg and one hand when her pressure cooker exploded Tuesday. She was fortunate in receiving no burns, and is recovering rapidly.

MORSE ITEMS

P. T. A. To Stage Carnival The Morse Parent Teacher Association will stage a carnival at the school house Halloween night. A free program, starting promptly at 7:30 will be given in the auditorium as the initial attraction.

Dr. Joseph Jones made a business trip to Dallas last week. Mrs. Marie Self and Mrs. Robert Snively, daughters of Mr. and Mrs. L. A. Avenett, who has been taking a beauty course at Fort Smith, Arkansas since the first of June, returned home last week and are thinking of putting in a beauty parlor here.

McBRYDE NEWS

Mr. and Mrs. Ed Howerton and Mr. and Mrs. Henry Keith visited Thursday afternoon in the home of Cecil Crawford.

Mr. and Mrs. Lester McLain and family were supper guests at the home of Bert Keith Sunday night. Mr. and Mrs. Henry Keith called Sunday at the Williams home in the Blodgett community.

Rev. E. J. Norman filled his regular appointment here Saturday night and Sunday morning. Those from a distance who attended were, Mrs. Harris and daughter of Pampa; Mr. and Mrs. Cummins of Skellytown, Mr. and Mrs. Foster of near Dumas, and Miss Cuginnis of Wellington.

There were sixty-five at Sunday School last Sunday. Mr. and Mrs. Cap Boney and daughter, Beulah Ann, visited at the Bill Boney home Sunday.

Mr. and Mrs. Bill Boney and family, Mr. and Mrs. Cap Boney and family, and Mrs. L. O. Boney were in Borger Monday. Those from Morse who attended the choral club meeting at Pringle Sunday were Mr. and Mrs. Roscoe Parks, Mr. and Mrs. E. J. Norman, and Woodrow Forester.

Mr. and Mrs. Holland called at the A. P. Wallin home Monday evening. Miss Helen Harvey spent the week end with her parents in the Kimball community.

Mr. and Mrs. B. V. McCants and daughter, Miss Birdie, of Guymon, were visitors in the L. E. McCants home Sunday evening. There will be a program and pie supper at the McBryde School Friday evening, October 27th. Everybody is invited.

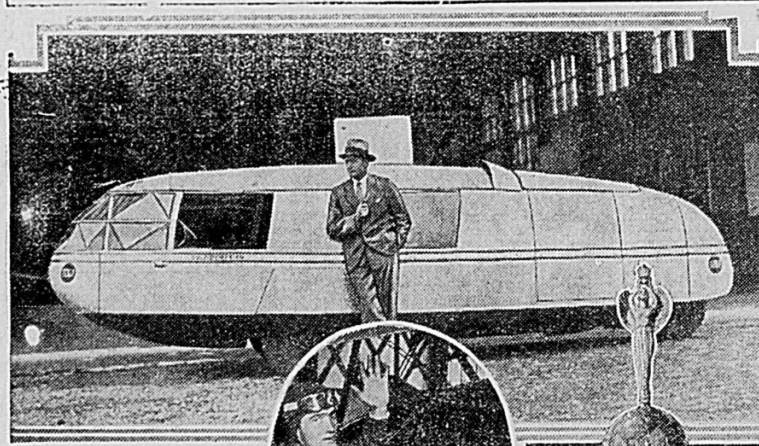
PO... 75c & \$1.50 Per Hundred Pounds

Hurry and get your Winter supply while they last. Available at Electrified Irrigation farm of Building in Spearman, Texas.

A MESSAGE TO HANSFORD COUNTY PEOPLE... ODDORLESS DRY CLEANING... Clothes kept well cleaned wear longer. It is best to have your summer clothing cleaned before putting them away for the winter.

We Are All Fighting For The N. R. A. In our national Recovery movement many people have made sacrifice help the general public. The first burden came on the merchants who regulated hours and have added additional help to their personnel now up to the consumer to do their share by buying as liberally as possible.

Planes Vie With Gulf-Dymaxion In Thrilling Air Pageant Throng



By Don Mockler (Feature Writer, 'U.S. Air Services') ROOSEVELT FIELD, N. Y. (Special).—With the calm and efficient hand of Captain Alford J. Williams at the controls as Director of Events, the aeronautical extravaganza staged for charity and billed as the National Air Pageant held here October 7 and 8, came to a glorious conclusion Sunday night.



Top: The Gulf-Dymaxion. Below: Captain Alford J. Williams, American speed and aerobatic ace, director of events at National Air Pageant, Roosevelt Field. Trophy donated anonymously as inspiration to continued development of American aviation.



October 20th, day assembled the people of the Church pre-teresting program was

Rev. and Mrs. Solo, Miss Ester Cox, Misses Ester Cox, Doris Kirk and Misses.

Violin and Guitar Duet, Miss Elizabeth Cox and Mr. Millsaps. Solo, Mr. Millsaps. Talk, Rev. McCann. Quartet, Misses Esther Cox, Elizabeth Cox, Doris Kirk and Mr. Millsaps.

After this program was rendered Mr. Word made some announcements and then the students returned to their classes.

**ODWELL FRESHMEN WIN OVER LYNX 48-0**

The Lynx were completely over-when they clashed with larger and more experienced freshmen ran the score up to 48 to 0. This is the only game this season in which the Lynx have rung up a counter.

Howard and A. J. Curtis are not on the line up on account of injuries. These boys will ready to help eliminate the conference.

cancel their orders, while decided to order a cheaper majority, however, do go ahead and pay the ad-charge. We hope to have

commit-ports to make, but g to hear from them

ve anxiously await- of the first six

the week d returned

y head was ab-

de

exams are all we jus- lynx win the

mer, Mrs. Hitt, weed. We are ave all visitors.

**A Grade**

in grade, having stas examinations. All of us good grades, and there were many failures. All of us are xious to get our report cards.

**Sixth Grade**

usekeepers this week Hays and Opal Ging. monitors are Clifton L. M. Womble. very glad to have How-back with us this morn-

very glad to welcome a nt, Miss Hattie Lee. re ro- his looking for- their report

**Report**

ry that Miss morning, but Mr. Finley d substitute. happy because of Friday night, even going to have to room

**Report**

with our examina- better have the have been Harjorie

**Senior News**

We are proud to have finished our examinations, which we made fairly good on.

Miss Pearson is reading a very interesting book to us. It is "When Life Was Young."

Many went to the Tom Thumb wedding and enjoyed it very much.

Our museum is growing gradually, we appreciate anything anyone would loan us to put in it.

Not so many of us have to go to the study hall, we do not know when we will.

Mr. Morris has been telling us how much the sixth grade is beating us in history. We think he is trying to get us to study harder.

Mr. Morris has been telling us how much the sixth grade is beating us in history. We think he is trying to get us to study harder.

Mr. Morris has been telling us how much the sixth grade is beating us in history. We think he is trying to get us to study harder.

**Jokes**

The high school across way thinks we sing to loud when they are taking tests. We suppose that is their excuse for making such a low grade.

**LOWER BEER PRICES**

**Bottle 15c**

**CASE 24 \$3.15**

*With 60c deposit on bottles.*

**For Sale By F. D. REED**

**At Filling Station Waka, Texas**

**MARY**

son was born in County Texas, July 1897, she spent childhood and grew into a beautiful christian character. At the age of 20 she united with the church of Christ.

In 1924 she moved with her father and brothers to Hansford. Her mother and two brothers Clarence and Wesley having preceded her into the great beyond.

When the Christian Church of Gruver was first organized, Ada joined them in their work and was a faithful and willing helper in the work until the unit disbanded as an organization a little more than a year ago.

She was an active member of the Ladies Christian Council and those who came to know her best found that to know her was to love her.

In 1930 she and her father moved from their farm to a new home in Gruver, and there she resided until the time of her death, October 13, 1933.

Beside a host of friends she leaves behind to mourn her death, J. R. Johnson of Gruver; two sisters, Mrs. Eva Cox of Plainview, and Mrs. Ida Hancock, of Amarillo; four brothers, Will, George, and Ernest of Gruver, and Lee of Stratford.

Mr. and Mrs. Reuben Watts of Grady, New Mexico, who have

Subscribe for the Reporter.

**START NOW FEEDING**

**Snider's**

LAYING MASH PER SACK

**\$1.80**

REDUCED FROM \$2.25

ns a proper balance of ap, corn gluten meal, l meal, alfalfa leaf meal, aize, barley, bran, shorts, l, limestone, iodized salt Liver Oil.

ete diet for hens and ickens, at a price you

—AT—

**R PRODUCE**

**EARMAN**

**Mr. and Mrs. Cummer** were in the Branch, formerly of and Lubbock and is Mrs. sister.

**Mr. and Mrs. Gruber** visited with relatives and South Dakota. Mrs. Cook things looked better to them at Gruver than any place besides the irrigated land.

**Save On your feed costs**



**It pays to grind at home and feed the crops you grow to milk or meat producing animals. You can always have fresh feed, of known ingredients, balanced exactly to your requirements. With only high protein supplements to buy, your cash outlay for feed is greatly reduced.**

In the new Case Hammer Feed Mill, we have the right machine for the job. It's a high quality mill... simple, practical and so unusually well equipped to grind grain or roughage that it just naturally does it better.

The feeder is controlled by two governors for uniform feeding and better grinding, with less power. The hammers are of the straight type, of heat treated steel, semi-rigidly mounted. This is the simplest known method, free of complicated parts, assuring long service. A high quality speed jack with trouble-free, multiple V-belt drive comes with the mill as regular equipment. This permits the use of a large pulley and puts an end to excessive belt slippage.

All these new features mean low-cost grinding. You'll get more out of your home-grown crops—and you'll save on your feed costs. This is worth looking into. Let's talk it over.

**CASE**

**R. M. McClellan Grain Co.**

Spearman, Texas

**MERRITT'S**

**A "CO-ED" DRESS**

Cannot Be Duplicated At "Co-Ed" Prices

Fashions That Thrill You... they're "Different"... Paris Inspired... they'll make you the envy and despair of all your friends. What's more they'll keep their sparkle... for Co-Ed Frocks are equal to frocks triple as expensive in Quality!

**For Girls With Limited Finances But Unlimited Fancies!**

**Left:** Rich, Woolen that makes you feel cuddly and warm in a rich shade of Rust, Gold, Red, Green, Blue... and an Ascot and border of a fabric that we'll have to convince you isn't genuine Persian Lamb!

**Right:** This is a copy of a famous designer's most expensive and popular dress. Two pieces with the knitted top in College stripes and a knitted rope and tassel "doo-lucky" that you'll adore!

**\$6.75**

**Friday, Sat. Monday**

PEARS, Bartlett one gallon  
COFFEE, Blis... pound  
MACKRELL, salt can, 3 for  
SHORTENING, 8 pounds for  
CHIPSO, 25c package for  
CHILI POWDER, pound  
Pineapple, Crushed, Delmonte, No. 2 1-2  
FLOUR, Kansas Cream, 48 pounds  
WHEATIES, two packages for  
K. C. Baking Powder, 25-ounces  
MUSTARD, quart jar  
CATSUP, two bottles 25c

**FREE!** BETTY CROCKER'S SET OF 4 BEEHIVE MEASURING CUPS for 2 Package SOFTASILK CAKE FLOUR MAILED TO BETTY CROCKER

**Bannerly Grocer**

**To Hansford County Farmers**

Before long an enormous sum of money will be allotted to farmers and wheat tenants of this county.

As certain as the sunrise, darkness gives way to light—clouds of gloom are dissolved and things take shape—in the brilliant light of the rising sun, life swings into action and terrors of the night are forgotten—As certain as the sunrise, will be America's full recovery from depression. Improvements are manifest at every hand—It is time to work and plan—In carrying through your plans, considering the benefits to yourself and the county as a whole, spend your allotment with local businesses, so it in turn will have a chance to come back to you, pay your back bills and make more, that is the way to start the old "Business Ball" rolling.

**Dr. J. E. GOWER**

Spearman Texas

**A BUDGET ITEM**

In the strictest and most conservative budget, FIRE INSURANCE should be well at the top of the list. Fire insurance should not be considered an expense item, for the protection it offers the property owner is an asset.

If your property is not adequately insured against fire loss, come in today and let us show you how cheaply you can be protected from such loss.

We are prepared to furnish complete accurate and bonded abstracts on any Hansford County upon short notice.

**Hansford Abstract Co.**

ABSTRACTS—INSURANCE

Spearman

**Friday, Sat. Monday**

PEARS, Bartlett one gallon  
COFFEE, Blis... pound  
MACKRELL, salt can, 3 for  
SHORTENING, 8 pounds for  
CHIPSO, 25c package for  
CHILI POWDER, pound  
Pineapple, Crushed, Delmonte, No. 2 1-2  
FLOUR, Kansas Cream, 48 pounds  
WHEATIES, two packages for  
K. C. Baking Powder, 25-ounces  
MUSTARD, quart jar  
CATSUP, two bottles 25c

**FREE!** BETTY CROCKER'S SET OF 4 BEEHIVE MEASURING CUPS for 2 Package SOFTASILK CAKE FLOUR MAILED TO BETTY CROCKER

**Bannerly Grocer**



Production and Area of Members of Wheat Production Control Association of Hansford County, State of Texas

The following is a statement of the production and planted acreage of wheat in the years 1930, 1931 and 1932, and planted acreage for 1933 of producers of Hansford County...

Any person may make a confidential report if he finds any statement here which he believes to be inaccurate. Such report should be made to the community or county Allotment Committee...

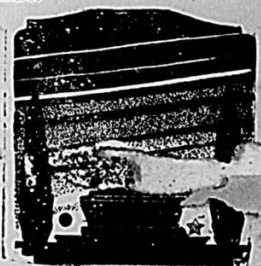
Table with columns: NAME OF APPLICANT, SECTION, Total Acres On Farm, 1930 Wheat (Acres Sown, Bu. Grown), 1931 Wheat (Acres Sown, Bu. Grown), 1932 Wheat (Acres Sown, Bu. Grown), 3-Yr. Average (1930-32) (Acres Sown, Bu. Grown), 1933 Wheat (Acres Sown, Bu. Grown).



Carver Funeral Chapel BORGER, TEXAS

Phone 500 E. C. CARVER

WISL... every detail, from funeral to transportation, if desired, mortuary service is unexcelled...



TO THE FARMERS

Our glorious nation is really coming back. Higher wages, employment, and greater happiness are again entering millions of good can homes...

SEE US FOR INTERNATIONAL REPAIRS BINDER TWINE Nu-Type Alladin Lamps, Only \$4.75

Spearman Hardware Co. Phone 35 Spearman

Service...

Mortuary service which includes actual attention to all detail is guaranteed our clients—There is no detail too small or none too exacting...

Flowers... For All Occasions...

WILSON FUNERAL I. E. Womble Spearman





	125	225	2414	4200	592				
Alexander, J. H.	640	3840	640	8320	640	2880	640	1075	640
...er, J. H.	000	126	2133	126	1034	110	110	126	126
Monsieur F.; Higgs, E.	276	53	5082	560	5983	400	3743	507	460
Monsieur F.; Harris, J. H.	252	326	300	3000	300	2100	300	1650	300
Monsieur F.	251	320	300	3600	300	2400	300	300	300
...t R.; McGowan, Jr. D.	297	640	630	7040	630	6400	540	1515	600
Bort, Albert R.; Higgs, P. B.	228	653	340	1471	640	11879	640	1000	540
Bort, Albert R.; Higgs, E.	50	653	450	1000	620	1200	620	6000	563
Sabb Estate, Borger, A. P.	155-157	1280	1075	12800	1075	10750	1075	000	1075
Cator, Leslie J.; Laird, C. W.	8-23	960	715	2860	715	5725	715	2000	715
Chester, Perry M.; Henderson, J. E.	51	640	465	1191	485	1724	485	3123	478
Cooper, Mary, Alfred, Darrel	15-16	1664	1300	13500	1350	11000	1250	4500	1300
Cool, William U. W. P. Dubose Survey	111	640	633	6773	633	6773	633	6773	633
Dilley, Don C.	181	653	562	8800	642	8300	642	5500	615
Dahl, James L.	183-232	653	560	3760	560	5590	560	2992	560
Dahl, James L. L. and F. Mathews	202	349	365	3390	300	2540	300	400	300
Dahl, Peter A.	201	320	290	2200	200	1890	200	800	200
Dahl, Peter A.; Dahl W. J.	250	320	315	3565	315	2298	316	1207	315
Dahl, Peter A.; Walker, Maude	104	640	420	7560	420	2500	420	2854	420
Dahl, Oscar	250	320	315	4018	315	3595	315	2974	315
Dahl, John J.	232	320	300	4018	300	3595	300	2974	300
Dahl, John J.	653	480	8000	480	3500	480	2500	480	4666
Dozier, Silas T.	131-132	986	800	5000	800	14000	800	8000	9000
Dietrich, George M.; Celsor, Daisy	277	653	580	3000	570	6000	555	3300	568
Daniels, James F.; Fletcher, G.	200 201 233	1280	260	2600	305	2550	260	780	275
Daniels, James F.; Fletcher, W. N.	280	640	553	6636	553	2765	583	1239	563
Daniels, James F.; ...ms, W. W.	298	653	629	6400	629	6000	629	3000	629
Preacher, Willey, J. A.	130	326	290	4350	290	2900	290	1450	290
...on, Arnold G.; R. B. and R. A. Ferguson	275-313	1280	566	8008	941	9917	891	3050	799
...on, 303	640	490	4900	520	3750	520	2750	510	3800
J. H. ...son 158 160 177 178 179 205 206 227	254 129 224 159	6932	4225	25566	5190	79897	5120	41235	4845
J. H. and Son; Shoup Jesse	180	320	310	1716	310	5028	310	2201	310
Paul B.; E. W. and H. R. Link	17	640	500	9000	500	4500	500	2760	500
Ben M.	251	320	280	4000	240	2400	140	1690	220
Ben M., Harris, J. H.	252	326	250	2500	250	1750	250	1375	250
...s, William L.; Hunt, H.	229	640	530	5113	530	6882	530	5462	547
...udson, Max E.; Borger, A. P.	203	653	633	2940	633	4759	633	5522	633
...utson, Emil; Ehrud, A.	225	640	500	3788	609	8030	600	4755	567
...son, Emil; ...son Bros.	174	320	000	000	250	5440	250	1225	167
...ank H. F. C. and L. W. Mathews	108 109 111	1920	1706	17963	1706	3357	1706	4082	1706
McClellan, Randolph D.; McClellan, L. S.	202	304	301	3300	301	2540	301	409	301
...olph D.; Chauin, M. B.	276-302	800	685	7535	725	9425	725	3625	712
McClellan, Randolph L. and David L. McClellan	278-299	980	950	5873	950	10777	950	7490	950
McClellan, Dave L. and Devona	14	320	115	1157	115	1440	115	792	115
McClellan, Dave L.; Grubbs, Myrtle	13-301	980	790	11850	790	7900	790	4740	790
McClellan, Lee S.	301	327	300	1800	300	5100	300	2500	300
...amo; Wm. E. and Ted B. McClellan	12	653	500	8750	500	5644	500	3666	500
...s, Pierless P.; Jennings, Mrs. Irving	300	653	600	8750	600	5466	600	3666	600
...n, Leo E.	274	320	200	2000	276	2222	276	000	251
...red	253	653	600	5000	600	8350	600	5180	600
Ward V.; Mingenback, E. C.	82	700	550	6600	550	6050	350	2000	423
...es E.; Walker, Marville	42	653	597	3921	597	3827	597	3500	597
...s, Charles E.; Alexander, R.	49	643	542	4218	542	2796	542	2339	542
Charles E.; Howard, Ruby	156	320	200	2000	200	1600	200	1000	200
...onal B.; Borger, A. P.	156	320	295	1700	295	1575	270	1200	287
...st C.	182	327	300	000	300	4500	300	1200	300
Robert C.; Spivey, L. A.	133	320	257	5140	257	2056	257	2570	257
Frank A.	249	640	610	6100	610	6320	610	3500	610
Willard A.; Schaub, J. S.	109	320	210	2740	160	1440	160	000	177
Ed	110	640	150	600	150	450	150	000	150
Thomas, Roy W.; Thomas, W. S.	9-22-39	1600	1000	8000	1000	13500	700	500	900
Thomas, Roy W.; Miller, S. P.	14	320	250	2842	250	2235	290	1000	263
Trostle, Winston E. W. R. and M. L. Murrell	256	160	145	524	145	1100	145	502	145
Vernon, James E.; Hudson, F. A.	18	327	302	1510	285	2280	282	564	290
Word, Oksie C.; Sumner, J. L.	6	160	153	1637	153	1637	153	1637	153
Word, Oksie C.; Alley, J. E.	20-40	1306	1147	6747	1147	10693	954	3780	1083
...n, Clinton M.	47-45	1040	990	6500	990	6400	990	3500	990
...son, Clinton M.; McClellan, Vera	41	640	612	7344	612	3200	000	000	408
Wilson, Clinton M.; Sumner, J. L.	11	160	156	3120	156	1710	156	624	156
Wilmeth, George K.	279-10	1306	1214	12820	1214	20700	1214	4160	1214
Wilmeth, George K.; Wilmeth, A. H.	9	320	310	000	310	9300	310	000	310
...son, ...ver Y.	11	480	465	7905	465	5115	465	1860	465

The Pr... association observed... day of the Texas Congress... evening, October 21st by having an appropriate program.

Mrs. Roy Holton's talk on "What the Texas Congress of Parents and Teachers have accomplished since 1909," informed the members of the achievements toward child welfare it has made. Also introduced bills in State Legislation for the health inspection of public school children and influenced State Legislation in behalf of several good educational bills as well as promoting Federal measures.

She spoke of the offering which is placed in the Endowment Fund and used for extension work in the state of Texas. The only two paid officers in the organization are the Executive Secretary and State Treasurer.

Miss Estelene Harris sang the state song "A Child Shall Lead" in a very impressive manner.

A lovely birthday cake presented the association by Mrs. Ernest Tannahill was lighted with 24 candles by Mrs. L. W. Knudsen.

...rooms were of parents who wish to... The Pringle Parent... society has also many things toward... since it was organized... It has financed music appreciation, bought library and magazines, sponsored... children against diphtheria, sponsored health examinations, supervised hand-up of children entering school.

Our birthday offering was one dollar and there were new members present and many visitors.

Instead of observing one parent visiting day the local unit arranged for the entire month of November to be open to parents and those interested in visiting.

Mr. J. H. Harris has been the sick list but is steadily improving.

Miss Mary Alexander spent week end with Mary Alice and her son.

### Tornado Is Most Frequent Disaster; Causes Heavy Loss of Lives

What type of disaster occurs most frequently in the United States?

This question is answered from the relief annals of the American Red Cross, which show over a period of years that the tornado, or cyclone as it is called in some sections, is the most frequent and claims a heavy toll of life. It swoops almost without warning, and in the terrific whirlpool of its fierce winds it destroys all in its path.

The Red Cross gave relief in 44 tornadoes in eighteen states last year. The tornadoes killed 326 persons, injured 2,755 and the Red Cross gave aid to 21,738 who were homeless, injured or otherwise victims of the storms.

### Prepared to Save Lives

One of the most valuable services given to the American public by the Red Cross is through its Life Saving and First Aid courses. Virtually all of the life guards at beaches and pools in the nation are Red Cross life savers. Nearly every industry in America supports the First Aid work of the Red Cross because it annually saves lives of thousands of injured persons. These courses are taught by Red Cross experts in both lines. Last year 66,354 certificates were issued to persons completing the First Aid course and 73,785 certificates for completing Life Saving instruction.

### Toll of the Earthquake

When a severe earthquake killed 95 persons; injured 4,911 and destroyed several thousand homes in Southern California last March, the Red Cross was first upon the ground with emergency relief. It required more than three months for the Red Cross to restore the needy to a self-sustaining basis. The organization expended a relief fund of \$411,000.

### War Veterans' Problems

Not since the period of the World War has the Red Cross faced a greater problem in handling the claims of World War and other veterans. Due to the changes in the regulations covering veterans' claims, chapters all over the nation have been crowded with veteran applicants for relief and for service in preparing appeals. During last year Red Cross home service workers in 2,268 chapters dealt with the problems of 411,124 ex-service men or their families. The chapters also aided 7,346 men still in the regular army, navy and marine corps.

### Safeguarding Public Health

The Red Cross reports that 693 nurses are employed by 428 of its chapters in public health nursing. During the past year Red Cross nurses made 1,234,000 nursing visits, other than to schools, and also inspected 633,000 children in schools. Nursing at the bedside of the sick unemployed, or other needy is a major part of their work. The Public Health Nursing Service of the Red Cross also directs the teaching of classes in Home Hygiene and Care of the Sick. This course was taught to 53,000 persons during last year.

### An Army of Children

The membership in the Junior Red Cross last year was 6,629,866 boys and girls in schools, private, public and parochial. They enjoyed volunteer work in hospitals and for orphans, the aged and crippled, and also aided their schoolfellows by providing attention for their eyes, purchasing their glasses, and giving many other types of service to them. The Juniors aid their school work by carrying on correspondence and the exchange of portfolios with school children in other nations.

The Red Cross enrolled 3,701,866 members in its roll call a year ago. Join the 1933 roll call—Arms! Day to the 22nd of the year.

## MERRITT'S

### A "CO-ED" DRESS

Cannot Be Duplicated At "Co-Ed" Prices

Fashions That Thrill You... they're "Different"... Fads Inspired... they'll make you the envy and despair of all your friends... What's more they'll keep their sparkle... for Co-Ed Frocks are equal to frocks triple as expensive in Quality!

For Girls With Limited Finances But Unlimited Fancies!

Left: Rich Woolen that makes you feel cuddly and warm in a rich shade of Rus, Gold, Red, Green, Blue... and an Accent and Border of a fabric that we'll have to convince you isn't genuine Persian Lamb!

Right: This is a copy of a famous designer's most expensive and popular dress. Two piece with the knitted top in College stripes and a knitted rope and tassel "doe-hicky" that you'll adore!

Look for the copy-righted trade name "Co-Ed" and pay more for your dresses... but for safety don't!

**Priced \$6.75**

### IT WILL ONLY TAKE A SHORT TIME

Until 1000 checks will be mailed out

ford County to the Wheat

made applications for their wheat a

Doubtless there will be one thou

uses for the individual check you rece

In view of the manner in which we b

led your business for the past 20 ye

that you should not consider us selfish

gest you apply a portion of your allo

on your indebtedness, not only at the

ness, but wherever you have incurred inde

ness.

Another suggestion that we fe

Use a portion of your money to ma

improvements around your farm

repair and build. You will find a mo

tune time.

Worth-C...brai

umber, Co

See Our Special Subscription Offer

Page 7 this Issue.