

The Spearman Reporter

32—NO. 6 SPEARMAN, HANSFORD COUNTY, TEXAS, THURSDAY, JANUARY 26, 1939 4 Pages Today

DON'T NAME IT

WILL J. MILLER

Next week is the 1st anniversary of the "Little Orphan Hansford" full page editorial published Jan. 27, 1938, drawn from many sections of the heart of the North Texas area that we were not just and fair consideration in any of the National magazines, more especially the same program of the New Government.

A year since the argument, we seem no larger lake in Hansford than we did one year ago.

The possibilities of location at the most logical from the standpoint of being remote at this seems logical that we begin planning a new for a proposed large

The program inaugurated by the Government is primarily a recreational program, it is not a lake program.

located South West of Nature Park, would if amount of money pent, afford flood control entire Palo Duro Valley, that is more it could be for IRRIGATION.

Mr. Hale, Sr., returned this from a special trip to do to investigate the possibilities of locating a sugar market for Hansford county was successful in gaining valuable information.

Mr. Hale in stating it would be possible to irrigate sugar beets in the Palo Duro valley and produce as high tons of beets to the acre.

Mr. Hale in the intention that land in Colorado the sugar beet industry gained a foothold, has in value from \$30 per acre to \$320 per acre. We quote Hale in stating that labor sugar beet district of do make an average of per day during the working

Hansford county find convenient to control the of the Palo Duro and at same time store up the moisture for irrigating sugar beet

the possibility of increasing the population of this county 3-fold and prosperity of the county

Hansford citizens well the news that the proposed lake site on the Irvin land was unavailable. Citizens feel that Hansford is too poor to receive a million dollars for recreation advantages alone. Such

is not a question but the proposed site on the Steele place would have the finest lake in the county from recreational and standpoint. However, lake could not be used to great advantage for irrigation in this county, since the Duro leaves Hansford a few miles north east

Steele has made quite a less in life, and is rated the most highly respected and most influential of this county. If he were not afraid the dam breaking and flooding his home, and would recon- sider selling the dam site to the Government, it is just possible he could make another size fortune from the production of sugar beets in the rich bottom land. If he could assured of lack of danger from the dam breaking, he would the assurance of flood con- over his large ranch lands, if he did not want to irri- for beet production, he grain produce alfalfa in valley, as it was done in

Wheat Acreage Abandonment More Than Doubles Last Year

As winter wheat growers look ahead to harvest time with national conditions indicating double the average abandonment, attention has centered on some 3,700 Texas farmers who have taken out wheat crop insurance.

George Slaughter, chairman of the Texas Agricultural Conservation Committee of the AAA, with state office here, has received government crop figures pointing toward an average winter's wheat abandonment of 20 to 25 percent, as compared with last winter's average of 11.6 percent and the long time abandonment from winter crop damage of 12 percent.

"The experience of these 3,700 growers," Slaughter commented, "will be observed closely by 6,000 Texas growers who applied for this insurance—and perhaps by many more. Their farms will be looked upon as test plots in the 69 Texas counties in which this new all-risk crop protection is getting a trial. What their protection costs them; what they get for their investment and cooperation; what they do about insuring for 1940—these are, and will be, important subjects for conservation among Texas wheat growers."

Participation in 1940 insurance will be much larger, according to information received by Slaughter from E. R. Duke of Amarillo, state supervisor of the Federal Crop Insurance Corporation.

"Time was not available in '38 to fully consider it, or fully meet its requirements," Duke said. "As was the case in most western plains regions, where repeated droughts had worn down all resources, cash payment in advance of all premiums constituted a serious problem. Of nearly two thousand growers who replied to questioning as to why they did not pay for policies after having made application, the most frequent reason given was they could not raise the money to pay the premiums."

Heydon Hensley Leads Lions Club Program

Heydon Hensley was program leader for the regular luncheon of the Spearman Lions club held Tuesday noon at the Pekoe Cafe. Hensley read a most interesting article tracing the history of many national anthems and popular songs of this and past centuries.

Lions voted to give all the fines assessed at regular meetings for the next year to the Spearman City Library.

MORSE H D CLUB

The Morse H. D. Club met Jan. 19th at 2 o'clock in the home of Mrs. R. C. Womble. Foundation patterns were cut for each member of the club. These patterns were measured and cut by the demonstrators Mrs. Henry T. Davis and Mrs. Horace Tompkins.

Mrs. R. B. Hays gave a report on the council held at Spearman Jan. 9th.

The third demonstrator Mrs. R. C. Womble was elected at this meeting. Mrs. W. A. Gillispie was appointed to be leader of the scrap book to be made by the club for the County Fair. Table service was the name chosen for the book.

Roll call was answered by: Mrs. D. H. Laughter, J. H. Davis, R. B. Hays, Frank Womble, Allen Pierce, Henry T. Davis, W. A. Gillispie, Horace Tompkins and the hostess.

The next meeting will be Feb. 2nd at the home of Mrs. George Bynum, visitors are welcome.

DR. POWELL—Eye, Ear, Nose and Throat specialist will be at Dr. Gowers office Wednesday, Feb. 1st. Glasses Fitted. Tonsils and adenoids removed.

H. L. Flanagan, Mobeetie, owner of the Spearman Gas Co. was a business visitor in Spearman Tuesday.

Mr. and Mrs. Butch Hale, took their young son Seldon to an Amarillo specialist on Monday of this week. Mrs. Hale stayed in Amarillo with her sister and will return home after young Seldon has been thoroughly examined by the specialist.

Mr. and Mrs. Chick Neilson of Canyon were visiting their parents Mr and Mrs W. A. Neilson in Spearman Sunday of this week.

JOIN THE MARCH OF DIMES

Hansford county has never officially joined in the president birthday celebration by holding a public dance. This year it seems the great emphasis is being placed on the march of dimes to the President. In this sort of a program Hansford county can qualify with any community of the nation. Join the march of dimes, send one today to President Roosevelt, to help spread health and joy to infantile paralysis victims all over the nation.

Finnell Says Wheat Outlook Bright

The best January rainfall in the Panhandle since 1921 has brought additional moisture which is expected to be of great aid in further checking wind erosion.

Heavy rains in October had given the wheat crop an excellent growing start. The January rainfall of from one to three inches over most of the best opportunity for a good wheat crop since the drought and dust storms started.

Especially is this true on land that is terraced or contour tilled, according to H. H. Finnell, regional director of the Soil Conservation Service. These structures have held most of the water on the land where it fell and moisture has been stored to carry the crops through to maturity unless there are severe blow hazards in the immediate area.

On row crop land, terraces have stored moisture in the soil for use by the growing crops next summer. Contour furrows have held the rainfall on range land and give assurance of an early and vigorous grass growth next spring, the Service director points out.

"Stubble from the wheat and row crops which the stored up moisture can be expected to produce, if properly maintained, should do much to check wind erosion in the future," Mr. Finnell states.

The advantage of terracing to conserve moisture was clearly demonstrated on two adjacent farms of identical slope and soil types near Dumas during a 3-inch rain which fell on October 9 and 10.

Terraces on the farm of Frank Anderson, who is cooperating with the Moore County Wind Erosion Conservation District, not only held the water that fell on the land, but also caught and retained most of the run-off from a square-mile area adjoining. Immediately after the 3-inch rain, water stood from 200 to 300 feet back of the first terrace. Because of the slow rate which moisture soaks into the heavy wheatland soils, the water did not disappear into the ground until three weeks after the rain, according to Claude Lovett, manager of the conservation district. Even three days after the rain, water stood more than 100 feet back of the first terrace.

In contrast, water was observed flowing off an adjoining unterraced field into a roadside ditch during and immediately after the rain. Within a few hours, no water was standing on this unterraced field, and despite the fact that the slope and soil are identical with the Anderson field.

Four weeks after the rain, tests were made to determine the depth of moisture penetration on the two adjacent fields. Boring 54 feet above the first terrace on the Anderson field showed excellent moisture to a depth of 48 inches at which point further exploration was halted for lack of a longer auger. However, at this depth the clay was moist enough to be very plastic.

On the unterraced field, tests showed that moisture had penetrated only 18 inches.

"Even though the slopes of these two fields are less than one-half percent, and the rain was slow in intensity, run-off was high on the unterraced field because of the slow infiltration rate of the heavy soil," Mr. Lovett points out.

"It is evident," he continues, "that especially on the heavy soils it is necessary to hold the water behind terraces until it can filter it into the ground in order to assure adequate moisture for producing good crops."

ATTEND C of C MEET

C. A. Gibner, H. L. Heard, Ray Platt, A. H. Schnell and Seldon Caradine attended the annual banquet of the Perryton C. of C. held at Perryton Tuesday evening of this week. They report an excellent record made by the Perryton organization and much enthusiasm and working plans for the future.

Hansford Agricultural Ass'n. Makes Report

To the farmers and ranchers of Hansford County we would like to report in a rather brief way the accomplishments and endeavors of the Association during the past year of 1938 and the coming year of 1939. During the past year the Agricultural situation has been more complicated than usual due to the new farm and range program getting a late start and many things had to be straightened out in the best way possible to fit the conditions of our county. In this matter the Agricultural Association has taken a very active part in a few of the following ways. At the beginning of the year permission was finally gained to allow grazing and cutting of sudan and cane on diverted acres for 1938 only, and we will fight for that same provision this year with the support of all the farmers and ranchers because it means more than a little to all of us in the county.

Then after a trip to Washington by a delegation from Hartley county representing some 5 counties, including Hansford, money was obtained to plant a cover crop on lands west of us that had not been farmed and was a blow hazard to all. Thus fixing the blow hazard in the worst portion of the Panhandle. Also land was allowed to be returned to grass and remain in the base for 3 years, used as contract land and draw 50c per acre also, this was accomplished after recommendations from our area. Then together with the county committee and a number of telegrams from farmers a committee went to College Station and was successful in getting an additional 6 percent wheat acreage cut removed that was given our county, this being very important to all farmers.

We have taken up the fight to secure the lake for our county and at all times are trying to secure any change of program that will help Hansford county.

At the present time we are corresponding with Congressman Marvin Jones and the state committee trying to get the average of 8.6 bu. for the county raised to an equal with counties that border us. A condition that exists due to the marketing of wheat in the past outside the county and state. Also a fight is going forward to retain the provision in the range program allowing the drilling of water wells for another year. This part has been removed for the year 1939. Also a petition signed by more than 70 operators urged immediate payment of allotments and we have the promise of the officials that this will be done.

Now this is only part of what we are doing every day to try to get for the farmers and ranchers of our county what they rightfully deserve.

Our organization is composed solely of farmers and ranchers and is not connected in any way with any government agency. All the support we get in from the actual operators of our county.

Within a short time we will ask you to join with us for the year 1939. We give you these facts so you can judge for yourself if you have been benefitted and think you will be benefitted to the amount of our membership fee. We need the name of every operator in our jurisdiction to help us attain these undertakings. It is only through your support that we can accomplish what needs to be done.

The membership is only \$3. per year and every penny is used only for actual expenses in-attaining the benefits we have derived.

If it has been worth that to you during 1938 then join with us in 1939 and we promise you an active organization that will fight your battle at all times. If you think our organization is not worth the price of membership then tell us in what way we can be of more benefit, we gladly solicit your suggestions at all times.

So for your own good and the good of all of us in the county, won't you join with us, please, and lets make Hansford county the county with the largest membership and most active organization in the North Panhandle this year, signed—Hansford County Agricultural Association.

FOR RENT Two furnished apartments. See E. R. Wilbanks.

FOR SALE: We will sell our place to the highest bidder. House and two lots. Mr. and Mrs. Joe Sollers.

PAY YOUR POLL TAXES NOW

Don't sell Texas politics SHORT this year. This is an "off" national election year, but if you want to get into one of the biggest shows ever staged in the State of Texas, you had better pay your gate receipts NOW. Voters of Texas may face votes on all kinds of issues this year. For sure they will vote on the transaction tax issue, provided it reaches a stage where a constitutional amendment is necessary to enact such plans into the laws of our state.

In all probability you will get a chance to vote on a hospital. Pay Your Poll Tax Now! Sheriff H. L. Wilbanks is responsible for the information on that poll taxes can be paid without paying property taxes. However, you cannot pay property taxes without poll taxes being charged up to your account.

R. V. Converse Says

And unto man he said, behold the fear of the Lord, that is Wisdom and to depart from evil is understanding. Job 28-28.

Senator Cornelius Cole who was 100 years old in 1922 told an audience that year that, "his long experience had brought him repeatedly that human liberties were won in this country at heavy sacrifice of blood and fortune, that liberty is easily lost; that we must be ready to fight, if necessary to keep it; that we must never suffer any man to arrogate to himself the power of a king, emperor or dictator."

The interesting development of ideas caused by President Roosevelt's requested appropriation for work relief, is worth watching as a whole the amount in controversy is small, but it is something to talk about and make long speeches about so the folks back home will be impressed, and might be induced to forgive some broken campaign promises on something really important.

Looks like O'Daniel had the boys in Austin on the hot spot, just as soon as the news items get the people all set to support the legislature, along comes Sunday with O'Daniel on the air and the people get the low down on the boys from the Governor. Then their eyes clear and they can see signs of the double cross in high places. Just like reading a continued story read the papers all week then on Sunday get the News over the air.

The situation in Spain is momentarily growing more serious if France stands by and lets Italy win with Franco, then France will have placed Italy and Germany in a position to attack her from both the north and south and she may fare badly in the settlement on the other hand if she should help the Spanish Government, Italy will according to all reports start a war with France, and then everyone will have to come in. It has just been reported that the foreign gunboats that are attempting to remove foreigners from the fighting zone have been bombed from the air and have cleared their decks for action.

Just learned that a bill providing for a retail sales tax has been introduced in the house at Austin, this of course is what a great many have wanted for a long time, and while the big boys are all howling against the proposal that O'Daniel asked for they want to substitute for the Transaction tax on all the tax on the poor or the retail sales tax this is the most unjust tax that can be enacted while the transaction tax reaches everyone and can not be passed on like some would have you believe.

It has recently come to my attention that there is some people in our county who seem to be dissatisfied with the way our farm program has been administered and are laying it to our county agent. It seems that this is unjust as the rules are made in Washington and the county agent only works with the committee in an attempt to administer them to all alike. Of course there may be some who want more than the rest and we can see why this would create a desire for a new county agent, it is the writers belief that Joe Hatton has done a good and honest job while he has been here, and it is a shame to have rumors spread around to the contrary.

R. V. Converse.

.20 Inches Moisture In Snow and Sleet Sunday Jan. 22

Streets of Spearman and highways leading to the city on all sides were covered with sleet and snow early Monday morning after several hours fall Sunday night which began about 8:30 p. m. Records of F. W. Brandt show a total of .20 inches of moisture. This brings the January moisture record close to an all time high. The average moisture over the county comes near 2 inches, with the Spearman official record showing only 1.55 inches. The all time high for January in Spearman was 1.78 inches in January of 1921. If the reports over the county are correct relative to previous rainfall in the Gruver, Morse and Oslo communities, the average for the county is above 2 inches, since some communities reported as much as 2 inches rainfall 2 weeks ago.

Chamber of Commerce Meeting To Be Held

Members of the Spearman Chamber of Commerce will meet at the Court House beginning at 7:30 p. m. Tuesday evening January 31st. The Tuesday night meeting will be the first meeting of the organization for 1939, and the new officers and directors will relate plans for the coming year. Appointment of Committees will be made public at the meeting. Discussion of possible Dollar Day or Trades Day will be part of the evening program.

GRUVER H D CLUB MET WED. JAN. 18

The H D Club was entertained in the attractive home of Mrs. Clinton Wilson Wednesday afternoon. The president Mrs. C. H. Williams presided.

The following program was given, an interesting talk on how the H D work helps the rural women by Mrs. Elmo McClellan; Mrs. Ralph Bandy gave a report of the clothing demonstration meeting, held in the court house at Spearman Jan. 6. After the program was given foundation patterns were partly made. The patterns are to be finished at home with Mrs. Ralph Bandy assisting. The club welcomes three new members, Mesdames A. R. Bort, J. C. Harris and Vernon Alexander. After the program and pattern making the hostess assisted in the courtesies by her charming daughter, Willie Mae served sandwiches, cookies and coffee to Mesdames F. A. Shapley, C. B. Williams, Ralph Bandy, Elmo McClellan, W. A. Shapley, Lloyd Frier, E. H. Tabet, J. C. Harris, A. R. Bort, Vernon Alexander and 3 visitors Mesdames R. E. Brooks, Gene Cluck and T. Woodall. The ladies of the community are invited to join the club. The club meets with Mrs. V. Alexander February 1.

BABY CHICKS every Monday, 20 varieties. Our stock won 33 firsts, New Mexico State Fair, 23 firsts, Oklahoma State Show. Write Munson Hatchery, Alva, Oklahoma.

Carl Edd Wilbanks is visiting his parents and friends in Spearman this week before enrolling for the fall semester at WTSTC at Canyon. He attended New Mexico State last semester.

MRS. JOHN BISHOP HOSTESS TO BELLE BENNETTS

Mrs. John Bishop was hostess to members of the Belle Bennett Missionary society at a regular meeting held at her home on Wednesday afternoon Jan. 25. Mrs. W. R. Finley was leader of the lesson "Christian Social Relations and Stewardship."

Mrs. Finley was assisted in presenting the program by Mrs. Sid Clark. Members present were Mesdames John Bishop, L. W. Mathews, J. L. Redus, Virgil Hull, O. L. Williams, R. L. McClellan, G. P. Gibner, W. R. Finley, Sid Clark, J. D. Hester, P. A. Lyon, Roy Jones and J. L. Lackey. The next meeting will be with Mrs. Buchanan.

DEPUTY GRAND MATRON WILL VISIT O. E. S.

Deputy Grand Matron of the O. E. S., Pampa will be a visitor at the regular meeting of the Eastern Star organization to be held at the Masonic Temple Friday evening. Two candidates for membership will be present at the meeting. Refreshments will be served.

AGENT'S REPORT FOR 1938

Beginning July 11, 1938, Hansford County obtained a Home Demonstration Agent who has spent her time in explaining the purposes of the Demonstration Clubs and in organizing the clubs in different communities. She will help improve the homes in appearance, convenience, and sanitation. Health and personal appearance are also included in the aim of Home Demonstration Work.

Hansford County has afforded and open field for clothing work, as a very few of the women have been able to take courses designed to teach sewing. In connection with other demonstrations, colors, foundation patterns, and the care of clothing, are being brought in to our work. Demonstrations on bound and tailored button-holes, plackets, pockets of all types, and the different seams and finishes have been of great interest and benefit to the club women.

In the short time the clubs have been enrolled in clothing, the foundation pattern has been the main achievement; however, they have taken an active interest in budget, account and providing more adequate storage space for the family clothing. There are 9 Home Demonstration clubs in Hansford County which have a total of 125 members.

There are many attractive articles made by the club women. A sack dress was made by one of the women. After bleaching and pressing several chick-feed sacks, she had very little trouble placing her foundation pattern and completing the garment. The dress was a satisfactory success.

A tailored suit was made from an old suit of clothing which was worn on the tractor for several years and then used as an article to wipe muddy feet on.

A small boy's jacket was made from an old pair of trousers. This jacket completed his wardrobe for school clothing.

Hansford County 4-H Club Girls have been very interested in clothing; however, some of them are rather young and inexperienced for this work, so individual attention must be given them.

There are 3 Four-H Clubs for girls in Hansford County. There is a total of 73 members; 60 of these girls have completed garments.

The council is an organization made up of the H D Club representatives of the county. County wide business is transacted through the council. The exhibit committee worked out an interesting educational exhibit on club work that was taken to the Tri-State Fair in Amarillo.

The H D Agent of Hansford County spent 54 days in the office and 98 days in the field. She has visited 164 farm homes.

The recommendations in improving care, renovation and remodeling of clothing estimated a total saving of \$206.50 for adults due to clothing program and \$102.50 saving for the girls program.

Boyer Appointed Head Of House Com.

AUSTIN—Rep. Max Boyer of Perryton was named Friday by Speaker Emmett Morse of the House of Representatives as Chairman of the House Committee on Criminal Jurisprudence. This committee is composed of 21 members of the House and deals with all bills pertaining to the Penal Code and Code of Criminal Procedure for the State of Texas.

Boyer was also appointed by the Speaker as a member of the all important committees on Revenue and Taxation; Committee on Municipal and Private Corporations and to the Oil, Gas and Mining Committee.

COMING ATTRACTIONS • ELLIS THEATRE, PERRYTON, TEX.

Jan. 26-27—Off The Record— with Pat O'Brien and Joan Blondell.

Jan. 28—Joe Penner and Lorraine Krueger in "I'm From The City."

Jan. 29-30—"St. Louis Blues with Dorothy Lamour and Loyd Nolan. The picture Kentucky as shown on the calendar has been cancelled.

Jan. 31, Feb. 1 — Adolphe Menjou, Jack Oakie, Arleen Whelan and Tony Martin in "Thanks for Everything."

OSLO NEWS

The following are my announcements for Sunday Jan. 29 4th Sunday after Epiphany: Sunday school 10:00 a. m. Morning worship 11:00 a. m. Sermon theme: Your Faith Should Be The Mountain Removing Kind" Matt. 17:18-22.

The Ladies' Aid which should have met on Jan. 26 with Mrs. Reuben TeBeest will meet with her in two weeks from that time. The Brotherhood Supper which should have been given on Friday Jan. 27 has been postponed for 2 weeks.

The Luther League will not meet next Sunday although that is the regular time for meeting. The postponements of these meetings has been made necessary by a threat of a scarlet fever epidemic in the community. H. C. Hjortholm, pastor.

NEWS ITEMS

Those now under quarantine for scarlet fever are: the P. A. Dahl, Gus Olson and Lars Hill families. According to reports only one member of the Olson family has been affected. This one is now greatly improved and this family, according to the physician, may be released this week. The others afflicted are only mildly ill.

The burning of tumble weeds which have lodged in fences and ditches is a very wise practice which every farmer in this section should follow. The Stedje boys have been busy with this work for the past few days. The roads where they have been working present an entirely different appearance and are much safer for traffic. Should the dust blow somewhat as in former years it will pass through the fences and blow piles will be avoided.

Several in the community have been enjoying air plane rides lately. It is said that one ride is almost enough to cause "air plane fever" that is the desire to own a plane. Up to this time the "fever" has not been strong enough to cause anyone to purchase one. Supper guests at the Henry Meen home on Saturday evening were Mr. and Mrs. Dick Wiersma and Mr. and Mrs. Ben TeBeest and Henry TeBeest. These people live at Castlewood, S. Dak. and have been visiting relatives in the community for a few days. They expect to return home this week.

Rev. H. C. Hjortholm called at the Joseph Knutson home on Thursday last. Mr. Knutson's mother is well and is thankful that up to this time she has escaped any return of the illness which afflicted her last winter. Miss Inga Reinertsen called at the parsonage on Saturday eve.

Mr. and Mrs. Cecil Holt and daughter of Gruver were guests at the Robert Alexander home last Sunday.

Mrs. Elmer Bass who lives on the Stratton ranch between Oslo and Guymon and whose husband is employed by Emil Knutson visited Mrs. Emil Knutson last Thursday and attended the home demonstration club meeting at Stedje's in the afternoon.

Rev. and Mrs. H. C. Hjortholm called at the Robert Alexander and Stedje homes on Sunday afternoon.

Mr. Robert Alexander, Rev. and Mrs. H. C. Hjortholm and Mrs. Frank Lurman drove to Portalis, New Mexico, on Monday to see a former resident of the community, Mr. H. Stone who is critically ill. They returned Monday evening. Mr. H. Stone, while very ill, was able to speak to them. He sent greetings to his friends in Oslo.

A supper in honor of the visitors to the community from S. Dak. was given at the H. M. TeBeest home last Sunday evening.

NOTICE BY PUBLICATION

The State of Texas, County of Hansford.

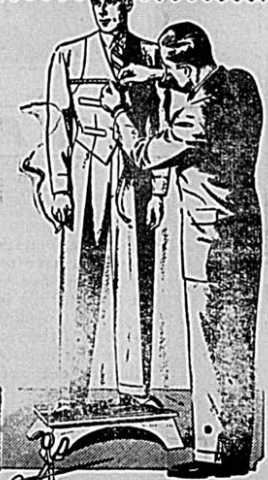
To the Owners, Lessees, Lienholders. And all other persons holding any interest of, in and to the following described tracts of land, or any part thereof:— Greetings: You are hereby notified that on the 9th day of January A. D. 1939, the Governing Body of the Hansford County Wind Erosion Conservation District determined upon a program of work embracing the land hereinafter described for entering upon, treating and/or constructing such improvements and maintaining such facilities thereon as determined upon for arresting or preventing soil erosion by reason of winds: has allocated a portion of the cost thereof to the following described tracts of land and the owners thereof, and intends to levy an assessment thereon in a sum equal to fifty cents per acre of the area thereof, and the same is hereby tentatively allocated to each of the following described tracts of land and to each of the owners thereof, the said land being situated in Hansford County, Texas, to-wit:

- Land in Block 2, G. H. and H. including sections Nos: 64 65 66 67 68 69 70 71 72 73 74 75 76 77 78 79 80 81 82 88 89 90 92 93 97 98 99 100 101 102 104 109 110 111 112 113 114 115 116 117 118 119 120 121 122 123 124 125 126 127 128 129 130 131 132 133 139 140 141 142 143 144 145 146 147 148 149 150 151 154 155 156 157 158 159 160 161 162 163 164 165 166 167 168 169 170 171 172 173 174 175 176 177 178 179 180 181 182 183 184 185 188 189 190 191 192 193 194 195 196 200 201 202 203 204 205 206 207 208 209 210 211 212 213 214 215 216 217 218 219 220 221 222 223 224 225 226 227 228 229 230 231 232 237 238 239 240 241 242 243 247 248 249 250 251 252 253 254 255 256 257 258 259 260 261 262 263 264 267 268 269 270 271 272 273 274 275 276 277 278 279 280 281 282 283 286 287 288 293 294 295 296 297 298 299 300 301 302 303 304 305 306 307 308 309 310 311.

- Land in Block P, H. and G. N. including sections Nos: 5 6 7 8 9 10 11 12 13 14 15 16 17 18 19 20 21 22 23 24 25 26 27 28 31 32 33 34 35 36 37 38 39 40 41 42 43 44 45 46 47 48 49 50 51 52 53 54 55 56 57 58 59 60 61 62.

Land in Block 3, G. H. and H.

KAHN TAILORING CO. Expert Tailoring. Mr. J. A. Etheridge at our store on January 31st



Mr. J. A. Etheridge at our store on January 31st

Enjoy the personal attention of an expert in the selection of color, pattern, and styling best suited to your appearance. Choose from hundreds of new 1939 custom quality woolsens—in yard-length samples to give a better idea of their beauty. Fine tailoring at popular prices.

Campbell Tailor Shop Spearman, Phone 113

LET HIM TAKE YOUR MEASURE FOR IMMEDIATE OR FUTURE DELIVERY. Spearman Drug Co.

- including sections Nos: 2 3 4 5 6 7 8 9 10 11 14 15 16 17 18 31 32 33 34 35. Land in Block 5-T, T. and N. O. including sections Nos: 9 10 11 12 16 17 19 20 21 25 26 27 28 29 30 31 32 33 34. Land in Block 46, P. W. Henderson, including sections Nos: 1 2 3 4. Land in W. P. B. Dubois, W. D. C. Hall, L. H. Stroud, E. Stroud, J. W. Jones, D. C. Jones, and J. B. Dulin tracts. Land in Block 1, P. F. S. including sections Nos: 1 2 3 4 5 6 7 8 9 10 11 12 13 14 15 16 17 18 19 20 2122. Land in Block 2, P. F. S. including sections Nos: 1 2 3 4 5 6 7 8 9 10. Land in Block 3, P. F. S. including sections Nos: 2 3 4 5 6. Land in Block 4, P. F. S. including sections Nos: 1 2 3 4 5. Land in Block 2, S. A. and M. G. including sections Nos: 1 2 3 4 5 6 7 8 9 10 11 12 13 14 15 16 17 18 19. Land in Block 1, C. I. F. including sections Nos: 1 2 3 4 5 6 7 8 9 10 11 12 13 14 15 16 17 18 19 20 21 22 23 24 25 26 27 28 29 30 31 32. Land in C. and M. 2, W. G. Railway and H. and O. B., 21 and 22. Land in Block 1, W. C. including sections Nos: 1 2 3 4 5 6 7 8 9 10 11 12 13 14 15 16 17 18 19 20 21 22 23 24 25 26 27 28 29 30 31 32 33 34 35 36 37 38 39 40 41 42 43 44 45 46 47 48 49 50 51 52. Land in Block 2, W. C. including sections Nos: 1 2 3 4 5 6 7 8 9 10 11 12 13 14 18 19 20 21 22 23 24 25 26 27 28. Land in Block 45, H. and T. C. including sections Nos: 4 5 6 7 37 38 39 40 41 50 51 52 53 54 55 60 61 66 67 68 69 70 75 76 77 78 79 80 81 82 83 84 85 86 97 105 106 107 108 109 110 111 112 113 114 116 118 119 121 122 123 124 125 126 127 128 129 130 131 132 133 134 135 136 138 139 140 141 142 144 145 146 150 151 152 162 164 165 166 167 168 169 170 171 172 173 174 175 176 177 178 179 180 181 182 183 184 185 186 187 188 189 190 191 192 193 194 195 196 197 198 199 200. Land in Block 3, S. A. and M. G. including sections Nos: 1 2 3 4 5 6 7 8 9 10 11 12 13 14 15 16 17 18 19 20 21 22. Land in Block 1, W. and N. W. including section Nos: 1 2 3 4. Land in Block 4-T, T. and N. O. including sections Nos: 1 2 3 4 5 6 7 8 9 10 27 28 29 30 31 32 33 34 35 36 37 38 39 40 41 42 43 44 52 53 54 55 56 57 58 59 60 61 62 63 64 65 66 67 68 69 70 71 72 73 82 83 84 85 86 87 88 89 90 91 92 93 94 95 96 97 98 99 100 101 102 103 112 113 114 115 116 117 118 119 120 121 122 123 124 125 126 127 128 129 130 131 132 133 142 143 144 145 146 147 148 149 150 151 152 153 154. Land in Block 1, H. and G. N. including sections Nos: 1 2 3 4 5 6 7 8. Land in Block 1, Torrey-including sections Nos: 1 2 3 4. Land in Block R. B. and B. including sections Nos: 1 2 3 4 5 6 25 26 27 28 29 30 31 32 33 34 35 36 37 38 39 40. Land in Block R. A. B. and M. including sections Nos: 41 42 43 44 45 46 55 56 57 58 59 60 61 62 63 64 65.

A hearing will be given and held by and before the Governing Body of the Hansford County Wind Erosion Conservation District on the 13th day of February, 1939 at 10 o'clock A. M., at the Courthouse of Hansford County in Spearman, Texas, at which time and place all persons owning, holding a lien upon or claiming any interests in, any of the above described tracts of land are hereby commanded to appear to contest said proposed assessment, and to show cause, if any they have, why the proposed assessment thereon should not be levied upon such tracts of land and the owners thereof. Given under my hand and the seal of said District, at office in Spearman, Texas, this 9th day of January, A. D. 1939. Fred J. Hoskins, Clerk of the Hansford County Wind Erosion Conservation District. (Seal).

FOR SALE

1 new 8ft. Sampson Windmill complete with stub tower. SPECIALLY PRICED \$39.50. First come, first served. WHITE HOUSE LUMBER CO.

SEED, OATS and BARLEY

Fresh shipment Quaker starting mashers, chick feed, granite grit, etc. Blue springs sooths coal, mineralized salt and tannage. Place your order for quality baby chicks with us. R. L. PORTER GRAIN & SEED CO. We Deliver Phone 175

BARGAINS

We strive to offer you the best quality food products at the most reasonable price that we can afford. We stock the freshest vegetables and dairy products and assure you of the most courteous service at all times. J. M. CATES and SON

IT'S IN THE NAVY NOW—

That genuine best of all lubricants and most economical gasoline. Check your government statistics—you will find that Sinclair products are used in the Navy air service of our government, largely to an exclusion of other products. IT HAS TO BE Good to satisfy Uncle Sam. Drive in at either of the two local service stations and fill-up with Sinclair gas and oil. FRANK HARDIN,

YOU DO NOT—

—Have to pool your order with that of your neighbor and buy perhaps more oil than you need, in order to get attractive prices. Your own farmer owned organization buys in large quantity and sell at attractive prices and you can come get your supplies when needed. You do not have to be a stockholder to get the very best prices. The price quotations at the Consumer Sales Co. is the same to everyone. Consumers Sales Co.

PHILLIPS 66

The best is the cheapest even if it cost more. But Phillips 66 cost no more than ordinary petroleum products. Buy Phillips Products. SLIM WINDOW Wholesale Agent

RADIO SERVICE

Radio Tubes Radio Service on all makes House Wiring Service on Small Motors Electric Fencers & supplies G. E. Mazda Lamps 6 volt Windchargers Equipped To Test 32 volt radios. W. O. SWAIM Phone 34 South of Court House

"Leto's" for the Gums Gums that itch or burn can be come mighty trying. Druggists will return your money if the first bottle of "LETO'S" fails to satisfy. Spearman Drug Co.

Baby Chicks

We have the finest assortment of chicks for sale. Priced right! PERRYTON HATCHERY In Masonic Bldg. Perryton

Are You A Gambler?

Being without adequate insurance is often an expensive type of gambling. Consult us for Fire, Wind-storm, Automobile, Life and Accident Insurance, or Automobile Financing. J. E. GERBER INS. AGENCY "Insurance of All Kinds."

COLD WEATHER JUST AROUND THE CORNER

Time to drain your motor and fill up with winter grade of oil. Let us change the grease in the cars transmission and give you a winter grease job. We will check hose connections and sell you your requirements in anti-freeze. Magnolia Filling Station J. D. Andrews

WINTER BARLEY

Limited quantity of genuine Michigan Winter Barley grown last season in Oklahoma from certified seed. Price 65c per bushel. R. L. McClellan Grain Co.

NOTICE

Notice is hereby given that the Commissioners Court of Hansford County, Texas, will receive proposals at its Regular meeting date in February, being the 13th day of February 1939, from any banking corporation, association or individual banker of said county, for the depositing of the public funds of said county in such bank, according to and as provided in Articles 2544 and 2545, of the Revised Civil Statutes of the State of Texas. A. F. BARKLEY, County Judge.

FOR SALE

1 new 8ft. Sampson Windmill complete with stub tower. SPECIALLY PRICED \$39.50. First come, first served. WHITE HOUSE LUMBER CO.

SEED, OATS and BARLEY

Fresh shipment Quaker starting mashers, chick feed, granite grit, etc. Blue springs sooths coal, mineralized salt and tannage. Place your order for quality baby chicks with us. R. L. PORTER GRAIN & SEED CO. We Deliver Phone 175

BARGAINS

We strive to offer you the best quality food products at the most reasonable price that we can afford. We stock the freshest vegetables and dairy products and assure you of the most courteous service at all times. J. M. CATES and SON

IT'S IN THE NAVY NOW—

That genuine best of all lubricants and most economical gasoline. Check your government statistics—you will find that Sinclair products are used in the Navy air service of our government, largely to an exclusion of other products. IT HAS TO BE Good to satisfy Uncle Sam. Drive in at either of the two local service stations and fill-up with Sinclair gas and oil. FRANK HARDIN,

YOU DO NOT—

—Have to pool your order with that of your neighbor and buy perhaps more oil than you need, in order to get attractive prices. Your own farmer owned organization buys in large quantity and sell at attractive prices and you can come get your supplies when needed. You do not have to be a stockholder to get the very best prices. The price quotations at the Consumer Sales Co. is the same to everyone. Consumers Sales Co.

PHILLIPS 66

The best is the cheapest even if it cost more. But Phillips 66 cost no more than ordinary petroleum products. Buy Phillips Products. SLIM WINDOW Wholesale Agent

RADIO SERVICE

Radio Tubes Radio Service on all makes House Wiring Service on Small Motors Electric Fencers & supplies G. E. Mazda Lamps 6 volt Windchargers Equipped To Test 32 volt radios. W. O. SWAIM Phone 34 South of Court House

"Leto's" for the Gums Gums that itch or burn can be come mighty trying. Druggists will return your money if the first bottle of "LETO'S" fails to satisfy. Spearman Drug Co.

DR. J. P. POWELL Eye, Ear, Nose, Throat SPECIALIST Glasses fitted, Tonsils and Adenoids removed. In Spearman Wednesday February 1 Office Dr. J. E. Gower

J. E. GOWER, M. D. Room 205 McLain Building Phone res. 98 Office 33

C. H. DUNLAP Registered Optometrist Have Your Eyes Tested 106 E. 5th St. Borger, Tex.

DR. F. J. DAILY DENTIST X-RAY McLain Building Ph. 156 SPEARMAN, TEXAS

EYES EXAMINED GLASSES FITTED Dr. G.P. Gibner McLain Bldg. Spearman

EAT at "JACK'S" CAFE Regular Meals Short Orders Sandwiches "JACK'S" CAFE Jack Wilbanks, Prop.

Campbell Tailor Shop —Odorless Dry Cleaning— Suits Made to Measure \$20.00 and up. Phone 113

T. D. SANSING Attorney and Counselor at Law General Practice Office in Court House SPEARMAN, TEXAS

Frank M. Tatum Milton Tatum TATUM & TATUM —Attorneys At Law— Dalhart, Texas

Home Made Cilli Our STEAKS a famous over the world, try one today! Home Made Pies BURL'S The home of good foods, properly served.

FRED M. MIZAR Truck Line SPEARMAN-AMARILLO Spearman Phone 112 Amarillo Phone 5351

GLASS For all Cars—installed while you wait. Safety or plate glass cut to factory patterns. Mirrors Re-Silvered DALEY GLASS SHOP Phone 146 Perryton

CLOSING OUT

We are closing out our ELECTROLUX Refrigerator Line in Spearman.

Offer, First come, first served—

6 foot Electrolux, kerosene burner, regularly priced at \$309.50 for—

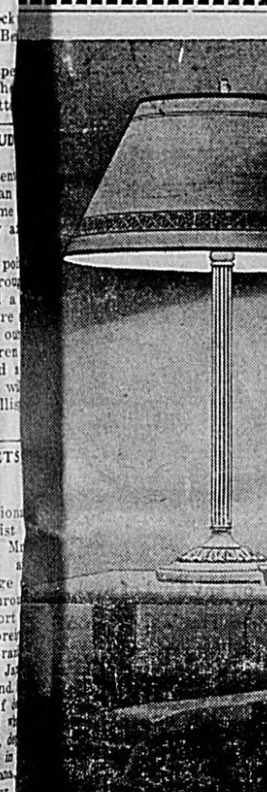
\$210.50

8 foot Electrolux, gas burner, regularly priced \$331.00 for—

\$250.00

Vomble Hardware

What is reading comfort worth to you?



A Better Sight Lamp Like This Will Provide Sight-saving Light for About 1/2 cent per Hour

Your eyes work ceaselessly every waking moment of the day. Why subject them to strain under poor light when good light is so cheap? Under our low average residential rates:

A modern table lamp equipped with a 100-watt bulb will provide sight-saving light for about one-half cent per hour.

There is one sure way to determine whether your present lighting conforms to life seeing standards—have it measured with a light meter. We will gladly perform this service without charge. Ask us about it.

A Citizen and Taxpayer COMMUNITY PUBLIC SERVICE COMPANY Alert and Eager To Serve You

GOOD LIGHT IS CHEAP—ENJOY BETTER LIGHT TONIGHT

Society

Call 10

LADIES COUNCIL OF CHRISTIAN CHURCH

Mrs. Rube Birdwell was hostess to members of the missionary society at her home on Wednesday Jan. 25. Mrs. Leland Close led a very interesting lesson which was from the 13 chapter of Mark. Those present were Mesdames Hix Wilbanks, Bert Briley, Marion Close, Olen Womble, Homer Allen, A. N. Meadows, Leland Close, the hostess Mrs. Birdwell and May Birdwell. The next meeting will be with Mrs. Bert Briley Feb. 1 with Mrs. Wilbanks as leader.

SUNSHINE NEEDLE CLUB

The Sunshine Needle Club met in the home of Mrs. Olin Chambers for their regular weekly meeting. Roll call was answered by each member giving a useful household hint. Plans for a valentine party were discussed. The afternoon was spent in sewing. Refreshments were served to the following: Mrs. Dub Hanners Noel Womble, Freeman Barkley, Slim Windom, R. B. Archer Jr., Eddie McCauley, Lafe DeArmond, Ray Phelps, the hostess Mrs. Chambers and one visitor Mrs. Gene Cline. The next meeting will be in the home of Mrs. Lafe DeArmond.

CATHOLIC CHURCH

Catholic services will be held at the District court room at Spearman each 3rd Sunday of the month. Father Daley from Borger will officiate. Services begin at 11:30 a. m.

LOTTIE MOON CIRCLE

The Lottie Moon circle of the Baptist church met at the home of Mrs. Virgil Floyd. The lesson studied was taken from the 15, 16 and 17th chapters of Romans. The next meeting will be at the church. Members present: Mrs. D. W. Hazelwood, O. J. Williams, May Hughes, Clyde Windom, Dave Tice, E. B. Howerton, Rex Sanders, Altha Groves, Mrs. Geneva Cline, visitor and hostess Mrs. Virgil Floyd.

MARY MARTHAS

The Mary Martha Missionary Society of the Methodist church met Wednesday Jan. 25 in the home of Mrs. Bruce Sheets. The next meeting will be in the home of Mrs. Van Earl Steed. Mrs. T. D. Sansing led the devotional. Mrs. L. M. Brown assisted by Mrs. C. A. Gibner and Mrs. E. N. Richardson presented an interesting lesson on "Religion of Japan." Those attending were Mesdames Leroy Brown, Fred Daily, Cecil Holt, R. B. Archer, Jr., J. M. Hatton, Clay A. Gibner, Gene N. Richardson, T. D. Sansing, W. P. Hutton, Lloyd Campbell, John Berry, Eddie McCauley, Van Earl Steed, one guest Mrs. F. B. Schubert and hostess Mrs. Bruce Sheets.

Mr. and Mrs. Wm. A. Wilbanks, of Amarillo, are in Spearman visiting Mr. Wilbanks parents, Mr. and Mrs. Ernest Wilbanks before starting on a round the world cruise. Mr. and Mrs. Wilbanks plan to leave by Feb. 1.

BLANCHE ROSE WALKER CIRCLE MET

The Blanche Rose Walker Circle met in the home of Mrs. Carl Hutchison Wed. Jan. 25. Those present were Mrs. Jess Edwards, Mrs. Van Sant, Mrs. Hardin, Mrs. Van Cleave, Mrs. D. B. Kirk, Mrs. Kiff White, Mrs. D. M. Jones, Mrs. H. E. Reed, Mrs. Gill of Cortez, Colo. Our next meeting will be at the church for the Royal Service program.

BOOK REVIEW CLUB

The meeting of the Spearman Book Review Club will be held at the home of Mrs. Gene Richardson Tuesday Jan. 31. Mrs. W. P. Hutton will be in charge of the review program.

SILVER WEDNESDAY CLUB

Patricia Hutton was hostess to members of the Silver Wednesday club, at the home of her parents Wednesday afternoon Jan. 25. This weeks meeting is a social meeting of the organization. Refreshments were served. Misses Nadine Hardin, Elnor Faye Womble, Sada Ruth Hoskins, Pauline Tucker, Dorothy Daniels, Rita Roach and Patricia Hutton. The next meeting is to be with Nadine Hardin.

BID A BIT CLUB AT GANDY HOME

Members of the Bid a Bit Bridge club met at the home of Mrs. Bill Gandy for the regular luncheon meeting of the club Friday Jan. 20. Mrs. John Berry won high score for members and Mrs. Fred Rattan won high for guests. Playing were Mesdames R. E. Lee, Joe Hatton, John Berry, Gwinfred Lackey, Will Russell, Bruce Sheets, Dave Hester, Will

Hutton, L. B. Campbell, Will Gandy, and guests Mesdames O. C. Holt and Fred Rattan.

MORSE NEWS

Everyone is looking forward to the Basketball Tournament that is to be held at the Morse High School Auditorium on Friday, Jan. 27, 1939. Spearman, Plemons, Sunray, and Morse will play. Everyone is invited to come enjoy themselves.

Erils Pittman, Alva Henderson and Henry Reid were transacting business in Fort Worth,

and Oklahoma City over the week-end. Wayne Kelly spent the week-end in the home of his mother Mrs. H. N. Kelly. Roberta Kelly returned with him to Amarillo.

Virgie Lee Dortch spent the week-end in the home of her grandmother Mrs. L. O. Boney. Miss Nannie Jessie Archer spent the week-end in her home in Canyon.

Mrs. C. C. Kellogg and Mack Quarrels returned Monday from a trip to Tulsa, Oklahoma where they were visiting Mr. Quarrels relatives.



DON'T MISS YOUR CARA NOME FACIAL! IT'S WONDERFUL!

EVERYONE SAYS SO! HOPE I'M NOT TOO LATE

NEVER SUCH A RUSH FOR APPOINTMENTS!

Are you satisfied with your complexion? Sure that your make-up enhances your beauty.

We have engaged Miss C. M. Gibson to help you with your individual beauty problems. Miss Gibson is a direct representative of Langlois, World-famous beauty authority. We offer without charge or obligation One Week Only Beginning Monday Jan 30 1 hour of private consultation including a complete skin analysis, suggestions for daily complexion care and a glorifying make-up.

Make your appointment now! Only 10 consultations can be given daily, 9 A. M. to 4:45 P. M.

ARRANGE FOR YOURS IMMEDIATELY AT OUR STORE!

Spearman Drug Co.

Remember The **Small** DRUG STORE FOR BEST VALUES IN TOWN

WHY Pay Rent

—When you can own your own home by paying a small cash payment and the balance like paying rent. Check up on the rent you have been paying and you will see what you are losing. Then, call at my office and see what we have to offer that will save you money. Rent houses are very scarce. With this fact and our good crop prospects, we are going to see higher rents and much higher values in all our properties. Buy your home NOW on these Liberal prices and terms.

J. R. Collard
SPEARMAN, TEXAS

Ample Supply

Seed Barley & Seed Oats
Get your needs now at

Spearman Grain Growers Inc.

Pat Bennett, Mgr.



NO GREATER PROPERTY HAZARD EXISTS THAN THAT OF FIRE.

Naturally you do all you can to prevent it. But what of the times you can't ??

INSURE NOW

To give yourself a bulwark against ruinous loss Do not let January go into past history without a check-up on your protection. IT IS GOOD JUDGMENT AND GOOD BUSINESS.

Hansford Abstract Co.

P. A. Lyon, mgr. Phone 42

NEW SPRING MERCHANDISE

—Arriving Daily—

Our buyer is at market this week and we are receiving a pleasing array of new Spring ready to wear, millinery and Spring piece goods.

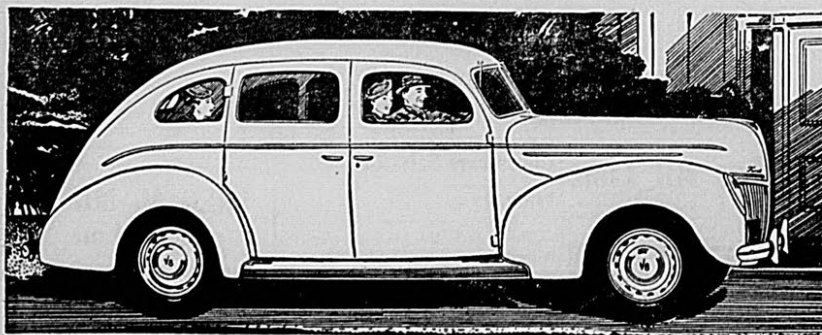
Visit our store and see these new arrivals.

SPEARMAN DRY GOODS CO.

Roy Russell

Its value is tradition . . .

ITS STYLE IS MAKING NEWS!



Ford cars have always been built to their own high standards of basic quality and performance. This year they also bring style that is new to the low-price field.

STYLE LEADERSHIP—The luxury cars of the low-price field.
V-TYPE 8-CYLINDER ENGINE—Eight cylinders give smoothness. Small cylinders give economy.
HYDRAULIC BRAKES—Easy-acting—quick, straight stops.
STABILIZED CHASSIS—No front end bobbing or dipping. Level starts, level stops, level ride.
SCIENTIFIC SOUNDPROOFING—Noises muffled for quiet ride.

TRIPLE-CUSHIONED COMFORT—New flexible roll-edge seat cushions, soft transverse springs, four hydraulic shock absorbers.
LOW PRICES—Advertised prices include many items of desirable equipment.

DE LUXE FORD V-8

\$76900 EQUIPMENT INCLUDED—State & Federal taxes extra
IS THE DETROIT DELIVERED PRICE
This is for the De Luxe Fordor Sedan illustrated and includes all the following: Bumpers and four bumper guards • Spare wheel, tire and tube • Cigar lighter • Twin air-electric horns • Dual windshield wipers • Two sun visors • Lock on glove compartment • Clock • De Luxe steering wheel • Rustless Steel wheel bands • Twin tail lights • Foot control for headlight beams with indicator on instrument panel • ENTIRELY NEW battery-condition indicator.
SEE YOUR FORD DEALER TODAY!

WE'RE Now Selling

MANSFIELD Tires!

TIRES FOR EVERY SERVICE



The extra mileage that Mansfield Tire users have received during the past twenty-five years has been responsible for the fact that the Company has grown steadily until it is now one of the six largest producers in the tire industry. Mansfield distributors dot the continent from coast to coast.

● There's a Mansfield Tire built to give extra mileage and extra safety on any make car or truck you drive — on any kind of work, in any season of the year, over all kinds of roads. That's the reason we are stocking them, yes, and selling them to your friends and neighbors who already have had the opportunity to see the extra safety, economy and performance of Mansfield Tires.



Mansfield Mudders

Designed and built to do just what their name implies — take you through the mud, slush, snow on any type of road, on their wide angled, heavy splayed treads.



Mansfield Cushion Balloons

Today's cars — built for small diameter wheels and low air pressures — need special tires for high speed service. Mansfield Cushion Balloons bring out all the sparkling performance built into modern cars.

THREE WAYS SAFER
Mansfield Tires are three ways safer because they are built three ways differently from other tires. For instance, Cord-Lock construction puts 31% more full weight cord fabric into the sidewalls, reinforcing the tire against flexing strains. The high tensile, steel piano wire beads are seven times as strong as actually needed. Mansfield treads are made of tougher Duro-mix rubber, today still more resistant to high speed wear and pavement "burn" from fast starts and quick stops. Every Mansfield Tire gives you more mileage than you pay for.

R. E. LEE OIL CO.

... MANSFIELD Tires

EXTRA MILEAGE