



THE

# Spearman Reporter

VOLUME 67, NO. 49

THE SPEARMAN REPORTER, SPEARMAN, TEXAS 79081

THURSDAY, OCTOBER 21, 1976

## Lynx, Dogs, Rangers in big games this week!

This will be the biggest weekend of football in the history of Hansford and Ochiltree Counties, as the Lynx host the Boys Ranchers in what easily could be the "upset" of the year as the tough Ranchers come to Spearman after the Lynx finished a real toughie at Dalhart.

The surprising Greyhounds, after trouncing a good White Deer team, will host an equally surprising Stinnett team at home Friday night.

The Rangers, of former Spearmanite Don Beck, will travel to Canyon in what promises to be the state's best AAA affair!

All three of the games could end up in a tie, but probably they will be high scoring affairs!

Whichever game you attend will be a dandy, so for those of you in Spearman and Gruver who plan to watch the "cats and dogs" in action, better take an extra blanket and be prepared for some real excitement!

The Lynx, who were just "Tremendous" in their game at Dalhart, should be "more than ready" for the tough Boys Ranch team. The Ranch has lost only one game this year and that was to an undefeated team. They will have the best all-around team we have played all year! Most observers think they will be better balanced than Dalhart, and the Lynx will have to play much harder against the Ranch than they did at Dalhart to win!

Unofficially, the Lynx came out of the Dalhart game with only two men injured. Mercury Morris has his chin wired

together this week and will be used sparingly, if at all, Friday night. Martin received a fractured thumb after scooting across the track area trying to catch a pass Friday night.

Billy "White Shoes" Sellars will probably take Mercury's place Friday night! Martin should be ready! This will put three sophomores in the backfield, Zane the Train, Billy White Shoes, and Kent Hargis, the Baker-Taylor Bullet! The other sophomore, Scott Sherwood, the "Mad Bomber", should loosen up his throwing arm for the Friday game, but we shall wait and see! Neither Boys Ranch or Spearman has lost a conference game this year and are both tied for first place, along with the Panhandle Panthers, another tough 1-AA district foe!

In a talk with Coach Sherwood and his coaching staff, we learned that the Boys Ranch team has lost one game--18-14 to undefeated Farwell, one of the state's top Class A teams! In this game, Boys Ranch had three touchdowns called back. The coach at Boys Ranch says this is the best team he has ever had at the Ranch! Also, Coach Sherwood said we will have to have Mercury Morris Friday night, depending, of course, on how he feels, to beat the Ranch. Boys Ranch is primarily a running team, with four good backs, and two good pass receivers, if they have to pass!

I asked the coaches if there were any particular "stars" in the Dalhart game, and they agreed with me that it was a team effort, and you just couldn't signal out any par-

ticular players! We still think that if the Lynx could have had a bit of luck, the Baker-Taylor Bullet would have made a couple of TD's Friday night!

But, Dalhart was just sensational on defense! Any way you look at it, the Spearman-Ranch game has got to be a

thriller, as does the Gruver-Stinnett, Perryton-Canyon games! The weather could have an effect on the outcome of all three games, remember!

## Shortage Of Gas Is Alleviated

The City of Spearman had to curtail the gas supply to everything west of the railroad tracks and other portions of the city from 10:30 until about 2:30 Monday due to a shortage of gas. High Plains Gas Company was able to get an emergency supply of gas from Northern Natural Gas Co. and the problem was alleviated about 1:30 p.m. Monday. The shortage was first noted Saturday afternoon, and Sunday the pressure was up some but dipped again Sunday night and early Monday morning.

According to city manager, Mark Neff, the city now has an adequate supply with the emergency hook-up, and he is very appreciative of the help of residents in turning down their thermostats and businesses and everyone that was contacted by the city to reduce their gas usage. Neff also said that the shortage was not the fault of the gas company, or the city but is an aftermath of the nation-wide shortage and that this is something that has to be worked on now, not in the future.

City gas users are asked to conserve as much gas as possible by turning down

thermostats when you are not at home and at night, and using a lower reading even if you are at home. This will not only conserve gas, but will be reflected on your gas bills.

Two weeks ago, High Plains Gas Company asked the city officials to work on an agreement with Transwestern for an emergency supply. Their reasoning behind this was that the city could possibly make a better deal with Transwestern because of FPC rules. City manager Mark Neff said they have contacted the FPC, talked with Mr. Sam Ballen of High Plains Gas Company and are currently working to provide additional gas not only for the city's needs now but in the future.

The city does have a contract with High Plains Gas Company stating that the gas company will furnish the city with an adequate supply of gas for its needs.

Xi Zeta Upsilon will be selling purple stadium bags at \$15 prior to home football games...

## Mrs. Massad's Father Dies

Mack Saied, Sr., of Wellington, 88, died Saturday. He was the father of Mrs. Frank Massad of Spearman.

Services were held at 3 p.m. Sunday at the First United Methodist Church, with the Rev. Jim Boswell, pastor, officiating. Burial was in Fairview Cemetery by Kelson Funeral Home.

Born in Jodaidet Marjoun, Lebanon, Mr. Saied came to the United States alone at the age of 12 to join an older brother already living here. After a short time in Fulton, Ken., he went to McAllister, Okla. After quitting school because of hard times, he worked in restaurants and broomcorn fields until he began selling dry goods from town to town.

On Dec. 31, 1911, he married the former Freeda Ayoub at Henrietta, Okla.

He and his brother went to Checotah, Okla. about the time an oil boom hit southern Oklahoma. The store that he started in the oil boom town of Ragtown was burned down three times by fire that destroyed the whole town. Then he started a store in another oil boom town, Healdton.

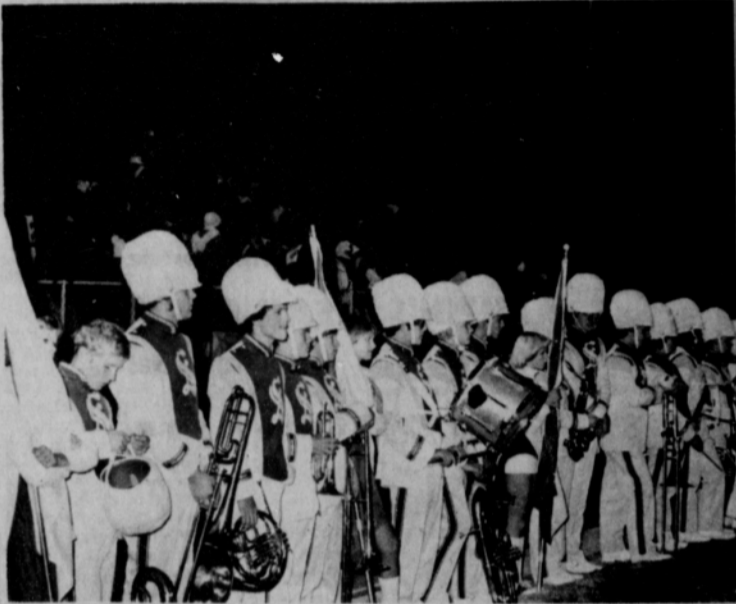
In 1927 he moved to Wellington and established the Leader Department Store. In 1959 he sold the store to his sons but remained active until 1965.

He was a member of the Masonic Lodge, the Kiwanis, and the First United Methodist Church.

Survivors are his widow; three sons, Mack, Jr., of Wellington, Dr. V. C. Saied of Wichita Falls and Fred of Elk City; two daughters, Mrs. Floyd Taylor of Quanah and Mrs. Frank Massad of Spearman; 18 grandchildren and five great-grandchildren.

## MARKETS

WHEAT	\$2.55
MILO	\$3.70
CORN	\$2.37



THE PAUSE THAT REFRESHES...The great Spearman Lynx band watches the Dalhart Band in action, at Dalhart Friday night. The Lynx band is the "pride of the land" and will perform at the Spearman-Boys Ranch game, here Friday night. The game will begin at 7:30 p. m., and the band will march at half-time. Director is Vic Kyler.

## Limited Swine Flu Clinic Set

Hansford County's first Swine Flu Vaccine Clinic will be conducted from 6 to 9 p.m. Thursday, October 21, at the Methodist Church Fellowship Hall, 407 S. Haney in Spearman.

The clinic, conducted by medical personnel from Spearman and Gruver and the Hansford Hospital Auxiliary will be primarily for the 65 or older age group and people in high risk jobs.

There is no charge for the vaccine and it will be administered by individual syringe and needle.

The Rotary Club of Spearman has volunteered to be available for "pick-up and delivery service" for anyone needing a ride to the clinic. Please call 3142 or 3305 to make arrangements.

A later clinic will be held for age 18 to 65 as the vaccine becomes available to us.

## City Sales Tax Received

The City of Spearman received its October rebate of the one-cent city sales tax this week. The amount for this period was \$3,432.83.

Comptroller Bob Bullock said Friday that his auditors turned up more than \$9 million in additional local sales taxes owed Texas cities and towns during fiscal 1976, more than double the amount turned up the two previous fiscal years.

Bullock said city sales tax audit production during the fiscal year ending Aug. 31 was \$9,056,072, compared to about \$4.5 million each of the two previous fiscal years.

The Comptroller Friday mailed checks totaling \$9.1 million to 478 cities and towns as their October rebate of the one-cent sales tax.

He added that city sales tax rebates have totaled \$239.1 million so far this year, well ahead of the \$209.2 million rebated during the same period in 1975.

## C of C Fun Breakfast

The October Chamber of Commerce Breakfast will be held Thursday, October 21, in the Hansford County Barn.

Another fun-filled breakfast is planned with games, money, and the KIDS wrestling program, under the direction of Capt. Littlejohn, will give a wrestling demonstration.

Wes Nivens, our local fiddler, will provide entertainment from 6:30 to 7:00 a.m. Lately Wes has been fiddling up a storm. He has first prizes at Farmington, N. M., at Laveta, Colorado and at San Jon, N. M. He was named Grand Champion in a fiddling contest at Pagosa, Colorado. So be sure and come out and see and hear Wes.

The Breakfast will be from

6:30 to 7:45 a.m. and the tickets are \$2.25 per person. This Breakfast is being sponsored by KBMF-FM Stereo Radio Station of Spearman.

## PO To Close

The Spearman Post Office will be closed Monday, October 25 in observance of Veterans' Day.

No deliveries will be made on city or rural routes. There will be no boxing of mail and no residential collections will be made.

Those desiring out-going mail service should deposit their mail in the outside collection box in front of the Post Office.

CHILI SUPPER - The Baker & Taylor Womens Association invite you to enjoy Chili - October 29! Tickets available!

## County Residents Will Vote For Hospital Proposition

Only three people have voted absentee for the November 2 General Election according to County Clerk Marie Gould. Absentee voting began Wednesday, October 13, and will be conducted from 8:30 a.m. to 5 p.m. on days the Clerk's office is open. Absentee balloting will continue through October 29 at the close of business.

Along with the General Election ballot, county residents will be voting for or against the proposition "Providing the office of director of the Hansford County Hospital District shall hereafter be an elective office." The directors have been appointed by the County Commissioners since the district was formed several years before and also before the hospital district was formed.

A petition was filed by county taxpayers requesting

that an election be called for the purpose of deciding whether or not the directors should be elected, so now is the time to voice your opinion on this subject.

Races highlighted in this area are the 64th District State Representative between incumbent, Republican Bob Close of Perryton and Dalhart ranchwoman and Democrat, Daisy Moore, and the race for 13th District Congressman between incumbent Democrat Jack Hightower and Republican Bob Price, who was Congressman for this district before being defeated in the last election by Hightower; the senatorial contest with incumbent, Senator Lloyd Bentsen, Democrat, being challenged by a young and fast-rising Republican, Alan Steelman.

The only other contested state races are for State Railroad Commissioner, where Jon

Newton, Democrat, Walter Wendlandt, Republican, and Fred Rodriguez Garza, Raza Unida Party and Pat O'Reilly of the Socialist Workers Party are on the ballot.

Incumbents District Judge, 84th Judicial District, Richard N. Countiss; District Attorney, 84th Judicial District, Stephen Cross; County Attorney, J. E. Blackburn; Sheriff, R. L. McFarlin, and County Tax Assessor-Collector, Helen Dry, are running unopposed as is Garland Head who won the race in the Democratic Primary for Precinct #1 Commissioner.

First on the ballot of course is the presidential race which seems to be very close at this time, if the results of the various polls can be believed.

According to Helen Dry, Tax Assessor-Collector, there are approximately 3,552 registered voters in Hansford County.

Vote as you please, for whatever party or candidate, but do go to the polls or if you are going to be out of the county on November 2, be sure to vote absentee before the deadline October 29.

Locations of polling places in the county are Voting Precinct #1-Spearman Courthouse; Voting Precinct #2-Renner Ranch; Voting Precinct #3-Gruver Elevator; Voting Precinct #4-Gruver-County Agriculture Barn; Voting Precinct #5-Spearman-County Agriculture Barn; Voting Precinct #6-Spearman High School; Voting Precinct #7-Oslo Church; Voting Precinct #8-Absentee-Courthouse; and Voting Precinct #9-Morse Community Building.

If you are not sure which is your voting precinct, look on your voter registration card.



One of the scenes at the Children's Hour for 3 and 4 year olds at the Hansford Library Tuesday morning from 10 to 11. Jeff Hutchison is enthralled with the puppet story Marsha Murphy is telling. The program is under her direction. She is a former teacher of pre-school and kindergarten children. The first session was well attended and thoroughly enjoyed by the children. The weekly "Children's Hour" will be each Tuesday at 10 a.m.

# The Cost of Rearing A Child \$\$\$\$

In Hansford County, under present conditions, how much does it cost to raise a child from birth to age 18?

Most parents have no idea of the overall amount. They don't think of children in terms of dollars and cents. Beyond recalling that at certain stages along the line the costs were very heavy, they have never thought about their total expenditures.

A new analysis of such costs provides some answers. It is based upon studies made by the Department of Agriculture, the Bureau of Labor Statistics and others.

The finding is that the amount spent by parents in rearing a child varies from family to family. In general, however, it is closely related to income.

In some families, the outlay in the 18 years is equivalent to as much as 3.6 years of earnings, after taxes. In others, as little as 2.9 years of earnings are so-spent. The average is slightly more than 3 years.

The studies show that where net income is in the \$15,000 to \$16,000 range, as it has been recently for the average family in Hansford County, the outlay

per child is approximately \$46,500.

The expenses incurred in the first year can be unusually large. According to the Health Insurance Institute, the average cost in that year for medical and hospital bills, furniture, clothing, medicines and the like runs to \$2,194 nationally. Insurance covers some of this in most cases.

Other than that, the greatest demand comes in the period between 13 and 18, when youngsters eat more, require more expensive clothes and more money for recreation.

In most local families, food

is a principal item of expense. With prices as they are now, the food bill to age 18 comes to about \$13,500.

Another major item is clothing, which amounts to \$4,480, on average, allowing for the fact that hand-me-downs are sometimes available.

Beyond these, there are the outlays for recreation, medical and personal care, housing, transportation, and the like.

Based upon current costs, the total expenditure by Hansford County parents for the 150 or so local youngsters who turn 18 each year, adds up to approximately \$6,975,000.

## Spearhead Breakers Meeting

The Spearhead Breakers had their monthly meeting October 7, at 8:00. President Sidewinder called the meeting to order and Penny Candy read the minutes. Lucky Louie gave the treasurer's report. Snowbird was elected chairman of the Ways & Means Committee. A come-as-your-handle party will be October 28, at 7:30 at the Home Demonstration Club Room. Each family will bring a covered dish.

C.B.'ers of the month are Daisy Mae and Wild Willie. Awards were presented to the following: Diddle Stick, Penny Candy, Ratcher Jaw, Tape Worm, Channel Peeper, Fuse Box, Bleed-Over, Screw Driver, Bucket Mouth, Gypsy Mama, Bull Shipper, and Diamond Back.

Hosts and Hostess for the month were Dandalion, Penthouse, and Lady-Arrowhead. The following members were present: Sidewinder - Phillip Stumpf; Daisy Mae - Carol Stumpf; Cave Man - Jim Thomas; Penny Candy - Penny Candy; Lucky Louie - Louis Meisner; Saddle Queen - Mary Meisner; Wild Willie - Bill Crouch, Sr.; Gypsy Mama - Betty Crouch; Screw Driver - Harold Frost; Ginger Snap - Joyce Frost; Piano Player - Charley Phipps; Belt Maker - Donna Phillips; Green Bomp - Chet Phillips; Tapeworm - Harley Murrell; Sawed-off Texan - Kim Murrell; Dandalion - Beth Baker; County Girl -



Miss Lisa Nelson, senior at Gruver High School was named 2nd runner-up in the Miss Aggie Princess Pageant held at Panhandle State University. Lisa is the daughter of Mr. & Mrs. Archie Nelson of Gruver.

Standing (L-R) Miss Mary Hawthorne, 1st runner-up from Dumas, Texas; Miss Oklahoma, 1976, Lucia Miller; Miss Leisha Harris, Miss Aggie Princess from Laverne, Oklahoma; and Miss Lisa Nelson, 2nd runner-up from Gruver.

Mary Hawthorne is the daughter of Mr. & Mrs. Lyle Hawthorne of Dumas.

## You're Invited . . .

Erwin Elms, pianist-vocalist, will entertain at

### MARTIN'S STEAK GARDEN

South Hiway 207 - Spearman, Texas

October 22-23 from 6 to 9 p.m.

Selections include pop arrangements of new and old, progressive country, spiritual and gospel, and original songs. Erwin has played piano since school days in Keyes, Oklahoma; was a piano major in college, has taught piano and organ; and has been writing songs for several years. In the spring of 1975, he and a partner released an album with nine of their songs "Erwin-Jerry Wrote Some Things". Last year Erwin was pianist-vocalist for Willowcreek, a band that played in Oklahoma and Kansas.

## Annual Mexican Dinner Planned

Peggy Robinson; Chatter Box - Debbie Crouch; Kansas Sunflower - Nelda Cook; Little Orphan Annie - Rony McClellan; Texas Longhorn - Roy Stinson; Diamond Back - Max Taylor; Fuse Box - Tim York; and Penthouse - Bill Watts.

On October 9, at 7:30 Spearhead Breakers had a family style barbeque catered by Stephen's of Berger at the County Barn. Approximately 20 members and their guests were present. Afterwards games were enjoyed by all.

The next meeting will be November 4, at 8:00 at the Home Demonstration Club Room.

CWF BAZAAR  
DECEMBER 4

## C of C Fun Breakfast

The October Chamber of Commerce Breakfast will be held Thursday, Oct. 21, in the County Show Barn. Another fun-filled breakfast is planned with games, money, the KIDS

wrestling program will give a demonstration, entertainment and a lot of good time Halloween fun. This breakfast is being sponsored by KBMF

"GET READY FOR WINTER"

and  
SAVE ON FUEL BILLS

With STORM WINDOWS & DOORS

contact - Howard Moyer at

Only Aluminum Industries

Guymon, Okla.  
114 W. St.

405 338-6966  
338-6170

PRICES GOOD: THURS., OCT. 21 THRU SAT., OCT. 23, 1976



# Oktoberfest

PEACHES

LARGE RIPE

LB. 49¢

CALIFORNIA  
CELERY

19¢  
LB.

MIRACLE WHIP

48 OZ.

\$1.59  
ONLY

TEXAS  
ORANGES 5 LB. BAG 79¢

PORK CHOPS

\$1.29  
LB.

BONELESS  
STEW MEAT

79¢  
LB.

### From The Delicatessen

SHOPMADE MILDLY SEASONED  
CHILI PT. 98¢

POTATO SALAD PT. 79¢

FRESH COOKED BEANS QT. 98¢

BEACON 32 OZ.  
MOP & GLOW \$1.49  
REG. \$2.05

POTATO CHIPS 3 PACK PRINGLES 99¢

MACARONI & CHEESE AMERICAN BEAUTY DINNER 2 FOR 59¢

SPRAY DISINFECTANT  
LYSOL ONLY \$1.77  
REG. \$1.99

M & M Grocery

AFFILIATED No. 1

202 N. Bernice Spearman, Texas

659-3234

ROASTED PEANUTS FRESH

49¢  
LB.

GROUND CHUCK

20 LBS. \$12.99

2 LB. PKG.

You must place your order early

CALL 659-3234 TO  
PLACE YOUR ORDER  
EARLY....

# WANT ADS

**Boxwell Bros.**  
**Funeral Home and Flower Shop**  
Day - Night Phone 659-2212  
Spearman, Texas

**O. J. ROOK**  
Phone 274-4968  
**PAINTING - INDUSTRIAL RESIDENTIAL**  
**FREE ESTIMATES**  
**ACOUSTICAL CEILINGS**  
**CARS AND TRUCKS**

**YOUR LOCAL USED COW DEALER: SPEARMAN BI-PRODUCTS.** Seven days a week dead stock removal. Please call as soon as possible. 659-3544.

**Hansford Lodge**  
**1040**  
**A.F. & A.M.**  
W.M. George Young  
Sec. Cecil Biggers  
2nd & 4th Mondays

### SERVICES

**Hansford County Planned Parenthood**  
26 S. Haney  
659-2483  
Spearman  
Mon.-Fri.  
8 a.m. to 12 noon  
305-rtn

**Custom fertilizing and any type of farming.**  
W. B. Barnes  
659-3493

**KIRBY SALES & SERVICE** of Spearman, 912 S. Bernice. 659-2797.  
30-rtn

**GRADER, Dozier, and Drag Line Work.** Call Lee Roy Mitchell, Gruver, 733-2384.  
28-rtn

**Custom Farming.** Reasonable rates. Call Jack McWhirter, Phone 659-2249 or 659-3308.  
135-rtn

**NEED MARY KAY COSMETICS.** Call 2751 after 5:00 p.m.  
305-rtn

**FOR SAND FREE DOMESTIC WELLS** call W. V. Block, 935-4088 at nights, Dumas.  
24-rtn

**STEAM RINSE AND VAC MACHINE** available for rental at Gordon's Drug. \$15.00 per day. Call 2141 for reservation.  
395-rtn

**IS ALCOHOL A PROBLEM IN YOUR FAMILY? AL-ANON FOR FAMILIES OF PROBLEM DRINKERS.**

In this fellowship you can:  
..Meet others who share your problem.  
..Learn about alcoholism as an illness.  
..Encourage the alcoholic to seek help.  
..Replace despair with hope.  
..Improve the family atmosphere.  
..Rebuild your self-confidence.  
For further information: CALL 659-2306  
445-rtn

**GENERAL PLUMBING**  
Phone 733-2912  
Gruver  
Call Collect  
Steve Phillips  
"Licensed"  
10 Years Experience

**CUSTOM HARVESTING**  
7700 needs  
cutting job

Let us help you get your grain in.  
**Wide World trailer** parked at J&R Mobile Court  
**MADDOX & PAYNE**

### Miscellaneous FOR SALE

**1972 Trailway Trailer,** 8x35 Park Model. Real clean, 659-3870  
49-1tp

**Rawleigh Vanilla** on sale. Call 659-2631  
475-7tc

Repossessed spinet piano, 6 months old; also 2 repossessed fun machines. Write or call Credit Manager, Brier-Hale Music Co., 424 N. Kansas, Liberal, Kansas 67901.  
485-2tc

**FOR SALE:** Back Hoe, new re-built transmission and rear end. In good shape. Jim Eller, 659-3169 or 3533.  
31-rtn

**FOR SALE:** One '73 250 Yamaha and 8 foot pool table. Call 659-3508.  
40-rtn

**Two American Saddle Mares** from registered stock-gaited, very gentle, good conformation fat. White mare, smooth mouth Sorral mare, eight years old, blaze face, two white socks \$400.00 each.  
Registered AQHA golden red dunn with star three years old, green broke 15 hands, dam same mare as below. Registered AQHA April colt red Dun star, two white socks on hind feet, heavy muscles. Sire Bob's Sugar Bar by Sugar Bar dam by Bay Scout by Union bay-winner, producer performance cutting reining, horses extra good. Sibley Jines, Phone 435-3520, Perryton, Texas.  
49-2tp

**FOR SALE:** Modern dinette with 4 chairs and recliner-rocker. 659-2608. 659-3691 after 5:30 p.m.  
49-3tc

**FOR SALE:** Spearman Car Wash for health reasons. Call 733-2655.  
425-rtn

**FOR SALE:** Modern dinette with 4 chairs and recliner-rocker. 659-2608. 659-3691 after 5:30 p.m.  
49-3tc

### Business Opportunities

**FOR SALE:** Spearman Car Wash for health reasons. Call 733-2655.  
425-rtn

### Real Estate FOR SALE

**Mayfield Real Estate**  
Price reduced, 911 Haney, 3 bedrooms, gas stove, large fenced corner lot.  
\*\*\*  
Completely redecorated 2 bedroom, water bed, 1 bath, fully carpeted, 521 S. Archer.  
\*\*\*  
Lots in Crawford Addition, 250 front feet x 180.  
Call Ruby Lair, 659-2188 or call John Mayfield, Perryton, 435-6528.

**FOR SALE:** Charming 3 bedroom, 2 bath home; attractive carpet throughout; large living-den area; electric kitchen; double attached garage; concrete patio; fenced yard; shown by appointment only. Emmett R. Sanders, Realtor, 659-2516, nights 659-2601  
42-rtn

**FOR SALE:** See this home with 3 bedrooms, 2 baths, living room, dining room, kitchen with built-in cabinets, den and office or workshop. Nice carpet and panelling. For the family needing lots of room at an affordable price. Emmett R. Sanders, Realtor, 659-2516, nights 659-2601.  
385-rtn

**FOR SALE:** See this home with 3 bedrooms, 2 baths, living room, dining room, kitchen with built-in cabinets, den and office or workshop. Nice carpet and panelling. For the family needing lots of room at an affordable price. Emmett R. Sanders, Realtor, 659-2516, nights 659-2601.  
385-rtn

**FOR SALE:** Two Sections of Land, NO. 1: Section Twenty-four (24), Block 5-T, T. & N. O. Ry. Co. Survey, Hansford and Hutchinson Counties, Texas. No. 2: Section Thirty-three (33), Block 5-T, T. & N. O. Ry. Co. Survey, Hansford and Hutchinson Counties, Texas. Seller shall retain one-half (1/2) of the minerals in and under or that may be produced from the above described land. Owned by The Annie E. Clifton Estate. Said land being approximately one (1) mile west of the town of Morse, County of Hansford, Texas. This land is to be sold for CASH and sealed bids will be received by HOMER A. DAVIS, 513 Denrock, Box 1110, Dalhart, Texas 79022, until 8 o'clock a.m. on Wednesday, November 10, 1976.  
The legal representatives of the Estate of ANNIE E. CLIFTON, Deceased, reserves the right to reject any and all bids, to disregard any informality in the bids and bidding, and to accept any bid that is to the best interest of the Estate of ANNIE E. CLIFTON, Deceased.  
49-4tc

**FOR SALE:** 3 bedroom stucco house, 2 baths, den, double garage. 2 bedroom mobile home included in deal. Emmett R. Sanders, Realtor, 659-2516, nights 659-2601.  
40-rtn

**FOR SALE:** Brick office building, central heat and air, large lot, plenty of parking, ideal for doctor's clinic, located just west of hospital at 7th & Roland, Emmett R. Sanders, Realtor, 659-2516, nights 659-2601.  
29-rtn

**FOR SALE:** 3 bedroom house, plus large basement, has nice fruit trees on 100 ft. lot, plenty of space for low-budget living. Emmett R. Sanders, Realtor, 659-2516, nights 659-2601.  
365-rtn

**FOR SALE:** 3 bedroom house, plus large basement, has nice fruit trees on 100 ft. lot, plenty of space for low-budget living. Emmett R. Sanders, Realtor, 659-2516, nights 659-2601.  
365-rtn

**FOR SALE:** 3 bedroom house, plus large basement, has nice fruit trees on 100 ft. lot, plenty of space for low-budget living. Emmett R. Sanders, Realtor, 659-2516, nights 659-2601.  
365-rtn

**FOR SALE:** 3 bedroom house, plus large basement, has nice fruit trees on 100 ft. lot, plenty of space for low-budget living. Emmett R. Sanders, Realtor, 659-2516, nights 659-2601.  
365-rtn

**FOR SALE:** 3 bedroom house, plus large basement, has nice fruit trees on 100 ft. lot, plenty of space for low-budget living. Emmett R. Sanders, Realtor, 659-2516, nights 659-2601.  
365-rtn

**FOR SALE:** 3 bedroom house, plus large basement, has nice fruit trees on 100 ft. lot, plenty of space for low-budget living. Emmett R. Sanders, Realtor, 659-2516, nights 659-2601.  
365-rtn

**FOR SALE:** 3 bedroom house, plus large basement, has nice fruit trees on 100 ft. lot, plenty of space for low-budget living. Emmett R. Sanders, Realtor, 659-2516, nights 659-2601.  
365-rtn

**FOR SALE:** 3 bedroom house, plus large basement, has nice fruit trees on 100 ft. lot, plenty of space for low-budget living. Emmett R. Sanders, Realtor, 659-2516, nights 659-2601.  
365-rtn

**FOR SALE:** 3 bedroom house, plus large basement, has nice fruit trees on 100 ft. lot, plenty of space for low-budget living. Emmett R. Sanders, Realtor, 659-2516, nights 659-2601.  
365-rtn

**FOR SALE:** 3 bedroom house, plus large basement, has nice fruit trees on 100 ft. lot, plenty of space for low-budget living. Emmett R. Sanders, Realtor, 659-2516, nights 659-2601.  
365-rtn

**FOR SALE:** 3 bedroom house, plus large basement, has nice fruit trees on 100 ft. lot, plenty of space for low-budget living. Emmett R. Sanders, Realtor, 659-2516, nights 659-2601.  
365-rtn

**FOR SALE:** 3 bedroom house, plus large basement, has nice fruit trees on 100 ft. lot, plenty of space for low-budget living. Emmett R. Sanders, Realtor, 659-2516, nights 659-2601.  
365-rtn

**FOR SALE:** 3 bedroom house, plus large basement, has nice fruit trees on 100 ft. lot, plenty of space for low-budget living. Emmett R. Sanders, Realtor, 659-2516, nights 659-2601.  
365-rtn

**FOR SALE:** 3 bedroom house, plus large basement, has nice fruit trees on 100 ft. lot, plenty of space for low-budget living. Emmett R. Sanders, Realtor, 659-2516, nights 659-2601.  
365-rtn

**FOR SALE:** 3 bedroom house, plus large basement, has nice fruit trees on 100 ft. lot, plenty of space for low-budget living. Emmett R. Sanders, Realtor, 659-2516, nights 659-2601.  
365-rtn

**FOR SALE:** 3 bedroom house, plus large basement, has nice fruit trees on 100 ft. lot, plenty of space for low-budget living. Emmett R. Sanders, Realtor, 659-2516, nights 659-2601.  
365-rtn

**FOR SALE:** 3 bedroom house, plus large basement, has nice fruit trees on 100 ft. lot, plenty of space for low-budget living. Emmett R. Sanders, Realtor, 659-2516, nights 659-2601.  
365-rtn

**FOR SALE:** 3 bedroom house, plus large basement, has nice fruit trees on 100 ft. lot, plenty of space for low-budget living. Emmett R. Sanders, Realtor, 659-2516, nights 659-2601.  
365-rtn

**FOR SALE:** 3 bedroom house, plus large basement, has nice fruit trees on 100 ft. lot, plenty of space for low-budget living. Emmett R. Sanders, Realtor, 659-2516, nights 659-2601.  
365-rtn

**FOR SALE:** 3 bedroom house, plus large basement, has nice fruit trees on 100 ft. lot, plenty of space for low-budget living. Emmett R. Sanders, Realtor, 659-2516, nights 659-2601.  
365-rtn

**FOR SALE:** 3 bedroom house, plus large basement, has nice fruit trees on 100 ft. lot, plenty of space for low-budget living. Emmett R. Sanders, Realtor, 659-2516, nights 659-2601.  
365-rtn

**FOR SALE:** 100 ft. Crawford Addition lot on the Spearman-Gruver Highway, utilities in, includes small office building, priced for quick sale. Emmett R. Sanders, Realtor, 659-2516, nights 659-2601.  
355-rtn

**FOR SALE:** By owner. Large 3 bedroom home, 1005 S. Barkley. Phone 659-3510.  
455-8tp

**FOR SALE:** 3 bedroom house, garage. 659-3304.  
30-rtn

**FOR SALE:** Vacant 100 ft. lot on Gruver highway in Crawford Addition. Emmett R. Sanders, Realtor, 659-2516, nights 659-2601.  
44-rtn

7 unit apartment house; good investment for the semi-retired handyman; Emmett R. Sanders, Realtor, 659-2516, nights 659-2601.  
435-rtn

### Automobiles FOR SALE

**FOR SALE:** 1973 Monte Carlo. 350 engine. Call 659-3402.  
45-rtn

**FOR SALE:** 1975 Malibu Classic. Blue w/dark blue vinyl Landau top, air conditioned, power steering, power brakes. Excellent condition, w/5 new steel belted radials, 659-2271.  
465-rtn

**1971 GMC Pick Up 1500.** Exceptionally good, 659-3870.  
49-1tp

### FOR RENT

**FOR RENT:** VA approved trailer space. 659-3000 after 5:00.  
395-rtn

**LBL Trailer Spaces:** \$40 monthly. 50' x 150' Lots. Trailers also for rent. Call Manager, 659-2617.  
40-rtn-T only

**FOR RENT:** Furnished apartments. Call 2082.  
48-rtn

### WANTED

**Beauty Operators Wanted:** Commission or booth rental. Evelyn's Beauty Salon, 659-2813.  
41-rtn

Woman 50 years old wants position as companion to older person or persons. Would like to locate in the Panhandle of Texas. References furnished; references required. Write Margaret L. Davis, 4129 Sherry Lane, Waco, TX 76711.  
48S-4tp

**HELP WANTED:** Management position, experience needed in Grocery Store operation. Self Service Gasoline. Call 733-2511 or 733-733-2817.  
49-rtn

### LEGAL NOTICE

**NOTICE TO CREDITORS OF THE ESTATE OF EDITH SHEETS, DECEASED**  
Notice is hereby given that Letters Testamentary were granted to me in the Estate of EDITH SHEETS, Deceased, in the County Court of Hansford County, Texas, on the 27th day of September, 1976.  
All persons holding claims against said estate are hereby notified to present the same to me within the time prescribed by law. My residence and mailing address are Spearman, Texas.  
OLIN SHEETS  
Independent Executor of the Estate of Edith Sheets, Deceased  
49-1tc

**NOTICE TO CREDITORS OF THE ESTATE OF WILLARD D. DAVIDSON, DECEASED.**  
Notice is hereby given that Letters Testamentary were granted to me in the Estate of WILLARD D. DAVIDSON, Deceased, in the County Court of Hansford County, Texas, on the 27th day of September, 1976.  
All persons holding claims against said estate are hereby notified to present the same to me within the time prescribed by law.  
LORRAINE B. DAVIDSON  
Independent Executrix of the Estate of Willard D. Davison, Deceased.  
49-1tc

**FOR SALE:** 3 bedroom, 1-3/4 bath, corner lot, nice yard, 2 blocks from high school, a home one would be proud to own.  
49-rtn

**FOR SALE:** Nice brick home on quiet street, 3 bedrooms, bath & half, den with wood-burner, central heat and air, dishwasher, disposal, carpets, drapes, fenced yard, carport. Appointment only, Emmett R. Sanders, Realtor, 659-2516, nights, 659-2601.  
49-rtn

**FOR SALE:** 4 bedroom, 2 bath 508 Cluck St., \$20,000.00, 733-2938, Gruver.  
475-4tc  
Thurs. Only

**STEAM**  
CLEANS CARPETS WITHOUT SCRUBBING DIRT IN...  
Now Steamway cleans carpet from bottom up. No dirt or shampoo left in fabric. Call us today, we'll be happy to show you the new method... Free Estimates.  
**ROGERS STEAMWAY**  
616 N. CREMLEY GUYMON, OKLA 406-838-7928

## Hightower Approves Loan Rate Increase

Congressman Jack Hightower said October 13 he was glad President Ford had recognized the critical economic dilemma confronting the nation's wheat farmers.  
"The announcement this afternoon by the Acting Secretary of Agriculture that he was raising the loan level for wheat to \$2.25 a bushel was welcome news," Hightower said, "and it represents a small step in the right direction."  
In a letter September 8 and a follow-up telegram September 30 the Congressman had urged the President to raise

**TEXAS PRESS**  
MEMBER 1975 ASSOCIATION  
**Spearman REPORTER**  
SPEARMAN, TEXAS 79081  
213 Main Box 458 659-3434  
Published Weekly at 213 Main Street  
Spearman, Texas 79081  
Owner-Publisher.....William M. Miller  
Second Class Postage Paid at Spearman, Texas  
ANY ERRONEOUS REFLECTION UPON THE CHARACTER OF ANY PERSON OR FIRM APPEARING IN THESE COLUMNS WILL BE GLADLY AND PROMPTLY CORRECTED UPON BEING BROUGHT TO THE ATTENTION OF THE MANAGEMENT.  
SUBSCRIPTION RATE--Hansford, adjoining counties, combination with the Hansford Plainsman, \$10.92 Tax included.  
Other points \$15.12. Tax included.

CWF BAZAAR DECEMBER 4 CWF BAZAAR DECEMBER 4

FOR THE ULTIMATE IN **STORM DOORS**  
CUSTOM BUILT, DESIGNED, AND IN COLORS TO FIT YOUR HOME.....  
CONTACT **HOWARD MOYER** AT **ONLY ALUMINUM INDUSTRIES**  
405 338-6966 or 338-6170  
P. O. BOX 471  
GUYMON, OKLA. 73942



Most of Our Cars, Have Extras GALORE, But It's Only The Car, We Charge You FOR.  
**EXCEL CHEV.-OLDS. CO.**

loan level to \$2.50.  
It is personally gratifying to me," Hightower said, "to note that everyone now has recognized that the desperate situation affecting wheat producers in many cities has declined dramatically over the past few years.  
Yet Halloween is too well established to die out completely.  
Since people probably will continue celebrating the holiday in some form or other, here are some tips from the Texas Medical Association to cut down on Halloween hazards.  
Make children bring all candy home before they eat any. Inspect the loot and throw away anything that could have been opened and resealed. In recent years, people have put poison, sharp objects and drugs in candy and fruit.  
Avoid costume masks that could slip and block a child's vision or breathing. Painting a child's face with cosmetics, grease paint or burned cork can be a good substitute.  
The costume itself should be light colored to help motorists spot children, flame resistant and not so loose or long it could trip a child or catch on obstacles. Costumes should not include sharp objects, torches or candles. Adults can improve safety by putting reflective tape or luminous paint on costumes and objects children carry.  
People can make their property safer and cut down on vandalism several ways. Keep the property well lighted. Put away hoses, lawn furniture and garbage cans. If possible, put cars in the garage and lock them. Bring pets inside to protect them and children from each other.  
Simple preparations like this can make the holiday safer for children and help adults survive the season.

Dr. Glenn Blodgett has joined Dr. Tom Latta in the practice of Veterinary Medicine.  
**HANSFORD COUNTY VETERINARY HOSPITAL**  
465-8tc

## What are friends



- To Greet you sincerely, recognizing the differences that make you an individual.
- To Share rough going as well as smooth sailing.
- To Trust because they tell you what you should know even when you don't want to learn it.
- To Lighten your load with help you may not expect.
- To Be around wher. they're needed. As we are always for our Circle of Friends.

### Too Late To Classify

**WANTED:** Evening job from 6:00 P.M. to 7? Call after 5:00, 659-3038.

**FOR SALE**  
Used T.V.'s  
Call 659-2663 or 659-3363  
Color or B & W

**FIRST STATE BANK**  
SPEARMAN, TEXAS 79081  
FDIC  
© 1975 Leon Shaffer Colnick Adv. Inc.



## Harvey-Eder Vows Exchanged

With the soft shafts of the October 1st sunset providing a beautiful background, wedding vows were exchanged by Miss Dena Jean Harvey of Gruver, Texas and Mr. William George Eder of Plainview, Minnesota, in a candlelight service performed at the Trinity Lutheran Church of Guymon, Oklahoma. Officiant for the 7:30 p.m. service was Pastor Roy Barlog.

The bride is the daughter of Mr. and Mrs. Darrell Harvey of Gruver, Texas, and Mr. Eder is the son of the late Mr. and Mrs. George William Eder whose family was represented at the nuptials by his sister, Miss June English of Plainview, Minnesota.

The double ring vows were exchanged before an altar setting of bouquets of white chrysanthemums and green fernery which flanked the Unity candle lit during the ceremony by the couple. The glow of candle light from branched candelabra bearing white cathedral tapers, lighted by the ushers prior to the ceremony, fell softly on the altar scene. Large blue satin bows and green ferns marked the family pews.

Nuptial music was presented by Miss Tanya Hart of Gruver at the organ who also accompanied Mr. and Mrs. Les Barkley as they sang "Whither Thou Goest" during the service, with Mr. Barkley offering the "Wedding Prayer" during the lighting of the Unity candle. Guests were registered by Brenda Andersen of Amarillo, Texas.

The radiant bride, who was escorted to the altar and given in marriage by her father, paused on her way down the aisle to bestow a long-stemmed red rose and a kiss on her mother. Enhancing her brunette loveliness was her floor length gown of bridal satin which extended into a chapel length train. Designed with a v-neckline, high fitted bodice with contour shaped waistline, and long belled sleeves, the gown featured applique lace and tiny seed pearls at the neckline, marking the bodice, edging the sleeves, hemline and the full sweeping chapel train.

Her veil of bridal illusion fell from a dainty coil of exquisite points of lace and she carried a white Bible topped with an opened white rose from which fell a shower of white satin ribbons and lace. She carried out the bridal tradition of something old, a 1956 wheat head penny in her shoe; something new, the white Bible, a gift from her godparents, Mr. and Mrs. Joseph Doocy of Blooming Prairie, Minnesota; something borrowed, a cross on a dainty chain from her personal attendant, Janice Beyer of Ely, Minnesota; something blue, her blue garter; and something new, a choker of white seed pearls, a gift from her groom.

Attending the bride was her sister, Gina Harvey of Gruver who served as her maid of honor and her bridesmaid, Debra Grant, her aunt from Stewartville, Minnesota. The petite flower girl was Miss Shelly Logsdon of Hitchland, Texas.

The attendants' floor length gowns were of blue satin overlaid with sheer blue floral crepe, designed with high rounded necklines, featuring cape collars and short flared sleeves. The gored skirts fell from slightly raised waistlines which were marked with white velvet ribbon. The flower girl wore a dress of similar design

in blue polyester knit with a sheer blue floral crepe overlay. Completing their costumes were white wrist gloves and head pieces of delicate blue silk hand-fashioned rose petals with narrow streamers of the blue silk, each ending with a blue silk rosebud. They carried long-stemmed white roses and the flower girl, a basket of rose petals.

Attending the groom was Craig Beyer, his best man from Ely, Minnesota; groomsman was Wesley Grant, an uncle of the bride from Stewartville, Minnesota. Serving as ushers were Rick Harvey, brother of the bride and Joe T. Venneman, both from Gruver. Ring Bearer was Todd Harvey, brother of the bride.

For her daughter's wedding, Mrs. Harvey chose a floor length gown of peacock blue crepe which was accented by slate gray jewelry and a red rose bud and white carnation corsage. Miss English, who represented the groom's parents at the nuptials, chose a spice colored metallic knit, floor length gown which was accented by a corsage of white carnations and red rose buds. She was presented with a long-stemmed red rose by the bride and groom as they left the altar.

Following the wedding, a reception was held in the Fellowship Hall of the Trinity Church with Helen Harvey and Nancy Grant, aunts of the bride from Brownsdale, Minnesota; Mrs. Suzanne Piedmont, sister of the groom from Santa Clara, California; and Sue Antalek, from Gruver, presiding at the beautifully appointed reception table. Gift bearers were Chad and Tracy Logsdon of Hitchland, who also passed out wheat bags to the guests.

Mrs. Eder wore a cloud pink crepe dress accented by a rose bud corsage for their wedding trip to Carlsbad, New Mexico. Upon their return, the couple are residing at the Joe T. Venneman farm and ranch northeast of Gruver where Mr. Eder is employed. Mrs. Eder is the secretary for Gruver attorney, Tommy Gumfory.

Guests from out-of-town attending the nuptials and wedding festivities included Mr. and Mrs. Ralph Grant, grandparents of the bride; grandfather of the bride, Mr. Clifford Harvey, Mr. and Mrs. James Grant, and Mr. and Mrs. Fred Harvey and family, aunt and uncle of the bride, all from Brownsdale, Minnesota; Susanne Piedmont, sister of the groom and his brother, Mr. and Mrs. Ron English from Santa Clara, California; June English, sister of the groom, Tom Hatlert and Mark Irke, all of Plainview, Minnesota; Jon Roesler, Minneapolis, Minnesota; Mr. and Mrs. Craig Beyer, Ely, Minnesota.

Coming from Blooming Prairie, Minnesota were Mr. and Mrs. Joseph Doocy, godparents of the bride and Bonita Doocy; from Jonathan, Minnesota came Mr. and Mrs. Der Grant; Mr. and Mrs. Wesley Grant, Stewartville, Minnesota; Regina Larson, Quincy, Iowa; Mr. and Mrs. Greg Thomas and family, Dodge Center, Minnesota, and Mr. and Mrs. Gene Guard, great uncle and aunt of the bride from Duluth, Minnesota.

CWF BAZAAR  
DECEMBER 4

CWF BAZAAR  
DECEMBER 4

## "Fantasy Land" Is Topic

The Spearman Music Club, members of State and National Federated Music Clubs met Tuesday, October 12, in the Home Demonstration Club Room.

The program was entitled "Fantasy Land" and included the following: "Somewhere Over The Rainbow" was sung by Mrs. J. L. Brock with Mrs. James Dunnihoo accompanying on piano; piano solo, "Overture From Bedknobs & Broomsticks" was played by Mrs. K. D. Clark; "Chim Chim Cher-ee" was sung by Mrs. Earl Novak, Mrs. Tom Sutton, Mrs. Dean Leighnor, Mrs. Jim Brown and Mrs. Mike Glass; "When You Wish Upon A Star" was sung by Mrs. Paul Reimer and Mrs. Dean Leighnor with Mrs. Carl Kunselman on piano; and Mrs. Ronnie Schaefer, accompanied by Mrs. Fred Groves on piano, sang "Peter Pan".

The program closed with the Club Chorus, accompanied by Mrs. Rue Sanders on piano, singing "It's A Small World".

Refreshments were served by hostesses, Mrs. Rue Sanders, Mrs. James Dunnihoo, Mrs. K. D. Clark and Mrs. Jim Brown to members, Mmes. Earl Novak, J. L. Brock, Ronnie Schaefer, Hoyt Biles, Dean Leighnor, Paul Reimer, Tom Sutton, Mike Glass, Carl Kunselman, Mike Pack, Russell Townsend, Ed Freeman, David Floyd, David Burnett, and Honorary Member, Mrs. J. D. Wilbanks.

Next meeting will be Oct. 26 in the home of Mrs. Kurt Shedeck for a practice session.

## Organ Recital Planned At Oslo

Mr. George Boseman will present an organ recital on the pipe organ at Oslo Lutheran on Friday, October 22, at 7:30. This will be a program of Bicentennial music that will be enjoyable to all.

Mr. Boseman is originally from Tulla. He presently has an organ business in Boston. He has been heard in concert at Oslo before at which times he was very favorably received.

There will be a time to visit with the organist following the

evening program. There will be refreshments available furnished by Oslo Lutheran. A free will offering to meet expenses will also be received. There are many activities which call for your time and presence. Not often do we have opportunity to hear gifted artists as this recital. We hope you will make special effort to attend in order that others may be encouraged to have special programs of similar nature to encourage this in our area.

## Women's Division C of C Meets

The Women's Division of the Chamber of Commerce met Monday, October 18, in the Library Club Room for their regular monthly meeting. President, Mrs. John Sutherland presided over the meeting.

The treasury report was given by Mrs. Jim McLain. Mrs. E. J. Callaway and Mrs. Vance Snider were appointed as Decorating Committee for the Chamber of Commerce Dinner to be held in December.

Discussion was held on installation of officers to be held in December. Date for the installation is pending.

Guests, Mrs. Earl Riley and Mrs. Virgil Floyd asked the Women's Division to help with the Annual Art Show, November 6 and 7. The Division agreed to be hosts for the event.

Those present at the meet-

ing were Mmes. Russell Townsend, Celestine Thompson, Sam Wysong, E. L. Collins, Belle Crawford, John Sutherland, Ronnie Schaefer, Jim McLain, Vance Snider, and C. D. Riggins. Next meeting will be Nov. 15 in the Library Club Room.

## Arts & Crafts Guild News

The Arts & Crafts Guild met Friday, October 15, in the home of Mrs. Bill Gandy.

Delicious refreshments were enjoyed by members, Mmes. Deta Blodgett, F. J. Daily, Guy Fuller, Pope Gibner, F. J. Hoskins, P. A. Lyon, Ned Turner, and hostess, Mrs. Gandy.

Next meeting will be October 22 in the home of Mrs. Clay Gibner.

## Rotary Club News

Rho Rho Sorority met Thursday, October 14, in the home of Mrs. Clark Mires.

President, Mrs. Vernon Pipkin presided over the meeting. The meeting was a model meeting with pledges as guests.

Mrs. Perry Dixon, Chapter Advisor, gave the program which was a "seance" calling up the officers of Rho Rho.

The Spearman Rotary Club met Monday, October 18, at Martin's Steak Garden.

President, Junior Lusby presided over the meeting.

The Club voted to have a game booth at the Halloween Carnival.

George Young presented the program with a film entitled, "The Workmanship Myth", which depicted the American manufacturing technique versus the foreign manufacturing technique.

Guests present were W. R. Foster of Riesel, Texas and George Young and Bill Morrison, both of Spearman.

Members present were Carrie Marie Berry, Larry Murphy, J. L. Brock, Archie Burress, John R. Collard, Pete Fisher, Ed Garner, Peyton Gibner, Don Hergert, John Hutchison, Junior Lusby, Mark Neff, Jack McWhirter, Coy Palmer, Bob Pearson, P. A. Lyon, Ellzey Vanderburg, Don Wirsdorfer, John Lynn, Jim Brown, L. E. Thomas, Jim McLain, Bob Elliott, Mack McCormack, Kerry Henton,

You are invited to a

bridal shower honoring

Denise Berner,

bride-elect of David Kellum

Saturday, October 23

3:00 P.M. to 4:30 P.M.

B&B Farm Industries

Hostesses: Mmes.

Major Lackey  
Bill Watson  
W.B. Barnes  
Ray Gressett  
Bernard Byers  
Doyle Jackson  
Monte Harbour  
Sonny Patterson  
Larry Holt  
Wesley Jarvis  
Phil Jenkins  
Billy Boatwright  
48S-2tp

Gary Sims, Tim Woodington and Gene Cudd.  
Next meeting will be Oct. 25 at Martin's Steak Garden.

## Presbyterian Women Meet

The Spearman Presbyterian Women met Wednesday, Oct. 13, at the First Presbyterian Church.

Mrs. Chester Martin presided over the meeting.

The devotional was given by Mrs. David Burnett.

Mrs. Glen Bohanan gave the program entitled, "Living The Adventure" by Larson and

Miller. The meeting was adjourned after a short business meeting.

Refreshments were furnished by Mrs. Tom Eitter and were served to Rev. Ed Freeman and members, Mmes. Chester Martin, Walter Spoonmore, Nona Davies, Ed Freeman, R. J. Largent, David Burnett, Glen Bohanan, and Henry Cornelius.

Next meeting will be Nov. 10 at the church.

CWF BAZAAR  
DECEMBER 4

 <b>FARM-FRESH</b> <b>Box-O Chicken</b> CONTAINS: 2-BREAST QUARTERS, 2-LEG QUARTERS, 2-WINGS, 2-GIBLETS. <b>39¢</b> RIBS ATTACHED Fryer Breasts.....Lb. 79¢	 <b>U.S.D.A. CHOICE BUTCHER BLOCK BEEF</b> <b>Boneless Roast</b> BEEF CHUCK <b>88¢</b> U.S.D.A. CHOICE BUTCHER BLOCK BEEF Boneless Steak.....Lb. 98¢	 <b>FRESH</b> <b>Pork Steaks</b> PORK SHOULDER BLADE CUTS <b>99¢</b> FRESH PORK Cubed Steaks.....Lb. \$1.39	 <b>BAR-S</b> <b>Pork Sausage</b> PURE PORK <b>69¢</b> 1-LB. ROLL FRESH, BLADE BOSTON CUTS Pork Roast.....Lb. 99¢	 <b>EMPIRE BRAND</b> <b>Young Turkeys</b> 16 TO 20-LB. AVERAGE <b>49¢</b> U.S.D.A. GRADE A... ALL SIZES Honesuckle Turkeys.....Lb. 69¢
--	--	--	---	---

# PLAY CASH KING...

\$80000 IN CASH PRIZES... PICK UP YOUR FREE TICKETS

the home of **THRIFT-PRICES**

**IDEAL FOOD STORES**

PRICES EFFECTIVE THRU SATURDAY, OCTOBER 23, 1976. NONE SOLD TO DEALERS. LIMIT RIGHTS RESERVED.

MON.-SAT. 8:00 A.M.-9:00 P.M.  
SUN. 10:00 A.M.-7:00 P.M.

**VALUABLE COUPON**

**25¢ OFF ON 1-LB. CAN OF FOLGER'S COFFEE**

LIMIT-1 WITH COUPON PLEASE. Offer Expires October 23, 1976.

IDEAL FOODS!

 <b>Camelot Flour</b> 5-LB. BAG <b>58¢</b>	 <b>Salad Dressing</b> 33-OZ. JAR <b>56¢</b>	 <b>Bath Tissue</b> 4-ROLL PKG. <b>72¢</b>
---	---	---

 <b>Golden Corn</b> 16-OZ. CANS <b>49¢</b>	 <b>Green Beans</b> 16-OZ. CANS <b>51¢</b>	 <b>Marsh-mallows</b> 18-OZ. PKG. <b>33¢</b>	 <b>Mushrooms</b> 8-OZ. CAN \$1.23
---	---	---	---

 <b>Chunk Tuna</b> LIMIT-3 WITH \$5.00 OR MORE PURCHASE. 6 1/2-OZ. CAN <b>47¢</b>	 <b>Sweet Peas</b> 16-OZ. CANS <b>89¢</b>	 <b>Tomato Soup</b> 16-OZ. CANS <b>87¢</b>	 <b>Drink Mix</b> 27-OZ. JAR <b>1.33</b>
---	--	---	---

 <b>Fruit Cocktail</b> 16-OZ. CANS <b>1.00</b>	 <b>Purple Plums</b> 18-OZ. CAN <b>39¢</b>	 <b>TIDE</b> GIANT SIZE 49-OZ. BOX <b>1.09</b>	 <b>LAVA</b> BAR SOAP <b>18¢</b>
---	---	---	---



### Kelp-Thomas Vows Read

The First Baptist Church of Spearman was the scene for the October 1 wedding, uniting Katrina Kay Kelp and Ricky Boyd Thomas.

Parents of the couple are Mr. and Mrs. L. J. Kelp of Spearman and Mr. and Mrs. Wilson Thomas of Hammon,

Oklahoma. The Reverend Russell Pogue of the First Baptist Church officiated at the double ring ceremony, which was conducted before an altar decorated with two baskets of white carnations and yellow mums with gladioli, and a

15-candle arch candelabra with yellow candles and greenery.

The bride, given in marriage by her father, wore a floor length beige dress with a scoop neck and empire waist and long puffy sleeves. She carried a lace bouquet of yellow and white daisies with baby breath.

Marcia Larson was the maid of honor and she wore a yellow floor length dress with yellow flower imprint, fashioned with an empire waist and long sleeves.

Charles Bartz, brother-in-law of the groom, was best man.

Wedding guests were registered by Vicki Crawford.

For her daughter's wedding Mrs. Kelp wore a floor length yellow and pink flowered dress and Mrs. Thomas, mother of the groom, chose a street length pink dress. Both mothers wore corsages of white carnations.

At the reception, the bride's table was covered with a yellow daisy tablecloth. The bride's bouquet was used as a floral arrangement. Serving at the reception were Marcia Larson and Vicki Crawford.

The bride chose a brown corduroy pantsuit with gold accessories for the wedding trip in parts of New Mexico. They will be making their home in Cuba, N.M., where the groom is employed by Orloff Engineers as a welder.

Out-of-town guests were Mr. and Mrs. Wilson, Thomas and Mrs. Dennis Orgin and girls of Hammon, Okla.; Lewis Libley, grandfather of the bride, Anita Kelp, Betty Pettitt, Mrs. Van Hilton, Wayne Thomas, Dixie Lovett, Vicki

Crawford, Marcia Larson of Amarillo; Ruth Ebel, aunt of the bride from Lodi, Calif.; Mrs. Henry Mathis and Lenora of Canadian; Charlotte Seibel of Booker; Mr. and Mrs. Robert Lowry and Patsy of Pampa; Judy Fox, Butler, Okla.; Mr. and Mrs. Charles Bartz and Gina, Medford, Okla.

### New HD Club Formed

The newly formed home demonstration club "Las Amigos" met Sept. 16 in the Home Demonstration Clubroom.

President Francis Ortega opened the meeting with the roll call which was followed by the devotion given by Maria Pacheco, vice-president, and the minutes of the previous meeting were given by Ema Lopez, treasurer.

Peggy Marrs, County Extension Agent, began the program with "Blender Tricks For Moderns" which was the topic for the meeting.

Delicious refreshments were served by Helen Bian and Juanita Flores to Nancy Garcia, Lydia Rodriguez, Ernestina Salgado, Maria Pacheco, Oliver Renteria, Esmeralda Renteria, Elva Sullivan, Francis Ortega, Ema Lopez and Maria Avila.

The next meeting will be November 18.

### Choir Members Sell Magazines

On October 21, the Spearman High Choral will begin their magazine drive.

This magazine program was

developed by the Reader's Digest. The students can renew your present subscriptions or sell you a new one at cheaper rates. There are over 250 different magazines to choose from.

The money raised will be used to purchase uniforms to wear when performing, and help to buy materials for the upcoming musical.

Please support your choir by renewing or buying a new subscription when called upon.

If you want to have someone call on you, contact a choral student or call 659-2584 and leave your name and address for Mr. Angel.

### Rho Rho Has Rush Party

Rho Rho Sorority held a Rush Party Saturday, October 16, at the County Barn for Rushes and their husbands.

The theme of the party was "Rodeo". The tables were decorated with red and white checked tablecloths with oil lamps. The serving table was decorated as a chuck wagon.

Supper consisted of chili and cornbread, with cheese and relish dishes and iced tea, coffee, sheet cake and oatmeal cookies.

Games were played and Jerry Floyd was caller for some square dances.

Pledges and their husbands present were Mr. and Mrs. Richard Pipkin, Mr. and Mrs. Jim Brown, and Mr. and Mrs. John Hutchison.

Members and their husbands present were Mr. and Mrs. Jerry Floyd, Mr. and

Mrs. Monty Blackman, Mr. and Mrs. David Collins, Mr. and Mrs. Lynn Cook, Mr. and Mrs. Billy DeArmond, Mr. and Mrs. Jim Evans, Mrs. Butch Lasater, Mrs. Ronnie Lusby, Mrs. Clark Mires, Mrs. Pat Patterson, Mrs. Bob Pearson, Mrs. Vernon Pipkin, Mrs. Phillip Renner, Mrs. Phil Sanders, Mrs. Craig Schumann, and Mrs. Charles Shield-knight.

### Bridge Club

The Ladies Dinner Bridge Club met Monday, October 18, in the home of Mrs. Joel Lackey.

High score was won by Mrs. Don DeArmond and the traveling prize and second prize were won by Mrs. Bill K. Johnson.

Delicious refreshments were served by Mrs. Lackey to guest, Mrs. James Cunningham, and to members, Mmes. Jim Evans, Glen Mackie, Sid Evans, Don DeArmond, Troy Sloan, and Bill K. Jackson.

Mrs. Glen Mackie will be hostess for the November meeting.

Blue Monday Bridge Club met Monday, October 18, in the home of Mrs. Sam Graves.

High score was won by Mrs. Gwenfred Lackey and second high was won by Mrs. Deta Blodgett.

Delicious refreshments were served by Mrs. Graves to members, Mmes. Deta Blodgett, F. J. Daily, Bill Gandy, Pope Gibner, Vester Hill, Gwenfred Lackey and Major Lackey.

Next meeting will be Nov. 1 in the home of Mrs. Major Lackey.

You are cordially invited to a  
Baby Shower  
honoring  
Mrs. Joe Clement  
at B & B Farm Bldg.  
Tuesday, Oct. 26, 1976  
from 7 til 9  
No invitations will be sent.  
485-3tc

## Our Heritage of Faith...

notes from Faith Lutheran Church

The women of The American Lutheran Church-Southern District will be meeting in convention at San Antonio October 22-24. It should prove to be an exciting weekend for those attending!

The Luther League has been invited to a hayride by the First Presbyterian League on October 23 at 6 p.m. Meet at Faith at about 5:45 and we can all go over together.

The seventh grade confirmation class will meet on October 26 at 4:30 p.m. The eighth grade class will not meet for that week.

The Junior League will meet after school, about 4 p.m. on October 27 at the church.

A class on the Lutheran confessional statements will be offered on November 3, 17, 24, and December 1 at 8 p.m. at Faith. It is scheduled to meet for one hour each time. Offered will be a basic outline of the contents and the history of the eight articles and confessions that are contained in The Book of Concord which has been said to contain the historic standards of faith commonly acknowledged in the Lutheran Church. The understanding of the church comes through our own efforts of wanting to know what it is that we stand for and where it is that we have come from. Perhaps if we can accomplish this, then we can get a clearer picture of where we are today and where we should be headed in the future. The class is intended for everyone. You can come, put in as much as you want to, and get out of it as much as you want to. You are urged to take this chance to become better acquainted with the great heritage we too often take for granted. If you have no home church or if you would like to visit with us, you are most welcome. Sunday morning worship begins at 9:30 a.m. The Sunday School hour begins at 10:30 a.m.

**100% GUARANTEE**  
ON ALL MEAT PRODUCTS!

**GORTON'S BREADED Fish Sticks**  
PRE-COOKED  
**\$1.29**

2-LB. PKG.

GORTON'S BREADED PRE-COOKED Fish and Fries... \$1.29

MEADOWDALE HICKORY SMOKED  
SLICED BACON... 1-LB. PKG. \$1.39  
ASSORTED PORK CHOPS... 1-LB. PKG. \$1.39  
BAR-S... MEAT OR BEEF SKINLESS FRANKS... 12-OZ. PKG. 69c  
BAR-S... MEAT OR BEEF SLICED BOLOGNA... 12-OZ. PKG. 89c  
BAR-S... MEAT OR BEEF Sliced Luncheon Meat... 4-OZ. PKG. 59c  
BLUE MORROW, PRE-COOKED Beef Fritters... 99c  
FAST FIXIN' Fritters... 99c  
OSCAR MAYER... MEAT OR BEEF Skinless Franks... 1-LB. PKG. \$1.39  
OSCAR MAYER... MEAT OR BEEF Sliced Bologna... 4-OZ. PKG. 89c  
OSCAR MAYER... MEAT OR BEEF Sliced Bologna... 12-OZ. PKG. \$1.29

**CONGRATULATIONS TO THESE \$1,000 WINNERS!**

<b>\$1,000 WINNER</b> MARY A. McCALLISTER CLAYTON, N.M.	<b>\$1,000 WINNER</b> LOUISE BERNING SCOTT CITY, KANSAS	<b>\$1,000 WINNER</b> FRANCES PHILLIPS PERRYTON, TEXAS
<b>\$1,000 WINNER</b> KATHIE WAUGH LAVERNE, OKLAHOMA	<b>\$1,000 WINNER</b> MIKE SAXON BORGER, TEXAS	<b>\$1,000 WINNER</b> J.H. DUNKERSON GUYMON, OKLAHOMA
<b>\$1,000 WINNER</b> MIKE ARCHEBAULT ULYSSES, KANSAS	<b>\$1,000 WINNER</b> KIRK TORRES SPEARMAN, TEXAS	<b>\$1,000 WINNER</b> BONETTA HUNTER WOODWARD, OKLAHOMA

**CONGRATULATIONS TO THESE NEW \$100 WINNERS!**  
MARIE GOODALL ... Garden City, Ks.  
CHARLES A. DOUGLAS ... Garden City, Ks.  
MRS. JOE HERNANDEZ ... Dumas, Texas  
ERMA MALLARD ... Guymon, Oklahoma

**WIN UP TO \$1,000!!!**  
NOW... NO PURCHASE NECESSARY!

WAVERLY CUT CRYSTAL GLASSWARE ON SALE THIS WEEK: 6-OZ. JUICE GLASS... EACH 39c

FUNK AND WAGNALLS ... LIBRARY OF GREAT MUSIC ON SALE THIS WEEK: VOLUME NO. 8... EACH \$2.69

**SHOP IDEAL FOR SUPERLATIVE SAVINGS, 7 DAYS A WEEK... WE WELCOME FOOD STAMP CUSTOMERS.**

**October Dairy Festival...**

MEADOWDALE MARGARINE... 1-LB. CTN. 34c

CAMELOT GRADE A MEDIUM EGGS... 1-LB. CTN. 34c

CAMELOT GRADE A MEDIUM EGGS... DOZEN 69c

CAMELOT GRADE A Large Eggs... DOZEN 75c

FAIRMONT Witches Brew... 1/2-GAL. CTN. 51c

KRAFT Cheez Whiz... 16-OZ. JAR \$1.49

MELO-CRUST Cinnamon Rolls... 2 89c

QUART BUTTERMILK... 36c

QUART CARTON Half and Half... 35c

**CAMELOT MIX-OR-MATCH SALE!**

- WHOLE KERNEL GOLDEN CORN 4 100
- MIXED VEGETABLES 4 100
- PEAS AND CARROTS 4 100
- THICKER SWEET PEAS... YOUR CHOICE...

BANQUET BEEF, TURKEY OR Chicken Dinners... 2 100

BANQUET BEEF, TURKEY OR Banquet Dinners... 2 89c

**Thrif-T Health & Beauty**

Aim Toothpaste... 4.4-OZ. TUBE 78c

ICE CREAM... 1/2-GAL. CTN. 95c

FAIRMONT ICE MILK, TWIN POPS OR Fudge Bars... 1-PKG. OF 12 89c

**CALIFORNIA Valencia Oranges**  
CTN. \$1.00

U.S. FANCY Jonathan Apples... 4 LBS. \$1.00

U.S. NO. 1 Golden Yams... 4 LBS. \$1.00

CALIFORNIA Calmeria Grapes... LB. 49c

MEDIUM SIZE Yellow Onions... LB. 12c

PARADISE, CANDIED Red Cherries... 8-OZ. PKG. \$1.09

OLD ENGLISH Mixed Fruit... FOR FRUIT CAKES 16-OZ. PKG. 79c

THRIF-T PRICED Wild Bird Seed... 5-LB. BAG 79c

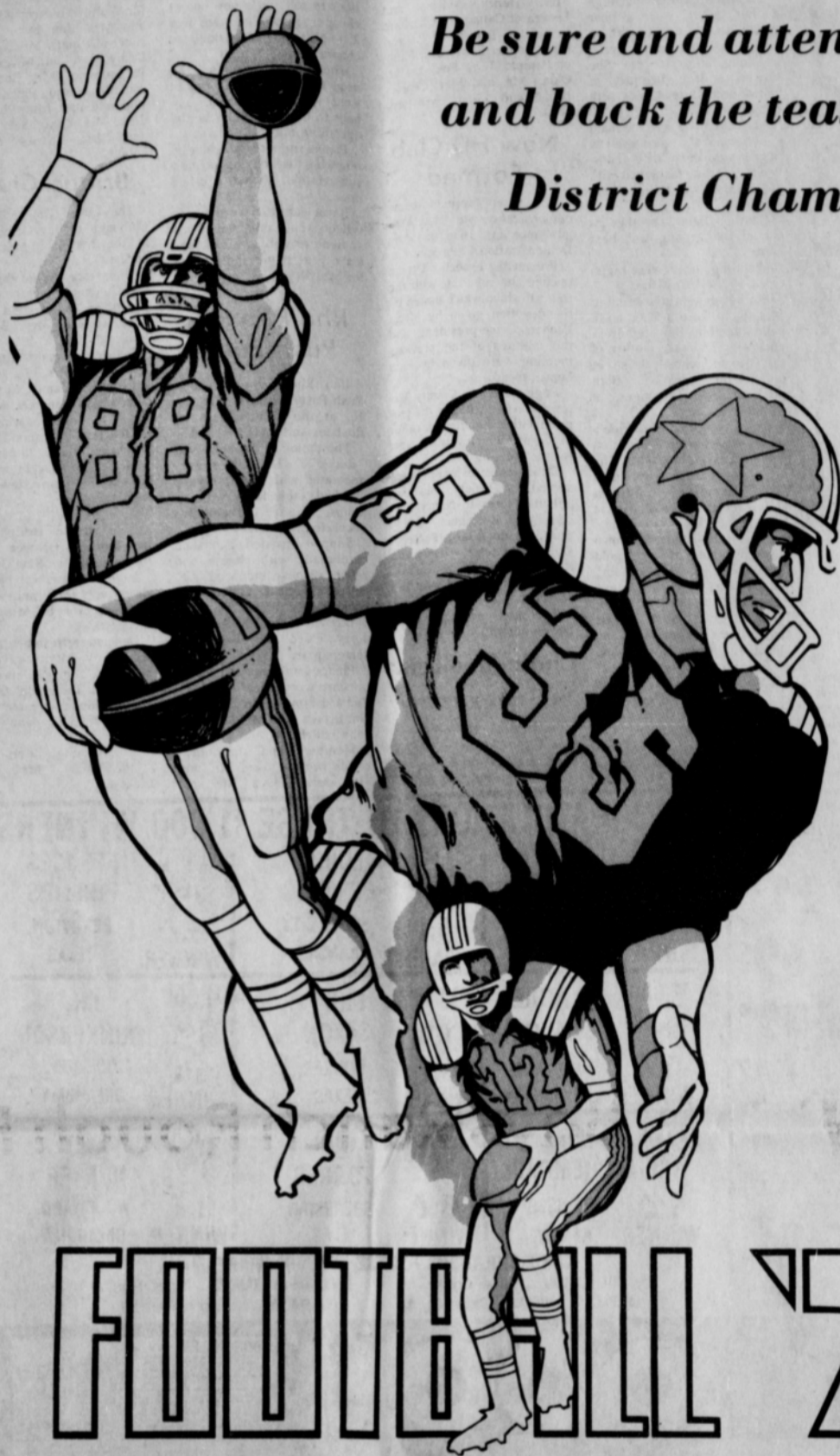
**Keep the TOP of TEXAS**

**CLOSE TO AUSTIN**

Bob Close had a perfect attendance record and 100 percent voting record at his first session and has worked hard to represent our district.

**Re-elect BOB CLOSE**  
REPUBLICAN CANDIDATE FOR STATE REPRESENTATIVE 64TH DISTRICT

Pol. Adv. Paid For By L.R. Queener, Campaign Treasurer, P.O. Box 947, Perryton, Tx.



Be sure and attend the Game and back the team on to the District Championship

# Lynx

No.	Name	Pos.	Wt.
10	RANDY REID	QB	143
13	SCOTT SHERWOOD	QB	160
21	PHILIP ARCHER	HB	182
23	BILLY SELLERS	HB	144
28	HECTOR TREVINO	HB	155
30	MIKE BODEY	FB	152
31	ZANE NEWTON	HB	165
33	PETE GARCIA	FB	155
37	KENT HARGIS	FB	150
40	TOMMY BARBER	HB	163
41	DAVID LESLY	HB	145
42	RICK MORRIS	HB	147
44	GREG PRICE	HB	160
45	SAM BOONE	HB	148
50	RAUL ORTEGA	C	167
51	JAMES WHITAKER	C	155
55	JIMMY KENNEY	T	186
58	ED POGUE	C	181
60	CHRIS McCLELLAN	T	154
61	JED MEISNER	G	202
63	DAVID WITT	G	170
64	JEFF HOHERTZ	T	163
65	TERRY LATHAM	G	191
66	MARK CUNNINGHAM	G	186
67	JOHN RENEAU	G	167
68	JOHNNY KENNY	G	155
70	BO DeARMOND	T	243
71	JIMMY VERNON	T	195
73	CHARLIE PRICE	T	205
74	SCOTTY DeWITT	T	206
77	DAVID ORTEGA	T	165
78	TODD BROCK	T	162
80	TWANE FRIEMEL	E	190
81	SCOTT MARTIN	E	150
84	JOHN HOLMAN	E	167
86	DOUG STEELE	E	172
87	JIM JONES	E	171
88	ERIC BROWN	E	147

Coaches: Greg Sherwood, Ed Moore, Kenneth Friemel, Dennis Tomlin, Chuck Steele, Windy Williams  
 Bill Hamilton, Curtis Beasley, Trainer  
 Managers: Ken Prachar, David Rosser, Kenneth Rosser  
 ROGER KENNARD  
 Superintendent: James Cunningham  
 Principal: Eddy Clemmons  
 Band Directors: Vic Kyler, Phillip Newsom  
 Cheerleaders: Cindy Hamilton, Brenda Wadsworth, Karen Dennis, Robin Denham, Christy Collier, Shari Fox, Valerie Hagerman  
 Mascot: Connie Moore

# FOOTBALL '76

**Anthony Elec.**  
 Plains Shopping Center  
 659-2441

**Cates Men & Boys Wear**  
 221 Main  
 659-3426

**HERGERT PONTIAC BUICK GMC**  
 SO. HWY. 207  
 659-3722  
 SPEARMAN, TEXAS

**Excel Chev-Olds. Co.**  
 Hwy 207  
 659-2541

**Callaway Lumber Co.**  
 Hwy 207  
 659-2426

**R. L. McClellan Grain Co., Inc.**  
 228 Collard  
 659-3223

**BROWN SUPPLY CO. Co.**  
 102 W Kenneth  
 659-3781

**Equity Elevators**  
 104 Collard  
 Spearman, Texas  
 659-2420

**Lil' Lynx Shoppe**  
 312 Main  
 659-2608  
 Spearman, Texas

**Hi-Plains Conoco**  
 415 Collard  
 659-3555

**Gordon's Drug**  
 314 Main  
 659-2141

**Nelson's Builders Supply**



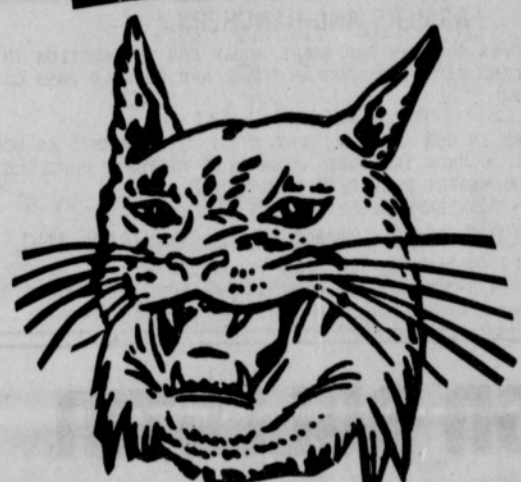
7th Grade		8th Grade	
Sept. 9	Dalhart	H	5:00
Sept. 16	Boys Ranch	T	5:00
Sept. 23	Open		
Sept. 30	River Road	H	5:00
Oct. 7	Canadian	H	5:00
Oct. 14	Dalhart	T	5:00
Oct. 21	Boys Ranch	H	5:00
Oct. 28	Panhandle	H	5:00
Nov. 4	Open		
Nov. 11	Canadian	T	5:00

SPEARMAN LYNX 9TH GRADE Football Schedule 1976			
Sept. 9	Dalhart	T	5:00
Sept. 16	Open		
Sept. 23	Guymon	T	6:00
Sept. 30	River Road	T	4:30
Oct. 7	Canadian	T	5:00
Oct. 14	Dalhart	H	5:00
Oct. 21	Open		
Oct. 28	Panhandle	T	5:00
Nov. 4	River Road	H	5:00
Nov. 11	Canadian	H	5:00

SPEARMAN LYNX B TEAM Football Schedule 1976			
Sept. 9	Dalhart	T	6:30
Sept. 16	Boys Ranch	H	6:30
Sept. 23	Open		
Sept. 30	Open		
Oct. 7	Canadian	T	6:30
Oct. 14	Dalhart	H	6:30
Oct. 21	Boys Ranch	T	6:30
Oct. 28	Panhandle	T	6:30
Nov. 4	Open		
Nov. 11	Canadian	H	6:30



# Spearman Lynx

VS

# Boys Ranch Rough Riders

Here

7:30 p.m.



5 miles South on FM 760  
659-3796

**ATEX** GRAIN INC.

DRILLING  
**BAKER & TAYLOR**  
COMPANY

**Consumer Sales Co.**  
421 W. Kenneth Ave.  
Spearman, Texas  
659-2012

**White House Lumber Co.**  
306 Davis  
659-2818

**Hansford Implement Co.**  
Hwy. 207 659-2712  
Spearman, Texas

**Ellsworth Oil Co.**  
  
659-3033

**Jr. Lusby "Cats"**  
W. Gruver Hwy.  
Spearman, Texas  
659-3766

**Speartex Grain Co.**  
514 Collard  
659-3711

**Gruver State Bank**  
GRUVER  
733-5061

# Sunday Field Trial Results

The Spearman Jaycees held Fall field Trials Sunday, Oct. 17, 6 miles west on Highway 15 and one mile north.

There were fifty dogs entered in the trial.

Judges for the Field Trial were Merle Custer of Logan, Oklahoma and Gary Newby of Beaver, Oklahoma.

Following is a list of the divisions and their winners:

**PUPPY:** 1st, Tramp, owned by Steve Henry, Beaver, Oklahoma, 85 points; 2nd, Gunner, owned by Larry Thompson, Beaver, Oklahoma, 70 points; 3rd, Meg, owned by Carl Owens, Beaver, Oklahoma, 62 points. Eighteen dogs were entered in puppy class.

**NOVICE:** 1st, Frosty, Carl Owens, Beaver, Oklahoma, 57 points; 2nd, Duke, Larry Muncrief, Beaver, Oklahoma, 55 points; 3rd, Nut, Gale Assunsen, Guymon, Oklahoma, 44 points. Ten dogs were entered in novice class.

**CHAMPIONSHIP:** 1st, Babe, owned by Steve Henry, Beaver, Oklahoma, 108 points; 2nd, Frosty, Carl Owens, Beaver, Oklahoma, 88 points; 3rd, Dixie, Carl Owens, Beaver, Oklahoma, 57 points. Thirteen dogs were entered in championship class.

**NON-WINNER:** 1st, Silly, owned by Jerry Robertson, Darrouzett, Texas, 55 points; 2nd, Lady, Steve Henry, Beaver, Oklahoma, 38 points; 3rd, Miss Cow Chip, Richard Staley, Beaver, Oklahoma, 33 points. Eight dogs were

entered in non-winner class.

The points of the thirteen dogs entered in the Championship class are as follows: Babe, owned by Steve Henry, 108 points; Frosty, Carl Owens, 88 points; Dixie, Carl Owens, 57 points; Pat, Larry Thompson, 57 points; Babe, Billy Westenhaver, 56 points; Doc, Jerry Robertson, 54 points; Joker, Claude Owens, 46 points; Gossip, Larry Muncrief, 42 points; Miss Cow Chip, Dick Staley, 40 points; Mike, Claude Owens, 36 points; Rambert, Danny Howard, 35 points; Spike, Carl Owens, 35 points; Hank, Denver Bench, 33 points. Carl Owens and Larry Thompson flipped a coin for third place; Carl Owens won the toss.

The Jaycees would like to thank the following sponsors, who furnished the trophies: H & H Water Well Service, Anthony Electric, Hi Plains Auto, Cates Men & Boys Wear, Gordon's Drug, Excel, Hansford Implement, J. L. Brock Insurance Agency, Frank Massad.

Other Fall Field Trials scheduled are to be held in Beaver, Oklahoma October 24, and in Guymon, Oklahoma on October 31. Call Carl Owens, 405-625-4234, for information on the Beaver Field Trials, and call Winston Brown, 405-338-2276, for information on the Guymon Field Trials.



**BUNNY MARTIN**  
World's YO-YO Champion

## Bunny Martin Featured Youth Leader

Bunny Martin, outstanding entertainer, magician, juggler, and World Champion Yo Yo specialist, will be the featured Week-end Youth leader, October 22-24 at First Baptist Church.

Mr. Martin will appear at the after game fellowship, sponsored by the First Baptist Church, following the Boys Ranch Football Game on October 22.

A Youth Rally featuring Mr. Martin, will be held on Saturday evening.

Martin is an outstanding youth speaker. He is popular at F.C.A. Summer Camps and Texas Super Summer '75.

The youth of First Baptist Church will be host to the youth of the community on these two evenings.



In the 18th century, a tourist in Cornwall was rebuked for shooting a raven, which might have been the reincarnation of King Arthur!

## Methodist Plan Revival

The First United Methodist Church of Spearman has completed plans for their upcoming Revival which is scheduled for November 14-18. Rev. Ed Robb will be the evangelist and Gene Moore will be directing the music. This is a great team and everyone is looking forward to this time. The youth will have a special youth rally on Saturday, Nov. 13, with Rev. Steve Harper of Borger bringing the message. It is hoped that everyone will make preparation to attend these special services.

CWF BAZAAR  
DECEMBER 4

## A GOOD PART-TIME JOB CAN GET YOU A GOOD FULL-TIME JOB.

The skill you learn from us might give you a better chance to find a full-time job. Ask your local Army Reserve unit what kind of job training is available now.



## THE ARMY RESERVE. PART OF WHAT YOU EARN IS PRIDE.

In Fiji wives were buried alive with their dead husbands and those reluctant to follow them into the grave were considered adulteresses.

October 28-29-30  
a penny saved is a penny earned  
at  
Lady Fair Sale  
ALL merchandise 10% off  
2 Racks 30% off

## FARMERS AND RANCHERS

THURSDAY, OCTOBER 14, WAS THE REGULAR DAY FOR THE AUCTION IN TEXHOMA. SELLING BEGAN AT 9:00 AM SHARP AND WE SOLD 2853 CATTLE AND CALVES.

\*\*\*\*\*

FOR A GOOD TURN IN OUR AUCTION, MAKE YOUR CONSIGNMENTS AS SOON AS POSSIBLE. YOU KNOW YOU WILL BE GETTING THE BEST POSSIBLE PRICES WHEN YOU MARKET YOUR CATTLE WITH US.

YOUR DEPENDABLE AUCTION MARKET

TEXHOMA LIVESTOCK COMMISSION COMPANY, INC.

P. O. BOX 70, TEXHOMA, OKLA. 73949  
PHONE 405-423-3251 or 405-423-3241 or 405-423-2031  
Cattle Department - Lloyd Goodner & Raymond Choate

## GAME NUMBER SEVEN

- Rough hits and hard knocks,
- A game fiercely fought;
- Victory came by one point,
- A defensive lesson well taught.
- Game predictors were right,
- Even up we stood;
- The one favoring factor,
- Here in Spearman is Sherwood.
- Erase it from your mind,
- Roughriders this Friday;
- Our game is no cinch, they're
- Undefeated in district play.
- Gifted athletes at the Ranch,
- Hold your poise and play well;
- Raise your spirit a little higher,
- Incentive will tell.
- Do your thing Purple Pride,
- Enjoy your position;
- Ride down those Ranchers, and
- Spearman on top will be sittin'.

# PIONEER INFORMATION BULLETIN

## Subject: SMUT

Most farmers in this area have heard of the epidemic of head smut which affected the corn crop in parts of six counties of West Texas. The disease is not expected to spread much beyond that area next year, if indeed it occurs at all, but the Pioneer Agronomy Service Department headquartered in Plainview, is conducting an informational program to acquaint all corn farmers with the disease.

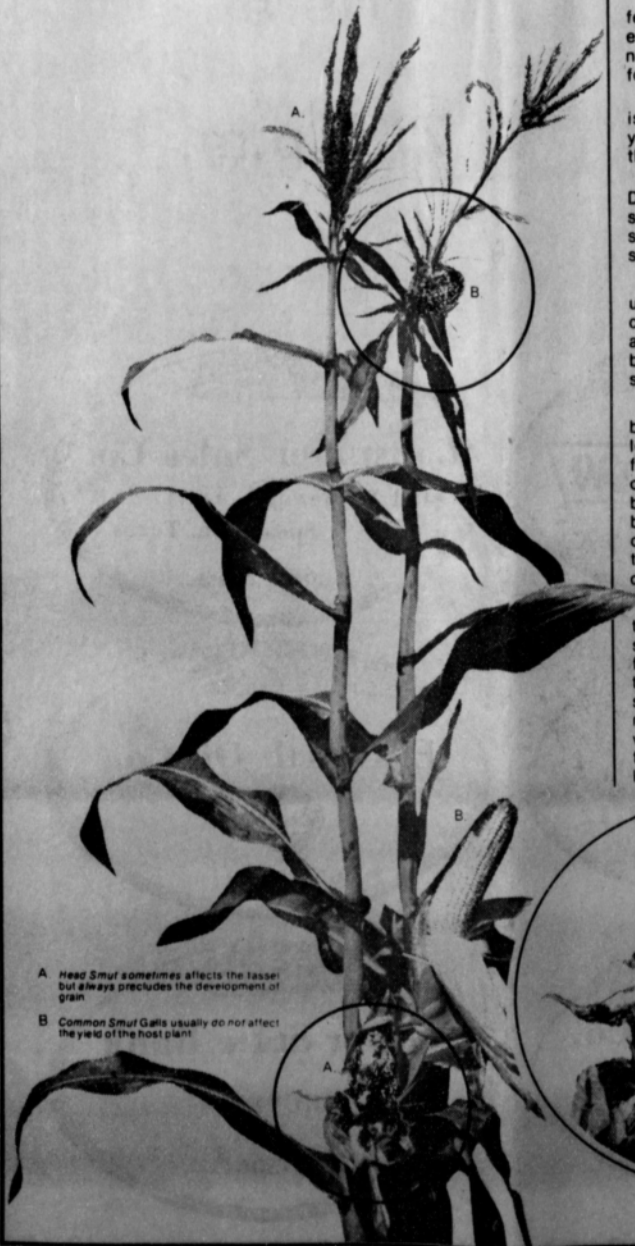
Not surprisingly, there is a good bit of confusion about head smut since this is the first year it has appeared in the Southwest in high enough incidence to affect yields. Pioneer agronomists had studied the problem elsewhere, however, and print this information as a service to High Plains farmers.

Two distinctly different kinds of smut appeared in parts of Parmer, Castro, Deaf Smith, Lamb, Bailey and Hale counties: **common smut** and **head smut**. Common smut has little, if any, economic significance, but it is frequently confused with head smut, which is the real culprit. Estimates are that head smut reduced the yields of some fields by over 20%.

**COMMON SMUT** (*Ustilago maydis*), sometimes called boil smut, does not usually reduce yields. It is characterized by galls, bulbous growths which are at first covered with a glistening, greenish to silvery-white tissue. The galls may appear on any part of the corn plant including the exposed tips of healthy ears protruding beyond the shuck. The plant becomes host to wind or water-borne sporidia which stimulate cells in young tissue to proliferate.

**HEAD SMUT** (*Sphacelotheca reiliana*) is systemic, the plant being infected by soil-borne teliospores in the seedling stage. The outward signs of the disease are less conspicuous than common smut. It first appears when ears and tassels are formed. Tassels of infected plants usually appear to be covered with a reddish brown or black, spiny rust. Silkless shucks look as if they might cover a short, fat ear of corn but opening the shuck exposes a mass of black, worm-like teliospores or a tangle of bright green, leafy buds. Since head smut is soil borne and there is no practical chemical treatment to control it, we can expect infection to increase from one year to the next if conditions are right. This year's weather (dry and cool) was particularly conducive to infestations of both types of smut fungus.

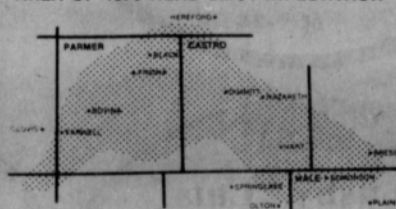
**WHAT ABOUT NEXT YEAR?** For the most part, head smut occurs in fields that have been planted to corn for several years. It appears that farmers with a head smut-infested field have a choice for the use of that field next year. They can plant the field to another crop or can, with reasonable safety, plant corn hybrids that offer resistance to the disease. Pioneer has three excellent hybrid corn varieties that show strong resistance to head smut. One of these is well known to area farmers and is the most planted variety in much of this area... Pioneer brand 3306. Two other Pioneer varieties... 3184 and 3195... which were planted widely in this area for the first time this year, not only resist smut but have even greater yield potential than the well-known yield champion, Pioneer brand 3369-A.



A Head smut sometimes affects the tassel but always precludes the development of grain.

B Common Smut Galls usually do not affect the yield of the host plant.

## AREA OF 1976 HEAD SMUT INFESTATION



**PIONEER**  
BRAND  
SEEDS

PIONEER HI-BRED INTERNATIONAL, INC.  
Southwestern Division P.O. Box 708, Plainview, Texas 79072

Performance of seeds or crops produced therefrom may be adversely affected by factors beyond our control including environmental conditions, insects and diseases. The limitation of warranty and remedy attached to each bag of Pioneer brand seed is part of the terms and conditions of the sale thereof.

## OFFICE FURNITURE BARGAINS

**LETTER FILE**  
4 Drawer Full Size Letter File with Thumb Lock  
\$82.88

**GRAND OPENING SPECIAL**  
30 X 80 Office Desk  
Budget Price \$124.88

**SWIVEL CHAIR**  
Upholstered Secretary Behind Chair Steel Frame  
Budget Price \$47.88

**STEEL STORAGE CABINET**  
Steel Storage Cabinet Double doors, heavy duty, 72 X 18 X 36 - with 4 shelves  
Budget Price \$97.88

## The Budget Store

611 Taylor St. • Amarillo, Tx. • Telephone 372-1257



# Local Residents Getting Bigger Pensions

How much money is going to residents of Hansford County each month in the form of Federal pension checks?

How do their checks compare, on average, with those going to people in other areas?

On the basis of the latest official figures from the Social Security Administration, the pension payments locally are relatively high.

They have been getting larger over the years by virtue of the frequent upward revisions legislated by Congress and, more recently, because of their being tied in with the cost of living. In July the benefits were increased by 6.4 percent, in line with a first quarter rise in the Consumer Price Index.

As of the beginning of this year, payments to beneficiaries in Hansford County were at an annual rate of \$2,201 per recipient. This compares with \$1,370 four years earlier.

Elsewhere in the United States, the average was \$2,142 and, in the West South Central States, \$1,897.

Just how much goes to a pensioner or to members of his family depends upon his annual income during his active

years and, in turn, upon his contributions to the retirement fund.

The comparatively large benefits that most local people become eligible for upon retirement reflects the fact that their earnings, during their working careers, were better than average.

The number of retired or disabled residents qualified to receive Social Security payments has been growing larger year by year, due to revisions of the law that have reduced the age of retirement and have brought in classes of workers who had been ineligible before.

The current report lists the

total in Hansford County on the receiving end as 676. In 1971, by comparison, there were 613.

As for the amount of money entering the local area via the Social Security route, it has now reached \$1,488,000 a year. Four years ago it was \$840,000.

Throughout the country as a whole, more than \$70 billion is being paid out this year to some 32 million retirees and their dependents.

Despite the increased outlay, payroll taxes remain the same, except for the fact that they are being levied on the first \$15,300 of income rather than on \$14,100.

Discussion was held on a bake sale to be held November 3 at Thriftway.

Refreshments were served by Mrs. Head to guest, Mrs. Gayle Brown and to members, Mmes. Monty Blackman, Dick Countiss, Ed Garner, Kent Guthrie, H. O. Abbott, Ray Martin, Mack McCormack, Dennis Nelson and Bert Sheppard.

Next meeting will be Oct. 20 at the church.

## UMW MEETS

The Susannah Wesley Circle of the U.M.W. met Wednesday, October 13, at the First United Methodist Church.

Mrs. Monty Blackman presided over the meeting.

Mrs. Garland Head gave the devotional.

The study on "The Prophets" was continued by Mrs. Bert Sheppard.

# Health Tips

The Texas Medical Association says one simple way to avoid getting shot this hunting season is to wear clothing colored daylight fluorescent orange, usually called "hunter orange". Deer are color-blind but hunters can spot people wearing bright-colored vests, caps, jackets, etc. Green, brown or dark colors are the most dangerous tones to wear. Many hunters blast away at movement alone and those colors do not provide enough contrast for a hunter to distinguish quickly between a human and any other animal.

Of course many hunters' greatest enemies are themselves. There are endless ways to shoot oneself accidentally. One common way is to keep a loaded gun in the camp or vehicle. In the excitement of the hunt, many people also forget advice about keeping the safety on until ready to fire, not climbing fences or trees while carrying a loaded weapon and keeping snow or mud from clogging the gun barrel.

One of the easiest ways to get shot is to hunt around careless people. Lots of folks fire at hard, flat surfaces or don't consider where the bullet will land if they miss. Even bullets from small bore weapons can ricochet at odd angles or travel more than a mile. Hunters also can be careless about pointing a gun at a companion when walking or getting somebody in the line of fire.

To make the season even more deadly, many hunters mix drinking and shooting. A hunting trip is not a backyard cocktail party. Even people who can handle their liquor get in trouble hunting because of the added danger and stress.

Bad weather, too much walking or carrying, and other types of stress have bagged many an ill-prepared hunter. Exercising, at least walking, starting a couple of months before hunting season and pacing oneself on the hunt can decrease stress.



These drama students are shown here as they enact a scene from "The Haunting of Hill House" will be presented Oct. 23 at the high school auditorium. Curtain time is 8:45 p.m.

You are cordially invited to attend  
Without charge  
The first session  
of the  
Siva Mind Control  
Basic Lecture Series  
Community Room - First State Bank  
Spearman, Texas  
Saturday, October 23, 1976, 1:30 P.M.  
Lecturer: Marlene Knapp

SOSE 763 Prescribed by Mark White, Secretary of State  
V.A.T.S. Election Code, art. 4.05

## NOTICE OF ELECTION AVISO DE ELECCION

To the Registered Voters of the County of Hansford, Texas:  
A los Votantes registrados del Condado de

Notice is hereby given that the polling places listed below will be open from  
Notifiquese por la presente que los sitios de votación indicados abajo se abrirán desde

7:00 a.m. to 7:00 p.m. November 2, 1976 (2 de noviembre de 1976  
hasta las (date-fecha)

for voting in the General (General) Election for the purpose of:  
para votar en la (type-clase) eleccion con el proposito de:

filling the offices of Presidential and Vice-Presidential electors, members of Congress, members of the Legislature, state, district, county and precinct officers and submitting two proposed constitutional amendments. (llenar los cargos de electores presidenciales y vice-presidenciales, miembros del Congreso, miembros de la Legislatura, oficiales del estado, de los distritos, de los condados, y los precinctos, y de someter dos enmiendas propuestas a la constitucion.)

## LOCATIONS OF POLLING PLACES Direcciones de los sitios de votación

- Voting Precinct #1 - Spearman - Courthouse
- Voting Precinct #2 - Renner Ranch
- Voting Precinct #3 - Gruver Elevator
- Voting Precinct #4 - Gruver - County Agriculture Barn
- Voting Precinct #5 - Spearman - County Agriculture Barn
- Voting Precinct #6 - Spearman High School
- Voting Precinct #7 - Oslo Church
- Voting Precinct #8 - Absentee - Courthouse
- Voting Precinct #9 - Morse Community Building

- Direcciones de los sitios de votación
- Votar Precintos numero #1 - Tribunal de justicia del condado.
- Votar Precintos numero #2 - El Rancho de los Renner.
- Votar Precintos numero #3 - El elevador de Gruver.
- Votar Precintos numero #4 - El edificio de agricola del condado.
- Votar Precintos numero #5 - El edificio de agricola del condado en Spearman.
- Votar Precintos #6 - La escuela secundaria de Spearman.
- Votar Precintos #7 - La iglesia de Oslo.
- Votar Precintos #8 - El lugar para votar si va a estar ausente esedia. El tribunal de justicia de condado. La oficina del archivero del condado.
- Votar Precintos #9 - El edificio de comunidad de Morse.

**OPEN 24 HOURS**

**ALLSUP'S**  
CONVENIENCE STORES

**OPEN 24 HOURS**

**FILL YOUR SHOPPING NEEDS AT ALLSUP'S**

**PRICES GOOD THURSDAY THROUGH SATURDAY OCTOBER 21-23, 1976**

**ALLSUP'S TOP QUALITY BUYS**

**RATH SAUSAGE**  
ONE POUND PACKAGE **59¢**

**BORDEN'S CHOCOLATE MILK** 2 QT. CTNS. **89¢**

**BORDEN'S SHERBET** HALF GALLON ROUND CARTON **\$1.09**

**SWIFT'S VIENNA SAUSAGE** 4 5 OZ. CANS **\$1**

**HALLOWEEN CANDY**  
REGULAR 70¢ VALUE SHOP EARLY & SAVE GRAB BAGS **49¢**

**NEW! NEW! KRAFT WRAPPLES**  
EVERYDAY LOW PRICES! PKG. **89¢**

**TURKEY HENS**  
8-14 LB. AVG. LB. **49¢**

**MAKE A TOUCHDOWN... Stop by ALLSUPS FRIDAY NITE...**

**SHOP THE FRIENDLY, CONVENIENT ALLSUP'S STORE NEAR YOU!**

305 W. KENNETH

**HOT COOKED FOODS**

- BBQ CHICKEN
- BBQ RIBS
- HOT LINKS
- MILD LINKS
- BURRITOS
- CORN DOGS
- GERMAN SAUSAGE
- BULK BBQ BEEF
- BBQ BEEF SANDWICHES

# Mac-Dye Packing Co. to have grand opening!

The Mac-Dye Packing Company of Booker will have their grand opening on October 23. The new Booker facility is one of the finest meat marketing and processing plants in the state.

Managers for the new plant include Larry Dye and Kenneth McCabe. Others working include Helen Herbel, Tommy Heflin, and Dusty Munsell. The retail meat counter is now open and includes such items as a full line of luncheon meats, cheeses, ground beef, turkeys, chickens, hams, bacon and sausages. They also have a good selection of beef in halves, baby beef or choice aged beef. They will cut steaks and roasts to your specifications.

The new Booker plant is open Monday through Friday, 7:30 a.m. - 5:30 p.m., and till noon on Saturdays. Except, they will be open all day Saturday, October 23, for the grand opening celebration. The new Mac-Dye Packing

Company is located on West Highway 15, out of Booker, and their phone number is 658-4582. Be sure and register for the free gifts at the Grand Open-

ing, which include one-half beef, one-half pork to be given away! There will be balloons for the kiddies. For custom kill, call 806-658-4582!

## "Stars Over The Panhandle" Returns

The Amarillo Discovery Center has scheduled a special limited two weekend return engagement of "STARS OVER THE PANDHANDLE", on October 23/24 and October 30/31. Programs are scheduled at 3 p.m., 5 p.m., and 8 p.m. on Saturdays and 3 p.m. and 5 p.m. on Sunday afternoons.

"STARS OVER THE PANDHANDLE" deals with the solar system. What is the solar system? It is you, me, everything on earth, all the planets, asteroids, comets, moons, meteors, sand, rock,

dust and most important, the sun. The program begins the exploration of the sun and its family by watching the bright evening stars begin to appear overhead. The make-believe sky in the Ecosphere looks exactly like the real one outside each night. Every star and planet is precisely in the correct place. If you play close attention, you should be able to locate the constellations and star shapes from your backyard or some dark place near where you live after you return home.

After a short sunset the program begins its exploration of the solar system via a tour that sweeps us from Mercury on out to Pluto.

The last segment of the program deals with a live discussion of the night sky, prominent stars, constellations and planets.

The program concludes with an audience participation session of questions and answers.

The Discovery Center is part of the Medical Center, located on the western edge of the City, across the lake from High Plains Baptist Hospital.

## Bowling News

### THURSDAY NIGHT MIXED LEAGUE 10-14-76

HIGH TEAM SERIES	
Hansford Implement	2200
Dairy Queen	2106
Anthony Electric	2104
HIGH TEAM GAME	
Hansford Implement	754
Callaway Constr.	740
Anthony Electric	739
HIGH IND. SERIES-MEN	
Rick Kerk	515
Verlin Behne	498
A. J. Rex	481
HIGH IND. SERIES-WOMEN	
Judy Everson	476
Winnie Urban	443
Debbie Crouch	440
HIGH IND. GAME-MEN	
Rick Kerk	200
Verlin Behne	182
Carlos Kenda	177
HIGH IND. GAME-WOMEN	
Winnie Urban	187
Judy Everson	175
Karen Kerk	163

### MONDAY NIGHT SCATTER PINS 10-18-76

HIGH TEAM SERIES		
Equity	22	2
Co-op	19	5
Martin's Stk. Hse.	14	10
Anthony Electric	13	11
Baker & Taylor	13	11
Evelyn's Bty. Shop	9	15
Spearman Stk. Hse.	5	19
Excel	1	23
HIGH TEAM GAME		
Equity	1983	
Co-op	1980	
Equity	1742	
HIGH TEAM GAME		
Equity	733	
Co-op	732	
Equity	667	
HIGH IND. SERIES		
Patty Spoonemore	565	
Judy Black	510	
Kate Farris	504	
HIGH IND. GAME		
Patty Spoonemore	234	
Kate Farris	201	
Judy Black	193	
June Lee	193	

## Why Lower Grain Prices?

LUBBOCK--Farmers' concern lately has been the low price of grain, with much emphasis on the "why." Texas Grain Sorghum Producers Board offers the following situation report which should give some explanation.

Fence to Fence Planting: Increased plantings of grains are taking a heavy toll on price scales. The combined 1976 production of grain sorghum and corn in the Texas High Plains is estimated at 274.5 million bushels, an increase of 45.36 million bushels over the previous five-year average of production (or enough to fatten 1.14 million head more of 600-pound steers than are now fed). The same trend of production is noted nationwide.

Shortage of Storage: Nationally the amount of storage facilities is far from adequate and in most cases already full.

Lack of storage forces grain into the market.

Mississippi River Low: Corn is backing up due to the Mississippi River barges not being able to haul full loads.

Harvest Season Slump: Harvest time is normally a weak price period; however, with increased corn production and inadequate drying and storage facilities, more pressure to sell for what is offered becomes increasingly common which forces prices downward.

Lack of Confidence in Market: Because of the presidential veto last year, there is no real speculative interest compared to two years ago.

Outlook: Grain sorghum production estimates are down from 758 million bushels in 1975 to 714 million bushels for 1976. Corn production is as forecast on Oct. 1 at 5,865 million bushels in comparison with 5,767 million bushels in

1975. Domestic consumption should increase for both sorghum and corn as a result of increased hog and poultry numbers. Exports, on the other hand, are expected to be about the same or even a bit lower. Russia's increased grain production will cut their grain import requirements and the amount of their reduction is likely to offset additional sales of domestic grain to Western Europe in the wake of their extended drought.

Total use of U.S. feed grains is now estimated at 201.4 million tons compared to 202.9 million tons.

After harvest is complete and all remaining grain is secure in storage, prices are expected to again return to a higher level through next spring and summer. Orderly marketing will help achieve maximum average prices.

### LIBRARY NEWS CHILDREN'S HOUR

Weekly "Children's Hour" for 3 and 4 year olds on Tuesday mornings, 10:00 to 11:00. The hour will consist of storytelling using various media-puppets, tape recorder, flannel board, films, books, etc.-to stimulate an interest in reading and using books for information as well as entertainment. The second half of the hour will be devoted to creative activities-various types of art projects, fingerplays, singing and games.

The program is under the direction of Marsha T. Murphy, M.Ed., a former teacher of preschool and kindergarten children.

Bring your child October 19th at 10:00 to your Public Library for an hour of fun and learning.

# Week End Sale

THURS, FRI AND SAT  
OCTOBER 21, 22, and 23

WINTER COATS

20% OFF

CHAMBERS

SPEARMAN, TEXAS 79081

### Altus Jaycees Plan Car Show

The Altus Jaycees and Prairie Rods will be holding the first ANNUAL JAYCEES CAR MEET Sunday, October 24, 1976. The meet will be held at the Western Oklahoma State College Parking lot from 8 a.m.-4 p.m. Sixteen trophies will be awarded to class winners and plaques to the various game winners. The different classes will be divided among Antique, Street Rods, Special Interest, and Motor Cycle. Cars are expected from Oklahoma City, Tulsa, Lawton, Wichita Falls, Dallas-Fort Worth, Lubbock, Abilene, Amarillo, and cities between. The Jaycees feel this will be among the best car and cycle meets ever held in Oklahoma. If you would like to attend the biggest car meet ever in Southwest Oklahoma but would like more information, contact MIKE MAINS 405-482-7330, 405-477-1664, or JIM MARBLE 405-482-7330, 405-482-6225.



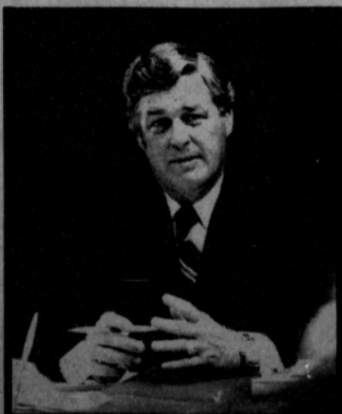
In chess, the castle gets the name rook from the Persian, *rukh*, which is said to have meant a warrior.

## Where was the voice of our Congressman?

Where was our voice when the liberal majority in Congress increased their own expense to the taxpayer a staggering 30% the past year? (He voted for this!)

We need a strong, vigorous voice in Washington to represent our point of view.

We need **Bob Price** back in Congress.



Paid for by Return Bob Price To Congress Committee, P.O. Box 2478, Pampa, Texas 79055, Harold Barrett, Chairman, Malcolm E. Hoke, Treasurer.



Register for door prizes one-half beef and one-half pork to be given away.



SELECT

Phone 658-4582

YOUR OWN

BEEF

Buy By the

- Whole
- Half
- Quarter

Cut and Packaged to your specifications

GUARANTEED

TO SATISFY

ALL WE SELL IS

CHOICE BEEF

# GRAND OPENING Saturday, October 23

## MAC-DYE PACKING CO.



The Only Federally Inspected Custom Packing Plant and Retail Outlet in This Area.

West On Highway 15

Booker, Texas 9 a.m. - 5 p.m.

- Beef Processing
- Custom
- Retail
- Wholesale
- Pork Processing and Curing

Now Taking Bookings

For Custom Kill  
Call 806-658-4582

OPEN MONDAY THRU FRIDAY  
7:30 A.M. - 5:30 P.M.  
TILL NOON SATURDAY



Kenneth McCabe and Larry Dye  
Owners-Operators



**Recital Features  
Rosemary Burkhart**



Rosemary Burkhart

sons de Bilitis" by Debussy, "Four Poems by Frederic Chopin" by Vaughn Williams and "Three Scenes from Madame Butterfly" by Puccini. She will be accompanied on the Puccini numbers by Ruby Moultrie, Pampa senior. Piano accompaniment for the recital will be provided by Lorna Schultz.

Miss Burkhart is a member of Alpha Psi Omega, honorary dramatic fraternity; Mu Phi Epsilon, music sorority; and Phi Mu Alpha Little Sisters.

She received the Best Actress Award and the BIT Award after her performance in "La Boheme" and "1776". She has also performed in "Don Giovanni" and was understudy for the part of Kate Lucas for two years in the summer musical drama "TEXAS".

In the 1976 offering of the WTSU Opera Workshop, "The Ballad of Baby Doe", Miss Burkhart will play Augusta Tabor.

The daughter of Mr. and Mrs. O. L. Burkhart, she is a student of Elsa Porter, assistant professor of music.

WTSU--Rosemary Burkhart, a senior at West Texas State University from Spearman, will be featured in a voice recital at 4 p.m., Oct. 27, in the WTSU Branding Iron Theatre.

A soprano, Miss Burkhart will sing "Four Mignon Poem" by Schumann, "Chan-

**GED Tests  
At FPC**

General Educational Development (GED) tests will be given at Frank Phillips College on October 22 and 23, to all persons who wish to take them and meet the listed requirements.

Persons taking the tests must be residents of Texas.

Seventeen year-olds may take the tests if they are entering the Armed Forces, and must bring with them a letter from the parents and the recruiting officer.

Person 18 years old may take the tests if they have been out of school for one calendar year and present a letter of proof from the principal of the school attended.

All persons 19 years of age or older are eligible.

Satisfactory completion of the tests will obtain for those taking them a certificate which is the equivalent of a high school diploma and is accepted in most states as such.

A series of five tests will be given, with two tests to be given Friday beginning at 6 p.m. and three on Saturday starting at 8 a.m. They will be given in the reading room of the Library Building.

Cost of the tests is \$5 for the complete series, or \$2 per individual test.

**Halloween  
Dance Planned**

The Spearman Spinners Square Dance Club will have a Halloween Dance on Thursday, October 21, at 8 p.m. in the County Barn.

Those attending are asked to either come in costume or in square dance clothes.

A box supper will be held, with boxes being auctioned off.

Prizes will be given for the best costume and the best decorated box.

Paul Lopez will be the caller.

**Spanish Club  
Has Dinner**

The Spanish Club met during class hours and decided to have their meetings the second Friday of each month.

The Club then discussed their plans to have a Mexican dinner, just for them.

The Spanish Club had a Mexican dinner Friday, Oct. 8, in the Home Economics Room. Everyone brought their favorite Mexican dish, and sponsor,

**CROSSWALK  
PATROL  
SCHEDULE**

- MONDAY**  
Morn. - Linda Beeson After. - Betty Morrison  
**TUESDAY**  
Morn. - Coy Kingsley After. - Vickie Hargrove  
**WEDNESDAY**  
Morn. - Helen Martin After. - Shirley Messer  
**THURSDAY**  
Morn. - Deb Gilbreath After. - Frances Garrison  
**FRIDAY**  
Morn. - Sharon Swan After. - Charlotte Jackson

**Speech Class To  
Present Drama**

Drama students of Spearman High School will be presenting "The Haunting of Hill House" from the novel by Shirley Jackson on Oct. 23, beginning at 8:45 p.m.

Members of the cast are: Eleanor-Carrie Clark; Theodora-Tracy Bulls; Mrs. Dudley-Linda Lewis; Dr. Montague-Chris McClellan; Luke-Ed Pogue; Mrs. Montague-Gerri Maize; and Arthur-Greg Price.

Members of the stage crew are Terrie Brown, Kelly Davis (sound effects), Kent Hargis, Max McCommond, Rhonda Morrison, and Carolyn Spears. Shari Fox is assistant director.

Advance tickets will go on sale at the beginning of next week. Adult tickets will be \$1.00, students 75 cents. Tickets at the door will be \$1.25 for adults and \$1.00 for students.

**Booths Available  
For Carnival**

Anyone wanting a booth at the Halloween Carnival Oct. 30, please call the high school at 2584 as soon as possible.

Booths are now on sale for \$15.00 by the Student Council.



Congressman Jack Hightower is shown here with editor Billy Miller as he visited in Spearman last week. He is seeking re-election to the post and was in town visiting constituents.

Mrs. McMullen, made sopapillas for dessert. When everyone was finished eating, they did the dishes, then if they could stay afterwards, they played games.

Members present were Donna Brogden, Cindy Gressett, Tracy Bulls, LaVon Kunselman, Virgil Jones, Leslie Groves, Leann Biles, Tammy Robertson, Jim Trinh, Alan Shields, Lucio Vela, Brock Nuckles, Chuck Ball, Raymie Porter, and Mrs. McMullen.

**Pampa Fall  
Field Trial Set**

The Top-O-Texas Brittany Club will hold its annual A.K.C. Licensed Fall Field Trial, October 29-30-31 on the Haynes Ranch located 16 miles southeast of Pampa, Texas.

Trials for Registered Brittany's only will be, Open All Age, Open Derby, Open Limited All Age, Amateur All Age, and Open Puppy.

Entry applications for the Field Trials should be mailed to Mrs. Sara Leverich, 1824 Christine Street, Pampa, Texas. Entries close promptly Wednesday, October 27, at 8 p.m. with drawings immediately following in the Leverich home.

The judges for the Trial are Harold Davis, Arlington, Texas; Frank Hanwright, Belen, N.M.; George Miller, Amarillo; and Joe Knittle, Amarillo.

The Field Trial Committee includes Jim Leverich, Chairman, Sara Leverich, Frank Roach, Dee Nix, T. M. Cox Jr., Dr. Jack Zachery, R. R. Jordan, Hershel Robertson and Bud Higginbotham. Field Trial Marshals will be Dr. Jack Zachery, Bill Hunt, Dee Nix, Sharon Nix and Bud Higginbotham.

Headquarters for the Trial will be the Coronado Inn in Pampa, Texas. Bud Higginbotham is president of the club.

Visitors are welcome to attend the Trial.

**WEATHER**

	Hi	Lo	Prec.
OCTOBER 8	69	27	.15
OCTOBER 9	81	40	
OCTOBER 10	90	41	
OCTOBER 11	88	46	
OCTOBER 12	86	42	
OCTOBER 13	77	43	
OCTOBER 14	80	45	
OCTOBER 15	58 1/4		
OCTOBER 16	59	27	
OCTOBER 17	62	27	
OCTOBER 18	59	37	

**HANSFORD COUNTY  
FARM BUREAU  
Annual Meeting  
Oct. 26, 1976  
7:30 P.M.  
Morse Community  
Building  
Everyone invited.**

Consolidated Report of Condition of **FIRST STATE BANK** (Legal title of bank) of **Spearman** **Hansford** **Texas** **79081** (City) (County) (State) (Zip Code) and Domestic Subsidiaries at the close of business on **September 30**, **1976**. State Bank No. **1107** Federal Reserve District No. **11**

BALANCE SHEET		ASSETS			LIABILITIES			EQUITY CAPITAL		
	Sch.	Item	Col.		Sch.	Item	Col.			
1. Cash and due from banks		C	7							
2. U.S. Treasury securities		B	1	E						
3. Obligations of other U.S. Government agencies and corporations		B	2	E						
4. Obligations of States and political subdivisions		B	3	E						
5. Other bonds, notes, and debentures		B	4	E						
6. Corporate stock										
7. Trading account securities										
8. Federal funds sold and securities purchased under agreements to resell		D	4							
9. a. Loans, Total (excluding unearned income)		A	10					11	047	9a
b. Less: Reserve for possible loan losses									297	
c. Loans, Net									10	750
10. Direct lease financing										
11. Bank premises, furniture and fixtures, and other assets representing bank premises									227	11
12. Real estate owned other than bank premises										
13. Investments in unconsolidated subsidiaries and associated companies										
14. Customers' liability to this bank on acceptances outstanding										
15. Other assets		G	7						019	15
16. TOTAL ASSETS (sum of items 1 thru 15)									23	536
17. Demand deposits of individuals, partnerships, and corporations		F	1f	A				10	394	17
18. Time and savings deposits of individuals, partnerships, and corporations		F	1f	B+C				8	817	18
19. Deposits of United States Government		F	2	A+B+C					182	19
20. Deposits of States and political subdivisions		F	3	A+B+C					985	20
21. Deposits of foreign governments and official institutions		F	4	A+B+C						21
22. Deposits of commercial banks		F	5+6	A+B+C					001	22
23. Certified and officers' checks		F	7	A					152	23
24. TOTAL DEPOSITS (sum of items 17 thru 23)									20	531
a. Total demand deposits		F	8	A				11	352	a
b. Total time and savings deposits		F	8	B+C				9	179	b
25. Federal funds purchased and securities sold under agreements to repurchase		E	4						500	25
26. Other liabilities for borrowed money										
27. Mortgage indebtedness										
28. Acceptances executed by or for account of this bank and outstanding										
29. Other liabilities		H	9						151	29
30. TOTAL LIABILITIES (excluding subordinated notes and debentures)									21	182
31. Subordinated notes and debentures										
32. Preferred stock	a								NONE	32
33. Common stock	a								100,000	33
34. Surplus									500	34
35. Undivided profits									1	354
36. Reserve for contingencies and other capital reserves										
37. TOTAL EQUITY CAPITAL (sum of items 32 thru 36)									2	354
38. TOTAL LIABILITIES AND EQUITY CAPITAL (sum of items 30, 31, and 37)									23	536

**MEMORANDA**

1. Average for 15 or 30 calendar days ending with call date:				
a. Cash and due from banks (corresponds to item 1 above)			3	086
b. Federal funds sold and securities purchased under agreements to resell (corresponds to item 8 above)				NONE
c. Total loans (corresponds to item 9a above)			11	077
d. Time deposits of \$100,000 or more (corresponds to Memoranda items 3a plus 3b below)			2	205
e. Total deposits (corresponds to item 24 above)			20	327
f. Federal funds purchased and securities sold under agreements to repurchase (corresponds to item 25 above)				267
g. Other liabilities for borrowed money (corresponds to item 26 above)				NONE
2. Standby letters of credit outstanding				NONE
3. Time deposits of \$100,000 or more:				
a. Time certificates of deposit in denominations of \$100,000 or more			2	125
b. Other time deposits in amounts of \$100,000 or more				240

**Freeman Barkley**, Vice President & Cashier of the above-named bank do solemnly swear that this report of condition (Name and title of officer authorized to sign report) (including the information on the reverse and hereof) is true and correct, to the best of my knowledge and belief.

Correct--Attest: **Freeman Barkley** (Signature of officer authorized to sign report)

**C. A. Gibner**  
**J. W. Gibner**  
**Gene Cudd** } Directors.

State of **Texas** County of **Hansford**  
Sworn to and subscribed before me this **13th** day of **October**, 19**76**,  
and I hereby certify that I am not an officer or director of this bank.  
My commission expires **June 1, 1977** **Arbeta Nobles** Notary Public.

### Boy & Girl Of The Month

The Spearman Study Club has selected outstanding students, Lonita Greene and Brent Biles as Boy and Girl of the Month for September.

Lonita is the daughter of Mr. and Mrs. Jimmy Greene. She participated in basketball her Freshman and Sophomore years and in track her Junior year. She has been a member of the band all four years, and is currently serving as Vice President. She was a member of the all region band 1974-75 and 1975-76. She qualified for State Solo and Ensemble Contest 1975-76. She has been a member of the choir her Junior and Senior years and was a member of all region choir in 1975-76.

She has been a member of F.H.A. all four years and served as Reporter her Junior Year. She was a citizen of Bluebonnet Girls State in 1976 and is currently serving on the annual staff.

She is a member of the Church of Christ.

Her plans for the future include attending Abilene Christian University next fall.

Brent is the son of Mr. and Mrs. Hoyt Biles.

He is a member of the Church of Christ.

He has been a member of the band all four years and plays trombone. He is active in speech, choir and band activities. He qualified for all region choir his Junior year.

He is Vice President of Choir and a member of the National Forensic League.

He has been in charge of lighting effects in numerous school productions.

His ambition is to major in voice and music and to teach or possibly perform.

Music is his greatest interest, but he also enjoys reading, art and other fine arts.

### Postal Service Deficit Less Than Expected

The Postal Service ended Fiscal Year 1976 with an operating deficit of \$1.176

billion—approximately \$200 million below its original projections, it announced today.

The announcement followed a review of financial statements for the year by independent accountants.

Postmaster General Benjamin F. Bailar said a number of things happened in the last half of the fiscal year (January through June) that were responsible for the substantial improvement in the operating results over earlier projections, including vigorous cost control measures, an improved economy that led to an increased mail volume of 90.3 billion pieces, and implementation of new rates on December 31, 1975.

### Saving Time Ends Oct. 31

Daylight saving time will run for two more weeks before Hansford County residents move the hands of the clocks back to regular or standard time.

The nation has been running on daylight saving time now for the past five and a half months, since the last Sunday in April.

By law, the time switch back to standard time comes each year on the last Sunday in October, and this year will be October 31.

### TFB Slates State Convention

The 43rd annual Texas Farm Bureau convention will be held December 5th through the 8th in Fort Worth with the Sheraton-Fort Worth named as the headquarters hotel and the Tarrant County Convention Center as the general sessions locale.

Policies for the state organization for 1977 will be formulated by the voting delegates from the county Farm Bureaus and recommendations on national issues will be made to the American Farm Bureau Federation.

\*\*\* Polo was developed in India.

\*\*\* Saccharin is derived from coaltar.

### Bullock Analyses Revenue Sharing

AUSTIN—Comptroller Bob Bullock said Thursday that an analysis by his office shows that Texas cities and counties spent a combined total of \$212.2 million in federal revenue sharing funds during federal fiscal year 1975, which ended June 30, 1975.

Bullock said cities spent 72 percent of their \$132.3 million in revenue sharing allotments for capital improvements and the remaining 28 percent for operating expenses.

Counties, he said, spent 62 percent of their \$79.9 million in allotments on capital improvements and 38 percent on operating expenses.

The analysis of local government use of federal revenue sharing funds was contained in the Comptroller's September monthly financial statement.

The analysis also showed that the biggest single use of revenue sharing money by local governments was transportation, which accounted for \$56.1 million or 26 percent of all revenue sharing funds spent by cities and counties during the year.

Bullock said August state expenditures of \$408.4 million ended the state's 1976 fiscal year for total expenditures of \$6.2 billion, an increase of \$826.4 million over the previous year.

Revenues for August were \$633.5 million, he said, closing out the fiscal year with total revenues of \$6.6 billion—a healthy 16 percent or \$917.1 million gain over the previous fiscal year.

### One Rural Accident Investigated

The Texas Highway Patrol investigated one accident on rural highways in Hansford County during the month of September, 1976 according to Sergeant Henderson, Highway Patrol supervisor of this area.

These crashes resulted in no persons killed and no persons injured.

The rural traffic accident summary for this county during the first nine months of 1976 shows a total of 27 accidents resulting in five persons killed and 13 persons injured.

The rural traffic accident summary for the 60 counties of the Lubbock Department of Public Safety Region for September 1976, shows a total of 567 accidents resulting in 15 persons killed and 306 injured, as compared to September 1975, with 551 accidents resulting in 29 persons killed and 314 persons injured. This was 16 more accidents, 14 less killed, and eight less injured in 1976 at the same period of time.

The 15 traffic deaths for the month of September, 1976, occurred in the following counties: Three each in Potter; Two each in Wise; one each in Donley, Deaf Smith, Lubbock, Dallam, Gray, Moore, Wilbarger, Knox, Parker, Wichita.

## Prices Good In Perryton's United Super Market!

QUANTITY RIGHTS RESERVED

**U**

PRICES GOOD THRU' OCT. 23RD

**UNITED**

**SUPER MARKETS**

BOOKER, TEXAS

**BEST BEEF**

**"UNITED'S TRU-TENDR BEEF!"**

ROUND **STEAK** ..... LB. **98¢**

BONELESS **SIRLOIN** ..... **\$1.38**

WASTE FREE

**ANIMAL WORLD**

**THIS WEEK \$1.99 EACH**

**VOLS. 10 & 11 WITH '3 PURCHASE**

**CASSEROLE PINTO BEANS**

**38¢**

1 LB. BAG

**SWIFT'S CHILI** **4** 303 CANS

WITH BEANS **59¢ VALUE**

**GAIN DETERGENT**

GIANT SIZE **\$1.19**

REG. \$1.41

**COMET RICE** **59¢**

73¢ VALUE 28 OZ.

**FINE FARE SALAD DRESSING**

**68¢**

32 OZ.

**FINE FARE TOWELS**

**39¢**

JUMBO ROLLS

COME JOIN OUR ..... **BICENTENNIAL BONUS BONANZA**

**"SHOP UNITED'S '88" CANNED GOODS SALE!"**

<b>PEAS</b> .....	KOUNTY KIST	<b>4</b>	303 CANS	<b>88¢</b>
<b>CUT GREEN BEANS</b> .....	PECAN VALLEY OR DEL HAVEN	<b>6</b>	303 CANS	
<b>TOMATOES</b> .....	DIAMOND	<b>4</b>	303 CANS	
<b>OUR DARLING CORN</b> .....		<b>4</b>	303 CANS	
<b>OUR DARLING CUT ASPARAGUS</b> .....		<b>2</b>	300 CANS	

**TEXAS FULL O' JUICE ORANGES**

**5 LB. BAG 75¢**

**McNEIL TOMATOES** 3-LB. TUB **89¢**

**CORN** FLA. WHOLE **7** FOR **\$1.19**

**PEPPER** CALIF. BELL **10** FOR **\$1.19**

**TURNIPS** TEXAS

Junior Troop #120 met Friday, October 15, in the Girl Scout House with leader, Mrs. Junior Hansen.

The girls made Halloween designs.

Refreshments of candy bars and cracker jacks were enjoyed by members, Sondra Younger, Cindy Hansen, and Mrs. Junior Hansen and by guest, Mrs. Lucille Crossland, who is Cindy's grandmother.

Next meeting will be October 23 in the Scout House.

**Girl Scout**

Goodman, and Yvonda Scroggs.  
Next meeting will be Oct. 25 in the Scout House.

**News**

Junior Troop #76 met Monday, October 18, in the Girl Scout House with leaders, Mrs. Kyle King and Mrs. Larry Evans.

Nut orders were taken and plans were discussed for the Halloween Carnival.

Discussion was held on the Cooking Badge, which the girls will be working on next week. Home Demonstration Agent, Peggy Marrs, will be at the meeting next week to give a cooking demonstration.

Refreshments were served by Becky Evans to members, LaTonia Phelps, Penny Cummings, Teri Thomas, Lelia

**Cub Scout Organizational Meet Set**

An organizational meeting for the Cub Scouts will be held at 7:30 p.m. Thursday, Oct. 21, in the Spearman Junior High auditorium.

Cub Scouts are for boys ages 8, 9 and 10.

All boys of this age and their parents are invited to attend. Ken Berquist, Boy Scout director, will be on hand to explain the program.

**Dahl Elected Delegate to National Meet**

A Gruver man and two others from the state of Texas have been elected to serve as delegates to the national meeting of the American Shorthorn Association to be held in Kansas City, Missouri, November 7th through the 9th.

Robert Dahl of Gruver will serve as chairman for the three man Texas delegation to the convention including Hart Farms Manager Buck Bardwell, Waxahachie; and Odis A. Lowe, Rockwall. The delegates were voted upon by all of the Texas members of the American Shorthorn Association with the delegate receiving the most votes named the chairman for the Texas group.

Robert has been appointed to serve on the A. I. Committee along with a number of other Shorthorn Breeders from all over the United States for the National Shorthorn Show and Sale and the annual meeting of the association.

The National Lassic Association will hold their annual meeting at this same time in Kansas City which will be attended by Mrs. Robert Dahl. The crowning of the National Lassic Queen will be an event of the November 8th meeting. Each state will send a queen candidate a young girl who is interested in the Shorthorn breed and the promotion of the

breed. At the national meeting and contest, a queen is chosen to represent the entire United States Shorthorn Association.

Both the national meeting of the American Shorthorn Association, the National Shorthorn Show and Sale, and the National Lassic Association annual meeting will be held in conjunction with the American Royal and the headquarters for the event will be the Muehleback Hotel in Kansas City.

**Hospital News**

Patients in Hansford Hospital are William T. Smith, Glen Lackey, Margaret She-

deck, Dorothy Wyatt, Rosalee Grotegut, Hazel Taylor, Allen Pierce, Lara Morris, Joe Day, Otis Dry, Forrest Cearley, Juliet Boyd and Ann Flowers.

Dismissed were Mary Sparks, Lelan Close, Elvin Garrett, Martha Steele, Denver Bench, Max Baggerly, Manor Stockstill, Mary Miesner, and Elva Lee Barkley.

Coaches: Windy Williams  
Chuck Steele  
Jimmy Kenney

Managers: Doug Guthrie  
Hank Sutterfield

Cheerleaders: Eadie Clemmons  
Cammye Gee

Sponsor: Mrs. Truelove

DON'T MISS SEEING THE 7th-8th - Freshmen and B team this Thursday.... Games start 5 p. m.

**JUNIOR HIGH**

- 1976-8TH GRADE  
10 Pat Steele  
12 Tal Jackson  
20 Phillip Paul  
21 Jamie Bulls  
22 Jeff Countiss  
24 Karey Bodey  
31 David West  
32 Felipe Lozano  
33 Mike Goff  
36 Kurt Spoonemore  
42 Kevin Kirk  
44 Kevin Russel  
45 Tylon Pierce  
50 Roney Clark

- 53 Calvin Pond  
54 Bill Cope  
60 Anselmo Vela  
62 Edward McIntyre  
63 Brad Pope  
64 David Pearson  
70 Hunter Novak  
71 David Hall  
72 Rocky Randall  
74 Shawn Swenn  
75 Greg Odegaard  
80 Wayne Meek  
81 Kenneth Brown  
83 Charles Zschlesche  
84 Jimmy Todd

**JUNIOR HIGH**

- 1976-7TH GRADE  
10 Monte George  
11 Rory Sheppard  
12 Steve Widener  
20 Mike Dixon  
21 John Shell  
22 Walter Esquibel  
24 Todd Wane  
25 Chuck Rigdon

- 30 James Scroggs  
31 Michael Vardell  
32 Joe Arjona  
33 Scott Alford  
40 Jerry Laird  
41 Jimmy Morley  
42 Roger Buchanan  
44 Stan Sherwood  
45 Kirk Davis  
50 Jimmy Haden

- 52 Van Hamilton  
53 Rusty Hazelwood  
54 Kenny Schaffer  
60 Scott Bullard  
61 Jimmy Snider  
62 Greg Miesner  
64 Scotty Evans  
65 Eddie Whitefield  
70 Kevin Rook  
71 Melvin Willis  
72 Jeff Lackey  
75 Tracy Vernon  
80 Roger Close  
81 Kyle Brack  
82 Mike Watts  
84 Horace Abbott  
85 Stephen Tindell

Coaches: Chuck Steele  
Windy Williams

Managers: Mike Asbill  
Joe Ned Turner

**SPEARMAN LYNX FRESHMEN**

- 67 Jose Avila  
23 Mark Back  
20 Kyle Beedy  
80 Chris Bodey  
71 Alvin Byers  
35 Mike Dennis  
73 Rickie Dowdy  
10 Dayton Edwards  
88 Andy Francis  
83 Brad Guthrie  
66 Greg Hazelwood  
40 Doug Hohertz  
50 Mike Kizlar  
33 Frank Lozano  
76 Kerry McMullan  
41 Kelly Mahanay  
68 Kemt Mahanay  
51 Clifton Morrison  
65 Ray Ortega  
31 Mike Owens  
45 Tony Papay  
64 James Pierce  
78 Clay Reid  
13 Rex Reid  
21 Charles Ross  
86 Dean Schaffer  
53 Karl Smith  
81 Tim Spoonemore  
37 Randy Stafford  
84 Jim Trinh  
28 Cole Umphress  
58 Ruben Vera  
74 Brent Ware  
63 David West

Managers: Mike Messer  
Ken Prachar

**SPEARMAN LYNX B-TEAM**

- 20 Ismael Vela  
74 Florencio Martinez  
41 Tony Truelove  
82 Steve Goff  
52 Cary Bridges  
73 Charlie Price  
42 Brent Connelly  
81 Kyle Nolner  
83 James Cummings  
63 Kirby Hargis  
62 Rick Alexander  
80 Gary McCalman  
60 Chris McClellan  
12 Eric Brown  
30 Billy Snider  
40 Tom Barber  
51 James Whitaker  
11 Mark Franklin  
21 Jerry Trout  
61 Benny Rodrigues  
31 David Pope  
75 Todd Brock

**Prices Good In Perryton's United Super Market!**

**ON THE BLOCK!**

**"UNITED'S TRU-TENDR BEEF!"**

T-BONE STEAK ..... LB. **1.58**

SIRLOIN STEAK ..... LB. **98c**

**"UNITED'S TRU-TENDR BEEF!"**

BONELESS STEW

"EXTRA LEAN" CUBES OF BEEF LB. **98c**

CUT FROM COUNTRY PRIDE GRADE "A" FRYERS

**TUB-O-CHICKEN** **38c**

CONTAINS: 2 BREAST QUARTERS  
• 2 LEGS • 2 WINGS PLUS  
• 2 THIGHS • 2 BACKS GIBLETS

LAZY "D"

**BACON ENDS**

**3 LB. BOX \$1.39**

CUBED

**STEAK**

UNITED'S TRU-TENDR BEEF

**\$1.69**

**PICK-O-CHICK** **68c**

CONTAINS: 2 SPLIT BREASTS  
3 THIGHS 3 DRUGSTICKS

TURKEY

**DRUMSTICKS** ..... LB. **29c**

STOVE TOP

**DRESSING MIX** ..... **59c**

6-OZ. BOX ASST. FLAVORS

**HENS** ..... LB. **59c**

COUNTRY PRIDE GRADE "A" 5 TO 7 LB. AVG.

KOBEY'S FRENCH

**FRIES** ..... **78c**

FOR SNACKS REG. 9 OZ. CAN 89c

STERNO

**LOGS** ..... **1.09**

REG. 18 OFF LABEL \$1.19

**PLEDGE** ..... **78c**

REG. 7 OZ.

COOK BOOK

**DOUGHNUTS** ..... **59c**

OLD FASHIONED REG. 79c

**PATIO** \*BEEF OR CHEESE ENCHILADA \*MEXICAN \*COMBINATION

**DINNERS** ..... **48c**

REG. 69c

**FISH STICKS** ..... **68c**

GORTON REG. 95c 9 OZ.

**COBBLERS** ..... **88c**

STILLWELL APRICOT REG. \$1.29 2 LB.

**"HEALTH AND BEAUTY AIDS"**

REG. \$1.79 7.5 OZ.

**RIGHT GUARD** ANTI PERSPIRANT

BRECK ALL VARIETIES 40' OFF REG. \$1.19 15 OZ.

**SHAMPOO** ..... **99c**

FINAL NET REG. OR UNSCENT. REG. \$1.44

**HAIR SPRAY** ..... **\$1.29**

8 OZ.

WE RESERVE THE RIGHT TO LIMIT QUANTITIES

**U**

PRICES GOOD THRU OCT. 23rd

**UNITED SUPER MARKETS**

BOOKER, TEXAS

WE GIVE \$1 GREEN STAMPS

**Auditions Being Taken For Talent Show**

Roger Brown, head of the music department at Frank Phillips College has announced that he is now taking applications for auditions for the "Fall Frolics", the third annual talent show to be presented by the department. "We welcome interest and applications for auditioning from out-of-town groups and

individuals, as well as those in the Tri-city area," he said. "And we think that this year the Fall Frolics will be bigger and better than ever." Interested persons may come by the College Bookstore to obtain application forms, or may call Roger Dale Brown, 1413 Lancelot, Borger. After

completing the forms, they may then present them to Brown, who will set up a time for auditioning. The "Fall Frolics" show will be presented November 11 in the College auditorium, at a time to be announced after the number of entries has been completed.

**Mrs. Mires Is Sorority Host**

Refreshments were served by Mrs. Mires to guests, Mrs. Richard Pipkin, Mrs. Joe Clement, Mrs. Jim Brown, Mrs. Carlos Kenda, and Mrs. John Hutchison, and to members, Mmes. Monty Blackman,



A scene from the drama class production of "The Haunting of Hill House" which they will present at 8:45 p.m. on October 23. Tickets may be purchased in advance or at the door. See you there.

**SALE The Dude**



**65¢**

The Dude. Texas tasin' chicken-fried meat, crisp fresh lettuce, and red, ripe tomato, sitting pretty in a golden bun. At participating stores.



**THURSDAY THRU SUNDAY ONLY OCTOBER 21, 22, 23 & 24**



\*Trademarks of the Texas Dairy Queen Trade Assoc. Copyright 1976, Texas Dairy Queen Trade Assoc.

David Collins, Jim Evans, Gilbert Harnish, Jerry Holton, Butch Lasater, Monte Lesly, Ronnie Lusby, Steve Mathews, Dennis Nelson, Bob Pearson, Vernon Pipkin, Dan Ralston, Phillip Renner, Phil Sanders, Craig Schumann, Charles Shieldknight, and Gary Taylor. Next meeting will be a Preferential Coffee, October 21 at the home of Mrs. Dennis Nelson.

**United Presbyterian Church News**

After-game ecumenical youth fellowship Friday night will be at the First Baptist Church. Presbyterian Youth will entertain the Luther League from Faith Lutheran Church in

a hayride Saturday, October 23, at 6:00 p.m. There will be games and refreshments at the church when the group returns. There is a Sunday Church

School class for every age group every Sunday at 9:45 a.m.

"Don't Be A Goose" will be the subject of Pastor Ed Freeman's children's sermon and

"The Making of a Christian Family" will be the subject of his adult sermon at the service for the public worship of God on Sunday, October 24 at 11:00 a.m.

**GET WITH THE SKI SET**

**Ladies Aspen Ski Wear**

- Sweaters Jackets
- Suits Stretch Pants
- Warm Up Pants
- Bib Overalls
- All Colors



Long Sleeve T-Shirts

Mock & Turtle Neck

**JEANIE'S SPECIALITY**

Box 425 SHOP 510 N. Deahl  
806-274-2245 Borger, Texas

Across Street First Natl Bank

**Jack Hightower believes in action . . . not empty words**

When the voters of the 13th District sent Jack Hightower to Congress two years ago he pledged to represent all of them fairly and honestly. He promised to work full-time at the job. **HE HAS KEPT THOSE PROMISES.**



**HERE IS WHAT THOSE WHO KNOW JACK HIGHTOWER'S RECORD SAY ABOUT HIS EFFECTIVENESS**

"... as one of the original co-sponsors, I again thank you for your splendid contribution which has brought about this most needed improvement in the estate tax law . . ."  
*Omar Burleson, Member of Congress*

"... your tremendous job on the floor and prior to the passage of H.R. 8410, the amendments to the Packers and Stockyards Act, are most deeply appreciated. It certainly was apparent to the people in the gallery and elsewhere that you know the subject matter well and handled the situation beautifully . . ."  
*C. W. McMillan, Executive Vice-President, American National Cattlemen's Assn.*

"... this award (Guardian of Small Business) is intended to acknowledge your efforts to protect small, independent businessmen and women and to maintain an economic environment in which they can grow and prosper. It is also based on the outstanding voting record you compiled on small business issues during the 94th Congress."  
*Wilson S. Johnson, president, National Federation of Independent Business*

"... Price better think twice before he spends more money for a big campaign because as it stands now he's going to be fighting a losing battle if he tosses his hat in the ring. . . Hightower has read his constituency well, and he's doing exactly what his voters want him to do, but he's also spent a session learning the ropes and he's shown he's a better informed thinker . . ."  
*Carroll Wilson, columnist, Canyon News, Jan. 18, 1976*

"... one of Jack Hightower's primary legislative projects has become the law of the land . . . it was H.R. 8410, an amendment to the Packers and Stockyards Act which Hightower co-sponsored in the House, and he was the author of its principal provision—prompt payment . . ."  
*Joe Brown, farm editor, Wichita Falls Record-News, Sept. 16, 1976*

"... thank you for your support of the Beef Research and Information Act, and especially for your fine statement on the House floor . . . the people are well aware of your leadership and your untiring efforts to help the cattle industry . . ."  
*O. J. Barron, chairman, Beef Development Task Force*

"... Of the 75 first-year Democrats, he is something of an anomaly—the most conservative of an outspokenly liberal group, one of the most careful and quiet of a largely shoot-from-the-hip crowd . . . Almost everyone on the Hill knows about Jack Hightower . . . the Congressman who votes his conscience, represents his district by organic instinct, but is capable of rising above parochial considerations when national interests are at stake. If that weren't enough, he lives a Spartan existence in a one-room efficiency apartment, sleeps on a couch that unfolds into a bed, washes his own socks, and drives an old car to work. The same qualities that made him an influential state senator for ten years—scrupulous honesty and an appetite for hard work—have served him well in Washington, but these alone do not explain the high regard in which he's held. In a town overpopulated by small people with large egos, it is a relief to find one for whom the reverse is true . . ."  
*Texas Monthly, May, 1976*

That's the kind of Congressman Jack Hightower has been since he took his oath in January 1975. It's why he has earned the respect of his colleagues and the confidence of people throughout this district . . . from both political parties. Jack Hightower, Democrat, has earned a second term. Vote November 2.

Printed and authorized by Hightower for Congress Committee, Jim Hughes, Treasurer, Box 1973, Vernon, TX 75384.

**Greetings To All Cattle Producers**

Friday October 15th was a good day for a Cattle Auction in Guymon, Oklahoma. The action began at 11 A.M. (C.D.T.) and was completed at 7:30 P.M. During that time 2717 Cattle and Calves were sold thru the Arena.

Buyers and Consignors were present from several states. A good active sale prevailed thru out.

We are now taking consignments, large or small, for every Friday for the balance of October and also for November. Advise us of your plans.

**NOTICE**  
Our next "Special Calf and Feeder Sale" will be Friday, October 29th, commencing at 10 A.M. on that date.

For consigning Cattle contact Wayne Roberts of Elkhart, Kansas or Don Prather of Boise City, Okla. or Bill Blackmore or Cliff Augustine at the Guymon yards.

Remember this is the Cattle Auction with "Action"

**Panhandle Livestock Comm. Co.**

Ph. 405-338-3378 Guymon, Oklahoma P. U. Box 789 73942