

Lynxettes travel to Canyon today

Today (Thanksgiving Day) the Spearman varsity Lynxettes will be in Plainview participating in the Plainview Queens Classic at the Wayland Baptist University campus. This is Spearman's first appearance in PQC although this is the 13th annual run for the high-lighted tournament. The Lynxettes will begin their game against Canyon at 1:30 p.m. today.

The tournament includes teams assembled from outstanding high school and college brackets. The high school division features three-time defending AAAAA state champ Levelland and Class A Titlist Nazareth, as well as defending PQC champion, Canyon, which handed Levelland its only loss of 1987-88 (in the PQC title game). Three of the other five high school entrants were regional or area playoff finalists a year ago.

In the high school field, last year's tournament had no less than four state champions, this year's field may prove to be the best balanced in the history of the tournament.

Levelland's Lady's have drawn the top seed in the eight-team bracket. Coached by Dean Weese, coach for several years in the Spearman Independent School District and with several state champions teams, is expected to put on another fine showing. Their last year's record was a sparkling 35-1 record and they won the state title. Weese has 892 career victories and will shortly be in line for number 900 after the PQC.

Others in the high school division of the tournament include Nazareth, coached by Sandy Heiman. The Swiftettes were 34-2 for another state title last year. Three all-district performers are gone from the team, but five lettermen are returning. The Swiftettes started out on the right foot with a big win over Morton on Nov. 15.

Canyon, the first team the Lynxettes will be up against in the tournament, will be trying for its third consecutive win of the PQC.



These first grade students had memorized their lines as they presented a entertaining Thanksgiving program last Tuesday. As Eddie Martin, music teacher noted, the children reminded the parents of what they had to be thankful for, the children. Staff Photo by Karen Goodman

Headed up by Coach Joe Lombard, the Lady Eagles have started this season with a big win over Amarillo High on Nov. 15. Canyon dropped down to AAA ranks this year so they won't be up against Levelland this year, who they lost to last year in the battle for the Region 1-AAAA title.

Slaton High School, coached by Chris Kennedy, will be in the PQC tournament for its ninth year this season. The Tigrettes won the state title in 1987 and made it all the way to Region 1-AAA title holders in 1988 season before bowing out.

Also among the high school teams are Plainview, Lubbock Monterey, and Hale Center. Plainview, coached by Kathy Harston had the 1987 Class 5A state championship team. Lubbock Monterey are regional semi-finalists

from the last season, coached by Dale Pectool. And Hale Center with Coach Melynn Hunt have eight returning lettermen back on the team. They finished third in District 3-AA last season. The winner of the Spearman

Canyon game will go on to meet the winner of the Levelland - Hale Center game in a Friday match set for 3:30. The tournament is scheduled to end after the championship game to be held Saturday at 7 p.m.

Lynxettes win again

The Spearman varsity Lynxettes traveled to Channing last night to gain another win for their record as they beat Channing 50-39.

At halftime the score was a close 24-22, as Channing only needed one field goal to tie the Lynxettes. In the fifth quarter the Lynxettes took control of the ball and added 14 points to their score, while Channing could only muster five.

During the last quarter, Spearman was called on a lot of fouls and Channing racked up seven points at the free throw line, compared to Spearman's two points at the line that quarter. This was not enough for Channing though, with the Lynxettes still hitting their field goals. Spearman took the win 50-39.

High scorer for the Lynxettes was Krista Kirkland with 13 field goals and two free throws for a total of 28 points. Michelle Cook was next in score for the Lynxettes with eight points. Then Heather Murrell was next in points, gaining five for the team, Joy Gafford with four, followed by Carly Shield-knight with three and Ginger Pearson with two.

The leading scorer for Channing was Shackelford who put 16 points on the scoreboard for Channing.

The Lynxettes will be in Plainview today to compete in the Plainview Queens classic this weekend. Next Tuesday they will play Dalhart in the Spearman

varsity gym after the junior varsity games which begin at 5 p.m.

Manor fund kicks off with donations

The Hansford Manor "Empty Stocking Fund" has received its first two donations this year. The Spearman Reporter will keep the community informed as to the progress of the fund.

Anyone wishing to contribute is reminded that the donations are tax deductible and may also be made as a memorial gift. Those wishing to remain anonymous may acknowledge that when they contribute.

Donations may be made to either Carol Hergert or Jody Harnish at the Hansford Manor, or mailed to the Hansford Manor, 707 S. Roland Spearman Tx. 79081.

The fund is used to purchase needed items for Hansford Manor residents who do not have the means to purchase the items themselves. Items purchased include such things as leg warmers, slippers, or extra blankets or toiletries.

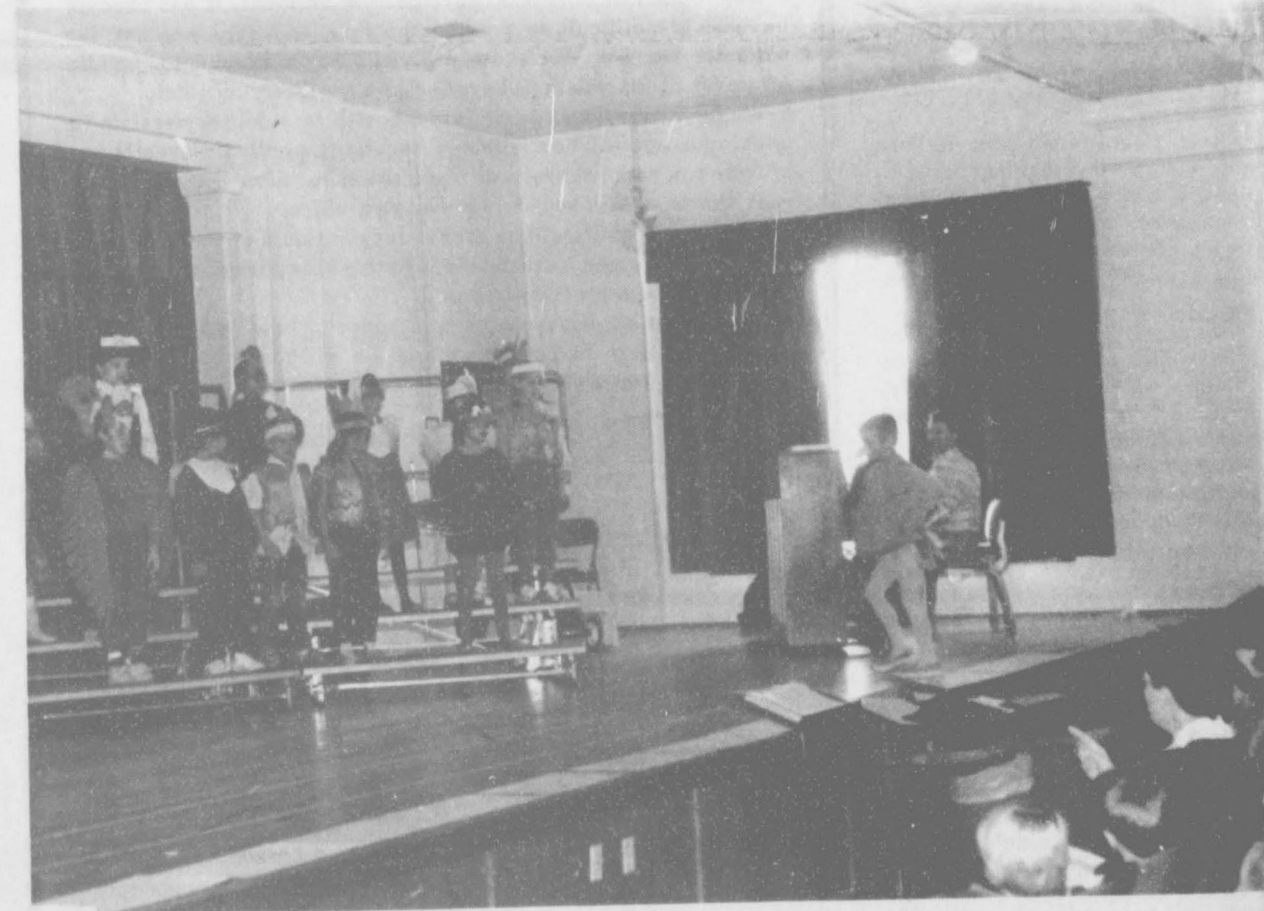
Previous Balance	0
Contributions	
Mr. Thane McCloy	\$20
Mary Gillispie	\$20
Total to date	\$40

The Spearman Reporter

25¢ Per Copy

6 Pages

Volume 81, no. 4 YOUR HOMETOWN NEWSPAPER Thursday, November 24, 1988



This Thanksgiving turkey had practiced his strut as he came on stage at the Thanksgiving play that two Spearman elementary classes presented last Tuesday. Many "Turkey Mothers" seemed rightfully proud as they watched the production. Staff Photo by Karen Goodman

3 city residents go to 79th PTA convention

Randy and Teresa Kirk and Betty Womble, all of Spearman PTA, were among the 3,000 PTA members and guests who attended the 79th annual Texas PTA Convention, Nov. 18-20, in Arlington.

State President Kathryn Whitfill, Pasadena, presided at the four general sessions in which delegates from 2,500 local PTAs representing 800,000 members participated.

Featuring the Theme, "Baseball, Hot Dogs, Apple Pie & PTA," the meetings and workshops were held at the Arlington Convention Center and the Sheraton Centre-Park Hotel. PTA'ers conducted their organization's annual business meeting, voted on legislative position, adopted resolutions, and elected five new officers to the executive board.

Spearman PTA was actively involved in writing a resolution and arguing for the resolution at the convention. The topic was local control of school districts in the area of school financing. The measure was passed by the delegate body and will now enable the lobbyist for Texas PTA to work for the passage of legislation which will preserve and promote local control of school districts.

Some 60 workshops, which included such topics as AIDS education, parenting, leadership, at risk children, drug/alcohol abuse prevention, and educational trends, were provided for the delegates. In addition, delegates visited numerous exhibit booths and displays which displayed a wide range of commercial and nonprofit educational materials, equipment and publications.

Public auction to be held at Panhandle

A public auction will be held Wednesday, Dec. 14, by the General Services Administration (GSA). The sale will be held at the County Agriculture Building, appx. 8 blocks East of Hwy 207 on 3rd St., Panhandle, beginning at 9:30 a.m.

Items to be sold include one AMC sedan; two AMC station wagons; 13 Dodge pickups; 11 Chevrolet pickups; one Dodge van; three Chevrolet vans; two IHC vans; eight Chevrolet Suburbans; one IHC bucket truck; one IHC stake dump truck; and two truck tractors. Items are located at the Mason & Hangar Pantex Plant, appx. 25 miles NE of Amarillo, on old Hwy 60., from 8:30 a.m. to 3:30 p.m. on Dec. 12-13, 1988, and from 8 a.m. to 9 a.m. only, on December 14.

Everyone who is at least 18 years of age is invited to participate in the sale, except employees of GSA. For further information and sales catalog, call (817)334-2352 and ask for Sale 89-16.

County rivals split four games

The Spearman Lynxettes and the Gruver Lady Hounds split four games in Gruver, Monday night Nov. 21, with the Lady Hounds taking the two early games - but the Lynxettes came back to win the two "prime time" games.

In the first game of the evening, the Gruver 8th grade "B" team surged in the fourth quarter to break open a tight game, and went on to defeat the Lynxettes 22-9. Gruver had a very balanced scoring attack, as all seven Lady Greyhounds tallied points in this game. Sonya Tindell, for Spearman, led all scorers with 6 points, while Brendi Brown and Crystal French each shot home 5 points for Gruver.

The second game was the 7th grade match, and the Lady Hounds again broke open a close game late, and went on to win 28-19. Anissa Ryan had 14 points, and Sara Jones added 8 more for Gruver, while Trixie Pearson scored 8 points to lead the Lynxettes.

In the third game of the night, the Lady Hounds 8th grade got some quality experience, as they played a really tough Lynxette

team. Spearman scored the first 14 points of the game, and went on to a 40-11 victory. Holly Jarvis tallied 10 points for the Lynxettes, to lead all scorers, and Holly Venneman scored 8 points to lead the Lady Hounds.

In the final game of the night, the Spearman Lynxette 9th grade defeated the Lady Hounds 9th grade 45-27. Both teams had balanced scoring, but one key stat in this game was turnovers. Gruver turned the ball over twice as many times as the defensive-minded Lynxettes. Mendy Lasater led Spearman scoring with 13 points, while Stacey Williams led Gruver with 8 points.

All-in-all it was an enjoyable night of basketball for fans and players alike. I even saw an ex-Hound wearing a Spearman booster cap - what will we come to next!

SPEARMAN 8th B [G] 4 6 8 9
GRUVER 8th B [G] 4 12 14 22

Spearman-Sonya Tindell-6, Randle Renner-3.

Gruver-Brendi Brown-5, Crystal French-5, Anjelica Munoz-4, Nan-

cy Alvarez-2, Akiko Bort-2, Angela Sistrunk-2, Mariquit Viola-2.

SPEARMAN 7th [G] 4 9 11 19
GRUVER 7th [G] 8 10 16 28

Spearman-Trixie Pearson-8, Carrie Pearson-6, Nikki Strawn-2, Rainy Whittington-2, Tommi Latta-1.

Gruver-Anissa Ryan-14, Sara Jones-8, Brena Hayes-2, Wynn Maupin-2, Traci Smith-2.

SPEARMAN 8th [G] 14 22 32 40
GRUVER 8th [G] 0 5 5 11

Spearman-Holly Jarvis-10, Gwen Benson-6, Laura Pearson-6, Adrian Blackburn-4, Sara Sanders-4, Kimbre Townsend-4, Mary Cook-2, Michelle Garnett-2, Jill Lusby-2. Gruver-Holly Venneman-8, Kim Boone-2, Traci Crawford-1.

SPEARMAN 9th [G] 10 26 32 45
GRUVER 9th [G] 7 17 22 27

Spearman-Mendy Lasater-13, Melodie Schumann-12, Shannon Holton-11, Tamri Townsen-9. Gruver-Stacey Williams-8, Jill Stedje-7, Meredith Runyan-6, Sandra Royval-5, Misty Payne-1.



Standing on the edge of the roof, these workers at the Spearman Elementary School are putting some finishing touches for the awning work on the roof before they get the rest of the weekend off to enjoy the Thanksgiving Holidays. The job superintendent

reported that construction is coming along almost up to schedule with only a few delays, and most of that was due to the extremely high winds Spearman received last week.

Staff Photo by Karen Goodman



Buckle Up
For Those
Who Depend on You
Texas Coalition for Safety Belts

Varsity Lynx beat Channing

The Spearman Lynx varsity boys traveled to Channing and defeated the Channing varsity with a score of 80 to 63. Statistics were unavailable at presstime of the Spearman Reporter.

Obituary

I.V. PIERCE

I.V. Pierce, 53 died Friday, Nov. 18.

Services were held Monday, Nov. 21 at Spearman Church of Christ with Gaylord Cook, pastor of Dalhart Church of Christ, and John Scott, pastor, officiating. Burial will be at 4 p.m. today in Center Plains Cemetery near Cotton Center by Boxwell Brothers Funeral Directors.

Mr. Pierce was born in Amherst. He married Darlene St. Clair in 1957 at Muleshoe. He moved to Spearman in 1960 from Muleshoe. He held Hansford County ASCS office for 17 years. He had worked for Maxus Energy Corp. since 1982, as a pumper. He was a member and elder of Spearman Church of Christ.

Survivors include his wife; Darlene of Spearman; a daughter, Darlita Ellis of Midland; a son, James Pierce of Boston, Mass.; a brother, Leroy Pierce of Wilcox, Ariz.; and two grandsons.



Rileys celebrate 55th anniversary

Mr. and Mrs. Earl M. Riley of Spearman celebrated their 55th wedding anniversary with a family dinner party Nov. 16 at Spearman.

The event was hosted by the Riley's daughter and son-in-law, Mr. and Mrs. Pat L. Northcutt, and three of the Riley's grandchildren, Tab Riley Smith of Houston, Timothy L. Smith and Jamie Anne Smith. Helen Buchanan Fisher, the couple's maid of honor, was the guest of honor.

Riley married the former Hollie Brewer Brown on Nov. 16, 1933 at Spearman. They have lived in Spearman since the town was established.

Riley is a retired farmer and rancher. Mrs. Riley is a homemaker.

The couple has been active in church, school and civic and community affairs. They were co-organizers of the Rolling Plains Wagon Train in 1961 and have traveled in covered wagons that

were used by their parents when they settled in the Texas Panhandle in the 1800s.

The Rileys were active members of the Texas Flying Farmers in the 1940s and 1950s. Mrs. Riley has been an active member of the Dahlia Flower Club and Snapdragon Flower Club since 1933. She was the first woman in Hansford County to become a licensed pilot in 1947. Riley is a member of the Texas Society of the Sons of the American Revolution, Panhandle Plains Chapter.

Children of the couple are Ann Riley Northcutt and the late Barton Riley.

The couple has five grandchildren, three mentioned previously and Mrs. Jim (Rhonda) Bonham of Spearman and Ron Riley, a senior in college at San Marcus. And they have two great-grandchildren, Amanda and Cory Bonham.

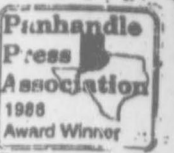
State employees host holiday meal

State Comptroller Bob Bullock said Wednesday that agency employees, with the aid of local businesses, sponsored a Thanksgiving dinner for Austin's homeless on the Capitol grounds Tuesday, Nov. 22.

About 2,000 homeless men, women and children were at the dinner, which featured turkey, dressing, vegetables, milk and cookies, Bullock said.

About 23 local businesses have contributed food and other goods for the project, according to Bullock.

The Spearman Reporter



Your Hometown Newspaper

USPS 509660

Spearman, Tx. 79081

213 Main, Box 458, 659-3434

Published Weekly at
213 Main, Spearman, Texas

Owned and Operated by:

Texas Independent Newspapers, Inc.

19906 Encino Grove, San Antonio, Tx 78259

Second class postage paid at Spearman, Texas 79081.

Any erroneous reflection upon the character of any person or firm appearing in these pages will be gladly and promptly corrected upon being brought to the attention of the management.

PUBLISHER: Karen Goodman

Subscription Rate: Hansford, adjoining counties, combination with the Hansford Plainsman \$19.95; non-adjointing counties, \$24.95 annually.

Postmaster: Send address changes to Spearman Reporter, Box 458, Spearman, Tx. 79081.

The publisher reserves the right to revise or reject at its option any advertisement which it deems objectionable, either in subject or phraseology, or which it may deem detrimental to its business.

CARD OF THANKS

To our many friends and loved ones, we express our heartfelt gratitude for expressing your sympathy in so many beautiful ways. Your thoughtful acts are too many to mention but they have not gone without our gratefulness.

Little Tiffanies Christmas Sale

Thur. Dec 1
thru
Sat. Dec. 3

65% off

10:00 a.m.
to
5:30 p.m.

All Diamond & Precious Stones
All 14K Gold Jewelry & Chain

FRIENDS

To be sure this is a heartfelt note of "Thank You" to my family, my friends and relatives from far and near. You made my 100 years celebration so happy the tears of rejoicing fell down my cheeks. So as words fail to tell you the joy that was mine on that wonderful day I am asking the dear Lord to bless you; as His great blessings are numerous.

In His name I am
Mrs. E.A. Gruver

Birth announcement

Frank and Tina Lozano of Spearman proudly announce the arrival of a new daughter, Jordanna Rachelle. She came into the world on Sunday, Nov. 20 at 9:25 p.m. She weighed seven pounds, 3/4 ounces and was 20 and 1/2 inches tall.

Jordanna will join older brother Jarred of the home. Her grandparents are Fransico and Petra Lozano and Jim and Beth Baker.

SPEARMAN FAMILY CLINIC
P.O. BOX 265
Spearman, Texas 79081

Dear Patients and Friends:

We are sorry to have to announce the closing of our Spearman Clinic.

Due to the loss of several physicians in Perryton, it has become increasingly difficult to provide the time and care we feel our patients deserve. We however, will be available to handle whatever needs you may have through our Perryton Clinic.

We have every confidence in the health care delivery system in Spearman, and will be available through the month of November to provide you with your records if you so desire. After December 1st, your charts will be kept in our Perryton office.

Past due accounts will be carried for a maximum of thirty days. If further arrangements are not made in this time period, they will be turned over to a collection agency.

It has been a great pleasure and honor to have made so many new friends here in Spearman and we will miss the hugs and handshakes, but we won't be far away and look forward to seeing you in Perryton.

Sincerely,
Rick A. Siewert, D.O.
Manon E. Childers, M.D.



Announcing
BIS



Coming to

MAIN
STREET
STORE

GRUVER, TEXAS
Faye, Kathy, Judy
506 MAIN • 733-5040

It's Thanksgiving, and We'd Like to Express Our Thanks!

To those determined people who some 50 years ago, had the vision and persistence to form rural electric cooperatives.

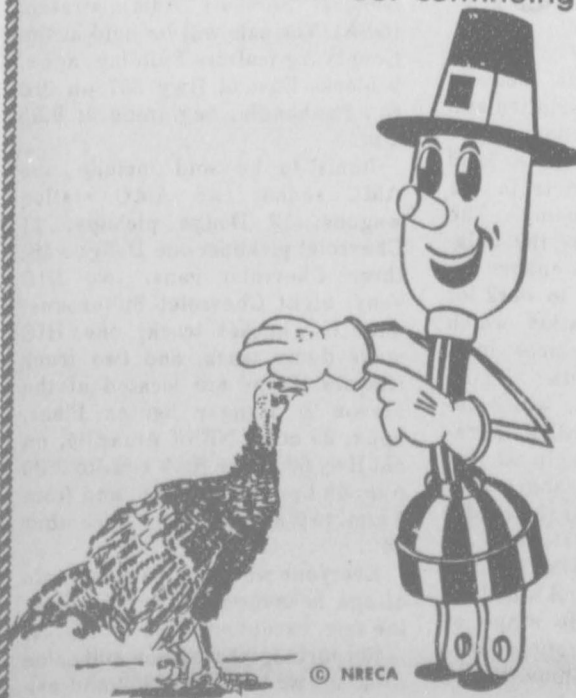
To our members - the consumers - who care about this system and keep it responsive to changing needs.

To our communities, for being interested and concerned about our progress.

To the cooperation of people in partnership which keeps the cooperative way strong and progressive.

And to a special time for families and friends to gather together to count blessings and enjoy the freedoms we have here in America.

We maintain our continuing commitment to provide the best possible electric service, to stay alert to your needs, and to work in the best interest of our communities and our nation.



Happy Thanksgiving from the
Board of Directors, Manager
and Employees of ...
North Plains Electric
Cooperative, Inc.

Special Holiday Recipe Section From Local Kitchens

BAKED CORN PUDDING From the Kitchen of Marva Hohertz

2 eggs, beaten
1-7 to 8 oz package corn muffin mix
1/2 cup oleo, melted
1-8 oz can cream-style corn
1-8 oz can whole kernal corn, drained
1-8 oz carton sour cream
1 cup shredded Swiss cheese
black pepper
Mix eggs, muffin mix, oleo, corn and sour cream. Spread in 7 X 11 baking dish. Bake at 350 degrees for thirty minutes. Sprinkle with cheese and pepper. Bake 5 to 10 minutes more. Serves 8

MICROWAVE VEGETABLE DISH From the Kitchen of Dorothy Baggerly

1 16 oz pkg frozen broccoli
1 16 oz pkg frozen cauliflower
8 oz jar Cheese Whiz w/jalapeno
2 oz jar diced pimento
1/2 cup chopped celery
1 can french fried onion rings
1 can cream celery soup
Put frozen vegetables and celery in glass baking dish, cover with plastic wrap. Cook for 13 minutes on High - Stir once. Drain.
Mix cheese whiz, soup, pimentos and pour over the partially cooked vegetables. Cook, uncovered, 8 minutes. Place onion rings on top and cook 2 minutes.

CHESTNUT DELIGHT From the Kitchen of Comfort Winders

1 pkg frozen broccoli
1 can water chestnuts
1/2 cup chopped celery
1/2 cup chopped bell pepper (optional)
1 cup Minute Rice
1/2 cup chopped onion
1-4 oz jar chopped pimento
1 small jar Cheeze Whiz
1 can cream of chicken or mushroom soup
Mix all ingredients then bake at 350 degrees for 30 to 40 minutes in a covered dish.
No need to cook broccoli or rice beforehand. Chop or slice the water chestnuts and use all of the water in the chestnut can.

HOMINY CASSEROLE From the Kitchen of Debbie Herrington

3-14 1/2 oz cans hominy (drained)
1-8 oz jar cheez whiz
1-can cream of mushroom soup
1-4 oz can green chilies (chopped and drained)
Mix all above ingredients in a baking dish. Bake in preheated oven at 350 degrees for 25 to 30 minutes or until bubbly.

VEGETABLE CASSEROLE From the Kitchen of Marva Hohertz

1 can whole kernal white corn (drained)
1 can french cut green beans (drained)
1 can cream of celery soup
1/2 cup sour cream
1/2 cup chopped celery
1/2 chopped bell pepper
1/2 cup grated cheese (sharp)
1/2 cup dry onions (in jar)
Mix all of the above and pour in greased casserole. Bake at 350 for 30 minutes.
TOPPING
1 roll Ritz Crackers (crushed)
1/2 cup grated cheese (sharp)
1 stick melted butter
Melt butter, stir in cheese and crackers. Mix well. After baking 30 minutes add topping and bake 15 minutes more. DO NOT SUBSTITUTE white corn and dry onion.

EGGPLANT CASSEROLE From the Kitchen of Lorene Burke

1 large eggplant (16 oz)
or 2 medium eggplants (8 oz each)
dash of Accent
1 small can milk
1 cup dry bread crumbs
1/4 cup whole milk
2 eggs, slightly beaten
1/2 stick of margarine
1 Tbs chopped pimentos
salt and pepper to taste
2 tsp sage
2 oz grated cheddar cheese
1/4 cup each of celery, green pepper, and onion-chopped fine.
Peel eggplant and soak 2 hours in salted water. Soak bread crumbs in milks. Saute celery, green peppers and onions in margarine until tender. Boil eggplant until tender, then mash. Mix all ingredients together until well blended. Top with the cheese and bake at 350 degrees about 35 to 40 minutes or until golden brown.

OKRA PATTIES From the Kitchen of Joyce Johnson

For about 2 cups fresh sliced okra, mix:
3/4 cup flour
1/2 tsp baking powder
salt and pepper
(self rising flour, salt and pepper may be used).
Add enough water to make a medium stiff dough. Patties will be tough if dough is too stiff and soaked with oil if dough is too soft. Drop by tablespoonfuls into oil that has been heated to 375 to 400 degrees. When brown on one side, turn and brown on other side. Remove from hot oil and serve while warm.

VEGETABLES ITALIANO From the Kitchen of Delphine Kopke

4 tbsp green onions, chopped
2 tbsp butter or oleo
2 cans (8 oz) stewed tomatoes
1/8 tsp thyme
dash pepper
2 cans (16 oz) cut green beans
3 tsp (heaping) cornstarch
Saute onion in butter in large skillet. Add tomatoes, thyme, pepper. Drain green beans, reserving liquid from one can only. Dissolve cornstarch in reserved liquid; add to tomatoe-onion mixture. Cook over low heat, stirring constantly until thickened. Add beans, heat and serve.

INDIAN CORN From the Kitchen of Sharron Swan

20 oz frozen corn (thawed)
1 bell pepper, chopped
1 cup celery, chopped
1 large onion, chopped
2 tsp salt
1 tsp black pepper
1 tsp mustard seed
1/4 tsp turmeric
1/4 cup wine vinegar
1/2 cup salad oil
1 small jar pimentoes
Add ingredients to thawed corn. Mix Well and refrigate several hours or overnight before serving.

VEGGIE BARS From the Kitchen of Joyce Johnson

Take 1 package Crescent Rolls--roll thin and spread on jelly roll pan - 10 X 13. Bake in a 375 degree oven 5 to 8 minutes (until very light brown).
Mix together 2 ounces cream cheese and 3/4 cup Miracle Whip. Spread on cooled dough.
1 package Hidden Valley vegetable salad dressing (dry) and mix together with the following:
3/4 cup each chopped very fine:
green pepper
broccoli
onion
cauliflower
mushrooms
carrots
cheese (American)
Spread mixture on the cheese spread. Press down. Chill. Cut in squares.

HOMINY CASSEROLE From the Kitchen of Wanda Brown

3 - 15 oz. cans white hominy
3/4 stick oleo
8 oz carton sour cream
1 - 4 oz can green chilies (chopped)
1/4 lb grated sharp cheddar cheese
1 small grated onion
Melt oleo in 1 1/2 quart baking dish. Combine remaining ingredients and Bake at 350 degrees for 20 to 30 minutes. Really good if made the night before and put in frig to season. Bake just before serving.

BROCCOLI CASSEROLE From the Kitchen of Debbie Herrington

1 cup cooked instant minute rice
2 pkgs frozen broccoli
1 medium chopped onion
1 can cream of mushroom soup
1 can cream of chicken soup
1 small jar cheez whiz
Salt and pepper to taste
Cook rice, set aside. Cook broccoli and onion until tender (drain). Add soups, cheese and rice. Bake at 350 degrees for 20 minutes or until bubbly.

VEGETABLE BREAD From the Kitchen of Mary Schumann

Saute in 2 squares of butter or oleo:
3/4 cup each of the following:
onion
celery
sweet bell pepper
sweet red pepper
1/2 lb sliced bacon fried crisp and broken
1/2 cup parmesan cheese
3 cans bisquits, quartered
Mix all together and bake in bundt pan 30 minutes at 350 degrees.

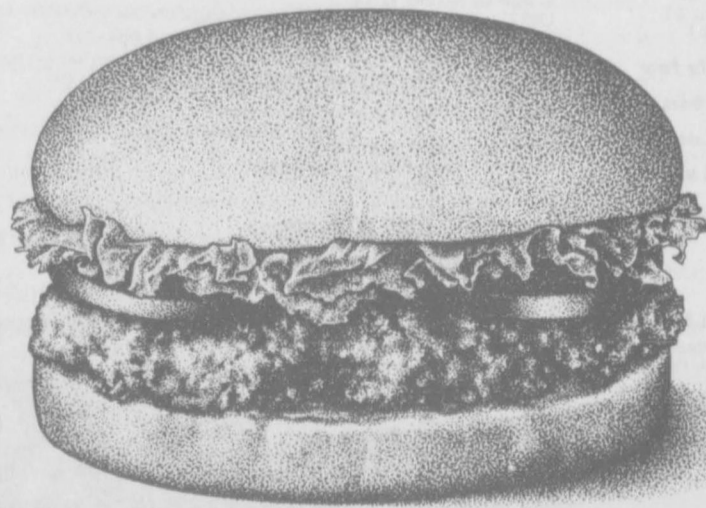
CHEESY POTATOES From the Kitchen of Sharron Swan

4 to 5 potatoes
1 large onion
1/2 cup butter
small can cream
1/4 lb Velveta Cheese
1 small jar pimentoes
Boil potatoes with jackets on. Cool and cut in chunks. Saute 1 large cut up onion in 1/2 cup butter, 1 small can milk, cheese, stir until cheese melts. Add 1 small jar of pimentoes. Add to potatoes and stir until well mixed.

CORN PUDDING From the Kitchen of Wanda Brown

1 small can diced green chilies
1/2 cup corn meal (yellow)
1 cup milk
2 eggs (beaten well)
1 tsp salt
1/2 tsp baking soda
1 can cream style corn
1 lb. grated longhorn cheese
1 onion chopped
1/4 cup bacon drippings or 1/4 cup oil.
Mix all above and bake in greased 9 X 13 X 3 pyrex dish. Bake at 350 degrees for 45 minutes.

MEET THE DUDE® AT A GET-ACQUAINTED PRICE.



\$1.29*

This DUDE's the best chicken fried steak sandwich in the country! With a quarter-pound** of 100% pure beef, served up fresh and hot with your favorite fixin's. You'll be friends forever!
ON SALE NOVEMBER 14-27, 1988

THIS IS **DQ** COUNTRY

*Reg. TM Tex. D.O. Op. Coun. © Reg. TM Am. D.O. Corp. © 1988 Tex. D.O. Op. Coun. **All participating Dairy Queen stores **Pre-cooked weight



Longer hours to serve you better on the Meat and Poultry Hotline.

Call 1-800-535-4555 for food safety advice.

Monday - Friday, Nov. 1-30, 9 to 5, EST
Saturday - Sunday, Nov. 19-20, 9 to 5, EST
Thanksgiving Day, Nov. 24, 8 to 2, EST
Monday - Friday, Year-round, 10 to 4, Eastern Time

A public service of this publication and the U.S. Department of Agriculture

Need a Christmas Idea for those hard to Buy for Give A Gift Certificate from **Inch by Inch**

Holiday Special

10 Sessions \$53.50
15 Sessions \$80.25
30 Sessions \$160.50

Massage Table Specials

9 Sessions \$26.50 - Toners
9 Sessions \$45.75 Non-Toners

Remember everyone likes to exercise some just need a push!

210 Main Spearman, TX
659-2238



Among the Neighbors

There are continuing reports of the wind damage of last Tuesday. J.B. Buchanan was blown off his feet, but was not nearly so concerned about his bruises and scratches as he was about the damage being done to several of his antique windmills. All the towers remained upright, but considerable damage was done to the wheels and he is considering how to restore them.

It is always a pleasure to learn of some former Spearman resident who is still interested in local folk enough to continue to take the **Spearman Reporter**.

Such was the case last week when Bobby Jack Glover, after reading the account of their 55th wedding anniversary, called Hollie and Earl Riley.

Bobby Jack's childhood was in the Riley's neighborhood and he attended school here.

He is now living in Austin and retired from a successful music

career. He extends greetings to all his old friends here.

Mr. and Mrs. Buddy Brockus visited in the home of Billy and Sybil Miller last Thursday. They were enroute from California to their home in Wichita, Kan. He reports that his mother, Frances, is now in a rest home in Wichita. They were residents here for many years and he has returned to some of the school reunions.

Mr. and Mrs. Ernest Archer returned Friday from Phoenix, Ariz. where they had been 6 weeks. She had undergone hip replacement surgery while there, and is happy to report that she is very pleased with her progress.

Her brother, T.C. Harvey and Mrs. Harvey, spent some time in Phoenix with them and then went out to assist them in their return trip.

Their daughter, Norma Payne, of Ralls is here now and expects to

stay until after Thanksgiving.

Tri-State High School Rodeo Association has issued the standings in points for the fall season. Among the numerous contestants of local interest: Calf roping - Clint Patterson, 14 points; Ribbon roping - Joel Prall, Gruver, 10; Team roping - Joel Prall, 18; Barrells - Kelly McCloy, Morse, 23; Goat tying - Kelly McCloy, 6; Break away roping - Kelly McCloy, 33.

Sympathy is extended to the family of L.V. Pierce whose funeral services were here Monday. So many, many friends mourn his passing.

Former Spearman residents celebrating their 50th wedding anniversary were Kenneth and Zina Longley of Vici, Okla.

It was hosted by their three children who were all present. They were Mrs. Geneva Babitski of Higgins, Darrell Longley of Denver, and Clifton Longley of Vici.

Among those attending were the Johnny Gaithers, the Billy Millers, Bruce Bailey, and Clyde Longley, all of Spearman, Evelyn Dodd of Panhandle and John Longley of Stillwell, Okla.

Mr. and Mrs. T.C. Kitchens returned recently from an extended trip through central and north-eastern part of the country.

Condensing their interesting travels - they first spent some time in Broken Arrow, Okla. in the home of their daughter and family. They visited briefly with Dick Hudsons at Spiro in eastern Oklahoma. Driving leisurely through Arkansas. They reached Tennessee where they did some sight seeing and enjoyed the Grand Ole Opry at Nashville. From there to Wyethville, Va. where they visited her sister and family.

Leaving their house trailer, they went on to Buffalo, New York to be with his aunt for a few days.

On their return trip, again in Nashville they toured the Methodist Upper Room and other Methodist facilities as it is the central headquarters of the Methodist

church. Returning through Arkansas, they stopped in Ft. Smith to again visit the Hudsons, as Dick was a patient in the hospital there at that time.

They returned by Broken Arrow and finally home.

Getting an early jump on Thanksgiving, Ivan and Delbert Allen consumed their turkey on Monday. Sharing in the over indulgence were Maxine Banister, Janice Black of Brady and Terry Vernon of Amarillo.

In a typical edition of a recent daily paper various headlines listed versions of what must be the No. 1 priority of the President-elect. They ranged from demanding first he must reduce urban poverty; another listed No. 1 as formulating an energy policy; another to provide funds to pay babysitters for working mothers; to get a responsible Supreme Court to control crime; and to the financial pages- No. 1 must reduce the deficit; cut spending; no new taxes and on and on.

The question comes to mind-how could any person actually seek public office and face all those responsibilities; undoubtedly there must be a strong commitment to public service.

On the local level the conscientious members of the Spearman City Council are wrestling with a divisive problem and trying to respond to the needs of the majority of the citizens.

The question of whether or not to demand that the T.V. Cable company change Channel 6 - the QVC to other programming has many proponents and many opponents.

Those requesting the channel be changed have good, valid, sensible reasons for their requests. Those asking that it be continued, earnestly feeling the channel answers a local need have good, valid and sensible reasons for their

opinions. No doubt the council would welcome any input. While this column is not a proper forum for the discussions of the controversy, it is suggested that letters to the editor listing the pros and cons would be informative.

This column will not appear in the next issue.

Texas set to reap big benefits from new project

State Comptroller Bob Bullock said recently that the choice of Texas for the \$4.4 billion Superconducting supercollider will have significant impact on Texas jobs and economic diversification into the high tech industries, research and education.

Texas will reap the most immediate benefit from the construction phase of the Supercollider project which is being considered one of the largest in history. Approximately 4,500 people will be employed directly in the construction of the plant with a potential spin-off of as many as 12,000 jobs.

Texas could see a \$650 million annual increase in payroll and business activity once the Supercollider is completed, according to Bullock.

Spearman loses two to Gruver

The Gruver Greyhounds took two games out of three at Spearman this past Monday night in junior high and 9th grade action. In the 7th grade game, the Hounds defeated the Lynx 24-15. In the 8th grade game, the Hounds also won by a score of 34-12. In the 9th grade game the Gruver 9th was pitted against the tough Spearman Junior Varsity, and Spearman won 58-15.

Line scores follow:
GRUVER 7th 6 14 20 24
SPEARMAN 7TH 2 5 9 15
Gruver-Kenton Odom-12, Steven Flowers-8, Tek Ferguson-2, Chris Stork-2.

Spearman-McMahon-11, Marshall-2, Scribner-2.
GRUVER 8TH 14 17 30 34
SPEARMAN 8TH 0 8 8 12

Gruver-Brady Pool-9, Carey Kauffman-6, Matt Etheredge-4, Heath Gaines-4, Cody Barkley-3, Richard DeSantiago-2, Michael Park-2, Trevor Shipley-2, Kevin Spivey-2.

Spearman-Graham-8, Butler-2, Munoz-2.
GRUVER 9TH 1 11 12 15
SPEARMAN JV 13 32 48 58

Gruver-Luke Miller-5, Chad Brown-4, Rex Ralston-4, Ryan Mathews-2.

Spearman-Howell-13, Jarvis-13, Shields-9, Vela-8, Williamson-6, Ochoa-3, Holt-2, Tanner-2, Villereal-2.

THE BRASS REGISTER

210 S. Main 435-9797

Perryton, Texas

Cordially Invites You to a Holiday Open House Sunday, November 27, 1988 1:30 p.m. to 5:00 p.m.

15% Savings Storewide

Refreshments served from our own kitchen products

We have your battery for LESS!

PARTS VALUE OF THE MONTH.



For tractors, farm equipment NOW ONLY **\$77²⁵** BHC30

For cars and trucks NOW ONLY **\$58⁹⁵** B2472

Whatever equipment you operate, whatever vehicle you drive, we can offer you the finest battery value available. During our Battery Sale, we're featuring special buys on quality batteries for cars, trucks, tractors, farm

equipment, and more. Come see our wide selection of maintenance free and heavy duty models. Each Case IH battery is designed for plenty of cranking amps and a long life. Stop in today!

Five Star Equipment

Hwy. 15 W. Spearman

659-3743



AUCTION

Thursday, December 1, 1988 — Sale Time: 10:00 a.m.
LOCATED: From Sunray, Texas, 8 miles East on F.M. Highway 281 then 1/2 mile North.

MRS. FREDERICK ROUSSER — Owner
Telephones: James G. Cruce (806) 296-7252 or Mervin Evans (806) 293-8195

TRACTORS —

- 1-1981 John Deere 4841 Diesel Tractor, P/S Trans, S.G. Cab, A/C, Htr., Radio, D.H., W.F., Weights, Lift Assist, Quick Hitch, 20.8X38 Rubber, Factory Duals, 3485 Hours
- 1-1979 John Deere 4843 Diesel Tractor, P/S Trans., S.G. Cab, A/C, Htr., Radio, D.H., W.F., Weights, Lift Assist, 18.4X42 Rubber, Factory Duals
- 1-1976 John Deere 4633 Diesel Tractor, P/S Trans., S.G. Cab, A/C, Htr., Radio, W.F., Weights, D.H., 18.4X38 Radial Rubber
- 1-1975 John Deere 4639 Diesel Tractor, P/S Trans., S.G. Cab, A/C, Htr., Radio, W.F., Weights, D.H., 18.4X38 Rubber

EQUIPMENT —

- 1-John Deere 7100 Max-Emerge 8 Row Planter, Double Boxes, Monitor, Plateless, D.D. V's
- 1-John Deere No. 355, 20" Offset Disc
- 1-John Deere No. 355, 18" Offset Disc
- 2-John Deere PK03, 21" Offset Discs
- 1-John Deere F-835, 4-16" Spinner Mouldboard Plow
- 1-John Deere 737, 4 Row Shredder (Needs Repair), D.T.
- 1-John Deere 36" Spring Shank Field Cultivator, D.T.
- 2-John Deere 400, 28" Rotary Hoers
- 1-John Deere 400, 14" Rotary Hoe Bar & Gangs (For Parts Or Extensions)
- 16-International 295 Ind. Bed Planters, D.D., F/G Boxes
- 3-Big 12, 21" Cultipackers, 3-pt., S.S.B.
- 1-Hamby 21", T.S.B. Chisel/Sweep Plow, Spring Loaded Shanks, H.C., L.T.M., D.G.W.
- 1-Hamby 21", T.S.B. Chisel/Sweep Plow, H.C., S.T.M., D.G.W.
- 1-S & S 21", 3-pt. Chisel/Sweep Plow, T.S.B., L.T.M., H.C., D.C.W.
- 2-Tye 8 Row 3-pt. Gran Drill, 8" Spacing
- 1-Lilliston 8 Row Rolling Cultivator, 40" Rows
- 1-Big Ox 9 Shank, 3-pt. V-Ripper Plow, D.G.W.
- 1-Hamby 3-pt. Disc Ditch Filler
- 1-Myers D.T. V-Ditcher, C.C. 1-Big Ox 3-pt. Blade, 8", C.C.
- 1-Schlags Clodbuster Packer For 4 Bottom Mouldboard
- 1-John Deere 8 Row Lister Fertilizer Rig, With A.A. Pump, Markers, D.G.W.
- 1-Wylie Twin 200 Gal. Side Mt. 8 Row Spray Rig, Ace Pump
- 1-Byrd R.A.C. 28", D.B. Cultivator-Fertilizer Rig, 4" X 7" Front, 4" X 4" Back, 3-pt., Gauge Wheels
- 1-Campbell 28", D.B. Toolbar Rodweeder Plow (8 Row), With Cleanouts, Gauge Wheels
- 1-John Deere BW, 14" Tandem Disc Plow
- 1-Krause 15' Oneway Plow
- 1-John Deere 15' Oneway Plow (For Repairs)
- 1-SM 14" X 27" Box Land Float, D.T.
- 1-Steel Drag Float 1-Eversman Drag Float
- 2-Noble Harrow Sections 4-J.D. Harrow Sections

PICKUPS —

- 1-1985 GMC Sierra 1500 Pickup, A/T, P/S, L.W.B., 305 Engine, A/C
- 1-1981 Chevrolet Custom Deluxe C-10 Pickup, A/T, P/S, L.W.B., 305 Engine

TANK, TRAILERS —

- 1-1000 Gallon 200 PSI Propane Tank
- 1-1000 Gallon Steel Water Nurse Tank On 4 Wheel Coil Link Axle Trailer, With Pump
- 1-SM Pickup Bed Trailer

IRRIGATION ENGINES, PIPE —

- 5-Ford 534 Irrigation Engines Completely Overhauled (Never Run, Stored In Barn), N/G Carburetor
- 4-Ford 534 Irrigation Engines, N/G Carburetor, Running
- 7-Ford 534 Irrigation Engines For Repair Or Rebuildable
- 1-International 605 Irrigation Engine
- 1-HD 800 Moline Irrigation Engine, New Overhaul
- 1-Chevrolet 292 Irrigation Engine, New Overhaul
- 1-Berkeley, Model 841, 4" X 5" Tail Water Pump, With Chevrolet 292 Engine, LPG
- 4-H.D. Drive Shafts 4-SM Irr. Eng. Stands
- 200-Joints 8" X 20" Gated Pipe, 40" Rows
- 80-Joints 8" X 30" Flowline 40-Ft. L's. End Caps - 8"
- 12-Joints 8" X 10" Flowline (Extensions)
- 34-Waterman Hydrants, 12" X 8"
- 1000 2" Irrigation Tubes 500-1 1/2" Irrigation Tubes
- 25-Nylon Ditch Tarps 1-Lot Scrap Aluminum Pipe
- 2-SM Pipe Trailers, 1 Has Coil Axle

LIVESTOCK EQUIPMENT, TRAILER —

- 1000-1/2" Rebar Electric Fence Posts, With Insulators
- 50-T-Posts 4-Rolls Barbed Wire, Used
- 9-Rolls Electric Fence Wire (Used)
- 12-Electric & Battery Operated Fence Chargers
- 1-2 Wheel, 12" Livestock Trailer
- 1-20" Steel Hay Rack, D/S

TRACTOR & TOOL MAKEUPS —

- 2-Sets John Deere 18.4X38 Tractor Duals, 4630 Hubs
- 18-Hamby 1X3 Shanks
- 18-Hamby 1X3 Diamond Bar Clamps
- 2-8 Row Hydraulic Driven Rodweeder
- 2-Sets R.A.C. G.W. 1-Lot Water Farrow Drags
- 2-8 Row, 8" Bed Rollers, Split Type
- 1-28", 3-pt. Double Reinforced Toolbar
- 1-Lot Railroad Drag Irons & Pipes
- 1-Lot John Deere 737 Shredder Parts (Gear Boxes, Blades, Wheel Assemblies)
- 2-Hamby 18", 4" X 4" Wing Extension
- 1-John Deere Cat. 2 Or 3 Quick Hitch
- 1-Lee Cat 3 Quick Hitch 48-Cone Offset Disc Blades
- 2-100X16 Tractor Tires On Rims
- 1-Lot John Deere Planter Boxes, Beams

NON-CLASSIFIED —

- 1-New Barrel SAE 40 Weight Triple Action Motor Oil (55 Gallon)
- 12-Used Barrels (55 Gallon)
- 1-Lot Scrap Iron, Scrap Batteries
- 1-Lot Shovels, Sweeps, Chisels, G.W. Brackets, Cans, Tires, Wheels, Oil, Grease, Motor Parts
- 1-Lot Items Too Numerous To Mention

Five Star Auctioneers Box 1030 — Plainview, Texas 79073-1030

<p>JAMES G. CRUCE (806) 296-7252 (TXS-018-006704)</p>	<p>BENNIE REAGAN (806) 847-2213 (TXS-028-007411)</p>	<p>MERVIN W. EVANS (806) 293-8195 (TXE-117-006427)</p>
<p>JIM SUMNER (806) 864-3611 (TXIA-128-008363)</p>	<p>JIMMY REEVES (806) 864-3362 (Clerk)</p>	

Classifieds

FOR SALE: Poinsetta's at reasonable prices. Call 659-2040 after 6:00 p.m. S04 9tp

EARN \$400 WEEKLY PROCESSING MAIL FROM HOME. NO EXPERIENCE NECESSARY. NO OBLIGATION. FREE DETAILS. RUSH SELF-ADDRESSED-STAMPED ENVELOPE. KOCH, 421 EAST MAIN ST., KUTZTOWN PA 19530 S04-3tp

QUITTING BUSINESS SALE:

50% or more off. Everything goes! Fabric, beads, rhinestones, colored stones, sweatshirts, pants, clothing, jewelry, clothes racks, and display cases. **Tops 'N Things** by Helen, Broadway and Main, Gruver, Tx. (806) 733-2461. S04-1t

FOR SALE: AKC Registered Sheltie Pups, 8 weeks old. 659-3804 9 North Brandt. S04-3tp

FOR SALE: King size waterbed with bookcase headboard, double dresser, chest and nightstand. 7 years old. Good condition! Call Denise Harbour at 659-3348. S04-2tp

FOR SALE: 2 Bedroom, 2 Bath, Lancer Mobile Home. Call 435-2439. No equity, take up 30 payments, or \$7,000.00 cash. S03 - 4tp

FOR SALE: 3 bedroom, 2 1/2 bath, 2 car garage, fireplace, sprinkler system and water softener system. 403 Cooper or call 733-2009. S01 - 8tp

HOUSE FOR SALE: 2 Bedroom, 207 Haney Call 659-2692. S02S-rtm

"ATTENTION - GOVERNMENT HOMES from \$1 (U-repair). Delinquent tax property. Repossessions. Call 602-838-8885 Ext H-4514. S02 7tp

FOR RENT: 3 bedroom trailer, call 733-5130 or come by 905 King in Gruver. S03-4tc

FOR RENT: Nice private trailer lot, established lawn and nice neighborhood. Call 659-3657. S02S-rtm

FREE RENT: First Month and reduced rates in Perryton's best mobile home park. Call Leo Meyers 435-2276 or 435-7676. S46S rtn

FOR SALE: Nice 9 year old quarter horse mare. Never bred. And WW 4 horse trailer full top saddle and tack. Call 659-3849. S04-6t

USED AUTO PARTS, nationwide parts locating hotline, we buy late model wrecked vehicles. MussCat Auto Salvage, located 4 miles west of Hooker, OK. Hwy 54. Call us toll free 1-800-999-5080. S50 12/88

HELP WANTED
Texas Refinery Corp.
needs mature person
now in Gruver area.
Regardless of
experience, write T.G.
Hopkins, Box 711,
Fort Worth, TX. 76101.
S-1tp

HELP WANTED: Full-time watchman, 6 nights per week, references required. If interested apply in person at Caprock No. 1, Gruver, Tx. EOE S52S rtn

Caprock No. 2 has a 10' X 45' trailer house and a '71 Buick car that were abandoned by Raymundo Loya 9/87. If the trailer house is not claimed by the owner by 12/10/88, it will be sold for salvage to the highest bidder. S02S 4t

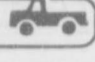
FOR SALE: hand quilted quilts and pillows. Also will do quilting for others. Call 659-2350 or 659-2217. So3S 5tp

GRASS FOR SALE: 2 sections of Western Lipscomb County native grass. Located on pavement, well watered and good fences. Sell individually or as a unit. Alternative financing available to qualified buyers. Contact Ken Burton, High Plains FLBA, Perryton, Tex. 806-435-4319. S51 rtn

EMPLOYMENT WANTED

WORK WANTED: Will do cleaning. Houses, offices, and businesses. Call 659-2950 or 659-3061. S03 4tp

WORK WANTED: Experienced, farm hand, truck driver, and construction work. Call 435-5670. S03-3t

Trucks for Sale 

FOR SALE: Two water trucks, excellent for hauling water to cattle. Nothing ever in tanks except clean water. \$1,995 and \$2,495. Call Randy Hunt at 659-3588. S03-rtm

CLASSIFIED RATES
Regular . . . Per Word-\$0.13
Display . . . Per col. Inch-\$4.20
Double rate for blind ads
Minimum charges
Cash \$4.00
Charge \$4.50

CASH IN ADVANCE ADS
•Work wanted •Trailers for Sale •Business Opportunities •No long Responsible •Political Advertising •Child Care •Baby sitting •Garage Sales •Out-of-county Ads unless advertiser has established credit with •The Spearman Reporter

DEADLINES
To place or cancel ads
Friday - 12:00 p.m. Sunday edition.
Tuesday - 12:00 p.m. Thursday edition
The Spearman Reporter reserves the right to reject, edit, revise and properly classify all advertising submitted for publication. The Spearman Reporter also reserves the right to cancel any advertisement at any time.
THE SPEARMAN REPORTER

NOTICE
Wallace Monument Co.
Monuments, Curbing,
Grave Covers
Local Representative
LEONARD JAMESON
Spearman, Texas

L & M
Body Works
1501 Hwy. 15
659-2775
Tailpipes-\$29.95
Mufflers-\$39.95
Most Duals-\$160.00
complete

OSGOOD
MONUMENT CO.
Amarillo, Texas
Dealers of Rock of Ages Granite, as well as all colored granites, marble and bronze memorials.
represented by
BOXWELL BROS.
FUNERAL HOME
519 S. Evans
659-3802

BEHLEN Curvet
Matched performance.
Building widths of 40', 51' and 68'
Hatfield
Design Builders
Art Hatfield
Phone-336-7542
124 N. Quinn Guymon

spotlight on health



Nearly 100,000 Americans may suffer from celiac sprue.

Imagine having an inherited disease that mimics several other diseases, making its diagnosis difficult, especially in children. Now imagine that this disease has five different names and a variety of different ways of showing itself in the human body.

People who have this disease can recover very quickly by simply eliminating any source of gluten from their diets—giving up for the rest of their lives all foods containing flour (wheat, rye, barley or oat)—breads, pasta, cakes, pies, most soups, many fast foods and many emulsifiers, additives and flavorings. But first they must have the condition diagnosed.

That's a description of celiac sprue, also known as celiac disease, gluten sensitivity, gluten-sensitive enteropathy, or non-tropical sprue. About one person in 2,500 in the United States has this sensitivity, diagnosed or not.

For many people, diagnosis takes many years. Meanwhile, they suffer from weight loss, sore mouth, muscle and bone pain and weakness, migraine headaches, high blood pressure, continual flu-like symptoms and, in children, a failure to grow.

Gluten contains a protein that contains a substance called gliadin. Gliadin damages the lining of the small intestine. Normally, this lining is covered by finger-like projections called villi that increase the absorptive surface area of the small intestine, allowing it to absorb nutrients as foods pass through. On the surface of normal villi are brush borders and further projections, so the whole surface somewhat resembles a shag carpet.

Located on these projections from the lining are enzymes. When gluten passes through the intestine in a gluten-sensitive person, the projections are flattened or eliminated, greatly decreasing the body's ability to absorb nutrients and eliminating some enzymes from the body.

The body responds to the destruction of the villi by trying to

make new cells at a faster rate, but it cannot keep up with the rate of destruction by gluten. So the patient may experience dehydration, electrolyte depletion, retarded growth, edema, anemia, numbness and tingling in fingers and toes, chronic fatigue, diarrhea, bloating, central nervous system and spinal cord lesions that affect balance, personality changes, especially in children; a gradual softening and bending of bones and increasing porosity of the bones, making them subject to fracture. A gluten-related skin disorder, dermatitis herpetiformis, may also be present.

In children, the symptoms are growth failure, diarrhea, projectile vomiting, and a bloated abdomen.

A pamphlet on the disease published by the Celiac Sprue Association/United States of America in Des Moines, Iowa, says bluntly, "A typical case of celiac sprue does not exist." Individuals may have any combination of symptoms.

Diagnosis is done in two stages. First, a small intestinal biopsy performed with a small flexible tube inserted into the small intestine through the mouth captures minute pieces of the small intestine. The second part of the diagnosis is improvement when placed on a gluten-free diet.

Treatment is easier to state than to do. Strict, lifelong adherence to a gluten-free diet brings relatively swift improvement and returns the patient to health. The problem with the treatment is that it's difficult to know what products might contain gluten. Such common foods as vinegar, malted milk shakes, Irish Mist liqueur and gravies are off-limits, and a celiac patient must spend long hours in grocery stores reading labels to find such "no-no" words as hydrolyzed vegetable protein, modified food starch and malt flavoring.

Two associations offer a series of low-cost brochures on the gluten-free diet, gluten-free commercial foods, gluten-free medication, and related topics. Contact CSA/USA, 2313 Rocklyn Drive 1, Des Moines, IA, 50322; or Gluten Intolerance Group of North America, P.O. Box 23053, Seattle, WA, 98102.

With the proper food substitutions, persons with celiac sprue may eat many delicious pasta and baked products made from rice, corn, soy and potato flours. A list of gluten-free foods is available by mail order from Dietary Specialties, Inc., P.O. Box 227, Rochester, NY, 14601 (716) 263-2787.

Warming trend sets climate concerns

While there is little doubt that the global climate will become significantly warmer in the decades ahead, the impacts of such warming are cause for debate.

"Global warming is already under way and is greatest at high altitudes in the northern hemisphere. This warming is also greater in winter than in summer," said Dr. William W. Kellogg, senior scientist with the National Center for Atmospheric Research at Boulder, Colo.

Speaking at the recent Water for Texas Conference here, Kellogg said that the current warming trend appears well entrenched since the 1980's have produced four of the warmest years on record as far as the global average is concerned—1983, 1985, 1986 and 1987.

"This warming trend will continue as long as people burn fossil fuels and release carbon dioxide and other greenhouse gases into the atmosphere," he said.

Kellogg said that the warming should lead to a general drying out in the central part of the North American continent. "Thus we should see more dry years in the heartland of the United States and Canada as the earth grows warmer. On the other hand, the Gulf Coast and West Coast areas, because of their closeness to sources of water vapor, may turn out to be relatively more favorable as far as soil moisture is concerned," said the weather expert.

Regarding the drought of 1988, Kellogg said that this pattern of summertime drought is fairly consistent with the global warming trend. Consequently, similar droughts will likely be occurring more frequently in the future, he said.

"The climate change in store for the world will create new and serious problems and enormous readjustments," Kellogg said. "No country will be unaffected by it, but it also is clear that some countries will be hurt more than others. Some may even benefit."

Kellogg predicted that use of fossil fuels, a major contributor to global warming, will not grow as fast as it has in the past (currently 2 percent per year) due to better energy efficiency and more alternative sources of energy.

"Advances in technology will inevitably make renewable (solar) energy more economically attractive," he said. "It may be possible to tame the atom more safely and efficiently than we have in the past."

In addition to using other sources of energy and overall

energy conservation, Kellogg said that other steps to deal with global warming should include re-planting forests, improving water management practices and developing plants that grow in a drier environment.

"These are all good things anyway, so we might as well focus on them in concert with the climate change that is going to occur," he

said.

Kellogg emphasized the need for a general understanding of the climate change in store for the world and then preparing for it.

"If we can know what to expect, we have an improved chance to survive," he said. "This biggest danger lies in complacency and the belief that somehow we can all 'muddle through'."

DANCE,
Uncle Ed's Audio Philo
(Sound System & Lights Show)
Saturday, December 3rd
(Old Crawford Imp. Building)
8:30 - 1:00
\$5.00 Cover Chg. - 21 yrs. and up
Concession Stand with snacks and set-ups available
(for more information call . . . 659-3328)

BOB HARDY REALTY
803 Wilmeth Dr.
659-3440
NEW LISTINGS
We need your listing
We also have some (FmHA) Repo Homes for sale - Call for details.
Robert Hardy - broker

Offered by
EMMETT R. SANDERS
REALTOR
3 bedroom home, attached garage.
Call for details on almost new FmHA repo's, 3 bedroom homes
EMMETT R. SANDERS
REALTOR
659-2516, nights 659-2601

Real Estate Sampler
Allen Alford-Broker-659-3034
Hester Sue Crawford-Sales
659-3060 or 659-2074
Dennis Nelson-Sales-659-3608
Larry Trosper-Sales-659-3491
715 Steele Dr. - 3 br, 1 1/2 baths.
Duplex - Kenneth & Hoskins
1111 Barkley - 3 bdr., 1 1/4 bth
316 Roland - 2 bdr., 1 1/2 bath
811 Townsend - 2 bdr, double car garage.
727 Wilbanks - Double lot, 3 bdr.
708 Steele Dr., 3 br, fireplace.
Price Reduced.
902 Dressen - 3 bdr., storage.
COUNTRY HOME
COMING UP SOON
Auctioneering services and Appraisal services available.
WE WANT TO BE YOUR REALTOR

Century 21
GOLDEN SPREAD REALTY
Janye Helton Pointer, Broker
Owner, 435-5444
SALES ASSOCIATES
T.O. Lesly 659-3836 or 659-2028
3/4 miles E. of Spearman High.
3/2 - large log home on 1 acre!
609 E. Kenneth - 3/2 smart style, smart buy!
515 S. Bernice - 4/3 1/4, extra large lot & close to school!
1012 S. Haney - 3/1 1/4. Walk to school!
712 Collier - 3/1 1/2, foreclosure! Fireplace & extra lot!
607, 609, 611, 615 Haney - Small home / 2 apartments.
118 Townsend - 4/2. Apartment included!
108 S. James - 3/1. No down payment to eligible buyers!
310 Townsend - 3/1 home with large lot!
1010 Dr. CONTRACT home with UNDER CONTRACT
322 S. Barkley - 3/1. Good location at affordable price!
121 Eadicott-Attention Investors!
315 S. Townsend - 2/1. Easy on the pocket book!
220 S. Snyder - Make an offer!
315 1/2 N. Bernice - Lot for sale!
FARM & COMMERCIAL
Industrial Road - 40 x 60 steel building.
[Buster Duster's]-3 offices with lots of storage and a 42 x 60 shop.
FARM
640 acres of grass in Sherman Co., over 500 acres in the C.P.R. Program.
2 Ranches in Brownwood area. Call today!

STATEMENT OF FINANCIAL CONDITION OF HANSFORD COUNTY RECONCILIATION WITH DEPOSITORY BANKS AS OF NOVEMBER 1, 1988.

FUND	Book Balance	Outstanding Checks	Outstanding Deposits	Bank Balance
JURY GENERAL	2,362.28	3,025.57		5,387.85
	52,305.21	69,894.50	731.71	121,468.00
Road & Bridge, General				
Precinct No. 1	6,886.82	11,116.12	922.80	42,889.44
Precinct No. 2	21,002.17	9,001.63	922.81	30,013.94
Precinct No. 3	12,686.76	3,349.31		16,294.48
Precinct No. 4	20,866.81	2,421.52		23,821.60
Road & Bridge, Precinct				
No. 1 Improvement	25,609.30			932.95
No. 2 Improvement	1,816.25			158.41
No. 3 Sinking	483.73			533.27
No. 4 Sinking	437.62			

FUND	BALANCE 8/1/88	RECEIPTS	DISBURSEMENTS	BALANCE 11/1/88
JURY GENERAL	6,997.16	21,226.86	25,879.74	2,344.28
	142,773.48	179,754.55	270,222.82	52,305.21
Road & Bridge, General				
Precinct No. 1	16,295.38	79,778.88	89,187.44	6,886.82
Precinct No. 2	14,158.37	124,646.45	117,802.65	21,002.17
Precinct No. 3	17,903.69	99,028.05	104,244.98	12,686.76
Precinct No. 4	28,860.61	104,306.58	112,240.38	20,866.81
Road & Bridge, Precinct				
No. 1 Improvement	16,385.48	25,223.82	16,000.00	25,609.30
No. 2 Improvement	1,816.25	8,116.70	9,000.00	932.95
No. 3 Sinking	483.73	29,674.68	30,000.00	158.41
No. 4 Sinking	437.62	115.65		533.27

HANSFORD COUNTY INVESTMENTS	
FUND #	\$15,000.00
1	50,000.00
2	40,000.00
8	60,000.00
9	70,000.00
10	80,000.00
11	9,000.00
13	30,000.00
14	
Total Investments \$354,000.00	

HANSFORD COUNTY INDEBTEDNESS	
FUND #	\$,000.00
14	5,000.00
15	10,000.00

©1988 by Century 21 Real Estate Corporation Equal Housing Opportunity INDEPENDENTLY OWNED AND OPERATED

Egypt approves purchase of sorghum

The Government of Egypt has approved the purchase of 50,000 tons of sorghum. In making the announcement, Elbert Harp, Executive Director of the Sorghum Promotion Federation, said the Egyptian Ministry of Industries has given a written guarantee that it would use sorghum in government feedmills. Several private Egyptian mills have also given assurance of their interest in using sorghum.

This tender by the Egyptian government comes after four years of work in that country by the Sorghum Federation and the U.S.

Feed Grains Council (USFGC). Just last month, the Egyptian government announced that sorghum has been added to its list of grains approved for use in government mills. While private milling is increasing, most Egyptian mixed feeds come from the government mills.

Government approval is necessary for any grain to be used in Egyptian poultry and animal rations. Sorghum did not have this approval and, until four years ago, was virtually unknown to Egyptian millers and feeders. In 1985, the

Sorghum Federation donated and shipped sorghum to Egypt to be used in two feeding trials designed and supervised by the USFGC. After the first demonstrations, completed in 1986, the Egyptians were satisfied with the nutritional value of sorghum but still had doubts about the ability of their mills to process it.

The Sorghum Promotion Federation is the marketing arm of the National Grain Sorghum Producers Association and is funded by the sorghum checkoff in Texas, Nebraska and Kansas.

Club News

Twentieth Century Club

The Twentieth Century Club met Nov. 10 in the vault of the Court House for their regular meeting. Verna Gail Keim gave a program on "The Patent Record" which included learning how to use the County Clerk's office to find and file information.

Many of the group seemed surprised to learn of the many duties of the office. Verna Gail has worked in this office on and off

since she was 18 and is very well informed so she was able to answer all questions during the question and answer period.

After the program the group adjourned to Verna Gail's home for the business meeting with Marjorie Curtis presiding. The club collect was repeated in unison. Minutes of the previous meeting were read and approved.

Marjorie Curtis reported on the Fall Board meeting held with 83 women in attendance. She read a letter of "thanks" from the district

president for the meeting and also extended an invitation to all club members to a Christmas coffee at her home in Canyon on Dec. 3.

Myrna Biggers reported that the monies from the Top of Texas Endowment Fund will be given to the Buchner Children's Home during the present district president's term of office.

The club welcomed three new members, Mrs. Roy Wilmet, Mrs. David Arrington, and Mrs. Richard Olsen.

Refreshments were served by hostess Verna Gail Keim to members Anita Anthony, Karen Babbitzke, Myrna Biggers, Gloria Carlson, Marjorie Curtis, Wren Holt, Louise Holt, Dorothy Woolley, Frances Stump, Mac Wilmet, Rogene Arrington, Melba Olsen, and Kathleen Sutton.

SERVITORS

Servitors met Thursday Nov. 17, at Prairie Garden. Wanda Reed gave a demonstration on how to make Christmas wreaths. Everyone then adjourned to Cindy Clyburn's home for the remainder of the meeting.

The meeting was called to order by President Laura Mackie. The prayer was led by Dalene Baker and the club collect led by Kim Vera. Charlotte Sheets called roll and 17 members answered to "Name a handmade Christmas gift you made." Minutes were read and approved. Cindy Avila gave the treasury report.

President Laura Mackie thanked Linda Cummings, Lee Schubert, and Hope Moore for helping at the carnival selling balloons.

Motion was made by Linda Cummings to donate the Christmas wreath made by Wanda Reed to a needy family, and to have the Sheriff's office choose the family and deliver the wreath. The motion carried.

Motion was made by Cindy Clyburn to donate the money which is designated for a needy family at Christmas to buy personal items for children from Spearman who are at Boys Ranch and Girls Town. That motion carried.

Dallas Trosper, who is working on his Eagle Scout award, is in charge of this project and it was decided to have him talk to the club to explain in further detail the program.

Laura Mackie reminded everyone to have their turkey raffle money turned in by 6 p.m. Sunday. The drawing was held at the radio station on Monday morning.

The Christmas party will be Dec. 20 at 7 p.m. and spouses are invited.

Cheryl Gibson and Ann Rook thanked everyone who helped with the Halloween party.

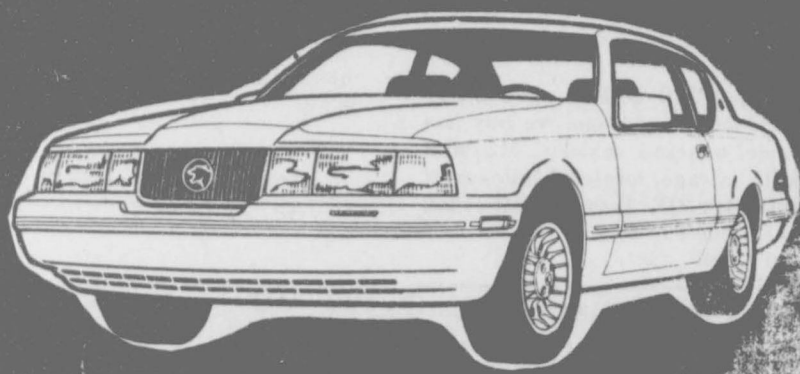
A motion was made by Cindy Avila to donate \$25 to the "Just say No to Drugs" program. That motion also carried.

A donation of \$500 was made to the Ronald McDonald House.

President Laura Mackie gave the installation of new members. The new members who were installed are: Cheryl Freeman, LeeAnn Sheets, Jami Guzman, Hope Moore, and Angie Salgado. Members present were: Cindy Avila, Dalene Baker, Cindy Clyburn, Linda Cummings, Terri Dewberry, Cheryl Freeman, Cheryl Gibson, Jami Guzman, Laura Mackie, Hope Moore, Ann Rooke, Angie Salgado, Lee Schubert, Charlotte Sheets, LeeAnn Sheets, Tina Tucker and Kim Vera.

Closeout Sale

New 1988 Ford Cars & Trucks



*Ford F-150 Styleside 4X2

Deep Shadow Blue, XLT Lariat, Auxiliary Fuel Tank, AM/FM Stereo, Speed Control, Tilt Wheel, Air Conditioning, Power Locks, Power Windows, Sliding Rear Window, Super Engine Cooling, S.O.L. EFI V8, 4-Speed Manual Transmission.

List \$15,249.00
 Now \$12,050.00
 Rebate \$ 300.00
Total Cost..... \$11,750⁰⁰

***All truck prices do not include bumpers**

*F-150 Styleside 4X2

Medium Silver, XLT Lariat, Auxiliary Fuel Tank, AM/FM Stereo, Speed Control, Tilt Wheel, Air Conditioning, Power Locks, Power Windows, Sliding Rear Window, Super Engine Cooling, S.O.L. EFI V8, 4-Speed Manual Transmission.

List \$15,334.00
 Now \$12,150.00
 Rebate \$ 300.00
Total Cost..... \$11,850⁰⁰

***All truck prices do not include bumpers**

*Ford F-150 Supercab 4X2

Desert White, XLT Lariat Trim, AM/FM Stereo Cassette, Speed Control, Tilt Wheel, Air Conditioning, Power Locks, Power Windows, 4.9 EFI I-6, Automatic Transmission, Trailer Tow Package.

List \$17,375.00
 Now \$14,175⁰⁰
 ***All truck prices do not include bumpers**

*F-250 Styleside 4X2

Regatta Blue/Deep Shadow Blue, XL Trim, Auxiliary Fuel Tank, Chrome Grill, AM/FM Stereo, Speed Control, Tilt Wheel, 7.5 EFI V-8, Tachometer, Automatic Transmission, Air Conditioning, Super Engine Cooling.

List \$17,491.35
 Now \$14,190.00
 ***All truck prices do not include bumpers**



1988 Ford Bronco 4X4

Regatta Blue, XLT Trim, Tachometer, Power Door Locks, Power Windows, Captain Chairs, Air Conditioning, AM/FM Stereo Cassette, 5.0 EFI V-8, Electric Shift 4X4, Automatic Transmission w/Overdrive, Outside Spare Tire Carrier, White Fiberglass Roof

List \$20,794.00
 Now \$18,350⁰⁰

1988 Cougar

Red, Interval Wipers, Tilt Wheel, Speed Control, Rear Defroster, Power Windows, Power Locks, AM/FM Cassette, Power Driver Seat, Wire Wheel Covers, Premium Sound System, 3.8 EFI V-6, Automatic w/Overdrive, Air Conditioning.

List \$16,254.00
 Now \$14,420.00
 Rebate \$ 600.00
Total Cost..... \$13,820⁰⁰

(2) 1988 Sable GS

(1) Regatta Blue; (1) Rose Quartz. Speed Control, Rear Defroster, Power Windows, Power Locks, Automatic w/Overdrive, Cast Aluminum Wheels, Premium Sound, Air Conditioning.

List \$15,324.00
 Now \$13,635.00
 Rebate \$ 500.00
Total Cost..... \$13,135⁰⁰

1988 Thunderbird

Light Grey, AM/FM Cassette, Electric Mirrors, Speed Control, Power Driver Seat, Power Locks, Interval Wipers, Rear Defroster, Tilt Wheel, Power Windows, 3.8 EFI V-6, Automatic w/Overdrive, Air Conditioning.

List \$15,290.00
 Now \$13,660.00
 Rebate \$ 600.00
Total Cost..... \$13,060⁰⁰

1988 Sable Stationwagon

White, Tilt Wheel, Speed Control, Rear Defroster, Power Windows, Power Locks, AM/FM Cassette, Power Driver Seat, 3.0 EFI V-6, Automatic w/Overdrive, Cast Aluminum Wheels, Premium Sound, Air Conditioning.

List \$16,278.00
 Now \$14,445.00
 Rebate \$ 500.00
Total Cost..... \$13,945⁰⁰

1988 Taurus Stationwagon GL

Regatta Blue, Air Conditioning, Rear Defroster, Speed Control, Tilt Wheel, Finned Wheel Covers, Power Door Locks, Power Driver Seat, Power Windows, 3.0 EFI V-6, Automatic w/Overdrive, AM/FM Stereo w/Cassette.

List \$16,066.00
 Now \$14,279.00
 Rebate \$ 300.00
Total Cost..... \$13,979⁰⁰

1988 Mercury Tracer

Marine Blue, AM/FM Cassette, 1.6 EFI, Automatic, Air Conditioning.

List \$10,644.00
 Now \$ 9,890.00
 Rebate \$ 750.00
Total Cost..... \$ 9,140⁰⁰

Ford LTD Crown Victoria LX

"Demo." Rear defroster, Power Door Locks, Power Drivers Seat, Tilt Wheel, Half Vinyl Roof, 5.0 EFI V-8, Automatic w/Overdrive, AM/FM Cassette, Premium Sound System.

List \$17,624.00
 Now \$15,320.00
Total Cost..... \$15,320⁰⁰

Ford Bronco II 4X4

Scarlet Red/White, "Demo." Air Conditioning, XLT Trim, Speed Control, Tilt Wheel, Tachometer, AM/FM Cassette, Luggage Rack, Spare Tire Carrier, 2.9 EFI V-6, 5 Speed Manual w/Overdrive.

List \$15,222.00
 Now \$13,690.00
 Rebate \$ 600.00
Total Cost..... \$13,090⁰⁰

1988 Ford Program Cars

(2) 1988 Lincoln Town Cars

Two (2) to Select From: White w/Blue Interior; White w/Burgundy Interior. Both Have: Air Conditioning, AM/FM Stereo Cassette, Power Driver Seat, Tilt Wheel, Cruise Control, Half Vinyl Top, Electric Windows, Power Door Locks, Remote Electric Mirrors, Rear Window Defroster.

\$19,995⁰⁰



(2) Mercury Topaz 4-Door

Two (2) to Select From: White w/Grey Cloth Interior; Blue w/Blue cloth Interior. Both Have: AM/FM Cassette, Automatic Transmission, Tilt Wheel, Air Conditioning.

\$8,950⁰⁰

(1) Ford Thunderbird

White w/Red Cloth Interior, Automatic Transmission w/Odometer, Power Brakes, Power Windows, Power Door Locks, AM/FM Radio, Cruise and Tilt Wheel, Remote Mirrors.

\$12,995⁰⁰

(2) Ford Taurus GL 4-Door

Two (2) to Select From: White/Red Interior; Silver w/Red Cloth Interior. Both Have: Power Windows, Power Door Locks, AM/FM Radio, Remote Mirrors, Automatic Transmission, Cruise, Tilt.

\$11,495⁰⁰



Motorcraft
Quality Parts



2322 S. Main



806-435-7676

AUCTION

REAL ESTATE

2238 HAMILTON
PAMPA, TEXAS
6:00 P.M.

TUESDAY, NOVEMBER 29

Selling a 3 bedroom frame house, 1 bath, attached single car garage, central air and heat, approx. 1100 sq. ft. living area.

TERMS: Cash or Assumption with 10% of the purchase price to be escrowed with the balance due on or before closing in 30 days. Successful bidder will be required to enter an Earnest Money Contract. Seller will furnish title policy. Taxes, insurance, and rents will be prorated to closing.

INSPECTION: Sunday, November 20, 2:00 to 6:00 p.m.

Call Auctioneer For More Information.

DENZEL TEVIS
AUCTION & REALTY
800-435-7566
P.O. Box 861
Perryton, TX 76070
TX 509-00788