

HANSFORD LIBRARY  
120 MAIN ST.  
SPEARMAN, TX.

# Beef is Best

24 hr. prayer  
Service 659-2911

# The Spearman Reporter

Volume 79 No. 14      The Spearman, Reporter, Spearman, Texas 79081      Thursday February 5, 1987

## YMCA BASKETBALL



FEBRUARY							1987
SUN	MON	TUES	WED	THURS	FRI	SAT	
1	2	3	4	5	6	7	
8	9	10	11	12	13	14	
15	16	17	18	19	20	21	
22	23	24	25	26	27	28	

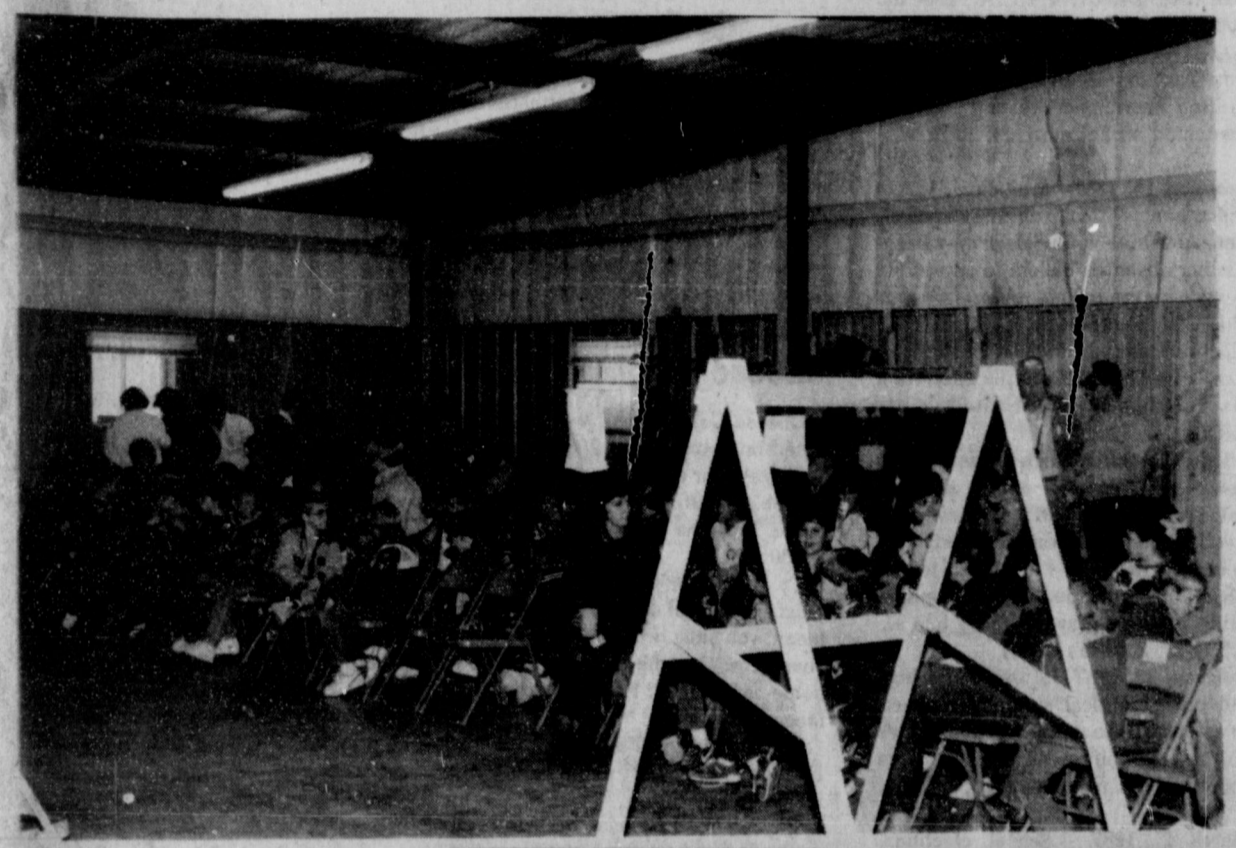
The YMCA Basketball Program in Spearman is going full swing. 111 players are participating in this outstanding program. The games involving the 111 players are all played on Saturday.

In the 3rd and 4th grades 28 boys and 22 girls participate in the program. In the 5th and 6th grades 31 girls and 30 boys participate in the program.

Boys Coaches are Don Townsen and Richie Thompson who coach the 5th and 6th grade boys. The 3rd and 4th grade boys are coached by Andria Mires and Brett Davis.

Barbara Townsen, Judith Schaefer, and Robbie Butts are the girls coaches for the YMCA Basketball program. Barbara Townsen and Judith Schaefer coach the 3rd and 4th grade girls. Robbie Butts and Judith Schaefer coach the 5th and 6th grade girls.

The YMCA Basketball games are played on Saturday. The games begin at 9 a.m. and usually last until 3 p.m. Games are played at the YMCA and the old gym at junior high school. With 111 participants and an average of 3 fans per family watching the players a large crowd is always on hand to watch the basketball games on Saturday. This is one of the finest programs in the area. Come out Saturday and watch these kids in action it will be worth your time.



### Space Race

Saturday, January 31st at 1 p.m. the Cub Scout Pack No. 578 had a meeting at the Hansford County Barn. There were 37 Cub Scouts, parents, den leaders and Cub Scout Master Terry Delozier present.

During the activities during the afternoon was a Space Race. Winners were: 1st place was Adam Queener, 2nd place - Ashley Baker, 3rd Place Cody McLeod, 4th place - Josh Howard and 5th place was Ben Queener.

There was also an Appearance Contest with 1st place going to Erick Cudd, 2nd place - Lucas Biggs, 3rd place Coyt Tigrett, 4th place Erick Vernon and 5th place - Cameron Kunselman.

Judges were Loyal Turner and Verlin Behne. A good time was enjoyed by all. There will be a Pinewood Derby held February 21st.



### Winter Sale Clearance

Beedy Furniture is continuing their store wide Winter Clearance Sale. Due to the recent snows, many super bargains are still available. Here are some of the super values you can get. All La-Z-Boy, Lane &

Benchcraft recliners - 30% off. All Simmons Bedding up to 50% off. All Simmons, La-Z-Boy, Benchcraft and International sleepers 30% off and all leather upholstery 30% off.

There are some other items up to 75% off. So don't miss out on these gigantic values. Drop by Beedy's and treat your Sweetheart to a valentine he or she will never forget.

Markets		
Wheat		\$2.30
Milo		\$2.55
Corn		\$1.80

Weather			
Date	Hi	Lo	
30	58	31	
31	49	35	
1	62	35	
2	66	36	

### New Police Sergeant

The Spearman Police Department has a new Sergeant, Billy Chandler. He is from Post, Texas. Billy was Sergeant at Slaton, Texas, and deputy at Post. He is married and has a little girl 9 months old, Ash' Leah, his wife is Karen. The Spearman Reporter welcomes you to Spearman.

### 3 Sign up for City Race

Three places will be open in the City Alderman race in Spearman this year. Terms will expire for Alderman Burl Buchanan, Wilson McClellan, and Mike Cudd. Their terms were for two years.

Three people have filed for the city race this year they are; incumbents Burl Buchanan, Wilson McClellan, and Mike Cudd. McClellan and Cudd have filed this week and Buchanan was the first to file for the race.

The complete 1987 election date are printed below concerning the city. The City and School election rules are not exactly the same however both the city and school elections will be held on the same date this year in April.



The Servitors Club donated 3 tables and a microwave to The Hideout (Teen Center) this past week. The Hideout greatly appreciates this wonderful

donation. Peggy Winegarner on the left along with Dr. Tom Latta, Linda Cummings and Laura Mackie are pictured above behind the table and

microwave donated by the Servitors Club of Spearman.

# 1987 Election Dates

## Important Political Dates - 1987

**January 19, 1987** - Municipal elections. First day to apply for a place on the ballot.  
**January 20, 1987** - Municipal, school and other political subdivision elections. Last date recommended to submit changes affecting voting to U.S. Justice Department for preclearance.  
**February 2, 1987** - Municipal elections. Recommended last day to order election supplies. Recommended last day to appoint presiding and alternate judges. **School elections.** Recommended last day to order election supplies.  
**February 3, 1987** - Municipal, school and other political subdivision elections. First day to accept applications for absentee ballots to be voted by mail (Sec. 84.007, V.T.C.A., Election Code).  
**February 16, 1987** - Municipal elections. Last day to post notice of ballot position drawing if drawing is to be conducted on February 19, 1987.  
**February 18, 1987** - Municipal, school and other political subdivision elections. Absentee voting clerk may begin mailing absentee ballots to applicants as soon as the ballots are ready on or after this date (Sec. 86.004, V.T.C.A., Election Code). Municipal elections. 5 p.m. - deadline to file application for a place on the ballot. Last date to order election.  
**Other political subdivision elections.** Last day to order election, unless otherwise provided by law [Sec. 3.005, V.T.C.A., Election Code].  
**February 19, 1987** - Municipal elections. Recommended date to conduct ballot position drawing (Sec. 52.094, V.T.C.A., Election Code).  
**February 23, 1987** - Municipal, school and other political subdivision elections. Last day to notify election judges of their appointment if they were appointed, as recommended, on Feb. 2, 1987.  
**March 2, 1987** - School elections. (at least 72 hours before ballot position drawing) Last day to post notice of ballot position drawing if drawing is to be conducted on March 5, 1987.  
**March 4, 1987** - School elections. Midnight - deadline to file application for a place on the ballot.  
**March 5, 1987** - Municipal and school elections, and elections ordered by county commissioners court. First day of period during which notice of election must be published. **School elections.** Recommended date to conduct ballot position drawing.  
**March 16, 1987** - (19th day before election day) Municipal, school and other political subdivision elections. Absentee voting by personal appearance begins (Sec. 85.001, V.T.C.A., Election Code). \* Last day to post copy of notice of election on the bulletin board used for posting notices of meetings of the governing body of the political subdivision holding the election. \*\*  
**\*NOTE:** Since the 20th day before election day falls on a Sunday, absentee voting begins on next working day.  
**\*\*NOTE:** Since the 21st day before election day falls on a Saturday, the deadline is extended to the next working day.  
**March 25, 1987** - Municipal and school elections, and elections ordered by county commissioners court. Last day of period for publication of notice of election.  
**March 27, 1987** - Municipal, school and other political subdivision elections. Last day to receive applications for absentee ballots to be voted by mail.  
**March 30, 1987** - [5th day before election day] \* 5 p.m. - Deadline for opposed candidates and political committees to file second statement of contributions and expenditures.  
**\*NOTE:** Since the 7th day before election day falls on a Saturday, the deadline is the next regular business day.

**March 31, 1987** - Municipal, school and other political subdivision elections. Last day to vote absentee by personal appearance.  
**April 4, 1987** - **ELECTION DAY.** Municipal, school, and other political subdivisions.  
**April 6, 1987** - Municipal, school and other political subdivision elections. Earliest date for official canvass of returns by governing authority of political subdivision.  
**April 10, 1987** - Municipal, school and other political subdivision elections. Last day for official canvass of returns by governing authority of political subdivision.

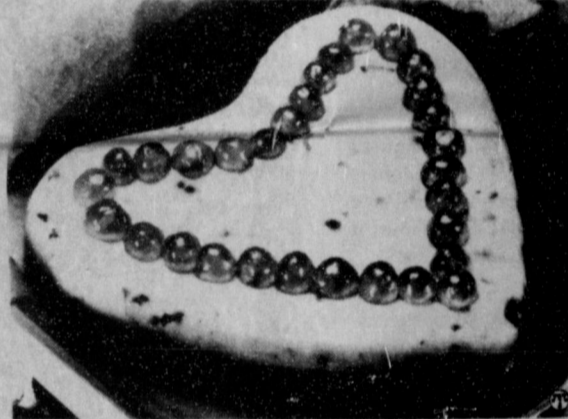
## Commodidades de Queso

Si Usted quiere Queso este Año Por favor de aser una nueva application antes del 13 de Febrero.  
 Tiene que enseñar lo que ase mensualmente or por ano. Puede llevar una carta del trabajo o Una Copia de sus taxas de 1986. El Queso sera distribuido el 18 de Febrero. Si no pone su application no puede recibir el queso.

## Cheese Commodities

Cheese Commodities will be distributed on February 18, 1987.  
 To get your cheese you must certify by Feb. 13, 1987 at the County Judges office. Between the hours of 8:30 a.m. - 5:00 p.m.  
 To qualify for the commodities you must show proof of Income. By this we mean, you must bring a check showing your gross income before your take home pay or a W 2 Form showing your income.  
 If you are self-Employed or a Farmer you must show your net income.  
 If you are on Social Security you must show a letter stating your income. Either your monthly or yearly.  
 You must apply to qualify for cheese commodities for this year.

### Sweetheart Cherry Nut Fudge



Getting to the heart of the matter can be a sweetheart of a task with the help of this recipe for a dessert that can make any day feel like Valentine's Day. The confection makes a marvelous gift, when you feel it's time to give your heart away.

### SWEETHEART CHERRY NUT FUDGE

(Makes about 2-1/2 pounds)

- 1-1/2 pounds white confectioners' coating\* or 3 (6-ounce) packages semi-sweet chocolate chips
  - 1 (14-ounce) can Eagle® Brand Sweetened Condensed milk (NOT evaporated milk)
  - 3/4 cup chopped nuts
  - 1/2 cup coarsely chopped maraschino cherries, well drained on paper towels or
  - 1/2 cup coarsely chopped red candied cherries
  - 1 teaspoon almond extract
- Lightly grease 9-inch heart-shaped cake pan\*\* or 8- or 9-inch square pan; line with wax paper. Set aside. In heavy saucepan, over low heat, melt coating with sweetened condensed milk. Remove from heat; stir in nuts, cherries and extract. Spread evenly into prepared pan. Chill 2 hours or until firm. Remove from pan; peel off wax paper. Garnish as desired. Store loosely covered in refrigerator.
- MICROWAVE:** In 2-quart glass measure, combine coating and sweetened condensed milk. Microwave on full power (high) 3 minutes or until coating melts. Stir. Add nuts, cherries and almond extract; mix well. Proceed as above.
- \*White confectioners' coating can be purchased in candy specialty stores.  
 \*\*To form heart shape without pan, draw 9-inch heart shape on wax paper; spread mixture to edge.

GRUVER  
 Invitational Volleyball Tournament  
 February 26, 27, 28th  
 Deadline for entries February 24th  
 Proceeds to go toward the Lisa Crane Scholarship fund

Please Circle One: Womens's Men's Co-ed

TEAM NAME: \_\_\_\_\_

Captain \_\_\_\_\_ Phone No. \_\_\_\_\_

Roster  
 \_\_\_\_\_  
 \_\_\_\_\_  
 \_\_\_\_\_  
 \_\_\_\_\_

Please mail entry fee and roster to:  
 Merry Shelton Ronnie or Johnnie Williams  
 Box 365 OR Box 325  
 Gruver, Tx. 79040 Gruver, Tx. 79040

OR CALL

Merry Shelton- 733-2769  
 Johnnie/Ronnie Williams- 733-2595  
 Linda Hiller- 733-2585

## American Heart Association

### A Time to Remember

Remember the special moments in your life with a gift to the American Heart Association. Whether you're celebrating an anniversary, a graduation, a birthday - whatever the occasion - your gift gives us hope for a healthy future. Your gift can make a difference in the fight against heart disease and stroke--diseases that in

the United States kill more people each year than all other causes combined. Remember your friends or relatives--give to the American Heart Association--in celebration of life, love and happiness. We're fighting for your life.

Give through your local bank or your local Heart Memorial Chairman -- 822 Roland St. - # 3.



The smallest mammal is the Kitti's hog-nosed bat of Thailand. It is about the size of a bumblebee and weighs no more than a penny.

# 4 file for School Board election in Spearman

One incumbent and three new candidates have filed for the school board race in Spearman. The incumbent, Phillip Renner has filed; and Don Townsen, Billy Brown, and robert Queener have filed.  
 The new candidates are; Don Townsen, a banker, and very active in

community affairs in Spearman. Billy Brown is a farmer, and also very active with the young people in 4-H and FFA. Robert Queener likewise is very active in school and community affairs in Spearman and is manager of Interstate Savings and Loan in Spearman.

# Election Dates

**March 2:** Last day to post notice of ballot position drawing.  
**March 4:** Midnight deadline for filing application for a place on the ballot.  
**March 5:** Conduct ballot position drawing.  
 Last day for voter registration for April 4th election.  
 Deadline for candidates to file first statement of campaign contributions and expenditures.  
 First day Notice of Election may be published.  
**March 14:** Last day to post Notice of Election in three public places.  
**March 16:** Absentee voting by personal appearance begins.

**March 25:** Last day Notice of Election may be published.  
**March 27:** Last day to receive applications for absentee ballot by mail.  
**March 30:** Deadline for candidates to file second statement of contributions and expenditures.  
**March 31:** Last day to vote absentee by personal appearance.  
**April 4:** ELECTION DAY  
**May 4:** Deadline for candidates to file statement of contributions and expenditures.  
**July 15:** Deadline for all elected office holders to file statement of contributions and expenditures.

# McClure Paint and Supply

Russ McClure of Spearman and his wife Ann McClure have opened a store at 307 Main in Spearman.  
 The McClure store is called McClure Paint and Supply. They have been opened now for 2 weeks and doing very well.  
 Some of the items in the store are Paints, building supplies, carpet, wallpaper, vinyl, formica and much, much more.  
 Russ and Ann cater to contractors as well as Do-It-Yourselfers.

Store hours are from 7:30 - 5:00 Mon.-Fri. and from 7:30-12:00 on Saturdays.  
 If you need any type of building supply come to McClure paints and ask Russ or Ann or Marla for assistance and they will gladly assist you.

\*\*\*\*\*  
 Eat More Beef  
 \*\*\*\*\*

# NEW GUARANTEED RATE CD PROGRAM

## WHAT IT OFFERS:

- \*\*\* YOU CAN HEDGE AGAINST DECLINING CD RATES
- \*\*\* GUARANTEED PREMIUM OVER CURRENT T-BILL RATES
- \*\*\* RATES GUARANTEED TO NEVER FALL BELOW ORIGINAL RATE FOR THREE YEARS\*
- \*\*\* INTEREST CAN BE COMPOUNDED DAILY
- \*\*\* YOU HAVE OPTION TO CHOOSE RATE--TIED TO CURRENT T-BILL RATE
- \*\*\* AVAILABLE FOR JUMBO'S--AND MINI-JUMBO'S
- \*\*\* INDIVIDUAL DEPOSITS INSURED UP TO \$100,000 BY FDIC

For more information visit our CD Department. This offer can be cancelled at any time.

**GRUVER STATE BANK**  
 GRUVER, TEXAS 79040  
 PHONE (806) 733-5061  
 BOX 978

THE MOST BANK FOR YOUR MONEY

\*Original rate is guaranteed for 3 years providing renewals are made at each 6 mo. anniversary. Subject to penalty for early withdrawal.



The Spearman Elementary School is starting the 1987-88 kindergarten students list. It is important that next year's students be known now in order that they may be given information on the immunizations and other planning which is necessary.

If you have a child or know of any child whose birthdate was prior to September 1, 1982, and who will be 5 years old before or as of Sept. 1, 1987, please complete the form and return it to the Spearman Elementary School, 511 S. Townsend. This should be done before January 31, 1987.

Registration Form for 1987-88 Kindergarten

Full name of child	Parent's names	Address	Phone	Birthdate	Sex

This student M or A. Please circle one. This student is the only student who have a choice of attending morning or afternoon. Please indicate your choice above.

WE WILL USE THE INFORMATION ON THIS FORM TO INVITE THE CHILDREN TO "RE-SCHOOL, ROUND-UP TO BE HELD IN THE SPRING.

BUY,SELL,TRADE OR RENT THROUGH THE

# CLASSIFIED ADS

## The Spearman Reporter

PUBLICATION [USPS 2346-6000]  
SPEARMAN, TEXAS 79081

213 Main  
Box 458  
Published Weekly at  
213 Main Street  
Spearman, Texas 79081

OWNER-PUBLISHER  
William M. Miller  
EDITOR  
William M. Miller

Second Class postage paid at  
Spearman, Texas 79081.

Any erroneous reflection upon  
the character of any person or firm  
appearing in these columns will be  
gladly and promptly corrected  
upon being brought to the attention  
of the management.

POSTMASTER: Send address  
changes to Spearman Reporter,  
Box 458, Spearman, Tx. 79081.

SUBSCRIPTION RATE: Hansford  
adjoining counties, combination  
with The Spearman Reporter,  
\$35.00 plus tax (2.19). Other  
points \$52.00 plus tax (3.25).

### Business Services

**NOTICE**  
Wallace Monument Co.  
Monuments, Curbing,  
Grave Covers  
Local Representative  
LEONARD JAMESON  
Spearman, Texas  
359-rtn

**MONUMENTS**  
Save Agents and  
Undertakers Profits

If it is inconvenient for you  
to visit our large display please  
phone collect (405) 327-0626 or  
write and we will call on you.  
ALVA MONUMENT  
WORKS, INC.  
Alva, OK 73717

### STEAM RINSE & VAC

Rinse and Vac Shampooer for  
rent at Gordons Drug. \$10.95 up to  
24 hours.

HAY SWATHING & Baling done.  
Call 733-2517 or Dennis at 733-  
5214.  
279-rtn-nc

APPLIANCE REPAIR: Call Jim  
Nobles, 659-3528.

## OSGOOD MONUMENT CO.

Amarillo, Texas  
Dealers of Rock of Ages Granite  
as well as all colored granites,  
marbles and bronze memorials.

represented by  
**BOXWELL BROS.**  
**FUNERAL HOME**  
**519 S. EVANS**  
**659-3802**

## L&M Body Works

1501 Hwy 15  
659-2775

Tailpipes - \$29.96  
Mufflers - \$39.95  
Most Duals \$160.00  
complete

### ALCOHOLICS ANONYMOUS MEETING

Tuesday  
8:00 P.M.  
Hansford County Library  
[Upstairs]  
122 Main - Spearman

### AL ANON

Tuesday  
8:00 P.M.

Protect your vehicles  
from the winter weather,  
and Spring hail & rain.  
We will erect a custom  
built carport or storage  
building to suit your needs.  
Special prices until Feb. 28.  
Free estimates  
Call 435-3222 after 6:00 p.m.

### Real Estate

**YOU'VE GOT CREDIT WITH US!!**  
Low, Low, down Repos!  
Good, Bad, & No Credit  
Welcomed  
806-381-1352  
Call Collect

**FOR SALE:**  
Income Property 40' X 70' metal  
Bldg on 7th St. 659-5289  
10-4Tc

**FOR SALE:** Remodeled 3 bedroom-2  
bath home in Spearman. Central Heat.  
Priced in the 20's. Call 435-9922 or  
435-7667.  
1-rtn-nc

**ABANDONED HOMES TAKE UP PAYMENTS!!!**  
Call Collect  
806-381-1352

**FOR SALE:** 2 bedroom 1 bath with  
rock fireplace. 659-5289  
10-4Tc Tonly

### Help Wanted

**INTERNATIONAL METAL BUILDING MANUFACTURER** selecting builder/  
dealer in some open areas. High  
potential profit in our growth industry.  
(303) 759-3200 EXT 2403.  
Feb. 8th

Immediate opening for a mature  
individual to supervise others in this  
area... Salary, Comm. could total over  
\$40,000 first year...No exp. necessary,  
no age limit. our product is world  
famous...Qualified applicant will be  
flown to La. office for training at our  
expense. Must have \$2800 (refund-  
able) cash deposit to cover your  
samples, supplies, etc. For free details  
call...Don Davis.  
1-800-225-4821  
Ask for Ext. 810

14-1tp

### Automobiles

1981 Bronco XLT  
Brand new tires, take up payments.  
Days 659-5005 after 6 p.m. nights  
659-2725

**FOR SALE:** 1977 Chevrolet Suburban.  
4X4 Good condition \$2250.00 Lynn  
Davis Morse. Call 733-2164 after 4:00  
p.m.  
13S-2tp

**FOR SALE:** 1979 GMC 78,000 miles  
New transmission & headers \$3500  
OBO call after 5:00 p.m. 435-6601.  
13-4tp

**For Sale:** 1974 Chevrolet, rebuilt  
engine, call 659-2175 after 5 p.m.  
11s-3tc

**FOR SALE:** 1982 Ford 4/w dr. ¾  
pickup call after 5:00 p.m. 659-2442.

### For Rent

**FOR RENT:** 1 bedroom house furnish-  
ed or unfurnished with fenced yard.  
Call Gus McLain. 659-2274  
10-rtn

**OFFICE FOR RENT:** Newly remodel-  
ed. Call Jim Greene at 659-3196.  
12s-4tp

**FOR RENT:** Trailer space in Spear-  
man. All utilities, fenced and concrete  
walk ways. Call 435-5080.  
38-rtn-c

**HOUSE FOR RENT:** \$375.00 per  
month or you can have what's behind  
door #2. Beautiful home with 3  
bedrooms, 2 baths, 2 large living areas  
and a kitchen big enough to float a  
battleship and all within walking  
distance of school. Call 435-6794.  
12S-rtn

**FOR RENT:** 2 bedroom house furnish-  
ed. Small 2 bedroom Mobile Home  
furnished. Call 659-3017 or 659-3727.  
11S-4tc

### Situation Wanted

**DURAN'S DISC ROLLING**  
35 years experience, no mileage  
charged. W. M. (Bill) Duran Call  
405-423-7238 Texhoma, Ok.  
12s-4tp-S only

If you want to feel better and  
enjoy life more and save money.  
Call NICK  
659-2049  
rtn-nc

### WE BUY & SELL

Antiques, Used furniture, Indian &  
Mexican artifacts also sell good used  
articles. Palo Duro Antiques &  
Bargain Store. Call 733-2129 or 733-  
5121. Located at 601 Main Street, in  
Gruver, Tx.  
13-8tc

Sewing wanted, alterations etc.  
Baking and decorating cakes. I now  
have the Wuzzles cake pan "EleRo".  
Call Joy 733-2517.  
46-rtn-nc

**GET READY FOR VALENTINES**  
Call 659-5279 or 659-8434 for a  
decorated Heart Cake or Heart  
Cookies. Call in advance and place  
your order. Just in time for  
Valentines.  
10 rtn

A Time to Remember  
Remember the special moments in  
your life with a gift to the American  
Heart Association. It's a gift of life for  
all of us. The American Heart Associa-  
tion. We're fighting for your life. give  
through your local bank or your local  
Heart Memorial Chairman...822  
Roland St. #3

**NOTICE TO ALL PERSONS HAVING CLAIMS AGAINST THE ESTATE OF BLANCHE ARCHER FULLER, DECEASED**

Notice is hereby given that original  
Letters Testamentary for the Estate of  
Blanche Archer Fuller were issued on  
the 22nd day of December, 1986, in  
Cause No. 1849, pending in the county  
Court of Hansford County, Texas, to:  
Mike Dixon and Mary Frances  
Archer Dixon  
The residences of such Executor/  
Executrix are Hansford County,  
Texas. The post office address is:  
c/o Mrs. Mary Frances Archer  
Dixon  
P.O. Box 747  
Spearman, Texas 79081  
All persons having claims against  
this Estate which is currently being  
administered are required to present  
them within the time and in the  
manner prescribed by law.  
DATED the 5 day of February,  
1987.  
Mike Dixon and Mary Frances Archer  
Dixon, Co-Executors of the Estate of  
Blanche Archer Fuller, Deceased

BY: Tommy M. Gumfory,  
Attorney for the Estate

14-1tp

### Miscellaneous

**HALF PRICE!** Flashing arrow signs  
\$289! Lighted, non-arrow \$279! Un-  
lighted \$239! Free letters! See locally.  
Call today! Factory: 1(800) 423-0163,  
anytime.

Own your own Jean-Sportswear,  
Ladies Apparel, Childrens/Maternity.  
Large sizes, Petite, Dancewear/  
Arobic or Accessories Store. Jordache,  
Chic, Lee, Levi, Izod, Gitano, Guess,  
Calvin Klein, Sergio Valente, Evan  
Picone, Liz Claiborne, Members only,  
Gasoline, Healthtex over 1000 others.  
\$14,800 to \$26,900 inventory, training,  
Fixtures, Grand Opening Etc. Can  
open 15 days. Mr. Keenan (305)  
678-3636

**Firewood Sale:** Seasoned or Green  
Locust. Andy Breisch Ph. 405-256-  
2940 or write 2920 Cheyenne Dr.  
Woodward, Okla. 73801  
rtn-nc

Own your own \$13.99 one price  
designer shoe store. A Retail Price  
unbelievable for quality shoes normal-  
ly priced from \$19 to \$60. Over 150  
Brand names 250 styles. \$14,800 to  
\$26,900 inventory, training, fixtures,  
grand opening. Can combine with over  
1,000 brands of apparel, accessory,  
Dancewear/Aerobic, Childrens Shop.  
Can open 15 days. Mr. McComb. (405)  
924 4583.

### Special Notice

**Panhandle Crisis Center** 101 S. W.  
Forth, Perryton, Texas 79070,  
806-435-5013. Help is available at  
no charge for domestic violence  
and sexual assault. Call Panhand-  
le Crisis Center, receive support  
during a difficult time. Counselors  
on call 24 hours a day. Call for  
help.  
19-rtn-nc

**TOPS #1245, SP** meets every  
Thursday night at 6:30 p.m. at Boyd's  
Beauty Salon located at 310 W. 4th.  
Drop by and join TOPS.

**WEIGHT WATCHERS** meets each  
Monday at 6:00 p.m. at the Home  
Demonstration Building, Spearman,  
Texas.

**Give Mom a break**  
**take her out for**  
**a Steak**



**GOLD KEY REALTY**  
Berger, Texas  
Bobbie Corbet  
Broker  
Hester Sue Crawford--9-2074  
Sales  
Debbie Hawkins--9-2288  
Sales

**30 1/2 Barkeley** - Corner lot gives value  
to this property. Will sell for  
reasonable offer. 3 bedroom-1 1/2  
bath.

**610 Haney** - Quality at low price! 3  
bedroom-1 1/2 bath-kitchen-utility  
room-living area-screened porch-  
office. All rooms are large. Must see  
to appreciate. Extra storage.

**1116 Haney** - 3 bedroom-1 1/2 bath-  
nice location. Large rooms. See  
today!

**1118 Barkeley** - Brick- 2 bath-3 bed-  
room-large kitchen-den area-formal  
living area-double garage.

**1102 Townsend** - Spacious and  
beautiful! 4 bedroom-3 bath-large  
kitchen with fireplace-formal living  
or dining room-large den with rock  
fireplace-utility and pantry. Inside is  
in excellent condition!

**1013 Townsend** - Immaculate 3 bed-  
room, 2 bath, formal living, large  
den area, kitchen dining, large  
utility, single garage, double car-  
port. Approx. 2000 sq. ft.

Century 21 Real Estate Corporation  
Equal Housing Opportunity  
INDEPENDENTLY OWNED AND OPERATED

### LEGAL NOTICE

Hansford County Commissioners'  
Court will receive bids until 4:00 p.m.  
on Friday, February 20, 1987 on one,  
new, 1987 1/2 ton pickup with and  
without trade-in. Bids will be opened  
on Monday, February 23, 1987 at the  
regular Commissioners' Court meet-  
ing.

Specifications are available at the  
County Judge's office or the County  
Auditor's office in the Hansford  
County Courthouse. The Court reser-  
ves the right to accept or reject any or  
all bids.

Roy L. McClellan,  
Hansford County Judge  
13-2tc-Tonly

### Hospital

Patients in Hansford Hospital are: Jim  
Medler, Helen Lee and Mattie Layton.  
Discharged were Maria Avila,  
Colleen Schaefer, Ricky Torres, Juan  
De Luna, Lanta Allred, Lisa Deakin  
and Daughter and Dorothy Davis.

Offered by  
**EMMETT R. SANDERS**  
**REALTOR**  
3 bedroom home, attached garage.  
\*\*\*\*  
Priced reduced on this 3 bedroom  
brick home on Steele Drive, large  
living area, central heat and air,  
carpeted.  
\*\*\*\*

Three bedroom home near junior  
high school, attached garaged,  
covered patio, storm doors and  
windows, central heat, nice carpets.  
\*\*\*\*

Attractive 3 bedroom brick home,  
large den with free-standing fire  
place, 1 1/2 baths, central heat and  
air, nice kitchen, curtains and  
drapes, fenced yard, priced in low  
forties. Shown by appointment only.  
\*\*\*\*

Large house partially remodeled  
located at 410 S. Hoskins; includes  
two lots. Needs to sell "as-is".  
\*\*\*\*

2 bedroom stucco home, good  
carpet, basement, detached double  
garage, corner lot. Shown by ap-  
pointment only.  
\*\*\*\*

3 bedroom home, attached garage  
with electric opener, fenced yard,  
central heat & air two ceiling fans.  
Shown by appointment only.  
\*\*\*\*

**EMMETT R. SANDERS**  
**REALTOR**  
659-2516, nights 659-2601  
45rtn-T only

**CLASSIFIED RATES**  
Regular.....Per Word-\$0.18  
Display.....Per Col. Inch-\$4.20  
Double rate for blind ads  
Minimum charges  
Cash.....\$4.00  
Charge.....\$4.50

**CASH IN ADVANCE ADS**  
Work Wanted\*Trailers For Sale\*  
Business Opportunities\*No Longer  
Responsible\*Political Advertist-  
ing\*Child Care\*Babysitting\*  
Garage Sales\*Out-of-County Ad-  
vertiser has established  
credit with

The Spearman Reporter  
**HEADLINES**  
To place or cancel ads  
Fri., 12:00 p.m.....Sun. edition  
Tues., 12:00 p.m.....Thurs. edition

The Spearman Reporter reserves  
the right to reject, edit, revise and  
properly classify all advertising  
submitted for publication. The  
Spearman Reporter also reserves  
the right to cancel any advertise-  
ment at any time.

The Spearman Reporter,  
213 Main, P.O. Box 458  
Spearman, Texas 79081

### PSU -

### BULL SALE

Sat. Feb. 21, 1987  
1:00 pm CST Activity Bldg.  
Univ. Farm Goodwell, OK  
Selling 90 Hd.  
For Catalog Call (405)349-2611  
Ext. 262 (office) 349-2514 (home)

### BOB HARDY REALTY

803 Wilmeth Dr.  
659-3440

603 S. Evans - 2 bedroom, some  
remodelling done, owner will give  
carpet allowance - fenced.

220 S. James - 3 bedroom, \$500  
move in - payments - \$236.00  
per month.

Robert R. Hardy - Broker



OPEN HOUSE JAN. 30,  
2 p.m.-4 p.m.

1117 Dessen-Relocation Company  
wants to deal on this 3 bedroom, 1 1/2  
bath home. Basement could be 4th  
bedroom.

**118 TOWNSEND-LOTS OF ROOM FOR THE MONEY**-in this 4  
bedroom, 2 bath home. The huge lot  
and apartment in the rear make this  
an excellent buy. REDUCED!

**101 W. 12th:** 3 bedroom, 1 1/2 bath  
brick with wood fence in a quiet  
comfy neighborhood. Also has fire-  
place!

**707 Collier-WHY Rent** when you  
can own this 3 bedroom, 1 bath  
home. REDUCED

**1006 S. Evans** - Close to School and  
Park. This 3 bedroom, 1 bath home  
has a cellar, storage and fence.

**121 S. Endicott** - Attention Invest-  
ors! This corner lot has a house  
plus 3 trailer houses.

**715 Cotter-Super Value!** in this 3  
bedroom, 1 1/2 bath home. Fenced  
backyard, with 2 storage buildings.

**3 miles North of Spearman**-3.6  
acres, 4 bedroom, 2 bath home with  
central heat and air. 3 water wells,  
sprinkler system and 1000 sq. ft.  
shop.

### GOLDEN SPREAD REALTY

Janye Helton Pointer, Broker, Owner  
435-5444

Larry Prosper 659-3491  
T.O. Lesly 659-2028

Dennis Neilson  
659-3608

**FORMOST DOUBLE WIDE** 28x52,  
3 bedroom, 2 bath to be moved,  
located 4 miles south of Spearman.

**426 S. Haney** - Drastically Reduced -  
Remodeled 3 bedroom, 2 bath home  
is close to elementary school.  
Corner lot with fence and storage.

**204 Lonita** - Why Rent when you can  
own this 3 bedroom, 1 bath home.

### COMMERCIAL

**Lucky Corner** - 21 miles South of  
Perryton: Drastic reduction on this  
thriving business and owner will  
carry part of the note!

**15 N. HAZELWOOD-LARGE BUILDING** and small building,  
enclosed with fence. Present owner  
would lease back part of building.  
**Price Reduced!**

**123 W. Kenneth**-Ideal Bldg. for sale  
or lease. Has over 10,000 Square Ft.

## Boys Ranch assumes control of Girls Town USA

A joint announcement was made today by Roy Turner, President of Cal Farley's Boys Ranch and Charles King, President of Girls Town USA, stating that Cal Farley's Boys Ranch will assume the control and operation of Girls Town USA.

Recently the Board of Directors of Girls Town asked the Cal Farley's Board to consider assuming their operation and after several months of discussion the Boys Ranch Board unanimously agreed to accept this opportunity.

"We at the Cal Farley's Boys Ranch think this is a wonderful opportunity to apply Cal Farley's philosophy of raising children to girls as well as boys," Roy Turner said. "Our main goal and concern is doing our best for each of the young ladies in Girls Town's care and to help as many children as possible." Cal Farley's Boys Ranch, which now makes a home for nearly 400 boys between the ages of 5 and 19 years of age, has become one of the most successful child caring facilities in the country due to Cal Farley, a dedicated Board of Directors, a hard working staff, but most of all because of our friends who have supported us from the beginning. We know they'll continue their friendship and support as we meet this great challenge and opportunity. Mr. Turner said, and we can give the same opportunities to the girls as well as the boys."

Mr. Marshall Cooper, Executive Director of Girls Town USA for 23 years stated, "We have followed the many ideas and concepts of Cal Farley's Boys Ranch since 1949 and I see this as a means of providing the best for our girls and they can have the same opportunities as the boys at the Ranch."

"Girls Town USA will continue operation as a separate organization as will Cal Farley's Boys Ranch. All the girls will be housed in present Girls Town facilities either at Whiteface, Borger, Austin or Lubbock. We have a lot to learn and we must

evaluate the program on each campus and the facilities, for the best advantages of the girls. Presently there are 65 girls being cared for by Girls Town and there is a capacity of 150. The cost for each girl is about \$23,000 per year. We will continue to need good friends, helping in whatever way possible, to provide a future for the fine young folks who need us," said Roy Turner.

There's a time to live and a time to die and a time to remember all... A gift in loving memory to the American Heart Association lives on in those dedicated to fighting heart disease and stroke -- diseases that kill more people every year than all other causes combined. Honor the life of a friend or relative with a gift that keeps on giving. A gift of love, life and hope. Give in loving memory to the American Heart Association. We're fighting for your life.

Give through your local bank or through your local memorial chairman 822 Roland

## The Southwestern Exposition and Fat Stock Show

Temple, Texas January 13, 1987. Farmers Seeking disaster emergency loans from the Farmer Home Administration (FmHa) for 1987 losses will need to have crop insurance if it is available, FmHa State Director, J. Lynn Futch said today.

If a farmer obtains the insurance required and if the value of his crop loss is still 80 percent or more after the insurance payment, the operation will be eligible for consideration for an emergency loan.

"All family-size farmers should be aware that a newly effective provision of the 1985 farm bill prohibits our making emergency loans for crop losses that could have been insured under multiple-peril crop insurance programs sponsored by the Federal Crop Insurance Corporation (FCIC)," said Futch.

Effective in January, the new requirement will affect crops planted in 1987, and thus will not affect winter wheat or other winter-seeded crops planted in 1986 and harvested in 1987. Insurance must be multiple-peril, covering most forms of disaster, rather than hail-only.

"Therefore I urge every Family-size farmer in the State of Texas to seriously take into account this new relationship between insurance coverage and emergency-loan eligibility."

Federally-subsidized multiple-peril crop insurance is now available for all wheat, corn, barley, grain sorghum, oats, upland cotton and rice, plus an additional 35 specialty crops in most growing areas. The government subsidy reduces the program costs by about 80 percent, Futch said, making crop insurance a worthwhile option to consider regardless of the newly-required tie-in with emergency loan eligibility.

The closing date for insurance sales on spring-planted crops in the State of Texas will vary, closing date for insurance sales in the coastal and South Texas Areas in February 15th; East Texas and Blackland Areas in March 31st; and the Rolling Plains and High Plains areas in April 15th. Because of these dates and the fact that a prevented-planting endorsement for eligible crops must be elected 45 days prior to sales closing, Futch urged farmers to contact their local insurance agents promptly.

Information is also available at FCIC field offices and through most county offices of the Agricultural Stabilization and Conservation Service (ASCS).

## COLD FACTS ABOUT THE COMMON COLD

### DON'T IGNORE YOUR COLD SYMPTOMS

You know the signs. Sniffling, sneezing, stuffed-up nose, watery eyes and a general achy feeling. You've got a cold.

According to folklore, "If you treat a cold, it takes seven days to go away. If you ignore it, it takes a week." But doctors say it's important to take a cold seriously and treat symptoms to avoid needless suffering and prevent complications, such as secondary bacterial infections from developing.

Although most colds disappear after about a week to 10 days with no aftereffects, colds can occasionally develop into more serious illnesses, including sinusitis, flu, bronchitis and pneumonia. That's why it's important to treat a cold for what it is—a disease of the upper respiratory tract. Doctors advise getting medical attention if cold symptoms worsen after a few days.

If your symptoms are caused by a cold virus, there are steps to take to relieve suffering. Most doctors advise rest, staying comfortable, drinking

plenty of liquids and not smoking. Just as important as rest and proper diet, is use of an over-the-counter cold medication. Such products are quite effective in relieving symptoms of sneezing, runny nose and congestion.

There are numerous brands for sale over-the-counter; one of the most familiar is **CONTACT**, which contains both an antihistamine and decongestant in a 12-hour continuous action formula.



The decongestant reduces swelling of the nasal passages, which relieves congestion and allows you to breathe easier, while the antihistamine dries up the excess secretions and decreases the sneezing associated with the common cold.

Medical experts say it's particularly important for people in high-risk groups—the elderly, young children,

pregnant women or those with chronic illnesses—to take cold symptoms seriously. People in these groups are prone to complications and may feel the effects of a cold more severely. A physician should be called during the early stages of illness.

In addition, other illnesses often begin with cold-like symptoms. Mononucleosis, for example, can start with a sore throat, headache and general fatigue. Pneumonia or bronchitis can begin with a cold-like cough. And the flu can often start out with stuffed-up nose, fever and cough.

To receive a free **CONTACT** "Cold Facts About the Common Cold" brochure, write to: **CONTACT**, P.O. Box 10000, Dept. W., Long Island City, NY 11101.



For a new flavor, toast cheese sandwiches in a frying pan lightly greased with bacon fat.

### MEXICAN BUFFET

All you can eat for -6<sup>95</sup> Children under 12 - 4<sup>95</sup>

#### MENU

Chile Rellenos	Sopapillas
Chicken, Cheese & Meat Enchiladas	Tacos
Fajitas-Chicken or Beef, with Beans & Spanish Rice	
Salad Extra	

**Saturday, February 7th**  
5:30 to 9:00 p.m.

**Jim 'O'lette Junction** Next to the Ambassador Inn

**210 S.E. 24th** Phone: 435-9544 **Perryton, Tx.**

# MID-WINTER CLEARANCE

Starts Wednesday, Feb. 4  
Closed Monday & Tuesday To Mark Down!

All La-Z-Boy RECLINERS **20% OFF**

All WOOD ROCKERS **25% OFF**

All CURIOS **30% OFF**

All FLAT TOP & ROLL TOP DESKS **25% OFF**

All SOFA SLEEPERS By Simmons & La-Z-Boy **30% OFF**

5-Pc. GAME SET - ONE ONLY **\$450<sup>00</sup>** Was \$695.00

### — LIVING ROOM —

	WAS	SALE PRICE
Brown Velvet Sofa By International	\$ 795.00	\$ 395.00
Beige Velvet Sofa & Loveseat by Clyde Pearson	\$2290.00	\$ 995.00
Blue Velvet Section With End Recliners by La-Z-Boy	\$1995.00	\$1395.00
Oak Living Room Entertainment Unit	\$1095.00	\$ 795.00
Oak Living Room Entertainment Unit	\$ 895.00	\$ 625.00

### — BEDROOM —

	WAS	SALE PRICE
Light Pine Bedroom Entertainment Unit	\$1595.00	\$ 995.00
Dark Oak Bedroom Suite With Dresser, Twin Mirrors, 2 Night Stands & Queen Headboard	\$1750.00	\$ 875.00
Off White Girl's Bedroom Group		<b>40% OFF</b>
Black Laquer & Wood Grain Bedroom Suite With Dresser, Mirror, 2 Night Stands & Queen Headboard	\$1695.00	\$ 995.00
Dark Pine Bedroom Suite With Dresser, Mirror, Chest, 2 Night Stands, Queen Headboard & Footboard	\$1595.00	\$ 995.00
Fruitwood Bedroom Suite With Dresser, Mirror, 2 Night Stands	\$1495.00	\$ 895.00

### — DINING ROOM —

	WAS	SALE PRICE
Solid Maple Dining Room Suite With Full China, Oval Table, 4 Side Chairs & 2 Arm Chairs	\$2895.00	\$1695.00
4 - 5-Piece Glass Top Dinette Set	\$ 495.00	\$ 250.00
One Group 5-Piece Dinettes		<b>30% OFF</b>

All SIMMONS BEDDING **20% OFF**

PORTABLE BAR **\$347<sup>50</sup>** Was \$695.00

PORTABLE BAR **\$425<sup>00</sup>** Was \$850.00

One Group DISCONTINUED LIVING ROOM TABLES **50% OFF**

One Group WALL PICTURES **75% OFF**

## Perryton

**FURNITURE CO.**  
Phone 435-5131 206 SO. MAIN • PERRYTON, TEXAS

# Point of View

by Marc Nothing

Tubs and Lardo are now in charge. They have been ever since the revolution, which took place in "Skinnies" territory. Piggy was taken away and Tubs took over.

Tubs says we are beautiful. We are the corpulent society. We do not work or exercise anymore. We do nothing of value.

The "Skinnies" do everything for us. They are in charge of cooking, cleaning, washing, and everything that requires movement. They also live in the outer city limits. Tubs forbids them to visit us except in cases of work.

When they do come in to town to work for us, we are ordered to put blindfolds on, in order that we do not see them and long to be like them. They do not stay for long, though. They jog out of town to be with their safety rings.

I am scared of the "Skinnies". They sometimes say that if I were like them, I could love myself. I don't care, though. I don't want to love myself. I tell them that Tubs can love me. I tell them Tubs has enough love for us that we do not feel empty because we do not love ourselves. Also, I think I would be incapable of loving myself. There is too much of myself to love. I let Tubs and Lardo love me. We all do.

Tubs says we are very beautiful, and we believe him. We believe him because he has helped us survive in a world that without him would be hostile. Tubs is so nice. He brings us trucks and trucks of food. Junk Food. We are not allowed to eat anything from wheat, soy, or barley origin. They are "No-nos," and only "Skinnies" eat them.

When we want to punish the "Skinnies", we eat their food. We are not supposed to eat with them, though, because Tubs says they will feed us lies.

When the T.V. is on, Tubs and Lardo show. They tell us that they love us. "We love you. Tubs loves you. Lardo loves you." They repeat this on and on and on until we feel hunger in our stomachs. Then we know they love us because they order the "Skinnies" to feed us. We have a feast all the time. This is how Tubs shows his love for us. And we feel deep inside, under all this layer of fat, Tubs' loving.

Our meals are a combination of many things. We eat everything mixed up. The only thing we do not mix is our drinks. They are given to us

in separate containers, but we can only drink them after we eat. In this way, Tubs says we will not get bloated. Then we can eat much.

After Tubs and Lardo are off the T.V., we go back to our rooms.

We sleep and dream of being like Tubs. He is our hero, although we never hope of being like him, because we are not able to eat so much. Tubs is fed fatty food by the "Skinnies". They make sure his food is high in calories, and try to feed him every few hours. Therefore, Tubs is in charge.

I hear talk of another possible revolution. Tubs warns us of listening to any rumors floating around. He tells us that if anyone says anything, we should walk away.

Well, Lardo casually mentioned today that Tubs perhaps may not be with us much longer. Everyone asks whether Tubs does not love us or if the "Skinnies" have stopped feeding him. We do not walk away, but wait to hear Tubs' fate.

"Don't worry. I will love you," says Lardo. "I will love you more and forever. I will take care of you." We listen because we are afraid. We listen because we fear for Tubs and fear Lardo, and because Lardo has taken Tubs away.

Tubs has been killed by the "Skinnies", and we are left with Lardo. The "Skinnies" slaughtered Tubs in a hideous manner. They pierced his heart and let him bleed to death. They cut his beautiful insides out and let them drain and put parts of his skins in them. They boiled his head, hung it on a sharp hook, and slid it into an oven. Then they hung his mutilated body by a rope. And all of this was done in front of us. That is why it was so nefarious. They try to make us see ourselves in Tubs' position, I think. It might work.

I know the "Skinnies" will eat Tubs. They think of success when others want parts of Tubs. After all, Tubs was in charge of many things. Maybe they hope that part of Tubs will stay with them.

I don't see where this attitude comes from, though. We still have parts of Tubs in us, and we didn't have to eat him. We are left with his feelings and love. But, unlike the "Skinnies" won't let Tubs live, much less love us, anymore.

So, as the barn door closes, Lardo shouts "Squeal! At the 'Skinnies'!" We squeal, but no one hears. Now, Lardo is in charge.

## For Valentines Day learn to save your loved ones life, the greatest gift you can give.

The American Heart Assn. has radically changed the methods of CPR (Cardio-pulmonary resuscitation.) Classes are being held Feb. 9th and 10th at City Hall from 6-10 p.m. to teach these changes. Parents of small children are encouraged to come. Information covered will be infant, children and adults in choking, mouth to mouth breathing and CPR. If you are interested in a CPR course but cannot be there on these dates call and we'll set up another course. Please call Michele Davis for more information 659-3411.

## Police Report

Spearman Police Report for January 20, 1987  
5:45 p.m. Prowler report  
9:12 p.m. Minor Accident, 900 block Highway 207 South

January 21, 1987  
6:44 a.m. Service Call  
10:45 p.m. Service Call

January 23, 1987  
9:22 p.m. Theft report  
10:22 p.m. Service Call  
January 24, 1987  
4:13 p.m. Service Call  
7:00 p.m. Service Call  
7:14 p.m. Service Call

January 25, 1987  
1:13 a.m. Vandalism report  
1:21 a.m. Service Call  
6:12 p.m. Report of reckless driver

January 27, 1987  
6:23 p.m. Service Call  
January 28, 1987  
6:28 p.m. Service Call  
January 29 11:36 p.m. Service Call

January 30  
9:37 p.m. Warrant Service  
11:44 p.m. Prowler report  
January 31  
12:55 a.m. Service Call  
2:54 p.m. Runaway report

Police Report for February 1, 1987  
7:29 p.m. Service Call  
February 2  
2:49 p.m. Hit and Run Accident, 316 Kenneth  
3:20 p.m. Service Call

## 6:31 p.m. Service Call 10:09 p.m. Service Call QUESTIONNAIRE

Dick Waterfield is interested in your comments and helpful hints as he begins his office as State Representative of the 99th District. The following is a questionnaire for the people to answer and Mr. Waterfield requests that you return your answers to his Austin office.

Also, the toll free number to call for information regarding legislation, committee hearings and other matters of the 70th Legislature is 1-800-252-9693. Calls will be taken from 8 a.m. until 6 p.m. Monday through Thursday, and until 5 p.m. Friday. STATES ISSUES QUESTIONNAIRE

- BUDGET
  - Do you feel that reduced state spending, increased taxes, or a combination of both is the best answer to the budget crisis?
- LOTTERY
  - Should the issue of a state lottery be decided by a vote of the people? YES OR NO
- TORT REFORM
  - Should court settlements in civil suits be capped? YES OR NO
  - Should the contingency fees of lawyers be capped? YES OR NO
  - Should a person's liability be limited to his degree of fault? YES OR NO
- EDUCATION
  - Should teachers receive automatic pay increases? YES OR NO
  - Is the career ladder accomplishing its goals? YES OR NO
- HOMESTEAD ACT
  - Should homeowners be allowed to borrow on their equity? YES OR NO
- GOVERNMENT
  - Should state government become MORE/LESS involved in the affairs of private citizens or business?
  - What is the most important role of your state representative?
  - What is the most important issue facing Texas today?
  - Suggestions.

I would appreciate any additional letters or comments. Please return to State Representative Dick Waterfield P. O. Box 2910, Austin, Tx 78769

## Farmers Union

The 83rd Annual State Convention of Texas Farmers Union is scheduled for January 29-31, 1987, at the Sheraton Crest Hotel, Congress at First Street, Austin, Texas. Our convention theme is: "NEW DIRECTION FOR AGRICULTURE-A FUTURE FOR TEXAS FAMILY

## Sweetheart Of The Week



Julie Latta

Julie Latta is the Spearman Reporter Calendar Girl for February 5th. Julie is a SHS Senior and is the daughter of Dr. & Mrs. Tom Latta. She is a prize winning beauty and excellent student.

FEBRUARY						
S	M	T	W	T	F	S
1	2	3	4	5	6	7
8	9	10	11	12	13	14
15	16	17	18	19	20	21
22	23	24	25	26	27	28

### FARMERS'

It is certain that we need a new direction if our family farms are to survive.

Our delegates and speakers are tried-and-true friends of agriculture, who have in the past and will in the future help search out new ideas and innovative policies to keep family farming viable.

The national agenda once again finds agriculture a priority, along with foreign affairs and trade policies. Changes in the 1985 Farm Bill are essential, and the input of Farmers Union will be strongly considered.

You are invited to attend this convention to see for yourself the policymaking process. You will have an opportunity to interview top and

state and national agricultural experts, as well as delegates from your home area.

You will be notified of news conferences featuring our major speakers. J. B. Bleckley, Texas Farmers Communications Office, and Kim Brown, National Farmers Union communications director, will coordinate our newsroom. For more information or for special news needs, call Mr. Bleckley at 512/477-6152, or Kim Brown in the St. Paul, Minnesota Office at 612/771-3380, or call Inez Montgomery at 817/776-4700.

We look forward to seeing you as agriculture meets the challenge in 1987.

Joe Rankin  
President

## Give Mom a break take her out for a Steak

Eat More Beef

## SAVE UP TO 70% During Vance Hall Sporting Goods "SKI LIQUIDATION SKI SALE"

Skis, boots, poles, bindings, jackets, bibs, gloves, sweaters, stretch pants, caps, socks, long underwear, after-ski boots, windbreakers, sweats, warm-up suits, shoes, and a whole lot more!

Free mounting with purchase of skis and bindings!

Thursday, Feb. 5 - 8 am till 7 pm  
Friday, Feb. 6 - 9 am till 7 pm  
Saturday, Feb. 7 - 9 am till 7 pm  
Sunday, Feb. 8 - 12 noon till 6 pm

NORTH SIDE OF THE AMARILLO CIVIC CENTER



### MILLIONS RETURN TO H & R BLOCK

Millions of people return to H & R Block every year for income tax preparation. They know from experience that getting your tax return prepared at H & R Block can be both a pleasant and money-saving experience.

When you come to H & R Block, you get a friendly greeting and can relax with a cup of fresh coffee. Next, you receive a personal interview and a well trained tax preparer gathers the information needed to assure you of every legitimate exemption, credit, and deduction which saves you money.

With the many changes in new tax laws and forms this year, you should try H & R Block. They'll make the new tax laws work for you.

Join the millions of American families who have discovered the advantages in using the H & R Block tax services.

807 W. Davis 659-2310  
Open: Monday Thru Friday  
9 a.m. to 5 p.m.  
Appointments available

### Spearman Track Meet Schedule

#### Spearman Invitational

The Spearman Invitational track meet will not be held this year due to the scheduling of the district track meet on Spearman's date, April 11th

and 12th. The district meet was moved from April 18th and 19th because of the Easter Break.

DATE	PLACE	TEAMS
FEB. 27-28	BOYS RANCH	7-8 JV-VARSITY BOYS
MARCH 6-7	FRITCH	7-8 JV-VARSITY BOYS 7-8 VARSITY GIRLS
MARCH 13-14	CANADIAN	7-8 JV-VARSITY BOYS 7-8 VARSITY GIRLS
MARCH 20-21	SUNRAY	JV-VARSITY BOYS VARSITY GIRLS
MARCH 20-21	PERRYTON	7,8,9 BOYS & GIRLS
MARCH 27-28	STINNETT	7-8 JV-VARSITY BOYS 7-8 VARSITY GIRLS
APRIL 3-4	WHITE DEER	7-8 JV-VARSITY BOYS 7-8 VARSITY GIRLS
APRIL 10-11	STRAITFORD (DISTRICT)	7-8 JV-VARSITY BOYS 7-8 VARSITY GIRLS
MAY 1-2	BIG SPRING (REGIONAL)	VARSITY BOYS VARSITY GIRLS
MAY 15-16	AUSTIN (STATE)	VARSITY BOYS VARSITY GIRLS

### Dean's Honor Roll

STILLWATER-- A total of 3,689 students earned recognition on academic honor rolls at Oklahoma State University for the 1986 fall semester, said Robin Lacy, OSU registrar.

Records show 3,333 of these students are from Oklahoma and bordering states of Arkansas, Colorado, Kansas, Missouri, New Mexico and Texas. The remainder are from other states and nations.

Of the students from Oklahoma and neighboring states, 2,928 were named to the Dean's Honor Roll while 572 earned recognition on the President's Honor Roll.

To be on the Dean's Honor Roll, a student must carry at least 12 credit hours, make a 3.25 grade point (B average) or higher, have no grade below a C and no incomplete courses.

The President's Honor Roll consists of Students who make straight A's, carry at least 12 hours and have no

incomplete courses.  
EDITOR'S NOTE: Name preceded by an asterisk are those students named to the President's Honor Roll. Oklahoma City and Tulsa metro area students' name are sorted by zip code.

Eva Marie Holt  
of Gruver.

## National Meat Week

We want to buy "Feeder Cattle"

also, we have good stocker calves

"For sale"

Boyd Colbert 806-435-5920

## Attention Cattlemen and Wheat Pasture Operators

We are currently contracting cattle off of winter wheat for current and spring delivery.

For more information call:

Bill McCoy, Mgr.  
Texas Beef Producers  
Dumas  
948-4163

Craig Clyburn, Mgr.  
Palo Duro Feedyard  
Gruver  
733-2416

Chris Umstock  
Texas Beef cattle Company  
A Division of TBP Group  
Amarillo  
Res: 383-2940 Office: 372-3877



Texas Beef Producers Group



The seventh grade Boys were introduced at the Varsity games last week. They are: (Standing L-R): Jason

Sutterfield, Dallas Trospier, Chad Davis, Chris Strawn, Timmy Kizziar, Mark Eakin, Jeryme Hunter.

(Down L-R): Chris Turner, Jesse tindell, Kris Kelp, John Antalek, Brian Kidder, Jeff Wagner.



The eighth grade boys were introduced at the Varsity games last week. They are: (Standing L-R): Shawn

Tanner, Joe Voshalike, Manuel Holquin, Jeff Hutchinson, Jay York, (down L-R): Jeff Williamson, Edgar

Nava, Mark Brown, Brandon Baker.

## Adult Sitter Workshop

The Area Agency on Aging is planning an Adult Sitter Workshop. The workshop is scheduled for February 25, 1987 with registration at 8:30 a.m. The class will begin at 9:00 a.m. and continue until 4:30 p.m. with an hour break for lunch on your own. The workshop will be held in the PRPC conference room, 2736 W. 10th, Amarillo (The Old Quarter Horse Building). Participants will develop skills to enable them to sit with Alzheimer's disease and related disorders victims. Volunteer Adult Sitters will be able to give families a much needed break in the constant care required by persons with Alzheimer's disease or related disorders.

Materials will be provided by the Area Agency and Barbara Fowler, Randall County Extension Agent. Amarillo College will give continuing education credits.

## Gruver Students on Honor Roll

Three students from Gruver were named to the Dean's Honor Roll for the fall 1986 semester at Wayland Baptist University.

Those named to the list, along with their classification and grade point average, include Julie Deakin, Sopho-

The course is free but pre-registration is required. Registration will be limited to 35 participants. There will be a second workshop offered, that is a repeat of the material, on March 11, 1987. If you are interested in attending, please pre-register by calling Barbara Serres, 372-3381 or writing to Ms. Serres, PRPC, Box 9257, Amarillo, TX 79105.

more, 3.50, daughter of Mr. and Mrs. James Deakin, 304 Richardson; Warren McClenagan, senior, 4.00, son of Mr. and Mrs. Dean McClenagan, 305 Chase; and Pamela Kay Doty, freshman, 4.00, daughter of Mr. and Mrs. Gary Doty, HCR 3.

The Dean's Honor roll is announced at the end of each semester by Dr. Fred A. Teague, academic vice president and dean of the university, and lists the names of students who posted a 3.50 or above on a 4.00 scale while carrying at least 12 semester hours.

A total of 129 students from 9 state and two foreign countries were named to the Dean's Honor Roll at Wayland for the fall term.



The seventh grade boys are doing a great job in Basketball this year. Here they are standing in the Gym: Timmy Kizziar, Kris Kelp, Jeff Wagner, Chad

Davis, Chris Strawn, John Antalek, Brian Kidder, Jeryme Hunter, Jason Sutterfield, Mark Eakin, Dallas Trospier, Chris Turner, Darian

Hawkins, Ramon Lozano, Brian Beck, James Macias, Alfonso Martinez.

**Annual WINTER CLEARANCE SALE**

**Due to the Recent Snows Our Storewide Sale Continues up to ...**

**70% off** on some items

LEATHER UPHOLSTERY **30%** or more off

SIMMONS MATTRESS & BOXSPRINGS up to **50%** off

SLEEPERS **30%** off

ALL LA-Z-BOY, LANE ACTION & BENCHCRAFT RECLINERS **30%** off

**Boody FURNITURE CO.**

659-3701  
723 W. 7th  
Spearman, Texas

plains shopping center

No Approvals, Returns or Exchanges  
All Items Subject to Prior Sale  
Every Item in Store Sale Priced

TERMS: 30 Day Open Account  
90 Days Same As Cash  
24 Months, Bank Rate Financing  
Mastercard & Visa Accepted  
All Terms Subject to Credit Approval  
No Phone Orders, Please.

**We Want To Be Your "Complete Car Care Center!"**

**Whatever Your Automotive Needs, We Are Here To Serve You!**

We will give a 10% discount on PARTS and LABOR in the Service Department for Cash or Preferred Customer Charges (Bill paid every 30 days). This excludes Texas Inspection Stickers and any "Specials" we are running.

**SERVICE DEPT. Ernie Vanderburg, Service Manager**

- ★ GM Trained Technicians
- ★ Inspection Stickers
- ★ Air Conditioning
- ★ Engine Diagnosis on gas or diesel engines
- ★ Transmission overhauls or replacement
- ★ Wrecker service
- ★ Front End Alignment
- ★ Electrical Troubleshooting
- ★ Gas or diesel engine overhauls or replacement
- ★ Tuneups
- ★ Free Service Loaners

**PARTS DEPT. Nita Bynum, Parts Manager**

- ★ Mr. Goodwrench replacement engines or transmissions with 12 month/ 12,000 miles warranty
- ★ Mr. Goodwrench gas shock absorbers with lifetime warranty to original owner.
- ★ Computerized parts ordering
- ★ Large parts inventory
- ★ Large windshield inventory
- ★ Large stock of sheet metal

**BODY SHOP Castulo Rosales, Body Shop Manager**

- ★ Wrecker service
- ★ Windshield Installation
- ★ MIG Welding
- ★ Complete "Classic" Restoration
- ★ Unitized body frame straightening equipment
- ★ Complete paint work
- ★ Free Service Loaners

**WE APPRECIATE YOUR BUSINESS!**

**GM QUALITY SERVICE PARTS**

**HERGERT GM SPEARMAN**

*Mr. Goodwrench*

**659-3721**



The seventh grade Boys were introduced at the Varsity games last week. They are: (Standing L-R); Jason

Sutterfield, Dallas Trospen, Chad Davis, Chris Strawn, Timmy Kizziar, Mark Eakin, Jeryme Hunter.

(Down L-R); Chris Turner, Jesse tindell, Kris Kelp, John Antalek, Brian Kidder, Jeff Wagner.

### Adult Sitter Workshop

The Area Agency on Aging is planning an Adult Sitter Workshop. The workshop is scheduled for February 25, 1987 with registration at 8:30 a.m. The class will begin at 9:00 a.m. and continue until 4:30 p.m. with an hour break for lunch on your own. The workshop will be held in the PRPC conference room, 2736 W. 10th, Amarillo (The Old Quarter Horse Building). Participants will develop skills to enable them to sit with Alzheimer's disease and related disorders victims. Volunteer Adult Sitters will be able to give families a much needed break in the constant care required by persons with Alzheimer's disease or related disorders.

Materials will be provided by the Area Agency and Barbara Fowler, Randall County Extension Agent. Amarillo College will give continuing education credits.

## Gruver Students on Honor Roll

Three students from Gruver were named to the Dean's Honor Roll for the fall 1986 semester at Wayland Baptist University.

Those named to the list, along with their classification and grade point average, include Julie Deakin, Sopho-

The course is free but pre-registration is required. Registration will be limited to 35 participants. There will be a second workshop offered, that is a repeat of the material, on March 11, 1987. If you are interested in attending, please pre-register by calling Barbara Serres, 372-3381 or writing to Ms. Serres, PRPC, Box 9257, Amarillo, TX 79105.

more, 3.50, daughter of Mr. and Mrs. James Deakin, 304 Richardson; Warren McClenagan, senior, 4.00, son of Mr. and Mrs. Dean McClenagan, 305 Chase; and Pamela Kay Doty, freshman, 4.00, daughter of Mr. and Mrs. Gary Doty, HCR 3.

The Dean's Honor roll is announced at the end of each semester by Dr. Fred A. Teague, academic vice president and dean of the university, and lists the names of students who posted a 3.50 or above on a 4.00 scale while carrying at least 12 semester hours.

A total of 129 students from 9 state and two foreign countries were named to the Dean's Honor Roll at Wayland for the fall term.



The eighth grade boys were introduced at the Varsity games last week. They are: (Standing L-R); Shawn

Tanner, Joe Voshalike, Manuel Holquin, Jeff Hutchinson, Jay York. (down L-R); Jeff Williamson, Edgar

Nava, Mark Brown, Brandon Baker.



The seventh grade boys are doing a great job in Basketball this year. Here they are standing in the Gym: Timmy Kizziar, Kris Kelp, Jeff Wagner, Chad

Davis, Chris Strawn, John Antalek, Brian Kidder, Jeryme Hunter, Jason Sutterfield, Mark Eakin, Dallas Trospen, Chris Turner, Darian

Hawkins, Ramon Lozano, Brian Beck, James Macias, Alfonso Martinez.

# Annual WINTER CLEARANCE SALE

Due to the Recent Snows Our Storewide Sale

## Continues

up to ...

# 70% off

on some items

LEATHER UPHOLSTERY

30% or more off

SIMMONS MATTRESS & BOXSPRINGS

up to 50% off

SLEEPERS

30% off

ALL LA-Z-BOY, LANE ACTION & BENCHCRAFT RECLINERS

30% off



## Boody FURNITURE CO.

659-3701

721 W. 7th

Spearman, Texas

No Approvals, Returns, or Exchanges. All Items Subject to Prior Sale. Every Item in Store Sale Priced.

TERMS: 30-60 Day Open Account, 90 Days Same As Cash, 24 Months Bank Rate Financing. Mastercard & Visa Accepted. All Terms Subject to Credit Approval. No Phone Orders Please.

plans shopping center

We Want To Be Your

## "Complete Car Care Center!"

Whatever Your Automotive Needs, We Are Here To Serve You!

We will give a 10% discount on PARTS and LABOR in the Service Department for Cash or Preferred Customer Charges (Bill paid every 30 days). This excludes Texas Inspection Stickers and any "Specials" we are running.

### SERVICE DEPT.

Ernie Vanderburg, Service Manager

- ★ GM Trained Technicians
- ★ Inspection Stickers
- ★ Air Conditioning
- ★ Engine Diagnosis on gas or diesel engines
- ★ Transmission overhauls or replacement

- ★ Wrecker service
- ★ Front End Alignment
- ★ Electrical Troubleshooting
- ★ Gas or diesel engine overhauls or replacement
- ★ Tuneups
- ★ Free Service Loaners

### PARTS DEPT.

Nita Bynum, Parts Manager

- ★ Mr. Goodwrench replacement engines or transmissions with 12 month/ 12,000 miles warranty
- ★ Mr. Goodwrench gas shock absorbers with lifetime warranty to original owner.

- ★ Computerized parts ordering
- ★ Large parts inventory
- ★ Large windshield inventory
- ★ Large stock of sheet metal

### BODY SHOP

Castulo Rosales, Body Shop Manager

- ★ Wrecker service
- ★ Windshield Installation
- ★ MIG Welding
- ★ Complete "Classic" Restoration

- ★ Unitized body frame straightening equipment
- ★ Complete paint work
- ★ Free Service Loaners

WE APPRECIATE YOUR BUSINESS!



GENERAL MOTORS CORPORATION

Mr. Goodwrench



659-3721

# UNITED Supermarket

THESE PRICES GOOD THRU FEB. 7  
PERRYTON ONLY  
DOUBLE COUPONS THURSDAY

## BEEF SALE-A-BRATION!

NATIONAL MEAT WEEK  
February 1-7, 1987

WE GIVE S&H GREEN STAMPS EVERY DAY  
DOUBLE STAMPS ON WED. & SAT. with purchase of \$2.50 or more, excluding cigarettes

PRODUCE



U.S. #1  
**RUSSET POTATOES**  
5 LB. BAG **.69**

FRESH TEXAS  
**YAMS**  
LB. **.39**

CRISP GREEN  
BELL PEPPERS  
4 FOR **\$1**



MARYLAND CLUB  
**COFFEE**  
ASSORTED GRINDS  
1 LB. CAN **\$2.39**



**KRAFT MIRACLE WHIP**  
REG. OR LITE  
32 OZ. **\$1.49**



**COKES**  
6-32 OZ. PLUS DEPOSIT  
**\$1.99**

JIF  
**PEANUT BUTTER**  
SMOOTH OR CRUNCHY  
18 OZ. **\$1.69**

FINE FARE  
**PINEAPPLE**  
15.25 OZ. **2 \$1** FOR

FINE FARE  
**TEA BAGS**  
100 CT. **\$1.89**

CAMPBELL'S  
**TOMATO SOUP**  
10.75 OZ. **4 \$1** FOR

FINE FARE  
**CRACKERS**  
16 OZ. **.49**

HONEY BOY  
**PINK SALMON**  
15.5 OZ. **\$1.69**

**RUFFLES CHIPS**  
ASSORTED 6.5 OZ. **.98**

MRS. BAIRD'S  
**WHITE BREAD**  
15' OFF LABEL 1 1/2 LB. LOAF **.69**

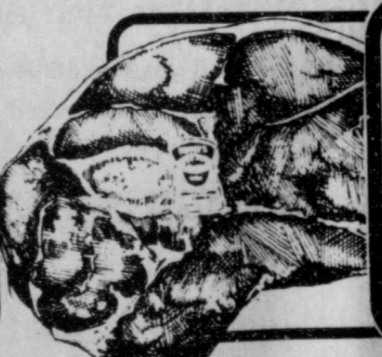
**CRISCO OIL**  
30' OFF LABEL 48 OZ. **\$1.98**

GROCERY



FAMILY PAK  
**GROUND BEEF**  
LB. **.88**

UNITED TRU TENDR  
**T-BONE STEAK**  
LB. **\$2.98**



UNITED TRU TENDR  
**SIRLOIN STEAK**  
CENTER CUT  
LB. **\$1.98**



UNITED TRU TENDR  
OR USDA CHOICE  
**BONELESS SHOULDER ROAST**  
LB. **\$1.58**

UNITED TRU TENDR  
OR USDA CHOICE  
**ROUND STEAK**  
CENTER CUT LB. **\$1.68**

UNITED TRU TENDR  
**BONELESS SIRLOIN TIP ROAST**  
LB. **\$2.58**

UNITED TRU TENDR  
OR USDA CHOICE  
**CHUCK ROAST**  
BLADE CUT LB. **\$1.18**

MEATS



UNITED  
**ICE CREAM**  
ASSORTED  
1/2 GAL. **\$1.49**

GREEN GIANT  
**CORN ON THE COB**  
REG. OR EXTRA CRISPY  
4 CT. **.89**

TREESWEET LITE  
**ORANGE JUICE**  
12 OZ. **.98**



UNITED PREMIUM  
QUALITY  
**EGGS**  
EXTRA LARGE  
DOZ. **.69**

PARKAY  
**OLEO QUARTERS**  
1 LB. PKG. **2 \$1** FOR

FINE FARE  
**TEXAS STYLE FLAKY BISCUITS**  
12 OZ. **2 FOR .89**

QUANTITY RIGHTS RESERVED • NO SALES TO DEALERS



**BOUNTY TOWELS**  
ASSORTED JUMBO ROLL  
**2 \$1.50** FOR



**LUV'S BABY PANTS**  
MED. 96 CT. LARGE 64 CT. EXTRA LARGE 56 CT.  
**\$16.99**



**FLEX SHAMPOO**  
30' OFF LABEL  
16 OZ. **\$1.49**



**ENERGIZER BATTERIES**  
2 PACK AA OR AAA  
**\$1.19**

HEALTH & BEAUTY