

Hansford Co. Library
120 Main
Spearman, Tx 79081



KELLIE MCWHIRTER DISPLAYS part of her new wardrobe for the upcoming Miss Wheatheart pageant to be held Aug. 8 in Perryton. The talented Spearman Miss is the reigning Miss Hansford County and will be sponsored by the Spearman Chamber of Commerce in the upcoming pageant.

As reigning Miss Hansford County . . .

McWhirter to Wheatheart pageant

She could almost be described as "pixyish", and a sparkling smile and twinkling eyes just adds to that definition of Kellie McWhirter, the 1987 Miss Hansford County.

Kellie and several other area hopefuls, will be in Perryton Aug. 8 to try for the Miss Wheatheart crown and the right to advance to next summer's Miss Texas Pageant.

The talented Spearman High School graduate won the right to represent Hansford County when she claimed the Miss Hansford title during the annual Hansford Round Up last June.

No stranger to the Scholarship Pageant circuit, the Spearman Miss will be competing in her second Miss Wheatheart contest. She was third runner up in 1986 behind classmate Jill McLain who

went on to represent the area in the Miss Texas Pageant in July.

Kellie also competed in the 1986 Miss Hansford Pageant where she was second runner up that year. In addition, she was named Miss Aggie Princess at Panhandle State University last October at Goodwell, Ok.

And, she has competed in the annual Lions Club Sweetheart district beauty pageant for three consecutive years, representing the Spearman Lions Club.

The annual Miss Hansford Scholarship Pageant includes a talent contest and there Miss McWhirter utilized her singing talents with her rendition of "Words Get In The Way".

But Kellie will not only be singing a different song for the Miss Wheatheart Pageant, she's

also undergone a wardrobe change as well.

"Jill and Gwen McLain have helped me tremendously there," declare the Miss Wheatheart hopeful. As mentioned earlier, Jill is the reigning Miss Wheatheart and Gwen is her mother.

In the talent portion, Kellie doesn't need a lot of help. At the Perryton pageant, she will sing "Mama, He's Crazy" to a soundtrack she has edited herself.

The Spearman High School graduate -- class of 1987 -- has been in the Spearman choir since the fifth grade.

Her accomplishments there are numerous, including four years as a member of the All District Choir, three years on the All Region Choir, two years on the All Area Choir and one year on All State.

She has also been a member of the Spearman show choir, "Celebrate".

It's no wonder then that she has chosen musical education as her major at Baylor University where she is already enrolled to begin classes this fall.

As if beauty and talent weren't enough, Kellie is also blessed with intelligence. She served her graduation class as valedictorian. The Spearman High School graduate managed to maintain a 97.962 grade point average through four years of high school.

What will happen if she doesn't win the Miss Wheatheart Pageant? "I don't think I'll pursue any pageants beyond Miss Wheatheart," she notes. "I've gained some invaluable experience in all

See "MCWHIRTER", p-2



The Spearman

Reporter

25¢
Per Copy

12 Pages

Volume 79, No. 39

YOUR HOMETOWN NEWSPAPER

Thursday, July 30, 1987

The HANSFORD REPORT

by JAMES JARRETT



This month's coveted "Murphy's Law" award goes to Spearman's own Joe Clement who has proven conclusively that irrigation motors have more than one method of pumping water.

This story began with a reluctant irrigation motor -- one of those which can be worked on for days without discovering exactly why it doesn't operate.

Joe had one of those. He spent a full day working on the engine and finally got it working -- of course it was too late to set out the field, but it was working.

At least it did when they left late one evening. When they arrived the next day to get it operating, it wasn't. Period.

So, another day of down time was spent trying to find the bug. They never did. Yet, the next day they came out to work on the engine and, Lo! It started. The first time. And it ran beautifully.

So, Joe and company scratched their heads and, after standing around some time to make sure there were no hitches, they left.

Later, when they went to check the field, they found more water in the road than in the field. It seems the cooling coil had burst and water was being pumped out of it in a grand fashion.

Joe doesn't understand how -- or why -- the engine started working. Nor can he explain how the cooling coils burst, probably shortly after they had left.

Those of us with experience know, Murphy was either gone on a coffee break or he was casing out his next job.

Joe, look on the bright side -- at least you're not on the hospital board or the school board. What? Oh, excuse me, Joe . . . God bless you and the rest of the school board.

Over the course of the next year, you'll be hearing a lot about the school board as they wrestle with the junior high building problem.

That problem has now been defined in dollars and cents. At least, the parameters have been outlined, actual definition is yet to come.

Questions are already being asked by some if a building program is really necessary. Those who have been in the east wing of the building, stood on the second floor and felt the wind sway the building don't ask questions like that. For what it's worth, the west wing isn't that much better. It doesn't sway in the wind, but you don't want to be on the floor with kids running down the hall . . . vibrations do funny things.

If something doesn't get done, then one day this newspaper will carry the story about the collapse of the building -- and possibly a few

obituaries along with the story.

The story will make good copy -- but that doesn't make it a good story, just one which will sell a lot of papers. That's a piece of profit I'd rather not make.

Somehow it just makes sense that Austin legislators -- in all their wisdom -- would throw in a \$25 fee to assess everyone who collects sales tax.

Where else but in America -- the country founded on a tax revolt -- could you get the opportunity to pay for the privilege of collecting taxes for the state?

And that's just one of the great things which have come out of the new tax package which was rammed through the state legislature in the waning days of its special session.

See "REPORT", p-2

Blood drive Monday at Parish Hall

A blood drive will be held at the Sacred Heart Catholic Parish Hall in Spearman Monday from 2 to 8 p.m.

The blood drive is sponsored by Coffee Memorial Blood Center of Amarillo. The Amarillo-based organization provides all the blood components which are used at the Hansford Hospital.

The blood drives which have been held on an every 6-month basis, generally average 75 to 90 pints per drive, reports Bob Thomas, community relations manager for the blood center.

"Hansford hospital generally orders about 200 pints of blood a year," notes Thomas. "Hansford residents have been super in responding to our blood drives."

'87 FNB tennis tourney entry deadline is Friday

Entry deadline for the third annual First National Bank Open Tennis Tournament is noon Friday, reports Don Townsen, tournament director for the 2-day meet.

Entry deadline for the junior tournament which will run Thursday and Friday, closed at noon Wednesday. The open tournament will have players competing for titles and prizes Saturday and Sunday.

Entry fees for the Open Tournament are \$8 for singles and \$16 for doubles events. Events are broken into A, B and C classes with competition in men's and women's

Tuesday afternoon, Spearman school officials were presented with five different possibilities on handling building problems on the junior high elementary campus with the price tag for the different operations running from a low of \$1,988 million to a high of \$5,389 million.

Larry Donham, an Andrews architect, presented the SISD board of trustees with five different options following the demolition of the east portion of the current junior high building.

Those options ran the gamut from enlarging the existing ele-

mentary campus in order to house grades K-5 while keeping grades 6-8 in the west portion of the existing junior high, to total demolition of the existing junior high and cafeteria in order to build an entire new junior high building while locating a competition gymnasium at high school.

"We're taking a hard look at what Larry (the architect) showed us," SISD school superintendent Larry Butler reports. "Our goal is still to get the most for our tax dollar."

Trustees have requested Donham to come up with some other

figures based on suggestions made during the Tuesday afternoon session. The Spearman school officials took parts of each plan and shifted them around to eliminate some cost items which were not broken down in Donham's presentation.

A portion of the presentation included the demolition of the entire junior high building -- both the east wing which was construct-

ed in 1923 -- and the west wing which was built seven years later in 1930.

"I don't want to call it (the west wing) an albatross," commented Donham during the meeting. "But it (leaving the west wing standing) wouldn't be a proper solution."

Donham pointed out to trustees that the west wing could be kept standing for another 20 years.

See "SCHOOLS", p-2

County commissioners delay \$5 tag decision

Hansford county commissioners tabled a possible \$5 vehicle tag fee increase pending a decision on their 1987-88 tax rate, reports Hansford county judge R.L. McClellan.

The special \$5 tag fee was allowed for counties several years ago when high state tag rates went into effect, but it has never been collected by Hansford county.

The Hansford commissioner's court was studying the tag fee as a way of raising funds to soften an expected tax rate hike for the upcoming fiscal year.

During Monday's meeting, commissioner's decided to take a wait and see posture before making a decision, pending a firm look at the 1987-88 budget and final figures on the tax rate.

County commissioners have been working with estimated values

A total of 7,683 vehicles are currently registered in Hansford county, reports Hansford Tax Assessor-Collector Helen Dry.

The state would receive 15 cents of the \$5 fee, giving the county a additional \$37,263 in revenues for the 1987-88 tax year if the fee is elected.

City commission awards system 34 computer

Spearman city fathers awarded the sale of their old IBM computer system to a Spearman man for less than \$600 during a light agenda Tuesday evening.

Mike Davis of Spearman purchased the system 34 computer along with an IBM CRT, printer and associated supplies. Davis' bid of \$586 was high bid for the system.

Commissioners also agreed to extend an existing grass lease with Ron Clark on 86.3 acres of land owned by the city which is located adjacent to the Hansford golf

course.

In other action Tuesday, commissioners passed a resolution supporting their municipal landfill and authorized the city manager to submit an application for a permit revision to operate the landfill.

City manager, Jim Murray gave a report to commissioners on wind damage at the city airport where T-Hangar doors were torn from their anchorings.

"We're covered by insurance and our cost will be a \$200 deductible," Murray told commissioners.



STORE OWNER BOB DOWNING and manager Vance McGee look over the new Jack and Jill store which opened this past weekend in Spearman. The new store boasts a newly remodeled interior as well as exterior with almost 11,000 square feet of space.

FEBREK



CAN BOBBY COME OUT AND PLAY?

STATE CAPITAL



HIGHLIGHTS

By Lyndell Williams
TEXAS PRESS ASSOCIATION

AUSTIN—One lawmaker said the Legislature should let Bob Slagle and George Strake, who respectively lead Texas Democrats and Republicans, mud-wrestle for the tax bill on the House floor.

Another said, the "good ol' boy" system (non-partisan) died in the House last week, probably never to be resurrected. Instead, the House will one day soon divide on party lines like the U.S. Congress.

In the wake of the fierce special session which produced the largest state tax hike in the nation's history, Texas government and Texas politics will never be the same again.

And the key ingredient is an angry voter backlash. Does it really exist? Will it rise across the state or just in pockets?

Cooler heads say the voters accepted new taxes long before the drawn-out legislative battle was over.

The state's tax collector, Comptroller Bob Bullock, estimated the average Texan will pay about \$63 a year more in new taxes. But local governments aren't through with their budgets and taxes will probably rise on the local level.

Texas 43rd

And while lawmakers fear a backlash from angry voters, Texas has only risen from 48th to 43rd among states in per-capita taxation. And that's after what one legislator called "the largest tax bill in the free world, outside of Congress."

Some players tried to claim a victory, but House Speaker Gib Lewis probably summed it up best: "No one got what they wanted." A tired, wounded Gov. Bill Clements said the GOP had won a victory by stopping growth, even though spending was not reduced.

Clements and White

In a session of bitter pills for all, his was the bitterest. For in the end, he signed the tax bill he promised to veto, doing just what he had despised his defeated nemesis, former Gov. Mark White, for doing.

On one hand, their fates were not the same. White hadn't been in office two months before he reversed himself on taxes and initiated the fight to raise them.

Clements surrendered to the Legislature only after a bitter partisan fight that lasted seven months.

And on the other hand, both Clements and White learned, like

many a governor before them, that under the Texas system the will of the Legislature prevails over the governor every time.

Republican Muscle

The House Republicans flexed more muscle this session than ever before, forcing the Democrats to resort to some of the trickiest maneuvering seen.

Included in the emerging leadership are Gerald Geistweidt of Mason, Mike Toomey and Ashley Smith of Houston, and old pros Terrell Smith of Austin, Bill Cerverha of Dallas and Tom Craddock of Midland.

Before it was over, they forced the Democrats to remove the so-called "Doomsday Amendment" which gutted anti-tax districts, and they forced the tax hike to be taken in two votes which attempted to camouflage GOP support for the tax.

GOP Plan

Thus, Texas Republicans positioned themselves to maintain their anti-tax posture, and that's how they will run come election time. And they can hardly wait.

Their stated goal is to gain 10 to 12 seats in the '88 election, which brings them in range of electing a speaker from their party.

They particularly want control by '90, when the Legislature will begin to redistrict the state.

Democratic Plan

The Democratic plan is not as clearly stated, although they certainly want to re-elect their members by claiming they maintained public education and services.

DEAR ONES,

We want to thank all our friends for making our last 10 months in our donut shop a good time. Butch has bought our shop and we have a pressing venture in Montana! We love you all and those in the church we will especially miss!

God Bless you all.

Come see us in Bozeman Montana.

Loyd & Joyce Reyher

P.S. Butch has 10 months experience and can make donuts as well as anyone.



Your family may find a refreshing change in your relationship if you all get away together. One place many families are discovering these days is the We The People Celebration in Philadelphia, commemorating the 200th anniversary of the writing of the Constitution of the United States there. After enjoying the parades, shows and exhibits, you can refresh yourselves with frosty glasses of iced tea and such Philadelphia delicacies as cheese steaks and pretzels with mustard as you tour one of America's most historic areas.

SEARS Catalog

NATIONAL HOME APPLIANCE SIDEWALK SALE

FREE POPCICLES FRIDAY AND SATURDAY



Kenmore refrigerators and freezers

SAVE *135 ALL-FROSTLESS 18.0 cu.ft. total capacity with durable seamless liner, more. JN67821 **464⁹⁹**

SAVE *155 Icemaker model 18.6 cu.ft. total cap. with factory-installed icemaker. JL77921 **594⁹⁹**

SAVE *235 Side-by-side model 19.1 cu.ft. total cap. with factory-installed icemaker. JL57921 **664⁹⁹**

VALUE! Chest freezer Spacious 23.1 cu.ft. total cap., 3 lift-out baskets. MY17331 Sears price. **379⁹⁹**

SAVE *140 Sears Best model 15.1 cu.ft. total cap. chest freezer, Spacemaster[®] baskets. JL18558 **329⁹⁹**

SAVE *40 Upright freezer Roomy upright model with durable seamless liner. W26251 **279⁹⁹**

Kenmore Gas Grill

GREAT BUY! Our lowest price ever for a gas grill this big 657 sq. in., 42,000 BTU grill with easy push-button ignition, dual controls, and more! Our requires assembly. **169⁸⁸**

Kenmore microwaves and dishwashers

SAVE *140 .9 cu.ft. microwave Solid-state, 3-stage memory with 12-hour delay start. MY87835 **189⁹⁹**

SAVE *130 Large-capacity model 1.4 cu.ft., 5-stage memory with auto defrost. JN67447 **289⁹⁹**

SAVE *170 Built-in dishwasher 15 cycles, 3 wash levels. Water miser cycle. JL15565 **299⁹⁹**

SAVE *140 Kenmore dishwasher Sears exclusive ULTRA WASH cleaning system, 16 cycles. MY16775 **349⁹⁹**

Extra-capacity laundry pair

SAVE *145 on the pair Kenmore 2-speed washer 9 cycles with Dual-Action[®] agitator, 3 water temperatures. JL26701 **354⁹⁹**

Kenmore 4-temperature dryer Automatic Fabric Master dryer with end-of-cycle signal. JL66701 **279⁹⁹**

Hard-working Kenmore vacuum cleaners

1/2 PRICE! Upright vacuum Our most powerful standard upright vac at terrific savings! Automatically adjusts to carpet pile height for easy cleaning. MR35941 **99⁹⁹**

SAVE *120 3.9 peak HP vac Hard-working Power-Mate[®] vac attacks stubborn carpet dirt, 4 pile settings, handy floor light. (1.0-HP VCMA). JL24975 **199⁹⁹**

Great buys on electronics

SAVE *60 Color TV with remote 19-in. diag. meas TV with 17-key remote, 117 channels, electronic quartz tuner. JL42411 **289⁹⁹**

Color TVs as low as *159⁹⁹

SAVE *40 Cable-ready VHS/VCR 14 day/4 program VCR with 107 channels, 15 function wireless remote. JL53295 **274⁹⁹**

Other VCRs on SALE! Come in and see our wide selection.

PRIZES GALORE!



DURING OUR 3RD ANNUAL FIRST NATIONAL JUNIOR AND OPEN TENNIS TOURNAMENT . . .

Open ENTRIES close AT NOON Friday . . . ENTER TODAY!



Women's Singles _____
 Women's doubles _____
 Men's singles _____
 Men's doubles _____
 Mixed doubles _____
 NAME: _____ DOUBLES PARTNER: _____
 ADDRESS: _____
 TELEPHONE: _____
 SEEDING INFORMATION: _____

Send entries to: First National Bank, P.O. Box 337, Spearman, Texas 79081
 Phone: (806) 659-5544.

Tournament Directors: Don and Barbara Townsen, (806) 659-2735

Hours:
 Monday thru Friday
 7:30 A.M. - 3:00 P.M.
 Also; 4:00 to 6:00 P.M.
 on Thursday



729 W. 7th

659-5544

We Service What We Sell



Hours
 9:00 a.m.
 to
 5:30 p.m.

Phone 659-2573
 517 Hwy 207 South
 Free Parking
 Spearman, Texas

There's more for your life at
SEARS

©Sears, Roebuck and Co., 1537
 Satisfaction guaranteed or your money back



FIRST NATIONAL BANK OFFICERS Don Townsen and Felma Evans display the prizes and trophies up for grabs during the Third Annual First National Bank Junior and Open Tennis Tournament which will run Thursday through Sunday at the Spearman Omni-Courts.

To God a Note of Thanks

by Mrs. Greever

Friends in 1 Cor. chapter 15 verse 58 we find these words, therefore my beloved brethren be ye steadfast unmovable always abounding in the work of the Lord for as much as ye know your labor is not in vain in the Lord. Now may we analyze this verse of scripture and by God's holy word and the Holy Ghost, our teacher it can be fully known for they fully agree. Now to be of the beloved brethren, we beyond doubt would have to repent of committed sins and fully surrendered spirit soul and body to God's will and by so doing have been sanctified made pure and holy and set apart for his glory and service and then to be steadfast unmovable will have to hold fast to that we have received that no man take our crown. Rev. 3:11. We will be firm established and never moved. The following words of a songwriter that knew what he was singing about. "Jesus is my Savior I shall not be moved. In His love and favor I shall not be moved. If I trust Him ever I shall not be moved. He will fail me never. I shall not be moved." Eph. 4:14 That ye henceforth be no more children tossed to and fro and carried about with every wind of doctrine by the slight of men and cunning craftiness where by they lie in wait to deceive. Verse 15 But speaking the truth in love. Heb. 3:14 For we are made partakers of Christ if we hold the beginning of our confidence stedfast unto the end.

Rev. 2:25 But that which ye have already holdfast till I come. Now this scripture tells us when stedfast unmovable to always abound in the work of the Lord.

Answer: This is fully explained by Jesus when asked, "What shall we do that we might work the works of God? Jesus answered and said unto them. This is the work of God that ye believe on Him whom God hath sent and only by the blood shed by Christ applied to our life can we be made free.

A glory to God the mystery hid from so many is so simple afterward. It only takes believing that

means faith. And without faith it is impossible to please Him. For he that cometh to God must believe that He is and that He is a rewarder of them that diligently seek Him.

Now here are some questions. Do I believe Jesus is the Son of God? Do I believe that the blood He shed can blot out all the sins I have committed? Do I believe Jesus loved the church or I also would say all who have been forgiven that by the same offering of His blood my sin, nature can be changed, that I am given the mind of Christ, pure and holy? If so by the authority of God's word it gives me a hope of the first resurrection and eternal life.

While waiting that glad day, do I

believe Jesus has the same compassion for the sick, for those demon possessed, the deaf, blind and lame as He did when walking the earthly sod? He went to the whipping post for that purpose and Peter tells us by His stripes we are healed.

Now friends with the abiding hope of eternal life what does it make us to know? Answer: That our labor (work) is not in vain in the Lord. So Jesus paid it all and by believing in the stripes He bore and the blood He shed we have the life that now is and that to come. (eternal) And some glad day God's appointed time faith or believing will be turned to sight and we'll see Jesus face to face and

more than that be made like Him. Yes, a joint heir with Him.

We have only studied in God's word such a small part of all faith in Jesus will do for us, while in these mortal bodies and of the glorious hope of that eternal. This study so inspires me that seemingly I'm lifted up out of the natural into the heavenly. My life and your life made of dust is of short duration even at the longest and there are many things that take place that makes our labor (work) as vanity, but not so if stedfast unmovable in the Lord so let us give heed to the words of Jesus. Labor not for the meat which perisheth but for that which endureth unto everlasting life. John 6:27.

ATTENTION MILO & CORN GROWERS

Problem Weeds?

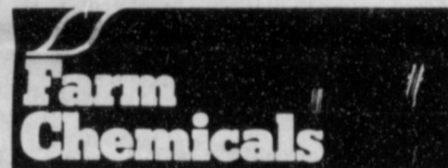
- Pigweed?
- Blueweed?
- Russian Thistle?
- Field Bindweed?
- Kochia?



Try the Affordable Alternative.

WEEDONE® 638.

BRAND HERBICIDE



WEEDONE 638 is a registered trademark of Rhône Poulenc.

TWO FAMILY GARAGE SALE

Dishes Toys Clothes

104 Barkley Spearman

This Saturday

10 a.m - 5 p.m.

HOMESTYLE

"Full Meal Deal"

only **\$2.59**

Monday, August 3 thru Sunday, August 16

The sweetest deal in town is the Dairy Queen Full Meal Deal. With a juicy quarter-pound Homestyle Hungr-buster. Golden french fries. Your favorite ice-cold soft drink. And a creamy 5-ounce Dairy Queen sundae with your choice of topping. The \$2.59 Full Meal Deal. It's a steal.

Without advertising a terrible thing happens ...

nothing

United in Marriage

Tracy Lee Graham and Linda Angella Coombs were united in marriage on Saturday, July 18, at 4:00 p.m. with the Reverend John Scott officiating.

The ceremony was held in the family room of the brides parents. The bride is the daughter of Mr. and Mrs. Randy Coombs of Spearman.

The groom is the son of Mr. and Mrs. Jack Moore of Celina, Tx.

Maid of honor was Patty McGuire of Spearman.

Kiley Coombs, brother of the bride, served as best man.

The bride wore a denim dress accented with red leather and concho belt and red roper boots.

Her corsage was white silk carnations tied with red bandana ribbon and was accented with a miniature white western hat.

The bride carried out the something old, something new, something borrowed, something blue and a penny minted in the year she was born, in her boot.

The groom wore wranglers, white western shirt and red bandana kerchief.

The maid of honor wore a denim skirt, red blouse with mutton sleeves and white eyelet trim, and roper boots. Her corsage was similar to that of the brides.

The best man wore levis, oxford shirt and ropers.

The mother of the bride chose for the wedding a light blue-faded denim skirt to the ankle, with matching sweater and three-corner tie collar.

Her corsage was fashioned after the brides. She wore pink accessories, including mauve pink roper boots to compliment her outfit.

Following the ceremony, a reception was held in the dining room. The reception table was covered with a wedgewood blue cloth.

Napkins were fashioned from red bandana handkerchiefs. Red punch was served in miniature mason jars.

The cake which was made by Peggy Varnon, was two inter-locking hearts with the words "We've Tied the Knot", the couples names and the wedding date.

On one side of the cake was the punch bowl, on the other was a western straw hat with silk spring flowers.

The couple are now at home in McKinney, Tx.

Newspaper copy ad deadlines set

Advertising and news story deadlines are as follows:

SPEARMAN: Thursday publication--Advertising copy and news copy deadline is 10 a.m. Wednesday preceding issue.

SPEARMAN: Sunday publication--Advertising copy and news copy deadline is 10 a.m. Friday preceding issue.

Lose a little around the middle.



Ten pounds in two weeks. Gone! Two inches trimmer? Easy. Diet Center has helped millions look and feel younger, faster. We do it without drugs or gimmicks--you do it without stress or hunger. With a use-it-forever loss maintenance program. Your first personal consultation is free. Call right now.



511 S.W. 11th
Pittman/Shieldknight
Building
Spearman, Texas
659-2199

CONGRATULATIONS!!!

SPEARMAN SWIM TEAM



League Champs for the Third Year in a row!

There's no big secret to success . . . all it requires is dedication, hard work and talent. And a proud community has been blessed with all this in the form of the 1987 Spearman Swim Team.

Indeed, we are proud of your accomplishments. And we're equally happy to share in your successful season. Your efforts have again put the name of Spearman in the minds of countless people who have seen you perform. Thank you all for being such capable representatives of our community. We look forward to your continuing good efforts and wish you all the best for the seasons yet ahead!

Best Wishes On An Even Brighter Future

From . . .

•Dorothy Lusby

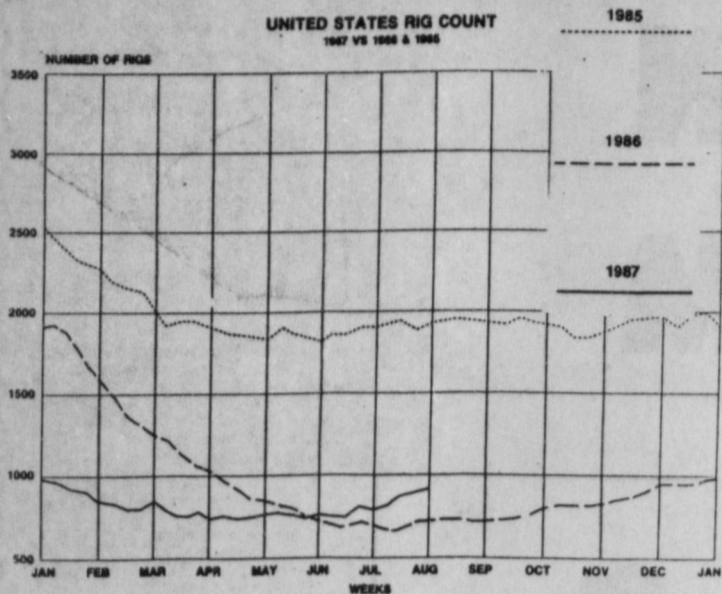
•Douglas Steger O.D. - Optometrist

•Interstate Savings and Loan

•Tom and Linda Latta

•Hotel Royal

OIL & GAS REPORT



RIG COUNT COMMENTS FROM T. BOONE PICKENS, JR.
 U.S. Rig Count: Week July 22, 1987, Count 922 Change from Previous Week up 31
Comments
 The U.S. drilling rig count climbed by 31 last week, to a total of 922, against 692 working rigs at

this time last year. Among individual states, the biggest gains were reported by Oklahoma, Kansas and Louisiana, which increased by 15, 9 and 6, respectively. The number of active rigs in Texas declined by seven.

Baker Hughes, spokesman Ike Kerridge, commented he was not surprised by the rise in the number of working rigs, which he attributed mostly to the increase and stability in oil prices. "We really expected to see sharper than seasonal increases in this quarter," he added.

T. Boone Pickens, Jr., general partner of Mesa Limited Partnership, recently predicted that OPEC will be able to maintain oil prices at \$18 a barrel or better. "By this time next year, we project oil prices at \$22 to \$24 a barrel, which will be the same price as we received in 1985."

COLLINGSWORTH [EAST PANHANDLE] Meridian Oil, Inc., #15 McDowell (640 ac) 1652' from North & 993' from east line, Sec. 127, 22, H&GN, 6 mi. southerly from Lela, PD 2200', start on

approval (400 North Belt East, Suite 1200, Houston, TX 77060)
COLLINGSWORTH [EAST PANHANDLE] Meridian Oil, Inc., #16 McDowell (640 ac) 991' from South & 1324' from West line, Sec. 128, 22, H&GN, 11 mi. southerly from Lela, PD 2200', start on approval.
COLLINGSWORTH [EAST PANHANDLE] Meridian Oil, Inc., #17 McDowell (640 ac) 330' from South & 2318' from East line, Sec. 129, 22, H&GN, 9 mi. southerly from Lela, PD 2200', start on approval.

HEMPHILL [WILDCAT & JONES upper Morrow] Sun Exploration & Production Co., #1 L.H. Humphreys (480 ac) 750' from South & 2350' from East line, Sec. 30, 1, G&M, 12 mi. northeast from Canadian, PD 11750' start on approval (525 Central Park Dr., Okla. City, OK 73105)
HUTCHINSON [PANHANDLE & WEST PANHANDLE] Cal-T Oil Co. #2-A Ethel L. Smith (1920 ac) 6878' from North & 430' from west line, Block 6, Wm. Heath Survey, 11 mi. northwest from Stinnett, PD 3350' start on approval (Box 1028, Borger TX 79008) Replacement Well for #2, which will be plugged.

LIPSCOMB [WILDCAT & COBURN Lower Morrow] Maxus Exploration Co., #1-188 Sidney A. Parsell (649 ac) 1320' from South & West line, Sec. 188, 43, H&TC, 9 mi. south-southeast from Lipscomb, PD 11950', start on approval (Box 400, Amarillo, TX 79188)
MOORE [PANHANDLE] S&N Energies, Inc., #2 Carolyn (52.46 ac) 1684' from South & 2089' from east line, Sec. 166, 3-T, T&NO, 3 mi. south from Sunray, PD 3500', start on approval (Box 30206, Amarillo, TX 79120)

OCHILTREE [WILDCAT & PSHIGODA Des Moines] Mewbourne Oil Co., #4 Milledge (640 ac) 1980' from North & West line, Sec.

28, 13, T&NO, 7 mi. south from Perryton, PD 7500' start on approval (Box 7698, Tyler, TX 75711)
WHEELER [WILDCAT & PANHANDLE] Union Pacific Resources Co., #12 G.W. Williams (80 ac) 2300' from North & 2250' from East line, Sec. 49, 24, H&GN, .5 mi. southwest from Kellerville, PD 3000', start on approval (1400 Smith St., Ste. 1500, Houston, TX 77002)

APPLICATION TO PLUG-BACK HEMPHILL [GILL RANCH Morrow] Marsh Operation Co., #2-14 Mathers (600 ac) 1375' from South & 467' from West line, Sec. 14, A-2, H&GN, 11 mi. south from Mendota, PD 14310', start on approval ((Box 460, Dallas, TX 75221)

LIPSCOMB [WILDCAT & BRADFORD Cleveland] Maxus Exploration Co., #2-636 Leroy Becker (645 ac) 660' from South & West line, Sec. 636, 43, H&TC, 5 mi. west from Lipscomb, PD 9350', start on approval.

Application to Re-Enter OCHILTREE [NORTH BULER Douglas] Tom McGee Corp., #1 McCarter 'A' (640 ac) 2173' from North & West line, Sec. 96, 13, T&NO, 16 mi. south from Perryton, PD 5815', has been approved (Box 276, Booker, TX 79005)

Oil Well Completions CARSON [PANHANDLE] Watson Operating Co., #3-A Two-Bar Ranch 'A', Sec. 94, 4, I&GN, elev. 3140 gr, spud 5-14-87, drig. compl. 5-20-87, tested 7-8-87, pumped 30 bbl. of 40 grav. + 22 bbls. water, GOR 380, perforated 2816-3182, TD 3250'--
HUTCHINSON [PANHANDLE] Watson Exploration, Inc., #3 Killough 'C', Sec. 1, Y, M&C, elev. 3101 gr, spud 5-5-87, drig. compl. 5-11-87, tested 7-2-87, pumped 33 bbl. of 40 grav. oil + 15 bbls. water, GOR 1212, perforated 2816-3098, TD 3206'--

LIPSCOMB [BRADFORD Tonkawa] Unit Drilling & Exploration Co., #8 Randall, Sec. 640, 43, H&TC, elev. 2467 rkb, spud 5-24-87, drig. compl. 5-31-87, tested 7-7-87, pumped 35 bbl. of 40.8 grav. oil + 79 bbls. water, GOR 286, perforated 6472-6494, TD 6614', PBD 6573'

WHEELER [PANHANDLE] Chevron U.S.A., Inc., #203W KSAM Unit, Sec. 51, 24, H&GN, spud unknown, plugged 6-20-87, TD 2421' (injection) --
MOORE [PANHANDLE] Lyco En-

ergy Corp., #6 Wilbar, Sec. 229, 3-1-23-87, drig. compl. 1-29-87, tested 7-11-87, pumped 4.3 bbl. of 38.6 grav. oil + 84.2 bbls. water, GOR 27907, perforated 3137-3514, TD 3754', PBD 3697' --

OCHILTREE [DUTCHER Cleveland] Maxus Exploration Co., #2 Clem G. Flowers, Sec. 132, 43, H&TC, elev. 3007 gr, spud 5-9-87, drig. compl. 6-6-87, tested 7-18-87, pumped 70 bbl. of 36.4 grav. oil + 14 bbls. water, GOR 4743, perforated 7463-10084, TD 10300', PBD 9030' --

WHEELER [PANHANDLE] Union Pacific Resources Co., #11 G.W. Williams, Sec. 49, 24, H&GN, elev. 2547 gr, spud 6-16-87, drig. compl. 6-28-87, tested 7-8-87, pumped 91 bbl. of 40.3 grav. oil + no water, GOR 22, perforated 2353-2702, TD 2702' -- Form 1 filed in Champlin Petroleum Co.

Gas Well Completions HEMPHILL [HEMPHILL Douglas] Kerr-McGee Corp., #8 Savage 'A', Sec. 20, 1, I&GN, elev. 2672 gr, spud 6-6-87, drig. compl. 6-6-87, tested 6-6-87, potential 16102 MCF rock pressure 1324, pay 7562-7798, TD 7927', PBD 7862' -- Plug-Back

ROBERTS [CLARK MARTIN Granite Wash] CNG Producing Co., #2-81 Martin Trust, Sec. 81, C, G&M, elev. 2858 kb, spud 4-22-87, drig. compl. 5-14-87, tested 6-17-87, potential 5100 MCF, rock pressure 2867, pay 8977-9338, TD 9550', PBD 9498' --

Plugged Wells LIPSCOMB [LEAR Lower Morrow] Wilshire Oil Co. of Texas, #1 Mason, Sec. 1085, 43, H&TC, spud 3-10-87, plugged 3-29-87, TD 9350' (dry) --

OCHILTREE [WILDCAT] TXO Production Corp., #1 Conner 'A', Sec. 12, 13, T&NO, spud 12-22-80, plugged 5-12-87, TD 6880' (oil) --

ROBERTS [CLARK MARTIN Granite Wash] CNG Producing Co., #1 Martin Trust, CCL Survey, spud 5-16-87, plugged 6-8-87, TD 9800' (dry) --
SHERMAN [TEXAS-HOGOTON] Wallace Oil & Gas, Inc., #2 Englebrecht, Sec. 102, 1, T, T&NO, spud 5-11-87, plugged 5-11-87, TD 1605' (dry) --
WHEELER [PANHANDLE] Chevron U.S.A., Inc., #203W KSAM Unit, Sec. 51, 24, H&GN, spud unknown, plugged 6-20-87, TD 2421' (injection) --

Religious singer ministers at Union

A religious recording artist will appear at the Union Church in Spearman this Sunday during morning and evening worship services, reports Steve Rogers, pastor.
 Eddie Burton is a minister of music and has sung and ministered in area churches.
 Union church worship services are at 10:45 a.m. and 6:30 p.m. each Sunday.

Texas DPS to recruit troopers

The Texas Department of Public Safety announced that January 19, 1988 has been selected as the beginning date for a recruit training school for the position of State Trooper according to Major V.J. Cawthon, Regional Commander for the Department of Public Safety.
 Entrance exams and agility tests will be given at the Lubbock, Amarillo and Wichita Falls Department of Public Safety offices every Tuesday and Thursday beginning on July 28, 1987. The final day for testing will be August 27, 1987. The testing will begin at 8:00 a.m. on each above mentioned days and will take most of the day to complete.

Selected applicants will attend an 18 week police training school at the Texas Department of Public Safety Academy in Austin. Recruit trainees will be paid a monthly salary of \$1,515.00 while they are attending the school.

Major Cawthon advised, "Interested persons should contact the recruiting coordinator in either Lubbock, Amarillo or Wichita Falls for employment qualifications and application forms. All necessary paperwork must be completed prior to taking the entrance exams. Employment qualifications and application forms may also be obtained by contacting your local Department of Public Safety Trooper."

The Texas Department of Public Safety is an Equal Opportunity Employer.

The Spearman Reporter and Hansford Plainsman Are Here to Serve You!

Special Subscription Rates
 For the Spearman Reporter and Hansford Plainsman
\$19⁹⁵ per year
 In Hansford County
 per year out-of-county subscriptions

Order Your Spearman Reporter and Hansford Plainsman Today!

Yes, I would like a full years' subscription.

Name: _____
 Address: _____
 City: _____ State: _____ Zip: _____

Mail to: The Spearman Reporter, Box 458, Spearman, TX 79081

The Spearman Reporter and Hansford Plainsman features

- ★ Spearman Sports
- ★ Oil and Gas Report
- ★ Spearman Happenings
- ★ Spearman and Hansford County News
- ★ And More!

★ Weekly Features

Your comments are invited -

It's important to us to make your newspaper what you want. Please-feel free to call or write us with your suggestions or comments.

CALL US TODAY!

Among the Neighbors

By Helen Fisher

Joan Hawkins and Melva Dell Oakes joined Loretta Boyd and Joyce Shockley of Amarillo on Saturday and all flew to Corpus Christi for a weekend visit with their aunt, Mrs. Ruth Smith. She is 93 years old and in a rest home.

They also visited her son and wife, Mr. and Mrs. Horace Smith of Odum and another cousin, Gail Compton.

The annual Beck family reunion was held at Stonewall, Co. from July 17-24. An average of 40 was the daily attendance.

All returned home safely, in spite of, or because of, the breakfast each morning cooked out under the pines. Al Tucker was the vice-president in charge of the breakfast production.

An especially enjoyable event of the reunion was the barbecue hosted by Stan Barron and some friends one evening at his Whiskey Creek Ranch.

Other high lights were the observance of the 52nd wedding anniversary of Mr. and Mrs. Smokey Huse and the birthday of Hester Sue Crawford. Which birthday was proclaimed by banners!

By families those attending were Mr. and Mrs. Smokey Huse, Spearman; Mr. and Mrs. Bryce Waugh and family, Buffalo, Ok.; Mr. and Mrs. Don Beck, Amarillo;

Mr. and Mrs. Bob Kiker, Albuquerque; Mr. and Mrs. Al Tucker, Spearman; Mr. and Mrs. Pat Tucker, Amarillo; Mr. and Mrs. Billy Joe Beck, Balko; Mr. and Mrs. Doug Beck and Lewis, Booker; Mr. and Mrs. Harold Beck, Dayton, Oh.;

Mrs. Buck Tucker, Matt, Carla Beasley and Kelcee, Spearman, and Mrs. Alice Kirby of Oklahoma who is the mother of Mrs. Tucker; Mr. and Mrs. John Crawford and family, Spearman;

Mr. and Mrs. Verlin Beck and family, Spearman; Kevin Nelson, Spearman; Gail Beck and boys, Amarillo; Mr. and Mrs. Larry Beck and son, San Antonio; Thea Robinson and boys, Amarillo.

Guests for several days in the home of Mrs. Ruth Bryan are her son and family, Mr. and Mrs. Joe Michael Bryan with Chris and Tim. They are from Houston.

John and Lucile Allen returned Friday from South Fork, Co. They have been there most of the summer. They report pleasant weather, but fishing was only fair.

Mr. and Mrs. O.B. Behne were honored on their 24th wedding anniversary this past Sunday, with a family gathering in their home. They were very surprised, pleased and grateful.

Anniversary cake and punch was served to family members present. Guests were Verlin Behne, Spearman; Jim and Leona Dooley, Billy, Tim and Christina Dooley;

Cecil and Louise Miller, Terry and Janet Miller and family, Wade Dooley, Kenneth and Deann Laners, Billy and Louetta McClellan,

Kathy Robertson, Jay Goodwin, all of Sunray;

Jim and Tina Dample, Guymon; Kelley, Tammy, George Artney, Strong City, Ok. Marshal Dooley, Dumas and Mrs. Loyd Andrews, Gruver.

Rick Jackson, 25-years old, son of Mr. and Mrs. A.L. Jackson of Guymon, died Saturday. He lived in Pryor, Ok. and left a wife and son.

A.L. Jackson lived in Spearman all his early life. He is a brother of Bill Jackson and Barbara Rosser.

Several members of the First Baptist Church put their convictions to practical use last week. They went to Gypsum, Co., near Vail, and worked on the construction of a small church, as a mission project.

Prior to their arrival, a similar group from Sulphur, Ok. had framed the building and roofed it. The Spearman group finished the construction -- sheet rock, siding and ceilings.

Those from Spearman were the pastor, Russ Gibbs, Roy Lee Uptergrove, Robert Queener, Alton Ellsworth, Jim and Virginia Fowler.

The report was that Virginia is not too handy with the hammer and nails, but can't be excelled with the cooking tools.

Mrs. Maudine Patterson, Mr. and Mrs. Pat Patterson and Travis flew back from Dallas late Sunday evening.

They had gone to attend the wedding of Brenda Patterson, daughter of John Patterson. The wedding was a beautiful ceremony held in the Highland Park Methodist Church, and the bridegroom was Charles Serafino.

The article in the Monday Amarillo News-Globe concerning Elmon Jacobs and the purple martins was most interesting.

Word has been received of the death of Olivette Hancock Nolan, 80, on Sautrday in the hospital at Hungerford, Tx.

Funeral services were held in Hungerford on Tuesday. She was survived by one son and two daughters, and her sister, Mrs. Elizabeth Bennett of Gruver.

Other survivors are cousins in Spearman -- Raymond Sparks, Ailene White, Fanny Venneman, Darlene Howell, and Willoughby Douglas.

Mrs. Nolan grew up in Spearman, finished high school here, and married Chief Nolan, who preceded her in death.

Mr. and Mrs. Garland Head attended the Morse family reunion at Lubbock last weekend. Other family members from here were Aleta Jackson and child, Delinda McLaughlin and children.

Mrs. Elizabeth Carr and Gary came from Miami and spent the night before accompanying the Heads.

Wayne and Carolyn Cummings

POKIN' FUN



BY DOC BLAKELY

At a recent meetig in the unlikely setting of Shangri-La, Okla., a resort east of Tulsa, some high level executives met to discuss

accompanied by his mother, Mrs. Stella Cummings, are back from a 2-week vacation in Knoxville, Tenn., their former home.

They visited Carolyn's mother and old friends. Kelli Cummings, their daughter who has been visiting her grandmother, returned with them.

matters of great consequence. Like how to start the meetings slowly and then gradually taper off.

All work and no play make Jack a poor golfer . . . so naturally sporting activities had to be offered. One of the most unusual games was called ballerina bar exercises. It consisted of a monotonous but very popular repetition of bending an elbow.

This was the Oklahoma Society of Association Executives. Vicki Canada, senior account manager for the Sheraton Kensington in Tulsa, accepted the challenge of arranging the extra curricular activities and poked a little fun at her colleagues with a variety of awards. They were as follows:

1. Bragging contest -- criterion for judging was to video tape remarks made by those reporting scores in any game. Points were rewarded according to dramatic presentation, staging, and colorful language. Most frequently heard, although not required, was the color blue.

2. Bowling -- with or without bowling balls, several members received honorable mention for mental concentration in the gutter.

3. Retrieving tennis balls -- Bjorn again award for the terminally high strung.

4. Underwater sports -- non-swimmers competed in the wading pool, puddle and dry cleaning category.

Swimmers were encouraged to just go jump in the lake. The three levels of awards possible were Boat, Float, and Gloat.

5. Wheels and heels sports -- depending on level of talent, the categories were Hike, Bike, or Trike. Short pants were optional except for the latter.

6. Fishing contests -- quickly filled up in the mermaid category. Bait shop quickly sold out of trolling lures shaped like lipstick. Several books were given out as awards with exciting titles like "Hooked Through the Cheek," "Wide Mouths I've Known," and "Trolling Around in All the Wrong

Places."

7. Golf -- avid, novice, and beginners were classified as Jocko, Socko, and Wacko. One ball from a wacko was given as a prize to a Jocko because it was never hit. Everytime he swung, he missed it completely.

8. Open heat -- consisted of lying in the sun, lounging, lurching, and leering.

Finally for the terminally unique, one-of-a-kind, there was a Design-your-own category with first prize of a one-way trip to Peculiar, Missouri, and a rotating trophy. The fellow who won it said he wanted a 3-way trip and a trophy that stood still.


Who says these execs are stuffy? At the conclusion of the fun meeting, a benediction prayer was offered. As the one offering the prayer proclaimed, "Lord, thank you for life and health. . ."

An insurance executive next to me muttered, ". . .and fire and auto. . ."

COMPARE AND YOU'LL SHOP HERE

OUR EVERYDAY LOW PRICES ARE

POCKET PLEASERS!



ALWAYS FRESH HOMO MILK
gal jug **\$1.99**




CORN FLAKES POST TOASTIES
13 oz. GIANT BOX **\$1.28**



CALIFORNIA ICEBERG LARGE SOLID HEADS LETTUCE
EACH HEAD **59¢**



LIPTON'S 1 GALLON SUN TEA JAR
With 1st coupons inside
Each **99¢**



DIET OR REG. PEPSI
6 12 oz. cans **\$1.59**



LIPTON FLO-THRU TEA BAGS
FAMILY SIZE
24-ct ctn **\$1.58**



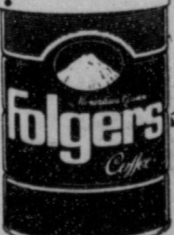
MIRACLE WHIP SALAD DRESSING
qt. jar **\$1.36**



"THIS WEEK ONLY" PILGRIM PRIDE "FRYING CHICKEN" THIGHS
RANDOM WEIGHT
TRAY lb. **49¢**



SUGAR
5 lb. Bag **\$1.49**



FOLGERS COFFEE
1-lb. **\$2.61**



SHURFINE CHARCOAL BAG
10 lb. **99¢**



Gold Medal FLOUR
5-lb **99¢**

Save Valuable BLUE STAMPS - Double Wednesdays "Blue Stamps" Can be redeemed at Home - In Spearman

THRIFTWAY

Plains Shopping Center - Spearman

Let's have lunch

Or dinner. Or just an after-work gathering. Whatever the occasion, we'd like to speak to your group's next meeting. Our Speaker's Bureau members are available to address topics such as efficient management of the electricity used in homes and the need for safety around electricity. There is no charge for this service. For more information on obtaining a TNP speaker for your group, call your local TNP office.



105 attend Ayers family reunion

A total of 105 people attended the L.W. Ayres, Sr. family reunion recently, at the Golden Age Center in Gruver. Held every other year, this was the sixth such reunion dating back to 1977. It honors the late L.W. and Maude Ayres, pioneer residents of Hansford County.

In charge of this year's event were Farene Williams and Glenda Renner. The noon meal was catered by Ivey's Hungry Cowboy of Spearman.

Following the meal, prizes were given to Vivian Green, oldest member; J.M. Ayres, oldest male member; Nathaniel Green, son of Robert and Jo Ellen Green, youngest member; James and Kim (Odom) Pyeatt, most recently married; Joe and Lisa Williams, children of Morris Allen and Susan Williams, traveled the farthest, from Tucson, Az.

Vivian Green, who had the largest number of family members present, was represented by Wel-Don and Elene Green and children, Ron of Gruver; Genna Dunlap and daughters Kenna, Michelle and Rani from Amarillo;

Dale and Mittie Blackburn from

Abilene. R.C. Green of Webster and children, Robert and Jo Ellen and sons Caleb and Nathaniel from Abilene; Dean and Beth Boyd and daughter Jessica from Irving; and Barry Green from Webster.

Joel and Adeline Wheeler and son Jan and friend Venetia Fregni; daughter Kay and friend Bob Stroud; and granddaughter Shem, all of Albuquerque, N.Mex.

Doctor Euline and Becky Green and children, Rho, Tuell and Lenna from Abilene, B.J. and Glenda Renner and children, Viva and Ross of Gruver, John and Virginia Alley from Springfield, Mo. Altha Groves, a cousin, from Spearman.

Members of Pauline Winger's family present were Joette Riley of Amarillo; Monty and Marie Harbour and children, David and Mary Kay Harbour and children Lena and Jacob;

Roy and Denise Harbour and daughter Macy, all of Spearman, and Noah Webster, a grandnephew from Columbus, Oh. Val and Marlene Winger and children;

Manda of Gruver; Marva and daughter Valerie Burnam from Fritch; Davin and Teague Winger

and son Ryan of Gruver; Darin and Tanya Winger from Keller. Kay Hobbs and sons Bret and Clay of Gruver.

Registering from the Charmian Lyle family were Farene Williams of Gruver and daughter Brenda Henderson and children Salee and Sam from Dallas; grandchildren Joe and Lisa Williams, children of Morris Allen and Susan Williams of Tucson, Az;

Daughter-in-law Julie Williams and son, Benjamin, of Gruver; George Paul Odom and daughter Darlene and husband Mack Hoel and sons Brian and Matthew of Gruver;

L.W. and Maylynn Ayres had the following present. Dean and Rosalyn McClenagan and sons Brian and Benny of Gruver; Les and Sharon Barkley of Gruver and son Barry and wife Kerri from Amarillo; Ricky and Sharilyn Finley and daughter Blythe from Amarillo. Edith (Ayers) Bolanz of Denni-

son was there with her son, George Odom, Jr., and his wife Linda and their son, Nat, all from Richardson, and their son-in-law and daughter, James and Kim Pyeatt from College Station.

Representing the late Aline Henderson's family were Jerry and Rita Williams and sons, Todd, Ty and Trevor, all of Gruver; Ty's fiancée, Paula Hargrove from Perryton.

J.M. and Ruby Ayres were present with son James Allen, all of Amarillo.

At the business meeting; Amarillo was chosen as the site for the 1989 reunion. In charge of arrangements will be Bret and Kay Hobbs and Trevor and Rita Williams.

Advertisement pays

call 659-3434



Texas farmers equip modern technology

COLLEGE STATION---Texas farmers are being equipped with cost-effective technology to improve water use efficiency and engage in water quality management strategies.

Present-day water management strategies are focused on maximizing precipitation effectiveness, limiting irrigation and maximizing water use efficiency (crop yield per unit volume of water use), points out Dr. John Sweeten, agricultural engineer with the Texas A&M University System.

Dryland, or totally rainfed, crop production is riskier but its acreage is increasing due to irrigation pumping costs. Key components of water management on dryland farms include reduced soil evaporation by conservation tillage and narrower row spacings for soil shading; weed control to reduce evapotranspiration; reduced runoff and increased soil moisture storage by conservation tillage, land leveling, level terraces, deep chiseling and furrow diking; and selecting crops, varieties and planting dates to coincide with rainfall probabilities.

Conservation Tillage Improves Soil Moisture

For example, conservation tillage, which involves maintaining crop residues on the soil surface, has increased soil moisture by 2.1-2.8 inches per fallow season following irrigated wheat as compared to conventional tillage, according to agricultural engineers and soil scientists with the USDA's Agricultural Research Service based near Amarillo. Increased storage of rainfall results from increased infiltration and reduced evaporation.

Furrow diking, in which soil dams are mechanically placed every few feet along furrows, prevents runoff from most rainfall, notes Sweeten. Researchers have reported that dryland grain sorghum yields more than doubled using furrow dikes as compared to open furrows, which lost more than 3 inches of runoff. Furrow diking increased cotton yields by 25 percent at Lubbock. Other tests have shown benefit-cost ratios for furrow diking usually exceeded 10 to 1.

Graded furrow irrigation systems, which are the predominant type used in Texas, have been improved in recent years to reduce tailwater runoff and deep percolation losses, Sweeten points out. Irrigation water use efficiencies have been increased through the use of shortened furrows, land leveling, limited irrigation frequencies and amounts, tailwater collection and reuse systems, skip-row planting and irrigation, alternate-row irrigation, tractor wheel compaction in irrigated furrows, conservation tillage and furrow diking.

Surge Flow Reduces Water Loss

Surge flow is an innovative method of graded furrow irrigation in which furrow streams are intermittently applied in on-off watering cycles controlled by a surge valve and timer. Light irrigations of 2 to 3 inches can be applied. Surge flow irrigation results in faster furrow stream advance due to partial soil sealing during off-cycles and primarily reduces deep percolation losses, especially for the first seasonal irrigation, notes Sweeten.

Surge valve sales in Texas have increased from only one in 1982 to

3,000 in 1986 on an estimated half-million acres. It appears that a 20 percent water savings with surge flow is a realistic expectation for many furrow irrigated farms, Sweeten points out. Benefits appear to be greatest on soils with moderate or high infiltration rates. Careful management is necessary to reduce excessive tailwater losses.

A Texas Agricultural Experiment Station engineer has developed an advance-rate feedback irrigation system (ARFIS) which is essentially a computer-controlled surge flow system for each furrow. Remote sensors in each furrow trigger calculations of rate-of-advance and infiltration rate and result in furrow stream adjustment. Irrigation water application efficiencies have ranged from 90-100 percent and distribution efficiencies from 85-92 percent.

In center pivot systems, which are labor efficient, low pressure spray nozzles operated at 25-30 psi just above the crop canopy have largely replaced higher pressure nozzles, notes Sweeten. Low pressure nozzles reduce evaporation losses but tend to increase runoff, which can be virtually eliminated through conservation tillage, soil chiseling, and furrow diking.

Services Friday for Edith Wallace

Funeral services for Edith O. Wallace, 68, a Hansford County native and life long resident, will be held at 2 p.m. Friday in the People's Chapel in Perryton with the Rev. Rick Clendenen, pastor, officiating.

Mrs. Wallace died Tuesday. Burial will be in Ochiltree Cemetery by Boxwell Brothers Funeral Directors.

Survivors include three sons, James Stroud of Amarillo, Dale Stroud of Cleveland and Benny Stroud of Perryton; two daughters, Marion Nollner of Spearman and Clara Shipp of Perryton; five brothers, Allen Smith of Amarillo, Bill Smith of Gruver, Jack Smith of Perryton, Dee Murphy of Bakersfield, Calif., and Pat Murphy of Perryton; a sister, Marylee Glassey of Perryton; 17 grandchildren; and nine great-grandchildren.

Services held for Alivette Noland

Funeral services for Alivette Lucille Hancock Noland, 80, were held Tuesday at the United Methodist Church in Wharton, Tx.

Mrs. Noland died Saturday. She was born in Hansford County July 11, 1907. She married Verlin "Chief" Noland in 1933.

She was preceded in death by her husband in January, 1984.

Mrs. Noland was the daughter of Jesse and Nannie Hancock. Mr. Hancock served as sheriff of Hansford county when the county seat was at Old Hansford.

Survivors include one son, Bill of Hungerford, Tx.; two daughters, Nancy DeWitt of Pasadena, Tx. and Mary Jane Denson of Houston; one sister, Mary Elizabeth Bennett of Gruver; six grandchildren and two great-grandchildren.

FAITH LUTHERAN CHURCH

Sunday School 9:45 a.m.
Worship 10:45 a.m.
Rev. David A. Carlson, Pastor
11th & Bernice, Spearman, Texas
659-2252 & 3298

MARKETS

MILK	\$3.10
CORN	\$2.00
WHEAT	\$2.11

We have 8 Cadillacs & over 40 GMC's to choose from, too.

We have an excellent selection of GMC Suburbans, 88 1/2-ton TraTech Vans, & Safari Vans to choose from.

ROOFING
INSURANCE WORK
Free Estimates FINANCING
OUT OF TOWN WORK WELCOMED

NORTH PLAINS ROOFING CO.
COMMERCIAL & RESIDENTIAL ROOFS & REPAIRS
Est. 1972

273-2368
Borger
Amarillo 352-7754

HERGERT GM
We've Got Over 40 New Cars in Stock at Both Dealerships!
Right Now Until Aug 6th, General Motor has **3.9%*** Financing Thru GMAC or up to \$1,200 Cash Back on Select Models!
(*Rate varies with length of term)

Cars

- Buick LeSabre - 4 door**
2 gold, 2 white, charcoal, metallic red/ white
3.9 APR or \$800 Cash Back
- Oldsmobile 98 - 4 door**
white, light metallic blue/ white
3.9 APR or \$1,200 Cash Back
- Delta 88 - 4 door**
Light metallic blue/ white, white, gold
3.9 APR or \$800 Cash Back
- Park Avenue - 4 door**
3 white, burgandy, silver dark brown/ tan, light blue/ white gold/ tan, dark blue firemist flame red.
3.9 APR or \$1,200 Cash Back
- 86 Buick Riviera - tan**
\$3,000 Rebate from Buick
- Pontiac Fiero**
2 gold (sunroofs)
3.9 APR or \$500 Cash Back
- Oldsmobile Cutlassiera - 4 door**
gold & silver
3.9 APR or \$500 Cash Back

Oldsmobile Calais - 2 door copper
3.9 APR or \$500 Cash Back

Buick Century - 4 door
2 beige/ tan, white, beige wagon silver/ burgandy
3.9 APR or \$500 Cash Back

Pontiac 6000
2 tone metallic blue, 2 tone metallic brown, metallic brown,
3.9 APR or \$800 Cash Back

Buick Somerset
dark metallic blue, copper
3.9 APR or \$500 Cash Back

Buick Skyhawk Hatchback
charcoal
3.9 APR or \$500 Cash Back

Pontiac Bonneville
light metallic blue, charcoal, gold, white
3.9 APR or \$800 Cash Back

FOR SERVICE AFTER THE SALE THAT IS SECOND TO NONE, WE STAND READY TO SERVE YOU!

GMAC FINANCING
Mr. Goodwrench

GM QUALITY SERVICE PARTS

Thank You For Your Patronage!
Hergert Pontiac Buick GMC Inc.
Donnie Hergert
806-659-3721
Spearman

DON HERGERT MOTOR Inc.
Don Hergert
Darl Hergert
Kip Lofland
806-435-3686
Perryton

SPEARMAN - PERRYTON

Ingram's of Amarillo
355-4416 4523 Western

DID YOU WANT to come to our carpet sale but just couldn't make it to Amarillo? Don't worry, we'll bring our sale to you. We're *Ingram's of Amarillo* and we go the extra mile for your business. Just call us collect today at 355-4416 for a private showing in your home.

Ingram's is the home of
Anso V Worry-Free
CARPET
the revolutionary new carpet that resists soil and stains

THAT'S ENTERTAINMENT
A Full Week of Programming

July 30 - August 2

July 30 - August 2

LEGEND

Table with 2 columns: Channel, Station. Lists various TV channels and their corresponding stations.

MORNING

- 6:00 [4] [8] Jimmy Swaggart
[5] (TH) MOVIE: This Is Elvis
[5] (FR) MOVIE: The Longshot
[5] (TU) MOVIE: Tender Is the Night, Part 2

- 12:00 [2] (TH) Top Rank Boxing
[2] (FR) Speedworld
[2] (MO) Horseshow Jumping
[2] (TU) Baseball Hall of Fame Induction

- 6:00 [2] SportsCenter (L)
[3] Nightly Business Report
[4] [7] [10] 10 News
[8] Hardcastle and McCormick

- 12:00 [2] (TH) Top Rank Boxing
[2] (FR) Speedworld
[2] (MO) Horseshow Jumping
[2] (TU) Baseball Hall of Fame Induction

- 6:00 [2] SportsCenter (L)
[3] Nightly Business Report
[4] [7] [10] 10 News
[8] Hardcastle and McCormick

- 9:00 [3] Great Performances
[4] Crime Story Torello and Krycheck on the Federal Strike Force to topple Luca (R)
[10] 10 Twilight Zone Mediocore Elvis impersonator's transported in time to meet The King

- 8:35 [SHOW] Celebrity Close-Up
9:00 [3] Upstairs, Downstairs James asks Hazel to marry him; Lady Marjorie's fortune is settled
[7] Spenser: For Hire Spenser has romantic encounter with a woman introduced to him by Rita

Now Showing at the LYRIC THEATRE Starts Friday 8 p.m. THE HEAT'S BACK ON EXCELLENT THE BEST "Hysterical! This movie is as funny as it gets!" EDDIE MURPHY BEVERLY HILLS COP II CONCESSION STAND Available For Take Out TREATS - COME ON IN!

- [8] Daktari
[9] 9 MOVIE: The War Wagon (1967) A rancher is obsessed with regaining his land and his name. John Wayne, Kirk Douglas. NR. 1:41

FRIDAY July 31 EVENING

- 6:00 [2] SportsCenter (L)
[3] Nightly Business Report
[4] [7] [10] 10 News
[8] Hardcastle and McCormick

MONDAY August 3 EVENING

- 6:00 [2] SportsCenter (L)
[3] Nightly Business Report
[4] [7] [10] 10 News
[5] MOVIE: Tender Is the Night, Part 1

WEDNESDAY August 5 EVENING

- 6:00 [2] SportsCenter (L)
[3] Nightly Business Report
[4] [7] [10] 10 News
[5] MOVIE: Tender Is the Night, Part 3

LEGEND

Table with 2 columns: Channel, Station. Lists various TV channels and their corresponding stations.

See Saturday and Sunday Listings on Next Page

WHAT'S ENTERTAINMENT Saturday & Sunday Programming July 30 - August 2

LEGEND

Channel Station table listing various stations like ESPN, OETA, KAMR, etc.

SATURDAY August 1 MORNING

- 6:00 [7] U.S. Farm Report
8:00 [2] SportsCenter (L)
9:00 [12] SportsWeek A recap of the week's events...

- 12:30 [3] From Country Garden
4 [4] Cowboy Weekly
7 [7] Dance Fever
9 [9] Iron Horse Big Deal

EVENING

- 6:00 [2] SportsCenter (L)
7 [4] Wild Side Goldfish
8 [4] Star Trek
9 [5] MOVIE: The Man with One Red Shoe

- [7] MOVIE: ABC Saturday Night Movie Chapter Two (1979) A widowed writer and a divorced actress marry after a brief courtship...

- [7] Young Universe
8 [8] Kenneth Copeland
9 [9] Mass for Shut Ins
10 [10] Second Baptist Church

- [3] Austin City Limits George Jones and Vern Gosdin perform some of their most popular hits. 1:00
[4] U.S. House David launches his own curb painting business. (R) 1:00

H & H WATER WELL SERVICE, INC. I'm the only one around who doesn't need a well! PUMP REPAIR - ALL MODELS PICK UP AND DELIVERY... SPEARMAN, TEXAS

- 1:00 [3] Firing Line
[5] MOVIE: Reds (1981) American idealists are caught up in the Russian Revolution...

- [1] News
[2] News
[3] News
[4] News
[5] News

- [1] News
[2] News
[3] News
[4] News
[5] News

- 2:30 [2] Speedworld American Racing Series (T)
[4] Music Superstars
[13] TBN Today

- [4] Raggs to Riches
[8] It's No Crush, I'm in Love (1983) A naive high school student develops a crush on her English teacher...

EVENING

- 6:00 [2] SportsCenter (L)
[3] Great Chefs of the West
[7] All New Ewoks

EVENING

'STATIC-FREE' Rock N' Roll Saturday Evenings 8 to Midnight KRDF-FM 'The Mighty 98' presents THE SATURDAY NIGHT SPECIAL

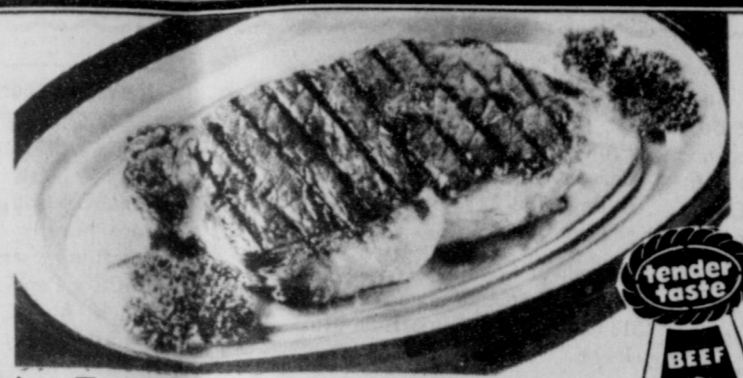


Super Summer Food Sale

Food Stamps WELCOME!



Tender Taste® BONELESS CHUCK STEAK Lb. **\$1.39**



Tender Taste® BONELESS SIRLOIN TOP STEAK Lb. **\$2.49**

Tender Taste® 'BONELESS' SHOULDER STEAK Lb. **\$1.59**

Bar-S Water-Added TURKEY HALF HAM Lb. **\$1.49**

81% Lean GROUND CHUCK Lb. **\$1.49**
Fresh 'SLICED' BEEF LIVER Lb. **\$79¢**
Packer Trim 'BONELESS' BEEF BRISKET Lb. **\$1.29**
Tender Lean® 'THICK CUT' LOIN PORK CHOPS Lb. **\$2.29**

Rodeo MEAT WIENERS 12 Oz. Pkg. **93¢**
Rodeo Reg. or Thick Sliced MEAT BOLOGNA 16 Oz. Pkg. **\$1.69**
Wilson Reg. or Honey 93% Lean BNLs. HALF HAM Lb. **\$3.19**
Wilson SLICED BACON 16 Oz. Pkg. **\$2.39**

Swift Regular or Beef SIZZLEAN 12 Oz. Pkg. **\$1.83**
Hormel 'SLICED' PEPPERONI 3.5 Oz. Pkg. **\$1.29**
Cook's 'SUPER TRIM' Center Cut HAM STEAK & Water Product. Lb. **\$2.29**
OSCAR MAYER SAUSAGE LINKS Lb. **\$2.69**

STORE HOURS
7 a.m. - 10 p.m.
7 Days a Week

Pleasmor 'Grade A' LARGE EGGS Dozen **49¢**

Quartered PLEASMOR MARGARINE 1 Lb. Pkg. **29¢**

Regular or Extra Thick VELVEETA SINGLES 12 Oz. Pkg. **\$1.29**

Pleasmor Regular or Rippled POTATO CHIPS 7 1/2 Oz. Package **29¢**

Delicious HILLS BROS. COFFEE 1 Lb. Can **\$1.59**

Refreshing PEPSI COLA 2 Liter Bottle **89¢**

Tony's RED BARON PIZZA 22 Oz. Pkg. **\$2.79**
All Varieties JIMI'S BURRITOS 3 5 Oz. Pkgs. **\$1.00**
Betty Crocker LAYER CAKE MIXES 18 1/2 Oz. Box **89¢**

Kraft 'COLBY or CHEDDAR' HALF-MOON CHEESE 10 Oz. Pkg. **\$1.59**
Donald Duck 100% Pure ORANGE JUICE Regular or w/Pulp 12 Oz. Can **89¢**

Nestle TEA BAGS 100 Ct. Box **\$2.99**
All Natural WESSON OIL 64 Oz. Btl. **\$2.99**

Presto 'TALL' KITCHEN BAGS 15 Ct. Box **\$1.29**
Northern BATH TISSUE 4 Roll Pkg. **99¢**

American Beauty 'SHELL RONI' or RONI MAC 24 Oz. Pkg. **\$1.29**
Hunt's Regular or No Salt TOMATO SAUCE 8 Oz. Cans **\$1.00**
Hunt's 'SPECIALTIES' TOMATO SAUCE 15 Oz. Can **69¢**
Wilderness CHERRY PIE FILLING 21 Oz. Can **89¢**

Baking Mix BISQUICK 40 Oz. Box **\$1.99**
Betty Crocker BROWNIES SUPREME 23 1/2 Oz. Box **\$1.89**
Juicy Sweet California CANTALOUPE Lb. **25¢**
Fresh California BROCCOLI Bunch **89¢**
California Large BELL PEPPERS 4 For Only **\$1.00**
Red Ripe Large California TOMATOES Lb. **49¢**
Great Snack Item BARTLETT PEARS Lb. **49¢**
Fresh Haas AVOCADOS 5 For **\$1.00**
Colorado GREEN CABBAGE Lb. **19¢**

Bolt 'COUNTRY KITCHEN' PAPER TOWELS Jumbo Roll **79¢**
TIDE Regular or Unscented DETERGENT (40¢ Off Label) 42 Oz. Box **\$1.99**

Kraft GRAPE JELLY 2 Lb. Jar **\$1.39**
Kraft MIRACLE WHIP Regular or Light 32 Oz. Jar **\$1.39**

Betty Crocker Assorted Varieties SUDDENLY SALADS Box **\$1.49**
Betty Crocker HAMBURGER HELPER Asst. Varieties Box **\$1.29**

\$3.00 Off Label PURINA DOG CHOW 50 Lb. Bag **\$13.99**
Nabisco RITZ CRACKERS Regular or No Salt 16 Oz. Box **\$1.79**

Personal Touch Disposable RAZORS 4 Ct. Pkg. **99¢**
Head & Shoulders SHAMPOO 11 Oz. Btl. **\$2.69**
Crest Asst. Flavors TOOTH PASTE 6.4 Oz. Tube **\$1.59**
Jack & Jill FOOD CENTER
YOUR STORE FOR SAVINGS IN THE 80'S
PRICES GOOD THRU SUN., AUG. 2nd
QUANTITY DISCOUNTS RESERVED