

Bean Supper

Rescheduled

The Music Booster Club has rescheduled their bean supper for Tuesday, January 27th from 5:00 p.m. - 8:00 p.m. All previous purchased tickets will be honored.

HANSFORD LIBRARY
120 MAIN ST.
SPEARMAN, TX.

24 hr. prayer
Service 659-2911

The Spearman Reporter

Volume 79 No 12

The Spearman, Reporter, Spearman, Texas 79081

Thursday January 22, 1987

Large Crowd Attends S.H.S. Homecoming



King and Queen

Monte Beck and Jennifer Yarbrough were crowned Spearman Basketball Homecoming King and Queen at the game Saturday.



The Royal Kiss

Queen Jennifer Yarbrough receives a traditional Royal Kiss from King Monte Beck.

Cream of Wheat Weather

14 Inch Snow Falls Here

It is cream of wheat weather in Hansford County! On Friday Jan. 16, 5 inches of snow fell. On Sat. Jan. 16, 3 inches of snow fell. Sunday Jan. 18, 3 inches of snow fell. On Monday Jan. 19, 2 inches of snow fell, leaving Hansford County with a total of 13 inches of snow. Frosty the snowman took a day off Monday, allowing city workers to clean up the streets in Spearman and Gruver. However at 10:30 p.m. Monday night Jan. 19 snow began falling again in the county. A total of 1 inch on Monday and Tuesday night to put our total of snow 14 inches.

Two things in Hansford County seem to prevail at all times. Basketball and Church continued despite the heavy snow fall. The Gruver Greyhounds and their fans attended the homecoming games in Spearman Sat. despite the heavy snow and all churches had services Sunday morning.

State Police Spokesmen in the Texas Panhandle, Oklahoma Panhandle, and Eastern New Mexico said there had been no highway deaths despite the heavy snow. A special thanks to the city crews and the sheriff and police officers who assisted during this heavy snow period.

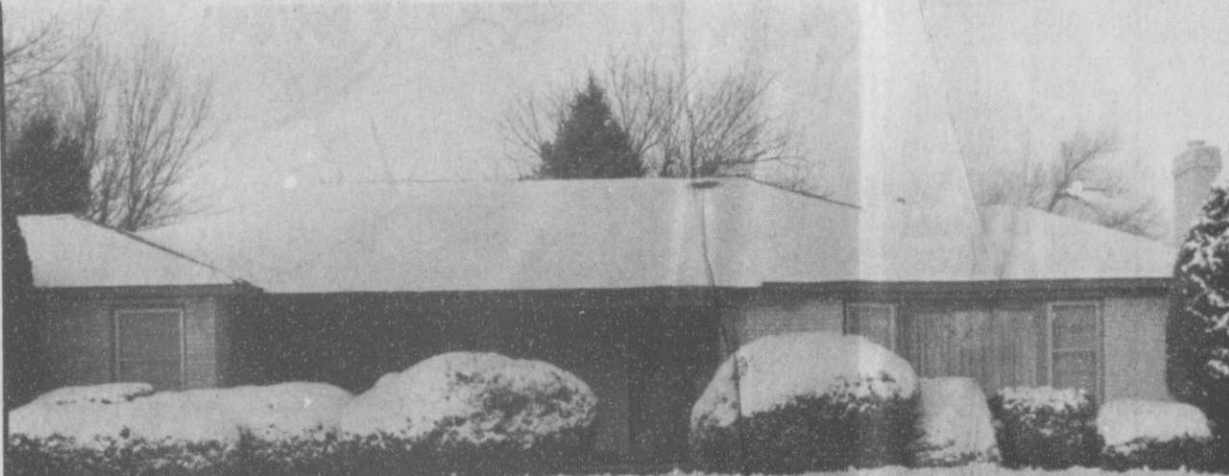
Road between Spearman and Perryton were snow packed as of Tuesday afternoon. Roads between Spearman and Gruver were open and excellent shape as of Tuesday.

Amarillo International and Will Rogers World Airport in Oklahoma City were both open and operating on Monday. Drive carefully! Watch for black ice!

Weather Report

DATE	HI	LO
16	14	12
17	17	13
18	26	16
19	35	18

On January 16th, 5" of snow fell. January 17th, 3" of snow. January 18th, 3" of snow. January 19th, 2" of snow. Leaving us with a total of 13" of snow.



The Wesley Garnett home at 614 S. Roland in Spearman after the 13 inch snow this week.



The Bob Pearson home at 708 Wilmeth Drive in Spearman after the heavy snow this week. Aren't they beautiful.



Sharon Scott

You are Cordially invited to... hear Sharon Scott who is being brought to Spearman by the Spearman I.S.D., P.T.A., and Families in Action. She will be speaking on Thursday, January 22 at 7:00 p.m. in the High School Auditorium.

PLEASE COME
Ms. Scott's schedule in Spearman will be as follows:
January 22-Thursday
9:00-10:00 Talk to 5th and 6th grades

10:00-11:00 small groups
1:00 - 2:00 Talk to 7th and 8th Grades
2:00-3:00 Small groups
7:00-8:30 PARENT MEETING
January 23-Friday
9:00-10:00 Talk to 9th and 10th grades
10:00-11:00 Small groups
1:00-2:00 Talk to 11th and 12th grades
2:00-3:00 Small groups
Special thanks to Mr. Roy Bulls for flying Ms. Scott from Amarillo to Spearman.

Lions Club Offer good Supper

The Spearman Lions Club will have their Annual Pancake Supper January 23, 1987.

Come and treat yourselves to the delicious pancakes while these men serve you.

COOKS
Harry Stumpf (head chef), Charles Newcomb, Ray Robertson, Oscar Donnell, Burl Buchanan, Randell Sauer, Larry Butler

DISHWASHERS
Robert Queener, Frosty Hickerson, Steve Holton, Dick Gillaspie

COFFEE
Alton Ellsworth, J.W. Gibner

Jack Oakes, Jim Murray, Kevin Russell, Wirt Davis
CLEANUP
Craig Vinson, Karl Smith, Steve Krug, Richey Thompson

ADVERTISING AND PROMOTION
Billie Miller

TABLES(Seconds, Syrup, Coffee, etc.)
Doug Steger, Everett Tracy, Max Taylor, Don Townsen

CASHIER
Cecil Biggers, Clay Gibner, Ken Van

TICKET SALES
Ken Van Wye



In Concert

Tim Sheppard will be appearing in concert on January 24, 1987 at the High School Auditorium. Sheppard, known as the "Songtailor", has been weaving classic Christian lyrics with memorable music for over a decade. His songs heavily reflect his extensive musical training in classical, as well as his interest in contemporary styles.

As a songwriter, Sheppard is virtually unequalled by any other artist in his field. He has written songs that have been recorded by such groups as Dallas Holm and Praise, the Imperials, The Cruse Family, Truth, Andrus-Blackwood and Company, Gary McSpadden, and Cynthia Clawson, to name a few. In addition, Sheppard's music has been adapted to numerous church ensemble groups, choral collections and musicals.

Sheppard is also an internationally-known recording artist. His albums have gained prominent positions on the respected charts of the contemporary music industry. The two latest releases, on Greentree Records, are FOREVER, his fourth solo album, and HOLM, SHEPPARD, JOHNSON, a popular album recorded with Dallas Holm and Phil Johnson.

As a concert artist and a minister, Sheppard performs over 100 concerts annually at festivals, colleges and universities, churches, concert halls, and prisons throughout the United States, Canada, Mexico and Europe. On stage, Sheppard is noted for communicating the gospel of Jesus Christ to a broad age-span by utilizing intense contemporary piano and explosive vocal artistry. His distinguishing strong convictions serve as a challenge for Christians to deepen their commitment; his sincere motives present an example to the unsaved to discover the Christ.

Tim Sheppard's concert begins at 7:00 p.m. The concert is absolutely free. So don't miss out on this wonderful opportunity. For more information, contact FCA.

DIET CENTER® Grand Opening

THIS
Monday January 19
Pittman-Shieldknight Building



Toni Schierenberg Shelli Lair

The "Diet Center" opened in Spearman, at 511 S.W. 11th Ave. Monday Jan. 19th. Shelli Lair will be the manager for the Spearman, Gruver area. Toni Schierenberg is the owner of the Diet Center, main office in Perryton. Ribbon Cutting for the

new business located in the Pittman Shieldknight Bldg. was at 10:00 a.m. Tuesday. The Diet Center features "Sensible" ways to not only lose weight, but maintain your new weight. The program is based on sound nutrition, private daily counseling behaviour modifications and life-time maintenance. Call for FREE introduction consultation at 659-2199!

Retired Teachers Meet

Hansford County Retired Teachers were organized this year. Their officers are:
President - James Cunningham
1st Vice President - Wilma Clark
2nd vice president - Dorothy Roden
Sec. - Tres. - Athalie Traylor
Parliamentarian - G.W. Robinson

All retired school employees are eligible for membership also interested adults are eligible to be associate members. Meetings are on the second Tuesday night of each month. Programs have been on a variety of subjects, informative, and most enjoyable.

In September Mrs. Bernice Beck, Darrouzette presented a program on Elderhostettes. At the October meeting James Cunningham showed pictures, slides, and related his adventures as a Participant in the Cross country antique care race last summer. Perry-

ton's Tom Ellzey came in November showing slides and talking about Indian archeological sites in this area. Members of the adult Texas history class were guest at this meeting. Wilma Clark was hostess to a Christmas dinner and evening of fun in December. This new year 1987 began with a visit to the Stationmaster's House Museum. The historical society opened the museum Tuesday night with some of their members present to guide and answer questions everyone was amazed at the improvements and beautiful displays. The Stationmaster's House is now a showplace where Spearmanites should be excited to take friends & guests. After enjoying this visit the retired teachers & employees went to Dorothy Roden's home for a business meeting, refreshments, and an evening of visiting. A great time was had by all present!



The recent snow turned Spearman into a "Fairy Tale" land. This is a scene outside Debbie's Day Center on Bernice Street.

MESSNER HERFORDS

PRODUCTION SALE
FEBRUARY 7, 1987-1:00 P.M.
AT THE RANCH, 6 miles South,
11 West of LAVERNE, OKLA.
70 SERVICE AGE BULLS
30 BRED HEIFERS
36 years of production
26 years of performance testing
MILTON & VAN MESSNER
RT. 1, BOX 45
LAVERNE, OK. 73848
Ph. 405-837-5384 or
405-837-5532

12-1tp

Markets

WHEAT	\$2.25
CORN	\$1.85
MILO	\$2.55

Grand Opening

HOW TO WIN AT THE LOSING GAME

DIET CENTER®

NOW OVER 2200 LOCATIONS TO SERVE YOU!

HAWAII UNITED KINGDOM

DIET CENTER®
"THE WEIGHT-LOSS PROFESSIONALS"

GRAND OPENING SPECIAL Offer good

Pre-paid 3 week program Save \$15⁰⁰
Pre-paid 6 week program get 7th week free. Save \$40⁰⁰

Bring This Coupon

CALL YOUR LOCAL DIET CENTER TODAY!

Toni-Schierenberg Owner
814 S. Main
435-200 Perryton

Shelli Lair Manager
659-2199
511 S.W. 11th Ave.-Spearman

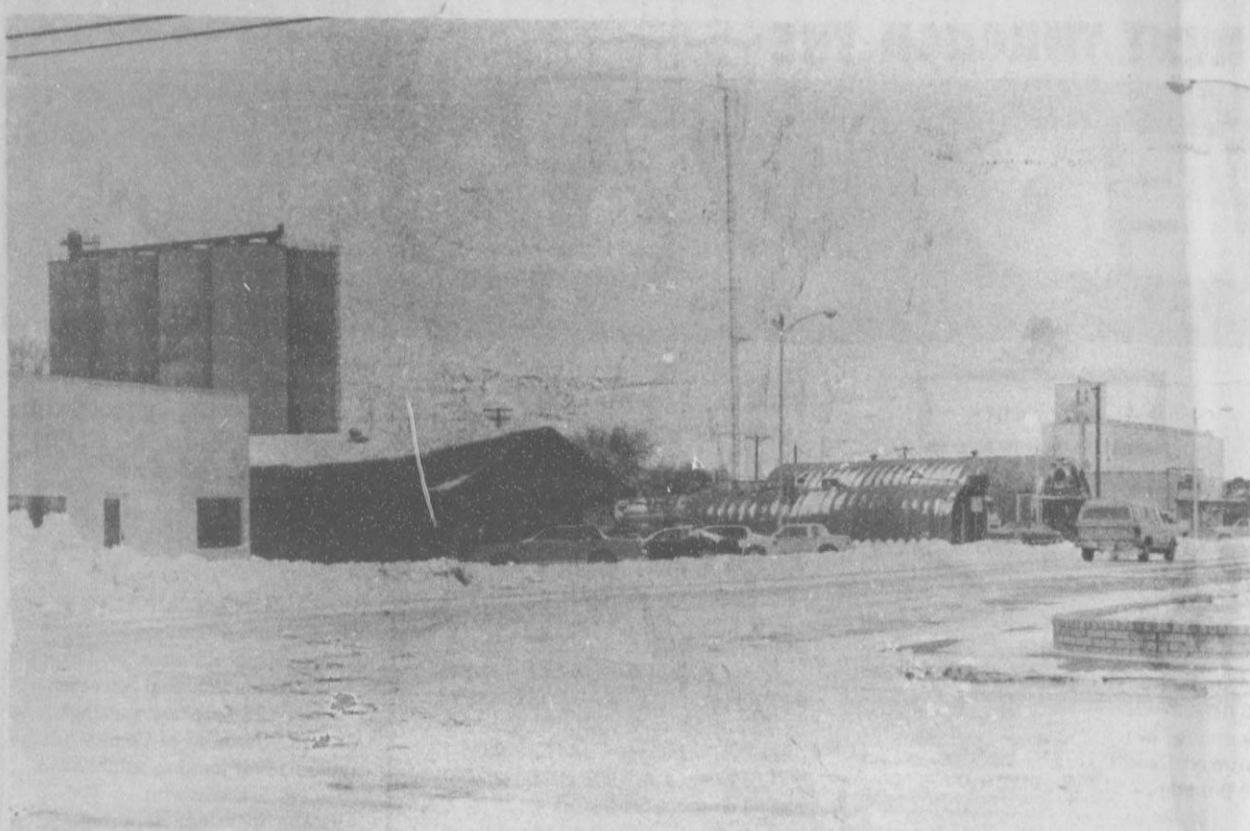
Is Your Home LEAKING Warm Air?
Make Your Home Leak-Proof With Weatherstripping

Is keeping your home comfortable throughout the winter months more costly than it should be? It is if you're losing heated air through the seams around your doors and windows.

You can prevent such heat leaks by weatherstripping. Found at your local hardware store, weatherstripping materials are inexpensive and easy to install.

Sealing your home from heat losses will help make your home more comfortable and energy efficient. Stop by our office for a free weatherstripping brochure.

Texas-New Mexico Power Company.
Neighborhood Professionals
Offering You The Best Choice



Main Street in Gruver



Frozen Assets



Gruver Drug Store 1987

Allsup's is the Best

Allsup's is always a good place to stop for area truck drivers. These three truck drivers are from Plainview and stopped at Gruver Allsup's recently. Allsup's in Spearman and Gruver have outstanding stores open 24 hours a day.



Gruver Farm Supply

The Gruver Farm Supply is pictured above during the 1987 snow storm. Roy and his crew handle Michelin tires and all parts for car, tractor and truck needs.



Gruver Park Scene

A scene made at Gruver park during the 1987 snowstorm. Gruver and Spearman received approximately 14 inches of snow.

Girl Scouts

Adult and older girl members of the Yuca Girl Scout Council will be meeting in their respective districts to elect delegates to the Annual Council Meeting and to provide input to the board of directors. Neighborhoods will also be sharing their plans for celebrating the 75th Anniversary of Girl Scouting.

The four districts together will elect 56 delegates - the member from each district will be in proportion to the number of girl members. In addition to delegates elected by districts,

board members and nominating committee members are also delegates for a total council body of 84.

Patti Sticker, District I, will chair meeting to be held January 25th at 2:30 p.m. at the Balco School. District I serves Beaver, Hansford, Lipscomb and Ochiltree Counties.

District II Chairman, Corinne Fross will hold their district meeting February 8th at 2:30 p.m. at the Liberal Girl Scout Cabin. District II serves Seward and Stevens Counties, Rolla, Kansas and Tyrone, Oklahoma.

Wannita Ferguson, Chairman for District III has set meeting date of January 31st at 2:30 p.m. at the City Hall in Bois City. District III serves Morton, Baca, Union and Cimarron

Counties.

District IV meeting will be chaired by Jimmie Pronger and will be held January 24th at 2:00 p.m. at the Goodwell High School Auditorium. District IV includes Texas, Sherman, Dallam and Hartley Counties.

All Girl Scouts age 14 and above are urged to take this opportunity to visit with friends old and new and learn about the affairs of the council.

Jo Hiddle
Yuca Girl Scout Council

A useless life is an early death.
—J.W. Goethe

BIBLE VERSE



Men judge by outward appearance, but I look at a man's thought and intentions."

1. Who was the author of this statement?
2. To whom was it spoken?
3. What is the interpretation of it?
4. Where may it be found?

Answers to Bible Verse

1. The Lord
2. To the prophet Samuel
3. The human tendency is to judge by looks, but the divine estimate of a man is based upon his character.
4. I Samuel 16:7b (The Living Bible)

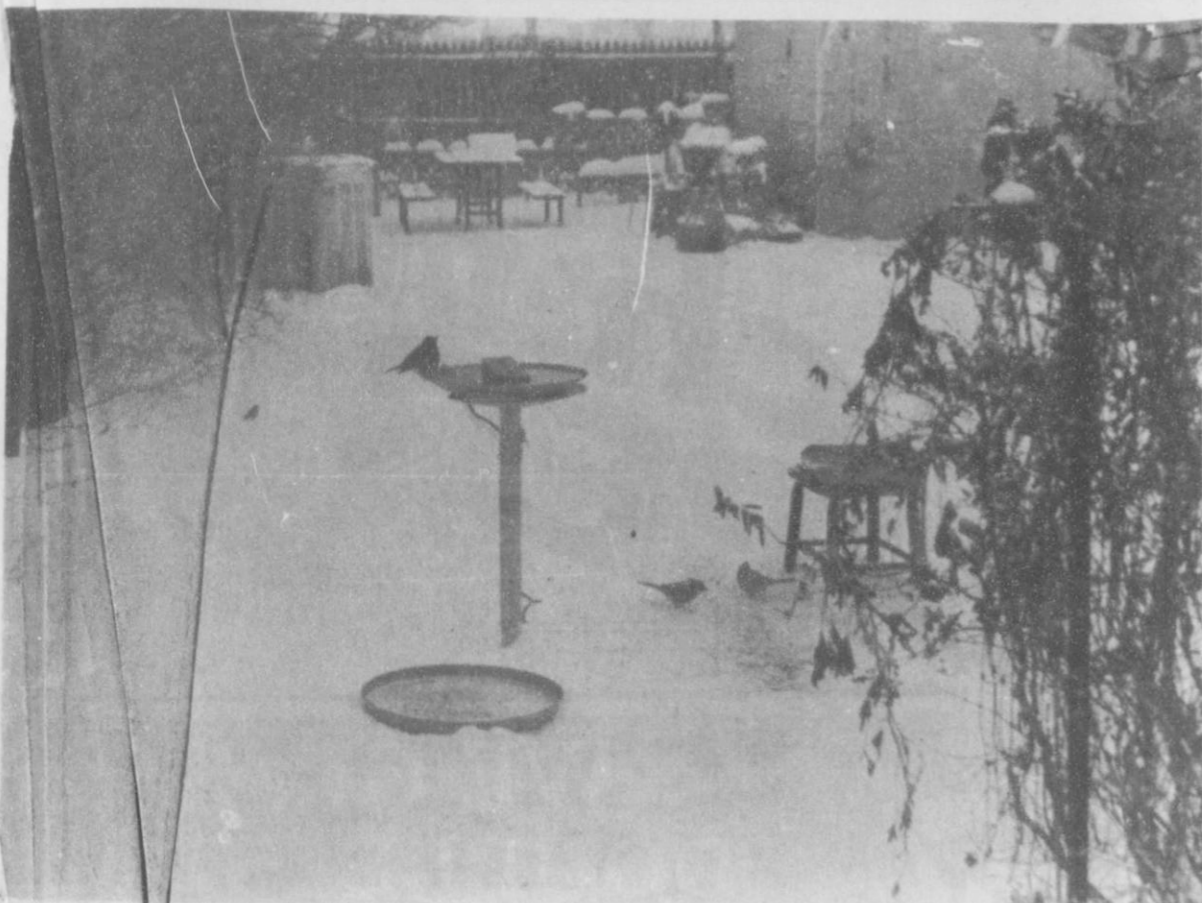
GRUVER-SPEARMAN BOYS Box Scores

Individual scoring for the Lgmx included (F.G., F.T., F. T.): Kevin Nelson (4-4-5-12); Brett Davis (6-0-2-

12); Tim Woolley (3-5-0-11); Carl Urban (1-3-5-5); Keith Benson (1-2-3-4); Mark Garnett (1-0-0-2); Monte Beck (0-0-3-0); Carson Womble (0-0-1-0); Jeff Gustin (0-0-1-0); and Charles Roper (0-0-1-0).

Youth is a blunder; manhood a struggle; old age a regret.
—Benjamin Disraeli

Man's real life is happy, chiefly because he is ever expecting that it soon will be so.
—E.A. Poe



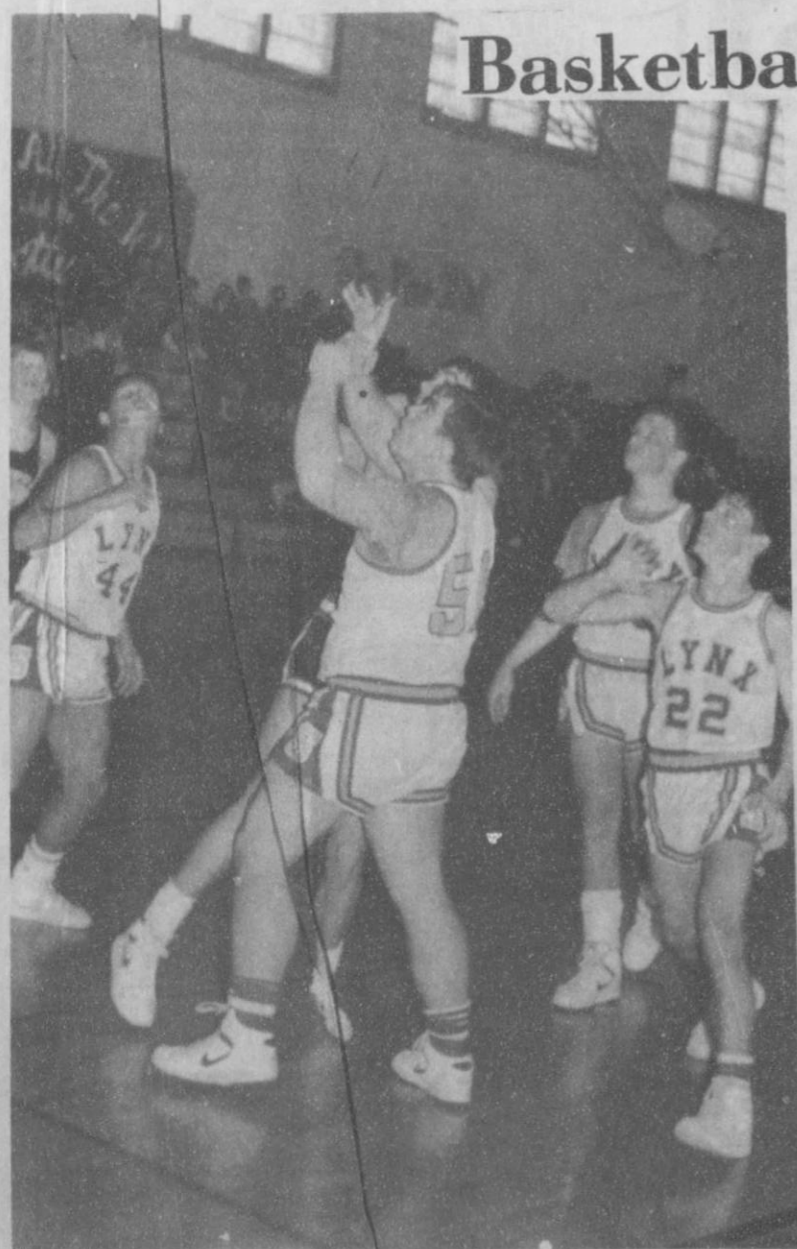
Hungry Bird

This robin perched on the bird bath, and these two bluejays on the ground were enjoying the 13 inches of snow that fell in Spearman over the week end.



Thanks Gruver Fans

These Lady Greyhounds are pictured above as they ready for the Lynette-Lady Greyhound Homecoming clash at Spearman last Saturday. A big thanks to all of the Gruver people who braved the storm for this big event.



J. V. Boys

The Spearman J. V. Boys score two more points on their way to a victory at Saturday's Homecoming Game against Gruver.

Basketball Roundup

The Spearman Junior Varsity hosted the Gruver Greyhounds Saturday, January 17, 1987.

The first quarter, the Lynx scored five field goals and one of two free throws, while Gruver scored two field goals and one of two free throws. First quarter score was Spearman 11, Gruver 5.

The second quarter, the Lynx scored three field goals and missed their only free throw, while Gruver scored four field goals and one of four free throws. Half-time score was Spearman 17, Gruver 14.

During the third quarter of play, the score would alternate with one team in the lead, then the other tying it up. The Lynx scored two field goals and one of two free throws, while the Greyhounds scored four field goals. Score at the end of the third quarter was tied up 22 to 22.

The final quarter, the Lynx scored one field goal and two of three free throws while the Greyhounds scored one field goal and one of four free throws. The Lynx won with a one point lead of 26 to 25.

Individual scoring for the Lynx included (F.G., F.T., F. T.): Matt Tucker (3-0-2-6); Shawn Cook (3-0-0-6); Pete Saenz (2-0-0-4); Star Brandt (1-1-1-3); Mark Garcia (0-3-4-3); Keith Slaton (1-0-1-2); Jerold Blain (1-0-4-2); J Garnett (0-0-0-0); Slade Jones (0-0-2-0); Pat Shields (0-0-0-0); Keith Clark (0-0-0-0); Tony Pacheco (0-0-0-0); James Tindell (0-0-0-0); Billy Club (0-0-0-0); and Kiley Coombs (0-0-0-0).

The Varsity Lynettes traveled to White Deer Monday, January 19 to make up their game that was cancelled Friday.

The Lynettes led 18 to 11 the first quarter, scoring seven field goals and four of five free throws, while holding White Deer to only five field goals and one of three free throws.

The second quarter, the Lynettes scored five field goals and four of five free throws to White Deer's two field goals and four of sixteen free throws. Half time score was Spearman 32, White Deer 19.

The third quarter, the Lynettes scored six field goals and eight of nine free throws to White Deer's three field goals. Score was Spearman 52, White Deer 25.

The final quarter, the Lynettes scored five field goals and only one of nine free throws to White Deer's two field goals and none of two free throws. Final score was Spearman 63, White Deer 29.

Individual scoring for the Lynettes included (F.G., F.T., F. T.): Jill McLain (5-9-4-19); Shannon Jenkins (5-4-2-14); Carrie Guthrie (4-2-1-10); Cayla Eaton (3-0-2-6); Mary Lou Baker (3-0-0-6); Ginger Pearson (1-2-2-4); Jennifer Yarbrough (1-0-3-2); Heather Murrell (1-0-5-2); and Kim Jenkins (0-0-0-0).

The Varsity Lynx traveled to White Deer Monday, January 19 to make up their game that was cancelled Friday because of the weather.

The first quarter, the Lynx led 16 to 14, scoring eight field goals and missing all three free goals, while White Deer scored seven field goals and missed their only free throw.

The second quarter, the Lynx scored five field goals and eight of twelve free throws, while the Buck's scored four field goals and four of seven free throws. Half time score was Spearman 34, White Deer 26.

The third quarter, the Lynx scored six field goals and only one of four free throws, but held the Buck's to only four field goals and one free throw, to lead the Bucks 47 to 35.

The final quarter, the Lynx scored eight of sixteen free throws and no field goals, while White Deer scored five field goals and all four free throws. The Lynx won the game 55 to 49.

Individual scoring for the Lynx included (F.G., F.T., F. T.): Brett Davis (7-1-0-15); Kevin Nelson (4-6-4-14); Keith Benson (2-7-2-11); Tim Woolley (3-2-4-8); Carl Urban (3-1-3-7); Monte Beck (0-0-0-0); Carson Womble (0-0-0-0); Jeff Gustin (0-0-0-0); and Charles Roper (0-0-0-0).

Mark Garnett missed the game because of illness.

The Spearman Varsity Lynettes hosted the Gruver Lady Greyhounds Saturday January 17 for their Homecoming Game.

The Lynettes trailed 10 to 14 the first quarter, scoring four field goals and two free throws to Gruver's six field goals and one of two free throws.

The second quarter, the Lynettes scored two field goals and four of six free throws to Gruver's three field goals and two of three free throws. Half time score was Spearman 18, Gruver 22.

The third quarter the Lynettes tied the score 32-32, making five field goals and four of five free throws to Gruver's five field goals.

The final quarter, the Lynettes put five field goals and eight of eleven free throws through the basket to Gruver's five field goals and six of nine free throws, to beat the Lady Greyhounds 50 to 48.

Individual scoring for the Lynettes included (F.G., F.T., F.T.): Jill McLain (7-9-4-23); Carrie Guthrie (5-1-1-11); Shannon Jenkins (3-3-3-9); Cayla Eaton (0-2-4-2); Heather Murrell (0-2-1-2); Ginger Pearson (1-0-0-2); Mary Lou Baker (0-1-0-1); Jennifer Yarbrough (0-0-4-0); and Kim Jenkins (0-0-0-0).

The Spearman Junior Varsity Lynettes were hosts to the Gruver Lady Greyhounds Saturday, January 17.

The first quarter, the Lynettes scored only one field goal while Gruver scored two field goals and one free throw to lead the Lynettes 5 to 2.

The second quarter, the Lynettes scored two field goals and three of five field goals, while the Greyhounds scored two field goals and one of six free throws. Half time score was Spearman 9, Gruver 10.

The third quarter the Lynettes scored three field goals and five of eight free throws while holding Gruver to only two free throws. Spearman led for the first time in the game with a score of 20 to 12.

The final quarter, the Lynettes scored two field goals and all six free throws, while Gruver scored two field goals and two of seven free throws. Final score was Spearman 30, Gruver 18.

Individual scoring for the Lynettes included (F.G., F.T., F. T.): Jennifer Turner (2-3-5-7); Michelle Cook (1-5-1-7); Margie Evans (1-2-3-4); Lisa Cazarez (0-4-1-4); Jan Crawford (1-0-1-2); Laci Lasater (1-0-0-2); Michele Graham (1-0-2-2); Londee Bradley (1-0-1-2); Carlee Shieldknight (0-0-0-0); Vonda Benson (0-0-0-0); Mitzi Pearson (0-0-0-0); Carol Poole (0-0-0-0); April Graham (0-0-0-0); Cacy McGill (0-0-0-0); and Crista Sims (0-0-0-0).

The Varsity Lynx hosted the Gruver Greyhounds Saturday afternoon for their Homecoming game.

The Lynx trailed 8 to 20 the first quarter, scoring only two field goals and all four free throws to Gruver's five field goals and ten of eleven free throws.

The second quarter, the Lynx scored thirteen points with four field goals and five of eight free throws, but Gruver scored fifteen with five field goals and all five free throws to lead the Lynx 21 to 35 at half time.

The third quarter, the Lynx scored seven field goals and one of three free throws, while Gruver put in five field goals and all four free throws, but the Greyhounds still led the Lynx 36 to 49.

The final quarter, the Lynx scored three field goals and four of five free throws to Gruver's three field goals and two of nine free throws.

The Lynx lost their Homecoming game to Gruver 57 to 46.

PUBLICATION COPY - COMMERCIAL BANK
CONSOLIDATED REPORT OF CONDITION (Including Domestic and Foreign Subsidiaries)

LEGAL TITLE OF BANK		CITY		STATE	ZIP CODE	STATE BANK NO		
First State Bank		Spearman, Texas		Texas	79081	1107-37		
Box 247		Spearman, Texas		Hansford	79081	FEDERAL RESERVE DISTRICT NO		
						11 13 17844		
						CLOSE OF BUSINESS DATE		
						December 31, 1986		
Dollar Amounts in Thousands						TH	MI	THRU
ASSETS								
1. Cash and balances due from depository institutions:								
a. Noninterest-bearing balances and currency and coin								
						4	359	1a
b. Interest-bearing balances								
						5	900	1b
2. Securities								
						21	664	2
3. Federal funds sold and securities purchased under agreements to resell in domestic offices of the bank and of its Edge and Agreement subsidiaries, and in IBFs								
						NONE		
4. Loans and lease financing receivables:								
a. Loans and leases, net of unearned income								
30						451		4a
b. LESS: Allowance for loan and lease losses								
						214		4b
c. LESS: Allocated transfer risk reserve								
						NONE		
d. Loans and leases, net of unearned income, allowance, and reserve (item 4 a minus 4 b and 4 c)								
						30	237	4d
5. Assets held in trading accounts								
						NONE		
6. Premises and fixed assets (including capitalized leases)								
						1	336	6
7. Other real estate owned								
						NONE		
8. Investments in unconsolidated subsidiaries and associated companies								
						NONE		
9. Customers' liability to this bank on acceptances outstanding								
						NONE		
10. Intangible assets								
						NONE		
11. Other assets								
						1	371	11
12. Total assets (sum of items 1 through 11)								
						64	867	12
LIABILITIES								
13. Deposits:								
a. In domestic offices								
(1) Noninterest-bearing								
						8	364	13a(1)
(2) Interest-bearing								
						45	841	13a(2)
b. In foreign offices, Edge and Agreement subsidiaries, and IBFs								
						NONE		
(1) Noninterest-bearing								
						NONE		
(2) Interest-bearing								
						NONE		
14. Federal funds purchased and securities sold under agreement to repurchase in domestic offices of the bank and of its Edge and Agreement subsidiaries, and in IBFs								
						NONE		
15. Demand notes issued to the U.S. Treasury								
						441		
16. Other borrowed money								
						NONE		
17. Mortgage indebtedness and obligations under capitalized leases								
						NONE		
18. Bank's liability on acceptances executed and outstanding								
						NONE		
19. Notes and debentures subordinated to deposits								
						NONE		
20. Other liabilities								
						5	16	20
21. Total liabilities (sum of items 13 through 20)								
						54	862	21
22. Limited-life preferred stock								
						NONE		
EQUITY CAPITAL								
23. Perpetual preferred stock (No. of shares outstanding								
						NONE		
24. Common stock (No. of shares								
						200,000		24
						200,000		24
						1	000	24
						2	000	25
						7	005	26
26. Total equity capital (sum of items 23 through 27)								
						10	005	26
29. Total liabilities, limited-life preferred stock, and equity capital (sum of items 21, 22, and 28)								
						64	867	29
MEMORANDA: Amounts outstanding as of Report Date:								
1. Standby letters of credit: Total								
						NONE		
1. Amount of Standby letters of credit in memo 1 a conveyed to others through participations								
						NONE		
NOTE: This report must be signed by an authorized officer(s) and attested by not less than three directors other than the official signing the report.								
I/We, the undersigned officer(s), do hereby declare that this Report of Condition has been prepared in conformance with official instructions and is true to the best of my knowledge and belief.								
SIGNATURE OF OFFICER(S) AUTHORIZED TO SIGN REPORT						DATE SIGNED		
<i>Lynnette Maize</i>						January 20, 1987		
NAME AND TITLE OF OFFICER(S) AUTHORIZED TO SIGN REPORT						AREA CODE/PHONE NO.		
Lynnette Maize, Cashier						806-659-5565		
We, the undersigned directors, attest the correctness of this Report of Condition and declare that it has been examined by us and to the best of our knowledge and belief has been prepared in conformance with official instructions and is true and correct.								
SIGNATURE OF DIRECTOR						SIGNATURE OF DIRECTOR		
<i>John Shirley</i>						<i>John Shirley</i>		
State of TEXAS						County of HANSFORD		
(MAKE MARK FOR NOTARY'S SEAL)						Sworn to and subscribed before me this 20th day of JANUARY 1987		
I hereby certify that I am not an officer or director of this bank.						My commission expires 11-17-88		
						<i>Shonda Nash</i>		
						Signature Notary Public		

UNITED
★ Supermarket ★
 THESE PRICES GOOD THRU JAN. 24 IN
 PERRYTON ONLY
 DOUBLE COUPONS THURSDAY



WE GIVE & HUR
 DOUBLE STAMPS ON

GROCERY



GOLD MEDAL FLOUR
 REG.
 5 LB. BAG
.79



FINE FARE MACARONI AND CHEESE
 7.25 OZ.
4 \$1 FOR



DR. PEPPER
 6-32 OZ.
\$1.68
 PLUS DEPOSIT



MAZOLA CORN OIL
 48 OZ.
\$1.98



BETTY CROCKER HAMBURGER HELPER
 ASSORTED
.98



HELLMAN'S MAYONNAISE
 REG. OR LIT
 32 OZ.
\$1.9



ELLIS CHILI NO BEANS
 19 OZ.
.89



HUNT'S TOMATO JUICE
 REG.
 46 OZ.
.89



MARYLAND CLUB CUSTOM ROAST COFFEE
 11.5 OZ.
\$1.98

ASSORTED DORITOS
 11 OZ.
\$1.69

BARD'S SANDWICH WHEAT BREAD
 1 1/2 LB. LOAF
.79

FINE FARE SANDWICH CREMES
 ASST. 20 OZ.
.89



WHITE CLOUD BATH TISSUE
 12c OFF LABEL
 4 ROLL
.98



LUVS DIAPERS
 CONVENIENCE PACK
 *SMALL 66 CT. *MED 48 CT. *LARGE 2 CT.
\$8.99



CARTRIDGE ATRA PLUS, ATRA, OR TRAC II
 10 CT.
\$3.69



GOOD NEWS RAZOR
 REC OR PIVOT
 10 CT.
\$2.49

HEALTH & BEAUTY

POTATO REG. OR WHI
3.98

FROZEN

NO SALES TO DEALERS • QUANTITY RIGHTS RESERVED

WAVE SUPER SAVINGS



GREEN STAMPS EVERY DAY
ON WED. & SAT. with purchase of \$2.50 or more, excluding cigarettes



KRAFT VELVEETA
 2 LB. BOX
\$3.38



GOOCH GERMAN SAUSAGE
 12 OZ.
.98



KAHN'S COCKTAIL SMOKIES
 1 LB. PKG.
\$2.48



FARMLAND PORK CHOPS CENTER CUT
 LB.
\$1.98

QUALITY MEATS

HORMEL LITTLE SIZZLERS
 12 OZ. **.98**

LOUIS RICH VARIETY PACK
 12 OZ. PKG. **\$1.98**

FARMLAND BOSTON BUTT PORK ROAST
 LB. **\$1.38**



UNITED ICE CREAM ASSORTED
 1/2 GAL. **\$1.49**

MINUTE MAID ORANGE JUICE
 6 OZ. **2 FOR \$1**

STILLWELL BREADED OKRA
 24 OZ. **\$1.19**



UNITED DAIRY PREMIUM QUALITY EGGS EXTRA LARGE
 DOZ. **.59**

BLUE BONNET MARGARINE QUARTERS
 LB. **2 FOR \$1**

UNITED HOMO MILK
 GAL. **\$1.98**



KENTUCKY GREEN BEANS
 LBS. **2 \$1**

POTATOES REG. OR LONG WHITE
 3 LBS. **\$1**



SUNKIST NAVAL ORANGES
 LB. **.39**

FRESH GREEN SPINACH OR LETTUCE GREEN LEAF OR RED
 BUNCHES **2 \$1**

PRODUCE

Among The Neighbors

Diana Parker was notified of the death of her aunt, Avalee Robinson Riemer of Lubbock on Thursday. Mrs. Parker was unable to attend services due to her ill health. Mrs. Riemer was a former resident of Spearman, leaving here about 30 years ago. She was the daughter of the late Mr. and Mrs. W.L. Robinson who owned a restaurant here for some years. She was survived by three children and her brother, Buck. Buck is the last member of the family and is the father of Mrs. Parker. He is now living in Hemet, California.

Mrs. Coleen Schaefer, who underwent open-heart surgery last week in St. Anthony's Hospital is reported recovering, but will remain at the hospital for an indefinite period.

Funeral service for Hershell Rogers, 70, of Stinnett was conducted Saturday. He was the father of Linda Bodey. Linda and Calvin attended the services despite the extremely inclement weather. A number of Spearman friends also attended.

Dr. and Mrs. Scott Martin, with 1 year old Garrett, left the latter part of the week to return to Lexington, Kentucky after a week's visit here with his parents, Mr. and Mrs. Ray Martin. The previous week all the Ray Martin family spent several days at the Trafton's condo at Angel's Fire. Mary Ann Martin flew in from Dallas, and Steve and Rajan Trafton with Jessica, of Amarillo completed the group. Not only was it a first ski party for Garrett and Jessica; it was the first time they had met.

Don Knox recently returned from a deer hunting expedition--literally hunting was the only result--no deer. However he was fortunate in bagging his limit of quail. He and his son, Danny, of Odessa, hunted around Irran, south of Odessa.

Family members report that Peggy Archer is recovering rapidly from back surgery performed Friday at Northwest Texas Hospital. She is in room 445 and expects to be there for some time. Mary Francis Dixon returned Monday and expresses satisfaction with her progress.

Mr. and Mrs. Curtis Covington, Jennifer and Michael, returned late Monday from a week-end of skiing at Angel's Fire. They left here after school on Friday and had no difficulty on the roads in spite of the storm.

A tragedy was narrowly averted last week when 3 month old Macy Harbour daughter of Mr. and Mrs. Roy Harbour, inhaled some obstruction which caused a lung to collapse. They brought her into the emergency room at Hansford Hospital and after preliminary treatment, she was rushed by ambulance to Amarillo. She was in Northwest Texas Hospital for two days, but is doing well at home now and is expected to fully recover. The Harbours express their appreciation and gratitude to Dr. Taylor and the ambulance personnel for the expert care.

Mr. and Mrs. Craig Vinson, Doug and Terry Burke and Mr. and Mrs. Royce Siedman of Canadian enjoyed a week-end in Taos. The skiing was excellent and the highways all open.

Roy Russell, 88, fell in his home Sunday morning and suffered a broken hip. He was found by Mrs. Teena Easley, who has been assisting in his care. He was taken to St. Anthony's in Amarillo, accompanied by Irvin and Betty Davis. His son, Roy Franklin, Denver arrived Sunday night. A hip replacement was performed Monday morning and apparently his condition is satisfactory.

Two Outstanding Players Named King and Queen

Ladies and Gentlemen were welcomed to the 1986-87 basketball homecoming honoring our Varsity Lynx and Lynettes.

Heather Murrell, sophomore, daughter of Mr. and Mrs. Butch Schaefer was escorted by Jeff Gustin, junior, son of Mr. and Mrs. Ed Williamson and also by Carson Womble, sophomore, son of Mr. and Mrs. Dab Womble.

Ginger Pearson, sophomore, daughter of Mr. and Mrs. Bob Pearson, was escorted by Keith Benson, junior, son of Mr. and Mrs. Frank Benson.

Mary Lou Baker, junior, daughter of Mr. and Mrs. Dennis Baker, was escorted by Kevin Nelson, junior, son of Mr. and Mrs. Dennis Nelson.

Kim Jenkins, junior, daughter of Mr. and Mrs. Gene Jenkins, was escorted by Carl Urban, junior, son of Mr. and Mrs. Dee Allen.

Cayla Eaton, senior, daughter of Mr. and Mrs. Charles Eaton, was escorted by Charles Roper, junior, son of Mr. and Mrs. Lovida Giblin.

Shannon Jenkins, senior, daughter of Mr. Stan Jenkins and Mrs. Jane Jenkins, was escorted by Tim Woolley, junior, son of Mr. and Mrs. Paul Woolley.

Carrie Guthrie, senior daughter of Mr. and Mrs. Kent Guthrie was escorted by Brett Davis, junior, son of Mr. and Mrs. Curtis Davis.

Jill McLain, senior daughter of Mr. and Mrs. Don McLain, was escorted by Mark Garnett, senior son of Mr. and Mrs. Mike Garnett.

The 1986-87 Basketball Homecoming Queen is Jennifer Yarbrough. She was escorted by the 1986-87 Homecoming King, Monte Beck.

Jennifer's activities include basketball for 4 years, track 2 years, band 2 years, rifle corp 1 year, FHA 2 years and FCA 2 years.

Her honors include Who's Who Among American High School Students, National History and Government Award, and National Honor Society for 2 years. Jennifer is the 18 year old daughter of Mr. and Mrs. Eugene Yarbrough.

Monte has been in basketball for 4 years, and is Team Captain this year. He has also participated in golf. His honors include attending Camp Ryla, FHA officer, FFA Secretary, sophomore year, and has been voted a Senior Honor. Monte is the son of Mr. and Mrs. Verlin Beck.

The Lynettes were presented a rose by the Spearman Varsity Cheerleaders. Heather was presented a rose by Michelle Cook, freshman daughter of Mr. and Mrs. Ron Cook.

Ginger was presented a rose by Laci Lasater, freshman daughter of Mr. and Mrs. Butch Lasater.

Mary Lou was presented a rose by Cacy McGill, freshman daughter of Mr. and Mrs. Ed Pearson.

Kim Jenkins was presented a rose by Neta Burger, senior daughter of Mr. and Mrs. Bill Burger.

Cayla was presented a rose by Michelle Cook.

Carrie Ann was presented a rose by Laci Lasater.

Jill was presented a rose by Cacy McGill.

The King and Queen's crowns, bouquets, and banner was presented by Neta Burger and Kathy Poole.



John R. Collard, Jr.

pyramid. These are forms of lottery and violate the Postal Lottery Statute.

There are three elements of a lottery--consideration, prize, and chance. In typical work at home promotions involving stuffing envelopes, the consideration is usually called an "application or introduction fee" or could be the price of a "startup kit." Consideration in multi-level marketing schemes is the money paid to a promoter in order for the participant to become a distributor and to recruit new distributors. The prize is always the promised "big money" that can be made quickly after the promotion has progressed several levels, and the chance is that investors will not recruit all the people

necessary to fill the pyramid and recoup the initial investments much less earn the "big money" prize. In fact, the chance that all participants will receive mail is mathematically impossible. If a scheme requires participants to mail to six new participants, who in turn must mail to six, etc., by the eleventh level of mailing, the entire United States population would be exhausted; and by the thirteenth level, the world population (over four billion) would be exhausted.

The U. S. Postal Inspection Service, who investigates mail fraud and Postal Lottery Statute violations, says that promoters as well as participants in work at home fraud schemes can be found in violation of Federal law even if they did not realize the promotion was illegal when they first got into it. If you receive information about a work-at-home promotion you feel may be in violation of the law, turn it in to your Postmaster or mail it to the Postal Inspector, in charge, P. O. Box 162929, Fort Worth, TX 76161-2929. Remember, if it sounds too good to be true--it probably is.

Our program last week was on the Easter Seal Society. Guest speakers were Jelaine Workman and Jan Reid with the Amarillo Easter Seal Society. Our absentees were: Roy, Bulls, Pete Fisher, Ronnie Lusby, Jack McWhirter, and Jim Shirley.

Eighteen clubs were admitted to membership in Rotary International in January 1987. Congratulations to these clubs upon their 50 years of service:

- Australia-New South Wales: Katoomba.
- Brazil-Jacarezinho; Sao Jose Do Rio Pardo
- England-Cleveland; Ormskirik; Retford.
- France-Niort; Saumur
- India-Jamshedpur
- Mexico-Puebla
- Norway-Egersund.
- Uruguay-Tacuarembó; Trinidad
- U.S.A.-Illinois: Auburn; East Peoria.
- Indiana: Attica-Williamsport. Kansas-Phillipsburg. Michigan: Charleton.

Spearman Rotary Club Brings Hope Service above self - Service above self

VAN'S PRIME SEAFOOD

Fresh shrimp and seafood...by air!

From Boston, Portland, Seattle, New Orleans, Texas Coast and elsewhere!

Spearman Super Service Hwy. 207 S.

Friday, January 23, 1987 2:00-6:00p.m.

Over 70 fresh and frozen items!

Clean, inspected mobile unit.

Amarillo Market: 1709 W. 6th (806) 376-5777

Spearman I.S.D. Met

January 12, 1987
State of Texas
County of Hansford

The Board of Trustees of the Spearman I.S.D. met in regular session at 7:00 p.m. at the Spearman High School Building, with the following present:

Members and Officers:

- Mike Garnett, President
- Tom Latta, Vice-President
- Charles Shieldknight, Sec.
- Dennis Nelson, Member
- Joe Clement, Member
- Phillip Renner, Member
- Jim Davis, member

School Officials:

- Larry Butler, Superintendent
- Orville Latham, Bus. Manager
- Allen Alford, Principal
- Eddie Gage, Asst. Principal
- Carrol Yarbrough, CTA Rep.
- Others: Sue Woolley
- Minutes of Previous Meeting
- Motion made by Davis and second-

ed by Clement that the minutes of previous meetings be approved as presented. Motion carried.

Ratification of Bills

Motion made by Renner and seconded by Nelson that bills and accounts numbers 46489 through 46611, as recorded on pages 36 through 40, Volume Five, Minutes of Accounts Allowed, be allowed and paid. Motion carried.

TASB School Board Policy Adoption

Motion made by Shieldknight and seconded by Renner that the School Board Policy as compiled and presented by TASB be adopted. Motion carried.

Discipline Management Plan Changes Adopted

Motion made by Clement and seconded by Latta that the discipline management plan changes be adopted to comply with the legislation passed in the summer of 1986 special session. Motion carried.

Adjournment

Meeting adjourned.



Donda Poole sang the National Anthem at Saturday's Homecoming game.

Work at Home Schemes

Each year the American public loses millions of dollars through fraudulent schemes operated through the United States Mail. With the increase of unemployment, especially in the oil related industries, work at home promotions have become more prevalent. These promotions are aimed at the elderly, shut-ins, the unemployed, and housewives who want to supplement their family income.

Work at home fraud schemes such as envelope stuffing, home addressing, and multi-level marketing sales distributorships always include "opportunities" to earn an unusually high income with relatively small investment and with little or no effort on the part of the customer, and in most cases, by someone they've never even met. They are usually schemes to sell the plan to do the work rather than doing the work itself, and no one has ever become wealthy through such schemes.

Any promotion where the success of any operator (regardless of whether "a product" is offered) depends on recruiting people to recruit more people, etc., to participate in the program is an endless chain of

Little Bradlee Arrives

A baby boy was born to Pam and Allen Carlile of Spearman. Little Bradlee Allen was born on January 12, 1987 at Ochiltree General Hospital. Bradlee came into this world at 4:20 a.m. He weighed 7 lbs. and 1 oz. and was 19 1/4 inches long.

Paternal Grandparents are Sonny and Carolyn Carlile of Rockdale, Texas. Maternal Grandparents are Phillip and Carole Stumpf of Spearman.

Great Grandparents are: Paternal, Lelan Close of Spearman, Tx. and Mary Carlile of Ringo, Tx. Maternal are: Harry and Hazel Stumpf of Spearman.

Positive influence on Children

Will your children be able to say NO to drugs? Sex? Drinking? Crime? ???? Please come and hear how parents can have a positive influence on their children. Sharon Scott will speak to the P.T.A. on Thursday, January 22, at 7:00 p.m. in the High School Auditorium.

REPORT OF CONDITION

Consolidating domestic and foreign subsidiaries of the

FIRST NATIONAL BANK of SPEARMAN

in the state of TEXAS

at the close of business on DECEMBER 31, 1986 published in response to call made by Comptroller of the Currency, under title 12, United States Code, Section 161. Charter Number 18609 Comptroller of the Currency SOUTHWESTERN District

Statement of Resources and Liabilities

	Thousands of dollars
ASSETS	
Cash and balances due from depository institutions	510
Noninterest-bearing balances and currency and coin	5,791
Interest-bearing balances	2,047
Securities	
Federal funds sold and securities purchased under agreements to resell in domestic offices	625
of the bank and of its Edge and Agreement subsidiaries, and in IBFs	
Loans and lease financing receivables	
Loans and leases, net of unearned income	7,653
LESS: Allowance for loan and lease losses	083
LESS: Allocated transfer risk reserve	NONE
Loans and leases, net of unearned income, allowance, and reserve	7,570
Assets held in trading accounts	NONE
Premises and fixed assets (including capitalized leases)	456
Other real estate owned	NONE
Investments in unconsolidated subsidiaries and associated companies	NONE
Customers' liability to this bank on acceptances outstanding	NONE
Intangible assets	NONE
Other assets	159
Total assets	17,158
LIABILITIES	
Deposits:	
In domestic offices	15,071
Noninterest-bearing	2,149
Interest-bearing	12,922
In foreign offices, Edge and Agreement subsidiaries, and IBFs	NONE
Noninterest-bearing	NONE
Interest-bearing	NONE
Federal funds purchased and securities sold under agreements to repurchase in domestic offices of the bank and of its Edge and Agreement subsidiaries, and in IBFs	NONE
Demand notes issued to the U.S. Treasury	NONE
Other borrowed money	NONE
Mortgage indebtedness and obligations under capitalized leases	NONE
Bank's liability on acceptances executed and outstanding	NONE
Notes and debentures subordinated to deposits	NONE
Other liabilities	108
Total liabilities	15,179
Limited-life preferred stock	NONE
EQUITY CAPITAL	
Perpetual preferred stock	NONE
Common stock	1,000
Surplus	999
Undivided profits and capital reserves	(20)
Cumulative foreign currency translation adjustments	NONE
Total equity capital	1,979
Total liabilities, limited-life preferred stock, and equity capital	17,178

We, the undersigned directors, attest to the correctness of the statement of resources and liabilities. We declare that it has been examined by us, and to the best of our knowledge and belief has been prepared in conformity with the instructions and is true and correct.

James C. Gidd
Tom Latta
Phillip Renner

FELMA B. EVANS
VICE PRESIDENT/CASHIER

of the above-named bank do hereby declare that this Report of Condition is true and correct to the best of my knowledge and belief.

Felma B. Evans
JANUARY 20, 1987

Super Bowl Sale at United



Curtis Christopher

Curtis Christopher, manager of the United Supermarket in Perryton, would like to invite everyone in Hansford County to participate in a super sale at the store during Super Bowl Week.

We are still observing our first anniversary. The United Store opened one year ago this month. Whether you are a Denver fan or a Giant fan you will not want to miss our super sale this week.

Notice of Public Auction
 The Spearman Police Department will have the following vehicles for sale at Public Auction:
 1972 Pontiac 2 door, VIN# 2K57T2A 139127 - inoperable
 1967 Pontiac 4 door, VIN# 256697R 148009 - inoperable
 1972 Chevrolet 2 door, VIN# 1037H4R 465116 - inoperable
 1973 GMC Pickup, VIN# TCY143S 520045 - inoperable
 1972 Plymouth 2 door, VIN# RM23H2 G204189 - inoperable
 1977 Dodge Van, VIN# B36BE7X 090906 - operable
 The auction will be held January 23, 1987 at 10:00 a.m., Lot #30 Crawford Addition, West of the City Limits.

JANUARY 1987

LYRIC THEATRE

SPEARMAN, TEXAS
 PHONE 806-659-2812

FEATURING
LARGE BRIGHT SCREEN AND "STEREO" SURROUND SOUND

PROGRAMS ARE SUBJECT TO CHANGE WITHOUT NOTICE.

THEATRE CLOSED EVERY WEDNESDAY AND THURSDAY

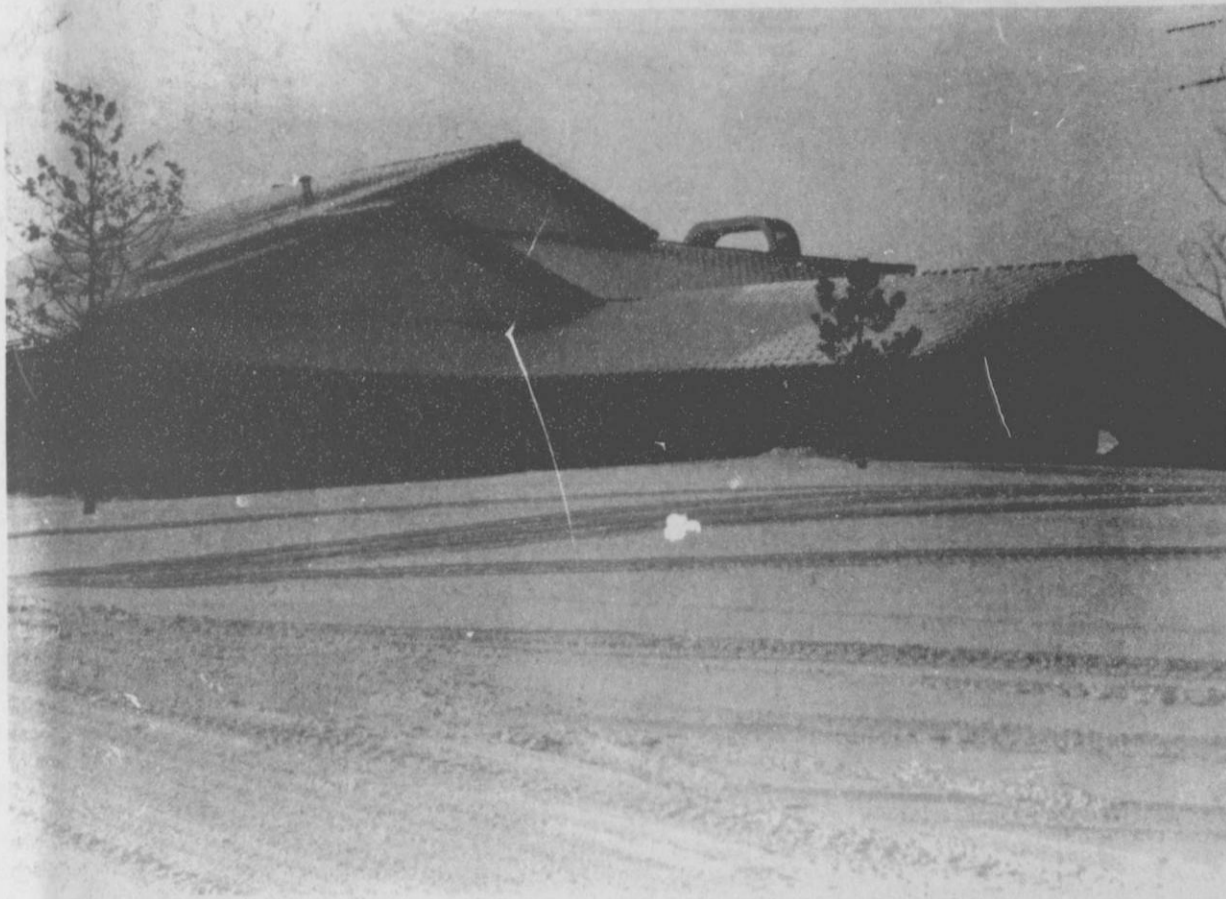
MONDAY AND TUESDAY NIGHTS
ALL SEATS \$3.00

23 24 25 26 27

STAR TREK IV THE VOYAGE HOME

SHOW AT: 8:00 PM

ONLY ONE SHOW EACH EVENING!!



Mayor Blodgett's house resembled a snow castle after a recent snow.

Consignment Auction

The Third Annual Kiwanis Consignment Auction will be held Saturday, February 7th, 10:00 a.m. at the EXPO Center in Perryton. Dale Naylor will be the auctioneer for the event. To list merchandise on the flier, consignments must be in by January 15. Their merchandise can be accepted as late as February 6, but it will not be listed in the print-outs.
 For consignments or additional information, call 435-7676 and ask for Jim Scott; 435-9993 for Bill Hartsfield; or after 6:00 p.m., 435-2481 for Frank Stamps.
 Merchandise will be set up at the EXPO Center Friday, February 6, 1987.

H & R BLOCK SIMPLIFIES FARM & RANCH TAX RETURNS

H & R Block Tax Preparers are specially trained to help Farmers and Ranchers with the new tax laws and regulations. The Block personal interview assures quality and accuracy backed by the Worldwide Block name.
 Block stresses early filing for Farmers and Ranchers with depreciable items listed. Block also prepares returns for farm employees. No tax return is too large or too small and you will receive every deduction to which you are entitled.

If you have questions on investment credit, oil and gas leases, unearned income, crops or livestock, or other farm related tax items, see or call H & R Block today. For one low fee, H & R Block offers accurate tax preparation assistance year round, with or without an appointment. H & R Block offices are located throughout Texas.
 307 W. Davis 659-2310
 Open: Monday thru Friday 9 a.m. to 5 p.m.
 Appointments available

Notice

Persons that are unauthorized to park in the handicapped spaces within the City of Spearman can be ticketed by the Spearman Police Department.

The only authorized persons to park in the disabled parking spaces must have one (1) of the following on their vehicle:

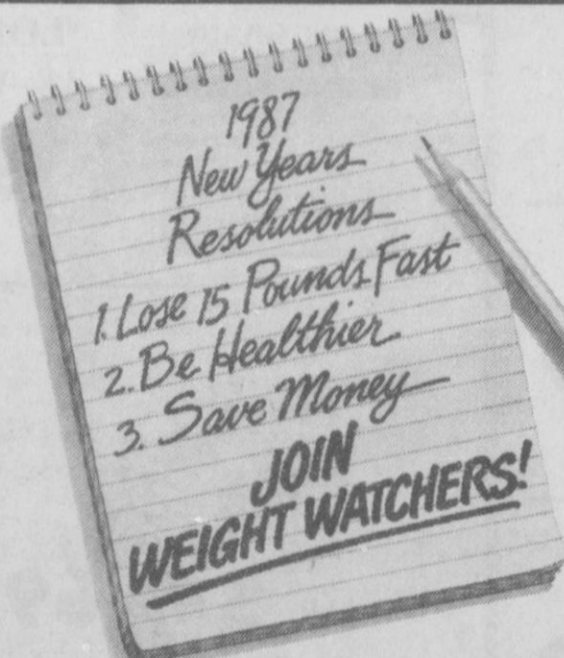
- 1) Handicapped license plate, or
- 2) Handicapped decal on front windshield, or
- 3) Handicapped identification card visible from windshield.

Vehicles that are parked in the disabled parking spaces that do not have one of the above handicapped identifications can be fined up to a maximum of Two Hundred Dollars (\$200.00).

Designated handicapped parking spaces are located at Thriftway, Plains Shopping Center, Texas-New Mexico Power Company, various churches, public buildings, and Hansford Hospital.

For information concerning a handicapped permit, please contact the Hansford County Tax Assessor-Collectors office located in the courthouse.

The public's cooperation in this matter will be appreciated by the Spearman Police Department.



NOTICE
 Offer extended to January 31st due to weather conditions.

"I want to invite you to a Weight Watchers meeting at NO CHARGE before January 31 1987"

Discover the newest additions to our new, improved Quick Start Plus. Now, besides our food plan and motivating discussions and group support, we've added an optional Exercise Plan and a wonderful new Self-Discovery Plan that helps change your eating habits. All together, our new, improved Quick Start Plus Plan will help you live a healthier, happier and slimmer life.



Vivian Aron Lipman
 Area Director

Please be my guest at a Weight Watchers meeting of your choice. For the very first time, this offer is being made in this area.

Then, when you decide to join, pay only \$12.00 including registration and first meeting fee. After you join, you'll receive your first week program materials including food program orientation.

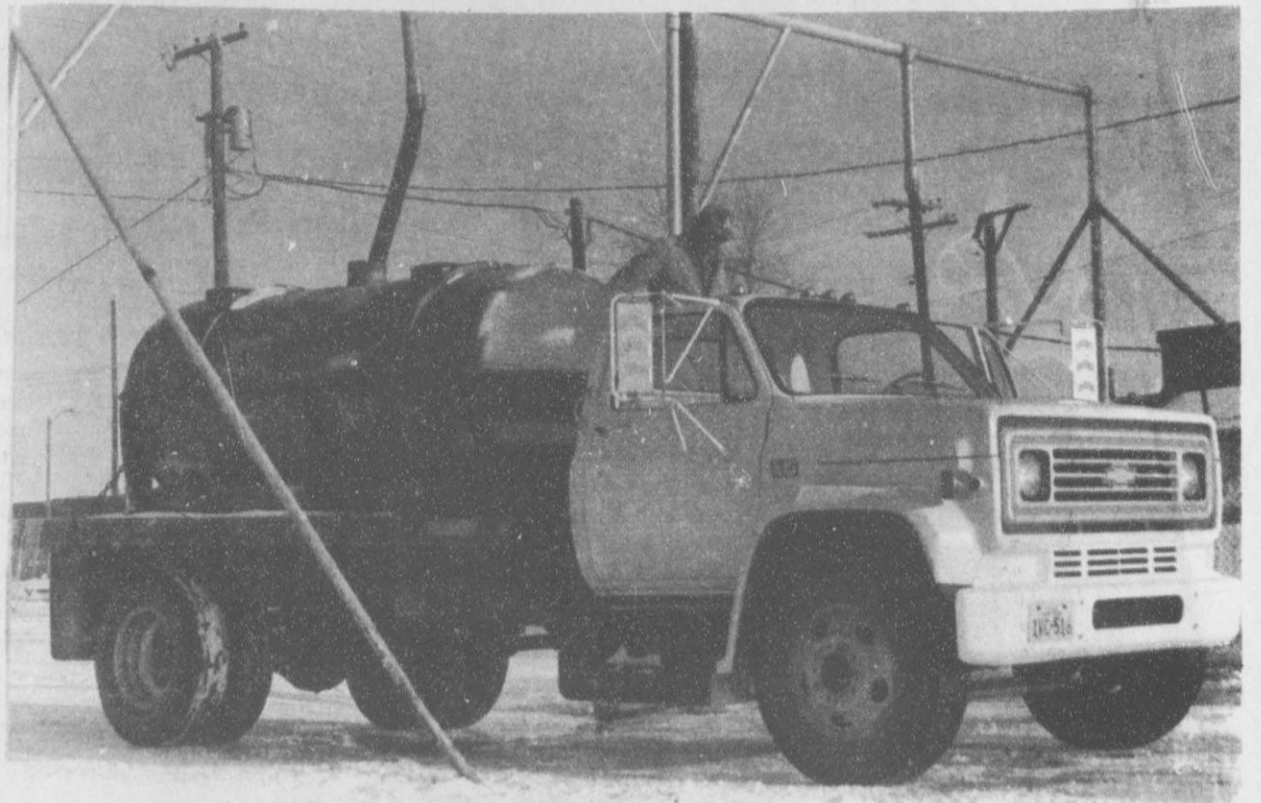
Regular Fees
 Registration \$13.00
 First Meeting Fee \$ 7.00
 TOTAL \$20.00
**NOW YOU PAY ONLY... \$12.00
 YOU SAVE \$8.00**

SPEARMAN HOME EXTENSION CLUB
 309 North Bernice
 Mon. 6:00 pm

JOIN WEIGHT WATCHERS NOW!
1-800-692-4329



These birds appreciate the food and water put out by caring people.



It's time to water the cattle as this rancher prepares to haul a load of water to his cattle. Livestock must have plenty of warm water during severe water.

Farm & Ranch Safety

The search is under way for a rural hero for 1986, according to Ben Bullard of Waco, president of the Texas Farm & Ranch Safety Council, which presents the annual rural heroism award.

The 1986 recipient will be announced Monday, March 23, at the 48th annual Texas/Southwestern Safety Exposition to be held at the Hyatt Regency Hotel in Houston.

Deadline for submitting 1986 entries will be March 2, Bullard said. Send all nominations to Texas Farm & Ranch Safety Council, P. O. Box 2689, Waco, Texas, 76702-2689.

To qualify for the honor, a candidate must have performed a heroic act of human-life saving within Texas boundaries during the calendar year 1986. The entry should preferably related to farming or ranching, Bullard noted.

The 1985 winner was C. R. Marsh of Crosbyton, who rescued a tractor operator from her tractor after the cotton stripping basket made contact with a power line.

The victims jumped from the tractor but was pulled back into the vehicle by the high voltage current which necessitated the rescue.

Marsh later won the Carnegie Medal, a national award for heroism.

Letters of nomination should include a written account of the accident with names, addresses and telephone numbers of all persons involved. When available, newspaper clippings and photos should accompany the nominations, Bullard said.

Bullard is associate director for safety and health for the Texas Farm Bureau.

THE WEIGH IN... THE WAY OUT

Toni Schierenberg
814 S. Main
435-2200

Shelli Lair, Manager
659-2199
511 S.W. 11th Ave. Spearman, Inc.

HOW TO WIN AT THE LOSING GAME

DIET CENTER

Call Us Today for a free, introductory consultation.

659-2199

Storewide Savings

THE MORE YOU BUY...THE MORE YOU SAVE!

Prices effective Thursday, Friday & Saturday January 22nd thru 24th

<p>DIET OR REGULAR-CANNED DRINKS</p> <p style="text-align: right;">12 OZ. CAN-6 PAK</p> <p style="font-size: 2em; font-weight: bold;">SLICE</p> <p style="font-size: 2em; font-weight: bold;">\$ 1⁵⁹</p>	<p>PURE VEGETABLE SHORTENING</p> <p style="font-size: 2em; font-weight: bold;">CRISCO</p> <p style="font-size: 2em; font-weight: bold;">\$ 1⁹⁹</p>	<p>MACARONI & CHEESE 'BONUS PACK' 8.7 oz. box</p> <p style="font-size: 2em; font-weight: bold;">KRAFT DINNERS</p> <p style="font-size: 2em; font-weight: bold;">\$ 1⁰⁰</p> <p style="text-align: center;">3 FOR</p>
<p>AF 'HOMOGENIZED' MILK</p> <p style="text-align: right;">GALLON JUG</p> <p style="font-size: 2em; font-weight: bold;">MILK</p> <p style="font-size: 2em; font-weight: bold;">\$ 1⁷⁹</p>	<p>ALL PURPOSE 'RUSSET' POTATOES</p> <p style="text-align: right;">20 LB. BAG</p> <p style="font-size: 2em; font-weight: bold;">\$ 1⁹⁹</p>	
<p>TENDERCRUST 'RANCH STYLE' BREAD</p> <p style="text-align: right;">1 1/2 LB. LOAF</p> <p style="font-size: 2em; font-weight: bold;">BREAD</p> <p style="font-size: 2em; font-weight: bold;">49^c</p>	<p style="font-size: 2em; font-weight: bold;">GROUND BEEF</p> <p style="font-size: 2em; font-weight: bold;">99^c LB.</p> <p style="font-size: 0.8em;">FRESH DAILY - 73% LEAN</p>	

SPECIAL SAVE!

4 DELICIOUS FLAVORS 4.3 OZ. PKG

LONG GRAIN & WILD RICE

\$ 1²⁹

'NEW' LIPTONS RICE & SAUCE

LONG GRAIN & WILD RICE

LIPTONS INSTANT TEA

4 OZ. JAR

\$ 2⁶⁹

100% tea

LIPTON 24 FAMILY SIZE FLO-THRU TEA BAGS

24 FAMILY SIZE

\$ 1⁶⁹

LIPTONS 'FLO-THRU' TEA BAGS 100 COUNT BOX

\$ 2⁹⁹

AF AFFILIATED FOODS INC. WE'RE PROUD TO GIVE YOU MORE!

STAMP COPY WE ACCEPT FOOD STAMPS WE RESERVE THE RIGHT TO LIMIT QUANTITIES

THRIFTWAY

47 Pupils Have Pre-registered

Mr. Allen Alford, principal of the Spearman Elementary School would like to announce that 47 pupils have pre-registered for the following 1987-88 school year:

- Abbott,
- Charles Michael Baker,
- Sean Travers Barber,
- Dustin Bart Barrera,
- Tobi Lynn Bynum,
- Stephanie Lynn Beasley,
- Halee Del Brock,
- Jordan David Burch,
- Bryan Cody Burch,
- Natasha Rae Carbajal,
- Brenda Renee Carrasco,
- Esmeralda Cudd,
- Evan Michael Davila,
- Monica Davis,
- Matthew Michael Delozier,
- Landon L. Diaz,
- Michael Jamie Gibbs,
- Ryan Russell Gilley,
- Nathan Eric Gilley,
- Jason Douglas Goodman,
- Cynthia Dawn Harris,
- Cortny Elizabeth Hataway,
- Brandon Henton,
- Kelsey Hergert.

- Kirby Keith Macias,
- Marisela Macke,
- Jeremy Glen Mathews,
- Mark Stephen Parker,
- David Turner Paul,
- Christopher Andres Pipkin,
- Frances "Angela" Ramon,
- Amber Kristine Rea,
- Clinton Drew Renner,
- Reagan Resse Salgado,
- Stephen Sanchez,
- Joshua Ray Schoenhals,
- Mickey Ethan Shaner,
- Bryan Lee Sherlock,
- Gary Travis Smith,
- Lanna Camille Standerfer,
- Jessica Vaquera,
- Irene Vasquez,
- Steven Watley,
- Janae Whitefield,
- Teddie Lynn Wilkerson,
- Clayton Dale Winegarner,
- Aaron Zortman,
- Kelly

If you know of any other children who will be of kindertner age not on the list should contact the Elementary School office.

C.W.F. Met

The C.W.F. (Christian Womens Fellowship) met Wednesday, January 14, 1987, at 12:00 noon in the fellowship hall of the First Christian Church in Gruver.

The tables were beautifully decorated in the theme of the New Year by the hostess for the month of January, Connie Gammill.

The President, Linda Tidwell, gave the blessing before the table of delicious food.

The meeting was called to order, and the worship was led by Lanessa Lilly. Joys and concerns were presented by Rose Cassidy. Pat Morley reported on a list of people for visiting.

Melinda McCollough gave a report on shoes bought for the needy at Christmas.

Discussion on project for the months of February and March were made.

Discussion was made on plans for our guest speaker: Dr. Harold Cline, who will be at the First Christian Church, in Gruver, February 7, 1987 between 2:30 - 5:00 p.m. Everyone is invited to attend and become a vital part in the total Disciple program called "Together in Mission".

The plans made for a special service for Lay Sunday, Jan. 25, was discussed.

The study on the book of Acts was led by Beth Coomer, and then the meeting was adjourned.

We will meet again February 7, at 12:00 noon in the fellowship hall of the First Christian Church in Gruver. Anyone interested in the work of CWF, their study and projects, good food and fellowship is encouraged to attend.

Square Dance Lessons

Are you sick and tired of the same old T.V. shows? Are you in a rut - and worse - it's feeling comfortable? Mark Thursday, January 22nd on your calendar. At 7:00 that evening at the Hansford Y.M.C.A., the Rainbows & Rangers square dance club of Spearman will host the second beginners' lesson for square-dancers to be. This lesson will be free. It will be the same as the first lesson which was Thursday, January 15th, so if you missed that one and come for this one, you will not be behind. Lessons will be from 7:00 to 9:00 each Thursday night. There will be from 16 to 20 lessons. Jeans and/or casual clothes are right for lessons.

Square dancing burns about 300 cal. perhour and is as good an exercise for the mind as it is the body.

Charge for the entire session of lessons will be \$50 a couple, \$25 single. This is less than \$3.50 a couple - \$1.75 a single - for each class. It can be paid in two or three payments. There is no other place people can go where they can have so much fun for so little money! Lessons will be taught by Richard Olsen, an excellent caller from Canadian.

There will be country-western dance lessons from 9:00 to 9:30 immediately after the square dance lessons are finished. They will be free to those in the square dance class and will be \$20 per couple for all others. They will last 10 weeks.

So, plan to be at the "Y" at 7:00 on January 22nd, THURSDAY, prepared

to enjoy yourself and have lots of fun. Participate - don't just be a spectator! Come join the 3 squares of people who were there last Thursday and have a GOOD TIME!

Chain Letter Promotions

Have you ever been asked to participate in a chain letter which is guaranteed to earn you lots of money with one small investment? Don't waste your money-chain letters are a form of lottery and may violate federal mail fraud laws. The same three elements that apply to lotteries (payment, prize, and chance) also make chain letters schemes illegal. The payment may be money or any other item of value. The prize is the large amount of money you are led to believe you will receive in the end if you participate. The chance is that the chain will break, and it must, because the chance that all participants in a chain letter will receive mail is mathematically impossible. For example, a typical chain letter may require participants to mail letters containing money to six new participants, each of whom must mail six letters to six more individuals and so on. By the eleventh level of mailing, the entire population of the United States (almost three-hundred million) would be exhausted. By the 13th level, the population of the world (over four

billion) would be exhausted. And remember, even if the chain letter itself is not mailed, as long as the payment or prize is sent through the mail, the entire scheme is illegal.

Some chain letters masquerade as Multi-Level Marketing (MLM) Plans. These require an original promoter to sell a product and enlist several other people to become sellers, who in turn recruit others. Most Multi-Level Marketing Plans are schemes to sell the plan rather than the product, and the fact that selling a product is involved, instead of winning money or statements saying the plan do not violate federal law, do not ensure legality.

Do not confuse regular chain letters or Multi-Level Marketing Plan chains with prayer chains that promise good luck but require no investment. These are not illegal-they're a nuisance. You should not be intimidated by implied threats of bad luck, personal injury, or disaster for breaking the chain. Feel free to throw the chain letter away.

Remember, you are under no obligation to participate if you receive a chain letter, and to do so may be a violation of federal law. Turn the letter in to the local post office or send it to the Postal Inspector in Charge, P. O. Box 162929, Fort Worth, TX 76161-2929.

News update

Are you hungry for a good meal. Come on down to Dairy Queen for their "Full Meal Deal" special only \$2.59. What you get is a juicy quarter-pound Homestyle Hunger-buster. Golden french fries. Your favorite ice-cold soft drink. And a creamy 5-ounce Dairy Queen sundae with your choice of topping. Don't that sound scrumptious! Don't wait to long offer good only til February 8, 1987.

The Equity Expo is nearing. Are you farmers ready? The Expo will be this Thursday January 22nd and will start precisely at 10:00 a.m. and last until 3 p.m. A lunch will be provided. Put the profits back into farming by attending the Spearman Equity Expo.

Trying to lose those unwanted pounds you put on during the holidays. Come to the New Diet Center at the Pittman-Shieldnight building. Call them today and get free introductory consultation. Toni Schirenborg is the owner and Shelli Lair is the Manager. Stop in today and meet these fine young ladies. The Diet Center features "sensible" ways to not only lose weight, but maintain your new weight. Drop in today!

Thriftway in Spearman is having a Storewide Savings Sale effective Thursday-January 22nd thru Saturday, January 24th. Mr. Fisher invites you to come in and shop and save. Store specials are elsewhere in this newspaper.

Have you noticed lately the various handicapped signs around Spearman? Please take heed. It is unauthorized to park in one of these zones and you can be ticketed for doing so. The only authorized persons to park in the disabled parking spaces must have one of the following on their vehicle: 1. Handicapped license plate, 2. Handicapped decal on front windshield or 3. Handicapped identification card visible from windshield. Vehicles that are parked in the disabled parking space that do not have one of the above identification can be fined up to a maximum of \$200.00 dollars.

Where are they located you say? They are located at Thriftway, Plains Shopping Center, Texas-New Mexico Power Company, various churches, public buildings, and Hansford Hospital. If you are handicapped and want information concerning a handicapped permit, please contact the Hansford County Tax Assessor Collectors office located in the Courthouse. The Spearman Police Departments asks for the Public's Co-operation and would greatly appreciate it. Notice inside this paper.

For all your Farm & Ranch tax returns look to H & R Block. H&R Blocks specially trained preparers are knowledgeable of the new tax laws and regulations. Come by 307 W. Davis; Monday thru Friday from 9 a.m. - 5 p.m. or by appointment. The Preparers of Spearman are waiting to hear from you.

Star Trek IV "The Voyage Home" will be appearing at the Lyric Theatre January 23-27. Showtime is a 8:00 p.m. Only one show each evening. Monday & Tuesday nights all seats are \$3.00. Spearman is now featuring a large bright screen and "stereo" surround sound. Come and see your favorite show at the Lyric. This newspaper will announce the movies for the week in each paper.

A Gigantic Super Bowl Sale is in effect now at United Supermarket in Perryton. Curtis Christopher, manager, would like to invite everyone in Hansford County to participate in a super sale at the store during Super

Bowl Week. Also celebrating their 1st anniversary at the new store this month.

Vivian Aron Lipman-Area director for Weight Watchers would like to invite you to a Weight Watchers meeting at NO CHARGE in your area before January 31, 1987. This offer has been extended due to weather conditions. If you want to enjoy friendly companionship and diet with people who care and are willing to help you through the rough times attend a Weight Watchers meeting soon.

Look in our newspaper for the Texas-New Mexico Power Co. Ad. It gives you helpful information on Weather Stripping. Make your home leak-proof. Texas-New Mexico, the Power of the Community.

Allsup's-the convenient store is your Super Bowl Snack Headquarters, for this weekend. Allsup has great values on chips, fries, links, cokes, plus alot more. Drop in and take advantage of the Super Bowl Specials.

Tim Sheppard will be in concert on January 24th at the High School Auditorium in Spearman. Tim is a nationally and internationally renowned Gospel Singer. His songs heavily reflect his extensive musical training in classical, as well as his interest in contemporary styles. Don't forget the date and enjoy yourself.

Don't forget Kids Stuff/Lady Fair are having their Fall and Winter 1/2 price sale. They will be having this sale for a few more weeks so don't miss out on these great values.

Cates Men and Boys Wear is having a January Clearance sale. Come and shop and enjoy the super savings.

Weekly Memo Calendars are still available at Hansford Abstract Co. in Spearman. Pick up you Memo Calendar today.

Shop at Beedy Furniture for great savings and beautiful selections on your favorite brand name furniture and accessories. Beedy's is having a winter clearance sale and you can get brand name furniture at super savings. Mr. and Mrs. Beedy are more than happy to help you choose your selections.

Police

Police Report for January 13, 1987
 5:15 p.m. Service Call
 8:02 p.m. Service Call
 8:26 p.m. Service Call
 January 15, 1987
 12:17 p.m. Service Call
 3:54 p.m. Service Call

January 16, 1987
 8:20 a.m. Service Call
 8:36 a.m. Service Call
 3:28 p.m. Traffic Complaint
 4:29 Minor Accident in the 500 block of South Bernice.

9:28 p.m. Service Call
 January 18, 1987
 9:02 p.m. Service Call
 January 19, 1987

12:20 p.m. Minor Accident in the 10 block of North Bernice.
 9:37 p.m. Service Call
 10:00 p.m. Disturbance

Hoop-La



Coach Jones

HOOP-LA

Individuals who persist that there is always a bright side to every situation are labeled eternal optimists. As a team we are eternally optimistic that we will never again turn the ball over seven out of fourteen possessions in the first quarter.

The following situations contributed to the first quarter break down.

1. Inability of the coach to recognize the type of press and use a clear out to advance the ball.
2. The players picking their dribble up immediately after crossing mid court.
3. Losing concentration defensively and allowing an easy lay-up.
4. Making one pass only before a shot is taken.

Lets give credit where credit is due. The Gruver ball club was extremely patient on offense, but they had to be successful. Our kids played well defensively except for the few times we went to sleep and allowed a player to sneak under for a lay-up.

The kids played extremely hard the second quarter and second half, but when you put yourself into a situation where you are behind by 20 plus points and you do not get the calls in crucial situations, sometimes, as in our case, you just do not catch up. The effort was there and I appreciate that type of reaction to a tough situation.

Offensive and Defensive player of the Game:

Kevin Nelson
 Bright Spots: The determination and effort.

Improvements needed: Patience offensively. We made two passes on offense twice during the night. The remainder of the night it was either one pass or none at all. That is not a team effort, that will be corrected. Lynx Notes: Setbacks are not permanent. Our team has Potential. It is up to us to reach that potential! One thing is certain, we will keep working, trying, and believing in ourselves!!

PEARMAN (G)	18	32	52	43
WHITE DEER	11	19	25	29
- Jill McClain 19, Shannon Jenkins 14; WD - Monica Viall and Shanna Ford 7				
SPEARMAN	16	34	47	58
WHITE DEER	14	26	35	49
- Brett Davis 15, Kevin Nelson 14; WD - Mike Bradley 14, Todd Hayes 16				
LUBBOCK (G)	2	11	19	25
PLAINVIEW	18	37	58	76
- Jill Rostad 6, Moilca S; P - Becky Remington 20, Ramona Black 17.				

DISTRICT 1-2A

Team	Dist.	All
Highland Park	4-0	13-7
Stinnett	2-1	7-9
Stratford	3-1	11-4
Panhandle	3-2	5-9
Spearman	2-3	13-7
Gruver	1-3	5-13
White Deer	1-4	6-11

Saturday's result
 Gruver 57, Spearman 45.
 Monday's result
 Spearman 55, White Deer 49.
 Tuesday's games
 Highland Park at White Deer; Stinnett at Spearman; Stratford at Gruver; Bookers at Panhandle.

Wednesday's game
 Stratford at Highland Park.
 Thursday's game
 Stinnett at Panhandle.
 Friday's games (begin second-half season)
 Highland Park at Spearman; White Deer at Stratford; Panhandle at Gruver; Stinnett, open.
 Saturday's games (end of first-half season)
 Panhandle at Stratford; Gruver at Stinnett; Highland Park, open.

Team	Dist.	All
Panhandle	4-0	15-4
Stratford	3-0	16-7
Stinnett	2-1	4-11
Spearman	3-2	13-6
Gruver	2-2	13-6
Highland Park	0-4	1-19
White Deer	0-5	2-15

Saturday's result
 Spearman 50, Gruver 48.
 Monday's result
 Spearman 63, White Deer 29.
 Tuesday's games
 Highland Park at White Deer; Stinnett at Spearman; Stratford at Gruver; Bookers at Panhandle.

Wednesday's game
 Stratford at Highland Park.
 Thursday's game
 Stinnett at Panhandle.
 Friday's games (begin second-half season)
 Highland Park at Spearman; White Deer at Stratford; Panhandle at Gruver; Stinnett, open.
 Saturday's games (end of first-half season)
 Panhandle at Stratford; Gruver at Stinnett; Highland Park, open.

Cheese Commodities

Cheese Commodities will be distributed on February 18, 1987.

To get your cheese you must certify by Feb. 13, 1987 at the County Judges office. Between the hours of 8:30 a.m. - 5:00 p.m.

To qualify for the commodities you must show proof of income. By this we mean, you must bring a check showing your gross income before your take home pay or a W-2 Form showing your income.

If you are self-Employed or a Farmer you must show your net income.

If you are on Social Security you must show a letter stating your income. Either your monthly or yearly.

You must apply to qualify for cheese commodities for this year.

Commodidades de Queso

Si Usted quiere Queso este Ano Por favor de aser una nueva application antes del 13 de Febrero.

Tiene que enseñar lo que ase mensualmente or por ano. Puede llevar una carta del trabajo o Una Copia de sus taxas de 1986. El Queso sera distribuido el 18 de Febrero. Si no pone su application no puede recibir el queso.

RUFFLES® ALL VARIETIES
Potato Chips REGULAR \$1.39

NOW ONLY

\$1.19

PRICES GOOD JANUARY 22, 23, 24, 1987 WHILE SUPPLIES LAST

AT SPEARMAN, TEXAS LOCATION

Filled With Scruming Hot Coffee

ALLSUP'S Coffee Mugs

REFILLED FOR ONLY 25¢

99¢

ALLSUP'S CONVENIENCE STORES

Golden Brown and Delicious

ALLSUP'S French Fries

49¢

Your Super Bowl Snack Headquarters

If it's Borden's... it's Got to be Good

BORDEN'S Homo Milk

GAL. CTN.

\$2.29

BORDEN'S Cottage Cheese

12 OZ. CTN.

79¢

BORDEN'S Frostlicks

6 CT. PAK

\$1.19

ALLSUP'S Hot Links

Perfect for 1/2 Hour Snacks

69¢ EACH

CAFFEINE FREE COKE, CHERRY COKE, COCA-COLA CLASSIC OR DIET COKE

12OZ. CANS 6PAK

1.89

To God a Note of Thanks

Friends, the scripture revealed to me for our study this week is found in II Cor. chapter 5; and really seems suitable at the beginning of the New Year 1987. Now we read it, "Examine yourselves whether ye be in the faith. Prove your own selves." We certainly have or should have learned in our study of Gods Holy Word we were all born with a nature to sin and that a remedy was made by God and His beloved Son by the shedding of the blood of Jesus at Calvary. What is sin? To me it seems it would be easy understood by saying to fail to do that commanded by God in His Holy Word and Jesus said, Man does not live by bread alone (That we daily eat) but by every word that proceedeth out of the mouth of God. By experience I learned when starting to school many years ago yes 93 years going to a subscription summer school at age 5 that when examination day came we were asked questions concerning what we had studied and now for you and me yes everybody we are to examine ourself concerning things God has commanded of us and we will find they can all be answered by two small words, "Yes and No." We will begin with about the first one found in the Bible. Do you have other Gods before me?

And now we continue. Do you love the Lord thy God with all of your heart, soul mind, and strength? Do you keep the Sabbath Day Holy or for worldly work or pleasure? Do you love your neighbor as yourself? Do you do unto others as you would have them do unto you? As much as lieth in you do you live peaceably with all people? Do you honor your father and mother? Have you been true to your marriage vows? Do you reverence your husband? Do you cherish your wife? Are you obedient to your parents? Are you committing adultery? Do you desire your neighbors wife? Do you covet anything of thy neighbors? Do you love your enemies? Do you bless them that curse you? Do you pray for them that despitefully use you? Do you bear false witness against your neighbor? Are you a talebearer? Do you have envy, malice, wrath, or strife in your heart toward anyone? Do you pray without ceasing? Do you in everything give thanks? Do you study Gods word to show yourself approved unto Him rightly dividing the word of truth? Are you ready or making ready for Christs return? Are you daily living a life that gives you beyond doubt a hope for immortality eternal life? Are Gods commandments grievous to you?

Can you as Jesus say I love to do thy will O God? Do you pay tithes? Do you give offerings? Do you give alms to the needy? Are you fully surrendered spirit soul and body? Many other questions I'm sure could be asked us that are recorded in the Bible and as you and I answer these written yes or no, I'm sure the Lord will know whether or not we have been honest with ourself God and man. May He help all of us to run the race set before us looking unto Jesus the author and finisher of our faith that we may obtain mercy and be given eternal life.

Hospital

Patients who were admitted in the Hansford Hospital are:
Lanta Allred Kim Vera
Carla Kizziar Charles Essin
Donald Schmehr Lorene Kunselman
Rosa Woffford Will Douglas
Will Lieb Sara Jenkins

James Roberts
Patients who were dismissed from the Hansford Hospital are:
Aline Hyman Oneida Bymun
Bill Baker Helen Soto

Spearman-Positive, Proud & Prosperous

Mark your calendars now for the Annual Chamber of Commerce Banquet, February 7, 1987, 7:00 p.m., Spearman High Cafeteria. This years speaker will be Kenneth Wyatt from Tulia, Texas. Mr. Wyatt pastored his first church at 14 years of age and currently he is an artist, author & after dinner speaker. Some of Kenneth Wyatts accomplishments include: First President of the Texas Cowboy Association; Tulia-Man of the Year, Texas State Artist and the West Texas Chamber of Commerce Cultural Achievement Award.

The Spearman Jaycees will be cooking delicious 10-12 oz. sirloin steaks for those in attendance, also included in the menu are: baked

potatoes, salad, Texas Toast and dessert.

The Women's Division is in charge of the decorations. Cindy Rice is chairman. Committee Members are Charlotte Jackson, Loretto Cook, Kari Schumann & Nancy Graves.

The highlight of the evening will be

presentation of awards to "Citizen of the Year," "Citizen Over the Years", Rotary Club "Employee of the Year" and Women's Division "Member of the Year". Tickets will be \$12.50 per Chamber Member and \$15.00 per non-member.

Come out and enjoy great food, great fun and great fellowship!

Obituary

Hershell Rogers, 70, died Friday in Borger.

Graveside services were at 2 p.m. Saturday at Sunset Memorial Park with Pete Hanks, minister of Stinnett Church of Christ, officiating. Burial was by Ed Brown & Sons Funeral Home.

Mr. Rogers was retired owner of Rogers Furniture Store. He was born in Princeton and lived in Stinnett for 40 years. He was a member of Church of Christ. He was a 32nd Degree Mason with Plemons Lodge No. 877. His wife, Edith, died in 1984 and his daughter, Sandie Toney died in 1983.

Survivors include two daughters, Donna Browning of Borger and Linda Bodey of Spearman; and eight grandchildren.

Buying Salvagable Vehicles Selling Used Parts
Hi-Way Auto Salvage
1429 Gruver Hwy
Spearman, Tx
806-659-3989

Ms. Dry Attends Tax Assessor-Collector Seminar

Hansford County Tax Assessor-Collector, Helen Dry, joined some 150 other tax officials for the fourth annual County Tax Assessor-Collectors' Seminar, Jan. 11 - 13. Theme of the seminar was "Together We Can Make It Happen."

"Working together is as important today as ever," said Helen. "As tax officials, we're working with the public to provide essential services and working with each other, in this seminar for instance, to develop more cost-effective ways of running our offices."

The Seminar is one of the educational programs of the V.G. Young Institute of County Government, a part of the Texas Agricultural Extension Service. The institute provides a forum of support for county officials, Extension Service staff and various government, academic and business leaders in Texas.

The program included presentations from representatives of various state agencies, including the State Department of Highways and Public Transportation, the Texas Parks and Wildlife Department, the Alcoholic Bever-

age Commission, the State Property Tax Board, and the Board of Tax Professional Examiners.

Major discussions covered upcoming legislation, telephone tax collections, consolidating tax collections, computer basics in the tax office, alcohol licensing procedures and Texas motor vehicle laws and procedures.

Servitors Club

Servitors toured the historical home of Gina and Jerry Pat Davis on Jan. 15 at 7:00 p.m. The group truly enjoyed seeing such a lovely home.

After the tour, a business meeting was held in the home of Linda Winegarner with Peggy Winegarner, president, presiding. Some of the needs of the Teen Center were discussed and it was decided to buy some of these items. Also, Servitors will be helping to buy General

Federation of Womens' Clubs road signs for Spearman.

The next meeting will be February 19 with the Public Affairs Department in charge. Members present were: Cindy Avila, Linda Cummings, Cheryl Gibson, Kerri Harris, Jan Howard, Tina Lozano, Laura Mackie, Brenda Shieldknight, Peggy Varnon, Kim Vera, Linda Winegarner, Peggy Winegarner, Ronda Rutherford, Eecky Butts, and Carmen Mireles.

COMMUNICATING WITH YOUR CHILD-IS IT POSSIBLE? Please come to the PTA meeting on Thursday, January 22nd, 7:00 p.m. in the High School Auditorium and hear Sharon Scott speak. It will be time well spent.

Tournament

Are you the best Ping-Pong player in high-school? Why not find out by signing up for the tournament to be held January 31 (tentative date).

Monty Beck & Kevin Nelson have already signed up, so if you think you can beat them, go by the Hide-Out between 3:30 - 6:30 and put your name on the list.

You can also sign up by contacting Marlene Davis at 659-2912 or go by 702 Lee Dr.

This tournament is for any high school student in the area. Prizes will be awarded.

You're Invited to SPEARMAN EQUITY'S

EXPO

TOGETHER WE CAN...

ORO
HYBRIDS...better every year

Milogard
Mnxx 90

COOP
Fertilizer/
Ag Chemicals

AAtrex
Nine-0

G



Paymaster
SEEDS

COOP
WIRE,
POSTS &
FENCE

At your service.

Ralgro implants

Service from the ground up.

Bearings and Seals

COOP
Glean
WEED KILLER

Roundup
Herbicide by

MOBAY

Anhydrous Ammonia

COOP
2,4-D Herbicides

asgrow
Feed

Banvel

PIONEER

Growers BRAND

ANIMAL HEALTH PRODUCTS

COOP
balanced mineral program

PUT THE PROFITS BACK INTO FARMING

COUNTY BARN
January 22nd

10 a.m. to 3 p.m.
Lunch will be provided

HOMESTYLE
"Full Meal Deal"
only **\$2.59**
Monday, Jan. 19 thru Sunday, Feb. 8

The sweetest deal in town is the Dairy Queen Full Meal Deal. With a juicy quarter-pound Homestyle Hungry-buster. Golden french fries. Your favorite ice-cold soft drink. And a creamy 5-ounce Dairy Queen sundae with your choice of topping. The \$2.59 Full Meal Deal. It's a steal.

Dairy Queen

© 1987 U.S. Pat. & TM. All rights reserved. Dairy Queen is a registered trademark. All other marks are the property of their respective owners.