



**BASKETBALL ROYALTY . . .** Basketball Homecoming Queen Krista Kirkland is escorted by Homecoming Kings Pat Shields [right] and Kevin Nelson following special ceremonies last Friday evening in the Spearman varsity gym.

## Following trio of games since Friday . . . Lynxettes lead 1-AA title chase; Lynx one game off league lead

The Spearman Lynxettes kept their district mark intact with a trio of back-to-back wins this past week while the Spearman Lynx suffered only one set-back with a homecoming loss to White Deer, then followed that up with a pair of conference wins.

Highlighting the 3-game conference cager spree was the naming of the 1987-88 Basketball Homecoming Kings and Queen during special ceremonies Friday evening in the Spearman varsity gym.

Krista Kirkland was crowned the Homecoming Queen while a tie for Homecoming King saw Pat Shields and Kevin Nelson sharing that honor there.

Meanwhile, the Spearman girls took the measure of White Deer

Friday evening with a 54-34 win, then met cross-county rival Gruver and walked away with a 56-28 win.

They wrapped up the first half of district 1-AA play with a 49-17 cruncher against West Texas High.

The Spearman Lynx saw their hopes for a tie with league leader Highland Park fall to the wayside as White Deer spoiled the Spearman homecoming in a 54-62 loss Friday night.

But the Lynx came back with a pair of back-to-back wins, outdistancing Gruver 63-56, then bombing West Texas in a 72-59 contest.

The Lynxettes are 6-0 through the first half of 1-AA play with both Panhandle (5-1) and Stratford (4-2) hot on their trail.

The Lynx find themselves in a 2-way tie for second place in the conference title race through the first half with Highland Park at 5-1 and Stratford and Spearman at 4-2 each.

Junior varsity play saw the Spearman Lynxettes take the measure of White Deer, 41-37, then they dropped a close encounter with Gruver, 29-31. Tuesday night the Lynxette jv'ers wound up on the short end of a 38-19 score against West Texas.

The Lynx jv crew speared White Deer, 53-42, then were edged out by Gruver in a 44-43 thriller Saturday. Results of the Lynx jv game against West Texas was not available at press time Wednesday.

Friday, the Spearman Lynx and Lynxettes will go to Amarillo to take on the Highland Park Hornets and Lady Hornets to open the second half of district action.

### GIRLS

WHITE DEER: 9 14 24 34  
SPEARMAN: 18 39 48 54

SPEARMAN: 10 28 38 56  
GRUVER: 6 15 20 28

SPEARMAN: 14 31 37 49  
WTHIGH: 8 13 15 17

### BOYS

WHITE DEER: 17 29 45 62  
SPEARMAN: 4 23 39 54

SPEARMAN: 12 29 45 65  
GRUVER: 15 32 44 56

SPEARMAN: 16 38 55 72  
WTHIGH: 12 23 38 59

## The Hansford Report

by JAMES JARRETT



Tuesday's weather -- rather, make that wind -- was something else again. In true Texas tradition we had a steady breeze of 25 mph with gusts up to around 50 mph.

Thankfully, there wasn't much snow, just a couple of flurries. Really it was one of the few horizontal snow falls we've ever witnessed. I'm not real sure any snow actually touched the ground, I think it all blew into the gulf.

Somebody remarked the other day that the weather had truly been strange ever since I showed up in Hansford county.

I don't know whether they were hinting that I might be a Jonah or that Hansford county weather was testing my mettle to see if I could make it.

Naturally, I prefer the latter since there's no way possible to prove I didn't cause the weather. I can, however, prove that Panhandle weather won't scare me off -- after all, I've been raised in Panhandle weather all my life.

And there's no sense recounting all the weather I've lived through during my life-long tenure in the Texas Panhandle.

Those who share that tenure with me already know it. Those

who are new to the area wouldn't believe it anyway.

What's it worth to you to discover how the universe may have been formed? say, . . . \$4-billion?

That's the price tag on the superconducting supercollider which had our friends slightly south of us so enchanted for a while--until they learned that the Panhandle had been ruled out as a possible site, anyway.

The object of the supercollider is to send atomic particles hurtling through a tunnel some 50 feet across -- and underground, by the way. As these atomic particles smash into one another, scientists hope to discover how the universe was formed.

In these days of economic woes, tightening pocketbooks and trillion-dollar plus deficits, I can truly think of nothing more important than an opportunity to discover how the universe may have been formed.

After all, the explanation in Genesis is far too simple. It's summed up in a few paragraphs and there are no \$10 words involved--or, perhaps we should say, no \$4-billion words involved.

And, as a people, we sit back and watch it happen. No protests are raised, only the hopes that our area will be picked to reap this \$4-billion boon.

Hopefully, one day soon, the people of this great land will rise up and say 'Enough is enough' and then will tell, no, demand that our politicians quit playing politics with our money.

We simply can't afford much more of their brand of generosity.

The nay sayers are having to take a back seat for just a little while now that the Palo Duro River Authority has secured its first piece of land toward construction of the dam.

It is going to be built. And, possible by 1990, we'll see that dam stretching across the Palo Duro draw.

Of course, there are still those who say it won't ever fill up. That group can keep talking until it does.

Remember back in 1965 when Lake Meredith was just being completed? I remember hearing that it would never fill up. Truthfully, it hasn't ever gone over the spillway.

But 85 feet of water at the dam is still a lot of water. And cities which belong to the Canadian River Water Authority are benefiting greatly from that reservoir.

One day, not too long down the road, Hansford county, Moore county and Stinnett will also benefit from the lake along the Palo

See "REPORT" p-2



The Spearman

# Reporter

25¢  
Per Copy

6 Pages

Volume 80, No. 12

YOUR HOMETOWN NEWSPAPER

Thursday, January 21, 1988

By Palo Duro River Authority . . .

## First land purchased for dam site

The first major hurdle in building a dam across the Palo Duro draw was cleared Tuesday afternoon when the Palo Duro River Authority board of directors and a group of Hansford county landowners agreed to a price on 3,218 acres of land along the proposed dam site.

The two parties agreed to a total purchase price of \$959,400 for land, improvements and severance of the property which will eventually have a 3,700-foot long dam located on it.

The land is owned by an out-of-county family group and is one of two parcels needed in order to begin construction on the dam site itself.

Another one-half section of land, owned by Alvin Bushman of Perryton, is still under current negotiation with action expected on it "shortly", according to PDRA manager, Johnnie Lee.

The final agreement on this, the first, purchase of land was reached between the two parties during an executive emergency session of the PDRA board Tuesday afternoon in Spearman.

The agreements calls for a

purchase price of \$200.88 per acre for the 3,218 acres required by the PDRA along with damages to the remaining portion of the ranch property--another 3,182 acres--at \$35 per acre.

In addition, the agreements calls for another \$200,000 to pay for costs of personal property which stands on the land--including water wells, pipes, electrical equipment and fixtures, as well as corrals, fences, sheds and barns.

Some 16 acres of farmland was included in the 3,218 acres of ranchland and another \$100 per acre was agreed to by the two parties for an additional cost of \$1,600.

The PDRA board authorized the general manager to act on their behalf in completing arrangements with the Hansford county landowners group which jointly owns the property.

That group consists of Donna Kim Flowers, Mitchell Kirk Flowers, Timothy Earl Flowers, James Roy Flowers and Jo Lynn Flowers Rowland.

In an earlier meeting this month, the PDRA authorized Lee to pro-

See "LAND", p-2

## Rankings tight through first half of district

If area high school sports fans thought the 1987 district 1-AA gridiron title chase was tight, they didn't reckon with the 1987-88 cager wars which have six of the 14 teams in the district within two games of the league lead through the first half of 1-AA conference play.

In girls district action, both Panhandle and Stratford are within two games of league leader Spearman.

On the boys side of the ledger, Spearman, Stratford and Gruver are all within two games of Highland Park who leads the conference race there.

Through the first half of district 1-AA play, the Spearman Lynxettes have no blemishes on their perfect, 6-0, conference record.

Panhandle is breathing down their necks, however, with a 5-1 mark -- their only loss is, of course, to Spearman. Stratford, meanwhile, stands at 4-2.

Gruver isn't out of girls action by a means with a 3-3 first half record. Highland Park girls stand at 2-4 while West Texas is 1-5 and White Deer at 0-6.

The Highland Park boys lead that division with a 5-1 district

1-AA mark. Both Spearman and Stratford are within striking distance with conference records of 4-2 each.

Gruver carries a 3-3 mark in the boys cager battles as well while West Texas and White Deer each sport 2-4 1-AA records. Panhandle is in the cellar with a 1-5 record.

The top two teams in district play will advance into post season competition following regular season play in February.

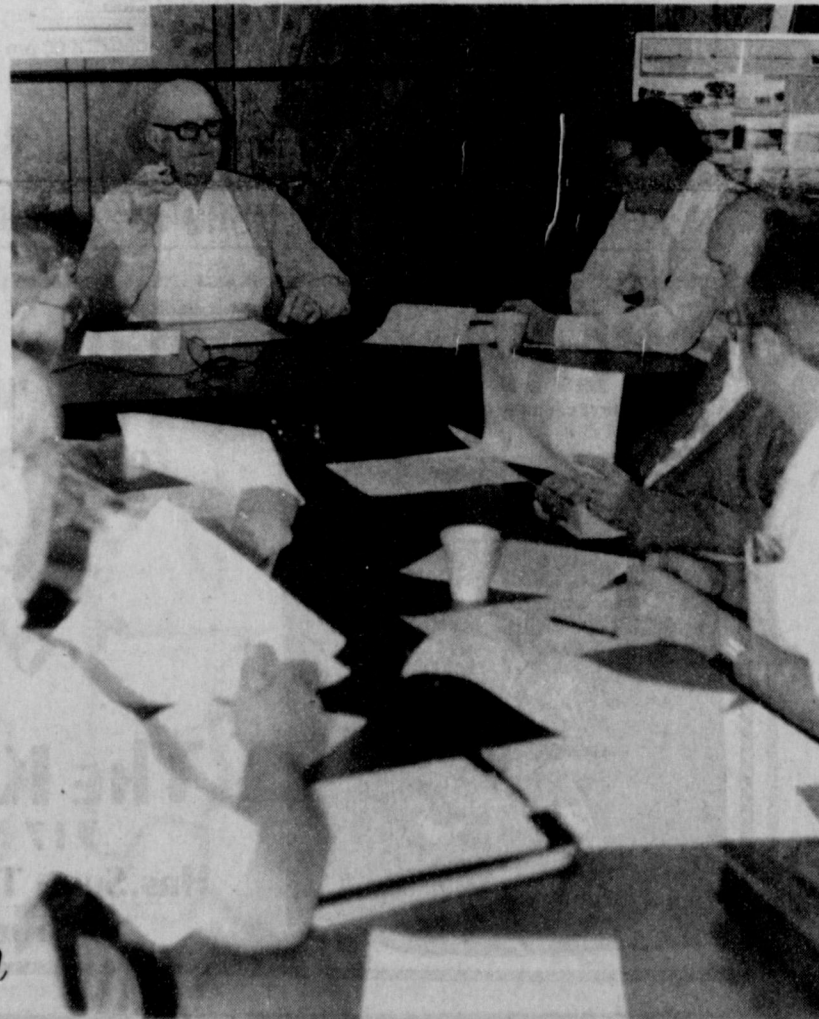
This year there will be no first and second half winners. The entire district record will help decide who the district champion and district runner up will be.

### GIRLS

Spearman 6-0  
Panhandle 5-1  
Stratford 4-2  
Gruver 3-3  
Highland Park 2-4  
West Texas 1-5  
White Deer 0-6

### BOYS

Highland Park 5-1  
Spearman 4-2  
Stratford 4-2  
Gruver 3-3  
West Texas 2-4  
White Deer 2-4  
Panhandle 1-5



**HISTORIC MEETING FOR HANSFORD COUNTY . . .** PDRA board president, J. T. Harris, calls the meeting to order in which the first land purchase for a proposed dam across the Palo Duro draw was agreed to by a group of Hansford County land owners and the river authority.

## County tax collections up to 66 percent mark

Some two-thirds of the \$7.86-million due taxing entities in Hansford County had been paid by the end of December, reports the two agencies responsible for tax billing in the county.

Amounts paid so far in January -- when all taxes are due -- were unavailable from the two agencies. Both the Hansford County tax assessor-collector's office and the Hansford County Appraisal District are responsible for tax statements which were sent out last October.

A total of \$7,863,815.76 was billed between the two and, by the end of December, all but \$2,724,628.54 had been received.

Payments are running only slightly behind the same reporting period last year with receipts off about three percent at each office, notes Helen Dry, tax assessor-collector, and Alice Paddy, chief appraiser for the appraisal district.

The county tax office sent out bills totaling \$2,994,116.69 and had collected \$1,893,207.29 by the end of December.

The appraisal district's statements were for a total of \$4,869,699.07 and of that amount, \$3,245,979.93 had been collected through the end of December.

Penalties will begin being added to tax statements which remain unpaid as of Feb. 1, notes Paddy. The first penalty will be seven percent, but it goes up each month the tax statement isn't paid -- up to a maximum of 40 percent by Jan. 31, 1989.

In addition, legal action can be taken by the different taxing entities if payment is not received by July 1 this year, notes Paddy.

She further notes that failure to receive a tax statement does not excuse a taxpayer from paying

See "TAXES", p-2



continued from p-1

**LAND**

ceed on advertising for bids for construction of the dam.

They also set a date and time for opening and awarding the bid, that to come March 9 at 10 a.m. in the Spearman high school auditorium.

The dam itself will be 135-foot tall and will be 750-foot wide at its base. It will span some 3,700 feet between the canyon walls of the Palo Duro draw.

Actual construction on the dam

could begin by early summer, reports the PDRA general manager.

Plans call for the dam to hold back some 60,900 acre feet of water which will act as both a reservoir and recreation area.

Estimates for construction call for a 2-year period from start to finish on the building of the dam.

"During that time, we'll have to complete our negotiations on land purchases," reports Lee. "But we're still ahead of schedule and things are looking good for the rest of the project."

**Preregistration needed for 1988 kindergarten**

A list of 48 kindergarteners for the beginning of the 1988-89 school year has been drawn up by the Spearman elementary school.

"We're not sure this is everybody," notes Allen Alford, principal of the elementary campus. "There may be some more children out there who are eligible and we need to know who they are."

Children who will be 5-years old by Sept. 1 can pre-register for kindergarten now and have a choice of morning or afternoon session.

In addition, a special spring round up is held each year for all students who have pre-registered to help familiarize the new kindergarteners with the school campus and teachers.

A list of new students who have already pre-registered follows. If your child's name is not included, parents may pick up a special pre-registration form at the elementary school business office.

New kindergarten students for the 1988-89 school year include Amanda M. Adams, Christina Alvarado, Ashlei C. Barrera;

Kelcee B. Beezley, Beau Bensing, Julie Anna Bravo, Joseph L. Burch, Travis R. Burgess, Timothy N. Bynum, Cary Charles Cates;

Brandon C. Clyburn, Andrew F. Cummings, Maranda J. Fight, Jared L. Freeman, Jessica A. Guzman, Jacob D. Harbour, Ashley R. Healey;

Michelle M. Laughlin, Erin N. Lozano, Danica D. Mahanay, Kyle B. McLaughlin, Delfina Medellin, Lindsay L. Mitchell, Robert Z. Morris;

Homero Munoz, Chelsea J. Nollner, David J. Oakley, Alexis R. Perea, Sally Jo Pittman, Richardo J. Salazar and Tashiana D. Schumann.

Elizabeth A. Sharp, David L. Sharp, Ricky L. Sharp, Alexis R. Smith, Clayton E. Vanderburg, Sergio Vargas Jr., Richard W. Varnon;

Tony J. Vasquez, Eduardo Vasquez, Chelsey D. Villines, Dusty A. Vinson, Sheri L. Wagner, Desiree Wattier, Jennifer L. Whitefield;

Devin N. Wolfe and Brady K. Woolley.

**Seal coating project set for Hansford**

A Tye contractor, J.H. Strain & Sons, Inc., is the apparent low bidder to seal coat 320.74 miles of Hansford County highways next summer.

Strain & Sons' \$2,060,907.13 bid was the lowest of seven recently submitted on the entire project to the State Highway and Public Transportation Commission in Austin.

The contract calls for seal coating State Hwy 15, from Spearman to Gruver; FM 759, from Spearman east to the Ochiltree County line; FM 1573, from the Sherman County line east and north to State 15; FM 520, from the Sherman County line east to State 136; FM 2349, from the Sherman County line east to FM 1262.

The contract is expected to be awarded by the highway commission when it meets again later this month.

**REPORT**

Duro draw. Then the nay sayers will have to move on to something else.

By the way, what's the name of the lake going to be? Perhaps it's time to start giving that some thought.

PDRA general manager Johnnie Lee admits that they haven't gotten that far yet.

We might suggest a contest among the member communities to come up with a name for the lake.

Of course, there might be names already on the drawing board that we aren't aware of. And there might be those who would simply like to call it the Palo Duro Lake, or Lake Palo, Duro.

Whatever the case, it would be nice to be able to refer to that body of water which, of course, is yet to be, as something other than a proposed project.

**Scholarships available for students**

High school students who are interested in applying for \$1,000 college scholarships should request applications by March 16, from Educational Communications Scholarship Foundation, 721 N. McKinley Road, Lake Forest, Illinois 60045.

To receive an application, students should send a note stating their name, address, city, state and zip code, approximate grade point average and year of graduation.

Sixty-five winners will be selected on the basis of academic performance, involvement in extra-curricular activities and need for financial aid.

The Spearman Reporter  
Your Hometown Newspaper  
USPS 509660 Spearman, Tx. 79081  
213 Main, Box 458, 659-3434  
Published Weekly at 213 Main, Spearman, Texas  
Owned and Operated by:  
Texas Independent Newspapers, Inc.  
19906 Encino Grove, San Antonio, Tx 78259  
Second class postage paid at Spearman, Texas 79081.  
Any erroneous reflection upon the character of any person or firm appearing in these pages will be gladly and promptly corrected upon being brought to the attention of the management.  
PUBLISHER: James C. Jarrett  
ADVERTISING DIRECTOR: Kirby McAdams  
Subscription Rate: Spearman, adjoining counties, combination with the Hansford Plainsman, \$19.95; non-adjointing counties, \$24.95 annually.  
Postmaster: Send address changes to Spearman Reporter, Box 458, Spearman, Tx. 79081.  
The publisher reserves the right to revise or reject at its option any advertisement which it deems objectionable, either in subject or phrasology, or which it may deem detrimental to its business.

**WEIGHT WATCHERS**  
**NEW 1988 QUICK SUCCESS PROGRAM**  
**LOSE WEIGHT 20% FASTER**  
Lighten up with the fastest, easiest approach to weight loss ever!  
Not only will you lose weight 20% faster in the first few weeks than on any previous Weight Watchers program, you can actually customize a plan that will fit your personal needs and lifestyle.  
Join now for only **\$12**  
**Final Week!**  
Registration Fee ..... \$17.00  
First Meeting Fee ..... \$ 8.00  
Regular Price ..... \$25.00  
**YOU SAVE ..... \$13.00**  
Offer Ends January 31, 1988.  
Come to the Weight Watchers meeting nearest you.  
PERRYTON 1st National Bank 201 S. Main Street Thur: 6:30 pm  
SPEARMAN Home Extension Club 309 N. Bernice Mon: 6:00 pm  
**NOTHING WORKS LIKE WEIGHT WATCHERS!**  
TEXAS TOLL FREE 1-800-692-4329

continued from p-1  
**TAXES**  
garding their tax statements should contact the appropriate office.  
Telephone numbers for the Hansford County Appraisal District are 659-5575 or 733-5139.  
Telephone numbers for the Hansford tax assessor-collector's office are 659-2371 or 733-2901.  
The Hansford County tax assessor-collector is responsible for Hansford County, Hansford Hospital District, North Plains Water District and the Palo Duro River Authority taxes.  
The Hansford County Appraisal District serves the city of Gruver, Gruver ISD, the city of Spearman, Spearman ISD and the Pringle-Morse CISD.  
Anyone having questions re-



The onion was worshipped in ancient Egypt and regarded by the Romans as a God who guarded the kitchen and guided the healing of battle wounds and skin diseases.

**A BLIZZARD of Bargains Awaits You . . . Up to 70% Off**  
Buddy FURNITURE CO.  
723 W. 7TH  
SPEARMAN, TEXAS 79081

**PLATOON**  
The first casualty of war is innocence.  
IT'LL BE HERE Friday! AND WE'LL HAVE 5 TAPES CALL & RESERVE IT TODAY  
5 DIRTY DANCING TAPES TOO  
**The Knack Shoppe**  
317 Main 659-5046  
HRS. SUN. - THUR. 9-9 Fri. & SAT. 9-11  
Tue. still 2 for 1

**Annual Fall and Winter 1/2 Price Sale**  
Starts Mon., Jan. 18th  
9 a.m. - 5:30 p.m.  
**Lady Fair & Kids' Stuff**  
719 W. 7th Spearman  
Also visit our Perryton stores -  
**Footprints Leprechaun Jackies Betty's**  
and our new store **Images** 127 N. Cuyler, Pampa

**CHEAP!! CHEAP!! CHEAP!!**  
**VINYL SIDING SALE**  
We over bought last year and our warehouse is overstocked with vinyl siding. We need to move this stock NOW!! If you have ever had an estimate on siding and thought it was too high, then DON'T MISS THIS SALE!! Call today!  
**EXTERIORS PLUS**  
**1-800-852-3692**



### Letter to the editor

Dear Editor:  
Christmas was a good season to be in Hansford County. Truly people are very generous and charitable here.

I was fortunate to be able to participate in the Christmas program here. I could use many names, but one is to be mentioned. He is Randy Brinkley, manager of T.G.&Y. He certainly was responsible for a great deal of happiness among our children pre-kindergarten to 9th year. He donated to our work many toys and candy, too. I feel he should be recognized for this act of helping Santa Claus this year.

Thank you for your considerations,  
Fr. Patrick Walsh, S.A.  
Pastor, Sacred Heart

### Wind shield REPAIR & REPLACEMENT

We can repair damaged areas in your windshield up to 2" in diameter.

-We'll come to your vehicle's location- in the oilfield or anywhere!

Most insurance companies pay all cost.

DAVY GURLEY 435-2998

## Waterfield announces for state legislature

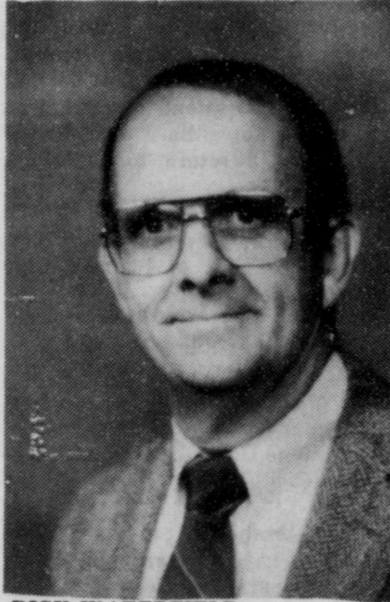
State Rep. Dick Waterfield, R-Canadian, stating that his work in the Legislature is just beginning, filed this week for reelection to the House of Representatives.

"I look forward to serve the people of my district with another term of responsible representation in Austin," Waterfield said. "This means that my open door policy will continue as always, for anyone who has a question or problem. For me, the calls and letters we have received are the most rewarding thing about the office. I encourage people to continue to stay in contact."

In looking ahead to the 71st legislature, Waterfield expects a continuation of the most debated issue of this session: taxes and state spending.

"What we saw this year on taxes was only the beginning," he said. "We have the select committee on tax equity currently meeting around the state to develop tax reform policy. This could set the stage for a major debate over present taxing structure. On the spending side, the Edgewood suit, which if it goes against the state, would drastically change our current system of funding public education."

With this in mind, Waterfield believes the dominant theme of the



DICK WATERFIELD  
... Announces Reelection Plans

past session, setting spending priorities and generating sufficient revenue, will again be a major point of debate next session. Through all of this, his legislative goals have not changed, he said.

"The priorities of the people of my district remain my priorities in the Legislature," Waterfield said. "When they want a lid placed on taxes and government spending, that's what I fight for."

Waterfield serves on the House committees on Agriculture and Human Services. He was recently appointed to chair the special committee to investigate security interest in farm products.

He was voted the top first-term Republican of the 70th Legislature and was named one of the top conservative legislators by the Young Conservatives of Texas, and the Free Market Coalition.

Advt. pd for by Dick Waterfield.

## 5 Spearman students on PSU honor list

Five area students have been named to Academic Honor Rolls for the fall semester at Panhandle State University in Goodwell.

Brenda Winegarner, of Spearman, has been named to the President's Honor Roll.

She is among the 88 students from PSU who earned a perfect 4.0 grade point average and have been named to the list by Dr. Larry Boyd.

To qualify for listing, a student must carry at least twelve hours of university courses, receive a straight A average and have no I's. Shelley Friemel, Johnnie Fuller and Tiki Jackson, all of Spearman, and Linda Rodgers, of Waka, were among the 177 students named to the Dean's Honor Roll.

The Dean's List each semester contains the names of students who have carried twelve hours or more, have at least a 3.3 grade point average on a 4.0 scale and have no F's or I's.

## Services held for brother of Spearman woman

Funeral services for James Noah Hugg, 61, of Amarillo—brother of Mavis Collins of Spearman—were held Monday afternoon at the Lamb Funeral Home Chapel in McLean.

The Rev. Jeff Misser, pastor of the First Baptist Church, officiated. Burial was at Hillcrest Cemetery in McLean by Lamb Funeral Home.

Mr. Hugg died Saturday. He was born in Alanreed and had moved to Amarillo from Dumas in 1973.

He was a paint and body repairman and a member of Bykota Baptist Church in Amarillo. He was a veteran of WWII.

Survivors include a son, Anthony Huggs of Dumas; a daughter, Lana Blakemore of Amarillo; two brothers, Bruce of Jal, N.M. and Brooks of Amarillo;

Five sisters, Kathryn Kite of Amarillo, Maxola Andrews of Port Hueneme, Ca., Dicie Simpson of Pampa, Mavis Collins of Spearman and Ethel Pool of Mound City, Kan.; and three grandchildren.

## Compton announces for district attorney

Senior judge -- Corporation Court, Amarillo, 1966; City attorney, Borger, Tx., 1970-1973;

District attorney, Hansford and Hutchinson Counties, 1985 to present.

He has been admitted to practice law in the United States District Court for the Northern District of Texas and in the United States Tax Court. He has practiced law for over twenty years. Compton is a member of the State Bar of Texas.

"We have one of the highest felony conviction rates of any Judicial District in the State of Texas, and are able to accomplish this on a reduced budget," says Compton. "However, this goal could not have been accomplished without the complete cooperation of the Sheriff's Department, Police Department and other law enforcement agencies. I am seeking reelection in order to continue this effort."

Gene Compton is a native of Pampa and a veteran of the United States Military Service. He has attended Frank Phillips College, University of Oklahoma, and Southern Methodist University for legal education.

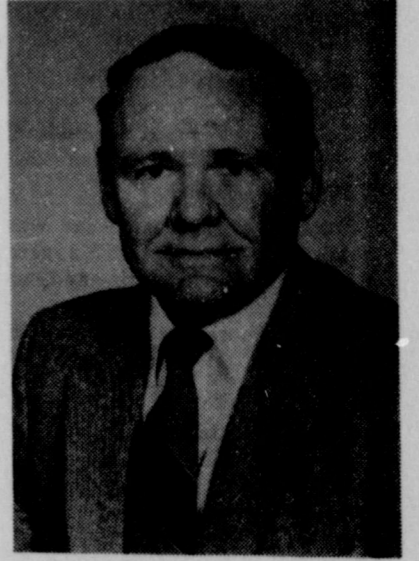
This advertisement paid for by Gene Compton.

Gene Compton, currently district attorney for the 84th judicial district, is a republican candidate for re-election to the office.

Compton has held the previous

The good things you've always wanted to believe about sugar are true, according to the latest government reports. The Food and Drug Administration confirms that sugar is not the cause of obesity or nutrient deficiencies, nor does it have an adverse effect on normal human behavior or contribute to diseases such as diabetes.

Sugar is an important source of carbohydrate—the body's primary energy source. It makes almost everything we eat taste better, a real nutritional plus when you consider a food is worthless unless it's eaten. Its unique chemical and physical properties make sugar an indispensable ingredient



Gene Compton  
... candidate for 84th Judicial District Attorney

offices that he feels qualify him for the office of district attorney; Assistant district attorney, Dallas, Tx., one year; District attorney, Amarillo, Tx., 47th judicial district, from 1967-1969;

We would appreciate the opportunity to discuss your CRP grass seed needs. All varieties available. Call

### Grass Seed Services;

(806)385-5229 nights;

Tommy Thrash 385-5357  
Dick Hopping 385-3653  
Terry Thrash 385-4403

Women's Fashion

WINTER-SALE 50%

2701 Paramount  
Amarillo, 358-2457  
Mastercard and Visa Welcome

You're never too old to quit blowing smoke.

American Heart Association  
WE'RE FIGHTING FOR YOUR LIFE

...new corn hybrids  
...new pricing programs.

When it comes to seed corn, no one has better hybrids or better pricing options than your neighborhood Pioneer representative.

For the High Plains  
3168 • 3124

**Get Together**  
with...

Billy Logsdon 733-2803  
Joe Paul 435-2501  
Andy Watley 659-3970

# Country Basket

## SALE \$1.89

Crisp, tender, chicken-fried fingers of 100% beef, golden fries, Texas toast and creamy country gravy. That's the one and only Dairy Queen Country Basket. So come on by for the Texas taste that's just this side of heaven — now at a heavenly sale price!

Sunday, January 17 thru  
Sunday, January 31  
at participating stores.

**Dairy Queen**  
"better than ever."

© Copyright 1985 by D.Q. Co. Council  
All Rights Reserved. ®  
The Trademarks of the Int. D.Q. Co. Council  
® Registered Trademark Int. D.Q. Co.



**Hanners services held at cemetery**

Graveside services for Marva Grace Hanners of Spearman were held Sunday afternoon at Hansford Cemetery by Foskey-Flemings Funeral Directors of Dimmitt.

Mrs. Hanners, 71, died Friday in Dimmitt. She was born in Ceiling, Ok. She had been a resident of Spearman until 1984, when she moved to Dimmitt.

She was a housewife. She was married to G.W. "Dub" Hanners in 1938 at Borger. He preceded her in death in 1982.

Mrs. Hanners was a member of the First Christian Church of Spearman.

Survivors include a son, Gerald Hanners of Dimmitt; a daughter, Gweneth Ann Griffin of Corpus Christi; a sister, Ola Hergert of Perryton;

A brother, Jess E. Smith of Caliente, Ca.; and two grandchildren.

**Spearman pair claim places at Amarillo**

A pair of Spearman swimmers -- swimming with the Borger Aquatic Club -- picked up a host of placings in a swim meet held this past weekend in Amarillo.

Jordan Brock took a pair of first place wins in the 6-and under freestyle and backstroke competition.

And Janna Brock took a first place finish in the 8-and under breaststroke, the freestyle and butterfly.

In addition, she claimed a second place finish in the backstroke and was third in the 10-and under individual medley.

Young Miss Brock's time of 17.91 in the freestyle and 20.91 in the butterfly were the best times of the meet.

**Among the Neighbors**

by Helen Fisher

A goodly number of old friends gathered on Sunday afternoon at the Hansford Cemetery to pay tribute to the memory of Marva Smith Hanners.

The services, conducted by family members, were most touching and impressive and included a letter, poem, shared memories and comments.

Marva, a gentle and quiet person lived here since a small child, attended school here, married here and reared her children here.

Other information is included in the obituary.

Friends greeted former residents including her son, Gerald who now lives in Dimmitt; her daughter, Gwen Griffin, living in Corpus Christi; and her sister, Ola Hergert of Perryton.

Elmer Delozier is back at home now, recuperating slowly. He underwent shoulder surgery at High Plains Baptist Hospital last week. He is pleased that the surgery went well but probably won't "put his shoulder to the wheel" for quite some time.

The relatives and many friends of Major James and Thel Lemons, with Brett and Jamie, are delighted to have them visiting here.

They are in the home of his parents, Mr. and Mrs. Louis Lemons, and are also guests of her sisters, Becky Baker and Lynn Woolley.

The Lemons are stationed at the Yokota Air Base near Tokyo, Japan where they have been for 1 1/2 years. They acknowledge many adjustments have been necessary, but they find living very interesting in Japan and have made many friends. They take advantage of

many opportunities to see the country and have traveled extensively.

Brett has entered school and they are pleased with his progress.

Major Lemons was sent back to the States to attend a seminar at Scott Air Force Base at Belleville, Ill. He will return to Japan on January 23.

Thel and the children will visit her parents, Reverend and Mrs. Wesley Daniels of Plainview for another week.

Mrs. James Riley, Mr. and Mrs. O.A. Scroggs, Wallace Berner, Mr. and Mrs. Irvin Delk and Lealand Grimmer all attended the funeral of Mrs. Gene Cornell at Laverne, Ok. on Friday.

The brother of Mavis Collins passed away in Amarillo on Saturday. Funeral services for J.N. Hugg, 61, was held Monday afternoon at McLain. Gordon and Mavis Collins attended.

Mr. and Mrs. T.C. Kitchens returned late Sunday from Broken Arrow, Ok. cutting short their intended visit in the home of their daughter and son-in-law Sandy and Burton Williamson.

The had arrived on Friday but after receiving the weather reports of an impending snow storm, and figuring that the weatherman might make a mistake and guess right, they headed for home.

They were there long enough to enjoy seeing granddaughter, Christy, participate and win in a Gymnastic Contest and to watch grandson, Mathew, play basketball with the church team.

The weather prevented Lometa and James Sparks from being present at the marriage of their granddaughter Lee Ann Sparks. However they had enjoyed her and all the other members of their family over Christmas.

Lee Ann, daughter of Ann and Larry Sparks was married to Mark Morris at Satler, Tex. on the 29.

Vernon and Jane King, enroute from Red River to their home in Seagrove, N.C., were her over the weekend. They were guests of his aunt, Mrs. Annie Allen, and left Tuesday morning.

**Hospital Report**

Patients in the Hansford Hospital are Bertha Forrester, Blanch Steffens, Nell Cummings and Amy Gift.

There were no dismissals today from the Hansford Hospital.

**CRP sign up Feb. 1-19**

Conservation Reserve Program (CRP) sign up is scheduled for February 1 through February 19, 1988.

The CRP was enacted December 23, 1985 as a part of the Food Security Act of 1985. The program encourages farmers to stop growing crops on highly erodible cropland and plant it to grass through a 10 year contract with the U.S. Department of Agriculture.

Some advantages of the CRP are:

- (1) Reduces soil erosion and saves money for the producer by ensuring sustained productivity.
- (2) Crop surplus reduction and a

reduction in the cost of commodity programs.

(3) A guaranteed income for 10 years on the acres entered into the program.


(4) One-half the cost of establishing permanent cover of grass on eligible land, to be paid by USDA.

(5) Valuable grass stands owned by the participating farmer or rancher at the end of the 10 year contract period.

(6) Increase of wildlife habitat as a result of the grass plantings.

(7) An opportunity for added income for landowners and operators through the leasing of land for hunting.

**The tax changes are the most sweeping in history.**



Put H&R Block on your side.

The tax laws have changed dramatically. And the forms have changed, too. Our experienced preparers thoroughly understand the new tax laws and forms. We'll find you the biggest refund you have coming. If there's ever a time for H&R Block, it's now.

**H&R BLOCK** DON'T FACE THE NEW TAX LAWS ALONE.

307 W Davis Spearman 659-2310

Late Appointments Available

Mon. Wed. Fri. 9A.M. -5 P.M.

**Solutions... for minor windshield damage**



**Ron Shaefer** has you covered. He can repair damaged areas in your windshield. It'll save you time and money plus most insurance companies will pay all cost.

**call today!**

**Safety Glass Co.**  
316w. Kenneth 659-2090 Spearman

Why replace 7sq.ft. of windshield glass when you can repair 2sq. inches

**PAINT SALE**



Pro Latex \$6<sup>86</sup>/gal.  
5 gal bucket \$29<sup>30</sup>

Stock colors only

**Dal. Worth Paints**



Pro Name! \$9<sup>93</sup> gal.  
5 gal bucket \$44<sup>65</sup>

While supplies last

**McCLURE PAINT & Supply** Spearman

307 Main

Thank you Hansford County for a year of patronage!



**\$2<sup>99</sup> Breakfast** | **Lunch Special \$3<sup>98</sup>**

2 eggs, ham, bacon or sausage, hashbrowns, toast or biscuits, coffee

Entree, vegetable, potato and beverage

**Any Steak in the house \$7<sup>95</sup>**

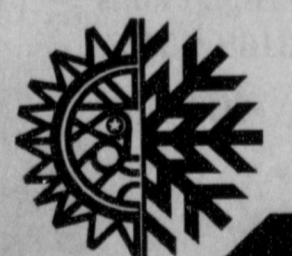

11:30 a.m. to 9 p.m.

**Family Steak dinner for 4 \$19<sup>95</sup>**

**Cattleman's Supper Club**  
Hwy. 207 S. Spearman

All specials good thru Feb. 29

**Through heat waves and cold spells insulation helps you save**

Insulation can help you use less electricity throughout the year. In the winter, it helps keep the heated air in your house. During hot weather, it keeps the hot air out.

With insulation, your home is more comfortable, and your heating and cooling systems don't have to work as hard during weather extremes.

To learn more about putting insulation to work for you, visit or call your local TNP office today.

**Texas-New Mexico Power Company.**  
Neighborhood Professionals Offering You The Best Choice



# Your Home Is Full Of Hidden Dollars



Call 659-3434

Turn idle items into cash fast with a Want Ad

### For All Types

### Repairs & Painting

Call Jim Cotten for handyman service at 659-2862.

### Real Estate

**HOUSE FOR SALE:** 2 bedroom 1 1/2 bath 2 car garage newly remodeled 1 block from school priced in the low 20's call 659-3987 S 51 rtn

**HOUSE FOR SALE:** 1850 sq. ft., 4 bedroom/2baths. Living room with fireplace. Reasonably priced. Located at 721 Wilbanks. Contact Frances Pipkin at 659-3938. S10-8tp

**ABANDONED HOMES** - Take over payments on 2 and 3 bedroom homes. Qualify by phone. 806/381-1352. Call collect. S46-rtn

**FOR SALE** 1983 Bonneville Mobile Home, 16x80. 3 bedroom, 2 full baths, fireplace, spacious bilevel kitchen. Set Up on Corner lot. Must see to appreciate. Call 659-2354 after 5:30 p.m. S09-rtn

**FOR SALE:** By owner, brick home, \$34,000. Call 659-2262. S12-4tc

**FOR SALE** Newly remodeled house 2 bedroom, central heat and air, by appointment only. Call after 5 p.m. 659-2697. S118 8tp

### For Rent

**FOR RENT:** Nice 3 bedroom unfurnished house, Carpet, drapes, central air and heat. Elec. or gas hookup for cook stove. Cleaning deposit required. No pets. Call 659-3657. S51-rtn

**FOR RENT** 2 bdr House 422 S. Hazelwood first house N of community building. Call 659-3185 S11-rtn

**FOR SALE:** 1979 Silverado Suburban. \$3,000 or make an offer. Call 659-3098. S12-2tc

**FOR SALE:** 1978 GMC Astro truck trailer S.A., 290 Cummings - 10 speed. 1960 American 45 foot, straight cattle trailer. 1980 Edson 22 ft., 500 bushel, hopper bottom, S.A., grain trailer, call Lynn Davis at 733-2164 after 6 p.m. S12-2tc

Offered by  
**EMMETT R. SANDERS**  
REALTOR

3 bedroom home, attached garage.  
\*\*\*\*  
**EMMETT R. SANDERS**  
REALTOR  
659-2516, nights 659-2601



**GOLDEN SPREAD REALTY**  
Janye Helton Pointer, Broker  
Owner, 435-5444  
**SALES ASSOCIATES**

T.O. Lesly - 659-2028

1112 S. Bernice - 3-1/2 location! Location!  
322 Hazelwood - 2/1 owner will finance.  
607, 611, 615, 609 Haney Small house/ 2 apartments!  
615 E. Kenneth - 3/2. Corner lot with extra acreage!  
102 Wanda - 3/1 Immaculate!  
118 Townsend - 4/2. Apartment included!  
711 Collier - 3/1 Why rent?  
322 S. Barkley - 3/1 Good location at affordable price!  
811 Townsend-2/1 affordable!  
**COMMERCIAL**  
15 N. Hazelwood  
201 Bernice - Former M&M grocery store. Can be sold with or without fixtures.

**FARM**  
640 acres of grass in Sherman Co., over 500 acres in the C.P.R. Program  
640 acres of wheat and milo land in Hansford Co.  
3 RANCHES in Brownwood area. Call today!

© 1988 Century 21 Real Estate Corporation  
Equal Housing Opportunity  
INDEPENDENTLY OWNED AND OPERATED

### Help Wanted

**GOVERNMENT JOBS** \$15,400-\$72,500 Now Hiring. Excellent Benefits. Call 504-649-7922 Ext J-1290. G:1-7,1-21,2-4,2-18.

**ADDRESS ENVELOPES** for firm\$, nationwide! \$en\$ational earning\$! No experience. We show you. Begin immediately! Stamped envelope: Publications-1, 804 Old Thornsby Road, Clanton, Alabama 35045. S08-(rtn)

**MASTERCARD.** No one refused. Regardless of credit history. Also ERASE bad credit. Do it yourself. Call 1-619-565-1522 Ext. C3559Tx 24 hrs. S10-3tp-T-only

**WANTED:** Any J.H. Gruver & Sons Advertising Gifts that you do not wish to keep, please contact Helen Shapley at 733-2671 or 733-2641. Especially bond books, coin purses, calenders, knives and pen and pencils. S11

### SCOTT'S CHIMNEY

### SWEEP

Prevent Chimney Fires

Call 806/323-5859

Serving the Panhandle Area for 5 Years

\$45 per Chimney

Have your Chimney cleaned today!  
**CLEAN-RELIABLE-FRIENDLY**  
Thurs. only til Jan. 28

### LEGAL NOTICE

Hansford County will receive bids until 4:00 p.m., Friday, January 22, 1988 on one used tractor between 1973 and 1978 year models for Precinct #2. Bids will be opened January 25, 1988 at the regular meeting of the Commissioners Court.

Specifications are available at the County Judge's office or the County Auditor's office in Hansford County Courthouse. The Court reserves the right to accept or reject any or all bids.

Roy L. McClellan  
Hansford County Judge

2tc T-Only

### BOB HARDY REALTY

803 Wilmeth Dr.  
659-3440

### NEW LISTINGS:

820 Linn Drive - Immaculate 3 bd - 2 bath - fireplace - double car garage. Area - 2200 sq. ft. living area. Custom drapes. Lawn Sprinkler System. Satellite dish and receiver. Fenced. Excellent location. Call for quote  
1001 Haney - 3 bd, 2 bath. Den with fireplace. Corner lot fenced. Carpeted. Nice, price reduced. Approx. 1450 sq. ft.

Robert Hardy - broker

### Real Estate

### Sampler

Allen Alford-Broker-659-3034  
Hester Sue Crawford-Sales 659-3060 or 659-2074  
Dennis Nelson-Sales-659-3608  
Larry Trosper-Sales-659-3491

316 S. Bernice - 2366 sq. ft.  
101 W. 12th - 1344 sq. ft.  
426 Haney - 1479 sq. ft.  
1005 Townsend - 1054 sq. ft.  
619 Evans - 1350 sq. ft.  
1014 Linn Dr. - 2,000 sq. ft.  
734 Wilbanks - 1192 sq. ft.  
32 N. Snider - 1850 sq. ft.  
729 Cotter - 1519 sq. ft.  
506 Endicott - 1100 sq. ft.  
907 Dressen - Nice starter  
505 Haney - 1600 sq. ft.

We want to be Your REALTOR

### Club News

#### RHO RHO

Rho Rho Chapter of Beta Sigma Phi held its 536th meeting last Thursday in the home of Marsha Murphy.

The social chairman reported that the Valentine Ball would be Feb. 6 at the Perryton Club at 7:30 p.m. There will be a buffet served all night. The dress will be semi-formal to formal.

The ways and means chairman reported that the Santa calling went well.

The next meeting will be Jan. 28 in the home of Kristi Ramon, with Beth Raper giving the program. Rho Rho will be honoring their Valentine Queen, Marsha Murphy. Denise gave a program on The Female Stress Syndrome.

Members present were Joyce Vanderburg, Kristi Ramon, Tammy Benton, Donna Murray, Beth Raper, Tina Wilmeth, Leann Gilaspie;

Denise Harbour, Michelle Mahanay, Marsha Murphy, Holly Simpson, Barbara Townsen, Peggy Varnon;

Pat Cudd, Stephanie Crossland, Janie Kunselman, Jan Williamson, and Samme Goehring.

#### CATHOLIC WOMEN'S GUILD

The Catholic Women's Guild met last Thursday in the parish hall of the Sacred Heart Catholic Church.

Officers for the upcoming year were elected, including Adela Lopez as president; Nancy Koons as vice-president;

Maria Pacheco as secretary and Rosemary Brown as treasurer. In

addition to the officers, elections and volunteers were accepted for the five commission chairpersons.

Those elected for these officers include Aurora Vela as chairperson for the Family Affairs Commission, Clementine Renner to head the Community Affairs Commission with assistant Estela Lopez;

The Church Community Commission will be headed by Eludia Bravo and the International Affairs Commission will have Helen Blau as chairperson. The Organizational Affairs Commission will be headed by Elina Sintas.

Delegates for the November

Diocesan Convention held in Borg-er brought back the Right to Life Roses. These roses representing the Catholics fight against abortion and were handed out during Saturday and Sunday mass.

The guild's meeting date has been changed to the first Wednesday of the month beginning in February.

### Markets

WHEAT	\$2.67
MILO	\$2.95
CORN	\$2.00

Before You Buy Your Next Luxury Car or Sports Car... Call 1-800-692-4125 For A No-Nonsense Quote!

We sell for less because we're the volume luxury car and sports car dealer in the Texas Panhandle.

**DON JUDD** Cadillac  
Porsche - Audi - Saab  
2501 Paramount • Amarillo, Texas

## ATTENTION

# Farmers and Ranchers

You're Invited To A Special Auction

Thursday, Jan. 28

10 a.m.

Cattleman's Steak House

Communications Satellite

Telestar 303

from

Satellite Cattle Exchange

Rick Hefley, Broker Local Agent Ron Cook

### OSGOOD MONUMENT CO.

Amarillo, Texas  
Dealers of Rock of Ages Granite, as well as all colored granites, marble and bronze memorials.

represented by  
**BOXWELL BROS.**  
FUNERAL HOME

519 S. Evans  
659-3802

### DIET CENTER. THE WEIGHT-LOSS PROFESSIONALS!

CALL US TODAY, for a free, introductory consultation, at 410 Davis, Spearman, Texas 659-2199

### HANSFORD COUNTY

Planned Parenthood  
412 Davis  
659-2483  
Spearman, Tx.  
Monday - Friday  
8:30 - 12:30

STEAM RINSE & VAC - Rinse and Vac Shampooer for rent at Gordons Drug. \$10.95 up to 24 hours.

### L & M Body Works

1501 Hwy. 15  
659-2775  
Tailpipes - \$29.95  
Mufflers - \$39.95  
Most Duals - \$160.00 complete

**WEIGHT WATCHERS:** meets each Monday at 6:00 p.m. at the Home Demonstration Building, Spearman Texas.

**PANHANDLE CRISIS CENTER:** 101 S.W. Forth, Perryton, Texas 79070, 806-435-5013. Help is available at no charge for domestic violence and sexual assault. Call Panhandle Crisis Center, receive support during a difficult time. Counselors on call 24 hours a day. Call for help.

### NOTICE

Wallace Monument Co.  
Monuments, Curbing,  
Grave Covers  
Local Representative  
**LEONARD JAMESON**  
Spearman, Texas

### ALCOHOLICS ANONYMOUS MEETING

Hansford County Library (Upstairs)  
122 Main-Spearman  
Open meeting 2nd Tuesday

**AL ANON**

Tuesday  
8:00 P.M.



# 7-8th girls win; frosh fall to Panhandle teams

The seventh and eighth grade Lynxettes took a pair of strong wins

over their panhandle counterparts Monday evening, but the frosh girls found it tough sledding in their game against the Lady Panthers.

The Spearman ninth grade girls wound up on the short end of a 36-25 encounter Monday evening while the eighth grade Lynxettes polished off Panhandle, 37-14, and the seventh grade girls claimed a 35-16 win.

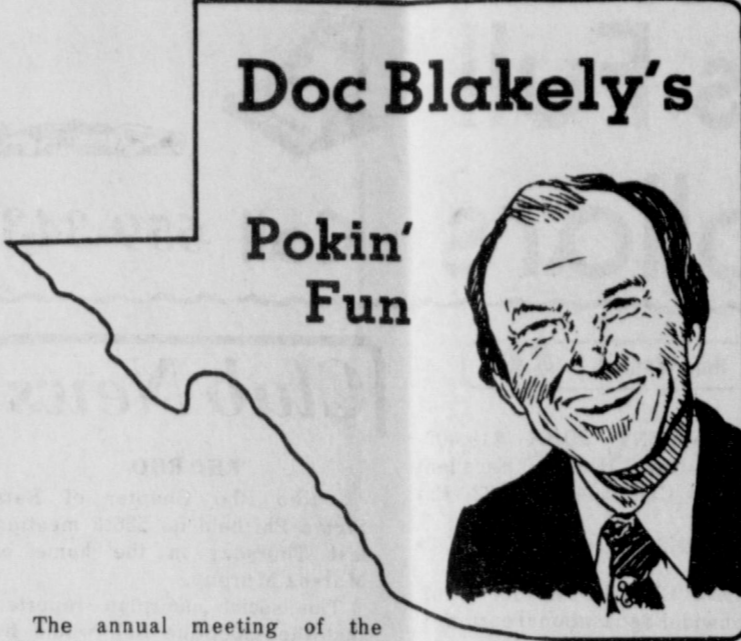
High point for Spearman in the ninth grade encounter was Bonnie Thompson with 10 points.

Tamri Townsen paced the eighth grade Lynxette efforts with 13 points and Laura Pearson's nine points led a group of 10 girls who gained points in the seventh grade contest.

**NINTH GRADE**  
**SPEARMAN:** 4 8 16 25  
**PANHANDLE:** 7 15 21 36  
 Sp--Marci Womble, 2; April Wilkerson, 7; Maleea Shaver, 6; Bonnie Thompson, 10.

**EIGHTH GRADE**  
**SPEARMAN:** 5 18 25 37  
**PANHANDLE:** 2 4 10 14  
 Sp--Mindy Lassater, 4; Joy Gafford, 4; Melody Schumann, 2; Tamri Townsen, 13; Carla Green, 2; Suzanne Sanders, 4; Shannon Holton, 4; Sonya Nitschke, 6.

**SEVENTH GRADE**  
**SPEARMAN:** 12 23 27 35  
**PANHANDLE:** 4 6 11 16  
 Sp--Jill Lusby, 4; Gwen Benson, 7; Holly Jarvis, 5; Michelle Garnett, 2; Adrian Blackburn, 2; Shea Crawford, 1; Laura Pearson, 9; Sarah Sanders, 3; Kimbre Townsen, 1; Sonya Tindell, 2.



The annual meeting of the Catawba County (North Carolina) Chamber of Commerce proved a couple of things to me. First, progress comes to those who are willing to work for it and secondly, it helps to have a sense of humor. The major city here is named Hickory, one of only six "All American Cities" in the U.S. and the smallest of the lot.

When I asked what the term meant, I was told that a high level of excellence had been recognized by President Reagan himself in a nationwide contest. "Three things were considered," a proud resident told me, "culture, education and business . . . and all of those qualities were graded by the highest standards."

"Democratic ideals?" I asked. "Republican votes," he replied. The nearby bedroom community of Bethlehem is reached by traveling on Highway 127 North, under major reconstruction and heavily traveled. The local joke during the past Christmas season was that if Joseph and Mary had taken 127 North to get to Bethlehem, Jesus would have been born in Hickory.

My friend and local politician Stein Eisenhower was the emcee at the annual banquet. He didn't even flinch when I told the crowd I thought his name in the program was a misprint. "Stein Eisenhower . . . sounds like a German beer mug to me."

He laughed heartily but it did concern me that he wrote down my name.

Stein tells the true story of the two North Carolina boys who were far from Catawba County, broke, and desperate to get home. They were too ashamed to ask for money, so one of the fellows got creative. He wrote a note that read: "I am deaf and dumb. Could you please give me some money to help me get home?" The pair approached a woman and one of them handed her the note. She read it, and while reaching in her purse, asked the other guy, "Are you deaf and dumb, too?" He replied, "Yes, ma'am."

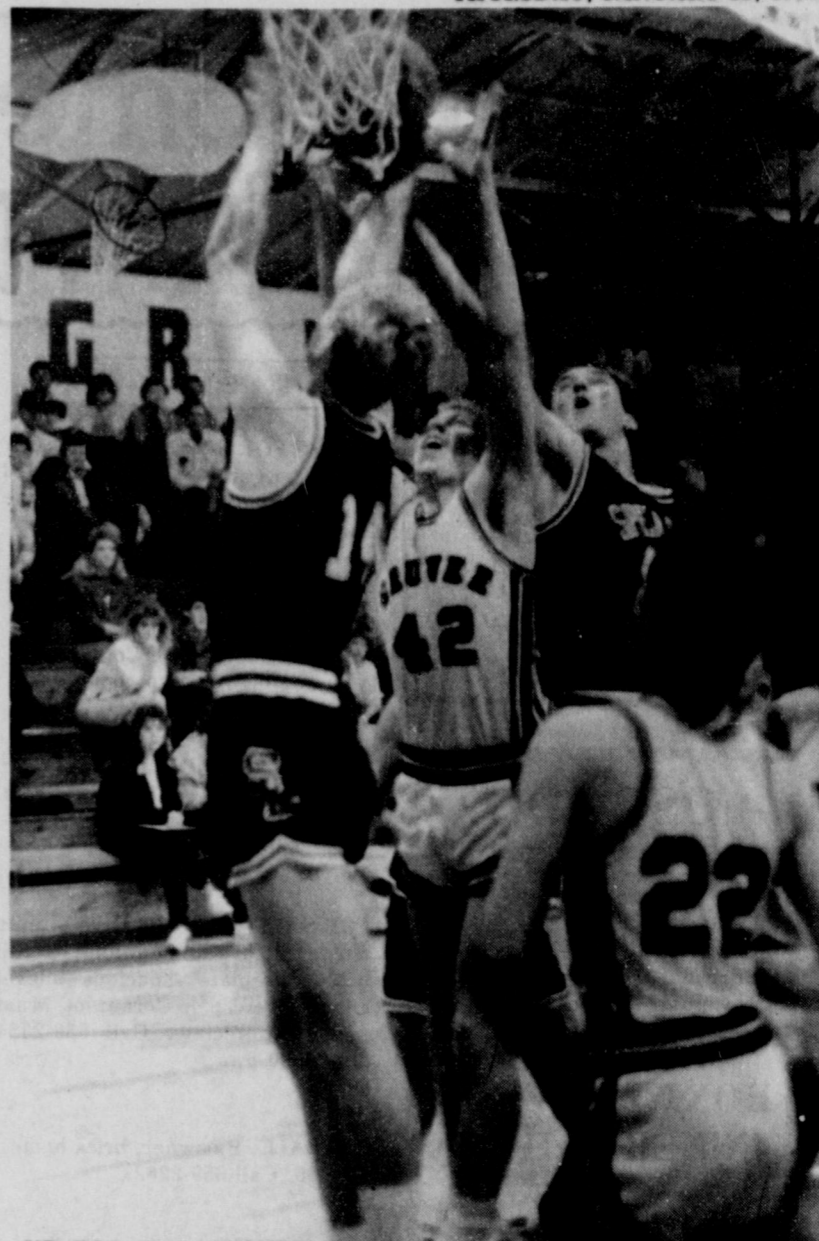
Then there was the case of the old widower from Toluca, North Carolina, who was losing his memory. An elderly lady friend asked him to come over to her house and she would tell him exactly how old he was. "You'll never guess," he said. "Take off all your clothes," she said. He complied. She looked him over and said, "You're 87."

"My gosh, that's exactly right. How could you tell?" he asked. "You told me yesterday, you old fool," she replied.

## TSTI offers auto course

Texas State Technical Institute offers an Auto Body Repair and Repainting course beginning any week in the Winter Quarter.

For additional information, contact Joe Latham in Adult Continuing Education at 335-2316 ext. 359 or in Texas call toll-free 1-800-227-TSTI.



UP FOR THE REBOUND in Saturday's intra-county district clash between Spearman and Gruver is Lynx Tim Woolley [14, dark] and Greyhound Theron Park [42, white]. Spearman won that matchup by a 63-54 count.

## 7-8th Lynx split games with Panthers

Junior high basketball action saw the seventh and eighth grade Lynx split a pair of games with Panhandle this Monday evening.

The seventh grade boys dropped a 32-22 game that night to their Panhandle counterparts while the eighth grade Lynx took a 44-33 win.

High point for Spearman in the seventh grade contest was Cody Pipkin with six points.

Brian Beck's eight point effort paced a field of nine Spearman scorers in the eighth grade boys contest.

Results of the ninth grade boys contest were not available at presstime.

**EIGHTH GRADE**  
**SPEARMAN:** 4 9 16 22  
**PANHANDLE:** 8 14 18 32  
 Sp-- Wes Dyess, 2; Curtis Pearson, 2; Russell Sahver, 2; Cody Pipkin, 6; Justin Boyd, 2; Mike Hager, 1.

**SEVENTH GRADE**  
**SPEARMAN:** 18 28 38 44  
**PANHANDLE:** 7 14 18 33  
 Sp-- Brian Beck, 8; Darren Hopkins, 6; Chad Riggons, 4; Chris Strawn, 6; Tim Kizziar, 6; Dallas Trooper, 2; Brandon Rex, 5; Chris Kelp, 4; Raymon Lozano, 3.

## QUICK HOSPITAL COVERAGE

Time's Short Term Hospital plan provides fast low cost "interim" coverage. If you're in between jobs. Recently graduated or discharged from service.

It offers a choice of 60, 90, 120, or 180 day protection. Comprehensive coverage. Low rates. And the policy can be issued on the spot. That quick. Of course, there's no coverage for pre-existing conditions.

Let me tell you the details of this quick coverage plan.

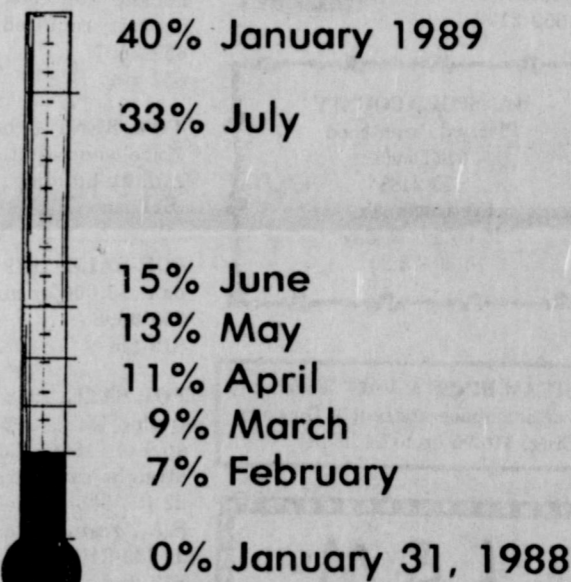
## Hansford Agency

16 S.W. Court  
 659-3888

TIME INSURANCE COMPANY

**DON'T DIG**  
 in streets, alleys or easements until you call the City of Spearman your gas company. The City of Spearman will then mark their underground gas lines with yellow stakes, flags or spray paint. Make request 48 hours in advance. This service is available at "no charge"

## IT PAYS TO PAY NOW



Penalty and interest on Your Delinquent Tax Account is Rising Monthly

No Matter What the Weather . . . the Place to be is the Annual Winter Clearance Sale at

**Boody FURNITURE CO.**  
 723 W. SEVENTH  
 SPEARMAN, TEXAS 79081

Everything in the store is reduced. Savings up to 70% on:

- Sofas
- Chairs
- Recliners
- Bedrooms
- Curios
- Lamps
- Dining Rooms
- Accessories
- TV's
- VCR's
- Washers
- Dryers
- Dishwashers
- Microwaves
- Radios
- Jam Boxes

SALE CONTINUES . . . We honor Visa and Mastercard. Extended terms, nothing down, up to 24 months to pay with approved credit. 30 - 60 - 90 day accounts.

OPEN 8:30 - 5:30 Monday thru Saturday

# Country Stitches

715 W. 7th Spearman, Tx.

## JANUARY PRICE THAW

All knitting yarn 99¢

50% off all Fall & Winter Fabric

All Cross Stitch Fabric

25% off

1 table of fabric 75% off