



MOISTURE IN 1987 CAME IN ALL FORMS . . . from scoops of hail in May to almost blizzard-like conditions in December, the year just ended goes down in the history books as one of the wettest of the last decades with 26.70 inches of precipitation which includes over 60 inches of snow last winter and this fall, hail, high winds and tornadoes last spring and an otherwise mild summer.

Wettest year in last decade . . .

Mother Nature grabs '87 headlines

Mother Nature grabbed the headlines in 1987 as 12 months of rain and snow accounted for over 26 inches of moisture for Hansford county--making it the wettest year in the past decade.

Total moisture in 1987 was 26.70 inches with some precipitation recorded in each month of the year.

The lightest month came in April with only .48 of moisture. The wettest month in 1987 was September with 5.16 inches of rain.

A total of 62.5 inches of snow fell on Hansford county in 1987 with the largest amount--21.5 inches of the white powder--falling in March.

December was a close second with 20 inches while February accounted for another inch and November totalled 2.5 inches. January last year saw 17.5 inches fall on the county.

All information on rain and snow fall for the year was compiled from the records at Hansford county's official weather reporting station, KRDF-FM in Spearman.

While 1987 was a record year for moisture, it was wind and hail which created the biggest stir.

On May 25 a flurry of tornado reports had Hansford county residents hopping with some 14 funnels reported dipping down from stormy skies, according to the Hansford sheriff's office.

"I've never seen anything like

this," Sheriff R.L. McFarlin told the newspaper at the time. "I've been in storms where you'll see a tornado dip down, but I counted 14 funnels coming out of the sky at different times Monday evening."

Most damages from that storm were to outbuildings and barns except for a pair of mobile homes which were overturned--one outside of Gruver and another in Waka. Both were unoccupied at the time.

That storm created at least one tragedy, however, when a group of Hansford county residents were caught on Lake Meredith and their boat overturned during the high winds generated.

A Spearman man, Richard Dean Pierce, 25, was drowned and his body was not recovered until June 17.

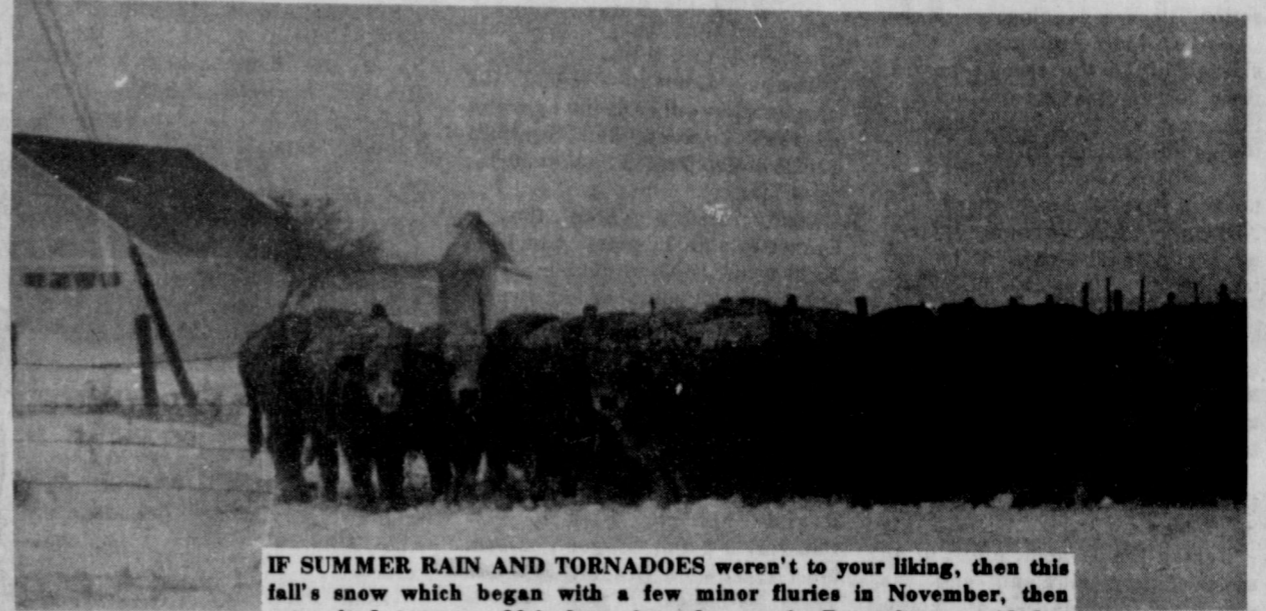
A combination of snow and hail blunted what would have otherwise been a record wheat harvest.

Instead, yields were average with light test weights coming from fields all across Hansford county.

Wind damage was recorded more than once in Hansford county with rain and hail adding its toll.

Hail cut a swath across the northwestern portion of the county in May further adding to the farmer's woe.

In all, 4.92 inches of moisture fell in May and it rained 10 out of 12 See "NATURE", p-2



IF SUMMER RAIN AND TORNADOES weren't to your liking, then this fall's snow which began with a few minor flurries in November, then catapulted to some 20-inches of total snow in December provided a counterpoint for taste, if nothing else.

Lynx dominate Elks

in district clash, 54-45

Putting together one of their best team efforts of the 1987-88 season, the Spearman Lynx wore down a talented crew from Stratford to break open a close court contest in the final quarter of district 1-AA action Tuesday night and take a 54-45 win over the Elk in the Spearman varsity gym.

Prior to the final eight minutes of play, the lead swapped hands eight different times as the two hard-charging teams jockeyed for position on the court.

Behind the floor leadership of senior Carl Urban, the Lynx displayed a calm team defense which controlled the tempo of the game in the latter minutes of play, and a patient offense which took advantage of Elk mistakes enroute to their first district win of the year.

"Carl did a super job setting up the offense," declares Lynx head eager mentor H.M. Garrett. "He helped us keep control of things, kept our tempo going as a team."

That calm hand also wound up with 21 points on the night for the senior ball handler as his basketball handling prowess helped pay off in dividends to the Spearman boys eager crew.

The only other Lynx in double figures was Kevin Nelson with 10 points while Brett Davis and Tim



CARL URBAN
... Paces Lynx Effort

Wooley each connected for nine points apiece.

Spearman now stands at 1-1 in district action and 10-6 for the year. Stratford is now 1-2 in 1-AA play and 9-7 for the season.

Fast-paced action was the byword Tuesday evening as the two district opponents met for the first time during the 1987-88 season.

The Lynx managed to pull out a slim 4-point lead at the close of the opening stanza, 14-10, but Stratford came back to knot the score at 21-ALL as the halftime buzzer sounded.

Following intermission, the lead see-sawed back and forth as the two squads vied for control of the ball game.

That control went to the Lynx as they took a 34-32 advantage at the opening of the fourth period, combined a tenacious defense with an opportunistic offense to add 20 fourth-quarter points and take the win, 54-45.

Stratford scored only one field goal in the first four minutes of the last frame while Spearman answered with six field goals during that same span.

In junior varsity action, the Spearman JV Lynx proved poor hosts as they downed their Stratford counterparts, 31-20, Tuesday evening.

Slade Jones turned in a 9-point effort while Delwin Whitmire added eight to pace the Lynx JV to their win.

Spearman managed only two points in the opening period, but

See "LYNX", p-4

Artic blast rips county . . . again

Yet another artic cold blast began dumping snow on Hansford county Tuesday with accumulations of four inches overnight.

As of presstime Wednesday, another 1 1/2 to 2 inches of the white powder had added to already snow-bound conditions.

Schools at Spearman and Gruver opened Tuesday but classes were turned out at 2 o'clock that afternoon as snow continued to fall.

Busses did not run in Spearman Tuesday and the Morse school bus was sent back from Spearman as road conditions worsened.

At noon Wednesday roads across Hansford county were reported as extremely hazardous and snow packed by the Hansford Sheriff's office.

"Roads are open but we are discouraging travel," a spokesman for the sheriff's office notes.

Should schools in Spearman be forced to close Thursday, the missed day would be made up later in the year, possibly either April 1 or April 4, notes SISD superintendent Larry Butler.

An earlier missed day this past December will be made up by cancelling a free day for students during a teacher inservice originally scheduled for Jan. 18. Teachers will have their inservice on Saturday, Jan. 16 and school will be held the following Monday.



The Spearman

Reporter

25¢
Per Copy

4 Pages

Volume 80, No. 10

YOUR HOMETOWN NEWSPAPER

Thursday, January 7, 1988

District, state and federal contests, too . . .

Contests develop for both county commissioner seats in party filings

Last minute filings have brought up a pair of contested local races among both Republican and Democratic parties with contested races in both the county commissioner seats open for election during the March 8 "Super Tuesday" party primaries.

A pair of political newcomers will vie for the right to represent the Republican party in the precinct one county commissioner's race.

Garland Head, the incumbent, has filed by petition on the Democratic ticket. Wiley Sheets and Ernest Vanderberg will face off in the Republican primary for the right to meet Head in the general election next November.

Both men also filed by petition, thus avoiding the payment of a \$600 filing fee for the ballot.

Filing by petition in Hansford County requires that a petition requesting the inclusion of the political hopeful's name on the ballot, be signed by 25 registered voters of the precinct who actually voted in the last gubernatorial race.

Otherwise a \$600 filing fee is required in order to have a name placed on either party's primary ballot.

Wiley is self-employed while Vanderberg is a service manager for a Spearman new car dealer.

Precinct three county commissioner B.J. Renner is being challenged by Don Evans in the Gruver business man, in the Democratic primary. The winner of this race will be unopposed in the general election.

The only other contested races come in the 84th Judicial District where incumbent district judge J.E. Blackwell is assured of an opponent next November. Blackwell filed on the Republican ticket while a Borger attorney, David Wagner, has filed on the Democratic ticket.

The district attorney's office has races on both tickets with incumbent Gene Compton facing two challengers on the Republican ticket, Phil Black and Stephen "Steve" F. Cross. All three are from Borger.

Vying for the right to meet the Republican winner in the general election for district attorney are Vance Jones and John LaGrone, both also of Borger.

Uncontested local elections will see John L. Hutchinson unopposed on the Republican ticket. Since he has no Democratic challenger he is assured the seat.

The remaining incumbents who are running unopposed on either ticket, but who all filed on the Democratic ballot include sheriff R.L. McFarlin and tax assessor-collector Helen Dry.

Voters will almost need a program to determine who is running where and for what on the state

and federal offices up for election in 1988.

Republican Beau Boulter's decision to run for U.S. Senator against incumbent Lloyd Bentsen provided the catalyst for a number of last minute filings Monday for the seat he vacated.

Boulter has served as Texas Representative to the congress since defeating Jack Hightower, a Vernon Democrat.

Boulter's decision to run for senate leaves his house seat up for grabs and a long list of filings came in there.

Republicans filing include Jim Brandon, an Amarillo business- See "CONTESTS", p-2

Certification required to get '88 commodities

Certification and re-certification of those eligible to receive surplus commodities must be done this month in order to meet requirements for the different programs, reports the Hansford county judge's office.

While certification and re-certification can be accomplished in any given month, January is the official reporting period and those who wait until later will find themselves waiting for the commodities as well.

"Certifying in another month will cause a definite waiting time," notes Donna Yarbrough, county judge's secretary.

Eligibility is based on gross income, unless self-employed or farming, which is based on net income, and on size of household and residency.

Income which must be counted includes regular wages or salary, social security benefits--including medicare premiums;

Veteran's benefits, worker's compensation; regular insurance payments, military allotments, child support payments;

Self-employment income less business expense, regular monthly cash contributions or allowances that help the household meet its usual living expenses;

Unemployment compensation, income from rental property and interest that is received regularly--monthly, quarterly or yearly.

Recipients of Aid to Families with Dependent Children (AFDC), food stamps, Medical Assistance Only (MAO), or Supplemental Security Income (SSI) are automatically eligible upon proof of receipt.

Food stamp identification cards are not proof since they are not dated. However, a letter from the Department of Human Resources stating that food stamps are to be received is proof.

Applicants must apply in the county of their residence and must provide proof of identity, residency and income.

In Hansford county, certification is made at the county judge's office in the Hansford county courthouse. Office hours are Monday through Friday from 8:30 a.m. to 5 p.m.

School bond rating to New York firm Monday

A delegation from the Spearman Independent School District met with a bond rating firm in New York City Monday the first step in rating \$2.185-million in tax bonds for a renovation of the junior high and elementary campuses in Spearman.

Board president Mike Garnett, along with board members Phillip Renner, Dennis Nelson, and Don Townsen and SISD superintendent Larry Butler met with officers of Moody's Investors, a bond-rating firm, Monday in New York.

The Spearman group was also represented by Bob Davis, a financial advisor from San Antonio who has represented the SISD on bond issues in the past.

The group answered questions

concerning Spearman, the economy, and other aspects of the community, reports Butler.

A rating on the bonds will come from Moody's in about two weeks, notes the Spearman school superintendent.

The bonds will then be sold Jan. 28, with the money to be in Spearman around March 15.

"If the current time table holds, we might be letting bids as early as May," explains Butler. "Construction could start in early summer."

Meanwhile, school officials and architects are refining specifications for construction at the elementary campus. These specifications must be complete before the school can advertise for bids.

Lynxettes control Lady Lynx, Lynxettes take Canadian tourney finals

The Spearman Lynxettes put together one of their best defensive efforts of the 1987-88 season as they manhandled their Stratford Lady Elks, 46-33, to maintain an unblemished district 1-AA mark at 2-0.

Running an aggressive defense paced by standout performer Londee Bradley, the Lynxettes popped in 16 first-quarter points while limiting a talent Stratford girls crew to only four during the opening eight minutes of cager action Tuesday evening.

While their offensive effort slacked off in the second period, their defensive effort did not and Spearman stood in firm control of things at halftime, 23-14.

"Londee came through for us," notes Lynxette head coach Jim Kirkland. "She probably played her best defensive game of the year tonight."

It was that same defensive strength which saw Spearman stretch their lead to 12 points in the third quarter as they dumped in nine points while holding Stratford to only six.

Going into the final stanza, Spearman held a commanding 32-20 lead.

Behind the 18-point effort of all stater Krista Kirkland and the emerging dominance of junior Heather Murrell who popped the nets for another 13 points, Spearman answered Stratford point-for-point and even one better in the final eight minutes of play.

The Lynxettes tallied 14 final period points while Stratford sunk

13 to put the final at 46-33.

Junior varsity action saw almost the same domination from the Spearman Lynxettes jv'ers as they took a 36-15 win over their Stratford opponents.

The outcome was never in doubt as the Spearman girls jumped out to 13-5 first quarter lead, then fashioned a 22-7 halftime lead.

From that point on it was all over for Stratford as Spearman dumped in eight points in the third frame to the Lady Elks jv'ers four.

Going into the final stanza, the scoreboard had Spearman firmly entrenched with a 30-11 count.

The pace didn't slow down in the final quarter, either as the Lynxette jv crew outscored their Stratford guests 6-4, to put the final at 36-15, Spearman.

Cindy Melton paced the jv Lynxettes with 11 points and Kyla Nelson turned in a double figure effort with 10 points of her own.

The Spearman Lynxettes varsity and jv will travel to Panhandle Friday evening.

VARSITY				
STRATFORD	4	14	20	33
SPEARMAN	16	23	32	46
Sp--Krista Kirkland,	6-1-3-18;			
Heather Murrell,	5-1-0-13;			
Lisa Cazarez,	3-0-0-6;			
Ginger Pearson,	0-0-1-1;			
Londee Bradley,	4-0-0-8;			
Team,	18-2-4-46.			

JUNIOR VARSITY				
STRATFORD	5	7	11	15
SPEARMAN	13	22	30	36
Sp--Cindy Melton,	11;			
Bonnie Thompson,	4;			
Brandy Schneider,	4;			
Kyla Nelson,	10;			
Michelle Cook,	5;			
April Graham,	2.			

The Spearman Lynxettes captured the third consecutive tournament title of the 1987-88 season and the Spearman Lynx claimed their second consolation trophy with wins Saturday at the Canadian Invitational Basketball Tournament in Canadian.

The Lynxettes outlasted panhandle, 29-22, while the Lynx eked out a 50-43 win over Gruver in final competition Saturday.

GIRLS				
SPEARMAN	6	12	22	29
PANHANDLE	6	11	14	22
Sp--Krista Kirkland,	6-0-5-17;			
Heather Murrell,	3-0-0-6;			
Lisa Cazarez,	1-0-2-4;			
Londee Bradley,	1-0-0-2;			
Team,	11-0-7-29.			

BOYS				
SPEARMAN	12	18	37	50
GRUVER	9	21	29	43
Sp--Brett Davis,	3-0-1-7;			
Keith Benson,	1-0-0-2;			
Kevin Nelson,	6-0-2-14;			
Carl Urban,	6-0-4-16;			
Tim Wooley,	1-0-0-2;			
Pat Shields,	3-0-0-6.			

continued from p-1

CONTESTS
man; Ron Buffum, a Wichita Falls oilman; Larry Milner, president of the Amarillo Chamber of Commerce;

Alan Pickering, a Church of Christ minister from Amarillo; Bob Price, a Pampa farmer who held the seat from 1967 to 1975; and state representative Chip Staniswalis of Amargillo.

Floyd County district attorney John Randolph Hollums has filed

NATURE

days near the end of the month. Precip records went like this with 5.16 in September, 4.92 in May, 3.81 in June, 2.85 in July;

In March, 2.55 was recorded while August had 2.44. October saw 1.44 while February's mark was 1.12.

All the remaining months had less than an inch of moisture with .71 in December, .64 in November, .58 in January and .48 in April.

Only one 100 degree day was recorded in 1987 according to official reports, that come in on August 6. The lowest temperature on record in 1987 was a -2 degrees on Dec. 15. The only other below freezing temperature came Dec. 16 at -1 degree.

January's top high was recorded at 69 degrees, hitting that mark twice on the 12th and 13th. The low that month was 11 and was recorded on the 21st.

February saw a 70 on the 7th with a low of 23 on the 18th. Then, despite the 21.5 inches of snow in March, it's top high was 77 on the 6th. The low came on the 29th at 13 degrees.

In April the temperature warmed up and the rain slowed down with the first temperatures in the 90's recorded for 1987.

That month the top high was recorded at 94 degrees on the 18th and the low for the month was 26

for that same seat on the Democratic ticket, along with Vernon businessman Ed Lehman and state senator Bill Sarpalius.

Political hopefuls for the 31st state senator's seat include perennial candidate Ron Slover will meet Teel Bivins of Amarillo for the Republican representative to the November general election.

On the Democratic side of the two-party ticket, former 47th district judge H. Bryan Poff along with Amarillo attorney Nancy Garms and Democratic party activist Mel Phillips of Amarillo will seek the state senatorial seat being vacated by Sarpalius.

All local political aspirants must now file the names of their campaign treasures with the county clerk's office, according to state law.

"They must designate a campaign treasurer, even if that is themselves," notes Amelia Johnson, Hansford County clerk. "This needs to be done just as soon as is humanly possible."

The first financial disclosure required of candidates must be filed within 15 days of naming their campaign treasurer.

on the 3rd. Rainfall that month slowed to less than one-half inch.

May's high was 91 degrees on the 18th with the lowest temperature recorded a 48 on May 7. June warmed up even more with 99 on the 17th and the low set at 42 on the 4th.

In all, there were six days of 90-plus degrees in June but July recorded the hottest weather with 20 days of 90-plus degrees.

The warmest day that month was 97 which was hit twice, on the 11th and 18th. The lowest temperature that month came on July 13 with a 54.

August had the only 100 degree day of the year with that coming on Aug. 6. There were 17 days of 90-plus degrees recorded that month. The lowest temperature in August came on the 28th with a 53. Otherwise lows that month were in the high 60's and low 70's--yes, those are lows.

September began the cooling off period for the year with only two 90's recorded that month, those coming on the 2nd and 3rd.

The lowest temperature in September was set on the 29th with 49 degrees.

October held on the at least one warm day, that a 90 recorded on the 8th. The low that month was 37 and that was hit on three days-- the 19th, 20th and 27th.

November 1's 81 was the last of the really warm days for the year and low of 18 was recorded Nov. 25. The first freeze of the year came in November with a 28 on the 9th.

December was the coldest month of the year with two days of sub-zero weather, those coming on consecutive days, Dec. 15 and a -2 and Dec. 16 with a -1.

Remarkably, the month began mild with the highest temperature recorded in December coming on the 5th with a 79.

The Spearman Reporter

Publication [USPS 509660]
Spearman, Texas 79081
213 Main, Box 458
Published weekly at
213 Main Street
Spearman, Texas 79081
OWNED AND OPERATED BY
Texas Independent
Newspapers Inc.



19906 Encino Grove
San Antonio, Tx. 78259

Second Class postage paid at Spearman, Texas 79081.

Any erroneous reflection upon the character of any person or firm appearing in these columns will be gladly and promptly corrected upon being brought to the attention of the management.

Member of the Texas Press Association

PUBLISHER
James C. Jarrett

ADVERTISING DIRECTOR
Kirby McAdams

SUBSCRIPTION: Hansford and adjoining counties, combination with The Hansford Plainsman, \$19.95, out of county \$24.95.

POSTMASTER: Send address changes to Spearman Reporter, Box 458, Spearman, Tx. 79081.

The publisher reserves the right to revise or reject at its option any advertisement which it deems objectionable, either in subject or phraseology, or which it may deem detrimental to its business.



THE SPEARMAN LYNXETTES POSE WITH THEIR THREE TOURNAMENT TROPHIES.

DRIFOOT INSULATED **LaCrosse**

- DRIFOOT liner, Gore-Tex®/Thinsulate®/Cambrelle™
- Rugged 1000 denier nylon woodland camouflage pattern uppers
- Lightweight and warm without excess bulk
- 100% waterproof brown rubber bottoms
- Heavy duty tire cleat outsoles
- Supportive steel shanks; speed lacing
- Removable and replaceable linings

JUST \$59.95
HANSFORD IMPLEMENT
659-2568

Hwy. 207

PARTS VALUE OF THE MONTH

Pre-Season **Service Savings**

BE READY TO GO!

Get a Performance Plus Checkup and save on service work, too!

SAVE 10% on parts
when work is done in our Service Center
plus **SAVE 10%** on labor and get **FREE HAULING**

Get your tractor in top shape for the busy season and save at off-season prices. Take a good hard look at your equipment and then, if you want repairs, we'll do them in our Service Center at a special discount. Don't wait until the busy season hits. Get your tractor ready to roll now at Special Pre-Season Service Savings.

case

Five Star Equipment Inc.
Hi-Way 15 West Spearman
659-3743

Without advertising a terrible thing happens ...

nothing

your advertising dollars do better in.....
the classifieds

CALL: (806) 659-3434.

L&M Body Works
 1501 Hwy 15
 659-2775
 Tailpipes - \$29.95
 Mufflers - \$39.95
 Most Duals \$160.00 complete

PANHANDLE CRISIS CENTER: 101 S.W. Forth, Perryton, Texas 79070, 806-435-5013. Help is available at no charge for domestic violence and sexual assault. Call Panhandle Crisis Center, receive support during a difficult time. Counselors on call 24 hours a day. Call for help.

EARN EXCELLENT MONEY in Home Assembly work. Jewelry, Toys & others. FT ? PT Avail. **CALL TODAY!** 1-518-459-3535 (Toll-Refundable) EXT B-8017 24 hrs. S09-3tp-Tonly

DIET CENTER. THE WEIGHT-LOSS PROFESSIONALS!
 CALL US TODAY, for a free introductory consultation at 410 Davis, Spearman, Texas 659-2199.

SCOTT'S CHIMNEY SWEEP
 Prevent Chimney Fires
 Call 806/323-5859
 Serving the Panhandle Area for 5 Years
 \$45 per Chimney
 Have your Chimney cleaned today!
CLEAN-RELIABLE-FRIENDLY
 Thurs. only til Jan. 28

WEIGHT WATCHERS: meets each Monday at 6:00 p.m. at the Home Demonstration Building, Spearman Texas.

STEAM RINSE & VAC-Rinse and Vac Shampooer for rent at Gordons Drug. \$10.95 up to 24 hours.

ALCOHOLICS ANONYMOUS MEETING
 Hansford County Library (Upstairs)
 122 Main-Spearman
 Open meeting 2nd Tuesday
AL ANON
 Tuesday 8:00 P.M.

HANSFORD COUNTY Planned Parenthood
 412 Davis 659-2488
 Spearman, Tx. Monday - Friday 8:30-12:30

OSGOOD MONUMENT CO.
 Amarillo, Texas
 Dealers of Rock of Ages Granite, as well as all colored granites, marble and bronze memorials,
 represented by
BOXWELL BROS. FUNERAL HOME
 519 S. Evans 659-3802

NOTICE
 Wallace Monument Co. Monuments, Curbing, Grave Covers
 Local Representative **LEONARD JAMESON** Spearman, Texas

Real Estate
HOUSE FOR SALE: 2 bedroom 1 1/2 bath 2 car garage newly remodeled 1 block from school priced in the low 20's call 659-3987 S 51 rtn

FOR SALE: Newly remodeled house -- 2 bedroom, central heat and air, by appointment only. Call after 5 p.m. 659-2697. S09-2tp

ABANDONED HOMES - Take over payments on 2 and 3 bedroom homes. **Qualify by phone.** 806/381-1352. Call collect. S46-rtm

FOR SALE 1983 Bonneville Mobile Home, 16x80. 3 bedroom, 2 full baths, fireplace, spacious bilvel kitchen. Set up on Corner lot. Must see to appreciate. Call 659-2354 after 5:30 p.m. S42-9tc

HOUSE FOR SALE: 1850 sq. ft., 4 bedroom/2baths. Living room with fireplace. Reasonably priced. Located at 720 Wilbanks. Contact Frances Pipkin at 659-3938. S10-8tp

For Rent
FOR RENT 2 bedroom mobile home, furnished, Hud approved call 659-5196 or 659-2898. S09S 3tp

FOR RENT: Nice 3 bedroom unfurnished house, Carpet, drapes, central air and heat. Elec. or gas hookup for cook stove. Cleaning deposit required. No pets. Call 659-3657. S51-rtm

MASTERCARD. No one refused. Regardless of credit history. Also ERASE bad credit. Do it yourself. Call 1-619-565-1522 Ext. C3559/Tx 24 hrs. S10-3tp-T-only

BOB HARDY REALTY
 803 Wilmet Dr. 659-3440
NEW LISTINGS:
 820 Linn Drive - 1mm - double bd - 2 bath - fire - double car garage. At price reduced. 2200 sq. ft. living area. Custom drapes. Lawn Sprinkler System. Satellite dish and receiver. Fenced. Excellent location. make offer. 1001 Haney - 3 bd, 2 bath. Den with fireplace. Corner lot fenced. Carpeted. Nice, price-reduced. Approx. 1450 sq. ft.
 Robert Hardy - broker

Century 21
GOLDEN SPREAD REALTY
 Janey Helton Pointer, Broker. Owner, 435-5444
SALES ASSOCIATES
 T. O. Lesly-659-2028

1112 S. Bernice - 3-1/4 location! Location!
 322 Hazelwood - 2/1 owner will finance.
 607, 611, 615, Haney

609 Haney - Small house / 2 apartments - priced reasonably.

615 E. Kenneth - 3/2. Corner lot with extra acreage!

102 Wanda-3/1 immaculate!
 118 Townsend - 4/2. Apartment included!
 711 Collier-3/1 Why rent?

322 S. Barkley - 3/1 Good location at affordable price!

16 S. James - 3-1/4 Assumant available on tender contract in excellent condition!
 811 Townsend - 2/1 Affordable!

COMMERCIAL
 15 N. Hazelwood
 201 Bernice - Former M&M grocery store. Can be sold with or without fixtures.

FARM
 640 acres of grass in Sherman Co., over 500 acres in the C. P. R. Program.
 640 acres of wheat and milo, land in Hansford Co.
3 RANCHES in Brownwood area. Call today!

Help Wanted
PIZZA HUT is now taking applications for night time employment. Apply in person.

NURSES AIDES WANTED: Full or part time, must be able to speak, read and write English, must be able to assist geriatric and handicapped residents, professional demeanor a plus. Evening and night shifts available. Applications may be obtained at the Hansford Manor nurses station or the hospital office. Apply in person only, phone calls will not be accepted. S10-4tc

Ladies can earn \$50 Tuesday or Thursday at Spearman and surrounding towns. No parties necessary. Stanley Home Products. Lois Piefer 273-7767.

ADDRESS ENVELOPES for firm\$, nationwide! \$en\$ational earning\$! No experience. We show you. Begin immediately! Stamped envelope: Publications-1, 804 Old Thornsbey Road, Clanton, Alabama 35045. S08-(rtm)

GOVERNMENT JOBS \$15,400-\$72,500 Now Hiring, Excellent Benefits. Call 504-649-7922 Ext J-1290. G:1-7-1-21,2-4,2-18.

Miscellaneous
Working Mothers need a babysitter while you are working? Call 659-2760. Also night sitting. S10-1tp


For Sale
FOR SALE: King size waterbed \$75. Brown upholstered living room or den chair, \$25. For information call 659-3633. S10-2tp

Is it True You Can buy Jeeps for \$44 through the U. S. Government? Get the facts today! Call 1-312-742-1142 Ext. 8631. 11-26, 12,10, 12,24, 1-7

VISA! MASTERCARD! GUARANTEED! Without investigation. Bankrupt? Bad Credit? Divorced? Widowed? On Welfare? No problem. All eligible. Free details. Send #10 self addressed stamped envelope. Success, Drawer 389, Clanton, Alabama 35045. S08-(rtm)

Offered by **EMMETT R. SANDERS REALTOR**
 3 bedroom home, attached garage.
EMMETT R. SANDERS REALTOR
 659-2516, nights 659-2601

Real Estate Sampler
 Allen Alford-Broker-659-3034
 Hester Sue Crawford-Sales 659-3060 or 659-2074
 Dennis Nelson-Sales-659-3698
 Larry Trospen-Sales-659-3491
 316 S. Bernice-2366 sq. ft.
 101 W. 12th-1344 sq. ft.
 426 Haney-1479 sq. ft.
 1005 Townsend-1054 sq. ft.
 619 Evans - 1350 sq. ft.
 1014 Linn Dr.-2,000 sq. ft.
 734 Wilbanks - 1192 Sq. ft.
 32 N. Snider - 1850 sq. ft.
 729 Cotter - 1519 sq. ft.
 506 Endicott - 1100 sq. ft.
 907 Dressen - Nice starter-505 Haney - 1600 Sq. ft.
We want to be Your REALTOR

DOC BLAKELY'S POKIN' FUN

 In a recent TV show, there was a feature on a flea spray for dogs. This particular product got rid of the fleas as advertised. Unfortunately it got rid of the dog, the neighbor's dog, and the nearest fire hydrant.

The company says the ingredients are not harmful except to certain sensitive pets but owners began to suspect something when whole flower beds died and their car tires glowed in the dark.

Of course, the lawyers got on it right away and started to sue everyone in sight. Animal rights, professional courtesy I suppose.

I mentioned this controversy to a friend and he suggested that research on this product should have been more thorough. "Should have used law students for research instead of white mice," he said. "Why is that?" I asked. "Because," he replied, "there are more of them, they would be easily replaced, and there are some things even a rat won't do."

In a similar life or death matter, a fellow went to his doctor feeling poorly. The doctor told him he had only one day to live. He decided to make the most of it, went home, told his wife about it. They invited friends over, had a great farewell party, stayed up late and celebrated a great life even though it was to be cut short. When the crowd was gone and they had retired, he tried to hold her close but she turned away. "I'm sorry," she said. "I have to get some rest."

"Have a heart," he pleaded. "Oh sure," she said. "That's easy for you to say. You don't have to get up in the morning."

Funny how danger can be exciting, humorous, and threatening all at the same time. A fellow told his wife he was going hunting but he wanted her to pack his silk pajamas so he could be comfortable in his sleeping bag. He was gone two weeks, returned wearing hunting boots and camouflage clothing. "I thought I asked you to pack my silk pajamas," he told her. "I did," she replied. "Well, I couldn't find them. Where did you put them?" he asked. "In your gun case," she answered.

Whether it is man or beast, life can be cut short in a variety of ways. Like a friend of mine says, "The old must, the young may, and wisest knows not when." That philosophy does not hold true if you are wise enough, however. A sign in a Louisiana quick stop "Shop & Rob" store has a sign that reads: "Shoplifters will be shot. Survivors will be shot again."

CARD OF THANKS
 Our recent sad loss leaves us with grateful hearts toward neighbors and friends. Their comforting expressions of sympathy and thoughtfulness will always be remembered.
 Lanore Boese family
 Eldon, Orville,
 Tina and David
 S10-1tc

CARD OF THANKS
 With God's love and thanks to Dr. Sangalang, the nursing and lab staff of Hansford Hospital. The ambulance crew were all wonderful and great care in getting me to St. Anthony's Hospital in Amarillo. The emergency treatment had been started. Our ambulance so well equipped and wonderful attendants to be proud of.

Thanks to my loving families whose Christmas was greatly interrupted and were with me. Thanks to pastor Mike who came to Amarillo and Sandy our secretary, they both made several calls and pastor Joe Hill of First Baptist Church, Hardesty, calls and prayers of their congregation. Thank my loving Church family for cards and prayers. They meant so much that came as God's love as part of healing. I am home recuperating for a while.

With love and God's blessings to all
 Hazel Jackson
 S10-1tc

Search underway
 The search is under way for the rural hero for 1987, according to Ben Bullard of Waco, president of the Texas Farm & Ranch Safety Council which presents the annual rural heroism award.
 The 1987 recipient will be announced March 7, 1988, at the 49th annual Texas/Southwestern Safety Conference and Exposition to be held at the Marriott Hotel in San Antonio. Deadline for submitting 1987 entries will be Feb. 15, 1988. Bullard said. Send all nominations to Texas Farm & Ranch Safety Council, Box 2698, Waco, Texas, 76702-2689.

You Are Invited
 to a **Baby Shower**
 honoring **Britta Marie**
 daughter of **Joe & Kim Vanderburg**
Sat. Jan. 9
 from 2 to 3:30
 at 104 Wanda Dr.

MID-WINTER MAYHEM AT CHALOR'S ALL CHRISTMAS MERCHANDISE 50% off
 (Excludes JUNE McKENNA Collectibles, AROMATIQUE, The Smell of Christmas and Fitz & Floyd "St. Nicholas" China)

WEIGHT WATCHERS NEW 1988 QUICK SUCCESS PROGRAM
LOSE WEIGHT 20% FASTER
Lighten up with the fastest, easiest approach to weight loss ever!
 Not only will you lose weight 20% faster in the first few weeks than on any previous Weight Watchers program, you can actually customize a plan that will fit your personal needs and lifestyle.
 Join now for only **\$12**
 Registration Fee \$17.00
 First Meeting Fee \$ 8.00
 Regular Price \$25.00
YOU SAVE \$13.00
 Offer Ends January 31, 1988.

Come to the Weight Watchers meeting nearest you.
PERRYTON 1st National Bank 201 S. Main Street Thur: 6:30 pm
SPEARMAN Home Extension Club 309 N. Bernice Mon: 6:00 pm

NOTHING WORKS LIKE WEIGHT WATCHERS!
 Offer valid January 2 through January 31. Offer valid at locations listed. \$17.00 only. Offer valid for new and renewing members only. Offer not valid with any other offer or special rate.
 Weight Watchers and Quick Success are trademarks of WEIGHT WATCHERS INTERNATIONAL, INC.
TEXAS TOLL FREE 1-800-692-4329

THE MIGHTY 98 ROCK'S
 HANSFORD COUNTY
Top 40 POP/ROCK Weekly TOP 10 COUNTDOWN Dedication Hour...and more
 Now, catch us Fridays following Lynx & Lynxette basketball and Saturdays 7 p.m. to midnight --
THEN, CRANK IT UP!!! AND REMEMBER
★ Be Smart-Don't Start! ★
★ Just Say No to Drugs & Alcohol

Multi-county meeting for conservation

A multi-county meeting to address the Conservation Reserve Program, Conservation Compliance, and the 1988 Farm Program will be held in Spearman at the County Barn on Tuesday, Jan. 19.

The meeting is being co-sponsored by the Texas Extension Service, Soil Conservation Service, and the Agriculture Stabilization and Conservation Service (ASCS).

The program will begin at 9:30 a.m. with discussion in the morning session focused on the Conservation Reserve Program.

Topics will include Documentation for Cost Sharing in the CRP, Managing Your CRP Grass, Weed Control, Managing Your CRP Land for Wildlife, and an Economics Evaluation of the CRP Bid. A sponsored lunch will follow.

The afternoon session will address Conservation Compliance and the 1988 Farm Bill. Topics will include Rules of Conservation Compliance, Agency Responsibilities, Who Will Be Affected and What are the Options for Meeting Conservation Compliance, and an Economic Evaluation of the Possible Options for Meeting Compliance.

The afternoon session will be wrapped up with a discussion on the 1988 Farm Program.

For further information contact Burt Williams, Hansford County Extension Agent at 659-2136 or 659-3680. Local participants are asked to RSVP to the Extension Office.

Among the Neighbors

by Helen Fisher

One of the more delightful New Years Partys was that given by Eddie Gale Martin for his parents, Mr. and Mrs. J.H. Martin in their rural home.

The house was beautifully decorated, and there was an abundance of good food, fellowship, laughter -- with hope and faith in the future permeating the atmosphere.

At the stroke of midnight, Chip and Mrs. Martin led the celebration with noise makers and all the trappings.

About 30 family members were present, mostly from Spearman. Mr. and Mrs. James Martin, Diana and Shawn from Quitman, Ark.; and Mr. and Mrs. Damon Goodheart and baby from Amarillo were out of town guests.

Friends present were Mr. and Mrs. Chalmers Porter and Mrs. Dwight Hutchinson.

Mr. and Mrs. R.W. Bullard were quite relieved when their son and daughter-in-law, Scott and Marla Bullard called back that they had reached Virginia Beach, Vir.

They had been visiting here for several days and started the drive back just after Christmas, and with the floods in Arkansas, snow and ice elsewhere, they had several delays enroute.

He is attached to the Naval Base in Virginia Beach.

Rhoda Overton is back shivering in the Panhandle cold after spending the holidays in the balmy weather at Port Arthur with her son

and family, the Larry Overtons.

She also visited in the home of her daughter, Nancy Thompson, west of San Antonio.

Mr. and Mrs. Dee Allen returned Sunday from a family gathering through the holidays in Red River. Just prior to going to Red River, they had attended the wedding of a relative in Sea Grove, N. Car.

Mr. and Mrs. Greg Wilson of Lubbock visited his parents for several days during the New Years holidays. They are Marilyn and David Wilson.

Mr. and Mrs. Don Maize spent part of the holidays in Red River. Jamie accompanied them. Also sharing the skiing were Gerri Maize of Plano and Tammi and Linn Simpson of Amarillo.

Don says that he really enjoyed the skiing -- from a snowmobile!

Friends of J.D. Wilbanks are welcoming him home after a stay in St. Anthony's hospital in Amarillo. He underwent surgery ten days ago, but is recuperating rapidly at home.

Mr. and Mrs. Bob Boxwell and daughters returned Sunday from a lengthy Christmas holiday with her parents, Mr. and Mrs. Cone, of Madison, Ind.

They found the highways hazardous going to Indiana as they left the day after Christmas, but the return trip was very pleasant.

Mr. and Mrs. Ira Harbour have spent all the holidays entertaining guests or being entertained, both of which delighted them very much.

Their son and family, Mr. and Mrs. Ted Harbour and three children from Rockwall, came just before Christmas and stayed a few days.

Other Christmas guests were Jean and Donnie Jones and three children of Morse, and Mr. and Mrs. Curtis Harbour and two boys of Spearman.

On New Year's Eve, as has been the tradition of the children of the late Mr. and Mrs. T.I. Harbour, gathered to see the New Year in. This year it was with Leota and Robin Giblin at Morse.

In addition to the Harbours, others were Mr. and Mrs. Leroy Smith, Perryton; Mr. and Mrs. Glen Smith, Dimmitt; Mr. and Mrs. Bob Harbour, Amarillo; and Monte Harbour, Spearman.

On New Year's Day Ira and Loree visited in the home of Mr. and Mrs. Maurice Risley of Clarendon.

Friends report that Orvill Latham is recovering from surgery and is expected to return home in the next few days.

He started the New Year by having surgery the day before in the High Plains Baptist Hospital. As nearly as can be ascertained, his New Year's resolution was "Never, never, again".

Mr. and Mrs. Don Denham from Skellytown visited Mrs. Evelyn Hiller at Hansford Manor early in the week. They also visited other friends here as they are former residents of Spearman.

Mr. and Mrs. Bill Swan attended the funeral of her sister-in-law in Shamrock on Sunday. She was Mrs. Jewel Pool, 73. Also attending the services were Mr. and Mrs. David Swan and Mr. and Mrs. Ronald Swan.

As of this writing, the condition of Gus Birdwell is still considered critical. He was taken to High Plains Baptist in Amarillo on Saturday afternoon and is in the Critical Care Unit.

He is not able to have visitors.

92 year old Harve Haney of Denver, Col., arrived unexpectedly in Spearman on Monday, apparently to steer his Texas relatives into the New Year with proper guidance.

As humorous and alert as some one 30 years younger, he had a good visit in the home of Mr. and Mrs. Chuck Newcomb -- entertaining Lola Newcomb, Myrtle DeArmond, Mabel Jameson, Dora Womble and Earl and Hollie Riley.

His son, Loyd Haney, of Springfield brought him to Spearman and they have returned to their home.

Distressing word of the injury in a car accident of Jeni Hester was received Tuesday night.

Jeni is the 30-year old grand-

Services held for Roy H. Sutton, 90

Services for Roy H. Sutton, 90, were held Saturday at the First Baptist Church in Gruver with the Rev. Larry Miller, pastor, officiating.

Mr. Sutton died Wednesday, Dec. 30. Burial was in Gruver Cemetery by Boxwell Brothers Funeral Home of Spearman.

He was born at Quitaque and moved to Gruver in 1949 from Tucumcari, N.M. He was a retired farmer and rancher.

Mr. Sutton was a veteran of World War I. He was a Baptist. He was married to Sadie Sellers in 1920 at Dalhart.

Survivors include his wife; a son, Bob Sutton of Gruver, five grandchildren and 13 great-grandchildren.

Markets

WHEAT	\$2.85
MILK	\$2.60
CORN	\$2.00

daughter of Sada Hoskins and the daughter of Winifred and J.D. Hester of Texline.

She is a missionary nurse in the hospital at Barranquilla, Columbia, South America.

The details that are available indicate that she and another nurse were involved in the accident and she is in the hospital at Barranquilla.

Her condition was first described as critical, but Tuesday morning later information was more encouraging and her condition was upgraded to serious.

Her parents are flying to her after hurriedly arranging for passports and visas.

Jeri Orr of Spearman was recently named to the Dean's Honor Roll for Clarendon College's 1987 Fall Semester. To be so listed a student must carry at least twelve hours with a minimum GPA of 3.5.

Hospital Report

Patients in the Hansford Hospital are Juan DeLuna, Clyde Soapes Jr., Viola Graves, Ofelia Vela, Charla Roberts, Dave Laughlin, E.J. Callaway, Caroline Murphy, and Leo Frazier.



People believe if you catch a falling leaf, you will have a good and happy life.

continued from p-1

LYNX

came back to take a 14-10 halftime advantage.

Neither team was able to dominate the boards in the third quarter, either, but Spearman still held the lead when the buzzer sounded with a 17-13 count.

The fourth quarter provided all the impetus the Spearman j'ers needed, however, as they tacked on 14 points while Stratford could answer with only seven to put the final at 31-20.

The Spearman Lynx will travel to Panhandle Friday evening to take on the Panthers in another district contest. A full slate of boys and girls junior varsity and varsity games will be on tap.

Junior varsity games will begin at 5 p.m. to be followed by varsity girls, then varsity boys basketball action.

VARSITY
 STRATFORD 10 21 32 45
 SPEARMAN 14 21 34 54
 Sp--Brett Davis, 3-0-3-9; Keith Benson, 1-0-1-3; Kevin Nelson, 4-0-2-10; Carl Urban, 8-0-5-21; Tim Woolley, 3-0-3-9; Pat Shields, 1-0-0-2; Team, 20-0-14-54.

JUNIOR VARSITY
 STRATFORD 4 10 13 20
 SPEARMAN 2 14 17 31
 Sp--Mark Garcia, 4; Slade Jones, 9; Billy Clubb, 5; Delwin Whitmire, 8; Gerald Blain, 5.

7-8-9th Lynxettes win over Stratford cagers

The Spearman seventh, eighth and ninth grade Lynxettes made it a clean sweep of the Stratford counterparts in a trio of games played Monday afternoon.

The seventh grade crew--with eight girls getting in the scoring column--took their Stratford counterparts, 29-11.

Eighth grade action saw Tammi Townsen's 10-point effort pace Spearman to a 28-11 win over the Stratford Lady Elks there.

And the frosh Lynxettes dumped their Stratford opponents by a 23-13 count to round out the Spearman wins.

The next games on tap for the Spearman girls junior high crews will come Jan. 13 against Panhandle.

SPEARMAN 11 13 25 29
 STRATFORD 2 6 6 11
 Sp--Adrian Blackburn, 6; Jill Lusby, 4; Gwen Benson, 5; Holly Jarvis, 4; Michelle Garnett, 1; Shea Crawford, 3; Laura Pearson, 4; Kimbre Townsen, 2.

EIGHTH
SPEARMAN 4 13 23 28
 STRATFORD 3 7 9 11
 Sp--Mendy Lasater, 2; Dezi Pearson, 2; Melody Schumann, 7; Tammi Townsen, 10; Joy Gafford, 4; Shannon Holton, 3; Shanna DeArmond, 2.

NINTH
SPEARMAN 2 4 16 23
 STRATFORD 6 7 9 13
 Sp--Hailey Shieldknight, 8; Cam Butts, 4; Misty Savage, 4; Maleea Shaver, 4; April Wilkerson, 3.

7-8-9th Lynx bow out to Stratford opponents

The Spearman junior high Lynx saw a trio of win-hungry Stratford Elks slip past them in games Monday evening as the seventh, eighth and frosh Lynx crew bowed out to their Stratford counterparts.

The seventh grade crew fell on the short end of a 22-17 encounter with their Stratford opponents.

Russell Shaver paced the Spearman team with five points and was one of seven teammates who helped accumulate the Lynx's 17 points in that game.

Eighth grade action saw Stratford edge out their Spearman opponents in a 24-21 contest.

High point for Spearman there was Tim Kizziar with 11 points, the only Lynx player in double figures.

It took an overtime period to decide the freshman cager contest, but when the buzzer sounded the score stood at 42-37 for Stratford.

Joel Shields paced the Spearman effort with 14 points and was the

only Lynx in double figures there.

The next games on the schedule for the Spearman junior high crews will come Jan. 13 as the Lynx host Panhandle. Games are scheduled to begin at 5 p.m.

SEVENTH
SPEARMAN 4 7 7 17
 STRATFORD 8 10 20 22
 Sp--Wesly Dyess, 3; Russell Shaver, 5; Cody Pipkin, 3; Justin Boyd, 2; Roman Arnold, 2; Landon Swan, 1; Sammy Graham, 1.

EIGHTH
SPEARMAN 3 6 10 21
 STRATFORD 9 16 16 24
 Sp--Brian Beck, 4; Darren Hawkins, 3; Dallas Trosper, 2; Tim Kizziar, 11; Brandon Rex, 1.

NINTH
SPEARMAN 9 19 30 35 37
 STRATFORD 2 19 23 35 42
 Sp--Joel Shields, 14; Shawn Tanner, 4; Allen Howell, 7; Clint DeArmond, 6; Edgar Nava, 2; Ross Jarvis, 4.

LaCrosse Boots
 PODNER

ON SALE NOW
 JUST **\$17.50**
 AT
HANSFORD IMPLEMENT
 Hwy. 207 659-2568

- Completely waterproof molded vinyl sno-boot
- Skin-lit nylon tricot lining, urethane foam backed
- One-piece molded construction
- Waterproof insole and counter plus steel shank reinforcement
- Skid resistant outsole and heel
- Men's, Women's and Boys' sizes

ANNOUNCING
Mark Rassmussen, OPTOMETRIST

In the offices of Douglas Steger, O.D.
 During Normal Business Hours
 9 to noon and 1 to 5, Mondays thru Thursdays
 and 9 to noon Fridays
 Call for appointment -- 659-3650
 710 S. Roland Spearman, Tx.

The value of your heating & cooling system isn't determined by its price tag

When you buy a heat pump, you'll realize the true value of your investment after it's installed.

You'll see then how efficient the heat pump is compared to traditional electric resistance heat -- and how comfortable it keeps your home in the summer and winter.

If you'd like to know more reasons your next heating and cooling system should be a heat pump, call our office today.

Texas-New Mexico Power Company.
 Neighboring Professionals Offering You The Best Choice

Questions about the sweeping tax changes?
 H&R Block has the answers. *Henry R. Block*

Everybody's asking questions about the most sweeping tax changes in history. Our experienced preparers know the answers. We know the new laws and the new forms. We'll save you every dollar possible. And, you'll get the biggest refund you have coming! If there's ever a time for H&R Block, it's now.

H&R BLOCK DON'T FACE THE NEW TAX LAWS ALONE.
 307 W Davis Spearman 659-2310
 Mon. Wed. Fri. 9A.M. - 5 P.M. Late Appointments Available

KEEPING THE FAITH

Readers Rank Newspapers 1st In Advertising

The newspaper is the "most believable" ad medium. Consumers also "look forward" to reading newspaper ads far more than they do any other kind of advertising.

Most Believable Advertising Medium

Newspapers	42%
TV	26%
Radio	11%
Magazine	11%
Direct Mail	5%

(SOURCE: Opinion Research)

Readers Look Forward To Media Advertising

Newspapers	44%
Radio	10%
TV	9%
Direct Mail	(fractional)

(SOURCE: Audits and Surveys, Inc.)

Prepared by Texas Newspaper Advertising Bureau (TNAB)
 An affiliate of the Texas Press Association

Trust In Newspapers far exceeds media

Wind shield REPAIR & REPLACEMENT

We can repair damaged areas in your windshield up to 2" in diameter. We'll come to your vehicle's location in the oilfield or anywhere!

Most insurance companies pay all cost.
DAVY GURLEY 435-2998