

COLLECTING FOULS . . . Spearman's Ginger Pearson [35, white] gets fouled by an overeager West Texas defender in girls varsity basketball action Tuesday evening in the Spearman varsity gym.

## Lynx in must-win situation . . . Lynxettes clinch playoff berth

The Spearman Lynxettes clinched a berth in post-season playoffs with a pair of back-to-back wins this past week while the Lynx fell out of the driver's seat into a series of must-win situations after dropping their second encounter to the Bucks in White Deer last Friday.

That lone loss -- coupled with a win over West Texas High -- saw the Lynx go to 7-4, just one-half game behind second place Stratford who wound up their regular season Tuesday evening with a strong win over Gruver.

The Elks finished the 1-AA district cager race with an 8-4 mark. This means the Spearman boys must beat Panhandle Friday evening in order to force a tie with Stratford and put the two teams into a playoff to decide who will represent the district as the second place team in post-season playoffs.

This past week, the Lynxettes downed White Deer, 50-16, then came back to defeat West Texas High, 54-30 Tuesday evening in the

Spearman varsity gym.

The Lynx were tripped up by the Bucks, 54-50, Saturday afternoon in White Deer, but came back to bury the Comanches of West Texas High, 86-68, Tuesday night in Spearman.

Against White Deer, the Lynxettes were paced by the double point effort of floor leader Krista Kirkland who had 12 points. A total of nine varsity girls got on the scoreboard in that contest.

Three Spearman girls gained double figures against West Texas with Kirkland leading the pack with 21 points.

Londee Bradley had 12 points and Ginger Pearson turned in a strong scoring performance with 11 points of her own.

The boys game in White Deer saw Brett Davis hit for five 3-point shots to claim 15 points and high scoring for Spearman in that loss.

Also in double figures in the Lynx-Buck roundball contest was Tim Woolley with 13.

Against West Texas Tuesday, the Lynx had four men in double figures and a total of 10 players who got on the scoreboard in one of their best team efforts to date.

Davis and Woolley each hit for 17 points apiece to lead the Spearman effort. Carl Urban turned in 15 points while Kevin Nelson dumped in another 13 for Spearman.

Junior varsity action saw the Spearman boys claim a pair of wins while the Lynxette JV crew dropped their contests.

The Lynx JV dropped White Deer by a 40-32 count, then came back to down their West Texas counterparts, 33-25, Tuesday evening.

Mark Garcia hit for 17 points to lead the Lynx JV against White Deer, then came back with a 16-point night against West Texas.

On the girls side of the ledger, the Lynxette JV bowed out to White Deer, 28-32, then fell to visiting West Texas, 22-34.

High point against White Deer

was Cindy Melton with eight points while Brandi Schneider hit for seven points to lead the Lynxette JV against West Texas.

The regular season will wrap up for both Spearman varsity crews this Friday evening when they play host to Panhandle.

Junior varsity games will begin at 5 p.m. with varsity girls action starting at approximately 7 o'clock and boys varsity at 8:30 that night.

### GIRLS VARSITY

West Texas:	7	12	18	30
Spearman:	18	35	43	54

S -- Carol Poole, 0-0-1-1; Krista Kirkland, 5-3-2-21; Kim Jenkins, 0-0-1-1; Heather Murrell, 1-0-0-2; Lisa Cazarez, 2-0-2-6; Ginger Pearson, 3-0-5-11; Londee Bradley, 6-0-0-12; Team, 17-3-11-54.

Spearman:	19	30	44	50
White Deer:	4	6	9	16

S -- Laci Lasater, 2-0-0-4; Kirkland, 5-0-2-12; Jenkins, 2-0-0-4; Vonda Benson, 1-0-5-7; Murrell, 3-0-0-6; See "LYNXETTES," p-2

## PDRA board votes to condemn dam site land

Palo Duro River Authority board members voted to move ahead with condemnation proceedings on a tract of land which would free the Hansford-based water authority to

move ahead on construction plans for the proposed dam.

That vote came in a Tuesday afternoon meeting where the board's land negotiator reported that he had failed to reach a settlement with Avlin Bushman of Perryton on the land needed for the dam proper.

No suit had been brought to 84th district court as of presstime Wednesday, however, and PDRA general manager Johnnie Lee was reported to be meeting with the board's land negotiator in Amarillo at the time in an attempt to reach a settlement.

A time table for the construction of the dam proper leaves the PDRA board in a position of needing to have access to the land in order to begin construction in late spring or early summer.

"This is not something we're wanting to do," notes Ken Evans, secretary of the PDRA board. "But in order to maintain our time schedule, we must move ahead."

In other action Tuesday, the board authorized and funded a trip to the Texas Water Conservation Association conference in Ft. Worth scheduled the end of this month.

They also authorized the general manager to enter into a contract with Natural Gas Pipeline for moving pipeline.

## School heads awarded new contracts

School administrators within the Spearman ISD were awarded new contracts at the SISD board meeting Tuesday morning.

Receiving 2-year contracts were high school principal Ken Friemel, elementary principal, Allen Alford, and business administrator, Orville Latham.

Junior high principal Eddie Gage was given a 1-year contract in order to have contracts for administrators on a staggered year basis.

The Spearman ISD also accepted the resignation of assistant football coach Ken Rutherford. Rutherford has indicated he is seeking a head coaching position outside of Hansford County.

The SISD board also agreed to purchase a tractor for the Spearman Ag Farm at a cost of approximately \$2,500.

## Rotary Club breaks goal in grand manner

The Spearman Rotary Club broke the \$11,000 mark in pledges this week as part of a fund raising effort by Rotary International to help wipe out polio world wide -- more than besting a goal of only \$800 set for them by their district office.

The money will be used in countries across the world to help vaccinate children against polio and five other childhood diseases including measles, TB, diphtheria, whooping cough and tetanus.

According to Spearman project chairman Jack McWhirter, each \$1 of pledges will help vaccinate eight children.

"People of Spearman have assured that some 88,000 children will receive these immunizations," he notes.

The drive is a long way from over and the Spearman civic club's total was boosted by a single donation of \$5,000 from one resident.

"This project isn't just for Rotary Club members," reports McWhirter. "It's open to every resident of Hansford County who feels they'd like to participate."

Pledges or donations can be made to any Spearman Rotary Club member or mailed to the club at Box 492 in Spearman.

The campaign -- called PolioPlus by Rotary International -- had already seen the Rotary Founda-

tion make grants totaling over \$40-million by mid-1987.

## Hospital in negotiation

Negotiations preparatory to recruit a new physician for Spearman and Hansford County will highlight an otherwise routine agenda for the Hansford County Hospital District this Thursday evening.

That meeting will begin at 7 p.m. in the board room of the Hansford Hospital in Spearman.

In addition, board members will also consider ordering a sheriff's sale on a piece of Hansford County property in order to collect an unpaid debt owed to the hospital.

Board members will also consider entering into an agreement with the Canadian Hospital District to share the expense on a full-time nurse-anesthetist.

"In order to have a qualified person fill this position, we'd be looking at a cost of approximately \$44,000 to \$48,000 annually," notes hospital administrator Al La Rochelle. "By splitting his time between here and Canadian, we can have the benefit of a certified anesthetist at half the price."

## Business administrator, teacher also resign . . . GISD superintendent quits

Gruver ISD school board officials received resignations this past week from the GISD school superintendent, the school business

administrator and a GISD science teacher -- those resignations effective immediately, reports a spokesman from the board.

## City hears audit report

Spearman city councilmen heard a report from Scott Beedy of Henton, Beedy and Company on the audit of the city's 1986-87 fiscal budget just ended Sept. 30.

The audit was accepted by city officials with no discrepancies shown by the accounting firm's audit.

An election for mayor and two aldermen was ordered by current Mayor Ralph Budgett, with the election to be held May 7.

The city also authorized city manager Jim Murray to purchase two Brother electronic typewriters for administration and accepted the annual reports from the city's different departments.

Superintendent Chester Juroska, business administrator Betty McWilliams and science teacher Carol Ladd turned in their resignations last Thursday afternoon to the GISD board.

The three tendered their resignations, effective immediately, stating "personal reasons" for leaving the Gruver school system.

The Gruver school board was scheduled to meet Wednesday afternoon to decide on a course of action for replacing the three GISD employees.

"Hiring a superintendent is a lengthy process," notes one board spokesman. "At this point, we don't know what we're going to do in the interim."

School officials may look at naming an interim superintendent, either from within the school system or through the temporary hiring of a retired administrator to fill that gap until a new superin-



CHESTER JUROSKA  
... Superintendent Resigns

tendent can be named.

A Dalhart assistant-superintendent may have talked with Gruver school officials during their Wednesday meeting concerning the Gruver head administrative position, but that report was unconfirmed at presstime.

## First free commodity distribution

While the first surplus commodity distribution will be held at the Hansford County courthouse in Spearman next Wednesday, only 115 of some 225 certified recipients from the 1987 rolls have recertified, reports Donna Yarbrough of the county judge's office.

"People who were certified last year must recertify again this year," notes Yarbrough. "And it would certainly speed things up if they don't wait until distribution day to accomplish that."

Those who were certified during 1987 are asked to come into the county judge's office and re-certify for this year prior to Wednesday's distribution, she adds.

Receipt of surplus commodities will be slowed down for those who have not already recertified prior to the Wednesday distribution, Yarbrough reports.

Those eligible for surplus commodities include recipients of Aid to Families with Dependent Children, those receiving food stamps, medical assistance only or supplemental security income.

Commodity distribution will be held from 1 to 5 p.m. next Wednesday.

## The HANSFORD REPORT

By JAMES JARRETT

Viola McNabb Whitson, the dear lady who graced the Hansford Round Up last June as Pioneer Queen, will be celebrating her 88th birthday this Friday.

Viola came to be a very dear friend during the hiatus of our getting to know Spearman and Hansford County.

We wish her a most happy birthday and many, many more yet to come.

Ken Rutherford, who has served here so capably for the past couple of years as a coach, has tendered his resignation in hopes of landing a head coaching position in another school.

Ken is impressive in his knowledge of sports and has proven a more than capable assistant here at Spearman. The Spearman coaching staff will certainly miss his expertise.

Of course, Ken is one of those easy going guys who seems to fit in with almost any group and is able to converse on a number of subjects as well.

The other night at the basketball game, Ken and a few other coaches were standing around talking when somebody intimated that Ken had a smart mouth.

Now, I'm very defensive when it comes to coaches and I felt it my duty to step in and defend Ken's honor.

Without hesitation, I said, "Now, gentlemen -- I know I haven't known Ken too long now, but I have to tell you, in the short time I've known him, I've never heard him say one smart thing."

Despite my stoic defense of his situation, Ken didn't seem to appreciate my efforts.

You know, some days it just doesn't seem to pay.

While we're talking about coaches, we might as well mention Spearman's own head football coach, athletic director and pork-barrell philosopher, Don Mullins.

Those who care to listen -- and I can't help but notice how people avoid him at these times -- can always catch an earfull of his off-the-cuff wit between games and at halftime intermissions at basketball games.

Fortunately, I don't remember any of the jokes he told -- or at least attempted to tell.

Except, of course, one he told by using me as the brunt of the joke. It was cute. Not diplomatic, but cute.

The football coach has gone  
See "REPORT," p-2



BONE-CHILLING COLD . . . Hansford county residents were treated to a return of winter chill and wind Wednesday morning when a cold front sept across the Texas Panhandle. Ten temperatures dropped down into the teens behind a wind which gusted to above 30 mph, giving a wind chill factor of -23 degrees.

## County agrees to retention fee

Hansford County commissioners agreed to enter into a contract with Amarillo forensic pathologist Ralph Erdman -- a contract which calls for a \$100 per month retention fee.

Commissioners were informed last week that Erdman was seeking the \$100 per month fee along with a \$500 per autopsy charge from the counties he serves.

He also stated that communities which elected to do without the retention fee would be charge \$750

per autopsy he is required to perform.

Erdman handles autopsies for some 33 counties in the Texas Panhandle area. Counties and cities are required to have autopsies performed on the bodies of individuals who die outside of hospitals or unattended and is ordered by the coroner or justice of the peace acting as coroner.

In other action, commissioners okayed the expense of a tent to house stock show animals next month during the annual junior livestock show.

They also accepted the appraisal district's audit and received their portion of the amount refunded to local government entities covered by the Hansford County appraisal district.

In addition, commissioners agreed to purchase some \$6,000 in fire fighting equipment to help the Spearman Volunteer Fire Department outfit a truck for use in fighting county fires.

continued from p-1

## LYNXETTES

Cazarez, 3-0-0-6; Pearson, 1-0-2-4; Bradley, 3-0-0-6; Jennifer Turner, 0-0-1-1; Team, 20-0-10-50.

## BOYS VARSITY

West Texas: 13 33 42 68  
 Spearman: 21 44 64 86  
 S -- Brett Davis, 5-2-1-17; Keith Benson, 2-0-0-4; Carl Urban, 5-0-5-15; Tim Woolley, 7-0-3-17; Kevin Nelson, 5-0-3-13; Pat Shields, 1-0-2-4; Carson Womble, 1-0-2-4; Shawn Cook, 3-0-0-6; Matt Tucker, 0-0-2-2; J Garnett, 1-0-2-4; Team, 30-2-20-86.

Spearman: 9 28 40 50  
 White Deer: 12 29 37 54  
 S -- Davis, 0-5-0-15; Benson, 1-0-1-3; Urban, 3-0-2-8; Woolley, 5-0-3-13; Nelson, 2-0-3-13; Nelson, 2-0-3-7; Shields, 2-0-0-4; Team, 13-5-0-50.

## GIRLS JUNIOR VARSITY

West Texas: 3 14 22 34  
 Spearman: 4 11 19 22  
 S--Michelle Cook, 4; Brandi Schneider, 7; Bonnie Thompson, 5; Cindy Melton, 2; April Graham, 2; Cam Butts, 2.

Spearman: 7 9 16 28  
 White Deer: 3 15 26 32  
 S -- Melton, 8; Thompson, 5; Kyla Nelson, 4; Butts, 4; Cook, 4; Schneider, 3.

## BOYS JUNIOR VARSITY

Spearman: 11 18 29 40  
 White Deer: 7 15 22 33  
 S -- Haskell Garrett, 5; Mark Garcia, 17; Slaid Jones, 6; Gerald Blan, 7; Billy Club, 3.

West Texas: 8 15 23 25  
 Spearman: 7 15 22 33  
 S -- Garrett, 7; Garcia, 16; Kylie Coombs, 2; Blan, 4; Clubb, 2; Scott Wilkerson, 2;

## FANCY THAT!

The uses for helium gas are ballooning, welding and breathing mixtures for deep sea divers use this lighter-than-air gas, as do medical diagnostic equipment that is safer than x-rays and optical fibers used for telecommunications.

continued from p-1

## REPORT

through a personality change since the end of the gridiron campaign. He's much more relaxed now than he was just a few short months ago. He's not any better looking, but he is more relaxed.

The political campaign is in full swing right now with TV coverage galore.

Never will so few men work so hard to evade or side step as many issues as they possibly can except during this special time.

Political plumage is at its best during this time of the season and people have quite a slate to choose from this Presidential year.

Both the Republicans and Democrats had their surprises in the Iowa caucuses held this past week.

Pat Robertson -- running on a platform of God and country -- beat out vice-president Bush there. And how-tie wielding Paul Simon showed strong for the Democrats, placing second there as well.

Our liberal national news media seems to have had their feelings hurt by Robertson's strong showing in Iowa.

They've been running around for the past few days finding all kinds of experts to declare it was a fluke and that he doesn't have a prayer.

Somehow, I think Robertson would argue that point. In fact, the news media's attention alone is worth more advertising than he can probably afford to pay out of his campaign treasury.

As a Bible-thumping, God-fear-

The Spearman

## Reporter

Your Hometown Newspaper

USPS 509660

Spearman, Tx. 79081

213 Main, Box 458, 659-3434

Published Weekly at  
 213 Main, Spearman, Texas

Owned and Operated by:

Texas Independent Newspapers, Inc.

19906 Encino Grove, San Antonio, Tx 78259

Second class postage paid at Spearman, Texas 79081.

Any erroneous reflection upon the character of any person or firm appearing in these pages will be gladly and promptly corrected upon being brought to the attention of the management.

PUBLISHER

ADVERTISING DIRECTOR

James C. Jarrett

Kirby McAdams

Subscription Rate: Spearman, adjoining counties, combination with the Hansford Plainsman, \$19.95; non-adjointing counties, \$24.95 annually.

Postmaster: Send address changes to Spearman Reporter, Box 458, Spearman, Tx. 79081.

The publisher reserves the right to revise or reject at its option any advertisement which it deems objectionable, either in subject or phraseology, or which it may deem detrimental to its business.

**Free Attic Insulation**  
 With Siding or Overhang Trim-Out Job.  
 Reid Construction  
 435-2772  
 February Only

*Sweetheart of a Sale*

Mens Hickerson Signature Gold tone Rolex look watch



Special Sweetheart Price \$99<sup>95</sup>

Hickerson Jewelers

South of Plains Shopping Center  
 721 W. Seven, Spearman, Texas 79081 • Phone 659-3566

continued from p-1

ing Christian, Robertson is not the first David to face a Goliath situations.

Then again, as a born-again Christian myself, I resent the implication the national news media is making that Pat Robertson isn't viable as a serious candidate. It could well be that many other Americans will take the media's

efforts in the same manner and just go out to the polls to show 'em a thing or two.

It certainly wouldn't be the first time it has happened. And, since they seem to prone to making remarks such as they have been -- all in the name of unbiased reporting, mind you -- it probably won't be the last time, either.

You are Invited to a Baby Shower honoring DeVonna Boyd & son Philip Andrew Friday, Feb. 12, from 7:30 to 8:30 p.m. at Fellowship Hall, First Christian Church.

Hostesses: Mary Brock Sandy Russell Jeanie Laughlin Ruth Bryan Janie Kunselman Beth Phelps Charlotte Jackson-Loretta Cook Rose Isenhower

S14S-2tp

Panhandle State University 36th Annual Performance Tested Bull Sale Sat., Feb. 20 at 1 p.m. CST Location: University Farm, Goodwell, OK.

Top 80 Bulls - Top Performance Pedigrees Angus, Charolais, Hereford, Polled Shorthorn, Santa Gertrudis and Simmental.

Call Jerry Martin Ph(405)349-2611 ext.262 or 221 Evenings (405)349-2514 Sale Day (405)349-2408

**We Want To Be Your "Complete Car Care Center!"**

Whatever Your Automotive Needs, We Are Here To Serve You!

We will give a 10% discount on PARTS and LABOR in the Service Department for Cash or Preferred Customer Charges (Bill paid every 30 days). This excludes Texas Inspection Stickers and any "Specials" we are running.

**SERVICE DEPT. Ernie Vanderburg, Service Manager**

- ★ GM Trained Technicians
- ★ Inspection Stickers
- ★ Air Conditioning
- ★ Engine Diagnosis on gas or diesel engines
- ★ Transmission overhauls or replacement
- ★ Wrecker service
- ★ Front End Alignment
- ★ Electrical Troubleshooting
- ★ Gas or diesel engine overhauls or replacement
- ★ Tuneups
- ★ Free Service Loaners

**PARTS DEPT. Nita Bynum, Parts Manager**

- ★ Mr. Goodwrench replacement engines or transmissions with 12 month/ 12,000 miles warranty
- ★ Mr. Goodwrench gas shock absorbers with lifetime warranty to original owner.
- ★ Computerized parts ordering
- ★ Large parts inventory
- ★ Large windshield inventory
- ★ Large stock of sheet metal

**BODY SHOP Castulo Rosales, Body Shop Manager**

- ★ Wrecker service
- ★ Windshield Installation
- ★ MIG Welding
- ★ Complete "Classic" Restoration
- ★ Unitized body frame straightening equipment
- ★ Complete paint work
- ★ Free Service Loaners

WE APPRECIATE YOUR BUSINESS!

GM QUALITY SERVICE PARTS GM

GENERAL MOTORS CORPORATION

HERGERT GM SPEARMAN

Mr. Goodwrench

659-3721

**HOMESTYLE**

**"Full Meal Deal"**

only \$2.59

Sunday, Feb. 14 thru Sunday, Mar. 13

The sweetest deal in town is the Dairy Queen Full Meal Deal. With a juicy quarter-pound Homestyle Hungr-buster. Golden french fries. Your favorite ice-cold soft drink. And a creamy 5-ounce Dairy Queen sundae with your choice of topping. The \$2.59 Full Meal Deal. It's a steal.



Dairy Queen

Reg U.S. Pat. & TM. Off. © 1987 TX D.G. Op. Council ® Registered Trademark Am. D.Q. Corp.

## Letter to the Editor

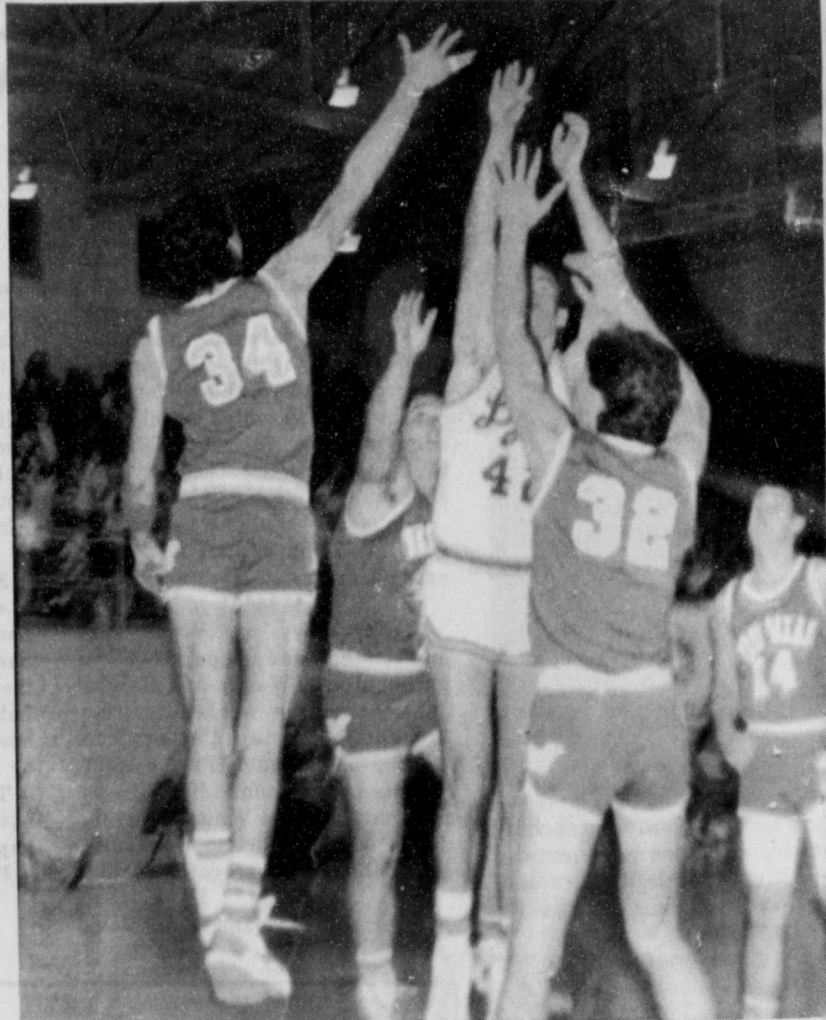
Dear Editor:

Congressmen are destroying our freedoms through their tightening down of the screws on American individualism and accomplishments, through the wrecking of Constitutional Common Laws of Biblical origin.

On May 26, 1987, Justices of the Supreme Court informed the nation that "we are now living in a police state." It is quite a political revelation to read in detail the Supreme Court Opinions on the May 26 preventative detention case. I say opinions because there were three of them: the majority opinion endorsing preventative detention (representing the view of six justices); and two separate dissenting opinions opposing it (representing the view of the other three justices). Although the massive stone lettering above the entrance to the Supreme Court says "equal justice under law", justice is, in fact, becoming increasingly uncommon in such high locations.

The preventative detention case called into question the constitutionality of the 1984 Bail Reform Act (18 U.S.C. 3141 et seq) which passed the U.S. Senate by an overwhelming 96 to 1 vote. Since its passage, approximately 7,000 individuals have been held without bail under the "preventive detention" sections of the Act because the government claimed they represented a future danger to society. This number is likely to grow; and so is plea-bargaining, because (for tactical reasons) overworked prosecutors are using the threat of no bail against arrestees to gain their "cooperation". The message is that trial is an insignificant afterthought. Arrest is given the weight of irrefutable evidence and conviction under this corrupt scheme.

What this means is that the government claims as "future threats" to society (i.e. patriotic Christians, so-called "tax protesters," so called "right-wing extremists," etc.) are to be held without bail and in many cases held



UP AND AT 'EM . . . Spearman's Kevin Nelson [42, white] goes up for two points against a pair of Comanche defenders in the Lynx's district win over West Texas Tuesday evening in Spearman.

without common law trial when they refuse to enter a plea. So anyone detained in a county jail must enter a "guilty" or "not guilty" of his own accord. To we citizens it sounds like the Supreme Court is right in calling the U.S. a "Police State".

Recently the *Boston Globe* reported in area newspapers of the FBI conducting a campaign of infiltration and surveillance against hundreds of U.S. political and religious groups opposed to Reagan administration policies in Central America.

The FBI is supposed to catch criminals, not political or Christian activists.

I believe all congressmen, whether active or positional inactive must be defeated in the

## Kenney named to Dean's Roll

Mary A. Kenney, a senior meteorology major from Spearman, has been named to the Dean's Honor Roll at Texas A & M University for the 1987 fall semester.

In order to be named to the Dean's Honor Roll, a student must be registered for 15 or more semester hours and earn at least a 3.75 grade point ratio, out of a possible 4.0, during the most recent grading period.

coming primary elections. They are not worthy of the trust and honor that we have placed upon them.

Paul T. Buchanan



In parts of Europe it was once believed putting cumin seeds in bread would keep the wood spirits from stealing it. Probably always worked, too.

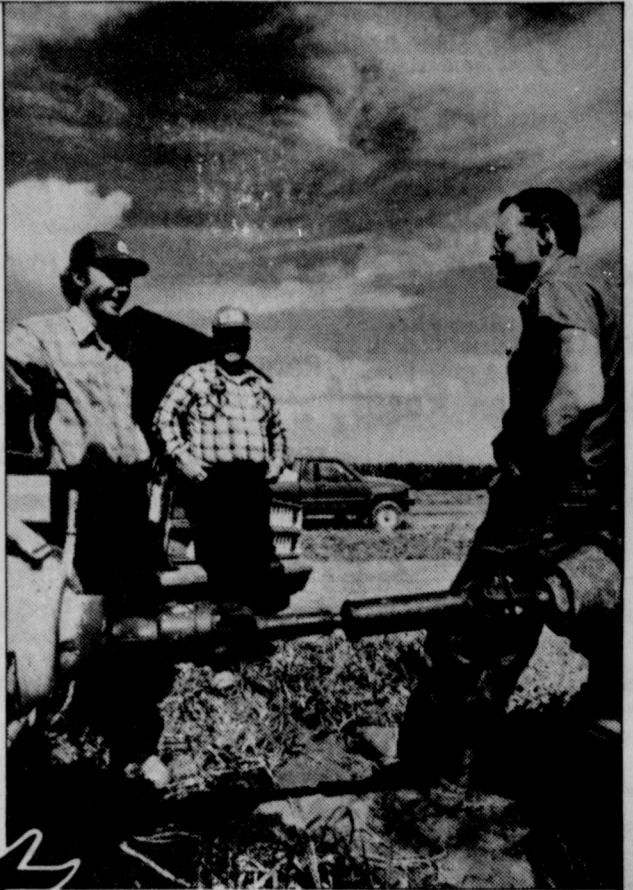
## Hospital Report

Patients in Hansford Hospital are Janyth Hart, Deta Blodgett, Jop Franz, Irene Brown, Donald Smith, Steve Gaines, Yolanda Hinojos, Ethel Robertson, Robert Gilpatrick and Ruth Garner.

...new  
corn hybrids  
...new  
pricing  
programs.

When it comes to seed corn, no one has better hybrids or better pricing options than your neighborhood Pioneer representative.

For the High Plains  
3168 • 3124



Chyd Damon Jr., Pioneer Sales Representative (l), with his dad, Chyd Damon, Sr., and customer Jim Collins (r), near Dimmitt, Texas.

# Get Together

with...

Billy Logsdon  
733-2803

Joe Paul  
435-2501

Andy Watley  
659-3970

Balloons

ORDER YOUR VALENTINE  
BALLOON BOUQUET

Free in-town delivery

CALL Leann Gillaspie  
Brenda Shieldknight  
Lois Shieldknight

Balloons for  
all occasions

Airloon Express

Spearman

This bright light  
is a bright idea  
for home safety

Texas-New Mexico Power Company's Nite-Liter is a smart addition to any home. The 100-yard diameter of usable light it provides makes your home safer.

Accidental falls caused by poor outdoor lighting will be less likely, and your well-lighted home won't be an easy nighttime target for burglars.

This light is bright in another way too — it automatically turns itself on at dusk and off at dawn.

Learn how you can have a Nite-Liter installed by calling your local Texas-New Mexico Power Company office today.



Texas-New Mexico  
Power Company.

Neighborhood Professionals  
Offering You The Best Choice

You are invited

to  
*A Fair  
of the  
Heart*

Coronado Hospital

Pampa, Texas

February 13

You MUST pre-register

Call 665-3721

### Schedule of Activities

7:00 a.m. to 9:00 a.m. — FREE cholesterol screening ... (see note about preparations).  
— visit exhibits, tour hospital ... HEARTy snacks served

9:00 a.m. to 9:30 a.m. — How to cook HEARTY ... dietary department of Coronado Hospital

9:30 a.m. to 10:00 a.m. — Risk factors for heart disease — Dr. Albert Sy

10:00 a.m. to 10:30 a.m. — Common medications used in treating heart disease — Dr. Laxman Bhatia

10:30 a.m. to 11:00 a.m. — Panel discussion featuring four heart patients and Pampa physicians

11:00 a.m. to 11:30 a.m. — Exercise after a heart attack — Dr. Kamnani

11:30 a.m. to ?  
— Results of cholesterol screening

NOTE: If you want to have a free cholesterol screening, you must not eat or drink after 8 p.m. Friday evening. You may drink water, and take your heart medications. Diabetics should wait until they have a snack before taking medications.

### Sheets named to honor listing

Anne Sheets, a 1987 Spearman High School graduate, has been named to the President's Honor Roll at West Texas State University in Canyon.

The freshman university student earned a perfect 4.0 grade point average in her first semester at WTSU.

Majoring in science, Sheets is

attending the Canyon university on a full 4-year scholarship.

She is the daughter of Mr. and Mrs. Claude Sheets of Spearman.

### Markets

WHEAT	\$2.76
MILO	\$3.00
CORN	\$2.05



**ENGAGEMENT ANNOUNCED . . .** The engagement and approaching marriage of Sharilyn Kay Vernon and Alan Lynne Jones is announced by the prospective bride's parents, Mr. and Mrs. Jimmie R. Vernon of Spearman. Jones is the son of Mr. and Mrs. Gary L. Jones of Stinnett. A June wedding is planned.

## Among the Neighbors

by Helen Fisher

A picture and article in the Sunday News-Globe of the Reverend Scott Latham tells of his appointment to Associate Pastor of St. Stephen United Methodist Church in Amarillo. His work will be largely with youth and families.

Scott and his wife, Hazel, have been serving the First United Methodist Church. They have two children.

He is the son of Martha and Orville Latham and he is a graduate of Spearman High School.

Jacob Jones of White Deer entertained and supervised his grandparents, Wanda and Hershall Jones, over the weekend. They brought him home with them from the non-ball game on Friday night.

Since their son, Jim, is an assistant coach at White Deer, the Jones were subject to more nailing than the average fan.

Guests of Mr. and Mrs. David

Collins have returned to their home in Grosbeck, Tx. His brother and family, Danny and Lynda Collins and two children were here for the funeral services of Roy Collins.

Others here for the services who have since left were Ted and Ida Kline of Emporia, Kan. and Becky and Kenneth Pittman of Amarillo. They were guests of Mrs. Emma Lou Collins in addition to Bea Ainsworth also of Grosbeck.

Many in Spearman were pleased to read of the promotion of former Spearman football Coach Greg Sherwood. He is to be the head of the athletic department of the Lubbock high schools. He has been coaching at Plainview since he left here in 1978.

The Sherwoods were here for a number of years and made an impact on Spearman youth.

His son, Scott, lives at League

See "NEIGHBORS", p-7

### Happy Valentine Day

In any language flowers say I LOVE YOU

**VALENTINE SPECIAL**  
**One Dozen Roses**

**\$30**

Register for our drawing on one dozen free red roses. Entry deadline Sat. Feb. 13 at noon.

Adela's Flowers & Gifts

511 Hwy. 207 S. 659-5180

# PRICE BREAK

## No One Beats Johnson-Cooke On Price — No One!

### America's Winners ...

	LIST PRICE	DEALER DISCOUNT	CONSUMER CASH ALLOWANCE	YOU PAY
'87 New Yorker Turbo. Loaded. Bronze. Lt. Hall	\$19,083.00	\$3,198.23	\$2,500.00	\$13,384 <sup>77</sup>
'87 5th Avenue. Mink Brown. Loaded	\$18,813.00	\$2,323.00	\$1,000.00	\$15,490 <sup>00</sup>
'87 5th Avenue. Crimson Red. Loaded. Cloth	\$18,813.00	\$2,323.00	\$1,000.00	\$15,490 <sup>00</sup>
'87 5th Avenue. Crimson Red. Loaded. Leather. Lt. Hall	\$19,099.00	\$3,186.09	\$1,000.00	\$14,912 <sup>91</sup>
'87 Daytona. Flash Red	\$12,126.00	\$1,687.00	\$ 750.00	\$ 9,689 <sup>00</sup>
'87 Daytona. Silver. Lt. Hall	\$11,567.00	\$2,078.19	\$ 750.00	\$ 8,738 <sup>91</sup>
'87 Colt Vista Wagon. 4 X 4. Lt. Hall	\$14,699.00	\$2,520.00	\$ 500.00	\$11,679 <sup>00</sup>
'87 D-150 Pickup. Loaded. Gold. Lt. Hall	\$15,471.00	\$4,178.00	\$ 750.00	\$10,543 <sup>00</sup>
'87 Ram D-50. 4 X 4. Roll Bar Kit	\$12,502.00	\$2,422.00	\$ 750.00	\$ 9,330 <sup>00</sup>
'87 LeBaron. 2-Dr. Coupe. Rosewood. Lt. Hall	\$14,327.00	\$3,666.00	\$1,500.00	\$ 9,161 <sup>00</sup>
'87 LeBaron. 2-Dr. Coupe. White. Lt. Hall	\$14,013.00	\$3,494.00	\$1,500.00	\$ 9,019 <sup>00</sup>

Consumer Cash Allowance Funded Fully by Chrysler Corp.

### Mercury ...

'87 Cougar LS. Two-Tone Taupe. Lt. Hall	\$15,602.00	\$2,776.00	\$ 600.00	\$12,226 <sup>00</sup>
'87 Cougar LS. White. Lt. Hall	\$15,287.00	\$2,549.00	\$ 600.00	\$12,138 <sup>00</sup>
'87 Sable LS Wagon. Silver	\$17,427.00	\$2,310.00	\$1,000.00	\$14,117 <sup>00</sup>
'87 Sable GS Wagon. Smoke. Lt. Hall	\$15,403.00	\$2,298.00	\$1,000.00	\$12,105 <sup>00</sup>
'87 Sable LS. Red. Demo	\$16,745.00	\$2,633.00	\$1,000.00	\$13,112 <sup>00</sup>

Cash Allowance Funded Fully by Lincoln-Mercury Division.  
Mercury Cash Allowance Program Ends March 8, 1988.

# JOHNSON MOTOR COMPANY COOKE

(806) 435-7676  
2322 S. Main  
Perryton, Texas

### Valentine's Special

CLEAN 3 SWEATERS,  
GET ONE CLEANED FREE

Special offer good through Feb. 14 only.

Call collect 435-4211 for pickup & delivery each Monday & Thursday

**PERRYTON CLEANERS**  
★ LAUNDRY ★

3 Days Only!

Thurs.-Fri.-Sat.  
Feb. 11-12-13

**VALENTINE SPECIAL**  
Winter Sale  
**75% off**

*j. Winston*

Women's Fashions . . .  
More than Traditional

2701 Paramount  
358-2457

## Attention Cattlemen and Wheat Pasture Operators

We are currently contracting  
cattle off of winter wheat  
for current and spring delivery.  
For more information call:

Bill McCoy, Mgr.  
Texas Beef Producers  
Dumas  
948-4163

Craig Clyburn, Mgr.  
Palo Duro Feedyard  
Gruver  
733-2416

Chris Cornstock  
Texas Beef Cattle Company  
A Division of TBP Group  
Amarillo  
Res: 383-2940 Office: 372-3877

**TBP**  
GROUP

**Texas Beef  
Producers  
Group**





**Dr. Rick Siewert D O is pleased to announce the association of**  
**Manon E. Childers, III, M.D.**  
 at the  
**Spearman Family Clinic**  
 11 W. Kenneth  
 Hours by appointment 659-3787

**Ladies Hickerson Signature**  
 2tone Rolex look watch



**Special Sweetheart Price \$89<sup>95</sup>**

*Hickerson Jewelers*

South of Plains Shopping Center  
 721 W. Seventh • Spearman, Texas 79081 • Phone 659-3566

continued from p-4  
**NEIGHBORS**  
 City, Tx. where he is an engineer and has one son. Information on Stan Sherwood is unavailable.

A very tired group returned Sunday from Ft. Worth where they had been attending the Fat Stock Show with their students who were showing stock.

Although the show was interesting and enjoyable, the hours were long.

Those making the trip, in addition to the students, were Dr. and Mrs. Tom Latta, Mr. and Mrs. Phillip Renner, Mr. and Mrs. Joe T. Venneman, Mr. and Mrs. Tony Harper, Keith Martin, Carolyn Close, Burt Williams and Tracy Vernon.

Julie Latta and Tim Stedje, both students at Tarleton University at Stephenville, met the group at Ft. Worth.

An overnight lock-in at the Hideout on Saturday night resulted in a very sleepy group in attendance at church Sunday morning.

The Methodist Youth Fellowship sponsored the lock-in and it was conducted by Scott Wright, associated with the Wesley Foundation of Texas Tech and Dale Bradley and Jamie Thayer, both students at

**CARD OF THANKS**

Words cannot begin to express the feelings of gratitude and appreciation that we feel. The love that was shown during the loss of our loved one touched each and everyone of us.

Thanks for all the flowers, the food, the visits, the prayers, and the thoughts. Thanks to the doctors and the hospital staff, the ambulance staff and a special thanks to David Knuckles.

Emma Collins  
 David, Phyllis, Lisa & Brent  
 Danny, Linda, Curt, & Cindy  
 Becky, Kenneth, Blaine & Molly

Texas Tech.  
 All night activities included skits, games, discussions, counseling and of course, refreshments.

It was unusual, interesting and very successful.

Adults staying up the night with the youth were Steve and Denise Donnell, Tindle and Kristi Ramon,

and Lee Ann Gibner.

If the Massachusetts legislature passes the asinine law being pushed by the animal righters providing that the entire livestock production business be under the direct control of the legislature -- including setting the space for each animal; the ventilation, the feed,

the medical treatments, slaughtering -- down to the reading of a bedtime story -- it is being suggested that all the other states throw up an embargo all around Massachusetts; forbidding from entering that state any beef, pork, or chicken; leaving them to their diet of cranberries and clams.

**Country Stitches**

**Final Reduction**  
**75% off**

**All Fall & Winter Fabric**

**1 Table of fabrics**  
**99¢ a yd. and under**

715 W. 7th Spearman, Tx.

**Your Home Is Full Of Hidden Dollars**

Call 659-3434

Turn idle items into cash fast with a Want Ad

**OSGOOD MONUMENT CO.**  
 Amarillo, Texas  
 Dealers of Rock of Ages Granite, as well as all colored granites, marble and bronze memorials.

represented by  
**BOXWELL BROS. FUNERAL HOME**

519 S. Evans  
 659-3802

**Real Estate**

**FOR SALE:** nice 3 bedroom brick home, approx. 1300 sq. ft.; single garage. Priced in 30's. Good neighborhood! Call 659-2263 after 5:00.

**ABANDONED HOMES -** Take over payments on 2 and 3 bedroom homes. **Qualify by phone.** (806) 381-1352. Call collect. S46-rtm

**FOR SALE** Newly remodeled house 2 bedroom, central heat and air, by appointment only. Call after 5 p.m. 659-2697. S11S 8tp

**FOR SALE:** Nice house in good neighborhood. 3 bedrooms, 1 1/2 baths, office, lots of cabinet storage, garage, on 2 lots. 727 Wilbanks. Price reduced. Call Sheila Watley 659-3970 S13 rtn

**For Rent**

**FOR RENT:** Small 2 bedroom apartment, partially furnished. Call 659-3491 after 5 p.m. S14-T's-only-rtm

**FOR RENT:** 1 bedroom furnished apartment with new paint. Call 659-3491 after 5 p.m. S14T's-only-rtm

**FOR RENT:** 2 bedroom house partially furnished, fenced backyard. 813 Townsend. \$150/month. Call 659-2090. S14S-2tp

**Help Wanted**

**Sales Representative**  
 High Caliber Person  
 Sales career position with management opportunities in growing organization. Intensive training program. Starting income to \$3,200 per month. No experience necessary. Outstanding group insurance and retirement benefits. Relocation not necessary.  
 For confidential personal interview, call (806)435-9448 or write Manager, P.O. Box 602, Perryton, TX 79070. S14-4tp

**Autos for Sale**

**FOR SALE:** 1981 Chevy, customized van. 57,000 miles, loaded with extras. Very clean. Call 658-4825 after 6 p.m. S15-4tc

**PSU - BULL SALE**  
 Sat. Feb. 20, 1988  
 1:00 p.m. CST Activity Bldg.  
 Univ. Farm, Goodwell, Ok  
 Selling 80 Hd.  
 For Catalog call (405)349-2611  
 Ext. 262 or 221 (Office)  
 or 349-2514 (Home)  
 SFeb.4,11,18-c

**Miscellaneous**

**I WILL DO IRONING, TYPING, OR PLOWING.** Also for sale electric typewriter, riding lawn mower, baby play pen, and three wheel bicycle. Call 733-5234 ask for Mary S15-1tc

**Will do babysitting in my home.** Call Julie at 659-2300. Reasonable rates. Day or night. Drop-ins welcome. S15-2tp

**Income Tax Service** Call 659-2223, Merle Washington, 617 Haney. S15-1tp

**Century 21**

**GOLDEN SPREAD REALTY**  
 Janye Helton Pointer, Broker  
 Owner, 435-5444  
**SALES ASSOCIATES**  
 T.O. Lesly - 659-2028

1112 S. Bernice - 3-1/4 location! Location!  
 322 Hazelwood - 2/1 owner will finance.  
 607, 609, 611, 615, Haney Small house/2 apartments.  
 615 E. Kenneth - 3/2. Corner lot with extra acreage!  
 102 Wanda - 3/1 Immaculate!  
 118 Townsend - 4/2. Apartment included!  
 711 Collier - 3/1 Why rent?  
 322 S. Barkley - 3/1 Good location at affordable price!  
 811 Townsend-2/1 affordable! **COMMERCIAL**

15 N. Hazelwood  
 201 Bernice - Former M&M grocery store. Can be sold with or without fixtures.  
**FARM**  
 640 acres of grass in Sherman Co., over 500 acres in the C.P.R. Program  
 640 acres of wheat and milo land in Hansford Co.  
 3 RANCHES in Brownwood area. Call today!

Offered by  
**EMMETT R. SANDERS**  
 REALTOR

3 bedroom home, attached garage.  
 \*\*\*\*\*  
**EMMETT R. SANDERS**  
 REALTOR  
 659-2516, nights 659-2601

**BOB HARDY REALTY**  
 803 Wilmeth Dr.  
 659-3440

**NEW LISTINGS:**  
 820 Linn Drive - Imp. 3 bd - 2 bath - fire - double car garage: Area 2200 sq. ft. living area. Custom drapes. Lawn Sprinkler System. Satellite dish and receiver. Fenced. Excellent location. Call for quote  
 1001 Haney - 3 bd, 2 bath. Den with fireplace. Cornerlot fenced. Carpeted. Nice, price-reduced. Approx. 1450 sq. ft.

Robert Hardy - broker

**Real Estate Sampler**

Allen Alford-Broker-659-3034  
 Hester Sue Crawford-Sales 659-3060 or 659-2074  
 Dennis Nelson-Sales-659-3608  
 Larry Trosper-Sales-659-3491

316 S. Bernice - 2366 sq. ft.  
 101 W. 12th - 1344 sq. ft.  
 619 Evans - 1350 sq. ft.  
 1014 Linn Dr. - 2,000 sq. ft.  
 734 Wilbanks - 1192 sq. ft.  
 32 N. Snider - 1850 sq. ft.  
 729 Cotter - 1519 sq. ft.  
 506 Endicott - 1100 sq. ft.  
 907 Drossen - Nice starter  
 505 Haney - 1600 sq. ft.

**We want to be Your REALTOR**

**STEAM RINSE & VAC** - Rinse and Vac Shampooer for rent at Gordons Drug. \$10.95 up to 24 hours.

**L & M Body Works**

1501 Hwy. 15  
 659-2775  
 Tailpipes - \$29.95  
 Mufflers - \$39.95  
 Most Duals - \$160.00 complete

**EXCELLENT INCOME FOR HOME ASSEMBLY WORK.** For Info call (504)646-1700. Dt. P-1039 S. J. 24&28, F. 7&11

**ADDRESS ENVELOPE** for firm\$, nationwide! \$en\$ational earning\$! No experience. We show you. Begin immediately! Stamped envelope: Publications-1, 804 Old Thornaby Road, Clanton, Alabama 35045. S08-rtm

**PORTAMEDIC** needs a LVN, RN or EMT to take part-time mobile insurance physicals in your area. Call (806)747-3223. S14S-2tc

**HELP WANTED:** Feed truck drivers and/or experienced mechanic. Call (806)882-4251. Frontier Feed-vac. EOE M/F S15-2tc

**VISA! MASTERCARD! GUARANTEED!** Without investigation. Bankrupt? Bad credit? Divorced? Widowed? On Welfare? No problem. All eligible. Free details. Send #10 self addressed stamped envelope. Success, Drawer 389, Clanton, Alabama 35045. S08-rtm

**NOTICE**  
 Wallace Monument Co. Monuments, Curbing, Grave Covers  
 Local Representative  
**LEONARD JAMESON**  
 Spearman, Texas

**WANTED:** Any J.H. Gruver & Sons Advertising Gifts that you do not wish to keep, please contact Helen Shapley at 733-2671 or 733-2641. Especially bond books, coin purses, calenders, knives and pen and pencils. S11

**NOTICE TO BIDDERS**

Sealed bids for the following item will be received by the City of Spearman, Texas, at the office of the city manager up until 2:00 p.m., March 16, 1988, and then publicly opened and read.  
 24 month contract for service of new uniforms and service of walk-off mats.  
 The city reserves the right to reject any or all bids, to waive informalities, and to accept the bid deemed to be the most advantageous to the city. All bids received after the closing hour will be returned unopened.  
 All bids shall be sealed and marked on the outer envelope of the type of bid being submitted. Specifications and bidding documents may be secured from the office of the city manager, P.O. Box 37, Spearman, Texas 79081. S14 2tc Tony

**CARD OF THANKS**  
 God loaned him to us for a while, now he has taken him home. He is at peace in a beautiful place. He is a beautiful flower in the Lord's bouquet. We will all miss him.  
 We would like to thank all our friends and neighbors for the flowers, visits, calls and food. Special thanks to Dr. Rick Siewert and the nurses at Ochiltree General Hospital for such tender loving care. To Ray Adams of the First Baptist Church, to Brother Fox and Brother Knuckles of Spearman for the prayers and visits, and to Rev. L.C. Lynch of Freewill Baptist Church for the services.  
 G19-1tp The Jim Medley family  
 Rochelle  
 Ray, Elva & children  
 Dennis & children  
 Bill, Jeanette & son  
 Doug, Mitzie & daughters  
 Cindy & Rick Young & Son  
 Essie Mae, Leo & Bonnie  
 Irene & Don Pendrell

**CARD OF THANKS**  
 - I and my family send our thanks to our Christian friends for the Love and Kindness given through our sadness of my son Melford. Your prayers were answered before I received your cards and a great burden was lifted from my heart, then when I received your cards I knew that God had answered your prayers. Special thanks to Mr. Connelly and Mr. Day.  
**LERA LANGSTON AND FAMILY**

**THE  
FINAL  
2-DAYS  
FRI. & SAT.  
... FEB. 12 & 13**

**OF** **BEEDY'S**  
**WINTER**  
*Clearance*  
*Sale*  
**OF**

**STORE CLOSED ALL DAY  
THURSDAY, FEBRUARY 11  
FOR FINAL MARKDOWN!**

**QUALITY FURNITURE**

**SAVINGS UP TO ... 70%**

**STORE HOURS: FRIDAY & SATURDAY —  
9:00 A.M. - 6:00 P.M.**

• ALL SALES FINAL •

• NO HOLDS • NO LAY-A-WAYS • NO PHONE ORDERS • NO REFUNDS • NO SPECIAL ORDERS •

**OPENING HOUR SPECIAL!**  
Friday at 9:00 A.M.  
PLANT STAND BY BUTLER  
**\$109.50 NOW \$45.00 SAVE!!!**  
One Only — Cash & Carry — All Sales Final

**OPENING HOUR SPECIAL!**  
Friday at 9:00 A.M.  
FRUITWOOD VALET BY BUTLER  
**\$79.50 NOW \$25.00 SAVE!!!**  
One Only — Cash & Carry — All Sales Final

**OPENING HOUR SPECIAL!**  
Friday at 9:00 A.M.  
1 PAIR END TABLES BY RIVERSIDE  
**\$198.50 EA. NOW \$95.00 EA. SAVE!!!**  
One Pair Only — Cash & Carry — All Sales Final

**OPENING HOUR SPECIAL!**  
Friday at 9:00 A.M.  
CORNER TABLE BY JACKSON  
**\$239.50 NOW \$50.00 SAVE!!!**  
One Only — Cash & Carry — All Sales Final

**OPENING HOUR SPECIAL!**  
Friday at 9:00 A.M.  
OAK WALL SHELF BY TELL CITY  
**\$110.00 NOW \$35.00 SAVE!!!**  
One Only — Cash & Carry — All Sales Final

**OPENING HOUR SPECIAL!**  
Friday at 9:00 A.M.  
FRUITWOOD WALL SHELF BY BUTLER  
**\$119.50 NOW \$30.00 SAVE!!!**  
One Only — Cash & Carry — All Sales Final

**OPENING HOUR SPECIAL!**  
Friday at 9:00 A.M.  
24" OAK BAR STOOL BY TELL CITY  
**\$169.50 NOW \$75.00 SAVE!!!**  
One Only — Cash & Carry — All Sales Final

**OPENING HOUR SPECIAL!**  
Friday at 9:00 A.M.  
30" OAK BAR STOOLS BY PULASKI  
**\$139.50 EA. NOW \$69.00 EA. SAVE!!!**  
Four Only — Cash & Carry — All Sales Final

**OPENING HOUR SPECIAL!**  
Friday at 9:00 A.M.  
KING SIZE MATTRESS SET BY SIMMONS  
**\$509.50 NOW \$255.00 SAVE!!!**  
One Only — Cash & Carry — All Sales Final

- 2 Groups of **50%**
- Lea Girls' Bedroom Furniture Reduced **70%**
- All Table & Wall Accessories Reduced Up To **50%**
- All Simmons Mattresses & Boxsprings Reduced Up To **30%**
- All Dresher Daybeds — Brass, Iron & Wood — Reduced **50%**
- All Wall Beds Reduced **40%**
- All La-Z-Boy, Lane Action & Stratolounger Chairs Reduced Up To **25%**
- All Whirlpool Appliances Reduced Up To **30%**
- All RCA & GE Electronics Reduced Up To

ALL ITEMS SUBJECT TO PRIOR SALE



No Approvals, Returns, or Exchanges  
All Items Subject to Prior Sale  
Every Item in Store Sale Priced

TERMS: 30-60 Day Open Account  
90 Days Same As Cash  
24 Months Bank Rate Financing  
Mastercard & Visa Accepted  
All Terms Subject To Credit Approval  
No Phone Orders Please

*Boody* **FURNITURE CO.**

plans  
shopping  
center

723 W. 7th

Spearman, Texas