

City may seek federal rehab grant funding

By MARTHA TOLES FROST
City Editor

The Muleshoe City Council will consider a proposal by Housing Rehabilitation and Community Development Specialists of Austin at the next Council meeting on Feb. 20, or in a special session before that, according to City Manager Dave Marr, Jr.

Community development specialist Bill Dixon is asking the City Council to give the okay for his company to seek a \$200,000 grant from Texas Department of Housing and Community Affairs (TDHCA) to renovate 10 single-family homes in Muleshoe this year.

"It takes us 90 days to do the remodeling," Dixon said. "We have two crews—it's all they do."

Apparently, low-income single family dwellings that are substandard or unsafe and owned by people 65 or older rank high in the point system for qualifying for the renova-

tions.

Dixon said his company works closely with the families whose homes are being renovated. They are given lots of choices about contractors, colors, designs, types of carpet, etc., within financial boundaries. "Anything is negotiable—all things within reason," Dixon said.

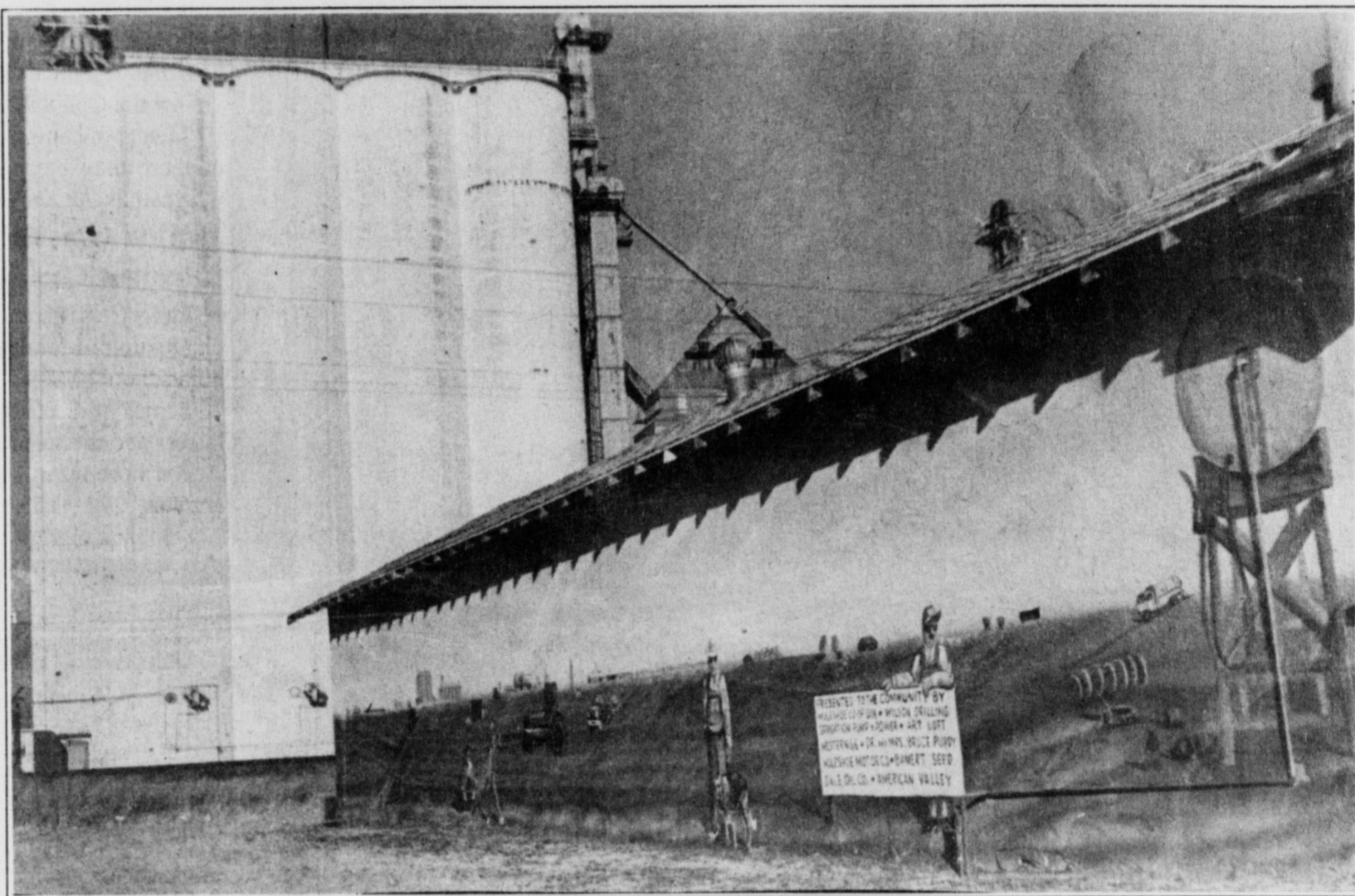
He said local building codes, which are higher than HUD minimum standards, will be observed.

"The bulk of TDHCA funds designated for this area (\$2.5 million) have been used in the Dallas-Fort Worth area or the Valley, and not in this region," Dixon said. "The program has not been successful in this area, and it is my company's goal to change that."

Dixon was allowed to make his presentation at the last City Council meeting on Jan. 16, but the Council took no action, as Dixon was not on the agenda.

Continued on page 6

Life imitating art



Morton artist Bob McClellan recently finished this mural depicting farm life in West Texas and another dedicated to "Keeper's of the Legend" on two buildings along American Boulevard. The murals are part of a Heritage Foundation project to spruce up Muleshoe and are paid for with donations. Two more are planned.

MHS cheerleader performs in London

By MARTHA TOLES FROST
City Editor

Muleshoe High School junior Jamie Bohler went to England to perform in the London New Year's Spectacular Parade and came back with lots of memories of a place that was full of surprises.

Surprise No. 1: "People lined the streets waiting to see the American cheerleaders—1,200 of us. They don't have cheerleaders in Europe," Bohler said.

"The most exciting part was when we actually performed. I was in the first group. We were right behind the confetti cannon—boom! We would get covered with it."

She said her group was following a music van that would stop so they could perform along a 2.2 mile stretch of road. "We would run behind it, trying to keep up—all the time dodging horse apples."

Surprise No. 2: The day after the parade, Bohler's picture showed up on the front page of a London newspaper, along with a story about the New Year's Day Spectacular Parade.

It was a photograph of her small group kicking back and relaxing—none of them even knew their picture was being taken.

Surprise No. 3: She didn't realize the grass would be so green in England, even with snow on the ground and leafless trees all around, or that most of the people in London would live in apartment buildings. Only the wealthy live in spacious homes out in the countryside, she was told.

During her 8-day trip, which lasted from Dec. 26 until Jan. 2, Bohler saw some of the places she had read or heard about:

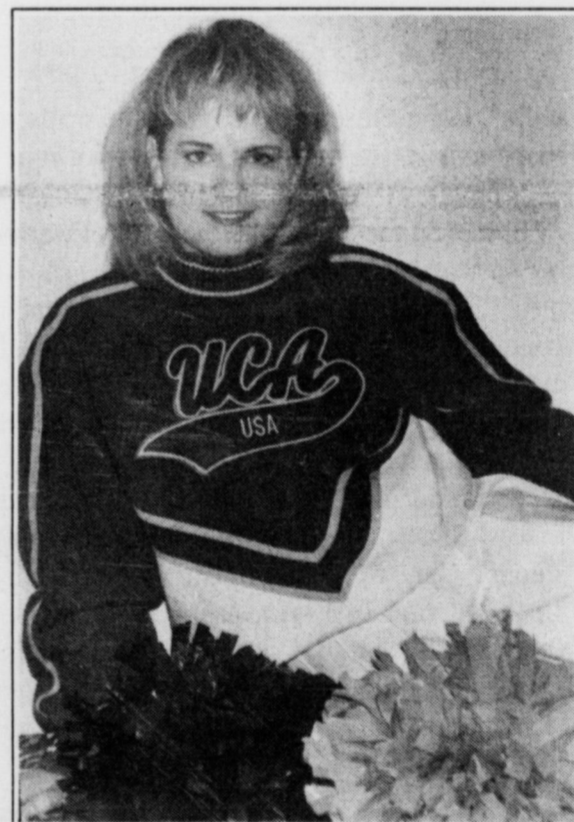
Windsor Castle ("no one lives

there anymore"), where she got her picture made during the changing of the guard; the Thames River, where she took a disco cruise; William Shakespeare's birthplace; and Piccadilly Circus—an outdoor shopping center with carnival rides.

Bohler, the daughter of Jim and Terri Bohler of Muleshoe, earned her trip to England during tryouts last summer at Universal Cheerleader Association camp at Angelo State University in San Angelo.

Muleteam Laundromat and Leal's Restaurant helped pay for the 10-hour flight to London and other expenses.

Bohler also raised funds by selling tickets for an oil painting by her grandmother, Ruth Barnett of Hale Center, and the other MHS cheerleaders helped her with car washes and bake sales.



Journal photo by Martha Toles Frost

World traveler

MHS cheerleader Jamie Bohler recently performed in a New Year's Day Spectacular Parade in London, England.

Price of cattle feed still rising

Low world grain supplies, along with huge demand, have convinced analysts that U.S. corn prices will continue to head higher this year.

The continued high grain prices, combined with increasing feeder cattle supplies, will cause continued pressure on feeder cattle prices, according to Jim Gill, Texas Cattle Feeders Association market director.

Dave Armstrong, analyst with Chicago Corp., said, "This is one of the few years that the (corn and soybean) markets have a chance of making all-time highs—the upside is still undefined."

So far there appears to have been only limited slowdown in corn usage due to the high prices, Knight-Ridder Financial News reported that analysts said.

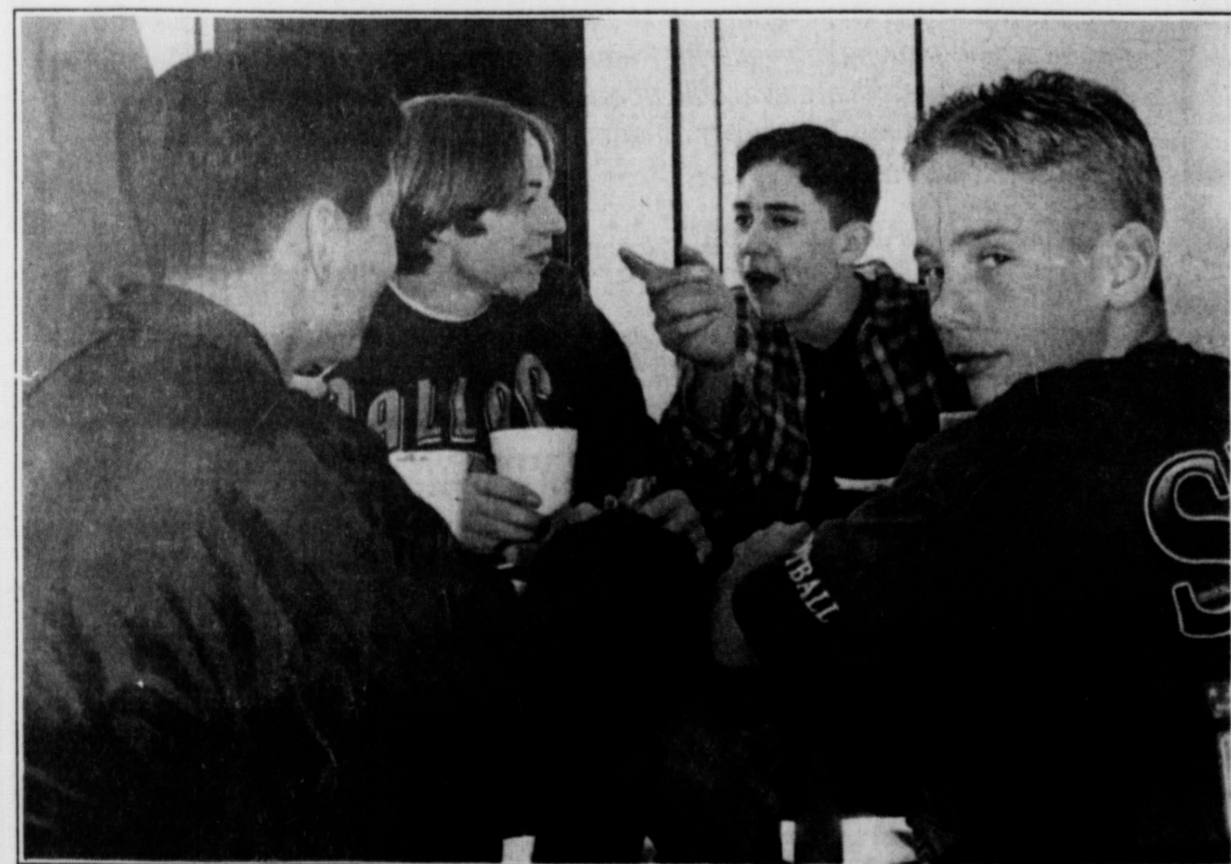
And the recent hogs and pigs report from USDA, which showed the largest U.S. December inventory since 1980, suggests strong demand for feed ingredients such as corn and soybean continues.

However, there typically is a glut of farmer selling in January and February that might weigh on corn and soybean prices and help to temporarily ease supply concerns, Armstrong said.

Some analysts predict the high corn prices may continue for several years, due to increased demand from other countries.

Asia will be the source of growing demand for U.S. ag-

A place they can call their own



Journal photo by Martha Toles Frost

A little relaxation

Watson Junior High students Carlos Gonzales (left), Grayson Rennels, Bret Clements and Rhett Green eat, talk and relax at the Snack Shack Thursday during their lunch hour.

Long-time high school hangout reopens this week after fall fire

By MARTHA TOLES FROST
City Editor

The Snack Shack, a student hangout and long-lasting informal Muleshoe institution, re-opened this week with a new look after suffering fire damage this fall.

"It's clean," said John Bryan Cowart, a Muleshoe High School student, "and the refills are free."

Cafe tables and chairs have replaced benches and a bar. Black and white linoleum and white walls have added a bright and cheery look, and "Go Mules" is spelled out in linoleum blocks where students stand in line to place their orders.

Bob Copeland, who, along

with his wife, bought the Snack Shack five years ago, remembers going there for lunch in 1960 when he was in the sixth grade.

He goes over from his job with the Texas Employment Commission to help Susan serve students, the restaurant's primary clientele, during the lunch hour.

"We try to accommodate them," he said. "At first there was some fisticuffs, but we told them, 'It's not going to happen here.' They're loud and rambunctious—but we don't mind if they let off steam."

Students gave several reasons why they like to go to the

Continued on page 2

Continued on page 2

Bigger than life



Watson Junior High students show off art work done in Tom Boutell's class. Students pictured are (back row, from left) Agustin Estrada and Michelle Parker. Middle: Michelle Lopez and April Kelly. Front: Tosha Norman, Tommie Hernandez and Chyla Torres.

Shack

Continued from page 1

Snack Shack at noon:

"It's a way to get away from school," Cassidy Cleavinger said Thursday while eating her favorite thing on the menu—a patty melt. "You don't have to be around people you don't want to be around."

"There are no adult authority figures here," said Jake Adair as he placed his order.

New MHS student Ben Seagroves said, "It's nice to go somewhere that teachers aren't looking over you. And we can smoke here (outside, if we're 18) since it's off campus."

"The chairs are comfort-

able," Jason Rasco said, and like most of the students, he says he likes the food.

Some of the items on the menu are pizza pockets, burritos, hamburgers, sandwiches, curly fries and homemade muffins, brownies and cookies. Students can even order funnel cake.

The atmosphere is laid back at the Snack Shack. (MHS student Clay Meyers calls it "friendly service.") And Susan Copeland likes it that way:

"People told me I shouldn't have put in the white walls. But the kids haven't touched

the walls, and we were packed for an hour today. I haven't met a bad kid—ornery maybe—but I was ornery when I was a kid," she said.

"People ask me why I do this. I do it because of the kids. I like to get out in the public with the kiddoes. They keep me young."

The Snack Shack, across the street from the high school, is open from 9 a.m. to 6 p.m. weekdays. Adults are welcome, and Susan said some of the students have even invited their parents to eat with them.

AROUND MULESHOE

Muleshoe Police Chief search awaits application deadline

City Secretary Mary Hicks said Friday that 25 applications for Muleshoe Police Chief have reached City Hall.

But City Manager Dave Marr, Jr. will not begin looking at the materials until the Feb. 1 application deadline has passed:

"If I look at them as they come in, I will just have it all to do over again after the deadline," Marr said.

According to the Muleshoe City Charter, the City Manager appoints the Chief of Police with the approval of the Council.

"I don't have a pre-conceived idea about how many applicants will be on the final list I show the Council," Marr said.

"Ten applicants may be equally good—or there may be one clear-cut candidate who stands out above all the rest."

Junior Class Parents starting "Project Graduation"

Junior Class Parents will kick off "Project Graduation" Monday at 7:30 p.m. in the high school library.

Topics of discussion will include fundraisers and the selection of a chairman.

For more information, call Dawn Williams at 272-3113 during the day and 272-5038 at night.

Area students graduate, receive honors at Texas Tech

LUBBOCK—John Daniel Shepard and David Michael Smith of Muleshoe were among more than 1,500 students at Texas Tech University receiving degrees during 1995 fall commencement exercises.

Shepard received a bachelor of science degree in animal production, and Smith, a bachelor of arts in mathematics.

Several area students were among the more than 3,394 Texas Tech students who qualified for the academic honor lists at the end of the 1995 fall semester:

On the President's List (with a 4.0 GPA in 12 or more semester hours) were Maria Santos Almanza, a senior Spanish major; Stacie Leigh Harris, a junior accounting major; Erin Lynn Kelley, a senior English major; and Ronda Raye Scott, a senior interdisciplinary agriculture major, all of Muleshoe.

On the Dean's List (having a 3.5 to 3.9 GPA in 12 or more hours) were Brandon Wade Kirk, a senior design communication major from Bula, as well as Leland Jay Brockman, a sophomore agronomy major, and Brittany Shea Wilbanks, a junior pre-occupational therapy major, both of Muleshoe.

ANNUAL MEMBERSHIP MEETING OF BAILEY COUNTY ELECTRIC COOPERATIVE ASSOCIATION

to be held in the
MULESHOE HIGH SCHOOL AUDITORIUM
MULESHOE, TEXAS
SATURDAY, FEBRUARY 3, 1996

Registration	9:00 A.M.
Business Meeting	10:00 A.M.
Free Meal (Bar-B-Q, Chicken, and Fish)	12:00 P.M.

Purpose of Meeting - - -

1. Give members a financial report, progress report and general condition of the Cooperative.
2. Elect two (2) directors for a term of three years.
DISTRICT #3 AND DISTRICT #6
3. Elect a committee on nominations, District #1 and #2 to be voted upon at the 1997 annual meeting.
4. Consider and take action upon any other matters that might be presented or come before the meeting.

The nominating committee has nominated the following members to be voted on for the following district.

DISTRICT #3	DISTRICT #6
Jimmy Craft	Tommy Kirk
Steve Meiwes	Terry Sowder

Additional nominations for directors may be made at the meeting.

Note: If you are a member or shareholder of a company, corporation or civic organization and you are acting as a voting delegate, you must present a letter of authorization at the registration table signed by the president and secretary of that organization.

The facility where the meeting is to be held is wheelchair-accessible and handicapped parking is available. Request for sign interpretive service and Spanish interpreters are available upon request if received at least 48 hours prior to the meeting. To make arrangements for these or other handicapped services, call 806-272-4504.

DATED JANUARY 23, 1996

NELSON CARLISLE, SECRETARY

Cattle

Continued from page 1

gricultural goods as tastes in those regions become more westernized, said Dan Markey, grains analyst with Agri Analysis in Evanston, Ill.

He expects a shift from rice to flour consumption as more wealth flows into countries like Malaysia, Indonesia and the Philippines.

"I think it is possible that we will move to new (price) highs over the next five years," Markey said.

Bailey County Journal USPS 040-200

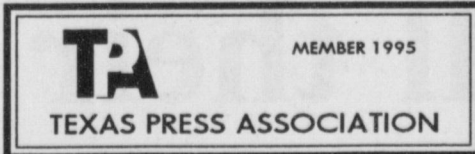
Established March 31, 1963. Published by Triple S Publishing, Inc. Every Sunday at 304 W. Second, Box 449, Muleshoe, TX 79347.

Second Class Postage paid at Muleshoe, TX. POSTMASTER: Send address changes to the Bailey County Journal, P.O. Box 449, Muleshoe, TX 79347.

We are qualified members of:
Panhandle Press Association, National Newspaper Association,
West Texas Press Association and Texas Press Association

WEST TEXAS PRESS
ASSOCIATION

PPA
Panhandle Press Association



Scot Stinnett, Publisher
Lisa Stinnett, Vice-President/Comptroller
Rick White, Editor
Holly Millsap, Classifieds
Pat Durben, Advertising

© 1990

SUBSCRIPTIONS: Muleshoe Journal and Bailey County Journal
By Carrier Yearly - \$22.00
Bailey and surrounding counties: by mail - \$24.00
Elsewhere - \$26.00
Advertising Rate Cards on Application

Advertisers should check their ad the first day of insertion. The Journals will not be liable for failure to publish an ad or for a typographical error or errors in publications except to the extent of the cost of the ad for the first day of insertion. Adjustment for errors will be limited to the cost of that portion of the ad where the error occurred.

January

CLEARANCE SALE

Sofas - Chairs - Lamps - Dinettes - Bedroom
Suites - Tables - Pictures - Mirrors

25 to 50% OFF
STOREWIDE

Including These Famous Furniture Brands •La-Z-Boy •Thomasville
•Mayo •Spring Air •Berkline •Kincaid •Rock City

Calton
Furniture

507 E. 2nd - Portales, NM
359-1112
Where Hwy. 70 Divides

Jennyslippers install new officers

By **MARTHA TOLES FROST**
City Editor

Jennyslippers, the women's division of the Muleshoe Chamber of Commerce & Agriculture, held its annual installation banquet at the Heritage Complex Depot Monday night.

Entertaining during the covered dish supper were Alan Finney on trumpet and Kerry Finney on the keyboard, accompanying Muleshoe High School student Cassidy Cleavinger with a "big band sound" as she sang nostalgia music.

New officers installed by Nancy Kidd in a ceremony about time management were Ruby Green, president; Doris Wedel, president-elect; Rhonda Calvery, secretary; Berta Combs, treasurer; and Donna Kirk, past-president.

Kirk recognized outgoing officers and special projects chairmen, and presented buttons that said, "Take me home and feed me" to Jennyslippers' husbands.

Dr. Robert Lepard gave a motivational talk on having fun while doing serious work and recognizing the moment while



Journal photo by Martha Toles Frost

The entertainers

Alan Finney on trumpet and Kerry Finney on the keyboard accompany Cassidy Cleavinger with a "big band sound" as she sings nostalgia music at the Jennyslippers' annual banquet and installation Monday night at the Muleshoe Heritage Complex Depot.

you're in it, noting that Jennyslippers have helped with several community projects this year.

Major projects in 1995 included a financial aid seminar,

"Toast to Texas," feeding the PUSH cyclists, a women's investment seminar, the Texas/New Mexico Floral Convention, the Fourth of July and Christmas parades, and the

"Basketcase" project—collecting clothes and other necessities for the needy.

The Jennyslippers listened

Continued on page 6

NEED A YARD MAN FOR '96?

Cappy's Lawn Service

HCR 6, Box 38 Muleshoe, TX 79347



Mowing
Edging
Trimming
Trees

Fertilizing
Hauling
New Lawns
Shrubs

CAPPY (The Yard Man) GATEWOOD

Dayhoff Shoes CLEARANCE SALE CONTINUES!

Prices Are Reduced!

Women's Shoes

Dress & Casual

40% to 50% off

Men's Dress
& Casual

**20% to
30% off**

Women's
Handbags

**1/2
Price!**

Dayhoff Shoes

"Put Yourself In Our Shoes"

403 Main, Downtown Clovis



Journal photo by Martha Toles Frost

Resting on their laurels

All-Region Honor Band members Shannon Noack (left), Samuel Villarreal, Melissa Mata, Gerardo Loya, Kristi Bennett and Stephanie Guerrero (in front) played music from a Dixieland Jazz Funeral, Peter and the Wolf, and other selections at Sundown Jan. 20.

Martha wins Lazbuddie Jr. High Geography Bee

Bobby Martha, an eighth grade student at Lazbuddie Junior High School, won the school-level competition of the National Geography Bee on Jan. 10, and a chance at a \$25,000 college scholarship.

The school-level Bee, at which students answered oral questions on geography, was the first round in the eighth

annual National Geography Bee, which is sponsored by *National Geographic World* and the Chrysler Corporation.

The National Geographic Society will provide an all-expense paid trip to Washington, D.C., for state champions and their teachers-escorts at the National Geography Bee national championship.



Winners of Lazbuddie Geography Bee
Winners of the Lazbuddie Geography Bee were Clint McCloy (left), second place; Kati Mimms, third place; and Bobby Martha, first place.

Federal Land Bank Association

316 Main St., Muleshoe
806-272-3010

Long Term Financing for Farms, Ranches, Rural Housing, Operating and Improvements.

Current Variable Rate 8.25%

Variable Rate beginning February 1, 7.8%

Fixed rates are available. Call for quote.

A Property Rights Advocate and Equal Opportunity Lender.



It was an old custom in England to draw lots for sweethearts on Valentine's Day, the person drawn being given a present, sometimes of an expensive kind, but more often a pair of gloves. The custom is said to have had its origin in a pagan practice connected with the worship of Juno on or about this day.

ALLSUP'S

EFFECTIVE JAN. 28 - FEB. 3, 1996

318 W. American Blvd. 272-4862

SAVE ON
Pepsi-Cola

24 pack, 12 oz. cans

\$5.99

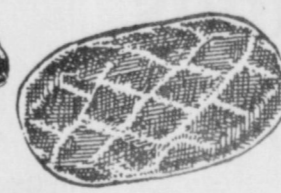


STOP IN AND STOCK UP!



HAM, EGG & CHEESE OR SAUSAGE, EGG & CHEESE
Breakfast Burrito

EACH
99¢



PEPPERONI, HAM & CHEESE OR BEEF & CHEDDAR
Hot Pockets

EACH
99¢



ALL VARIETIES LAY'S® OR DORITOS®
Grab Bags

REGULAR 75¢
2\$1
FOR



U.S. #1
Russet Potatoes

10 LB. BAG
\$1.49

STOCK UP NOW ON THESE UNBEATABLE SAVINGS!

FAMILY SIZE LANCE

Potato Chips

REGULAR \$1.39
99¢

ALL FLAVORS SNACK WELL

Cookies

REGULAR \$2.29
\$1.99

Sunny Cookies

6 oz. pk. **2/\$1**

Folger's Coffee

\$2.99

13 oz. can

Fresh Made

Chili Dogs

2/99¢

QUENCH YOUR THIRST

FILLED WITH YOUR FAVORITE FOUNTAIN DRINK

HONCHO

BIG 44 OZ. PAPER CUP

79¢

STORE SPECIALS

ALLSUP'S 1.5 LB. LOAF SANDWICH
Bread 69¢ EACH OR 2 FOR \$1.00
VALLEY FARE
Bath Tissue 4 ROLL PKG. 79¢
ALL FLAVORS 1.7 OZ.
Corn Nuts 3 FOR \$1.00
SHURFINE
Crackers 1 LB. BOX 85¢

Large
Shurfine Eggs dozen 99¢

Mello
Crisp Bacon 1 lb. pkg. 99¢

**ALLSUP'S CONVENIENCE STORES,
WE'RE JUST THAT... "CONVENIENT"!**

Sports

Loss leaves MHS lagging behind in 2-3A

By RICK WHITE
Managing Editor

Muleshoe is going to have to play the rest of the District 2-3A season without a safety net after dropping a 45-44 decision to Shallowater Friday at WJHS gym.

Muleshoe's second-straight district home loss leaves little room for error. One more slip-up could prove fatal to the Lady Mules' state-playoff chances.

"There's only one loss we can afford and still make the playoffs. And that's Friona," Muleshoe coach Jim Gruhlkey said after the Lady Mules dropped to 3-3 in the district.

Friona (5-1) holds a one-game lead over Dimmitt and Littlefield (both 4-2) after losing at Littlefield Friday, 42-37. Dimmitt beat Floydada, 59-43.

Muleshoe plays at Floydada Tuesday and hosts Dimmitt next Friday.

Trailing 45-44, Muleshoe missed two shots in the last five seconds, and a wide-open layup with 27 seconds left.

Felicia Fuentes' free throw with 48 seconds left proved to be the difference.

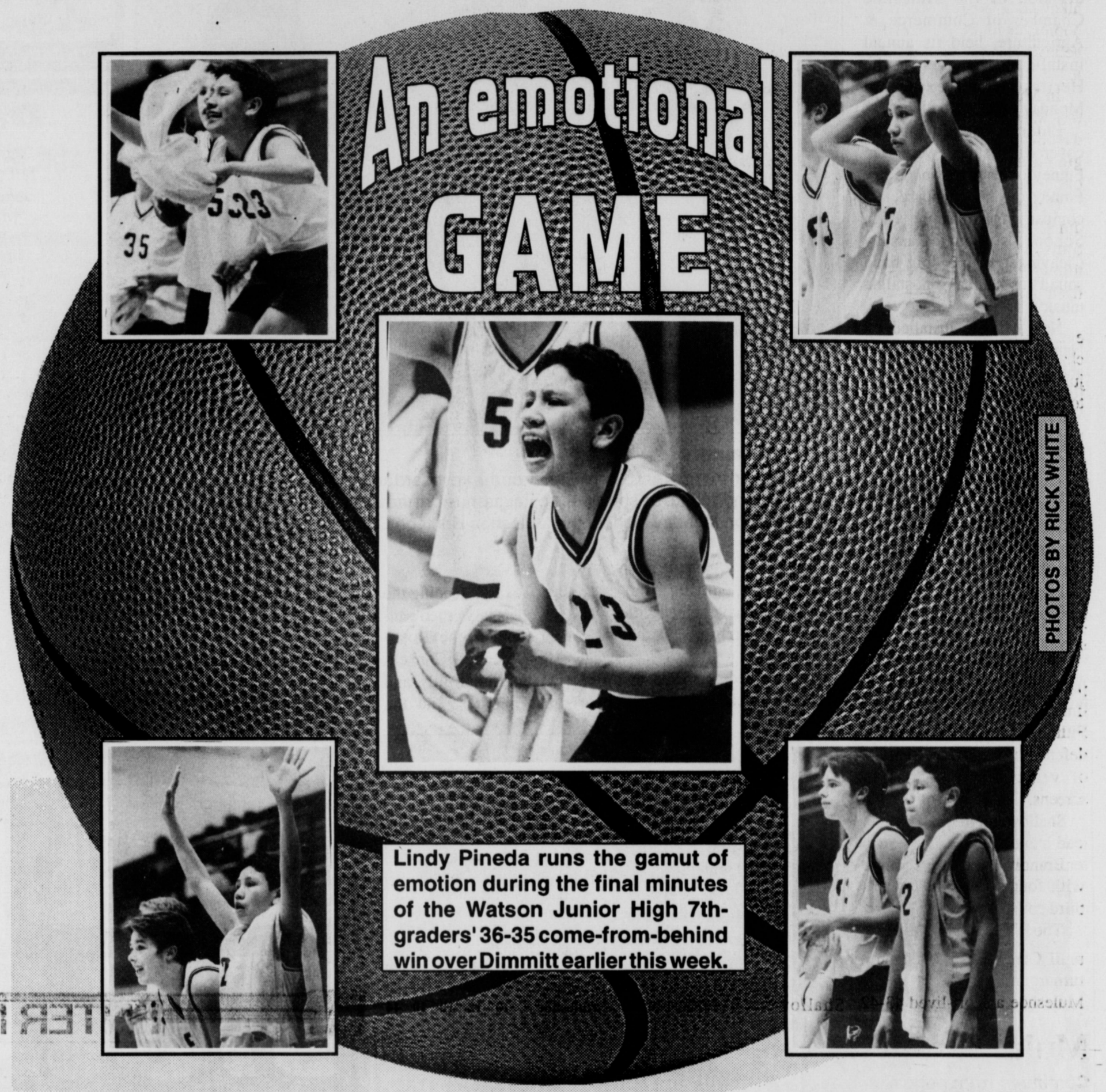
Mandy Cleavinger's free throw tied the score at 44 for Muleshoe with two minutes left. She was fouled after grabbing an offensive rebound.

Both teams blew several chances down the stretch. The teams combined to make just 10 of 30 free throws in the fourth quarter in a game the referees felt compelled to blow the whistle more than a traffic cop during rush hour.

"It's the little things that are killing us," Gruhlkey said. "Not boxing out, free throws."

Muleshoe (18-8) made 20 of 38 free

Continued on page 5



PHOTOS BY RICK WHITE

Lindy Pineda runs the gamut of emotion during the final minutes of the Watson Junior High 7th-graders' 36-35 come-from-behind win over Dimmitt earlier this week.

Roberts, Mustangs run over Mules, 79-55

By RICK WHITE
Managing Editor

Muleshoe had a good game plan.

Spread the floor and switch defenses in an attempt to slow down run-and-gun Shallowater Mustangs.

Cole Roberts didn't want any part of the plan.

Roberts scored 17 of his game-high 23 points in the first half, triggering a second-quarter outburst as Shallowater ran past Muleshoe, 79-55, in a District 2-3A game Friday at WJHS gym.

Muleshoe spread the floor from the opening tip, with Alfonzo Mendoza's 3-pointer from the corner giving the Mules a 7-2 lead with a minute left in the first quarter.

The plan looked good as Muleshoe patiently attacked Shallowater's man-to-man defense. On the other end, the Mustangs were jacking up the first 3-pointer available.

Then Roberts took over. He scored all six of Shallowater's first quarter points, and scored 10 of 11 points in an 11-2 run that gave Shallowater the lead for good, 23-13, midway through the second quarter.

The 6-5, 220-pound junior post was able to get good position in the low post, most of the time simply overpowering freshman Dustin

Cleavinger and smaller Muleshoe defenders.

A 3-pointer by Cleavinger (15 points) got the Mules within 25-18 with a little less than three minutes left in the half.

Muleshoe was still within reach at halftime, trailing 30-20.

Muleshoe stayed within 10 until midway through the third quarter, but Shallowater (17-6 overall, 5-1 in district) outscored Muleshoe 11-4 the rest of the quarter and led 50-32 heading into the fourth quarter.

Shallowater made 19 of 23 free throws in a foul-plagued fourth quarter.

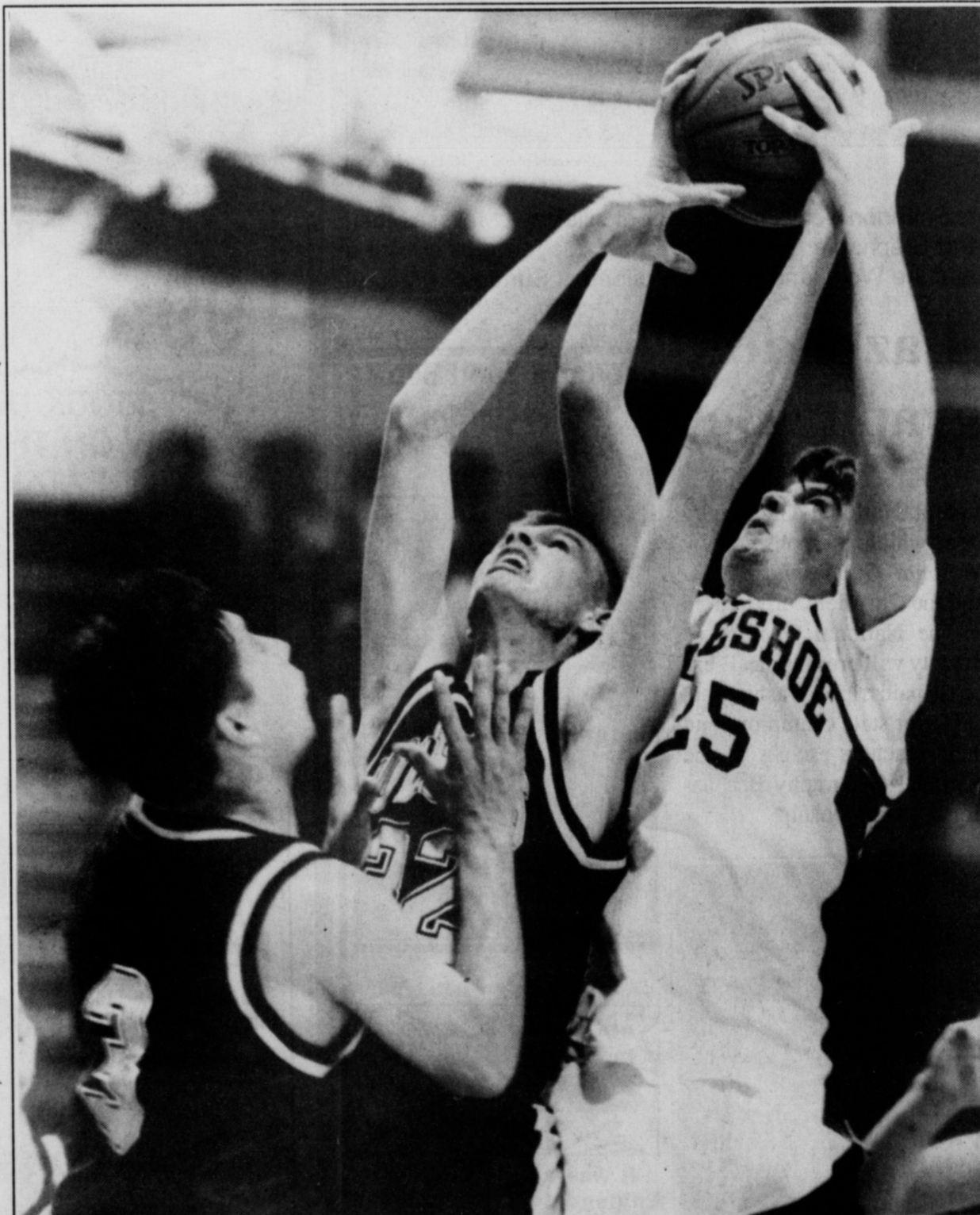
Shallowater switched to half-court trap in the second half to combat Muleshoe's spread, with all five players above the foul line extended looking to trap.

And once Shallowater got a turnover, they ran the floor like Mustangs (what else?).

"We didn't do a good job of taking it to them," Muleshoe coach Ralph Mason said. "That's what killed us. But that's the difference between youth and experience."

"I was really pleased with the kids though," Mason added. "We stuck with what we were trying to do. The kids did a good job."

Continued on page 5



Battlin' Mule

Muleshoe High School sophomore Chris Shelburne battles Johnny Don Davis of Plains for a rebound during the Mules' 96-60 loss Tuesday in a non-district game at WJHS gym. The Mules started the second half of their District 2-3A schedule when they hosted Shallowater Friday.

Lady Horns open district with 54-48 win

LAZBUDDIE—Freshmen Kia Morris and Holly Engelking combined for 28 points, leading Lazbuddie to a 54-48 win over Cotton Center Tuesday in the District 8-1A opener for both teams.

With Lazbuddie (10-16) leading by five with one minute and 40 seconds left in the game, Morris scored on an offensive rebound and then stole the inbounds pass and scored again to put the game out of reach.

Engelking led Lazbuddie with 15 points, Morris finished with 13 and Shana Foster added 12. Lazbuddie played without sophomore post Roxanne Warren, who was injured in a car accident last weekend. She'll probably miss the rest of the season.

"The girls really had a fire in their eyes," Lazbuddie coach Carey Sudduth said. "They really wanted it. They ran down loose balls and overcame a big size disadvantage with hustle."

Josie Pool, a 5-10 wing, led Cotton Center (7-13) with 28 points. All-District post Tara Buffa was limited to four points.

Lazbuddie played Spade Friday.

Cotton Center (48) — Odom 0 2-72, Rodriguez 1 (1) 0-05, Pool 11 6-1228, Buffa 12-44, Sanez 20-34, Barrera 10-02, Sanchez 0 (1) 0-03, Totals 16 (20 10-26 48).

Continued on page 5

MHS

Continued from page 4

throws, including 4 of 14 in the fourth quarter.

"It's all psychological," Gruhlkey said. "We're going to line hoping to make it instead of believing we're going to make it."

In Muleshoe's defense, the rim wasn't kind to them Friday. Several shots danced the gig on the rim before falling out.

Questionable officiating didn't help either. A total of 49 fouls were called (68 free throws) in a game that was far from physical.

"Despite the refs, despite everything, we still had our chances," Gruhlkey said. "We just never adjusted defensively to the refs."

The game was tight throughout, with the biggest lead being four, 22-18, on a pair of free throws by Muleshoe's Carolyn Schuster with 1:40 left in the first half.

Three-pointers by Fuentes (12 points) and Jenny Neal gave Shallowater (12-14, 2-4) a 28-26 lead three minutes into the second half.

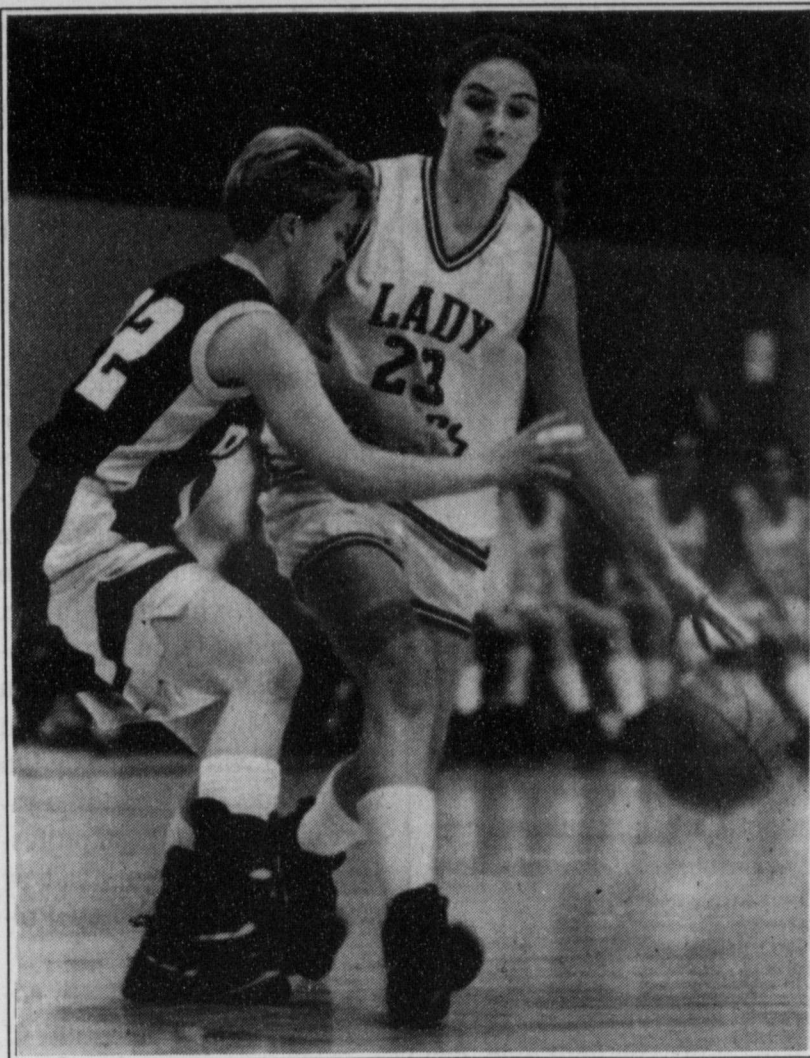
Neal scored a game-high 19 points, shaking free several times under the basket in the Fillies' flex offense, which runs defenders through a battlefield of vertical and horizontal screens.

Shallowater took a 35-34 lead into the fourth quarter after Brandi Harrison's 3-pointer with four seconds left in the third rolled out.

The Fillies didn't trail again until Cleavinger scored on a turnaround 10-footer, giving Muleshoe a short-lived 43-42

2-3A standings

GIRLS		
	District	Overall
Friona	5-1	20-6
Dimmitt	4-2	13-15
Littlefield	4-2	14-9
Muleshoe	3-3	18-8
Shallowater	2-4	11-14
Floydada	0-6	9-17
Tuesday		
Muleshoe 68, Plains 54, Floydada 57, Trinity Christian 43, Dimmitt 70, River Road 58		
Friday		
Shallowater 45, Muleshoe 44, Dimmitt 59, Floydada 43, Littlefield 42, Friona 37		
BOYS		
	District	Overall
Dimmitt	6-0	23-6
Shallowater	5-1	17-6
Littlefield	4-2	13-11
Friona	2-4	12-12
Floydada	1-5	12-15
Muleshoe	0-6	4-20
Tuesday		
Plains 96, Muleshoe, 60 Floydada 54, Trinity Christian 44, Dimmitt 81, River Road 52		
Friday		
Shallowater 79, Muleshoe 55, Dimmitt 69, Floydada 44, Littlefield 70, Friona 65		



What pressure

MHS sophomore Cassidy Cleavinger works the ball into the front court despite pressure from Kyle Bearden during the Lady Mules' 68-54 win over Plains Tuesday.

lead with 2:30 left.

Fuentes (7 of 10) hit a pair of free throws nine seconds later.

Allyson Field led Muleshoe with 14 points and Cleavinger finished with 10 points.

"We've got to get Mandy the ball," Gruhlkey said. "She'll get fouled or get a good look at the basket. We're not patient enough looking for her."

During the first half of the season, the 6-0 senior post was averaging about 17 points per game. She's been averaging about 10 points a game in January.

Between all the fouls and Shallowater's bothersome

three-quarter-court trap, Muleshoe never developed a rhythm.

"We didn't attack it the way we planned," Gruhlkey said. "That's what's so frustrating. We put our head down and dribble right into the traps."

Shallowater (45) — Dunham 0 0-0 0, Boils 1 0-1 2, Lester 0 0-0 0, Fuentes 1 (1) 7-10 12, Cruz 1 0-0 2, Hural 0 0-2 0, Neal 5 (1) 6-8 19, Cole 1 2-4 4, Jenson 2 1-2 5. Totals 11 (2) 17-30 45.

Muleshoe (44) — Field 5 4-6 14, Williams 2 2-2 6, C. Cleavinger 0 0-0 0, Hutton 0 0-0 0, Puckett 0 1-6 1, Schuster 1 2-4 4, Nichols 0 0-0 0, M. Cleavinger 3 4-9 10, Harrison 1 7-11 9. Totals 12 20-38 44.

	1	2	3	4	tot
Shallowater	8	12	15	10	45
Muleshoe	10	12	12	10	44

WJHS 7th remains unbeaten with come-from-behind win

A fourth-quarter rally lifted the Watson Junior High seventh-graders to a 36-35 win over Dimmitt, keeping the Mules perfect record intact.

Chris Vela scored 11 points, including an offensive rebound with seconds left that won the game.

Moises Garcia added six points and Jeff Shelburne finished with five points for WJHS (7-0 overall, 6-0 in District 2-3A), which trailed the whole game.

	1	2	3	4	tot
Dimmitt	10	10	7	8	35
WJHS	7	7	8	14	36

WJHS scorers — Chris Vela 11, Moises Garcia 6, Jeff Shelburne 5, Sonny Chavez 4, Dan Williams 4, Landon Nichols 3, Jerrell Ottwell 1.

WJHS 8th 67
Dimmitt 40

Clint Black scored 17 points and the Mules hit five 3-pointers, leading the Watson Junior High eighth-graders to a 67-40 win over Dimmitt Monday at

WJHS gym. Mitch Mason had 11 points and two 3-pointers and Bret Clements added 10 points for WJHS, 8-2 overall and 4-2 in District 2-3A.

	1	2	3	4	tot
Dimmitt	7	12	8	13	40
WJHS	17	15	19	16	67

WJHS scorers — Clint Black 17, Mitch Mason 11, Bret Clements 10, Jesse Reyes 9, Kyle Hahn 8, James Barrett 5, Jeff Bruns 3, Sammy Baeza 3, John McClanahan 2.

(Jan. 16)
WJHS 60, Tulia 24

	1	2	3	4	tot
Tulia	4	10	5	5	24
Muleshoe	19	13	16	12	60

WJHS scorers — Clements 16, Eric Posadas 8, Black 8, Mason 8, Reyes 7, Barrett 4, McClanahan 3, Hahn 3, Latham 2, Norman 1.

GIRLS
MHS JV 38
Plains JV 24

Amy Locker scored 10 points and Cari Faver and Keisha Whitt added eight each,

Mules

Continued from page 4

Chris Shelburne added eight points for the Mules (4-20, 0-6) and Jesse Gonzales chipped in seven points.

Curtis Lemon had 14 points for Shallowater, Josh McMenemy added 13 and senior standout Jay Lusk a quiet 11.

"They were where we right now two years ago," said Mason, who plays three freshman. "Hopefully we can get to where they are now."

Shallowater (79) — Martin 0 0-20, Guzman 0 5-6 5, Workman 1 1-13, Lemon 5 (1) 1-2 14, Ellison 0 0-0 0, Shannon 0 0-0 0, Lusk 4 (1) 0-0 1, Shaun 3 4-4 10, Roberts 10 3-8 23, McMenemy 2 9-10 13. Totals 25 (2) 23-33 79.

Muleshoe (55) — Mason 0 3-4 3, Lewis 0 (1) 0-0 3, Mendoza 0 (1) 0-0 3, Williams 1 0-2 2, Shelburne 3 2-2 8, Slayden 1 0-0 2, A. Gonzales 2 0-0 4, J. Gonzales 3 1-1 7, McClanahan 2 2-3 6, Cleavinger 6 (1) 0-0 15, Sierra 1 0-0 2. Totals 19 (3) 12-18 55.

	1	2	3	4	tot
Shallowater	6	24	20	29	79
Muleshoe	9	11	12	23	55

Lazbuddie sweeps Spade in District 8-1A

Lazbuddie swept Spade in a District 8-1A doubleheader Friday.

Jason Thomas scored 25 points and Justin St. Clair added 18 a 77-47 boys win. Lazbuddie is 2-0 in district and 19-6 overall.

In the girls game, Holly Engelking scored 16 points for Lazbuddie (7-10, 2-0) in a 52-33 win. Lazbuddie plays at Amherst Tuesday.

	1	2	3	4	tot
WJHS 8th	12	9	17	15	53
Olton	14	9	8	16	47

WJHS — Eric Posadas 3, James Barrett 2, Clint Black 4, Mitch Mason 4, Jesse Reyes 4, Jeff Bruns 2, Kyle Hahn 7, Carlos Gonzales 4, Bret Clements 23, Ike Norman, Sammy Baeza, Delwyn Latham, Ryan Hodge, John McClanahan, B.J. Copeland.

WJHS 7th 49
Olton 13
WJHS outscored Olton, 19-1, in the third quarter en route to a 49-13 win.

Jeff Shelburne led WJHS with eight points and seven Mules scored at least four points.

	1	2	3	4	tot
WJHS 7th	12	5	19	13	49
Olton	4	4	1	4	13

WJHS — Moises Garcia 4, Dan Williams 6, Lindy Pineda 5, Chris Vela 5, Daniel Ramirez 6, Joe Adair 2, Stephen Woodard 2, Sonny Chavez 5, Manuel Flores 4, Jerrell Ottwell 2, Jeff Shelburne 8, Jeffrey King, Jerry Lacefield, Zack Barrett, Travis Tunnell.

'96' Junior Mule Classic

Lady Mules 8th need overtime in opener

The Watson Junior High School 8th-grade girls needed overtime to beat Olton, 53-48, Thursday in the first round of the 1996 Junior Mule Classic basketball tournament.

Lindsey Field scored three of her team-high 18 points in overtime for WJHS. The game was tied at 44 at the end of regulation.

Lynsie Black added 12 points and Stacy Locker finished with 11 points for the Lady Mules, who took a 16-7 first-quarter lead.

	1	2	3	4	ot	tot
WJHS 8th	16	14	9	5	9	53
Olton	7	18	13	6	4	48

WJHS — Stacy Locker 11, Bobbi Benham 4, Lynsie Black 12, Lela Hancock 2, Lindsey Field 18, Crystal Wheeler 4, Brandy Whitt 2, Kayla Johnson, Barbara Morales, Audra Clarkson.

WJHS 7th 45
Olton 15

Shari Alanis led a balanced attack with 11 points in the

Lady Mules' 45-15 win.

Kyla Torres, Michelle Parker and Myndi Heathington (two 3-pointers) all added six points for WJHS. Nine of 12 Lady Mules scored at least two points.

	1	2	3	4	tot
WJHS 7th	12	8	11	14	45
Olton	4	6	4	1	15

WJHS — Courtney Marr 4, Melissa Flores 2, Roxanne Garcia 2, Stephanie Sharp 4, Kyla Torres 6, Shari Alanis 11, Michelle Parker 6, Myndi Heathington 6, Tommy Hernandez 4, Megan Tipps, Toni Bray, Rhea Gonzales.

BOYS
WJHS 8th 53
Olton 47

Bret Clements scored 23 points and WJHS rallied from a two-point halftime deficit to beat Olton, 53-47.

WJHS outscored Olton, 17-8, in the third quarter.

Kyle Hahn added seven points for WJHS.
WJHS 8th 53, Olton 47

ENTER NOW!!

The Muleshoe Journal's
2nd Annual 1995
Cutest Baby Contest

Remember The Special Times of Their First year By Including
Your Baby's Picture in Our Cutest Baby Contest.
Enter Any Child Special To You That Was Born In 1995 -
Children, Grandchildren, Nieces, Nephews.

Winner Will Receive \$50 Savings Bond For Being Selected 1995 Cutest Baby!

A panel of unbiased judges will pick the most attractive picture to be the 1995 Cutest Baby. All baby pictures will be printed. Babies need not have been born in this area. Bring your favorite child's photo to the Muleshoe Journal, 304 W. 2nd, Monday - Friday between 9:00 a.m. & 5:00 p.m. or mail coupon below with photo and \$9.75 to the Muleshoe Journal, Box 449, Muleshoe, TX 79347.

Please leave phone number or address (it will not be published) so we may contact you if we need additional information.

Baby's Name _____

Date of Birth _____

Weight At Birth _____

Place of Birth _____

Length At Birth _____

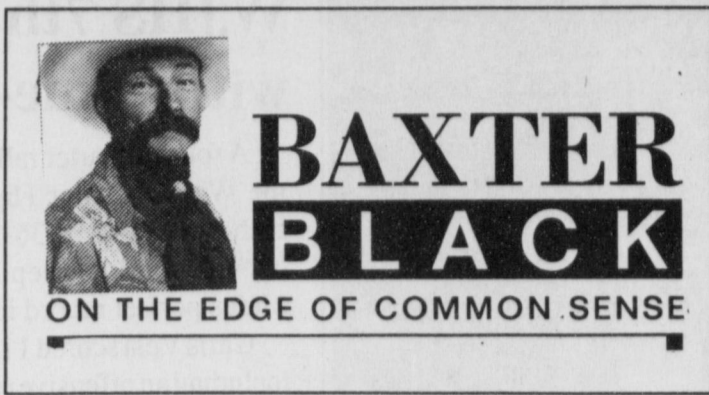
Mom & Dad's Name _____

Grandparents Name _____

HURRY! DEADLINE TO SUBMIT PHOTOS AND INFORMATION IS 5:00 P.M. FRIDAY, FEB. 16, 1996. You may pick up your baby's picture during office hours after Monday, Feb. 26, 1996. At this time you will receive a FREE copy of The Cutest Baby Contest. Additional copies will be available. This years edition will appear in the Muleshoe Journal, Sunday, Feb. 25, 1996 issue. If you would like for your business, club or organization to be included in Cutest Baby Contest, contact the Retail Advertising Dept at 272-4536 by Monday, Feb. 19, 1996.

DEADLINE IS FRIDAY, FEB. 16, 1996

The Government Shutdown



"CATTLE FEEDERS UNAFFECTED BY SHUTDOWN"
(headline-Texas Cattle Feeder Association Newsletter - Nov. 17, 1995)

The story referred to the partial government shutdown which idled non-essential federal workers while the Republicans and the Democrats fought with each other over the balanced budget bill.

The headline was right as far as it went. But it could have said, "PORK PRODUCERS UNAFFECTED BY SHUTDOWN", OR "IRRIGATORS UNAFFECTED BY SHUTDOWN" OR "BEET GROWERS, COTTON FARMERS, SHEEP HERDERS, DAIRYMEN, VETERINARIANS, HORSE TRAINERS, A.I. TECHS, WHEAT GROWERS, CORN FARMERS, COTTON PICKERS, CATFISH BAITERS, POULTRY PLUCKERS, GRAPE PRUNERS", OR "PUREBRED OSTRICH, ALPACA OR ELK RAISERS ALL UNAFFECTED BY SHUTDOWN."

Does that mean agricultural people are essential workers? That depends on whether you're lookin' from the Congressman's point of view or the cow's.

I have first hand reports that the Arch in St. Louis and the hot springs in Big Bend National Park were closed. The Arch was locked and non-essential Big Bend Park workers patrolled the roads looking for trespassing tourists. I'm sure many people had plans disrupted. Unfortunately they would have to be classified as non-essential plans.

But all the smoke and fire emanating from Washington (sorry, George) D.C. didn't affect the man who was cutting his corn last November. Or the rancher weaning his calves. People who make a living off the land have a different time table. The cow that needs milked doesn't care if you balance the budget in seven years or ten. She doesn't care if your polls are up, your taxes are down, if you believe in free love, pro life, non-dairy creamer or the Chicago Cubs.

Crops are planted, colts trained, hog farrowed and eggs laid on a schedule that is not governed by arbitrary guidelines. . . "If you don't have that calf by Friday at 5 p.m., you're on your own. I'm takin' four days off!"

Unlike the government, for whom the taxpayers work, farmers work for the animals who give them their livelihood. We are at the beck and call of bad weather, broken fences, bovine belligerence, boll weevils, blight, bloat and bad hare days.

So in the grand scheme of things, the cattle feeder kept running his bunks, pullin' the sick and processing new arrivals. He didn't worry too much about the non-essential federal worker, the Congressmen or the President. After all, none of them lost a day's pay and no lives were lost whether they worked or not.

I guess that's the big difference between essential and non-essential work.

LISD magnet program goes regional

Since 1992, the Lubbock Independent School District has offered the students of LISD an opportunity to enroll in the Medical Professions Magnet Program at Estacado High School.

Beginning with the 1996-97 school year, that same opportunity will be offered to any student in the West Texas region who has an interest in making a medical profession an option for his or her future.

Additionally, in the 1996-97 school year, the Profession Career Magnet Program at Estacado will be expanded to all students interested in a career in the law or legal profession, with the advent of a new regional Justice and Law Program.

This new program will encompass a wide spectrum of training in preparation for a career in justice and law as an attorney, police officer, paralegal, court reporter, correctional officer or criminal investigator.

The Medical, Law and Justice Professions Program will be offered to area high school students to provide them with career or college preparation opportunities that are presently not available to them.

Lubbock ISD students presently enrolled in the Medical Professions Program get a hands on view into the careers of physicians, nurses and those involved in allied health or veterinary medicine. Students may also receive credit for college level courses which are part of the program.

The new Justice and Law Magnet Program also will assist students with a first hand look at the various aspects of a career in law enforcement or the justice system. The program will also allow students the opportunity to take college preparatory courses which will assist them in achieving their individual career goals.

Students wishing to secure additional information or file an application for admission to the Estacado Professional Careers Magnet should contact Paula Finney, Magnet Program Specialist, Estacado High School, 1504 E. Itasca Ave., Lubbock, TX 79403, or call (806) 766-1375 by May 1, 1996.

Standing At Stud - **PONCHO DOC OLENA**
SIRE: Doc's General by Doc O'lena & out of Gay Benana
DAM: Ms. Pancho Cinco by Sugar Again & out of Ms. Doc Bar
RED OAK STABLES, Clovis, NM
Owner, Jim Pearson 505-762-5427

We Have Blueberry Cake
Holes or Plain Yeast
Donut Holes
-for showers

We Are Now Taking
Orders For Cookies

Buy Your Sweetie
a Dozen
Cherry Donut Holes
for Valentines!

- We Will Make Heart
Cookies For Valentines -

T.J.'s Donuts
328 S. Main Muleshoe

Rehab

Continued from page 1

The Councilmen seemed interested, however, and asked lots of questions about the program.

City Manager Dave Marr, Jr. said Friday that Dixon had responded in writing to all the questions the Councilmen raised at the last meeting and that he would be making copies of his correspondence to share with them.

The company's 13 percent management fee for overseeing the projects will come out of the grant funds, Dixon said. And 87 percent goes into materials and labor.

One of the questions the Councilmen raised was what portion of the 87 percent is for materials, and what portion is for labor.

They also wanted to know what would happen if the ten homes were repaired successfully and there was some money left over.

If the Council gives Dixon's company the go-ahead, and the grant is awarded, a Town Meeting will be held to educate people on how to get their applications accepted.

Applications that are rejected this year could be high on the waiting list next year, Dixon said.

Dixon told the Council that the community could boost its chances of being accepted for the grant if it could come up with some matching funds from any source, but he predicts this region should do well statewide since it has a high "community distress level."

"Not being an oil-patch community, we typically score well at the state level," Marr added.

Mayor Robert Montgomery said, "I personally am serious about pursuing this."

Marriages



Mr. and Mrs. Rodney Reynolds

Richard and Rickie Warren, of Muleshoe, announce the marriage of their daughter, Rebecca Dawn Warren, to Rodney Dale Reynolds on January 12, 1996. Rodney is the son of Roger and Shirley Reynolds of Muleshoe. Rebecca is a 1995 graduate of Muleshoe High School and attended Texas State Technical College in Amarillo. Rodney is a 1991 graduate of Muleshoe High School and is currently employed by Keith Morris Cattle Processing. The couple will make their home in Muleshoe.

Banquet

Continued from page 3

to programs on elderly rights and women's protective services and held concession stands at several community events, including the Rotary Car Show.

Other projects included a barbecue dinner during the Moonlighters Extension Home-

makers Arts and Crafts Fair, a scholarship program, and the Garden Spot of the Week, as well as decorating for the Chamber of Commerce Banquet, making badges for Muleplex Productions and assembling newcomer welcome packets.



The Great Meteor Crater of Arizona lies between the towns of Flagstaff and Winslow. Scientists believe that a meteorite struck the earth about 50,000 years ago and dug a hole about 4,150 feet across and 570 feet deep.

A man who has been the indisputable favorite of his mother keeps for life the feeling of a conqueror, that confidence of success that often induces real success.

-Freud

Home Folks Caring For Folks At Home.



MULESHOE AREA HOME HEALTH

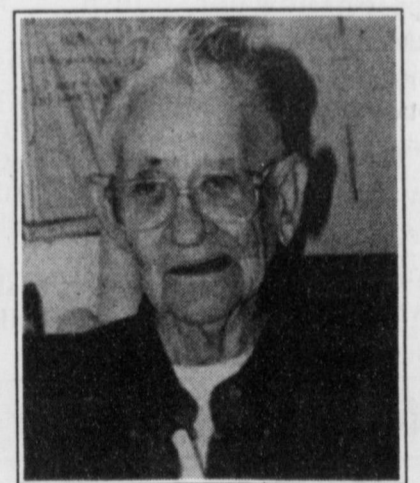
Agency

Featured Patient

Virgie Perry has lived in Muleshoe since she was 15 years old when she moved from Marlow, OK. Other than working at the Muleshoe Cannery, she also did yardwork, chopped cotton and whatever she could to help her dad.

Her mother, Lilly, was sick for 10 years and Virgie took care of her. She also took care of her dad Sam Perry for 2 1/2 years. With 2 older brothers, she took care of one for 6 or 7 years.

All the people in Muleshoe, as well as the girls at Muleshoe Area Home Health Agency have always been good to her. They are wonderful and take good care of her.



Virgie Perry

To receive Home Health Services, talk with your physician or talk with hospital personnel when you are hospitalized.

24 Hour # 272-3346

Local Nurse on call 24 hours a day to offer prompt service.

We accept Medicare, Medicaid and Private Insurance

It Is Your Right To Choose The Home Health Agency You Prefer.



Affiliated with

LUBBOCK METHODIST HOSPITAL SYSTEM

FREE Information On Advance Directives

Also known as Living Wills or Right To Die Directives

You may call our agency 272-3346 for more directives. You may also obtain assistance at 623 W. 1st St.

Nursing Home News By Joy Stancell

Thursday morning, Pastor David McIntire, Clara Lou Jones and Glenda Jennings conducted a memorial service for Mary Suran.

Jean O'Brien came to play Skip-Bo with the residents that afternoon.

Friday morning, Nathan Crawford, minister of the Lazbuddie Church of Christ, lead us in our devotional/hymn time.

Saturday afternoon, Melvin and Wanda Griffin came to direct the Bingo Party.

Sunday afternoon, the New Covenant Church came for church services.

Monday morning, Clara Lou Jones lead the exercise class and reading group.

Tuesday morning, Melvin Griffin showed us a very special video following exercise class.

That afternoon, Claudine

Embry, Lanell Stancell, Skeet Bradshaw, Pat Watson, Mable Nieman and the Activity Department shampooed and set the ladies' hair and gave hair care.

Jane Reeder baked and brought us strawberry bread Tuesday morning that was served at coffee time. Susan Copeland brought a box of muffins and brownies from the Snack Shack Tuesday afternoon.

"Tony," Julia Smith's special canine, came to visit us Tuesday. "Victoria" and her little master, Mason Reeder, came to visit and do tricks for Mason's great grandmother, Roma Davis, last week.

Nettie Quesenberry attended her nieces' 60th wedding anniversary celebration with her daughter, Anna B. Lane, recently.

Lucille Tuggles' niece, Mrs. Bales, and her sister-in-law

cooked and brought her lunch, Monday on Lucille's birthday.

The residents sang the birthday son to Jeanetta Hukill on her birthday Tuesday.

Wednesday morning, Buster and Wanda Kittrell hosted coffee/spudnut time.

Mildred Head, Tennie McCormick, Florene Upchurch and Mrs. Knowles were guests at the Glenda Jennings, Jonessa Brockmans'

Wednesday afternoon Sing-A-Long.

Among those visiting the Healthcare Center this week were Mr. and Mrs. Jerry Hutton, Paul Poyner, Velta Fyie, Ruby Garner, Joyeline Costen and Lynda Lowe.

Melvin Griffin constructed and hung a "High Rise" bird feeder out on the patio, where the residents can watch the birds out of the window.

Healthcare residents celebrate birthdays

A birthday party for Muleshoe Healthcare Center residents having January birthdays was held Jan. 25.

Entertainment at the birthday party was provided by Pat Watson and Yaunda Martin. Lasting Impressions furnished the flowers, and the balloons were furnished by Balloons and Gifts.

Hostesses were Mildred Head, Melvin and Wanda Griffin and Volunteers Plus.

The following residents had January birthdays:

Mary Jennings, 82, was born in Texas on Jan. 21, 1914. She is married to Joe Jennings, and they have two sons. She recently became a grandmother of a baby girl. She is a Presbyterian.

Antonio Romero, 91, was born in Mexico on Jan. 1, 1905. He is a Catholic.

D.B. Head, 93, was born

Jan. 11, 1903, in Dunn, Texas. He is married to Mildred (Wilterding) Head. They have four children: three boys, Norman, Marshall and Glenn, and one daughter, Irene. He is a retired farmer and a member of the United Methodist Church.

Jeanetta Hukill, 92, was born Jan. 23, 1904, in Texas. She is married to M.J. Hukill, and they have two daughters, Wanda and Mary. She was a homemaker and a member of the First United Methodist Church. She and her husband traveled a lot and have been in almost every state.

Lucille Tuggle, 86, was born Jan. 22, 1910, in Oklahoma. She is an avid reader who writes poems and is a historian. She has two sisters-in-law, Dorothy Brock and Eunice Bales, of Muleshoe. She is a Methodist.

Retired teachers explore services for the elderly

The Muleshoe Area Retired Teachers met Jan. 19 at the 16th and D Church of Christ with Eloise Wilson and Mabel Wolfe as hostesses.

Judge Glen Williams spoke on services for the aged, such as Meals on Wheels, Senior Citizens Bus and the Department of Aging.

Those attending were Letha Patterson, Ann Oyler, Joyeline Costen, Elizabeth Watson, Maxine Ragsdale, Lucy Faye Smith, Eloise Wilson, Wilma Smith, Mabel Wolfe, Pauline Gunn, Maude Blaylock, Dorothy Beddingfield, Pauletta Crawford, Alene Bryant, Mary Nell Bleeker, Margie Moore and Mary B. Obenhaus.

The next meeting will be Feb. 19 with school superintendent, Bill Moore, on legislative and M.I.S.D. updates.

"Worthy Is the Lamb!"

In his book *Christian Theology in Plain Language*, Bruce Shelley writes, "The living church is not so much a school of folks who are completely correct doctrines; it is a worshipping congregation of God's people." Interesting.

Concerning the composition of the church, Shelley is absolutely right, isn't he? Perfect

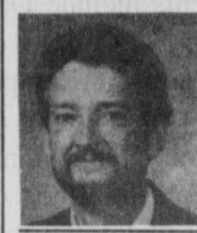
good reason to suppose that the area of doctrine is any different.

If, then, the church is not—indeed, cannot be—a group of folks who are completely correct doctrinally, what is it? If Shelley is right, and I think he is, the church "is a worshipping congregation of God's people."

In *Real Worship*, Warren Wiersbe, tracing the roots of the English word "worship" back to the words from which it derives, says that "worship" really means "worth-ship." "We worship," he explains, "that which is worthy. 'You are worthy, O Lord, to receive glory and honor and power' (Rev. 4:11). 'Worthy is the Lamb who was slain' (Rev. 5:2). Man is not worthy of worship, and certainly the idols that man makes are not worthy. Only God is worthy of our worship."

Whenever we meet together to worship God, we come publicly acknowledging our imperfection, our deep need for the cleansing and the grace He offers, His complete worthiness to receive our highest praise and deepest adoration. We are called into worship, not because we are worthy, but because He is worthy, and through the perfect Lamb He freely offers us both the pardon and the power we need to joyfully approach His throne.

Curtis Shelburne is minister of the 16th & Avenue D Church of Christ in Muleshoe.



Focus On Faith
Curtis Shelburne

people might be perfectly correct in every area doctrinally, but there are no perfect people; therefore, the church cannot be made up of a group of people perfectly adhering to all the right doctrines. No matter how badly we may want to, none of us do.

That fact gives us no license to be shoddy in our thinking or our approach to doctrine. The truly foundational doctrines of Christianity have stood the tests of time and experience and have guided generations of Christians to the Savior; if we toss them aside lightly, it will be at our own peril. But we need to realize that since we all are deficient in some way in every area of life, we are all absolutely dependent upon the grace of God in every facet of it, and I see no

The crest of the flower or the pattern of the lichen may or may not be significant symbols. But there is no stone in the street and no brick in the wall that is not actually a deliberate symbol—a message from some man, as much as if it were a telegram or a post card.

—G.K. Chesterton

What's Cooking?

Area school menus

Muleshoe High School Watson Junior High Breakfast

Monday-Biscuit w/gravy, fruit or juice, milk

Tuesday-Breakfast pizza, fruit or juice, milk

Wednesday-Breakfast burrito, fruit or juice, milk

Thursday-Ham biscuit, fruit or juice, milk

Friday-Cinnamon roll, fruit or juice, milk

Lunch

Monday-Chicken sandwich, lettuce and tomatoes, tator tots, milk

Tuesday-Crispy tacos, lettuce and tomatoes, refried beans, corn bread, milk

Wednesday-Corn dog, vegetable soup, cinnamon roll, fruit crisp, milk

Thursday-Frito pie, vegetable dippers, sliced peaches, corn bread, milk

Friday-Fried chicken, mashed potatoes w/gravy, whole baby carrots, hot roll, milk

Dillman, DeShazo

Breakfast

Monday-Biscuit w/gravy, fruit or juice, milk

Tuesday-Breakfast pizza, fruit or juice, milk

Wednesday-Breakfast burrito, fruit or juice, milk

Thursday-Ham biscuit, fruit or juice, milk

Friday-Cinnamon roll, fruit or juice, milk

Lunch

Monday-Cheeseburger, lettuce and tomatoes, French fries, white cake w/ chocolate icing, milk

Tuesday-Chicken tetrazzini, yellow squash w/cheese, crinkle cut carrots, milk

Wednesday-Baked potato, chili & cheese, oriental vegetables, jello, milk

Thursday-Beef nachos, ranch style beans, whole kernel corn, corn bread, milk

Friday-Steak fingers, mashed potatoes, green beans, hot roll, milk

Three Way

Breakfast

Monday-Pancake, juice, milk

Tuesday-Breakfast burrito, juice, milk

Wednesday-Oatmeal or cereal, juice, toast, graham crackers, milk

Thursday-Biscuit, sausage, juice, milk

Friday-Waffles, juice, milk

Lunch

Monday-Steak fingers w/ gravy, green beans, creamed potatoes, hot rolls, peaches, milk

Tuesday-Pizza, salad, black-eyed peas, apple cobbler, milk

Wednesday-Cheeseburger, crispy fries, mixed fruit, milk

Thursday-Nacho grande, salad, raisins, birthday cake, milk

Friday-Chicken nuggets, raw vegetable, corn, hot bread, apricots, milk

GOING OUT OF BUSINESS

Tires starting at
\$19.95

155 80R 13

HUGE SALE GOING ON!!

1621 N. Prince
Clovis, NM

505-763-4425

- NEW - Triple Decker Pizza



Triple Decker Cheese Pizza
\$9.99

Any Specialty
Triple Decker Pizza **\$12.99**

DELIVERY AVAILABLE 11 a.m. - 1:30 p.m. & after 5:00 p.m.

Pizza Hut
Delivers Great Taste!



Pizza Hut

1412 American Blvd.
Muleshoe 272-4213

Public Record

Police Report

Arrests

Jan. 22 — Sonia Carrasco Garcia, 27, was charged on local warrants on two counts of failure to appear, two counts of driving without a license, no insurance and defective tail lights.

Jan. 22 — James Kent Kelly, 29, was charged with issuing a bad check.

Jan. 21 — Samuel Barron Alvarado, 53, was charged with public intoxication.

Jan. 20 — Janell Cavezos, 22, was charged with failure to appear and on a local warrant for driving without a license.

Jan. 19 — Margie Montiel, 17, was charged with theft.

Incidents

Jan. 25 — A female reported the theft of electronic equipment valued at \$100 from a vehicle in the 300 block of S. Main. The case is active.

Jan. 23 — A male reported criminal mischief to a vehicle in the 200 block of E. 3rd St. Damage was estimated at \$75. The case is active.

Jan. 23 — A juvenile reported the theft of office equipment valued at \$155.62 in the 400 block of E. 4th St. The case is active.

Jan. 23 — A female in the 200 block of E. Ave. B reported the unauthorized use of a motor vehicle. The case is active.

Jan. 23 — A business in the 100 block of E. American Blvd. reported the theft \$16.40 worth of gas. The case is active.

Jan. 22 — A female reported the burglary of a habitation in the 300 block of E. Ave. E. The case was exceptionally cleared.

Jan. 21 — A female reported an intoxicated person in the 1,000 block of W. Ave. C., which resulted in an adult arrest.

Jan. 20 — A female in the 900 block of Country Club Rd. reported criminal mischief which resulted in an estimated \$250 damage to a building.

Jan. 19 — An employee at a business in the 1400 block of W. American Blvd. reported the theft of makeup valued at \$4.54, which resulted in an adult arrest.

Jan. 19 — A male in the 500 block of W. American Blvd. reported the theft of electronic/video equipment valued at \$100. The case is active.

Sheriff's Report

Jan. 20 — David Clyde Marr, 18, was charged with DWI and possession of alcohol.

Jan. 12 — Timothy Galen Gray, 24, theft by check

Births

Brandi Rae Lynne Drennan

Bonita Rainey and Randy Drennan announce the birth of a new daughter born Tuesday, Jan. 23 at the Muleshoe Area Medical Center.

The young lady weighed 6 lbs., 14 oz. at birth and has been named Brandi Rae Lynne Drennan. She has three sisters, Autumn, Alysha and Amanda.

Grandparents include Doris Marts and Davis Marts of Muleshoe. Great-grandparent is Elva Marts of Muleshoe.

DonAnn Rae Rempe

Keith and Dana Rempe announce the birth of a new baby girl born Jan. 15 at the Methodist Hospital in Lubbock.

The young lady weighed 8 lbs., 13 oz. at birth and was 22 1/2 inches long. She has been named DonAnn Rae Rempe.

DonAnn has two big sisters at home, Jennifer, 12 and Shanna, 8.

Grandparents include Don and Marlene McDonald of Clays Corner and Joan Rempe, and the late Don Rempe, of Muleshoe. Great-grandparents are Annie Cargile Elder of Farwell and Loyd and Viola Wescott of Topeka, Kan.

Hospital

Admissions

The Muleshoe Area Medical Center has reported the following admissions:

Jan. 19 — Earnest Logan,

Harriett Ellington, Miguel Cruz, Alfred Williams, Lena Ashton, Irene Purser, Margaret Graves

Jan 20 — Earnest Logan, Harriett Ellington, Miguel Cruz, Lena Ashton, Irene Purser

Jan. 21 — Earnest Logan, Harriett Ellington, Miguel Cruz, Lena Ashton, Irene Purser

Jan. 22 — Earnest Logan, Harriett Ellington, Kay Griswold, Maria Rodriguez,

Continued on page 9

If you're grazing cattle under a center pivot... you need

Matusa BROME GRASS

225 - 250 Days of Grazing
16 - 26% Protein
70 - 75% TDN

Matusa is a cool season perennial that continues to grow through the summer months under center pivot. Matusa can provide more grazing days than any other forage available... with an 1800% of gain per acre potential

"... just like having wheat pasture from March 'til November" —Strafford, TX

The Nation's Largest Distributor Of

- ✓ Tremendous Feed Value
- ✓ Excellent Yield Potential
- ✓ Persists Under Dry Conditions
- ✓ Winter Hardiness-Growth
- ✓ Unmatched Palatability

WIEDEBUSH & COMPANY 806-272-4281

ENJOY OUR 99¢ DAILY SPECIALS AT SONIC

MONDAY	2 Corndogs	
TUESDAY	Single Sonic Burger	with cheese \$1.24
WEDNESDAY	Steak Sandwich	with cheese \$1.24
THURSDAY	Single Sonic Burger	with cheese \$1.24
FRIDAY	Steak Sandwich	with cheese \$1.24
SATURDAY	2 Mini Burgers	with cheese \$1.24
SUNDAY	Single Sonic Burger	with cheese \$1.24

Not valid with any other special offers. No coupon necessary. Offers for a limited time, subject to change. Available at Muleshoe location only.

1633 AMERICAN BLVD., MULESHOE CALL AHEAD!!! 272-3998

The family of Ruby Atkins would like to thank all friends and neighbors for all the food, flowers, words of comfort, prayers and especially Dr. Purdy and the hospital staff during our time of sorrow.

Daniel, Dianne, Gene & families

Real Joy!

Unbounded joy! The joy of discovering new things. Each day bringing new wonders. All of life... so new... and exciting. God has been so wonderful. We have so much to appreciate. Living each day being thankful to God for all the wonderful things that he has given us. Attend church each week and know the "REAL JOY" of worshipping God.

The Church is God's appointed agency in this world for spreading the knowledge of His love for man and of His demand for man to respond to that love by loving his neighbor. Without this grounding in the love of God, no government or society or way of life will long persevere and the freedoms which we hold so dear will inevitably perish. Therefore, even from a selfish point of view, one should support the Church for the sake of the welfare of himself and his family. Beyond that, however, every person should uphold and participate in the Church because it tells the truth about man's life, death and destiny; the truth which alone will set him free to live as a child of God.

Immaculate Conception Catholic Church
805 E. Hickory
Father Joseph Augustine

First Baptist Church
220 West Ave. E.
Pastor, Stacey Conner

Emmanuel Baptist Church
Iglesia Bautista Emmanuel
107 East Third
Isaias Cardenas, Pastor

Trinity Baptist Church
314 E. Ave. B
Pastor Robert Brown

Circle Back Baptist Church
Intersection FM 3397 & FM 298
Rev. Jessie Shaver
946-3676

Calvary Baptist Church
1733 W. Ave. C
Pastor Ben Davis

Progress Baptist Church
Progress, Texas

Richland Hills Baptist Church
17th & West Ave. D
Brad Gathright

St. Matthews Baptist Church
Corner of West Boston & West Birch
Pastor, Floyd R. Monroe

Progress Second Baptist Church
1st and 3rd Sundays
Rev. Arthur Hayes

Primitive Baptist Church
621 South First
Elder Cleveland Bass, Pastor

1st Baptist Church
Lazbuddie, Tx.
965-2126

Lazbuddie Church of Christ
Minister, Nathan Crawford
Sunday School 9:30 a.m.
Morning Services 10:20 a.m.
Evening Services 5:00 p.m.
Wednesday Night 7:00 p.m.

First United Methodist Church
507 W. 2nd Street
Dr. James Bell, Pastor

El Divino Salvador Methodist Church
E. 5th and E. Ave. D
Guadalupe Ballinas, Pastor

Shepherd's Chapel of the Sacred Heart of Jesus Christ
Non-Denominational Spirit Filled Fellowship Worship:
809 E. Fir, Muleshoe
Rev. Manuel A. Cruz-Medina
Sunday Services:
9:00 a.m. - En Espanol - Devine Services
11:00 a.m. - In English - Devine Services
6:00 p.m. - In English - Devine Services
The Doors Are open each day from 9 a.m. to 6 p.m. for whomever needs our Lord, Jesus Christ or to talk with the Pastor.

St. John Lutheran
Lariat, Texas
Sunday School and Bible Church Services 9:30 a.m.
Fellowship 10:30 a.m.
Classes 10:45 a.m.
Rev. Richard Greenthauer

The Christian Center
Morton Hwy.
Reydon Stanford
272-5105

New Covenant Church
Plainview Hwy
Sunday School 9:00 a.m.
Sunday 10:00 a.m.
Wednesday 6:00 p.m.
Phil Ensminger, Pastor

Lazbuddie Methodist Church
965-2121
G. Scott Richards, Pastor

New Vision Church Of The Nazarene
814 W. Ave. C
272-3622
Pastor David R. McIntire

Primera Iglesia Bautista
223 E. Ave. B
Roy Martinez, Pastor

"Iglesia Pentecostal Unida"
207 East Ave. G
272-3636
Pastor: Wenceslado Trevino

Lariat Church of Christ
Sunday School 10:00 a.m.
Worship 11:00 & 6:00
Wednesday Services 7:00 p.m.
Sam Billingsley, Minister

Muleshoe Church of Christ
22nd & W. Amer. Blvd
Sunday School 9:30 a.m.
Morning Worship 10:20
Evening Services 6 p.m.
Wed. Night 7:30 p.m.

16th & Ave. D Church of Christ
Sunday 10:30 a.m.
Evening 6:00 p.m.
Wednesday 7:30 p.m.
Curtis Shelburne, Minister
272-4619

Irrigation Pumps & Power W. Hwy 84 272-4483	Attend the church of your choice		Western Drug 114 Main 272-3106
5-Area Telephone Cooperative, Inc. 302 Uvalde 272-5533	James Crane Tire Co. 322 N. 1st 272-4594	Bobo Insurance Agency 108 E. Ave. C 272-4264	Wes-Tex Feed Yards, Inc. 272-7555
Bob Stovall Printing 221 E. Ave. B. 272-3373	First Bank Member F.D.I.C. 202 South First 272-4515	American Valley, Inc. W. Hwy 84 272-4266	Bailey Gin Co. 946-3397

Journal Classifieds

Call 272-4536 Deadlines: For Thursday, Noon Tuesday; for Sunday, Noon Friday Call 272-4536

Advertisement of Invitation For Bids

Sealed proposals addressed to the Honorable Mayor and City Council of the City of Muleshoe, Texas will be received at City Hall, 215 S. First St., Muleshoe, Texas 79347, until February 16, 1996, at 11:00 a.m., for construction of Seal Coat Improvements including all labor, material and equipment and performing all work required for seal coating city streets.

Immediately following the closing time for receipt of bids, proposals will be publicly opened and read aloud in the council room. Any bid received after closing time will be returned unopened. The right is reserved to reject all bids and to waive any informality in bids received. Bidders are expected to inspect the site of the work and to inform themselves regarding all local conditions.

Bidders must submit a Cashier's or Certified Check issued by a bank satisfactory to the Owner, or a Proposal Bond from a reliable surety company, payable without recourse to the order of the City of Muleshoe, in an amount not less than five percent (5%) of the bid submitted as a guaranty that the Bidder will enter into a contract and execute bonds and guaranty in the forms provided within fifteen (15) days after notice of award of contract to him. Bids without the required check or Proposal Bond will not be considered.

If the contract is over \$25,000 the successful Bidder will be required to furnish a Performance Bond and a Payment bond, each in the amount of the contract, written by a responsible Surety Company, authorized to do business in the State of Texas, and satisfactory to the Owner, as required by Article 5160, V.A.T.C.S., as amended by H.B. 344, passed by the 56th Legislature, Regular Session 1959 and Experience Record.

Bid documents are on file at City Hall, City of Muleshoe, Texas, and at the office of Parkhill, Smith & Cooper, Inc., Engineers * Architects * Planners.

Copies of the bid documents may be secured at the office of Parkhill, Smith & Cooper, Inc., Engineers * Architects * Planners, 6300 Canyon Drive, Amarillo, Texas (Phone (806) 352-2796) for the deposit of Fifty Dollars (\$50.00) for each set of plans and specifications. Upon return, in good condition and within ten (10) days after the bids have been opened, of each set of documents, the entire deposit will be refunded.

Not less than the general prevailing rates of wages established by the Secretary of Labor must be paid on this project. Bidders on this work will be required to comply with the President's Executive Order No. 11256, as amended for Equal Opportunity in Employment.

CITY OF MULESHOE, TEXAS
By Robert Montgomery Mayor
published in the Muleshoe Journal Jan 25 and 28, 1996.

Notice To Bidders

The Bailey County Commissioners' Court will receive bids until 10:00 a.m., Monday, February 12, 1996, for courthouse lawn maintenance. Specifications describing expected services can be obtained from, and all bids must be submitted to, the County Judge's office prior to the above time.

Bids should state the charge per mowing and/or chemical application. Payment will be made monthly after presentation of an itemized statement to the Commissioners Court, and will be made out of the General Fund.

The Commissioners Court reserves the right to reject any or all bids and to waive formalities.

Published in the Bailey County Journal Jan. 28, 1996 and Feb. 4, 1996.

Notice To Bidders

The Muleshoe Area Hospital District will accept bids for a Blood Gas Analyzer on or before February 16, 1996. Specifications may be obtained from the office of Administration, Muleshoe Area Medical Center, 708 South First Street, Muleshoe, Texas 79347

Published in the Bailey County Journal, Jan. 28, 1996.

Real Estate

For Sale: 3 bedroom, 1 bath, brick home. Newly remodeled kitchen, 806-481-3502. 33t-tfc

Richland Hills - 3, 1 3/4, 2, Great location. Recently remodeled, lg storage building, low \$70. Call 806-272-4754. 32s-Sun tfc

Irrigation Water For Sale Land FREE!!
717 Acres some of the best water in Lamb County. Smith Land and Cattle Owner
Call David Smith
806-938-2110
5s-4tsun chg

359-1775, Portales
1991 Jeep Cherokee, 4x4 - Extra nice, \$11,500.00 (505) 359-0947, Portales
1993 Jeep Wrangler - Soft Top - 14,000 miles, \$11,995.00, (505) 359-1775, Portales
1989 Cadillac Sedan DeVille - Blue - NICE - \$8,995.00, (505) 359-0947, Portales
1990 Cadillac Sedan DeVille - Loaded - Low Miles - White \$7,500.00 (505) 359-1775, Portales

Wanted

House Cleaning - Bi-Weekly, Weekly and Monthly.
Call Renee, 272-5957. 2s-7tpd.

Needed Baby Sitter for New Born! Mon-Fri, 8a.m. - 5 p.m. Call 925-6704 4t-4tc

J&J Portable Welding
Build Hay Barns, pre-fab buildings, tear down gins. 893-5860 or 272-5122. 4t-8tpd

For Sale

For Sale Good Quality Alfalfa, inside a barn .See or call Alex Aguirre 806-272-5012. 2t-8tc

For Sale
Alfalfa Hay
Small Square Bales
272-4367
or 946-7045
2s-7tpd

For Sale: 3-300 Ford irrigation wells. 1 is new, other 2 overhauled, with long block assembly, excellent shape, ready to run. Call 925-6716. 5s-3tc

Console/Spinnet piano for sale. Take on small payments. See locally. 1-800-343-6494. 5s-1tpd

Farm For Sale

320 Acres, Good Land, Good Yield, Good Water, 1 Sprinkler, Small House, Near Lazbuddie. Call 965-2695, Mobile 946-8078 51t-12tc

IN YOUR BACK YARD
If you are interested in running a large number of yearlings on sprinkler irrigated permanent pasture with cheap pumping cost, please call us! We will attempt to divide to suit your needs, fully allotted to wheat, corn and milo if farming is desired, on pavement, nice pens. **ALMOST 8 SECTIONS**, good country, excel, fences, well watered by subs, pipeline and mill, pavement, loan estab. 3 CIRCLES, fenced for cattle, shallow pumping, good area for wheat, corn, cotton, alfalfa, peanuts or vegetables. Adjoins 8 sections mentioned above and 20 circles. 14 1/2 Sections Well improved (houses, barns, scale, pens) watered by subs & pipeline.

Automobile

1993 Chevy - Regular Cab - Sport Side, Texas Stagecoach Package - Raspberry Color \$14,500.00 (505) 359-1775

TOP QUALITY HAY FOR SALE
German millet hay, milo hay, haygrazer hay, wheat hay and oat hay. Large round bales. Discounts on quantity. Call 505-276-7522, 505-276-8482 or 595-276-7527. Delivery Available!

*¡Queremos
envitar a nuestros amigos
y amigas que vengan a
ver nuestras casas!*



Jerry Padilla
We want to invite our friends to come and see our homes.

BETTER LIVING HOMES
Located 1/2 Mile North Of Portales
On US 70
Lic. # D00681 505-356-5448
SE HABLA ESPANOL

James F. Hayes & Co.

AGRICULTURAL REAL ESTATE SERVICES

- 152 Acres West of Muleshoe. Electric Center pivot sprinkler, 2 wells, 1/2 circle of improved grass. Good barbed wire fence. Priced for immediate sale.
 - 120 acres west of Muleshoe. 2 wells. Good soil. Lays good. Immediate possession available.
 - Dodd Area - 160 acres with electric center pivot. Excellent soil and water.
 - 320 Acres Northwest of Lariat. 2 centerpivot sprinklers, 2 wells, modest home, quonset barn.
 - 480 Acres of C.R.P. West of Muleshoe One payment left \$150 per acre.
 - 480 Acres on highway 1760, 3 miles from New Mexico state line. 6 wells, lots of underground pipe
 - South of Lariat - 160 acres with center pivot. Priced to sell in order to settle estate.
 - 639 Acres Northwest of Earth. 5 wells, 3 sprinklers, livestock feeding pens. Nice 4 bedroom home with basement. One 3 bedroom home for employee or to rent our. NICE COMPLETE OPERATION!
 - 320 Acres East of Farwell on Hwy 145. 2 Valley water drive sprinklers, 2 wells, excellent water
 - NEW LISTING
160 Acres Northeast of Muleshoe in Parmer County. Excellent water. Excellent soil. Electric Center Pivot Sprinkler. New set of bowls on pump. Top Notch Farm Labor of C.R.P. Southwest of Muleshoe. One year left on contract. \$200 per acre.
 - 160 Acres East of Farwell on Hwy. 145 with modest home and large quonset barn
 - 177 Acres with center pivot Southwest of Muleshoe Lays good, allotted.
 - 120 Acres of C.R.P. in Stegal Area. Good soil, good turf. Price reduced to sell.
 - 320 Acres East of Farwell on hwy 145. 2 Electric sprinklers, 3 wells, fully allotted. Excellent soils and water
- Vic Coker, Agent**
310 Main St. Suite 103 Muleshoe
Office 272-3100 Home 965-2468
WHEN LAND INVOLVES COWS AND PLOWS

Nieman Realty

116 E. Ave. C George Nieman, Broker 272-5285 or 272-5286

RICHLAND HILLS

NICE 3-3-1 Brick, cent. Heat, Evap. Air, built-ins, 2000' + lv. area, fenced yd., stor. bldg., MORE !! \$60's !!! RH-2

VERY NICE 3-2-2 Brick, cent. A&H, built-ins, FP, approx. 2,000' + lv. area, auto, splkr., storage bldg., fenced yd., MORE !!! \$70's !!! RH-1

NICE 3-2-2 Brick, cent. A&H, built-ins, FP, approx. 2150' lv. area, fenced yd., MORE!!! \$70's!!! RH-7

HIGHLAND AREA

VERY NICE 2-1-1 Home, wall furnace, window air, nicely decorated, storm cellar, stor. bldg. \$20's !! HL-7

NICE 3-1-1 carport Home, wall furnace heat, evap. air, stove, fenced yd. \$25K!!! HL-3

2 Bdrm, 1 bath home, fenced yard. \$16,500!!! HL-4

VERY NICE 3-2-2 Brick, Cent. A&H, built-ins, fenced yd., splkr. sys., MUCH MORE!!! \$60's !!! HL-1

Very nice 3-1 1/2-2 carport home, Geothermal heat and air, dishwasher, fireplace, nice carpet, storage building, fenced yard. \$30's!!! HL-5

JUST LISTED 3-2-2 home, Cent. A&H, built-ins, fenced yd., corner lot. \$30's !!! HL-2

JUST LISTED - VERY NICE 3-2-1 carport Home, heat pump, built-ins, nice carpet, fans, storage-workshop! MUCH MORE!!! \$50,000 !!! HL-6

LENAU ADDITION

NICE 3-2-1 carport Home, geothermal heat pump, fenced yd., storage bldg. \$27,500!!! L-3

ASK ABOUT OUR COMMERCIAL LISTINGS!!!

PARMER - BAILEY CO. Area-Elevator & Cleaning Facility - 12 million lb. Capacity, Scales, Dryer, & Office on approx. 6.5 acres!!! PRICED TO SELL !!! POSSIBLE OWNER FINANCING!!!

COMMERCIAL-200' Hwy. 84 frontage-Former Richland Hills Texaco, excellent business location, PRICED TO SELL!!!!!!

LENAU ADDITION

VERY NICE 3-2-1 Home, Heat Pump, storm windows & doors, extra insulation, nice carpet, splkr. sys. & MORE!!! \$30's!!!!L-2

JUST LISTED - Nice 2-2-2 Brick, on corner lot, heat pump, fenced yard, storage bldg., MORE! \$40's !!! L-1

COUNTRY CLUB

VERY NICE 3-2-1 Home, A&H, built-ins, large screened porch, fenced yd., MORE!!! \$40's !!! CC-1

2-1-1 carport home, wall furnace heat, nice carpet, storm shelter, storage bldg., fenced yd. MORE!!! \$20's.

HIGH SCHOOL

VERY NICE 3-1-1 Brick, Cent. A&H, stove, nice carpets, fenced yd. \$30's!!! HS-4

NICE 3-2 Home, Cent. A&H, built-ins, nice carpet, fans, stor. bldg., fenced yd. \$30's HS5

JUST LISTED - NICE 3-2-2 carport home, cent. A&H, built-ins, guest cottage or eff. apartment, insul. wkshop-stor. bldg. w/elect., fenced yd., & MORE!!! \$40's!!! HS2

NICE 3-2-2 Brick Home, Cent. Heat, built-ins, fenced yd., large shop & office (ideal for automotive-woodworking, etc.), storage, eff. apartment, MORE!! \$80's HS-3

JUST LISTED - 2-2-2 carport Mobile Home, Cent. Heat, built-ins, fenced yard, More!!! \$12K HS-1

RURAL HOMES

BEAUTIFUL 4-3-4 carport home on 2.4 acres on Highway, Geo. Heat pump, FP, nice carpets, loads of storage. SHOWN BY APPOINTMENT. \$90's!!! HR-4

VERY NICE 3-2-2+2 Carport Brick Home on 2.5 acres on pavement, close to town, Heat Pump, built-ins, FP, MUCH MORE. \$70K !!! HR-3

Hospital

Continued from page 8

Lena Ashton, Irene Purser, Bernice Holderman

Jan. 23 — Earnest Logan, Harriett Ellington, Michael King, Lloyd Hemphill, Lena Ashton, Bernice Holderman, Meda Huges, Bonita Rainey, Baby Girl Drennan

Jan. 24 — Earnest Logan, Michael King, Amber DeLeon, Jacqueline Lopez, Willie Waddell, Lloyd Hemphill, Lena Ashton, Bernice Holderman, Addie Meeks, Bonita Rainey, Brandi Drennan

Jan. 25 — Bud Logan, Michael King, Amber DeLeon, Jacqueline Lopez, Willie Waddell, Lloyd Hemphill, Lena Ashton, Bernice Holderman, Linnie Bower, Addie Meeks, Bonita Rainey, Brandi Drennan

Subscribe to the Muleshoe Journal today!

SCORE SUPER SAVINGS

FROM EVERY DEPARTMENT

DOUBLE COUPONS EVERYDAY

All Types
Coca-Cola
6 pack, 12 oz. cans
2/\$3



MEAT



SMALL PACK
lb. **\$3.19**

Value Pack, Beef
T-Bone Steak
lb. **\$2.99**

Pilgrim's Pride
Boneless Skinless
Chicken Fajitas
lb. **\$2.49**

- Value Pack, Excellent for Chicken Fry!
Beef Cubed Steak lb. **\$2.49**
- Beef Chuck** lb. **\$1.49**
- Chili Meat** lb. **\$1.49**
- Peyton's Bun Length
Smoked Sausage 12 oz. pkg. **79¢**
- Small Pack
Beef Strip Steak lb. **\$4.99**
- Cooked
Popcorn Shrimp lb. **\$4.99**
- Wafer Thin Cut
T-Bone Steaks lb. **\$3.28**
- Boneless
Pork Loin Roast lb. **\$3.59**
- Thorn Apple Valley
Little Smokies 1 lb. pkg. **\$1.99**
- Thorn Apple Polish, Cheese,
Regular or Spicy
Smoked Sausage 12 oz. pkg. **79¢**
- Ready to Cook, Market Made Beef
Hamburger Patties lb. **\$1.39**

Bar S
Meat Franks
12 oz. pkg. **69¢**

Bar S
Beef Patties
5 lb. box **\$6.99**

Bar S
Meat Bologna
12 oz. pkg. **79¢**



Hormel Regular, Low Salt or
Mesquite
Black Label Bacon
1 lb. pkg. **\$1.87**



Hormel Links
Little Sizzlers
12 oz. pkg. **99¢**



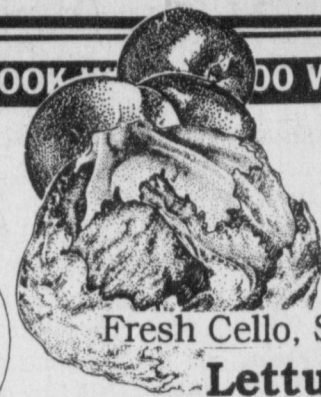
Boneless Butterfly
Pork Chops
lb. **\$3.79**

Wafer Thin Cut Boneless
Pork Chops
lb. **\$3.99**

PRODUCE

LOOK FOR THE DO WILL BUY!!

Mix or Match
Lemons
or **Limes**
7 for \$1



Fresh Cello, Small Size
Lettuce
2 for \$1

- Super Select
Cucumbers 3 for **\$1**
- Extra Large
Navel Oranges 2 lbs. **\$1**
- Fresh
Broccoli 2 lbs. **\$1**

- Salted or Roasted
Peanuts 1 lb. pkg. **\$1.00**
- Mini Peeled
Carrots 1 lb. pkg. **\$1.00**

SALE-A-BRATION

KRAFT SUPERBOWL COUNTDOWN

- REGULAR KRAFT ASSORTED Dressing 18 oz. btl. **\$1.89**
- KRAFT ASSORTED LONGSHORN Colby Jack • Mild Cheddar • Colby 16 oz. pkg. **\$1.69**
- KRAFT ASSORTED CHEESE WHIZ 16 oz. jar **\$2.99**
- REGULAR OR LIGHT Kraft Cheez Whiz 16 oz. jar **\$2.99**
- KRAFT ASSORTED CHUNK Cheese 8 oz. can **2/\$3**
- MINI OR JET-POFFED Kraft Marshmallows 8 oz. pkg. **89¢**
- KRAFT PHILADELPHIA Cream Cheese 8 oz. can **99¢**
- KRAFT PHILADELPHIA CHEESE SINGLES 1.5 oz. pkg. **2/\$4**
- KRAFT AMERICAN PIMENTO, OR SWISS Cheese Singles 1.5 oz. pkg. **2/\$4**
- JELL-O Assorted, 2.9-3.9 oz. Regular, 3.4-3.8 oz. Fat Free or 1.5-2.2 oz. Sugar Free Pudding 2/\$1

KICK-OFF SALE

- RALSTON NEW Chex Mix Snack 7.25-8 oz. pkg. **2/\$3**
- EXTRA FINE GRANULATED Imperial Sugar 4 lb. bag **\$1.39**
- PEDIGREE Dog Food 13.2 oz. can **2/\$1**
- WHITE OR COLOR Hefty Foam Plates 10 ct. **2/\$3**
- Skinner Short Cut Elbow or Long/Thin Spaghetti 12 oz. pkg. **2/\$1**
- Solo Party Cups 16 oz. 25 ct. pkg. **\$1.19**
- Assorted, Orville Redenbacher's Popcorn 3 pk. or 5 pk. **2/\$3**
- Assorted, Mister Salty Pretzels 9-10 oz. box/bag **\$1.19**
- Assorted, Nabisco Harvest Crisps, Mr. Phipps, Tater Crisps, Triscuits or Snacks 5.5-10 oz. pkg. **3/\$5**
- Nabisco Assorted Easy Cheese 8 oz. can **69¢**
- SHURFINE WHITE Bath Tissue 9 roll pkg. **\$1.79**

Yogurt, Regular, Light or Diet
Blue Bell Ice Cream
1/2 gal. round ctn. **2/\$5**

Lowe's, 8 ct. pkgs.
Hamburger or Hot Dog Buns
2/\$1

Assorted Regular or Waxy Lay's
Potato Chips
Reg. \$2.99 size **\$1.69**

Assorted, Italian Style Pastry Crust 12"
Tony's Pizza
3/\$5

HOMO OR HI-PRO
Borden Milk WOODBON **FREE**

Lowe's Valuable Coupon
Good Only At Lowe's Pay N Save Marketplace
Expires Jan. 31, 1996
HOMO OR HI-PRO
Borden Milk WOODBON **FREE**

Oscar Mayer Savings

- Oscar Mayer Bun Length Regular or Light **Meat Wieners** 16 oz. pkg. **\$1.69**
- 1 qt. Sauerkraut, 20 oz. Sandwich Sliced Bread N Butter or Sandwich Sliced Kosher **Claussen YOUR CHOICE** **\$2.19**
- Louis Rich Red Rind **Turkey Bologna** 16 oz. pkg. **\$1.19**
- Ham & Turkey • Chub • Healthy Favorites **Oscar Mayer Variety Pack** 9 oz. pkg. YOUR CHOICE **\$2.19**

DAIRY

CALIFORNIA OR FLORIDA
Sunny Delight Citrus Punch
128 oz. jug. **\$1.99**

Regular or Light
Kraft Velveeta 2 lb. box **\$3.79**

FAT FREE MILD, RANCH, OR FRENCH ONION
Kraft Dips 8 oz. **79¢**

Avocado, Ranch, Green Onion, French Onion or Jalapeno
Assorted Kraft Dip 8 oz. **69¢**

FROZEN

BANQUET LEMON, BANANA CHOCOLATE OR COCONUT
Cream Pies 3 **\$3**

BANQUET ASSORTED Fried Chicken **\$2.69**

BANQUET 11 OZ. BREADED TENDERS, OR MIZZARELLA, CHICKEN PLAN
Chicken Nuggets **\$2.69**

FAT FREE MILD, RANCH, OR FRENCH ONION
Kraft Dips **79¢**

ONE-IDA ASSORTED DTYA CHEESE, OR
Bagel Bites **2/\$3**

TAI PAN ASSORTED FROZEN
Chinese Entrees **\$1.89**

HEALTH & BEAUTY

ANTI-PERSPIRANT OR DEODORANT
Degree **\$1.89**

Paste or GEL Cool Mint
Listerine Toothpaste 4.8 oz. pkg. **\$1.99**

Children's Tablets
Tylenol Cold Plus Cough 24 ct. pkg. **\$3.29**

Cold & Cough Medicine Tablets
Alka Seltzer Plus 20 ct. pkg. **\$3.89**

Night-Time Cold Medicine Tablets
Alka Seltzer Plus 20 ct. pkg. **\$4.89**

Maxwell House
Maxwell House Coffee
\$1.99

Post
Post Banana Nut Crunch Cereal
\$2.49

It's time to get a
SUPER BOWL™ XXX Watch!
ONLY FROM **KRAFT**

Small print text regarding the Super Bowl XXX Watch promotion.

WESTERN MONEY UNION TRANSFER™
"The fastest way to send money"

Lowe's Pay-n-Save

515 W. American Blvd.
401 W. American Blvd.
Muleshoe 272-4585

WE RESERVE THE RIGHT TO LIMIT QUANTITIES IN TEXAS

Muleshoe 272-4406

Prices Effective January, 1996
WED THUR FRI SAT SUN MON TUE
24 25 26 27 28 29 30