

HANSFORD COUNTY  
130 N  
SPEARMAN, TEXAS

24 hr. prayer  
service 659-2911

TA MEMBER 1984  
TEXAS PRESS ASSOCIATION

# The Spearman Reporter

Volume 76, Number 8

The Spearman Reporter, Spearman, Texas 79081

Thursday, December 29, 1983

## Happy New Year to all

**EDITOR'S NOTE:** People who say nothing ever happens in a small city have not been keeping abreast of events in Spearman during 1983. The year was chock full of happenings, big and small, some exciting, some happy and humorous, some tragic and sad.

In this issue of *The Reporter*, and Sunday's *Hansford Plainsman*, the top stories of 1983 are recapped. Events of the first half of the year, January through June, are described in this issue, and the last half year will be recounted in the *Plainsman*.

Obviously, there have to be some limitations and rules imposed. Arbitrarily, it was decided to not include sporting events in this "News Highlights of 1983," and instead come out later with a "Sports Highlights of the Year." Deciding what is a sporting event is at times difficult. Horse shows were included as news while rodeos will go in the sports summary, for example.

It was also decided not to include obituaries, although deaths of some members of the community are major stories as their loss of leadership and comradeship will be deeply felt by many. This decision was based on the concern that someone might be omitted unintentionally and to avoid placing a value tag on a person's life.

mits issued in Spearman during 1982 totaled more than \$3.5 million. Of that total, in excess of \$2.5 million was permits for business and industry construction, most of it for ag-related business.

The biggest single construction project was the \$2.6 million expansion of Speartex Grain facilities, and this helped the business industry stats to top those of the previous year considerably. Residential construction was down a little from '81, but still a substantial number of permits for a quarter-million dollars in residential construction were issued, impressive in the face of continued high interest rates and a faltering economy nationally.

The not so positive news came from Hansford County Sheriff R.L. McFarlin who said the county crime rate was higher in 1982 than any time since he assumed office. The leading offense was "hot checks" with theft of services, theft by appropriation and bond "jumpers" also up there on the list, as were "illegal aliens and public intoxication."

New and old also made the news in January. On Jan. 3, Bobby Lujan was born. The 7 pound, 2 1/4 ounce son of Miguel and Linda Lujan, thus became the first baby born in Hansford County in 1983.

Also on Jan. 3, new county commissioner Val Winger of Gruver was sworn in along with the incumbents re-elected. He succeeds Buddy Lowe who declined to run for commissioner after serving in that capacity for more than two decades.

And on Jan. 7, Darlene Lowe was honored upon her retirement after serving 29 years with Hansford ASCS office.

On the night of Jan. 10, flames gutted the Spearman City Hall—one of the biggest stories of the year, repercussions of which would make headlines on and off throughout the year. Fire gutted the administrative offices and the empty fire truck stalls, unused since the opening of the new fire station. The fire department stalls served as a fire break, that allowed the police department on the north end of the building to escape serious damage.

The city wide alarm system did not sound because the fire was in city hall, a vital link in the alarm system. The fire department responded just four minutes after learning of the fire via telephone.

The next morning, the city council met in emergency session and accepted the old Speartex Grain office, made available by kindness of Carl Archer, as temporary city hall. The city is still operating from this site.

In the Jan. 30 issue, it was announced that Jim Shirley had been elected president and Mike Schnell vice president of First State Bank of Spearman.

And also during January, several Spearman High School students and Spearman Junior High students were named to All-Region band honors. The SHS All-Region honorees were Tracy Taylor, Tonya Curtis, David Tucker, Terji Thøgersen, Christie Black, David Sorgi, and Mary Ann Kenney. Alternates were Jeff Gressett, Edward Beck, and Greg Reimer. Sorgi was named to try out for the All-State Band. Junior High All-Region band

honorees were Anne Sheets, Alana Barnes, Kerri Ann Holt, and Kelli McWhirter.

**FEBRUARY**

The weather made banner headlines in February as an accumulated 14 inches of snow fell the first week—10 inches on Feb. 3 and four inches on Feb. 6.

Staged by Agco of Spearman Inc., a "Winter Fair" was held in the County Barn in Spearman. It featured prizes, a noon fish fry and 17 companies with sales representatives on hand to answer questions about farm equipment offered by their firms.

Will Jarvis, son of Mr. and Mrs. Britt Jarvis of Spearman, was honored as Reserve Champion Youth at the annual Golden Spread Quarter Horse Association banquet in Amarillo.

Al Tucker, a post office employee for 24 years, retired Tuesday Feb. 8 and was honored with a dinner at Cattleman's Restaurant by his fellow workers.

Eighty-four Hansford County youth entered the Feb. 19-March 6 Houston Fat Stock Show and Rodeo.

Mrs. Ora Lee Blackburn, owner and operator of Blackburn's Flowers for many years, announced she sold the business to her daughter, Bodil Stackhouse. Mrs. Stackhouse moved the shop from its old location on Drensen Street to the remodelled old Kon-Tiki building.

Jim Turner, a graduate of Colorado State University assumed the duties of new manager at Spearman's Equity elevators.

Spearman Chamber of Commerce Ambassadors helped celebrate the formal opening of Mrs. Bruce Womble's, The Woodcrafter, on Main Street.

The Spearman Lynx band earned a "Superior" rating at UIL sanctioned solo and ensemble competition held at WTSU. David Sorgi won a "Superior" rating and Jeff Gressett an "Excellent" in the contest.

On Feb. 10, a program to Hansford and Hutchinson County farmers was held in Spearman High School auditorium. ASCS District Director Sam Cook and Hutchinson County Ag Agent Rick Hargrove conducted the program. Will Jarvis was winner of a \$600 calf purchase certificate from Pearch Industries at the Houston Livestock Show and Rodeo Feb. 16.

Heather McRee of Spearman 4-H. Jose Augustin Vargas of Spearman 4-H showed the Grand Champion Swine. Mack McLain, Spearman FFA, had the Champion York Swine. The Champion Dorset Lamb was shown by Kevin Slaten, Spearman FFA. The Champion Chester White Swine was shown by Davonna Cator of Gruver 4-H. Greg Reimer, Spearman FFA, showed the Champion Duroc Swine. Brooks Beck, Spearman 4-H, showed the Champion Spot Swine.

The Telethon raised \$9,000 for Golden Spread Center. Dora Womble was named "Senior Citizen of the Year," and Marilyn Cline was named "Volunteer of the Year." Rosalee Butt was awarded a plaque of appreciation from the board of the center.

In March 27 issue of the *Plainsman*, it was announced that Hansford County farmers went overwhelmingly for the government's PIK program. Of the county's 690 farms, 603 in wheat production were committed to PIK, and 471 of the corn and grain sorghum producing farms were signed up.

City Council authorized City Manager Jim Murray to take sealed bids for reconstruction of fire gutted Spearman City Hall.

Clint Patterson, local sixth grader and the son of Mr. and Mrs. Pat Patterson, won the Hansford County Spelling Bee held in Morse. Ann Sheets, daughter of Mr. and Mrs. Claude Sheets Junior of Spearman placed second.

Jay McMullan of Spearman placed third in Panhandle Professional Photographers Association spring competition in Amarillo.



The year 1983 will be remembered for two of the severest winters ever, yet each very different. It was the year of PIK, where planting of wheat was cut in about half, yet, because of the heavy, wet winter snows preceding it, one of the greatest wheat crops in years was produced.

One of the biggest stories of the year was that Hansford County is the Number One wheat producing county in the State of Texas.

Conversely, the grain sorghum crop was practically a disaster. Plagued by summer long drought and rains when they did come only delayed harvest, and an early freeze that damaged plants, the milo harvest was poor.

It was a year of change with many new businesses, new owners or managers for old businesses and expansions and new facilities for existing ones. Making big headlines were the announcement that First State Bank will build an ultra-modern new home on the old carnival grounds in the heart of the downtown area, and that another group is seeking a charter for a new bank here, First National Bank.

Another big story, a continuing one, was the gutting of old city hall by flames and the chain of events this set off—temporary quarters for the city, plans to refurbish the old city hall, finally shelved when the city bought the present First State Bank building for \$350,000, and the selling of the existing city hall for \$35,000.

By month, here are the big events of 1983:

**JANUARY**

Two of January's bigger stories were holdover statistical reports on 1982—one of them positive and the other one not so positive.

The positive item—published in the Jan. 2 issue of the *Hansford Plainsman*—was that building per-

**MARCH**

Rob Dennis won the Spearman Cub Scout's annual Pinewood Derby, his eighth win without a loss in pinewood derby racing.

Jim and Virginia Fowler of Spearman were part of a team traveling to Guatemala for an International Crusade.

Ribbon cutting ceremonies for Jack Lamb's and Vernon Morris' L&M Body Works was held March 10.

First Assembly of God Church held a note-burning service March 13.

Despite adverse weather conditions, the 1983 Hansford County Stock Show brought in \$83,731.88 for the approximately 120 exhibitors. Scott Strawn of Spearman FFA received \$2,827 from Hansford Implement for his 1,285 pound Grand Champion Steer. The Grand Champion Lamb was show by

Hansford County commissioners agreed to enter into a contract with Perdue, Branden and Blair of Amarillo for the collection of delinquent taxes.

Jan's new and nearly Fashions moved from its old location to new headquarters in Plains Shopping Center. There were grand opening festivities in the new, more spacious store, and Jan celebrated with a big sale that drew a large turnout of shoppers.

Texas Governor Mark White signed a new law giving Palo Duro River Authority new powers in levying taxes, issuing bonds and increasing eminent domain. The law, sponsored by Senator Bill Sarpalius and State Rep. J.W. Buchanan was passed to insure municipalities in the Panhandle region that water will be available to them.

Hansford County Historical Commission announced the depot to Stationmaster's House Museum will be moved to the museum site at 30 South Townsend.

Rev. Albert Lindley, pastor of First United Methodist Church is moving to Perryton to assume duties of pastor of First United Methodist there.

The Gift Box celebrated its 20th anniversary and a new Pride Mart opened in Spearman during April.

The Hansford County 4-H Junior Livestock Judging team advanced to state.

Spearman Cub Scouts held their Rain gutter Regatta and race winners were Jason Riggs, Rob Dennis, Chris Kelp, Shannon Lanier and Mark Eaton. Design trophy winners were Brandon Babitzke, Steven Reynard, Mark Eakin, Chad Davis and Mack Sheppard.

**APRIL**

Some 100 children participated in the annual Moose Lodge sponsored Easter Egg Hunt.

Wilson McClellan and Burl Buchanan defeated incumbent city councilmen Jim Meroer and Gerald Heinrich in the city election Saturday. Jim Nicholson running unopposed for the one-year unexpired term was top vote getter with 242 votes. Incumbent Bob Pearson received 232, Burl Buchanan 181, McClellan 152, and Heinrich 133.

In the school board election, incumbents Charles Shieldknight, Tom Latta and Dennis Nelson were returned to office. Latta received 283 votes, Shieldknight 261, Nelson 257, Marlane W. Shutter 57, and Pat Sutterfield 24.

On Tuesday, March 29, Spearman joined with other cities served by Texas-New Mexico Power Company filed testimony with the State Public Utility Commission in the company's rate increase pending before the city councils and the PUC.

On April 18, Danny and Cindy Howell held a grand opening for their new D & C Greenhouse, located two miles west on Gruver Highway.

The Hospital Auxillary held its annual salad luncheon April 11 at First Christian Church. New officers elected were president Virginia Head, first vice president Dorothy Haner, second vice president Virginia Trindle, secretary Rosa Lee Butt, and treasurer Barbara McClellan. Betty Jean Davis was outgoing president.

After canvassing of the vote, Dr. Tom Latta was named new president of Spearman ISD board of trustees.

**MAY**

The Palo Duro Creek water project was very much in the news early in May, as a public workshop was held at the courthouse for Palo Duro Creek Multipurpose Lake, Conveyance and Treatment Facility on May 4. At the hearing Army Corps of Engineers put a \$125 million price tag on the project. This was preceded by a city council meeting late in April where the number one topic was the river authority and Judge R.L. McLellan appeared to discuss the matter with the city aldermen.

The county commissioners voted to use revenue sharing funds—allocating \$2,500 to the museum and \$3,500 to the senior citizen center.

Dr. Bob Cator and son Bryan opened a new veterinary clinic known as Panhandle Regional Veterinary Clinic west of Spearman.

The annual FFA parent and member banquet was held May 2 in Spearman High School cafeteria. Hadley Reed is the new president of the FFA. FFA Sweetheart was Jo Anne Odegaard. Guest speaker Tom McDonald Area I FFA president spoke on "Looking Ahead."

The chapter bestowed honorary degrees to Dr. Tom Latta and Roy Bulls. Chapter Farmer and Greenhand degrees were presented.

The Downtown Revitalization Committee of Spearman Chamber of Commerce set goals for Main Street.

- Make a park area at 320 Main;
- To use old wood to make 217 Main attractive;
- Place park benches and planters in the recessed area;
- A Beautification Committee "got with it" and turned the old rundown area at the old Whites Auto Location into a thing of beauty.

At the SHS awards assembly, the All-Around Student awards went to Lea Ann Gibner and Mike Caldwell. Spearman High School Head Coach, Athletic Director Larry Lanier welcomed new SHS coach Derryl Friday at the awards assembly.

Senior winners from Hansford County in the annual District 4-H Roundup were, first place—Andrea Archer, Anne Marie Jarvis, Tammy Savage and Will Jarvis.

Junior winners, second place—Bonnie Jarvis, Mark Eakin, Deana Turner and Michael Whitefield.

Billy J. Kuehl retired after 33 years of service with the Exxon Company, USA.

Spearman school board accepted the resignations of Fern Newton and Carrol Yarbrough.

Spearman High School Lynx bands, beginning band, presented a concert May 12 in the SHS auditorium under direction of band director Pat Daniel.

Flag Girl and Rifle Girl tryouts were held May 19. Chosen as flag girls for 1983-84 were Tisha Peary as captain, senior Angela Coombs,

See Happy New Year P. 12



WHO KNOWS

1. What is the area of Great Britain?
2. How many drops are in a teaspoon?
3. Who was the first pilot to fly over the South Pole?
4. Who made the first solo round-the-world airplane flight?
5. Name Europe's longest river.
6. Name the presidents born in January.
7. Name the first man to take office under the Constitution's 25th Amendment.
8. How long is the Nile River?
9. Name the flower and the stone for January.
10. The Battle of New Orleans was fought on what day in 1815?

Answers to Who Knows

1. 94,000 square miles.
2. From 40 to 50 drops.
3. Bert Balchen, pilot for Richard E. Byrd's expedition, in 1929.
4. Wiley Post, in 1933, in 7 days 18 hours and 49 minutes.
5. The Volga.
6. Millard Fillmore, William McKinley, Franklin D. Roosevelt and Richard M. Nixon.
7. Gerald R. Ford as vice president.
8. 4,145 miles long.
9. The carnation for the flower and the garnet for the stone.
10. January 8.

Timely Warning  
You can't change the past, but you can ruin the present by worrying about the future.  
-Sun, Sac City, Ia.

**Strange Cookbook**  
All some girls know about cooking is to bring a male to a boil.  
-Mainsheet, Bainbridge.

**Good Substitute**  
There is no wholly satisfactory substitute for brains, but silence does pretty well.  
-Missile, Red Bank, N.J.

**Sweet Oblivion**  
Perhaps if we could forget our troubles as easily as our blessings we would live better.  
-Tribune, Oskaloosa, Ia.

**George P. Shultz**, Secretary of State, on Embassy bombing:  
"If the offenders can be clearly identified, then I think there will be ways of getting at them."

**Caspar Weinberger**, Defense Secretary, on Soviet mobile missile build-up:  
"Because of their mobility, all of the SS-20s now east of the Urals pose an equal threat to Europe and to the Far East."

**Jim Burnett**, chairman, National Transportation Safety Board, on 21 as legal drinking age:  
"The proposal to withhold federal highway funds for non-complying states would needlessly complicate the issue."

**Best of Press**

**Right!**  
The chief trouble with this country is too darned many legal ways to steal.  
-Constitution, Atlanta, Ga.

BIBLE VERSE

"The law was given through Moses, but grace and truth came through Jesus Christ."

1. Who is the author of this statement?
2. Upon what occasion was it spoken?
3. Briefly explain its meaning.
4. Where may this verse be found?

Answers to Bible Verse

1. John the Baptist.
2. As John the Baptist was introducing Jesus to His disciples as the long-promised Messiah.
3. The Mosaic laws were given to an unregenerate people for obedience. Jesus provides the grace by which believers receive the basic impulse necessary to real obedience to God.
4. John 1:17.

Spearman Reporter

PUBLICATION (USPS 5096-6000)  
SPEARMAN, TEXAS 79081  
213 Main Box 458 659-3434  
Published Weekly at 213 Main Street  
Spearman, Texas 79081  
Owner-Publisher.....William M. Miller  
Editor.....Faye Lynch  
Second Class postage paid at Spearman, Texas 79081

Any erroneous reflection upon the character of any person or firm appearing in these columns will be gladly and promptly corrected upon being brought to the attention of the management.

POSTMASTER: Send address changes to Spearman Reporter, Box 458, Spearman, Tx. 79081.

SUBSCRIPTION RATE: Hansford, adjoining counties, combination with the Hansford Plainsman \$15.00  
Other points, \$20.00

MEMBER  
Texas Press Association

\*\*\*\*  
The person who always has an emphatic and final opinion shouldn't be taken seriously.

\*\*\*\*  
People who are ailing all the time sometimes have too little to occupy their minds.

**FREE BLOOD PRESSURE CLINIC**  
Tuesday, January 3, 1984 at  
The First State Bank in Spearman, Texas--  
-9 a. m. 'til 3 p. m.


**NOTICE**

On page 5 of this week's TG&Y Circular the Men's and Boys' Nylon Suede Joggers will not be available, due to insufficient quantities. However, we are substituting the Men's and Boys' Royal Blue Nylon Suede Joggers at the same ad retail of 7.00 pr., reg. 12.97 pr. We regret this error and any inconvenience caused.

**TG&Y family centers**



We made it to the big 50  
Happy Birthday

  
K. Dale Johnson, D.D.S., Inc.  
3102 Carrut Drive  
Perryton, Texas 79070  
435-6564

**GOING OUT OF BUSINESS SALE!!**

**50% OFF EVERYTHING IN THE STORE!**

- Brass
- Fieldcrest
- All Fabrics
- Notions
- Patterns

**FABRIC SHOP**  
BORGER, TEXAS

520 N. Main 274-2721

CLEARANCE SALE

Lady Fair & Kids' Stuff

Save up to 30%

on all Fall and Winter Merchandise

Now in progress

719 W. 7th Spearman

Call  
**659-3434**

**SERVICES**

**Hansford County  
Planned Parenthood**  
26 S. Haney  
659-2483  
Spearman  
Mon.-Fri.  
8:30-12:30

**NOTICE  
Wallace Monument Co.**  
Monuments, Curbing,  
Grave Covers  
Local Representative  
**LEONARD JAMESON**  
Spearman, Texas  
35aRTN

**STEAM RINSE & VAC**  
Steam Rinse-and-vac Sham-  
poosers; \$10.95 for up to 24  
hrs. available at Gordon's  
Drug; also at Freddie Lar-  
gen's 716 Cotter Dr. after 4  
p.m. and Saturdays and  
Sundays.

**SERVICE:** Pits cleaned, wet  
or dry. Dragline or loader.  
Also, dozer, grader, carry-  
all service. Lee Roy Mitch-  
ell, 806-733-2384, Gruver,  
Texas 79040.  
12-rtn

New to area?  
Give us a try  
Call your local  
**USED COW DEALER**  
As soon as Possible.  
659-3544  
659-3545  
1-800-692-4043  
17S-rtn

**MONUMENTS**  
Save Agents and  
Undertakers Profits  
If it is inconvenient for  
you to visit our large  
display, please phone col-  
lect (405) 327-0626 or write  
and we will call on you.  
**ALVA MONUMENT  
WORKS, INC.**  
Alva OK 73717

**SPEARMAN ELECTRIC**  
Licensed and Bonded  
New work and rework  
Phone 659-2636  
11-rtn

**OSGOOD  
MONUMENT CO.**  
Amarillo, Texas  
Dealers of Rock of Ages  
Granitem as well as all  
colored granites, marble  
and bronze memorials.  
represented by  
**BOXWELL BROS.  
FUNERAL HOME**  
519 S. EVANS  
659-3802

**DOG GROOMING** at prices  
you can afford. Also provide  
boarding service. Call Jodie at  
659-3937.  
50-rtn

**FOR SALE**

Cabbage Patch Dolls. \$50.00.  
The Knack Shoppe. 317 Main.  
Spearman, Texas 659-3469.  
45-rtn

**FOR SALE:** Old English Sheep  
Dog. Call 733-2517.  
15-rtn

**FOR SALE:** Girls new fur pile  
coat with hood. Rust color.  
Size 12. Machine washable.  
\$25.00. Call 659-2739 or come  
by 1118 S. Haney.  
45S-rtn-nc

**FOR SALE:** Microwave space  
saver stand, \$75.00; refriger-  
ated air conditioner, 1983  
model, \$450.00; dishwasher,  
\$200. 659-5216--call anytime.  
712 Wilbanks.  
2s-rtn  
**ORGAN FOR SALE.** Baldron's  
Funster. Double keyboard.  
Like new. 702 Steele Drive,  
659-3857, 659-2915.  
65-4tc

Order your Brandied Fruit  
Cake for Christmas. Call 733-  
2517.  
5-rtn-nc

**FOR RENT**

**RENT REDUCED--**nicely furn-  
ished 1 bedroom apart-  
ments. No pets. Call 9-3471  
afternoons & evenings.  
52S-rtn

**FOR RENT:** 2 bedroom apart-  
ment. 659-3937.  
4-RTN

**HIDE AWAY & FABRIC  
MART** has crafts, china, oils,  
toll paints, stained glass, sup-  
plies and lessons in each. 112  
Main, Perryton, Tx. 435-3806.  
25-12tc

**FOR RENT:** Small furnished  
apartment for rent. Nice and  
clean. 119 1/2 S. Snider. Call  
659-2039.  
8-RTN

**REAL ESTATE  
FOR SALE**

**TO BE MOVED:** 28 1/2 X 42 1/2,  
1 1/2 story building to finish for  
dwelling or office. New roof,  
wall paneling and carpet al-  
ready installed. Contact God-  
frey Real Estate Company at  
274-6313 in Borger.  
6S-6tp

**Spacious Country Living--**5 mi.  
South of Spearman. 3,191 sq.  
ft. well constructed home on  
11 acres - 3 bedroom-2 bath-2  
car garage- plenty of storage  
and special features. Make  
this home one of quality.  
\$149,900. Call 659-2823 for  
appointment.  
4S-24tc

**FOR SALE:** 3 bedroom, 1 bath  
home with new patio. Located  
at 205 Lonita. Is fenced and  
has underground utilities. Call  
659-2369.  
42-rtn

**HOME FOR SALE:** 3 bed-  
room, 2 bath, 1,750 square  
feet. Large rooms, huge kit-  
chen and den. Built-ins. 708  
Townsend. 659-2868.  
49S-rtn

**LEGAL NOTICE**

**LEGAL NOTICE**  
The Palo Duro River Author-  
ity will receive bids until 4:00  
P.M. on Monday, January 9,  
1984 on one, new, 1984 auto-  
mobile. Bids will be opened  
January 11, 1984 at 11:00  
A.M. at a regular meeting of  
the Palo Duro River Authority.  
Specifications are available  
at the County Judge's office or  
the Palo Duro River Authority  
office in the Hansford County  
Courthouse. Delivery date  
must be immediately.  
The Palo Duro River Author-  
ity reserves the right to accept  
or reject any or all bids.  
Johnnie C. Lee, Manager  
7S-2tc

**MOBILE HOMES  
FOR SALE**

**DEALER REPO!**  
**3 BEDROOM**  
2 baths, 14X80 mobilehome,  
wood siding, storm windows,  
garden tub, etc. Assume pay-  
ments of \$272.70 with approv-  
ed credit.  
**WE TAKE TRADES--**  
Anything of Value!  
**QUALITY AFFORDABLE**  
**MOBILE HOMES**  
Highway 60 West  
Pampa, Tx. 69065  
66S-0715  
6-8tc

The years teach much  
which the days never  
know.  
-R.W. Emerson.

**BUSINESS  
OPPORTUNITIES**

**TEXAS REFINERY CORP.,**  
offers PLENTY OF MONEY  
plus cash bonuses, fringe ben-  
efits to mature individual in  
Spearman area. Regardless of  
experience, write A.D. Sears,  
Pres., Texas Refinery Corp.,  
Box 711, Fort Worth, Texas  
76101.  
8-1tc

There's a great danger  
that what we consider im-  
portant is unimportant.

**CARD OF THANKS**

We are so thankful for our  
many friends for the prayers,  
food, cards, errands, phone  
calls, flowers, and all the  
interest and kindness shown  
us during the weeks Earl has  
been in the hospital in Amari-  
lo and Dallas, and while we  
are at home.  
Earl and Holley Riley  
We are very grateful to our  
many friends and neighbors  
for the visits, cards, flowers,  
food and prayers while I was  
in the hospital and recovering  
at home. Thanks to each of you  
and may God bless you.  
Beulah & Al Abston

**PUBLIC NOTICE**

The Cowboy Sub-Chapter of  
the F.C.A. meets the fourth  
Saturday of every month at  
7:30 p.m. at the Home Demon-  
stration Building, Spearman,  
Texas.  
Weight Watchers meets  
each Monday at 6:00 p.m. at  
the Home Demonstration  
Building, Spearman, Texas.

**NOTICE**

**HAVE CREDIT PROBLEMS?**  
Obtain a major credit card  
(M/C or Visa), guaranteed,  
even if you have bad credit, no  
credit, bankrupt or divorced.  
For free brochure send  
S.A.S.E. to 1st Capital Credit  
P.O. Box 9620, #217, Ft.  
Worth, Texas 76107, or call  
1-817-457-5581. Anytime.  
7S-8tc

**TO GIVE AWAY**

**GIVE A PUPPY FOR  
CHRISTMAS. FREE.** Part  
German Shepherd. 659-3272.  
5S-6tc

**AUTOMOBILES  
FOR SALE**

**FOR SALE:** 1978 4-door Ca-  
price Classic. Loaded with all  
the power. White with red  
interior. \$3500. Call 659-2723,  
659-2675 after 5.  
6S-rtn

Our idea of futility:  
Trying to forecast elec-  
tions a year ahead of the  
elections.

**ALL Steel Buildings  
Sales & Erection**

Feed lot repairs & construction  
All types of welding  
&  
Feed mill repair  
Corrals & pens  
No job too large or small  
Double D Construction  
Dan Seale David Davis  
405-888-4667 405-888-4402  
Nite 405-888-4510

**GEBO'S**  
... the kind of store you remember.

Prices Good Dec. 27-31. 501 N. Dumas 935-7403

**BEKAERT**  
**GAUCHO**  
**GAUCHO**  
Barbed Wire!  
Made in USA

2 Pt. 107-001  
Reg. 21.69 **\$1989**

4 Pt. 107-002  
Reg. 22.85 **\$2089**  
(4 Pt. not stocked in all stores)

**6-FOOT  
T-POSTS**  
210-010 or 821-160  
**\$1.99**

**MADE IN U.S.A.  
NAGEL  
BARBED WIRE**  
12 1/2 Ga. 2 Pt.  
628-001  
Regular  
33.45 **\$3145**

**Happy Holidays**  
Closed Monday XXXVIII

Offered Exclusively By  
**EMMETT R. SANDERS,  
REALTOR**



75 ft. by 225 ft. lot on paved  
county road in Crawford  
Addition.

Elegant home on 100 ft.  
corner lot, 3 bedrooms, 3  
baths, formal living room,  
formal dining room, base-  
ment den, detached double  
garage with small apartment  
in rear, covered patio, estab-  
lished landscaping, yard  
sprinkler system, new  
shingle roof, quality con-  
struction throughout. Shown  
by appointment.

3 bedroom, 1 bath, home  
with attached garage, good  
location, built-in oven and  
cook top, carpets, curtains &  
drapes. Shown by appoint-  
ment only.

**NO CLOSING COSTS,** qual-  
ified buyers move in for  
5% down payment. New 3  
bedroom, 2 bath brick  
home, carpets, central heat  
and air, dishwasher, extra  
insulation, attached garage.  
75 ft. lot frontage.

**NO CLOSING COSTS,** qual-  
ified buyers move in for 5%  
down payment. Extra nice 3  
bedroom home, 2 miles  
West of Spearman. Has 2  
baths, den with wet bar,  
carpets, utility room, large  
kitchen with Jenn Air  
range. Shown by appoint-  
ment only.

EMMETT R. SANDERS  
REALTOR  
659-2516  
659-2601 [nights]  
52-rtn/only

**VIRGINIA WHITE  
Realtor**  
Your Business Is Appreciated

**LARGE FAMILY HOME--**4 bedrooms, 2 baths,  
incredible closets and storage through out the  
house. Near grade school. Low 70's. CALL TO  
SEE!

**BEAUTIFUL** 3 bedrooms, 2 baths, fireplace, 12 1/2  
fixed rate assumable loan. Priced right in low  
60's. Call for appointment.

**THIS SMALL 2 BEDROOM HOME COULD BE  
THE START OF SOMETHING BIG!** Near school.  
Call! Priced in low 20's.

**CORNER LOT FOR SALE WITH** 2 garages,  
storm cellar, chainlink fence. Priced \$20,000.

Virginia White, Broker  
659-3841

Century 21  
Daryl Wynn, Broker  
658-4258

**"We'll Give Our Word To You"**

Allen Alford 659-3034  
Larry Trosper 659-3491

**GOLDEN SPREAD REALTY**  
Corporate Registered Trademark of Century 21  
Real Estate Corporation. Printed in U.S.A. Each  
office is independently owned and operated.

Equal Housing Opportunity.

**WE WANT YOUR  
LISTINGS!!!  
CALL TODAY!!!  
Several Lots  
FOR SALE**

WE ARE WILLING TO HELP YOU WITH V.A.  
OR F.H.A. FINANCING.

**12th and Archer.** 3 bedroom, 2 bath, skylight,  
double car garage, underground storm shelter.  
10.25% financing available. Excellent location.

**This Home Needs Som Repairs, but is Priced to  
Sell--**3 bedroom 1 1/2 baths, single garage, it has a  
little over twelve hundred feet of living area.

314 S. Townsend--Owner needs to sell this 2  
bedroom, 1 bath, struct' ally sound. Needs a  
little paint. Has a larg' **SOLD**. Let us show you this  
home today. Qualifies for bond money.

**Starter Home--**421 S. Dessen. Corner lot, 2  
bedroom, 1 large unfinished room. Fenced yard,  
small rent apartment in back of house, close to  
school. Ideal location. Sets on two lots. Priced to  
sell.

1010 HANEY - Three bedroom home; single  
garage. This home has just been redecorated in  
the past year. New six foot fence and landscaping  
is excellent. Has a fireplace to enjoy on these  
snowy days that will be coming our way. Has  
central air and heat. Insulated well. Let us show  
you this home today. Shown by appointment only.

7 GLOVER PLACE - This beautiful home has 3  
bedrooms with matching wall paper and drapes,  
with 2 full baths. Has a fireplace and all the  
amenities. The garage is an oversized garage  
with alot of storage. Shown by appointment. Let  
us wrap this up for you for Christmas.

307-12th Street **MUST SEE THIS HOME TODAY**  
3 bedroom; central heat and air with many  
amenities. Let us show you this home today.

715 Cotter--**ASSUME EQUITY OR NEW LOAN--**  
on this 3 bedroom, bath and a half, den with  
fireplace, central **SOLD** and air. Shown by  
appointment only. Priced to sell. Price lowered.

### January, 1984

*There is snow on the windowpane  
Framing my room  
And the trees are heavy  
With frosty bloom*

-Anne Lawler

January is the first full month of winter, sometimes the coldest month of the year and, in America, the month of football bowl games.

The 1st is New Year's Day and also Emancipation Day--dating from 1863. (Lincoln didn't actually set free slaves in Union states on that day but freed the slaves in Confederate states, where his proclamations often had little effect.)

Washington's significant victory at Princeton, N.J. came on the 3rd in 1777. The first boat traversed the Panama Canal on the 7th in 1914.

The 7th is also the birthday anniversary of the nation's 13th president, Millard Fillmore, born at Locke, New York, in 1800. Former President Richard Nixon was born January 9 in 1913.

Other well-known Americans born in January: Alexander Hamilton on the 11th, in 1757, in the West Indies; Benjamin Franklin on the 17th in 1706 in Boston; Daniel Webster on the 18th in 1782 at Franklin (formerly Salisbury), New Hampshire.

Robert E. Lee was born on the 19th at Stratford in Virginia, in 1807. His great lieutenant, Stonewall Jackson, was born on the 21st at Clarksburg, West Virginia, in 1824. Douglas MacArthur was born on the 26th in 1880, on an army base at Little Rock.

The 29th is Kansas Day, commemorating Kansas' admission to the Union in 1861. William McKinley, 25th president, was born at Niles, Ohio, on the 29th in 1843.

Franklin Roosevelt was born on the 30th in 1882; he was the 32nd president and the only one elected to the office four times.

### High Plains

### Irrigation Conference

SPEARMAN--Research scientists, Extension specialists and agents, and area farmers will get together in Amarillo in January to share the latest information on new equipment and techniques to improve crop irrigation.

This will be the annual High Plains Irrigation Conference, on Jan. 12 at the Texas A&M University Agricultural Research and Extension Center in Amarillo. The center is at 6500 Amarillo Blvd., West.

The emphasis this year will be upon surge flow irrigation, use of low energy precision application (LEPA) systems, use of soil sensors to monitor moisture needs, pending water legislation which will affect West Texas.

On the program will be: Olan Moore agricultural con-

sultant from Dimmitt; Jerry Walker, Soil Conservation Service agricultural engineer who has been testing surge irrigation on the High Plains; State Sen. Bill Sarpalus of Canyon; Dr. Bill Lyle, research agricultural engineer with the Texas Agricultural Experiment Station in Lubbock, who developed the LEPA system, and a panel of producers.

The growers are Phil Johnson of Friona, Willie Wieck of Etter, Q.D. Bevil of Gruver and Norman Hinchliffe of Earth.

The program will begin with registration, coffee and exhibits of equipment at 8:45 a.m., It will conclude at 3 p.m. It is sponsored by the Texas Agricultural Extension Service and the Panhandle Economic Program.

### ABOUT YOUR



### HOME

By April Rhodes

Children need to learn to play alone and with others. Give them a generous amount of "make-believe." This will teach them to be creative.

Chinese leader to visit U.S. in January.

Domestic industry output up again in November.

Study recipes ahead and you can often substitute costly items with more economical ingredients and serve delicious meals.

EPA announces plans to clean up dioxin.

More security seen at nation's federal sites.



### SMILES



**Cause and Effect**  
Hub (at supper table)--What's the idea of all this canned stuff?

Wife--I've canned the cook, dear.

**Sure Bet**  
Mother (horrified): "Kissing a man you just met! You never saw me do that!"

Daughter: "No, but I'll bet grandma did."

**Fully Explained**  
Son in college was applying pressure for more money from home.

"I cannot understand why you call yourself a kind father," he wrote his dad, "when you haven't sent me a check for three weeks. What kind of kindness do you call that?"

"That's unremitting kindness," wrote the father in his next letter.

Dear Louisa,  
Why are some people so contrary? I know a person who always does just the opposite of what he thinks other people want to do. If his wife wants to go out he wants to stay home or visa versa. If the children want to see a parade he takes them to the movies.  
Then he expects them to say they like the movie better than the parade.  
I don't know what's the matter with him--has he some kind of obsession to make others do what he wants them to do and prove

he is boss?  
What can we do to change him?  
A.B.--Ga.

Answer:  
I doubt if you can change him but one day it will probably dawn on him that the people around him have built up so much resentment against the way he acts that the children will get away from him as soon as possible.  
Louisa

Address: Louisa, Box 532, Orangeburg, S. C. 29115

Items Available At TG&Y Family Centers Only.  
Limited quantities. Sorry, no rainchecks.

# Clearance Clearance

## 50% off! Entire Stock Christmas Decorations

<p><b>CLEARANCE</b></p> <p><b>FALL FABRIC</b></p> <p><b>50%-75% OFF</b></p> <p>GOOD SELECTION</p>	<p><b>CLEARANCE</b></p> <p>ENTIRE STOCK</p> <p><b>COATS</b></p> <p><b>25% OFF</b></p>
<p><b>CLEARANCE</b></p> <p>JR. ASST.</p> <p><b>KNIT TOPS</b></p> <p><b>5.00</b></p> <p>AND MORE</p>	<p><b>CLEARANCE</b></p> <p>GROUP OF</p> <p><b>BLOUSES</b></p> <p><b>50% OFF</b></p>
<p><b>CLEARANCE</b></p> <p><b>FIRE PLACE EQUIPMENT</b></p> <p><b>25%-50% OFF</b></p> <p>SCREEN, GLASS DOOR AND MORE</p>	<p><b>CLEARANCE</b></p> <p><b>LINGERIE</b></p> <p><b>25%-50% OFF</b></p> <p>GOWNS-ROBES-BRA SETS &amp; MORE</p>

**50% off!** Select group of **Toys**

# TG&Y

521 Hwy. 207 South 659-3741

Family Centers

Copyright 1984, TG&Y Stores, Co.

INTERNATIONAL COMPANY

Haircuts • Colors • Perms • Frisings  
Beards & Mustaches

**Hair Loft 2100**  
For Men & Women  
Betty West

Mon. - Fri. 8:30 a.m. to 6:00 p.m.

310 Main  
Spearmen, Texas 79081

(806) 659-3161  
(806) 659-3833

Super savings on all Homes...on our lot for a limited time only...Up to \$4,000.00 off on selected homes. Now is the time to buy at these fantastic prices, and get air conditioning, skirting, and tie-downs free of charge.

**LIBERAL MOBILE HOMES**  
HWY. 54 E.  
LIBERAL, KANSAS 67901  
PHONE 318-824-1981

\$300.00 REWARD

for return of 14 K. Gold man's diamond ring, lost about 8 AM Dec. 21, on Allsup's parking lot.

Emmett R. Sanders 659-2516 or 659-2601.

For The Ultimate In **STORM DOORS & WINDOWS**  
Custom Built, Designed And In Colors To Fit Your Home  
Contact Howard Moyer at

**Only Aluminum Industries**

Guyton, Okla. 73942

114 W. 1st

405-338-6966 or 405-338-6170  
AFTER 6 P.M.

# Congressman Hance visits here recently

Congressman Kent Hance, a candidate for the Democratic nomination for the United States Senate visited with local Democrat Party leaders during a Spearman stopover Friday.

Hance, who now represents Texas' nineteenth district, including the area around Lubbock, was honored with a luncheon at Cattlemen's Restaurant. There he visited with Bill Pittman, the Hansford County coordinator for his campaign, Carl Archer, Hansford County Democratic Party chairman, other Democrats and local dignitaries that turned out to welcome him.

Hance is one of three major candidates for the Democratic nomination; his most serious opponents so far are former congressman Bob Krueger and state senator Lloyd Doggett.

Hance expects to be involved in a run-off for the nomination, and views Doggett as his most likely opponent. In a race involving three candidates, each with significant financial backing, Hance said, it is unlikely that anyone will be able to capture the necessary majority to win the primary outright.

Hance, however, considers his local support strong and does not anticipate either Krueger or Doggett attracting many votes in the northern Panhandle. He perceives Krueger losing support, in part because he has already lost a statewide race by a close margin to Tower in 1978 and sees Doggett coming under attack from both the left and the right.

Hance sought to put some distance between himself and the Republican president, insisting that he become known as the "boll weevil" because he voted his conscience rather than his party affiliation. Although he has supported Reagan on the budget, the tax cut, the sale of AWACS missiles to Saudi Arabia and other issues, he pointed out that he has opposed the Administration on many issues as well. Among those he noted was the federal withholding tax bill in 1982.

The congressman elaborated on his philosophical differences with Rep. Phil Gramm, another of the "boll weevils." Once a Democrat, Gramm switched his party affiliation a year ago and is now a candidate for the Republican nomination for the job Hance also seeks.

"Gramm believes in no government; I see the need for some governmental programs," Hance explained, implying that Gramm has become a puppet of the president while he has not. Hance went on to list some of the areas in which he believes the federal government should be active. Chief among these was the field of education, and Hance cited his support for such federal programs as vocational education and Head Start, a pre-school reading and training agency.

"Programs like Head Start let kids start out even when they enter school," Hance said. "If they don't start out even they won't stay in school. They will become a drain on society."

The candidate reaffirmed his support of the Equal Rights Amendment, although he added that he does not see ERA as a viable issue in the foreseeable future. Hance said that he supports the idea of equal pay for equal work, and continued that he felt that ERA would not solve all the problems its supporters believe it will not cause all the damage its opponents fear it might.

Hance listed himself as the first congressman to speak out against the American presence in Vietnam, charging that Marines were sent without a

clear goal or purpose. In Hance's view, the Israelis should have been allowed to proceed through Lebanon during their invasion last year to rid the country of the Syrian presence. Hance contrasted Lebanon with the U.S. invasion of Grenada, which he supported because he felt that the United States did have a clear goal and purpose in that case.

Contributions from political action committees-PAC's, as they are known-will be welcomed by the Hance campaign, although the candidate qualified his statement by saying that he would refuse any contributions if it were offered with any strings attached as to how he would vote if elected. Hance said that he believed that PACs exerted a positive influence on the political process by allowing groups to participate in elec-

tions. The \$5,000 limit on donations made it unlikely that any special interest PAC would exert an undue influence on a campaign.

Mexican-Americans can feel comfortable with his voting record, Hance continued, and cited his opposition to an immigration bill last year which would have granted amnesty to illegal aliens already in this country. Such a law would encourage more illegals to enter this country, Hance added, and said that sanctions against employers who hired the aliens would discriminate against Mexicans as well as add unnecessary regulations to business. Hance contrasted his position with that of his opponent, Krueger, who he says testified in support of the bill.

Wholesale prices down for November.



KENT HANCE

## Do you need a Tax Shelter?

### DO YOU NEED A TAX SHELTER?

If so, there is such a place—the Stationmaster's House Museum right here in Spearman. It is a non-profit organization and as such your contribution may be deducted.

Maybe you do not need a tax break but would like to do something worthwhile for your community. Again, here is where the Museum comes in handy. Now that the depot is moved we need money to connect the two buildings and many other necessities.

Any contribution, large or small, will gladly be accepted and put to good use. Let us have your contribution now.

\*\*\*\*

Making plans for the future is often a way of escaping work in the present.

Bomb blast at London store leave dead and injured.

Madrid discotheque fire kills 79.

### ONE MINUTE SPORTS QUIZ

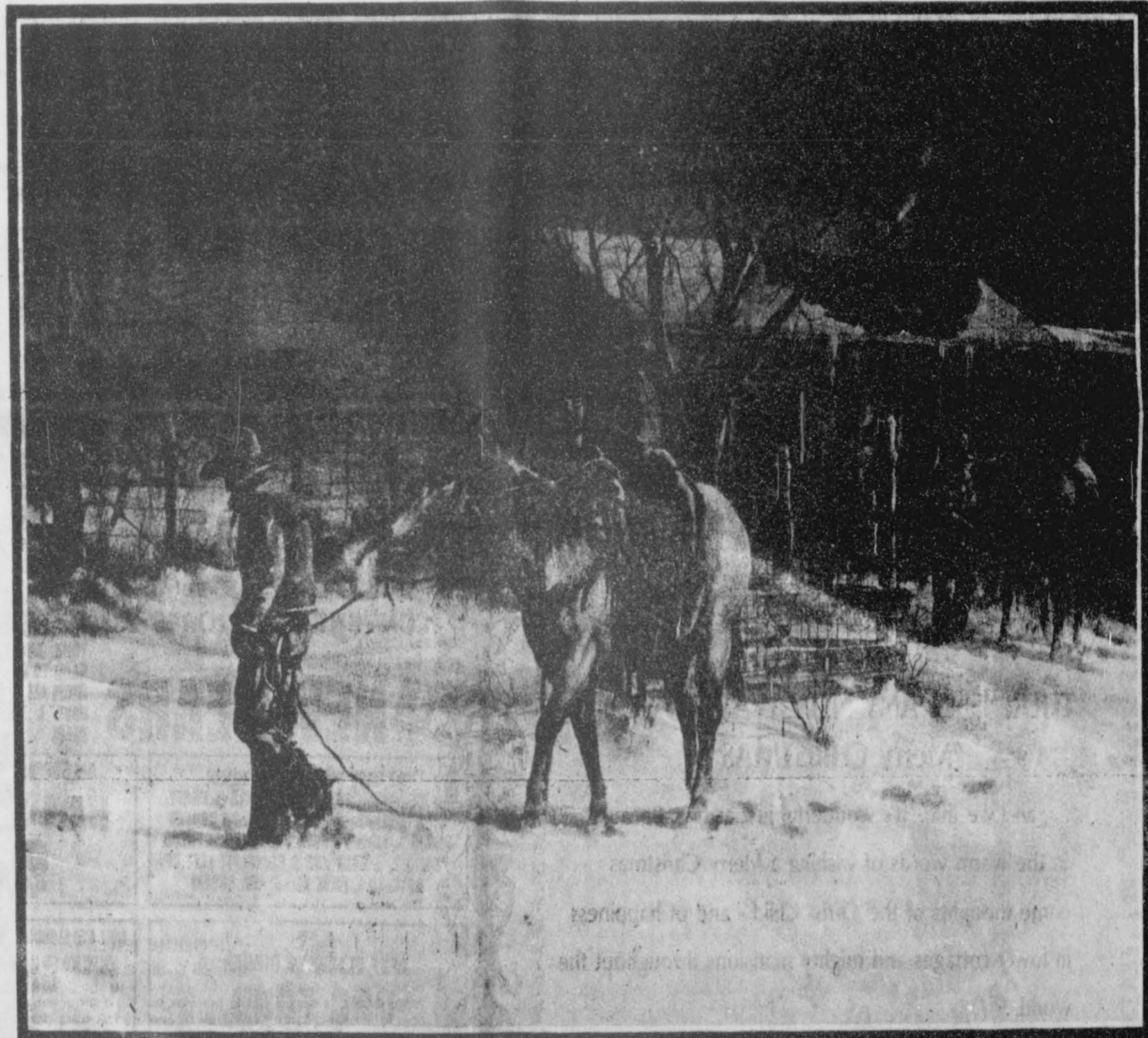
1. Lou Holtz recently resigned from coaching which college football team?
2. Billy Sims plays pro football for what team?
3. Who won the Citrus Bowl?
4. Who won the Chrysler PGA team best ball tournament?
5. Wayne Gretzky is known in what sport?

5. Hockey.
- Miller.
4. Jack Nicklaus, Johnny
- 21.
3. Tennessee 30, Maryland
2. Detroit Lions
1. Arkansas Razorbacks.

### Answers To Sports Quiz

### NADER & SEAT BELT LAW

Consumer advocate Ralph Nader challenged President Reagan recently to buck the auto industry and require new cars to come equipped with air bags or automatic seat belts beginning in 1985.



*Seasons Greetings To All Our Friends And Patrons  
A Sincere Thank You For Your Support!*



**First National Bank**  
Perryton, Texas  
806/435-3676  
Member FDIC

Resolutions are made to be broken! They're nevertheless worth making. And occasionally someone keeps one.

Make a few for the new year. See if you can keep one of them. Suggestion: Resolve to slow down and live longer. Resolve to stress compliments more, criticisms less. Resolve to spend only what one can afford to spend.

Resolve to help a neighbor, to be cheerful whenever possible and to be thankful for life's blessings rather than envious.

And--resolve to work diligently and faithfully in 1984 for one's dear employer.

**Safe Schools**

In Boston, a year-long study by the Commission on Safe Public Schools has found that of 470 teachers questioned, fifty percent have been victims of robbery, vandalism, assault or theft.

Thirty-eight percent of 500 students questioned have been such victims. More than half the students questioned rated school buses as unsafe, or disruptive. Thirty-seven percent of the male students came to school armed (17 percent of the girls came to school armed). Drugs are a problem.

These are shocking statistics to Americans who don't live in metropolitan areas. They show clearly why those who can afford it in troubled areas (mostly in northern metropolitan cities), so often send their children to private schools.

It explains to some degree the resistance to busing in areas where parents fear disorder and violence.

**Gimmie, Gimmie**

Legree Daniels, co-chairman of the Black Republican Council, is seeking to attract blacks back into the Republican Party.

Mrs. Daniels says Democrats offer blacks less than many think. The Democrats, she says, encourage blacks to say "gimmie, gimmie" while Republicans encourage "economic independence."

The gimmie-gimmie approach, Mrs. Daniels believes, is the approach of the sixties, not the eighties. She believes more and more thinking blacks will see the long-term advantages of economic independence, compared to more and more welfare handouts and dependency on Democratic administrations.

Whether she's right or not won't be known for perhaps a decade. All indications point to another one-sided majority for Democrats in 1984.

**Doctor Talk**



**Harold B. Ligon, MD**  
Enthusiastic TV viewers often see and hear "High blood pressure--treat it for life," in health promotional commercials--and they're very well said!

We've written quite a number of articles on hypertension and hypertensive cardiovascular disease--and we sometimes feel that we harp on some themes a little excessively. But I'm of the feeling that it's hard to remind you, the reading and viewing public, too much of the importance of treating your high blood pressure, if you have it.

Apparently, according to the TV commercial, there's an element of society who doesn't seem to grasp the fact that continued, unremitting, and monitored treatment is vitally necessary for effective control of high blood pressure.

**In Fashion**

Designers are softening the suit-look by creating them in knits.

The knit suit has a thigh-length cardigan jacket with a slim skirt.

Some ensembles feature a bold striped cardigan with a solid skirt.

Some designers mix knit cardigans with wool skirts.

**Ronald Reagan, President:**  
... "We want no conflict with Syria. Certainly we're not there (Lebanon) to enter into a war."

**Yasuhiro Nakasone, Japan's Prime Minister:**  
"I plan to carry on with governmental reform efforts and to maintain Japan's voice, role and responsibility in international affairs."

A year begun is to be reckoned as one finished.

-Legal Maxim.

Ring out the old, ring in the new, Ring, happy bells, across the snow; The year is going, let him go;

Ring out the false, ring in the true.

-Alfred Tennyson.

**NOTES --- COMMENTS**  
Why is it that idle women are usually dissatisfied?

Every man's business is "big" to him and his family.

The choice of clothes is important but not all-important.

It's now time to start saving up for another Christmas.

When in doubt about a controversial subject, keep quiet.

A good friend is one who doesn't care how much money you have.

The hardest work of some people is to appear important.

Why is it we find it so easy to mind other people's business?

Courtesy is so cheap that some people take no interest in it.

Patients and doctors seldom agree on the treatment of any ailment.

Schedules are made to remind you know far behind you are in your work.

**HARVEST DAMAGED**  
Persistent heavy rain recently has delayed the Australian wheat harvest and caused deterioration in the quality, government officials reported.

**MERCHANT FLEET**  
The United States has dropped to 11th place in the size of its privately owned merchant marine fleet, and Soviet flagships now outnumber U.S. vessels 4-to-1, a maritime group reported recently.

**VALUE TRIMMED**  
**Bnls. Round Steak**  
**1 68**  
LB.

**FOR A CLEAN, FRESH LAUNDRY**  
**Tide Detergent**  
49-OZ. BOX  
**1 48**

**ASSORTED GRINDS**  
**Folgers Coffee**  
1-LB. CAN  
**1 68**

**Health and Beauty Aids ...**

**Free** 8-OZ. BTL. ENHANCE CONDITIONER  
WHEN YOU PURCHASE 8-OZ. BTL. NORMAL OR DRY  
**Enhance Shampoo**  
**2 19** SAVE UP TO 8%  
AT

**Colgate** REGULAR OR GEL  
**Colgate Toothpaste**  
6.4-OZ. GEL OR 7-OZ. REG. **1 17** SAVE UP TO 37%

FRESH PACK OR WITH BACON -- GRIFFIN  
**Blackeye Peas** 3 \$1  
15-OZ. CANS

ASSORTED MIXERS  
**Canada Dry** 77c  
1-LITER BTL.

JIFFY  
**Corn Bread Mix** 4 \$1  
8 1/2-OZ. BOXES

SUNSHINE  
**Cheez-It Crackers** 1 49  
16-OZ. BOX

**NEW YEAR**

**FAST ACTING** SAVE UP TO 19% **BTL. 1 69**  
**Bayer Aspirin** 100

**EXTRA DRY OR LITE POWDER** SAVE UP TO 34% **OZ. 2 29**  
**Arrid Deod.** 2.5

**MORE CLEANING POWER** SAVE UP TO 37% **PKG. 1 89**  
**Efferdent Tabs** 60

**ALLERGY CONTROL** SAVE UP TO 40% **24 CT. 2 39**  
**Actifed Tabs** PKG.

**FOR WOMEN** SAVE UP TO 29% **30'S 1 89**  
**Correctol** LAXATIVE 30'S

**EX. PROTECTION OR EX. MOIST** SAVE UP TO 38% **4 OZ. 99c**  
**Soft Sense** HAND LOTION 4 OZ.

**DISPOSABLE -- ASSORTED SCENTS** SAVE UP TO 30% **2 1 39**  
**Massengill Douche** 2

**EXTRA STRENGTH** SAVE UP TO 25% **BTL. 4 99**  
**Tylenol Caps** 100

**COMTREM -- 36 CAPS -- 50 TABS** SAVE UP TO 27% **BTL. 3 69**  
**Cold Caps or Tabs** BTL.

**REG., MENTHOL, CHILDREN'S** SAVE UP TO 27% **PKG. 1 59**  
**Sucrets Lozenges** 24

**CHAPSTICK** SAVE UP TO 30% **1 69c**  
**Lip Smoother** 1.5

**CHILDREN'S CHEWABLE** SAVE UP TO 27% **24 CT. 1 49**  
**Co-Tylenol** BTL.

**JIMMY DEAN -- PURE**  
**Pork Sausage** 99c  
2 LB. PKG. \$1.98

**FOR NEW YEAR'S DAY**  
**Smoked Jowls** 59c  
SLICED LB. 69c

**BUTCHER BLOCK BEEF**  
**Chicken Fry Steaks** 1 98  
LB.

**LEAN, TENDER CUBES**  
**Stew Meat** 1 79  
LB.

**WILSON'S CERTIFIED**  
**Sliced Bacon** 1 89  
2-LB. PKG. \$3.75

**DELI SPECIALS**

**CARL BUDDIG'S**  
**Wafer Sliced Meats** 49c  
4-OZ. 79c 2% OZ. PKG.

**WILSON'S ALL MEAT**  
**Skinless Wieners** 98c  
12-OZ. PKG.

**ECKRICH -- ALL MEAT, BEEF OR CHEESE**  
**Smoked Sausage** 2 39  
LB.

**WILSON'S CERTIFIED**  
**Variety Pak** 1 59  
12-OZ. PKG.

**FROZEN FOODS**

**Fried Chicken** BANQUET 2 99  
2 LB. BOX

**MINUTE MAID**  
**Orange Juice** 1 49  
16-OZ. CAN

**JENO'S**  
**Pizza Rolls & Snacks** 99c  
9-OZ. PKG.

# Canadian Tournament next on schedule

The powerful Spearman Lynx and the promising Spearman Lynxettes return to action after the Christmas-New Year's break today as they open play in the Canadian Wildcat Invitational Basketball Tournament.

The Lynx will open against the Phillips Blackhawks in first round action beginning at 1:30 p.m. Other

first round games pit the Darrouzett Longhorns and the Follett Panthers in the boys division lid lifter at 10:30 a.m. Thursday. At 5:30, the Childress Bobcats and Valley Patriots square off, and first day action closes at 8:30 when the host Wildcats tangle with Mobeetie.

Should the Lynx win against Phillips, they will advance to the

semi-finals against the winner of the Childress-Valley clash with tip off at 5:30 p.m. A win against the Bobcats would put them into the boys' championship game at 8:30 Saturday night.

A win over Phillips but a loss to the Childress-Valley winner would land the Lynx a third place show-down berth at 5:30 p.m. Saturday.

A first round loss would drop the Lynx into the losers bracket for a 1:30 p.m. Friday clash with the Bobcat-Patriot loser. Losers of the second round consolation bracket would play the loser of the playoff between the Darrouzett-Follett and Mobeetie-Canadian games losers at 10:30 Friday. The boys' division consolation trophy game will be at

1:30 Saturday.

The Lynxettes will play Phillips girls at 9 a.m. Thursday. Winners of this game and the Childress-Valley girls contest will play at 4 p.m. on Friday, while losers of the first game will play losers of the Childress-Valley fray at 12 noon Friday.

The girls consolation final will be

played at 12 noon Saturday, the third place clash at 4 p.m. Saturday and the championship clash at 7 p.m. Saturday.

STOLEN: Black male chow. Spot of red on mane. Call 659-3707. Reward offered.

## BUSINESS OUTLOOK

By Edward Thorlund

The hottest topic among economists today, concerning the economic outlook, is whether big budget deficits might halt the recovery--in 1984 or 1985.

Though economists never agree on any scenario, many prominent experts who have served Republican administrations in the past are sounding warnings.

Their common concern is that heavy federal borrowing to finance huge deficits will take too much money from the private sector of the economy--slowing capital expansion and holding up interest rates.

Among those expounding this view on Capitol Hill in recent hearings were Herbert Stein, Rudolph Penner and Alan Greenspan. They seem to be supporting the dissent of presidential economic advisor Martin Feldstein, who has been at odds with the president. He doesn't accept the Reagan-Regen view that big deficits won't necessarily hold up interest rates and slow the recovery.

On the other hand, there are economists who agree with Treasury Secretary Donald Regan, and some are beginning to speak out. Frank Morris and Leonard Lempert are two of them. Lempert, of Statistical Indicator Associates, recently suggested Americans could forget all that emphasis on money supply, deficits, Federal Reserve policy, the actions of Congress and the president.

Never has so much non-sense been talked about the dangers facing a recovery, he says. Nothing can stop the normal continuation of recovery in 1984, he says--except an unforeseen crisis.

Morris, president of the Federal Reserve Bank on Boston, says it's very hard to find any place of weakness in the present recovery. He doesn't see how anyone could build a near-term recession out of today's scenario.

Nevertheless, as this is written, a standby tax increase is said to be included in the budget President Regan is finishing this month--for 1984-85. The taxes would be levied if the deficit is greater than expected, and doesn't decline.

## PARENT GUIDE

By Nancy Moore Thurmond (Mrs. J. Strom Thurmond, author, *Mother's Medicine*)

Waterproof pants increase the chance of a diaper rash because they hold heat and thus help the bacteria to grow faster. Prevention and cure of a diaper rash can be achieved with cornstarch, petroleum jelly, or any other powder or cream recommended by your pediatrician.

Just going without diapers for a short time can help a diaper rash as air is the greatest healer under the sun.

Laundering is a daily chore. Whether or not you use a diaper service will depend on your laundry facilities and your family income.

If your income is limited and a relative wants to give you a nice, practical baby gift, why not suggest a diaper service for the first few weeks of your baby's life?


If you use cloth diapers and launder your own, rinse them in the toilet immediately after your baby has had a bowel movement.



**Coca Cola, Tab, or Diet Coke**  
2-LITER BTL.  
**99¢**



ASSORTED  
**Jeno's Pizza**  
10-OZ. PKG.  
**89¢**



COLLEGE CLUB OR CAMELOT  
**Cottage Cheese**  
24-OZ. CTN.  
**99¢**

ASST. VARIETIES  
**Doritos Chips** REG. \$2.49 16-OZ. BAG **2.29**  
ALL VARIETIES - NABISCO  
**Snack Crackers** 8-OZ. BOX **1.09**

RANCH STYLE  
**Chili & Beans** 15-OZ. CAN **79¢**  
RANCH STYLE  
**Plain Chili** 15-OZ. CAN **99¢**

ONLY 3 MORE WEEKS TO COMPLETE YOUR SET OF JOHANN HAVILAND FINE CHINA

VALUABLE COUPONS

COUPON FOREVER SPRING  
**SAVE \$4.00**  
LARGE PLATTER  
Regular Discount Price 21.99  
Coupon Savings 4.00  
Price with Coupon \$17.99  
COUPON VALID 12-28 THRU 1-3-84 with each \$3.00 purchase

COUPON FOREVER SPRING  
**SAVE \$5.00**  
BEVERAGE SERVER W/COVER  
Regular Discount Price 23.99  
Coupon Savings 5.00  
Price with Coupon \$18.99  
COUPON VALID 12-28 THRU 1-3-84 with each \$3.00 purchase

# SALE!!!

**Fish and Seafoods**

BOOTH - DELICIOUS JUMBO  
**Breaded Shrimp** 12-OZ. PKG. **5.98**  
DELICIOUS  
**Shrimp Cocktail** 4-OZ. JAR **98¢**  
GOLDEN SHORE  
**Cooked Shrimp** 6-OZ. PKG. **2.59**

**Gourmet Cheeses**  
FOR YOUR HOLIDAY PARTY

KAUKAUNA - PORT WINE OR SHARP CHEDDAR  
**Cheese Balls** 12 OZ. PKG. **2.29**  
KAUKAUNA - ALL VARIETIES  
**Cheese Logs** 10 OZ. PKG. **1.98**  
KAUKAUNA - MILD OR AGED MIDGET  
**Longhorn Cheese** 12 OZ. PKG. **2.39**  
KAUKAUNA - FAMOUS  
**Norwegian Jarlsberg** 1 LB. **3.29**  
PAULEY'S  
**Smoked Cheddar** 1 LB. **2.89**



FOR PARTY DIPS  
**California Avocados** 4 FOR **\$1**  
FOR AVOCADO DIP Guacamole Mix. PKG. **69¢**

LARGE RIPE  
**Slicer Tomatoes** LB. **59¢**  
GARDEN FRESH Green Onions..... 3 BUNS **\$1**

ALL PURPOSE  
**Russet Potatoes** 10 LB. BAG **1.79**  
GARDEN FRESH Red Radishes..... 3 BAGS **\$1**

**DAIRY SPECIALS**

STEFFEN'S OR COLLEGE CLUB  
**Sour Cream or Dips** 2 8-OZ. CTNS. **89¢**  
PILLSBURY COUNTRY OR BUTTERMILK  
**Biscuits** 4 8-OZ. CANS **\$1**  
ASSTD. CHEDDAR WITH WINE, GARLIC, NACHO  
**Merket Cheese Spread** 8-OZ. CTR. **1.69**  
COLBY OR CHEDDAR - 1/2 MOON  
**Kraft Cheese** 10-OZ. PKG. **1.69**

**FRESH BAKERY**

GOOD ONLY AT LOCATIONS WITH IN-STORE BAKERIES  
FRIED  
**Cinnamon Rolls**..... FOR **6.79¢**  
FRESH BAKED  
**French Bread**..... SAVE 30% LOAF **79¢**  
- CAKES FOR ALL OCCASIONS -

**Humpty & Ideal**  
Supermarkets and Drug Centers  
PRICES EFFECTIVE THRU JAN. 3, 1984. QUANTITY RIGHTS RESERVED. NO SALES TO DEALERS.

## FmHA to continue making emergency loans

The Farmers Home Administration (FmHA) will resume making economic emergency loans by the beginning of next year, according to FmHA County Supervisor, Mark D.

Latham. "Economic emergency loans are designed for farmers who are in a cost-price squeeze or face other financial difficulty beyond their control," Latham said. "In other words, the

loans are for a financial emergency rather than a natural disaster such as a drought or flood."

The economic emergency or "EE" program was in opera-

tion from 1978 to 1981. The program expired in 1981 but was later reauthorized by Congress. It is being reopened under an order by the U.S. district court in Washington,

D.C.

"Under the program, loans will be available to farmers who are suffering an economic emergency through no fault of their own. They must show that they have tried unsuccessfully to get a loan from another source before coming to FmHA and that they can repay the loan over a period of time, depending on the use of the funds," Latham said.

The interest rate for direct loans fluctuates with the cost to the government of borrowing money. The interest rates for guaranteed loans, which are made by commercial lenders and backed by the government, are negotiated between the borrower and the lender.

Applications for economic emergency loans will be available at the FmHA county office located at 403 S. Amherst Street, Perryton, Texas 79070.

### HOSPITAL

Patients in Hansford Hospital are Andres Romero, Evelyn Shrader and Leonard Jameson.

Dismissed were Leslie Latta, Ruby Lieb, Harold King, Tony Henry, Ed Garner, Juanita Kemper, Alice Lackey and Lessie Beasley.

### The Happiness Code For 1984

I will try each day to lighten someone's load, because I, too, sometimes know the weariness of life's road.

Maybe I can help a weary mother in her care, or someone else who has a burden to bear.

Maybe I can bring a smile to a lonely face, or share the wonders of God's grace.

Maybe I can help ease another's pain. If I can put others above myself in 1984—I will not have lived in vain.

*Karen's Rogy Korner*  
By Karen Harruff  
Hansford County Extension Agent  
Home Economics

One of the biggest changes in any family takes place when it goes from having a single wage-earner to being a "two pay-check" family.

In addition to the stresses of arranging for child care, shopping and household chores, many families have to face an entirely new type of financial situation says Harruff.

According to family management specialists with the Texas Agricultural Extension Service, more than one-half of all husband-wife two earner families have incomes averaging 30 to 40 percent higher than families with only one wage earner.

Not only do two-earner families have more income, but they also have more expenses. They spend about one-third more on transportation and 100 percent more on education than one-earner families. They must buy goods and services which might be produced at home if both spouses were not employed.

So it may take special planning for two-earner families to manage their incomes effectively.

Two-income families manage their funds in many different ways. Some have each partner responsible for certain bills or payments. One does the car payment and the other the mortgage, for example. Problems can occur if one spouse runs short and has to "borrow" from the other.

But other issues can come up using this method: Should each partner have money that

is not accountable to the other? Should the spouse who makes the greater income have veto or tie-breaker power in money decisions?

Managing funds separately also may complicate record-keeping. If two separate checking accounts are being used, the family is paying charges for each. Or, if new interest checking or NOW accounts are used, the family is not earning as much interest as if the funds were pooled.

Many families manage by living on one income and saving the second income for a special purpose such as a down payment on a house, college education for the children or a retirement fund.

Other families pool both incomes and pay all bills from it.

Regardless of the method used to handle the bills, two-earner families also need to know about the laws that can help or hinder their financial situation.

The Equal Credit Opportunity Act, for example, guarantees some important credit rights. Under the act, women must be considered for credit by the same standards used for men. New joint credit accounts must be opened in both names, such as Sam and Sue Smith, rather than Mr. and Mrs. Sam Smith. It is also illegal to question an applicant for credit about birth control practices or childbearing plans.

Since two-earner families

can often qualify for more credit than families with one income, there is also the risk of borrowing more money than can be repaid easily.

Changes in the tax laws have also reduced the so-called "marriage penalty" on two-earner families. This can increase family income by decreasing the tax on the second income, even for families that do not itemize deductions.

Increased income from a second-wage-earner may also mean that families need to investigate savings plans, investments or tax shelters that can help them achieve long-term financial goals.

Financial planning is important for any family—even when there are two pay-checks.



### Pretty Party Penquin

Here's a nifty idea for a New Year's Party invitation:

1. Draw a pattern for a penguin shape on a piece of paper, including the beak and feet. Draw around your pattern on a piece of black construction paper. Flip the pattern up and draw another penguin, head-to-head so that when it is cut out it may be folded at the head for a card.
2. Cut out a yellow beak and feet, and glue them over the black ones.
3. Glue on a bright sequin or button for an eye.
4. Stick on notebook ring reinforcements for the tummy, or use cotton.
5. Tie a pretty piece of fabric around the top penguin's neck for a scarf.
6. Write a message inside with white ink, or glue a piece of white paper inside with your message on it.

## SOUND TRAX

Our best wishes for a

HAPPY NEW YEAR

We, here at Sound Trax would like to take this time to express our sincere gratitude for your patronage during our first week of business. You all have made our first week a very successful and learning experience. Thank you all so much.

Happy New Year.

Wishing You Joy for the Holidays

With the holiday season upon us, it is most important to remember the best gift of all to give ourselves, our families, our country, and future generations — Energy Conservation.

Conservation of energy is very important to ensure our well-being, as well as that of our nation and those who guide it several years from now.

**North Plains Electric Cooperative, Inc.**

Operating in ...

Ochiltree Lipscomb Wheeler Hutchinson  
Roberts Hemphill Hansford

Happy Holidays

to all our customers and friends!

**WOODY'S PUMP & SUPPLY**  
117 S. INDUSTRIAL • 435-5489

At this time of year, we pause to consider the good things of life, and to send best wishes to our friends and neighbors. We appreciate each of you. May 1984 be a great year!

Woody, Bobbie and Allan



## "A Centerpiece"

Well--this weather has been something we've never had before in our time in the Panhandle. The chill factor was a -44 on Tuesday morning and folks that's cold and with the sharp wind from the Southeast it was almost impossible to stay outside long. However the gas stayed on the electricity stayed on some water freeze-ups and all in all it was a cold, cold Christmas. By Monday we did have a high of 34 degrees--with all of this we were more fortunate than lots of folks. And after all this is a fine part of the country to call home. Just one blessing was being able to keep warm.

On Tuesday evening of the 20th a turkey and ham dinner was prepared and furnished by

Baker and Taylor, General Store and Bulls Country. This was complete with meat, vegetables and salads with dessert being furnished by Senior Citizens attending.

Really there was a nice crowd of some 40 people. It was a horrible evening, cold and snowy but--those sturdy senior citizens kept coming and all enjoyed an evening of Christmas dinner and games and fellowship later. Everyone seemed to have a good time and the food was delicious.

Our thanks go out to anyone who helped or furnished food for the occasion and a special "Thanks" to Charlene for the organization, Baker and Taylor, General Store, Bulls Country and all the helpers.

The Log Cabin quilt was drawn for also on Tuesday evening and the lucky winner was Audrey Behne. This is a beautiful quilt and we're all happy for Mrs. Behne that she won it. Our thanks again to those who helped in the piecing of blocks to quilting to completion. Our volunteer ladies came through again as always.

To each and everyone who has been so supportive through the past years we hope you had a very Merry Christmas and may your New Year be filled with love, happiness and good health.

## Fencing Class to sponsor dance

The Fencing Class of the YMCA will sponsor a dance, December 30, 1983 from 8 p.m. to 12 midnight at the YMCA. Music is being provided by P&R Productions. It will be Rock, Country on request. Admission is \$3.00 single and \$5.00 couple.



Bonnie Jarvis [left] won a blue ribbon in district 4-H Food Show competition Junior Nutritious Snacks and Desserts competition, while Carla Greene also won a blue ribbon county winner in Junior Nutritious Snacks and Desserts, and was an alternate to district.



Kathy Poole [left] and Stacy Gardiner each won red ribbons in District 4-H Food Show competition, Kathy's for Junior Bread and Cereal and Stacy for Junior Fruits and Vegetables.

## WTSU honor students for fall semester

WTSU--Honor roll lists for the fall semester at West Texas State University name 666 students.

Included on the President's List are 84 students and the Dean's List includes the names of 582 students.

To be eligible for the Dean's List, students must have completed 12 semester credit hours with at least a grade point average of 3.25 on a 4.0 scale and President's List honorees must have earned a grade point average of 3.85 to a perfect 4.0 and completed 12 semester credit hours.

The students are recognized for academic achievement in the School of Agriculture, College of Arts and Sciences, School of Business, College of Education, School of Fine Arts, School of Nursing and Graduate School.

Named to the President's List from Spearman is James Pierce, senior music therapy major of 702 Cotter Drive.

The Dean's List includes Donna Ball, freshman majoring in computer information

systems and daughter of Patsy Hunt; Denice Blackburn, sophomore performance major, daughter of J.E. Blackburn of 510 S. Endicott; Bill Cope, junior marketing major, son of Wayne and Waurayne Cope of 1010 Blodgett Drive; and Lisa Jones, junior accounting major and daughter of Claude Sheets, Jr. 610 E. Kenneth.

## Obituary

Thora Jean Van Cleave, 60, died December 14, 1983.

Survivors include her husband Sam, of Bell, Calif.; a daughter, Linda Morgan of Park Dale, Ore.; two sons, Paul, of Park Dale, Calif., and Lee, of Blue Lake, Calif.; her mother Mabel Edwards of Spearman; her father Jess Edwards of Cedar Vale, Kan.; A sister, June Weant of Tucson, Ariz.; and a brother, Wayman Edwards of Spearman.

## MARKETS

WHEAT	\$3.38
MILO	5.00
CORN	3.45

## Seal In Indoor Comfort

With Caulk and Weatherstripping



Losses of heated air and cold drafts in your home waste energy by making your heating system work harder than it should. Keep your home comfortable and stop the flow of outdoor air into your home by sealing the cracks around doors and windows with caulk and weatherstripping. Having a good seal around windows and doors helps keep the warm air in and the cold air out. For more tips on how you can get the most from the energy you use, ask for our free booklet, "A Guide To Better Home Energy Management."



E 52-83

## SALE

3 DAYS ONLY  
Dec. 29-30-31

## Hats & Boots

Resistol, and American hats  
Sanders, Tony Lama and Justin Boots

Lady Wrangler Denim and cords.

Jackets, sweaters, blouses, shirts by John Henry,

Manhattan, Panhandle slim and Wrangler.

All Children's clothing.

## The Bunkhouse

210 Main

659-2476

## Money Market Investor's Guide

Choose the Certificate of Deposit You Want	\$2,500	\$10,000	\$25,000	\$50,000	\$100,000	
					Rate	Yield**
31 DAYS	8.93%	9.03%	9.13%	9.28%	9.48%	9.943%
90 DAYS	9.13%	9.23%	9.33%	9.48%	9.68%	10.163%
180 DAYS	9.38%	9.48%	9.58%	9.73%	9.93%	10.438%
1 YEAR	9.58%	9.68%	9.78%	9.93%	10.13%	10.659%
18 MONTHS *	9.68%	9.78%	9.88%	10.03%	10.23%	10.770%

7 DAY ACCT. 8.93%



First National Bank  
Perryton, Texas  
806/435-3676  
Member FDIC

Rates Effective  
Thru January 2, 1984

\*Available with \$500 Minimum Deposit  
\*\*Annual Yield Based on Daily Compounding

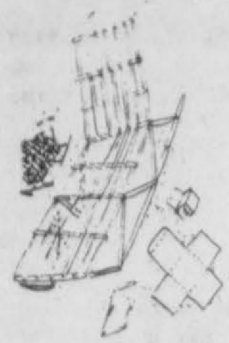
All Deposits Insured to \$100,000.

Substantial Penalty for Early Withdrawal.

THE ACTION AUCTION  
ALWAYS AN ABUNDANCE OF BUYING POWER  
TEXHOMA LIVESTOCK COMM. INC.  
Box 449  
Cattale sold 1358

PACKER COWS	\$31.00-\$43.50
PACKER BULLS	\$44.00-\$50.00
STOCKER COWS	\$37.00-\$45.00
PAIRS	
STEER CALVES	
300-400#	\$70.00-\$75.00
400-500#	\$68.00-\$72.50
HEIFER CALVES	
300-400#	\$56.00-\$63.50
400-500#	\$54.00-\$61.50
FEEDER STEERS	
525-600#	\$67.00-\$71.00
600-700#	\$66.00-\$68.00
700-800#	\$64.00-\$67.50
800-900#	\$61.00-\$65.80
FEEDER HFRS.	
525-600#	\$57.00-\$60.00
600-700#	\$56.00-\$60.00

405-423-7511 SALE EVERY THURSDAY  
KEITH LAUER, MANAGER  
ROB LAUER, YARD MANAGER  
SONNY GARRETT, ASST. YARD MANAGER  
RAYMOND CHOATE, CATTLE DEPT.  
BOBBIE ADAMSON, OFFICE MGR.  
JIMMY NICHOLS, FIELD REP.



**A Sled of New Year Gifts**

For a special New Year's gift to a friend, make this tiny Eskimo sled from toothpicks and glue!  
Start with 6 cross boards of the sled's seat and build according to the picture. Make 12 tiny gift boxes by cutting out a box form from pretty paper and folding it into a box, taping the sides together in the inside.  
On 12 small pieces of paper write, for each month of the year, something you wish for your friend: "I wish you a gift of happiness in January," "I wish you the gift of love in February," etc., etc. Tuck each piece of paper in the tiny box, writing the name of the month on the box. Tie a tiny ribbon around each box and attach a bow. Pile the Eskimo sled high with its special New Year's gift.

**Luscious Party Ices**

If it's a snowy New Year's, try a delicious party treat.  
Bring in a pan of clean snow. Open a can of frozen orange juice or frozen grape juice. Stir a few spoonfuls of the frozen juice into the snow until you get just the taste you like. Experiment with all kinds of flavors to make your party ices.

**I'll Keep That Resolution**

Husband: "One important New Year's resolution I've made is not to lose my temper."  
Wife: "And you intend to keep that resolution no matter what?"  
Husband: "Certainly!"  
Wife: "Well, in that case I'll tell you—I had an accident with the car this morning."



**New Year's Party Magic**

1. Put an ice cube in a glass of water.  
2. Give your friends a piece of string and ask them if they can think of a way to get the ice cube from the water with the string. Watch as each one tries to slip the string around the ice cube as it goes bobbing away from the string.  
SOLUTION: Lay a string on the ice cube. Slowly sprinkle salt on the string and cube. After 2 or 3 minutes the string will have frozen to the cube and you can lift it out. (Experiment, first, as too much salt will tip the cube. Also, if you try to pull the cube up too soon, it will not be frozen.)

**New Year's Tears**

"I guess I'm just sentimental, but there's something about going out to dinner on New Year's Eve that brings tears to my eyes."  
"What's that?"  
"The price!"

**Each Day Is Yours**

Each day that you awake in the new year will be yours—all yours. No matter what might happen each new day, it will be nothing that you and God, together, can't handle—so cherish each day of the new year as a gift to enjoy.

**Happy New Year to Feathered Friends**

Mix an equal amount of shortening and peanut butter. Cover a pine cone with this mixture and roll it in bird seed. Hang this New Year's treat in a tree in easy reach of the birds, and listen to their notes of thanks!

**New Years-- New Life**

For New Year's the ancient Iranians, or Persians, followed the custom of giving eggs as gifts to their friends. Since an egg brought forth life, it meant the same thing as our expression of "turning over a new leaf."

**New Year's Pin Money**

On New Year's one English custom was for husbands to give their wives enough money to buy a year's supply of pins. This was where our term of "pin money" originated. Later this custom was dropped as pins started being manufactured by machines.



**New Year's Party Placer**

For a cute name plate at your New Year's party:

1. Twist 2 pipe cleaners together. Stick the 2 ends through a styrofoam ball. Bend the protruding pipe cleaner ends, to hold.
2. Paint Eskimo facial features on the ball. Glue black yarn on for hair. Form a hood from furry material, a piece of fringed construction paper, or cotton.
3. Turn a paper or styrofoam cup upside down. Punch a hole in its bottom to insert the twisted pipe cleaners through.
4. Separate the pipe cleaners into feet. Glue on wooden ice cream spoons or cardboard for snowshoes.
5. Cut out a spear and a fish, and other things you'd like to add.
6. Write the person's name on the cup.

**Out Of The Soup**

The snow was piled thick on the ground and snow, sleet and rain was intermittently falling.  
A father, living on a hilly country road phoned back home to tell his teenage daughter, who would soon be driving to school, the conditions of the roads. "Stay in the tracks," he emphasized, "Stay in the tracks. If you get out of the tracks, it's nothing but soup, with no traction."  
Last year, or maybe the year before, we sometimes felt we just had to get out in the "soup" to try something different and then found there was no traction.  
As we travel down 1984's road, let's stay out of the "soup" by staying in the tried and proven tracks for real happiness.

**New Year's Happiness Rules, by Little George**

Were our first American President alive to give us a New Year's message, he would base his thoughts upon his background of 1) Hard work, 2) Public service, and 3) Worship of God.

Little George copied these rules in his exercise book that if the intent is followed could make our new year a happy one:

- "Turn not your Back to others especially in Speaking, Jog not the Table or Desk on which Another reads or writes, lean not upon anyone.
- "Use no Reproachful Language against any one neither Curse nor Revile.
- "Play not the Peacock, looking everywhere about you to See if you be well Deck'd, if your Shoes fit well, if your Stokings Sit neatly, and Cloths handsomely.
- "While you are talking, Point not with your Finger at him of Whom you Discourse nor Approach too near him to whom you talk especially to his face.
- "Be not Curious to Know the Affairs of Others neither approach those that Speak in Private.
- "It's unbecoming to Stoop much to ones Meat. Keep your Fingers clean and when foul wipe them on a Corner of your Table Napkin."

**A Prosperous New Year**

May 1984 be the prosperous 1983 that 1982 was supposed to be in 1981.

**It's New Year's Time**

A new year is a time to stop thinking of me and remembering you. It's a time to re-evaluate our goals and to reach the goals we didn't quite reach in the past that were worthy. It's a time to make good resolutions and make them last.

**A New Year's Challenge**

It would be a challenge at the beginning of a new year to look around and find someone who seems to always be sad, lonely, or even downright sour, and try to help that person to have a happy frame of mind.

You might want to bring that person a special baked item, or a small gift of love from time to time. Looking into the reasons for that person's gloom you may find he's in financial need, hungering spiritually, or in ill health, and you can help to fill that cup.

That person may find new happiness and new interests in hobbies or becoming involved in projects in which he too may put joy in someone else's life.

Although you may not have all the financial means you'd like—there's one thing that doesn't cost a penny and we can all give—A SMILE!

Let's challenge ourselves to turn at least just someone's sadness to happiness this new year.

**It's A Boomerang**

This new year will be a lot like a boomerang. What we send out will determine to a high degree what will come back to us.

As we approach our tasks each day this year with a calm cheerfulness, we will get the work finished with only a small portion of the fatigue that the grumpy person feels.

Joyful people can see happiness, humor, and kindness. The critical feel that the whole world is at fault for their misery.

Here's to good attitudes, a loving spirit and many good friends during 1984!

**A Better New Year**

New Year's Day is celebrated in almost every country on varying days during the year.

The Chinese New Year is based on the waxing and waning of the moon and comes between January 21 and February 19.

Among the Hindus there are many different religious groups. Each group considers a different day as the beginning of the year.

Early Egyptians celebrated New Year's Day when the Nile usually overflowed its banks in June.

Whatever day of the year that is chosen for New Year's Day by various countries, it seems to be a time of making resolutions to correct bad habits, to correct faults and resolve to make the new year better.

**Will it! Fill it!**

This new year can't really give me happiness unless I really will it!

This new year just gives me time and space—it's up to me to fill it!

**Walking In The Tracks**

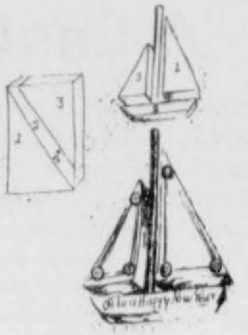
"Thou hast enlarged my steps under me, that my feet did not slip." Psalms 18:36.

On a beautiful winter morning when all was covered with a thick white blanket of snow, a father was taking shorter strides than usual. As his boots crunched through the snow, he left large tracks for the little boy who was following behind, to walk in.

The small son walked along happily until he thought he could get ahead of Father and make the tracks himself. He soon got bogged down; the trudging got harder for the small feet and shorter legs.

Our heavenly Father prepares the way before us, in 1984, so that our feet may not slip. If we try to stubbornly trudge on ahead we will only grow weaker and weaker.

We will not be yanked back, but when we are ready to say, "I've tried to make my own path, Lord; I'm truly sorry I tried to get ahead of Your plans; please lead the way," then God's heart is filled with joy and He leads the way, making the path easy.



**Bon Voyage For A Happy New Year**

As we're sailing off into the new year, here's a special party cake idea:

1. Use any cake mix that you wish. Bake it in a 13x9x2-inch pan.

2. After the cake is cool, cut it as shown in Figure 1. Arrange the cake on a large tray, as shown in Figure 2. (The mast is a rolled up 12 x 5 inch of pretty wrapping paper.)

3. Frost sides and top of sails with white frosting. Use shoestring licorice for the sail ropes and circle mints or Lifesavers for the rings. Add a few drops of food coloring to the frosting for whatever color you choose to make the boat. Write, "Off to a Happy New Year," on the boat with frosting, or silver ball decorations, etc.

**New Year's At Grandfather's**

They were on their way to Grandfather's farm, lost in a New Year's Eve snowstorm: "Oh, look, Hector! There's a chicken, so we must be near the farm!"

"A chicken? That's the weathercock on the township's schoolhouse!"

**Happiness in 1984**

Happiness in 1984, just what will it be—a guess, a game, a selfish wish?

Will it be a dream of fame, a trick or scheme? Will it be an old-time song to hum when something goes wrong?

Could it be a quiet hour in the woodlands or by the sea? Or a smile while watching children at play?

This much-sought prize of happiness can be easy to find for it is simply peace of mind—following the Golden Rule of love for God and man.

**SOUND TRACKS**

**NOW OPEN**

**Plains Shopping Center**

**Spearman, Texas**

**806/659-5174**

**Terry and Linda Butt**  
Owners

**Top 10 Books and Records**  
**All The Latest Tunes**

- \* Hardback & Paperback Books
- \* L.P.'s
- \* Cassettes
- \* Singles
- \* Blank Cassettes
- \* Cassette Adaptors
- \* Headphones
- \* Etc.
- \* Spanish Music
- \* Books
- \* Music
- \* VCR Sales & Rental
- \* VCR Movie Rentals (By Day)
- \* VCR Machine Rentals (By Day)
- \* Children's Books & Records

*We take special orders. Special orders come in within 2 days.*

**Happy New Year**

**ALLSUP'S**  
CONVENIENCE STORES

**ALLSUP'S IS OPEN ALL DAY FOR YOUR CONVENIENCE**  
**SHOP ALLSUP'S FOR ALL YOUR PARTY NEEDS**

<b>ALLSUP'S SPARKLING ICE</b>	<b>LARGE BAG</b>	<b>99¢</b>
<b>BORDEN'S EGG NOG</b>	<b>QT. CTN.</b>	<b>99¢</b>
<b>COOKED FOOD SPECIAL AS FEATURED ON TV.</b>		<b>2 FOR 89¢</b>
<b>BORDEN'S ASST. SOUR CREAM &amp; DIPS</b>	<b>8 OZ. TUB.</b>	<b>59¢</b>
<b>FRITO LAY'S REG.</b>	<b>1.39</b>	<b>TOSTITOS</b>
<b>ALLSUP'S ASST. FLAVORS ICE CREAM</b>	<b>1/2 GAL. RD. CTN.</b>	<b>\$1.59</b>
<b>POP SPECIAL COCA-COLA</b>		<b>6 PACK CAN \$1.59</b>

**Shop Allsup's for your last minute Party Needs**

**ICE, MILK, BREAD, FRESH PRODUCE, FILM & FLASH, SNACKS, SOFT DRINKS, BROWN & SERVE ROLLS, CHIPS & DIPS, & DESSERTS.**

*Best of the New Year from your Friends at Allsup's*

# Operation Christmas Greeting underway

We wish everyone a joyous Holiday Season. Instead of sending Christmas cards this year, we have donated to the Hansford Hospital Auxiliary for use in their work in the Hospital and the Manor.

- Beth and Ray Phelps
- Raymond and Virginia Sparks
- Dorothy and Max Baggerly
- Ralph and Johanne Blodgett
- B & B Farm Industries
- Pearl Pierce
- Rue and Anne Sanders
- Don and Lynanne Maize and family
- Freeman Barkley
- J. L. and Mary Brock
- Pauline Johnson
- Viola Graves
- Albert and Joanne Graves
- Mr. and Mrs. Howard C. Nash
- C. A. Gibner
- Woodie and Lois Gibner
- J. W. Jenkins
- Doris and Condee Ellison
- Lelan Close
- Irvin and Betty Davis
- Rosa Lee Butt
- Maylyn Schubert
- Garland and Virginia Head
- Floye and Eddie Largent
- Gus and Clementine Renner
- Sandy, Kevin, Kayla and Tommy Russell
- Jerry Pat, Gina and Grace Davis
- John and Virginia Trindle
- Elsie Mathews
- Willard and Jettie Davis
- Adalyn Barnes
- P. A. and Buena Lyon
- Bernard and Ethel Byers
- Jo and Marcus Larson
- Myrt and Glen Bohanan
- Tom and Helen Etter
- Gertrude B. Archer
- Pat and Virginia Cates
- Ruth Ann and Marvin Jones
- Dora Womble
- Raymond and Grace Kirk
- W. E. and Loydell Sparks
- Mary Fern Terry
- Kiff and Ailene White
- Don and Elaine Floyd
- Byron and Barbara Kenney and children
- Woodville and Verna Jarvis
- Jewell Thomas Renner
- Merrel and Grace Johnson
- Del and Barbara Cluck
- The Sammy Don Jones Family
- Phil and Marguerite Jenkins
- Glen and Evelyn Hiller
- Jack and Dolly McWhirter
- Emmett R. Sanders
- Carl and Peggy Archer
- Jane S. Meek
- Mr. and Mrs. Travis Davis
- Deta Blodgett
- Faye Lynch
- Mr. and Mrs. John Bishop
- Sid and Jo McAdams
- Roy and Emma Lou Collins
- Newell and Dickie Allen
- Don and Gwen Smith
- Mr. and Mrs. W. E. Bratton
- Maudine Patterson
- Lonnie, Linda and Amanda Hiller
- Kent and Glenda Guthrie
- Tom and Kathleen Sutton
- Floyd and Aileen Close
- Mr. and Mrs. Dennis Cline
- Bernice V. Brown
- Billy, Joan and Ashley Brown
- Mr. and Mrs. Deacon Clement
- Mrs. Walter Wilmeth
- Juanita Logan
- J. C. and Vivian Harris
- The O. K. Pendergrafts
- Joel Lee and Joyce Lackey
- Robert and Margaret Novak
- Slim and Mary Cates
- E. J. and Joe Copeland
- Raye and Helen Gibson
- Mr. and Mrs. E. C. Abston
- Gordon and Rose Cummings
- Bob and Ruth Crawford
- Martha Nitschke
- Bob Nitschke and family
- A. D., Sharon and Hadley Reed
- Mr. and Mrs. Pope Gibner
- R. L. and Barbara McClellan
- Edith Womble
- The Dennis Nelson Family
- Irwin and Susan Delk
- E. E. and Mildred Martin
- Stephen, Susan, Kristina and Shauna Poole
- Mrs. Margaret Shedeck
- Viola Hutton
- Helen and Dave Hand
- Dave Hand, Jr.
- Nana Lee Brown
- Winnie Allen
- Eva M. Adkison
- Dorothy Lusby
- J. D. and Robyjo Wilbanks
- Lois and Jimmy Shieldknight
- Ira and Loree Harbour
- Mr. and Mrs. L. L. Anthony
- Knox Pipkin
- John and Wanda Brown
- Bobby and Teresa Brown and children
- Rev. and Mrs. Bruce Chesser
- Mr. and Mrs. Lee Roy Mitchell
- Bill and Estelle Jackson
- Gene and Frances Cudd
- Charles R. Ball
- T. C. and Doris Kitchens
- Roy and Ann Flowers
- Fanny and Johnny Venneman
- Eddie and Ellen Babbs
- Mr. and Mrs. Alton Ellsworth
- Dorothy and Edward Haner
- Howard and Verna Barkley
- Mr. and Mrs. Ceril E. Batton
- Bill and Lemmie Russell
- Ruth and Joe Dan Bryan

- Ray and Sylvia Robertson
- Dee and Ed Rafferty
- Mrs. Pearl M. Dixon
- Jimmie and Vera Beth Hicks
- Pat and Georgia Holt
- Linda and Tom Latta and girls
- Granville and Muriel Boyd
- Troy and Frankie Sloan
- Mr. and Mrs. Bruce Sheets
- Roy and Carrie Russell
- Herbert and Grace Kirk
- Dorothy and Lloyd Buzzard
- Mr. and Mrs. Leroy Smith
- Don and Lorene Kunselman
- Woodie and Fern Fulkerson
- Mr. and Mrs. Jack Oakes

Every year during December, the members of the Hansford Hospital Auxiliary ask the community to give the money they would spend on Christmas cards to the "Operation Christmas Greeting Fund." The entire proceeds, from this fund are used solely for Hospital equipment and this is the only fund raising campaign the Auxiliary does.

This fund raising method has been used by the Auxiliary since 1974 and the citizens of the County have responded very well. In 1983,

some \$3300 was sent in and all of it was donated to the Hospital for a Plasma Freezer which the Hospital had been needing.

The Auxiliary asks your support for this Fund for another year. It will be greatly appreciated. Please send your contributions marked "Operation Christmas Greeting" to Helen Etter, Box 1045, Spearman, Texas, 79081, and list your name the way you wish it to appear in the Christmas Card list which will be published in the paper each week through December.

## Holiday Punch

Makes 1 Gallon - Serves 20

- 1 46 oz. can unsweetened pineapple juice
- 1 46 oz. can yellow Hawaiian Punch
- 1 qt. bottle 7-Up
- 1 can frozen limeade
- 2 bananas
- 2 pints lime sherbet

Have all ingredients cold. Make limeade according to directions. Before mixing, use part of the juice to liquefy bananas. Mix all ingredients. Slightly soften sherbet and float it on top.

## 365 Pages

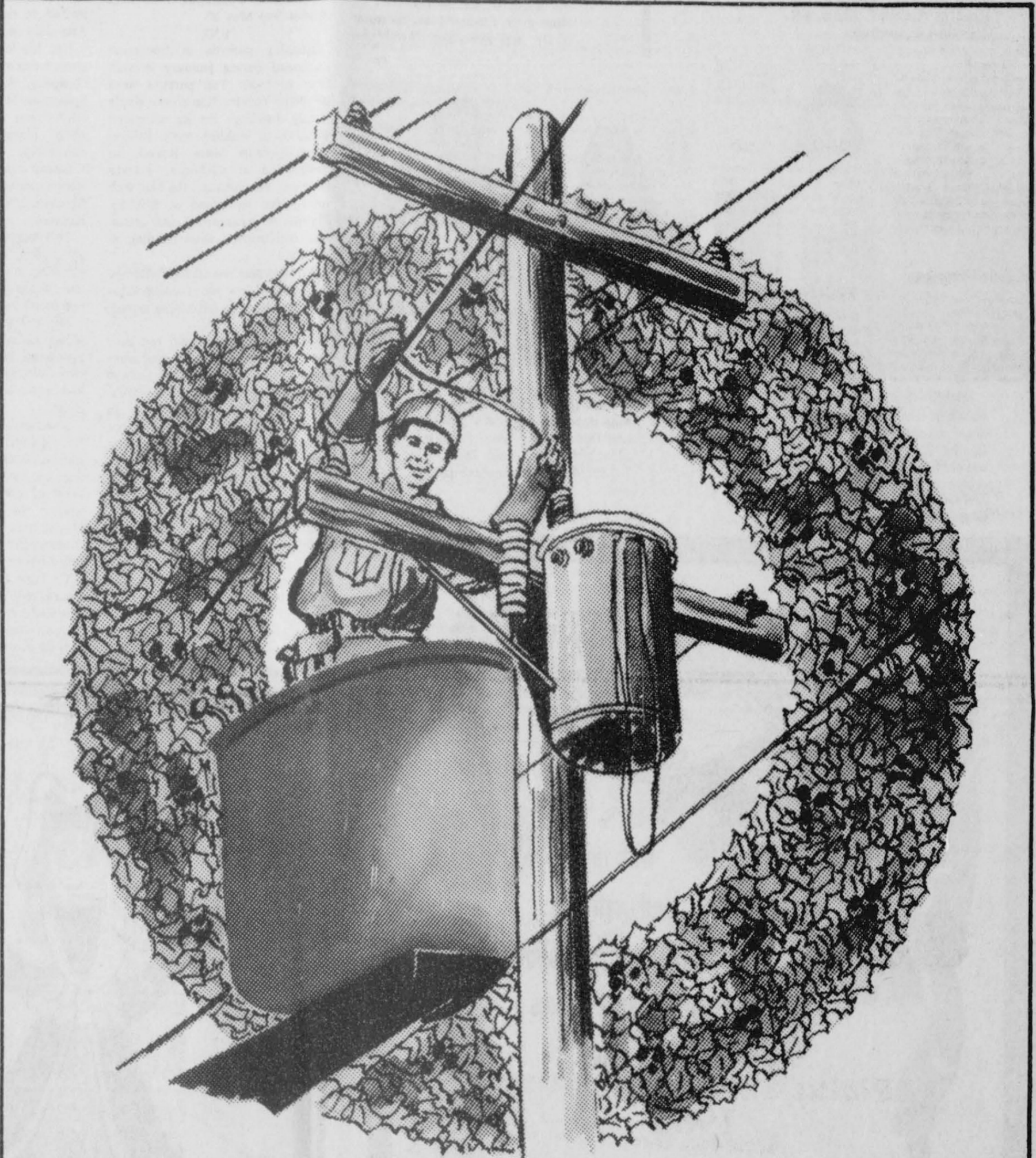
The new year of 1984 has 365 pages. Each day is a spotless page to fill.

Our 1984 journey cannot be made without leaving footprints. Others will follow where we go because we have marked the way.

The past cannot be changed but the future is ours to impart good to our fellowman.

Those who bring sunshine to others cannot keep it from themselves.

May your New Year be a truly rewarding one to yourself and to others.



# Seasons Greetings

The message is clear ...

we wish everyone a Happy New Year...

## Cattlemans Restaurant

Rita Underwood

Hwy 207 South

659-2664

Spearman, Texas

# Happy New Year



Ginger Sasser [left] won a red ribbon and Kyla Nelson a blue ribbon in Hansford County 4-H Main Dish competition.



Michelle Cook [left] won a blue ribbon in Hansford County Food Show competition and a Red in District in Junior Main Dish competition. Carol Poole also won a blue in the county Main Dish competition and was an alternate in the district competition.



Anne Marie Jarvis [left] won a blue ribbon in Nutritious Snacks and Desserts and Stacy Poole a blue ribbon in Main Dish in District 4-H Food Show competition.

sophomore Pat Ochoa and freshmen Leticia Vela, Rocio Rosales and Kellye McFarlin. Jennifer Yarbrough, captain, and Rhonda Mathews, both freshmen, were chosen as rifle girls.

City Council authorized repair for the water well in Rocket Slide Park.

Robbie Heinrich, daughter of Mr. and Mrs. Gerald Heinrich of Spearman, was crowned Miss Hansford at the annual beauty pageant; winning the honor in competition with 18 other girls. Cinda Novak, daughter of Dr. and Mrs. Earl Novak was

named first runner up and Miss Congeniality. Kim Nelson, daughter of Mr. and Mrs. Dennis Nelson was second runner up. Escort contestant winners were Amy Anderson and Joshua Mayhew. Joe T. Venneman was master of ceremonies. Contestants gave a fashion revue with fashions courtesy of JG's, Main Street, Lady Fair, Trudy's, Baker's Sports Tally and The Bunkhouse.

The Rev. Bruce Chesser, pastor, announced that First Baptist Church of Spearman had launched a new, 24-hour intercessory prayer "hot-line."

Pat Tucker and Billy Ray Haden were chosen to represent Spearman at the American Legion's Boys State at the University of Texas.

Spearman Swimming Pool held Splash Day May 28.

## JUNE

Housing permits in Spearman increased during January through May of 1983. Ten permits were issued for construction of new single family dwellings for an estimated \$782,000 in building costs. Fifteen other permits were issued for construction of additions, storage facilities, car ports and the like, with total value estimated at \$79,750. Figures on commercial, and industrial construction were pending at the time.

An alert was issued for Catherine Southerland who was missing since May 20 when she left Morse enroute to Borger.

One new business and two new managers for local businesses were announced in the June 9 issue of the Reporter. Jay Johnson, new manager of TG&Y invited people to come by and get acquainted at a free coffee and donuts celebration at the Plains Shopping Center store.

Gene Harris took over the reins as manager of Consumer Sales Company.

Larry Bowen, owner, announced the opening of his new business, Larry's Complete Small Engine Repair Service, and local authorized Ariens lawn and garden equipment dealer.

The giant garage sale, bake sale and auction held June 4 drew \$8,000

to benefit the local YMCA.

A three wheeler donated by Agco was purchased by Johnny Crawford. Artists donating their works for the Y benefit were Martha Latham, Mary Ann Lesater, Mona Beth Windom, Karen Reimer, Gwen McLain, Linda Blackman, Gina Davis, Linda Sanders and Janie Henton.

Groundbreaking for the Santa Fe Depot addition to Station Master's House Museum was held June 13. The station will be moved from its present location along the railroad right of way.

First State Bank's armadillo racing team of Paulette Laxon, Sherry Dement, Jim Shirley, Larry Trosper and Jamie Bulls won the Borger races, defeating 40 teams, and were invited to the state championship Armadillo race in October.

Jim Morley assumed duties of shop foreman at Crawford Motor Company. A longtime resident of Spearman, Morley was employed by High Plains Auto before becoming shop foreman at the Ford dealership.

Grand opening festivities and ribbon cutting were held June 18 for Blackburn's Flowers at 222 Hancock.

Two Perryton men were killed and six others were injured, in the grinding, broadside crash of a car and pickup some six miles west of Spearman June 14.

Steven Harris assumed the duties of new manager for Ideal Grocery in Spearman. He moved to Spearman from Woodward, Okla. where he had been a co-manager for the Ideal chain.

Spearman City Council accepted the apparent low bid of \$178,516 for renovation of fire damaged city hall from an Amarillo firm, but stopped short of giving city manager Jim Murray the go-ahead to negotiate the contract to give the city's legal counsel and architect the opportunity to review the bid.

On June 15 and 16, 16 Hansford County 4-H'ers took top honors at the District 4-H Horse Show. Jon Garnett was named all-Around in judged events and Andrea Archer

took all-Around in timed events.

Larry Trosper was named president of Spearman Rotary Club, Albert Graves as president-elect and Jack McWhirter as secretary-treasurer during a special joint meeting of Spearman, Perryton and Canadian Rotarians in Perryton.

Butch Baker was chosen as Lion of the Year. Clay Gibner was honored for 55 years of service as a Spearman Lion, and Ray Robertson was installed as new Boss Lion during the ceremonies June 21. Al La Rochelle was inducted as a new Lion member and other officers installed included Elbre Hickerson, first vice president, Butch Baker, second vice president, Rich Melton, third vice president and Cecil Biggers, treasurer.

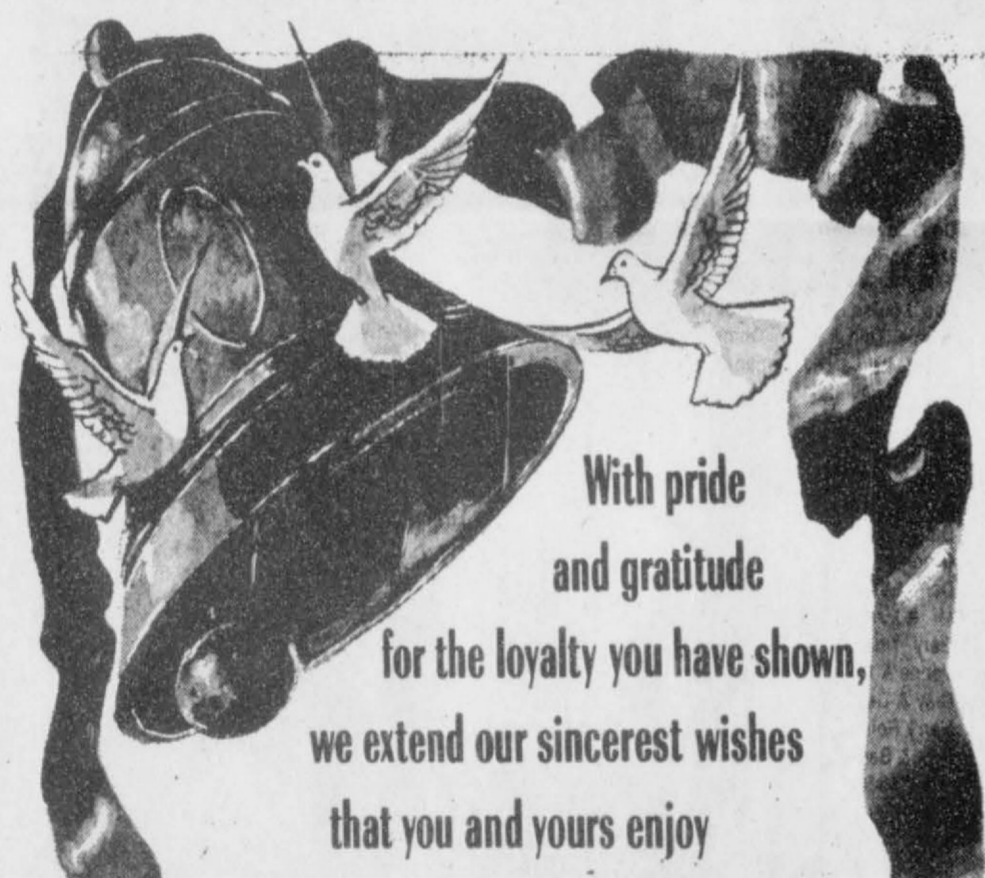
The Rev. C. Lane Boyd, his wife Tamra and their son Chris, 8, arrived in Spearman where he will assume the duties of pastor of First United Methodist Church. They came here after a stint at Elmwood West United Methodist Church in Abilene. They are originally from Dumas.

Wheat harvest began to crank up in late June.

Within one hour after theft of a dining room suite belonging to Mrs. Ruby Banks, was reported, Sheriff R.L. McFarlin and deputies had recovered the stolen items and arrested a suspect. Roy Bulls presented a \$10,000 check, posted by Max Banks owner of Baker & Taylor Drilling Co. to Sheriff McFarlin, who in turn donated the money to the Texas Sheriff's Association to set up a scholarship in honor of his late son, victim of a tragic shooting incident. The scholarship will be for youngsters wishing to pursue law enforcement studies.


A suspect in the two-year old robbery and fatality of a Wheeler jewelry store and fatal beating of the elderly woman running the store and was arrested in Spearman by Sheriff McFarlin and Deputy Gary Evans.

Faith Lutheran Church welcomed new interim pastor Bill Schardin. [Continued in the Sunday Hansford Plainsman.]



With pride and gratitude for the loyalty you have shown, we extend our sincerest wishes that you and yours enjoy

1984



**GOLDEN SPREAD SALES CO.**  
Phillips 66 Products  
Box 277, Spearman, Texas  
(806) 659-3776  
Everett Tracy

Kevin Bynum  
Rusty Tindell  
Bob Burke-Corner Service Station

Bill Porter  
Dwayne Booth



**HEAR YE- HEAR YE!**

We Wish to One and All a Happy, Happy

1984

**LOUIS SCHNELL ELECTRIC**  
208 Hancock 659-3433

1984