

# 1975 Corn Harvest All But Over

see story inside...

## The Spearman Reporter

VOLUME 66, NO. 48

THE SPEARMAN REPORTER, SPEARMAN, TEXAS 79081

THURSDAY, OCTOBER 16, 1975

# Lynx face "Big Bad Wolves" here!

The defending state runner-up Spearman Lynx will face a formidable foe in the Dalhart Wolves at Lynx stadium this Friday night at 7:30 p.m. Although the Wolves have won only 1 game this year, they could be the surprise of the district this coming Friday night. In fact, we think it quite possible that Dalhart could eliminate the Lynx from the District race Friday night, if we aren't extremely careful....

In the first place, the Wolves have nothing to lose at Spearman Friday night, but the Lynx could lose "everything." That is, the Lynx are tied with Phillips for first place in the district race this year (as far as favorites go) and the Wolves would like nothing better than to eliminate the high flying Lynx.

In a talk with coach Sherwood, we learned that with the exception of Hargis, the Lynx are all in pretty good shape. Hargis injured his knee again on Monday, but he should be running at near full speed by Friday night.

Coach Sherwood reports

to us that the Wolves will have a "bunch" of their injured people back this Friday night, and will be ready to run against the Lynx. The game promises to be a thriller, in any event! In fact, as we said before it could be the biggest upset of the year as the Wolves are a big powerful group of boys, who almost beat Guymon and did beat Friona last weekend.

In a talk with band director Vic Kyler, he informed the newspaper that the band would perform some of the numbers that they will use in competition this year. The band is "tremendous" this year, and both the Lynx and Dalhart bands will put on a great halftime show Friday!

This will be the first district game of the year for all of the 1-AA teams. The fog should clear some by Friday night when the first round of the district games are over. We will see you at the game Friday night! Come out and back the Lynx to another state championship run! See you at Lynx Stadium, 7:30 p.m. Friday night.

### GAME NUMBER SIX

We've come to that time,  
Entering the district war;  
All the fans are behind you,  
Race for the victory door.

One more big challenge,  
Under the lights of Lynx field;  
The 'honeymoon' is over,

The injuries all healed,  
Hop up your Purple Pride,  
Engage the Big O:

Work over the Wolves,  
Our Lynx are on the go.  
Lynx defense will shire,  
Victory's better than defeat;  
Each task needs to be done, and  
Spearman will not be beat.



The Spearman Volunteer firemen are pictured above during a "pause" while working on Bill Gaither's home in Spearman. These firefighters are the finest in the world!

## Construction Begins On Hwy 51

A Pre-Construction Safety Conference for the construction of a new highway in southeastern Hansford County was held in Spearman October 9th. The new road is 5.744 miles long and will extend from State Highway 207, east to the junction of F. M. Highway 760 and F. M. Highway 281 about 8 miles south of Spearman. It will be 36 feet wide including paved shoulders.

This new highway will be known as State Highway 51. As portions of F. M. Highway 281 are upgraded to state highway standards in the future, they will be redesignated as State Highway 51. Eventually this new highway will extend from U. S. Highway 83 in eastern Ochiltree County all the way to Dalhart. This change is being made because of a request made to the Highway Commission in Austin on May 1, 1972 by County officials and interested citizens along

this route. Cooper & Woodruff, Inc., of Amarillo is the contractor for this first project. Mr. Charles Schmidt representing the contracting firm, stated that caliche crush big would begin about October 13th and grading and culvert work would begin as soon as the ditches are dry. If weather permits, the caliche base will be placed

on the road this fall. Asphalt surfacing will be completed in early spring when the weather is warmer.

This project is partially financed by federal tax funds so the contractor will be required to comply with the latest federal equal employment opportunity regulations as well as the safety and health

regulations for construction as established by the U. S. Department of Labor.

L. R. Loyd of Perryton, project engineer for the Department of Highways and Public Transportation, stated that every effort will be made to keep the road open to traffic at all times and asked that motorists drive carefully through this construction zone.

## C of C Breakfast Set For Tuesday

The Spearman Chamber of Commerce invites you to attend the second breakfast, Tuesday, October 21, in the County Show Barn. Sponsor for this breakfast is the Hansford Implement Company. Clark Mires and Kent Guthrie will Emcee. Breakfast will be served from 6:30 - 7:00 a.m.

A drawing for \$25.00 will be held from those present, a \$25.00 drawing from the Chamber

membership (must be present to win) and a \$25.00 drawing from the clubs and organizations will also be held. Be sure and be present and have representatives from your club and organizations there. Bring a friend.

Wes Nivens will play a few hoe down tunes while we eat breakfast. Wes just returned from Farmington, New Mexico where he took third place in a fiddlers' contest.

We have been bringing home lots of trophies lately from the Fiddlers' Contests. We feel very honored to have Wes entertain at our breakfast. Call 659-3330 for your reservation TODAY. Menu--Bacon, scrambled eggs, biscuits, orange juice and coffee. A \$10.00 cash prize will be given to the OLDEST person at the breakfast.

## Fire Department Lends Helping Hand

More news from your Volunteer Fire Department Dear Folks:

Thought maybe you all would be interested in what YOUR Fire Department accomplished this past weekend. On Saturday morning, your Fire Department went to Bill Gaither's and poured a new concrete driveway and concrete ramp so that Bill could get around a little easier. Bill was injured a while back and when he gets

home, will be in a wheelchair for a while. We also made several modifications inside the house to help Bill get around a little easier.

We finished up Sunday evening and then went out and fought a grass fire and finished up around 10:00 pm Sunday night.

All of the above amounts to this - There is nothing on earth to compare with the joy that comes from helping our fellow man. We would like to thank:

Roscoe Nelson for furnishing the materials used on the job; Jr. Lusby for helping with the dirt work on the driveway; Bill Whitford and Bernard Dossett at Spearman Red-Mix for furnishing all the cement and putting the finishing touches, which was from start to finish, on the job; Don Hendricks for building a great safety rail! and Don's wife Nina for keeping us supplied with cold soda pop and

sandwiches. You folks are the greatest and again - THANKS!

Your fire truck donations are coming along fairly well, and we would like to thank these folks:

Anthony Electric	\$100.00
George Yancy	20.00
Tim Woodington	20.00
Farm Bureau	225.00
Money at Open House	57.00
Earl Novak	10.00
Money Jam	37.02
Spearman Texaco	25.00
Plains Cafe	50.00
TOTAL TO DATE	\$549.02

## Chili Supper Friday Night

The Baker & Taylor Women's Association will have a chili supper Friday, October 17, from 5-7 in the High School Cafeteria before the football game between the Lynx and the Dalhart

Wolves at Lynx Stadium. Price of the meal which includes chili and a dessert will be \$2.00 for adults and \$1.00 for children. Everyone is invited to come out and eat chili Friday night.

## New Rules For School

Supt. James Cunningham of Spearman received the following ruling by the Attorney General on the authority of school districts to charge fees for certain courses, school supplies, and extracurricular activities from the Commissioner of Education, Texas Education Agency, M. L. Brockette.

The commissioner stated that the Attorney General's ruling carries no weight as judicial precedent; however, state officers and officials are expected to rely on it. Therefore, school districts are put on notice as to the opinion rendered on October 1, 1975.

The effective date is the date of the ruling, October 1, 1975. The ruling did not cover fees collected prior to the date of October 1, 1975.

Workbooks, fees for typing, labs, etc. come under the ruling and cannot be charged to students. Traditional supplies such as pencils, paper, etc. do not come under the ruling.

Materials necessary for the student to acquire basic skills required in vocational education courses must be furnished by the school district; however, the school district may allow a student, at his option, to furnish costlier or different vocational materials for approved projects undertaken for credit in such courses without incurring any obligation to pay for such materials, so long as the materials and the projects created them remain the property of the student.

A school district may charge tuition for driver training if taught in a student's fourth quarter (summer school). This is one of the areas in

which tuition may be charged as indicated in Texas Education Code, Section 16.864.

A school district may charge nonparticipating students admission to extracurricular activities where attendance is voluntary.

A rental fee may not be charged on band uniforms. The opinion does not address the question of students furnishing their own uniforms and/or equipment.

The commissioner further states that school districts should prudently apply this ruling to specific cases within the district in determining the legality of any funds collected from or purchases required of pupils.

## Firefighters Schedule Stage Show & Dance

The Spearman Firefighters Association are sponsoring a special stage show and a dance on November 22nd featuring Bill Mack and his Midnight Cowboys.

Mack is rated as America's No. 1 radio personality. Some of the songs he is famous for are "Drinking Champagne", "Somewhere Between" and "Today I'm Bringin' You Roses".

The special stage show will be held in the high school auditorium beginning at 6 p.m. and the dance will be at the Community Building beginning at 8 p.m.

Tickets are \$4.00 for adults and \$1.50 for the stage show, and ticket price for the dance is \$6.00. Tickets are available at the Chamber of Commerce office, fire station or any volunteer firemen. All proceeds from these two performances will go into the local firefighters fund.

# Council opens Community Bldg to local civic organizations

The City Council in its regular meeting Monday night voted to allow use of the Community Building for civic organizations if the money, above expenses, would stay in Spearman. This means that the building can be used for dances, etc. sponsored by local organizations. The building was closed for dances over a month ago due to some alterations at some of the dances being put on by an out of town promoter.

In other business, consideration of submitting a bid for a 10,000 barrel crude oil tank to be converted to a water storage unit was tabled.

A discussion for a Charter for Spearman was held; but it was learned in order to obtain a charter for the town there must be a population of 3,000 within the city limits. The advantage of a charter, makes it "a home rule city" and allows the aldermen a much "freer" hand

in running the city. The city considered an ordinance declaring the necessity for and ordering the paving and improvement of certain streets or portions thereof in the city of Spearman, approving plans and specifications for such work, authorizing the City Manager to advertise for bids, directing the preparation of estimates, invoking the procedure provided by article 1105B Texas Civil Statutes.

The monthly report was given by the Police Chief. It was learned that four dogs were killed in the local pound this past week. The chief reported that the dogs are killing each other, apparently because of inadequate facilities.

City officials request that you do not haul your dead animals to the dump grounds. Call your local Used Cow Dealer.

### MINUTES OF SPECIAL CITY COUNCIL MEETING: OCTOBER 2, 1975

The City Council of the City of Spearman, Texas, met in Special Session on October 2, 1975, at 9:00 pm in the Council Chamber. PRESENT: Mayor Palmer, Presiding. ALDERMAN: Holton, Nicholson, Ellsworth. ALSO PRESENT: Ed Thompson - City Manager, Mark Neff - City Secretary, J. E. Blackburn - Attorney for the City, Lee Phillips - Chief of Police. VISITORS: George Young, Mark Cox, Eugene Yarbrough, Ronald Dunaway, Tim Woodington, Butch Locke, Ronnie Antalek, Raymond Gilley, Chuck Rigdon, LoVell Kennard, and Billy Miller.

POLICY OF POLICE DEPT. UNDER THE JURISDICTION OF THE CITY MANAGER: Discussion was held by the Council concerning placing the Police Department under the direct supervision of the City Manager. Motion by Ellsworth, seconded by Holton, to place the Police Department under the jurisdiction of the City Manager. Motion carried. For - Holton, Ellsworth. Against - Nicholson.

ADDITIONAL FIRE TRUCK: Ronald Dunaway, President of Spearman Volunteer Fire Department, discussed the purchase of an additional truck for the Fire Department and the use of the Community Building for a Fireman's Ball. Motion by Nicholson, seconded by Ellsworth, that

the City make available the monies required to purchase an additional pumper for the Fire Department and borrow the monies if necessary to do so. Motion carried.

APPOINTMENT OF COUNCILMAN TO FILL THE VACANCY OF ROSCOE NELSON: Motion by Nicholson to appoint Irvin Davis to fill the vacancy resulting from the resignation of Roscoe Nelson. Motion died for lack of a second. Motion by Holton, seconded by Ellsworth, to appoint Troy Sloan to replace Roscoe Nelson. Motion carried unanimously.

APPOINTMENT OF CITY HEALTH OFFICER: Motion by Ellsworth, seconded by Holton, to appoint Dr. R. L. Kleeberger as the City Health Officer, effective October 1, 1975, till September 30, 1976. Motion carried.

SANTA FE WATER WELL LEASE: Motion by Ellsworth, seconded by Holton, to authorize the Mayor to execute the lease of the Santa Fe Water Well Site, in the form of a Resolution provided by Santa Fe Railway Co. Motion carried.

OTHER: Discussion was held by the Council on the upcoming E. D. A. grant hearing.

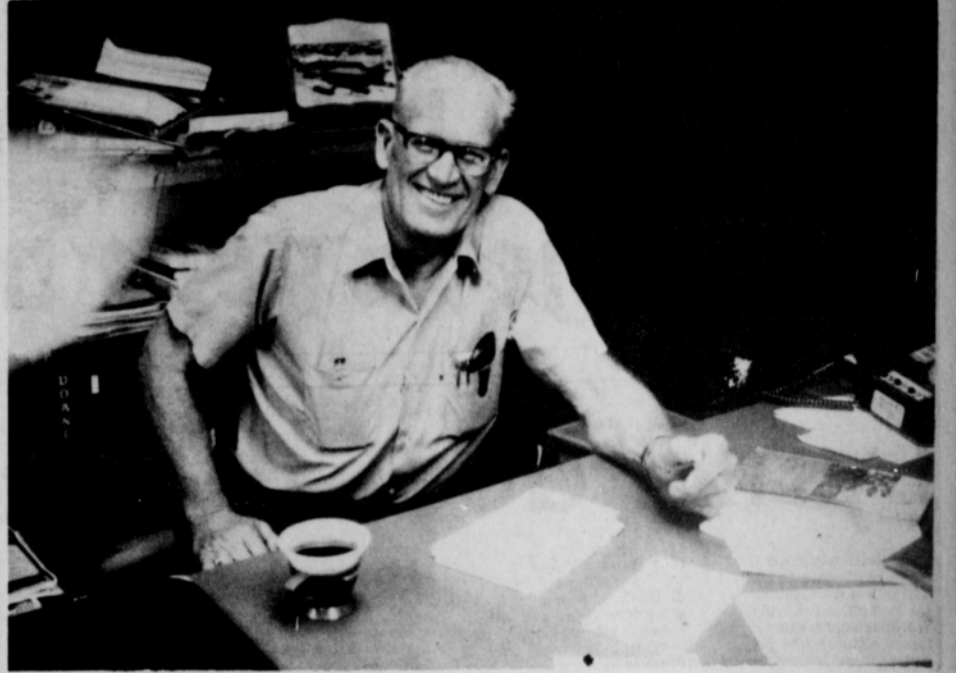
SWEARING-IN OF ALDERMAN TROY SLOAN: City Secretary Mark Neff administered the Oath of Office to newly appointed Alderman Troy Sloan.

ADJOURNMENT: Motion to adjourn was made by Nicholson, seconded by Holton. Motion carried.

Mayor - Coy Palmer  
City Secretary - Mark Neff



Gene Cudd will play host for the Chamber of Commerce breakfast in Spearman next Tuesday morning. Gene will also attend the big chili supper and ball game in Spearman Friday.



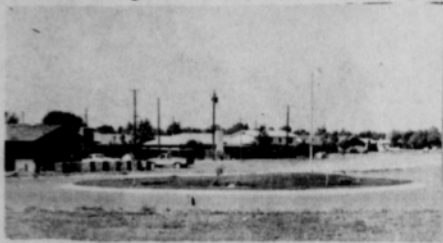
Dick Hudson plans to attend the ball game this Friday night. Dick is predicting a big win for the Lynx... See you at the game this Friday at 7:30 p. m.

Shop and Save  
Spearman Rexall  
Backroom Sale

Shop and Save  
Spearman Rexall  
Backroom Sale

WANTED  
CUSTOM MILO  
CUTTING

Have Three Machines.  
Call and leave message  
for Brad Black, Room 6,  
Patton Motel,  
659-2227



**ONLY 5 LEFT**  
We have 5 choice  
residential lots left in  
Glover Terrace Addition  
Call 659-2538

# VAN FOR SALE

**LOW MILEAGE 1974  
CHEVY VAN!**  
CALL  
**659-3052**

**Spearman, Texas**



DON R. KNOX

A lot of life insurance  
looks a lot alike. Until you  
need service. Who gives it?  
A professional.

**Southwestern Life**  
Happiness is what we sell

Box 1016 - Spearman, Texas - Phone 659-3294

## Who'll treat you like you own the Excel Chevrolet - Olds.?

We have the following trucks and cars in stock!



LUV Pickup

'76 KACS-26



Impala

One of America's most popular full-size cars. That's the result of giving America good value for the dollar. This year, the Impala series

includes the new value of the thrifty Impala S—Chevrolet's lowest priced full-size car.



Caprice

Chevelle

Enough car for practically anything. It offers room for six at a sensible price.



C10 Custom Deluxe Stepside Pickup

'76 KACS-26



C10 Silverado Fleetside Pickup

'76 KACS-27



El Camino SS

'76 KACS-26



Cheyenne Blazer

'76 KACS-27



G30 Beauville Sportvan

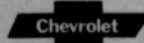
'76 KACS-29

Several Large Trucks On Hand For Milo Harvest!



We have "over-stocked"! We have "over-bought"! Our loss is your gain - several new cars on hand!

"Your 4-Wheel Drive--Rec. Vehicle Headquarters"



We will because you do! Without customers and their faith and trust in us, we'd have no business! AND WE NEVER FORGET IT!

# EXCEL CHEVROLET - OLDS.

"TRUCK CITY"

SPEARMAN

# WANT ADS

**Boxwell Bros.**  
Funeral Home and Flower Shop  
Day-Night Phone 659-2212  
Spearman, Texas

Listen To  
**Harvest Time**  
9:00 A.M.  
SUNDAY  
KBMF  
United Pentecostal Church  
Sponsor

**YOUR LOCAL USED COW DEALER:** Spearman Bi-Products. Seven days a week dead stock removal. Please call as soon as possible. 659-3544. 8-rm

**Hansford Lodge 1040 A.F.&A.M.**  
2nd & 4th Mondays 7:30 P.M.  
Master Masons Degree October 14 7:30 P.M.  
Dan Farley, W. M.  
Cecil Bacon, Secy.

## SERVICES

**Hansford County Planned Parenthood**  
26 S. Haney  
659-2483  
Spearman  
Mon.-Fri.  
8: A.M. to 12 Noon  
305-rm

Custom fertilizing and any type of farming.  
W. B. Barnes  
659-3493

**KIRBY SALES & SERVICE** of Spearman, 912 S. Bemice. 659-2797. 30-rm

**Alcoholics Anonymous** Meeting every Tuesday, 8:00 p.m. at the Girl Scout Little House, 22 S. Endicott. Call 3394 or 2762 for information. 45-rm

**MARY KAY COSMETICS** Call 659-2119. Malolah Fullbright. 325-rm

**Sewing Machine Repair.** All makes and models. 408 E. Kenneth. 659-2415. 395-rm

**GRADER:** Dozier and Drag Line work. Call Lee Roy Mitchell, Gruver 733-2384. 28-rm

**PORTABLE DISC ROLLING BALLARD'S,** 935-5229, Dumas, Texas. 48-rm

**RAWLEIGH SALE:** Janie Kunselman. 659-2631. 47-4tcOnly

## Miscellaneous For Sale

**GARAGE SALE:** Sat. & Sun. Oct. 18 & 19, 612 S. Evans. 8 to 5 each day. 48-1tc

**FOR SALE:** 2 - 26" 10 Speed, Western Flyer Bicycles. 1 Mr. and Mrs. Dresser, pecan wood with mirror. Call 2862. 475-2tc

**FOR SALE:** Alfalfa Bales. Bob Urban, owner. Contact Bob Urban, 435-5737 or Claude Sheets, Jr. 659-2085 Spearman. 46-8tc

**FOR SALE:** 1973 Chevy Pick-up. Call 659-3373 after 6:00. 438-RTN

**FOR SALE:** 1961 Buick. For sale cheap. Good condition at 119 S. Snider. 659-2039. 47-rm

## REAL ESTATE FOR SALE

Give an offer on large 3 bedroom home on 3.7 acres north of Spearman.

3 Bedroom 1974 model Laredo Trailer, Furniture, 2 bathroom, central heat, Electric fire place, side by side refrigerator, drapes and carpet. 14 ft. by 71 ft.

Corner lots, sell front feet for \$40 per ft. Inside lots for \$30 per ft. Glover Terrace.

3 Bedroom, 1 3/4 bath home with 40 x 80 steel building at Farnsworth. Need additional Listings call Mayfield Real Estate Perryton 435-6528 or call Ruby Lail, Sales-person. 659-2188

**FOR SALE:** 1972 Chevy pick-up Custom 10 with topset Power and Air and Automatic Transmission. See at 718 E. Second or at Ideal Food Store. Phone 659-2113. 48-rm

**FOR SALE:** Newly redecorated inside and out, 2 Bedroom Home. Don with woodburning fireplace, utility room, built-ins, including new dishwasher and garbage disposal, central heat, 3 new refrigerated units, Outdoor Metal Building. Call 659-3643 after 6. 48-2tc

**FOR SALE:** Large 3 bedroom custom built home. Kitchen-Dining Room Combination, with built-in appliances: Family Room-Living Room Combination. 2 car garage with storage above. 2 Bathrooms, Large walk-in closets. Fenced Back yard. Call 659-3273. 44S-rm

**FOR SALE:** By owner - 3 Bedroom Home in Good Location. Central heating. For more information call 2067. 475-2tc

**FOR SALE:** 2 Bedroom House, attached double car garage, in Morse on 6 lots. Call 733-2793 in daytime or 733-2797 at night. 47-4tc

**FOR SALE:** 3 Bedroom, 2 Bath, corner lot, SW Spearman. Call 733-2005. 375-rm

**FOR RENT:** Furnished apartment. 303 Davis. Phone 659-3792. 42-rm

**FOR RENT:** Nice furnished apartment. Suitable for couple or bachelor. Call 2082. 48-rm

**SEMI-PRIVATE** trailer space. Good location, lots of room at 119 S. Snider. Call 659-2039. 47-rm

**L.B.L. Trailer Spaces.** \$40 monthly. 50' x 150' lots. Call manager after 5. 659-2257. 34S-rm

**FOR RENT:** Trailer Space. Phone 659-3000 after 5 p.m. 39-rm

**FOR RENT:** Semi-private Trailer Space. 213 S. Endicott. Call 659-2404. 43-rm

## MOBILE HOMES For Sale

**FOR SALE:** 71 Model 14 x 73 Patriot Mobile Home. \$7,500 call after 8:00 P.M. 659-3508. 39-rm

**FOR SALE:** 1971 Melody 12 x 56 Mobilhome. New carpet throughout, partially furnished. 659-2928. 44S-rm

**To Give Away**  
PUPPY to give away. Phone 2156. 46S-rm

## HELP WANTED

Northern Natural Gas Company will take applications for clerk on October 20 & 21 between 8 a.m. and 4 p.m. Apply at office located 9 miles South and 7 miles East of Spearman, Texas on Highway 281. Involves the preparation of reports and correspondence related to district activities. This will include typing, filing and arithmetic functions. We offer an exceptional employee benefit program and a challenging future. We are an equal opportunity employer and welcome applications from men and women of any race who can pass a physical. 47-4tc

**HELP WANTED:** For inside workers and machinists. Apply in person at Roger's Sales and Service, Waka, Texas. 16-rm

**TRUCK DRIVER** needed Must have commercial license. Call 659-3642. 48-rm

## RUMMAGE SALE

**KIDDIE WORLD--Community Rummage Sale,** Home Demonstration Council Benefit, Oct. 17 & 18, Friday & Saturday, 9 to 5, Spearman Co. Bldg; if unable to bring donations, call 659-2045. 47S-2tc

## Card of Thanks

We would like to express our sincere appreciation for your prayers, cards, flowers, food and memorials. It was a great comfort to us in our time of sorrow. The family of Thomas E. (Tom) Jones, Mrs. Polly Jones, Mr. & Mrs. Gene Reynolds & Children, Mr. & Mrs. Sonny Blankenship & Children, Mrs. Blanche Taber

**Shop and Save Spearman Rexall Backroom Sale Bazaar-Dec. 6**

**NEEDED: COMBAT ARMS PEOPLE**

If you qualify, we'll teach you a job, pay you while you learn, and give you one of the best benefit packages anywhere. Then you'll earn your keep and know a job. Join the people who've joined the Army. Call 405-338-8324 in Guyton, Okla. for SFC Verle R. Eldridge.

## Shop and Save Spearman Rexall Backroom Sale

**FOR THE ULTIMATE IN STORM DOORS**  
CUSTOM BUILT, DESIGNED, AND IN COLORS TO FIT YOUR HOME.  
CONTACT - **HOWARD MOYER** at **ONLY ALUMINUM INDUSTRIES**  
405 338-6966 or 338-6170  
P. O. BOX 471  
GUYMON, OKLA. 73942

## YORK ELECTRIC

**PHONE 659-3625**  
WE DO ALL TYPES OF ELECTRICAL WIRING...  
WE WANT YOUR BUSINESS...  
GRUVER HIGHWAY  
SPEARMAN, TEXAS

## Legal Notice

**CITATION BY PUBLICATION**  
THE STATE OF TEXAS  
TO: LEONARD LEE YOUNG,  
Respondent, Greeting: YOU ARE HEREBY COMMANDED to appear before the Honorable District Court 84th Judicial District of Hansford County at the Courthouse thereof, in Spearman, Texas, by filing a written answer at or before 10 o'clock, A.M., of the first Monday next after the expiration of forty-two days from the date of the issuance of this citation, same being the 10 day of November A. D., 1975, to Petitioner's Petition filed in said court, on the 5th day of September A. D., 1975, in this cause, numbered 2238 on the docket of said court and styled **IN THE MATTER OF THE MARRIAGE OF DENISE LYNN YOUNG, Petitioner, vs. LEONARD LEE YOUNG, Respondent.**  
A brief statement of the nature of this suit is as follows, to-wit: as is more fully shown by Petitioner's Petition on file in this suit.  
If this citation is not served within ninety days after the date of its issuance, it shall be returned unserved.  
The officer executing this writ shall promptly serve the same according to requirements of law, and the mandates hereof, and make due return as the law directs.  
Issued and given under my hand and the seal of said court at Spearman, Texas, this the 22nd day of September A. D., 1975.  
Attest: Marie H. Gould  
Clerk, District Court  
Hansford County, Texas  
By B. R. Dennis, Deputy. 45-4tc

## Bob Buess To Speak Here



**Bob Buess** will be the speaker for the Full Gospel Business Men's Fellowship meeting Monday, October 20, 1975 at Martin's Steak Garden.  
The evening meal and business meeting will begin at 7 p.m. and the speaker will begin at 8 p.m.  
Bob is a graduate of Baylor University and has been an ordained Southern Baptist minister for 20 years. During 12 of these years, he was a missionary to the Indians in New Mexico.  
Bob spent two years in

prayer and fasting seeking God in this dimension of the Holy Spirit. He spent much of this time in the mountains and desert of New Mexico and Arizona. One evening while he was relaxing in his living room chair, God poured out his promise of the Holy Spirit (Acts 1, 4: 2, 4) and gave him the ministry of helping others to come into this dimension.  
Bob has spent the last few years working with almost all denominations. He has been an eyewitness to the beginning of the restoration of the Church of our Lord Jesus Christ. He is also an author with his "Sweeter Than Honey" publications. He is highly recommended as a speaker by the Happy Hunters, Kenneth Copeland, Christ for the Nations Inst., Dr. Bizzard, Dr. Dabbs, Vicki Jamison and others.  
The Spearman Chapter of FGBMFI invites everyone to come out and hear this dynamic speaker and enjoy the fellowship.

**Bazaar Dec. 6**  
**Shop and Save Spearman Rexall Backroom Sale**

**TEXAS PRESS ASSOCIATION**  
MEMBER 1975

**Spearman REPORTER**

Spearman, Texas 79081  
213 Main Box 458 659-3434

Published Weekly at 213 Main Street  
Spearman, Texas 79081

Owner-Publisher.....William M. Miller  
Second Class Postage Paid at Spearman, Tex.

Any erroneous reflection upon the character of any persons or firm appearing in these columns will be gladly and promptly corrected upon being brought to the attention of the management.

SUBSCRIPTION RATE -- Hansford, adjoining counties, combination with the Hansford Plainman, \$10.92 Tax included.  
Other points \$15.12 Tax included.

**TWO FAMILY GARAGE SALE** will be held at 26 South Archer. A Cook Stove will be offered at the sale. Sale starts Monday thru Saturday. 48-1tc

Thanks to Doctor Novak for the beautiful flowers in front of your Dental Offices in Spearman! They are just gorgeous! And, you have helped make Spearman a more beautiful and better place with this floral display!

**Shop and Save Spearman Rexall Backroom Sale**

Remember to eat chile before the ball game this Friday at the school cafeteria!

# The ones for all:

## Everything Checking Accounts

*personal*  
*joint*  
*joint*  
*commercial*  
*Special*

We have a checking plan for everyone. You name it—your personal account or the accounts for your business, joint accounts and special. The ones for all are all at the bank where everyone is someone important... unique as his signature.

**EVERYBODY'S BANK**  
IN A GREAT BIG WAY

SPEARMAN, TEXAS 79081

SM—© 1974 Leon Shaffer Gotnick Adv. Inc.

# Nelle's News

by Nelle Evans

With home sewing on the rise choosing the correct pattern is important. Choosing the correct pattern type can help you solve many of your fitting problems.

But since several categories are available, choosing the right pattern type requires some personal analysis.

Pattern type relates to the figure-type-not age. All major pattern companies base their pattern types and sizes on the same body measurements approved by the Measurement Standard Committee of the Pattern Fashion Industry.

To identify the correct pattern type for you, analyze your body build and compare it to the description for the pattern types in the back of pattern catalogs.

If you have an average, well proportioned and developed figure (5'5" - 5'6") choose Misses' patterns. If you find that Misses' patterns are almost right for you but too long waisted, choose Miss Petite, designed for the shorter figure (5'2" - 5'4").

Junior patterns are designed for well proportioned but somewhat shorter (5'4" - 5'5") and generally more slender figures than the Misses'. For the petite junior figure (5'1" - 5'2"), select Junior Petite patterns.

Half size patterns are specifically designed for fully-developed but shorter waisted figures (5'2" - 5'3"). For larger, more fully mature figures (5'5" - 5'6") Women's patterns are best.

Young Juniors Teen is especially designed for the developing preteen and teen figure. These patterns, regardless of size, do not allow for much bust development. But if bust allowance is needed, larger sizes in this category should not be substituted for pattern sizes unavailable in other categories.

Once you have identified your pattern type, select pattern numbers from that category in the size closest to your measurements. A few alterations may be needed to allow for figure irregularities, but fewer changes to obtain a perfect fit will be needed with the correct pattern category.

Now some information for saving time in the kitchen.

Convenient kitchen storage arrangements will reduce the time, effort and energy you spend there.

But finding the best place for everything needed in the kitchen takes organization.

The best way to stretch storage space is to discard articles that are never used. Store frequently-used items in accessible places, and put less-frequently used items in the harder-to-reach spots.

Having a definite place to store each kitchen article saves time and energy because less searching and reaching is required, and everyone who uses the kitchen should know "where things go."

Group items together that are used together--and store them near where they are first used. For example, sugar, shortening, mixes, bowls and measuring cups belong together at the mix center. Potheolders, turners, and stirring spoons should be stored near the range.

# Hospital News

Patients in Hansford Hospital are Clarence Pettit, Horton Prater, Shirley Shearer and son, Mammie Stewart, Laquita Evans, Leon Seay, Jesse Bratton, Ruby Wilbanks, Leonard Jameson, Ralph Bynum and Trisera Kennell.

Dismissed were Trevor Carpenter, Doug Rasor, Chet Wise, David Easter, Janie Hensley, Patty Christy, Lydia Rodriguez and son, Jerry Shees, Ben Woodington, Mary Jackson, Lyta Mason, Idella Randall and Thelma Lamb.

Shop and Save Spearman Rexall Backroom Sale

Shop and Save Spearman Rexall Backroom Sale

# FARM AND RANCH NEWS

By Joe Van Zandt

This is State Fair of Texas Week for several Hansford County 4-H and FFA members. Several head of steers, heifers and barrows are being exhibited by Spearman youth at the Fair. Here's hoping we will have good placings to tell you about next week.

I certainly enjoyed a little week-end trip to Lubbock last Saturday. What I enjoyed the most was the score of a football game played Saturday night in Jones Stadium 35-9, that is the best come-back to all the Aggie jokes I hear.

The October crop report was released by USDA, last Friday and it did not contain any real surprises. The corn production es-

timate for the U. S. was increased a little from the September report to a level of 5,737,266,000 bushels. All wheat production for the U. S. is forecast for 2,137,904,000 bushels. The 1976 sorghum production is predicted at 775,539,000 bushels, which is a slight decrease from the September 1 estimate.

We had a real interesting program for our marketing meeting last week. The attendance was rather light since the excellent harvest weather allowed a lot of farmers to be harvesting. I have a listing of several crop market reporting publications that are available free of charge. If you want to request to be added to the mailing list for some of these publications, please let us know.

I would like to remind farmers that are needing any type of farm workers to call the Spearman C of C office. The have recently opened an em-

ployment service in their office. They would be most happy to assist you with any type of labor hiring problem you may have.

# Shop and Save Spearman Rexall Backroom Sale



DATE	HI	LG
OCTOBER 7	86	45
OCTOBER 8	87	54
OCTOBER 9	84	42
OCTOBER 10	89	42
OCTOBER 11	91	54
OCTOBER 12	92	58
OCTOBER 13	90	62

# Shop and Save Spearman Rexall Backroom Sale

# FLCW Meeting Noted

The Faith Lutheran Church Women met Wednesday night, October 8 at the Parish Hall in Spearman. The leader, Selma Reneau, presented the lesson on "One Who Loves and Understands People", based on Matthew 18-22. Selma Ward opened the meeting with a devotion after which Myrna Biggers, president, conducted the business meeting. A workday was planned for October 22 at 9:00 A.M. The object for the day will be a wall hanging representing the Christmas season.

Workshop will be at the Oslo Lutheran Church October 18 at 9:00 A.M. with everyone invited. After the meeting was ad-

# Museum's Pioneer Village

WTSU--Butter churning, spinning, muzzle loading and dancing are just part of the historical combinations planned for "American Reflections: A Bicentennial Ball" set for the evening of Oct. 25 in the Panhandle-Plains Historical Museum.

The Bicentennial Ball is being sponsored by the Panhandle-Plains Historical Society, the West

Texas State University Advisory Council for Campus Enhancement and the Randall County-Canyon Bicentennial Committee.

The Museum's Pioneer Village will come alive, as each of its offices, stores, bar and blacksmith shop are opened for business and exhibitions of the old ways. There will be demonstrations of butter churning, spinning, muzzle loading and tool sharpening, as well as free home remedies lists and old-fashioned candy.

Special events planned are a presentation by the WTSU Readers Theatre, a square dancing exhibition and a slide show on the Panhandle Pioneer women. Dave Ritter's combo will provide the music for dancing. The ball will also kick off the Panhandle-Plains Historical Museum's

"Museum Week," Quilts and coverlets will be on display, as well as the National Water color Exhibition.

Tickets to the ball are \$10 per couple. The president of the Panhandle-Plains Historical Society is Joe Poole, and museum director is Dr. James Hanson. Co-chairmen of the Advisory Council are Mrs. Lloyd I. Watkins, Mrs. Charles M. Smallwood and Mrs. Frank Daugherty.



If you need softened butter for baking in a hurry, shred it on a vegetable grater, using the larger holes.

# Shop and Save Spearman Rexall Backroom Sale

QUANTITY RIGHTS RESERVED

**U** PRICES GOOD THRU OCT. 11th

# UNITED DOUBLE

PERRYTON, TEXAS

**SUPER MARKETS**

WE GIVE 8 1/2 GREEN STAMPS

<b>MORTON SALAD DRESSING</b> QUART JAR <b>69c</b>	<b>SHASTA POP</b> 12 OZ. CAN ASSORTED <b>6 FOR 79c</b>	<b>UNITED HAMBURGER OR CONEY BUNS</b> 3 BCT PKGS. <b>\$1</b>	<b>BOUNTY TOWELS</b> JUMBO ROLL <b>49c</b>
<b>PEPSI COLA</b> 32 OZ. BTL. <b>59c</b> 6 PK. CRTN.	<b>BISCUITS</b> FINE FARE <b>10c</b>	<b>UNITED POTATO CHIPS</b> DIP OR REG. <b>59c</b>	<b>PALMOLIVE LIQUID</b> 13c OFF LABEL 22 OZ. BTL. <b>69c</b>
<b>CRANBERRIES</b> OCEAN SPRAY 16 OZ. BAG <b>39c</b>	<b>EGGS</b> GRADE "A" EXTRA LARGE UNITED CAGED DOZ. <b>55c</b>	<b>FLCW Meeting Noted</b>	<b>BEANS</b> CASSEROLE PINTOS 4 LB. BAG <b>\$1.29</b>
<b>FRESH CRISP CABBAGE</b> LB <b>10c</b>	<b>SYRUP</b> MORTON'S WAFFLE 32 OZ. BOTTLE <b>69c</b>	<b>Museum's Pioneer Village</b>	<b>SAUCE</b> TOMATO FINE FARE 6 8 OZ. CANS <b>\$1.00</b>
<b>CRISP CARROTS</b> 16 OZ. CELLO BAG <b>2 FOR 49c</b>	<b>OLEO</b> UNITED BREAKFAST ORANGE REG. DTR'S. <b>39c</b>	<b>Shop and Save Spearman Rexall Backroom Sale</b>	<b>CREAMER</b> BODEN HALF GAL. JUG <b>59c</b>
	<b>DRINK</b> <b>59c</b>	<b>Shop and Save Spearman Rexall Backroom Sale</b>	<b>APPLES</b> RED DELICIOUS OR JONATHAN MIX OR MATCH 5 LBS. <b>10c</b>
	<b>NON DAIRY CREAMER</b> FINE FARE LARGE 22 OZ. JAR <b>\$1.19</b>		<b>CORN</b> COLO. FRESH SWEET 10 LARGE FULL EARS <b>10c</b>
			<b>TOMATOES</b> VINE RIPE 4 COUNT CARTON <b>39c</b>



The Panhandle-Plains Historical Museum's Pioneer Village will come alive the evening of the Bicentennial Ball, set for Oct. 25, with exhibits and demonstrations of the old ways. Working with the basics, bread and butter, are Mrs. Joe Kraai, Mrs. George Louder and Mrs. Steve Hines of Canyon.



A bit more easily than in the old days, workmen pull up the Eclipse windmill base next to the T-Anchor Ranch House in preparation for dedication ceremonies held at the Panhandle-Plains Historical Museum on Oct. 25 at 4 p.m.

## 100 Year Old Building To Be Dedicated

WTSU---The T-Anchor Ranch Headquarters, probably the oldest building in the Panhandle, will be dedicated Oct. 25 at 4 p.m. at its new home north of the Panhandle-Plains Historical Museum Annex.

The almost 100-year-old structure was moved from its original location on the West Texas State University farm north of Canyon, and is being restored to as it was in the late 1800's by the museum. An Eclipse windmill will be on display next to the headquarters.

The three-room headquarters, built by Charles Goodnight's brother-in-

law Leigh Dyer in 1877, was the first such house in the northern 36 Texas counties. Dyer cut the cedar logs in the breaks and canyon near the Timber Creek Trail.

He was the first to plant an oat crop in the Texas Panhandle, which was eaten in the spring by a herd of buffalo. In 1878 Dyer sold his claim to the ranch, and the 225 sections of land were broken up and sold in 1902 after a long series of owners.

When WTSU acquired the house in 1927, officials removed the kitchen bedroom and porch which had been added in 1906 by the J. L. Prichard family.

West Texas State agriculture students were the last people to occupy the cabin in the early 1930s. Modern conveniences such as wallpaper, sanitation facilities and cement and plaster were removed by museum workmen.

Dr. James Hanson, museum director, said he hesitates to move historical structures, but decided to move the cabin to prevent further deterioration.

Original material has been used to restore the house, but new cedar fence posts replaced a few of the badly rotted logs, Dr. Hanson explained. The roof was reshingled with new cedar, and fresh mud chinking was used between the logs.

New windows were also installed to replace the larger windows of one of Dyer's successors.

The cabin has a sleeping loft, in addition to the three bedrooms, which was entered by a trap door under the porch. One room served as the ranch office and another was the foreman's bedroom. Lower rooms will contain hard-packed dirt floors, as the original structure, Dr. Hanson said.

The T-Anchor Ranch house dedication ceremonies are a part of the Panhandle-Plains Historical Museum's "Museum Week," which will spotlight Panhandle history and the role museums play in society. Other events planned are a quilt and coverlets show and the National Watercolor Exhibition.

Shop and Save Spearman Rexall Backroom Sale County Saving

Bonds Sales

Noted

August sales of Series E and H United States Savings Bonds in Hansford county were reported today by County Bond Chairman C. A. Gibner. Sales for the eight-month period totaled \$45,844.00 for 51% of the 1975 sales goal of \$90,000.00. Texans purchased \$21,075,759 in Savings Bonds during the month for an increase of 12.9% over the same period last year. Year-to-date sales amounted to \$182,055,315 with 69% of the yearly sales goal of \$234.3 million.

Chairman Named For "Athletes Against Cancer"

Johnny Bench, Cincinnati Reds' Catcher, has been named Chairman of the ACS' "Athletes Against Cancer." Twice named the most valuable player of the National League, Johnny plans to make radio and TV spots for the American Cancer Society and to work with a committee of prominent athletes from all sports to help show American how they can protect themselves against cancer.

Bench is deeply committed to this cause for he lost a very close young friend to leukemia. The Texas Division of the ACS is also scheduled to recruit outstanding athletes to cooperate in the program.

Shop and Save Spearman Rexall Backroom Sale

# S & H GREEN STAMPS SAT. WITH \$2.50 PURCHASE OR MORE EXCLUDING CIGS.

**"UNITED'S TRU-TENDR GRAIN FED STEER BEEF!"**

<b>UNITED'S TruTendr BRAND BEEF</b>	<b>WASTE FREE ROAST RANCH STEAK</b>	<b>BONELESS SHOULDER</b> .....LB. <b>\$1.29</b>
		<b>CENTER CUT 7-BONE CHUCK</b> .....LB. <b>\$1.19</b>
<b>Rib STEAK</b>	<b>CHUCK STEAK</b>	<b>GROUND BEEF</b> 100% ALL BEEF FAMILY PACK
<b>\$1.29</b>	<b>89¢</b>	<b>89¢</b>
<b>ROUND STEAK FULL CUT</b>	<b>BONELESS STEW</b> EXTRA LEAN CUBES OF BEEF	<b>CUTLETS</b> WASTE FREE
<b>\$1.29</b>	<b>\$1.29</b>	<b>\$1.99</b>
<b>Sirloin STEAK</b>	<b>FARM RAISED CATFISH</b> WHOLE GRAIN FED	
<b>\$1.29</b>	<b>\$1.49</b>	
	<b>HAND LOTION</b> VASELINE INTENSIVE CARE 10 OZ.	<b>\$1.09</b>
	<b>NOTEBOOK FILLER PAPER</b> 300 SHEET PACK	<b>89¢</b>
	<b>TYPE-WRITER PAPER</b> 200 SHEET PACK	<b>89¢</b>

**ECKRICH SMOKED SAUSAGE FULLY COOKED**

**\$1.49**

**OWENS' COUNTRY STYLE SAUSAGE** WHOLE HOG PURE PORK

2 LB. BAG **\$3.37** | 1 LB. BAG **\$1.69**

**HALF GALLON CLOROX 49¢**

**32 OZ. ERA 99¢**

**FAMILY SIZE TIDE \$3.98**

**STILLWELL FROZEN COBBLER**

- CHERRY
- BLACKBERRY
- PEACH
- APPLE
- STRAWBERRY

**2 LB. CARTON 89¢**

UNITED ASSORTED

**MELLORINE HALF GAL. 59¢**

**JENO'S FROZEN PIZZA REG. 98¢ 79¢**

- CHEESE
- SAUSAGE
- PEPPERONI
- HAMBURGER

**PATIO FROZEN TAMALES 8 COUNT 15 OZ. PKG. 39¢**

NEXT DOOR TO GIBSON DISCOUNT CENTER FOR DOUBLE SAVINGS

**U**

PRICES GOOD THRU OCT. 18TH

**UNITED SUPER MARKETS**

PERRYTON, TEXAS

WE GIVE \$2 GREEN STAMPS

# Spearman High School

# Lynx 75

**Spearman Lynx**  
**Vs.**  
**Dalhart Wolves**  
**At Lynx Stadium**  
**7:30 P.M.**  
**OPENING DISTRICT**  
**FOOTBALL GAME**

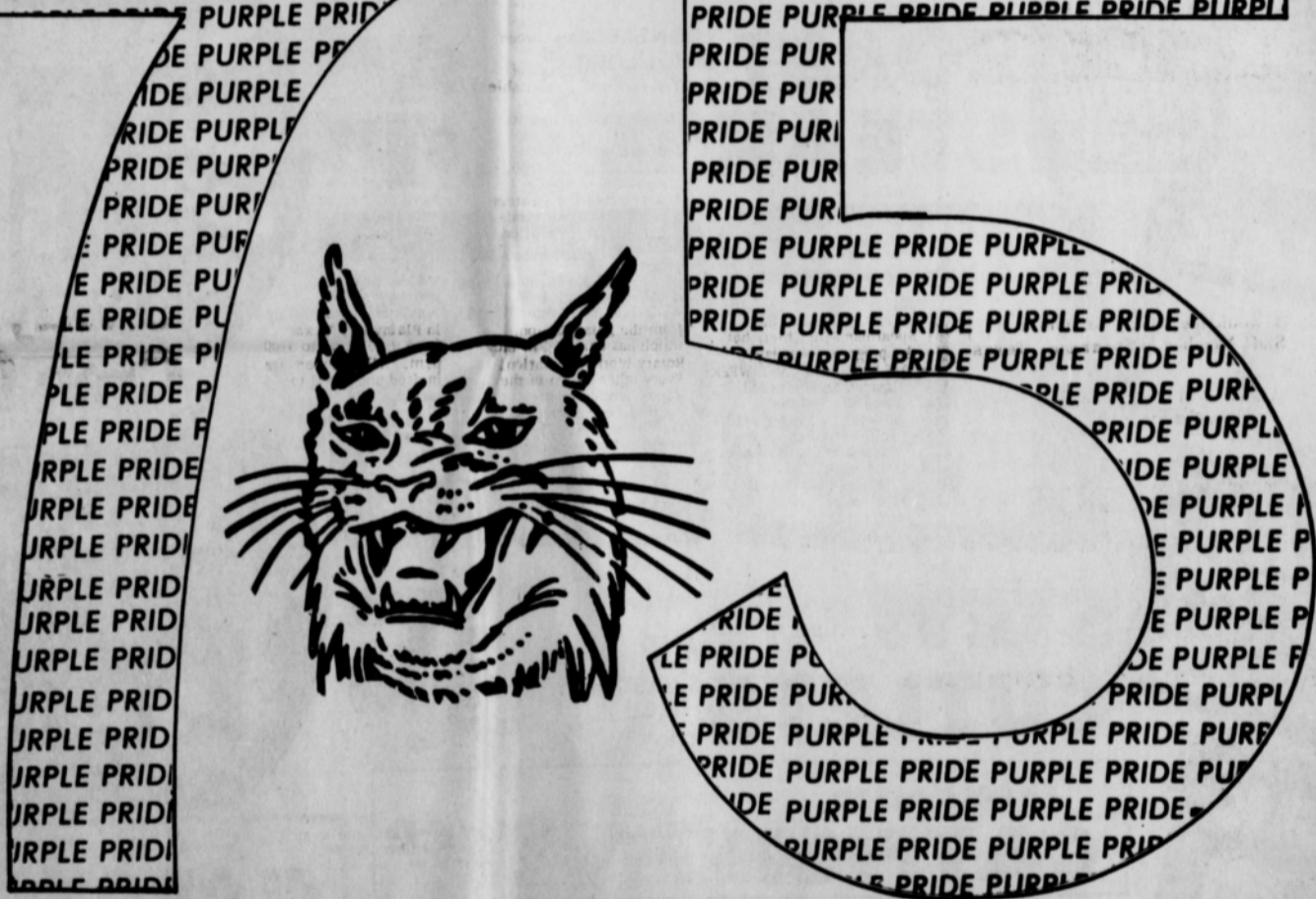
10-DAVID STEELE.....	QB	180
11-JOEL JACKSON.....	QB	122
12-MIKE PACK.....	QB	151
13-SCOTT SHERWOOD.....	QB	146
17-JIMMY JACKSON.....	DHB	151
20-RANDY REID.....	HB	132
21-PHILIP ARCHER.....	LB	170
22-MARK FOX.....	HB	170
23-BILLY SELLERS.....	HB	131
28-DANNY DRY.....	E	128
30-MIKE BODEY.....	FB	136
31-ZANE NEWTON.....	FB	156
32-CARY COLLIER.....	LB	172
33-PETE GARCIA.....	FB	148
37-KENT HARGIS.....	FB	155
40-ROGER JONES.....	LB	190
41-DAVID LESLEY.....	DHB	144
42-RICK MORRIS.....	HB	143
44-GREG PRICE.....	FB	151
45-SAM BOONE.....	HB	143
50-LARRY BOWEN.....	T	187
51-TERRILL EVANS.....	C	186
52-TWAIN FRIEMEL.....	DE	174
55-JIMMY KENNY.....	T	175
58-ED POGUE.....	LB	165
60-CHRIS McCLELLAN.....	E	146

61-JED MIESNER.....	DT	221
62-REGIE ROBERTSON.....	GDE	166
63-DAVID WITT.....	G	156
64-JIMMY VERNON.....	G	175
65-TERRY LATHAM.....	G	186
66-MARK CUNNINGHAM.....	LB	180
67-JOHN RENEAU.....	G	155
68-JOHN KENNY.....	G	152
70-BO DeARMOND.....	DT	260
71-BOBBY SNIDER.....	GT	148
72-CALVIN BODEY.....	T	181
73-CHARLES PRICE.....	T	210
74-SCOTTY DeWITT.....	DT	202
75-LEON HAGERMAN.....	DT	195
76-RAUL ORTEGA.....	C	157
77-DAVID ORTEGA.....	T	157
78-TODD BROCK.....	T	148
80-PAUL COMEGYS.....	E	174
81-JEFF BEEDY.....	E	158
82-DAVID LEWIS.....	DE	196
83-JEFF HOHERTZ.....	E	144
84-JOHN HOLMAN.....	E	147
85-DAVID STAFFORD.....	E	135
86-SCOTT MARTIN.....	E	133
87-JIM JONES.....	LB	153
88-ERIC BROWN.....	S	126

**GO**  
**LYNX**  
**WIN**  
**DISTRICT**

PURPLE PRIDE PURPLE PRIDE PURPLE PRIDE  
 PURPLE PRIDE PURPLE PRIDE PURPLE PRIDE  
 PURPLE PRIDE PURPLE PRIDE PURPLE PRIDE  
 PURPLE PRIDE PURPLE PRIDE PURPLE PRIDE

PRIDE PURPLE PRIDE PURPLE PRIDE PURPLE PRIDE  
 PRIDE PURPLE PRIDE PURPLE PRIDE PURPLE PRIDE  
 PRIDE PURPLE PRIDE PURPLE PRIDE PURPLE PRIDE  
 PRIDE PURPLE PRIDE PURPLE PRIDE PURPLE PRIDE



<p><b>Nelson's Builders Supply</b> Spearman, Texas</p>	<p><b>ALLSUP'S</b> CONVENIENCE STORE OPEN 24 HOURS A DAY</p>	<p><b>CONSUMER SALES COMPANY</b> COOP - GAS - OIL - BUTANE - Spearman, Texas</p>	<p><b>White House</b> of Spearman</p>
<p><b>Speartex Grain Co</b> Spearman, Texas</p>	<p><b>Alton's Gulf Service</b> Gulf</p>	<p><b>Jr. Lusby Cats</b> 523-5371 Canadian 659-2146 Spearman</p>	<p><b>Lil' Lynx Shoppe</b> Spearman, Texas</p>
<p><b>Daco Lease And Well Service</b> Spearman, Texas</p>	<p><b>DRILLING BAKER &amp; TAYLOR COMPANY</b> Spearman, Texas</p>	<p><b>FOUR (Sevens) 7777 TRACTOR, INC.</b> MASSEY-FERGUSON SALES AND SERVICE TRACTORS - COMBINES COMPLETE LINE OF EQUIPMENT PHONE 686-2546 SPEARMAN, TEXAS</p>	<p>"THE ELECTRIC COMPANY" <b>Anthony Electric</b> Lawrence Anthony Go-Lynx-Go</p>

PIE EATERS PLAN TO EAT CHILI FRIDAY NITE...



Frosty Hickerson...one of the best pie eaters in the recent contest by the Museum backers!



Some more pretty pie eaters who ate pies for the Museum in Spearman.



THE UGLIEST PIE EATER... Big bad John Bishop!



THE PRETTIES PIE EATER...

NEW FROM WEIGHT WATCHERS

- Develop your own plan of action to change eating habits.
- Personalize modules to reflect your lifestyle.
- Individualize your own goal weight as part of our total program.
- Keep ideas for ready reference—with take home booklets.
- Now at a Weight Watchers meeting we have so much more to help you reach your goal weight.

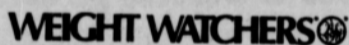
PERSONAL ACTION PLAN!

WEIGHT WATCHERS needs to know if you want a WEIGHT WATCHERS class in Spearman, Texas

Name \_\_\_\_\_  
Address \_\_\_\_\_  
City \_\_\_\_\_ Zip \_\_\_\_\_ Telephone No. \_\_\_\_\_

- Yes - I want to join Weight Watchers
- Yes - I would be willing to train as a Staff Member in Spearman, Texas

Send to:  
Weight Watchers of West Texas, Inc.  
4207 34th Street  
Lubbock, Texas 79410



Rotary Club News

The Spearman Rotary Club met Monday, October 13th at Martin's Steak Garden.

President, Roy Bulls presided over the meeting.

Fire Chief Charles Littlejohn and Ronnie Antalek of the Spearman Fire Department gave a film presentation on Fire Fighting.

Guests present at the meeting were Bob Farr, Ronnie Antalek and Charles Littlejohn, all of Spearman, Steve Cross and Arthur Waite of Borger and Bob Davis of Amarillo.

Members present were Carrie Marie Berry, Pete Fisher, Roy Bulls, John Hutchison, Bob Pearson, Peyton Gibner, Archie Burress, Coy Palmer, Ed Thompson, Elzey Vandenburg, J. L. Brock, Jack McWhirter, Don Hergert and Jim Nicholson.

Members absent were Ed Garter, E. J. Copeland, Don Windsor, D. E. Hackley, J. E. Blackburn, Dick Countris, John R. Collard, Junior Lusby and C. D. Riggins.

Next meeting will be October 20th at Martin's Steak Garden.

OUR PROGRAM FOR TODAY: Tommy Messer, the Spearman Fire Chief, has the program for today.

THE PROGRAM LAST WEEK: Coach Greg Sherwood showed films of the Sanford-Fritch game and gave a commentary on the outstanding plays and players of the game.

ATTENDANCE STATISTICS:  
Number present last week-----13  
Visitors present last week-----6  
Total Present 19  
Total Club Member-

ship-----23  
Present October 6 13  
Absent October 6 10  
Percentage present October 6 59%

MEMBERS ABSENT OCTOBER 6: Dr. Hackley, John R. Collard, Peyton Gibner, Jim Nicholson, Don Hergert, Pete Fisher, Coy Palmer, J. L. Brock and Archie Burress.

GUESTS, OCTOBER 6 E. V. Garrett---- Borger, Texas; Tom Lindsey, Borger, Texas; Steve Cross, Borger, Texas; Jody Sheets, Borger, Texas; Tom Messer, Spearman, Texas.

THE ROTARY FOUNDATION:

The Rotary Foundation is a Philanthropic Trust, organized in the State of Illinois in 1931. The purpose of the foundation is to further the understanding and create friendly relations between people of different nations thru projects of a philanthropic, charitable or educational nature.

Total contributions to the Rotary Foundation for over 1974-1975 reached \$7,115,856.00. Over the next three years Foundation Trustees are committed to spending nearly \$18.4 million dollars on Foundation programs.

Of the 7,115,856.00 contributed in 1974-75 more than 39% came from the Asian Region, which has only 14% of the Rotary World population. Every other region of the Rotary World has increased their giving to the Foundation. The largest increase came from the Central and South America region

Shop and Save Spearman Rexall Backroom Sale

where there was a 120% increase.

The week of November 9th thru 15th each year is designated as Rotary Foundation week as a means of making the work of the foundation more widely known.

ROTARY STATISTICS: There are 16,543 Rotary Clubs and 774,500 Rotarians in 151 countries.

FROM THE SPEARMAN REPORTER, OCTOBER 10, 1975:

The Panhandle Panthers from Panhandle came over Friday of last week and defeated the Spearman Lynx 12-0. The final touchdown came for the Panthers when the Lynx had the ball on their own 23 yard line with a fourth down situation. Quarter back Henshel Ooley with only a few yards to go decided to keep the ball and perhaps to score and tie up the game. However a fumble lost the ball and a fifteen yard penalty placed the ball within scoring distance for the panthers.

The Panhandle Panthers have the best team this year that they have had since 1926.

ROTARY INFORMATION INSTITUTE for 573 will be held Wednesday, October 15, 1975 at Wayland Baptist College in Plainview, Texas from 9:00 a.m. to 4:00 p.m. All members are invited and urged to attend.

ROTARY FOUNDATION WEEK is November 9 thru 15.

examined closely, and time is very short if we are to enact tax cuts to become effective next January.

I hope the President will soon offer specific suggestions concerning how the national budget can be reduced and the national debt diminished.

FIFRA The house today passed a bill extending the Federal Insecticide, Fungicide and Rodenticide Act. The bill was not as strong as I would have liked, but it became apparent during hearings conducted by the House Agriculture Committee that adoption of more stringent requirements for the Environmental Protection Agency would probably have assured the bill's defeat.

I believe the compromise bill provides important first steps toward assuring accountability

Shop and Save Spearman Rexall Backroom Sale

by the EPA.

The bill states that the EPA must give the Department of Agriculture a chance to comment on any proposed agency regulations that would affect agriculture, as well as to notify the Agriculture Committees in the House and Senate of any proposed regulations. Equally important, the EPA is directed to provide an economic impact statement, which would apply a dollar and cents measurement to its regulations.

Recent indictments of individuals for illegal grain inspection practices in New Orleans and other ports have raised loud cries for federal or state operation of the inspection program. I think that the majority of the American public knows that government involvement is not necessarily the best way to solve a problem. In fact, government attempts to solve relatively isolated problems caused by a small minority frequently make operations for the majority of honest businessmen ever more burdensome.

Shop and Save Spearman Rexall Backroom Sale

SERVICE ACADEMY NOMINATIONS

I am still accepting applications for nominations to our academies. I am authorized to fill three vacancies at the Air Force Academy, three at West Point and two at the Naval Academy. I can also nominate ten individuals to compete on a State-wide basis for admission to the U. S. Merchant Marine Academy.

I urge all high school seniors who are interested in attending one of the academies to contact me immediately at my Washington office: 1315 House Office Building, Washington, D. C. 20515 (202/225-3706).

Shop and Save Spearman Rexall Backroom Sale

6 ways your Crop Care dealer helps you make better crop profits:

To help you farm better, and make more money, your Crop Care dealer offers the following services:

- 1 Complete, accurate, soil testing service.** Your Certified Crop Care dealer will take your soil samples and send them for you to a leading soil analysis laboratory. The laboratory soil analysis and computerized fertilizer recommendations will be delivered to you.
- 2 Plant Analysis.** Your Crop Care dealer will help you take samples, and handle all details, up to and including delivering to you the printed analysis of the nutrient uptake of your plants. This service pinpoints deficiencies in uptake of nutrients, particularly minor elements, such as zinc, boron, etc.
- 3 One-source responsibility** for your farm chemicals. Your Certified Crop Care dealer offers weed and pest control programs, as well as fertilization of your crop land. In some instances, your Crop Care dealer may render a complete range of services... from seed corn all the way through drying corn at harvest time.
- 4 Full measure.** You will receive certification that guarantees your getting full weight or volume of fertilizer, or other farm chemicals, you order from your Crop Care dealer.
- 5 Professional counsel.** Your Crop Care dealer is well informed on agronomy. He attends forums

that keep him up-to-date on the latest crop care techniques. Your Crop Care dealer is a central source of information about successful farming ideas used in your area. And he can draw on the experiences and techniques of other Crop Care dealers in the network.

**6 Skilled, professional application.** As a part of his total Crop Care service, your dealer offers custom application of fertilizer and other farm chemicals. Application may be made by one of your Crop Care dealer crews; or he may arrange for application by an independent applicator.

The services your Crop Care dealer offers are designed to help you get maximum yield; and to free up your time to do what you do best: **Manage.** Nobody can manage your farming operation like you. Your Certified Crop Care dealer can provide professional advice and services to help you do it better.

Remember, you get Certified Crop Care Center services only where you see this sign:



Your Certified Crop Care dealer is:

B & B FARM INDUSTRIES, INC.  
659-2551  
SPEARMAN, TEXAS

two phones are better than one

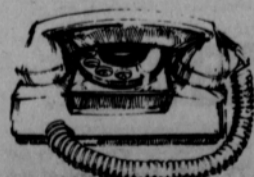
...to save you steps, to bring more pleasure, convenience and security to your home. Now, for that second phone you really know you need, there's a fascinating selection of functional, colorful, clever, crazy, sophisticated, new-fashion old-fashioned designer/decorator telephones in General Telephone's Extension Extravaganza. Like the STYLELINE® telephone... the phone that puts the works so lightly in the palm of your hand... handset, dial and recall button, too. Could anything be easier (and come in 10 exciting colors, too)?



**CRADLEPHONES** are the very last word in sophisticated styling... Mediterranean, Brocade, Antique White... all resplendent with gold trim and fingerwheels. Conversation pieces right out of another world.



**CANDLESTICK PHONE**... the new-fashion old-fashioned phone styled right out of the roaring twenties in Black Bottom Black, Whiffenpoof White and Razzamatazz Red. Except that we did away with the separate big old bell box.



**STARLITE®** telephone is a practical luxury for "her room." Delightful style with dial that glows. Ideal for night table or vanity for after-dark dialing, or as a friendly, adjustable-brightness night light.



GTE GENERAL TELEPHONE

HIGHTOWER WASHINGTON HIGHLIGHTS



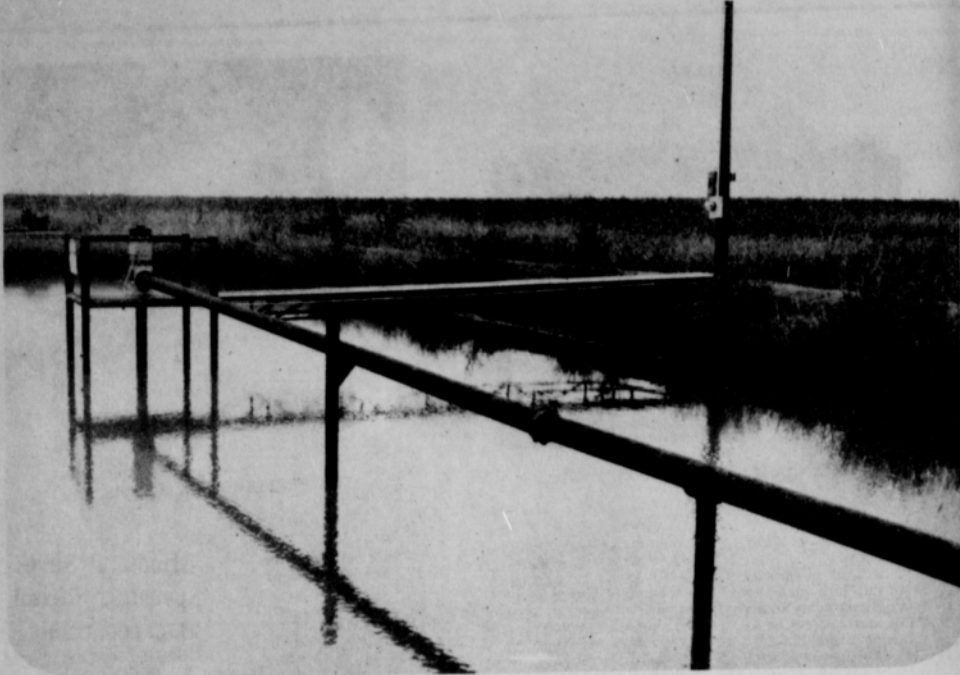
from Congressman Jack Hightower

President Ford Surprised the American public and many of his closest advisers with his proposed \$28 billion tax reduction program. Although it had been an open secret for weeks that he would ask for an extension of the tax cuts enacted last spring, only a few top officials had expected the request for such a dramatic increase.

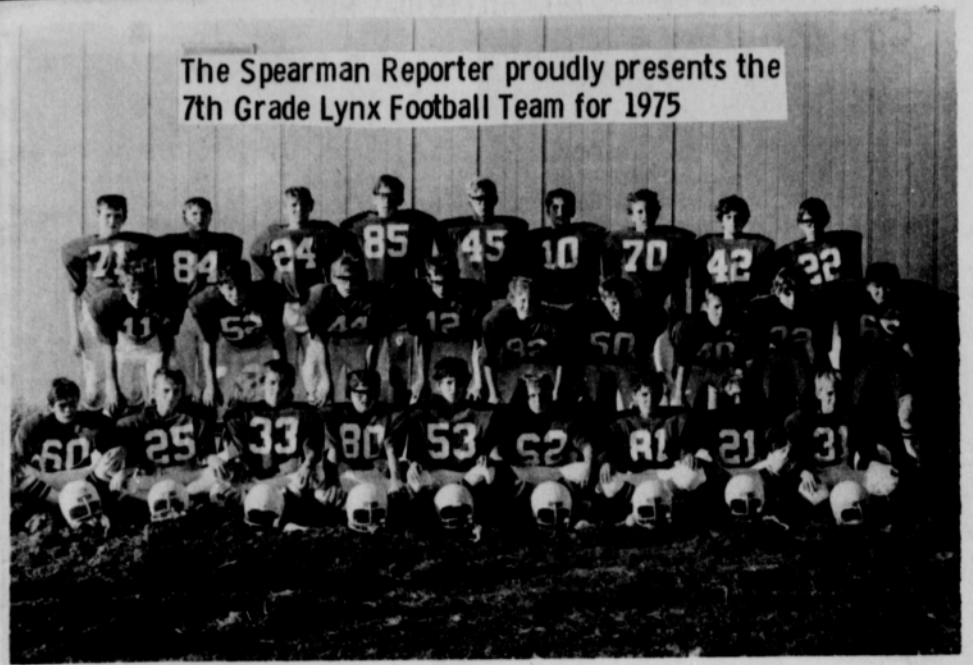
I commend the President's intent. Each of us would like to keep more of our earnings rather than carry the present tax burden. However, the President gave us the recipe for only half a loaf. In this instance half a loaf could be worse than no loaf at all. The reality is that a tax cut at our present levels of spending could create economic disaster. Although the President suggested specific areas in which tax cuts could be made, he did not suggest specific spending programs that could be reduced. It would have been politically unpopular to do so, and it is also an extremely difficult task.

The President did say the Congress and the Administration must work together to reduce spending. I agree. I will support these efforts. He also said much of the increase in each year's federal budget can be attributed to programs already on the statute books. These programs must be

Shop and Save Spearman Rexall Backroom Sale



With the cost and shortage of fuel, tailwater return systems have become more important to the farmers. Most irrigation systems in Hansford County will lose at least 20% of the total gallons per minute. For instance, an irrigation well producing 1000 gallons per minute would lose 200 gallons per minute of tailwater. With a tailwater recovery system you can recover 65% of that loss. That would mean around 130 gallons per minute of the 200 could be recovered. This practice not only saves fuel, but saves a valuable resource of water. This is a tailwater recovery system on the S & S Farms.



The Spearman Reporter proudly presents the 7th Grade Lynx Football Team for 1975

- |                    |                       |
|--------------------|-----------------------|
| WB Mark Avila      | ST Ray Partridge      |
| WB Karey Bodey     | C David Pearson       |
| SE Kenneth Brown   | FB Tylon Pierce       |
| SM Jamie Bulls     | C Calvin Pond         |
| C Ron Clark        | QG Brad Pope          |
| WB Jeff Countriss  | QG Rocky Randell      |
| HB Mike Goff       | HB Jerry Ross         |
| ST David Hall      | HB Kevin Russell      |
| QT Tal Jackson     | QB Stan Sherwood      |
| SE Jimmy Ladd      | QG Ricky Shields      |
| FB Felipe Lozano   | SM Kurt Spoonemore    |
| SG Edward McIntyre | QB Pat Steele         |
| SE Wayne Meek      | SG Frank Sturgeon     |
| QT Hunter Novak    | ST Shawn Sween        |
| QT Greg Odegaard   | FB Ricky Wharton      |
| SG Phillip Paul    | SM Charles Zschiesche |

Coaches: Chuck Steele, Windy Williams  
Managers: Joe McBride, Hank Sutterfield

## FIRST DAY OF THE WEEK

*It Makes a Difference What You Call It*

Our Great Grandfathers called it the "Holy Sabbath"  
Our Grandfathers called it the "Sabbath"  
Our Fathers called it "Sunday"  
We refer to it as the "Weekend"

**HOW TIMES HAVE CHANGED  
A NATION THAT NO LONGER KEEPS  
THE SABBATH DAY HOLY WILL FALL**

—THE FAMILY OF GOD WORSHIPS TOGETHER—

FIRST UNITED METHODIST CHURCH  
SPEARMAN, TEXAS  
VISITORS ARE ALWAYS WELCOME  
—Don't Forget to Pray for the Services—

## Shop and Save Spearman Rexall Backroom Sale Voter Aid Needed Here?

NEW YORK, Oct. 11  
--How will Hansford County be affected, if at all, by the 1975 amendment to the Voting Rights Act, requiring communities to adjust their election procedures, under certain circumstances, to provide special assistance to minority voters?

To what extent have the changes in the immigration law, made in 1965, brought this situation to the fore?

The revisions, which  
Shop and Save  
Spearman Rexall  
Backroom Sale

## Shop and Save Spearman Rexall Backroom Sale

eliminated the existing immigration quotas, led to a record inflow of foreign-born into this country. Although most of the newcomers have become sufficiently familiar with the English language to vote intelligently, some have not.

They are to be assisted under the new regulations, which come into play where more than five percent of the voting age population are members of a single language minority, where less than half the citizens of voting age cast ballots in the 1972 Presidential election and where the illiteracy rate is more than 4.6 percent.

The special assistance, specified by the Justice Department, includes furnishing bi-lingual election materials and special monitors at polling places.

In Hansford County according to the latest Census Bureau statistics, 0.5 percent of the population is foreign-born. This compares with 4.9 percent in the United States as a whole and with 2.8 percent in the State of Texas.

Conversely, the great bulk of the local population, 96.0 percent of it, consists of native-born Americans with a history that goes back three generations or more in this country.

The Census Bureau and the Justice Department have released the names, to date, of localities in several states where the special help to minorities and illiterates will have to be supplied. Determinations are being made as to the remaining states. They will be announced later.

The figures show that the illiteracy rate in the local area, defined as the percentage of the adult population with less than five years of schooling, is relatively low. Some 4.4 percent fall within that classification.



Courtship — To take aim kneeling.

Shop and Save  
Spearman Rexall  
Backroom Sale

## What do you have to do to get a good old-fashioned 100% cotton denim jean that...

- won't shrink out of size
- resists wrinkling
- resists puckering
- gets softer sooner
- stays stronger longer
- fits and fades beautifully



Boys Sizes  
6-14 (Slim & Regular)  
Student Belts  
Regular Belts & Flairs



## the answer is simply... DO-NOTHING Jeans & Jackets by SEDGEFIELD

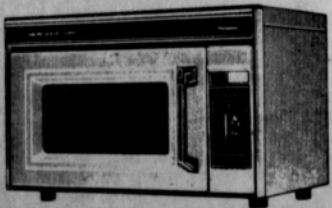
Just what you've always wanted... a perfect jacket and jean that comes right out of the dryer right on your back with hardly a pucker or wrinkle. Our amazing Do-Nothing 14 oz. denim is made to outperform, outwash and withstand the toughest wear and tear of any other denim around. Plus the great Sedgfield styling and fit that's second to none. And best of all you get all this without paying one penny more than ordinary denim.

**BAKER'S DEPT. STORE**  
Spearman 216 Main

## PANASONIC MICROWAVE OVEN DEMONSTRATION

Place: County Barn.—Time: 7.30: P.M.

Date: October 21st. —You Are Invited.

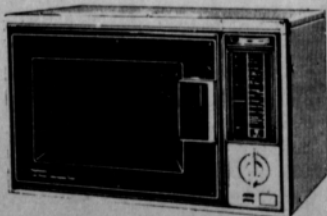


NE-5300  
Compact Microwave Oven

- Compact, lightweight design
- Easy Operation. Set the 15-minute timer, press the "Cook" button
- End of cooking bell, automatic shut-off

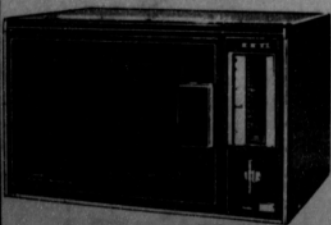


Corning Browner  
Browns your steaks to sizzling goodness



NE-6600  
Recipe-Matic™  
Microwave Oven with Twin Power™

- Recipe-Matic™ Time Power Selection ("Dial-a-Dinner")
- Twin Power™. Low for delicate foods, full power for regular foods cooking
- Automatic Defrost
- 30-Minute Timer
- Easy Operation. Dial one of 6 recipe cards, set the timer, press the "Cook" button
- End of cooking bell, automatic shut-off



NE-6450  
Recipe-Matic™  
Microwave Oven

- Recipe-Matic™ Time Selection ("Dial-a-Dinner")
- 30-Minute Timer
- Easy Operation. Dial one of 6 recipe cards, set the timer, press the "Cook" button
- End of cooking bell, automatic shut-off

## Panasonic Microwave Ovens

These Ovens may be seen at

**EARL'S T.V.** 106 E. Kenneth  
Spearman



### City Meeting Minutes

The City Council of Spearman, Texas met in regular session in the Council Chamber of City Hall, Monday September 22, 1975, at 8:00 P.M. Present: Mayor Coy Palmer - presiding, Alderman Ellsworth, Holton, Jackson, Nicholson, Also present: City Mgr. Thompson, City Sec. Mark Neff, Attorney for the City Blackburn, Police Chief Phillips, Visitors: C. W. Kennard, Tom Messer, Chuck Rigdon, Ronald Dunaway, Billy Miller, L. F. Hand, Max Taylor, Jimmy Shieldknight, Bill Pittman, John Hutchinson, Kevin Kennedy, Edwin Limbocker, E. J. Callaway, Jr., Paul Farrar, R. R. McCullough, Gerald T. Hamilton.

**PLEDGE AND INVOCATION:** The Pledge of Allegiance to our flag was led by T. E. Thompson, followed with the invocation given by James Jackson.

**MINUTES:** Motion by Jackson, second by Ellsworth, to accept the minutes of the regular City Council meeting, Sept. 5, 1975, and minutes of the special City Council meeting of Sept. 16, 1975 as read, with the correction to the special meeting minutes of Sept. 16, 1975 to read: "Nicholson nominated by Holton" rather than Ellsworth. Motion carried. Alderman Nicholson commended the Fire Department for the good service. Alderman Holton stated that Spearman had a Volunteer Fire Department that we could all be proud of.

Aldermen Ellsworth and Jackson thanked the Fire Department and stated that they are behind the department 100%.

City Mgr. Thompson informed the Fire Department that they could call upon him for assistance at any time.

Chuck Rigdon stated that the City Council of Spearman had the support of the Spearman Volunteer Fire Dept.

**1975-76 BUDGET HEARING** Assistant City Mgr. Neff reviewed the proposed budget for fiscal year 75-76, commencing on the first day of October, 1975. Motion by Holton, second by Jackson, to adopt ordinance #381, as follows: An ordinance for approving and adopting the budget for the fiscal year beginning October 1 1975 through September 30, 1976, for the City of Spearman, Hansford County, Texas, and review the standing of the budget at the second meeting in January 1976. Motion carried.

**SETTING 1976 TAX RATE** Mark Neff, Tax Assessor-Collector, reviewed the tax assessments for 1975. Motion by Jackson, second by Ellsworth to adopt ordinance #382, as follows:

An ordinance levying ad valorem taxes on all taxable property in the City of Spearman, Texas for the year 1975: Fixing the due date and time of payment thereof: Providing

discounts for prompt payments: Finally applying a penalty of eight (8) percent and interest at the rate of six (6) percent per annum on all past due taxes: And providing for the collection of taxes and adoption of the emergency clause. Motion carried.

**701 PLANNING GRANT** Mark Neff read a resolution to the Council, concerning 701 planning grant. Motion by Jackson, second by Ellsworth, to adopt the resolution as read. Motion carried. **PAVING OF 9TH STREET** Lengthy discussion between council, attorney for the City Blackburn, City Mgr. Thompson, and representatives of Golden Circle, John Hutchinson and Jimmy Shieldknight concerning 9th street. Motion by Jackson, second by Nicholson, to give notice of Public Hearings for the discussion of opening of 9th street and assessing adjoining property owners. Motion carried.

**GENERAL TELEPHONE** City Council discussed the rate increase presented by General Telephone Representatives, Paul Farrar-District Mgr., Paul Hamilton - District Engineer, and Roland McCullough - Rate Consultant for General Telephone. Items discussed were local rates, outgoing/incoming circuits, direct dialing, service problems, rate of return, grounding of telephone equipment and catholic protection.

Nicholson stated that when the Council hears less complaints, then General Telephone will be due a rate increase. Ellsworth stated that General Telephone is getting closer to a rate increase, but service needs to be improved. Holton stated that General Telephone has the same old problem they had 15 or 20 years ago, and they are 2 years behind in service.

Jackson stated that General Telephone probably needed the relief, how much he did not know, but that the Council needed time to digest the proposal and would like to be fair to all parties concerned. Mayor Palmer asked General Telephone if they would come back to the second meeting in October, giving the Council more time to study the proposal. Paul Farrar stated representatives of General Telephone would attend that meeting.

**MEETING DATES:** Motion by Jackson, second by Nicholson, that the meeting dates for October be set for the 13th and 27th at 7:30 P.M. Motion carried.

**OTHER:** Chief Phillips informed Council that a new Patrolman, Wayne Maynard, had been hired. Also, three 30 MPH signs had been placed on 11th street and one 30MPH sign on Roland Street.

**ADJOURNMENT:** Motion by Jackson,

### Retirement Community Opens In Lubbock

**LUBBOCK**--The Grand Opening of model apartments at John Knox Village of West Texas, the new Affordable Life-Care retirement community 1717 Norfolk Ave. was announced this week by Lee Thomas, Executive Director of John Knox Village, Lee's Summit, Mo., who is Project Coordinator for the Lubbock facility.

The buildings which comprise the Lubbock retirement community were originally constructed for Texas Tech College dormitories, and are currently owned by Northwestern Insurance Company. The property will be re-modeled and managed by Christian Services, Inc., the Lee's Summit-based consulting firm which manages retirement communities across the country.

Upon completion John Knox Village of West Texas will have 275 units, representing a \$10 million investment, according to Fred Fox, CSI Marketing Director. The project involves six wings, each with four floors. The first construction phase includes 150 units in studio, one and two-bedroom apartments and a 15-bed Med-Center. Special pre-construction rates for apartment reservations offer \$1,600 to \$5,000 discounts for a limited time, and Exceptional Service Units, offering professional nurses aide attention

apartment reservations offer \$1,600 to \$5,000 discounts for a limited time, and Exceptional Service Units, offering professional nurses aide attention

apartment reservations offer \$1,600 to \$5,000 discounts for a limited time, and Exceptional Service Units, offering professional nurses aide attention

apartment reservations offer \$1,600 to \$5,000 discounts for a limited time, and Exceptional Service Units, offering professional nurses aide attention

considered appropriate under the provisions of Article 678g, Vernon's Annotated Civil Statutes. It is our privilege to be able to certify this project under the terms of the law.

We commend the officials of the Spearman Independent School District for their desire and willingness to serve the people of their community by providing "barrier free" facilities and by cooperating in the State's program to eliminate obstacles in public buildings in Texas. If we can be of any assistance in future construction projects, please feel free to call on us.

Very truly yours,  
H. R. Nicman, Jr.  
By: R. Douglas Lawson,  
Chief Construction and Inspection

### National Honor Society To Induct Members

Spearman High School's annual induction ceremony for the Edna Hartman Chapter of the National Honor Society will be Monday, October 20, 1975, at 10:15 a.m. in the High School Auditorium announced Karl Johnson, chapter president.

To be eligible for membership consideration students must have a cumulative grade average of 90 percent. Additionally, potential members must meet high standards in leadership, service, and character.

Leadership is based on the student's participation in the community and/or school activities, or election to an office. To meet the service requirement, the student must have been active in service projects in the school and community. Character is measured in terms of integrity, behavior, ethics, and cooperation with both students and faculty.

Candidates are screened by a faculty council. This year the following students are being inducted: Crystal Canon, Carrie Clark, David Evans, Jim Jones, Rajan Martin, Gail Montgomery, Raymie Porter, Elaine Reimer, Tammy Robertson, Pam Rylant, George Schick, Alan Shields, Karen Tope and Vicki Owens.

### Shop and Save Spearman Rexall Backroom Sale

### Shop and Save Spearman Rexall Backroom Sale

### Stadium Receives Certification

Mr. James Cunningham Supt. of Schools Spearman Ind. School Dist. Spearman, Texas

**SUBJECT:** New Stadium and Dressing Room Facilities

Dear Mr. Cunningham: This is to advise you of the results of the inspection and evaluation of the above subject project conducted on September 29, 1975, by a representative of the State Building Commission. It is the opinion of this office that this facility complies with the minimum building standards and specifications con-

You are cordially invited to a

wedding shower honoring

Mrs. Kirby Brillhart

(nee Loretta Shelton)

on Thursday, October 23, 1975

from 3 to 4:30 p.m.

in Hansford County Library

Hostesses: Mesdames

Garland Head Jimmy Davis

P.A. Lyon, Jr. Etta Beck

Harry Stumpf H.L. Boyd

Charlie West Newell Allen

Jack Hamilton Irvin Boyd

Marcus Larson

### Shop and Save Spearman Rexall Backroom Sale

second by Nicholson, that the meeting be adjourned. Mayor Coy Palmer Mark Neff, City Sec.

Consolidated Report of Condition of " **First State Bank** (Legal title of bank) and Domestic Subsidiaries  
Spearman Hansford Texas 79081  
(City) (County) (State) (Zip Code)  
at the close of business on **September 30, 1975**  
State Bank No. **1107** Federal Reserve District No. **11**

ASSETS	DOLLARS				Cts.
1. Cash and due from banks (including unposted debits) (Schedule D, item 7)	3	692	690	48	1
2. (a) U.S. Treasury securities	854	191	00		2
(b) Obligations of Federal Financing Bank	1	601	750	00	3
3. Obligations of other U.S. Government agencies and corporations	5	143	393	31	4
4. Obligations of States and political subdivisions			NONE		5
5. Other securities (including corporate stocks)			NONE		6
6. Trading account securities	3	500	000	00	7
7. Federal funds sold and securities purchased under agreements to resell	9	521	818	62	8
8. Other loans (Schedule A, item 8)			80	555	18
9. Bank premises, furniture and fixtures, and other assets representing bank premises				1	10
10. Real estate owned other than bank premises				NONE	11
11. Investments in subsidiaries not consolidated				NONE	12
12. Customer's liability to this bank on acceptances outstanding	24	132	185	89	13
13. Other assets (item 6 of "Other Assets") (including direct lease financing)		326	385	88	14
<b>14. TOTAL ASSETS</b>		<b>21,698,816.23</b>			
		<b>13,360,095.76</b>			
		<b>8,338,716.47</b>			
LIABILITIES					
15. Demand deposits of individuals, partnerships, and corporations (Schedule E, item 3)	11	862	516	26	15
16. Time and savings deposits of individuals, partnerships, and corporations (Schedule F, item 5)	7	593	594	61	16
17. Deposits of United States Government (Schedule E, item 4 and Schedule F, item 6)		138	857	59	17
18. Deposits of States and political subdivisions (Schedule E, item 5 and Schedule F, item 7)	1	869	005	22	18
19. Deposits of foreign governments and official institutions (Schedule E, item 6 and Schedule F, item 8)			NONE		19
20. Deposits of commercial banks (Schedule E, items 7 and 8 and Schedule F, items 9 and 10)		1	415	56	20
21. Certified and officers' checks, etc. (Schedule E, item 9)		233	426	99	21
22. TOTAL DEPOSITS					22
(a) Total demand deposits (Schedule E, item 10)					(a)
(b) Total time and savings deposits (Schedule F, item 11)					(b)
23. Federal funds purchased and securities sold under agreements to repurchase				NONE	23
24. Other liabilities for borrowed money				NONE	24
25. Mortgage indebtedness				NONE	25
26. Acceptances executed by or for account of this bank and outstanding		534	696	62	26
27. Other liabilities (item 7 of "Other Liabilities" schedule)		22	233	512	75
<b>28. TOTAL LIABILITIES</b>					28
<b>29. MINORITY INTEREST IN CONSOLIDATED SUBSIDIARIES</b>					29
RESERVES ON LOANS AND SECURITIES					
30. Reserve for bad debt losses on loans - set up pursuant to Internal Revenue Service rulings		225	710	82	30
31. Other reserves on loans				NONE	31
32. Reserves on securities				NONE	32
<b>33. TOTAL RESERVES ON LOANS AND SECURITIES</b>		<b>225</b>	<b>710</b>	<b>82</b>	33
CAPITAL ACCOUNTS					
34. Capital notes and debentures				NONE	34
35. Equity capital, total (items 36 to 40 below)	2	067	361	91	35
36. Preferred stock-total par value				NONE	36
No. shares outstanding NONE					
37. Common stock-total par value		500	000	00	37
No. shares authorized 100,000 No. shares outstanding 100,000					
38. Surplus		1	067	361	91
39. Undivided profits				NONE	39
40. Reserve for contingencies and other capital reserves		2	067	361	91
<b>41. TOTAL CAPITAL ACCOUNTS (items 34 and 35 above)</b>	<b>2</b>	<b>067</b>	<b>361</b>	<b>91</b>	<b>40</b>
<b>42. TOTAL LIABILITIES, RESERVES, AND CAPITAL ACCOUNTS (items 28, 29, 33, and 41 above)</b>	<b>24</b>	<b>526</b>	<b>565</b>	<b>88</b>	<b>42</b>
MEMORANDA					
1. Average of total deposits for the 15 calendar days ending with call date	20	630	970	94	1
2. Average of total loans for the 15 calendar days ending with call date	13	743	221	21	2
3. Unearned discount on instalment loans included in total capital accounts				NONE	3
4. Standby letters of credit				NONE	4

I, **Freeman Barkley, Vice President & Cashier** of the above-named bank do solemnly **SWEAR** (AFFIRM) that this report of condition including the information on the reverse side hereof is true and correct, to the best of my knowledge and belief.

Correct - Attest:  
Freeman Barkley  
Signature of officer authorized to sign report  
C. A. Gibner  
J. W. Gibner  
Erlis Pittman } Directors.  
Texas, County of Hansford, ss:  
9th day of October, 1975  
Felma B. Evans, Notary Public.

**Fuel Ad-just'ment Charge** (noun) an amount added to your electric bill to pay only for the increased cost of fuel used to generate your electricity.

Part of your basic monthly electric rate goes to pay for fuel needed to generate the electricity needed to serve you. But... everyone knows what has happened to fuel costs since the last electric rates were approved. Fuel prices have gone up, up, up, month after month. To compensate for this increase, electric companies are allowed to collect a "fuel adjustment" which is passed through directly to the supplier. None of the fuel adjustment money is used for other purposes or stays with the utility company. Community Public Service Company is doing everything possible to hold down the cost of electricity, just as we have done for years. But... if you are to continue enjoying the convenience of having all the electricity you need... it's going to cost more.



**Shop and Save  
Spearman Rexall  
Backroom Sale**

**Shop and Save  
Spearman Rexall  
Backroom Sale**



**December Wedding**

Rev. and Mrs. Wesley Daniel of Littlefield are announcing the engagement of their daughter Thel of Canyon to Lt. James Lemons of the United States Air Force, Dayton, Ohio.  
Parents of the groom are Mr. and Mrs. Louis Lemons of Spearman.  
The wedding will be December 27, 1975 in the First United Methodist Church here.  
The bride-elect is a graduate of Spearman High School and McMurry College, and is in her third year of teaching at Canyon Junior High School.  
The prospective bridegroom is also a graduate of Spearman High School, and of Air Force Academy, Colorado Springs, Colorado; he received his masters degree from Princeton University, Princeton, N. J., and is now stationed at Wright-Patterson USAF, Dayton, Ohio.

**Annual Art  
Show Scheduled**

Dahlia Flower Club's Art, Craft and Antique Show will be held Saturday and Sunday, November 1 and 2, from 1 to 5 p.m.  
Hansford County and surrounding area residents are invited to exhibit their crafts and antiques at this show. Works will be accepted by the committee at the Hansford County Library building on North Main Street in Spearman, Friday afternoon, October 31 from 2 to 5, and Saturday morning, November 1, until 11 a.m. All exhibits are to be picked up by 6 p.m. Sunday.  
A silver tea will be given during the show.  
Mrs. Virgil Floyd is general chairman and Mrs. F. J. Hoskins is president and staging chairman for the show. Heads of each committee are as follows: China Painting-Annie Allen and Jewel Turner; Oil Painting-Mable Edwards; Tole Painting-Sammie Bishop; Needlework-Cora Smith; Decoupage & Quilting-Edith Sheets; Rocks-Cleo Denman; Antiques-Myrtle Davis; Miscellaneous Crafts, Woodwork, Metal, Bottle Cutting etc. - Mrs. H. M. Shedeck; Children's Craft - Sada Hoskins; Purchasing and Refreshments - Hollie Riley and Martha Batton; Publicity and Reporter - Alma Remy.  
The Women's Division of the Chamber of Commerce has kindly consented to help in any way possible and are members of various committees. Mrs. Travis Davis is president of the Women's Division of C. of C.  
Please free to call any of these women if you need information about the Arts & Crafts Show.  
Department chairman and their helpers are as follows: China Painting, Annie Allen, 2152; Jewel Turner, 3148; Alta Fisher, 3120; Alpha Townsend, 2906;  
Oil Painting - Mable Edwards, 3403; Evelyn Kingsley, 2302; Janie Hand, 3516.  
Tole Painting - Sammie Bishop, 2606; Irene Snider, 2327; and Gina McLean, 2712.  
Needlework - Cora Smith, 3685; Reba Benge, 2219; Colleen Schaeffer, 2183;  
Decoupage and Quilting - Edith Sheets, 3167; Peggie Carroll, 3661; Par Summerfield, 3637.  
Rocks - Cleo Denman, 3495; Louise Sampson,

**Our Heritage of Faith...**

**notes from Faith Lutheran Church**  
This Saturday October 18th the American Lutheran Church Women (ALCW) of the Panhandle Conference will have a worship at Oslo Lutheran Church. This is for officers and wives of Pastors. Eleven churches will be represented there. The time will be from 9:00 to 2:30. Also coming up for the Faith Lutheran Woman is a workday for banner making on the 22nd of October at 9:00.  
At 6:30 on the 19th of October the Luther League is gathering at the Intern's house for a time of sharing and fun. We will discuss some of our coming plans for the Hayride with the First Presbyterian Youth on the 25th of October and our Talent Show and Congregational Supper on the 9th of November. League is going very well and plans are being made for even more events.  
The class on the Holy Spirit is going well but the end is in sight. However, plans are being made for future classes. Possible topics could be a Bible Study on 1 Corinthians or a study of Death, Dying and Grief. Each one of these topics can speak to each one of us today in our own situation. There can be other choices of topics if one is special to many of the people.  
What do Lutherans believe? Lutherans believe that God speaks to us and acts through the means of Grace. The means of Grace is simply the word and the Sacraments. God works by external signs coming from the outside to us. It is significant that God comes to us for that is Grace. We cannot by ourselves come to God but only by the Holy Spirit working through the means of Grace. Of course the means of Grace are administered at church and therefore attending worship service is very important.  
If you have no home of worship join us at Faith and hear the word of God and experience the means of Grace. Worship is at 9:30 and Sunday School is at 10:30.

**Arts & Crafts Guild News**  
The Arts and Crafts Guild met Friday, October 10th in the home of Mrs. Garrett Allen.  
Delicious refreshments were served by Mrs. Allen to members, Mesdames:  
C. A. Gibner, P. A. Lyon, F. J. Hoskins, Joe Trayler, Guy Fuller, Deta Blodgett and W. L. Russell.  
Next meeting will be October 17th in the home of Mrs. Deta Blodgett.  
**Bazaar Dec. 6**

**HD CLUB NEWS**

The Town & Country Home Demonstration Club met Tuesday, October 7th in the home of Mrs. Cecil Biggers.  
President, Mrs. Jerry Holton presided over the meeting.  
Roll Call was answered to "How I File My Favorite Recipes".  
Bob Boxwell presented the program on "Care of House Plants".  
Discussion was held on plans for a Halloween booth at the Halloween Carnival. Members brought potted plants to the meeting and drew for the plants at the end of the meeting.  
Also discussed was the Council Rummage Sale to be held this weekend, October 17th and 18th at the County Barn.  
Delicious refreshments were served by Mrs. Biggers to guests, Bob Boxwell and to members, Mesdames: Joe Close, Bobby Everson, Jerry Hayes, Darl Hergert, Jerry Holton, Carl Kunselman, Dan Ralston, Phillip Renner, Kurt Shedeck, Gary Taylor, John Trimmell, Jerry Younger, Doug Holmes, Bob Pearson and George Rex.  
Next meeting will be October 21st with Mrs. Joe Close as hostess.  
The Holt Home Demonstration Club met Tuesday, October 7th in the home of Mrs. Fred Holt.  
President, Mrs. Jon Jarvis presided over the meeting.  
Roll Call was answered to "The Best Laugh I've

Heard Lately".  
The Holt Home Demonstration Club will furnish refreshments for the Home Demonstration Council Meeting in Borger October 24th. Mesdames: Mike Holt, Doyle Jackson, Randy Kirk and Jon Jarvis will be responsible for taking and serving the refreshments.  
Hutchison County Home Demonstration Agent, Miss Geraldine Mayes presented the program on "Basic Nutrition" and demonstrated a new appliance, the Miro Matic Wiz-Grid quick cooker.  
Refreshments were served by Mrs. Fred Holt to members, Mesdames: Doyle Jackson, Lloyd Poole, Verlin Beck, Randy Kirk, Britt Jarvis, Wallace Berner, Mike Holt, Marvin Jones, Raymond Kirk, M. C. Guthrie, Jon Jarvis and Richard Kirk.  
Next meeting will be October 21st in the home of Mrs. Britt Jarvis.

**The children of Mr. and Mrs. C. A. Gibner**  
request the pleasure of your company  
at a reception in honor of their  
**Fiftieth Wedding Anniversary**  
on Sunday, the twenty-sixth of October  
nineteen hundred and seventy-five  
from two until five in the afternoon  
**Fellowship Hall**  
First United Methodist Church  
Spearman, Texas

**Microwave Oven Demonstration**  
There will be a microwave oven cooking demonstration Oct. 21 at 7:30 p.m. in the County Barn here. Anyone interested in learning to cook in microwave ovens is invited to attend.  
The demonstration is being sponsored by Earl's TV, 106 E. Kenneth, Spearman.  
Panasonic microwave ovens are on display in the store.  
Weekend before last Mr. and Mrs. Darrell McCoy traveled to Red River for the foliage tour.

**Sorority Has Costume Party**  
Rho Rho Sorority held a Halloween Costume Party Saturday, October 11th at the Community Building for Rushees and husbands of members and Rushees.  
Stew, cobbler and games were enjoyed by mystery guests, Kent and Glenda Guthrie and by members and Rushees, Mr. and Mrs. Perry Dixon, Mr. and Mrs. Billy DeArmond, Mr. and Mrs. Dennis Nelson, Mr. and Mrs. Phillip Renner, Mr. and Mrs. Clark Mires, Mr. and Mrs. Craig Schumann, Mr. and Mrs. Phil Sanders, Mrs. Vernon Pipkin, Mrs. Charles Shieldknight, Mr. and Mrs. Mike Davis, Mr. and Mrs. Tim Barkley,  
Mr. and Mrs. Murphy Allen, Mr. and Mrs. Lynn Cook, Mr. and Mrs. Gilbert Hamish, Mr. and Mrs. Gary Woolley, Mr. and Mrs. Dan Ralston, Mr. and Mrs. Monty Blackman and Mr. and Mrs. Gary Taylor.  
Rho Rho will have a pre-ferential Coffee October 16th in the home of Mrs. Ronnie Luby.  
Visiting in the home of Mr. and Mrs. Eugene Yarbrough and family last Saturday were Mr. and Mrs. Marvin Mills, Randy and Brett of Borger.

**New Gamerama Starts**  
CONGRATULATIONS TO ALL GAMERAMA SERIES 52 WINNERS

PRICES EFFECTIVE THRU SATURDAY, OCT. 18, 1975. HOME SOLD TO DEALERS. LIMIT RIGHTS RESERVED.

MON. - SAT. 8:00 A.M. - 10:00 P.M.  
SUN. 9:00 A.M. - 8:00 P.M.

the home of THRIF-T-Prices

**IDEAL FOOD STORES**

<b>Round Steak</b> CENTER SLICES, BEEF ROUND <b>99¢</b> LB.	<b>Rib Steak</b> LARGE END, BEEF RIB <b>99¢</b> LB.	<b>Chuck Roast</b> BLADE CUTS, BEEF CHUCK <b>69¢</b> LB.
--	--	---

THRIF-T BABY BEEF 7 BONE CUTS BEEF CHUCK 89¢  
Chuck Steaks.....LB. 89¢

THRIF-T BABY BEEF BEEF LOIN \$1.39  
T-Bone Steak.....LB. \$1.39

THRIF-T BABY BEEF BEEF CHUCK 89¢  
Arm-Pot Roast.....LB. 89¢

KRAFT SALAD DRESSING

**MIRACLE WHIP**  
LIMIT 1 WITH \$5.00 OR MORE PURCHASE.  
**88¢**  
32-oz. JAR

KRAFT MIRACLE WHIP Salad Dressing

**TOMATO JUICE**  
LIMIT 4 WITH \$5 OR MORE PURCH.  
**48¢**  
46-oz. CAN

CAMELOT TOMATO JUICE

**HARVEST of VALUES SALE!**

MACARONI AND CHEESE LIMIT 4 WITH \$5.00 OR MORE PURCHASE.

**Kraft Dinner** 7 1/4-oz. BOX **25¢**

CAMELOT CUT **Green Beans** 4 16-oz. CANS **96¢**

ZEE, NICE'N SOFT **Bath Tissue** PKG. OF 4 **72¢**

CHIFFON ASSORTED **Paper Towels** JUMBO ROLL **51¢**

KRAFT MINIATURE **Marshmallows** 10 1/2-oz. BAG **38¢**

KRAFT WITH STICKS.....14-oz. BAG **79¢**  
KRAFT FRENCH Italian Dressing.....16-oz. BTL. **77¢**  
KRAFT HILD Spaghetti Dinner.....2 8-oz. BOXES **59¢**  
CAMELOT ORANGE Drink Mix.....17-oz. JAR **\$1.69**  
CAMELOT PINK Grapefruit Juice.....4-oz. CAN **52¢**  
CAMELOT EVAPORATED Milk.....TALL CAN **31¢**

CAMELOT **Dog Food** 25-LB. BAG **\$4.29**

CAMELOT POWDERED **Blue Detergent** 49-oz. BOX **\$1.08**

KEEBLER CRACKERS **Town House** 14-oz. BOX **89¢**  
KEEBLER Honey Grahams.....14-oz. BOX **75¢**

CAMELOT WHOLE **Green Beans** 14-oz. CAN **41¢**

CAMELOT **Sweet Peas** 14-oz. CANS **39¢**

CAMELOT **Spinach** 15-oz. CANS **5 \$1.00**

MEADOWDALE WHOLE **Tomatoes** 3 16-oz. CANS **\$1.00**

CAMELOT **Catsup** LIMIT 2 PLEASE 16-oz. BTL. **72¢**

CAMELOT WHOLE **Green Beans** 14-oz. CAN **41¢**

CAMELOT **Peas and Carrots** 14-oz. CAN **39¢**

YELLOW CLING SLICED OR HALVES **CAMELOT PEACHES** 29-oz. CAN **52¢**

CAMELOT **Apple Sauce** 4 16-oz. CANS **\$1**

CAMELOT CRUSHED, CHUNK OR **Sliced Pineapple** 16-oz. CAN **48¢**

THRIF-T Health & Beauty

JOHNSON AND JOHNSON **Baby Shampoo** 16-oz. BTL. **\$2.88**

LADY CAMELOT **Knee-Hi Hose** PKG. OF 2 PAIR **74¢** LIMIT 3

ARRID **Deodorant** 4-oz. CAN **68¢**

CAMELOT, ALL COLORS **Bath Oil** 64-oz. BTL. **\$1.24**

**Shop and Save  
Spearman Rexall  
Backroom Sale**

Fine Arts Festival At Borger

The bicentennial celebration for Borger and Hutchinson County will be ushered in Friday morning at 10:30 a.m., Oct. 17, with the raising of Borger's bicentennial flag in front of the Aluminum Dome.

crafts and in 1974 attracted more than 5000 visitors. Exhibits include oil painting, water colors, ceramics, sculpture, needlecraft, jewelry, macramé and a host of other hand-crafted items.



November Wedding Planned

Mr. and Mrs. Owen Montgomery of Spearman would like to announce the engagement and approaching marriage of their daughter Donna Marie to Curtis Bryon Wood, son of Mr. and Mrs. H. W. Wood of Stinnett. A November wedding is planned.

Hansford Lodge Meets

Hansford Lodge #1040 A. F. & A. M. met Monday, October 13th in the Hansford Lodge Hall. Dan Faries, Worshipful Master presided over the meeting.

Shop and Save Spearman Rexall Backroom Sale

Volunteer Fire Department Receives Checks

The Spearman Volunteer Fire Department recently received checks for \$225.00 from Texas Farm Bureau Insurance Companies as an expression of thanks for the Department's work on the property of Ted J. Godfrey.

Boy Scout News

The Cub Scout Pack Meeting was held Tuesday, October 7th at the First United Methodist Church. Cub Master, Roy Bull, presided over the meeting.

when the department works at a fire in rural areas, involving property insured by them.

The Insurance Company believes volunteer fire departments have contributed to reduce the amount of loss involved by fire and more important, to prevent fires.

Committee members include John R. Collard, Jr., Bob Farr, John Sutterfield, Jim Davis, Al Tucker, Mrs. Don Windsor, Mrs. Kent Guthrie and Mrs. Roy Bull.

Den Leaders will meet the 1st Monday of each month at 10:00 A.M. Pack Meetings will be held the 1st Tuesday of each month at the First United Methodist Church with meetings beginning at 7:30 P.M.

Meeting Friday, October 10th in the home of Mrs. Jim Davis was her Den troop.

The boys worked on paper mache masks. Refreshments of fudge-cicles were enjoyed by members, Doug Murrow, Terry Phillips, Steve Womble, James Davis, Jeff Vanlandingham, Chad

Guthrie and Den Mothers, Mrs. Bruce Womble and Mrs. Jim Davis. Next meeting will be October 17th in the home of Mrs. Davis with Chad Guthrie as host.

BOWLING NEWS

THURSDAY NIGHT MIXED LEAGUE 10-9-75

Table with bowling scores for various leagues including Anthony Elec., Merchants, and High Game Series.

PIN BENDERS 10-10-75

Table with bowling scores for Pin Benders league, listing names like Brock Ins., Cinderella, and Jun Lee.

SCATTER PIN 10-13-75

Table with bowling scores for Scatter Pin league, listing names like Equity, Co-op, and Martin's Stk.



Seaman Byrd Completes Basic

Seaman William Dean Byrd, son of Mr. and Mrs. Preston Byrd, 508 S. Bemise, has completed nine weeks basic training at the Naval Training Center in Great Lakes, Ill.

HD Club News

The Spearman Home Demonstration Club met Friday, October 10th in the home of Mrs. Altha Groves. President, Miss Groves, opened the meeting with the devotional.

Also discussed was a Veteran Day Program. Mrs. Frank Davis was elected as recreational chairman.

Home Demonstration Agent, Nelle Evans gave the program on "Quick Meals". Refreshments of cookies, coffee and tea were served by Miss Groves to members, Mesdames: Bertie Lewis, B. J. Gamett, A. D. Reed, W. H. Tarbox, Eldon Ferrell, W. A. Ellsworth, Richard Shedeck, John Kenney and Agent, Nelle Evans.

MARKETS

Small table listing market prices for WHEAT, CORN, and MILO.

Bridge Clubs

The Ladies Dinner Bridge Club met Monday, October 13th in the home of Mrs. Sid Evans.

High was won by Mrs. Don DeArmond, second high was won by Mrs. Troy Sloan and the traveling prize was won by Mrs. Glen Mackie.

Refreshments were served by Mrs. Evans to guests, Mrs. Don Bell, Mrs. Orville Latham and Mrs. Wilson McClellan and to members, Mesdames: Glen Mackie, Joel Lackey, Troy Sloan and Don DeArmond.

Next meeting will be November 17th in the home of Mrs. Jim Evans.

Methodist Youth Slave Sale Set

The United Methodist youth will be holding a slave sale, Oct. 18, 1975. Youth will be waiting patiently for your call at 659-3220.

According to Frosty Hickenon, spokesman for the group, the money made will go into a fund for different activities the youth of the church have planned for this year.

If you would like to buy someone for a couple of hours work or however long you need them they guarantee service with a smile.

The money you give will be whatever you want to donate. The youth say they will do any job under the sun.

WIN \$ \$ \$ \$ \$ \$ \$ \$

at the October Breakfast on Tuesday, October 21

County Show Barn 6:30 a.m.

\$2.00 per person

Sponsored by: Hansford Implement Call for reservations 659-3330

City officials are asking that everyone move all of the old cars off of the streets. This is against the law to leave un-licensed cars on the streets!

Mon. Oct. 20 REDEEM YOUR WINNING GAMES THROUGH SATURDAY OCT. 25th. COME GET YOUR NEW GAME CARD AND TICKETS MONDAY.

WINCHESTER Smoked Sausage HICKORY SMOKED BULK PACK 99c LB. Sliced Hickory Smoked, Pork Sausage, Smoked Sausage, Sliced Bacon, Skinless Franks, Luncheon Meats.

FRESH, 100% PURE BEEF Ground Beef IN 3-LB. PKGS. OR MORE 89c LB. MR. BOSTON, PRE-COOKED FISH STICKS BREADED 89c 2-LB. PKG.

FRESH WATER Catfish Steaks 4 to 6-oz. EACH 89c LB. INDIVIDUALLY QUICK FROZEN Catfish Fillets 59c 1-LB. PKG. PERCH FILLETS BREADED 59c 1-LB. PKG.

CONGRATULATIONS TO THESE \$1,000 WINNERS OF SERIES NO. 52. THERE IS STILL TIME FOR YOU TO WIN! NEWEST \$1,000 WINNER: MARCIA ANN NIX 804 N. PURDUE LIBERAL, KANS. OTHER \$1000.00 WINNERS: MYRTLE ENGLE ALVA, OKLA., JOYCE NELSON PAMPA, TEXAS, FAY JAMES HUGOTON, KANS., SHIRLEY BIRDWELL PAMPA, TEXAS, ALMA MANGAN GARDEN CITY, KANS., C.K. FOLLIS PAMPA, TEXAS, JOEL CURTIS LIBERAL, KANSAS, J. E. SHACKELFORD PAMPA, TEXAS, JACKIE DOYLE HUGOTON, KANSAS.

U.S.D.A. GRADE 'A', ALL SIZES HoneySuckle Turkeys 79c LB. SWIFT'S PREMIUM, U.S.D.A. GRADE A ALL WHITE TURKEY ROAST \$3.99, SWIFT'S PREMIUM, U.S.D.A. GRADE A MIXED WHITE AND DARK TURKEY ROAST \$3.99, SWIFT'S PREMIUM, U.S.D.A. GRADE A ALL DARK TURKEY ROAST \$2.99.

FAIRMONT DAIRY FAIR ALL FLAVORS Ice Milk 79c 1/2-GAL. CTN. SANDWICH BARS 69c PER DOZ.

October Cheese FESTIVAL KRAFT VELVEETA \$1.58 3-LB. LOAF, CAMELOT Longhorn Cheese \$1.49 16-OZ. PKG., FAIRMONT Whipping Cream 41c HALF PINT, FAIRMONT ALL FLAVORS Yogurt 69c 2 8-OZ. CTNS., KRAFT Parkay 46c 1-LB. CTN.

Thril-T Frozen Foods CAMELOT FROZEN FLORIDA Orange Juice 44c 12-OZ. CAN, MEADOWDALE Crinkle Cut Potatoes 94c 5-LB. BAG, CAMELOT WHOLE KERNEL Golden Corn 53c 16-OZ. BAG, MEADOWDALE Garden Peas 68c 24-OZ. CTN., MEADOWDALE Chopped Spinach 59c 5 10-OZ. PKGS., MEADOWDALE Broccoli Spears 59c 5 8-OZ. PKGS., MEADOWDALE CUT Broccoli 42c 10-OZ. PKG., MEADOWDALE Cauliflower 59c 5 8-OZ. PKGS.

FANCY JONATHAN APPLES \$1.00 5 LBS., \$1.49 8-LBS., U.S. NO. 1 Southern Yams 4 \$1.00 LBS., CALIFORNIA Valencia Oranges 89c 4-LB. BAG, THOMPSON Seedless Grapes 49c LB., CALIFORNIA Tokay Grapes 39c LB., IMPORTED Coconuts 49c EACH, TREAT Pie Pumpkins 10c LB., HARDIN Apple Cider \$1.98 GAL., PURPLE TOP Turnips 19c LB., MARRINATED Artichokes 69c DOZ., MARRINATED Mushrooms 69c DOZ.

# Record Yields In Corn Harvest

With the exception of a few isolated late-planted fields, the 1975 Hansford County corn harvest

is all but over according to a survey of the elevators in the area. Yields from the corn-laden fields averaged

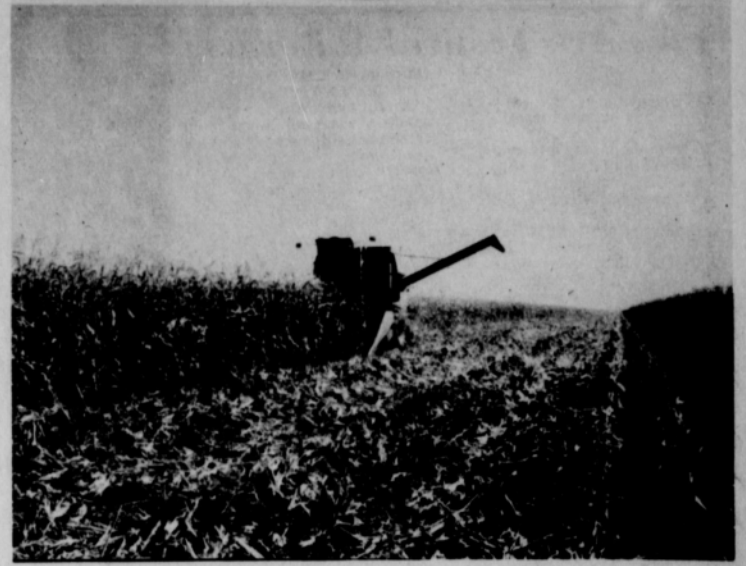
County-wide about 140 bushels per acre with some test plots in the western part of the County

going as high as over 200 bushels and those nearer Spearman as high as 180 bushels.

Ensilage came in for the spotlight also with one known yield of 28 tons for a 50 acre plot near Gruver. Thus, Hansford County may well be on its way to assuming the "corn crown" of the U. S. A. According to Joe Van Zandt, Hansford County Agent, last year's corn harvested-for-grain was 23,200 acres against an estimated planting of 44,000 acres for the County this year. VanZandt's figures for the production in 1974 was 2,035,000 and the estimated yield per acre from 140 to 150 bushels (and the actual figures bear this estimate out). 1974 figures totaled 26,900 acres planted for all purposes and 23,200 harvested.

According to Texas State Agriculture Commissioner John C. White Texas farmers expect to harvest the third largest crop on record but this may be exceeded if the Hansford County figures are true of the rest of the State. An 111.1 million bushel yield is estimated by the Texas Crop and Livestock Reporting Service for Texas this, the largest since the 11.2 million bushels produced in 1919. Texas record crop of 117 million was harvested in 1910. Estimated yield from the Commissioner's desk for the 1975 crop was 101 bushels per acre, which is a record for Texas according to White. Other grain crop production estimates also indicate significant increases.

A mid-September "Cattle Feeders" Report indicated that yield of 150 to 200 bushels are not uncommon in Texas. At that time about 10 percent of the corn had been harvested with an estimate it would take two weeks to complete. Actually, however, the corn harvest is all but complete in the Hansford County area now. Several of the County elevator managers when contacted were enthusiastic over the corn crop this year. At the Bernstein Elevator, Fred Davidson contended that



"Broadway", Hansford County, U.S.A. --Combine makes a broad swath down a cornfield in Hansford County during recent bumper corn harvest--Wayne Garrett cutting the golden nuggets at one of the DeKalb Test Plots near Gruver.

the yield was far better than last year over all and at the time contacted about two weeks ago, farmers stood to earn \$2.83 per bushel there. At the Equity Elevator in Mosco, it was indicated that the average just might be a bit lower than the rest of the County--perhaps approximately 100 bushels per acre with the going price two weeks ago, \$2.85. Kermit McKee of Gruver's Continental estimated the yield in the neighborhood of 140 to 150 bushels and the price quoted that day was \$2.83. Mrs. Jack Hart at the Palo Duro Grain estimated the yield to be about 170 bushels and the price at that time \$2.83.

In the Spearman area, E. J. Copeland when contacted Tuesday said that the corn harvest for 1975 was all but over with only a few isolated late-planted

fields yet to be harvested. He estimated the yield to be in the neighborhood of 130 bushels with one field yielding 180 bushels as the best about which he had heard. The price of corn Tuesday, Mr. Copeland quoted as \$2.80. The Equity has now turned over to milo harvest and Mr. Copeland felt that the Spearman area about 45% of the milo was already harvested. Moisture basis for #2 milo 14% or below and it was running just about that percent. Price for milo Tuesday at the Equity was \$4.50.

At the Spear-Text Elevator, the last load of corn went through Monday unless some comes in unexpectedly. The price quoted for corn Tuesday was \$2.80 and according to Eck Lee and John Brown the average yield for corn harvest 1975 was 140 to 150 bushels. At Spear-Text they, too are well into the milo harvest and consider that they are about half way through the milo harvest 1975 so far. Price quoted

for milo at Spear-Text was \$4.50. Whatever the price, whatever the yield, the corn harvest for Hansford is over and the milo harvest has begun and one can not be wrong in saying "This is a very good year!"

**Shop and Save Spearman Rexall Backroom Sale**

**Firemen's Dance Nov. 22, 1975 Please Attend you all!**

**Shop and Save Spearman Rexall Backroom Sale**

This is an exact re-print of the Market Card Report mailed each Friday to over 3,000 customers and others interested in the cattle industry.

## TEXHOMA LIVESTOCK COMMISSION COMPANY, INC.

Under Federal Supervision - Bonded For Your Protection

LIVESTOCK AUCTION -----EVERY THURSDAY & Friday when Necessary PHONES - (Area 405)423-2031 & 423-3251

Greetings to all Cattlemen: October 11, 1975 To-Day - closes another busy week at the Texhoma Cattle Auction at Texhoma, Oklahoma. Thursday, October 9th was the day of our Annual "Feeder Cattle Show, Sale and Free Barbecue" Approximately 2500 fine cattle were shown & sold thru the Arena and 3250 people from many states were served barbecue. I believe the "HIGH LIGHT OF THE ACTIVITIES" in the Sales Arena was the selling of a "Beautiful Decorated Cake at Auction", for the benefit of the Texhoma High School Band at a "Total Selling Price of \$1135.00".

The Judges for the show were Orville Kalsen, Huxley, Iowa; Chandler Scott, Montgomery, Alabama; and Jerry Robb, Pueblo, Colorado. The GRAND CHAMPION load of WF Feeder Steers, were shown by the Pamel Bros. of Perryton, Texas - Avg. Wt. 855# and sold for the "TOP" of the Sale @\$39.00 per cwt. The RESERVE CHAMPION a load of Blk WF Steers owned by Warren & Warren of Griggs, Okla. Avg. Wt. 505# @ \$37.25 per cwt.

- |  |  |
|--|--|
| Some Representative sales as follows:                        | 20 Blk WF Steers - Avg. Wt. 746# @ \$38.50 per cwt.        |
| 19 WF Steer Calves - Avg. Wt. 327# @ \$38.25 per cwt.        | 25 WF & Blk WF Steers - Avg. Wt. 878# @ \$38.50 per cwt.   |
| 24 WF Steer Calves - Avg. Wt. 364# @ \$37.75 per cwt.        | 64 Blk WF Heifers - Avg. Wt. 670# @ \$33.00 per cwt.       |
| 30 WF Steer Calves - Avg. Wt. 371# @ \$36.00 per cwt.        | 52 WF Heifers - Avg. Wt. 674# @ \$32.80 per cwt.           |
| 26 WF Steer Calves - Avg. Wt. 399# @ \$37.40 per cwt.        | 36 WF Heifers - Avg. Wt. 683# @ \$33.50 per cwt.           |
| 25 WF Steer Calves - Avg. Wt. 402# @ \$37.10 per cwt.        | 32 Horned WF Heifers - Avg. Wt. 691# @ \$32.30 per cwt.    |
| 125 Blk-Short Yrl. Steers - Avg. Wt. 448# @ \$36.00 per cwt. | 69 WF Heifers - Avg. Wt. 686# @ \$33.30 per cwt.           |
| 33 WF Heifer Calves - Avg. Wt. 321# @ \$30.00 per cwt.       | 39 Blk WF Heifers - Avg. Wt. 717# @ \$34.00 per cwt. (TOP) |
| 31 WF Heifer Calves - Avg. Wt. 384# @ \$28.90 per cwt.       | 90 WF & Blk WF Steers - Avg. Wt. 778# @ \$38.00 per cwt.   |
| 20 WF Heifer Calves - Avg. Wt. 406# @ \$28.50 per cwt.       | 20 WF Steers - Avg. Wt. 789# @ \$38.25 per cwt.            |
| 43 Blk WF Steer - Avg. Wt. 547# @ \$36.50 per cwt.           |  |

Friday, October 10th was the day of our regular sale, selling approximately 500 cows and 1200 other mixed cattle. Most of the cows sold 50¢ to \$1.50 per cwt. lower than the previous week, but a good active sale prevailed at the price decline. Bologna Bulls about steady with a \$28.00 top. Calves and light yearlings hard to sell, especially for the plainer, thinner kinds. The dry weather over a large area is sure making it rough for the "Cow-Calf" Operation.

Thursday, October 16th will be the day for our next regular Cattle Auction, commencing at 9 A.M. "Sharp" (CDT). We are expecting 3500 to 4000 cattle of various classes for that event.

Listen to our various Radio reports, commencing every Tuesday Evening for a closer report as to our expectations. Advise us of your plans.

All of us here at the Texhoma Livestock want to thank all of you for helping make our Annual Affair, here last Thursday, a great success.

Sincerely, Clif Augustine

CATTLE: C. F. Augustine & Raymond Choate-----OFFICE: Euline Smith  
EXPERIENCED ---- BONDED --- RELIABLE "Added Value Thru Livestock Auction Market Service"

# Feed Service Corporation Allied Chemical Co.

We are growing to be of better service to you our customer

Everyone knows that balanced nutrition is the key to health and Health to your Crops and Livestock is the key to production

We can provide balanced nutrition for your livestock thru our FSC<sup>®</sup> Morano<sup>®</sup> Energized Liquifed, Morea<sup>®</sup> Energized Liquid Protein Supplement and Cataly<sup>®</sup> Mineral Program. Each mineral fed separate and free choice

We can provide balanced nutrition for your crops thru our association with Allied<sup>®</sup> Chemical Co. Providing Liquid Fertilizers Blended to your soil Requirements. Our Motto Is "BALANCED NUTRITION FOR YOUR CROPS AND LIVESTOCK" To Give you our customer a Maximum return for your investment dollar.

# BOOSTER AG. CHEM. INC.

BURL BUCHANAN MANAGER

SPEARMAN  
659-3159  
659-3367

15 Miles East of Spearman on 759

PERRYTON  
435-3546