



**Sgt. Tipton Coming Home**  
 First Sergeant Donald J. Tipton, whose wife, the former Miss Ruth Buchanan, resides in Spearman, is preparing to embark for a reassignment in the zone of the Interior. After serving with the 20th Air Force as First Sergeant of Squadron here since Feb. 1947, it has been found that under a special regu-

lation he is eligible for a return to stateside duty. F. Sgt. Tipton has been in the service since Feb. of 1941, and has seen duty at Jefferson Barracks, Miss., Shepard Field, Tex. and Murock, Calif., and during the war spent 20 months with the 8th Air Force in England. While in the European Theatre of operations he partici-

ated in seven major battles. He enlisted on this tour of duty in Oct., 1945 at Lockburn, Ohio. The Sergeants' parents, Mr and Mrs. O. Tipton, live at 820 North 9th street in Vincennes, Indiana.

party office, Box 6030, in Dallas, or by a visit to the WAA's plant in North American Aviation building at Grand Prairie.

Some 14,000 acres of the Pantex Ordnance Works near Amarillo, are seen coming up for disposal to classes. The land is to be sold in two parcels, with World War II veterans and former owners, among the eligible priority claimants. Complete information on this land disposal may be obtained from the WAA's real property office, Box 6030, Dallas, or by a visit to the WAA plant in the North American building at Grand Prairie.

On March 12, the Laughlin Army Air Field, near Del Rio, Texas, will be opened to the public pre-

paratory to a location sale of 452 buildings. It will be the latest in a continuance series of camp buildings sales being held throughout the Southwest for clearing the installations of all buildings to be held throughout the southwest for offsite use. Inspection period will close March 23, and the buildings will be sold to the highest bidders on March 24, 25 and 26.

No more priority certification will be needed here after from World War II veterans seeking war surplus items. Previously, special certification had been eliminated from all surplus materials except certain aircraft surplus and road rolling stock and laundry items. Now the only requirement for establishment of veterans preference to surplus is a showing of World War II discharge papers or filing of a si-

ple statement of intent. which also provide veterans priority in a few cases will be handled the same as previously. Real property disposals,

**WEEK'S NEWS**



**DOESN'T BARK** — But sings! Dottie, 10-year-old black and tan terrier, plays the piano and vocalizes, dog style, especially when there's an audience.



**RECEIVES HONOR**—National Association of Public Relations Counsel top award goes to Paul W. Litchfield, left, chairman of the board, Goodfellow Tire and Rubber Company, for his company's sponsorship of the ABC network radio program, "The Greatest Story Ever Told." Earle Ferris, president of the Association, gives award as W. Averell Harriman, U. S. Secretary of Commerce looks on.



**CRYSTAL GAZER**—Nothing but bright stardom lies ahead for Barbara Bates. Denver beauty who's started on her way to movie fame.



**NAVY COACH**—George Sauer, Navy's new football coach, signs contract as Capt. E. B. Taylor, director of athletics at Naval Academy, looks on.



**SENSATIONAL** — That's the word for beautiful Jeannie Eueger as she prettily suns herself at Miami's Venetian Pool. Queen Jean, of Orange Bowl fame, loves the great outdoors, yet protects her fair complexion with Tarian, a suntan lotion that permits her to tan, never burn.

**WAA NEWS**

More than 300 buildings of the Pampa Airfield are to be sold by the sealed bid method for off-site use. Schools and other tax upkeep institutions will get the first chance to buy the buildings by submitting purchase applications on special forms provided by the WAA. The initial priority will expire on March 23. Inspection array plans may be obtained from the WAA's real pro-

Expecting 500 to 750 Cattle

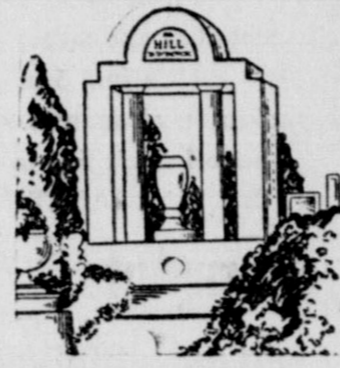
Monday, March 22

Due to roads and weather conditions we sold only 328 cattle last Monday, but all classes found an active market.

Plan to Attend Every MONDAY

AUGUSTINE LIVESTOCK COMMISSION CO.

TEXHOMA, OKLAHOMA



Select a monument from our wide variety of designs or suggest one to be specially built for you. Enduring and beautiful, our monuments are of superb quality granite.

J. H. NICHOLS

PHONE 22  
SPEARMAN

**Great 1947 SERVEL GAS REFRIGERATOR**



BIG FROZEN FOOD LOCKER  
 MOIST COLD, DRY COLD  
 STAYS SILENT, LASTS LONGER

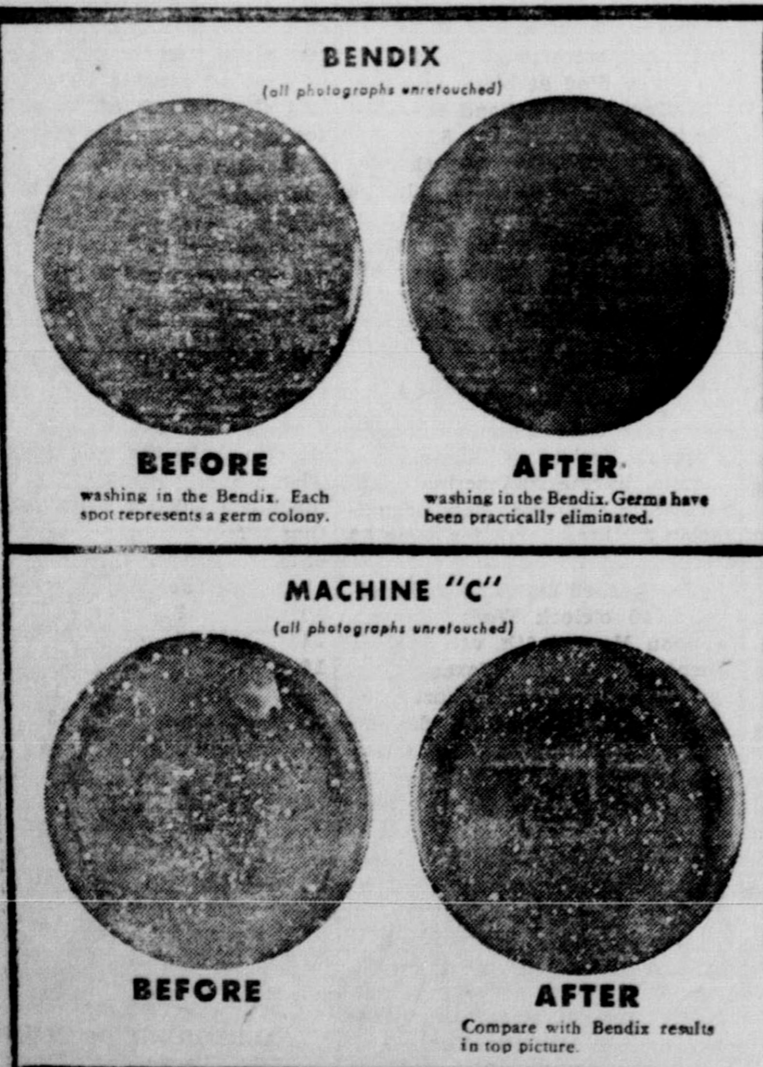
STAYS SILENT, LASTS LONGER  
**Servel**  
 The GAS Refrigerator

It's here—the famous silent Servel Gas Refrigerator with no moving parts in its freezing system! New and finer for 1947, it brings you every modern refrigeration convenience. A big Frozen Food Locker, plus moist cold and dry

cold for fresh meats, fruits, and vegetables, plus the basically different operating system that more than 2,000,000 happy owners know stays silent, lasts longer. Come see the new Servel Gas Refrigerators now on display.

**R. E. LEE OIL COMPANY**  
 SPEARMAN, TEXAS

**The facts you need to choose a washer wisely!**



No general words... no vague statistics... but actual, unretouched photographs

SHOW THE BENDIX METHOD IS MORE THOROUGH!

At last it's possible to know in advance what results to expect from the washer you buy. No more disappointments if you read and heed the results of tests just completed by America's largest independent testing laboratory.

The Bendix outwashed all others tested for both soil and germ removal.

Matched against three leading non-automatic washers in two-way tests of washing thoroughness, the Bendix did a much better job than any of the others, according to reports from the Pittsburgh Testing Laboratory.

In soil removal tests, the Bendix automatic Home Washer removed 23.3% more soil than the "next-best" machine tested.

In germ removal tests, the Bendix did 10 times as good a job as the other washers tested!

Best way is also thriftiest and easiest!

According to the Pittsburgh Testing Laboratory's report, the do-everything Bendix used 40% less soap than the average of the other washers tested, and averaged 10 gallons less water for a single load of clothes! Get the whole story and see a demonstration at your authorized Bendix Dealer's.

BENDIX DE LUXE

(Illustrated)

\$26950

with normal installation

BENDIX STANDARD

\$24950

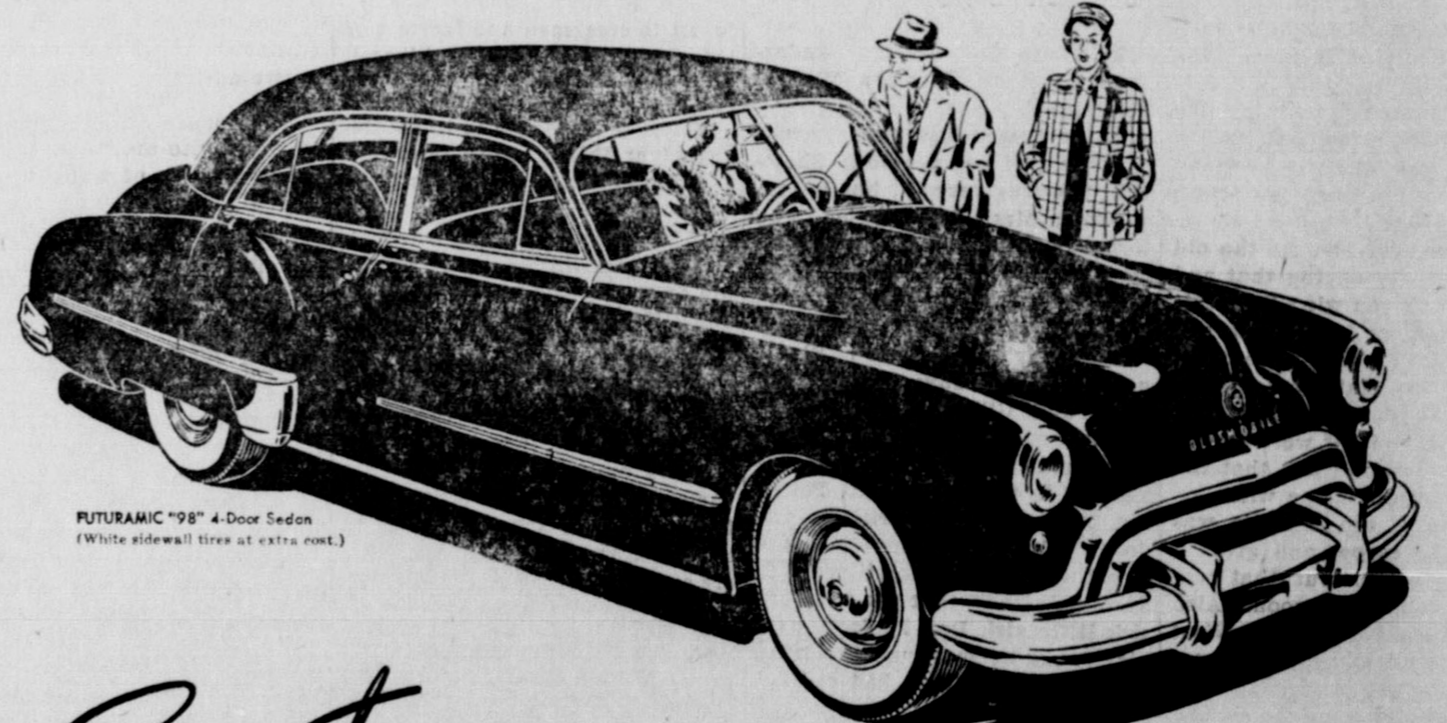
with normal installation

**BENDIX**  
 automatic  
**Washer**



COME SEE HOW THE BENDIX WASHER GETS CLOTHES SO EXTRA CLEAN!

**COMMUNITY PUBLIC SERVICE CO.**  
 Spearman, Texas



FUTURAMIC '98" 4-Door Sedan (White sidewall tires at extra cost.)

*Smart Lines!*

ALL THREE LINES OF THE  
**1948 OLDSMOBILE**



OFFER  
 The SMART choice is the new Oldsmobile... and look what a wide choice it offers. 31 models! 10 body types! 2 engines! And every single Oldsmobile is available with GM Hydra-Matic Drive! This is the original "no-clutch, no-shift" drive—the General Motors drive that gives you "Whirlaway" action!



FUTURAMIC OLDSMOBILE—it's the "48" for '48—Oldsmobile's Golden Anniversary model—the car of the year in public acclaim and acceptance! The Futuramic Oldsmobile offers General Motors' eagerly awaited new Body by Fisher. It's lower, wider, roomier—affords greater visi-

bility in all directions—and it's styled throughout with typical Oldsmobile smartness. In the lower price classes, the car that's really "going places" this year is the bright, sparkling Dynamic Oldsmobile—available in two complete lines, the "60" and the "70" for 1948.

With GM Hydra-Matic Drive\*, and with a choice of 6- or 8-cylinder engines, they're tops in performance and dependability—worthy running mates for the Futuramic Oldsmobile "98's!" Turn in your scrap... to turn into steel... To help turn out your OLDSMOBILE

YOUR OLDSMOBILE DEALER

**W. M. GLOVER**  
 Spearman, Texas

### Farm Topics

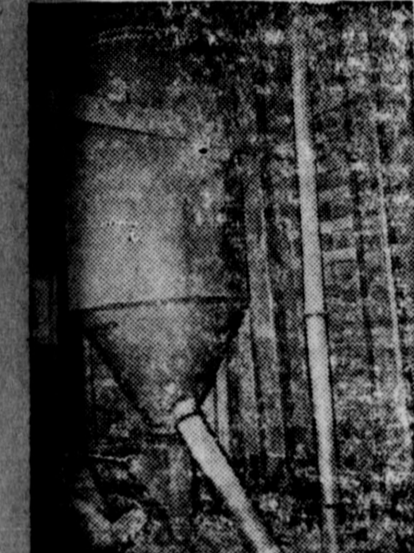
#### Automatic Mixers Available on Farm

#### Electricity Cuts Down On Farm Labor Costs

By Bob Wilson

Feed mixing, like an increasing number of other farm chores, now is being placed on practically an automatic basis and coordinated with related activities. In this case, mixing is coordinated with cribbing and grinding operations.

Generally, mixers are located either adjacent to the grinder or in the barn now almost directly above the mill. The two-ton mixer, shown in the accompanying illustration, is in the mow of a Midwestern farm. When processing operations begin, shelled corn, which has been blown



Such a mixer will save labor.

into a bin to the right of the mixer, drops through a chute to the grinder on the floor below. The blower pipe is shown at the right of the mixer.

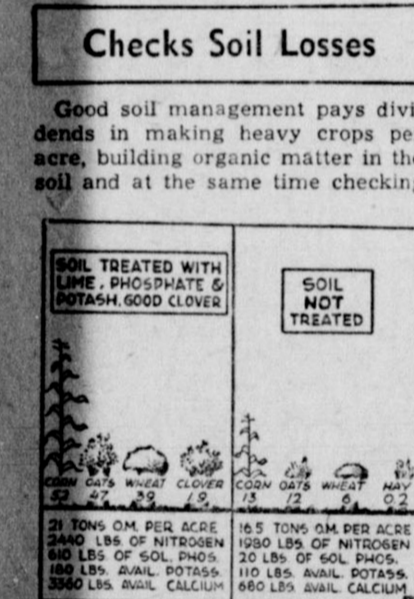
After grinding has been completed, the ground grain is blown into the mixer and necessary supplements added. The thoroughly mixed grain then flows out of the mixer and down a chute to be loaded into a feed cart on the first floor.

The only manual work required is dumping the sacked supplement into the mixer. A conventional type blower cribbs the whole grain automatically, while the blower attachment on the electrically powered grinder returns the ground grain to the mixer.

Setup of this type are becoming commonplace on scores of electrified farms. They can be constructed at relatively small cost and, in most cases, by unskilled farm labor.

#### Checks Soil Losses

Good soil management pays dividends in making heavy crops per acre, building organic matter in the soil and at the same time checking



erosion. The results shown above summarize tests at the University of Illinois Elhazabettown experiment field since 1918.

Manure, lime and phosphate made the difference between the two plots. The soil was already rich in potash.

The heavy crops of alfalfa-clover and small grains protected the soil from beating rains. The soil of the treated plot with its 16 tons of organic matter per acre could soak up more water faster than the soil of the untreated plot with only five tons. Less water was left to run off and carry soil with it.

For erosion control on longer slopes a crop rotation that includes more years in soil protecting crops such as legume grass mixtures is advised. Full fields on a 12 per cent slope such as was in this field would need a rotation of corn, winter grain and two or three years of legume-grass mixtures for best results. Contour farming, strip cropping and terracing would help, too, to slow down the water so that more would have a chance to soak into the ground.

#### Three Major Problems Face Pork Producers

The pork producer faces three problems as he makes plans for 1948, say Michigan State college specialists. A short corn crop, a relatively narrow corn-hog ratio and a stressed feed conservation program are the problems to be met. The danger is that too few sows will be bred for spring pigs and there may not be enough hogs to consume the corn crop produced in 1948.

#### Sets Up Crime Lab

Wisconsin has set up a state crime laboratory with \$100,000 appropriated by the legislature, the Council of State Governments reports. The laboratory will serve as a clearing house for technical and scientific aid to police officers throughout the state, operating probably from University of Wisconsin. Officials also hope to set up moving laboratories on wheels to give on-the-spot aid to crime investigators.

#### Gravity System Removes Moisture From Dairy Barn

Among inquiries that Michigan State college agricultural engineering department receives from farmers, one of the most common deals with moisture condensation in dairy barns.

A. J. Bell, agricultural engineer, says that air in a dairy barn is just about saturated with moisture. When this warm, moist air comes in contact with a cold surface, such as an outside wall, the air cools and the moisture condenses.

The answer to the problem lies in a good ventilation system and warm—rather than cold—walls.

A mature cow gives off in breathing about eight and one-half quarts of water in 24 hours. A large herd of cows gives off a large amount of moisture that must be removed by ventilation. A gravity system, designed to fit the needs of the barn, works well. When a more elaborate system is desired, electric fans can be installed to draw out the moisture-laden air.

#### Cancer of Hard Metals

Just as cancer originating in the body cells is one of the principal causes of human death, the breaking up of the basic crystals or "cells" of hard metals accounts for more failures in modern engineering practices than any other single factor, according to SKF metallurgists. Steel, like all metals, is crystalline. In the carefully heat-treated parts of bearings, these crystals are exceedingly small, but they are still crystals. The cohesive forces which hold material together are stronger toward the interior of such crystals than they are across the areas where one crystal meets another. Since the crystals are irregularly shaped, it seems for instance, reasonable to conceive points in steel where two, three or more crystals meet and where the cohesive forces, therefore, would be particularly weak and subject to cracking or breaking under prolonged strains.



#### Uncle Sam Says

The kid in upper 4 captured your heart during wartime. In spirit you traveled with him toward his uncertain future on the battlefields. The kid upstairs today is yours. The "kid" may be a freckled boy or a curly haired little girl—your son or daughter who will need your help through savings to find a place in everyday life. The Payroll Savings Plan for buying United States Savings Bonds where you work is the only automatic, safe, profitable way for you to buy bonds by the installment payment method. In this way you can build the nestegg which can make the difference between wishing and having the funds for your children. If you are self-employed, buy bonds automatically through the Bond-A-Month Plan where you bank.

U. S. Treasury Department

### In Ping Pong or GASOLINE

# IT'S CONTROL THAT COUNTS!

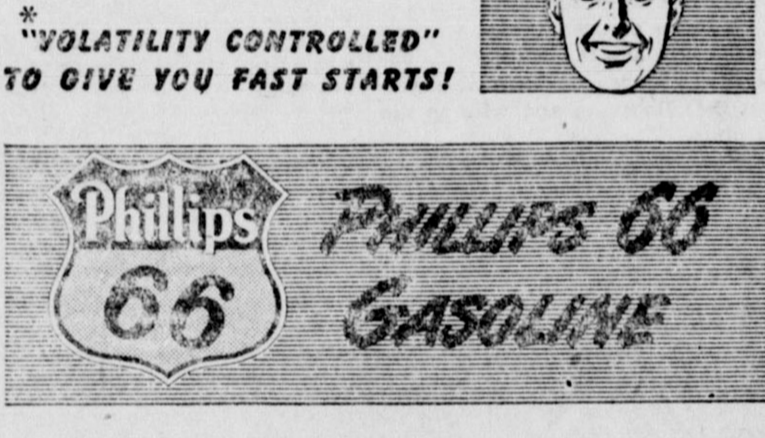


### PHILLIPS 66 IS CONTROLLED\* FOR QUICK STARTS AND PLENTY OF POWER!

It takes a pretty neat touch to keep that little white ball on the table . . . and it takes plenty of control to build a gasoline as good as Phillips 66, too!

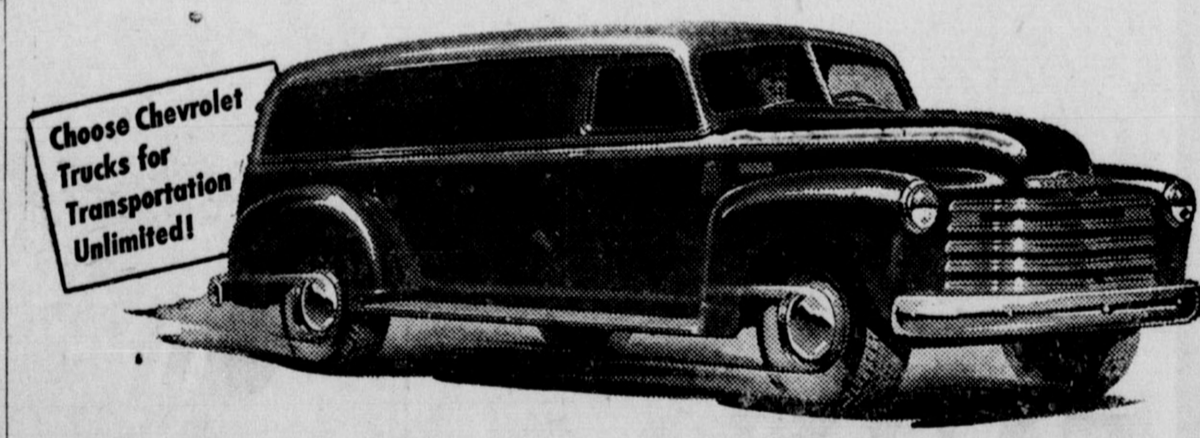
The trick we use is to control the blending of the high-quality components that go into Phillips 66 to fit your driving needs in hot weather or cold!

Give your car a break with Phillips 66 Gasoline next time. The proof's in the performance!



# CHEVROLET

## Advance-Design Trucks



# LOWEST IN PRICE

Only Chevrolet Advance-Design trucks have these new and finer features!

**NEW CHEVROLET 4-SPEED SYNCHRO-MESH TRUCK TRANSMISSION** in heavy-duty models that offers new operating ease and efficiency.

**NEW STEERING COLUMN GEARSHIFT CONTROL** in models with 3-speed transmissions provides greater driving ease and convenience.

**NEW FOOT-OPERATED PARKING BRAKE** providing clear floor area, safety and efficiency in models with 3-speed transmissions.

**SPINED REAR-AXLE SHAFT ATTACHMENT TO WHEEL HUB** of greater strength and durability in heavy-duty models.

**NEW IMPROVED VALVE-IN-HEAD ENGINE** has greater durability and operating efficiency.

**THE CAB THAT** is heated in cold weather—drawn in and used air forced out!

**Plus:** • Uniflow, all-steel cab construction • New, heavier springs • Full-floating hypoid rear axles • Specially designed brakes • Ball-bearing steering • Wide base wheels • and many others!

*\*Fresh air heating and ventilating system optional at extra cost.*

**CHEVROLET and ONLY Chevrolet IS FIRST!**

McClellan Chevrolet Co. Spearman  
Gruver Motor Company Gruver

#### CLASSIFIED ADS

Notice, classified display advertising and news columns close at noon every Tuesday. Please arrange for advertising early, also bring in your news items promptly.

**TRANSFER AND STORAGE**  
Careful and experienced moving. Special care given your furniture. Plenty of storage space. BRUCE AND SON, Transfer and Storage, 227 N. Harvey, Pampa, Texas. Phone 192. No. 21 rtn.

**FOR RENT, FURNISHED** apartment, 1 block E. of new Baptist church. (Please come to South entrance, not to east entrance.) Call 27. 14-rtn

**FOR RENT:** large nicely furnished sleeping rooms. Adjoining bath, plenty of hot water. Private entrance. 4 houses north of the school building. Phone 38J. 14-21-C

**For Rent:** Sleeping rooms for men or women. Call 27. 14-21c

#### LAND BARGAIN:

377 acres of perfect farm land, now in grass, located 12 miles East of Amarillo, running one mile on 66 highway. No improvements. Priced at \$60.00 per acre. H. N. Wheeler, Amarillo Bldg., Amarillo, Texas, Phone 829.

**FOR SALE:** Dairy and Cattle ranch adjoining the village of Grover, Colorado, situated on Railroad in Crow Creek valley and on all weather highway. Good high school and other suburban development. The greater part of the land is under lawn with a shallow and inexhaustible supply of water from Crow Creek. The land lays level to slightly rolling and neighbors believe that alfalfa would grow in abundance. All fenced and being used for hay and pasture. Seven room house, garage granaries, shelter sheds, water supply system, well and windmill, telephone and REA. Schools, churches, stores, etc. within walking distance. Two sections leased grass goes with sale. Priced at \$26.00 per acre.

**FARM for sale** at Pine Bluffs Wyoming, 960 acres, mostly level land. Immediate possession at \$32.50 per acre.

Several other tracts, large and small, priced from \$30.00 to \$65.00 for irrigated land.

J. L. Noel, P. O. Box 460, Phone 239W Pampa, Texas. 13-31-C

**For Sale:** 5120 acre ranch in Hansford County, Texas, 480 acres good farm land, 350 acres alfalfa, balance good grass. See call or write - Gerald Dixon at First National Bank Bldg., Guyton, Oklahoma. 13-31c



Through actual experience of trying our Butane gas service, the citizens of Spearman are of the opinion that the LEE OIL CO. offers a service that is economical. We'd like to number you among our ever growing satisfied customers. Let us install a new range, too.

**LEE Supergas**  
BUTANE & PROPANE SERVICE  
Phone 41 - Spearman, Tex.

When yer on the horns of a dilemma let yer consthunts be yer guide!

217 Spearman, Texas

RENDERING AMARILLO COMPANY

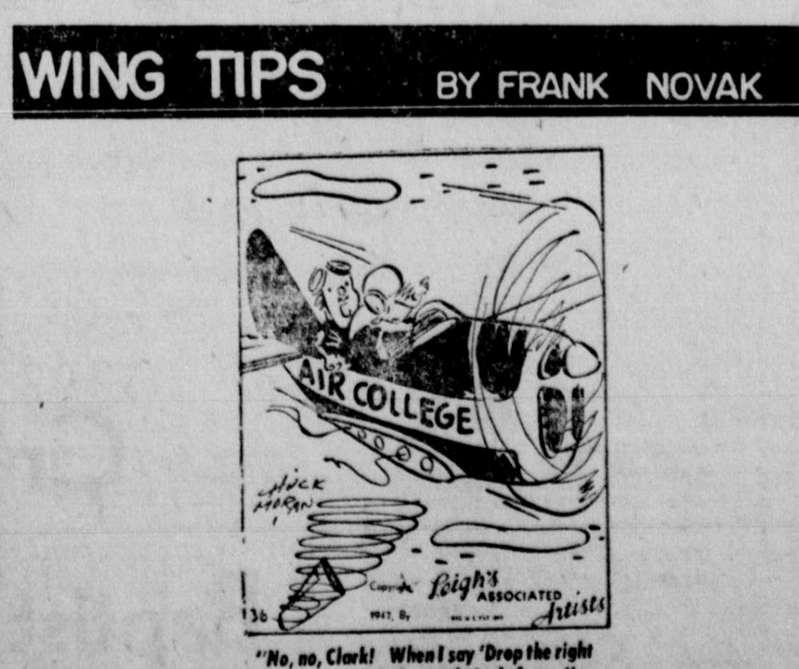
#### FAST SANITARY SERVICE

Remington Adding machines - seven column capacity - with and without subtraction. Electrics available soon. - Filing cabinets and filing supplies -we service all makes office machines. If interested call 10 Spearman.

**BORGER TYPEWRITER COMPANY**

#### WING TIPS BY FRANK NOVAK

NOVAK FLYING FIELD  
ALL G.I.'S INTERESTED IN FLYING CONTACT FRANK NOVAK  
ROUTE A SPEARMAN, TEXAS



#### MEMORIALS

We are in a position to provide the best in memorial stone and coping, and grave covers.  
J. H. NICHOLS

**POSTED**  
The Joseph W. Jones Ranch is posted. Absolutely no fishing, no hunting, no trespassing.  
Gwenfred Lackey. 28-400

#### Professional Directory

### Jump Our way for Hardware Needs

**SPEARMAN HARDWARE**

**RADIO and Appliance REPAIRS**  
Davis Electric  
Phone 107  
Or See Dub

#### Real Estate

Loans And Insurance  
**E. C. GREENE**  
Phone 226  
Spearman, Texas  
Box 145

**Dr. G. S. BURK**  
Optometrist  
6 S. W. First Ave  
Perryton  
Phone 9

**SANFORD HOSPITAL and CLINIC**  
PERRYTON, TEXAS  
Herbert M. Sanford, M. D.  
Roy K. Sanford, M. D.

**Boyer & McConnell**  
Attorneys-At-Law  
309 1/2 S. Main  
Perryton Texas

**T. D. SANSING**  
Attorney At Law  
SPEARMAN TEXAS

**HANSFORD LODGE 1040 A. F. & A. M.**  
Regular communications 2nd and 4th Monday of each Month.  
Howard Brillhart W. M  
Freeman Barkley Secy.

**Frank M Tatum**  
—Attorney At Law—  
Dalhart Texas

#### SUCCESSFUL FARMING

Is Based On Sound Management

The wise use of farm credit will go a long ways to help you succeed. LAND BANK LOANS are designed to fit your needs. Get your farm mortgage credit the Cooperative Way—thru the System that has saved farmers and ranchers millions of dollars in interest and has financed more than a million farms.

Bring your farm and ranch financing problems to the Secretary - Treasurer of the Spearman National Farm Loan Association serving Hansford and Hutchinson counties.

**Spearman National Farm Loan Association**  
Phone 108 E. N. RICHARDSON, Secy. - Treas.

A COMPLETE SUPPLY OF MONUMENTS AND MARKERS IN STOCK.

**OSGOOD MONUMENT Company**  
800 TAYLOR STREET PHONE 2-0614  
AMARILLO, TEXAS

**Dependable Service Since 1906**  
CERTIFIED "ROCK OF AGES" DEALER

Whether it is a mirror for your home or your compact, we have it. Beautiful or plain in circles, rectangles, squares and ventians.

Full length mirrors for doors or large ones for Mantels. These are the best quality polished plate that gives only a perfect reflection.

Auto and House Glass Plate Glass  
**DALEY GLASS SHOP**  
Phone 146 Perryton, Tex





# The Spearman Reporter

SUCCESSORS TO THE MANSFORD HEADLIGHT  
PUBLISHED THURSDAY OF EACH WEEK  
WILL A. MILLER, EDITOR AND PUBLISHER

Entered as second class matter on November 21, 1933, at the postoffice at Spearman, Texas, under the Act of March 3, 1879.

In Mansford and adjoining counties, One Year, \$1.50  
Out of Mansford and adjoining counties, One Year, \$1.00

**CLASSIFIED ADVERTISING**  
First insertion, 6¢ per word. Ten words for every line thereafter.  
Card of Thanks, 4¢ per word. Display rates on request.

**NOTICE TO THE PUBLIC**—Any erroneous reflection upon any reputation or standing of any individual, firm or corporation that may appear in the columns of The Spearman Reporter will be corrected when called to the attention of the management!

## Editorial

### Can We Afford National Defense?

The Communist coup d'etat in Czechoslovakia, coupled with Stalin's demands for a "defense" agreement with Finland and mounting totalitarian pressures in France, Italy and other European countries, has brought the international situation to its worst point since 1939.

It is clear that those who dislike and envy us abroad respect only one quality in a country—and that quality is military strength. It is not war mongering to say that the United States must maintain a defense establishment far more effective than any we have had in peacetime so long as the world remains in its present explosive state. That is simply insurance for our survival.

According to those who know best, all branches of our military forces, Army, Navy, Air Force and Coast alike, are in a dangerously weak condition. We have sunk, in the space of about two years, from the greatest military power on earth to a third rate military power.

This was only partially the result of the postwar demobilization. The armed services have been denied requested appropriations for research and development which they consider absolutely vital if they are to keep pace with the Soviet Union, whose army is reported to be at wartime strength. This has been done of course, in the name of economy. But while military budgets have been cut, there has been the most flagrant waste in other directions.

As an example, no one can say that socialized government power plants are necessary to the nation—taxed, regulated private industry can provide the service at the lowest practical cost. Yet the billions that we are now spending to operate these plants, and to build new ones, are far in excess of what the armed forces want for basic research. Those billions would help to make the difference between a progressive, prepared armed force, an one which is going down hill. The proposed St. Lawrence Seaway is another example of an incredibly costly public work that, in the view of many experts, is not exceeded and could not possibly justify itself on economic grounds. And so are various flood control and reclamation projects that, in reality, are a camouflaged form of public power development which simply duplicates existing adequate facilities.

This is not a political matter. The national defense is the first function of government, regardless of what party is in power. And to say we cannot afford a first rate

military establishment at a time when we are wasting untold billions, is to criminally mislead the people.

### NOW I CAN SIT DOWN

By Walking Man  
JACK BENNY

Boy, am I tired!

For eight weeks I've been walking while practically everyone in the country was trying to figure out who I was. Although it was one of the most wonderful experiences of my life, it was one of the most difficult because there I was in possession of one of the big secrets of the year and couldn't tell a soul.

Now all my friends are sore at me because I spent weeks trying to help them work out the jingle and clues and didn't even give a hint that I might be the "Walking Man".

My wife Mary will hardly speak to me because she thought it was Babe Ruth, and I agreed with her. At least once a week Van Johnson and I argued about the identity of the gentleman. He was inclined to think it was Doak Walker and finally I agreed with him. I saw Van last night after it was all over and all he did was look sad and shake his head. I'm afraid to go to my golf club because the entire membership has been working on the contest, and when I walk in they'll probably beat me to death with a niblick.

My toughest problem was with Mary. You see, each Saturday night, I had to go to a house way up in the Hollywood hills with Ralph Edward's engineer


and yet I had to do a program about the contest on Sunday, immediately following the announced winner. So we just wrote a regular show, and on Saturday night, after I was identified, I gathered my writers together and we worked until three the following morning to write a new show.

If you happened to hear the show and liked it, you may have guessed that the "Walking Man" was tired. I think I'll sit down for a while.

My writers had no idea it was me. In fact, they worked up a gag on the "Walking Man," and I got a big kick out of hearing them explain the contest to me so I could understand the humor of the joke.

One of my big problems was my own program after the identity of the Walking man was guessed. I couldn't tell the writers,

TAKE A TIP FROM *Elois*



SERVE **Borden's** GRADE A MILK AND OTHER FINE DAIRY PRODUCTS

Fresh Daily AT YOUR GROCER

If it's Borden's It's Got To Be Good! See Why Our Ice Cream Tastes!

Keep all your records safe and accessible

Use **TRANSFILE** FILMS



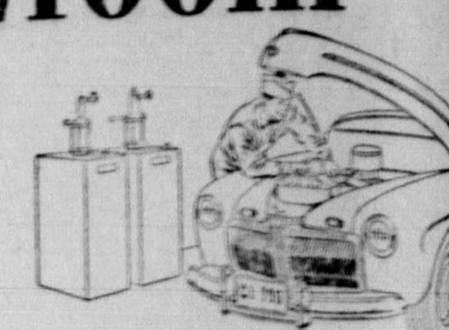
Steel Fronts Are Available Again In All Sizes

Now all your records—film in various emergency situations—can be kept in safe, clean, orderly fashion in Transfile TRANSFILE three board film. Now it's so easy to get all those valuable records in usable, accessible condition once again. The steel front TRANSFILE films are available in all sizes.

SPEARMAN REPORTER

# Care in our shop sells cars in our showroom

The better we service Fords today the more Fords we'll sell tomorrow



We know that the customer who's happy with our service will want to get on our list for a new car. That's one big reason why we make it a point to give the best Ford care for less money.

And fortunately we're in the position to do it. Our 4-way Ford service gives you the advantage of:

- 1. Ford-trained Mechanics** ... their experience saves you time and money
- 2. Genuine Ford Parts** ... made right, fit right and last longer
- 3. Factory-approved Methods** ... engineer-designed for better service at lower cost
- 4. Special Ford Equipment** ... just right for Fords. Saves you time, money and trouble

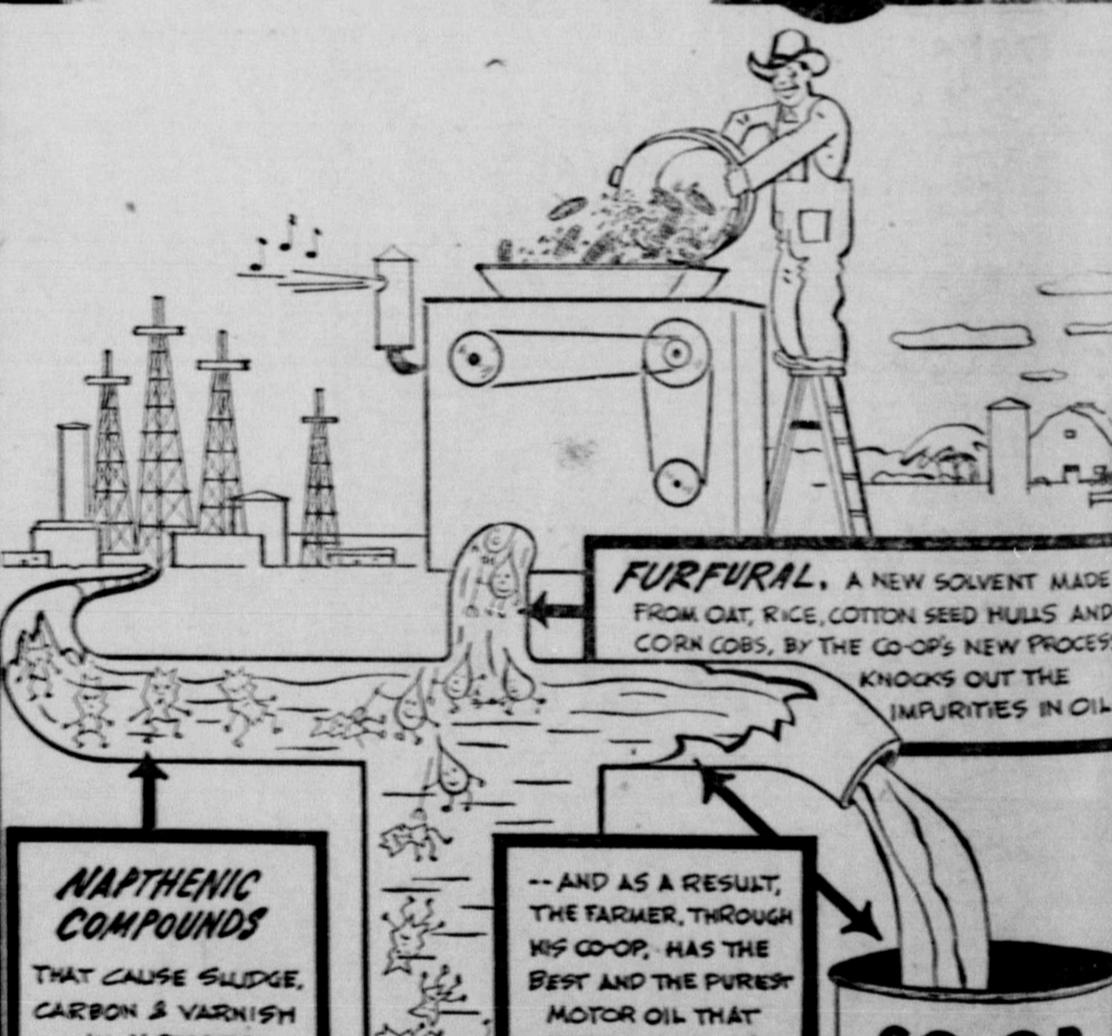
Come in soon and see for yourself why there's no place like "home" for Ford service.

Your Ford Dealer invites you to listen to the Fred Allen Show, Sunday Evenings—NBC Network. Listen to the Ford Theater, Sunday Afternoons—NBC Network. See your newspaper for time and station.



## We Ford Dealers know Fords best! Woodward Motor Co.

## CO-OP PRESENTS A GREAT NEW OIL



**FURFURAL**, A NEW SOLVENT MADE FROM OAT, RICE, COTTON SEED HULLS AND CORN COBS, BY THE CO-OP'S NEW PROCESS, KNOCKS OUT THE IMPURITIES IN OIL.

**NAPHTHENIC COMPOUNDS** THAT CAUSE SLUDGE, CARBON & VARNISH IN MOTORS

-- AND AS A RESULT, THE FARMER, THROUGH HIS CO-OP, HAS THE BEST AND THE PUREST MOTOR OIL THAT MONEY CAN BUY!

**CO-OP PREMIUM MOTOR OIL**

This great new oil that is big news to oil users is the new Furfural Solvent Refined oil... it is available in two types: CO-OP PREMIUM and CO-OP HEAVY-DUTY.

Furfural is an amazing new filter, now being used in the Co-Op refinery to purge oil of Naphthenes—those elements in ordinary oils that cause sludge and carbon to form in your motor.

That's why the Co-Op Solvent Refined Oil is big news for your engine. It means the virtual elimination of motor-wearing carbon and sludge. It means instant lubrication on starting. It is the oil that will retain full "oiliness" under greatest heat and flow freely even in coldest weather.

You'll like the great new Co-Op Solvent Refined Oil... your engine will like it too! Buy it at your local Co-Op.

Furfural is made of oat hulls, rice hulls, cottonseed hulls, corn cobs, and other farm by-products. It cleanses oil of impurities that refiners have sought for years to get rid of, the impurities that cause sludge and carbon to form.

## Boys and Girls FLY YOUR KITES Safely

### Away from Electric Lines!

Kite flying is great fun but danger lurks when kites are flown near electric lines. Many a child has lost his life using wire for a kite string or climbing a pole to get a tangled kite. Play safe by following these rules:

1. Use only dry, cotton string to fly your kite.
2. Do not use metal or wire on kites.
3. Do not climb a pole to get a tangled kite.
4. Fly your kite only in open fields away from power lines or busy highways.

If your kite becomes entangled in electric wires, don't risk injury by trying to get it down yourself. Call our office and we'll send a man to remove it for you safely.

### Woodward Motor Quiz Program

10 WHICH OF THE FOLLOWING REQUIRES THE MOST FOOD, IN PROPORTION TO ITS WEIGHT?

A. BARY  
B. SUP  
C. BIRD  
D. FISH

THE "OLD GRADS" ARE SINGING

A. CAROLINA MOON  
B. OLD McDONALD  
C. THREE LITTLE KITTENS

WHAT PART OF THE U.S. WAS PURCHASED FROM A DICTATOR?

A. TEXAS  
B. INDIAN TER.  
C. LOUISIANA TER.  
D. PHILIPPINES

There's no question about it; Bird, Old McDonald and Louisiana Territory answer the above questions and the WOODWARD MOTOR COMPANY offers the most dependable car and truck maintenance at the most reasonable prices.

Woodward Motor Company  
Sales, Ford, Service  
PHONE 45 SPEARMAN, TEX.

COMMUNITY PUBLIC SERVICE COMPANY

Consumers Sales Company

**Reckless Passing, Driving Wrong Side Of Road, Major Cause For Traffic Accidents**

By Dr. Walter A. Cutter  
The latest available figures indicate that more than ten percent of the motorists involved in all fatal accidents were driving on the wrong side of the road. On rural highways, about 13 out of every 100 fatal accidents can be attributed to too late or with too little passing too fast, too soon, thought.

The inherent risk involved in passing is the unknown. Vertical curves, hills or a roadway may restrict vision and hide vehicles just beyond the area of vision; horizontal curves often conceal what lies ahead, and approaching vehicles frequently blend deceptively with the background. Passing on the wrong side is often an accident cause. The safest practice, and generally the only lawful one, is to pass on the left. Multiple-lane express highways and street cars sometimes provide exceptions to this rule.

Misjudging the speed of other cars is another cause of mishaps. About the only way the speed and distance of an oncoming vehicle can be judged is the rapidity with which it passes such landmarks as telephone poles, billboards and buildings, and this comparatively accurate judgement can only be made when the car approaches from directly ahead.

There is always the danger that the passing driver may be forced to swing back to his original position in the line because oncoming traffic has made it pass. Many times the driver's original position on the highway has already been filed. To guard against this, if the driver will ease his vehicle slightly over the center line at a safe distance to the rear of the vehicle in front, and assure himself of enough distance ahead to complete the pass, he can always swing safely back in line if necessary. In general, a clear open road of approximately 1,000 feet and an allowable time interval of 12 seconds is a safe margin.

In addition accident comment these special precautions:  
1. A standing street car or bus taking on or discharging passengers should never be passed on the right unless the landing area is protected by a safety zone.  
2. Vehicles should not pass on approaching curves, crests of hills, railroad grade crossings or at any intersections.  
3. Never attempt to pass vehicles that are travelling at top speed or at maximum safe speed, and never attempt to pass when the required passing speed is greater than that allowed by the local law.  
4. Indicate well in advance the desire to pass, either by shifting position of the car into the correct lane or by the use of hand signals or both.

The urge to pass every vehicle is an indication of emotional immaturity and has no place in the mind of the expert driver who makes it as difficult as

possible for other cars to pass him is equally childish and dangerous. Nearly everyone has at some time been the near victim of the speed demon, who, due to some psychological quirk in his make-up, cannot bear to stay behind the car ahead; or the road hog who straddles the center line, refusing share the highway with anyone not complying with his prescribed rate of speed. The rule keep to the right except when passing should be adhered to by all motorists, whether they are moving at 20 or at 50 miles an hour.

**THE HIGHWAY Gambler**

It is hard to imagine a gambler so desperate to win a very small prize that he would stake his own life, his family's or some other person's.

Unfortunately, it is not at all hard to imagine a motorist doing the same thing on the highway. Reckless passing, of which gambling is the prime ingredient, causes 49,000 accidents a year in which some one is killed or injured, according to accident reports. That is a lot too much gambling with life, and it does not include the thousands of chance takers who have won the toss thus far. Unless they mend their ways and soon, they or their victims will be

**HOW TO KILL IT. ATHLETES FOOT GERM IN ONE HOUR.**

If not pleased your 35c back Ask any druggist for this strong fungicide, TIE-OL. Made with 99 percent alcohol, it Penetrates Reaches and kills MORE germs faster. Today at **SPEARMAN DRUG**

next years statistics.

The psychology of improper passing seems to be a blind optimism on the part of the driver that nothing is coming around the curve or over the hill to catch him while he is on the wrong side of the road. The fact that he has no way on earth of telling whether or not the way is clear, no second sight, X-ray eye and no radar equipment to guide him, does not enter into his calculations at all. He is tired of poking along in line, it makes him feel superior to the other fellow to go whizzing past, and he feels pretty smug when he makes it safely. Smart driving, he tells himself. I knew nothing was coming.

What if he fails? Have you ever seen a bad accident? Do you remember the grinding of metal, the shattering glass, the screaming passengers, the blazing gas and oil, the blood

on the highway?

Shocking? Of course. But so is our annual toll of ventable death and injury. Don't gamble with lives.

**NEW OLDSMOBILE**

The new Futuramic 98 Oldsmobile is powered by a 115 h. p. eight cylinder engine, fitted with a new high-compression head. This engineering development has noticeably increased the power performance of the Oldsmobile 8 and has made it one of the smoothest operating power plants ever offered to the Oldsmobile customers.

The new body of the new Oldsmobile has better vision all around. There is 30 percent more area in the new curved windshield and 58 per cent more area in the curved rear window. The side windows in this model have been enlarged too, with the result that blind spots are reduced to the minimum without sac-

rificing steel 'tuuret-top' safety, pioneered by Fisher Body.

A broader lower hood increases the drivers' vision ahead and reduces the danger of striking objects hidden from view in older model cars.

**Christian Science Service**

"Matter" is the subject of the Lesson-Sermon which will be read in all Churches of Christ, Scientist, on Sunday, March 21, 1948. The Golden text is: Love not the world, neither the things that are in the world. If any man love the world, the love of the Father is not in him".

Among the citations which comprise the lesson sermon is the following from the Bible: Vanity of vanities, saith the preacher vanity of vanities; all is vanity".

The lesson sermon also includes the following passage from the Christian Science

ience textbook, "Science and Health with the Key to the scriptures, by Mary Baker Eddy: "The perfect Mind sends forth perfection, for God is Mind. Imperfect mortal mind sends forth its own resemblances of which the wise man said All is vanity".

**Dog Tags for Children**  
If children wore identification discs similar to those of the armed forces there would be fewer lost children, and better and quicker emergency treatment would be possible in many cases of accidental injury. Dr. Edward Press of the U. S. children's bureau recommended to American Medical association. Information on the tag as to the child's blood type, bleeding tendency, serum sensitivity and whether immunized against lockjaw, would facilitate emergency treatment and might well save the child's life in case of accident.

Texas County Registered Hereford Breeders

Association SALE

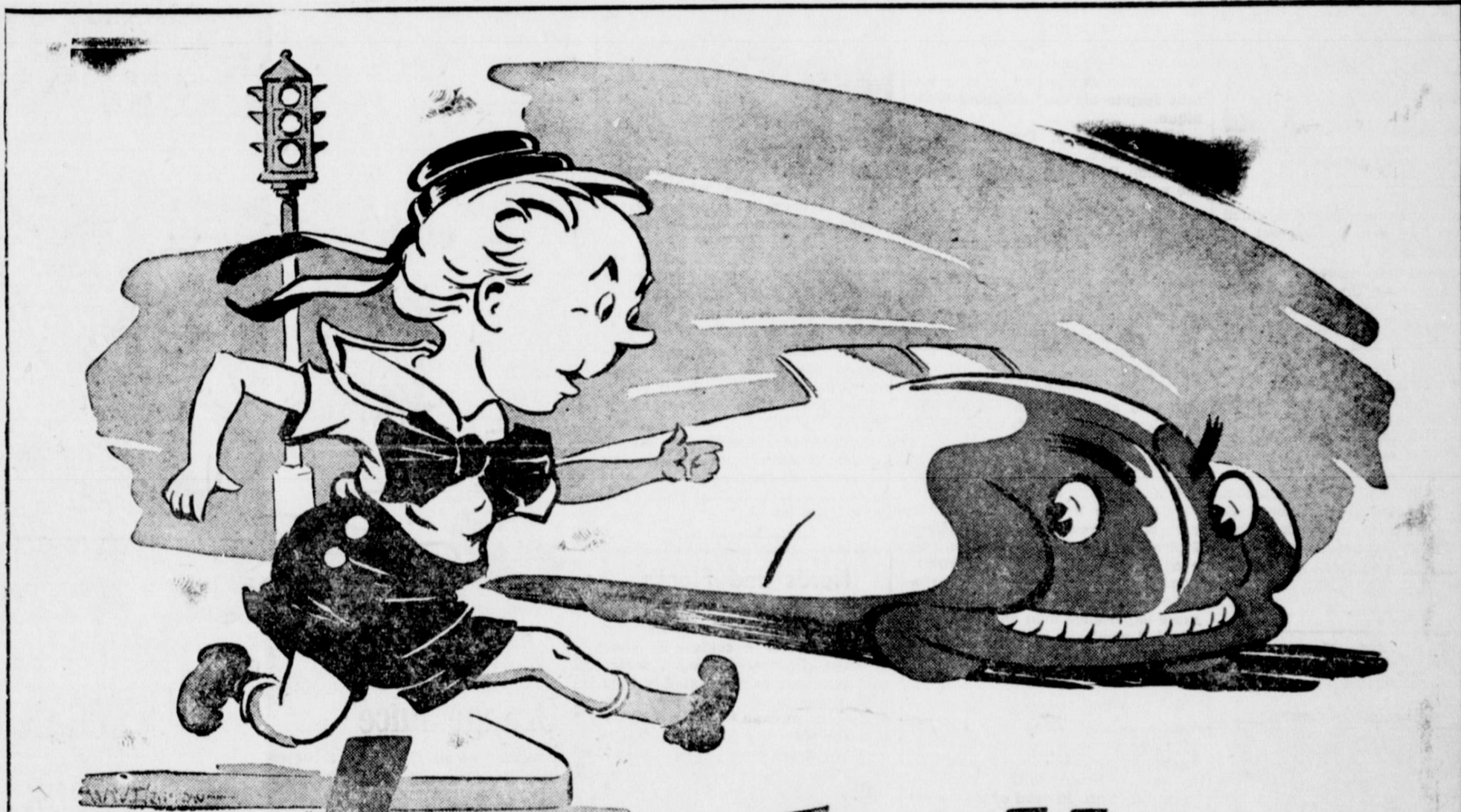
THURSDAY March 25, 1948

30 BULLS — 30 FEMALES

This Sale Was Postponed Because of Weather

Conditions from February 13th

Guymon, Oklahoma Clifford Hatcher - Sec.



**LITTLE JACK HORNER**

Ran from the corner,  
when the light was RED;  
He didn't get far,  
when hit by a car  
SO NOW POOR JACKIE IS DEAD

This Jack Horner isn't a first-grader who doesn't know any better. Grade school children have better safety records than adults. No—this Jack Horner is you.

Three out of every four pedestrians killed are breaking a rule—jaywalking—crossing in middleblock—disregarding a traffic signal. What a tragic waste of 9,000 lives a year!

Next time you cross the street, wait for that green light! Cross only at crosswalks; don't rush out from behind parked cars. Where there are no signals, look both ways before crossing. Spend an extra second and stay alive!



THIS MESSAGE MADE POSSIBLE BY THE FOLLOWING BUSINESS FIRMS OF SPEARMAN

- McClellan Chevrolet Company
- Spearman Super Service Station
- Corner Service Station
- R. L. McClellan Grain Co.
- Consumers Sales Company
- Bruce - Pontiac Company
- Foxworth-Galbraith Lumber Co.
- Spearman Drug Company
- B. And C. Equipment Company
- Pattison Motor Supply
- Joe Smith, Massey-Harris Company
- Boxwell Brothers Hardware and Furn. Co.

**We're In The Same Boat With You**



Yes, it's tax paying time, and Reddy Kilowatt will be paying his too. And, your Public Service Company is a large tax payer, the largest in many of the communities it serves.

Our taxes go to local school district, county, state and federal treasuries to help provide governmental services for the folks we serve.

**SOUTHWESTERN PUBLIC SERVICE COMPANY**  
23 YEARS OF GOOD CITIZENSHIP AND PUBLIC SERVICE

