

Commissioners Raise Employees Salaries

County Commissioners met January 12. The first item on the agenda was the approval of the minutes of the December 22 meeting.

A Salary Grievance Board was appointed. The Board includes Judge Lee, County Clerk Marie Gould, County Treasurer Selma Reneau, Sheriff R. L. McFarlin and four people from the last grand jury, David Fletcher, Lorene Schick, Gary Doty and Elvagne Dixon.

Commissioners passed an order raising salaries of county employees 8% effective January 1, 1976, and for elected officials 8%, and commissioners 5%, after a hearing on January 22. They also passed an order to raise car mileage for the sheriff to 17¢ a mile from the present 15¢ which is also subject to the hearing.

They passed an order making it optional for employees who have military service to use the service time in their retirement plan.

Bills were ordered paid. The low bid of \$2900 from George Collard of God's Corner was accepted to install public address systems in the County

Barns in Spearman and Gruver. The Hansford Livestock Show Association will pay one third of the cost and the county will pay \$2000 out of general revenue.

Floyd Cline and Fred Groves were appointed to serve on the Hansford Historical Survey Committee. Mrs. Arthur Evans resigned from the committee.

Approval was given for someone from the County Clerk's office to attend a seminar at College Station in February.

Kenneth Evans was appointed to the Palo Duro River Authority Board to

replace Slim Cates who was appointed recently after N. F. Renner resigned. Cates declined to serve for personal reasons. Commissioners appropriated general revenue money for the following year in these amounts: Road Construction \$40,000; Equipment \$5,000; Library \$6600 and Law Enforcement \$45,000.

The final item on the agenda was the passing of an order to relocate Precinct 4 Voting box from the Gruver School Agricultural Building to the County Agricultural Building in Gruver.

Rex Sanders Services Held

Rex Ernest Sanders, 82, died at 6:20 p.m. January 12, 1976 at Northwest Texas Hospital in Amarillo.

Mr. Sanders, a retired farmer and rancher of Spearman, had been in Amarillo hospitals and rest homes for the past 6½ years.

He was born March 13, 1893 and came to Hansford County in 1900 from Hamilton, Texas. He was a veteran of World War I.

He married Ora Alice Sires at Tulla, Texas on July 23, 1919.

He was a member of the First Baptist Church of Spearman, Hansford Lodge 1040, and Khiva Temple, Dallas.

Services were held at 3 p.m. Wednesday, January 14, 1976 at the First Baptist Church here. Rev. Russell Pogue, pastor, officiated. Interment was in Hansford Cemetery under the direction of Boxwell Bros. Funeral Home.

Survivors include the wife, Ora of 5509 Brinkman, Amarillo; two sons, R. E. and Rue of Spearman; a brother, Fred Sanders, Spearman; two sisters, Mrs. Ethel Taylor of Kaycee, Wyoming, and Mrs. Mae Leventon of Spearman; four grandchildren and three great-grandchildren.

Crash Victim Rites Held

Don R. Roper, 40, of Clovis, was killed in a light plane crash north-west of Muleshoe Sunday, was a former resident of Gruver.

Services for Mr. Roper were at 1 p.m. Wednesday at the First Christian Church of Gruver with the Rev. J. W. Doak officiating. Burial was in the Gruver Cemetery under the direction of Boxwell Brothers Funeral Home.

Mr. Roper was born in 1935 in Guymon and lived in Clovis for the past five years after

moving from Gruver. He was a farm irrigation mechanic.

Survivors include the widow, Trude; two sons, Alan and Brian, both of the home; his mother, Mrs. Edith Roper of Gruver and one sister, Mrs. Maxine Ferguson of Amarillo.

WEATHER

DATE	HI	LO
JANUARY 9	58	15
JANUARY 10	54	25
JANUARY 11	53	16
JANUARY 12	63	23



Members of the wrestling team shown above are left to right 1st row, Travor Longley, Terry Phillips, Justin Ooley, Ray Dunaway, Damon Goodheart, Tracy Longley, Ross Bulls, Felix Sandoval. 2nd row, Toby Phillips, Greg Meek, Daron Goodheart, Ben Dunaway, Derek Umphress, Jeff Vanlandingham, Byron Sutterfield, Rory Sheppard. 3rd row, Jimmy Snider, Gary Thomas, Wayne Cook, Scotty Evans, Eddie Whitefield, Dennis Randall, Chuck Rigdon. 4th Row Roger Kennard, Charles Littlejohn and Ronnie Antalek.

The Spearman wrestling team showed a lot of pride and determination before losing a very close duel match to Amarillo. Coach Littlejohn said all of his boys had done much better this first year than he had hoped and that being beaten by a veteran team by only 4 points was a victory, but that he would make the necessary adjustments to insure that our team kept improving. This Saturday they will have a local tournament at 1:00 pm at the Community Building. Public is invited.

Hearing Held On Paving 9th Street

At the regular city council meeting on January 12 at city hall a lengthy discussion was held concerning assessment program for the paving of 9th Street. Attorneys were present for Golden Circle Development and Mrs. J. R. Collard. Others concerned with the paving include Lawrence Anthony, Spearman Industrial Plan, Don Hergert. Mrs. Collard's attorney presented their position that the paving cost to Mrs. Collard would not appreciate her property to the extent of compensating for the cost. The council took no action on Monday's night meeting, tabling the decision until the next meeting on January 26.

No action was taken on combining the city police department with the Hansford County Sheriff's department as the county commissioners do not seem to be in favor of this action. Brock Insurance Agency was awarded the firemen's insurance policy. Two proposals were presented to the council.

The council appointed Cecil Biggers, local attorney, to the post of municipal court judge. Monthly reports of the police, fire, ambulance and municipal court activity were given.

Acting city manager Mark Neff reported to the council on the systems, taxes, cash position and financial standing. The next regular meeting of the city council will be on January 26, 1976 at city hall.

Lovinggood Services Held

Services were held at 2 p.m. Monday in Fairview Cemetery in Pampa for Jerrell David Lovinggood, 18, who died Saturday night at Hansford Hospital.

Officiating was James Lusby, minister of Westside Church of Christ in Pampa. Arrangements were by Duenkel Funeral home of Pampa.

Lovinggood was an employee of Consumers Sales Co. at the time of his death.

He was born in Groom, and resided in Pampa, Skellytown and Mineola, Kansas, before moving here in 1968.

He was a 1975 graduate of Spearman High School. Survivors include his parents, Mr. and Mrs. Jerry Lovinggood of the home; a sister, Mrs. Sue Sterling of Spearman; a brother, Richard Lovinggood of Midwest City, Oklahoma; Grandparents, Mrs. John B. Lovinggood of Pampa and Mr. and Mrs. Charles Spence of Crane.

Filings Begin For County Offices

The following candidates have filed with Democratic Chairman Carl Archer for County offices subject to the action of the voters in the May primary elections.

R. L. McFarlin has filed for re-election as Sheriff of Hansford County.

Garland Head has filed for Commissioner Precinct

1, Robert Ferguson and B. J. Renner have filed for Commissioner Precinct 3.

Other county races this year include County Attorney and County Tax Assessor.

Other public offices which voters will be voting on in May include District Judge, 84th Judicial

District, District Attorney, 84th Judicial District, State Representative, 64th District, numerous state offices & national offices.

Deadline for filing is 6 p.m. Feb. 2, 1976.

A map showing the re-districting of Hansford County is printed elsewhere in this newspaper.

Garland Head Announces Candidacy

Garland Head has authorized this newspaper to announce his candidacy for Commissioner for Precinct 1 subject to the action of the voters in the May Democratic Primary.

Head has been a resident of Hansford County for the past 22 years, residing southwest of Spearman where he is a farmer.

He is a member of the First United Methodist Church of Spearman. He is married to the former Virginia White of Spear-

man. The couple have two children, both of whom are married. They are Ronnie Head of Lubbock and Mrs. Danny McLaughlin of Spearman. The Head's also have a granddaughter, Jennifer Head of Lubbock.

MARKETS

WHEAT	\$3.43
MILO	4.10
CORN	5.60

B. J. Renner Is Candidate For Commissioner



B. J. Renner has authorized the Reporter-Plainsman to announce his candidacy for Commissioner of Precinct 3, subject to the action of the voters in the May Democratic Primary.

B. J., who lives west of Gruver, is the son of the present and long-time commissioner, B. W. Renner, who will not seek re-election this year. The elder Renner has served as county commissioner Precinct 3 since 1948.

B. J. is a native of Hansford County and incidentally his mother,

the former Thelma Hays is also a native of Hansford County. B. J. was born in 1931 and educated in Gruver schools. He holds a Bachelor of Science Degree in Agriculture from Abilene Christian College. He is a Korean War veteran, having served 2 years.

Since that time he has been a farmer and rancher in Hansford County. He is married to the former Glenda Green and they have three children, Viva age 9; Ross, age 7; and Anise, age 4. The two older children attend Gruver Schools.

Renner said in announcing his candidacy that he is sincerely interested in county government and keeping government at a local level and feels that his background with his father having been county commissioner so many years and being familiar with county government gives him an insight into the needs of county government and of the tax structure necessary. He feels that he is well qualified for this office and would greatly appreciate all votes and influence in this election.

CB Club To Organize

A meeting has been scheduled to organize a Citizens Band Radio Club on Thursday, Jan. 22 at 8 p.m. at 14 S. Haney.

Coffee and cookies will be served. Anyone interested is invited to attend.

Happy Birthday

We would like to say "Happy Birthday" to Mrs. Vernie Caldwell who will be celebrating her 93rd birthday Friday, January 16. Mrs. Caldwell is the mother of Mrs. Bill Hopper.

Kemper Named Supervisor

Lynn Kemper, son of Mr. and Mrs. B. J. Kemper of Spearman, has been appointed Supervisor over the West Texas Area. Lynn is employed with the Texas Department of Agriculture, (TAP) Texas Agricultural Products Marketing Division. Lynn has been employed with the Department of Agriculture for the past three years and lives in Lubbock. He is a 1972 graduate of Texas Tech University.

Buy Some Dunkin Munchkins Sat. From UMY

Lavender Lynxettes Lace Laverne

The Spearman Lynxettes defeated the Laverne Tigers for the Championship of the Beaver Invitational Tournament at Beaver, Oklahoma by the score of 69-57. This win by the Lynxettes put their season record at

11-7 and prepares them for the opening district game against the Dalhart Wolves at Lynx gym Tuesday night at 7:00 P. M.

The Lynxettes started out slow in the championship game as they fell

behind at the end of the first quarter, 17-15.

Scoring for the Lynxettes in the first quarter was Shelly Schumann with 7 points followed by Carla Harper with 6 points and Janyth Lackey with 2 points.

Scoring for the Laverne Tigers in the first quarter was Cindy Luttrell with 6 points followed by Sandra Thronnett with 4 points and Denise Hays with 3 points. Also scoring for the Tigers was Mosley with 4 points.

Trailing by 2 points going into the second quarter the Spearman Lynxette defense came through as they held the Laverne offense to only 11 points in the second quarter while the Lynxettes were scoring 22 points. Of the nine points that were scored by Laverne, Cindy Luttrell had 9 of them and 5 of those points were on free throws. Also scoring for the Tigers was Mosley with 2 points.

Scoring for the Lynxettes was Janyth Lackey and Carla Harper each with 8 points apiece and followed by Shelly Schumann with 6 points. The second quarter ended with the Lynxettes leading 37-26.

Leading by nine points going into the third quarter the Spearman Lynxettes were outscored by the Laverne Tigers 16-14 to come within 7 points of the Lynxettes at the end of the third quarter. Leading the comeback try for the Laverne team was Cindy Luttrell with 10 points followed by Denise Hays with 4 points

and Sandra Thronnett with 2 points.

Leading the scoring for the Spearman Lynxettes on the third quarter was Carla Harper with 6 points and Shelly Schumann with 8 points. The score at the end of the third quarter ended with the Lynxettes holding on to a 7 point lead, 51-44.

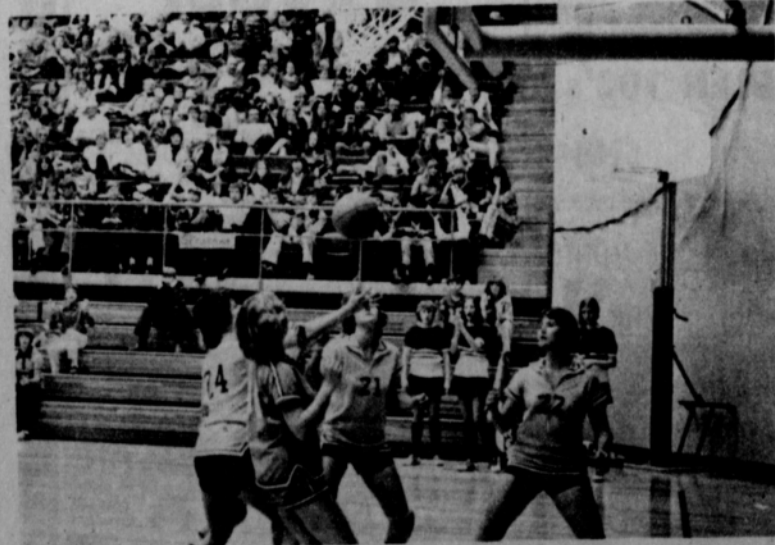
Going into the fourth quarter, the Lynxettes outscored the Tigers 18-13 to win the game by 12 points, 69-57. Leading the Lynxettes in the fourth quarter was Carla Harper with 15 of the 18 points. Also scoring was Shelly Schumann with 3 points.

Leading the scoring for the Laverne Tigers was Cindy Luttrell with 7 points followed by Denise Hays and Curtis with 2 points apiece.

LYNXETTE STATISTICS

	Fg	Ftm	Pts.
S. Schumann	10	4	24
J. Lackey	3	4	10
C. Harper	10	15	35
D. Greene			
R. Martin			
M. Papay			
T. Platt			
TOTALS	23	23	69

	Fg	Ftm	Pts.
TIGER STATISTICS			
C. Luttrell	10	12	32
D. Hays	5	1	11
S. Thronnett	3	6	6
Curtis	1	2	2
S. Hendigh			
S. Kirkhart			
Walcher			
Meyer			
Mosley	3	6	6
TOTALS	22	13	57



The Spearman Lynxettes took charge at the Beaver Tournament and came out in First.

B-Team Boys Edge Sanford-Fritch

The Spearman B-Team opened their opening round game of the Spearman B-Team tournament with a close 44-43 decision over the Sanford-Fritch Eagles in Lynx gym Thursday night. With this win they will face the Canadian Wildcats in the semi-finals of the tournament.

The first quarter saw both teams race up and down the court and miss valuable lay-ups only to go back down to the other end and do the same thing. Led by the shooting and rebounding of Doug Steele with 6 points and the rebounding of Doug Steele with 6 points and the rebounding of Twain Freimel the Lynx led at the end of the first quarter by 4 points 16-12. Scoring for the Lynx was David Witt with 2 points, followed by Mike Bodey with 3 points. Also scoring for the Lynx was Hector Trevino with 2 points, Sam Boone with 2 points and Twain Freimel with one point.

Scoring for the Eagles in the first quarter was Clay Richerson with 8 points, followed by T. Collins with 2 points. Also scoring for the Eagles was W. Schoenhals with 2 points, all on free throws.

In the second quarter with Doug Steele sitting out the rest of the game with a sprained ankle, the Eagles outscored the Lynx 13-9 to tie the game up at 25 all at the end of the second quarter. Scoring for the Eagles was Clay Richerson with 6 points followed by W. Schoenhals with 5 points. Also scoring for the Eagles was C. Winters with 2 points.

Scoring for the Lynx in the second quarter was Twain Freimel with 2 points, Mike Bodey with 2 points, Pete Garcia with 2 points, Sam Boone with one point, Sam Boone with 2 points and Doug Steele with 2 points.

Going into the third quarter the Lynx outscored the Eagles by 2 points, 10-8 to take a 35-33 lead at the end of the third quarter. Going with fresh people as often as they could, the Lynx stole the ball away from the Eagles

on many numerous times but could not convert the miscue into a score. Scoring for the Lynx in the third quarter was Scott Martin with 4 points, followed by David Witt, Mike Bodey and Allen Shields all with 2 points apiece.

Scoring for the Eagles was Clay Richerson with 4 points followed by R. Trolinger and W. Schoenhals each with 2 points.

In the fourth and final quarter the Lynx were outscored by the Eagles 10-9 but the winning margin for the Lynx came with 1:22 seconds left in the game when Hector Trevino stepped to the line and sank a 1 and 1 that put the Lynx 5 points ahead with less than a minute to go. Scoring for the Lynx other than Hector Trevino was Mike Bodey with 2 points followed by Allen Shields with 2 points. Also scoring was Scott Martin with 1 point, and Twain Freimel with 2 points.

The Eagles were led by W. Schoenhals with 4 points followed by J. Hicks with 2 points, R. Barnes with 2 points and Clay Richerson who had been hurting the Lynx with his inside shooting was held to only 2 points in the final quarter.

The game ended with the Spearman B-Team holding on to a 1 point lead at 44-43.

LYNX STATISTICS

	Fg.	F.	Pts.
D. Witt	2	1	4
M. Bodey	4	3	9
P. Garcia			1
D. Ortega		1	2
D. Steele	3	1	8
H. Trevino	1		4
S. Boone	2	1	4
S. Martin	2	1	5
S. Sherwood			4
A. Shields	2		4
T. Freimel	2	1	5
TOTALS	18	8	44

SANFORD-FRITCH STAT.			
J. Hicks	1	3	2
R. Barnes	1	5	2
C. Richerson	9	4	20
R. Trolinger	1		2
W. Schoenhals	4	2	13
T. Collins	1	1	2
C. Winters	1		2
R. Wyche		2	
TOTALS	18	17	43

SCORE BY QUARTERS				
SPEARMAN	16	25	35	44
S.-F.	12	25	33	43

Spearman B-Team In Finals

The Spearman B-Team advanced into the final of the Spearman Invitational B-Team tournament Saturday night as they defeated the Canadian Wildcats here in Lynx gym before a large home crowd by the score of 57-50. This win tonight puts them against the Guymon Tigers for the first place championship. Guymon defeated the River Road team in the other semi-final game.

The Lynx with their number one scorer on the bench with a severely sprained ankle that will keep him out of action until sometime next week relied on their outside shooting as they led at the end of the first quarter by 5 points, 14-9. Leading the outside shooting for the Lynx B-Team was David Witt with 4 points along with Twain Freimel with 4 points. Also scoring for the Spearman B-Team was Mike Bodey, David Ortega and Sam Boone all with 2 points. Scoring for the Canadian Wildcats in the first quarter was G. Fitzgerald, F. Sword, G. Thompson, R. Todd all with 2 points and S. Francis with one point.

Going into the second quarter anybody there watching the game would probably tell you that it was more like a football game out there the rest of the game as both teams were shoving the other people down and getting away with it and not being called a foul on by the referees. Many times you would see three or four ball players sprawled on the floor while the ball was rolling off at some other part of the court. Other than the football game part of it the Spearman B-Team was outscored 10-9 in the second quarter as the Wildcats were led by G. Thompson and S. Francis with four points apiece. Also scoring for the Wildcats was R. Conn, G. Fitzgerald and M. Carr all with two points apiece. Scoring for the Lynx B-Team in the second quarter was Twain Freimel

with 4 points, followed by Scott Martin with 3 points, all on free throws and Scott Sherwood with 2 points. The quarter ended with the Spearman B-Team on top by 4 points, 23-19.

Going into the third quarter the Lynx B-Team outscored the Wildcats 14-12 behind the shooting of David Witt and Twain Freimel each with 4 points. Also scoring for the Lynx B-Team was Mike Bodey with 2 points, followed by Pete Garcia and Scott Martin all with 2 points. Leading the scoring for the Wildcats was G. Thompson with 6 points followed by R. Conn, G. Fitzgerald and M. Carr each with two points. The third quarter ended with the Spearman B-Team on top by the score of 37-31.

Going into the final quarter the Lynx behind free throw shooting kept the game out of reach for the Wildcats. The Lynx B-Team went to the free throw line 16 times in the last quarter and made 8 of them. Pete Garcia led the B-Team in shooting as he went to the line 5 times and made 4. He was also the leading scorer for the B-Team in the 1st quarter. Also scoring for the B-Team was David Witt, Mike Bodey, David Ortega and Allen Shields all with 3 points. Also scoring was Twain Freimel with 2 points.

Scoring for the Wildcats in the last quarter was G. Fitzgerald with 5 points, followed by D. Schafer, S. Chrismon, each with 4 points. Also scoring for the Wildcats was R. Conn, G. Thompson and M. Carr all with 2 points. The final score ended with the Spearman B-Team on top by the score of 57-50.

SPEARMAN STATISTICS

	Fg.	F.	P.
D. Witt	5	3	11
M. Bodey	3	1	7
P. Garcia	1		6
T. Freimel	4	1	14
S. Martin	1	2	5
H. Trevino			1
S. Sherwood	1		2
D. Ortega	2	2	5
S. Boone	2	2	4
A. Shields	1	2	3
TOTALS	20	12	57

CANADIAN STATISTICS			
D. Schafer	1	3	4

R. Conn	2	2	4
S. Francis	2	2	5
G. Fitzgerald	5	3	11
E. Sword	1	3	2
S. Chrismon	2	2	4
G. Thompson	7	14	
R. Todd	1	2	2
R. Bucher			3
M. Carr	2	1	4
TOTALS	23	21	50

SCORE BY QUARTERS				
SPEARMAN	14	23	37	57
CANADIAN	9	19	31	50

B-Team Girls Defeat Sanford-Fritch

The Spearman B-Team girls opened their B-Team tournament Thursday night with a 34-25 win over the Sanford-Fritch Eagles before a good crowd at Lynx gym. The game was close all the way through three quarters and in the fourth quarter the B-Team girls slowly pulled away.

The first quarter was not the best start for the B-Team girls from Spearman as they could not hit with any consistency. Also bothering the B-Team girls was the job that Sanford-Fritch was doing on Tracie Keetch, the leading scorer for the B-Team girls. Throughout the first half Miss Keetch was double-teamed and the only scoring power for the B-Team girls was Christy Collier as she scored all of the 4 points that Spearman scored in the first quarter.

Leading the scoring for the Eagles was Cindy Brown with 4 points, followed by Sperry and Stine each with 2 points apiece. The first quarter ended with the B-Team girls trailing by 4 points, 8-4.

In the second quarter, the Spearman girls started to find the range a little bit better and led by the shooting of Christy Collier with 7 points and Tracie Keetch with 4 points, all in the second quarter the Spearman girls fought back to within one point at the end of the second quarter, 16-15.

Leading scorer for the Eagles in the second quarter was Durr with 4 points followed by Brown, Cunningham, each with 2 points. Going into the third quarter, the Spearman girls outscored the Sanford-

Fritch girls 10-6 led by the shooting of Christy Collier with 4 points. Also scoring for the Spearman girls was Carrie Clark, Tracie Keetch and Connie Vernon each with 2 points. High for the Eagles in the third quarter was Brown, Sperry and Stine each with 2 points apiece. The quarter ended with the Spearman girls leading by 3 points, 25-22.

Going into the last quarter leading by three points the Spearman girls outscored the Sanford-Fritch girls 9-3. Leading the scoring for the Spearman girls was Christy Collier with 2 points followed by Carrie Clark with one point.

Scoring for the Eagles in the fourth quarter was Durr with 2 points and Cindy Brown with one point. The final score ended with the Spearman girls coming from behind to take a hard fought victory away from the Sanford-Fritch girls by the score of 34-25.

This win puts the Spearman girls into the semi-finals bracket against the Canadian girls.

LYNXETTE B-TEAM STAT.

	Fg.	F.	Pts.
C. Clark	1	2	3
T. Keetch	8	1	17
C. Collier	4		12
C. Vernon	1		2
C. Moore		1	
TOTALS	14	4	34

SANFORD-FRITCH STAT.			
C. Brown	4	1	9
Cunningham	1		2
Sperry	2	1	4
Durr	3	1	6
Stine	2	2	4
Pribe			1
Williams		2	
TOTALS	12	8	25

SCORE BY QUARTERS				
SPEARMAN	4	15	25	34
S.-F.	8	16	22	25

B-Team Defeats Canadian In Second Round

The Spearman B-Team girls advanced into the finals of the Spearman Invitational B-Team tournament with a come from behind victory over the Canadian Wildcats before a good home crowd at Lynx gym. This win puts the Spearman girls against an opponent unknown at this time. This win by the Spearman girls puts

their season record at 10-1. In the first quarter the Sanford-Fritch girls showed good scoring balance as they outscored the Spearman girls 14-12. Leading the attack for the Wildcats was N. Peil with 6 points followed by Sword and Steidle with 4 points apiece. Scoring for the Spearman girls was Tracie Keetch with 8 points followed by Christy Collier with 4 points. Also helping out the Canadian defense was the fact that Spearman could not buy a shot inside 3 feet as the ball would roll around and finally come out of the basket.

Going into the second quarter and trailing by 2 points to the Spearman girls led by the shooting of Tracie Keetch with 6 points and Christy Collier with 5 points, took over the lead in the middle of the second quarter and held the lead throughout the second quarter to lead at the end of the quarter by the score of 25-20. Also scoring for the Spearman girls was Stephanie Floyd with 2 points.

Scoring for the Wildcats was Steidle with 4 points followed by Boyett with 2 points.

The third quarter was almost the disaster quarter for the Spearman girls as they only scored 2 points in the third quarter and that was on a shot by Christy Collier while Canadian came back with 10 points in the third quarter, thanks to the shooting of N. Peil, with 6 points. Also scoring for the Wildcats was Boyett with 2 points and Steidle with 2 points. The third quarter ended with the Canadian Wildcats leading by the score of 30-27.

In the fourth quarter the Spearman defense did a absolutely super job as they held the Canadian offense to only 2 points in the final quarter and that was made by Boyett while the Spearman girls countered with 7 points behind the shooting of Tracie Keetch with 4 points followed by Christy Collier with 3 points. The Spearman girls came from 3 points down at the start of the quarter to win the ball

game by two points with the score ending at 34-32.			
B-TEAM STATISTICS			
	Fg.	F.	Pts.
C. Collier	6		14
T. Keetch	8		18
C. Clark			2
C. Moore		1	
C. Vernon			1
B. Flowers			1
S. Floyd			2
TOTALS	15	5	34

WILDCAT STATISTICS				
Sword	2	2	4	
Boyett	3	4	6	
Steidle	5	2	10	
Ashley		2		
N. Peil	6		12	
Lewis			3	
Smith			1	
TOTALS				
SPEARMAN	12	25	27	34
CANADIAN	14	20	30	32

Dalhart Wolves (Boys)

COACH: Robert Hale 1974-75: 12-15

The Wolves, under the guidance of a new coach, Robert Hale, lack impressive returning experience, but they boast impressive height and an eager group of B-Team graduates upon whom the season will rest. His only returning starter is 6'4" Malcom Green, who bears watching. He is a seasoned player capable of duty at either forward or post.

From Green on down however, Coach Hale will be working with B-Team recruits. Among them is 6'4" Bart Cadenhead, a junior who should add to Dalhart's inside strength.

Among other prospects are guard candidates Greg Lloyd, Chuck Vickers, Mike Smith and Artie Ledbetter.

Jerry Noys is a possibility at forward or post, while other wing prospects include Jim Bob Matthews and Butch Stewart.

If Dalhart's young recruits from the B-Team mature rapidly, the Wolves could be a factor in the District 1-AA race they have never won.

ROSTER:		
Malcom Green	F.	SR.
Jerry Noys	P.	SR.
Artie Ledbetter	G.	SR.
Mike Smith	G.	SR.
Bart Cadenhead	G.	JR.
Chuck Vickers	G.	JR.
Jim Bob Matthews	G.	Jr.
Greg Lloyd	G.	SR.
Butch Stewart	F.	JR.

FINE food priced LOW

Specials good Thurs., Jan. 15 thru Sat., Jan. 17, 1976

 <p>T-BONE STEAK lb. \$1.49</p> <p>SIRLOIN STEAK lb. 1.49</p>	<p>PIKES PEAK ROAST lb. \$1.29</p> <p>ROUND STEAK ROAST lb. 1.29</p>	<p>FEBRUARY 14th is VALENTINE'S DAY</p> <p>OUR VALENTINE'S DAY CANDY HAS ARRIVED.... BUY YOURS NOW....</p>
 <p>RUMP ROAST lb. 99c</p>	 <p>Beef Rib lb. 49c</p>	<p>Oxydol GIANT \$1.19</p>
<p>Bar-B-Que CHICKENS \$2.09</p>	<p>ZESTA Saltines 1 LB. 59c</p>	<p>TIDE GIANT SIZE \$1.19</p>
<p>POTATO SALAD PINT 79c</p>	<p>JOHNSTON'S Pie Shells 49c</p>	<p>KEEBLER 100's 89c</p>
	<p>GRAPES RED EMP. LB. 39c</p> <p>ORANGES 5 LB. BAG 69c</p>	<p>PEACH OR PEAR NECTAR DEL MONTE 12 OZ. CAN 4 for \$1</p>
	<p>KRAFT MACARON & CHEESE Dinner 7 1/4 OZ. 31c</p>	<p>M & M Grocery No. 1 202 N. Bernice Spearman, Texas 659-3234</p>

WANT ADS

Boxwell Bros. Funeral Home and Flower Shop
Day-Night Phone 659-2212
Spearman, Texas

Listen To
Harvest Time
9:00 A.M. SUNDAY
KBMF
United Pentecostal Church
Sponsor

YOUR LOCAL USED COW DEALER: Spearman Bi-Products. Seven days a week dead stock removal. Please call as soon as possible. 659-3544.
8-rm

Hansford Lodge 1040 A.F.&A.M.
Stated Meeting 2 & 4 Mondays 7:30 P.M.
Dan Farley, W. M.
Cecil Barton, Secy.

SERVICES

Hansford County Planned Parenthood
26 S. Haney
659-2483
Spearman
Mon.-Fri.
8 A.M. to 12 Noon
308-rm

Custom fertilizing and any type of farming.
W. B. Barnes
659-3493

Alcoholics Anonymous Meeting every Tuesday, 8:00 P.M. at the Girl Scout Little House, 22 S. Endicott. Call 3394 or 2762 for information.
48-rm

KIRBY SALES & SERVICE of Spearman, 912 S. Bemice. 659-2797.
30-rm

MARY KAY COSMETICS Call 659-2119. Malolah Fullbright.
32S-rm

GRADER, Dozier, and Drag Line work. Call Lee Roy Mitchell, Gruver 733-2384.
28-rm

Moonlight Janitorial Service. Call for free estimate. 659-2067.
7-rm

PORTABLE DISC ROLLING BALLARD'S, 935-5229, Dumas, Texas.
48-rm

For your Shalkee Products call 659-2062.

RAWLEIGH - Pie Filling, Black Pepper Sale, Janie Kunselman, 659-2631.
7-9c

Miscellaneous For Sale

FOR SALE: 18 foot upright freezer, 1967 Chevy pickup. 659-3345.
9-2tc

FOR SALE: Portable dishwasher \$35.00. Call 659-2267 after 5 p.m.
9-rm

LADY FAIR'S Greater reduction on Winter merchandise. Two racks early Spring sportswear 20% off.
9-2tc

FOR SALE: '65 Chevrolet Tandem Axle. 18 ft. bed & hoist. 435-2575.
8S-2tp

A. K. C. Registered Doberman Puppies for sale. Call 948-5431, Sunray.
6S-rm

15 ft. Lonestar 40 hp Johnson Motor. Drive on trailer. Call 659-2350.
8S-rm

FOR SALE: Recliner sofa and two chairs, king-size head board, desk and chair, dining room suite, drapes, 733, 2598, Gruver.
9-8tc

REAL ESTATE FOR SALE

FOR SALE: Nice 3 bedroom home, many extras including carpets, drapes, dishwasher, central heat and air, large storm shelter, fenced yard. Shown by appointment. Emmett R. Sanders, Realtor, 659-2516, nights 659-2601.
4S-rm

FOR SALE: An older 3 bedroom home. Carpeted. Dishwasher. 659-3272.
5-rm

FOR SALE: 3 Bedroom House on corner lot, 907 S. Archer. Moss Green 30" Range and Whirlpool Refrigerator. Call Wayman Edwards 659-3292 for appointment.
8S-rm

404 Endicott, game room, 1 3/4 baths, central heat, on 3 lots. 3 bedroom.

3 bedroom, 1107 Dressen, 1 bath, garage, fenced yard.

1 section in Oldham County.

3 bedroom house on 3 lots in Farnsworth.

3 bedroom, doublewide trailer, 2 full baths, 1970 model.

Call Mayfield Real Estate, Perryton 435-6528 or call Ruby Lair, Salesperson, 659-2188.

FOR RENT
FOR RENT: Furnished apartment. 303 Davis. Phone 659-3792.
5S-rm

LBL Trailer Spaces - \$40 Monthly. 50' x 150' Lot. Call Manager 659-2617.
48S-rm T only

FOR RENT: Trailer spaces. Call 3529.
7-rm

Trailer Space. \$30.00 monthly. Call 2404.
7S-rm

FOR RENT -Furnished apt. Bills paid. Prefer bachelor. No pets. Call 2082.
8S-rm

WANTED

WANTED: A baby carriage to buy or borrow. Call Sue Savidge, 659-3352.
7S-4tc

WANTED: Experienced electrician. Apply at Anthony Electric.
8S-rm

To Give Away
TO GIVE AWAY: Real cute puppies. Mother a registered Beagle. Call 2067.
9-rm

ELECTROLUX VACUUM CLEANERS
Authorized Dealer
Parts, Service & Supplies
For free demonstration call
659-2415
or see at 408 E. Kenneth.

Card of Thanks

We wish to express our deep appreciation for the phone calls, visits, food, cards, and flowers and other acts of kindness shown to us at the death of our beloved daughter and mother.
May God's richest blessing be on each and everyone.
Pope and Margaret Glibner Van, Dan and Randy Steed

Political Announcements

The Reporter-Plainsman is authorized to announce the candidacy of the following candidates for public office, subject to the action of the voters in the May Primary Elections.
FOR COUNTY COMMISSIONER
Pct. 1
Garland Head
Precinct 3
B. J. Renner

Dalhart Wolves (Girls)

COACH: Jay Wilson
1974-75 Record 18-10
The Dalhart girls 1975-76 season will be influenced by the loss of three starters off last year's 18-10 team, and will be mostly a rebuilding year, though varsity newcomers show promise for second-year coach Jay Wilson.
Returning starters from last season's guards are forwards Deanna Seitz and Lanita Johnson, and guard Cindy Slatton.
Miss Seitz, a 5'4" Senior led the team last season with a 19.2 game average, while Miss Johnson scored 10.2 counters a game.
Miss Slatton, a 5'2" Senior was an all-district pick on defense last season, and will be joined by junior varsity graduates Shirleyne Chisum, Cindy Stanley and Alexia Burkhalter.
Varsity letterman Mary Ann Bowers a 4'4" Senior, averaged 6.1 points a game last season, will be among those vying to complete the forward trio.
ROSTER:
Susie Stanley F. SR.
Deanna Seitz F. SR.
Lanita Johnson F. SR.
Mary L. Bowers F. SR.
Debbie Tague F. SR.
Kelly Saunders F. Soph.
Jammie Field F. Soph.
Cindy Slatton G. SR.
Shirlyne Chisum G. SR.
Cindy Stanley G. SR.
Alexia Burkhalter G. JR.
Laura Lang-home G. Soph.

Private Pilot Ground School

Starts Jan. 15 at Gruver, Texas.
Instructor Paul Lloyd, Kim Cluck.
For more details call Kim Cluck 806-733-2990

SEWING MACHINE SALES AND SERVICE

AUTHORIZED DEALER
NECCHI-ALCO
For FREE Demonstration Call 659-2415 or see at 408 E. Kenneth
Parts and Service on all makes

YORK ELECTRIC

PHONE 659-3625
WE DO ALL TYPES OF ELECTRICAL WIRING.....
WE WANT YOUR BUSINESS.....
Downtown Spearman
SPEARMAN, TEXAS

Lynxettes Win In Beaver Tournament

The Spearman Lynxettes opened up their first round activity of the Beaver Tournament by easily defeating the Beaver Dusters by the score of 73-22. The game was a mismatch from the opening tipoff as the Lynxettes controlled all phases of the game to run their season record to 9-7. They will play the winner of the Forgan-Tyrone game.

The Lynxettes, who are one of the favorites to win the tournament, showed any disbelief why they are seeded No. 1 in the tournament by shooting 47% from the field and 73% from the free throw line.

The Dusters on the other hand could not hit anything when they had the ball. The Dusters shot the ball only 27 times the whole game while making only 9 of them for 33%. Also hurting them was the lack of any or no free throw shooting as they went to the line 14 times and made just 4 of them for 28%.

The Lynxettes had four players in double figures led by Carla Harper with 22 points.
The next game for the Lynxettes after the tournament will be against the Dalhart Wolves, Jan. 13 with the first game starting at 4:00 P.M. with the B-Girls game.

LYNXETTE STATISTICS

	SM	FTM	Pct.
C. Harper	8	6	22
J. Lackey	4	4	12
S. Schumann	6	2	14
D. Ware	4	2	10
D. Greene	3	2	8
M. Cage	3	1	7
M. Papay			
T. Platt			
L. McAdams			
G. Wilson			
J. N. Comegys			
TOTALS	28	17	73

BEAVER STATISTICS:
27 Shots Att. 9 shots made-33%. 14 Free Throw attempts-4 Free Throws made.
FINAL SCORE:
SPEARMAN 73
BEAVER 22

Lynxettes Edge Forgan

The Spearman Lynxettes edged the No. 2 ranked team in the state of Oklahoma in Class B at Beaver by the score of 51-50 to advance into the finals of the Beaver Tournament against Laverne. This win by the Lynxettes improves their record to 10-7 for the year.

Led by Shelly Schumann with 10 points in the first quarter, the Lynxettes jumped to a 14-9 first quarter lead. Also scoring for the Lynxettes was Carla Harper and Janyth Lackey each with 2 points.

Leading the scoring for the Forgan Bulldogs was Lynette Robbins with 5 points in the first quarter followed by Radcliff with 4 points.
Leading by 5 points entering the second quarter, the Lynxettes outscored the Bulldogs 16-15 to take a 30-24 halftime lead. Scoring for the Lynxettes was led by Carla Harper with 12 points followed by Shelly Schumann with 3 points and Janyth Lackey with one point.

Scoring for the Bulldogs was Lynette Robbins with 10 points followed by Bullard with 3 points and Radcliff with 2 points.
Leading the Bulldogs by 6 points entering the third quarter, the Lynxettes were outscored by the Bulldogs 14-11 to close the lead that the Lynxettes had to 3 points at the end

O. J. ROOK
PHONE 274-4968
PAINTING-INDUSTRIAL RESIDENTIAL
FREE ESTIMATES
ACOUSTICAL CEILINGS
CARS AND TRUCKS

of the third quarter, 41-38. Scoring for the Lynxettes was Shelly Schumann with 9 points and Janyth Lackey with 2 points.

Leading the scoring for the Bulldogs was Lynette Robbins with 4 points followed by Bullard with 6 and Radcliff with 4.

Leading the Forgan Bulldogs by three points starting the fourth quarter the Lynxettes were again outscored by the margin of 12-10, but still held on to a one point victory, 51-50.

Leading the Lynxettes in the fourth quarter was Carla Harper with 8 points followed by Shelly Schumann with 2 points.

Leading the Bulldogs in their rally to overcome the Lynxettes, they were led by Lynette Robbins with 8 points followed by Bullard with 6 points and Radcliff with 4 points.

LYNXETTE STATISTICS

	Fg	Ftm	Pct.
S. Schumann	11	2	24
J. Lackey	1	1	3
C. Harper	9	4	22
D. Ware			
D. Greene			
R. Martin			
M. Papay			
G. Wilson			
TOTALS	21	9	51

BULLDOG STATISTICS

	Fg	Ftm	Pct.
D. Shvey	8	11	27
L. Robbins	3	3	9
K. Daugherty	7	1	14
Radcliff			
Daugherty			
TOTALS	18	15	50

Classes Underway At Panhandle SU

Enrollment for the second semester at Panhandle State University is underway and classes started on Wednesday, January 7. A student may enroll as late as Wednesday, January 21, but a selection of classes will be limited the later a student waits to enroll. Two spring reads are scheduled for the 2nd semester. The first break begins March 18 and ends March 24, and the second break begins April 15 and ends April 20.

Evening classes for the second semester include Accounting, Real Estate, Problems in Business Administration, Business Law, Computer Programming, Historical Geology, Audio-Visual Education, Freshman English, School Library Ad., Childrens Literature, General Psychology, Test and Measurements, Old Testament Prophets, and Marriage Family Living, Senior Life Saving and Water Safety Instruction.

One workshop, "Living Textbook" is scheduled April 5-8 from 5:00 to 9:00 p.m. Schedules of classes and further information may be received by writing to the Office of the Registrar, Panhandle State University, Goodwell, OK. 73939.

TEXAS PRESS ASSOCIATION
MEMBER 1975
Spearman REPORTER
Spearman, Texas 79081
Box 458 659-3434
Published Weekly at 213 Main Street
Spearman, Texas 79081
Owner-Publisher.....William M. Miller
Second Class Postage Paid at Spearman, Tex.
Any erroneous reflection upon the character of any persons or firm appearing in these columns will be gladly and promptly corrected upon being brought to the attention of the management.
SUBSCRIPTION RATE -- Hansford, adjoining counties, combination with the Hansford Plainsman, \$10.92 Tax included.
Other points \$15.12 Tax included.

FOR THE ULTIMATE IN
STORM DOORS
CUSTOM BUILT, DESIGNED, AND IN COLORS TO FIT YOUR HOME. . . .
CONTACT
HOWARD MOYER AT ONLY ALUMINUM INDUSTRIES
405 338-6966 or 338-6170
P. O. BOX 471
GUYMON, OKLA. 73942

Dunkin Munchkin Sale Saturday
Dunkin Munchkin Sale Is Saturday

Do it up big.

Or small.

With our home improvement loan.

Maybe you're re-siding the whole house or adding a garage. Maybe just remodeling the kitchen or installing a bathroom. Big job or small, ours is the home-improvement loan that does it all. We provide the money you need, the way you want to pay it. For ease and convenience, we do it up big. Only the cost does it up small.

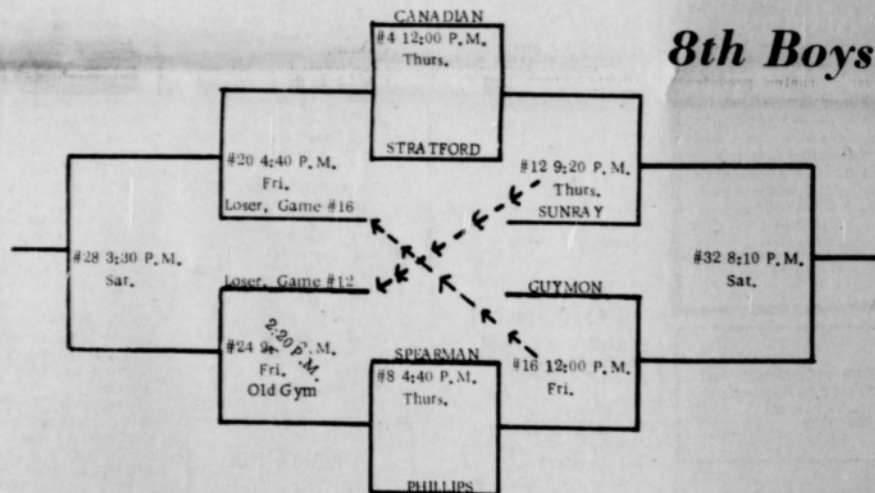
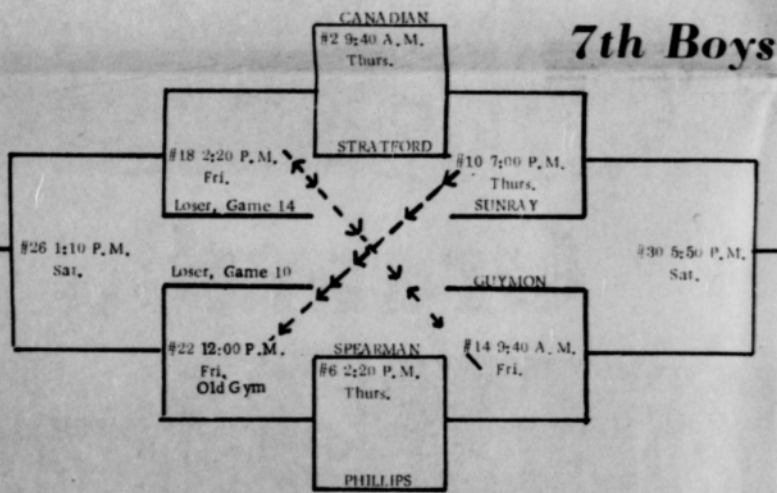
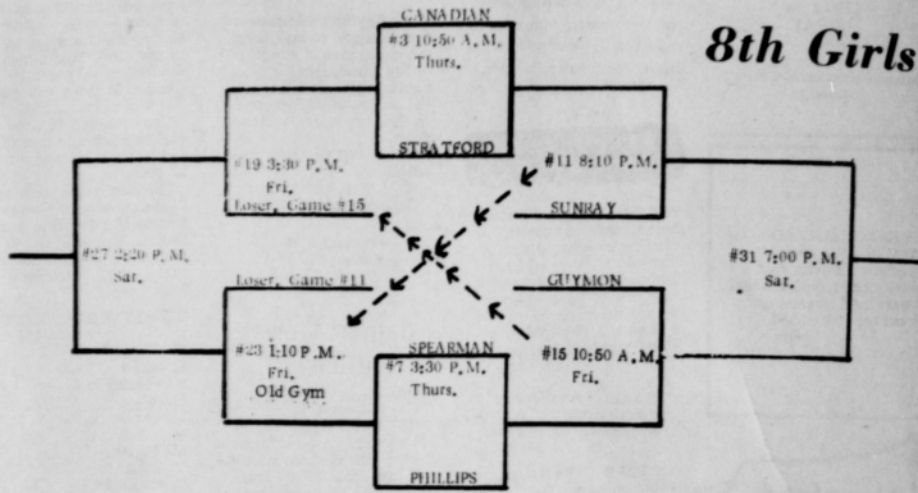
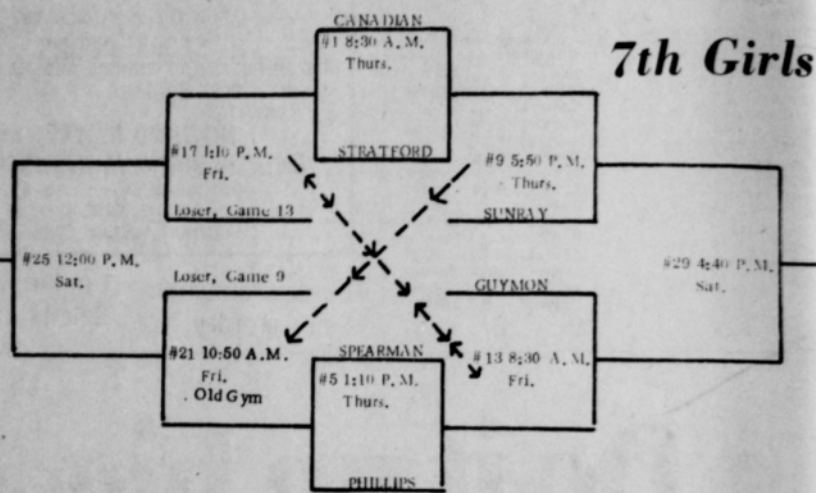
EVERYBODY'S BANK
IN A GREAT BIG WAY

FIRST STATE BANK
SPEARMAN, TEXAS 79081
EQUAL HOUSING LENDER

SM-© 1974 Leon Shaffer Goinick Adv. Inc.

Spearman Jr. High Tournament

Jan 15, 16, 17



ALLSUPS
CONVENIENCE STORE

OPEN 24 HOURS

**White House
Lumber Co.**

**YORK
ELECTRIC**

DOWNTOWN SPEARMAN
WE DO ALL TYPES OF ELECTRICAL WIRING

**R. L. McClellan
& Sons**

Spearman, Texas

**Speartex
Grain Co.**

Spearman Texas

**Gruver
State Bank**

**Tucker Water
Well Service**
659-3013

**Daco Lease
and Well Service**
Spearman, Texas

**CONSUMERS
SALES**



**Alton's Gulf
Service**



**EXCEL
CHEVROLET-OLDS**
CHEVROLET — OLDSMOBILE — JEEP
Sales and Service
Genuine Parts and Accessories

Spearman Redi-Mix
Spearman, Texas

FGMBF Meeting Slated Rape Prevention Program Planned



Dr. Terry Peters

The Spearman Chapter of the Full Gospel Business Men's Fellowship International will meet at 8 p.m. January 19 at the County Ag Barn on East Ave. D, Spearman.

The speaker this month is Dr. Terry Peters of Amarillo.

Peters was born in Idaho and moved to Hereford, Texas at the age of 7. He was reared a Catholic, attending Catholic Parochial School and Four years of Catholic High School, graduating from Price in Amarillo in 1957. Dr. Peters went to chiropractic college a few years after graduating from high school. He

graduated from Texas Chiropractic College in 1967. After practicing in Austin, Texas, Peters returned to Amarillo. Shortly after returning to Amarillo, he accepted Jesus and was baptized in the Holy Spirit. Two years later Dr. Peters returned to practice. He attends St. Mary Catholic Church where he teaches a Sunday morning class. Dr. Peters has recently been appointed as field representative for the Full Gospel Business Men's Fellowship International in the Panhandle area of Texas. He has shared his testimony in many chapters, prayer groups and denominational churches in the area.

Holt News

by Maude Rosson
Mr. and Mrs. Richard Gaines spent the weekend with their daughter, Mr. and Mrs. Alan Varmon in Pampa.

Mr. and Mrs. Travis Reger visited their daughter Debbie Reger in Amarillo Sunday. Debbie is a student at Amarillo College.

Mr. and Mrs. Ira Harbour had as their guest Monday and Tuesday, her niece Mr. and Mrs. Jim Packard and son, Justin from Garden City, Kansas. The Packard's also called on her grandparents, Mr. and Mrs. D. W. Jackson.

Mr. and Mrs. Wallace Bemer, Denise and Ed spent Monday to Saturday at Eagle Nest, New Mexico. They enjoyed skiing and snow mobiling at Angel Fire. The report 6" of new snow fell Tuesday and the slopes were excellent. Mr. and Mrs. Tom Sutton and Darlene of Spearman were there also. They all had a real good relaxing time.

New Year's Day dinner guests of Mr. and Mrs. Phil Jenkins were Mrs. Teresa Kulpter from Sebley, Iowa, Mrs. Arlyis Stephen and Shawnee from Biglow, Minn., Ms. Dickie Johnson, Leslie, Todd and Micah, Mr. and Mrs. Dana Dancer and Jennifer, Mr. Travis Wingert, Mr. and Mrs. James Stephen, Mr. Hayden Stephen, Mr. Ray Davis, Ms. Myrtle Stephen and Mr. and Mrs. Neal Stephen all of Borger and Jennifer Stephen from Amarillo.

Ms. John Campbell (Mabel), a resident of Abraham Memorial Home of Canadian, celebrated her 83rd birthday Monday. Helping her enjoy the day was her daughter, Ms. Maudine Patterson and her brother, Mr. and Mrs. D. W. Jackson. A table was set up where the four ate dinner together and enjoyed the beautiful birthday cake Maudine had brought to her mother.

Mrs. W. R. (Mae) Shaull returned Tuesday from Fort Stockton where she had spent the holidays. Her daughter, Mrs. Wayne Hines, came for her a week before Christmas. The Hines have two children, Linda who works in Midland and Ronnie who lives in Fort Stockton and he and his wife have two little ones that Mae says are live wires. She says she had a wonderful time with her daughter and son-in-law, her grandchildren and great-grandchildren this holiday season.

Social Security News

"Many people frequently ask me, 'What is Social Security?'" said Howard L. Weatherly, Social Security Manager for the Pampa office. Weatherly pointed out during working years, employees, their employers, and self-employed people pay Social Security contributions which are pooled in special trust funds. When the worker's earnings stop or are reduced because the worker retires, dies or becomes disabled, monthly cash benefits are paid from these funds to replace part of the earnings a family has lost. Weatherly also pointed out the purpose of the Pampa office is to issue social security cards, provide in-

formation about Social Security during a person's working years, and in the event of death, disability or retirement, assist the residents of this area in filing their claims for

Social Security benefits. He further states the job of administering the Social Security program becomes much simpler and more efficient when people are fully informed about their rights under Social Security.

The Pampa Social Security Office is located at 1541 North Hobart Street and the office is open Monday through Friday from 9:00 A.M. to 4:45 P.M. The phone number is 669-3381.

GREETINGS TO ALL CATTLEMEN

Thursday, January 8, was the regular day for the cattle auction in Texhoma. The action began at 9 AM (CST) 8 AM (MT) and was completed at 10:30 PM. 6093 cattle and calves were sold through the arena.

We are now taking consignments for every Thursday in January. Arrange your plans and give us a call. We would like to do our best marketing your cattle.

YOUR CATTLE AUCTION WITH "ACTION"

Texhoma Livestock Commission Co., Inc.

Texhoma, Okla. 73949

Phone 405-423-3251

P. O. Box 70

Dunkin Munchkin Sale January 17

Bridge Club

The Blue Monday Bridge Club met Monday, January 12th at Martin's Steak Garden with Mrs. Gwenfred Lackey as hostess. High score was won by Mattie Ruth Grigsby and second high was won by Viola Graves.

Guests present were Vi Whitson and Mattie Ruth Grigsby.

Members present were Viola Graves, Emma Seitz, Ruth Hill, Kubah Gandy, Mildred Daily, Deta Blodgett and hostess, Gwenfred Lackey.

Next meeting will be January 26th in the home of Mrs. Emma Seitz.

Littlejohns Are Club Hosts

The Pinochle Club met Saturday, January 10th in the home of Mr. and Mrs. Charles Littlejohn.

A delicious fried chicken supper was enjoyed by guests, Mr. and Mrs. Earl Taylor an by members, Mr. and Mrs. Earl Goodheart, Mr. and Mrs. Burton Schubert, Mr. and Mrs. Fendorf Schubert, Mr. and Mrs. Granville Boyd, and hosts, Mr. and Mrs. Littlejohn.

Next meeting will be February 7th in the home of Mr. and Mrs. Granville Boyd.

Rotary Club News

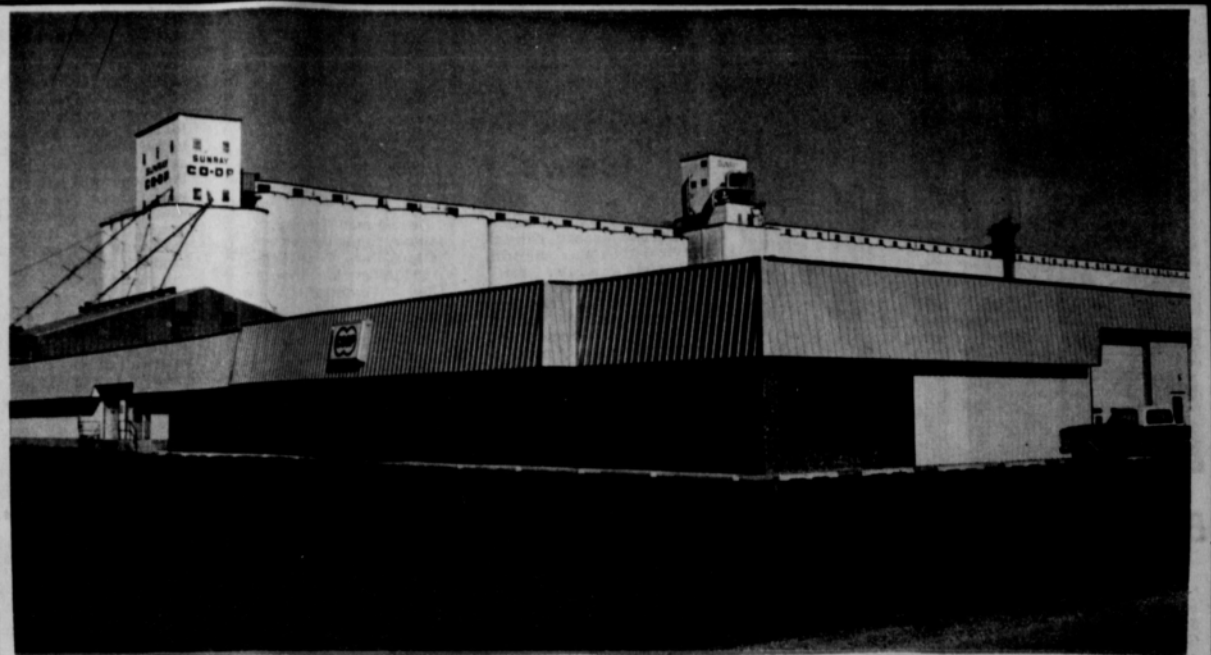
The Spearman Rotary Club met Monday, January 12th at Martin's Steak Garden.

President, Roy Bulls presided over the meeting. Eddie Gale Martin presented the program with several musical selections on the piano.

Visitors present were David Simpson and Dick Ripper of Borger and Jim Brown of Shamrock.

Members present were Carrie Marie Berry, Roy Bulls, J. L. Brock, Archie Burress, E. J. Copeland, Pete Fisher, Ed Garner, Peyton Gibner, Don Hergert, John Hutchinson, Eddie Limbocker, Junior Lusby, James Lyon, Jack McWhirter, Mark Neff, Coy Palmer, Elizey Vandenburg, Don Wirsdorfer and John Lynn.

Next meeting will be January 19th at Martin's Steak Garden.



You're All Invited . . . to the OPEN HOUSE OF OUR LARGE, NEW, COMPLETE FARM STORE

All Day SATURDAY, JAN. 17

TOURS FROM 9 a.m. to 4 p.m.

FREE Coffee, Donuts, Popcorn, Soft Drinks

Door Prizes Every Hour - All Day Long

BIGGER PRIZES AT DAY'S END - ALL YOU DO IS REGISTER!

And COMPLETE is the word!! . . . 31,200 feet of sales and service area under our great big roof -- and with lots of paved parking right out the doors.

EVERYTHING to provide you the fullest in farm supplies -- Equipment, Fertilizer, Chemicals, Livestock Supplies and Feeds, Seeds . . . Auto Parts and Accessories, Tires for Vehicles of all sizes . . . Front-End Alignment Service . . . an Automatic Car Wash, 4 Service Stalls . . . and Handy Lading Docks for everything you need for modern, irrigated farming!

COME VISIT AND SEE . . . Enjoy a tour through our Big New Farm Store . . . and with our Neighborly People.

IT'S ALLDAY SATURDAY . . . COME ENJOY THE FESTIVITIES . . .

VALUABLE COUPON
GOOD FOR
FREE LUBE JOB
Schedule 48 hours in advance. Good until March 1, 1976.
LIMIT ONE

VALUABLE COUPON
GOOD FOR
10% OFF ON ANY Co-Op Tire
Now until Feb. 15, 1976. Car, truck or tractor.

VALUABLE COUPON
GOOD FOR
\$4.00 ON ANY Front-End Alignment
On our new electronic system. Passenger car and light truck.

SUNRAY COOP COOP

948-4124

NORTH MAIN STREET - SUNRAY

Piggy Who Went To Market Provides Nutritious Food

Replaying the fable of the little piggy that went to market... smart shoppers who go to market these days might look into the "porker" when they are trying to make nutrition and pocketbook meet. Pork has surprisingly high protein values and low calorie count, and you might also find...the price is right! Pork is one of the natural foods people don't seem to know too much about, especially the product improvements through better breeding. Now, the Pork Industry Group of the National Live Stock and Meat Board has announced a recipe pamphlet, "Pork, An American Tradition", that tells all.

There has been a need for a compact source of information on pork, and this pamphlet provides it. Anyone just starting to cook can learn from it. The pamphlet not only includes information about the excellent nutritional qualities of pork but it has a chart showing where the various pork cuts come from. It should keep the customer coming back to the counter for pork. If you would like a copy send a stamped, self-addressed envelope to: Pork Industry Group of the National Live Stock and Meat Board, 36 South Wabash Avenue, Chicago, Ill. 60603. And, if you've a family of

children with man-sized appetites the following recipe taken from the pamphlet should provide the tastiest sandwiches since the Earl of Sandwich thought of the idea.

- Oh Boy, Farm Boy
- 1 1/2 lb. pork sausage
- 3/4 c. chopped sauerkraut, well drained
- 1/2 t. caraway seeds
- 1 t. butter or margarine
- 6 slices (1 ounce each) natural Swiss cheese
- 6 enriched hamburger buns, toasted
- 18 slices pimiento-stuffed green olives (3 large olives)
- Heat sauerkraut and caraway seeds in butter or margarine until hot, stirring frequently to prevent browning. Keep warm. Divide pork sausage into 6 patties. Cook on both sides, draining off drippings. Cover each sausage patty with a slice of Swiss cheese. Broil until cheese melts. Place two tablespoons sauerkraut mixture on bottom half of each bun. Arrange sausage patties on sauerkraut. Place three olive slices over cheese on each patty. Partially close each sandwich with top half of bun. Serve hot. Yield 6 sandwiches.

SPEARHEAD PORK PRODUCER

OWNER - JAMES and RUBY LAIR

MANAGER - JIM KUNSELMAN

Kindergarten Survey Being Made

The Spearman Elementary School is starting the 1976-77 kindergarten students list. It is important that next years' students be known now in order that they may be given information on the immunizations and other planning which is necessary.

If you have a child or know of any child whose birthdate was prior to September 1, 1971, and who will be 5 years old before or as of Sept. 1, 1976, please complete the form and return it to the Spearman Elementary School, 511 S. Townsend.

REGISTRATION FORM FOR 1976-77 KINDERGARTEN

Full Name of Child	Parent's names	Address & Phone	Birthdate

Please check whether the child will be a town student or a bus student. () Town () Bus

Lung Association To Train Specialists

\$50,000 in medical grants for 1976 were announced today by the American Lung Association of Texas, for training of chest specialists in 1976. Five recipients of \$10,000 each will pursue advanced lung research studies at University of Texas medical centers in Galveston, Dallas, and San Antonio.

Lung disease ranges from the newborn baby with hyaline membrane disease to the elderly patient with pneumonia. Yearly epidemics of influenza take their toll. Along with chronic emphysema and bronchitis. One acutely dangerous condition is

pulmonary embolism, caused when a blood clot lodges in the lung.

Citing a critical shortage of chest doctors to care for these patients, the Lung Association urged individuals who have not yet answered their Christmas Seal letters to do so.

"Either there is a specialist to care for the patient in lung failure, or there is not. Too often, there is not, and we are using Christmas Seal money to close that gap. It is a matter of vital concern to the patient," said Mrs. Mary Brock of Spearman, Hansford County Representative of the Lung Association.

"Our motto is that it's a matter of life and death, and that is exactly what it is," she added.

The U. S. Department of Agriculture (USDA) today announced it is postponing the effective date of a brucellosis quarantine on Texas cattle, until further notice.

Meanwhile, according to officials of USDA's Animal and Plant Health Inspection Service (APHIS), Texas is complying with the "uniform methods and rules" which set forth minimum standards for the 50 states participating in the cooperative brucellosis program.

In response to a temporary court order issued Dec. 30, the Texas Animal Health Commission began requiring the S-branding of cattle exposed to brucellosis to prevent them from being diverted from shipment to slaughter, and also requiring tighter controls of cattle entering brucellosis-free areas of the state.

Following a Jan. 8 hearing, Judge J. T. Boyd of the

state's 64th Judicial District in Castro County, issued a temporary injunction directing the Texas Commission to continue enforcing these measures until further order by the court, or until such time as the new state regulations can be put into effect. The Commission has scheduled a hearing for Feb. 5 on these regulations.

USDA officials said they will continue cooperating with Texas in carrying out a brucellosis eradication program, including the payment of indemnities to owners of infected cattle.

Also, Texas counties will retain their standing in the national brucellosis program. Most of the state's 254 counties are currently rated as "modified-certified" brucellosis areas; 25 are "certified brucellosis-free," but 28 are listed as "noncertified." Brucellosis or Bang's disease annually causes millions of dollars in losses

"Texas" Auditions Are Saturday

Canyon... It's time for the "Texas" auditions. In the Bicentennial year, as in the previous ten, 150 people will be able to walk back into history with drama and song and dance. They will re-live the life in the Texas Panhandle in the 1880's and will re-create it for the audiences who travel thousands of miles to come.

Eighty of them will be on the stage, ten in the technical crew, and the rest in the front-of-the-house (ushers, box office, parking attendants, etc.)

The Directors of "Texas" will hold the auditions for the Panhandle on Saturday January 17 in Canyon, Texas and January 18 in Lubbock, Texas. The schedule is: Saturday, January 17th - 10:00 A. M. to 12 noon and from 1:30 P. M. to 4:00 P. M. in the Branding Iron Theatre, Fine Arts Building West Texas State University. Dances only from 5:00 P. M. In Lubbock, Texas on January 18th, Sunday - University Theatre, Texas Tech University. Actors, Singers and Technicians from 1:00 P. M. to 3:00 P. M. Dances only from 3:00 P. M.

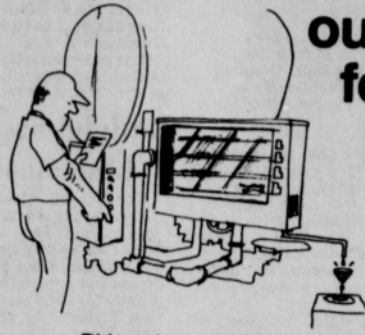
Downstate auditions will be held in February and March.

"Texas" played to 92,623 in 1975, bringing the attendance for the first ten years to 770,000.

A place in the cast is an opportunity to bring pleasure and historical understanding to many thousands - as well to gain much experience in theatre.

All applicants are welcome. For further information call 806-655-2182 or write Box 268, Canyon, Texas 79015.

Squeeze more efficiency out of your fertilizer dollar.



Did you know that we can formulate over twenty thousand fertilizer combinations? That means that you can get the precise amount of major and minor plant food elements your soils and crops need on a field by field basis. You don't have to pay for ingredients you don't need. Which is why using ARCADIAN® liquid fertilizers made the SLF® way is such an efficient way to fertilize. You make maximum use of every pound of fertilizer applied.

So if you're looking for ways to cut crop production costs, look at how much more efficiently you can fertilize with ARCADIAN liquid. It can do exactly what you want it to. Without doing more than you need. Talk to us today. And start fertilizing more efficiently tomorrow.



Booster Ag. Chem., Inc.

435-3546 Burl Buchanan Manager 659-3159 or 659-3367



MILANA PAPAY



FROSTY HICKERSON

Boy & Girl Of The Month

Outstanding students in Spearman High School selected by the Spearman Study Club as Boy and Girl of the Month for December is Milana Papay and Elbie Ellis (Frosty) Hickerson.

Milana Papay is the 18 year old daughter of Mr. and Mrs. Edward H. Papay of Morse. She is a member of the First Baptist Church of Morse, where she is a substitute pianist.

She has been a guard on the Lynxette basketball team for the last four years.

She attended Girls State last year, sponsored by the American Legion.

She attended elementary and junior high at Morse and is now a transfer Senior from Morse at

Spearman High School. She is undecided about her plans after graduation.

Elbie (Frosty) is the 17 year old son of Mr. and Mrs. J. C. Hickerson. Frosty attends the First United Methodist Church and is the U. M. Y. reporter. He is also on the administrative board of the church.

He has played football one year, been in speech four years, in drama three years, on the Annual Staff three years and is a member of Who's Who.

Frosty plans to go to watchmakers school in Paris, Texas after graduation.

Dunkin Munchkin Sale January 17

Girl Scout News

Junior Troop #76 met Monday, January 12th in the Girl Scout House with leaders, Mrs. Jim Davis and Mrs. Tommy White.

Mrs. Clark Miles gave the program on "Skin Care" and demonstrated the proper use of make up.

Refreshments of punch and cookies were served by Cindy and Debbie Burton to guest, Mrs. Mires, and to members, Penny Cunnings, Jan Davis, Jean Davis, Sonya Coley, Lana Paul, Yvonda Scroggs, Angela McCain, Janet Reed, Teri Thomas, and Nikki Rylant.

Next meeting will be January 19th in the Scout House with Lana Paul as hostess.

ham, Chad Guthrie, Todd Martin and Den Mother, Mrs. Davis.

Next meeting will be January 16th in the home of Mrs. Davis.

Den #4 met Thursday, January 8th in the home of Mrs. Floyd Close with Den Mother, Mrs. Lynn Cook and assistant, D'Anda Close.

The boys discussed their achievements and held game tournaments.

Refreshments were served by Bob Cook to members, Joe Lujan, Anthony Sturgeon, Travis Patterson, Jesse Browning, Cole Ivey, Jeff Gressett, Nick Wisdorfer and Bryan Gray.

Meeting days have been changed from Fridays to Thursdays.

Next meeting will be January 15th in the home of Mrs. Floyd Close.

Den #2 met Wednesday January 7th in the home of Mrs. Joe Temple.

The boys discussed achievements and played games.

Refreshments were served by Tommy Temple to members, Chuck Smith, Mark Guthrie, Mack McCain and Greg Meek.

Next meeting will be Thursday, January 15th in the home of Mrs. Dwight Sumner.

Boy Scout News

Den #3 met Friday, January 9th in the home of Mrs. Jim Davis.

The boys made helmets and swords and practiced their skit for the Pack Meet.

The boys discussed Bob Cat Badge requirements and practiced the Cub Scout Promise.

Refreshments were served by James Davis to members, Doug Murrow, Terry Phillips, Jeff Vanlandingham,

Dunkin Munchkin Sale January 17

SALE



79¢

Beltbuster IT'S A BIG 'UN!

Takes a real Texan to finish one!

Bust your belt while you ease up on your pocketbook.

The 79c Beltbuster; two big patties cooked from a fresh start, giant bun to load 'em on, garnished with crispy lettuce, crunchy pickles, juicy tomatoes, the works!

The 79c Beltbuster Sale. A really big deal in more than 900 neighborhood Dairy Queen stores.

Wednesday through Sunday only, JANUARY 14 THROUGH 18 At participating stores.



© Copyright 1976 Dairy Queen, Inc. The Beltbuster is a trademark of the Dairy Queen/Trade Assn.

What's in our name?

Community Public Service

Service... it's the most important part of our name and our job... that of providing you with dependable electric service. Electricity has become such an important part of our lives that people rely upon it daily, both in their homes and on their jobs. We have the responsibility of providing electric service at just the flip of a switch. And since we have a legal obligation to provide electric service to a particular area, we cannot pick up and move. Community Public Service Company is an investor-owned electric utility company which is a closely regulated, tax-paying business financed by the sale of stocks and bonds. Those regulations include rates, services, methods of accounting, new construction and operating procedures. At Community Public Service Company we are doing our best to provide you with the kind of electric service you deserve and expect. And... we're doing it as efficiently and economically as possible.



COMMUNITY PUBLIC SERVICE Your Electric Light & Power Company An Equal Opportunity Employer

BICENTENNIAL BONUS BONANZA

1000 EXTRA



An American way of thrift
Since 1896



To our founding fathers, being thrifty was a way of life. It had to be. And for 80 of our country's 200 years, American shoppers have been following in that tradition by enjoying the extra value and valuable extra gifts of S&H Green Stamps. All...at no extra cost!

And thriftier than that, you just can't get.

So, for 1,000 Extra Stamps come on in and

join our salute to America! To American shoppers! And to an American way of thrift!

Pick up your BiCentennial Bonus Bonanza Sticker Card the next time you shop and start saving.

You get a sticker with every \$10.00 purchase. Save any 24 stickers and be 1,000 Extra S&H Green Stamps thriftier...as many times as you can. Start today!



GET 1000 EXTRA STAMPS WITH EACH FILLED CARD!



County Cancer Rate Compared

Mark your calendar now for January 22nd from 9 a. m. - 3 p. m. at the La Casita Room of the Gruver State Bank. We will be having a rug making workshop. Hooked, punched and braided rugs will be demonstrated. Bring the materials to work on your own or simply come to see how it's done.

Then at 7:30 p. m. on the 22nd in the H. D. Club room in Spearman we will have a special program on self defense and rape prevention. Jerry Gess, Public Information officer with the Department of Public Safety, will present the program. He has received special training to present this information.

A training film will be shown with demonstrations and a question-answer session. Learn how to defend yourself from attack, how to report abductions, rapes, etc. by attending this 2 hour program which is free and open to the public.

One of the most versatile "vegetables" -- the mushroom -- isn't really a vegetable at all. It's a fungus. Though sold in vegetable sections of stores, the mushroom cannot be called a vegetable because it has no green coloring matter and cannot take carbon dioxide from the air. It is

NELLE'S

NEWS

by Nelle Evans

The dramatic increase in cancer deaths in the United States in the past year, recently disclosed by health officials, draws attention to the situation in Hansford County.

What do the latest figures show for the local area? How does its mortality rate compare with that in other communities?

Figures released by the National Center for Health Statistics show that the increase in the cancer rate throughout the country as a whole was more than five times greater than had been expected.

Instead of a rise of about one percent, which had been the norm for many years, there was a sudden jump of 5.2 percent. It was the biggest one-year increase ever recorded. Thus far the experts are baffled as to the cause. Some of them suspect that the surge may be due to a big rise in lung cancer among women, who are smoking more than they ever did.

In Hansford County, the figures show, cancer continues to be second only to heart disease among the major causes of death.

On the basis of the U. S. Public Health Service's last three annual reports, the number of deaths in the local area attributed to cancer in one or more of its various forms has averaged 5 per year. Lung cancer was blamed for one of them.

The figures refer to the resident population only. Deaths of non-residents are not included.

In terms of population, the local mortality from the disease was equivalent to a rate of 78 deaths per 100,000 people.

The average rate nationally, by way of comparison, was 163 per 100,000. In the State of Texas it was 145.

Health officials at the American Cancer Society and the National Cancer Institute are engaged in in-depth examinations of the death records to determine the cause of the sharp increase.

It will take the better part of a year, they believe, before a detailed analysis of the statistics will show what types of cancer have become more prevalent, what environmental factors, if any, may be responsible, what foods and food additives may be having an effect and whether the cancer surge has been concentrated in particular sections of the country.

"When in the Course of Human Events" is the theme for the Waka P-T.A. January 19 at 7:30 in the school cafeteria.

The Cultural Arts made by the school children will be on display under the supervision of Mrs. Jane Henton.

The students of the 4th grade, under direction of Mrs. Lesley Stinson. A social hour will follow the meeting - everyone is welcome, with a supervised recreation for the children in the gym, following the meeting.

does not affect taste -- it's merely a matter of personal preference.

It isn't necessary to peel mushrooms. Rinse them quickly in a light stream of cold water, never let them soak. Cook no longer than 10 minutes in a little butter or margarine with salt and pepper to taste.

Tuning to past glories of the mushroom, centuries ago the Chinese treasured them as a delicacy and a medicine. The Romans prized mushrooms highly as a food for the gods.

Cultivated mushrooms were grown in caves and cellars of France in 1749. Today the U. S. is the leading cultivator of mushrooms.

Dunkin Munchkin Sale January 17

FARM AND RANCH NEWS

by Joe VanZandt

Hansford County 4-H members have entered twenty steers, twelve lambs and six barrows in the Amarillo Stock Show which is coming up next week.

Among those 4-H's who have entered steers are: Stan Sherwood, Chad Clawson, Darren Goodheart, Sandy Dry, Rex Shook, Scott Henderson, Chris Cooper, Donald Hartman, Mary Ann Martin, Ron Clark, Ty Williams, Todd Williams, Elden Allen, Roy Don Gammon, Pamela Clawson and Darla Armes.

Lamb showmen include Jodie Zschiesche, Charles Zschiesche, William Jar-

vis, Paige Holt, Chad Clawson, Tina Clawson, Shelly Logsdon, Suzanne Hart, Tracy Vernon, Jana VanZandt and Diane VanZandt.

Those entering the barrow show include: Scott Henderson, Marshall Cator, Durward Cator, Gary Thompson and Ron Clark.

The steer and lamb show will be held on Friday, January 23 and the barrow show will be Saturday, January 24. Everyone is invited to come over to the Amarillo Stock Show and watch these exhibits display their livestock.

In addition there will be a large number of FFA exhibitors from Spearman and Gruver also entered in the show.

With Texas Arbor Day coming up January 16, people will be planting trees shrubs and vines. For successful transplanting, particular attention

should be given to a few details.

In transplanting any woody plant, the planting hole and backfill used are extremely important. The old saying that "it is better to use a \$1 plant in a \$10 hole than to try to squeeze a \$10 plant in a \$1 hole" is still true. The hole should be just deep enough to allow the tree or shrub to be set at the same depth it was in the container or at the nursery.

The poorer the soil, the greater should be the diameter of the hole. A good rule-of-thumb is to make the pit at least one-and-one-half times larger than the root ball.

If the existing soil is to be used as backfill, it should be enriched with at least one part peat moss or compost to two parts soil. Work the soil mixture in around the roots

of a bare-root plant or pack it in firmly around the soil ball of container or balled-and-burlapped plants. When the pit is about two-thirds filled with soil, water thoroughly and allow the water to drain before completely filling the hole with backfill.

I suggest building a dam or berm about 8 to 12 inches beyond the edge of the hole as an aid in watering the first year or two. Trees over 4 to 5 feet high should be staked or guyed, especially if they are evergreen. If using guy wires, run the wire through a piece of old garden hose before placing it around the trunk to prevent damage to the bark. Check frequently to be sure the tree is not being girdled.

Care after planting is important. Water regularly and thoroughly

when needed but do not overwater as this keeps soil pores filled with water and slows root growth. Use a mulch around the base of the plant to keep down weeds, conserve moisture and prevent soil compaction. Fertilize only after the plant is well established.

Further information on transplanting woody plants is available at the County Extension office.

I encourage everyone in the county to seriously consider planting at least one tree on Arbor Day. Remember, as you plant a tree, you are planning for the future.

Hospital News

Patients in Hansford Hospital are Clarence Pettitt, James Ferguson,

QUANTITY RIGHTS RESERVED **PRICES GOOD THRU' JAN. 17TH**



UNITED
PERRYTON, TEXAS
SUPER MARKETS
WE GIVE S&H GREEN STAMPS

PRICE

1000 extra S&H Green Stamps
come make history in our big



BICENTENNIAL BONUS BONANZA
pick up your card today!

YOU GET ONE STICKER WITH EACH \$10 PURCHASE! A FILLED CARD EARNS YOU 1000 STAMPS!

CASSEROLE PINTO BEANS
NEW CROP

4 LB. BAG 98¢

KLEENEX 125 COUNT FACIAL TISSUE REG. 49¢

39¢

KLEENEX TERRY TOWELS JUMBO REG. 61¢

49¢

WILSON'S BAKE-RITE SHORTENING

3 LB. CAN 98¢

GEBHARDT'S JUMBO Tamales

30 OZ. CAN 59¢

LIGHT CRUST FLOUR

5 LB. BAG 59¢

SPINACH

PEAS BLACKEYED

HOMINY

CARROTS SLICED

5 303 CANS \$1

WHEATIES BREAKFAST CEREAL 18 OZ. BOX

89¢

Farm Fresh United Produce

CRISP CABBAGE

CLIP TOP PURPLE TOP TURNIPS - YOUR CHOICE -

10 LB. 78¢

RUSSET ALL PURPOSE POTATOES 20 LB. BAG

\$1 25

DELICIOUS APPLES OR NAVAL ORANGES 5 LBS. MIX OR MATCH

\$1 00

TEXAS RUBY RED GRAPEFRUIT 7 FOR

78¢

W. T. Smith, Cecelia Randall, Karl Nielsen, Bob Potts, Rose Beck, Lawrence Wilbanks, Willie Damell, Helen Truax, Dr. Don Hackley, Tammy McLain, Vera Wroten, Myrtle Eller, Ethel Cookston, Ashbury Cookston, Bessie Callaway, Frances Sim, Bill L. Miller and James Haden.
Dismissed were Pauline Hale, Ed Haner, Norma Buxton, Sandy Cooper, Allena Gould, Mary Shook and daughter, Michael Helker, Bill Hunter, Nancy Rodriguez and son, Susan Delk, Edythe Curlee, Elwana Eaton and Nell Cummings was transferred.

Dr. Hackley's office personell will have the office open weekends (except Wednesdays) from 9-12 & 1-3. This is for the convenience of patients who need information on their records, insurance, accounts, etc.

Leadership appears to be the art of getting others to want to do something you are convinced should be done.
- Vance Packard

Certified nurse-midwives make it possible for pregnant women to get good prenatal care in some parts of the country where it was not available before, says the March of Dimes.

Doctors today recommend a weight gain of 24 to 30 pounds during a normal pregnancy, the March of Dimes reports, depending on the Mother's original weight.

Revenue Sharing Based On Population & Income

Individual Internal Revenue Service (IRS) taxpayer returns for 1975 include questions on residence intended to provide an accurate basis for equitable distribution of general revenue sharing funds, according to the Office of Revenue Sharing (ORS) of the U. S. Treasury Department.

Such funds are returned by the Federal government to State and local general purpose governments under terms of Federal revenue sharing law. The amount each government receives is based, in part, on population and per capita income estimates made by the Bureau of the Census.

U. S. Department of Commerce.

The new questions on the income tax form are designed to identify the taxpayer's legal residence, which may differ from his or her mailing address. Authority to ask the new questions is provided in Section 6017A of the Internal Revenue Code.

The information from the residence questions will be used by the Bureau of the Census to make biennial population and per capita income estimates needed to insure that States and communities receive the amounts of general revenue sharing funds to which they are

entitled. For this reason, all taxpayers are urged to provide the information as an assistance to their States and communities. The Internal Revenue

Code authorizes a fine to be imposed for failure to provide the residence data, unless reasonable cause is shown for such failure.

Information provided to the Census Bureau, under law, can be published as statistical totals only, and no information about a person or individual firm may be disclosed to any person, institution, or government agency. This law of confidentiality under which the Bureau operates applies also to the residence data to be

collected on IRS returns.

The new questions are labeled A, B, C, and D, and the wording of each follows:

Question A--In what city, town, village, etc., do you live?

Question B--Do you live within the legal limits of the city, town, etc.?

Question C--In what county and State do you live?

Question D--In what township do you live?

In regard to Questions A and B, directions on the form explain that every municipality has defined legal limits. If the area where you live is unincorporated, or is outside the legal limits of the place named in Question A, check "no" to Question B. If you are not sure whether you live within the legal limits, check "Don't Know"

to Question B.

Question D, the form also explains, applies only to townships or equivalent areas in New England, Illinois, Indiana, Kansas, Michigan, Minnesota, Missouri, Nebraska, New Jersey, New York, North Dakota, Ohio, Pennsylvania, South Dakota, and Wisconsin.

Taxpayers who have difficulty in answering the residence questions are instructed to seek assistance from their local government officials or to write the Bureau of the Census, Residence Question, Washington, D. C. 20233, or to call collect at 812-948-2111 between 8 a.m. and 5 p.m. (E. S. T.) Monday through Friday.

Get Back On The Track

Have you got those post New Year's "Oh my gosh, I ate too much over the holidays and I must get rid of these extra pounds" blues?

According to Adele McGinty, Area Director for WEIGHT WATCHERS in West Texas, the Christmas and New Year's holidays traditionally are times when many people become expansive--in more ways than one.

That Christmas dinner and the "How can I refuse?" New Year's celebrations invariably mean too much food and drink and very often the wrong foods and the wrong type of beverage.

If your trousers or your dress are a bit tighter than were a few weeks ago, this is a good time to get back on the weight control track, and start getting rid of those unwanted pounds.

Mrs. McGinty suggested a six-point program that is in line with the "Personal Action Plan" developed by Weight Watchers International, Inc.

The plan takes the form of a series of behavior-oriented Eating Management Techniques--day-by-day steps designed to help the overweight to face and overcome problems and obstacles in weight reduction.

The program is as follows:
1) Start by STARTING... with a breakfast exactly as specified by your weight-control program. Then you're already committed and back on the weight-reduction track.
2) Get back on the track by KEEPING TRACK... Chart every food you eat, hour by hour, every day. Keeping a record can open your eyes.

3) Clean house... of all temptations. If you're struggling to get back on the right eating track, you don't need an obstacle course.

4) Have a drink... of WATER, every time you pass a drinking fountain. (Try it. It's a great filler-upper.)
5) If you're stuck in the house and think you're hungry when you're not, set a timer. Wait 10 minutes, or better still an hour. It will help you adhere to your weight-reduction program.

6) Better still, get OUT of the house... keep busy and consider, as part of your schedule, a WEIGHT WATCHERS class. Fill up on motivation. It isn't fattening at all.

The "Personal Action Plan," which stresses individual behavior within the framework of the weekly WEIGHT WATCHERS class sessions, evolved after careful testing involving members who were given attention aimed at helping them to cope with specific eating problems.

Mrs. McGinty believes that if you follow the above suggestions you will not have to resolve to lose weight again next year.

BOTTLE GARDENING--Bottle gardening can be fun for busybodies, contends a landscape horticulturist for the Texas Agricultural Extension Service. All that is needed is a waterproof container, tap water and cuttings of some favorite plants. Beverage bottles, vases, canning jars, fish bowls and aquariums make good containers. Use cuttings from any plant with a thick stem, such as a myrtle, geranium, oleander, wax begonia, coleus or hibiscus. Change the water monthly and wash the container with hot water and detergent. Also make a fresh cut on the plant stem to improve water uptake. Any cuttings that develop roots can be planted.

FIGHTERS!

"UNITED'S TRU-TENDR BEEF!"

• ROUND • RIB • SIRLOIN

STEAK **\$ 1²⁹**
LB.

WASTE FREE BEEF
CUTLETS **\$ 1⁹⁹**
LB.

BONELESS SHOULDER
ROAST **\$ 1²⁹**
WASTE FREE LB.



BONELESS STEW
EXTRA LEAN CUBES OF BEEF
\$ 1¹⁹
LB.

FAMILY PACK GROUND BEEF
78^c
LB.

BONELESS FULL COOKED FARMLAND HAMS
\$ 5⁹⁸
3 LB. CAN

WILSON'S CERTIFIED SUGAR CURED BACON
\$ 1⁴⁹ | **\$ 2⁹⁷**
1 LB. PKG. | 2 LB. PKG.
THICK SLICED

WILSON'S CERTIFIED FRANKS
MEAT OR BEEF 12 OZ. PKG
79^c



WE RESERVE THE RIGHT TO LIMIT QUANTITIES



PRICES GOOD THRU JAN. 17TH

UNITED
PERRYTON, TEXAS
SUPER MARKETS
WE GIVE 8 1/2 GREEN STAMPS

CURITY DIAPERS DAYTIME 30 CT. TODDLER 24 CT. YOUR CHOICE \$2. VALUE **\$ 1⁷⁹**
MARACONI & CHEESE DINNERS FINE FARE 7 1/2 OZ. BOX **4 FOR \$ 1**
KEEBLER ZESTA CRACKERS SALTINES 1 LB. BOX **54^c**
SUN SPUN OLEO SOLID **4** 1 LB. CRTNS. **\$ 1**
FINE FARE BISCUITS SWEET MILK OR BUTTER MILK **10** 8 OZ. CANS **\$ 1**

"FROZEN FOODS"
FLAV-R-PAC POTATOES SHOESTRING LGE. 20 OZ. BAG **25^c**
FISH STICKS MRS. PAULS REG '1" 14 OZ. PKG. **98^c**
NIGHT HAWK REG. '1" DINNERS TASTE OF TEXAS BEEF PATTY DINNER **88^c**
FLAV-R-PAC HALVES 10 OZ. PKG. STRAWBERRIES REG. 49^c **39^c**

Our Heritage of Faith

notes from Faith Lutheran Church

The 15th. Faith is having its Annual Meeting. Items on the agenda are the budget, Thanksgiving Offering Designation, elections and Intership. It is important that everyone attend and have a voice in your church. The time for this meeting is 7:30.

Once again the men of Faith will have a busy week. On the 19th we have dartball here against Hooker. Our team is coming on just fine and we hope to continue. We have a fairly balanced attack with no real superstar. On the 20th we will have our second men's breakfast at 6:30 sharp. Dale Oltman will be the cook and Bruce will again have a short topic to present. All men are invited to attend either of these events. For the breakfast let either Bruce or Dale know if you plan to attend.

The class on Scripture was well attended. On the 21st we will have our second class. We hope that this class will deepen our understanding of God's Word and motivate us to study it more. Time is 8:00.

The Luther League has a ski trip planned for the weekend of the 23rd - 25th. It was only going to be Saturday and Sunday but there had to be a change in plans. We will leave Friday instead of Saturday. We hope the church will defray some of the costs. It should be fun for other Leagues as well.

It is not too well known, but the Lutheran Church is the largest protestant church in the world. There are over 72 million members in the world and around 12 million of them are in the U. S. The highest concentration is in Wisconsin, Iowa, Minnesota, Dakota, and Pennsylvania. The fewest are in the South. The Lutheran tradition started when Martin Luther, a German monk and Doctor of Theology felt the Roman Catholic church was in error. He acted and the Reformation was started. Almost all other Protestant churches began in or after this movement.

We invite you to Faith and worship God in a setting filled with rich tradition and heritage. Worship is 9:30 and Sunday School is 10:30.

Thank You To Local Citizens

Again, thanks to all of you in Spearman and surrounding communities who have left the "Christ" in Christmas by remembering those of us less fortunate at this special time of the year.

The many gifts, which you have sent our way, have made our Christmas a merrier one. The thought and warm wishes accompanying the gifts have added an extra note of cheer to our holiday season.

We wish to extend a very special "Thank You" to Mrs. Dorothy Quinn, who has given of her time in bringing these gifts to us.

A great big "Thank You" to: Billy Miller, owner of the Spearman Reporter, and Faye Lynch, reporter for the items; also to Radio Station KBMF-FM, to Orville Brummett of Spearman Rexall Drug, and the following list of citizens in your area who have responded so generously in our behalf.

- VI Homby & Troup
- Ann Thomas
- Mae Shaull
- Grace Lyon
- Mae Hargis
- Ruth Caro
- Rita Petritt
- Evelyn Hiller
- W. Jarvis
- Margaret Womble
- Candy Boxwell
- Susie Hand
- Faye Schmehr
- E. A. Melzer
- Verlin Beck
- Polly Hoobler
- Colleen Murrow
- Margaret Gibner
- Mrs. R. B. Archer
- Mitch Fedric
- Dolly McWhirter
- Raymond Kirk
- Alpha Townsend
- Frieda Sheets
- Mildred Taylor
- Agnes Hutchison
- Linda Venneman
- Betty Davis
- Garland Hopper
- Peggy Archer
- Dor Jenkins
- Reba Bengt
- Donna Cook
- Beverly Waggoner
- Jewel Turner
- Herbert Kirk

*May the Light of Our

Savior shine on you and yours, not only during this special season, but all during the New Year. With warmest wishes, The patients and staff of L-Ward, A Unit Loma T. Bailey Wichita Falls State Hospital

Annual Banquet Set For Jan. 31

The Annual Banquet of the Spearman Chamber of Commerce will be held Saturday, January 31, 1976 in the High School Cafeteria and Auditorium. This is the first scheduled bicentennial event and the theme is "And That's The Way It Was" with flash backs on the History of Hansford County. The Women's Division is in charge of the decorations, Dorothy Roden, Chairman. Mr. John Hutchison will take over as the new President and C. D. Riggins is the Immediate Past President. Pat Sutterfield is the newly elected president of the Women's Division. Elvanna Davis is the retiring president. Master of Ceremonies for this Bicentennial Banquet is Clark Mires. Entertainment will be provided by Karen Countiss. Tickets will go on sale next week for \$6.00 each at the Chamber of Commerce office. John Sutterfield is Chairman of cooking the steaks. The cafeteria personnel is in charge of the rest of the menu. The meal will be served by the F. H. A. girls.

The main features of the evening will be the naming of the Citizen of the Year by the Chamber of Commerce and the Employee of the Year by the Rotary Club and the Member of the Year by the Women's Division.

Mrs. Eakin Hosts Sorority

Rho Sorority met Thursday, January 8th in the home of Mrs. Jim Eakin.

President, Mrs. Dennis Nelson presided over the meeting.

Mrs. Vernon Pipkin gave the program entitled "Viva La Difference", a bi-centennial program on women today.

Discussion was held on the Valentine Ball.

Refreshments were served by Mrs. Eakin to members, Mesdames: Dennis Nelson, Pat Patterson, Phillip Renner, Clark Mires, Phil Sanders, Vernon Pipkin, Jack Lasater, Mike Davis, Jerry Holton, Ken Schneider, Jerry Hayes, Tim Barkley, Murphy Allen, Lynn Cook, Gilbert Hamish, Dan Ralston, Monty Blackman, Gary Taylor and Bob Pearson.

Next meeting will be January 22nd with Mrs. Murphy Allen as hostess.

Holt HD Club Plans Party

The Holt Home Demonstration Club will host a "42" Party for the families of the Holt Community Friday, January 30th at 6:30 P.M. to be held in the Holt School House.

At the party, a stamp shower will be held to replace card tables and chairs.

Those attending are asked to bring sandwiches, desserts, snacks, or enough food to feed your family.

HD Club News

The Spearman Home Demonstration Club met Friday, January 9th in the home of Mrs. B. J. Garnett.

President, Alpha Groves presided over the meeting. The meeting was opened with prayer and Mrs. Garnett gave the devotional taken from Psalms 85.

Minutes of the previous meeting were read and approved.

Roll Call was answered to "My Favorite Centerpiece".

Home Demonstration Agent, Nelle Evans gave a demonstration on Monthly Centerpieces, which were very original and interesting.

Refreshments of cake, coffee and tea were served by Mrs. Garnett to guests, Mrs. Ed Hutton and Mrs. Tommy Reger and to members, Mesdames: Bertie Lewis, A. D. Reed, John Kenney, Carl Hutchison, Eldon Ferrell, W. H. Tarbox and Alpha Groves.

Next meeting will be January 23rd in the home of Mrs. Virgil Hull.

Hansford Lodge Meets

Hansford Lodge #1040 A. F. & A. M. met Monday, January 12th in the Hansford Lodge Hall for their regular meeting.

Dan Faries, Worshipful Master presided over the meeting.

Plans were made for a visit to the Top Of Texas Lodge #1381 on January 17th for a Costumed Master's Degree. The Degree will begin at 3:00 P.M., followed by a second Degree. Supper will be served about 5:30 P.M., followed by a third Degree. All Master Masons are cordially invited to attend.

Hansford Lodge #1040 will hold an Entered Apprentice Degree Monday, January 19th at 7:30 P.M. at the Lodge Hall.

Refreshments of hot dogs and chili, ice cream and cake were served to approximately 15 members present.

Next regular meeting will be January 26th at the Lodge Hall. Also the District Deputy Grand Master of the 102 Masonic District of the Grand Lodge of Texas will be present. All Master Masons are urged to attend.

Also the Hansford Shrine Club will hold its regular monthly meeting Thursday, January 15th at Martin's Steak Garden.

Arts & Crafts Guild News

The Arts & Crafts Guild met Friday, January 9th in the home of Mrs. F. J. Hoskins.

Delicious refreshments were served by Mrs. Hoskins to guest, Vera Campbell and to members, Mesdames: Garrett Allen, F. J. Daily, Guy Fuller, Bill Gandy, Nolan Holt, P. A. Lyon, W. L. Russell, Joe Traylor, and Ned Turner.

Next meeting will be January 16th in the home of Mrs. P. A. Lyon.

Jaycee Corner

The Spearman Jaycees met Thursday, January 8th at the Fred Groves Barn.

Vice President, Rusty Tindell presided over the meeting.

Discussion was held on a Valentine Dance.

Preparations were made to begin work on the Community Building, mainly the concession area and the Jaycee Meeting Room.

Discussion was held on Jaycee Month and having a membership drive.

Present were Members, Rusty Tindell, Jamie Creamer, Henry Herring, Del Baskin, Ronnie Bullard, Steven Slater, Preston Graham and visitor, Bill Walker.

Next meeting will be January 15th at the Community Building.

Jaycee Wives Plan Projects

The Spearman Jaycee Wives Club met Thursday, January 8th in the home of Judy Tindell.

It was decided the wives would paint the screens for the Hansford County Museum. Workday will be Tuesday, January 12th at the Fred Groves Barn.

January is Jaycee Month and the Jaycees and Jaycee Wives are planning a get-acquainted supper for new and prospective members. If you are interested, contact any Jaycee or Jaycee Wife, the only qualification is, you must be under thirty-five years old.

A discussion was held on decorations for the Valentine dance to be held February 14th at the Community Building. Bill Mack and The Midnight Cowboys will be performing and there will be advance ticket sales from any Jaycee member.

The next meeting of the

Wives will be February 5th at 9:00 A. M. in the home of Vicky Bullard. Those present at the meeting were: Vicky Bullard, Judy Tindell, Willa Faye Creamer, Peggy Herring, Kathy Slater, new member Linda Walker and prospective new member, Peggy Woodington.

Buy Some Dunkin Munchkins Sat. From UMY

CONCORD HOUSE For The Home

Ethan & Allen American Traditional Interiors

45th Off Western Amarillo

WINTER SALE NOW

ODDS CHART

PRIZE	NO. OF WINNERS	AMOUNT
1st Prize	1	\$1,000.00
2nd Prize	2	\$500.00
3rd Prize	3	\$250.00
4th Prize	4	\$100.00
5th Prize	5	\$50.00
6th Prize	6	\$25.00
7th Prize	7	\$10.00
8th Prize	8	\$5.00
9th Prize	9	\$2.50
10th Prize	10	\$1.25
11th Prize	11	\$0.625
12th Prize	12	\$0.3125
13th Prize	13	\$0.15625
14th Prize	14	\$0.078125
15th Prize	15	\$0.0390625
16th Prize	16	\$0.01953125
17th Prize	17	\$0.009765625
18th Prize	18	\$0.0048828125
19th Prize	19	\$0.00244140625
20th Prize	20	\$0.001220703125
21st Prize	21	\$0.0006103515625
22nd Prize	22	\$0.00030517578125
23rd Prize	23	\$0.000152587890625
24th Prize	24	\$0.0000762939453125
25th Prize	25	\$0.00003814697265625
26th Prize	26	\$0.000019073486328125
27th Prize	27	\$0.0000095367431640625
28th Prize	28	\$0.00000476837158203125
29th Prize	29	\$0.000002384185791015625
30th Prize	30	\$0.0000011920928955078125

HERE'S THE IDEAL PLACE TO SAVE FOOD DOLLARS

the home of THIRTY-1 PRICES

IDEAL FOOD STORES

PRICES IN OUR 12-PG. SPECIAL CIRCULAR AND THIS AD ARE EFFECTIVE THRU SAT., JAN. 17, 1976. NONE SOLD TO DEALERS. LIMIT RIGHTS RESERVED.

FULLY COOKED, HICKORY SMOKED

HAMS

SHANK PORTION 7 TO 9-LB. AVG.

89¢

FULLY COOKED, 1 TO 7-LB. AVG. RUMP PORTION

Smoked Hams **99¢**

FARMLAND FROZEN

YOUNG TURKEY Drumsticks

BULK PACK **29¢** LB.

FRESH, EXTRA LEAN IN ALB. PKGS. OR MORE

Ground Chuck 89¢

Chuck Beef 89¢

Roast Beef 89¢

BUTCHER BLOCK BEEF BONELESS CHUCK STEAKS..... **99¢**

25-LB. Freezer Beef Bundle \$22.99

INCLUDES M.B. ROUND STEAK - 7-LB. CHUCK ROAST - 5-LB. SHORT RIBS - 7-LB. GROUND BEEF - 3-LB. RIB STEAKS.

ALL 25-LB. FOR ONLY

RODERO ASSORTED Luncheon Meats **89¢**

CAMELOT HICKORY SMOKED Sliced Bacon **51¢**

OSCAR MAYER Sliced Bologna **89¢**

OSCAR MAYER Pickle Loaf **89¢**

ENRICHED **Camelot Flour 64¢** 5-LB. BAG

MEADOWDALE **Shortening 118¢** 5-LB. CAN

ALL GRENDS **Folger's Coffee 128¢** 1-LB. CAN

HUNT'S **Tomato Juice 52¢** 46-OZ. CAN

CAMELOT CUT **GREEN BEANS 51¢** 16-OZ. CANS

CAMELOT CREAM OR KERNEL **GOLDEN CORN 85¢** 3 16-OZ. CANS

CAMELOT WHOLE Tomatoes **85¢** 3 16-OZ. CANS

CAMELOT LONG GRAIN Rice **58¢** 1-LB. PKG.

CAMELOT REG. OR GRAVY Dry Dog Food **88¢** 1-LB. BAG

HUNT'S Tomato **68¢** 16-OZ. BTL.

CAMELOT PINK Ketchup **68¢** 16-OZ. BTL.

CAMELOT PINK Grapefruit Juice **48¢** 46-OZ. CAN

MEADOWDALE Pancake Syrup **88¢** 16-OZ. BTL.

ALL FLAVORS Camelot Pop **58¢** 66-OZ. BTL.

KEEPLER C. C. BROWN OR Rich 'n Chips **83¢** 16-OZ. PKG.

CAMELOT HALVES OR SLICES **Cling Peaches 47¢** 16-OZ. CAN

Thrift-7 Quality Products

CHIFFON Facial Tissues **3 \$1** 3 CTNS. OF 200

MONEYSWORTH Bath Tissue **88¢** 6-ROLL PKG.

CAMELOT POWDERED Blue Detergent **94¢** 16-OZ. BOX

CAMELOT GREEN, LEMON OR Pink Detergent **74¢** 16-OZ. BTL.

PLAY GAMERAMA... WIN UP TO \$1,000 CASH.

CONGRATULATIONS TO THESE \$1,000 WINNERS:

- SUE ROBERTS, Perryton, Texas
- MRS. IRVIN LILLY, Perryton, Texas
- EARL MADDOX, Pampa, Texas
- DELINDA WALTMAN, Hays, Kansas
- HAROLD BLACKMON, Pampa, Texas
- MRS. H. SCHIBBELMUT, Ulysses, Kansas
- LESLIE KURTH, Alva, Oklahoma

NEW \$100 WINNERS: MRS. KENNETH SMITH, 918 N. Davis, Enid, Okla. NELLON ROACH, Box 451, Laverne, Okla. VELMA JONES, RR1, Liberal, Kans. SHERI DAVIS, 205 Pear, Dumas, Texas

COLORADO RUSSET **POTATOES 169¢** 20-LB. BAG

TEXAS **RUBY RED GRAPEFRUIT 169¢** 15-LB. BAG

CALIFORNIA NAVEL Oranges **51¢** 5-LB. PKG.

FANCY RED DELICIOUS Apples **51¢** 4-LB. PKG.

U. S. NO. 1 Southern Yams **32¢** 1-LB. BAG

FRESH FLORIDA Orange Juice **59¢** 12-OZ. BTL.

FRESH FLORIDA Orange Juice **59¢** 6-OZ. BTL.

CRISP, TENDER Fresh Carrots **19¢** 1-LB. BAG

MEADOWDALE **ICE CREAM 78¢** 1/2-GAL. CONT.

Thrift-7 Dairy Foods

CAMELOT GRADE 'A' Medium Eggs **75¢** DOZ.

CAMELOT GRADE 'A' Large Eggs **79¢** DOZ.

QUARTERED ... LIMIT-3 PLEASE **Meadowdale 88¢** 14-LB. CTN.

Margarine 28¢ IDEAL REG. OR SMALL CURD

Cottage Cheese 89¢ 16-OZ. CTN.

CAMELOT INDIVIDUALLY WRAPPED **American Slices 51¢** 12-OZ. PKG.

HELLO-CRUST Canned Biscuits **51¢** 9-OZ. CAN

Thrift-7 Frozen Foods

MEADOWDALE **ORANGE JUICE 88¢** 15-OZ. CANS

MEADOWDALE **Crinkle-Cut Potatoes 51¢** 1-LB. PKG.

CAMELOT WHOLE **Strawberries 88¢** 16-OZ. PKG.

PANHANDLE HEREFORD BREEDERS

60th Annual Selected Hereford Sale

January 28, 1:00 p.m. Amarillo Texas

SINGLE BULLS-FEMALES-RUGGED, UNPAMPED PEN BULLS- @27 OFFERINGS TO BE PLACED, 2:00p.m., TUESDAY JANUARY 27.

Amarillo Stock Show & Rodeo

6 PERFORMANCES-JANUARY 22-26

FOR SALE CATALOG: GAINES FRANKS, SEC.-MGR., BOX 828, AMARILLO, TEXAS 79105